

980284

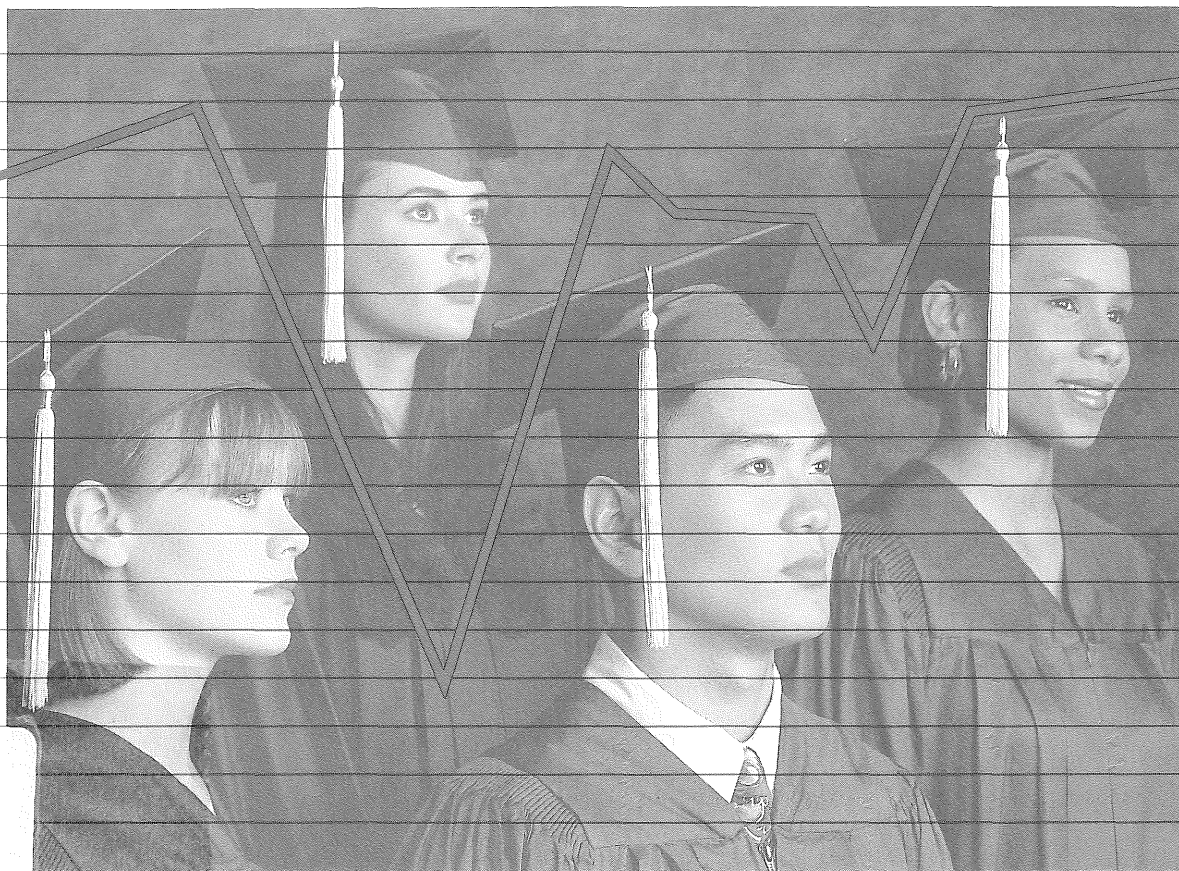
LEGISLATIVE REFERENCE LIBRARY



3 0307 00013 5080

MINNESOTA DEPARTMENT OF

*Children
Families &
Learning*



School

District

Profiles

1996-97

LB
2817
.S38
1996/97
c.2

The Minnesota Department of Children, Families & Learning does not discriminate on the basis of race, color, national origin, creed, sex, marital status, status with regard to public assistance, or disability.

FOR MORE INFORMATION

If you have comments or questions concerning information in this report, please contact:

Michael Enman
Financial Management Team
543 Capitol Square Building
St. Paul, MN 55101
(612) 296-5082

FOR ADDITIONAL COPIES

Copies of the *School District Profiles 1996-97* may be purchased from:

Minnesota's Bookstore
Print Communications Division
117 University Avenue
St. Paul, MN 55155
Telephone: (612) 297-3000 or
Toll Free: 1-800-657-3757

March, 1998
Robert J. Wedl, Commissioner
Minnesota Department of Children, Families & Learning

This document was prepared and published by the staff of the Financial Management, Transportation and Accountability Team, Division of Management Assistance, Minnesota Department of Children, Families & Learning, 552 Capitol Square Building, St. Paul, Minnesota 55101.

RECEIVED

MAY 21 1998

LEGISLATIVE REFERENCE LIBRARY
STATE POLICE BUILDING
ST. PAUL, MN 55155

TABLE OF CONTENTS

Introduction	2
UFARS Sources of Expenditure Data Definitions	4
Trends and Patterns	6
Definitions of Data Elements	14
List of School Districts	19
Map – Minnesota Counties and Development Regions	23
Data for School Districts	25
Data for Counties, Development Regions and the State	50
Data for Enrollment Size Groups	58
Summary Statistics	60

INTRODUCTION

School District Profiles, 1996-97 is the twenty-fifth in a series which presents data on school districts in the areas of enrollment, staffing and finance. Beginning with 1994-95, data is presented as per average daily membership (ADM). Prior to that, data was per weighted average daily membership (WADM). The 1994-95 data on an ADM basis is available with the 1995-96 edition.

Interdistrict Cooperation and Consolidations

Minnesota legislation has encouraged Minnesota school districts to cooperate in the provision of educational services to ensure efficient and effective operation.

Academic Pairing

Laws enacted in 1979 and 1983 eliminated the requirement that every school district provide educational services for all grades. This allowed districts to enter into agreements with each other for the provision of services for particular grades. Forty-nine districts participated in academic pairing during the 1996-97 school year.

1996-97 Academically Paired Districts

21	Audubon	402	Hendricks
24	Lake Park	403	Ivanhoe
25	Pine Point	409	Tyler
309	Park Rapids	418	Russell
57	Beardsley	584	Ruthton
2342	West Central	413	Marshall
175	Westbrook	415	Lynd
641	Walnut Grove	421	Brownton
178	Storden-Jeffers	426	Stewart
633	Lamberton	593	Crookston
638	Sanborn	599	Fertile-Beltrami
218	Delavan	604	Mentor
219	Elmore	630	Red Lake Falls
2148	Blue Earth	2609	Win-E-Mac
6059	Blue Earth Jt. Power	611	Cyrus
243	Emmons	769	Morris
245	Glenville	631	Belview
325	Lakefield	648	Danube
330	Heron Lake-Okabena	654	Renville
328	Sioux Valley	655	Sacred Heart
513	Brewster	413	Marshall
516	Round Lake	417	Tracy
62	Ortonville	635	Milroy
371	Bellingham	707	Nett Lake
		2142	St. Louis County

Consolidations

Declining enrollments in many districts, combined with legislated financial incentives, have resulted in a number of school district consolidations in recent years. Between the 1995-96 and the 1996-97 school years fourteen districts combined to form six new districts. These are:

<u>1996-97 New District Number & Name</u>	<u>1995-96 Old District Number & Name</u>
2687 Howard Lake-Waverly Winsted	0427 Winsted 0880 Howard Lake
2752 Fairmont Area Schools	0451 Ceylon 0454 Fairmont
2853 Lac Qui Parle Valley	0128 Milan 0784 Appleton 2153 Madison-Marietta- Nassau 6011 Lac Qui Parle Valley
2854 Ada-Borup	0521 Ada 0522 Borup
2856 Stephen-Argyle Central Schools	0437 Argyle 0443 Stephen
2859 Glencoe-Silver Lake	0422 Glencoe 0425 Silver Lake

FOR MORE INFORMATION

If you have comments or questions concerning information in this report, please contact:

Michael Enman
Financial Management Team
543 Capitol Square Building
550 Cedar Street
St. Paul, MN 55101
(612) 296-5082

Copies of *School District Profiles 1996-97* may be purchased from:

Minnesota's Bookstore
Print Communications Division
117 University Avenue
St. Paul, MN 55155
Telephone: (612) 297-3000 or
Toll Free: 1-800-657-3757

UFARS ACCOUNTING SYSTEM BACKGROUND

In 1976 the Uniform Financial Accounting and Reporting Standards (UFARS) Council was established by the Minnesota Legislature. The Council was charged with making recommendations to the State Board of Education for accounting standards consistent with Minnesota Statutes 121.90 through 121.917 and with Generally Accepted Accounting Principles (GAAP). The result was the UFARS Manual which brought greater accuracy and uniformity in accounting and reporting by the local educational agencies. In 1993-94 the Department of Children, Families & Learning became responsible for the UFARS System with assistance from the Accounting Guidelines Committee.

Overview of Dimensions

The Uniform Financial Accounting and Reporting Standards (UFARS) revenue and expenditure account structure consists of six dimensions. Each dimension contributes specific information about every revenue and expenditure transaction. The dimensions are Fund, Organization, Program, Finance, Object or Source, and Course. The Fund Dimension is a two digit field; the remaining five dimensions each have three digits. Thus, an entire account code contains seventeen digits. The Department of Children, Families & Learning collects data on all six dimensions; however, the course dimension has only minimal use in UFARS at this time.

Because *Profiles* displays only aggregate data, only the Fund, Program and Object Dimensions are used to extract the data needed for this publication. For explanations of other dimensions in the UFARS system, please contact the Financial Management Team at (612) 297-5776.

Fund

A fund is a fiscal entity with a set of accounts that record revenues, expenditures, liabilities and assets. Each fund is segregated for the purpose of carrying on specific activities or attaining certain objectives in accordance with state and federal laws and regulations. Fund numbers (03) Transportation and (05) Capital Outlays were discontinued beginning with 1996-97. These expenditures are now reported in Fund 01.

Minnesota schools used the following UFARS funds in 1996-97:

<u>Fund Number</u>	<u>Fund Name</u>
01	General Fund
02	Food Service Fund
04	Community Service Fund
06	Building Construction Fund
07	Debt Service Fund
08	Trust Funds
09	Agency Funds
20	Internal Service Fund

Program

This dimension is used to separate all instructional and support service activities associated with public school districts. The series in the dimension are:

District and School Administration	(001-099)
District Support Services	(100-199)
Elementary and Secondary Regular Instruction	(200-299)
Vocational Education Instruction	(300-399)
Special Education Instruction	(400-499)
Community Education and Services	(500-599)
Instructional Support Services	(600-699)
Pupil Support Services	(700-799)
Sites and Buildings	(800-899)
Fiscal and Other Fixed Costs Programs	(900-999)

Object

The Object Dimension identifies the service or commodity obtained as the result of an expenditure. This is the most detailed level of expenditure reporting. The object series are:

1. Salaries and Wages (110-199)
2. Employee Benefits (200-299)
3. Purchased Services (300-399)
4. Supplies and Materials (400-499)
5. Capital Expenditures (500-599)
6. Debt Service (600-699)
7. Other Expenditures (700-799)
8. Other Financing Uses (800-899)

Profiles Expenditure Categories

As stated above, *Profiles* displays only aggregate data so only the Fund, Program and Object Dimensions are needed to extract the data for this publication. The table below describes the *Profiles* expenditure categories. The first column contains the column number from the district data section of the report, the second column contains the description of the activities included in that column, the third column identifies the funds included, the fourth column identifies the program series included, and the fifth column identifies the object series included.

EXPENDITURE CATEGORIES

<u>Columns</u>	<u>Descriptions</u>	<u>Funds</u>	<u>Program Series</u>	<u>Object Series</u>
18.	District and School Administration	1, 8, 9	001-099	All Objects except 500-599 and 910
19.	District Support Services	1, 8, 9	100-199	"
20.	Regular Instruction	1, 8, 9	200-299	"
21.	Vocational Instruction	1, 8, 9	300-399	"
22.	Exceptional Instruction	1, 8, 9	400-499	"
23.	Instructional Support Services	1, 8, 9	600-699	"
24.	Pupil Support Services	1, 8, 9	700-749, 770-799	"
25.	Operations and Maintenance	1, 8, 9	800-899	"
26.	Food Service	2	All	"
27.	Pupil Transportation	1, 8, 9	750-760	"
28.	Other Operating Programs	1, 8, 9	0, 500-599, 900-999	"
29.	Total PK-12 Operating Expenditures (This is the total of categories 18 through 28)	1, 2, 8, 9	All	"
30.	Community Service	4	All	"
31.	Capital Outlay	1, 2, 4	All	500-599
32.	Building Construction	6	All	All but 910
33.	Debt Service	7	All	All but 910

TRENDS AND PATTERNS

Students

Minnesota PK-12 enrollment increases, which began with the 1985-86 school year, continue through 1999-2000 (see Figure 1). Enrollment in 1996-97 totaled 835,097 average daily membership (ADM), a 0.9% increase over the 1995-96 total of 827,588. The vast majority of enrollment increases are the result of resident births rather than immigration.

Minnesota's school districts vary greatly in enrollment size. The largest 10 districts, all in metropolitan areas, enrolled almost 30 percent of Minnesota's public school pupils.

Minnesota, as well as the rest of the nation, is experiencing a growth in the proportion of its population classified as minority. This minority population growth, as seen in Figure 2, shows up in school enrollments. Although Minnesota's minority enrollment percentages increased significantly from 6.1% in 1986-87 to 13.5% in 1996-97, they still constitute a relatively modest percentage of total Minnesota PK-12 public school enrollment - approximately one-third of the U.S. percentage.

Further, Minnesota's minority composition is quite different than that of the United States (Table 1, Page 8). American Indians have always constituted a significant proportion of Minnesota's population; its Asian population became significant after the Vietnam war.

FIGURE 1
Average Daily Membership; Actual and Projected
1980-1981 Through 1999-2000

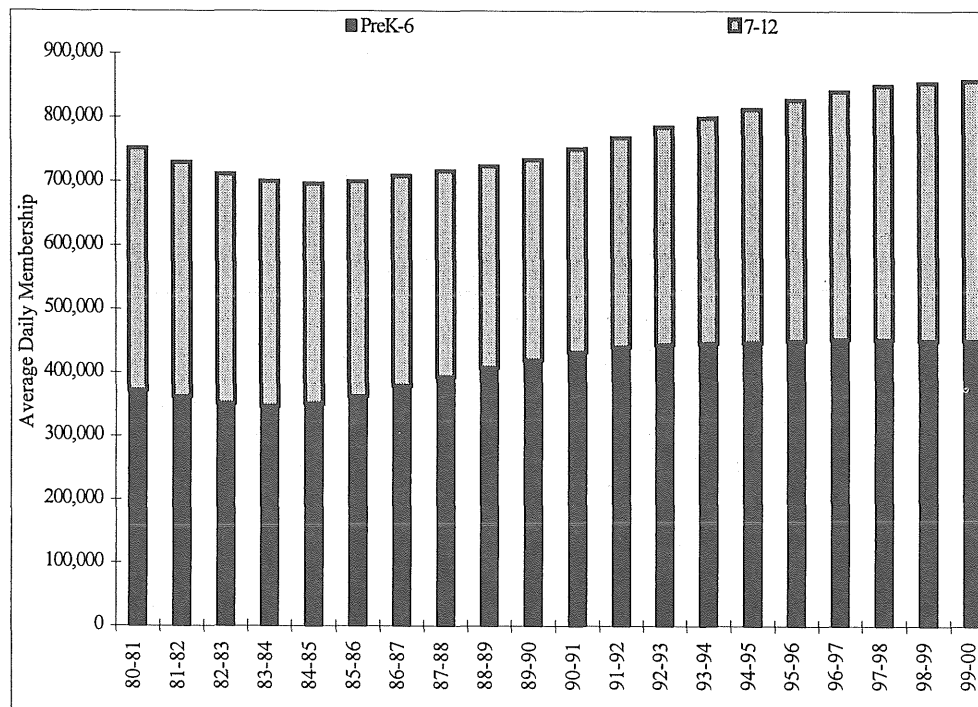
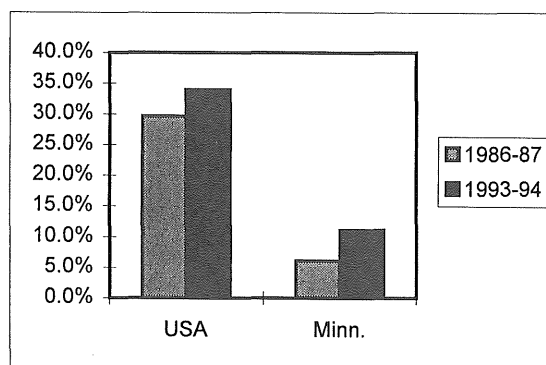


FIGURE 2
Percent Minority Enrollments
Minnesota and United States



Year	1986-87	1993-94
USA	29.6%	33.9%
Minn.	6.1%	11.1%

The statewide 0.9% growth in 1996-97 ADM over 1995-96 ADM has not, generally, been shared throughout the state. Figure 3 shows that districts in and around the Twin Cities Metropolitan Area experienced significant growth over the past decade, as did districts around St. Cloud and between St. Cloud and the Twin Cities. In contrast, many districts in the southwest, northeast and far northwest counties of the state either grew very little or experienced declining enrollments.

FIGURE 3
Minnesota Development Regions
Average Daily Membership Growth
1985-86 to 1996-97

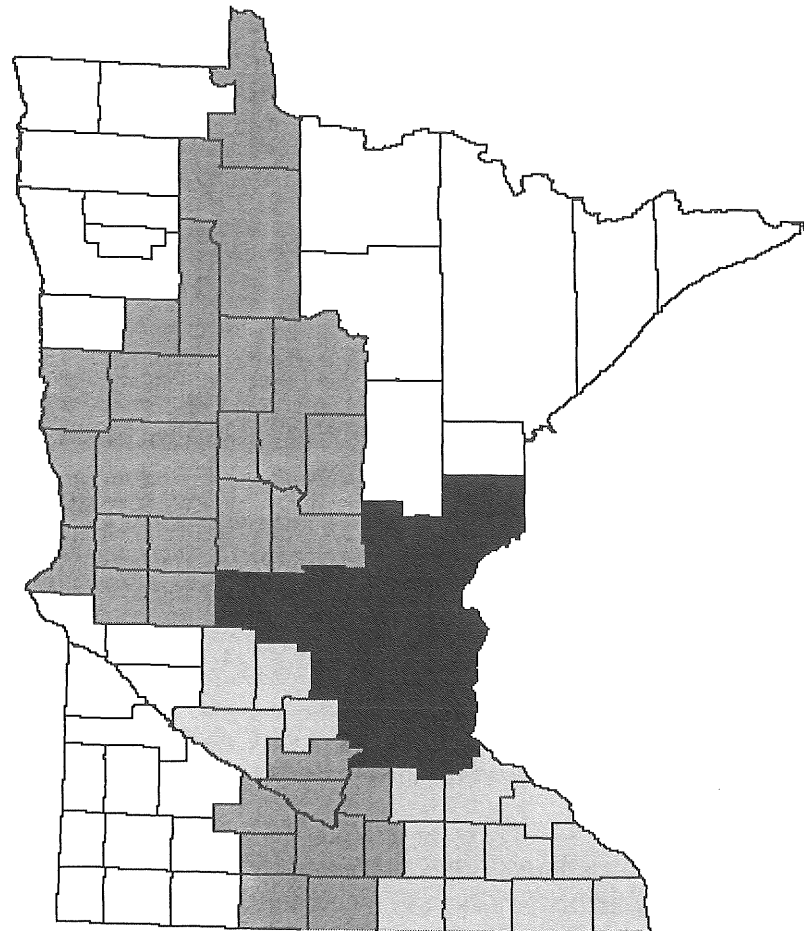
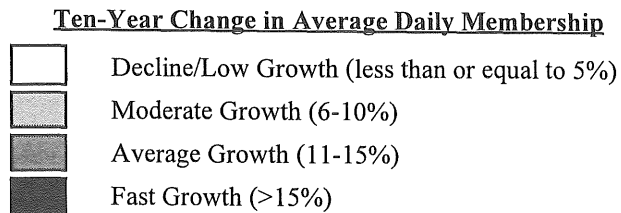


TABLE 1
Percent of Minority Enrollments
Minnesota and United States

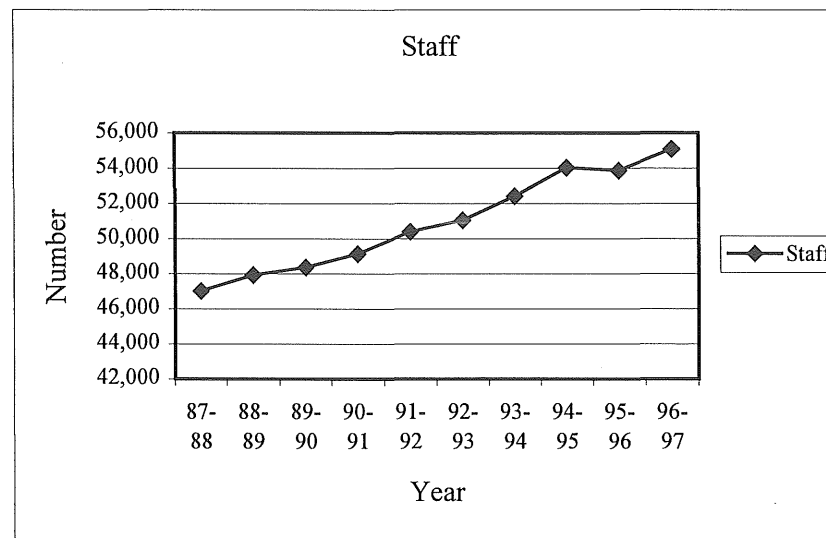
<u>Year</u>	<u>Native American</u>	<u>Black</u>	<u>Asian</u>	<u>Hispanic</u>	<u>Total Minority</u>
<u>1986-87</u>					
USA *	0.09	16.1	2.8	9.9	29.6
MINN	1.5	2.1	1.7	0.9	6.1
<u>1993-94 (Last year of Available Federal Data)</u>					
USA *	1.0	16.6	3.6	12.7	33.9
MINN	1.8	4.2	3.5	1.7	11.1
<u>1996-97</u>					
USA *	N/A	N/A	N/A	N/A	N/A
MINN	2.0	5.2	4.1	2.2	13.5

*Source: *Digest of Education Statistics, 1996; National Center for Educational Statistics*

Instructional Staff

Compensation for teachers and other district staff constitutes the districts' largest operating cost. Figure 4 shows the number of these staff over the past decade. The accompanying table also shows the ratio of pupils (in ADM) to licensed professional staff. This ratio has varied little over time, ranging from 14.9 to 15.3 over this period.

FIGURE 4
State Total Licensed Staff
1986-87 Through 1996-97



<u>Year</u>	<u>Staff</u>	<u>Pupil/Staff</u>
87-88	47,031	15.2
88-89	47,931	15.0
89-90	48,372	15.1
90-91	49,138	15.1
91-92	50,386	15.0
92-93	51,042	15.2
93-94	52,415	15.1
94-95	54,032	14.9
95-96	53,875	15.3
96-97	55,092	15.0

Teacher salaries are determined by negotiations between staff and their local school boards (Figure 5). Rapidly growing school districts usually have a higher proportion of younger, less experienced staff with fewer advanced degrees; this translates into lower average salaries than in more stable districts. Figures 6 and 7 show how age and educational attainment of teachers have changed over the decade.

FIGURE 6
Percentage Distribution Age of Minnesota Classroom Teachers
1985-86 and 1996-97

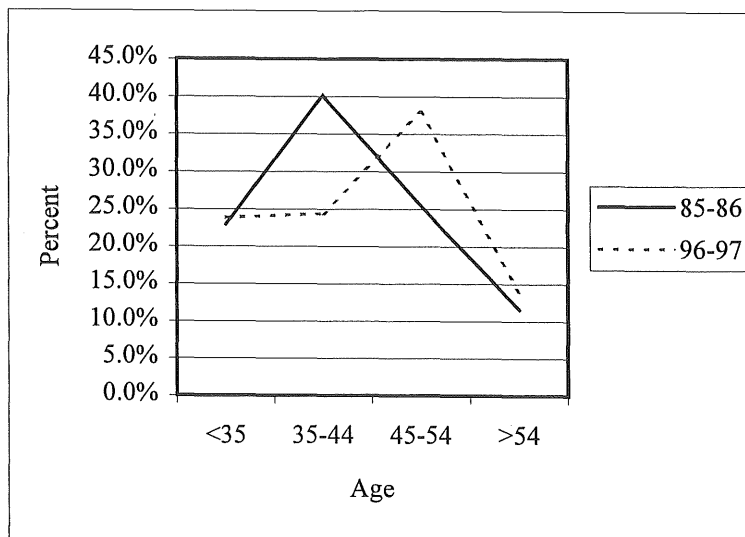
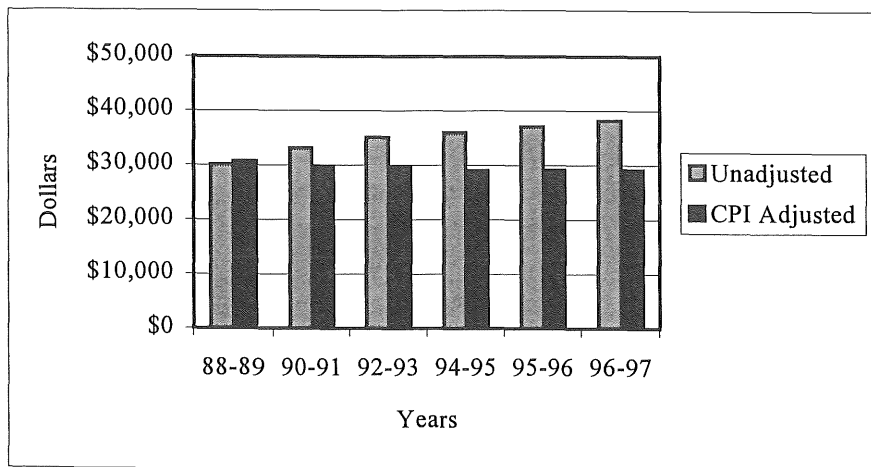
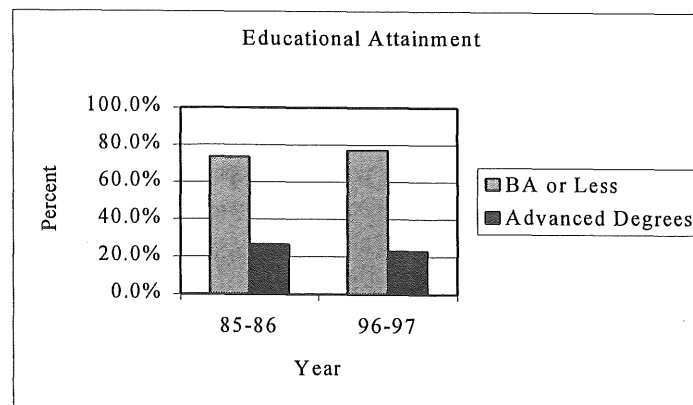


FIGURE 5
Average Minnesota Teacher Salaries
1988-89 Through 1996-97



Year	Unadjusted	CPI Adjusted
88-89	\$30,060	\$30,660
90-91	\$33,126	\$29,816
92-93	\$35,093	\$29,790
94-95	\$35,948	\$28,967
95-96	\$37,094	\$29,093
96-97	\$38,151	\$29,122

FIGURE 7
Percentage Distribution of Minnesota Classroom Teachers
By Educational Attainment
1985-86 and 1996-97

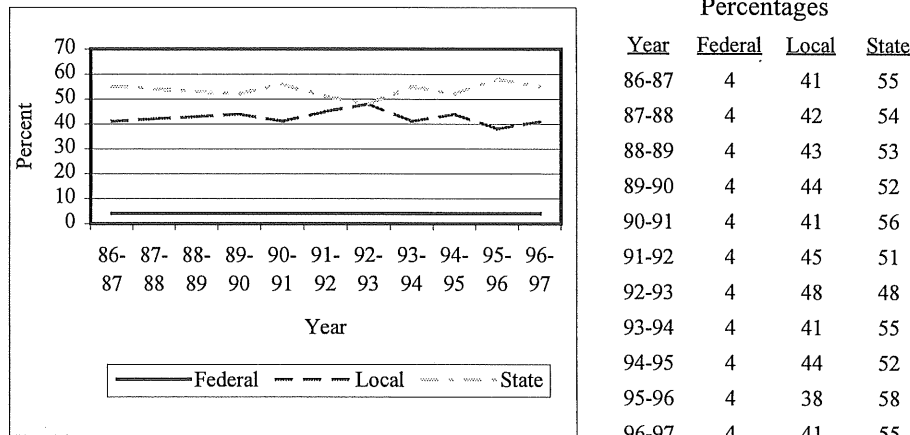


	85-86	96-97
BA or Less	73.3%	77.0%
Advanced Degrees	26.7%	23.0%

Revenues

School revenues come from three sources: local (predominantly property taxes), state, and federal. Figure 8 indicates that the percentage of revenue received by Minnesota school districts

FIGURE 8
Statewide Average Sources
of Revenues for All Funds
1986-87 Through 1996-97



from the three sources remained fairly constant over most of the last decade until 1991-92. In 1991-92, as a result of state budgetary problems, school districts were required to “recognize” certain levy receipts earlier than in prior years. This earlier recognition had the effect of shifting the state/local mix towards a larger local contribution. The ratio further decreased in 1992-93 but rebounded in 1993-94 to percentages which typify most of the period.

Minnesota’s four percent federal revenue percentage is less than the national average of approximately six percent. Federal funds

are typically targeted toward specific minority and disadvantaged student populations - groups which constitute a smaller proportion of Minnesota’s enrollment than is the situation nationwide.

Another way of examining Minnesota’s PK-12 revenues is by accounting fund. A fund in the Uniform Financial, Accounting and Reporting Standards (UFARS) system is a self-contained set of accounts established for either general purposes or for a specifically defined set of fiscal activities such as food service or debt redemption. Table 2 compares Minnesota school district revenues in the six UFARS funds existing in 1996-97. The 1985-86 funds were reformatted to reflect current active funds. Over that period the proportion of revenues allocated to nonoperating funds grew dramatically, led by sizable increases in the Building Construction Fund. Concern in recent years over deteriorating school facilities and capital funding equity have been major factors in the increase in monies dedicated to Minnesota’s school facilities.

TABLE 2
Percent of Minnesota Revenues by Fund
1985-86 and 1996-97

	<u>1985-86</u>	<u>1996-97</u>
General Fund	85.0%	77.5%
Food Service Fund	4.1%	3.2%
Community Service Fund	2.4%	3.2%
Total, Operating Funds	91.5%	83.9%
Building Construction Fund	3.2%	9.1%
Debt Redemption Fund	5.0%	6.0%
Other Funds	0.3%	1.0%
Total, Non-Operating Funds	8.5%	16.1%
Total, All Funds	100.0%	100.0%

Expenditures

Figure 9 indicates that statewide average operating expenditures have grown at a rate slightly exceeding inflation (as adjusted by the Consumer Price Index (CPI)) over most of the decade. These expenditures vary significantly district-to-district as shown in Figure 10. Districts at the 95th percentile expended approximately 45 percent more per average daily membership than districts at the 5th percentile.

The distribution of operating expenditures by program has also changed over the decade as indicated in Table 3. The percent expended on instruction has increased significantly, increasing from 61.9% to 68.5%.

TABLE 3
Distribution of District Operating
Expenditures By Program
1985-86 and 1996-97

	<u>1985-86</u>	<u>1996-97</u>
Administration	8.6%	7.9%
Instruction	61.9%	68.5%
Student Services	14.1%	12.2%
Operations & Maintenance	9.7%	10.7%
Other Operating Programs	5.7%	0.7%
Total	100.0%	100.0%

FIGURE 9
State Average Operating Expenditures
Per Average Daily Membership
1986-87 Through 1996-97

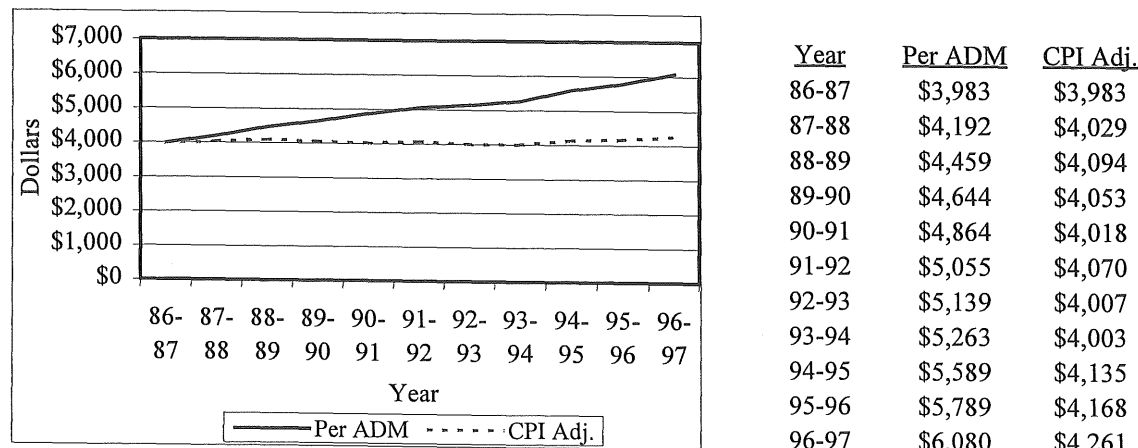


FIGURE 10
Distribution of District Operating
Expenditures Per Average Daily Membership
Selected Percentiles for 1996-97

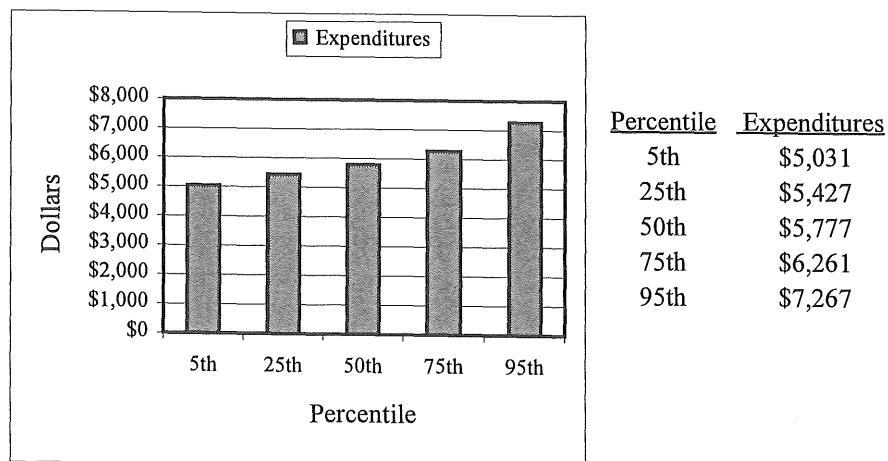
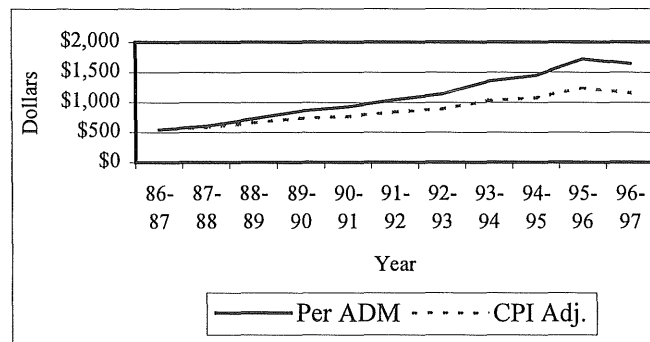


Figure 11 indicates that nonoperating expenditures also continued to grow at a rate exceeding inflation. Non-operating expenditures include Capital Outlay, Building Construction,

FIGURE 11
State Average Non-Operating Expenditures
Per Average Daily Membership
1986-87 Through 1996-97



and Debt Service (columns 31, 32 and 33, respectively of the district detail). Part of the rapid growth is the result of equalizing the Debt Service Levy which had the effect of providing low property value districts with additional dollars for capital needs.

Community Services

Figure 12 shows the growth in community service expenditures from 1986-87 to 1996-97. It shows that these expenditures also have grown faster than the general rate of inflation. Community education/community service programs include sports, recreation, crafts, self improvement and skills enhancement, the Early Childhood and Family Education (ECFE) program and the Youth Development Program.

Operating Funds Balance

A school district's net unappropriated operating fund balance is a measure of its financial health at the end of the school year. It can be either positive or negative. A positive balance represents a financial cushion; a negative balance means that liabilities (debts) exceed assets. Districts with a negative year-end balance greater than 2.5 percent of their prior year's operating expenditures are defined as being in violation of expenditure limitations specified by Minnesota statute and are required to submit a plan to the Commissioner of Children, Families & Learning explaining how they will eliminate the deficit.

Figure 13 (next page) shows the state average operating funds balance, as a percentage of operating expenditures, for the past decade. The ratio declined dramatically until 1993-94 when a rebound occurred.

FIGURE 12
State Average Community Service Expenditures
Per Average Daily Membership
1986-87 Through 1996-97

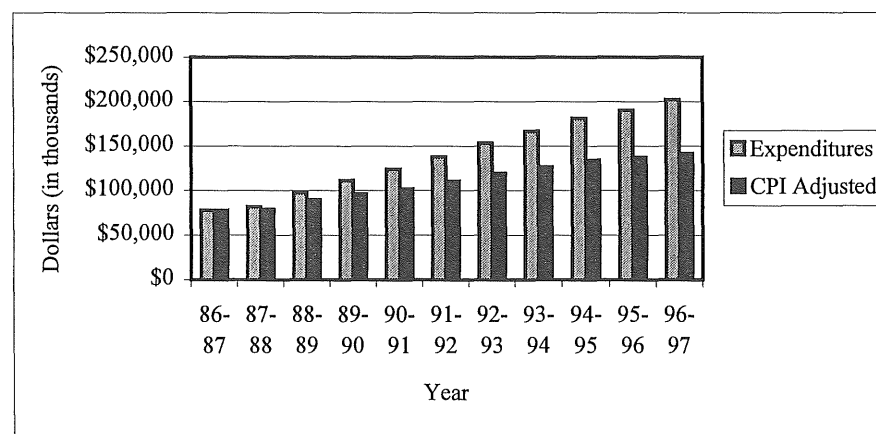


FIGURE 13
State Average Operating Funds Balance
As Percent of Operating Expenditures
1986-87 Through 1996-97

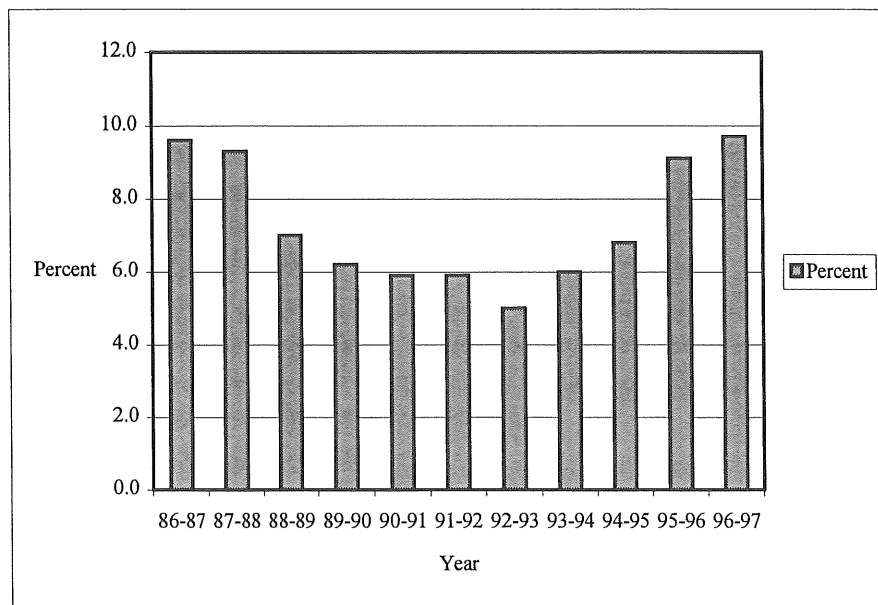
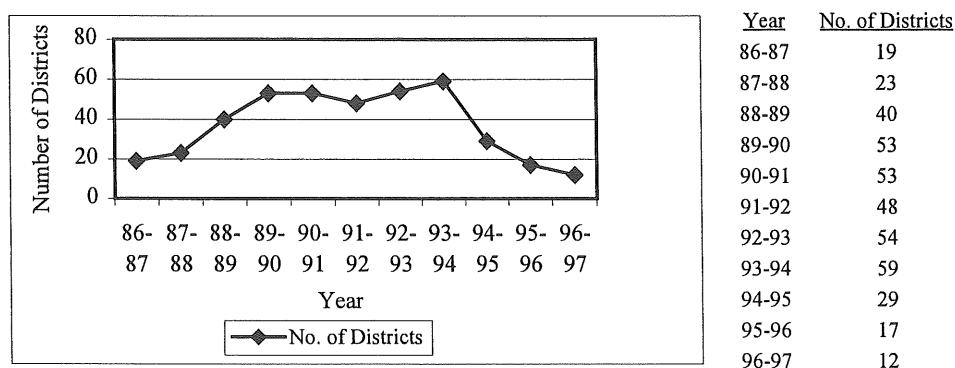


Figure 14 indicates that a long term upward trend in districts who exceeded the operating debt limitation also turned around at the same time. The number of these districts decreased by approximately 30 percent between 1995-96 and 1996-97. Much of this improvement was the result of consolidations of previously out-of-compliance districts into new, more financially viable entities.

Adjusted Net Tax Capacity

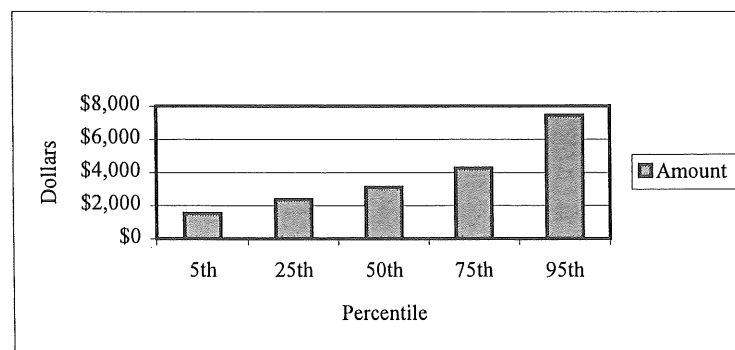
A school district's Adjusted Net Tax Capacity per ADM is a measure of real and personal property subject to local property tax levy. There is great disparity in the property wealth per ADM in school districts. It is such disparity and its effect on the equitable funding of PK-12

FIGURE 14
Number of Districts With Net Unappropriated
Operating Debt Exceeding 2 1/2% of Yearly
Expenditures 1986-87 Through 1996-97



education which has been the cause of many of the education funding lawsuits across the country. Figure 15 indicates that in Minnesota the property richest districts at the 95th percentile have almost five times the Adjusted Net Tax Capacity per ADM than districts at the 5th percentile. Minnesota has taken measures over the years to neutralize the effects of these differences.

FIGURE 15
Distribution of Adjusted Net Tax Capacity
Per Average Daily Membership
1996-97



DEFINITIONS OF DATA ELEMENTS

The tables on pages 26 through 61 contain 38 separate statistics for each school district, county, region, and size of districts in the state. Definitions of these 38 statistics are given below. All data are for the 1996-97 school year.

1996-97 Resident Average Daily Membership

Average daily membership (ADM) is the average number of pupils in membership during the school year. Pupils need not be in attendance to be counted in ADM, but they must be in membership (i.e., currently enrolled in the district). For example, a pupil who is enrolled for the entire school year counts as 1.0 ADM; a pupil who is enrolled for exactly half the year counts as 0.5 ADM.

The ADM counts in this report are, more specifically, counts of total resident ADM, including all residents who are (a) enrolled in their home district, (b) educated in another district for whom tuition is paid, or (c) attending another district under the

Enrollment Options legislation. Resident membership includes:

1. **PreKindergarten Disabled** - ADM of prekindergarten students enrolled in special education programs.
2. **Kindergarten** - ADM of students enrolled in kindergarten classes.
3. **Elementary, Grades 1-6** - ADM of students enrolled in grades 1 - 6, including students in elementary level ungraded and special education classes.
4. **Secondary, Grades 7-12** - ADM of students enrolled in grades 7 - 12, including those students in secondary level ungraded and special education classes.
5. **Total** - Total ADM of all district residents, prekindergarten through grade 12; this is the total of columns 1 through 4.

Pupil Data

6. **Percent Minority** - The percentage of the district's students who are of

Native American/Alaskan, Black, Asian or Hispanic ancestry.

7. **Percent Attendance** - The average ratio of days attended to days enrolled for all students in the district.
8. **Percent Transported** - The percentage of resident public school students eligible to be transported to and from school.

Professional Staff

These statistics provide information about each district's professional staff. Staff are counted in full time equivalents (FTE). For example, a full time staff member is counted as 1.0 FTE; one employed only half time is counted as 0.5 FTE.

9. **Total Staff FTE** - The average daily membership of all students (both residents and nonresidents) who were enrolled in the school district, divided by the number of professional staff (column 9).

10. Pupil Staff Ratio – The average daily membership of all students (both residents and nonresidents) who were enrolled in the school district, divided by the number of professional staff (column 9).

Tax Capacity Rates

These figures show the tax burden, expressed as a percent of tax capacity, for school district property taxes payable in 1996. Taxes payable in 1996 provide revenue for the 1996-97 school year.

11. Auditor Percent – The actual school district tax rate as determined by the county auditor. With a rate of five percent, a property owner would be taxed \$5 for each \$100 of tax capacity. Because of differences in property assessment levels between counties, comparisons of auditor tax rates among districts may be misleading (see No. 12). This figure includes additional tax rates for special intermediate districts (287, 916 and 917) where they are part of a district's tax burden.

12. Equalized Percent – This tax rate is computed by multiplying the auditor percent (No. 11) by the 1996 market sales ratio. This ratio is equal to the market values, as determined by the local assessor, divided by actual selling prices. Equalized percents are computed to compensate for varying assessment practices. Thus, when making interdistrict comparisons, these rates provide a more valid comparison.

Average Daily Membership

13. Resident ADM – Average daily membership of students who reside in a district.

14. Total ADM – This includes residents attending their home district, resident students tuitioned to other school districts, nonpublic school students being served via a Shared Time program, nonresident students who transfer in via one of the attendance options programs, and nonresident tuition students. Excluded is the portion of a student's time spent in a postsecondary institution via the Postsecondary Enrollment Options

Program, as well as those residents who transfer to other districts via one of the Attendance Options Programs.

Revenue Percentages

These three columns show the percentage of each district's revenues received from the federal government, the state government, and local and other sources. The percentages are based on all 1996-97 revenue reported by each district, except for proceeds from sales of real property and equipment, insurance recoveries, sales of bonds, loans and interfund transfers.

15. Federal – The percentage of revenues from the federal government, whether paid directly or through another governmental unit.

16. State – The percent of revenues from Minnesota state government.

17. Local and Other – The percent of revenues from local sources, including property taxes, fees, county apportionment, etc.

1996-97 Expenditures Per ADM

Columns 18 through 33 show each district's 1996-97 expenditures in sixteen different categories, divided by total ADM (column 14).

18. District and School

Administration – Expenditures for the school board and for the office of the superintendent, principals, and any other line administrators who supervise staff. (Includes Funds 1, 8, 9; Program Series 001-099; and all Object Series except 500-599 & 910.)

19. District Support Services –

Expenditures for central office administration and central office operations not included in district and school administration (see No. 18). Includes expenditures for business services, data processing, legal services, personnel office, printing, and the school census. (Includes Funds 1, 8, 9; Program Series 100-199; and all Object Series except 500-599 & 910.)

20. Regular Instruction –

Expenditures for elementary and secondary classroom instruction,

not including vocational instruction (#21) and exceptional instruction (#22). Includes salaries of teachers, classroom aides, coaches, and expenditures for classroom supplies and textbooks. (Includes Funds 1, 8, 9; Program Series 200-299; and all Object Series except 500-599 & 910.)

21. Vocational Instruction –

Expenditures in secondary schools for instruction that is related to job skills and career exploration. Includes expenditures for home economics, as well as industrial, business, agriculture, and distributive education. (Includes Funds 1, 8, 9; Program Series 300-399; and all Object Series except 500-599 & 910.)

22. Exceptional Instruction –

Expenditures for instruction of students who, because of atypical characteristics or conditions, are provided educational programs that are different from regular instructional programs. Includes expenditures for special instruction of students who are emotionally or psychologically disabled, or mentally retarded; for students with

physical, hearing, speech, and visual impairments; and for students with special learning and behavior problems. (Includes Funds 1, 8, 9; Program Series 400-499; and all Object Series except 500-599 & 910.)

23. Instructional Support Services –

Expenditures for activities intended to help teachers provide instruction, not including expenditures for principals or superintendents. Includes expenditures for assistant principals, curriculum development, libraries, media centers, audio visual support, staff development, and computer assisted instruction. (Includes Funds 1, 8, 9; Program Series 600-699; and all Object Series except 500-599 & 910.)

24. Pupil Support Services –

Expenditures for all noninstructional services provided to students, not including transportation and food. Includes expenditures for counseling, guidance, health services, psychological services, and attendance and social work services. (Includes Funds 1, 8, 9;

all Object Series except 500-599 & 910.)

25. Operations and Maintenance –

Expenditures for operation, maintenance, and repair of the district's buildings, grounds, and equipment. Includes expenditures for custodians, fuel for buildings, electricity, telephones, and repairs. (Includes Funds 1, 8, 9; Programs Series 800-899; and all Object Series except 500-599 & 910.)

26. Food Services – Expenditures for the preparation and serving of meals and snacks to students. (Includes Fund 2; all Program Series; and all Object Series except 500-599 & 910.)

27. Pupil Transportation –

Expenditures for transportation of students, including salaries, contracted services, fuel for buses, and other expenditures. (Includes Fund 1; Program Series 750-760 and all Object Series except 500-599 & 910.)

28. Other Operating Programs –

Expenditures for general fund operating programs necessary to a

district's operations but not assignable to other programs. These can include federally funded community education services for students, property and liability premiums, principal and interest on noncapital obligations, and nonrecurring costs such as judgments and liens. (Includes Funds 1, 8, 9; Program Series 500-599 & 900-999; and all Object Series except 500-599 & 910.)

29. Total PK-12 Operating

Expenditures – The total of the eleven preceding categories of expenditures (columns 18 through 28). This figure includes all expenditures incurred for the benefit of elementary and secondary education during the 1996-97 school year, except capital and debt service expenditures.

30. Community Service –

Expenditures for recreation, civic activities, adult education, early childhood education, or similar programs which are not conducted primarily for elementary and secondary students, and for noncredit summer school programs. (Includes Fund 4; all Program

Series; and all Object Series except 500-599 & 910.)

31. Capital Outlay – All capital

expenditures charged to the operating funds. (Includes Funds 1, 2 and 4; all Program Series; and Object Series 500-599.)

32. Building Construction – All

expenditures charged to the district's building construction fund. Expenditures are for major capital projects funded by bond proceeds, state capital loans, state facility grants or the downpayment levies. (Includes Fund 6, all Program Series; and all Object Series except 910.)

33. Debt Service – Expenditures for

repayment of long term debt (see No. 37) including payments of principal and interest on bonds and capital loans. (Includes Fund 7, all Program Series, and all Object Series except 910.)

Other Measures Per ADM

34. Operating Funds Balance – This figure is a measure of the district's financial condition at the end of the 1996-97 school year. It is equal to the sum of the undesignated balances on June 30, 1997 from the four operating funds (general, transportation, food service, and community service), excluding the amount of statutory operating debt. This balance is then divided by 1996-97 resident ADM (column 13).

35. Change in Funds Balance – The difference between the district's operating funds' balance on June 30, 1997 (see No. 34 above) and on June 30, 1996 divided by 1996-97 resident ADM. This is essentially equal to the difference between the district's revenues and expenditures in 1996-97 for the four operating funds combined. Thus, a negative number indicates that the district's expenditures in the operating funds were greater than its revenues in these funds.

36. State and Local Operating Costs
This figure is also called adjusted

maintenance cost. It is used to measure that portion of the overall cost of PK-12 education which is financed from state and local sources. It is computed as follows:

Sum of General, Food Service and Agency Fund expenditures;

Plus textbook expenditures from the Capital Expenditure Fund;

Minus transfers between funds;

Minus revenue from the federal government;

Minus revenue from sale of food and materials;

Minus admission fees and gate receipts from school activities;

Minus special education tuition.

This total is then divided by 1996-97 total ADM (column 14).

37. Long Term Debt – The amount of long term debt outstanding on June 30, 1997, divided by 1996-97 resident ADM. Long term debt includes bonds and capital, debt

service, and energy loans from the state. Beginning with the 1995-96 school year, June 30th payables for the following are included:

- a) separation and severance pay,
- b) special assessments,
- c) capitalized levies, and
- d) compensated absences.

38. Prior Year Adjusted Net Tax Capacity – The 1996 adjusted net tax capacity of the district divided by 1996-97 resident ADM. This figure is an indicator of the district's ability to raise revenue through local property taxes.

DISTRICT NAME	NUMBER	REGION	COUNTY
A.C.G.C.	2396	6E	Meeker
Ada-Borup	2854	1	Norman
Adrian	511	8	Nobles
Aitkin	001	3	Aitkin
Albany	745	7W	Stearns
Albert Lea	241	10	Freeborn
Alden	242	10	Freeborn
Alexandria	206	4	Douglas
Annandale	876	7W	Wright
Anoka-Hennepin	011	11	Anoka
Ashby	261	4	Grant
Audubon	021	4	Becker
Austin	492	10	Mower
Badger	676	1	Roseau
Bagley	162	2	Clearwater
Balaton	411	8	Lyon
Barnsville	146	4	Clay
Barnum	091	3	Carlton
Battle Lake	542	4	Otter Tail
Beardsley	057	6W	Big Stone
Becker	726	7W	Sherburne
Belgrade-Brooten-Elrosa	2364	7W	Stearns
Belle Plaine	716	11	Scott
Bellingham	371	6W	Lac Qui Parle
Belview	631	8	Redwood
Bemidji	031	2	Beltrami
Benson	777	6W	Swift
Bertha-Hewitt	786	5	Todd
Big Lake	727	7W	Sherburne
Bird Island-Olivia-Lake Lillian	2534	6E	Renville
Blackduck	032	2	Beltrami
Blooming Prairie	756	10	Steele
Bloomington	271	11	Hennepin
Blue Earth-Winnebago	2148	9	Faribault
Braham	314	7E	Isanti
Brainerd	181	5	Crow Wing
Brandon	207	4	Douglas
Breckenridge	846	4	Wilkin
Brewster	513	8	Nobles

DISTRICT NAME	NUMBER	REGION	COUNTY
Brooklyn Center	286	11	Hennepin
Browerville	787	5	Todd
Browns Valley	801	4	Traverse
Browntown	421	6E	McLeod
Buffalo	877	7W	Wright
Buffalo Lake-Hector	2159	6E	Renville
Burnsville	191	11	Dakota
Butterfield	836	9	Watonwan
Byron	531	10	Olmsted
Caledonia	299	10	Houston
Cambridge-Isanti	911	7E	Isanti
Campbell-Tintah	852	4	Wilkin
Canby	891	6W	Yell. Medicine
Cannon Falls	252	10	Goodhue
Carlton	093	3	Carlton
Cass Lake	115	5	Cass
Cedar Mountain	2754	8	Redwood
Centennial	012	11	Anoka
Chaska	112	11	Carver
Chatfield	227	10	Olmsted
Chisago Lakes	2144	7E	Chisago
Chisholm	695	3	St. Louis
Chokio-Alberta	771	4	Stevens
Clearbrook-Gonv.	2311	2	Clearwater
Cleveland	391	9	LeSueur
Climax	592	1	Polk
Clinton-Graceville	055	6W	Big Stone
Cloquet	094	3	Carlton
Cold Spring	750	7W	Stearns
Greenway	316	3	Itasca
Columbia Heights	013	11	Anoka
Comfrey	081	9	Brown
Cook County	166	3	Cook
Cromwell	095	3	Carlton
Crookston	593	1	Polk
Crosby-Ironton	182	5	Crow Wing
Cyrus	611	4	Pope
Danube	648	6E	Renville
Dassel-Cokato	466	6E	Meeker
Dawson-Boyd	378	6W	Lac Qui Parle
Delano	879	7W	Wright

DISTRICT NAME	NUMBER	REGION	COUNTY
Deer River	317	3	Itasca
Delavan	218	9	Faribault
Detroit Lakes	022	4	Becker
Dilworth-Glyndon Felton	2164	4	Clay
Dover-Eyota	533	10	Olmsted
Duluth	709	3	St. Louis
Eagle Valley	2759	5	Todd
East Central	2580	7E	Pine
East Grand Forks	595	1	Polk
Eden Prairie	272	11	Hennepin
Eden Valley-Watkins	463	6E	Meeker
Edgerton	581	8	Pipestone
Edina	273	11	Hennepin
Elgin-Millville	806	10	Steele
Elk River	728	7W	Sherburne
Ellsworth	514	8	Nobles
Elmore	219	9	Faribault
Ely	696	3	St. Louis
Emmons	243	10	Freeborn
Esko	099	3	Carlton
Evansville	208	4	Douglas
Eveleth-Gilbert	2154	3	St. Louis
Fairmont Area Schools	2752	9	Martin
Faribault	656	10	Rice
Farmington	192	11	Dakota
Fergus Falls	544	4	Ottertail
Fertile-Beltrami	599	1	Polk
Fillmore Central	2198	10	Fillmore
Fisher	600	1	Polk
Floodwood	698	3	St. Louis
Foley	051	7W	Benton
Forest Lake	831	11	Washington
Fosston	601	1	Polk
Franconia	323	7E	Chisago
Frazee	023	4	Becker
Fridley	014	11	Anoka
Fulda	505	8	Murray

LIST OF SCHOOL DISTRICTS

DISTRICT NAME	NUMBER	REGION	COUNTY
GFW	2365	9	Sibley
Glencoe-Silver Lk.	2859	6E	McLeod
Glenville	245	10	Freeborn
Goodhue	253	10	Goodhue
Goodridge	561	1	Pennington
Granada-Huntley-East Chain	2536	9	Martin
Grand Meadow	495	10	Mower
Grand Rapids	318	3	Itasca
Greenbush-Middle River	2683	1	Roseau
Grygla	447	1	Marshall
Halstad-Hendrum	2527	1	Norman
Hancock	768	4	Stevens
Hastings	200	11	Dakota
Hawley	150	4	Clay
Hayfield	203	10	Dodge
Hendricks	402	8	Lincoln
Henning	545	4	Otter Tail
Herman-Norcross	264	4	Grant
Hermantown	700	3	St. Louis
Heron Lake-Okabena	330	8	Jackson
Hibbing	701	3	St. Louis
Hill City	002	3	Aitkin
Hills-Beaver Creek	671	8	Rock
Hinckley-Finlayson	2165	7E	Pine
Holdingford	738	7W	Stearns
Hopkins	270	11	Hennepin
Houston	294	10	Houston
Howard Lake-Waverly-Winsted	2687	7W	Wright
Hutchinson	423	6E	McLeod
International Falls	361	3	Koochiching
Inver Grove	199	11	Dakota
Isle	473	7E	Mille Lacs
Ivanhoe	403	8	Lincoln
Jackson	324	8	Jackson
Janesville-Waldorf Pemberton	2835	9	Waseca
Jordan	717	11	Scott

DISTRICT NAME	NUMBER	REGION	COUNTY
Kasson-Mantorville	204	10	Dodge
Kelliher	036	2	Beltrami
Kenyon-Wanamingo	2172	10	Goodhue
Kerkhoven-Murdock Sunburg	775	6W	Swift
Kimball	739	7W	Stearns
Kingsland	2137	10	Fillmore
Kittson Central	2171	1	Kittson
LacQuiParle	2853	6W	LacQuiParle
LaCrescent-Hokah	300	10	Houston
Lake Benton	404	8	Lincoln
Lake City	813	10	Wabasha
Lake Crystal-Welcome	2071	9	Blue Earth
Lake of the Woods	390	2	Lake of the Woods
Lake Park	24	4	Becker
Lake Superior	381	3	Lake
Lakefield	325	8	Jackson
Lakeville	194	11	Dakota
Lakeview	2167	8	Lyon
Lamberton	633	8	Redwood
Lancaster	356	1	Kittson
Lanesboro	229	10	Fillmore
Laporte	306	2	Hubbard
LeCenter	392	9	LeSueur
LeRoy	499	10	Mower
Lester Prairie	424	6E	McLeod
LeSueur Henderson	2397	9	LeSueur
Lewiston	857	10	Winona
Litchfield	465	6E	Meeker
Little Falls	482	5	Morrison
Littlefork-Big Falls	362	3	Koochiching
Long Prairie-Grey Eagle	2753	5	Todd
Luverne	2184	8	Rock
Lyle	497	10	Mower
Lynd	415	8	Lyon
Mabel-Canton	238	10	Fillmore
Madelia	837	9	Watsonwan
Mahnomen	432	2	Mahnomen
Mahtomedi	832	11	Washington
Mankato	077	9	Blue Earth

DISTRICT NAME	NUMBER	REGION	COUNTY
Maple Lake	881	7W	Wright
Maple River	2135	9	Blue Earth
Marshall	413	8	Lyon
Martin County W.	2448	9	Martin
MACCRAV	2180	6W	Chippewa
McGregor	004	3	Aitkin
Medford	763	10	Steele
Melrose	740	7W	Stearns
Menahga	821	5	Wadena
Mesabi East	2711	3	St. Louis
Mentor	604	1	Polk
Milaca	912	7E	Mille Lacs
Milroy	635	8	Redwood
Minneapolis	SP 1	11	Hennepin
Minneota	414	8	Lyon
Minnetonka	276	11	Hennepin
Minnewaska	2149	4	Pope
Montevideo	129	6W	Chippewa
Montgomery-Lonsdale	394	9	LeSueur
Monticello	882	7W	Wright
Moorhead	152	4	Clay
Moose Lake	97	3	Carlton
Mora	332	7E	Kanabec
Morris	769	4	Stevens
Mounds View	621	11	Ramsey
Mountain Iron-Buhl	712	3	St. Louis
Mountain Lake	173	8	Cottonwood
Murray County	2169	8	Murray
Nashwauk-Keewatin	319	3	Itasca
Nett Lake	707	3	St. Louis
Nevis	308	2	Hubbard
New London-Spicer	345	6E	Kandiyohi
New Prague	721	11	Scott
New Ulm	088	9	Brown
New York Mills	553	4	Otter Tail
Newfolden	441	1	Marshall
Nicollet	507	9	Nicollet
Norman Co. East	2215	1	Norman
North Branch	138	7E	Chisago
North St. Paul-Maplewood	622	11	Ramsey
Northfield	659	10	Rice

DISTRICT NAME NUMBER REGION COUNTY

Norwood-Young America	108	11	Carver
NRHEG	2168	9	Waseca
Ogilvie	333	7E	Kanabec
Oklee	627	1	Red Lake
Onamia	480	7E	Mille Lacs
Orono	278	11	Hennepin
Ortonville	062	6W	Big Stone
Osakis	213	4	Douglas
Osseo	279	11	Hennepin
Owatonna	761	10	Steele
Park Rapids	309	2	Hubbard
Parkers Prairie	547	4	Otter Tail
Paynesville	741	7W	Stearns
Pelican Rapids	548	4	Otter Tail
Pequot Lakes	186	5	Crow Wing
Perham	549	4	Otter Tail
Pierz	484	5	Morrison
Pillager	116	5	Cass
Pine City	578	7E	Pine
Pine Island	255	10	Goodhue
Pine Point	025	2	Becker
Pine River-Backus	2174	5	Cass
Pipestone-Jasper	2689	8	Pipestone
Plainview	810	10	Wabasha
Plummer	628	1	Red Lake
Princeton	477	7E	Mille Lacs
Prinsburg	815	6E	Kandiyohi
Prior Lake	719	11	Scott
Proctor	704	3	St. Louis
Randolph	195	11	Dakota
Red Lake	038	2	Beltrami
Red Lake Falls	630	1	Red Lake
Red Wing	256	10	Goodhue
Redwood Falls	2758	8	Redwood
Remer-Longville	118	5	Cass
Renville	654	6E	Renville
Richfield	280	11	Hennepin
Robbinsdale	281	11	Hennepin
Rochester	535	10	Olmsted
Rockford	883	7W	Wright

DISTRICT NAME NUMBER REGION COUNTY

Roseau	682	1	Roseau
Rosemount-Apple Valley-Eagan	196	11	Dakota
Roseville	623	11	Ramsey
Rothsay	850	4	Wilkin
Round Lake	516	8	Nobles
Royalton	485	5	Morrison
Rush City	139	7E	Chisago
Rushford-Peterson	239	10	Fillmore
Russell	418	8	Lyon
Ruthton	584	8	Pipestone
Sacred Heart	655	6E	Renville
St. Anthony-New Brighton	282	11	Hennepin
St. Charles	858	10	Winona
St. Clair	75	9	Blue Earth
St. Cloud	742	7W	Stearns
St. Francis	15	11	Anoka
St. James	840	9	Watsonwan
St. Louis County	2142	3	St. Louis
St. Louis Park	283	11	Hennepin
St. Michael-Albertville	885	7W	Wright
St. Paul	625	11	Ramsey
St. Peter	508	9	Nicollet
Sanborn	638	8	Redwood
Sartell	748	7W	Stearns
Sauk Centre	743	7W	Stearns
Sauk Rapids	47	7W	Benton
Sebeka	820	5	Wadena
Shakopee	720	11	Scott
Sibley East	2310	9	Sibley
Sioux Valley	328	8	Jackson
Sleepy Eye	84	9	Brown
South Koochiching	363	3	Koochiching
South St. Paul	SP6	11	Dakota
South Washington County	833	11	Washington
Southland	500	10	Mower
Spring Grove	297	10	Houston
Spring Lake Park	016	11	Anoka
Springfield	085	9	Brown

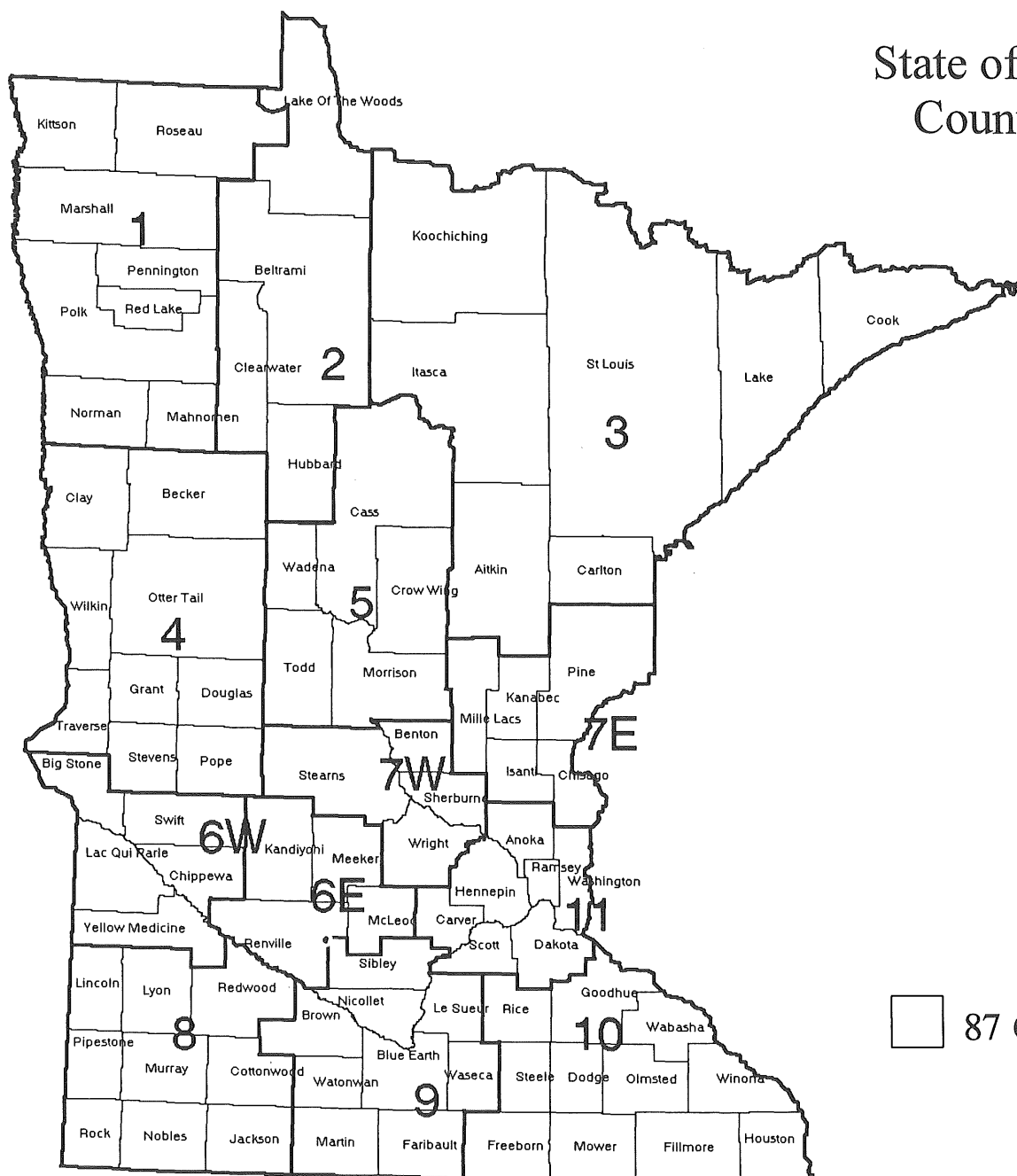
DISTRICT NAME NUMBER REGION COUNTY

Staples-Motley	2170	5	Todd
Stephen-Argyle Central Schools	2856	1	Marshall
Stewart	426	6E	McLeod
Stewartville	534	10	Olmstead
Stillwater	834	11	Washington
Storden-Jeffers	178	8	Cottonwood
Swanville	486	5	Morrison
Thief River Falls	564	1	Pennington
Tracy	417	8	Lyon
Tri-County	2358	1	Kittson
Triton	2125	10	Dodge
Truman	458	9	Martin
Tyler	409	8	Lincoln
Ulen-Hitterdal	914	4	Clay
Underwood	550	4	Otter
United South Central	2134	9	Faribault
Upsala	487	5	Morrison
Verndale	818	5	Wadena
Virginia	706	3	St. Louis
Wabasha-Kellogg	811	10	Wabasha
Wabasso	640	8	Redwood
Waconia	110	11	Carver
Wadena-Deer Creek	2155	5	Wadena
Walker-Akeley-Hackensack	113	5	Cass
Walnut Grove	641	8	Redwood
Warren-Alvarado-Olso	2176	1	Marshall
Warroad	690	1	Roseau
Waseca	829	9	Waseca
Watertown-Mayer	111	11	Carver
Waterville-Elysian-Morristown	2143	9	LeSueur
Waubun	435	2	Mahnomen
Wayzata	284	11	Hennepin
West Central Area	2342	4	Grant
West St. Paul	197	11	Dakota
Westbrook	175	8	Cottonwood
Westonka	277	11	Hennepin

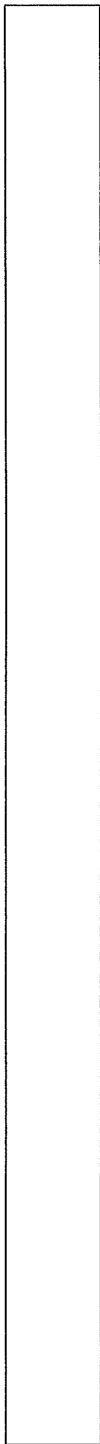
LIST OF SCHOOL DISTRICTS

DISTRICT NAME	NUMBER	REGION	COUNTY
Wheaton	803	4	Traverse
White Bear Lake	624	11	Ramsey
Willmar	347	6E	Kandiyohi
Willow River	577	7E	Pine
Win-E-Mac	2609	1	Polk
Windom	177	8	Cottonwood
Winona	861	10	Winona
Worthington	518	8	Nobles
Wrenshall	100	3	Carlton
Yellow Med. East	2190	6W	Yellow Med.
Zumbrota-Mazeppa	2805	10	Goodhue

State of Minnesota Counties 1997



☐ 87 Counties



1996-97
School District Profiles

**STATISTICAL
TABLES**

SCHOOL DISTRICTS

District Name	District Number	1996-97 Resident Average Daily Membership					Pupil Data			Prof. Staff		Tax Rates		ADM		Revenue %		
		1. Pre-Kindergarten Disabled	2. Kindergarten	3. Elementary (Grades 1-6)	4. Secondary (Grades 7-12)	5. Total (PK-12)	6. Percent Minority	7. Percent Attendance	8. Percent Transported	9. Total Staff (FTE)	10. Pupil-Staff Ratio	11. Auditor Percent	12. Equalized Percent	13. Resident ADM	14. Total ADM	15. Federal	16. State	17. Local and Other
01 AITKIN																		
AITKIN	1	11	85	587	719	1,402	2.5	95.1	86	95	14.4	42.96	33.68	1,402	1,372	4	50	46
HILL CITY	2	2	23	165	160	350	7.2	94.7	84	35	11.5	48.35	39.70	350	399	8	74	18
MCGREGOR	4	3	43	261	304	611	12.0	93.1	81	45	12.0	59.58	46.65	611	544	7	44	49
02 ANOKA																		
ANOKA-HENNEPIN	11	264	3,021	19,263	17,558	40,106	6.6	94.5	81	2,432	16.1	57.67	53.52	40,106	39,217	3	60	37
CENTENNIAL	12	33	501	3,048	2,386	5,968	4.7	95.3	78	374	16.1	66.37	60.46	5,968	6,071	2	64	34
COLUMBIA HEIGHTS	13	18	251	1,422	1,422	3,113	17.3	92.1	67	209	14.1	84.75	78.39	3,113	3,007	4	44	52
FRIDLEY	14	17	190	1,143	1,136	2,486	11.1	93.4	85	188	14.2	69.80	65.33	2,486	2,713	3	47	50
SPRING LAKE PARK	16	19	284	1,861	1,843	4,007	6.5	93.9	94	264	15.5	61.64	57.41	4,007	4,164	3	45	52
ST. FRANCIS	15	27	410	2,747	2,427	5,611	3.7	94.1	91	365	15.4	62.35	55.18	5,611	5,627	3	66	31
03 BECKER																		
AUDUBON (ICA)	21	6	33	165	154	358	3.1	96.0	76	21	17.4	44.14	39.73	358	338	10	47	43
DETROIT LAKES	22	28	173	1,294	1,430	2,925	13.5	94.0	70	223	13.5	59.98	54.58	2,925	3,033	5	63	32
FRAZEE	23	15	88	596	657	1,356	8.5	95.8	87	96	13.4	65.40	57.81	1,356	1,308	6	68	26
LAKE PARK (ICA)	24	4	20	163	237	424	3.2	94.9	84	29	12.7	60.99	52.27	424	413	1	58	41
PINE POINT (EXP)	25	2	12	48	24	86	100.0	83.6	66	10	6.3	-	-	86	61	27	66	7
04 BELTRAMI																		
BEMIDJI	31	25	410	2,575	2,663	5,673	15.8	92.0	94	424	13.4	57.74	49.71	5,673	5,688	8	65	27
BLACKDUCK	32	4	67	373	388	832	10.9	94.4	86	67	13.8	63.15	56.64	832	922	6	71	23
KELLIHER	36	1	17	119	138	275	17.5	93.5	76	26	11.7	62.37	54.89	275	299	6	78	16
RED LAKE	38	10	151	719	502	1,382	100.0	86.6	63	86	14.4	52.71	51.44	1,382	1,254	30	66	4
05 BENTON																		
FOLEY	51	12	100	735	944	1,791	1.3	95.2	100	118	15.8	55.91	49.04	1,791	1,862	4	79	17
SAUK RAPIDS	47	30	215	1,520	1,615	3,380	2.0	94.8	80	210	15.6	56.11	47.36	3,380	3,308	4	70	26
06 BIG STONE																		
BEARDSLEY (ICA)	57	1	5	77	73	156	4.5	96.5	72	9	9.3	53.11	47.16	156	140	6	60	34
CLINTON-GRACEV'L (ICA)	55	3	26	252	237	518	2.0	96.1	69	39	13.6	70.20	63.11	518	536	5	50	45
ORTONVILLE (ASE)	62	3	38	256	327	624	2.5	95.2	66	53	14.6	74.41	67.04	624	784	3	64	33
07 BLUE EARTH																		
LAKE CRYSTAL-WELLCOME	2071	17	71	525	642	1,255	2.3	96.5	70	93	12.8	56.49	47.50	1,255	1,197	3	63	34
MANKATO	77	48	502	3,263	3,458	7,271	6.2	93.8	64	466	15.7	56.63	46.38	7,271	7,344	4	55	41
MAPLE RIVER	2135	8	67	581	611	1,267	1.0	95.4	85	91	14.2	52.47	47.75	1,267	1,302	4	64	32
ST. CLAIR	75	6	35	282	262	585	-	94.6	100	42	16.5	72.43	63.74	585	689	3	69	28
08 BROWN																		
COMFREY	81	1	14	93	108	216	1.0	96.8	80	20	10.0	59.80	56.34	216	203	5	35	60
NEW ULM	88	19	182	1,272	1,436	2,909	2.8	95.7	86	199	14.4	57.19	49.12	2,909	2,931	3	64	33
SLEEPY EYE	84	4	38	308	363	713	18.9	93.9	43	53	13.4	56.45	44.88	713	724	4	54	42
SPRINGFIELD	85	3	30	294	384	711	0.5	96.6	48	55	13.8	63.90	60.20	711	760	3	61	36

District Number	1996-97 Expenditures Per ADM												Other Measures Per ADM								
	18. District and School Admin.	19. District Support Services	20. Regular Instruction	21. Vocational Instruction	22. Exceptional Instruction	23. Instructional Support Services	24. Pupil Support Services	25. Operations and Maintenance	26. Food Service	27. Pupil Transportation	28. Other Oper. Programs	29. Total PK-12 Operating Expenditures	30. Community Service	31. Capital Outlay	32. Building Construction	33. Debt Service	34. Operating Funds Balance	35. Change in Funds Balance	36. State and Local Operating Costs	37. Long Term Debt	38. Prior Yr. Adj. Net Tax Capacity
1	304	134	2,992	106	365	270	139	453	242	358	11	5,375	128	767	179	110	1,064	289	4,674	406	4,942
2	499	271	3,413	118	439	324	105	573	301	423	3	6,469	168	216	-	809	1,364	80	5,293	25,994	1,643
4	586	239	3,745	1	753	323	243	663	349	567	39	7,508	185	320	-	754	(799)	(423)	6,431	6,122	5,492
11	258	141	2,802	156	777	299	216	397	286	298	30	5,660	259	266	256	311	285	(71)	4,985	4,157	2,900
12	219	119	2,624	121	1,046	240	128	399	218	301	71	5,486	109	231	4,771	598	545	(61)	4,872	11,511	2,576
13	450	245	2,911	83	1,108	469	318	607	360	238	82	6,872	299	226	65	-	(373)	73	6,194		5,186
14	669	225	2,998	231	1,191	259	145	547	257	292	58	6,872	320	172	2,966	432	119	(55)	6,061	7,921	4,421
16	205	157	3,000	211	822	407	233	644	241	369	73	6,363	445	174	3,780	988	(273)	(297)	5,259	9,894	5,007
15	271	195	2,483	91	1,023	434	149	591	273	366	18	5,895	173	373	647	969	292	(168)	5,123	11,365	2,529
21	535	135	2,447	208	664	455	42	587	355	419	46	5,892	159	649	-	-	610	(161)	4,890	-	4,544
22	371	115	2,862	103	854	247	183	422	244	453	20	5,875	158	303	2,806	422	697	(106)	5,053	5,554	2,898
23	322	76	2,605	244	779	199	120	380	226	470	42	5,463	109	388	3,757	474	606	(170)	4,539	7,903	1,746
24	450	139	2,418	217	803	384	48	655	176	320	20	5,633	131	536	-	129	1,992	854	5,047	1,769	3,933
25	628	1,219	5,528	-	1,604	722	3	685	861	196	135	13,582	2,140	1,693	-	-	7,661	458	9,463	110	-
31	321	88	3,015	100	1,245	202	162	555	278	359	43	6,368	291	581	-	380	331	(217)	5,395	4,657	2,567
32	381	153	2,867	183	892	141	94	452	261	423	26	5,874	144	534	9	540	871	(102)	5,317	6,835	1,453
36	542	212	3,615	232	849	166	36	543	336	513	47	7,091	125	406	2,100	547	840	95	6,283	25,352	1,581
38	531	374	4,330	159	820	500	18	250	394	600	38	9,013	146	1,281	-	60	1,077	365	5,357	10,645	17
51	310	110	2,704	89	614	249	111	342	241	249	51	5,070	111	403	197	409	538	20	4,511	7,993	1,630
47	193	99	2,579	56	789	168	135	382	283	387	26	5,098	187	174	92	585	738	144	4,394	5,522	2,789
57	326	230	3,601	-	249	187	41	369	314	470	62	5,851	290	176	-	-	(223)	(146)	4,971	95	3,258
55	486	125	2,966	28	708	92	105	905	296	323	55	6,089	121	141	3,461	402	906	262	4,974	5,006	4,239
62	397	205	2,266	464	769	273	112	430	267	292	125	5,600	170	271	869	16	415	380	4,991	14,663	2,140
2071	368	180	3,142	71	712	255	129	417	275	462	64	6,075	140	368	-	-	397	(7)	5,518	130	3,545
77	287	90	2,879	91	755	245	180	544	232	243	21	5,568	217	336	-	298	569	(163)	5,006	3,215	5,034
2135	404	212	2,590	111	500	250	94	617	269	391	27	5,464	161	479	95	-	1,303	119	4,933	4,806	3,666
75	371	150	2,466	1	794	160	34	516	287	477	96	5,353	140	132	-	313	67	174	4,368	3,459	2,677
81	366	241	3,882	119	1,046	97	87	748	296	308	196	7,386	198	245	-	-	(412)	(514)	6,496	118	5,380
88	317	106	2,732	104	705	296	144	458	226	493	19	5,601	169	278	784	-	907	37	4,809	3,538	3,800
84	388	153	2,619	316	729	175	130	450	256	454	31	5,701	222	536	3,403	384	693	130	4,741	4,127	5,816
85	344	80	2,735	209	461	103	113	358	277	326	28	5,037	150	481	-	611	1,085	(37)	4,786	7,293	3,045

SCHOOL DISTRICTS

SCHOOL DISTRICTS

SCHOOL DISTRICTS

District Name	District Number	1996-97 Resident Average Daily Membership					Pupil Data			Prof. Staff		Tax Rates		ADM		Revenue %		
		1. Pre-Kindergarten Disabled	2. Kindergarten	3. Elementary (Grades 1-6)	4. Secondary (Grades 7-12)	5. Total (PK-12)	6. Percent Minority	7. Percent Attendance	8. Percent Transported	9. Total Staff (FTE)	10. Pupil-Staff Ratio	11. Auditor Percent	12. Equalized Percent	13. Resident ADM	14. Total ADM	15. Federal	16. State	17. Local and Other
09 CARLTON																		
BARNUM	91	3	47	305	365	720	3.7	94.2	89	51	13.6	70.41	50.91	720	702	4	75	21
CARLTON	93	4	60	375	387	826	11.5	93.3	90	58	13.4	59.24	50.59	826	792	4	65	31
CLOQUET	94	12	194	1,040	1,173	2,419	15.3	93.6	73	170	14.8	57.27	53.83	2,419	2,545	9	61	30
CROMWELL	95	1	16	115	150	282	-	95.8	93	23	12.6	76.95	63.87	282	295	3	66	31
ESKO	99	1	80	464	481	1,026	1.0	95.9	95	68	15.4	82.31	71.28	1,026	1,056	2	71	27
MOOSE LAKE	97	3	56	319	375	753	2.3	95.3	92	60	13.1	61.74	54.76	753	784	3	66	31
WRENSHALL	100	-	18	157	165	340	2.6	95.0	93	33	12.5	77.24	66.19	340	417	3	60	37
10 CARVER																		
CHASKA	112	29	490	3,055	2,536	6,110	5.0	93.4	88	379	15.8	69.14	63.95	6,110	6,073	2	56	42
NORWOOD	108	9	61	453	585	1,108	2.2	94.5	71	86	13.0	65.22	55.18	1,108	1,127	3	59	38
WACONIA	110	11	128	755	789	1,683	3.0	95.6	92	114	14.6	66.55	58.36	1,683	1,685	2	48	50
WATERTOWN-MAYER	111	12	83	583	690	1,368	2.1	94.9	89	89	15.0	63.47	52.74	1,368	1,348	3	61	36
11 CASS																		
CASS LAKE	115	10	93	488	434	1,025	73.6	89.5	84	83	12.9	79.52	71.17	1,025	1,084	12	62	26
PILLAGER	116	10	51	349	280	690	3.6	93.5	91	50	13.5	55.19	44.37	690	675	4	44	52
PINE RIVER-BACKUS	2174	10	83	634	644	1,371	1.3	94.0	87	90	14.8	53.19	43.72	1,371	1,333	5	54	41
REMER-LONGVILLE	118	2	33	260	290	585	19.4	91.5	87	51	11.3	50.52	41.22	585	582	13	22	65
WALKER-HACKENSACK-AKE	113	8	82	540	514	1,144	18.9	92.3	80	76	13.9	41.70	33.24	1,144	1,058	7	37	56
12 CHIPPEWA																		
M.A.C.C.R.A.Y.	2180	5	55	439	536	1,035	5.3	95.9	93	82	12.6	80.00	74.00	1,035	1,032	3	52	45
MONTEVIDEO	129	8	86	672	807	1,573	2.1	94.3	70	122	14.0	63.53	59.14	1,573	1,718	6	63	31
13 CHISAGO																		
CHISAGO LAKES	2144	16	223	1,641	1,582	3,462	2.7	92.2	94	212	16.0	45.13	37.36	3,462	3,398	2	71	27
FRANCONIA (NONOPER)	323	-	3	21	9	33	-	-	100	-	-	65.62	52.62	33	25	0	74	26
NORTH BRANCH	138	6	252	1,548	1,440	3,246	1.8	92.4	99	190	16.8	67.75	56.54	3,246	3,205	2	69	29
RUSH CITY	139	1	72	411	421	905	2.7	95.1	87	60	15.2	73.59	63.22	905	918	3	63	34
14 CLAY																		
BARNESVILLE	146	2	52	369	414	837	0.6	95.6	63	60	13.7	55.70	51.13	837	828	4	57	39
DILWORTH-GLYNDON-FELTON	2164	7	97	620	555	1,279	10.4	94.8	67	98	13.0	66.88	58.18	1,279	1,311	4	70	26
HAWLEY	150	3	29	378	398	808	0.9	97.1	63	57	14.9	77.59	66.96	808	865	2	72	26
MOORHEAD	152	25	398	2,847	2,699	5,969	15.3	93.4	67	435	13.4	57.07	47.20	5,969	5,953	6	71	23
ULEN-HITTERDAL	914	1	16	174	180	371	6.3	94.8	78	26	13.6	66.28	60.64	371	353	4	63	33
15 CLEARWATER																		
BAGLEY	162	12	89	550	602	1,253	15.5	93.6	96	82	14.8	70.17	65.96	1,253	1,242	8	63	29
CLEARBROOK-GONVICK	2311	4	38	256	272	570	5.3	94.9	100	43	15.1	43.71	42.96	570	653	5	56	39
16 COOK																		
COOK COUNTY	166	3	51	337	353	744	10.6	95.1	80	53	13.9	41.83	34.84	744	742	7	20	73

District Number	1996-97 Expenditures Per ADM													Other Measures Per ADM							
	18. District and School Admin.	19. District Support Services	20. Regular Instruction	21. Vocational Instruction	22. Exceptional Instruction	23. Instructional Support Services	24. Pupil Support Services	25. Operations and Maintenance	26. Food Service	27. Pupil Transportation	28. Other Oper. Programs	29. Total PK-12 Operating Expenditures	30. Community Service	31. Capital Outlay	32. Building Construction	33. Debt Service	34. Operating Funds Balance	35. Change in Funds Balance	36. State and Local Operating Costs	37. Long Term Debt	38. Prior Yr. Adj. Net Tax Capacity
91	456	126	3,025	128	521	248	216	401	309	356	19	5,807	152	171	68	550	756	(163)	5,045	11,933	1,728
93	402	175	2,653	25	611	207	149	486	202	375	155	5,441	107	308	-	56	154	54	4,557	778	2,619
94	425	140	3,010	132	1,124	245	208	521	213	352	18	6,389	250	476	-	222	801	56	5,456	4,193	3,124
95	483	433	2,678	240	712	257	56	524	299	465	18	6,167	135	273	-	156	1,201	427	5,363	27,125	2,828
99	373	77	2,845	130	824	181	105	415	141	279	45	5,418	133	278	2,742	676	679	108	4,909	12,549	2,091
97	428	173	3,174	33	671	226	239	524	230	318	18	6,037	122	714	546	709	548	(202)	5,412	4,480	2,580
100	478	189	2,756	-	695	173	264	556	220	333	16	5,681	125	184	2,346	8	852	435	5,111	13,370	3,710
112	349	186	2,440	56	960	522	140	487	216	395	46	5,797	230	230	813	704	336	46	5,131	11,494	3,721
108	453	154	2,597	328	1,142	121	130	500	239	286	45	5,997	265	365	-	784	52	(171)	5,350	7,114	4,055
110	408	138	2,805	163	857	210	189	554	249	520	33	6,126	278	273	-	804	447	(315)	5,328	8,428	4,978
111	319	138	2,667	123	847	334	99	397	300	361	46	5,631	164	303	28	522	887	(34)	4,953	4,733	3,591
115	647	167	3,168	66	1,472	499	102	714	352	609	140	7,937	146	775	98	801	717	(168)	6,287	15,987	3,004
116	441	146	2,878	25	815	210	155	391	295	401	24	5,783	89	292	296	464	442	(336)	5,100	4,654	6,371
2174	333	96	2,708	47	620	136	79	441	263	324	16	5,064	121	443	-	293	897	461	4,574	2,626	4,446
118	361	252	3,196	139	1,151	533	135	605	258	590	24	7,244	158	542	-	91	773	99	5,589	721	10,840
113	313	180	2,824	116	1,067	177	133	455	293	364	20	5,942	233	444	-	87	887	107	5,098	197	7,186
2180	381	225	2,833	82	983	169	79	603	249	496	73	6,173	126	930	3,482	581	880	92	5,519	6,757	3,835
129	328	67	2,575	261	878	284	42	431	548	317	45	5,775	229	396	407	501	1,152	60	4,830	6,934	2,363
2144	296	174	2,465	144	649	187	152	410	243	219	-	4,939	200	539	-	15	610	(4)	4,453	894	2,915
323	-	111	6,181	-	172	-	-	-	-	326	-	6,790	-	-	-	-	(2,348)	(1,984)	6,464	-	2,910
138	310	272	2,538	116	783	418	144	435	246	315	28	5,606	147	335	4,770	45	416	18	4,937	13,507	2,393
139	377	147	2,495	122	538	259	152	382	280	234	45	5,031	279	612	1,011	6	759	56	4,464	11,053	2,344
146	448	92	3,072	101	662	144	134	503	283	346	25	5,810	140	201	-	844	624	14	5,055	3,430	3,068
2164	335	121	2,702	36	843	268	138	480	271	337	68	5,599	182	584	155	416	313	(377)	5,018	5,051	2,719
150	297	195	2,953	58	559	35	102	394	213	192	29	5,027	215	611	1,662	619	1,172	422	4,877	14,055	1,760
152	299	109	2,804	67	1,345	277	150	545	179	340	25	6,142	149	415	-	151	720	(33)	5,346	1,380	2,813
914	490	258	2,585	224	844	155	122	828	320	434	61	6,321	120	104	-	-	1,255	415	5,463	74	2,748
162	355	106	3,144	92	918	263	62	507	283	358	38	6,128	144	443	1,453	739	718	233	5,142	10,782	2,314
2311	297	180	2,834	110	553	154	136	557	301	578	28	5,729	141	471	-	-	1,152	172	4,819	762	6,368
166	509	160	3,297	7	586	133	114	504	174	342	-	5,826	183	475	4,202	515	1,000	227	5,100	14,266	10,098

SCHOOL DISTRICTS

SCHOOL DISTRICTS

SCHOOL DISTRICTS

District Name	District Number	1996-97 Resident Average Daily Membership					Pupil Data			Prof. Staff		Tax Rates		ADM		Revenue %		
		1. Pre-Kindergarten Disabled	2. Kindergarten	3. Elementary (Grades 1-6)	4. Secondary (Grades 7-12)	5. Total (PK-12)	6. Percent Minority	7. Percent Attendance	8. Percent Transported	9. Total Staff (FTE)	10. Pupil-Staff Ratio	11. Auditor Percent	12. Equalized Percent	13. Resident ADM	14. Total ADM	15. Federal	16. State	17. Local and Other
17 COTTONWOOD																		
MOUNTAIN LAKE	173	1	42	228	315	586	23.2	96.4	43	46	12.2	58.83	58.59	586	572	5	51	44
STORDEN-JEFFERS(ICA)	178	-	11	113	137	261	0.4	97.1	79	16	15.8	44.84	-	261	236	10	33	57
WESTBROOK (ICA)	175	1	25	105	135	266	1.1	94.6	74	21	12.3	50.02	46.67	266	262	1	48	51
WINDOM	177	4	64	531	574	1,173	3.7	96.7	72	101	12.1	57.54	51.55	1,173	1,224	4	62	34
18 CROW WING																		
BRAINERD	181	46	475	3,180	3,420	7,121	2.8	95.5	91	470	15.4	54.78	44.86	7,121	7,264	6	58	36
CROSBY-IRONTON	182	9	120	805	796	1,730	1.8	93.4	87	113	14.1	49.03	39.12	1,730	1,604	5	47	48
PEQUOT LAKES	186	5	65	490	526	1,086	3.6	94.1	100	75	15.4	42.93	35.25	1,086	1,163	3	10	87
19 DAKOTA																		
BURNSVILLE	191	80	928	5,623	4,765	11,396	12.8	94.1	82	743	15.3	73.68	69.19	11,396	11,487	2	47	51
FARMINGTON	192	31	309	1,823	1,559	3,722	1.8	95.5	93	218	16.9	66.96	61.20	3,722	3,719	2	68	30
HASTINGS	200	24	334	2,224	2,621	5,203	2.7	94.8	91	336	15.3	55.51	50.07	5,203	5,252	3	63	34
INVER GROVE	199	25	309	2,063	1,877	4,274	9.7	94.7	81	256	15.7	67.90	64.03	4,274	4,159	3	50	47
LAKEVILLE	194	42	699	4,025	3,119	7,885	2.7	95.4	89	513	15.2	65.94	60.40	7,885	7,867	2	55	43
RANDOLPH	195	1	27	189	216	433	2.8	82.7	85	39	13.7	60.11	49.77	433	534	2	60	38
ROSEMOUNT-APPLE VALLEY	196	155	2,017	13,038	11,246	26,456	9.5	94.9	92	1,819	14.5	64.67	59.30	26,456	26,454	2	57	41
SOUTH ST. PAUL	6	26	199	1,440	1,646	3,311	8.9	92.0	71	234	15.3	61.68	57.24	3,311	3,642	3	60	37
WEST ST. PAUL-MENDOTA	197	30	373	2,345	2,136	4,884	16.8	94.4	90	344	14.0	60.02	57.08	4,884	4,948	2	19	79
20 DODGE																		
HAYFIELD	203	11	59	448	520	1,038	2.2	95.5	70	69	15.1	49.20	41.67	1,038	1,055	4	72	24
KASSON-MANTORVILLE	204	10	118	774	755	1,657	2.8	94.4	100	111	15.1	58.70	50.19	1,657	1,690	2	91	7
21 DOUGLAS																		
TRITON	2125	10	81	630	612	1,333	2.7	94.7	77	78	15.4	73.69	61.24	1,333	1,233	3	64	33
ALEXANDRIA	206	20	272	1,873	2,191	4,356	1.2	94.6	88	275	15.9	55.40	48.48	4,356	4,390	5	56	39
BRANDON	207	2	17	157	195	371	1.3	94.8	78	25	15.7	53.40	44.70	371	394	4	71	25
EVANSVILLE	208	-	19	139	167	325	-	96.8	65	22	13.1	49.18	42.89	325	289	5	71	24
OSAKIS	213	5	37	247	318	607	1.5	95.1	78	44	14.8	68.39	59.91	607	658	6	64	30
22 FARIBAULT																		
BLUE-EARTH (CSF)	2148	11	82	558	712	1,363	6.3	96.0	66	55	24.7	55.83	-	1,363	1,381	4	62	34
DELAVAL (CSF)	218	2	11	70	81	164	2.9	96.3	70	9	15.0	52.82	-	164	148	3	42	55
ELMORE (CSF)	219	3	10	57	94	164	6.8	95.7	60	7	20.6	55.49	-	164	154	4	52	44
UNITED SOUTH CENTRAL	2134	7	71	515	673	1,266	5.9	96.2	61	86	13.7	64.26	56.23	1,266	1,185	4	56	40
23 FILLMORE																		
FILLMORE CENTRAL	2198	6	62	419	479	966	1.6	95.9	82	70	13.1	65.36	53.01	966	926	5	68	27
KINGSLAND	2137	8	67	479	521	1,075	0.7	94.3	79	80	13.0	56.67	46.53	1,075	1,036	4	74	22
LANESBORO	229	2	27	148	172	349	0.7	94.0	84	32	12.9	66.89	53.98	349	417	6	66	28
MABEL-CANTON	238	4	39	181	184	408	1.7	95.8	78	32	12.4	61.68	52.37	408	401	8	63	29
RUSHFORD-PETERSON	239	5	45	351	402	803	1.2	95.3	73	57	13.3	46.72	35.18	803	756	4	76	20

District Number	1996-97 Expenditures Per ADM																	Other Measures Per ADM				
	18. District and School Admin.	19. District Support Services	20. Regular Instruction	21. Vocational Instruction	22. Exceptional Instruction	23. Instructional Support Services	24. Pupil Support Services	25. Operations and Maintenance	26. Food Service	27. Pupil Transportation	28. Other Oper. Programs	29. Total PK-12 Operating Expenditures	30. Community Service	31. Capital Outlay	32. Building Construction	33. Debt Service	34. Operating Funds Balance	35. Change in Funds Balance	36. State and Local Operating Costs	37. Long Term Debt	38. Prior Yr. Adj. Net Tax Capacity	
173	477	79	2,826	393	737	309	176	690	273	149	52	6,162	358	760	-	10	290	3	5,796	1,118	3,493	
178	742	442	3,499	133	523	155	78	640	366	414	60	7,052	60	267	-	-	(2,321)	(735)	5,811	104	-	
175	590	200	2,925	155	447	195	182	783	314	529	53	6,374	137	751	-	48	324	(516)	5,734	75	5,460	
177	397	189	2,914	229	1,343	129	110	579	263	226	18	6,398	174	517	-	107	1,084	385	5,935	965	3,491	
181	248	82	2,710	227	883	266	127	458	261	345	13	5,621	163	346	562	295	820	(59)	4,803	3,723	4,034	
182	330	90	2,993	134	765	172	184	544	224	455	39	5,931	111	304	50	885	246	(81)	5,124	3,112	5,381	
186	305	126	2,535	80	450	205	102	445	282	273	21	4,824	95	307	3,726	502	1,180	150	4,271	5,312	12,922	
191	354	176	3,061	160	1,061	189	221	596	242	305	64	6,431	472	288	848	450	796	(7)	5,803	5,165	4,445	
192	289	182	2,338	111	877	243	204	523	266	415	38	5,485	154	161	3,526	181	580	92	4,710	16,586	2,649	
200	416	30	2,958	50	795	276	178	437	264	385	31	5,819	194	296	-	916	5,964	5,316	5,246	1,477	3,614	
199	459	167	2,988	5	1,095	224	204	467	286	293	47	6,235	305	452	883	335	825	91	5,517	5,364	4,188	
194	378	159	2,396	44	772	217	163	502	290	369	39	5,329	288	227	97	883	376	223	4,615	14,136	3,829	
195	424	142	3,075	215	265	693	43	451	160	275	34	5,777	232	474	-	21	1,069	154	4,858	774	4,311	
196	293	166	2,726	77	634	293	102	394	194	247	14	5,141	160	291	829	668	526	220	4,591	6,975	3,846	
6	367	202	2,751	33	918	277	186	519	262	272	122	5,909	438	415	9	485	583	53	5,434	8,137	3,551	
197	405	165	2,895	59	1,042	373	211	886	282	392	50	6,761	295	323	4,532	344	246	(193)	5,879	9,596	9,376	
203	315	117	2,550	141	621	286	102	341	302	380	70	5,226	86	444	-	55	750	85	4,519	230	2,768	
204	308	57	2,688	72	711	250	135	448	195	256	26	5,146	135	524	519	635	585	(148)	4,651	7,381	2,101	
2125	321	163	2,674	22	728	101	88	509	261	269	31	5,167	140	743	5,878	354	760	210	4,600	7,309	3,049	
206	187	87	2,818	91	755	202	299	383	246	250	21	5,341	147	303	-	426	472	61	4,715	4,420	4,365	
207	363	93	2,785	119	398	163	103	346	259	410	86	5,126	81	487	-	172	1,212	231	4,331	762	2,389	
208	477	138	2,648	123	193	101	135	402	283	296	27	4,824	139	281	-	-	1,193	424	4,361	-	2,282	
213	386	161	2,454	158	470	142	185	456	243	294	30	4,980	93	247	-	695	1,138	668	4,242	14,440	2,677	
2148	185	106	3,151	36	787	169	38	357	305	219	44	5,398	292	662	-	15	238	(86)	4,829	589	-	
218	431	273	4,602	-	510	9	16	526	162	638	74	7,242	357	112	-	-	(763)	(80)	6,268	-	-	
219	387	538	3,910	-	460	39	-	881	149	281	58	6,704	236	1,114	-	-	299	(364)	5,785	-	-	
2134	424	101	3,128	55	797	248	138	521	288	379	65	6,145	159	421	-	34	242	129	5,486	764	3,863	
2198	341	104	2,973	90	639	213	43	500	291	383	95	5,672	111	387	-	326	389	418	4,809	3,625	2,618	
2137	372	79	3,028	122	874	153	81	440	311	333	68	5,862	127	334	-	140	423	149	5,056	814	2,323	
229	410	143	2,899	266	705	134	34	325	299	463	38	5,717	347	212	-	355	1,162	(43)	4,590	4,347	2,762	
238	446	146	3,089	236	504	266	114	479	312	286	92	5,970	145	218	-	1	603	(1)	5,050	120	2,924	
239	411	127	2,817	147	729	119	86	475	302	461	86	5,762	119	765	-	5	(245)	(446)	5,034	589	2,464	

SCHOOL DISTRICTS

SCHOOL DISTRICTS

SCHOOL DISTRICTS

District Name	District Number	1996-97 Resident Average Daily Membership					Pupil Data			Prof. Staff		Tax Rates		ADM		Revenue %		
		1. Pre-Kindergarten Disabled	2. Kindergarten	3. Elementary (Grades 1-6)	4. Secondary (Grades 7-12)	5. Total (PK-12)	6. Percent Minority	7. Percent Attendance	8. Percent Transported	9. Total Staff (FTE)	10. Pupil-Staff Ratio	11. Auditor Percent	12. Equalized Percent	13. Resident ADM	14. Total ADM	15. Federal	16. State	17. Local and Other
24 FREEBORN																		
ALBERT LEA	241	23	264	1,963	1,983	4,233	9.1	94.2	74	284	14.6	55.43	49.67	4,233	4,170	4	68	28
ALDEN	242	-	19	149	167	335	3.1	96.6	79	31	13.6	66.47	61.95	335	423	3	69	28
EMMONS (ASE)	243	1	12	92	111	216	3.3	95.9	70	19	11.2	50.56	47.07	216	218	3	69	28
GLENVILLE (ASE)	245	2	23	139	206	370	4.0	98.2	72	27	13.3	66.20	63.75	370	369	4	61	35
25 GOODHUE																		
CANNON FALLS	252	8	98	784	797	1,687	2.1	95.5	97	106	15.6	60.67	50.72	1,687	1,665	2	64	34
GOODHUE	253	3	35	223	276	537	-	95.1	80	41	13.7	62.01	60.65	537	558	3	66	31
KENYON-WANAMINGO	2172	7	72	486	518	1,083	2.9	95.3	76	67	15.9	83.74	73.77	1,083	1,074	3	57	40
PINE ISLAND	255	5	80	471	507	1,063	2.5	95.9	78	82	14.7	58.97	52.66	1,063	1,211	2	73	25
RED WING	256	27	219	1,527	1,706	3,479	6.1	93.3	87	234	14.9	57.64	54.06	3,479	3,515	3	18	79
ZUMBROTA-MAZEPPA	2805	9	67	577	655	1,308	1.7	96.0	78	82	15.9	60.95	56.08	1,308	1,316	2	65	33
26 GRANT																		
ASHBY	261	1	14	128	148	291	2.0	96.0	91	24	14.1	51.79	41.38	291	341	3	73	24
HERMAN-NORCROSS	264	1	7	88	126	222	2.1	97.1	46	22	8.8	60.56	56.20	222	194	4	31	65
WEST CENTRAL AREA	2342	3	76	451	518	1,048	1.8	95.0	84	71	14.4	55.26	44.81	1,048	1,032	4	58	38
27 HENNEPIN																		
BLOOMINGTON	271	50	774	5,225	5,468	11,517	17.0	94.2	94	679	16.5	50.11	47.25	11,517	11,566	3	25	72
BROOKLYN CENTER	286	5	128	652	612	1,397	35.5	93.6	69	102	15.9	61.10	57.07	1,397	1,642	4	55	41
EDEN PRAIRIE	272	43	719	4,857	3,916	9,535	5.9	96.0	100	621	15.3	65.30	55.90	9,535	9,660	1	35	64
EDINA	273	24	455	2,843	2,712	6,034	5.4	99.1	87	433	14.6	62.59	53.20	6,034	6,388	1	13	86
HOPKINS	270	35	539	3,607	3,620	7,801	9.1	95.0	98	577	14.0	62.10	55.40	7,801	8,272	2	16	82
MINNEAPOLIS	1	312	5,085	24,873	18,188	48,458	65.7	90.6	97	3,720	12.6	72.38	66.88	48,458	47,569	7	47	46
MINNETONKA	276	45	575	3,680	3,267	7,567	5.0	95.4	99	489	14.8	78.42	68.77	7,567	7,459	2	33	65
ORONO	278	13	148	1,072	1,075	2,308	3.0	93.9	100	168	15.4	62.49	55.74	2,308	2,621	1	31	68
OSSEO	279	116	1,704	10,070	9,471	21,361	16.1	94.6	67	1,385	15.3	68.69	62.92	21,361	21,443	2	57	41
RICHFIELD	280	25	355	2,032	2,035	4,447	23.7	94.3	89	308	13.9	63.65	60.66	4,447	4,464	3	34	63
ROBBINSDALE	281	55	1,142	7,050	6,384	14,631	17.0	94.4	79	926	15.0	63.76	60.06	14,631	14,479	3	46	51
ST. ANTHONY-NEW BRIGH	282	6	64	492	481	1,043	12.5	98.9	87	91	14.3	72.11	66.48	1,043	1,305	1	38	61
ST. LOUIS PARK	283	52	310	2,011	1,997	4,370	13.4	94.6	86	263	15.8	62.95	60.81	4,370	4,302	2	22	76
WAYZATA	284	49	594	3,980	3,724	8,347	6.3	95.8	91	488	16.9	63.98	54.19	8,347	8,446	4	20	76
WESTONKA	277	14	187	1,233	1,254	2,688	4.1	94.2	91	161	14.6	56.66	49.97	2,688	2,438	3	30	67
28 HOUSTON																		
CALEDONIA	299	3	58	432	557	1,050	1.1	95.8	58	74	14.1	56.93	47.60	1,050	1,041	4	71	25
HOUSTON	294	2	43	245	257	547	-	97.7	60	41	12.3	60.78	47.41	547	513	4	71	25
LACRESCENT-HOKAH	300	10	101	629	752	1,492	2.8	94.5	79	104	15.5	53.19	43.46	1,492	1,615	2	69	29
SPRING GROVE	297	-	32	200	243	475	1.2	96.1	53	36	13.1	53.34	40.22	475	481	4	71	25

District Number	1996-97 Expenditures Per ADM																Other Measures Per ADM				
	18. District and School Admin.	19. District Support Services	20. Regular Instruction	21. Vocational Instruction	22. Exceptional Instruction	23. Instructional Support Services	24. Pupil Support Services	25. Operations and Maintenance	26. Food Service	27. Pupil Transportation	28. Other Oper. Programs	29. Total PK-12 Operating Expenditures	30. Community Service	31. Capital Outlay	32. Building Construction	33. Debt Service	34. Operating Funds Balance	35. Change in Funds Balance	36. State and Local Operating Costs	37. Long Term Debt	38. Prior Yr. Adj. Net Tax Capacity
241	339	122	2,822	89	919	265	208	603	204	301	73	5,948	159	357	-	197	105	(212)	5,208	755	2,688
242	392	187	2,728	117	411	164	76	389	228	315	42	5,051	78	143	605	-	858	358	4,435	9,057	3,097
243	637	141	2,692	-	521	131	199	457	282	204	43	5,307	77	86	-	-	1,416	558	4,758	117	2,774
245	430	174	2,729	183	493	209	120	552	274	258	50	5,473	84	318	-	-	1,013	296	5,008	164	2,968
252	290	82	2,502	79	555	206	137	428	275	220	145	4,919	208	758	481	556	1,135	453	4,919	4,898	3,326
253	404	115	2,533	184	554	316	85	430	283	436	35	5,376	97	427	29	289	850	247	4,478	3,550	2,633
2172	390	57	2,622	88	586	188	68	623	301	552	21	5,497	134	207	2,998	464	462	101	4,349	13,800	3,247
255	298	79	2,635	170	532	166	133	357	234	203	66	4,874	103	656	-	516	235	(135)	4,451	6,792	2,115
256	304	213	2,832	157	919	258	250	589	353	348	26	6,249	289	422	388	901	526	182	5,456	9,520	8,216
2805	371	72	2,507	252	839	268	83	670	283	295	23	5,664	147	327	3,005	333	866	(38)	4,723	4,618	2,355
261	407	145	2,523	90	498	335	207	372	219	236	75	5,108	140	292	-	332	1,221	503	4,666	1,690	2,518
264	857	114	4,135	359	614	317	104	792	318	334	199	8,144	239	769	-	21	1,522	98	7,841	76	6,517
2342	286	166	2,744	104	552	228	103	602	288	446	56	5,577	281	991	69	434	766	323	5,031	5,368	3,855
271	382	324	3,010	146	1,056	353	210	442	269	333	8	6,533	706	244	202	97	1,174	316	5,900	2,240	8,991
286	269	219	2,801	135	749	532	148	539	302	181	38	5,915	261	381	-	331	128	559	5,433	3,258	4,933
272	349	213	2,795	107	769	274	132	489	246	286	16	5,677	212	326	1,731	520	404	(216)	5,181	12,040	7,641
273	435	306	3,391	35	744	339	148	694	194	200	23	6,509	577	369	4	574	331	14	6,103	6,022	11,499
270	379	245	3,358	87	1,246	528	325	553	276	322	28	7,349	509	341	1,118	998	1,071	385	6,691	7,149	10,836
1	437	297	3,640	122	1,661	419	306	681	314	611	145	8,344	264	230	2,108	693	849	354	7,122	1,887	6,012
276	309	252	3,208	201	1,105	401	241	536	251	366	2	6,872	438	338	949	570	486	109	6,214	10,538	6,853
278	330	214	3,170	115	858	210	162	532	237	447	52	6,327	353	564	-	357	1,007	242	5,740	4,173	8,938
279	326	144	2,936	175	913	349	122	455	244	316	16	5,996	234	287	429	561	398	(403)	5,403	6,221	3,743
280	355	256	2,915	152	1,095	686	400	694	217	242	68	7,080	165	231	303	575	583	(167)	6,508	9,329	6,939
281	318	218	2,991	246	1,120	252	239	603	265	344	21	6,617	400	444	-	7	254	(54)	5,992	663	5,099
282	406	262	3,381	34	721	153	199	631	75	233	682	6,777	606	181	1,815	473	685	150	6,382	6,581	6,955
283	364	252	3,134	119	1,444	630	321	830	230	440	30	7,793	764	305	5	386	980	177	7,014	5,327	8,693
284	487	507	3,513	15	615	238	177	458	209	297	20	6,537	372	296	3,727	318	767	75	5,764	16,103	9,813
277	403	254	2,885	159	916	213	247	618	253	352	61	6,361	358	114	662	674	20	33	5,622	5,230	7,435
299	396	55	2,622	102	795	316	129	385	344	401	97	5,641	174	533	-	89	286	4	4,881	859	2,636
294	406	169	3,072	106	496	167	138	524	275	321	7	5,681	164	507	-	98	123	(307)	5,133	578	2,420
300	359	154	2,824	82	563	193	130	408	246	352	16	5,327	193	360	-	129	971	81	4,628	753	2,730
297	421	87	3,135	81	215	164	59	432	286	312	5	5,197	177	730	-	171	943	210	4,785	1,780	2,703

SCHOOL DISTRICTS

SCHOOL DISTRICTS

District Name	District Number	1996-97 Resident Average Daily Membership					Pupil Data			Prof. Staff		Tax Rates		ADM		Revenue %		
		1. Pre-Kindergarten Disabled	2. Kindergarten	3. Elementary (Grades 1-6)	4. Secondary (Grades 7-12)	5. Total (PK-12)	6. Percent Minority	7. Percent Attendance	8. Percent Transported	9. Total Staff (FTE)	10. Pupil-Staff Ratio	11. Auditor Percent	12. Equalized Percent	13. Resident ADM	14. Total ADM	15. Federal	16. State	17. Local and Other
29 HUBBARD																		
LAPORTE	306	1	12	143	140	296	19.0	93.7	100	28	13.9	57.75	49.67	296	398	5	69	26
NEVIS	308	4	27	160	192	383	0.9	93.4	100	36	14.9	62.97	47.92	383	533	4	53	43
PARK RAPIDS	309	34	123	872	990	2,019	7.2	94.0	89	-	-	48.00	40.27	2,019	2,002	5	57	38
30 ISANTI																		
BRAHAM	314	6	67	454	524	1,051	1.4	94.3	82	69	14.6	66.28	55.87	1,051	1,006	3	75	22
CAMBRIDGE-ISANTI	911	26	294	2,152	2,124	4,596	2.7	91.9	85	287	16.7	50.29	43.15	4,596	4,823	5	65	30
31 ITASCA																		
DEER RIVER	317	5	87	535	559	1,186	24.9	92.8	93	83	14.2	43.93	38.53	1,186	1,183	9	56	35
GRAND RAPIDS	318	23	294	2,025	2,526	4,868	5.2	94.4	100	324	15.0	56.77	51.83	4,868	4,957	6	39	55
GREENWAY	316	11	97	700	818	1,626	8.0	94.0	80	115	13.3	51.69	43.37	1,626	1,542	4	65	31
NASHWAUK-KEEWATIN	319	4	47	331	368	750	3.5	95.5	91	47	15.1	50.51	42.53	750	720	4	68	28
32 JACKSON																		
HERON LAKE (ICA)	330	1	23	165	180	369	4.6	96.7	70	27	12.0	54.11	49.67	369	345	4	52	44
JACKSON	324	5	63	478	505	1,051	9.1	95.9	66	83	13.1	51.72	-	1,051	1,103	4	58	38
LAKEFIELD (ICA)	325	5	30	175	252	462	0.2	95.3	48	26	17.2	50.88	-	462	435	4	56	40
SIOUX VALLEY (ICA)	328	1	5	43	39	88	1.9	96.1	96	7	23.3	71.90	71.76	88	90	3	30	67
33 KANABEC																		
MORA	332	5	134	899	1,019	2,057	3.2	94.7	83	135	15.0	52.40	46.85	2,057	2,037	4	73	23
OGILVIE	333	3	61	358	352	774	2.5	91.1	100	57	13.9	58.51	48.85	774	798	6	81	13
34 KANDIYOHI																		
NEW LONDON-SPICER	345	13	105	759	894	1,771	1.7	95.3	100	104	17.5	68.57	60.75	1,771	1,837	3	63	34
PRINSBURG (NONOPER)	815	1	3	21	15	40	-	-	100	-	-	52.63	47.68	40	41	7	30	63
WILLMAR	347	31	331	2,118	2,105	4,585	18.8	93.1	94	399	11.9	66.91	59.55	4,585	4,738	4	65	31
35 KITTSO																		
KITTSO CENTRAL	2171	4	33	276	250	563	5.7	95.8	62	48	11.4	68.57	66.37	563	545	2	21	77
LANCASTER	356	1	13	87	97	198	4.5	95.1	83	18	13.2	89.88	84.66	198	240	3	62	35
TRI-COUNTY	2358	1	23	182	214	420	1.2	95.0	79	35	11.3	60.63	56.63	420	400	4	58	38
36 KOOCHICHING																		
INTERNATIONAL FALLS	361	4	129	808	876	1,817	5.6	93.6	88	117	15.2	47.08	43.88	1,817	1,794	5	61	34
LITTLEFORK-BIG FALLS	362	2	35	140	177	354	1.5	94.5	60	24	13.0	54.17	48.05	354	321	4	72	24
SOUTH KOOCHICHING	363	-	20	132	143	295	2.7	94.6	100	48	9.2	67.73	57.70	295	447	5	77	18
37 LAC QUI PARLE																		
BELLINGHAM (ASE)	371	1	9	75	95	180	-	97.6	84	11	7.1	73.62	69.06	180	146	5	59	36
DAWSON-BOYD	378	2	45	303	364	714	2.4	95.7	58	52	13.6	45.10	42.03	714	713	5	62	33
LAC QUI PARLE VALLEY	2853	9	86	649	717	1,461	4.7	94.9	75	96	14.2	58.47	54.32	1,461	1,388	5	62	33
38 LAKE																		
LAKE SUPERIOR	381	11	149	1,032	1,119	2,311	1.9	95.1	75	142	15.6	50.64	36.31	2,311	2,301	4	58	38
39 LAKE OF THE WOODS																		
LAKE OF THE WOODS	390	7	60	383	412	862	2.2	94.6	94	55	15.3	74.46	66.27	862	847	4	57	39

District Number	1996-97 Expenditures Per ADM																Other Measures Per ADM					
	18. District and School Admin.	19. District Support Services	20. Regular Instruction	21. Vocational Instruction	22. Exceptional Instruction	23. Instructional Support Services	24. Pupil Support Services	25. Operations and Maintenance	26. Food Service	27. Pupil Transportation	28. Other Oper. Programs	29. Total PK-12 Operating Expenditures	30. Community Service	31. Capital Outlay	32. Building Construction	33. Debt Service	34. Operating Funds Balance	35. Change in Funds Balance	36. State and Local Operating Costs	37. Long Term Debt	38. Prior Yr. Adj. Net Tax Capacity	
306	509	128	2,721	221	584	171	154	527	316	356	-	5,688	86	211	-	377	1,273	(73)	4,962	6,384	2,917	
308	310	128	2,435	217	693	184	32	524	251	341	21	5,135	113	616	-	697	1,063	135	4,623	12,642	5,850	
309	364	133	2,764	144	762	188	149	474	216	323	16	5,532	140	419	-	-	823	425	4,859	542	4,508	
314	415	151	3,069	100	686	121	135	536	244	375	39	5,872	119	428	-	325	690	(225)	5,440	7,546	1,699	
911	240	81	2,641	152	620	238	117	385	196	216	30	4,917	142	293	124	322	270	(80)	4,335	5,360	2,270	
317	369	170	2,928	79	832	332	203	462	298	544	55	6,272	120	332	-	301	340	(30)	4,984	745	3,481	
318	322	153	3,192	161	990	221	131	553	216	394	18	6,352	141	307	131	387	580	56	5,478	7,686	5,847	
316	354	192	3,218	134	1,375	213	193	657	201	376	70	6,983	86	420	2	154	(386)	(64)	6,247	5,021	1,683	
319	369	152	2,596	174	1,087	118	62	618	205	795	89	6,265	98	742	-	-	72	693	5,228	466	1,861	
330	343	136	3,304	227	644	465	99	663	264	256	80	6,480	169	426	-	-	1,007	719	6,139	88	5,099	
324	398	77	2,592	124	733	171	139	440	256	318	19	5,267	210	223	-	407	389	(7)	4,564	1,859	-	
325	392	149	2,895	227	768	233	129	622	279	154	44	5,894	139	378	-	5	707	173	5,417	80	-	
328	625	981	2,913	125	680	341	114	843	492	501	54	7,670	303	704	-	-	4,115	862	6,682	-	7,690	
332	322	64	2,720	134	563	161	121	479	202	234	20	5,021	211	436	371	373	1,099	265	4,500	3,999	1,861	
333	262	145	3,184	122	536	120	91	489	394	289	26	5,658	149	283	-	359	336	104	4,904	2,833	1,203	
345	294	157	2,647	127	586	139	121	379	250	369	20	5,089	165	244	-	853	234	(21)	4,435	10,048	3,225	
815	12	314	3,581	-	4,186	5	1	-	-	1,086	40	9,226	161	55	-	-	1,493	2,272	7,401	-	11,826	
347	374	309	3,017	255	1,226	200	178	475	256	389	69	6,747	229	310	-	553	(5)	(75)	5,996	6,955	3,003	
2171	679	79	3,399	-	475	180	83	640	272	411	41	6,261	106	659	88	66	1,442	735	6,245	1,320	8,458	
356	643	119	3,768	-	312	115	21	701	386	464	95	6,624	114	506	-	160	707	(48)	6,080	236	3,420	
2358	561	40	3,829	45	706	237	150	216	343	456	39	8,622	71	521	-	492	1,106	157	6,664	2,156	3,983	
361	393	120	3,121	88	660	156	201	632	241	226	23	5,861	222	318	-	-	739	190	5,184	505	3,240	
362	551	297	3,278	44	942	271	65	740	251	461	26	6,926	143	734	9,857	672	1,129	241	6,312	21,304	2,065	
363	330	139	4,298	4	424	312	362	784	316	633	46	7,650	78	1,199	85	653	1,749	643	6,815	62,993	1,563	
371	385	166	4,204	-	550	309	-	526	237	698	48	7,123	254	160	-	-	963	275	5,836	342	3,140	
378	346	174	2,817	187	710	118	132	504	337	260	45	5,632	142	361	-	4	757	(122)	4,973	941	3,251	
2853	384	147	2,778	210	738	264	209	577	302	341	45	5,997	173	214	-	276	873	1,386	5,242	1,991	3,212	
381	402	53	2,860	111	683	176	122	581	188	333	41	5,550	185	384	-	70	1,449	627	4,839	2,397	3,623	
390	452	87	2,856	-	515	132	89	553	370	396	46	5,496	140	968	54	932	562	(54)	5,061	25,965	2,329	

SCHOOL DISTRICTS

SCHOOL DISTRICTS

SCHOOL DISTRICTS

District Name	District Number	1996-97 Resident Average Daily Membership					Pupil Data			Prof. Staff		Tax Rates		ADM		Revenue %		
		1. Pre-Kindergarten Disabled	2. Kindergarten	3. Elementary (Grades 1-6)	4. Secondary (Grades 7-12)	5. Total (PK-12)	6. Percent Minority	7. Percent Attendance	8. Percent Transported	9. Total Staff (FTE)	10. Pupil-Staff Ratio	11. Auditor Percent	12. Equalized Percent	13. Resident ADM	14. Total ADM	15. Federal	16. State	17. Local and Other
40 LESUEUR																		
CLEVELAND	391	5	33	203	248	489	1.9	91.7	64	37	12.9	59.12	48.95	489	485	3	63	34
LECENTER	392	11	61	358	404	834	7.9	95.4	42	55	14.7	56.79	48.04	834	813	4	76	20
LESUEUR-HENDERSON	2397	14	86	627	722	1,449	6.6	94.9	75	97	14.2	53.51	46.29	1,449	1,386	3	64	33
MONTGOMERY-LONSDALE	394	14	78	526	619	1,237	6.3	95.0	71	76	14.9	57.50	48.88	1,237	1,172	4	71	25
WATERVILLE-ELYSIAN-MOR	2143	13	69	521	570	1,173	2.9	95.3	73	87	12.9	54.05	46.70	1,173	1,125	4	67	29
41 LINCOLN																		
HENDRICKS (ICA)	402	1	14	93	86	194	0.4	96.1	88	22	12.1	45.00	43.97	194	210	9	54	37
IVANHOE (ICA)	403	2	16	138	172	328	0.8	95.4	73	23	11.6	44.63	41.55	328	328	2	68	30
LAKE BENTON	404	3	13	127	133	276	1.1	96.3	68	20	14.0	41.12	36.84	276	305	4	67	29
TYLER (ICA)	409	3	21	164	201	389	1.2	96.6	90	20	13.2	61.02	56.93	389	383	2	68	30
42 LYON																		
BALATON	411	-	10	95	138	243	1.6	95.7	54	20	12.4	60.27	52.55	243	247	5	54	41
LAKEVIEW	2167	2	48	257	267	574	1.5	96.3	75	39	15.3	53.12	48.12	574	595	4	60	36
LYND (ASE)	415	1	14	76	119	210	13.5	96.6	56	12	8.4	50.84	44.48	210	160	3	67	30
MARSHALL (ASE)	413	11	163	932	1,089	2,195	9.7	95.5	79	161	14.5	51.16	46.40	2,195	2,352	4	56	40
MINNEOTA	414	3	45	189	315	552	3.7	96.0	75	42	14.3	53.35	48.44	552	604	4	67	29
RUSSELL (ICA)	418	1	16	86	111	214	2.1	96.8	89	16	11.8	49.72	50.56	214	208	2	52	46
TRACY	417	7	48	327	451	833	11.8	95.7	98	60	14.6	49.26	42.91	833	886	4	56	40
43 MCLEOD																		
BROWNTON (ICA)	421	1	21	155	194	371	1.6	94.4	59	20	14.9	50.73	45.56	371	345	3	71	26
GLENCOE-SILVER LAKE	2859	6	124	826	927	1,883	9.7	95.1	74	124	14.8	55.17	46.40	1,883	1,855	3	70	27
HUTCHINSON	423	14	194	1,421	1,518	3,147	4.1	93.6	94	184	17.5	66.28	55.28	3,147	3,249	2	64	34
LESTER PRAIRIE	424	1	37	221	239	498	0.2	96.1	64	40	14.3	62.04	52.92	498	577	3	73	24
STEWART (ICA)	426	1	19	135	149	304	2.8	95.4	74	20	16.0	62.36	54.38	304	278	4	59	37
44 MAHNOMEN																		
MAHNOMEN	432	11	63	338	467	879	55.0	84.7	75	69	13.2	57.95	56.39	879	919	13	67	20
WAUBUN	435	15	49	303	321	688	57.2	92.0	77	45	14.9	53.85	48.41	688	676	14	68	18
45 MARSHALL																		
GRYGLA	447	-	13	101	124	238	1.7	96.3	83	20	11.6	56.95	52.51	238	231	4	72	24
MARSHALL COUNTY CENT.	441	1	20	167	215	403	1.5	95.3	90	33	12.2	49.67	47.58	403	404	4	52	44
STEPHEN-ARGYLE CENTRAL	2856	-	33	249	260	542	3.3	95.7	44	43	12.4	52.48	51.54	542	541	9	52	39
WARREN-ALVARADO-OSLO	2176	5	57	356	384	802	11.1	93.6	43	62	12.3	62.83	60.82	802	776	3	50	47
46 MARTIN																		
FAIRMONT AREA SCHOOLS	2752	16	133	918	1,143	2,210	3.7	93.7	84	109	20.2	57.43	52.84	2,210	2,223	3	66	31
GRANADA HUNTLEY-EAST	2536	3	25	177	245	450	2.2	95.6	80	35	11.6	54.63	52.44	450	406	4	45	51
MARTIN COUNTY WEST	2448	3	69	440	464	976	2.6	95.6	91	74	14.2	55.11	50.54	976	1,063	4	46	50
TRUMAN	458	4	26	218	252	500	2.7	95.1	63	36	13.1	44.41	39.61	500	484	4	61	35

District Number	1996-97 Expenditures Per ADM																Other Measures Per ADM				
	18. District and School Admin.	19. District Support Services	20. Regular Instruction	21. Vocational Instruction	22. Exceptional Instruction	23. Instructional Support Services	24. Pupil Support Services	25. Operations and Maintenance	26. Food Service	27. Pupil Transportation	28. Other Oper. Programs	29. Total PK-12 Operating Expenditures	30. Community Service	31. Capital Outlay	32. Building Construction	33. Debt Service	34. Operating Funds Balance	35. Change in Funds Balance	36. State and Local Operating Costs	37. Long Term Debt	38. Prior Yr. Adj. Net Tax Capacity
391	395	142	2,871	147	712	167	119	406	237	271	13	5,480	89	314	-	441	474	79	4,994	3,072	3,801
392	471	88	2,738	237	625	112	74	491	244	202	45	5,326	135	346	65	223	114	(349)	4,734	10,007	2,147
2397	415	132	2,824	119	724	246	202	484	231	225	25	5,627	243	231	-	385	(120)	(250)	5,125	3,279	3,026
394	305	129	2,564	71	814	143	146	421	285	429	33	5,340	190	325	2	480	1,056	599	4,626	4,870	2,731
2143	346	221	2,754	108	847	199	107	461	280	260	25	5,608	141	424	-	111	654	(52)	4,995	309	2,919
402	533	158	3,145	210	962	162	136	554	498	258	52	6,667	161	697	-	152	658	(197)	5,910	82	3,833
403	481	153	2,591	282	672	145	125	684	258	277	40	5,708	124	660	-	-	971	283	5,016	149	3,323
404	447	144	3,049	259	431	69	53	553	305	290	31	5,632	110	242	-	-	62	(190)	5,022	-	4,038
409	293	88	2,892	326	301	142	22	478	210	474	33	5,259	110	482	-	182	242	(440)	4,634	2,292	2,520
411	520	119	3,204	-	639	219	8	592	264	259	21	5,845	190	504	-	-	1,306	270	5,156	219	4,554
2167	471	208	2,797	164	373	135	54	502	307	259	33	5,304	126	347	-	-	1,429	57	4,771	-	3,918
415	262	389	3,575	-	591	66	6	494	223	387	37	6,032	248	206	-	-	807	(35)	5,407	235	3,202
413	390	98	2,602	88	826	178	160	575	290	339	27	5,574	206	484	-	284	590	(115)	5,015	2,361	4,295
414	310	186	2,629	55	553	324	26	507	249	193	17	5,051	111	862	-	35	1,008	87	4,941	425	3,151
418	492	136	3,435	-	477	228	30	402	296	312	33	5,841	115	456	-	-	(1,148)	(960)	5,364	-	3,558
417	319	112	3,170	150	667	269	151	461	293	256	24	5,874	151	365	-	-	292	(325)	5,289	550	4,077
421	421	155	2,306	179	508	269	152	385	188	441	33	5,038	133	560	-	-	605	7	4,639	390	2,595
2859	443	132	2,772	60	593	402	179	503	316	355	40	5,795	244	581	-	106	314	436	5,295	394	2,736
423	323	105	2,528	80	647	203	115	465	251	344	30	5,092	99	156	597	519	256	(47)	4,453	8,046	3,145
424	341	207	2,651	18	392	281	84	327	259	287	43	4,890	145	149	-	395	749	610	4,319	5,613	2,092
426	430	180	2,421	86	693	263	126	451	288	396	137	5,472	214	795	-	-	950	522	4,962	273	3,292
432	594	134	3,077	243	1,242	164	40	547	301	437	20	6,800	103	159	-	340	(382)	(172)	5,362	5,836	2,062
435	546	193	3,293	184	903	392	145	417	372	491	29	6,965	69	137	-	-	1,047	514	5,241	30	2,179
447	415	149	3,795	598	580	316	12	632	429	710	102	7,739	128	315	-	471	496	(71)	6,473	4,592	2,150
441	507	141	3,409	125	615	198	62	715	308	367	68	6,516	157	652	-	192	873	(43)	6,373	1,501	6,353
2856	798	63	3,268	-	327	107	180	738	331	418	28	6,259	235	731	-	2	744	401	5,772	8	5,428
2176	471	52	3,081	10	848	237	54	669	257	238	30	5,949	186	638	-	-	1,456	662	5,294	156	4,430
2752	274	103	2,659	157	779	407	169	632	292	392	27	5,891	196	501	180	28	927	864	5,135	1,081	3,161
2536	584	285	3,370	-	631	217	65	619	336	392	47	6,547	166	763	-	-	768	(51)	5,914	119	5,436
2448	462	140	2,965	178	551	183	87	548	278	272	35	5,698	182	335	-	-	1,420	45	5,189	36	5,898
458	410	128	3,025	115	789	114	77	666	288	510	42	6,166	136	355	-	-	807	(379)	5,166	211	4,566

SCHOOL DISTRICTS

SCHOOL DISTRICTS

SCHOOL DISTRICTS

District Name	District Number	1996-97 Resident Average Daily Membership					Pupil Data			Prof. Staff		Tax Rates		ADM		Revenue %		
		1. Pre-Kindergarten Disabled	2. Kindergarten	3. Elementary (Grades 1-6)	4. Secondary (Grades 7-12)	5. Total (PK-12)	6. Percent Minority	7. Percent Attendance	8. Percent Transported	9. Total Staff (FTE)	10. Pupil-Staff Ratio	11. Auditor Percent	12. Equalized Percent	13. Resident ADM	14. Total ADM	15. Federal	16. State	17. Local and Other
47 MEEKER																		
A.C.G.C.	2396	6	60	557	630	1,253	2.7	95.8	80	85	12.9	81.39	71.54	1,253	1,104	3	63	34
DASSEL-COKATO	466	4	133	957	973	2,067	2.0	94.9	99	137	15.6	62.46	52.03	2,067	2,163	3	71	26
EDEN VALLEY-WATKINS	463	7	53	406	481	947	0.2	94.9	93	60	15.1	62.23	54.27	947	910	4	73	23
LITCHFIELD	465	10	123	934	1,066	2,133	4.6	95.8	90	132	15.7	61.71	55.17	2,133	2,078	3	66	31
48 MILLE LACS																		
ISLE	473	3	25	226	275	529	6.6	94.2	79	42	12.8	76.71	65.97	529	540	4	51	45
MILACA	912	11	123	789	835	1,758	5.0	94.5	78	117	14.6	63.88	55.38	1,758	1,726	4	75	21
ONAMIA	480	17	48	377	400	842	16.0	87.7	91	71	12.9	61.17	53.22	842	926	7	55	38
PRINCETON	477	18	195	1,368	1,438	3,019	3.2	93.6	86	187	15.7	52.82	41.67	3,019	2,955	3	72	25
49 MORRISON																		
LITTLE FALLS	482	28	138	1,634	1,772	3,572	1.7	94.7	84	223	16.2	53.92	49.23	3,572	3,622	4	77	19
PIERZ	484	6	60	352	579	997	1.0	95.8	89	75	13.3	52.51	47.31	997	1,014	7	78	15
ROYALTON	485	5	50	357	388	800	1.0	94.5	92	59	13.6	63.61	57.38	800	805	5	73	22
SWANVILLE	486	4	29	148	223	404	1.9	96.7	80	33	13.3	55.28	47.65	404	445	5	78	17
UPSALA	487	4	19	197	200	420	0.2	96.8	99	30	13.6	68.85	59.21	420	418	4	76	20
50 MOWER																		
AUSTIN	492	31	302	1,785	2,035	4,153	5.7	95.1	66	264	16.0	54.64	48.58	4,153	4,234	5	65	30
GRAND MEADOW	495	1	28	201	196	426	3.1	96.2	55	35	12.1	45.38	40.84	426	422	2	70	28
LEROY	499	2	26	206	231	465	-	95.9	58	31	14.1	86.63	75.63	465	442	4	61	35
LYLE	497	1	23	135	150	309	0.7	93.3	58	21	13.8	66.75	57.68	309	294	4	69	27
SOUTHLAND	500	6	61	252	312	631	1.3	94.1	95	53	12.4	65.54	58.59	631	662	5	56	39
51 MURRAY																		
FULDA	505	3	29	255	309	596	4.7	96.5	64	50	12.8	57.67	53.92	596	637	4	60	36
MURRAY COUNTY CENTRAL	2169	7	70	452	445	974	0.6	96.7	78	66	14.5	55.08	50.17	974	958	4	65	31
52 NICOLLET																		
NICOLLET	507	2	18	158	239	417	-	95.5	78	36	12.1	68.39	63.60	417	434	2	57	41
ST. PETER	508	30	128	829	993	1,980	4.0	93.4	74	138	14.5	56.92	48.10	1,980	2,034	3	66	31
53 NOBLES																		
ADRIAN	511	6	44	256	281	587	2.4	97.0	73	46	14.3	47.21	41.36	587	658	5	70	25
BREWSTER (ICA)	513	2	14	106	129	251	7.9	97.5	74	11	11.9	50.42	46.94	251	255	7	61	32
ELLSWORTH	514	1	11	109	112	233	1.1	97.6	39	19	9.4	60.63	60.08	233	176	4	50	46
ROUND LAKE (ICA)	516	1	14	87	73	175	1.2	96.7	75	21	11.5	63.32	59.01	175	182	2	51	47
WORTHINGTON	518	12	213	1,127	1,355	2,707	23.6	93.3	71	169	15.8	51.92	49.22	2,707	2,677	4	63	33
54 NORMAN																		
ADA-BORUP	2854	1	37	252	290	580	8.1	96.0	75	52	11.4	38.89	36.05	580	598	13	50	37
HALSTAD-HENDRUM	2527	4	34	174	174	386	11.8	92.7	100	37	11.9	62.86	59.66	386	452	8	57	35
NORMAN COUNTY EAST	2215	1	36	222	266	525	11.8	95.0	68	43	10.6	71.36	66.29	525	456	3	66	31

District Number	1996-97 Expenditures Per ADM												Other Measures Per ADM								
	18. District and School Admin.	19. District Support Services	20. Regular Instruction	21. Vocational Instruction	22. Exceptional Instruction	23. Instructional Support Services	24. Pupil Support Services	25. Operations and Maintenance	26. Food Service	27. Pupil Transportation	28. Other Oper. Programs	29. Total PK-12 Operating Expenditures	30. Community Service	31. Capital Outlay	32. Building Construction	33. Debt Service	34. Operating Funds Balance	35. Change in Funds Balance	36. State and Local Operating Costs	37. Long Term Debt	38. Prior Yr. Adj. Net Tax Capacity
2396	456	111	2,692	77	949	304	80	751	344	445	63	6,270	129	343	2,740	689	441	297	5,258	8,041	3,461
466	303	89	2,645	65	623	264	162	372	227	321	46	5,117	155	290	211	303	797	(145)	4,560	6,062	2,228
463	376	127	2,749	111	763	182	86	471	262	431	31	5,590	130	408	-	610	1,174	380	4,918	5,022	1,949
465	334	146	2,742	80	578	173	78	473	244	381	44	5,272	172	318	-	324	779	(19)	4,552	3,787	2,523
473	450	137	2,620	42	586	290	63	494	390	278	30	5,379	106	374	1,276	493	1,408	563	4,647	14,701	4,015
912	397	125	2,659	117	741	269	98	426	259	378	47	5,516	123	617	-	411	441	(150)	5,033	5,395	1,693
480	309	115	3,418	38	963	144	82	453	273	340	24	6,159	132	340	-	651	1,181	217	5,291	7,120	3,310
477	301	119	2,536	182	640	231	209	437	257	457	21	5,391	164	222	7	437	529	20	4,536	4,045	2,368
482	328	131	2,547	309	931	301	143	506	285	471	38	5,989	166	433	-	211	295	(33)	5,292	2,133	1,829
484	404	111	2,809	217	748	278	165	341	260	458	18	5,808	107	631	-	438	881	(35)	4,994	5,427	1,792
485	442	166	2,786	170	532	196	80	377	288	214	13	5,263	98	260	7,116	881	492	60	4,698	10,868	1,960
486	409	97	2,887	130	813	58	56	371	246	352	30	5,451	107	254	-	439	566	179	4,751	1,699	1,807
487	394	180	2,821	336	700	303	54	430	251	281	80	5,830	91	148	-	-	(244)	168	5,047	29	1,464
492	356	155	2,709	224	1,119	149	124	550	262	251	279	6,177	264	272	-	485	147	(147)	5,321	6,252	2,782
495	500	218	2,704	97	727	100	113	464	288	231	25	5,467	152	546	-	-	768	(123)	4,960	6	3,053
499	315	348	3,027	346	418	87	216	380	260	246	29	5,673	283	1,021	408	209	857	23	5,117	6,561	3,123
497	298	204	2,910	-	370	200	33	528	294	191	57	5,085	111	533	-	12	1,286	488	4,684	10	2,428
500	442	152	2,751	172	610	196	228	505	225	573	119	5,974	120	277	8	451	(12)	(73)	4,755	5,374	4,313
505	460	147	2,565	307	629	211	103	561	229	385	103	5,700	241	158	925	77	(15)	(48)	4,883	1,939	3,702
2169	406	169	2,780	94	756	219	111	584	240	594	27	5,982	113	313	-	27	482	118	4,881	455	3,571
507	415	254	2,982	131	346	284	362	463	344	537	29	6,149	172	140	-	952	1,031	153	5,245	7,149	4,241
508	393	108	2,673	23	1,246	251	139	446	213	287	25	5,805	118	260	-	337	381	(100)	5,316	2,928	2,855
511	364	94	2,731	40	413	222	72	378	274	388	31	5,008	112	309	-	210	84	147	4,304	878	3,358
513	550	106	2,944	192	212	366	51	389	160	251	36	5,256	183	168	-	-	1,008	309	4,530	-	3,782
514	357	263	3,777	-	575	228	10	620	316	350	117	6,614	144	216	-	-	306	(209)	5,798	158	3,485
516	649	594	2,645	132	860	137	40	743	332	348	104	6,584	163	119	-	-	869	218	5,794	3	4,801
518	285	150	2,694	138	1,101	416	418	377	243	305	62	6,190	187	247	38	188	466	44	5,519	952	2,960
2854	290	106	2,893	763	739	103	22	478	333	614	-	6,342	101	387	1,443	17	535	507	5,410	569	4,835
2527	539	65	3,018	408	580	187	202	678	310	457	44	6,490	90	787	-	207	1,152	82	5,681	1,516	4,354
2215	646	138	3,569	480	685	78	20	637	360	571	71	7,256	99	560	522	734	1,086	1,117	6,385	7,161	2,103

SCHOOL DISTRICTS

SCHOOL DISTRICTS

SCHOOL DISTRICTS

District Name	District Number	1996-97 Resident Average Daily Membership					Pupil Data			Prof. Staff		Tax Rates		ADM		Revenue %		
		1. Pre-Kindergarten Disabled	2. Kindergarten	3. Elementary (Grades 1-6)	4. Secondary (Grades 7-12)	5. Total (PK-12)	6. Percent Minority	7. Percent Attendance	8. Percent Transported	9. Total Staff (FTE)	10. Pupil-Staff Ratio	11. Auditor Percent	12. Equalized Percent	13. Resident ADM	14. Total ADM	15. Federal	16. State	17. Local and Other
55 OLMSTED																		
BYRON	531	10	97	639	660	1,406	1.6	95.7	76	95	14.5	65.71	58.55	1,406	1,393	2	72	26
CHATFIELD	227	6	66	380	437	889	1.0	96.8	66	61	15.0	55.40	42.99	889	920	2	71	27
DOVER-EYOTA	533	2	45	363	388	798	0.8	96.0	96	65	15.6	59.03	50.29	798	1,019	3	74	23
ROCHESTER	535	48	1,149	7,573	6,814	15,584	14.8	94.6	67	964	15.8	66.40	57.57	15,584	15,233	3	49	48
STEWARTVILLE	534	9	111	853	798	1,771	2.3	95.3	94	116	15.7	68.86	59.28	1,771	1,829	2	74	24
56 OTTER TAIL																		
BATTLE LAKE	542	1	34	275	274	584	2.7	96.3	83	38	14.4	49.56	41.53	584	548	5	39	56
FERGUS FALLS	544	15	199	1,402	1,752	3,368	2.9	91.8	81	227	14.7	53.53	47.10	3,368	3,387	3	67	30
HENNING	545	2	28	209	261	500	1.3	96.6	70	37	12.4	68.92	56.31	500	462	5	60	35
NEW YORK MILLS	553	4	50	313	351	718	0.4	94.5	93	49	15.0	54.87	47.46	718	736	4	77	19
PARKERS PRAIRIE	547	3	38	289	299	629	1.4	95.6	87	46	14.8	57.48	49.26	629	681	4	75	21
PELICAN RAPIDS	548	2	93	625	685	1,405	9.5	93.6	75	90	15.0	49.45	41.39	1,405	1,364	4	62	34
PERHAM	549	5	121	757	931	1,814	2.3	94.1	88	130	14.0	62.80	54.70	1,814	1,835	4	62	34
UNDERWOOD	550	2	28	172	207	409	2.6	94.9	100	33	12.9	44.77	39.49	409	434	5	75	20
57 PENNINGTON																		
GOODRIDGE	561	-	15	78	121	214	1.7	95.7	95	20	11.3	70.96	65.07	214	232	6	75	19
THIEF RIVER FALLS	564	15	140	1,016	1,155	2,326	3.8	90.8	78	147	15.7	65.23	54.14	2,326	2,327	4	72	24
58 PINE																		
EAST CENTRAL	2580	3	65	478	501	1,047	10.6	92.2	95	104	11.0	55.75	48.84	1,047	1,153	5	61	34
HINCKLEY-FINLAYSON	2165	1	79	551	588	1,219	4.3	94.5	85	86	13.9	62.30	54.45	1,219	1,211	5	64	31
PINE CITY	578	5	102	788	874	1,769	2.5	94.0	93	111	15.9	51.37	46.33	1,769	1,773	4	69	27
WILLOW RIVER	577	-	36	229	269	534	3.9	94.9	87	42	11.6	67.86	63.86	534	491	3	70	27
59 PIPESTONE																		
EDGERTON	581	3	11	83	148	245	-	96.8	70	24	11.0	47.67	43.90	245	262	5	57	38
PIPESTONE-JASPER	2689	9	115	773	749	1,646	5.1	94.4	58	118	13.4	53.14	49.68	1,646	1,623	5	68	27
RUTHTON (ICA)	584	2	15	81	81	179	3.8	96.5	81	28	11.1	61.13	57.09	179	176	12	43	45
60 POPE																		
CLIMAX	592	1	10	61	88	160	11.5	92.6	79	17	9.4	71.39	67.54	160	164	5	32	63
CROOKSTON (ASE)	593	2	112	754	1,012	1,880	15.0	92.9	60	132	14.0	62.67	58.54	1,880	1,883	5	63	32
EAST GRAND FORKS	595	5	157	1,109	991	2,262	17.6	93.0	41	151	14.6	48.93	45.65	2,262	2,227	8	71	21
FERTILE (ASE)	599	1	30	209	267	507	5.1	93.9	100	51	13.4	52.36	53.88	507	683	4	66	30
FISHER	600	1	19	111	87	218	11.1	94.7	93	24	11.6	60.75	56.62	218	281	3	51	46
FOSSTON	601	2	34	318	345	699	9.1	94.6	78	55	13.0	61.46	56.30	699	723	4	72	24
MENTOR (ASE)	604	-	8	85	92	185	1.5	95.4	100	8	9.3	32.37	28.80	185	189	2	56	42
WIN-E-MAC (ASE)	2609	2	43	200	263	508	1.7	95.1	83	35	13.8	94.07	89.46	508	486	4	64	32
61 POPE																		
CYRUS (ASE)	611	1	13	66	79	159	4.2	97.0	100	10	11.7	49.49	43.11	159	185	4	65	31
MINNEWASKA	2149	8	111	829	942	1,890	1.8	95.6	85	134	13.6	64.28	54.90	1,890	1,834	5	66	29

District Number	1996-97 Expenditures Per ADM																Other Measures Per ADM					
	18. District and School Admin.	19. District Support Services	20. Regular Instruction	21. Vocational Instruction	22. Exceptional Instruction	23. Instructional Support Services	24. Pupil Support Services	25. Operations and Maintenance	26. Food Service	27. Pupil Transportation	28. Other Oper. Programs	29. Total PK-12 Operating Expenditures	30. Community Service	31. Capital Outlay	32. Building Construction	33. Debt Service	34. Operating Funds Balance	35. Change in Funds Balance	36. State and Local Operating Costs	37. Long Term Debt	38. Prior Yr. Adj. Net Tax Capacity	
531	368	71	2,770	53	774	193	123	505	238	283	56	5,436	185	376	-	541	3	(52)	4,835	4,884	2,172	
227	451	116	2,579	123	637	124	123	421	242	317	21	5,156	194	742	-	2	948	485	4,651	323	2,915	
533	371	165	2,499	96	500	168	137	370	244	199	20	4,769	88	178	-	675	791	230	4,277	14,050	2,199	
535	240	180	2,927	142	754	418	162	467	210	419	12	5,932	295	179	1,360	232	723	(68)	5,239	4,365	4,655	
534	312	60	2,696	105	614	289	160	346	276	335	35	5,228	210	192	459	232	458	13	4,674	7,704	1,966	
542	382	121	2,635	247	537	100	70	394	273	323	25	5,107	165	340	121	-	1,112	536	4,453	13,627	7,564	
544	362	95	2,725	132	883	224	261	465	164	348	10	5,670	145	292	-	227	389	(358)	5,090	1,938	3,033	
545	250	146	2,960	255	715	320	92	480	252	336	21	5,827	118	289	-	777	484	159	5,053	8,880	3,223	
553	380	219	2,879	380	576	134	59	434	302	275	26	5,664	151	861	-	602	120	49	5,056	9,680	1,531	
547	328	153	3,127	183	525	228	97	494	258	541	27	5,962	120	415	188	523	430	(94)	5,101	4,822	2,021	
548	292	60	2,794	74	454	123	80	381	205	392	18	4,874	74	418	-	197	945	35	4,214	834	3,714	
549	327	223	2,460	122	661	243	226	494	275	400	27	5,458	137	369	29	621	307	(234)	4,821	6,220	3,303	
550	381	183	2,911	28	481	176	87	398	322	281	23	5,272	188	375	-	-	620	(228)	4,715	469	2,285	
561	584	246	3,420	461	827	193	8	770	395	556	45	7,506	117	922	-	-	748	(10)	6,736	137	2,072	
564	339	124	2,513	148	762	200	112	500	216	258	25	5,198	144	310	-	944	734	137	4,643	8,844	2,408	
2580	594	13	2,834	137	1,989	171	110	415	285	318	118	6,985	121	392	-	208	(493)	34	6,227	3,905	2,130	
2165	411	125	2,710	55	591	256	107	458	267	247	28	5,255	115	508	3,114	368	1,629	485	4,620	5,942	2,901	
578	352	178	3,117	46	665	195	166	341	251	431	34	5,777	144	307	847	305	689	(257)	4,963	4,569	2,509	
577	426	176	2,959	49	923	149	211	463	265	437	25	6,084	64	385	-	816	661	(113)	5,658	6,672	2,232	
581	474	107	3,097	50	797	280	62	582	281	810	36	6,576	183	746	-	-	2,004	120	5,719	-	5,477	
2689	342	48	3,061	124	658	222	116	433	258	434	29	5,726	229	183	-	18	262	(501)	4,944	184	2,789	
584	500	169	5,993	-	1,320	145	31	834	504	552	63	10,112	196	749	-	-	305	(763)	8,464	842	3,247	
592	47	403	3,777	36	582	121	180	586	377	586	67	7,763	67	323	-	-	342	26	6,779	-	6,395	
593	369	142	2,855	218	754	199	127	552	292	170	118	5,796	166	237	3,852	686	285	(126)	5,129	7,373	2,783	
595	360	156	2,832	174	579	266	165	500	245	174	128	5,579	131	277	268	-	714	41	5,065	295	2,491	
599	486	49	2,709	413	605	137	98	433	292	475	28	5,725	68	894	-	509	477	(133)	5,386	7,554	2,350	
600	674	205	2,827	-	435	218	120	716	270	361	54	6,880	131	550	-	-	1,304	449	5,190	374	7,103	
601	516	244	2,417	501	566	281	78	590	249	329	187	5,958	80	757	5,680	782	871	51	6,116	8,465	1,951	
604	163	109	3,560	-	284	18	2	311	177	559	40	5,224	101	85	-	-	410	95	4,563	-	4,719	
2609	446	245	3,136	108	667	180	11	636	263	316	35	6,043	106	288	512	-	736	47	5,390	15,671	2,511	
611	172	235	3,215	-	469	92	6	427	245	329	110	5,301	509	526	-	-	833	212	4,523	-	3,087	
2149	288	162	3,077	103	563	150	97	458	355	364	19	5,636	167	342	-	630	586	(135)	4,855	6,627	2,638	

SCHOOL DISTRICTS

SCHOOL DISTRICTS

SCHOOL DISTRICTS

District Name	District Number	1996-97 Resident Average Daily Membership					Pupil Data			Prof. Staff		Tax Rates		ADM		Revenue %		
		1. Pre-Kindergarten Disabled	2. Kindergarten	3. Elementary (Grades 1-6)	4. Secondary (Grades 7-12)	5. Total (PK-12)	6. Percent Minority	7. Percent Attendance	8. Percent Transported	9. Total Staff (FTE)	10. Pupil-Staff Ratio	11. Auditor Percent	12. Equalized Percent	13. Resident ADM	14. Total ADM	15. Federal	16. State	17. Local and Other
62 RAMSEY																		
MOUNDS VIEW	621	49	793	5,588	5,677	12,107	9.2	94.1	87	698	17.4	60.84	54.06	12,107	12,215	3	46	51
N. ST. PAUL-MAPLEWOOD	622	55	890	5,286	4,858	11,089	8.1	93.2	83	613	18.0	65.86	59.92	11,089	11,247	3	47	50
ROSEVILLE	623	27	505	3,243	2,996	6,771	15.2	98.1	96	449	15.0	75.02	68.75	6,771	6,842	2	33	65
ST. PAUL	625	262	4,029	22,607	17,941	44,839	57.4	92.4	74	2,695	16.2	69.65	64.43	44,839	44,162	8	58	34
WHITE BEAR LAKE	624	57	641	4,423	4,506	9,627	3.8	93.8	82	552	17.3	60.18	54.00	9,627	9,665	2	54	44
63 RED LAKE																		
OKLEE	627	2	10	104	148	264	4.6	94.1	75	24	11.7	51.22	49.58	264	277	5	73	22
PLUMMER	628	1	9	65	110	185	1.5	94.7	97	19	10.6	46.89	45.29	185	206	6	58	36
RED LAKE FALLS (ASE)	630	2	24	179	283	488	3.2	95.0	90	39	12.8	82.11	72.17	488	499	3	70	27
64 RED WOOD																		
CEDAR MOUNTAIN	2754	6	45	192	245	488	3.4	97.0	73	35	13.9	55.43	49.44	488	486	4	51	45
LAMBERTON (ICA)	633	2	15	127	125	269	1.7	94.9	85	17	13.8	57.26	-	269	262	1	47	52
MILROY (ASE)	635	1	13	83	101	198	-	97.6	97	12	10.9	52.98	45.88	198	203	4	57	39
REDWOOD FALLS	2758	9	100	653	712	1,474	10.8	94.2	91	101	14.9	56.44	49.61	1,474	1,514	4	58	38
SANBORN (ICA)	638	1	12	77	104	194	0.5	96.8	65	8	22.0	56.73	-	194	165	3	46	51
WABASSO	640	4	25	152	303	484	0.9	95.6	73	38	12.2	55.49	49.05	484	465	5	53	42
WALNUT GROVE (ICA)	641	2	15	107	134	258	0.9	95.7	65	22	10.3	51.90	46.14	258	230	9	42	49
65 RENVILLE																		
BIRD ISLAND-OLIVIA-LAKE L	2534	9	77	474	516	1,076	9.5	95.6	79	84	13.0	50.22	44.20	1,076	1,097	4	57	39
BUFFALO LAKE-HECTOR	2159	4	46	284	305	639	6.9	95.2	81	47	13.9	53.46	46.67	639	651	3	53	44
66 RICE																		
FARIBAULT	656	18	296	1,947	2,164	4,425	9.1	94.2	78	306	14.1	82.11	73.32	4,425	4,407	4	61	35
NORTHFIELD	659	12	214	1,598	1,761	3,585	5.2	94.1	92	-	-	63.60	56.66	3,585	3,677	2	60	38
67 ROCK																		
HILLS-BEAVER CREEK	671	3	31	169	217	420	1.7	96.4	79	26	13.4	77.22	65.48	420	366	4	55	41
LUVERNE	2184	13	95	636	662	1,406	3.5	95.5	75	108	14.0	78.82	71.49	1,406	1,512	4	65	31
68 ROSEAU																		
BADGER	676	1	19	116	122	258	-	94.3	59	20	11.6	103.02	95.29	258	238	4	62	34
GREENBUSH-MIDDLE RIVER	2683	2	33	251	303	589	0.3	96.2	81	42	14.1	57.11	57.68	589	586	5	72	23
ROSEAU	682	11	115	701	693	1,520	1.5	95.7	82	93	16.5	64.26	58.73	1,520	1,540	3	71	26
WARROAD	690	8	107	768	666	1,549	12.4	93.5	91	113	14.0	57.16	54.24	1,549	1,587	4	64	32

District Number	1996-97 Expenditures Per ADM												Other Measures Per ADM								
	18. District and School Admin.	19. District Support Services	20. Regular Instruction	21. Vocational Instruction	22. Exceptional Instruction	23. Instructional Support Services	24. Pupil Support Services	25. Operations and Maintenance	26. Food Service	27. Pupil Transportation	28. Other Oper. Programs	29. Total PK-12 Operating Expenditures	30. Community Service	31. Capital Outlay	32. Building Construction	33. Debt Service	34. Operating Funds Balance	35. Change in Funds Balance	36. State and Local Operating Costs	37. Long Term Debt	38. Prior Yr. Adj. Net Tax Capacity
621	265	217	2,922	192	977	201	189	657	252	308	27	6,207	248	183	52	711	152	(11)	5,370	2,620	5,505
622	314	162	3,044	115	875	273	213	480	259	275	15	6,024	311	394	2,106	438	543	(180)	5,352	8,834	5,046
623	443	243	3,290	127	1,036	624	208	660	234	320	17	7,203	558	642	672	513	515	43	6,569	8,456	6,611
625	256	234	3,361	94	1,164	398	355	580	288	320	21	7,071	291	335	576	339	433	(67)	6,252	6,407	3,872
624	280	149	2,530	138	873	298	189	405	230	217	41	5,351	286	192	325	430	(299)	61	4,811	6,657	4,150
627	519	168	3,357	145	563	106	6	682	334	382	45	6,306	154	858	-	170	544	(87)	5,622	462	3,788
628	642	137	3,251	417	526	203	15	691	328	421	37	6,667	203	717	-	-	637	(223)	5,744	-	3,780
630	661	169	2,955	108	471	69	79	54	267	309	125	7,267	68	153	5,385	484	143	145	5,044	11,423	1,651
2754	480	97	2,583	74	659	226	135	599	325	373	34	5,585	99	551	-	183	1,284	388	4,999	1,075	5,196
633	507	141	3,063	328	454	115	70	547	330	310	43	5,908	282	544	-	-	147	116	5,489	222	-
635	219	163	3,369	-	438	128	50	488	218	325	104	5,501	62	575	-	-	926	180	4,888	-	4,641
2758	332	129	2,821	34	617	241	181	360	298	389	18	5,419	134	482	282	719	1,299	475	4,602	10,519	3,071
638	577	102	3,051	79	875	456	93	500	439	363	66	6,602	294	120	-	-	(227)	(109)	5,868	433	-
640	298	183	2,677	150	984	195	123	339	269	259	34	5,511	93	372	-	7	1,531	975	4,881	-	4,968
641	463	203	3,215	121	377	276	78	548	309	268	47	5,907	87	557	-	-	908	130	5,042	66	5,323
2534	340	135	2,894	108	681	253	92	429	240	472	27	5,672	194	301	-	20	676	(277)	5,020	62	4,275
2159	364	128	2,904	64	520	169	155	534	249	283	34	5,405	85	548	-	-	1,016	135	5,149	460	5,637
656	318	188	2,882	82	1,416	357	125	617	276	409	68	6,738	180	375	4,285	847	(20)	(109)	5,691	9,494	2,936
659	374	180	2,969	34	799	248	165	430	232	404	18	5,855	210	195	1,537	417	534	(241)	5,183	5,973	3,778
671	432	187	2,855	228	648	262	76	969	304	294	65	6,322	85	317	291	-	1,249	295	5,090	4,911	3,864
2184	295	81	2,649	93	657	221	233	386	214	232	30	5,092	174	375	695	-	902	74	4,562	9,004	3,193
676	469	240	3,618	88	508	219	93	646	348	293	340	6,865	110	601	-	202	960	(46)	6,171	4,012	1,980
2683	557	146	3,345	87	573	272	49	516	353	588	79	6,566	77	788	-	-	485	15	5,622	278	2,098
682	261	93	2,636	59	693	311	59	520	189	326	1	5,149	148	622	-	598	921	5	4,793	11,489	2,161
690	360	124	2,668	129	593	216	232	583	247	347	24	5,525	261	559	34	701	686	244	4,570	13,829	2,100

SCHOOL DISTRICTS

SCHOOL DISTRICTS

SCHOOL DISTRICTS

District Name	District Number	1996-97 Resident Average Daily Membership					Pupil Data			Prof. Staff		Tax Rates		ADM		Revenue %		
		1. Pre-Kindergarten Disabled	2. Kindergarten	3. Elementary (Grades 1-6)	4. Secondary (Grades 7-12)	5. Total (PK-12)	6. Percent Minority	7. Percent Attendance	8. Percent Transported	9. Total Staff (FTE)	10. Pupil-Staff Ratio	11. Auditor Percent	12. Equalized Percent	13. Resident ADM	14. Total ADM	15. Federal	16. State	17. Local and Other
69 ST. LOUIS																		
CHISHOLM	695	4	70	402	536	1,012	4.1	94.6	64	68	14.6	37.17	32.97	1,012	989	3	67	30
DULUTH	709	61	951	6,354	6,474	13,840	10.0	94.6	68	1,019	13.7	63.78	56.51	13,840	13,957	6	66	28
ELY	696	5	43	364	394	806	6.6	94.9	57	56	16.1	56.83	35.01	806	907	4	54	42
EVELETH-GILBERT	2154	3	112	717	790	1,622	3.3	95.1	67	113	14.0	48.30	41.54	1,622	1,609	4	63	33
FLOODWOOD	698	2	25	171	159	357	1.6	94.4	84	33	11.8	69.37	64.65	357	394	3	55	42
HERMANTOWN	700	4	117	843	845	1,809	2.9	95.1	100	121	15.6	60.05	53.33	1,809	1,891	2	60	38
HIBBING	701	15	188	1,283	1,718	3,204	1.7	94.3	86	226	14.8	45.13	39.09	3,204	3,369	3	62	35
MESABI EAST	2711	4	92	534	716	1,346	2.2	92.5	81	84	15.9	42.78	36.02	1,346	1,344	3	54	43
MOUNTAIN IRON-BUHL	712	5	64	355	419	843	1.3	95.3	80	51	13.0	19.76	17.11	843	685	4	46	50
NETT LAKE(ASE)	707	2	7	41	36	86	100.0	90.3	67	11	4.9	65.06	51.20	86	85	23	64	13
PROCTOR	704	7	133	911	1,105	2,156	1.5	95.4	85	141	15.3	57.59	49.99	2,156	2,161	3	71	26
ST. LOUIS CO.(ASE)	2142	20	219	1,388	1,731	3,358	10.3	94.5	78	244	12.2	45.38	38.08	3,358	3,012	7	47	46
VIRGINIA	706	5	135	806	966	1,912	4.0	95.0	85	148	14.8	66.16	60.34	1,912	2,206	7	56	37
70 SCOTT																		
BELLE PLAINE	716	4	101	493	569	1,167	2.0	95.4	73	81	14.2	63.46	55.21	1,167	1,180	3	67	30
JORDAN	717	9	73	478	626	1,186	1.4	93.8	78	73	15.4	57.69	49.27	1,186	1,143	3	65	32
NEW PRAGUE	721	14	144	1,063	1,155	2,376	-	95.7	93	142	16.8	67.09	57.90	2,376	2,445	1	62	37
PRIOR LAKE	719	20	306	1,981	1,883	4,190	2.7	93.8	96	235	16.7	64.79	56.56	4,190	4,061	1	58	41
SHAKOPEE	720	19	240	1,507	1,454	3,220	8.0	93.5	67	213	15.2	64.17	59.17	3,220	3,293	2	55	43
71 SHERBURNE																		
BECKER	726	10	127	810	733	1,680	1.2	95.5	87	120	14.1	35.79	34.97	1,680	1,711	2	7	91
BIG LAKE	727	16	178	949	828	1,971	1.6	94.0	86	123	15.3	64.31	56.59	1,971	1,909	2	71	27
ELK RIVER	728	44	606	3,750	3,737	8,137	3.0	94.5	95	469	17.3	65.37	59.36	8,137	8,165	2	67	31
72 SIBLEY																		
G.F.W.	2365	3	82	478	555	1,118	3.5	95.3	88	79	13.7	51.23	44.36	1,118	1,094	5	60	35
SIBLEY EAST	2310	14	79	622	684	1,399	9.1	95.2	77	96	14.1	54.72	48.05	1,399	1,378	3	69	28
73 STEARNS																		
ALBANY	745	10	63	711	909	1,693	0.7	96.1	95	106	15.7	60.94	52.22	1,693	1,686	3	77	20
BELGRADE-BROOTEN-ELROSA	2364	11	62	424	482	979	1.7	94.1	80	62	15.3	79.54	64.98	979	955	5	71	24
COLD SPRING	750	18	117	842	1,172	2,149	1.1	96.0	92	128	17.9	60.57	51.24	2,149	2,314	3	69	28
HOLDINGFORD	738	5	64	502	549	1,120	0.4	95.3	80	76	14.8	53.57	43.93	1,120	1,138	4	79	17
KIMBALL	739	9	43	403	504	959	1.3	95.4	90	68	14.2	53.94	45.90	959	973	4	77	19
MELROSE	740	17	86	523	884	1,510	1.3	95.4	88	109	14.6	63.00	52.60	1,510	1,592	4	73	23
PAYNESVILLE	741	9	82	561	688	1,340	1.6	95.7	88	97	14.2	63.09	57.03	1,340	1,389	4	71	25
SARTELL	748	14	130	1,046	1,187	2,377	2.0	96.2	85	156	15.6	62.98	57.25	2,377	2,445	2	72	26
SAUK CENTRE	743	13	56	372	748	1,189	0.9	95.8	80	81	14.8	56.07	48.39	1,189	1,201	4	69	27
ST. CLOUD	742	112	745	5,027	5,620	11,504	5.0	94.0	81	825	13.7	53.29	47.53	11,504	11,381	4	57	39

District Number	1996-97 Expenditures Per ADM												Other Measures Per ADM								
	18. District and School Admin.	19. District Support Services	20. Regular Instruction	21. Vocational Instruction	22. Exceptional Instruction	23. Instructional Support Services	24. Pupil Support Services	25. Operations and Maintenance	26. Food Service	27. Pupil Transportation	28. Other Oper. Programs	29. Total PK-12 Operating Expenditures	30. Community Service	31. Capital Outlay	32. Building Construction	33. Debt Service	34. Operating Funds Balance	35. Change in Funds Balance	36. State and Local Operating Costs	37. Long Term Debt	38. Prior Yr. Adj. Net Tax Capacity
695	427	151	3,158	49	573	332	59	805	150	201	91	5,995	161	555	-	471	811	138	5,529	6,523	1,584
709	331	163	2,774	269	966	282	275	568	187	307	38	6,161	326	302	14	684	911	423	5,499	5,750	2,979
696	341	138	3,043	18	629	187	60	687	169	209	23	5,504	114	305	9	164	987	267	5,032	6,430	4,462
2154	335	155	2,966	154	686	248	133	765	180	297	49	5,968	83	560	536	386	793	(40)	5,326	6,416	1,729
698	566	198	2,994	127	538	180	129	596	297	430	38	6,093	135	796	252	912	432	(210)	5,693	11,140	4,306
700	393	234	2,600	61	562	235	198	518	190	297	102	5,390	174	445	-	532	648	(121)	4,749	4,033	3,922
701	318	154	3,138	52	681	271	149	812	177	336	18	6,106	193	526	264	212	727	(47)	5,516	7,155	2,241
2711	438	165	3,330	254	846	156	101	882	165	338	46	6,723	131	502	72	24	161	126	6,193	5,157	2,786
712	551	131	3,104	427	1,092	152	85	697	188	605	41	7,073	169	275	-	119	1,017	87	5,875	2,433	2,620
707	213	888	4,513	5	2,586	429	509	451	416	616	218	14,844	272	2,029	183	9	1,631	1,246	1,134	483	20
704	344	93	2,962	50	647	273	131	540	178	317	21	5,558	153	627	-	439	884	12	4,940	2,922	2,587
2142	294	113	3,821	-	962	240	152	668	235	522	33	7,041	208	475	330	286	879	33	6,092	3,189	4,583
706	358	163	3,092	262	1,301	199	133	929	179	187	17	6,820	125	338	207	191	643	9	5,830	11,525	2,066
716	357	75	2,682	91	1,015	152	60	386	199	487	70	5,574	176	192	332	429	350	48	4,802	4,756	3,124
717	425	510	2,267	174	723	274	206	296	271	402	39	5,589	244	217	-	123	1,254	382	4,798	1,729	3,465
721	324	133	2,502	83	782	271	123	397	222	301	24	5,163	157	302	3,815	581	414	157	4,684	10,686	3,064
719	197	124	2,741	141	814	240	161	413	220	379	88	5,518	173	309	3,219	599	(46)	(82)	4,911	2,963	4,214
720	440	156	2,920	159	1,068	358	147	444	235	384	19	6,331	154	328	10	224	508	(28)	5,809	4,266	4,498
726	371	109	3,282	75	613	198	148	722	204	337	30	6,089	140	284	-	875	873	141	5,649	7,612	17,383
727	284	115	2,527	71	638	281	116	562	207	309	31	5,142	234	249	913	538	860	243	4,594	17,506	2,314
728	309	112	2,642	155	776	249	129	414	261	408	14	5,471	155	790	123	452	152	(123)	4,824	8,828	3,091
2365	439	131	2,383	194	561	164	91	446	280	347	38	5,074	163	551	141	-	1,025	436	4,286	3,012	4,614
2310	388	136	2,823	190	534	212	111	397	236	313	42	5,384	198	367	-	47	460	(339)	4,817	635	2,889
745	326	129	2,731	87	717	185	114	425	243	241	68	5,267	109	343	811	810	113	109	4,645	9,731	1,890
2364	411	52	2,821	148	820	75	110	423	293	376	44	5,573	94	425	-	797	(94)	545	4,651	8,777	2,159
750	459	77	2,848	83	641	130	112	523	323	416	55	5,667	147	199	-	693	488	(39)	4,819	5,471	2,845
738	376	134	2,787	133	609	190	37	423	221	204	60	5,175	111	267	4,505	577	647	238	4,615	10,985	1,516
739	358	61	2,671	99	665	257	75	405	260	412	32	5,296	154	453	-	405	878	36	4,750	3,212	1,960
740	264	116	2,936	103	775	173	105	401	244	458	19	5,593	114	155	980	555	915	190	4,735	8,452	2,464
741	347	95	2,831	174	614	211	75	332	259	301	29	5,268	138	367	-	605	741	(222)	4,809	5,402	2,178
748	238	79	2,659	98	746	240	74	476	238	274	33	5,156	96	258	-	636	833	342	4,638	8,791	2,465
743	367	200	2,672	135	746	317	110	406	261	294	43	5,552	183	567	-	406	926	174	4,727	5,196	2,523
742	240	124	2,502	86	1,380	413	148	528	235	312	21	5,989	254	296	1	378	642	163	5,333	2,105	4,344

SCHOOL DISTRICTS

SCHOOL DISTRICTS

SCHOOL DISTRICTS

District Name	District Number	1996-97 Resident Average Daily Membership					Pupil Data			Prof. Staff		Tax Rates		ADM		Revenue %		
		1. Pre-Kindergarten Disabled	2. Kindergarten	3. Elementary (Grades 1-6)	4. Secondary (Grades 7-12)	5. Total (PK-12)	6. Percent Minority	7. Percent Attendance	8. Percent Transported	9. Total Staff (FTE)	10. Pupil-Staff Ratio	11. Auditor Percent	12. Equalized Percent	13. Resident ADM	14. Total ADM	15. Federal	16. State	17. Local and Other
74 STEELE																		
BLOOMING PRAIRIE	756	5	55	411	501	972	10.9	96.1	59	72	13.0	54.38	49.05	972	939	5	67	28
MEDFORD	763	1	39	232	252	524	4.3	95.8	55	37	14.2	55.93	48.49	524	533	2	63	35
OWATONNA	761	42	339	2,186	2,202	4,769	6.5	95.5	76	297	16.1	70.68	59.65	4,769	4,800	3	63	34
75 STEVENS																		
CHOKIO-ALBERTA	771	1	29	138	154	322	3.9	96.5	70	27	11.1	76.07	63.37	322	304	5	48	47
HANCOCK	768	2	19	135	150	306	2.4	94.7	55	22	12.6	55.07	48.51	306	284	5	70	25
MORRIS (ASE)	769	7	51	431	556	1,045	3.3	95.5	100	85	13.8	55.26	50.78	1,045	1,184	4	62	34
76 SWIFT																		
BENSON	777	3	90	547	630	1,270	2.4	96.2	72	87	14.7	50.80	46.48	1,270	1,286	4	67	29
KERKHOVEN-MURDOCK-SUNB	775	4	49	272	297	622	3.2	95.4	89	46	13.8	69.12	65.60	622	638	4	64	32
77 TODD																		
BERTHA-HEWITT	786	5	29	234	299	567	1.4	95.5	83	43	13.1	46.37	40.76	567	577	8	83	9
BROWERVILLE	787	4	28	166	276	474	1.1	95.2	88	35	15.9	60.57	53.12	474	557	6	80	14
EAGLE VALLEY	2759	4	30	238	358	630	2.9	93.0	70	43	12.8	60.33	51.88	630	555	6	82	12
LONG PRAIRIE-GREY EAGLE	2753	21	96	636	826	1,579	2.3	94.5	63	97	15.3	76.24	71.06	1,579	1,518	4	66	30
STAPLES-MOTLEY	2170	13	107	774	1,019	1,913	2.4	94.6	87	122	14.3	55.53	49.64	1,913	1,801	5	70	25
78 TRAVERSE																		
BROWNS VALLEY	801	1	8	83	81	173	35.0	95.6	52	18	11.1	59.45	52.26	173	244	8	56	36
WHEATON	803	5	34	218	250	507	5.0	95.1	61	40	13.9	58.32	53.53	507	560	4	58	38
79 WABASHA																		
ELGIN-MILLVILLE	806	5	42	268	261	576	4.0	95.6	83	23	26.9	62.80	55.83	576	608	4	72	24
LAKE CITY	813	12	90	665	684	1,451	2.1	95.6	75	103	13.9	47.86	43.17	1,451	1,449	3	63	34
PLAINVIEW	810	8	82	466	586	1,142	3.5	95.9	70	81	14.6	59.61	52.52	1,142	1,190	2	71	27
WABASHA-KELLOGG	811	5	42	331	514	892	1.0	94.7	94	58	14.5	56.01	47.78	892	851	3	62	35
80 WADENA																		
MENAHGA	821	4	51	358	359	772	1.9	94.2	89	55	14.1	58.12	50.45	772	780	7	72	21
SEBEKA	820	4	31	255	297	587	0.3	94.7	92	47	12.6	52.48	46.61	587	603	7	75	18
VERNDALE	818	3	30	172	165	370	3.8	95.0	100	41	10.6	91.05	79.39	370	431	7	67	26
WADENA-DEER CREEK	2155	16	90	650	738	1,494	0.9	95.9	68	117	12.4	61.45	53.95	1,494	1,462	7	67	26
81 WASECA																		
JANESVILLE-WALDORF-PEMBE	2835	26	48	324	507	905	1.9	95.0	60	62	12.1	66.10	56.38	905	756	5	59	36
N.R.H.E.G.	2168	11	65	458	514	1,048	1.5	96.0	82	81	13.6	64.36	57.93	1,048	1,103	4	57	39
WASECA	829	21	150	968	1,132	2,271	4.8	93.7	72	165	14.3	68.55	57.86	2,271	2,369	5	61	34
82 WASHINGTON																		
FOREST LAKE	831	28	572	3,575	3,789	7,964	3.0	94.5	97	493	16.2	53.12	46.75	7,964	8,028	3	63	34
MAHTOMEDI	832	12	176	1,331	1,197	2,716	2.5	94.7	100	177	15.6	69.55	61.50	2,716	2,780	1	48	51
SOUTH WASHINGTON CO.	833	47	1,080	6,955	6,299	14,381	7.1	94.4	74	797	17.3	62.67	56.50	14,381	14,215	2	62	36
STILLWATER	834	37	566	4,251	4,258	9,112	2.4	95.0	85	479	18.2	62.13	54.54	9,112	9,028	2	44	54

District Number	1996-97 Expenditures Per ADM												Other Measures Per ADM									
	18. District and School Admin.	19. District Support Services	20. Regular Instruction	21. Vocational Instruction	22. Exceptional Instruction	23. Instructional Support Services	24. Pupil Support Services	25. Operations and Maintenance	26. Food Service	27. Pupil Transportation	28. Other Oper. Programs	29. Total PK-12 Operating Expenditures	30. Community Service	31. Capital Outlay	32. Building Construction	33. Debt Service	34. Operating Funds Balance		35. Change in Funds Balance	36. State and Local Operating Costs	37. Long Term Debt	38. Prior Yr. Adj. Net Tax Capacity
756	377	130	2,978	83	584	224	86	354	289	353	37	5,496	122	173	-	260	(134)	(293)	4,637	3,096	2,543	
763	339	169	2,731	-	250	48	103	414	220	187	38	4,499	82	208	-	-	109	797	3,872	575	3,636	
761	267	173	2,612	169	688	305	249	469	246	330	65	5,571	171	217	625	180	511	67	4,970	8,244	3,567	
771	397	131	3,305	59	624	208	95	678	312	294	87	6,192	279	796	-	39	847	390	5,487	653	5,205	
768	337	193	3,031	195	395	377	76	525	239	146	40	5,554	144	325	-	-	909	182	4,992	25	2,292	
769	325	99	3,144	133	603	266	220	483	228	220	33	5,754	204	238	4	581	852	(50)	5,203	4,465	3,017	
777	280	93	2,490	320	661	252	154	448	240	243	21	5,203	147	563	-	267	642	(164)	4,747	3,115	2,588	
775	398	138	3,070	42	754	165	117	507	305	572	55	6,121	82	202	-	929	(242)	(627)	5,169	9,102	3,307	
786	297	82	3,126	304	533	332	101	517	324	415	24	6,057	161	186	-	322	936	97	4,981	5,595	908	
787	311	121	2,349	402	677	223	49	885	324	358	23	5,723	105	212	-	398	615	(532)	4,954	844	1,383	
2759	525	142	2,855	283	550	295	79	413	317	432	44	5,933	181	425	-	271	320	203	5,040	1,458	1,011	
2753	301	55	2,876	236	667	130	91	754	280	402	44	5,838	127	254	7,132	827	836	339	4,778	11,084	1,672	
2170	395	242	3,062	257	806	254	183	664	310	404	102	6,680	152	454	-	294	643	(9)	5,663	2,488	1,971	
801	308	269	3,524	-	748	153	108	497	278	295	42	6,222	168	597	-	-	69	(323)	5,403	461	2,351	
803	451	44	2,862	68	689	147	82	883	297	310	93	5,925	205	661	-	-	1,347	494	5,141	83	4,807	
806	453	69	2,730	79	868	76	117	481	264	433	44	5,616	139	36	1,218	448	132	(515)	4,810	5,368	2,101	
813	291	75	2,761	237	554	160	131	397	254	319	26	5,204	142	190	14	172	853	249	4,646	2,067	2,940	
810	278	110	2,709	81	690	131	122	350	227	357	23	5,077	184	504	-	424	590	38	4,383	3,915	2,233	
811	377	84	2,597	107	720	256	96	333	289	442	38	5,340	113	341	-	660	1,035	115	4,570	8,244	3,065	
821	368	112	2,634	135	524	125	99	302	300	308	30	4,938	85	1,633	-	691	1,282	469	4,169	11,061	1,558	
820	411	122	2,819	265	792	166	102	526	291	443	30	5,967	96	286	-	166	1,036	166	5,006	1,095	1,520	
818	478	186	3,061	205	871	158	19	492	392	286	103	6,251	245	227	99	624	(110)	(99)	5,254	8,600	1,772	
2155	417	151	2,905	206	1,213	274	82	505	260	225	24	6,262	305	399	15	750	1,301	219	5,546	10,462	1,661	
2835	556	273	3,065	120	1,131	201	73	507	221	429	25	6,600	116	266	-	18	518	181	5,734	526	3,567	
2168	283	196	2,500	131	703	141	86	708	242	253	21	5,265	82	347	64	629	1,621	89	4,484	6,489	3,732	
829	388	119	2,491	134	969	307	160	484	298	284	110	5,746	393	303	3,275	390	581	68	4,846	6,144	3,118	
831	287	150	2,733	87	566	282	119	449	286	324	26	5,309	243	374	216	304	899	(2)	4,644	2,073	3,477	
832	375	212	2,749	186	748	191	179	534	207	275	44	5,699	353	611	1,071	657	290	(14)	5,081	10,356	4,804	
833	226	162	2,617	118	629	277	144	465	232	237	16	5,124	276	485	173	578	470	(87)	4,663	7,391	3,349	
834	318	163	3,090	44	548	190	452	469	184	332	44	5,834	238	348	1,019	664	463	61	5,246	9,415	5,303	

SCHOOL DISTRICTS

SCHOOL DISTRICTS

SCHOOL DISTRICTS

District Name	District Number	1996-97 Resident Average Daily Membership					Pupil Data			Prof. Staff		Tax Rates		ADM		Revenue %		
		1. Pre-Kindergarten Disabled	2. Kindergarten	3. Elementary (Grades 1-6)	4. Secondary (Grades 7-12)	5. Total (PK-12)	6. Percent Minority	7. Percent Attendance	8. Percent Transported	9. Total Staff (FTE)	10. Pupil-Staff Ratio	11. Auditor Percent	12. Equalized Percent	13. Resident ADM	14. Total ADM	15. Federal	16. State	17. Local and Other
83 WATONWAN																		
BUTTERFIELD	836	2	21	110	126	259	20.6	95.2	42	22	11.0	60.02	52.28	259	242	4	46	50
MADELIA	837	9	35	250	347	641	22.9	95.8	67	49	12.8	60.61	53.27	641	631	6	58	36
ST. JAMES	840	8	118	593	631	1,350	19.6	95.5	81	101	13.1	44.32	42.46	1,350	1,347	6	68	26
84 WILKIN																		
BRECKENRIDGE	846	3	48	467	536	1,054	5.5	95.7	74	76	13.8	54.67	42.81	1,054	1,061	9	61	30
CAMPBELL-TINTAH	852	1	13	102	121	237	4.4	94.9	76	19	11.6	53.94	41.37	237	223	9	32	59
ROTHSAY	850	-	18	108	126	252	6.3	96.0	91	21	13.2	70.66	55.33	252	275	2	59	39
85 WINONA																		
LEWISTON	857	6	53	299	425	783	1.5	95.7	84	57	15.1	53.89	48.88	783	868	3	69	28
ST. CHARLES	858	5	84	522	494	1,105	9.3	95.2	55	70	15.5	45.79	40.57	1,105	1,086	4	76	20
WINONA	861	22	352	2,218	2,335	4,927	6.6	93.5	67	325	14.6	53.20	46.92	4,927	4,753	3	65	32
86 WRIGHT																		
ANNANDALE	876	13	136	884	888	1,921	1.0	94.1	98	129	14.6	59.89	50.85	1,921	1,910	3	60	37
BUFFALO	877	17	288	2,132	2,167	4,604	1.8	94.2	97	298	15.3	65.72	57.37	4,604	4,595	3	63	34
DELANO	879	10	122	695	814	1,641	2.3	94.9	100	113	15.1	63.48	53.71	1,641	1,711	2	58	40
HOWARD LAKE-WAVERLY-WI	2687	3	76	467	585	1,131	0.9	95.6	71	71	13.5	57.55	46.56	1,131	981	3	64	33
MAPLE LAKE	881	3	57	391	503	954	0.6	94.8	85	67	13.7	60.81	50.04	954	934	2	70	28
MONTICELLO	882	19	249	1,594	1,504	3,366	2.5	94.5	97	263	13.2	63.84	60.90	3,366	3,513	5	39	56
ROCKFORD	883	7	124	837	719	1,687	2.2	95.2	78	111	14.4	63.46	54.45	1,687	1,611	1	67	32
ST. MICHAEL-ALBERTVL	885	12	184	986	923	2,105	1.1	95.6	74	139	15.5	61.95	54.64	2,105	2,190	1	71	28
87 YELLOW MEDICINE																		
CANBY	891	8	44	304	446	802	2.1	95.8	66	56	14.4	53.35	51.27	802	807	5	68	27
YELLOW MEDICINE EAST	2190	8	89	678	747	1,522	11.3	95.5	79	85	16.9	63.30	56.15	1,522	1,443	4	60	36
STATE OF MINNESOTA		4,776	60,420	385,373	381,691	832,266	13.4	94.2	83	55,092	15.0	62.17	55.97	832,266	835,097	4	55	41

District Number	1996-97 Expenditures Per ADM												Other Measures Per ADM								
	18. District and School Admin.	19. District Support Services	20. Regular Instruction	21. Vocational Instruction	22. Exceptional Instruction	23. Instructional Support Services	24. Pupil Support Services	25. Operations and Maintenance	26. Food Service	27. Pupil Transportation	28. Other Oper. Programs	29. Total PK-12 Operating Expenditures	30. Community Service	31. Capital Outlay	32. Building Construction	33. Debt Service	34. Operating Funds Balance	35. Change in Funds Balance	36. State and Local Operating Costs	37. Long Term Debt	38. Prior Yr. Adj. Net Tax Capacity
836	533	121	3,382	14	454	139	61	635	272	284	114	6,010	116	308	-	-	(7)	305	5,452	-	4,752
837	379	160	3,231	128	779	193	210	603	298	383	28	6,393	89	472	-	-	1,110	(280)	5,544	133	3,735
840	377	115	2,913	126	597	171	213	450	229	323	51	5,566	255	543	-	5	52	(250)	4,912	487	2,794
846	356	88	2,923	30	766	152	105	536	221	222	27	5,427	177	666	2,870	262	746	(82)	4,613	3,448	3,887
852	677	500	3,492	516	627	131	12	774	409	301	65	6,504	65	528	-	-	1,515	994	5,906	-	9,946
850	428	210	2,603	593	464	159	9	413	328	449	82	5,738	162	212	-	-	1,615	1,028	4,547	69	4,027
857	363	177	2,518	92	656	172	322	538	263	306	87	5,494	109	563	3,254	215	135	233	4,642	6,118	2,667
858	259	103	2,869	69	484	139	97	274	257	266	18	4,837	102	345	-	6	539	21	4,296	8	2,062
861	278	75	2,808	87	1,049	261	158	447	240	416	57	5,876	239	654	2	44	282	78	5,193	1,298	3,711
876	358	111	2,728	59	744	316	127	363	264	419	19	5,507	164	364	-	580	779	(31)	4,922	8,112	3,586
877	285	130	2,642	160	556	267	196	450	259	411	31	5,385	237	325	2,562	719	937	181	4,679	8,175	3,178
879	301	95	2,902	68	664	217	98	415	215	406	45	5,427	230	355	-	947	555	53	4,860	11,645	4,424
2687	418	292	2,909	140	818	247	141	441	195	295	49	5,946	224	286	-	128	809	(167)	5,086	463	3,649
881	381	195	2,560	139	652	365	95	463	275	348	24	5,498	152	205	-	545	431	(219)	4,878	4,689	2,831
882	287	125	3,048	70	1,384	178	183	473	247	355	20	6,371	275	238	201	585	402	(246)	5,611	13,409	5,474
883	308	89	2,538	100	794	274	123	405	234	267	25	5,158	215	377	3	853	573	219	4,604	5,809	2,887
885	389	93	2,431	48	485	229	226	397	216	356	19	4,890	270	357	129	145	821	22	4,513	10,789	2,508
891	405	119	2,813	85	627	270	138	516	304	224	19	5,522	163	770	-	9	932	319	5,162	265	2,427
2190	378	87	2,630	55	951	207	105	584	262	449	24	5,732	298	520	-	182	1,069	190	5,122	806	3,425
	338	172	2,923	127	899	289	184	519	255	347	26	6,080	243	350	784	508	594	78	5,362	5,736	4,191

SCHOOL DISTRICTS

SCHOOL DISTRICTS

COUNTIES, DEVELOPMENT REGIONS & STATE

County and Region	1996-97 Resident Ave. Daily Mem.					Pupil Data			Prof. Staff		Tax Rates		ADM		Revenue %		
	1. Pre-Kindergarten Disabled	2. Kindergarten	3. Elementary (Grades 1-6)	4. Secondary (grades 7- 12)	5. Total (PK thru Grade 12)	6. Percent Minority	7. Percent Attendance	8. Percent Transported	9. Total Staff (FTE)	10. Pupil-Staff Ratio	11. Auditor Percent	12. Equalized Percent	13. Resident ADM	14. Total ADM	15. Federal	16. State	17. Local and Other
MARSHALL	6	123	873	983	1,985	5.9	94.9	58	158	12.3	55.73	53.90	1,985	1,952	5	54	41
NORMAN	6	107	648	730	1,491	10.3	94.7	80	132	11.3	52.58	49.11	1,491	1,505	9	57	34
PENNINGTON	15	155	1,094	1,276	2,540	3.6	91.2	79	167	15.2	65.68	54.93	2,540	2,559	4	72	24
POLK	14	413	2,847	3,145	6,419	12.9	93.5	62	473	13.7	58.73	55.09	6,419	6,635	6	65	29
RED LAKE	5	43	348	541	937	3.3	94.7	87	82	12	59.02	55.45	937	981	4	68	28
ROSEAU	22	274	1,836	1,784	3,916	5.6	94.8	84	268	14.7	62.57	58.99	3,916	3,951	4	68	28
REGION 01	74	1,184	8,191	9,020	18,469	8.1	93.9	71	1,381	13.4	60.13	56.22	18,469	18,768	5	63	32
BELTRAMI	40	645	3,786	3,691	8,162	28.6	91.5	87	603	13.5	58.27	50.36	8,162	8,163	12	66	22
CLEARWATER	16	127	806	874	1,823	12.0	94.0	97	125	14.9	55.06	53.08	1,823	1,895	7	61	32
HUBBARD	39	162	1,175	1,322	2,698	7.7	93.9	98	64	45.6	51.30	42.37	2,698	2,934	5	58	37
LAKE OF THE WOODS	7	60	383	412	862	2.2	94.6	94	55	15.4	74.46	66.27	862	847	4	57	39
MAHNOMEN	26	112	641	788	1,567	55.9	87.8	76	114	13.9	56.18	52.77	1,567	1,596	13	67	20
REGION 02	128	1,106	6,791	7,087	15,112	23.9	92.0	89	961	16	56.32	49.36	15,112	15,435	10	64	26
AITKIN	16	151	1,013	1,183	2,363	5.6	94.6	84	175	13.2	48.42	38.04	2,363	2,314	6	53	41
CARLTON	24	471	2,775	3,096	6,366	8.2	94.4	85	463	14.1	64.09	56.86	6,366	6,591	6	65	29
COOK	3	51	337	353	744	10.6	95.1	80	53	13.9	41.78	34.80	744	742	7	20	73
ITASCA	43	525	3,591	4,271	8,430	8.4	94.2	95	569	14.6	54.80	49.37	8,430	8,402	6	49	45
KOOCHICING	6	184	1,080	1,196	2,466	4.6	93.9	92	189	13.5	49.01	45.20	2,466	2,562	5	66	29
LAKE	11	149	1,032	1,119	2,311	1.9	95.1	75	142	15.6	50.64	36.31	2,311	2,301	4	58	38
ST. LOUIS	137	2,156	14,169	15,889	32,351	6.7	94.6	75	2,315	14	56.14	48.55	32,351	32,607	5	61	34
REGION 03	240	3,687	23,997	27,107	55,031	6.9	94.5	81	3,906	14.1	55.11	47.60	55,031	55,520	5	59	36
BECKER	55	326	2,266	2,502	5,149	11.6	94.5	76	379	13.4	59.11	53.09	5,149	5,153	6	63	31
CLAY	38	592	4,388	4,246	9,264	11.6	94.2	67	676	13.5	59.83	50.70	9,264	9,310	5	70	25
DOUGLAS	27	345	2,416	2,871	5,659	1.2	94.8	85	366	15.6	56.07	48.97	5,659	5,731	5	58	37
GRANT	5	97	667	792	1,561	1.9	95.5	80	117	13.3	56.22	47.04	1,561	1,566	4	57	39
OTTER TAIL	34	591	4,042	4,760	9,427	3.3	93.6	83	650	14.4	54.83	47.16	9,427	9,446	4	65	31
POPE	9	124	895	1,021	2,049	2.0	95.7	87	144	13.5	62.97	53.87	2,049	2,019	5	66	29
STEVENS	10	99	704	860	1,673	3.3	95.6	89	134	13.2	61.10	54.28	1,673	1,773	4	61	35
TRAVERSE	6	42	301	331	680	13.0	95.3	59	58	13.1	58.47	53.35	680	804	5	57	38
WILKIN	4	79	677	783	1,543	5.5	95.6	77	116	13.3	56.63	44.05	1,543	1,558	8	56	36
REGION 04	188	2,295	16,356	18,166	37,005	6.4	94.5	78	2,640	14	57.55	49.52	37,005	37,360	5	64	31

County & Region	1996-97 Expenditures Per ADM																	Other Measures Per ADM					
	District and School Admin.	District Support Services	Regular Instruction	Vocational Instruction	Exceptional Instruction	Instructional Support Services	Pupil Support Services	Operations and Maintenance	Food Services	Pupil Transportation	Other Operating Programs	Total PK-12 Operating Expenditures	Community Services	Capital Outlay	Building Construction	Debt Service	Operating Funds Balance	Change in Funds Balance	State and Local Operating Costs	Long Term Debt	Prior Yr. Adj. Net Tax Capacity		
MARSHALL	563	85	3,286	101	624	202	86	693	308	371	46	6,364	186	629	-	96	1,028	360	5,790	920	4,820		
NORMAN	473	103	3,137	571	675	121	75	586	335	554	35	6,666	97	560	732	291	889	612	5,789	3,135	3,748		
PENNINGTON	362	135	2,596	177	768	200	102	525	233	285	27	5,408	142	366	-	859	735	125	4,834	8,110	2,379		
POLK	423	164	2,847	226	622	217	120	576	267	260	107	5,830	125	390	1,840	332	591	(5)	5,288	5,035	2,826		
RED LAKE	617	162	3,132	183	508	108	45	1,382	299	353	84	6,873	121	470	2,738	294	354	7	5,356	6,079	2,673		
ROSEAU	358	122	2,814	93	624	262	129	552	246	371	42	5,614	181	620	14	929	765	98	4,910	10,236	2,116		
REGION 01	443	132	2,938	190	634	207	107	657	273	338	66	5,986	141	490	858	493	746	150	5,309	5,788	3,099		
BELTRAMI	368	144	3,223	123	1,125	240	128	649	296	409	40	6,745	246	677	811	355	530	(96)	5,413	6,590	1,989		
CLEARWATER	335	131	3,039	98	792	226	88	525	289	434	35	5,993	143	453	953	484	854	214	5,033	7,649	3,581		
HUBBARD	374	131	2,700	167	725	185	128	490	236	331	15	5,483	128	427	-	178	907	329	4,832	2,901	4,524		
LAKE OF THE WOODS	452	87	2,858	-	515	132	89	553	371	396	46	5,499	140	969	54	932	562	(54)	5,064	25,965	2,329		
MAHNOMEN	574	159	3,170	218	1,099	261	85	492	331	460	24	6,872	89	150	-	1,925	245	129	5,313	3,287	2,113		
REGION 02	391	138	3,075	131	972	224	116	582	291	402	33	6,357	189	563	549	531	608	43	5,226	6,822	2,666		
AITKIN	404	182	3,243	83	469	292	157	523	278	418	16	6,067	148	567	106	382	627	74	5,195	5,674	4,595		
CARLTON	424	153	2,932	103	851	224	186	490	217	343	39	5,961	175	392	660	396	683	45	5,186	7,512	2,688		
COOK	509	160	3,302	7	587	133	114	505	174	342	-	5,833	183	476	4,208	516	1,000	227	5,106	14,266	10,098		
ITASCA	338	162	3,109	145	1,047	226	146	565	224	447	39	6,449	124	369	78	299	315	77	5,528	5,553	4,357		
KOOCHICING	402	146	3,348	68	655	198	212	672	255	326	27	6,309	187	524	2,504	198	916	251	5,612	15,021	2,871		
LAKE	402	53	2,861	111	683	176	122	581	188	333	41	5,551	185	384	-	70	1,449	627	4,839	2,397	3,623		
ST. LOUIS	350	157	2,998	176	876	259	195	663	188	325	39	6,228	231	412	111	555	818	192	5,530	5,955	2,965		
REGION 03	366	154	3,032	149	860	244	182	617	204	350	37	6,193	200	414	331	453	750	174	5,444	6,431	3,336		
BECKER	391	122	2,766	153	827	265	145	456	249	441	29	5,843	167	382	2,605	540	890	(38)	4,963	5,384	2,746		
CLAY	325	123	2,820	71	1,122	237	142	529	210	330	33	5,940	158	426	176	555	716	(19)	5,235	3,126	2,729		
DOUGLAS	237	99	2,767	102	669	188	264	390	248	269	27	5,259	136	308	-	418	633	158	4,617	5,001	3,935		
GRANT	384	155	2,870	132	548	263	126	576	277	387	78	5,795	246	812	45	361	958	325	5,302	3,930	3,984		
OTTER TAIL	340	137	2,740	152	682	202	173	452	227	368	19	5,491	134	385	26	353	498	(139)	4,854	4,408	3,263		
POPE	277	169	3,091	93	555	145	88	455	345	361	27	5,607	199	359	-	573	606	(108)	4,826	6,113	2,673		
STEVENS	339	119	3,155	131	574	274	175	523	245	221	43	5,799	208	348	2	395	861	77	5,220	2,919	3,306		
TRAVERSE	407	112	3,064	47	707	149	90	766	291	306	78	6,017	194	642	-	-	1,022	286	5,222	180	4,182		
WILKIN	415	26	2,949	199	693	151	74	548	266	273	42	5,637	158	566	1,954	179	1,006	264	4,787	2,367	4,841		
REGION 04	330	122	2,827	119	793	217	163	482	241	341	31	5,666	159	411	493	438	700	6	4,967	4,158	3,242		

COUNTIES, DEVELOPMENT REGIONS & STATE

COUNTIES, DEVELOPMENT REGIONS & STATE

COUNTIES, DEVELOPMENT REGIONS & STATE

County and Region	1996-97 Resident Ave. Daily Mem.					Pupil Data			Prof. Staff		Tax Rates		ADM		Revenue %		
	1. Pre-Kindergarten Disabled	2. Kindergarten	3. Elementary (Grades 1-6)	4. Secondary (grades 7-12)	5. Total (PK thru Grade 12)	6. Percent Minority	7. Percent Attendance	8. Percent Transported	9. Total Staff (FTE)	10. Pupil-Staff Ratio	11. Auditor Percent	12. Equalized Percent	13. Resident ADM	14. Total ADM	15. Federal	16. State	17. Local and Other
CASS	40	342	2,271	2,162	4,815	24.4	92.2	85	350	13.4	52.78	43.21	4,815	4,730	9	47	44
CROW WING	60	660	4,475	4,742	9,937	2.8	95.0	92	658	15.2	50.55	41.24	9,937	10,031	6	51	43
MORRISON	47	296	2,688	3,162	6,193	1.4	95.1	87	420	14.9	55.91	50.50	6,193	6,303	5	77	18
TODD	47	290	2,048	2,778	5,163	2.2	94.6	77	340	14.4	62.57	56.39	5,163	5,008	5	72	23
WADENA	27	202	1,435	1,559	3,223	1.5	95.2	82	260	12.5	63.08	55.30	3,223	3,276	7	69	24
REGION 05	221	1,790	12,917	14,403	29,331	5.7	94.5	86	2,028	14.4	53.40	44.61	29,331	29,349	6	62	32
KANDIYOHI	45	439	2,898	3,014	6,396	14.1	93.7	97	503	13	67.04	59.61	6,396	6,616	4	64	32
MCLEOD	23	395	2,758	3,027	6,203	5.2	94.4	82	388	16.1	61.81	52.07	6,203	6,303	3	67	30
MEEKER	27	369	2,854	3,150	6,400	2.7	95.4	91	414	15	67.28	58.54	6,400	6,255	3	68	29
RENVILLE	13	123	758	821	1,715	8.6	95.5	79	131	13.3	51.64	45.29	1,715	1,748	4	56	40
REGION 06E	108	1,326	9,268	10,012	20,714	7.5	94.6	89	1,436	14.5	63.62	55.30	20,714	20,922	3	65	32
BIG STONE	7	69	585	637	1,298	2.4	95.6	68	101	13.8	69.45	62.39	1,298	1,459	4	58	38
CHIPPEWA	13	141	1,111	1,343	2,608	3.3	94.9	79	204	13.4	71.98	66.79	2,608	2,750	5	59	36
LAC QUI PARLE	12	140	1,027	1,176	2,355	3.8	95.3	71	159	13.5	55.49	51.64	2,355	2,247	5	62	33
SWIFT	7	139	819	927	1,892	2.7	95.9	78	133	14.4	58.02	53.85	1,892	1,924	4	66	30
YELLOW MEDICINE	16	133	982	1,193	2,324	8.0	95.6	75	141	15.8	60.46	54.84	2,324	2,249	4	63	33
REGION 06W	55	622	4,524	5,276	10,477	4.2	95.4	75	738	14.1	62.78	57.76	10,477	10,629	4	61	35
CHISAGO	23	550	3,621	3,452	7,646	2.3	92.7	96	462	16.2	57.34	47.91	7,646	7,546	2	69	29
ISANTI	32	361	2,606	2,648	5,647	2.4	92.3	84	356	16.3	52.55	44.98	5,647	5,829	5	67	28
KANABEC	8	195	1,257	1,371	2,831	3.0	93.7	89	192	14.7	53.51	47.23	2,831	2,835	4	76	20
MILLE LACS	49	391	2,760	2,948	6,148	6.0	93.0	84	417	14.7	60.33	50.08	6,148	6,147	4	68	28
PINE	9	282	2,046	2,232	4,569	5.1	93.8	91	343	13.4	57.39	51.21	4,569	4,628	4	65	31
REGION 07E	121	1,779	12,290	12,651	26,841	3.7	93.0	89	1,770	15.2	56.83	48.42	26,841	26,985	4	68	28
BENTON	42	315	2,255	2,559	5,171	1.8	95.0	87	328	15.6	56.07	47.75	5,171	5,169	4	74	22
SHERBURNE	70	911	5,509	5,298	11,788	2.5	94.6	93	712	16.4	49.60	46.68	11,788	11,785	2	58	40
STEARNS	218	1,448	10,411	12,743	24,820	3.0	94.9	84	1,708	14.6	56.35	49.63	24,820	25,074	4	65	31
WRIGHT	84	1,236	7,986	8,103	17,409	1.7	94.7	91	1,191	14.5	63.13	55.87	17,409	17,445	3	59	38
REGION 07W	414	3,910	26,161	28,703	59,188	2.4	94.8	88	3,939	15	56.36	50.55	59,188	59,473	3	62	35

County & Region	1996-97 Expenditures Per ADM																Other Measures Per ADM				
	18. District and School Admin.	19. District Support Services	20. Regular Instruction	21. Vocational Instruction	22. Exceptional Instruction	23. Instructional Support Services	24. Pupil Support Services	25. Operations and Maintenance	26. Food Services	27. Pupil Transportation	28. Other Operating Programs	29. Total PK-12 Operating Expenditures	30. Community Services	31. Capital Outlay	32. Building Construction	33. Debt Service	34. Operating Funds Balance	35. Change in Funds Balance	36. State and Local Operating Costs	37. Long Term Debt	38. Prior Yr. Adj. Net Tax Capacity
CASS	419	157	2,924	75	1,008	288	114	520	294	442	47	6,289	152	510	65	363	776	85	5,284	4,952	5,843
CROW WING	268	88	2,736	195	814	244	133	470	257	355	18	5,578	146	335	848	893	760	(40)	4,793	3,790	5,240
MORRISON	365	133	2,662	266	827	267	126	448	276	415	34	5,819	139	411	908	335	396	6	5,114	3,621	1,814
TODD	360	143	2,911	275	690	227	119	671	305	403	60	6,164	144	332	2,162	468	692	87	5,169	5,182	1,592
WADENA	412	141	2,846	200	927	203	81	459	293	293	37	5,892	206	649	20	612	1,086	232	5,081	8,686	1,624
REGION 05	345	124	2,793	205	839	248	120	507	279	383	36	5,879	152	414	866	584	710	42	5,037	4,728	3,576
KANDIYOHI	350	267	2,918	218	1,066	182	161	445	253	388	55	6,302	211	290	-	633	70	(45)	5,571	7,768	3,120
MCLEOD	370	129	2,595	74	602	275	133	459	269	350	39	5,295	153	331	308	335	368	184	4,722	4,689	2,911
MEEKER	351	118	2,701	78	686	229	109	487	258	379	46	5,441	153	326	557	1,659	777	61	4,733	5,537	2,526
RENVILLE	349	132	2,899	91	621	222	115	468	244	402	30	5,574	154	393	-	12	803	(123)	5,069	210	4,783
REGION 06E	356	169	2,754	122	775	227	133	464	258	375	45	5,680	171	322	259	798	439	50	5,022	5,531	3,012
BIG STONE	423	178	2,652	259	697	198	102	599	282	320	94	5,805	163	214	1,737	156	534	270	4,983	9,058	3,112
CHIPPEWA	348	126	2,673	194	918	241	56	495	436	384	55	5,926	190	596	1,562	531	1,044	73	5,090	6,864	2,947
LAC QUI PARLE	372	157	2,884	189	717	221	171	551	309	339	46	5,956	168	257	-	172	845	844	5,196	1,546	3,219
SWIFT	319	108	2,683	228	692	223	142	468	262	352	32	5,509	126	444	-	487	352	(317)	4,888	5,083	2,825
YELLOW MEDICINE	388	99	2,697	66	835	230	117	560	277	368	22	5,658	250	609	-	120	1,022	234	5,137	619	3,081
REGION 06W	366	131	2,721	181	786	225	115	530	323	357	47	5,782	183	447	642	309	806	236	5,070	4,234	3,036
CHISAGO	311	212	2,513	129	691	293	148	416	248	262	17	5,240	186	460	2,149	573	533	4	4,667	7,447	2,626
ISANTI	270	93	2,715	143	632	218	120	411	204	244	32	5,082	138	316	103	495	349	(107)	4,526	5,767	2,163
KANABEC	305	87	2,852	131	556	149	112	482	256	250	22	5,201	194	393	267	369	890	221	4,615	3,680	1,681
MILLE LACS	342	122	2,712	129	712	234	146	441	272	401	30	5,541	143	364	115	467	669	45	4,799	5,769	2,446
PINE	436	123	2,924	71	1,003	200	141	403	265	355	53	5,975	122	389	1,139	352	665	25	5,263	5,029	2,494
REGION 07E	330	137	2,708	122	722	232	137	425	248	305	30	5,396	156	388	873	473	585	16	4,763	5,900	2,365
BENTON	235	103	2,625	68	726	197	127	367	268	337	35	5,088	160	257	130	522	669	101	4,436	6,378	2,388
SHERBURNE	314	112	2,717	130	730	247	130	483	244	382	19	5,508	165	629	233	527	373	(24)	4,907	10,106	4,998
STEARNS	297	112	2,651	100	1,010	295	117	477	250	322	33	5,664	184	304	322	513	627	154	4,995	4,976	3,242
WRIGHT	323	128	2,734	100	787	250	165	431	242	370	27	5,556	233	315	732	723	695	3	4,917	8,902	3,687
REGION 07W	302	116	2,686	103	864	263	134	455	248	349	29	5,551	192	368	408	578	600	70	4,906	7,275	3,648

COUNTIES, DEVELOPMENT REGIONS & STATE

COUNTIES, DEVELOPMENT REGIONS & STATE

County and Region	1996-97 Resident Ave. Daily Mem.					Pupil Data			Prof. Staff		Tax Rates		ADM		Revenue %		
	1. Pre-Kindergarten Disabled	2. Kindergarten	3. Elementary (Grades 1-6)	4. Secondary (grades 7-12)	5. Total (PK thru Grade 12)	6. Percent Minority	7. Percent Attendance	8. Percent Transported	9. Total Staff (FTE)	10. Pupil-Staff Ratio	11. Auditor Percent	12. Equalized Percent	13. Resident ADM	14. Total ADM	15. Federal	16. State	17. Local and Other
COTTONWOOD	6	142	977	1,161	2,286	7.8	96.5	65	184	12.5	54.43	61.36	2,286	2,293	4	55	41
JACKSON	12	121	861	976	1,970	5.8	95.9	64	143	14.1	53.73	169.87	1,970	1,973	4	55	41
LINCOLN	9	64	522	592	1,187	0.8	96.1	80	85	12.7	47.80	44.47	1,187	1,227	4	65	31
LYON	25	344	1,962	2,490	4,821	7.8	95.8	80	350	14.1	51.68	46.61	4,821	5,054	4	58	38
MURRAY	10	99	707	754	1,570	2.3	96.6	73	116	13.7	56.09	51.62	1,570	1,595	4	63	33
NOBLES	22	296	1,685	1,950	3,953	16.8	94.5	70	266	14.5	52.47	49.18	3,953	3,948	4	62	34
PIPESTONE	14	141	937	978	2,070	4.3	95.0	61	170	12.6	52.75	49.16	2,070	2,061	6	63	31
REDWOOD	25	225	1,391	1,724	3,365	5.9	95.3	82	233	13.8	55.51	57.86	3,365	3,324	4	54	42
ROCK	16	126	805	879	1,826	3.1	95.7	76	134	13.9	78.42	69.90	1,826	1,878	4	63	33
REGION 08	139	1,558	9,847	11,504	23,048	7.4	95.6	73	1,681	13.7	54.93	56.70	23,048	23,353	4	59	37
BLUE EARTH	79	675	4,651	4,973	10,378	4.7	94.4	70	692	15.1	56.72	47.17	10,378	10,532	4	58	38
BROWN	27	264	1,967	2,291	4,549	5.0	95.6	73	327	13.9	58.07	49.91	4,549	4,617	3	60	37
FARIBAULT	23	174	1,200	1,560	2,957	6.0	96.1	64	157	18	59.01	124.46	2,957	2,869	4	57	39
LESUEUR	57	327	2,235	2,563	5,182	5.5	94.8	67	352	13.9	55.61	47.52	5,182	4,981	4	68	28
MARTIN	26	253	1,753	2,104	4,136	3.1	94.6	83	254	16.2	54.63	50.31	4,136	4,176	3	59	38
NICOLLET	32	146	987	1,232	2,397	3.3	93.7	75	174	14	59.85	51.78	2,397	2,468	3	64	33
SIBLEY	17	161	1,100	1,239	2,517	6.6	95.3	82	175	13.9	52.77	45.97	2,517	2,472	4	65	31
WASECA	58	263	1,750	2,153	4,224	3.4	94.5	72	308	13.7	66.80	57.55	4,224	4,228	5	60	35
WATONWAN	19	174	953	1,104	2,250	20.6	95.5	73	172	12.7	51.83	47.58	2,250	2,219	5	62	33
REGION 09	338	2,437	16,596	19,219	38,590	5.6	94.8	72	2,611	14.6	57.31	51.82	38,590	38,561	4	61	35
DODGE	31	258	1,852	1,887	4,028	2.6	94.8	86	258	15.2	61.84	52.15	4,028	3,979	3	76	21
FILLMORE	25	240	1,578	1,758	3,601	1.1	95.1	79	271	13	58.85	47.41	3,601	3,536	5	70	25
FREEBORN	26	318	2,343	2,467	5,154	8.0	94.8	74	361	14.3	56.80	51.42	5,154	5,179	4	68	28
GOODHUE	59	571	4,068	4,459	9,157	3.6	94.7	85	612	15.1	60.29	55.41	9,157	9,339	2	45	53
HOUSTON	15	234	1,506	1,809	3,564	1.7	95.5	66	255	14.3	55.37	44.79	3,564	3,650	3	70	27
MOWER	41	440	2,579	2,924	5,984	4.4	95.0	67	404	14.9	58.69	52.13	5,984	6,054	5	64	31
OLMSTED	75	1,468	9,808	9,097	20,448	11.5	94.9	71	1,301	15.6	66.02	57.08	20,448	20,394	3	55	42
RICE	30	510	3,545	3,925	8,010	7.4	94.2	84	306	26	72.68	64.83	8,010	8,084	3	61	36
STEELE	48	433	2,829	2,955	6,265	7.0	95.6	71	406	15.4	67.39	57.46	6,265	6,273	4	63	33
WABASHA	30	256	1,730	2,045	4,061	2.6	95.5	79	265	15.4	54.31	47.96	4,061	4,098	3	66	31
WINONA	33	489	3,039	3,254	6,815	6.4	94.0	67	452	14.8	52.53	46.48	6,815	6,707	3	67	30
REGION 10	413	5,217	34,877	36,580	77,087	6.7	94.9	75	4,891	15.7	62.49	54.79	77,087	77,293	3	60	37

County & Region	1996-97 Expenditures Per ADM																Other Measures Per ADM				
	18. District and School Admin.	19. District Support Services	20. Regular Instruction	21. Vocational Instruction	22. Exceptional Instruction	23. Instructional Support Services	24. Pupil Support Services	25. Operations and Maintenance	26. Food Services	27. Pupil Transportation	28. Other Operating Programs	29. Total PK-12 Operating Expenditures	30. Community Services	31. Capital Outlay	32. Building Construction	33. Debt Service	34. Operating Funds Balance	35. Change in Funds Balance	36. State and Local Operating Costs	37. Long Term Debt	38. Prior Yr. Adj. Net Tax Capacity
COTTONWOOD	475	189	2,954	252	1,005	184	131	636	282	261	35	6,405	204	579	-	65	403	55	5,865	802	3,322
JACKSON	398	144	2,799	165	723	244	129	538	273	279	37	5,727	191	315	-	229	746	210	5,124	1,027	1,299
LINCOLN	423	131	2,896	278	546	128	77	565	296	339	37	5,717	122	507	-	83	470	(143)	5,054	806	3,310
LYON	384	136	2,823	93	681	207	112	530	284	294	26	5,572	172	483	-	137	655	(122)	5,060	1,240	4,014
MURRAY	428	160	2,695	179	705	216	108	575	236	511	58	5,869	164	251	370	47	293	55	4,882	1,018	3,621
NOBLES	335	163	2,763	119	895	359	301	406	250	319	59	5,970	171	245	26	162	452	69	5,278	792	3,184
PIPESTONE	372	66	3,317	104	732	223	102	486	282	492	33	6,209	220	303	-	14	472	(451)	5,344	219	3,147
REDWOOD	377	139	2,859	85	647	229	138	435	303	349	34	5,594	135	475	128	355	1,098	428	4,881	4,811	3,494
ROCK	322	102	2,690	120	656	229	203	500	231	244	37	5,334	157	364	616	-	982	125	4,667	8,063	3,347
REGION 08	384	139	2,856	137	745	236	155	505	273	332	39	5,801	171	397	97	142	643	38	5,136	2,034	3,301
BLUE EARTH	316	119	2,847	85	722	241	154	537	245	302	32	5,599	197	344	12	228	610	(91)	5,014	3,050	4,554
BROWN	335	115	2,766	155	684	237	135	453	242	451	30	5,603	176	351	1,031	161	839	14	4,869	4,055	4,073
FARIBAULT	307	136	3,259	40	759	186	76	462	282	310	55	5,873	237	558	-	21	187	(9)	5,228	598	1,654
LESUEUR	381	145	2,738	127	756	181	138	457	257	282	29	5,492	175	324	11	325	429	12	4,902	4,050	2,863
MARTIN	368	133	2,850	142	708	297	127	613	293	375	33	5,939	182	467	96	15	1,012	421	5,229	625	4,224
NICOLLET	397	134	2,728	42	1,088	257	178	449	236	331	26	5,866	127	239	-	445	494	(56)	5,304	3,662	3,096
SIBLEY	410	134	2,630	192	546	191	102	419	256	328	40	5,248	182	448	62	26	711	5	4,583	1,691	3,655
WASECA	391	167	2,597	131	929	245	125	547	270	302	72	5,774	262	308	1,852	386	826	97	4,910	5,026	3,366
WATONWAN	394	129	3,055	114	633	174	196	514	253	336	52	5,850	192	498	-	3	347	(195)	5,150	330	3,287
REGION 09	355	133	2,817	113	753	229	138	506	257	331	39	5,671	194	376	346	199	631	19	5,008	2,862	3,660
DODGE	314	106	2,648	75	693	213	112	439	244	293	39	5,174	124	571	2,043	394	685	31	4,601	5,514	2,587
FILLMORE	385	111	2,961	149	720	172	71	454	303	383	78	5,787	149	413	-	169	357	53	4,931	1,782	2,544
FREEBORN	363	132	2,803	94	831	247	191	576	214	295	68	5,814	144	325	49	158	274	(107)	5,112	1,226	2,738
GOODHUE	326	129	2,661	152	733	234	160	536	304	328	52	5,613	201	474	1,002	623	664	158	4,941	7,808	4,855
HOUSTON	384	119	2,843	91	574	220	121	421	283	356	36	5,449	181	479	-	119	635	16	4,792	894	2,651
MOWER	369	176	2,747	207	949	149	137	525	261	281	215	6,016	235	359	31	404	288	(92)	5,189	5,416	2,971
OLMSTED	271	158	2,859	129	725	365	156	452	221	387	18	5,742	265	219	1,057	265	663	(24)	5,086	4,892	4,080
RICE	343	184	2,922	60	1,135	308	143	532	256	407	46	6,336	193	293	3,035	651	228	(168)	5,460	7,918	3,313
STEELE	290	166	2,678	142	635	271	212	447	250	321	59	5,470	156	210	479	177	377	72	4,827	6,804	3,414
WABASHA	329	86	2,708	141	675	159	119	382	255	372	30	5,257	148	290	186	387	717	52	4,579	4,412	2,650
WINONA	286	92	2,781	85	907	230	169	431	246	378	54	5,659	200	592	422	60	307	87	4,976	1,642	3,323
REGION 10	318	141	2,793	123	790	265	152	476	252	354	55	5,718	202	350	914	329	497	2	5,014	4,894	3,504

COUNTIES, DEVELOPMENT REGIONS & STATE

COUNTIES, DEVELOPMENT REGIONS & STATE

County and Region	1996-97 Resident Ave. Daily Mem.					Pupil Data			Prof. Staff		Tax Rates		ADM		Revenue %		
	1. Pre-Kindergarten Disabled	2. Kindergarten	3. Elementary (Grades 1-6)	4. Secondary (grades 7-12)	5. Total (PK thru Grade 12)	6. Percent Minority	7. Percent Attendance	8. Percent Transported	9. Total Staff (FTE)	10. Pupil-Staff Ratio	11. Auditor Percent	12. Equalized Percent	13. Resident ADM	14. Total ADM	15. Federal	16. State	17. Local and Other
ANOKA	378	4,657	29,484	26,772	61,291	6.9	94.3	82	3,832	15.8	62.06	57.41	61,291	60,798	3	59	38
CARVER	61	762	4,846	4,600	10,269	4.0	94.1	87	668	15.1	67.62	60.58	10,269	10,233	2	56	42
DAKOTA	414	5,195	32,770	29,185	67,564	8.8	94.6	88	4,502	14.9	65.25	60.48	67,564	68,062	2	53	45
HENNEPIN	844	12,779	73,677	64,204	151,504	29.3	93.7	90	10,411	14.3	65.49	59.30	151,504	152,053	4	39	57
RAMSEY	450	6,858	41,147	35,978	84,433	34.2	93.4	79	5,007	16.6	67.10	61.38	84,433	84,130	5	53	42
SCOTT	66	864	5,522	5,687	12,139	3.4	94.3	83	744	15.9	64.38	56.98	12,139	12,122	2	59	39
WASHINGTON	124	2,394	16,112	15,543	34,173	4.5	94.6	84	1,946	17.1	61.19	54.53	34,173	34,050	2	56	42
REGION 11	2,337	33,509	203,558	181,969	421,373	20.3	94.0	86	27,110	15.3	65.18	59.32	421,373	421,449	4	48	48
STATE OF MINNESOTA	4,776	60,420	385,373	381,697	832,266	13.4	94.2	83	55,092	15.0	62.17	55.97	832,266	835,027	4	55	41
Regional Totals																	
REGION 01	202	2,310	15,114	16,250	33,876	15.1	93.1	80	2,390	14.4	58.64	53.37	33,876	34,650	7	64	29
REGION 03	240	3,667	23,865	26,964	54,736	6.9	94.5	80	3,858	14.1	55.08	47.57	54,736	55,073	5	59	36
REGION 04	188	2,295	16,356	18,166	37,005	6.4	94.5	78	2,640	14	57.55	49.52	37,005	37,360	5	64	31
REGION 05	221	1,790	12,917	14,403	29,331	5.7	94.5	86	2,028	14.4	53.4	44.61	29,331	29,349	6	62	32
REGION 06	302	3,506	23,639	26,792	54,239	6.9	95.1	80	3,855	14.1	59.26	56.38	54,239	54,904	4	62	34
REGION 07	535	5,689	38,451	41,354	86,029	2.8	94.2	88	5,709	15	56.46	50.07	86,029	86,458	3	64	33
REGION 09	338	2,437	16,596	19,219	38,590	5.6	94.8	72	2,611	14.6	57.31	51.82	38,590	38,561	4	61	35
REGION 10	413	5,217	34,877	36,580	77,087	6.7	94.9	75	4,891	15.7	62.49	54.79	77,087	77,293	3	60	37
REGION 11	2,337	33,509	203,558	181,969	421,373	20.3	94	86	27,110	15.3	65.18	59.32	421,373	421,449	4	48	48

County & Region	1996-97 Expenditures Per ADM																Other Measures Per ADM				
	District and School Admin.	District Support Services	Regular Instruction	Vocational Instruction	Exceptional Instruction	Instructional Support Services	Pupil Support Services	Operations and Maintenance	Food Services	Pupil Transportation	Other Operating Programs	Total PK-12 Operating Expenditures	Community Services	Capital Outlay	Building Construction	Debt Service	Operating Funds Balance	Change in Funds Balance	State and Local Operating Costs	Long Term Debt	Prior Yr. Adj. Net Tax Capacity
ANOKA	280	154	2,783	150	864	320	204	449	278	306	40	5,827	253	260	1,096	437	235	(86)	5,113	6,527	3,150
CARVER	366	169	2,548	112	948	402	142	487	235	399	44	5,852	233	262	486	705	397	(47)	5,164	9,618	3,946
DAKOTA	346	159	2,774	80	818	267	159	498	238	305	39	5,682	264	296	1,053	645	981	521	5,053	7,717	4,271
HENNEPIN	384	266	3,257	135	1,188	377	237	585	266	409	25	7,079	361	294	1,195	632	668	102	6,276	5,153	6,822
RAMSEY	283	213	3,154	119	1,054	360	281	564	268	300	23	6,619	309	330	683	431	330	(50)	5,864	6,376	4,512
SCOTT	326	166	2,692	133	887	273	144	405	228	377	50	5,680	171	293	1,883	634	356	37	5,088	4,872	3,886
WASHINGTON	277	164	2,781	96	602	248	223	468	230	286	28	5,403	264	433	481	779	554	(22)	4,847	6,927	4,015
REGION 11	332	208	3,018	121	993	335	222	530	259	345	12	6,375	303	307	1,001	580	563	96	5,652	6,254	5,034
STATE OF MINNESOTA	338	172	2,923	127	899	289	184	519	255	347	26	6,080	243	350	784	508	594	78	5,362	5,736	4,191
REGION 01	418	135	3,017	162	782	216	114	626	282	370	51	6,172	162	531	710	512	693	107	5,291	7,042	2,893
REGION 03	366	154	3,021	150	863	243	180	615	203	348	37	6,181	201	408	333	451	745	171	5,433	5,943	3,346
REGION 04	330	122	2,827	119	793	217	163	482	241	341	31	5,666	159	411	493	438	700	6	4,967	4,158	3,242
REGION 05	345	124	2,793	205	839	248	120	507	279	383	36	5,879	152	414	866	584	710	42	5,037	4,728	3,576
REGION 06	370	149	2,791	140	764	231	139	494	277	353	43	5,751	174	378	265	424	596	81	5,080	3,795	3,139
REGION 07	311	123	2,693	109	820	254	135	446	248	335	29	5,503	181	374	553	545	595	53	4,861	6,846	3,248
REGION 09	355	133	2,817	113	753	229	138	506	257	331	39	5,671	194	376	346	199	631	19	5,008	2,862	3,660
REGION 10	318	141	2,793	123	790	265	152	476	252	354	55	5,718	202	350	914	329	497	2	5,014	4,894	3,504
REGION 11	332	208	3,018	121	993	335	222	530	259	345	12	6,375	303	307	1,001	580	563	96	5,652	6,254	5,034

COUNTIES, DEVELOPMENT REGIONS & STATE

ENROLLMENT SIZE GROUPS

The use of this table is to permit comparisons of districts with similar enrollments. For example, a district with 600 pupils may be compared to data for Group 4 (470 to 624 ADM) to see how that district's per pupil expenditures compare with other districts of similar size.

ADM Group and Range	1996-97 Resident Average Daily Mem.					Pupil Data			Prof. Staff		Tax Rates		ADM		Revenue %		
	1. Pre-Kind. Disabled	2. Kindergarten	3. Elementary (Grades 1-6)	4. Secondary (Grades 7-12)	5. Total (Pre-K thru Grade 12)	6. Percent Minority	7. Percent Attendance	8. Percent Transported	9. Total Staff (FTE)	10. Pupil-Staff Ratio	11. Auditor Percent	12. Equalized Percent	13. Resident ADM	14. Total ADM	15. Federal	16. State	17. Local and Other
1 0 TO 234	35	349	2,435	2,884	5,703	6.5	95.9	77.0	480	11.3	57.26	58.44	5,703	5,690	6	53	41
2 235 TO 339	50	675	4,637	5,250	10,612	4.0	95.3	79.0	853	12.6	59.08	57.13	10,612	11,083	5	63	32
3 340 TO 469	100	1,148	7,417	9,180	17,845	2.7	95.0	76.0	1,375	13.1	60.70	55.98	17,845	18,316	4	62	34
4 470 TO 624	133	1,280	8,784	9,963	20,160	7.5	95.0	77.0	1,499	13.7	55.24	48.45	20,160	20,704	6	59	35
5 625 TO 874	216	1,863	12,537	14,738	29,354	5.3	94.6	80.0	2,089	14.1	58.12	50.18	29,354	29,617	5	66	29
6 875 TO 1149	276	2,958	20,112	22,851	46,197	6.8	95.1	78.0	3,321	13.9	57.99	51.50	46,197	46,525	4	62	34
7 1150 TO 1499	385	3,740	25,153	27,350	56,628	7.5	94.8	80.0	3,808	14.7	54.49	49.86	56,628	56,657	4	62	34
8 1500 TO 2199	418	4,891	32,761	36,225	74,295	4.6	94.4	85.0	4,769	15.7	59.02	51.63	74,295	75,535	4	62	34
9 2200 TO 4449	809	9,217	61,832	64,639	136,497	7.4	93.9	85.0	8,771	15.4	61.03	55.22	136,497	137,255	3	54	43
10 4450 OR HIGHER	2,354	34,299	209,705	188,617	434,975	20.0	94.0	84.0	28,127	15.2	64.60	58.20	434,975	433,715	4	51	45

The table below lists totals or averages for all districts in each of the ten enrollment size groups based on 1996-97 total average daily membership (ADM) served. For example, Group 1 includes all districts with 234 or fewer ADM and Group 2 includes all districts with 235 to 339 ADM.

Enrollment Group	1996-97 Expenditures Per ADM																	Other Measures Per ADM				
	District and School Admin.	District Support Services	Regular Instruction	Vocational Instruction	Exceptional Instruction	Instructional Support Services	Pupil Support Services	Operations and Maintenance	Food Service	Pupil Transportation	Other Operating Programs	Total PK-12 Operating Expenditures	Community Service	Capital Outlay	Building Construction	Debt Service	Operating Funds Balance	Change in Funds Balance	State and Local Operating Costs	Long Term Debt	Prior Yr. Adj. Net Tax Capacity	
1	518	218	3,580	115	692	202	60	691	322	429	74	6,901	201	502	3	32	788	36	5,969	1,844	3,917	
2	462	187	2,985	162	556	220	106	552	289	364	57	5,940	146	447	1,299	232	816	194	5,232	7,603	3,028	
3	435	147	2,901	161	593	206	98	629	282	342	39	5,834	129	462	329	308	810	183	5,112	3,728	3,365	
4	422	151	2,884	200	648	208	120	497	284	410	48	5,872	140	395	631	299	615	69	5,097	4,983	3,998	
5	402	132	2,853	122	712	186	108	477	267	355	39	5,653	137	470	387	592	620	115	4,941	5,501	2,676	
6	376	146	2,793	115	800	219	117	487	257	345	66	5,720	171	433	738	533	692	81	5,014	4,629	3,369	
7	338	118	2,849	127	727	230	125	513	256	335	37	5,655	179	433	619	457	670	105	4,946	5,820	3,179	
8	366	136	2,780	117	763	233	150	506	246	326	44	5,667	194	354	550	555	635	80	5,005	5,610	3,275	
9	319	160	2,824	124	927	292	198	528	247	355	50	6,024	231	327	1,061	448	424	(30)	5,302	6,638	4,138	
10	318	197	3,000	126	995	330	216	520	254	345	6	6,306	292	317	815	548	600	99	5,582	5,720	4,760	

ENROLLMENT SIZE GROUPS

SUMMARY STATISTICS

The table below lists a variety of summary statistics for each of the 38 variables included in this report. The attendant definitions explain the meaning of these statistics. It may be used to better understand the distribution of a particular variable among Minnesota school districts. For example, percent attendance (column 7) varies little; ninety (90) percent of the school districts are within the narrow range of 92.0% (5th percentile) to 96.8% (95th percentile).

The table may also be used to see how an individual school district compares with other districts in the state. Two examples illustrate the use of the data:

1. A district which has total PK-12 operating expenditures (column 29) of \$5,800 per pupil unit is very near the median value, which is \$5,777. Thus about half the districts in the state have lower and half have higher expenditures.
2. A district with total average daily membership (column 5) of 450 students is between the 20th and 25th percentiles for this variable. Somewhere between 20 and 25 percent of Minnesota school districts have fewer students than this district.

	1996-97 Resident Average Daily Mem.					Pupil Data			Prof. Staff		Tax Rates		ADM		Revenue %		
Percentiles	1. Pre-Kind. Disabled	2. Kindergarten	3. Elementary (Grades 1-6)	4. Secondary (grades 7-12)	5. Total (PK thru Grade 12)	6. Percent Minority	7. Percent Attendance	8. Percent Transported	9. Total Staff (FTE)	10. Pupil-Staff Ratio	11. Auditor Percent	12. Equalized Percent	13. Resident ADM	14. Total ADM	15. Federal	16. State	17. Local and Other
Lowest Value	-	3	21	9	33	-	-	39	0	-	-	0	33	25	0	7	4
5th Percentile	1	11	83	97	194	0.2	92.0	55	16	10.6	44.63	35.18	194	193	2	32	19
10th Percentile	1	15	108	129	258	0.8	93.2	61	20	11.6	48.00	40.57	258	254	2	44	22
20th Percentile	2	25	167	201	404	1.3	94.0	69	32	12.6	52.40	44.81	404	417	3	52	26
25th Percentile	2	30	201	250	489	1.6	94.2	71	37	12.9	53.34	46.65	489	485	3	55	27
30th Percentile	3	35	247	276	567	1.8	94.4	74	42	13.2	54.63	47.5	567	571	3	57	28
40th Percentile	4	48	337	387	798	2.4	94.7	78	55	13.7	56.73	49.61	798	783	3	60	31
Median (50th)	5	64	452	514	1,045	2.9	95.0	81	71	14.1	59.24	52.27	1,045	1,055	4	63	34
60th Percentile	8	83	558	631	1,308	3.8	95.3	85	87	14.6	61.68	54.38	1,308	1,304	4	65	36
70th Percentile	11	115	768	818	1,687	5.6	95.6	88	113	15.0	63.60	56.62	1,687	1,710	4	67	39
75th Percentile	13	130	872	990	1,980	6.6	95.8	91	130	15.3	65.22	57.81	1,980	2,034	5	69	41
80th Percentile	16	176	1,109	1,173	2,419	9.1	95.9	92	165	15.4	66.28	59.36	2,419	2,544	5	71	44
90th Percentile	28	339	2,186	2,202	4,868	15.0	96.5	97	325	16.0	71.36	64.98	4,868	4,823	7	73	52
95th Percentile	46	594	3,980	3,737	8,137	19.0	96.8	100	493	16.9	77.22	68.77	8,137	8,271	8	76	64
Highest Value	312	5,085	24,873	18,188	48,458	100.0	99.1	100	3,720	26.9	103.02	95.29	48,458	47,568	30	91	91
State (Total or Avg.)	4,776	60,420	385,373	381,697	832,266	13.4	94.2	83	55,092	15.0	62.17	55.97	832,266	835,097	4	55	41

Lowest and Highest Values. For any specific variable, the lowest AND highest values for each variable.

XXth Percentile. For any specific variable, a value chosen such that XX percent of the school districts are below the chosen value. For example, the 10th percentile for total staff (column 9) is 20. This means that ten percent of the school districts have 20 or fewer staff members (FTE). The 25th, 50th, and 75th percentiles are called quartiles; the 10th, 20th, 30th, ... through 90th percentiles are called deciles.

Median. For any specific variable, a value chosen such that half of the school districts are below the chosen value and half are above.

State Total. For variables 1-5 (1996-97) resident average daily membership, 9 (total staff), and 13-14 (ADM), the state total is simply the sum of the corresponding values for all districts listed in the report. For all other variables, the state total is computed as the sum of the numerators for all districts, divided by the sum of the denominators. For these variables, the state total is the average.

Examples: $\frac{\text{State Total of Pupils}}{\text{State Total of Staff}} = \text{State Total Pupil/Staff Ratio}$

SUMMARY STATISTICS

1996-97 Expenditures Per ADM															Other Measures Per ADM					
18. District and School Admin.	19. District Support Services	20. Regular Instruction	21. Vocational Instruction	22. Exceptional Instruction	23. Instr. Support Services	24. Pupil Support Services	25. Operations and Maintenance	26. Food Services	27. Pupil Transportation	28. Other Op. Programs	29. Total PK-12 Operating Expenditures	30. Community Services	31. Capital Outlay	32. Building Construction	33. Debt Service	34. Operating Funds Balance	35. Change in Funds Balance	36. State and Local Oper. Costs	37. Long Term Debt	38. Prior Yr. Adj. Net Tax Capacity
-	13	2,266	-	172	-	-	-	-	146	-	4,499	-	-	-	-	(2,348)	(1,984)	3,872	-	-
250	64	2,467	-	395	97	16	350	179	204	14	5,031	82	153	-	-	(134)	(358)	4,435	-	1,516
283	79	2,533	14	464	121	40	380	202	232	18	5,124	91	183	-	-	72	(234)	4,547	76	1,746
308	101	2,636	52	550	150	73	413	226	272	21	5,327	111	237	-	-	292	(123)	4,663	394	2,172
318	111	2,673	67	573	163	80	429	235	286	24	5,427	120	267	-	15	376	(81)	4,750	578	2,351
328	119	2,709	79	593	171	87	442	242	295	26	5,496	127	288	-	48	433	(52)	4,817	834	2,518
357	131	2,787	94	647	195	104	467	251	318	30	5,631	142	318	-	197	555	5	4,954	2,292	2,789
376	144	2,855	117	693	216	120	500	263	340	36	5,777	155	360	-	324	686	56	5,047	4,127	3,087
397	156	2,925	132	749	243	133	526	276	366	43	5,925	169	415	7	424	793	109	5,183	5,364	3,481
424	174	3,043	156	799	266	149	561	289	400	47	6,142	194	487	155	523	884	181	5,370	6,757	3,863
442	186	3,082	174	846	274	161	592	297	416	56	6,261	214	536	296	581	937	230	5,486	7,554	4,241
459	203	3,145	195	883	284	180	622	302	436	65	6,389	236	563	562	636	1,016	289	5,649	8,465	4,544
535	252	3,400	255	1,087	353	213	708	334	496	93	6,872	290	742	2,346	827	1,221	469	6,116	11,423	5,637
594	297	3,640	328	1,242	418	247	812	366	573	118	7,267	353	790	3,726	998	1,420	627	6,431	14,050	7,435
1,628	1,219	6,182	763	4,186	429	509	2,451	861	1,086	682	14,844	2,140	2,029	22,100	7,689	7,661	5,316	7,841	62,993	17,383
338	172	2,923	127	899	289	184	519	255	347	26	6,080	243	350	784	508	594	78	5,362	5,736	4,191

