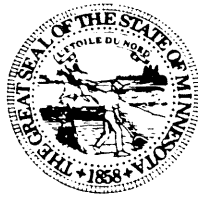


1996 Probation Survey

Minnesota Department of Corrections
Office of Planning and Research
1450 Energy Park Drive, Suite 200
St. Paul, MN 55108

March 28, 1997



State of Minnesota
Minnesota Department of Corrections

RECEIVED

APR 24 1997

LEGISLATIVE REFERENCE LIBRARY
STATE OFFICE BUILDING
ST. PAUL, MN 55155

March 28, 1997

I am pleased to present the 1996 Probation Survey. This is the seventeenth year that the Department of Corrections has published this report. The value of this cooperative effort in documenting the use of community supervision of offenders cannot be overstated. In no small sense it played a significant role in the governor's, legislature's, and DOC's response to probation crowding.

There is still much that can be done to make this survey even more accurately reflect the work that is expected of and being done by probation officers and corrections agents throughout Minnesota. We welcome your suggestions on ways in which the survey can be made a more useful tool for you.

As always, we are appreciative to those of you who helped in collecting the data, your promptness in responding to our requests, and for your cooperation with the department's Office of Planning and Research. I am especially appreciative of the efforts of Dan Storkamp, Director, and Mark Evenson, Research Analyst.

With an increase of more than 4000 persons under probation supervision at the end of 1996, already overworked agents have an enormous amount of additional work. The additional probation officers and corrections agents made possible by the funding for workload/caseload reduction will help manage these new cases.

While this report represents work for all of us, it is also a prime example of what we can achieve when we work together. If you need additional copies of this report, please call Mark Evenson at (612) 642-0301.

Sincerely,

R.T. Mulcrone
Assistant Commissioner
Community Services Division

I. Introduction.....	1
II. Methodology	3
III. Findings.....	5
A. Overview	5
B. Minnesota probationer population, 1984-1996	7
C. Minnesota probationer demographics, 1985-1996.....	9
D. Probationer distribution by agent type	10
E. Probationer distribution by type of offense.....	13
F. 1996 probation population by county.....	16
G. December 31, 1996 diversion population.....	19
H. December 31, 1996 supervised release/parole/ICS population.....	19
I. Summary.....	20
Appendix A: 1996 Probation Survey instructions and questionnaire.....	23
Appendix B: 1996 Probation Survey data by county	31
Appendix C: December 31, 1996 probationers by county, offense level, and offense type	57
Appendix D: December 31, 1996 supervised release, parole, and ICS population by county	71
Appendix E: Adult and juvenile pretrial diversion.....	75
Appendix F: Court Services in Minnesota	79

I. Introduction

The Minnesota Department of Corrections (DOC) has collected probation data from Minnesota counties on an annual basis since the early 1980's. The reporting of entries, removals, year-end populations, and distribution by race and gender has remained largely unchanged since the 1984 survey. Throughout these years, one purpose of the Minnesota Probation Survey has been to collect data requested by the Bureau of the Census and the Bureau of Justice Statistics regarding Minnesota probationers. The organization of the Minnesota questionnaire and its definition of "probationer" is patterned after that used by the federal questionnaire. In addition to meeting federal reporting requirements, the findings of the probation survey are used by the Minnesota Department of Corrections, other state agencies, the Minnesota Legislature, county probation offices, and other parties for management and policy-making purposes.

"Probation officers" do much more than provide probation supervision. Other duties can include supervising individuals on supervised release, parole, intensive community supervision, pre-trial diversion, or CHIPS (child in need of protection or services), as well as conducting presentence investigations, processing transfer requests, and working with prevention programs. In addition to presenting probation data, this report includes a profile of some of these other contributors to the workload of probation service providers. The Minnesota Department of Corrections' Corrections Management Information System (CMIS) was used as the source for supervised release and parole data included in this report.

II. Methodology

This chapter describes the content of the probation survey, and how the probation survey data was collected. Issues that arose in the course of this year's data collection are also addressed.

A. Survey design

The 1996 probation survey instructions and questionnaire are shown in Appendix A. Throughout the years, the essential definition of "probationer" has been "those who have been placed under the supervision of a probation agency as part of a court order—regardless of whether they have been convicted." However, clarifications and changes have been made in the detailed instructions in recent years, to ensure that the data needed for reporting and management purposes is collected, and to promote more consistent interpretations of the instructions by all counties. For instance, prior to the 1993 survey respondents were told to exclude "cases for whom an agent is only monitoring compliance with a sanction such as a fine or restitution." However, the Bureau of Justice Statistics directs the DOC to report on all probationers, including those in "paper" or "administrative" classifications, so the Minnesota survey's instructions were changed to include these cases.

The handling of diversion cases has also undergone changes in recent years. In the 1993 survey, counties were instructed to include individuals supervised in pre-trial diversion programs. In the 1994 survey, counties again were asked to report on diversion cases, but the questionnaire provided separate columns for this reporting, so that probation and diversion could be differentiated in the data. While planning the 1995 survey it was found that diversion data could be obtained from the county attorneys' required biennial reports to the Department of Corrections and the legislature (*Minnesota Statutes* 388.24, 401.065), so diversion has been excluded from the survey's data collection beginning with the 1995 survey.

Thus the only year in which any diversion cases were included in the probation figures was in the 1993 survey. The 1993 data included in this report is not adjusted to deduct diversion cases. The number of diversion cases reported in the 1993 survey is believed to be small, because in the largest counties (including Hennepin and Ramsey) diversion services are not provided by Community Corrections and thus were not reported on the 1993 survey, and because the 1993 survey predated the statutes mandating that diversion programs be established in counties.

B. Survey administration

Questionnaires were mailed on December 19, 1996 to the following:

- Community Corrections Act (CCA) directors—to collect data on all probationers in their counties.
- County probation offices in non-CCA counties not served by DOC contract agents—for reporting all probationers under their supervision (generally juveniles and adult non-felons).

Minnesota Department of Corrections district offices maintain caseload data on probationers supervised by adult state agents and contract agents. The district offices were requested to generate and submit their probation survey data using a reporting feature built into their PROBER software.

Appendix F shows how court services are delivered in Minnesota's counties.

C. Reporting issues

All probation offices completed and returned the survey. All survey data was received by February 19—significantly earlier than in previous years and indicative that overall the reporting process went smoothly for the probation offices. Some probation offices offered explanatory notes describing estimations or other limitations in their data (see the "Notes" at the end of Appendix B), but their caveats seem minor.

III. Findings

This chapter provides an analysis of the 1996 probation survey data. Comparisons are also made to probation data from previous years.

A. Overview

Appendix B presents the data reported by the probation offices on their questionnaires. One set of data is shown for each county. In the case of non-CCA counties, this was obtained by adding the numbers provided on the state agent and county agent questionnaires. After each county's data, Appendix B presents various aggregations of the data:

- by agent type (adult state agents, CCA agents, contract agents, and non-CCA county agents)
- by CCA status (CCA counties, non-CCA counties)
- by metro/non-metro status (where "metro" is defined as consisting of Hennepin, Ramsey, Anoka, Washington, Dakota, Scott, and Carver Counties)

as well as statewide totals of all probationers.

The reader will observe that the Appendix B column headings correspond to questions 1 through 8 of the questionnaire (Appendix A). The first columns report the 1995 and 1996 year-end populations, as well as movements (entries and removals) during 1996. After establishing the December 31, 1996 population, the remaining columns show the distribution of the year-end probationer population by gender, race, Hispanic status, and offense category.

Year-beginning and year-end probationer population data are collected by the probation survey every year. The December 31, 1995 statewide adult and juvenile probation population reported in the 1995 Probation Survey was 99,433. Several counties revised their December 31, 1995 probationer counts on the 1996 probation survey. As a result, the December 31, 1995 probationer population as reported on the 1996 survey was 101,088. The 1995 Probation Survey will be used as the source of December 31, 1995 probation population data throughout this chapter.

Appendix B shows that on December 31, 1996, there were 88,039 adults and 15,835 juveniles under probation supervision in Minnesota. Below is a comparison of 1995 and 1996 probation populations:

Table 1: Comparison of 1995 and 1996 year-end Minnesota probation populations

	12/31/95	12/31/96	Change
Felony probation	26,114	27,373	+ 4.8%
Gross Misdemeanor probation	19,966	20,736	+ 3.9%
Misdemeanor probation	<u>37,698</u>	<u>39,930</u>	+ 5.9%
Total adult probationers	83,778	88,039	+ 5.1%
Juvenile probationers	<u>15,655</u>	<u>15,835</u>	+ 1.1%
Total probation population (adults and juveniles)	99,433	103,874	+ 4.5%

Figures 1 and 2 present the Table 1 data graphically. The distribution of the December 31, 1996 probation population is given in Figure 1, while Figure 2 provides a comparison of year-end 1995 and 1996 populations. Figure 3 shows that during 1996 CCA counties and non-CCA counties both showed an increase in probationer

Figure 1: Distribution of 12/31/96 probation population

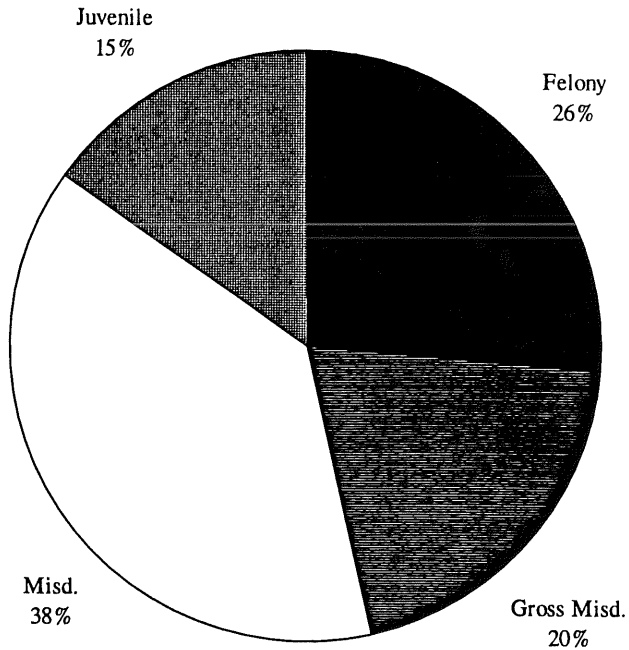


Figure 2: Comparison of 1995 and 1996 year-end probation populations

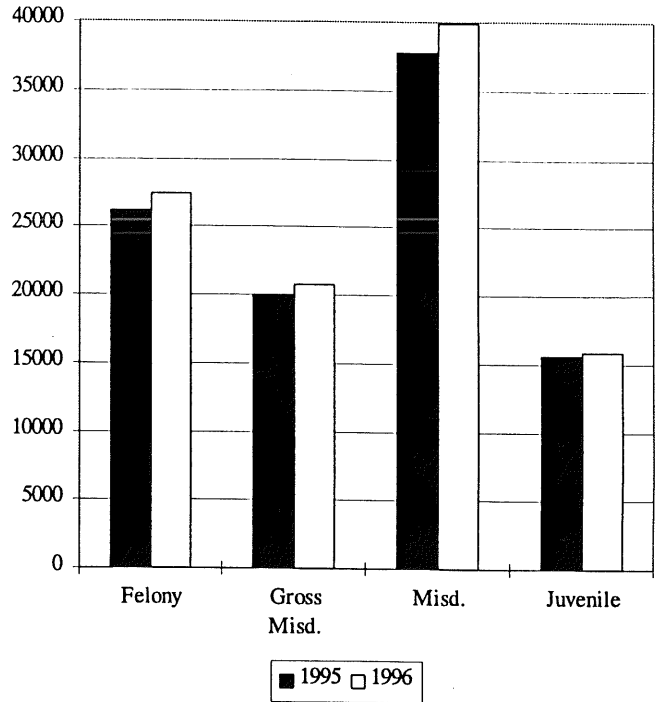
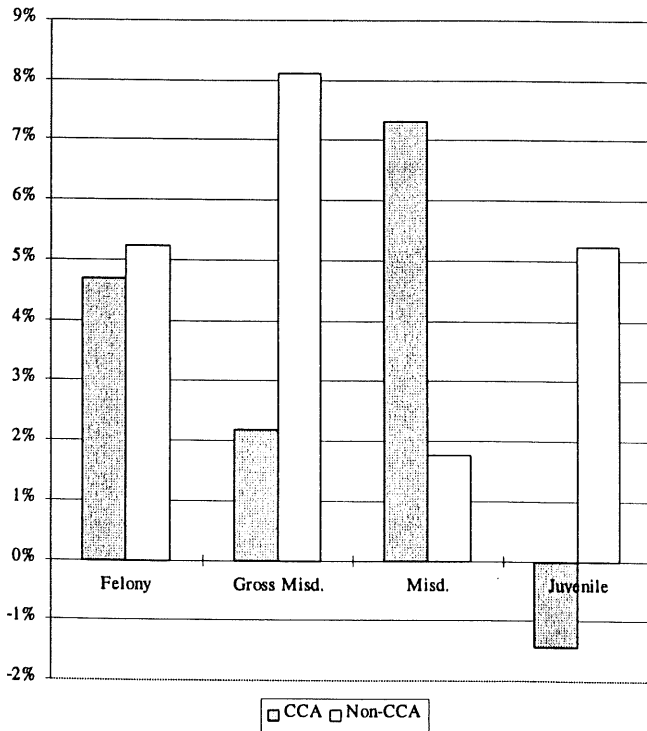


Figure 3: Percentage change in year-end populations from 1995 to 1996 in CCA and non-CCA counties



population at every offense level, except that the number of juveniles supervised in CCA counties decreased slightly.

The total probation population of 103,874 means that approximately one out of every 36 Minnesotans age 12 or older was on probation on December 31, 1996 (although not all were under active supervision). One out of 25 juveniles statewide were on probation on that day. The Bureau of Justice Statistics reports that as of December 31, 1995 (the most recent nationwide per-capita probation data available), only four states had more adult probationers per 100,000 adult population than Minnesota.

B. Minnesota probationer population, 1984-1996

The probation population increased at every offense level during 1996, and at every adult offense level (felony, gross misdemeanor, misdemeanor) the percentage of increase was greater than last year. Table 2 shows the year-end probationer population by offense level for each year from 1984 to 1996, while Figure 4 presents the same information graphically.

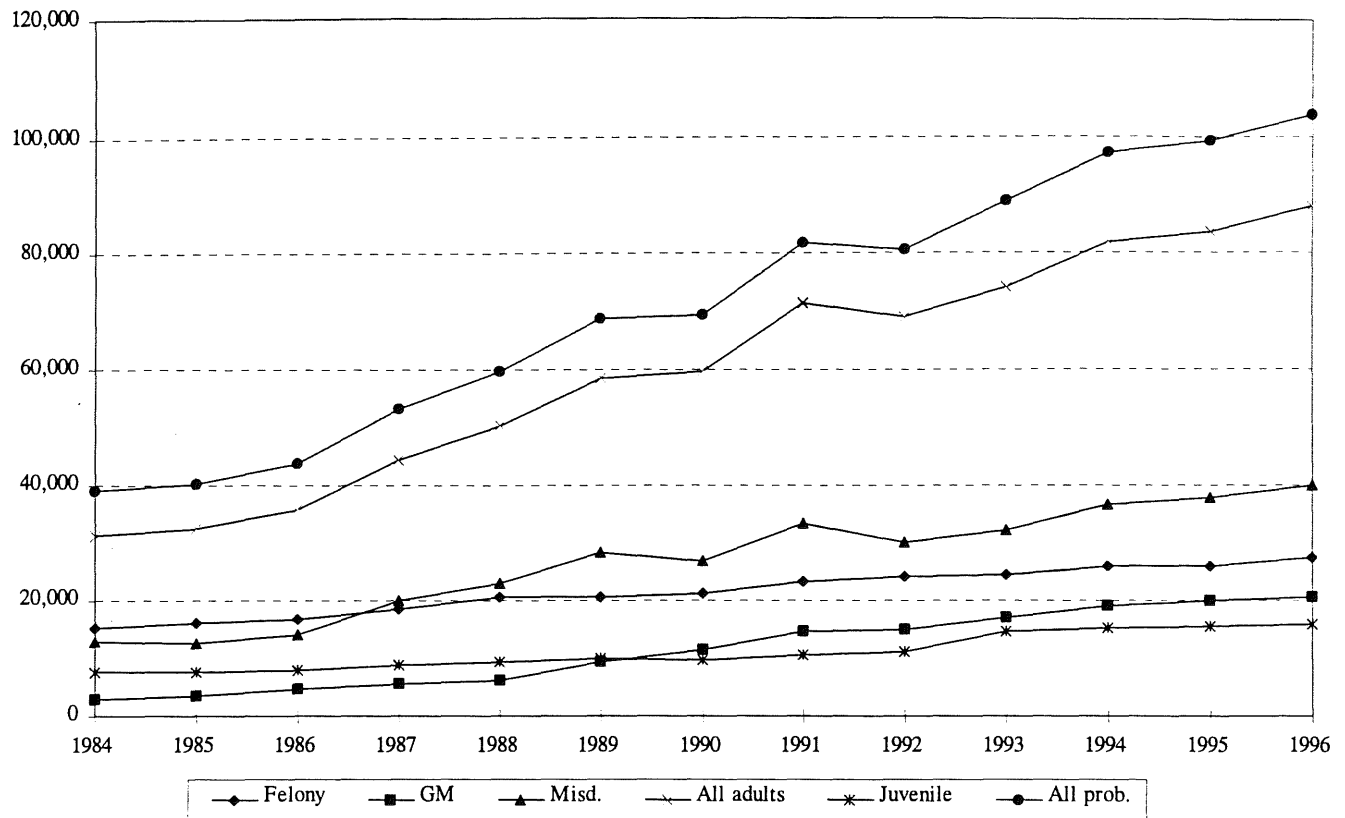
The Table 2 numbers were obtained from probation surveys conducted over the years. The pre-1993 data is supplemented with annual statewide counts of felony probationers supervised by DOC felony agents. (DOC felony agents did not participate in the probation survey before 1993.) From 1990 to the present, all probation offices have completed and returned the probation survey each year, and participation was nearly 100 percent before 1990. In the three instances before the 1990 survey where a populous county failed to submit probation data, the missing numbers were estimated, using the county's population data from the year before and after, so that Table 2 and Figure 4 represent a complete accounting of the Minnesota year-end probation population for each year from 1984 through 1996. With the exception of a slight dip in 1992, adult probation populations always increased from one year to the next. In fact, the adult probationer population increased by 160 percent during the ten-year period from December 31, 1984 (31,440) to December 31, 1994 (81,972). By comparison, the population of Minnesota-committed inmates in state correctional facilities increased by about 108 percent during that period.

Table 2: Minnesota probation population, 1984-1996

	Gross					All
	Felony	Misdemeanor	Misdemeanor	All adults	Juvenile	probationers
1984	15,341	3,012	13,087	31,440	7,674	39,114
1985	16,350	3,510	12,683	32,543	7,781	40,324
1986	16,730	4,602	14,310	35,642	8,039	43,681
1987	18,659	5,747	19,957	44,363	8,862	53,225
1988	20,774	6,234	23,176	50,184	9,541	59,725
1989	20,677	9,490	28,481	58,648	10,158	68,806
1990	21,395	11,540	26,851	59,786	9,715	69,501
1991	23,300	14,782	33,325	71,407	10,544	81,951
1992	24,233	15,054	30,001	69,288	11,360	80,648
1993	24,667	17,265	32,254	74,186	14,822	89,008
1994	25,874	19,345	36,753	81,972	15,346	97,318
1995	26,114	19,966	37,698	83,778	15,655	99,433
1996	27,373	20,736	39,930	88,039	15,835	103,874

Prior to 1993 respondents were instructed to exclude cases where the agent was "only monitoring compliance with a sanction," whereas in the past three years these cases have been included. If these cases had been counted

Figure 4: Minnesota probation population, 1984–1996



Source: 1984–1996 Minnesota Department of Corrections probation survey data

prior to 1993, it would have increased the number of probationers for those years, and would lessen the percentage of probation population increase when comparing any year prior to 1993 to any year after that. Since the probation survey has never collected information regarding the supervision level of probationers, attempts to adjust the pre-1993 numbers would be speculative. However, the general trends of steady growth in probation populations from 1984 to 1996, plus the observation that the rate of adult population increase from 1992 (with administrative cases excluded) to 1993 (with administrative cases included) was little different than the average annual increase in previous years, suggests that including administrative supervision cases had only a small impact on the total adult probation numbers, so that Table 2 and Figure 4 represent the probation population situation fairly accurately, even without adjustment of the pre-1993 data.

Table 2 shows that the sharpest population increase has been in gross misdemeanants. The year-end 1996 gross misdemeanor probationer population of 20,376 was nearly seven times the number of gross misdemeanor probationers at the end of 1984 (3,012). The least increase has been in felony probationers, whose numbers have increased about 78 percent from 1984 to 1996. It should be noted that the designation of an offense as a felony, gross misdemeanor, or misdemeanor, is not always clear-cut. Thus the data on the total adult probationer population over the years provides another useful perspective.

The juvenile probation population increased markedly from 1992 to 1993 (about 31 percent). Most likely this is largely due to the change in the 1993 instructions described above (including administrative supervision cases for the first time). The juvenile probation growth has subsequently returned to a slower rate.

C. Minnesota probationer demographics, 1985-1996

A common element of the probation survey over the years has been the reporting of the gender and race distribution of the year-end population. However, 1985 was the first year in which gender data was reported for a clear majority of probationers. Race data is presented from 1986 to the present, since 1986 was the first year of substantially complete race data for all four offense levels—adult felony, adult gross misdemeanor, adult misdemeanor, and juvenile. The 1996 data used in this section is given in Appendix B. This appendix also provides the breakdown of demographic data on a by-county basis, for readers interested in examining this level of detail.

Probationers supervised by adult state agents are included in the demographic data only in 1989 and from 1993 to the present, since these are the only years within this span in which adult state agents participated in the survey. However, since county-supervised felony cases outnumbered state felony cases by ratios of two- or three-to-one over these years, the findings presented in this section should not be substantially distorted by the missing data. With the exception of adult state agent cases, race and gender were reported for virtually 100 percent of the probationer population from 1987 to the present.

The composition of the adult and juvenile probationer population by gender is shown in Figure 5. At year-end 1996, 79 percent of adult probationers and 76 percent of juvenile probationers were male. The percentage of females among adult probationers has increased from 17 percent in 1985 to 21 percent in 1996, and the percentage of females in the juvenile probationer population increased from 21 percent to 24 percent during this period. Females constitute a much higher percentage of the probationer population than the adult prison population. (At present, 4.5 percent of the adult Minnesota Correctional Facility population is female.)

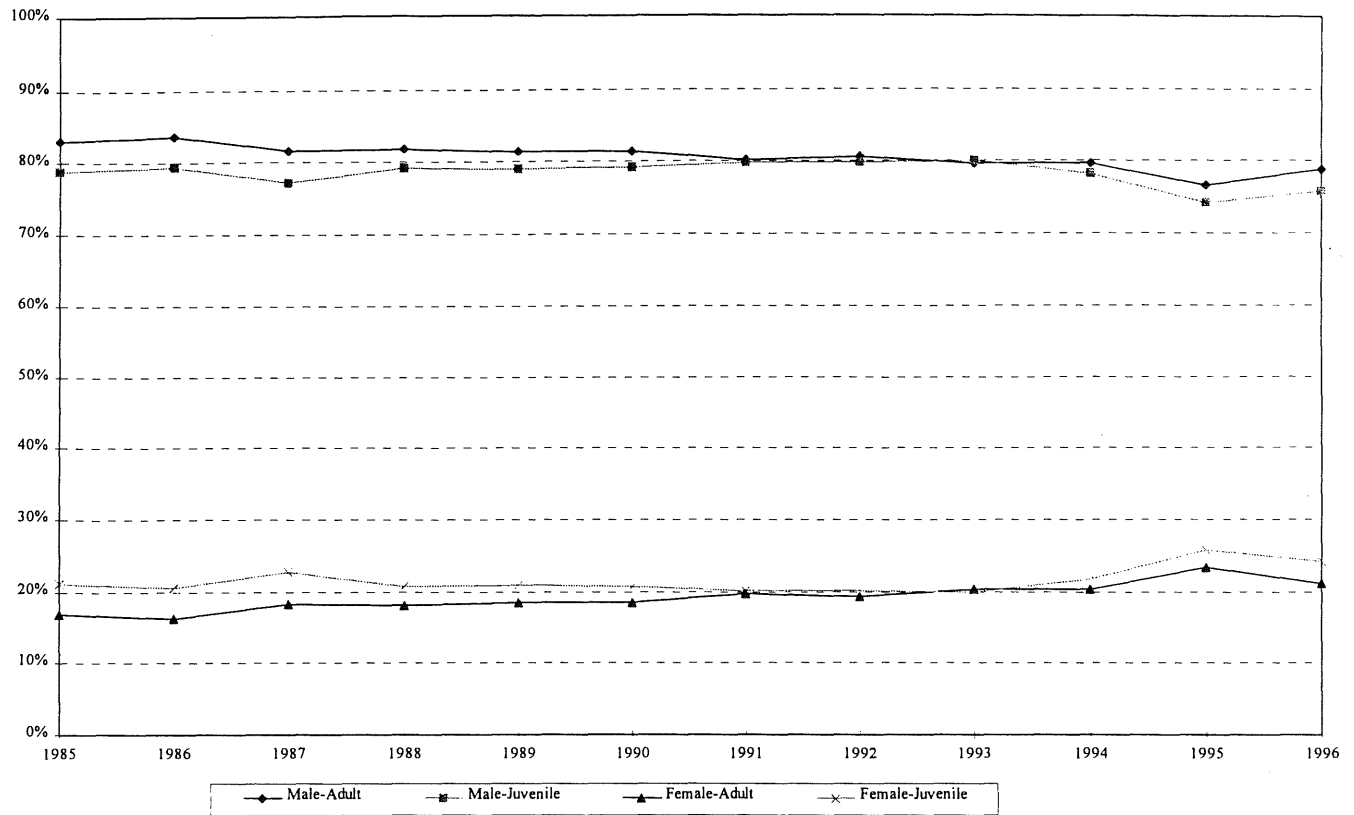
The race categories were changed on the 1994 survey to correspond to the race categories used in the federal Bureau of Justice Statistics probation survey and other BJS and Census Bureau surveys. The changes made were the addition of an "Asian/Pacific Islander" category and the removal of "Hispanic" as a racial category. In order to present race data in a format comparable with that of previous years, the previous years' Hispanic population figures were moved into the "other" race category, and the "Asian/Pacific Islander" figures reported since the 1994 survey were included in the "other" category of the Figure 6 charts. The 1996 data used in producing the bar charts of Figure 6 is given in Appendix B.

Figure 6 shows that probationers at all offense levels have been predominantly white, from 1986 to the present, but that the proportion of minority probationers has increased over this time. The proportion of white felons on probation was about 69 percent at year-end 1996, after holding nearly constant at about 73 percent for the previous five years. Thus, recent years show a decrease from levels around 80 percent in earlier years. At present, whites constitute about 84 percent of the gross misdemeanor and misdemeanor probation population, and about 75 percent of the juvenile probation population; in each case this figure has declined about eight to twelve percentage points from that of 1986.

The percentage of blacks among felony probationers decreased very slightly in 1996, but this percentage has tended to increase gradually over the duration of the study. There has been a sharp increase in the percentage of black gross misdemeanants and misdemeanants, and a gradual increase in black juveniles, over the period shown in the graph. The proportion of American Indian probationers has held quite constant over the years at all offense levels.

The 1996 year-end population of Minnesota's state correctional facilities displays some notably different racial characteristics from the felony probation population. The racial distribution of Minnesota's adult inmate population is 50.4 percent white, 35.7 percent black, 6.6 percent American Indian, 5.7 percent Hispanic, and 1.7 percent other. ("Hispanic" is counted as a racial category in the Corrections Management Information System.)

Before 1994, the probation survey treated "Hispanic" as a racial category. To synchronize the Minnesota survey with the federal probation survey, an "ethnic origin" question has been included in the probation survey since

Figure 5: Probationers by gender, 1985–1996

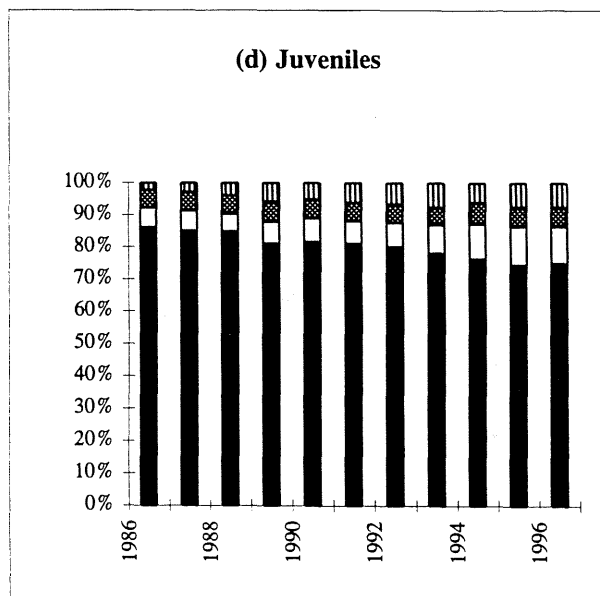
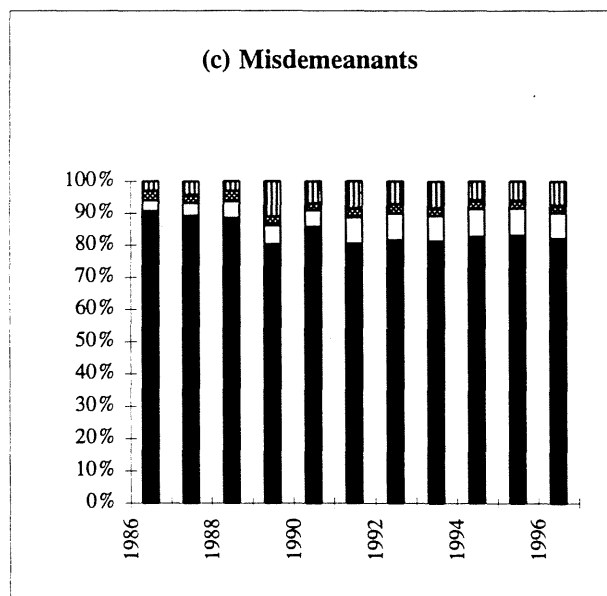
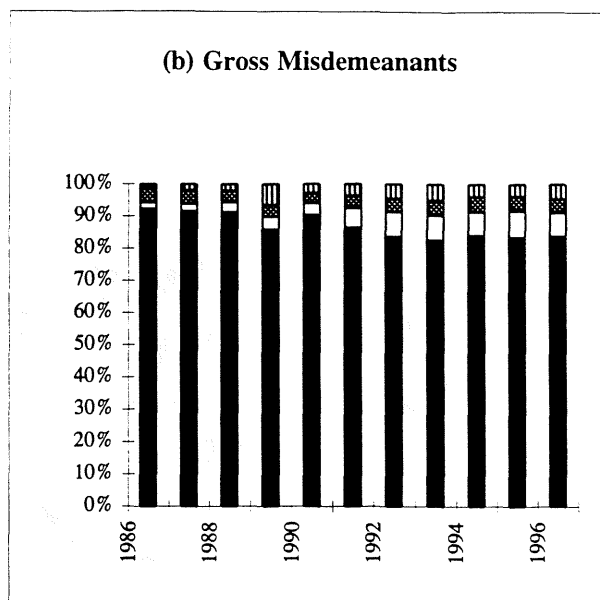
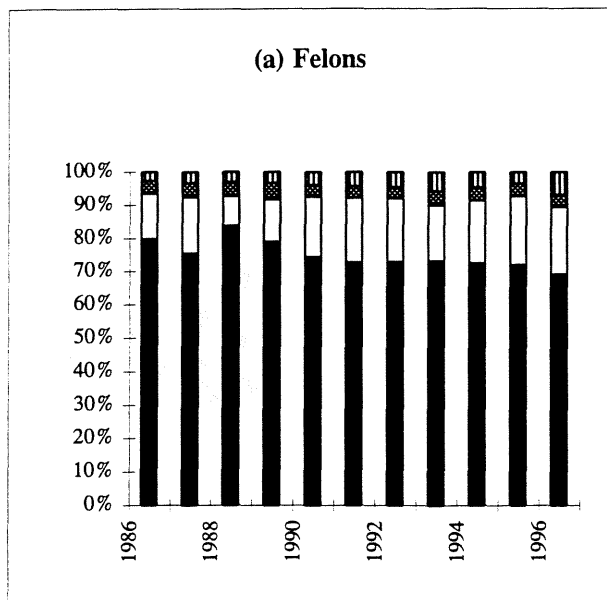
1994, in which respondents were asked to break down their year-end probation population as “Hispanic” or “not Hispanic.” At the same time, the Hispanic racial category was removed, and respondents were instructed to count Hispanics in one of the Census Bureau racial categories (White, Black, American Indian, or Asian). As is shown in Appendix B, 3.9 percent of all probationers in the 1996 study were reported as being of “Hispanic origin,” about the same as in the 1994 and 1995 surveys. In 1993 (when Hispanic was included in the survey as a racial category), 2.8 percent of all probationers were reported as being of “Hispanic race.” This would represent a sizable increase from 1993 to the present in the number of Hispanics under probation supervision, except that the 1994–1996 data is not directly comparable to that of years past. In past years, when “Hispanic” was used as a racial category, one would have to choose whether to code a black Hispanic (for example) as black or Hispanic.

D. Probationer distribution by agent type

Table 3 shows the distribution of December 31, 1996 probationers by agent type and offense level. Note that the first three data columns include only probationers processed in adult court; all juveniles are reported in the fourth column. (This data can also be found in Appendix B.)

Figure 7 uses these numbers to present the statewide probation population served by each agent type. As might be expected of “felony agents,” about 83 percent of the probationers under the supervision of adult state agents are felons, with most of the remainder being gross misdemeanants. Among probationers supervised by agents in CCA counties, about 28 percent are felons, 19 percent are gross misdemeanants, 40 percent are misdemeanants, and 12 percent are juveniles. Contract agents (DOC employees providing non-felon probation services in non-

Figure 6: Probationer distribution by race, 1986-1996

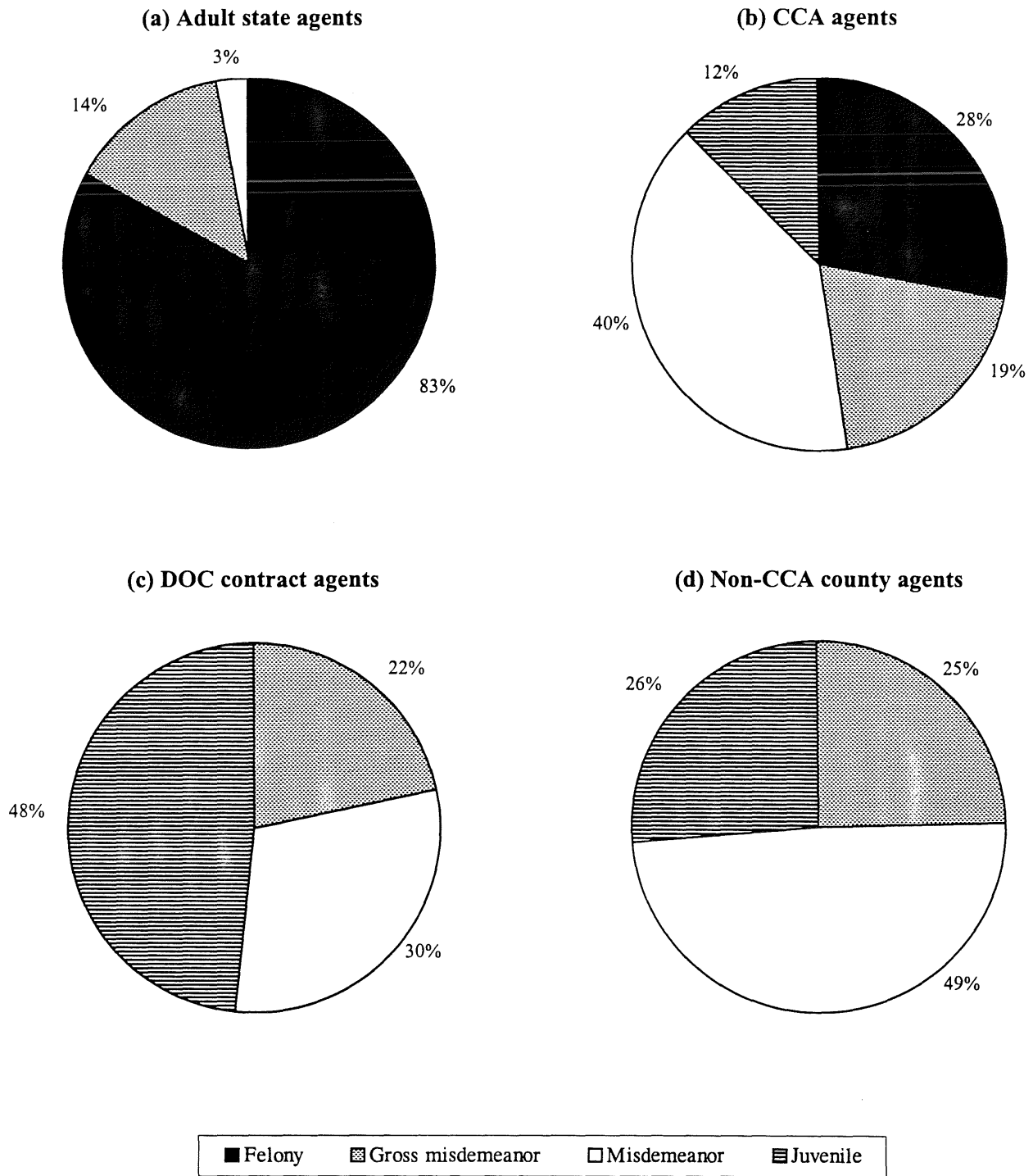


■ White □ Black ▨ Indian ▩ Other

Note:

The sharp decline in black felony probationers in 1988, as shown in Figure 3(a), is due to that year's report showing only 221 black felons for Hennepin County, as compared to 1242 in 1987 and 1482 in 1989. Almost certainly this indicates a data quality problem, rather than an actual fluctuation in the racial distribution of probationers.

Figure 7: Offense level of probationers supervised by each agent type



Source: 1996 Minnesota Department of Corrections probation survey data

Table 3: December 31, 1996 probationers by agent type and offense level

<u>Agent type</u>	Gross				<u>Total</u>
	<u>Felony</u>	<u>Misdemeanor</u>	<u>Misdemeanor</u>	<u>Juvenile</u>	
Adult State Agents	6,134	1,057	205		7,396
CCA Agents	21,222	14,684	30,287	9,452	75,645
Contract Agents		853	1,191	1,918	3,962
Non-CCA County Agents	17	4,142	8,247	4,465	16,871
Total	27,373	20,736	39,930	15,835	103,874

CCA counties) had a caseload consisting of approximately 22 percent gross misdemeanants, 30 percent misdemeanants, and 48 percent juveniles. Probation agents employed by non-CCA counties served a caseload of which about half (49 percent) were misdemeanants and 26 percent were juveniles, with the remainder (25 percent) being gross misdemeanants.

Figure 8 looks at the data in the above table from the other perspective; that is, how are cases at each offense level distributed among the agent types? About 71 percent of the state's population live in CCA counties, and nearly the same percentage (73 percent) of the state's probationers were supervised by CCA agents. CCA counties are supervising over three-fourths of the statewide felony probationer population, with the adult state agents being responsible for the remainder. CCA counties supervise over 70 percent of the gross misdemeanor and misdemeanor probationers in the state, and 60 percent of the juvenile probationers.

E. Probationer distribution by type of offense

The probation survey has included an "offense category" question since 1993. The offense categories used in the questionnaire were derived from the Minnesota Offense Code general index categories, with the main differences being the creation of separate categories for DWI and juvenile status offenses, due to the frequent occurrence of these offenses in the probationer population. Probationers frequently are under supervision for more than one offense, but survey respondents were directed to count each individual exactly once, according to their most serious offense.

Appendix B provides the numbers of probationers in each offense category (i.e., arson, assault, burglary, etc.) by offense level (felony, gross misdemeanor, etc.) by county, and also provides summary data by agent type, county type, and statewide. A more concise summary of the offense data is provided in Appendix C. In Appendix C, offense categories have been collapsed into "offense types" as shown below:

Person: assault, criminal sexual conduct, homicide, kidnapping, robbery

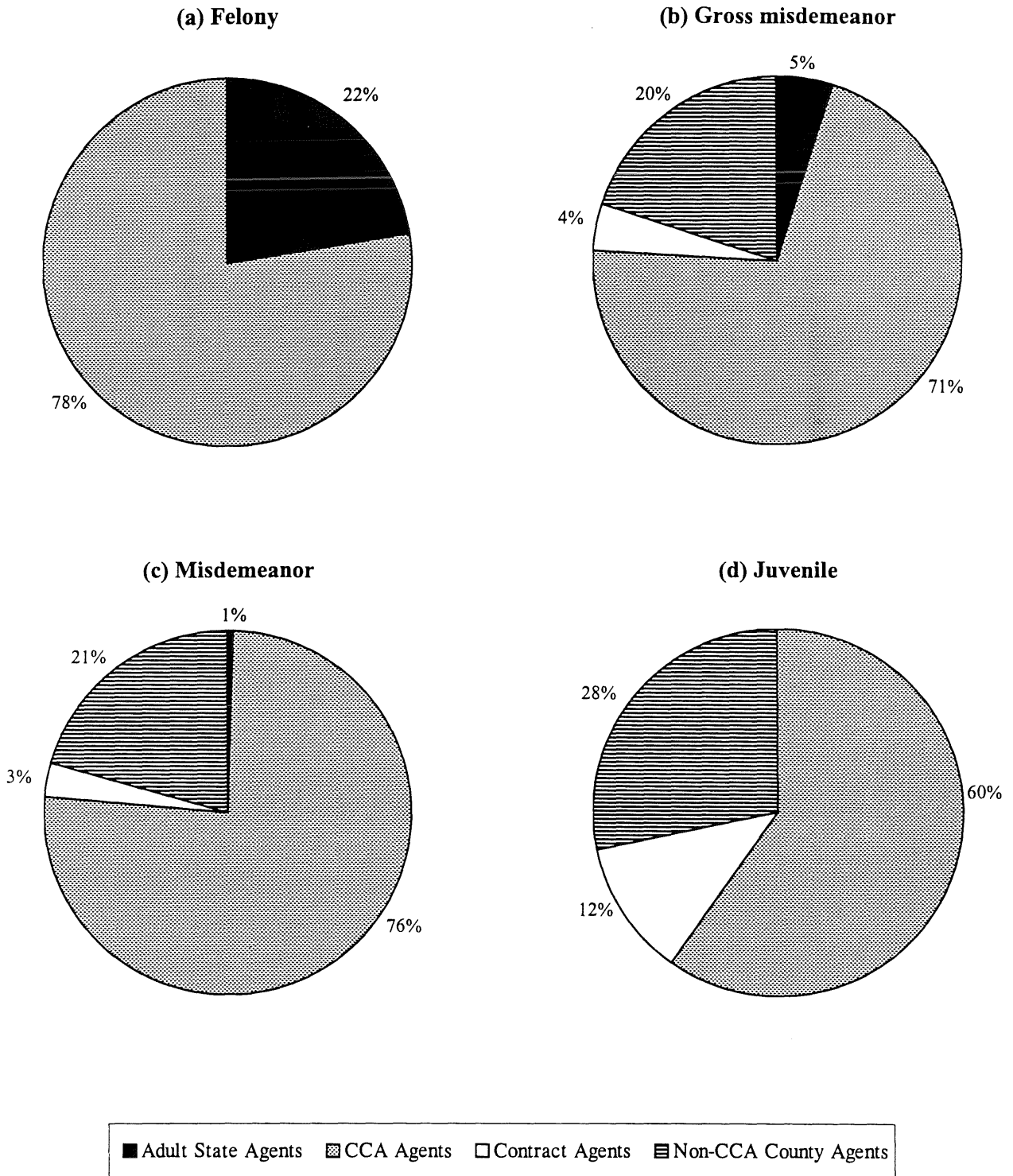
Property: arson, burglary, forgery, property damage, stolen property, theft, theft related, vehicle theft

Other: crime against family, crime against administration of justice, crime against government, disturbing peace, escape, gambling, obscenity, sex related, weapons, other

In addition, the survey's offense categories for "drugs", "DWI", "juvenile status offenses", "traffic/accidents (except DWI)", "other", and "unknown/not applicable" are each represented as an offense type in Appendix C.

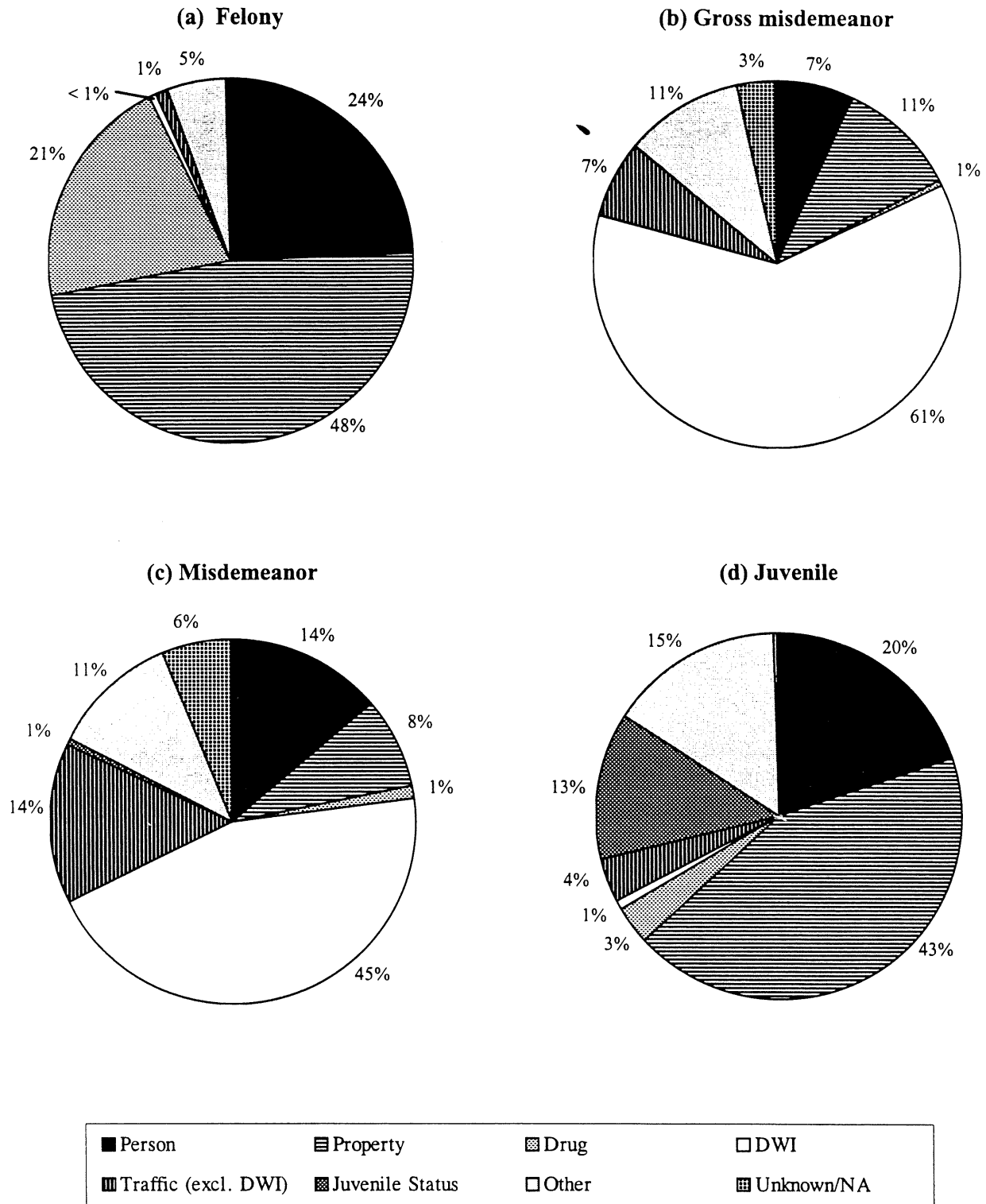
Figure 9 shows the types of offenses represented in the probationer population at each offense level. About half (48 percent) of Minnesota's felony probationers were under supervision for a property offense, with most of the remaining felons divided fairly evenly between person offenders (24 percent) and drug offenders (21 percent). In comparison, the 1996 year-end adult population of Minnesota's state correctional facilities included 63 percent person offenders, 21 percent property offenders, and 11 percent drug offenders.

Figure 8: Agent type supervising probationers at each offense level



Source: 1996 Minnesota Department of Corrections probation survey data

Figure 9: Offense type of probationers at each offense level



Source: 1996 Minnesota Department of Corrections probation survey data

Sixty-one percent of the gross misdemeanants were DWI cases; another eleven percent were property offenders. Forty-five percent of the misdemeanants were under supervision for a DWI as their most serious offense, with the next largest slices representing person offenders and other traffic offenders (14 percent each). The most serious offense of 43 percent of the juveniles was a property offense. Next most common among juveniles were person offenders (20 percent).

F. 1996 probation population by county

The ten Minnesota counties with the largest December 31, 1996 adult and juvenile probationer populations are shown in Table 4. Eight counties appear on both lists. About 70 percent of all adult probationers in the state are in the ten counties listed in Table 4(a). These ten counties have about 63 percent of the state's general adult population. About 53 percent of all juvenile probationers in the state are in the ten counties listed in Table 4(b). These ten counties have 59 percent of the general juvenile population of Minnesota.

Table 4: Counties with the largest probationer populations

(a) Adult probationers				(b) Juvenile probationers			
	n	Percent of state total	Cumulative percent		n	Percent of state total	Cumulative percent
Hennepin	21,402	24.3%	24.3%	Hennepin	2,917	18.4%	18.4%
Ramsey	11,770	13.4%	37.7%	Ramsey	1,475	9.3%	27.7%
Anoka	7,162	8.1%	45.8%	Anoka	866	5.5%	33.2%
Dakota	5,888	6.7%	52.5%	St. Louis	716	4.5%	37.7%
Washington	4,813	5.5%	58.0%	Dakota	620	3.9%	41.6%
St. Louis	3,839	4.4%	62.3%	Wright	436	2.8%	44.4%
Stearns	1,906	2.2%	64.5%	Itasca	368	2.3%	46.7%
Wright	1,702	1.9%	66.4%	Washington	336	2.1%	48.8%
Scott	1,698	1.9%	68.4%	Olmsted	325	2.1%	50.9%
Crow Wing	1,352	1.5%	69.9%	Stearns	302	1.9%	52.8%

Table 5 shows the number of adult probationers per 1000 adults (age 18 and older) for each county, as well as on a summary level. The adult county populations were obtained using projections from the state demographer's office. In the table, counties are listed in descending order of their per-thousand adult probationer population. The four counties with the highest proportion of their population on probation, and nine of the top eleven counties in this ranking, are contiguous counties to the north and east of Hennepin and Ramsey Counties. In all the years that this analysis has been done (1993–1996) this pattern has been present, that east central Minnesota counties have the highest percentage of their adult population on parole. The lowest usage of adult probation has also followed a geographical pattern throughout the 1993–1996 surveys. Of the six counties with the fewest adult probationers per 1000 population, four are the contiguous counties of Lake of the Woods, Marshall, Kittson, and Roseau, in the northwestern corner of the state.

The table shows that while about 26 of 1000 adults statewide are on probation, the median county figure is 19 per 1000. This difference between the mean and the median is due to the more populous counties tending to have higher proportions of their adult populations on probation. Another way of looking at the 26/1000 probationer ratio is to say that approximately one out of 38 adults in Minnesota were under probation supervision on December 31, 1996.

Table 6 shows the "probationers per 1000 population" data for juveniles. In this table, the December 31, 1996 juvenile probationer population in each county is compared to the population of 12- through 17-year-olds in that county, and expressed on a per-thousand basis. The counties with the highest "juvenile probationers per 1000

Table 5: Adult probationers per 1000 population

	Felony	Gross Misd.	Misd.	All		Felony	Gross Misd.	Misd.	All
Isanti	9	10	34	53	Rice	7	5	6	18
Aitkin	16	13	24	52	Lake	6	3	9	18
Pine	11	10	31	52	McLeod	5	4	8	17
Chisago	8	9	26	43	Carlton	7	4	5	16
Mahnomen	18	20	4	42	Brown	5	5	6	16
Washington	7	7	28	41	Winona	5	3	8	16
Mille Lacs	10	15	16	40	Rock	2	4	9	15
Crow Wing	11	13	16	40	Koochiching	7	4	5	15
Nobles	9	8	24	40	Le Sueur	4	4	6	15
Cass	12	14	12	38	Grant	4	7	4	15
Anoka	8	9	20	37	Sibley	6	4	5	15
Scott	6	13	18	37	Wadena	11	2	2	15
Cook	6	7	22	35	Todd	7	6	2	14
Wright	6	10	16	33	Swift	2	4	8	14
Jackson	3	7	23	33	Chippewa	5	4	6	14
Clearwater	9	20	3	32	Dodge	4	4	5	13
Meeker	8	7	17	32	Waseca	3	4	7	13
Goodhue	5	9	17	32	Olmsted	6	4	4	13
Polk	19	9	4	32	Freeborn	5	4	4	13
Ramsey	13	5	14	31	Cottonwood	6	3	4	13
Kanabec	12	9	11	31	Red Lake	9	2	2	12
Carver	5	9	15	29	Traverse	1	5	7	12
Morrison	10	8	11	28	Big Stone	3	2	7	12
Sherburne	6	9	12	27	Becker	9	2	1	12
Houston	2	4	20	26	Otter Tail	8	1	2	11
Steele	4	7	15	26	Clay	7	2	2	11
Hennepin	9	6	11	26	Beltrami	9	2	0	11
Dakota	8	7	11	26	Pennington	10	1	0	10
St. Louis	7	5	13	25	Stevens	4	3	4	10
Pope	3	7	15	25	Hubbard	7	2	2	10
Watonwan	8	5	12	24	Wilkin	4	4	2	10
Blue Earth	5	5	14	24	Lincoln	4	3	3	10
Kandiyohi	6	4	13	23	Pipestone	4	3	2	8
Itasca	9	10	2	22	Roseau	7	1	0	8
Mower	6	5	11	21	Kittson	6	0	0	6
Stearns	7	5	9	21	Lac Qui Parle	2	1	3	6
Benton	8	7	5	20	Murray	2	2	2	6
Renville	4	6	10	20	Marshall	4	0	0	5
Martin	10	4	6	20	Lake of the Woods	4	0	0	4
Lyon	7	6	7	20					
Redwood	6	6	8	20	CCA counties	9	6	12	27
Wabasha	2	5	13	19	Non-CCA counties	6	6	10	23
Norman	6	7	6	19					
Douglas	7	6	7	19	T.C. Metro (7 counties)	9	6	14	29
Yellow Medicine	3	5	11	19	Non-metro counties	7	6	10	22
Nicollet	4	5	10	19					
Faribault	8	3	7	18	Statewide	8	6	12	26
Fillmore	3	5	10	18					

Source: 1996 Minnesota Department of Corrections probation survey data, State Demographer's 1995 and 2000 population projections

Table 6: Juvenile probationers per 1000 population

Big Stone	99	Hennepin	38
Itasca	92	Steele	37
Wilkin	87	Kittson	36
Mille Lacs	86	Le Sueur	36
Koochiching	86	Fillmore	36
Grant	83	Brown	36
Meeker	83	Lake	35
Clearwater	81	Marshall	34
Cass	79	Morrison	33
Kanabec	78	Chippewa	33
Mahnomen	70	Anoka	33
Stevens	70	Olmsted	32
Faribault	69	Hubbard	32
Blue Earth	69	Swift	32
Watonwan	66	Goodhue	31
Freeborn	65	Norman	31
Becker	64	Martin	29
Aitkin	63	Otter Tail	29
Redwood	61	Pope	29
Beltrami	60	Waseca	29
Clay	60	Wadena	28
Lyon	58	Stearns	27
Sherburne	58	Dodge	26
Traverse	58	Rock	26
Roseau	57	Lac Qui Parle	26
Nobles	55	Carlton	24
Mower	54	Pipestone	23
Wright	54	Lake of the Woods	22
Winona	54	Benton	21
Kandiyohi	53	Wabasha	21
Rice	52	Yellow Medicine	20
Jackson	51	Dakota	20
Pine	50	Todd	20
Nicollet	49	Washington	20
Houston	49	Red Lake	17
Isanti	49	Cook	15
St. Louis	47	Renville	14
Chisago	45	Lincoln	12
Crow Wing	44	Murray	11
McLeod	44		
Pennington	44	CCA counties	35
Cottonwood	43	Non-CCA counties	50
Carver	43		
Polk	43	T.C. Metro (7 counties)	34
Sibley	41	Non-metro counties	46
Ramsey	40		
Douglas	39	Statewide	40
Scott	39		

population” ratios at yearend 1996 were Big Stone (99), Itasca (92), Wilkin (87), Mille Lacs (86), and Koochiching (86). The lowest usage of juvenile probation was in the counties of Murray (11 probationers per 1000 juveniles), Lincoln (12), and Renville (14). Overall, there was virtually no statistical correlation between a county’s rank as a user of juvenile probation and their rank as a user of adult probation.

The greatest use of juvenile probation was in “260 counties,” non-CCA counties which provide their own court services for juveniles; they had 51 juveniles on probation per 1000 juveniles in the population. In DOC contract counties overall, 47 juveniles per 1000 were on probation at year-end, and for CCA counties the overall figure was 35 juveniles on probation per 1000 population.

The statewide figure of 40 juveniles on probation per 1000 is over 50 percent higher than the proportion of adults on probation. To express this finding in other terms, one out of 25 Minnesotans of age 12-17 were under probation supervision at year-end. Furthermore, Big Stone County reported that one out of ten juveniles in their county were under probation supervision, while in Itasca County one out of eleven juveniles were on probation at year-end.

G. December 31, 1996 diversion population

Minnesota Statutes 401.065 states that “by July 1, 1994, every county attorney of a county participating in the Community Corrections Act shall establish a pretrial diversion program for adult offenders.” Similarly, *Minnesota Statutes* 388.24 states, “by July 1, 1995, every county attorney shall establish a pretrial diversion program for (juvenile) offenders.” County attorneys are required to submit biennial reports on the operation of these pretrial diversion programs to the Department of Corrections and the Legislature—juvenile reports in even-numbered years, adult reports in odd-numbered years.

In some counties, probation officers provide supervision and services to pretrial diversion cases, while in other counties these services are provided by the county attorney’s office or a contractor. The 1994 probation survey collected data on Minnesota’s pretrial diversion population. However, since diversion data is not readily available from probation offices in counties where diversion services are not provided by court services, and since the statutes cited above already require counties to report diversion data via biennial reports, it seemed appropriate to exclude the collection of diversion data from the probation survey for 1995 and future years, and use the county attorney reports as the source of diversion data.

Appendix E gives one-day counts of adult and juvenile pretrial diversion populations as reported in the county attorney reports. As noted above and in Appendix E, only CCA counties are required to report on adult pretrial diversion, so the table shows blanks for adult diversion in non-CCA counties. Furthermore, blanks are displayed in instances where a CCA county had not submitted an adult diversion report in a timely manner, or where any county failed to submit a juvenile diversion report. Since some counties’ diversion programs are not represented in Appendix E, the actual total would be higher than Appendix E indicates. Nonetheless, the available data indicates that about 2,400 adults and 2,500 juveniles are in pretrial diversion programs on a given day.

H. December 31, 1996 supervised release/parole/ICS population

Appendix D presents demographic information concerning offenders under community supervision in Minnesota after being released from state correctional institutions. This data was not collected using the probation survey, but was extracted from the DOC Corrections Management Information System (CMIS) database.

Adult releasees in non-CCA counties are supervised by Department of Corrections agents. Juvenile parolees in non-CCA counties are supervised by county probation agents in some counties, and by Department of Corrections “contract agents” in counties where the counties contract with the DOC to supervise their juvenile probationers and parolees. Adult and juvenile releasees living in Community Corrections Act counties are supervised by CCA county agents, except that releasees in intensive supervision programs (Intensive Supervised Release, Intensive Community Supervision, and Challenge Incarceration Program community supervision) are sometimes supervised by DOC agents. Due to the more serious nature of their crimes, supervised

releasees/parolees tend to require higher levels of supervision than probationers. Thus it is important to include prison releasees in considerations of the overall workload of agencies providing community supervision.

Over half of all adult releasees live in Hennepin or Ramsey Counties. In fact, the number of adult releasees living in these counties is disproportionately large in comparison to the populations of these counties. Juvenile parolees are distributed more evenly throughout the state.

The offense distribution of adult releasees includes higher percentages of property and drug offenders and a lower percentage of person offenders than is found in the correctional institutions. This is due to the longer prison sentences served by person offenders. The percentages of female offenders and white offenders in the adult releasee population are higher than in the prison population, due to these groups having shorter sentences, on average, than males and non-whites, respectively.

I. Summary

The number of Minnesotans on probation again increased in 1996. At year-end, over 88,000 adults and over 15,000 juveniles were under probation supervision. Additionally, 2,031 adults and 283 juveniles are being supervised in Minnesota as releasees from state correctional institutions. This adds up to over 106,000 offenders under community supervision in Minnesota. Thousands of additional Minnesotans were in pretrial diversion programs at year-end.

While it is important to count the number of offenders on probation, additional information is needed to determine the workload represented by these probationers. Standards for face-to-face contact with a probation agent vary according to the risk represented by the offender, the sanctions pronounced in court, the number of offenses for which the offender has been sentenced, the offender's compliance with the probation conditions, and local probation policies. "Weighting" probationer data to reflect supervision requirements for individual probationers allows probation services providers and the State of Minnesota to allocate resources in proportion to needs. While individual providers of probation services have caseload management systems, at present no procedures exist to uniformly measure probation workloads statewide. The Minnesota Legislature has taken several steps to address this concern:

1. *Minnesota Session Laws* 1992, Chapter 571, Article 11, Section 15 appointed a "probation standards task force." *Session Laws* 1993, Chapter 326, Article 10 directed this task force to report to the Legislature concerning statewide probation officer and funding needs, and to make recommendations to facilitate uniform case classification and reporting. In their December, 1994 report, *Probation in Minnesota: Putting the Pieces Together*, the task force proposed a method of weighting probation survey population data to estimate the workload represented by the probation population.
2. In *Minnesota Session Laws* 1995, Chapter 226, Article 1, Section 11, Subdivision 3, the Legislature asked the Legislative Auditor's Office to conduct "a weighted workload study to be used as a basis for fund distributions across all three probation delivery systems, based on uniform workload standards and level of risk of individual offenders." The study was to "recommend to the Legislature...a statewide uniform workload system...; a standardized data collection system...; and a new mechanism or formula for aid distribution based on the data." The Legislative Auditor's report (*Funding for Probation Services*, January 1996) explains that subsequent discussions with legislators led to some modification of the focus of their study. The Legislative Auditor concluded that "a weighted workload study based on the risk of individual offenders cannot be done at this time." However, the Legislative Auditor's report made suggestions on how to implement a statewide method of offender risk assessment. A bill was introduced during the 1996 legislative session to implement recommendations included in the Legislative Auditor's report concerning data collection, offender classification, and probation outcome measurement, but the bill did not pass. Essentially the same bill has been reintroduced in the 1997 Legislature (S.F. 31).

3. The 1996 Omnibus Crime Bill directed the Office of Strategic and Long-Range Planning to develop "a weighted workload study to be used as a basis of distributing probation officer caseload reduction funding across all three probation delivery systems, based on uniform workload standards and level of risk of individual offenders." Their recommendations had not yet been presented to the Legislature in final form at the time this report was written.

The Minnesota Department of Corrections plans to conduct its next probation survey at year-end 1997, to meet the ongoing need for information on the number of individuals on probation. In addition, the DOC is presently working with CCA and DOC probation offices to compile a felony probationer database with individual-level offender data. Given the widespread interest in evaluating probation outcomes, distributing state funding for probation based on the risk represented by individual offenders, and making individual probationer data available for law enforcement purposes, this database will be a valuable resource for research and evaluation, and for exploring future possibilities for individual-level data collection and data management.

Appendix A

1996 Probation Survey instructions and questionnaire

Instructions for Completing the 1996 Probation Survey

Why do a probation survey? Who participates in the survey?

Thank you for your participation in this annual study, which is conducted in order to provide supervision information to probation policymakers in the Minnesota Department of Corrections, Minnesota counties, and other government agencies. In order to obtain information regarding all 1996 probationers, this questionnaire is being mailed to:

- Community Corrections directors, to collect all CCA-county probation information
- Department of Corrections district supervisors, to collect data on all probationers supervised by DOC felony agents and DOC contract agents
- Chief probation officers in non-CCA counties, to collect data on all probationers supervised by non-CCA county agents.

One questionnaire is enclosed for each county in which your office provides probation services. Please answer the questions for all probationers under your supervision.

Who should be counted as a "probationer" for purposes of this report?

- Include all probationers, regardless of conviction status, who were under the supervision of a probation agency as part of a court order at any time between December 31, 1995 and December 31, 1996.
- Count probationers if there is a court order for supervision and/or services such as restitution, community services, or monitoring.
- Include persons placed on probation under Minnesota Statutes 152.18 ("deferred adjudication" for certain drug offenders) and 609.135 (stay of imposition or execution) if you are providing probation supervision or services.
- Exclude persons on investigative status only, such as PSI's, pre-pleas, bail evaluations, etc.
- Exclude persons on "bench probation," "court probation," or "summary probation," who have not been placed under the supervision of a probation agency.
- Exclude pre-trial diversion and pre-trial supervision cases.
- Exclude juveniles receiving services under a CHIPS petition.
- Exclude persons released from state correctional facilities, who are on supervised release, parole, intensive community supervision, ITP, etc.
- Include those probationers who are sent to your county from another county or state for supervision.
- Exclude from year-end counts (questions 1, 4, etc.) those whom you send to another county or state for supervision.

In all questions on this survey, you are asked to report the number of **people**, not the number of offenses or open files. In each question, each offender should be counted only once. If an offender is under both juvenile probation and adult probation supervision, count the offender only once, placing the individual as an adult or juvenile according to the more serious offense. If you are unable to eliminate double-counting of individuals under both adult and juvenile supervision, asterisk the juvenile total on line 4 of page 1 and in the "Comments" section on page 2, estimate the number of juveniles also counted as adults.

If an adult offender is on probation for offenses of differing severity, count him/her in the category of highest severity. (For instance, the offender under supervision for a felony and a misdemeanor would be counted as a felon.)

When and where should I return the survey? What if I have questions?

Please return your completed questionnaire(s) by January 31, 1997 to the address below.

Mark Evenson
Minnesota Department of Corrections
1450 Energy Park Drive, Suite 200
St. Paul, MN 55108-5219
fax: (612) 642-0223

Mr. Evenson can be reached at (612) 642-0301 if you have questions as you complete the survey.

Notes on specific questions

Question 1. You will note that the "1995 year-end population" figures you reported on line 4 of last year's survey have been entered on line 1 of the enclosed questionnaire(s). If you no longer agree with these numbers, strike them out and write in your amended numbers.

Question 2. Count individuals who newly entered probation supervision during the year. If an offender picks up another offense while on your caseload, this should not be counted.

Question 3. Count individuals who were removed from probation supervision during the year—for example, offenders who are discharged from probation, are sent to another county or state for supervision; are incarcerated upon revocation of their probation, absconders who you remove from your caseload; or offenders who die. Do not count as a removal an offender who is discharged from probation for one offense but remains on probation for another offense.

Question 4. The year-end populations reported for this question are the most important data collected by the questionnaire. Questions 5 through 8 ask you to provide a breakdown of the question 4 population by gender, race, Hispanic origin, and offense category.

In past years this question has included a formula indicating that line 4 should equal line 1 + line 2 - line 3. Some counties have made the correct observation that this formula will not necessarily be exactly correct for each individual column¹, but the line 1 + line 2 - line 3 = line 4 formula should be true for the "total" column.

Question 5. Self-explanatory.

Questions 6-7. The DOC reports the aggregate statewide data from this annual probation survey to the Bureau of Justice Statistics (BJS) on their nationwide probation survey. The race and ethnic origin categories used in questions 6 and 7 are the same as those used by the BJS survey. The federal government regards "Hispanic" as a designation of ethnicity, not race. Thus Hispanic probationers will generally be counted as White or Black in question 6, and as Hispanic in question 7. The following Census Bureau definitions may be useful:

White (race)—A person having origins in any of the original peoples of Europe, North Africa, or the Middle East. (DOC note: this is true of most Hispanics. If your agency records Hispanic origin as a racial category but does not have a white/black distinction, then include them in the white category.)

Hispanic (ethnic origin)—A person of Mexican, Puerto Rican, Cuban, Central or South American or other Spanish culture or origin, regardless of race.

Question 8. As was mentioned previously, a probationer being supervised due to more than one offense should only be counted once (not as many times as he/she has offenses). Report the most serious offense for which the individual was under supervision on 12/31/96.

The offense categories used in question 8 are derived from the Minnesota Offense Code (MOC) general index categories, except that "juvenile status offenses" and DWI were made into separate categories, and some MOC "miscellaneous" offenses (liquor, conservation) were added to the "crime against government" category. Therefore, if you are familiar with the MOC system, you can consult its tables if you have questions in categorizing offenses.

Here are some offenses for which survey completers had questions in the past, and how to categorize them:

Offense	Offense category
terroristic threats	Assault
criminal vehicular homicide	Traffic/Accidents
witness tampering, probation violation	Crime against administration of justice
bad checks, welfare fraud	Theft related
tax evasion	Crime against government

On question 8, questions have arisen as to how to determine the "most serious offense" for the probationer who is under supervision for more than one offense. In a recent study, the Bureau of Justice Statistics used the statutory maximum sentence for each offense to determine which was most severe. Strict application of this approach may not be feasible in your reporting, but their definition provides a useful guiding principle that you can probably apply to some extent. For example, if one offense is a felony and the remainder are gross misdemeanors or misdemeanors (all of these terms are defined in terms of their statutory maximum sentences), report the felony offense. If one offense is a gross misdemeanor and the others are misdemeanors, report the gross misdemeanor offense.

A computer program was developed to automatically produce the probation survey report for users of PROBER caseload management software (used by Department of Corrections agents/offices). The PROBER data lacks detailed offense information, so its offense selection logic used an arbitrary ranking of the offense categories of question 8 to select one felony over another, or one misdemeanor over another. This offense ranking logic is also built into CSTS+. The ranking of the question 8 offense categories used by PROBER and CSTS+ is given below for your information:

Homicide; Criminal Sexual Conduct; Kidnapping/False Imprisonment; Assault; Robbery; Arson; Escape/Flight; Burglary; Drugs; Crime Against Administration of Justice; Crime Against Government, Liquor, Conservation; DWI; Obscenity; Sex Related; Crime Against Family; Vehicle Theft; Theft; Theft Related; Forgery/Counterfeiting; Property Damage; Stolen Property; Traffic/Accidents (excl. DWI); Weapons; Disturbing Peace/Privacy; Gambling; Juvenile Status Offenses; Other

¹ For instance, suppose an offender is on probation for the entire year. He begins the year as a misdemeanor. During the year he picks up a felony offense, and is under supervision for that offense at year end. In question 1 he would be counted as a misdemeanor. In question 4 he would be counted as a felon. Since he was under supervision for the entire year he would not represent an entry or removal for questions 2 or 3. This occurrence would cause the line 1 + line 2 - line 3 = line 4 formula to fail for the felony and misdemeanor columns (unless there was another offender who went from felon to misdemeanor to cancel things out).

1996 Probation Survey

County:

Contact Person:

NOTE: Read the instructions before completing this form. Return by January 31, 1997 to Mark Evenson, Minnesota Department of Corrections, 1450 Energy Park Drive, Suite 200, St. Paul, MN 55108-5219; phone (612) 642-0301; fax (612) 642-0223.

	Adult Felony Probationers	Adult GM Probationers	Adult Misd. Probationers	Juvenile Probationers	Total
1. 1995 Year-end population How many individuals were you supervising on 12/31/95?					
2. 1996 Entries How many individuals entered your caseload during 1996?					
3. 1996 Removals How many individuals were removed from your caseload during 1996?					
4. 1996 Year-end population How many individuals were you supervising on 12/31/96? (see instructions)					

5. Gender. Of the 12/31/96 population (line 4):	Adult Felony Probationers	Adult GM Probationers	Adult Misd. Probationers	Juvenile Probationers	Total
a) How many were male?					
b) How many were female?					
c) Total (should be the same as line 4)					

6. Race. Of the 12/31/96 population (line 4), how many were:	Adult Felony Probationers	Adult GM Probationers	Adult Misd. Probationers	Juvenile Probationers	Total
a) White					
b) Black					
c) American Indian or Alaskan Native					
d) Asian or Pacific Islander					
e) Other					
f) Unknown					
g) Total (should be the same as line 4)					

7. Hispanic origin. Of the 12/31/96 population (line 4):	Adult Felony Probationers	Adult GM Probationers	Adult Misd. Probationers	Juvenile Probationers	Total
a) How many were Hispanic?					
b) How many were not Hispanic?					
c) Not known					
d) Total (should be the same as line 4)					

8. **Offense categories.** For the 12/31/96 population (line 4), report the most serious offense for which each offender was under supervision on 12/31/96.

	Adult Felony Probationers	Adult GM Probationers	Adult Misd. Probationers	Juvenile Probationers	Total
Arson/Negligent Fires					
Assault					
Burglary					
Crime Against Family (e.g., non-support)					
Crime Against Administration of Justice					
Crime Against Govt.; Liquor; Conservation					
Criminal Sexual Conduct					
Disturbing Peace/Privacy					
Drugs					
DWI					
Escape/Flight					
Forgery/Counterfeiting					
Gambling					
Homicide					
Juvenile Status Offenses					
Kidnapping/False Imprisonment					
Obscenity					
Property Damage					
Robbery					
Sex Related					
Stolen Property					
Theft					
Theft Related					
Traffic/Accidents (except DWI)					
Vehicle Theft/Vehicle Theft Related					
Weapons					
Other					
Unknown/Not Applicable					
Total (should be the same as line 4)					

COMMENTS

Please provide any comments that would be of assistance to those using the figures you provide. If any of your figures are estimates, please describe your method of estimation. Attach an additional sheet if needed.

Completed by: _____ Phone: _____ Date: _____

Appendix B

1996 Probation Survey data by county

	1995 Year-end population	1996 Entries	1996 Removals	1996 Year-end population	Male	Female	White	Black	American Indian	Asian/Pacific Islander	Other race	Unknown race	Hispanic	Not Hispanic	Unknown Hispanic status	Arson	Assault	Burglary	Crime Against Family	Crime Against Justice
Aitkin (CCA)																				
Felony	157	43	56	144	109	35	135	1	7	1			3	141		1	9	20		1
Gross Misd.	133	58	75	116	99	17	102	2	12					116		1	3	1	2	4
Misdemeanor	187	163	130	220	168	52	216		4				1	219			17			
Juvenile	51	58	43	66	57	9	55		11					66		1	8	13		1
Total	528	322	304	546	433	113	508	3	34	1			4	542		3	37	34	2	6
Anoka (CCA)																				
Felony	1652	450	823	1570	1193	377	1422	100	21	11	6	10	3	1557	10	10	152	148	6	7
Gross Misd.	1750	698	906	1770	1424	346	1453	41	35	3	7	231	2	1537	231		86	10	27	27
Misdemeanor	3893	3006	3097	3822	2941	881	2500	101	52	15	9	1145	21	2656	1145	2	563		83	34
Juvenile	824	1111	1230	866	688	178	732	27	16	5		86	8	772	86	6	100	60		19
Total	8119	5265	6056	8028	6246	1782	6107	269	124	34	22	1472	34	6522	1472	18	901	218	116	87
Becker																				
Felony	193	68	99	162	124	38	136	26					3	159		2	15	21	1	
Gross Misd.	62	91	108	45	34	11	34		11					45			4			2
Misdemeanor	24	47	57	14	11	3	10		4					14			1			1
Juvenile	129	163	126	166	126	40	124		42				3	163		3	17	23		
Total	408	369	390	387	295	92	304	26	57				6	381		5	37	44	1	3
Beltrami																				
Felony	274	92	126	240	189	51	158	8	72			2	3	237		5	26	30	1	2
Gross Misd.	49	33	42	40	34	6	21	2	17					40			5	1		1
Misdemeanor	4	4	5	3	3		3							3			1			
Juvenile	248	115	150	213	156	57	97	3	113				1	212		1	29	31		2
Total	575	244	323	496	382	114	279	13	202			2	4	492		6	61	62	1	5
Benton																				
Felony	214	63	89	188	135	53	164	9	8		3	4	4	184		1	17	18		2
Gross Misd.	166	103	104	165	140	25	158	1	3		1	2		165			6			2
Misdemeanor	95	112	85	122	107	15	117	3		1		1		122			28		3	
Juvenile	73	71	77	67	52	15	61	2		4				67			22	9		
Total	548	349	355	542	434	108	500	15	11	5	4	7	4	538		1	73	27	3	4
Big Stone																				
Felony	11	4	4	11	11		11							9	2		1			
Gross Misd.	9	8	8	9	9		7	1			1		1	8						2
Misdemeanor	30	16	15	31	29	2	31							31			1			
Juvenile	49	41	36	54	36	18	51		1		2			54			5	1		1
Total	99	69	63	105	85	20	100	1	1		3		1	102	2		7	1		3
Blue Earth (CCA)																				
Felony	178	66	55	189	139	50	167	16		2		4	4	181	4	2	15	20	1	2
Gross Misd.	153	112	66	199	153	46	190	4	2			3	4	192	3		8	1		4
Misdemeanor	554	436	386	604	481	123	578	9	1	6		10	19	575	10		48	2	4	5
Juvenile	310	361	397	274	185	89	263	3	3	3		2	4	268	2		30	12		9
Total	1195	975	904	1266	958	308	1198	32	6	11		19	31	1216	19	2	101	35	5	20
Brown																				
Felony	103	46	45	104	87	17	102	1				1	5	94	5	1	5	17		
Gross Misd.	108	45	62	91	77	14	91						4	87			1	2		10
Misdemeanor	131	117	134	114	85	29	114						2	112			15	1		1
Juvenile	96	134	140	90	70	20	90						4	86		4	18	15		
Total	438	342	381	399	319	80	397	1				1	15	379	5	5	39	35		11

Crime Against Government	Criminal Sexual Conduct	Disturbing Peace	Drugs	DWI	Escape/Flight	Forgery	Gambling	Homicide	Juvenile Status Offenses	Kidnapping	Obscenity	Property Damage	Robbery	Sex Related	Stolen Property	Theft	Theft Related	Traffic (excluding DWI)	Vehicle Theft	Weapons	Other	Unknown/NA
	28	10	16			2		1				6	1		7	31			6	1	4	
7	7	4		50	4	1						2			2	13		13			2	
7		4	4	98								1		1		19		67			2	
12	3	2	3			2						1			1	10		2	4	2	1	
26	38	20	23	148	4	5		1				10	1	1	10	73		82	10	3	9	
	183	5	287	22	9	67	1	1		5		25	27	45	65	104	321	13	46	15	6	
12	11	14	1	1041	39	32	3			2	7	11			17	45	128	236	5	12	4	
30		375	9	1535	3	5	2		24		11	80	1		23	161	175	666	5	16	19	
1	23	59	13	3	2	13		2	199		3	74	6		20	78	60	36	60	24	5	
43	217	453	310	2601	53	117	6	3	223	7	21	190	34	45	125	388	684	951	116	67	34	
	16		23			7						5	2		8	52	3	4			3	
1	1	1		26		1						1				6	1	1				
			1	3												4		4				
28	7	1	1	1		8			2			11	1			44	3	12	3	1		
29	24	2	25	30		16			2			17	3		8	106	7	21	3	4		
	38		37	1	2	8		1				2	1		4	16	40	2	18	3		3
	2	3	1	18								2				1	2	4				
															1		1					
17	14	11	6			3			10			18	1		2	26		4	28	10		
17	54	14	44	19	2	11		1	10			22	2		7	43	43	10	46	13		3
1	15		26			11					4	5	4		7	21	41	6	7	1		1
3	3	2		106	2	4					1	5			2	6	8	11	1	1	1	1
		5	1	72								1			1	1	3	3			4	
												5				24					5	2
4	18	7	27	178	2	15					5	16	4		10	52	52	20	8	2	10	4
	2		2													4	1		1			
				7																		
		3	4	18														1	1	3		
		3		1	1				28			3						5	5		1	
	2	6	6	26	1				28			3				4	7	6	4	1		
1	28		33		1	8		1			1	3	7		2	34	20	2	3	2	1	2
	2	3	2	93	1	4						2	1		3	29	35	7			4	
	2	31	6	294	3	13						3			2	73	10	90	5	1	8	4
		6	18	2	3	1			84			12	3		1	50		15	20	4	2	2
1	32	40	59	389	8	26		1	84		1	20	11		8	186	65	114	28	7	15	8
	12	1	23			4						6	3	1		25	1	3		2		
5			1	49		3						3			1	6	2	8				
				80					6							6		3				2
	1	1	7	2		1			9			9				10	1	7	3		2	
5	13	2	31	131		8			15			18	3	1	1	47	4	21	3	2	4	

	1996 Year-end population			1996 Year-end population			1996 Year-end population			1996 Year-end population			1996 Year-end population			1996 Year-end population			1996 Year-end population		
	1995 Year-end population	1996 Entries	1996 Removals	1996 Year-end population	Male	Female	White	Black	American Indian	Asian/Pacific Islander	Other race	Unknown race	Hispanic	Not Hispanic	Unknown Hispanic status	Arson	Assault	Burglary	Crime Against Family	Crime Against Justice	
Carlton (CCA)																					
Felony	110	76	40	158	124	34	120	2	36				3	155		4	13	13			
Gross Misd.	66	61	63	80	72	8	56		24					80			18	3			8
Misdemeanor	92	197	189	104	74	30	75		29					104		1	30		1		2
Juvenile	58	201	197	70	55	15	52	1	17				2	68		2	7	11			3
Total	326	535	489	412	325	87	303	3	106				5	407		7	68	27	1		13
Carver																					
Felony	166	70	61	175	146	29	168	6	1				5	166	4		20	12	2		1
Gross Misd.	363	177	204	336	280	56	317	2	1		12	4	14	321	1		26	2	1		59
Misdemeanor	532	481	432	581	452	129	526	3	1	3	44	4	45	536			117		1		64
Juvenile	240	347	362	225	178	47	209	1		2	5	8	5	220		4	53	11			13
Total	1301	1075	1059	1317	1056	261	1220	12	3	5	61	16	69	1243	5	4	216	25	4		137
Cass																					
Felony	209	64	75	198	155	43	100		97			1	2	196		1	35	34			1
Gross Misd.	203	106	95	227	202	25	135		90			2		225	2	1	10	3			9
Misdemeanor	210	143	152	194	156	38	107	1	84		1	1		193	1		56				7
Juvenile	211	93	155	175	128	47	102		71			2	1	173	1	3	33	15			6
Total	833	406	477	794	641	153	444	1	342		1	6	3	787	4	5	134	52			23
Chippewa (CCA)																					
Felony	41	32	29	44	34	10	43	1					5	39		1	3	5			1
Gross Misd.	31	26	24	33	24	9	31		2				2	31							
Misdemeanor	54	60	63	51	42	9	47	2	2				4	47			10				2
Juvenile	39	47	46	41	36	5	36		4			1		41			1	7			1
Total	165	165	162	169	136	33	157	3	8			1	11	158		1	14	12			4
Chisago																					
Felony	194	58	71	181	151	30	181							181		2	8	22			1
Gross Misd.	203	118	102	219	193	26	214		3		2		2	216	1		14	1	5		8
Misdemeanor	369	523	283	609	506	103	593	7		7	2		6	603			105				
Juvenile	97	254	190	161	126	35	153	3	1	1	3		4	157			19	13			
Total	863	953	646	1170	976	194	1141	10	4	8	7		12	1157	1	2	146	36	5		9
Clay																					
Felony	267	131	113	285	221	64	245	15	19		6		88	197		2	29	30			1
Gross Misd.	108	74	114	68	49	19	63	2	3				14	54			2	1	1		2
Misdemeanor	348	219	478	89	53	36	77	2	10				21	68			14				1
Juvenile	248	296	290	254	178	76	223	1	28		2		65	189		3	21	11			5
Total	971	720	995	696	501	195	608	20	60		8		188	508		5	66	42	1		9
Clearwater																					
Felony	65	17	26	56	46	10	29		26			1		56			7	11			
Gross Misd.	77	82	39	120	97	23	67		52			1		120			12	5			3
Misdemeanor	23	7	13	15	8	7	11		4					15			11	2			
Juvenile	72	91	93	70	52	18	28		42					70			12	14			
Total	237	197	171	261	203	58	135		124			2		261			42	32			3
Cook (CCA)																					
Felony	13	9	7	17	13	4	15		1	1			1	16			2	4			
Gross Misd.	19	9	8	20	17	3	16		4					20			1				
Misdemeanor	40	73	49	64	50	14	55		9				2	62			3				
Juvenile	8	10	16	5	3	2	3		2					5					1		
Total	80	101	80	106	83	23	89		16	1			3	103			6	5			

Crime Against Government	Criminal Sexual Conduct	Disturbing Peace	Drugs	DWI	Escape/Flight	Forgery	Gambling	Homicide	Juvenile Status Offenses	Kidnapping	Obscenity	Property Damage	Robbery	Sex Related	Stolen Property	Theft	Theft Related	Traffic (excluding DWI)	Vehicle Theft	Weapons	Other	Unknown/N/A	
	15		51	1	1	6				2		6	1		2	7	27	4	5				
2	1	1	1	21	9							1			3	2	2	7	1				
8		7	2	11					3			5				2	6	25		1			
2	2	3	6		2				11			8				1	4	3	5				
12	18	11	60	33	12	6			14	2		20	1		5	12	39	39	11	1			
1	31	1	20			12		1		1		8	7		6	34	2	12	3	1			
2	6	1	11	129	5	6						2			2	13	1	47			22	1	
	2	29	8	232					11			9				20		80			8		
	13	15	12	1		12		2	17			27				28	1	12	2		2		
3	52	46	51	362	5	30		3	28	1		46	7		8	95	4	151	5	1	32	1	
	26		24			6	1	3		1		2			12	16	21	6	6	1		2	
9	3	1	5	141	4	1						4			1	5	7	22				1	
5		12	2	85	1				2			3				5		14	1	1			
7	8	1	3	3	1	1			24			16			3	22		20	8	1			
21	37	14	34	229	6	8	1	3	26	1		25			16	48	28	62	15	3		3	
	6		6			3									3	10	3		2			1	
2	2			16	2											4	6				1		
		3		22					3			1				1	2	7					
	4	1		1		2			5			7	1		1	4	1	3	1	1			
2	12	4	6	39	2	5			8			8	1		4	19	12	10	3	1	1	1	
	21		38	1		13				1		6	2	1	14	30	2	4	10	3	2		
4			2	120	1	1						3			1	2	1	24		3	28	1	
				286								1						126			91		
		5	8			2			32			11		2	1	22		23	7	4	2	10	
25	5	48	407	1	16				32	1		21	2	3	16	54	3	177	17	10	123	11	
	17	3	75		1	9						5	3		6	93	7	2		1		1	
		4		31	1	1						5				11	2	5				2	
5	1	4	2	20												5		36				1	
28	7	14	9	3	2	2			40			13	1			57	7	21	5	4		1	
33	25	25	86	54	4	12			40			23	4		6	166	16	64	5	5		5	
	5		5	1		1		1				3	1			5	9	4	2	1			
	3	1		81								10				1	4						
				10								1							1				
	8	1	5	92		1		1				4			2	15		2	9	2			
												18	1		2	21	13	6	12	3			
	2		4										1		2	1				1			
4		4	3	13	2	1						1			1			1					
1				28					9			1		1		2		9					
5	2	4	7	42	2	1			11			2	1	1	3	3		10		1			

	1995 Year-end population	1996 Entries	1996 Removals	1996 Year-end population	Male	Female	White	Black	American Indian	Asian/Pacific Islander	Other race	Unknown race	Hispanic	Not Hispanic	Unknown Hispanic status	Arson	Assault	Burglary	Crime Against Family	Crime Against Justice
Cottonwood																				
Felony	54	14	16	52	43	9	47	2	2	2	1	4	35	13			7	13		
Gross Misd.	45	21	37	29	26	3	28				1	5	24				2		1	
Misdemeanor	37	45	48	34	28	6	31				3	4	30				5			1
Juvenile	44	51	48	47	37	10	38	1			8	3	44			1	7	1		
Total	180	131	149	162	134	28	144	1	2		13	2	16	133	13	1	21	14	1	1
Crow Wing (CCA)																				
Felony	328	133	91	370	289	81	356	4	9	1		8	362				16	60		1
Gross Misd.	351	204	103	452	386	66	414	5	33			1	451			2	13	9	3	17
Misdemeanor	394	453	317	530	380	150	493	3	33	1		1	529				29		3	1
Juvenile	144	179	136	187	150	37	181	1	4	1		2	185			2	22	26		2
Total	1217	969	647	1539	1205	334	1444	13	79	3		12	1527			4	80	95	6	21
Dakota (CCA)																				
Felony	1546	548	372	1884	1363	521	1533	225	25	43		58	73	1753	58	12	200	139		7
Gross Misd.	1194	805	471	1587	1340	247	1434	73	19	7		54	54	1479	54	1	80	5	1	21
Misdemeanor	2002	2093	1646	2417	1936	481	2093	125	28	33		138	97	2182	138	1	369	1	1	7
Juvenile	604	825	801	620	486	134	499	74	16	23		8	29	583	8	6	98	43		2
Total	5346	4271	3290	6508	5125	1383	5559	497	88	106		258	253	5997	258	20	747	188	2	37
Dodge (CCA)																				
Felony	48	18	16	50	42	8	48				1	1	1	49		1	7	10		
Gross Misd.	53	21	25	49	48	1	48	1						49			1	3		4
Misdemeanor	30	64	40	54	45	9	48	1	1			4	4	50			5			
Juvenile	48	79	81	46	36	10	41	2				3	3	43		1	3	5		
Total	179	182	162	199	171	28	185	4	1		1	8	8	191		2	16	18		4
Douglas																				
Felony	151	47	56	142	113	29	140		1			1	96	45		2	13	20		1
Gross Misd.	112	79	64	127	110	17	126		1			1	126				4	1	2	4
Misdemeanor	121	241	218	144	115	29	143		1				144				30			2
Juvenile	113	197	204	106	91	15	106						106				7	17		1
Total	497	564	542	519	429	90	515		3			1	2	472	45	2	54	38	2	8
Faribault																				
Felony	86	35	31	90	61	29	88					2	16	74			5	5		
Gross Misd.	32	21	15	38	32	6	37	1					4	34						
Misdemeanor	71	103	87	87	69	18	86				1		5	82			6		1	
Juvenile	73	103	64	112	81	31	108		3		1		9	103			2	4		
Total	262	262	197	327	243	84	319	1	3		2	2	34	293			13	9	1	
Fillmore (CCA)																				
Felony	44	13	7	50	43	7	48					2	2	48			7	9		
Gross Misd.	63	23	14	72	62	10	69	1	2					72			1			1
Misdemeanor	134	71	57	148	110	38	146	1				1		147	1					
Juvenile	119	86	132	73	50	23	71			1		1		72	1		3	9		1
Total	360	193	210	343	265	78	334	2	2	1		4	2	339	2		11	18		2
Freeborn																				
Felony	127	46	44	129	105	24	126	2	1				21	108		2	9	14		
Gross Misd.	62	150	126	86	73	13	83	3					11	75			7			
Misdemeanor	16	118	38	96	68	28	96						16	80			17			
Juvenile	133	577	528	182	128	54	182						29	153			27			
Total	338	891	736	493	374	119	487	5	1				77	416		2	60	14		

Crime Against Government	Criminal Sexual Conduct	Disturbing Peace	Drugs	DWI	Escape/Flight	Forgery	Gambling	Homicide	Juvenile Status Offenses	Kidnaping	Obscenity	Property Damage	Robbery	Sex Related	Stolen Property	Theft	Theft Related	Traffic (excluding DWI)	Vehicle Theft	Weapons	Other	Unknown/N/A
	7		4			1						2	1		1	13	1		1	1		
4		1		9								1				8	1	2			1	
		1		19								1				3	4					
5	3	1		3		1			1			3			1	12	1	2	2	1		2
9	10	3	4	31		2			1			6	1		2	36	3	8	3	2	1	2
								1		3		5			17	95		4	10	6	1	
8	2	2	2	299	19	11					2		1	6	27		25		3	1		
8		17	8	372					1		6		2	3	26		51	3				
2	16	12	16	1	1	2		1	1		5			10	28		17	20	3			
18	70	49	72	676	26	38		1	2	4	18		3	36	176		97	33	12		2	
13	178	1	358	8	8	119	2	9		6	27	32		54	628	3	17	43	15	1	4	
74	5		7	1110	30	10	1			2	4		3	1	90		134	1	6	1		
103		99	16	1206	1	4					9	1	11	3	57	3	515		2	4	4	
41	30	60	22	7	5	11			3	3	47	6	1	18	117	12	10	46	27	4	1	
231	213	160	403	2331	44	144	3	9	3	11	87	39	15	76	892	18	676	90	50	10	9	
1	2		6	1							1			4	6	1		2	2			6
			36	2									1									2
	1		48																			
11		6	2	3							2			1	6		1	3	1	1		
12	3	6	92	6							2	1	1	5	12	1	1	5	3	1	1	8
1	17		23			12		1		1	4	1		1	31	3	1	6	1	1	2	
3	2	1		79	1						4			2	4	5	8	2	1		4	
5		6	1	64							7				2	7	15		3		2	
15	6	3	2			2			5		10			2	11	2	6	16	1			
24	25	10	26	143	1	14		1	5	1	25	1		5	48	17	30	24	6	1	8	
	16	1	20			3					6					33			1			
3		1	1	21		1	1										2	5		3		
10		2		27													5	34				2
34	2	6	1			2			12		16					26		3	1	1	2	
47	18	10	22	48		6	1		12		22					33	33		42	2	4	4
	7		5	1												14			3	1		3
	1			60							3		1		2				2			1
30		1	1	115											1							
20		2	1	4				1	1		6				19		1	1			1	3
50	8	3	7	180				1	1		9		1		36		1	4	3	1	7	
	16		40		2	4		1			1		1	5	17	11	1	1	3			1
				77											2							
				79																		
	4		46						19		18			16	38			14				
20			86	156	2	4		1	19		19		1	21	57	11	1	15	3			1

	1995 Year-end population	1996 Entries	1996 Removals	1996 Year-end population	Male	Female	White	Black	American Indian	Asian/Pacific Islander	Other race	Unknown race	Hispanic	Not Hispanic	Unknown Hispanic status	Arson	Assault	Burglary	Crime Against Family	Crime Against Justice
Goodhue																				
Felony	158	55	61	152	127	25	142	5	2		2	1	2	144	6		12	15		1
Gross Misd.	325	126	165	286	242	44	261	6	17		2		2	284			16	1	1	10
Misdemeanor	566	436	476	526	401	125	478	14	18	5	10	1	10	515	1		58			7
Juvenile	106	263	238	131	96	35	120		9	1	1		1	130			18	14		5
Total	1155	880	940	1095	866	229	1001	25	46	6	15	2	15	1073	7		104	30	1	23
Grant																				
Felony	15	3	2	16	13	3	16							12	4		1	5		
Gross Misd.	30	15	13	32	31	1	32							32			6			
Misdemeanor	27	23	33	17	16	1	17							17			4			
Juvenile	45	44	40	49	32	17	49							49			1			
Total	117	85	88	114	92	22	114							110	4		12	5		
Hennepin (CCA)																				
Felony	6773	2111	1542	7342	5668	1674	3539	3187	288	158	12	158	201	7101	40	40	857	505	132	42
Gross Misd.	5739	2146	2976	4909	4006	903	3693	869	215	41	4	87	108	4745	56		328	7	11	90
Misdemeanor	9086	9036	8971	9151	6969	2182	6842	1806	273	127	17	86	325	8811	15	3	991		1	105
Juvenile	3040	1714	1837	2917	2301	616	1205	1164	253	124	9	162	104	2660	153	32	489	208		35
Total	24638	15007	15326	24319	18944	5375	15279	7026	1029	450	42	493	738	23317	264	75	2665	720	144	272
Houston																				
Felony	30	6	9	27	25	2	26				1			27			2	4		
Gross Misd.	48	42	35	55	48	7	54		1					55						
Misdemeanor	318	229	274	273	224	49	269	3		1				273			12			10
Juvenile	36	84	28	92	75	17	90			2				92		3	8	5	1	
Total	432	361	346	447	372	75	439	3	1	3	1			447		3	22	9	11	
Hubbard																				
Felony	109	28	62	75	59	16	71		4				1	74		1	4	14		1
Gross Misd.	32	16	23	25	15	10	23		1			1		25			2			
Misdemeanor	15	3	1	17	14	3	13		4					17			4			
Juvenile	55	33	39	49	38	11	44		5					49		1	4	8		
Total	211	80	125	166	126	40	151		14			1	1	165		2	14	22		1
Isanti																				
Felony	172	79	73	178	138	40	178						1	176	1	2	20	15	1	
Gross Misd.	157	116	88	185	160	25	185						1	184			8	1		14
Misdemeanor	629	548	523	654	495	159	645	6	2	1			6	648			50		2	15
Juvenile	191	254	298	147	116	31	136	1	1		6	3		144	3	2	29	11		
Total	1149	997	982	1164	909	255	1144	7	3	1	6	3	8	1152	4	4	107	27	3	29
Itasca																				
Felony	311	115	152	279	234	45	240		38			1		272	7	3	22	52		2
Gross Misd.	255	180	160	297	239	58	257	4	36					297			23	3	4	26
Misdemeanor	127	119	184	72	54	18	64		7		1		1	71			18			7
Juvenile	329	370	331	368	276	92	314	3	45			6		362	6	8	44	35		9
Total	1022	784	827	1016	803	213	875	7	126		1	7	1	1002	13	11	107	90	4	44
Jackson																				
Felony	28	4	9	23	16	7	19				2	2	1	21	1		2	3		
Gross Misd.	59	30	34	55	44	11	54			1			4	51			2			1
Misdemeanor	136	164	114	186	132	54	184	1		1			13	173			16			
Juvenile	64	57	68	53	40	13	51			1		1	6	46	1		7	1		
Total	287	255	225	317	232	85	308	1		3	2	3	24	291	2		27	4		1

Crime Against Government	Criminal Sexual Conduct	Disturbing Peace	Drugs	DWI	Escape/Flight	Forgery	Gambling	Homicide	Juvenile Status Offenses	Kidnapping	Obscenity	Property Damage	Robbery	Sex Related	Stolen Property	Theft	Theft Related	Traffic (excluding DWI)	Vehicle Theft	Weapons	Other	Unknown/NA
2	32	1	28			9						2	1		2	40	2	1	4			
4	3		2	171	11	5						6			1	17	3	15				20
23		26	15	208								9			1	28	25	104	2			20
	4	8	2	1		1		1	16			11			1	29		2	9			9
29	39	35	47	380	11	15		1	16			28	1		5	114	30	122	15			49
			3									1				3						
			1	23														1		1		3
			1	8												1						3
				1					28			3				6	5	2		1		2
	3	1	4	32					28			4				10	5	3		2		5
16	570	18	1606	15	20	525	12	23		27	3	141	265	14	173	1156	463	88	240	176	215	
9	11	43	5	3186	63	31	4			1	1	19	1	41	11	102	100	83	1	41	64	656
33		488	9	4607	3	4					1	47		70	3	159	14	105	1	5	99	2403
16	142	123	95		29	32	1	16	305	4	3	173	158	2	50	221	222	13	335	170	31	12
74	723	672	1715	7808	115	592	17	39	305	32	8	380	424	127	237	1638	799	289	577	392	409	3071
		7		2	1							1		1		6	1		2			
				44		2						2				2		4				1
7	1	9	2	115		14						7				17	3	63	1			12
8	2	1	2	1		1			10			7				16	10	9	2	1		5
15	10	10	6	161		17			10			17		1		41	14	76	5	1		18
		16		9		1						2			3	9	11	2	2			
			1		12											3	5			2		
				8								1			1		1	1				1
2	1	5							4			4			1	10	1	5	2			1
2	17	6	9	20		1			4			7			5	22	18	8	4	2		2
		24		28		1	9		1			5	3		10	46	2	4	6			1
3			1	2	96	5	3					2				8		34				8
			54	1	201		1					5		1	6	23	46	216	2		20	11
19		14	8			5			4			7		3	3	24	1	5	12			
22	24	69	39	297	6	18		1	4			19	3	4	19	101	49	259	20		28	12
		40	5	43	1	4	7		1			5			7	23	36	6	13	6		2
13	3		1	132	5	2						6				8	19	50		1	1	
6		5		11					1		1	3				4	1	13	1			1
3	21	15		1		6		2	80			18	1		4	46	1	39	20	10	3	2
22	64	25	44	145	9	15		3	81	1	1	32	1		11	81	57	108	34	17	5	4
		3		3								1				11						
3			1		28	2						2				11		5				
1		6	3	40								3				61		50				6
1	1	2		2					15			3			2	11		5				3
5	4	9	6	70	2				15			9			2	94		60				9

	1996 Year-end population				Male	Female	White	Black	American Indian	Asian/Pacific Islander	Other race	Unknown race	Unknown Hispanic status			Arson	Assault	Burglary	Crime Against Family	Crime Against Justice
	1995 Year-end population	1996 Entries	1996 Removals	1996 Total									Hispanic	Not Hispanic	Unknown					
Kanabec																				
Felony	132	25	46	111	86	25	109	2				1	110		4	8	7			
Gross Misd.	82	62	64	80	64	16	78	2					80			1		1	3	
Misdemeanor	120	116	136	100	83	17	94	2	4				100			13				
Juvenile	109	200	196	113	85	28	109	2	1	1			113			20	7			
Total	443	403	442	404	318	86	390	4	9	1		1	403	4	42	14	1	3		
Kandiyohi (CCA)																				
Felony	190	70	102	162	134	28	113	1	5		41	2	41	119	2	2	10	22	1	
Gross Misd.	141	84	101	129	105	24	89	1	2		37		37	92			5	5		
Misdemeanor	352	570	528	386	305	81	267	2	5	1	107	4	107	275	4		23	1		
Juvenile	245	229	276	201	150	51	139	2	1		57	2	57	142	2	1	26	20	2	
Total	928	953	1007	878	694	184	608	6	13	1	242	8	242	628	8	3	64	48	3	
Kittson																				
Felony	13	16	5	24	21	3	24						3	21			2	1		
Gross Misd.	1		1																	
Misdemeanor	1		1																	
Juvenile	13	26	21	18	15	3	18							18						
Total	28	42	28	42	36	6	42						3	39		2	1			
Koochiching (CCA)																				
Felony	76	25	24	76	63	13	67	2	6			1		75	1		4	13		
Gross Misd.	37	32	26	44	42	2	42		2					44			3		2	
Misdemeanor	56	96	92	58	44	14	52		3			3		55	3		3		4	
Juvenile	68	117	80	111	75	36	104		3			4		107	4		7	8	3	
Total	237	270	222	289	224	65	265	2	14			8		281	8		17	21	9	
Lac Qui Parle (CCA)																				
Felony	22	6	13	14	13	1	13		1					14		1		2		
Gross Misd.	5	5	5	5	5		5							5						
Misdemeanor	19	14	17	17	17		16	1					1	16			2		1	
Juvenile	33	30	43	21	16	5	20	1					1	20			3	2		
Total	79	55	78	57	51	6	54	2	1				2	55	1	5	4	1	1	
Lake (CCA)																				
Felony	41	15	16	43	30	13	41	2						43			1	7	1	
Gross Misd.	18	17	12	24	20	4	24							24			3	1		
Misdemeanor	51	113	98	68	58	10	67		1				1	67			7		1	
Juvenile	27	71	74	29	23	6	29							29	1	4	4			
Total	137	216	200	164	131	33	161	2	1				1	163	1	15	12		2	
Lake of the Woods																				
Felony	12	6	6	12	10	2	12							12			3	4		
Gross Misd.	1	1	1	1	1		1							1						
Misdemeanor	1		1																	
Juvenile	7	6	4	9	8	1	8		1					9			2			
Total	21	13	12	22	19	3	21		1					22			5	4		
Le Sueur																				
Felony	85	33	43	75	54	21	73	1	1				9	66		2	5	5		
Gross Misd.	82	42	52	72	58	14	71					1	1	70	1		4		1	
Misdemeanor	111	137	145	103	84	19	101	2					6	97			18		3	
Juvenile	59	134	104	89	65	24	88		1				4	85	1	10	8			
Total	337	346	344	339	261	78	333	3	2			1	20	318	1	3	37	13	9	

	1995 Year-end population	1996 Entries	1996 Removals	1996 Year-end population	Male	Female	White	Black	American Indian	Asian/Pacific Islander	Other race	Unknown race	Hispanic	Not Hispanic	Unknown Hispanic status	Arson	Assault	Burglary	Crime Against Family	Crime Against Justice
Lincoln																				
Felony	15	6	4	17	10	7	16					1	1	16		2	1	1		
Gross Misd.	18	16	18	16	15	1	16							16			1			
Misdemeanor	18	20	25	13	10	3	13						1	12			3			
Juvenile	10	11	13	8	8		8							8				2		
Total	61	53	60	54	43	11	53					1	2	52		2	5	3		
Lyon																				
Felony	107	43	28	122	88	34	107	7	2		3	3	11	92	19	1	14	12	1	1
Gross Misd.	152	115	149	118	101	17	110	7				1	13	105			7	1		6
Misdemeanor	135	166	172	129	103	26	123	3	1		1	1	16	113			19			1
Juvenile	132	98	104	126	106	20	121	4				1	13	113		2	12	17		
Total	526	422	453	495	398	97	461	21	3		4	6	53	423	19	3	52	30	1	8
Mahnomens																				
Felony	82	25	42	65	53	12	17		48					65		1	14	11		1
Gross Misd.	116	42	87	71	63	8	30		41				1	70			10			5
Misdemeanor	18	26	31	13	10	3	6		7					13			3			
Juvenile	26	46	32	40	31	9	13		27				4	36			7	8		
Total	242	139	192	189	157	32	66		123				5	184		1	34	19		6
Marshall																				
Felony	33	14	18	29	25	4	26		2			1	6	23			5	5		
Gross Misd.	3	2	2	3	3		3							3						
Misdemeanor		2		2	2		2						1	1						
Juvenile	18	67	47	38	32	6	38						9	29			2	7		
Total	54	85	67	72	62	10	69		2			1	16	56			7	12		
Martin																				
Felony	174	64	73	165	136	29	164				1		12	149	4	1	20	12	2	
Gross Misd.	60	33	22	71	57	14	68	1	2				4	67			2	1		
Misdemeanor	58	66	34	90	54	36	88					2	5	85			5			
Juvenile	63	43	43	63	51	12	63						3	60			10	6		
Total	355	206	172	389	298	91	383	1	2		1	2	24	361	4	1	37	19	2	
McLeod																				
Felony	127	92	98	121	81	40	120	1					16	93	12	1	9	5	1	
Gross Misd.	136	74	112	98	83	15	93	2	2			1	5	93			3		1	4
Misdemeanor	190	305	305	190	148	42	187	2				1	25	163	2		21		1	2
Juvenile	96	320	273	143	105	38	141	1	1				8	135		1	16	13		3
Total	549	791	788	552	417	135	541	6	3			2	54	484	14	2	49	18	3	9
Meeker																				
Felony	137	41	63	115	89	26	115						5	84	26		9	14	1	2
Gross Misd.	151	79	122	108	91	17	98	1		1	8		8	100			1		5	6
Misdemeanor	229	269	238	260	203	57	212		1	2	45		45	215			29			7
Juvenile	221	123	161	183	109	74	164				19		19	164		2	17	16		1
Total	738	512	584	666	492	174	589	1	1	3	72		77	563	26	2	56	30	6	16
Mille Laacs																				
Felony	163	34	67	130	98	32	95	3	30		2		1	129		1	14	15		
Gross Misd.	167	146	113	200	172	28	142		57			1		200		1	10	1		3
Misdemeanor	216	244	241	219	174	45	191		27	1			1	218			39			2
Juvenile	216	221	268	169	129	40	130		38	1			1	168			11	14		
Total	762	645	689	718	573	145	558	3	152	1	3	1	3	715		2	74	30		5

Crime Against Government	Criminal Sexual Conduct	Disturbing Peace	Drugs	DWI	Escape/Flight	Forgery	Gambling	Homicide	Juvenile Status Offenses	Kidnapping	Obscenity	Property Damage	Robbery	Sex Related	Stolen Property	Theft	Theft Related	Traffic (excluding DWI)	Vehicle Theft	Weapons	Other	Unknown/NA
	1		3			1										8						
2				9								1				1		2				
1		1		4												1	1	2				
2	1											1				1						1
5	2	1	3	13		1						2				11	1	4				1
1	16		16	1		9		2				2			1	32	7	2	2	2		
4		7		64	1	6						4				3	7	3			2	3
7		7		64											1	5	8	16			1	
15	8	2	4	2		5			3			19			3	18	9	1	4			2
27	24	16	20	131	1	20		2	3			25			5	58	22	30	3	6	3	5
	4		11					1								16	4	2				
3				39	2	2						3				4	1	2				
1		1		4												1		2			1	
2	3					1		2				5	2			9			1			
6	7	1	11	43	2	3		3				8	2			30	5	6	1		1	
	2		5	1								2			1	3	3		2			
	1			1								1										
				1								1										
6	3	4				1						10				3					1	1
6	6	4	5	3		1						14			1	6	3		2		1	1
1	22	2	27			6		1				8	1			51	4	3		3		1
4	2		1	26	1	2						3				12		8			9	
1		4		30		1			1			3				21		21		1		2
5	2	4	1			3			2			10				17		3				
11	26	10	29	56	1	12		1	3			24	1			101	4	35		4	9	3
	14		23		1	7						2	1		3	48	1		4		1	
2	5	1		62	1	1						2			1	6	1	4	1	1		2
1		11	1	95		1						7				14	7	28			1	
27	6	12		2					6			7	1		5	28	2	2	10	1		1
30	25	24	24	159	2	9			6			18	2		9	96	11	34	15	2	2	3
	18		23	1		1		3				1	1		3	30	3	1	4			
				69	2	6						4				5		9		1		
13		11	4	43	1											12		131	2		7	
1		5	14	1	2	8			31			14			7	41	2	11	5	2	3	
14	18	16	41	114	5	15		3	31			19	1		10	88	5	152	11	3	10	
	23	2	15	1		3						1			6	16	29		2	1	1	
1	1	1	2	124	7							6			2	9	2	18		1	9	2
3			1	139	1							4			2	2	2	15		1	5	3
27	10		5	1	2	2			20	1		20		1	9	21		12	7	3		3
31	34	3	23	265	10	5			20	1		31		1	19	48	33	45	9	6	15	8

	1995 Year-end population	1996 Entries	1996 Removals	1996 Year-end population	Male	Female	White	Black	American Indian	Asian/Pacific Islander	Other race	Unknown race	Hispanic	Not Hispanic	Unknown Hispanic status	Arson	Assault	Burglary	Crime Against Family	Crime Against Justice
Morrison (CCA)																				
Felony	187	59	45	201	152	49	196	2	3				1	200			8	27		
Gross Misd.	119	95	55	159	140	19	153	1	5				1	158			6	3	2	4
Misdemeanor	168	273	208	233	179	54	222	4	7				2	231			47		1	4
Juvenile	94	170	152	112	79	33	109	3						112			9	18		1
Total	568	597	460	705	550	155	680	10	15				4	701			70	48	3	9
Mower																				
Felony	167	46	50	163	121	42	157	4	1		1		16	147		2	12	10	1	1
Gross Misd.	119	142	121	140	125	15	124	4		1	9	2	9	129	2	11	4			5
Misdemeanor	257	358	320	295	221	74	263	5	1	1	19	6	19	270	6	12	52			5
Juvenile	142	269	232	179	137	42	159	4		2	11	3	7	169	3	1	37	17		2
Total	685	815	723	777	604	173	703	17	2	4	40	11	51	715	11	26	105	27	1	13
Murray																				
Felony	22	1	11	12	11	1	11				1			7	5		1	1		
Gross Misd.	23	14	21	16	13	3	16							16					1	1
Misdemeanor	9	10	8	11	6	5	11							11			2			
Juvenile	22	15	27	10	10		10							10			1			
Total	76	40	67	49	40	9	48				1			44	5		4	1	1	1
Nicollet																				
Felony	74	35	29	80	67	13	79	1					2	76	2	1	8	6		
Gross Misd.	104	46	50	99	89	10	94	2	1		1	1	3	95	1		3		2	2
Misdemeanor	222	166	150	221	179	42	214	4	1	1	1		11	210			13		8	4
Juvenile	74	165	135	119	86	33	116					3	4	112	3		11	10		2
Total	474	412	364	519	421	98	503	7	2	1	2	4	20	493	6	1	35	16	10	8
Nobles (CCA)																				
Felony	106	66	44	128	93	35	105	5		18			24	104			8	15	1	3
Gross Misd.	89	71	51	109	90	19	99	2		8			21	88			4	2		4
Misdemeanor	329	348	334	343	276	67	311	9	2	21			116	227			34		1	6
Juvenile	75	78	55	98	77	21	83			15			21	77			12	13		5
Total	599	563	484	678	536	142	598	16	2	62			182	496			58	30	2	18
Norman (CCA)																				
Felony	38	9	12	35	26	9	33	1	1				6	29		1	2	5		
Gross Misd.	27	18	8	37	33	4	33		4				3	34			3			2
Misdemeanor	29	23	18	34	26	8	34						2	32			7		1	2
Juvenile	15	22	13	24	17	7	24						3	21			9	1	1	1
Total	109	72	51	130	102	28	124	1	5				14	116		1	21	6	2	5
Olmsted (CCA)																				
Felony	486	169	183	472	370	102	367	55	5	20	3	22	20	450	2	4	59	53	2	
Gross Misd.	310	177	163	324	274	50	279	18	3	10	3	11	9	315			29		1	10
Misdemeanor	363	366	416	313	255	58	262	30	2	4	5	10	8	303	2		91			2
Juvenile	279	239	193	325	249	76	228	24	4	28	5	36	10	289	26	2	63	49		3
Total	1438	951	955	1434	1148	286	1136	127	14	62	16	79	47	1357	30	6	242	102	3	15
Otter Tail																				
Felony	335	96	135	296	223	73	283	5	7		1		14	282		3	22	39	3	
Gross Misd.	54	54	53	55	45	10	50	1	4				2	53			11	1		2
Misdemeanor	57	99	80	76	60	16	74		1		1		2	74			33			4
Juvenile	155	232	246	142	101	41	139	1	2				1	141		2	23	15		1
Total	601	481	514	569	429	140	546	7	14		2		19	550		5	89	55	3	7

Crime Against Government	Criminal Sexual Conduct	Disturbing Peace	Drugs	DWI	Escape/Flight	Forgery	Gambling	Homicide	Juvenile Status Offenses	Kidnapping	Obscenity	Property Damage	Robbery	Sex Related	Stolen Property	Theft	Theft Related	Traffic (excluding DWI)	Vehicle Theft	Weapons	Other	Unknown/NA
	41		25			2		3				4			4	80		3	3		1	
2	1		1	100	7	4						1			2	12		14				
14		12	3	90								5				16		36	3		1	1
18	3	2	5		4			1	3			12			1	18		10	2	3	2	
34	45	14	34	190	11	6		4	3			22			7	126		63	8	3	4	1
			30			4		5				2	3		4	31	27	1	5	1		
4	3		2	81		3						3			2	12	1	6		1	2	
	1		2	127		1						7			2	14	2	46	1		23	
	9		6	2		2			28			10	3		3	37	1	4		3	14	
4	37		40	210		10		5	28			22	6		11	94	31	57	6	5	39	
			2			1		1				1				4						1
				9												2		2			1	
				7												1		1				
	3	1										2				3						
	3	1	2	16		1		1				3				10		3			1	1
			10			5						5				26		1		1		1
8	1			52	2	5						3			1	3	1	15		1		
	1	18		158					3			1				6	2	5	1		1	
	4	5	2	3					25			16			1	27		7	5	1		
8	22	23	12	213	2	10			28			25			2	62	3	28	6	3	1	1
			23			3						7		1	5	38	2	4	2	5		
			2	69	1	1						2			2	11	2	3		6		
16		4	2	101		31						3		1	2	27	33	78	3	1		
2	2	4	2	1	2	2			18			8		1	2	15	2	2	3	2		
18	13	8	29	171	3	37			18			20		3	11	91	39	87	8	14		
			1			2		1				2				6	12					
				28		1						1				1		1				
				16								1					5	2				
2		2	1									3				4						
2	3	2	2	44		3		1				7				11	17	3				
			74	9				1		1		9	12		13	74	10		8	6	2	40
3	7	1	2	209	5							5		1	3	20	3	18	1	2	1	3
7		22	4	147								5		5		11		15		2	2	
13	25	13	3	5				2	1			19	9		6	72	3	3	18	3	6	7
23	127	36	83	370	5			1	2	2		38	21	6	22	177	16	36	27	13	11	50
			32	1		11		1		2		9	2		9	91	20	3	1	3		2
2	4	1		19	2	1						1				1	8	2				
		1	1	12		1					2	2				2	6	5		1	6	
	6	9	9			4			15			6			1	17	10	5	14	5		
2	51	12	42	32	2	17		1	15	2	2	18	2		10	111	44	15	15	9	6	2

	1995 Year-end population				1996 Year-end population		1996 Year-end population					Unknown Hispanic status			Crime Against Justice					
	1996 Entries	1996 Removals	1996 Entries	1996 Removals	Male	Female	White	Black	American Indian	Asian/Pacific Islander	Other race	Unknown race	Hispanic	Not Hispanic	Unknown Hispanic status	Arson	Assault	Burglary	Crime Against Family	Crime Against Justice
Pennington																				
Felony	93	51	45	99	78	21	89	3	6			1	7	91	1	1	8	13		
Gross Misd.	9	5	9	5	4	1	5						1	4			2			
Misdemeanor		1	1																	
Juvenile	26	73	50	49	39	10	44		4		1	1	48			4	4			
Total	128	130	105	153	121	32	138	3	10		1	1	9	143	1	1	14	17		
Pine																				
Felony	168	78	69	177	141	36	171	1	5				1	173	3	2	15	33		1
Gross Misd.	164	94	92	166	139	27	147	1	16			2		164	2		9	1	1	6
Misdemeanor	534	424	465	493	397	96	403	3	34	1	52	6	435	52		68		2	12	
Juvenile	72	98	57	113	92	21	82	3	11	1	16		97	16		20	26		3	
Total	938	694	683	949	769	180	803	8	66	2	70	7	869	73	2	112	60	3	22	
Pipestone																				
Felony	35	8	17	26	21	5	25		1				1	20	5	1	1	1		
Gross Misd.	26	21	25	22	15	7	20		2					22					1	
Misdemeanor	19	10	17	12	8	4	10		2					12			4			
Juvenile	23	33	34	22	17	5	18	2	2					22			2	2		
Total	103	72	93	82	61	21	73	2	7				1	76	5	1	7	3	1	
Polk (CCA)																				
Felony	406	188	159	435	343	92	394	5	33	1	1	1	111	323	1	2	76	58	9	6
Gross Misd.	205	128	128	205	177	28	193		12				21	184		1	19		7	26
Misdemeanor	134	55	101	88	74	14	87		1				18	70			28	1	4	5
Juvenile	152	105	125	132	104	28	125	2	5				23	109			33	19		3
Total	897	476	513	860	698	162	799	7	51	1	1	1	173	686	1	3	156	78	20	40
Pope																				
Felony	19	7	5	21	19	2	21							13	8		3			
Gross Misd.	54	37	40	51	42	9	51							51			4			
Misdemeanor	119	98	104	113	90	23	108		1	1	3	3	110			21				
Juvenile	54	44	67	31	24	7	31							31			4			
Total	246	186	216	216	175	41	211		1	1	3	3	205	8		32				
Ramsey (CCA)																				
Felony	4766	1046	1083	4763	3570	1193	1993	1638	42	125	965	244	3554	965	34	529	253	2	18	
Gross Misd.	1867	765	786	1904	1581	323	1327	368	26	29	154	86	1664	154	2	135	5	18	68	
Misdemeanor	4739	3967	3511	5103	3991	1112	3647	835	58	96	467	325	4311	467		969	1	1	96	
Juvenile	1540	1705	1770	1475	1078	397	797	413	46	177	42	74	1359	42	6	257	52		40	
Total	12912	7483	7150	13245	10220	3025	7764	3254	172	427	1628	729	10888	1628	42	1890	311	21	222	
Red Lake (CCA)																				
Felony	28	7	9	26	22	4	26							26			2	2		
Gross Misd.	8	3	4	7	6	1	7							7						
Misdemeanor	5	4	4	5	4	1	5							5			1			1
Juvenile	9	9	10	8	8		8							8			2			
Total	50	23	27	46	40	6	46							46			5	2		1
Redwood																				
Felony	80	22	32	70	58	12	60	1	8		1	3	58	9	1	12	13	1	1	
Gross Misd.	43	58	32	69	55	14	55		13		1	3	64	2		8	1	2	2	
Misdemeanor	155	97	158	94	73	21	80	1	13			12	82			14			2	
Juvenile	70	105	73	102	80	22	79		22		1	16	86			17	15		1	
Total	348	282	295	335	266	69	274	2	56		3	34	290	11	1	51	29	3	6	

Crime Against Government	Criminal Sexual Conduct	Disturbing Peace	Drugs	DWI	Escape/Flight	Forgery	Gambling	Homicide	Juvenile Status Offenses	Kidnaping	Obscenity	Property Damage	Robbery	Sex Related	Stolen Property	Theft	Theft Related	Traffic (excluding DWI)	Vehicle Theft	Weapons	Other	Unknown/N/A
	11		26		1	1						3			2	12	18		2	1		
			1	1											1							
	3	2	3	1		2			2			4			2	9	4	1	7	1		
	3	13	3	28	1	3			2			7			5	21	22	1	9	2		
		25	26	1		7		2				6			2	54	2			1		
2		1	86	1	4							2			1	2	3	13			34	
		23	3	205	1						1	7				9	15	138				9
	3	6	8	1	1				7			8	2		2	10	1	8	6	1		
2	28	30	37	293	3	11		2	7		1	23	2		5	75	21	159	6	2		43
	3		7			1						3				6	1	1			1	
1		1		12	2		1					1				1	1	1				1
		1		3												1		2				
2	2		1			1						6				4		1		1		
3	5	2	8	15	2	2	1					10				12	2	5		2		1
	1	49	74		1	15						5	1	2	10	71	48	4		3		
	2			116		2						6			1	12	5	7		1		
		1		44								1				2		2				
16	5	1	1	1		3			4			7			1	28		1	1	8		
17	56	2	75	161	1	20			4			19	1	2	12	113	53	14	1	12		
	8		4			1										4			1			
				33												11		2				1
				54								1					19					18
			2					7				5		1		7			4			1
	8		6	87		1		7				6		1		22		21	5			20
	5	385	13	1432	2	13	306	5	30			94	151	7	68	638	415	33	170	105	32	1
	5	20	51	3	1119	51	42	1				25		24	19	111	44	103		44	13	1
	54	2	355	41	1918	7	4				1	131		52	9	267	137	919	11	10	110	8
	71	22	87	68	1	9	22		3	233	2	63	31	2	28	215	1	3	152	58	49	
135	429	506	1544	3040	80	374	6	33	233	24	1	313	182	85	124	1231	597	1058	333	217	204	10
	6		5									1		1		5	4					
	1			2								2				2						
				1								1						1				
4																2						
4	7		5	3								4		1		9	4	1				
	9	1	10			3		1				1				12		2	2			1
3		1		38	2											2	6	3		1		
11	1	6		46								1				1	2	5			2	3
13	2	5		1	1	2			2			12			5	11		2	9	4		
27	12	13	10	85	3	5		1	2			14			5	26	8	12	11	5	2	4

	1995 Year-end population			1996 Year-end population			1996 Year-end population																
	1996 Entries	1996 Removals	1996 Entries	1996 Removals	1996 Entries	1996 Removals	Male	Female	White	Black	American Indian	Asian/Pacific Islander	Other race	Unknown race	Hispanic	Not Hispanic	Unknown Hispanic status	Arson	Assault	Burglary	Crime Against Family	Crime Against Justice	
Renville																							
Felony	59	23	33	49	37	12	49								4	31	14	1	6	4			1
Gross Misd.	76	41	46	71	64	7	69			2					7	64			1		2		
Misdemeanor	125	126	127	124	109	15	120		1	3					18	106			7				2
Juvenile	44	35	56	23	18	5	22							1	2	21			3	1			
Total	304	225	262	267	228	39	260		1	5				1	31	222	14	1	17	5	2		3
Rice (CCA)																							
Felony	235	82	52	265	216	49	251		4	2	2			6	28	231	6	5	33	36			
Gross Misd.	186	86	81	191	160	31	182		1	1	2			5	20	166	5		6	1			
Misdemeanor	184	159	120	223	177	46	207		1		3			12	33	178	12		37				8
Juvenile	237	255	260	232	171	61	217		3	3	4			5	16	211	5	3	26	20			1
Total	842	582	513	911	724	187	857		9	6	11			28	97	786	28	8	102	57			9
Rock (CCA)																							
Felony	19	2	4	17	15	2	16					1				17				2	2	1	
Gross Misd.	27	14	15	26	23	3	26								1	25			1				1
Misdemeanor	63	66	65	64	45	19	60		1	1	2				3	61			2				3
Juvenile	25	26	26	25	17	8	25								1	24			6	3			
Total	134	108	110	132	100	32	127		1	1	3				5	127			11	5	1		4
Roseau																							
Felony	75	35	30	80	71	9	69			11						79	1		3	8			
Gross Misd.	12	7	6	13	12	1	13									13				1			
Misdemeanor	2		2																				
Juvenile	63	96	61	98	70	28	88		1	8			1		98				8	7			
Total	152	138	99	191	153	38	170		1	19			1		190	1			11	16			
Scott																							
Felony	294	104	121	277	217	60	241		19	9			8		5	262	10	1	29	19	1		2
Gross Misd.	516	301	229	588	457	131	554		6	9	5	14			18	567	3		36	4	2		23
Misdemeanor	823	756	746	833	667	166	762		15	20	8	28			31	802			101	1	1		21
Juvenile	214	766	722	258	206	52	232		3	8	8	7			5	253			23	18			1
Total	1847	1927	1818	1956	1547	409	1789		43	46	21	57			59	1884	13	1	189	42	4		47
Sherburne																							
Felony	234	92	119	207	161	46	195		3	2			2	5	2	205		1	18	17	1		2
Gross Misd.	281	230	195	316	274	42	310		4		1			1	3	313			18	1			1
Misdemeanor	317	542	433	426	338	88	424		2						1	425		1	100		3		1
Juvenile	288	425	413	300	208	92	292		4	1	3				3	297		1	43	18	1		
Total	1120	1289	1160	1249	981	268	1221		13	3	4	2	6		9	1240		3	179	36	5		4
Sibley																							
Felony	53	19	10	62	45	17	61							1	7	34	21		6	6	1		
Gross Misd.	39	20	23	36	33	3	36								4	32					1		2
Misdemeanor	65	48	60	53	48	5	53								11	42			8				
Juvenile	19	52	14	57	48	9	56							1	3	54			3	1			2
Total	176	139	107	208	174	34	206							2	25	162	21		17	7	2		4
St. Louis (CCA)																							
Felony	968	461	420	1092	874	218	847		71	89	6			79	7	1078	7	11	157	120	4		3
Gross Misd.	757	453	434	833	725	108	709		20	58	2			44	5	785	43		71	3	9		48
Misdemeanor	1993	2485	2559	1914	1473	441	1589		29	112	3			181	3	1733	178		285	1	2		30
Juvenile	719	1071	1126	716	511	205	504		18	75	5			114	18	627	71	4	97	79	1		20
Total	4437	4470	4539	4555	3583	972	3649		138	334	16			418	33	4223	299	15	610	203	16		101

Crime Against Government	Criminal Sexual Conduct	Disturbing Peace	Drugs	DWI	Escape/Flight	Forgery	Gambling	Homicide	Juvenile Status Offenses	Kidnapping	Obscenity	Property Damage	Robbery	Sex Related	Stolen Property	Theft	Theft Related	Traffic (excluding DWI)	Vehicle Theft	Weapons	Other	Unknown/NA
1	5	1	11			1		1				1			2	7	2		4	1		
2		1		46	1	1	1					1				4	1	14	1			1
5	4	9		88					2			5					10		3			1
8	9	11	11	134	1	2	1	1	2			7			2	11	4	24	8	1	1	1
2	26		49		5	14		1		1		5	4		4	25	19	5	9	4	16	2
3	2		1	121	5	4						1			1	14	1	23	1	1	4	2
5	1	12	1	109								4		1	2	20	13				9	1
18	6	8	12	3	1	3			4			19	4		9	64	10	6		12	3	
28	35	20	63	233	11	21		1	4	1		29	8	1	16	123	30	47	10	17	32	5
		1	5			1										3	2					
2	1		12	2	2												4	1				
		2	25		10							2				1		18		1		
	2	1	1		1				1			2				7	1					
2	4	3	5	38	2	14			1			4				11	7	19		1		
		16	21	1		2		2				2	1			7	6		9	2		
	2		1	3								2					2	2				
29	2	3	2		1				12			5			1	11	2	10		3	2	
29	20	3	24	4	1	2		2	12			9	1		1	18	10	12	9	5	2	
	30	1	67		1	20		1		1		5	4		13	65	7	2	4	3	1	
8	5	1	1	331	8	6	1					7		1	4	22	16	96	1	4	11	
10		47	4	382	8						3	12		2		23	32	173	3	3	7	
1	8	6	9	6	2	4			64			16	1		21	36	1	2	23	5		11
19	43	55	81	719	19	30	1	1	64	1	3	40	5	3	38	146	56	273	31	15	19	11
		21	4	34	1	1	10			1		7			13	18	39	5	8	4		
		8		251	4	3				2		2			1	2	4	17		1	2	
		17		182	1							7				31	12	50				21
		13				4			109			11	2	18	2	52		1	12	10	3	
	21	42	34	434	6	17		1	109	2		27	2	19	16	103	55	73	20	15	26	
		7		7	2										1	20	6	1		1	1	1
				29		2										3		1				
		2		34													1	3	1	3		1
15		2	3	2	1				4			7			2	10	1	2	1	1		
15	7	4	10	67	1	2			4			7			3	33	8	7	2	5	1	2
9	168	2	171	8	11	54	7	1		9		25	24		17	103	112	31	33	12		
39	11	6	3	497	11	11	1				1	8		6	5	21	6	69	1	5	1	
66		101	19	837	1	1			89		1	17			1	24	57	242	1	1	129	9
24	55	27	32	3	6	5			133	1	1	44	7		8	48	28	33	46	11	3	
138	234	136	225	1345	29	71	8	1	222	10	3	94	31	6	31	196	203	375	81	29	133	9

	1995 Year-end population		1996 Year-end population		Male	Female	White	Black	American Indian	Asian/Pacific Islander	Other race	Unknown race	Hispanic	Not Hispanic	Unknown Hispanic status	Arson	Assault	Burglary	Crime Against Family	Crime Against Justice
	1996 Entries	1996 Removals	1996 Entries	1996 Removals																
Stearns (CCA)																				
Felony	573	308	251	639	473	166	558	38	7	16	15	5	8	626	5	5	99	70		4
Gross Misd.	360	360	282	446	374	72	403	16	9	3	7	8	3	435	8		35	1	6	7
Misdemeanor	613	1275	1029	821	656	165	718	24	8	5	13	53	7	761	53		135		2	21
Juvenile	308	311	317	302	237	65	239	9	2	4	9	39	1	262	39	1	58	35		11
Total	1854	2254	1879	2208	1740	468	1918	87	26	28	44	105	19	2084	105	6	327	106	8	43
Steele																				
Felony	117	22	50	89	71	18	87	1			1		8	81		1	10	15	1	1
Gross Misd.	98	114	43	169	136	33	140	4	4	2	19		19	150			11	6	1	1
Misdemeanor	299	349	315	333	266	67	313	3	2		15		15	318			32		2	4
Juvenile	121	392	402	111	69	42	79	6	1		25		25	86			18	4		1
Total	635	877	810	702	542	160	619	14	7	2	60		67	635		1	71	25	4	7
Stevens																				
Felony	39	10	19	30	24	6	29		1					23	7	1	4	7		
Gross Misd.	28	15	20	23	22	1	22	1						23				1		
Misdemeanor	49	41	59	31	26	5	28				3		3	28					2	
Juvenile	38	47	28	57	42	15	57							57			2	2		
Total	154	113	126	141	114	27	136	1	1		3		3	131	7	1	6	10	2	
Swift (CCA)																				
Felony	12	13	10	15	13	2	14		1				2	13			3	1		
Gross Misd.	24	24	22	27	24	3	26					1	2	25			1		1	1
Misdemeanor	33	76	47	61	49	12	61						6	55			3			1
Juvenile	23	74	64	32	23	9	31	1					2	30			1	4		
Total	92	187	143	135	109	26	132	1	1			1	12	123			8	5	1	2
Todd (CCA)																				
Felony	103	37	30	114	89	25	109		2			3		111	3	2	12	7		
Gross Misd.	89	41	46	91	79	12	88				1	2	3	86	2		6			2
Misdemeanor	31	22	22	31	27	4	31							31			7			2
Juvenile	43	51	45	51	45	6	50		1					51		2	7	5		1
Total	266	151	143	287	240	47	278		3		1	5	3	279	5	4	32	12		5
Traverse																				
Felony	6		3	3	2	1	3							3					1	
Gross Misd.	13	9	8	14	10	4	11		3					14		2				
Misdemeanor	34	6	20	20	17	3	18		2					20		8				
Juvenile	29	59	65	23	19	4	13		10					23		2	4			
Total	82	74	96	60	48	12	45		15					60		12	4	1		
Wabasha																				
Felony	25	14	16	23	19	4	23						1	22			2	4		
Gross Misd.	70	31	36	65	51	14	65						2	63			5	1		
Misdemeanor	124	122	54	192	153	39	187	5					2	190			43			
Juvenile	62	72	91	43	40	3	41		1	1				43			5	4		
Total	281	239	197	323	263	60	316	5	1	1			5	318			55	9		
Wadena (CCA)																				
Felony	134	22	56	104	88	16	101		2			1		104		3	8	25		
Gross Misd.	16	7	6	17	13	4	16		1					17			2			
Misdemeanor	22	14	15	18	15	3	17	1						18			7			
Juvenile	37	20	22	35	33	2	33	1					1	35		1	5	9		
Total	209	63	99	174	149	25	167	2	3			2		174		4	22	34		

Crime Against Government	Criminal Sexual Conduct	Disturbing Peace	Drugs	DWI	Escape/Flight	Forgery	Gambling	Homicide	Juvenile Status Offenses	Kidnapping	Obscenity	Property Damage	Robbery	Sex Related	Stolen Property	Theft	Theft Related	Traffic (excluding DWI)	Vehicle Theft	Weapons	Other	Unknown/NA
	61	1	75			33				4		12	7		20	214		15	15	2	1	1
3	3	3	1	296	20	5					2	4		1	5	19		30		1	4	
58		46	14	428							4	22		1		36		52	1		1	
7	13	19	3	8		3		1	11		1	22	2		4	60		20	15	8		
68	77	69	93	732	20	41		1	11	4	7	60	9	2	29	329		117	31	11	6	1
			16			2				1			3		4	15	3	2				
2	5		2	52	2	9						7		1	2	35	9	22	1	1		
4		14		131	3											18	40	66				7
	4	4	1	7					17			12	1	3	4	25		4	5	1		
6	24	18	19	190	5	11			17	1		19	4	4	10	93	52	94	18	2		7
			5			3														1		1
2				16	1											2	1	1				
1				21	1											1	1	3			2	
			3	2				31				1				3	4	2	1	1	5	
3	3		8	39	2	3		31				3				7	6	6	1	2	7	1
			2												2	1	2	1	1			
1	1			16	3											2	1					
		7		34				2								2	1	11				
						4		5				7				4		4	2	1		
1	3	7	2	50	3	4		7				7			2	9	4	16	3	1		
	29		12			3									6	34	2		5	1	1	
3	3	1		60	3	2						1				6		3			1	
		1		18														3				
1	6	2	2	1				12				2				6		3		1		
4	38	4	14	79	3	5		12				3			6	46	2	9	5	2	2	
	1					1																
2				8												1		1				
		2		10																		
		1						11				2			1	1					1	
2	1	3		18		1		11				2			1	2		1			1	
	7		1		1		1								1	5	1					
				48								1			1	4		1	1	1	2	
			6	95								8			3	10		15	2		10	
	2			1				10				6		1		11			3			
9		7	144	1		1		10				15		1	5	30	1	16	6	1	12	
	19		7	2		2		2				1			3	27	3		1		1	
3				9												3						
		3		1				1								5		1				
	2	1	2	1		1		1								7		1	3	1		
24	4	9	13		3		2	2				1			3	42	3	2	4	1	1	

	1995 Year-end population			1996 Year-end population			Race						Hispanic status			Crime Against Justice			
	1996 Entries	1996 Removals	1996 Year-end population	Male	Female	White	Black	American Indian	Asian/Pacific Islander	Other race	Unknown race	Hispanic	Not Hispanic	Unknown Hispanic status	Arson	Assault	Burglary	Crime Against Family	Crime Against Justice
Waseca																			
Felony	57	20	35	42	34	8	42					2	40		6	5			1
Gross Misd.	40	37	31	46	39	7	39	1	3	3		3	43		1				1
Misdemeanor	140	118	170	88	74	14	83	2	2	1		2	86		10				1
Juvenile	53	128	134	47	36	11	40	3	2	1	1	1	46	6	4	5			1
Total	290	303	370	223	183	40	204	6	7	1	5	8	215	6	21	10			4
Washington (CCA)																			
Felony	918	226	367	777	605	172	707	45	11	4	9	1	7	770	5	82	62	6	11
Gross Misd.	866	404	491	779	691	88	726	20	12	4	14	3	3	776		18	3	5	45
Misdemeanor	2932	2204	1879	3257	2626	631	3074	116	34	29	3	1	74	3183	2	297	3	2	72
Juvenile	339	509	512	336	259	77	308	10	4	12		2	1	335	4	53	35		6
Total	5055	3343	3249	5149	4181	968	4815	191	61	49	26	7	85	5064	11	450	103	13	134
Watowan																			
Felony	58	25	20	63	47	16	62					1	22	39	2	1	4	2	1
Gross Misd.	34	28	23	39	33	6	37					2	11	28		3			1
Misdemeanor	102	65	70	97	80	17	96	1					49	48		6		3	
Juvenile	76	98	98	76	55	21	72				2	2	30	46		10	4		
Total	270	216	211	275	215	60	267	1			2	5	112	161	2	1	23	6	4
Wilkin																			
Felony	26	10	13	23	18	5	21	1	1				4	19		1	6		
Gross Misd.	22	12	11	23	21	2	22				1		1	22			1		
Misdemeanor	22	8	22	8	8		6						2	6		3			
Juvenile	75	57	70	62	44	18	58		1		3		3	59		3	1		
Total	145	87	116	116	91	25	107	1	2		6		10	106		7	8		
Winona																			
Felony	173	86	82	177	143	34	157	19			1		4	173		16	19		
Gross Misd.	94	185	163	116	104	12	45	13	3	4	16	35	6	75	35	10			
Misdemeanor	356	512	574	294	207	87	185	23	2	8	24	52	12	230	52	42			
Juvenile	203	455	443	215	149	66	201	8		1	5		2	213		1	14	11	2
Total	826	1238	1262	802	603	199	588	63	5	13	46	87	24	691	87	1	82	30	2
Wright																			
Felony	349	145	161	333	243	90	330	1	1		1		2	329	2	2	24	27	1
Gross Misd.	516	222	229	537	466	71	519	7	11				6	531			58		9
Misdemeanor	773	726	659	832	670	162	803	8	16	3	1	1	8	823	1	1	197		14
Juvenile	353	568	488	436	317	119	421	4	3	1	1	6	1	429	6	6	76	27	15
Total	1991	1661	1537	2138	1696	442	2073	20	31	4	3	7	17	2112	9	9	355	54	39
Yellow Medicine (CCA)																			
Felony	27	19	20	26	22	4	21	1	4				1	25		3	2	9	
Gross Misd.	42	38	42	40	31	9	34		3	2		1	1	39					1
Misdemeanor	79	126	116	85	69	16	72		13				4	81		16			3
Juvenile	33	49	60	22	16	6	19		3					22		1	7		3
Total	181	232	238	173	138	35	146	1	23	2		1	6	167		3	19	16	7
Adult state agents																			
Felony	6549	2376	2791	6134	4806	1328	5515	143	408		39	29	327	5572	235	56	574	698	21
Gross Misd.	1045	701	689	1057	877	180	950	14	83		4	6	16	1033	8	2	83	17	11
Misdemeanor	178	182	155	205	165	40	192	7	5			1	11	192	2	38	1	1	3
Juvenile																			
Total	7772	3259	3635	7396	5848	1548	6657	164	496		43	36	354	6797	245	58	695	716	33

Crime Against Government	Criminal Sexual Conduct	Disturbing Peace	Drugs	DWI	Escape/Flight	Forgery	Gambling	Homicide	Juvenile Status Offenses	Kidnapping	Obscenity	Property Damage	Robbery	Sex Related	Stolen Property	Theft	Theft Related	Traffic (excluding DWI)	Vehicle Theft	Weapons	Other	Unknown/NA	
1	7	2	1	1																			
1	3	1	28	2								3			3	2	1			1	1		
1		6	51						7						2	1	7			1	1		
1	1	1	1	1		1			7			5			1	5			6	1	1		
3	11	7	54	29	3	2			14			8			4	15	8	11	7	4	2		
3	88	4	195	1	3	34	4	6		1		14	11	5	25	83	96	17	17	4			
6	9	12	1	549	13	7	1					7		1	4	22	7	67	1	1			
20		113	51	1543	2	5	1		17			33			5	181	67	837		5		1	
	14	28	10	11	3	3			47	4	1	10	2		8	34	4	46	7	6			
29	111	157	257	2104	21	49	6	6	64	5	1	64	13	6	42	320	174	967	25	16		1	
1	8		12	1				1		1		2				27				2			
4			1	16								1				6		2			5		
2		4		59												3		19			1		
10	2	9		1					1			12				16		9			1	1	
17	10	13	13	77				1	1	1		15				52		30		2	7	1	
1	3		5													7		1					
				15	1	2						1									2		
				3												1				1			
1	2	7		3		1			15			3				4	13	1		6	2		
2	5	7	5	21	1	3			15			4				12	13	2		7	4		
	22	3	31		3	9		1				5		1	5	40	14	3	1	2		2	
	7	2	7	61	5	1	2					3		1	2	4	2	5	2	2			
	2	9	18	79								21		2	9	23	28	59	2				
	7	4	10			3			58			18	1		8	43	22	5			8		
	38	18	66	140	8	13	2	1	58			47	1	4	24	110	44	89	10	4	8	2	
	37		79		1	20		2				8	4		8	94	6	3	13	2		1	
3	6	7	3	310	14	6						7			7	17	26	50		7	6		
1	2	80	9	331	2	2			43		1	10				17	17	89	1		4		
1	4	28	18		3	7			73			27	3		5	39	51	28	15	5	5		
5	49	115	109	641	20	35		2	116		2	52	7		20	167	100	170	29	14	15	1	
1	1		6			1								1		2	1						
				27	3					1	1					1	3						
		1	1	48								1						13		1		1	
		2							4						1	1		2	1				
1	1	3	7	75	3	1			4	1	1	1	1		1	4	4	15	1	1		1	
9	811	25	1076	15	20	255	3	36		14	4	157	49	5	172	1351	413	96	150	63	9	25	
22	33	16	16	353	18	24	2				1	44			16	98	45	115	2	10	74	3	
9	1	16	4	72								4			5	10	8	23	4	2	2	2	
40	845	57	1096	440	38	279	5	36		14	5	205	49	5	193	1459	466	234	156	75	85	30	

	1995 Year-end population	1996 Entries	1996 Removals	1996 Year-end population	Male	Female	White	Black	American Indian	Asian/Pacific Islander	Other race	Unknown race	Hispanic	Not Hispanic	Unknown Hispanic status	Arson	Assault	Burglary	Crime Against Family	Crime Against Justice
CCA agents																				
Felony	20225	6329	5938	21222	16228	4994	13398	5406	601	410	88	1319	804	19314	1104	149	2378	1722	164	108
Gross Misd.	14745	6985	7489	14684	12224	2460	11967	1443	486	111	73	604	387	13741	556	7	886	63	95	397
Misdemeanor	28661	27908	26124	30287	23562	6725	23892	3101	679	346	154	2115	1184	27075	2028	9	4066	10	108	418
Juvenile	9546	9812	10139	9452	7235	2217	6230	1759	473	402	80	508	380	8633	439	75	1440	778	2	173
Total	73177	51034	49690	75645	59249	16396	55487	11709	2239	1269	395	4546	2755	68763	4127	240	8770	2573	369	1096
Contract agents																				
Felony																				
Gross Misd.	1030	684	861	853	713	140	764	11	72			6	64	789			46	3	11	29
Misdemeanor	1573	1622	2004	1191	930	261	1129	10	43		5	4	165	1026			165		5	13
Juvenile	1677	2216	1975	1918	1465	453	1627	13	257		16	5	174	1744		13	194	190		14
Total	4280	4522	4840	3962	3108	854	3520	34	372		21	15	403	3559		13	405	193	16	56
Non-CCA co. agents																				
Felony	26	17	31	17	15	2	15		1			1		13	4		1	5		1
Gross Misd.	3834	2583	2337	4142	3502	640	3687	52	256	15	86	46	113	3987	42	13	244	22	14	161
Misdemeanor	7778	7927	7434	8247	6499	1748	7552	105	227	44	202	117	260	7874	113	22	1272	3	44	175
Juvenile	4221	7001	6802	4465	3298	1167	4000	48	249	31	89	48	122	4304	39	45	631	339	2	63
Total	15859	17528	16604	16871	13314	3557	15254	205	733	90	377	212	495	16178	198	80	2148	369	60	400
CCA counties																				
Felony	20225	6329	5938	21222	16228	4994	13398	5406	601	410	88	1319	804	19314	1104	149	2378	1722	164	108
Gross Misd.	14745	6985	7489	14684	12224	2460	11967	1443	486	111	73	604	387	13741	556	7	886	63	95	397
Misdemeanor	28661	27908	26124	30287	23562	6725	23892	3101	679	346	154	2115	1184	27075	2028	9	4066	10	108	418
Juvenile	9546	9812	10139	9452	7235	2217	6230	1759	473	402	80	508	380	8633	439	75	1440	778	2	173
Total	73177	51034	49690	75645	59249	16396	55487	11709	2239	1269	395	4546	2755	68763	4127	240	8770	2573	369	1096
Non-CCA counties																				
Felony	6575	2393	2822	6151	4821	1330	5530	143	409		39	30	327	5585	239	56	575	703	21	28
Gross Misd.	5909	3968	3887	6052	5092	960	5401	77	411	15	90	58	193	5809	50	15	373	42	36	242
Misdemeanor	9529	9731	9593	9643	7594	2049	8873	122	275	44	207	122	436	9092	115	22	1475	4	50	191
Juvenile	5898	9217	8777	6383	4763	1620	5627	61	506	31	105	53	296	6048	39	58	825	529	2	77
Total	27911	25309	25079	28229	22270	5959	25431	403	1601	90	441	263	1252	26534	443	151	3248	1278	109	538
Twin Cities metropolitan area (7 counties)																				
Felony	16115	4555	4369	16788	12762	4026	9603	5220	397	341	35	1192	538	15163	1087	102	1869	1138	149	88
Gross Misd.	12295	5296	6063	11873	9779	2094	9504	1379	317	89	51	533	285	11089	499	3	709	36	65	333
Misdemeanor	24007	21543	20282	25164	19582	5582	19444	3001	466	311	101	1841	918	22481	1765	8	3407	6	90	399
Juvenile	6801	6977	7234	6697	5196	1501	3982	1692	343	351	21	308	226	6182	289	58	1073	427		116
Total	59218	38371	37948	60522	47319	13203	42533	11292	1523	1092	208	3874	1967	54915	3640	171	7058	1607	304	936
Non-metro counties																				
Felony	10685	4167	4391	10585	8287	2298	9325	329	613	69	92	157	593	9736	256	103	1084	1287	36	48
Gross Misd.	8359	5657	5313	8863	7537	1326	7864	141	580	37	112	129	295	8461	107	19	550	69	66	306
Misdemeanor	14183	16096	15435	14766	11574	3192	13321	222	488	79	260	396	702	13686	378	23	2134	8	68	210
Juvenile	8643	12052	11682	9138	6802	2336	7875	128	636	82	164	253	450	8499	189	75	1192	880	4	134
Total	41870	37972	36821	43352	34200	9152	38385	820	2317	267	628	935	2040	40382	930	220	4960	2244	174	698
Minnesota																				
Felony	26800	8722	8760	27373	21049	6324	18928	5549	1010	410	127	1349	1131	24899	1343	205	2953	2425	185	136
Gross Misd.	20654	10953	11376	20736	17316	3420	17368	1520	897	126	163	662	580	19550	606	22	1259	105	131	639
Misdemeanor	38190	37639	35717	39930	31156	8774	32765	3223	954	390	361	2237	1620	36167	2143	31	5541	14	158	609
Juvenile	15444	19029	18916	15835	11998	3837	11857	1820	979	433	185	561	676	14681	478	133	2265	1307	4	250
Total	101088	76343	74769	103874	81519	22355	80918	12112	3840	1359	836	4809	4007	95297	4570	391	12018	3851	478	1634

Crime Against Government	Criminal Sexual Conduct	Disturbing Peace	Drugs	DWI	Escape/Flight	Forgery	Gambling	Homicide	Juvenile Status Offenses	Kidnapping	Obscenity	Property Damage	Robbery	Sex Related	Stolen Property	Theft	Theft Related	Traffic (excluding DWI)	Vehicle Theft	Weapons	Other	Unknown/NA
51	2110	72	4633	75	80	1231	32	81		82	4	402	547	75	514	3523	1600	246	631	364	288	60
182	111	142	71	9232	296	171	11			6	12	111	2	80	90	585	368	861	12	125	103	665
467	6	1744	250	13837	21	81	3		161	1	18	391	3	145	59	1129	517	3916	35	49	411	2432
286	389	482	336	63	68	112	1	24	1126	16	11	578	229	6	181	1177	352	266	766	357	133	25
986	2616	2440	5290	23207	465	1595	47	105	1287	105	45	1482	781	306	844	6414	2837	5289	1444	895	935	3182
29	10	18	2	473	9	13	2					23			3	59	21	55	9	4	22	12
41	1	61	4	548		2			1			22			2	65	36	165	35	7	6	12
293	83	92	33	15	5	33		2	116			199	8	1	25	316	49	94	92	34	5	12
363	94	171	39	1036	14	48	2	2	117			244	8	1	30	440	106	314	136	45	33	36
63	34	19	33	2606	72	51	2				1	66		4	20	137	93	380	4	20	80	3
80	9	367	133	3462	19	19			73		8	122		5	21	334	237	1497	31	7	286	21
79	120	154	179	53	13	65		5	820	1		330	14	29	99	691	108	254	198	67	78	28
222	164	542	347	6122	104	136	2	5	893	1	9	518	14	38	140	1164	438	2131	233	95	444	52
51	2110	72	4633	75	80	1231	32	81		82	4	402	547	75	514	3523	1600	246	631	364	288	60
182	111	142	71	9232	296	171	11			6	12	111	2	80	90	585	368	861	12	125	103	665
467	6	1744	250	13837	21	81	3		161	1	18	391	3	145	59	1129	517	3916	35	49	411	2432
286	389	482	336	63	68	112	1	24	1126	16	11	578	229	6	181	1177	352	266	766	357	133	25
986	2616	2440	5290	23207	465	1595	47	105	1287	105	45	1482	781	306	844	6414	2837	5289	1444	895	935	3182
9	812	27	1078	16	20	256	3	36		14	4	157	49	5	172	1353	413	96	150	64	9	25
114	77	53	51	3432	99	88	6				2	133		4	39	294	159	550	15	34	176	18
130	11	444	141	4082	19	21			74		8	148		5	28	409	281	1685	70	16	294	35
372	203	246	212	68	18	98		7	936	1		529	22	30	124	1007	157	348	290	101	83	40
625	1103	770	1482	7598	156	463	9	43	1010	15	14	967	71	44	363	3063	1010	2679	525	215	562	118
38	1465	43	3965	48	54	1083	24	71		63	3	314	497	71	404	2708	1307	182	523	319	255	5
116	67	122	29	7465	209	134	11			5	8	75	1	70	58	405	296	766	9	108	115	658
250	4	1506	138	11423	24	22	3		52		16	321	2	135	43	868	428	3295	20	41	247	2416
130	252	378	229	29	50	97	1	23	868	13	7	410	204	5	145	729	301	122	625	290	91	24
534	1788	2049	4361	18965	337	1336	39	94	920	81	34	1120	704	281	650	4710	2332	4365	1177	758	708	3103
22	1457	56	1746	43	46	404	11	46		33	5	245	99	9	282	2168	706	160	258	109	42	80
180	121	73	93	5199	186	125	6			1	6	169	1	14	71	474	231	645	18	51	164	25
347	13	682	253	6496	16	80			183	1	10	218	1	15	44	670	370	2306	85	24	458	51
528	340	350	319	102	36	113		8	1194	4	4	697	47	31	160	1455	208	492	431	168	125	41
1077	1931	1161	2411	11840	284	722	17	54	1377	39	25	1329	148	69	557	4767	1515	3603	792	352	789	197
60	2922	99	5711	91	100	1487	35	117		96	8	559	596	80	686	4876	2013	342	781	428	297	85
296	188	195	122	12664	395	259	17			6	14	244	2	84	129	879	527	1411	27	159	279	683
597	17	2188	391	17919	40	102	3		235	1	26	539	3	150	87	1538	798	5601	105	65	705	2467
658	592	728	548	131	86	210	1	31	2062	17	11	1107	251	36	305	2184	509	614	1056	458	216	65
1611	3719	3210	6772	30805	621	2058	56	148	2297	120	59	2449	852	350	1207	9477	3847	7968	1969	1110	1497	3300

Notes:

Central Minnesota Community Corrections (Aitkin, Crow Wing, Morrison Counties)—They installed CSTS during the past year and entered all cases back to 1/1/96. Therefore their 12/31/95 populations as reported on this year's survey differ from the populations reported on the 1995 Probation Survey. They feel their revised 12/31/95 figures are more accurate.

Hennepin County Community Corrections—The adult data was synthesized from "straight probationer" databases, an "inter/intrastate probationer" database, and manually-tracked data on "sole-sanction probationers" (gross misdemeanants and simple misdemeanants). Since the sole-sanction probationer data is manually tracked, estimation techniques were used to count the number of entries and removals during 1996 and to categorize the offenders by gender and race. Sole-sanction probationers were placed in the "unknown" offense category since offense information has never been recorded.

Houston County Court Services—Data reported is their best estimate based on the information available. (Data retrieval was hampered as their office was in the midst of a database conversion.)

Itasca County Probation Department—They reported the numbers generated from their database software, but they feel their actual number of probationers is higher.

Ramsey County Community Corrections—1) Their breakdown of juvenile probationers by offense category is an estimate based on offense percentages of all admitted on sustained offenses in juvenile court during 1996. 2) In the adult probationer data, the "unknown" race category reflects clients entered from a manual card system to CSTS in 1993. The card system did not include race data; however, this data is now entered on all new clients.

Rice County Community Corrections—In the "juvenile probationers" category, auto thefts are in the "theft" category.

Wabasha County Court Services—Some figures are estimates due to difficulties with their computer program.

Appendix C

December 31, 1996 probationers by county, offense level, and offense type

	Person		Property		Drug		DWI		Traffic (excl. DWI)		Juv. Status Offenses		Other		Unknown/NA		Total	
	n	%	n	%	n	%	n	%	n	%	n	%	n	%	n	%	n	%
Aitkin (CCA)																		
Felony	39	27%	73	51%	16	11%							16	11%			144	100%
Gross Misd.	10	9%	20	17%			50	43%	13	11%			23	20%			116	100%
Misdemeanor	17	8%	20	9%	4	2%	98	45%	67	30%			14	6%			220	100%
Juvenile	11	17%	32	48%	3	5%			2	3%			18	27%			66	100%
Total	77	14%	145	27%	23	4%	148	27%	82	15%			71	13%			546	100%
Anoka (CCA)																		
Felony	368	23%	786	50%	287	18%	22	1%	13	1%			94	6%			1570	100%
Gross Misd.	99	6%	248	14%	1	0%	1041	59%	236	13%			145	8%			1770	100%
Misdemeanor	564	15%	451	12%	9	0%	1535	40%	666	17%	24	1%	573	15%			3822	100%
Juvenile	131	15%	371	43%	13	2%	3	0%	36	4%	199	23%	113	13%			866	100%
Total	1162	14%	1856	23%	310	4%	2601	32%	951	12%	223	3%	925	12%			8028	100%
Becker																		
Felony	33	20%	98	60%	23	14%			4	2%			4	2%			162	100%
Gross Misd.	5	11%	9	20%			26	58%	1	2%			4	9%			45	100%
Misdemeanor	1	7%	4	29%	1	7%	3	21%	4	29%			1	7%			14	100%
Juvenile	25	15%	95	57%	1	1%	1	1%	12	7%	2	1%	30	18%			166	100%
Total	64	17%	206	53%	25	6%	30	8%	21	5%	2	1%	39	10%			387	100%
Beltrami																		
Felony	66	28%	123	51%	37	15%	1	0%	2	1%			8	3%	3	1%	240	100%
Gross Misd.	7	18%	6	15%	1	3%	18	45%	4	10%			4	10%			40	100%
Misdemeanor	1	33%	2	67%													3	100%
Juvenile	44	21%	109	51%	6	3%			4	2%	10	5%	40	19%			213	100%
Total	118	24%	240	48%	44	9%	19	4%	10	2%	10	2%	52	10%	3	1%	496	100%
Benton																		
Felony	36	19%	111	59%	26	14%			6	3%			8	4%	1	1%	188	100%
Gross Misd.	9	5%	26	16%			106	64%	11	7%			12	7%	1	1%	165	100%
Misdemeanor	28	23%	6	5%	1	1%	72	59%	3	2%			12	10%			122	100%
Juvenile	22	33%	38	57%									5	7%	2	3%	67	100%
Total	95	18%	181	33%	27	5%	178	33%	20	4%			37	7%	4	1%	542	100%
Big Stone																		
Felony	3	27%	6	55%	2	18%											11	100%
Gross Misd.							7	78%					2	22%			9	100%
Misdemeanor	1	3%	4	13%	4	13%	18	58%	1	3%			3	10%			31	100%
Juvenile	5	9%	9	17%			1	2%	5	9%	28	52%	6	11%			54	100%
Total	9	9%	19	18%	6	6%	26	25%	6	6%	28	27%	11	10%			105	100%
Blue Earth (CCA)																		
Felony	51	27%	92	49%	33	17%			2	1%			9	5%	2	1%	189	100%
Gross Misd.	11	6%	74	37%	2	1%	93	47%	7	4%			12	6%			199	100%
Misdemeanor	50	8%	108	18%	6	1%	294	49%	90	15%			52	9%	4	1%	604	100%
Juvenile	33	12%	96	35%	18	7%	2	1%	15	5%	84	31%	24	9%	2	1%	274	100%
Total	145	11%	370	29%	59	5%	389	31%	114	9%	84	7%	97	8%	8	1%	1266	100%
Brown																		
Felony	20	19%	54	52%	23	22%			3	3%			4	4%			104	100%
Gross Misd.	1	1%	17	19%	1	1%	49	54%	8	9%			15	16%			91	100%
Misdemeanor	15	13%	7	6%			80	70%	3	3%	6	5%	3	3%			114	100%
Juvenile	19	21%	43	48%	7	8%	2	2%	7	8%	9	10%	3	3%			90	100%
Total	55	14%	121	30%	31	8%	131	33%	21	5%	15	4%	25	6%			399	100%
Carlton (CCA)																		
Felony	31	20%	70	44%	51	32%	1	1%	4	3%			1	1%			158	100%
Gross Misd.	19	24%	12	15%	1	1%	21	26%	7	9%			20	25%			80	100%
Misdemeanor	30	29%	14	13%	2	2%	11	11%	25	24%	3	3%	19	18%			104	100%
Juvenile	9	13%	31	44%	6	9%			3	4%	11	16%	10	14%			70	100%
Total	89	22%	127	31%	60	15%	33	8%	39	9%	14	3%	50	12%			412	100%

	Person		Property		Drug		DWI		Traffic (excl. DWI)		Juv. Status Offenses		Other		Unknown/NA		Total			
	n	%	n	%	n	%	n	%	n	%	n	%	n	%	n	%	n	%		
Carver																				
Felony	60	34%	77	44%	20	11%			12	7%			6	3%					175	100%
Gross Misd.	32	10%	26	8%	11	3%	129	38%	47	14%			90	27%	1	0%			336	100%
Misdemeanor	119	20%	29	5%	8	1%	232	40%	80	14%	11	2%	102	18%					581	100%
Juvenile	68	30%	85	38%	12	5%	1	0%	12	5%	17	8%	30	13%					225	100%
Total	279	21%	217	16%	51	4%	362	27%	151	11%	28	2%	228	17%	1	0%			1317	100%
Cass																				
Felony	65	33%	98	49%	24	12%			6	3%			3	2%	2	1%			198	100%
Gross Misd.	13	6%	22	10%	5	2%	141	62%	22	10%			23	10%	1	0%			227	100%
Misdemeanor	56	29%	9	5%	2	1%	85	44%	14	7%	2	1%	26	13%					194	100%
Juvenile	41	23%	68	39%	3	2%	3	2%	20	11%	24	14%	16	9%					175	100%
Total	175	22%	197	25%	34	4%	229	29%	62	8%	26	3%	68	9%	3	0%			794	100%
Chippewa (CCA)																				
Felony	9	20%	27	61%	6	14%							1	2%	1	2%			44	100%
Gross Misd.	2	6%	10	30%			16	48%					5	15%					33	100%
Misdemeanor	10	20%	4	8%			22	43%	7	14%	3	6%	5	10%					51	100%
Juvenile	6	15%	23	56%			1	2%	3	7%	5	12%	3	7%					41	100%
Total	27	16%	64	38%	6	4%	39	23%	10	6%	8	5%	14	8%	1	1%			169	100%
Chisago																				
Felony	32	18%	99	55%	38	21%	1	1%	4	2%			7	4%					181	100%
Gross Misd.	18	8%	9	4%	2	1%	120	55%	24	11%			45	21%	1	0%			219	100%
Misdemeanor	105	17%	1	0%			286	47%	126	21%			91	15%					609	100%
Juvenile	19	12%	56	35%	8	5%			23	14%	32	20%	13	8%	10	6%			161	100%
Total	174	15%	165	14%	48	4%	407	35%	177	15%	32	3%	156	13%	11	1%			1170	100%
Clay																				
Felony	49	17%	152	53%	75	26%			2	1%			6	2%	1	0%			285	100%
Gross Misd.	2	3%	20	29%			31	46%	5	7%			8	12%	2	3%			68	100%
Misdemeanor	15	17%	5	6%	2	2%	20	22%	36	40%			10	11%	1	1%			89	100%
Juvenile	29	11%	98	39%	9	4%	3	1%	21	8%	40	16%	53	21%	1	0%			254	100%
Total	95	14%	275	40%	86	12%	54	8%	64	9%	40	6%	77	11%	5	1%			696	100%
Clearwater																				
Felony	14	25%	31	55%	5	9%	1	2%	4	7%			1	2%					56	100%
Gross Misd.	15	13%	20	17%			81	68%					4	3%					120	100%
Misdemeanor	11	73%	4	27%															15	100%
Juvenile	12	17%	44	63%			10	14%	2	3%			2	3%					70	100%
Total	52	20%	99	38%	5	2%	92	35%	6	2%			7	3%					261	100%
Cook (CCA)																				
Felony	5	29%	7	41%	4	24%							1	6%					17	100%
Gross Misd.	1	5%	3	15%			13	65%	1	5%			2	10%					20	100%
Misdemeanor	3	5%	3	5%	3	5%	28	44%	9	14%	9	14%	9	14%					64	100%
Juvenile			1	20%			1	20%			2	40%	1	20%					5	100%
Total	9	8%	14	13%	7	7%	42	40%	10	9%	11	10%	13	12%					106	100%
Cottonwood																				
Felony	15	29%	32	62%	4	8%							1	2%					52	100%
Gross Misd.	2	7%	9	31%			9	31%	2	7%			7	24%					29	100%
Misdemeanor	5	15%	4	12%			19	56%	4	12%			2	6%					34	100%
Juvenile	10	21%	22	47%			3	6%	2	4%	1	2%	7	15%	2	4%			47	100%
Total	32	20%	67	41%	4	2%	31	19%	8	5%	1	1%	17	10%	2	1%			162	100%
Crow Wing (CCA)																				
Felony	72	19%	212	57%	46	12%	4	1%	4	1%			32	9%					370	100%
Gross Misd.	15	3%	57	13%	2	0%	299	66%	25	6%			54	12%					452	100%
Misdemeanor	29	5%	38	7%	8	2%	372	70%	51	10%	1	0%	31	6%					530	100%
Juvenile	39	21%	93	50%	16	9%	1	1%	17	9%	1	1%	20	11%					187	100%
Total	155	10%	400	26%	72	5%	676	44%	97	6%	2	0%	137	9%					1539	100%

	Person		Property		Drug		DWI		Traffic (excl. DWI)		Juv. Status Offenses		Other		Unknown/NA		Total	
	n	%	n	%	n	%	n	%	n	%	n	%	n	%	n	%	n	%
Dakota (CCA)																		
Felony	425	23%	1025	54%	358	19%	8	0%	17	1%			47	2%	4	0%	1884	100%
Gross Misd.	87	5%	112	7%	7	0%	1110	70%	134	8%			137	9%			1587	100%
Misdemeanor	370	15%	78	3%	16	1%	1206	50%	515	21%			228	9%	4	0%	2417	100%
Juvenile	137	22%	300	48%	22	4%	7	1%	10	2%	3	0%	140	23%	1	0%	620	100%
Total	1019	16%	1515	23%	403	6%	2331	36%	676	10%	3	0%	552	8%	9	0%	6508	100%
Dodge (CCA)																		
Felony	9	18%	25	50%	6	12%	1	2%					3	6%	6	12%	50	100%
Gross Misd.	1	2%	3	6%	36	73%	2	4%					5	10%	2	4%	49	100%
Misdemeanor	6	11%			48	89%											54	100%
Juvenile	3	7%	16	35%	2	4%	3	7%	1	2%			21	46%			46	100%
Total	19	10%	44	22%	92	46%	6	3%	1	1%			29	15%	8	4%	199	100%
Douglas																		
Felony	33	23%	79	56%	23	16%			1	1%			4	3%	2	1%	142	100%
Gross Misd.	6	5%	18	14%			79	62%	8	6%			12	9%	4	3%	127	100%
Misdemeanor	30	21%	16	11%	1	1%	64	44%	15	10%			16	11%	2	1%	144	100%
Juvenile	13	12%	60	57%	2	2%			6	6%	5	5%	20	19%			106	100%
Total	82	16%	173	33%	26	5%	143	28%	30	6%	5	1%	52	10%	8	2%	519	100%
Faribault																		
Felony	21	23%	47	52%	20	22%							2	2%			90	100%
Gross Misd.			8	21%	1	3%	21	55%					8	21%			38	100%
Misdemeanor	6	7%	39	45%			27	31%					13	15%	2	2%	87	100%
Juvenile	4	4%	51	46%	1	1%					12	11%	42	38%	2	2%	112	100%
Total	31	9%	145	44%	22	7%	48	15%			12	4%	65	20%	4	1%	327	100%
Fillmore (CCA)																		
Felony	14	28%	26	52%	5	10%	1	2%					1	2%	3	6%	50	100%
Gross Misd.	2	3%	5	7%			60	83%					4	6%	1	1%	72	100%
Misdemeanor			1	1%	1	1%	115	78%					31	21%			148	100%
Juvenile	4	5%	35	48%	1	1%	4	5%	1	1%	1	1%	24	33%	3	4%	73	100%
Total	20	6%	67	20%	7	2%	180	52%	1	0%	1	0%	60	17%	7	2%	343	100%
Freeborn																		
Felony	26	20%	55	43%	40	31%			1	1%			6	5%	1	1%	129	100%
Gross Misd.	7	8%	2	2%			77	90%									86	100%
Misdemeanor	17	18%					79	82%									96	100%
Juvenile	31	17%	86	47%	46	25%					19	10%					182	100%
Total	81	16%	143	29%	86	17%	156	32%	1	0%	19	4%	6	1%	1	0%	493	100%
Goodhue																		
Felony	45	30%	74	49%	28	18%			1	1%			4	3%			152	100%
Gross Misd.	19	7%	33	12%	2	1%	171	60%	15	5%			46	16%			286	100%
Misdemeanor	58	11%	65	12%	15	3%	208	40%	104	20%			76	14%			526	100%
Juvenile	23	18%	65	50%	2	2%	1	1%	2	2%	16	12%	22	17%			131	100%
Total	145	13%	237	22%	47	4%	380	35%	122	11%	16	1%	148	14%			1095	100%
Grant																		
Felony	4	25%	9	56%	3	19%											16	100%
Gross Misd.	6	19%			1	3%	23	72%	1	3%			1	3%			32	100%
Misdemeanor	4	24%	1	6%			8	47%					4	24%			17	100%
Juvenile	1	2%	14	29%			1	2%	2	4%	28	57%	3	6%			49	100%
Total	15	13%	24	21%	4	4%	32	28%	3	3%	28	25%	8	7%			114	100%
Hennepin (CCA)																		
Felony	1742	24%	3243	44%	1606	22%	15	0%	88	1%			648	9%			7342	100%
Gross Misd.	341	7%	271	6%	5	0%	3186	65%	83	2%			367	7%	656	13%	4909	100%
Misdemeanor	991	11%	231	3%	9	0%	4607	50%	105	1%			805	9%	2403	26%	9151	100%
Juvenile	809	28%	1273	44%	95	3%			13	0%	305	10%	410	14%	12	0%	2917	100%
Total	3883	16%	5018	21%	1715	7%	7808	32%	289	1%	305	1%	2230	9%	3071	13%	24319	100%

	Person		Property		Drug		DWI		Traffic (excl. DWI)		Juv. Status Offenses		Other		Unknown/NA		Total	
	n	%	n	%	n	%	n	%	n	%	n	%	n	%	n	%	n	%
Houston																		
Felony	9	33%	14	52%	2	7%	1	4%					1	4%			27	100%
Gross Misd.			6	11%			44	80%	4	7%			1	2%			55	100%
Misdemeanor	13	5%	42	15%	2	1%	115	42%	63	23%			38	14%			273	100%
Juvenile	10	11%	44	48%	2	2%	1	1%	9	10%	10	11%	16	17%			92	100%
Total	32	7%	106	24%	6	1%	161	36%	76	17%	10	2%	56	13%			447	100%
Hubbard																		
Felony	20	27%	43	57%	9	12%			2	3%			1	1%			75	100%
Gross Misd.	2	8%	8	32%			12	48%					3	12%			25	100%
Misdemeanor	4	24%	3	18%			8	47%	1	6%					1	6%	17	100%
Juvenile	5	10%	27	55%					5	10%	4	8%	7	14%	1	2%	49	100%
Total	31	19%	81	49%	9	5%	20	12%	8	5%	4	2%	11	7%	2	1%	166	100%
Isanti																		
Felony	48	27%	95	53%	28	16%			4	2%			2	1%	1	1%	178	100%
Gross Misd.	8	4%	14	8%	2	1%	96	52%	34	18%			31	17%			185	100%
Misdemeanor	50	8%	83	13%	1	0%	201	31%	216	33%			92	14%	11	2%	654	100%
Juvenile	29	20%	65	44%	8	5%			5	3%	4	3%	36	24%			147	100%
Total	135	12%	257	22%	39	3%	297	26%	259	22%	4	0%	161	14%	12	1%	1164	100%
Itasca																		
Felony	64	23%	146	52%	43	15%	1	0%	6	2%			17	6%	2	1%	279	100%
Gross Misd.	26	9%	38	13%	1	0%	132	44%	50	17%			50	17%			297	100%
Misdemeanor	18	25%	9	13%			11	15%	13	18%	1	1%	20	28%			72	100%
Juvenile	68	18%	138	38%			1	0%	39	11%	80	22%	40	11%	2	1%	368	100%
Total	176	17%	331	33%	44	4%	145	14%	108	11%	81	8%	127	13%	4	0%	1016	100%
Jackson																		
Felony	5	22%	15	65%	3	13%											23	100%
Gross Misd.	2	4%	13	24%			28	51%	5	9%			7	13%			55	100%
Misdemeanor	16	9%	64	34%	3	2%	40	22%	50	27%			13	7%			186	100%
Juvenile	8	15%	17	32%			2	4%	5	9%	15	28%	6	11%			53	100%
Total	31	10%	109	34%	6	2%	70	22%	60	19%	15	5%	26	8%			317	100%
Kanabec																		
Felony	25	23%	67	60%	16	14%							2	2%	1	1%	111	100%
Gross Misd.	3	4%	7	9%	2	3%	56	70%	1	1%			11	14%			80	100%
Misdemeanor	13	13%	9	9%	1	1%	56	56%	10	10%			11	11%			100	100%
Juvenile	26	23%	40	35%	4	4%	2	2%	16	14%	10	9%	15	13%			113	100%
Total	67	17%	123	30%	23	6%	114	28%	27	7%	10	2%	39	10%	1	0%	404	100%
Kandiyohi (CCA)																		
Felony	44	27%	71	44%	36	22%			1	1%			10	6%			162	100%
Gross Misd.	9	7%	39	30%	2	2%	71	55%	6	5%			2	2%			129	100%
Misdemeanor	24	6%	50	13%	7	2%	129	33%	114	30%			62	16%			386	100%
Juvenile	34	17%	100	50%	12	6%	1	0%	15	7%			39	19%			201	100%
Total	111	13%	260	30%	57	6%	201	23%	136	15%			113	13%			878	100%
Kittson																		
Felony	5	21%	11	46%	8	33%											24	100%
Gross Misd.																		
Misdemeanor																		
Juvenile	1	6%	8	44%									9	50%			18	100%
Total	6	14%	19	45%	8	19%							9	21%			42	100%
Koochiching (CCA)																		
Felony	20	26%	37	49%	14	18%			4	5%			1	1%			76	100%
Gross Misd.	3	7%	3	7%			24	55%	10	23%			4	9%			44	100%
Misdemeanor	4	7%	8	14%			22	38%	11	19%			10	17%			58	100%
Juvenile	11	10%	42	38%	6	5%	1	1%	11	10%	24	22%	16	14%			111	100%
Total	38	13%	90	31%	20	7%	47	16%	36	12%	27	9%	31	11%			289	100%

	Person		Property		Drug		DWI		Traffic (excl. DWI)		Juv. Status Offenses		Other		Unknown/NA		Total		
	n	%	n	%	n	%	n	%	n	%	n	%	n	%	n	%	n	%	
Lac Qui Parle (CCA)																			
Felony	4	29%	7	50%	2	14%							1	7%				14	100%
Gross Misd.			1	20%			3	60%					1	20%				5	100%
Misdemeanor	2	12%	1	6%			5	29%	4	24%	1	6%	4	24%				17	100%
Juvenile	4	19%	10	48%			2	10%	3	14%	2	10%						21	100%
Total	10	18%	19	33%	2	4%	10	18%	7	12%	3	5%	6	11%				57	100%
Lake (CCA)																			
Felony	4	9%	29	67%	7	16%	1	2%					2	5%				43	100%
Gross Misd.	4	17%	5	21%	1	4%	13	54%					1	4%				24	100%
Misdemeanor	7	10%	9	13%	1	1%	33	49%	9	13%	8	12%	1	1%				68	100%
Juvenile	5	17%	7	24%	1	3%	1	3%	2	7%	11	38%	2	7%				29	100%
Total	20	12%	50	30%	10	6%	48	29%	11	7%	19	12%	6	4%				164	100%
Lake of the Woods																			
Felony	6	50%	5	42%									1	8%				12	100%
Gross Misd.							1	100%										1	100%
Misdemeanor																			
Juvenile	2	22%	5	56%	1	11%					1	11%						9	100%
Total	8	36%	10	45%	1	5%	1	5%			1	5%	1	5%				22	100%
Le Sueur																			
Felony	13	17%	42	56%	17	23%			1	1%			2	3%				75	100%
Gross Misd.	4	6%	14	19%			36	50%	6	8%			11	15%	1	1%		72	100%
Misdemeanor	18	17%	13	13%			43	42%	12	12%			17	17%				103	100%
Juvenile	14	16%	33	37%	1	1%			5	6%	7	8%	29	33%				89	100%
Total	49	14%	102	30%	18	5%	79	23%	24	7%	7	2%	59	17%	1	0%		339	100%
Lincoln																			
Felony	2	12%	12	71%	3	18%												17	100%
Gross Misd.	1	6%	2	13%			9	56%	2	13%			2	13%				16	100%
Misdemeanor	3	23%	2	15%			4	31%	2	15%			2	15%				13	100%
Juvenile	1	13%	4	50%									2	25%	1	13%		8	100%
Total	7	13%	20	37%	3	6%	13	24%	4	7%			6	11%	1	2%		54	100%
Lyon																			
Felony	32	26%	66	54%	16	13%	1	1%	2	2%			5	4%				122	100%
Gross Misd.	7	6%	21	18%			64	54%	3	3%			20	17%	3	3%		118	100%
Misdemeanor	19	15%	14	11%			64	50%	16	12%			16	12%				129	100%
Juvenile	20	16%	65	52%	4	3%	2	2%	9	7%	3	2%	21	17%	2	2%		126	100%
Total	78	16%	166	34%	20	4%	131	26%	30	6%	3	1%	62	13%	5	1%		495	100%
Mahnomen																			
Felony	19	29%	32	49%	11	17%			2	3%			1	2%				65	100%
Gross Misd.	10	14%	10	14%			39	55%	2	3%			10	14%				71	100%
Misdemeanor	3	23%	1	8%			4	31%	2	15%			3	23%				13	100%
Juvenile	14	35%	24	60%									2	5%				40	100%
Total	46	24%	67	35%	11	6%	43	23%	6	3%			16	8%				189	100%
Marshall																			
Felony	7	24%	16	55%	5	17%	1	3%										29	100%
Gross Misd.	1	33%	1	33%			1	33%										3	100%
Misdemeanor			1	50%			1	50%										2	100%
Juvenile	5	13%	21	55%									11	29%	1	3%		38	100%
Total	13	18%	39	54%	5	7%	3	4%					11	15%	1	1%		72	100%
Martin																			
Felony	44	27%	82	50%	27	16%			3	2%			8	5%	1	1%		165	100%
Gross Misd.	4	6%	18	25%	1	1%	26	37%	8	11%			14	20%				71	100%
Misdemeanor	5	6%	25	28%			30	33%	21	23%	1	1%	6	7%	2	2%		90	100%
Juvenile	12	19%	36	57%	1	2%			3	5%	2	3%	9	14%				63	100%
Total	65	17%	161	41%	29	7%	56	14%	35	9%	3	1%	37	10%	3	1%		389	100%

	Person		Property		Drug		DWI		Traffic (excl. DWI)		Juv. Status Offenses		Other		Unknown/NA		Total				
	n	%	n	%	n	%	n	%	n	%	n	%	n	%	n	%	n	%			
McLeod																					
Felony	24	20%	71	59%	23	19%							3	2%					121	100%	
Gross Misd.	8	8%	12	12%			62	63%	4	4%			10	10%	2	2%			98	100%	
Misdemeanor	21	11%	29	15%	1	1%	95	50%	28	15%			16	8%					190	100%	
Juvenile	23	16%	66	46%			2	1%	2	1%	6	4%	43	30%	1	1%			143	100%	
Total	76	14%	178	32%	24	4%	159	29%	34	6%	6	1%	72	13%	3	1%			552	100%	
Meeker																					
Felony	31	27%	56	49%	23	20%	1	1%	1	1%			3	3%					115	100%	
Gross Misd.	1	1%	15	14%			69	64%	9	8%			14	13%					108	100%	
Misdemeanor	29	11%	14	5%	4	2%	43	17%	131	50%			39	15%					260	100%	
Juvenile	17	9%	95	52%	14	8%	1	1%	11	6%	31	17%	14	8%					183	100%	
Total	78	12%	180	27%	41	6%	114	17%	152	23%	31	5%	70	11%					666	100%	
Mille Lacs																					
Felony	37	28%	73	56%	15	12%	1	1%					4	3%					130	100%	
Gross Misd.	11	6%	21	11%	2	1%	124	62%	18	9%			22	11%	2	1%			200	100%	
Misdemeanor	39	18%	10	5%	1	0%	139	63%	15	7%			12	5%	3	1%			219	100%	
Juvenile	22	13%	73	43%	5	3%	1	1%	12	7%	20	12%	33	20%	3	2%			169	100%	
Total	109	15%	177	25%	23	3%	265	37%	45	6%	20	3%	71	10%	8	1%			718	100%	
Morrison (CCA)																					
Felony	52	26%	120	60%	25	12%			3	1%			1	0%					201	100%	
Gross Misd.	7	4%	22	14%	1	1%	100	63%	14	9%			15	9%					159	100%	
Misdemeanor	47	20%	24	10%	3	1%	90	39%	36	15%			32	14%	1	0%			233	100%	
Juvenile	13	12%	51	46%	5	4%			10	9%	3	3%	30	27%					112	100%	
Total	119	17%	217	31%	34	5%	190	27%	63	9%	3	0%	78	11%	1	0%			705	100%	
Mower																					
Felony	44	27%	85	52%	30	18%			1	1%			3	2%					163	100%	
Gross Misd.	7	5%	32	23%	2	1%	81	58%	6	4%			12	9%					140	100%	
Misdemeanor	53	18%	39	13%	2	1%	127	43%	46	16%			28	9%					295	100%	
Juvenile	49	27%	71	40%	6	3%	2	1%	4	2%	28	16%	19	11%					179	100%	
Total	153	20%	227	29%	40	5%	210	27%	57	7%	28	4%	62	8%					777	100%	
Murray																					
Felony	2	17%	7	58%	2	17%										1	8%			12	100%
Gross Misd.			2	13%			9	56%	2	13%			3	19%					16	100%	
Misdemeanor	2	18%	1	9%			7	64%	1	9%									11	100%	
Juvenile	4	40%	5	50%									1	10%					10	100%	
Total	8	16%	15	31%	2	4%	16	33%	3	6%			4	8%	1	2%			49	100%	
Nicollet																					
Felony	24	30%	43	54%	10	13%			1	1%			1	1%	1	1%			80	100%	
Gross Misd.	4	4%	13	13%			52	53%	15	15%			15	15%					99	100%	
Misdemeanor	14	6%	10	5%			158	71%	5	2%	3	1%	31	14%					221	100%	
Juvenile	15	13%	59	50%	2	2%	3	3%	7	6%	25	21%	8	7%					119	100%	
Total	57	11%	125	24%	12	2%	213	41%	28	5%	28	5%	55	11%	1	0%			519	100%	
Nobles (CCA)																					
Felony	19	15%	72	56%	23	18%			4	3%			10	8%					128	100%	
Gross Misd.	4	4%	20	18%	2	2%	69	63%	3	3%			11	10%					109	100%	
Misdemeanor	34	10%	99	29%	2	1%	101	29%	78	23%			29	8%					343	100%	
Juvenile	14	14%	45	46%	2	2%	1	1%	2	2%	18	18%	16	16%					98	100%	
Total	71	10%	236	35%	29	4%	171	25%	87	13%	18	3%	66	10%					678	100%	
Norman (CCA)																					
Felony	6	17%	28	80%	1	3%													35	100%	
Gross Misd.	3	8%	3	8%			28	76%	1	3%			2	5%					37	100%	
Misdemeanor	7	21%	6	18%			16	47%	2	6%			3	9%					34	100%	
Juvenile	9	38%	8	33%	1	4%							6	25%					24	100%	
Total	25	19%	45	35%	2	2%	44	34%	3	2%			11	8%					130	100%	

	Person		Property		Drug		DWI		Traffic (excl. DWI)		Juv. Status Offenses		Other		Unknown/NA		Total	
	n	%	n	%	n	%	n	%	n	%	n	%	n	%	n	%	n	%
Olmsted (CCA)																		
Felony	168	36%	171	36%	74	16%	9	2%					10	2%	40	8%	472	100%
Gross Misd.	36	11%	32	10%	2	1%	209	65%	18	6%			24	7%	3	1%	324	100%
Misdemeanor	91	29%	16	5%	4	1%	147	47%	15	5%			40	13%			313	100%
Juvenile	98	30%	169	52%	3	1%	5	2%	3	1%	2	1%	38	12%	7	2%	325	100%
Total	393	27%	388	27%	83	6%	370	26%	36	3%	2	0%	112	8%	50	3%	1434	100%
Otter Tail																		
Felony	68	23%	183	62%	32	11%	1	0%	3	1%			7	2%	2	1%	296	100%
Gross Misd.	15	27%	12	22%			19	35%	2	4%			7	13%			55	100%
Misdemeanor	33	43%	11	14%	1	1%	12	16%	5	7%			14	18%			76	100%
Juvenile	29	20%	69	49%	9	6%			5	4%	15	11%	15	11%			142	100%
Total	145	25%	275	48%	42	7%	32	6%	15	3%	15	3%	43	8%	2	0%	569	100%
Pennington																		
Felony	19	19%	52	53%	26	26%							2	2%			99	100%
Gross Misd.	2	40%	1	20%	1	20%	1	20%									5	100%
Misdemeanor																		
Juvenile	6	12%	32	65%	1	2%			1	2%	2	4%	7	14%			49	100%
Total	27	18%	85	56%	28	18%	1	1%	1	1%	2	1%	9	6%			153	100%
Pine																		
Felony	42	24%	106	60%	26	15%	1	1%					2	1%			177	100%
Gross Misd.	9	5%	13	8%			86	52%	13	8%			45	27%			166	100%
Misdemeanor	68	14%	31	6%	3	1%	205	42%	138	28%			48	10%			493	100%
Juvenile	25	22%	53	47%	8	7%	1	1%	8	7%	7	6%	11	10%			113	100%
Total	144	15%	203	21%	37	4%	293	31%	159	17%	7	1%	106	11%			949	100%
Pipestone																		
Felony	4	15%	13	50%	7	27%			1	4%			1	4%			26	100%
Gross Misd.			3	14%			12	55%	1	5%			6	27%			22	100%
Misdemeanor	4	33%	1	8%			3	25%	2	17%			1	8%	1	8%	12	100%
Juvenile	4	18%	13	59%	1	5%			1	5%			3	14%			22	100%
Total	12	15%	30	37%	8	10%	15	18%	5	6%			11	13%	1	1%	82	100%
Polk (CCA)																		
Felony	126	29%	209	48%	74	17%			4	1%			22	5%			435	100%
Gross Misd.	21	10%	27	13%			116	57%	7	3%			34	17%			205	100%
Misdemeanor	28	32%	4	5%			44	50%	2	2%			10	11%			88	100%
Juvenile	38	29%	59	45%	1	1%	1	1%	1	1%	4	3%	28	21%			132	100%
Total	213	25%	299	35%	75	9%	161	19%	14	2%	4	0%	94	11%			860	100%
Pope																		
Felony	11	52%	6	29%	4	19%											21	100%
Gross Misd.	4	8%	11	22%			33	65%	2	4%			1	2%			51	100%
Misdemeanor	21	19%	1	1%			54	48%	19	17%			18	16%			113	100%
Juvenile	4	13%	16	52%	2	6%					7	23%	2	6%			31	100%
Total	40	19%	34	16%	6	3%	87	40%	21	10%	7	3%	21	10%			216	100%
Ramsey (CCA)																		
Felony	1117	23%	1978	42%	1432	30%	2	0%	33	1%			200	4%	1	0%	4763	100%
Gross Misd.	155	8%	248	13%	3	0%	1119	59%	103	5%			275	14%	1	0%	1904	100%
Misdemeanor	971	19%	560	11%	41	1%	1918	38%	919	18%			686	13%	8	0%	5103	100%
Juvenile	315	21%	539	37%	68	5%	1	0%	3	0%	233	16%	316	21%			1475	100%
Total	2558	19%	3325	25%	1544	12%	3040	23%	1058	8%	233	2%	1477	11%	10	0%	13245	100%
Red Lake (CCA)																		
Felony	8	31%	12	46%	5	19%							1	4%			26	100%
Gross Misd.	1	14%	4	57%			2	29%									7	100%
Misdemeanor	1	20%	1	20%			1	20%	1	20%			1	20%			5	100%
Juvenile	2	25%	2	25%									4	50%			8	100%
Total	12	26%	19	41%	5	11%	3	7%	1	2%			6	13%			46	100%

	Person		Property		Drug		DWI		Traffic (excl. DWI)		Juv. Status Offenses		Other		Unknown/NA		Total	
	n	%	n	%	n	%	n	%	n	%	n	%	n	%	n	%	n	%
Redwood																		
Felony	22	31%	32	46%	10	14%			2	3%			3	4%	1	1%	70	100%
Gross Misd.	8	12%	9	13%			38	55%	3	4%			11	16%			69	100%
Misdemeanor	15	16%	4	4%			46	49%	5	5%			21	22%	3	3%	94	100%
Juvenile	19	19%	54	53%			1	1%	2	2%	2	2%	24	24%			102	100%
Total	64	19%	99	30%	10	3%	85	25%	12	4%	2	1%	59	18%	4	1%	335	100%
Renville																		
Felony	12	24%	22	45%	11	22%							4	8%			49	100%
Gross Misd.	1	1%	3	4%			46	65%	14	20%			7	10%			71	100%
Misdemeanor	7	6%	6	5%			88	71%	10	8%			12	10%	1	1%	124	100%
Juvenile	7	30%	9	39%							2	9%	5	22%			23	100%
Total	27	10%	40	15%	11	4%	134	50%	24	9%	2	1%	28	10%	1	0%	267	100%
Rice (CCA)																		
Felony	65	25%	117	44%	49	18%			5	2%			27	10%	2	1%	265	100%
Gross Misd.	8	4%	23	12%	1	1%	121	63%	23	12%			13	7%	2	1%	191	100%
Misdemeanor	38	17%	26	12%	1	0%	109	49%	13	6%			35	16%	1	0%	223	100%
Juvenile	36	16%	128	55%	12	5%	3	1%	6	3%	4	2%	43	19%			232	100%
Total	147	16%	294	32%	63	7%	233	26%	47	5%	4	0%	118	13%	5	1%	911	100%
Rock (CCA)																		
Felony	3	18%	8	47%	5	29%							1	6%			17	100%
Gross Misd.	2	8%	6	23%			12	46%	1	4%			5	19%			26	100%
Misdemeanor	2	3%	13	20%			25	39%	18	28%			6	9%			64	100%
Juvenile	8	32%	14	56%			1	4%			1	4%	1	4%			25	100%
Total	15	11%	41	31%	5	4%	38	29%	19	14%	1	1%	13	10%			132	100%
Roseau																		
Felony	22	28%	34	43%	21	26%	1	1%					2	3%			80	100%
Gross Misd.	2	15%	5	38%	1	8%	3	23%	2	15%							13	100%
Misdemeanor																		
Juvenile	10	10%	26	27%	2	2%			10	10%	12	12%	38	39%			98	100%
Total	34	18%	65	34%	24	13%	4	2%	12	6%	12	6%	40	21%			191	100%
Scott																		
Felony	65	23%	134	48%	67	24%			2	1%			9	3%			277	100%
Gross Misd.	41	7%	60	10%	1	0%	331	56%	96	16%			59	10%			588	100%
Misdemeanor	101	12%	71	9%	4	0%	382	46%	173	21%			102	12%			833	100%
Juvenile	32	12%	119	46%	9	3%	6	2%	2	1%	64	25%	15	6%	11	4%	258	100%
Total	239	12%	384	20%	81	4%	719	37%	273	14%	64	3%	185	9%	11	1%	1956	100%
Sherburne																		
Felony	42	20%	113	55%	34	16%	1	0%	5	2%			12	6%			207	100%
Gross Misd.	18	6%	13	4%			251	79%	17	5%			17	5%			316	100%
Misdemeanor	100	23%	51	12%			182	43%	50	12%			43	10%			426	100%
Juvenile	45	15%	100	33%					1	0%	109	36%	45	15%			300	100%
Total	205	16%	277	22%	34	3%	434	35%	73	6%	109	9%	117	9%			1249	100%
Sibley																		
Felony	13	21%	35	56%	7	11%	2	3%	1	2%			3	5%	1	2%	62	100%
Gross Misd.			3	8%			29	81%	1	3%			3	8%			36	100%
Misdemeanor	8	15%	2	4%			34	64%	3	6%			5	9%	1	2%	53	100%
Juvenile	3	5%	22	39%	3	5%	2	4%	2	4%	4	7%	21	37%			57	100%
Total	24	12%	62	30%	10	5%	67	32%	7	3%	4	2%	32	15%	2	1%	208	100%
St. Louis (CCA)																		
Felony	359	33%	475	43%	171	16%	8	1%	31	3%			48	4%			1092	100%
Gross Misd.	82	10%	55	7%	3	0%	497	60%	69	8%			127	15%			833	100%
Misdemeanor	285	15%	102	5%	19	1%	837	44%	242	13%	89	5%	331	17%	9	0%	1914	100%
Juvenile	160	22%	262	37%	32	4%	3	0%	33	5%	133	19%	93	13%			716	100%
Total	886	19%	894	20%	225	5%	1345	30%	375	8%	222	5%	599	13%	9	0%	4555	100%

	Person		Property		Drug		DWI		Traffic (excl. DWI)		Juv. Status Offenses		Other		Unknown/NA		Total	
	n	%	n	%	n	%	n	%	n	%	n	%	n	%	n	%	n	%
Stearns (CCA)																		
Felony	171	27%	369	58%	75	12%			15	2%			8	1%	1	0%	639	100%
Gross Misd.	38	9%	34	8%	1	0%	296	66%	30	7%			47	11%			446	100%
Misdemeanor	135	16%	59	7%	14	2%	428	52%	52	6%			133	16%			821	100%
Juvenile	74	25%	140	46%	3	1%	8	3%	20	7%	11	4%	46	15%			302	100%
Total	418	19%	602	27%	93	4%	732	33%	117	5%	11	0%	234	11%	1	0%	2208	100%
Steele																		
Felony	29	33%	40	45%	16	18%			2	2%			2	2%			89	100%
Gross Misd.	16	9%	69	41%	2	1%	52	31%	22	13%			8	5%			169	100%
Misdemeanor	32	10%	70	21%			131	39%	66	20%			27	8%	7	2%	333	100%
Juvenile	23	21%	50	45%	1	1%	7	6%	4	4%	17	15%	9	8%			111	100%
Total	100	14%	229	33%	19	3%	190	27%	94	13%	17	2%	46	7%	7	1%	702	100%
Stevens																		
Felony	7	23%	16	53%	5	17%							1	3%	1	3%	30	100%
Gross Misd.			3	13%			16	70%	1	4%			3	13%			23	100%
Misdemeanor			1	3%			21	68%	3	10%			6	19%			31	100%
Juvenile	2	4%	11	19%	3	5%	2	4%	2	4%	31	54%	6	11%			57	100%
Total	9	6%	31	22%	8	6%	39	28%	6	4%	31	22%	16	11%	1	1%	141	100%
Swift (CCA)																		
Felony	5	33%	7	47%	2	13%			1	7%							15	100%
Gross Misd.	2	7%	3	11%			16	59%					6	22%			27	100%
Misdemeanor	3	5%	3	5%			34	56%	11	18%	2	3%	8	13%			61	100%
Juvenile	1	3%	21	66%					4	13%	5	16%	1	3%			32	100%
Total	11	8%	34	25%	2	1%	50	37%	16	12%	7	5%	15	11%			135	100%
Todd (CCA)																		
Felony	41	36%	59	52%	12	11%							2	2%			114	100%
Gross Misd.	9	10%	9	10%			60	66%	3	3%			10	11%			91	100%
Misdemeanor	7	23%					18	58%	3	10%			3	10%			31	100%
Juvenile	13	25%	15	29%	2	4%	1	2%	3	6%	12	24%	5	10%			51	100%
Total	70	24%	83	29%	14	5%	79	28%	9	3%	12	4%	20	7%			287	100%
Traverse																		
Felony	1	33%	2	67%													3	100%
Gross Misd.			3	21%			8	57%	1	7%			2	14%			14	100%
Misdemeanor			8	40%			10	50%					2	10%			20	100%
Juvenile	4	17%	6	26%							11	48%	2	9%			23	100%
Total	5	8%	19	32%			18	30%	1	2%	11	18%	6	10%			60	100%
Wabasha																		
Felony	9	39%	11	48%	1	4%							2	9%			23	100%
Gross Misd.	5	8%	8	12%			48	74%	1	2%			3	5%			65	100%
Misdemeanor	43	22%	23	12%	6	3%	95	49%	15	8%			10	5%			192	100%
Juvenile	7	16%	24	56%			1	2%			10	23%	1	2%			43	100%
Total	64	20%	66	20%	7	2%	144	45%	16	5%	10	3%	16	5%			323	100%
Wadena (CCA)																		
Felony	29	28%	65	63%	7	7%	2	2%					1	1%			104	100%
Gross Misd.	5	29%	3	18%			9	53%									17	100%
Misdemeanor	7	39%	5	28%			1	6%	1	6%	1	6%	3	17%			18	100%
Juvenile	7	20%	21	60%	2	6%	1	3%	1	3%	1	3%	2	6%			35	100%
Total	48	28%	94	54%	9	5%	13	7%	2	1%	2	1%	6	3%			174	100%
Waseca																		
Felony	13	31%	19	45%	2	5%			4	10%			4	10%			42	100%
Gross Misd.	4	9%	9	20%	1	2%	28	61%					4	9%			46	100%
Misdemeanor	10	11%	3	3%	51	58%			7	8%	7	8%	10	11%			88	100%
Juvenile	5	11%	29	62%			1	2%			7	15%	5	11%			47	100%
Total	32	14%	60	27%	54	24%	29	13%	11	5%	14	6%	23	10%			223	100%

	Person		Property		Drug		DWI		Traffic (excl. DWI)		Juv. Status Offenses		Other		Unknown/NA		Total		
	n	%	n	%	n	%	n	%	n	%	n	%	n	%	n	%	n	%	
Washington (CCA)																			
Felony	188	24%	336	43%	195	25%	1	0%	17	2%			40	5%				777	100%
Gross Misd.	27	3%	51	7%	1	0%	549	70%	67	9%			84	11%				779	100%
Misdemeanor	297	9%	296	9%	51	2%	1543	47%	837	26%	17	1%	215	7%	1	0%		3257	100%
Juvenile	73	22%	105	31%	10	3%	11	3%	46	14%	47	14%	44	13%				336	100%
Total	585	11%	788	15%	257	5%	2104	41%	967	19%	64	1%	383	7%	1	0%		5149	100%
Watsonwan																			
Felony	14	22%	32	51%	12	19%	1	2%					4	6%				63	100%
Gross Misd.	3	8%	7	18%	1	3%	16	41%	2	5%			10	26%				39	100%
Misdemeanor	6	6%	3	3%			59	61%	19	20%			10	10%				97	100%
Juvenile	12	16%	32	42%			1	1%	9	12%	1	1%	20	26%	1	1%		76	100%
Total	35	13%	74	27%	13	5%	77	28%	30	11%	1	0%	44	16%	1	0%		275	100%
Wilkin																			
Felony	4	17%	13	57%	5	22%			1	4%								23	100%
Gross Misd.			4	17%			15	65%					4	17%				23	100%
Misdemeanor	3	38%	1	13%			3	38%					1	13%				8	100%
Juvenile	5	8%	22	35%			3	5%	1	2%	15	24%	16	26%				62	100%
Total	12	10%	40	34%	5	4%	21	18%	2	2%	15	13%	21	18%				116	100%
Winona																			
Felony	39	22%	93	53%	31	18%			3	2%			9	5%	2	1%		177	100%
Gross Misd.	17	15%	14	12%	7	6%	61	53%	5	4%			12	10%				116	100%
Misdemeanor	44	15%	83	28%	18	6%	79	27%	59	20%			11	4%				294	100%
Juvenile	22	10%	89	41%	10	5%			22	10%	58	27%	14	7%				215	100%
Total	122	15%	279	35%	66	8%	140	17%	89	11%	58	7%	46	6%	2	0%		802	100%
Wright																			
Felony	67	20%	178	53%	79	24%			3	1%			5	2%	1	0%		333	100%
Gross Misd.	64	12%	63	12%	3	1%	310	58%	50	9%			47	9%				537	100%
Misdemeanor	199	24%	48	6%	9	1%	331	40%	89	11%	43	5%	113	14%				832	100%
Juvenile	83	19%	177	41%	18	4%			28	6%	73	17%	57	13%				436	100%
Total	413	19%	466	22%	109	5%	641	30%	170	8%	116	5%	222	10%	1	0%		2138	100%
Yellow Medicine (CCA)																			
Felony	4	15%	16	62%	6	23%												26	100%
Gross Misd.	1	3%	4	10%			27	68%					8	20%				40	100%
Misdemeanor	16	19%	1	1%	1	1%	48	56%	13	15%			5	6%	1	1%		85	100%
Juvenile	1	5%	10	45%					2	9%	4	18%	5	23%				22	100%
Total	22	13%	31	18%	7	4%	75	43%	15	9%	4	2%	18	10%	1	1%		173	100%

	Person		Property		Drug		DWI		Traffic (excl. DWI)		Juv. Status Offenses		Other		Unknown/NA		Total	
	n	%	n	%	n	%	n	%	n	%	n	%	n	%	n	%	n	%
Adult state agents																		
Felony	1484	24%	3252	53%	1076	18%	15	0%	96	2%			186	3%	25	0%	6134	100%
Gross Misd.	116	11%	248	23%	16	2%	353	33%	115	11%			206	19%	3	0%	1057	100%
Misdemeanor	39	19%	32	16%	4	2%	72	35%	23	11%			33	16%	2	1%	205	100%
Juvenile																		
Total	1639	22%	3532	48%	1096	15%	440	6%	234	3%			425	6%	30	0%	7396	100%
CCA agents																		
Felony	5198	24%	9772	46%	4633	22%	75	0%	246	1%			1238	6%	60	0%	21222	100%
Gross Misd.	1005	7%	1407	10%	71	0%	9232	63%	861	6%			1443	10%	665	5%	14684	100%
Misdemeanor	4076	13%	2231	7%	250	1%	13837	46%	3916	13%	161	1%	3384	11%	2432	8%	30287	100%
Juvenile	2098	22%	4019	43%	336	4%	63	1%	266	3%	1126	12%	1519	16%	25	0%	9452	100%
Total	12377	16%	17429	23%	5290	7%	23207	31%	5289	7%	1287	2%	7584	10%	3182	4%	75645	100%
Contract agents																		
Felony																		
Gross Misd.	56	7%	131	15%	2	0%	473	55%	55	6%			124	15%	12	1%	853	100%
Misdemeanor	166	14%	162	14%	4	0%	548	46%	165	14%	1	0%	133	11%	12	1%	1191	100%
Juvenile	287	15%	917	48%	33	2%	15	1%	94	5%	116	6%	444	23%	12	1%	1918	100%
Total	509	13%	1210	31%	39	1%	1036	26%	314	8%	117	3%	701	18%	36	1%	3962	100%
Non-CCA co. agents																		
Felony	2	12%	8	47%	2	12%	1	6%					4	24%			17	100%
Gross Misd.	278	7%	406	10%	33	1%	2606	63%	380	9%			436	11%	3	0%	4142	100%
Misdemeanor	1281	16%	789	10%	133	2%	3462	42%	1497	18%	73	1%	991	12%	21	0%	8247	100%
Juvenile	771	17%	1875	42%	179	4%	53	1%	254	6%	820	18%	485	11%	28	1%	4465	100%
Total	2332	14%	3078	18%	347	2%	6122	36%	2131	13%	893	5%	1916	11%	52	0%	16871	100%
CCA counties																		
Felony	5198	24%	9772	46%	4633	22%	75	0%	246	1%			1238	6%	60	0%	21222	100%
Gross Misd.	1005	7%	1407	10%	71	0%	9232	63%	861	6%			1443	10%	665	5%	14684	100%
Misdemeanor	4076	13%	2231	7%	250	1%	13837	46%	3916	13%	161	1%	3384	11%	2432	8%	30287	100%
Juvenile	2098	22%	4019	43%	336	4%	63	1%	266	3%	1126	12%	1519	16%	25	0%	9452	100%
Total	12377	16%	17429	23%	5290	7%	23207	31%	5289	7%	1287	2%	7584	10%	3182	4%	75645	100%
Non-CCA counties																		
Felony	1486	24%	3260	53%	1078	18%	16	0%	96	2%			190	3%	25	0%	6151	100%
Gross Misd.	450	7%	785	13%	51	1%	3432	57%	550	9%			766	13%	18	0%	6052	100%
Misdemeanor	1486	15%	983	10%	141	1%	4082	42%	1685	17%	74	1%	1157	12%	35	0%	9643	100%
Juvenile	1058	17%	2792	44%	212	3%	68	1%	348	5%	936	15%	929	15%	40	1%	6383	100%
Total	4480	16%	7820	28%	1482	5%	7598	27%	2679	9%	1010	4%	3042	11%	118	0%	28229	100%
Twin Cities metropolitan area (7 counties)																		
Felony	3965	24%	7579	45%	3965	24%	48	0%	182	1%			1044	6%	5	0%	16788	100%
Gross Misd.	782	7%	1016	9%	29	0%	7465	63%	766	6%			1157	10%	658	6%	11873	100%
Misdemeanor	3413	14%	1716	7%	138	1%	11423	45%	3295	13%	52	0%	2711	11%	2416	10%	25164	100%
Juvenile	1565	23%	2792	42%	229	3%	29	0%	122	2%	868	13%	1068	16%	24	0%	6697	100%
Total	9725	16%	13103	22%	4361	7%	18965	31%	4365	7%	920	2%	5980	10%	3103	5%	60522	100%
Non-metro counties																		
Felony	2719	26%	5453	52%	1746	16%	43	0%	160	2%			384	4%	80	1%	10585	100%
Gross Misd.	673	8%	1176	13%	93	1%	5199	59%	645	7%			1052	12%	25	0%	8863	100%
Misdemeanor	2149	15%	1498	10%	253	2%	6496	44%	2306	16%	183	1%	1830	12%	51	0%	14766	100%
Juvenile	1591	17%	4019	44%	319	3%	102	1%	492	5%	1194	13%	1380	15%	41	0%	9138	100%
Total	7132	16%	12146	28%	2411	6%	11840	27%	3603	8%	1377	3%	4646	11%	197	0%	43352	100%
Minnesota																		
Felony	6684	24%	13032	48%	5711	21%	91	0%	342	1%			1428	5%	85	0%	27373	100%
Gross Misd.	1455	7%	2192	11%	122	1%	12664	61%	1411	7%			2209	11%	683	3%	20736	100%
Misdemeanor	5562	14%	3214	8%	391	1%	17919	45%	5601	14%	235	1%	4541	11%	2467	6%	39930	100%
Juvenile	3156	20%	6811	43%	548	3%	131	1%	614	4%	2062	13%	2448	15%	65	0%	15835	100%
Total	16857	16%	25249	24%	6772	7%	30805	30%	7968	8%	2297	2%	10626	10%	3300	3%	103874	100%

Source: 1996 Minnesota Department of Corrections probation survey data

Appendix D

December 31, 1996 supervised release, parole, and ICS population by county

Demographics of 12/31/96 supervised release/parole/ICS population

	Adult		Juvenile	
	n	%	n	%
12/31/96 population	2031	100%	283	100%
Supervised release	1578	78%		
Parole (1)	295	15%	283	100%
ICS/CIP community supervision (2)	158	8%		
Male	1846	91%	268	95%
Female	185	9%	15	5%
White	1197	59%	177	63%
Black	605	30%	46	16%
Hispanic	87	4%	12	4%
American Indian	103	5%	35	12%
Other	37	2%	13	5%
Unknown	2	0%		
Arson	20	1%		
Assault	257	13%	49	17%
Burglary	255	13%	48	17%
Crime Against Family	7	0%		
Crime Against Administration of Justice	10	0%	3	1%
Crime Against Government	2	0%		
Criminal Sexual Conduct	327	16%	27	10%
Disturbing Peace/Privacy	5	0%	2	1%
Drugs	388	19%	11	4%
DWI (3)	1	0%		
Escape/Flight	26	1%	2	1%
Forgery/Counterfeiting	51	3%	3	1%
Gambling				
Homicide	167	8%	1	0%
Juvenile Status Offenses (4)			16	6%
Kidnapping/False Imprisonment	19	1%	3	1%
Obscenity				
Property Damage	10	0%	11	4%
Robbery	177	9%	14	5%
Sex Related	18	1%		
Stolen Property	36	2%	9	3%
Theft	87	4%	16	6%
Theft Related	55	3%	2	1%
Traffic—excluding DWI (3)	35	2%	1	0%
Vehicle Theft	43	2%	46	16%
Weapons	21	1%	19	7%
Other	5	0%		
Unknown/NA	9	0%		
Person	947	47%	94	33%
Property	557	27%	135	48%
Drug	388	19%	11	4%
DWI (3)	1	0%		
Traffic—excluding DWI (3)	35	2%	1	0%
Juvenile Status Offenses (4)			16	6%
Other	94	5%	26	9%
Unknown/NA	9	0%		

NOTES:

- (1) Includes 265 adult and 17 juvenile parolees transferred to Minnesota from other states under the Interstate Compact.
- (2) I.e., the programs described in Minnesota Statutes 244.12-244.15 and 244.17-244.172.
- (3) The DWI offender was received from another state under the Interstate Compact. Many of the "Traffic—excluding DWI" offenses resulted in death or bodily harm of a victim.
- (4) The juveniles in this category are all interstate parole cases transferred to Minnesota from other states.

December 31, 1996 supervised release/parole/ICS population by county

	Adult Parole	Supervised Release	ICS	Juvenile Parole		Adult Parole	Supervised Release	ICS	Juvenile Parole
Aitkin		3			Mille Lacs	1	14	2	12
Anoka	7	65	11	2	Morrison	2	6	1	
Becker	2	9		1	Mower	1	10	1	2
Beltrami	1	15	3	6	Murray	1			1
Benton	2	2		2	Nicollet		22		7
Big Stone		1			Nobles	4	4	1	2
Blue Earth	4	26	1	4	Norman				
Brown		2		2	Olmsted	3	25	1	6
Carlton	3	14	1	1	Otter Tail		12	1	9
Carver	3	8	1	7	Pennington	1	1		1
Cass	2	24		6	Pine	4	19	1	4
Chippewa		4			Pipestone		2		1
Chisago	3	5		4	Polk	6	7	2	
Clay	3	6	2	1	Pope		2		
Clearwater		3			Ramsey	50	347	31	25
Cook					Red Lake		1		
Cottonwood		2	1		Redwood	1	3		3
Crow Wing	2	20	2	2	Renville	1	1		1
Dakota	11	40	6	6	Rice		7		11
Dodge	1	3			Rock				
Douglas	1	5	2	1	Roseau		2		
Faribault		1	1	4	St. Louis	17	67	1	9
Fillmore		2			Scott	4	5		2
Freeborn	2	5		1	Sherburne	2	12	3	3
Goodhue		3		3	Sibley		2	1	
Grant		1			Stearns	2	39	6	8
Hennepin	114	541	67	64	Steele	2	10		2
Houston		1		1	Stevens				1
Hubbard	1	3	1	2	Swift		1		
Isanti	1	12		4	Todd		5		
Itasca	1	14	2	8	Traverse				
Jackson	1	1			Wabasha		5		
Kanabec	1	1		1	Wadena	1	4		
Kandiyohi	4	16			Waseca	1	1		
Kittson		1			Washington	10	23	3	3
Koochiching	1	2	1		Watsonwan		1		
Lac Qui Parle		1		1	Wilkin				2
Lake		2			Winona	1	3		10
Lake of the Woods	1	1			Wright	2	16		4
Le Sueur	1	5		2	Yellow Medicine		1	1	1
Lincoln		3		1					
Lyon	1	5		3	CCA counties	242	1276	136	145
McLeod	1	2		4	Non-CCA counties	53	302	22	138
Mahnomen		2							
Marshall					T.C. Metro (7 counties)	199	1029	119	109
Martin	3	12		4	Non-metro counties	96	549	39	174
Meeker		4		5					
					Grand Total	295	1578	158	283

Appendix E

Adult and juvenile pretrial diversion

Adult and juvenile pretrial diversion—one-day counts reported on county attorney reports

	Adult	Juvenile		Adult	Juvenile
Aitkin (CCA)		0	McLeod		20
Anoka (CCA)	116	N/A	Meeker		13
Becker		14	Mille Lacs		21
Beltrami		33	Morrison (CCA)	26	10
Benton		25	Mower		
Big Stone		0	Murray		
Blue Earth (CCA)	10	71	Nicollet		20
Brown		29	Nobles (CCA)		64
Carlton (CCA)	7	17	Norman (CCA)		0
Carver		35	Olmsted (CCA)		120
Cass		13	Otter Tail		N/A
Chippewa (CCA)	0	9	Pennington		9
Chisago		12	Pine		27
Clay		5	Pipestone		N/A
Clearwater		7	Polk (CCA)	4	26
Cook (CCA)	0	0	Pope		
Cottonwood		4	Ramsey (CCA)	376	443
Crow Wing (CCA)		0	Red Lake (CCA)		
Dakota (CCA)	125	27	Redwood		8
Dodge (CCA)		2	Renville		0
Douglas		5	Rice (CCA)	3	166
Faribault		23	Rock (CCA)	10	29
Fillmore (CCA)	14	5	Roseau		15
Freeborn		45	Scott		76
Goodhue		20	Sherburne		57
Grant		0	Sibley		13
Hennepin (CCA)	1226	310	St. Louis (CCA)	24	
Houston		44	Stearns (CCA)	377	126
Hubbard		6	Steele		7
Isanti		16	Stevens		0
Itasca		16	Swift (CCA)	0	
Jackson		6	Todd (CCA)	0	2
Kanabec		23	Traverse		
Kandiyohi (CCA)	7	12	Wabasha		
Kittson		3	Wadena (CCA)	0	29
Koochiching (CCA)	5	15	Waseca		22
Lac Qui Parle (CCA)	0	4	Washington (CCA)	66	75
Lake (CCA)			Watsonwan		5
Lake of the Woods		9	Wilkin		0
Le Sueur		25	Winona		15
Lincoln		6	Wright		132
Lyon		47	Yellow Medicine (CCA)	0	9
Mahnomen		0			
Marshall		1	Total	2396	2515
Martin		12			

Notes:

"Adult" column: Number of individuals participating in the county's adult pretrial diversion program on December 31, 1996. (In a few instances a county reported the population on some other date, such as November 30, 1996.) Note that only Community Corrections Act (CCA) counties are expected to report this data, so non-CCA counties are blank, as well as CCA counties for which the county attorney had not submitted a report by the time the Probation Survey report was prepared. A zero is shown in cases where the county attorney submitted a report, but the county had no adults in pretrial diversion at year-end.

"Juvenile" column. Number of individuals participating in the county's juvenile pretrial diversion program on December 31, 1995. A zero is shown in cases where the county attorney submitted a report, but the county had no juveniles in pretrial diversion at year-end. N/A indicates that information was not provided for this item or the item was deemed not applicable, even though the county attorney did submit a report. A blank indicates that the county attorney did not submit a report.

Appendix F

Court Services in Minnesota

