

LEGISLATIVE REFERENCE LIBRARY



3 0307 00013 4703

School District

Profiles

LB
2817
.S38
1992/93
c.2

MDE
MINNESOTA DEPARTMENT OF
EDUCATION

1992-93

January, 1995

Linda Powell, Commissioner of Education

This document was prepared and published by staff of the Data Management and Education Funding Teams,
Minnesota Department of Education, 845 Capitol Square Building, St. Paul, Minnesota 55101.

ERATA SHEET

Column 35, *Change in Funds Balance*, is incorrect for the following recently consolidated school districts (as well as the total state).

<u>District Number</u>	<u>District Name</u>	<u>Correct Value</u>
2071	Lake Crystal-Wellcome Memorial	112
2174	Pine River-Backus	11
2125	Triton	(184)
2805	Zumbrota-Mazappa	243
2354	Kittson Central	(202)
2358	Karlstad-Strandquist	66
2397	LeSueur-Henderson	(9)
2536	Granada- Huntley	447
2448	Martin County	(185)
2527	Halstad-Hendrum	38
2580	East Central	(385)
2609	Winn-E-Mac	(236)
2534	Bird Island-Olivia	245
2711	Mesabi East	(173)
2365	GFW	148
2835	Janesville-Waldorf	(60)
State	Minnesota	(30)

TABLE OF CONTENTS

Introduction.....	1
UFARS Sources of Expenditure Data.....	4
Trends and Patterns.....	5
Definitions.....	13
List of School Districts.....	17
Map - Minnesota Counties and Development Regions.....	21

STATISTICAL TABLES

Data for School Districts.....	22
Data for Counties, Development Regions, and the State.....	44
Data for Enrollment Size Groups.....	50
Summary Statistics.....	52

School District Profiles, 1992-93 is MDE's twentieth consecutive annual publication providing interdistrict comparisons in the areas of enrollments, staffing, and finance. Although a number of the definitions have changed somewhat during the period, it is still possible to make useful interdistrict comparisons for a substantial number of years.

Interdistrict Cooperation

Legislation of the late 70's, and early 80's encouraged Minnesota school districts to cooperate in the provision of educational services to students. The aegis for these efforts was two-fold, 1) to ensure that all students receive adequate course offerings, and 2) to make the delivery of these courses more cost-efficient, statewide.

Laws enacted in 1979 and 1983 suspended the requirement that every school district provide educational services for all grades. This allowed districts to enter into agreements with each other for the provision of services for particular grades. More than one hundred districts participated in an ASE or ICA during the 1992-93 school year. Interdistrict Cooperation Agreements (ICA) allow two or more districts to cooperate in providing services for specific grades.

However, only one of the districts may provide service for pupils in grades 10, 11, and 12. Agreements for Secondary Education (ASE) allow a district(s) with fewer than 375 pupils in grades 7-12 to enter into an agreement with another district(s) to provide instruction to its secondary pupils. Districts in these arrangements are noted in parenthesis after the district name by an (ICA) or (ASE), respectively.

In 1992-93 the following districts participated:

ASE:

072	Mapleton
218	Delavan
224	Wells
240	Blue Earth
219	Elmore
240	Blue Earth
2536	Granada-East Chain
460	Granada
225	Winnebago
240	Blue Earth
458	Truman
243	Emmons
245	Glenville
371	Bellingham
062	Ortonville
404	Lake Benton
408	Verdi

413	Marshall
415	Lynd
413	Marshall
417	Tracy
635	Milroy
424	Lester Prairie
427	Winsted
880	Howard Lake
451	Ceylon
454	Fairmont
2448	Martin Co. West
521	Ada
522	Borup
570	Finlayson
573	Hinckley
593	Crookston
599	Fertile
604	Mentor
630	Red Lake Falls
2609	Erskine
611	Cyrus
769	Morris
637	Redwood Falls
652	Morton
892	Clarkfield
893	Echo
894	Granite Falls

INTRODUCTION

ICA:

021	Audubon	325	Lakefield	543	Deer Creek
024	Lake Park	330	Heron Lake	819	Wadena
057	Beardsley	328	Sioux Valley	631	Belview
801	Browns Valley	513	Brewster	648	Danube
072	Mapleton	516	Round Lake	654	Renville
079	Amboy	341	Atwater	655	Sacred Heart
223	Minnesota Lake	464	Grove City	633	Lamberton
126	Clara City	354	Kennedy	638	Sanborn
127	Maynard	2359	Hallock	636	Morgan
346	Raymond	395	Waterville	650	Franklin
140	Taylors Falls	657	Morristown	647	Buffalo Lake
141	Chisago Lakes	402	Hendricks	651	Hector
145	Glyndon-Felton	403	Ivanhoe	669	Magnolia
147	Dilworth	409	Tyler	670	Luverne
158	Gonvick	418	Russell	697	Eveleth
161	Clearbrook	584	Ruthton	699	Gilbert
175	Westbrook	412	Cottonwood	731	Arlington
641	Walnut Grove	896	Wood Lake	732	Gaylord
209	Kensington	421	Brownston	736	Belgrade
265	Hoffman	426	Stewart	737	Brooten
217	Bricelyn	440	Middle River	762	Ellendale
222	Kiester	678	Greenbush	827	New Richland
224	Wells	504	Slayton	789	Clarissa
244	Freeborn	918	Chandler-Lk. Wilson	790	Eagle Bend
236	Wykoff	523	Gary	892	Clarkfield
237	Spring Valley	526	Twin Valley	894	Granite Falls

INTRODUCTION

In addition to ICA's and ASE's, eleven districts were members of a Cooperative Secondary Facility as noted by a CSF in parenthesis after their name. In this arrangement member districts operate a separate school for the secondary pupils of each of the member districts. In 1992-93 the eleven CSF districts were:

128 Milan
218 Delevan
219 Elmore
225 Winnebago
240 Blue Earth
376 Marietta
377 Madison
612 Glenwood
614 Starbuck
615 Villard
784 Appleton

Consolidations

Recent State Board of Education rules mandating more rigorous minimal course offerings, combined with legislative financial inducements, has resulted in a number of school district consolidations in recent years. Between the 1991-92 and the 1992-93 school years twenty-one school districts combined to form nine new districts. These were:

1991-92 (Old)	1992-93 (New)
201 Claremont 202 Dodge Ctr. 205 W. Concord	2125 Triton
114 Backus 117 Pine River	2174 P. River-Backus
649 Fairfax 733 Gibbon 735 Winthrop	2365 G.F.W.
393 LeSueur 734 Henderson	2397 LeSueur-Henderson
456 Sherburne 457 Trimont 459 Welcome	2448 Martin County
646 Bird Island 653 Olivia	2534 Bird Island-Olivia-Lake Lillian
453 East Chain 460 Granada	2536 Granada-Huntley-East Chain
566 Askov 576 Sandstone	2580 East Central
260 Zumbrota 809 Mazeppa	2805 Zumbrota-Mazeppa

For More Information

Copies of School District Profiles, 1992-93 may be purchased from:

Minnesota's Bookstore,
Print Communications Division
117 University Avenue;
St. Paul, Minnesota 55155
Telephone: (612) 297-3000 or
Toll Free: 1-800-657-3757

If you have comments or questions concerning information in this report, or would like further information, please contact:

Minnesota Department of Education
Data Management Team
845 Capitol Square Building
St. Paul, MN 55101
Telephone: (612) 296-2400

For more specific information regarding financial data, please call:

(612) 296-4436

UFARS SOURCES OF EXPENDITURE DATA FOR SCHOOL DISTRICT PROFILES

This table is intended for use by persons who are familiar with the Uniform Financial Accounting and Reporting System (UFARS) and its manual, *Manual for the Uniform Financial Accounting and Reporting System for Minnesota Schools*.

Each of the 16 expenditure categories in Profiles includes all expenditures within a defined set of funds, programs, and objects, as defined in the upper table below.

The lower section of the table summarizes the funds, major program categories, and object categories used for Profiles.

Categories Used in the Report		Funds ¹	Programs ²	Objects ³
18.	District and school administration	1 and 9	1-99	All objects except 500-599 and 910
19.	District support services	1 and 9	100-199	
20.	Regular instruction	1 and 9	200-299	
21.	Vocational instruction	1 and 9	300-399	
22.	Exceptional instruction	1 and 9	400-499	
23.	Instructional support services	1 and 9	600-699	
24.	Pupil support services	1 and 9	700-799	
25.	Operations and maintenance	1 and 9	800-899	
26.	Food service	2	All	
27.	Pupil transportation	3	All	
28.	Other operating programs	1 and 9	0, 500-599, and 900-999	
29.	Total PK-12 operating expenditures (this is the total of categories 18 through 28)	1,2,3, & 9	All	
30.	Community service	4	All	All but 910 and 460 ⁴ 500-599
31.	Capital outlay	5	All	
		1,2,3, & 4	All	
32.	Building construction	6	All	All but 910
33.	Debt service	7	All	All but 910
¹ Funds		² Major Program Categories		³ Objects
1.	General	0	Districtwide (no specific program)	460 Textbooks
2.	Food Service	1-99	District and school administration	500-599 Capital expenditures
3.	Pupil Transportation	100-199	District support services	910 Transfers to other funds
4.	Community Service	200-299	Regular instruction	
5.	Capital Expenditure	300-399	Vocational instruction	
6.	Building Construction	400-499	Exceptional instruction	
7.	Debt Service	500-599	Community services	
9.	Trust and Agency	600-699	Instructional support services	
		700-799	Pupil support services	
		800-899	Sites, buildings, and equipment	
		900-999	Other programs	

⁴ 460 textbook expenditures have been allocated, based on program code, into categories 18-28 to assure valid inter-year comparisons.

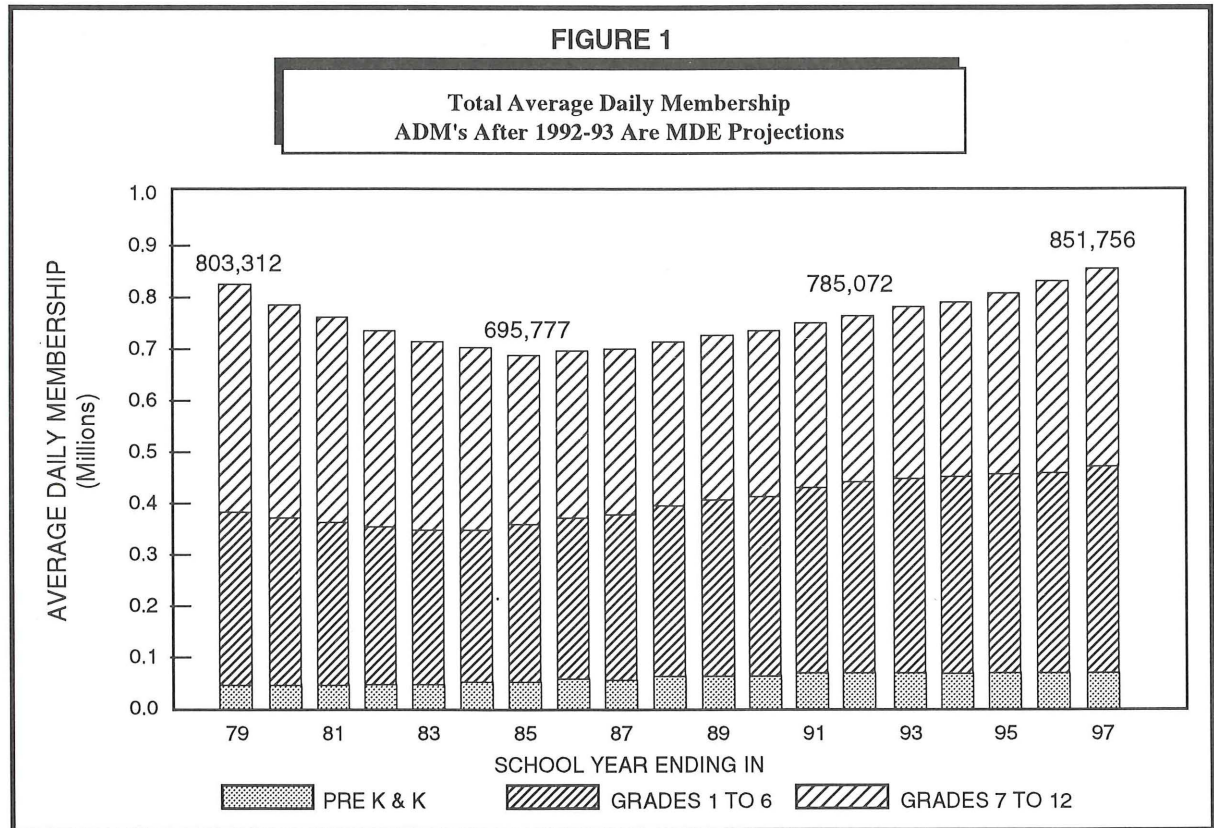
TRENDS AND PATTERNS

Students

The enrollment increases which began in the 1985-86 school year continue as shown in Figure 1. Enrollment in 1991-92 totaled 759,428, a 1.3 percent increase over 1990-91's total of 749,825. The vast majority of the enrollment increases are the result of increased births; secondary enrollments actually decreased until the 1990-91 school year. Elementary and secondary enrollments are then both projected to increase through the 1994-95 school year after which time elementary enrollments are expected to begin to decline. Table 1 indicates that 58.5 percent of Minnesota school districts experienced a decline during the past decade, although during the past seven years total state enrollments have increased.

Minnesota school districts vary greatly in enrollment size. The largest 10 districts, all in metropolitan areas, enrolled over one quarter of Minnesota's public school pupils. Or, as shown in Table 2, the largest ten percent of Minnesota districts enrolled over half of the state's public school pupils.

Minnesota, as well as the rest of the nation, is experiencing a growth in the proportion of its population which are classified as minorities. This growth carries over to school enrollments as seen in Figure 2 and Table 3, the latter



which also shows changes in minority enrollments for the United States. Although Minnesota's minority enrollment percentages are increasing at a significant pace, minorities still constitute a very modest proportion of total Minnesota PK-12 public school enrollments. Further, Minnesota's minority mix is quite different than that of the U.S. as a whole. Blacks constitute approximately half of U.S. minority enrollments, Hispanics an additional

TABLE 1

**Percent Change in Resident ADM
1982-1983 through 1992-1993**

		PERCENT OF DISTRICTS
20	Percent and Greater Growth	12.6%
10-19	Percent Growth	13.7%
1-9	Percent Growth	20.8%
Less	than 1% Change	3.6%
1-9	Percent Decline	24.4%
10-19	Percent Decline	17.8%
20	Percent and Greater Decline	7.1%

TRENDS AND PATTERNS

TABLE 2

Distribution of Minnesota 1992-93 Resident ADM By Ten Enrollment Size Groups

GROUP NUMBER	SIZE RANGE 1992-93 RESIDENT ADM	NUMBER OF DISTRICTS	TOTAL RESIDENT ADM	PERCENT STATE TOTAL
1	0 - 219	41	6,331	.8
2	220 - 304	42	10,950	1.4
3	305 - 413	43	14,763	1.9
4	414 - 544	41	20,212	2.6
5	545 - 744	42	26,919	3.4
6	745 - 1009	42	35,413	4.5
7	1010 - 1349	40	46,409	6.0
8	1350 - 1999	40	64,961	8.3
9	2000 - 4299	41	119,538	15.3
10	4300 or Higher	42	435,913	55.8
State Totals		414	781,409	100.0

TABLE 3

Percent Minority Enrollments Minnesota and United States

YEAR	NATIVE AMERICAN	BLACK	ASIAN	HISPANIC	TOTAL MINORITY
1983-84					
U. S. A.*	0.9	16.2	2.5	9.1	28.7
Minn.**	1.6	2.3	1.9	0.8	6.6
1989-90					
U. S. A.*	1.0	16.2	3.4	11.5	32.1
Minn.**	1.7	3.3	3.0	1.2	9.2
1992-93					
Minn.**	1.7	3.9	3.3	1.5	10.4

* Source: The Condition of Education, 1993. National Center For Education Statistics.

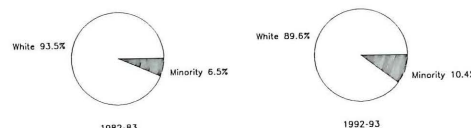
** Includes students enrolled in cooperatives and other Non-Traditional Districts.

one-third, with Asians and Native Americans the remainder (as of 1989-90, the last year for which U.S. data are available). By contrast, Blacks and Asians each constituted approximately one third of Minnesota's minority enrollment with Native Americans a significant 20.7 percent and Hispanics 12.2 percent in the same year. Minnesota's large Asian enrollment is the result of significant immigration of Southeast Asian refugees following the Vietnam war. Native Americans have always been a relatively significant constituent of Minnesota's enrollments.

Figure 3 indicates the number of students from families who received AFDC payments. The percentage of pupils from these families has increased during most of the past decade.

FIGURE 2

Minnesota Percent Minority Enrollments 1982-83 and 1992-93



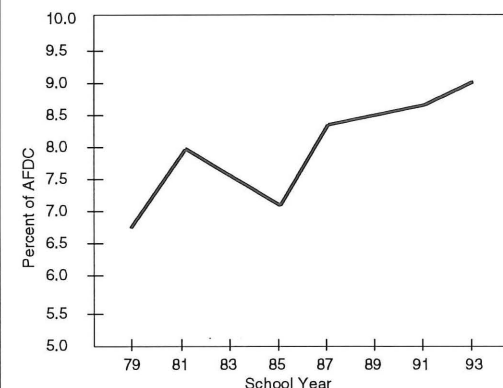
	1982-83	1992-93
White	93.5%	89.6%
Black	2.3%	3.9%
Native Americans	1.5%	1.7%
Hispanic	0.8%	1.5%
Asian	1.9%	3.3%

Instructional Staff

Teachers, and other school and district staff, are the most important input in the educational process. They also constitute the largest operating cost. The numbers of these staff together with their salaries and benefits determine this cost. Figure 4 shows the number of professional staff over the past decade. It further indicates that the number of these staff does not bear a constant relation-

FIGURE 3

AFDC Students as a Percent of ADM 1978-79 through 1992-93



YEAR	% AFDC	YEAR	% AFDC
1978-79	6.80	1986-87	8.30
1980-81	8.04	1988-89	8.37
1982-83	N.A.	1990-91	8.44
1984-85	7.02	1992-93	8.82

TRENDS AND PATTERNS

ship to the number of pupils enrolled. In times of relatively stable budgets, staff tend not to grow or decline as fast as the growth or decline in enrollments. However, in times of budget crises, such as the early 80's, substantial staff

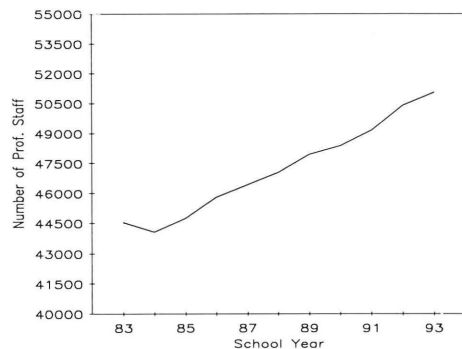
cutbacks caused increases in pupil/staff ratios.

Salaries, the other half of the staff cost equation, have grown significantly during the past decade as indicated by Figure 5 (They remained fairly constant after adjusting for changes in the Consumer Price Index). These salaries are, in turn, the result of salary schedules negotiated between teachers and school boards as well as the experience and

educational attainment of the teacher cadre. During times of enrollment decline, such as the 70's and early 80's, substantial numbers of staff were laid off. These staff were younger, less experienced and had fewer advanced degrees; as a result the staff which remains was, on average, a high cost(salary) staff. Figures 6 and 7 show how the age and educational attainment of Minnesota school teachers have changed during the past decade. It indicates that Minnesota's teacher cadre is older and, on average, better educated than was the case in 1982-83. This would account for some of the increase in salaries over the decade.

FIGURE 4

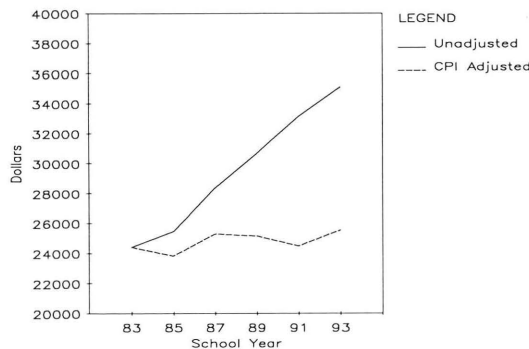
**State Total Professional Staff
1982-83 through 1992-93**



YEAR	STAFF	PUPILS/STAFF
1982-83	44,553	16.0
1983-84	44,044	15.9
1984-85	44,744	15.5
1985-86	45,789	15.2
1986-87	46,425	15.2
1987-88	47,031	15.2
1988-89	47,931	15.0
1989-90	48,372	15.1
1990-91	49,138	15.1
1991-92	50,386	15.0
1992-93	51,042	15.2

FIGURE 5

**Average Minnesota Teachers Salaries
1982-83 through 1992-93**

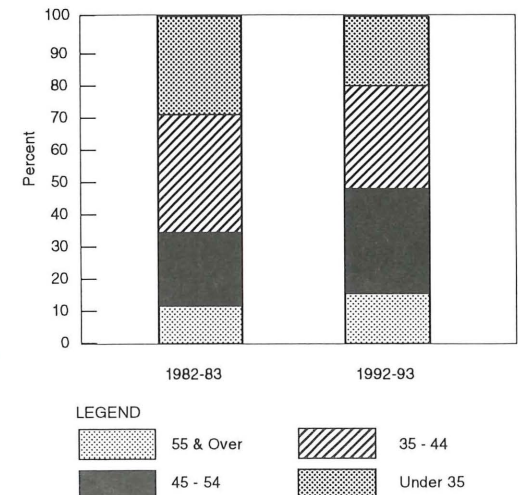


YEAR	UNADJUSTED*	CPI ADJUSTED
1982-83	24,400	24,400
1984-85	25,450	23,807
1986-87	28,340	25,281
1988-89	30,660	25,131
1990-91	33,130	24,468
1992-93	35,093	25,541

*Source: *Rankings of the States*, National Education Association, various annual editions.

FIGURE 6

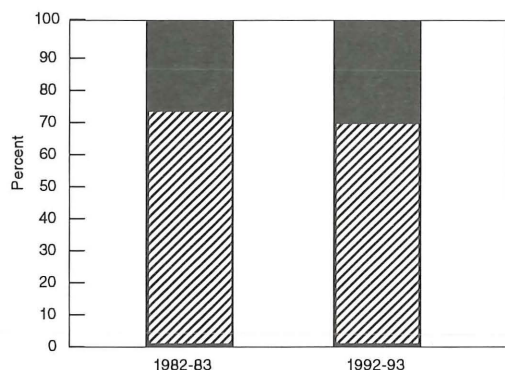
**Age of Classroom Teachers
1982-83 and 1992-93**



TRENDS AND PATTERNS

FIGURE 7

**Distribution of Minnesota Classroom Teachers
By Educational Attainment
1982-83 and 1992-93**



LEGEND



	1982-83	1992-93
BA or Less	73.0%	71.3%
Advanced Degrees	27.0%	28.7%

FINANCIAL

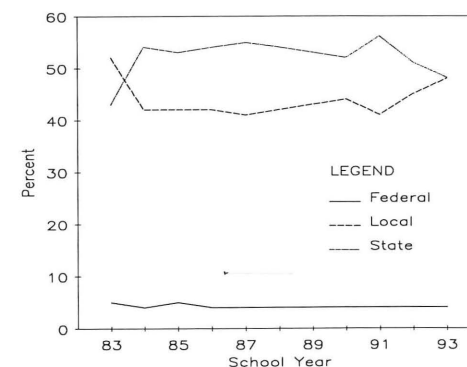
Revenues: Minnesota school revenues come from three sources—state funds, local funds (predominantly property taxes), and Federal funds.

The percentage of revenue received by Minnesota school districts from the three sources remained fairly constant over the past decade until 1991-92, as indicated in Figure 8. The 1991-92 turnaround was the result of state budgetary problems; school districts were required to advance the recognition of certain local levy receipts which effectively shifted the state/local revenue mix.

Minnesota's four percent Federal revenue percentage compares with a national average of approximately 6.0 percent; Federal funds are typically targeted towards specific disadvantaged client populations—groups which are likely underrepresented in the Minnesota population.

FIGURE 8

**Statewide Average Sources of Revenue
(All Funds)
1982-83 through 1992-93**



YEAR	FEDERAL	LOCAL	STATE
1982-83	5%	52%	43%
1983-84	4%	42%	54%
1984-85	5%	42%	53%
1985-86	4%	42%	54%
1986-87	4%	41%	55%
1987-88	4%	42%	54%
1988-89	4%	43%	53%
1989-90	4%	44%	52%
1990-91	4%	41%	56%
1991-92	4%	45%	51%
1992-93	4%	48%	48%

TRENDS AND PATTERNS

One can also examine Minnesota's PK-12 revenues by fund. A fund is a self-contained set of accounts established for the purpose of a specifically defined set of fiscal activities such as Food Service, Debt Redemption etc. Table 4 compares Minnesota school district revenues by the eight UFARS funds for the years 1985-86 and 1992-93. Over that decade, the proportion of revenues allocated to nonoperating funds has grown significantly, largely as a result of growth in Building Construction.

TABLE 4

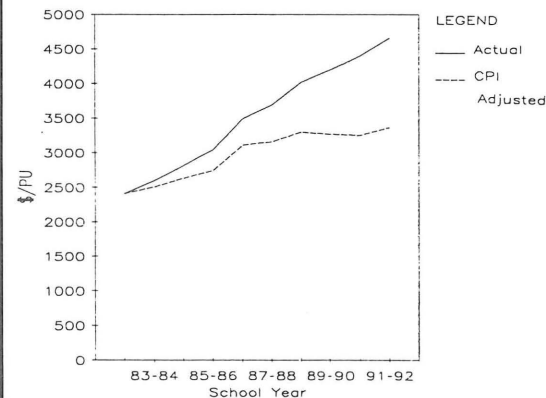
Percent of Minnesota Revenues By Fund*
1985-86 and 1992-93

	1985-86	1992-93
General Fund	74.2%	67.0%
Food Service Fund	4.1	3.3
Transportation Fund	6.3	4.9
Community Service Fund	2.4	3.2
Total, Operating Funds	87.0%	78.4%
Capitol Expenditure Fund	4.5%	5.0%
Building Construction Fund	3.2	8.3
Debt Redemption Fund	5.0	7.4
Trust and Agency Fund	0.3	0.9
Total, Nonoperating Funds	13.0%	21.6%
TOTAL	100.0%	100.0%

* Includes State, Local and Federal Sources

FIGURE 9

**State Average Operating Expenditures
Per Pupil Unit
1982-83 through 1992-93**

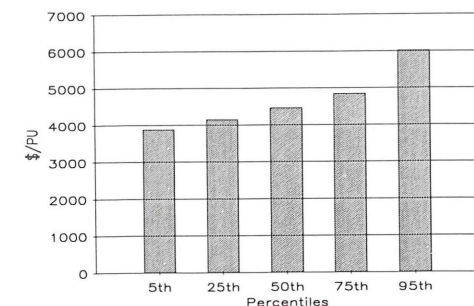


YEAR	UNADJUSTED	CPI ADJUSTED
1982-83	2402	2402
1983-84	2590	2500
1984-85	2808	2627
1985-86	3039	2738
1986-87	3485	3109
1987-88	3684	3157
1988-89	4017	3293
1989-90	4192	3267
1990-91	4398	3248
1991-92	4655	3359
1992-93	4706	3291

Expenditures: Figure 9 indicates that state-wide average operating expenditures have been growing at a rate exceeding inflation—as represented by the Consumer Price Index (CPI). These expenditures vary significantly from district-to-district as shown in Figure 10. The top spending five percent of districts expend at least fifty percent more than the lowest spending five percent.

FIGURE 10

**Distribution of Operating Expenditures
Per Pupil Unit
Selected Percentiles
1992-93**



TRENDS AND PATTERNS

The distribution of these expenditures by program has also changed over the decade as indicated in Table 5. The percent expended on Instruction has increased while most other program areas either declined or remained stable.

Figure 11 indicates that nonoperating expenditures have also increased at a pace exceeding the general rate of inflation. These are expenditures which vary little if any with the day-to-day operations of a school district; they tend to be "fixed" in the short term. Included are Capital Outlay, Building Construction, and Debt Service (columns 31, 32, and 33, respectively). Part of the reason for the rapid rate of growth is the result of the

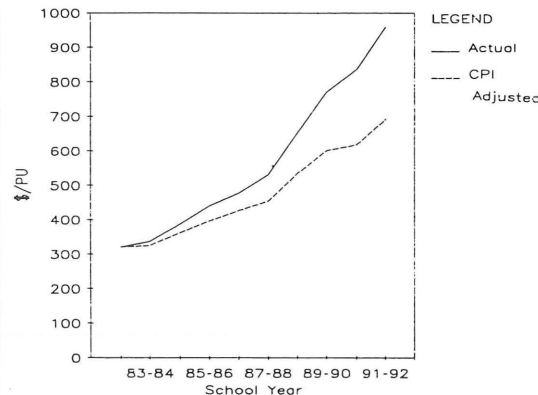
TABLE 5

**Distribution of Operating Expenditures
Per Pupil Unit
1982-83 vs 1992-93**

	1982-83	1992-93
Administration	8.6%	8.8%
Instruction	60.5%	67.8%
Student Services	14.7%	12.9%
Operations & Maintenance	10.5%	7.9%
Other Operating Programs	5.7%	2.6%
TOTAL	100.0%	100.0%

FIGURE 11

**State Average Nonoperating Expenditures
Per Pupil Unit
1982-83 through 1992-93**



YEAR	UNADJUSTED	CPI ADJUSTED
1982-83	\$320	\$320
1983-84	335	323
1984-85	386	361
1985-86	439	395
1986-87	476	425
1987-88	530	454
1988-89	651	534
1989-90	770	600
1990-91	836	617
1991-92	958	691
1992-93	1040	727

state providing poorer districts additional dollars for capital needs by equalizing capital expenditure levy receipts.

Community Service:

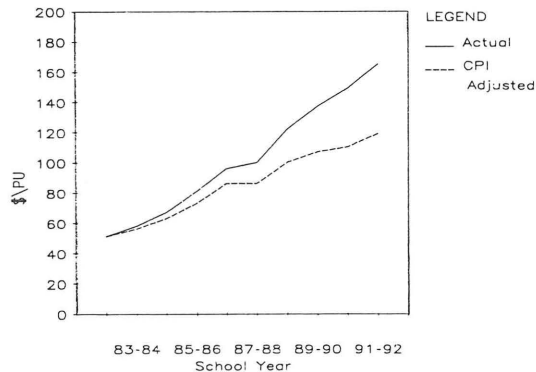
Figure 12 shows the growth in community service expenditures since 1982-83. They also have grown faster than the general rate of inflation during the decade. Community education/community service programs were "traditionally" perceived as consisting of courses in sports, recreation and crafts, and more recently in self improvement/skills enhancement. However, beginning with the 1984-85 school year the scope of community education/community service was expanded with the initiation of the Early Childhood and Family Education (ECFE) program. This program is designed to improve the parenting skills of parents with pre-school aged children and as a result the readiness of these children for school.

The community education/community service umbrella was further expanded in 1987-88 with the addition of the Youth Development Program. This program was designed to recruit and involve school aged youth in various school/community decision making processes. The addition of these two programs, with their attendant levy authorities, explain much of the growth in community education/community service expenditures since 1984-85; they are now "equals" with the traditional programs.

TRENDS AND PATTERNS

FIGURE 12

**State Average
Community Service Expenditures
Per Pupil Unit
1982-83 through 1992-93**



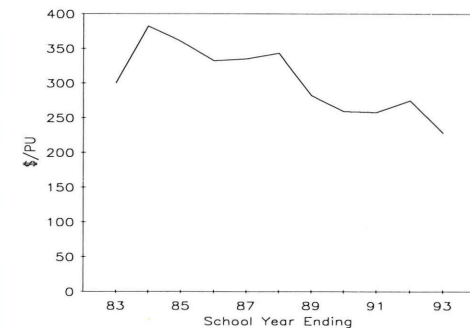
YEAR	UNADJUSTED	CPI ADJUSTED
1982-83	\$51	\$51
1983-84	58	56
1984-85	67	63
1985-86	81	73
1986-87	96	86
1987-88	100	86
1988-89	122	100
1989-90	137	107
1990-91	149	110
1991-92	165	119
1992-93	179	125

Operating Funds Balance:

A school district's undesignated operating funds balance is a measure of its financial health at the end of school year. It can be either positive or negative. Districts with a negative balance (deficit) greater than 2.5 percent of their prior year's operating expenditures are in violation of expenditure limitations specified by Minnesota Statute. These districts are required to submit a financial plan to the Commissioner of Education describing their plan to eliminate the deficit. By contrast, districts with positive net operating fund balances in excess of \$600 per pupil unit will have their general education revenue reduced in the following school year. Figure 13 shows the state average operating funds balance since 1982-83. It has decreased and leveled during the past four years. Nevertheless, during the same period an increasing number of districts have exceeded the expenditure limitations as shown in Figure 14.

FIGURE 13

**State Average Operating Funds Balance
Per Pupil Unit
1982-83 through 1992-93**

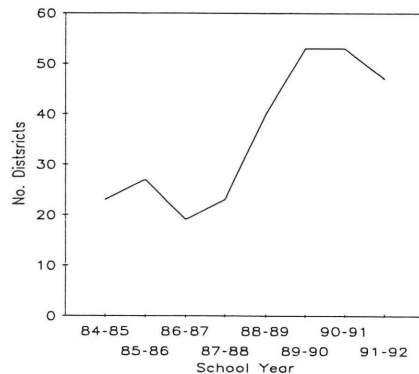


YEAR	OPERATING FUNDS BALANCE
1982-83	\$300
1983-84	382
1984-85	360
1985-86	332
1986-87	335
1987-88	343
1988-89	282
1989-90	259
1990-91	258
1991-92	275
1992-93	236

TRENDS AND PATTERNS

FIGURE 14

**Number of Districts
Exceeding Expenditure Limitations
1984-85 through 1992-93**



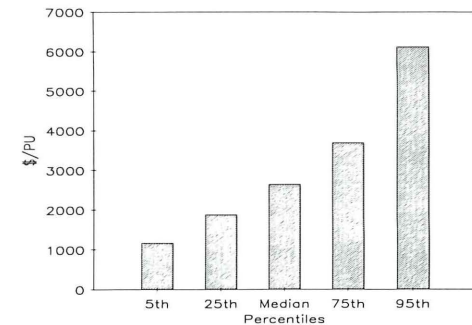
<u>YEAR</u>	<u># of DISTRICTS</u>
1984-85	23
1985-86	27
1986-87	19
1987-88	23
1988-89	40
1989-90	53
1990-91	53
1991-92	47
1992-93	55

Adjusted Net Tax Capacity:

A school district's Adjusted Net Tax Capacity per pupil unit is a measure of its real and personal property which is subject to a local property tax levy. There is great disparity in the wealth of school districts. It is these disparities and their effect on the equitable funding of public PK-12 education which is the ultimate cause of education funding lawsuits from the 1970's to the present day. Figure 15 indicates that five percent of Minnesota's districts have at least seven times the Adjusted Net Tax Capacity of the poorest five percent of districts.

FIGURE 15

**Distribution of Adjusted Net Tax Capacity
Per Pupil Unit
1992-93**



The tables on pages 22 through 49 contain 38 separate statistics for each school district, county, and region in the state. Definitions of these 38 statistics are given below. All data are for the 1992-93 school year.¹

1992-93 Resident Average Daily Membership

Average daily membership (ADM) is the average number of pupils in membership during the school year. Pupils need not be in attendance to be counted in ADM, but they must be in membership (i.e., currently enrolled in the district). For example, a pupil who is enrolled for the entire school year counts as 1.0 ADM; a pupil who is enrolled for exactly half the school year counts as 0.5 ADM.

The ADM counts in this report are, more specifically, counts of total resident ADM including all residents who are, a) enrolled in their home district, b) educated in another district to whom tuition is paid, or c) attending another district under the Enrollment Options law. Resident membership includes:

1. **Prekindergarten Handicapped** -- ADM of prekindergarten students enrolled in special education programs.
2. **Kindergarten** -- ADM of students enrolled in kindergarten classes.
3. **Elementary, Grades 1-6** -- ADM of students enrolled in grades 1-6, including students in elementary-level ungraded and special education classes.
4. **Secondary, Grades 7-12** -- ADM of students enrolled in grades 7-12, including students in secondary-level ungraded and special education classes.

5. **Total** -- Total ADM of all district residents, prekindergarten through grade 12; this is the total of columns 1 through 4.

Pupil Data

6. **Percent Minority** -- The percentage of the district's students who are of Native American, Alaskan, Black, Asian, or Hispanic ancestry.
7. **Percent Attendance** -- The average ratio of days attended to days enrolled, for all students in the district.
8. **Percent Transported** -- The number of resident public school students transported to and from school twenty or more days, as a percentage of the district's resident pupils.

Professional Staff

These statistics provide information about each district's professional staff. Staff are counted in full time equivalents (FTE). For example, a full time staff member is counted as 1.0 FTE; one employed only half time is counted as 0.5 FTE. Staff counts include only elementary-secondary personnel; postsecondary personnel are excluded.

9. **Total Staff FTE** -- The total number of licensed professional staff employed by the district, measured in full-time equivalents (FTE). This count includes administrators, classroom teachers, and all other licensed professional personnel.
10. **Pupil Staff Ratio** -- The average daily membership of all students (both residents and nonresidents) who were enrolled in the school district, divided by the number of professional staff (column 9).

DEFINITIONS

Tax Capacity Rates

These figures show the tax burden, expressed as a percent of tax capacity, for school district property taxes payable in 1993. Taxes payable in 1993 provide revenue for the 1993-94 school year.

11. Auditor Percent -- The actual school district tax rate as determined by the county auditor. With a rate of 5 percent, a property owner would be taxed \$5 for each \$100 of tax capacity. Because of differences in property assessment levels between counties, comparisons of auditor tax rates among districts may be misleading. This figure includes additional tax rates for special intermediate districts (287, 916 and 917) where they are part of the tax burden.

12. Equalized Percent -- This tax rate is computed by multiplying the auditor percent (item 11) by the 1992 market sales ratio. This ratio is equal to the market values, as determined by the local assessor, divided by actual selling prices. For state assessed properties, such as utilities, the ratio is 1.00.

Equalized percents are computed to compensate for varying assessment practices. Thus, when making interdistrict comparisons, these rates provide a more valid comparison.

Pupil Units (Weighted ADM)

13. Resident Pupil Units -- This figure is computed by applying weightings to a district's resident average daily membership (as defined above). Each kindergarten ADM counts as 0.5 pupil units; each prekindergarten, kindergarten handicapped, and elementary ADM counts as 1.0 pupil unit; and each secondary ADM counts as 1.30 pupil units. Resident pupil units are used in calculating the district's general education revenue and property tax levy limitations.

14. Total Pupil Units -- This is a count of pupil units which adjusts the resident pupil units in column 13 to better reflect the expenditures reported by the school districts. It includes residents attending the home district, resident students tuitioned to other school districts, nonpublic school students being served via a Shared Time program, nonresident students who transfer in via one of the attendance options programs, and nonresident students whose tuition is paid by a parent or out-of-state source. Excluded are pupil units which represent that portion of a student's time spent in a Postsecondary institution via the Postsecondary Enrollment Options Programs as well as those residents who transfer to other districts via one of the Attendance Options Programs.

Revenue Percentages

These three columns show the percentage of each district's revenues from the federal government, the state government, and local and other sources. The percentages are based on all 1992-93 revenue reported by each district, except for proceeds from sales of real property and equipment, insurance recoveries, sales of bonds, loans and interfund transfers.

15. Federal -- The percentage of revenues from the federal government, whether paid directly or through another governmental unit.

16. State -- The percentage of revenues from the Minnesota State Government.

17. Local and Other -- The percentage of revenues from local and other sources. This category includes revenues from property taxes, interest, rent, gifts, tuition, fees, and other revenue not classified as federal or state.

1992-93 Expenditures Per Pupil Unit

Columns 18 through 33 show each district's 1992-93 expenditures in sixteen different categories, divided by total pupils units (column 14). Columns 18 through 30 include all expenditures for the indicated purpose, except capital expenditures.

- 18. District and School Administration** -- Expenditures for the school board and for the office of the superintendent, principals, and any other line administrators who supervise staff.
- 19. District Support Services** -- Expenditures for central office administration and central office operations not included in district and school administration (see #18). Includes expenditures for business services, data processing, legal services, personnel office, printing, and the school census.
- 20. Regular Instruction** -- Expenditures for elementary and secondary classroom instruction, not including vocational instruction (#21) and exceptional instruction (#22), and for cocurricular and extracurricular activities. Includes salaries of teachers, classroom aides, and coaches, and expenditures for classroom supplies and textbooks.
- 21. Vocational Instruction** -- Expenditures in secondary schools for instruction that is related to job skills and career exploration. Includes expenditures for home economics, as well as industrial, business, agriculture, and distributive education.
- 22. Exceptional Instruction** -- Expenditures for instruction of students who, because of atypical characteristics or conditions, are provided educational programs that are different from regular instructional programs. Includes expenditures for special instruction of students who are emotionally or psychologically handicapped, gifted and talented, or mentally retarded; for students with physical, hearing, speech, and visual impairments; and for students with special learning and behavior problems.

- 23. Instructional Support Services** -- Expenditures for activities intended to help teachers provide instruction, not including expenditures for principals or superintendents. Includes expenditures for assistant principals, curriculum development, libraries, media centers, audio visual support, staff development, and computer assisted instruction.
- 24. Pupil Support Services** -- Expenditures for all noninstructional services provided to students, not including transportation and food. Includes expenditures for counseling, guidance, health services, psychological services, and attendance and social work services.
- 25. Operations and Maintenance** -- Expenditures for operation, maintenance, and repair of the district's buildings, grounds, and equipment. Includes expenditures for custodians, fuel for buildings, electricity, telephones, and repairs.
- 26. Food Service** -- Expenditures for the preparation and serving of meals and snacks to students.
- 27. Pupil Transportation** -- Expenditures for transportation of students, including salaries, contracted services, fuel for buses, and other expenditures.
- 28. Other Operating Programs²** -- Expenditures for general fund operated programs necessary to a district's operations but not assignable to other programs. These can include federally funded community education services, property and liability premiums, unemployment insurance premiums, principal and interest on noncapital obligations, and nonrecurring costs such as judgements and liens.
- 29. Total PK-12 Operating Expenditures** -- The total of the eleven preceding categories of expenditures (columns 18 through 28).

This figure includes all expenditures incurred for the benefit of elementary and secondary education during the 1992-93 school year, except capital and debt service expenditures.

- 30. Community Service** -- Expenditures for recreation, civic activities,

DEFINITIONS

adult education, early childhood education, or similar programs which are not conducted primarily for elementary and secondary students, and for noncredit summer school programs.

- 31. Capital Outlay** -- All capital expenditures charged to the operating funds plus expenditures charged to the district's capital expenditure fund.
- 32. Building Construction** -- All expenditures charged to the district's building construction fund. Expenditures are for major capital projects funded by bond proceeds, state capital loan, state facility grant or the downpayment levy.
- 33. Debt Service** -- Expenditures for repayment of long term debt (see #37), including payments of principal and interest on bonds and capital loans.

Other Measures Per Pupil Unit

- 34. Operating Funds Balance** -- This figure is a measure of the district's financial condition at the end of the 1992-93 school year, and of how much resources are available to be used in future years. It is equal to the sum of the undesignated balances on June 30, 1993, from the four operating funds (general, food service, pupil transportation, and community service), excluding the amount of statutory operating debt; this balance is then divided by 1992-93 resident pupil units (column 13).
- 35. Change in Funds Balance** -- The difference between the district's operating funds balance on June 30, 1993 (see # 34 above) and on June 30, 1992, divided by 1992-93 resident pupil units. This is essentially

equal to the difference between the district's 1992-93 revenues and expenditures, for the four operating funds combined. Thus, a negative number indicates that the district's expenditures in the operating funds were greater than its revenues.

- 36. State and Local Operating Costs** -- This figure is also called adjusted maintenance cost. It is used to measure that portion of the overall cost of public P-K education which is financed from state and local sources. It is computed as follows:

Sum of general, food service and agency fund expenditures,
Plus textbook expenditures from the capital expenditure fund,
Minus transfers between funds,
Minus revenue from the federal government,
Minus revenue from sale of food and materials,
Minus admission fees and gate receipts from school activities,
Minus special education tuition;
This total is then divided by 1992-93 total pupil units (column 14).

- 37. Long Term Debt** -- The amount of long term debt outstanding on June 30, 1993, divided by 1992-93 resident pupil units. Long term debt includes bonds and capital, debt service and energy loans from the state.
- 38. 1992 Adjusted Net Tax Capacity** -- The 1992 adjusted net tax capacity of the district divided by 1992-93 resident pupil units. This figure is an indicator of the district's ability to raise revenue through local property taxes.

Footnotes

¹ There are three exceptions to this general rule. The two tax rate statistics (columns 11 and 12) are for taxes payable in calendar year 1993; these taxes will provide revenue for 1993-94. Adjusted net tax capacity (column 38) is based on property values in 1992; this figure will be used in computing state aids and tax levy limitations for the 1994-95 school year.

² Most school districts included all expenditures for employee benefits in the same UFARS programs as the employees' salaries. Thus, for example, health insurance for the superintendent is included with "district and school administration" (column 18), and benefits for teachers are included with instructional programs (columns 20, 21 and 22). Other districts incorrectly reported all expenditures for employee benefits separately; for these districts, the expenditures show up in "other operating programs" (column 28). Because of this difference in accounting practices there is significant variation in the amounts reported in column 28.

MINNESOTA SCHOOL DISTRICTS

District Name / Number -- Region / County

Ada	521	1	Norman
Adrian	511	8	Nobles
Aitkin	001	3	Aitkin
Albany	745	7W	Stearns
Albert Lea	241	10	Freeborn
Alden	242	10	Freeborn
Alexandria	206	4	Douglas
Alvarado	436	1	Marshall
Amboy-Good Thunder	079	9	Blue Earth
Annandale	876	7W	Wright
Anoka-Hennepin	011	11	Anoka
Appleton	784	6W	Swift
Argyle	437	1	Marshall
Arlington	731	9	Sibley
Ashby	261	4	Grant
Atwater	341	6E	Kandiyohi
Audubon	021	4	Becker
Austin	492	10	Mower

Babbitt	692	3	St. Louis
Badger	676	1	Roseau
Bagley	162	2	Clearwater
Balaton	411	8	Lyon
Barnesville	146	4	Clay
Barnum	091	3	Carlton
Barrett	262	4	Grant
Battle Lake	542	4	Otter Tail
Beardsley	057	6W	Big Stone
Becker	726	7W	Sherburne
Belgrade-Elrosa	736	7W	Stearns
Belle Plaine	716	11	Scott
Bellingham	371	6W	Lac Qui Parle
Belview	631	8	Redwood
Bemidji	031	2	Beltrami
Benson	777	6W	Swift
Bertha-Hewitt	786	5	Todd
Big Lake	727	7W	Sherburne
Bird Island-Olivia	2534	6E	Renville

Blackduck	032	2	Beltrami
Blooming Prairie	756	10	Steele
Bloomington	271	11	Hennepin
Blue Earth	240	9	Faribault
Borup	522	1	Norman
Braham	314	7E	Isanti

District Name / Number -- Region / County

Brainerd	181	5	Crow Wing
Brandon	207	4	Douglas
Breckenridge	846	4	Wilkin
Brewster	513	8	Nobles
Bricelyn	217	9	Faribault
Brooklyn Center	286	11	Hennepin
Brooten	737	7W	Stearns
Browerville	787	5	Todd
Browns Valley	801	4	Traverse
Brownton	421	6E	McLeod
Buffalo	877	7W	Wright
Buffalo Lake	647	6E	Renville
Burnsville	191	11	Dakota
Butterfield	836	9	Watsonwan
Byron	531	10	Olmsted

Caledonia	299	10	Houston
Cambridge-Isanti	911	7E	Isanti
Campbell-Tintah	852	4	Wilkin
Canby	891	6W	Yellow Medicine
Cannon Falls	252	10	Goodhue
Carlton	093	3	Carlton
Cass Lake	115	5	Cass
Centennial	012	11	Anoka
Ceylon	451	9	Martin
Chandler-Lake Wilson	918	8	Murray
Chaska	112	11	Carver
Chatfield	227	10	Olmsted
Chisago Lakes	141	7E	Chisago
Chisholm	695	3	St. Louis
Chokio-Alberta	771	4	Stevens
Clara City	126	6W	Chippewa
Clarissa	789	5	Todd
Clarkfield	892	6W	Yellow Medicine
Clearbrook	161	2	Clearwater
Cleveland	391	9	LeSueur
Climax	592	1	Polk
Clinton-Graceville	055	6W	Big Stone
Cloquet	094	3	Carlton
Cold Spring	750	7W	Stearns
Coleraine	316	3	Itasca
Columbia Heights	013	11	Anoka
Comfrey	081	9	Brown
Cook County	166	3	Cook
Cosmos	461	6E	Meeker

District Name / Number -- Region / County

Cottonwood	412	8	Lyon
Cromwell	095	3	Carlton
Crookston	593	1	Polk
Crosby-Ironton	182	5	Crow Wing
Cyrus	611	4	Pope

Danube	648	6E	Renville
Dassel-Cokato	466	6E	Meeker
Dawson	378	6W	Lac Qui Parle
Deer Creek	543	4	Otter Tail
Deer River	317	3	Itasca
Delano	879	7W	Wright
Delavan	218	9	Faribault
Detroit Lakes	022	4	Becker
Dilworth	147	4	Clay
Dover-Eyota	533	10	Olmsted
Duluth	709	3	St. Louis

Eagle Bend	790	5	Todd
East Central	2580	7e	Pine
East Grand Forks	595	1	Polk
Echo	893	6W	Yellow Medicine
Eden Prairie	272	11	Hennepin
Eden Valley-Watkins	463	6E	Meeker
Edgerton	581	8	Pipestone
Edina	273	11	Hennepin
Elbow Lake	263	4	Grant
Elgin-Millville	806	10	Steele
Elk River	728	7W	Wabasha
Ellendale-Geneva	762	10	Steele
Ellsworth	514	8	Nobles
Elmore	219	9	Faribault
Ely	696	3	St. Louis
Emmons	243	10	Freeborn
Erskine-McIntosh	2609	1	Polk
Esko	099	3	Carlton
Evansville	208	4	Douglas
Eveleth	697	3	St. Louis

Fairmont	454	9	Martin
Faribault	656	10	Rice
Farmington	192	11	Dakota
Fergus Falls	544	4	Ottertail
Fertile-Beltrami	599	1	Polk
Finlayson	570	7E	Pine

MINNESOTA SCHOOL DISTRICTS

District Name / Number -- Region / County

Fisher	600	1	Polk
Floodwood	698	3	St. Louis
Foley	051	7W	Benton
Forest Lake	831	11	Washington
Fosston	601	1	Polk
Franconia	323	7E	Chisago
Franklin	650	6E	Renville
Frazee-Vergas	023	4	Becker
Freeborn	244	10	Freeborn
Fridley	014	11	Anoka
Fulda	505	8	Murray

Gary	523	1	Norman
Gaylord	732	9	Sibley
GFW	2365	9	Sibley
Gilbert	699	3	St. Louis
Glencoe	422	6E	McLeod
Glenville	245	10	Freeborn
Glenwood	612	4	Pope
Glyndon-Felton	145	4	Clay
Gonvick	158	2	Clearwater
Goodhue	253	10	Goodhue
Goodridge	561	1	Pennington
Granada-Huntley E. Chain	2536	9	Martin
Grand Meadow	495	10	Mower
Grand Rapids	318	3	Itasca
Granite Falls	894	6W	Yellow Medicine
Greenbush	678	1	Roseau
Grey Eagle	791	5	Todd
Grove City	464	6E	Meeker
Grygla-Gatzke	447	1	Marshall

Hallock-Humbolt	2359	1	Kittson
Halstad-Hendrum	2527	1	Norman
Hancock	768	4	Stevens
Harmony	228	10	Fillmore
Hastings	200	11	Dakota
Hawley	150	4	Clay
Hayfield	203	10	Dodge
Hector	651	6E	Renville
Hendricks	402	8	Lincoln
Henning	545	4	Otter Tail
Herman-Norcross	264	4	Grant
Hermantown	700	3	St. Louis
Heron Lake-Okabena	330	8	Jackson
Hibbing	701	3	St. Louis

District Name / Number -- Region / County

Hill City	002	3	Aitkin
Hills-Beaver Creek	671	8	Rock
Hinckley	573	7E	Pine
Hoffman	265	4	Grant
Holdingford	738	7W	Stearns
Hopkins-Golden Valley	270	11	Hennepin
Houston	294	10	Houston
Howard Lake	880	7W	Wright
Hutchinson	423	6E	McLeod

International Falls	361	3	Koochiching
Inver Grove	199	11	Dakota
Isle	473	7E	Mille Lacs
Ivanhoe	403	8	Lincoln

Jackson	324	8	Jackson
Janesville Waldorf Pemb.	2835	9	Waseca
Jasper	582	8	Pipestone
Jordan	717	11	Scott

Karlstad-Strandquist	2358	1	Kittson
Kasson-Mantorville	204	10	Dodge
Kelliher	036	2	Beltrami
Kennedy	354	1	Kittson
Kensington	209	4	Douglas
Kenyon	254	10	Goodhue
Kerkhoven-Murdock-Sunburg	775	6W	Swift
Kiester-Walters	222	9	Faribault
Kimball	739	7W	Stearns

LaCrescent	300	10	Houston
Lake Benton	404	8	Lincoln
Lake City	813	10	Wabasha
Lake Crystal Welcome	2071	9	Blue Earth
Lake of the Woods	390	2	Lake of the Woods
Lake Park	024	4	Becker
Lake Superior	381	3	Lake
Lakefield	325	8	Jackson
Lakeville	194	11	Dakota
Lamberton	633	8	Redwood
Lancaster	356	1	Kittson
Lanesboro	229	10	Fillmore
Laporte	306	2	Hubbard
Le Center	392	9	LeSueur
LeRoy	499	10	Mower

District Name / Number -- Region / County

Lester Prairie	424	6E	McLeod
Le Sueur Henderson	2397	9	LeSueur
Lewiston	857	10	Winona
Litchfield	465	6E	Meeker
Little Falls	482	5	Morrison
Littlefork-Big Falls	362	3	Koochiching
Long Prairie	792	5	Todd
Luverne	670	8	Rock
Lyle	497	10	Mower
Lynd	415	8	Lyon

Mabel-Canton	238	10	Fillmore
Madelia	837	9	Watsonwan
Madison	377	6W	Lac Qui Parle
Magnolia	669	8	Rock
Mahnomen	432	2	Mahnomen
Mahtomedi	832	11	Washington
Mankato	077	9	Blue Earth
Maple Lake	881	7W	Wright
Mapleton	072	9	Blue Earth
Marietta-Nassau	376	6W	Lac Qui Parle
Marshall	413	8	Lyon
Martin County	2448	9	Martin
Maynard	127	6W	Chippewa
McGregor	004	3	Aitkin
Medford	763	10	Steele
Melrose	740	7W	Stearns
Menahga	821	5	Wadena
Mesabi East	2711	3	St. Louis
Mentor	604	1	Polk
Middle River	440	1	Marshall
Milaca	912	7E	Mille Lacs
Milan	128	6W	Chippewa
Milroy	635	8	Redwood
Minneapolis	sp1	11	Hennepin
Minneota	414	8	Lyon
Minnesota Lake	223	9	Faribault
Minnetonka	276	11	Hennepin
Montevideo	129	6W	Chippewa
Montgomery-Lonsdale	394	9	LeSueur
Monticello	882	7W	Wright
Moorhead	152	4	Clay
Moose Lake	097	3	Carlton
Mora	332	7E	Kanabec
Morgan	636	8	Redwood
Morris	769	4	Stevens

MINNESOTA SCHOOL DISTRICTS

District Name / Number -- Region / County

Morristown	657	10	Rice
Morton	652	6E	Renville
Motley	483	5	Morrison
Mounds View	621	11	Ramsey
Mountain Iron-Buhl	712	3	St. Louis
Mountain Lake	173	8	Cottonwood
Nashwauk-Keewatin	319	3	Itasca
Nett Lake	707	3	St. Louis
Nevis	308	2	Hubbard
New London-Spicer	345	6E	Kandiyohi
New Prague	721	11	Scott
New Richland-Hartland	827	9	Waseca
New Ulm	088	9	Brown
New York Mills	553	4	Otter Tail
Newfolden	441	1	Marshall
Nicollet	507	9	Nicollet
North Branch	138	7E	Chisago
North St. Paul- Maplewood	622	11	Ramsey
Northfield	659	10	Rice
Norwood-Young America	108	11	Carver
Ogilvie	333	7E	Kanabec
Oklee	627	1	Red Lake
Onamia	480	7E	Mille Lacs
Orono	278	11	Hennepin
Ortonville	062	6W	Big Stone
Osakis	213	4	Douglas
Oslo	442	1	Marshall
Osseo	279	11	Hennepin
Owatonna	761	10	Steele
Park Rapids	309	2	Hubbard
Parkers Prairie	547	4	Otter Tail
Paynesville	741	7W	Stearns
Pelican Rapids	548	4	Otter Tail
Pequot Lakes	186	5	Crow Wing
Perham	549	4	Otter Tail
Pierz	484	5	Morrison
Pillager	116	5	Cass
Pine City	578	7E	Pine
Pine Island	255	10	Goodhue
Pine Point	025	2	Becker
Pine River-Backus	2174	5	Cass
Pipestone	583	8	Pipestone
Plainview	810	10	Wabasha

District Name / Number -- Region / County

Plummer	628	1	Red Lake
Preston-Fountain	233	10	Fillmore
Princeton	477	7E	Mille Lacs
Prinsburg	815	6E	Kandiyohi
Prior Lake	719	11	Scott
Proctor	704	3	St. Louis
Randolph	195	11	Dakota
Raymond	346	6E	Kandiyohi
Red Lake	038	2	Beltrami
Red Lake Falls	630	1	Red Lake
Red Wing	256	10	Goodhue
Redwood Falls	637	8	Redwood
Remer	118	5	Cass
Renville	654	6E	Renville
Richfield	280	11	Hennepin
Robbinsdale	281	11	Hennepin
Rochester	535	10	Olmsted
Rockford	883	7W	Wright
Roseau	682	1	Roseau
Rosemount- Apple Valley-Eagan	196	11	Dakota
Roseville	623	11	Ramsey
Rothsay	850	4	Wilkin
Round Lake	516	8	Nobles
Royalton	485	5	Morrison
Rush City	139	7E	Chisago
Rushford-Peterson	239	10	Fillmore
Russell	418	8	Lyon
Ruthton	584	8	Pipestone
Sacred Heart	655	6E	Renville
St. Anthony-New Brighton	282	11	Hennepin
St. Charles	858	10	Winona
St. Clair	075	9	Blue Earth
St. Cloud	742	7W	Stearns
St. Francis	015	11	Anoka
St. James	840	9	Watonwan
St. Louis County	710	3	St. Louis
St. Louis Park	283	11	Hennepin
St. Michael-Albertville	885	7W	Wright
St. Paul	625	11	Ramsey
St. Peter	508	9	Nicollet
Sanborn	638	8	Redwood
Sartell	748	7W	Stearns
Sauk Centre	743	7W	Stearns
Sauk Rapids	047	7W	Benton

District Name / Number -- Region / County

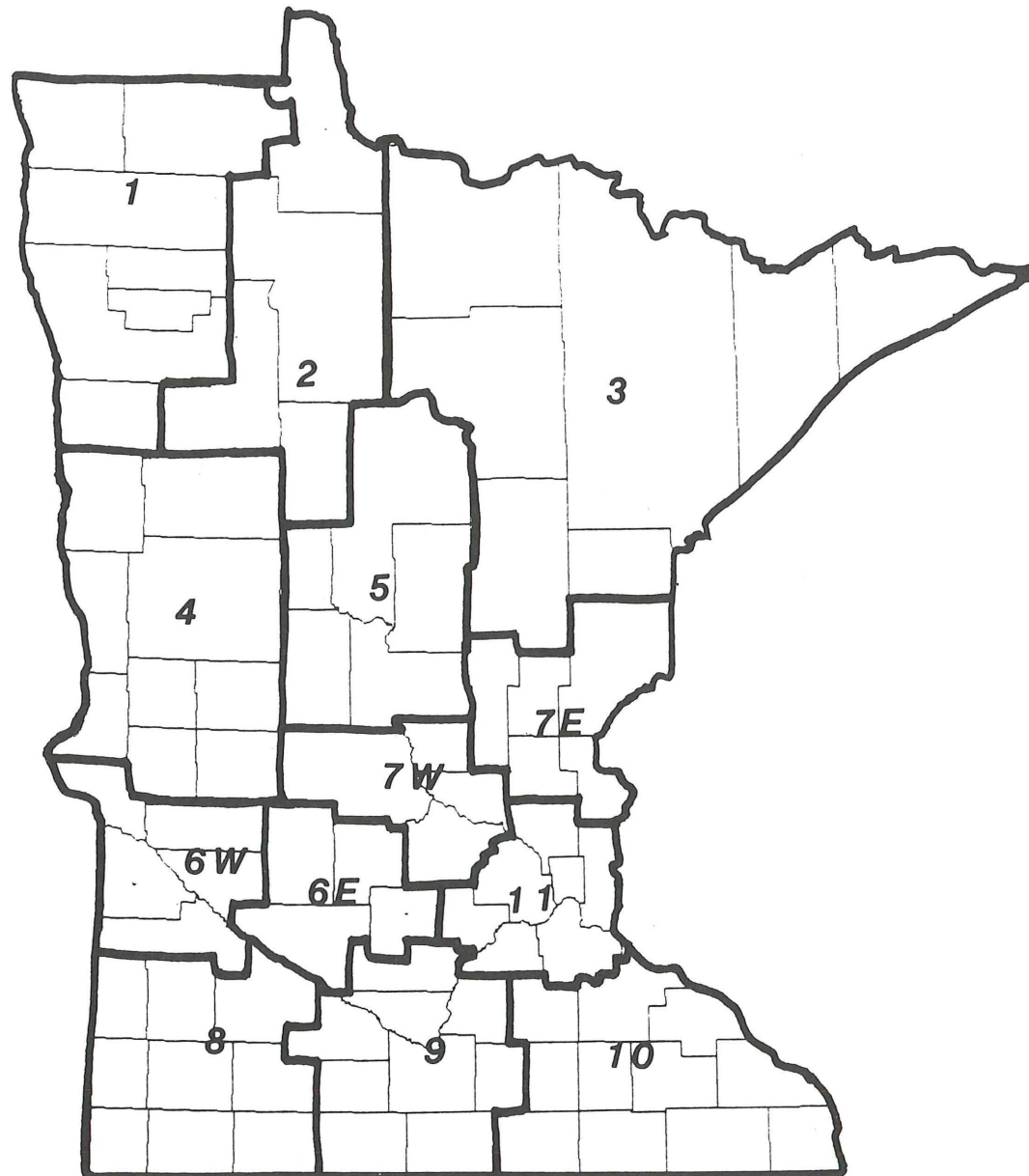
Sebek	820	5	Wadena
Shakopee	720	11	Scott
Silver Lake	425	6E	McLeod
Sioux Valley	328	8	Jackson
Slayton	504	8	Murray
Sleepy Eye	084	9	Brown
South Koochiching	363	3	Koochiching
South St. Paul	sp6	11	Dakota
South Washington County	833	11	Washington
Southland	500	10	Mower
Spring Grove	297	10	Houston
Spring Lake Park	016	11	Anoka
Spring Valley	237	10	Fillmore
Springfield	085	9	Brown
Staples	793	5	Todd
Starbuck	614	4	Pope
Stephen	443	1	Marshall
Stewart	426	6E	McLeod
Stewartville	534	10	Olmstead
Stillwater	834	11	Washington
Storden-Jeffers	178	8	Cottonwood
Swanville	486	5	Morrison
Taylor's Falls	140	7E	Chisago
Thief River Falls	564	1	Pennington
Tower-Soudan	708	3	St. Louis
Tracy	417	8	Lyon
Triton	2125	10	Dodge
Truman	458	9	Martin
Twin Valley	526	1	Norman
Tyler	409	8	Lincoln
Ulen-Hitterdal	914	4	Clay
Underwood	550	4	Otter Tail
Upsala	487	5	Morrison
Verdi	408	8	Lincoln
Verndale	818	5	Wadena
Villard	615	4	Pope
Virginia	706	3	St. Louis
Wabasha	811	10	Wabasha
Wabasso	640	8	Redwood
Waconia	110	11	Carver
Wadena	819	5	Wadena
Waldorf-Pemberton	913	9	Waseca
Walker-Akeley	113	5	Cass

MINNESOTA SCHOOL DISTRICTS

District Name / Number -- Region / County

Walnut Grove	641	8	Redwood
Wanamingo	258	10	Goodhue
Warren	446	1	Marshall
Warroad	690	1	Roseau
Waseca	829	9	Waseca
Watertown-Mayer	111	11	Carver
Waterville	395	9	LeSueur
Waubun	435	2	Mahnomen
Wayzata	284	11	Hennepin
Wells	224	9	Faribault
West St. Paul	197	11	Dakota
Westbrook	175	8	Cottonwood
Westonka	277	11	Hennepin
Wheaton	803	4	Traverse
White Bear Lake	624	11	Ramsey
Willmar	347	6E	Kandiyohi
Willow River	577	7E	Pine
Windom	177	8	Cottonwood
Winnebago	225	9	Faribault
Winona	861	10	Winona
Winsted	427	6E	McLeod
Wood Lake	896	6W	Yellow Medicine
Worthington	518	8	Nobles
Wrenshall	100	3	Carlton
Wykoff	236	10	Filmore
Zumbrota-Mazeppa	2805	10	Goodhue

ECONOMIC DEVELOPMENT REGIONS



DATA FOR SCHOOL DISTRICTS

County Number and Name School District Name	District Number	1992-93 Resident Average Daily Membership					Pupil Data			Professional Staff		Tax Capacity Rates		Pupil Units (Weighted ADM)	
		1. Pre- Kindergarten Handicapped	2. Kindergarten	3. Elementary (Grades 1-6)	4. Secondary (Grades 7-12)	5. Total (Pre-K thru Grade 12)	6. Percent Minority	7. Percent Attendance	8. Percent Transported	9. Total Staff (FTE)	10. Pupil-Staff Ratio	11. Auditor Percent	12. Equalized Percent	13. Resident Pupil Units	14. Total Pupil Units
O1 AITKIN	1	12	89	651	601	1,353	2.0	95.0	84	93	14.3	51.29	45.14	1,490	1,461
AITKIN	2	2	28	164	122	316	7.4	95.1	74	27	13.2	57.34	53.10	339	379
HILL CITY	4	2	48	292	293	635	7.2	94.0	91	40	14.6	55.26	51.23	701	660
MCGREGOR															
O2 ANOKA															
ANOKA-HENNEPIN	11	266	3,082	17,882	15,579	36,809	5.1	94.5	81	2,152	16.8	63.72	61.17	39,962	39,450
CENTENNIAL	12	26	430	2,625	1,834	4,915	3.9	95.2	73	287	17.3	62.29	56.83	5,260	5,372
COLUMBIA HEIGHTS	13	10	263	1,568	1,385	3,226	11.2	93.5	66	236	13.3	68.14	66.92	3,509	3,481
FRIDLEY	14	6	205	1,195	1,066	2,472	7.1	94.8	74	166	15.5	67.97	67.69	2,689	2,834
SPRING LAKE PARK	16	24	322	2,021	1,735	4,102	5.7	95.6	73	255	16.1	60.62	58.27	4,462	4,548
ST. FRANCIS	15	21	411	2,510	2,092	5,034	3.0	93.9	93	303	16.6	60.09	55.04	5,459	5,482
O3 BECKER															
AUDUBON (ICA)	21	3	20	170	151	344	.0	95.5	82	29	14.1	52.69	50.32	378	371
DETROIT LAKES	22	26	197	1,351	1,212	2,786	11.2	94.3	71	198	14.4	51.31	45.46	3,056	3,133
FRAZEE	23	13	92	637	614	1,356	6.5	95.2	83	92	14.0	54.81	50.48	1,496	1,422
LAKE PARK (ICA)	24	2	25	199	208	434	1.7	94.2	85	27	13.2	59.40	55.60	484	476
PINE POINT (EXP)	25		11	50	5	66	100.0	89.8	66	10	4.4	.00	.00	62	39
O4 BELTRAMI															
BEMIDJI	31	32	415	2,576	2,327	5,350	13.3	92.2	92	353	15.2	62.11	56.21	5,852	5,928
BLACKDUCK	32	4	46	364	337	751	7.3	94.2	86	57	14.8	64.86	59.87	831	940
KELLIHER	36	1	20	119	130	270	15.7	92.6	76	25	11.9	39.96	36.81	299	332
RED LAKE	38	7	125	569	413	1,114	100.0	85.6	68	76	13.3	75.33	73.89	1,176	1,070
O5 BENTON															
FOLEY	51	8	106	861	861	1,836	1.3	94.9	100	115	16.2	59.89	56.84	2,043	2,076
SAUK RAPIDS	47	25	238	1,532	1,312	3,107	1.1	95.0	83	186	16.4	53.38	49.22	3,384	3,350
O6 BIG STONE															
BEARDSLEY (ICA)	57	1	10	76	45	132	17.5	95.1	91	6	16.1	37.82	33.21	139	155
CLINTON-GRADEVILLE	55	2	44	252	222	520	1.8	96.6	75	39	12.6	45.00	39.78	565	536
ORTONVILLE (ASE)	62	8	42	284	293	627	1.3	95.8	57	51	14.5	47.54	42.12	694	833
O7 BLUE EARTH															
AMBOY GOOD THUND (ICA)	79	2	35	206	172	415	2.3	96.4	81	24	14.8	56.91	54.35	450	448
LAKE CRYSTAL-WELLCOME	2071	14	83	578	609	1,284	3.1	94.4	77	95	13.0	63.25	60.78	1,430	1,384
MANKATO	77	37	512	3,422	3,059	7,030	3.9	94.3	57	408	17.4	59.31	54.86	7,703	7,785
MAPLETON (ICA)	72	7	39	270	243	559	.8	95.8	70	49	12.8	51.68	49.25	613	610
ST. CLAIR	75	7	43	243	233	526	.0	96.3	84	33	15.6	63.11	59.95	577	578
O8 BROWN															
COMFREY	81		12	111	140	263	3.3	96.0	76	20	12.2	61.22	56.69	298	285
NEW ULM	88	14	195	1,322	1,240	2,771	2.9	95.5	86	167	16.6	60.70	55.54	3,048	3,073
SLEEPY EYE	84	6	50	340	328	724	14.3	94.1	38	52	13.8	48.05	46.23	798	795
SPRINGFIELD	85	5	49	311	331	696	.4	96.5	50	47	15.2	60.72	56.65	771	796
O9 CARLTON															
BARNUM	91	2	54	327	350	733	3.4	94.5	90	47	14.7	71.79	62.53	811	778
CARLTON	93	5	63	367	381	816	11.1	93.7	93	56	14.5	55.52	50.41	898	903
CLOQUET	94	26	176	1,067	1,054	2,323	13.6	93.0	68	143	16.7	58.18	54.05	2,553	2,662
CROMWELL	95	1	25	144	165	335	.3	96.1	92	22	15.3	71.82	65.78	372	379
ESKO	99	4	80	428	436	948	1.1	95.5	89	60	15.9	61.45	55.36	1,039	1,053
MOOSE LAKE	97	6	50	360	365	781	1.9	94.5	94	58	14.2	66.64	58.17	867	914
WRENSHALL	100	2	27	173	167	369	2.5	96.1	86	32	12.3	61.62	58.04	405	442

District Number	Revenue %			1992 - 93 Expenditures per Pupil Unit																			Other Measures per Pupil Unit				
	15. Federal	16. State	17. Local and Other	18. District and School Admin.	19. District Support Services	20. Regular Instruction	21. Vocational Instruction	22. Exceptional Instruction	23. Instructional Support Services	24. Pupil Support Services	25. Operations and Maintenance	26. Food Service	27. Pupil Transportation	28. Other Oper. Program	29. Total PK-12 Operating Expenditures	30. Community Service	31. Capital Outlay	32. Building Construction	33. Debt Service	34. Operating Funds Balance	35. Change in Funds Balance	36. State and Local Oper. Costs	37. Long Term Debt	38. 1992 Adj. Net Tax Capacity			
1	4 47	49		265	100	2048	94	507	192	106	409	161	294	393	4569	79	321	89	211	575	113	3927	166	3,917			
2	6 72	22		397	147	2503	89	416	111	115	371	240	422	39	4851	137	377	0	423	628	13-	3999	23715	1,620			
4	7 45	48		434	127	2090	47	490	162	122	414	266	421	91	4665	117	361	98	5279	514	70	3747	5148	3,951			
11	3 55	42		255	110	2112	106	665	165	167	343	223	246	106	4498	189	228	164	330	106	47-	4149	1469	2,427			
12	3 57	40		235	104	2099	58	799	189	109	348	155	247	68	4411	94	234	608	414	127	145-	3834	4355	2,173			
13	4 36	60		386	188	2635	77	1090	372	171	496	302	246	108	6070	243	254	0	0	63-	36-	5306	0	4,673			
14	3 41	56		739	118	2181	130	821	197	121	324	225	206	389	5450	271	175	0	4	310	128-	4902	54	3,917			
16	3 41	56		175	119	2237	132	668	242	173	418	169	272	139	4746	225	280	0	146	88	17-	4056	1073	4,127			
15	3 65	32		256	85	1796	62	935	135	154	299	206	286	90	4303	107	291	502	1094	247	62-	3693	6745	1,999			
21	10 48	42		332	117	1768	191	765	132	35	383	309	291	90	4413	109	340	0	332	516	162	3498	792	3,725			
22	7 62	31		296	100	2067	63	720	174	138	290	185	375	97	4505	113	223	0	481	538	42-	3705	1795	2,583			
23	7 73	20		252	68	1952	191	590	123	93	274	188	376	48	4156	75	242	0	54	360	12	3398	462	1,398			
24	2 56	42		386	77	1861	177	484	145	3	417	164	277	83	4074	112	298	1	282	149	135	3412	2054	2,975			
25	39 48	13		913	929	4914	0	2421	77	979	2203	1201	169	32	13837	501	3285	0	0	6032	2040	6532	0	0			
31	6 64	30		228	71	1871	81	911	134	79	413	194	277	256	4514	162	201	908	393	401	109	3789	2982	2,058			
32	8 71	21		307	114	2097	151	631	87	50	294	169	310	35	4246	101	120	441	33	634	83	3496	7243	1,331			
36	8 76	16		418	73	2315	547	581	105	31	418	251	337	90	5167	66	539	0	0	1221	315-	4327	0	1,460			
38	31 65	4		483	286	3031	256	1049	372	114	697	301	374	292	7256	123	230	4764	4	187	554	4165	3256	23			
51	5 75	20		226	93	1994	68	445	202	93	306	191	208	81	3907	129	246	0	311	348	13-	3325	5452	1,096			
47	3 84	13		232	92	1953	52	640	167	107	269	198	339	51	4100	143	210	17	178	319	22-	3387	1708	2,075			
57	4 56	40		435	339	2048	0	349	105	47	524	259	391	53	4550	174	185	0	0	943	883-	3948	0	3,221			
55	10 53	37		351	74	2245	20	764	106	128	329	240	323	77	4658	113	280	0	0	240	163-	3736	15	3,741			
62	5 68	27		308	135	1957	322	607	86	81	403	207	248	165	4518	155	339	0	145	330-	82	3858	195	1,778			
79	4 56	40		333	131	2148	69	630	112	67	343	164	361	118	4476	121	235	0	0	365-	263	3787	0	3,248			
2071	4 57	39		319	94	2240	53	651	200	104	317	199	379	92	4647	102	320	0	0	161	5608	3898	0	2,456			
77	4 52	44		223	96	2021	78	603	135	98	339	182	203	52	4027	177	261	1545	228	252	46	3504	3245	3,512			
72	8 59	33		339	114	2241	74	901	102	97	385	198	221	56	4729	82	240	0	0	507-	107-	3916	0	2,683			
75	3 64	33		286	128	2175	1	689	174	40	322	241	438	112	4604	121	122	282	0	225	32-	3821	3368	2,104			
81	6 39	55		288	150	2502	82	462	82	66	398	232	193	203	4659	89	256	0	0	75-	258	3893	53	3,971			
88	4 58	38		226	72	1896	105	538	190	120	315	198	367	82	4110	126	267	0	0	439	233	3416	32	2,880			
84	5 50	45		343	100	1862	244	586	130	74	266	187	405	58	4256	192	230	0	261	546	72-	3379	733	3,851			
85	5 60	35		282	62	2086	141	390	82	77	231	204	236	31	3822	130	231	190	0	1361	963-	3264	7651	2,873			
91	4 71	25		360	77	1861	135	412	138	87	321	221	280	96	3986	134	356	0	327	433	238	3315	9491	1,108			
93	6 67	27		345	257	2125	89	460	162	94	381	189	275	112	4490	76	331	0	114	520-	270-	3749	457	1,986			
94	9 56	35		324	164	1830	95	842	144	156	345	164	283	108	4456	245	336	238	187	463	83	3802	1729	2,584			
95	4 62	34		325	243	1886	142	510	135	69	425	208	331	71	4346	66	977	14501	1014	212	62-	3625	15652	1,821			
99	3 71	26		279	47	2047	56	574	152	91	308	116	267	104	4039	83	332	0	223	165	26	3523	1381	1,687			
97	4 63	33		322	116	2028	93	555	116	149	353	141	223	112	4207	91	298	0	484	559	7	3628	6716	2,033			
100	4 48	48		304	194	1898	35	652	71	219	404	181	321	435	4713	113	849	3	240	482	77-	4097	88	3,107			

County Number and Name School District Name	District Number	1992-93 Resident Average Daily Membership					Pupil Data			Professional Staff		Tax Capacity Rates		Pupil Units (Weighted ADM)	
		1. Pre- Kindergarten Handicapped	2. Kindergarten	3. Elementary (Grades 1-6)	4. Secondary (Grades 7-12)	5. Total (Pre-K thru Grade 12)	6. Percent Minority	7. Percent Attendance	8. Percent Transported	9. Total Staff (FTE)	10. Pupil-Staff Ratio	11. Auditor Percent	12. Equalized Percent	13. Resident Pupil Units	14. Total Pupil Units
10 CARVER															
CHASKA	112	38	426	2,440	1,872	4,776	3.3	95.7	91	282	16.7	57.40	55.97	5,130	5,118
NORWOOD	108	8	66	455	497	1,026	1.8	96.1	75	78	13.2	59.97	54.28	1,143	1,147
WACONIA	110	10	109	590	640	1,349	2.1	95.4	94	91	14.8	86.49	78.54	1,489	1,504
WATERTOWN-MAYER	111	13	103	626	600	1,342	.8	94.3	94	86	15.0	67.84	58.27	1,473	1,439
11 CASS															
CASS LAKE	115	8	64	448	363	883	60.5	91.1	81	72	12.3	71.97	66.21	964	972
PILLAGER	116	9	45	286	269	609	2.4	93.5	82	39	13.8	57.22	50.07	667	596
PINE RIVER-BACKUS	2174	12	82	651	543	1,288	3.2	95.0	89	90	14.0	54.70	46.33	1,410	1,382
REMER	118	3	32	253	283	571	15.6	93.4	91	47	12.3	53.19	46.59	640	656
WALKER-AKELEY	113	4	88	510	425	1,027	12.3	93.6	85	79	12.3	48.26	42.66	1,112	1,066
12 CHIPPEWA															
CLARA CITY (ICA)	126	2	22	210	185	419	6.1	95.7	98	33	13.3	62.55	54.80	466	462
MAYNARD (ICA)	127	1	13	131	111	256	5.6	96.1	81	21	13.2	46.98	40.69	283	259
MILAN (CSF)	128	2	14	128	112	256	2.5	96.3	70	10	11.8	71.69	56.62	282	239
MONTEVIDEO	129	6	108	727	777	1,618	1.7	94.5	56	115	14.7	49.84	46.30	1,799	1,895
13 CHISAGO															
CHISCAGO LAKES (ICA)	141	11	208	1,290	1,136	2,645	1.3	93.6	90	160	17.6	52.40	47.42	2,884	3,108
FRANCONIA (NONOPER)	0323		0	10	9	19	.0	.0	100	0	.0	37.76	36.17	22	15
NORTH BRANCH	138	9	182	1,407	1,186	2,784	1.1	92.7	94	153	18.1	59.98	53.56	3,049	3,043
RUSH CITY	139	4	63	408	364	839	2.0	93.9	74	57	14.4	78.75	73.00	916	902
TAYLORS FALLS (ICA)	140	6	28	196	154	384	1.6	92.8	89	15	13.2	55.73	51.61	416	399
14 CLAY															
BARNESVILLE	146		53	372	416	841	2.4	96.2	56	50	16.4	60.35	55.70	940	927
DILWORTH(ASE)	147		45	247	231	523	7.2	95.9	40	35	14.2	47.12	42.97	570	596
GLYNDON(ASE)	145	2	60	311	293	666	3.9	94.8	75	53	12.9	49.67	46.10	725	710
HAWLEY	150	3	55	343	348	749	2.5	96.7	62	54	14.4	47.44	44.03	827	861
MOORHEAD	152	38	476	2,976	2,436	5,926	11.2	93.2	75	414	14.0	57.14	50.57	6,428	6,401
ULEN-HITTERDAL	914	1	30	175	183	389	4.7	94.2	82	30	12.5	69.22	65.69	429	418
15 CLEARWATER															
BAGLEY	162	9	99	574	571	1,253	16.4	93.6	85	81	15.2	32.95	30.94	1,374	1,348
CLEARBROOK (ICA)	161	2	18	176	167	363	4.6	95.3	88	32	11.5	40.16	39.40	403	415
GONVICK (ICA)	158	3	15	87	79	184	7.5	94.5	100	16	13.8	29.89	29.05	201	236
16 COOK															
COOK COUNTY	166	3	56	338	307	704	11.7	93.5	84	52	13.5	38.19	33.30	768	768
17 COTTONWOOD															
MOUNTAIN LAKE	173	2	35	296	250	583	21.9	94.8	37	43	13.3	60.84	52.87	642	640
STORDEN-JEFFERS	178		22	106	175	303	.0	96.3	75	25	12.3	54.08	46.56	344	345
WESTBROOK (ICA)	175	1	14	122	153	290	.4	94.2	71	26	9.9	58.47	52.39	328	326
WINDOM	177	4	95	571	505	1,175	4.4	95.5	74	92	12.9	57.85	52.23	1,283	1,313
18 CROW WING															
BRAINERD	181	58	505	3,122	2,989	6,674	2.2	94.4	87	431	15.9	56.41	47.61	7,327	7,543
CROSBY-IRONTON	182	14	122	759	739	1,634	1.6	94.2	86	103	15.4	57.13	48.22	1,802	1,755
PEQUOT LAKES	186	8	60	487	453	1,008	3.5	95.1	91	61	16.7	46.83	38.12	1,115	1,127

District Number	Revenue %			1992 - 93 Expenditures per Pupil Unit																Other Measures per Pupil Unit				
	15. Federal	16. State	17. Local and Other	18. District and School Admin.	19. District Support Services	20. Regular Instruction	21. Vocational Instruction	22. Exceptional Instruction	23. Instructional Support Services	24. Pupil Support Services	25. Operations and Maintenance	26. Food Service	27. Pupil Transportation	28. Other Oper. Program	29. Total PK-12 Operating Expenditures	30. Community Service	31. Capital Outlay	32. Building Construction	33. Debt Service	34. Operating Funds Balance	35. Change in Funds Balance	36. State and Local Oper. Costs	37. Long Term Debt	38. 1992 Adj. Net Tax Capacity
112	4	24	72	308	130	1940	46	723	326	137	309	142	420	28	4509	128	275	62	162	149	19	3829	2079	2,931
108	4	52	44	338	92	1815	184	953	115	94	395	187	220	114	4508	214	329	0	2943	237	149	3948	3468	3,303
110	3	35	62	320	96	2107	135	801	75	139	316	193	431	142	4753	198	251	1279	505	398	106	3988	10141	4,325
111	3	56	41	456	140	1882	81	572	139	65	310	175	319	91	4231	188	162	193	538	266	224	3598	4271	2,696
115	15	55	30	472	166	2443	72	1110	436	95	444	275	492	158	6162	165	339	5408	785	103	360	4506	9117	3,080
116	4	37	59	354	94	2081	1	594	138	62	257	215	342	55	4194	64	104	469	519	657	162	3524	5121	4,953
2174	8	56	36	291	128	2058	52	691	100	82	376	200	267	59	4303	77	464	21	305	590	590	3586	2865	3,373
118	8	22	70	305	154	2262	90	782	380	67	377	177	410	118	5123	131	447	0	138	601	147	4115	309	8,346
113	8	36	56	232	88	2260	115	1054	215	119	285	236	325	80	5008	123	344	0	168	772	327	4250	602	5,445
126	2	57	41	279	129	2016	76	571	100	63	366	192	372	162	4327	118	435	0	128	320	425	3626	47	3,007
127	17	50	33	304	129	2000	19	1284	100	104	354	247	323	79	4942	129	501	0	123	685	310	3548	0	3,896
128	6	52	42	342	126	2200	123	573	118	186	503	151	327	230	4878	183	135	0	0	961	238	4045	9	2,819
129	8	66	26	241	62	1965	155	663	143	37	290	434	164	65	4220	188	166	0	51	596	25	3494	68	1,841
141	2	62	36	223	125	1876	130	459	147	121	246	182	162	92	3763	130	330	0	324	480	136	3364	887	2,151
0323	0	75	25	0	78	4896	0	0	0	0	0	0	364	0	5338	0	0	0	0	1531	382	4974	0	2,155
138	4	70	26	265	151	1724	91	634	201	74	329	174	270	207	4119	120	333	0	355	256	113	3515	2704	1,536
139	4	53	43	340	90	2107	148	547	127	55	274	204	190	58	4140	210	348	6119	488	309	215	3656	9101	2,094
140	2	63	35	290	129	2511	0	362	84	12	292	132	306	413	4532	121	192	0	136	287	785	3987	973	2,235
146	5	54	41	324	59	2093	62	507	161	16	340	220	289	278	4349	176	262	0	3411	93	220	3564	3073	2,467
147	3	82	15	298	109	2059	27	527	134	83	232	141	111	146	3869	144	333	0	160	626	131	3532	204	994
145	7	55	38	247	84	2186	44	764	171	100	302	168	396	133	4595	220	212	0	52	57	82	3690	393	3,095
150	4	74	22	308	108	2718	71	302	10	52	298	160	166	141	4332	173	194	0	220	630	427	3818	1334	1,340
152	5	72	23	245	115	2028	59	1165	205	111	238	149	230	134	4678	123	321	362	55	322	76	4159	1546	2,187
914	6	56	38	376	138	2125	173	767	107	82	470	227	308	46	4817	151	297	0	0	512	20	4118	0	2,266
162	10	73	17	265	68	2239	89	724	199	84	252	203	322	205	4650	62	358	0	0	223	60	3821	0	1,710
161	6	52	42	387	106	2452	17	466	142	98	341	246	431	138	4826	182	185	0	0	515	33	3937	0	3,893
158	8	52	40	472	73	2154	184	517	91	45	386	286	433	151	4792	168	286	0	0	684	63	3729	0	5,258
166	7	27	66	343	101	2659	9	639	100	126	434	135	264	33	4843	148	177	0	0	435	1	4121	0	7,386
173	5	45	50	356	55	1911	230	726	120	40	397	205	97	84	4221	220	315	0	0	1092	262	3759	61	3,526
178	6	32	62	445	141	2515	170	382	98	7	407	262	213	66	4705	42	143	0	0	91	298	4032	0	5,172
175	2	39	59	456	201	2321	119	335	223	76	470	189	392	146	4928	150	330	0	0	392	138	4285	0	4,855
177	4	45	51	300	149	2444	59	1104	119	97	390	232	192	157	5242	143	349	0	610	250	173	4613	595	3,079
181	6	53	41	232	63	1853	239	819	228	92	310	208	273	57	4374	117	193	396	84	340	113	4049	1193	2,983
182	6	64	30	180	70	2152	111	623	108	191	371	180	360	124	4471	82	266	75	546	39	180	3713	4084	4,091
186	5	3	92	290	91	1842	62	474	124	85	305	224	238	30	3765	86	270	0	292	190	27	3114	1085	10,043

County Number and Name School District Name	District Number	1992-93 Resident Average Daily Membership					Pupil Data			Professional Staff		Tax Capacity Rates		Pupil Units (Weighted ADM)	
		1. Pre- Kindergarten Handicapped	2. Kindergarten	3. Elementary (Grades 1-6)	4. Secondary (Grades 7-12)	5. Total (Pre-K thru Grade 12)	6. Percent Minority	7. Percent Attendance	8. Percent Transported	9. Total Staff (FTE)	10. Pupil-Staff Ratio	11. Auditor Percent	12. Equalized Percent	13. Resident Pupil Units	14. Total Pupil Units
19 DAKOTA															
BURNSVILLE	191	77	929	5,199	4,289	10,494	10.9	93.4	90	656	16.0	70.02	65.04	11,317	11,505
FARMINGTON	192	43	231	1,546	1,132	2,952	2.2	94.9	87	171	17.0	70.01	63.46	3,189	3,172
HASTINGS	200	26	341	2,194	2,349	4,910	2.2	94.1	92	281	17.5	71.39	64.18	5,449	5,512
INVER GROVE	199	29	318	2,018	1,602	3,967	5.0	94.1	79	252	15.2	72.40	67.87	4,297	4,237
LAKEVILLE	194	37	544	3,069	2,181	5,831	2.9	95.0	93	363	15.9	68.83	62.56	6,217	6,214
RANDOLPH	195	1	28	161	205	395	.0	95.7	80	34	10.9	70.62	60.72	442	416
ROSEMOUNT-APPLE VALLE	196	120	1,989	11,803	9,159	23,071	6.2	94.9	88	1,326	17.2	60.19	55.09	24,854	24,769
SOUTH ST. PAUL	SP6	33	248	1,626	1,462	3,369	7.2	91.8	31	200	17.5	75.92	70.44	3,696	3,909
WEST ST. PAUL-MENDOTA	197	39	385	2,314	1,881	4,619	11.3	94.4	89	320	14.4	58.58	54.09	5,000	5,072
20 DODGE															
HAYFIELD	203	9	71	496	459	1,035	1.7	95.4	69	71	14.7	49.05	43.56	1,137	1,159
KASSON-MANTORVILLE	204	9	117	794	685	1,605	1.6	95.5	91	101	15.9	51.34	44.46	1,756	1,747
TRITON	2125	12	102	654	592	1,360	4.0	95.0	67	101	12.7	57.71	50.95	1,485	1,421
21 DOUGLAS															
ALEXANDRIA	206	27	305	1,880	1,970	4,182	1.3	94.3	84	268	15.6	59.25	53.38	4,630	4,662
BRANDON	207	4	31	175	212	422	1.2	95.7	73	30	14.5	45.44	41.53	470	481
EVANSVILLE	208	1	16	172	137	326	.3	96.5	69	21	14.7	41.26	38.16	359	339
KENSINGTON (ICA)	209		12	80	74	166	3.3	96.4	92	16	15.2	49.58	47.74	182	196
OSAKIS	213	1	31	269	303	604	.5	96.0	80	44	14.3	66.49	60.64	681	717
22 FARIBAULT															
BLUE EARTH (ASE)	240	10	56	518	481	1,065	5.3	96.1	54	104	13.7	62.00	58.78	1,181	1,648
BRIGELYN (ICA)	217	1	11	68	69	149	1.4	96.0	79	12	12.1	64.82	61.38	164	164
DELAVAN (ASE)	218	2	14	90	82	188	13.0	95.6	80	12	8.8	56.90	50.17	205	205
ELMORE (ASE)	219	3	8	82	92	185	5.6	95.2	63	10	9.2	64.91	57.30	208	203
KIESTER (ICA)	222	2	19	111	101	233	2.0	95.4	84	16	12.3	65.22	62.03	252	234
MINNESOTA LAKE (ICA)	223	3	18	121	123	265	.4	96.4	76	22	11.5	59.28	56.49	292	293
WELLS (ICA)	224	7	46	281	353	687	3.1	94.3	59	46	14.4	55.71	52.31	769	773
WINNEBAGO (ASE)	225	4	4	211	195	414	.5	94.6	59	19	11.3	57.98	49.37	469	442
23 FILLMORE															
HARMONY	228	3	18	191	182	394	3.1	96.1	57	33	12.1	61.03	54.38	439	440
LANESBORO	229	2	31	182	181	396	.7	95.4	64	32	13.8	54.97	46.01	436	487
MABEL-CANTON	238		29	201	183	413	1.7	95.5	73	37	11.0	64.71	56.49	454	443
PRESTON-FOUNTAIN	233	2	30	294	246	572	1.2	96.1	83	45	12.5	73.17	64.10	632	613
RUSHFORD-PETERSON	239	7	65	367	373	812	1.0	96.3	70	55	13.9	43.43	39.00	891	833
SPRING VALLEY (ICA)	237	5	54	386	343	788	2.1	94.7	88	64	11.6	59.45	51.72	864	869
WYKOFF (ICA)	236	1	12	106	128	247	1.1	95.2	79	20	13.6	67.92	58.62	279	252
24 FREEBORN															
ALBERT LEA	241	24	332	2,088	1,942	4,386	6.9	93.1	72	270	16.3	60.15	56.00	4,809	4,836
ALDEN	242	1	24	171	147	343	2.0	96.0	80	29	14.0	53.78	50.18	376	446
EMMONS (ASE)	243	1	7	112	94	214	2.3	96.0	63	18	11.9	69.02	65.16	238	224
FREEBORN (ICA)	244	1	9	90	80	180	2.8	95.8	61	17	10.6	50.37	47.70	200	146
GLENVILLE (ASE)	245	2	25	202	189	418	2.3	94.6	75	29	13.5	52.83	48.60	462	450

District Number	Revenue %			1992 - 93 Expenditures per Pupil Unit															Other Measures per Pupil Unit					
	15. Federal	16. State	17. Local and Other	18. District and School Admin.	19. District Support Services	20. Regular Instruction	21. Vocational Instruction	22. Exceptional Instruction	23. Instructional Support Services	24. Pupil Support Services	25. Operations and Maintenance	26. Food Service	27. Pupil Transpor- tation	28. Other Oper. Program	29. Total PK-12 Operating Expendi- tures	30. Community Service	31. Capital Outlay	32. Building Construction	33. Debt Service	34. Operating Funds Balance	35. Change in Funds Balance	36. State and Local Oper. Costs	37. Long Term Debt	38. 1992 Adj. Net Tax Capacity
191	2	41	57	272	127	2335	134	738	135	162	431	178	248	94	4854	294	190	288	98	315	101	4345	1403	4,121
192	4	62	34	324	104	1882	47	626	124	196	321	181	334	130	4270	88	238	2687	697	224	48	3593	8569	2,059
200	3	53	44	316	44	2135	33	541	128	127	358	199	316	54	4253	160	259	0	146	135	59	3567	1713	3,026
199	3	41	56	348	153	2334	20	823	197	222	392	208	230	94	5022	194	271	0	196	575	19	4483	2456	3,707
194	2	49	49	301	116	1842	44	610	187	124	333	180	320	67	4123	199	218	2754	676	84	72-	3531	11867	3,440
195	3	48	49	390	164	2649	73	465	151	111	353	174	297	89	4918	157	136	0	141	345	128-	4176	96	3,255
196	2	52	46	223	109	2045	47	469	200	80	286	129	182	30	3799	118	245	822	855	248	33-	3411	7018	3,220
SP6	3	44	53	264	220	2086	7	647	233	157	394	187	194	170	4558	352	339	2108	484	627	25	4034	3863	3,145
197	3	6	91	315	105	2171	35	708	266	163	416	231	289	104	4803	200	671	0	148	729-	50	4106	1195	9,040
203	5	70	25	271	70	1922	97	648	146	77	285	241	302	91	4150	98	160	0	0	112	45-	3402	31	2,092
204	2	77	21	248	47	1910	69	542	177	103	273	170	179	89	3806	94	501	0	275	459	35-	3378	2392	1,476
2125	4	67	29	413	174	2225	52	723	120	75	376	241	228	92	4720	149	366	0	0	540-	540-	4112	35	2,219
206	5	53	42	180	54	2035	61	672	135	133	280	194	210	88	4043	108	285	256	262	282	35-	3475	4492	3,218
207	7	75	18	330	96	2010	56	357	148	70	233	207	297	28	3831	63	140	0	564	876	117	3144	737	1,493
208	7	65	28	350	128	1991	118	337	124	54	307	230	214	49	3901	69	227	0	0	569	90-	3283	0	1,818
209	4	68	28	475	107	2289	82	478	151	43	340	297	212	82	4556	56	298	0	0	123-	250-	4001	0	2,023
213	8	59	33	341	73	2013	135	616	105	129	331	195	252	63	4254	87	717	1763	496	77	284-	3536	12405	2,049
240	4	45	51	251	73	1922	146	561	186	142	259	172	144	83	3940	166	248	0	0	410	25	3513	127	2,806
217	10	28	62	425	669	2303	0	659	136	94	406	1635	442	131	6900	208	164	462	228	177	296-	4788	1858	5,115
218	6	29	65	269	100	2882	0	435	41	18	363	142	406	61	4716	258	299	0	0	1014	217	3934	0	5,326
219	3	46	51	187	238	2532	0	270	35	4	368	118	228	187	4168	105	417	0	0	813	537	3669	0	3,976
222	1	43	56	414	443	2273	0	313	191	96	415	0	262	134	4542	167	413	0	0	60	81-	4181	71	3,593
223	7	47	46	462	152	2209	82	621	126	90	540	258	215	49	4803	192	473	0	0	305	33-	4074	0	3,439
224	8	52	40	391	118	2135	74	813	149	91	391	1	336	126	4623	90	154	0	11	20-	51-	3875	0	2,837
225	4	60	36	206	84	2647	0	403	147	0	322	151	184	61	4206	77	85	0	0	167-	88-	3732	57	2,681
228	6	62	32	476	98	2420	71	611	206	57	365	178	166	49	4698	99	245	0	0	413	195-	4048	72	2,356
229	7	65	28	301	101	2058	279	676	40	37	219	249	291	71	4321	216	262	0	284	668	56	3336	3957	1,684
238	7	58	35	420	122	2271	204	681	199	93	394	239	277	105	5005	233	255	0	0	173	118-	4178	0	2,123
233	4	68	28	365	126	2113	33	533	140	71	395	242	179	100	4296	90	188	680	489	223	271-	3736	4940	1,548
239	6	73	21	341	82	1965	125	616	103	58	330	236	241	117	4213	51	241	0	65	62	128	3485	0	1,591
237	3	72	25	331	81	2096	137	683	170	124	360	211	268	83	4545	202	428	0	0	225	35	3908	35	1,663
236	7	62	31	425	150	2740	186	710	164	112	428	293	321	153	5681	84	641	0	0	272-	66	4611	39	1,959
241	8	34	58	253	117	2097	64	672	133	140	401	184	239	123	4422	89	247	321	133	172	115-	3871	855	2,225
242	4	59	37	356	98	2239	321	309	157	77	296	201	293	32	4379	73	161	0	0	196	46-	3604	0	2,844
243	4	46	50	427	124	2183	0	338	140	69	319	269	272	166	4307	72	375	0	0	865	303	3696	15	2,494
244	1	39	60	399	405	2172	8	958	130	93	399	0	357	125	5045	171	869	0	0	406	600-	4603	11	3,890
245	4	62	34	336	125	2133	166	549	147	62	444	224	166	200	4551	46	634	0	0	395	221-	4084	0	2,425

County Number and Name School District Name	District Number	1992-93 Resident Average Daily Membership					Pupil Data			Professional Staff		Tax Capacity Rates		Pupil Units (Weighted ADM)	
		1. Pre- Kindergarten Handicapped	2. Kindergarten	3. Elementary (Grades 1-6)	4. Secondary (Grades 7-12)	5. Total (Pre-K thru Grade 12)	6. Percent Minority	7. Percent Attendance	8. Percent Transported	9. Total Staff (FTE)	10. Pupil-Staff Ratio	11. Auditor Percent	12. Equalized Percent	13. Resident Pupil Units	14. Total Pupil Units
25 GOODHUE															
CANNON FALLS	252	7	131	738	675	1,551	1.9	95.1	92	95	15.8	65.51	61.77	1,691	1,657
GOODHUE	253	2	42	252	256	552	.2	96.2	80	39	14.2	52.83	48.76	607	618
KENYON (ICA)	254	3	45	347	291	686	1.0	95.8	71	43	15.4	61.45	56.66	751	755
PINE ISLAND	255	4	69	505	480	1,058	3.3	96.0	70	80	14.2	61.74	55.69	1,170	1,256
RED WING	256	40	227	1,598	1,537	3,402	4.3	94.5	66	237	14.5	52.67	50.56	3,756	3,821
WANAMINGO (ICA)	258	2	29	185	134	350	3.1	95.7	61	24	14.9	47.87	45.19	376	360
ZUMBROTA-MAZEPPA	2805	10	85	621	528	1,244	1.4	95.5	72	80	15.3	50.31	46.18	1,365	1,351
26 GRANT															
ASHBY	261		20	146	141	307	.9	95.7	85	20	16.2	50.96	46.07	338	369
BARRETT (ICA)	262		9	68	58	135	3.9	95.9	85	4	38.2	29.94	26.97	147	141
ELBOW LAKE (ICA)	263	1	43	241	215	500	1.7	96.0	62	34	13.6	35.19	30.16	543	544
HERMAN-NORCROSS	264	1	17	127	135	280	2.7	96.0	61	27	9.8	50.62	45.00	310	293
HOFFMAN (ICA)	265	2	15	124	111	252	2.6	93.1	89	16	11.9	45.61	41.32	278	284
27 HENNEPIN															
BLOOMINGTON	271	59	830	5,535	5,095	11,519	12.9	94.3	83	719	15.8	51.26	49.80	12,638	12,724
BROOKLYN CENTER	286	7	125	669	573	1,374	20.8	93.6	75	107	15.7	68.11	73.51	1,483	1,891
EDEN PRAIRIE	272	45	715	4,025	2,847	7,632	5.5	95.5	99	490	15.6	71.38	76.82	8,129	8,235
EDINA	273	29	426	2,756	2,413	5,624	4.6	94.9	83	360	15.8	64.84	60.75	6,133	6,291
HOPKINS	270	42	596	3,605	3,161	7,404	7.4	94.0	96	531	14.5	66.28	70.53	8,055	8,531
MINNEAPOLIS	SP1	359	4,380	22,068	15,364	42,171	55.9	89.3	89	3,254	12.8	68.03	74.76	44,656	44,434
MINNETONKA	276	34	594	3,347	2,793	6,768	3.2	95.5	98	425	15.6	75.28	68.99	7,314	7,292
ORONO	278	15	160	1,035	983	2,193	2.9	94.1	100	152	15.8	68.29	61.07	2,410	2,668
OSSEO	279	107	1,727	10,239	8,517	20,590	11.8	94.7	69	1,306	15.6	66.05	65.34	22,299	22,290
RICHFIELD	280	26	391	2,123	1,943	4,483	19.3	94.5	85	320	13.6	59.94	60.54	4,872	4,885
ROBBINSDALE	281	63	1,234	6,849	5,953	14,099	13.8	94.6	76	892	15.3	62.91	63.41	15,273	15,239
ST. ANTHONY-NEW BRIGH	282	5	88	422	413	928	9.9	93.8	83	79	13.4	61.12	61.43	1,007	1,155
ST. LOUIS PARK	283	53	343	2,123	1,881	4,400	9.1	94.6	80	303	14.1	68.44	67.27	4,802	4,753
WAYZATA	284	24	564	3,632	3,211	7,431	5.3	95.3	99	402	18.6	66.01	68.09	8,114	8,228
WESTONKA	277	13	214	1,223	1,170	2,620	3.7	94.4	94	146	15.9	60.07	54.61	2,864	2,597
28 HOUSTON															
CALEDONIA	299	2	79	390	466	937	1.7	95.8	60	74	12.8	55.94	49.06	1,039	1,045
HOUSTON	294	2	36	242	255	535	.2	95.6	67	37	14.2	50.70	45.53	594	595
LACRESCENT-HOKAH	300	5	80	626	670	1,381	1.6	95.6	73	89	15.8	64.03	55.84	1,543	1,570
SPRING GROVE	297	1	38	212	232	483	.0	96.4	56	36	13.4	62.23	55.01	534	531
29 HUBBARD															
LAPORTE	306	3	24	133	126	286	6.5	94.0	100	24	15.1	77.00	66.52	312	396
NEVIS	308	2	24	154	173	353	2.2	93.5	97	28	14.4	64.64	54.56	393	448
PARK RAPIDS	309	20	135	922	881	1,958	6.0	94.0	90	138	14.2	52.22	45.64	2,159	2,178
30 ISANTI															
BRAHAM	314	8	67	540	462	1,077	.5	93.9	79	65	15.8	76.54	70.64	1,182	1,132
CAMBRIDGE-ISANTI	911	30	297	2,198	1,817	4,342	2.9	93.3	87	257	17.3	47.28	43.50	4,743	4,894
31 ITASCA															
COLERAINE	316	8	114	742	826	1,690	6.2	94.4	80	99	15.7	48.64	44.70	1,881	1,762
DEER RIVER	317	4	80	533	470	1,087	20.9	94.2	94	72	15.1	44.59	40.98	1,189	1,186
GRAND RAPIDS	318	25	312	2,284	2,276	4,897	4.3	94.0	93	326	15.1	49.19	45.21	5,428	5,574
NASHWAUK-KEEWATIN	319	7	51	335	368	761	3.0	94.3	90	48	15.3	47.64	41.35	846	832

District Number	Revenue %			1992 - 93 Expenditures per Pupil Unit																Other Measures per Pupil Unit				
	15. Federal	16. State	17. Local and Other	18. District and School Admin.	19. District Support Services	20. Regular Instruction	21. Vocational Instruction	22. Exceptional Instruction	23. Instructional Support Services	24. Pupil Support Services	25. Operations and Maintenance	26. Food Service	27. Pupil Transportation	28. Other Oper. Program	29. Total PK-12 Operating Expenditures	30. Community Service	31. Capital Outlay	32. Building Construction	33. Debt Service	34. Operating Funds Balance	35. Change in Funds Balance	36. State and Local Oper. Costs	37. Long Term Debt	38. 1992 Adj. Net Tax Capacity
252	2 57 41			276	73 2011	75		475 106	153	349	210	246	107		4081	114	228	0	513	129-	56	3537	3954	2,428
253	5 64 31			323	80 2030	147		476 180	62	279	217	366	48		4208	61	134	0	0	439	107	3429	0	2,346
254	5 56 39			336	70 2170	85		350 147	50	326	238	363	44		4181	273	299	0	0	59	233-	3469	26	2,571
255	2 71 27			262	59 1953	161		506 125	131	288	150	147	129		3912	84	534	783	351	281	151-	3499	5833	1,561
256	4 25 71			271	85 2135	122		776 166	173	305	194	273	94		4594	210	387	234	82	202	62-	3991	9977	8,135
258	4 61 35			386	109 2326	68		462 214	48	374	221	360	54		4622	78	450	0	0	58-	562-	3922	161	2,966
2805	3 66 31			289	65 2046	188		586 198	69	312	223	233	86		4296	103	365	0	78	421	421	3521	352	2,009
261	4 69 27			334	127 1864	123		468 321	4	322	184	225	71		4043	118	173	5	330	646	46	3516	1992	1,672
262	4 71 25			483	860 2234	85		151 111	51	507	285	206	60		5033	323	122	0	0	203	358-	4427	0	2,667
263	5 59 36			280	104 2164	82		553 32	30	358	184	240	69		4097	257	264	0	0	102-	163-	3458	121	3,395
264	6 47 47			704	55 2679	186		549 213	63	427	233	257	130		5494	242	262	0	0	122-	729-	4795	48	4,390
265	8 63 29			354	98 2444	88		619 25	36	275	189	144	98		4372	118	202	0	0	34	13	3728	0	2,354
271	3 19 78			626	199 2338	68		708 274	205	349	216	238	287		5507	461	347	0	69	65-	400-	4942	107	7,534
286	5 43 52			203	189 2285	141		1019 252	140	448	225	218	214		5333	197	437	1857	261	327	19-	4749	3438	4,794
272	2 23 75			274	201 2099	52		787 250	120	432	174	224	80		4693	164	353	1512	708	378	111-	4218	10579	5,425
273	1 1 98			314	233 2592	32		622 279	142	649	138	219	217		5437	415	274	1714	0	53-	63-	4973	6320	9,608
270	2 0 98			299	226 2486	96		994 499	255	419	177	289	284		6025	373	394	6	130	332-	458-	5435	1081	8,229
SP1	7 29 64			421	163 2580	110		1292 260	282	413	248	437	202		6408	230	427	431	281	93	71-	5426	1779	5,966
276	3 44 53			254	245 2469	115		772 323	188	464	194	315	132		5470	276	320	2051	227	491	33	4865	3275	5,451
278	2 18 80			271	166 2430	97		668 155	144	418	198	383	174		5105	249	261	558	101	352	142	4394	2765	6,967
279	2 49 49			293	213 2165	126		766 231	114	345	179	266	43		4740	134	205	34	389	588	6	4205	5971	2,951
280	3 22 75			285	158 2289	85		927 192	234	516	170	191	184		5231	157	267	10	21	207	35	4726	360	5,886
281	3 34 63			253	142 2270	159		831 203	208	453	193	267	144		5123	289	272	0	22	62	38-	4537	0	4,588
282	2 21 77			409	221 2831	67		693 189	162	520	61	158	185		5498	555	255	0	0	75	615-	5493	0	6,895
283	2 9 89			304	251 2627	64		1113 497	243	679	192	328	65		6362	611	416	1331	0	943	151-	5746	3290	7,550
284	4 13 83			387	265 1969	19		556 143	158	408	162	270	138		4475	239	230	8	404	304-	384	3781	4984	6,485
277	4 20 76			312	93 2329	67		707 133	220	527	200	249	242		5079	417	357	0	0	90-	34	4422	11	5,765
299	5 68 27			312	53 1966	66		725 155	71	321	220	341	194		4425	128	177	0	91	111	46	3632	232	1,957
294	5 75 20			317	149 2141	64		435 87	68	333	158	228	47		4027	108	330	0	91	43	160-	3460	362	1,573
300	2 64 34			266	62 2091	14		436 88	90	244	178	316	130		3915	138	191	0	128	288	186	3515	831	1,868
297	5 67 28			320	63 2209	73		385 106	32	330	208	276	104		4105	97	136	0	154	438	82	3391	2854	1,707
306	7 66 27			396	32 1804	84		620 154	81	461	277	234	57		4202	90	257	0	271	638	346	3506	3285	2,219
308	5 47 48			289	107 2183	259		590 100	97	373	251	262	52		4564	120	377	0	3506	678	45	3929	4449	4,506
309	9 49 42			338	107 1884	137		808 250	131	320	195	274	93		4539	117	252	1	69	79-	166-	3729	0	3,548
314	5 72 23			282	92 1928	68		670 123	95	326	196	291	43		4114	85	251	786	202	189	11	3486	7277	1,217
911	7 67 26			227	91 1992	220		754 137	134	317	187	185	33		4275	109	302	17	69	291	43-	3654	392	1,629
316	5 67 28			288	121 2484	104		498 186	126	475	147	291	80		4798	62	506	414	108	336-	98-	4144	1016	1,176
317	10 69 21			304	100 2382	59		599 259	154	367	190	498	98		5009	97	368	0	1802	592	240	3820	1543	2,782
318	5 39 56			265	98 2274	106		899 180	123	412	154	312	134		4958	120	368	0	186	194	98-	4281	956	5,251
319	4 67 29			282	142 2150	199		766 83	108	552	178	720	244		5424	67	733	0	179	1699-	688-	4347	148	1,413

County Number and Name School District Name	District Number	1992-93 Resident Average Daily Membership					Pupil Data			Professional Staff		Tax Capacity Rates		Pupil Units (Weighted ADM)	
		1. Pre- Kindergarten Handicapped	2. Kindergarten	3. Elementary (Grades 1-6)	4. Secondary (Grades 7-12)	5. Total (Pre-K thru Grade 12)	6. Percent Minority	7. Percent Attendance	8. Percent Transported	9. Total Staff (FTE)	10. Pupil-Staff Ratio	11. Auditor Percent	12. Equalized Percent	13. Resident Pupil Units	14. Total Pupil Units
32 JACKSON															
HERON LAKE (ICA)	330	1	29	177	185	392	.0	95.8	75	30	13.9	54.77	51.65	433	433
JACKSON	324	8	72	510	501	1,091	6.3	95.5	57	75	14.4	45.88	43.95	1,207	1,204
LAKEFIELD (ICA)	325	5	22	232	233	492	.0	94.4	58	35	13.4	62.51	58.88	550	546
SIOUX VALLEY (ICA)	328	1	3	49	31	84	.0	97.0	86	11	13.0	54.51	50.47	91	87
33 KANABEC															
MORA	332	14	129	982	815	1,940	2.4	94.7	80	122	15.6	57.80	49.36	2,119	2,088
OGILVIE	333	4	58	330	323	715	2.0	91.6	100	46	16.2	65.09	61.05	782	812
34 KANDIYOHI															
ATWATER (ICA)	341	1	44	307	297	649	2.0	96.6	67	40	13.5	43.88	37.69	717	697
NEW LONDON-SPICER	345	10	112	801	761	1,684	1.9	94.6	96	115	14.9	63.26	54.21	1,860	1,895
PRINSBURG (NONOPER)	0815		1	14	7	22	.0	.0	100	0	.0	45.48	42.44	23	24
RAYMOND (ICA)	346	3	22	158	161	344	8.5	94.8	89	20	13.8	48.50	43.02	384	355
WILLMAR	347	39	351	2,222	2,004	4,616	13.1	94.1	80	379	12.6	61.73	57.59	5,050	5,285
35 KITTSO															
HALLOCK (ICA)	2359	4	37	198	174	413	1.2	94.9	46	33	10.2	55.69	50.57	446	423
KARLSTAD-STRANDQUIST	2358	1	33	195	210	439	.2	94.9	85	37	11.7	50.54	47.16	484	477
KENNEDY (ICA)	354	2	8	72	64	146	1.5	95.6	59	16	12.2	68.97	61.04	161	156
LANCASTER	356	2	15	84	78	179	.5	95.6	86	20	10.5	88.79	78.14	194	225
36 KOCHICHING															
INTERNATIONAL FALLS	361	7	127	840	916	1,890	6.6	93.5	90	121	15.7	55.33	38.51	2,100	2,116
LITTLEFORK-BIG FALLS	362	3	24	178	184	389	1.7	95.0	54	27	12.8	36.02	30.97	431	387
SOUTH KOCHICHING	363	1	20	148	157	326	.0	94.7	100	40	10.1	55.43	46.56	363	449
37 LAC QUI PARLE															
BELLINGHAM (ASE)	371	1	9	90	77	177	1.0	96.7	92	11	8.6	60.10	53.25	195	169
DAWSON	378	2	47	354	345	748	2.9	95.6	58	51	14.5	50.41	45.32	830	813
MADISON (CSF)	377	2	45	288	256	591	.0	96.3	71	21	18.6	45.40	34.85	646	712
MARIETTA (CSF)	376	1	2	42	55	100	.0	93.7	97	0	.0	34.49	25.73	116	107
38 LAKE															
LAKE SUPERIOR	381	12	161	1,077	1,063	2,313	.4	94.5	76	141	15.8	52.29	43.45	2,551	2,530
39 LAKE OF THE WOODS															
LAKE OF THE WOODS	390	7	64	388	332	791	2.5	93.3	98	54	14.5	65.18	60.88	860	853
40 LESUEUR															
CLEVELAND	391	3	42	234	247	526	1.9	95.2	64	38	13.4	57.76	49.21	580	557
LECENTER	392	13	44	395	318	770	1.8	95.2	48	55	13.9	60.41	50.32	845	854
LESUEUR-HENDERSON	2397	17	101	596	665	1,379	4.2	95.2	63	91	15.0	65.59	51.36	1,530	1,518
MONTGOMERY	394	9	77	529	536	1,151	3.5	94.9	61	73	14.5	69.70	59.94	1,275	1,203
WATERVILLE (ICA)	395	13	55	368	416	852	1.9	94.4	78	59	12.9	50.51	44.09	951	933
41 LINCOLN															
HEDRICKS (ICA)	402	1	11	85	69	166	.0	96.9	88	16	15.3	53.82	49.62	180	207
IVANHOE (ICA)	403	2	20	158	175	355	.7	96.9	87	25	12.0	39.09	36.27	397	408
LAKE BENTON (ASE)	404	3	17	126	121	267	.3	96.9	66	23	13.4	50.93	44.00	295	351
TYLER (ICA)	409	3	24	197	216	440	1.9	94.6	93	17	15.4	54.63	48.07	493	489
VERDI (ASE)	408		1	36	49	86	.0	97.8	47	5	4.2	30.42	26.34	99	55

County Number and Name School District Name	District Number	1992-93 Resident Average Daily Membership					Pupil Data			Professional Staff		Tax Capacity Rates		Pupil Units (Weighted ADM)	
		1. Pre- Kindergarten Handicapped	2. Kindergarten	3. Elementary (Grades 1-6)	4. Secondary (Grades 7-12)	5. Total (Pre-K thru Grade 12)	6. Percent Minority	7. Percent Attendance	8. Percent Transported	9. Total Staff (FTE)	10. Pupil-Staff Ratio	11. Auditor Percent	12. Equalized Percent	13. Resident Pupil Units	14. Total Pupil Units
42 LYON															
BALATON	411	3	16	119	144	282	2.1	95.7	56	26	10.8	62.06	55.86	317	321
COTTONWOOD (ICA)	412	3	31	179	190	403	1.5	96.9	64	33	14.0	49.59	44.38	446	473
LYND (ASE)	415	1	13	109	121	244	23.4	96.2	56	13	10.3	44.88	37.61	275	242
MARSHALL (ASE)	413	9	163	1,013	953	2,138	5.9	95.2	70	141	16.3	50.70	51.00	2,346	2,567
MINNEOTA	414	2	44	214	294	554	1.1	96.6	62	42	13.7	48.72	42.39	621	648
RUSSELL (ICA)	418	3	21	109	89	222	.5	95.9	93	17	11.7	45.39	41.89	238	237
TRACY (ASE)	417	7	48	343	428	826	4.7	92.4	91	57	15.2	47.33	43.35	931	975
43 MCLEOD															
BROWNTON (ICA)	421	1	30	165	159	355	1.0	95.6	60	23	13.2	55.46	49.14	387	364
GLENCOE	422	8	108	636	690	1,442	6.3	95.3	76	77	19.1	55.57	47.73	1,599	1,636
HUTCHINSON	423	24	219	1,398	1,379	3,020	2.9	94.1	94	175	17.7	58.71	51.55	3,329	3,439
LESTER PRAIRIE (ASE)	424	2	36	232	203	473	.0	95.8	61	39	14.3	61.57	54.73	517	613
SILVER LAKE	425	3	36	126	217	382	.6	96.2	78	25	14.5	62.79	53.75	428	405
STEWART (ICA)	426	1	16	138	129	284	2.5	96.6	59	22	12.9	57.06	50.39	315	294
WINSTED (ASE)	427	1	13	103	96	213	.0	97.3	42	13	10.6	33.54	28.51	235	198
44 MAHNOMEN															
MAHNOMEN	432	3	47	369	418	837	51.1	89.8	85	70	12.3	49.99	43.44	939	969
WAUBUN	435	1	47	293	272	613	52.9	93.1	80	57	10.6	42.29	38.10	672	662
45 MARSHALL															
ALVARADO (ASE)	436	1	12	84	68	165	8.6	94.3	63	9	7.6	56.46	51.32	179	122
ARGYLE	437	1	18	118	115	252	1.2	97.1	44	22	11.7	50.57	46.12	278	284
GRYGLA	447	1	22	105	118	246	.0	95.1	86	22	10.9	75.18	68.79	270	266
MIDDLE RIVER (ICA)	440	1	11	79	103	194	1.6	96.7	80	18	13.6	89.70	80.37	220	209
NEWFOLDEN	441	2	23	189	196	410	1.9	94.7	96	37	11.5	52.69	50.79	458	475
OSLO (ASE)	442	1	11	67	76	155	12.6	95.1	57	22	12.0	97.47	87.04	173	298
STEPHEN	443		19	159	127	305	4.8	96.4	50	24	12.3	51.62	47.90	333	329
WARREN (ASE)	446	2	42	258	293	595	6.5	95.2	43	47	13.4	54.60	49.52	662	704
46 MARTIN															
CEYLON (ASE)	451	1	16	62	85	164	7.5	95.2	57	7	10.0	41.31	37.43	181	122
FAIRMONT (ASE)	454	18	137	1,004	1,014	2,173	3.7	94.2	87	118	19.2	62.90	57.30	2,412	2,536
GRANADA-E CHAIN (ASE)	2536	2	28	234	234	498	1.4	95.1	83	39	12.2	41.99	38.17	554	531
MARTIN CO WEST (ASE)	2448	3	68	446	441	958	.9	96.0	71	75	13.4	46.24	42.72	1,056	1,110
TRUMAN (ASE)	458	5	30	205	223	463	.0	95.3	66	34	13.7	51.74	47.29	514	531
47 MEEKER															
COSMOS	461	1	29	137	133	300	4.6	96.5	90	15	19.7	44.99	41.39	325	313
DASSEL-COKATO	466	14	153	941	850	1,958	1.9	95.0	100	126	15.7	61.48	55.95	2,142	2,171
EDEN VALLEY	463	7	53	351	471	882	.6	95.4	98	59	15.1	67.80	62.78	1,000	1,011
GROVE CITY (ICA)	464	3	24	204	149	380	1.2	95.0	61	35	12.2	73.17	68.41	413	374
LITCHFIELD	465	15	169	1,000	998	2,182	4.8	95.2	93	134	15.9	58.24	53.23	2,402	2,362
48 MILLE LACS															
ISLE	473	1	35	242	238	516	5.9	94.5	97	39	13.8	67.75	59.34	570	590
MILACA	912	16	114	795	758	1,683	2.2	94.0	80	103	16.0	70.31	62.08	1,856	1,820
ONAMIA	480	18	74	420	327	839	20.4	90.5	96	66	13.5	71.66	63.56	904	969
PRINCETON	477	24	217	1,340	1,284	2,865	2.7	94.3	89	173	16.2	55.67	49.32	3,151	3,089

District Number	Revenue %			1992 - 93 Expenditures perPupil Unit															Other Measures per Pupil Unit					
	15. Federal	16. State	17. Local and Other	18. District and School Admin.	19. District Support Services	20. Regular Instruction	21. Vocational Instruction	22. Exceptional Instruction	23. Instructional Support Services	24. Pupil Support Services	25. Operations and Maintenance	26. Food Service	27. Pupil Transpor- tation	28. Other Oper. Program	29. Total PK-12 Operating Expendi- tures	30. Community Service	31. Capital Outlay	32. Building Construction	33. Debt Service	34. Operating Funds Balance	35. Change in Funds Balance	36. State and Local Oper. Costs	37. Long Term Debt	38. 1992 Adj. Net Tax Capacity
411	4	49	47	545	118	2600	18	466	152	95	357	242	240	87	4921	114	302	0	0	92	276-	4331	0	3,294
412	6	57	37	393	137	2089	71	524	138	71	235	218	157	59	4093	75	120	0	0	644	8	3501	0	3,168
415	4	71	25	247	154	2402	0	561	80	10	261	190	289	54	4247	121	423	0	0	331	216-	3735	0	2,116
413	5	57	38	295	74	1866	46	668	132	111	433	212	273	50	4161	97	298	0	284	431	32-	3489	2697	3,061
414	5	63	32	243	161	2104	44	460	93	61	303	177	158	253	4057	111	459	345	19	532	64-	3424	322	2,581
418	3	46	51	457	146	2995	0	334	82	16	255	276	188	34	4784	125	468	0	0	295	82-	4340	0	3,665
417	6	50	44	229	83	2096	137	676	131	91	350	204	207	105	4308	101	307	0	0	699	285	3634	0	3,440
421	5	62	33	446	70	1949	136	503	108	135	376	176	295	68	4262	85	655	0	0	157	390-	3588	0	2,042
422	2	66	32	307	87	2021	18	429	128	143	319	202	206	170	4032	204	206	0	135	162-	19-	3519	175	2,108
423	2	65	33	235	83	1853	82	438	156	114	360	189	295	139	3944	83	194	1	314	153	34-	3367	3922	2,247
424	4	71	25	301	156	2169	30	423	183	42	298	186	239	26	4054	49	337	103	198	401	365-	3492	3218	1,584
425	3	71	26	387	88	2088	113	326	83	36	310	216	382	60	4090	135	206	0	661	174	60-	3396	4587	1,636
426	8	54	38	322	100	1958	97	643	103	170	349	215	276	151	4383	143	284	0	0	377-	181-	3527	0	2,765
427	4	42	54	562	41	2566	0	1146	20	24	262	17	302	318	5258	204	221	0	0	118	398-	4754	0	4,100
432	20	65	15	406	94	2631	153	934	212	67	474	285	344	85	5684	122	553	0	334	83-	241-	4151	3071	1,456
435	20	60	20	512	89	2683	124	1000	273	92	319	286	417	50	5843	39	182	0	0	340	267-	4265	0	2,232
436	2	33	65	419	296	3339	0	838	25	83	574	172	300	502	6548	0	105	0	724	600-	198-	6074	1335	4,752
437	8	39	53	433	143	2248	20	626	150	129	456	258	353	86	4903	287	394	0	0	432	201-	3888	49	4,434
447	8	69	23	353	130	2294	398	608	236	8	472	235	579	71	5384	35	316	0	218	699	142	4165	999	1,692
440	7	67	26	504	68	1989	18	515	197	21	484	453	600	368	5218	102	582	0	120	534	141	3924	272	1,410
441	6	51	43	442	70	2210	111	624	117	38	412	275	367	146	4812	106	259	4710	0	355-	145-	3887	0	4,082
442	4	40	56	568	174	2175	56	670	79	32	391	201	210	84	4639	97	194	81	250	393-	355-	4111	49	2,849
443	6	32	62	603	126	2236	0	436	218	144	625	244	262	69	4962	109	323	0	0	641	58	4195	0	5,139
446	4	50	46	419	21	2065	11	622	117	59	439	216	156	67	4192	86	534	0	0	1342	589	3694	0	3,480
451	3	37	60	412	245	3062	0	425	32	11	447	222	339	181	5377	390	219	0	0	792	1055	4662	0	5,385
454	4	44	52	220	77	1898	118	441	162	88	395	214	310	85	4007	221	335	277	0	8-	52	3734	106	2,668
2536	5	36	59	441	140	2429	0	476	85	43	422	254	243	73	4605	103	289	0	0	1195	1195	3951	0	5,263
2448	4	34	62	390	137	2206	155	446	121	70	447	211	215	79	4478	136	369	0	0	811	811	3933	7	5,733
458	5	42	53	309	93	2214	91	587	82	65	321	200	433	80	4474	116	391	0	0	559	115-	3651	0	4,443
461	6	59	35	625	205	1900	7	549	114	62	316	259	335	388	4762	116	459	0	0	719	525-	4042	0	3,028
466	8	66	26	246	52	2006	80	580	182	99	309	175	260	67	4056	149	179	665	317	483	94-	3511	5759	1,623
463	5	69	26	273	103	1874	94	624	81	56	340	220	361	42	4069	117	433	3170	349	529	95	3348	4880	1,567
464	7	59	34	260	214	2479	0	770	200	30	290	189	326	116	4874	37	300	0	0	254-	42	4025	0	1,729
465	4	65	31	282	107	2066	32	553	104	72	254	140	303	128	4041	136	268	0	9	575	172	3409	53	2,034
473	4	44	52	376	112	2066	33	529	99	28	428	268	216	99	4254	86	360	2892	647	611	66	3636	3542	3,360
912	4	69	27	285	120	1914	99	754	110	78	339	167	370	82	4317	136	297	1763	371	58-	39-	3563	4123	1,351
480	6	54	40	239	110	2391	30	757	87	55	370	237	328	36	4641	101	323	1390	556	570	40	3843	7192	2,916
477	4	69	27	292	87	1921	130	514	198	132	288	216	357	118	4253	138	282	297	222	149	84-	3455	3355	1,588

County Number and Name School District Name	District Number	1992-93 Resident Average Daily Membership					Pupil Data			Professional Staff		Tax Capacity Rates		Pupil Units (Weighted ADM)	
		1. Pre- Kindergarten Handicapped	2. Kindergarten	3. Elementary (Grades 1-6)	4. Secondary (Grades 7-12)	5. Total (Pre-K thru Grade 12)	6. Percent Minority	7. Percent Attendance	8. Percent Transported	9. Total Staff (FTE)	10. Pupil-Staff Ratio	11. Auditor Percent	12. Equalized Percent	13. Resident Pupil Units	14. Total Pupil Units
49 MORRISON															
LITTLE FALLS	482	27	212	1,627	1,682	3,548	1.7	95.0	84	190	18.9	75.66	73.77	3,951	4,019
MOTLEY	483	2	38	254	248	542	.0	94.8	43	25	10.7	46.37	43.36	597	292
PIERZ	484	9	45	347	546	947	.4	99.5	81	74	12.7	62.34	60.78	1,089	1,089
ROYALTON	485	7	62	401	370	840	.1	94.5	85	58	14.4	52.78	51.36	919	920
SWANVILLE	486	5	27	183	224	439	1.4	96.7	80	28	15.2	73.18	68.50	493	485
UPSALA	487	4	40	208	194	446	.2	96.3	92	35	12.7	64.68	62.35	486	492
50 MOWER															
AUSTIN	492	40	281	1,880	1,853	4,054	4.6	93.7	62	282	14.6	75.94	73.59	4,473	4,568
GRAND MEADOW	495	1	35	196	182	414	2.4	95.9	53	35	11.7	71.88	62.53	450	443
LERDY	499	2	38	206	198	444	.2	95.9	67	37	11.7	69.54	61.40	484	476
LYLE	497	2	17	134	120	273	.0	95.5	52	24	11.2	57.38	51.76	300	297
SOUTHLAND	500	5	71	270	297	643	1.4	95.2	94	51	13.1	61.81	55.26	698	735
51 MURRAY															
CHANDLER-LW (ICA)	918	1	23	119	122	265	.0	96.7	80	17	7.9	49.52	44.91	289	272
FULDA (ICA)	505	6	39	260	260	565	1.9	96.8	63	46	12.6	57.00	50.44	623	649
SLAYTON (ICA)	504	5	52	339	348	744	.6	96.0	78	51	16.7	66.46	60.61	824	818
52 NICOLLET															
NICOLLET	507	4	26	170	204	404	2.4	92.1	73	30	13.9	71.21	60.46	451	469
ST. PETER	508	17	142	852	895	1,906	2.8	93.1	70	122	16.1	60.56	50.99	2,105	2,185
53 NOBLES															
ADRIAN	511	4	28	259	258	549	.4	96.2	62	38	14.4	54.89	49.02	614	617
BREWSTER (ICA)	513	1	9	126	99	235	8.5	96.4	69	10	13.5	48.53	44.11	261	264
ELLSWORTH	514	2	17	125	104	248	.5	95.3	56	16	13.4	56.23	48.25	269	246
ROUND LAKE (ICA)	516	1	16	71	74	162	3.0	96.2	83	17	11.9	66.30	58.88	176	182
WORTHINGTON	518	14	179	1,108	1,268	2,569	13.7	91.0	90	169	15.4	52.19	47.54	2,860	2,904
54 NORMAN															
ADA (ASE)	521	2	31	220	254	507	5.2	95.2	94	43	13.6	50.27	46.55	567	665
BORUP (ASE)	522	2	5	44	74	125	17.6	94.2	96	8	7.8	46.14	43.19	144	137
GARY (ICA)	523		12	72	77	161	7.4	97.4	70	16	10.4	84.21	78.56	177	135
HALSTAD-HENDRUM	2527	1	25	201	188	415	14.7	94.2	98	36	13.6	54.10	50.53	457	546
TWIN VALLEY (ICA)	526		27	173	169	369	11.3	95.2	78	30	10.7	69.98	64.74	406	398
55 OLMSTED															
BYRON	531	9	117	662	549	1,337	1.1	95.6	69	84	15.5	68.28	61.11	1,446	1,416
CHATFIELD	227	5	63	446	383	897	.8	95.4	67	59	15.4	58.03	50.08	981	996
DOVER-EYOTA	533	3	66	398	399	866	.8	95.7	79	62	14.4	55.48	49.27	953	977
ROCHESTER	535	63	1,204	7,451	6,057	14,775	9.9	95.0	66	890	16.6	62.68	56.48	15,997	16,061
STEWARTVILLE	534	1	151	824	716	1,692	2.0	96.1	78	101	16.7	72.74	64.37	1,832	1,831
56 OTTER TAIL															
BATTLE LAKE	542	2	37	259	230	528	3.3	94.4	80	37	13.4	46.14	39.50	579	543
DEER CREEK (ICA)	543	2	17	102	96	217	.5	96.0	85	0	.0	52.23	48.94	236	215
FERGUS FALLS	544	17	217	1,603	1,482	3,319	1.6	93.0	74	203	16.5	51.25	47.10	3,656	3,707
HENNING	545	1	29	219	230	479	1.7	95.7	81	37	12.3	50.09	43.98	536	513
NEW YORK MILLS	553	5	52	324	361	742	.7	95.3	88	47	15.4	84.12	78.57	823	818
PARKERS PRAIRIE	547	2	37	296	262	597	1.7	95.7	82	45	13.8	62.16	57.31	658	691
PELICAN RAPIDS	548	3	100	586	536	1,225	3.7	95.3	74	87	13.8	49.68	43.22	1,335	1,308
PERHAM	549	4	137	673	743	1,557	2.5	94.8	81	103	15.2	60.17	53.07	1,716	1,739
UNDERWOOD	550	1	28	198	209	436	.7	95.7	92	30	15.0	58.82	51.41	484	503

District Number	Revenue %			1992 - 93 Expenditures per Pupil Unit																	Other Measures per Pupil Unit				
	15. Federal	16. State	17. Local and Other	18. District and School Admin.	19. District Support Services	20. Regular Instruction	21. Vocational Instruction	22. Exceptional Instruction	23. Instructional Support Services	24. Pupil Support Services	25. Operations and Maintenance	26. Food Service	27. Pupil Transpor- tation	28. Other Oper. Program	29. Total PK-12 Operating Expendi- tures	30. Community Service	31. Capital Outlay	32. Building Construction	33. Debt Service	34. Operating Funds Balance	35. Change in Funds Balance	36. State and Local Oper. Costs	37. Long Term Debt	38. 1992 Adj. Net Tax Capacity	
482	13	62	25	256	64	1664	227	690	137	80	349	197	365	70	4099	123	389	1375	303	306	318	3337	51	1,436	
483	14	65	21	413	139	2871	1	927	118	20	453	272	626	229	6069	139	250	0	320	1145	390	4799	629	2,776	
484	10	68	22	302	90	1795	195	898	133	155	280	187	368	42	4443	121	251	10	382	589	9	3442	4663	1,323	
485	9	82	9	336	109	2057	114	514	105	65	264	214	170	29	3978	83	191	0	212	580	7	3373	1056	1,493	
486	6	73	21	436	84	2333	141	532	69	35	315	229	301	109	4583	74	224	0	388	178	154	3850	2463	1,216	
487	8	72	20	357	144	1987	307	738	161	33	281	197	249	58	4511	125	263	0	0	169	218	3679	0	990	
492	5	56	39	286	140	1999	92	993	154	87	439	168	207	370	4934	143	396	2389	206	39	6	4493	3688	2,239	
495	5	52	43	323	132	2252	185	629	59	111	348	222	202	81	4545	91	347	0	106	381	257	3876	62	2,692	
499	5	56	39	207	173	2379	210	474	52	96	305	214	184	116	4409	397	261	0	190	31	107	3778	794	2,703	
497	11	52	37	390	96	2164	0	1015	431	229	480	252	179	329	5564	93	255	0	0	468	211	4661	50	2,106	
500	5	52	43	387	87	2084	182	615	162	145	398	217	445	347	4375	313	358	108	151	14	53	4368	1310	3,566	
918	17	45	38	504	137	2083	63	836	109	137	500	65	935	309	5677	107	2179	0	0	1030	1149	4278	0	3,602	
505	6	51	43	348	152	2061	274	501	154	99	424	193	317	86	4609	330	460	0	0	146	109	3820	383	3,450	
504	6	55	39	309	119	2062	67	761	114	112	391	271	362	166	4734	88	531	0	0	808	208	3849	50	2,661	
507	3	51	46	335	172	2181	86	290	194	196	369	268	492	94	4677	197	562	0	991	490	79	3806	7902	3,378	
508	4	64	32	292	68	1962	38	788	126	125	353	137	244	64	4197	108	410	0	276	170	91	3661	2589	2,103	
511	6	56	38	315	65	2216	39	519	154	76	320	193	379	85	4362	78	284	0	334	410	114	3491	1954	2,786	
513	5	54	41	367	98	2013	120	430	113	5	311	163	231	39	3891	264	240	0	0	1198	180	3337	0	3,512	
514	4	49	47	319	134	2519	0	613	105	6	387	220	213	154	4669	24	479	0	0	3	33	3991	0	3,173	
516	2	30	68	491	166	1905	114	538	178	28	443	277	338	126	4603	195	381	0	0	426	444	3915	0	4,727	
518	4	60	36	239	125	1824	112	1188	385	174	316	222	253	147	4987	165	285	0	171	39	230	4338	0	2,588	
521	5	46	49	153	28	2062	678	614	76	17	240	227	411	65	4572	83	782	0	213	618	1	3505	617	3,532	
522	4	32	64	217	109	3158	253	487	22	3	171	197	1005	307	5929	277	256	0	113	573	608	4600	0	5,599	
523	8	34	58	641	114	3943	164	926	130	9	959	392	739	389	8404	196	341	0	495	107	42	6733	619	2,809	
2527	8	52	40	435	51	1884	280	724	237	84	471	268	346	92	4873	57	390	0	235	520	2225	3966	1682	3,674	
526	6	67	27	349	30	2368	221	605	30	19	231	275	366	56	4549	108	172	0	39	35	565	3700	111	1,609	
531	2	68	30	275	64	2087	42	635	103	134	360	208	195	58	4160	172	786	866	428	350	115	3682	4972	1,708	
227	3	68	29	364	112	1955	108	419	90	93	333	187	279	60	3999	103	382	0	0	488	2	3426	17	1,907	
533	4	72	24	295	77	1980	72	463	182	102	317	213	186	41	3927	84	492	1802	313	433	137	3397	7904	1,441	
535	3	43	54	255	118	1998	107	765	302	122	376	167	307	70	4587	197	214	76	209	348	54	4295	2089	3,972	
534	2	70	28	282	47	1933	88	622	169	99	298	189	265	66	4057	140	241	0	501	222	40	3532	489	1,548	
542	5	25	70	304	132	2332	224	567	73	29	354	180	305	79	4578	112	389	0	0	62	30	3874	11	6,153	
543	0	83	17	347	23	3178	0	112	72	47	419	279	280	7	4764	114	158	0	0	296	341	3390	0	935	
544	3	64	33	275	49	2020	100	622	170	116	305	145	304	107	4213	116	149	0	0	555	27	3611	109	2,349	
545	6	65	29	269	128	2323	192	615	142	60	272	187	285	30	4504	95	409	0	0	366	13	3847	0	2,329	
553	7	65	28	313	152	2022	243	602	81	37	320	221	214	112	4318	93	549	4559	445	359	122	3500	5306	1,021	
547	8	66	26	301	126	2131	123	684	158	77	278	209	383	51	4521	87	235	0	301	321	50	3566	1395	1,524	
548	6	56	38	255	42	2065	67	534	93	65	269	171	334	51	3946	64	257	0	151	564	3	3256	412	3,141	
549	5	58	37	228	144	1955	147	648	154	122	316	202	361	54	4331	113	292	1	374	475	112	3592	3068	2,807	
550	5	70	25	297	118	2051	133	409	168	51	271	210	226	47	3981	118	212	0	161	691	53	3328	176	1,514	

County Number and Name School District Name	District Number	1992-93 Resident Average Daily Membership					Pupil Data			Professional Staff		Tax Capacity Rates		Pupil Units (Weighted ADM)	
		1. Pre- Kindergarten Handicapped	2. Kindergarten	3. Elementary (Grades 1-6)	4. Secondary (Grades 7-12)	5. Total (Pre-K thru Grade 12)	6. Percent Minority	7. Percent Attendance	8. Percent Transported	9. Total Staff (FTE)	10. Pupil-Staff Ratio	11. Auditor Percent	12. Equalized Percent	13. Resident Pupil Units	14. Total Pupil Units
57 PENNINGTON GOODRIDGE	561		14	97	109	220	1.3	94.8	95	21	10.5	80.76	74.30	246	251
THIEF RIVER FALLS	564	5	145	1,053	1,114	2,317	3.3	91.7	64	157	14.8	62.56	58.37	2,582	2,604
58 PINE EAST CENTRAL	2580	2	67	455	474	998	8.4	94.2	88	93	11.6	68.14	62.21	1,106	1,229
FINLAYSON (ASE)	570		13	98	121	232	.0	95.9	81	13	8.1	53.29	51.21	262	244
HINCKLEY (ASE)	573	2	64	449	421	936	6.5	95.5	84	59	17.8	53.47	48.98	1,031	1,038
PINE CITY	578	6	94	819	751	1,670	2.0	93.6	89	109	15.7	56.16	51.11	1,848	1,905
WILLOW RIVER	577	1	39	279	241	560	3.0	95.2	90	34	15.4	67.97	60.83	614	579
59 PIPESTONE EDGERTON	581	1	17	127	138	283	.3	97.3	69	24	12.2	52.92	47.15	318	328
JASPER	582	1	21	119	100	241	2.9	97.0	46	21	10.5	59.16	46.97	261	257
PIPESTONE	583	7	100	633	566	1,306	5.5	94.8	58	90	14.9	48.24	44.38	1,427	1,472
RUTHTON (ICA)	584	1	14	86	88	189	2.4	96.0	82	30	12.5	52.61	47.93	209	206
60 POLK CLIMAX	592	1	7	81	95	184	1.9	95.2	67	22	9.0	61.21	56.19	208	231
CROOKSTON (ASE)	593	3	121	897	969	1,990	12.6	94.2	55	140	14.4	49.51	45.60	2,224	2,277
EAST GRAND FORKS	595	8	184	1,043	885	2,120	15.5	94.1	56	140	15.2	49.20	47.82	2,295	2,331
FERTILE (ASE)	599	2	33	247	250	532	1.3	95.3	85	45	13.9	49.18	45.69	591	700
FISHER	600	1	17	108	89	215	14.3	96.4	48	20	10.1	70.81	64.65	233	224
FOSSTON	601	4	52	335	351	742	4.8	94.6	73	50	15.0	74.84	70.05	821	824
MENTOR (ASE)	604	1	15	89	64	169	.0	95.9	96	7	12.0	44.64	40.58	180	180
WIN-E-MAC (ASE)	2609	1	39	242	253	535	1.9	95.4	85	39	13.5	59.62	55.81	591	583
61 POPE CYRUS (ASE)	611	1	8	70	67	146	4.6	96.6	96	10	11.5	43.90	39.82	161	176
GLENWOOD (CSF)	612	2	80	602	533	1,217	1.8	96.7	79	41	16.3	70.11	45.18	1,338	1,303
STARBUCK (CSF)	614	3	33	205	198	439	1.7	95.8	87	14	16.3	63.69	38.64	483	468
VILLARD (CSF)	615	1	17	121	104	243	2.9	96.4	100	10	13.8	75.62	50.56	267	235
62 RAMSEY MOUNDS VIEW	621	56	839	5,754	5,061	11,710	7.9	93.8	88	711	16.7	68.90	66.32	12,815	13,139
N. ST. PAUL-MAPLEWOOD	622	61	850	4,973	4,227	10,111	6.4	93.1	79	544	18.7	64.30	61.41	10,970	11,193
ROSEVILLE	623	16	515	3,160	2,816	6,507	11.4	94.5	95	427	15.2	67.47	66.82	7,095	7,146
ST. PAUL	625	278	3,627	19,789	14,338	38,032	46.7	91.6	73	2,555	14.7	55.07	54.30	40,548	40,257
WHITE BEAR LAKE	624	39	753	4,732	3,923	9,447	4.2	94.4	80	605	15.5	62.45	58.62	10,248	10,277
63 RED LAKE OKLEE	627		15	118	164	297	2.3	95.8	74	24	12.9	58.68	56.98	339	354
PLUMMER	628		12	108	108	228	.0	96.9	79	17	13.2	67.05	64.64	254	253
RED LAKE FALLS (ASE)	630	1	31	167	284	483	9.6	95.1	91	44	11.2	78.34	73.33	553	566
64 REDWOOD COUNTY BELVIEW (ICA)	631		16	86	61	163	1.7	96.5	63	12	9.6	58.28	50.88	174	159
LAMBERTON (ICA)	633	1	19	137	142	299	.0	95.3	81	22	11.0	48.65	41.69	332	332
MILROY (ASE)	635	1	20	106	91	218	.0	96.6	83	13	12.3	54.09	46.19	235	233
MORGAN (ICA)	636	5	36	84	179	304	.0	96.5	66	20	13.3	54.25	46.98	340	339
REDWOOD FALLS (ASE)	637	6	100	588	565	1,259	5.0	94.4	93	93	15.0	66.36	55.48	1,382	1,574
SANBORN (ICA)	638	1	13	115	101	230	.7	96.6	68	20	13.6	63.40	54.65	254	239
WABASSO	640	5	33	185	263	486	.4	94.8	77	42	11.5	49.25	41.86	549	544
WALNUT GROVE (ICA)	641	2	13	116	123	254	.0	95.8	71	20	12.9	48.51	41.72	285	256

District Number	Revenue %			1992 - 93 Expenditures per Pupil Unit																	Other Measures per Pupil Unit				
	15. Federal	16. State	17. Local and Other	18. District and School Admin.	19. District Support Services	20. Regular Instruction	21. Vocational Instruction	22. Exceptional Instruction	23. Instructional Support Services	24. Pupil Support Services	25. Operations and Maintenance	26. Food Service	27. Pupil Transpor- tation	28. Other Oper. Program	29. Total PK-12 Operating Expendi- tures	30. Community Service	31. Capital Outlay	32. Building Construction	33. Debt Service	34. Operating Funds Balance	35. Change in Funds Balance	36. State and Local Oper. Costs	37. Long Term Debt	38. 1992 Adj. Net Tax Capacity	
561	10	66	24	528	172	2270	335	925	148	8	499	372	528	121	5905	52	590	0	0	576	640-	4687	0	1,620	
564	5	68	27	330	105	1927	138	711	206	82	363	185	187	129	4361	132	435	827	352	271	12-	3769	2484	1,675	
2580	6	59	35	370	87	1909	155	1624	160	109	354	238	276	126	5408	103	423	0	298	308-	308-	4610	5322	1,790	
570	4	53	43	201	98	2597	0	494	136	144	323	150	329	58	4529	128	308	0	444	826	301-	3969	3386	2,725	
573	6	66	28	370	73	2184	40	508	92	117	349	217	207	42	4200	94	355	0	324	1138	152-	3526	1890	1,816	
578	5	60	35	276	201	1868	61	526	210	121	269	190	328	54	4103	81	207	0	301	648	76	3399	2067	2,152	
577	5	65	30	264	94	1903	35	760	158	256	323	197	332	26	4348	55	490	446	478	438	82-	3642	6642	1,912	
581	6	52	42	330	88	2083	54	843	79	54	320	183	797	40	4870	136	178	0	142	1890	259	3627	0	3,816	
582	4	40	56	458	44	2357	123	407	312	78	345	208	260	125	4716	147	179	0	0	1860	158	4134	0	4,214	
583	6	66	28	207	28	2069	124	690	137	100	325	185	302	89	4257	224	298	0	72	541	4-	3531	135	2,180	
584	17	35	48	626	132	4048	0	2055	147	33	543	486	579	59	8708	104	710	0	0	1208	131-	6460	0	2,795	
592	5	37	58	671	251	3142	93	482	103	137	495	319	363	80	6137	51	349	0	0	930	913-	5362	0	4,723	
593	3	64	33	258	100	2025	194	690	196	93	332	240	128	87	4344	89	246	0	49	457	4-	3951	315	2,301	
595	4	68	28	254	117	2053	161	486	158	122	310	213	182	126	4182	107	305	0	121	482	17-	3682	104	2,202	
599	4	60	36	306	31	1723	283	634	113	61	306	230	347	68	4103	122	218	0	341	403	223	3382	6734	2,136	
600	4	17	79	812	226	2859	31	474	264	74	591	273	292	103	5999	133	250	0	0	316-	371-	5295	0	6,217	
601	5	66	29	339	60	1926	296	621	104	116	310	199	275	119	4365	81	187	0	1842	221-	211	3620	1493	1,577	
604	6	41	53	165	80	2467	0	433	12	9	228	133	663	316	4506	42	38	0	0	349	393-	3564	0	4,978	
2609	6	56	38	322	138	2451	102	596	123	11	370	204	244	85	4647	126	586	0	0	304	9871	3995	12	2,124	
611	7	62	31	97	133	2683	0	579	94	5	311	168	294	78	4441	386	349	0	0	351	281-	3789	0	2,645	
612	2	72	26	109	62	2633	0	235	63	13	114	107	344	40	3721	131	319	0	146	428	104	3253	1636	2,036	
614	2	70	28	167	79	2741	0	275	56	7	187	147	294	65	4018	114	360	0	0	174	29-	3596	0	2,241	
615	2	65	33	205	78	2710	0	246	55	17	250	205	273	52	4090	151	533	235	452	123	246-	3653	4642	1,976	
621	2	33	65	157	138	2480	127	669	190	179	401	180	256	99	4875	155	221	149	127	33	25-	4334	1814	4,745	
622	3	35	62	268	127	2285	58	705	190	141	255	213	211	171	4625	253	362	0	67	178	115	4102	146	4,421	
623	3	20	77	327	168	2356	90	833	476	194	460	180	262	150	5496	310	358	125	129	715	35	4918	1906	6,123	
625	8	46	46	217	180	2190	69	1425	219	155	537	215	282	277	5766	244	375	290	92	315	10	4842	1191	4,449	
624	2	47	51	296	129	2331	128	697	278	117	400	185	176	68	4804	243	250	281	122	75-	209	4340	841	3,303	
627	8	57	35	309	118	2020	101	471	126	10	368	231	282	132	4168	112	166	0	128	16-	281-	3428	664	2,786	
628	9	58	33	425	115	2147	92	655	34	18	356	274	365	40	4521	97	400	0	0	474	260	3579	0	2,220	
630	6	65	29	492	106	2400	98	489	121	125	456	189	236	117	4829	206	289	0	0	1231-	53	4019	21	1,365	
631	9	41	50	525	112	2900	0	621	147	25	539	251	386	221	5727	18	198	0	0	58	226-	4754	0	4,010	
633	2	47	51	309	84	2251	205	587	128	81	371	247	201	52	4517	181	556	0	0	763	131-	4041	117	3,961	
635	5	50	45	282	132	2380	0	410	120	8	309	155	296	111	4202	78	427	0	0	242	18-	3568	0	3,871	
636	6	35	59	306	180	2102	103	752	143	79	393	177	449	54	4737	132	362	1340	275	153	1124-	3817	1866	5,278	
637	3	57	40	295	75	2080	31	543	168	81	298	216	217	58	4062	120	172	0	484	1-	32	3497	10202	2,691	
638	11	37	52	390	52	2369	118	857	170	77	359	325	210	112	5039	102	264	0	0	227-	7	4014	132	3,764	
640	9	41	50	296	120	2064	100	952	217	175	278	228	213	104	4748	139	174	0	0	316-	311-	3914	56	4,629	
641	13	27	60	430	154	2298	65	694	140	90	450	293	214	43	4874	86	279	0	0	257	275-	3881	106	5,064	

County Number and Name School District Name	District Number	1992-93 Resident Average Daily Membership					Pupil Data			Professional Staff		Tax Capacity Rates		Pupil Units (Weighted ADM)	
		1. Pre- Kindergarten Handicapped	2. Kindergarten	3. Elementary (Grades 1-6)	4. Secondary (Grades 7-12)	5. Total (Pre-K thru Grade 12)	6. Percent Minority	7. Percent Attendance	8. Percent Transported	9. Total Staff (FTE)	10. Pupil-Staff Ratio	11. Auditor Percent	12. Equalized Percent	13. Resident Pupil Units	14. Total Pupil Units
65 RENVILLE															
BIRD ISLAND-OLIVIA-LA	2534	15	95	448	497	1,055	5.9	95.2	75	79	13.7	50.04	43.68	1,160	1,193
BUFFALO LAKE (ICA)	647	1	20	128	132	281	3.1	95.7	80	21	15.2	49.90	43.76	311	307
DANUBE (ICA)	648	1	26	146	148	321	10.1	95.7	80	19	17.1	46.04	40.01	353	333
FRANKLIN (ICA)	650	2	9	67	53	131	.6	96.4	68	12	13.6	48.28	41.81	142	145
HECTOR (ICA)	651	4	27	195	192	418	3.1	95.5	73	34	10.9	54.85	47.72	462	459
MORTON (ASE)	652	1	16	137	114	268	42.6	93.8	80	12	11.2	44.37	36.92	293	282
RENVILLE (ICA)	654	3	32	211	193	439	8.7	94.7	86	24	12.0	45.18	39.44	482	476
SACRED HEART (ICA)	655	1	26	135	92	254	8.3	96.3	74	26	15.5	44.50	39.02	269	262
66 RICE															
FARIBAULT	656	24	290	2,037	1,881	4,232	5.3	93.9	80	290	14.5	74.93	67.81	4,656	4,704
MORRISTOWN (ICA)	657	1	25	162	141	329	2.7	96.4	53	25	13.4	51.61	46.04	359	298
NORTHFIELD	659	13	225	1,528	1,491	3,257	3.9	94.6	88	217	15.2	66.05	59.04	3,599	3,684
67 ROCK															
HILLS-BEAVER CREEK	671	1	29	190	215	435	1.2	97.3	75	30	14.2	55.35	47.38	486	478
LUVERNE (ICA)	670	8	90	583	534	1,215	2.1	96.3	48	95	14.1	52.90	43.38	1,335	1,498
MAGNOLIA (ICA)	669	1	16	96	85	198	8.3	96.9	76	11	9.5	36.41	29.78	215	206
68 ROSEAU															
BADGER	676	1	18	114	110	243	.0	94.7	67	21	11.5	95.06	86.02	268	273
GREENBUSH (ICA)	678	3	33	195	200	431	12.0	95.6	73	28	12.9	75.70	68.97	474	468
ROSEAU	682	3	102	638	615	1,358	.9	95.8	79	86	15.9	66.06	60.18	1,497	1,499
WARROAD	690	13	127	703	599	1,442	6.7	94.8	96	97	15.0	60.58	55.49	1,561	1,575
69 ST. LOUIS															
BABBITT	692	2	34	240	273	549	.0	95.5	76	38	13.6	15.09	13.03	614	581
CHISHOLM	695	4	56	522	500	1,082	4.2	94.8	78	73	15.1	64.17	55.83	1,205	1,238
DULUTH	709	57	1,038	6,800	6,067	13,962	6.8	93.5	63	923	15.2	72.09	63.65	15,286	15,479
ELY	696	5	58	364	411	838	3.8	94.4	53	56	16.4	53.07	43.62	933	1,026
EVELETH (ICA)	697	3	85	511	529	1,128	2.1	94.5	74	62	15.4	44.28	38.79	1,244	1,235
FLOODWOOD	698	2	27	163	133	325	2.1	95.0	74	30	11.1	51.99	49.18	351	356
GILBERT (ICA)	699	2	38	259	255	554	4.1	95.2	59	48	14.8	20.17	17.41	612	618
HERMANTOWN	700	7	115	807	747	1,676	2.1	95.4	100	97	18.0	52.71	46.07	1,844	1,930
HIBBING	701	22	222	1,485	1,713	3,442	1.9	94.4	81	224	15.8	49.75	42.99	3,855	4,009
MESABI EAST	2711	11	102	673	816	1,602	1.6	94.8	83	91	17.2	45.28	40.53	1,801	1,793
MOUNTAIN IRON-BUHL	712	4	76	385	457	922	2.8	94.4	79	53	13.8	44.84	39.91	1,025	820
NETT LAKE (ASE)	707		7	43	35	85	100.0	90.9	60	10	4.7	64.39	53.38	92	92
PROCTOR	704	7	139	1,047	1,054	2,247	1.1	94.9	85	138	16.0	64.58	54.18	2,495	2,473
ST. LOUIS CO. (ASE)	710	8	161	1,157	1,229	2,555	12.4	94.2	90	187	13.2	50.82	45.49	2,846	2,792
TOWER-SOUDAN	708	1	27	165	167	360	8.6	94.6	78	19	15.6	54.50	44.03	398	372
VIRGINIA	706	9	153	880	933	1,975	4.3	93.9	96	151	14.9	37.80	35.53	2,180	2,532
70 SCOTT															
BELLE PLAINE	716	8	82	449	460	999	1.1	94.9	75	68	14.9	58.30	47.34	1,096	1,120
JORDAN	717	5	74	443	535	1,057	.4	94.7	79	63	15.9	51.63	44.20	1,182	1,147
NEW PRAGUE	721	6	149	856	981	1,992	.3	95.8	82	122	16.9	52.55	44.78	2,211	2,309
PRIOR LAKE	719	27	278	1,785	1,529	3,619	.3	94.5	96	176	20.1	50.12	42.95	3,939	3,901
SHAKOPEE	720	27	228	1,291	1,247	2,793	3.8	93.1	59	160	17.9	61.50	54.55	3,060	3,185

District Number	Revenue %			1992 - 93 Expenditures per Pupil Unit															Other Measures per Pupil Unit					
	15. Federal	16. State	17. Local and Other	18. District and School Admin.	19. District Support Services	20. Regular Instruction	21. Vocational Instruction	22. Exceptional Instruction	23. Instructional Support Services	24. Pupil Support Services	25. Operations and Maintenance	26. Food Service	27. Pupil Transpor- tation	28. Other Oper. Program	29. Total PK-12 Operating Expendi- tures	30. Community Service	31. Capital Outlay	32. Building Construction	33. Debt Service	34. Operating Funds Balance	35. Change in Funds Balance	36. State and Local Oper. Costs	37. Long Term Debt	38. 1992 Adj. Net Tax Capacity
2534	6 53	41		254	115	2057	67	619	105	69	327	158	301	117	4189	141	226	0	0	562	562	3483	92	3,788
647	2 64	34		342	127	1998	0	197	130	68	384	240	266	54	3805	63	233	0	0	417	276	3295	0	4,295
648	7 48	45		343	82	1853	0	569	124	50	358	209	335	149	4073	56	337	0	0	203	119	3278	0	4,027
650	4 39	57		534	173	2052	76	655	141	89	633	378	215	92	5039	108	473	0	0	88	484	4379	235	6,022
651	6 61	33		226	99	1971	0	547	106	86	328	155	194	81	3792	89	177	0	118	229	156	3236	108	4,333
652	16 56	28		299	145	3137	0	506	26	317	222	166	256	16	5090	284	88	0	0	35	214	3908	0	2,686
654	3 48	49		355	85	1874	131	427	120	37	370	128	241	136	3904	128	718	0	0	426	264	3325	0	4,627
655	8 51	41		350	84	1897	0	721	140	40	365	387	231	146	4360	91	191	0	0	364	179	3534	0	3,947
656	5 58	37		202	111	2151	78	1215	254	66	390	218	329	57	5070	150	168	0	1267	160	60	4291	1578	2,301
657	5 63	32		346	141	1972	91	458	93	67	319	258	230	76	4051	107	174	0	486	505	92	3403	3493	1,879
659	2 55	43		285	142	2020	50	653	194	132	354	171	348	81	4431	210	370	292	197	596	33	3829	1341	2,740
671	6 56	38		418	132	2130	158	510	128	51	381	237	277	210	4632	73	240	0	0	139	180	3842	65	3,182
670	5 55	40		225	84	2035	89	520	121	189	300	173	184	65	3986	187	270	0	0	607	8	3454	9	2,506
669	8 49	43		271	110	3134	0	584	33	2	236	153	281	44	4847	13	254	0	0	492	1027	4211	0	3,909
676	5 56	39		306	161	2497	70	457	251	159	366	261	228	409	5165	55	145	0	192	1102	283	4295	1748	1,730
678	7 56	37		265	110	2277	117	706	204	56	422	234	427	132	4950	103	677	0	0	388	394	3756	0	1,908
682	5 64	31		221	90	2008	96	761	156	50	331	160	338	102	4313	140	180	5702	505	312	16	3514	6350	1,732
690	4 59	37		336	96	2024	101	440	136	130	485	213	353	72	4385	130	276	1035	717	205	250	3595	9065	1,863
692	3 48	49		581	130	2878	0	580	88	76	735	183	443	522	6216	82	325	647	168	1248	816	5507	779	1,456
695	3 66	31		302	113	2114	31	713	176	62	554	118	200	473	4855	108	260	269	323	664	289	4340	2402	1,158
709	6 68	26		316	152	1713	181	977	319	202	456	146	245	255	4963	273	528	311	304	261	203	4359	1756	2,235
696	4 59	37		301	104	2274	14	507	149	107	502	146	154	169	4428	110	196	50	141	585	144	4000	1020	2,132
697	5 65	30		269	160	2296	118	591	166	121	547	233	236	99	4836	114	770	479	324	220	257	4221	2253	1,570
698	5 51	44		572	189	2200	102	557	214	125	489	280	292	60	5081	122	484	0	0	385	95	4355	200	4,360
699	3 69	28		400	129	2122	35	880	281	84	461	0	248	219	4859	153	455	0	162	793	65	4472	1350	1,070
700	2 63	35		301	155	1892	32	396	177	107	379	164	232	94	3928	109	256	236	466	346	29	3450	4463	3,037
701	4 66	30		287	85	2155	30	622	166	108	492	132	223	310	4609	114	184	0	178	72	51	4084	1181	1,795
2711	4 63	33		287	126	2114	151	802	120	110	647	126	246	341	5069	94	618	0	0	93	2303	4546	40	1,834
712	4 39	57		388	86	2358	204	818	123	68	547	139	438	359	5528	127	424	0	830	298	39	4641	3747	2,023
707	24 61	15		984	700	4723	0	2256	567	510	602	429	509	159	11439	178	260	0	0	487	714	8154	0	15
704	3 72	25		272	49	2102	51	512	111	110	322	144	264	261	4199	138	250	0	401	170	305	3676	2353	1,683
710	5 55	40		254	93	2449	8	680	186	90	371	184	433	113	4860	98	354	473	405	680	129	4100	1361	2,913
708	6 25	69		497	293	2798	0	778	135	4	531	13	390	180	5620	139	192	0	306	166	205	4797	2317	8,062
706	6 63	31		235	96	2091	139	1029	146	89	462	131	150	254	4821	83	301	118	107	618	70	4216	5482	1,768
716	2 59	39		329	55	2092	75	677	105	54	280	161	339	87	4255	147	235	0	0	160	46	3613	940	2,843
717	3 50	47		305	61	1887	115	606	191	171	265	208	326	122	4256	198	124	0	160	90	334	3581	279	3,085
721	3 66	31		273	106	1860	76	507	233	142	341	165	233	104	4040	128	246	164	207	289	289	3539	1583	2,334
719	2 58	40		171	127	1877	97	466	144	94	301	186	316	61	3841	101	160	2	403	131	80	3290	3312	3,263
720	2 46	52		334	115	2127	68	742	248	129	354	164	300	240	4822	141	238	76	190	549	99	4274	6357	3,855

County Number and Name School District Name	District Number	1992-93 Resident Average Daily Membership					Pupil Data			Professional Staff		Tax Capacity Rates		Pupil Units (Weighted ADM)	
		1. Pre- Kindergarten Handicapped	2. Kindergarten	3. Elementary (Grades 1-6)	4. Secondary (Grades 7-12)	5. Total (Pre-K thru Grade 12)	6. Percent Minority	7. Percent Attendance	8. Percent Transported	9. Total Staff (FTE)	10. Pupil-Staff Ratio	11. Auditor Percent	12. Equalized Percent	13. Resident Pupil Units	14. Total Pupil Units
71 SHERBURNE															
BECKER	726	4	90	643	472	1,209	.6	95.8	92	82	15.5	27.14	26.97	1,307	1,387
BIG LAKE	727	11	117	759	621	1,508	1.0	93.6	75	91	15.4	62.24	56.95	1,640	1,559
ELK RIVER	728	28	508	3,322	2,977	6,835	2.9	94.0	93	395	17.4	61.18	56.89	7,485	7,572
72 SIBLEY															
ARLINGTON (ICA)	731	5	53	330	409	797	3.3	94.8	85	53	14.1	57.24	50.89	892	887
G.F.W.	2365	1	80	474	503	1,058	1.6	94.1	82	73	14.2	48.79	43.57	1,170	1,151
GAYLORD (ICA)	732	2	53	280	287	622	7.8	95.9	69	46	14.7	43.89	39.81	683	692
73 STEARNS															
ALBANY	745	10	120	777	799	1,706	.2	96.2	96	120	14.1	55.04	49.64	1,886	1,884
BELGRADE (ICA)	736	7	47	300	248	602	.0	96.8	80	39	14.3	34.79	31.77	655	619
BROOTEN (ICA)	737	3	33	175	187	398	.5	94.9	76	35	11.1	57.88	53.94	440	435
COLD SPRING	750	12	114	844	1,115	2,085	.6	95.9	76	134	16.0	58.98	53.08	2,363	2,416
HOLDINGFORD	738	3	81	550	505	1,139	.1	96.3	81	80	14.2	47.94	42.24	1,250	1,262
KIMBALL	739	10	64	440	456	970	1.3	95.8	89	68	13.7	58.27	52.90	1,077	1,050
MELROSE	740	21	111	517	817	1,466	.0	96.1	82	98	14.9	67.02	60.85	1,656	1,676
PAYNESVILLE	741	11	93	643	596	1,343	.6	96.2	92	89	15.4	63.62	57.96	1,479	1,520
SARTELL	748	10	153	1,022	898	2,083	1.0	96.3	86	123	16.7	65.35	60.12	2,275	2,249
SAUK CENTRE	743	9	50	351	689	1,099	1.1	96.3	78	76	14.6	47.97	44.66	1,280	1,303
ST. CLOUD	742	107	775	5,494	4,866	11,242	3.0	94.5	81	716	15.8	55.87	51.18	12,333	12,498
74 STEELE															
BLOOMING PRAIRIE	756	7	70	484	473	1,034	13.1	95.8	53	73	13.8	45.96	40.86	1,140	1,131
ELLENDALE (ICA)	762	6	36	240	222	504	1.5	95.7	78	32	16.5	65.24	58.85	554	539
MEDFORD	763	2	33	240	288	563	2.5	95.9	50	41	13.5	43.97	38.12	632	626
OWATONNA	761	35	339	2,169	1,954	4,497	2.6	95.1	71	275	16.6	60.38	52.89	4,913	4,993
75 STEVENS															
CHOKIO-ALBERTA	771	3	25	144	156	328	.3	96.9	80	25	12.7	63.90	55.08	361	354
HANCOCK	768	2	21	143	146	312	1.2	95.2	58	20	15.6	56.16	49.65	347	345
MORRIS (ASE)	769	6	77	496	519	1,098	3.0	95.7	88	78	15.2	55.50	50.17	1,215	1,320
76 SWIFT															
APPLETON (CSF)	784	3	29	276	306	614	10.2	95.1	77	20	14.4	49.49	36.96	692	651
BENSON	777	6	82	562	570	1,220	1.7	94.6	68	92	13.4	59.86	52.14	1,350	1,380
KERKHOVEN-MURDOCK-SUN	775	3	43	285	315	646	.9	95.9	85	47	13.4	72.22	61.97	718	719
77 TODD															
BERTHA-HEWITT	786	4	40	258	292	594	2.5	95.0	83	48	12.8	68.05	66.48	660	697
BROWERVILLE	787	2	25	191	274	492	.4	94.7	74	35	15.5	50.32	46.90	563	620
CLARISSA (ICA)	789	2	17	172	147	338	3.0	95.9	67	26	13.0	61.40	58.40	373	318
EAGLE BEND (ICA)	790	2	14	160	176	352	3.6	94.1	77	22	12.3	70.20	69.57	397	381
GREY EAGLE	791	2	24	145	140	311	.7	97.4	79	22	12.1	64.26	59.12	341	313
LONG PRAIRIE	792	8	73	487	585	1,153	.9	95.7	66	76	15.0	64.00	59.14	1,292	1,329
STAPLES	793	6	106	592	745	1,449	1.8	94.5	98	106	15.3	69.05	66.01	1,620	1,894
78 TRAVERSE															
BROWNS VALLEY (ICA)	801	2	9	91	84	186	13.7	95.4	43	25	12.4	52.86	47.94	206	289
WHEATON	803	5	26	236	227	494	2.6	95.2	62	38	13.8	51.59	46.63	548	594

NOTE: The percent breakdown of revenues for Becker ISD 726 should be Federal 1%; State -6%; and Local 105%

District Number	Revenue %			1992 - 93 Expenditures per Pupil Unit															Other Measures per Pupil Unit					
	15. Federal	16. State	17. Local and Other	18. District and School Admin.	19. District Support Services	20. Regular Instruction	21. Vocational Instruction	22. Exceptional Instruction	23. Instructional Support Services	24. Pupil Support Services	25. Operations and Maintenance	26. Food Service	27. Pupil Transpor- tation	28. Other Oper. Program	29. Total PK-12 Operating Expendi- tures	30. Community Service	31. Capital Outlay	32. Building Construction	33. Debt Service	34. Operating Funds Balance	35. Change in Funds Balance	36. State and Local Oper. Costs	37. Long Term Debt	38. 1992 Adj. Net Tax Capacity
726	1	6	93	390	126	2421	36	462	118	92	783	173	270	33	4905	186	250	0	2007	1271	306-	4425	4171	24,713
727	3	66	31	281	84	2036	29	516	145	102	286	180	274	40	3972	119	226	319	307	334	113-	3432	7943	1,849
728	2	62	36	245	68	1895	54	567	174	91	350	216	320	55	4036	103	270	274	3115	188	12	3397	5341	2,258
731	4	66	30	262	72	2099	141	422	113	105	308	211	254	160	4146	155	392	0	0	166	254-	3545	0	1,890
2365	6	54	40	356	105	1947	190	551	121	75	375	236	342	110	4407	162	180	0	0	164	164	3588	8	3,812
732	4	63	33	274	95	2154	46	453	127	86	234	235	216	48	3969	152	137	0	121	485	101-	3440	526	2,583
745	5	74	21	278	108	2037	36	574	192	75	271	203	217	32	4021	74	334	0	71	520	61-	3425	103	1,288
736	4	76	20	243	125	2313	0	485	247	143	326	255	252	84	4474	89	252	465	0	629-	746-	3910	7262	1,302
737	13	57	30	318	91	2456	259	999	17	33	329	219	444	120	5286	221	550	584	0	1249-	731-	4054	9092	1,911
750	4	64	32	310	71	2068	40	508	69	105	311	224	314	45	4065	132	207	3826	332	369	6-	3366	5249	1,930
738	5	78	17	322	85	2052	146	509	133	25	350	174	159	80	4034	83	269	1	1437	160-	90-	3499	3820	950
739	6	72	22	335	51	2058	100	639	186	61	265	209	366	35	4304	136	232	0	411	206	328-	3547	3225	1,344
740	7	69	24	216	70	2228	80	678	143	87	242	185	404	39	4372	136	214	444	60	558	8-	3511	6452	1,795
741	4	66	30	252	72	2115	88	527	95	56	244	197	242	75	3962	108	288	1510	411	259	58-	3430	5285	1,738
748	1	64	35	157	65	2116	72	569	193	75	280	150	251	12	3941	94	191	4386	393	590	30	3478	5672	1,947
743	6	65	29	261	131	2012	121	677	180	73	343	169	263	90	4320	170	314	0	158	48	64-	3520	0	1,924
742	4	51	45	159	89	1810	54	987	277	103	320	192	236	117	4344	173	301	8	230	335	103-	3803	2117	3,585
756	5	70	25	276	85	2115	97	465	114	83	179	232	249	57	3952	63	202	0	0	841	416	3346	21	1,997
762	5	58	37	587	297	1907	43	611	89	22	339	199	214	44	4352	84	353	1426	0	843	264	3786	6981	2,675
763	4	67	29	307	124	2226	85	259	86	84	313	206	152	28	3869	107	173	0	0	277	417-	3442	0	2,280
761	4	59	37	411	31	2009	76	628	118	159	384	188	261	63	4329	146	200	2	185	210	26	3718	1860	2,646
771	7	43	50	324	142	2238	67	631	227	111	413	228	237	118	4735	194	330	0	0	1045	413	4002	123	4,037
768	5	65	30	406	183	1966	122	436	231	104	304	204	117	96	4168	92	333	0	0	596	186	3680	25	1,811
769	5	59	36	234	56	2190	116	628	141	57	337	195	179	52	4184	232	234	143	331	481	39-	3636	3614	2,350
784	5	69	26	255	109	1959	135	756	120	188	351	163	277	161	4474	99	234	0	0	150	490	3756	48	2,663
777	6	60	34	231	54	1794	209	594	153	75	317	215	172	104	3920	186	354	240	75	1014	49-	3319	2942	2,316
775	6	62	32	263	103	2200	96	755	111	57	329	191	379	87	4570	72	364	837	0	248	132-	3755	9535	2,700
786	12	75	13	176	67	2022	201	784	208	109	288	204	339	79	4478	150	220	0	210	182	34	3406	4591	655
787	9	72	19	292	66	1775	256	736	93	54	398	225	283	17	4196	87	174	64	575	634	11-	3397	1723	1,030
789	0	86	14	383	102	1953	118	431	198	62	256	0	349	63	3917	193	213	156	302	338	20-	3553	2416	691
790	16	72	12	372	100	1867	158	948	194	61	248	438	339	61	4784	157	195	0	179	169	8	3478	440	736
791	14	74	12	356	109	2454	14	666	124	38	228	236	277	91	4594	126	280	0	0	283-	286-	3712	0	1,824
792	9	78	13	250	50	2032	200	511	132	79	222	179	327	51	4034	106	275	0	256	494	69	3317	0	1,391
793	6	74	20	257	145	1868	168	661	145	113	346	193	278	79	4254	81	366	0	321	444	206	3488	2826	1,058
801	8	35	57	500	232	3515	0	967	191	80	451	301	180	75	6491	29	203	0	0	970	300-	5705	0	1,875
803	5	50	45	478	19	2409	27	585	85	92	541	212	312	139	4898	82	307	0	0	35-	165-	4158	0	4,130

County Number and Name School District Name	District Number	1992-93 Resident Average Daily Membership					Pupil Data			Professional Staff		Tax Capacity Rates		Pupil Units (Weighted ADM)	
		1. Pre- Kindergarten Handicapped	2. Kindergarten	3. Elementary (Grades 1-6)	4. Secondary (Grades 7-12)	5. Total (Pre-K thru Grade 12)	6. Percent Minority	7. Percent Attendance	8. Percent Transported	9. Total Staff (FTE)	10. Pupil-Staff Ratio	11. Auditor Percent	12. Equalized Percent	13. Resident Pupil Units	14. Total Pupil Units
79 WABASHA															
ELGIN-MILLVILLE	806	5	40	271	231	547	2.9	96.2	80	40	14.4	51.51	44.55	598	628
LAKE CITY	813	9	109	638	646	1,402	2.0	96.1	75	95	14.6	56.04	50.27	1,541	1,536
PLAINVIEW	810	13	73	564	502	1,152	1.7	96.4	68	78	14.9	62.94	54.38	1,267	1,286
WABASHA-KELLOGG	811	13	51	342	427	833	.0	95.3	84	58	13.9	57.91	50.26	936	918
80 WADENA															
MENAHGA	821	2	59	331	288	680	3.7	95.0	92	49	14.5	63.18	58.76	737	779
SEBEKA	820	3	45	277	304	629	.8	94.3	95	45	14.2	66.10	64.05	697	719
VERNDALE	818	1	29	187	201	418	.0	95.7	92	35	12.7	40.09	39.80	465	495
WADENA (ICA)	819	7	92	509	617	1,225	.4	94.8	63	114	10.3	73.57	74.01	1,366	1,524
81 WASECA															
JANESVILLE-WALDORF-PE	2835	17	73	400	518	1,008	1.6	95.4	66	71	13.6	69.58	61.02	1,133	1,094
NEW RICHLAND (ICA)	827	5	43	300	284	632	1.0	95.4	55	44	13.4	57.18	50.83	697	697
WASECA	829	23	157	979	1,063	2,222	2.7	94.4	70	158	14.4	56.08	51.09	2,470	2,525
82 WASHINGTON															
FOREST LAKE	831	29	536	3,595	3,302	7,462	2.5	93.6	94	436	17.0	48.93	43.94	8,184	8,176
MAHTOMEDI	832	10	187	1,125	901	2,223	2.3	94.4	100	141	16.2	73.14	64.22	2,401	2,496
SOUTH WASHINGTON CO.	833	53	995	6,379	5,064	12,491	5.7	94.6	69	697	18.0	67.43	60.87	13,514	13,606
STILLWATER	834	35	512	3,980	3,678	8,205	2.4	94.7	80	460	17.8	67.87	60.02	9,057	9,084
83 WATONWAN															
BUTTERFIELD	836	2	14	114	141	271	14.0	96.1	66	26	10.1	54.37	49.80	306	304
MADELIA	837	8	31	266	315	620	15.8	95.2	61	50	12.3	70.69	66.94	701	703
ST. JAMES	840	10	102	630	613	1,355	13.2	95.3	74	91	14.7	50.65	47.11	1,493	1,477
84 WILKIN															
BRECKENRIDGE	846	8	73	493	476	1,050	5.0	95.2	66	65	16.1	57.28	52.06	1,158	1,168
CAMPBELL-TINTAH	852	2	16	122	91	231	.0	96.1	68	19	11.3	58.18	53.41	250	237
ROTHSAY	850		10	118	124	252	5.8	96.5	96	21	12.8	55.80	51.50	284	302
85 WINONA															
LEWISTON	857	5	46	371	360	782	1.7	96.3	69	60	14.0	53.97	48.47	866	926
ST. CHARLES	858	8	88	510	476	1,082	9.8	95.4	52	66	16.2	49.76	44.73	1,182	1,170
WINONA	861	24	351	2,287	2,174	4,836	3.4	93.9	71	312	15.4	54.31	50.62	5,313	5,294
86 WRIGHT															
ANNANDALE	876	9	128	889	790	1,816	2.0	94.5	96	109	16.4	71.39	63.54	1,991	1,983
BUFFALO	877	19	303	2,014	1,915	4,251	1.3	95.2	91	257	16.4	61.52	56.60	4,678	4,682
DELAND	879	13	101	701	760	1,575	1.6	96.5	91	98	16.3	67.80	59.26	1,756	1,797
HOWARD LAKE (ASE)	880	13	56	365	421	855	.9	94.8	81	51	16.4	56.42	52.47	954	999
MAPLE LAKE	881	2	59	408	389	858	1.6	96.1	85	52	16.0	65.31	59.50	946	928
MONTICELLO	882	22	241	1,505	1,242	3,010	1.8	94.2	93	229	13.6	57.15	55.55	3,261	3,401
ROCKFORD	883	11	148	806	573	1,538	2.6	94.8	79	94	15.7	60.69	54.99	1,638	1,590
ST. MICHAEL-ALBERTV'L	885	10	135	795	654	1,594	.0	96.0	93	102	15.7	55.72	51.87	1,724	1,749
87 YELLOW MEDICINE															
CANBY	891	5	47	316	385	753	1.2	96.3	66	55	13.8	48.49	43.01	846	859
CLARKFIELD (ICA)	892	2	20	203	160	385	3.1	95.8	60	34	12.9	64.15	56.26	422	400
ECHO (ASE)	893	1	10	71	63	145	.0	97.3	65	6	11.9	55.03	49.09	157	121
GRANITE FALLS (ICA)	894	6	65	458	440	969	7.0	95.5	75	60	15.4	58.09	53.56	1,069	1,075
WOOD LAKE (ICA)	896		14	76	78	168	.0	96.9	93	12	10.4	47.42	42.58	185	178

District Number	Revenue %			1992 - 93 Expenditures per Pupil Unit																Other Measures per Pupil Unit				
	15. Federal	16. State	17. Local and Other	18. District and School Admin.	19. District Support Services	20. Regular Instruction	21. Vocational Instruction	22. Exceptional Instruction	23. Instructional Support Services	24. Pupil Support Services	25. Operations and Maintenance	26. Food Service	27. Pupil Transportation	28. Other Oper. Program	29. Total PK-12 Operating Expenditures	30. Community Service	31. Capital Outlay	32. Building Construction	33. Debt Service	34. Operating Funds Balance	35. Change in Funds Balance	36. State and Local Oper. Costs	37. Long Term Debt	38. 1992 Adj. Net Tax Capacity
806	4	73	23	286	66	2059	67	681	56	27	303	203	312	74	4133	63	268	0	143	164	25-	3500	234	1,792
813	3	63	34	259	76	2101	217	477	132	115	305	202	255	52	4192	99	412	0	191	380	2-	3630	139	2,354
810	4	72	24	241	89	1988	68	463	132	120	286	176	263	48	3873	88	174	1548	0	599	28	3324	3377	1,782
811	4	62	34	338	66	1998	94	582	142	90	308	194	347	33	4193	65	171	4540	418	547	5	3511	4785	2,514
821	7	68	25	289	90	2074	98	524	123	71	313	262	257	42	4145	58	309	3861	478	615	140-	3458	6363	1,300
820	8	75	17	289	91	1760	230	744	134	82	331	224	268	101	4254	70	175	0	144	644	157	3494	1104	1,051
818	9	74	17	317	52	2117	129	734	79	35	223	244	213	51	4194	130	300	0	0	197	272-	3505	222	1,265
819	9	56	35	281	112	2145	154	1209	129	95	358	183	207	97	4969	89	331	1176	389	307	41-	4083	5611	1,335
2835	6	62	32	341	85	2097	68	762	131	49	311	197	310	94	4444	69	238	0	0	127	9578-	3739	59	2,433
827	4	49	47	300	170	1946	156	463	94	85	294	145	174	63	3889	98	223	20	524	769	153	3418	5264	3,053
829	6	56	38	269	126	2081	120	853	191	135	327	209	226	87	4624	314	352	0	91	157	99-	3802	734	2,384
831	3	59	38	325	62	2071	58	460	211	98	295	180	268	51	4079	152	291	0	333	386	180-	3523	2447	2,733
832	3	39	58	321	157	2071	101	629	132	88	401	134	270	127	4433	150	386	46	441	534-	96	3833	4767	4,332
833	2	49	49	234	195	1970	103	558	216	101	349	178	202	14	4120	182	1037	116	291	546	23	3674	4848	2,805
834	2	37	61	266	93	2433	54	476	156	237	328	152	230	136	4562	139	268	2629	280	544	21	3995	7252	4,337
836	5	48	47	382	112	2378	93	483	115	16	379	187	256	96	4497	59	363	0	0	520-	103-	3805	0	3,692
837	6	46	48	302	72	1981	73	809	84	81	305	223	296	167	4393	140	187	0	0	167	350	3660	0	3,044
840	4	62	34	299	63	1993	93	570	129	164	343	192	272	72	4191	160	311	0	168	652	39	3619	317	2,325
846	6	58	36	218	57	1915	31	694	155	83	462	202	177	123	4115	66	556	0	105	594	48	3540	217	2,710
852	9	16	75	753	148	2469	409	930	218	78	538	274	363	119	6300	5	560	0	0	133-	85	5475	0	6,958
850	4	49	47	476	270	2236	466	304	139	83	392	258	354	99	5075	111	842	0	0	1678	108-	4041	229	2,772
857	5	67	28	283	96	1990	82	678	103	104	319	228	225	44	4151	180	211	0	188	105	186-	3565	468	2,018
858	5	73	22	221	81	2144	58	482	127	74	224	224	206	32	3872	92	330	0	47	490	18-	3341	158	1,533
861	5	38	57	251	77	1932	32	767	130	126	315	191	323	154	4297	204	197	0	0	145	29	3678	3	2,771
876	3	54	43	281	68	2092	46	606	157	91	310	184	342	60	4237	107	187	0	415	195	56-	3605	4087	2,765
877	3	61	36	192	112	1956	76	576	182	154	310	190	321	65	4135	164	230	0	324	281	62-	3511	2235	2,348
879	3	56	41	251	79	2074	36	580	155	79	309	191	329	85	4168	175	372	46	5314	342	10-	3524	6634	2,780
880	4	60	36	314	99	2074	123	660	193	88	352	184	243	76	4407	118	401	251	194	391	214-	3696	865	2,037
881	3	61	36	305	113	1903	49	461	152	54	270	210	288	55	3859	166	253	17	520	498	133	3280	4715	2,028
882	5	28	67	232	135	2210	81	1155	144	76	427	195	289	55	5001	146	118	726	586	350	124-	4287	4715	5,603
883	2	62	36	362	80	2028	66	545	101	75	311	199	231	27	4025	186	200	550	515	328	31	3527	6713	2,154
885	2	69	29	378	59	1989	24	456	123	112	333	186	300	36	3995	227	157	1556	354	355	137-	3445	4898	1,812
891	7	65	28	275	94	2051	37	578	120	123	311	217	199	12	4017	176	565	0	0	586	18-	3438	119	2,517
892	11	48	41	431	145	2422	19	675	249	109	534	366	266	149	5364	169	2394	124	246	319-	313-	4545	1632	3,591
893	8	43	49	251	165	2556	0	591	145	12	456	259	532	65	5033	268	103	0	0	237-	392-	4015	0	4,758
894	4	59	37	308	72	2133	11	719	110	66	354	182	319	85	4358	211	289	0	153	264	6	3687	937	2,653
896	2	50	48	588	210	2101	49	170	145	69	440	231	405	62	4469	173	307	0	0	1056	142-	3842	0	3,779

DATA FOR COUNTIES, DEVELOPMENT REGIONS & STATE

County Number and Name School District Name	1992-93 Resident Average Daily Membership					Pupil Data			Professional Staff		Tax Capacity Rates		Pupil Units (Weighted ADM)	
	1. Pre-Kindergarten Handicapped	2. Kindergarten	3. Elementary (Grades 1-6)	4. Secondary (Grades 7-12)	5. Total (Pre-K thru Grade 12)	6. Percent Minority	7. Percent Attendance	8. Percent Transported	9. Total Staff (FTE)	10. Pupil-Staff Ratio	11. Auditor Percent	12. Equalized Percent	13. Resident Pupil Units	14. Total Pupil Units
KITTSO	9	93	549	526	1,177	.8	95.1	68	106	11.0	60.87	55.11	1,288	1,279
MARSHALL	9	158	1,059	1,096	2,322	4.6	95.6	63	201	12.0	57.44	53.07	2,578	2,687
NORMAN	5	100	710	762	1,577	10.0	95.1	89	133	12.1	56.13	52.22	1,753	1,880
PENNINGTON	5	159	1,150	1,223	2,537	3.1	91.9	67	178	14.3	64.15	59.78	2,829	2,856
POLK	21	468	3,042	2,956	6,487	10.3	94.5	63	463	14.1	54.21	50.80	7,147	7,352
RED LAKE	1	58	393	556	1,008	5.3	95.7	83	85	12.1	67.32	64.45	1,146	1,173
ROSEAU	20	280	1,650	1,524	3,474	4.4	95.3	84	232	14.8	67.11	61.24	3,801	3,816
REGION 01	70	1,316	8,553	8,643	18,582	6.6	94.6	71	1,398	13.4	58.95	54.65	20,542	21,043
BELTRAMI	44	606	3,628	3,207	7,485	24.2	91.5	87	511	14.7	61.64	55.91	8,159	8,270
CLEARWATER	14	132	837	817	1,800	12.8	94.1	88	129	14.1	34.49	33.11	1,979	1,999
HUBBARD	25	183	1,209	1,180	2,597	5.5	93.9	93	190	14.4	56.01	48.62	2,866	3,023
LAKE OF THE WOODS	7	64	388	332	791	2.5	93.3	98	54	14.5	65.18	60.88	860	853
MAHONOMEN	4	94	662	690	1,450	51.9	91.1	83	127	11.5	45.93	40.67	1,612	1,631
REGION 02	94	1,079	6,724	6,226	14,123	20.9	92.4	88	1,011	14.2	54.33	49.07	15,476	15,776
AITKIN	16	165	1,107	1,016	2,304	4.2	94.7	85	160	14.2	52.91	47.46	2,531	2,500
CARLTON	46	475	2,866	2,918	6,305	7.5	94.2	82	418	15.3	60.94	55.66	6,948	7,132
COOK	3	56	338	307	704	11.7	93.5	84	52	13.5	38.19	33.30	768	768
ITASCA	44	557	3,894	3,940	8,435	6.7	94.1	90	545	15.2	48.68	44.65	9,347	9,354
KOOCHICHING	11	171	1,166	1,257	2,605	5.0	93.9	89	188	14.1	53.70	38.38	2,895	2,953
LAKE	12	161	1,077	1,063	2,313	.4	94.5	76	141	15.8	52.29	43.45	2,551	2,530
ST. LOUIS	144	2,338	15,501	15,319	33,302	5.2	94.1	75	2,200	15.2	59.23	52.07	36,790	37,347
REGION 03	276	3,923	25,949	25,820	55,968	5.5	94.2	79	3,704	15.1	55.38	48.78	61,831	62,583
BECKER	44	345	2,407	2,190	4,986	9.2	94.6	76	356	13.8	53.00	47.96	5,479	5,440
CLAY	44	719	4,424	3,907	9,094	8.6	94.1	70	636	14.1	56.47	50.84	9,923	9,913
DOUGLAS	33	395	2,576	2,696	5,700	1.2	94.8	83	379	15.3	58.34	52.78	6,323	6,395
GRANT	4	104	706	660	1,474	2.1	95.5	74	101	13.9	42.49	37.47	1,619	1,630
OTTER TAIL	37	654	4,260	4,149	9,100	2.0	94.4	79	589	15.4	53.81	48.03	10,029	10,036
POPE	7	138	998	902	2,045	2.2	96.5	85	75	15.2	66.84	61.65	2,251	2,183
STEVENS	11	123	783	821	1,738	2.2	95.9	81	123	14.7	58.04	51.58	1,925	2,020
TRAVERSE	7	35	327	311	680	6.7	95.2	57	63	13.3	51.77	46.82	755	883
WILKIN	10	99	733	691	1,533	4.4	95.6	71	105	14.6	57.34	52.40	1,694	1,707
REGION 04	197	2,612	17,214	16,327	36,350	4.8	94.7	76	2,427	14.6	55.54	49.99	39,997	40,208
CASS	36	311	2,148	1,883	4,378	19.1	93.5	86	327	13.0	55.36	48.59	4,796	4,672
CROW WING	80	687	4,368	4,181	9,316	2.2	94.4	88	595	15.9	53.97	45.11	10,245	10,425
MORRISON	54	424	3,020	3,264	6,762	1.1	95.8	81	410	15.9	66.32	64.09	7,537	7,298
TODD	26	299	2,005	2,359	4,689	1.6	95.1	81	335	14.3	64.72	61.02	5,250	5,553
WADENA	13	225	1,304	1,410	2,952	1.2	94.9	80	243	12.3	64.99	63.67	3,266	3,517
REGION 05	209	1,946	12,845	13,097	28,097	4.3	94.8	84	1,910	14.6	57.61	50.66	31,094	31,465

The figures listed on the next six pages are, for each county, totals for all school districts which have their central offices in the county. Totals are also listed for the state's thirteen development regions and for the entire state. Counties are listed by region, with the regions in numerical order.

	Revenue %			1992 - 93 Expenditures per Pupil Unit																	Other Measures per Pupil Unit						
	15. Federal	16. State	17. Local and Other	18. District and School Admin.	19. District Support Services	20. Regular Instruction	21. Vocational Instruction	22. Exceptional Instruction	23. Instructional Support Services	24. Pupil Support Services	25. Operations and Maintenance	26. Food Service	27. Pupil Transportation	28. Other Oper. Program	29. Total PK-12 Operating Expenditures	30. Community Service	31. Capital Outlay	32. Building Construction	33. Debt Service	34. Operating Funds Balance	35. Change in Funds Balance	36. State and Local Oper. Costs	37. Long Term Debt	38. 1992 Adj. Net Tax Capacity			
	4 34 62			508 171 2807 47 481 206 96 529 254 301 151 5550 72 1157 0 195 49 2546 4762 1698 5,568																							
	6 48 46			464 99 2218 72 606 143 63 466 251 316 129 4827 107 370 842 91 462 101 4030 230 3,586																							
	6 49 45			316 47 2290 398 657 113 35 352 259 449 112 5028 103 469 0 195 386 3814- 3992 727 3,220																							
	5 68 27			347 111 1957 155 730 201 75 375 201 217 128 4498 125 449 754 322 298 67- 3850 2268 1,670																							
	4 61 35			303 105 2099 183 586 155 94 334 224 217 107 4407 99 281 0 293 356 804 3854 861 2,424																							
	7 61 32			423 112 2231 98 520 104 67 408 220 278 105 4564 154 276 0 38 494- 0 3747 207 1,975																							
	5 60 35			280 100 2083 99 600 160 92 408 198 347 115 4483 125 278 2669 508 333 27- 3634 6347 1,807																							
	5 57 38			346 103 2159 156 607 157 81 387 224 283 117 4620 110 384 694 281 293 1766 3897 1995 2,592																							
	11 65 24			277 104 2064 131 884 158 78 437 207 296 229 4865 146 209 1317 286 424 155 3826 3346 1,668																							
	9 66 25			315 77 2274 86 646 175 82 286 222 358 185 4704 99 314 0 0 329 41 3835 0 2,516																							
	8 51 41			339 97 1918 148 751 215 120 347 214 267 82 4499 114 271 1 605 103 82- 3730 969 3,535																							
	6 53 41			338 28 2054 0 616 145 71 384 288 355 107 4386 147 672 1723 461 639 116 3557 14588 2,026																							
	20 63 17			449 92 2653 141 962 237 77 411 285 374 71 5751 88 403 0 198 93 252- 4199 1790 1,780																							
	11 62 27			315 94 2123 122 822 179 86 395 223 309 172 4840 128 279 784 311 330 52 3832 2941 2,154																							
	5 50 45			329 114 2129 81 489 172 111 404 201 347 260 4637 98 340 78 1580 565 84 3891 4705 3,618																							
	6 62 32			322 149 1935 91 641 138 130 350 167 276 126 4326 150 398 859 284 287 20 3688 3692 2,121																							
	7 27 66			344 101 2660 9 639 100 126 434 135 264 33 4846 148 177 0 0 435 1- 4123 0 7,386																							
	6 50 44			275 107 2316 108 774 182 126 431 160 368 129 4976 102 426 78 376 33- 108- 4203 970 3,769																							
	5 63 32			290 103 2359 83 600 114 139 471 188 264 137 4747 120 248 0 21 367 7- 4087 5572 2,945																							
	6 55 39			361 65 2278 99 519 157 109 448 153 288 228 4704 133 535 59 34 958- 324- 3988 417 2,351																							
	5 64 31			308 127 2005 112 803 225 142 466 147 256 249 4840 178 414 221 285 1- 463 4242 2017 2,176																							
	5 60 35			307 122 2084 105 744 197 135 444 155 281 209 4784 155 405 247 324 33 251 4139 2232 2,577																							
	7 63 30			300 97 2019 115 681 154 113 317 200 360 82 4437 105 264 0 339 516 27 3605 1364 2,343																							
	5 69 26			267 107 2111 62 945 173 93 267 161 238 145 4569 142 296 234 387 201 50- 4001 1445 2,144																							
	6 56 38			228 65 2036 73 618 133 121 285 200 222 78 4059 98 320 385 205 309 59- 3463 4680 2,850																							
	5 61 34			399 165 2244 111 510 136 33 361 202 220 85 4465 205 220 1 75 102 215- 3843 467 2,980																							
	5 61 34			273 90 2081 128 593 140 89 303 179 310 76 4263 103 256 372 150 473 33- 3557 1156 2,514																							
	2 70 28			131 73 2669 0 273 63 12 160 131 322 50 3884 150 353 25 136 331 6 3414 1524 2,117																							
	5 57 38			279 92 2161 108 596 171 75 345 202 179 71 4280 202 268 94 217 608 86 3709 2309 2,570																							
	6 45 49			485 88 2772 18 710 120 88 512 241 269 118 5421 65 273 0 0 240 202- 4667 0 3,514																							
	6 49 45			338 107 2050 161 658 161 82 460 222 234 118 4591 66 608 0 72 669 27 3899 187 3,348																							
	5 62 33			273 94 2129 92 680 147 91 301 183 271 96 4357 121 297 218 235 373 33- 3708 1799 2,505																							
	9 44 47			325 126 2216 69 862 240 88 354 222 357 92 4953 112 362 1191 377 545 67 3996 3571 4,679																							
	6 50 44			229 67 1902 198 749 197 108 320 205 284 65 4325 108 214 299 185 271 52- 3892 1690 3,947																							
	11 69 20			298 84 1848 199 701 129 81 325 203 339 69 4274 115 319 759 289 203 112 3473 1040 1,490																							
	8 75 17			270 96 1954 177 656 149 87 296 203 306 64 4260 110 279 16 291 368 65 3442 1840 1,086																							
	9 64 27			289 94 2047 154 896 122 79 324 218 231 79 4532 84 290 1365 304 433 54- 3743 4050 1,256																							
	8 58 34			273 88 1961 170 755 171 92 322 208 306 71 4417 108 280 607 270 330 26 3714 2096 2,698																							

County Number and Name School District Name	1992-93 Resident Average Daily Membership					Pupil Data			Professional Staff		Tax Capacity Rates		Pupil Units (Weighted ADM)	
	1. Pre-Kindergarten Handicapped	2. Kindergarten	3. Elementary (Grades 1-6)	4. Secondary (Grades 7-12)	5. Total (Pre-K thru Grade 12)	6. Percent Minority	7. Percent Attendance	8. Percent Transported	9. Total Staff (FTE)	10. Pupil-Staff Ratio	11. Auditor Percent	12. Equalized Percent	13. Resident Pupil Units	14. Total Pupil Units
KANDIYOHI	53	530	3,502	3,230	7,315	9.6	94.4	83	554	13.2	58.95	53.31	8,037	8,256
MCLEOD	40	458	2,798	2,873	6,169	3.2	94.9	81	374	16.5	56.54	49.32	6,813	6,949
MEEKER	40	428	2,633	2,601	5,702	2.9	95.2	94	369	15.5	60.27	55.23	6,284	6,230
RENVILLE	28	251	1,467	1,421	3,167	7.6	95.4	77	227	13.6	48.72	42.39	3,475	3,457
REGION 06E	161	1,667	10,400	10,125	22,353	5.9	94.9	84	1,524	14.6	56.22	50.07	24,610	24,892
BIG STONE	11	96	612	560	1,279	2.8	96.0	68	96	13.8	44.95	39.73	1,399	1,524
CHIPPEWA	11	157	1,196	1,185	2,549	2.9	95.0	67	179	14.1	54.60	49.02	2,832	2,855
LAC QUI PARLE	6	103	774	733	1,616	1.8	95.9	69	83	14.9	48.76	43.40	1,788	1,801
SWIFT	12	154	1,123	1,191	2,480	2.6	95.1	75	159	13.6	60.66	52.17	2,762	2,750
YELLOW MEDICINE	14	156	1,124	1,126	2,420	3.8	96.0	71	167	13.9	55.44	49.82	2,682	2,634
REGION 06W	54	666	4,829	4,795	10,344	2.9	95.5	70	684	14.0	53.96	47.84	11,463	11,564
CHISAGO	30	481	3,311	2,849	6,671	1.3	93.2	90	385	17.1	58.69	53.67	7,290	7,467
ISANTI	38	364	2,738	2,279	5,419	2.5	93.4	85	322	17.0	51.93	47.80	5,926	6,026
KANABEC	18	187	1,312	1,138	2,655	2.3	93.8	85	168	15.7	59.15	51.36	2,903	2,900
MILLE LACS	59	440	2,797	2,607	5,903	5.6	93.6	88	381	15.4	64.08	56.65	6,483	6,468
PINE	11	277	2,100	2,008	4,396	4.7	94.4	87	308	14.5	59.24	54.13	4,863	4,995
REGION 07E	156	1,749	12,258	10,881	25,044	3.3	93.6	87	1,564	16.0	58.85	53.20	27,465	27,856
BENTON	33	344	2,393	2,173	4,943	1.1	95.0	89	301	16.3	55.03	51.10	5,428	5,426
SHERBURNE	43	715	4,724	4,070	9,552	2.3	94.2	90	568	16.8	39.30	38.09	10,433	10,518
STEARNS	203	1,641	11,113	11,176	24,133	1.7	95.3	83	1,578	15.3	56.82	51.94	26,699	26,912
WRIGHT	99	1,171	7,483	6,744	15,497	1.5	95.1	90	992	15.6	60.96	56.78	16,953	17,129
REGION 07W	378	3,871	25,713	24,163	54,125	1.7	95.0	87	3,439	15.7	52.64	49.24	59,513	59,984
COTTONWOOD	7	166	1,095	1,083	2,351	7.8	95.3	65	186	12.5	57.96	51.34	2,599	2,625
JACKSON	15	126	968	950	2,059	3.3	95.4	62	151	13.9	52.20	49.50	2,282	2,270
LINCOLN	9	73	602	630	1,314	7	96.4	82	86	13.3	47.03	42.19	1,467	1,511
LYON	28	336	2,086	2,219	4,669	4.7	95.1	72	329	14.6	49.99	47.24	5,176	5,464
MURRAY	12	114	718	730	1,574	1.0	96.3	73	114	13.8	59.36	53.43	1,737	1,739
NOBLES	22	249	1,689	1,803	3,763	10.0	92.5	82	250	14.8	53.60	48.37	4,184	4,213
PIPESTONE	10	152	965	892	2,019	4.0	95.5	61	165	13.4	51.43	45.77	2,216	2,262
REDWOOD COUNTY	21	250	1,417	1,525	3,213	2.4	95.2	81	242	13.2	56.13	47.86	3,555	3,675
ROCK	10	135	869	834	1,848	2.3	96.5	57	136	13.7	51.20	42.48	2,037	2,182
REGION 08	134	1,601	10,409	10,666	22,810	4.7	95.1	72	1,659	13.8	53.37	47.96	25,254	25,941
BLUE EARTH	67	712	4,719	4,316	9,814	3.3	94.6	63	609	16.1	59.38	55.38	10,776	10,805
BROWN	25	306	2,084	2,039	4,454	4.5	95.5	71	286	15.6	58.07	53.90	4,917	4,950
FARIBAULT	32	176	1,482	1,496	3,186	4.0	95.6	63	241	12.8	60.35	58.11	3,545	3,961
LESUEUR	55	319	2,122	2,182	4,678	3.0	95.0	63	316	14.1	61.83	51.44	5,183	5,065
MARTIN	29	279	1,951	1,997	4,256	2.4	94.9	80	273	15.7	51.47	47.09	4,720	4,830
NICOLLET	21	168	1,022	1,099	2,310	2.7	93.0	70	152	15.7	63.53	53.61	2,557	2,653
SIBLEY	8	186	1,084	1,199	2,477	3.8	94.8	80	172	14.2	49.46	44.28	2,747	2,730
WASECA	45	273	1,679	1,865	3,862	2.1	94.8	66	273	14.0	59.82	53.69	4,301	4,316
WATONWAN	20	147	1,010	1,069	2,246	14.0	95.3	70	167	13.3	57.74	53.87	2,501	2,484
REGION 09	302	2,566	17,153	17,262	37,283	3.9	94.8	68	2,489	14.9	57.79	52.77	41,247	41,794

	Revenue %			1992 - 93 Expenditures per Pupil Unit																Other Measures per Pupil Unit				
	15. Federal	16. State	17. Local and Other	18. District and School Admin.	19. District Support Services	20. Regular Instruction	21. Vocational Instruction	22. Exceptional Instruction	23. Instructional Support Services	24. Pupil Support Services	25. Operations and Maintenance	26. Food Service	27. Pupil Transportation	28. Other Oper. Program	29. Total PK-12 Operating Expenditures	30. Community Service	31. Capital Outlay	32. Building Construction	33. Debt Service	34. Operating Funds Balance	35. Change in Funds Balance	36. State and Local Oper. Costs	37. Long Term Debt	38. 1992 Adj. Net Tax Capacity
	4 62 34			263	73	2089	145	898	144	84	272	199	300	105	4571	131	219	1731	204	236	69-	3910	5693	2,517
	3 65 32			291	89	1964	65	460	139	111	340	189	274	134	4056	118	239	10	243	74	97-	3473	2491	2,202
	6 65 29			284	99	2030	56	587	133	76	292	174	300	105	4137	130	275	746	170	489	24	3503	2760	1,851
	6 53 41			303	109	2071	44	541	109	84	348	193	266	105	4174	124	295	0	16	357	167	3468	55	4,057
	5 62 33			282	89	2037	87	648	135	90	306	189	288	113	4263	126	249	763	181	273	19-	3625	3261	2,477
	7 61 32			336	134	2068	183	636	95	94	389	224	289	123	4571	142	303	0	79	28	113-	3825	103	2,715
	8 61 31			262	84	1996	127	697	130	60	326	354	226	96	4358	171	237	0	66	404	31	3567	52	2,337
	5 60 35			242	136	2029	86	525	136	114	366	167	263	96	4158	156	300	0	0	140	267	3506	71	2,874
	6 63 31			245	80	1940	162	674	134	97	328	196	251	113	4222	136	328	339	38	598	64	3537	3933	2,503
	6 57 37			333	104	2168	23	624	138	89	378	228	288	68	4439	193	692	19	100	299	86-	3763	669	2,959
	6 61 33			281	102	2036	113	640	129	88	353	242	260	97	4340	161	381	85	58	339	31	3628	1140	2,653
	3 64 33			257	131	1882	109	535	163	88	285	178	218	152	3998	135	325	739	346	324	82-	3498	2683	1,891
	6 68 26			237	91	1980	192	738	134	126	318	189	205	35	4245	105	293	161	94	271	32-	3622	1766	1,547
	6 69 25			283	84	1981	108	548	158	101	372	190	194	26	4045	130	161	58	194	580	139	3470	1307	1,449
	5 64 31			290	102	2003	98	619	148	96	327	210	343	94	4330	127	300	1110	353	189	41-	3560	4127	1,861
	5 61 34			314	129	1983	74	818	163	134	315	206	290	66	4494	88	328	52	333	518	100-	3779	3419	1,999
	5 65 30			273	111	1960	118	651	153	108	317	194	255	85	4222	118	296	506	275	342	41-	3587	2811	1,782
	4 80 16			230	93	1969	58	565	180	101	283	195	289	63	4027	138	224	10	229	330	18-	3364	3117	1,706
	2 52 46			269	78	1986	48	546	163	93	397	205	307	50	4141	116	261	245	2552	347	47-	3538	5603	5,009
	4 60 36			213	86	1971	68	773	207	88	304	193	260	82	4244	143	279	847	293	291	104-	3639	3264	2,546
	3 53 44			265	99	2049	64	679	154	103	336	192	301	58	4299	161	219	375	934	321	64-	3670	4151	2,959
	4 58 38			239	89	1995	63	687	182	94	328	195	283	68	4222	143	254	531	866	313	75-	3605	3913	3,019
	4 43 53			352	132	2309	123	821	129	69	404	224	196	126	4885	149	311	0	305	356	93	4289	309	3,691
	6 47 47			279	71	2197	107	548	147	85	384	227	252	82	4379	158	254	0	237	520	86	3631	942	3,699
	6 60 34			378	126	2179	244	506	92	79	329	207	287	52	4478	143	212	0	23	216	268-	3758	78	2,782
	5 56 39			305	101	2071	58	601	125	88	366	210	232	86	4244	101	316	41	136	478	2-	3605	1261	3,073
	8 52 40			354	134	2065	144	676	128	111	421	210	435	158	4837	182	763	0	0	607	251	3907	161	3,101
	4 57 39			274	117	1938	96	981	309	133	326	216	271	131	4791	152	297	0	167	180	109-	4113	287	2,803
	8 56 36			291	48	2284	102	804	149	85	347	215	394	83	4803	191	304	0	68	953	41	3880	87	2,713
	6 47 47			322	101	2184	69	653	163	88	336	227	248	77	4468	119	255	124	233	60	189-	3757	4183	3,767
	6 55 39			272	97	2160	95	524	114	141	312	185	213	95	4210	146	262	0	0	313	146-	3611	21	2,816
	6 52 42			308	103	2132	100	698	162	98	356	215	268	99	4540	141	317	26	147	383	34-	3834	1037	3,179
	4 54 42			249	100	2075	70	632	142	94	338	188	246	63	4196	157	258	1128	165	170	780	3607	2500	3,238
	4 55 41			257	80	1956	132	518	157	102	298	200	342	77	4119	135	255	31	42	570	3-	3413	1342	3,103
	5 46 49			303	145	2183	81	565	153	94	339	189	228	96	4377	147	246	19	12	255	8	3772	141	3,226
	4 63 33			311	88	2041	110	572	131	105	311	183	212	91	4154	132	330	428	274	200	54-	3595	2803	2,228
	4 41 55			298	104	2092	108	462	132	74	403	216	295	84	4268	181	341	146	0	409	377	3818	56	3,957
	3 61 36			299	87	2001	47	700	138	138	356	160	288	70	4282	124	437	0	402	54-	89	3687	3528	2,328
	5 60 35			305	92	2049	138	484	120	88	317	228	281	110	4212	157	238	0	31	244	38-	3537	135	2,881
	6 56 38			292	123	2063	113	767	160	105	317	196	239	85	4460	217	302	3	138	248	5190-	3724	1291	2,505
	5 56 39			310	72	2038	87	627	115	123	337	200	277	102	4287	142	282	0	100	373	109	3654	190	2,694
	4 54 42			283	100	2059	96	593	141	99	335	194	263	82	4246	156	291	366	129	267	291-	3638	1558	2,987

DATA FOR ENROLLMENT SIZE GROUPS

The chief purpose of this table is to permit easy comparisons of districts with similar enrollment. For example, a superintendent in a district with 600 pupils may want to examine the data for group 5 (545 to 744 ADM), to see how his/her expenditures compare with other districts of similar size.

		1992-93 Resident Average Daily Membership					Pupil Data			Professional Staff		Tax Capacity Rates		Pupil Units (Weighted ADM)	
		1. Pre-Kindergarten Handicapped	2. Kindergarten	3. Elementary (Grades 1-6)	4. Secondary (Grades 7-12)	5. Total (Pre-K thru Grade 12)	6. Percent Minority	7. Percent Attendance	8. Percent Transported	9. Total Staff (FTE)	10. Pupil-Staff Ratio	11. Auditor Percent	12. Equalized Percent	13. Resident Pupil Units	14. Total Pupil Units
1 0 TO 219		42	431	3,039	2,819	6,331	6.2	96.0	74	500	11.8	55.16	50.01	6,965	6,808
2 220 TO 304		57	728	5,012	5,153	10,950	3.7	95.8	74	837	12.2	55.71	49.71	12,147	11,980
3 305 TO 413		80	1,022	6,921	6,740	14,763	2.5	95.4	75	1,134	12.8	56.24	50.78	16,293	16,201
4 414 TO 544		109	1,375	9,246	9,482	20,212	2.6	95.4	76	1,437	13.3	54.40	48.96	22,400	22,423
5 545 TO 744		156	1,889	12,386	12,488	26,919	5.1	95.2	74	1,907	14.0	54.72	49.25	29,762	30,012
6 745 TO 1009		262	2,468	16,035	16,648	35,413	6.0	94.8	79	2,501	14.2	56.66	50.73	39,229	39,772
7 1010 TO 1349		296	3,346	21,720	21,047	46,409	6.1	95.0	75	3,197	14.4	50.03	45.99	51,127	52,110
8 1350 TO 1999		397	4,735	30,097	29,732	64,961	3.6	94.8	83	4,226	15.5	58.24	51.68	71,619	72,800
9 2000 TO 4299		788	8,671	56,644	53,435	119,538	4.3	94.2	80	7,547	15.9	60.72	56.29	131,405	133,471
10 4300 OR HIGHER		2655	36,379	217,111	179,768	435,913	15.1	93.6	82	27,756	15.6	63.02	62.06	472,050	474,419

DATA FOR ENROLLMENT SIZE GROUPS

The table below lists totals or averages for all districts in each of ten enrollment size groups, based on 1992-93 resident average daily membership (ADM). For example, group 1 includes all districts with 219 or fewer ADM, and group 2 includes all districts with 220 to 304 ADM. Each group includes approximately ten percent of the state's school districts.

	Revenue %			1992 - 93 Expenditures per Pupil Unit																Other Measures per Pupil Unit				
	15. Federal	16. State	17. Local and Other	18. District and School Admin.	19. District Support Services	20. Regular Instruction	21. Vocational Instruction	22. Exceptional Instruction	23. Instructional Support Services	24. Pupil Support Services	25. Operations and Maintenance	26. Food Service	27. Pupil Transportation	28. Other Oper. Program	29. Total PK-12 Operating Expenditures	30. Community Service	31. Capital Outlay	32. Building Construction	33. Debt Service	34. Operating Funds Balance	35. Change in Funds Balance	36. State and Local Oper. Costs	37. Long Term Debt	38. 1992 Adj. Net Tax Capacity
01	7 42 51			454	208	2728	42	639	121	58	452	288	376	149	5515	142	330	15	55	389	83-	4560	167	3,980
02	7 51 42			397	130	2298	118	586	138	78	390	230	312	117	4794	120	386	43	54	379	118-	3990	413	3,345
03	6 56 38			375	130	2241	111	560	150	79	367	222	311	106	4652	124	391	499	255	275	2433	3893	2994	2,868
04	5 58 37			331	105	2170	131	561	120	57	341	205	280	88	4388	116	363	122	112	222	163-	3681	1118	2,766
05	6 58 36			322	101	2104	116	616	138	92	346	198	292	88	4414	122	294	364	313	303	40-	3702	2501	2,634
06	6 59 35			324	98	2119	96	652	139	86	353	199	280	98	4444	136	337	590	303	264	616-	3748	2648	2,487
07	6 58 36			280	90	2113	102	643	145	95	340	195	265	99	4368	133	311	365	384	354	197	3668	2562	2,923
08	4 63 33			273	96	2030	94	614	156	108	345	190	262	99	4268	126	281	476	388	255	289	3660	2914	2,215
09	4 53 43			274	110	2058	85	704	181	125	357	188	283	133	4499	165	280	492	276	254	15-	3876	2490	3,019
10	4 41 55			285	141	2175	93	844	227	159	389	191	273	133	4911	210	323	421	306	202	34-	4314	2811	4,142

SUMMARY STATISTICS

The table below lists a variety of summary statistics for each of the 38 variables included in this report. The attendant definitions explain the meaning of these statistics.

This table may be used to better understand the distribution of a particular variable among Minnesota school districts. For example, percent attendance (column 7) varies little; ninety percent of the school districts are

within the narrow range of 93.4% (5th percentile) to 96.9% (95th percentile).

The table may also be used to see how an individual school district compares with other districts in the state. Two examples illustrate this use of the data.

1. A district which has total PK-12 operating expenditures (column 29) of \$4,00 per pupil unit is very

near the median value, which is \$4,467. Thus, about half the districts in the state have lower and half have higher expenditures.

2. A district with total average daily membership (column 5) of 310 students is between the 20th and 25th percentiles for this variable. Somewhere between 20 and 25 percent of Minnesota school districts have fewer students than this district.

	1992-93 Resident Average Daily Membership					Pupil Data			Professional Staff		Tax Capacity Rates		Pupil Units (Weighted ADM)	
	1. Pre-Kindergarten Handicapped	2. Kindergarten	3. Elementary (Grades 1-6)	4. Secondary (Grades 7-12)	5. Total (Pre-K thru Grade 12)	6. Percent Minority	7. Percent Attendance	8. Percent Transported	9. Total Staff (FTE)	10. Pupil-Staff Ratio	11. Auditor Percent	12. Equalized Percent	13. Resident Pupil Units	14. Total Pupil Units
Lowest Value	0	0	10	5	19	.0	.0	31	0	.0	.00	.00	22	14
5th Percentile	0	10	79	74	165	.0	93.0	53	11	10.1	40.09	36.81	180	176
10th Percentile	1	14	103	95	218	.1	93.6	57	16	11.0	45.18	39.80	238	235
20th Percentile	1	20	137	141	304	.7	94.2	66	22	12.3	49.20	43.68	339	332
25th Percentile	2	25	170	167	355	1.1	94.4	68	26	12.7	50.41	45.14	397	395
30th Percentile	2	28	190	189	413	1.3	94.5	70	30	13.2	51.63	46.30	451	449
40th Percentile	3	37	247	250	535	1.8	94.9	75	39	13.6	54.85	49.22	594	596
Median (50th)	4	49	331	331	733	2.3	95.2	79	51	14.2	57.28	51.18	811	813
60th Percentile	6	68	448	459	998	3.0	95.5	82	68	14.7	60.17	54.35	1,096	1,094
70th Percentile	9	100	626	599	1,343	4.3	95.8	86	91	15.3	62.90	56.83	1,479	1,497
75th Percentile	10	117	759	745	1,602	5.5	95.9	88	103	15.5	64.68	58.88	1,756	1,793
80th Percentile	13	148	941	916	1,992	6.5	96.1	90	134	15.8	66.30	60.78	2,224	2,308
90th Percentile	27	318	2,088	1,881	4,342	11.8	96.4	94	275	16.5	70.81	65.69	4,743	4,753
95th Percentile	39	515	3,347	2,977	6,835	15.5	96.7	97	425	17.3	74.84	69.57	7,485	7,571
Highest Value	359	4,380	22,068	15,579	42,171	100.0	99.5	100	3,254	38.2	97.47	87.04	44,656	44,433
State (Total or Avg.)	4842	61,044	378,211	337,312	781,409	10.4	94.1	80	51,042	15.2	60.83	58.16	852,998	859,996

SUMMARY STATISTICS

Lowest Value - For any specific variable, the lowest value of that variable among all school districts. The table also shows the highest value for each variable.

XXth percentile - For any specific variable, a value chosen such that XX percent of the school districts are below the chosen value. For example, the 10th percentile for total staff (column 9) is 16, this means that ten percent of the school districts have 16 or fewer staff members (FTE). The 25th and 75th percentile are also

called quartiles; the 10th, 20th, 30th,...through 90th percentiles are also called deciles.

Median - For any specific variable, a value chosen such that half of the school districts are below the chosen value, and half are above.

State Total - For variables 1-5 (1992-93 resident average daily membership, 9 (total staff), and 13-14 (pupil units), the state total is simply the sum of the corre-

sponding value for all 433 districts listed in the report. For all other variables, the state total is computed as the sum of the numerators for all districts, divided by sum of the denominators. For example, State total pupil-staff ratio =

$$\frac{\text{State total of pupils}}{\text{State total of staff}}$$

For these variables, the state total is a form of weighted average.

	Revenue %			1992 - 93 Expenditures per Pupil Unit															Other Measures per Pupil Unit					
	15. Federal	16. State	17. Local and Other	18. District and School Admin.	19. District Support Services	20. Regular Instruction	21. Vocational Instruction	22. Exceptional Instruction	23. Instructional Support Services	24. Pupil Support Services	25. Operations and Maintenance	26. Food Service	27. Pupil Transportation	28. Other Oper. Program	29. Total PK-12 Operating Expenditures	30. Community Service	31. Capital Outlay	32. Building Construction	33. Debt Service	34. Operating Funds Balance	35. Change in Funds Balance	36. State and Local Oper. Costs	37. Long Term Debt	38. 1992 Adj. Net Tax Capacity
Low	0	0	4	0	19	1664	0	0	0	0	0	0	97	0	3721	0	0	0	0	2967-	2225-	3114	0	0
5th	2	23	19	203	50	1853	0	335	56	9	235	131	169	31	3905	54	137	0	0	492-	562-	3336	0	1,176
10th	2	34	22	226	61	1886	0	419	82	22	262	147	186	40	3986	66	171	0	0	261-	344-	3397	0	1,441
20th	3	44	27	255	73	1965	31	468	103	50	295	170	214	52	4105	85	195	0	0	32-	216-	3489	0	1,745
25th	3	47	29	266	80	1998	42	491	108	57	306	178	226	58	4161	90	212	0	0	77	152-	3511	3	1,890
30th	4	50	30	275	85	2021	52	514	115	65	311	182	236	63	4202	98	230	0	0	145	124-	3534	35	2,026
40th	4	55	34	292	96	2066	68	569	128	76	327	190	261	79	4321	109	255	0	32	207	64-	3634	135	2,280
Med.	5	58	37	308	107	2107	85	610	138	88	349	200	277	87	4469	121	282	0	127	309	25-	3739	595	2,653
60th	5	62	40	325	118	2172	99	640	151	98	369	211	297	103	4578	136	316	0	179	391	12	3876	1350	2,916
70th	6	65	45	349	130	2270	120	690	168	113	395	223	327	122	4753	155	353	8	275	491	52	4032	2416	3,395
75th	6	66	48	372	140	2321	130	724	182	121	413	231	339	132	4854	171	369	103	314	547	83	4118	3245	3,703
80th	7	67	51	393	149	2391	142	764	193	129	432	240	357	146	4958	187	400	256	351	588	119	4216	3922	3,961
90th	8	72	60	469	190	2631	194	926	231	157	496	273	406	216	5450	232	534	869	495	727	260	4613	5901	5,064
95th	10	74	71	545	245	2900	244	1049	273	188	543	297	445	307	5999	284	641	1802	676	1014	444	4955	7277	6,123
Hgh.	39	90	98	984	929	4914	678	3071	567	979	2203	635	1726	526	13837	611	3285	14501	5314	6032	432	8154	44408	24,713
Ste.	4	48	48	291	125	2143	95	756	195	134	373	194	276	123	4706	179	315	424	301	236	25	4077	2640	3,532

