

950154

Overview of Juvenile Justice in Minnesota 1993

January 23, 1995

Presentation to:
Minnesota House of Representatives
Judiciary Committee
Representative Wesley Skoglund, Chair

Presented by:
Criminal Justice Center
Daniel Storkamp, Director
(612) 297-7518

CRIMINAL
JUSTICE
CENTER



Table of Contents

Definitions	2
Summary	3
<div style="display: flex; justify-content: space-between; align-items: flex-start;"> <div style="width: 60%;"> <p>I. Minnesota Population Projections</p> <p style="margin-left: 40px;">By Age: 1995 4</p> <p style="margin-left: 40px;">By Hennepin and Ramsey Counties: 1995 to 2020 5</p> <p style="margin-left: 40px;">By "Metropolitan 7 Counties: 1995 to 2020 6</p> <p style="margin-left: 40px;">By Race: 1995 to 2020 7</p> <p style="margin-left: 40px;">By White and Non-White: 1995 to 2020 8</p> <p>II. Juvenile Apprehensions</p> <p style="margin-left: 40px;">Total, Part I and Part II: 1985 to 1993 9</p> <p style="margin-left: 40px;">Percent of Arrests by Offense 10</p> <p style="margin-left: 40px;">Percent by Region: 1993 11</p> <p style="margin-left: 40px;">Minnesota's National Rankings: 1993 12</p> <p style="margin-left: 40px;">Part I Rates by Age Groups Minnesota and Nation: 1993 ... 13</p> <p style="margin-left: 40px;">Violent Rates by Age Groups: 1993 14</p> <p style="margin-left: 40px;">Property Rates by Age Groups: 1993 15</p> <p>III. Other Minnesota Justice System Workloads</p> <p style="margin-left: 40px;">Juvenile Court Delinquency Cases by Geographic Area:</p> <p style="margin-left: 80px;">1985 to 1993 16</p> <p style="margin-left: 40px;">Juvenile Probation Cases by Geographic Area:</p> <p style="margin-left: 80px;">1985 to 1993 17</p> <p style="margin-left: 40px;">Juveniles Under the Jurisdiction of Counties:</p> <p style="margin-left: 80px;">1985 to 1993 18</p> <p style="margin-left: 40px;">Juveniles Under the Jurisdiction of the State:</p> <p style="margin-left: 80px;">June 1992 to January 1995 19</p> </div> <div style="width: 35%; text-align: center;"> <div style="border: 1px solid black; padding: 5px; margin-bottom: 10px;"> <p style="font-size: 1.2em; margin: 0;">RECEIVED</p> <p style="font-size: 0.8em; margin: 0;">FEB 16 1995</p> </div> <p style="font-size: 0.8em; margin: 0;">LEGISLATIVE REFERENCE LIBRARY STATE OFFICE BUILDING ST. PAUL, MN 55155</p> </div> </div>	

Definitions

Apprehension occurs when an individual younger than age 18 is processed by an arrest, citation or summons for committing an offense.

Apprehension rate is the number of apprehensions made for an offense or group of offenses per 100,000 population.

Juvenile offenses are status offenses that adults cannot be arrested for, such as loitering, violating curfew and running away.

Part I offenses include murder, rape, robbery, aggravated assault, burglary, larceny, auto theft and arson.

Part I - property offenses include burglary, larceny, auto theft and arson.

Part I - violent offenses include murder, rape, robbery and aggravated assault.

Part II offenses include other assaults, forgery and counterfeiting, fraud, embezzlement, buying stolen property, receiving stolen property, possessing stolen property, vandalism or destruction of property, weapons, prostitution and commercialized vice, sex offenses, narcotic drug laws, gambling, offenses against family and children, driving under the influence, liquor laws, disorderly conduct, disturbing the peace, vagrancy and all other offenses (all crimes other than part I or juvenile status crimes).

Summary

Population 10 to 17 Years Old

- Statewide this age group will reach the largest number in the year 2000.
- The "metropolitan 7 counties" numbers will not peak till 2005 and will have a much slower decline than the state as a whole.
- The number of white population will peak in 2000, while the non-white population will approximately double by 2020.

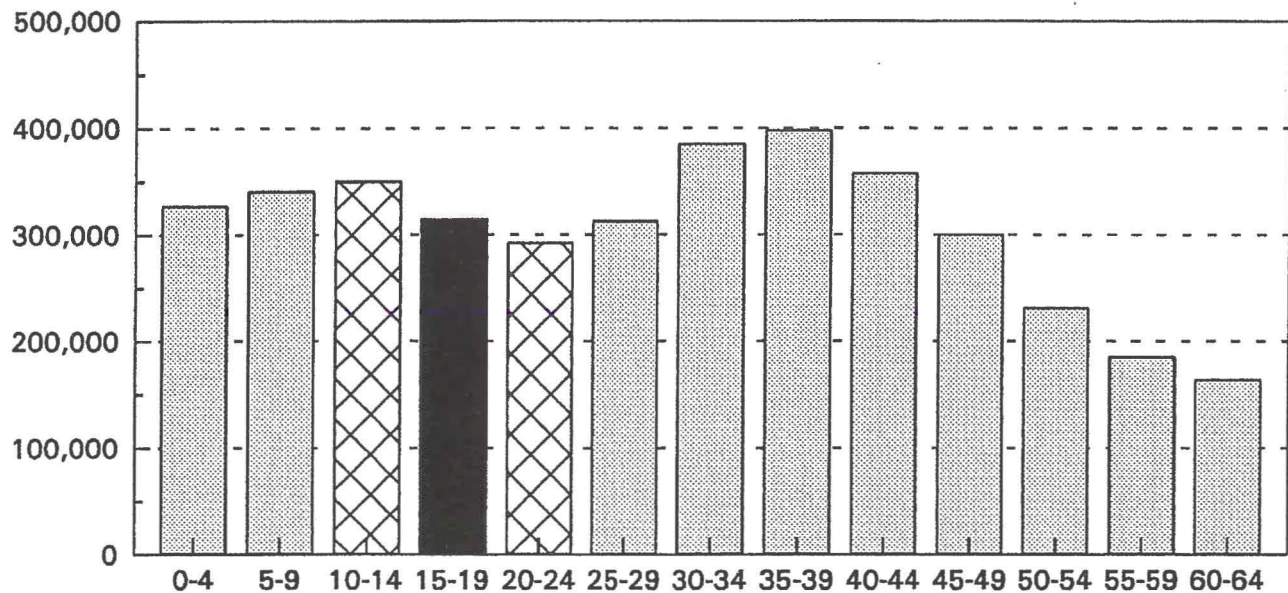
Minnesota Juvenile Apprehensions

- Juvenile apprehensions accounted for approximately 25 percent of all arrests and apprehensions between 1985 and 1993.
- Minnesota had higher apprehension rates than the nation for Part I property crimes, but lower apprehension rates for Part I violent crimes.
- While Minneapolis and St. Paul combined accounted for 12 percent of Minnesota's 10- to 17-year olds in 1995, they accounted for over 40 percent of the Part I violent apprehensions for this age group in 1993.

Other Juvenile Justice System Components

- The number of juvenile court cases have grown 56 percent from 1985 to 1993.
- The number of juvenile probation cases has grew 90 percent from 1985 to 1993.
- Counties, not the State, have jurisdiction over a majority of juveniles in residential treatment facilities.

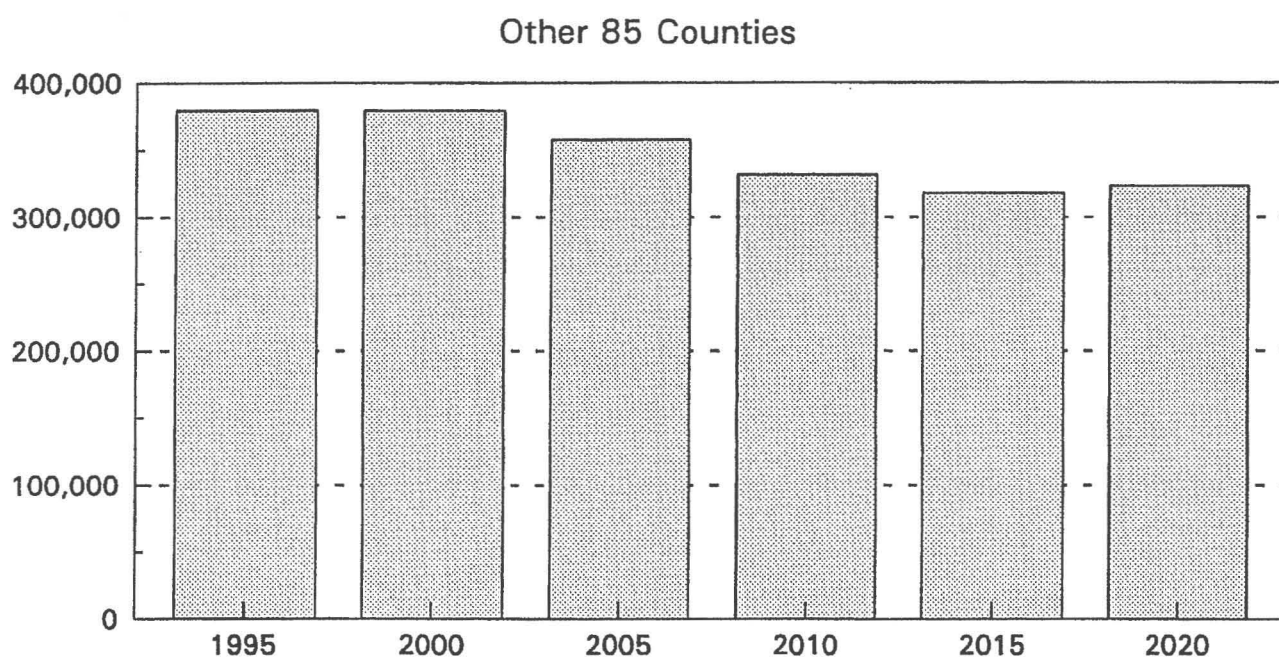
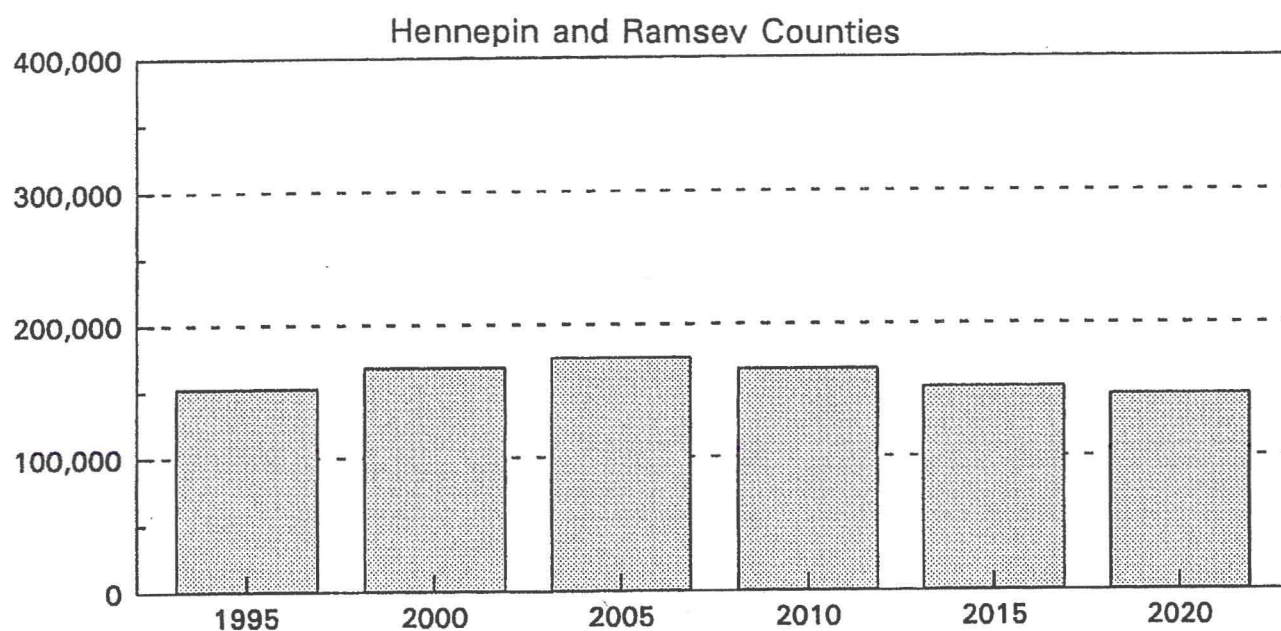
Minnesota Population Projections by Age 1995



- The solid bar in the above graph reflects the age category with the highest arrest rates in 1993. The age categories with the hatched bars in the above graph reflects the second and third highest arrest rates in 1993.

Note: For this graph, arrest refers to both apprehensions and arrests.

Minnesota Population Projections 10- to 17-Year Olds

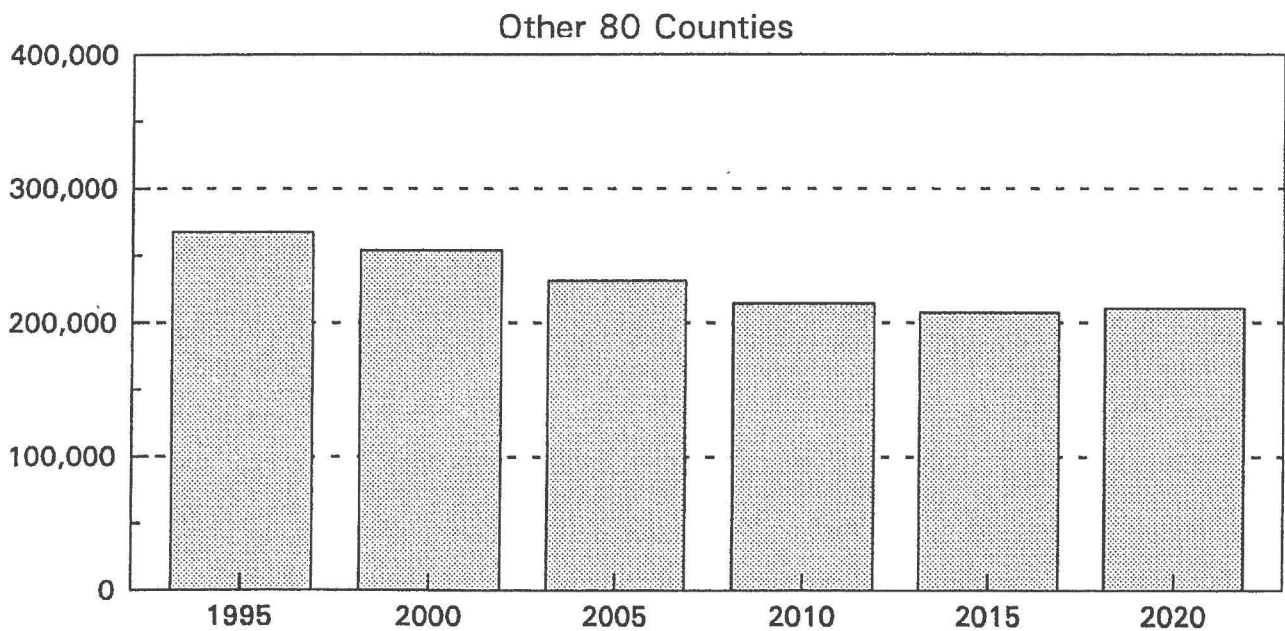
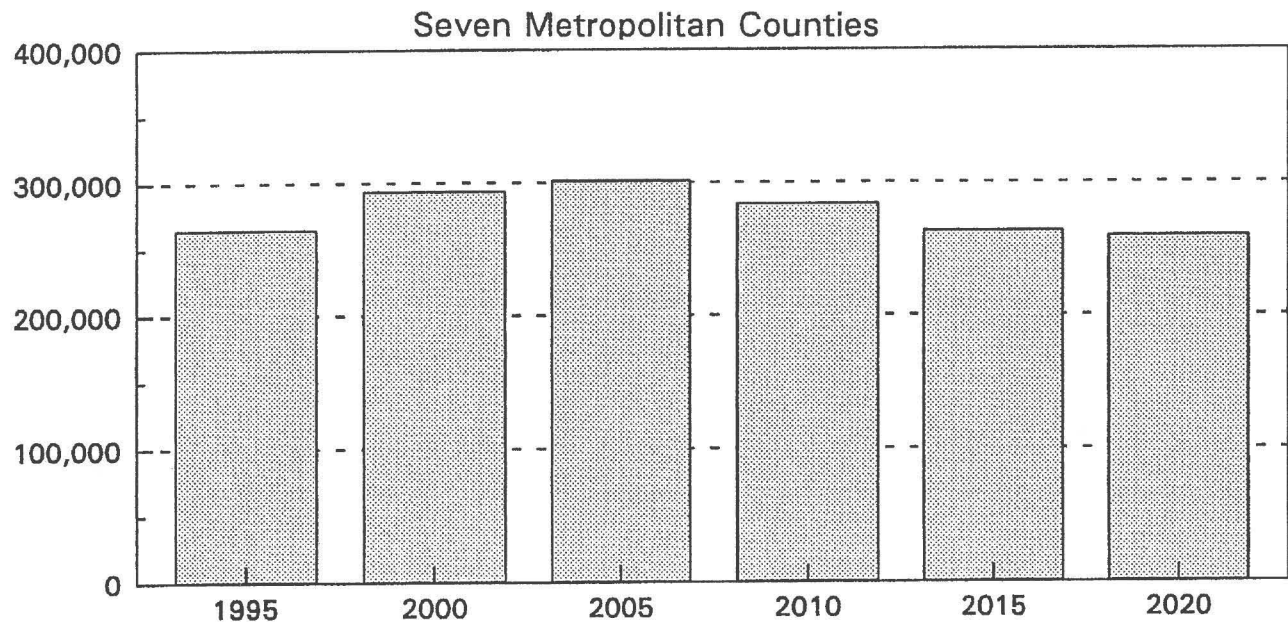


- The 10 to 17 year old population in Hennepin and Ramsey counties are expected to peak by 2005 and then return to 1995 levels by the year 2020. This population in the other 85 counties will peak in 1995 and decrease by more than 50,000 youth by 2020.

Data source: Minnesota State Demographer's Office

Prepared by: Criminal Justice Center, Minnesota Planning, (612) 296-4852

Minnesota Population Projections 10- to 17-Year Olds



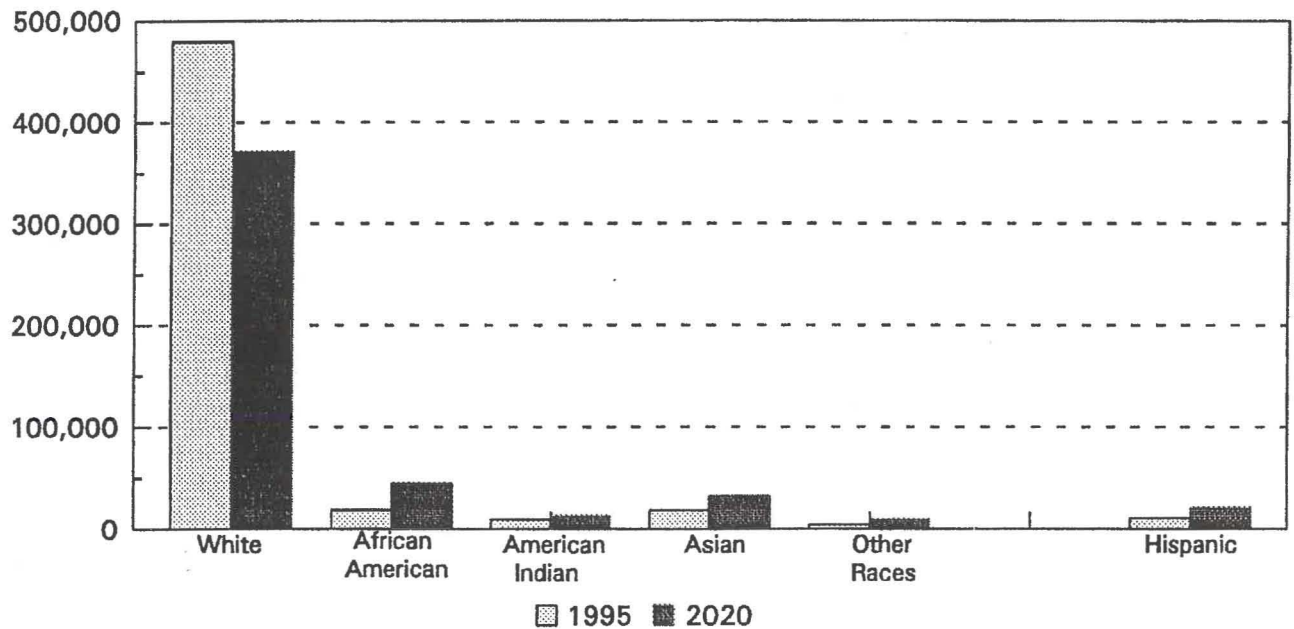
- The seven metropolitan counties are expected to peak by 2005, unlike the state as a whole which will peak in 2000. A dramatic drop in 10- to 17-year olds will occur in the remaining 80 counties.

Note: The seven metropolitan counties are Anoka, Carver, Dakota, Hennepin, Ramsey, Scott and Washington counties.

Data source: Minnesota State Demographer's Office

Prepared by: Criminal Justice Center, Minnesota Planning, (612) 296-4852

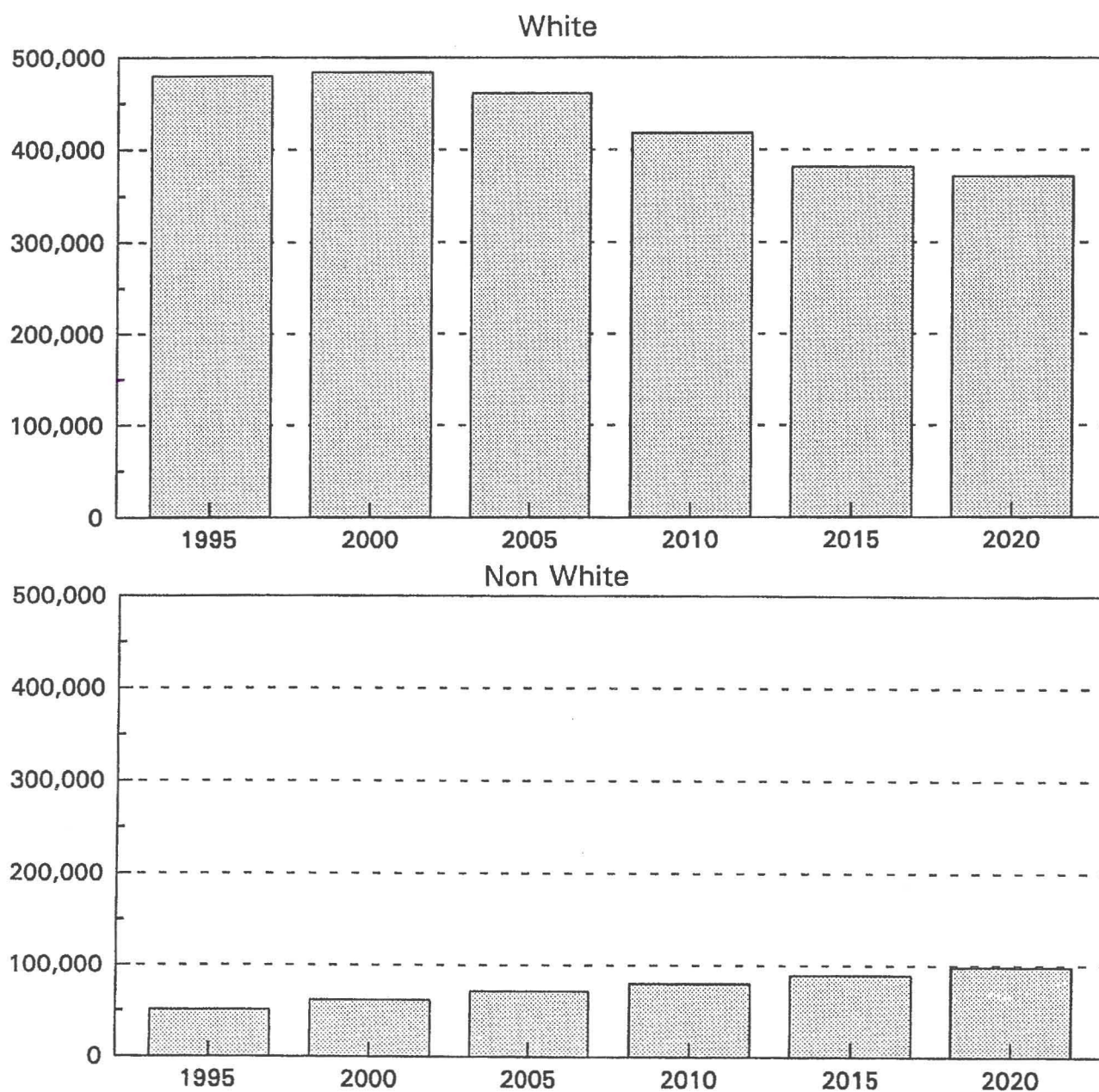
Minnesota Population Projections 10- to 17-Year Olds By Race



- The 10 to 17 year old white population is the only race that will be decreasing between 1995 and 2020.

Note: A person with Hispanic ethnicity may be classified in any race category.

Minnesota Population Projections 10- to 17-Year Olds



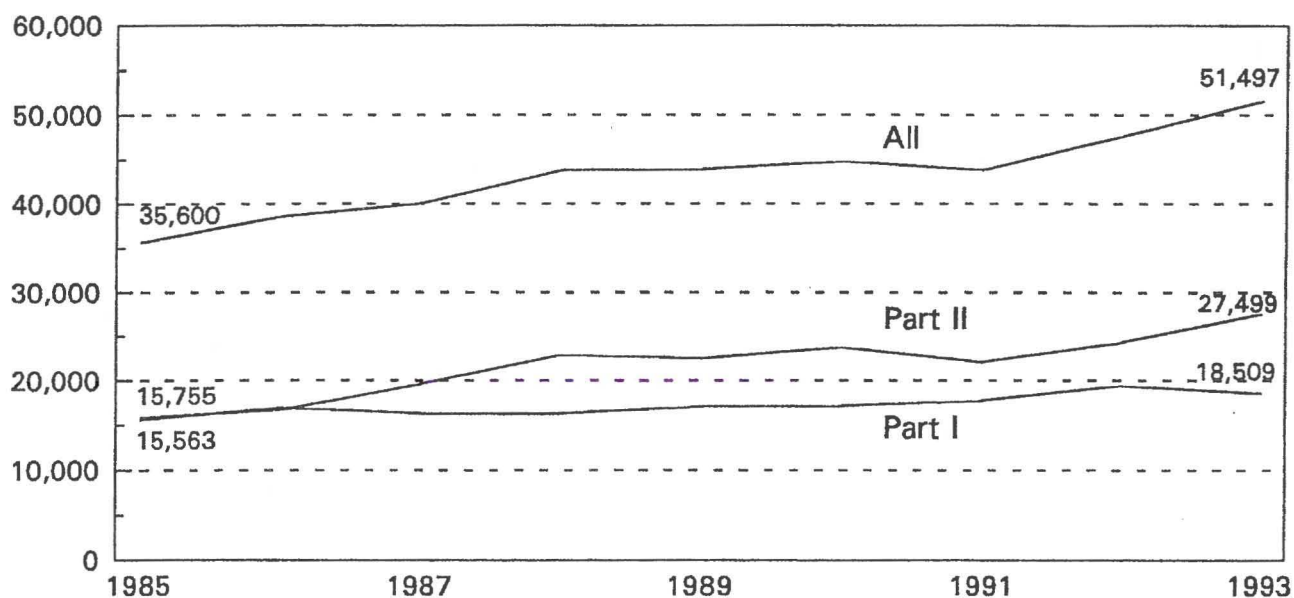
- The white population age 10 to 17 is expected to peak by 2000, while the non-white population will approximately double by 2020.

Note: A person with Hispanic ethnicity may be classified either white or nonwhite. The nonwhite category includes individuals not identifying themselves as white.

Data source: Minnesota State Demographer's Office

Prepared by: Criminal Justice Center, Minnesota Planning, (612) 296-4852

Juvenile Apprehensions Total, Part I and Part II



- All juvenile apprehensions in Minnesota climbed 45 percent, while Part I apprehensions rose 19 percent and Part II apprehensions went up 74 percent from 1985 to 1993.

Juvenile Apprehensions Percent of Arrests by Offense

		1985	1993
Apprehensions	Part I - Total	45%	45%
	Part I - Violent	24%	26%
	Part I - Property	45%	45%
	Part II	15%	19%
	All	25%	26%

- Juvenile apprehensions accounted for the majority of arrests for only three offenses: auto theft, arson and vandalism.

Note: The term arrests in this graph refers to both apprehensions and arrests.

Juvenile Apprehensions Percent by Region

Estimated Juvenile Population 1995	Minneapolis and St. Paul	Hennepin and Ramsey Counties	Seven Metropolitan Counties
10- to 17-Years Old	12%	29%	50%

Apprehensions 1993	Minneapolis and St. Paul	Hennepin and Ramsey Counties	Seven Metropolitan Counties
Part I - Total	20%	40%	61%
Part I - Violent	41%	59%	75%
Part I - Property	18%	38%	59%
Part II - Total	16%	37%	59%
Total Apprehensions	16%	38%	61%

- The combined Minneapolis and St. Paul population accounted for slightly more than 10 percent of Minnesota's 10- to 17-year-old population, but Minneapolis and St. Paul had more than 40 percent of the apprehensions for Part I violent crimes in 1993 for that age group.

Note: The seven metropolitan counties include Anoka, Carver, Dakota, Hennepin, Ramsey, Scott and Washington. The populations are based on extrapolations of the State Demographer's official population projections.

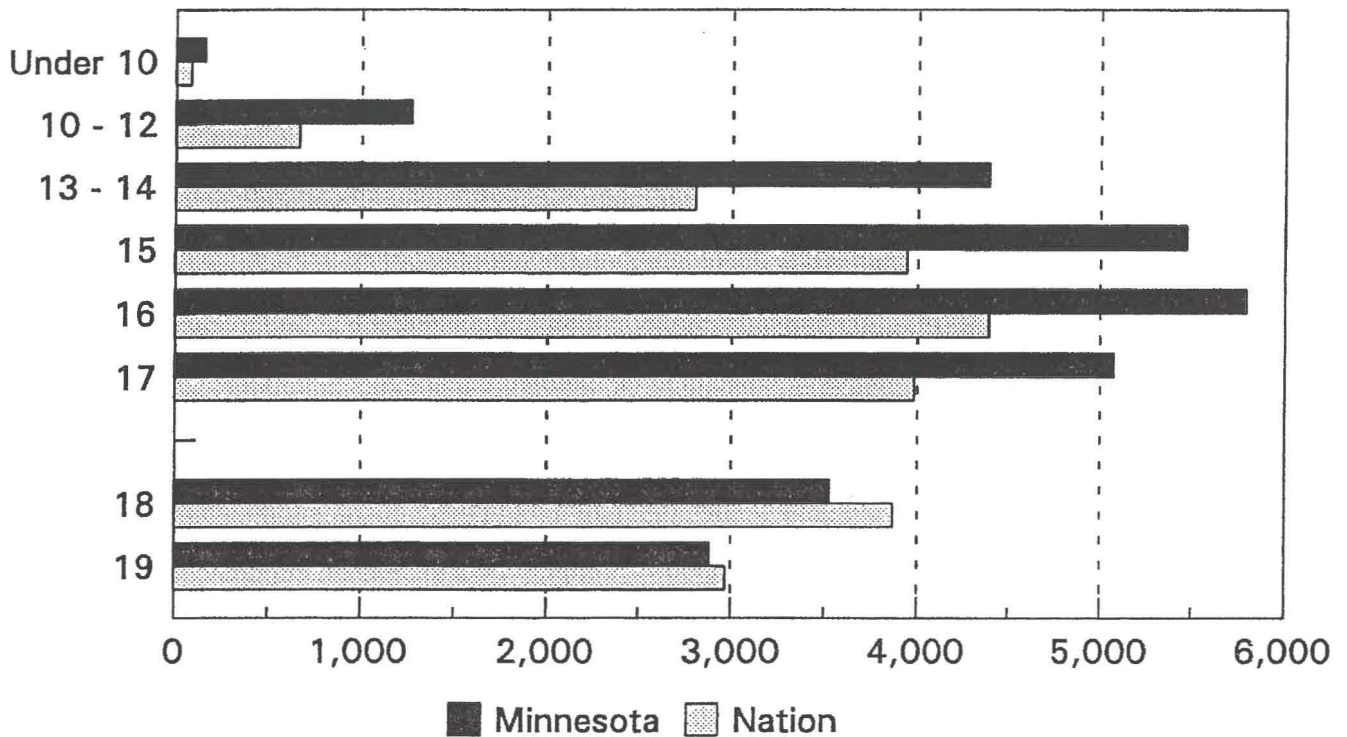
Juvenile Apprehensions Minnesota's National Ranking

		1987	1993
Apprehensions	Part I - Total	14th	11th
	Part I - Violent	18th	15th
	Part I - Property	14th	10th
	Part II	NA	10th
	All	13th	12th

- Based on the number of apprehensions for individuals under age 18, Minnesota's ranking has increased since 1987.

Note: Apprehension rankings for 1993 are based on 48 states (missing Kansas and Illinois) and the 1987 are based on 48 states (missing Kentucky and Montana).

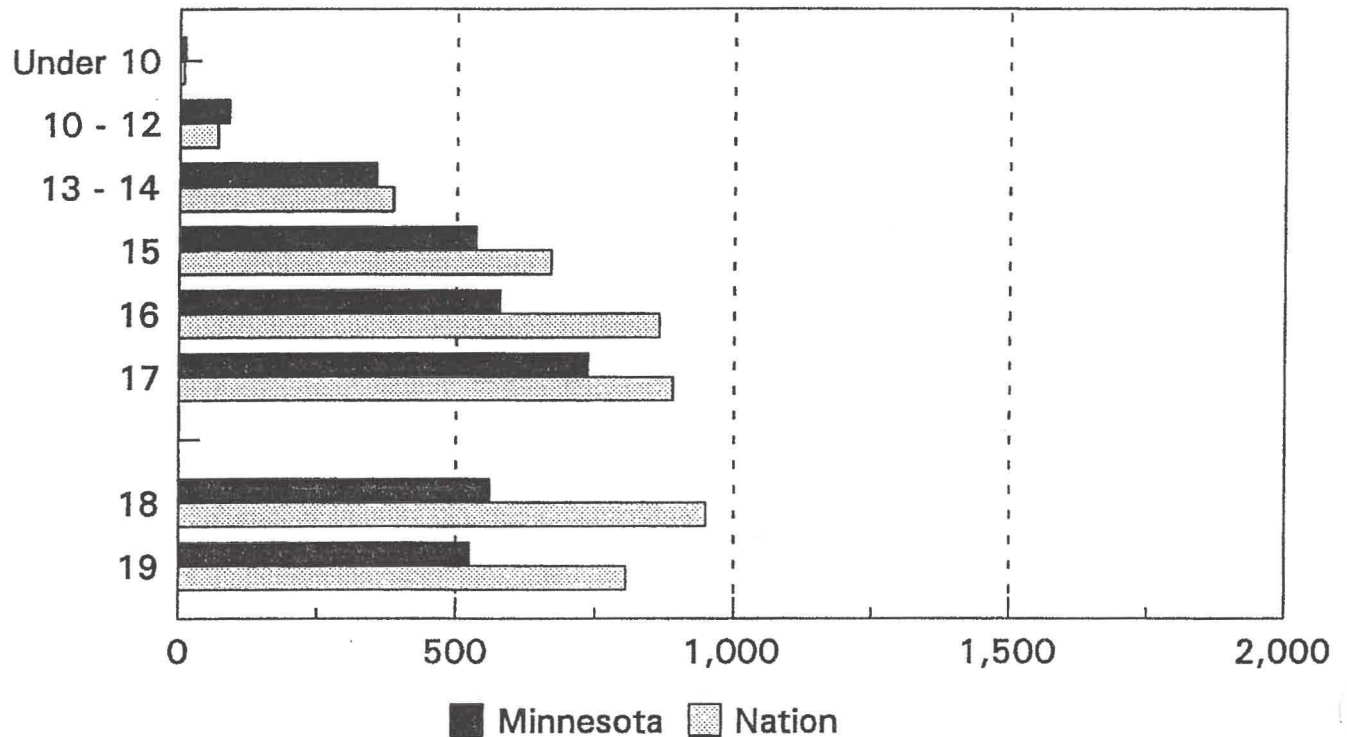
Juvenile Apprehensions Part I Rates by Age 1993



- For youth under age 18, Minnesota had higher Part I apprehension rates than the nation in 1993.

Note: The Part I apprehension rates are per 100,000 population and include the offenses of murder, rape, robbery, aggravated assault, burglary, larceny, auto theft and arson.

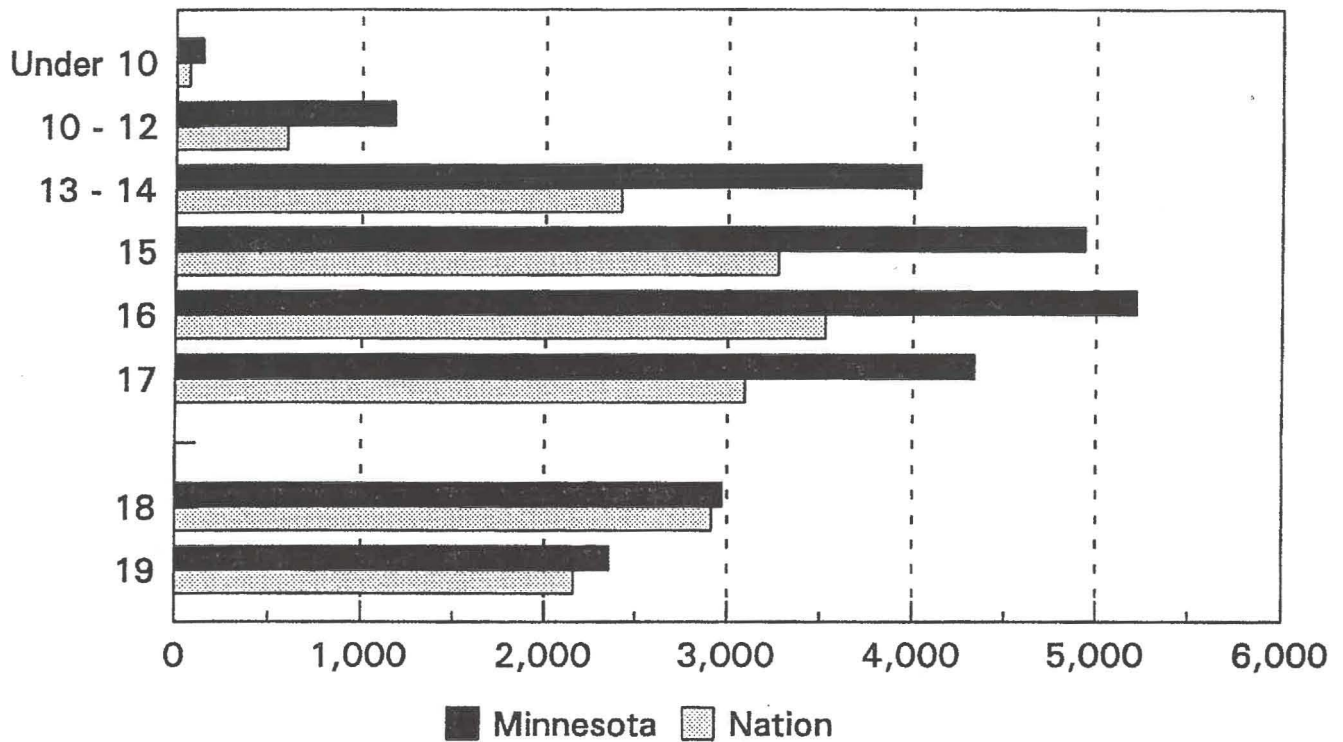
Juvenile Apprehensions Violent Rates by Age 1993



- For youth age 13 to 17, Minnesota has lower Part I violent apprehension rates than the nation, but higher rates for those age 5 to 12 in 1993.

Note: Apprehension rates for violent crimes are per 100,000 population and includes murder, rape, robbery and aggravated assault.

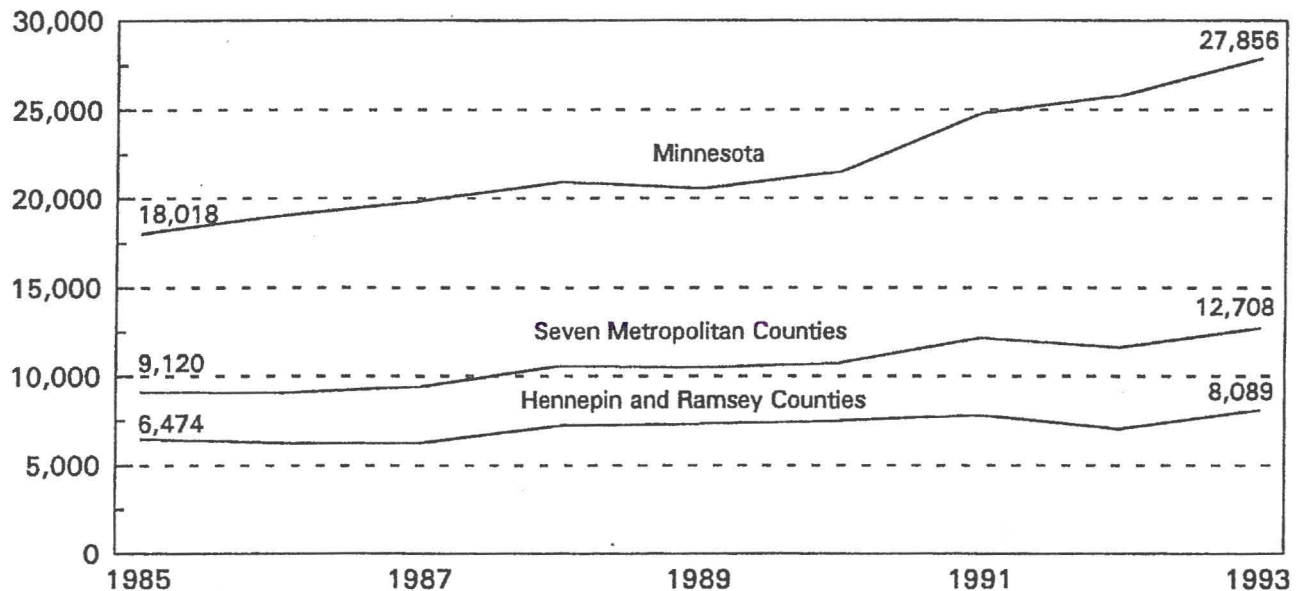
Juvenile Apprehensions Property Rates by Age 1993



- For youth under age 18, Minnesota had higher Part I property apprehension rates than the nation in 1993.

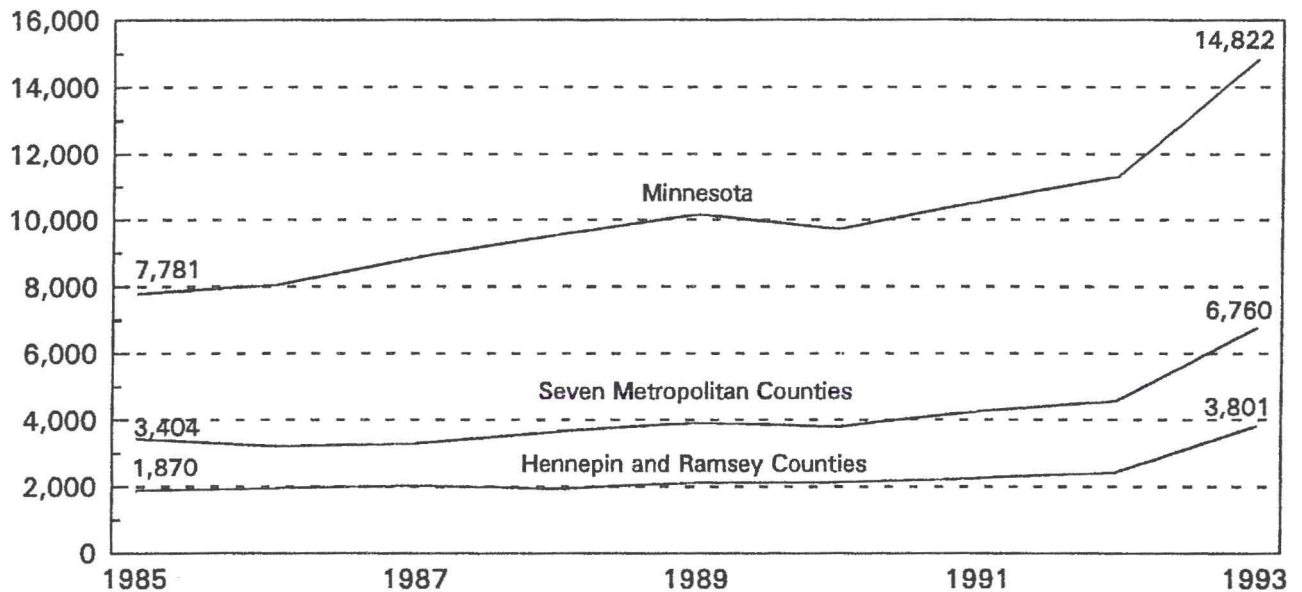
Note: Property apprehension rates are per 100,000 population and includes the offenses of burglary, larceny, auto theft and arson.

Minnesota Justice System Workloads Juvenile Court Delinquency Cases



- Juvenile court delinquency cases increased statewide by more than 55 percent. Within the seven metropolitan counties, cases climbed 39 percent between 1985 and 1993.

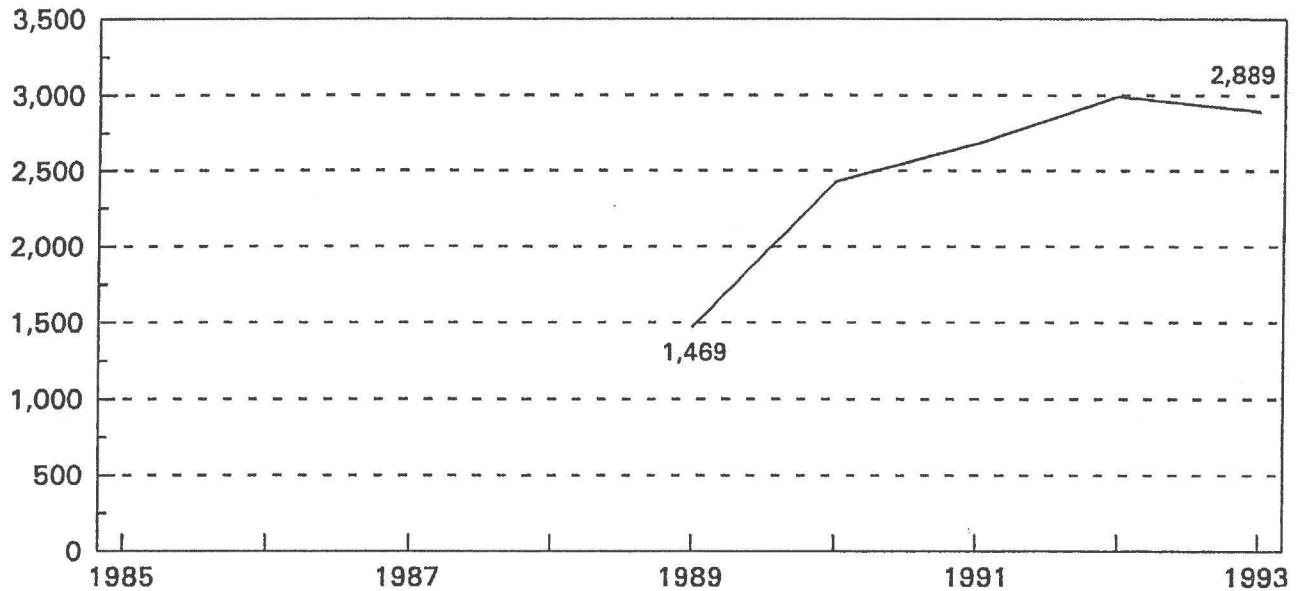
Minnesota Justice System Workloads Juvenile Probation Cases



- Juvenile probation cases increased statewide by more than 90 percent. Within the seven metropolitan counties, cases climbed almost 100 percent between 1985 and 1993.

Note: In 1993, the Minnesota Department of Corrections obtained more complete, consistent and detailed accounting of Minnesota probationers. As a result, some of the increases between 1992 and 1993 may be due to better reporting.

Minnesota Justice System Workloads Juveniles Under County Supervision

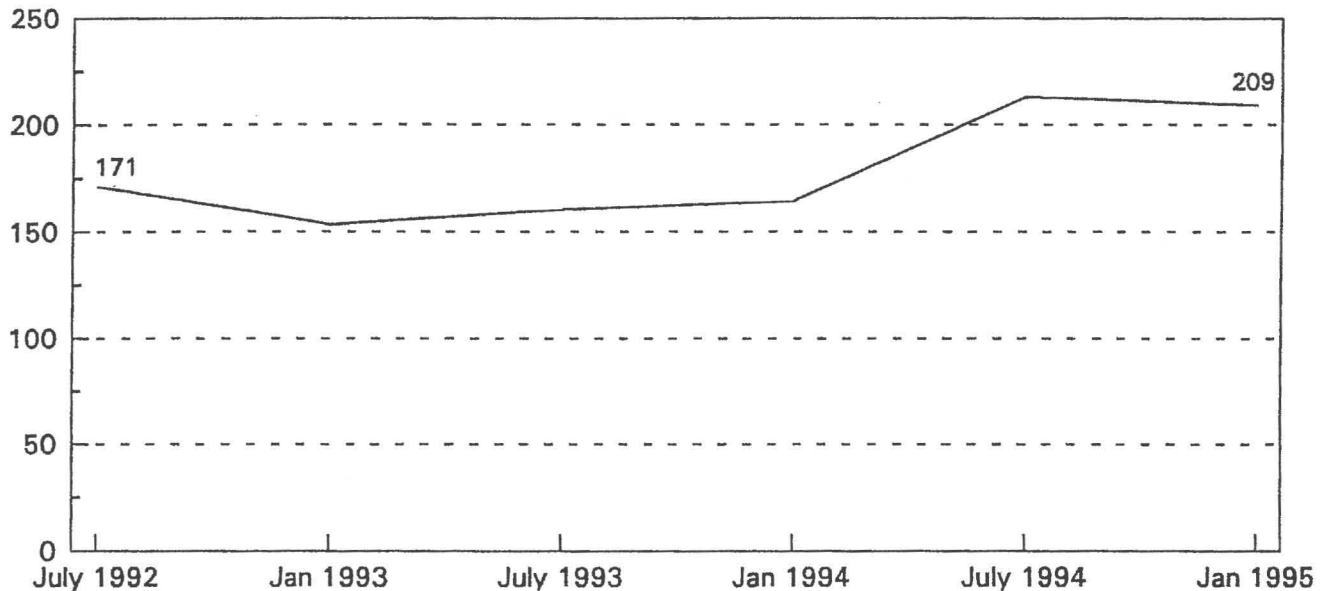


- The number of juveniles in residential treatment centers who were not certified as adult and were under the jurisdiction of the Minnesota Counties increased 97 percent between 1989 and 1993.

Note: Only residential treatment centers licensed by the Minnesota Department of Corrections are included.

Data source: Minnesota Department of Corrections
Prepared by: Criminal Justice Center, Minnesota Planning, (612) 296-4852

Minnesota Justice System Workloads Juveniles Under State Jurisdiction



- The number of juveniles who were not certified as adult and were under the jurisdiction of the State of Minnesota increased 22 percent between July 1992 and January 1995.

Note: The two residential treatment centers maintained by the State of Minnesota are located in Red Wing and Sauk Center.

Data source: Minnesota Department of Corrections

Prepared by: Criminal Justice Center, Minnesota Planning, (612) 296-4852