

LEGISLATIVE REFERENCE LIBRARY
3 0307 00016 5210

School District

Profiles

LB
2817
.S38
1991/92
c.2

MDE
MINNESOTA DEPARTMENT OF
EDUCATION

1991-92

August, 1993

Gene Mammenga, Commissioner of Education

This document was prepared and published by staff of the Data Management and Education Funding Core Teams,
Minnesota Department of Education, 845 Capitol Square Building, St.Paul, Minnesota 55101.

CHANGE IN PUPIL UNIT COMPUTATION

Late in the 1993 Legislative session a change was made in the way school districts were to be reimbursed for pupils who participated in the Post Secondary Enrollment Options (PSEO) program. This change, made retroactive to the 1991-92 school year, credits school districts with General Education Revenue for these students (rather than computing a special categorical aid as originally intended.)

These PSEO pupil units were not included when the 1991-92 Profiles tables were programmed. The expenditure data in columns 18 through 38 will be exaggerated for districts with these pupils. Further, comparisons between districts which have significantly different proportions of PSEO students may be invalid.

Those wishing to receive a district-by-district list of pupil units (including PSEO) should call 612/296-3474.

TABLE OF CONTENTS

Introduction.....	1
UFARS Sources of Expenditure Data.....	4
Trends and Patterns.....	5
Definitions.....	13
List of School Districts.....	17
Map - Minnesota Counties and Development Regions.....	21

STATISTICAL TABLES

Data for School Districts.....	22
Data for Counties, Development Regions, and the State.....	44
Data for Enrollment Size Groups.....	50
Summary Statistics.....	52

School District Profiles, 1991-92 is MDE's twentieth consecutive annual publication providing interdistrict comparisons in the areas of enrollments, staffing, and finance. Although a number of the definitions have changed somewhat during the period, it is still possible to make useful interdistrict comparisons for a substantial number of years.

Interdistrict Cooperation

Legislation of the late 70's, and early 80's encouraged Minnesota school districts to cooperate in the provision of educational services to students. The aegis for these efforts was two-fold, 1) to ensure that all students receive adequate course offerings, and 2) to make the delivery of these courses more cost-efficient, statewide.

Laws enacted in 1979 and 1983 suspended the requirement that every school district provide educational services for all grades. This allowed districts to enter into agreements with each other for the provision of services for particular grades. One hundred and thirty (130) districts participated in an ASE or ICA during the 1991-92 school year. Interdistrict Cooperation Agreements (ICE) allow two or more districts to cooperate in providing services for specific grades; however, only one of the districts may provide

service for pupils in grades 10, 11, and 12. Agreements for Secondary Education (ASE) allow a district(s) with fewer than 375 pupils in grades 7-12 to enter into an agreement with another district(s) to provide instruction to its secondary pupils. Districts in these arrangements are noted in parenthesis after the district name by an (ICE) or (ASE), respectively.

In 1991-92 the following districts participated:

ASE:

072	Mapleton
218	Delavan
224	Wells
240	Blue Earth
219	Elmore
240	Blue Earth
453	East Chain
460	Granada
225	Winnebago
240	Blue Earth
458	Truman
243	Emmons
245	Glenville
371	Bellingham
062	Ortonville
404	Lake Benton
408	Verdi
413	Marshall
415	Lynd

413	Marshall
417	Tracy
635	Milroy
424	Lester Prairie
427	Winsted
880	Howard Lake
451	Ceylon
454	Fairmont
456	Sherburne
457	Trimont
459	Welcome
521	Ada
522	Borup
593	Crookston
599	Fertile
604	Mentor
630	Red Lake Falls
2609	Erskine
611	Cyrus
769	Morris
637	Redwood Falls
652	Morton
892	Clarkfield
893	Echo
894	Granite Falls

ICE:

021	Audubon
024	Lake Park

INTRODUCTION

057 Beardsley
 801 Browns Valley

 072 Mapleton
 079 Amboy
 223 Minnesota Lake

 114 Backus
 117 Pine River

 126 Clara City
 127 Maynard
 346 Raymond

 145 Glyndon-Felton
 147 Dilworth

 158 Gonvick
 161 Clearbrook

 175 Westbrook
 641 Walnut Grove

 201 Claremont
 202 Dodge Center
 205 West Concord

 209 Kensington
 265 Hoffman

 217 Bricelyn
 222 Kiester
 224 Wells
 244 Freeborn

 254 Kenyon
 258 Wanamingo

260 Zumbrota
 809 Mazeppa

 262 Barrett
 263 Elbow Lake

 325 Lakefield
 330 Heron Lake

 328 Sioux Valley
 513 Brewster
 516 Round Lake

 341 Atwater
 464 Grove City

 354 Kennedy
 2359 Hallock

 393 LeSueur
 734 Henderson

 395 Waterville
 657 Morristown

 402 Hendricks
 403 Ivanhoe

 409 Tyler
 418 Russell
 584 Ruthton

 412 Cottonwood
 896 Wood Lake

 436 Alvarado
 442 Oslo

453 East Chain
 460 Granada

 456 Sherburne
 457 Trimont
 459 Welcome

 543 Deer Creek
 819 Wadena

 566 Askov
 576 Sandstone

 631 Belview
 648 Danube
 654 Renville
 655 Sacred Heart

 633 Lamberton
 638 Sanborn

 636 Morgan
 650 Franklin

 646 Bird Island
 653 Olivia

 647 Buffalo Lake
 651 Hector

 649 Fairfax
 733 Gibbon
 735 Winthrop

 669 Magnolia
 670 Luverne

INTRODUCTION

697 Eveleth
 699 Gilbert

731 Arlington
 732 Gaylord

736 Belgrade
 737 Brooten

762 Ellendale
 827 New Richland

789 Clarissa
 790 Eagle Bend

892 Clarkfield
 894 Granite Falls

In addition to ICE's and ASE's, seven districts were members of a Cooperative Secondary Facility as noted by a CSF in parenthesis after their name. In this arrangement member districts operate a separate school for the secondary pupils of each of the member districts. In 1991-92 the seven CSF districts were:

128 Milan
 376 Marietta
 377 Madison
 612 Glenwood
 614 Starbuck
 615 Villard
 784 Appleton

Consolidations

Recent State Board of Education rules mandating more rigorous minimal course offerings, combined with legislative financial inducements, has resulted in a number of school district consolidations in recent years. Between the 1990-91 and the 1991-92 school years eight school districts combined to form four new districts. These were:

351 Hallock 352 Humboldt	2359 Hallock-Humboldt
524 Karlstad 444 Strandquist	2358 Karlstad-Strandquist
524 Halstad 525 Henderson	2527 Halstad-Henderson
597 Erskine 603 McIntosh	2609 Erskine-McIntosh

For More Information

Copies of School District Profiles, 1991-92 may be purchased from:

Minnesota's Bookstore,
 Print Communications Division
 117 University Avenue;
 St. Paul, Minnesota 55155
 Telephone: (612) 297-3000 or
 Toll Free: 1-800-657-3757

If you have comments or questions concerning information in this report, or would like further information, please contact:

Minnesota Department of Education
 Data Management Team
 845 Capitol Square Building
 St. Paul, MN 55101
 Telephone: (612) 296-2400

For more specific information regarding financial data, please call:

(612) 296-4436

UFARS SOURCES OF EXPENDITURE DATA FOR SCHOOL DISTRICT PROFILES

This table is intended for use by persons who are familiar with the Uniform Financial Accounting and Reporting System (UFARS) and its manual, *Manual for the Uniform Financial Accounting and Reporting System for Minnesota Schools*.

Each of the 16 expenditure categories in Profiles includes all expenditures within a defined set of funds, programs, and objects, as defined in the upper table below.

The lower section of the table summarizes the funds, major program categories, and object categories used for Profiles.

Categories Used in the Report		Funds ¹	Programs ²	Objects ³
18.	District and school administration	1 and 9	1-99	All objects except 500-599 and 910
19.	District support services	1 and 9	100-199	
20.	Regular instruction	1 and 9	200-299	
21.	Vocational instruction	1 and 9	300-399	
22.	Exceptional instruction	1 and 9	400-499	
23.	Instructional support services	1 and 9	600-699	
24.	Pupil support services	1 and 9	700-799	
25.	Operations and maintenance	1 and 9	800-899	
26.	Food service	2	All	
27.	Pupil transportation	3	All	
28.	Other operating programs	1 and 9	0, 500-599, and 900-999	
29.	Total PK-12 operating expenditures (this is the total of categories 18 through 28)	1,2,3, & 9	All	
30.	Community service	4	All	All but 910 and 460 ⁴ 500-599 All but 910 All but 910
31.	Capital outlay	5	All	
		1,2,3, & 4	All	
		6	All	
32.	Building construction	6	All	
33.	Debt service	7	All	
¹ Funds		² Major Program Categories		³ Objects
1.	General	0	Districtwide (no specific program)	460 Textbooks
2.	Food Service	1-99	District and school administration	500-599 Capital expenditures
3.	Pupil Transportation	100-199	District support services	910 Transfers to other funds
4.	Community Service	200-299	Regular instruction	
5.	Capital Expenditure	300-399	Vocational instruction	
6.	Building Construction	400-499	Exceptional instruction	
7.	Debt Service	500-599	Community services	
9.	Trust and Agency	600-699	Instructional support services	
		700-799	Pupil support services	
		800-899	Sites, buildings, and equipment	
		900-999	Other programs	

⁴ 460 textbook expenditures have been allocated, based on program code, into categories 18-28 to assure valid inter-year comparisons.

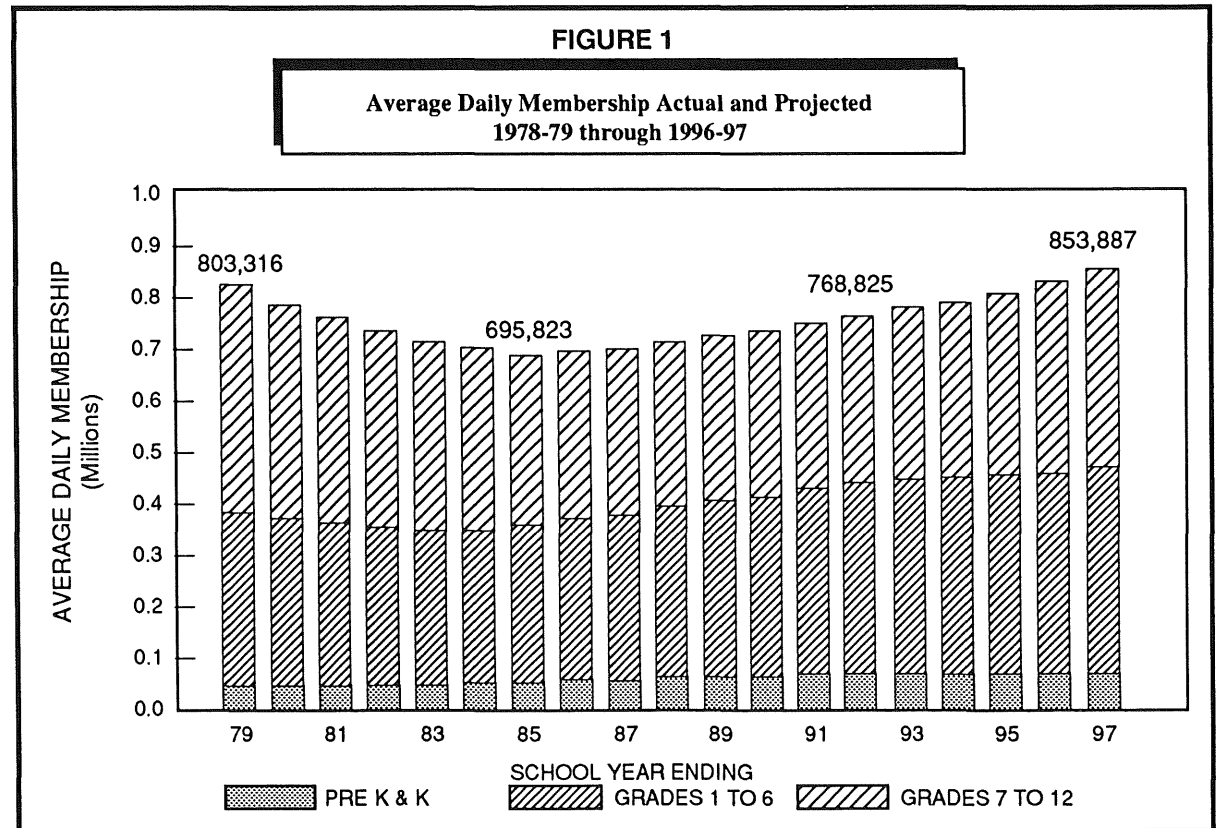
TRENDS AND PATTERNS

Students

The enrollment increases which began in the 1985-86 school year continue as shown in Figure 1. Enrollment in 1991-92 totaled 759,428, a 1.3 percent increase over 1990-91's total of 749,825. The vast majority of the enrollment increases are the result of increased births; secondary enrollments actually decreased until the 1990-91 school year. Elementary and secondary enrollments are then both projected to increase through the 1994-95 school year after which time elementary enrollments are expected to begin to decline. Table 1 indicates that 58.5 percent of Minnesota school districts experienced a decline during the past decade, although during the past seven years total state enrollments have increased.

Minnesota school districts vary greatly in enrollment size. The largest 10 districts, all in metropolitan areas, enrolled over one quarter of Minnesota's public school pupils. Or, as shown in Table 2, the largest ten percent of Minnesota districts enrolled over half of the state's public school pupils.

Minnesota, as well as the rest of the nation, is experiencing a growth in the proportion of its population which are classified as minorities. This growth carries over to school enrollments as seen in Figure 2 and Table 3, the latter



which also shows changes in minority enrollments for the United States. Although Minnesota's minority enrollment percentages are increasing at a significant pace, minorities still constitute a very modest proportion of total Minnesota PK-12 public school enrollments. Further, Minnesota's minority mix is quite different than that of the U.S. as a whole. Blacks constitute approximately half of U.S. minority enrollments, Hispanics an additional

TABLE 1		
Percent Change in Resident ADM 1981-1982 through 1991-1992		
		PERCENT OF DISTRICTS
20	Percent and Greater Growth	8.2%
10-19	Percent Growth	11.1%
1-9	Percent Growth	20.5%
Less	than 1% Change	1.7%
1-9	Percent Decline	23.3%
10-19	Percent Decline	23.9%
20	Percent and Greater Decline	11.3%

TRENDS AND PATTERNS

TABLE 2

Distribution of Minnesota 1991-92 Resident ADM By Ten Enrollment Size Groups

GROUP NUMBER	SIZE RANGE 1991-92 RESIDENT ADM	NUMBER OF DISTRICTS	TOTAL RESIDENT ADM	PERCENT STATE TOTAL
1	0 - 214	43	6,644	.9
2	215 - 294	42	10,194	1.3
3	295 - 389	42	15,713	2.1
4	390 - 489	42	17,358	2.3
5	490 - 639	42	22,880	3.0
6	640 - 869	42	33,104	4.4
7	670 - 1199	43	44,533	5.8
8	1200 - 1939	43	62,821	8.3
9	1940 - 4149	44	124,419	16.4
10	4150 or Higher	42	421,757	55.5
State Totals		426	759,428	100.0

TABLE 3

Percent Minority Enrollments Minnesota and United States

YEAR	NATIVE AMERICAN	BLACK	ASIAN	HISPANIC	TOTAL MINORITY
1983-84					
U. S. A.*	0.9	16.2	2.5	9.1	28.7
Minn.**	1.6	2.3	1.9	0.8	6.6
1987-88					
U. S. A.*	0.9	16.1	2.2	9.9	29.7
Minn.**	1.7	2.9	2.6	1.0	8.2
1991-92					
Minn.**	1.8	3.6	3.3	1.4	10.1

* Source: The Condition of Education, 1992. National Center For Education Statistics.

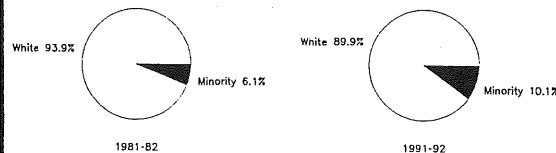
** Includes students enrolled in cooperatives and other Non-Traditional Districts.

one-third, with Asians and Native Americans the remainder (as of 1987-88, the last year for which U.S. data are available). By contrast, Blacks and Asians each constituted approximately one third of Minnesota's minority enrollment with Native Americans a significant 20.7 percent and Hispanics 12.2 percent in the same year. Minnesota's large Asian enrollment is the result of significant immigration of Southeast Asian refugees following the Vietnam war. Native Americans have always been a relatively significant constituent of Minnesota's enrollments.

Figure 3 indicates the number of students from families who received AFDC payments. The percentage of pupils from these families has increased during most of the past decade.

FIGURE 2

Percent Minority Enrollments Minnesota and United States



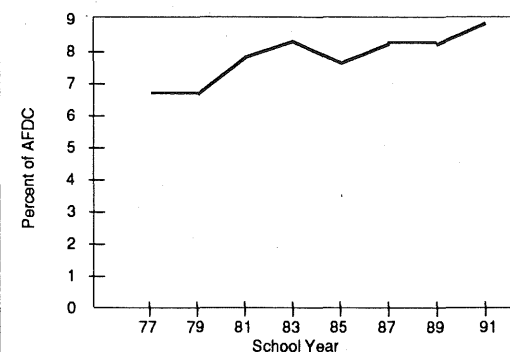
	1981-82	1991-92
White	93.9%	89.9%
Black	2.1%	3.6%
Native Americans	1.5%	1.8%
Hispanic	0.7%	1.4%
Asian	1.8%	3.3%

Instructional Staff

Teachers, and other school and district staff, are the most important input in the educational process. They also constitute the largest operating cost. The numbers of these staff together with their salaries and benefits determine this cost. Figure 4 shows the number of professional staff over the past decade. It further indicates that the number of these staff does not bear a constant relation-

FIGURE 3

AFDC Students as a Percent of ADM 1977-78 through 1991-92



YEAR	% AFDC	YEAR	% AFDC
1977-78	6.80	1985-86	7.83
1979-80	6.84	1987-88	8.29
1981-82	7.94	1988-89	8.29
1983-84	8.26	1991-92	8.82

TRENDS AND PATTERNS

ship to the number of pupils enrolled. In times of relatively stable budgets, staff tend not to grow or decline as fast as the growth or decline in enrollments. However, in times of budget crises, such as the early 80's, substantial staff

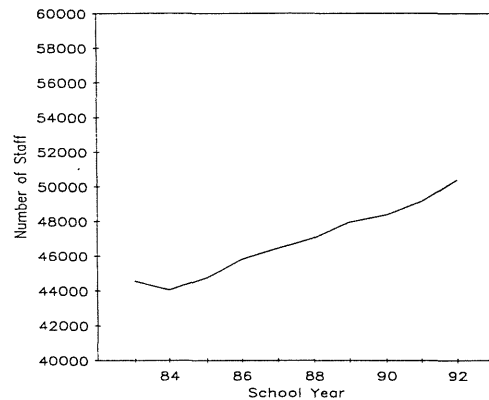
cutbacks caused increases in pupil/staff ratios.

Salaries, the other half of the staff cost equation, have grown significantly during the past decade as indicated by Figure 5 (They remained fairly constant after adjusting for changes in the Consumer Price Index). These salaries are, in turn, the result of salary schedules negotiated between teachers and school boards as well as the experience and

educational attainment of the teacher cadre. During times of enrollment decline, such as the 70's and early 80's, substantial numbers of staff were laid off. These staff were younger, less experienced and had fewer advanced degrees; as a result the staff which remains was, on average, a high cost(salary) staff. Figures 6 and 7 show how the age and educational attainment of Minnesota school teachers have changed during the past decade. It indicates that Minnesota's teacher cadre is older and, on average, better educated than was the case in 1981-82. This would account for some of the increase in salaries over the decade.

FIGURE 4

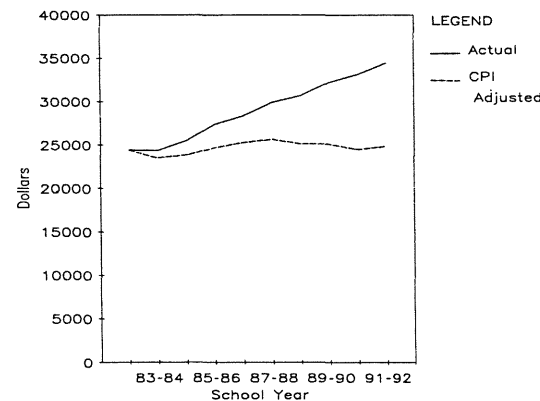
**State Total Professional Staff
1982-83 through 1991-92**



YEAR	UNADJUSTED	CPI ADJUSTED
1982-83	44,553	16.0
1983-84	44,044	15.9
1984-85	44,744	15.5
1985-86	45,789	15.2
1986-87	46,425	15.2
1987-88	47,031	15.2
1988-89	47,931	15.0
1989-90	48,372	15.1
1990-91	49,138	15.1
1991-92	50,386	15.0

FIGURE 5

**Average Minnesota Teachers Salaries
1982-83 through 1991-92**

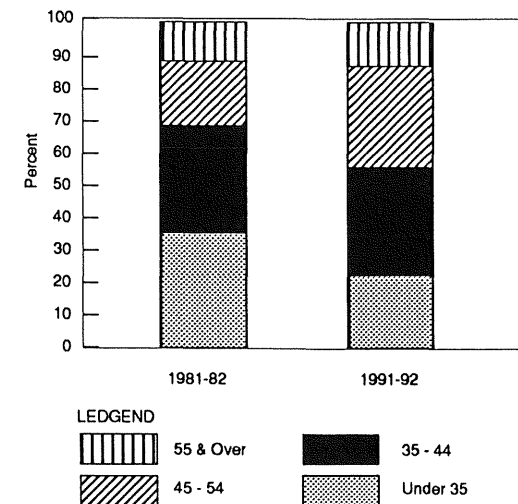


YEAR	UNADJUSTED*	CPI ADJUSTED
1982-83	24,400	24,400
1984-85	25,450	23,807
1986-87	28,340	25,281
1988-89	30,660	25,131
1991-92	34,451	24,856

*Source: *Rankings of the States*, National Education Association, various annual editions.

FIGURE 6

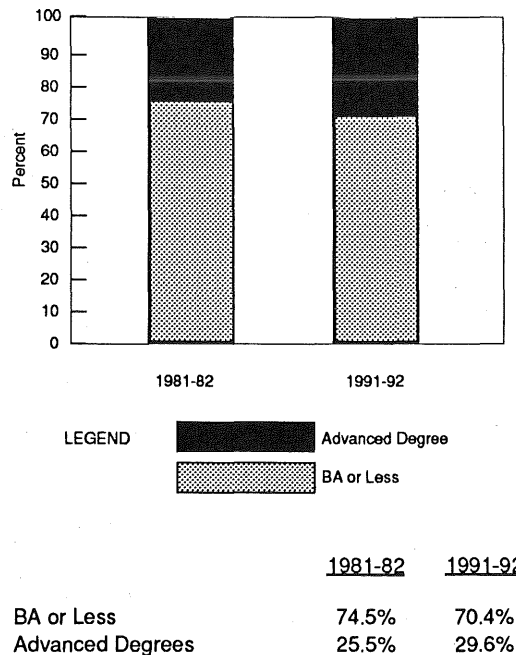
**Age of Classroom Teachers
1981-82 and 1991-92**



TRENDS AND PATTERNS

FIGURE 7

Distribution of Minnesota Classroom Teachers
By Educational Attainment
1981-82 and 1991-92



FINANCIAL

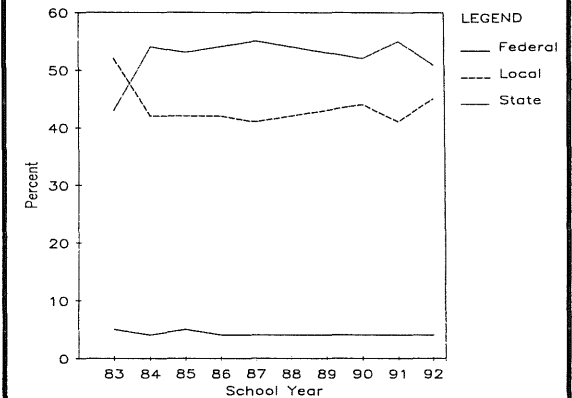
Revenues: Minnesota school revenues come from three sources—state funds, local funds (predominantly property taxes), and Federal funds.

The percentage of revenue received by Minnesota school districts from the three sources remained fairly constant over the past decade until 1991-92, as indicated in Figure 8. The 1991-92 turnaround was the result of state budgetary problems; school districts were required to advance the recognition of certain local levy receipts which effectively shifted the state/local revenue mix.

Minnesota's four percent Federal revenue percentage compares with a national average of approximately 6.0 percent; Federal funds are typically targeted toward specific disadvantaged client populations—groups which are likely underrepresented in the Minnesota population.

FIGURE 8

Statewide Average Sources of Revenue
(All Funds)
1982-83 through 1991-92



YEAR	FEDERAL	LOCAL	STATE
1982-83	5%	52%	43%
1983-84	4%	42%	54%
1984-85	5%	42%	53%
1985-86	4%	42%	54%
1986-87	4%	41%	55%
1987-88	4%	42%	54%
1988-89	4%	43%	53%
1989-90	4%	44%	52%
1990-91	4%	41%	56%
1991-92	4%	45%	51%

TRENDS AND PATTERNS

One can also examine Minnesota's PK-12 revenues by fund. A fund is a self-contained set of accounts established for the purpose of a specifically defined set of fiscal activities such as Food Service, Debt Redemption etc. Table 4 compares Minnesota school district revenues by the eight UFARS funds for the years 1985-86 and 1991-92. Over that decade, the proportion of revenues allocated to nonoperating funds has grown significantly, largely as a result of growth in Building Construction.

TABLE 4

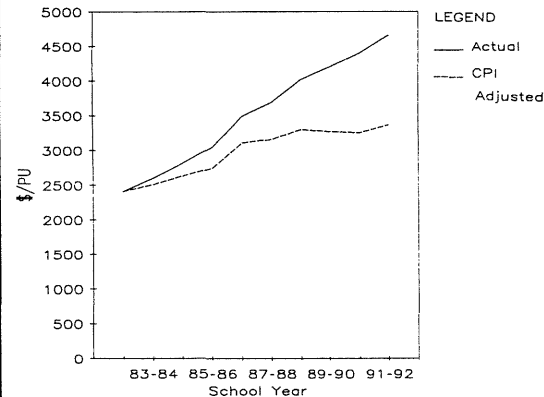
Percent of Minnesota Revenues By Fund*
1985-86 and 1991-92

	1985-86	1991-92
General Fund	74.2%	70.2%
Food Service Fund	4.1	3.3
Transportation Fund	6.3	5.0
Community Service Fund	2.4	3.1
Total, Operating Funds	87.0%	81.6%
Capitol Expenditure Fund	4.5%	4.9%
Building Construction Fund	3.2	6.8
Debt Redemption Fund	5.0	5.9
Trust and Agency Fund	0.3	0.8
Total, Nonoperating Funds	13.0%	18.4%
TOTAL	100.0%	100.0%

* Includes State, Local and Federal Sources

FIGURE 9

**State Average Operating Expenditures
Per Pupil Unit
1982-83 through 1991-92**

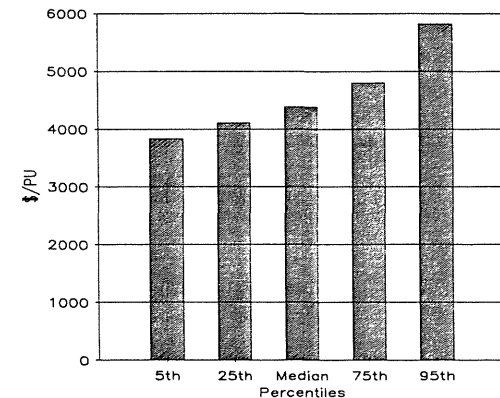


YEAR	UNADJUSTED	CPI ADJUSTED
1982-83	2402	2402
1983-84	2590	2500
1984-85	2808	2627
1985-86	3039	2738
1986-87	3485	3109
1987-88	3684	3157
1988-89	4017	3293
1989-90	4192	3267
1990-91	4398	3248
1991-92	4655	3359

Expenditures: Figure 9 indicates that state-wide average operating expenditures have been growing at a rate exceeding inflation—as represented by the Consumer Price Index (CPI). These expenditures vary significantly from district-to-district as shown in Figure 10. The top spending five percent of districts expend at least fifty percent more than the lowest spending five percent.

FIGURE 10

**Distribution of Operating Expenditures
Per Pupil Unit
Selected Percentiles
1991-92**



TRENDS AND PATTERNS

The distribution of these expenditures by program has also changed over the decade as indicated in Table 5. The percent expended on Instruction has increased while most other program areas either declined or remained stable.

Figure 11 indicates that nonoperating expenditures have also increased at a pace exceeding the general rate of inflation. These are expenditures which vary little if any with the day-to-day operations of a school district; they tend to be "fixed" in the short term. Included are Capital Outlay, Building Construction, and Debt Service (columns 31, 32, and 33, respectively). Part of the reason for the rapid rate of growth is the result of the

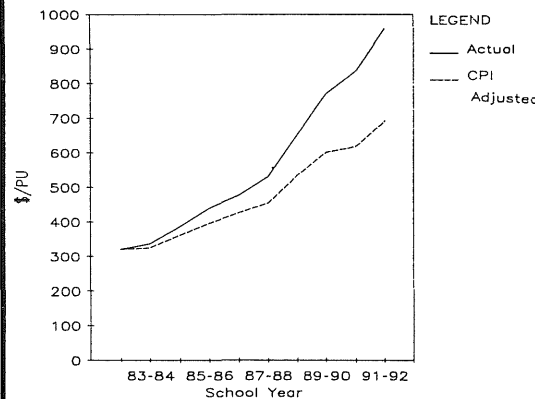
TABLE 5

**Distribution of Operating Expenditures
Per Pupil Unit
1981-82 vs 1991-92**

	1981-82	1991-92
Administration	8.8%	9.0%
Instruction	60.1%	67.2%
Student Services	15.0%	12.8%
Operations & Maintenance	10.9%	8.0%
Other Operating Programs	5.2%	3.0%
TOTAL	100.0%	100.0%

FIGURE 11

**State Average Nonoperating Expenditures
Per Pupil Unit
1982-83 through 1991-92**



YEAR	UNADJUSTED	CPI ADJUSTED
1982-83	\$320	\$320
1983-84	335	323
1984-85	386	361
1985-86	439	395
1986-87	476	425
1987-88	530	454
1988-89	651	534
1989-90	770	600
1990-91	836	617
1991-92	958	691

state providing poorer districts additional dollars for capital needs by equalizing capital expenditure levy receipts.

Community Service:

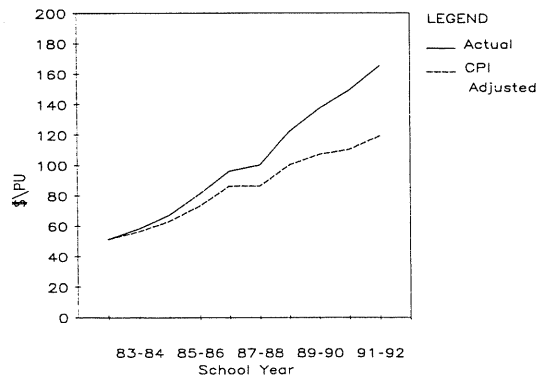
Figure 12 shows the growth in community service expenditures since 1982-83. They also have grown faster than the general rate of inflation during the decade. Community education/community service programs were "traditionally" perceived as consisting of courses in sports, recreation and crafts, and more recently in self improvement/skills enhancement. However, beginning with the 1984-85 school year the scope of community education/community service was expanded with the initiation of the Early Childhood and Family Education (ECFE) program. This program is designed to improve the parenting skills of parents with pre-school aged children and as a result the readiness of these children for school.

The community education/community service umbrella was further expanded in 1987-88 with the addition of the Youth Development Program. This program was designed to recruit and involve school aged youth in various school/community decision making processes. The addition of these two programs, with their attendant levy authorities, explain much of the growth in community education/community service expenditures since 1984-85; they are now "equals" with the traditional programs.

TRENDS AND PATTERNS

FIGURE 12

State Average
Community Service Expenditures
Per Pupil Unit
1982-83 through 1991-92



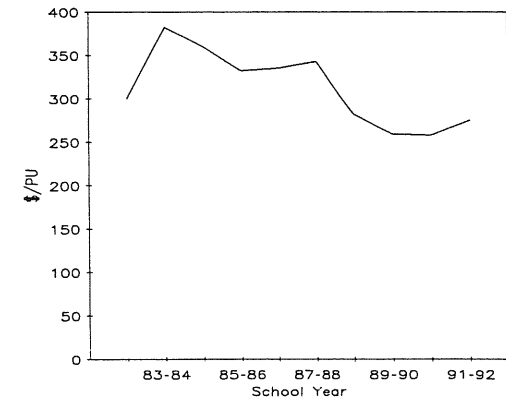
YEAR	UNADJUSTED	CPI ADJUSTED
1982-83	\$51	\$51
1983-84	58	56
1984-85	67	63
1985-86	81	73
1986-87	96	86
1987-88	100	86
1988-89	122	100
1989-90	137	107
1990-91	149	110
1991-92	165	119

Operating Funds Balance:

A school district's undesignated operating funds balance is a measure of its financial health at the end of school year. It can be either positive or negative. Districts with a negative balance (deficit) greater than 2.5 percent of their prior year's operating expenditures are in violation of expenditure limitations specified by Minnesota Statute. These districts are required to submit a financial plan to the Commissioner of Education describing their plan to eliminate the deficit. By contrast, districts with positive net operating fund balances in excess of \$600 per pupil unit will have their general education revenue reduced in the following school year. Figure 13 shows the state average operating funds balance since 1982-83. It has decreased and leveled during the past four years. Nevertheless, during the same period an increasing number of districts have exceeded the expenditure limitations as shown in Figure 14.

FIGURE 13

State Average Operating Funds Balance
Per Pupil Unit
1982-83 through 1991-92

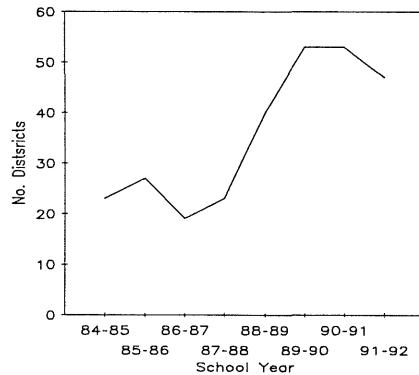


YEAR	OPERATING FUNDS BALANCE
1982-83	\$300
1983-84	382
1984-85	360
1985-86	332
1986-87	335
1987-88	343
1988-89	282
1989-90	259
1990-91	258
1991-92	275

TRENDS AND PATTERNS

FIGURE 14

**Number of Districts
Exceeding Expenditure Limitations
1984-85 through 1991-92**



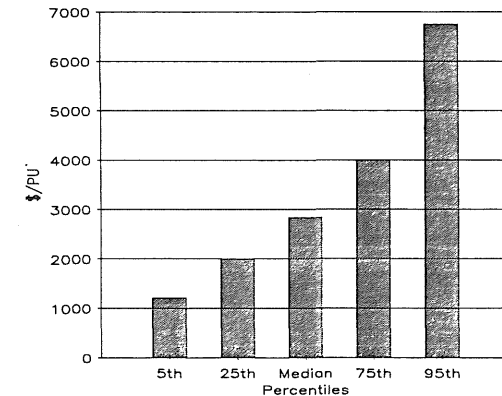
<u>YEAR</u>	<u># of DISTRICTS</u>
1984-85	23
1985-86	27
1986-87	19
1987-88	23
1988-89	40
1989-90	53
1990-91	53
1991-92	47

Adjusted Net Tax Capacity:

A school district's Adjusted Net Tax Capacity per pupil unit is a measure of its real and personal property which is subject to a local property tax levy. There is great disparity in the wealth of school districts. It is these disparities and their effect on the equitable funding of public PK-12 education which is the ultimate cause of education funding lawsuits from the 1970's to the present day. Figure 15 indicates that five percent of Minnesota's have at least seven times the Adjusted Net Tax Capacity of the poorest five percent of districts.

FIGURE 15

**Distribution of Adjusted Net Tax Capacity
Per Pupil Unit
1991-92**



The tables on pages 22 through 49 contain 38 separate statistics for each school district, county, and region in the state. Definitions of these 38 statistics are given below. All data are for the 1991-92 school year.¹

1991-92 Resident Average Daily Membership

Average daily membership (ADM) is the average number of pupils in membership during the school year. Pupils need not be in attendance to be counted in ADM, but they must be in membership (i.e., currently enrolled in the district). For example, a pupil who is enrolled for the entire school year counts as 1.0 ADM; a pupil who is enrolled for exactly half the school year counts as 0.5 ADM.

The ADM counts in this report are, more specifically, counts of total resident ADM including all residents who are, a) enrolled in their home district, b) educated in another district to whom tuition is paid, or c) attending another district under the Enrollment Options law. Resident membership includes:

1. **Prekindergarten Handicapped** -- ADM of prekindergarten students enrolled in special education programs.
2. **Kindergarten** -- ADM of students enrolled in kindergarten classes.
3. **Elementary, Grades 1-6** -- ADM of students enrolled in grades 1-6, including students in elementary-level ungraded and special education classes.
4. **Secondary, Grades 7-12** -- ADM of students enrolled in grades 7-12, including students in secondary-level ungraded and special education classes.
5. **Total** -- Total ADM of all district residents, prekindergarten through grade 12; this is the total of columns 1 through 4.

Pupil Data

6. **Percent Minority** -- The percentage of the district's students who are of Native American, Alaskan, Black, Asian, or Hispanic ancestry.
7. **Percent Attendance** -- The average ratio of days attended to days enrolled, for all students in the district.
8. **Percent Transported** -- The number of resident public school students transported to and from school twenty or more days, as a percentage of the district's resident pupils.

Professional Staff

These statistics provide information about each district's professional staff. Staff are counted in full time equivalents (FTE). For example, a full time staff member is counted as 1.0 FTE; one employed only half time is counted as 0.5 FTE. Staff counts include only elementary-secondary personnel; postsecondary personnel are excluded.

9. **Total Staff FTE** -- The total number of licensed professional staff employed by the district, measured in full-time equivalents (FTE). This count includes administrators, classroom teachers, and all other licensed professional personnel.
10. **Pupil Staff Ratio** -- The average daily membership of all students (both residents and nonresidents) who were enrolled in the school district, divided by the number of professional staff (column 9).

DEFINITIONS

Tax Capacity Rates

These figures show the tax burden, expressed as a percent of tax capacity, for school district property taxes payable in 1992. Taxes payable in 1992 provide revenue for the 1992-93 school year.

11. Auditor Percent -- The actual school district tax rate as determined by the county auditor. With a rate of 5 percent, a property owner would be taxed \$5 for each \$100 of tax capacity. Because of differences in property assessment levels between counties, comparisons of auditor tax rates among districts may be misleading. This figure includes additional tax rates for special intermediate districts (287, 916 and 917) where they are part of the tax burden.

12. Equalized Percent -- This tax rate is computed by multiplying the auditor percent (item 11) by the 1991 market sales ratio. This ratio is equal to the market values, as determined by the local assessor, divided by actual selling prices. For state assessed properties, such as utilities, the ratio is 1.00.

Equalized percents are computed to compensate for varying assessment practices. Thus, when making interdistrict comparisons, these rates provide a more valid comparison.

Pupil Units (Weighted ADM)

13. Resident Pupil Units -- This figure is computed by applying weightings to a district's resident average daily membership (as defined above). Each kindergarten ADM counts as 0.5 pupil units; each prekindergarten, kindergarten handicapped, and elementary ADM counts as 1.0 pupil unit; and each secondary ADM counts as 1.30 pupil units. Resident pupil units are used in calculating the district's general education revenue and property tax levy limitations.

14. Total Pupil Units -- This is a count of pupil units which adjusts the resident pupil units in column 13 to better reflect the expenditures reported by the school districts. It includes residents attending the home district, resident students tuitioned to other school districts, nonpublic school students being served via a Shared Time program, nonresident students who transfer via one of the attendance options programs, and nonresident students whose tuition is paid by a parent or out-of-state source. Excluded are pupil units which represent that portion of a student's time spent in a Postsecondary Enrollment Options institution.

Revenue Percentages

These three columns show the percentage of each district's revenues from the federal government, the state government, and local and other sources. The percentages are based on all 1991-92 revenue reported by each district, except for proceeds from sales of real property and equipment, insurance recoveries, sales of bonds, loans and interfund transfers.

15. Federal -- The percentage of revenues from the federal government, whether paid directly or through another governmental unit.

16. State -- The percentage of revenues from the Minnesota State Government.

17. Local and Other -- The percentage of revenues from local and other sources. This category includes revenues from property taxes, interest, rent, gifts, tuition, fees, and other revenue not classified as federal or state.

1991-92 Expenditures Per Pupil Unit

Columns 18 through 33 show each district's 1991-92 expenditures in sixteen different categories, divided by total pupils units (column 14). Columns 18 through 30 include all expenditures for the indicated purpose, except capital expenditures.

- 18. District and School Administration** -- Expenditures for the school board and for the office of the superintendent, principals, and any other line administrators who supervise staff.
- 19. District Support Services** -- Expenditures for central office administration and central office operations not included in district and school administration (see #18). Includes expenditures for business services, data processing, legal services, personnel office, printing, and the school census.
- 20. Regular Instruction** -- Expenditures for elementary and secondary classroom instruction, not including vocational instruction (#21) and exceptional instruction (#22), and for cocurricular and extracurricular activities. Includes salaries of teachers, classroom aides, and coaches, and expenditures for classroom supplies and textbooks.
- 21. Vocational Instruction** -- Expenditures in secondary schools for instruction that is related to job skills and career exploration. Includes expenditures for home economics, as well as industrial, business, agriculture, and distributive education.
- 22. Exceptional Instruction** -- Expenditures for instruction of students who, because of atypical characteristics or conditions, are provided educational programs that are different from regular instructional programs. Includes expenditures for special instruction of students who are emotionally or psychologically handicapped, gifted and talented, or mentally retarded; for students with physical, hearing, speech, and visual impairments; and for students with special learning and behavior problems.

- 23. Instructional Support Services** -- Expenditures for activities intended to help teachers provide instruction, not including expenditures for principals or superintendents. Includes expenditures for assistant principals, curriculum development, libraries, media centers, audio visual support, staff development, and computer assisted instruction.
- 24. Pupil Support Services** -- Expenditures for all noninstructional services provided to students, not including transportation and food. Includes expenditures for counseling, guidance, health services, psychological services, and attendance and social work services.
- 25. Operations and Maintenance** -- Expenditures for operation, maintenance, and repair of the district's buildings, grounds, and equipment. Includes expenditures for custodians, fuel for buildings, electricity, telephones, and repairs.
- 26. Food Service** -- Expenditures for the preparation and serving of meals and snacks to students.
- 27. Pupil Transportation** -- Expenditures for transportation of students, including salaries, contracted services, fuel for buses, and other expenditures.
- 28. Other Operating Programs²** -- Expenditures for general fund operated programs necessary to a district's operations but not assignable to other programs. These can include federally funded community education services, property and liability premiums, unemployment insurance premiums, principal and interest on noncapital obligations, and nonrecurring costs such as judgements and liens.
- 29. Total PK-12 Operating Expenditures** -- The total of the eleven preceding categories of expenditures (columns 18 through 28).

This figure includes all expenditures incurred for the benefit of elementary and secondary education during the 1991-92 school year, except capital and debt service expenditures.

DEFINITIONS

- 30. Community Service --** Expenditures for recreation, civic activities, adult education, early childhood education, or similar programs which are not conducted primarily for elementary and secondary students, and for noncredit summer school programs.
- 31. Capital Outlay --** All capital expenditures charged to the operating funds plus expenditures charged to the district's capital expenditure fund.
- 32. Building Construction --** All expenditures charged to the district's building construction fund. Expenditures are for major capital projects funded by bond proceeds, state capital loan, state facility grant or the down payment levy.
- 33. Debt Service --** Expenditures for repayment of long term debt (see #37), including payments of principal and interest on bonds and capital loans.

Other Measures Per Pupil Unit

- 34. Operating Funds Balance --** This figure is a measure of the district's financial condition at the end of the 1991-92 school year, and of how much resources are available to be used in future years. It is equal to the sum of the undesignated balances on June 30, 1992, from the four operating funds (general, food service, pupil transportation, and community service), excluding the amount of statutory operating debt; this balance is then divided by 1991-92 resident pupil units (column 13).
- 35. Change in Funds Balance --** The difference between the district's operating funds balance on June 30, 1992 (see #34 above) and on June

30, 1991, divided by 1991-92 resident pupil units. This is essentially equal to the difference between the district's 1991-92 revenues and expenditures, for the four operating funds combined. Thus, a negative number indicates that the district's expenditures in the operating funds were greater than its revenues.

- 36. State and Local Operating Costs --** This figure, also called adjusted maintenance cost, is often used to compare overall costs of education per pupil unit that is financed through state and local funds. It is computed as follows:

Sum of general, food service and agency fund expenditures,
Plus textbook expenditures from the capital expenditure fund,
Minus transfers between funds,
Minus revenue from the federal government,
Minus revenue from sale of food and materials,
Minus admission fees and gate receipts from school activities,
Minus special education tuition;
This total is then divided by 1991-92 total pupil units (column 14).

- 37. Long Term Debt --** The amount of long term debt outstanding on June 30, 1992, divided by 1991-92 resident pupil units. Long term debt includes bonds and capital, debt service and energy loans from the state.
- 38. 1990 Adjusted Net Tax Capacity --** The 1991 adjusted net tax capacity of the district divided by 1991-92 resident pupil units. This figure is an indicator of the district's ability to raise revenue through local property taxes.

Footnotes

- ¹ There are three exceptions to this general rule. The two tax rate statistics (columns 11 and 12) are for taxes payable in calendar year 1992; these taxes will provide revenue for 1992-93. Adjusted net tax capacity (column 38) is based on property values in 1991; this figure will be used in computing state aids and tax levy limitations for the 1993-94 school year.
- ² Most school districts included all expenditures for employee benefits in the same UFARS programs as the employees' salaries. Thus, for example, health insurance for the superintendent is included with "district and school administration" (column 18), and benefits for teachers are included with instructional programs (columns 20, 21 and 22). Other districts incorrectly reported all expenditures for employee benefits separately; for these districts, the expenditures show up in "other operating programs" (column 28). Because of this difference in accounting practices there is significant variation in the amounts reported in column 28.

MINNESOTA SCHOOL DISTRICTS

District Name / Number -- Region / County

Ada	521	1	Norman
Adrian	511	8	Nobles
Aitkin	001	3	Aitkin
Albany	745	7W	Stearns
Albert Lea	241	10	Freeborn
Alden	242	10	Freeborn
Alexandria	206	4	Douglas
Alvarado	436	1	Marshall
Amboy-Good Thunder	079	9	Blue Earth
Annandale	876	7W	Wright
Anoka-Hennepin	011	11	Anoka
Appleton	784	6W	Swift
Argyle	437	1	Marshall
Arlington	731	9	Sibley
Ashby	261	4	Grant
Askov	566	7E	Pine
Atwater	341	6E	Kandiyohi
Audubon	021	4	Becker
Aurora-Biwabik	691	3	St. Louis
Austin	492	10	Mower
Babbitt	692	3	St. Louis
Backus	114	5	Cass Lake
Badger	676	1	Roseau
Bagley	162	2	Clearwater
Balaton	411	8	Lyon
Barnesville	146	4	Clay
Barnum	091	3	Carlton
Barrett	262	4	Grant
Battle Lake	542	4	Otter Tail
Beardsley	057	6W	Big Stone
Becker	726	7W	Sherburne
Belgrade-Elrosa	736	7W	Stearns
Belle Plaine	716	11	Scott
Bellingham	371	6W	Lac Qui Parle
Belview	631	8	Redwood
Bemidji	031	2	Beltrami
Benson	777	6W	Swift
Bertha-Hewitt	786	5	Todd
Big Lake	727	7W	Sherburne
Bird Island	646	6E	Renville
Biwabik	693	3	St. Louis
Blackduck	032	2	Beltrami
Blooming Prairie	756	10	Steele
Bloomington	271	11	Hennepin

District Name / Number -- Region / County

Blue Earth	240	9	Faribault
Borup	522	1	Norman
Braham	314	7E	Isanti
Brainerd	181	5	Crow Wing
Brandon	207	4	Douglas
Breckenridge	846	4	Wilkin
Brewster	513	8	Nobles
Bricelyn	217	9	Faribault
Brooklyn Center	286	11	Hennepin
Brooten	737	7W	Stearns
Browerville	787	5	Todd
Browns Valley	801	4	Traverse
Brownton	421	6E	McLeod
Buffalo	877	7W	Wright
Buffalo Lake	647	6E	Renville
Burnsville	191	11	Dakota
Butterfield	836	9	Watsonwan
Byron	531	10	Olmsted
Caledonia	299	10	Houston
Cambridge-Isanti	911	7E	Isanti
Campbell-Tintah	852	4	Wilkin
Canby	891	6W	Yellow Medicine
Cannon Falls	252	10	Goodhue
Carlton	093	3	Carlton
Cass Lake	115	5	Cass
Centennial	012	11	Anoka
Ceylon	451	9	Martin
Chandler-Lake Wilson	918	8	Murray
Chaska	112	11	Carver
Chatfield	227	10	Olmsted
Chisago Lakes	141	7E	Chisago
Chisholm	695	3	St. Louis
Chokio-Alberta	771	4	Stevens
Clara City	126	6W	Chippewa
Claremont	201	10	Dodge
Clarissa	789	5	Todd
Clarkfield	892	6W	Yellow Medicine
Clearbrook	161	2	Clearwater
Cleveland	391	9	LeSueur
Climax	592	1	Polk
Clinton-Graceville	058	6W	Big Stone
Cloquet	094	3	Carlton
Cold Spring	750	7W	Stearns
Coleraine	316	3	Itasca

District Name / Number -- Region / County

Columbia Heights	013	11	Anoka
Comfrey	081	9	Brown
Cook County	166	3	Cook
Cosmos	461	6E	Meeker
Cottonwood	412	8	Lyon
Cromwell	095	3	Carlton
Crookston	593	1	Polk
Crosby-Ironton	182	5	Crow Wing
Cyrus	611	4	Pope
Danube	648	6E	Renville
Dassel-Cokato	466	6E	Meeker
Dawson	378	6W	Lac Qui Parle
Deer Creek	543	4	Otter Tail
Deer River	317	3	Itasca
Delano	879	7W	Wright
Delavan	218	9	Faribault
Detroit Lakes	022	4	Becker
Dilworth	147	4	Clay
Dodge Center	202	10	Dodge
Dover-Eyota	533	10	Olmsted
Duluth	709	3	St. Louis
Eagle Bend	790	5	Todd
East Chain	453	9	Martin
East Grand Forks	595	1	Polk
Echo	893	6W	Yellow Medicine
Eden Prairie	272	11	Hennepin
Eden Valley-Watkins	463	6E	Meeker
Edgerton	581	8	Pipestone
Edina	273	11	Hennepin
Elbow Lake	263	4	Grant
Elgin-Millville	806	10	Steele
Elk River	728	7W	Wabasha
Ellendale-Geneva	762	10	Steele
Ellsworth	514	8	Nobles
Elmore	219	9	Faribault
Ely	696	3	St. Louis
Emmons	243	10	Freeborn
Erskine-McIntosh	2609	1	Polk
Esko	099	3	Carlton
Evansville	208	4	Douglas
Eveleth	697	3	St. Louis

MINNESOTA SCHOOL DISTRICTS

District Name / Number -- Region / County

Fairfax	649	6E	Renville
Fairmont	454	9	Martin
Faribault	656	10	Rice
Farmington	192	11	Dakota
Fergus Falls	544	4	Ottertail
Fertile-Beltrami	599	1	Polk
Finlayson	570	7E	Pine
Fisher	600	1	Polk
Floodwood	698	3	St. Louis
Foley	051	7W	Benton
Forest Lake	831	11	Washington
Fosston	601	1	Polk
Franconia	c323	7E	Chisago
Franklin	650	6E	Renville
Frazee-Vergas	023	4	Becker
Freeborn	244	10	Freeborn
Fridley	014	11	Anoka
Fulda	505	8	Murray
Garden City	078	9	Blue Earth
Gary	523	1	Norman
Gaylord	732	9	Sibley
Gibbon	733	9	Sibley
Gilbert	699	3	St. Louis
Glencoe	422	6E	McLeod
Glenville	245	10	Freeborn
Glenwood	612	4	Pope
Glyndon-Felton	145	4	Clay
Gonvick	158	2	Clearwater
Goodhue	253	10	Goodhue
Goodridge	561	1	Pennington
Granada-Huntley	460	9	Martin
Grand Meadow	495	10	Mower
Grand Rapids	318	3	Itasca
Granite Falls	894	6W	Yellow Medicine
Greenbush	678	1	Roseau
Grey Eagle	791	5	Todd
Grove City	464	6E	Meeker
Grygla-Gatzke	447	1	Marshall
Hallock-Humbolt	2359	1	Kittson
Halstad-Hendrum	2527	1	Norman
Hancock	768	4	Stevens
Harmony	228	10	Fillmore
Hastings	200	11	Dakota
Hawley	150	4	Clay

District Name / Number -- Region / County

Hayfield	203	10	Dodge
Hector	651	6E	Renville
Henderson	734	9	Sibley
Hendricks	402	8	Lincoln
Henning	545	4	Otter Tail
Herman-Norcross	264	4	Grant
Hermantown	700	3	St. Louis
Heron Lake-Okabena	330	8	Jackson
Hibbing	701	3	St. Louis
Hill City	002	3	Aitkin
Hills-Beaver Creek	671	8	Rock
Hinckley	573	7E	Pine
Hoffman	265	4	Grant
Holdingford	738	7W	Stearns
Hopkins-Golden Valley	270	11	Hennepin
Houston	294	10	Houston
Howard Lake	880	7W	Wright
Hutchinson	423	6E	McLeod
International Falls	361	3	Koochiching
Inver Grove	199	11	Dakota
Isle	473	7E	Mille Lacs
Ivanhoe	403	8	Lincoln
Jackson	324	8	Jackson
Janesville	830	9	Waseca
Jasper	582	8	Pipestone
Jordan	717	11	Scott
Karlstad-Strandquist	2358	1	Kittson
Kasson-Mantorville	204	10	Dodge
Kelliher	036	2	Beltrami
Kennedy	354	1	Kittson
Kensington	209	4	Douglas
Kenyon	254	10	Goodhue
Kerkhoven-Murdock-Sunburg	775	6W	Swift
Kiester-Walters	222	9	Faribault
Kimball	739	7W	Stearns
LaCrescent	300	10	Houston
Lake Benton	404	8	Lincoln
Lake City	813	10	Wabasha
Lake Crystal	070	9	Blue Earth
Lake of the Woods	390	2	Lake of the Woods
Lake Park	024	4	Becker

District Name / Number -- Region / County

Lake Superior	381	3	Lake
Lakefield	325	8	Jackson
Lakeville	194	11	Dakota
Lamberton	633	8	Redwood
Lancaster	356	1	Kittson
Lanesboro	229	10	Fillmore
Laporte	306	2	Hubbard
LeCenter	392	9	LeSueur
LeRoy	499	10	Mower
Lester Prairie	424	6E	McLeod
LeSueur	393	9	LeSueur
Lewiston	857	10	Winona
Litchfield	465	6E	Meeker
Little Falls	482	5	Morrison
Littlefork-Big Falls	362	3	Koochiching
Long Prairie	792	5	Todd
Luverne	670	8	Rock
Lyle	497	10	Mower
Lynd	415	8	Lyon
Mabel-Canton	238	10	Fillmore
Madelia	837	9	Watsonwan
Madison	377	6W	Lac Qui Parle
Magnolia	669	8	Rock
Mahnomen	432	2	Mahnomen
Mahtomedi	832	11	Washington
Mankato	077	9	Blue Earth
Maple Lake	881	7W	Wright
Mapleton	072	9	Blue Earth
Marietta-Nassau	376	6W	Lac Qui Parle
Marshall	413	8	Lyon
Maynard	127	6W	Chippewa
Mazeppa	809	10	Wabasha
McGregor	004	3	Aitkin
Medford	763	10	Steele
Melrose	740	7W	Stearns
Menahga	821	5	Wadena
Mentor	604	1	Polk
Middle River	440	1	Marshall
Milaca	912	7E	Mille Lacs
Milan	128	6W	Chippewa
Milroy	635	8	Redwood
Minneapolis	sp1	11	Hennepin
Minneota	414	8	Lyon
Minnesota Lake	223	9	Faribault
Minnetonka	276	11	Hennepin

MINNESOTA SCHOOL DISTRICTS

District Name / Number -- Region / County

Montevideo	129	6W	Chippewa
Montgomery-Lonsdale	394	9	LeSueur
Monticello	882	7W	Wright
Moorhead	152	4	Clay
Moose Lake	097	3	Carlton
Mora	332	7E	Kanabec
Morgan	636	8	Redwood
Morris	769	4	Stevens
Morristown	657	10	Rice
Morton	652	6E	Renville
Motley	483	5	Morrison
Mounds View	621	11	Ramsey
Mountain Iron-Buhl	712	3	St. Louis
Mountain Lake	173	8	Cottonwood
Nashwauk-Keewatin	319	3	Itasca
Nett Lake	707	3	St. Louis
Nevis	308	2	Hubbard
New London-Spicer	345	6E	Kandiyohi
New Prague	721	11	Scott
New Richland-Hartland	827	9	Waseca
New Ulm	088	9	Brown
New York Mills	553	4	Otter Tail
Newfolden	441	1	Marshall
Nicollet	507	9	Nicollet
North Branch	138	7E	Chisago
North St. Paul- Maplewood	622	11	Ramsey
Northfield	659	10	Rice
Norwood-Young America	108	11	Carver
Ogilvie	333	7E	Kanabec
Oklee	627	1	Red Lake
Olivia	653	6E	Renville
Onamia	480	7E	Mille Lacs
Orono	278	11	Hennepin
Ortonville	062	6W	Big Stone
Osakis	213	4	Douglas
Oslo	442	1	Marshall
Osseo	279	11	Hennepin
Owatonna	761	10	Steele
Park Rapids	309	2	Hubbard
Parkers Prairie	547	4	Otter Tail
Paynesville	741	7W	Stearns
Pelican Rapids	548	4	Otter Tail
Pequot Lakes	186	5	Crow Wing

District Name / Number -- Region / County

Perham	549	4	Otter Tail
Pierz	484	5	Morrison
Pillager	116	5	Cass
Pine City	578	7E	Pine
Pine Island	255	10	Goodhue
Pine Point	025	2	Becker
Pine River	117	5	Cass
Pipestone	583	8	Pipestone
Plainview	810	10	Wabasha
Plummer	628	1	Red Lake
Preston-Fountain	233	10	Fillmore
Princeton	477	7E	Mille Lacs
Prinsburg	815	6E	Kandiyohi
Prior Lake	719	11	Scott
Proctor	704	3	St. Louis
Randolph	195	11	Dakota
Raymond	346	6E	Kandiyohi
Red Lake	038	2	Beltrami
Red Lake Falls	630	1	Red Lake
Red Wing	256	10	Goodhue
Redwood Falls	637	8	Redwood
Remer	118	5	Cass
Renville	654	6E	Renville
Richfield	280	11	Hennepin
Robbinsdale	281	11	Hennepin
Rochester	535	10	Olmsted
Rockford	883	7W	Wright
Roseau	682	1	Roseau
Rosemount- Apple Valley-Eagan	196	11	Dakota
Roseville	623	11	Ramsey
Rothsay	850	4	Wilkin
Round Lake	516	8	Nobles
Royalton	485	5	Morrison
Rush City	139	7E	Chisago
Rushford-Peterson	234	10	Fillmore
Russell	418	8	Lyon
Ruthton	584	8	Pipestone
Sacred Heart	655	6E	Renville
St. Anthony-New Brighton	282	11	Hennepin
St. Charles	858	10	Winona
St. Clair	075	9	Blue Earth
St. Cloud	742	7W	Stearns
St. Francis	015	11	Anoka
St. James	840	9	Watsonwan

District Name / Number -- Region / County

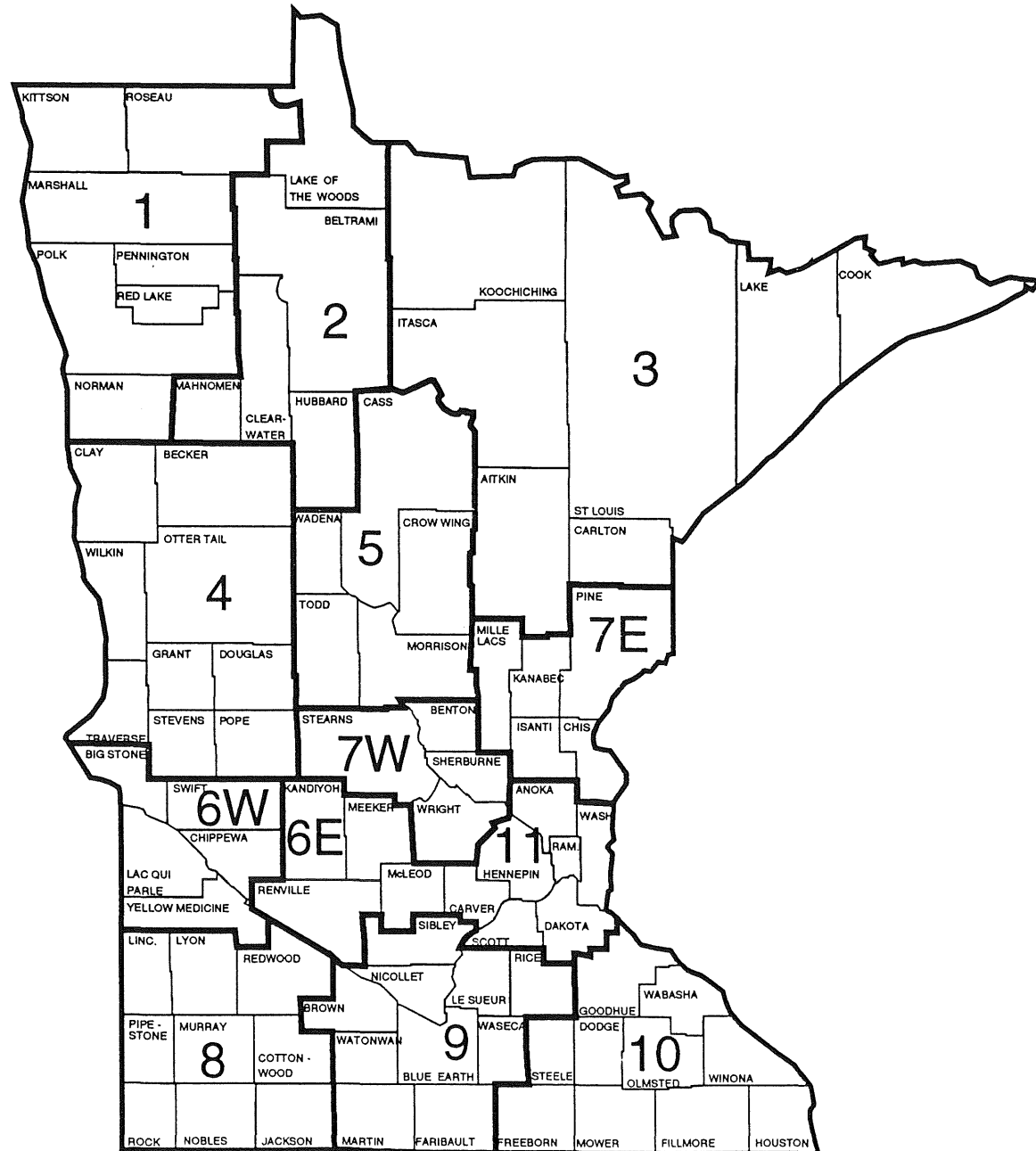
St. Louis County	710	3	St. Louis
St. Louis Park	283	11	Hennepin
St. Michael-Albertville	885	7W	Wright
St. Paul	625	11	Ramsey
St. Peter	508	9	Nicollet
Sanborn	638	8	Redwood
Sandstone	576	7E	Pine
Sartell	748	7W	Stearns
Sauk Centre	743	7W	Stearns
Sauk Rapids	047	7W	Benton
Sebeka	820	5	Wadena
Shakopee	720	11	Scott
Sherburn	456	9	Martin
Silver Lake	425	6E	McLeod
Sioux Valley	328	8	Jackson
Slayton	504	8	Murray
Sleepy Eye	084	9	Brown
South Koochiching	363	3	Koochiching
South St. Paul	sp6	11	Dakota
South Washington County	833	11	Washington
Southland	500	10	Mower
Spring Grove	297	10	Houston
Spring Lake Park	016	11	Anoka
Spring Valley	237	10	Fillmore
Springfield	085	9	Brown
Staples	793	5	Todd
Starbuck	614	4	Pope
Stephen	443	1	Marshall
Stewart	426	6E	McLeod
Stewartville	534	10	Olmstead
Stillwater	834	11	Washington
Storden-Jeffers	178	8	Cottonwood
Swanville	486	5	Morrison
Taylor's Falls	140	7E	Chisago
Thief River Falls	564	1	Pennington
Tower-Soudan	708	3	St. Louis
Tracy	417	8	Lyon
Trimont	457	9	Martin
Truman	458	9	Martin
Twin Valley	526	1	Norman
Tyler	409	8	Lincoln
Ulen-Hitterdal	914	4	Clay
Underwood	550	4	Otter Tail
Upsala	487	5	Morrison

MINNESOTA SCHOOL DISTRICTS

District Name / Number -- Region / County

Verdi	408	8	Lincoln
Verndale	818	5	Wadena
Villard	615	4	Pope
Virginia	706	3	St. Louis
Wabasha	811	10	Wabasha
Wabasso	640	8	Redwood
Waconia	110	11	Carver
Wadena	819	5	Wadena
Waldorf-Pemberton	913	9	Waseca
Walker-Akeley	119	5	Cass
Walnut Grove	641	8	Redwood
Wanamingo	258	10	Goodhue
Warren	446	1	Marshall
Warroad	690	1	Roseau
Waseca	829	9	Waseca
Watertown-Mayer	111	11	Carver
Waterville	395	9	LeSueur
Waubun	435	2	Mahnomen
Wayzata	284	11	Hennepin
Welcome	459	9	Martin
Wells	224	9	Faribault
West Concord	205	10	Dodge
West St. Paul	197	11	Dakota
Westbrook	175	8	Cottonwood
Westonka	277	11	Hennepin
Wheaton	803	4	Traverse
White Bear Lake	624	11	Ramsey
Willmar	347	6E	Kandiyohi
Willow River	577	7E	Pine
Windom	177	8	Cottonwood
Winnebago	225	9	Faribault
Winona	861	10	Winona
Winsted	427	6E	McLeod
Winthrop	735	9	Sibley
Wood Lake	896	6W	Yellow Medicine
Worthington	518	8	Nobles
Wrenshall	100	3	Carlton
Wykoff	236	10	Filmore
Zumbrota	260	10	Goodhue

ECONOMIC DEVELOPMENT REGIONS



DATA FOR SCHOOL DISTRICTS

County Number and Name School District Name	District Number	1991-92 Resident Average Daily Membership					Pupil Data			Professional Staff		Tax Capacity Rates		Pupil Units (Weighted ADM)	
		1. Pre- Kindergarten Handicapped	2. Kindergarten	3. Elementary (Grades 1-6)	4. Secondary (Grades 7-12)	5. Total (Pre-K thru Grade 12)	6. Percent Minority	7. Percent Attendance	8. Percent Transported	9. Total Staff (FTE)	10. Pupil-Staff Ratio	11. Auditor Percent	12. Equalized Percent	13. Resident Pupil Units	14. Total Pupil Units
O1 AITKIN															
AITKIN	1	8	68	678	541	1,295	1.8	95.8	85	92	13.8	44.01	40.89	1,425	1,391
HILL CITY	2	1	26	152	125	304	9.6	95.2	75	28	12.3	59.36	56.51	329	367
MCGREGOR	4	5	50	287	247	589	6.5	94.1	93	41	13.1	46.79	44.73	637	591
O2 ANOKA															
ANOKA-HENNEPIN	11	214	3,047	17,508	14,431	35,200	5.2	95.2	82	2,038	17.0	56.53	53.25	38,026	37,481
CENTENNIAL	12	23	468	2,494	1,526	4,511	4.4	95.6	78	271	16.5	68.74	63.72	4,735	4,723
COLUMBIA HEIGHTS	13	12	272	1,602	1,351	3,237	10.1	94.1	68	237	13.3	61.85	59.37	3,507	3,469
FRIDLEY	14	12	197	1,202	1,010	2,421	7.9	94.7	77	169	14.6	58.03	55.18	2,625	2,733
SPRING LAKE PARK	16	18	381	2,047	1,692	4,138	5.9	95.3	72	265	15.6	49.80	47.16	4,455	4,506
ST. FRANCIS	15	19	428	2,435	1,948	4,830	2.5	94.5	100	306	15.7	54.09	49.00	5,205	5,202
O3 BECKER															
AUDUBON (ICA)	21	2	32	146	133	313	2.9	99.5	85	31	12.6	34.79	33.12	337	337
DETROIT LAKES	22	22	215	1,337	1,141	2,715	12.1	94.5	72	188	14.6	47.79	46.79	2,957	2,987
FRAZEE	23	11	98	649	534	1,292	5.6	94.9	88	92	13.4	44.41	40.72	1,403	1,344
LAKE PARK (ICA)	24	2	22	205	192	421	1.5	96.1	91	27	12.1	44.02	39.53	468	453
PINE POINT (EXP)	25		6	51	9	66	100.0	85.7	65	10	4.3	.00	.00	65	46
O4 BELTRAMI															
BEMIDJI	31	30	472	2,593	2,163	5,258	11.9	93.6	92	353	14.9	57.60	53.51	5,671	5,723
BLACKDUCK	32	5	57	368	315	745	6.3	94.1	86	56	14.7	37.20	34.41	812	915
KELLIHER	36	2	14	124	118	258	11.0	93.4	91	25	11.2	31.29	29.66	287	314
RED LAKE	38	7	128	523	417	1,075	100.0	90.3	71	98	10.2	60.50	59.35	1,136	1,058
O5 BENTON															
FOLEY	51	8	129	883	811	1,831	.7	95.2	100	118	15.6	56.77	52.06	2,013	2,030
SAUK RAPIDS	47	19	254	1,456	1,241	2,970	1.2	95.7	84	173	16.6	46.40	40.93	3,217	3,121
O6 BIG STONE															
BEARDSLEY (ICA)	57		17	76	43	136	18.4	94.3	86	6	19.3	34.47	29.54	140	164
CLINTON-GRADEVILLE	55	1	47	239	197	484	2.3	96.5	71	41	11.0	36.24	31.02	519	496
ORTONVILLE (ASE)	62	8	37	298	279	622	1.9	95.7	57	50	14.5	34.16	30.68	686	818
O7 BLUE EARTH															
AMBOY GOOD THUND (ICA)	79	3	35	192	157	387	.8	96.4	83	24	14.1	44.01	34.94	417	418
LAKE CRYSTAL-WELLCOME	2071	11	77	616	554	1,258	3.2	94.9	78	102	12.1	57.86	47.62	1,392	1,371
MANKATO	77	32	520	3,427	2,946	6,925	3.6	95.4	56	437	15.8	48.41	43.61	7,559	7,578
MAPLETON (ICA)	72	4	46	269	237	556	1.5	96.1	69	50	12.0	37.80	30.50	604	598
ST. CLAIR	75	12	30	257	209	508	.2	96.7	86	36	13.5	48.28	38.92	557	540
O8 BROWN															
COMFREY	81		17	106	137	260	2.7	95.9	81	22	11.8	51.18	46.52	293	291
NEW ULM	88	14	228	1,308	1,176	2,726	2.7	96.2	91	181	15.1	40.69	36.42	2,966	2,978
SLEEPY EYE	84	5	49	320	297	671	8.1	95.3	43	49	13.8	36.48	32.40	735	742
SPRINGFIELD	85	5	53	300	334	692	.1	96.0	46	47	14.8	31.82	28.16	765	766
O9 CARLTON															
BARNUM	91	4	42	338	355	739	3.9	95.0	91	47	14.9	75.69	67.74	826	790
CARLTON	93	3	61	378	362	804	10.0	94.4	87	59	13.8	43.36	39.59	882	903
CLOQUET	94	13	198	1,068	1,046	2,325	14.3	93.6	68	146	16.4	56.17	50.50	2,542	2,652
CROMWELL	95	1	17	156	169	343	.0	96.0	89	26	12.9	98.08	92.58	385	389
ESKO	99	4	75	418	426	923	1.3	95.2	89	59	15.4	61.90	55.40	1,014	1,014
MOOSE LAKE	97	5	48	358	378	789	2.4	95.7	96	57	14.4	54.56	48.99	879	928
WRENSHALL	100	2	16	179	175	372	3.0	95.8	87	34	11.2	61.67	58.58	416	434

District Number	Revenue %			1991 - 92 Expenditures per Pupil Unit																Other Measures per Pupil Unit				
	15. Federal	16. State	17. Local and Other	18. District and School Admin.	19. District Support Services	20. Regular Instruction	21. Vocational Instruction	22. Exceptional Instruction	23. Instructional Support Services	24. Pupil Support Services	25. Operations and Maintenance	26. Food Service	27. Pupil Transportation	28. Other Oper. Program	29. Total PK-12 Operating Expenditures	30. Community Service	31. Capital Outlay	32. Building Construction	33. Debt Service	34. Operating Funds Balance	35. Change in Funds Balance	36. State and Local Oper. Costs	37. Long Term Debt	38. 1991 Adj. Net Tax Capacity
1	4	46	50	261	109	2155	92	479	183	101	428	134	285	396	4622	80	290	0	416	483	74-	4018	736	4,077
2	5	71	24	387	124	2309	113	407	132	105	358	237	475	61	4707	146	163	0	586	660	19	3817	23612	1,767
4	6	49	45	508	141	1956	29	519	150	102	423	248	443	411	4930	94	373	4060	673	488	87-	4020	5560	4,477
11	3	58	39	227	110	2044	90	634	178	159	327	213	249	81	4313	163	201	740	164	160	69	3985	1637	2,658
12	2	60	38	228	102	2095	68	771	164	110	327	149	288	61	4363	79	195	2914	450	301	226	3803	4960	2,444
13	4	42	54	373	189	2638	88	926	332	153	484	289	231	71	5774	238	296	0	0	27-	54-	5003	0	5,011
14	3	45	52	682	259	1817	119	743	141	120	303	215	203	758	5359	250	162	0	4	448	101-	4845	57	4,369
16	3	43	54	172	113	2210	118	588	248	166	419	163	246	137	4580	205	201	0	150	105	33	3947	1832	4,507
15	2	67	31	271	89	1855	49	918	112	140	299	175	306	87	4299	103	254	203	483	324	113	3671	3935	2,193
21	9	52	39	361	94	1864	203	743	194	28	389	329	314	84	4602	118	201	0	382	397	234	3648	1186	4,313
22	6	63	31	306	100	2069	66	655	170	131	289	178	387	69	4419	98	195	44	200	599	20	3636	1940	2,458
23	7	75	18	267	66	2085	209	606	141	91	270	208	399	72	4415	75	279	0	58	371	58-	3605	516	1,540
24	2	60	38	378	96	1893	178	437	157	14	446	144	291	96	4131	98	299	24	293	14	262	3536	2252	3,298
25	24	73	3	1035	931	3458	0	1607	84	771	1920	980	127	432	11344	43	1429	0	0	3823	1368	8811	0	0
31	6	64	30	228	64	1820	82	867	128	86	408	179	291	231	4384	118	201	293	286	301	127	3684	3271	2,092
32	7	72	21	280	112	2190	158	583	108	52	327	171	341	68	4389	87	195	0	36	564	99-	3584	123	1,408
36	8	74	18	399	87	2110	552	489	121	30	404	229	451	74	4945	56	219	0	0	1601	123-	4054	0	1,609
38	33	63	4	531	269	3108	270	1245	238	129	698	309	502	273	7572	101	298	0	0	380-	535	4117	0	25
51	5	76	19	235	75	2008	67	432	211	86	306	199	206	61	3886	137	350	0	319	366	145-	3323	5595	1,194
47	3	69	28	228	88	1897	51	557	164	118	271	191	338	90	3994	134	219	8	186	358	101	3381	1852	2,243
57	3	56	41	371	325	1941	0	296	102	43	511	241	346	107	4285	176	151	0	0	1811	606-	3761	0	3,297
55	10	58	32	486	84	2432	25	780	134	109	375	231	310	71	5035	121	289	0	0	439	286-	4142	25	4,201
62	4	64	32	318	79	1862	366	571	113	143	349	223	252	186	4462	133	535	0	129	416-	206-	3802	342	1,764
79	2	59	39	322	143	2128	32	593	90	59	355	174	382	134	4413	124	226	0	0	678-	52-	3781	28	4,559
2071	4	62	34	347	94	2268	54	620	217	95	333	189	355	85	4658	94	275	0	77	50	5761	3923	0	3,163
77	4	59	37	223	90	2168	86	600	150	98	350	172	199	38	4174	162	227	304	53	210	111-	3690	3345	3,567
72	2	65	33	330	112	2127	133	785	111	90	352	199	219	85	4544	69	354	0	0	405-	537-	4073	0	3,429
75	3	68	29	326	88	2332	2	694	207	58	376	234	463	103	4884	103	265	0	0	267	75-	4050	36	2,710
81	5	49	46	277	155	2501	80	437	78	60	416	231	192	234	4661	89	428	0	0	339-	203	3926	98	4,596
88	4	64	32	265	76	1947	101	557	226	118	310	195	373	94	4262	120	333	0	0	212	108-	3544	44	3,176
84	5	57	38	353	95	1916	196	582	141	79	271	188	471	88	4381	170	229	0	1319	670	173-	3435	1033	4,900
85	4	63	33	250	58	2102	132	348	77	78	229	208	213	31	3725	141	209	0	76	2339	36	3185	0	3,267
91	4	71	25	346	73	1740	188	457	129	86	301	207	280	130	3936	135	320	0	327	191	66	3201	9084	1,049
93	6	71	23	325	255	2163	91	448	175	126	353	204	274	166	4579	70	269	0	254	255-	235-	3831	561	2,015
94	8	61	31	255	110	1704	98	868	136	137	307	158	278	525	4576	199	351	1267	196	382	126	3812	1713	2,608
95	5	66	29	319	210	1960	130	474	163	60	449	211	299	30	4307	47	135	1801	137	265	56	3628	8705	1,787
99	3	72	25	285	50	2040	71	574	155	130	314	112	262	113	4107	58	281	0	341	142	52	3583	1552	1,622
97	4	65	31	309	104	1963	98	538	140	147	330	148	229	141	4145	72	259	0	413	545	47-	3549	3779	1,961
100	4	53	43	282	184	1819	63	607	131	181	412	156	317	570	4723	90	309	126	259	545	23-	4117	344	3,060

County Number and Name School District Name	District Number	1991-92 Resident Average Daily Membership					Pupil Data			Professional Staff		Tax Capacity Rates		Pupil Units (Weighted ADM)	
		1. Pre- Kindergarten Handicapped	2. Kindergarten	3. Elementary (Grades 1-6)	4. Secondary (Grades 7-12)	5. Total (Pre-K thru Grade 12)	6. Percent Minority	7. Percent Attendance	8. Percent Transported	9. Total Staff (FTE)	10. Pupil-Staff Ratio	11. Auditor Percent	12. Equalized Percent	13. Resident Pupil Units	14. Total Pupil Units
10 CARVER															
CHASKA	112	36	421	2,155	1,767	4,379	3.5	94.2	96	252	17.3	62.66	62.85	4,698	4,734
NORWOOD	108	8	81	453	496	1,038	2.0	96.2	54	81	12.6	54.28	49.78	1,148	1,138
WACONIA	110	13	86	583	629	1,311	2.8	96.1	89	96	13.5	55.04	51.63	1,458	1,457
WATERTOWN-MAYER	111	13	90	618	555	1,276	1.0	95.7	93	83	15.0	58.71	53.78	1,398	1,371
11 CASS															
BACKUS (ICA)	114	4	23	183	135	345	3.1	96.2	84	23	8.3	42.56	37.75	373	354
CASS LAKE	115	10	67	434	334	845	66.6	92.1	71	71	11.9	61.77	57.07	912	924
PILLAGER	116	8	53	272	239	572	2.4	93.5	85	41	11.9	51.92	45.43	617	537
PINE RIVER (ICA)	117	6	59	447	382	894	3.3	95.0	92	68	15.1	50.06	43.05	979	970
REMER	118	1	35	242	272	550	17.5	94.0	91	46	11.9	46.64	40.81	613	616
WALKER-AKELEY	113	7	87	475	417	986	13.1	93.8	90	75	12.7	39.59	34.16	1,068	1,043
12 CHIPPEWA															
CLARA CITY (ICA)	126	2	30	219	176	427	3.1	96.0	92	32	13.0	56.25	47.81	466	461
MAYNARD (ICA)	127	1	16	125	112	254	1.4	96.9	81	21	13.6	30.83	24.94	279	257
MILAN (CSF)	128		15	133	104	252	7.5	97.2	70	9	13.7	52.59	37.15	276	238
MONTEVIDEO	129	6	112	780	702	1,600	2.2	95.4	56	113	14.8	40.83	38.38	1,756	1,837
13 CHISAGO															
CHISAGO LAKES	141	15	179	1,274	1,004	2,472	1.9	94.0	90	147	16.5	54.18	49.36	2,684	2,661
FRANCONIA (NONOPER)	0323		2	11	6	19	.0	.0	100	0	.0	43.02	39.37	19	19
NORTH BRANCH	138	10	219	1,355	1,079	2,663	2.1	93.9	96	142	18.5	57.53	51.95	2,877	2,873
RUSH CITY	139	3	74	375	325	777	1.0	94.7	78	55	13.5	65.50	60.26	837	801
TAYLORS FALLS	140	5	27	178	161	371	1.6	93.8	64	19	16.0	64.27	55.98	406	335
14 CLAY															
BARNESVILLE	146		62	375	411	848	2.2	96.0	57	55	15.2	60.27	54.30	941	933
DILWORTH(ASE)	147	1	39	271	231	542	6.6	95.7	24	38	16.2	52.27	47.56	591	621
GLYNDON(ASE)	145	1	54	308	299	662	6.0	95.3	77	47	11.9	46.99	41.49	723	689
HAWLEY	150	3	56	362	344	765	1.8	97.0	62	54	14.3	52.12	46.91	839	860
MOORHEAD	152	22	470	2,935	2,249	5,676	10.9	94.4	73	394	14.2	43.06	38.02	6,127	6,132
ULEN-HITTERDAL	914	2	25	181	170	378	4.8	94.0	88	28	12.7	56.94	51.13	416	404
15 CLEARWATER															
BAGLEY	162	11	91	573	585	1,260	15.1	93.1	92	82	15.2	37.79	36.81	1,389	1,385
CLEARBROOK (ICA)	161	6	36	177	168	387	3.3	95.1	86	31	12.4	46.06	45.41	419	428
GONVICK (ICA)	158	2	17	88	78	185	11.2	94.9	100	17	12.9	38.26	36.96	199	218
16 COOK															
COOK COUNTY	166	2	41	326	292	661	13.1	93.6	85	51	13.0	32.73	28.74	728	726
17 COTTONWOOD															
MOUNTAIN LAKE	173	1	39	261	244	545	16.6	95.3	38	41	13.1	63.23	58.04	598	598
STORDEN-JEFFERS	178		22	114	177	313	.0	95.8	80	25	12.6	43.19	39.78	354	351
WESTBROOK (ICA)	175	1	19	127	154	301	1.5	95.4	69	28	9.5	49.52	45.41	337	332
WINDOM	177	4	83	559	502	1,148	3.2	96.1	72	91	12.8	59.28	54.66	1,259	1,289
18 CROW WING															
BRAINERD	181	47	495	3,083	2,799	6,424	2.5	94.6	86	428	15.2	47.48	42.26	7,029	7,154
CROSBY-IRONTON	182	16	119	733	666	1,534	1.7	95.2	86	107	14.0	54.54	48.21	1,681	1,640
PEQUOT LAKES	186	6	82	466	436	990	4.1	95.4	92	60	16.4	39.91	35.32	1,079	1,073

District Number	Revenue %			1991 - 92 Expenditures per Pupil Unit																	Other Measures per Pupil Unit				
	15. Federal	16. State	17. Local and Other	18. District and School Admin.	19. District Support Services	20. Regular Instruction	21. Vocational Instruction	22. Exceptional Instruction	23. Instructional Support Services	24. Pupil Support Services	25. Operations and Maintenance	26. Food Service	27. Pupil Transportation	28. Other Oper. Program	29. Total PK-12 Operating Expenditures	30. Community Service	31. Capital Outlay	32. Building Construction	33. Debt Service	34. Operating Funds Balance	35. Change in Funds Balance	36. State and Local Oper. Costs	37. Long Term Debt	38. 1991 Adj. Net Tax Capacity	
112	2 54	44		304	126	1784	31	769	341	120	330	144	386	139	4473	104	261	572	174	141	106	3859	2292	3,252	
108	4 55	41		320	83	1740	195	918	116	86	346	172	228	97	4299	176	237	0	422	384	84	3752	3517	3,442	
110	3 48	49		331	98	2166	126	891	119	126	300	203	454	71	4885	180	207	302	89	298	228	4141	10393	4,376	
111	2 58	40		225	139	1562	76	601	89	71	285	174	328	641	4192	185	240	825	542	45	145	3607	4891	2,848	
114	3 56	41		342	110	2237	0	667	45	87	281	7	242	48	4068	98	427	0	185	606	27	3690	134	3,431	
115	19 55	26		507	181	2456	107	1088	443	89	442	282	487	121	6203	158	371	2629	148	490	88	4332	8673	3,105	
116	4 37	59		376	84	2146	1	636	177	64	277	244	409	93	4509	106	483	4682	575	535	69	3750	5662	5,240	
117	10 56	34		287	107	1966	72	658	124	111	410	252	272	41	4303	67	365	400	382	602	17	3464	4281	3,424	
118	9 28	63		309	145	2283	118	754	424	34	406	175	428	89	5166	104	597	0	144	473	463	4103	473	8,150	
113	7 44	49		233	88	2126	111	993	163	87	280	226	313	84	4704	114	309	0	746	1146	14	3915	749	5,673	
126	2 63	35		321	137	1989	89	579	95	60	360	182	380	186	4377	89	352	0	172	105	285	3617	178	3,075	
127	16 55	29		334	153	1988	46	1220	91	99	398	238	362	56	4984	120	648	0	129	1010	468	3599	107	4,031	
128	8 65	27		344	128	2384	167	491	127	149	515	209	274	185	4973	184	450	0	0	738	499	4138	18	2,954	
129	8 66	26		238	60	1972	128	673	164	52	285	448	166	103	4290	183	222	0	52	585	3	3487	121	1,920	
141	2 67	31		251	156	1978	129	453	172	120	282	198	183	36	3958	146	306	0	1219	662	146	3521	1214	2,274	
0323	0 79	21		0	39	3489	0	0	0	0	0	0	257	0	3785	0	0	0	0	1289	643	3528	0	2,398	
138	3 71	26		273	159	1832	87	591	219	78	338	169	246	180	4172	140	341	21	355	384	81	3634	2558	1,653	
139	3 65	32		379	126	2256	174	517	118	67	300	198	196	39	4370	121	320	582	198	573	26	3901	10075	2,422	
140	3 48	49		476	195	2282	64	452	146	30	484	188	272	141	4731	109	231	76	149	1100	445	4100	1059	2,528	
146	5 59	36		321	71	1999	67	502	142	3	376	226	278	278	4264	188	277	5	362	313	76	3512	3526	2,731	
147	3 83	14		345	114	2087	16	455	124	85	214	143	115	96	3792	58	391	0	146	478	139	3466	407	962	
145	6 60	34		275	86	2115	65	676	144	97	290	156	406	206	4517	177	164	0	25	139	44	3631	437	3,393	
150	3 75	22		266	84	2121	66	267	4	86	293	162	182	623	4154	166	132	0	234	200	43	3659	1436	1,391	
152	5 74	21		239	98	2051	52	1077	202	111	251	151	220	100	4552	105	422	0	57	418	10	4035	531	2,265	
914	5 60	35		382	129	2245	193	682	127	127	474	232	341	61	4993	177	375	0	0	508	119	4274	0	2,636	
162	8 74	18		253	69	2200	85	679	198	77	255	178	319	168	4481	55	299	0	0	161	128	3684	0	1,460	
161	7 60	33		337	120	2165	17	511	119	94	312	219	424	53	4370	104	151	0	0	535	110	3528	0	3,143	
158	8 57	35		450	51	2228	249	575	64	45	387	308	516	104	4979	133	188	0	244	626	536	3848	0	4,454	
166	6 31	63		414	81	2582	9	636	133	121	486	122	288	48	4919	137	305	0	0	460	134	4190	0	7,587	
173	4 49	47		343	57	1926	240	782	113	33	346	206	139	154	4338	102	286	0	0	892	252	3869	79	3,940	
178	5 44	51		429	153	2427	178	279	116	7	441	246	219	81	4576	34	274	0	0	377	212	3933	0	5,038	
175	2 49	49		452	135	2336	182	295	211	92	526	198	417	125	4966	134	456	0	93	247	239	4272	0	4,990	
177	4 50	46		293	135	2232	58	1114	119	96	371	229	191	259	5096	125	158	0	113	79	252	4394	690	3,214	
181	6 59	35		240	63	1960	232	804	214	112	320	205	287	485	4922	107	244	707	66	472	43	4179	1272	2,913	
182	5 49	46		210	76	2244	112	599	146	200	461	201	365	73	4688	72	133	69	595	151	93	3941	4689	4,033	
186	5 22	73		280	86	1847	85	464	139	60	295	212	254	40	3763	69	231	0	314	224	285	3116	1353	9,552	

County Number and Name School District Name	District Number	1991-92 Resident Average Daily Membership					Pupil Data			Professional Staff		Tax Capacity Rates		Pupil Units (Weighted ADM)	
		1. Pre- Kindergarten Handicapped	2. Kindergarten	3. Elementary (Grades 1-6)	4. Secondary (Grades 7-12)	5. Total (Pre-K thru Grade 12)	6. Percent Minority	7. Percent Attendance	8. Percent Transported	9. Total Staff (FTE)	10. Pupil-Staff Ratio	11. Auditor Percent	12. Equalized Percent	13. Resident Pupil Units	14. Total Pupil Units
19 DAKOTA															
BURNSVILLE	191	84	978	5,008	4,133	10,203	10.0	94.7	87	638	15.9	60.96	58.92	10,956	11,097
FARMINGTON	192	33	252	1,468	1,041	2,794	2.6	95.3	89	162	17.0	69.78	62.38	2,988	2,980
HASTINGS	200	31	337	2,221	2,193	4,782	2.2	95.0	92	285	16.7	51.43	45.62	5,276	5,305
INVER GROVE	199	22	349	1,980	1,533	3,884	5.8	94.8	79	245	15.3	67.60	62.67	4,181	4,123
LAKEVILLE	194	20	503	2,707	1,929	5,159	3.4	95.5	94	339	15.0	60.33	54.45	5,490	5,473
RANDOLPH	195	2	32	167	175	376	.0	95.9	81	33	10.9	56.25	46.40	412	405
ROSEMOUNT-APPLE VALLE	196	96	2,020	11,232	8,511	21,859	6.5	95.5	88	1,236	17.5	55.68	52.09	23,431	23,295
SOUTH ST. PAUL	SP6	29	281	1,574	1,380	3,264	6.3	93.8	32	189	17.9	77.60	71.24	3,545	3,786
WEST ST. PAUL-MENDOTA	197	40	367	2,322	1,831	4,560	9.9	94.9	88	326	13.9	53.74	50.29	4,934	5,004
20 DODGE															
CLAREMONT (ICA)	201	2	19	133	94	248	1.4	95.8	75	14	10.3	61.54	53.41	267	251
DODGE CENTER (ICA)	202	5	40	334	280	659	2.6	95.3	62	48	12.9	38.78	33.89	722	703
HAYFIELD	203	5	64	497	435	1,001	2.8	95.4	70	73	13.9	31.89	28.16	1,103	1,126
KASSON-MANTORVILLE	204	10	117	808	630	1,565	1.7	95.6	93	98	15.8	46.55	39.90	1,698	1,700
WEST CONCORD (ICA)	205	2	39	203	173	417	3.3	94.7	62	42	12.2	54.55	48.71	448	440
21 DOUGLAS															
ALEXANDRIA	206	29	296	1,931	1,831	4,087	1.4	95.3	86	276	14.8	44.29	40.21	4,492	4,519
BRANDON	207	3	25	182	193	403	1.5	95.6	74	29	14.1	28.99	26.47	450	450
EVANSVILLE	208	1	33	163	123	320	1.0	96.1	70	21	14.7	32.70	30.68	341	328
KENSINGTON (ICA)	209	1	14	86	78	179	2.3	95.7	85	16	15.8	49.10	48.07	195	210
OSAKIS	213	2	46	259	298	605	.2	95.3	82	44	14.3	58.12	54.23	672	702
22 FARIBAULT															
BLUE EARTH (ASE)	240	11	66	542	464	1,083	4.7	95.9	46	101	14.2	47.08	38.04	1,189	1,651
BRICELYN (ICA)	217	1	10	69	55	135	1.3	95.6	75	12	12.1	53.66	48.62	146	145
DELAVAN (ASE)	218	2	13	81	81	177	4.5	96.4	76	12	7.8	50.76	45.23	194	187
ELMORE (ASE)	219	2	10	94	95	201	8.8	96.3	62	9	11.5	51.34	45.80	224	220
KIESTER (ICA)	222	1	19	101	91	212	.6	95.9	84	17	11.1	56.55	50.89	229	221
MINNESOTA LAKE (ICA)	223	1	18	133	127	279	.0	96.8	64	22	12.7	51.84	43.85	308	310
WELLS (ASE)	224	4	34	312	342	692	2.2	96.4	88	40	15.7	42.40	37.52	780	975
WINNEBAGO (ASE)	225	2	1	217	190	410	12.2	95.8	61	20	11.0	50.30	45.02	465	467
23 FILLMORE															
HARMONY	228	3	25	197	192	417	2.7	95.9	60	29	14.2	55.97	50.04	461	457
LANESBORO	229	1	25	168	183	377	1.2	96.4	64	31	13.0	54.02	46.13	422	455
MABEL-CANTON	238	1	31	201	172	405	1.5	96.2	78	36	11.2	57.88	51.28	441	439
PRESTON-FOUNTAIN	233	4	46	286	239	575	1.4	96.0	70	45	12.6	80.00	69.52	623	617
RUSHFORD-PETERSON	239	6	45	378	361	790	.5	96.3	71	58	12.8	42.69	37.48	875	830
SPRING VALLEY	237	4	58	391	336	789	2.8	95.8	86	62	12.7	54.79	47.94	860	855
WYKOFF	236		14	122	123	259	1.6	95.9	74	24	10.7	57.28	50.87	288	280
24 FREEBORN															
ALBERT LEA	241	32	312	2,076	1,923	4,343	7.4	94.4	67	262	16.6	44.09	40.12	4,764	4,793
ALDEN	242	2	36	165	159	362	1.7	96.5	77	32	13.0	43.65	40.29	391	451
EMMONS (ASE)	243		14	107	79	200	3.3	96.9	61	16	12.7	64.28	60.23	216	287
FREEBORN (ICA)	244	1	14	74	90	179	2.0	97.1	59	17	11.7	46.35	42.55	198	142
GLENVILLE (ASE)	245	1	22	204	179	406	2.4	95.4	75	31	11.7	49.47	45.76	449	487

District Number	Revenue %			1991 - 92 Expenditures per Pupil Unit																	Other Measures per Pupil Unit				
	15. Federal	16. State	17. Local and Other	18. District and School Admin.	19. District Support Services	20. Regular Instruction	21. Vocational Instruction	22. Exceptional Instruction	23. Instructional Support Services	24. Pupil Support Services	25. Operations and Maintenance	26. Food Service	27. Pupil Transpor- tation	28. Other Oper. Program	29. Total PK-12 Operating Expendi- tures	30. Community Service	31. Capital Outlay	32. Building Construction	33. Debt Service	34. Operating Funds Balance	35. Change in Funds Balance	36. State and Local Oper. Costs	37. Long Term Debt	38. 1991 Adj. Net Tax Capacity	
191	2 45 53			275	139	2299	124	679	135	164	402	174	229	92	4712	292	258	28	82	222	92	4216	1008	4,256	
192	3 64 33			330	119	1827	54	604	119	174	326	178	346	112	4189	95	286	2840	366	187	147	3492	6494	2,269	
200	3 57 40			325	56	2125	42	520	128	141	357	201	289	60	4244	156	189	0	206	78	64-	3602	1196	3,320	
199	3 43 54			331	150	2261	36	727	182	201	395	199	223	78	4784	167	208	559	188	571	24	4274	1670	3,996	
194	2 49 49			297	122	1879	45	581	194	123	314	174	307	58	4093	181	208	2629	751	177	40-	3558	9929	3,998	
195	3 52 45			337	116	2295	60	439	95	56	302	172	320	819	5012	143	267	0	166	508	149	4211	249	3,840	
196	2 57 41			206	115	1965	46	441	193	78	293	122	186	32	3675	102	206	183	534	297	80	3292	6214	3,404	
SP6	3 52 45			242	157	2042	14	581	229	160	388	184	207	229	4433	330	145	171	15	628	129	3888	4310	3,489	
197	3 20 77			329	121	1239	33	634	371	153	403	223	266	110	4883	176	455	0	139	789-	220-	4217	1282	9,790	
201	3 63 34			447	273	1743	53	965	169	93	505	215	216	117	4797	170	533	0	0	349	446	4298	57	2,431	
202	3 76 21			381	162	2043	52	656	100	73	321	215	183	57	4244	131	257	0	0	117	39	3725	17	2,441	
203	5 73 22			246	84	1904	114	585	150	120	273	229	289	116	4109	94	252	0	0	162	18	3366	43	2,362	
204	2 79 19			252	48	1907	62	528	166	95	260	169	158	155	3799	87	356	0	282	511	31	3383	2573	1,546	
205	4 69 27			577	184	2203	52	886	140	97	347	306	325	187	5305	125	284	0	0	1575-	583-	4490	94	2,470	
206	6 60 34			171	53	2030	70	644	158	134	290	186	217	76	4029	102	262	0	184	327	7	3450	4687	3,175	
207	6 74 20			348	73	1990	48	350	114	68	232	220	294	31	3768	61	200	0	164	793	113	3103	875	1,652	
208	7 72 21			360	95	1989	124	333	103	47	294	234	212	52	3842	66	277	0	0	693	209-	3246	0	2,028	
209	4 70 26			477	86	2165	79	340	162	50	312	275	202	93	4243	45	181	0	0	119	352	3725	0	1,966	
213	7 64 29			332	95	2049	149	663	103	144	307	176	240	53	4311	92	159	8422	575	366	245-	3662	11057	2,186	
240	4 51 45			235	67	1924	100	512	187	140	244	170	117	52	3747	122	271	0	0	382	165-	3358	147	3,655	
217	9 36 55			537	315	2500	9	554	194	73	429	756	420	140	6925	180	841	1442	25	529	192-	4765	2162	6,405	
218	5 38 57			305	124	3129	0	427	42	5	327	145	381	61	4945	40	426	0	0	840	215	4216	0	6,439	
219	3 57 40			276	266	2428	0	248	92	0	335	125	233	130	4133	73	375	0	0	257	705	3624	0	4,124	
222	0 51 49			411	153	2461	9	324	157	72	434	0	279	141	4440	182	760	0	0	155	101	4119	99	4,554	
223	11 52 37			440	152	2126	37	833	109	79	487	271	214	59	4806	146	441	0	0	321	132-	3916	0	4,020	
224	7 62 31			306	114	1839	71	611	129	66	323	1	267	105	3831	79	306	0	9	31	394-	3217	0	3,204	
225	4 65 31			159	89	2615	0	388	122	6	254	134	193	85	4046	83	428	0	0	79-	332-	3623	73	2,927	
228	6 63 31			396	124	2382	40	566	210	67	332	169	157	78	4522	89	359	0	0	579	35	3880	69	2,330	
229	6 70 24			326	96	2051	283	593	36	18	184	250	345	52	4233	254	301	0	296	632	18	3182	4213	1,761	
238	7 59 34			470	97	2279	202	652	170	91	364	215	271	147	4959	213	244	0	0	298	104-	4147	0	2,340	
233	3 66 31			416	131	2073	55	514	134	56	347	251	221	98	4295	84	548	4917	473	500	36-	3717	5117	1,632	
239	6 73 21			355	86	2064	95	664	93	54	311	240	228	137	4327	72	128	0	114	67-	167	3564	57	1,782	
237	4 75 21			329	115	2070	97	604	182	103	316	219	233	79	4348	169	424	0	0	191	55	3762	44	1,722	
236	7 65 28			578	155	2301	152	646	165	66	339	198	381	140	5123	114	194	0	115	327-	210-	4122	167	1,980	
241	7 41 52			257	95	2038	55	603	112	133	383	168	224	133	4200	65	173	433	133	290	42-	3698	940	2,439	
242	3 65 32			310	87	2242	63	313	137	88	305	205	279	38	4067	42	293	0	0	233	104-	3489	0	3,163	
243	5 52 43			346	130	1653	33	256	100	8	312	188	196	57	3278	54	394	0	90	616	136	2814	24	3,136	
244	1 44 55			397	151	2338	53	810	191	70	419	0	271	136	4835	182	1226	0	0	1015	233-	4479	22	4,626	
245	4 62 34			286	124	1936	126	526	134	18	362	186	189	101	3989	30	548	0	0	634	25	3508	0	2,885	

County Number and Name School District Name	District Number	1991-92 Resident Average Daily Membership					Pupil Data			Professional Staff		Tax Capacity Rates		Pupil Units (Weighted ADM)	
		1. Pre- Kindergarten Handicapped	2. Kindergarten	3. Elementary (Grades 1-6)	4. Secondary (Grades 7-12)	5. Total (Pre-K thru Grade 12)	6. Percent Minority	7. Percent Attendance	8. Percent Transported	9. Total Staff (FTE)	10. Pupil-Staff Ratio	11. Auditor Percent	12. Equalized Percent	13. Resident Pupil Units	14. Total Pupil Units
25 GOODHUE															
CANNON FALLS	252	8	111	763	637	1,519	1.8	95.4	97	97	15.1	52.63	47.57	1,660	1,619
GOODHUE	253	2	35	252	250	539	1.1	95.8	77	42	12.9	37.84	34.17	597	612
KENYON (ICA)	254	2	58	346	278	684	3.1	96.3	67	42	16.3	31.16	28.01	739	747
PINE ISLAND	255	5	75	511	479	1,070	2.7	95.8	68	77	14.5	63.40	58.58	1,177	1,232
RED WING	256	36	262	1,587	1,425	3,310	4.5	95.1	67	229	14.5	41.86	40.69	3,614	3,664
WANAMINGO (ICA)	258	2	20	185	134	341	2.8	96.2	61	24	13.4	24.96	23.09	370	351
ZUMBROTA (ICA)	260	5	58	399	317	779	1.9	96.7	64	51	13.0	34.17	31.23	845	835
26 GRANT															
ASHBY	261		17	165	135	317	1.4	95.5	79	21	16.4	28.57	26.09	348	380
BARRETT (ICA)	262		11	66	50	127	3.8	96.6	89	3	52.4	45.29	42.21	138	135
ELBOW LAKE (ICA)	263	1	40	242	194	477	1.3	96.3	64	36	11.9	43.44	40.35	514	509
HERMAN-NORCROSS	264		15	136	135	286	2.2	96.2	61	26	10.7	43.38	40.56	318	310
HOFFMAN (ICA)	265	2	19	124	107	252	1.6	95.0	85	18	10.9	53.37	50.06	275	281
27 HENNEPIN															
BLOOMINGTON	271	58	904	5,554	5,061	11,577	11.4	95.0	81	723	15.8	50.35	51.49	12,651	12,752
BROOKLYN CENTER	286		114	668	568	1,350	21.4	94.5	76	109	15.2	55.21	57.65	1,463	1,865
EDEN PRAIRIE	272	44	750	3,725	2,598	7,117	6.1	95.8	93	458	15.4	59.43	63.93	7,522	7,560
EDINA	273	28	439	2,681	2,317	5,465	5.0	95.3	100	355	15.6	52.33	50.22	5,940	6,090
HOPKINS	270	68	632	3,520	3,036	7,256	7.1	94.3	96	522	14.4	61.81	61.12	7,852	8,254
MINNEAPOLIS	SP1	325	4,421	21,616	14,457	40,819	53.5	90.9	84	3,200	12.5	55.02	52.98	43,009	43,711
MINNETONKA	276	35	630	3,152	2,686	6,503	3.4	95.9	98	410	15.5	64.53	58.64	6,999	6,983
ORONO	278	10	170	1,007	917	2,104	2.0	94.3	100	156	14.5	60.31	55.26	2,295	2,484
OSSEO	279	93	1,742	10,167	8,050	20,052	10.1	95.1	70	1,233	16.0	66.28	65.44	21,601	21,482
RICHFIELD	280	26	361	2,135	1,762	4,284	17.1	95.4	93	298	14.0	57.52	59.18	4,634	4,666
ROBBINSDALE	281	59	1,362	6,797	5,817	14,035	14.3	94.7	76	874	15.6	59.23	59.72	15,107	15,092
ST. ANTHONY-NEW BRIGH	282	4	68	446	406	924	8.6	95.0	88	79	13.0	53.66	52.22	1,012	1,134
ST. LOUIS PARK	283	60	358	2,036	1,797	4,251	11.3	94.5	81	286	14.4	56.86	55.67	4,615	4,582
WAYZATA	284	25	586	3,473	3,160	7,244	7.6	95.4	99	444	16.4	59.06	58.79	7,901	8,024
WESTONKA	277	9	209	1,206	1,125	2,549	4.0	94.8	94	157	14.7	56.64	53.04	2,782	2,598
28 HOUSTON															
CALEDONIA	299	4	85	382	433	904	1.4	95.9	77	70	12.8	41.78	36.68	990	986
HOUSTON	294	2	42	239	233	516	1.0	95.7	67	36	14.2	28.40	25.04	566	565
LACRESCENT	300	3	117	615	661	1,396	1.5	95.7	74	97	14.7	51.96	46.09	1,536	1,565
SPRING GROVE	297	2	23	226	210	461	.7	96.4	56	37	12.3	44.96	39.79	513	511
29 HUBBARD															
LAPORTE	306	2	13	156	123	294	3.1	93.5	100	24	13.6	69.63	63.64	324	369
NEVIS	308	2	25	146	163	336	2.9	93.3	99	24	15.4	54.21	47.60	371	408
PARK RAPIDS	309	19	123	919	886	1,947	6.5	94.3	91	136	14.4	38.81	34.82	2,157	2,175
30 ISANTI															
BRAHAM	314	10	74	544	407	1,035	1.4	94.5	80	62	15.8	55.35	50.81	1,120	1,067
CAMBRIDGE-ISANTI	911	20	339	2,148	1,641	4,148	2.8	94.6	92	252	16.6	41.02	37.20	4,473	4,528
31 ITASCA															
COLERAINE	316	8	92	745	837	1,682	5.5	95.5	78	93	17.1	40.47	36.18	1,886	1,813
DEER RIVER	317	5	73	544	470	1,092	21.4	94.5	94	74	14.5	28.20	25.24	1,196	1,192
GRAND RAPIDS	318	27	353	2,274	2,122	4,776	4.8	94.4	90	323	14.7	43.29	39.44	5,241	5,320
NASHWAUK-KEEWATIN	319	8	51	336	348	743	3.2	94.6	78	47	15.7	45.89	40.10	821	827

District Number	Revenue %			1991 - 92 Expenditures per Pupil Unit																	Other Measures per Pupil Unit				
	15. Federal	16. State	17. Local and Other	18. District and School Admin.	19. District Support Services	20. Regular Instruction	21. Vocational Instruction	22. Exceptional Instruction	23. Instructional Support Services	24. Pupil Support Services	25. Operations and Maintenance	26. Food Service	27. Pupil Transporta- tion	28. Other Oper. Program	29. Total PK-12 Operating Expendi- tures	30. Community Service	31. Capital Outlay	32. Building Construction	33. Debt Service	34. Operating Funds Balance	35. Change in Funds Balance	36. State and Local Oper. Costs	37. Long Term Debt	38. 1991 Adj. Net Tax Capacity	
252	2 64	34		260	76	1964	94	453	99	138	366	216	258	133	4059	97	215	0	825	188-	246-	3503	4195	2,666	
253	5 70	25		357	81	2046	143	467	175	76	285	225	362	61	4278	57	152	0	0	337	78-	3505	0	2,677	
254	4 71	25		315	61	2095	81	390	116	44	305	208	340	39	3993	254	227	0	0	297	35-	3326	25	2,891	
255	2 69	29		235	72	1949	154	473	131	121	219	161	149	88	3753	82	297	4137	386	430	179	3320	5126	1,602	
256	2 23	75		280	99	2112	137	757	153	155	319	155	267	75	4509	186	180	29	138	271	8	4016	848	8,080	
258	4 69	27		418	90	2193	71	327	180	24	340	182	345	52	4222	63	374	0	0	512	91-	3584	24	3,203	
260	3 66	31		349	51	2218	247	641	188	70	290	204	212	143	4612	154	149	0	0	103	135	3772	33	2,388	
261	4 73	23		319	128	1804	125	390	334	25	304	187	231	52	3900	125	533	15	309	582	137	3379	2078	1,684	
262	4 62	34		474	158	2225	87	276	123	41	487	326	213	64	4474	308	142	0	0	598	425-	3913	0	2,716	
263	5 57	38		298	133	2191	86	402	75	108	336	168	251	85	4133	199	278	0	0	64	114-	3488	160	3,279	
264	5 53	42		689	42	2409	172	492	208	58	374	222	227	112	5005	185	997	0	0	591	268-	4389	58	4,096	
265	6 64	30		349	94	2214	87	498	13	38	275	191	127	116	4002	79	390	0	0	22	56-	3489	0	2,356	
271	2 22	76		431	206	2327	50	728	305	209	368	204	252	195	5273	384	498	0	83	335	49-	4712	111	7,648	
286	4 43	53		200	189	2402	119	607	405	136	386	202	156	3	4807	142	283	1068	2	351	82-	4327	3588	5,540	
272	1 22	77		286	190	2089	53	734	242	116	445	175	225	82	4639	166	243	150	599	529	188	4182	5818	6,614	
273	2 15	83		322	285	2755	27	577	302	148	670	126	210	173	5595	391	336	21	0	11	31	5179	1	10,730	
270	2 11	87		267	224	2459	102	1006	463	253	419	170	272	244	5880	343	450	171	170	129	43	5320	1141	10,142	
SP1	6 35	59		422	178	2636	78	1243	263	291	414	229	493	219	6465	224	383	725	254	170	110	5430	1847	7,467	
276	1 28	71		267	210	2432	116	774	303	186	441	193	303	68	5294	251	353	128	139	479	120	4728	3510	6,259	
278	1 21	78		267	161	2397	106	701	169	151	438	194	396	147	5128	207	554	73	108	220	41-	4430	1202	8,027	
279	2 51	47		290	227	2073	119	726	234	112	353	187	262	34	4616	122	195	255	342	602	11	4091	4108	3,239	
280	2 26	72		281	157	2436	87	879	193	231	554	175	202	166	5362	167	261	0	30	180	70	4854	22	6,599	
281	3 38	59		247	131	2285	178	812	214	208	442	187	268	143	5115	272	347	0	73	101	4-	4551	0	4,952	
282	1 24	75		447	172	2666	79	757	201	150	514	59	157	427	5629	578	526	0	0	687	685	5380	0	7,741	
283	3 20	77		306	252	2469	69	1062	512	265	692	177	327	59	6189	575	521	144	0	1138	361-	5569	3423	8,449	
284	4 19	77		433	251	2181	21	536	152	163	458	152	289	147	4781	220	369	394	360	706-	42	4045	5279	7,601	
277	3 25	72		302	191	2312	97	696	162	226	502	199	251	152	5091	399	457	0	0	127-	50-	4402	17	6,432	
299	5 69	26		321	56	2031	68	712	170	83	350	217	352	223	4584	127	186	0	105	69	25-	3730	326	2,179	
294	4 78	18		336	146	2193	107	506	88	71	350	194	243	48	4281	101	280	0	99	213	368-	3716	450	1,805	
300	2 69	29		286	55	2186	17	443	92	80	273	171	322	386	4311	119	295	0	122	102	6-	3671	919	1,773	
297	5 72	23		372	68	2155	71	479	125	41	317	203	292	62	4185	114	114	0	163	370	79-	3519	1587	1,974	
306	6 65	29		394	41	1781	89	598	205	103	442	262	278	75	4269	73	356	0	281	282	216	3562	3268	2,129	
308	4 48	48		299	100	2137	252	525	93	36	389	211	298	72	4410	103	305	0	453	671	56	3746	4660	4,757	
309	7 59	34		309	130	1803	129	748	241	109	332	174	277	56	4308	95	203	9	70	88	114-	3632	65	3,526	
314	5 75	20		292	112	1966	67	713	128	92	409	199	291	57	4326	75	183	117	199	188	156-	3662	7898	1,373	
911	6 68	26		230	87	2054	229	816	133	144	323	176	184	41	4419	105	227	0	129	355	26	3747	465	1,755	
316	4 67	29		317	127	2367	76	513	183	120	475	152	268	145	4744	64	341	474	105	238-	40-	4083	1069	1,212	
317	10 71	19		301	92	2374	86	550	279	106	428	187	479	74	4956	88	372	0	321	350	115-	3809	1751	2,577	
318	5 43	52		263	90	2290	111	870	169	126	420	153	313	130	4936	95	312	0	210	303	57-	4245	1126	5,474	
319	3 63	34		319	113	2074	112	815	92	94	572	156	741	343	5431	72	503	266	176	1042-	750-	4341	298	1,414	

County Number and Name School District Name	District Number	1991-92 Resident Average Daily Membership					Pupil Data			Professional Staff		Tax Capacity Rates		Pupil Units (Weighted ADM)	
		1. Pre- Kindergarten Handicapped	2. Kindergarten	3. Elementary (Grades 1-6)	4. Secondary (Grades 7-12)	5. Total (Pre-K thru Grade 12)	6. Percent Minority	7. Percent Attendance	8. Percent Transported	9. Total Staff (FTE)	10. Pupil-Staff Ratio	11. Auditor Percent	12. Equalized Percent	13. Resident Pupil Units	14. Total Pupil Units
32 JACKSON															
HERON LAKE (ICA)	330	4	22	186	197	409	4.9	96.2	76	31	13.4	53.10	45.45	456	447
JACKSON	324	6	79	505	473	1,063	6.8	96.1	59	77	13.7	38.14	33.07	1,166	1,162
LAKEFIELD (ICA)	325	4	34	208	233	479	.4	96.1	52	35	13.2	56.91	48.65	532	532
SIOUX VALLEY (ICA)	328	1	6	49	27	83	.0	97.6	90	11	12.2	64.60	54.97	88	87
33 KANABEC															
MORA	332	10	144	991	757	1,902	1.7	95.1	79	121	15.6	51.62	45.68	2,057	2,059
OGILVIE	333	4	51	330	296	681	2.3	95.3	100	46	14.9	62.96	61.39	743	751
34 KANDIYOHI															
ATWATER (ICA)	341	1	52	304	305	662	1.9	95.9	70	45	12.4	39.74	33.86	727	715
NEW LONDON-SPICER	345	10	133	803	710	1,656	1.5	95.7	100	109	15.1	64.86	56.36	1,805	1,808
PRINSBURG (NONOPER)	0815		5	14	10	29	.0	.0	100	0	.0	30.10	25.95	29	29
RAYMOND (ICA)	346	3	23	174	147	347	10.3	94.5	88	21	13.9	54.94	46.64	380	350
WILLMAR	347	25	393	2,211	1,924	4,553	12.0	94.9	79	366	12.9	45.70	40.21	4,939	5,142
35 KITTSON															
HALLOCK (ICA)	2359	3	44	199	169	415	.9	95.7	46	34	10.1	54.76	49.23	443	418
KARLSTAD-STRANDQUIST	2358	1	32	201	195	429	.0	96.2	82	38	11.0	46.04	42.17	471	468
KENNEDY (ICA)	354	1	18	73	56	148	5.8	96.7	58	17	11.2	62.19	54.72	155	149
LANCASTER	356	2	12	79	82	175	.0	95.5	92	20	10.3	73.60	63.37	192	224
36 KOOCHICHING															
INTERNATIONAL FALLS	361	5	128	850	878	1,861	7.3	95.0	93	127	14.5	45.85	31.40	2,062	2,049
LITTLEFORK-BIG FALLS	362	2	27	179	158	366	1.4	95.1	60	30	11.1	55.45	48.19	400	363
SOUTH KOOCHICHING	363		27	135	154	316	3.1	95.1	100	41	9.7	39.97	35.33	349	443
37 LAC QUI PARLE															
BELLINGHAM (ASE)	371	2	15	88	80	185	.9	96.8	76	13	8.3	56.83	48.87	201	179
DAWSON	378	4	66	334	324	728	2.1	95.8	56	54	13.4	41.22	34.83	793	793
MADISON (CSF)	377	3	39	287	228	557	.9	96.7	66	18	21.9	48.07	35.44	606	673
MARIETTA (CSF)	376		9	40	45	94	.0	.0	100	0	.0	33.50	23.90	102	101
38 LAKE															
LAKE SUPERIOR	381	15	168	1,098	1,053	2,334	1.6	94.7	80	144	15.6	43.98	34.61	2,565	2,552
39 LAKE OF THE WOODS															
LAKE OF THE WOODS	390	5	67	389	305	766	2.5	94.3	87	56	13.5	58.82	55.88	824	814
40 LESUEUR															
CLEVELAND	391	4	40	246	233	523	1.2	95.7	64	35	14.0	56.37	49.27	572	547
LECENTER	392	10	63	399	297	769	.9	95.9	46	52	14.7	49.68	42.82	826	833
LESUEUR (ICA)	393	11	91	435	522	1,059	3.1	95.5	55	75	14.5	68.68	59.14	1,170	1,231
MONTGOMERY	394	7	93	520	486	1,106	3.0	95.6	60	70	14.7	54.88	48.13	1,206	1,146
WATERVILLE (ICA)	395	10	51	383	405	849	2.2	95.5	80	59	12.7	49.02	43.67	947	926
41 LINCOLN															
HEDRICKS (ICA)	402	1	12	88	59	160	.8	97.1	87	22	11.4	48.09	44.43	171	200
IVANHOE (ICA)	403	1	19	162	165	347	.0	96.9	90	27	11.0	35.29	32.96	386	400
LAKE BENTON (ASE)	404		21	117	118	256	.0	96.8	75	24	12.8	38.43	34.32	281	342
TYLER (ICA)	409		22	220	211	453	.0	96.3	90	16	14.0	44.27	40.42	378	378
VERDI (ASE)	408		9	37	44	90	.0	96.3	47	4	6.9	52.89	43.68	99	60

District Number	Revenue %			1991 - 92 Expenditures per Pupil Unit																	Other Measures per Pupil Unit				
	15. Federal	16. State	17. Local and Other	18. District and School Admin.	19. District Support Services	20. Regular Instruction	21. Vocational Instruction	22. Exceptional Instruction	23. Instructional Support Services	24. Pupil Support Services	25. Operations and Maintenance	26. Food Service	27. Pupil Transportation	28. Other Oper. Program	29. Total PK-12 Operating Expenditures	30. Community Service	31. Capital Outlay	32. Building Construction	33. Debt Service	34. Operating Funds Balance	35. Change in Funds Balance	36. State and Local Oper. Costs	37. Long Term Debt	38. 1991 Adj. Net Tax Capacity	
330	6	52	42	243	68	2161	133	400	95	21	361	223	265	85	4057	134	388	0	153	568	350	3357	303	4,246	
324	5	60	35	290	53	2225	68	558	108	120	446	211	281	78	4438	132	192	0	365	579	2	3656	1994	3,705	
325	6	54	40	302	71	1983	145	641	141	37	321	195	208	109	4152	218	298	0	0	9	246	3525	20	3,725	
328	10	21	69	435	285	2437	131	1020	223	13	797	517	482	176	6515	330	264	0	0	564	32	5066	0	8,952	
332	6	70	24	257	65	1799	98	530	163	125	329	156	180	54	3754	138	206	0	195	489	176	3213	930	1,765	
333	5	75	20	310	91	2109	149	430	110	64	365	248	222	61	4159	97	224	3399	266	370	110-	3561	2946	977	
341	5	64	31	319	81	2130	117	587	144	84	220	164	221	76	4145	97	360	0	0	165	203-	3606	0	3,091	
345	3	66	31	249	90	1969	107	493	105	52	259	195	317	20	3856	127	222	348	358	364	193	3267	6263	2,441	
0815	1	35	64	21	201	2983	0	2242	98	0	2	0	1911	29	7486	159	245	0	0	1686-	1999-	5482	0	15,669	
346	2	59	39	322	156	2129	48	600	102	65	379	184	355	60	4400	98	239	0	94	367	85	3806	55	3,173	
347	5	66	29	275	68	2006	162	1013	162	83	310	169	271	142	4662	120	225	22	105	320	8	3985	984	2,493	
2359	2	30	68	670	178	3107	0	361	235	96	479	164	320	225	5836	67	375	0	0	639-	1052	5178	0	6,754	
2358	4	57	39	434	110	2057	157	706	201	49	499	261	373	129	4976	89	346	0	440	217	9930	4111	2741	3,586	
354	3	13	84	700	453	3448	0	371	157	106	818	304	361	625	7343	59	209	0	0	106-	765	6395	458	11,774	
356	5	53	42	459	82	2910	32	365	136	8	532	320	336	82	5262	248	284	0	163	157	151	4472	882	3,997	
361	5	67	28	286	73	2216	157	654	87	176	504	167	204	79	4604	134	291	0	0	90	212-	3985	0	3,297	
362	5	71	24	363	180	2660	54	784	159	19	499	192	370	119	5397	116	962	0	0	1625	557-	4633	0	1,525	
363	5	71	24	273	94	2820	6	340	157	137	542	237	516	108	5230	39	443	0	147	700	96	4303	35935	1,115	
371	9	60	31	226	125	2606	0	704	96	10	297	180	578	262	5083	174	347	0	0	998-	325	3741	426	3,029	
378	5	64	31	327	132	2099	83	554	148	74	356	202	190	78	4243	192	393	0	0	97	187-	3615	89	3,276	
377	5	67	28	260	117	1960	169	469	126	124	402	147	267	90	4130	110	224	0	0	242-	64	3518	0	2,923	
376	1	73	26	284	317	2600	194	334	110	133	232	23	315	83	4626	10	1093	0	0	426	1356	4203	0	3,770	
381	4	61	35	390	83	2226	96	564	181	111	457	138	277	261	4784	120	431	116	29	631-	213-	4130	114	2,493	
390	6	56	38	355	44	2140	50	590	147	74	275	208	301	73	4256	169	321	12365	571	546	39-	3536	5654	2,084	
391	3	61	36	287	101	2122	142	379	112	47	268	181	200	48	3888	49	195	0	396	274	310-	3459	3330	2,717	
392	4	73	23	343	60	1975	171	477	129	52	328	205	180	49	3968	67	313	0	160	410	25-	3494	415	1,851	
393	4	63	33	274	110	1974	141	526	188	146	300	149	169	57	4034	226	458	3009	463	228-	356-	3594	4454	2,440	
394	5	67	28	254	100	2123	89	548	103	108	271	193	266	80	4136	152	212	35	328	212	83	3354	6129	2,138	
395	4	69	27	303	102	1935	104	666	127	95	325	165	169	53	4043	84	239	0	22	595	116	3567	0	2,403	
402	9	37	54	469	142	2508	278	794	135	139	456	320	295	121	5657	138	433	0	181	96	131-	4629	814	4,927	
403	8	64	28	333	94	1917	258	608	92	112	279	215	209	65	4181	65	235	0	0	121	4-	3522	0	2,953	
404	5	69	26	314	111	2106	189	465	43	53	367	216	209	46	4118	88	143	0	0	993	133	3556	0	2,623	
409	2	75	23	283	124	3238	115	281	129	49	273	164	449	43	5146	147	584	0	0	851	191-	4425	0	2,559	
408	4	13	83	467	422	2420	0	301	121	3	615	189	365	160	5063	193	474	0	0	447	196	4430	0	4,038	

County Number and Name School District Name	District Number	1991-92 Resident Average Daily Membership					Pupil Data			Professional Staff		Tax Capacity Rates		Pupil Units (Weighted ADM)	
		1. Pre- Kindergarten Handicapped	2. Kindergarten	3. Elementary (Grades 1-6)	4. Secondary (Grades 7-12)	5. Total (Pre-K thru Grade 12)	6. Percent Minority	7. Percent Attendance	8. Percent Transported	9. Total Staff (FTE)	10. Pupil-Staff Ratio	11. Auditor Percent	12. Equalized Percent	13. Resident Pupil Units	14. Total Pupil Units
42 LYON															
BALATON	411	2	18	150	137	307	4.9	95.9	57	28	10.7	54.76	47.54	339	337
COTTONWOOD (ICA)	412	3	28	189	187	407	7	96.7	66	33	13.4	40.55	33.66	449	466
LYND (ASE)	415		15	110	115	240	18.5	93.9	62	13	11.7	35.89	28.31	267	252
MARSHALL (ASE)	413	6	176	990	940	2,112	6.1	95.7	74	143	15.7	47.45	42.89	2,306	2,481
MINNEOTA	414	2	56	210	256	524	.7	96.1	62	39	14.3	44.39	36.18	573	611
RUSSELL (ICA)	418	1	17	105	80	203	.0	97.0	87	19	12.9	44.25	39.73	220	218
TRACY (ASE)	417	5	50	338	385	778	4.3	94.8	94	58	13.9	42.88	37.61	870	916
43 MCLEOD															
BROWNTON	421	1	27	174	165	367	3.1	95.5	50	27	13.2	43.71	37.77	402	391
GLENCOE	422	15	112	572	645	1,344	4.4	95.3	80	86	15.8	50.07	43.66	1,481	1,520
HUTCHINSON	423	18	249	1,379	1,290	2,936	1.9	94.6	94	177	16.7	56.68	50.84	3,203	3,263
LESTER PRAIRIE (ASE)	424	1	38	220	199	458	.0	96.4	62	39	13.4	53.66	47.12	497	586
SILVER LAKE	425	1	35	121	207	364	1.4	96.4	78	26	13.2	31.71	27.12	409	388
STEWART	426	1	22	142	125	290	4.3	96.1	56	27	10.4	38.59	32.73	317	307
WINSTED (ASE)	427	1	23	102	103	229	.0	96.1	42	13	12.1	36.62	33.14	247	231
44 MAHNOMEN															
MAHNOMEN	432	4	42	395	410	851	44.7	91.1	73	70	12.4	58.56	52.77	952	975
WAUBUN	435	2	50	297	274	623	52.8	92.6	85	55	11.0	37.64	33.69	681	668
45 MARSHALL															
ALVARADO (ICA)	436	2	8	82	75	167	16.1	95.1	54	13	13.6	42.29	34.89	185	190
ARGYLE	437	1	14	123	119	257	1.1	97.1	44	23	11.3	39.73	34.25	284	289
GRYGLA	447	1	13	108	117	239	.4	95.4	90	26	9.1	37.58	33.11	267	261
MIDDLE RIVER	440	1	3	94	103	201	.0	96.9	83	18	12.2	58.79	49.26	229	246
NEWFOLDEN	441	2	24	200	201	427	1.2	95.8	87	40	10.6	41.15	37.73	475	468
OSLO (ICA)	442	1	6	68	81	156	6.2	92.3	73	18	10.5	40.60	32.44	176	226
STEPHEN	443		23	150	134	307	1.7	96.9	48	24	12.5	44.22	38.34	336	334
WARREN	446	3	44	264	277	588	4.0	96.0	41	47	12.6	51.63	44.24	650	665
46 MARTIN															
CEYLON (ASE)	451	1	12	64	78	155	5.5	96.6	28	9	8.4	59.31	54.03	172	136
EAST CHAIN (ICA)	453	1	14	92	59	166	2.5	97.0	95	16	13.0	49.30	45.65	177	179
FAIRMONT (ASE)	454	19	147	1,002	973	2,141	3.5	94.0	88	125	17.3	51.97	44.33	2,360	2,434
GRANADA-HUNTLEY (ICA)	460	3	16	161	154	334	2.1	96.9	65	25	11.4	42.83	38.63	371	355
SHERBURN (ICA)	456	1	37	230	210	478	1.5	96.5	68	43	13.4	45.64	42.45	522	533
TRIMONT (ICA)	457	1	21	107	109	238	.3	95.5	77	22	13.1	48.78	45.07	259	270
TRUMAN (ASE)	458	5	17	216	202	440	.0	95.2	62	36	12.6	44.74	40.49	491	512
WELCOME (ICA)	459	2	15	127	128	272	4.7	96.4	84	12	12.2	39.04	35.83	303	304
47 MEEKER															
COSMOS	461		16	139	122	277	6.0	96.6	100	22	12.4	33.60	31.65	306	308
DASSEL-COKATO	466	18	138	928	825	1,909	2.1	96.0	87	126	15.2	48.07	43.70	2,096	2,107
EDEN VALLEY	463	6	67	377	430	880	1.1	96.1	100	62	14.6	57.54	54.55	975	1,002
GROVE CITY (ICA)	464	2	29	203	138	372	1.6	95.2	65	29	14.6	59.04	57.15	398	375
LITCHFIELD	465	17	174	983	992	2,166	4.0	95.4	94	125	17.1	46.24	43.74	2,381	2,350
48 MILLE LACS															
ISLE	473	1	35	265	187	488	6.5	95.3	100	41	12.2	60.72	53.80	526	542
MILACA	912	15	125	800	695	1,635	3.1	93.8	82	105	15.2	61.12	55.87	1,780	1,743
ONAMIA	480	10	72	446	291	819	21.8	92.4	93	64	12.9	71.90	63.85	871	889
PRINCETON	477	19	201	1,363	1,153	2,736	2.3	94.2	93	176	15.3	54.66	48.81	2,987	2,937

District Number	Revenue %			1991 - 92 Expenditures per Pupil Unit																	Other Measures per Pupil Unit				
	15. Federal	16. State	17. Local and Other	18. District and School Admin.	19. District Support Services	20. Regular Instruction	21. Vocational Instruction	22. Exceptional Instruction	23. Instructional Support Services	24. Pupil Support Services	25. Operations and Maintenance	26. Food Service	27. Pupil Transpor- tation	28. Other Oper. Program	29. Total PK-12 Operating Expendi- tures	30. Community Service	31. Capital Outlay	32. Building Construction	33. Debt Service	34. Operating Funds Balance	35. Change in Funds Balance	36. State and Local Oper. Costs	37. Long Term Debt	38. 1991 Adj. Net Tax Capacity	
411	4	58	38	441	86	2517	49	500	172	26	334	250	224	68	4666	73	231	0	0	345	54	4043	0	3,384	
412	7	63	30	380	143	2232	84	373	124	81	244	203	175	67	4105	52	314	0	0	631	136	3509	0	3,485	
415	4	74	22	223	134	2204	0	462	90	12	242	180	192	2	3740	122	254	0	0	562	41	3302	0	2,339	
413	4	57	39	287	70	1813	56	602	109	92	390	210	280	156	4066	113	261	11	297	471	288	3284	2896	3,374	
414	5	65	30	310	77	2081	47	411	88	71	272	169	146	249	3921	134	274	1	0	646	32	3322	349	3,043	
418	4	41	55	452	152	2963	100	468	103	18	276	370	202	34	5137	149	854	0	0	407	382	4592	0	4,369	
417	6	53	41	226	95	2111	152	623	131	90	335	200	203	143	4309	110	337	0	0	443	56	3612	0	4,036	
421	5	72	23	405	55	1698	221	492	154	116	355	171	266	69	4002	71	350	0	0	527	64	3374	0	2,266	
422	2	67	31	312	77	2093	36	506	189	166	361	200	211	154	4307	196	217	0	152	155	172	3801	324	2,383	
423	2	66	32	259	83	1849	93	423	146	115	392	187	300	84	3931	60	309	2	317	194	8	3384	2695	2,304	
424	4	72	24	315	127	2135	28	346	183	42	276	188	244	40	3923	32	175	2883	173	796	489	3362	3345	1,795	
425	3	71	26	382	95	2035	121	370	124	63	307	177	401	53	4128	126	285	0	694	245	134	3428	5047	1,947	
426	6	65	29	459	175	1973	83	565	131	104	303	186	230	125	4333	128	349	0	0	194	326	3645	0	3,171	
427	3	63	34	450	54	2238	0	1008	31	11	208	21	167	231	4418	226	260	0	0	490	325	4110	0	3,772	
432	25	59	16	341	98	2472	143	837	164	98	428	287	317	89	5273	103	887	0	2962	156	12	3937	3207	1,428	
435	19	63	18	496	87	2510	96	886	288	70	349	271	412	73	5539	44	250	0	0	599	65	4047	0	2,294	
436	4	50	46	348	79	1912	123	546	73	138	404	261	231	170	4285	0	57	0	457	390	194	3748	1674	5,299	
437	6	47	47	402	127	2235	16	518	110	70	464	250	365	92	4650	161	453	0	0	620	236	3791	64	4,825	
447	8	69	23	533	40	2800	482	672	266	8	489	279	508	81	6157	24	1017	0	209	563	520	4681	1176	1,828	
440	6	70	24	425	51	2203	167	314	69	65	392	341	411	458	4897	79	487	0	84	377	110	3864	348	1,449	
441	6	63	31	487	54	2357	114	556	148	37	372	293	378	145	4942	97	329	8313	171	203	409	4028	0	3,307	
442	5	43	52	460	104	1998	162	670	115	183	533	235	309	594	5363	55	34	177	364	37	1044	4641	460	3,211	
443	6	39	55	511	129	2113	0	397	193	145	585	228	220	46	4566	125	368	0	0	578	186	3868	0	5,909	
446	4	54	42	373	28	2247	11	614	97	44	465	219	163	75	4336	87	457	0	0	767	282	3834	0	3,911	
451	3	28	69	581	226	2890	0	420	39	15	492	263	314	843	6083	181	708	0	0	275	1080	5344	0	5,830	
453	8	28	64	505	193	2534	0	575	102	49	491	269	444	33	5195	86	339	0	0	28	35	4121	0	5,495	
454	3	62	35	215	78	1995	142	416	164	89	402	219	307	93	4118	202	294	164	0	62	39	3500	37	2,985	
460	3	50	47	359	148	2259	0	397	98	46	272	236	243	22	4079	84	125	0	0	1131	81	3606	0	5,487	
456	3	45	52	330	103	2064	176	433	130	68	442	178	203	102	4229	134	739	0	0	1039	84	3723	9	5,821	
457	6	26	68	399	160	2541	108	468	160	70	568	278	247	157	5157	170	532	0	0	1218	77	4283	32	5,825	
458	6	50	44	297	90	2260	94	564	87	71	335	191	436	99	4523	116	256	0	0	706	156	3681	0	4,945	
459	1	44	55	381	135	2063	130	332	91	59	369	226	202	51	4040	175	492	0	0	632	11	3708	0	5,825	
461	5	64	31	481	191	1673	0	600	120	54	369	264	333	141	4227	153	148	0	0	1322	101	3538	0	3,388	
466	3	71	26	244	52	1950	93	574	187	95	300	169	250	58	3969	117	235	94	296	589	12	3452	2989	1,735	
463	5	70	25	272	95	1962	92	597	97	61	322	207	331	63	4098	94	200	1327	120	445	45	3424	5115	1,706	
464	8	65	27	261	144	2534	0	741	181	31	255	183	306	121	4757	31	278	0	0	307	348	3949	0	1,907	
465	4	66	30	274	101	1968	47	562	82	71	246	146	289	157	3943	135	151	0	60	407	133	3294	68	2,093	
473	5	55	40	422	142	2159	35	558	127	92	410	243	223	74	4486	119	444	1415	260	591	37	3859	4217	3,606	
912	4	71	25	265	94	1952	94	716	101	76	302	182	394	86	4264	143	182	2206	778	20	88	3473	4413	1,395	
480	10	56	34	302	97	2334	31	750	105	97	408	237	302	62	4724	87	316	5403	501	550	31	3766	7415	3,107	
477	4	71	25	297	95	1959	126	516	200	151	295	220	362	167	4386	133	359	13	1074	245	62	3535	3650	1,702	

County Number and Name School District Name	District Number	1991-92 Resident Average Daily Membership					Pupil Data			Professional Staff		Tax Capacity Rates		Pupil Units (Weighted ADM)	
		1. Pre- Kindergarten Handicapped	2. Kindergarten	3. Elementary (Grades 1-6)	4. Secondary (Grades 7-12)	5. Total (Pre-K thru Grade 12)	6. Percent Minority	7. Percent Attendance	8. Percent Transported	9. Total Staff (FTE)	10. Pupil-Staff Ratio	11. Auditor Percent	12. Equalized Percent	13. Resident Pupil Units	14. Total Pupil Units
49 MORRISON															
LITTLE FALLS	482	25	226	1,577	1,574	3,402	1.6	95.3	88	193	17.9	53.76	51.45	3,767	3,841
MOTLEY	483	1	33	243	222	499	2.5	95.8	47	26	10.2	40.29	37.43	549	321
PIERZ	484	8	61	331	544	944	.9	99.6	84	73	12.9	63.27	60.23	1,079	1,090
ROYALTON	485	6	66	397	369	838	.1	96.1	88	56	15.0	49.24	47.03	915	916
SWANVILLE	486	5	23	190	225	443	1.6	97.0	85	28	15.5	60.94	56.06	499	494
UPSALA	487	5	26	221	187	439	.7	96.5	93	35	12.4	40.69	37.92	483	487
50 MOWER															
AUSTIN	492	33	269	1,932	1,778	4,012	4.6	94.7	63	295	13.7	70.63	66.53	4,410	4,450
GRAND MEADOW	495	2	32	196	177	407	2.0	95.9	52	34	11.8	50.82	44.26	444	439
LEROY	499	2	30	214	199	445	.5	95.5	65	37	12.0	52.92	44.98	488	489
LYLE	497	1	21	132	115	269	.4	95.8	57	23	11.3	48.08	42.07	292	283
SOUTHLAND	500	5	57	251	303	616	.3	95.1	98	52	12.5	49.87	43.63	680	721
51 MURRAY															
CHANDLER-LAKE WILSON	918	4	18	124	118	264	.0	95.9	87	21	12.3	42.06	36.80	291	287
FULDA	505	3	46	254	259	562	1.7	97.2	63	46	12.7	45.02	39.25	615	634
SLAYTON	504	4	70	333	318	725	.4	95.8	76	52	13.5	57.10	50.65	787	756
52 NICOLLET															
NICOLLET	507	4	19	183	195	401	1.7	95.7	70	30	13.5	67.91	60.10	450	459
ST. PETER	508	14	144	848	851	1,857	2.5	94.2	69	130	14.5	57.57	49.69	2,042	2,106
53 NOBLES															
ADRIAN	511	3	45	261	261	570	1.2	96.8	62	41	13.9	48.56	42.39	627	626
BREWSTER (ICA)	513	1	16	131	92	240	4.1	96.0	75	10	14.6	45.69	39.66	260	256
ELLSWORTH	514	1	16	123	99	239	2.3	95.7	58	18	12.1	43.67	37.42	261	245
ROUND LAKE (ICA)	516	2	9	73	69	153	1.5	96.1	84	18	10.5	64.15	54.72	169	171
WORTHINGTON	518	16	157	1,098	1,091	2,362	11.7	92.3	88	167	14.1	45.75	42.14	2,611	2,614
54 NORMAN															
ADA (ASE)	521	2	39	225	262	528	3.7	95.9	93	41	14.5	54.18	49.74	587	675
BORUP (ASE)	522	1	6	44	66	117	8.3	95.9	99	7	8.5	49.38	42.72	133	126
GARY	523		9	77	84	170	1.9	96.1	80	17	9.3	77.35	67.45	191	184
HALSTAD-HENDRUM	2527	1	29	190	167	387	12.1	94.5	94	36	12.5	54.41	48.04	422	501
TWIN VALLEY	526	1	16	182	163	362	9.9	95.5	77	30	12.2	47.10	43.24	403	402
55 OLMSTED															
BYRON	531	11	100	640	524	1,275	.9	96.4	54	88	14.2	65.78	59.66	1,387	1,361
CHATFIELD	227	6	72	429	364	871	.7	96.7	65	56	15.4	44.21	38.33	944	935
DOVER-EYOTA	533	5	64	405	379	853	.6	96.4	74	61	14.1	50.55	46.71	935	942
ROCHESTER	535	49	1,365	7,192	5,679	14,285	9.3	95.6	66	863	16.5	57.80	51.33	15,318	15,385
STEWARTVILLE	534	4	118	817	684	1,623	2.0	95.8	78	105	15.5	56.84	50.70	1,772	1,772
56 OTTER TAIL															
BATTLE LAKE	542	2	35	257	213	507	2.6	95.1	88	36	13.6	43.30	36.42	552	536
DEER CREEK (ICA)	543	1	17	100	91	209	.9	97.5	88	0	0	53.69	49.72	228	204
FERGUS FALLS	544	13	240	1,638	1,376	3,267	2.1	94.7	70	198	16.6	44.72	40.34	3,559	3,601
HENNING	545	6	36	221	230	493	3.0	95.6	81	36	13.4	43.59	38.57	544	537
NEW YORK MILLS	553	2	47	316	347	712	.1	96.0	93	48	14.7	85.67	79.76	794	793
PARKERS PRAIRIE	547	1	47	300	248	596	1.6	96.2	82	43	14.3	51.74	47.81	649	663
PELICAN RAPIDS	548	3	84	582	511	1,180	6.8	95.0	74	79	14.6	44.10	39.30	1,291	1,271
PERHAM	549	6	124	653	715	1,498	2.1	95.1	80	97	15.4	52.72	46.55	1,657	1,660
UNDERWOOD	550	2	18	197	215	432	.7	95.6	90	32	13.2	45.66	39.95	486	486

District Number	Revenue %			1991 - 92 Expenditures per Pupil Unit																Other Measures per Pupil Unit				
	15. Federal	16. State	17. Local and Other	18. District and School Admin.	19. District Support Services	20. Regular Instruction	21. Vocational Instruction	22. Exceptional Instruction	23. Instructional Support Services	24. Pupil Support Services	25. Operations and Maintenance	26. Food Service	27. Pupil Transportation	28. Other Program	29. Total PK-12 Operating Expenditures	30. Community Service	31. Capital Outlay	32. Building Construction	33. Debt Service	34. Operating Funds Balance	35. Change in Funds Balance	36. State and Local Oper. Costs	37. Long Term Debt	38. 1991 Adj. Net Tax Capacity
482	5	71	24	265	68	1671	202	688	147	73	371	207	370	89	4150	117	205	218	150	13-	46	3404	2057	1,618
483	8	45	47	307	240	2283	0	837	112	8	464	221	608	168	5249	183	289	0	302	822-	1420-	4106	844	3,154
484	10	67	23	299	74	1804	250	848	122	150	246	168	356	36	4352	118	224	1665	383	585	79	3436	4789	1,509
485	7	72	21	309	104	1925	118	486	113	63	274	197	171	25	3786	60	264	0	213	589	11-	3220	1187	1,630
486	6	75	19	394	79	2227	130	442	55	38	296	218	316	49	4244	66	190	0	394	24-	123-	3549	2651	1,305
487	9	75	16	341	119	1948	193	664	161	30	285	202	247	51	4241	138	269	0	0	49	180-	3494	0	1,062
492	5	55	40	295	154	2067	166	980	128	97	465	162	204	617	5334	117	284	1450	140	33-	94-	4546	3231	2,405
495	4	62	34	341	153	2258	160	553	43	55	364	211	207	60	4406	111	139	0	111	126	155-	3873	174	2,955
499	5	64	31	196	149	2257	196	506	48	11	302	193	185	128	4171	384	374	0	171	76	34-	3585	967	2,927
497	12	64	24	374	110	2054	0	655	75	322	500	239	195	253	4777	125	308	0	0	697	273-	3826	62	2,461
500	4	60	36	386	96	2025	175	604	178	110	386	200	464	161	4784	272	172	516	53	40	0	3877	1411	4,013
518	5	61	34	318	131	2400	0	775	77	46	365	53	336	136	4638	104	299	0	0	118-	439	3852	0	3,967
505	5	57	38	332	110	2073	245	396	131	99	407	206	313	134	4445	303	481	0	0	255	10	3650	235	3,883
504	7	60	33	318	118	2096	85	721	139	105	383	225	354	119	4663	109	605	0	0	628	6-	3805	78	3,058
507	3	57	40	310	247	2132	87	292	185	244	402	225	478	105	4707	273	371	0	980	413	52	3862	8265	3,736
508	3	67	30	295	75	1998	86	768	164	120	371	143	239	72	4330	103	334	179	212	269-	140-	3807	2775	2,164
511	6	62	32	291	63	2144	43	482	128	63	349	186	323	71	4145	81	272	0	324	290	101	3343	2094	2,991
513	5	62	33	380	108	2078	187	424	121	7	271	154	264	45	4038	229	377	0	0	1022	51-	3483	0	3,772
514	5	59	36	334	135	2457	15	623	95	10	319	215	195	167	4562	49	228	0	0	31-	118	3878	0	3,496
516	2	44	54	387	307	2176	163	521	163	7	503	260	335	152	4976	188	687	0	0	18-	19	4305	0	5,172
518	4	60	36	264	137	1894	138	1123	386	194	319	213	280	204	5152	172	260	0	2153	295	281-	4407	0	2,786
521	4	50	46	163	25	1973	615	531	75	21	211	222	365	35	4236	209	563	0	211	596	15-	3242	792	3,618
522	4	47	49	156	264	2654	260	544	26	16	451	243	455	353	5423	29	250	0	127	1274	723	4610	112	6,833
523	7	57	36	358	72	2478	270	620	65	10	476	297	508	608	5762	164	645	0	381	60	545-	4711	864	2,979
2527	8	51	41	430	56	1993	280	708	104	39	490	268	341	57	4764	68	400	230	266	522	6630-	3837	2002	4,446
526	6	67	27	331	33	2119	479	575	42	27	261	274	337	68	4546	96	242	0	41	534	7	3652	136	1,721
531	2	68	30	288	52	2043	29	520	105	97	293	199	187	77	3890	122	354	4365	465	485	108	3419	5223	1,711
227	3	73	24	378	123	1964	97	367	94	84	309	173	286	32	3908	86	391	0	0	509	54	3320	8	2,097
533	4	72	24	301	75	1942	74	435	188	97	261	221	223	37	3854	83	227	6033	356	581	7-	3324	6322	1,562
535	2	48	50	278	116	1956	109	721	278	117	389	152	297	370	4781	181	202	14	198	307	68	4249	2266	4,118
534	2	74	24	267	61	2039	85	625	193	129	306	202	262	53	4222	132	199	0	207	188	136-	3714	664	1,670
542	5	41	54	370	72	2099	220	498	94	38	386	183	303	33	4297	92	124	0	41	97	148	3628	23	6,485
543	1	85	14	49	26	3469	0	110	28	0	8	23	302	51	4065	92	785	0	0	46-	285-	3725	0	1,082
544	2	64	34	267	50	1961	122	600	198	118	316	144	273	62	4111	105	270	0	57	597	41	3528	118	2,447
545	6	68	26	250	115	2131	184	514	98	50	275	166	277	17	4078	104	300	0	0	347	120	3478	0	2,304
553	7	71	22	302	136	1952	285	536	85	35	273	257	217	114	4193	105	300	564	103	499	86	3368	5613	1,134
547	7	70	23	305	135	2149	122	658	177	76	285	187	376	51	4521	85	208	0	316	376	70-	3642	1629	1,659
548	6	60	34	256	47	2003	75	508	97	74	266	182	328	67	3903	55	234	0	164	587	5	3230	542	3,278
549	5	60	35	217	135	1828	125	610	130	102	349	184	338	94	4112	98	394	18	392	608	39-	3374	3334	2,911
550	5	74	21	318	138	2007	107	451	169	76	279	199	189	42	3974	100	372	0	176	635	417-	3360	326	1,528

County Number and Name School District Name	District Number	1991-92 Resident Average Daily Membership					Pupil Data			Professional Staff		Tax Capacity Rates		Pupil Units (Weighted ADM)	
		1. Pre- Kindergarten Handicapped	2. Kindergarten	3. Elementary (Grades 1-6)	4. Secondary (Grades 7-12)	5. Total (Pre-K thru Grade 12)	6. Percent Minority	7. Percent Attendance	8. Percent Transported	9. Total Staff (FTE)	10. Pupil-Staff Ratio	11. Auditor Percent	12. Equalized Percent	13. Resident Pupil Units	14. Total Pupil Units
57 PENNINGTON															
GOODRIDGE	561		12	107	95	214	.0	96.9	100	22	9.0	53.83	47.96	235	223
THIEF RIVER FALLS	564	5	171	1,052	1,058	2,286	4.4	92.7	62	147	15.4	58.64	55.82	2,518	2,523
58 PINE															
ASKOV (ICA)	566		30	157	163	350	4.8	95.6	94	27	13.9	58.43	55.33	383	370
FINLAYSON	570		14	97	113	224	1.0	95.7	100	14	7.8	45.59	41.35	251	233
HINCKLEY	573	1	66	437	367	871	5.2	96.1	93	58	16.7	49.99	46.84	947	1,083
PINE CITY	578	5	138	823	676	1,642	1.3	95.0	91	109	15.1	49.76	46.82	1,775	1,782
SANDSTONE (ICA)	576		57	297	298	652	11.2	94.0	91	70	10.3	65.01	61.11	712	741
WILLOW RIVER	577	1	33	265	227	526	2.6	95.2	93	33	14.6	61.06	58.25	577	553
59 PIPESTONE															
EDGERTON	581	1	11	137	136	285	.0	97.0	66	24	12.0	43.08	37.83	320	326
JASPER	582	2	23	110	110	245	5.1	95.9	51	21	11.5	50.72	43.36	266	284
PIPESTONE	583	2	99	635	531	1,267	6.4	95.1	60	88	14.7	44.43	39.85	1,377	1,408
RUTHTON (ICA)	584	2	20	84	77	183	3.3	97.0	80	30	11.9	47.68	41.96	323	324
60 POLK															
CLIMAX	592	3	18	79	89	189	1.4	95.1	64	21	9.8	47.85	40.87	206	229
CROOKSTON (ASE)	593	6	124	934	885	1,949	11.1	94.5	55	132	14.8	43.99	39.32	2,158	2,182
EAST GRAND FORKS	595	7	161	1,059	833	2,060	14.9	94.4	56	141	14.7	41.24	37.37	2,234	2,262
FERTILE (ASE)	599	2	32	258	242	534	1.4	95.9	80	43	13.6	60.07	52.20	591	653
FISHER	600		24	100	92	216	17.2	96.4	49	21	9.8	50.94	43.15	231	224
FOSSTON	601	2	47	337	350	736	4.5	95.1	71	55	13.3	55.37	50.11	817	817
MENTOR (ASE)	604		12	82	69	163	1.3	96.6	83	7	11.6	36.74	33.17	177	177
WINEMAC (ASE)	2609	1	25	248	238	512	1.9	95.6	90	39	13.0	49.17	43.96	571	575
61 POPE															
CYRUS (ASE)	611	1	8	81	65	155	3.7	95.8	89	9	12.2	37.19	34.47	170	180
GLENWOOD (CSF)	612	3	88	604	471	1,166	1.5	96.3	80	43	15.9	62.63	40.72	1,264	1,235
STARBUCK (CSF)	614	2	30	237	187	456	2.3	95.7	84	16	15.9	58.53	36.27	497	486
VILLARD (CSF)	615	1	24	119	101	245	3.0	96.8	100	10	13.6	79.01	57.58	264	238
62 RAMSEY															
MOUNDS VIEW	621	48	957	5,605	4,818	11,428	7.0	94.5	88	740	15.6	58.86	55.32	12,406	12,678
N. ST. PAUL-MAPLEWOOD	622	59	903	4,874	4,026	9,862	6.1	93.6	80	525	18.7	58.13	52.61	10,623	10,746
ROSEVILLE	623	22	528	3,188	2,773	6,511	11.3	94.8	89	409	15.7	66.68	64.41	7,078	7,061
ST. PAUL	625	246	3,472	19,144	13,396	36,258	45.2	92.4	72	2,471	14.6	54.90	52.32	38,573	38,869
WHITE BEAR LAKE	624	39	762	4,635	3,648	9,084	5.0	94.6	79	568	15.9	66.34	61.93	9,798	9,805
63 RED LAKE															
OKLEE	627		18	136	147	301	1.6	96.5	78	29	10.7	37.13	35.90	335	341
PLUMMER	628		13	109	98	220	.0	96.7	79	18	12.0	57.47	55.86	242	244
RED LAKE FALLS (ASE)	630	2	26	181	270	479	7.9	95.8	91	43	11.2	57.97	54.55	546	553
64 REDWOOD COUNTY															
BELVIEW (ICA)	631		10	90	66	166	.9	97.0	60	14	8.1	61.37	52.90	182	167
LAMBERTON (ICA)	633	1	29	131	143	304	.0	96.0	76	22	11.0	42.94	37.27	333	334
MILROY (ASE)	635		10	115	80	205	.6	97.7	75	13	12.4	51.10	43.08	224	225
MORGAN (ICA)	636	4	16	89	167	276	.8	96.6	69	22	11.1	51.46	43.08	318	325
REDWOOD FALLS (ASE)	637	5	88	606	531	1,230	5.0	95.9	99	89	15.3	57.28	49.03	1,347	1,523
SANBORN (ICA)	638	2	18	114	100	234	.0	97.1	73	21	13.9	60.62	52.20	254	252
WABASSO	640	2	30	174	266	472	.0	95.3	82	43	10.9	38.22	32.60	537	536
WALNUT GROVE (ICA)	641	1	19	120	113	253	.0	96.5	70	22	11.8	47.41	39.92	277	253

District Number	Revenue %			1991 - 92 Expenditures per Pupil Unit																	Other Measures per Pupil Unit				
	15. Federal	16. State	17. Local and Other	18. District and School Admin.	19. District Support Services	20. Regular Instruction	21. Vocational Instruction	22. Exceptional Instruction	23. Instructional Support Services	24. Pupil Support Services	25. Operations and Maintenance	26. Food Service	27. Pupil Transpor- tation	28. Other Oper. Program	29. Total PK-12 Operating Expendi- tures	30. Community Service	31. Capital Outlay	32. Building Construction	33. Debt Service	34. Operating Funds Balance	35. Change in Funds Balance	36. State and Local Oper. Costs	37. Long Term Debt	38. 1991 Adj. Net Tax Capacity	
561	9 72	19		471	190	2674	378	1107	188	5	472	397	588	155	6625	29	343	0	0	1268	76-	5215	0	1,918	
564	4 68	28		336	127	1830	187	713	174	81	401	191	191	161	4390	150	374	0	248	291	44	3805	1692	1,755	
566	8 66	26		470	33	2151	232	726	122	229	453	269	292	164	5141	85	331	0	394	510-	222-	4203	9343	1,867	
570	3 56	41		201	114	2589	0	456	144	139	290	160	362	77	4532	82	130	0	456	1180	417	3943	3743	3,167	
573	6 62	32		282	79	1895	36	459	76	106	471	218	201	27	3849	71	239	47	321	1405	249-	3296	2269	2,009	
578	5 65	30		272	220	1885	115	523	214	110	277	195	320	85	4215	86	165	0	321	596	225	3489	2276	2,239	
576	6 56	38		376	87	1993	52	2355	121	69	340	252	318	148	6112	190	455	0	310	394	48	5131	1707	1,874	
577	5 65	30		225	81	1971	35	511	128	168	293	178	356	35	3982	64	169	0	500	554	17	3292	4728	2,084	
581	6 54	40		294	81	2340	51	758	84	48	374	194	787	40	5050	132	264	0	152	1618	136-	3472	140	4,025	
582	4 46	50		378	36	2103	107	329	322	65	291	210	231	61	4135	144	187	0	0	1666	483	3576	0	4,006	
583	7 70	23		214	26	2076	121	578	134	92	352	189	310	91	4185	201	207	0	90	565	1	3454	232	2,454	
584	15 35	50		333	92	2395	83	1092	82	22	323	329	361	33	5144	88	523	0	0	867	151-	3897	0	1,964	
592	5 43	52		612	239	2896	202	401	124	144	523	318	391	78	5928	81	527	0	0	1868	829-	5167	0	5,572	
593	4 62	34		271	103	2017	151	685	192	79	336	239	138	62	4274	96	398	0	50	475	76-	3873	357	2,602	
595	4 71	25		240	111	1963	162	502	143	136	330	206	171	97	4060	88	196	0	35	513	20	3578	129	2,589	
599	4 62	34		303	20	1758	312	631	110	69	310	231	362	80	4187	133	109	67	365	180	210	3446	3811	2,430	
600	3 35	62		758	216	2942	64	481	265	76	495	276	318	82	5973	102	344	0	0	55	387-	5186	0	7,390	
601	2 69	29		344	50	2053	320	587	108	121	326	202	315	92	4520	83	170	0	564	434-	2-	3865	1785	1,722	
604	5 46	49		176	74	2551	0	478	14	13	248	150	566	319	4588	54	396	0	0	756	263	3764	0	5,522	
2609	6 63	31		335	143	2307	88	569	118	23	347	184	262	70	4446	104	407	0	0	560	213	3801	17	2,447	
611	5 73	22		101	112	2801	0	432	66	11	256	176	276	88	4320	177	733	0	0	599	185-	3704	0	2,515	
612	2 74	24		104	61	2525	0	229	62	15	147	103	356	45	3647	112	387	0	123	343	68	3153	953	2,099	
614	1 74	25		153	69	2577	0	252	38	16	183	133	272	41	3734	100	311	0	0	197	218	3343	0	2,189	
615	1 63	36		215	76	2706	0	240	41	17	283	173	281	52	4084	122	439	4765	376	374	241-	3619	4770	1,994	
621	2 36	62		170	152	2461	134	688	200	173	421	184	245	145	4972	137	273	0	143	60	13-	4451	815	5,301	
622	3 40	57		256	127	2299	56	671	181	140	262	226	210	160	4587	234	254	0	61	66	150	4059	222	4,977	
623	3 25	72		320	154	2306	97	771	415	179	472	176	245	163	5298	280	383	0	178	682	387	4742	301	6,669	
625	8 47	45		214	267	2036	71	1324	196	143	535	201	261	244	5493	226	318	472	216	321	52	4631	881	5,044	
624	2 41	57		351	100	2123	104	628	199	97	388	189	168	266	4611	226	319	0	128	298-	202-	4189	980	3,615	
627	6 71	23		329	324	2391	94	457	252	3	249	228	365	55	4747	91	578	0	139	268	49	3970	761	2,842	
628	9 58	33		417	92	2317	110	587	22	19	374	280	367	68	4652	109	237	0	0	224	332	3721	0	2,511	
630	5 72	23		492	211	2452	107	419	131	139	457	200	242	116	4964	202	741	0	0	1299-	547-	4166	32	1,518	
631	7 45	48		381	154	2875	0	542	123	12	545	230	324	92	5278	7	447	0	0	272	52-	4454	0	3,887	
633	2 55	43		319	77	2101	210	539	125	77	354	240	233	46	4321	160	245	0	127	893	133-	3856	124	3,996	
635	4 58	38		270	134	2392	0	427	130	6	301	159	317	114	4250	66	180	0	0	274	356	3600	0	4,109	
636	4 36	60		358	175	2111	103	744	150	94	352	150	463	4	4704	111	942	640	60	1366	518	3834	315	5,903	
637	3 61	36		301	72	2013	40	495	169	97	326	217	220	62	4013	113	190	2293	502	34-	52-	3450	10136	2,546	
638	12 46	42		359	67	2268	116	833	141	72	302	323	202	120	4803	98	242	0	0	233-	255	3783	151	4,029	
640	8 53	39		287	189	2173	123	828	177	143	276	202	273	78	4749	131	310	0	0	5-	274-	3913	79	4,799	
641	10 41	49		424	149	2230	72	610	247	81	437	297	206	52	4805	96	359	0	0	546	102-	3875	120	5,327	

County Number and Name School District Name	District Number	1991-92 Resident Average Daily Membership					Pupil Data			Professional Staff		Tax Capacity Rates		Pupil Units (Weighted ADM)	
		1. Pre- Kindergarten Handicapped	2. Kindergarten	3. Elementary (Grades 1-6)	4. Secondary (Grades 7-12)	5. Total (Pre-K thru Grade 12)	6. Percent Minority	7. Percent Attendance	8. Percent Transported	9. Total Staff (FTE)	10. Pupil-Staff Ratio	11. Auditor Percent	12. Equalized Percent	13. Resident Pupil Units	14. Total Pupil Units
65 RENVILLE															
BIRD ISLAND (ICA)	646	5	48	130	173	356	6.8	96.1	76	31	15.2	43.01	37.29	384	385
BUFFALO LAKE (ICA)	647	2	16	135	113	266	3.5	96.0	76	19	14.7	43.50	36.10	291	292
DANUBE (ICA)	648		14	149	144	307	5.6	96.6	83	23	13.0	38.49	32.29	342	330
FAIRFAX (ICA)	649	1	23	125	169	318	2.6	97.0	75	28	11.4	23.32	19.96	357	357
FRANKLIN (ICA)	650	2	19	57	48	126	1.2	98.0	59	13	12.9	52.13	45.66	132	134
HECTOR (ICA)	651	3	35	184	185	407	3.1	95.9	85	32	11.8	47.06	39.15	444	440
MORTON (ASE)	652		23	142	105	270	35.2	94.2	76	12	12.5	42.67	35.67	290	287
OLIVIA (ICA)	653	9	56	329	275	669	5.2	95.5	73	45	12.4	44.77	38.99	724	726
RENVILLE (ICA)	654	3	29	220	167	419	2.9	96.1	87	27	10.3	35.59	29.93	456	454
SACRED HEART (ICA)	655		17	133	84	234	3.3	96.8	75	26	15.2	39.85	33.63	250	248
66 RICE															
FARIBAULT	656	23	295	2,051	1,780	4,149	4.8	94.1	79	287	14.4	69.53	60.42	4,541	4,586
MORRISTOWN (ICA)	657	2	27	160	139	328	2.0	96.1	57	24	14.2	52.90	49.46	356	309
NORTHFIELD	659	13	248	1,513	1,391	3,165	3.3	95.0	81	211	15.1	65.73	56.40	3,463	3,508
67 ROCK															
HILLS-BEAVER CREEK	671		29	202	212	443	1.8	96.3	79	33	13.3	45.29	39.00	493	490
LUVERNE (ICA)	670	8	86	570	484	1,148	2.4	96.1	46	98	12.5	47.11	39.99	1,255	1,354
MAGNOLIA (ICA)	669	1	19	87	81	188	7.0	96.7	87	13	8.1	32.38	27.36	203	198
68 ROSEAU															
BADGER	676	1	24	110	114	249	1.6	95.8	65	22	11.4	89.88	80.90	272	276
GREENBUSH	678	4	30	197	185	416	.0	96.2	78	36	11.2	79.59	71.95	457	450
ROSEAU	682	9	105	651	590	1,355	.8	95.6	76	86	15.6	68.52	62.76	1,484	1,482
WARROAD	690	11	125	702	551	1,389	5.7	94.7	94	89	15.7	77.19	73.10	1,493	1,505
69 ST. LOUIS															
BABBITT	692	1	34	255	260	550	2.2	95.8	64	40	13.3	16.90	14.92	610	595
CHISHOLM	695	3	76	534	499	1,112	4.5	94.9	81	76	14.8	29.92	26.15	1,226	1,258
DULUTH	709	59	1,114	6,823	5,961	13,957	9.2	93.5	63	955	14.7	63.56	54.47	15,203	15,425
ELY	696	4	56	373	354	787	4.9	95.3	55	57	14.9	32.64	28.53	866	935
EVELETH (ICA)	697	4	84	496	554	1,138	5.3	95.2	74	60	15.2	34.30	29.80	1,262	1,255
FLOODWOOD	698	1	31	171	116	319	1.2	96.3	72	27	11.5	43.83	41.68	339	340
GILBERT (ICA)	699	2	35	276	239	552	4.9	94.5	57	53	14.2	17.71	14.98	606	604
HERMANTOWN	700	5	120	790	715	1,630	1.9	95.9	100	96	17.4	62.24	55.52	1,785	1,852
HIBBING	701	22	220	1,558	1,687	3,487	2.2	94.6	79	232	15.2	34.76	30.69	3,892	3,982
MESABI EAST	2711	14	81	715	837	1,647	1.3	94.8	83	104	15.5	25.49	23.32	1,858	1,855
MOUNTAIN IRON-BUHL	712	5	63	404	455	927	3.6	95.4	81	56	13.2	30.75	28.13	1,035	837
NETT LAKE(ASE)	707		11	48	31	90	100.0	93.5	67	10	6.1	44.69	38.48	94	94
PROCTOR	704	6	155	1,019	1,023	2,203	2.4	95.7	89	145	15.2	60.43	50.58	2,432	2,461
ST. LOUIS CO.(ASE)	710	10	164	1,197	1,146	2,517	11.8	94.7	90	190	12.7	37.81	33.92	2,781	2,705
TOWER-SOUDAN	708	1	28	162	182	373	10.6	94.5	86	19	16.2	44.52	36.46	413	391
VIRGINIA	706	6	161	920	881	1,968	5.1	95.3	95	149	14.7	24.46	21.13	2,153	2,441
70 SCOTT															
BELLE PLAINE	716	6	74	440	432	952	2.5	95.7	70	69	13.6	59.94	49.21	1,044	1,041
JORDAN	717	6	83	445	519	1,053	2.5	94.2	85	69	14.6	64.11	56.36	1,168	1,139
NEW PRAGUE	721	8	143	847	944	1,942	1.5	96.2	83	118	16.8	54.26	47.53	2,154	2,212
PRIOR LAKE	719	17	297	1,742	1,476	3,532	2.6	95.7	98	189	18.4	49.36	43.49	3,826	3,808
SHAKOPEE	720	26	225	1,232	1,183	2,666	3.7	94.8	55	161	16.9	66.51	68.30	2,912	3,045

District Number	Revenue %			1991 - 92 Expenditures per Pupil Unit																	Other Measures per Pupil Unit				
	15. Federal	16. State	17. Local and Other	18. District and School Admin.	19. District Support Services	20. Regular Instruction	21. Vocational Instruction	22. Exceptional Instruction	23. Instructional Support Services	24. Pupil Support Services	25. Operations and Maintenance	26. Food Service	27. Pupil Transportation	28. Other Oper. Program	29. Total PK-12 Operating Expenditures	30. Community Service	31. Capital Outlay	32. Building Construction	33. Debt Service	34. Operating Funds Balance	35. Change in Funds Balance	36. State and Local Oper. Costs	37. Long Term Debt	38. 1991 Adj. Net Tax Capacity	
646	6	50	44	299	170	2058	76	547	138	64	448	236	404	55	4495	133	448	0	0	953	247	3659	96	4,034	
647	6	56	38	406	114	2014	55	446	118	62	385	249	297	62	4209	62	467	0	0	742	236	3521	0	4,987	
648	7	59	34	324	87	1922	42	552	142	24	331	209	337	62	4031	66	80	0	0	86	166	3290	0	4,293	
649	3	66	31	400	152	2097	224	629	130	48	359	216	424	71	4749	248	103	0	0	356	98	4037	0	4,426	
650	4	42	54	579	156	1946	70	440	144	106	580	408	241	63	4734	138	674	0	0	428	109	4094	315	6,377	
651	4	53	43	304	92	2057	55	385	118	82	491	161	198	90	4032	69	204	0	128	401	293	3554	225	4,794	
652	16	62	22	372	96	2840	0	554	35	76	225	172	219	24	4612	229	373	0	0	181	309	3524	0	2,677	
653	4	66	30	232	95	2141	56	598	99	63	258	162	256	113	4074	200	383	0	0	2	181	3452	122	4,034	
654	4	53	43	338	91	1980	59	514	144	25	343	112	247	67	3918	176	258	0	0	171	167	3397	0	5,186	
655	7	57	36	342	92	2018	53	869	161	25	349	349	220	66	4543	81	140	0	0	198	96	3797	0	4,506	
656	4	60	36	209	91	2073	76	1088	254	62	377	201	326	87	4843	145	222	0	295	226	59	4088	1752	2,476	
657	5	64	31	300	134	1821	91	443	105	67	293	236	213	142	3847	91	197	0	420	601	376	3201	2194	1,916	
659	2	56	42	273	130	1958	55	666	138	127	344	149	332	92	4265	208	243	0	1257	585	59	3702	1778	2,986	
671	6	64	30	409	102	2119	181	601	139	43	326	218	289	130	4557	74	249	0	0	40	248	3774	94	3,272	
670	5	61	34	250	82	2150	77	541	139	205	340	179	209	58	4229	200	355	0	0	637	10	3653	12	2,587	
669	6	65	29	258	112	3347	0	590	25	5	213	149	282	50	5032	84	192	0	0	566	293	4424	0	4,067	
676	4	52	44	345	169	2383	60	514	260	149	375	257	235	471	5217	53	383	0	176	809	658	4323	1781	1,855	
678	6	57	37	286	93	2446	184	735	127	44	369	204	387	191	5068	67	530	0	0	6	277	3932	0	2,229	
682	5	62	33	229	88	2019	80	741	145	49	356	160	330	119	4317	91	250	944	571	298	95	3536	6411	1,835	
690	3	47	50	272	76	1897	98	435	130	111	368	192	324	50	3953	92	248	4856	715	475	35	3235	9227	1,906	
692	3	47	50	544	132	2768	0	588	108	120	649	177	427	350	5863	67	275	251	46	436	17	5195	963	1,538	
695	3	70	27	352	139	2101	30	707	169	70	612	127	200	341	4847	94	387	1515	318	368	242	4370	2669	1,110	
709	5	72	23	315	127	1679	184	925	309	204	446	155	249	175	4767	260	541	350	175	59	132	4174	1765	2,227	
696	3	61	36	326	106	2353	34	500	185	99	521	153	179	192	4647	96	373	883	145	476	12	4213	1257	2,191	
697	4	66	30	245	133	2234	147	529	158	161	439	218	312	105	4681	81	294	2450	319	470	32	3997	2487	1,514	
698	7	55	38	641	194	2233	115	677	175	125	537	279	308	76	5359	114	940	0	0	497	336	4582	244	4,470	
699	3	70	27	383	58	1993	29	846	264	101	418	0	327	221	4641	133	705	416	178	866	326	4168	1500	1,116	
700	2	66	32	303	153	1916	27	364	165	103	385	170	254	108	3948	108	293	682	3289	388	151	3459	4753	2,636	
701	4	69	27	293	80	2183	37	587	207	116	517	137	228	256	4642	106	330	3	179	21	255	4132	1246	1,717	
2711	3	65	32	325	130	2179	142	898	136	67	611	127	232	252	5100	75	294	0	0	135	1925	4596	38	1,691	
712	3	44	53	367	111	2570	224	840	145	55	545	139	417	415	5827	103	443	0	976	257	17	4984	4093	1,918	
707	27	62	11	864	633	4580	0	2089	592	377	682	465	556	123	10962	205	531	0	0	221	628	7388	444	16	
704	3	75	22	288	79	2034	82	539	146	80	320	146	290	200	4204	120	308	0	409	488	61	3674	2606	1,644	
710	5	56	39	269	92	2504	20	650	227	91	374	176	429	89	4920	85	367	241	355	564	19	4179	1693	2,903	
708	5	39	56	325	275	2698	0	725	87	19	516	11	384	235	5276	84	170	0	298	38	132	4494	2388	7,411	
706	3	68	29	223	92	2162	139	880	142	69	493	108	166	237	4712	69	330	0	112	697	88	4269	1067	1,820	
716	3	61	36	344	56	2161	84	690	135	54	291	156	376	123	4472	133	207	0	0	120	53	3752	7	3,204	
717	3	50	47	239	51	1455	94	512	149	130	251	187	340	774	4181	177	183	0	235	430	428	3511	616	3,042	
721	3	68	29	266	95	1888	76	510	220	94	331	162	262	83	3988	103	227	1612	218	0	704	3466	262	2,439	
719	2	57	41	172	130	1956	99	455	139	75	332	175	301	95	3929	93	211	4	434	217	139	3269	3551	3,202	
720	2	50	48	309	129	2069	67	694	196	131	371	155	260	131	4511	102	204	0	205	473	58	4005	822	3,555	

County Number and Name School District Name	District Number	1991-92 Resident Average Daily Membership					Pupil Data			Professional Staff		Tax Capacity Rates		Pupil Units (Weighted ADM)	
		1. Pre- Kindergarten Handicapped	2. Kindergarten	3. Elementary (Grades 1-6)	4. Secondary (Grades 7-12)	5. Total (Pre-K thru Grade 12)	6. Percent Minority	7. Percent Attendance	8. Percent Transported	9. Total Staff (FTE)	10. Pupil-Staff Ratio	11. Auditor Percent	12. Equalized Percent	13. Resident Pupil Units	14. Total Pupil Units
71 SHERBURNE BECKER	726	5	114	593	419	1,131	.5	95.9	84	76	15.2	21.72	21.58	1,199	1,243
BIG LAKE	727	8	131	700	526	1,365	1.1	94.7	78	81	16.0	54.82	49.61	1,461	1,411
ELK RIVER	728	30	533	3,206	2,805	6,574	2.4	94.7	92	391	16.6	64.36	58.31	7,163	7,139
72 SIBLEY															
ARLINGTON (ICA)	731	2	53	334	417	806	2.1	95.7	84	56	13.0	49.35	41.65	906	898
GAYLORD (ICA)	732	5	41	285	269	600	7.0	96.5	62	49	13.8	42.72	37.38	661	668
GIBBON (ICA)	733	1	17	130	126	274	1.6	96.0	83	24	15.4	37.72	32.25	303	303
HENDERSON (ICA)	734	4	27	136	128	295	2.9	96.2	67	21	11.6	50.39	43.54	318	331
WINTHROP (ICA)	735	2	40	195	189	426	1.9	95.1	80	32	9.5	34.59	29.51	462	442
73 STEARNS															
ALBANY	745	11	124	773	741	1,649	.4	96.3	99	111	14.7	50.27	46.09	1,809	1,808
BELGRADE (ICA)	736	7	43	300	227	577	1.1	96.5	89	39	13.8	29.64	27.83	625	598
BROOTEN (ICA)	737	3	34	186	175	398	5.3	95.4	69	35	11.0	47.64	45.02	437	432
COLD SPRING	750	12	137	846	1,075	2,070	.5	95.7	76	128	16.6	61.64	56.34	2,323	2,370
HOLDINGFORD	738	4	95	554	494	1,147	.7	96.3	81	78	14.6	51.49	47.37	1,249	1,243
KIMBALL	739	9	60	477	409	955	1.3	95.7	90	64	14.5	50.28	47.76	1,046	1,034
MELROSE	740	21	135	504	670	1,330	.1	96.3	89	94	13.7	41.72	39.14	1,463	1,430
PAYNESVILLE	741	13	104	648	575	1,340	.7	95.7	88	91	14.9	70.58	65.71	1,460	1,486
SARTELL	748	11	137	1,017	851	2,016	1.1	96.5	87	117	16.9	65.54	57.48	2,201	2,172
SAUK CENTRE	743	9	57	335	663	1,064	4.5	96.3	81	73	14.8	45.43	42.43	1,234	1,261
ST. CLOUD	742	99	895	5,473	4,755	11,222	4.5	94.0	82	680	16.7	49.44	45.09	12,219	12,446
74 STEELE															
BLOOMING PRAIRIE	756	4	63	481	431	979	10.6	96.2	60	73	13.3	36.26	32.27	1,076	1,073
ELLENDALE (ICA)	762	5	36	236	216	493	2.4	96.8	79	29	17.1	57.29	52.87	541	532
MEDFORD	763		41	247	260	548	2.9	96.4	57	36	15.4	39.04	34.94	605	617
OWATONNA	761	26	374	2,130	1,861	4,391	3.3	95.4	67	276	16.0	59.65	53.15	4,764	4,796
75 STEVENS															
CHOKID-ALBERTA	771	2	18	155	145	320	.3	97.1	80	27	11.6	58.27	51.45	354	351
HANCOCK	768	2	23	143	152	320	2.5	95.7	63	21	15.1	47.90	43.83	354	356
MORRIS (ASE)	769	3	79	507	505	1,094	4.1	95.9	87	78	15.0	53.93	49.29	1,207	1,315
76 SWIFT															
APPLETON (CSF)	784	3	35	274	301	613	9.2	96.5	81	21	14.6	49.07	37.70	686	666
BENSON	777	8	77	569	534	1,188	2.5	95.5	64	87	13.6	44.04	38.79	1,309	1,321
KERKHOVEN-MURDOCK-SUN	775	2	47	289	294	632	1.1	96.4	86	46	13.4	53.55	45.94	696	698
77 TODD															
BERTHA-HEWITT	786	2	50	267	274	593	2.9	95.4	83	45	13.6	77.43	76.50	650	682
BROWERVILLE	787	3	38	198	257	496	.2	95.3	76	37	15.1	55.07	52.81	557	622
CLARISSA (ICA)	789	1	27	162	142	332	2.5	96.6	62	25	13.8	64.06	64.44	361	306
EAGLE BEND (ICA)	790	1	12	161	179	353	2.1	94.6	78	22	12.7	53.03	52.44	401	393
GREY EAGLE	791	2	26	158	143	329	1.3	97.0	77	23	13.3	44.31	40.76	359	344
LONG PRAIRIE	792	7	82	483	547	1,119	1.2	96.0	58	70	15.9	53.62	50.51	1,243	1,262
STAPLES	793	7	98	608	686	1,399	1.7	97.1	91	112	13.9	63.59	61.42	1,557	1,771
78 TRAVERSE															
BROWNS VALLEY (ICA)	801	3	18	100	67	188	13.2	94.7	48	25	12.6	52.26	47.56	198	280
WHEATON	803	2	37	241	188	468	2.6	95.6	61	38	13.2	43.05	36.03	506	540

District Number	Revenue %			1991 - 92 Expenditures per Pupil Unit																Other Measures per Pupil Unit				
	15. Federal	16. State	17. Local and Other	18. District and School Admin.	19. District Support Services	20. Regular Instruction	21. Vocational Instruction	22. Exceptional Instruction	23. Instructional Support Services	24. Pupil Support Services	25. Operations and Maintenance	26. Food Service	27. Pupil Transportation	28. Other Oper. Program	29. Total PK-12 Operating Expenditures	30. Community Service	31. Capital Outlay	32. Building Construction	33. Debt Service	34. Operating Funds Balance	35. Change in Funds Balance	36. State and Local Oper. Costs	37. Long Term Debt	38. 1991 Adj. Net Tax Capacity
726	1	0	99	337	128	2543	9	377	130	94	823	178	251	53	4922	180	280	741	858	1719	241	4460	5122	28,649
727	3	69	28	284	76	2021	25	468	140	100	297	165	276	43	3894	83	201	0	350	502	17	3339	3884	2,088
728	2	65	33	235	73	1937	64	540	151	91	350	200	314	58	4014	97	149	1504	552	184	75	3396	5792	2,453
731	4	71	25	282	66	2174	102	421	133	81	313	207	271	31	4080	152	262	0	0	414	526-	3516	0	2,066
732	4	65	31	327	125	1978	84	426	128	106	241	222	227	67	3931	132	187	0	107	605	20	3402	605	2,978
733	14	51	35	471	183	2114	201	1053	103	31	392	287	201	170	5207	188	294	0	0	356-	420-	4019	0	4,426
734	5	76	19	453	60	1943	108	375	97	27	305	135	221	62	3786	57	295	0	139	329	59	3264	282	2,441
735	1	63	36	328	126	2149	201	255	107	142	402	203	261	96	4270	150	364	0	0	272	40-	3738	33	4,426
745	5	76	19	243	145	1973	29	495	184	76	287	205	216	72	3926	75	402	0	78	606	5	3365	171	1,384
736	4	79	17	258	109	2241	1	512	108	144	317	243	244	85	4261	79	305	0	0	123	340-	3713	0	1,400
737	12	65	23	278	87	2380	224	1021	17	49	340	223	434	72	5126	229	201	0	0	522-	75-	3890	0	2,024
750	3	68	29	298	51	2033	37	468	72	94	300	225	308	77	3964	134	244	318	258	380	114	3261	5453	1,949
738	6	78	16	274	94	1885	146	469	141	24	380	170	151	71	3806	90	267	7	307	69-	32-	3264	3786	944
739	6	73	21	329	47	1955	97	627	201	59	249	206	358	41	4170	118	143	19	388	550	115-	3421	3450	1,413
740	7	70	23	242	79	2365	85	701	159	104	305	205	467	74	4786	145	271	0	73	641	5	3772	223	2,102
741	3	65	32	252	72	2091	123	512	104	55	229	151	242	45	3877	100	293	3522	385	321	209	3349	5428	1,814
748	1	66	33	164	64	2050	71	485	182	83	285	153	260	16	3814	90	305	736	1455	579	14	3335	5960	2,079
743	6	66	28	243	131	1892	121	696	169	74	316	175	259	101	4177	145	290	0	162	117	143	3400	158	2,076
742	4	57	39	150	79	1715	59	895	272	95	303	186	217	98	4067	156	208	2	208	442	152	3562	2170	3,635
756	6	69	25	284	101	2310	99	619	137	84	226	230	242	51	4383	71	351	0	0	450	372-	3745	44	2,269
762	4	57	39	562	120	1894	41	594	77	39	392	171	229	56	4175	83	158	0	40	593	82	3619	0	2,824
763	3	73	24	317	92	2120	79	196	118	74	336	204	149	87	3772	80	198	0	0	726	69	3362	0	2,003
761	4	60	36	394	31	2105	106	602	146	167	400	181	264	90	4485	119	264	61	202	190	161-	3897	1979	2,727
771	7	48	45	385	144	2391	160	510	261	74	384	210	250	166	4936	161	579	0	0	757	140	4125	66	4,057
768	5	69	26	389	173	2077	76	408	182	101	277	183	96	81	4043	86	215	0	0	403	109-	3617	32	1,857
769	5	60	35	200	38	2071	120	575	171	57	319	178	182	64	3974	216	266	1790	322	523	59	3411	3803	2,414
784	7	68	25	273	138	2122	185	683	129	150	395	167	240	136	4617	60	231	0	0	343-	238-	3921	60	2,692
777	6	65	29	249	52	1859	196	555	149	76	307	205	169	75	3892	194	279	0	161	1096	169-	3308	184	2,518
775	7	65	28	260	93	2177	94	770	97	61	343	191	376	114	4576	72	200	0	0	379	17-	3762	0	2,948
786	9	75	16	210	75	1979	214	670	175	95	263	217	348	91	4336	106	279	0	211	150	142-	3384	4604	718
787	8	73	19	295	84	1733	303	638	58	46	346	210	291	40	4044	73	117	125	335	651	34	3304	2287	1,084
789	11	76	13	353	106	1845	244	950	152	53	238	0	388	62	4390	122	220	170	168	369	61	3466	2604	721
790	6	78	16	363	109	1903	241	436	160	55	244	429	351	64	4355	114	225	0	651	159	68	3564	571	808
791	10	65	25	475	114	2300	34	417	98	31	236	217	190	66	4180	96	409	0	0	2	116-	3496	0	1,850
792	8	73	19	245	43	1980	230	475	126	74	278	179	323	72	4024	134	375	0	258	442	128	3313	1685	1,512
793	6	75	19	288	135	1965	209	717	191	136	364	210	305	99	4619	98	354	176	369	247	144-	3826	3073	1,133
801	7	34	59	487	240	3513	0	841	188	77	428	308	187	95	6365	31	150	0	63	1321	171-	5646	0	1,995
803	6	55	39	511	37	2505	32	574	135	65	549	221	329	118	5075	95	232	0	190	141	253	4271	0	4,788

County Number and Name School District Name	District Number	1991-92 Resident Average Daily Membership					Pupil Data			Professional Staff		Tax Capacity Rates		Pupil Units (Weighted ADM)	
		1. Pre- Kindergarten Handicapped	2. Kindergarten	3. Elementary (Grades 1-6)	4. Secondary (Grades 7-12)	5. Total (Pre-K thru Grade 12)	6. Percent Minority	7. Percent Attendance	8. Percent Transported	9. Total Staff (FTE)	10. Pupil-Staff Ratio	11. Auditor Percent	12. Equalized Percent	13. Resident Pupil Units	14. Total Pupil Units
79 WABASHA															
ELGIN-MILLVILLE	806	5	44	264	216	529	2.5	96.9	76	37	14.5	31.01	27.32	575	582
LAKE CITY	813	6	100	643	606	1,355	1.2	96.5	74	98	13.8	45.05	39.42	1,488	1,496
MAZEPPA (ICA)	809	2	38	205	145	390	1.0	97.1	70	33	14.7	51.56	43.77	416	405
PLAINVIEW	810	18	84	543	474	1,119	1.3	96.2	57	77	14.6	35.73	31.76	1,220	1,230
WABASHA	811	5	50	338	436	829	1.3	96.0	87	60	13.7	49.01	42.10	936	931
80 WADENA															
MENAHGA	821	3	53	347	281	684	3.5	95.5	97	50	14.5	75.75	70.37	742	785
SEBEKA	820	5	46	299	304	654	9	99.5	93	52	12.4	51.17	49.02	721	715
VERNDALE	818	4	29	192	181	406	1.9	95.5	88	35	11.8	38.30	37.54	445	466
WADENA (ICA)	819	6	91	512	588	1,197	9	95.4	63	121	9.5	68.66	67.63	1,328	1,487
81 WASECA															
JANESVILLE-WALDORF-PE	2835	18	53	438	475	984	1.7	95.9	64	73	13.1	38.24	31.43	1,104	1,086
NEW RICHLAND (ICA)	827	6	40	303	248	597	1.0	96.2	58	44	13.2	56.07	47.27	654	655
WASECA	829	22	194	996	1,042	2,254	2.9	97.0	71	155	14.7	49.31	42.45	2,476	2,522
82 WASHINGTON															
FOREST LAKE	831	19	560	3,525	3,113	7,217	2.0	94.5	95	413	17.3	50.26	45.04	7,871	7,814
MAHTOMEDI	832	13	180	1,019	780	1,992	2.3	94.9	100	130	15.4	64.13	55.91	2,138	2,181
SOUTH WASHINGTON CO.	833	47	959	6,060	4,820	11,886	5.5	94.9	66	636	18.6	60.24	56.63	12,852	12,861
STILLWATER	834	31	546	3,803	3,623	8,003	2.6	94.9	79	452	17.6	58.68	53.17	8,817	8,820
83 WATONWAN															
BUTTERFIELD	836	2	22	116	131	271	11.6	95.6	57	25	10.4	40.65	39.31	301	298
MADELIA	837	4	54	259	306	623	13.4	96.1	63	46	13.3	58.66	53.85	690	681
ST. JAMES	840	8	100	641	558	1,307	11.6	95.7	81	91	14.4	46.15	44.91	1,429	1,441
84 WILKIN															
BRECKENRIDGE	846	7	64	486	430	987	4.5	95.3	69	64	15.6	44.87	41.73	1,085	1,103
CAMPBELL-TINTAH	852	2	17	114	96	229	5	95.8	76	20	10.6	49.72	44.70	248	237
ROTHSAY	850	1	17	118	115	251	4	96.9	84	21	12.5	48.87	45.26	276	287
85 WINONA															
LEWISTON	857	4	53	367	349	773	3.1	96.3	69	59	13.9	46.76	41.62	851	902
ST. CHARLES	858	6	80	488	448	1,022	8.4	96.6	53	68	14.9	40.05	35.76	1,118	1,105
WINONA	861	21	398	2,292	2,172	4,883	3.2	94.2	71	321	15.0	46.53	43.74	5,339	5,318
86 WRIGHT															
ANNANDALE	876	7	143	870	702	1,722	1.9	94.9	100	110	15.3	64.15	55.30	1,865	1,835
BUFFALO	877	22	319	1,990	1,824	4,155	1.2	95.7	93	248	16.8	55.14	50.73	4,549	4,565
DELANO	879	14	124	672	733	1,543	2.0	95.2	91	99	15.6	67.55	59.58	1,704	1,741
HOWARD LAKE (ASE)	880	11	40	396	391	838	1.3	95.3	76	57	15.0	57.94	52.38	936	999
MAPLE LAKE	881	3	54	381	362	800	1.5	95.5	94	55	14.1	64.82	58.92	883	868
MONTICELLO	882	22	232	1,487	1,200	2,941	3.0	93.9	91	222	13.7	50.33	48.82	3,183	3,313
ROCKFORD	883	15	125	771	545	1,456	3.0	94.7	81	95	14.5	62.77	57.25	1,558	1,500
ST. MICHAEL-ALBERTV'L	885	11	123	746	586	1,466	9	96.1	92	94	15.6	52.10	48.08	1,582	1,605
87 YELLOW MEDICINE															
CANBY	891	5	40	333	338	716	2.0	96.5	70	54	13.1	38.20	32.35	798	792
CLARKFIELD (ICA)	892	2	39	202	146	389	2.1	96.3	63	33	13.2	44.44	36.80	414	377
ECHO (ASE)	893	1	12	72	59	144	0	98.0	59	7	10.4	40.96	33.67	154	112
GRANITE FALLS (ICA)	894	12	76	446	380	914	6.9	95.4	79	58	14.7	42.48	38.02	991	986
WOOD LAKE (ICA)	896		12	65	79	156	1.4	97.6	98	11	12.4	50.41	41.63	173	172

District Number	Revenue %			1991 - 92 Expenditures per Pupil Unit																	Other Measures per Pupil Unit				
	15. Federal	16. State	17. Local and Other	18. District and School Admin.	19. District Support Services	20. Regular Instruction	21. Vocational Instruction	22. Exceptional Instruction	23. Instructional Support Services	24. Pupil Support Services	25. Operations and Maintenance	26. Food Service	27. Pupil Transportation	28. Other Oper. Program	29. Total PK-12 Operating Expenditures	30. Community Service	31. Capital Outlay	32. Building Construction	33. Debt Service	34. Operating Funds Balance	35. Change in Funds Balance	36. State and Local Oper. Costs	37. Long Term Debt	38. 1991 Adj. Net Tax Capacity	
806	4	76	20	282	56	2152	28	700	61	5	311	214	336	42	4185	51	184	0	136	196	205	3517	373	2,020	
813	3	65	32	264	69	2099	196	468	138	119	323	194	262	75	4208	126	254	0	196	396	169	3650	494	2,578	
809	2	69	29	297	103	1650	84	422	213	82	390	265	293	178	3977	8	152	0	479	372	504	3185	1247	2,386	
810	4	77	19	250	96	1958	66	437	122	143	287	171	260	71	3860	64	330	71	0	593	41	3323	3508	1,961	
811	4	66	30	322	56	2023	112	570	160	83	291	196	332	79	4225	72	201	225	167	543	68	3548	4785	2,598	
821	7	73	20	280	108	1969	73	487	147	80	341	253	256	35	4028	70	242	291	195	749	132	3337	6414	1,336	
820	8	76	16	382	121	1863	283	806	149	74	323	224	272	68	4566	92	418	0	141	470	112	3760	1136	1,096	
818	14	70	16	324	52	2062	241	599	90	25	241	229	209	38	4111	87	903	0	0	490	117	3426	246	1,435	
819	9	53	38	280	110	2157	156	1207	128	108	329	165	199	88	4926	78	474	3630	340	358	41	4077	5772	1,474	
2835	6	69	25	354	62	1932	67	714	145	34	303	213	327	258	4407	66	273	0	0	191	94	3672	0	2,888	
827	4	54	42	261	142	1981	159	477	110	70	463	147	209	65	4084	94	334	269	560	656	136	3520	5777	3,741	
829	4	61	35	266	125	1996	91	685	183	124	293	195	222	100	4280	275	269	0	127	255	83	3566	776	2,642	
831	3	62	35	264	60	2003	61	406	184	78	306	178	273	61	3875	131	299	0	575	589	55	3312	1628	2,908	
832	3	44	53	365	166	2476	52	541	56	82	382	139	272	153	4683	127	322	13	470	707	478	4083	5761	5,174	
833	2	57	41	243	200	1902	111	494	275	100	357	178	186	16	4063	156	288	494	348	550	1	3614	2436	2,938	
834	2	41	57	263	185	2390	48	401	188	176	323	146	218	121	4458	121	171	1475	262	537	55	3931	3992	4,564	
836	5	55	40	360	107	2519	47	484	140	32	321	199	239	85	4534	102	213	0	0	424	411	3872	0	3,775	
837	5	55	40	299	64	1970	58	675	81	81	311	195	299	141	4175	144	282	0	0	186	520	3457	0	3,469	
840	4	65	31	281	63	1957	94	551	134	137	324	189	253	63	4045	153	210	0	180	641	122	3519	490	2,582	
846	6	60	34	217	71	1950	36	664	151	96	324	205	180	134	4027	77	161	0	106	583	18	3425	348	3,060	
852	9	27	64	681	130	2310	505	775	145	95	553	279	387	101	5960	0	605	0	0	219	181	5125	0	7,611	
850	5	56	39	466	224	2054	530	309	159	24	316	274	379	49	4783	167	242	0	0	1842	111	3812	0	3,178	
857	5	70	25	276	100	1994	91	617	57	101	293	230	246	61	4068	183	215	0	195	296	46	3459	646	2,338	
858	5	76	19	233	87	2149	60	515	143	78	231	231	211	32	3970	83	232	0	52	538	38	3403	167	1,742	
861	5	41	54	256	74	1913	47	668	116	128	312	178	316	139	4146	205	164	103	0	116	138	3537	5	2,818	
876	3	57	40	303	99	2118	54	605	159	103	330	215	362	57	4405	111	171	1067	448	268	78	3768	4501	3,093	
877	3	65	32	178	105	1890	76	504	171	136	301	183	305	105	3956	156	145	82	346	352	14	3357	2298	2,451	
879	2	57	41	253	66	1947	36	579	146	105	315	187	330	99	4064	143	213	3389	604	363	46	3427	6863	2,903	
880	4	56	40	340	93	1850	119	650	155	65	318	171	264	117	4143	105	454	310	216	616	332	3432	1020	2,318	
881	3	62	35	332	136	1993	45	500	153	77	261	198	308	67	4071	163	283	37	512	391	26	3464	5214	2,281	
882	4	36	60	213	113	2197	76	1091	123	79	375	181	278	54	4780	141	145	1929	463	485	47	4132	5049	5,886	
883	2	61	37	339	68	2015	38	589	120	78	298	193	227	36	4000	155	145	2905	599	312	82	3511	7135	2,286	
885	2	71	27	380	81	1988	22	507	125	102	255	163	325	38	3986	161	125	6714	408	536	31	3426	5491	1,941	
891	5	70	25	293	87	2247	75	558	137	114	335	209	199	22	4276	115	420	0	66	641	10	3717	20	2,769	
892	6	56	38	466	119	2505	0	556	276	27	505	405	313	104	5275	151	381	1738	218	252	464	4462	241	3,644	
893	7	43	50	329	200	2486	0	881	194	9	525	292	610	102	5628	305	697	0	0	157	432	4519	0	4,855	
894	4	63	33	317	82	2162	24	624	153	66	379	204	333	50	4393	236	348	0	833	278	69	3678	1150	2,988	
896	2	57	41	500	181	2245	76	229	195	106	408	232	382	70	4622	135	153	0	0	1278	254	3988	0	3,828	

DATA FOR COUNTIES, DEVELOPMENT REGIONS & STATE

		1991-92 Resident Average Daily Membership					Pupil Data			Professional Staff		Tax Capacity Rates		Pupil Units (Weighted ADM)	
		1. Pre-Kindergarten Handicapped	2. Kindergarten	3. Elementary (Grades 1-6)	4. Secondary (Grades 7-12)	5. Total (Pre-K thru Grade 12)	6. Percent Minority	7. Percent Attendance	8. Percent Transported	9. Total Staff (FTE)	10. Pupil-Staff Ratio	11. Auditor Percent	12. Equalized Percent	13. Resident Pupil Units	14. Total Pupil Units
KITTSOON		7	106	552	502	1,167	1.2	96.0	67	109	10.6	56.45	50.48	1,264	1,259
MARSHALL		11	135	1,089	1,107	2,342	3.3	95.9	62	209	11.4	44.74	38.62	2,607	2,679
NORMAN		5	99	718	742	1,564	7.4	95.4	89	131	12.5	54.83	49.09	1,737	1,888
PENNINGTON		5	183	1,159	1,153	2,500	4.0	93.1	65	169	14.6	58.22	55.09	2,755	2,746
POLK		21	443	3,097	2,798	6,359	9.8	94.9	63	459	13.8	45.96	40.92	6,989	7,119
RED LAKE		2	57	426	515	1,000	4.2	96.2	85	90	11.2	49.47	47.45	1,124	1,138
ROSEAU		25	284	1,660	1,440	3,409	2.7	95.3	83	233	14.6	75.11	69.52	3,709	3,713
REGION 01		76	1,307	8,701	8,257	18,341	5.8	95.0	70	1,400	13.2	53.02	47.65	20,184	20,542
BELTRAMI		44	671	3,608	3,013	7,336	23.0	93.2	88	532	13.8	54.97	51.09	7,908	8,009
CLEARWATER		19	144	838	831	1,832	12.2	93.7	92	130	14.3	40.49	39.52	2,008	2,031
HUBBARD		23	161	1,221	1,172	2,577	5.6	94.1	93	184	14.4	43.62	39.04	2,853	2,952
LAKE OF THE WOODS		5	67	389	305	766	2.5	94.3	87	56	13.4	58.82	55.88	824	814
MAHNOMEN		6	92	692	684	1,474	48.0	91.7	78	125	11.8	47.41	42.56	1,634	1,643
REGION 02		97	1,135	6,748	6,005	13,985	19.9	93.3	89	1,027	13.7	49.10	45.32	15,227	15,449
AITKIN		14	144	1,117	913	2,188	4.2	95.3	86	161	13.3	45.86	43.06	2,392	2,349
CARLTON		32	457	2,895	2,911	6,295	7.8	94.6	82	428	14.9	58.75	53.26	6,946	7,110
COOK		2	41	326	292	661	13.1	93.6	85	51	12.9	32.73	28.74	729	726
ITASCA		48	569	3,899	3,777	8,293	7.0	94.7	87	537	15.1	41.90	38.01	9,146	9,153
KOOCHICHING		7	182	1,164	1,190	2,543	5.9	95.1	92	198	13.0	46.38	32.85	2,812	2,855
LAKE		15	168	1,098	1,053	2,334	1.6	94.7	80	144	15.6	43.98	34.61	2,565	2,552
ST. LOUIS		143	2,433	15,741	14,940	33,257	6.7	94.4	75	2,269	14.7	49.35	42.95	36,562	37,029
REGION 03		261	3,994	26,240	25,076	55,571	6.6	94.6	79	3,788	14.6	47.40	41.45	61,153	61,775
BECKER		37	373	2,388	2,009	4,807	9.7	95.1	79	348	13.6	45.27	43.23	5,233	5,167
CLAY		29	706	4,432	3,704	8,871	8.4	94.9	69	616	14.2	47.01	41.72	9,641	9,638
DOUGLAS		36	414	2,621	2,523	5,594	1.3	95.4	84	386	14.7	44.46	40.60	6,151	6,209
GRANT		3	102	733	621	1,459	1.8	96.0	73	104	13.5	43.12	40.11	1,596	1,615
OTTER TAIL		36	648	4,264	3,946	8,894	2.5	95.2	78	569	15.6	47.81	42.48	9,765	9,750
POPE		7	150	1,041	824	2,022	2.0	96.2	86	78	15.0	61.31	58.28	2,197	2,139
STEVENS		7	120	805	802	1,734	3.2	96.1	81	126	14.3	54.34	49.19	1,916	2,022
TRAVERSE		5	55	341	255	656	6.5	95.2	57	63	12.8	44.42	37.62	705	820
WILKIN		10	98	718	641	1,467	3.2	95.7	73	105	13.9	46.92	43.16	1,611	1,628
REGION 04		170	2,666	17,343	15,325	35,504	4.9	95.3	76	2,395	14.5	47.34	42.95	38,815	38,988
CASS		36	324	2,053	1,779	4,192	20.6	93.9	85	324	12.5	47.79	41.90	4,565	4,444
CROW WING		69	696	4,282	3,901	8,948	2.5	94.8	87	595	15.1	46.68	41.43	9,790	9,867
MORRISON		50	435	2,959	3,121	6,565	1.3	96.3	84	411	15.5	52.43	49.76	7,295	7,148
TODD		23	333	2,037	2,228	4,621	1.7	96.2	76	334	14.2	58.11	55.63	5,132	5,380
WADENA		18	219	1,350	1,354	2,941	1.7	96.3	81	258	11.4	62.58	60.49	3,238	3,453
REGION 05		196	2,007	12,681	12,383	27,267	4.7	95.4	84	1,922	14.1	49.66	44.84	30,019	30,293

The figures listed on the next six pages are, for each county, totals for all school districts which have their central offices in the county. Totals are also listed for the state's thirteen development regions and for the entire state. Counties are listed by region, with the regions in numerical order.

	Revenue %			1991 - 92 Expenditures per Pupil Unit																	Other Measures per Pupil Unit				
	15. Federal	16. State	17. Local and Other	18. District and School Admin.	19. District Support Services	20. Regular Instruction	21. Vocational Instruction	22. Exceptional Instruction	23. Instructional Support Services	24. Pupil Support Services	25. Operations and Maintenance	26. Food Service	27. Pupil Transportation	28. Other Oper. Program	29. Total PK-12 Operating Expenditures	30. Community Service	31. Capital Outlay	32. Building Construction	33. Debt Service	34. Operating Funds Balance	35. Change in Funds Balance	36. State and Local Oper. Costs	37. Long Term Debt	38. 1991 Adj. Net Tax Capacity	
	4 41 55			549	168 2723	64		491 195	64	536	245		347 211		5593	107 328		0 193		133-	3247	4801	1213	5,771	
	5 55 40			439	69 2254	109		544 133	75	461	258		303 172		4817	86 417		1469 121		358	134-	4015	309	3,778	
	6 54 40			288	55 2105	440		597 71	25	338	254		373 125		4672	131 439		61 201		557	3771-	3723	889	3,556	
	5 68 27			347	132 1899	202		746 175	75	407	207		223 160		4573	140 371		0 228		375	33	3920	1547	1,769	
	4 63 33			301	102 2074	179		581 149	97	340	221		224 86		4355	95 284		6 125		397	805	3813	684	2,788	
	6 69 25			427	219 2405	104		466 144	72	377	225		306 88		4832	149 584		0 42		503-	180-	4012	243	2,127	
	4 54 42			262	90 2048	98		600 145	81	364	186		328 126		4328	86 293		2346 531		369	135	3521	6414	1,913	
	5 59 36			339	106 2130	171		591 145	78	383	222		279 126		4570	105 348		623 218		314	1803	3864	1833	2,832	
	11 65 24			281	97 2044	134		869 140	85	437	197		331 212		4828	110 214		210 208		277	153	3744	2358	1,707	
	8 70 22			292	78 2196	88		633 167	77	281	200		363 137		4512	74 256		0 26		286	119	3669	0	2,109	
	7 58 35			318	115 1847	141		698 216	98	354	190		280 61		4318	93 236		7 149		186	55-	3640	1027	3,528	
	6 56 38			356	44 2141	50		590 147	74	275	208		301 74		4259	169 322		2374 572		546	39-	3538	5654	2,084	
	23 60 17			404	94 2488	124		857 215	86	396	280		356 82		5382	79 628		0 1758		341	20	3983	1869	1,789	
	11 63 26			307	95 2079	124		790 166	86	388	206		326 152		4718	102 273		761 357		282	85	3728	1924	2,131	
	5 51 44			343	119 2130	80		478 167	102	416	179		354 347		4714	94 291		1022 507		509	65-	3988	5172	3,865	
	6 65 29			290	125 1869	103		647 145	129	330	164		272 302		4377	124 301		579 267		267	28	3689	2988	2,103	
	6 31 63			415	81 2583	9		636 133	121	486	122		288 48		4920	137 305		0 0		460	134	4191	0	7,587	
	5 53 42			284	100 2297	101		753 179	119	446	158		364 145		4946	86 343		118 201		77	124-	4165	1121	3,851	
	5 68 27			294	90 2367	120		622 107	150	509	181		274 89		4803	117 400		0 23		385	222-	4117	4470	2,774	
	4 61 35			390	83 2227	96		564 181	111	457	138		277 261		4785	120 431		116 29		631-	213-	4131	114	2,493	
	4 67 29			311	118 2002	118		769 231	140	463	149		266 196		4762	164 429		365 371		151	507	4180	1858	2,126	
	5 64 31			309	113 2068	110		724 202	133	445	154		286 202		4748	141 394		347 305		148	268	4109	2031	2,560	
	6 65 29			313	98 2057	122		637 162	110	319	200		374 77		4467	93 237		28 181		513	52	3667	1513	2,375	
	5 72 23			265	95 2067	60		864 166	96	277	162		234 170		4456	124 360		0 103		259	5	3895	864	2,255	
	6 62 32			222	62 2032	80		598 146	123	289	193		225 69		4040	94 244		952 211		379	14-	3448	4695	2,854	
	5 61 34			402	110 2149	112		422 155	61	338	200		217 86		4252	167 484		4 73		322	107-	3671	517	2,885	
	5 64 31			265	85 2007	135		560 147	87	303	172		292 66		4119	95 294		49 150		520	1-	3456	1263	2,620	
	2 72 26			128	69 2581	0		252 55	15	179	124		322 49		3774	116 405		531 113		333	45	3296	1122	2,139	
	5 59 36			265	80 2128	119		534 189	67	323	184		179 85		4154	184 312		1165 209		544	43	3572	2414	2,615	
	6 47 47			503	106 2852	21		666 153	69	508	251		281 110		5521	73 204		0 147		473	134	4745	0	4,002	
	6 53 41			328	107 2022	192		618 151	83	356	228		245 114		4444	82 240		0 72		675	3-	3743	234	3,783	
	5 65 30			270	87 2094	97		632 151	91	299	180		268 97		4267	109 306		257 147		420	8	3636	1694	2,590	
	10 47 43			338	121 2193	81		837 241	83	359	221		362 81		4918	110 405		1200 394		681	63	3892	3667	4,768	
	6 53 41			240	68 1995	196		733 194	121	341	205		296 368		4757	97 224		525 181		338	15-	4024	1867	3,838	
	7 70 23			292	86 1809	184		675 132	75	333	201		341 71		4196	111 223		371 207		94	93-	3433	2165	1,661	
	7 74 19			290	95 1954	219		619 148	89	305	208		314 78		4317	107 308		82 304		310	25-	3529	2401	1,163	
	9 64 27			307	104 2041	175		878 131	83	319	206		228 65		4538	80 467		1629 220		491	54-	3756	4125	1,353	
	7 60 33			283	89 1978	178		731 171	94	333	207		312 170		4545	102 293		635 245		343	28-	3747	2548	2,725	

		1991-92 Resident Average Daily Membership					Pupil Data			Professional Staff		Tax Capacity Rates		Pupil Units (Weighted ADM)	
		1. Pre-Kindergarten Handicapped	2. Kindergarten	3. Elementary (Grades 1-6)	4. Secondary (Grades 7-12)	5. Total (Pre-K thru Grade 12)	6. Percent Minority	7. Percent Attendance	8. Percent Transported	9. Total Staff (FTE)	10. Pupil-Staff Ratio	11. Auditor Percent	12. Equalized Percent	13. Resident Pupil Units	14. Total Pupil Units
KANDIYOHI		39	606	3,506	3,096	7,247	8.8	95.1	84	541	13.3	49.32	43.03	7,882	8,043
MCLEOD		38	506	2,710	2,734	5,988	2.4	95.2	81	395	15.2	50.65	44.74	6,559	6,687
MEEKER		43	424	2,630	2,507	5,604	2.8	95.7	91	364	15.5	48.09	45.02	6,158	6,142
RENVILLE		25	280	1,604	1,463	3,372	5.6	96.2	77	256	12.9	40.50	34.41	3,674	3,652
REGION 06E		145	1,816	10,450	9,800	22,211	5.1	95.5	84	1,556	14.2	47.24	41.63	24,272	24,523
BIG STONE		9	101	613	519	1,242	3.5	95.9	66	97	13.3	35.36	30.74	1,346	1,478
CHIPPEWA		9	173	1,257	1,094	2,533	2.5	95.8	66	175	14.3	43.73	38.50	2,778	2,794
LAC QUI PARLE		9	129	749	677	1,564	1.6	96.2	65	85	14.5	44.68	37.88	1,704	1,746
SWIFT		13	159	1,132	1,129	2,433	3.0	95.9	74	154	13.7	48.00	41.91	2,693	2,685
YELLOW MEDICINE		20	179	1,118	1,002	2,319	3.9	96.1	74	163	13.6	42.24	36.15	2,533	2,440
REGION 06W		60	741	4,869	4,421	10,091	3.0	96.0	69	674	13.9	43.44	37.59	11,054	11,143
CHISAGO		33	501	3,193	2,575	6,302	1.8	94.0	90	363	16.9	57.67	52.56	6,825	6,690
ISANTI		30	413	2,692	2,048	5,183	2.5	94.6	90	314	16.4	43.36	39.41	5,594	5,595
KANABEC		14	195	1,321	1,053	2,583	1.8	95.1	85	167	15.4	53.67	48.30	2,800	2,809
MILLE LACS		45	433	2,874	2,326	5,678	5.8	93.9	91	386	14.5	60.75	54.37	6,167	6,111
PINE		7	338	2,076	1,844	4,265	4.2	95.1	93	311	13.8	53.59	50.34	4,647	4,762
REGION 07E		129	1,880	12,156	9,846	24,011	3.4	94.4	90	1,541	15.4	54.53	49.71	26,034	25,968
BENTON		27	383	2,339	2,052	4,801	1.0	95.5	90	291	16.2	49.07	43.71	5,231	5,151
SHERBURNE		43	778	4,499	3,750	9,070	2.0	94.8	89	548	16.3	35.89	34.52	9,825	9,792
STEARNS		199	1,821	11,113	10,635	23,768	2.8	95.1	84	1,510	15.8	51.39	47.00	26,073	26,281
WRIGHT		105	1,160	7,313	6,343	14,921	1.9	95.1	91	980	15.2	56.09	52.00	16,263	16,427
REGION 07W		374	4,142	25,264	22,780	52,560	2.2	95.1	87	3,329	15.7	47.81	44.50	57,394	57,650
COTTONWOOD		6	163	1,061	1,077	2,307	5.6	95.8	65	185	12.3	55.65	51.20	2,550	2,570
JACKSON		15	141	948	930	2,034	4.5	96.2	62	154	13.4	47.71	41.06	2,243	2,228
LINCOLN		2	83	624	597	1,306	2	96.8	84	93	11.9	42.28	38.42	1,318	1,379
LYON		19	360	2,092	2,100	4,571	4.7	95.7	74	333	14.3	45.56	39.90	5,028	5,281
MURRAY		11	134	711	695	1,551	8	96.4	73	119	12.9	49.38	43.39	1,695	1,677
NOBLES		23	243	1,686	1,612	3,564	8.6	93.6	81	254	13.7	47.31	42.54	3,931	3,912
PIPESTONE		7	153	966	854	1,980	4.9	95.7	61	163	13.3	45.50	40.24	2,288	2,342
REDWOOD COUNTY		15	220	1,439	1,466	3,140	2.3	96.1	84	246	12.8	50.31	42.88	3,476	3,615
ROCK		9	134	859	777	1,779	2.5	96.2	58	144	12.2	44.46	37.88	1,953	2,042
REGION 08		107	1,631	10,386	10,108	22,232	4.4	95.6	73	1,691	13.2	48.05	42.27	24,481	25,046
BLUE EARTH		62	708	4,761	4,103	9,634	3.2	95.5	62	649	14.8	48.70	42.71	10,531	10,506
BROWN		24	347	2,034	1,944	4,349	3.1	96.0	76	299	14.6	39.35	35.14	4,762	4,777
FARIBAULT		24	171	1,549	1,445	3,189	4.2	96.1	63	233	13.2	48.85	42.08	3,540	4,175
LESUEUR		42	338	1,983	1,943	4,306	2.3	95.6	61	291	14.2	56.94	49.70	4,724	4,682
MARTIN		33	279	1,999	1,913	4,224	2.5	95.1	78	288	14.6	48.14	43.05	4,660	4,722
NICOLLET		18	163	1,031	1,046	2,258	2.4	94.5	69	160	14.4	60.47	52.56	2,492	2,564
SIBLEY		14	178	1,080	1,129	2,401	3.5	95.9	76	182	12.8	42.04	36.06	2,653	2,642
WASECA		46	287	1,737	1,765	3,835	2.3	96.6	67	272	14.0	47.85	40.53	4,235	4,263
WATONWAN		14	176	1,016	995	2,201	12.1	95.8	73	162	13.4	49.27	46.99	2,421	2,420
REGION 09		277	2,647	17,190	16,283	36,397	3.5	95.7	68	2,536	14.2	48.22	42.41	40,017	40,752

	Revenue %			1991 - 92 Expenditures per Pupil Unit																	Other Measures per Pupil Unit				
	15. Federal	16. State	17. Local and Other	18. District and School Admin.	19. District Support Services	20. Regular Instruction	21. Vocational Instruction	22. Exceptional Instruction	23. Instructional Support Services	24. Pupil Support Services	25. Operations and Maintenance	26. Food Service	27. Pupil Transportation	28. Other Oper. Program	29. Total PK-12 Operating Expenditures	30. Community Service	31. Capital Outlay	32. Building Construction	33. Debt Service	34. Operating Funds Balance	35. Change in Funds Balance	36. State and Local Oper. Costs	37. Long Term Debt	38. 1991 Adj. Net Tax Capacity	
	4 65 31			274	79 2018	140	845 145		75 292	175	287 105		4434		119 237	92 152		311	27 3788	2054	2,618				
	3 67 30			308	88 1951	80	463 154		113 357	183	271 101		4067		102 278	254 244		177	120- 3516	1958	2,356				
	4 68 28			273	90 1980	65	585 129		74 283	172	286 105		4041		117 195	249 144		474	22 3422	1854	1,962				
	6 58 36			331	111 2108	69	552 120		56 359	202	285 74		4266		148 298	0 15		314	62 3581	73	4,416				
	4 65 31			291	89 2004	94	632 139		82 318	180	282 99		4210		118 247	162 155		317	9- 3591	1677	2,653				
	6 61 33			380	108 2063	211	611 119		121 376	227	282 139		4638		134 410	0 72		146	279- 3914	184	2,864				
	8 64 28			270	87 2012	117	693 143		66 327	364	229 120		4428		162 303	0 75		380	51- 3575	119	2,429				
	5 65 30			288	136 2127	114	524 132		90 360	168	267 102		4309		148 364	0 0		133-	56 3625	92	3,151				
	6 66 28			258	84 2008	167	643 131		91 338	192	241 100		4251		129 247	0 79		544	147- 3580	105	2,673				
	5 63 32			345	102 2264	39	576 172		76 393	243	303 53		4566		180 379	269 392		367	143- 3874	496	3,198				
	6 64 30			301	100 2090	124	618 141		85 356	247	261 100		4423		152 330	59 133		309	107- 3693	206	2,829				
	3 68 29			286	156 1968	113	519 184		91 318	184	216 103		4138		138 318	83 669		431	63 3644	2855	2,046				
	6 70 24			242	92 2037	198	796 132		134 340	181	205 44		4401		99 219	23 143		321	10- 3731	1954	1,678				
	6 72 22			271	72 1882	112	503 149		109 338	180	191 56		3863		127 211	909 214		458	100 3306	1465	1,556				
	5 67 28			300	99 2029	95	611 152		117 324	213	350 120		4410		128 310	1547 834		241	48 3580	4451	1,975				
	6 62 32			297	131 1969	81	805 148		120 347	211	297 81		4488		96 238	11 352		665	49 3756	3155	2,136				
	5 67 28			280	115 1988	121	651 155		114 331	195	257 85		4293		118 269	491 487		407	45 3632	2944	1,913				
	3 72 25			231	83 1941	57	508 182		105 285	194	286 79		3952		136 271	5 239		361	6 3359	3293	1,840				
	2 55 43			255	80 2026	52	509 147		92 402	192	301 55		4112		105 173	1190 562		419	87 3523	5427	5,597				
	4 63 33			203	82 1895	71	716 203		85 299	188	252 79		4075		133 247	291 311		405	86 3483	2662	2,637				
	3 56 41			260	97 2008	61	659 146		101 315	186	301 75		4208		144 179	1833 438		401	16 3598	4427	3,162				
	3 61 36			231	86 1953	64	646 175		93 320	189	278 74		4108		132 217	857 383		402	59 3511	3693	3,220				
	4 49 47			344	119 2201	133	817 129		69 394	222	212 193		4833		108 242	0 69		268	123 4194	359	3,873				
	5 55 40			289	70 2164	102	564 118		76 413	222	268 91		4377		161 260	0 221		441	132 3621	1103	4,026				
	5 61 34			340	127 2435	193	497 97		79 339	215	294 66		4686		109 347	0 26		538	30- 3981	106	3,109				
	5 58 37			301	89 2044	73	544 115		77 339	210	231 139		4162		109 303	5 140		494	111 3469	1369	3,450				
	6 59 35			323	117 2140	131	607 126		93 389	189	335 128		4577		181 506	0 0		364	76 3755	122	3,514				
	5 60 35			286	131 1994	119	917 299		141 329	207	283 167		4873		154 286	0 1490		307	165- 4139	335	3,035				
	8 60 32			262	44 2161	104	644 143		73 344	212	374 72		4434		169 256	0 75		884	17 3534	159	2,786				
	5 53 42			320	112 2150	77	600 164		89 338	221	260 66		4397		110 307	1024 229		255	3 3700	4004	3,843				
	5 62 33			289	90 2259	94	560 128		147 324	185	235 75		4386		158 314	0 0		479	87- 3757	31	2,914				
	5 57 38			304	100 2134	105	653 156		94 352	210	269 118		4494		135 303	149 330		430	20 3771	1073	3,417				
	3 60 37			254	94 2185	78	618 157		94 350	179	241 54		4304		143 242	220 49		121	645 3764	2404	3,499				
	4 61 35			277	81 2001	119	520 180		102 298	199	352 92		4219		129 303	0 217		591	76- 3493	193	3,544				
	5 53 42			283	113 2126	60	519 148		84 306	177	205 81		4100		109 368	50 3		247	142- 3538	155	3,847				
	4 67 29			289	96 2020	126	533 136		98 299	177	198 59		4032		131 298	800 281		222	86- 3497	3145	2,286				
	4 51 45			290	104 2133	118	436 136		75 403	219	300 109		4323		168 368	85 0		348	8- 3688	22	4,254				
	3 64 33			297	105 2022	86	683 167		143 377	157	282 78		4398		133 341	147 350		146-	105- 3817	3766	2,448				
	5 66 29			344	103 2085	126	461 119		85 318	210	244 71		4167		139 268	0 45		339	237- 3551	191	3,020				
	5 62 33			288	111 1977	95	661 162		93 321	192	247 135		4283		194 280	41 161		300	5169- 3586	1346	2,876				
	4 61 35			296	69 2030	78	578 120		108 320	192	264 88		4143		144 231	0 107		273	25 3546	289	2,983				
	4 60 36			283	97 2085	96	561 150		95 334	188	257 81		4229		144 294	177 119		252	431- 3627	1450	3,286				

DATA FOR ENROLLMENT SIZE GROUPS

The chief purpose of this table is to permit easy comparisons of districts with similar enrollment. For example, a superintendent in a district with 500 pupils may want to examine the data for group 5 (490 to 639 ADM), to see how his/her expenditures compare with other districts of similar size.

			1991-92 Resident Average Daily Membership					Pupil Data			Professional Staff		Tax Capacity Rates		Pupil Units (Weighted ADM)	
			1. Pre-Kindergarten Handicapped	2. Kindergarten	3. Elementary (Grades 1-6)	4. Secondary (Grades 7-12)	5. Total (Pre-K thru Grade 12)	6. Percent Minority	7. Percent Attendance	8. Percent Transported	9. Total Staff (FTE)	10. Pupil-Staff Ratio	11. Auditor Percent	12. Equalized Percent	13. Resident Pupil Units	14. Total Pupil Units
1	0 TO	214	41	515	3,238	2,850	6,644	5.1	96.2	77	552	11.7	50.97	44.94	7,375	7,418
2	215 TO	294	44	706	4,870	4,574	10,194	3.5	96.0	74	801	11.9	46.70	41.08	11,223	11,143
3	295 TO	389	79	1,175	7,363	7,096	15,713	3.2	95.8	76	1,229	12.6	46.67	41.54	17,264	17,180
4	385 TO	489	94	1,173	8,284	7,807	17,358	2.1	95.9	75	1,345	12.3	48.38	42.72	19,001	19,068
5	490 TO	639	136	1,693	10,733	10,318	22,880	4.7	95.7	72	1,662	13.6	48.27	42.61	25,161	25,272
6	640 TO	869	203	2,374	15,638	14,894	33,109	6.4	95.3	77	2,387	13.6	48.71	43.43	36,418	36,877
7	870 TO	1199	285	3,342	20,828	20,078	44,533	6.2	95.6	73	3,149	14.0	41.25	37.81	48,932	49,759
8	1200 TO	1939	406	4,750	30,112	27,553	62,821	3.3	95.4	85	4,209	14.9	53.72	48.28	68,809	69,504
9	1950 TO	4149	752	9,675	60,018	53,974	124,419	4.6	94.8	80	8,047	15.5	53.23	48.95	135,913	137,635
10	4150 OR HIGHER		2416	37,454	211,477	170,410	421,757	14.6	94.3	81	27,005	15.5	56.68	54.33	454,505	457,078

DATA FOR ENROLLMENT SIZE GROUPS

The table below lists totals or averages for all districts in each of ten enrollment size groups, based on 1991-92 resident average daily membership (ADM). For example, group 1 includes all districts with 214 or fewer ADM, and group 2 includes all districts with 215 to 294 ADM. Each group includes approximately ten percent of the state's school districts (i.e., 42 to 44 districts).

	Revenue %			1991 - 92 Expenditures per Pupil Unit																	Other Measures per Pupil Unit				
	15. Federal	16. State	17. Local and Other	18. District and School Admin.	19. District Support Services	20. Regular Instruction	21. Vocational Instruction	22. Exceptional Instruction	23. Instructional Support Services	24. Pupil Support Services	25. Operations and Maintenance	26. Food Service	27. Pupil Transportation	28. Other Oper. Program	29. Total PK-12 Operating Expenditures	30. Community Service	31. Capital Outlay	32. Building Construction	33. Debt Service	34. Operating Funds Balance	35. Change in Funds Balance	36. State and Local Oper. Costs	37. Long Term Debt	38. 1991 Adj. Net Tax Capacity	
01	6 49	45		398	173	2587	82	558	117	56	418	278	354	174	5194	112	439	34	60	485	5	4344	210	4,097	
02	7 55	38		403	125	2242	119	605	131	68	378	224	291	106	4691	121	386	121	48	507	25-	3886	398	3,708	
03	5 60	35		370	126	2169	124	525	140	66	368	213	314	109	4524	105	323	94	151	363	1440-	3805	2273	3,126	
04	5 61	34		354	114	2225	108	520	129	66	351	202	280	96	4446	123	346	334	114	184	2802	3747	762	3,180	
05	5 61	34		329	97	2092	132	587	134	79	347	196	300	107	4399	106	303	591	167	295	213	3694	1609	2,865	
06	6 65	29		323	100	2088	114	618	138	82	333	199	275	111	4380	122	313	767	269	333	39-	3656	2255	2,411	
07	6 60	34		283	91	2086	104	632	145	97	351	186	267	123	4365	128	291	529	254	391	448-	3658	2173	3,229	
08	4 65	31		271	91	2043	90	581	157	104	338	190	279	108	4252	119	256	828	379	289	421	3630	3209	2,306	
09	4 57	39		274	113	2043	98	677	177	120	362	182	271	152	4469	148	270	264	305	280	7-	3840	1944	3,137	
10	4 45	51		278	151	2137	88	801	236	157	391	184	275	146	4844	194	291	384	232	245	39	4244	2208	4,628	

SUMMARY STATISTICS

The table below lists a variety of summary statistics for each of the 38 variables included in this report. The attendant definitions explain the meaning of these statistics.

This table may be used to better understand the distribution of a particular variable among Minnesota school districts. For example, percent attendance (column 7) varies little; ninety percent of the school districts are

within the narrow range of 93.5% (5th percentile) to 97.0% (95th percentile).

The table may also be used to see how an individual school district compares with other districts in the state. Two examples illustrate this use of the data.

1. A district which has total PK-12 operating expenditures (column 29) of \$4,400 per pupil unit is very

near the median value, which is \$4,390. Thus, about half the districts in the state have lower and half have higher expenditures.

2. A district with total average daily membership (column 5) of 310 students is between the 20th and 25th percentiles for this variable. Somewhere between 20 and 25 percent of Minnesota school districts have fewer students than this district.

		1991-92 Resident Average Daily Membership					Pupil Data			Professional Staff		Tax Capacity Rates		Pupil Units (Weighted ADM)	
		1. Pre-Kindergarten Handicapped	2. Kindergarten	3. Elementary (Grades 1-6)	4. Secondary (Grades 7-12)	5. Total (Pre-K thru Grade 12)	6. Percent Minority	7. Percent Attendance	8. Percent Transported	9. Total Staff (FTE)	10. Pupil-Staff Ratio	11. Auditor Percent	12. Equalized Percent	13. Resident Pupil Units	14. Total Pupil Units
Lowest Value		0	1	11	6	19	.0	.0	24	0	.0	.00	.00	19	19
5th Percentile		0	11	79	69	163	.0	93.5	52	12	9.5	31.71	28.01	177	178
10th Percentile		1	15	102	92	214	.4	94.2	57	17	10.9	36.48	32.25	235	237
20th Percentile		1	19	136	134	301	1.1	94.7	64	23	11.9	41.02	36.18	329	328
25th Percentile		1	23	162	154	343	1.3	94.9	67	26	12.4	43.08	37.61	373	366
30th Percentile		2	27	183	175	387	1.5	95.1	70	29	12.6	44.21	39.15	417	428
40th Percentile		2	36	237	222	493	1.9	95.4	76	37	13.2	47.06	41.68	544	537
Median (50th)		4	47	303	296	659	2.5	95.7	79	47	13.8	50.26	44.91	722	721
60th Percentile		5	64	404	407	871	3.1	95.9	83	60	14.5	53.55	47.62	952	975
70th Percentile		8	91	582	541	1,230	4.4	96.1	87	88	14.8	56.25	50.65	1,347	1,370
75th Percentile		10	119	715	666	1,498	5.0	96.2	89	99	15.1	57.80	52.44	1,657	1,659
80th Percentile		13	143	920	851	1,947	6.1	96.3	91	126	15.4	59.23	54.55	2,153	2,174
90th Percentile		22	319	2,036	1,762	4,148	10.9	96.8	94	262	16.2	64.15	59.14	4,492	4,527
95th Percentile		36	533	3,206	2,799	6,574	14.3	97.0	99	413	16.9	68.66	63.64	7,163	7,154
Highest Value		325	4,421	21,616	14,457	40,819	100.0	99.6	100	3,200	52.4	98.08	92.58	43,009	43,710
State (Total or Avg.)		4456	62,857	372,561	319,554	759,428	10.1	94.7	80	50,386	15.0	54.30	50.98	824,601	830,935

SUMMARY STATISTICS

Lowest Value - For any specific variable, the lowest value of that variable among all 426 school districts. The table also shows the highest value for each variable.

XXth percentile - For any specific variable, a value chosen such that XX percent of the school districts are below the chosen value. For example, the 10th percentile for total staff (column 9) is 17, this means that ten percent of the school districts have 17 or fewer staff members (FTE). The 25th and 75th percentile are also

called quartiles; the 10th, 20th, 30th,...through 90th percentiles are also called deciles.

Median - For any specific variable, a value chosen such that half of the school districts are below the chosen value, and half are above.

State Total - For variables 1-5 (1991-92 resident average daily membership, 9 (total staff), and 13-14 (pupil units), the state total is simply the sum of the corre-

sponding value for all districts listed in the report. For all other variables, the state total is computed as the sum of the numerators for all districts, divided by the sum of the denominators.

For example, State total pupil-staff ratio =

$$\frac{\text{State total of pupils}}{\text{State total of staff}}$$

For these variables, the state total is a form of weighted average.

	Revenue %			1991 - 92 Expenditures per Pupil Unit																Other Measures per Pupil Unit				
	15. Federal	16. State	17. Local and Other	18. District and School Admin.	19. District Support Services	20. Regular Instruction	21. Vocational Instruction	22. Exceptional Instruction	23. Instructional Support Services	24. Pupil Support Services	25. Operations and Maintenance	26. Food Service	27. Pupil Transportation	28. Other Oper. Program	29. Total PK-12 Operating Expenditures	30. Community Service	31. Capital Outlay	32. Building Construction	33. Debt Service	34. Operating Funds Balance	35. Change in Funds Balance	36. State and Local Oper. Costs	37. Long Term Debt	38. 1991 Adj. Net Tax Capacity
Low	0	0	3	0	20	1239	0	0	0	0	0	0	96	0	3278	0	0	0	0	1686-	6630-	2814	0	0
5th	2	28	19	201	50	1804	0	314	48	9	238	125	169	32	3842	47	143	0	0	416-	468-	3269	0	1,212
10th	2	41	21	228	56	1885	2	385	82	19	261	147	190	40	3931	63	164	0	0	203-	325-	3343	0	1,538
20th	3	49	25	257	73	1956	36	446	101	44	287	165	211	53	4063	78	201	0	0	40	169-	3452	0	1,851
25th	3	52	26	267	79	1970	48	469	109	53	298	171	221	60	4112	84	212	0	0	116	132-	3494	1	2,003
30th	3	55	28	275	84	1993	55	495	118	61	305	176	231	63	4172	89	227	0	0	162	104-	3528	32	2,186
40th	4	58	31	294	94	2054	72	530	128	73	323	187	257	74	4270	100	257	0	50	268	47-	3619	124	2,447
Med.	4	62	34	312	104	2110	87	575	139	82	341	198	277	85	4390	113	283	0	123	358	4-	3725	426	2,842
60th	5	64	36	330	118	2162	103	607	150	95	367	206	302	101	4566	127	309	0	171	448	33	3834	1020	3,175
70th	6	66	40	352	131	2242	122	666	166	108	392	218	324	125	4723	144	354	3	218	537	69	3985	1832	3,644
75th	6	69	43	373	139	2299	137	696	177	118	410	225	337	141	4805	158	374	47	298	578	101	4091	2487	4,013
80th	6	70	47	387	152	2380	158	728	188	126	441	232	358	154	4956	174	398	176	342	597	134	4168	3345	4,313
90th	8	73	55	460	190	2534	202	867	219	149	495	269	409	231	5275	205	523	944	465	742	252	4472	5117	5,487
95th	10	75	68	508	247	2800	250	1013	275	176	542	308	467	370	5827	251	674	2840	599	1138	446	4854	6263	6,754
Hgh.	33	85	99	1035	931	4580	615	2355	371	771	1920	756	1911	843	11344	578	1429	2365	3289	3823	1052	8811	35935	28,649
Ste.	4	51	45	287	131	2115	95	720	200	131	374	188	277	137	4655	165	290	419	249	275	68	4023	2155	3,872

