

LEGISLATIVE REFERENCE LIBRARY

HD5876.M6 S87

- Summary of area office activities.

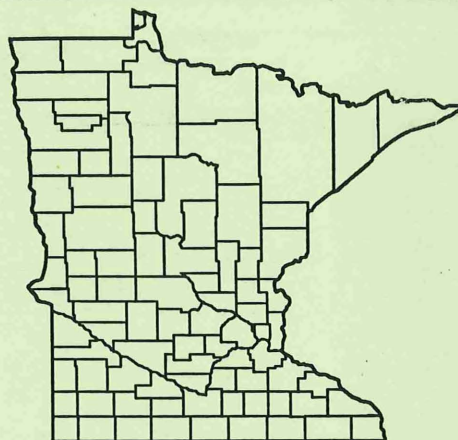


3 0307 00053 3565

910318

Calendar
Year
1990

Summary of Area Office Activities



For
Unemployment
Insurance
and
Job Service

LEGISLATIVE REFERENCE LIBRARY
645 State Office Building
Saint Paul, Minnesota 55155

HD
5876
.M6
S87
1990



MINNESOTA DEPARTMENT OF
Jobs and Training

RESEARCH AND STATISTICS OFFICE
390 North Robert Street
St. Paul, Minnesota 55101
612-296-6534

TABLE OF CONTENTS

	<u>PAGE</u>
JOB SERVICE HIGHLIGHTS	1
JOB SERVICE SUMMARY	1-3
Job Openings Received/Filled by Occupation (Figure 1)	4
Nonagricultural Job Openings Received (Figure 2)	5
Nonagricultural Job Placements (Figure 3)	5
Job Openings Received - Farm/Fish/Forestry (Figure 4)	6
Job Openings Received - Domestic (Figure 5).....	6
Job Openings Received - Motor Freight/Trans. (Figure 6)	7
Job Openings Received - Professional/Tech./Mang. (Figure 7)...	7
Job Openings Received - Clerical (Figure 8)	8
New Applications by District (Figure 9)	8
Job Service Activities by Area Office:	
New Applications	9-11
New Partials	12-14
Renewals	15-17
Enrollments in Training	18-20
Counseling Interviews	21-23
Testing	24-26
Referred to Supportive Services	27-29
Referrals Nonagricultural	30-32
Referrals Agricultural	33-35
Placements Nonagricultural	36-38
Placements Agricultural	39-41
UNEMPLOYMENT INSURANCE HIGHLIGHTS	42
UNEMPLOYMENT INSURANCE SUMMARY	42
UI Initial Claims (Figure 10)	43
UI Weeks Claimed (Figure 11)	43
Persons in Active Claim Status, (Figure 12)	44
UI Benefits Paid by District (Figure 13)	44
Initial Claims by Industry	45
Weeks Claimed by Industry	46
Unemployment Insurance Initial Claims	47
Unemployment Insurance Continued Claims	48
Initial Claims and Separation Issues	49
Continued Claims and Nonseparation Issues	50
Regular Benefits Payments Activity	51
Unemployment Insurance Weeks Claimed and Approved Training..	52
Nonmonetary Eligibility Determinations	53
Nonmonetary Eligibility Denials	54
Footnotes	55

For questions regarding this summary contact:
JOHN STRASSBURG OR RICK CALIGIURI (612) 296-6534.

MAR 19 1991

JOB SERVICE HIGHLIGHTS
CALENDAR YEAR 1990

Intake Activities

	<u>Total</u>	<u>% Change CY 89-90</u>
New Applications	186,301	+5.7
New Partials	25,045	-1.7
Renewals	127,617	+7.0
Counseling	5,241	-10.1
Testing	16,726	-25.0
Referrals to Supportive Services	26,555	+5.2
Training Enrollments	635	-21.5

Placement Activities

	<u>Total</u>	<u>% Change CY 89-90</u>
Nonagricultural Job Openings Received	123,013	-7.9
Agricultural Job Openings Received	16,183	-10.0
Nonagricultural Referrals	423,763	+6.6
Agricultural Referrals	23,874	+7.4
Nonagricultural Placements	67,291	-6.2
Agricultural Placements	11,955	-6.2

JOB SERVICE COMMENTARY

This year an important event occurred which affects the comparisons of current data to previous years statistics. At the midpoint of the calendar year a new reporting system was implemented for Job Service. The new computer system is the SESA Automated Management System (SAMS). It replaces the Employment Services Automated Reporting System (ESARS) which had been in use since the early 1970's.

The new SAMS system uses a different approach to statistical applications than ESARS did. With ESARS, data entered into the system is tabulated to standardized cells when each month's extract is compiled. It is then no longer available for ad hoc reports since only summarized totals exist. SAMS keeps all data transactions separate and available for ad hoc requests.

An advantage of the new system is not being burdened by years of modifications or revisions. Any system which operates over many years such as ESARS did, collects myriad programming modifications which lead to possibilities for inaccuracy. The new SAMS system was run in parallel with the old system for the months of July and August to test its accuracy under actual operating conditions. In the two month comparison it was found that there are some Job Service activities where totals from the new reports system differ from ESARS. For example, individuals identified as minority, migrants and as unemployment insurance (UI) claimants all show higher counts under the new system. One type of transaction was not aggregated correctly by the new SAMS system. Obtained employment counts by month were incorrectly added when the new system was first operationally used. This made the Calendar Year 1990 total count for obtained employment far too small. That data is excluded from this publication.

In 1990, economic conditions were stable in Minnesota. The recession which has been anticipated nationally by economists for many months has not impacted on Minnesota in Calendar Year 1990. Job applicants registered, through new and renewal applications, increased from the prior year - as would happen with more people unemployed. However, the total number of Job Service registrants in Minnesota has been down since the early 1980's and the increase this year is not major. Associated applicant intake services, such as counseling and testing, have declined. Referrals to supportive services continue to increase. This is tied mainly to services to veterans which accounted for 54.9% of all these referrals. Area office veterans representatives state that these referrals are a requirement of services to veterans.

Of greater interest is the yearly change in job openings received and job placements. Job Service is judged on its ability to find jobs for the people who register with this agency. Despite the many other services provided to job seekers such as job search techniques, self help analysis, or referrals to supportive community services, the efficiency of this public agency is studied by job placements. 1990 was a normal year for job placements. Figure 1 on page 4 shows which occupational groups Job Service has the greatest success with. The results are typical. Farming/fishing/ forestry, processing, and packaging are groups where Job Service can quickly provide workers and has great success. Other occupations such as professional/technical/managerial, sales, and other services have specific job requirements and many avenues open for employers to fill job openings.

Both agricultural and non agricultural job placements were down from the previous year. For agricultural placements, the continuing decline of agricultural jobs available is the major reason. Both continuing mechanization and the weather have contributed to the decline of job opportunities. There are fewer labor intensive tasks requiring unskilled labor (mainly youth or migrants). Drought has affected crops, and the need for labor during several recent years.

For nonagricultural jobs, Job Service did well with the job openings which were available. The placements are a higher percentage of job openings received than for the prior year. However, there are fewer job openings to work with than last year.

It is well known that hiring patterns are seasonal for many industries in Minnesota. Occupations in agriculture, food processing, construction, resorts, and outdoor maintenance, are strongly influenced by weather, and by available labor. A classic example is for farm/fishing/forestry occupations, shown in Figure 4.

The curve in Figure 4 could be drawn for practically any calendar year, differing only in total job openings received, but rarely in shape. Similarly, the same could be said for domestic labor (Figure 5). In this graph two years are shown to further make the point that Job Service may predict when job openings become available. Even occupations in transportation (Figure 6), or packaging, material handling have some season trends. Occupations with little predictability are professional/technical/managerial, (Figure 7) clerical (Figure 8) other services, and benchwork, jobs that responds more to current demand, rather than to seasonal weather conditions.

Overall, the major portion of job openings received and placements made are from May through October. Even the exclusion of agricultural placements does not alter this fact (See Figures 2 & 3).

The Minneapolis Downtown office was split into two new locations during 1990. The South Minneapolis office opened in October. The North Minneapolis office opened in December. In this summary the data is still combined as Minneapolis.

Figure 1
 Job Openings Received & Filled
 By Occupation

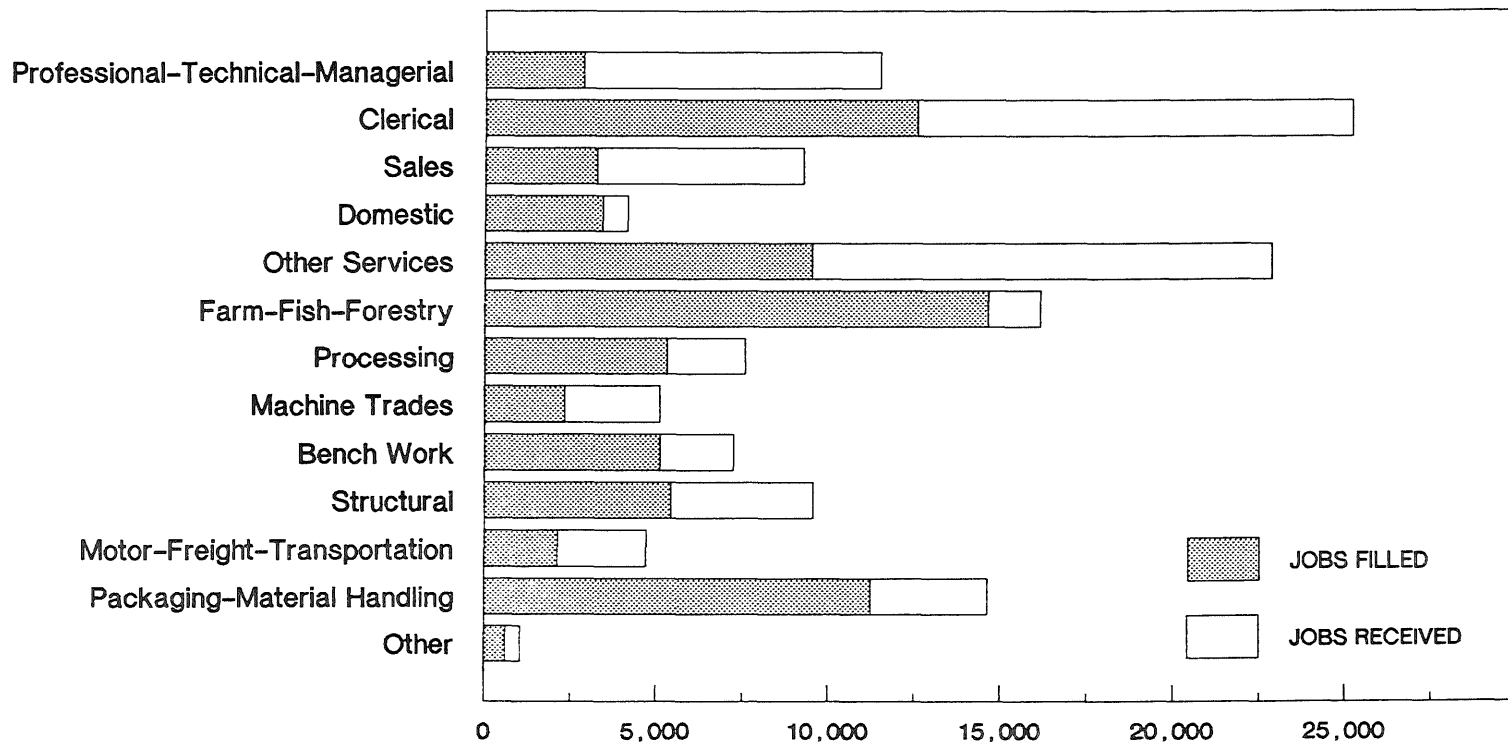


Figure 2
Nonagricultural Openings Received

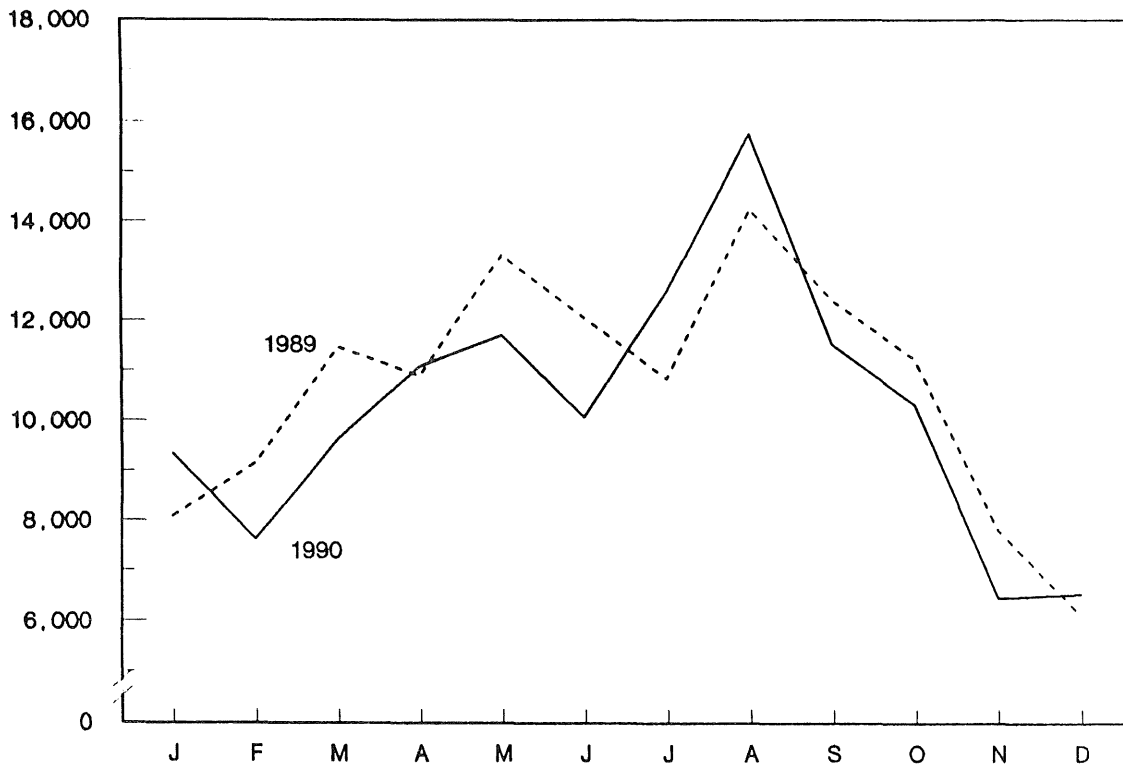


Figure 3
Nonagricultural Placements

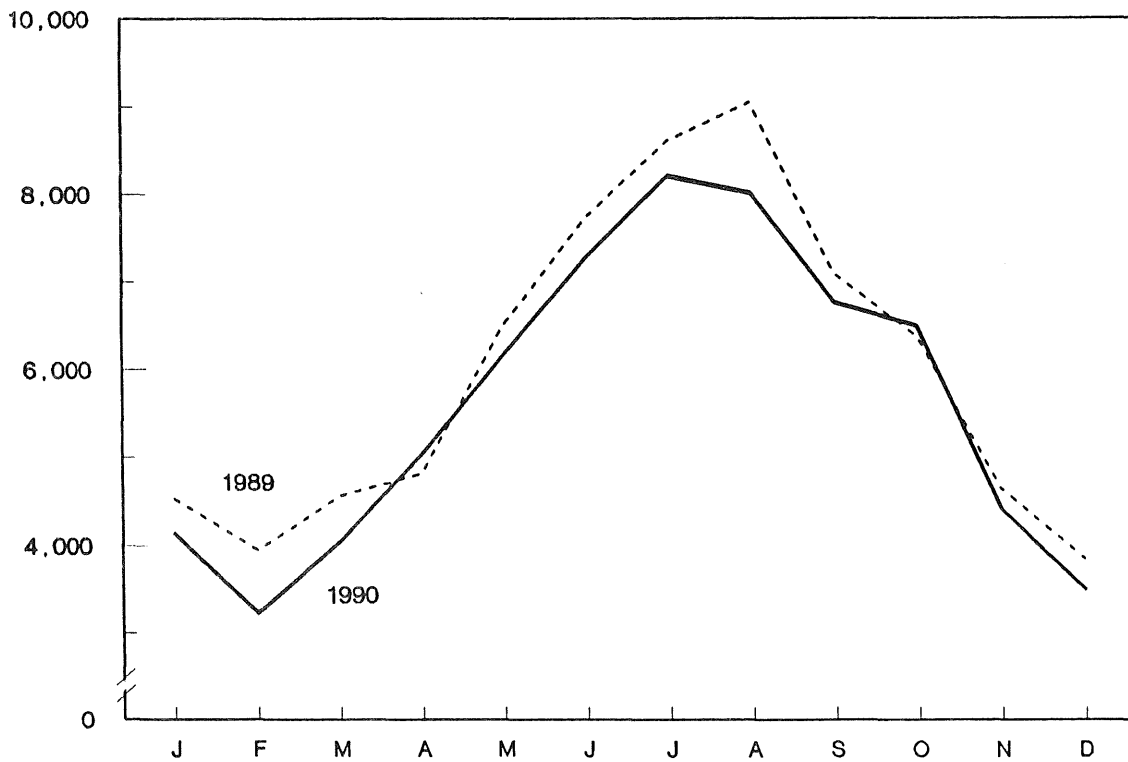


Figure 4
 Job Openings Received
 Farm-Fish-Forestry

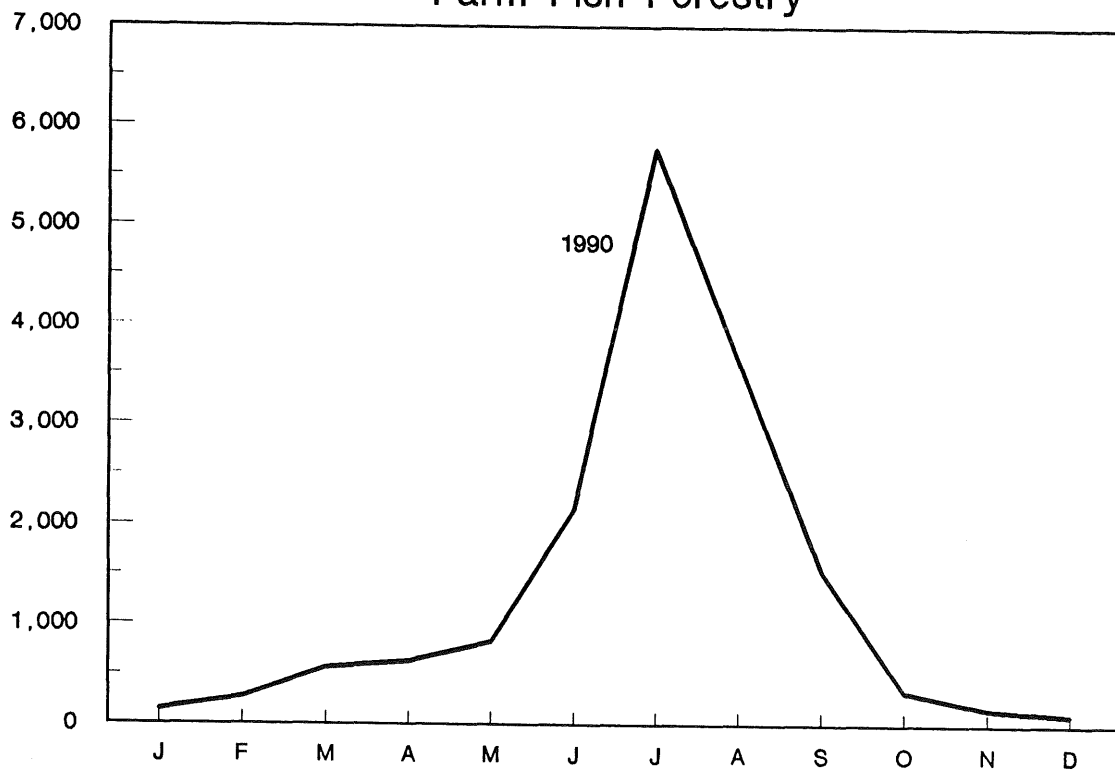


Figure 5
 Job Openings Received
 Domestic

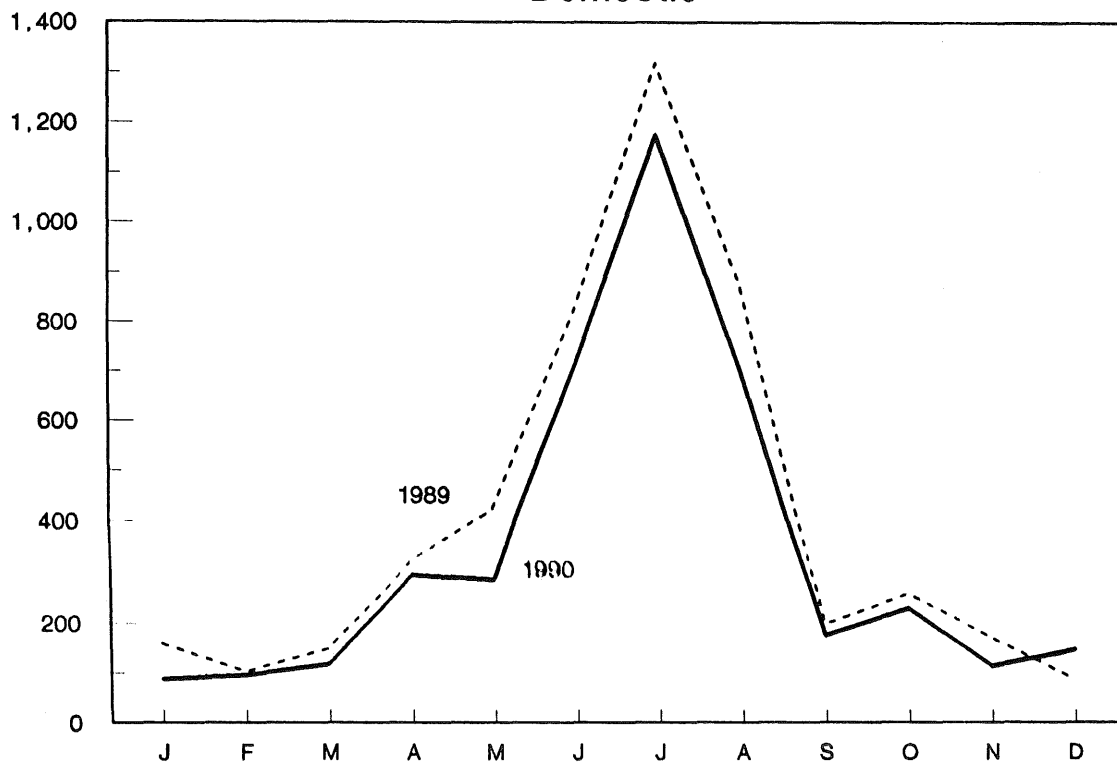


Figure 6
 Job Openings Received
 Motor-Freight-Transportation

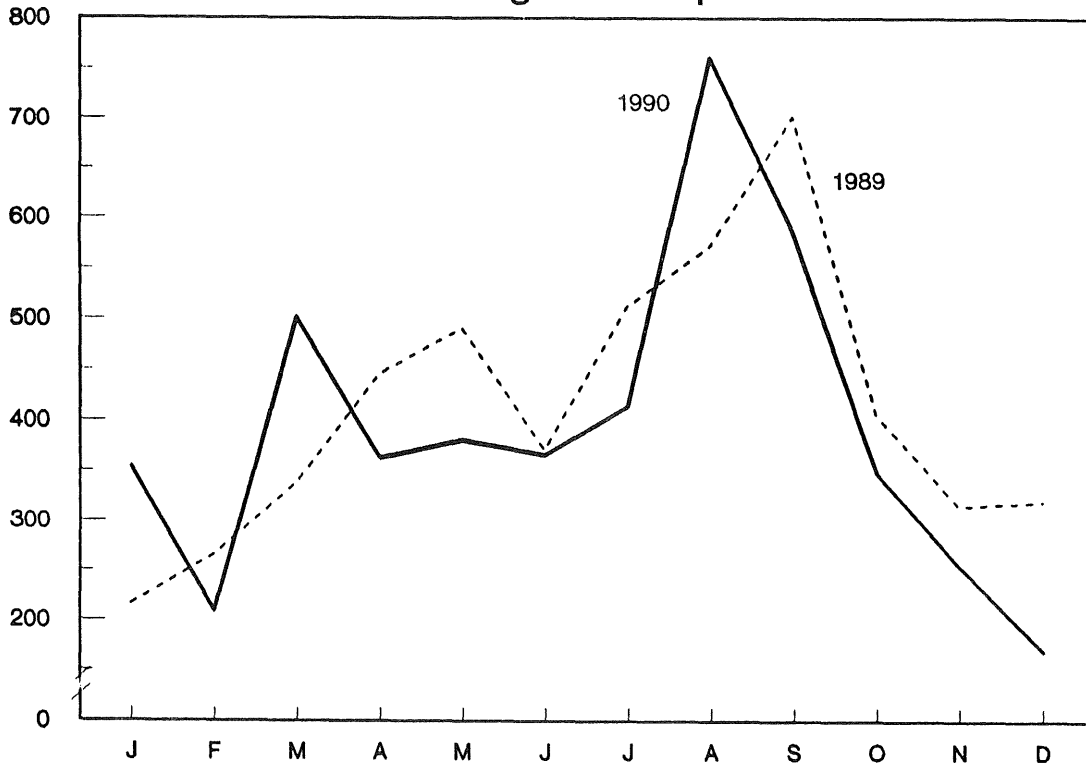


Figure 7
 Job Openings Received
 Professional, Technical, Managerial

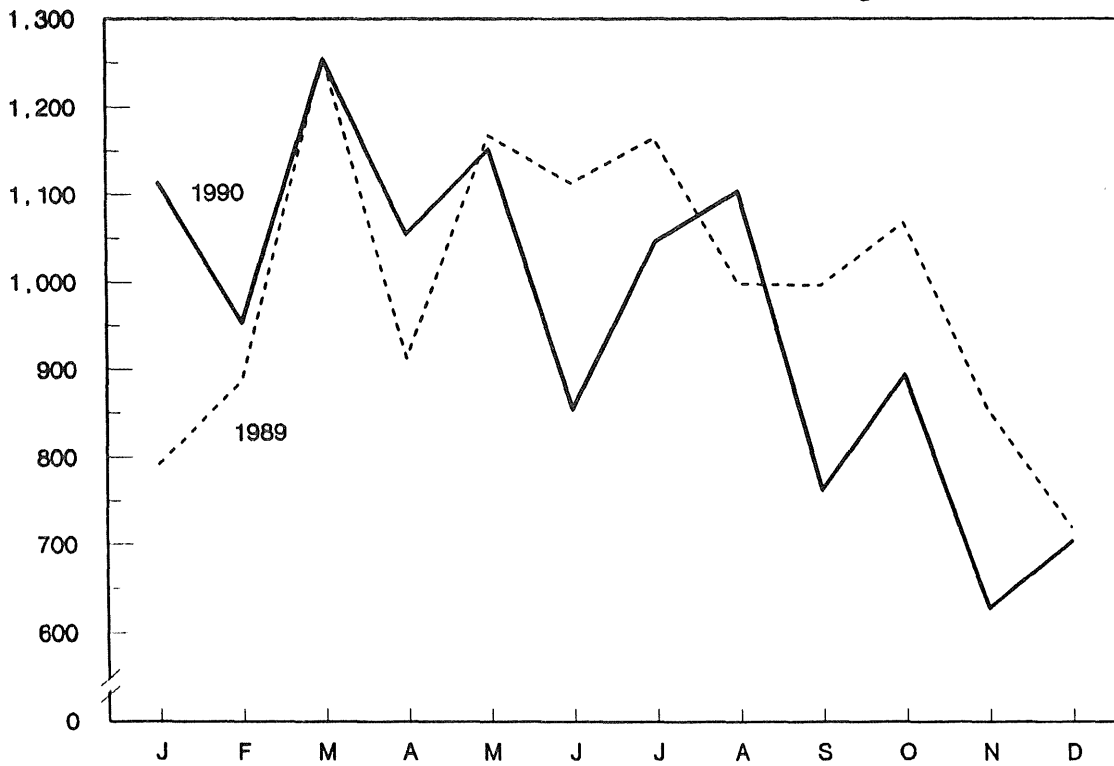


Figure 8
 Job Openings Received
 Clerical

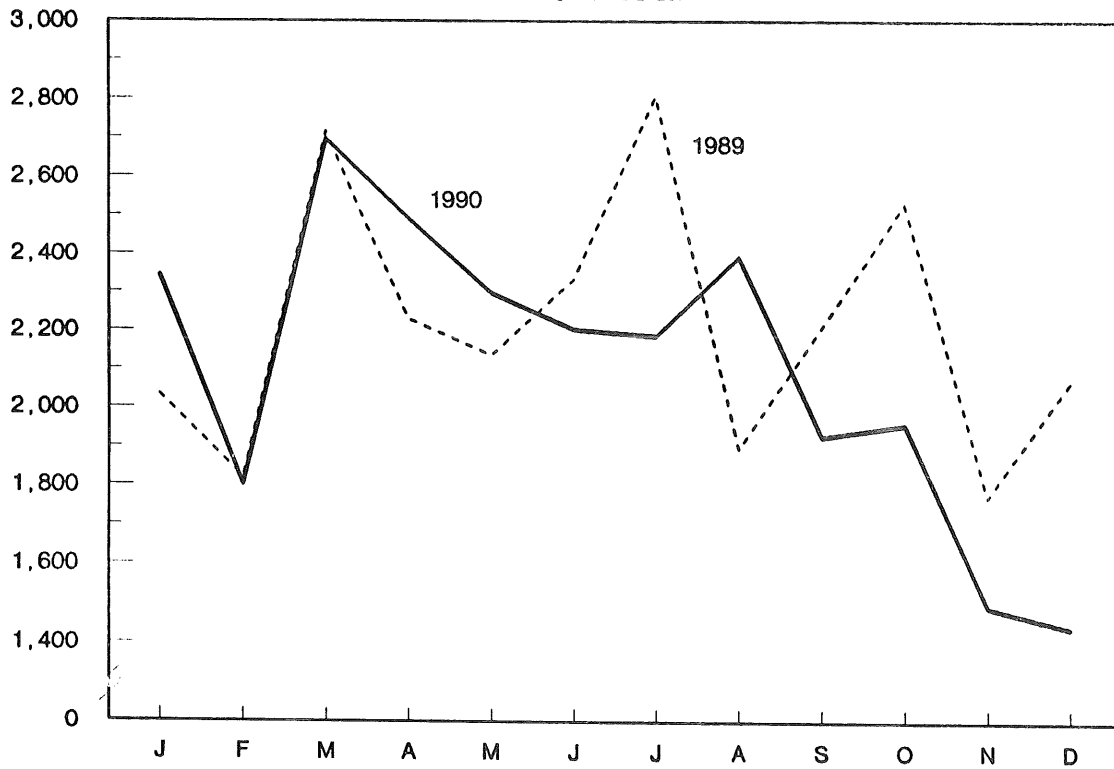
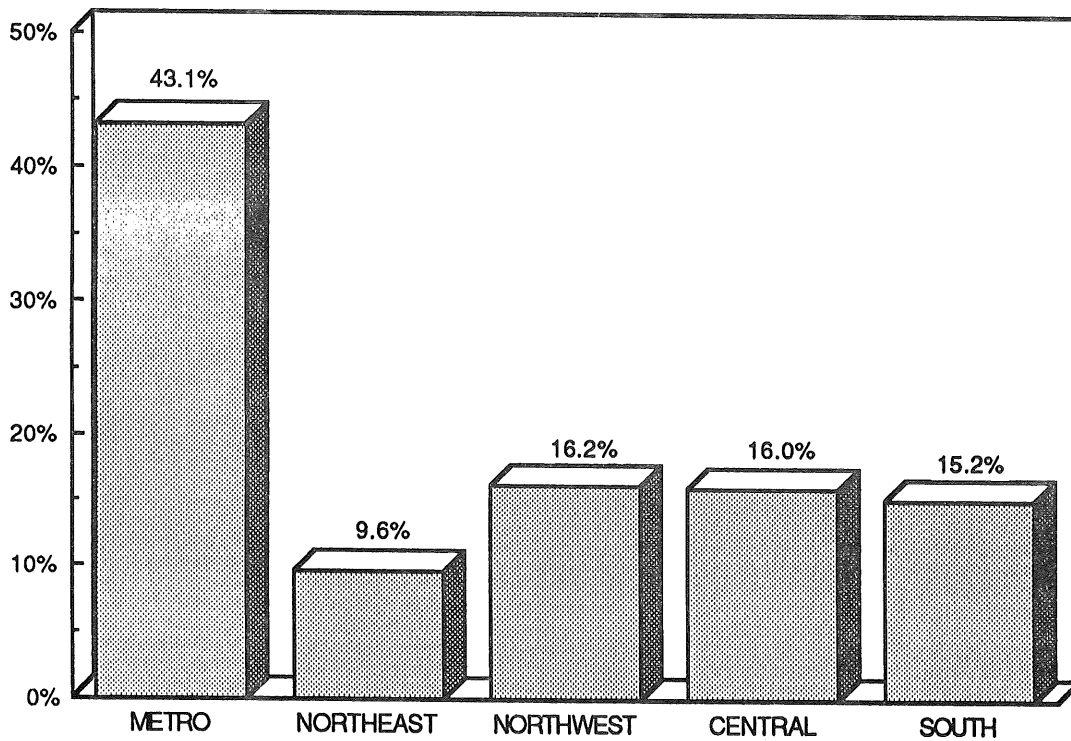


Figure 9
 Percent Distribution of New Applications
 By District



NEW APPLICATIONS

DISTRICT AND AREA OFFICES	TOTAL		FEMALE		MINORITY		HANDICAPPED		VETERAN		UNDER 22		45 & OVER		UI CLAIMANT	
	CY 90	CY 89	CY 90	CY 89	CY 90	CY 89	CY 90	CY 89	CY 90	CY 89	CY 90	CY 89	CY 90	CY 89	CY 90	CY 89
STATE TOTAL.....	186302	177658	78,651	74,759	16,073	14,196	4,776	5,729	24,723	22,753	42,406	45,438	27,242	23,554	52,738	42,711
JS STATE TOTAL.....	186301	176300	78,651	73,792	16,073	14,069	4,776	5,710	24,723	22,690	42,406	45,184	27,242	23,498	52,738	42,596
METRO AREA.....	80,256	68,427	32,060	26,765	9,741	7,741	2,212	2,115	11,827	10,188	11,823	11,191	12,408	9,991	33,461	24,030
WEST METRO.....	43,706	33,442	16,805	12,513	6,869	4,787	1,212	1,138	6,737	5,327	4,901	4,287	7,085	5,164	19,946	12,471
MINNEAPOLIS AREA...	13,285	9,979	4,596	3,519	5,191	3,578	446	525	2,237	1,645	1,477	1,351	1,692	1,229	4,715	2,648
HENN. CTY WK READY	2,448	1,717	723	504	1,387	957	47	60	401	311	298	205	253	200	159	119
MINNEAPOLIS.....	10,481	7,817	3,725	2,855	3,638	2,465	392	432	1,777	1,294	1,018	1,045	1,415	1,005	4,549	2,499
MPLS CASUAL.....	95	102	16	7	22	18	3	1	54	3	11	14	16	6	3	4
MPLS SUMMER.....	125	7	54	5	98	4	-	-	-	-	121	4	1	-	-	-
MPLS TECH INST....	11	208	2	81	4	90	-	14	1	28	2	56	1	10	-	23
MPLS T.I. SPCL PGM	125	128	76	67	42	44	4	18	4	9	27	27	6	8	4	3
BLOOMINGTON.....	10,816	8,188	4,329	3,201	651	450	275	128	1,749	1,430	844	722	2,305	1,547	6,385	3,589
BROOKLYN PARK AREA.	7,574	7,270	3,129	2,902	565	465	178	240	1,141	1,127	1,012	1,063	1,173	1,129	3,778	3,413
BROOKLYN PARK.....	7,182	6,828	2,978	2,761	537	449	171	226	1,124	1,101	839	877	1,148	1,109	3,757	3,388
CRYSTAL AVTI.....	392	442	151	141	28	16	7	14	17	26	173	186	25	20	21	25
MINNETONKA AREA....	12,031	8,005	4,751	2,891	462	294	313	245	1,610	1,125	1,568	1,151	1,915	1,259	5,068	2,821
HOPKINS AVTI.....	134	167	50	43	4	3	-	1	5	16	51	52	5	19	4	5
MINNETONKA.....	10,149	6,204	4,075	2,352	381	201	186	96	1,355	873	1,140	758	1,685	1,042	4,728	2,485
SHAKOPEE.....	1,748	1,634	626	496	77	90	127	148	250	236	377	341	225	198	336	331
EAST METRO.....	36,502	34,958	15,244	14,247	2,871	2,952	999	976	5,080	4,855	6,909	6,895	5,318	4,826	13,501	11,552
ST. PAUL CENTRAL....	7,720	8,410	2,995	3,310	1,652	1,859	195	195	1,018	1,042	972	1,306	968	982	2,436	2,167
ST. PAUL AVTI.....	1	199	1	90	-	25	-	9	-	1	-	60	-	2	-	1
ST. PAUL GU. & TRN.	116	84	58	44	53	40	4	4	8	13	17	7	13	11	2	4
ST. PAUL-MIDWAY....	7,218	7,550	2,808	2,973	1,303	1,342	188	181	973	980	889	1,114	913	909	2,395	2,106
MARTIN LUTHER KING	385	573	128	203	296	451	3	1	37	47	66	125	42	60	39	55
STATE FAIR.....	-	4	-	-	-	1	-	-	-	1	-	-	-	-	-	1
ST. PAUL NORTH.....	8,095	7,679	3,479	3,375	289	223	135	156	1,215	1,113	1,301	1,184	1,316	1,310	3,808	4,060
NORTH ST. PAUL....	7,780	7,594	3,277	3,315	268	219	133	155	1,200	1,111	1,168	1,162	1,306	1,303	3,801	4,057
916 AVTI.....	315	85	202	60	21	4	2	1	15	2	133	22	10	7	7	3
ST. PAUL SOUTH.....	8,077	7,069	3,277	2,708	531	523	248	329	989	839	2,019	2,046	1,076	764	2,457	2,035
DAKOTA CO. AVTI....	991	1,063	444	501	20	24	8	9	45	19	479	518	34	26	26	19
WEST ST. PAUL.....	7,086	6,006	2,833	2,207	511	499	240	320	944	820	1,540	1,528	1,042	738	2,431	2,016
ANOKA COUNTY.....	12,610	11,800	5,493	4,854	399	347	421	296	1,858	1,861	2,617	2,359	1,958	1,770	4,800	3,290
ANOKA AVTI.....	358	372	130	126	23	9	19	6	80	56	133	144	27	21	30	16
ANOKA/RAMSEY C. COL	382	426	237	227	15	10	5	5	20	30	234	253	22	7	7	10
FRIDLEY.....	11,039	9,860	4,789	3,998	301	246	320	231	1,675	1,645	1,969	1,595	1,833	1,597	4,675	3,171
SPRING LAKE PARK..	831	1,142	337	503	60	82	77	54	83	130	281	367	76	145	88	93

AREA OFFICE ACTIVITIES

CALENDAR YEAR 1990

NEW APPLICATIONS - (CONT.)

DISTRICT AND AREA OFFICES	TOTAL		FEMALE		MINORITY		HANDICAPPED		VETERAN		UNDER 22		45 & OVER		UI CLAIMANT	
	CY 90	CY 89	CY 90	CY 89	CY 90	CY 89	CY 90	CY 89	CY 90	CY 89	CY 90	CY 89	CY 90	CY 89	CY 90	CY 89
NORTHEAST DIST.....	17,928	20,082	7,638	8,772	449	628	353	658	2,454	2,534	4,511	5,357	2,077	2,337	2,747	3,256
DULUTH AREA.....	9,539	11,203	4,166	4,947	293	448	197	410	1,233	1,375	2,582	3,213	1,052	1,218	1,656	2,201
DULUTH.....	7,715	7,642	3,156	3,174	260	309	169	292	1,126	1,043	1,547	1,793	942	918	1,524	1,770
DULUTH AVTI.....	62	295	32	174	1	14	-	6	6	18	22	79	7	16	10	10
DULUTH MALL.....	1,654	1,859	935	1,007	26	47	24	38	80	105	1,001	1,024	79	118	81	97
CLOQUET.....	43	1,179	16	496	4	76	1	67	8	167	6	289	7	120	27	267
NORTH SHORE.....	65	228	27	96	2	2	3	7	13	42	6	28	17	46	14	57
ELY.....	461	582	206	260	3	13	2	5	60	64	110	145	95	153	65	44
GRAND RAPIDS AREA..	2,627	2,785	1,057	1,213	52	54	43	116	410	362	537	645	352	354	367	430
GRAND RAPIDS.....	2,530	2,710	1,009	1,188	51	53	40	113	392	346	528	627	320	340	328	410
AITKIN.....	97	75	48	25	1	1	3	3	18	16	9	18	32	14	39	20
HIBBING.....	2,013	2,705	861	1,180	24	15	52	56	253	314	564	627	197	263	246	230
INT'L FALLS.....	1,369	869	550	342	33	46	3	10	167	135	286	251	151	91	181	39
VIRGINIA.....	1,919	1,938	798	830	44	52	56	61	331	284	432	476	230	258	232	312
NORTHWEST DIST.....	30,109	28,349	13,095	11,985	3,146	3,177	865	1,104	3,628	3,558	8,544	7,918	4,590	3,967	4,869	4,989
ALEXANDRIA.....	2,599	2,622	1,247	1,204	16	14	24	49	277	309	805	838	416	409	544	535
BEMIDJI AREA.....	5,127	5,020	2,053	2,016	620	622	129	202	721	766	1,417	1,215	756	730	998	1,437
BEMIDJI.....	4,013	3,664	1,576	1,447	584	553	110	156	562	564	1,122	884	516	471	764	1,148
PARK RAPIDS.....	1,114	1,356	477	569	36	69	19	46	159	202	295	331	240	259	234	289
BRAINERD AREA.....	5,589	5,515	2,416	2,428	79	117	207	206	797	782	1,525	1,472	932	853	1,116	1,016
BRAINERD.....	3,390	3,393	1,451	1,504	56	89	148	136	522	499	790	820	625	556	774	726
STAPLES.....	549	707	247	301	5	8	23	25	58	99	221	224	72	82	58	61
WADENA.....	1,650	1,413	718	623	18	20	36	45	217	184	514	428	235	215	284	229
CROOKSTON AREA.....	6,274	6,699	2,636	2,833	1,136	1,812	236	280	674	644	1,732	2,085	921	831	1,186	990
CROOKSTON.....	1,872	2,196	722	852	574	942	83	89	205	216	499	671	304	293	417	409
E.GRAND FORKS.....	1,451	2,147	556	935	480	790	52	97	176	172	445	677	149	223	49	54
ROSEAU.....	836	274	434	135	10	6	22	13	59	22	187	118	138	26	273	18
THF. RIV. FALLS.....	2,115	2,082	924	911	72	74	79	81	234	234	601	619	330	289	447	509
FERGUS FALLS.....	2,316	1,570	1,021	651	399	49	87	115	270	210	609	359	391	218	275	215
LITTLE FALLS.....	1,728	1,392	835	610	9	9	30	51	185	166	563	390	252	189	356	98
MOORHEAD AREA.....	6,476	5,533	2,887	2,243	887	554	152	201	704	681	1,893	1,559	922	737	394	698
MOORHEAD.....	3,636	3,015	1,460	1,140	679	282	96	145	456	453	1,048	708	502	417	245	418
DETROIT LAKES.....	2,840	2,518	1,427	1,103	208	272	56	56	248	228	845	851	420	320	149	280

AREA OFFICE ACTIVITIES

CALENDAR YEAR 1990

NEW APPLICATIONS - (CONT.)

DISTRICT AND AREA OFFICES	TOTAL		FEMALE		MINORITY		HANDICAPPED		VETERAN		UNDER 22		45 & OVER		UI CLAIMANT	
	CY 90	CY 89	CY 90	CY 89	CY 90	CY 89	CY 90	CY 89	CY 90	CY 89	CY 90	CY 89	CY 90	CY 89	CY 90	CY 89
CENTRAL DIST.....	29,736	29,153	13,477	12,729	1,629	1,660	676	905	3,462	3,146	9,107	10,252	4,217	3,491	6,243	5,005
MARSHALL.....	1,646	1,667	768	777	44	46	46	74	189	188	368	397	266	222	294	86
MONTEVIDEO.....	1,142	1,640	522	706	71	108	17	35	154	130	238	763	234	199	221	246
MORA AREA.....	4,819	4,032	2,201	1,885	76	47	193	268	697	612	1,257	1,060	780	671	1,462	978
MORA.....	2,857	2,211	1,266	1,055	56	40	98	120	456	338	620	596	540	371	1,035	497
CAMBRIDGE.....	1,962	1,821	935	830	20	7	95	148	241	274	637	464	240	300	427	481
ST.CLOUD.....	11,367	10,895	5,406	4,756	168	159	259	306	1,390	1,331	3,377	3,513	1,408	1,175	2,534	2,338
WILLMAR AREA.....	7,917	8,100	3,342	3,457	775	1,159	147	197	830	679	2,835	3,212	1,160	922	1,533	1,228
WILLMAR.....	3,897	4,478	1,709	1,896	669	1,046	78	133	349	348	1,435	1,723	520	500	452	611
HUTCHINSON.....	3,339	3,442	1,323	1,459	93	108	48	56	402	318	1,122	1,418	563	402	971	585
LITCHFIELD.....	681	180	310	102	13	5	21	8	79	13	278	71	77	20	110	32
NORTHINGTON.....	2,845	2,819	1,238	1,148	495	141	14	25	202	206	1,032	1,307	369	302	199	129
SOUTH DIST.....	28,272	30,288	12,381	13,540	1,108	863	670	928	3,352	3,264	8,421	10,465	3,950	3,712	5,418	5,316
ALBERT LEA AREA....	4,408	4,440	1,642	2,037	230	208	118	154	674	513	1,082	1,403	877	731	1,083	621
ALBERT LEA.....	2,610	2,067	834	854	151	114	56	92	471	276	538	639	643	381	889	392
AUSTIN.....	1,798	2,373	808	1,183	79	94	62	62	203	237	544	764	234	350	194	229
FAIRMONT.....	2,262	2,807	1,086	1,289	133	102	98	182	164	183	993	1,245	247	289	191	237
FARIBAULT AREA....	3,996	3,710	1,773	1,602	198	112	76	132	466	465	912	1,131	618	572	974	1,042
FARIBAULT.....	2,427	2,407	1,076	1,039	108	45	30	73	304	313	545	805	392	373	674	789
FARIBAULT AVTI....	179	208	121	110	1	5	-	6	1	5	62	81	10	9	3	6
OWATONNA.....	1,390	1,095	576	453	89	62	46	53	161	147	305	245	216	190	297	247
MANKATO.....	4,919	5,917	2,370	2,674	131	121	89	110	479	491	1,903	2,676	511	472	320	318
NEW ULM.....	2,064	2,362	919	1,138	68	62	50	43	235	210	598	925	312	272	360	553
RED WING.....	1,907	2,147	814	950	28	31	13	19	244	239	505	628	251	266	341	350
ROCHESTER AREA....	5,203	5,282	2,081	2,063	231	183	163	140	750	782	1,033	1,038	752	711	1,713	1,788
ROCHESTER.....	4,964	5,103	1,966	1,993	215	173	161	139	745	769	891	951	745	705	1,706	1,781
RCHSTR COM COL....	116	56	52	23	7	3	1	-	3	2	81	43	1	-	2	3
ROCHESTER AVTI....	123	123	63	47	9	7	1	1	2	11	61	44	6	6	5	4
WINONA.....	3,513	3,623	1,696	1,787	89	44	63	148	340	381	1,395	1,419	382	399	436	407

NEW PARTIALS

DISTRICT AND AREA OFFICES	TOTAL		FEMALE		MINORITY		HANDICAPPED		VETERAN		UNDER 22		45 & OVER		UI CLAIMANT	
	CY 90	CY 89	CY 90	CY 89	CY 90	CY 89	CY 90	CY 89	CY 90	CY 89	CY 90	CY 89	CY 90	CY 89	CY 90	CY 89
STATE TOTAL.....	25,049	28,426	11,679	13,518	4,654	6,245	602	744	1,315	1,321	12,268	13,188	2,043	2,524	1,375	1,093
JS STATE TOTAL.....	25,045	25,466	11,678	11,580	4,653	4,729	602	726	1,314	1,314	12,268	12,583	2,040	2,220	1,375	1,016
METRO AREA.....	15,315	15,818	7,243	7,010	4,096	3,517	466	575	907	981	5,979	6,565	1,500	1,453	888	756
WEST METRO.....	6,920	7,466	3,069	3,191	2,701	2,434	283	400	477	492	3,172	3,458	598	617	496	409
MINNEAPOLIS AREA...	4,445	3,927	1,927	1,619	2,356	2,008	114	223	303	275	2,230	2,026	311	274	264	79
HENN. CTY WK READY	136	113	32	57	73	67	5	2	22	9	19	15	18	8	15	2
MINNEAPOLIS.....	3,251	2,629	1,556	1,206	1,868	1,484	85	203	136	117	1,968	1,657	214	149	156	36
MPLS CASUAL.....	429	565	64	69	129	168	15	10	104	119	40	50	55	88	54	39
MPLS SUMMER.....	46	179	19	82	36	114	1	-	-	-	44	166	2	1	-	-
MPLS TECH INST....	583	441	256	205	175	250	8	8	41	30	159	138	22	28	39	2
MPLS T.I. SPCL PGM	-	-	-	-	-	-	-	-	-	-	-	-	-	-	-	-
BLOOMINGTON.....	420	1,380	213	630	60	166	33	11	25	114	206	408	28	157	54	265
BROOKLYN PARK AREA.	1,055	1,319	479	601	219	203	30	43	67	46	432	676	118	93	88	27
BROOKLYN PARK.....	1,008	1,312	460	598	215	203	28	43	55	42	428	676	113	92	78	26
CRYSTAL AVTI.....	47	7	19	3	4	-	2	-	12	4	4	-	5	1	10	1
MINNETONKA AREA....	1,000	840	450	341	66	57	106	123	82	57	304	348	141	93	90	38
HOPKINS AVTI.....	7	9	3	-	-	1	-	-	2	1	-	2	-	-	-	1
MINNETONKA.....	952	772	434	332	63	48	105	123	72	47	302	340	136	78	74	28
SHAKOPEE.....	41	59	13	9	3	8	1	-	8	9	2	6	5	15	16	9
EAST METRO.....	8,392	8,345	4,174	3,819	1,395	1,083	183	175	429	489	2,807	3,107	902	835	390	347
ST.PAUL CENTRAL....	4,279	3,720	1,867	1,538	1,127	875	89	67	200	249	1,537	1,406	422	363	151	94
ST.PAUL AVTI.....	158	9	84	5	26	2	1	1	7	-	53	3	3	-	1	-
ST.PAUL GU. & TRN.	45	59	18	25	22	32	-	-	3	1	5	5	6	8	1	1
ST.PAUL-MIDWAY....	2,656	2,504	1,179	1,008	655	603	82	64	134	185	771	806	257	225	127	73
MARTIN LUTHER KING	347	95	132	29	269	74	4	1	30	8	76	20	38	13	20	6
STATE FAIR.....	1,073	1,053	454	471	155	164	2	1	26	55	632	572	118	117	2	14
ST.PAUL NORTH.....	1,960	2,595	1,201	1,472	127	109	27	47	55	54	607	1,020	252	234	84	79
NORTH ST.PAUL.....	1,886	2,377	1,161	1,351	120	104	24	46	48	52	587	947	243	226	71	72
916 AVTI.....	74	218	40	121	7	5	3	1	7	2	20	73	9	8	13	7
ST.PAUL SOUTH.....	1,258	518	675	247	100	59	22	39	91	18	344	207	126	31	52	29
DAKOTA CO.AVTI....	138	16	68	7	3	-	1	1	11	3	37	6	4	1	5	3
WEST ST.PAUL.....	1,120	502	607	240	97	59	21	38	80	15	307	201	122	30	47	26
ANOKA COUNTY.....	895	1,512	431	562	41	40	45	22	83	168	319	474	102	207	103	145
ANOKA AVTI.....	287	40	202	16	3	3	3	3	12	8	80	18	34	4	15	2
ANOKA/RAMSEY C.COL	88	69	40	24	4	3	1	2	3	4	58	51	3	2	1	3
FRIDLEY.....	425	1,389	156	515	18	34	15	16	66	155	94	400	64	201	87	138
SPRING LAKE PARK..	95	14	33	7	16	-	26	1	2	1	87	5	1	-	-	2

NEW PARTIALS - (CONT.)

DISTRICT AND AREA OFFICES	TOTAL		FEMALE		MINORITY		HANDICAPPED		VETERAN		UNDER 22		45 & OVER		UI CLAIMANT	
	CY 90	CY 89	CY 90	CY 89	CY 90	CY 89	CY 90	CY 89	CY 90	CY 89	CY 90	CY 89	CY 90	CY 89	CY 90	CY 89
NORTHEAST DIST.....	996	765	392	326	27	15	26	7	101	102	456	195	103	152	102	67
DULUTH AREA.....	470	186	188	121	17	2	10	-	36	18	288	24	34	47	39	28
DULUTH.....	353	150	145	99	10	1	6	-	17	16	250	11	16	42	24	24
DULUTH AVTI.....	4	2	1	1	1	-	-	-	-	1	3	-	-	-	-	-
DULUTH MALL.....	87	23	35	17	5	-	2	-	5	1	34	11	12	2	4	1
CLOQUET.....	7	11	2	4	1	1	1	-	1	-	1	2	-	3	2	3
NORTH SHORE.....	19	-	5	-	-	-	1	-	13	-	-	-	6	-	9	-
ELY.....	125	101	57	39	3	2	2	1	12	9	33	44	23	30	12	16
GRAND RAPIDS AREA..	32	33	10	9	1	-	3	-	4	10	9	4	3	5	8	6
GRAND RAPIDS.....	28	33	7	9	-	-	3	-	4	10	8	4	2	5	7	6
AITKIN.....	4	-	3	-	1	-	-	-	-	-	1	-	1	-	1	-
HIBBING.....	162	70	73	30	3	-	2	-	21	17	45	13	21	12	26	7
INT'L FALLS.....	72	250	16	100	-	8	3	4	18	15	13	45	10	39	11	8
VIRGINIA.....	135	125	48	27	3	3	6	2	10	33	68	65	12	19	6	2
NORTHWEST DIST.....	3,140	3,973	1,576	2,005	333	975	53	52	114	70	1,981	2,713	164	248	183	96
ALEXANDRIA.....	52	82	26	31	2	1	-	4	4	3	25	56	2	10	6	-
BEMIDJI AREA.....	287	276	79	139	40	81	13	6	34	7	97	226	42	10	70	18
BEMIDJI.....	139	251	34	131	32	80	3	4	11	2	60	221	15	3	50	11
PARK RAPIDS.....	148	25	45	8	8	1	10	2	23	5	37	5	27	7	20	7
BRAINERD AREA.....	221	58	79	20	2	2	21	5	28	6	85	14	36	8	45	8
BRAINERD.....	98	25	30	4	2	1	4	1	20	3	19	6	16	4	31	5
STAPLES.....	39	7	11	4	-	-	1	1	4	1	18	-	8	1	9	1
WADENA.....	84	26	38	12	-	1	16	3	4	2	48	8	12	3	5	2
CROOKSTON AREA.....	212	173	79	66	57	19	8	3	17	14	70	50	23	18	29	51
CROOKSTON.....	54	31	20	12	27	5	1	1	3	4	15	5	6	3	8	20
E.GRAND FORKS.....	34	10	7	3	20	5	1	1	1	-	10	-	5	-	4	-
ROSEAU.....	32	4	20	3	4	-	2	-	3	-	7	1	6	-	6	1
THF.RIV.FALLS.....	92	128	32	48	6	9	4	1	10	10	38	44	6	15	11	30
FERGUS FALLS.....	44	276	22	100	4	88	2	2	8	-	13	211	5	22	9	2
LITTLE FALLS.....	29	194	8	94	-	1	-	13	6	5	8	168	5	7	9	1
MOORHEAD AREA.....	2,295	2,914	1,283	1,555	228	783	9	19	17	35	1,683	1,988	51	173	15	16
MOORHEAD.....	2,225	2,850	1,248	1,531	218	776	9	17	13	26	1,636	1,961	48	166	12	9
DETROIT LAKES.....	70	64	35	24	10	7	-	2	4	9	47	27	3	7	3	7

AREA OFFICE ACTIVITIES

CALENDAR YEAR 1990

NEW PARTIALS - (CONT.)

DISTRICT AND AREA OFFICES	TOTAL		FEMALE		MINORITY		HANDICAPPED		VETERAN		UNDER 22		45 & OVER		UT CLAIMANT	
	CY 90	CY 89	CY 90	CY 89	CY 90	CY 89	CY 90	CY 89	CY 90	CY 89	CY 90	CY 89	CY 90	CY 89	CY 90	CY 89
CENTRAL DIST.....	2,449	2,392	1,071	1,062	70	116	29	55	65	57	1,815	1,655	120	166	109	42
MARSHALL.....	654	991	289	447	36	34	2	18	3	7	570	837	13	36	8	2
MONTEVIDEO.....	596	279	259	120	2	6	-	2	3	1	470	235	30	17	4	2
MORA AREA.....	90	108	39	52	3	-	4	8	19	12	17	17	16	20	30	13
MORA.....	46	78	17	42	2	-	2	3	8	9	8	10	4	15	15	8
CAMBRIDGE.....	44	30	22	10	1	-	2	5	11	3	9	7	12	5	15	5
ST. CLOUD.....	808	643	363	255	12	4	4	4	23	26	571	393	44	58	49	7
WILLMAR AREA.....	267	338	114	170	15	69	18	21	17	10	161	161	17	32	16	17
WILLMAR.....	100	152	47	88	10	63	13	15	6	5	52	83	5	15	7	6
HUTCHINSON.....	102	186	46	82	4	6	5	6	11	5	45	78	11	17	9	11
LITCHFIELD.....	65	-	21	-	1	-	-	-	-	-	64	-	1	-	-	-
WORTHINGTON.....	34	33	7	18	2	3	1	2	-	1	26	12	-	3	2	1
SOUTH DIST.....	3,145	2,518	1,396	1,177	127	106	28	37	127	104	2,037	1,455	153	201	93	55
ALBERT LEA AREA....	119	115	48	54	10	7	4	2	14	9	50	41	9	19	13	8
ALBERT LEA.....	49	15	21	8	6	1	1	-	3	-	33	3	2	6	4	1
AUSTIN.....	70	100	27	46	4	6	3	2	11	9	17	38	7	13	9	7
FAIRMONT.....	28	26	12	11	1	-	-	8	-	2	10	4	6	4	1	1
FARIBAULT AREA....	117	140	48	79	7	3	2	1	7	7	62	67	7	16	16	4
FARIBAULT.....	48	41	21	22	4	2	1	1	5	2	20	27	4	6	6	3
FARIBAULT AVTI....	6	80	3	47	-	-	-	-	1	1	-	37	1	6	1	-
OWATONNA.....	63	19	24	10	3	1	1	-	1	4	42	3	2	4	9	1
MANKATO.....	1,108	349	521	136	46	8	7	1	26	22	734	165	13	32	16	7
NEW ULM.....	483	119	176	61	14	6	3	5	8	5	412	31	14	22	16	14
RED WING.....	83	110	23	41	-	3	3	-	3	-	57	72	4	5	8	4
ROCHESTER AREA....	947	1,244	419	624	41	74	8	14	67	54	554	706	83	94	15	13
ROCHESTER.....	933	1,229	410	618	38	74	8	13	66	54	547	697	82	94	15	11
RCHSTR COM COL....	4	6	3	1	-	-	-	1	1	-	3	4	-	-	-	1
ROCHESTER AVTI....	10	9	6	5	3	-	-	-	-	-	4	5	1	-	-	1
WINONA.....	260	415	149	171	8	5	1	6	2	5	158	369	17	9	8	4

RENEWALS

DISTRICT AND AREA OFFICES	TOTAL		FEMALE		MINORITY		HANDICAPPED		VETERAN		UNDER 22		45 & OVER		UI CLAIMANT	
	CY 90	CY 89	CY 90	CY 89	CY 90	CY 89	CY 90	CY 89	CY 90	CY 89	CY 90	CY 89	CY 90	CY 89	CY 90	CY 89
STATE TOTAL.....	127630	119820	44,985	41,098	13,572	12,659	6,148	6,330	20,868	19,423	31,377	30,602	17,720	15,457	24,543	19,535
JS STATE TOTAL.....	127617	119340	44,982	40,839	13,570	12,513	6,148	6,316	20,864	19,374	31,376	30,562	17,709	15,416	24,543	19,482
METRO AREA.....	39,691	33,289	12,379	9,948	7,738	6,702	2,174	1,947	9,262	7,266	6,258	5,775	6,664	4,773	9,077	6,776
WEST METRO.....	19,810	16,412	5,905	4,493	5,647	4,630	1,221	1,144	4,547	4,022	3,632	3,072	3,093	2,386	4,370	3,049
MINNEAPOLIS AREA...	9,430	8,584	2,874	2,551	4,769	4,094	592	624	2,086	1,925	2,561	2,158	1,111	986	1,405	1,047
HENN. CTY MK READY	740	423	150	78	444	229	28	20	171	91	37	21	92	49	55	48
MINNEAPOLIS.....	6,988	6,551	1,962	1,811	3,154	2,740	476	547	1,812	1,731	1,207	950	935	852	1,306	957
MPLS CASUAL.....	266	259	21	25	105	94	9	13	87	83	13	16	74	72	35	26
MPLS SUMMER.....	1,326	1,191	704	578	1,022	948	75	33	1	2	1,283	1,137	8	10	4	4
MPLS TECH INST....	101	144	32	54	41	78	4	9	14	17	20	30	21	3	5	12
MPLS T.I. SPCL PGM	9	16	5	5	3	5	-	2	1	1	1	4	-	-	-	-
BLOOMINGTON.....	2,275	1,761	627	370	241	128	143	110	726	788	162	104	493	430	757	540
BROOKLYN PARK AREA.	3,205	2,754	935	763	285	240	163	159	695	581	435	443	565	372	875	602
BROOKLYN PARK.....	2,972	2,570	864	711	279	234	157	153	681	567	358	371	552	367	856	590
CRYSTAL AVTI.....	233	184	71	52	6	6	6	6	14	14	77	72	13	5	19	12
MINNETONKA AREA....	4,900	3,313	1,469	809	352	168	323	251	1,040	728	474	367	924	598	1,333	860
HOPKINS AVTI.....	153	101	26	13	7	5	3	3	22	20	20	24	14	6	30	18
MINNETONKA.....	3,857	2,553	1,246	667	305	133	231	176	824	603	328	254	789	511	1,143	703
SHAKOPEE.....	890	659	197	129	40	30	89	72	194	105	126	89	121	81	160	139
EAST METRO.....	19,880	16,873	6,474	5,455	2,091	2,072	953	803	4,715	3,243	2,626	2,703	3,570	2,387	4,706	3,727
ST. PAUL CENTRAL....	5,055	5,069	1,592	1,716	1,408	1,395	168	169	916	837	604	700	739	680	806	851
ST. PAUL AVTI.....	99	63	41	22	29	11	2	3	13	7	14	14	5	1	12	7
ST. PAUL GU. & TRN.	203	126	76	47	102	62	8	2	22	11	17	11	37	25	20	24
ST. PAUL-MIDWAY....	3,876	4,066	1,180	1,368	898	967	149	150	778	745	342	448	549	541	720	749
MARTIN LUTHER KING	297	277	95	91	263	252	4	4	38	33	33	32	37	28	36	53
STATE FAIR.....	580	537	200	188	116	103	5	10	65	41	198	195	111	85	18	18
ST. PAUL NORTH.....	3,710	3,220	1,413	1,180	131	118	123	141	727	550	435	480	692	516	952	681
NORTH ST. PAUL....	3,558	3,149	1,331	1,151	125	114	123	139	717	544	404	460	680	512	937	676
916 AVTI.....	152	71	82	29	6	4	-	2	10	6	31	20	12	4	15	5
ST. PAUL SOUTH.....	4,249	3,325	1,437	932	340	334	199	205	726	554	716	546	607	435	963	992
DAKOTA CO. AVTI....	632	121	281	42	25	6	5	2	20	8	273	33	23	2	13	8
WEST ST. PAUL.....	3,617	3,204	1,156	890	315	328	194	203	706	546	443	513	584	433	950	984
ANOKA COUNTY.....	6,866	5,259	2,032	1,627	212	225	463	288	2,346	1,302	871	977	1,532	756	1,985	1,203
ANOKA AVTI.....	292	194	121	44	6	10	18	14	76	73	70	64	32	12	36	29
ANOKA/RAMSEY C.COL	232	182	97	72	9	9	4	6	30	13	101	115	23	4	16	9
FRIDLEY.....	5,822	4,394	1,555	1,272	170	174	410	246	2,176	1,171	604	667	1,402	683	1,852	1,126
SPRING LAKE PARK..	520	489	259	239	27	32	31	22	64	45	96	131	75	57	81	39

RENEWALS - (CONT.)

DISTRICT AND AREA OFFICES	TOTAL		FEMALE		MINORITY		HANDICAPPED		VETERAN		UNDER 22		45 & OVER		UI CLAIMANT	
	CY 90	CY 89	CY 90	CY 89	CY 90	CY 89	CY 90	CY 89	CY 90	CY 89	CY 90	CY 89	CY 90	CY 89	CY 90	CY 89
NORTHEAST DIST.....	13,809	15,117	4,984	5,289	483	539	526	576	1,979	2,001	2,920	3,187	1,685	1,894	2,022	1,867
DULUTH AREA.....	7,055	7,944	2,623	2,722	333	383	254	306	889	1,094	1,619	1,718	891	1,008	1,002	1,015
DULUTH.....	5,568	5,573	1,882	1,712	289	274	209	238	804	895	847	820	781	771	895	751
DULUTH AVTI.....	73	210	23	98	3	4	5	6	7	25	20	32	6	14	8	25
DULUTH MALL.....	1,219	1,156	639	555	32	19	34	17	34	45	738	695	53	64	52	65
CLOQUET.....	84	851	31	305	9	84	1	41	11	87	13	152	8	101	25	150
NORTH SHORE.....	111	154	48	52	-	2	5	4	33	42	1	19	43	58	22	24
ELY.....	426	581	173	217	6	3	6	9	76	87	48	86	109	173	58	65
GRAND RAPIDS AREA..	1,910	1,913	701	717	51	65	83	95	213	208	379	411	196	222	332	228
GRAND RAPIDS.....	1,897	1,896	697	710	51	65	81	95	209	205	378	408	191	219	328	227
AITKIN.....	13	17	4	7	-	-	2	-	4	3	1	3	5	3	4	1
HIBBING.....	1,710	2,034	679	810	15	20	88	84	210	272	366	447	166	196	222	201
INT'L FALLS.....	908	951	249	289	35	40	26	27	168	133	204	215	86	88	158	77
VIRGINIA.....	1,800	1,694	559	534	43	28	69	55	423	207	304	310	237	207	250	281
NORTHWEST DIST.....	28,383	26,073	10,315	8,927	3,511	3,350	1,393	1,450	3,926	4,036	6,976	6,459	4,324	3,857	6,719	5,240
ALEXANDRIA.....	1,531	1,536	579	551	15	10	37	57	156	183	459	457	211	209	201	221
BEMIDJI AREA.....	6,315	5,611	1,806	1,563	729	743	246	285	1,213	1,221	918	882	1,244	1,080	2,756	2,182
BEMIDJI.....	4,851	4,249	1,317	1,140	652	653	202	219	976	896	664	645	930	794	2,234	1,814
PARK RAPIDS.....	1,464	1,362	489	423	77	90	44	66	237	325	254	237	314	286	522	368
BRAINERD AREA.....	4,429	5,359	1,589	1,893	84	140	260	321	757	1,002	952	1,089	645	764	852	840
BRAINERD.....	2,870	3,402	1,021	1,251	72	118	187	238	560	680	504	604	441	500	636	598
STAPLES.....	276	474	92	147	5	8	19	26	41	77	70	124	41	65	35	53
HADENA.....	1,283	1,482	476	495	7	14	54	57	156	245	378	361	163	199	181	189
CROOKSTON AREA.....	7,096	6,118	2,420	2,105	1,625	1,319	449	447	903	787	1,396	1,257	1,178	1,005	2,122	1,453
CROOKSTON.....	2,675	2,420	750	686	930	677	131	120	381	347	541	467	492	473	802	804
E.GRAND FORKS.....	1,316	1,346	456	463	625	575	84	105	111	154	312	302	161	153	86	45
ROSEAU.....	386	131	207	69	6	5	27	16	31	11	79	34	50	13	91	14
THF.RIV.FALLS.....	2,719	2,221	1,007	887	64	62	207	206	380	275	464	454	475	366	1,143	590
FERGUS FALLS.....	1,425	1,331	540	452	53	89	98	87	201	178	315	376	198	162	220	144
LITTLE FALLS.....	950	812	427	291	5	8	39	35	95	88	288	262	105	77	182	86
MOORHEAD AREA.....	6,637	5,306	2,954	2,072	1,000	1,041	264	218	601	577	2,648	2,136	743	560	386	314
MOORHEAD.....	4,240	3,563	1,963	1,457	770	846	172	158	360	359	2,006	1,569	425	358	184	146
DETROIT LAKES.....	2,397	1,743	991	615	230	195	92	60	241	218	642	567	318	202	202	168

AREA OFFICE ACTIVITIES

CALENDAR YEAR 1990

RENEWALS - (CONT.)

DISTRICT AND AREA OFFICES	TOTAL		FEMALE		MINORITY		HANDICAPPED		VETERAN		UNDER 22		45 & OVER		UI CLAIMANT	
	CY 90	CY 89	CY 90	CY 89	CY 90	CY 89	CY 90	CY 89	CY 90	CY 89	CY 90	CY 89	CY 90	CY 89	CY 90	CY 89
CENTRAL DIST.....	22,029	21,644	8,425	8,220	1,051	1,162	973	1,098	2,891	2,872	7,533	7,449	2,339	2,309	3,344	2,737
MARSHALL.....	1,953	1,818	710	634	53	50	76	85	196	181	894	837	168	181	159	145
MONTEVIDEO.....	1,625	1,911	614	894	43	38	45	66	107	111	875	908	149	224	174	142
MORA AREA.....	3,084	3,212	1,353	1,427	25	30	250	293	384	403	696	766	488	447	589	456
MORA.....	1,661	1,616	739	743	21	19	121	126	224	227	358	399	283	240	329	252
CAMBRIDGE.....	1,423	1,596	614	684	4	11	129	167	160	176	338	367	205	207	260	204
ST.CLOUD.....	7,482	6,866	2,786	2,376	176	137	291	315	1,451	1,430	2,010	1,840	795	722	1,313	1,047
WILLMAR AREA.....	6,140	6,039	2,255	2,188	661	854	288	304	645	622	2,174	2,206	612	593	996	845
WILLMAR.....	3,515	3,623	1,312	1,292	613	807	207	234	353	393	1,123	1,119	344	391	423	416
HUTCHINSON.....	2,440	2,261	869	817	37	43	63	63	276	212	1,001	1,036	244	181	537	392
LITCHFIELD.....	185	155	74	79	11	4	18	7	16	17	50	51	24	21	36	37
WORTHINGTON.....	1,745	1,798	707	701	93	53	23	35	108	125	884	892	127	142	113	102
SOUTH DIST.....	23,705	23,218	8,879	8,455	787	760	1,082	1,245	2,806	3,199	7,689	7,692	2,697	2,583	3,381	2,862
ALBERT LEA AREA....	3,920	3,625	1,373	1,274	233	256	207	238	542	525	1,083	1,012	503	482	608	454
ALBERT LEA.....	1,939	1,699	630	517	149	149	117	117	286	252	495	472	291	223	351	262
AUSTIN.....	1,981	1,926	743	757	84	107	90	121	256	273	588	540	212	259	257	192
FAIRMONT.....	2,103	1,923	908	801	96	58	203	200	114	110	1,077	925	145	170	134	111
FARIBAULT AREA....	2,354	2,099	891	744	88	80	109	128	322	330	520	499	354	312	376	337
FARIBAULT.....	1,285	1,186	479	425	36	34	57	84	186	191	329	325	191	182	194	181
FARIBAULT AVTI....	237	198	135	103	6	10	9	12	14	17	43	55	26	21	14	10
OWATONNA.....	832	715	277	216	46	36	43	32	122	122	148	119	137	109	168	146
MANKATO.....	4,751	5,133	1,819	1,874	112	106	136	176	462	637	1,837	2,016	423	442	392	368
NEW ULM.....	2,251	2,003	929	842	51	43	74	87	173	179	961	810	198	192	342	326
RED WING.....	1,185	1,230	431	432	16	13	17	27	118	147	349	353	121	121	157	153
ROCHESTER AREA....	4,441	4,350	1,347	1,223	150	166	233	262	750	960	878	858	681	639	1,031	853
ROCHESTER.....	4,354	4,282	1,314	1,202	142	162	232	261	743	952	845	834	671	638	1,022	849
RCHSTR COM COL....	31	24	11	13	2	2	-	-	2	3	20	12	-	-	2	-
ROCHESTER AVTI....	56	44	22	8	6	2	1	1	5	5	13	12	10	1	7	4
WINONA.....	2,700	2,855	1,181	1,265	41	38	103	127	325	311	984	1,219	272	225	341	260

AREA OFFICE ACTIVITIES

CALENDAR YEAR 1990

ENROLLMENTS IN TRAINING

DISTRICT AND AREA OFFICES	TOTAL		FEMALE		MINORITY		HANDICAPPED		VETERAN		UNDER 22		45 & OVER		UI CLAIMANT	
	CY 90	CY 89	CY 90	CY 89	CY 90	CY 89	CY 90	CY 89	CY 90	CY 89	CY 90	CY 89	CY 90	CY 89	CY 90	CY 89
STATE TOTAL.....	636	823	308	385	57	79	42	66	139	144	101	154	89	94	223	168
JS STATE TOTAL.....	635	809	308	379	57	76	42	66	139	142	101	153	88	94	223	167
METRO AREA.....	193	162	89	69	11	16	14	15	52	48	4	4	47	39	145	76
WEST METRO.....	96	84	38	31	10	10	8	10	38	28	-	-	31	26	62	53
MINNEAPOLIS AREA...	16	20	3	4	5	8	6	9	12	13	-	-	2	3	8	2
HENN. CTY WK READY	-	-	-	-	-	-	-	-	-	-	-	-	-	-	-	-
MINNEAPOLIS.....	16	20	3	4	5	8	6	9	12	13	-	-	2	3	8	2
MPLS CASUAL.....	-	-	-	-	-	-	-	-	-	-	-	-	-	-	-	-
MPLS SUMMER.....	-	-	-	-	-	-	-	-	-	-	-	-	-	-	-	-
MPLS TECH INST....	-	-	-	-	-	-	-	-	-	-	-	-	-	-	-	-
MPLS T.I. SPCL PGM	-	-	-	-	-	-	-	-	-	-	-	-	-	-	-	-
BLOOMINGTON.....	55	29	25	13	3	1	2	-	18	10	-	-	17	11	36	20
BROOKLYN PARK AREA.	25	21	10	7	2	1	-	1	8	5	-	-	12	8	18	18
BROOKLYN PARK.....	25	21	10	7	2	1	-	1	8	5	-	-	12	8	18	18
CRYSTAL AVTI.....	-	-	-	-	-	-	-	-	-	-	-	-	-	-	-	-
MINNETONKA AREA....	-	14	-	7	-	-	-	-	-	-	-	-	-	4	-	13
HOPKINS AVTI.....	-	-	-	-	-	-	-	-	-	-	-	-	-	-	-	-
MINNETONKA.....	-	14	-	7	-	-	-	-	-	-	-	-	-	4	-	13
SHAKOPEE.....	-	-	-	-	-	-	-	-	-	-	-	-	-	-	-	-
EAST METRO.....	97	78	51	38	1	6	6	5	14	20	4	4	16	13	83	23
ST.PAUL CENTRAL....	2	26	-	12	-	3	-	2	2	4	-	2	-	2	1	5
ST.PAUL AVTI.....	-	-	-	-	-	-	-	-	-	-	-	-	-	-	-	-
ST.PAUL GU. & TRN.	-	10	-	7	-	1	-	-	-	-	-	-	-	-	-	-
ST.PAUL-MIDWAY....	2	16	-	5	-	2	-	2	2	4	-	2	-	2	1	4
MARTIN LUTHER KING	-	-	-	-	-	-	-	-	-	-	-	-	-	-	-	-
STATE FAIR.....	-	-	-	-	-	-	-	-	-	-	-	-	-	-	-	-
ST.PAUL NORTH.....	57	3	29	-	1	-	4	-	6	2	4	1	13	-	50	1
NORTH ST.PAUL.....	57	3	29	-	1	-	4	-	6	2	4	1	13	-	50	1
916 AVTI.....	-	-	-	-	-	-	-	-	-	-	-	-	-	-	-	-
ST.PAUL SOUTH.....	1	1	-	-	-	-	-	-	-	1	-	-	-	-	1	1
DAKOTA CO.AVTI....	-	-	-	-	-	-	-	-	-	-	-	-	-	-	-	-
WEST ST.PAUL.....	1	1	-	-	-	-	-	-	-	1	-	-	-	-	1	1
ANOKA COUNTY.....	37	48	22	26	-	3	2	3	6	13	-	1	3	11	31	16
ANOKA AVTI.....	-	2	-	-	-	-	-	-	-	2	-	-	-	1	-	-
ANOKA/RAMSEY C.COL	-	3	-	-	-	-	-	1	-	3	-	-	-	1	-	-
FRIDLEY.....	37	42	22	26	-	2	2	2	6	8	-	1	3	9	31	16
SPRING LAKE PARK..	-	1	-	-	-	1	-	-	-	-	-	-	-	-	-	-

ENROLLMENTS IN TRAINING - (CONT.)

DISTRICT AND AREA OFFICES	TOTAL		FEMALE		MINORITY		HANDICAPPED		VETERAN		UNDER 22		45 & OVER		UI CLAIMANT	
	CY 90	CY 89	CY 90	CY 89	CY 90	CY 89	CY 90	CY 89	CY 90	CY 89	CY 90	CY 89	CY 90	CY 89	CY 90	CY 89
NORTHEAST DIST.....	37	80	4	20	2	2	3	5	21	30	7	13	8	5	10	24
DULUTH AREA.....	2	2	-	-	-	-	-	-	-	2	2	-	-	-	-	2
DULUTH.....	2	2	-	-	-	-	-	-	-	2	2	-	-	-	-	2
DULUTH AVTI.....	-	-	-	-	-	-	-	-	-	-	-	-	-	-	-	-
DULUTH MALL.....	-	-	-	-	-	-	-	-	-	-	-	-	-	-	-	-
CLOQUET.....	-	-	-	-	-	-	-	-	-	-	-	-	-	-	-	-
NORTH SHORE.....	-	-	-	-	-	-	-	-	-	-	-	-	-	-	-	-
ELY.....	8	5	-	-	-	-	1	7	5	5	-	-	5	2	3	2
GRAND RAPIDS AREA..	-	1	-	-	-	-	-	-	-	1	-	-	-	-	-	-
GRAND RAPIDS.....	-	1	-	-	-	-	-	-	-	1	-	-	-	-	-	-
AITKIN.....	-	-	-	-	-	-	-	-	-	-	-	-	-	-	-	-
HIBBING.....	21	51	4	16	2	1	3	4	8	15	5	12	3	3	5	12
INT'L FALLS.....	-	-	-	4	-	-	-	-	-	-	-	-	-	-	-	-
VIRGINIA.....	6	21	-	4	-	1	-	-	6	7	-	1	-	-	2	8
NORTHWEST DIST.....	313	512	185	277	43	56	19	39	18	29	78	127	28	42	27	54
ALEXANDRIA.....	-	-	-	-	-	-	-	-	-	-	-	-	-	-	-	-
BEHIDJI AREA.....	15	8	12	3	-	-	-	1	-	1	3	3	5	-	-	2
BEHIDJI.....	-	1	-	-	-	-	-	-	-	1	-	-	-	-	-	-
PARK RAPIDS.....	15	7	12	3	-	-	-	1	-	-	3	3	5	-	-	2
BRAINERD AREA.....	-	1	-	-	-	-	-	-	-	1	-	-	-	1	-	-
BRAINERD.....	-	-	-	-	-	-	-	-	-	-	-	-	-	-	-	-
STAPLES.....	-	1	-	-	-	-	-	-	-	1	-	-	-	1	-	-
WADENA.....	-	-	-	-	-	-	-	-	-	-	-	-	-	-	-	-
CROOKSTON AREA.....	276	486	172	265	42	56	19	38	17	26	72	120	22	36	21	50
CROOKSTON.....	158	182	105	116	29	39	10	18	9	10	46	46	8	15	6	8
E.GRAND FORKS.....	21	13	13	5	9	4	4	1	-	1	7	3	-	2	1	-
ROSEAU.....	42	40	24	10	2	-	2	1	3	4	7	12	10	3	7	5
THF.RIV.FALLS.....	55	251	30	134	2	13	3	18	5	11	12	59	4	16	7	37
FERGUS FALLS.....	1	9	-	4	-	-	-	-	-	1	-	3	-	2	-	1
LITTLE FALLS.....	21	-	1	-	1	-	-	-	1	-	3	-	1	-	6	-
MOORHEAD AREA.....	-	8	-	5	-	-	-	-	-	-	-	1	-	3	-	1
MOORHEAD.....	-	-	-	-	-	-	-	-	-	-	-	-	-	-	-	-
DETROIT LAKES.....	-	8	-	5	-	-	-	-	-	-	-	1	-	3	-	1

AREA OFFICE ACTIVITIES

CALENDAR YEAR 1990

ENROLLMENTS IN TRAINING - (CONT.)

DISTRICT AND AREA OFFICES	TOTAL		FEMALE		MINORITY		HANDICAPPED		VETERAN		UNDER 22		45 & OVER		UI CLAIMANT	
	CY 90	CY 89	CY 90	CY 89	CY 90	CY 89	CY 90	CY 89	CY 90	CY 89	CY 90	CY 89	CY 90	CY 89	CY 90	CY 89
CENTRAL DIST.....	8	26	2	4	-	2	1	3	4	18	-	3	2	5	5	9
MARSHALL.....	3	-	-	-	-	-	-	-	2	-	-	-	-	-	2	-
MONTEVIDEO.....	2	14	1	2	-	1	-	2	1	11	-	2	2	3	1	3
MORA AREA.....	1	8	-	2	-	1	1	1	1	6	-	-	-	1	1	3
MORA.....	1	7	-	2	-	1	1	1	1	5	-	-	-	-	1	2
CAMBRIDGE.....	-	1	-	-	-	-	-	-	-	1	-	-	-	1	-	1
ST.CLOUD.....	1	2	1	-	-	-	-	-	-	1	-	-	-	1	1	2
WILLMAR AREA.....	1	2	-	-	-	-	-	-	-	-	-	1	-	-	-	1
WILLMAR.....	-	2	-	-	-	-	-	-	-	-	-	1	-	-	-	1
HUTCHINSON.....	-	-	-	-	-	-	-	-	-	-	-	-	-	-	-	-
LITCHFIELD.....	1	-	-	-	-	-	-	-	-	-	-	-	-	-	-	-
WORTHINGTON.....	-	-	-	-	-	-	-	-	-	-	-	-	-	-	-	-
SOUTH DIST.....	84	29	28	9	1	-	5	4	44	17	12	6	3	3	36	4
ALBERT LEA AREA....	-	-	-	-	-	-	-	-	-	-	-	-	-	-	-	-
ALBERT LEA.....	-	-	-	-	-	-	-	-	-	-	-	-	-	-	-	-
AUSTIN.....	-	-	-	-	-	-	-	-	-	-	-	-	-	-	-	-
FAIRMONT.....	-	-	-	-	-	-	-	-	-	-	-	-	-	-	-	-
FARIBAULT AREA....	2	1	2	-	-	-	-	-	-	1	-	-	-	-	2	1
FARIBAULT.....	2	1	2	-	-	-	-	-	-	1	-	-	-	-	2	1
FARIBAULT AVTI....	-	-	-	-	-	-	-	-	-	-	-	-	-	-	-	-
OHATONNA.....	-	-	-	-	-	-	-	-	-	-	-	-	-	-	-	-
MANKATO.....	1	10	1	3	-	-	-	2	-	4	-	4	-	3	-	1
NEW ULM.....	7	-	2	-	-	-	-	-	3	-	1	-	1	-	1	-
RED WING.....	2	-	-	-	-	-	-	-	-	-	2	-	-	-	-	-
ROCHESTER AREA....	2	1	1	-	1	-	1	1	2	1	-	-	-	-	1	-
ROCHESTER.....	2	1	1	-	1	-	1	1	2	1	-	-	-	-	1	-
RCHSTR COM COL....	-	-	-	-	-	-	-	-	-	-	-	-	-	-	-	-
ROCHESTER AVTI....	-	-	-	-	-	-	-	-	-	-	-	-	-	-	-	-
WINONA.....	70	17	22	6	-	-	4	1	39	11	9	2	2	-	32	2

AREA OFFICE ACTIVITIES

CALENDAR YEAR 1990

COUNSELING INTERVIEWS

DISTRICT AND AREA OFFICES	TOTAL		FEMALE		MINORITY		HANDICAPPED		VETERAN		UNDER 22		45 & OVER		UI CLAIMANT	
	CY 90	CY 89	CY 90	CY 89	CY 90	CY 89	CY 90	CY 89	CY 90	CY 89	CY 90	CY 89	CY 90	CY 89	CY 90	CY 89
STATE TOTAL.....	5,243	6,135	1,946	2,252	736	1,105	399	452	1,435	1,605	445	625	1,265	1,263	2,281	2,112
JS STATE TOTAL.....	5,241	5,831	1,946	2,084	736	1,007	399	443	1,434	1,584	445	601	1,263	1,247	2,281	2,098
METRO AREA.....	4,390	5,111	1,660	1,689	633	890	336	383	1,086	1,410	350	502	1,098	1,171	2,030	1,997
WEST METRO.....	2,406	3,327	901	1,093	429	656	230	287	636	943	265	348	536	794	1,045	1,374
MINNEAPOLIS AREA...	892	1,323	302	479	364	550	139	183	301	381	218	269	133	231	181	344
HENN. CTY WK READY	-	1	-	1	-	-	-	-	-	-	-	-	-	-	-	1
MINNEAPOLIS.....	857	1,261	285	438	333	502	139	182	301	381	186	209	133	231	181	343
MPLS CASUAL.....	-	-	-	-	-	-	-	-	-	-	-	-	-	-	-	-
MPLS SUMMER.....	35	61	17	40	31	48	-	1	-	-	32	60	-	-	-	-
MPLS TECH INST....	-	-	-	-	-	-	-	-	-	-	-	-	-	-	-	-
MPLS T.I. SPCL PGM	-	-	-	-	-	-	-	-	-	-	-	-	-	-	-	-
BLOOMINGTON.....	290	590	78	170	18	56	38	30	128	199	7	55	82	107	148	215
BROOKLYN PARK AREA	535	488	250	173	32	32	20	47	91	130	16	11	175	162	337	277
BROOKLYN PARK.....	535	488	250	173	32	32	20	47	91	130	16	11	175	162	337	277
CRYSTAL AVTI.....	-	-	-	-	-	-	-	-	-	-	-	-	-	-	-	-
MINNETONKA AREA....	689	926	271	271	15	18	33	27	116	233	24	13	146	294	379	538
HOPKINS AVTI.....	-	-	-	-	-	-	-	-	-	-	-	-	-	-	-	-
MINNETONKA.....	687	926	270	271	15	18	31	27	116	233	24	13	146	294	379	538
SHAKOPEE.....	2	-	1	-	-	-	2	-	-	-	-	-	-	-	-	-
EAST METRO.....	1,984	1,784	759	596	204	234	106	96	450	467	85	154	562	377	985	623
ST. PAUL CENTRAL....	916	903	362	249	170	181	51	39	140	182	66	88	204	121	343	271
ST. PAUL AVTI.....	-	-	-	-	-	-	-	-	-	-	-	-	-	-	-	-
ST. PAUL GU. & TRN.	-	16	-	8	-	4	-	-	-	1	-	-	-	5	-	3
ST. PAUL-MIDWAY....	913	887	362	241	167	177	51	39	137	181	66	88	203	116	343	268
MARTIN LUTHER KING	3	-	-	-	3	-	-	-	3	-	-	-	1	-	-	-
STATE FAIR.....	-	-	-	-	-	-	-	-	-	-	-	-	-	-	-	-
ST. PAUL NORTH.....	559	330	173	125	20	28	26	17	185	130	10	7	185	121	328	126
NORTH ST. PAUL.....	559	330	173	125	20	28	26	17	185	130	10	7	185	121	328	126
916 AVTI.....	-	-	-	-	-	-	-	-	-	-	-	-	-	-	-	-
ST. PAUL SOUTH.....	66	90	20	14	6	4	11	19	36	59	4	1	26	39	38	54
DAKOTA CO. AVTI....	-	-	-	-	-	-	-	-	-	-	-	-	-	-	-	-
WEST ST. PAUL.....	66	90	20	14	6	4	11	19	36	59	4	1	26	39	38	54
ANOKA COUNTY.....	443	461	204	208	8	21	18	21	89	96	5	58	147	96	276	172
ANOKA AVTI.....	-	-	-	-	-	-	-	-	-	-	-	-	-	-	-	-
ANOKA/RAMSEY C. COL	-	72	-	37	-	2	-	3	-	7	-	49	-	-	-	2
FRIDLEY.....	443	389	204	171	8	19	18	18	89	89	5	9	147	96	276	170
SPRING LAKE PARK..	-	-	-	-	-	-	-	-	-	-	-	-	-	-	-	-

COUNSELING INTERVIEWS - (CONT.)

DISTRICT AND AREA OFFICES	TOTAL		FEMALE		MINORITY		HANDICAPPED		VETERAN		UNDER 22		45 & OVER		UI CLAIMANT	
	CY 90	CY 89	CY 90	CY 89	CY 90	CY 89	CY 90	CY 89	CY 90	CY 89	CY 90	CY 89	CY 90	CY 89	CY 90	CY 89
NORTHEAST DIST.....	32	73	9	30	-	3	5	9	16	33	2	5	4	10	6	9
DULUTH AREA.....	3	3	1	-	-	-	2	-	1	2	-	-	2	-	1	2
DULUTH.....	3	3	1	-	-	-	2	-	1	2	-	-	2	-	1	2
DULUTH AVTI.....	-	-	-	-	-	-	-	-	-	-	-	-	-	-	-	-
DULUTH MALL.....	-	-	-	-	-	-	-	-	-	-	-	-	-	-	-	-
CLOQUET.....	-	-	-	-	-	-	-	-	-	-	-	-	-	-	-	-
NORTH SHORE.....	-	-	-	-	-	-	-	-	-	-	-	-	-	-	-	-
ELY.....	1	-	-	-	-	-	-	-	-	-	-	-	-	-	-	-
GRAND RAPIDS AREA..	-	1	-	-	-	1	-	-	-	1	-	-	-	-	-	-
GRAND RAPIDS.....	-	1	-	-	-	1	-	-	-	1	-	-	-	-	-	-
AITKIN.....	-	-	-	-	-	-	-	-	-	-	-	-	-	-	-	-
HIBBING.....	10	12	2	11	-	-	1	-	9	1	1	1	2	2	-	-
INT'L FALLS.....	-	7	-	2	-	-	-	3	-	7	-	-	-	2	-	-
VIRGINIA.....	18	50	6	17	-	2	2	6	6	22	1	4	-	6	5	7
NORTHWEST DIST.....	319	461	119	307	97	109	16	26	85	63	64	82	17	30	50	42
ALEXANDRIA.....	-	-	-	-	-	-	-	-	-	-	-	-	-	-	-	-
BEMIDJI AREA.....	3	-	-	-	-	-	1	-	3	-	-	-	1	-	1	-
BEMIDJI.....	-	-	-	-	-	-	-	-	-	-	-	-	-	-	-	-
PARK RAPIDS.....	3	-	-	-	-	-	1	-	3	-	-	-	1	-	1	-
BRAINERD AREA.....	77	44	13	15	-	1	5	3	61	41	12	10	4	-	42	24
BRAINERD.....	77	44	13	15	-	1	5	3	61	41	12	10	4	-	42	24
STAPLES.....	-	-	-	-	-	-	-	-	-	-	-	-	-	-	-	-
WADENA.....	-	-	-	-	-	-	-	-	-	-	-	-	-	-	-	-
CROOKSTON AREA.....	238	415	106	291	97	108	10	23	20	22	52	72	12	29	7	16
CROOKSTON.....	214	267	83	177	96	91	10	10	20	16	42	53	10	19	6	2
E.GRAND FORKS.....	2	1	2	1	-	-	-	-	-	-	2	-	-	-	-	-
ROSEAU.....	-	-	-	-	-	-	-	-	-	-	-	-	-	-	-	-
THF.RIV.FALLS.....	22	147	21	113	1	17	-	13	-	6	8	19	2	10	1	14
FERGUS FALLS.....	-	-	-	-	-	-	-	-	-	-	-	-	-	-	-	-
LITTLE FALLS.....	-	2	-	1	-	-	-	-	-	-	-	-	-	1	-	-
MOORHEAD AREA.....	1	-	-	-	-	-	-	-	1	-	-	-	-	-	-	-
MOORHEAD.....	1	-	-	-	-	-	-	-	1	-	-	-	-	-	-	-
DETROIT LAKES.....	-	-	-	-	-	-	-	-	-	-	-	-	-	-	-	-

AREA OFFICE ACTIVITIES

CALENDAR YEAR 1990

COUNSELING INTERVIEWS - (CONT.)

DISTRICT AND AREA OFFICES	TOTAL		FEMALE		MINORITY		HANDICAPPED		VETERAN		UNDER 22		45 & OVER		UI CLAIMANT	
	CY 90	CY 89	CY 90	CY 89	CY 90	CY 89	CY 90	CY 89	CY 90	CY 89	CY 90	CY 89	CY 90	CY 89	CY 90	CY 89
CENTRAL DIST.....	358	128	119	44	3	3	28	21	176	47	13	9	127	28	141	35
MARSHALL.....	1	3	-	-	-	-	-	1	1	3	-	-	1	1	-	-
MONTEVIDEO.....	-	-	-	-	-	-	-	-	-	-	-	-	-	-	-	-
MORA AREA.....	2	3	2	2	-	-	-	-	-	-	1	-	1	-	1	-
MORA.....	2	3	2	2	-	-	-	-	-	-	1	-	1	-	1	-
CAMBRIDGE.....	-	-	-	-	-	-	-	-	-	-	-	-	-	-	-	-
ST.CLOUD.....	285	85	81	21	2	2	21	18	141	41	9	2	106	24	118	29
WILLMAR AREA.....	69	37	35	21	1	1	7	2	33	3	3	7	19	3	21	6
WILLMAR.....	69	26	35	18	1	1	7	1	33	1	3	7	19	-	21	2
HUTCHINSON.....	-	11	-	3	-	-	-	1	-	2	-	-	-	3	-	4
LITCHFIELD.....	-	-	-	-	-	-	-	-	-	-	-	-	-	-	-	-
WORTHINGTON.....	1	-	1	-	-	-	-	-	1	-	-	-	-	-	1	-
SOUTH DIST.....	142	58	39	14	3	2	14	4	71	31	16	3	17	8	54	15
ALBERT LEA AREA....	3	6	1	-	-	1	-	2	3	6	2	-	-	2	2	4
ALBERT LEA.....	3	6	1	-	-	1	-	2	3	6	2	-	-	2	2	4
AUSTIN.....	-	-	-	-	-	-	-	-	-	-	-	-	-	-	-	-
FAIRMONT.....	13	1	5	-	1	-	1	-	2	-	1	-	1	-	-	1
FARIBAULT AREA....	4	1	3	-	-	-	-	-	1	1	-	-	-	-	2	-
FARIBAULT.....	4	1	3	-	-	-	-	-	1	1	-	-	-	-	2	-
FARIBAULT AVTI....	-	-	-	-	-	-	-	-	-	-	-	-	-	-	-	-
OWATONNA.....	-	-	-	-	-	-	-	-	-	-	-	-	-	-	-	-
MANKATO.....	-	5	-	2	-	-	-	-	-	2	-	-	-	-	-	1
NEW ULM.....	-	5	-	1	-	-	-	-	-	4	-	-	-	1	-	3
RED WING.....	20	8	-	4	-	-	3	1	17	-	-	2	5	1	10	3
ROCHESTER AREA....	-	-	-	-	-	-	-	-	-	-	-	-	-	-	-	-
ROCHESTER.....	-	-	-	-	-	-	-	-	-	-	-	-	-	-	-	-
RCHSTR COM COL....	-	-	-	-	-	-	-	-	-	-	-	-	-	-	-	-
ROCHESTER AVTI....	-	-	-	-	-	-	-	-	-	-	-	-	-	-	-	-
WINONA.....	102	32	30	7	2	1	10	1	48	18	13	1	11	4	40	3

AREA OFFICE ACTIVITIES

CALENDAR YEAR 1990

TESTING

DISTRICT AND AREA OFFICES	TOTAL		FEMALE		MINORITY		HANDICAPPED		VETERAN		UNDER 22		45 & OVER		UI CLAIMANT	
	CY 90	CY 89	CY 90	CY 89	CY 90	CY 89	CY 90	CY 89	CY 90	CY 89	CY 90	CY 89	CY 90	CY 89	CY 90	CY 89
STATE TOTAL.....	16,727	22,308	9,262	12,134	1,296	2,011	461	657	1,998	2,546	2,712	3,994	2,213	2,477	3,108	3,865
JS STATE TOTAL.....	16,726	22,306	9,262	12,132	1,296	2,011	461	657	1,998	2,546	2,712	3,994	2,212	2,476	3,108	3,865
METRO AREA.....	6,921	11,164	3,433	5,136	862	1,619	189	297	902	1,427	759	1,904	940	1,197	1,577	2,153
WEST METRO.....	3,038	5,681	1,161	2,602	505	1,061	97	170	437	689	388	1,055	362	593	754	1,069
MINNEAPOLIS AREA...	571	2,461	232	1,281	200	828	21	66	82	189	59	513	55	194	146	351
HENN. CTY WK READY	-	-	-	-	-	-	-	-	-	-	-	-	-	-	-	-
MINNEAPOLIS.....	571	2,461	232	1,281	200	828	21	66	82	189	59	513	55	194	146	351
MPLS CASUAL.....	-	-	-	-	-	-	-	-	-	-	-	-	-	-	-	-
MPLS SUMMER.....	-	-	-	-	-	-	-	-	-	-	-	-	-	-	-	-
MPLS TECH INST....	-	-	-	-	-	-	-	-	-	-	-	-	-	-	-	-
MPLS T.I. SPCL PGM	-	-	-	-	-	-	-	-	-	-	-	-	-	-	-	-
BLOOMINGTON.....	327	889	125	354	41	75	21	22	75	194	10	132	63	107	137	220
BROOKLYN PARK AREA.	533	896	249	493	127	74	14	42	76	109	60	173	90	121	175	225
BROOKLYN PARK.....	533	896	249	493	127	74	14	42	76	109	60	173	90	121	175	225
CRYSTAL AVTI.....	-	-	-	-	-	-	-	-	-	-	-	-	-	-	-	-
MINNETONKA AREA....	1,607	1,435	555	474	137	84	41	40	204	197	259	237	154	171	296	273
HOPKINS AVTI.....	1	1	-	-	-	-	-	-	1	-	-	-	-	-	-	1
MINNETONKA.....	1,587	1,414	544	464	128	82	40	35	202	196	254	232	152	165	293	267
SHAKOPEE.....	19	20	11	10	9	2	1	5	1	1	5	5	2	6	3	5
EAST METRO.....	3,883	5,483	2,272	2,534	357	558	92	127	465	738	371	849	578	604	823	1,084
ST. PAUL CENTRAL....	1,558	1,875	1,104	1,161	253	363	23	29	74	119	170	271	186	214	182	243
ST. PAUL AVTI.....	-	1	-	-	-	-	-	-	-	-	-	-	-	-	-	-
ST. PAUL GU. & TRN.	-	23	-	10	-	11	-	1	-	4	-	-	-	2	-	8
ST. PAUL-MIDWAY....	1,558	1,851	1,104	1,151	253	352	23	28	74	115	170	271	186	212	182	235
MARTIN LUTHER KING	-	-	-	-	-	-	-	-	-	-	-	-	-	-	-	-
STATE FAIR.....	-	-	-	-	-	-	-	-	-	-	-	-	-	-	-	-
ST. PAUL NORTH.....	706	866	543	570	24	21	17	19	58	69	72	140	139	160	183	236
NORTH ST. PAUL.....	706	866	543	570	24	21	17	19	58	69	72	140	139	160	183	236
916 AVTI.....	-	-	-	-	-	-	-	-	-	-	-	-	-	-	-	-
ST. PAUL SOUTH.....	1,005	1,112	385	260	53	124	31	30	197	264	57	88	136	87	255	270
DAKOTA CO. AVTI....	-	-	-	-	-	-	-	-	-	-	-	-	-	-	-	-
WEST ST. PAUL.....	1,005	1,112	385	260	53	124	31	30	197	264	57	88	136	87	255	270
ANOKA COUNTY.....	614	1,630	240	543	27	50	21	49	136	286	72	350	117	143	203	335
ANOKA AVTI.....	6	38	3	6	-	-	-	-	-	2	2	26	1	-	2	-
ANOKA/RAMSEY C. COL	1	-	1	-	-	-	-	-	-	-	-	-	-	-	-	-
FRIDLEY.....	499	1,500	175	458	23	43	17	47	117	278	56	303	100	142	166	331
SPRING LAKE PARK..	108	92	61	79	4	7	4	2	19	6	14	21	16	1	35	4

TESTING - (CONT.)

DISTRICT AND AREA OFFICES	TOTAL		FEMALE		MINORITY		HANDICAPPED		VETERAN		UNDER 22		45 & OVER		UI CLAIMANT	
	CY 90	CY 89	CY 90	CY 89	CY 90	CY 89	CY 90	CY 89	CY 90	CY 89	CY 90	CY 89	CY 90	CY 89	CY 90	CY 89
NORTHEAST DIST.....	2,927	3,003	1,592	1,929	58	70	45	67	466	372	322	354	352	369	464	461
DULUTH AREA.....	1,475	2,002	780	1,262	41	57	24	42	284	304	139	247	183	250	271	333
DULUTH.....	1,473	1,960	778	1,222	41	57	24	40	284	303	138	240	182	244	271	331
DULUTH AVTI.....	2	22	2	20	-	-	-	2	-	1	1	5	1	2	-	-
DULUTH MALL.....	-	-	-	-	-	-	-	-	-	-	-	-	-	-	-	-
CLOQUET.....	-	20	-	20	-	-	-	-	-	-	-	2	-	4	-	2
NORTH SHORE.....	-	-	-	-	-	-	-	-	-	-	-	-	-	-	-	-
ELY.....	117	64	105	55	1	-	2	1	2	4	9	3	42	16	5	8
GRAND RAPIDS AREA..	400	589	217	364	5	11	2	11	51	34	32	52	41	57	76	73
GRAND RAPIDS.....	400	589	217	364	5	11	2	11	51	34	32	52	41	57	76	73
AITKIN.....	-	-	-	-	-	-	-	-	-	-	-	-	-	-	-	-
HIBBING.....	120	109	86	76	-	-	3	4	12	5	12	12	18	15	12	18
INT'L FALLS.....	554	25	202	16	9	1	6	-	96	1	110	2	44	5	68	5
VIRGINIA.....	261	214	202	156	2	1	8	9	21	24	20	38	24	26	32	24
NORTHWEST DIST.....	1,235	1,523	799	899	78	145	64	79	127	175	241	278	149	169	143	210
ALEXANDRIA.....	57	79	56	76	-	-	-	-	-	1	5	5	9	20	8	10
BEMIDJI AREA.....	113	185	74	93	14	17	6	15	16	33	22	14	22	24	20	41
BEMIDJI.....	82	141	46	54	14	16	6	11	16	33	14	8	12	15	16	32
PARK RAPIDS.....	31	44	28	39	-	1	-	4	-	-	8	6	10	9	4	9
BRAINERD AREA.....	213	372	151	242	4	15	11	17	25	43	46	67	22	44	20	58
BRAINERD.....	200	353	139	225	3	15	11	17	25	43	43	64	22	42	20	58
STAPLES.....	-	-	-	-	-	-	-	-	-	-	-	-	-	-	-	-
WADENA.....	13	19	12	17	1	-	-	-	-	-	3	3	-	2	-	-
CROOKSTON AREA.....	393	587	169	311	53	108	41	41	54	67	75	114	40	47	42	73
CROOKSTON.....	80	200	36	100	11	48	4	18	10	18	14	58	6	15	9	15
E. GRAND FORKS.....	65	69	23	26	33	36	3	6	9	9	19	18	2	5	3	1
ROSEAU.....	61	15	51	14	2	-	-	-	4	-	7	3	11	-	4	1
THF. RIV. FALLS.....	187	303	59	171	7	24	34	17	31	40	35	35	21	27	26	56
FERGUS FALLS.....	23	16	17	6	1	-	-	-	1	1	-	3	3	3	3	3
LITTLE FALLS.....	301	254	201	145	-	5	3	6	30	28	76	75	31	26	40	20
MOORHEAD AREA.....	135	30	131	26	6	-	3	-	1	2	17	-	22	5	10	5
MOORHEAD.....	2	14	-	10	-	-	1	-	1	2	-	-	-	1	-	2
DETROIT LAKES.....	133	16	131	16	6	-	2	-	-	-	17	-	22	4	10	3

AREA OFFICE ACTIVITIES

CALENDAR YEAR 1990

TESTING - (CONT.)

DISTRICT AND AREA OFFICES	TOTAL		FEMALE		MINORITY		HANDICAPPED		VETERAN		UNDER 22		45 & OVER		UI CLAIMANT	
	CY 90	CY 89	CY 90	CY 89	CY 90	CY 89	CY 90	CY 89	CY 90	CY 89	CY 90	CY 89	CY 90	CY 89	CY 90	CY 89
CENTRAL DIST.....	3,249	3,886	1,827	2,214	221	127	91	133	314	401	815	751	451	459	510	634
MARSHALL.....	80	141	33	60	1	3	1	8	11	24	6	16	12	26	37	42
MONTEVIDEO.....	244	198	181	143	2	5	5	3	19	11	33	29	43	30	42	30
MORA AREA.....	406	550	358	475	6	2	29	25	19	20	54	71	75	91	62	67
MORA.....	299	454	256	382	2	2	14	19	17	18	45	58	56	75	51	55
CAMBRIDGE.....	107	96	102	93	4	-	15	6	2	2	9	13	19	16	11	12
ST.CLOUD.....	450	955	268	398	10	12	7	33	50	144	71	156	66	75	120	181
WILLMAR AREA.....	1,896	2,002	907	1,100	200	105	48	64	199	202	616	475	234	232	233	310
WILLMAR.....	1,021	1,057	499	651	186	90	28	45	104	107	281	228	136	136	118	166
HUTCHINSON.....	776	945	346	449	13	15	17	19	86	95	309	247	85	96	103	144
LITCHFIELD.....	99	-	62	-	1	-	3	-	9	-	26	-	13	-	12	-
WORTHINGTON.....	173	40	80	38	2	-	1	-	16	-	35	4	21	5	16	4
SOUTH DIST.....	2,394	2,730	1,611	1,954	77	50	72	81	189	171	575	707	320	282	414	407
ALBERT LEA AREA....	422	332	374	302	12	11	11	12	14	13	53	42	64	51	58	43
ALBERT LEA.....	162	141	125	117	8	3	5	5	5	6	30	14	24	24	48	30
AUSTIN.....	260	191	249	185	4	8	6	7	9	7	23	28	40	27	10	13
FAIRMONT.....	120	98	82	63	6	-	14	11	9	9	17	19	19	11	28	13
FARIBAULT AREA....	9	27	4	21	-	-	-	1	3	1	1	4	-	2	3	3
FARIBAULT.....	9	27	4	21	-	-	-	1	3	1	1	4	-	2	3	3
FARIBAULT AVTI....	-	-	-	-	-	-	-	-	-	-	-	-	-	-	-	-
OWATONNA.....	-	-	-	-	-	-	-	-	-	-	-	-	-	-	-	-
MANKATO.....	540	625	435	418	15	10	4	5	14	25	236	318	53	30	48	46
NEW ULM.....	212	205	109	126	1	2	8	5	23	17	57	56	21	15	42	28
RED WING.....	140	17	19	15	2	-	1	-	26	-	32	1	14	4	14	-
ROCHESTER AREA....	540	661	338	448	28	22	22	33	64	60	89	109	99	81	129	165
ROCHESTER.....	540	661	338	448	28	22	22	33	64	60	89	109	99	81	129	165
RCHSTR COM COL....	-	-	-	-	-	-	-	-	-	-	-	-	-	-	-	-
ROCHESTER AVTI....	-	-	-	-	-	-	-	-	-	-	-	-	-	-	-	-
WINONA.....	411	765	250	561	13	5	12	14	36	46	90	158	50	88	92	109

AREA OFFICE ACTIVITIES

CALENDAR YEAR 1990

REFERRED TO SUPPORTIVE SERVICE

DISTRICT AND AREA OFFICES	TOTAL		FEMALE		MINORITY		HANDICAPPED		VETERAN		UNDER 22		45 & OVER		UI CLAIMANT	
	CY 90	CY 89	CY 90	CY 89	CY 90	CY 89	CY 90	CY 89	CY 90	CY 89	CY 90	CY 89	CY 90	CY 89	CY 90	CY 89
STATE TOTAL.....	26,555	25,361	6,279	5,418	2,919	2,450	2,195	2,484	14,566	14,967	2,645	2,345	6,066	5,883	8,652	7,750
JS STATE TOTAL.....	26,555	25,262	6,279	5,356	2,919	2,443	2,195	2,480	14,566	14,959	2,645	2,339	6,066	5,881	8,652	7,745
METRO AREA.....	18,112	17,027	4,373	3,387	1,677	1,440	1,303	1,462	9,799	10,368	1,469	1,273	4,183	4,192	6,808	6,115
WEST METRO.....	5,577	4,263	587	497	746	621	612	538	4,687	3,480	136	96	1,578	1,214	2,385	1,728
MINNEAPOLIS AREA...	2,090	1,848	93	134	630	557	309	315	2,006	1,694	41	35	484	405	739	569
HENN. CTY WK READY	5	9	-	-	3	6	1	1	5	8	-	1	1	1	-	3
MINNEAPOLIS.....	2,085	1,839	93	134	627	551	308	314	2,001	1,686	41	34	483	404	739	566
MPLS CASUAL.....	-	-	-	-	-	-	-	-	-	-	-	-	-	-	-	-
MPLS SUMMER.....	-	-	-	-	-	-	-	-	-	-	-	-	-	-	-	-
MPLS TECH INST....	-	-	-	-	-	-	-	-	-	-	-	-	-	-	-	-
MPLS T.I. SPCL PGM	-	-	-	-	-	-	-	-	-	-	-	-	-	-	-	-
BLOOMINGTON.....	1,117	1,102	97	75	37	35	99	77	960	1,005	22	16	384	401	634	519
BROOKLYN PARK AREA.	1,079	193	142	43	46	12	68	24	891	137	31	3	359	68	472	110
BROOKLYN PARK.....	1,079	193	142	43	46	12	68	24	891	137	31	3	359	68	472	110
CRYSTAL AVTI.....	-	-	-	-	-	-	-	-	-	-	-	-	-	-	-	-
MINNETONKA AREA....	1,291	1,120	255	245	33	17	136	122	830	644	42	42	351	340	540	530
HOPKINS AVTI.....	-	-	-	-	-	-	-	-	-	-	-	-	-	-	-	-
MINNETONKA.....	697	713	212	217	13	11	47	45	281	278	23	25	188	238	410	447
SHAKOPEE.....	594	407	43	28	20	6	89	77	549	366	19	17	163	102	130	83
EAST METRO.....	12,535	12,764	3,786	2,890	931	819	691	924	5,112	6,888	1,333	1,177	2,605	2,978	4,423	4,387
ST. PAUL CENTRAL....	941	535	44	19	214	78	69	67	896	499	14	18	272	136	230	183
ST. PAUL AVTI.....	-	-	-	-	-	-	-	-	-	-	-	-	-	-	-	-
ST. PAUL GU. & TRN.	12	14	2	6	3	4	1	-	5	1	-	-	3	5	-	2
ST. PAUL-MIDWAY....	862	518	40	13	158	72	67	67	824	495	12	18	253	130	215	181
MARTIN LUTHER KING	67	3	2	-	53	2	1	-	67	3	2	-	16	1	15	-
STATE FAIR.....	-	-	-	-	-	-	-	-	-	-	-	-	-	-	-	-
ST. PAUL NORTH.....	1,038	867	255	149	24	13	46	40	711	612	41	32	276	249	537	545
NORTH ST. PAUL.....	1,038	867	255	149	24	13	46	40	711	612	41	32	276	249	537	545
916 AVTI.....	-	-	-	-	-	-	-	-	-	-	-	-	-	-	-	-
ST. PAUL SOUTH.....	7,021	7,412	2,594	1,882	542	602	337	588	1,748	3,540	813	712	1,314	1,552	2,610	2,641
DAKOTA CO. AVTI....	24	-	-	-	1	-	1	-	24	-	2	-	3	-	3	-
WEST ST. PAUL.....	6,997	7,412	2,594	1,882	541	602	336	588	1,724	3,540	811	712	1,311	1,552	2,607	2,641
ANOKA COUNTY.....	3,535	3,950	893	840	151	126	239	229	1,757	2,237	465	415	743	1,041	1,046	1,018
ANOKA AVTI.....	116	85	3	1	5	-	20	11	115	81	13	8	23	16	29	22
ANOKA/RAMSEY C. COL	11	5	3	-	3	-	-	2	4	4	5	1	1	1	-	-
FRIDLEY.....	2,310	2,538	443	300	70	47	150	131	1,498	1,962	192	156	605	811	909	942
SPRING LAKE PARK..	1,098	1,322	444	539	73	79	69	85	140	190	255	250	114	213	108	54

REFERRED TO SUPPORTIVE SERVICE - (CONT.)

DISTRICT AND AREA OFFICES	TOTAL		FEMALE		MINORITY		HANDICAPPED		VETERAN		UNDER 22		45 & OVER		UI CLAIMANT	
	CY 90	CY 89	CY 90	CY 89	CY 90	CY 89	CY 90	CY 89	CY 90	CY 89	CY 90	CY 89	CY 90	CY 89	CY 90	CY 89
NORTHEAST DIST.....	438	765	35	68	11	38	45	80	389	670	35	59	76	139	129	218
DULUTH AREA.....	251	530	17	25	7	35	26	55	243	500	25	42	34	91	75	145
DULUTH.....	249	445	17	20	6	32	26	47	243	426	25	31	34	80	75	116
DULUTH AVTI.....	-	-	-	-	-	-	-	-	-	-	-	-	-	-	-	-
DULUTH MALL.....	-	-	-	-	-	-	-	-	-	-	-	-	-	-	-	-
CLOQUET.....	-	72	-	3	-	2	-	7	-	72	-	10	-	8	-	25
NORTH SHORE.....	2	13	-	2	1	1	-	1	-	2	-	1	-	3	-	4
ELY.....	34	35	5	16	-	-	1	-	12	10	1	2	12	15	11	12
GRAND RAPIDS AREA..	14	49	2	4	-	1	2	7	12	48	1	4	5	9	6	18
GRAND RAPIDS.....	14	48	2	4	-	1	2	6	12	47	1	4	5	8	6	18
AITKIN.....	-	1	-	-	-	-	-	1	-	1	-	-	-	1	-	-
HIBBING.....	58	38	7	7	1	-	12	7	49	31	5	3	13	3	16	12
INT'L FALLS.....	46	2	1	-	2	-	2	1	44	2	3	-	8	2	16	-
VIRGINIA.....	35	111	3	16	1	2	2	10	29	79	-	8	4	19	5	31
NORTHWEST DIST.....	4,024	4,037	1,198	1,244	864	693	404	479	1,672	1,731	739	611	764	748	523	476
ALEXANDRIA.....	10	26	6	8	-	-	2	7	3	6	-	3	5	6	-	8
BEMIDJI AREA.....	83	332	8	11	9	49	16	44	80	331	3	3	25	121	20	82
BEMIDJI.....	79	309	7	10	9	49	16	41	77	308	3	3	23	110	19	72
PARK RAPIDS.....	4	23	1	1	-	-	-	3	3	23	-	-	2	11	1	10
BRAINERD AREA.....	655	507	191	134	8	14	70	66	313	261	101	82	142	87	121	93
BRAINERD.....	158	201	20	46	4	9	34	34	139	153	11	23	36	38	48	46
STAPLES.....	36	46	6	3	-	1	4	3	27	39	1	4	6	11	3	12
WADENA.....	461	260	165	85	4	4	32	29	147	69	89	55	100	38	70	35
CROOKSTON AREA.....	2,453	2,454	929	1,005	794	574	192	249	562	586	603	481	305	318	232	203
CROOKSTON.....	760	712	232	302	221	194	74	78	270	180	183	178	116	109	100	68
E.GRAND FORKS.....	1,121	1,014	387	290	543	338	81	111	205	319	305	159	127	130	53	43
ROSEAU.....	241	96	126	33	4	3	10	6	17	10	47	18	29	12	52	8
THF.RIV.FALLS.....	331	632	184	380	26	39	27	54	70	77	68	126	33	67	27	84
FERGUS FALLS.....	507	374	16	21	7	5	81	63	495	348	10	11	199	146	101	60
LITTLE FALLS.....	137	25	6	7	1	1	7	5	110	13	7	3	36	7	28	2
MOORHEAD AREA.....	179	319	42	58	45	50	36	45	109	186	15	28	52	63	21	28
MOORHEAD.....	115	142	15	9	38	25	28	28	80	121	8	3	37	34	7	9
DETROIT LAKES.....	64	177	27	49	7	25	8	17	29	65	7	25	15	29	14	19

AREA OFFICE ACTIVITIES

CALENDAR YEAR 1990

REFERRED TO SUPPORTIVE SERVICE - (CONT.)

DISTRICT AND AREA OFFICES	TOTAL		FEMALE		MINORITY		HANDICAPPED		VETERAN		UNDER 22		45 & OVER		UI CLAIMANT	
	CY 90	CY 89	CY 90	CY 89	CY 90	CY 89	CY 90	CY 89	CY 90	CY 89	CY 90	CY 89	CY 90	CY 89	CY 90	CY 89
CENTRAL DIST.....	2,473	2,391	428	433	322	240	209	274	1,622	1,536	275	272	631	550	791	633
MARSHALL.....	229	290	37	39	5	12	25	24	152	199	9	14	65	69	67	33
MONTEVIDEO.....	32	51	18	6	-	2	-	9	6	39	1	1	9	12	18	7
MORA AREA.....	232	566	34	86	9	7	40	77	176	349	25	56	58	151	83	254
MORA.....	180	430	27	66	9	7	32	56	141	246	22	50	45	105	66	159
CAMBRIDGE.....	52	136	7	20	-	-	8	21	35	103	3	6	13	46	17	95
ST.CLOUD.....	345	658	27	63	6	18	44	92	323	592	20	50	79	155	93	146
WILLMAR AREA.....	1,617	793	308	223	302	201	100	70	950	344	218	150	413	151	528	178
WILLMAR.....	959	568	282	210	297	199	55	45	326	126	198	147	169	76	142	94
HUTCHINSON.....	611	221	11	12	5	2	42	25	601	214	14	3	231	73	373	84
LITCHFIELD.....	47	4	15	1	-	-	3	-	23	4	6	-	13	2	13	-
WORTHINGTON.....	18	33	4	16	-	-	-	2	15	13	2	1	7	12	2	15
SOUTH DIST.....	1,508	1,042	245	224	45	32	234	185	1,084	654	127	124	412	252	401	303
ALBERT LEA AREA....	470	280	24	20	3	10	56	35	430	255	24	6	160	110	175	113
ALBERT LEA.....	189	193	12	7	2	9	15	24	174	189	8	1	85	84	125	100
AUSTIN.....	281	87	12	13	1	1	41	11	256	66	16	5	75	26	50	13
FAIRMONT.....	170	175	77	68	15	3	48	74	23	29	37	49	31	24	18	40
FARIBAULT AREA....	173	7	9	1	3	-	17	-	165	4	7	-	44	2	49	5
FARIBAULT.....	137	6	9	1	3	-	16	-	130	4	6	-	36	2	38	4
FARIBAULT AVTI....	-	-	-	-	-	-	-	-	-	-	-	-	-	-	-	-
OMATONNA.....	36	1	-	-	-	-	1	-	35	-	1	-	8	-	11	1
MANKATO.....	47	50	2	4	-	3	8	6	45	47	-	1	20	15	12	5
NEW ULM.....	243	183	101	89	14	13	31	16	52	32	38	46	47	20	73	62
RED WING.....	11	24	2	14	-	-	1	4	7	8	4	3	-	8	1	6
ROCHESTER AREA....	127	124	16	22	6	3	39	28	109	102	7	16	23	21	34	29
ROCHESTER.....	127	124	16	22	6	3	39	28	109	102	7	16	23	21	34	29
RCHSTR COM COL....	-	-	-	-	-	-	-	-	-	-	-	-	-	-	-	-
ROCHESTER AVTI....	-	-	-	-	-	-	-	-	-	-	-	-	-	-	-	-
WINONA.....	267	199	14	6	4	-	34	22	253	177	10	3	87	52	39	43

AREA OFFICE ACTIVITIES

CALENDAR YEAR 1990

REFERRALS, NON-AGRICULTURAL

DISTRICT AND AREA OFFICES	TOTAL		FEMALE		MINORITY		HANDICAPPED		VETERAN		UNDER 22		45 & OVER		UI CLAIMANT	
	CY 90	CY 89	CY 90	CY 89	CY 90	CY 89	CY 90	CY 89	CY 90	CY 89	CY 90	CY 89	CY 90	CY 89	CY 90	CY 89
STATE TOTAL.....	423774	397585	154948	143903	39,639	35,026	19,066	19,224	81,281	74,581	96,175	95,280	55,144	49,590	83,701	80,717
JS STATE TOTAL.....	423763	397432	154948	143832	39,639	34,947	19,066	19,220	81,280	74,564	96,175	95,264	55,133	49,586	83,701	80,705
METRO AREA.....	162918	148786	49,806	43,214	27,449	25,561	7,872	7,255	37,811	32,810	21,613	21,801	26,072	22,816	45,982	44,822
WEST METRO.....	87,938	75,175	25,154	20,304	18,258	16,258	4,690	4,529	20,822	17,305	11,080	10,452	14,524	12,040	25,476	23,262
MINNEAPOLIS AREA...	32,989	31,237	8,126	7,630	14,377	13,495	1,857	2,004	8,963	7,745	4,866	5,036	5,248	4,695	6,723	6,842
HENN. CTY WK READY	2,097	1,487	513	324	1,221	862	126	92	499	345	118	107	257	168	234	139
MINNEAPOLIS.....	24,272	22,446	6,148	5,563	9,862	9,062	1,466	1,645	6,743	5,668	2,670	2,570	3,040	2,734	6,196	6,414
MPLS CASUAL.....	4,007	3,799	146	132	1,483	1,355	166	119	1,654	1,601	97	83	1,903	1,716	240	198
MPLS SUMMER.....	1,854	2,070	970	1,009	1,464	1,581	78	42	4	8	1,779	1,910	17	13	15	9
MPLS TECH INST....	558	1,038	217	420	260	498	11	32	51	90	158	291	21	31	34	76
MPLS T.I. SPCL PGM	201	397	132	182	87	137	10	74	12	33	44	75	10	33	4	6
BLOOMINGTON.....	10,141	6,828	3,061	1,848	901	578	589	286	2,727	1,867	909	638	1,851	1,328	3,763	2,886
BROOKLYN PARK AREA.	18,175	16,991	5,544	5,117	1,596	1,358	745	946	4,003	3,499	2,282	2,366	3,023	2,517	6,681	6,282
BROOKLYN PARK.....	17,683	16,524	5,352	4,994	1,576	1,339	734	929	3,965	3,461	2,096	2,189	2,996	2,500	6,637	6,243
CRYSTAL AVTI.....	492	467	192	123	20	19	11	17	38	38	186	177	27	17	44	39
MINNETONKA AREA....	26,633	20,119	8,423	5,709	1,384	827	1,499	1,293	5,129	4,194	3,023	2,412	4,402	3,500	8,309	7,252
HOPKINS AVTI.....	405	324	103	68	18	11	5	7	43	37	93	98	32	27	51	26
MINNETONKA.....	21,042	15,282	6,857	4,541	1,188	653	1,062	762	3,830	3,123	2,121	1,668	3,689	2,824	7,177	6,112
SHAKOPEE.....	5,186	4,513	1,463	1,100	178	163	432	524	1,256	1,034	809	646	681	649	1,081	1,114
EAST METRO.....	74,975	73,604	24,652	22,910	9,191	9,303	3,182	2,726	16,989	15,505	10,533	11,349	11,545	10,775	20,503	21,560
ST. PAUL CENTRAL....	22,850	24,010	6,730	7,350	6,436	6,598	742	658	4,047	4,393	2,765	3,170	2,826	3,099	4,960	5,459
ST. PAUL AVTI.....	267	290	135	125	58	39	5	10	19	8	70	92	8	3	12	11
ST. PAUL GU. & TRN.	690	570	241	220	365	265	15	5	84	59	64	37	118	114	39	46
ST. PAUL-MIDWAY....	18,807	19,938	5,355	5,903	4,476	4,667	691	625	3,684	4,088	1,665	1,996	2,335	2,658	4,632	5,155
MARTIN LUTHER KING	1,500	1,538	374	418	1,284	1,354	24	4	170	127	181	252	148	115	257	210
STATE FAIR.....	1,586	1,674	625	684	253	273	7	14	90	111	785	793	217	209	20	37
ST. PAUL NORTH.....	10,496	11,455	3,837	3,885	402	371	398	389	3,525	3,495	1,138	1,464	2,287	2,360	3,172	4,243
NORTH ST. PAUL....	10,047	11,193	3,528	3,731	381	364	397	388	3,505	3,488	1,012	1,374	2,266	2,357	3,144	4,232
916 AVTI.....	449	262	309	154	21	7	1	1	20	7	126	90	21	3	28	11
ST. PAUL SOUTH.....	15,144	13,550	5,229	3,793	1,266	1,418	846	754	3,449	3,266	2,013	1,876	2,356	2,012	4,646	4,570
DAKOTA CO. AVTI....	658	374	315	149	9	8	4	4	24	17	251	148	10	6	18	10
WEST ST. PAUL.....	14,486	13,176	4,914	3,644	1,257	1,410	842	750	3,425	3,249	1,762	1,728	2,346	2,006	4,628	4,560
ANOKA COUNTY.....	26,485	24,589	8,856	7,882	1,087	916	1,196	925	5,968	4,351	4,617	4,839	4,076	3,304	7,725	7,288
ANOKA AVTI.....	906	570	382	142	34	25	39	16	215	167	224	178	90	35	89	67
ANOKA/RAMSEY C.COL	596	457	297	209	28	16	8	8	45	45	293	293	50	10	26	18
FRIDLEY.....	22,278	21,069	7,344	6,573	740	621	914	809	5,126	3,872	3,596	3,673	3,580	2,982	7,215	6,901
SPRING LAKE PARK..	2,705	2,493	833	958	285	254	235	92	582	267	504	695	356	277	395	302

REFERRALS, NON-AGRICULTURAL - (CONT.)

DISTRICT AND AREA OFFICES	TOTAL		FEMALE		MINORITY		HANDICAPPED		VETERAN		UNDER 22		45 & OVER		UI CLAIMANT	
	CY 90	CY 89	CY 90	CY 89	CY 90	CY 89	CY 90	CY 89	CY 90	CY 89	CY 90	CY 89	CY 90	CY 89	CY 90	CY 89
NORTHEAST DIST.....	29,034	34,015	11,385	13,569	1,055	1,176	1,111	1,364	6,553	7,147	6,622	7,510	3,272	4,059	4,407	5,058
DULUTH AREA.....	13,261	15,560	5,464	6,529	677	726	542	661	3,191	3,446	3,255	3,569	1,528	2,009	2,111	2,532
DULUTH.....	10,702	11,115	3,922	4,262	632	607	513	529	3,103	3,064	1,633	1,447	1,430	1,743	1,996	2,235
DULUTH AVTI.....	151	699	85	396	6	23	4	22	8	66	43	133	10	36	20	38
DULUTH MALL.....	2,407	3,036	1,457	1,696	39	53	25	34	80	132	1,579	1,861	88	124	94	170
CLOQUET.....	-	663	-	165	-	42	-	74	-	178	-	104	-	100	-	85
NORTH SHORE.....	1	47	-	10	-	1	-	2	-	6	-	24	-	6	1	4
ELY.....	1,205	1,608	469	595	21	32	19	35	277	354	162	269	255	461	226	211
GRAND RAPIDS AREA..	5,369	5,326	2,177	2,463	172	147	207	237	992	667	1,257	1,354	584	499	903	899
GRAND RAPIDS.....	5,346	5,321	2,174	2,463	172	147	205	235	981	665	1,253	1,354	574	499	893	898
AITKIN.....	23	5	3	-	-	-	2	2	11	2	4	-	10	-	10	1
HIBBING.....	3,104	5,182	1,298	1,993	41	55	145	234	603	1,125	733	1,164	360	424	346	653
INT'L FALLS.....	1,606	2,731	515	849	50	140	30	54	392	511	408	573	147	226	244	176
VIRGINIA.....	4,489	3,608	1,462	1,140	94	76	168	143	1,098	1,044	807	581	398	440	577	587
NORTHWEST DIST.....	75,143	66,490	32,091	29,066	5,331	3,904	3,060	3,231	10,648	9,218	27,039	25,096	7,439	6,276	7,426	6,429
ALEXANDRIA.....	4,824	5,574	1,700	2,023	72	44	80	252	703	741	1,484	1,713	703	767	692	793
BEMIDJI AREA.....	9,493	7,884	3,386	3,144	1,194	884	538	504	2,323	1,626	2,236	2,154	1,090	831	1,311	1,049
BEMIDJI.....	6,840	5,812	2,378	2,347	1,081	752	460	436	1,797	1,257	1,588	1,539	628	572	916	825
PARK RAPIDS.....	2,653	2,072	1,008	797	113	132	78	68	526	369	648	615	462	259	395	224
BRAINERD AREA.....	10,709	11,330	4,170	4,900	234	340	547	684	1,957	2,124	2,619	2,688	1,415	1,554	1,750	1,801
BRAINERD.....	7,192	7,690	2,681	3,388	196	286	438	554	1,520	1,550	1,498	1,618	958	1,103	1,267	1,226
STAPLES.....	270	451	117	192	3	15	12	27	29	78	84	99	58	72	21	61
WADENA.....	3,247	3,189	1,372	1,320	35	39	97	103	408	496	1,037	971	399	379	462	514
CROOKSTON AREA....	10,099	9,640	3,716	3,701	1,067	984	843	949	1,856	1,784	2,343	2,338	1,047	1,051	1,239	916
CROOKSTON.....	2,394	2,150	766	715	284	308	219	240	584	470	520	456	310	267	371	324
E.GRAND FORKS.....	2,665	2,713	933	1,116	664	548	156	219	447	464	573	532	249	275	154	98
ROSEAU.....	762	545	391	226	8	5	27	34	63	64	172	206	92	39	74	29
THF.RIV.FALLS.....	4,278	4,232	1,626	1,644	111	123	441	456	762	786	1,078	1,144	396	470	640	465
FERGUS FALLS.....	5,097	4,620	2,065	1,676	106	114	320	294	881	763	1,108	1,147	800	522	707	641
LITTLE FALLS.....	2,140	1,470	958	639	9	9	59	39	381	211	536	522	263	122	308	152
MOORHEAD AREA.....	32,781	25,972	16,096	12,983	2,649	1,529	673	509	2,547	1,969	16,713	14,534	2,121	1,429	1,419	1,077
MOORHEAD.....	24,665	21,427	12,463	11,244	1,885	1,086	418	387	1,646	1,398	14,413	13,116	1,080	936	765	563
DETROIT LAKES.....	8,116	4,545	3,633	1,739	764	443	255	122	901	571	2,300	1,418	1,041	493	654	514

AREA OFFICE ACTIVITIES

CALENDAR YEAR 1990

REFERRALS, NON-AGRICULTURAL - (CONT.)

DISTRICT AND AREA OFFICES	TOTAL		FEMALE		MINORITY		HANDICAPPED		VETERAN		UNDER 22		45 & OVER		UI CLAIMANT	
	CY 90	CY 89	CY 90	CY 89	CY 90	CY 89	CY 90	CY 89	CY 90	CY 89	CY 90	CY 89	CY 90	CY 89	CY 90	CY 89
CENTRAL DIST.....	67,896	64,573	27,650	25,406	2,693	1,971	3,174	3,290	11,242	10,693	18,000	17,519	7,943	7,052	11,203	10,794
MARSHALL.....	6,346	6,103	2,433	2,317	167	211	309	312	939	870	1,707	1,776	741	666	733	702
MONTEVIDEO.....	3,326	3,118	1,212	974	31	53	134	162	485	443	956	1,169	421	354	614	428
MORA AREA.....	11,791	11,171	5,338	4,967	121	82	877	918	2,083	1,963	2,902	2,869	1,797	1,584	2,385	2,182
MORA.....	6,609	6,696	3,083	3,168	86	67	428	458	1,358	1,204	1,370	1,710	1,155	1,041	1,344	1,279
CAMBRIDGE.....	5,182	4,475	2,255	1,799	35	15	449	460	725	759	1,532	1,159	642	543	1,041	903
ST. CLOUD.....	25,231	24,260	10,005	9,359	768	573	1,083	996	4,819	4,476	6,935	6,908	2,517	2,209	4,564	4,150
WILLMAR AREA.....	17,835	17,796	7,127	7,060	1,091	901	747	868	2,589	2,698	4,664	4,186	2,034	2,035	2,659	3,192
WILLMAR.....	9,896	9,655	3,988	3,846	954	740	498	612	1,449	1,549	2,452	2,274	1,023	1,099	1,314	1,782
HUTCHINSON.....	6,574	7,799	2,501	3,027	110	152	198	233	972	1,117	1,878	1,789	826	899	1,131	1,358
LITCHFIELD.....	1,365	342	638	187	27	9	51	23	168	32	334	123	185	37	214	52
WORTHINGTON.....	3,367	2,125	1,535	729	515	151	24	34	327	243	836	611	433	204	248	140
SOUTH DIST.....	88,772	83,568	34,016	32,577	3,111	2,335	3,849	4,080	15,026	14,696	22,901	23,338	10,407	9,383	14,683	13,602
ALBERT LEA AREA....	13,761	10,243	4,655	3,752	674	648	571	567	2,481	1,812	2,997	2,632	2,119	1,486	2,629	1,755
ALBERT LEA.....	7,248	5,166	1,999	1,512	444	406	281	310	1,513	988	1,249	1,329	1,494	785	1,868	1,209
AUSTIN.....	6,513	5,077	2,656	2,240	230	242	290	257	968	824	1,748	1,303	625	701	761	546
FAIRMONT.....	5,795	5,550	2,579	2,505	212	129	629	692	776	678	1,454	1,636	628	600	696	672
FARIBAULT AREA....	8,681	8,496	3,594	3,571	398	264	337	347	1,398	1,319	1,815	2,314	1,195	1,023	1,560	1,671
FARIBAULT.....	3,937	3,884	1,291	1,313	181	97	142	194	923	785	783	1,192	581	530	894	985
FARIBAULT AVTI....	1,907	2,238	1,379	1,410	27	44	41	56	81	89	467	716	213	130	64	95
OHATONNA.....	2,837	2,374	924	848	190	123	154	97	394	445	565	406	401	363	602	591
MANKATO.....	23,089	24,819	8,471	8,966	640	457	670	914	4,144	5,237	6,717	7,400	2,054	2,321	2,865	3,359
NEW ULM.....	9,038	6,501	3,751	2,808	236	139	337	207	1,104	775	3,133	2,500	866	631	1,655	1,002
RED WING.....	2,933	2,218	1,023	824	49	25	35	44	459	327	769	734	306	194	450	347
ROCHESTER AREA....	14,939	14,802	5,306	5,365	641	528	964	778	3,395	3,287	2,531	2,357	2,226	2,154	3,295	3,347
ROCHESTER.....	14,748	14,621	5,232	5,319	624	519	962	775	3,389	3,270	2,423	2,285	2,211	2,149	3,286	3,334
RCHSTR COM COL....	84	45	33	17	4	4	1	-	1	5	67	29	-	-	1	-
ROCHESTER AVTI....	107	136	41	29	13	5	1	3	5	12	41	43	15	5	8	13
WINONA.....	10,536	10,939	4,637	4,786	261	145	306	531	1,269	1,261	3,485	3,765	1,013	974	1,533	1,449

AREA OFFICE ACTIVITIES

CALENDAR YEAR 1990

REFERRALS, AGRICULTURAL

DISTRICT AND AREA OFFICES	TOTAL		FEMALE		MINORITY		HANDICAPPED		VETERAN		UNDER 22		45 & OVER		UI CLAIMANT	
	CY 90	CY 89	CY 90	CY 89	CY 90	CY 89	CY 90	CY 89	CY 90	CY 89	CY 90	CY 89	CY 90	CY 89	CY 90	CY 89
STATE TOTAL.....	23,874	22,224	5,089	4,603	5,893	3,383	709	657	2,144	2,017	12,513	13,452	1,857	1,403	1,717	1,424
JS STATE TOTAL.....	23,874	22,223	5,089	4,603	5,893	3,383	709	657	2,144	2,016	12,513	13,452	1,857	1,403	1,717	1,424
METRO AREA.....	2,545	2,127	350	310	191	175	115	65	431	326	1,052	976	163	150	394	300
WEST METRO.....	1,193	867	114	74	126	110	76	48	264	209	323	188	108	105	210	161
MINNEAPOLIS AREA...	297	365	19	22	100	98	11	17	98	125	35	37	47	78	49	59
HENN. CTY WK READY	52	14	2	-	34	4	3	1	15	1	7	-	6	3	3	3
MINNEAPOLIS.....	151	169	11	16	33	41	6	12	52	57	14	21	12	17	37	43
MPLS CASUAL.....	78	166	2	4	25	47	2	4	31	67	2	3	29	58	9	13
MPLS SUMMER.....	14	10	4	2	8	6	-	-	-	-	12	10	-	-	-	-
MPLS TECH INST....	2	6	-	-	-	-	-	-	-	-	-	3	-	-	-	-
MPLS T.I. SPCL PGM	-	-	-	-	-	-	-	-	-	-	-	-	-	-	-	-
BLOOMINGTON.....	115	54	12	2	1	-	19	5	38	14	32	7	18	4	20	17
BROOKLYN PARK AREA.	233	192	29	18	10	5	6	20	34	30	92	58	9	9	46	42
BROOKLYN PARK.....	220	187	25	17	10	5	6	20	33	29	88	54	5	9	46	42
CRYSTAL AVTI.....	13	5	4	1	-	-	-	-	1	1	4	4	4	-	-	-
MINNETONKA AREA....	548	256	54	32	15	7	40	6	94	40	164	86	34	14	95	43
HOPKINS AVTI.....	1	1	-	-	-	-	-	-	-	-	-	-	-	-	-	-
MINNETONKA.....	393	178	32	21	8	2	30	1	62	28	118	52	28	6	77	34
SHAKOPEE.....	154	77	22	11	7	5	10	5	32	12	46	34	6	8	18	9
EAST METRO.....	1,352	1,260	236	236	65	65	39	17	167	117	729	788	55	45	184	139
ST. PAUL CENTRAL....	190	149	32	25	26	18	8	2	23	12	40	34	15	10	44	30
ST. PAUL AVTI.....	-	-	-	-	-	-	-	-	-	-	-	-	-	-	-	-
ST. PAUL GU. & TRN.	7	1	5	-	1	-	-	-	1	-	2	-	4	1	-	1
ST. PAUL-MIDWAY....	173	146	27	25	17	16	8	2	21	12	36	33	11	9	44	29
MARTIN LUTHER KING	10	2	-	-	8	2	-	-	1	-	2	1	-	-	-	-
STATE FAIR.....	-	-	-	-	-	-	-	-	-	-	-	-	-	-	-	-
ST. PAUL NORTH.....	133	164	11	19	1	3	6	3	37	49	49	54	9	9	23	43
NORTH ST. PAUL.....	131	163	11	19	1	3	6	3	37	49	49	53	9	9	23	43
916 AVTI.....	2	1	-	-	-	-	-	-	-	-	-	1	-	-	-	-
ST. PAUL SOUTH.....	619	712	147	173	30	38	7	5	34	20	504	609	14	9	39	27
DAKOTA CO. AVTI....	14	6	3	3	-	-	-	-	1	1	6	1	2	-	-	-
WEST ST. PAUL.....	605	706	144	170	30	38	7	5	33	19	498	608	12	9	39	27
ANOKA COUNTY.....	410	235	46	19	8	6	18	7	73	36	136	91	17	17	78	39
ANOKA AVTI.....	7	4	1	1	-	-	-	1	1	1	3	1	-	1	2	-
ANOKA/RAMSEY C. COL	10	3	1	-	1	-	1	-	-	-	7	2	-	-	1	-
FRIDLEY.....	332	203	35	14	3	2	13	6	63	32	115	87	14	15	72	37
SPRING LAKE PARK..	61	25	9	4	4	4	4	-	9	3	11	1	3	1	3	2

AREA OFFICE ACTIVITIES

CALENDAR YEAR 1990

REFERRALS, AGRICULTURAL - (CONT.)

DISTRICT AND AREA OFFICES	TOTAL		FEMALE		MINORITY		HANDICAPPED		VETERAN		UNDER 22		45 & OVER		UI CLAIMANT	
	CY 90	CY 89	CY 90	CY 89	CY 90	CY 89	CY 90	CY 89	CY 90	CY 89	CY 90	CY 89	CY 90	CY 89	CY 90	CY 89
NORTHEAST DIST.....	431	497	72	73	27	32	22	30	114	146	91	74	41	46	63	73
DULUTH AREA.....	129	236	10	29	10	23	1	17	39	92	23	33	10	28	20	40
DULUTH.....	129	210	10	27	10	22	1	14	39	81	23	26	10	24	20	39
DULUTH AVTI.....	-	3	-	1	-	-	-	-	-	-	-	-	-	-	-	-
DULUTH MALL.....	-	1	-	1	-	-	-	-	-	-	-	1	-	-	-	-
CLOQUET.....	-	22	-	-	-	1	-	3	-	11	-	6	-	4	-	1
NORTH SHORE.....	-	-	-	-	-	-	-	-	-	-	-	-	-	-	-	-
ELY.....	11	10	-	2	-	-	-	3	4	5	1	1	2	7	2	3
GRAND RAPIDS AREA..	94	108	20	10	6	6	7	6	14	24	21	17	16	6	14	22
GRAND RAPIDS.....	93	107	20	10	6	6	6	6	14	24	21	17	15	6	13	22
AITKIN.....	1	1	-	-	-	-	1	-	-	-	-	-	1	-	1	-
HIBBING.....	50	85	24	19	1	2	6	2	6	12	18	13	5	4	5	4
INT'L FALLS.....	10	1	6	-	-	-	-	-	-	1	6	-	-	1	1	-
VIRGINIA.....	137	57	12	13	10	1	8	2	51	12	22	10	8	-	21	4
NORTHWEST DIST.....	6,068	4,259	1,386	834	2,967	1,631	197	179	659	589	1,988	1,479	839	519	406	292
ALEXANDRIA.....	300	373	15	40	3	-	2	13	29	28	149	235	12	22	32	18
BEMIDJI AREA.....	487	403	83	96	69	51	19	20	118	73	90	92	92	51	63	48
BEMIDJI.....	159	208	10	38	26	31	12	11	45	35	29	60	23	10	23	24
PARK RAPIDS.....	328	195	73	58	43	20	7	9	73	38	61	32	69	41	40	24
BRAINERD AREA.....	508	496	41	44	8	9	17	16	76	81	197	171	49	23	50	53
BRAINERD.....	240	156	27	24	8	5	11	9	42	31	83	51	32	9	23	21
STAPLES.....	6	5	1	-	-	-	-	1	1	2	4	-	1	1	2	1
WADENA.....	262	335	13	20	-	4	6	6	33	48	110	120	16	13	25	31
CROOKSTON AREA.....	1,989	1,607	482	378	1,149	873	99	93	219	228	597	477	287	236	156	112
CROOKSTON.....	1,249	985	319	264	791	590	35	40	119	122	369	294	176	161	91	71
E.GRAND FORKS.....	438	346	140	80	345	272	12	16	23	31	159	115	80	52	5	9
ROSEAU.....	23	12	9	1	-	-	-	1	2	-	10	3	3	-	4	1
THF.RIV.FALLS.....	279	264	14	33	13	11	52	36	75	75	59	65	28	23	56	31
FERGUS FALLS.....	819	297	238	57	613	154	17	13	63	36	275	96	132	43	35	19
LITTLE FALLS.....	31	38	2	7	-	-	1	-	11	3	9	29	3	2	6	1
MOORHEAD AREA.....	1,934	1,045	525	212	1,125	544	42	24	143	140	671	379	264	142	64	41
MOORHEAD.....	1,552	850	478	200	1,095	537	24	18	89	98	560	328	237	123	26	25
DETROIT LAKES.....	382	195	47	12	30	7	18	6	54	42	111	51	27	19	38	16

AREA OFFICE ACTIVITIES

CALENDAR YEAR 1990

REFERRALS, AGRICULTURAL - (CONT.)

DISTRICT AND AREA OFFICES	TOTAL		FEMALE		MINORITY		HANDICAPPED		VETERAN		UNDER 22		45 & OVER		UI CLAIMANT	
	CY 90	CY 89	CY 90	CY 89	CY 90	CY 89	CY 90	CY 89	CY 90	CY 89	CY 90	CY 89	CY 90	CY 89	CY 90	CY 89
CENTRAL DIST.....	8,890	8,913	2,361	2,305	2,480	1,388	185	195	429	473	5,539	6,359	520	420	425	385
MARSHALL.....	843	1,072	166	268	24	27	25	13	35	43	573	844	52	43	35	29
MONTEVIDEO.....	1,454	1,314	360	345	32	29	12	17	37	24	1,082	1,170	88	36	46	21
MORA AREA.....	289	300	35	33	1	7	22	20	51	60	87	111	20	25	53	43
MORA.....	143	132	19	18	1	5	9	8	32	29	29	41	13	15	24	22
CAMBRIDGE.....	146	168	16	15	-	2	13	12	19	31	58	70	7	10	29	21
ST.CLOUD.....	489	497	34	55	22	7	22	13	97	96	144	196	23	25	87	81
WILLMAR AREA.....	5,065	4,208	1,606	1,175	2,394	1,290	102	128	195	243	3,015	2,626	325	273	194	201
WILLMAR.....	3,989	3,009	1,278	829	2,359	1,259	86	105	162	193	2,121	1,619	309	243	148	155
HUTCHINSON.....	851	1,191	276	344	21	30	10	21	27	48	715	1,006	15	30	37	45
LITCHFIELD.....	225	8	52	2	14	1	6	2	6	2	179	1	1	-	9	1
WORTHINGTON.....	750	1,522	160	429	7	28	2	4	14	7	638	1,412	12	18	10	10
SOUTH DIST.....	5,940	6,427	920	1,081	228	157	190	188	511	482	3,843	4,564	294	268	429	374
ALBERT LEA AREA....	842	614	52	61	22	18	24	12	74	58	549	453	41	36	56	21
ALBERT LEA.....	281	224	21	23	12	11	12	7	31	27	153	154	27	18	29	11
AUSTIN.....	561	390	31	38	10	7	12	5	43	31	396	299	14	18	27	10
FAIRMONT.....	1,122	1,128	336	317	54	45	82	70	36	14	826	956	30	30	26	17
FARIBAULT AREA....	454	407	43	73	43	15	16	22	81	95	191	92	42	47	70	79
FARIBAULT.....	305	289	30	52	33	8	6	22	57	71	131	67	27	40	53	64
FARIBAULT AVTI....	6	18	1	16	-	-	-	-	1	2	1	6	-	-	1	-
OMATONNA.....	143	100	12	5	10	7	10	-	23	22	59	19	15	7	16	15
MANKATO.....	901	1,325	141	206	25	15	16	25	118	136	502	866	46	55	66	87
NEW ULM.....	1,173	1,206	205	254	52	17	11	17	70	32	852	1,016	48	31	86	53
RED WING.....	65	64	4	6	3	7	-	1	7	7	31	45	5	1	10	6
ROCHESTER AREA....	762	1,016	98	116	23	36	32	27	111	107	371	616	72	48	97	92
ROCHESTER.....	761	1,011	97	114	23	36	32	27	111	107	371	613	72	48	97	91
RCHSTR COM COL....	1	1	1	-	-	-	-	-	-	-	-	1	-	-	-	-
ROCHESTER AVTI....	-	4	-	2	-	-	-	-	-	-	-	2	-	-	-	1
WINONA.....	621	667	41	48	6	4	9	14	14	33	521	520	10	20	18	19

AREA OFFICE ACTIVITIES

CALENDAR YEAR 1990

PLACEMENTS, NON-AGRICULTURAL

DISTRICT AND AREA OFFICES	TOTAL		FEMALE		MINORITY		HANDICAPPED		VETERAN		UNDER 22		45 & OVER		UI CLAIMANT	
	CY 90	CY 89	CY 90	CY 89	CY 90	CY 89	CY 90	CY 89	CY 90	CY 89	CY 90	CY 89	CY 90	CY 89	CY 90	CY 89
STATE TOTAL.....	67,293	71,730	25,275	26,053	7,498	7,441	2,378	2,761	10,701	11,123	23,475	26,860	8,205	7,548	6,624	7,643
JS STATE TOTAL.....	67,291	71,719	25,275	26,049	7,498	7,436	2,378	2,760	10,701	11,121	23,475	26,858	8,203	7,548	6,624	7,643
METRO AREA.....	23,421	24,451	7,901	7,688	4,990	5,226	987	959	4,715	4,603	6,101	7,353	3,949	3,483	2,731	3,129
WEST METRO.....	11,623	12,328	2,867	2,923	3,636	3,862	539	596	3,027	2,995	2,763	3,359	2,579	2,347	1,331	1,482
MINNEAPOLIS AREA...	6,953	7,424	1,321	1,388	3,276	3,502	343	316	2,172	2,166	1,542	1,762	2,061	1,908	497	587
HENN. CTY WK READY	258	362	60	82	152	223	5	27	67	105	24	37	32	40	19	46
MINNEAPOLIS.....	2,041	2,366	589	620	986	1,101	108	141	554	535	452	542	194	222	297	366
MPLS CASUAL.....	3,526	3,432	110	82	1,316	1,212	152	110	1,537	1,508	71	73	1,816	1,630	175	170
MPLS SUMMER.....	979	1,090	503	525	763	893	74	33	1	-	952	1,061	10	7	2	-
MPLS TECH INST....	120	144	46	64	52	62	1	-	10	17	40	44	6	8	4	3
MPLS T.I. SPCL PGM	29	30	13	15	7	11	3	5	3	1	3	5	3	1	-	2
BLOOMINGTON.....	828	1,014	263	357	84	93	28	42	213	242	182	317	106	111	198	204
BROOKLYN PARK AREA.	1,518	1,896	481	641	162	175	37	76	210	207	546	738	144	121	244	319
BROOKLYN PARK.....	1,291	1,658	403	575	156	167	33	74	200	187	446	640	134	112	229	305
CRYSTAL AVTI.....	227	238	78	66	6	8	4	2	10	20	100	98	10	9	15	14
MINNETONKA AREA....	2,324	1,994	802	537	114	92	131	162	432	380	493	542	268	207	392	372
HOPKINS AVTI.....	232	288	77	59	11	9	-	7	18	30	68	91	14	23	18	19
MINNETONKA.....	1,668	1,372	588	407	95	64	106	125	328	287	355	382	203	152	299	273
SHAKOPEE.....	424	334	137	71	8	19	25	30	86	63	70	69	51	32	75	80
EAST METRO.....	11,798	12,123	5,034	4,765	1,354	1,364	448	363	1,688	1,608	3,338	3,994	1,370	1,136	1,400	1,647
ST. PAUL CENTRAL....	4,070	4,205	1,623	1,754	939	908	76	66	468	413	1,177	1,232	522	502	348	442
ST. PAUL AVTI.....	251	273	129	121	49	38	5	10	18	5	69	87	6	3	11	10
ST. PAUL GU. & TRN.	61	100	26	38	34	49	2	-	7	10	4	8	15	20	7	9
ST. PAUL-MIDWAY....	2,045	1,997	807	859	489	391	60	42	344	280	304	314	268	257	290	356
MARTIN LUTHER KING	128	179	37	55	114	157	2	-	9	10	16	35	16	19	20	31
STATE FAIR.....	1,585	1,656	624	681	253	273	7	14	90	108	784	788	217	203	20	36
ST. PAUL NORTH.....	1,683	2,061	922	1,052	68	76	48	37	267	264	352	583	218	205	241	313
NORTH ST. PAUL.....	1,442	1,852	755	936	56	72	48	36	257	258	264	506	213	204	231	305
916 AVTI.....	241	209	167	116	12	4	-	1	10	6	88	77	5	1	10	8
ST. PAUL SOUTH.....	3,172	2,299	1,338	741	226	197	164	156	495	434	903	720	349	194	385	382
DAKOTA CO. AVTI....	653	369	313	148	8	8	4	2	24	13	251	148	9	5	14	8
WEST ST. PAUL.....	2,519	1,930	1,025	593	218	189	160	154	471	421	652	572	340	189	371	374
ANOKA COUNTY.....	2,873	3,558	1,151	1,218	121	183	160	104	458	497	906	1,459	281	235	426	510
ANOKA AVTI.....	241	316	72	89	7	13	13	9	61	60	75	118	8	12	29	24
ANOKA/RAMSEY C. COL	413	342	227	155	14	12	6	5	30	30	213	236	35	6	9	9
FRIDLEY.....	1,772	2,123	665	628	59	78	56	65	332	366	360	583	209	176	363	437
SPRING LAKE PARK..	447	777	187	346	41	80	85	25	35	41	258	522	29	41	25	40

PLACEMENTS, NON-AGRICULTURAL - (CONT.)

DISTRICT AND AREA OFFICES	TOTAL		FEMALE		MINORITY		HANDICAPPED		VETERAN		UNDER 22		45 & OVER		UI CLAIMANT	
	CY 90	CY 89	CY 90	CY 89	CY 90	CY 89	CY 90	CY 89	CY 90	CY 89	CY 90	CY 89	CY 90	CY 89	CY 90	CY 89
NORTHEAST DIST.....	5,061	5,718	1,969	2,284	155	177	151	161	1,121	1,147	1,395	1,640	584	538	591	670
DULUTH AREA.....	2,131	2,554	928	1,151	91	91	66	67	533	534	711	880	228	250	211	328
DULUTH.....	1,460	1,548	518	604	78	71	60	44	507	469	286	360	202	199	192	253
DULUTH AVTI.....	29	112	14	54	1	2	-	3	3	10	10	19	2	6	2	9
DULUTH MALL.....	642	771	396	448	12	13	6	12	23	34	415	472	24	33	17	43
CLOQUET.....	-	107	-	41	-	5	-	8	-	19	-	21	-	10	-	22
NORTH SHORE.....	-	16	-	4	-	-	-	-	-	2	-	8	-	2	-	1
ELY.....	259	330	103	132	5	14	6	5	53	53	39	115	67	66	36	34
GRAND RAPIDS AREA..	674	700	249	316	16	13	18	22	127	92	149	197	66	48	107	97
GRAND RAPIDS.....	672	699	249	316	16	13	18	22	127	92	149	197	66	48	106	96
AITKIN.....	2	1	-	-	-	-	-	-	-	-	-	-	-	-	1	1
HIBBING.....	613	680	265	257	7	7	29	35	120	144	166	206	75	58	66	81
INT'L FALLS.....	858	925	252	309	29	43	17	17	146	168	235	177	82	55	120	65
VIRGINIA.....	526	529	172	119	7	9	15	15	142	156	95	65	66	61	51	65
NORTHWEST DIST.....	13,170	13,306	5,193	5,005	1,108	1,095	516	634	1,668	1,783	5,101	5,512	1,384	1,157	1,081	1,038
ALEXANDRIA.....	1,474	1,523	395	397	44	10	23	94	187	172	604	611	192	183	146	151
BEMIDJI AREA.....	1,844	1,871	666	732	239	243	85	90	368	325	618	730	193	174	192	160
BEMIDJI.....	1,110	1,080	433	451	211	186	60	68	243	193	404	478	89	75	104	94
PARK RAPIDS.....	734	791	233	281	28	57	25	22	125	132	214	252	104	99	88	66
BRAINERD AREA.....	1,951	1,930	823	817	28	73	119	108	311	355	633	612	278	201	240	259
BRAINERD.....	1,216	1,187	503	479	26	59	86	94	240	246	335	374	194	118	160	161
STAPLES.....	115	154	50	77	-	4	10	5	11	27	51	29	23	24	5	21
WADENA.....	620	589	270	261	2	10	23	9	60	82	247	209	61	59	75	77
CROOKSTON AREA.....	2,156	2,217	847	784	308	263	125	176	286	342	603	717	220	202	193	143
CROOKSTON.....	379	327	133	115	63	45	18	25	61	56	128	104	40	36	25	33
E.GRAND FORKS.....	563	762	195	286	210	192	27	58	83	123	124	204	58	63	30	9
ROSEAU.....	378	156	204	73	6	1	14	7	25	13	96	94	43	9	42	6
THF.RIV.FALLS.....	836	972	315	310	29	25	66	86	117	150	255	315	79	94	96	95
FERGUS FALLS.....	969	1,031	395	369	31	41	45	45	122	121	355	470	116	81	93	108
LITTLE FALLS.....	559	530	259	236	4	3	17	17	64	52	254	300	51	24	58	35
MOORHEAD AREA.....	4,217	4,204	1,808	1,670	454	462	102	104	330	416	2,034	2,072	334	292	159	182
MOORHEAD.....	2,212	1,950	1,072	918	237	162	50	51	132	199	1,313	1,161	102	87	39	43
DETROIT LAKES.....	2,005	2,254	736	752	217	300	52	53	198	217	721	911	232	205	120	139

AREA OFFICE ACTIVITIES

CALENDAR YEAR 1990

PLACEMENTS, NON-AGRICULTURAL - (CONT.)

DISTRICT AND AREA OFFICES	TOTAL		FEMALE		MINORITY		HANDICAPPED		VETERAN		UNDER 22		45 & OVER		UI CLAIMANT	
	CY 90	CY 89	CY 90	CY 89	CY 90	CY 89	CY 90	CY 89	CY 90	CY 89	CY 90	CY 89	CY 90	CY 89	CY 90	CY 89
CENTRAL DIST.....	11,358	11,516	4,478	4,570	750	426	284	350	1,541	1,582	4,344	4,449	1,121	1,050	1,018	1,282
MARSHALL.....	988	878	359	311	20	27	26	21	102	100	537	447	83	66	72	73
MONTEVIDEO.....	769	1,029	262	382	5	16	14	38	70	80	466	632	64	75	70	78
MORA AREA.....	1,061	1,145	526	552	10	8	56	65	142	154	302	363	168	146	156	165
MORA.....	619	600	327	320	8	6	31	31	85	78	149	180	121	95	96	84
CAMBRIDGE.....	442	545	199	232	2	2	25	34	57	76	153	183	47	51	60	81
ST.CLOUD.....	3,705	4,077	1,527	1,654	86	98	83	99	604	647	1,432	1,674	321	323	370	460
WILLMAR AREA.....	3,085	2,804	1,193	1,162	146	130	98	105	477	427	1,019	814	302	297	267	424
WILLMAR.....	1,352	1,255	460	449	120	95	71	70	294	285	376	326	134	150	120	202
HUTCHINSON.....	1,654	1,452	699	650	26	34	26	32	171	139	619	442	160	138	140	216
LITCHFIELD.....	79	97	34	63	-	1	1	3	12	3	24	46	8	9	7	6
WORTHINGTON.....	1,750	1,583	611	509	483	147	7	22	146	174	588	519	183	143	83	82
SOUTH DIST.....	14,281	16,728	5,734	6,502	495	512	440	656	1,656	2,006	6,534	7,904	1,165	1,320	1,203	1,524
ALBERT LEA AREA....	1,937	2,303	584	733	100	144	54	97	292	371	714	830	180	261	281	295
ALBERT LEA.....	737	999	190	239	42	85	26	45	146	185	275	363	84	116	162	196
AUSTIN.....	1,200	1,304	394	494	58	59	28	52	146	186	439	467	96	145	119	99
FAIRMONT.....	1,325	1,530	603	679	68	44	124	188	129	116	530	665	112	139	93	94
FARIBAULT AREA....	1,017	1,385	474	505	41	53	25	38	123	121	350	723	138	146	98	139
FARIBAULT.....	416	794	149	253	23	21	9	18	75	49	157	545	56	75	49	71
FARIBAULT AVTI....	176	217	121	121	2	8	1	8	8	7	43	76	14	17	12	9
OWATONNA.....	425	374	204	131	16	24	15	12	40	65	150	102	68	54	37	59
MANKATO.....	4,182	4,976	1,748	1,995	122	116	73	121	402	558	2,138	2,548	247	310	203	319
NEW ULM.....	1,410	1,541	589	620	28	25	44	49	135	132	677	895	130	102	142	135
RED WING.....	628	676	239	258	17	9	7	10	66	75	228	290	59	42	50	69
ROCHESTER AREA....	1,978	2,184	690	751	90	99	68	76	339	433	800	737	199	198	217	291
ROCHESTER.....	1,818	2,090	626	722	76	92	66	75	333	423	700	690	189	195	210	289
RCHSTR COM COL....	81	35	33	15	4	4	1	-	1	4	66	24	-	-	1	-
ROCHESTER AVTI....	79	59	31	14	10	3	1	1	5	6	34	23	10	3	6	2
WINONA.....	1,804	2,133	807	961	29	22	45	77	170	200	1,097	1,216	100	122	119	182

PLACEMENTS, AGRICULTURAL

DISTRICT AND AREA OFFICES	TOTAL		FEMALE		MINORITY		HANDICAPPED		VETERAN		UNDER 22		45 & OVER		UI CLAIMANT	
	CY 90	CY 89	CY 90	CY 89	CY 90	CY 89	CY 90	CY 89	CY 90	CY 89	CY 90	CY 89	CY 90	CY 89	CY 90	CY 89
STATE TOTAL.....	11,955	12,748	3,126	3,166	3,536	2,135	128	148	374	416	8,506	10,175	736	577	248	229
JS STATE TOTAL.....	11,955	12,748	3,126	3,166	3,536	2,135	128	148	374	416	8,506	10,175	736	577	248	229
METRO AREA.....	794	917	142	174	81	85	11	11	92	93	535	643	48	62	50	40
WEST METRO.....	212	246	8	13	54	54	8	9	62	82	36	31	38	59	26	25
MINNEAPOLIS AREA...	126	180	2	5	53	51	3	5	45	70	6	5	32	58	15	15
HENN. CTY WK READY	38	3	-	-	26	-	1	-	12	1	3	-	4	-	2	-
MINNEAPOLIS.....	16	14	-	1	3	4	-	1	6	5	1	1	1	1	4	3
MPLS CASUAL.....	71	162	2	4	24	47	2	4	27	64	2	3	27	57	9	12
MPLS SUMMER.....	-	-	-	-	-	-	-	-	-	-	-	-	-	-	-	-
MPLS TECH INST....	1	1	-	-	-	-	-	-	-	-	-	1	-	-	-	-
MPLS T.I. SPCL PGM	-	-	-	-	-	-	-	-	-	-	-	-	-	-	-	-
BLOOMINGTON.....	13	6	-	-	-	-	3	2	3	3	3	-	1	1	1	3
BROOKLYN PARK AREA.	27	22	4	3	1	-	1	1	6	3	12	9	2	-	2	3
BROOKLYN PARK.....	22	19	3	2	1	-	1	1	5	2	11	7	1	-	2	3
CRYSTAL AVTI.....	5	3	1	1	-	-	-	-	1	1	1	2	1	-	-	-
MINNETONKA AREA....	46	38	2	5	-	3	1	1	8	6	15	17	3	-	8	4
HOPKINS AVTI.....	1	1	-	-	-	-	-	-	-	-	-	-	-	-	-	-
MINNETONKA.....	33	19	2	1	-	-	1	-	5	5	10	8	2	-	6	3
SHAKOPEE.....	12	18	-	4	-	3	-	1	3	1	5	9	1	-	2	1
EAST METRO.....	582	671	134	161	27	31	3	2	30	11	499	612	10	3	24	15
ST.PAUL CENTRAL....	9	10	3	-	-	1	-	1	1	2	4	1	-	1	2	3
ST.PAUL AVTI.....	-	-	-	-	-	-	-	-	-	-	-	-	-	-	-	-
ST.PAUL GU. & TRN.	-	1	-	-	-	-	-	-	-	-	-	-	-	1	-	-
ST.PAUL-MIDWAY....	9	9	3	-	-	1	-	1	1	2	4	1	-	-	2	2
MARTIN LUTHER KING	-	-	-	-	-	-	-	-	-	-	-	-	-	-	-	-
STATE FAIR.....	-	-	-	-	-	-	-	-	-	-	-	-	-	-	-	-
ST.PAUL NORTH.....	22	25	-	1	1	-	1	-	9	3	9	13	-	-	6	7
NORTH ST.PAUL.....	22	24	-	1	1	-	1	-	9	3	9	12	-	-	6	7
916 AVTI.....	-	1	-	-	-	-	-	-	-	-	-	1	-	-	-	-
ST.PAUL SOUTH.....	498	609	125	159	25	30	1	-	11	3	466	584	7	-	8	4
DAKOTA CO.AVTI....	14	6	3	3	-	-	-	-	1	1	6	1	2	-	-	-
WEST ST.PAUL.....	484	603	122	156	25	30	1	-	10	2	460	583	5	-	8	4
ANOKA COUNTY.....	53	27	6	1	1	-	1	1	9	3	20	14	3	2	8	1
ANOKA AVTI.....	5	3	1	1	-	-	-	-	-	-	2	1	-	-	1	-
ANOKA/RAMSEY C.COL	5	2	-	-	-	-	-	-	-	-	5	2	-	-	-	-
FRIDLEY.....	37	17	4	-	1	-	1	1	9	3	11	11	2	1	7	1
SPRING LAKE PARK..	6	5	1	-	-	-	-	-	-	-	2	-	1	1	-	-

- 39 -

PLACEMENTS, AGRICULTURAL - (CONT.)

DISTRICT AND AREA OFFICES	TOTAL		FEMALE		MINORITY		HANDICAPPED		VETERAN		UNDER 22		45 & OVER		UI CLAIMANT	
	CY 90	CY 89	CY 90	CY 89	CY 90	CY 89	CY 90	CY 89	CY 90	CY 89	CY 90	CY 89	CY 90	CY 89	CY 90	CY 89
NORTHEAST DIST.....	63	62	13	9	5	4	3	2	11	21	18	15	2	4	7	7
DULUTH AREA.....	15	28	1	1	1	4	-	2	2	13	2	6	1	2	1	1
DULUTH.....	15	19	1	1	1	4	-	1	2	11	2	4	1	1	1	1
DULUTH AVTI.....	-	1	-	-	-	-	-	-	-	-	-	-	-	-	-	-
DULUTH MALL.....	-	-	-	-	-	-	-	-	-	-	-	-	-	-	-	-
CLOQUET.....	-	8	-	-	-	-	-	-	1	-	2	-	2	-	1	-
NORTH SHORE.....	-	-	-	-	-	-	-	-	-	-	-	-	-	-	-	-
ELY.....	5	3	-	1	-	-	-	-	3	1	-	1	1	1	-	1
GRAND RAPIDS AREA..	11	12	5	1	2	-	-	-	1	4	2	1	-	-	2	3
GRAND RAPIDS.....	11	12	5	1	2	-	-	-	1	4	2	1	-	-	2	3
AITKIN.....	-	-	-	-	-	-	-	-	-	-	-	-	-	-	-	-
HIBBING.....	9	12	6	4	-	-	1	-	1	-	5	6	-	-	-	1
INT'L FALLS.....	5	1	1	-	-	-	-	-	-	1	4	-	-	1	-	-
VIRGINIA.....	18	6	-	2	2	-	2	-	4	2	5	1	-	-	4	1
NORTHWEST DIST.....	3,136	2,144	1,056	602	2,568	1,369	35	42	131	147	1,192	959	489	286	74	73
ALEXANDRIA.....	106	234	9	34	1	-	1	4	11	10	72	195	1	7	10	6
BEMIDJI AREA.....	130	162	28	47	16	16	3	12	39	32	18	29	31	33	23	17
BEMIDJI.....	25	35	3	7	5	4	1	4	11	9	4	10	3	3	3	3
PARK RAPIDS.....	105	127	25	40	11	12	2	8	28	23	14	19	28	30	20	14
BRAINERD AREA.....	75	97	8	9	1	1	1	2	11	15	38	39	5	3	8	7
BRAINERD.....	27	21	4	5	1	-	1	-	7	4	12	7	4	2	2	1
STAPLES.....	6	1	1	-	-	-	-	1	1	1	4	-	1	-	2	-
WADENA.....	42	75	3	4	-	1	-	1	3	10	22	32	-	1	4	6
CROOKSTON AREA.....	1,148	895	395	278	1,014	746	17	18	33	50	432	351	185	122	21	25
CROOKSTON.....	769	581	271	202	704	499	6	5	19	24	269	242	118	85	15	14
E.GRAND FORKS.....	334	276	119	75	309	244	4	10	5	15	149	99	59	33	2	6
ROSEAU.....	6	4	1	-	-	-	-	-	1	-	2	1	2	-	1	1
THF.RIV.FALLS.....	39	34	4	1	1	3	7	3	8	11	12	9	6	4	3	4
FERGUS FALLS.....	646	178	231	56	610	152	1	3	14	7	249	78	97	36	3	6
LITTLE FALLS.....	2	25	-	6	-	-	-	-	1	-	-	25	-	-	1	-
MOORHEAD AREA.....	1,029	553	385	172	926	454	12	3	22	33	383	242	170	85	8	12
MOORHEAD.....	974	494	381	170	919	451	8	3	11	20	371	219	168	81	2	6
DETROIT LAKES.....	55	59	4	2	7	3	4	-	11	13	12	23	2	4	6	6

AREA OFFICE ACTIVITIES

CALENDAR YEAR 1990

PLACEMENTS, AGRICULTURAL - (CONT.)

DISTRICT AND AREA OFFICES	TOTAL		FEMALE		MINORITY		HANDICAPPED		VETERAN		UNDER 22		45 & OVER		UI CLAIMANT	
	CY 90	CY 89	CY 90	CY 89	CY 90	CY 89	CY 90	CY 89	CY 90	CY 89	CY 90	CY 89	CY 90	CY 89	CY 90	CY 89
CENTRAL DIST.....	4,666	5,685	1,349	1,654	782	597	29	29	74	85	3,847	4,994	134	155	67	63
MARSHALL.....	532	676	112	201	14	12	5	3	4	3	478	619	6	16	7	5
MONTEVIDEO.....	1,075	924	315	248	28	27	2	7	9	7	924	871	34	21	3	4
MORA AREA.....	24	60	3	8	-	-	4	3	7	13	9	22	5	5	4	12
MORA.....	6	17	1	4	-	-	1	-	3	2	-	11	2	2	1	2
CAMBRIDGE.....	18	43	2	4	-	-	3	3	4	11	9	11	3	3	3	10
ST.CLOUD.....	63	125	3	9	-	1	3	1	14	10	27	98	4	1	10	3
WILLMAR AREA.....	2,289	2,422	759	759	733	529	14	13	35	45	1,779	1,989	78	95	38	33
WILLMAR.....	1,490	1,426	481	444	717	517	12	13	29	34	1,006	1,045	73	84	31	22
HUTCHINSON.....	651	993	232	315	6	12	2	-	5	11	627	944	4	11	7	9
LITCHFIELD.....	148	3	46	-	10	-	-	-	1	-	146	-	1	-	-	2
WORTHINGTON.....	683	1,478	157	429	7	28	1	2	5	7	630	1,395	7	17	5	6
SOUTH DIST.....	3,296	3,940	566	727	100	80	50	64	66	70	2,914	3,564	63	70	50	46
ALBERT LEA AREA....	473	457	25	50	12	7	4	4	13	11	412	408	13	17	13	6
ALBERT LEA.....	155	169	11	19	6	5	1	4	5	6	130	142	8	9	6	5
AUSTIN.....	318	288	14	31	6	2	3	-	8	5	282	266	5	8	7	1
FAIRMONT.....	846	997	287	298	39	35	33	50	2	7	765	915	12	18	5	5
FARIBAULT AREA....	124	46	15	6	5	6	2	3	9	7	101	19	1	4	3	4
FARIBAULT.....	71	28	9	4	3	2	-	3	6	5	59	13	-	3	2	3
FARIBAULT AVTI....	2	-	-	-	-	-	-	-	-	-	-	-	-	-	1	-
OWATONNA.....	51	18	6	2	2	4	2	-	3	2	42	6	1	1	-	1
MANKATO.....	461	825	115	180	9	6	2	2	12	20	377	721	14	17	5	12
NEW ULM.....	608	682	83	128	22	3	2	2	9	6	554	651	11	4	13	5
RED WING.....	18	33	1	3	2	6	-	1	1	1	15	30	-	-	1	2
ROCHESTER AREA....	275	438	14	44	7	17	5	2	20	16	213	371	11	9	10	10
ROCHESTER.....	274	435	13	43	7	17	5	2	20	16	213	369	11	9	10	9
RCHSTR COM COL....	1	1	1	-	-	-	-	-	-	-	-	1	-	-	-	-
ROCHESTER AVTI....	-	2	-	1	-	-	-	-	-	-	-	1	-	-	-	1
WINONA.....	491	462	26	18	4	-	2	-	-	2	477	449	1	1	-	2

AREA OFFICE ACTIVITIES

CALENDAR YEAR 1990

UNEMPLOYMENT INSURANCE HIGHLIGHTS

	State Total Calendar Year 1990 <u>UC, UCFE, UCX</u>	% Change from <u>Calendar Year 1989</u>	% Change from <u>Calendar Year 1988</u>
Initial Claims	258,160	+0.3	+7.4
Continued Claims	1,148,503	+11.5	+16.6
Weeks Claimed	2,104,563	+9.4	+14.5
Amount Paid	\$355,727,213	+13.3	+21.1
Weeks Paid	1,925,222	+10.0	+14.5
Average Weekly Benefit Amount	\$184.77	+3.1	+5.7
First Payments	131,084	+8.1	+17.2
Exhaustions	39,146	+16.8	+9.4
Sep. Issue Determinations	31,942	+8.2	+11.3
Sep. Issue Denials	14,409	+11.8	+15.9
Nonsep. Issue Determinations	38,621	+16.4	+16.7
Nonsep. Issue Denials	31,261	+18.9	+22.1

UNEMPLOYMENT INSURANCE COMMENTARY

Unemployment Insurance activities in Calendar Year 1990 have basically continued in a four year pattern of low UI activity, due to favorable and stable economic conditions. Only in the last quarter of 1990 was there any increase in initial claims over the previous two calendar years (Figure 10 page 43). Initial claims is generally a good indicator of layoffs occurring in the State and the overall statewide increase from 1989 to 1990 was only 0.3 percent. Weeks claimed ran slightly above the 1988 and 1989 levels for most of the Calendar Year but again, began to increase a little more at the end of the year (Figure 11 page 43). Most of the other major categories also follow this general pattern, but overall, Unemployment Insurance activity levels were low in Calendar Year 1990.

The construction industry showed a 4.7 percent drop in initial claims over the previous year, while manufacturing remained virtually the same with a 0.5 percent increase over 1989. Services and trade showed 4.2 percent and 2.0 percent increases respectively, over last year's totals.

Looking at initial claims by area, The West Metro and East Metro Districts increased 2.3 percent and 3.7 percent respectively over last year. The Northeast District and the Central District decreased 5.4 percent and 10.7 percent from the year-ago figures, while the Northwest District increased 7.3 percent. The South District remained almost at the same level with a 1.1 percent increase over 1989.

The Unemployment Insurance Fund balance at the end of the year was \$393,306,265 which is a new record high year-end fund balance. Current legislation has the maximum weekly benefit amount (MBA) tied to the year-end fund balance. As the year-end fund balance gets higher (within increments of \$50,000,000 i.e., \$200,000,000, \$250,000,000, \$300,000,000), the percentage of the average weekly wage used to calculate the MBA decreases by one percent for each increment. The 1990 year-end fund balance surpassed the top increment of \$350,000,000, so for the twelve month period beginning July 1, 1991 through June of 1992, the MBA will be 60 percent of the average weekly wage for Calendar Year 1990. This is the lowest percent allowable and compares to 61 percent for the current period and 62 percent the previous year.

Figure 10
Total Initial Claims
 (Includes Transitionals)

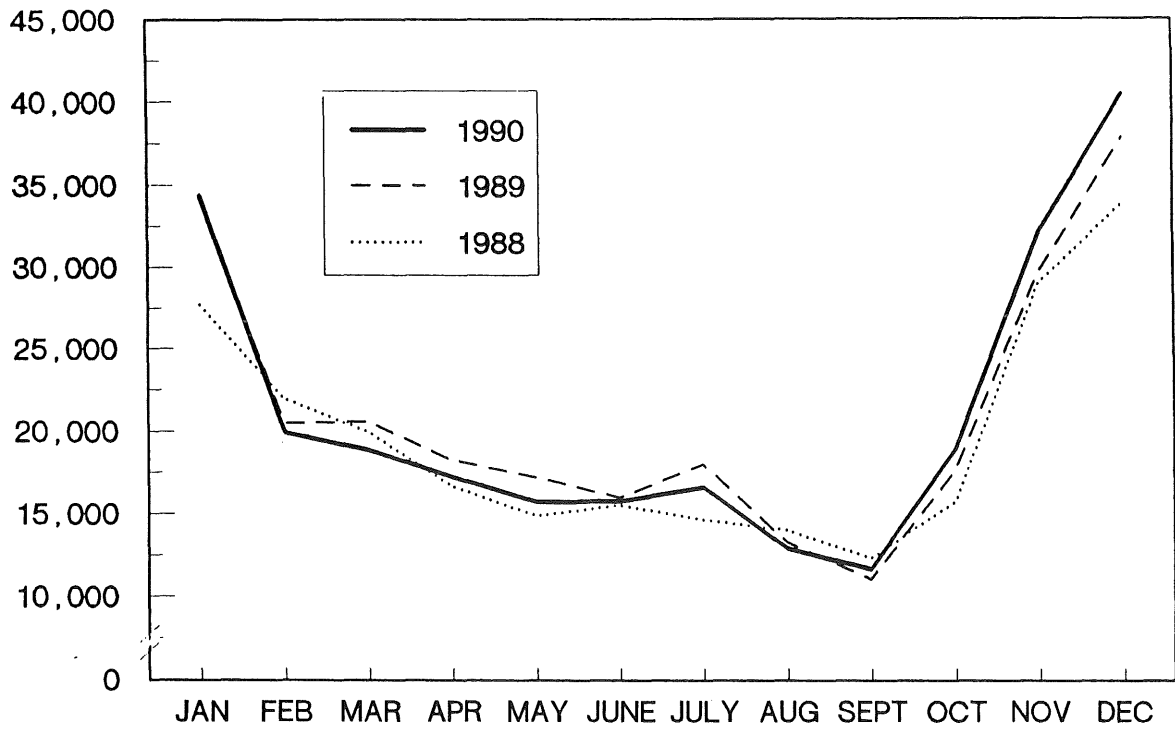


Figure 11
UI Weeks Claimed

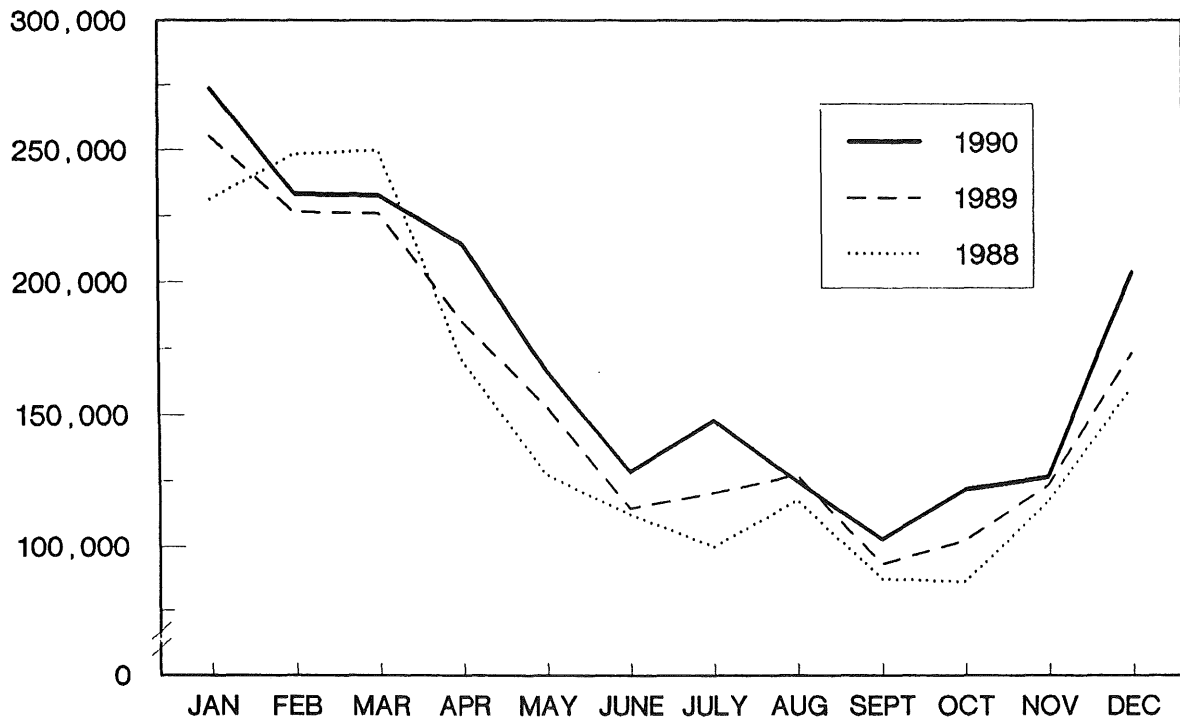


Figure 12
Persons In Active Claim Status

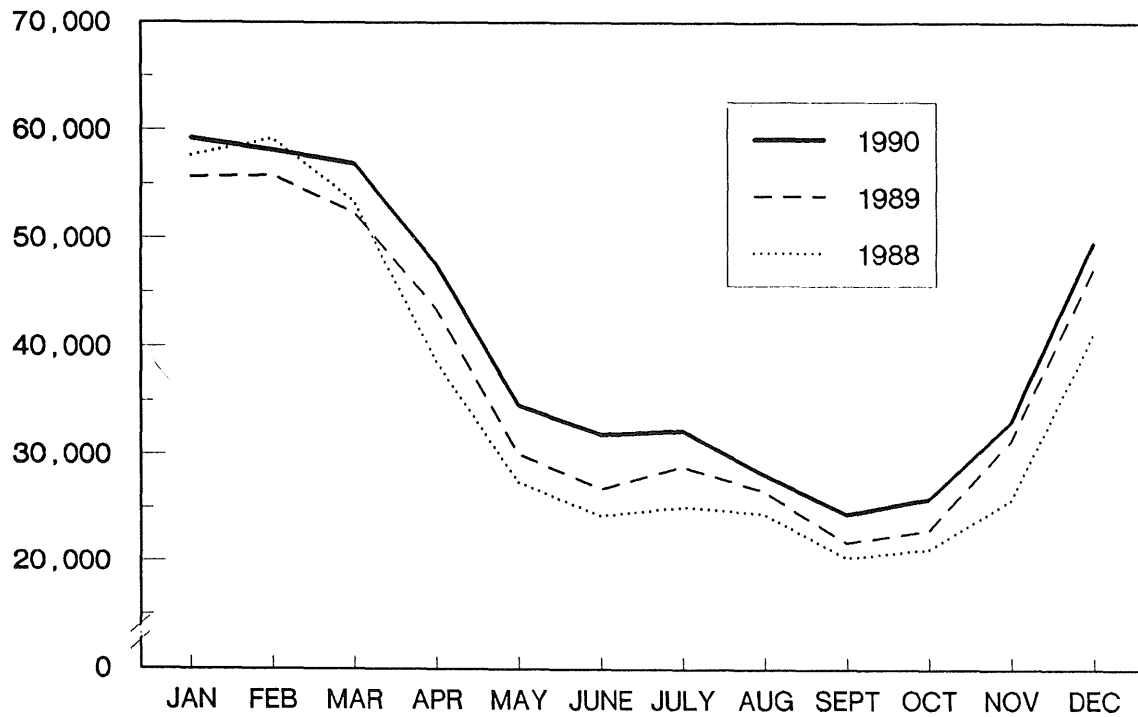
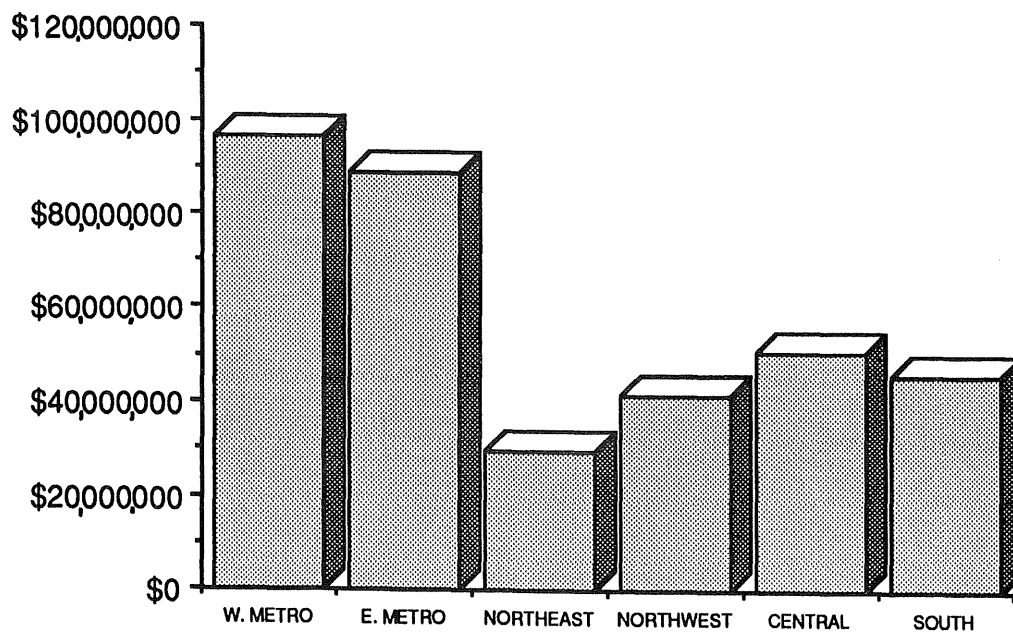


Figure 13
Benefits Paid By District
(UC, UCFE, UCX)



MINNESOTA
INITIAL CLAIMS FILED DURING CALENDAR YEAR 1990
(Excluding Transitional Claims)

INDUSTRY	First Quarter	Second Quarter	Third Quarter	Fourth Quarter	Calendar Year Totals		
					1990	1989	% Change
AGRICULTURE, FORESTRY and FISHING	1,132	434	394	2,602	4,562	4,616	-1.2
MINING	694	545	177	1,297	2,713	2,639	2.8
CONSTRUCTION	21,484	10,284	7,312	27,818	66,898	70,195	-4.7
TOTAL MANUFACTURING	18,178	12,885	12,339	25,733	69,135	68,778	0.5
Food Processing	4,399	2,303	1,687	4,293	12,682	15,316	-17.2
Lumber	1,304	512	1,082	1,558	4,456	4,491	-0.8
Primary Metals	288	244	217	367	1,116	946	18.0
Fabricated Metals	1,256	958	992	1,457	4,663	4,073	14.5
Industrial Machinery	1,982	2,593	2,142	2,687	9,404	10,071	-6.6
Electrical Equipment	1,277	1,049	1,381	2,715	6,422	8,014	-19.9
Transportation Equipment	2,281	1,873	1,688	6,351	12,193	8,137	49.8
TRANSPORTATION, COMMUNICATION, and PUBLIC UTILITIES	3,076	2,066	1,877	3,216	10,235	9,281	10.3
TOTAL TRADE	11,049	8,209	7,144	9,713	36,115	35,396	2.0
Wholesale	3,529	2,794	2,467	3,721	12,511	12,044	3.9
Retail	7,520	5,415	4,677	5,992	23,604	23,352	1.1
FINANCE, INSURANCE, and REAL ESTATE	1,634	1,400	1,270	1,610	5,914	5,306	11.5
TOTAL SERVICES	9,588	10,170	8,739	10,307	38,804	37,251	4.2
Lodging	718	530	376	1,114	2,738	2,787	-1.8
Medical	1,108	1,079	1,147	1,106	4,440	4,519	-1.7
Educational	669	1,607	1,114	684	4,074	4,772	-14.6
PUBLIC ADMINISTRATION	1,295	1,000	887	1,810	4,992	3,411	46.4
INDUSTRY UNKNOWN	1,151	463	453	571	2,638	4,460	-40.9
TOTAL INITIAL CLAIMS	69,281	47,406	40,592	84,677	241,956	241,333	0.3

Summary of Area Office Activities - Research & Statistics Office

MINNESOTA
UC WEEKS CLAIMED DURING CALENDAR YEAR 1990

INDUSTRY	First Quarter	Second Quarter	Third Quarter	Fourth Quarter	Calendar Year Totals		
					1990	1989	% Change
AGRICULTURE, FORESTRY and FISHING	25,535	8,255	2,932	9,650	46,372	46,016	0.8
MINING	13,169	5,316	1,216	3,968	23,669	21,865	8.3
CONSTRUCTION	266,799	132,399	40,308	92,539	532,045	529,701	0.4
TOTAL MANUFACTURING	163,678	133,028	109,511	120,372	526,589	494,974	6.4
Food Processing	27,478	33,489	22,972	15,954	99,893	88,838	12.4
Lumber	9,960	6,545	3,243	9,571	29,319	29,462	-0.5
Fabricated Metals	13,191	11,869	8,945	10,263	44,268	35,708	24.0
Industrial Machinery	23,391	23,278	25,584	24,157	96,410	96,231	0.2
Electrical Equipment	16,646	12,841	11,494	9,485	50,466	62,453	-19.2
Transportation Equipment	13,192	5,774	6,762	15,940	41,668	29,839	39.6
TRANSPORTATION, COMMUNICATION, and PUBLIC UTILITIES	29,413	22,108	16,525	18,665	86,711	73,304	18.3
TOTAL TRADE	105,677	93,206	83,683	76,985	359,551	306,830	17.2
Wholesale	39,421	32,940	29,742	30,207	132,310	125,195	5.7
Retail	66,256	60,266	53,941	46,778	227,241	181,635	25.1
FINANCE, INSURANCE, and REAL ESTATE	18,471	18,114	17,441	16,932	70,958	61,059	16.2
SERVICES	82,440	73,888	85,539	72,395	314,262	276,833	13.5
PUBLIC ADMINISTRATION	15,509	10,127	7,912	12,731	46,279	31,061	49.0
INDUSTRY UNKNOWN	19,748	13,397	11,359	10,986	55,490	58,166	-4.6
BYPASS AGENTS	15,408	11,444	11,652	12,525	51,029	46,468	9.8
TOTAL WEEKS CLAIMED	755,847	521,282	388,078	477,748	2,142,955	1,946,277	10.1

Summary of Area Office Activities – Research & Statistics Office

**UI INITIAL CLAIMS
REGULAR PROGRAM**

AREA OFFICE	UC Total		Total	Intrastate UC			UC Agents	UCFE	UCX
	1990	1989		New Claims Incl.	Transi- tionals	Addi- tionals		Total	Total
STATE TOTAL	255,083	254,890	247,419	155,045	12,632	92,375	7,684	859	2,218
METRO TOTAL	119,017	115,519	115,587	77,247	4,141	38,338	3,444	302	912
WEST METRO	57,762	56,452	55,709	39,438	1,643	16,269	2,058	146	446
Minneapolis	11,762	11,894	10,925	8,383	193	2,540	841	48	107
Bloomington	19,127	20,554	18,577	12,715	568	5,862	551	59	148
Brooklyn Park	10,703	8,236	10,419	7,389	308	3,030	284	14	108
Minnetonka	16,170	15,768	15,788	10,951	574	4,837	382	25	83
EAST METRO	61,255	59,066	59,878	37,809	2,498	22,069	1,386	156	466
Fridley	21,972	21,632	21,614	13,962	1,018	7,652	361	18	177
St. Paul-Midway	13,294	13,005	12,837	8,334	308	4,503	459	48	72
North St. Paul	15,963	15,709	15,658	9,421	787	6,237	307	50	134
West St. Paul	10,026	8,720	9,769	6,092	385	3,677	259	40	83
NORTHEAST	23,647	24,986	22,605	12,887	1,212	9,718	1,043	199	321
Duluth	10,955	11,737	10,356	6,091	507	4,265	600	108	168
Ely	647	-	623	364	30	259	24	28	16
Grand Rapids	4,499	4,861	4,347	2,339	293	2,008	152	32	46
Hibbing	2,509	3,457	2,425	1,342	117	1,083	84	5	34
Int'l. Falls	1,308	-	1,243	795	45	448	65	15	13
Virginia	3,729	4,662	3,611	1,956	220	1,655	118	11	44
NORTHWEST	36,399	33,912	35,008	19,854	2,561	15,154	1,393	178	316
Alexandria	3,524	4,008	3,388	2,010	235	1,378	136	16	42
Bemidji	5,828	5,697	5,539	3,272	421	2,267	289	53	69
Brainerd	6,281	5,995	6,070	3,728	424	2,342	211	22	59
Crookston	2,221	2,057	2,102	1,299	189	803	119	5	21
Fergus Falls	3,356	3,589	3,209	1,692	218	1,517	147	15	24
Little Falls	4,311	3,532	4,284	2,198	219	2,086	27	29	24
Moorhead	5,151	5,007	4,890	3,021	266	1,869	262	26	56
Thief River Falls	5,727	4,027	5,526	2,634	589	2,892	202	12	21
CENTRAL	39,046	43,716	38,265	22,830	2,595	15,435	785	88	340
Marshall	3,089	3,720	3,028	1,690	148	1,338	61	21	19
Montevideo	1,976	2,163	1,919	1,206	131	713	58	9	24
Mora	7,805	7,797	7,664	4,637	679	3,027	143	10	89
St. Cloud	16,544	19,438	16,316	9,462	995	6,854	228	21	123
Willmar	6,568	7,587	6,379	4,052	415	2,327	190	20	65
Worthington	3,064	3,011	2,959	1,783	227	1,176	105	7	20
SOUTH	36,974	36,563	35,954	22,227	2,123	13,730	1,019	92	329
Albert Lea	5,409	4,469	5,239	3,281	218	1,958	167	19	51
Fairmont	1,964	1,912	1,894	1,156	143	738	70	4	12
Faribault	6,443	7,154	6,312	3,880	340	2,432	131	16	44
Mankato	4,738	5,002	4,636	2,949	291	1,687	102	9	52
New Ulm	2,921	3,409	2,868	1,685	252	1,186	53	7	22
Red Wing	3,472	3,422	3,351	2,043	238	1,308	122	16	30
Rochester	6,771	6,453	6,562	4,164	371	2,398	209	9	76
Winona	5,256	4,742	5,092	3,069	270	2,023	165	12	42
Liabile State *1/ Calendar Year 1990	11,428	9,998	11,428	6,077	261	5,048	0	118	64

Summary of Area Office Activities - Research & Statistics Office

**UI CONTINUED CLAIMS
REGULAR PROGRAM**

AREA OFFICE	Total UC,UCFE,UCX		% Change 1989-1990	UC	UCFE	UCX
	1990	1989				
STATE TOTAL	1,148,503	1,030,030	11.5	1,135,084	4,226	9,193
METRO TOTAL	561,458	490,258	14.5	556,799	1,349	3,310
WEST METRO	292,526	254,766	14.8	290,244	657	1,625
Minneapolis	56,277	48,926	15.0	55,679	222	376
Bloomington	102,297	97,068	5.4	101,372	313	612
Brooklyn Park	51,393	34,830	47.6	51,013	45	335
Minnetonka	82,559	71,291	15.8	82,180	77	302
EAST METRO	268,932	235,492	14.2	266,555	692	1,685
Fridley	101,081	90,827	11.3	100,441	33	607
St. Paul-Midway	57,869	48,823	18.5	57,322	251	296
North St. Paul	71,408	63,094	13.2	70,669	261	478
West St. Paul	38,574	32,748	17.8	38,123	147	304
NORTHEAST	104,784	98,546	6.3	101,882	1,186	1,716
Duluth	48,075	46,844	2.6	46,568	725	782
Ely	3,511	3,094	13.5	3,236	189	86
Grand Rapids	21,114	19,196	10.0	20,679	120	315
Hibbing	11,149	10,148	9.9	10,932	18	199
Int'l. Falls	4,854	3,739	29.8	4,674	106	74
Virginia	16,081	15,525	3.6	15,793	28	260
NORTHWEST	153,783	140,320	9.6	151,460	871	1,452
Alexandria	16,846	14,799	13.8	16,548	110	188
Bemidji	27,900	26,041	7.1	27,247	315	338
Brainerd	28,339	26,220	8.1	27,970	91	278
Crookston	11,005	10,039	9.6	10,911	22	72
Fergus Falls	14,207	13,987	1.6	14,063	34	110
Little Falls	14,559	12,004	21.3	14,308	123	128
Moorhead	21,032	21,078	-0.2	20,685	93	254
Thief River Falls	19,895	16,152	23.2	19,728	83	84
CENTRAL	169,706	163,322	3.9	167,841	461	1,404
Marshall	11,825	13,720	-13.8	11,664	83	78
Montevideo	9,170	9,664	-5.1	9,028	79	63
Mora	36,614	32,337	13.2	36,192	72	350
St. Cloud	73,804	65,749	12.3	73,160	92	552
Willmar	26,898	31,093	-13.5	26,520	97	281
Worthington	11,395	10,759	5.9	11,277	38	80
SOUTH	158,772	137,584	15.4	157,102	359	1,311
Albert Lea	29,571	15,509	90.7	29,290	64	217
Fairmont	8,862	8,002	10.7	8,759	24	79
Faribault	27,037	26,386	2.5	26,775	67	195
Mankato	19,964	18,624	7.2	19,723	34	207
New Ulm	12,199	13,663	-10.7	12,117	19	63
Red Wing	12,746	12,634	0.9	12,601	52	93
Rochester	28,404	24,531	15.8	28,093	34	277
Winona	19,989	18,233	9.6	19,744	65	180
Liabile State *1/ Calendar Year 1990	49,643	39,960	24.2	48,960	418	265

Summary of Area Office Activities - Research & Statistics Office

**INITIAL CLAIMS AND SEPARATION ISSUES * 2/
REGULAR PROGRAM**

AREA OFFICE	Total Initial Claims Less Transitionals	Separation Issue Determinations	% of Initial Claims	Separation Issue Denials	Denials % of Determinations
STATE TOTAL	245,504	31,942	13.0%	14,409	45.1%
METRO TOTAL	116,100	19,355	16.7%	8,002	41.3%
WEST METRO	56,717	10,621	18.7%	4,115	38.7%
Minneapolis	11,727	3,288	28.0%	1,578	48.0%
Bloomington	18,768	2,802	14.9%	1,023	36.5%
Brooklyn Park	10,518	1,505	14.3%	659	43.8%
Minnetonka	15,704	3,026	19.3%	855	28.3%
EAST METRO	59,383	8,734	14.7%	3,887	44.5%
Fridley	21,152	2,725	12.9%	1,061	38.9%
St. Paul-Midway	13,106	2,285	17.4%	1,172	51.3%
North St. Paul	15,360	2,000	13.0%	959	48.0%
West St. Paul	9,765	1,724	17.7%	695	40.3%
NORTHEAST	22,930	2,440	10.6%	1,230	50.4%
Duluth	10,710	1,255	11.7%	593	47.3%
Ely	655	58	8.9%	30	51.7%
Grand Rapids	4,280	440	10.3%	222	50.5%
Hibbing	2,430	263	10.8%	157	59.7%
Int'l. Falls	1,291	162	12.5%	91	56.2%
Virginia	3,564	262	7.4%	137	52.3%
NORTHWEST	34,329	2,660	7.7%	1,456	54.7%
Alexandria	3,348	361	10.8%	201	55.7%
Bemidji	5,527	399	7.2%	233	58.4%
Brainerd	5,937	632	10.6%	325	51.4%
Crookston	2,058	166	8.1%	95	57.2%
Fergus Falls	3,176	297	9.4%	125	42.1%
Little Falls	4,144	184	4.4%	113	61.4%
Moorhead	4,968	419	8.4%	240	57.3%
Thief River Falls	5,654	202	3.6%	124	61.4%
CENTRAL	36,877	3,874	10.5%	1,841	47.5%
Marshall	2,980	162	5.4%	92	56.8%
Montevideo	1,878	107	5.7%	49	45.8%
Mora	7,225	849	11.8%	383	45.1%
St. Cloud	15,692	1,764	11.2%	812	46.0%
Willmar	6,238	734	11.8%	371	50.5%
Worthington	2,864	258	9.0%	134	51.9%
SOUTH	35,268	3,613	10.2%	1,880	52.0%
Albert Lea	5,260	578	11.0%	239	41.3%
Fairmont	1,837	171	9.3%	77	45.0%
Faribault	6,161	548	8.9%	304	55.5%
Mankato	4,508	540	12.0%	279	51.7%
New Ulm	2,698	273	10.1%	121	44.3%
Red Wing	3,278	283	8.6%	131	46.3%
Rochester	6,485	927	14.3%	522	56.3%
Winona	5,041	293	5.8%	207	70.6%
Liabile State *1/ Calendar Year 1990	11,342	2,155	19.0%	1,612	74.8%

Summary of Area Office Activities - Research & Statistics Office

CONTINUED CLAIMS AND NONSEPARATION ISSUES * 2/
REGULAR PROGRAM

AREA OFFICE	Total Continued Claims	Nonseparation Issue Determinations	% of Continued Claims	Nonseparation Issue Denials	Denials % of Determinations
STATE TOTAL	1,148,503	38,621	3.4%	31,261	80.9%
METRO TOTAL	561,458	22,901	4.1%	18,220	79.6%
WEST METRO	292,526	11,573	4.0%	9,810	84.8%
Minneapolis	56,277	2,464	4.4%	1,812	73.5%
Bloomington	102,297	3,670	3.6%	3,060	83.4%
Brooklyn Park	51,393	1,910	3.7%	1,755	91.9%
Minnetonka	82,559	3,529	4.3%	3,183	90.2%
EAST METRO	268,932	11,328	4.2%	8,410	74.2%
Fridley	101,081	3,647	3.6%	2,983	81.8%
St. Paul-Midway	57,869	1,991	3.4%	1,649	82.8%
North St. Paul	71,408	3,345	4.7%	2,116	63.3%
West St. Paul	38,574	2,345	6.1%	1,662	70.9%
NORTHEAST	104,784	1,922	1.8%	1,618	84.2%
Duluth	48,075	835	1.7%	696	83.4%
Ely	3,511	49	1.4%	36	73.5%
Grand Rapids	21,114	411	1.9%	339	82.5%
Hibbing	11,149	261	2.3%	210	80.5%
Int'l. Falls	4,854	54	1.1%	45	83.3%
Virginia	16,081	312	1.9%	292	93.6%
NORTHWEST	153,783	4,518	2.9%	3,840	85.0%
Alexandria	16,846	659	3.9%	578	87.7%
Bemidji	27,900	649	2.3%	501	77.2%
Brainerd	28,339	998	3.5%	944	94.6%
Crookston	11,005	195	1.8%	127	65.1%
Fergus Falls	14,207	443	3.1%	397	89.6%
Little Falls	14,559	616	4.2%	560	90.9%
Moorhead	21,032	549	2.6%	410	74.7%
Thief River Falls	19,895	409	2.1%	323	79.0%
CENTRAL	169,706	3,862	2.3%	3,290	85.2%
Marshall	11,825	361	3.1%	347	96.1%
Montevideo	9,170	199	2.2%	187	94.0%
Mora	36,614	474	1.3%	408	86.1%
St. Cloud	73,804	1,514	2.1%	1,196	79.0%
Willmar	26,898	593	2.2%	484	81.6%
Worthington	11,395	721	6.3%	668	92.6%
SOUTH	158,772	5,418	3.4%	4,293	79.2%
Albert Lea	29,571	1,535	5.2%	984	64.1%
Fairmont	8,862	375	4.2%	320	85.3%
Faribault	27,037	586	2.2%	511	87.2%
Mankato	19,964	788	3.9%	537	68.1%
New Ulm	12,199	520	4.3%	483	92.9%
Red Wing	12,746	336	2.6%	324	96.4%
Rochester	28,404	832	2.9%	692	83.2%
Winona	19,989	446	2.2%	442	99.1%
Liabile State *1/ Calendar Year 1990	49,643	982	2.0%	829	84.4%

Summary of Area Office Activities - Research & Statistics Office

REGULAR PROGRAM: BENEFIT PAYMENT ACTIVITY
UC, UCFE, UCX

AREA OFFICE	Claimants	Payments	Weeks Paid	Amount Paid	Average WBA	Exhaustion Payments	First Payments
STATE TOTAL		1,104,390	1,925,222	355,727,213	184.77	39,146	131,084
METRO TOTAL		529,944	935,658	184,948,290	197.67	19,093	62,834
WEST METRO		273,658	488,211	96,233,805	197.12	10,308	31,294
Minneapolis	51,169	93,581	15,914,661	170.06	2,287	5,698	
Bloomington	95,646	170,064	34,525,114	203.01	3,561	10,618	
Brooklyn Park	48,687	86,701	17,101,765	197.25	1,700	5,920	
Minnetonka	78,156	137,865	28,692,265	208.12	2,760	9,058	
EAST METRO		256,286	447,447	88,714,485	198.27	8,785	31,540
Fridley	98,272	171,466	34,345,238	200.30	3,200	12,145	
St. Paul-Midway	53,886	94,829	17,771,087	187.40	2,078	6,428	
North St. Paul	68,038	118,630	24,033,410	202.59	2,341	8,111	
West St. Paul	36,090	62,522	12,564,750	200.97	1,166	4,856	
NORTHEAST		100,036	169,235	29,654,724	175.23	4,068	11,220
Duluth	45,878	78,996	13,863,715	175.50	1,921	5,038	
Ely	3,432	5,427	835,932	154.03	141	395	
Grand Rapids	19,915	34,486	5,944,777	172.38	858	2,037	
Hibbing	10,554	16,061	2,776,126	172.85	347	1,158	
Int'l. Falls	4,611	7,903	1,472,847	186.37	156	628	
Virginia	15,646	26,362	4,761,327	180.61	645	1,964	
NORTHWEST		146,588	249,976	41,667,837	166.69	5,603	17,609
Alexandria	16,108	27,498	4,607,404	167.55	575	1,777	
Bemidji	26,498	45,719	7,925,725	173.36	1,178	2,997	
Brainerd	26,670	46,003	7,202,505	156.57	1,051	3,076	
Crookston	10,864	19,036	3,232,092	169.79	521	1,198	
Fergus Falls	13,573	22,786	3,745,166	164.36	442	1,487	
Little Falls	13,587	22,918	3,996,153	174.37	424	1,873	
Moorhead	20,260	34,399	5,917,998	172.04	737	2,615	
Thief River Falls	19,028	31,617	5,040,794	159.43	675	2,586	
CENTRAL		163,262	278,241	50,772,492	182.48	5,001	20,427
Marshall	11,128	18,968	3,516,406	185.39	425	1,319	
Montevideo	8,907	15,275	2,718,632	177.98	292	1,097	
Mora	35,786	61,469	11,693,769	190.24	1,131	4,147	
St. Cloud	71,177	121,285	22,469,261	185.26	2,042	9,091	
Willmar	25,435	42,978	7,412,086	172.46	817	3,457	
Worthington	10,829	18,266	2,962,338	162.18	294	1,316	
SOUTH		152,718	263,872	46,146,107	174.88	4,932	18,209
Albert Lea	29,766	53,460	9,223,909	172.54	1,270	3,203	
Fairmont	8,639	14,850	2,442,508	164.48	293	961	
Faribault	25,840	44,184	8,169,891	184.91	795	3,174	
Mankato	19,191	32,863	5,695,095	173.30	590	2,327	
New Ulm	11,862	20,226	3,365,393	166.39	393	1,413	
Red Wing	12,342	20,751	4,033,870	194.39	286	1,602	
Rochester	26,294	45,332	8,248,061	181.95	758	3,224	
Winona	18,784	32,206	4,967,380	154.24	547	2,305	
Liabile State *1/		36,550	61,988	12,255,743	197.71	1,743	3,620
**Office Unknown		11,842	28,240	2,537,763	89.86	449	785

Calendar Year 1990

Summary of Area Office Activities - Research & Statistics Office

REGULAR PROGRAM: WEEKS CLAIMED

AREA OFFICE	UI Weeks Claimed					UI Approved Training Weeks Claimed				
	Total		UC	UCFE	UCX	Total		UC	UCFE	UCX
	1990	1989				1990	1989			
STATE TOTAL	2,104,563	1,923,915	2,079,392	7,826	17,345	24,139	12,583	23,449	40	650
METRO TOTAL	1,038,327	924,042	1,029,573	2,518	6,236	15,952	7,698	15,818	0	134
WEST METRO	545,273	482,492	540,969	1,223	3,081	6,130	2,624	6,036	0	94
Minneapolis	106,271	99,218	105,132	422	717	2,944	268	2,924	0	20
Bloomington	190,488	183,147	188,765	573	1,150	1,605	1,450	1,574	0	31
Brooklyn Park	95,745	65,970	95,015	89	641	811	337	784	0	27
Minnetonka	152,769	134,157	152,057	139	573	770	569	754	0	16
EAST METRO	493,054	441,550	488,604	1,295	3,155	9,822	5,074	9,782	0	40
Fridley	185,360	170,877	184,160	53	1,147	3,579	2,378	3,557	0	22
St. Paul-Midway	106,537	91,602	105,509	469	559	2,011	908	2,003	0	8
North St. Paul	130,821	117,672	129,453	491	877	3,016	1,099	3,006	0	10
West St. Paul	70,336	61,399	69,482	282	572	1,216	689	1,216	0	0
NORTHEAST	188,706	180,946	183,237	2,223	3,246	854	1,277	710	26	118
Duluth	88,212	86,763	85,329	1,397	1,486	180	305	150	12	18
Ely	5,982	5,728	5,482	352	148	12	1	0	0	12
Grand Rapids	38,344	35,686	37,544	198	602	110	244	96	0	14
Hibbing	18,212	17,163	17,807	33	372	213	146	193	0	20
Int'l. Falls	8,990	7,104	8,662	192	136	26	0	14	0	12
Virginia	28,966	28,502	28,413	51	502	313	581	257	14	42
NORTHWEST	278,227	261,277	273,903	1,602	2,722	981	608	861	0	120
Alexandria	30,462	26,931	29,893	215	354	459	74	398	0	61
Bemidji	50,981	49,084	49,778	573	630	22	56	8	0	14
Brainerd	51,229	49,290	50,556	159	514	190	106	165	0	25
Crookston	20,319	18,974	20,139	41	139	31	54	23	0	8
Fergus Falls	25,204	25,720	24,944	61	199	18	0	18	0	0
Little Falls	26,249	21,774	25,784	221	244	0	0	0	0	0
Moorhead	38,581	39,456	37,929	171	481	17	82	17	0	0
Thief River Falls	35,202	30,048	34,880	161	161	244	236	232	0	12
CENTRAL	308,289	302,230	304,811	825	2,653	2,174	1,591	2,036	14	124
Marshall	21,098	25,125	20,801	145	152	1,173	1,020	1,173	0	0
Montevideo	16,740	17,968	16,475	144	121	65	63	50	0	15
Mora	66,895	60,633	66,105	134	656	135	116	135	0	0
St. Cloud	134,527	121,059	133,307	170	1,050	317	161	311	0	6
Willmar	48,768	57,780	48,089	159	520	425	187	350	0	75
Worthington	20,261	19,665	20,034	73	154	59	44	17	14	28
SOUTH	291,014	255,420	287,868	658	2,488	4,178	1,409	4,024	0	154
Albert Lea	55,226	28,703	54,696	121	409	2,793	637	2,748	0	45
Fairmont	16,237	14,843	16,038	46	153	339	61	331	0	8
Faribault	49,059	48,648	48,582	118	359	241	259	227	0	14
Mankato	36,582	34,508	36,116	67	399	202	112	158	0	44
New Ulm	22,248	25,383	22,094	30	124	20	17	20	0	0
Red Wing	23,123	23,349	22,849	95	179	92	115	92	0	0
Rochester	52,207	45,983	51,614	63	530	215	66	215	0	0
Winona	36,332	34,003	35,879	118	335	276	142	233	0	43
Liabile State *1/	81,549	71,151	80,446	688	415	755	247	755	0	0
Bypass Agents	52,694	47,698	51,311	1,040	343					

Summary of Area Office Activities - Research & Statistics Office

**UI NONMONETARY NONSEPARATION DETERMINATIONS * 3/
REGULAR PROGRAM**

AREA OFFICE	Total		Determinations by Claim Category			Determinations by Issue			Misc. & Refusal Issues
	1990	1989	UC	UCFE	UCX	Able and Available	Disqual. Income	Reporting Requiremt	
STATE TOTAL	38,621	33,183	37,311	134	1,177	11,256	19,716	1,320	6,329
METRO TOTAL	22,901	19,042	22,382	41	478	6,462	12,358	716	3,365
WEST METRO	11,573	10,040	11,340	11	222	2,704	7,022	359	1,488
Minneapolis	2,464	1,906	2,404	4	56	867	1,025	134	438
Bloomington	3,670	2,723	3,592	6	72	613	2,567	105	385
Brooklyn Park	1,910	1,584	1,860	0	50	359	1,252	27	272
Minnetonka	3,529	3,827	3,484	1	44	865	2,178	93	393
EAST METRO	11,328	9,002	11,042	30	256	3,758	5,336	357	1,877
Fridley	3,647	3,294	3,573	0	74	959	1,907	142	639
St. Paul-Midway	1,991	1,522	1,938	9	44	468	1,019	27	477
North St. Paul	3,345	2,568	3,257	10	78	1,253	1,423	140	529
West St. Paul	2,345	1,618	2,274	11	60	1,078	987	48	232
NORTHEAST	1,922	1,595	1,692	35	196	518	815	40	549
Duluth	835	643	706	31	98	275	322	23	215
Ely	49	0	39	1	9	11	11	1	26
Grand Rapids	411	491	382	1	28	116	163	5	127
Hibbing	261	193	237	0	24	51	113	5	92
Int'l. Falls	54	0	47	1	7	22	11	3	18
Virginia	312	258	281	1	30	43	195	3	71
NORTHWEST	4,518	3,745	4,356	21	141	1,294	2,272	98	854
Alexandria	659	697	628	0	31	162	314	6	177
Bemidji	649	763	618	4	27	182	208	11	248
Brainerd	998	782	969	2	27	248	633	0	117
Crookston	195	165	189	2	4	66	73	17	39
Fergus Falls	443	493	431	1	11	138	205	30	70
Little Falls	616	271	603	4	9	102	481	4	29
Moorhead	549	341	519	5	25	240	186	15	108
Thief River Falls	409	233	399	3	7	156	172	15	66
CENTRAL	3,862	4,090	3,683	19	160	1,125	1,761	67	909
Marshall	361	1,162	352	4	5	135	187	0	39
Montevideo	199	216	188	2	9	66	99	1	33
Mora	474	328	445	0	29	126	196	8	144
St. Cloud	1,514	1,059	1,439	4	71	514	496	22	482
Willmar	593	709	553	6	34	167	268	20	138
Worthington	721	616	706	3	12	117	515	16	73
SOUTH	5,418	4,702	5,198	18	202	1,857	2,510	399	652
Albert Lea	1,535	1,049	1,495	2	38	361	724	322	128
Fairmont	375	238	365	2	8	141	200	4	30
Faribault	586	972	559	4	23	150	300	42	94
Mankato	788	582	748	6	34	361	263	0	164
New Ulm	520	445	505	0	15	177	303	0	40
Red Wing	336	512	324	0	12	143	145	8	40
Rochester	832	548	779	2	51	351	366	15	100
Winona	446	356	423	2	21	173	209	8	56
Liabile State *1/ Calendar Year 1990	982	487	966	7	9	348	377	98	159

Summary of Area Office Activities - Research & Statistics Office

**UI NONMONETARY NONSEPARATION DENIALS * 4/
REGULAR PROGRAM**

AREA OFFICE	Total		Denials by Claim Category			Denials by Issue			
	1990	1989	UC	UCFE	UCX	Able and Available	Disqual. Income	Reporting Requiremt	Misc. & Refusal Issues
STATE TOTAL	31,261	26,287	30,099	112	1,050	7,850	19,044	635	3,732
METRO TOTAL	18,220	14,729	17,769	29	422	3,970	12,008	422	1,820
WEST METRO	9,810	8,137	9,601	7	202	1,887	6,903	185	835
Minneapolis	1,812	1,485	1,757	3	52	556	1,004	63	189
Bloomington	3,060	2,082	2,994	3	63	293	2,505	31	231
Brooklyn Park	1,755	1,227	1,709	0	46	321	1,250	22	162
Minnetonka	3,183	3,343	3,141	1	41	717	2,144	69	253
EAST METRO	8,410	6,592	8,168	22	220	2,083	5,105	237	985
Fridley	2,983	2,427	2,921	0	62	662	1,883	99	339
St. Paul-Midway	1,649	1,150	1,599	9	41	453	928	17	251
North St. Paul	2,116	1,567	2,041	9	66	449	1,328	84	255
West St. Paul	1,662	1,348	1,607	4	51	519	966	37	140
NORTHEAST	1,618	1,181	1,401	32	185	430	773	28	387
Duluth	696	525	572	29	95	196	304	11	185
Ely	36	-	30	1	5	11	9	1	15
Grand Rapids	339	318	313	1	25	111	156	5	67
Hibbing	210	135	186	0	24	50	99	5	56
Int'l. Falls	45	-	38	1	6	20	10	3	12
Virginia	292	196	262	0	30	42	195	3	52
NORTHWEST	3,840	2,992	3,697	18	125	1,143	2,160	68	469
Alexandria	578	595	552	0	26	151	312	5	110
Bemidji	501	557	471	4	26	175	197	9	120
Brainerd	944	643	917	2	25	239	627	0	78
Crookston	127	130	122	2	3	44	60	3	20
Fergus Falls	397	407	385	1	11	133	189	25	50
Little Falls	560	200	548	3	9	82	455	1	22
Moorhead	410	281	385	3	22	201	150	15	44
Thief River Falls	323	179	317	3	3	118	170	10	25
CENTRAL	3,290	3,569	3,123	16	151	974	1,688	53	575
Marshall	347	1,047	339	4	4	134	185	0	28
Montevideo	187	197	176	2	9	66	95	1	25
Mora	408	264	379	0	29	124	190	8	86
St. Cloud	1,196	840	1,124	4	68	422	488	18	268
Willmar	484	639	447	5	32	133	230	12	109
Worthington	668	582	658	1	9	95	500	14	59
SOUTH	4,293	3,816	4,109	17	167	1,333	2,415	64	481
Albert Lea	984	690	950	2	32	201	673	9	101
Fairmont	320	203	312	2	6	112	195	0	13
Faribault	511	885	487	4	20	110	299	28	74
Mankato	537	418	511	5	21	184	251	0	102
New Ulm	483	440	476	0	7	170	295	0	18
Red Wing	324	483	312	0	12	136	143	8	37
Rochester	692	382	642	2	48	247	350	11	84
Winona	442	315	419	2	21	173	209	8	52
Liabile State *1/ Calendar Year 1990	829	425	814	7	8	336	312	94	87

Summary of Area Office Activities - Research & Statistics Office

***Footnotes**

- 1/ Liable State data not included in State totals.
- 2/ Totals include UC, UCFE and UCX combined. Redeterminations are also included.
- 3/ Includes redeterminations and refusal issues for denials and nondenials.
- 4/ Includes redeterminations and refusal issues for denials only.