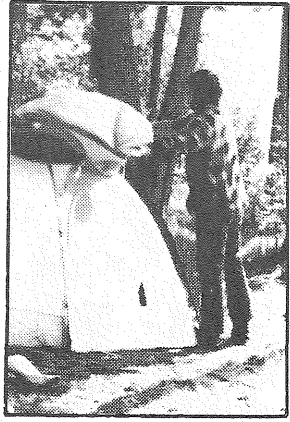
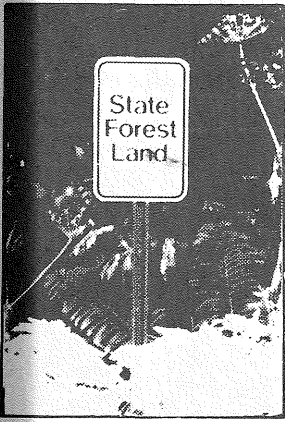
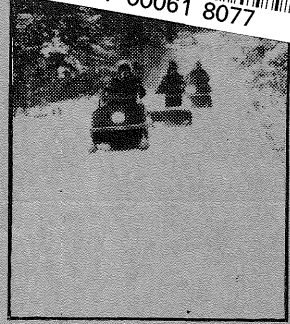
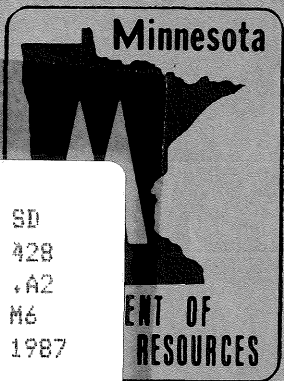


870883

LEGISLATIVE REFERENCE LIBRARY  
SD428.A2 M6 1987  
- Minnesota state forest campgrounds  
3 0307 00061 8077



# MINNESOTA STATE FOREST CAMPGROUNDS AND RECREATION AREAS 1987



LEGISLATIVE REFERENCE LIBRARY  
645 State Office Building  
Saint Paul, Minnesota 55155

# Minnesota State Forests and State Forest Recreation Areas

Minnesota's 56 state forests contain over 3.2 million acres of state owned lands which are administered by the Department of Natural Resources, Division of Forestry. State forest lands are managed to produce timber and other forest crops, provide outdoor recreation, protect watershed, and perpetuate rare and distinctive species of flora and fauna. State forests are multiple use areas that are managed to provide a sustained yield of renewable resources, while maintaining or improving the quality of the forest.

Minnesota's state forests provide unlimited opportunities for outdoor recreationists to pursue a variety of outdoor activities. Berry picking, mushroom hunting, wildflower identification, nature photography and hunting are just a few of the unstructured outdoor activities which can be accommodated in state forests.

For people who prefer a more structured form of recreation, Minnesota's state forests contain over 30 campgrounds and 20 canoe campsites, most located on lakes or canoe routes. State forest campgrounds are of the primitive type designed to furnish only the basic



Many State Forest Campgrounds are located on popular fishing lakes and rivers .

needs of individuals who camp for the enjoyment of the outdoors. Each campsite consists of a cleared area, fireplace and table. In addition, pit toilets, garbage cans and drinking water are provided at campgrounds that charge a fee. Some campgrounds have hiking trails, water access sites and swimming beaches.

In addition to campgrounds, over 20 day use areas have been developed adjacent to campgrounds or at other scenic locations within state forests. Day use areas are commonly equipped with picnic tables, fire rings, drinking water, toilets and garbage cans. Many have boat accesses and swimming beaches.

To accommodate hikers and skiers, there are more than 150 miles of trails spread throughout the forests. Motorized vehicles are prohibited on these trails.

State forests also have trails for the snowmobiler and horseback rider. Some forests have camps specifically designed for horse users. Most state forest snowmobile trails are groomed and many connect into local grant-in-aid trails, thus providing a system of thousands of miles of trail for the avid snowmobiler. Trail maps can be obtained at the District or Area office in charge of that state forest or from the DNR Information Center in St. Paul.

In addition, Minnesota's state forests contain over 2,000 miles of forest roads and logging trails that allow access to the forest for wildlife observation, hunting, or just enjoyment of the forest's natural beauty.

Off-road vehicles (ORV's) such as motorcycles, ATV's, ATC's, three-wheelers and others are currently permitted to use forest roads and trails not posted to prohibit motorized vehicles. ORV's are prohibited from using marked and groomed snowmobile trails in state forests during the snow months.

Any user of a state forest should remember that there are private lands within state forests. Respect landowner rights; always ask permission before entering private land.

The activities mentioned are just a few of the recreational opportunities available in your state forests. They are there for you to enjoy and you are limited only by your own desires.

# State Forest Rules and Fees

The following activities are permitted on state forest lands:

- Hunting, fishing and trapping in accordance with state regulations.
- Hiking, both on and off designated trails.
- Picking fruit and mushrooms.
- Use of dead wood for recreational fires.

Activities requiring a permit and/or fee include:

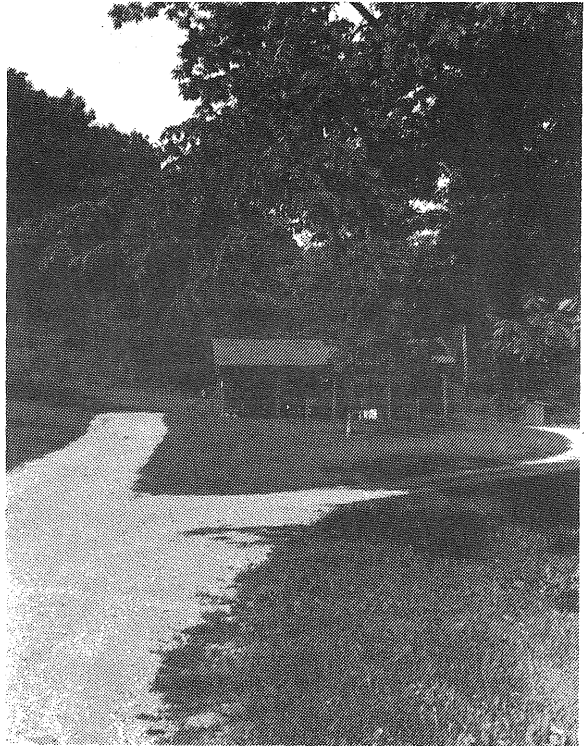
- Cutting of commercial timber on state land.
- Cutting fuelwood for home use on state land.
- Open burning on private land.
- Camping in designated state forest campgrounds.

It is unlawful while in a designated state forest campground or day use area to:

- Consume intoxicating liquors.
- Possess explosives.
- Possess a firearm unless it is unloaded and completely contained in a guncase or trunk of a car.
- Possess a bow and arrow unless either unstrung or completely contained in a case or trunk of a car.
- Build a fire except in a fireplace or a fire ring provided for the purpose.



Many State Forest Trails are designated multiple use and are available for a variety of users.



State Forest Day-use Areas contain facilities for swimming and/or picnicing and a variety of trail uses.

This is only a partial list of permitted and prohibited activities. A complete copy of the rules governing the use of designated state forest campgrounds and day use areas is available from the Department of Natural Resources. Remember that there are private lands within and adjacent to state forests. Respect landowner rights; always ask permission before entering private land.

The State Forest Campgrounds, Day Use Areas and Trails are free to the public for your enjoyment unless it is noted that a fee of \$5.00 per campsite per night is charged. Group camp fees are similar to State Parks.

Registration is required on envelopes provided at each campground where a fee is charged. Reservations are not taken, except at group camps, so sites are available on a first come, first served basis only. Group camp reservations are available through Area Forestry Offices where noted.

# State Forest Campgrounds

## REGION 1, NORTHWEST--CAMPGROUNDS

### Beltrami Island State Forest

\*Bemis Hill Campground

\*Blueberry Hill Campground

\*Fauce Campground

### Mississippi Headwaters State Forest

Bear Den Landing Campground

Iron Bridge Landing Campground

Pine Point Landing Campground

Stumphges Rapids Campground

Wannagan Landing Campground

### Paul Bunyan State Forest

Mantrap Lake Campground

Gulch Lakes Recreation Area

### Red Lake State Forest

Wasish Campground--Closed for reconstruction 7-15 to 10-15-87

### Two Inlets State Forest

Hungry Men Lake Campground

### White Earth State Forest

\*Arrow Point Campground

### Forestry Administered Facilities

Coffee Pot Landing Campground

Island Point Landing Campground

Legrande Landing Campground

## REGION 2, NORTHEAST--CAMPGROUNDS

### Big Fork State Forest

Harrison Landing Campground

\*Long Lake Campground

### Bowstring State Forest

Cottonwood Lake Campground

Crazy Jim's Canoe Campground

### Cloquet Valley State Forest

Cedar Bay Campground

\*Dr. Barney's Landing Canoe Campground

Indian Lake Campground

Severson Landing Canoe Campground

	Camping Fee	# Campsites	Drinking Water	Picnic Sites	Swimming	Water Access	Fishing	Canoe Route	Miles of Trail				Special Features
									Hiking	X-C Ski	Horseback	Snowmo.	
*Bemis Hill Campground	4	X	6								X	X	Shelter, ski slopes, toboggan slide, horse corral, access to Beltrami Island snowmobile trails
*Blueberry Hill Campground	8		4										
*Fauce Campground	6		2										
Bear Den Landing Campground	2					X	X	X					On Mississippi River canoe route
Iron Bridge Landing Campground	2						X	X					On Mississippi River canoe route
Pine Point Landing Campground	2					X	X	X					On Mississippi River canoe route
Stumphges Rapids Campground	2						X	X					On Mississippi River canoe route
Wannagan Landing Campground	2					X	X	X					On Mississippi River canoe route
Mantrap Lake Campground	X	38	X	5	X	X	X						Designated muskie lake
Gulch Lakes Recreation Area	8		11		X	X	X						6 individual units on different lakes
Wasish Campground--Closed for reconstruction 7-15 to 10-15-87	X	33	X	22		X	X						On Tamarack River and Upper Red Lake, good walleye fishing
Hungry Men Lake Campground	X	14	X	4	X	X	X						
*Arrow Point Campground	6				X		X						On Big Rock Lake
Coffee Pot Landing Campground	2					X	X	X					On Mississippi River canoe route
Island Point Landing Campground	2					X	X	X					On Mississippi River canoe route
Legrande Landing Campground	2				X	X	X						On Steamboat River
Harrison Landing Campground	2					X							On Big Fork River Panfish lake
*Long Lake Campground	12	X	2			X	X						
Cottonwood Lake Campground	15	X	1		X	X	X						Panfish lake
Crazy Jim's Canoe Campground	2		X			X							On Mississippi River canoe route. No road access.
Cedar Bay Campground	8	X	4		X	X	X	X					On Bear Lake, panfish lake
Dr. Barney's Landing Canoe Campground	2					X	X	X					On Cloquet River
Indian Lake Campground	8	X	4		X	X	X	X					On Cloquet River, panfish lake
Severson Landing Canoe Campground	2					X	X	X					On Cloquet River

# Campgrounds Cont.

	Camping Fee	# Campsites	Drinking Water	Picnic Sites	Swimming	Water Access	Fishing	Canoe Route	Miles of Trail				Special Features
									Hiking	X-C Ski	Horseback	Snowmo.	
<u>Finland State Forest</u>													
Eckbeck Campground	X	35	X	4									On Baptism River
Finland Campground	X	19	X	10									On Baptism River
*Sullivan Lake Campground		10	X	2		X	X		1.8				Former Civilian Conservation Corps (CCC) camp, designated trout lake
<u>George Washington State Forest</u>													
Bear Lake Campground	X	30	X		X	X	X						Walleye lake
Beatrice Lake Campground	X	25	X	X	X	X	X		2.5				Panfish lake
Button Box Lake Campground		12	X	3		X	X		X				Panfish lake
Larson Lake Campground	X	16	X			X	X						Designated trout lake
Lost Lake Campground	X	20	X			X	X						Panfish lake
Owen Lake Campground	X	27	X		X	X	X						Panfish lake
Thistledeew Lake Campground	X	20	X	2	X	X	X						Large Norway pine, walleye lake
<u>Grand Portage State Forest</u>													
*Esther Lake Campground and Access		3				X							
*McFarland Lake Campground and Access		2				X							
*Swamp River #1				X		X							Many small Northern pike
*Swamp River #2				X		X							
<u>Kabetogama State Forest</u>													
Ash River Campground	X	9	X	2		X	X						Access to Lake Kabetogama
Hinsdale Island Campground	X	11	X			X	X						Accessible only by boat on Lake Vermillion, walleye lake
Wakemup Bay Campground	X	21	X	2	X	X	X						On Lake Vermillion, walleye lake
Wooden Frog Campground	X	59	X	5	X	X	X						On Lake Kabetogama, access to Voyageurs National Park, good walleye lake
<u>Koochiching State Forest</u>													
Johnson Landing Campground		2				X	X	X					On Big Fork River canoe route
<u>Pine Island State Forest</u>													
Benn Linn Landing Campground		3				X	X	X					On Big Fork River canoe route
Gowdy Landing Campground		2					X	X					On Big Fork River, accessible by boat from Sturgeon River Landing Campground
Sturgeon River Campground		2				X	X	X					On Big Fork River
<u>Forestry Administered Facilities</u>													
Gambler's Point Landing Campground		3	X	X		X	X	X					On Mississippi River canoe route
Moose Lake Campground	X	12	X			X	X						Walleye lake

\*Minimum Maintenance Campground - Please pack out all of your trash and leave the area clean.

# Campgrounds cont.

## REGION 3, CENTRAL--CAMPGROUNDS

Birch Lakes State Forest  
Birch Lake Campground

Chengwatana State Forest  
Snake River Campground

Crow Wing State Forest  
Greer Lake Campground

D.A.R. State Forest  
D.A.R. Campground

General C.C. Andrews State Forest  
Willow River Campground

Huntersville State Forest  
Shell City Landing Campground

Huntersville Forest Landing Campground

\*Big Bend Landing Campground  
Land O' Lakes State Forest  
Clint Converse Memorial Campground

Nemadji State Forest  
Gafvert Campground

Pillsbury State Forest  
Rock Lake Campground  
St. Croix State Forest  
Boulder Campground  
Tamarack River Horseback Campground

Sand Dunes State Forest  
Ann Lake Campground

Savanna State Forest  
Hay Lake Campground

## REGION 5, SOUTHEAST--CAMPGROUNDS (also see page 8)

Dorer Memorial Hardwood State Forest  
Krueger Management Unit

Zumbro Bottoms Management Unit

	Camping Fee	# Campsites	Drinking Water	Picnic Sites	Swimming	Water Access	Fishing	Canoe Route	Miles of Trail				Special Features
									Hiking	X-C Ski	Horseback	Snowmo.	
Birch Lakes State Forest Birch Lake Campground	X	29	X	8	X	X	X		2				Walleye lake - group camping available by reservation. Contact Area Forester.
Chengwatana State Forest Snake River Campground	X	26	X	8			X	X	X		X		On Snake River canoe route
Crow Wing State Forest Greer Lake Campground	X	34	X	2	X	X	X						Panfish lake, Bass Lake nature trail
D.A.R. State Forest D.A.R. Campground	X	6		2									
General C.C. Andrews State Forest Willow River Campground	X	41	X			X	X						Group camping available by reservation. Contact Area Forester.
Huntersville State Forest Shell City Landing Campground	X	18	X			X	X	X			X		On Crow Wing River canoe route and Saddle trail
Huntersville Forest Landing Campground	X	13	X			X	X	X			X		On Crow Wing River canoe route and Saddle trail Accessible by canoe
*Big Bend Landing Campground	X	6					X	X					
Land O' Lakes State Forest Clint Converse Memorial Campground	X	30	X	7	X	X	X		X				On Washburn Lake, walleye lake
Nemadji State Forest Gafvert Campground	X	9	X	1		X	X						On Pickerel Lake, on MN/WI Boundary Trail
Pillsbury State Forest Rock Lake Campground	X	18	X	4	X	X	X		1.5				Game and fish lake
St. Croix State Forest Boulder Campground	X	19	X	6		X	X		9				On Rock Lake
Tamarack River Horseback Campground	X	12							8		8		Nice horse trails along river
Sand Dunes State Forest Ann Lake Campground	X	36	X	7	X		X	X					Panfish lake - Group camping available by reservation. Contact Area Forester.
Savanna State Forest Hay Lake Campground	X	20	X	10	X	X	X		1				Panfish lake - Mature Northern, Hardwood setting
REGION 5, SOUTHEAST--CAMPGROUNDS (also see page 8)													
Dorer Memorial Hardwood State Forest Krueger Management Unit	X	20	X	13		X	X	X	8	3	8	5	Easy Wheeling nature trail
Zumbro Bottoms Management Unit		10				X	X		9		10	3	Campground designed for horse and trailer camping

\*Minimum Maintenance Campground - Please pack out all of your trash and leave the area clean.

# State Forest Day Use Areas

## REGION 1, NORTHWEST--DAY USE AREAS

### Mississippi Headwaters State Forest

Rognlien Day Use Area

### Red Lake State Forest

Wasikish Beach and Picnic Area

### Two Inlets State Forest

\*Cedar Lake Picnic Area

## REGION 2, NORTHEAST--DAY USE AREAS

### George Washington State Forest

Bear Lake Day Use Area

\*Pickere1 Lake Day Use Area

### Not in State Forest

\*Leaning Pine Day Use Area

\*O'Reilly Lake Day Use Area

\*Sissabagama Lake Day Use Area

## REGION 3, CENTRAL--DAY USE AREAS

### Crow Wing State Forest

Harvey Drake Landing and Day Use Area

Staircase Landing and Day Use Area

\*Pine Lake Access and Day Use Area

Pelican Beach

### General Andrews State Forest

Dago Lake Day Use Area

### Land O' Lakes State Forest

Washburn Lake Recreation Area

### Pillsbury State Forest

Rock Lake Recreation Area

### Savanna State Forest

Remote Lake Recreation Area

	Camping Fee	# Campsites	Drinking Water	Picnic Sites	Swimming	Water Access	Fishing	Canoe Route	Miles of Trail				Special Features	
									Hiking	X-C Ski	Horseback	Snowmo.		
				15	X	X	X							On Grant Lake
				5	X	X								Sand Beach
				5		X	X							Nature trail
				7	X	X	X							
				3		X	X							
				12	X	X	X							On Island Lake
				4	X	X	X							
				4		X	X							
				X		X	X	X						Water access available, Mississippi River from Pine River On Pine River canoe route
				X		X	X	X						On Pelican Lake
				X		X	X	X						On Pelican Lake
				6		X	X		9.4			9.4		ATV Trail head
									16	15	15			Marked and groomed, no motorized vehicles
									1.5	9				Marked and groomed, no motorized vehicles
									7	11				Marked trail, no motorized vehicles allowed

# State Forest Trails

## REGION 1, NORTHWEST--TRAILS

### Beltrami Island State Forest

#### Beltrami Island Snowmobile Trail

Marked and groomed, connects to Hayes Lake State Park and Baudette/Norris snowmobile trail

#### Baudette/Norris Snowmobile Trail

Marked and groomed

### Buena Vista State Forest

#### Buena Vista Trail

Marked and groomed, connects to Beltrami County trails and Bemidji to Itasca trail

### Mississippi Headwaters State Forest

#### Bemidji/Itasca Trail

Connects to Itasca State Park and Hubbard and Beltrami county trails

### Paul Bunyan State Forest

#### Paul Bunyan Trail

Marked and groomed, connects to Hubbard County and Heartland trails

### Smoky Hills State Forest

#### North Smoky Hills Trail

Not groomed

#### Wolf Lake Trail

Not groomed

### Two Inlets State Forest

#### Two Inlets Trail

Groomed, connects to Hubbard County trails

### White Earth State Forest

#### Aspen Hills Trail

Marked and groomed

#### Buckboard Trail

Marked and groomed

#### Height of Land Trail

Marked and groomed

## REGION 2, NORTHEAST--TRAILS

### Bear Island State Forest

#### Tower - Fishing Lakes and Putnam Trails

Marked and groomed

### Big Fork State Forest

#### North Itasca Trail

Marked and groomed

### Cloquet Valley State Forest

#### Cloquet Valley Trail

Marked and groomed

#### Taft Area Trail

Marked and groomed

### Finland State Forest

#### Moose Walk Trail

Marked and groomed, connects to North Shore Trail

#### Woodland Caribou Trail

Marked, not groomed, remote area

### Fond Du Lac State Forest

#### Fond Du Lac Trail

Marked and not groomed

#### Fond Du Lac Ski Trail

Marked and groomed

### George Washington State Forest

#### Tim Corey Trail

Marked and groomed, connects to Taconite Trail

#### Bear Lake Trail

Marked and groomed

#### Circle L Trail

Marked and groomed

#### Circle T Trail

Marked and groomed

#### Thistledeew Trail

Marked

### Golden Anniversary State Forest

#### Golden Anniversary Trail

Cowhern Lake Loop

River Road Loop

Marked and groomed

### Grand Portage State Forest

#### Border Route Trail

Excellent backpacking trail, connects to Border Route Trail through BWCAW, drinking water

### Kabetogama State Forest

#### Pelican Lake Area Trails

Various trails, not a loop, marked and groomed

#### Ash River Recreation Trails

Marked, not groomed

### Forestry Administered Facilities

#### Lake Williams Trail

	Miles of Trail				Map Avail.
	Hiking	X-C Ski	Horseback	Snowmo.	
				76.0	X
				52.5	X
				22.5	X
				30.8	
				75.4	X
				13.0	X
				17.0	X
				27.5	X
				36.0	
				15.6	
				19.0	
				17.9	X
				35.0	

	Miles of Trail				Map avail.
	Hiking	X-C Ski	Horseback	Snowmobile	
				29.0	X
				43.1	X
	25.0			25.0	X
		12.0			X
				35.8	X
			11.0		X
				17.0	X
				13.7	X
				24.8	X
				39.5	X
	20.0	20.0			X
	4.6	4.6			X
	1.7	1.7			X
	15.0	15.0			X
				68.0	X
	12.5	12.5			X
				20.3	



## Trails cont.

### REGION 3, CENTRAL--TRAILS

#### Chengwatana State Forest

##### Chengwatana Trails

Connects with MN/WI Boundary Trail and Pine City grants trail, marked and groomed

##### Minnesota/Wisconsin Boundary Trail

Marked and groomed, 3 campsites

##### Red Horse Trail

Marked and not groomed

#### Crow Wing State Forest

##### Bass Lake Nature Trail

Interpretive trail brochure available

#### Foot Hills State Forest

##### Foothills Trail

Marked, connects to Cass County snowway

##### Spider Lake Trail

Marked and not groomed

#### General C.C. Andrews State Forest

##### General C.C. Andrews Trail

Marked and groomed, connects with Willow River grants trail and MN/WI Boundary Trail

#### Hill River State Forest

##### Moose-Willow-Washburn Lake Trail

Marked and groomed

	Miles of Trail				Map avail.
	Hiking	X-C Ski	Horseback	Snowmo.	
				16.2	X
	12.0	12.0	12.0	12.0	X
	9.0	9.0			X
	1.8				X
	7.2		7.2		X
	15.0	15.0			X
			9.4		X
			15.0		X

#### Huntersville State Forest

##### Huntersville Trail

Marked and groomed

#### Land O' Lakes State Forest

##### Ben Draper Trail

Marked and groomed

#### Nemadji State Forest

##### Nemadji Trail

Marked and groomed, connects to MN/WI Boundary Trail

#### Pillsbury State Forest

##### Pillsbury Trail

Marked and groomed

#### Run River State Forest

##### Kanabec Trail

Marked and groomed

##### Hoot Owl Trail

Marked and groomed

#### St. Croix State Forest

##### St. Croix Trail

Marked and groomed, connects to MN/WI Boundary Trail

#### Sand Dunes State Forest

##### Orrock Trail

Marked and groomed

#### Savanna State Forest

##### Savanna Trails

Marked and groomed

	Miles of Trail				Map Avail.
	Hiking	X-C Ski	Horseback	Snowmo	
			24.0	24.6	X
	24.0		24.0		X
			43.1		X
	27.0		27.0	27.0	X
			15.0		X
			11.5		X
	32.0		32.0	25.2	X
			18.0		X
			32.5		X

# Richard J. Dorer Memorial Hardwood State Forest

### REGION 5, SOUTHEAST--DAY USE AREAS

#### Dorer Memorial Hardwood State Forest

##### Kruegr Management Unit

(Fees charged May 1 - November 1)

##### Hay Creek Management Unit

##### Cannon Junction Management Unit

##### Snake Creek Management Unit

##### Zumbro Bottoms Management Unit

##### Oak Ridge Management Unit

##### Reno Management Unit

##### Trout Valley Management Unit

##### Brightsdale Management Unit

##### Isnours Demonstration Woodland

	Camping Fee	# Campsites	Drinking Water	Picnic Sites	Swimming	Water Access	Fishing	Canoe Route	Miles of Trail				Special Features	Map Available
									Hiking	X-C Ski	Horseback	Snowmo.		
	X	20	X	13	X	X	X	X	8	3	8	5	Easy Wheeling nature trail	X
			X	3		X	X		8	8	9	9	Marked and groomed	X
					X	X	X		9.1	2.5	6.7	6.7	Marked	X
		X		X					9	4	10	3	Marked	X
		1							8.8	8.8	8.8	2	Marked	X
		X	X						15	15	15	13.9	Marked and groomed for snowmobiling	X
									4.4		4.4	4.4		X
						X	X		5.7	5.7			Root River canoe route to Forest Resource Center	
			X						3.2	3.2			Connects to Root River Trail marked groomed	

# Directions to Recreation Areas

## REGION 1, NORTHWEST

218/755-2891

### BELTRAMI ISLAND STATE FOREST

BEMIS HILL CAMPGROUND - From Warroad take Co.Rd. 5 S. 12 mi. to ranger station; turn W. on gravel road 7 mi. (not on lake or river). 218/386-1304. Area Forester, Box 47, Warroad, MN 56763.

BLUEBERRY HILL CAMPGROUND - From Williams take State Hwy. 11 W. 4 mi. (not on lake or river). 218/634-2172. Area Forester, R.R. 1, Box 1001, Baudette, MN 56623.

FAUNCE CAMPGROUND - From Williams take Co.Rd. 2 S. 12 mi. (not on lake or river). 218/634-2172. Area Forester, R.R. 1, Box 1001, Baudette, MN 56623.

BELTRAMI ISLAND SNOWMOBILE TRAIL - 12 mi. S. and 6 mi. W. of Warroad. 218/386-1304. Area Forester, Box 47, Warroad, MN 56763.

BAUDETTE/NORRIS SNOWMOBILE TRAIL - 3 mi. S. of Baudette. 218/634-2172. Area Forester, R.R. 1, Box 1001, Baudette, MN 56623.

### BELUNA VISTA STATE FOREST

BUENA VISTA TRAIL - 12 mi. N. of Bemidji on Co.Rd. 15. 218/755-2890. Area Forester, 2220 Bemidji Ave., Bemidji, MN 56601.

### MISSISSIPPI HEADWATERS STATE FOREST

BEAR DEN LANDING CAMPGROUND - From Solway take Co.Rd. 5 S. 5 mi.; turn left (E.) on Rice Lake forest road 1 mi.; turn right (S.) 2 mi. 218/755-2265. DNR-Trails, 2115 Birchmont Beach Road N.E., Bemidji, MN 56601.

IRON BRIDGE LANDING CAMPGROUND - From Bemidji take Co.Rd. 7 W. about 7½ mi. 218/755-2265. DNR-Trails, 2115 Birchmont Beach Road N.E., Bemidji, MN 56601.

PINE POINT LANDING CAMPGROUND - From Becida take Co.Rd. 3 N. 3 mi. to Stecker forest road; continue N. 2½ mi. 218/755-2265. DNR-Trails, 2115 Birchmont Beach Road N.E., Bemidji, MN 56601.

STUMPHGES RAPIDS CAMPGROUND - From Lake Itasca take Co.Rd. 2 N. 6 mi. to Co.Rd. 40; turn right (E.) 2 mi.; turn left (N.) ½ mi. to Coffee Pot Landing; then N. 8 mi.. 218/755-2265. DNR-Trails, 2115 Birchmont Beach Road N.E., Bemidji, MN 56601.

WANNAGAN LANDING CAMPGROUND - From Lake Itasca N. 4 mi. on Co.Rd. 2, W. 1½ mi. to landing (on Mississippi River). 218/755-2265. DNR-Trails, 2115 Birchmont Beach Road N.E., Bemidji, MN 56601.

ROGNLIEN DAY USE AREA - From Wilton take Co.Rd. 14 S. 1 mi. 218/755-2890. Area Forester, 2220 Bemidji Ave., Bemidji, MN 56601.

BEMIDJI/ITASCA TRAIL - From Bemidji 1½ mi. W. on Hwy. 12, ½ mi. S. on Co.Rd. 11. 218/755-2890. Area Forester, 2220 Bemidji Ave., Bemidji, MN 56601.

### PAUL BUNYAN STATE FOREST

GULCH LAKE RECREATION AREA - From Lake George take Co.Rd. 4 S. 2½ mi. to forest road; turn left (E.) 3 to 9 mi. 218/755-2890. Area Forester, 2220 Bemidji Ave., Bemidji, MN 56601.

MANTRAP LAKE CAMPGROUND - From Park Rapids take Co.Rd. 4 N. 12 mi. to Emmaville (Co.Rd. 24); turn right (E.) 1½ mi. to Co.Rd. 104; turn left (N.) and follow signs 3/4 mi. Area Forester, 607 W. 1st St., Hwy. 34, Park Rapids, MN 56470. Fees charged mid-May to end of October.

PAUL BUNYAN TRAIL - From Walker 10 mi. S.W. on Hwy. 34 at Akeley. 218/732-3309. Area Forester, 607 W. 1st St., Hwy. 34, Park Rapids, MN 56470.

### RED LAKE STATE FOREST

WASKISH CAMPGROUND - At Waskish just S. of bridge. 218/835-6684. Area Forester, Blackduck, MN 56630. Fee charged mid-May to November 1. Reconstruction 7-15 to 10-15-87.

### SMOKY HILLS STATE FOREST

NORTH SMOKY HILLS TRAIL - From Osage 1 mi. W. of Hwy. 34; 5 mi. N. and W. on Hwy. 225; ½ mi. W. on Twp. Rd. 218/732-3309. Area Forester, 607 W. 1st St., Hwy. 34, Park Rapids, MN 56470.

WOLF LAKE TRAIL - From Osage S. 3½ mi. on Co.Rd. 42. 218/732-3309. Area Forester, 607 W. 1st St., Hwy. 34, Park Rapids, MN 56470.

### TWO INLETS STATE FOREST

HUNGRY MEN LAKE CAMPGROUND - From Park Rapids take State Hwy. 71 N. 10 mi. to Co.Rd. 41; turn left (W.) 1½ mi.; turn right (N.) 1 mi. 218/732-3309. Area Forester, 607 W. 1st St., Hwy. 34, Park Rapids, MN 56470. Fees charged mid-May to end of October.

TWO INLETS TRAIL - 4 mi. S.E. of Two Inlets. 218/732-3309. Area Forester, 607 W. 1st St., Hwy. 34, Park Rapids, MN 56470.

CEDAR LAKE PICNIC AREA - From Park Rapids take Hwy. 71 N. 10 mi.; Co.Rd. 41 W. 1½ mi.; N. 1 mi. 218/732-3309. Area Forester, 607 W. 1st St., Hwy. 34, Park Rapids, MN 56470.

### WHITE EARTH STATE FOREST

ARROW POINT CAMPGROUND - From Park Rapids 17 mi. N. on Hwy. 71; 19 mi. W. on Hwy. 113; N. 5 mi. on Height of Land forest road; walk E. ½ mi. 218/755-2890. Area Forester, 2220 Bemidji Ave., Bemidji, MN 56601.

ASPEN HILLS TRAIL - 5 mi. W. of Hwy. 71 on Hwy. 113. 218/755-2890. Area Forester, 2220 Bemidji Ave., Bemidji, MN 56601.

BUCKBOARD TRAIL - 4 mi. W. of Zerke. 218/755-2890. Area Forester, 2220 Bemidji Ave., Bemidji, MN 56601.

HEIGHT OF LAND TRAIL - 15 mi. W. of Hwy. 71 on Hwy. 113.  
218/755-2890. Area Forester, 2220 Bemidji Ave.,  
Bemidji, MN 56601.

#### FORESTRY ADMINISTERED FACILITIES

COFFEE POT LANDING CAMPGROUND - From Lake Itasca take  
Co.Rd. 2 N. 6 mi. to Co.Rd. 40; turn right (E.) 2 mi.;  
turn left (N.) ½ mi. 218/755-2265. DNR-Trails, 2115  
Birchmont Beach Road N.E., Bemidji, MN 56601.

ISLAND POINT LANDING CAMPGROUND - From Bemidji take  
Co.Rd. 8 E. 7 mi. to Co.Rd. 411; turn left (N.) 3/4 mi.  
to forest road; turn left (W.) 1 mi. 218/755-2890.  
Area Forester, 2220 Bemidji Ave., Bemidji, MN 56601.

LEGRANDE LANDING CAMPGROUND - From Guthrie 2 mi. E. on  
Co.Rd. 16; S. 2 mi. (on Steamboat River).  
218/755-2890. Area Forester, 2220 Bemidji Ave.,  
Bemidji, MN 56601.

REGION 2, NORTHEAST  
218/327-1719

#### BEAR ISLAND STATE FOREST

TOWER - FISHING LAKES AND PUTNAM TRAILS - 218/757-3274.  
Area Forester, Orr, MN 55771.

#### BIG FORK STATE FOREST

HARRISON LANDING CAMPGROUND - From Wirt take Co.Rd. 29 E.  
2 mi. to Co.Rd. 14; continue E. 2½ mi. 218/835-6684.  
Area Forester, Blackduck, MN 56630.

LONG LAKE CAMPGROUND - From Talmoo take State Hwy. 6 N.  
6 mi. 218/246-8343. Area Forester, Box 157, Deer  
River, MN 56636.

NORTH ITASCA TRAIL - From Big Fork 4 mi. W. on Co.Rd. 14.  
218/246-8343. Area Forester, Box 157, Deer River, MN  
56636.

#### BOWSTRING STATE FOREST

COTTONWOOD LAKE CAMPGROUND - From Deer River take State  
Hwy. 6 N. 4 mi. to Co.Rd. 19; turn right (E.) 3 mi.;  
turn left (N.) 1½ mi.; turn right (E.) and follow signs  
about 1 mi. 218/246-8343. Area Forester, Box 157,  
Deer River, MN 56636.

CRAZY JIM'S CANOE SITE - About 2½ mi. via Mississippi  
River from Little Winnibigoshish Lake. 218/246-8343.  
Area Forester, Box 157, Deer River, MN 56636.

#### CLOQUET VALLEY STATE FOREST

CEDAR BAY CAMPGROUND - From Brimson take Co.Rd. 52 E. 1  
3/4 mi. to Co.Rd. 44; turn right (S.) 5.5 mi. to Bear  
Lake forest road; turn right (W.) 3 mi.; turn left (E.)  
3/4 mi. 218/723-4669. Area Forester, 6163 Rice Lake  
Road, Duluth, MN 55803.

DR. BARNEY'S LANDING CAMPGROUND - From Duluth 17 mi. N.  
on Co.Rd. R and 4 mi. E. on Corral Trail.  
218/723-4669. Area Forester, 6163 Rice Lake Road,  
Duluth, MN 55803.

SEVERSON'S CANOE LANDING CAMPGROUND - From Brimson take  
Co.Rd. 52 E. 1 3/4 mi. to Co.Rd. 44; turn right (S.)  
5 mi. to Bear Lake forest road; turn right 3 miles;  
stay right (W.) 1/4 mi. 218/723-4669. Area Forester,  
6163 Rice Lake Road, Duluth, MN 55803

INDIAN LAKE CAMPGROUND - From Wales take Co.Rd. 55 W. 5½  
mi. to Co.Rd. 44; turn right (N.) 1 mi. 218/723-4669.  
Area Forester, 6163 Rice Lake Road, Duluth, MN 55803.

CLOQUET VALLEY TRAIL - From Duluth 26 mi. N. on Co.Rd. 4.  
218/723-4669. Area Forester, 6163 Rice Lake Road,  
Duluth, MN 55803.

TAFT AREA TRAIL - 9 mi. S. of Cotton on Hwy. 53, then 1  
mi. E. on 152. 218/879-4544. Area Forester, Box 220,  
Cloquet, MN 55720.

#### FINLAND STATE FOREST

ECKBECK CAMPGROUND - From Finland take State Hwy. 1 S. 3  
mi. 218/723-4669. Area Forester, 6163 Rice Lake Road,  
Duluth, MN 55803. Fees charged May 1 to mid-November.

FINLAND CAMPGROUND - From Finland take Co.Rd. 6 E. ¼ mi.  
218/723-4669. Area Forester, 6163 Rice Lake Road,  
Duluth, MN 55803. Fees charged May 1 to mid-November.

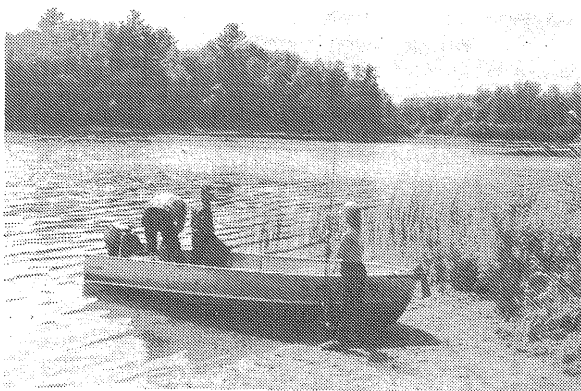
SULLIVAN LAKE CAMPGROUND - From Two Harbors take Co.Rd. 2  
N. 26 mi. to Co.Rd. 15; turn left (W.) ½ mi.; turn left  
(S.) about ½ mi. 218/723-4669. Area Forester, 6163  
Rice Lake Road, Duluth, MN 55803.

MOOSE WALK TRAIL - From Finland 1½ mi. W. on Hwy. 1.  
218/723-4669. Area Forester, 6163 Rice Lake Road,  
Duluth, MN 55803.

WOODLAND CARIBOU TRAIL - From Two Harbors 38 mi. N. on  
Co.Rd. 2. 218/723-4669. Area Forester, 6163 Rice Lake  
Road, Duluth, MN 55803.

#### FOND DU LAC STATE FOREST

FOND DU LAC TRAIL - From Cromwell 1.5 mi. E. on Hwy. 210  
then 3 mi. No. on Co.Rd. 120. 218/879-4544. Area  
Forester, Box 220, Cloquet, MN 55720.



The Division of Forestry maintains over 100 public  
accesses, many of which are located at campgrounds.

FOND DU LAC SKI TRAIL - From Cromwell 1.5 mi. E. on Hwy. 210 then 3.5 mi. N. on Co. Rd. 120. 218/879-4544. Area Forester, Box 220, Cloquet, MN 55720.

#### GEORGE WASHINGTON STATE FOREST

BEAR LAKE CAMPGROUND - From Nashauk take State Hwy. 65 N. 23 mi. to Co.Rd. 52 (Venning Road); turn left (W.) 2 mi.; turn left (S.) 2½ mi. 218/262-6760. Area Forester, 1208 E. Howard St., Hibbing, MN 55746. Fees charged mid-May to mid-September.

BEATRICE LAKE CAMPGROUND - From Hibbing take Hwy. 169 N. 5 mi.; Co.Rd. 5 N. 17 mi.; W. 3½ mi. 218/254-2411. Park Manager, Star Route 2, Hibbing, MN 55746.

BUTTON BOX LAKE CAMPGROUND - From Togo take State Hwy. 1 W. 4½ mi. to ranger station; turn right (N.W.) 4 mi. 218/262-6760. Area Forester, 1208 E. Howard St., Hibbing, MN 55746.

LARSON LAKE CAMPGROUND - From Effie take State Hwy. 1 E. 11 mi. to Bass Lake Road; turn right (S.) about 1½ mi. to junction (½ mi. S. of Bass Lake); turn right (W.) 1 mi. 218/246-8343. Area Forester, Box 157, Deer River, MN 56636. Fees charged May 1 to mid-September.

LOST LAKE CAMPGROUND - From Bigfork take Scenic Hwy. (Co.Rd. 7) S.E. 10 mi. to Co.Rd. 340; turn left (E.) about 7 mi. to ranger station; turn left (N.) across from ranger station and follow signs 3½ mi. 218/246-8343. Area Forester, Box 157, Deer River, MN 56636. Fees charged May 1 to mid-September.

OWEN LAKE CAMPGROUND - From Bigfork take Scenic Hwy. (Co.Rd. 7) S.E. 10 mi. to Co.Rd. 340; turn left (E.) 7 mi. to ranger station; turn left (N.) across from ranger station and follow signs 3½ mi. 218/246-8343. Area Forester, Box 157, Deer River, MN 56636. Fees charged May 1 to mid-September.

THISTLEDEW LAKE CAMPGROUND - From Togo take Hwy. 1 W. 4½ mi. to ranger station; turn left (S.) 2 mi. 218/262-6760. Area Forester, 1208 E. Howard St., Hibbing, MN 55746. Fees charged mid-May to mid-September.

BEAR LAKE DAY USE AREA - From Nashauk take MN 65 N. 20 mi.; then W. 4 mi. 218/262-6760. Area Forester, 1208 E. Howard St., Hibbing, MN 55746.

PICKEREL LAKE DAY USE AREA - From Effie take Hwy. 1 E. 14 mi.; N. 2 mi. 218/246-8343. Area Forester, Box 157, Deer River, MN 56636.

TIM COREY TRAIL - From Hibbing 20 mi. N. on Hwy. 5. 218/262-6760. Area Forester, 1208 E. Howard St., Hibbing, MN 55746.

BEAR LAKE TRAIL - From Nashauk 17 mi. N. on Hwy. 65. 218/262-6760. Area Forester, 1208 E. Howard St., Hibbing, MN 55746.

CIRCLE L TRAIL - From Togo 3 mi. W. on Hwy. 1. 218/246-8343. Area Forester, Box 157, Deer River, MN 56636.

CIRCLE T TRAIL - From Togo 3 mi. W. on Hwy. 1. 218/262-6760. Area Forester, 1208 E. Howard St., Hibbing, MN 55746.

#### GOLDEN ANNIVERSARY TRAIL

GOLDEN ANNIVERSARY TRAIL - 218/246-8343. Area Forester, Box 157, Deer River, MN 56636. River Rd. Loop - 6.5 miles S.E. of Grand Rapids on Co.Rd. 3. Cowhorn Loop - 5 mi. S.E. of Grand Rapids on Co.Rd. 3, turn right S. on Co.Rd. 67, 2 mi., turn left on Co.Rd. 427 watch for signs.

#### GRAND PORTAGE STATE FOREST

ESTHER LAKE CAMPGROUND AND ACCESS - 11½ mi. N. of Hovland on Co.Rd. 16; turn left (W.) 2 mi.; then N.W. 2½ mi. on forest road #6. 218/723-4669. Area Forester, 6163 Rice Lake Road, Duluth, MN 55803.

McFARLAND LAKE CAMPGROUND AND ACCESS - 18 mi. N. of Hovland on Co.Rd. 16. 218/723-4669. Area Forester, 6163 Rice Lake Road, Duluth, MN 55803.

SWAMP RIVER #1 - 11½ mi. N. of Hovland on Co.Rd. 16; then 3 mi. E. on forest road #8. 218/723-4669. Area Forester, 6163 Rice Lake Road, Duluth, MN 55803.

SWAMP RIVER #2 - 6 mi. N. of Hovland on Co.Rd. 16; then E. ½ mi. on river access road. 218/723-4669. Area Forester, 6163 Rice Lake Road, Duluth, MN 55803.

BORDER ROUTE TRAIL - 11½ mi. N. of Hovland on Co.Rd. 16; then 3 mi. E. on forest road #8. 218/723-4669. Area Forester, 6163 Rice Lake Road, Duluth, MN 55803.

#### KABETOGAMA STATE FOREST

ASH RIVER CAMPGROUND - From Orr take U.S. Hwy. 53 N. 26 mi. to Ash River Road (Co.Rd. 126); turn right (E.) 9 mi. 218/757-3274. Area Forester, Orr, MN 55771. Fees charged mid-May to mid-September.

HINSDALE ISLAND CAMPGROUND - From Cook take Co.Rd. 24 N. to Co.Rd. 78; turn right (E.) 6 mi. to Co.Rd. 540; continue E. about 2 mi. to public access. 218/757-3274. Area Forester, Orr, MN 55771. Fees charged mid-May to mid-September.

WAKEMUP BAY CAMPGROUND - From Cook take Co.Rd. 24 N. 2½ mi. to Co.Rd. 78; turn right (E.) 3 mi.; left (N. 1 mi. 218/757-3274. Area Forester, Orr, MN 55771. Fees charged mid-May to mid-September.

WOODEN FROG CAMPGROUND - From Orr take U.S. Hwy. 53 N. 30 mi. to Co.Rd. 122 (Gamma Road); turn right (N.) and follow signs about 6 mi. 218/757-3274. Area Forester, Orr, MN 55771. Fees charged mid-May to mid-September.

PELICAN LAKE AREA TRAILS - Various locations near Orr, MN. 218/757-3274. Area Forester, Orr, MN 55771.

ASH RIVER RECREATION TRAILS - From Orr take Hwy. 53 N. 26 mi. to Ash River Road; turn right (E.) 5 mi. 218/757-3274. Area Forester, Orr, MN 55771.

#### KOOCHICHING STATE FOREST

JOHNSON LANDING CAMPGROUND - From Big Falls take State Hwy. 6 S. 10 mi.; turn left (E.) and follow signs 1 mi. 218/278-6651. Area Forester, Littlefork, MN 56653.

## PINE ISLAND STATE FOREST

**BENN LINN LANDING CAMPGROUND** - From Big Falls take Co.Rd.

13 N. 1½ mi.; turn left (W.) and follow signs 3½ mi.

218/278-6651. Area Forester, Littlefork, MN 56653.

**GWADY LANDING CAMPGROUND** - On Big Fork River. By boat from Sturgeon River Campground. 218/278-6651. Area Forester, Littlefork, MN 56653.

**STURGEON RIVER CAMPGROUND** - From Big Falls take Co.Rd. 30 W. 3½ mi.; turn right (N.) 1½ mi. 218/278-6651. Area Forester, Littlefork, MN 56653.

## FORESTRY ADMINISTERED FACILITIES

**GAMBLER'S POINT LANDING CAMPGROUND** - From Ball Club 1½ mi. S. on Co.Rd. 18 to bridge; 2 mi. by boat on Mississippi. 218/246-8343. Area Forester, Box 157, Deer River, MN 56636.

**MOOSE LAKE CAMPGROUND** - From Deer River take State Hwy. 6 N. 4 mi. S. on Co.Rd. 19; turn right (E.) 5½ mi.; turn left (N.) 1 mi. 218/246-8343. Area Forester, Box 157, Deer River, MN 56636. Fees charged May 1 to mid-September.

**LEANING PINE DAY USE AREA** - From Hibbing take Hwy. 73 S. 10 mi. 218/262-6760. Area Forester, 1208 E. Howard St., Hibbing, MN 55746.

**O'REILLY LAKE DAY USE AREA** - From Taconite take Co.Rd. 7 N. 2½ mi.; W. 1½ mi. 218/246-8343. Area Forester, Box 157, Deer River, MN 56636.

**SISSABAGAMA LAKE DAY USE AREA** - From Aitkin take MN Hwy. 47 E. 2½ mi.; Co.Rd. 17 S. 2 mi.; N. 1 mi. 218/697-2476. Area Forester, Box 9, Hill City, MN 55748.



State Forests contain over 50 winter trails with over 1,200 miles for snowmobiling and skiing.

**LAKE WILLIAMS TRAIL** - From Cotton 1½ mi. W. on Co.Rd. 52. 218/879-4544. Area Forester, Box 220, Cloquet, MN 55720.

## REGION 3, CENTRAL

218/828-2616

## BIRCH LAKES STATE FOREST

**BIRCH LAKE CAMPGROUND** - From Melrose take Co.Rd. 13 N. 5½ mi. to Co.Rd. 17; turn right (E.) 1½ mi.; turn left (N.) 2 mi.; turn right (E.) on forest road. 612/689-2832. Area Forester, 915 S. Hwy. 65, Cambridge, MN 55064. Fees charged May 1 to October 1. Closed remainder of year.

## CHENGWATANA STATE FOREST

**SNAKE RIVER CAMPGROUND** - From Pine City take Co.Rd. 8 and 118 E. 9 mi. and N. ½ mi. 218/485-4474. Area Forester, Route 2, 701 S. Kenwood, Moose Lake, MN 55767. Fees charged May through mid-November.

**CHENGWATANA TRAILS** - 9 mi. E. of Pine City on Co.Rd. 8 and 118. 218/485-4474. Area Forester, Route 2, 701 S. Kenwood, Moose Lake, MN 55767.

**MINNESOTA/WISCONSIN BOUNDARY TRAIL** - 9 mi. E. of Pine City on Co.Rd. 8 and 118. 218/485-4474. Area Forester, Route 2, 701 S. Kenwood, Moose Lake, MN 55767.

**RED HORSE TRAIL** - 9 mi. E. of Pine City on Co.Rd. 8 and 118. 218/485-4474. Area Forester, Route 2, 701 S. Kenwood, Moose Lake, MN 55767.

## CROW WING STATE FOREST

**GREER LAKE CAMPGROUND** - From Crosby Lake take State Hwy. 6 N. 12 mi. to Co.Rd. 36; turn left (W.) 3 mi. to Co.Rd. 14; turn left (S.) 1½ mi.; turn right (W.) and follow signs 2 mi. 218/828-2565. Area Forester, 1601 Minnesota Drive, Brainerd, MN 56401. Fees charged mid-May to mid-November.

**BASS LAKE NATURE TRAIL** - Located at Greer Lake Campground. 218/828-2565. Area Forester, 1601 Minnesota Drive, Brainerd, MN 56401.

**HARVEY DRAKE LANDING AND DAY USE AREA** - From Crosby take #6 N. 5 mi. to Co.Rd. 11; turn left and go 4 mi. to the Pine River; on left side of road; see signs. 218/828-2565. Area Forester, 1601 Minnesota Drive, Brainerd, MN 56401.

**STAIRCASE LANDING AND DAY USE AREA** - 1½ mi. S. of Cross Lake on Co.Rd. 36; follow signs. 218/828-2565. Area Forester, 1601 Minnesota Drive, Brainerd, MN 56401.

**PINE LAKE ACCESS AND DAY USE AREA** - 3 mi. S. of Crosslake; then left on Co.Rd. ½ mi.; follow signs. 218/828-2565. Area Forester, 1601 Minnesota Drive, Brainerd, MN 56401.

**PELICAN BEACH** - From Merrifield take Co.Rd. 3 N. 6 mi. to Co.Rd. 118; turn left (W.) 1 mi.; turn right (N.) and follow signs. 218/947-3232. Area Forester, Box 6, Backus, MN 56475.

#### D.A.R. STATE FOREST

D.A.R. CAMPGROUND - From Askov take State Hwy. 23 N.E. 2 mi. 218/485-4474. Area Forester, Route 2, 701 S. Kenwood, Moose Lake, MN 55767.

#### FOOT HILL STATE FOREST

FOOTHILLS TRAIL - 7 mi. W. of Backus on Hwy. 87. 218/947-3232. Area Forester, Box 6, Backus, MN 56435.  
SPIDER LAKE TRAIL - 10 mi. W. of Pine River on Co.Rd. 2. 218/947-3232. Area Forester, Box 6, Backus, MN 56435.

#### GENERAL C.C. ANDREWS STATE FOREST

WILLOW RIVER CAMPGROUND - In village of Willow River take N. Street E. to service road of Int. Hwy. 35; turn left (N.)  $\frac{1}{2}$  mi. (on Willow River Flowage). 218/485-4474. Area Forester, Route 2, 701 S. Kenwood, Moose Lake, MN 55767. Fees charged May through mid-November.

DAGO LAKE DAY USE AREA - From Willow River, go N. on Co. Rd. 61 2 mi., turn right (E.) 2 mi. turn left (N.)  $\frac{1}{2}$  mi. 218/485-4474, Area Forester, Rt. 2, 701 S. Kenwood, Moose Lake, MN 55767

GENERAL C.C. ANDREWS TRAIL - From Willow River  $\frac{1}{2}$  mi. N. on Co.Rd. 61. 218/485-4474. Area Forester, Route 2, 701 S. Kenwood, Moose Lake, MN 55767.



State Forests contain three specially developed campgrounds and many miles of trail for horseback riding.

#### HILL RIVER STATE FOREST

MOOSE-WILLOW-WASHBURN LAKE TRAIL - 3 mi. E. of Hill City on Hwy. 200. 218/697-2476. Area Forester, Box 9, Hill City, MN 55748

#### HUNTERSVILLE STATE FOREST

SHELL CITY LANDING CAMPGROUND - From Menahga take Co.Rd. 17 E. 4 mi. to Co.Rd. 23; turn left (N.) 1 mi. to Co.Rd. 18; turn right (E.) 6 mi. to Co.Rd. 25; turn left (N.) 2 mi. 218/947-3232. Area Forester, Box 6, Backus, MN 56475. Fees charged mid-May to mid-September.

HUNTERSVILLE FOREST LANDING CAMPGROUND - From Menahga take Co.Rd. 148 E. 4 mi.; continue E. 3 mi. on Co.Rd. 150; continue E.  $1\frac{1}{2}$  mi. on forest road. 218/947-3232. Area Forester, Box 6, Backus, MN 56475. Fees charged mid-May to mid-September.

BIG BEND LANDING CAMPGROUND - From Shell City Landing Campground about 10 mi. by canoe on Crow Wing River. 218/947-3232. Area Forester, Box 6, Backus, MN 56475. Fees charged mid-May to mid-September.

HUNTERSVILLE TRAIL - From Menahga 11 mi. E. on Hwy. 17. 218/947-3232. Area Forester, Box 6, Backus, MN 56475.

#### LAND O' LAKES STATE FOREST

CLINT CONVERSE MEMORIAL CAMPGROUND - From Outing take State Hwy. 6 N. 2 mi. to Co.Rd. 48; turn left (W.) 2 mi. 218/947-3232. Area Forester, Box 34, Backus, MN 56475. Fees charged mid-May to mid-September.

BEN DRAPER TRAIL - From Outing 7 mi. N. on Hwy. 6; 3/4 mi. E. on Ben Draper Tower Road. 218/947-3232. Area Forester, Box 34, Backus, MN 56475.

WASHBURN LAKE RECREATION AREA - 2 mi. N. of Outing on Hwy. 6,  $1\frac{1}{2}$  mi. W. on Co.Rd. 48. 218/947-3232. Area Forester, Box 34, Backus, MN 56475.

#### NEMADJI STATE FOREST

GAFVERT CAMPGROUND - From Nickerson take State Hwy. 23 N.E.  $\frac{1}{2}$  mi.; turn right (S.) across railroad tracks  $\frac{1}{2}$  mi.; turn left (E.)  $1\frac{1}{2}$  mi. to Nett Lake forest road; turn right (S.)  $1\frac{1}{2}$  mi.; turn left (E.) about  $\frac{1}{2}$  mi. 218/485-4474. Area Forester, Route 2, 701 S. Kenwood, Moose Lake, MN 55767. Fees charged May 1 to mid-November.

NEMADJI TRAIL - Take Hwy. 23 to Nickerson. 218/485-4474. Area Forester, Route 2, 701 S. Kenwood, Moose Lake, MN 55767.

#### PILLSBURY STATE FOREST

ROCK LAKE CAMPGROUND - From Pillager take State Hwy. 210 W.  $\frac{1}{2}$  mi. to Co.Rd. 1; turn right (N.) 6 mi.; turn left (W.) and follow road along lake. 218/828-2565. Area Forester, 1601 Minnesota Drive, Brainerd, MN 56401. Fees charged May to mid-November.

PILLSBURY TRAIL - From Pillager 1 mi. E. on Hwy. 210; then N.  $3\frac{1}{2}$  mi. 218/828-2565. Area Forester, 1601 Minnesota Dr., Brainerd, MN 56401.

ROCK LAKE RECREATION AREA - 6½ mi. N. of Pillager on Co.Rd. 1. 218/828-2565. Area Forester, 1601 Minnesota Drive, Brainerd, MN 56401.

#### RUM RIVER STATE FOREST

KANABEC TRAIL - North of Oglivie off of Co.Rd. 6.

218/485-4474. Area Forester, Rt. 2, 701 S. Kenwood Ave., Moose Lake, MN 55767

HOOT OWL TRAIL - From Onamia 8 mi. S. on 169; 4 mi. E. on Co.Rd. 20. 612/689-2832. Area Forester, 915 S. Hwy. 65, Cambridge, MN 55008.

#### ST. CROIX STATE FOREST

BOULDER CAMPGROUND - From Sandstone take Co.Rd. 30 E. 17 mi. to Co.Rd. 24 (Duxbury); turn right (S.) 2 mi. to Co.Rd. 25; turn left (E.) 4 mi. to Co.Rd. 173; turn right (S.) 3/4 mi. to Tamarack Forest Road; turn left (E.) about 5 mi. 218/485-4474. Area Forester, Route 2, 701 S. Kenwood, Moose Lake, MN 55767. Fees charged May 1 to mid-November.

TAMARACK RIVER HORSEBACK CAMPGROUND - From Sandstone take Co.Rd. 30 W. 17 mi.; then 2 mi. S. on Co.Rd. 24; then 4 mi. E. on Co.Rd. 25; then S. 3/4 mi.; Tamarack Forest Road 4 mi. 218/485-4474. Area Forester, Route 2, 701 S. Kenwood, Moose Lake, MN 55767.

ST. CROIX TRAIL - 17 mi. E. of Sandstone on Co.Rd. 30; 2 mi. S. on Co.Rd. 24; turn E. on Co.Rd. 25 4 mi. to Co.Rd. 173; turn S. 3/4 mi. to Graces Lake parking lot. 218/485-4474. Area Forester, Route 2, 701 S. Kenwood, Moose Lake, MN 55767.

#### SAND DUNES STATE FOREST

ANN LAKE CAMPGROUND - From Elk River take State Hwy. 169 N. 9 mi. to Co.Rd. 4 (Zimmerman); turn left (W.) 6 mi.; turn left (S.) and follow signs 1½ mi. 612/689-2832. Area Forester, 915 S. Hwy. 65, Cambridge, MN 55008. Fees charged April 1 to November 15.

ORROCK TRAIL - From Zimmerman 6 mi. W. on Co.Rd. 4; 1½ mi. S. 612/689-2832. Area Forester, 915 S. Hwy. 65, Cambridge, MN 55008.

#### SAVANNA STATE FOREST

HAY LAKE CAMPGROUND - From Jacobson take State Hwy. 65 S. 2½ mi.; turn left (E.) 3 mi.; turn S. 1 mi. 218/697-2476. Area Forester, Box 9, Hill City, MN 55748. Fees charged May through November 1.

REMOTE LAKE SOLITUDE AREA - 15 mi. N. of McGregor on Hwy. 36. 218/697-2476. Area Forester, Box 9, Hill City, MN 55748.

SAVANNA TRAILS - From McGregor 3 mi. E. on Hwy. 210. 218/697-2476. Area Forester, Box 9, Hill City, MN 55748.

REGION 5, SOUTHEAST  
(507) 285-7420

DORER MEMORIAL HARDWOOD STATE FOREST (Goodhue and Wabasha counties)

KRUEGER MANAGEMENT UNIT - From Wabasha take Co.Rd. 60 W. 5 mi.; then Co.Rd. 81 S. ½ mi. (on Zumbro River). 612/345-3216. Forester, Box 69, Lake City, MN 55091. Fees charged May 1 to November 1.

HAY CREEK MANAGEMENT UNIT - 4 mi. S. of Red Wing on Hwy. 58; then 1½ mi. N. on gravel road. 612/345-3216. Forester, Box 69, Lake City, MN 55091.

CANNON JUNCTION MANAGEMENT UNIT - 5 mi. N. of Red Wing on Hwy. 61; E. on Co.Rd. 46 2½ mi. 612/345-3216. Forester, Box 69, Lake City, MN 55091.

SNAKE CREEK MANAGEMENT UNIT - 3 mi. S. of Kellogg on Hwy. 61. 612/345-3216. Forester, Box 69, Lake City, MN 55091.

ZIMERO BOTTOMS MANAGEMENT UNIT - 1 mi. N. of Dumfries; then 2 mi. S. on Co.Rd. 86 and township road. 612/345-3216. Forester, Box 69, Lake City, MN 55091.

DORER MEMORIAL HARDWOOD STATE FOREST (Fillmore, Houston and Winona counties)

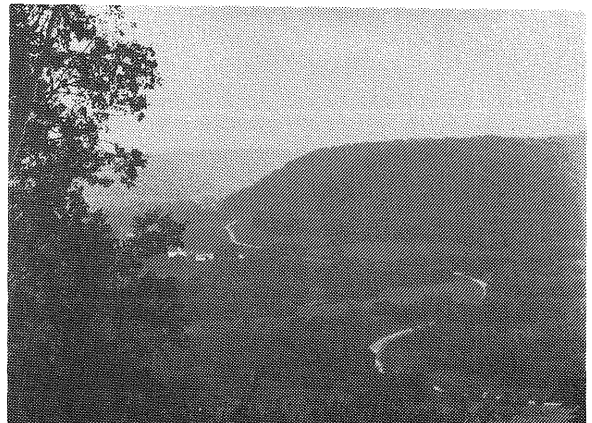
OKA RIDGE MANAGEMENT UNIT - From Houston go W. 4.8 mi. on Co.Rd. 13. 507/523-2183. Area Forester, Box 278, Lewiston, MN 55952.

RENO MANAGEMENT UNIT - ½ mi. N. of Reno. 507/523-2183. Area Forester, Box 278, Lewiston, MN 55952.

TROUT VALLEY MANAGEMENT UNIT - 15 mi. N. of Winona on Hwy. 61; 1½ mi. S.W. on Co.Rd. 29. 507/523-2183. Area Forester, Box 278, Lewiston, MN 55952.

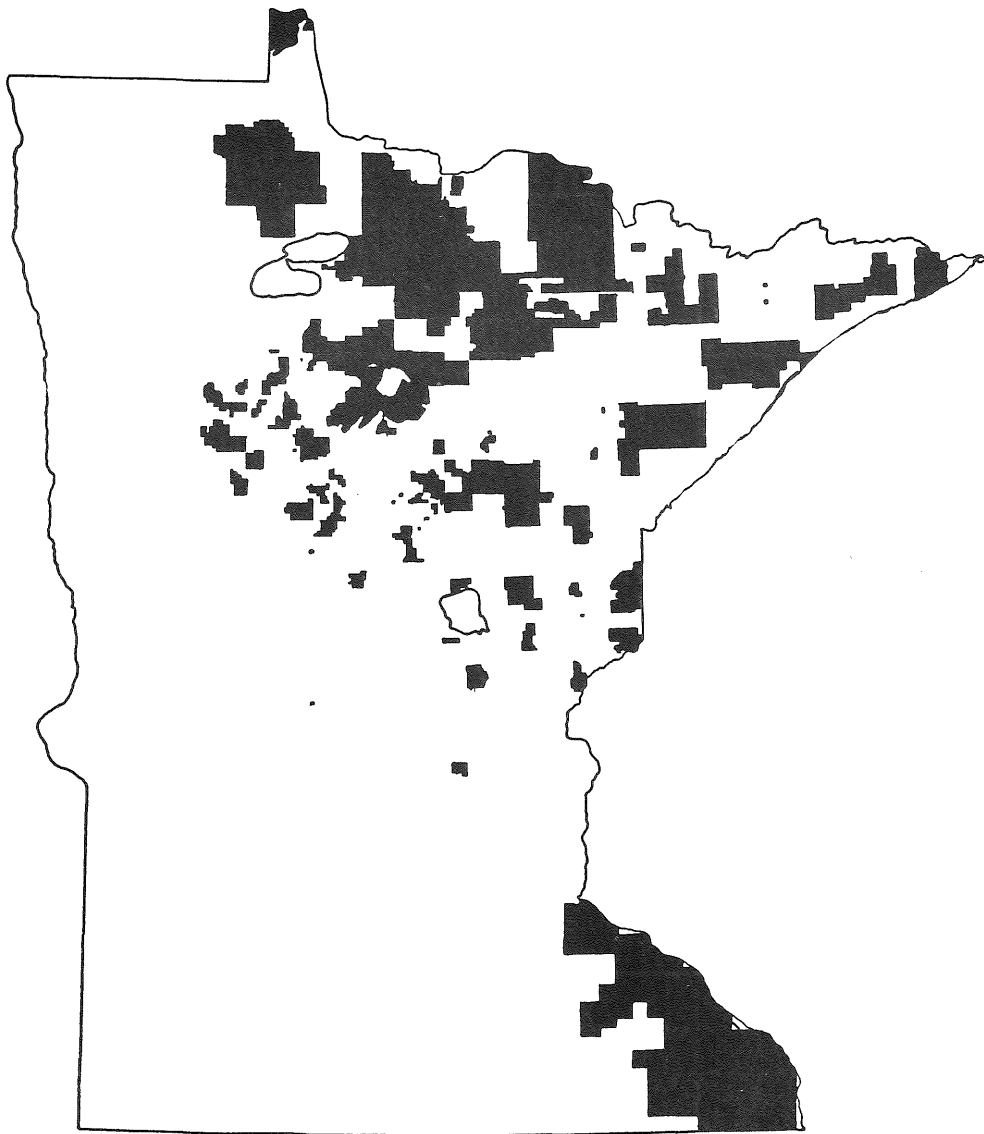
ISNOURS DEMONSTRATION WOODLAND - From Preston go 2.6 mi. N. on Co.Rd. 17 then follow signs. 507/523-2183. Area Forester, Box 278, Lewiston, MN 55952

BRIGHTSDALE MANAGEMENT UNIT - From Lanesboro go N. 2 mi. on Hwy 250 then W. 2.2 mi. on Township Rd. 507/523-2183. Area Forester, Box 278, Lewiston, MN 55952



Most of the 40,000 acres of State Forest Land in south-eastern Minnesota are wooded hillsides and valleys.

# Minnesota State Forests



For a more detailed map of Minnesota's State Forests please consult the Minnesota Official Highway Map available at many Department of Natural Resources Offices or from the Minnesota Department of Transportation.



## For Information on:

State Trails, Grants-in-Aid Trails, Canoe and Boating Routes, Water Access Sites, River Water Levels and Snow Depth contact:

DNR - Trails and Waterways Unit  
Box 52, 500 Lafayette Road  
St. Paul, Minnesota 55146  
(612) 296-6699

State Parks contact:

DNR - Division of Parks and Recreation  
Box 39, 500 Lafayette Road  
St. Paul, Minnesota 55146  
(612) 296-4776

Hunting or Fishing contact:

DNR - Division of Fish and Wildlife  
Box 33, 500 Lafayette Road  
St. Paul, Minnesota 55146  
(612) 296-3325

Boundary Waters Canoe Area and Superior National Forest contact:

Forest Supervisor  
U.S.F.S. Superior National Forest  
Box 338  
Duluth, Minnesota 55801  
(218) 720-5320, Twin Cities phone 349-5333

Chippewa National Forest contact:

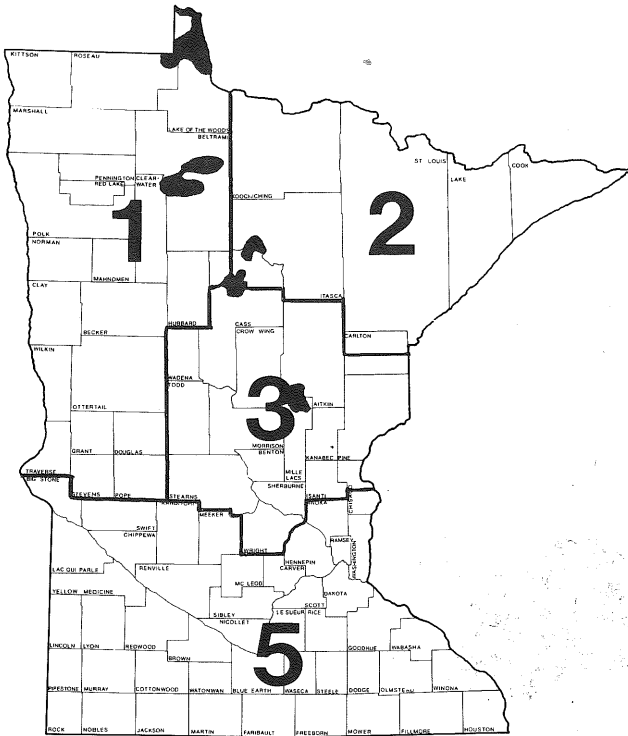
Chippewa National Forest  
Cass Lake, Minnesota 56633  
(218) 335-2226, Twin Cities phone 349-5333

Voyageurs National Park contact:

Voyageurs National Park  
Box 50  
International Falls, Minnesota 56649  
(218) 283-9821, Twin Cities phone 349-5333

Additional information is available from the Minnesota Tourist Information Center. Their publications include camping and lodging guides, calendars of events, skiing, snowmobiling, fishing, hiking and backpacking brochures. Contact:

Minnesota Tourist Information Center  
375 Jackson St., 250 Skyway  
St. Paul, Minnesota 55101  
Twin Cities phone 296-5029  
Toll free inside Minnesota 1-800-652-9747  
Toll free outside Minnesota 1-800-383-1461



## Need More Information?

For general Minnesota State Forest information write or call:

Minnesota Department of Natural Resources  
Division of Forestry  
Box 44, 500 Lafayette Rd.  
St. Paul, Minnesota 55155-4044  
(612) 296-4491

or contact:

### Northwest

DNR - Region I  
Regional Forest Supervisor  
1601 Birchmont Beach Road NE  
Bemidji, MN 56601  
(218) 755-2891

### Central

DNR - Region III  
Regional Forest Supervisor  
1601 Minnesota Drive  
Brainerd, MN 56401  
(218) 828-2616

### Northeast

DNR - Region II  
Regional Forest Supervisor  
1201 East Highway 2  
Grand Rapids, MN 55744  
(218) 327-1718

### Southeast

DNR - Region V  
Regional Forest Supervisor  
2300 Silver Creek Road NE  
Rochester, MN 55904  
(507) 285-7420





Department of Natural Resources  
Division of Forestry  
Saint Paul, Minnesota 55155