

970260

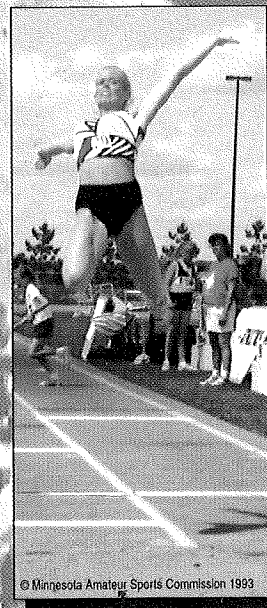
LEGISLATIVE REFERENCE LIBRARY
GV430.M6 M564 1997
Minnesota Amate - Minnesota Amateur Sports Commissio



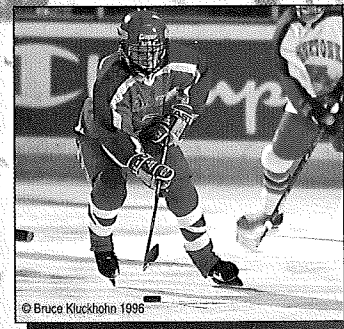
3 0307 00052 4127



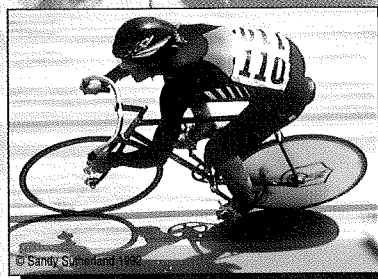
**MINNESOTA
AMATEUR
SPORTS
COMMISSION**



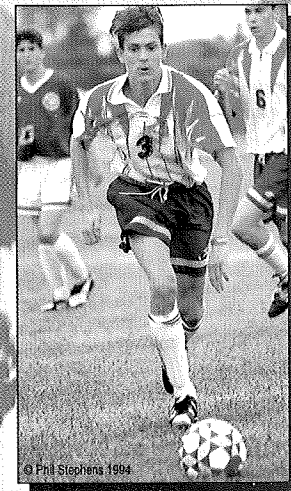
© Minnesota Amateur Sports Commission 1993



© Bruce Kluckhohn 1996

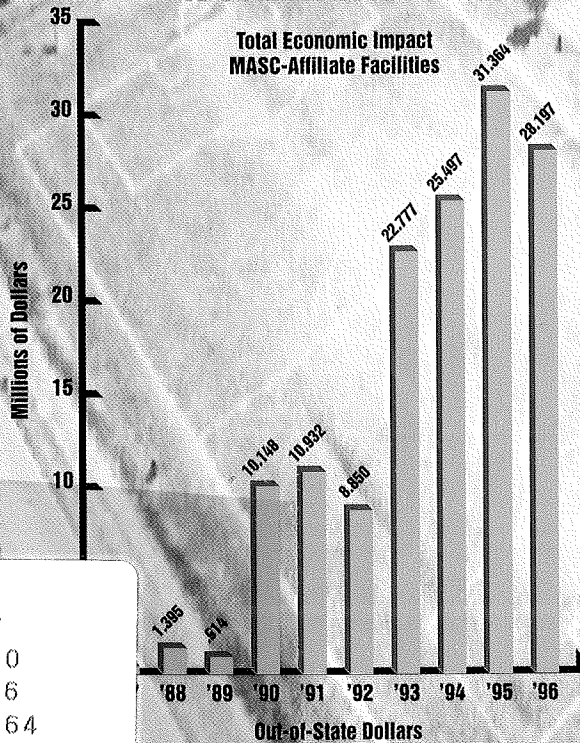


© Sandy Smedland 1999



© Phil Stephens 1994

Minnesota Amateur Sports
"A Sound Investment"



GV
4 30
. M6
M564
1997



RECEIVED

MAY 01 1997

LEGISLATIVE REFERENCE LIBRARY
STATE OFFICE BUILDING
ST. PAUL, MN 55155

1995 - 1996

Addendum to 1987 - 1994 Report

Presented March 1997

CONTENTS

Agency Mission	3
Cumulative Economic Impact	5
Mighty Ducks Ice Arena Grant Program	7
MASC Affiliate Facilities	
U of Minnesota Aquatics Center	13
National Sports Center	14
National Hockey Center	15
Giants Ridge Golf & Ski Resort	16
National Whitewater/Kayak Center	17
Ole Mangseth Memorial Ski Jump	18
John Rose Minnesota OVAL	19
National Volleyball Center	20
Urban Sports Center	20
Quad Cities Curling Center	21
Bush Lake Ski Jump	21



Part I
Agency Mission

**The purpose of the Minnesota Amateur Sports Commission (MASC)
is to elevate the social and economic benefits of
sport to enrich the lives of all Minnesotans.**

MASC Mission Statement

MASC Background

The MASC was created in 1987 by the Minnesota State Legislature to promote the economic and social benefits of sports. Since then, the MASC has made enormous strides in accomplishing its goals and Minnesota is considered a national role model for its proactive methods in creating benefits from amateur sports. The MASC has been a model agency in creating economic impact through the creation of amateur sports events and programs, and in the fostering of public/private partnerships. Many MASC projects are funded primarily through private sponsors and partnership organizations.

MASC Goals

(1) TO CREATE ECONOMIC DEVELOPMENT THROUGH AMATEUR SPORT

- by attracting major sport events to Minnesota
- by developing annual sport events, camps and programs that create annual benefits in Minnesota
- by assisting Minnesota communities in developing local sports tourism

1995, 1996 Highlights

- Through the Mighty Ducks ice arena grant program awarded 76 grants totaling \$10.853 million to support the construction of 41 new sheets of ice and the renovation of 35 additional ice arenas around Minnesota. The program leveraged over \$70 million of additional private and public local spending and serviced over 5 million annual users of those arenas.
- Continued the growth and development of the MASC'S three new major annual events: All American Women's Hockey Tournament, All American Women's Soccer Tournament and USA International Hockey Cup
- Created an additional new event: the Great American Shoot Out, a summer youth basketball tournament of national and international scope.
- Assisting organizing committees in preparations for the 1998 World Figure Skating Championships in Minneapolis, the 1997 World Cup Speedskating Meet and 1998 Junior World Speedskating Championships in Roseville.

(2) TO CREATE THE MAXIMUM OPPORTUNITY FOR SPORT PARTICIPATION FOR ALL MINNESOTANS

- by sponsoring Olympic-style summer and winter State Games events
- by targeting special programs to increase opportunity for women, seniors and disadvantaged
- by supporting Minnesota's amateur sport associations and organizations

1995, 1996 Highlights

- Following an in-depth study of Minnesota ice usage, documented the shortage in available ice time to service the growth in all ice sports, especially girls and women's ice hockey.
- Through the resulting Mighty Ducks ice arena grant program, assisted in the construction of 41 new sheets of ice and the renovation of 35 existing sheets of ice around the state to increase the opportunity for Minnesota residents to participate in an ice sport.
- Created opportunities for more than 90,000 Minnesotans via Star of the North Games program. The 1997 Summer Star of the North Games in St. Cloud will be the 10th edition of Minnesota's annual Olympic-style multi-sport event.
- Created statewide sportsmanship and sports ethics campaign (television, print and in-school) called *Sports 4 The Right Reason*.

(3) TO ESTABLISH MINNESOTA AS A NATIONAL MODEL FOR THE OLYMPIC AND AMATEUR SPORT MOVEMENT

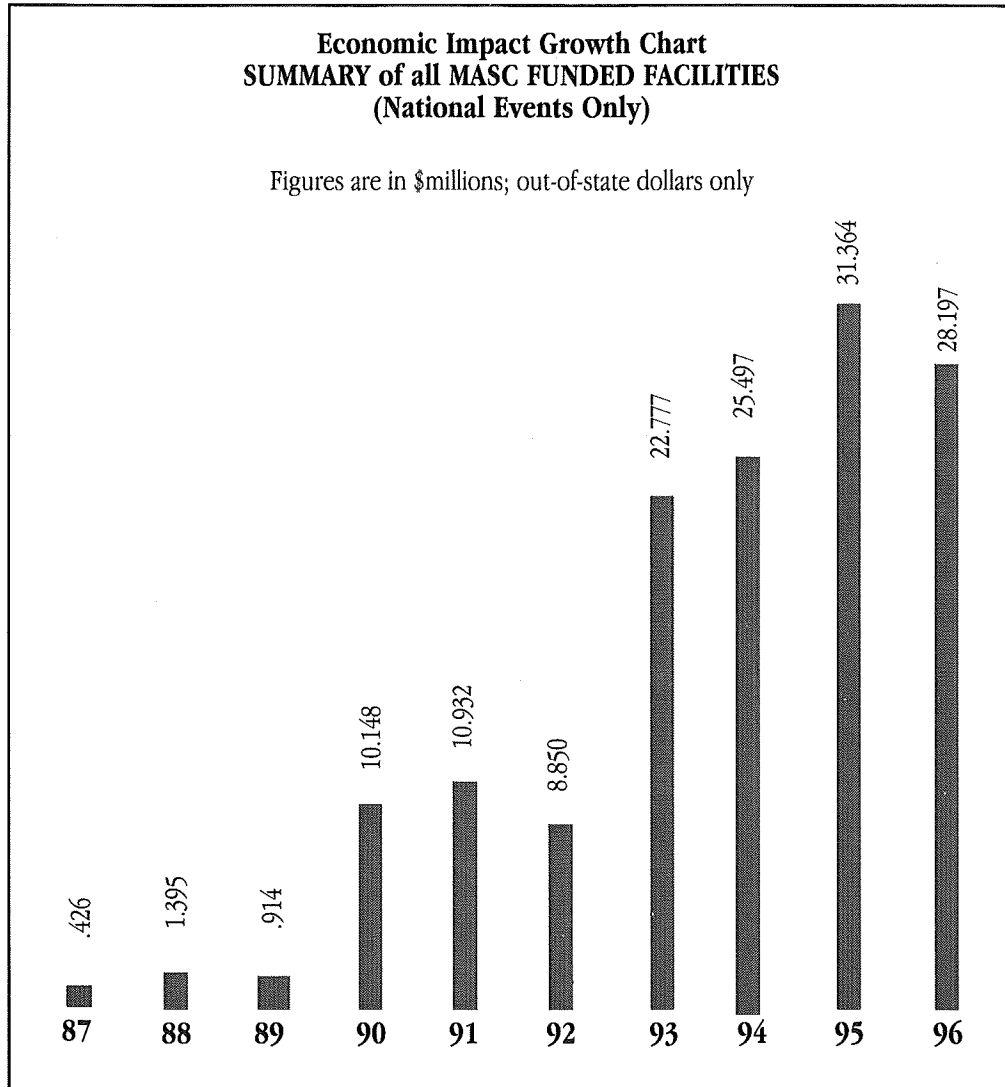
- by developing Olympic-caliber training and event facilities for all winter and summer sports
- by establishing relationships with the national governing bodies and other sport organizations

1995, 1996 Highlights

- Obtained funding to construct the National Volleyball center in Rochester and the Urban Sports Center in Minneapolis, plus a curling center to be built in Eveleth and a ski jump in Bloomington. All these facilities will be capable of hosting training and competition events for the US Olympic Committee's National Governing Bodies.
- Secured a \$1 million U.S. Olympic Committee grant to fund a USOC Community Olympic Development Program for the Twin Cities. One of only three such community grassroots-oriented Olympic development programs in the country (San Antonio and Salt Lake City are the others), the Minnesota program will focus on the following sports: speedskating, women's ice hockey, cross-country skiing, biathlon, and an additional indoor sport to be determined later. This program will provide developing Minnesota athletes access to top level coaching and competition with the ultimate goal of producing more Olympic medal-caliber athletes in those sports.
- Provided program assistance and support to Minnesota facilities hosting national and international amateur sports events.
- Supervised successful financial administration of National Sports Center

ECONOMIC IMPACT & USER NUMBER SUMMARY

MASC Affiliate Facilities (1987 – 1996)



Total State Investment in MASC Affiliate Sport Facilities (1987 – 1996)

\$36.554 million

(an additional \$3.4 million is on hold pending raising of non-state matching funds.)

Total Return on Investment (economic impact) From MASC Affiliate Sport Facilities (1987 – 1996)

\$140.5 million

Total Estimated Users at MASC Affiliate Sport Facilities (1987 – 1996)

7,587,271



Part II
'Mighty Ducks' Ice Arena
Grant Program



Sports Served

Girls and Women's Hockey
Boys and Men's Hockey
Figure Skating
Short-Track Speedskating
In-Line Hockey
Bandy
Sledge Hockey
Other ice sports

1995, 1996 Update

The "Mighty Ducks" Ice Arena Grant Program is an innovative program of the MASC that provides grants of up to \$250,000 for communities seeking to construct new sheets of ice or \$50,000 for renovation projects on existing ice facilities. These grants, which must be matched by local private or public funds, have provided the stimulus for the construction of **41 new sheets** of ice all across the State.

In awarding Mighty Ducks grants, the MASC seeks to meet the following objectives:

- Provide increased opportunities for female ice-sport participation.
- Increase ice-time access for sports other than hockey.
- Generate net economic activity for the State.
- Encourage partnerships among public and private organizations.

State Investment

\$2.853 million (1995)

\$8 million (1996)

Number of Grants Awarded

1995 = 11 grants for new arenas
14 grants to renovate existing arenas

1996 = 30 grants for new arenas
21 grants to renovate existing arenas

Estimated Economic Impact

Total local private and public spending leveraged: \$70 million

Estimated Users

Annual number of users at arenas receiving Mighty Ducks grants = 5.75 million

MIGHTY DUCKS NEW ARENA GRANTS (1995-96)

By Congressional District

District 1	Faribault	\$250 K	December 1995
	La Crescent	\$250 K	April 1996
	Rochester/Olmsted County	\$250 K	April 1996
	Kasson/Dodge County	<u>\$250 K</u>	April 1996
	TOTAL DISTRICT 1	\$1 Million	
District 2	Sleepy Eye	\$150 K	December 1995
	New Prague	\$250 K	April 1996
	St. Michael/Albertville	\$200 K	November 1996
	Mankato	<u>\$250 K</u>	November 1996
	TOTAL DISTRICT 2	\$850 K	
District 3	Plymouth	\$250 K	December 1995
	Maple Grove	\$250 K	April 1996
	Edina	\$250 K	April 1996
	Orono Hockey & ISD #278	\$100 K	April 1996
	Brooklyn Park	<u>\$150 K</u>	November 1996
TOTAL DISTRICT 3	\$1 Million		
District 4	South St. Paul	\$250 K	April 1996
	Inver Grove Heights	\$150 K	April 1996
	Ramsey County (Highland Arena)	\$250 K	November 1996
	New Brighton	<u>\$250 K</u>	November 1996
	TOTAL DISTRICT 4	\$900 K	
District 5	Minneapolis	\$250 K	December 1995
	St. Louis Park	\$250 K	April 1996
	New Hope/ISD #281	<u>\$250 K</u>	April 1996
	TOTAL DISTRICT 5	\$750 K	
District 6	Oakdale/Maplewood	\$250 K	December 1995
	Blaine	\$125 K	November 1996
	Anoka County	\$125 K	November 1996
	Hastings	\$125 K	November 1996
	Eagan	\$125 K	November 1996
	Mahtomedi	\$125 K	November 1996
	Stillwater	<u>\$125 K</u>	November 1996
TOTAL DISTRICT 6	\$1 Million		
District 7	Bagley (Clearwater County)	\$200 K	December 1995
	Sauk Centre	\$125 K	December 1995
	Richmond	\$200 K	December 1995
	Alexandria	\$150 K	December 1995
	Detroit Lakes	\$250 K	April 1996
	Moorhead	\$250 K	April 1996
	Roseau	<u>\$100 K</u>	November 1996
	TOTAL DISTRICT 7	\$1.275 Million	
District 8*	Cloquet	\$250 K	December 1995
	Elk River	\$250 K	April 1996
	Eveleth	\$250 K	April 1996
	Duluth	\$250 K	April 1996
	Moose Lake	\$150 K	April 1996
	International Falls	<u>\$100 K</u>	November 1996
	TOTAL DISTRICT 8	\$1.25 Million	
	* Quad-Cities Curling Center, Eveleth	\$1.0 Million	April 1996

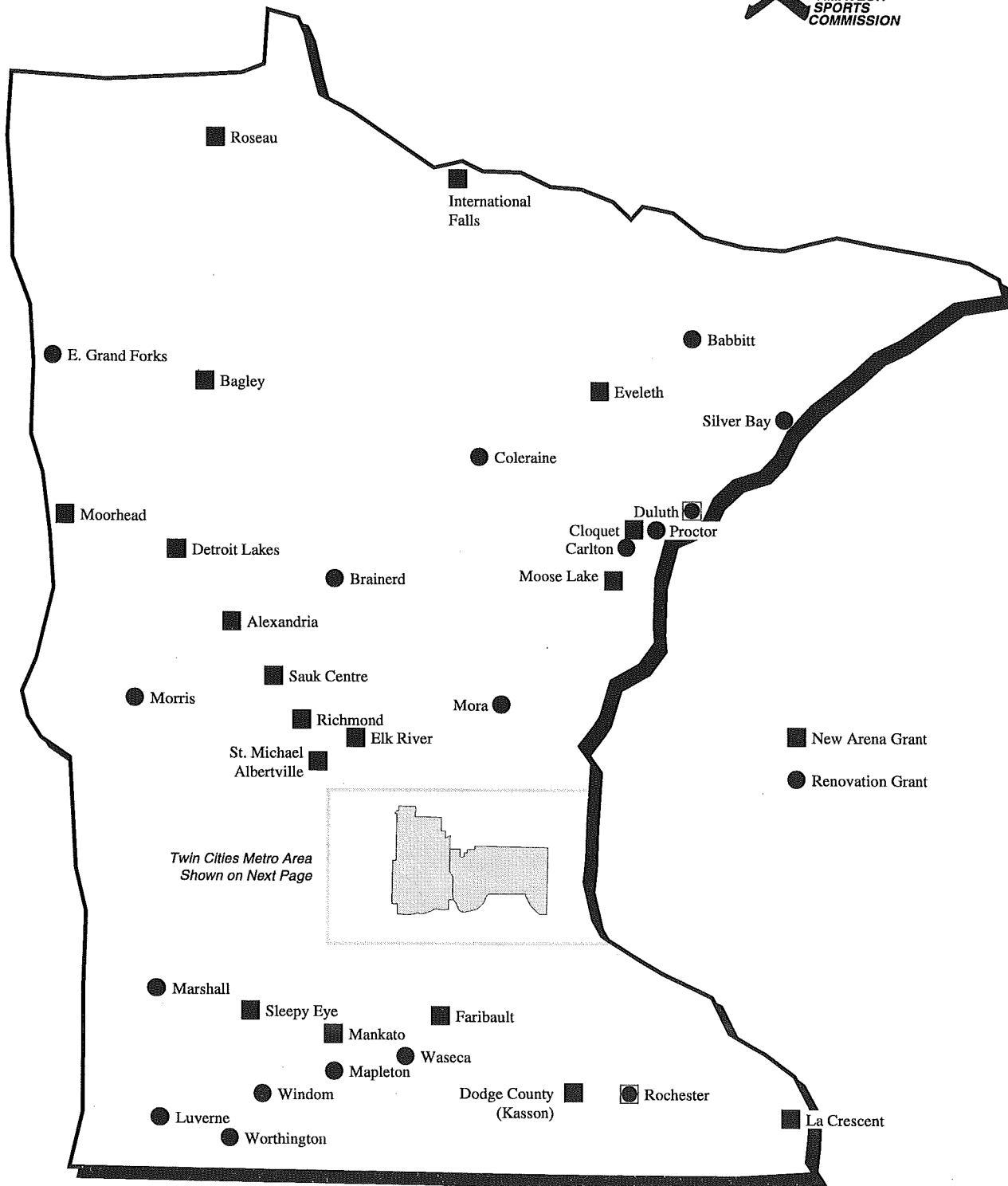
MIGHTY DUCKS ARENA RENOVATION GRANTS (1995-96)

By Congressional District

District 1	Rochester	\$50 K	December 1995
	Waseca	\$50 K	December 1995
	Mapleton	<u>\$30 K</u>	November 1996
	TOTAL DISTRICT 1	\$130 K	
District 2	Worthington	\$50 K	December 1995
	Marshall	\$50 K	December 1995
	Windom	\$50 K	December 1995
	Sleepy Eye	\$50 K	April 1996
	Hutchinson	\$50 K	April 1996
	Luverne	<u>\$50 K</u>	April 1996
	TOTAL DISTRICT 2	\$300 K	
District 3	Brooklyn Park	\$25 K	December 1995
	Osseo/ISD #279	\$50 K	April 1996
	Eden Prairie	\$25 K	November 1996
	Minnetonka	\$25 K	November 1996
	Mound	<u>\$25 K</u>	November 1996
	TOTAL DISTRICT 3	\$150 K	
District 4	Ramsey County	\$50 K	December 1995
	West St. Paul	\$50 K	April 1996
	Ramsey County	\$50 K	April 1996
	Ramsey County	<u>\$100 K</u>	November 1996
	TOTAL DISTRICT 4	\$250 K	
District 5	Richfield	\$50 K	December 1995
	Minneapolis Public Schools	<u>\$50 K</u>	November 1996
	TOTAL DISTRICT 5	\$100 K	
District 6	Cottage Grove	\$40 K	December 1995
	White Bear Lake	\$16 K	April 1996
	Farmington	\$50 K	April 1996
	Apple Valley	<u>\$50 K</u>	November 1996
	TOTAL DISTRICT 6	\$156 K	
District 7	Stevens County/Morris	\$50 K	December 1995
	East Grand Forks	<u>\$45 K</u>	April 1996
	TOTAL DISTRICT 7	\$96 K	
District 8	Babbitt	\$12 K	December 1995
	Lindstrom	\$50 K	December 1995
	Mora	\$50 K	December 1995
	Carlton	\$50 K	December 1995
	Duluth	\$50 K	April 1996
	Silver Bay	\$50 K	April 1996
	Coleraine	\$50 K	April 1996
	Brainerd	\$45 K	November 1996
	Proctor	<u>\$50 K</u>	November 1996
	TOTAL DISTRICT 8	\$407 K	

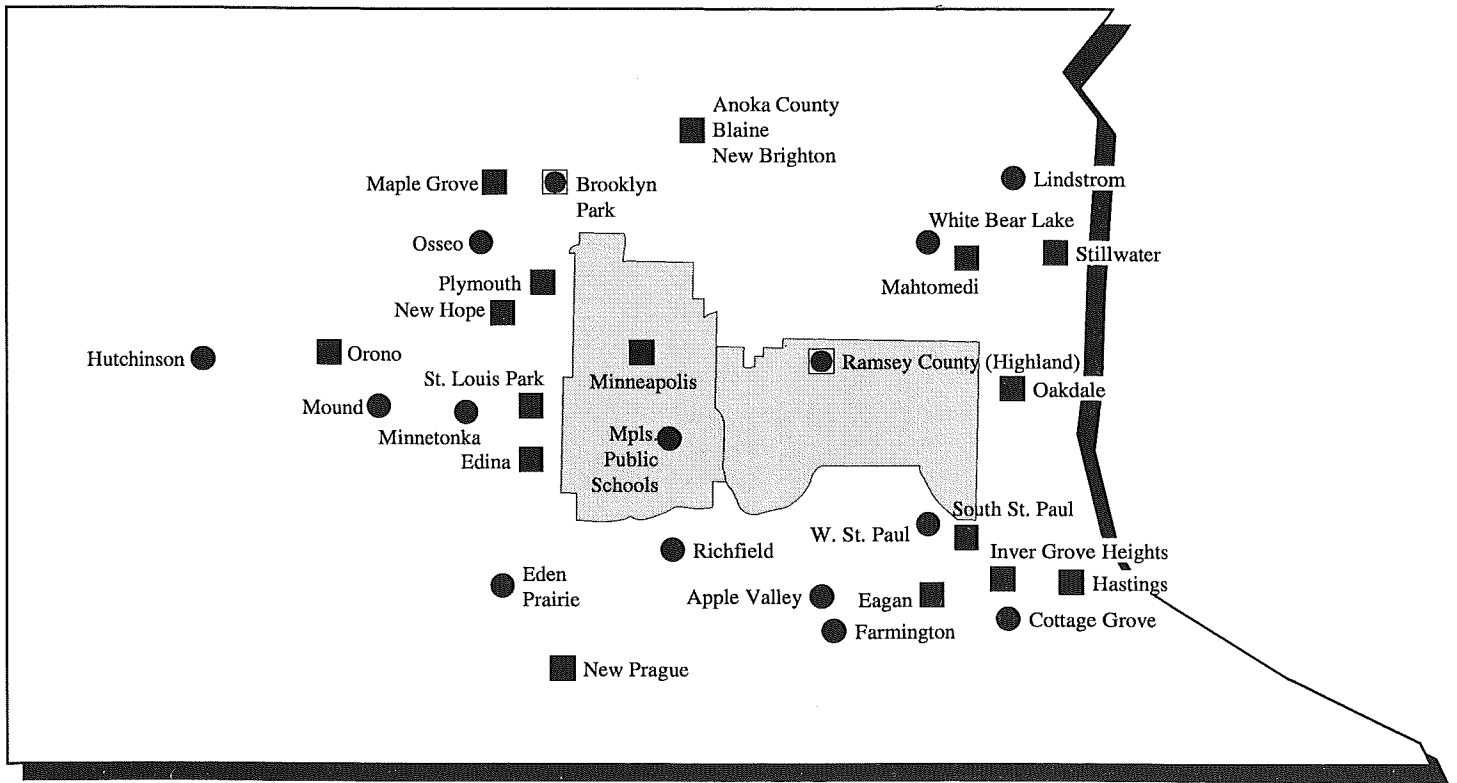
1995-1996 Mighty Ducks Grant Awards

Distribution



1995-1996 Mighty Ducks Grant Awards

Distribution



■ New Arena Grant
● Renovation Grant



Part III
Affiliate Facilities

Sports Served

- Diving
- Swimming
- Synchronized Swimming
- Water Polo

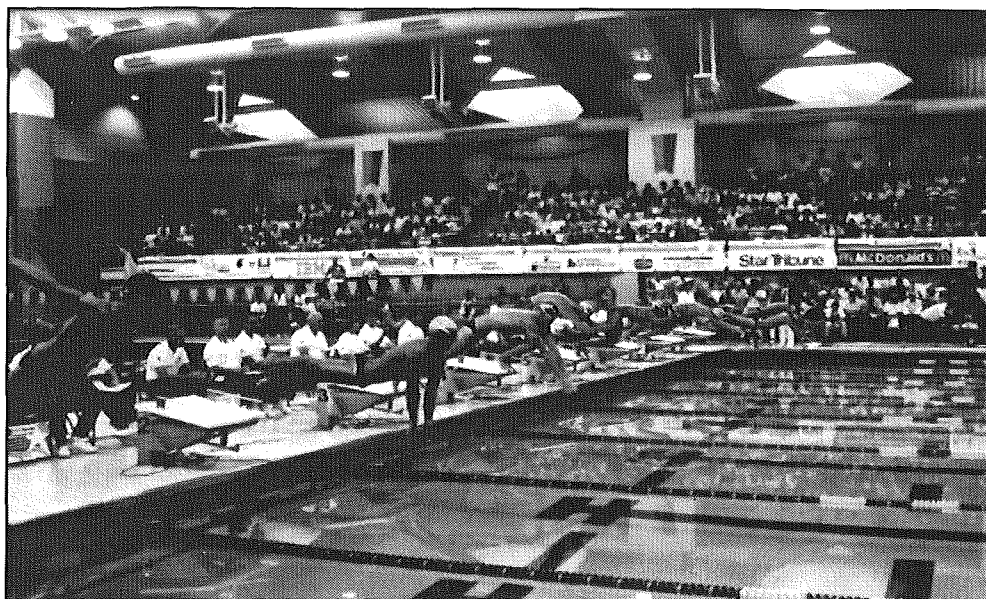
Major Events Hosted

1995

- Minneapolis City Conference Championships
- Twin Cities Diving Invitational
- YMCA State Championships
- Men's Big 10 Swimming & Diving Championships
- Minnesota State High School League Championships
- USS State Championships
- Phillips 66 National Senior Indoor Championships
- YMCA Midwest Regionals
- Minnesota Masters Championships
- Chevrolet Indoor Sailing Championships
- Minnesota State Synchronized Swimming Championships
- Junior Olympic Regionals
- US Open Synchronized Swimming Championships
- Midwest Senior Championships
- Collegiate Dual Meets

1996

- Minnesota Masters Championships
- Minneapolis City Conference Championships
- YMCA State Championships
- Women's Big 10 Swimming & Diving Championships
- Minnesota State High School League Championships
- USS State Championships
- YMCA Midwest Regionals
- Jason Project
- West Junior National Championships
- Minnesota State Synchronized Swimming Championships
- Midwest Senior Championships
- USS State Championships
- Minnesota Masters Championships
- Minneapolis City Conference Championships



1995, 1996 Update

The University of Minnesota Aquatic Center continues to attract the most prestigious aquatic sport events available. During the past two years, the Aquatics Center hosted both the Big Ten Men's and Women's Championships. The return on investment from the Aquatic Center well exceeds the original \$3 million invested.

State Investment

\$3 million (1987) (+ \$15 million U of M resources)

Current Financial Support

Operated by University of Minnesota

Estimated Economic Impact

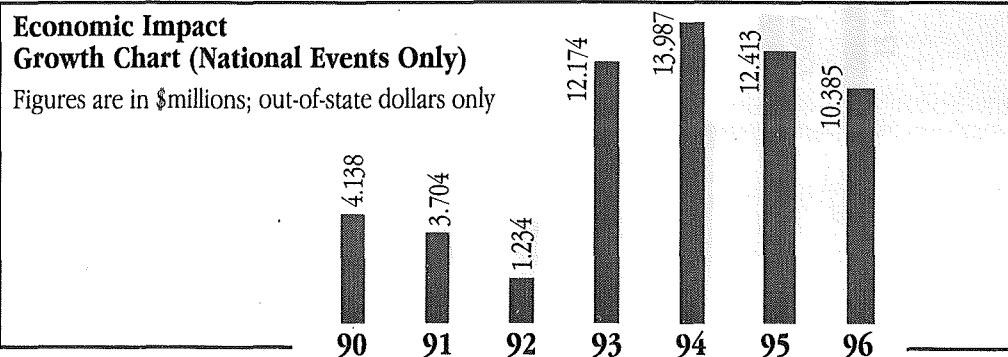
1990 - 1992 = \$9.076 million (annual average: \$3.052 million)
 1993 - 1994 = \$26.162 million (annual average: \$13.081 million)
 1995 - 1996 = \$22.798 million (annual average: \$11.399 million)

Total economic impact since opening (1990) = \$58.036 million

Estimated Users

1990 - 1992 = 223,729 (annual average: 74,576)
 1993 - 1994 = 513,920 (annual average: 256,960)
 1995 - 1996 = 714,425 (annual average: 357,212)

Total users since opening (1990) = 1,452,074



Sports Served

- Archery
- Basketball
- Bowling
- Boxing
- Cycling
- Football
- In-Line Skating
- Jazzercise
- Judo
- Karate
- Rugby
- Soccer
- Taekwondo
- Track and Field
- Ultimate Disk
- Volleyball
- Weightlifting
- Wrestling

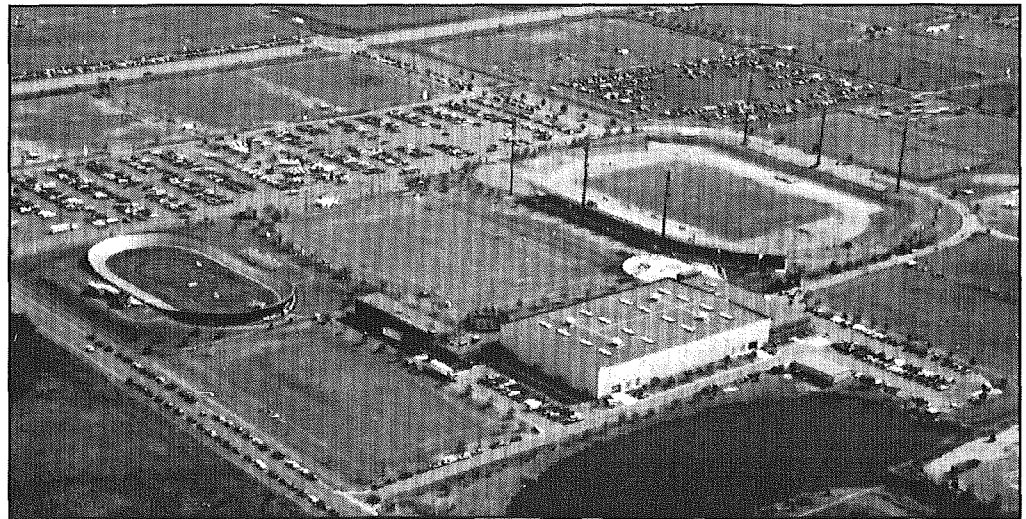
Major Events Hosted

1995

- Minnesota Wrestling Invitational
- USA CUP International Youth Soccer Tournament
- Adidas NSC Soccer Cup
- All-American Girls Soccer Tournament
- National Wheelchair Shooting Championships
- North American Indigenous Games
- Northern Lights Volleyball Tournament
- Minnesota State High School League Track & Field Championships
- Minnesota True Team Track & Field Championships

1996

- USA CUP International Youth Soccer Tournament
- Adidas NSC Soccer Cup
- All-American Girls Soccer Tournament
- National Wheelchair Shooting Championships
- Northern Lights Volleyball Tournament
- Minnesota State High School League Track & Field Championships
- Minnesota True Team Track & Field Championships



1995, 1996 Update

The National Sports Center in Blaine has achieved an annual profit of more than \$100,000 for six consecutive years since 1991. The National Sports Center (NSC) continues to host local, national and international events and training programs. In 1997, construction will begin on a new four-sheet ice arena at the NSC, with completion scheduled for 1998.

State Investment

- \$14.7 million (1987)
- \$.4 million (1992)
- \$.119 million (1994)

Current Financial Support

Self-supporting non-profit organization

Estimated Economic Impact

- 1990 - 1992 = \$18.558 million (annual average: \$6.186 million)
- 1993 - 1994 = \$17.613 million (annual average: \$8.806 million)
- 1995 - 1996 = \$28.787 million (annual average: \$14.393 million)

Total economic impact since opening (1990) = \$64.958 million

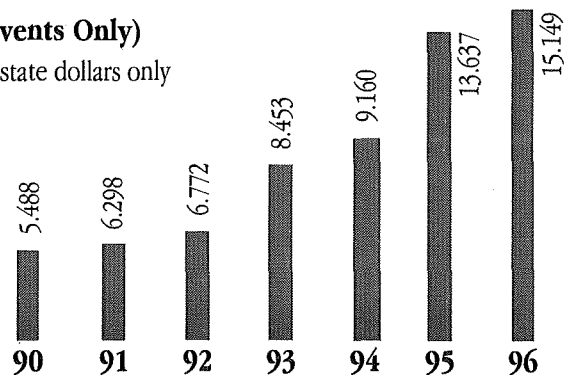
Estimated Users

- 1990 - 1992 = 1,158,000 (annual average: 386,000)
- 1993 - 1994 = 875,000 (annual average: 435,500)
- 1995 - 1996 = 1,493,445 (annual average: 746,722)

Total users since opening (1990) = 3,526,445

Economic Impact Growth Chart (National Events Only)

Figures are in \$millions; out-of-state dollars only





Sports Served

- Broomball
- Curling
- Figure Skating
- Ice Hockey
- Ice Ringette

Major Events Hosted

1995

- MAHA Bantam Festival
- USA National "15" Tournament
- USA National "16" Tournament
- Home of the St. Cloud State Husky Hockey Team
- Home of the St. John's University Hockey Team
- High school and public events, programs and camps

1996

- MAHA Bantam Festival
- USA National "15" Tournament
- USA National "16" Tournament
- Home of the St. Cloud State Husky Hockey Team
- Home of the St. John's University Hockey Team
- High school and public events, programs and camps

1995, 1995 Update

The National Hockey Center continues to successfully support a quality Division I ice hockey program. In addition to meeting University needs of intercollegiate competition, physical education and recreation, the facility hosts national and regional sport programs and camps.

State Investment

\$9.5 million (1987)

Current Financial Support

Operated by St. Cloud State University

Estimated Economic Impact

- 1990 - 1992 = \$398 million (annual average: \$.132 million)
- 1993 - 1994 = \$392 million (annual average: \$.196 million)
- 1995 - 1996 = \$917 million (annual average: \$.458 million)

Total economic impact since opening (1990) = \$1.707 million

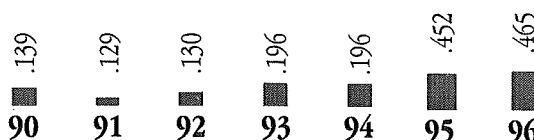
Estimated Users

- 1990 - 1992 = 156,123 (annual average: 52,041)
- 1993 - 1994 = 280,000 (annual average: 140,000)
- 1993 - 1994 = 600,000 (annual average: 300,000)

Total users since opening (1990) = 1,036,123

Economic Impact Growth Chart (National Events Only)

Figures are in \$millions; out-of-state dollars only



Sports Served

- Alpine Skiing
- Biathlon
- Cross Country Skiing
- Freestyle Skiing
- Golf
- In-Line Skating
- Mountain Biking
- Nordic Combined
- Ski Jumping
- Snowboarding
- Snowmobiling

Major Events Hosted

1995

- Pepsi Challenge Cup Race
- U.S. National Snowboarding Championships
- NCAA Regional Cross-Country Skiing Championships
- International Classic Cross-Country Ski Marathon
- Minnesota State High School League Nordic Skiing Championship
- Mesabi East Invitational High School Cross-Country Ski Race

1996

- Pepsi Challenge Cup Race
- NCAA Cross-Country Skiing Championships
- International Classic Cross-Country Ski Marathon
- Minnesota State High School League Nordic Skiing Championship
- Mesabi East Invitational High School Cross-Country Ski Race



1995, 1996 Update

While continuing its tradition of hosting national and regional events, Giants Ridge has expanded in two significant areas. A \$400,000 investment by the IRRRB allowed the construction of ten new downhill ski runs, increasing the alpine skiing area by 50%. And a new \$6 million Lanny Wadkins-designed championship golf course will open in the summer of 1997. The golf course was funded by the sale of \$4.25 million in revenue bonds and a \$1.75 investment from the IRRRB. The opening of the golf course, which will make Giants Ridge a true four-season recreational sports facility, is expected to attract significant additional private investment from the hospitality industry.

State Investment

\$2.2 million (1987)

Current Financial Support

Giants Ridge is a self-supporting operation of the IRRRB.

Estimated Economic Impact

- 1987 - 1992 = \$3.683 million (annual average: \$.614 million)
- 1993 - 1994 = \$2.302 million (annual average: \$1.151 million)
- 1995 - 1996 = \$1.891 million (annual average: \$.946 million)

Total economic impact since 1987 expansion = \$7.876 million

Estimated Users

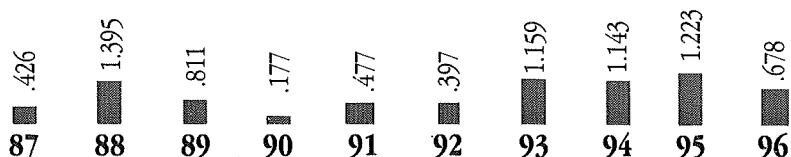
- 1987 - 1992 = 691,770 (annual average: 115,295)
- 1993 - 1994 = 274,000 (annual average: 137,000)
- 1993 - 1994 = 261,000 (annual average: 130,500)

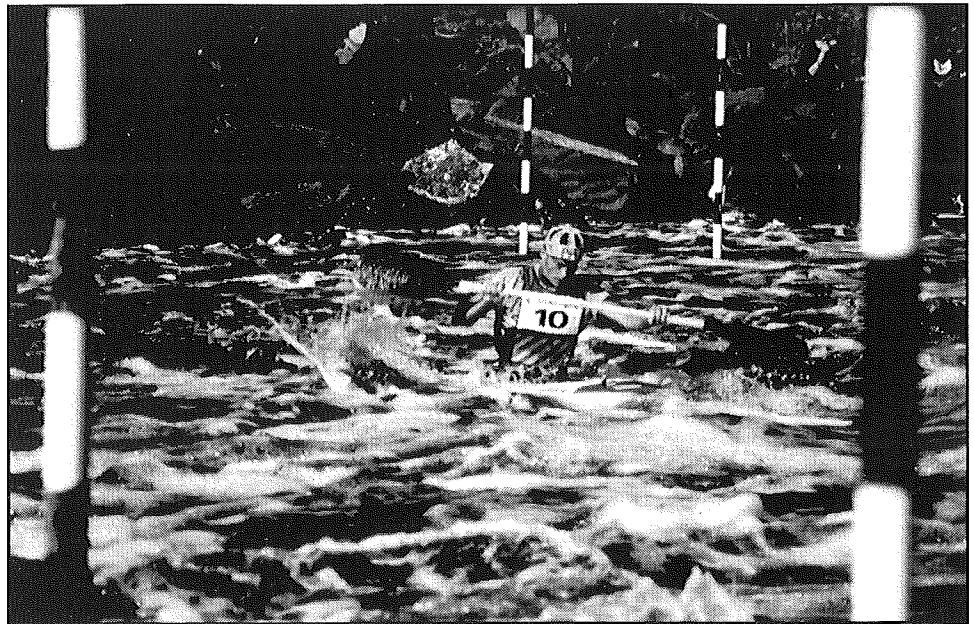
Total users since 1987 expansion = 1,226,770

Economic Impact

Growth Chart (National Events Only)

Figures are in \$millions; out-of-state dollars only





Sports Served

- Cycling
- Flat Water Canoe
- Hiking
- In-Line Skating
- Whitewater Kayak & Canoe

Major Events Hosted

- 1995**
- Champion International Whitewater Series Final
 - Wet & Wild Paddling Expo
 - American Canoe Assn. Whitewater Kayak and Canoe Instructor Certification
 - St. Louis River Regional Rodeo & Slalom

1996

- Wet & Wild Paddling Expo
- American Canoe Assn. Whitewater Kayak and Canoe Instructor Certification
- St. Louis River Regional Rodeo & Slalom

1995, 1996 Update

The National Kayak Center continues to be a favorite site in the U.S. for national and Olympic caliber paddlers. The Outpost Visitor's Center, a natural log structure, serves as a rest stop for athletes and staging location for classes, clinics, and competition events.

State Investment

\$.260 million (1989)

Current Financial Support

Carlton Area Chamber of Commerce Kayak Committee in cooperation with the University of Minnesota, Duluth

Estimated Economic Impact

- 1989 - 1992 = \$.853 million (annual average: \$.213 million)
- 1993 - 1994 = \$1.293 million (annual average: \$.646 million)
- 1995 - 1996 = \$.780 million (annual average: \$.390 million)

Total economic impact since 1989 = \$2.926million

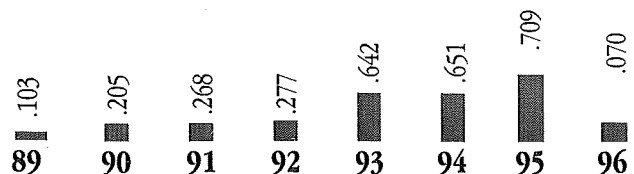
Estimated Users

- 1989 - 1992 = 26,874 (annual average: 6,718)
- 1993 - 1994 = 25,745 (annual average: 12,872)
- 1993 - 1994 = 30,500 (annual average: 15,250)

Total users since 1989 = 83,119

Economic Impact Growth Chart (National Events Only)

Figures are in \$millions; out-of-state dollars only





Sports Served

- Alpine Skiing
- Cross Country Skiing
- Ski Jumping

Major Events Hosted

- 1995**
- Coleraine Invitational USSA Ski Jumping Tournament
 - USSA Thanksgiving Training Camp
 - USSA Christmas Training Camp
 - USSA January Training Camp

1996

- Coleraine Invitational USSA Ski Jumping Tournament
- USSA Thanksgiving Training Camp
- USSA Christmas Training Camp
- USSA January Training Camp

1995, 1996 Update

The Ole Mangseth Memorial Ski Jump is a successful example of a public partnership with a local community group. The Itasca Ski & Outing Club has raised substantial dollars and resources to develop this facility. The investment by the State has enabled them to host regional and national caliber events and camps. In 1998, the ski jump will host the U.S. Junior Olympic Ski Jumping and Nordic Combined competition.

State Investment

\$.175 million (1989)

Current Financial Support

Operated by Itasca Ski & Outing Club

Estimated Economic Impact

- 1991 – 1992 = \$.097 million (annual average: \$.048 million)
- 1993 – 1994 = \$.082 million (annual average: \$.041 million)
- 1995 – 1996 = \$.400 million (annual average: \$.200 million)

Total economic impact since opening (1991) = \$.579 million

Estimated Users

- 1991 – 1992 = 2,249 (annual average: 1,124)
- 1993 – 1994 = 2,982 (annual average: 1,491)
- 1995 – 1996 = 1,405 (annual average: 703)

Total users since opening (1991) = 6,636

Economic Impact Growth Chart (National Events Only)

Figures are in \$millions; out-of-state dollars only



Sports Served

- Ice Speedskating
- In-Line Speedskating
- Bandy
- Ice Hockey
- Ice Skating
- In-Line Hockey
- In-Line Skating
- Aggressive Skating

Major Events Hosted

1995

- USISA Junior National Long Track Speedskating Championships
- ASU National Long Track Speedskating Championships
- World Bandy Championships

1996

- America Cup I - Long Track Speedskating Championships
- America Cup II - Long Track Speedskating Championships
- World Cup Sprints Long Track Speedskating Championships
- North American Long Track Speedskating Championships

Annual Events

- John Rose Cup - Long Track Speedskating Championship
- National In-Line Speedskating Championships
- Minnesota State Novice Speedskating Championships
- USISA Junior Regional Long Track Speedskating Championships
- America Cup - Long Track Speedskating Championships



1995, 1996 Update

The John Rose Minnesota OVAL opened late in 1993 and has established itself as one of Minnesota's most visible venue for major national and international events. With its hosting of the World Bandy Championships in 1995 and a World Cup Speedskating Meet in 1996, the OVAL attracted the best athletes in the World in those respective sports. In the winter of 1997-98, the OVAL will host another World Cup Speedskating event (in November 1997) and the Junior World Speedskating Championships (in March 1998).

State Investment

- \$1.9 million (1992)
- \$.5 million (1994)

Current Financial Support

Operated by the City of Roseville

Estimated Economic Impact

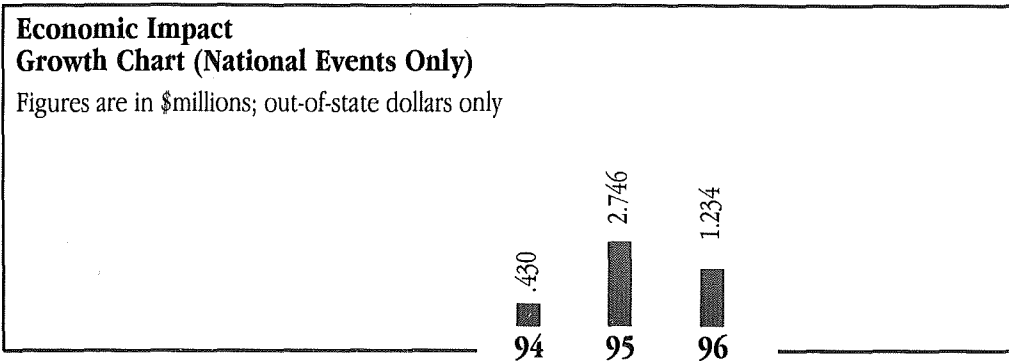
- 1993 = \$.114 million (December only)
- 1994 = \$.316 million
- 1995 - 1996 = \$3.980 million (annual average: \$1.99 million)

Total economic impact since opening (Dec. 1993) = \$4.41 million

Estimated Users

- 1993/1994 = 85,204 (annual average: 42,602)
- 1995 - 1996 = 170,900 (annual average: 85,450)

Total users since opening (Dec. 1993) = 256,104

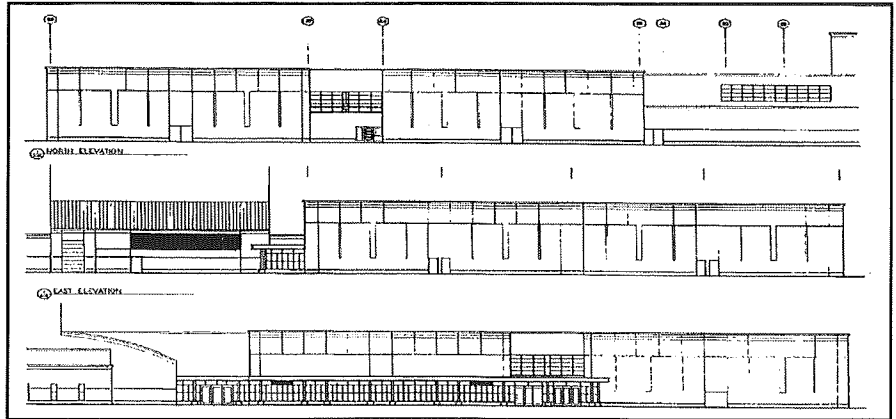


National Volleyball Center, Rochester (Projected Completion: Fall 1998)

20

Sports To Be Served

Volleyball
Wrestling
Badminton
Basketball
Taekwondo
Karate
Indoor Soccer



Designed as a national-caliber volleyball facility, the Volleyball Center will also function as a venue for other indoor sports, including basketball, badminton, wrestling, taekwondo, and other sports. The location adjoining the new Century High School in Rochester, will allow a sharing of facilities, including meeting rooms, parking and locker rooms. The facility will be a prime host to USA Volleyball regional and national programs and events.

State Investment: \$2.3 million (1996)

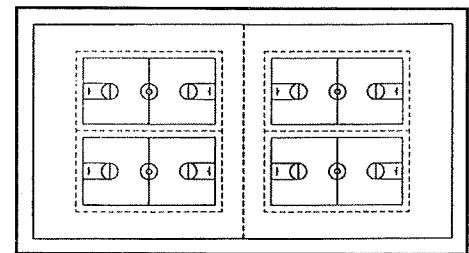
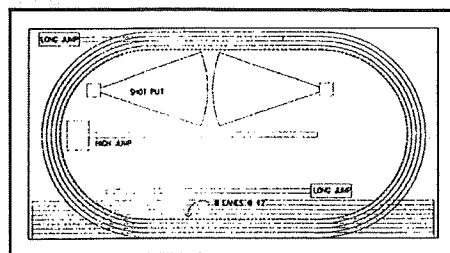
Financial Support: City of Rochester and the Rochester School District. Facility will be operated by the City of Rochester Park and Recreation Department;

Specs: 36,000 sq. feet of playing surface, with an additional 10,000 sq. feet in a mezzanine viewing area. The ceiling clearance will be 30 feet; with space for a minimum of 8 volleyball courts or 6 basketball courts, with spectator viewing area at court level or overhead on the mezzanine level.

Urban Sports Center, Minneapolis (Projected completion: December 1998)

Sports To Be Served

USOC Olympic Community
Development Program
Track and Field
Tennis
Volleyball
Team Handball
Wrestling
Indoor Soccer
Basketball
Taekwondo
Karate



The Urban Sports Center is a collaborative effort between the MASC, the Minneapolis Public Schools, and the Minneapolis YWCA. Located adjacent to South High School on Lake Street in Minneapolis, the facility will provide athletic training facilities for under-served urban youth. It will also serve as the headquarters for the US Olympic Committee's Community Olympic Development Program.

State Investment: \$3.4 million (1996); Project currently on hold pending the raising of a required non-state matching investment of at least \$8 million.

Financial Support: Owned by Minneapolis Public School District; Operated by the Minneapolis YWCA

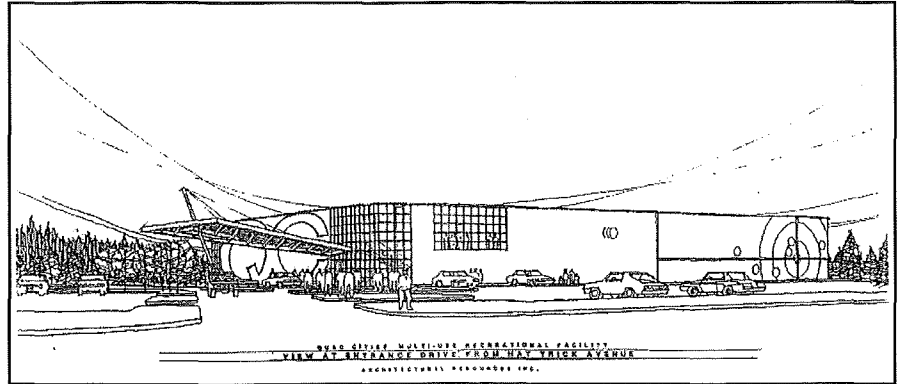
Specs: 50,000 sq. feet; sufficient space to accommodate a 200m indoor track, 50 x 96 yard soccer field, 4 basketball courts, 12 volleyball courts, or 4 tennis courts, depending on configuration.

Quad Cities Curling Center, Eveleth (Projected Completion: Late Fall 1997)

21

Sports To Be Served

Curling
Indoor Tennis
Volleyball
Other Indoor Sports &
Events



The Quad-Cities Curling Center is a cooperative venture of the cities of Eveleth, Virginia, Mountain Iron, and Gilbert. This facility, which will be a US Olympic Curling Training Center, will feature eight curling sheets, as well as the multi-use potential to host indoor sports such as volleyball and events such as trade shows and large meetings. The new curling center will be located adjacent to the U.S. Hockey Hall of Fame in Eveleth.

State Investment: \$250,000 (1995 "Mighty Ducks" grant), \$1 million (1996). A total of \$1.75 million in matching funding will be provided from the following sources: \$250,000 from the Virginia, Eveleth, and Gilbert Curling Clubs; \$500,000 from the four cooperating cities; \$500,000 from the IRRRB, and \$500,000 to be raised from other local sources. Total budget: \$3 million.

Financial Support: A joint powers agreement will create a governing board made up of a representatives of the cities of Virginia, Eveleth, Mountain Iron, and Gilbert, as well as the curling club.

Bush Lake Ski Jump, Bloomington (Projected Completion: Nov. 1997)

Sports To Be Served

Ski Jumping



This State of Minnesota investment will fund the construction of a 70-meter ski jump that will be an first-class training facility and a potential host site to U.S. Ski Association events such as the Junior Olympics. The State investment will fund the construction of the foundation, steel scaffolding, and timber decking for the jump. The Minneapolis Ski Club will contribute \$60,000 in cash and in-kind services to complete the site preparation and make the jump suitable for use.

State Investment: \$500,000 (1996)

Financial Support: Facility would be operated by the Minneapolis Ski Club and Hennepin County Parks.

Specs: 70-meter ski jump in Bloomington's Hyland Park Reserve.