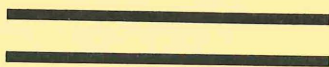




# ***ANNUAL REPORT***

Fiscal Year 1986

NOT FILMED



LEGISLATIVE REFERENCE LIBRARY,  
645 State Office Building  
Saint Paul, Minnesota 55155

## **NORTHWEST REGIONAL DEVELOPMENT COMMISSION**

HT  
393  
.M62  
N67ax  
1986

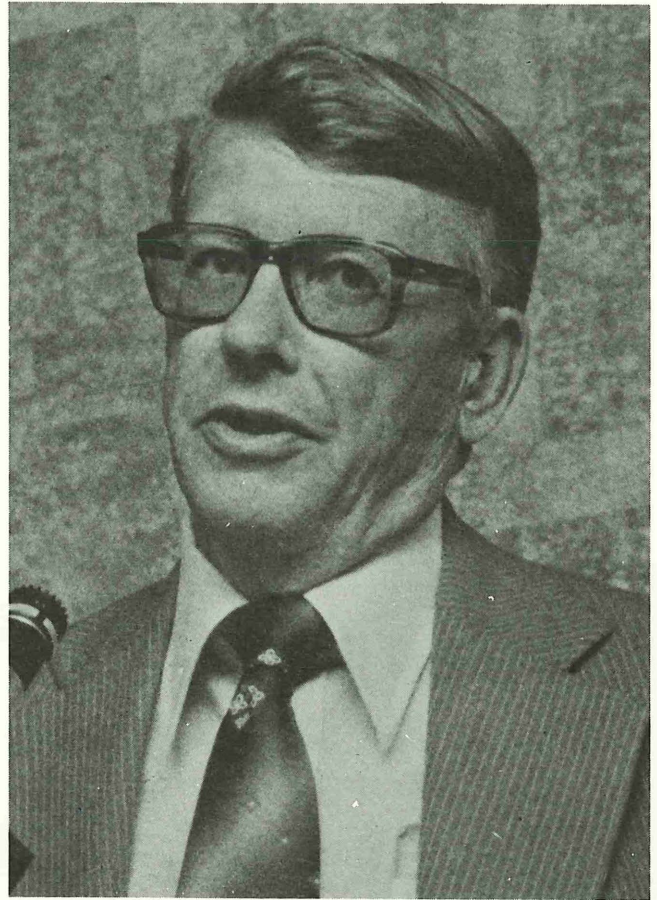
Pursuant to Mn Stat 462.363

# CHAIRMAN'S LETTER

The past year has seen a great many changes in the Regional Development Commission's role. Some of its major successes have been:

- The Arts program sponsored its first region-wide art event.
- The Aging program weathered the Gramm-Rudman Act and became stronger and more consolidated than ever.
- The Fall Conference on Aging boasted a record attendance.
- The Transportation Program arranged the largest rail rehab project in the State of Minnesota.
- The Economic Development Program got the Regional Enterprise Loan Fund up and operational.
- The Commission Staff was instrumental in putting together the strategies for the Rural Initiative McKnight Project.
- Several communities received assistance in comprehensive planning, and the staff continues to provide grant management to several communities with the Small Cities Program.

The future of the Commission has my own best wishes for its successful and effective performance and I have every confidence that new leadership will strengthen and consolidate Region One.



Respectfully submitted,

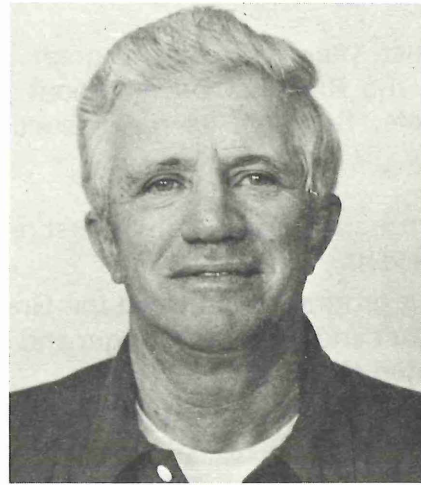
*Harry Sjulson*

Harry Sjulson

# BOARD OF DIRECTORS



**Cleo Cleveland**  
East Grand Forks



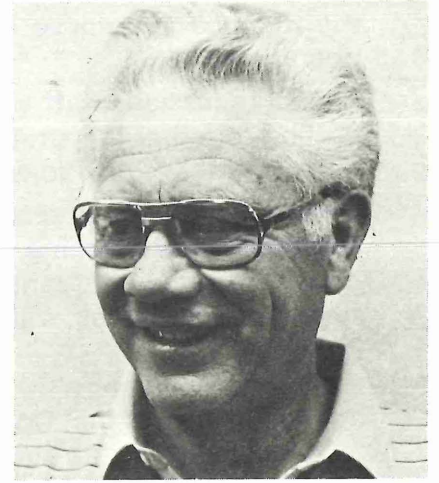
**Kermit Finstad**  
Thief River Falls



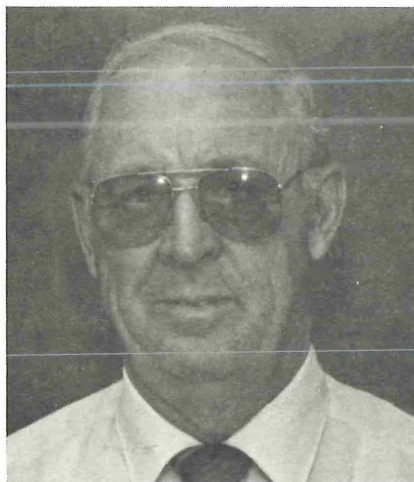
**William Gatheridge**  
Humboldt



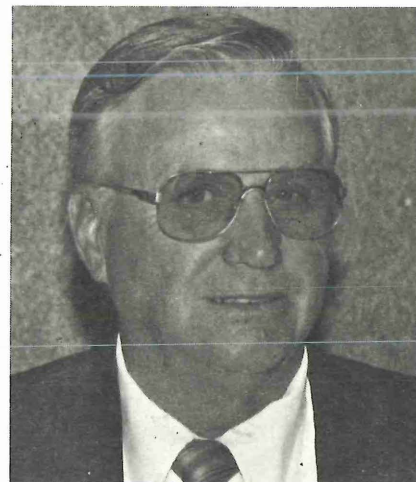
**Floyd Hovland**  
Ada



**Wayne Juhl**  
Greenbush



**Willard Purath**  
Red Lake Falls



**Ervin Strandquist**  
Newfolden

# COMMISSION MEMBERSHIP

COUNTY	COUNTY BOARD	TOWNSHIP BOARD	CITIES
Kittson	Charles Lindberg Kennedy	*William Gatheridge Humboldt	Dr. Joe Bouvette Hallock
Marshall	Delray Larson Gatzke	*Ervin Strandquist Newfolden	Vernon Gunderson Newfolden
Norman	John Storsved Hendrum	Cary Sip Ada	*Floyd Hovland Ada
Pennington	Donald Grabanski Thief River Falls	*Kermit Finstad Thief River Falls	Karen Young St. Hilaire
Polk	Eugene Mattson East Grand Forks	Gary Letnes Crookston	Duane Knutson Fertile
Red Lake	*Willard Purath Red Lake Falls	Ralph Berg Brooks	Russell Pahlen Plummer
Roseau	*Wayne Juhl Greenbush	Donald Fast Warroad	Gary Hendrickson Warroad

## SCHOOL DISTRICT REPRESENTATIVES

\*Cleo Cleveland  
East Grand Forks

\*\*Harry Sjulson, Chairman  
St. Hilaire

## PUBLIC INTEREST GROUPS

Agriculture	Marville Magnusson, Argyle	Soil & Water Conservation	Verne Green, Newfolden
Business	Harold Thomforde, Crookston	Vocational Schools	Harvey Tripp, East Grand Forks
Industry	George Wikstrom, Jr., Karlstad	Watershed District	Rudee Anderson, Greenbush
Low Income	Lowell Enerson, Oklee	Women	Treasure Omdahl, Warren
Labor	Ray Beauchamp, TRF	Financial Institutions	John Carpenter, Hallock



\* Member of Board of Directors  
\*\* Chairman

# **NORTHWEST PRIVATE INDUSTRY COUNCIL**

Maryel Anderson, Thief River Falls  
Donald Bakken, Fertile  
Rollin Bergman, Ada  
Gary Erickson, Thief River Falls  
Ellef Erlien, Twin Valley  
Twila Fore, Oklee  
Marcella Gonsorowski, Newfolden  
Donald Goodrich, Thief River Falls  
Steve Gorman, East Grand Forks  
Marlys Horvath, Roseau

Lloyd Hovelson, Gary  
Bill Huggett, Crookston  
Anne Jaeger, Plummer  
John Johnson, Thief River Falls  
Victor Johnson, Lake Bronson  
Joyce Magner, Newfolden  
Elworth Maki, Newfolden  
Dawn Newton, Crookston  
Claudia Nielsen, Lancaster  
Channing Peterson, Roseau

Stanley Roadfeldt, Badger  
Faith Rud, Warren  
JoAnn Sayler, East Grand Forks  
Robert Smith, Crookston  
Randal Swenson, Lancaster  
Gary Thibert, Red Lake Falls  
Nick Waldoch, Red Lake Falls  
George Wikstrom, Jr., Karlstad  
Joan Wilson, Thief River Falls

## **ADVISORY COMMITTEES**

### **AGING ADVISORY COMMITTEE**

Michael Ackley, Halstad  
Emil Bagley, Crookston  
Norbert Bertek, Fosston  
Monica Douglas, Moorhead  
Kermit Finstad, Thief River Falls  
William Gatheridge, Humboldt

Verne Green, Newfolden  
Pearl Hotvedt, East Grand Forks  
Lloyd Hovelson, Gary  
Albert Koop, Thief River Falls  
A. J. Kramer, Roseau  
Calvin Melgard, Warren

John Nowacki, Warren  
Phyllis Raebel, Red Lake Falls  
Wayne Rusten, Hallock  
Lilja Snyder, R.N., Crookston  
JoAnn Thompson, Roseau

### **ARTS ADVISORY COMMITTEE**

Ruth Anderson, Greenbush  
Cleo Cleveland, East Grand Forks  
Sharon Fannin, Karlstad  
Glenda Gausen, Thief River Falls  
Carol Hallan, Warroad  
Heidi Hoks, Thief River Falls  
Diane Krepp, Thief River Falls  
Judith Landin, Warroad  
Evangeline Myhre, Warren  
Mil Sahlstrom, Crookston  
Marie Scott, Red Lake Falls  
Mary Sjaasheim, Thief River Falls  
Ric Sorenson, Fosston  
Mike Trudeau, Thief River Falls  
Luanne Visser, Ada

### **ECONOMIC DEVELOPMENT COMMITTEE**

Richard Anderson, Thief River Falls  
Orville Botner, Thief River Falls  
Neil Bursheim, McIntosh  
John D. Carpenter, Hallock  
Cleo Cleveland, East Grand Forks  
Steve Gorman, East Grand Forks  
Fred Grant, Thief River Falls  
Cleighten Hastad, Halstad  
Norman Hayes, Roseau  
Jim Ingeman, Karlstad  
Delray Larson, Gatzke  
Lowell Larson, Crookston  
Louie Martinez, East Grand Forks  
Steve Mercil, Crookston  
Michael Moore, Fertile  
William Muldoon, Red Lake Falls  
David Paulson, Warroad  
Laurie Polansky, Grygla  
Kenneth Redland, Ada  
Jim Rogalla, Thief River Falls  
Mary Beth Sargeant, Crookston  
Vaughn Thorfinnson, Red Lake Falls  
Ray Tunheim, Newfolden  
Steve Wright, Crookston

### **TRANSPORTATION ADVISORY COMMITTEE**

Harlan Almen, Red Lake Falls  
Ralph Berg, Brooks  
Troy Dagen, Kennedy  
Captain Daniels, Thief River Falls  
Winton Forsberg, Thief River Falls  
Donald Grabanski, Thief River Falls  
Marvin Hutchinson, Thief River Falls  
Richard Jorde, Thief River Falls  
Wayne Juhl, Greenbush  
Delray Larson, Gatzke  
Ronald Rasmusson, Ada  
Cary Sip, Ada  
Harold Thomforde, Crookston  
Gene Wagar, Halstad

### **NORTHWEST REGIONAL ENERGY COUNCIL**

John Helgerson, Ada  
Dan Juhl, Crookston  
Herb Mauritsen, Shelly  
Gene Miller, Crookston  
Renee Murray, Hallock  
Jerry Nagel, Crookston  
Dave Nelson, Wannaska  
Steve Nordhagen, Thief River Falls  
Earl Radi, Crookston  
Charles Riesen, Warren  
Clarence Vathauer, Red Lake Falls

# ***PHYSICAL PLANNING***

## **ECONOMIC DEVELOPMENT**

Major structural changes in the National Economy have provided an impetus to local action. The dramatic shift from a growing manufacturing based national economy to one of low growth dominated by service sector activity, and the major changes in the farm economy have brought many changes to our small communities. Increased unemployment has been the most painful and visible signs of these changes . . . other signs are the loss of main street businesses and the deterioration of the small communities.

All of these changes have pressed small city leaders and the NWRDC closer together to share the responsibility of economic development/job creating initiatives.

NWRDC had some of its own stressful times this past year with Commission members being divided on the location of its offices. After nine months of stress and deliberation the offices were moved from Crookston in Polk county to Thief River Falls in Pennington county with the loss of 80% of the staff.

NWRDC has strong commitments to assist communities in economic development. Assistance is given to communities and to individual businesses.

NWRDC has used a number of tools in assisting economic development . . . the Minnesota Small Cities Economic Development Grant was used in Stephen and Crookston (any community, if it has an acceptable project, can be funded once a year).

Staff members assist in loan packaging and business planning and act as a liaison to state and federal agencies.

NWRDC was successful in creating a revolving loan for economic development activities. The Economic Development Administration provided \$425,000 of funds and local communities provided a match of \$142,000. The Northwest Regional Enterprise Fund is a private entity but is staffed and is provided fiscal management through NWRDC.

## **COMMUNITY DEVELOPMENT BLOCK GRANTS**

The Commission has been involved in assisting three area cities in the implementation of Community Development Block Grants during the year. These activities consist of helping the cities to complete the actual projects and activities for which grant funds have been allocated.

Assistance is usually administrative or technical in nature, ranging from being the fiscal agent to writing detailed policies and procedures. These activities give Commission staff the opportunity to become involved in the everyday operation and problems of local units of government. Crookston, Red Lake Falls and Strathcona were the three cities involved and the specific activities in each community are described below.

Crookston — the Commission became involved in assisting Crookston to finish up activities from a comprehensive Community Development Block Grant and a Single Purpose Grant For Housing Rehabilitation when the city needed extra staff for a short period of time. Getting things finished up by the grant deadlines became a joint effort as staff from Tri-Valley Opportunity Council and a private consultant were also brought in to help out. Commission staff assisted in completing housing acquisition policies, writing revolving loan fund policies, developing a downtown historical booklet,

completing three housing acquisitions and coordinating housing rehabilitation write-ups being completed by Tri-Valley and the consultant. All the activities were completed by the deadline and the City was able to take full advantage of the Grant Funds.

Red Lake Falls — the Commission completed its third year of involvement with the Red Lake Falls Comprehensive Community Development Block Grant during 1986 with grant activities scheduled for completion in the fall of 1986. The Commission has taken a very active role in the Red Lake Falls Grant, providing the bulk of staff services and acting as the fiscal agent. This was the last full year of the Grant and efforts were directed towards finishing up all activities. The final tally will be 54 units in housing rehabilitation, 21 housing acquisitions, 21 housing demolitions, 50 blocks of streets, eight business loans, renovation of the Lincoln hotel, relocation of three displaced families and a multitude of smaller projects. An area where the Commission was of special assistance was in obtaining special grants. A new library, park improvements and tourism promotion were funded by successful grant applications. Commission staff also provided technical assistance to the City on conversion of the cities water billing system to an in-house microcomputer. As things are winding down in

terms of the Commission's involvement the city is continuing at full pace. An Economic Development Grant to retain mobile home manufacturing and a large sewage disposal project are only the large items currently underway.

Strathcona — The Commission is also providing a full range of assistance to Strathcona on their Comprehensive Community Development Block Grant. Although the grant is scaled down to the size of the area, it is a big undertaking for the area. The city actually handles the Grant, but the effort has involved eight surrounding townships through the coordinative efforts

of the Strathcona Community Club. The project represents their ideas on how a small town can make a place for itself. The major activity will be the construction of a multi-purpose building to house a cafe, general store, gas station, post office and meeting room through an Economic Development Loan to the Community Club. This effort is supported by smaller projects in streets fix-up, drainage improvement, a new well and sewer improvements. Construction is now in progress on all the projects and everything is on schedule or ahead of schedule.

Look for an opening date in late summer.

## ENERGY DEVELOPMENT

The commission is continuing its interest and involvement in the energy industry. Of special interest is the ongoing developments in the Fiber Fuels industry of which the NWRDC has become an active participant. Mounting evidence continues to support the fact that the region can benefit from the development and production of fiber fuels.

"Integrated Short Rotation Intensive Culture Tree Production and Harvesting as a Cash Crop."

This report was a cooperative venture of the University of Minnesota, the Fiber Fuels Institute and the NWRDC. The report covers virtually all aspects of the biomass project that began last year and was presented at the Energy from Biomass and Wastes Tenth Annual Conference in April. The report was one of only two that were presented at this international conference. Copies were distributed to all concerned and interested parties.

Included in the report is a discussion on the agricultural benefits of producing Fiber Fuels as a cash crop. Substantial momentary benefits are possible with production of Fiber Fuels as other more traditional

energy products should become most costly than they are at the present time.

Research on planting densities and configurations, fertilization, chemical and cultural weed control will aid in determining the most practical and cost efficient manner in which growers can establish nurseries and plantations.

There is interest throughout the region in the use of Fiber Fuels. In fact a number of businesses, institutions and schools are currently using Fiber Fuels products; however, most of the product is shipped in from outside the region. Of particular benefit to the area would be to consume a fuel that is produced in the same area. Overall economic benefits would enhance the areas depressed cash flow situation.

The project is a cooperative effort of the University of Minnesota Crookston, the Crookston Experiment Station, University of Minnesota Soil Sciences Department, the Fiber Fuels Institute, the Governors Council for Rural Development, the Department of Energy and Economic Development, and the NWRDC.

## TECHNICAL ASSISTANCE

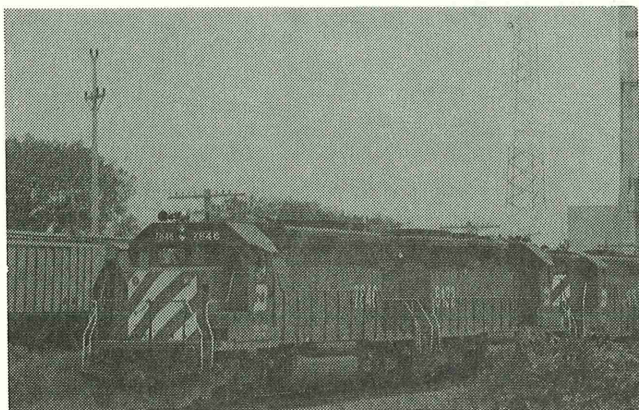
A significant amount of time is spent providing assistance to local governments, agencies, private business and industries.

Human service staff provide many hours of assistance to grant applicants in grant writing and project planning, then in the management of grants once they are funded.

NWRDC Community Development staff provide grants management to communities who need such service.

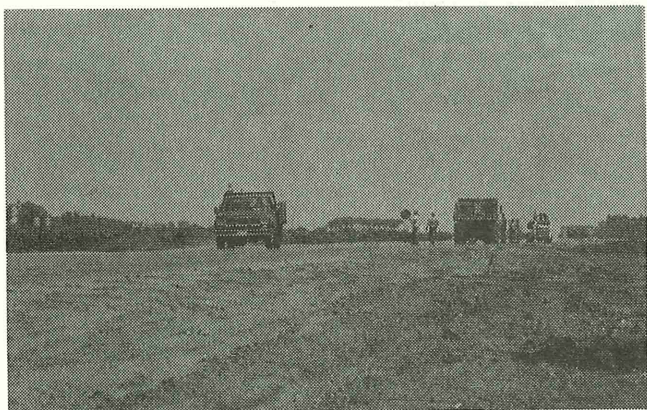
A number of communities have contracted with NWRDC staff to prepare or update their comprehensive plans.

# TRANSPORTATION



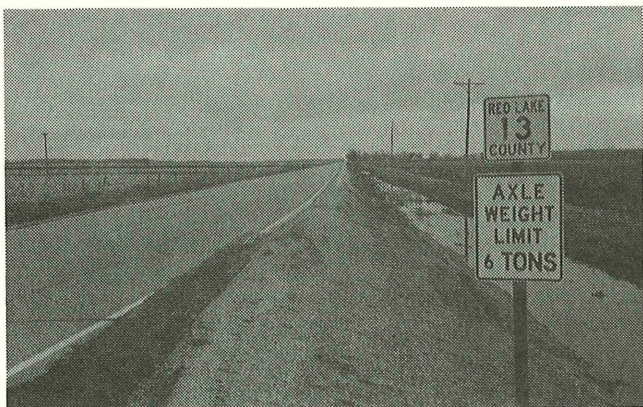
**Burlington Northern has agreed to participate with local shippers and the state to improve rail conditions on the Warroad to St. Hilaire line.**

Arrangements for the largest rail rehabilitation project in the state were finalized in early 1986 which will result in a \$6.4 million dollar rail rehabilitation project on the Warroad to St. Hilaire rail line. Multi-car rail rates have continued to generate increased rail shipments from the region.



**Construction on TH 32 from Thief River Falls to St. Hilaire improved the smoothness and strength of this road.**

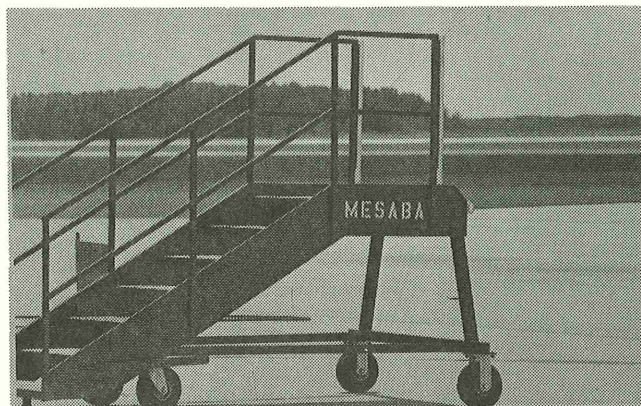
Several major highway construction projects were completed in the Region resulting in significant expansion of 10-routes in the Region. The Region had 60 per cent of its trunk highway mileage designated as 10-ton year-round during the spring of 1986.



**Capacity problems on local roads have become a growing concern.**

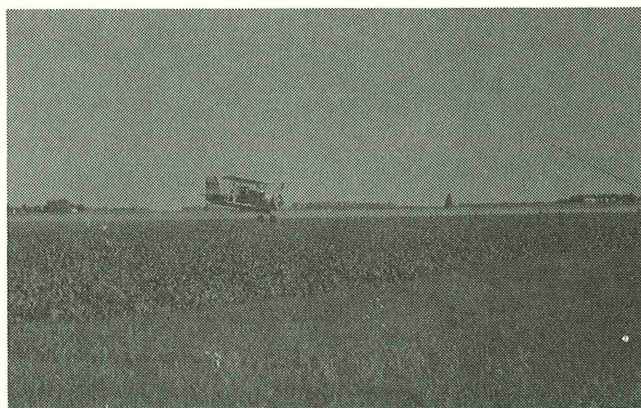
With the rapid rise of 10-ton trunk highways, the NWRDC has spent considerable time this past year in addressing local road issues — producing a report and slide-tape production highlighting the demands being placed on local roads and constraints faced by local road providers. The NWRDC presented a conference on this subject also illustrating the need for road users and road providers to coordinate their efforts to meet future demands.

The NWRDC assisted Mn/DOT in identifying a network of roads which serve as the major haul roads for the Region. The Region will be further analyzing all roads in the region during the upcoming year as a roadway jurisdiction study will be completed to determine what role each road plays and which jurisdiction should be responsible for owning it.



**Mesaba begins boardings at Regional Airport.**

Air commuters have enjoyed the services of both Bemidji Air and Mesaba at the Regional Airport in Thief River Falls over the past year. Mesaba has offered to provide essential air service needs to the Regional Airport for the next two years at no subsidy. While attention has primarily been devoted to preserving commuter air service in the Region, it must be remembered that the other 15 airports around the region also play a major role for flight training and crop spraying.



**Agriculture depends on aerial spraying in the Red River Valley.**

# REGIONAL REVIEWS

The Regional Development Commissions are charged with the responsibility of performing the regional review process on most federal and state funding requests. The purpose of this function is to provide coordination of projects and to avoid duplication of services where possible. NWRDC carries this out with the "Notification System" where local government and agencies having an interest are notified of the applicant's intent to apply for funds and given the opportunity to comment on the project or program.

In its capacity as the Regional Clearinghouse, the Commission reviewed 40 proposals and plans for FY'85. Following is a breakdown of the distribution of applicants.

## FEDERAL AGENCIES

Action .....	\$ 1,218,347
Urban Mass Transit .....	99,383
Employment & Training .....	14,970,510
Farmers Home Administration ...	505,900

## STATE AGENCIES

Dept. of Energy & Economic Development .....	\$ 38,981,842*
MN Dept. of Transportation .....	2,354,501

\* This includes Small Cities Community Development Grants, LAWCON, LCMR parks recreation and Economic Development projects in the SCDP Program. The figures are for grants reviewed and not necessarily funded.

# ***HUMAN RESOURCES PLANNING***

## **AGING**

The amended Federal Older Americans Act of 1965 provides the philosophical base and fundamental guidelines for the Northwest RDC's Aging Program. It defines our purpose of working for a coordinated and comprehensive system of community options that help older persons maintain independence and dignity in a home environment. With this as the goal, the Commission examines and plans for the needs of local older persons, advocates on their behalf, provides information and education, assists local governments and service providers through the provision of technical assistance and allocates funds for services.

In 1986, the Aging Program has experienced a year of transition and changes. Legislation on the federal level in the form of the Gramm-Rudman Act provided urgent impetus for the Aging Advisory Committee and local decision makers to review and rethink past direction and to discuss future avenues. As an aid in this process, statistical and service profiles of each county were prepared. These along with other planning tools and data will serve as the foundation for the forthcoming four year plan, a road map for the future.

Recognizing the need for education on issues of concern to older persons, the NWRDC held a conference, "Age is Priceless". Topics covered included: Marketing and Public Relations for Nonprofit Service Providers, Financial Opportunities for Seniors, Coping with Change, Independent Living Skills, Osteoporosis, The Caregiver: Family Responsibility and Support, Minnesota Legislation issues, Federal Legislative issues and a film festival. The record attendance of 280 persons, indicated a desire for education on the serious issues confronting seniors today.

In an effort to inform the public and help seniors make informed medical consumer choices, the Commission compiled a "Medicare Participating Physician's Directory". The directory lists physicians in northwest Minnesota and North Dakota and the rate of participation in Medicare.

The NWRDC continued its strong system of community based services through the support of the following projects:

### **ACCESS SERVICES**

Kittson County Senior Transportation .....	\$ 3,350
Roseau Senior Medical Travel .....	9,500

### **ADVOCACY SERVICE**

Northwest Minnesota Legal Service - Region I .....	19,740
--	--------

### **IN-HOME SERVICES**

Inter-County Home Health Aide Care	5,619
Marshall County Home Health Aide Service .....	4,633
Polk County Home Health Aide Program .....	7,375
Roseau County Home Health Aide Program .....	2,550
Roseau County Chore Program .....	9,900
Valley Chore Service - Polk, Norman, Pennington .....	39,705

### **NUTRITION SERVICES**

Senior Congregate Nutrition Program .....	322,502
Region I Home Delivered Meals .....	81,283

### **SENIOR CENTERS**

Warroad Senior Center .....	17,386
East Grand Forks Senior Center .....	6,870
Thief River Falls Senior Center (reaward) .....	31,011

# ARTS

The NWRDC Arts Program sponsored its first region-wide event in FY'86. The Regional Arts Council selected six area schools to participate in a visual arts residency with artist Lou Ferreri, St. Paul. Ferreri visiting Borup, Crookston, Fosston, Oslo, Twin Valley and Warroad sharing his skills with students, teachers and parents. The responses from the schools were so enthusiastic that the Council is planning another residency for the 1986-87 school year.

In addition to the residency program the Council awarded \$17,507 in grants to 14 area organizations. As in previous years, a large share of the grant dollars were

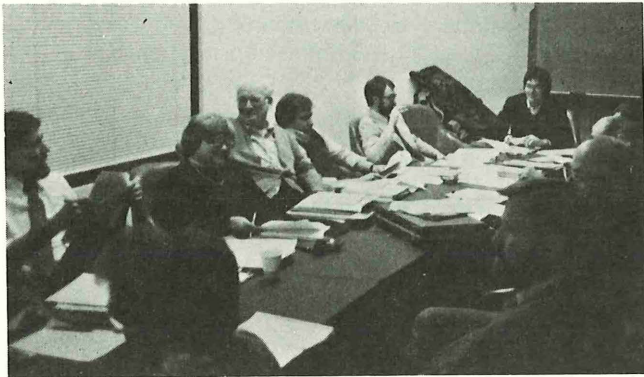
awarded to community theatres in the seven counties for their summer productions.

The Council awarded three grants using funds for capacity-building from the McKnight Foundation. The groups receiving funds were:

- East Grand Forks COMPAC, \$1,412.20, for lighting equipment.
- Warroad Summer Theatre, \$1,966.39, for risers.
- Fosston Community Library and Arts Center, \$1,819.41, for track lighting and sculpture boxes.

GRANTEE	ACTIVITY	GRANT
Independent School District 593 (Crookston)	Residency by the Midwest Opera Company	\$1,710
Northwest Regional Library - Hallock Branch	Art Appreciation Series	\$ 540
Crookston Civic Music League	Performance and Residency by the Suzuki Strings	\$1,500
East Grand Forks ComPAC	Production of an Original play "Movin On"	\$1,685
Red River Valley Winter Shows	Performance "Down To Earth" by the Great North American History Theatre	\$2,100
Northwest Regional Library	Series of Pre-School Music/Creative Dramatics Programs	\$ 590
Warroad Summer Theatre	Production of "Barefoot in the Park"	\$1,782
Thief River Falls Community Education	Performance of "Becoming Memories" by Illusion Theatre	\$2,000
Agassiz Environmental Education Council	Performance of "Planting in the Dust"	\$ 845
Fosston Community Library and Art Center	Production of "Sound of Music"	\$2,455
Crookston Community Theatre	Production of "Carousel"	\$1,000
Warren Community Arts Board	Concert by two Swedish Singers	\$ 350
City of Ada Summer Arts Program	Performance of "The Wizard of Oz" by the Missoula Children's Theatre	\$ 500
Goodridge Area Historical Society, Inc.	Production of an Original Play "Mama's Quilting Party"	\$ 450

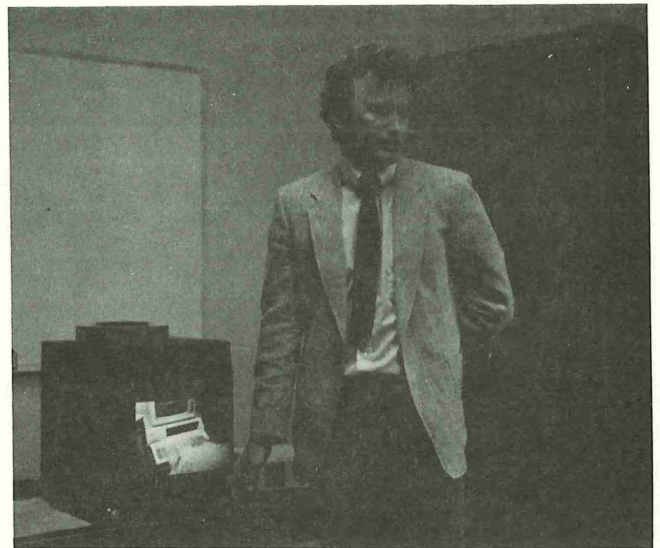
# JOB TRAINING PROGRAM



The NW Private Industry Council has been very busy over the last year in an effort to reorganize the Northwest Service Delivery Area for Job Training services. As of July 1, 1986, the PIC will become its own Administrative Entity and Grant Recipient for Job Training funds in the seven-county area.

In addition to the reorganization, we have selected a new contracting system which is performance-based. We will continue with the same service providers for the Program Year of 1986 and evaluate this new system. Services to clients are still the number one priority of the NWPIC and their concern for providing trained employees for the business community is an on-going priority in designing programs.

The NWPIC has provided oversight to programs by contacting former clients who have been placed into permanent unsubsidized employment and by also contacting the employers to request information on how our programs can better serve them.



The NWPIC Marketing Committee has continued its efforts in the area of getting information to the public about the Job Training Partnership Act and about the programs in our local area. Employers and clients find this helpful in understanding this sometimes very complex program.

The NWPIC Planning Committee prepared the PY 86-87 Job Training Plan complete with the new entity and its procedures. Staff will be available to begin work on July 1, 1986.

The Northwest Private Industry Council and its role with the Job Training Partnership Act has benefited a great deal by its relationship with the Northwest Regional Development over the past two years and nine months. The NWRDC has done an excellent job in the early stages of setting up the programs in this Service Delivery Area and the NWPIC looks forward to continued involvement as the RDC continues their role as the "Chief Elected Officials" partner with the Private Industry Council.

# NWRDC PUBLICATIONS

## **PY 86-88 JOB TRAINING PLAN ANNUAL UPDATE**

The Job Training Plan covers a two-year period beginning July 1, 1986 through June 30, 1988. The annual update includes administrative and program revisions for the Job Training Partnership Act programs in the NWSDA. This Job Training Plan is written in conjunction with the NWPIC.

## **1984-1986 AREA PLAN FOR PROGRAMS ON AGING UPDATE**

This Plan outlines the needs of senior citizens in Region I and their demographic characteristics. The 1985 Area Plan Amendments to the 1984-1986 Area Plan includes an update inventory of services plus revised goals and objectives.

## **DIRECTORY OF RESOURCES AND PROGRAMS FOR OLDER PERSONS IN NORTHWEST MINNESOTA UPDATE**

This Directory has been developed as a resource for Region One senior citizens, consumers and professionals in the field of aging. It provides a brief description of programs, resources and agencies. It describes the service areas, the primary contact person, as well as the addresses and phone numbers. The Directory is updated regularly as information changes.

## **DIRECTORY OF GOVERNMENT UNITS & SERVICE AGENCIES**

This Directory was updated as an easily available resource of information on governmental agencies and services in Region I.

The Directory contains listings of service agencies which have full time staff and governmental offices from the township level through the legislative level. It also contains a brief description of the agency or office, the phone number, and key contact person. The Directory is updated periodically to keep current with ongoing changes.

## **OVERALL ECONOMIC DEVELOPMENT PROGRAM**

During the year, this required document was rewritten. Sections were updated using available statistics. The Economic and Community Development Committee reviewed and revised the "Economic Development Strategy" section of the Overall Economic Development Program (OEDP). The acceptance of the OEDP by the Economic Development Administration, following its adoption by the seven counties in Region I and the NWRDC, is required for the Region to retain its designation as the Economic Development District.

## **NWRDC NEWSLETTER**

The Commission's newsletter, which is published monthly, is to keep units of government and agencies abreast of Commission happenings and funding resources.

## **FY 1985 ANNUAL REPORT**

The NWRDC's Annual Report for FY 1985 was prepared and distributed to the members of legislature and local officials and citizens.

## **ARTS PLAN FOR FY 86-87 UPDATE**

This Plan includes a needs assessment which was developed to permit the Arts Advisory Committee to establish the listed priorities for the arts in Region I. Another important aspect of the Plan is that it explains the grant process and the re-granting categories which are necessary information to those interested in applying for the arts grants.

## **REGIONAL TRANSPORTATION PLAN UPDATE**

This Plan involves two primary parts: 1) an inventory of various transportation modes in the Region; and 2) goals and policies to guide transportation planning in the Region. The Plan provides a multi-model development strategy based on the Region's perceptions of its future transportation system needs — primarily reflecting the Region's need for efficient movement of agricultural commodities. The Plan was initially developed in 1981 with updates occurring bi-annually.

## **LOCAL ROAD STUDY**

This plan focuses on the local road system. The main categories in the Local Road Study are: 1) Physical characteristics; 2) funding characteristics; 3) standards and service levels; 4) weight restrictions and enforcement; 5) coordination/communication; and 6) jurisdictional issues.

## **FY 87 WORK PLAN**

The Commission's Fiscal Year 1987 Work Plan was published. The document details the goals and objectives of the Commission in each of the program and planning areas.

# NWRDC PUBLICATIONS

## COMPLETED FOR UNITS OF GOVERNMENT OR AGENCIES

### **CITY OF CROOKSTON**

Commercial Rehabilitation Loan Fund Policies and Procedures.

### **CITY OF CROOKSTON**

A Helpbook and Guide for the Historical Development of Downtown Crookston.

### **CITY OF CROOKSTON**

Voluntary Acquisition Guidelines.

### **CITY OF RED LAKE FALLS**

Community Improvement Workbook.

### **CITY OF RED LAKE FALLS**

Business Loan Information and Application Package.

### **CITY OF RED LAKE FALLS**

Guide to Basic Housing Construction and Weatherization.

### **CITY OF RED LAKE FALLS**

Housing Program Policies and Procedures Manual.

### **BUREAU OF THE CENSUS**

Copies of the 1980 publication: Summary Characteristics for Governmental Units and Standard Metropolitan Statistical Areas. Copies of these publications and a variety of other publications are available by contacting the NWRDC at 681-2637.

### **COMMUNITY COMPREHENSIVE PLANS**

A tool for directing the future growth for the next 5 to 10 years. It examines existing features such as National Resources, Existing Land Use, Housing, Public Facilities, Park and Recreation, Transportation Network and Public Utilities. The plan provides Social Data, Economic Data, the fiscal status of the City and conclusions. The Northwest Regional Development Commission staff wrote Comprehensive Plans for the following cities: Warroad, McIntosh, St. Hilaire, Fosston.

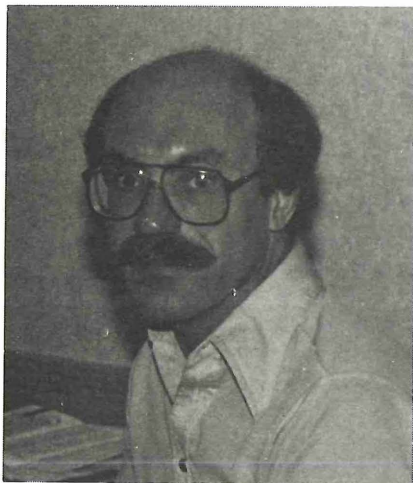
### **STATISTICAL PROFILE ELDERLY POPULATION**

Analysis of population 60 and over for the seven counties of Region I.

### **RURAL STRATEGY FOR NORTHWEST MINNESOTA**

Report to Governors Council on Rural Development.

# NORTHWEST REGIONAL DEVELOPMENT COMMISSION STAFF



**Leon Heath**



**Helen Jurchen**



**Carol Sorensen**

## STAFF

Leon Heath

Helen Jurchen

Carol Sorensen

Donna Christianson

## RESPONSIBILITIES

Community Development/Red Lake Falls SCBG

Economic Development/Community Development

Administrative Secretary/Financial Assistant

Financial Officer

Following are the staff that did work for the NWRDC during FY 1986 but are no longer employees:

Judi Bruggeman

Gail Butenhoff

Mary Jo Crystal

Debbie Dufault

Wayne Faust

Wayne Goeken

Thomas Jorgens

Ed Meister

Marian Normandin

Pat Rood

Delore Zimmerman

# COMMISSION BUDGET

## FY 1986 ACTUAL

### REVENUE

State Appropriations (State) .....	\$ 43,153
Local Levy .....	98,467
Minnesota Department of Transportation (State) .....	15,000
Economic Development Administration (Federal) .....	39,006
State Arts Board (State) .....	25,955
State Job Training Office (Federal) ..	145,799
MN Board on Aging (Federal) .....	60,982
Northwest Enterprise Fund (Local) ..	6,287
Energy Council (State) .....	19,839
Bio-Mass Project (State) .....	6,974
Local Road Management Study (State) .....	8,991
Rural Road Issues (State) .....	13,050
Highway Jurisdictional Study (State) .....	5,159
McKnight Rural Strategy (Foundation) .....	12,716
Governor's Rural Strategy (State) .....	8,058
Marshall County LCR .....	5,750
McKnight Arts (Foundation) .....	108
St. Vincent Township (Federal) .....	3,901
City of Ada (Federal) .....	2,518
City of Ada (Local) .....	1,146
City of Crookston (Federal) .....	11,761
City of McIntosh (Local) .....	2,343
City of Red Lake Falls (Federal) .....	30,466
City of Strathcona (Federal) .....	7,441
City of Oklee (Local) .....	905
City of St. Hilaire .....	2,130
	<u>*\$577,905</u>

### EXPENDITURES

Salary/Fringe .....	\$355,938
Travel & Registrations .....	40,505
Commission Travel Expenses & Per Diem .....	21,652
Committee Expenses .....	22,002
Office Expenses .....	59,499
Professional Fees .....	43,798
Contract Payable/Capital Expenditures .....	8,073
	<u>*\$551,467</u>

## FY 1987 BUDGET

### PROJECTED REVENUE

State Appropriations (State) .....	\$ 40,981
Local Levy .....	102,906
Minnesota Department of Transportation (State) .....	15,000
Economic Development Administration (Federal) .....	49,500
State Arts Board (State) .....	18,000
MN Board on Aging (Federal) .....	60,000
Energy Council (State) .....	16,000
Bio-Mass Project (State) .....	15,000
Highway Jurisdictional Study (State) .....	11,000
Northwest Enterprise Fund (Local) ..	3,500
McKnight Arts (Foundation) .....	600
State Job Training Office (Federal) .....	5,000
City of Ada .....	3,700
City of Crookston .....	1,000
City of Red Lake Falls .....	20,000
City of Strathcona .....	6,000
St. Vincent Township .....	4,000
Interest .....	3,500
TOTAL .....	<u>\$375,687</u>

### PROJECTED EXPENDITURES

Salary/Fringe .....	\$255,181
Travel & Registrations .....	25,200
Commission Travel Expenses & Per Diem .....	13,500
Committee Expenses .....	5,500
Office Expenses .....	40,752
Professional Fees .....	33,000
Contract Payable/Capital Expenditures .....	2,554
	<u>\$375,687</u>

\*Unaudited Totals — Subject to Change



ARNE H. CARLSON  
STATE AUDITOR

# STATE OF MINNESOTA

OFFICE OF THE STATE AUDITOR

SUITE 400  
555 PARK STREET  
SAINT PAUL 55103

296-2551

## AUDITOR'S OPINION

Mr. Harry Sjulson, Chairman  
Northwest Regional Development  
Commission  
425 Woodland Avenue  
Crookston, Minnesota 56716

We have examined the combined financial statements of Region I, Northwest Regional Development Commission, Crookston, Minnesota, as of and for the year ended June 30, 1985, as listed in the table of contents. Our examination was made in accordance with generally accepted auditing standards and, accordingly, included such tests of the accounting records and such other auditing procedures as we considered necessary in the circumstances.

In our opinion, the combined financial statements referred to above present fairly the financial position of Region I, Northwest Regional Development Commission, at June 30, 1985, and the results of its operations for the year then ended, in conformity with generally accepted accounting principles applied on a basis consistent with that of the preceding year.

Our examination was made for the purpose of forming an opinion on the combined financial statements taken as a whole. The combining and individual fund financial statements and supporting schedules listed in the table of contents are presented for purposes of additional analysis and are not a required part of the combined financial statements of Region I, Northwest Regional Development Commission. That information has been subjected to the auditing procedures applied in the examination of the combined financial statements and, in our opinion, is fairly stated in all material respects in relation to the combined financial statements taken as a whole.

We have also examined the schedules of direct and indirect costs, schedules 1 through 3, for the year ended June 30, 1985. In our opinion, these schedules are fairly presented in accordance with the Commission's cost allocation plan and the provisions of the Office of Management and Budget's Circular A-87, "Cost Principles for State and Local Governments."

A handwritten signature in dark ink, appearing to read "Arne H. Carlson".

ARNE H. CARLSON  
State Auditor

October 11, 1985

- 3 -

AN EQUAL OPPORTUNITY EMPLOYER

