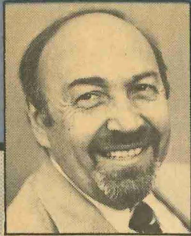


## METROPOLITAN COUNCIL 1983 ANNUAL REPORT



HT  
394  
.T9  
M473  
1983





Gerald Isaacs

**Metro Day...State Fair Booth...Lake Overflow...  
Landfill Siting...Racetrack...  
Metro Housing Fund...World Trade Center...**

## MESSAGE FROM THE CHAIR

We've tried some new initiatives—done some things differently—gotten involved in new arenas. In other fields, we've continued the work already begun and signed off on some major results.

One achievement we can claim without fear of contradiction is that the Council was more visible at the end of my first year than it was before. This was accomplished in various ways—Metro Day, when the public was invited to tour various regional facilities, our State Fair booth, and tripling the circulation of the *Metro Monitor*, the Council's monthly newspaper, in a low-cost way.

In a more substantive vein, at least five items come to mind. In the waning weeks of 1983, after causing major disputes and lawsuits for over ten years, the lake overflow problem was successfully resolved. St. Paul and the eight suburbs involved, along with the Metropolitan Waste Control Commission, have agreed with a plan put together by the Mayors' Lake Overflow Task Force, led by Council negotiations.

The landfill siting process has proceeded as fast as possible. A forum exploring the issues in long-term care for the Twin Cities' handicapped and elderly people was held in the fall. It will lead to discussions by a new long-term-care task force. In the health planning arena, we've continued to produce important consumer booklets on health issues, including information on hospital costs, how to choose a hospital and the role of smoking and exercise in health.

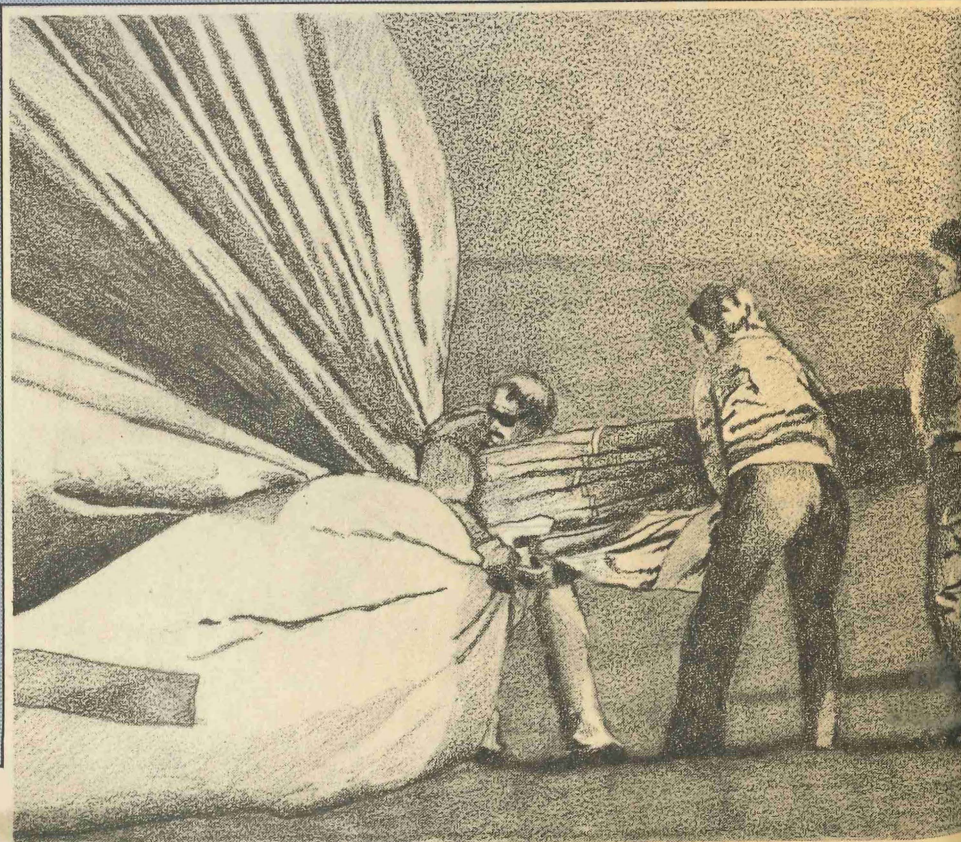
And a major study of regional financing of such regional services as parks, airports, transit, sewage treatment and solid-waste management was completed in December. This study represents the first major oversight of all regional commission activities, and the majority of work was done this year.

Speaking of the regional commissions, I consider it a major accomplishment that the Council appointed members to three of them—waste control, parks and transit. We also inaugurated a special orientation for these commissioners that got them off on the right foot. We've made important

appointments to several advisory committees, too. And we revamped the Council's committee structure to ensure more extensive study of the issues before the Council.

One new area we tackled was to review proposed sites for a racetrack. We created a Metro Housing Fund that heralds an exciting new direction for the Council—helping communities provide decent housing for people with modest incomes. And I played a role in one of the top priorities for the Area's near future—the development of a world trade center.

We held public meetings that showed us the direction we could go with economic develop-



*Illustrations on cover and at right show one activity from 1983's Metro Day, May 1—inflation of hot-air balloons.*



ment and we are considering new policies along those lines. After the first of the year, we plan to open a dialogue on a regional-level finance agency independent from the Council that would satisfy some of the Area's needs and respond to some of the criticisms heard at the economic development meetings.

It's been a busy year and I've learned a lot—all without slowing down the pace of Council accomplishments. I look forward to a second, equally busy and interesting year.

Gerald J. Isaacs  
Chair

# INSIDE

**4** At its best, long-term care meets the needs of elderly and handicapped people in a way that permits them as much independence as possible. The Metropolitan Council has started to explore some of the issues involved in meeting that goal.

**11** Dealing with wastes is a mammoth, complicated problem. But last year the Council could claim progress on several fronts.

**12** A horse-racing track could add jobs and income to the state and regional economies. The Council has speeded its review of race-track proposals so a decision about a site can be made as soon as possible.

**5** Economic activity is important to the vitality of the Twin Cities Area. For the first time, the Council stepped into the arena of economic development with several initiatives.

**7** Is some kind of rail system in the Twin Cities transit picture of the future? The Council is looking into several ideas.

**13** Cost is an important factor for consumers to consider when they buy health care. People also need to know how their activities affect health risks. The Council and its Health Planning Board are trying to boost awareness of both.

**14** A long-standing dispute over lake overflow water is now resolved. The communities involved have agreed to a solution—with the Council's help.

**21** Too little is known about crimes committed via computers. The Council has started to examine the problem and will do more in '84.

**T**he Metropolitan Council . . . what is it? It's a regional planning and coordinating agency unique to the Twin Cities Area. It's one of very few governmental agencies in the nation designed to deal effectively with the needs of a large, diverse region that includes central cities, suburbs and the rural areas beyond.

What does it do?

It plans for the future of the Twin Cities Metropolitan Area . . . all 3,000 square miles and two million people . . . and, through metropolitan commissions, provides vital services to the Area.

What kind of planning and services?

The Council works toward preserving and improving what we all call our "quality of life"—the good things that make this part of the country a special place to live.

That takes in a lot of areas—from planning for solutions to air and noise pollution to health, transportation, the arts, housing, sewers . . . and more.

The Council sets regional policies in these areas and other groups—including metropolitan commissions for transit, sewers, airports and sports facilities—carry them out. Ten implementing agencies carry out policies for the parks and open space commission.

These activities affect the lives of people like you—whether you're catching a bus downtown or a flight down South.

Who runs the Council?

The Council has 17 members, all appointed by the governor. Sixteen, who serve four-year terms, represent equal-population districts. The 17th member is the Council chair, who serves at the governor's pleasure.

Where's the Council located?

The Council has its offices in downtown St. Paul in the Metro Square Building, 7th and Robert Sts. Call us at 291-6464 for more information.

COUNCIL... A QUICK PROFILE

THE METROPOLITAN



# LONG-TERM CARE: IS THERE A BETTER WAY?

**A**mericans spend \$30 billion each year on long-term care—the range of services provided to elderly and handicapped people who require care over an extended period.

As long-term care increasingly has become a topic for national debate, it's become apparent that not many people are happy with what their money buys: primarily nursing home care.

But what can be done differently? That's one of the many questions a new task force on long-term care appointed by the Council is to explore. And it'll tackle other questions. How can individual choice be maintained in the long-term-care system? How should conflicts among varying goals and values be resolved? How

can the importance of the informal support system best be recognized and supported? How can the public interest be protected as long-term care comes under increasing control of private investment?

Those are all complex questions, questions that demand careful attention by the broad range of community representatives making up the task force.

Some aspects of long-term care had been dealt with in the past by the Metropolitan Council, primarily in its programs on aging and health. It soon became clear that long-term-care needs demanded a joint approach, with housing as a third crucial element.

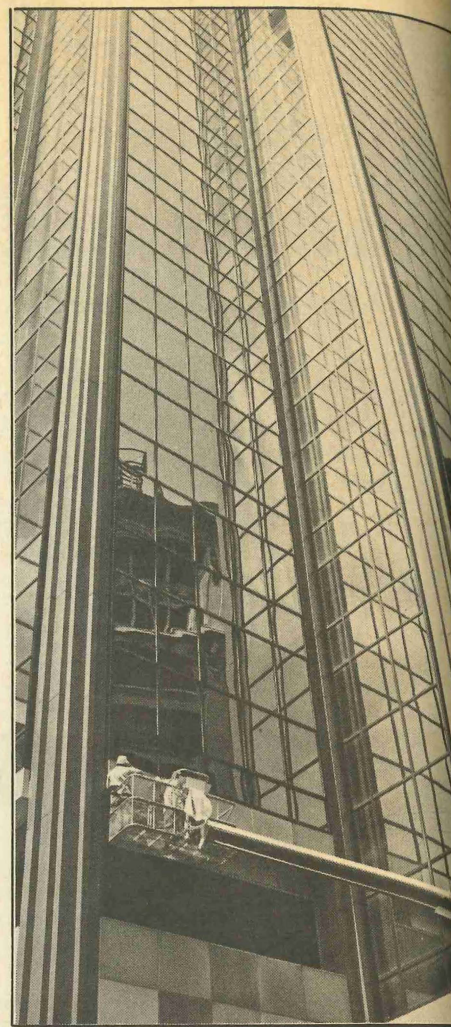
Surveys have shown that many senior citizens want to live independently as long as possible—and the right type of housing plays as vital a role in allowing that to happen as the right support services.

In the fall of 1983, the Council and its aging, health and housing advisory committees sponsored a seven-week forum on long-term care, an ambitious effort that brought together national leaders and local experts with Twin Citians.

Those forums, which touched many issues—financing, the living environment, the involvement of “informal” care-givers—made it clear just how much work needs to be done in the long-term care area—and how important such work is to the future of the Area's residents.

The knowledge that dealing effectively with long-term care will require a community planning process—and consensus—about what's to be done led to the creation of the task force.

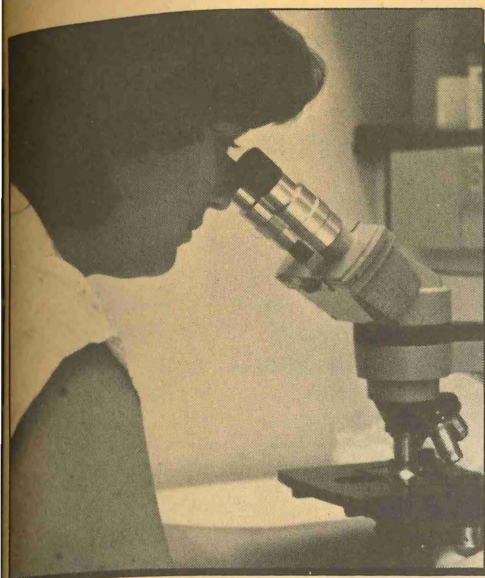
Many of the issues raised by the forums will be considered by the task force as it works to develop long-term-care policies for the Twin Cities Area. Once adopted, the policies will help resolve some of those issues. Some will guide the Council's own



actions, some may involve recommendations to the state Legislature; others, it's hoped, will influence how services are provided and funded by private and governmental agencies.

The work of the task force clearly will help shape the future of long-term care in the Twin Cities Area. And that will ultimately affect many who live here: recipients of care, including the elderly, disabled and people with chronic physical or mental illness; their families and friends; and the taxpayers who support publicly financed care.





# ECONOMIC DEVELOPMENT: A NEW ARENA

**L**ast year, the Metropolitan Council opened the door to its involvement in a whole new field—economic development. The Council hopes its efforts will help strengthen the regional economy and thereby foster creation of more jobs.

A major focus of the Council's attention was a set of economic policies it drafted and opened up for public discussion last year. In the process, the Council considered a wide range of issues—from the retraining needs of the Twin Cities labor force to business financing.

The policies mark a whole new effort to bring business and economic concerns into Council decisions—alongside other important considerations. In the past, Council decisions have been based primarily on two factors. One is environmental concerns. The other is the Council's plans for the four big regional systems—transportation, sewers, parks and airports.

Council action on the economic policies is expected

early this year.

As part of the new direction, businesses locating in the Twin Cities Area will get some "welcome-wagon" hospitality—an offer of assistance from the Metropolitan Council.

The idea is to let firms planning major expansions know that the Council can be useful to them. The Council is offering to provide statistical data firms might need or help in making contact with local business leaders, lenders and public officials.

Twin Cities development. It will also look at ways of fostering entrepreneurship.

Job training and unemployment will also be studied in 1984. The Council will examine the nature of Twin Cities joblessness and current programs aimed to deal with it. The effort may lead to recommendations about how job training could help alleviate the problem.

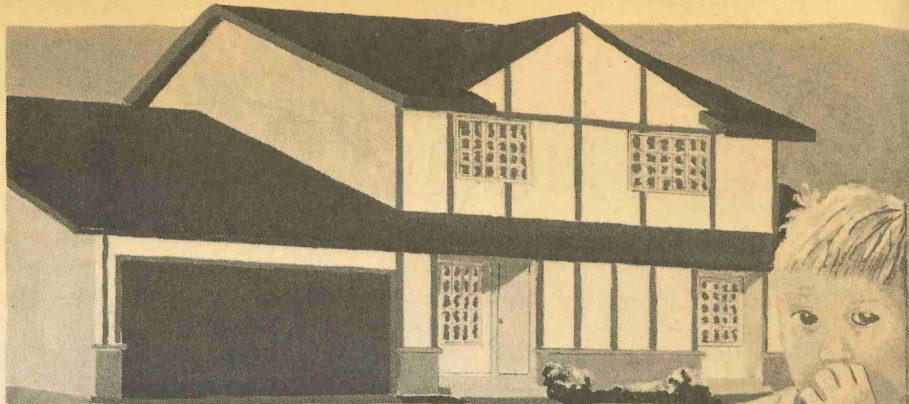
**Small businesses are viewed by many as the key to creating new jobs. And small businesses, in turn, are the creations of entrepreneurs.**

Small businesses are viewed by many as the key to creating new jobs. And small businesses, in turn, are the creation of entrepreneurs.

The Council plans to hold a conference early this year that will give entrepreneurial efforts in the Twin Cities a boost. The goal will be to increase the understanding of entrepreneurship and its role in



**W**here Will Our Children Live?" That's the title of an hour-long educational program and slide show that's been presented dozens of times this year, to elected officials, civic groups and schools. The idea is to inform the public about changes in the housing market so they will better understand and accept new forms of housing.



## HOUSING: SHAPING THE FUTURE

High costs, including high interest rates, have made it impossible to build big single-family homes that young people can afford. The program describes a new look in housing: condominiums, townhouses, attached housing, use of smaller lots. It also deals with the realities of financing housing today and some common concerns about new housing types.

In one case, St. Paul planners presented it to an East Side audience where the city was proposing a mixture of townhouses and other multifamily housing on two sites. "The people found it very informative. They really were impressed," said Mark Basten, project designer. Even more encouraging was the fact that expected opposition to the proposals did not develop.

Speaking of condominiums, they're here to stay as an important housing option. The Twin Cities Area now has 25,000 condominiums, according to the latest Council count, compared with fewer than 1,000 in 1970.

Who buys condos? Most of them—71 percent, in fact—are sold to single people. Of those, 45 percent are women. Only a quarter of the Area's condos are in Minneapolis and St. Paul. Suburbs with high numbers are Edina, Bloomington, Burnsville, Minnetonka and St. Louis Park.

In 1983 the Council proposed creation of a Metro Housing Fund. The fund would draw on private and public money to help finance affordable housing in the suburbs. Efforts have begun to raise the initial money.

The Council also worked on updating its housing policy plan. It's expected to adopt a new plan by the end of this year.

## METRO HRA

**C**reating apartments within homes is one way to help ease the shortage of housing for people with low to moderate incomes. They're called "accessory apartments," and the Metropolitan Council Housing and Redevelopment Authority (Metro HRA) last year began to loan money to help finance their construction.

The low-interest funds, which come from the Minnesota Housing Finance Agency, are offered in a demonstration program in six suburbs. It is the only program of its kind in the Area.

Suburban Ramsey County homeowners were beneficiaries of two Metro HRA loan programs in 1983—a new one for energy improvements to their homes and rehabilitation loans for major structural improvements.

Fifty-eight apartments in half a dozen suburbs were rehabilitated through the Metro HRA's rental rehabilitation program for owners of rental property, and the tenants now receive rent assistance.

Metro HRA also served 66 suburban communities with the federal "Section 8" rent assistance program that subsidizes low-income renters. Last year, \$9.4 million in rent assistance was provided for more than 3,000 households. Most of the families would otherwise have had to pay well over 30 percent of their income for housing or live in substandard or overcrowded housing conditions.



# TRANSIT STUDIED, AIRPORT NOISE GUIDELINES ADOPTED

**Y**ou may be able to ride between downtown Minneapolis and downtown St. Paul much easier than ever before, if the Metropolitan Council has anything to say about it. The Council is studying some new, high-tech transportation links that could have a far-reaching impact.

Last year a study group led by the Council began to explore four alternatives for transit between the two downtowns along University Av. and between downtown Minneapolis and the Lake Minnetonka area.

The group—including eleven state, regional and local governmental units—is examining the social, economic and environmental impacts of the alternatives. The alternatives range from bus improvements to light-rail transit—a modern version of the streetcar.

Early in 1983 the Council changed its transportation policies to permit consideration of rail transit for the Twin Cities Area. The study group expects to hold a public hearing on the alternatives

in August and make a selection of the best alternatives in each corridor by the end of the year.

Another idea to link the two downtowns has come from Council Chair Gerald Isaacs, who wants to explore a "fast-transit connection." The Council has invited firms in this country and abroad to come up with a way to get from one downtown to the other in 15 minutes, including stops at the state Capitol and the University of Minnesota.

Isaacs is looking for a way to integrate the 20 million square feet of office and retail space in the two downtowns, in effect, under one roof. People would be able to move from the skyway system in either downtown to the other in a climate-controlled environment via fast-link transit. The Council has asked for proposals by the end of March on any appropriate transit technology—a high-speed train, a people-mover automated guideway, conventional rapid transit or something else.

Meanwhile, Twin Cities residents are traveling more within

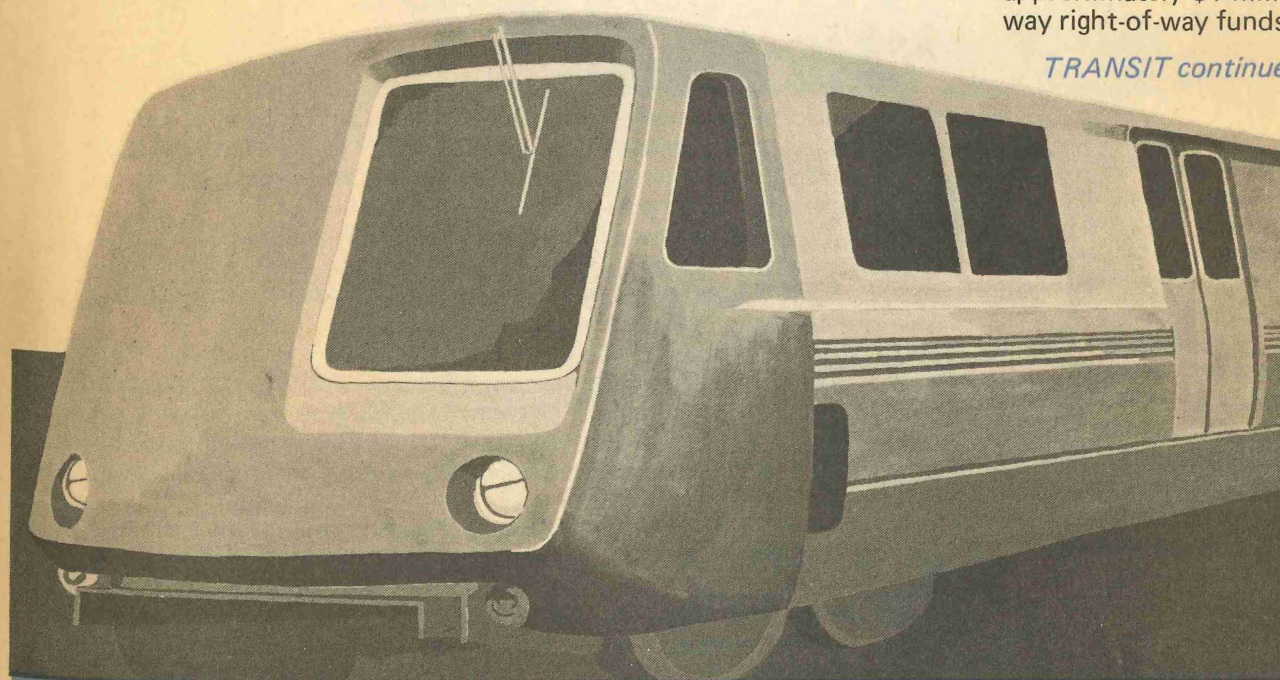
the Seven-County Area than they did in 1970, according to results of a study the Council released in 1983. The study updates travel behavior of Twin Citians from 1970 to 1982.

The Council is participating in a study of potential transportation impacts surrounding redevelopment of the old Metropolitan Stadium property in Bloomington. The city is expecting a big increase in traffic on Cedar Av. and Interstate Hwy. 494. The study is exploring what road improvements should be made and who should pay for them.

The Council continued its study of the movement of goods by truck, rail and water in the Area and this year will produce a map for use by the trucking industry.

What happens when land planned for a regional or state highway is threatened with private development? To address the problem, the Council held public hearings last year on how to use an annual property tax revenue of approximately \$1 million in highway right-of-way funds to purchase

*TRANSIT continued on page 8.*





and thus save land for future highways.

*Airports—Different Things to Different People.* Depending on how you travel or where you live, you may like them or hate them. Neighbors of airports often find noise levels too high for conversation or other daily activities. To travelers and freight-handlers, they're a lifeline.

Last year the Council took two steps toward helping to resolve the conflict.

The Council began a 12- to 18-month reevaluation of the regional aviation system, including the role the eight regional airports play in the local economy. The study will identify the Twin Cities' economic needs for air transportation and balance those needs against environmental concerns.

The Council also approved noise guidelines that some 20 potentially affected cities can use to make their land uses compatible with airport operations. The cities are currently exploring the need to amend their comprehensive plans to meet the guidelines. The cities, working with the Metropolitan Airports Commission (MAC), are to submit plans of action to the Council by May.

The guidelines indicate various noise levels around the airports, what the compatible land uses would be, and suggest possible solutions. The Council is currently working with MAC and local governmental units on a model noise ordinance to ensure that buildings within aircraft noise zones meet acoustic standards.

The economic analysis will bring into sharper focus controversies such as the one last year involving long-term plans for the Anoka County-Blaine Airport. Nearby residents concerned with aircraft noise and safety had earlier persuaded the state Legislature to restrict all minor airports from being upgraded to intermediate status. The Council will be examining the impact of the restriction in 1984.



## GETTING ON THE WORLD TRADE MAP

**A** world trade center, many believe, could put Minnesota—and the Twin Cities, in particular—"on the map" of international trade. A World Trade Center Commission appointed last year by Gov. Rudy Perpich is looking for a site for such a center.

A commission committee chaired by Metropolitan Council Chair Gerald Isaacs put together guidelines for would-be developers of the center. The Council is also providing key staff assistance to help the commission study the idea and help it select a site.

In a nutshell, a world trade center would be a focal point for foreign buyers and sellers visiting Minnesota, a place where face-to-face contacts could be made—an essential ingredient in trading. It would also provide access to communication and information networks that facilitate business.

It's hoped that the center would be a catalyst to encourage businesses to look beyond U.S. markets.

Some of the facilities a Minnesota world trade center might contain are a language school; a trade reference library; an advanced telecommunications system that would allow tenants to communicate via satellite with other parts of the world; foreign language interpretation and translation services; a members-only club featuring a restaurant and social events; a large lobby suitable for art shows, receptions and trade shows; and offices for foreign and Minnesota businesses engaged in international trade.

The center could be operating by early 1986.



# TELECOMMUNICATIONS: A LEADERSHIP ROLE

**A** smorgasbord of TV programs—with possibilities ranging from high school tennis championships to child care advice given by public health nurses—could very well be available to Twin Citians within the next few years—all via a regional telecommunications channel.

And because of the wide-ranging impact of such a channel, the Metropolitan Council is interested in playing a leadership role in overseeing its development.

Each cable system in the Twin Cities Area is required to set aside a VHF channel 6 for priority use by schools, governmental agencies, community groups and other public users. Since mid-1983, the Minnesota Cable Communications Board has been looking for an organization to supervise development of the channel.

The Council plans to submit an application to the state cable board within the next six

months for designation as that "entity." The board is expected to make a decision some time after that. If the state approves the application, the Council plans to establish a board to oversee planning and operation of the channel, under Council policy guidance.

The Council was active in other telecommunication areas, too. The Council "loaned" several members of its Regional Telecommunications Task Force to help the state World Trade Center Commission in its study of a regional telecommunications center.

The commission is studying how such a center could help meet the communication needs of the Area, including how it could serve a Minnesota world trade center. Such a telecommunications center could include satellite receiving-and-sending "dishes," a master switching center for data communications, special data storage facilities and an area for related office development.

The existing communication system consists primarily of telephone lines, microwave facilities and some cable lines. But small users cannot always afford access to the existing system. A network, with a telecommunications center as the linchpin, would give access to more users.

In 1983, the Council continued efforts toward the goal of regional "interconnection." Interconnection is the linking of separate cable systems so they can exchange programs and services.

The Council's telecommunications task force established a subcommittee that will study specific issues affecting how interconnection is accomplished. In the process, it will work closely with cities, cable service territories, cable companies and potential users. This work will continue into 1984. The task force will also examine the economic development impacts of regional telecommunications.



**A smorgasbord of TV programs—all via a regional telecommunications channel.**



# AGING: MAKING A DIFFERENCE

**B**efore she discovered her community's senior center, 81-year-old Marjorie Case said she often cried from loneliness. Now, she said, she's a three-times-a-week regular at Fairview Community Center in Roseville, a place to see her friends and socialize. "It's made all the difference in the world," she said.

The Twin Cities senior center that means so much to Case and many other elderly people is one of several designated by the Metropolitan Council as "community focal points." That means they're places where elderly people can take advantage of a variety of programs and get information about services.

Designating such centers is one part of a series of plans the Council is developing county by county to improve the way services are delivered to elderly people. The plans are aimed at more comprehensive and coordinated systems of services for elderly people in Twin Cities Area counties. The Council adopted a plan for Anoka County in 1983; plans in

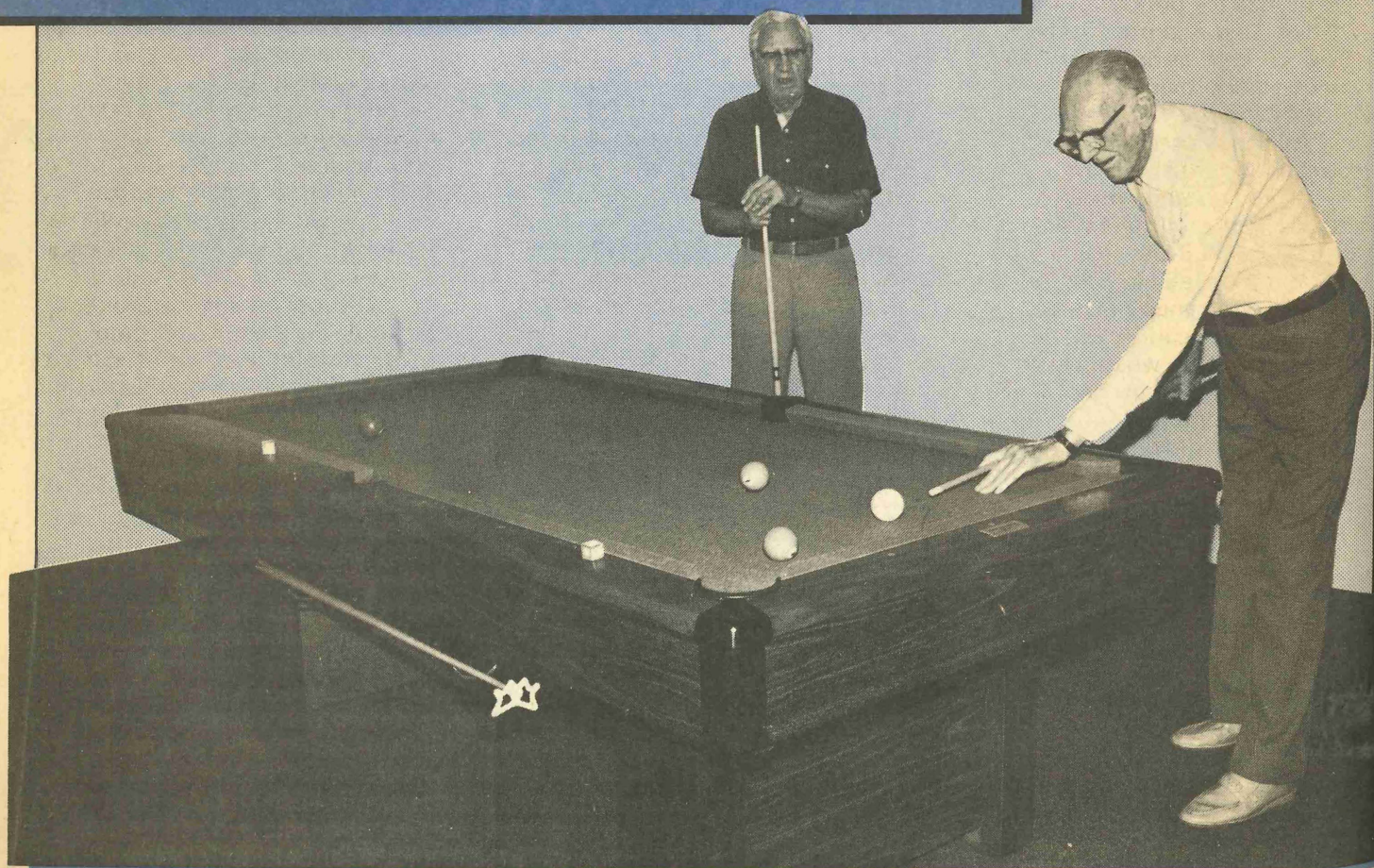
Ramsey, Dakota and Hennepin Counties already have been completed.

The Council also awarded more than \$4 million in federal Older Americans Act grants for nutrition programs, senior centers and other services in the Metropolitan Area.

Another major effort was development of a 1984-86 area-wide plan on aging and continued technical assistance to local governments and agencies needing planning and coordinating help the Council can offer.

In 1984, the Council will complete the fifth in a series of service delivery plans for metropolitan counties. It will also "package" and distribute consumer-oriented information useful to elderly people and provide technical assistance to organizations that provide housing and other services. That's part of a continuing effort to carry out a Council plan for housing and service arrangements.

The Council awarded more than \$4 million in federal Older Americans Act Grants for nutrition programs, senior centers and other services in the Metropolitan Area.





**A** compensation fund, the Metropolitan Council hopes, will help provide relief to local residents who may experience problems from existing and future solid waste landfills in the Twin Cities Area.

## WASTE MANAGEMENT. ACTION ON MANY FRONTS

The Council adopted recommendations last year calling for the Minnesota Legislature to establish a compensation fund to give local residents immediate relief from landfill pollution and pay cleanup costs.

The fund would also provide money for the Minnesota Pollution Control Agency to investigate a landfill area for pollution. In addition, it would pay for other measures, such as drilling a new water well or providing alternative water supplies.

Also proposed under the recommendations:

- Owners and operators of landfills, waste-burning plants and other waste facilities would have to guarantee they can pay for remedial or cleanup measures.

- Waste facilities under public ownership would make a payment in lieu of property taxes to the host community.

- Landfill owners would pay a royalty to the host community over and above any payments for taxes, municipal services or other costs.

- Landowners living within one mile of a new landfill would be reimbursed if they subsequently sell their property at a loss because of the siting or operation of the waste facility.

**New Landfill Sites.** Filling the regional "pool" of new landfill sites has been a long process, but it isn't over yet. The state requires each of the seven metro-

politan counties to find four "candidate" landfill sites. Not all the sites will be developed as landfills, but those that are will be picked among the candidate sites.

Although Anoka and Carver Counties have met their quota, or inventory, of sites, the Metropolitan Council last year assumed responsibility for completing the inventories of other counties.

Dakota and Scott each need an additional site; Hennepin, two. Ramsey may need one site, and Washington needs one or more additional sites.

The Council expects to complete the siting effort by fall of 1984.

**Reusing Wastes.** During 1983, all seven counties in the Twin Cities Area completed proposals for reusing waste that would otherwise go to landfills. The proposals show that some counties are aggressively pursuing waste-reuse programs; others are moving more slowly.

All counties expect to reuse a substantial amount of waste by burning it to produce steam. Other waste-reuse programs proposed by the counties include: cutting the amount of office paper used in county offices,

thereby reducing the amount of waste paper; collecting recyclable materials, like glass, newspapers and metals, for reuse; and composting yard wastes, like grass clippings and leaves.

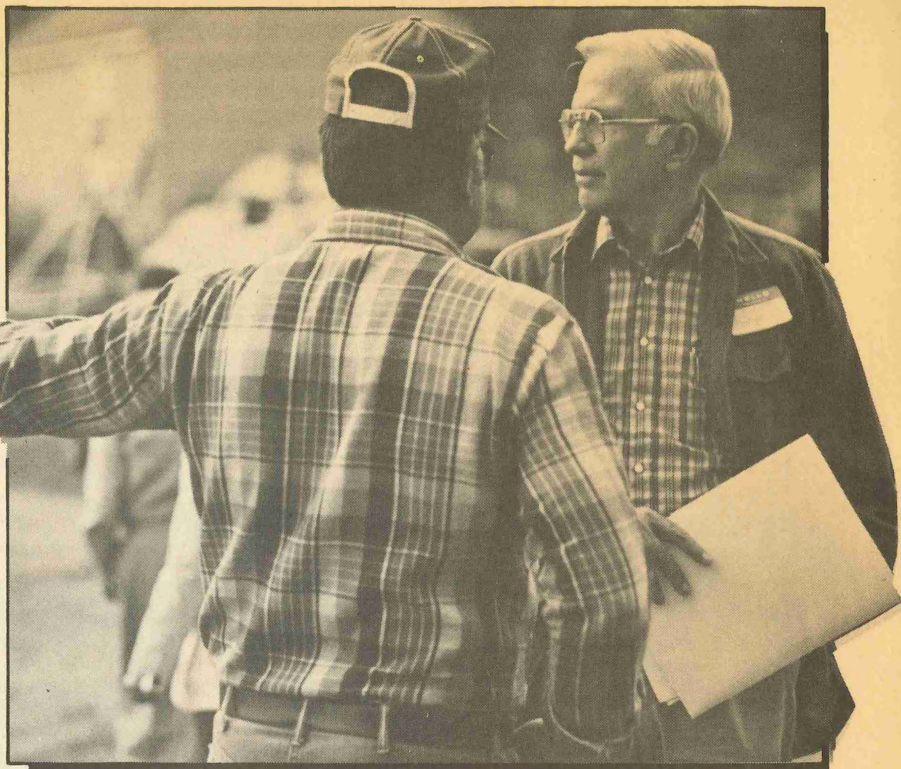
Sewage sludge ash also has reuse possibilities. It's the by-product of burning sludge, the mud-like material remaining after sewage is treated. Each day, 100 tons of sludge ash is produced at the Metropolitan Waste Control Commission's big sewage treatment plant in St. Paul.

Disposing of it is a problem, but tests have shown it could prove a useful additive to asphalt and possibly concrete. Last year, the waste control commission used ash-amended asphalt in building a street and several sidewalks at its St. Paul treatment plant. The ash was also used in asphalt laid for temporary bypasses along a 2½-mile stretch of Hwy. 5 in Bloomington. This test will help determine whether ash-amended asphalt is suitable in state highway projects.

### *Regional Solid Waste Plan.*

The Council is required by state law to complete a new regional

*Waste Management  
continued on page 12.*

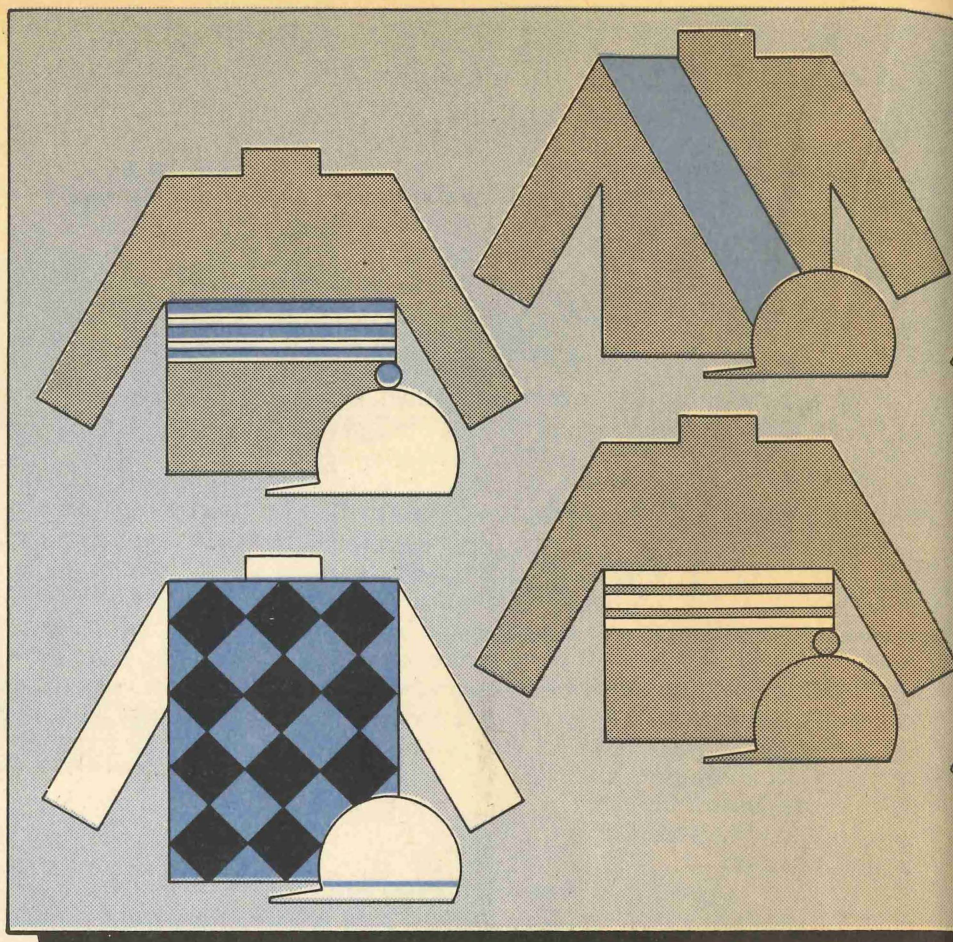




solid waste plan by Jan. 1, 1984. Work on the plan continues, but it won't be adopted until the Council completes its landfill siting efforts for the counties.

The plan will show how much waste reuse must be accomplished in each county from 1984 to the year 2000. The plan will indicate the types of reuse projects that need to be carried out, their location and how they should be financed.

It will also say how many landfills the Twin Cities Area will need, how much landfill capacity each county will have to supply, and establish a schedule for counties to follow in acquiring the sites and developing them as landfills.



## COUNCIL SPEEDS RACETRACK

**A** local horse-racing track could add over 3,000 permanent jobs to the Twin Cities' economy, by some estimates, and could generate \$14 million to \$19 million in direct income to state government each year.

State law calls for the Metropolitan Council to comment on proposals for racetrack sites submitted to the Minnesota Racing Commission. The Council is interested in what impact a racetrack would have on the host community, regional systems like sewers and highways, and the local environment. According to Ray Eliot, commission chair, the Council's help in selecting a track site will have "a big impact" on the commission's selection of a developer.

The Council last year decided to work closely with the racing

commission to help speed selection of a site. The Council asked sponsors to submit site proposals for Council review by Oct. 1, 1983, so it could complete its legislatively mandated reviews as soon as possible. Candidate sites are located in Blaine, Eagan, Farmington, Hastings, Lakeville, Lino Lakes, Savage, Shakopee and Woodbury.

The commission may select a developer for the track in April. The facility is expected to cost between \$30 million and \$50 million.

Here's a brief look at proposed racetrack site information submitted by each sponsor, except for Hastings, which is expected to submit a proposal in early 1984:

— *North Star Race Track*, proposed for Blaine, on Interstate Hwy. 35W north of 95th St. The

proposal is for a 453-acre site, a 10,000-vehicle parking lot and 232 acres for off-site commercial development.

— *Minnesota Jockey Club*, northeast Eagan, east of Hwy. 55 and south of a proposed section of I-494. The site would be 234 acres, with an adjacent commercial area of 198 acres and parking for 7,730 vehicles.

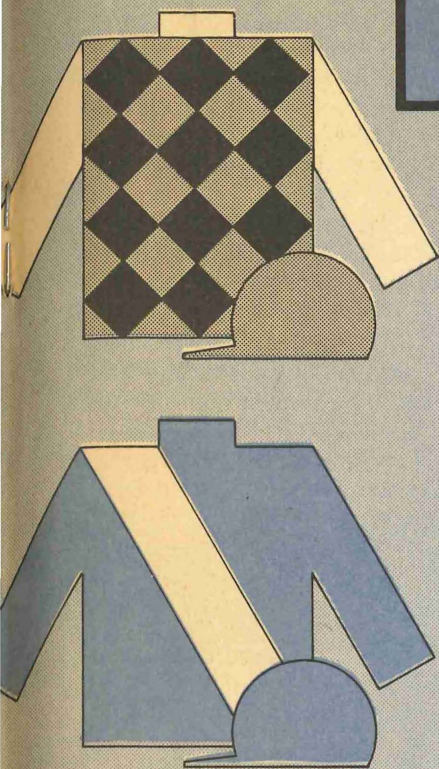
— *Farmington*, a site to be located in the north-central part of the city, east of Hwy. 31. Plans are for a 350-acre site with 50 acres of off-site development.

— *Lakeville*, a site west of I-35 and north of Hwy. 64. The 370-acre site would require \$1.2 million in sewer and water improvements and a \$3.2 million partial interchange on I-35, which the developer would pay for.

— *Lino Lakes*, a site immedi-



# HEALTH CARE: INFORMED CHOICES



## REVIEWS

ately west of I-35E, between I-35E and I-35W. The site would have 315 acres, an additional 120 acres of off-site development and from 10,000 to 15,000 parking places.

— *Savage*, a 320-acre site in the west-central portion of the city that would include off-site development. Sewer and water service would cost an estimated \$800,000.

— *Shakopee*, a 390-acre site one-half mile southwest of Valley Fair amusement park, south of Hwy. 101 and west of County Rd. 83. It would have 9,500 parking spaces and would require \$1.7 million in road improvements.

— *Woodbury*, a site in the northeast section of the city, near Hwy. 12. The site would have 250 acres, 85 off-site acres and 7,500 parking places.

**A**rmed with information, consumers can make better choices about what they buy. It's as true of health care as anything else. Much of the Metropolitan Council's effort in the health planning area last year was aimed at getting valuable information to consumers and payers of health care services to use in making choices that are right both medically and financially.

The information push is a vital part of dealing with what has become a central theme for the Council and its Health Planning Board—containing health care costs.

Toward that end, the Council and board in 1983 published and distributed more than 20 reports, including ones dealing with Twin Cities health-related behavior (smoking, drinking, overweight and exercise), data on hospital costs and a consumer's guide to hospital care.

In 1984, publication of more information is planned, including reports on medical and surgical costs, guides to health plans and specialty services, and a consumer survey of health care expenditures.



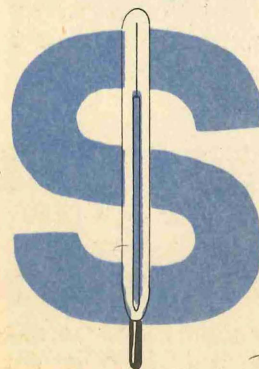
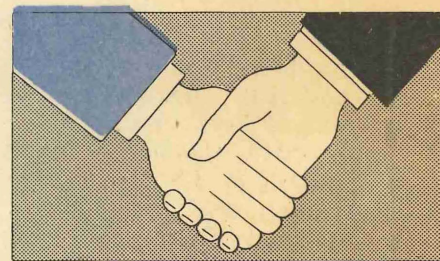
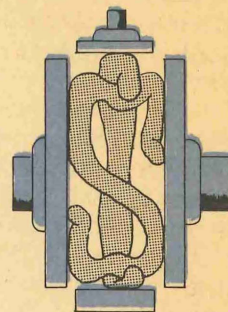
A major 1983 publication, which will continue to provide key direction for the board's efforts in containing health care costs, was *Prescription for Change—Balancing Competitive, Community and Regulatory Forces in Twin Cities Health Care*. Based on recommendations of a community task force, the report lays out the desirable balance between the three forces and recommends strategies for achieving them.

A broad effort, involving a wide range of community groups and agencies, is already under way to develop community consensus, and assistance in implementing the report's recommendations.

To strengthen marketplace incentives, the report recommends a combination of public and private initiatives to improve consumer education, cost-conscious behavior, and entering and leaving the marketplace.

Several other policy recommendations deal with maintaining the high level of voluntary community initiatives already occurring in the Metropolitan Area. Recommendations for appropriate regulation involve protection of the consumer, ensuring equity and public monitoring of the changing health care system.

Another major 1984 effort will be the Council's continued study of policies related to capital needs of the health care system. When completed in 1984, the study will include recommendations on what changes are needed to move from a system with a heavy reliance on cost reimbursement to one more reliant on marketplace competition.





# LAKE OVERFLOW: A SOLUTION AT LAST

**L**ast year the Metropolitan Council helped midwife a solution to a three-year-old dispute over who should pay for treatment of water that overflows from several Ramsey County lakes into the regional sewer system. The water originally flows into the lakes as surface runoff in eight suburban communities, but then gets mixed with sewage when it enters St. Paul's combined storm and sanitary sewers.

Ultimately it flows to the Pig's Eye sewage treatment plant in St. Paul, operated by the Metropolitan Waste Control Commission (MWCC). The question has been: Who should pay for sewage treatment of the water—St. Paul or the suburban communities?

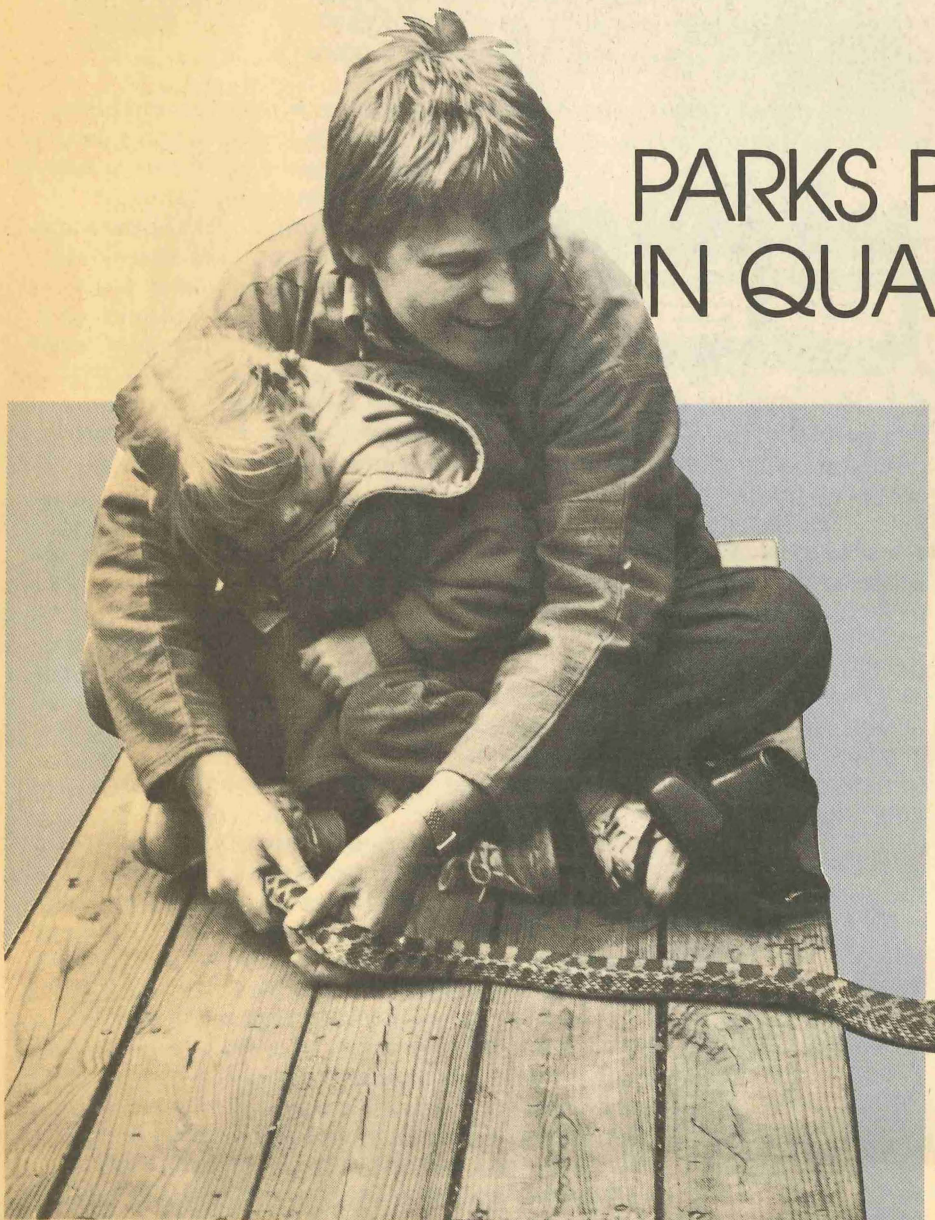
About two years ago, the Council helped establish

a task force that included mayors of the nine communities, but movement toward a solution had been slow. Last year, that changed. The task force, chaired by Council Chair Gerald Isaacs, adopted a plan to separate the lake overflow from St. Paul's combined sewers.

An existing sanitary sewer will be converted for channeling the overflow directly to the Mississippi River. A new sanitary sewer line will be built to replace it.

The plan will mean 100 percent of the overflow from Beaver and Phalen Lakes will be diverted from the Pig's Eye treatment plant. Suburban communities are expected to save over \$800,000 in sewage treatment costs each year. It also means less untreated sewage will go into the Mississippi River after a heavy rain.

## PARKS PUT QUALITY IN QUALITY OF LIFE



**T**o many people, the Twin Cities' 47 large regional parks are a way of getting in touch with nature—plus just plain fun. Twin Citians can bike, canoe, sail, camp, fish, hike, go horseback riding—and more—all in their “back yard.”

They'll be enjoying more and better park facilities in the future as a result of efforts made last year by the Metropolitan Council and its Metropolitan Parks and Open Space Commission.

Last year the Council awarded a \$4.4 million grant to acquire land at Nicollet Island's Central Mississippi Riverfront Regional Park in Minneapolis. Battle Creek and Mississippi Gorge Regional Parks and the Hyland-Bush-Anderson Park Reserve in Bloomington and Eden Prairie are being developed with the help of grants approved by the Council.

A Metropolitan River Corridor Study Committee, with the help of the Council, will study



# U

rbansprawl, which until recently had been swallowing up fertile farmland on the fringes of the Twin Cities Area, has lost much of its appetite lately. An important

reason is that growing numbers of farmers are enlisting their land in the state's agricultural preserves program.

The Metropolitan Council helped establish the program and is monitoring its progress.

The program is currently protecting almost 90,000 acres of farmland from urban development. Another 447,000 acres is eligible for protection under the program. Last year, farmers increased their participation in the program by 49 percent. The greatest use of the program is occurring on the urban fringe and around small rural towns, precisely the area targeted for help.



the protection and enhancement of recreation areas along the Mississippi, Minnesota and St. Croix rivers in the Area. A grant of \$75,000 from the U.S. Fish and Wildlife Service will make this study possible.

Not only are there more parks, but they're used more. The Council surveyed 20,000 park users last year and it's now getting the results. The survey shows park use is up 33 percent since 1977-78.

In 1984, the Council will complete a recreation and parks policy plan, using information from the park survey and other sources. It will also study the site selection and planning of a metropolitan speed skating rink.

## MORE FARMLAND GETS PROTECTION

*Metropolitan Commission Budgets.* Capital budgets for major regional services, such as sewers, transit, airports and parks, continue to hold the line. The combined budgets of the Metropolitan Waste Control, Transit and Airports Commissions continued to shrink, dipping 2.6 percent from 1983 to 1984. The decrease follows a 24 percent plunge in the three combined budgets from 1982 to 1983.

*Financing Regional Services.* The Council continued its study of new ways to pay for the regional services. Options range from a one percent regional sales tax to keeping the existing financing system. The study, begun in 1983 and to be completed early this year, is a follow-up to recommendations from a blue-ribbon Metropolitan Council task force on regional revenues.

*Updating the Framework.* This year the Council will integrate, as never before, comprehensive plans of local communities with Council forecasts in updating the Metropolitan Development Framework, the Council's guided-growth plan for the Twin Cities Area.

The changes the Council will make in the framework will reflect all 190 of the local plans reviewed by the Council, and Council forecasts of population, households and jobs for 1990 and 2000 (see article page 17). The framework will put greater emphasis on fostering regional economic growth and conserving energy resources.

*River Traffic.* Last year the Council completed a study of the effects of fleeting, or parking, barges adjacent to park and open space land on the Mississippi and Minnesota Rivers. Such land may be requested to accommodate barge fleeting and the study suggested ways to reduce undesirable impacts.

In 1984 the Council plans to complete a study on overall economic impacts commercial navigation has on the Twin Cities Area.

## ...and Fiscal, Growth Issues Studied



# PROPOSED FACILITY COULD MEAN CLEANER WATER

**I**t would have a double payoff, proponents say. It would help clean up the Mississippi River. It could also help some Twin Cities firms to stay in business, and retain needed jobs.

It's a proposal to divert tons of heavy metals used in metal-finishing and electroplating shops from the Twin Cities' sewer system to a central recovery facility for treatment.

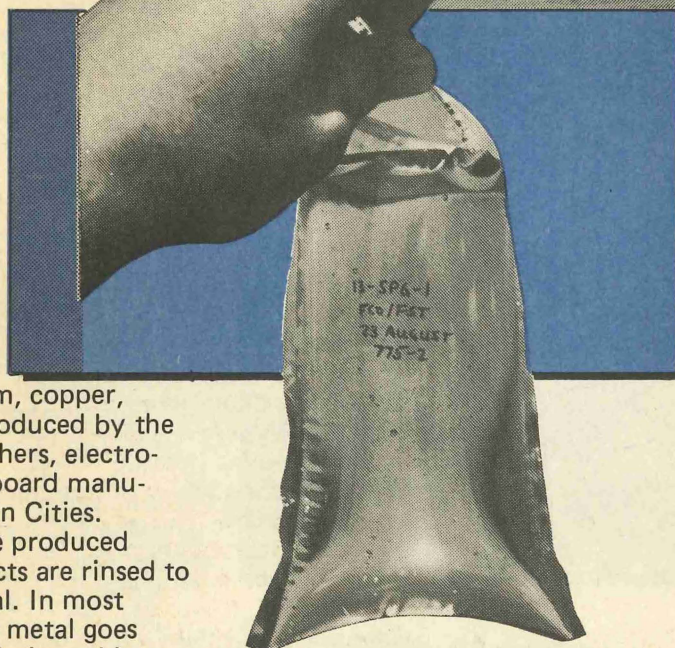
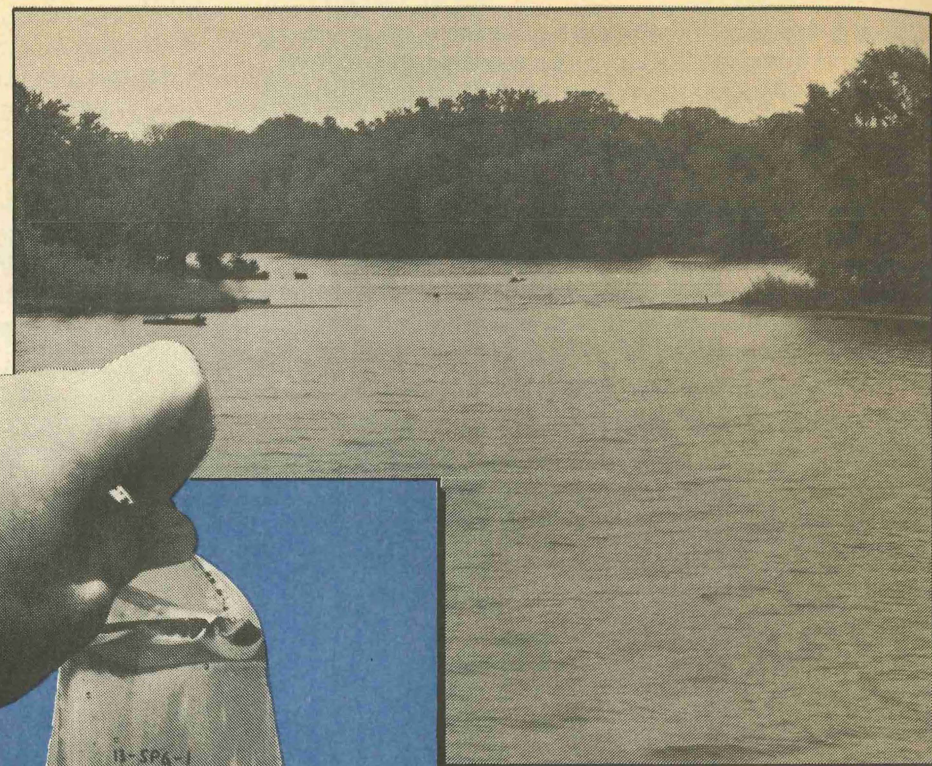
Studies done for the Metropolitan Council and a trade group—the Twin Cities Association of Metal Finishers—have shown such a facility is technically and economically feasible. It would treat potentially toxic metals—lead, chromium, cadmium, copper, nickel and zinc—produced by the 90-some metal finishers, electroplaters and circuit-board manufacturers in the Twin Cities.

The wastes are produced when plated products are rinsed to remove excess metal. In most factories, the waste metal goes directly down the drain and into the sewer system.

However, new regulations taking effect in April prohibit dumping the metals in the regional sewer system, operated by the Metropolitan Waste Control Commission (MWCC).

As a result, shops must pretreat the waste before sending it down the sewer or prepare the waste for shipment to a central plant. Larger shops can afford to treat their own waste, but it can be a back-breaking expense for smaller ones.

The electroplating and circuit-board manufacturing industry plays a significant part in supporting the Twin Cities high-



tech electronics and computer manufacturers. The treatment facility could have a beneficial impact on the industry.

Right now, however, financing for the project is the key. Last year, a joint-venture group asked the MWCC to lend it over \$6 million to finance the facility. The group proposed to repay the MWCC over a five-year period. The Council is expected to make a decision on the project sometime in the first quarter of this year.

The Council last year was engaged in other water-pollution control efforts as well. The Council made changes in its regional sewer plan authorizing several new projects. They include:

- Dechlorination facilities at the MWCC's big sewage treatment plant in St. Paul.
- A study of the St. Paul treatment plant's capabilities and impact on the Mississippi River.
- Phaseout of the Medina treatment plant.
- Construction of new inter-community sewer lines to serve parts of Ramsey, Lino Lakes, Blaine, Arden Hills and Mendota.



# FORECASTING NOT CRYSTAL-BALL AFFAIR



# A

t the Metropolitan Council, keeping an eye on the future means watching trends, checking statistics and making some guesses about what may be coming down the line.

Last year the Council did make some "guesstimates" about what it expects to see in future years. Council planners forecast that, by 1990, the Twin Cities Area will experience a whopping 22 percent increase in employment, a 17 percent growth in the number of households and a nine percent increase in population.

The Council prepared the forecasts to better estimate the future demand for regional services, such as sewers, transportation, parks and airports. Regional commissions use the forecasts to determine where growth is likely to occur. Local communities also use them in their own planning.

They show that the Area can expect to have 1.3 million people employed in 1990, an increase of 235,000 over 1980's level. While employment growth should occur in all types of jobs, it's expected to concentrate in trade and service jobs.

The Area is expected to add 124,000 new households by 1990. There were about 721,000 in 1980. Because of increasing numbers of middle-aged people, the demand for single-family housing should remain high.

The population won't increase as fast as jobs or households. There were about 1,986,000 Twin Citians in 1980. By 1990, the figure is expected to be about 2,160,000.

The Council forecasts a shift in the age structure of the Twin Cities' population. Over half the Twin Cities' population was under age 30 in 1980. However, 60 percent will be over 30 by the year 2000. By the same year, the number of people aged 18 to 29 is projected to drop 26 percent.

In addition to these forecasts, the Council started a new data series on quarterly economic indicators.

In 1984, the Council will use census data to help explain migration and travel behavior in the Twin Cities Area. A computer will make population, household, and employment forecasts easier to update on a regular basis.

**It takes more than a crystal ball  
to tell what the future may bring.**

The Council provides a broad range of data on the Twin Cities Area. It includes information on income, occupation, housing, and aging as well as industrial, commercial and residential development. This supports the Council's policy development and planning activities.





## AIR QUALITY: BREATHING EASIER

**W**

e can all breathe easier. The Metropolitan Council's annual assessment of air quality contained good news for Twin Cities residents.

The Council found during 1982 that air quality at only one monitoring location violated carbon monoxide standards, and there were no violations of ozone standards in the Twin Cities Area.

The Council helps plan ways of dealing with these pollutants, which are caused primarily by motor vehicles.

The Council coordinated a study monitoring carbon monoxide levels near the "hot spot" intersection of Snelling and University Aves. during the spring and summer of 1983. This work will help identify measures that would lower pollutant levels and bring the Area into compliance with air quality standards.

The air quality impact of traffic in and near Bloomington's Airport South Area has also been a Council concern. The Council is working with the city of Bloomington to plan for redevelopment of this area with a special focus on environmental concerns. Work in both these areas will continue in 1984.

## HELPING LOCAL PLANNING EFFORTS

**T**

he Metropolitan Council in 1983 stepped in as mediator and advisor to coordinate planning efforts of several local Twin Cities communities.

The Council developed a plan, agreed to by the city of Stillwater and Stillwater Township, for a coordinated extension of municipal services.

"We've been trying to work out some long-term planning between the city and the township," said Kathy Buck, a member of the Stillwater Township board and a special commission made up of city and township representatives. "It's not something that's accomplished overnight."

In need of impartial guidance, the commission contacted the Council. "It's really been helpful to have professional assistance from the Council," Buck said.

At long last, efforts have proved successful to resolve a three-year-old argument about who should pay for sewage treatment of water overflow from

several Ramsey County lakes (see article page 14).

Also, the Council worked with the city of Bloomington to carry out an environmental study of proposed development of its Airport South area, centered on the Metropolitan Stadium site. The project uses a new approach: the public will work with the private developer to prepare a master plan for the area. Planners hope the new approach will ensure the development satisfies environmental concerns.

The Council also prepared and distributed advisory materials for local planning. They include a series of reports describing innovative projects undertaken by Twin Cities communities to deal with special needs or problems, such as energy management of municipal buildings. The idea is to share information that may help other communities. The Council also prepared a kit that can help local planning officials prepare a capital improvement program.



# DEVELOPMENTAL DISABILITIES

If you have a handicapped child, you have unique problems and need specialized help. Where do you go to find people who can give support and direction?

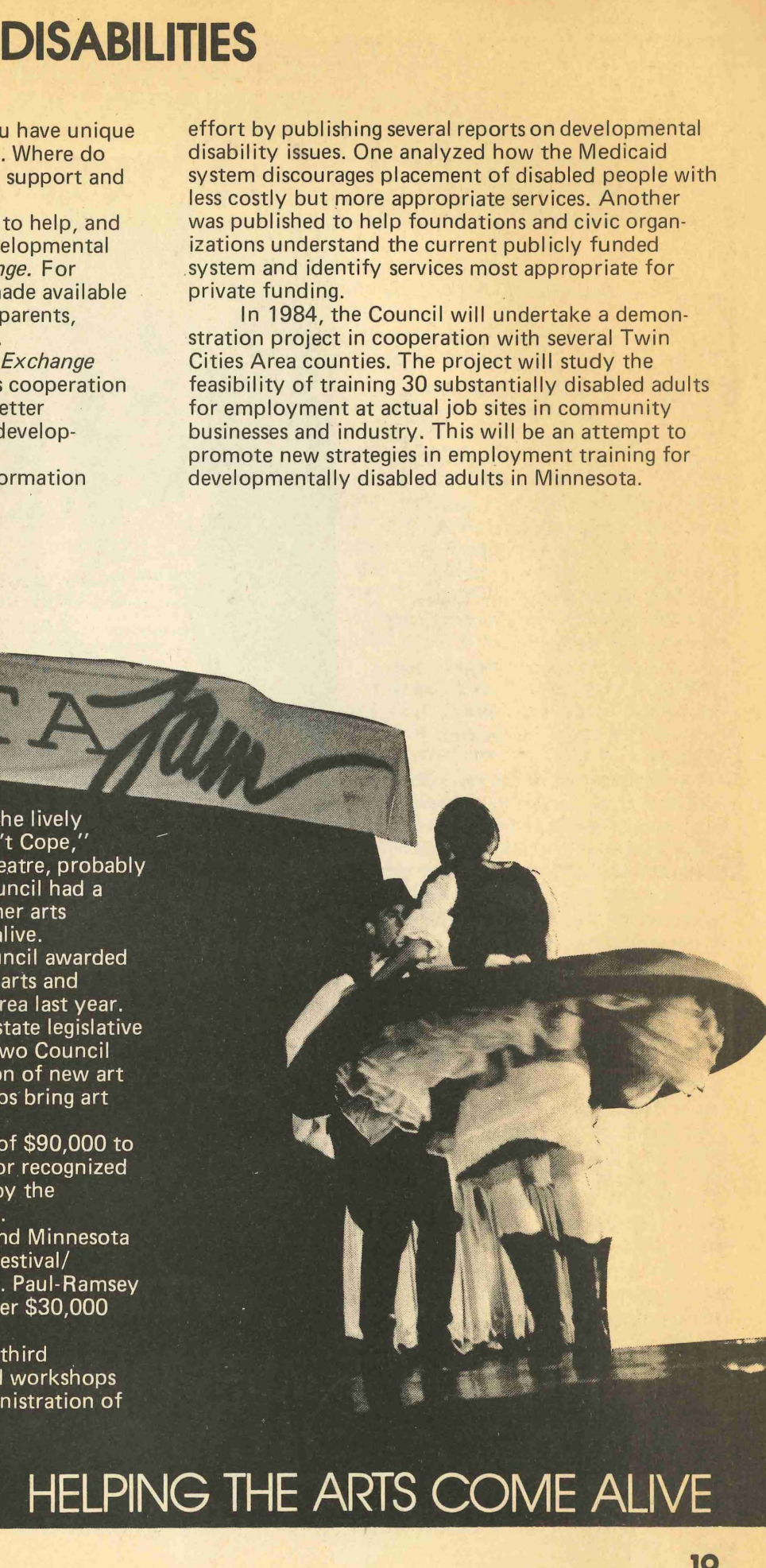
The Metropolitan Council is trying to help, and one way is through its newsletter on developmental disabilities—the *DD Information Exchange*. For the last eight years, the newsletter has made available the latest information on the subject to parents, professionals and “informal” care-givers.

One reader of the *DD Information Exchange* said she thought the newsletter increases cooperation among agencies and allows them to be better informed of all the options available to developmentally disabled people.

The Council also carried out its information

effort by publishing several reports on developmental disability issues. One analyzed how the Medicaid system discourages placement of disabled people with less costly but more appropriate services. Another was published to help foundations and civic organizations understand the current publicly funded system and identify services most appropriate for private funding.

In 1984, the Council will undertake a demonstration project in cooperation with several Twin Cities Area counties. The project will study the feasibility of training 30 substantially disabled adults for employment at actual job sites in community businesses and industry. This will be an attempt to promote new strategies in employment training for developmentally disabled adults in Minnesota.



Audience members delighted with the lively musical, “Don’t Bother Me, I Can’t Cope,” staged by St. Paul’s Penumbra Theatre, probably didn’t know the Metropolitan Council had a hand in making that—and a variety of other arts activities in the Twin Cities Area—come alive.

Through its arts program, the Council awarded 59 grants totaling \$198,000 to nonprofit arts and similar organizations in the Twin Cities Area last year. The funds, which came primarily from a state legislative appropriation, were distributed through two Council grants programs. One assists in the creation of new art works; the second helps community groups bring art programs into their communities.

The Council also awarded a total of \$90,000 to six small professional arts organizations for recognized artistic excellence. Funds were provided by the McKnight Excellence in the Arts program.

A major 1983 effort was the second Minnesota Jam to Preserve the Arts, a combination festival/fundraising event copresented with the St. Paul-Ramsey United Arts Council. The “jam” raised over \$30,000 for participating Twin Cities arts groups.

The Council is planning to hold a third Minnesota Jam next year. It will also hold workshops on art and tourism, and continue its administration of the three arts grant programs.

## HELPING THE ARTS COME ALIVE



# CITIZENS: PARTNERS IN DECISION-MAKING

...from landfill siting to the arts, citizens provide the grist for what eventually becomes the Council's regional policy.

**S**usan Gray wanted to be of service.

A Minneapolis attorney who has been a Hennepin County public defender, Gray read about vacancies on the Metropolitan Council's Criminal Justice Advisory Committee and decided it would be a good place to start.

She applied, was appointed and has been a member for the past four years. For more than a year, she's chaired a subcommittee on computer security.

It's been a special experience, Gray says, one that allows citizens like herself to work on equal terms with a variety of public officials.

"It's both an opportunity to learn and an opportunity to share," Gray said of the part advisory committee members play at the Council.

Gray's experience—finding out what it's like to shape policy at the regional level—is one shared by more than 300 members of the Council's many standing advisory committees.

The advisory committee members, and those who serve on other special task forces and committees, play a vital role in Twin Cities Area regional government. In nearly every area, from landfill siting to the arts, citizens provide the grist for what eventually becomes the Council's regional policy.

But citizen participation in the life of the Metropolitan Council doesn't stop with advisory committees. Much more is involved, as the Council actively seeks out and encourages citizen involvement in its affairs.

Council procedures call for involving the public at every major decision point in the process of preparing or amending a policy plan.



Through November, 1983, more than 60 public meetings or hearings had been held on regional issues, from proposed economic policies to computer crime. Those meetings attracted about 5,000 citizens of the Twin Cities Area.

The Council also reaches out to the Twin Cities Area with its publications. In the past year, the circulation of the monthly newspaper, the *Metro Monitor*, has increased from 21,000 to 65,000. It is now available on the buses and on racks in downtown skyways, libraries and a variety of other public places.

The new jazzed-up *Monitor* keeps readers current on major regional issues in a readable way and provides a forum for different viewpoints.

The Council also published more than 150 reports in 1983, on a variety of subjects of regional importance. The reports—which covered everything from a listing

of arts activities to population forecasts—are available free or at low cost from the Council communications office.

Another innovation designed to bring the people of the Twin Cities Area in closer contact with regional government and services was the first-ever Metro Day, held May 1, 1983. People turned out in droves to look at the airports, the Pig's Eye sewage treatment plant, the Metrodome, the regional parks and the Metropolitan Transit Commission's giant bus-overhaul garage.

Visitors to the 1983 State Fair grandstand also got a closer look at what the Council is and does, through its fair booth.

From advisory committee members debating policy to fairgoers picking up a Council publication—each is an important part of the regional partnership that makes the Metropolitan Council work.



# MORE FACTS NEEDED ON COMPUTER CRIME

**C**omputer crime isn't a kid's game. It's a serious—and expensive—business that could become even more widespread as computers play a bigger role in our lives.

But it's apparent not enough is known about computer crime. For example, how much occurs in the Twin Cities Area? How can it be detected? How can it be prevented?

The Metropolitan Council, through its Criminal Justice Advisory Committee, decided some time ago that those questions deserved answers—and set about getting them.

A special subcommittee was formed, made up of representatives of private industry and federal, state and local law enforcement agencies. In 1983, after over a year of study, the subcommittee issued its report.

It found that hard numbers about how much computer crime there is—and how much it costs—simply aren't available. As a result, the Council plans to survey Twin Cities computer users—small businesses, large corporations and individuals—to determine the extent of the problem.

In another important step, the Council will work to establish a regional "clearinghouse" for information about computer crime and security. Such an information center will make it easier for individuals and organizations to get the help they need when they first suspect a computer crime.

*Other Public Safety Efforts.* The Council continued to play the lead role in a joint effort to develop a coordinated response to a potential aircraft disaster around the Minneapolis-St. Paul International Airport. Expertise developed in the effort will be expanded in 1984 to strengthen coordinated responses to other mass-casualty incidents, such as hazardous waste spills, high-rise fires and other disasters.

Last fall Council Chair Gerald Isaacs coolly walked out of a burning house purposely set ablaze to be extinguished by a residential sprinkler system. The demonstration was designed to stimulate the use of home sprinkler systems in the Area and thus increase fire protection. The systems may also have potential as a new industry source of new jobs.

## NATURAL RESOURCES

**W**hat happens to rain or snowmelt when people build a road, roof or parking lot? Water can't seep into the earth and turns into runoff. If not controlled, the flowing water can cause serious damage.

At its worst, it can do what it did to Ramsey County's Battle Creek Regional Park and its environs—erode a creekbed to the point of threatening homes with collapse and halt park recreation for eight years. That problem cost \$7 million to correct.

Last year, the Metropolitan Council produced several reports designed to make Twin Cities communities more aware of water quality issues and the need for water resources management. One project involved publishing a series of five reports on runoff control to help cities respond to a 1982 state law requiring them to implement surface water management by the end of 1985.

Another was producing a series of eight reports with recommendations to restore or maintain water quality in seven regional lakes: Square, Fish and Spring Lakes and Lakes Bryant, Elmo, George and Riley. The Council also continued developing a water quality data base by surveying 28 lakes last year, with plans to survey another 35 this year.

This year the Council will turn its attention to uses and possible abuses of the Twin Cities' groundwater.

Supplies of sand and gravel in the Twin Cities Area, important to future economic development, are plentiful, according to a Council study completed last year. However, the study found that the resource needs to be protected and recommended strategies to do so.



# COUNCIL BUDGET INCLUDES PROPERTY TAX REDUCTION

**W**hen the Metropolitan Council adopted its 1984 budget last year, it cut the amount of money it will raise from property taxes by \$175,000. The Council's '84 budget totals \$10.91 million.

The cut reduces the amount to be raised through the Council's mill levy from \$6.06 million to \$5.89 million.

In percentage terms, it also lowers the projected increase in Council revenue from property tax sources from 8.3 percent to 5.2 percent. This figure is below the average increase of 6.3 percent for municipal budgets recommended by the Association of Metropolitan Municipalities.

The new budget will support a wide range of Council efforts. Priority items entail revising several policy plans, including those on regional growth and development, health, housing, aviation, solid waste, and parks and open space.

Other activities include completing plans for services to elderly people, beginning a comprehensive study of barge fleet and water

transportation, and the first inventory of land use in the Twin Cities Area since 1962.

The 1984 budget reflects changes that have occurred in the past five years in the Council's sources of funding. Federal revenues, which accounted for 55 percent of the Council's 1979 budget, have leveled off at about 30 percent.

State funds have remained a small, fairly constant share of the Council's budget—between 3 and 4 percent.

The percentage of local revenue has grown from 30 percent in 1979 to 66 percent in the 1984 budget. Most of the local revenue comes from a property tax of 8/30ths (.267) mill on all real property in the Twin Cities Area. However, the levy reduction means the Council will be levying .258 mill.

Complete financial information is contained in the separate appendix to this report.

## EQUAL OPPORTUNITY

**I**n 1983, the Metropolitan Council updated its plans for affirmative action and minority enterprise. The plans continue the Council's efforts to ensure:

- Equal opportunity in employment.
- Citizen participation in shaping Council programs.
- Business opportunities afforded by the Council's purchase of goods and services, and participation in federally funded programs.

Currently women constitute 54 percent of all Council staff, 30 percent of its management staff and 41 percent of its professional staff. Minority group members make up 7 percent of all Council staff and 5 percent of its professional and management staff.

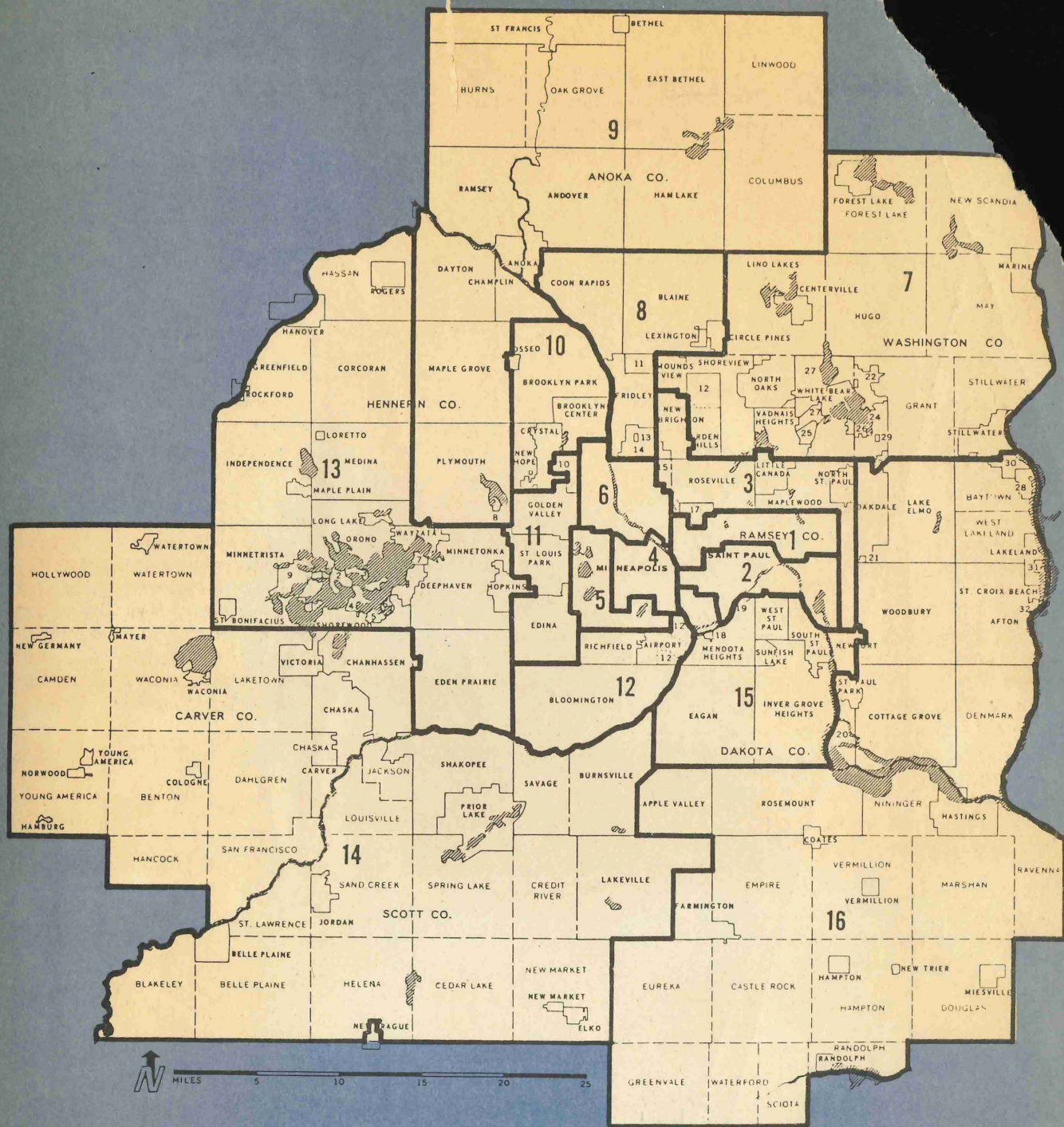
## TALLY OF PROPOSALS REVIEWED

**S**ome 1,008 proposals were referred to the Metropolitan Council for review in 1983 under federal and state directives. Council review serves to coordinate regional and local planning. It also brings proposals into the public arena for discussion.

Among the items were metropolitan commission plans, park grants, environmental impact statements, local comprehensive plans, arts grants, housing proposals and community development block grants.

The separate appendix to this report contains the complete list of referrals. President Reagan in 1982 abolished the federal "A-95" review process, but invited governors to replace it with review systems of their own. Last year, Gov. Perpich gave the Council the responsibility of continuing to review applications for federal grants and loans for the Twin Cities Area.





## METROPOLITAN COUNCIL DISTRICTS

Gerald Isaacs, Chair

- |                         |                            |
|-------------------------|----------------------------|
| 1 Liz Anderson          | 9 Josephine D. Nunn        |
| 2 Mike McLaughlin       | 10 Philip C. Carruthers    |
| 3 Charles William Wiger | 11 Patricia Hasselmo       |
| 4 Carol Flynn           | 12 Gertrude Ulrich         |
| 5 Alton J. Gasper       | 13 Dirk deVries            |
| 6 Joan Campbell         | 14 Raymond J. Joachim      |
| 7 Mary Hauser           | 15 Carol Wold Sindt        |
| 8 Marcia Bennett        | 16 Patrick J. (Pat) Scully |



COUNCIL  
PROPERTY

V



Publication No. 08-84-001

January 1984





840444

January 1984

---

**APPENDIX**  
to the  
**Metropolitan Council**  
**1983 Annual Report**  
to the  
**Minnesota State Legislature**

---

**NOT FILMED**

HT  
394  
.T9  
M47a  
1983  
appendix



---

Pursuant to Mn Stat 473.245



### **About this Appendix**

This document is an appendix to the Metropolitan Council's 1983 annual report. The report and appendix have been prepared to fulfill requirements in Minn. Stat., sec. 473.245. The law requires that detailed financial information and referral listings be included in the annual report.

This appendix also contains a list of Council publications completed during 1982 and a roster of Council advisory committee members.

*Metropolitan Council of the Twin Cities Area  
300 Metro Square Building  
7th and Robert Streets  
St. Paul, Minnesota 55101  
Publication No. 08-84-002*



## Table of Contents

Referrals .....	1
Financial Information .....	33
Metropolitan Council 1983 Budget .....	33
Metropolitan Council 1983 Estimated Revenue .....	34
Metropolitan Council Statement of Actual 1983 Revenues and Expenditures .....	35
Metropolitan Council 1984 Budget .....	36
Metropolitan Council 1984 Estimated Revenue .....	37
1983 Publications .....	38
Advisory Committee Membership, 1983 .....	42



## Referrals

The listing that follows contains all plans and projects the Metropolitan Council received for review under its referral process from Nov. 1, 1982, to Oct. 31, 1983. Some 1,008 referrals were received for review during the period.

The referral process is a system of review and evaluation carried out by the Council under responsibilities assigned to it by state and federal law. The purpose of the review is to ensure coordination of project proposals and local planning regional planning.

The types of "referrals," or projects, that undergo regional review vary widely, as the listing suggests. Federal regulations and state statutes have involved the Council in reviewing applications submitted by local governmental units and private agencies for federal financial assistance. For most of 1983, the Council followed the "A-95" review process, established by federal regulation, in reviewing such requests.

On Oct. 1, 1983, however, the Minnesota Intergovernmental Review Process replaced A-95 procedures. The change resulted from an order abolishing the A-95 review process issued by President Reagan, who nonetheless invited governors to replace it with a review system of their own. In 1983, the Minnesota Intergovernmental Review Process was established as its replacement.

In the referral process, the Council can generally take two kinds of actions, depending on the type of referral. It can 1) *recommend* a certain course of action to another, approving agency, or it can 2) *approve* or *disapprove* a referral with no further consideration by another governmental unit. Projects proposed under the former A-95 procedures, the current state review process and certain state provisions fall into the *recommend* category. A limited number of proposals, which include those of metropolitan commissions, come under the *approve* or *disapprove* category.



**I. FEDERAL GRANT AND LOAN REQUESTS**  
**A. U.S. DEPARTMENT OF AGRICULTURE**

Referral Number	Applicant	Description	Amount	Action Code
11065-1	Jacobson, William Associates	Senior Citizen Apartment, 8 Units, Hampton	Unknown	01
11111-1	H M H Enterprises, Inc.	Low- and Moderate-Income Housing 25 Units, Watertown	Unknown	01
11244-1	Riverview Heights Limited	FMHA, Riverview Heights, 18 Units Camden Twp. (Mayer)	\$ 409,000	07
11678-1	Carver	Water Supply, Storage & Distribution	822,650	16

**I. FEDERAL GRANT AND LOAN REQUESTS**  
**B. U.S. DEPARTMENT OF COMMERCE**

Referral Number	Applicant	Description	Amount	Action Code
11287-1	Price Waterhouse	Minority Business Development	\$ 168,300	04
11289-1	Control Data Business Centers	Minority Business Development	168,300	04
11303-1	Vensure, Ltd.	Minority Business Development	153,000	04
11314-1	Impact, Inc.	Minority Business Development	168,300	04
11339-1	Minneapolis	King's Highway Reconstruction	600,000	04
11340-1	Minneapolis	City Hall Renovation	500,000	04
11341-1	Minneapolis	Hennepin Avenue Street Furniture	250,000	04
11342-1	Inver Grove Heights	Public Works Maintenance Facility	765,750	04
11403-1	St. Paul	Homegrown Economy Project	80,000	01

**I. FEDERAL GRANT AND LOAN REQUESTS**  
**C. U.S. DEPARTMENT OF HEALTH AND HUMAN SERVICES**  
**1. MISCELLANEOUS PROGRAMS**

Referral Number	Applicant	Description	Amount	Action Code
10950-1	Red School House, Inc.	American Indian Employment Training	\$ 200,000	04
10976-1	Hennepin County	An Alternative to Nursing Homes	150,000	06
11041-1	Red School House, Inc.	Indian Runaway Youth Shelter	150,000	01
11042-1	St. Paul Urban Indian Health Board	Community-Based Health Care	125,000	06
11043-1	Portland State University	Skid Row Agencies	Unknown	04

Action Codes and Description

01 Favorable	10 Funded Prematurely
02 Qualified Favorable	11 No Action
03 Unfavorable	12 Staff Information
04 No Comment	13 Superseded
05 Returned	14 Letter of Intent Only
06 Suspended Review	15 Other, Reason Given in Notes
07 Nonreviewable	16 Referral 'In Process' on Oct. 31, 1983
08 Withdrawn	17 Void
09 Default	



Referral Number	Applicant	Description	Amount	Action Code
11171-2	University of Minnesota	Agricultural Enterprise for New Americans	225,000	01
11187-1	Anoka County Community Action Program	Head Start	198,800	04
11266-1	Bridge for Runaway Youth	Residential Facility and Services to Runaways & Families	133,193	01
11305-1	St. Paul American Indian Planning & Development Council	Employment Training Project	274,343	04
11321-1	Parents In Community Action, Inc.	Head Start	1,009,995	04

**I. FEDERAL GRANT AND LOAN REQUESTS**  
**C. U.S. DEPARTMENT OF HEALTH AND HUMAN SERVICES**  
**2. AGING PROGRAMS**

Referral Number	Applicant	Description	Amount	Action Code
10350-2	American Red Cross, St. Paul Chapter	Purchase of Rides	\$ 97,300	01
11046-1	Augsburg College	Elderly Self-Sufficiency Project	111,331	06
11071-1	Southern Minnesota Regional Legal Services	Legal Services	51,500	02
11072-1	Judicare of Anoka County	Legal Services	27,851	03
11073-1	Legal Aid Society of Minneapolis	Legal Services for Seniors	76,000	01
11074-1	Nursing Home Residents' Advisory Council	Nursing Home Advocacy	78,521	01
11075-1	Senior Citizens Centers of Greater Minneapolis	Transportation Coordination	123,788	01
11076-1	American Red Cross, St. Paul Chapter	Purchase of Rides	111,406	01
11077-1	American Red Cross, St. Paul Chapter	Coordinated Transportation	94,331	01
11078-1	Amherst H. Wilder Foundation	Adults Day Care	53,622	01
11079-1	Carver County	County Care Center	45,769	01
11080-1	Ebenezer Society	Human Development Day Center	34,599	01
11081-1	St. Paul Rehab Center	Home Modification Project	28,426	02
11082-1	South Hennepin Human Services Council	Chore/Maintenance Project	38,787	03
11083-1	Amherst H. Wilder Foundation	Chore/Maintenance Service	26,232	02
11084-1	Forest Lake Youth Service Bureau	Senior Chore Service	16,907	01
11085-1	North Memorial Medical Center	Services to Elderly Project	45,211	02
11086-1	Pillsbury-Waite Neighborhood Services	Homemaker/Health Aide Project	40,604	02
11087-1	Home Services Association	Project Syntax	69,631	01
11088-1	South Hennepin Human Services Council	H.O.M.E.	26,767	01
11089-1	Ebenezer Society	Homemaker Project	72,056	02
11090-1	Senior Outreach, Inc.	Senior Outreach	7,850	01
11091-1	West 7th Neighborhood Center	Multipurpose Senior Center	13,565	01
11092-1	Scott-Carver Economic Council, Inc.	Multipurpose Senior Center	16,955	08
11093-1	Cedar Riverside People's Center	Multipurpose Senior Center	28,847	01



Referral Number	Applicant	Description	Amount	Action Code
11094-1	Blaine	Senior Center Program	5,628	02
11095-1	Belle Plaine	Senior Center Equipment	15,100	02
11096-1	Amherst H. Wilder Foundation	Wilder Senior Center	20,160	03
11097-1	Suburban Community Service	Westonka Senior Center	16,973	02
11098-1	Suburban Community Service	Southshore Senior Center	10,900	01
11099-1	Burnsville-Eagan-Savage School District #191	Sioux Trail Senior Center	22,635	01
11100-1	Lynglomsten, Inc.	Senior Center	8,733	03
11101-1	Fridley School District #14	Senior Center Project	9,860	01
11102-1	Farmington Area Senior Center, Inc.	Senior Center	24,123	01
11103-1	Coon Rapids	Senior Center Administration	33,225	01
11141-1	Greater Minneapolis Council of Churches	Chore Service	214,152	02
11614-1	Volunteers of America	Congregate Meals	1,528,196	16
11615-1	Greater Minneapolis Council of Churches	Home-Delivered Meals	294,705	16
11616-1	Scott-Carver Economic Council, Inc.	Home-Delivered Meals	49,376	
11617-1	Scott-Carver Economic Council, Inc.	Congregate Meals	154,420	16
11618-1	Ramsey Action Programs	Congregate Meals	983,009	16
11619-1	Ramsey County	Home-Delivered Meals	176,691	16

**I. FEDERAL GRANT AND LOAN REQUESTS**  
**C. U.S. DEPARTMENT OF HEALTH AND HUMAN SERVICES**  
**3. HEALTH PROGRAMS**

Referral Number	Applicant	Description	Amount	Action Code
10826-1	University of Minnesota	Nurse-Midwifery Graduate Program	\$ 146,404	01
10836-1	Minn. Department of Welfare	Health Manpower Shortage Designation	N/A	01
10861-1	Minn. Department of Health	Diabetes Control Program	224,538	07
11175-1	Hennepin County Medical Center	St. Paul Dialysis Unit Expansion	N/A	01
11176-1	Hennepin County Center	Coon Rapids Dialysis Unit	N/A	01
11213-1	Methodist Hospital	Increase Dialysis Stations	N/A	01
11243-1	Minn. Department of Health	Pediatric Cardiac Services Program	136,979	01
11254-1	Minneapolis	Health Care In Day-Care Settings	82,000	07
11272-1	Gillette Children's Hospital	Community Health Care; Children With Chronic Conditions	273,435	01
11274-1	Ramsey County	Block Nurse Program, St. Anthony Park	274,960	01
11288-1	St. Paul	Urban Health Expansion Satellites	170,874	07
11301-1	Great Lakes Hemophilia Foundation	Hemophilia Diagnostic and Treatment Center, U of M	316,642	01
11315-1	Search Institute	Adolescent Family Life Demonstration Program	399,317	01
11537-1	St. Paul	Family Planning Program	324,790	01
11542-1	St. Paul	Model Cities Health Center	260,787	16
11544-1	University of Minnesota	Increase 2 Hemodialysis Stations	N/A	01



**I. FEDERAL GRANT AND LOAN REQUESTS**  
**D. U.S. DEPARTMENT OF HOUSING AND URBAN DEVELOPMENT**  
**1. COMMUNITY DEVELOPMENT PROGRAMS**

Referral Number	Applicant	Description	Amount	Action Code
10732-2	Minneapolis	Amendment, 1983-85 Housing Assistance Plan	\$ N/A	01
11273-1	Anoka County	1983 Community Development Block Grant (CDBG)	1,912,000	01
11302-1	Hennepin County	1983 CDBG (Voluntary)	3,752,000	01
11302-2	Hennepin County	"Jobs" Bill Projects	1,051,000	01
11361-1	Anoka County	"Jobs" Bill Projects	536,000	01
10607-2	Little Canada	Garden Terrace Elderly-Handicapped (E-H) Housing	147,000	02
10789-2	Mendota	Sewer Systems Development	200,000	01
10852-1	Prior Lake	Sewer and Water Mains	600,000	01
10855-1	Shakopee	East 2nd Avenue Project	1,200,000	01
10875-1	Stillwater	Housing Rehabilitation	600,000	01
10876-1	Washington County	Carnelian-Marine Reclamation	1,200,000	01
10944-1	Hastings	Trunk Storm Sewer (CDBG)	0	01
10952-1	New Brighton	New Municipal Well	600,000	01
10944-1	Watertown	Water Storage Expansion	220,000	01
11009-1	Belle Plaine	Senior Citizen Center	200,000	02
11010-1	Prior Lake	North Shore Sewer/Water	6,000	01
11011-1	Savage	Highway 13 Program	1,200,000	01
11012-1	Maplewood	Housing Improvement Program	231,710	01
11013-1	Hopkins	Commercial & Residential Rehabilitation	827,000	02
11035-1	St. Paul Park	Comprehensive Revitalization	629,500	02
11036-1	South St. Paul	Housing Improvement Program	600,000	02
11037-1	Shakopee	East 2nd Street Revitalization	1,201,300	01
11038-1	Stillwater	Housing Revitalization	496,800	01
11039-1	Willernie	Community Revitalization	249,838	02
11044-1	Farmington	Neighborhood Improvement Program	600,000	02
11045-1	Rosemount	Commercial Neighborhood Improvements	1,073,000	01

**I. FEDERAL GRANT AND LOAN REQUESTS**  
**D. U.S. DEPARTMENT OF HOUSING AND URBAN DEVELOPMENT**  
**2. HOUSING SUBDIVISION PROGRAMS**

Referral Number	Applicant	Description	Amount	Action Code
08526-2	Barrett Builders	Subdivision Feasibility (SF) 4715, French Lake Terrace, 69 Lots, Champlin	N/A	01
10070-2	Rehbein, El & Son, Inc.	SF 4410, Shilo, 22 Lots, East Bethel	N/A	02
10153-2	Rehbein, El & Son, Inc.	SF 4418, Brywood Acres, 11 Lots, East Bethel	N/A	02
10830-1	Northway Construction, Inc.	SF 4539, Heather Ridge, 188 Lots, Shoreview	N/A	01
10832-1	Consumers Realty and Development Co.	SF 4540, Oakridge Heights, 68 Lots, Lakeville	N/A	01
10838-1	Carmody, T. Michael	SF 4542, Towers Addition, 34 Lots, Eden Prairie	N/A	01
10839-1	Riverwood Construction Co.	SF 4544, Londin Hills, 20 Lots, St. Paul	N/A	01
10840-1	R. J. S. Builders, Inc.	SF 4545, Meadowwood Park 2nd Addn., 20 Lots, Brooklyn Park	N/A	01
10853-1	Schmidt Investment Co., Inc.	SF 4547, Petersens Estates, 14 Lots, Champlin	N/A	01
10857-1	Ches Mar Development	SF 4546, Sheffield, 39 Lots, Eagan	N/A	01



Referral Number	Applicant	Description	Amount	Action Code
10871-1	Castle Design & Development, Inc.	SF 4551, Sterling Glen, 76 Lots, Maplewood	N/A	01
10872-1	Da Verne Addition, A General Partnership	SF 4552, Da Verne Addition, 12 Lots, Roseville	N/A	01
10873-1	Townhome Investment Company, Inc.	SF 4553, Country Club Estates-Phase I & II, 24 Lots, North St. Paul	N/A	01
10874-1	Exemplar, Inc.	SF 4555, Holstens Pristine Meadows 3rd Addn., 39 Lots, Brooklyn Park	N/A	01
10878-1	Exemplar, Inc.	SF 4557, Holstens Pristine Meadows 4th Addn., 15 Lots, Brooklyn Park	N/A	01
10885-1	Lowry Hill Construction Co.	SF 4554, Deerhaven 2nd Addn., 40 Lots, Plymouth	N/A	01
10900-1	Butler, George R. Constr. Co.	SF 4556, Carriage Place 2nd Addn., 18 Lots, Burnsville	N/A	01
10901-1	First National Bank, Anoka	SF 4567, Muriel Acres, 22 Lots Champlin	N/A	01
10904-1	Wensmann Homes	SF 4560, Pilot Knob Estates, 32 SF, 24 Twins, Apple Valley	N/A	01
10905-1	Branton, George E. Construction, Inc.	SF 4562, Lake-Vale TH, 56 Units, Lakeville	N/A	01
10906-1	Cranberry, Inc.	SF 4569, Cranberry Heights, 35 Lots Forest Lake Twp.	N/A	01
10935-1	Equitable Life Assurance /Eden Land Sales	SF 4570, Edenvale 14th Addn., 57 Lots, Eden Prairie	N/A	01
10943-1	Near Mountain Partnership	SF 4577, Near Mountain, 134 Lots, Chanhassen	N/A	01
10947-1	Dupont, Michael D. & Associates	SF 4578, Michael Dupont 1st Addn., 9 Lots, Mendota Heights	N/A	01
10948-1	G & E Development	SF 4580, Canterbury Square 3rd Addn., 39 Lots, Savage	N/A	01
10949-1	De Gardner, Robert D.	SF 4582, De Gardners Grove Estates, 292 Lots, Cottage Grove	N/A	01
10953-1	Mardon Homes, Inc.	SF 4581, Mardon Homes Addition, 47 Lots, Shoreview	N/A	01
10954-1	Skyehill Co.	SF 4584, Skyehill Townhouses (TH), 31 Lots, St. Louis Park	N/A	01
10975-1	Afton Court Limited Partnership	SF 4583, Afton Court TH, 15 Units, St. Paul	N/A	01
11052-1	Parklands Development	SF 4589, Deerwood Meadows, 116 Lots, Plymouth	N/A	01
11053-1	Hagen, Hans Home, Inc.	SF 4591, Cherokee East Plat #4, 68 Lots, Shoreview	N/A	01
11054-1	Advanced United Development, Inc.	SF 4592, Cobblestone Manor II, 82 Lots, Apple Valley	N/A	01
11059-1	Rehbein, Glenn Excavating, Inc.	SF 4593, Oakland Addition, 133 Lots, Circle Pines	N/A	01
11060-1	Miller, Joseph Construction	SF 4594, Oak Shores 9th, 55 Lots, Burnsville	N/A	01
11061-1	Wildwood Development of Savage	SF 4596, Wildwood Estates 1st Addn., 38 TH, Savage	N/A	01
11062-1	Nevada Place Development Co.	SF 4595, Nevada Place, 22 Lots, St. Paul	N/A	01
11067-1	GCL Development Co.	SF 4590, Merlinwood, 20 Lots, St. Paul Park	N/A	01
11105-1	Building Coordinators, Inc.	SF 4599, Jason Addition, 13 Lots, Brooklyn Park	N/A	01
11106-1	Lund, James Construction, Inc.	SF 4601, Woods of Golden Lake, 91 Lots, Circle Pines	N/A	01
11115-1	Hein Marg, Inc.	SF 4608, Lenzen 2nd, 19 Lots, Carver	N/A	03
11117-1	Parranto, J. E. Inc.	SF 4610, Tiberon 1st, 26 Lots, Eagan	N/A	01
11129-1	Lundgren Brothers Construction, Inc.	SF 4605, Willow Bend, 15 Lots, Plymouth	N/A	01
11130-1	Peterson Construction	SF 4612, Orchard Lake Estates 2nd Addn., 16 Lots, Lakeville	N/A	01
11134-1	Hendricks, Gerald E.	SF 4609, Village View Heights II, 52 Lots, Watertown	N/A	01
11142-1	Schweich Home Builders	SF 4618, Shangri-La, 55 Lots, Prior Lake	N/A	01



Referral Number	Applicant	Description	Amount	Action Code
11150-1	Aradco, Inc.	SF 4611, Edgewood, 74 Lots, Brooklyn Park	N/A	01
11151-1	Oak Ridge Associates	SF 4622, Oaks of Apple Valley, 67 Lots	N/A	01
11153-1	Fairfax Construction Co.	SF 4624, Valley Farm Addition, 18 Lots, Empire Twp.	N/A	01
11157-1	Johnson-Reiland Construction	SF 4626, Highland Five Estates, 30 Lots, Burnsville	N/A	01
11162-1	Seward West Redesign, Inc.	SF 4615, Seward Court, 2 Lots, Minneapolis	N/A	01
11165-1	Fleming, John C.	SF 4628, Bakken Heights 2nd Addn., 22 Lots, Inver Grove Heights	N/A	02
11167-1	Leekley's, Inc.	SF 4621, Southridge Townhomes, 16 Units, Minnetonka	N/A	01
11170-1	Parkview, Inc.	SF 4632, O'Leary's Hills, 30 Lots, Rosemount	N/A	01
11172-1	Brighton Shores	SF 4625, Brighton Shore, TH, 27 Lots, New Brighton	N/A	01
11173-1	Bros, Garet M.	SF 4629, Chesterwood Two, 16 Lots, Maplewood	N/A	01
11177-1	Evergreen Investments, Inc.	SF 4636, Dakota County Estates, 144 Lots, Farmington	N/A	01
11178-1	Almac, Inc.	SF 4638, Island View 3rd Addn., 19 Lots, Prior Lake	N/A	01
11181-1	Houston Construction, Inc.	SF 4634, Oak Chase 5th, 8 Lots, Eagan	N/A	01
11182-1	Sybrant, Richard J.	SF 4635, Country Acres 2nd Addn., 27 Lots, Champlin	N/A	01
11183-1	Wadsworth, Frend H.	SF 4637, Weaverview, 17 Lots, Maple Grove	N/A	01
11192-2	Brooklyn Development Co.	SF 4727, Park Woods 2nd Addn., 172 Lots, Brooklyn Park	N/A	01
11193-1	Muhlenhardt Farms	SF 4644, Horizon Heights 2nd & 3rd Addn., 54 Lots, Shakopee	N/A	03
11194-1	Link, Cletus Construction Co.	SF 4648, Maplewood th, 12 Units, Shakopee	N/A	01
11195-1	Fortune Realty	SF 4650, Safari Estates, 51 Lots, Eagan	N/A	01
11208-1	Brunet, Charles & June	SF 4651, Brunet's Addition, 19 Lots, Vadnais Heights	N/A	01
11209-1	Klingelhutz Realty & Development	SF 4652, Circle Gardens 2nd, 13 Lots, Bloomington	N/A	01
11210-1	Schmidt Investment Co., Inc.	SF 4653, Maplewood Estates, 19 Lots, Maple Grove	N/A	01
11211-1	Peterson, Hewitt and Associates	SF 4655, Aron Heights, 43 Lots, Coon Rapids	N/A	01
11212-1	Forest Park Development Corp.	SF 4654, Forest Park Estates 3rd, 25 Lots, Apple Valley	N/A	01
11218-1	Coffman Realty Co.	SF 4657, Burl Oaks 2nd, 58 Lots, Coon Rapids	N/A	01
11219-1	Elfering Construction, Inc.	SF 4666, Patricial Manor, 10 Lots, Burnsville	N/A	01
11220-1	Viking Holding Co.	SF 4659, Elm Creek Park Plaza, 20 Lots, Maple Grove	N/A	01
11222-1	Tandem Corporation	SF 4668, Dellwood, 90 Lots, Eden Prairie	N/A	01
11225-1	Kent W. Jefferson Construction	SF 4663, Tamarack Ridge, 25 Lots, White Bear Lake	N/A	01
11227-1	Good Value Homes, Inc.	SF 4667, Falcon Woods No. 3, 50 Lots, Falcon Heights	N/A	01
11230-1	Peterson, Hewitt and Associates	SF 4665, Autumn Oaks 2nd, 30 Lots, Rockford	N/A	01
11231-1	Monson/Ueland, Inc.	SF 4669, Ewald Place Planned Unit Development (PUD), 10 Lots, Golden Valley	N/A	01
11241-1	Al Sieben Construction Co.	SF 4674, Birchwood TH, 12 Units, Hastings	N/A	01



Referral Number	Applicant	Description	Amount	Action Code
11242-1	Riverdale Development Corp.	SF 4676, Woodlawn Heights 139 Lots, Eden Prairie	N/A	01
11255-1	Good Value Homes, Inc.	SF 4675, Moundsview Square, 15 Lots, Mounds View	N/A	01
11256-1	Gray Construction, Inc.	SF 4677, Gray's Riverview Terrace, 21 Lots, St. Paul	N/A	01
11257-1	B C & J, Inc.	SF 4678, Dakota Heights 8th, 65 Lots, Lakeville	N/A	01
11258-1	Wellner, Gary A. & Doty, W. G.	SF 4679, Doty/Wellner Addition, 135 F, S Double, Fridley	N/A	01
11259-1	J. E. Parranto Companies, Inc.	SF 4680, Southview Hills, 31 Lots, Inver Grove Heights	N/A	01
11260-1	Hustad Development Corp.	SF 4682, Bluffs East, 90 Lots, Eden Prairie	N/A	01
11262-1	Sherman-Boosalis Interests, Inc.	SF 4681, The Lakes, 61 Lots, Minneapolis	N/A	01
11267-1	LGS Concord Corp.	SF 4684, Pilot Pond, 20 Lots, Apple Valley	N/A	01
11268-1	Shamrock Builders, Inc.	SF 4685, Dublin Greens, 60 Lots, Coon Rapids	N/A	01
11269-1	Villas Associates	SF 4689, Willow Creek, 87 Lots, Shoreview	N/A	01
11275-1	Registered Properties Corp.	SF 4690, Valley Curve, 80 Lots, Eden Prairie	N/A	01
11276-1	Brutger Companies, Inc.	SF 4693, Brookwood TH, 33 Units, Brooklyn Center	N/A	01
11277-1	Rosella Realty	SF 4695, Rosella's Addition, 25 Lots, Andover	N/A	01
11283-1	Sunwood Energy Homes, Inc.	SF 4692, Crosstown Estates 2nd Addn., 48 Lots, Burnsville	N/A	01
11292-1	Graham Development Co.	SF 4697, Fish Lake West 4th, 30 Quads, 92 Lots, Maple Grove	N/A	01
11293-1	Cecka, James	SF 4699, Syivan Estates, 16 Lots, Little Canada	N/A	01
11296-1	TCF Development Corp.	SF 4701, Douglas Pines, 77 Lots, Champlin	N/A	01
11297-1	Nolde & Son	SF 4703, Sunnyside on the St. Croix, 16 TH, Oak Park Heights	N/A	01
11307-1	Margaret Barrett & Assoc.	SF 4706, Barrett 1st, 142 Lots, Lakeville	N/A	01
11308-1	R & B Investments	SF 4713, Prairie View, 14 Lots, Blaine	N/A	01
11311-1	Reynolds Homes & Land Development, Inc.	SF 4717, Parkwood Terrace East, 16 Quads, Brooklyn Park	N/A	01
11312-1	Mission Hills Park Partnership	SF 4719, Mission Hills Park 6th, 14 Lots, Plymouth	N/A	01
11317-1	New Community Builders, Inc.	SF 4723, Heidenreich Addition, 12 Lots, Brooklyn Park	N/A	01
11318-1	Shamrock Builders, Inc.	SF 4725, Shenanigan Addition, 13 Lots, Coon Rapids	N/A	01
11320-1	Crystal Lake Investment Co.	SF 4710, Crystal Lake 2nd, 11 Lots, Burnsville	N/A	01
11326-1	Countryside Builders, Inc.	SF 4698, SF 4712, Oakwood Heights, 2nd & 3rd Addn., 44 Lots, Eagan	N/A	01
11330-1	Aradco, Inc.	SF 4733, Colorado Addition, 32 Lots, Brooklyn Park	N/A	01
11332-1	Riverdale Development Corp.	SF 4718, Park Ridge, 114 Lots, Eagan	N/A	01
11338-1	Derrick Land Co.	SF 4720, Hunters Wood 3rd, 25 Lots, Apple Valley	N/A	01
11344-1	Bohn, Karl	SF 4722, Maple Leaf Woods, 63 Lots, Savage	N/A	01
11345-1	Peterson Land Corp.	SF 4743, Eagle Lake Trails, 28 Lots, Maple Grove	N/A	01
11350-1	Derrick Land Co.	SF 4747, Creek Ridge South, 21 Lots, Minnetonka	N/A	01
11351-1	Miller, Joseph M. Construction Co.	SF 4745, Miller North Addition, 39 Lots, Maple Grove	N/A	01
11363-1	Derrick Land Co.	SF 4726, Hidden Glen I, 65 Lots, Eden Prairie	N/A	01



Referral Number	Applicant	Description	Amount	Action Code
11397-1	Foley Woods	SF 4761, Foley Woods, 113 Units, Coon Rapids	N/A	01
11398-1	Northland Mortgage Co.	SF 4763, Parkland East, 38 Lots, Brooklyn Park	N/A	01
11399-1	Hiner Properties, Inc.	SF 4765, Heritage Estates III Addition, 48 Lots, Vadnais Heights	N/A	01
11400-1	Laurent Development Company	SF 4767, Silverthorne, 104 Lots, Plymouth	N/A	01
11405-1	Advance Developers, Inc.	SF 4738, Sun Cliff South, 282 Lots, Eagan	N/A	01
11472-1	Northland Mortgage Co.	SF 4773, Wellington Crest & W. C. 2nd, 243 Lots, Maple Grove	N/A	01
11473-1	TCF Development Corp.	SF 4775, Creekside, 42 Lots, Blaine	N/A	01
11482-1	Lebanon Hills Limited Partnership	SF 4742, Meadowbrook Glen, 78 Lots, Apple Valley	N/A	01
11483-1	Laukka & Associates, Inc.	SF 4777, Tonka Bay Woods, 3rd, 37 Lots, Tonka Bay	N/A	01
11484-1	Crescent Associates, Inc.	SF 4779, Crescent 3rd, 16 Lots, Maple Plain	N/A	01
11488-1	Eliason Construction Co.	SF 4752, Grosse Pointe 2nd, 40 Lots, Burnsville	N/A	01
11514-1	Sunset Homes Corp.	SF 4785, 4787, Donnay's Eagle Lake, 25 Lots, Maple Grove	N/A	01
11515-1	Shamrock Builders, Inc.	SF 4789, Erin Go Bragh, 91 Lots, Coon Rapids	N/A	01
11516-1	Reed Properties, Inc.	SF 4791, Penzance Ridge, 13 Lots, Maple Grove	N/A	01
11519-1	Home Estates, Inc.	SF 4756, Southcross Estates, 45 Lots, Burnsville	N/A	01
11520-1	Berkshire, Ltd.	SF 4760, Berkshire, 24 Lots, Burnsville	N/A	01
11521-1	Portfolio Management, Inc.	SF 4762, Knob Hill II, 11 Doubles Homes, Burnsville	N/A	01
11522-1	Allen, James E.	SF 4766, Wellington Forest, 46 Lots, Savage	N/A	01
11526-1	Northwest Properties Corp.	SF 4768, Apple Groves, 181 Lots, Eden Prairie	N/A	01
11527-1	Gramsey, Louis	SF 4770, Crystal Shore 2nd, 31 Lots, Burnsville	N/A	01
11528-1	Shamrock Builders, Inc.	SF 4795, Shannon Glen, 30 Lots, Robbinsdale	N/A	01
11539-1	B-T Land Co.	SF 4772, Timber Creek Estates, 156 Lots, Eden Prairie	N/A	01
11540-1	Lundgren Brothers Construction, Inc.	SF 4774, Quail Ridge, 17 Lots, Bloomington	N/A	01
11543-1	J. E. Parranto Inc.	SF 4780, Hillcrest Addition, 38 Lots, Eagan	N/A	01
11548-1	Sunwood Energy Homes, Inc.	SF 4776, St. Francis Woods 3rd, 34 Lots, Eagan	N/A	01
11549-1	South Grandview Properties Partnership	SF 4782, Murr Rearrangement, 19 Lots, So. St. Paul	N/A	01
11550-1	Interlachen Co.	SF 4799, Interlachen Hills, 95 Lots, Stillwater	N/A	01
11557-1	T & J Development, Inc.	SF 4784, Whispering River TH, 37 Lots, Farmington	N/A	01
11559-1	Edwall Contracting	SF 4801, Edwalls Oak Meadows, 14 Lots, Blaine	N/A	01
11598-1	Harstad, Keith T.	SF 4786, West Buck Hill Estates, 177 Lots, Burnsville	N/A	01
11630-1	J. E. Parranto Inc.	SF 4790, Lake Park Shores, 22 Lots, Eagan	N/LA	01
11631-1	Devries Builders, Inc.	SF 4813, Rosemary Terrace, 10 Lots, Brooklyn Center	N/A	01
11632-1	Rolling Green of Crystal Partnership	SF 4815, Rolling Green, 84 Lots, Crystal	N/A	01
11635-1	Devries Builders, Inc.	SF 3-84-DC, Devries 2nd, 22 Lots, Plymouth	N/A	01
11649-1	Ed Cave & Sons, Inc.	SF 7-84-DC, Caves Century 3rd, 55 Lots, Maplewood	N/A	16



Referral Number	Applicant	Description	Amount	Action Code
11650-1	Countryside Investment, Inc.	SF 4-84-DC, High Trail Estates 2nd, 21 Lots, Eden Prairie	N/A	16
11651-1	Wolter, Myron L.	SF 9-84-DC, Oak Green Estates, 30 Lots, Oakdale	N/A	16
11661-1	Baron Construction, Inc.	SF 13-84-DC, Pheasant Run 2nd, 21 Lots, Mahtomedi	N/A	16
11667-1	Hiller, Alvin	SF 15-84-DC, Hiller Addition, 9 Lots, Maple Grove	N/A	16
11671-1	Urban Unit Corp.	SF 12-84-DC, Bluff Ridge, 88 Lots, Eden Prairie	N/A	16
11672-1	Werthausen, Arthur	SF 17-84-DC, Oakville Heights Addition, St. Paul	N/A	16

**I. FEDERAL GRANT AND LOAN REQUESTS**  
**D. U.S. DEPARTMENT OF HOUSING AND URBAN DEVELOPMENT**  
**3. MULTIPLE, PUBLIC HOUSING PROGRAM**

Referral Number	Applicant	Description	Amount	Action Code
08819-2	Homedale Builders	221D4, The Parkway at Nicollet, 159 Units, Burnsville	\$ 5,605,000	01
10879-1	Mears Park Development Company	221D4, Galtier Plaza Apts., 250 Units, St. Paul	15,392,700	
11049-1	Episcopal Church Home of Minnesota	221D3, Becketwood Cooperative, 237 Units, Minneapolis	15,405,000	01
11050-1	Health Resources, Inc.	221D3, Hazel Ridge Cooperative, 75 Units, Maplewood	5,028,800	01
11154-1	Miller Companies	221D4, Bay Point Manor, 152 Units, Eden Prairie	6,586,500	01
11163-1	Harrington, Jerry E.	221D4, Eagle Ridge Apartments, 240 Units, Maple Grove	9,282,200	01
11164-1	Heritage Heights Partnership	221D4, Heritage Heights, 90 Units, Coon Rapids	2,872,700	01
11196-1	Yankee Doodle Associates	221D4, Surrey Gardens Apartments, 88 Units, Eagan	2,812,800	01
11197-1	Crossroads Apartment Partnership	221D4, Crossroads Apartments, 64 Units, Eagan	2,077,200	01
11232-1	Lapierre Enterprises	234, The Kent House, 8 Units, St. Paul	500,000	01
11304-1	Duckwood Trails Partnership	221D4, Aspenwoods of Eagan, 162 Units	5,930,000	01
11541-1	Shepard Park Partnership	221D3, Shepard Park Congregate Housing, 114 Units, St. Paul	Unknown	01
11558-1	Riley, James R.	221D4, Lexington Heights Apts., 189 Units, Mendota Heights	7,541,800	02

**I. FEDERAL GRANT AND LOAN REQUESTS**  
**D. U.S. DEPARTMENT OF HOUSING AND URBAN DEVELOPMENT**  
**4. ELDERLY AND HANDICAPPED HOUSING PROGRAMS**

Referral Number	Applicant	Description	Amount	Action Code
11352-1	Archdiocese of St. Paul and Minneapolis	202, Northwest Area Housing, 38 Units, Maple Plain	\$ 1,322,400	01
11353-1	Archdiocese of St. Paul and Minneapolis	202, Tim's Greenwich Court, 35 Units, Blaine	1,218,000	01



Referral Number	Applicant	Description	Amount	Action Code
11354-1	Presbyterian Homes of Minnesota	202, Gideon Pond Residence, 45 Units, Bloomington	1,600,000	01
11355-1	Social Ministry Housing, LCA	202, Shepherd Arms of Anoka, 40 Units	1,405,650	01
11356-1	Crest View Lutheran Home	202, Crest View Residences II, 35 Units, Columbia Heights	1,218,000	01
11357-1	Archdiocese of St. Paul and Minneapolis	202, United Blind Project, 24 Units, Minneapolis	835,200	01
11358-1	Archdiocese of St. Paul and Minneapolis	202, Lakeville Project, 24 Units, Lakeville	835,200	01
11359-1	St. Philip's Lutheran Church	202, Moore View, 40 Units, Fridley	4,755,600	01

# **I. FEDERAL GRANT AND LOAN REQUESTS** **E. U.S. DEPARTMENT OF INTERIOR**

Referral Number	Applicant	Description	Amount	Action Code
11336-1	Ramsey County Historical Society	Prepare National Register Nominations	\$ 3,500	04
11411-1	Young America	Willkommen-Friendship Development	4,000	03
11412-1	Norwood	Norwood Park Improvements	5,000	03
11413-1	Chaska	Chaska Community Park Development	50,000	01
11414-1	Chanhausen	Lake Ann Park Expansion and Development	144,388	01
11415-1	Carver	Campground and Boat Access	25,750	01
11416-1	Savage	Canterbury Park Development	75,000	01
11417-1	Shakopee	Huber Park Trail Enhancement	57,450	01
11418-1	Prior Lake	Crest Avenue Public Access	100,000	02
11419-1	New Market	Wagner Park Development	9,265	01
11420-1	Jordan	Mill Pond Beach Development	61,250	01
11421-1	Belle Plaine	Prairie Park Development	5,750	01
11422-1	Eagan	Fish Lake Park Development	32,475	01
11423-1	Farmington	Rambling River Park Expansion II	35,000	01
11424-1	Hastings	Vermillion Falls Park Development II	50,050	01
11425-1	Lakeville	Aronson Park Development	33,473	01
11426-1	West St. Paul	Wentworth/Oakdale Playfield Development	90,000	01
11427-1	Anoka	Rum River Pedestrian Thoroughfare Development	51,000	01
11428-1	Blaine	Aquatore Park Expansion and Development	20,000	01
11429-1	Coon Rapids	Pheasant Ridge Park Development	29,000	01
11430-1	Lauderdale	Breck Woods Nature Area Expansion and Development	41,250	01
11431-1	Lauderdale	Community Park Acquisition	75,000	01
11432-1	Little Canada	Gervais Mill Park Development	35,000	01
11433-1	Mounds View	Silver View Park II Development	75,000	01
11434-1	Ramsey County	Island Lake Park Development	25,000	01
11435-1	Roseville	Langton Lake Park Development	70,120	01
11436-1	St. Paul	Burns Avenue Park Development	59,000	01
11437-1	St. Paul	Rice Park Development	69,000	01
11438-1	St. Paul	West Minnehaha Recreation Center	108,000	01
11439-1	Vadnais Heights	Berwood Park Development	39,670	01
11440-1	Vadnais Heights	Bridgewood Park Development	27,250	01
11441-1	Vadnais Heights	Westfield Park Development	52,250	01
11442-1	Birchwood	Park Structures Development	7,500	01
11443-1	Lake Elmo	Pebble Park Development	30,750	07
11444-1	Oakdale	Oakdale Park Development	120,000	01
11445-1	Oak Park Heights	Brekke Park Development	98,260	01
11446-1	Stillwater Twp.	Township Park Development	3,500	01



Referral Number	Applicant	Description	Amount	Action Code
11447-1	Woodbury	Tamarack Nature Preserve Development	75,000	01
11448-1	Brooklyn Park	North-South Corridor Link Development	88,000	07
11449-1	Brooklyn Park	Palmer Lake Park Development	170,000	01
11450-1	Brooklyn Park	Maplebrook Park Development	180,000	01
11451-1	Brooklyn Park	Oak Group Park Addition Development	25,000	01
11452-1	Brooklyn Park	North/South Trail Development	60,000	07
11453-1	Champlin	North River Park Development	41,650	01
11454-1	Champlin	Richardson Park Development	50,000	01
11455-1	Crystal	Becker Park Expansion	300,000	01
11456-1	Eden Prairie	Riley Lake Park Development	60,000	01
11457-1	Maple Grove	Elm Creek Special Use Park Development	75,000	01
11458-1	Minneapolis Park & Recreation Board	Jordan Neighborhood Park Development	244,100	01
11459-1	Minnetonka	Big Willow Field Development	40,850	01
11460-1	New Hope	Theatre Complex Development	7,500	01
11461-1	Richfield	Memorial Park Development	148,500	01
11462-1	Plymouth	West Medicine Lake Park Development	82,500	01
11463-1	Robbinsdale	Lakeview Terrace Field Lights	30,000	01
11464-1	Rogers	Softball Field Development	11,350	01
11497-1	Young America	Friendship Park Development	10,800	01
11498-1	Norwood	City Park Development	6,000	01
11664-1	Dayton	Central Park Development	45,395	07
11665-1	Ramsey	Central Park Development	120,500	07
10887-1	Minneapolis Park & Recreation Board	Maintenance Facility Study	25,046	01
11295-1	Minneapolis Park & Recreation Board	Park Building Rehabilitation	525,000	01
11465-1	St. Paul	Jimmy Lee Recreation Center/Oxford Pool Rehabilitation	225,400	01

**I. FEDERAL GRANT AND LOAN REQUESTS**  
**F. U.S. DEPARTMENT OF LABOR**

Referral Number	Applicant	Description	Amount	Action Code
10646-2	Hennepin County	1983 CETA Modifications	N/A	04
10647-2	St. Paul	1983 CETA Modification	\$ 2,652,152	04
10652-2	North Star Consortium	1983 CETA Modifications	3,098,329	04
11034-1	Hennepin County	Transition Demonstration Project	125,000	04
11300-1	North Star Consortium	1983 Summer Youth Employment	870,437	04
11362-1	Hennepin County	Refugee Targeted Assistance	620,441	04

**I. FEDERAL GRANT AND LOAN REQUESTS**  
**G. U.S. DEPARTMENT OF TRANSPORTATION**  
**1. AIRPORT PROGRAMS**

Referral Number	Applicant	Description	Amount	Action Code
11310-1	Metropolitan Airports Commission (MAC)	1984 Airport Development Aid Program	\$ 2,800,000	02



**I. FEDERAL GRANT AND LOAN REQUESTS**  
**G. U.S. DEPARTMENT OF TRANSPORTATION**  
**2. TRANSIT PROGRAMS**

Referral Number	Applicant	Description	Amount	Action Code
11504-1	Metropolitan Transit Commission (MTC)	Purchase of 64 Standard Buses	\$ 8,499,999	01
11505-1	MTC	Rehabilitation of Buses and 1983 Transit System Improvements	3,561,152	01
11506-1	MTC	Purchase of 20 Lift-Equipped Buses	3,000,000	02
10833-1	Suburban Paratransit, Inc.	Transportation Services, Elderly and Handicapped (E & H) (3)	41,580	01
10835-1	Community Involvement Programs	Transportation Services, E & H (3)	52,708	01
11642-1	East Side Neighborhood Service, Inc.	Transportation Services, E & H	22,260	16
11643-1	Martin Luther Manor	Transportation Services, E & H	18,900	16
11644-1	Courage Center	Transportation Services, E & H (2)	32,760	16
11645-1	Carver County, Coordinated Services, Inc.	Transportation Services, E & H	22,260	16
11646-1	Phoenix Residence, Inc.	Transportation Services, E & H	18,900	16
11647-1	Mounds View School District #621	Transportation Services, E & H	18,900	16
11648-1	Ebenezer Society	Transportation Services, E & H	26,124	16
11652-1	D.A.R.T.S.	Transportation Services, E & H	18,900	16
11657-1	Westonka Senior Citizens, Inc.	Transportation Services, E & H	23,184	16
11662-1	Suburban Paratransit, Inc.	Transportation Services, E & H	22,260	16

**I. FEDERAL GRANT AND LOAN REQUESTS**  
**G. U.S. DEPARTMENT OF TRANSPORTATION**  
**3. HIGHWAY PROGRAMS**

Referral Number	Applicant	Description	Amount	Action Code
09511-4	Transportation Advisory Board (TAB)	1983, I-335 Interstate Substitution Projects	\$35,498,500	01
09511-5	TAB	I-335, I-335 Interstate Substitution Modifications	N/A	01
09511-6	TAB	1983, I-335 Interstate Substitution Modifications	N/A	01
10844-1	TAB	1983-85 Transportation Improvement Program (TIP)	N/A	01
10844-2	TAB	1983-85 TIP Amendment, West 7th	N/A	01
10844-3	TAB	1983-5 TIP Amendment, I-394	N/A	01
10844-4	TAB	Parking Ramps	N/A	01
10844-5	TAB	1983-85 TIP Amendment, 64 Standard Buses, Bus Rehab	N/A	02
10847-1	Minn. Department of Transportation	1983-85 TIP Amendment, 20 Lift Buses	N/A	01
11401-1	TAB	1983 Work Program for Highway Planning and Research	N/A	01
11503-1	Scott County	Federal-Aid Urban Plan Amendment, TH 13 Deletion	N/A	01
11610-1	TAB	Improvements, CSAH 2 and CSAH 27	151,100	01
11611-1	TAB	Allocation Process I-335 Interstate Substitution Funds FY 1984	N/A	16
		FAU Functional Classification, Dakota County Roadways	N/A	01



**I. FEDERAL GRANT AND LOAN REQUESTS**  
**G. U.S. DEPARTMENT OF TRANSPORTATION**  
**4. HIGHWAY PROJECTS**

<b>Referral Number</b>	<b>Applicant</b>	<b>Description</b>	<b>Amount</b>	<b>Action Code</b>
08761-2	Anoka County	Replace Bridge #1784, CR 71, Seelye Brook	\$ 100,000	01
10863-1	Ramsey County	Replace Bridge, CSAH 45 at Rice Creek	155,000	01
10886-1	Washington County	Replace Bridge L8171, Valley Creek	120,000	01
10895-2	Anoka	Main Street Bridge Rehab, Rum River	1,050,450	01
11233-1	Minneapolis	Replace Bridge 92351, 2nd St. NE.	262,000	01
11335-1	Minn. Department of Transportation	TH 3/I-494 Connection	1,440,000	08
11551-1	Inver Grove Heights	Great River Road, River Heights Rest Area	260,000	01
11604-1	Anoka County	Replace Bridge #2501, CSAH 24, Rum River	220,000	01
11628-1	St. Paul	Replace CNW RR Bridge, Payne Avenue	1,600,400	02
11669-1	Scott County	Resurface CSAH 2 & 27	71,610	16
11670-1	Anoka County	Improvements, CR 51	532,000	16

**I. FEDERAL GRANT AND LOAN REQUESTS**  
**H. U.S. VETERANS ADMINISTRATION**

<b>Referral Number</b>	<b>Applicant</b>	<b>Description</b>	<b>Amount</b>	<b>Action Code</b>
10899-1	Woodmark, Inc.	VA, Bennington Woods Condos, 56 Units, Maplewood	N/A	01
11217-1	Loft Homes, Inc.	VA Unknown, Loft Homes of Sand Creek, 4 Lots, Coon Rapids	N/A	01
11253-1	Borden Development	VA, Lakeside Village TH, 44 Units, Long Lake	N/A	01
11263-1	Klodt, Frantz & Son, Inc.	VA, Loon Lake Condo, 30 Units, St. Louis Park	N/A	01

**I. FEDERAL GRANT AND LOAN REQUESTS**  
**I. U.S. ENVIRONMENTAL PROTECTION AGENCY**

<b>Referral Number</b>	<b>Applicant</b>	<b>Description</b>	<b>Amount</b>	<b>Action Code</b>
07688-5	Helena/Cedar Lake Twp.	Step II-III Facility Plan	\$ 859,500	08
08261-3	Greenfield	Facilities Report Revision	N/A	01
08262-3	Independence	Facilities Planning Report	N/A	06
09189-3	Carver County	Alternative Wastewater Treatment Systems	4,206,085	01
09189-4	Carver County	Alternative Wastewater Treatment Systems	4,206,085	01
10562-2	Carver	Wastewater Facility	1,302,285	01
10910-1	Elko/New Market	Joint Wastewater Facility Plan	N/A	01
10938-1	Lake Elmo	Small Wastewater Treatment Systems	388,450	01
11133-1	Washington County	Step 2/3, Plans and Construction (Part I)	6,095,303	01
11133-2	Washington County	Step 2/3, Plans and Construction (Part II)	6,095,303	01
11246-1	Oak Grove Twp.	Step 2/3 Facility Grant	265,782	16
11286-1	Independence	Facilities Planning Report	N/A	02



**I. FEDERAL GRANT AND LOAN REQUESTS**  
**J. U.S. ACTION AGENCY**

Referral Number	Applicant	Description	Amount	Action Code
10936-1	Minnesota Association for Retarded Citizens, Inc.	Foster Grandparent Program	\$ 513,987	01
10942-1	Minnesota Association for Retarded Citizens, Inc.	Senior Companion Program	172,752	01
11348-1	Anoka County	Retired Senior Volunteer Program	26,803	01
11470-1	Senior Citizen Centers	Retired Senior Volunteer Program	80,310	01
11534-1	St. Paul-Ramsey Medical Center	Retired Senior Volunteer Program	62,639	01

**I. FEDERAL GRANT AND LOAN REQUESTS**  
**K. U.S. DEPARTMENT OF ENERGY**

Referral Number	Applicant	Description	Amount	Action Code
11265-1	Miscellaneous	Hospital Maxi-Audit, Fairview-Southdale, Eitel, Mt. Sinai, Metro Med.	N/A	01

**I. FEDERAL GRANT AND LOAN REQUESTS**  
**L. U.S. DEPARTMENT OF EDUCATION**

Referral Number	Applicant	Description	Amount	Action Code
11390-1	Hennepin Technical Centers	Rehabilitation Services, Special Project for Blind & Visually Impaired	\$ 152,650	04
11402-1	In Touch, Inc.	Rehabilitation Services—Special Project, Aimed at Deaf-Blind	107,230	04

**I. FEDERAL GRANT AND LOAN REQUESTS**  
**M. DIRECT FEDERAL PROJECTS**  
**1. DEPARTMENT OF DEFENSE**

Referral Number	Applicant	Description	Amount	Action Code
10882-1	U.S. Air Force	FY 85 Military Constr. 934 Tact. Airlift Group	N/A	01
11144-1	U.S. Corps of Army Engineers	Bank Erosion Control, Robert/Wabasha St. Paul	N/A	01
11334-1	U.S. Corps of Army Engineers	Lock & Dam 2 Loading Dock	N/A	01
11360-1	U.S. Air Force	Recruiting Administrative Facility, Wold-Chamberlain	N/A	01



**I. FEDERAL GRANT AND LOAN REQUESTS**  
**M. DIRECT FEDERAL PROJECTS**  
**2. DEPARTMENT OF INTERIOR**

<b>Referral Number</b>	<b>Applicant</b>	<b>Description</b>	<b>Amount</b>	<b>Action Code</b>
10849-1	U.S. Department of Interior	Round Lake Land Exchange	N/A	04

**I. FEDERAL GRANT AND LOAN REQUESTS**  
**M. DIRECT FEDERAL PROJECTS**  
**3. DEPARTMENT OF TRANSPORTATION**

<b>Referral Number</b>	<b>Applicant</b>	<b>Description</b>	<b>Amount</b>	<b>Action Code</b>
10854-1	U.S. Department of Transportation	New Lights, Runway 35	N/A	01
11125-1	U.S. Department of Transportation	Middle Marker, Runway 29R	N/A	01

**I. FEDERAL GRANT AND LOAN REQUESTS**  
**M. DIRECT FEDERAL PROJECTS**  
**4. POSTAL SERVICE**

<b>Referral Number</b>	<b>Applicant</b>	<b>Description</b>	<b>Amount</b>	<b>Action Code</b>
09889-2	U.S. Postal Service	Postal Facility Relocation, Lowry Station	N/A	04
10061-2	U.S. Postal Service	New Postal Facility, Southwest Station, Bloomington	N/A	01
10881-1	U.S. Postal Service	New Postal Facility, Blaine-Coon Rapids	N/A	07
10907-1	U.S. Postal Service	Postal Facility Relocation, Cologne	N/A	07
10907-2	U.S. Postal Service	Postal Facility Relocation, Cologne	N/A	04
10907-3	U.S. Postal Service	Postal Facility Relocation, Cologne	N/A	16
11160-1	U.S. Postal Service	Postal Facility Relocation, Mendota Branch	N/A	04
11224-1	U.S. Postal Service	Postal Facility Relocation, Jordan	N/A	01
11284-1	U.S. Postal Service	Postal Facility Relocation, Blaine	N/A	01
11306-1	U.S. Postal Service	Postal Facility Relocation	N/A	01
11523-1	U.S. Postal Service	Postal Facility Relocation	N/A	01
11524-1	U.S. Postal Service	Postal Facility Relocation	N/A	01

**II. STATE GRANT AND LOAN REQUESTS**  
**A. STATE CRIME CONTROL PLANNING BOARD**

<b>Referral Number</b>	<b>Applicant</b>	<b>Description</b>	<b>Amount</b>	<b>Action Code</b>
10766-2	Minnetonka School District #276	Parent Education Center	\$ 18,098	01



## II. STATE GRANT AND LOAN REQUESTS

### B. MINNESOTA ARTS COUNCIL

Referral Number	Applicant	Description	Amount	Action Code
10955-1	Artspace Projects, Inc.	Marshall-University Site Development	\$ 17,043	03
10956-1	Association for Cambodian Refugees in Minnesota	Traditional Dance/Drama	2,550	08
10957-1	Bach Society of Minnesota, Inc.	Bach's 300th Birthday Calendar	27,000	03
10958-1	Blaine Community Theatre	Produce "The Fantasticks"	10,950	03
10959-1	Bloomington Art Center	Fund Raising Coordinator	5,146	01
10960-1	Brass Tacks Theatre	Produce "Women with Problems"	9,825	01
10961-1	Coffeehouse Extempore	Program Development	13,200	01
10962-1	Community Access to Media	Film Distribution, "Foreclosure"	14,218	08
10963-1	Concentus Musicus	Produce "Le Mariage Forcé"	13,265	01
10964-1	Edina School District #273	Produce "Jabberwock"	8,990	03
10965-1	Eclectic Company, Inc.	Record Album Production	15,861	01
10966-1	Eclectic Company, Inc.	Organizational Development	9,650	01
10967-1	Fallout, Inc.	Produce Fallout Magazine	3,800	01
10968-1	Fil-Minnesotan Association	Produce "Noli Me Tangere"	50,947	01
10969-1	Fresh Air, Inc.	7 Concerts, New Music	16,457	01
10970-1	Fuller Community Theatre	Children's Theatre Production	2,269	03
10971-1	Great North American History Theatre	Produce "Allegro with Spirits"	30,030	01
10972-1	Hallie Q. Brown Community Center	Produce "Don't Bother Me — I Can't Cope"	26,700	01
10973-1	Heart of the Beast Theater	Community Productions	115,00	03
10977-1	Inner City Youth League	Inner City Playwright Discovery	23,950	01
10978-1	Lakeshore Players, Inc.	Audience Development	11,370	01
10979-1	Lao Family Community, Inc.	Produce Hmong Music	5,400	01
10980-1	Milkweed Chronicle	Anthology of Poetry	6,900	01
10981-1	Minneapolis 4-H Performing Arts Club	Variety Theater	6,467	03
10982-1	Minneapolis Artists Ensemble	Four Concerts	5,080	01
10983-1	Minneapolis Arts Commission	Organizational Development	69,320	03
10984-1	Minneapolis Chamber Symphony	Five Summer Concerts	76,500	01
10985-1	Minneapolis School of Art & Design	Regional Young Artist Exhibit	12,550	01
10986-1	Minneapolis College of Art & Design	Lake Minnetonka Architecture Exhibit	12,550	03
10987-1	Minnesota Alliance for Arts in Education	Organizational Development	38,000	01
10988-1	Minnesota Chorale	Special Concert	26,650	01
10989-1	Minnesota Jazz Association	Video Jazz Program	15,581	01
10990-1	Minnesota Literature Newsletter	Subscription Development	6,160	01
10991-1	Minnesota Songwriters Association	New Musical Workshop	21,000	03
10992-1	Mississippi Valley Chamber Orchestra	Four Free Concerts	12,450	01
10993-1	Nancy Hauser Dance Company	Special Dance Production	9,500	01
10995-1	Nancy Hauser Dance Company	Marketing Program	5,600	01
10996-1	The Network	Organizational Pilot Project	113,586	01
10997-1	New Dance Ensemble	Two Dance Performances	33,875	01



Referral Number	Applicant	Description	Amount	Action Code
10998-1	New Rivers Press, Inc.	Minnesota Voices Project	37,522	01
10999-1	Out-And-About Theatre, Inc.	Volunteer Coordinator	9,340	01
11000-1	Ozone Dance School	New Jazz Dance	3,700	01
11001-1	Palace Theater	Full-Time Administration	12,500	01
11002-1	Palace Theater	Produce "Rutabaga Tales"	36,670	01
11003-1	Park Square Theatre	Organizational Development	29,600	01
11004-1	Park Square Theatre	Produce Two New Scripts	10,142	01
11005-1	Paul Kaye Singers	Organization Development	4,000	01
11006-1	Persimmon Productions	Produce "Just Remember My Name"	6,575	01
11007-1	Rainbo Children's Theatre Company	Produce "Center Stage"	6,000	01
11008-1	St. Paul Art Collective	12 Visual Art Exhibitions	23,500	01
11014-1	Sweet Adelines, St. Paul Chapter	Annual Barbershop Quartet Show	7,890	03
11015-1	St. Paul City Ballet	Produce "Romeo and Juliet"	23,220	03
11016-1	SFZ Ensemble, U of M	Z-Concer Series	22,120	01
11017-1	Sing Heavenly Muse!	Fund Raising Program	15,355	01
11018-1	Sing Heavenly Muse!	Publish Sing Heavenly Muse! Journal	21,580	01
11019-1	Smiksmak Theatre	Produce Czech Comedy	13,790	01
11020-1	Surface Design Minnesota	"Artwear" Show	29,160	08
11021-1	Sylmar Chamber Ensemble	Produce Two Regional Shows	8,670	01
11022-1	Theatre De La Jeune Lune	Produce "Count of St. Germain"	36,054	08
11023-1	21st Street Players	Produce "Lucrece"	13,770	01
11024-1	21st Street Players	Organizational Development	1,790	01
11025-1	Twin Cities Metropolitan Arts Alliance	Metropolitan Arts Guide	30,000	08
11026-1	Twin Cities Public Television	Produce Show on Walker Center	28,802	01
11027-1	Up & Over Theater	Produce "Love Letters on Blue Paper"	6,666	03
11028-1	Visual Arts Information Service	Develop Art Newspaper	47,000	01
11029-1	Weavers Guild of Minnesota, Inc.	Fiber Art Exhibit	8,465	01
11030-1	West Bank School of Music	Special Jazz & Modern Concerts	6,110	01
11031-1	Women's Art Registry of Minnesota	"Rent-A-Mentor" Program	15,506	01
11032-1	Women's Theatre Project	Produce "Life In The Pink Collar Ghetto"	13,972	01
11033-1	Zeitgeist	Public Concerts, New Music	16,750	01
11364-1	Cambodian Association	Cambodian Dance Program	3,610	03
11365-1	Children's Museum, Inc.	Music Festival	7,200	02
11366-1	Coffman Union Program Council	Educational Contemporary Dance Series	17,364	03
11367-1	Community Child Care Center	Fine Arts Classes	6,090	02
11368-1	Courage Center	Workshop for Physically Disabled	18,880	02
11369-1	Eclectic Company, Inc.	Three Workshop/Jam Sessions	930	01
11370-1	Great Midwestern Bookshow	Metro Area Bookshow	7,850	01
11371-1	Jehovah Lutheran Church	Organ Recitals	4,950	01
11372-1	Jewish Community Center of Greater Minneapolis	Art Glass Show	9,710	01
11373-1	Lowertown Community Council	Artistic Shows	5,900	03
11374-1	Minneapolis School District #1	Children's Writing Project	1,215	01
11375-1	Minneapolis School District #1	Arts Sponsor Assistance	7,270	03
11376-1	Ozone Dance, Inc.	Molissa Fenley Dancers	7,358	03
11377-1	Performing Arts Center in Edina	Nancy Hauser Residency	6,845	02
11378-1	Performers' Ensemble	Red Eye Collaboration Residency	12,190	03



Referral Number	Applicant	Description	Amount	Action Code
11379-1	Pillsbury-Waite Cultural Arts Center	Neighborhood Arts Events	6,550	02
11380-1	St. Anthony Park Arts Forum	Music in the Park	13,105	01
11381-1	St. Croix Friends of the Arts	"Don Pasquale" Production	6,500	01
11382-1	St. Paul School District #625	Southeast Asian Programs	7,530	03
11383-1	Up & Over Theater	"What Every Woman Knows" Production	5,640	01
11384-1	Wesley Metropolitan Foundation	Architectural Residency	1,505	03
11385-1	Whittier Park & Neighborhood Center	Artist-In-Residence	6,000	01
11386-1	YWCA of St. Paul	Woman Artist Subsidies	1,970	03

## II. STATE GRANT AND LOAN REQUESTS

### C. MINNESOTA DEPARTMENT OF ECONOMIC DEVELOPMENT

Referral Number	Applicant	Description	Amount	Action Code
11499-1	West Bank Community Development Corp.	Venture Capital, Coffeehouse	\$ 35,000	01
11500-1	West Bank Community Development Corp.	Extempore Administrative Funding	51,540	01

## II. STATE GRANT AND LOAN REQUESTS

### D. MINNESOTA DEPARTMENT OF ECONOMIC SECURITY

Referral Number	Applicant	Description	Amount	Action Code
11394-1	Washington County	Senior Community Service Employment Program	\$ 46,000	10

## II. STATE GRANT AND LOAN REQUESTS

### E. MINNESOTA DEPARTMENT OF HEALTH

Referral Number	Applicant	Description	Amount	Action Code
11337-1	Fremont Community Health Services	Family Planning Services	\$ 24,140	01
11387-1	Ramsey County	Refugee Self-Sufficiency Project	918,292	04
11388-1	West Suburban Teen Clinic	Transitions Program	26,151	01
11408-1	Scott County	Community Health Services Plan	1,167,197	01
11474-1	Health, Inc.	Family Planning Special Project	123,350	01
11475-1	St. Paul-Ramsey Medical Center	Family Planning Special Project	104,676	01
11476-1	Washington County	Community Health Services Plan	243,267	01
11478-1	Inver Hills Community College	Family Planning Special Project	118,196	01
11479-1	Neighborhood Involvement Program	Family Planning, Uptown Clinic	326,511	01



Referral Number	Applicant	Description	Amount	Action Code
11489-1	Ramsey County	Community Health Services Plan	3,879,792	01
11490-1	Anoka County	Community Health Services Plan	1,240,418	01
11491-1	Southside Community Clinic	Hypertension Education	40,000	01
11492-1	Midwest Health Center for Women	Family Planning Service, "For Men Only"	21,735	01
11493-1	Teen Age Medical Services	Adolescent Family Planning	293,469	01
11494-1	Southside Community Clinic	Family Planning Project	75,154	01
11495-1	Planned Parenthood of Minnesota	Family Planning Project	60,828	01
11496-1	Cedar Riverside People's Center	Family Planning Project	110,294	01
11501-1	Twin Cities Mutual Family Planning Center, Inc.	Family Planning Project	55,200	01
11502-1	Carver County	Community Health Services Plan	142,238	01
11508-1	Dakota County	Community Health Services Plan	415,782	01
11509-1	Common Health Clinic	Family Planning Project	277,023	01
11510-1	Community University Health Care Center	Family Planning Project	77,482	01
11511-1	Children's Home Society	Community Education Too Early Pregnancy	85,123	01
11512-1	Hennepin County	Community Health Services Plan	1,139,558	01
11518-1	St. Paul-Ramsey Medical Center	Natural Child Health Special Project	47,176	
11562-1	Search Institute	Ethnic-Based Sex Education	39,621	01
11565-1	Hennepin County	Public Health Nursing Services	220,890	01
11566-1	American Red Cross, Minneapolis Chapter	Child Education on Sexuality	66,171	01
11567-1	Incarnation House	Wellness Center	112,316	01
11568-1	Common Health Clinic	Prenatal Care	103,752	01
11569-1	White Bear Lake School District #624	Adolescent Mother Project	42,019	01
11570-1	White Bear Lake School District #624	Sexual Abuse Prevention Project	20,800	01
11571-1	Mary's Shelter	Unwed Pregnant Women	73,000	01
11572-1	Minneapolis	Nursing Services	163,309	01
11573-1	Minneapolis School District #1	Cooperative Health Access for Teens	181,265	01
11574-1	Ramsey County	Comprehensive Child Care Program	77,202	01
11575-1	St. Paul School District #625	Health Services, Disadvantaged Mothers	53,179	01
11576-1	Mounds View School District #621	Chronic Absenteeism Project	105,000	01
11577-1	Gillette Children's Hospital	Services for Incidence Handicapping	52,021	01
11585-1	Lutheran Social Service of Minnesota	Child Development Program	51,551	01
11586-1	North St. Paul - Maplewood School District #622	Friendship Group Program	98,340	01
11587-1	North St. Paul - Maplewood School District #622	Child Sexual Assault Prevention	98,340	01
11588-1	St. Paul-Ramsey Medical Center	Hearing Impaired Parents Program	96,648	01
11589-1	St. Paul-Ramsey Medical Center	Preventive Dental Care	72,885	01
11590-1	St. Paul	Lead Poisoning Program	152,001	01
11591-1	Roseville School District #623	Families at Risk	49,460	01
11592-1	Archdiocese of St. Paul and Minneapolis	Aftercare Service	83,870	01
11593-1	Minnesota Foundation of Dentistry for the Handicapped	Campaign of Concern	27,207	01



Referral Number	Applicant	Description	Amount	Action Code
11601-1	American Academy of Pediatrics	Child Passenger Restraint Project	205,800	01
11602-1	St. Mary's Hospital	Nutritional Assistance, High-Risk Pregnant Women	66,000	01
11603-1	Minneapolis Children's Medical Center	Family Development Clinic	147,515	01
11639-1	Metro Community Health Consortium	Community Health Clinics	143,219	16
11655-1	St. Paul-Ramsey Medical Center	Maternal and Child Health	728,898	16
11658-1	Face-To-Face Health Counseling Service	Disenfranchised Pregnant and Parenting Youth	70,244	16

## II. STATE GRANT AND LOAN REQUESTS

### F. MINNESOTA DEPARTMENT OF TRANSPORTATION

Referral Number	Applicant	Description	Amount	Action Code
10895-1	Anoka	Replace Main Street Bridge #5875	\$ 2,218,000	01
10937-1	Plymouth	Transit Service Demonstration	276,987	02
11223-1	Anoka County	Bridge Replacements, Cedar Creek at CSAH 9 and CSAH 22	95,485	01
11324-1	St. Paul	Replace Bridge 90418, Payne Av. at CNW	479,800	01
11325-1	Dakota County	Replace Bridge L3275, TR 166	300,000	01
11469-1	Anoka County	Replace Bridge 8148, Sunrise River	29,800	01
11525-1	Columbia Heights	Shared Ride Paratransit	30,200	16
11545-1	Washington County	Transportation Services, E & H	181,715	16
11552-1	Human Services, Inc. Anoka County	Senior Volunteer Transportation Program	43,777	16
11578-1	Hastings	Paratransit Assistance	85,050	16
11579-1	Carver County	Paratransit Assistance	160,321	16
11595-1	Hopkins	Paratransit Assistance	73,585	16
11596-1	Scott County	Paratransit Assistance	144,104	16
11597-1	White Bear Area Transit Commission	Paratransit Assistance	105,200	16
11599-1	St. Louis Park	Paratransit Assistance	12,235	16
	Emergency Program			

## II. STATE GRANT AND LOAN REQUESTS

### G. MINNESOTA HOUSING FINANCE AGENCY (MHFA)

Referral Number	Applicant	Description	Amount	Action Code
08819-3	Chazin, Norman	Medium-Density Homeownership Program (MDHP), The Parkway, 159 Units, Burnsville	\$ 5,591,800	01
10207-2	El Rehbieh & Son, Inc.	MDHP, Golden Oaks, 40 Units, Circle Pines	2,276,200	01
10598-2	Marvin H. Anderson Construction Co.	MDHP, Silver Lake Woods, 14 Units, Mounds View	917,700	01
10612-2	Crest View Lutheran Home Association	MDHP, Elderly, Crest View Residence, 75 Units, Columbia Heights	2,581,759	01
10899-2	Woodmark, Inc.	MDHP, Bennington Woods, 18 Units, Maplewood	1,162,800	01
10911-1	Summerhill, Ltd.	MDHP, Summerhill II, 40 Units, Bloomington	2,504,200	01



Referral Number	Applicant	Description	Amount	Action Code
10912-1	DeGardner Realty & Construction Co.	MDHP, DeGardner Ponds, 20 Units, Coon Rapids	1,085,660	01
10913-1	Halek Construction Co.	MDHP, Birkshire of Burnsville, 40 Units	2,342,700	01
10914-1	Brutger Companies, Inc.	MDHP, Coachman Highlands, 40 Units, Eagan	2,432,000	01
10915-1	Crossroads Development Corp.	MDHP, The Crossroads, 40 Units Eden Prairie	2,562,150	01
10916-1	Darrel A. Farr Development Corp.	MDHP, Fountain Oaks, 24 Units, Fridley	1,525,320	01
10917-1	Ed Cave & Sons, Inc.	MDHP, Ivy Place, 40 Units, Maplewood	2,466,200	01
10918-1	Neighborhood Improvement Co.	MDHP, Edenburg Condos, 19 Units, Minneapolis	1,118,150	01
10919-1	Crossroads Development Corp.	MDHP, Crossroads of New Brighton, 32 Units	2,082,400	01
10920-1	Brutger Companies, Inc.	MDHP, Northwood Village, 40 Units, North St. Paul	2,329,400	01
10921-1	Baton Corporation	MDHP, Mission West Townhouses, 40 Units, Plymouth	2,479,500	01
10922-1	Swanco, Inc.	MDHP, Park Terrace West, 30 Units, Brooklyn Park	1,772,700	01
10923-1	Darrel A. Farr Development Corp.	MDHP, Stepney Ridge, 40 Units, Maple Grove	2,427,250	01
10924-1	Good Value Homes, Inc.	MDHP, Clover Leaf Farm, 40 Units, Blaine	2,185,000	01
10925-1	Glendale Woods Partnership	MDHP, Glendale Woods, 20 Units, Savage	1,206,500	01
10926-1	Lakeridgeland Development	MDHP, Lakeridge Condos, 22 Units, Woodbury	1,256,850	01
10928-1	Farr, Darrel A. Development Corp.	MDHP, Sunset Ridge, 40 Units, St. Louis Park	2,310,400	01
10929-1	White Diamond Builders	MDHP, White Diamond Estates, 8 Units, Bloomington	463,600	01
10930-1	Crossroads Development Corp.	MDHP, Crossroads of Burnsville, 40 Units	2,562,150	01
10931-1	Trucker Development	MDHP, Thousand Oaks Townhouses, 40 Units, Coon Rapids	2,128,000	01
11154-2	Miller Companies	MHFA, Bay Point Manor, 152 Units, Eden Prairie	6,586,500	01
11163-2	Harrington, J. & Koch, N.	MHFA, Eagle Ridge, 240 Units, Maple Grove	9,282,000	01
11196-2	Gustafson, D. H. & Appelbaum, K.	MHFA, Surrey Garden 88 Units, Eagan	2,812,800	01
11245-1	Casselman, Robert/Essex Corp.	MHFA Section 8, Laurelwood, 80 Units, Coon Rapids	2,548,076	01
11247-1	Duckwood Trails Partnership	MHFA, Duckwood Trails II, 162 Units, Eagan	5,935,800	01
11248-1	Strub & Associates/Bisanz Development	MHFA, West Gate Apartments, 60 Units, West St. Paul	2,076,200	01
11249-1	Orville E. Madsen & Sons, Inc.	MHFA, Bloomington Greens, 150 Units, Bloomington	5,464,538	
11250-1	Brutger Companies, Inc.	MHFA, Brookwood Manor, 65 Units, Brooklyn Center	2,338,600	01
11251-1	West Bank Community Development Corp.	MHFA Section 8, Cedar Riverside Block 40, 39 Units, Minneapolis	1,195,932	01
11252-1	Powderhorn Residents Group	MHFA Section 8, Ebenezer Block, 32 Units, Minneapolis	1,676,947	01



## II. STATE GRANT AND LOAN REQUESTS

### H. STATE PLANNING AGENCY

Referral Number	Applicant	Description	Amount	Action Code
10962-2	Community Access to Media	"Foreclosure" Film	\$ 81,188	06
11066-1	Minnesota Assn. of Soil & Water Conservation Districts	"Wildlife On The Land" Calendar	19,000	04
11068-1	Minnesota Valley Regional Rail Authority	Rehabilitate Railroad	231,000	06
11069-1	Specrotech International	Fresh Produce Hauling Systems	50,000	04
11070-1	University of Minnesota	High-Tech Software for Farm & Rural Business	83,718	06
11113-1	Minnesota Forestry Association	Forest Products Utilization	20,000	04
11114-1	University of Minnesota	Commercial Blueberry Industry	74,000	04
11119-1	Energy Consult Corporation	Rural Energy Program	105,000	04
11120-1	University of Minnesota	Computerized Forage Analysis	220,600	04
11122-1	Immegres Center for Ethnic Arts	Ethnic Craft Markets	21,945	04
11126-1	Minnesota Coast	Farm Survival Hotline	41,948	04
11127-1	MACPZA	Certification Program	30,000	04
11128-1	Biosyn Chemical Corp.	Harvest Residue Chemicals	500,000	04
11135-1	Minn. Department of Education	Management Training, Rural Small Business	107,800	04
11136-1	WDSE-TV	Marketing Rural Products	84,320	04
11137-1	Jackson Area VII	Vo-Ag Education	53,700	04
11138-1	Minnesota Women for Agriculture	Agri-School	50,720	04
11171-1	University of Minnesota	Agricultural Enterprise for New Americans	50,000	01

## II. STATE GRANT AND LOAN REQUESTS

### I. MINNESOTA WASTE MANAGEMENT BOARD

Referral Number	Applicant	Description	Amount	Action Code
11640-1	St. Paul	Recycling Facility	\$ 804,675	16

## III. INDEPENDENT AND METRO AGENCY PLANS AND PROGRAMS

Referral Number	Applicant	Description	Action Code
09586-2	Metropolitan Waste Control Commission (MWCC)	1982-1986 Development Program Amendment, Second Ramsey Connection	01
09586-3	MWCC	1982-1986 Development Program Amendment, Lino Lakes Interceptor Extension	01
09586-4	MWCC	1982-1986 Development Program Amendment, Mendota Interceptor	01
09586-5	MWCC	1982-1986 Development Program Amendment, Medina Treatment Plant	01
09586-6	MWCC	1982-1986 Development Program Amendment, Metro Treatment Plant Disinfection Project	02
09586-7	MWCC	1982-1986 Development Program Amendment, New Brighton Interceptor	01



Referral Number	Applicant	Description	Action Code
09586-8	MWCC	1982-1986 Development Program Amendment, Central Recovery Facility	16
09850-3	MAC	1983 Capital Improvement Program (CIP) Amendment, Green Concourse Apron	01
10656-2	MWCC	1983 CIP Amendments, Metro Plant Retrofit, Beltline Interceptor, Sewage Sludge	01
10656-3	MWCC	1983 CIP Amendments, Medina Ill, Blue Lake Thickening	01
10656-4	MWCC	1983 CIP Amendment, Mendota Interceptor	01
10656-5	MWCC	1983 CIP Amendment, Disinfection Project, 83-58	01
10656-6	MWCC	1983 CIP Amendment, New Brighton Interceptor	01
10701-2	MTC	1983 CIP Amendment, Northside Garage/ Office Facility	01
10824-3	Carnelian-Marine Watershed District	Gravity-Pipe Outlet Supplement to Engineers Report	01
10945-1	MTC	1982 Transit Development Program	02
11186-1	MWCC	Blue Lake Plant Sludge Thickeners, Plans and Specifications	01
11237-2	MWCC	Gervais Lake Interceptor, Plans and Specifications	01
11271-1	MWCC	Medina Interceptor, Plans and Specifications	16
11309-1	MAC	1983-1984 Capital Budget	02
11313-1	Minnehaha Creek Watershed District	Painter Creek Project	01
11349-1	MWCC	1982-1986 Development Program Amendment, Construction of Segmented Treatment Facilities	01
11409-1	MWCC	1984 Capital Budget	02
11487-1	MTC	1984 Capital Budget	02
11536-1	MAC	Anoka County-Blaine Airport Master Plan	16
11633-1	Metropolitan Sports Facilities Commission	1984-1985 Capital Budget	01

#### IV. LOCAL GOVERNMENT PLANS

Referral Number	Applicant	Description	Action Code
08440-6	Rosemount	Comprehensive Plan (CP) Amendment, 218 Acres Agriculture Preserve	01
08480-3	Hennepin County	1983 Capital Budget & 1983-1987 CIP	01
08490-5	Plymouth	CP Modification Certification	01
08490-6	Plymouth	CP Modification	01
08490-7	Plymouth	CP Amendment, Parkers Lake Planned Development	01
08490-8	Plymouth	CP Amendment, Plymouth Creek Estates	01
08493-6	Minnetonka	CP Amendment, Acre Building	01
08493-7	Minnetonka	CP Amendment, Construct Hotel	01
08493-8	Minnetonka	CP Amendment, Woodside Office Condo	01
08506-6	Arden Hills	CP Amendment, New Brighton Connection	01
08523-3	St. Louis Park	Comprehensive Plan (Resubmitted)	01
08525-4	Chaska	CP Amendment, West Creek Line	07
08525-5	Chaska	CP Amendment, West Watershed	07
08525-6	Chaska	CP Amendment, Laketown Service	16
08542-6	Maple Grove	CP Amendment, Maple Grove Mall	01
08550-4	Scott County	CP Amendment, Louisville Twp. Nursery	01
08563-4	Inver Grove Heights	CP Modification Certification	01
08583-8	Carver County	CP Amendment, Area 9B, CSAH #10, Chaska Twp.	01
08583-9	Carver County	CP Amendment, Sewer Service, Laketown	01
08585-6	Maplewood	CP Amendment, Gladstone Neighborhood	01
08585-7	Maplewood	CP Amendment, 2335 Stillwater Rd.	01
08585-8	Maplewood	CP Amendment, Bulk Service	01
08585-9	Maplewood	CP Amendment, Shortridge Property	01
08590-4	Washington County	CP Modification Certification	01
08592-4	Centerville	CP Amendment, Sewer Service Area, Clearwater Dr.	01
08592-5	Centerville	CP Amendment, Manufactured Housing District	01
08601-3	Ramsey County	CP Amendment, 1983-1987 CIP	01



Referral Number	Applicant	Description	Action Code
08618-4	Farmington	CP Amendment, Sewer Service Area, 146 Units	01
08622-7	Bloomington	CP Amendment, Bluffs	01
08622-8	Bloomington	CP Amendment, Senior High Rise	01
08622-9	Bloomington	CP Amendment, Nine Mile School Site	01
08649-3	Cottage Grove	Staging Plan, Res. No 83-19	01
08653-3	Champlin	CP Amendment, Sewer Allocation	01
08663-3	Shoreview	CP Amendment, Carlson Road	01
08663-4	Shoreview	CP Amendment, Royal Oak Estates	01
08706-3	Corcoran	CP Amendment, Land Use, (C.O.M.B. Co.)	16
08976-4	East Bethel	CP Amendment, Increase Minimum Acreage	07
08989-4	Brooklyn Center	CP Amendment, Elderly Housing, I-94/TH 100	01
09040-5	Ramsey	CP Amendment, Flintwood Hills First, North	01
09043-3	Independence	CP Amendment, Sewer Service Areas	01
09056-3	Greenfield	CP Amendment, Sewer Service Area	01
09107-3	Elko	CP Amendment, 79.39 Acres Housing	16
10074-3	West Lakeland Twp.	Comprehensive Plan (Resubmitted)	16
10556-4	Lakeville	CP Amendment, Barrett's 1st	01
10850-1	East Bethel	Ordinance Adoption Extension	01
10893-1	Hastings	Annexations	01
11184-1	Empire Twp.	CP Amendment, MUSA Extension, 18 Units	01
11238-1	Maplewood	CP Amendment, KFC, 1685 White Bear Ave.	01
11238-2	Maplewood	CP Amendment, 2075 Prosperity	01
11238-3	Maplewood	CP Amendment, Maple Hills Office	01
11238-4	Maplewood	CP Amendment, Gervais Ave.	01
11238-5	Maplewood	CP Amendment, Hillwest Development	08
11238-6	Maplewood	CP Amendment, Cope Avenue	01
11238-7	Maplewood	CP Amendment, Carver/Dorland, Trail Elimination	01
11238-8	Maplewood	CP Amendment, Gall Avenue	01
11238-9	Maplewood	CP Amendment, Land Use Change, Beebe & Holloway	01
11264-1	Eden Prairie	CP Amendment, Red Rock Ranch	01
11264-2	Eden Prairie	CP Amendment, Apple Groves	16
11264-3	Eden Prairie	CP Amendment, Bluff Ridge	16
11264-4	Eden Prairie	CP Amendment, Preserve Manor Homes	01
11323-1	Marshan Twp.	CP Amendment, Ford Dealership	01
11327-1	Rosemount	CP Amendment, 7.5 Acre MUSA Deletion	01
11333-1	Anoka	CP Amendment, Mineral Pond	01
11347-1	Mahtomedi	CP Amendment, Annexation Part of Grove Park Addn. from Dellwood	01
11395-1	Hastings	Annexation	16
11406-1	Bayport	Comprehensive Plan	16
11407-1	Ham Lake	Comprehensive Plan	16
11480-1	Brooklyn Center	CP Amendment, Brooklyn Blvd.	01
11507-1	South St. Paul	CP Amendment, Housing Element	01
11517-1	Mayer	CP Amendment, School Site	01
11535-1	Bloomington	CP Amendment, Airport South	02
11583-1	Minnetonka	CP Amendment, Colehour/U-Wash/It	01
11594-1	Chanhassen	CP Amendment, Sunnybrook Development	01
11608-1	Maple Grove	CP Amendment, Land Use Change to Commercial	16
11608-2	Maple Grove	CP Amendment, Eagle Lake 3rd Commercial	16
11609-1	Woodbury	CP Amendment, Deletion of Restricted Area	16
11627-1	Lake Elmo	Adoption Changes	16
11627-2	Lake Elmo	CP Amendment, Section 32/33 Mixed Urban Uses	16
11638-1	Maplewood	CP Amendment, SE. Corner, L. Afton & McKnight	16
11638-2	Maplewood	CP Amendment, Cope & Birmingham	16
11666-1	Mendota Heights	CP Amendment, 24.4 Acres, Residential	16



**V. MISCELLANEOUS REFERRALS**  
**A. SPECIAL TRANSPORTATION PROJECTS**

<b>Referral Number</b>	<b>Applicant</b>	<b>Description</b>	<b>Action Code</b>
08855-2	St. Louis Park	TH 100, TH 7 to Excelsior Blvd.	01
09310-4	Minn. Department of Transportation	I-394 Construction, Air Quality Permit	11
09923-2	Minn. Department of Transportation	I-494/CR 15 Interchange	01
10557-2	Minn. Department of Transportation	TH 55/TH 110/TH 13 Interchange	01
10784-2	Minn. Department of Transportation	I-694/TH 61 Interchange Modification	16
10867-1	Minn. Department of Transportation	I-35E, TH 110 to I-94, St. Paul	01
11229-1	Minn. Department of Transportation	I-35W, Replace & Widen Minnesota River Bridge	02
11580-1	Minn. Department of Transportation	Improvement, Douglas Drive, TH 55 Frontage	01

**V. MISCELLANEOUS REFERRALS**  
**B. ENVIRONMENTAL ASSESSMENTS AND STATEMENTS**  
**1. FEDERAL ENVIRONMENTAL ASSESSMENTS AND STATEMENTS**

<b>Referral Number</b>	<b>Applicant</b>	<b>Description</b>	<b>Action Code</b>
10828-2	Minn. Department of Transportation	Boone Av. Interchange	01
08377-4	Minn. Department of Transportation	TH 55 (59th to Franklin), TH 62 (TH 55 to 46th Av.)	02
10828-1	Brooklyn Park	Boone Av. Interchange	02
10841-2	Minneapolis Park & Recreation Board	West River Parkway	02
10892-1	Hennepin County	Broadway Bridge Replacement	01
10946-1	Hennepin County	CSAH 18, I-494 to TH 13	02
11048-1	Hennepin County	CR 62, Shady Oak Rd. to Eden Prairie Rd.	01
11063-1	Hennepin County	Hennepin Bridge	01
11133-3	Washington County	On-Site Systems, No Significant Effect	01
11286-2	Independence	Waste Treatment Facility	01
11389-1	Greenfield	Waste Treatment Facility	01
11629-1	U.S. Corps of Army Engineers	Hydropower, Upper & Lower St. Anthony Falls	01

**V. MISCELLANEOUS REFERRALS**  
**B. ENVIRONMENTAL ASSESSMENTS AND STATEMENTS**  
**2. STATE ENVIRONMENTAL ASSESSMENTS AND STATEMENTS**

<b>Referral Number</b>	<b>Applicant</b>	<b>Description</b>	<b>Action Code</b>
07688-3	Minn. Pollution Control Agency	Cedar Lake Treatment Plant	08
07841-7	Minn. Pollution Control Agency	Lake St. Croix Beach Treatment Plant	01
07841-8	Minn. Pollution Control Agency	Marine Treatment Plant	08



Referral Number	Applicant	Description	Action Code
08573-2	Savage	Southridge Residential	01
09149-4	St. Francis	DeGardner St. Francis Estates (Amended)	01
09188-2	Minn. Pollution Control Agency	Hastings Treatment Plant Expansion	01
10071-2	Savage	Rolling Meadows	01
10824-2	Carnelian-Marine Watershed District	Gravity Pipe Outlet	01
10837-1	Cottage Grove	Woodbridge Coach Homes	01
10856-1	Burnsville	Manor Homes of Burnsville	01
10860-1	Minn. Pollution Control Agency	Lower Beltline Interceptor	01
10866-1	Minn. Pollution Control Agency	Koch No. 4 Sulfur Plant	01
10889-1	Shoreview	Victoria Village Condos	01
10891-1	Minneapolis	Northwestern Bell Telephone/Opus Corporation Building	01
10909-1	Cottage Grove	Cottage Grove Estates	01
10932-1	Hennepin County	Broadway Bridge Replacement	01
10933-1	Minneapolis	Radisson Plaza	01
10974-1	Bloomington	Minnesota Valley Condos	01
11059-2	Circle Pines	Oakland Addition	01
11108-1	Mahtomedi	Lost Lake Villa	01
11109-1	Brooklyn Park	Southeast Area Redevelopment Project	01
11110-1	Carver County	County Ditch #11	03
11116-1	Brooklyn Park	Lazaroff's Park Terrace	01
11139-1	Plymouth	Willow Meadows, GAR-LAR	01
11149-1	Forest Lake Twp.	White Bear Rod & Gun Club	01
11156-1	Plymouth	CR 61 Improvements	01
11158-1	Minn. Pollution Control Agency	Wastewater Treatment Facility, Lake St. Croix Beach	03
11159-1	Minn. Pollution Control Agency	Wastewater Treatment Facility, Marine-St. Croix Service Area 2	01
11179-1	Minn. Pollution Control Agency	Oil, Gas, Sulphur Storage Tanks (KOCH)	01
11180-1	Minn. Pollution Control Agency	CAB Interceptor	01
11185-1	Inver Grove Heights	Salem Green Plaza	01
11191-1	Plymouth	Silverthorne	02
11192-1	Brooklyn Park	Park Woods 2nd	01
11206-1	Bloomington	Barge Fleeting, Twin City Barge	02
11207-1	Dakota County	CR 43 (Lexington Av.), CR 30 to CR 32	01
11234-1	Anoka	Mineral Pond Addition	01
11237-1	Minn. Pollution Control Agency	Environmental Assessment Worksheet (EAW), Lake Gervais Interceptor	01
11290-1	Carver County	Schimmelpfenning Gravel Pit	01
11346-1	Minnetonka	West Oaks	01
11393-1	Minn. Pollution Control Agency	Metropolitan Metals Recovery & Processing Facility	01
11467-1	Ashland Petroleum Co.	Northwestern Refinery Fluid Catalytic Cracking	01
11468-1	Plymouth	Parkers Lake Development-Stage A	01
11526-2	Eden Prairie	Apple Groves	01
11556-1	Carver County	Carver-Sibley Joint Ditch #23	03
11582-1	Maple Grove	Eagle Lake 3rd Addition	01
11600-1	Eagan	Laukka-Beck, Minnesota Jockey Club	02
11612-1	Burnsville	McAndrews Road (County Rd. 38)	01
11613-1	Savage	Savage Industrial Development, Phase I and II	01
11653-1	Cottage Grove	Oakwood Heights 2nd	16
11654-1	White Bear Twp.	Birch Lake Ponds	16
11663-1	Minn. Pollution Control Agency	Downtown Parking Facility, Minneapolis	16
10843-1	Coon Creek Watershed District	Ditch #58	03

**V. MISCELLANEOUS REFERRALS**  
**C. CRITICAL AREA PROJECTS**

<b>Referral Number</b>	<b>Applicant</b>	<b>Description</b>	<b>Action Code</b>
11107-1	Denmark Twp.	Cable TV Tower	10

**V. MISCELLANEOUS REFERRALS**  
**D. SOLID WASTE PLANS, PROJECTS AND REPORTS**

<b>Referral Number</b>	<b>Applicant</b>	<b>Description</b>	<b>Action Code</b>
07822-2	North Star Steel Co.	Shredder Waste Landfill	16
10223-6	Dakota County	Landfill Site Reduction Request	16
10858-1	Empire Twp.	Local Sludge Restriction Ordinance	16
11040-1	Northwest Disposal, Inc.	Landfill Expansion, Oak Grove	16
11121-1	Scott County	1982 Annual Solid Waste Report	01
11188-1	Hennepin County	1982 Annual Solid Waste Report	01
11189-1	Ramsey County	1982 Annual Solid Waste Report	01
11198-1	Eklund's Tree Service	Open Burning Permit	01
11199-1	Dakota County	Open Burning Permit	01
11200-1	Hennepin County	Open Burning Permit	01
11201-1	Plymouth	Open Burning Permit	01
11202-1	Belle Plaine	Open Burning Permit	01
11203-1	Eagan	Open Burning Permit	01
11204-1	Shakopee	Open Burning Permit	01
11205-1	Chaska	Open Burning Permit	01
11240-1	Ramsey County	Hazardous Waste Ordinance	01
11261-1	Carver County	1982 Annual Solid Waste Report	01
11270-1	South St. Paul	Open Burning Site	16
11391-1	Koch Refining Co.	Solid Waste Processing Facility	02
11392-1	Anoka County	1982 Annual Solid Waste Report	01
11547-1	Minnesota Mining & Manufacturing Co.	Chemolite Landfill Expansion	16
11563-1	Washington County	1982 Solid Waste Annual Report	01
11581-1	Minnetrista	Open Burning Site	16
11656-1	Pahl, Joseph C.	Louisville Landfill Expansion	16

**V. MISCELLANEOUS REFERRALS**  
**E. SPECIAL PERMITS**  
**1. NATIONAL POLLUTION DISCHARGE ELIMINATION SYSTEM (NPDES)**

<b>Referral Number</b>	<b>Applicant</b>	<b>Description</b>	<b>Action Code</b>
07688-4	Helena Twp.	Wastewater Treatment Facilities, Cedar Lake Improvement Assn.	08
10421-2	MWCC	Metro Treatment Plant, NPDES Permit	01
10775-2	Laketown Twp.	Wastewater System 6D2	01
10851-1	MWCC	Pretreatment Program	01
10896-1	St. Louis Park	Municipal Water Treatment Plants ##1, 6, 8, 10	01
10897-1	Vermillion	Wastewater Treatment	01
10898-1	Minn. Veterans Home	Effluent Limitation Change	01
10938-2	Lake Elmo	Wastewater Disposal Systems	01
11058-1	MWCC	Maple Plain Treatment Plant	02
11064-1	Andersen Corporation	Permit Modification	01
11104-1	J. L. Shiely Co.	Treatment Facility	01
11131-1	Burlington Northern, Inc.	Cooling Water Discharge	01



Referral Number	Applicant	Description	Action Code
11132-1	Savage	Wastewater Facility	01
11146-1	Oxford Properties, Inc.	Cooling Water Discharge	01
11214-1	Profile Extensions Co.	Waste Treatment Facility	01
11215-1	TCC Center Companies	Runoff Settling Ponds	01
11216-1	N-Ren Corporation	Waste Treatment Facility	01
11235-1	W. G. Pearson, Inc.	Dewatering Discharge	01
11236-1	Ashland Oil, Inc.	Wastewater Treatment	01
11239-1	Minneapolis	Water Treatment Discharge	01
11281-1	North Star Steel Co.	Wastewater Treatment Systems	01
11282-1	Independence	Wastewater Treatment Facility	01
11285-1	Owens-Corning Fiberglass Corp.	Cooling Water Discharge	01
11316-1	Hay, Bruce	Wastewater Facility, Maple Hill Mobile Home Park	04
11328-1	Trammell Crow Co.	Cooling Water Discharge	01
11329-1	Oak Grove	Wastewater Treatment	16
11404-1	Brockway, Inc.	Wastewater Treatment	04
11466-1	Vel-Tex Chemical Co.	Wastewater Treatment	04
11471-1	Federal Cartridge Corp.	Wastewater Treatment	04
11529-1	Minneapolis Electric Steel Castings Co.	Process Waste Treatment	04
11531-1	Bell Cold Storage	Cooling Water Discharge	04
11532-1	United Hospitals, Inc.	Cooling Water Discharge	04
11533-1	General Mills, Inc.	Cooling Water Discharge	04
11554-1	Anoka	Water Treatment Discharge	01
11555-1	New Brighton	Water Treatment Discharge	01
11584-1	D. J's Sand and Gravel	Wastewater Discharge	04
11605-1	Honeywell, Inc.	Cooling Water Discharge	01
11606-1	G. Heilman Brewing Co., Inc.	Rinse Water Discharge and Storm Water Runoff	01
11607-1	Minnesota Mining & Manufacturing	Cooling Water Discharge	01
11636-1	Union Oil Co.	Storm Water Runoff	01
11637-1	St. Joseph's Hospital	Cooling Water Discharge	01
11673-1	Red Owl Stores, Inc.	Cooling Water Discharge	16
11674-1	Rahr Malting Co.	Cooling Water Discharge	16
11675-1	Consolidated Freightways Corp.	Storm Water Treatment	16
11676-1	Maddux Properties, Inc.	Cooling Water Discharge	16

**V. MISCELLANEOUS REFERRALS**  
**E. SPECIAL PROJECTS**  
**2. STATE DISPOSAL SYSTEM**

Referral Number	Applicant	Description	Action Code
11485-1	Medtronic	Hazardous Waste Storage	09
11486-1	Solv-Oil Service & Supply	Hazardous Waste Storage	09
11145-1	University of Minnesota	Waste Treatment Facility	01
11158-2	Lake St. Croix Beach	Wastewater Disposal Systems	02
11159-2	Marine on St. Croix	Wastewater Disposal Facility	02
11190-1	Washington County	Wastewater Disposal Systems	01
11278-1	Linwood Terrace Mobile Home Park	Wastewater Disposal System	02
11279-1	Greenfield	Wastewater Treatment Facility	01
11280-1	Barton Sand & Gravel Co.	Gravel Washing System	01
11298-1	Koch Fuels, Inc.	Dredge Spoil Disposal	01
11299-1	Cargill, Inc.	Dredge Spoil Disposal	09
11343-1	Dakota County	Beach Development	04
11530-1	Union Oil Co.	Surface Water Treatment	04
11553-1	Anoka	Water Treatment Discharge	01
11677-1	Washington County	Control Well and Spray Irrigation	16

**V. MISCELLANEOUS REFERRALS**  
**E. SPECIAL PROJECTS**  
**3. U.S. CORPS OF ARMY ENGINEERS**

<b>Referral Number</b>	<b>Applicant</b>	<b>Description</b>	<b>Action Code</b>
10771-2	Brooklyn Center	Wetland Trail	01
10823-2	U.S. Corps of Army Engineers	Bassett Creek Flood Control	11
10825-1	Evolute Properties	Fill for Construction	01
10831-1	Minn. Department of Natural Resources	Boat Access Rip-Rap	07
10846-1	Brooklyn Center	Wetland Fill	02
10880-1	Washington County	Replace Rip-Rap in St. Croix River at Point Douglas	01
10883-1	Lino Lakes	Wetland Fill	01
10884-1	Minn. Department of Transportation	Storm Sewer Outlet	01
10894-1	Minn. Department of Natural Resources	Temporary Cofferdam and Rip-Rap	01
11051-1	Burlington Northern, Inc.	Bridge Construction Fill	02
11056-1	Dakota County	Lake Byllesby Fill Sites	01
11106-2	James Lund Construction, Inc.	Storm Water Detention Ponds	01
11116-2	Voiska, John	Wetland Fill, Lazaroff's Park Terrace	01
11166-1	Surfside Seaplane Base	Runway Expansion, Fill	01
11206-2	Bloomington	Barge Fleeting Area	02
11221-1	Hennepin County	Marsh Lake Fill, France Av.	01
11319-1	Bayport Marina Co.	Marina Construction	01
11331-1	Minn. Department of Transportation	Fill Discharge, TH 610 Bridge	01
11396-1	Ramsey County	Sand Blanket for Public Beach in Long Lake, New Brighton	01
11481-1	U.S. Corps of Army Engineers	Wetland Fill	01
11513-1	MAC	Wetland Fill, St. Paul Airport	02
11538-1	Minn. Department of Natural Resources	Boat Ramp	01
11564-1	W.A. Building Co.	Sedimentation Pond Berm, Rice Lake	02
11634-1	Parranto, Edward E.	Wetland Fill	02
11660-1	D.H. Blattner & Sons, Inc.	Dredge Spoil Area	16

**V. MISCELLANEOUS REFERRALS**  
**E. SPECIAL PROJECTS**  
**4. U.S. COAST GUARD**

<b>Referral Number</b>	<b>Applicant</b>	<b>Description</b>	<b>Action Code</b>
10890-1	U.S. Corps of Army Engineers	Draft Upper Mississippi River Land Use Allocation Plan	01
11051-2	Burlington Northern, Inc.	Replace Railroad Bridge	01
11228-1	U.S. Coast Guard	Extend Removal Deadline, Bloomington Ferry Bridge	04



**V. MISCELLANEOUS REFERRALS**  
**F. REGIONAL PARKS MASTER PLAN**

<b>Referral Number</b>	<b>Applicant</b>	<b>Description</b>	<b>Action Code</b>
09201-1	Anoka County	Master Plan Amendment, Lake George Regional Park Boundary	01
09213-3	St. Paul	Como Conservatory Master Plan	16
09225-1	Minneapolis Park & Recreation Board	Master Plan, Lower Gorge	02
09234-3	Hennepin County Park Reserve District	Hyland-Bush-Anderson Lakes Park Reserve Joint Master Plan	02
09244-4	Hennepin County Park Reserve District	Medicine Lake Park Reserve Master Plan Amendment, Easements	01
09274-1	Hennepin County Park Reserve District	Trail, Medicine Lake to Elm Creek Park Reserve	16

**V. MISCELLANEOUS REFERRALS**  
**G. HOUSING BOND MORTGAGE PLANS**

<b>Referral Number</b>	<b>Applicant</b>	<b>Description</b>	<b>Action Code</b>
08153-2	St. Paul	Housing Bond Plan Amendment	01
09058-2	Blaine	Housing Bond Plan (Amendment)	01
10773-2	Brooklyn Center	Housing Bond Plan Amendment	01
10845-1	Dakota County Housing and Redevelopment Authority	Housing Bond Plan, W. St. Paul, Eagan Mendota Heights	02
10862-1	Savage	Housing Bond Plan	01
10869-1	Lino Lakes	Housing Bond Plan	02
10870-1	Circle Pines	Housing Bond Plan	01
11118-1	Maple Grove	Housing Bond Plan	01
11148-1	Hopkins	Housing Bond Plan	01
11152-1	Plymouth	Housing Bond Plan	01
11322-1	Burnsville	Housing Bond Plan	01
11560-1	Rosemount	Housing Bond Plan	16
11561-1	Farmington	Housing Bond Plan	16

**V. MISCELLANEOUS REFERRALS**  
**H. HEALTH FACILITY CERTIFICATE OF NEED**  
**1. LETTERS OF INTENT ONLY**

<b>Referral Number</b>	<b>Applicant</b>	<b>Description</b>	<b>Action Code</b>
10406-2	St. Therese Home	New 150-Bed Nursing Home (LI Renewal)	14
10782-2	Forestview Community Homes, Inc.	Renew CN/LI, 18 Mentally Retarded (MR) Persons	16
10829-1	Forestview Community Homes, Inc.	Group Home 6 MR Young Adults	14
10864-1	St. Therese Home	New 180-Bed Nursing Home	14
10877-1	A I D Homes, Inc.	New 15 Bed ICF/MR Adults Facility	14
10888-1	B & C Homes, Inc.	Group Home, 36 MR Adults	14
10939-1	Community Residential Services, Inc.	Group Home, 6 MR Elderly	14
10940-1	Community Residential Services, Inc.	Group Home, 6 MR Elderly	14
10941-1	Community Residential Services, Inc.	Group Home, 6 MR Adults	14
11047-1	Ebenezer Ridges	150-Bed Nursing Home	14

<b>Referral Number</b>	<b>Applicant</b>	<b>Description</b>	<b>Action Code</b>
11057-1	Presbyterian Homes of Minnesota	Respite, Hospice and Skilled-Care Bed Expansion	14
11112-1	Maplewood West Health Care Center	New 120-Bed Nursing Home	14
11124-1	Covenant Manor	New 16-Bed Transition Facility	14
11140-1	Crest View Lutheran Home Association	Nursing Home Expansion	14
11147-1	Ebenezer Ridges	Nursing Home Expansion, 150 Beds	14
11161-1	Presbyterian Homes of Minnesota	Gideon Pond Senior Complex	14
11226-1	Sholom Home	New Nursing Home	14
11546-1	St. Paul's Church Home	Relocate 112-Bed Nursing Home	16

**V. MISCELLANEOUS REFERRALS**  
**H. HEALTH FACILITY CERTIFICATES OF NEED (CON)**  
**2. PROPOSALS**

<b>Referral Number</b>	<b>Applicant</b>	<b>Description</b>	<b>Action Code</b>
08104-3	White Bear Lake Care Center	Con Time Extension	01
09638-3	St. John's Hospital	Relocation of Hospital	02
09638-4	St. John's Hospital	Con Amendment	01
09999-4	Outreach Group Homes	Con Modification	01
10025-4	Dakota's Children, Inc.	Group Home, 8 MR Adults (Amendment)	01
10155-2	Mercy Medical Center	Renovate Core Services	02
10827-1	North Memorial Medical Center	Perinatal Services	02
10834-2	A I D Homes, II	Group Home, 15 MR Adults	01
10848-2	Our House, Inc.	Group Home, 6 MR Adults	11
10865-1	Inver Grove Care Center, Inc.	70-Bed Nursing Home Expansion	02
10868-1	Wedgewood Health Care Center	170-Bed Nursing Home Expansion	02
10902-2	Careco Homes, Inc.	Group Home, 15 MR Adults	01
10903-2	Methodist Hospital	10-Mev Photon Beam Linear Accelerator	01
10951-1	United Care Centers, Inc.	Group Home, 6 MR Adults	16
11123-2	Lutheran Social Service of Minnesota	St. Lukes Group Home, 12 MR Adults	01
11123-3	Lutheran Social Services of Minnesota	CN Modification	16
11155-1	Bethany Covenant Home	Nursing Home Bed Reclassification	01
11174-1	Mount Olivet Careview Home	Nursing Home Modification	03
11294-1	Augustana Home of Minneapolis	Recertify 40 ICF-II Beds	03

**V. MISCELLANEOUS REFERRALS**  
**I. AMBULANCE SERVICE AREA PROPOSALS**

<b>Referral Number</b>	<b>Applicant</b>	<b>Description</b>	<b>Action Code</b>
11055-1	University of Minnesota	Air Ambulance Service	02
11477-1	District Memorial Hospital of Forest Lake	Advanced Life Support Service	02



**V. MISCELLANEOUS REFERRALS**  
**J. CABLE TV SERVICE AREA PROPOSALS**

Referral Number	Applicant	Description	Action Code
09172-2	Belle Plaine	Cable Service Territory	01
10927-1	Watertown	Cable Service Territory Proposal	01

**VI. MCKNIGHT FOUNDATION AWARD REVIEW**

Referral Number	Applicant	Description	Action Code
11641-1	East Side Neighborhood Service, Inc.	McKnight Grant Service Center	16
11679-1	Columbus Township	Columbus Senior Building	16
11680-1	Waconia	Senior Center Alteration and Equipment	16
11681-1	Hastings School District #200	Senior Center Equipment	16
11682-1	Cedar Riverside People's Center	Senior Center Renovation and Equipment	16
11683-1	Dayton	Senior Center Equipment	16
11684-1	Robbinsdale School District #281	Senior Center Air Conditioners	16
11685-1	Senior Citizen Centers of Greater Minneapolis	Senior Center Renovations	16
11686-1	Capitol Community Services	Activites Equipment	16
11687-1	Guadalupe Service Center	Learning Resource Center	16
11688-1	Korean Elders Society	Senior Center Appliance	16
11689-1	Roseville School District #623	Senior Center Equipment	16
11690-1	West 7th Neighborhood Center	Senior Center Equipment	16
11168-1	Maple Plain	Cable TV Service Territory	01
11291-1	Chanhassen	Cable TV Service Area	01
11410-1	Norwood	Cable Service Territory	01

**VII. SPECIAL AND VOLUNTARY REVIEW**

Referral Number	Applicant	Description	Action Code
11620-1	Blaine	Horse Race Facility, Blaine	16
11621-1	Lino Lakes	Horse Race Facility, Lino Lakes	16
11622-1	Eagan	Horse Race Facility, Eagan	16
11623-1	Lakeville	Horse Race Facility, Lakeville	16
11624-1	Woodbury	Horse Race Facility, Woodbury	16
11625-1	Savage	Horse Race Facility, Savage	16
11626-1	Farmington	Horse Race Facility, Farmington	16
11668-1	Shakopee	Horse Race Facility, Shakopee	16

**METROPOLITAN COUNCIL  
1983 BUDGET**

Department/Program	Salaries and Benefits	Consultant	Computer	Travel	Printing	General Overhead	Total
Housing Planning	\$ 396,167	\$ 0	\$ 5,000	\$ 5,000	\$ 16,180	\$ 92,420	\$ 514,767
Metro HRA	794,662	0	20,000	10,000	13,500	221,338	1,059,500
Housing Department Subtotal	1,190,829	0	25,000	15,000	29,680	313,758	1,574,267
Aging	520,203	0	7,500	4,000	21,400	123,523	676,626
Arts	109,364	0	200	2,200	7,550	32,603	151,917
Special Projects	265,492	10,000	500	4,200	5,500	57,391	343,083
Human Services							
Department Subtotal	895,059	10,000	8,200	10,400	34,550	213,517	1,171,626
Health Planning	548,361	20,000	25,000	5,000	40,000	139,012	777,373
Developmental Disabilities	112,995	17,500	1,000	1,000	4,000	25,014	161,509
Health Department Subtotal	661,356	37,500	26,000	6,000	44,000	164,026	938,882
Policy Development	548,326	0	2,000	3,250	1,750	113,783	669,109
Policy Implementation	298,249	0	300	2,900	8,600	62,691	372,740
Comprehensive Planning							
Department Subtotal	846,575	0	2,300	6,150	10,350	176,474	1,041,849
Research Department	476,793	30,000	10,000	2,600	11,000	110,197	640,590
Planning Assistance Department	370,674	3,000	3,500	4,500	6,850	80,672	469,196
Policy Development	404,988	40,000	30,000	5,500	25,500	92,325	598,313
Policy Implementation	377,931	402,500	0	5,450	6,250	86,857	878,988
Transportation Planning							
Department Subtotal	782,919	442,500	30,000	10,950	31,750	179,182	1,477,301
Air Quality	51,781	35,000	1,200	1,800	1,530	10,903	102,214
Solid Waste	335,606	75,000	800	4,400	16,100	71,626	503,532
Water Pollution Control	249,690	40,000	1,000	2,600	4,200	52,745	350,235
Natural Resources	223,180	11,000	500	4,400	4,550	56,934	300,564
Environmental Planning							
Department Subtotal	860,257	161,000	3,500	13,200	26,380	192,208	1,256,545
Parks and Open Space Department	357,919	25,000	5,000	6,000	15,350	98,780	508,049
Referral Administration	67,055	0	3,000	600	400	18,480	89,535
Geographic Base File Project	7,920	90,000	1,500	0	400	1,938	101,758
General Administration	74,580	0	0	4,000	3,250	158,630	240,460
Chair's Office	223,664	0	0	4,500	3,500	219,178	450,842
<b>TOTAL</b>	<b>\$6,815,600</b>	<b>\$799,000</b>	<b>\$118,000</b>	<b>\$83,900</b>	<b>\$217,360</b>	<b>\$1,927,040</b>	<b>\$9,960,900</b>



**METROPOLITAN COUNCIL  
1983 ESTIMATED REVENUE**

Source of Revenue

A. Federal

Department of Transportation	
Federal Highway Administration (FHWA) .....	\$ 454,000
FHWA—I-35E Environmental Impact Study .....	193,500
Urban Mass Transit Administration (UMTA) .....	200,000
UMTA—Southwest/University Av.	
Alternatives Analysis .....	230,000
UMTA—Geographic Base File Project .....	100,000
Federal Aviation Administration .....	27,000
Department of Housing and Urban Development	
Section 8 Administrative Fees .....	1,167,500
Department of Health and Human Services	
Administration on Aging .....	450,000
Health System Agency .....	426,800
Developmental Disabilities .....	70,600
Environmental Protection Agency	
'208' Water Quality Planning .....	47,000

Federal Subtotal ..... \$ 3,366,400

B. State

Parks Planning .....	\$ 200,000
Pollution Control Agency—Lakes Study .....	35,000
Arts Board—Regional Arts Planning .....	50,000
Waste Management Board—Waste Treatment .....	20,000

State Subtotal ..... \$ 305,000

C. Local

Reimbursement from:	
Waste Control Commission .....	\$ 620,000
Transit Commission .....	205,000
Airports Commission .....	125,000
Sports Facilities Commission .....	27,000
Environmental Review Cost Reimbursements .....	228,800
Interest Income from:	
General Fund .....	250,000
Aging Fund .....	75,000
McKnight Arts Fund .....	20,000
Other Revenue .....	41,000
Tax Levy .....	5,595,000

Local Subtotal ..... \$ 7,186,800

Total Estimated Revenue ..... \$10,858,200

Less Estimated Expenditures ..... \$ 9,960,900

Estimated Reserve ..... \$ 897,300\*

\*Unanticipated funds from several sources were received after the Metropolitan Council adopted its 1983 budget and tax levy in September 1982.

**METROPOLITAN COUNCIL  
STATEMENT OF ACTUAL 1983 REVENUES AND EXPENDITURES**

(Fourth Quarter Estimated)

**REVENUE**

Federal Grants .....	\$ 2,998,000
State Grants .....	308,000
Reimbursement from Regional Commissions:	
Metropolitan Airports Commission .....	118,000
Metropolitan Transit Commission .....	180,000
Metropolitan Waste Control Commission .....	444,000
Metropolitan Sports Facilities Commission .....	24,000
Total Commission Reimbursements .....	\$ 766,000
Property Taxes:	
Anoka County .....	\$ 281,000
Carver County .....	70,000
Dakota County .....	380,000
Hennepin County .....	2,080,000
Ramsey County .....	875,000
Scott County .....	95,000
Washington County .....	210,000
State of Minnesota—Homestead Credit .....	1,330,000
Total Taxes .....	\$ 5,321,000
Interest Earned on Investments .....	347,000
Environmental Review Cost Reimbursements .....	214,000
Other Revenue .....	61,000
Total Revenue .....	\$10,015,000

**EXPENDITURES**

Housing Department	
Housing Planning .....	\$ 507,000
Metro HRA .....	994,000
Human Services Department	
Aging .....	632,000
Arts .....	186,000
Special Projects .....	317,000
Health Department	
Health Planning .....	697,000
Developmental Disabilities .....	159,000
Comprehensive Planning	
Policy Development .....	608,000
Policy Implementation .....	356,000
Research Department .....	618,000
Planning Assistance Department .....	482,000
Transportation Planning Department	
Policy Development .....	566,000
Policy Implementation .....	808,000
Environmental Planning Department	
Air Quality .....	127,000
Solid Waste .....	526,000
Water Pollution Control .....	268,000
Natural Resources .....	261,000
Parks and Open Space Department .....	513,000
Referral Administration .....	71,000
Geographic Base File Project .....	54,000
General Administration .....	104,000
Chair's Office .....	355,000
Total Expenditures .....	\$ 9,209,000



**METROPOLITAN COUNCIL  
1984 BUDGET**

Department/Program	Salaries and Benefits	Consultant	Computer	Travel	Printing	General Overhead	Total
Housing Planning	\$ 420,582	\$ 0	\$ 10,000	\$ 5,500	\$ 19,140	\$ 98,310	\$ 553,531
Metro HRA	852,062	0	22,363	13,800	13,050	293,960	1,195,236
Housing Department Subtotal	1,272,644	0	32,363	19,300	32,190	392,270	1,748,767
Aging	473,267	0	10,363	4,400	25,000	119,492	632,522
Arts	194,115	1,000	2,645	2,200	9,315	60,249	269,523
Special Projects	302,344	46,800	3,395	9,650	6,240	69,829	438,258
Human Services							
Department Subtotal	969,726	47,800	16,403	16,250	40,555	249,570	1,340,304
Health Planning	546,561	111,000	25,363	5,000	44,000	153,038	884,962
Developmental Disabilities	118,530	70,000	0	2,700	5,400	26,648	223,278
Health Department Subtotal	665,091	181,000	25,363	7,700	49,400	179,686	1,108,240
Policy Development	539,566	55,000	9,653	5,000	20,200	104,380	733,800
Policy Implementation	373,704	0	2,945	4,500	8,500	73,014	462,663
Comprehensive Planning							
Department Subtotal	913,270	55,000	12,598	9,500	28,700	177,394	1,196,463
Research Department	555,217	20,000	23,006	2,700	10,860	121,002	732,785
Planning Assistance Department	393,363	3,300	3,500	4,700	10,470	82,189	497,522
Policy Development	389,874	190,000	43,935	6,150	32,000	104,900	766,859
Policy Implementation	386,858	257,000	8,298	5,500	7,300	85,629	750,585
Transportation Planning							
Department Subtotal	776,732	447,000	52,233	11,650	39,300	190,529	1,517,444
Air Quality	66,527	0	0	2,200	2,920	13,495	85,142
Solid Waste	301,870	60,000	3,008	5,100	19,620	78,627	468,225
Water Pollution Control	245,974	0	4,149	2,200	9,000	48,810	310,133
Natural Resources	270,580	24,000	4,149	2,500	6,360	64,037	371,626
Environmental Planning							
Department Subtotal	884,951	84,000	11,306	12,000	37,900	204,969	1,235,126
Parks and Open Space Department	351,477	25,000	8,653	4,500	19,350	112,281	521,261
Referral Administration	84,667	0	1,325	600	1,000	27,260	114,852
General Administration	170,821	0	0	5,000	3,500	129,821	309,141
Chair's Office	291,218	20,000	2,645	5,000	1,000	268,591	588,454
<b>TOTAL</b>	<b>\$7,329,178</b>	<b>\$883,100</b>	<b>\$189,395</b>	<b>\$98,900</b>	<b>\$274,225</b>	<b>\$2,135,562</b>	<b>\$10,910,360</b>

**METROPOLITAN COUNCIL  
1984 ESTIMATED REVENUE**

Source of Revenue

A. Federal

Department of Transportation	
Federal Highway Administration .....	\$ 490,000
Urban Mass Transit Administration (UMTA) .....	200,000
UMTA—Southwest/University Av.	
Alternatives Analysis .....	257,000
UMTA—Geographic Base File Project .....	22,000
Federal Aviation Administration .....	142,500
Department of Housing and Urban Development	
Section 8 Existing Administrative Fees .....	1,291,600
Section 8 Moderate Rehabilitation Fees .....	24,200
Department of Health and Human Services	
Administration on Aging .....	405,000
Health System Agency .....	398,000
Developmental Disabilities .....	94,000

Federal Subtotal ..... \$ 3,324,300

B. State

Parks Planning .....	\$ 350,000
Arts Board—Regional Arts Planning .....	50,000
State Planning Agency—Developmental	
Disabilities Newsletter .....	6,000
Housing Finance Agency—Home Improvement Loans .....	10,000

State Subtotal ..... \$ 416,000

C. Local

Reimbursement from:	
Waste Control Commission .....	\$ 473,470
Transit Commission .....	191,860
Airports Commission .....	99,845
Sports Facilities Commission .....	26,000
Environmental Review Cost Reimbursements .....	21,500
Interest Income from:	
General Fund .....	275,000
Aging Fund .....	46,000
McKnight Arts Fund .....	18,000
Other Revenue .....	132,800
Tax Levy .....	5,885,585

Local Subtotal ..... \$ 7,170,060

Total Estimated Revenue ..... \$10,910,360

Less Estimated Expenditures ..... \$10,910,360

Estimated Reserve ..... \$ 0



## **1983 Publications**

The following is a list of 1983 Metropolitan Council publications, by category. Copies are available from the Council's Communication Department by calling 291-6464. Single copies of many publications are free; others are available at a nominal charge. A complete list of Council publications is also available.

### **METROPOLITAN DEVELOPMENT GUIDE**

Amendment to Regional Parks Capital Improvement Program. No. 11-83-151.  
Amendments to Water Resources Management Development Guide/Policy Plan, Part 1.  
No. 13-83-086.  
Aviation Amendments, Guidelines for Land Use Compatibility with Aircraft Noise.  
No. 25-83-040.  
Proposed Amendments to Water Resources Management Development Guide, Part 1,  
Sewage Treatment and Handling. No. 10-83-115.  
Revised Capital Improvement Program for Regional Recreation Open Space. No. 11-83-036.  
Transportation Development Guide/Policy Plan. No. 25-83-075.

### **METROPOLITAN COUNCIL GENERAL INFORMATION**

Review, a biweekly newsletter.  
Metro Monitor, a monthly newspaper.  
Brochures describing each commission, board or advisory committee associated with the  
Metropolitan Council.  
Bylaws of the Metropolitan Council. No. 85-83-156.  
Citizen's Guide to the Metropolitan Council. No. 08-83-097.  
A Decade Down the Road: What Will the Region be Like? No. 08-83-068.  
Metropolitan Council Act, including amendments passed by 1983 Legislature. No. 08-83-119.  
Metropolitan Council Affirmative Action Plan, 1983. No. 90-82-112.  
Metropolitan Council Comprehensive Annual Financial Report, Fiscal Year Ended  
December 31, 1982. No. 86-83-087.  
Metropolitan Council Directory, a brochure listing Council Member and staff names.  
No. 08-83-096.  
Metropolitan Council Minority Business Enterprise Plan, 1983. No. 32-83-026.  
Metropolitan Council Publications Directory. No. 08-83-023.  
Metropolitan Council 1983 Annual Report to the Minnesota State Legislature. No. 08-83-001.  
Appendix to 1983 Metropolitan Council Annual Report to the Minnesota State Legislature.  
No. 08-83-002.  
Metropolitan Council 1984 Work Program and Budget. No. 23-83-073.  
Minnesota Intergovernmental Review Process, Federal Programs Selected for Review.  
The Next 10 Years in the Twin Cities Metropolitan Area: New Directions for  
the Region and State. No. 08-83-077.  
Values and Traditions of the Metropolitan Council, transcript. No. 08-83-108.  
Where Can I Find a Complete Affirmative Action Plan? No. 90-83-038.

### **AGING**

Plan for Housing and Services for Older People in the Twin Cities  
Metropolitan Area. No. 14-83-064.  
Planning for Older People. No. 14-83-100.  
When Older People Need Help. No. 14-83-114.  
1984-86 Area Plan for Programs on Aging. No. 14-83-125.

### **ARTS**

Art About Town, a map and directory of nonprofit arts services in the  
Metropolitan Area. No. 58-83-057.

### **ASSISTANCE FOR LOCAL PLANNING**

Directory of Planners in the Twin Cities Metropolitan Area. No. 07-83-060.  
Local Planning Assistance News, a quarterly newsletter.  
Negotiated Zoning Standards in the Planned Unit Development, Coon Rapids, Minn.  
No. 07-83-069.

### **CRIME CONTROL**

Confronting Computer Crime: A Challenge for the 1980s, draft. No. 36-83-120.  
Crime Trends in the Twin Cities Metropolitan Area, An Update. No. 36-83-153.

## **DEVELOPMENT FRAMEWORK**

A History of Municipal Incorporations in the TCMA. No. 01-73-016.  
Obscure Geographic Place Names, Twin Cities Metropolitan Area. No. 01-83-157.  
Profile of Urban Services in the Twin Cities Metropolitan Area. No. 02-83-015.  
Protecting the Region's Farmland, the 1980 Metropolitan Agricultural Preserves Act. No. 02-83-099.  
1983 Agricultural Preserves Annual Report. No. 03-83-131.

## **ECONOMIC DEVELOPMENT**

Availability of Investment Capital in the Twin Cities Area. No. 02-83-007.  
Commercial Construction in the Twin Cities Metropolitan Area, 1982. No. 01-83-065.  
Construction Activity and Major Construction Projects in the Twin Cities Metropolitan Area, January-June 1983. No. 01-83-116.  
Employment in the Twin Cities Metropolitan Area, 1980-1981. No. 01-83-059.  
Interim Economic Policies for the Metropolitan Development Framework, draft. No. 02-83-129.  
Summary of Proposed Interim Economic Policies, draft. No. 02-83-129A.  
Manufacturing Trends in the Twin Cities Economy. No. 02-83-041.  
Office Construction Update, 1979-1982, Twin Cities Metropolitan Area. No. 01-83-128.  
Regional Service and Finance Study, Phase 1, draft. No. 02-83-091.  
1982 Construction in the Twin Cities Metropolitan Area and Major Construction Projects, July-December 1982. No. 01-83-061.  
1982 Industrial Construction in the Twin Cities Metropolitan Area. No. 01-83-078.

## **ENERGY**

Home Energy Conservation: Where to Find Help. No. 19-83-154.

## **ENVIRONMENT**

### **Air Quality**

1983 Report of Reasonable Further Progress Toward Meeting Air Quality Standards During 1982 in the Twin Cities Metropolitan Area. No. 09-83-113.

### **Natural Resources**

Twin Cities Metropolitan Area Aggregate Resources Study. No. 10-83-019.

### **Sewage Sludge and Sludge Ash**

Sludge and Sludge Ash Disposal, Environmental Impact Statement, Scoping Decision Document. No. 12-83-072.

### **Solid Waste**

Environmental Assessment Worksheet, Expansion of Flying Cloud Sanitary Landfill. No. 12-83-029.  
Environmental Assessment Worksheet, Ramsey/Washington County Waste-to-Energy Project. No. 09-83-008.  
Environmental Assessment Worksheet, Waste Energy Systems Incinerator, Midwest Asphalt Corp., New Brighton, Minn., public meeting draft. No. 09-83-110.  
Evaluation of Hennepin County Solid Waste Landfill Sites, public meeting draft.  
Expansion of Flying Cloud Sanitary Landfill, Environmental Impact Statement Scoping Decision Document. No. 12-83-047.  
Draft Environmental Impact Statement Ramsey/Washington County Waste-to-Energy Project. No. 09-83-134.  
Executive Summary, Ramsey/Washington County Waste-to-Energy Project, Draft Environmental Impact Statement. No. 09-83-134a.  
Ramsey/Washington County Waste-to-Energy Project, Environmental Impact Statement, Scoping Decision Document. No. 09-83-046.  
Air Quality Assessment for the Ramsey/Washington County Waste-to-Energy Facility. No. 09-83-134c.  
Archaeological Reconnaissance Survey of the Ramsey/Washington County Waste-to-Energy Project. No. 09-83-134b.  
Habitat Evaluation of the Ramsey/Washington County Waste-to-Energy Project. No. 09-83-134f.  
Noise Assessment of the Ramsey/Washington County Waste-to-Energy Project. No. 09-83-134d.  
Surface Water Impacts of the Ramsey/Washington County Waste-to-Energy Project. No. 09-83-134e.  
Recommendations for Dealing with Adverse Impacts of Solid Waste Disposal Facilities. No. 12-83-053.  
Recycle It! Directory of Recycling Centers in the Twin Cities Metropolitan Area. No. 12-83-082A.  
Review of County Proposals for Solid Waste Reduction and Recovery. No. 12-83-133.



## **Water Resources**

Diagnostic-Feasibility Study of Seven Metropolitan Area Lakes,  
Part 1: Overview. No. 10-83-092.  
Diagnostic-Feasibility Study of Seven Metropolitan Area Lakes,  
Part 2: Lake Studies. Nos. 10-83p093A through 10-83-093G.  
Surface Water Management, Evaluation of Nationwide Urban Runoff Program. No. 10-83-127.  
Surface Water Management, Financing Local Management Programs. No. 10-83-143.  
Surface Water Management, Management Practices Evaluation. No. 10-83-144.  
Surface Water Management, Watershed Management Guide. No. 52-83-109.  
Surface Water Management, Simplified Modeling for Watersheds. No. 10-83-130.  
Water Conservation in the Twin Cities Metropolitan Area. No. 10-83-021.  
Water Use in the Twin Cities Metropolitan Area. No. 10-83-056.

## **HEALTH**

### **Developmental Disabilities**

Developmental Disabilities Information Exchange, a monthly newsletter.  
Fiscal Disincentives in the Developmental Disabilities System. No. 53-83-083.  
Personnel Turnover in Community Group Homes for Mentally Retarded People in the Twin Cities  
Metropolitan Area. No. 53-83-045.  
Services for People with Developmental Disabilities: A Guide for Private Funders. No. 53-83-055.

### **Health Planning Board**

Annual Implementation Plan for the Metropolitan Health Systems Agency No. 18-83-005.  
Consumer's Guide to Hospital Care in the Twin Cities Metropolitan Area. No. 18-83-028.  
Consumer's Guide to Physicians in the Twin Cities Metropolitan Area. No. 18-83-067.  
Drinking: Twin Cities Health Risk. No. 18-83-136.  
East-West Metro Hospital Use Trends. No. 18-83-152.  
Exercise: Twin Cities Health Behavior. No. 18-83-104.  
Hospital Acute Care Use in the Twin Cities Metropolitan Area, 1981 and 1982. No. 18-83-085.  
Hospital Charges for Medicare Patients, 1979 and 1981. No. 18-83-014.  
Hospital Patient Origin Trends. No. 18-83-058.  
I Think I Need a Nursing Home: What Do I Do Now? No. 18-83-106.  
Metropolitan Birth Trends, 1960-1980. No. 18-83-076.  
Overweight: Twin Cities Health Risk. No. 18-83-032.  
Prescription for Change: Balancing Competitive, Community and Regulatory Forces in Twin Cities  
Health Care. No. 18-83-074.  
Strategy for Implementing the Future of Regional Health Planning Task Force Report.  
No. 18-83-012.  
Use of Pediatric Services in Metropolitan Area Hospitals, 1975-1982. No. 18-83-139.  
1979 Birth Statistics for Health Planning Areas in the Twin Cities. No. 18-83-033.  
1979 Death Statistics for the Health Planning Areas in the Twin Cities. No. 18-83-034.

## **HOUSING**

Condominiums in the Twin Cities Metropolitan Area. 19-83-095.  
Housing Construction in the Twin Cities Metropolitan Area, 1981. No. 01-83-017.  
Housing Construction in the 25 Largest U.S. Metropolitan Areas 1971-1983. No. 01-83-142.  
Housing Regional Relocation Clearinghouse, a monthly newsletter.  
Housing Vacancy and Turnover in the Twin Cities Metropolitan Area:  
Oct.-Dec. 1982. No. 19-83-031.  
Jan.-March 1982 19-83-070.  
April-June 1983. No. 19-83-102.  
July-Sept. 1983. No. 19-83-140.  
Metropolitan Housing Fund, draft. No. 19-83-121.  
Mobile Home Trends in the Metropolitan Area. No. 01-83-084.  
Proposed Scope of Study: Twin Cities Area Housing Needs in the Next Decade.  
No. 19-83-107.  
Residential Zoning Ordinances. A Summary from Selected Metropolitan Area Communities.  
No. 19-83-141.  
Subsidized Rental Housing Directory. No. 19-83-090.  
Third-Quarter 1983 Building Permits. No. 01-83-155.  
1981 Subsidized Housing Activity in the Twin Cities Metropolitan Area. No. 19-83-011.  
1982 Manufactured Housing Law: Local Control of the Location of Manufactured Housing.  
No. 07-83-024.  
1983 Subsidized Housing Handbook. No. 19-83-132.  
1983 Update on Housing Affordability in the Twin Cities Metropolitan Area.  
No. 19-83-098.

## **PARKS AND OPEN SPACE**

A Cooperative Program for Providing Public Access Sites on Metropolitan Area Lakes, 1983 Update.  
Barge Fleeting: Potential Impacts on Parkland. No. 02-83-042.  
The Great Outdoors...It's Just Next Door. A directory of regional parks. No. 11-83-063.  
Public Boat Launch Guide, Twin Cities Metropolitan Area. No. 11-83-035.  
Public Water Access on Twin Cities Metropolitan Area Lakes and Rivers. No. 11-83-149.  
Warm Up Winter! Parks Directory. No. 11-83-148.

## **POPULATION**

Minority Population Trends in the Twin Cities Metropolitan Area, 1980. No. 01-83-022.  
An Overview of Historic Population and Housing Trends in the Twin Cities Metropolitan Area. No. 01-83-147.

## **TRANSPORTATION**

Anoka County-Blaine Airport Master Plan review draft. No. 26-83-138.  
Proposed Guidelines to Allocate Funds for Metropolitan Highway Rights-of-Way, draft. No. 26-83-117.  
Prospectus for a Fast-Transit Connection Between Minneapolis and St. Paul. No. 08-83-118.  
Southwest/University Avenue Corridors Study, Transit Alternatives Analysis and Draft Environmental Impact Statement, Phase I: Draft Scoping Report. No. 26-83-089.  
Transportation Improvement Program. No. 25-83-146.  
Transportation: The Road Ahead. A conference transcript. No. 25-83-071.

## **OTHER**

Metropolitan Issues: A Classroom Kit. No. 08-83-080.  
Safety Net or SOS? Proceedings of the Region-Wide Forum to Assess Needs of Lower-Income Twin Citizens. No. 08-83-006.

## **MAPS**

8½ x 11. Political Boundaries, Twin Cities Metropolitan Area.  
17 x 22. A History of Municipal Incorporations in the Twin Cities Metropolitan Area. No. 01-83-016.  
17 x 22. Legislative Districts, Twin Cities Metropolitan Area. No. 08-82-090.  
17 x 22. Regional Recreation Open Space System. No. 11-83-081.



## Advisory Committee Membership, 1983

**CHAIR'S ADVISORY COMMITTEE:** Mary Anderson, chair; Jerome Aretz, Dick Asleson, Philip Cohen, Maynard Eder, John Elam, Tom Foley, Donald Fraser, Ruby Hunt, William Konarski, Richard Kremer, Margaret Langfeld, Victor Miller, Bruce Nawrocki, Elliott Perovich, Vern Peterson, A.B. Shaefer, Jr., Thomas P. Spies, Gerald Splinter, Russell Streefand, Duane Zaun.

**ADVISORY COMMITTEE ON AGING:** James Malley, chair; Kris Bulcroft, Lois DeSantis, Nancy Devitt, Henry Fitzgerald, Char Fitzpatrick, Amelia Flocken, Arnold J. Foslien, Etta E. Furlow, Ferne E. Grosmann, Cheryl Heide, JoEllen L. Hurr, Karen Krahn, Dwight E. Larson, Arnold H. Lindquist, William Meyer, Grace Nelson, Hortense L. O'Neill, Naomi Pikul, Edna L. Ramsey, Dorothy E. Troeltzsch, Cornelius A. VanDoren, Alfonso Vasquez.

**ARTS ADVISORY COMMITTEE:** Sim Varner, chair; Wilma Behm, Tom Borrup, Carol Daly, Robert Derus, Cheryl Dickson, Janet Dieterich, Sally Dixon, Nancy Hauser, Ruthann Isaacson, Mary Katherine Johnson, Monica Maye, Karin McGinnis, Nancy Miller, Janet Miner, Marilyn O'Connor, George Roberts, Phyllis Jane Rose, Jeffrey Scherer, Emily Anne Staples, Donald Steinkraus, David Swanson, Geol Weirs, Janet Whitmore, Linda Wyszynski.

**CRIMINAL JUSTICE ADVISORY COMMITTEE:** Robert W. Johnson, chair; Lindsay Arthur, Richard H. Blay, Eugene Borgida, Kevin Burke, Barbara Chester, Nathaniel R. Davis, Polly Franke, Michael Geraghty, Susan Gray, Erling Johnson, Thomas L. Johnson, Richard T. Mulcrone, Al E. Pufahl, Paul Tschida, Peter Vanderpoel, Richard Wedell, Charles Zacharias.

**DEVELOPMENTAL DISABILITIES TASK FORCE:** Kathryn Beebe, chair; Carolyn Anderson, Jay Bischoff, Harold Booker, Mary Busch, Beth Dhennin, Michelle Ellis, Diane Fleetham, Dennis Johnson, Nancy Ledin, Dennis Matthews, Al Oertwig, Nancy Pflager, Mary Powell, Sharon Sayles, Eileen Schmokel, Joan Schoepke, Katherine Schultz, Carol J. Sime, Virginia Spurr, Sally Swallen, Judy Sweeney, Robert Teeling, Maynard Woodbury, Kay Zwernik.

**LAND USE ADVISORY COMMITTEE:** Gerald Stelzel, chair; Helen Baker, James Bergman, Brad Bjorklund, Edward Gergen, Charlee Hoyt, Howard Hunt, Jerome E. Kamprud, Alvin Kehr, Margaret Langfeld, Gordon L. Nelson, Gerald R. Pitzl, Orlin A. Schneewind, Bradley Stanius, Everett Thies, Rosemary Thorsen, Al Zweber.

**METROPOLITAN HRA ADVISORY COMMITTEE:** Philip Cohen, chair; Joan Archer, Edmund Bowler, Lyn Burton, Thomas Duffy, Sharon Garber, Wanda Schumacher, Marilyn Spensley, Josey Warren.

**METROPOLITAN HEALTH PLANNING BOARD:** Elaine V. Voss, chair; LaVonne Barac, Margit Berg, John W. Bluford, Fred C. Cady, Kirby J. Erickson, Robert W. Geist, Sam S. Grais, A. Stuart Hanson, Lawren.

**METROPOLITAN HEALTH PLANNING BOARD:** Elaine V. Voss, chair; LaVonne Barac, Margit Berg, John W. Bluford, Fred C. Cady, Kirby J. Erickson, Robert W. Geist, Sam S. Grais, A. Stuart Hanson, Lawrence R. Kaplan, Marilyn M. King, Jane A. Legwold, Harry J. Lemieux, Russell V. Lucas, Bea Ludens, Barbara Lukermann, Nancy McIntosh, Steven R. Mosow, Richard Pomerantz, William J. Quinn, Harold Ravitz, James Scheibel, A. Frank Smart, James P. Smith, Florence C. Wermerskirchen.

**METROPOLITAN PARKS AND OPEN SPACE COMMISSION:** John McBride, chair; William C. Barbeau, Douglas F. Bryant, Douglas R. Ewald, Barbara Ann Johnson, Kristine A. Kremer, Carol J. Osip, Phyllis Crimmins Stenerson, Richard A. Wedell.


**REGIONAL TELECOMMUNICATIONS TASK FORCE:** Adrian Herbst, chair; Vera Anderson, John Bolland, Peter Bradley, Linda J. Camp, Ralph Campbell III, William Coleman, William Craig, Rich Dethmers, Gene Ekness, Ray Foley, Karen Gochberg, Ken Henderson, Ronald Jerich, Mark Kaplan, Todd Lefko, Vicky Long, Michael Martin, William Nee, Robert Rohlf, Peter Roll, Melanie Soucheray.

**TRANSPORTATION ADVISORY BOARD:** David L. Graven, chair; John Achartz, Richard Braun, Robert Britton, Howard Bunce, William P. Craig, Douglas Differt, Joe Fogarty, Ruth Franklin, Alison Fuhr, Earl F. Gnan, Sam Grais, Richard Hammero, William Hise, Barbara Hughes, James Krautkremer, Richard Kremer, Margaret Langfeld, Wendy Maltzen, R.E. Mertz, Roger P. Miller, Michelle Mueller, Bruce Nawrocki, Hal Norgard, Al Ross, Barbara J. Savanick, Tony Scallon, James Scheibel, Jacqueline Slater, Robert Thene, John S. Voss, Willis Warkentien.

**METROPOLITAN WASTE MANAGEMENT ADVISORY COMMITTEE:** Gary Pagel, chair; Mary Ayde, Gary Brown, James Bryan, Russ Edlund, Del Edwards, Floyd Forsberg, Susan Fries, Ed Gregory, Hilmer Hartman, Mary Heitzig, Ray Hoag, Barbara Kelley, Louise Kuderling, John Leadholm, Barbara Lukermann, Bruce Nawrocki, Joanne Nelson, Luther Nelson, Forrest Nowlin, Laura Oatman, Florence Olson, Richard Pecar, Richard Person, Betty Sindt, Erika Sitz, Richard Svanda, Carolyn Voss, Doug Wood, Ronald Ylitalo. Expanded membership also includes: Leon Buss, Arnold Cox, Lance P. Delfino, Jim E. Elling, Gerald Gray, Karen Grimm, Timothy Kelly, Al Klingelhutz, Shirley Larson, Bernie Lauman, John Leroux, David A. Morgan, Ray H. Rother, Robert Sayers, Jon C. Simon, Joe Simon, Shirley D. Slater, Allen Sorteberg, David Wilde.

HT 394 .T9 M47a 1983 appendi  
Metropolitan Council of the  
Twin Cities Area.  
Annual report to the

HT 394 .T9 M47a 1983 appendi  
Metropolitan Council of the  
Twin Cities Area.  
Annual report to the

DATE	ISSUED TO
MAR 8 '89	

LEGISLATIVE REFERENCE LIBRARY  
645 State Office Building  
Saint Paul, Minnesota 55155