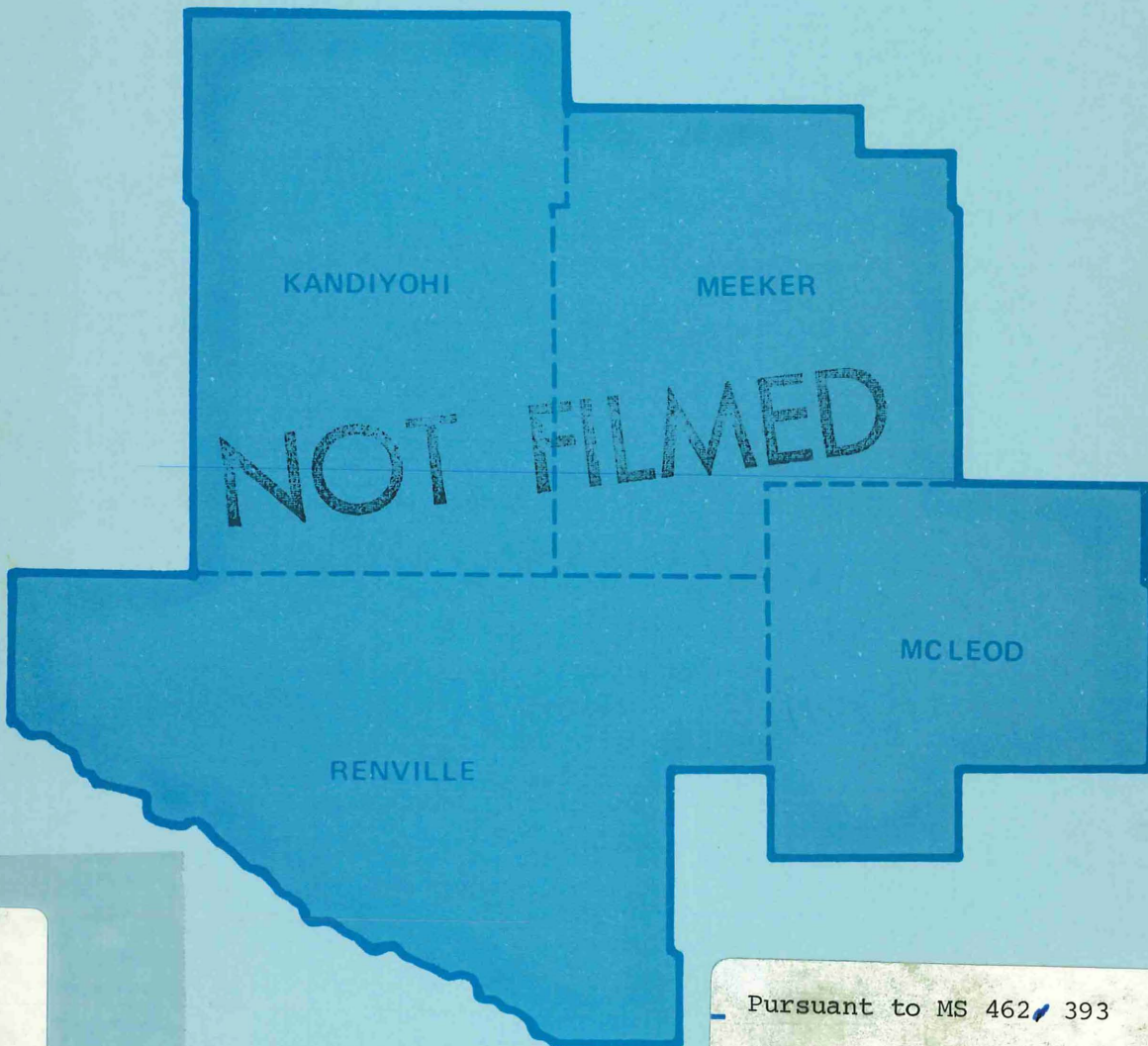




6
E
R
D
C

SIX EAST REGIONAL DEVELOPMENT COMMISSION



HT
393
.M62
S59ax
1982/83

Pursuant to MS 462, 393

Annual Report

JULY 1, 1982

JUNE 30, 1983

TABLE OF CONTENTS

	Page
Chairman's Message	3
Director's Message and Commissioners	4
Committees and Appointments	5
Advisory Committees	6
Comprehensive Development Plan Activities	7
A-95 Clearinghouse Process	10
Program Budget Summary	17
Revenue - Expenditure Summary	18
Program Budget Summary FY 1984	19
Summary of Studies, Reports and Plans	20

CHAIRMAN'S MESSAGE



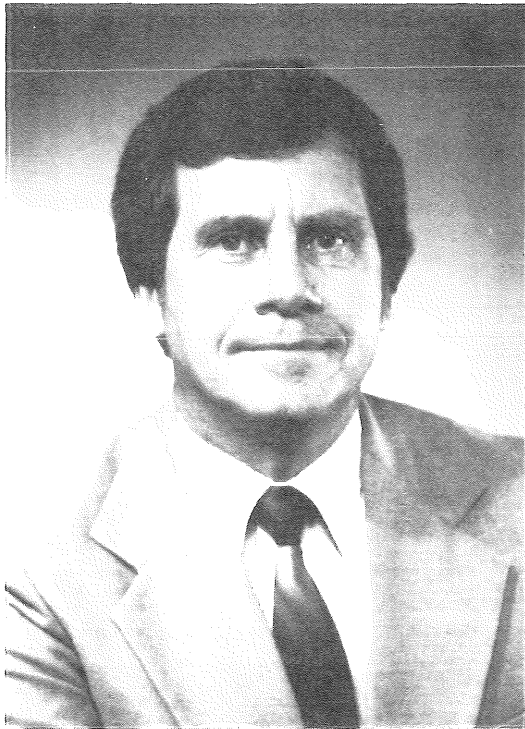
With the passing of this past year, the commission marks ten years of existence. It all began in 1969 when the Minnesota Legislature passed enabling legislation, making it possible to form regional development commissions. In February, 1973, all four of our county boards of commissioners passed resolutions requesting governor Lovander to designate our four-county area as a region and to authorize the forming of a commission. The region was formed and the commission authorized in July of that same year.

The "Regional Development Act of 1969" placed several requirements on the commission. One of these requirements is that we review and comment on all applications for state and federal funding assistance that are regionally significant. So far, the commission has processed 1,132 applications which we refer to as the A-95 review.

Another requirement in the law is for the commission to prepare and adopt a comprehensive development plan. That's a big order which we took very seriously. We have conducted many specialized studies and developed reports on numerous subjects. Most of these were adopted after holding a public hearing. The document which best addresses this requirement of the law is our Comprehensive Development Policy Plan. It addresses goals, objectives and policies for 18 different subjects which the commission identified as the most important areas of concern.

There are still four of us on the commission who were part of the original 15 members back in 1973. I have watched the commission develop from a loose-knit group asking questions about community problems and needs to a well-organized body with a highly trained staff that helps local units of government find solutions for their problems and meet their needs.

I enjoyed filling out the remainder of the term of office for my very capable predecessor, O. Homer Bach. It was truly an honor and a privilege to serve as chairman. I am looking forward to another exciting and productive year.



DIRECTOR'S MESSAGE

Most of Fiscal Year 1983 (July 1 - June 30) was a time of funding uncertainty. The funding picture became a little more clear toward the end of the year which allowed the commission to plan for the future with more confidence.

The staff found 1983 to be a challenging year because of the changes in state and federal programs. This affected not only internal operations, but also the staff's ability to assist local units of government and help them meet their needs.

In general, it was a good year with one exception. In August, 1982, one of our secretaries was killed in a car accident as she, her husband Bob, and two others were returning from a trip to New Mexico. We will always remember Karen Lundquist as a very pleasant person to work with and as a very competent secretary.

COMMISSIONERS

KANDIYOHI COUNTY

Dean Aarvig, Townships
Chuck Hauptert, Municipalities
Earl Larson, County Board

RENVILLE COUNTY

Wesley Kuske, Townships
Mary Ann Woelfel, Municipalities
Pat Kubesh, County Board

McLEOD COUNTY

Ed Duesterhoeft, Townships
Joe Miller, Municipalities
Lawrence Wendorff, County Board

NON-COUNTY APPOINTMENTS

Virginia Draheim, School Boards
Andrew Walters, School Boards
Stephen Enockson, Councilman, Willmar
(Community over 10,000)

MEEKER COUNTY

Orville Wog, Townships
Eilert Flemming, Municipalities
George Rice, County Board

OFFICERS

Ed Duesterhoeft, Chairman
Wesley Kuske, Vice Chairman
Eilert Flemming, Secretary/Treasurer

PUBLIC INTEREST COMMISSIONERS

Delbert Carlson, Region 6E Soil and Water Conservation Districts
Wes Stevens, Minnesota Association of Voluntary Social Service Agencies
Charles Warner, Local Development Corporations
Richard Loftness, Local Development Corporations
Patricia Bonniwell, Region 6E Employment and Training Interests

COMMITTEES AND APPOINTMENTS

EXECUTIVE STEERING COMMITTEE

Ed Duesterhoeft, Chairman - Stewart
Stephen Enockson - Willmar
Eilert Flemming - Cosmos
Wes Kuske - Olivia

BYLAW COMMITTEE

Wes Kuske, Chairman - Olivia
Earl Larson, Willmar
Andrew Walters - Watkins
Lawrence Wendorff - Hutchinson

BUDGET AND WORK PROGRAM COMMITTEE

Dean Aarvig, Chairman - Willmar
Virginia Draheim - Olivia
Ed Duesterhoeft - Stewart
Eilert Flemming - Cosmos

PERSONNEL COMMITTEE

Earl Larson, Chairman - Willmar
Ed Duesterhoeft - Stewart
Wes Kuske - Olivia
Andrew Walters - Watkins

NOMINATING COMMITTEE

Ed Duesterhoeft, Chairman - Stewart
Wes Kuske - Olivia
Earl Larson - Willmar
Andrew Walters - Watkins

APPOINTMENTS

Robert Otto, Environmental Education Council
LeRoy Scharmer, Private Industry Council
Pat Kubesh, Governor's Council on Rural Development
Stephen Enockson, Governor's Council on Rural Development (First Alternate)
Pat Kubesh, Emergency Medical Service Corporation
Chuck Warner, Emergency Medical Service Corporation
Jan Gustafson, Health Systems Agency Six

ADVISORY COMMITTEES

AGING COUNCIL

Andrew Walters, Chairperson - Watkins
Brenda Birkholz - Glencoe
Ancher Nelson - Hutchinson
Clara Sagness - Glencoe
Jackie Michaelson - Darwin
Florence Casey - Litchfield
Clifford Johnson - Litchfield
Jo DeBruycker - Willmar
Alpha Kragenbring - Atwater
Agnes Draheim - Olivia
Henriette Nielsen - Buffalo Lake
Della Kahmann - Bird Island

TRANSPORTATION

Ed Duesterhoeft, Chairperson - Stewart
Reuben Barka - Litchfield
Roger Gustafson - Glencoe
Dick Hamilton - Willmar
LeRoy Olson - Hutchinson
John O'Neill - Olivia
Marlow Priebe - Hutchinson
Gary Danielson - Willmar

DEVELOPMENTAL DISABILITIES

Gene Dillon, Chairperson - Olivia
Ernie Schafer - Buffalo Lake
Norman Tempel - Willmar
Bob Neessen - Willmar
Norma Syverson - Winsted
Dorothy Desens - Hutchinson
Carol Marchant - Litchfield
Claris Peters - Spicer

ECONOMIC DEVELOPMENT

Ellert Flemming, Chairperson - Cosmos
Don Hultgren - Raymond
Lillian West - Brownton
Dick Loftness - Hector
Chuck Warner - Brownton
Bob Johnson - Spicer
Ken Franke - Plato
John Seehausen - Morton
Dick Hamilton - Willmar
Howard Page - Dassel
Nick Kleinhuizen - Renville

COMPREHENSIVE DEVELOPMENT PLAN ACTIVITIES

The commission has attempted to set up its work program along the lines or requirements in the State Statutes that require the commission to "prepare and adopt, after appropriate study and such public hearings as may be necessary, a comprehensive development plan for the region." State Statutes go on to say "The plan shall consist of a compilation of policy statements, goals, standards, programs and maps prescribing guides for an orderly and economic development, public and private, of the region. The comprehensive development plan shall recognize and encompass physical, social or economic needs of the region, and those future developments which will have an impact on the entire region including, but not limited to, such matters as land use, parks and open space land needs, the necessity for and location of airports, highway, transit facilities, public hospitals, libraries, schools, public and private housing, and other public buildings."

The commission adopted a Comprehensive Development Policy Plan on June 24, 1981. The plan consists of 37 goals, 106 objectives and 389 policies. The following list of work program categories forms the basis for the Comprehensive Development Policy Plan. Each category was treated as a separate but integrated component of the plan. Special studies, reports and plans have been completed by the commission for 12 of the 18 elements. Information has been gathered for the other six elements but no individual documents have been written.

COMPREHENSIVE DEVELOPMENT PLAN ELEMENTS

Housing

Housing: 1978 Analysis and Policies (177 pages)
Housing: Summary Report (25 pages)

Public Facilities

Public Facilities: Analysis and Policies (33 pages)

Economic Development

Regional Overall Economic Development Plan
(456 pages)
West Central Minnesota: A Land of Plenty
(133 pages)
Feasibility of a Total Resource Agricultural
Processing Industrial Park (325 pages)
Summary Report: Co-Location/Co-Generation for
Agricultural Processing Facilities in Region Six
East (22 pages)

Land Use and Natural Resources

Growth and Development: Analysis and Policies
(156 pages)
Growth and Development: Summary Report
(24 pages)
Wetlands: Analysis, Policies and
Recommendations (106 pages)

Transportation

Transportation Plan (60 pages)

Open Space/Recreation

Outdoor Recreation Report (243 pages)
Outdoor Recreation Report: Summary (47 pages)

Agriculture

Regional Agricultural Profile (70 pages)
Agricultural Land Preservation (36 pages)

Water Resources

Water Resources Plan (91 pages)

Energy

Employment and Training

Education

Human Services

Multi-County Human Service Agencies Inventory
(32 pages)

Population

Population Analysis (77 pages)

Aging

Area Plan for Programs on Aging (163 pages)
The Golden Pages: A Directory of Services for the
Elderly (54 pages)

Criminal Justice

Health

Developmental Disabilities

Comprehensive Plan for Developmental Disabilities
(78 pages)
Developmental Disabilities Resources Guide
(61 pages)

Arts and Humanities



EMPLOYMENT AND TRAINING



The Minnesota Department of Economic Security terminated its contract with the Regional Development Commission on September 30, 1982. Since then, the major role of the Regional Development Commission has been to give assistance to local efforts regarding implementing the new "Job Training Partnership Act." Local efforts have established a 13-county, three-region (Six East, Seven East and Seven West) service delivery area to implement provisions of the Job Training Partnership Act.



ECONOMIC DEVELOPMENT



Economic development has always been one of the main concerns of the Regional Development Commission. In previous years it supplied the staff necessary to prepare Overall Economic Development Plans (OEDP) for Renville, Kandiyohi and Meeker Counties. The preparation of these OEDP's has qualified these counties to be eligible areas for federal Economic Development Administration (EDA) programs.

On December 1, 1979, the Regional Development Commission submitted a 305-page District OEDP to the Chicago EDA office. In June, 1981, a 456-page revised copy of the District OEDP was submitted to the Chicago EDA office. Major accomplishments during the year were the consultant's final draft on a co-location/co-generation study for an agricultural processing industrial park and the compilation of data and printing of a promotional booklet. The commission utilizes an Economic Development Advisory Committee to identify problems, analyze programs and suggest solutions.



WATER RESOURCES



Since its beginning in 1973, the commission has been concerned about the quality and quantity of water. It was involved with MnPCA and the "208" Nonpoint Pollution Source Program. Also, the commission worked closely with the Minnesota Geologic Survey on a well log program. During the past year, the commission completed and held a public hearing on a Water Resources Plan. The document attempts to focus on the issues and various levels of data available. The document was printed and distributed this past year. To date, it has generated very little interest in either water quality or water quantity.



AGING



The Six East Regional Development Commission became a partner in a tri-regional 18-county Southwestern Area Agency on Aging on July 1, 1977. During 1979, the Six East Regional Development Commission was approved a separate four-county agency, effective January 1, 1980. As part of this approval, a transition plan was developed which included evaluating and monitoring the nutrition programs being administered by the Six East Community Action Agency. The evaluation and monitoring previously had been conducted by the Minnesota Board on Aging.

Although the Area Agency on Aging is officially the Six East Regional Development Commission, most of the responsibility and credit goes to the 13-member advisory council. This past year a three-year plan was updated regarding the operation of the agency. Guidelines have been developed for administration of direct service grant money. Priority areas for direct service funds are transportation, information and referral, in-home services (homemaker/chore services, health services), nutrition (congregate and home delivered meals), multipurpose senior centers, coordination/advocacy and legal services.

This past year funds became available to expand the nutrition program by two sites. The commission worked jointly with the community action agency to appoint a task force which developed selection criteria and selected two communities for new sites.



POPULATION

Requests for census information are made on a frequent basis. The 1980 Census provided an opportunity to develop a report that provides necessary information in a convenient written form. During 1982, the commission agreed to be a census information distribution office in conjunction with the Minnesota Department of Energy, Planning and Development.



DEVELOPMENTAL DISABILITIES



The four counties of Region Six East became part of an 18-county Developmental Disabilities Council in 1972. In 1976 it became part of a tri-regional program and on October 1, 1980 a four-county program was formed. A comprehensive plan was adopted on May 27, 1981 which inventories facilities and services, analyzes needs and makes recommendations regarding meeting the needs of certain handicapped individuals. During the past two years efforts have been made to increase awareness of developmental disabilities. One special effort was by utilizing a program called "Count Me In" which consisted of a short play utilizing handicapped puppets. Special training opportunities were made available this past year to the staff of agencies delivering services to handicapped persons. A report was printed last year entitled "Resource Guide for Developmental Disabilities."

The Developmental Disabilities Program is a contract program with the Governor's Council on Developmental Disabilities. A local Developmental Disabilities Advisory Committee assists the commission with this program.

TRANSPORTATION



A contract with the Minnesota Department of Transportation resulted in the development of a Transportation Plan for the region. An advisory committee working with staff prepared the document which subsequently was adopted by the commission after a public hearing was held. One of the areas which generated considerable local input was the establishment of a priority projects list. The commission was concerned that previously high priority projects at the local level were not given a high priority at the state level. Last year the contract with the Minnesota Department of Transportation resulted in a study that analyzed industrial zoned land in relationship to road access and type of road servicing an industrial area.



TECHNICAL ASSISTANCE

According to language in the Regional Development Act, the commission may offer technical assistance to local units of government. It is the purpose of the commission to increase the planning and programming capability of local units of government by working with them to help assess their needs and overcome or avoid the problems. The existence of the commission has no effect on the authority or responsibility of local units of government to do their own planning and programming to meet the needs and desires of their citizens.

Requests for technical assistance are initiated by local units of government and public/semi-public agencies. The commission provides assistance on a time available basis. A new emphasis on technical assistance was initiated two years ago. This new direction is to provide more assistance in the area of total community and economic development.

Communities are encouraged to update or develop comprehensive plans and land use ordinances. Also, they are offered technical assistance in forming or reactivating local development corporations.

A-95 CLEARINGHOUSE PROCESS

On June 4, 1975, Governor Wendell Anderson designated the Six East Regional Development Commission as the official A-95 clearinghouse review agency for the region. The commission has adopted, published and distributed an "A-95 Clearinghouse Procedural Manual."

Section 462.391, Subdivision 3 of the Regional Development Act states in part "The commission shall review all applications of governmental units, independent commissions, boards or agencies and colleges or universities, for public facilities, studies or any other purposes if the application clearly is related to the region, whether or not such review is required by the Federal Government." In 1976, the commission initiated a policy that it would review and process all applications but would comment only on those which have regional significance.

After the RDC is notified regarding an application, it notifies all local units of government, public agencies and semi-public agencies which may be concerned with or affected by the proposal. Also, the RDC notifies the State Clearinghouse which may be concerned with or affected by the proposal. The RDC does not have the authority to approve or disapprove applications. It acts as a coordinating agency for purposes of review and comment.

Ideally, the commission should base its review and comment on that element of an adopted comprehensive development plan that relates to the application. The commission now has an adopted Comprehensive Development Policy Plan and uses the goals, objectives and policies in its review and comment process.

The following list of funding agencies and their acronyms are used in the list of 118 applications processed by the commission for the 12 months prior to July 1, 1983.

ACRONYMS

CCB	Cable Communications Board
DEPD	Minnesota Department of Energy, Planning and Development
DOE	U.S. Department of Energy
DOL	U.S. Department of Labor
DOT	U.S. Department of Transportation
EPA	Environmental Protection Agency
GCDD	Governor's Council on Developmental Disabilities
GCRD	Governor's Council on Rural Development
HHS	U.S. Department of Health and Human Services
HUD	U.S. Department of Housing and Urban Development
LCMR	Legislative Committee on Minnesota's Resources
McK	McKnight Foundation
MCCPB	Minnesota Crime Control Planning Board
MDH	Minnesota Department of Health
MnBOS/PIC	Minnesota Balance of State/Private Industry Council
MnDOT	Minnesota Department of Transportation
MnPCA	Minnesota Pollution Control Agency
MSAB	Minnesota State Arts Board
USDA/FmHA	U.S. Department of Agriculture/Farmers Home Administration
USPS	U.S. Postal Service

A-95 APPLICATIONS PROCESSED

APPLICATION NUMBER	APPLICANT	PROJECT DESCRIPTION	RDC ACTION	LOAN/ GRANT	FUNDING AGENCY	TOTAL COST	AMOUNT REQUESTED	AMOUNT FUNDED
1-83	City of Danube	Senior Center Facility Renovation	Positive	Grant	McK	\$ 3,045	\$ 2,284	\$ 1,000
2-83	City of Atwater	Equipment for Senior Center	Positive	Grant	McK	263	197	197
3-83	City of Spicer	Senior Center Facility Renovation	Positive	Grant	McK	1,641	1,231	1,083
4-83	City of Willmar	Willmar Transit System	Positive	Grant	MnDOT	83,000	50,400	50,400
5-83	City of Hutchinson	Hutchinson Transit System	Positive	Grant	MnDOT	100,540	55,693	55,693
6-83	Kandiyohi County	Family Intervention and Aftercare	Positive	Grant	MCCPB	14,714	14,714	14,714
7-83	MnDES	Comprehensive Employment and Training Program	No Comment	Grant	DOL	8,714,389	8,714,389	8,714,389
8-83	MnDES	CETA Special Grant to the Governor	Positive	Grant	DOL	2,259,891	2,259,891	2,259,891
9-83	6E CAA	Retired Senior Volunteer Program	Positive	Grant	ACTION	45,073	36,883	36,883
10-83	Willmar State Hospital	Opiate Detoxification Project	No Comment	Grant	HHS	91,144	91,144	Not Funded
11-83	City of Litchfield	Lake Ripley Trail	Positive	Grant	LCMR	60,900	30,450	Not Funded
12-83	6E RDC	Ag-Processing Decision-Making Aids	Positive	Grant	GCRD	26,658	21,326	Not Funded
13-83	Kandiyohi County	Community Development Block Grant	Positive	Grant	HUD	1,518,297	600,000	600,000
14-83	Renville County	Community Development Block Grant	Positive	Grant	HUD	600,000	600,000	Not Funded
15-83	McLeod County	Community Development Block Grant	Positive	Grant	HUD	600,000	600,000	Not Funded
16-83	City of Winsted	Community Development Block Grant	Positive	Grant	HUD	574,190	530,000	401,390
17-83	City of Hutchinson	Community Development Block Grant	Positive	Grant	HUD	600,000	600,000	Not Funded
18-83	City of Brownton	Community Development Block Grant	Positive	Grant	HUD	175,000	175,000	Not Funded
19-83	City of Stewart	Community Development Block Grant	Positive	Grant	HUD	308,000	258,000	Not Funded
20-83	Minnesota Association of Soil and Water Conservation Districts	Wildlife on the Land Calendar	Positive	Grant	GCRD	18,450	13,400	Not Funded
21-83	West Central Minnesota Educational Television	KWCM Computer Users Group	Positive	Grant	GCRD	95,675	37,156	33,441
22-83	Minnesota Educational Computing Consortium	Information Exchange	No Comment	Grant	GCRD	71,755	45,125	Not Funded

APPLICATION NUMBER	APPLICANT	PROJECT DESCRIPTION	RDC ACTION	LOAN/ GRANT	FUNDING AGENCY	TOTAL COST	AMOUNT REQUESTED	AMOUNT FUNDED
23-83	Jackson AVTI	Strengthening Minnesota's Rural Economy by Improving High School Vo-Ag Farm Business Management	Negative	Grant	GCRD	\$ 40,000	\$ 27,000	Not Funded
24-83	Center for Rural Studies	Minnesota Farm Unity Coalition	Negative	Grant	GCRD	102,000	51,000	Not Funded
25-83	Soil and Water Conservation Board	CONSERVE	No Comment	Grant	GCRD	8,900	7,200	\$ 6,300
26-83	McLeod County	Computer Aided Financial Planning and Enterprise Analysis	Positive	Grant	GCRD	33,250	18,250	Not Funded
27-83	Minnesota Migrant Council	Rural Accessible Computer Systems	Negative	Grant	GCRD	142,502	87,996	Not Funded
28-83	Willmar AVTI	Research Project for Computer Record Systems in Farm Management	No Comment	Grant	GCRD	26,000	17,500	Not Funded
29-83	MnBOS/PIC	Small Business Expansion Program	No Comment	Grant	GCRD	250,000	50,000	Not Funded
30-83	6E CAA	Nutrition Project - Congregate	Positive	Grant	HHS	476,210	171,000	171,000
31-83	6E CAA	Nutrition Project - Home Delivered	Positive	Grant	HHS	74,220	27,500	27,500
32-83	Minnesota State Department of Education	Management Training for Rural Small Business	Positive	Grant	GCRD	483,240	45,500	Not Funded
33-83	6E CAA	Transportation for Elderly and Handicapped	Negative	Grant	MnDOT	101,829	48,370	Not Funded
34-83	6E CAA	Rural Transportation-Coordination and Development	Negative	Grant	GCRD	14,700	9,950	Not Funded
35-83	City of Lester Prairie	Senior Center Equipment	Positive	Grant	McK	1,865	1,399	1,424
36-83	City of New London	Construction of Senior Center	Positive	Grant	HHS/McK	78,500	58,875	58,875
37-83	Cardinal Rentals	Section 515 Rural Rental Housing	Positive	Loan	USDA/FmHA	600,000	570,000	Pending
38-83	Paul Vollen, Jr.	Section 515 Rural Rental Housing	Positive	Loan	USDA/FmHA	600,000	570,000	Pending
39-83	MnDOT	Highway Planning and Research	No Comment	Grant	DOT	5,955,732	5,955,732	5,955,732
40-83	Southern Minnesota Regional Legal Services	Southwest Area Ombudsman Program	Negative	Grant	HHS	26,667	20,000	20,000
41-83	Central Minnesota Senior Federation	Health Advocacy Project	Negative	Grant	HHS	16,125	11,944	Not Funded
42-83	Henry Wiedenroth	Section 515 Rural Rental Housing	Positive	Loan	USDA/FmHA	425,600	404,320	Pending

APPLICATION NUMBER	APPLICANT	PROJECT DESCRIPTION	RDC ACTION	LOAN/ GRANT	FUNDING AGENCY	TOTAL COST	AMOUNT REQUESTED	AMOUNT FUNDED
43-83	6E CAA	Head Start	Positive	Grant	HHS	\$ 422,438	\$ 339,777	\$ 333,687
44-83	MnDES	Greater Minnesota Job Training Program	Positive	Grant	DOL	13,041,464	13,041,464	13,041,464
45-83	Kandi West Apartments	Section 515 Rural Rental Housing	Positive	Loan	USDA/FmHA	384,000	364,800	Pending
46-83	Scandia Terrace Partnership	Section 515 Rural Rental Housing	Negative	Loan	USDA/FmHA	299,700	284,700	Withdrawn
47-83	Bird Island Apartments	Section 515 Rural Rental Housing	Positive	Loan	USDA/FmHA	200,000	190,000	Pending
48-83	Willmar Housing and Redevelopment Authority	Community Development Block Grant	Positive	Grant	HUD	2,220,411	1,197,047	1,197,047
49-83	McLeod County	Community Development Block Grant	Positive	Grant	HUD	600,000	600,000	Not Funded
50-83	Kandiyohi County	Community Development Block Grant	Positive	Grant	HUD	600,000	600,000	Not Funded
51-83	City of Olivia	Community Development Block Grant	Positive	Grant	HUD	465,500	151,500	Not Funded
52-83	City of Franklin	Community Development Block Grant	Positive	Grant	HUD	590,000	423,000	Not Funded
53-83	City of Hutchinson	Community Development Block Grant	Positive	Grant	HUD	412,500	412,500	Not Funded
54-83	City of Glencoe	Community Development Block Grant	Positive	Grant	HUD	538,235	334,235	Not Funded
55-83	City of Litchfield	Community Development Block Grant	Positive	Grant	HUD	1,346,177	366,418	Not Funded
56-83	City of Brownton	Community Development Block Grant	Positive	Grant	HUD	155,000	175,000	Not Funded
57-83	City of Stewart	Community Development Block Grant	Positive	Grant	HUD	308,000	258,000	Not Funded
58-83	City of Hector	Community Development Block Grant	Positive	Grant	HUD	169,600	169,600	169,600
59-83	City of Atwater	Community Development Block Grant	Positive	Grant	HUD	320,000	300,000	Not Funded
60-83	Minnesota Association for Retarded Citizens	Senior Companion Program	Positive	Grant	ACTION	51,120	43,320	43,320
61-83	Minnesota Association for Retarded Citizens	Foster Grandparent Program	Positive	Grant	ACTION	1,137,046	513,987	513,987
62-83	DOT	Region Six East Highway Projects (Fiscal Year 1983)	Positive	Grant	DOT	7,984,830	7,984,830	7,984,830
63-83	Minnesota Association of Townships	Township Government Slide/Tape Set	Positive	Grant	GCRD	5,800	4,000	Not Funded
64-83	6E CAA	Women, Infants and Children	Positive	Grant	MDH	37,923	36,783	36,783

APPLICATION NUMBER	APPLICANT	PROJECT DESCRIPTION	RDC ACTION	LOAN/ GRANT	FUNDING AGENCY	TOTAL COST	AMOUNT REQUESTED	AMOUNT FUNDED
65-83	MnDOE, Vocational-Technical Division	Management Training for Small Business	Positive	Grant	GCRD	\$ 483,740	\$ 45,500	Not Funded
66-83	City of Litchfield	Senior Center Energy Improvement	Positive	Grant	HHS	15,143	11,357	\$ 11,228
67-83	Watkins Area Homes II, Inc.	Senior Center Equipment	Positive	Grant	McK	24,249	18,187	7,495
68-83	Grove City Community Homes	Senior Center Renovation	Positive	Grant	HHS	6,205	4,654	3,770
69-83	U.S. Postal Service	Silver Lake Postal Facility	Positive	NA	USPS	NA	NA	Approved
70-83	Korngiebel Architects Associated Housing Group	Section 515 Rural Rental Housing	Positive	Loan	USDA/FmHA	400,000	380,000	Pending
71-83	Fridlund Associates	Section 515 Rural Rental Housing	Positive	Loan	USDA/FmHA	548,000	522,000	Pending
72-83	6E RDC	Job Creation Expeditor	Positive	Grant	GCRD	42,443	29,710	Not Funded
73-83	Southwest and West Central Educational Cooperative Service Unit	Secondary Vocational Education Renewal	Negative	Grant	GCRD	85,905	49,637	Not Funded
74-83	Minnesota Association of Soil and Water Conservation Districts	Wildlife on the Land Calendar	No Comment	Grant	GCRD	19,000	13,300	Not Funded
75-83	Canby AVTI	Balancing Family and Work	No Comment	Grant	GCRD	32,400	22,625	Not Funded
76-83	Jackson AVTI	Improving High School Vo-Ag Farm Business Management Education	No Comment	Grant	GCRD	53,700	27,000	Not Funded
77-83	6E RDC	Ag-Processing Decision-Making Aids	Positive	Grant	GCRD	34,340	24,038	Not Funded
78-83	Glacial Ridge Training Center	Regional Behavior Management Information System	Positive	Grant	HHS	250,000	184,000	Pending
79-83	Minnesota Women for Agriculture	Agri-School	Positive	Grant	GCRD	50,720	34,300	Not Funded
80-83	University of Minnesota, Ag Education Division	High Technology Computer Software for Farm and Rural Business	No Comment	Grant	GCRD	83,718	56,894	Not Funded
81-83	West Central Community Services Center	Employment Readiness and Personal Growth for Rural Residents	No Action	Grant	GCRD	117,764	60,000	Not Funded
82-83	Minnesota Valley Regional Rail Authority	Norwood-Hanley Falls Railroad	Positive	Grant	GCRD	266,000	60,000	Not Funded

APPLICATION NUMBER	APPLICANT	PROJECT DESCRIPTION	RDC ACTION	LOAN/ GRANT	FUNDING AGENCY	TOTAL COST	AMOUNT REQUESTED	AMOUNT FUNDED
83-83	Community Access to Media	Foreclosure	No Comment	Grant	GCRD	\$ 85,488	\$ 49,488	Not Funded
84-83	Specrotech International	Development of Fresh Produce Handling System	Positive	Grant	GCRD	50,000	35,000	\$ 34,392
85-83	Immigres Center for Ethnic Arts	Development of Markets for Ethnic Crafts	No Comment	Grant	GCRD	21,945	15,345	Not Funded
86-83	McLeod County Extension Office	Computer Aided Financial Planning and Enterprise Analysis	Positive	Grant	GCRD	16,441	9,398	Not Funded
87-83	Pipestone AVTI	Sheep for Profit Publication	No Comment	Grant	GCRD	14,750	8,750	Not Funded
88-83	Southwest State University	Solving Critical Rural Problems through Education	Positive	Grant	GCRD	18,262	10,365	Not Funded
89-83	Minnesota Forestry Assn.	Forest Products Utilization	No Action	Grant	GCRD	20,000	10,000	Not Funded
90-83	Department of Horticultural Science	Development of Commercial Blueberry Industry	Positive	Grant	GCRD	73,800	35,500	Not Funded
91-83	Agricultural Extension Service	A Delivery System for Computerized Forage Analysis, Ration Formulation and Hay Grading	Negative	Grant	GCRD	220,600	60,000	58,958
92-83	Energy Consult Corporation	Minnesota "REED" Program	No Action	Grant	GCRD	105,000	45,000	Not Funded
93-83	Minnesota COACT	Farm Survival Hotline Project	Negative	Grant	GCRD	41,948	25,000	Not Funded
94-83	Minnesota Association of County Planning and Zoning Administrators	Continuing Education/Voluntary Certification	Negative	Grant	GCRD	30,000	21,000	20,635
95-83	WDSE TV, et. al.	Marketing Rural Products	Positive	Grant	GCRD	84,320	44,920	Not Funded
96-83	Donald H. Wagoner	Section 515 Rural Rental Housing	Positive	Loan	USDA/FmHA	249,800	237,300	Pending
97-83	Kleven & Kleven Housing	Section 515 Rural Rental Housing	Positive	Loan	USDA/FmHA	299,700	284,700	Pending
98-83	Renville County Community Residence	Community Center Worksite	Positive	Grant	GCDD/McK	34,575	15,000	Not Funded
99-83	West Central Industries	McKnight/DD Grant Application	Positive	Grant	DEPD	64,456	18,000	15,000
100-83	Health Systems Agency Six	Designation as a Health Systems Agency	Negative	Grant	HHS	119,460	119,460	Pending

APPLICATION NUMBER	APPLICANT	PROJECT DESCRIPTION	RDC ACTION	LOAN/ GRANT	FUNDING AGENCY	TOTAL COST	AMOUNT REQUESTED	AMOUNT FUNDED
101-83	Southwest Minnesota Arts and Humanities Council	Biennial Regional Block Grant	Positive	Grant	MSAB	\$ 88,858	\$ 88,858	\$ 87,928
102-83	Northern Video	Expansion of Cable Service Territory	Negative	NA	CCB	NA	NA	Approved
103-83	6E RDC	DD Grant Proposal	Positive	Grant	DEPD	71,823	53,867	Pending
104-83	Richard Schmidtbauer	Section 515 Rural Rental Housing	Positive	Loan	USDA/FmHA	300,000	285,000	Pending
105-83	Southwest and West Central Educational Cooperative Service Unit	Regional Low Incidence Project	Positive	Grant	DEPD	23,072	13,192	Not Funded
106-83	Spicer Living Center	Section 515 Rural Rental Housing	Positive	Loan	USDA/FmHA	449,000	426,500	Pending
107-83	MnPCA	Dassel Wastewater Treatment	Positive	NA	MnPCA	NA	NA	Pending
108-83	City of Spicer	Whistle Stop Transportation Program	Positive	Grant	HHS	11,626	4,955	5,088
109-83	West Central Community Services Center	Elderly Day Services Center	Positive	Grant	HHS	197,750	18,500	18,500
110-83	Willmar Community College	Students of Service	Positive	Grant	HHS	35,424	15,937	15,711
111-83	Meeker-McLeod-Sibley Community Health Services	Meeker-McLeod Screening/Assessment Project	Positive	Grant	HHS	57,702	33,943	33,943
112-83	Western Minnesota Legal Services	Legal Advocacy for Older Americans	Negative	Grant	HHS	47,207	30,100	30,100
113-83	Southern Minnesota Regional Legal Services	Legal Services for Seniors in McLeod County	Negative	Grant	HHS	14,269	9,961	9,961
114-83	City of Glencoe	Glencoe Senior Transportation Project	Positive	Grant	HHS	5,064	2,402	1,144
115-83	Meeker County Council on Aging	Meeker County Transportation Services	Positive	Grant	HHS	31,953	13,877	14,696
116-83	City of Atwater	Atwater Nutrition Transportation Program	Positive	Grant	HHS	7,168	3,284	3,284
117-83	MnDOT	McLeod County Highway Resurfacing	Positive	Grant	DOT	220,000	167,200	Pending
118-83	City of Buffalo Lake	Street Improvements	Positive	Loan	USDA/FmHA	600,325	600,325	Pending

PROGRAM BUDGET SUMMARY

FISCAL YEAR 1983

July 1, 1982 - June 30, 1983

	SOURCE OF FUNDING			
	Local	State	Federal	Total
100 GENERAL ADMINISTRATION				
101 General Office	\$ -0-	\$ 1,133	\$ -0-	\$ 1,133
102 Fiscal	9,000	-0-	-0-	9,000
200 TECHNICAL ASSISTANCE	79,106	7,777	12,000	98,883
300 COMPREHENSIVE DEVELOPMENT GUIDE				
301 Housing	-0-	-0-	-0-	-0-
302 Public Facilities	-0-	-0-	-0-	-0-
303 Economic Development	11,617	8,333	25,000	44,950
304 Land Use/Natural Resources	-0-	-0-	-0-	-0-
305 Transportation	-0-	8,000	-0-	8,000
306 Open Space/Recreation	-0-	-0-	-0-	-0-
307 Agriculture	-0-	-0-	-0-	-0-
308 Water Resources	-0-	-0-	-0-	-0-
309 Energy	-0-	-0-	-0-	-0-
310 Employment and Training	-0-	-0-	3,928	3,928
311 Education	-0-	-0-	-0-	-0-
312 Human Services	-0-	-0-	-0-	-0-
313 Population	-0-	-0-	-0-	-0-
314 Aging	3,904	19,716	515,486	539,106
315 Criminal Justice	-0-	-0-	-0-	-0-
316 Health	-0-	-0-	-0-	-0-
317 Developmental Disabilities	160	7,215	22,125	29,500
318 Arts and Humanities	-0-	-0-	-0-	-0-
TOTALS	\$103,787	\$52,174	\$578,539	\$734,500

REVENUE-EXPENDITURE SUMMARY

FISCAL YEAR 1983

REVENUES

FEDERAL	\$718,709
Economic Development Administration	\$ 64,378
Small Cities Technical Assistance	7,000
Housing and Urban Development "107"	5,000
DOL - Employment and Training	3,928
HHS - Developmental Disabilities	25,196
HHS - Area Agency on Aging	613,207
STATE APPROPRIATION	44,174
LOCAL	96,436
OTHER	41,290
Minnesota Department of Transportation	\$ 8,000
Mobile Home and Miscellaneous Tax	492
Interest Earnings	27,360
Miscellaneous	3,113
In-Kind Contributions	2,325
TOTAL	<u>\$900,609</u>

EXPENDITURES

PERSONAL SERVICES	\$205,125
SUPPLIES	11,761
OTHER SERVICES: contracts, communications, postage, etc.	584,937
OTHER CHARGES: insurance, professional service, rent, bonds, etc.	17,849
CAPITAL OUTLAY: office equipment	918
DEBT SERVICE: interest, xerox contract	132
TRAVEL	10,861
COMMISSION TRAVEL AND PER DIEM	8,372
IN-KIND SERVICES	<u>2,325</u>
TOTAL	<u>\$842,280</u>

The State Auditor audits the commission annually and identified no significant problems during the most recent audit.

PROGRAM BUDGET SUMMARY

FISCAL YEAR 1984

July 1, 1983 - June 30, 1984

SOURCE OF FUNDING				
	Local	State	Federal	Total
100 GENERAL ADMINISTRATION				
101 General Office	\$ 10	\$ -0-	\$ -0-	\$ 10
102 Fiscal	9,500	-0-	-0-	9,500
200 TECHNICAL ASSISTANCE	93,116	44,174	12,000	149,290
300 COMPREHENSIVE DEVELOPMENT GUIDE				
301 Housing	6,013	-0-	-0-	6,013
302 Public Facilities	-0-	-0-	-0-	-0-
303 Economic Development	14,269	-0-	25,000	39,269
304 Land Use/Natural Resources	-0-	-0-	-0-	-0-
305 Transportation	95	10,000	-0-	10,095
306 Open Space/Recreation	-0-	-0-	-0-	-0-
307 Agriculture	-0-	-0-	-0-	-0-
308 Water Resources	-0-	-0-	-0-	-0-
309 Energy	-0-	-0-	-0-	-0-
310 Employment and Training	-0-	-0-	-0-	-0-
311 Education	-0-	-0-	-0-	-0-
312 Human Services	-0-	-0-	-0-	-0-
313 Population	-0-	-0-	-0-	-0-
314 Aging	21,999	-0-	609,426	631,425
315 Criminal Justice	-0-	-0-	-0-	-0-
316 Health	-0-	-0-	-0-	-0-
317 Developmental Disabilities	15,552	-0-	28,031	43,583
318 Arts and Humanities	-0-	-0-	-0-	-0-
TOTALS	\$160,554	\$54,174	\$674,457	\$889,185

SUMMARY OF STUDIES - REPORTS - PLANS

Resource Guide for Developmental Disabilities

This 61-page document is a comprehensive list of programs, services and facilities for developmentally disabled. Most listings are for the four counties in the region but there are some statewide listings. The categorical areas for which programs, services and facilities are listed are 1) health services, 2) social services, 3) education, 4) day programs, 5) employment and training, 6) advocacy and consumer organizations, 7) residential services, 8) community education and recreation, and 9) miscellaneous.

Feasibility of a Total Resource Agricultural Processing Industrial Park

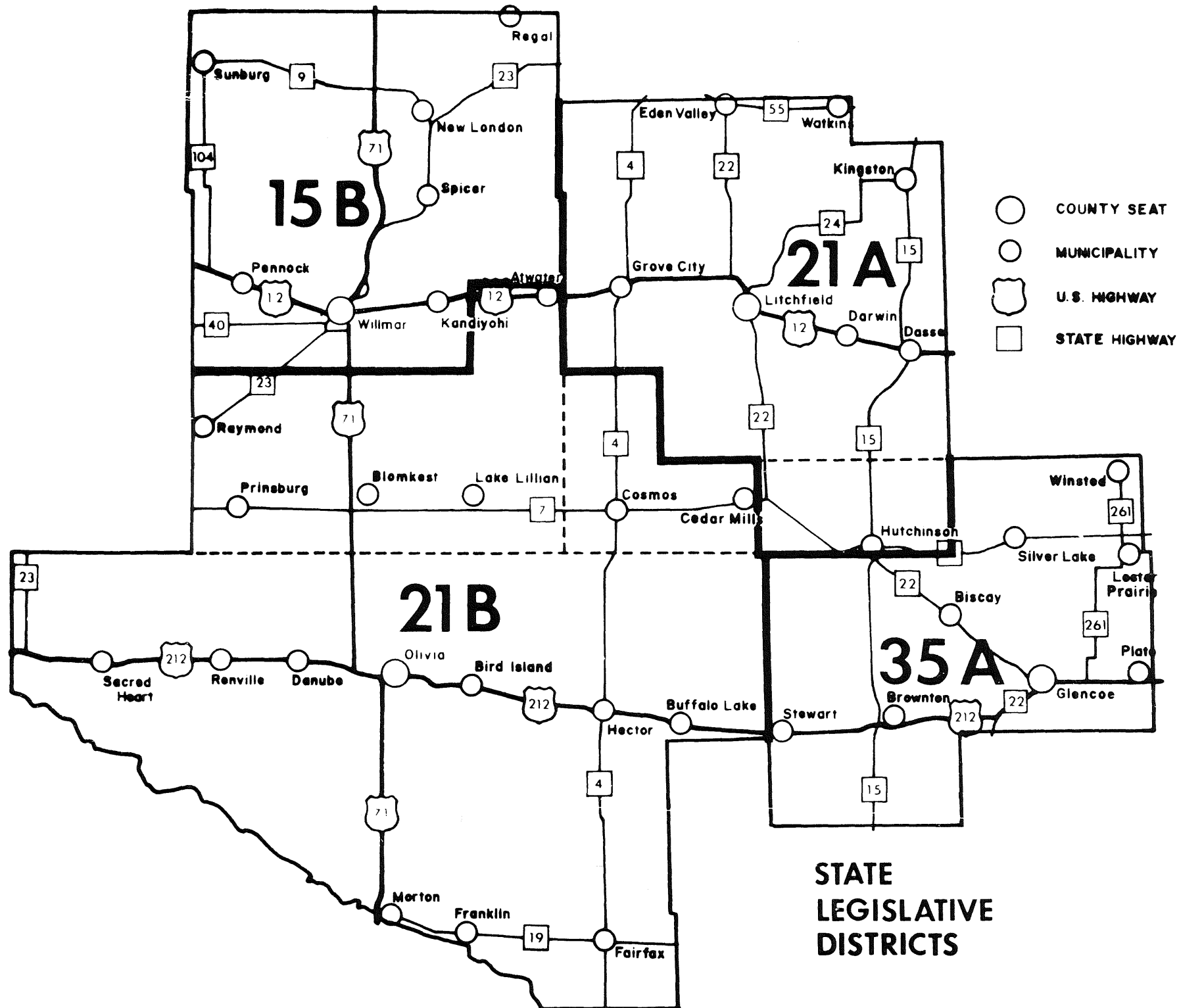
This study and the report was accomplished by a consultant using a grant secured from the Economic Development Administration. Four search areas were identified and received extensive analysis. The areas are the Greater Hutchinson-Glencoe Area, the Renville-Olivia-Hector Highway 212 corridor, the Greater Litchfield Area, and the Greater Willmar Area. Agricultural production in the areas, as well as existing processing, was analyzed. Interviews were conducted with local industrialists in an effort to establish local perspective on needs and opportunities. Infrastructure items such as highways, rail, sewer and water were analyzed in terms of relationship to an agricultural processing industrial park.

Summary Report: Co-Location/Co-Generation for Agricultural Processing Facilities in Region Six East

This 22-page summary of the previously listed document was written by commission staff in an attempt to highlight the consultant's study.

Opportunities for Economic Development West Central Minnesota: A Land of Plenty

Each of the 40 communities in the region is given a full three pages listing their assets in this 133-page report. Regional assets are listed in general terms in a regional section. The major inventory categories for each city are population, transportation, utilities, government, financial, health, education, communication, community services, major employers and industrial sites.



**STATE
LEGISLATIVE
DISTRICTS**

SIX EAST REGIONAL
DEVELOPMENT COMMISSION
City Office Building
333 West Sixth Street
Willmar, MN 56201
Telephone (612) 235-8504