



831312

---

# **Annual Report**

---

# **NORTHWEST REGIONAL DEVELOPMENT COMMISSION**

---

## **Fiscal Year 1983**

---

NOT FILMED

---

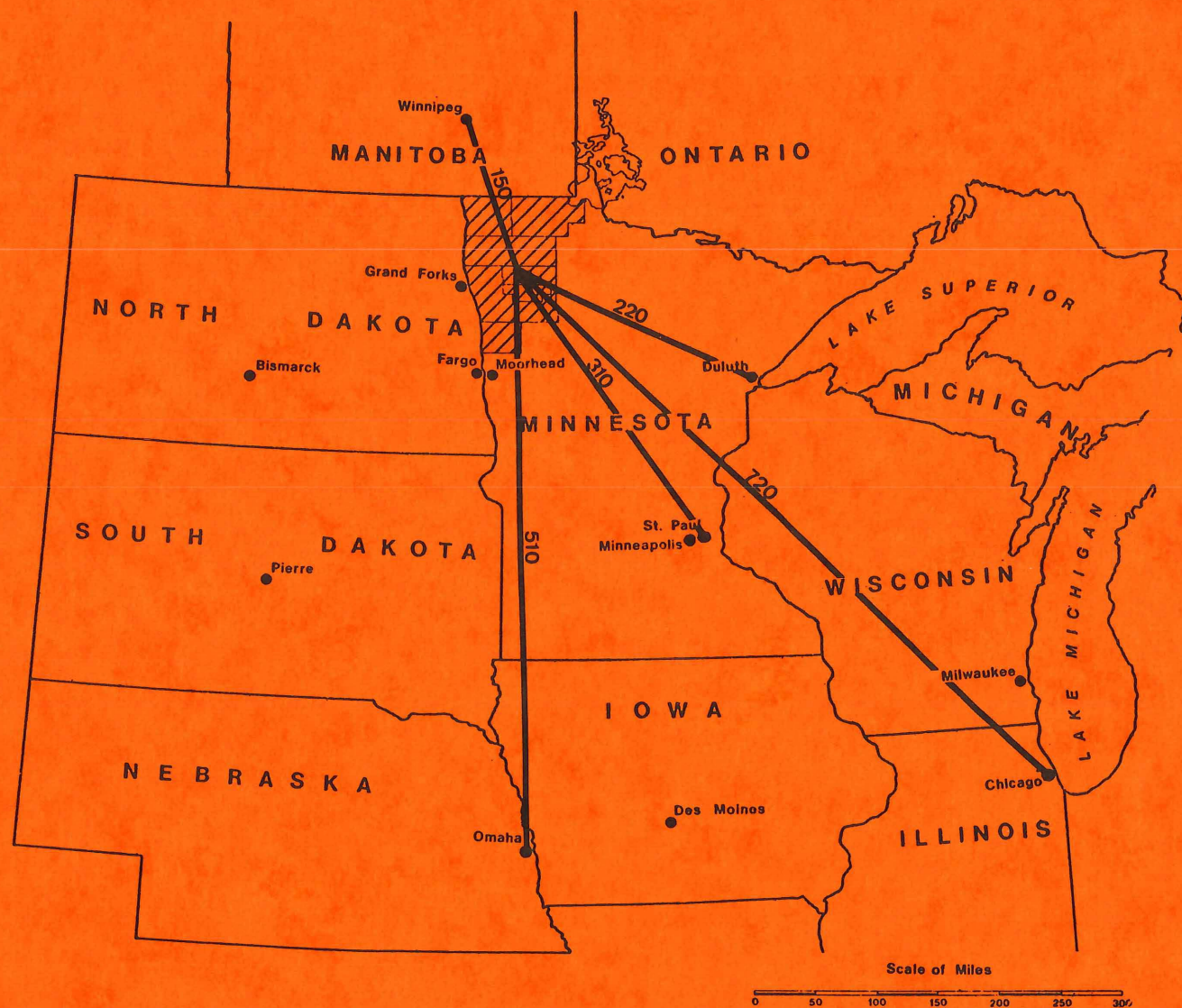
HT  
393  
.M62  
N67ax  
1983

Pursuant to MS 462.393

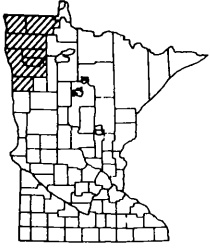


# Location Of Minnesota

## Development Region One



*Prepared by the  
Northwest Regional Development Commission*



# NORTHWEST REGIONAL DEVELOPMENT COMMISSION

425 WOODLAND AVENUE • CROOKSTON, MINN. 56716 • 218-281-1396

## CHAIRMAN'S LETTER

It is an honor for me to present this Annual Report to the Legislature, local governments and citizens of Northwestern Minnesota. The past year has been quite eventful across the diverse activities in which the Commission has involvement.

It is not possible here to cover the many accomplishments of the year, hence I leave the coverage to the body of this report. I would like to make special note of several significant events. First, the Commission acting on behalf of and with the support of the seven counties successfully sought designation of Region 1 as a Service Delivery Area under the provisions of the Job Training Partnership Act which will shortly replace the Comprehensive Employment and Training Act (CETA). This designation means that a Private Industry Council comprised of employers, local officials and other interested group representatives from Northwestern Minnesota will assume the responsibility to focus job training efforts in a direction that is keyed directly to the needs of businesses and working people in this area. Secondly, the Commission through its Transportation Committee and staff has pursued efforts to further implement its Transportation Plan, particularly as it relates to the movement of farm products. A report given by Minnesota Department of Transportation spokesman at a recent Commission meeting informed us that seven of the ten high priority projects identified in that Plan have been completed or are scheduled to be completed in the near future. Finally, efforts involving the Commission in the area of economic and community development have been quite successful over the past year, with a number of projects now underway and several others pending commencement shortly.

I want to thank my fellow Commission members for a job well done, my fellow local officials for their support, the many members of the Commission's Committees for their dedicated service and the Commission staff for their fine work. I look forward to another year of working with this fine group of people and I shall look forward to meeting some new people along the way.

As I look to the future, I am confident that many of the foundations that have been built over the past year will reach completion to serve our citizens in a variety of ways and that many new developments will commence in the coming year. With your understanding and support success will surely follow.

Respectfully submitted,

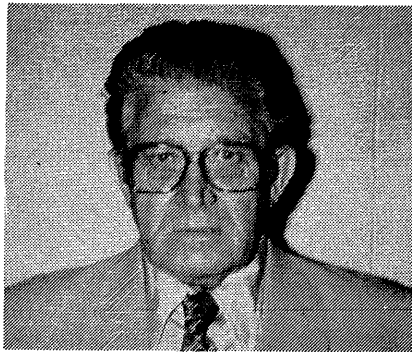
Harry Sjulson  
Chairman



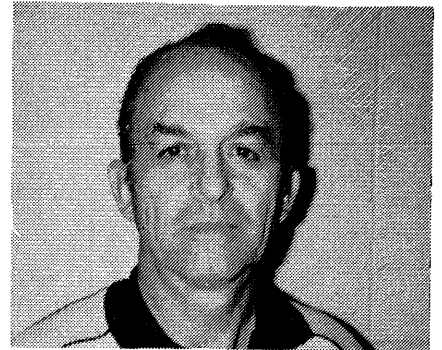
# **Board of Directors**



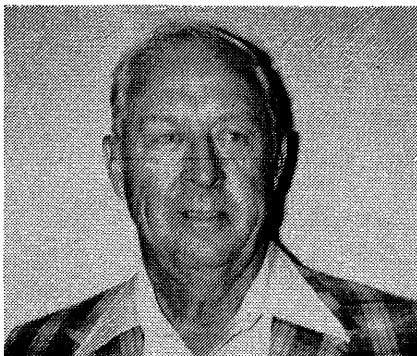
**Harry Sjulson, NWRDC Chairman**



**William Gatheridge**



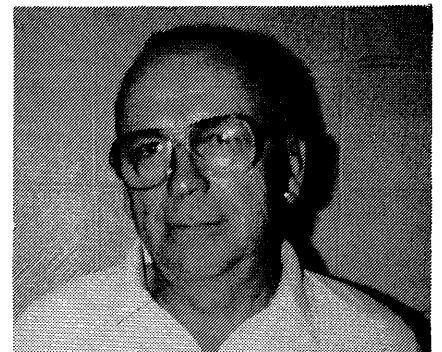
**Kenneth Price**



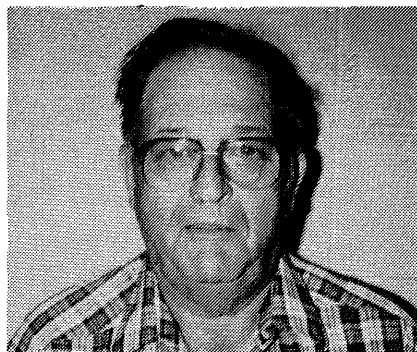
**Willard Purath**



**Cleo Cleveland**



**Ambrose Wysocki**



**Kenneth Redland**



**Wayne Juhl**

## **COMMISSION MEMBERSHIP**

<b>County</b>	<b>County Board</b>	<b>Township Board</b>	<b>Cities</b>
Kittson	Randy Swenson Lancaster	*William Gatheridge Humboldt	Dr. Joe Bouvette Hallock
Marshall	*Kenneth Price Stephen	Ervin Strandquist Newfolden	Glenn Halvorson Warren
Norman	John Storsved Hendrum	Cary Sip Ada	*Kenneth Redland Ada
Pennington	Donald Grabanski Thief River Falls	Kermit Finstad Thief River Falls	*Ambrose Wysoski Thief River Falls
Polk	Donald Bakken Fertile	Gary Letnes Crookston	Duane Knutson Fertile
Red Lake	*Willard Purath Red Lake Falls	Ralph Berg Brooks	Vaughn Thorfinnson Red Lake Falls
Roseau	*Wayne Juhl Greenbush	Joe Jacobson Wannaska	Adrian Pulczynski Greenbush

### **Ex-Officio Membership**

Senator Leroy Stumpf, Plummer  
 Senator Roger Moe, Ada  
 Representative Jim Tunheim, Kennedy

Representative Tony Stadum, Ada  
 Representative Wallace Sparby, Thief River Falls  
 Representative Willis Eken, Twin Valley

### **School District Representatives**

\*Cleo Cleveland  
 East Grand Forks

\*Harry Sjulson, Chairman  
 St. Hilaire

### **Public Interest Groups**

Agriculture	Marville Magnusson, Argyle
Business	Harold Thomforde, Crookston
Financial Institutions	Fred Sorensen, Grygla
Industry	Jerome Sandstrom, Thief River Falls
Labor	George Wikstrom, Jr., Karlstad
Low Income	Elton Jones, Twin Valley
Soil & Water Conservation	Verne Green, Newfolden
Vocational Schools	Norma Hanson, Goodridge
Watershed Districts	Rudee Anderson, Greenbush
Women	Barbara Oseth, Crookston

\*Member of Board of Directors

Members Who No Longer Serve But Did Serve During FY 1983

Roy Engh  
 Warren  
 Orrin Linder  
 Plummer

Werner Mahlum  
 Gary  
 Floyd Sanner  
 Lancaster

# INTRODUCTION

The passage of the Regional Development Act in 1969 by the State Legislature led to the creation of the Northwest Regional Development Commission on February 8, 1973. The legislation enabled the local units of government to petition the Governor to create a Commission within the officially designated regions.

The purpose of the Commission was succinctly stated in the legislation: "...to facilitate intergovernmental cooperation and to insure the orderly and harmonious coordination of state, federal and local comprehensive planning and development programs for the solution of economic, social, physical and governmental problems of the state and its citizens..."

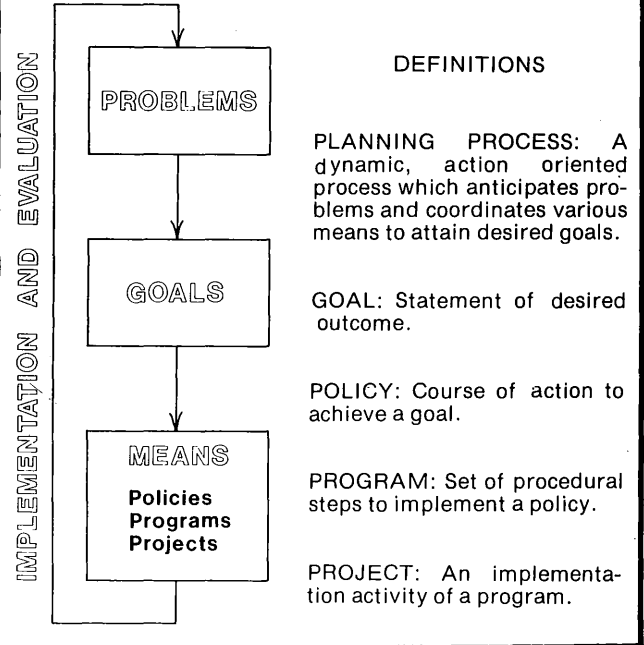
The Northwest Region includes Kittson, Marshall, Norman, Pennington, Polk, Red Lake and Roseau Counties. Take into consideration counties, cities, townships and school districts, there are nearly 330 local units of government covering an area of 8,550 square miles. These units of government are represented on the Commission in the following manner; each county has a county commissioner representing county government, a township supervisor representing the township in that county, a mayor or city councilman representing city governments from that county and two representatives from school districts across the region. In addition, the Commission has ten non-elected members representing various public interests such as industry, labor and agriculture. The staff of the Commission is multi-disciplinary in nature and compliments the wide array of advisory committees for the different program areas. This organizational structure lends itself to fulfilling the intent of the legislation.

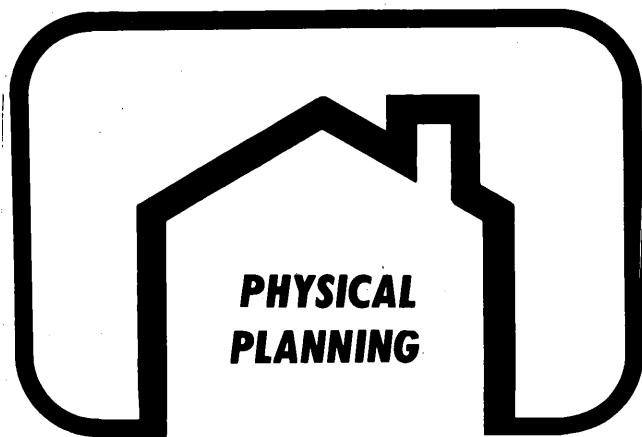
The full Commission meets on a quarterly basis and serves as the overall policy making body which determines the direction and the role of the agency. The Board of Directors is an eight person body which meets monthly to guide the operations of the agency and to serve as the review board for clearinghouse activities.

The total population of the seven county area is 97,245. The number of people serving on the Commission and its various advisory committees is 145. This gives us an approximate ratio of 671/1 as a measure of public participation. In the next few pages you will read

about the various programs of the Commission and the manner in which they contribute toward the successful implementation of the legislation.

## The NWRDC Planning Process



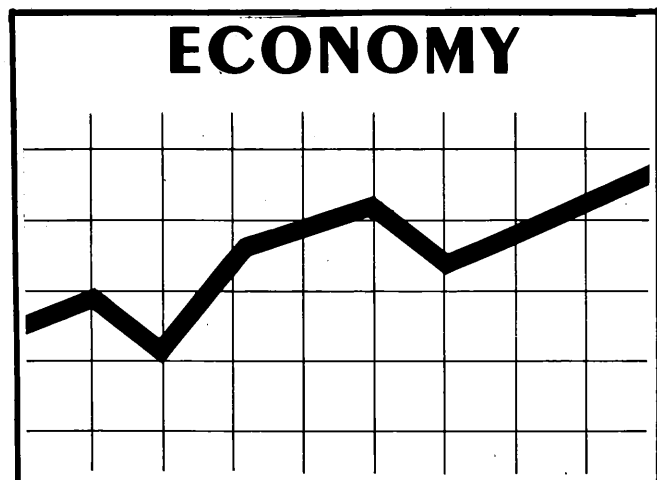


## COMMUNITY DEVELOPMENT

FY 1983 was the first year for a separate Community Development Program at the Commission. Although these activities had always existed in the past, the creation of a separate program category has provided a more organized and focused approach. The first year provided an opportunity for staff to learn a great deal about the needs of the various communities and the resources which are available to meet those needs. In some cases old assumptions held true, but there were a number of new lessons and a few surprises during the year.

A Community Development Survey and the many visits to specific communities provided the initial direction for the program. The focus of Community Development took an abrupt turn when it became apparent that most communities were not interested in a formalized planning process or the application of detailed analytical methods. The demand was for a more informal process which would combine community organization and technical assistance to provide motivation and direction to the communities own efforts. Major projects during the year included 12 initial community visits, holding one county forum on community development, providing extensive grant writing assistance to two communities during the State Community Block Grant round, preparing and conducting four community surveys and providing many hints, tips and help to communities on smaller items. The program also moved into a new area of community development with the addition of administrative support to the City of Red Lake Falls for their State Community Block Grant.

During the upcoming year staff will be concentrating on visiting as many communities as possible to gain more knowledge on community development needs and working with communities to establish organized approaches to solving problems. Getting to know people in the area and developing technical capacities for helping meet their needs will continue to provide the program's motivation and direction.



## ECONOMIC DEVELOPMENT

This year offered some improvement in the measures of economic distress that have impacted the Region over the past several years. Of the three primary measures of economic distress, finance, wages and unemployment, only finance improved somewhat. That is interest rates came down from 18-20 percent to 13-15 percent for business and farm borrowers. However, the length of loans have been shortened considerably to a typical three year term or less with variable interest rates. Incomes grew slightly overall, but unfortunately, declined relative to the State. For example, an analysis of earned income data revealed that the earnings in the Region fell from 24.6 percent less than the State average to 27.6 percent less than the State average. The average earnings for all workers in the Region was \$11,476. Unemployment reported for last year averaged 9.9 percent with some counties experiencing unemployment in excess of 13 percent. For this year, average unemployment for the Region was, again 9.9 percent, although some counties had unemployment rates as high as 19 percent, in fact, Red Lake County exceeded 22 percent in one month. In Kind Program (PIK) of the Federal Government is helping participating farmers weather the continuing low commodity prices and relatively high costs. Of course, not all sectors of the agricultural economy of the Region are benefiting. Farm equipment dealer sales remain weak. Our small business community has not yet seen an upturn, but it appears that improvements in sales may soon occur given this sectors' growing optimism.

The Technical Advisory Committee on Economic Development (TACED) has updated the Economic Development Strategy section of the Overall Economic Development Program (OEDP). The TACED's concern for the suffering agricultural sector of the regional economy led them to establish a goal to seek ways to strengthen this primary component of the regional economic base. The Region continues to be a designated Economic Development District of the Economic Development Administration (EDA). The Cities of East Grand Forks and Warroad are expected to benefit from this fact. Each is very likely to receive approximately \$450,000. East Grand Forks will use these funds for the development of an industrial park to initially permit three businesses to expand and, therefore, remain in that City. In the case of Warroad, a water tower will be built and water line improvements installed providing adequate water supply to residents and allow for economic improvements.

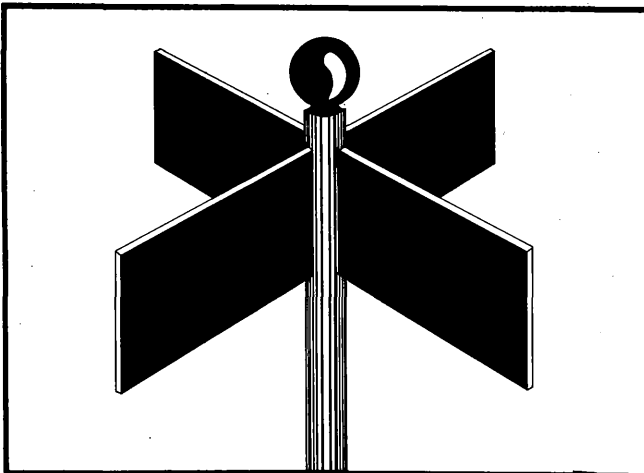
Technical assistance concerning economic development was provided to East Grand Forks and Warroad. In addition, efforts were begun to seek means for the City of Thief River Falls and its business community to develop and promote the reuse of the vacant Arctic Enterprise facility and create jobs. A variety of economic development tools have been investigated and discussed with a number of other businesses and communities representing all parts of the Region. The newest financing tool, the Small Business Administration certified 503 Development Corporation, had been established by the State. NWRDC staff have received extensive development financing training in the use of this innovative financing method.

Because of the renewed funding of the public works projects for economic development and the creation of jobs by the EDA, the OEDP was updated on an interim basis to meet the immediate requirements for the above mentioned projects at East Grand Forks and Warroad. But in addition to the interim update, the work program for the next fiscal year includes the completion of a comprehensive update of the OEDP which is already underway. The unique aspect of this latest update will be the identification and delineation of job centers. It is anticipated that information concerning job centers will heighten the chances for funding of economic development projects within the job center areas from an assortment of public and private sources.



## NATURAL RESOURCES

Over the past year, the Natural Resources Committee has focused upon the subject of water management in Northwest Minnesota. A central objective of the Committee has been the exploration of technical information on the nature of the problems faced by the area as well as the development of an enhanced understanding of the current efforts to manage our water resources to curtail damage from flooding. The Committee has worked and continued to work on a public awareness effort targeted for late 1983. The objective of this effort will be to provide current information on the problems and ongoing efforts to address and understand them.



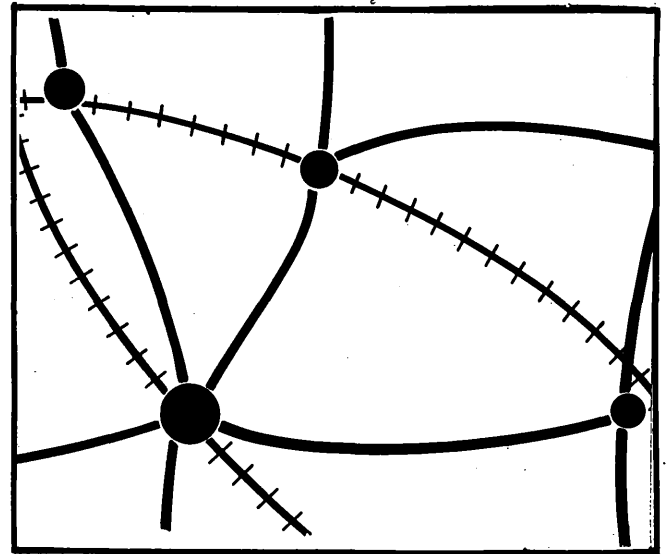
## SMALL BUSINESS ASSISTANCE PROGRAM

The Small Business Assistance Program (SBAP), designed to help small businesses with problems and opportunities and any persons wanting to go into business in Northwestern Minnesota by providing extensive professional managerial and technical assistance, was funded for a second year by the Governor's Council on Rural Development (GCRD). The GCRD resources are the cooperation and influence of its members and use of the interest derived from the Rural Rehabilitation Trust Fund - A revolving fund which dates back to the 1930's.

The two year SBAP which is a pilot for possible replication throughout the State has three primary elements. The first of which involves managerial and technical assistance which includes but is not limited to: advertising; bookkeeping/basic accounting; accounts receivable/collections; cash flow management; development planning; equity procurement; inventory control; marketing; new product development; personnel management/training; purchasing; salesmanship; and purchasing existing or starting new businesses. The second important element is to establish a network of experienced business and professional volunteers who will lend their expertise to assisting small businesses and individuals wanting to go

into business. Thirdly, the final goal of the SBAP is to establish funding from the private sector in addition to the volunteers in order to permit the program to continue after the two year GCRD grant ends.

Presently, the SBAP activities include the completion of a video program entitled "Steps to Starting or Buying a Business." This video program will be available on demand for viewing by individuals and groups at locations close to their homes. At this time the SBAP has 62 clients. In addition, staff has provided answers to questions on business and has explained sources of information to numerous other persons who did not choose to become SBAP clients.



## TRANSPORTATION

The Transportation Program is designed to allow for active participation in the transportation planning and decision making process established by the Minnesota Department of Transportation (MnDOT). Transportation problems affecting the Region are identified and analyzed by the Transportation Advisory Committee (TAC). These problems and concerns are reflected in the TAC's reviews and comments on plans and projects proposed by Mn/DOT and local authorities and on legislative proposals relating to transportation.

These concerns are addressed in the Regional Transportation Plan which was initially completed in July of 1981, with an update occurring in 1983. The Plan provides a multi-modal development strategy based on the Region's perceptions of its future transportation system needs. The major transportation concern of the Region, as expressed throughout the Plan, continues to be the need to recognize the impact which the large volume of agricultural commodities shipped from the Region has on the transportation network.

A Regional Commodity Movements Study was completed in 1982 which documents the quantity and geographic distribution of agricultural commodities produced within the Region and the transportation mode and market destination of these commodities. The study revealed that Duluth/Superior received 69 percent of total shipments from regional elevators in 1981. Twenty-two percent went to the Twin Cities. Rail movement accounted for 58 percent of total regional shipments of all commodities. Rail was most predominant for goods movement to the Twin Cities, accounting for 84 percent of all goods moved to this destination. Rail movement to Duluth/Superior, at 53 percent, was slightly lower than the regional average.

Additional analysis is needed to determine the impact of alternative commodity movement scenarios on the regional transportation system. Changes in factors such as multi-car rail shipments, rail line abandonments and weight restrictions on area highways need to be constantly monitored and incorporated into the transportation planning process to effectively respond to user demands and financial constraints.

Many of the highway projects identified as high priorities by the



TAC in the 1981 Regional Transportation Plan have been moved up into some phase of programming. Of particular significance to the Region was the programming of TH 59 between Thief River Falls and Erskine which is scheduled for resurfacing in the summer of 1983. This work will bring this segment of road, a long time concern of Regional shippers, up to a 9 ton year-round/10 ton seasonal rating, thereby accommodating the heavy tonnage of agricultural commodities moved on this route. Developing 10 ton routes for regional commodity movements continues to be a priority.

Regional transportation developments in other modes also occurred during the past year. A final determination was made by the Civil Aeronautics Board (CAB) which reduced the level of essential air service to Thief River Falls from 68 to 56 seats per day in-bound and out-bound. The CAB also designated Bemidji Airlines as the replacement carrier for Republic to serve the Thief River Falls Regional Airport. In the area of transit, a proposal made by Greyhound Bus line to discontinue service to Northwestern Minnesota communities was turned down. However, bus service to this area remains in jeopardy as Greyhound is appealing the decision.

Burlington Northern completed their rail agency centralization plan during the past year thereby centralizing six outlying stations into one central agency in Crookston. One agent was maintained in Warroad. During the year, Burlington Northern also proposed to abandon 31 miles of branch line between Fertile and Ulen. The abandonment is expected to occur by August of 1983. Selected rail lines in the Region were reviewed as potential lines for rehabilitation. Segments of the line between Crookston and Moorhead are undergoing extensive upgrading to better accommodate multi-car unit train shipments.

The NWRDC opposed the proposal by the U.S. Customs Service to reduce the 24 hour a day operations at the Warroad Border Station. The Customs Service proposal was subsequently withdrawn. During the year meetings were held with Minnesota Department of Transportation interest groups to discuss regional transportation concerns. The Commission's TAC was expanded during the year to include representation from elevators and law enforcement, thereby creating a broader base of expertise to draw on in addressing regional transportation needs. The NWRDC also supported the increased state gas tax and state constitutional amendments which will allow more financial resources for highway and rail improvements.

## HUMAN RESOURCES PLANNING

### ADULT FOSTER CARE

Consider how it might be if you were a disabled or handicapped person, needing limited supervision or assistance, and wanted to remain in or return to your home community. Or think of how many people go to live in an institutional setting who do not need to be there and could function more independently if there was a suitable setting.

These are two of the important areas that prompted NWRDC staff to write a grant hiring a half-time consultant to establish a Region-wide Adult Foster Care Program. Since October 1, 1982, the consultant has been working with a Task Force of social workers and other county representatives to, first of all, build a strong program, i.e., adopt standards for foster homes, develop criteria of foster parents and clients, establish training requirements and a workable case management system. When the grant was written there were no adult foster homes except in Pennington County and the goal of twenty homes was set.

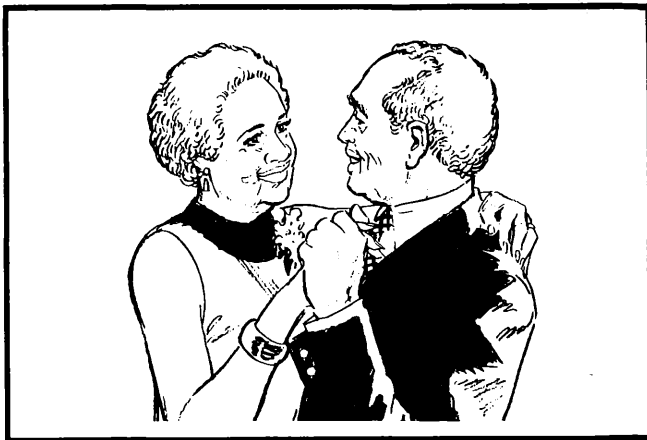
Each county has evolved its own "flavor" to the Adult Foster Care Program. Roseau and Norman Counties adopted tighter than required foster home standards, with Roseau County moving quite quickly to a recruitment campaign, technical assistance being provided by the consultant. It appears they are about to meet their goal of four homes, with one social worker recruiting and another licensing the home and providing case management. Norman County recently received the services of an Adult Foster Care Recruiter, arranged

through the consultant, who is well on the way of meeting the goal of four homes.

Kittson County has a public information campaign planned hoping to certify two adult foster care homes, especially for the elderly. Red Lake County needs two more homes (there is one now) for the elderly and will enlist the aid of the Adult Foster Care Recruiter. Marshall County has four homes now (their goal) using them for the mentally retarded individual, emotionally dependent or elderly, with one social worker recruiting and licensing and another providing case management. Polk County is looking for four more homes (there is one presently with two people placed) with active recruitment provided by the consultant. Pennington County had an ongoing Adult Foster Care Program.

The consultant continues to work on writing a suitable Adult Foster Care Training Manual since none exists for such a program as this. Use of already established community services for training of foster parents has received positive response and coordination will be completed by the end of the grant, 9/30/83.

Thus, it seems the purpose of the grant is being fulfilled: hire a consultant to establish a new program, allowing individual counties to adapt it to their own circumstances. This had been successfully accomplished by working closely with the County Social Services Offices, other service providers, committees, media, organizations and churches.



### AGING

The Aging Program has as its foundation the federal Older American Act. This Act, passed in 1965, and amended seven times since, places primary emphasis on efforts meant to secure and maintain maximum independence and dignity in a home environment for older persons capable of self-care with supportive services. With this as its charge, the Region 1 Aging Program directs its efforts in four main areas 1) Planning and data development, 2) Administration of Title III funds, 3) Coordination and 4) Education and information dissemination.

Planning and data development are necessary in order to assess the needs and available resources, determine the gaps in service and direct the program's regrant funds.

The Aging Advisory Committee reviews available data and conducts a series of public meetings to assess available programs and needs. This consumer directed process along with the Aging Advisory Committee recommendations resulted in the development of funding and work priorities for the 1983 Area Plan for Programs on Aging.

The Northwest Regional Development Commission, through recommendations made by the Aging Advisory Committee, awards and administers Title III Older American Act funds. The following projects were funded in 1983:

- 1) The Roseau County Transit Service Project: The major purpose is to provide access to medical services for Senior Citizens in Roseau County (total cost \$25,500, grant amount \$10,775).
- 2) Kittson County Senior Transportation Project: The major purpose is to provide access to medical services for Kittson County Senior Citizens (total cost \$10,972, grant amount \$4,177).
- 3) Northwest Minnesota Legal Services Project: The primary purpose is to provide limited legal services to older persons of

Region 1 (total cost \$36,750, grant amount \$18,300).

4) Valley Chore Service Project: The primary purpose is to provide a variety of services (lawn mowing, snow removal, house cleaning and window changing) in order to assist older persons in maintaining their homes. The program provides service in Norman, Polk and Pennington Counties (total cost \$86,001, grant amount \$35,933).

5) Northwest Chore Service Program: The primary purpose is to provide a variety of home maintenance services that will assist older persons in maintaining their homes. This program serves Roseau, Kittson and Marshall Counties (total cost \$47,288, grant amount \$20,644).

6) Home Health Aide Maintenance Care Project: This project operates for Red Lake and Pennington Counties. The primary purpose is to provide needed home health aide services to individuals who are not covered by other third party reimbursement systems (total cost \$11,472, grant amount \$5,499).

7) Marshall County Home Health Aide Services: The primary purpose is to provide needed home health aide services to older persons in Marshall County, who are not covered by other third party reimbursement systems (total cost \$6,770, grant amount \$4,703).

8) Polk County Home Health Maintenance Program: The primary purpose is to provide needed home health aide services to older persons in Polk County, who are not covered by other third party reimbursement systems (total cost \$11,998, grant amount \$7,252).

9) Region 1 Senior Meals and Activity Program: The major purpose is to provide a nutritional meal to older persons in a congregate setting. This year the program will be operating 22 meal sites. (total cost \$465,576, grant amount \$180,259).

10) Region 1 Home Delivered Meal Program: The primary purpose is to provide a nutritional meal in the home of older persons who have an identified need for this type of service (total cost \$58,494, grant amount \$24,000).

11) Senior Citizen Centers: Financial assistance was provided for the development of Senior Centers in the following communities:

Strandquist - total cost \$42,648 - grant amount \$18,039

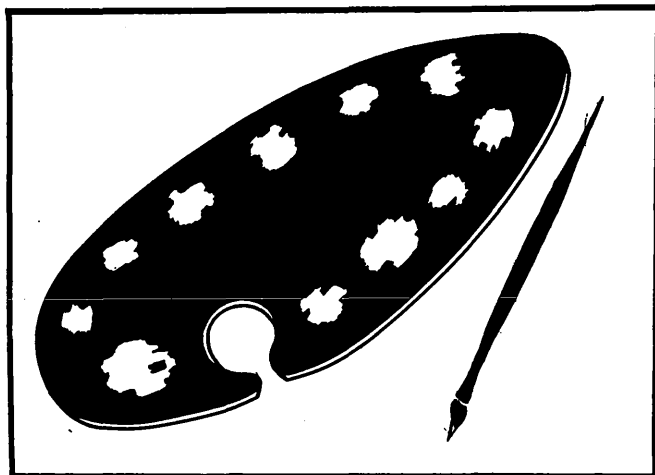
Grygla - total cost \$14,105 - grant amount \$9,833

Plummer - total cost \$35,044 - grant amount \$17,263

The Aging Program has continued its coordination efforts with area service providers and consumers to increase communication among programs and to strive for an improved service delivery system. This will continue to be an area for emphasis in the future.

Educational, the Aging program's most visible aspect is the Annual Fall Conference. The 1982 conference focused on the topic of Wellness. It presented a variety of workshops developed for seniors and service providers geared toward promoting a healthy active informed life style.

The Aging program will continue the direction of assessing the region's elderly and their needs, supporting system gaps with additional financial resources, continuing coordination efforts and providing information and educational opportunities for service providers and older persons in Region 1.



## ARTS

The purpose of the Commission's Arts Program is to facilitate and encourage local arts development through reviewing, evaluating and funding local/regional applications and providing technical assistance services, when appropriate, within the Region.

The Commission, through its Arts Advisory Committee and staff, provides assistance and encouragement to local arts organizations to enhance the quality and availability of arts experiences for communities in the Region. In addition, the Commission serves the communities as an advocate for local and regional arts development and as a vehicle for input to the MSAB concerning the involvement and development of the arts at the local, regional and state level.

The Northwest Regional Development Commission, upon recommendations by the Arts Advisory Committee, awarded the following grants:

### Marshall County

Argyle Centennial Committee; Historic drama depicting Argyle from 1883-1983 - \$970.

Middle River Senior Citizens, Inc.; Series of painting classes - \$1,565.

### Pennington County

Chameleon Theatre; Three one-act Christmas plays - \$866.25.

Chameleon Theatre; Production of "Harvey" - \$751.25.

Franklin Middle School, Thief River Falls; Sponsor a COMPAS artist-in residency - \$412.50.

Goodridge Historical Society; Production of "Diary of Anne Frank" - \$250.

### Polk County

Crookston Central High School; Sponsor residency and concert by Fargo-Moorhead String Trio and Quintet - \$700.

Crookston Civic Music League; Sponsor concert by Graz Chamber Orchestra of Austria - \$840.

Crookston Community Theatre; Production of "Brigadoon" - \$1,137.50.

East Grand Forks Auditorium Action Committee; Original musical "Those Were The Days" - \$1,195.

East Grand Forks Community Education; Production of "The Fourposter" - \$715.

East Grand Forks School District No. 595; Series of residencies for elementary students using local artists - \$413.47

Fosston Community Library and Arts Association; Creative workshops for children - \$842.

Fosston Community Library and Arts Association; Exhibit of 40 original Edward S. Curtis prints - \$300.

Fosston Community Library and Arts Association; Production of "Music Man" and "The Fabulous Fables Factory" - \$2,121.

McIntosh Booster Club; Pageant and Norwegian performance - \$1,175.

Midwest Stage Company; Production of "Diary of Anne Frank" - \$830.

Polk County Ag Extension/4-H; Production of 4-H Arts-In - \$225.

Tri-County Community Corrections; Series of basic arts experiences for incarcerated adults - \$980.

Women's Division - RRVWS; Leisure time education programs - \$110.65.

### Red Lake County

Red Lake Falls Community Education; Three groups performing the music and dance of the French-Canadian/Metchif tradition - \$1,068.60.

### Roseau County

Roseau County Historical Society; Show the film "Northern Lights" - \$100.

Warroad Summer Theatre; Summer theatre season of five plays - \$2,500.

### Out-Of-Region

Visual Arts Information Service; Publish 10 issues of Art-paper - \$500.

Of the 24 projects funded from July 1, 1982 - June 30, 1983, eleven have completed their projects and submitted final reports. Close to 5,000 people have taken classes, viewed exhibits, attended

concerts, or attended productions funded in part by the regional arts program.

The NWRDC also received a McKnight Foundation grant to provide capacity building opportunities to rural arts organizations. The capacity building project consists of three parts:

- The opportunity to continue and accelerate management and organizational development through access to a professional consultant.
- The opportunity to communicate through publication of a quarterly newsletter.
- The opportunity to improve their artistic resources, facilities, or management initiatives through a regrant program.

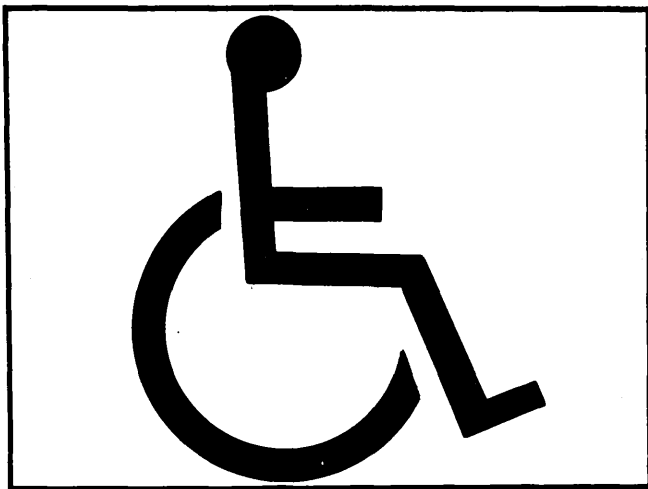
The professional consultant component consists of two parts. In September, two two-day Arts Management Workshops were held in Red Lake Falls and Karlstad. Each workshop covered Planning, Fundraising, Working with People, and Marketing. Then in December, three arts groups were selected to receive 1½ days of additional consulting services. The groups selected were East Grand Forks Performing Arts Council, Fosston Community Library and Arts Association and Thief River Falls Chameleon Theatre. Unfortunately, Thief River Falls Chameleon Theatre was not able to participate in the individual consultancy at the last minute.

The newsletter, Northwestern Arts, was published four times - September, December, March, June - and distributed to approximately 800 people.

Two arts groups applied for the \$5,000 of regrant funds available this year. Funds were awarded to:

Crookston Community Theatre; Purchase of a light control system - \$3,241.

Fosston Community Library and Arts Association; Purchase of a light control panel and dimmer system - \$1,759.



## DEVELOPMENTAL DISABILITIES

The Developmental Disability Program is designed to assist local human services organizations in the coordination and development of services for handicapped people. Since the Welsch v. Noot Consent Decree was established, more severely handicapped persons are being placed in local communities which creates a need for better trained staff persons, appropriate facilities and more appropriate work activity. These needs determine three of the priority areas of the DD Program. They are:

- 1) Training for developmental achievement center (DAC) and grouphome staff;
- 2) Development of a grouphome for children who are both mentally and physically handicapped; and
- 3) Development of paid work activity project for DAC clients.

The fourth priority area was determined by the Developmental Disabilities Advisory Committee to be prevention of birth defects and a project was initiated to make presentations to many of the high school classes in the Region.

These priorities are based on the program emphasis in FY 1982 which were:

- 1) Community alternatives of institutionalization;
- 2) Employment opportunities for handicapped adults;
- 3) Parent and community education; and
- 4) Needs of 0-3 age group (disabled).

Involvement of the DD Program has continued with the Preschool Coordination Committee, Region I Respite Care and Northwest Chapter of the Minnesota Association for Education of Young Children. A conference was co-sponsored by the DD Program and NW MNAEYC as a training session for parents and included topics such as "Recognizing Developmental Delays" and "Children's Awareness of Handicaps."

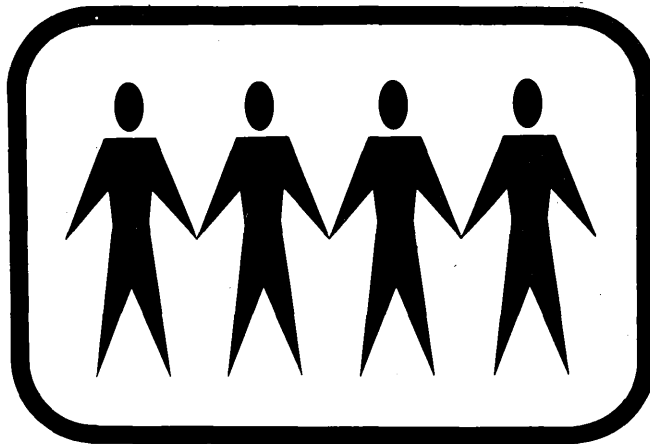
Training sessions for DAC and grouphome staff were presented by a dentist, a speech pathologist and an optometrist.

The DD Program worked with "Jobs Incorporated," of Crookston, to develop and analyze a needs assessment for a grouphome for children who are multiply-handicapped.

Recommendations of a task force on employment of severely handicapped persons were acted upon by the DD Program. Contact was made with college instructors in the Industrial Technology Departments at Bemidji and UND to determine possible interest in internships being developed to design work activity projects for DAC's.

Presentations on preventing birth defects were made to approximately 2,000 students at twenty-three high schools in Region I. More general methods of disseminating information are the use of the agency newsletter and news releases to the local media.

During the upcoming year several new projects based on the defined priorities will take place. In this way the greatest possible impact on the developmentally disabled citizens of Region I can be achieved.



## JOB TRAINING

The Job Training Program provides planning guidance for services offered in Region One through the new Job Training Partnership Act. The Job Training Partnership Act is the replacement for the Comprehensive Employment and Training Act which has previously provided a variety of training and employment related services to economically disadvantaged persons in the Region. The change from Employment and Training to Job Training is reflective of a new emphasis on training persons for entering the labor market rather than creating employment. The central focus of the Job Training Program itself is the Region One Job Training Council which is staffed through the Commission and completes recommendations for the operation of Job Training Programs in the area.

During the past year major activities of the Council and staff have focused on the transition into the Job Training Partnership Act. The transition process will be completed in a two year process with FY 1983 as the first year transition and FY 1984 as the second year transition. During the first part of FY 1983, the Job Training Council began preparation for the transition by establishing two goals for this first transition year. Those goals were to finalize the program reporting system and to make every effort to establish Region One as a separate Service Delivery Area for the new Act. This second goal

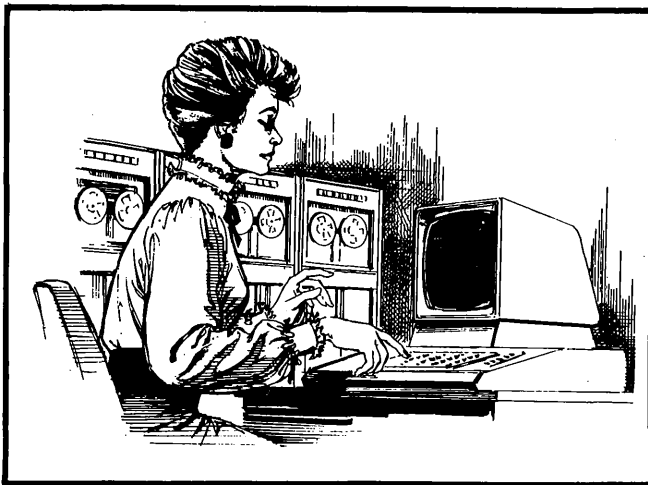


took on increasing importance as it became clear that being part of a larger Service Delivery Area would mean having very little local control over program direction.

At the end of FY '83 the Council and staff felt that the two major goals for the year had been completed. A Year End Program Review of Region One Job Training Programs was completed as the culmination of the development of a quarterly Program Operator Reporting system and initial approval of a Region One Service Delivery Area was obtained from the Governor's Job Training Council and the Governor. Approval of the Service Delivery Area was a long process involving gaining approval of all seven counties, preparing both an initial request and a final application and communicating the desires of the local area to the Governor in a convincing manner. The organizational structure and spirit of cooperation which began during the completion of the Year End Review proved to be a critical resource in becoming a Service Delivery Area.

With the final designation of Region One as a Service Delivery Area the Job Training Program and the Region One Job Training Council will be ended. A new decision making system will be set in place for FY 1984 with final decision making responsibilities resting with local elected officials and a new Region One Private Industry Council. This will be a major change as in the past this final responsibility always rested in St. Paul. Initial work on this new system has already started with the recommendations of a special Transition Task Force establishing the structure of the Private Industry Council and the seven counties forming a joint powers agreement specifying their role in decision making.

FY 1984 will be a new step for Region One in terms of this type of program. Originally termed Manpower Programs during the 1960's, changing to Employment and Training Programs during the 1970's and now moving to Job Training Programs in the 1980's, these services have slowly progressed towards becoming an established part of the local labor market system. The addition of a simpler design and real local decision making should place the program in a position to move even closer to the needs and demands of Region One.



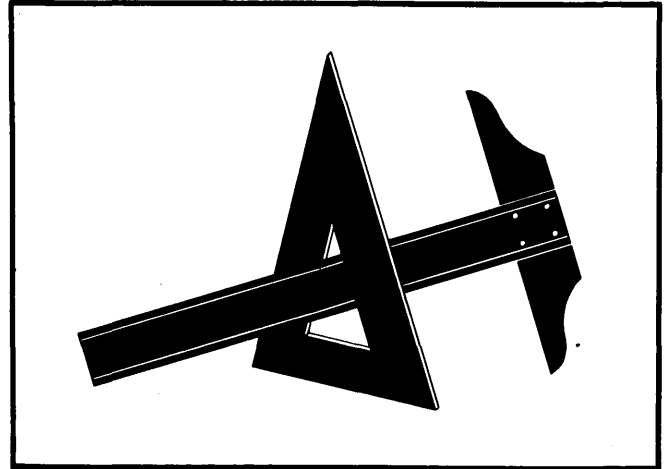
## DATA MANAGEMENT

The Data Management Program is designed to provide a central gathering place for the many types of information which are necessary for both the Commission's own operation and for assisting local units of government, service agencies, business, and individuals with their data needs. The emphasis during the past year has been on maintaining the basic data items and making information readily available to staff and the public.

Major projects during the year have included initial automation of the Commission's accounting system, joining the Minnesota State Data Center Program, automating the Commission's mailing lists, designing a format for updating the Region One Directory of Governmental Units and Service Agencies, and distributing the 1980 Census information. Improved organization and the automation of some functions have increased the Commission's ability to respond to

requests and the capacity to make informed decisions. The addition of a computer provided a source of both frustration and accomplishment as staff battled through the changes, conflicts and learning which always accompany the introduction of new technology.

During the upcoming year the program will concentrate on finishing some of the current projects and building on the new capacities created by these projects. Special attention will be focused on automating more of the data items and making services easier to use.



## TECHNICAL ASSISTANCE

A significant amount of staff time is spent on what we call technical assistance to local governments, agencies, private businesses and industry. Assistance generally falls into the categories of planning, grantsmanship, special projects or information dissemination. All of these services are available on request and the demand for these services are increasing daily.

Planning and grantswriting are the most widely used services. In the areas of Arts and Aging Programs, staff assist in finalizing projects, in preparing applications and then in managing funds after they are received.

In the areas of community development and economic development extensive assistance was given in project planning for Small Cities Community Development Block grants and Economic Development Administration (EDA) grants. Staff gave many hours of assistance in preparing grant applications with information and data and in several cases prepared entire applications. The Commission has contracted with the Community of Red Lake Falls to manage a \$1.3 million Community Development Block Grant it received for housing rehab and updated infrastructure.

The Commission provides statistical data on a daily basis and is a source of the 1980 Census materials. With the use of the Commission's computer the information can be available in many forms.

Staff maintains a close working relationship with funding agencies in order to optimally assist local governments in targeting and leveraging funds for their specific needs.

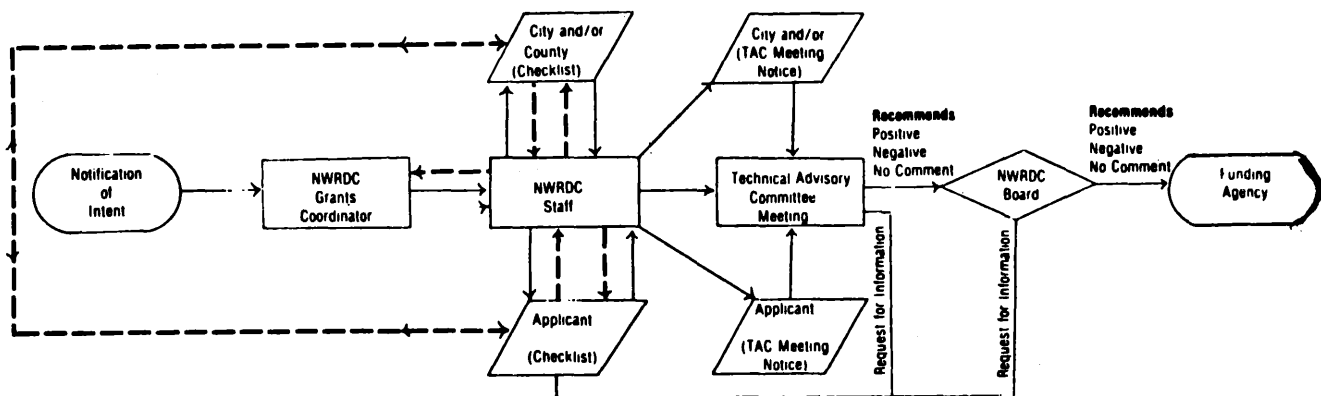
# Regional Review

The Regional Development Commissions are charged with the responsibility of performing the A-95 review process on most federal and state funding requests. The purpose of this function is to provide coordination of projects and to avoid duplication of services where possible. NWRDC carries this out with the "Notification System" where local government and agencies having an interest are notified of the applicants intent to apply for funds and given the

opportunity to comment on the project or program.

In its capacity as the Regional Clearinghouse for A-95 and other reviews, the Commission reviewed about 110 proposals and plans for FY '83. Following is a list of projects reviewed and a key to agency abbreviations. The list is only a list of projects submitted for review and is no indication the projects were funded.

## NORTHWEST REGIONAL DEVELOPMENT COMMISSIONS REGIONAL REVIEW PROCESS



### Legend

- Beginning
- Processing
- ▭ Input/Output
- ◇ Decision
- Paper Flow
- .-> Coordination as Needed

# PROJECTS REVIEWED JULY 1, 1982, THROUGH JUNE 30, 1983

Applicant	Project	Total Project Cost	Funding Agency
NW Mn Juvenile Training Center	Family Participation Program	\$17,000	DEPD
Tri Co. Community Corrections	Alternative Sentencing (Juvenile)	19,366	DEPD
MW Mn Community Dev. Corp.	Enterprise Development Fund	2,150,000	OCS
Polk Co. Group Homes, Inc.	Group Home for Fosston	666,400	HUD
Mn Dept of Economic Security	Comprehensive Em/Training Prog.	8,714,389	DOL
Retired Senior Volunteer Prog.	Red River Valley Program	55,705	ACTION
Marshall Co. DAC	Purchase Mini Bus	19,000	Mn/DOT
Norman County	Housing Rehab Project	600,000	HUD
Red Lake Falls	Southside Revitalization Program	1,385,040	HUD
East Grand Forks	Neighborhood Revitalization	1,157,000	HUD
Thief River Falls	Industrial/MFG Revitalization	1,874,887	HUD
Goodridge	Sewer Project	550,000	HUD
Grygla	Economic Development	346,300	HUD
Polk County	E. Polk Housing Rehab	600,000	HUD
Fertile	Emergency Medical Services	112,510	HUD
Argyle	Streets/Housing Rehab/Watermains	794,000	HUD
St. Hilaire	Streets/Housing Rehab/Watermains	1,200,000	HUD
Alvarado	Economic Development	2,188,000	HUD
Soil & Water Conservation Dist.	Computer Program on Conservation	7,200	GCRD
Mn Educational Computer Consortium	Information Exchange	45,125	GCRD
Jackson Area Voc-Tech	Strengthen Farm Management	27,000	GCRD
Flui Dyne Engineering Corp.	Peat for Fuel Evaluation	38,430	GCRD
Mark Richtie	Mn Farm Unit Coalition	51,000	GCRD
Mn Ass'n Soil and Water Conserv.	Wildlife on Land Calander	13,400	GCRD
NW Economic Dev., Inc.	Ag Fiber Fuel Industry Dev.	25,000	GCRD
NWRDC	Fiber Fuel Feasibility Study	13,674	GCRD
Minn. Migrant Council	Rural Accessible Computer System	87,996	GCRD
Tri-Valley Opportunity Council	Fiber Fuel Industry and Mkt Dev.	187,850	GCRD
Good Samaritan Nursing Home	Elderly/Handicapped Transp. Van	31,279	Mn/DOT
Mn Balance of State PIC	Small Business Expansion Prog.	50,000	GCRD
New Era Industry, Virginia, Mn	Low Value Cellulose as Foodstuffs	191,000	GCRD
Agassiz Health Systems, Inc.	Continuation Health Planning Grant	100,000	BOH
St. Hilaire Coop Elevator	Sunflower Processing Plant	92,500	GCRD
Dept of Ed. Vo-Tech St. Paul	Management Training for Rural Bus.	483,240	GCRD
Mn Dept of Transportation	1983 Work Program and Research Proj.	NA	
U.S. Post Office	New Post Office for Winger	NA	
Department of Economic Security	FY '83 Annual Plan		
Roseau County	Bridge Replacement Project	30,000	MN/DOT
Ass'n for Retarded Citizens Mn.	Foster Grandparent Program	1,137,046	ACTION
Grand Forks	Transportation Improvement Prog.	492,923	US/DOT
Mn. Energy Planning and Development	Multi-Yr Juvenile Justice Plan	NA	
East Grand Forks	Community Development Block Grant	1,400,000	DEPD
Red Lake Falls	Community Development Block Grant	1,131,699	DEPD
Strathcona	Community Development Block Grant	356,754	DEPD
St Hilaire	Community Development Block Grant	1,200,000	DEPD
Stephen	Community Development Block Grant	565,000	DEPD
Alvarado	Community Development Block Grant	1,400,000	DEPD
Argyle	Community Development Block Grant	1,173,000	DEPD
Thief River Falls	Community Development Block Grant	548,226	DEPD
Gully	Community Development Block Grant	122,960	DEPD
Minn Ass'n of Townships	Education Program	56,000	GCRD
Tri-Valley Opportunity Council	Senior Employment	75,000	HHS
Cecil Malme	Radio Station for Norman County	115,500	GCRD
Grygla	Community Development Block Grant	159,000	DEPD
Fertile	Community Development Block Grant	1,336,500	DEPD
Multi-County Nursing Service	Women/Infant/Childrens Program	58,113	MDH
Polk County	Bridge Replacement, Keystone/Euclid	130,060	MN/DOT
Marshall County	Township Bridge Replacement	43,000	MN/DOT
Jackson Area Vo-Tech	Vo-Ag Farm Mgmt Education Prog.	53,700	GCRD
Polk County Soil Water Cons. Dist.	Burnham Creek Project	NA	
Polk County	Twp Bridge Replacements	68,381	MN/DOT
Ag Extension U of Mn	Computerized Forage Analysis	220,600	GCRD
U of M Horticultural Dept	Develop Blueberry Industry	73,800	GCRD
Inter County Community Council	Heritage Design Project	85,715	GCRD
Minnesota Forestry Assn.	Forest Products Utilization	20,000	GCRD
Northwest Regional Dev. Comm.	Fiber Fuels Industry	31,420	GCRD
Seprotech International	Fresh Produce Handling System	50,000	GCRD
Mn Women For Ag	Agri School	50,720	GCRD
Thief River Falls Public Schools	Rural Family Life Improvements	45,540	GCRD
Immiges Center For Ethnic Arts	Development of Market	21,945	GCRD
Energy Consult Corporation	Mn REED Program	105,000	GCRD



Applicant	Project	Total Project Cost	Funding Agency
Mn Planning and Zoning	Education Program for Administration	20,635	GCRD
Mn COACT	Farm Survival Hotline	41,948	GCRD
Roseau/Polk County	Bridge Replacement Projects	141,324	MN/DOT
Red Lake County	Bridge Replacement	95,700	MN/DOT
U of M Extension Service	Hmong Venture	50,000	GCRD
Roseau County	Bridge Replacement	30,000	MN/DOT
Northwest Regional Dev. Comm.	Developmental Disabilities Planning	42,000	DEPD
Goodridge	Wastewater Treatment System	559,000	FmHA
NW Community Action, Inc.	Head Start Program	336,460	HHS
Pennington County	Bridge Replacements (8)	248,500	MN/DOT
Roseau County	Bridge Replacement	30,000	MN/DOT
Warroad	Water Tower, Main Improvements	950,000	EDA
East Grand Forks	Industrial Park	902,000	EDA
Marshall County	Bridge Replacements	111,556	MN/DOT
Bagley	District Heating/Solid Waste	8,818,795	EDA
Brooks	Sewage Treatment Construction	390,000	EPA
Alvarado	Street Paving		FmHA
Argyle	Wastewater Treatment/Sewer	525,000	FmHA
Norman County	Bridge Replacements	91,000	MN/DOT
Pennington County	Bridge Replacements	100,000	MN/DOT
Roseau County	Bridge Replacements	22,000	MN/DOT
Roseau County	Bridge Replacement	25,000	MN/DOT
Roseau County	Bridge Replacement	77,000	MN/DOT
Marshall County	Bridge Replacements (5)	189,100	MN/DOT
Grygla	Street Improvements	982,000	EDA
Tri County Corrections	Postadjudication Alternatives	20,562	CCPB
Tri County Corrections	Training	8,011	CCPB

#### FUNDING AGENCY IDENTIFICATION

BOH	Bureau of Health
CCPB	Crime Control Planning Board
DEPD	Department of Energy and Planning
DOL	Department of Labor
EDA	Economic Development Administration
EPA	Environmental Protection Agency
GCRD	Governor's Council on Rural Development
HHS	Health and Human Services
HUD	Department of Housing and Urban Development
MN/DOT	Minnesota Department of Transportation
OCS	Office of Community Services
US/DOT	United States Department of Transportation
FmHA	Farmers Home Administration
MDH	Minnesota Department of Health

## Aging Advisory Committee

June, 1983

Michael Ackley	Halstad
Orville Anderson	Karlstad
R.L. Edwards	McIntosh
William Gatheridge (c)	Humboldt
Verne Green (c)	Newfolden
Vivian Harney	East Grand Forks
Lloyd Hovelson	Gary
Olivine Juneau	Brooks
Calvin Melgard	Warren
John Nowacki	Warren
Ernest Pederson	Plummer
Linda Rethemeier	Crookston
Wayne Rusten	Hallock
Lilja Snyder	Crookston
John Spina	Roseau
Otto Stenberg	Thief River Falls
LaVerne Swan	Badger
Ambrose Wysoski (c)	Thief River Falls

## Arts Advisory Committee

June, 1983

Ruth Anderson	Greenbush
Cleo Cleveland (c)	East Grand Forks
Gayle Hanson	Hallock
Janette Haubrich	Hallock
Barb Jauquet	Thief River Falls
Elton Jones (c)	Twin Valley
Bob Kinkade	Ada
Tony Kuznik	Crookston
Marilyn Lingen	Stephen
Merle Miller	Crookston
Evangeline Myhre	Warren
Margaret Saetre	Thief River Falls
Marie Scott	Red Lake Falls
Ric Sorenson	Fosston
Luanne Visser	Ada

## Developmental Disability Advisory Committee

June, 1983

Tessie Dahlman	Hallock
Renae Dalen	Red Lake Falls
Gary Erickson	Thief River Falls
Donna Fournier	Thief River Falls
Verne Green (c)	Newfolden
Karen Hagen	Roseau
Don Huot	Red Lake Falls
Charlie Johnson	Fergus Falls
Robert Johnson	Shelly
Elton Jones (c)	Twin Valley
Mrs. Alvin Pearson	East Grand Forks
Willard Purath (c)	Red Lake Falls
Gloria Skrutvold	Roseau
Linda Sparhawk	Leonard
Harry Sutherland	Hallock
Pat Thorson	Warren

## Housing Advisory Committee

June, 1983

Clarence Beck	Hallock
Percy Blake	Crookston
Carol Bordenkircher	Crookston
Al Clark	Middle River
Ron Foss	Grygla
Jan Geroy	Badger
Jim Hella	Twin Valley
Duane Knutson (c)	Fertile
Bob Melby	Oklee
Marilyn Nelson	Thief River Falls
Allan Olson	Roseau
Phyllis Raebel	Red Lake Falls
Kenneth Redland (c)	Ada
Donald Schneider	East Grand Forks
Bill Seeger	Mentor
Larry Stauss	East Grand Forks
Jan Thorstad	Thief River Falls
JoAnn White	Thief River Falls
George Wikstrom, Jr. (c)	Karlstad
John Wynn	Mentor

## Natural Resources Advisory Committee

June, 1983

Charles Anderson	Crookston
Rudee Anderson (c)	Greenbush
Rudy Applequist	Crookston
Irving Beyer	Red Lake Falls
Terry Courneya	Thief River Falls
John Gaukerud	Badger
Marcella Gonsorowski	Newfolden
Verne Green (c)	Newfolden
Alan Gustafson	Hallock
Wendell Johnson	Crookston
Earl Radi	Crookston
Leonard Skaar	Thief River Falls
Dan Svedarsky	Crookston
Ken Wieland	Red Lake Falls
Terry Wolfe	Crookston
Dean Younggren	Hallock

## Economic Development Advisory Committee

June, 1983

Cecil Anderson	Thief River Falls
John Carpenter	Hallock
Harlan Charon	Hallock
Cleo Cleveland (c)	East Grand Forks
Pam Hetteen	Roseau
Harold Janneck	Red Lake Falls
Richard Kruse	Thief River Falls
Robert Maas	Crookston
Gerald McClean	Grygla
Tom Riederer	East Grand Forks
Omarr Rood	Crookston
Wayne Ruud	Karlstad
Jerry Sandstrom (c)	Thief River Falls
Ken Schuster	Argyle
Fred Sorensen (c)	Grygla
Roy Tunheim	Newfolden

## Transportation Advisory Committee

June, 1983

Harlan Almen	Red Lake Falls
Ralph Berg (c)	Brooks
Dr. Joe Bouvette (c)	Hallock
Captain Daniels	Thief River Falls
Donald Grabanski (c)	Thief River Falls
Marvin Hutchinson	Thief River Falls
Richard Jorde	Thief River Falls
Wayne Juhl (c)	Greenbush
Delray Larson	Gatzke
Bernie Lieder	Crookston
Cary Sip (c)	Ada
Ralph Stoffel	Thief River Falls
Harold Thomforde (c)	Crookston
Gene Wagar	Halstad

(c) Commission member

# NWRDC PUBLICATIONS

## 1981-1983 Area Plan For Programs On Aging

This Plan outlines the needs of senior citizens in Region 1 and their demographic characteristics. The 1982 Area Plan Amendments to the 1981-1983 Area Plan includes an update inventory of services plus revised goals and objectives.

## Arts Plan For FY '84-85

This Plan identifies the following areas of arts resources: people, organizations, contact people and arts advocates. It includes a needs assessment which was developed to permit the Arts Advisory Committee to establish the listed priorities for the arts in Region 1. Another important aspect of the Plan is that it explains the grants process and the regranting categories which is necessary information to those interested in applying for arts grants.

## Directory of Government Units & Service Agencies

The Directory was prepared as an easily available resource of information on governmental agencies and services available in Region 1.

The Directory contains listings of service agencies which have full time staff and governmental offices from the township level through the legislative level. It also contains a brief description of the agency or office, the phone number, and key contact person. The Directory is updated periodically to keep current with ongoing changes.

## Earning Comparisons and Effects In Region 1: No. 2: December 1982

This report compares the analyzed earnings of the major industry group of workers by Standard Industrial Classification (SIC). Each county in the Region is compared with the State of Minnesota on the base of workers' earnings. The data is useful in qualifying for various community and economic development programs that require evidence of the level of economic distress in a community.

## Regional Transportation Plan

This Plan involves two primary parts: 1) an inventory of various transportation modes in the Region; and 2) goals and policies to guide transportation planning in the Region. A large part of the planning effort was the identification of a 20 year work plan for the maintenance of state trunk highway projects in a priority order as to their maintenance needs and importance to the efficient movement of people and goods, particularly agricultural commodities within the Region. The Plan provides a multi-model development strategy based on the Region's perceptions of its future transportation system needs. The Plan also includes maps denoting characteristics of the various segments of the state trunk highway system within Region 1, as well as railroad, transit and aeronautics information. The Plan was initially developed in 1981 with an update occurring in 1983.

## Region I Agricultural Commodity Movements 1981

This study report represents the initial phase of an effort to shed light on the agricultural commodity movement situation in Northwestern Minnesota. Namely, the study identifies movements from elevators by crop type and transportation mode. The primary benefit of this effort are: 1) to enhance understanding by all parties of the facts in commodity movement; and 2) to provide a base for decisions regarding the allocation of scarce transportation investment dollars.

## Year End Program Review, Region One Job Training Programs, Fiscal Year 1982

This report presents an overall look at the operation of Job Training or CETA programs in Region One during FY 1982 (October '81 to September '82). The information is organized into statistical and narrative sections and provides information on allocations, program performance, problem areas and public perceptions.

## Region I, A Statistical Profile

This report presents statistical information on a wide variety of human resource, economic and physical resource subjects. Most data is presented at the Regional and county levels with some items including township and cities. The report is supplemented with a variety of 1980 Census publications currently available and will be updated with a new report which contains major 1980 Census items.

## 1982 Annual Report

The NWRDC's Annual Report for 1982 was prepared and distributed to the members of legislators and to local officials and citizens.

## Northwestern Arts Newsletter

This is a quarterly publication describing Arts related activities within Region One. The publication is prepared in conjunction with NWRDC staff and the Arts Program consultant and funded by the McKnight Foundation.

## NWRDC Newsletter

Commission's newsletter, which is published monthly, is to keep units of government and agencies abreast of Commission happenings and funding resources.

## FY '84 Work Plan

The Commission's Fiscal Year 1984 Work Plan was published. The document details the goals and objectives of the Commission in each of the program and planning areas.



## Commission Budget

### FY '83 ACTUAL

#### REVENUE

State Appropriation	\$42,400
Local Tax Levy	81,055
HUD 701	4,000
HUD 107	5,000
Department of Economic Security	11,273
Economic Development Administration	36,382
MN Board on Aging	38,512
MN Board on Aging - Nutrition	5,873
Developmental Disabilities Planning Board	26,207
MN Department of Transportation	7,200
MN State Arts Board	14,000
Governor's Rural Development Council	43,210
Commodity Movement Study	7,817
Fosston	1,206
McKnight Foundation Adult Foster Care	11,250
McKnight Foundation Arts	22,679
Other	9,384

TOTAL \$367,448\*

#### EXPENDITURES

Salaries/Fringe	\$231,204
Travel	18,462
Regional Commission Expenses and Per Diem	13,761
Committee Expenses	4,415
Office Expenses	82,107

TOTAL \$349,949\*

\*Unaudited Totals - Subject to Change

### FY '84 BUDGET

#### PROJECTED REVENUE

MN Department of Energy, Planning, Development	\$44,097
Local Tax Levy	83,000
Community Development Block Grant	12,000
Economic Development Administration	49,500
MN Board on Aging	55,595
Developmental Disabilities Planning Board	27,072
MN State Arts Board	14,000
MN Department of Transportation	10,000
Governor's Rural Development Council	20,000
McKnight Foundation Adult Foster Care	3,750
McKnight Foundation Arts	8,389
Estimated Carry-over for FY 1982	23,851
Other	7,500
Red Lake Falls Contract	30,755

TOTAL \$389,509

#### PROJECTED EXPENDITURES

Salaries/Fringe	\$251,695
Travel	20,000
Regional Commission Expenses and Per Diem	15,939
Committee Expenses	5,000
Office Expenses	96,875

TOTAL \$389,509



ARNE H. CARLSON  
STATE AUDITOR

# STATE OF MINNESOTA

OFFICE OF THE STATE AUDITOR  
SUITE 400  
555 PARK STREET  
SAINT PAUL 55103

## AUDITOR'S OPINION

296-2551

Mr. Harry Sjulson, Chairman  
Northwest Regional Development  
Commission  
425 Woodland Avenue  
Crookston, Minnesota 56716

We have examined the combined financial statements of Region I, Northwest Regional Development Commission, Crookston, Minnesota, as of and for the year ended June 30, 1982, as listed in the table of contents. Our examination was made in accordance with generally accepted auditing standards and, accordingly, included such tests of the accounting records and such other auditing procedures as we considered necessary in the circumstances.

In our opinion, the combined financial statements referred to above present fairly the financial position of Region I, Northwest Regional Development Commission, at June 30, 1982, and the results of its operations for the year then ended, in conformity with generally accepted accounting principles applied on a basis consistent with that of the preceding year, except for the change, with which we concur, in accounting for tax revenue as discussed in Note 7.

Our examination was made for the purpose of forming an opinion on the combined financial statements taken as a whole. The combining and individual fund financial statements and schedules listed in the table of contents are presented for purposes of additional analysis and are not a required part of the combined financial statements of Region I, Northwest Regional Development Commission. The information has been subjected to the auditing procedures applied in the examination of the combined financial statements and, in our opinion, is fairly stated in all material respects in relation to the combined financial statements taken as a whole.

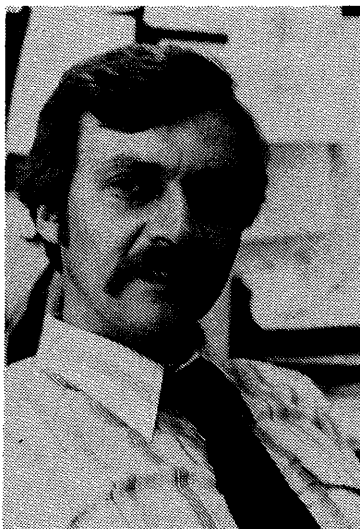
A handwritten signature in cursive script, reading "Arne H. Carlson".

ARNE H. CARLSON  
State Auditor

September 3, 1982

AN EQUAL OPPORTUNITY EMPLOYER

## **Northwest Regional Development Commission Staff**



Tom Jorgens, Executive Director

### **Staff**

Donna Christianson  
Mary Jo Crystal  
Wayne Faust  
Wayne Goeken  
Leon Heath

Helen Jurchen  
Donna Myhrer  
Marian Normandin  
Pat Rood  
Carol Sorensen  
Diane Markel

Mike Moore and Joe McKenna were 1982 staff members, but are no longer with the NWRDC.

### **Responsibilities**

Accounting  
Financial Management/Grants Management/Arts  
Small Business/Economic Development  
Transportation/Economic Development  
Employment and Training/Community Development/Data Management/  
Red Lake Falls SDBG  
Information/Regional Reviews/Housing/Planning Assistance  
Developmental Disabilities  
Secretary  
Aging  
Secretary/Data Processing  
Adult Foster Care (consultant)