



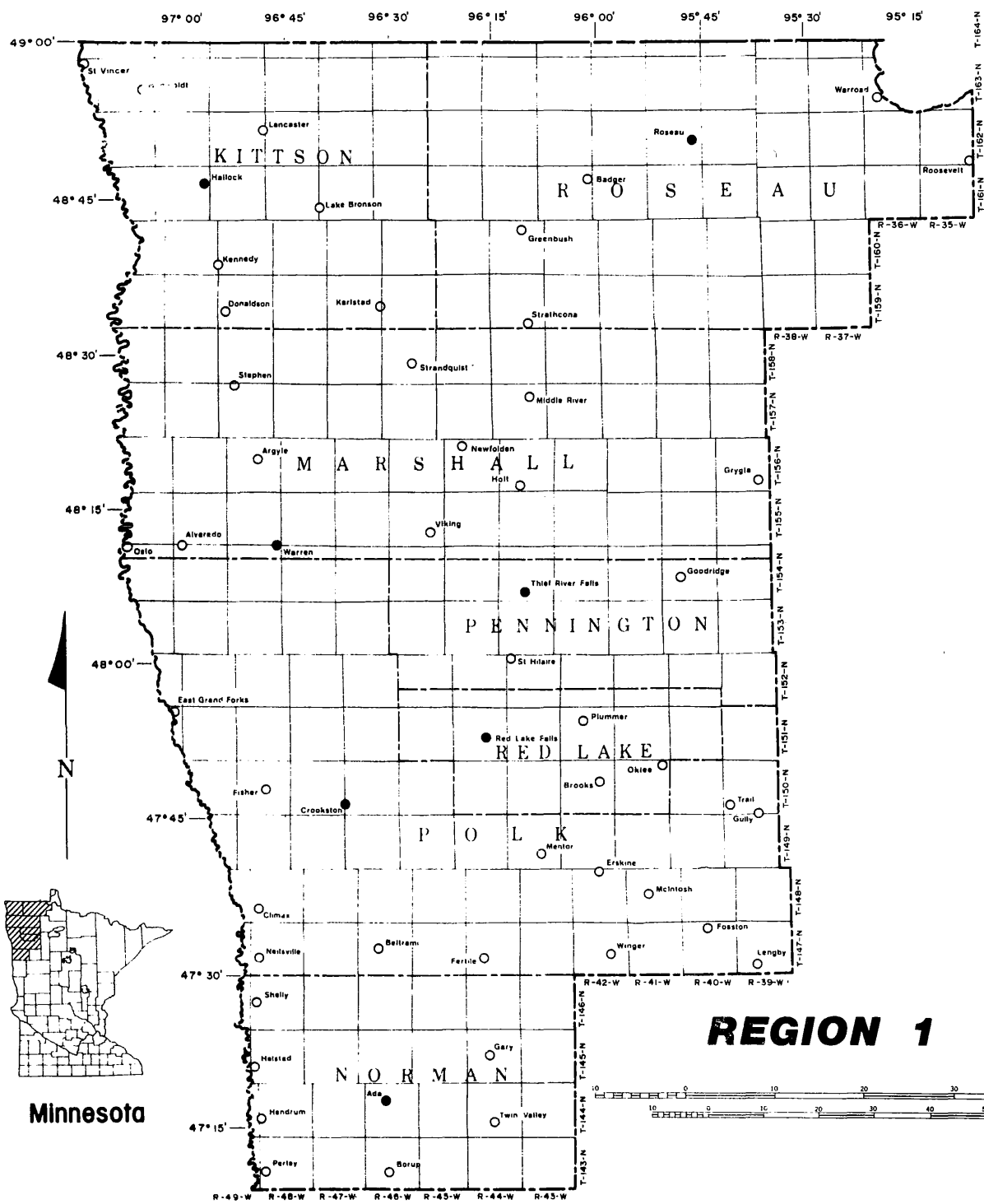
3 0307 00010 8038

Annual Report 1982

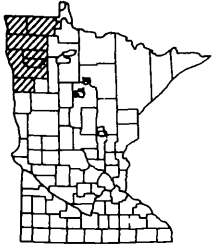


HT
393
.M62
N672x
1982

Northwest Regional Development Commission



**Prepared by the
Northwest Regional Development Commission**



NORTHWEST REGIONAL DEVELOPMENT COMMISSION

425 WOODLAND AVENUE • CROOKSTON, MINN. 56716 • 218-281-1396

CHAIRMAN'S LETTER

It is with great pleasure that I present this Annual Report to the local governments and to the citizens of Northwestern Minnesota. The past year has been filled with a wide variety of activities for the Commission. During the year the Commission became involved in new projects in the area of Small Business Assistance and in a Commodity Movement Study to provide technical assistance to the important small business sector of the area's economy and to examine the movement of the Region's farm products to domestic and international markets, respectively. These and other activities of the Commission have served to continue the important pursuit of an improved quality of life for the residents of Northwestern Minnesota.

I want to take this opportunity to thank the members of the Commission, its committees and the staff for their dedication and important contributions over the course of the year. I especially want to recognize those members who have joined the Commission during the year and those members who left the Commission during the year, to whom our sincere appreciation for their service in past years is extended.

This letter will be my final one as Chairman of the Commission, since I have decided not to be a candidate for re-election to the post after serving the Commission for nine years. During the past nine years, I have watched the Commission grow from infancy to maturity in meeting the challenges and pursuing the opportunities in Northwest Minnesota. I have been most fortunate to enjoy many associations with dedicated and outstanding individuals in pursuit of the common cause of building for an ever more prosperous future in this most special area. The accomplishments of the Commission in the years since its formation in 1973 are many and have served to advance development throughout the seven counties in Region 1. These accomplishments have been achieved through the cooperative hard work and vision of all those with whom I have served and worked. It has been a special honor to me to share in those efforts.

In closing, I want to focus briefly on the road ahead. The future challenges facing the area and the Commission are numerous and substantial with solutions always being difficult and often controversial. On the other hand, Northwestern Minnesota is a land of boundless opportunity that can and will be realized through vision, dedication and cooperation. By continuing to work together toward common objectives, future challenges can be turned into opportunities and realities.

Respectfully submitted,

Ervin Strandquist, Chairman



Ervin Strandquist, Chairman Board of Directors.



Members of the Board of Directors (left to right): Wayne Juhl, Orrin Linder, Ervin Strandquist, William Gatheridge, Kenneth Redland, Cleo Cleveland, Kenneth Price and Harry Sjulson.

Commission Membership

County	County Board	Township Board	Cities
Kittson	Floyd Sanner Lancaster	*William Gatheridge Humboldt	Dr. Joe Bouvette Hallock
Marshall	*Kenneth Price Stephen	*Ervin Strandquist Newfolden	Roy Engh Warren
Norman	*Werner Mahlum Gary	Cary Sip Ada	Kenneth Redland Ada
Pennington	Donald Grabanski Thief River Falls	Kermit Finstad Thief River Falls	Ambrose Wysoski Thief River Falls
Polk	Donald Bakken Fertile	Gary Letnes Crookston	Duane Knutson Fertile
Red Lake	*Orrin Linder Plummer	Ralph Berg Brooks	Vaughn Thorfinnson Red Lake Falls
Roseau	*Wayne Juhl Greenbush	Joe Jacobson Wannaska	Adrian Pulczynski Greenbush

School District Representatives

*Cleo Cleveland
East Grand Forks

*Harry Sjulson
St. Hilaire

Public Interest Groups

Agriculture	Norma Hanson Goodridge
Business	Harold Thomforde Crookston
Financial Institutions	Fred Sorenson Grygla
Industry	Jerome Standstrom Thief River Falls
Labor	George Wikstrom, Jr. Karlstad
Low Income/Minority	Elton Jones Twin Valley
Soil & Water Conservation	Verne Green Newfolden
Vocational Schools	Marville Magnusson Argyle
Watershed Districts	Rudee Anderson Greenbush

Women

Bonnie Folkedahl
Thief River Falls

*Member of Board of Directors

Members Who No Longer Serve But Did Serve During FY 1982

Rudy Applequist
Crookston

Richard Lorensen
Strathcona

Richard Kruse
Thief River Falls

Ex-Officio Membership

Senator Marvin Hanson, Hallock
Senator Roger Moe, Ada
Representative Willis Eken, Twin Valley

Representative Myron Nysether, Roseau
Representative Tony Stadum, Ada
Representative Leroy Stumpf, Plummer

Introduction

The passage of the Regional Development Act in 1969 by the State Legislature led to the creation of the Northwest Regional Development Commission on February 8, 1973. The legislation enabled the local units of government to petition the Governor to create a Commission within the officially designated regions.

The purpose of the Commissions was succinctly stated in the legislation: "...to facilitate intergovernmental cooperation and to insure the orderly and harmonious coordination of state, federal and local comprehensive planning and development programs for the solution of economic, social, physical and governmental problems of the state and its citizens..."

The Northwest Region includes Kittson, Marshall, Norman, Pennington, Polk, Red Lake and Roseau Counties. Taking into consideration counties, cities, townships and school districts, there are nearly 330 local units of government covering an area of 8,550 square miles. These units of government are represented on the Commission in the following manner; each county has a county commissioner representing county government, a township supervisor represent-



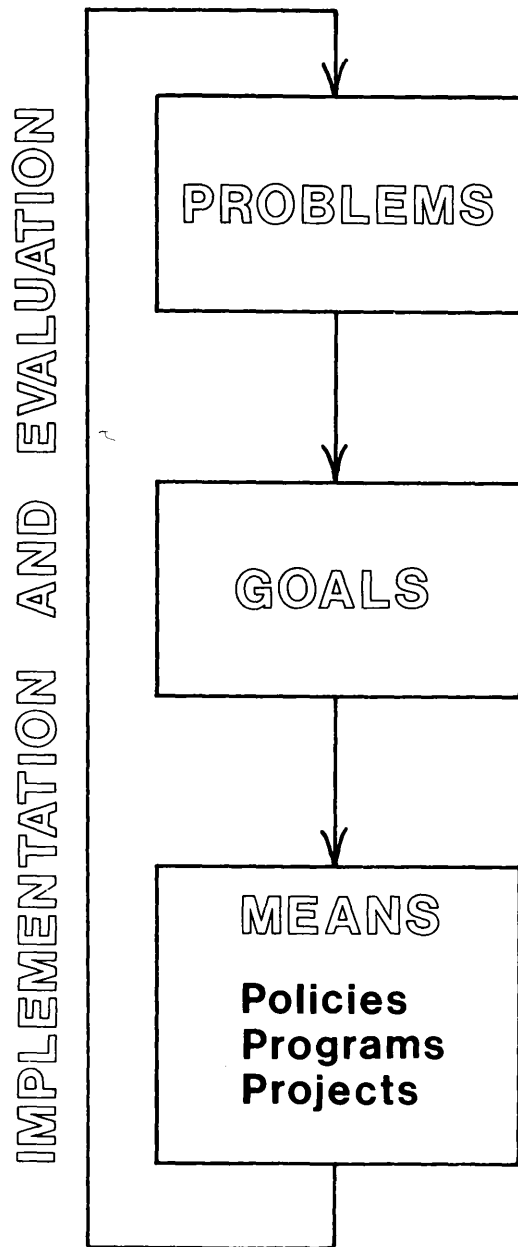
ing the townships in that county, a mayor or city councilman representing city governments from that county and two representatives from school districts across the Region. In addition, the Commission has ten non-elected members representing various public interests such as industry, labor and agriculture. The staff of the Commission is multi-disciplinary in nature and complements the wide array of advisory committees for the different program areas. This organizational structure lends itself to fulfilling the intent of the legislation.

The full Commission meets on a quarterly basis and serves as the overall policy making body which determines the direction and the role of the agency. The Board of Directors is an eight person body which meets monthly to guide the operations of the agency and to serve as the review board for clearinghouse activities.

The total population of the seven county area is 97,225. The number of people serving on the Commission and its various advisory committees is 136. This gives us an approximate ratio of 715/1 as a measure of public participation. In the next few pages you will read about the various programs of the Commission and the manner in which they contribute toward the successful implementation of the legislation.



The NWRDC Planning Process



DEFINITIONS

PLANNING PROCESS: A dynamic, action oriented process which anticipates problems and coordinates various means to attain desired goals.

GOAL: Statement of desired outcome.

POLICY: Course of action to achieve a goal.

PROGRAM: Set of procedural steps to implement a policy.

PROJECT: An implementation activity of a program.

Physical Planning



Economic Development

Unfortunately, the measures of economic distress which indicate financial, wage, and unemployment problems continued to show that the Region's economic situation remained in difficulty during 1981. During this period, unemployment averaged 9.9 percent, with some counties experiencing unemployment in excess of 13 percent. An analysis of earned income data revealed that median earnings in the Region are 24.6 percent below the State average. Businesses continue to have grave doubts about their futures due to slackening sales and the high operating costs. The lack of funds to adequately maintain the Region's important highway transportation system continues to make it difficult to maintain the trunk highways. Highway deterioration could limit the timely shipment of agricultural commodities and further reduce farm income.

The Technical Advisory Committee on Economic Development (TACED) has provided direction to the updating of the Economic Development Strategy which is the most important part of the Overall Economic Development Program (OEDP). The Economic Development Administration (EDA) has required an OEDP from those regions that are certified as Economic Development Districts. Since the Commission received funding from the Governor's Council On Rural Development for a Small Business Assistance Program, the TACED membership has been modified to include business and professional people who have the expertise to help clients solve their business problems. (See the Small Business Assistance Program section for additional information.)

Technical Assistance concerning economic development was provided to local governments. Work was done with and for a number of cities in the Region on projects and opportunities of specific benefit to their city. These efforts took the form of assistance with the economic development aspects of Community Development Block Grants (CDBG's), Urban Development Action Grants (UDAG's), Industrial Revenue Bonding, and Tax Increment Financing, among others. In addition, activities were undertaken that had wider regional impacts. These efforts included the successful application to the Minnesota Department of Transportation (MN/DOT) for funding to conduct a Commodity Movement Study. This study, supported by the District Highway Engineer, will help the Region to build a case for more highway maintenance and construction funding from the State. The TACED provided testimony at a public hearing conducted by MN/DOT in support of the Commission's opposition to the Burlington-Northern proposal to centralize its railway

freight agents in Crookston. The TACED also opposed reduction in scheduled commercial air service to the Thief River Falls Regional Airport.

Because economic development and related economic matters are an integral part of all aspects of people's lives in the Region and because economics are related to all of the various programs and projects of the Commission, Economic Development staff participate in a comprehensive, interdisciplinary approach to plan and program development by coordinating with the other sections of the Commission.

Of the many work program elements scheduled for the next fiscal year, one is the Community Facilities Inventory. This inventory is designed to allow the Commission to maximize its assistance to communities that want to apply for funds under the CDBG program. This is particularly important since the State will begin administering the CDBG program in 1983. Another area to be emphasized involves financing methods and combinations of methods available to cities to accomplish economic development and other development activities. Financing tools having potentials for businesses in the Region will also be identified and information concerning their use will be provided to businesses. It should be noted that given the prospects for interest rates remaining relatively high, creative financing by cities and business for economic development will become increasingly important.

Housing

Because of reduced federal funding and high interest rates, the substantial activity of the past years to meet the housing needs of low and moderate income families and elderly in the Region slackened considerably.

In 1981 there was review of 14 proposals for subsidized new rental housing amounting to 225 units or 7.1 million dollars. However, in 1982 there were only four proposals for subsidized rental housing units amounting to 65 units or \$1,854,610. This represents a decrease in funding of 73.9 percent. The Technical Advisory Committee on Housing (TACH) met three times during the year to consider these proposals. Under the Department of Housing and Urban Development's (HUD) Public Housing Program, 44 units of elderly and low income housing received approval in the amount of \$1,290,150. These units are scheduled for construction in Badger, Fosston and Middle River.

The NWRDC staff provided technical assistance with a number of communities on their applications. These included Gary which applied for a Farmers Home Administration (FHA) loan for 16 units of elderly housing; Halstad which applied for a HUD loan for 24 units of elderly housing; Hallock which applied for 19 units of elderly housing; and Alvarado which applied for six units of elderly housing.

Because of the reduced funding for housing by Congress through HUD and FmHA, the TACH was kept informed about other federal programs that had housing elements and could to a small extent help take up the slack in the reduced funding of the single purpose housing programs. The Overall Economic Development Program was presented to members of the TACH at the July, 1981 meeting. This document contains detailed statistical data which can be used in establishing housing need criteria and developing local housing plans. Information concerning the Small Cities Community Development Block Grant

(CDBG) as it may impact housing was presented to the TACH at its October, 1981 meeting. Of the three elements which may be funded by a CDBG, housing for low and moderate income people is eligible and may be combined with the other elements, economic development and city infrastructure the streets and sidewalks.

There were announcements of various programs available during the year. Section 202 loans were available at the HUD Area Office. This program provided direct loans for non-profit and limited dividend sponsors of housing for the elderly and handicapped. The Minnesota Housing Finance Agency (MHFA), through a number of participating banks in Region I, is providing home improvement loans during 1982 at interest rates from 3% to 14.5% depending on the income of the borrower.

The areas of focus in the next year will be updating the demographic and housing data as they become available from the 1980 Census. There will be a continuation of monitoring of programs offering housing funding and relationships with HUD, FMHA, MHFA, local Housing and Redevelopment Authorities, Community Action Agencies and communities seeking to address housing needs. Technical assistance will be provided to any community in the Region who requests Commission involvement in meeting their housing needs for low and moderate income families and the elderly.



Land Use and Natural Resources

The past year was an active one in the land use and natural resources area. The Commission created a Natural Resources Advisory Committee to address natural resource issues. The Committee has chosen to focus its main attention on the problems of water management in the Region and to explore avenues to achieve better public education on both problems and solutions. The Committee's membership includes a cross-section of local officials, watersheds and soil conservation managers, educators and others, providing for an interchange of diverse perspectives and experiences.

Undoubtedly the most controversial, as well as time consuming, natural resource related issue the Commission was involved in during the year was the hazardous waste land disposal facility siting process. As the year began, all parts of Region I had been removed from consideration for selection as a disposal facility. Shortly thereafter, however, the re-examination of public lands by the Minnesota Waste Management Board turned up a number of potential sites in Polk, Kittson, and Marshall Counties. The Commission directed its staff to monitor the situation surrounding these sites and present further information.

During this period a number of informational meetings were held by the Waste Management Board and these were attended by the Commission members and staff. The Waste Management Board narrowed its list of potential sites following these meetings, leaving three sites in Marshall County and one site in Kittson County under consideration.

During the remainder of the year, the Commission and its staff spent considerable effort to ensure that adequate information was available to local governments and citizens regarding the technical specifics of the proposed sites and the processes used by the Waste Management Board in reviewing sites. Testimony was presented on behalf of the Commission at a large general public hearing held in Thief River Falls. The testimony reflected the consensus reached by the Commission after reviewing a wide range of information about the sites and the potential ramifications of locating a disposal facility on them. The Commission noted severe drawbacks to the sites on four major criteria: 1) all of the sites are subject to periodic overland flooding due to their low elevations raising unacceptable potential for the contamination of domestic and international surface waters, including waterways used for drinking water supplies; 2) all of the sites lack ideal subsurface geology to ensure the protection of groundwater aquifers; 3) all of the sites can be accessed only by two lane highways which are less than ideal for the movement of hazardous materials; and 4) the sites are located at a considerable distance from the primary generation points in the Twin Cities area and would necessitate very high transportation costs for waste generators, thereby raising several questions about the economic viability of disposal operations located in this area. As this Annual Report goes to press, the report of the independent hearing examiner is still pending and future consideration of these sites by the Waste Management Board is unclear.



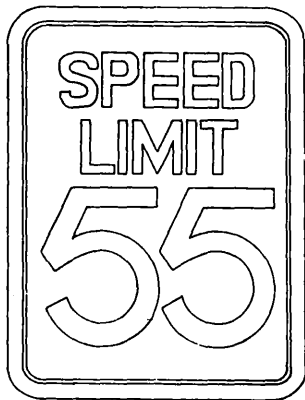
Small Business Assistance Program

The Small Business Assistance Program (SBAP), designed to help small businesses with problems and opportunities and any person wanting to go into business in Northwestern Minnesota by providing extensive professional managerial and technical assistance, began operations in late 1981. The primary funding for this program was made available on a competitive basis through the Governor's Council on Rural Development (GCRD). It should be noted that the GCRD chose this type of program as one of three areas for its initial focus based on a statewide "issue identification" process in 1980, involving local participation through the

regional development commissions. It should be further noted that the resources available to the GCRD are the cooperation and influence of its members and use of the interest derived from the Rural Rehabilitation Trust Fund - a revolving fund which dates back to the 1930's.

The two year SBAP which is a pilot for possible replication throughout the State has three primary elements. The first of which involves managerial and technical assistance which includes but is not limited to: advertising; bookkeeping/basic accounting; accounts receivable/collections; cash flow management; development planning; equity procurement; inventory control; marketing; new product development; personnel management/training; purchasing; salesmanship; and purchasing existing or starting new businesses. The second important element is to establish a network of experienced business and professional volunteers who will lend their expertise to assisting small businesses and individuals wanting to go into business. Thirdly, the final goal of the SBAP is to establish funding from the private sector in addition to the volunteers in order to permit the program to continue after the two year GCRD grant ends.

Presently, the SBAP's activities are directed with the authority of the Commission by an 18 member Technical Advisory Committee On Economic Development (TACED). The TACED is comprised of business and professional people who are eager to help small business people succeed. The TACED chairman is Fred Sorensen, President of the American State Bank of Grygla. As of June 1982, the first six months the SBAP has been in existence, sixteen businesses have become clients of the program and are being assisted by the Management Specialist on the Commission staff with the assistance of members of the TACED.



Transportation

The Transportation Program is designed to allow for active participation in the transportation planning and decision making process established by the Minnesota Department of Transportation (Mn/DOT). Transportation problems affecting the Region are identified and analyzed by the Technical Advisory Committee on Transportation (TACT). These problems and concerns are reflected in the TACT's reviews and comments on plans and projects proposed by Mn/DOT and on legislative proposals relating to transportation.

These concerns are also addressed in the Regional Transportation Plan which was completed and approved by the Commission in July of 1981. The Plan provides a multi-modal development strategy based on the Region's perceptions of its future transporta-

tion system needs. The major concern expressed throughout the Plan is the need to recognize the impact which the large volume of agricultural commodities shipped from the Region has on the transportation network. In order to take these commodity movements more fully into account in future highway and transportation system developments, the Commission received a matching grant from Mn/DOT to study the movement of agricultural commodities produced within the Region.

The study will provide documentation of the quality and geographic distribution of agricultural commodities produced within the Region and the present transportation system and market destination of these commodities. The impact on the regional transportation system of moving these commodities will be analyzed based on the tonnage estimates of crop production being transported. Crop production data has been gathered from the ASCS offices in the Region. Data concerning the mode of shipping and the market destinations of the Region's agricultural commodities has been collected from a survey of elevator managers in the Region.

The study will provide information on how to best respond to the changing structure of agricultural transportation to promote an efficient multi-modal system. A second year study proposal was prepared and submitted to Mn/DOT which will use the information gathered in the first year's study to develop forecast of potential future transportation system developments and the resultant commodity flows. Recommendations will be developed concerning the use of commodity movement analysis and transportation system management strategies which will result in transportation system planning which is more responsive to user demands and financial constraints.

Although most emphasis is placed on the highways mode, changes also took place during the year which will affect future air and rail service in the Region. On December 1, 1981 Republic Airlines filed a 90 days notice to suspend all service to Thief River Falls. The Commission provided testimony at the Civil Aeronautics Board (CAB) Hearing on January 27, 1982 in support of maintaining the level of essential air service which was present with Republic. A decision was since made by the CAB to reduce the essential air service from 68 seats in-bound and out-bound to 56 seats in-bound and out-bound. Negotiations are currently underway to select an acceptable commuter airline to replace the services of Republic. Republic will continue to operate at Thief River Falls until such a replacement is found.

Testimony was also presented at a public hearing on May 18, 1982 in opposition to a proposal by Burlington Northern to centralize their freight agency in Crookston, thereby eliminating agency service at the outlying stations of Fosston, Thief River Falls, Roseau, Warroad, Warren, Stephen, and Hallock. The Commission reflected the concerns of many shippers throughout the area that service could not be maintained at the present level if this proposal was adopted. The testimony also reflected concerns that as rail service deteriorates, shippers will utilize trucks more, thereby increasing the damage to the highways in the Region.

In the coming year the analysis of commodity movements will again be the central focus of the Transportation Program. The TACT will continue to review and comment on Mn/DOT plans and projects.

Problems concerning all modes of transportation will continue to be analyzed with recommendations forthcoming to promote an efficient multi-modal transportation system.

Human Resources Planning



Aging

The intent of the Aging Program is to meet the needs of the elderly within Region I. That mission is carried out through the functions and activities of the Older Americans Act. Improvement continued in 1981 in the understanding of the problems which confront the more than twenty thousand older persons in Northwestern Minnesota.

Growth was evident in two areas. First, growth has taken place through senior center development and increased social service projects. But growth is also evident within the Aging Advisory Committee through its understanding of aging issues and how to best solve those issues.

The Aging Advisory Committee (AAC) was instrumental in developing the 1982 Area Plan on Aging Amendments and in setting the course of action for 1981. During the year the AAC made recommendations to the full Commission which resulted in the successful implementation of the Aging Plan.

The following projects were funded:

1) The Roseau County Transit Service Project, its major purpose is to provide access to medical services for senior citizens in Roseau County (total cost \$27,945 - grant amount \$11,973).

2) The Kittson County Senior Transportation Program, its major purpose is to provide access to medical services for Kittson County senior citizens (total cost \$14,397 - grant amount \$5,567).

3) The Northwest Minnesota Legal Services Project, its purpose is to provide limited legal services to the Region's elderly (total cost \$49,000 - grant amount \$24,400).

4) The Valley Chore Service Project, its purpose is to provide a range of services from lawn mowing and snow removal to major house cleaning within the homes of senior citizens in Norman, Pennington, and Polk Counties (total cost \$90,966 - grant amount \$35,933).

5) The Northwest Chore Service Program, its major purpose is the same as number four but will be providing the service in Kittson, Marshall and Roseau Counties (total cost \$44,230 - grant amount \$22,938).

6) The Inter-County Nursing Service Home Health Aide Care Program, the major purpose of this project is to provide a full range of services for individuals within their own home. Services such as bathing, personal care, toileting, help with medications, etc.

This project will operate within Pennington and Red Lake Counties (total cost \$10,735 - grant amount \$6,321).

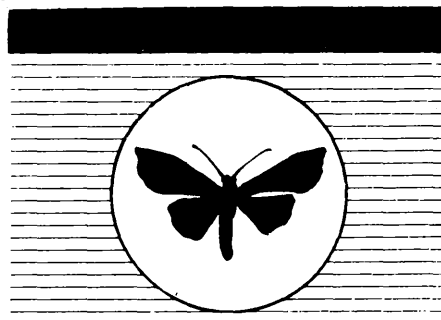
7) The number of senior citizens centers grew during 1981. Also, many projects were completed during 1981 which was funded the previous year. In 1981 there were two funding sources available for senior center development, Title III of the Older Americans Act and the McKnight Foundation. Funds from these sources were allocated to the following communities in the amounts shown: Title III-B Funding - Alvarado \$20,382, Goodridge \$6,035, and Kennedy-Donaldson \$21,159; McKnight Funding - East Grand Forks \$4,710 and Gary \$546.

8) The Region I Senior Meals and Activity Program, the major purpose of the project is to provide a nutritious meal to older persons in a congregate setting and to also provide the opportunity for fellowship (total cost \$448,255 - grant amount \$188,361).

9) The Region I Home Delivered Meal Program, which provides for the opportunity of homebound older persons, with a identifiable need, to receive a nutritious meal in their home (total cost \$68,547 - grant amount \$41,485).

The Commission's Aging Program continued to focus on its educational aspects with increased "information awareness" on practical matters as the goal, the Commission sponsored the 7th Annual Fall Aging Conference. The topic for the Conference focused on senior citizens centers, how to get one and what to do with it after you get it. The Aging Program also co-sponsored with the seven individual county committees on aging a series of "County Forums." The public forums are designed to provide for local input.

In 1981 the focus was on improving the system for delivering services with controlled growth. During 1982 the emphasis will be placed on "local coordination and local initiative." Actual program development could be less because of impending cutbacks in funds at all levels. It is the consensus of the Aging Advisory Committee that true coordination is necessary if local programming for the elderly is to be maintained. Plans to improve coordination and increase local initiative will be made here with the aid of the entire Region I Aging Network.



Arts

The purpose of the Commission's Arts Program is to facilitate and encourage local arts development through reviewing, evaluating, and funding local/regional applications and to provide technical assistance services, when appropriate, within the Region.

The Commission, through its Arts Committee and staff, provides assistance and encouragement to local arts organizations to enhance the quality and availability of arts experiences for communities in the

Region. In addition, through the activities of the Region I Arts Committee and its staff, the Committee serves the communities as an advocate for local and regional arts development and as a vehicle for input to the MSAB concerning the involvement and development of the arts at the local, regional and state level.

The Northwest Regional Development Commission, upon recommendations by the Arts Committee, awarded grant funds in two categories - Production Assistance (PA) and Sponsorship (S). The organizations receiving funds were:

Kittson County

Camp Sunshine (PA)

Art activities in dance and photography for the Handicapped.

\$805

Marshall County

Middle River Senior Citizens, Inc. (PA)

China painting instruction.

\$1,000

Pennington County

Thief River Falls Community Arts Council (S)

"Teddy Roosevelt"

\$500

Thief River Falls Community Arts Council (S)

Blue grass concert - by Shelby and Alex.

\$127

Polk County

Crookston Community Theatre (PA)

Musical Production of "Anything Goes".

\$2,656

Fosston Community Library & Art Center (PA)

Photography, display and watercolor workshop.

\$513

Fosston Community Library & Art Center (S)

Woodcut Exhibit

\$300

Fosston Community Library & Art Center (PA)

Musical Production of "South Pacific."

\$1,299

Fosston School District (PA)

Traveling high school art exhibit

\$140

Tri-County Community Corrections (PA)

Basic art activities for incarcerated adults.

\$724

Women's Division - Red River Valley Winter Shows (PA)

Series of art demonstrations & events.

\$525

Roseau County

Warroad Summer Theatre (PA)

Summer Theatre Season - 5 plays

\$1,875

The NWRDC also received a McKnight Foundation grant to provide capacity building opportunities to rural arts organizations. The capacity building project consists of three parts:

- The opportunity to continue and accelerate management and organizational development through access to a **professional consultant**;
- the opportunity to communicate through publication of a quarterly **newsletter**;
- the opportunity to improve their artistic resources, facilities, or management initiatives through a **regrant program**.

The professional consultant portion of the project will take place in early FY'83; the **Northwest Arts** was published in March and June and distributed to approximately 700 people; the three following semi-professional organizations received grants to purchase equipment:

Polk County

Crookston Community Theatre

Purchase of sound amplification system

\$1,815.87

Fosston Community Library & Art Center

Purchase of theatre lights

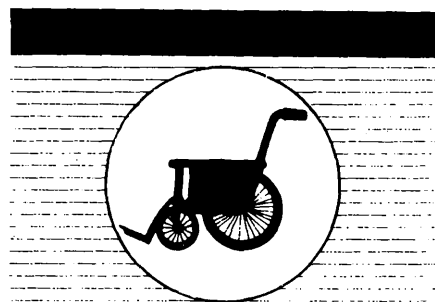
\$1,517.46

Roseau County

Warroad Summer Theatre

Purchase of light equipment and dimmer board

\$1,666.67



Developmental Disabilities

The Developmental Disabilities Program is designed to assist local human services organizations in the coordination and development of services for handicapped people. During the past year, four priority areas have been identified by the Developmental Disabilities Advisory Committee (DDAC) and the NWRDC staff. These priorities are:

- 1) The needs of the 0-3 age group of disabled persons and their families;
- 2) The search for alternatives to institutionalization of both children and adults who are developmentally disabled;
- 3) The need for employment opportunities for handicapped adults;
- 4) The need for parent and community education.

Several projects have been undertaken during the past year to develop and coordinate local services in an

effort to alleviate these needs in our communities. The Preschool Coordination Task Force has been compiling a directory of services for families with young handicapped children. Since the first contact most of these families have with professionals is with medical personnel in clinics and hospitals, the directory is being designed for use by doctors, hospital social workers, etc. to inform these parents about other available services.

Assistance has also been given to organize a local chapter of the Minnesota Association for the Education of Young Children. The purpose of this group is to provide guidance and information concerning recent research, trends, and experimental programs in an effort to improve and extend quality education and contribute to a better life for young children.

Developing alternatives to institutionalization has been the activity which has been most emphasized by local agencies. At the request of the County Social Services directors of Region I a proposal to develop adult foster care has been prepared by the Developmental Disabilities program staff and submitted to the McKnight Foundation. If funded this project will be staffed jointly by the developmental disabilities staff and a consultant hired for this purpose. Its primary goals are the development of county foster home recruitment plans and a training package for foster families of mentally retarded adults.

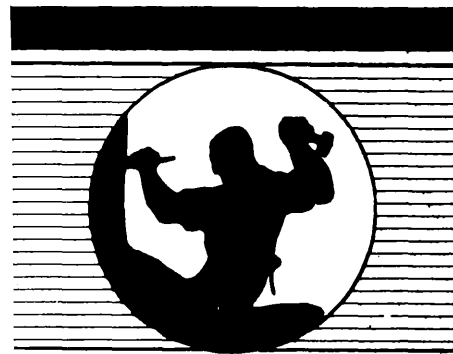
Since one of the problems encountered in community placement of handicapped persons is a lack of available training for the staff of group homes and Developmental Achievement Centers, another project done by the developmental disabilities program was a survey of the training needs of these staffs. During the next year the kinds of training identified by this survey will be made available locally to these organizations.

The Region I Respite Care program, which provides a service that is designed to help families avoid the institutionalization of a handicapped member, has been expanded in the past year to cover the entire Region and has been incorporated with assistance from the Developmental Disabilities staff.

A specific need for employment opportunities for handicapped adults has been identified as a need for paid work activity for the clients of the developmental achievement centers. A task force was organized to discuss possible ways to get paid work activity into Region I. At least one of the solutions discussed will be developed further during the next year.

A final priority area, concerning a need for parent and community education, was addressed in part by several well-attended workshops and conferences. Two PACER parent advocacy workshops were held. Four CADRE workshops for law enforcement personnel and attorneys were held. The subject of the CADRE workshops was training on how to deal with handicapped offenders and/or victims of crimes. A large conference on the **Welsch v. Noot** Consent Decree was also held. The subject was the impact on the local counties of the reduction of the state hospital population through community placement. Other methods of disseminating information to the public are the use of the agency newsletter and news releases to the local media.

The emphasis for the upcoming year will be on the following through on many of the projects and surveys done in this past year. In this way the greatest possible impact on the developmentally disabled citizens of Region I can be achieved.



Employment and Training

The Employment and Training Program is based in the creation of the Comprehensive Employment and Training Act (CETA) and the need to provide both basic working skills and specific job training to persons who are unable to find work. The Commission's role in providing these services is to offer the local guidance, input and planning needed to direct the program in serving local needs in the most effective and efficient manner possible. The Regional Employment and Training Advisory Council was created by the Commission to assist the Commission in performing these duties.

During the past year activities have concentrated on two basic areas: assisting in maintaining the current programs and planning and assisting in forming a new structure for the delivery of employment and training services. In terms of maintaining current programs, efforts have concentrated on working with local program administration and program operation to make recommendations on allocation of resources, program design, and service levels. Program Operators (Career Education Center, Crookston CETA Center, Inter-County Community Council, Thief River Falls CETA Center) and local administration have reciprocated by seeking assistance on appropriate issues. Some of the major areas considered have included Private Industry Council Grant recommendations, reorganization of In-School Youth Programs, granting of Office of Statewide CETA Special Grant Funds, establishment of local target groups and setting service levels to Department of Labor Significant Segments.

An area which involves current programs and yet led to designs for new programs, has been the development of a RETAC Member Handbook. This effort resulted from a feeling by members that although efforts were being made to keep members informed of the purpose and direction of the Committee, it was often difficult for members to get a total picture of how everything fits together. RETAC members, Program Operator staff and Commission staff were formed into a work group to clearly define the purpose and structure of the entire CETA system. The resulting Handbook outlines the history, organization, and roles of the Committee and related staff. The completion of this booklet was very timely as major efforts towards the reorganization of CETA programs soon began at both the state and federal levels, and the Handbook represented a clear foundation for the Committee to make local recommendations on possible changes.

The development of local recommendations eventually led into the second major area of emphasis as it became apparent that major changes in the admini-

strative and planning structure were going to be made. This task required coordination with all of the various actors and sorting through the organizational complications of the program. Although the initial efforts indicated a clear direction, forming final recommendations required a great deal of negotiation and the compiling of information. In the end both private and public sector representatives agreed on a strong council structure characterized by specific decision making responsibility, predominately private sector representation, a state/local division of decision making, a clear definition of roles, and an emphasis on program changes based on evaluation. The underlying theme of these recommendations was to create a strong planning system designed to support program operation and guide administration in implementing any necessary changes.

In future months Committee members and staff hope to implement whatever changes are finally dictated by state and federal changes and work with a system which can provide the training and assistance to move workers into jobs.

Data Management

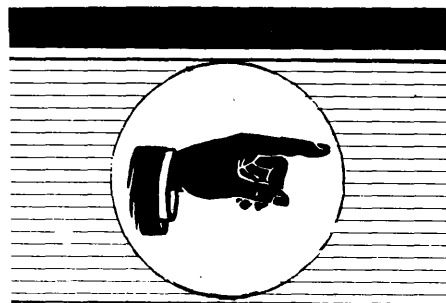
The area of Data Management functions to keep track of the volumes of information which support planning, agency administration, and services to local governments and agencies. Although data management and development has always required considerable attention, special efforts were made during the past year to organize and improve the gathering and distribution of information. Areas of special effort have included purchase of computer equipment and the allocation of additional staff time to provide a central focus and foundation.

Specific projects have involved development of a core information base; beginning automation of administrative functions such as accounting timesheets and mailing lists; keeping current on census reports; replacing information sources lost to budget cuts; automating surveys in transportation, residential care and developmental disabilities training needs; and keeping current on new sources of information. Special efforts are made to make certain information is available to local persons and governmental units. This



includes providing census information and other basic statistic such as: unemployment, income or trade; searching out special hard to find data sources; preparing special purpose reports; consulting on information for grant applications; and researching federal or state legislation questions. The addition of a micro computer will also allow staff the opportunity to work with solutions to problems which might involve an automated approach.

During the upcoming year efforts will concentrate on finishing up the internal projects, keeping information current, and providing services to governmental and private agencies or persons. The concentration will be on moving from storing and finding to using and distributing information.



Technical Assistance

NWRDC staff spent a significant amount of time towards providing technical assistance to local governments, private industries and businesses, agencies, and citizens in Region I. Assistance generally falls into one of four categories: planning, grantsmanship, special projects or information dissemination. All of these services are available upon request. Large projects can be handled by contracting the services of the Commission, (i.e. a land use plan).

All four areas of activities were used quite extensively during the year with grantwriting and/or technical assistance in the area of community development block grants for Red Lake Falls, Red Lake County, Karlstad and Marshall Counties. Grantwriting and/or technical assistance was provided in the area of the Aging Program in transportation programs for Roseau and Kittson Counties; chore service in Kittson, Marshall, Norman, Polk and Pennington Counties; the communities of Alvarado, Goodridge, East Grand Forks, Gary, Kennedy-Donaldson received assistance in preparing applications for senior centers. Technical assistance was provided in the area of promoting arts in the Counties of Kittson, Marshall, Pennington, Polk and Roseau. A land use planning contract was entered into with the City of Fosston.

The provision of statistical data and information is a daily ongoing effort for the Commission as more people become aware of and take advantage of the Commission's data sources and services. As the 1980 Census materials become available, the Commission is programming the data for its computer. As a result, the Census data will be available in many forms to increase its usefulness to users.

Several private industries were assisted. One business had developed a new product for which the Commission assisted with an eight state market survey, and helped develop marketing aids. Another business was assisted with an environmental problem with the

result that the business has remained in the State (see Small Business Assistance Program for other private industry assistance).

NWRDC maintains close working relationships with funding agencies in order to optimally assist local governments in targeting and leveraging funds for their specific needs.

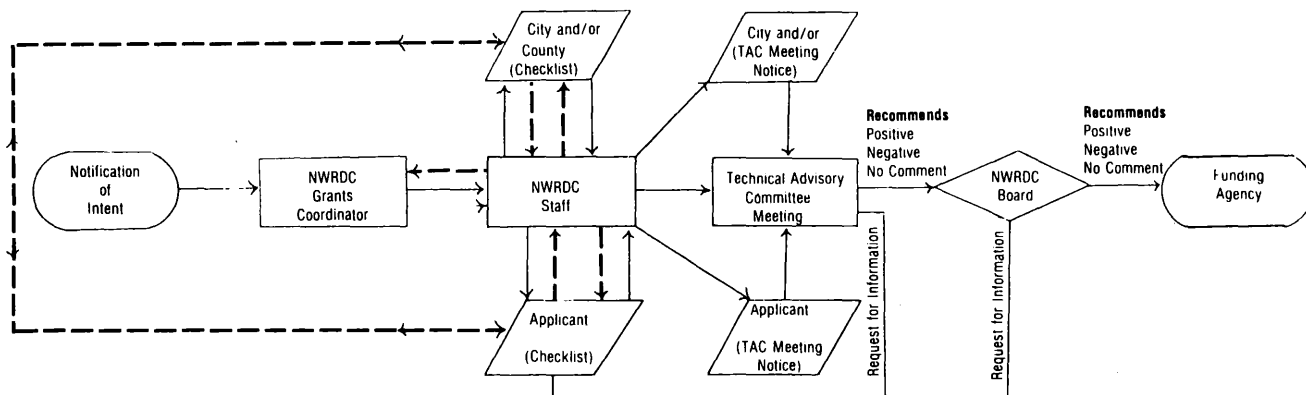
Regional Review

To fulfill the requirements of the Regional Development Act of the State of Minnesota and the office of Management and Budget of the federal government, the Commission performs the coordinative function through the A-95 review process. The review process is designed to promote maximum coordination of programs using federal and state funding. The key to coordination through the A-95 process is communica-

tion. The NWRDC provides this medium through which local governments and agencies can do this. The process is designed to identify and understand communities of interest and areas of conflict in the expenditure of public funds and to resolve differences when they do arise. When the RDC is given the "Notification of Intent" to apply, prior to filing a formal application communication between the applicant and the RDC can take place while there is still time to revise a grant application in the event that it is advantageous in light of regional plans, goals, and policies. The Commission also reviews plans for consistency with regional goals and policies.

In its capacity as the Regional Clearinghouse for A-95 and other reviews, the Commission reviewed about 90 proposals and plans. Following is a list of projects and plans reviewed. A key to various funding agency abbreviations is attached at the end of the project list.

NORTHWEST REGIONAL DEVELOPMENT COMMISSIONS REGIONAL REVIEW PROCESS



Legend

- Beginning
- Processing
- ▱ Input/Output
- ◇ Decision
- Paper Flow
- ↔ Coordination as Needed

Projects reviewed January 1981 through June 30 1982 [A-95]

Applicant	Project	Total Project Cost	Funding Agency
City of Crookston	Diseased Tree Disposal Facility	\$4,699	USDA
Kittson County	Bridge Replacement Project	86,040	Mn/DOT
NW Community Action Agency	Administration Grant	167,375	CSA
Marshall County	Year II, Community Development Grant	275,000	HUD
NW Community Action Agency	Weatherization Program	149,000	DOE
Department of Economic Security	1982 CETA Program	NA	USDOL
Mn. Dept. of Transportation	Trunk Highway 11 and 90 Roseau Study	NA	USDOT
City of Alvarado	Water Storage Tank/Watermain Improvement	237,700	FmHA
Kittson County	Bridge Replacement	37,800	Mn/DOT
Norman County	Design Study on Reconditioning T.H. 75	NA	Mn/DOT
Garden Valley Telephone Company	Cable TV for 7 small communities	2,500,000	FmHA
Martha Ripley Alliance	Direct services to battered women	6,600	DOC
Marshall County	Bridge Replacement	30,000	Mn/DOT
Marshall County	Bridge Replacement	30,000	Mn/DOT
Tri-Valley Opportunity Council	FY'82 Administration Grant	156,000	CSA
Mn. Crime Control Planning Board	State Juvenile Justice Plan	NA	MCCB
Multi-County Nursing Service	Family Planning	40,932	MDH
Roseau County	Bridge Replacement	40,000	Mn/DOT
University of Minnesota (Crookston)	Retired Volunteer Service Program	52,424	ACTION
Multi-County Nursing Service	Women Infant Childrens Program (WIC)	43,023	MDH
Tri-Valley Opportunity Council	Women Infant Childrens Program (WIC)	39,194	MDH
Lowell Moen	Low Rent Elderly Housing Project	424,000	FmHA Loan
Twin Valley Telephone Company	Cable TV Service	550,000	REA
East Grand Forks	Street Improvements	317,500	Mn/DOT
Garden Valley Telephone Company	Expansion of Cable TV Service	NA	MCCB
NW Community Action Agency	Headstart Program	7,000	CSA
Quinn County Board of Health	Community Health Service (2 yr. program)	2,296,628	MDH
Agassiz Health Systems Agency	1982 Health Plan	NA	MDH
Tri-Valley Opportunity Council	Transportation Program	59,413	Mn/DOT
Border Area Health Service	Rural Health Initiative Program	315,437	BCHS
Thief River Falls	Land Use Plan	7,550	DEPD
Polk County	Community Health Services Plan	91,002	MDH
Multi-County Nursing Service	Community Health Services Plan	140,485	MDH
Fosston	UDAG Eligibility	NA	HUD
Inter-County Community Council	Head Start Program	205,884	HHS
Kittson County	Bridge Replacement	615,000	HHS
City of Newfolden	Street Improvements	1,339,000	FmHA Loan
NW Community Action Agency	Head Start Program	5,682	HHS
Roseau County	Bridge Replacement	25,000	Mn/DOT
Warren Housing & Redevelopment Auth.	Site Report on Elderly Housing	NA	HUD
City of Red Lake Falls	Sewage Facility Plan	NA	EPA
City of Argyle	Sewage Facility Plan Revision	NA	EPA
Mn. Dept. of Economic Security	Prime Sponsorship FY '82 CETA Program	NA	USDOL
City of Warroad	Water Tower/Lift Station	750,000	FmHA
			Loan/Grant
Mn. Dept. of Transportation	Fiscal Year 1982 Work Plan	NA	Mn/DOT
Tri-Valley Opportunity Council	Senior Cottage Industry Employment		HHS
Roseau County	Bridge Replacement	60,000	Mn/DOT
Kittson County	Bridge Replacement	95,000	Mn/DOT
Valley Congregate Housing	Elderly Congregate Housing (Halstad)	684,800	HUD Loan
Association for Retarded Citizens	Foster Grandparent Program	64,692	HUD
First American Company	19 Units Elderly Housing (Hallock)	559,610	FmHA
Norman County	Bridge Replacements	105,500	Mn/DOT
Norman County	Bridge Replacement	80,000	Mn/DOT
Polk County	Bridge Replacement	600,000	Mn/DOT
Inter-County Community Council	Administration Grant	70,315	DES
Mn. Department of Transportation	Upgrading S Polk Line to Erskine #59		US/DOT
Roseau County	Bridge Replacement	20,000	Mn/DOT
City of Kennedy	Cable TV Franchise	NA	MCCB
			McKnight
Thief River Falls School District	Playground for Handicapped	68,680	Fo.
City of Twin Valley	Cable TV Franchise	NA	MCCB

Applicant		Total Project Cost	Funding Agency
NW Community Action Agency	Head Start	5,000	HHS
NW Community Action Agency	Head Start	244,058	HHS
NW Community Action Agency	Head Start	20,048	HHS
City of East Grand Forks	Bitumonous Overlay	411,300	Mn/ DOT
NW Regional Corrections Center	Adult Special Education	10,000	MDDC
Respite Care Program	Respite Care Program	30,000	MDDC
Northwest Regional Dev. Commission	Adult Foster Care	15,000	McKnight Fo.
Northwest Regional Dev. Commission	Developmental Disabilities FY'83 Prog.	32,487	MDDC
City of Lancaster	Recreation Project	22,000	DEPD
East Grand Forks	Running/ Jogging Track with Obstacles	149,375	DEPD
Pennington County	Oakland Park (Lighting & Access)	11,000	DEPD
Middle River	Sledding Hill, Tennis Courts, Playground	97,700	DEPD
Red Lake Falls	Phil Cuno Park Project	17,890	DEPD
Marshall County	Bridge Replacement	50,500	Mn/ DOT
Marshall County	Bridge Replacement	187,000	Mn/ DOT
Marshall County	Bridge Replacement	67,500	Mn/ DOT
Marshall County	Bridge Replacement	25,000	Mn/ DOT
Alvarado Area Development Corp.	6 Elderly Housing Units	187,000	FmHA Loan
City of Warren	Jogging Track	60,000	DEPD
Marshall County	Bridge Replacement	185,000	Mn/ DOT
Norman County	Bridge Replacement	90,000	Mn/ DOT
Roseau County	Bridge Replacement	100,000	Mn/ DOT
Polk County	Bridge Replacement	37,367	Mn/ DOT
Polk County	Bridge Replacement	55,935	Mn/ DOT
Polk County	Bridge Replacement	22,407	Mn/ DOT
Polk County	Bridge Replacement	19,525	Mn/ DOT
Polk County	Bridge Replacement	21,483	Mn/ DOT
Marshall County	Year 2 Community Development Block Grant	519,000	HUD

NA: Not Available

FUNDING AGENCY IDENTIFICATION

CSA	Community Service Administration (US)
BCHS	Bureau of Community Health System
DEPD	Department of Planning & Economic Development
DES	Department of Economic Security
DOC	Department of Corrections
DOE	Department of Energy (US)
DOL	Department of Labor (US)
EPA	Environmental Protection Administration (US)
FmHA	Minnesota Farmers Home Administration
HHS	Health and Human Services (US)
HUD	Department of Housing and Urban Development (US)
MCCB	Minnesota Cable Commission Board
MDH	Minnesota Department of Health
Mn/ DOT	Minnesota Department of Transportation
MDDC	Minnesota Developmental Disabilities Council
REA	Rural Electric Administration
USDA	United States Department of Agriculture
USDOT	United States Department of Transportation

Aging Advisory Committee

June 1982

Ackley, Michael
Anderson, Orville
Edwards, R.L.
Green, Verne (C)
Harney, Vivian
Juneau, Olivine
Mahlum, Werner (C)
Moen, Kenneth
Pederson, Ernest
Pulkrabek, Sylvia
Rethemeier, Linda
Stenberg, Otto
Swan, LaVerne
*Wysoski, Ambrose (C)
Zutz, Dale

Halstad
Karlstad
McIntosh
Newfolden
East Grand Forks
Brooks
Gary
Newfolden
Plummer
Mentor
Crookston
Thief River Falls
Badger
Thief River Falls
Warren

Developmental Disabilities Committee

June 1982

Dahlman, Tessie
Dalen, Renae
Erickson, Gary
Green, Verne (C)
Huot, Don
Irvine, Sherryll
Jones, Elton (C)
Nellis, Evelyn
Pankow, Terry
Pearson, Mrs. Alvin
Rafteseth, Ruth
Sutherland, Harry
*Thorson, Pat
Westman, Pat

Hallock
Thief River Falls
Thief River Falls
Newfolden
Red Lake Falls
Thief River Falls
Twin Valley
Mahnomen
Crookston
East Grand Forks
Crookston
Hallock
Warren
Roseau

Arts Advisory Committee

June 1982

Anderson, Ruth
Bushkofsky, Dennis
Cleveland, Cleo (C)
*Forney, Dee
Hastad, Becky
Haubrich, Jeanette
Jones, A. Elton (C)
Kuznik, Tony
Lodahl, Arlene
Miller, Merle
Myher, Evangeline
Price, Kenneth (C)
Saetre, Margaret
Scott, Marie
Sorenson, Ric
Visser, Luanne

Greenbush
Hallock
East Grand Forks
Thief River Falls
Halstad
Hallock
Twin Valley
Crookston
Warroad
Crookston
Warren
Stephen
Thief River Falls
Red Lake Falls
Fosston
Ada

Economic Development Committee

June 1982

Anderson, Cecil
Carpenter, John
Charon, Harlan
Cleveland, Cleo (C)
Heteen, Pam
Maas, Robert
McClellan, Gerald
Riederer, Tom
Rood, Omar
Ruud, Wayne
Sandstrom, Jerome (C)
Schuster, Ken
*Sorensen, Fred (C)
Tunheim, Ray

Thief River Falls
Hallock
Hallock
East Grand Forks
Roseau
Crookston
Grygla
East Grand Forks
Crookston
Karlstad
Thief River Falls
Argyle
Grygla
Newfolden

Criminal Justice Advisory Committee

June 1982

Aaby, Jr., Henry
Hauger, Curt
Horn, Harvey
Howard, Dennis
Huseby, Jason
Jorgenson, Larry
*Knutson, Duane (C)
Knutson, Kermit
Larson, George
Moen, Oris
Nordling, Duane
Olin, Dave
Richards, Charles
Stoltman, Leonard
Strandquist, Ervin (C)
Thompson, Roger

Twin Valley
Roseau
Ada
Bemidji
Crookston
Warren
Fertile
Red Lake Falls
Roseau
Fertile
Hallock
Thief River Falls
Thief River Falls
Argyle
Newfolden
Lake Bronson

Employment and Training Advisory Committee

June 1982

Bakke, Harvey
Brandt, June
Brown, Doug
*Cavalier, Donald
Cheney, Charles
Christianson, Judith
Coquette, Rodger
Gamber, Harl
Gentry, Sally
Gomez, Juan
Gunderson, Orley
Huggett, William
Jorgenson, Roy
Larson, Joyce
Larson, Ardell
Magnusson, Marville (C)
Melgaard, Arlin
Moreno, Juan
Mosher, Tom
Sjulsom, Harry (C)
Wikstrom, Jr., George (C)
Wilde, Diane

Red Lake Falls
Thief River Falls
Crookston
Crookston
Warren
Ada
Crookston
Crookston
Middle River
East Grand Forks
Thief River Falls
Thief River Falls
Oklee
Thief River Falls
Lake Bronson
Argyle
Bemidji
Crookston
Ada
St. Hilaire
Karlstad
Red Lake Falls

Housing Advisory Committee

June 1982

Beck, Clarence	Hallock
Blake, Percy	Crookston
Bordenkircher, Carole	Crookston
Clark, Al	Middle River
Foss, Ron	Grygla
Geroy, Jan	Badger
Hella, Jim	Twin Valley
*Knutson, Duane (C)	Fertile
Melby, Bob	Oklee
Nelson, Marilyn	Thief River Falls
Olson, Allan	Roseau
Raebel, Phyllis	Red Lake Falls
Redland, Kenneth (C)	Ada
Schneider, Don	East Grand Forks
Seeger, Bill	Mentor
Stauss, Larry	East Grand Forks
Thorstad, Jan	Thief River Falls
White, JoAnn	Thief River Falls
Wikstrom, Jr., George (C)	Karlstad
Wynn, John	Mentor

Natural Resources Advisory Committee

June 1982

Anderson, Rudee (C)	Greenbush
Anderson, Charles	Crookston
Applequist, Rudy	Crookston
Beyer, Irving	Red Lake Falls
Courneya, Terry	Thief River Falls
Gaukerud, John	Badger
Gonsorowski, Marcella	Newfolden
Grabanski, Don (C)	Thief River Falls
Green, Verne (C)	Newfolden
Gustafson, Alan	Hallock
Johnson, Wendell	Crookston
Ogaard, Don	Ada
Radi, Earl	Crookston
Skaar, Leonard	Thief River Falls
Svedarsky, Dan	Crookston
Wieland, Ken	Red Lake Falls
Wolfe, Terry	Crookston
Younggren, Dean	Hallock

Transportation Advisory Committee

June 1982

Almen, Harlan	Red Lake Falls
Berg, Ralph (C)	Brooks
*Bouvette, Dr. Joe (C)	Hallock
Engh, Roy (C)	Warren
Grabanski, Donald (C)	Thief River Falls
Hutchinson, Marvin	Thief River Falls
Juhl, Wayne (C)	Greenbush
Lieder, Bernie	Crookston
Sip, Cary (C)	Ada
Stoffel, Ralph	Thief River Falls
Thomforde, Harold (C)	Crookston

* Committee Chairperson
(C) Member of Commission

NWRDC PUBLICATIONS

1981-1982 Area Plan for Programs on Aging 1982 Area Plan Amendments

This Plan outlines the needs of senior citizens in Region I and their demographic characteristics. The 1982 Area Plan Amendments to the 1981-1983 Area Plan includes an updated inventory of services plus revised goals and objectives.

Arts Plan for FY '82-83

This Plan identifies the following areas of arts resources: people, places, organizations, contact people and arts advocates. It includes a needs assessment which was developed to permit the Arts Advisory Committee to establish the listed priorities for the arts in Region I. Another important aspect of the Plan is that it explains the grants process and the regranting categories which is necessary information to those interested in applying for arts grants.

Region One Employment and Training Advisory Committee Member Handbook

This Handbook was prepared in response to requests from Regional Employment and Training Advisory Committee (RETAC) members for more information on exactly what individual members should be doing and how the RETAC itself fits into the wider perspective of Comprehensive Employment and Training Act (CETA) programs. The Role of the RETAC Members Task Force was created in September of 1981 to lay the ground work for providing this information and the recommendations and findings of the Task Force resulted in the Handbook. The Handbook attempts to begin with the creation of CETA in the early 1970's and follow the structure through to the role of individual RETAC members in Region One, explaining how each part relates to the other in achieving the purpose of CETA.

Work Activities for the Seriously Handicapped in Rural Areas

This report summarizes discussions of a DAC Work Activities Task Force which met early in 1982. The Task Force was formed in response to concerns expressed by the Developmental Achievement Center (DAC) staff about the use of simulated work for their mentally retarded clients. The paper deals with efforts to insure that every seriously handicapped person is able to make a contribution to the maximum level possible and that the person receives reasonable compensation for his/her work.

Earning Comparisons and Effects in Region I: August 1981

This report compares the annualized earnings of the major industry group of workers by Standard Industrial Classification (SIC). Each county in the Region is compared with the State of Minnesota on the basis of workers' earnings. The data is useful in qualifying for various community and economic development programs that require evidence of the level of economic distress in a community. On the positive side, the fact that the regional average earnings of an employed worker is 26.4 percent below the State average may be an inducement for industry to locate or expand in the Region.

Grygla Comprehensive Plan Grygla Zoning Ordinance

Both of the above publications were prepared by the NWRDC acting as the City of Grygla's planning consultant. The City contracted with the Commission to design the process and write the Plan and the Ordinance. Extensive information, data, review and comments provided by members of the City's Planning Commission, other City officials and interested citizens of Grygla were used in preparing the documents.

The Comprehensive Plan considered the natural setting, including housing and existing land use, among others. It also contains sections concerning social and economic data. It focused on a description of the existing conditions in the City. In the process of developing this information, the City's Planning Commission identified policy goals to direct the City's future growth and change.

The Zoning Ordinance was prepared in light of the previously prepared and adopted Comprehensive Plan. It was adopted following changes suggested by City residents.

Regional Transportation Plan

This Plan involves three primary parts: 1) an inventory of various transportation modes in the Region, 2) goals and policies to guide transportation planning in the Region and 3) criteria for prioritizing highway projects. A large part of the planning effort was the identification of a 20 year work plan for the maintenance of state trunk highway projects in a priority order as to their maintenance needs and importance to the efficient movement of people and goods, particularly agricultural commodities within the Region. The Plan provides a multi-model development strategy based on the Region's perceptions of its future transportation system needs. The Plan also includes maps denoting characteristics of the various segments of the state trunk highway system within Region I, as well as railroad, transit and aeronautics information.

1980 Annual Report

The NWRDC's Annual Report for 1980 was prepared and distributed to the members of legislature and to local officials and citizens.

Northwestern Arts Newsletter

This is a quarterly publication describing Arts related activities within Region One. The publication is prepared in conjunction with NWRDC staff and the Arts program consultant and funded by the McKnight Foundation.

NWRDC Newsletter

Commission's newsletter which is published monthly.

FY '83 Work Plan

The Commission's Fiscal Year 1983 Work Plan was published. The document details the goals and objectives of the Commission in each of its program and planning areas.

Commission Budget

FY '81 ACTUAL		FY '82 BUDGET	
REVENUE		PROJECTED REVENUE	
State Appropriation	\$ 67,758	State Appropriation	\$ 40,000
Local Tax Levy	69,522	Local Tax Levy	75,482
HUD 701	11,401		
HUD 107	7,834		
DES	23,553	DES	16,507
EDA	52,317	EDA	24,750
MBA	39,961	MBA	37,581
MBA-Nutrition	12,763	MBA-Nutrition	16,570
MDDC	21,907	MDDC	24,365
MnDOT	6,000	MnDOT	8,000
MSAB	12,349	MSAB	13,000
MnDOT-Special Study	9,087		
GRDC-Small Business Assistance	7,814	GRDC . Small Business	37,500
Grygla	1,826		
Fosston	3,067	Fosston	1,433
McKnight Foundation-Arts	1,666	McKnight Foundation-Arts	2,000
Other	10,333	Other	28,792
		DNR	6,130
TOTAL	\$ 359,158*	TOTAL	\$332,110
EXPENDITURES		PROJECTED EXPENDITURES	
Salaries/Fringe	\$ 239,841	Salaries/Fringe	\$ 216,483
Travel	29,404	Travel	31,000
Per Diem	8,785	Per Diem	10,000
Office Expenses	67,876	Office Expenses	74,627
TOTAL	\$345,906*	TOTAL	332,110

*Unaudited totals-subject to change.

WALL & SANDVIK, LTD.
CERTIFIED PUBLIC ACCOUNTANTS
SUITE 300, F-M CENTER
403 CENTER AVENUE
MOORHEAD, MINNESOTA 56560
218 - 236-1112

JOHN R. WALL

STANLEY N. SANDVIK

To the Honorable Arne H. Carlson
State Auditor
State of Minnesota
Suite 400, 555 Park Street
Saint Paul, Minnesota 55103

Mr. Ervin Strandquist, Chairman
Northwest Regional Development
Commission
425 Woodland Avenue
Crookston, Minnesota 56716

We have examined the combined financial statements of the NORTHWEST REGIONAL DEVELOPMENT COMMISSION as of and for the year ended June 30, 1981, as listed in the table of contents. Our examination was made in accordance with generally accepted auditing standards and, accordingly, included such tests of the accounting records and such other auditing procedures as we considered necessary in the circumstances.

In our opinion, the combined financial statements referred to above present fairly the financial position of the Northwest Regional Development Commission, at June 30, 1981, and the results of its operations for the year then ended, in conformity with generally accepted accounting principles applied on a basis consistent with that of the preceding year.

Our examination was made for the purpose of forming an opinion on the combined financial statements taken as a whole. The combining, individual fund, and account group financial statements and schedules listed in the table of contents are presented for purposes of additional analysis and are not a required part of the combined financial statements of the Northwest Regional Development Commission. The information has been subjected to the auditing procedures applied in the examination of the combined financial statements and, in our opinion, is fairly stated in all material respects in relation to the combined financial statements taken as a whole.

Moorhead, Minnesota

September 16, 1981

Wall & Sandvik, Ltd

NWRDC STAFF

Thomas Jorgens	Executive Director
Donna Christianson	Administrative Secretary
Mary Jo Crystal	Financial Officer
Wayne Faust	Economic Development, Small Business Assistance
Wayne Goeken	Transportation
Leon Heath	Employment & Training, Data, Economic Development
Helen Jurchen	Community Development & Information
Joseph McKenna	Aging & Community Development
Michael Moore	Aging, Human Services
Donna Myhrer	Developmental Disabilities
Patricia Rood	Natural Resources, Arts
Carol Sorenson	Secretary

Judi Williamson was a 1981-1982 staff member, but is no longer with the NWRDC.



Thomas Jorgens, Executive Director



From left to right: Wayne Faust, Carol Sorensen, Joseph McKenna, Donna Christianson, Wayne Goeken, Donna Myhrer, Leon Heath, Mary Jo Crystal and Helen Jurchen. Not shown: Michael Moore and Patricia Rood.