



3 0307 00015 3323

811873

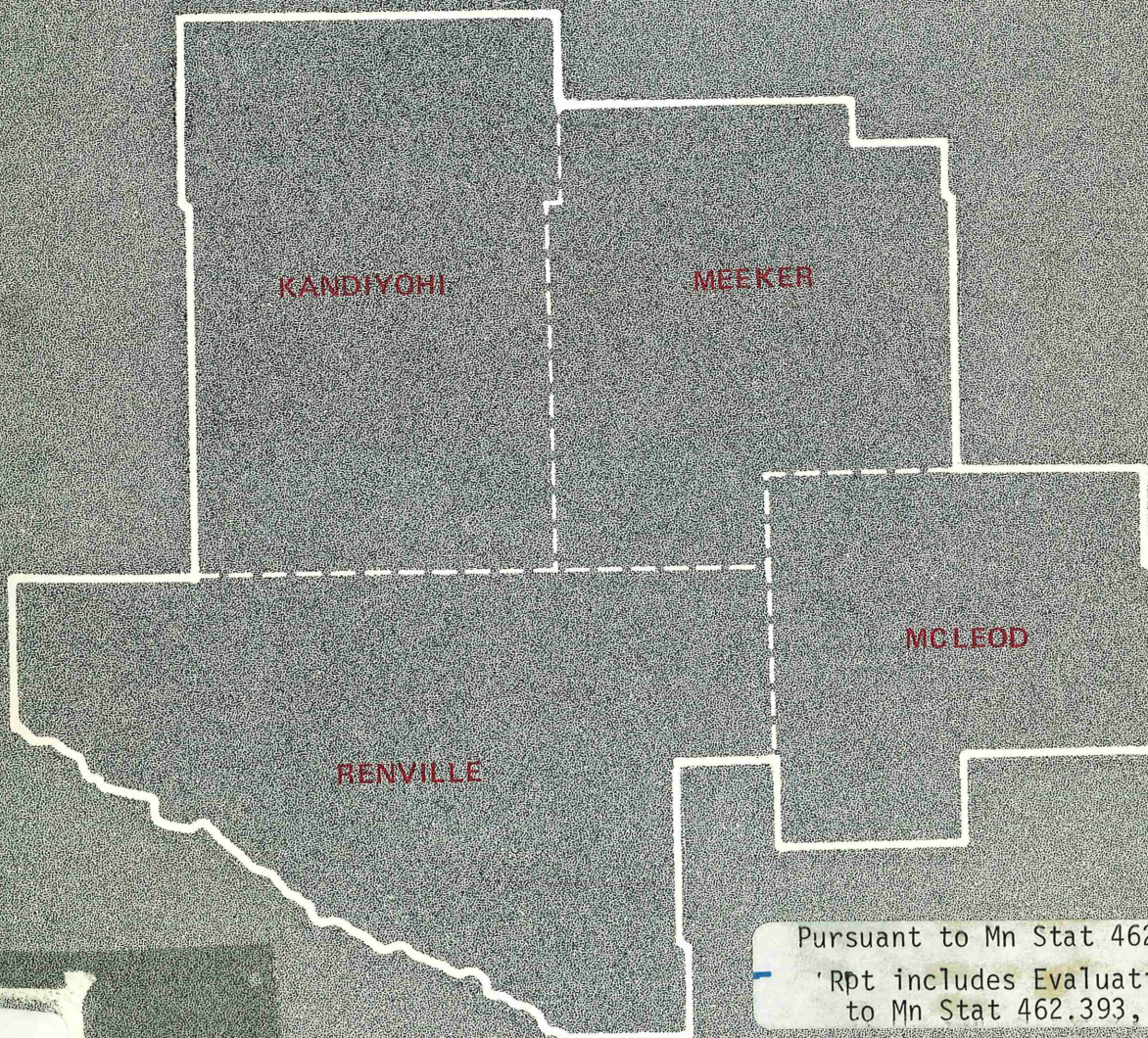
SIX

EAST

REGIONAL

DEVELOPMENT

COMMISSION



Pursuant to Mn Stat 462.393-Annual Rpt

Rpt includes Evaluation rpt pursuant
to Mn Stat 462.393, sd 2/every 5 yrsHT
393
.M62
S59ax
1980/81

Annual Report

1980

JUNE 30, 1981

CHAIRMAN'S MESSAGE



This report records past activity and accomplishments of the commission. It is appropriate that there be a record such as this. However, I want to take this opportunity to discuss the future.

The next few years will be trying times for all units of government. There will still be a need to provide certain services and facilities at the local level but we won't be able to look to the state or federal government for much assistance. Not only is state and federal financial assistance decreasing but also they are asking local units of government to shoulder a greater share of the responsibility.

There are no easy solutions to these problems. But we can find solutions if we work together in a friendly atmosphere. We need to utilize our energy for progressive and constructive purposes. We cannot afford to waste either our time or energy being negative. We can be conservative without being negative and we can be progressive and not be liberal. What we need is a blend of community leadership, pride, financial independence and pioneering spirit that keeps our area moving ever forward.

Our Regional Development Commission provides an existing organization which allows us to conveniently work together without placing an unreasonable financial burden on any of us. Each person in the region pays approximately \$1.00 in local property taxes to support the commission's economic and community development efforts. This is a small price to pay for an opportunity to be constructive and progressive.

EXECUTIVE DIRECTOR'S MESSAGE

This annual report reflects an 18 month rather than a 12 month period due to recent changes in state statutes. During those 18 months the commission has been confronted with many challenges. Many of those challenges have been turned into opportunities to work together to jointly resolve common concerns.

The strength of this commission focuses on its ability to respond to the identified needs of municipalities. Over half of the region's population lives in cities and the rest of the population relates to the business, service and education facilities found in cities. Residents of cities-especially small cities--benefit from the varied assistance the commission's staff has to offer. Any activity that strengthens or maintains the economic vitality of a community is helping not only the residents of that community but also all persons who relate to and depend on that community for all or part of their business, household, social or educational needs.

Although distinctive political divisions exist on paper for townships, cities and counties, our common needs, problems and opportunities transcend these paper boundaries. The true spirit of cooperation knows no bounds and I am confident that by working together we can and will make a difference.

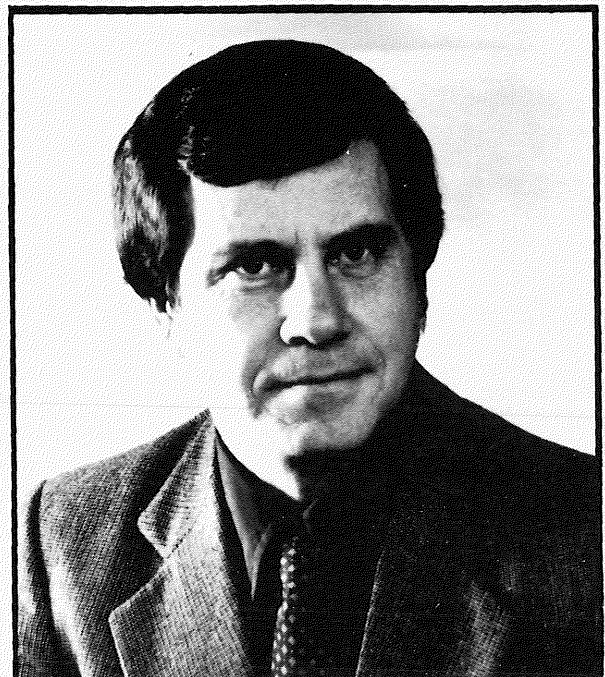


TABLE OF CONTENTS

	Page
Commissioners and Staff	3
Committees and Appointments	4
Advisory Committees	5
Comprehensive Development Plan Activities	6
A-95 Clearinghouse Process	9
Technical Assistance	24
Program Budget Summary	25
Revenue - Expenditures Summary	26
Program Budget Summary FY 1982	27
Summary of Studies, Reports and Plans	28
Commission Evaluation	30
State and Federal Legislators	40

COMMISSIONERS AND STAFF

KANDIYOHI COUNTY

Dean Aarvig, Townships
Homer Bach, Municipalities
Earl Larson, County Board

McLEOD COUNTY

Ed Duesterhoeft, Townships
Lawrence Wendorff, County Board
Ralph Westlund, Municipalities

MEEKER COUNTY

Eilert Flemming, Municipalities
George Rice, County Board
Ed Ackman, Townships

RENVILLE COUNTY

Albert Nicolai, Municipalities
Pat Kubesh, County Board
Wesley Kuske, Townships

NONCOUNTY APPOINTMENTS

Gene Dillon, School Boards
Andrew Walters, School Boards
Irma Peterson, Councilwoman, Willmar
(Community over 10,000)

PUBLIC INTEREST COMMISSIONERS

Patricia Bonniwell, Chairperson, Region 6E Employment and Training Advisory Committee
Delbert Carlson, Region 6E Soil and Water Conservation Districts

OFFICERS

Homer Bach, Chairman
Ed Duesterhoeft, Vice Chairman
Eilert Flemming, Secretary-Treasurer

STAFF

H. Eugene Hippe, Executive Director
Shirley Brandt, Part-time Secretary
Richard Brouwer, Draftsman
Ione Carlson, Planner - Aging
Gerald Grinde, Planner - Economic Development
Lee Larson, Planner - Community Development
Karen Lundquist, Secretary
Kathleen McCormick, Planner - Aging
Robert Otto, Planner - Employment and Training
Lorraine Patton, Financial Officer
Tom Peterson, Planner - Community Development
John Walsh, Planner - Developmental Disabilities
Pam Wiegmann, Secretary/Receptionist

COMMITTEES AND APPOINTMENTS

EXECUTIVE STEERING COMMITTEE

Homer Bach - Atwater
Gene Dillon - Olivia
Ed Duesterhoeft - Stewart
Eilert Flemming - Cosmos

BYLAW COMMITTEE

Wes Kuske - Olivia
Earl Larson - Willmar
George Rice - Watkins
Ralph Westlund - Hutchinson

BUDGET & WORK PROGRAM COMMITTEE

Irma Peterson, Chairperson - Willmar
Ed Duesterhoeft - Stewart
Eilert Flemming - Cosmos
Albert Nicolai - Hector

PERSONNEL COMMITTEE

Ed Duesterhoeft - Stewart
Wes Kuske - Olivia
Earl Larson - Willmar
George Rice - Watkins

NOMINATING COMMITTEE

Ed Duesterhoeft - Stewart
Wes Kuske - Olivia
Irma Peterson - Willmar
Andrew Walters - Watkins

APPOINTMENTS

H. Eugene Hippe, Environmental Education Council
Wes Kuske, Criminal Justice Planning Council
Pat Bonniwell, Regional Employment and Training Advisory Committee
Cy Kobbermann, Private Industry Council
Irma Peterson, Governor's Council On Rural Development
Bernie Knutson, Health Systems Agency Six
Pat Kubesh, Emergency Medical Service Corporation
Dennis Goldman, Emergency Medical Service Corporation

ADVISORY COMMITTEES

ECONOMIC DEVELOPMENT

Eilert Flemming, Chairman - Cosmos
Ken Franke - Plato
Dick Hamilton - Willmar
Don Hultgren - Raymond
Bob Johnson - Spicer
Nick Kleinhuizen - Renville
Dick Loftness - Hector
Linda Melby - Grove City
Howard Page - Dassel
John Seehausen - Morton
Doug Uhrhammer - Winsted
Lillian West - Brownton

EMPLOYMENT AND TRAINING

Pat Bonniwell, Chairperson - Dassel
Craig Bradash - Willmar
Gary Erickson - Willmar
William Haggerty - Watkins
Kevin Halliday - Olivia
Archie Hansen - Willmar
Roger Iverson - New London
Gary Jorgenson - Willmar
Mel Knudson - Willmar
Doug Knutson - Olivia
Cy Kobbermann - Hector
Dorothy Lindstrom - Grove City
Warren Macemon - Hutchinson
Scott Nelson - Willmar
Jerrel Sharpe - Cosmos
Don Werder - Willmar
Bill Zanin - Willmar

AGING COUNCIL

Irma Peterson, Chairperson - Willmar
Frank Arlt - Bird Island
Beverly Barker - Glencoe
Florence Casey - Litchfield
Irene Dailey - Atwater
John Doidge - Glencoe
Doris Ginsburg - Hector
Clifford Johnson - Litchfield
Alpha Kragenbring - Atwater
Jackie Michaelson - Darwin
Henriette Nielsen - Buffalo Lake
Clara Sagness - Glencoe
Michelle Then - Willmar

DEVELOPMENTAL DISABILITIES

Gene Dillon, Chairman - Olivia
Beverly Barker - Glencoe
Bob Carlson - Litchfield
Dorothy Desens - Hutchinson
Jan Downey - Willmar
Jean Kolbe - Olivia
Carol Marchant - Litchfield
Bob Neessen - Willmar
Claris Peters - Spicer
Ernie Schafer - Buffalo Lake
Richard Swenson - Willmar
Norman Tempel - Willmar

TRANSPORTATION

Ralph Westlund, Chairman - Hutchinson
Kenneth Agren - Litchfield
Reuben Barka - Litchfield
Roger Gustafson - Glencoe
Dick Hamilton - Willmar
Bill Martens - Litchfield
Dean Oleson - Hutchinson
Leroy Olsen - Hutchinson
Marlow Priebe - Hutchinson
Dennis Stoeckman - Olivia
Delbert Thomas - Litchfield

COMPREHENSIVE DEVELOPMENT PLAN ACTIVITIES

The commission has attempted to set up its work program along the lines or requirements in the State Statutes that require the commission to “prepare and adopt, after appropriate study and such public hearings as may be necessary, a comprehensive development plan for the region.” State Statutes go on to say “The plan shall consist of a compilation of policy statements, goals, standards, programs and maps prescribing guides for an orderly and economic development, public and private, of the region. The comprehensive development plan shall recognize and encompass physical, social or economic needs of the region, and those future developments which will have an impact on the entire region including, but not limited to, such matters as land use, parks and open space land needs, the necessity for and location of airports, highway, transit facilities, public hospitals, libraries, schools, public and private housing, and other public buildings.”

The following list of work program categories forms the basis for what has been adopted as a comprehensive development policy plan for the region. Each category was treated as a separate but integrated component of the plan. Those items identified with an asterisk (*) have been approved and distributed or are being prepared for distribution as separate detailed reports as the commission begins the 1982 fiscal year.

On June 24, 1981, the commission adopted an 86 page comprehensive development policy plan. This plan sets forth goals, objectives and policies for the eighteen elements listed below.

COMPREHENSIVE DEVELOPMENT PLAN ELEMENTS

Housing

- *Housing: 1978 Analysis and Policies (177 pages)
- *Housing: Summary Report (25 pages)

Public Facilities

- *Public Facilities: Analysis and Policies (33 pages)

Economic Development

- *Regional Overall Economic Development Plan (456 pages)

Land Use and Natural Resources

- *Growth and Development: Analysis and Policies (156 pages)
- *Growth and Development: Summary Report (24 pages)
- *Wetlands: Analysis, Policies and Recommendations (106 pages)

Transportation

Open Space/Recreation

- *Outdoor Recreation Report (243 pages)
- *Outdoor Recreation Report: Summary (47 pages)

Agriculture

- *Regional Agricultural Profile (70 pages)
- *Agricultural Land Preservation (36 pages)

Water Resources

Energy

Employment and Training

- *Employment and Training Plan (74 pages)

Education

Human Services

- *Multi-County Human Service Agencies Inventory (32 pages)

Population

- *Population Report (69 pages)

Aging

- *Area Plan for Programs on Aging (162 pages)
- *The Golden Pages Directory of Services (54 pages)

Criminal Justice

Health

Developmental Disabilities

- *Comprehensive Plan for Developmental Disabilities (78 pages)

Arts and Humanities



EMPLOYMENT AND TRAINING



The development commission prepares and adopts an "Employment and Training Plan" on an annual basis. It has been involved with the Minnesota Department of Economic Security (DES) since 1973 and has contracted with DES to provide certain services related to the CETA program since then.



ECONOMIC DEVELOPMENT



Economic development has always been one of the main concerns of the Regional Development Commission. In previous years it supplied the staff necessary to prepare Overall Economic Development Plans (OEDP) for Renville, Kandiyohi and Meeker Counties. The preparation of these OEDP's has qualified these counties to be eligible areas for federal Economic Development Administration (EDA) programs.

On December 1, 1979, the Regional Development Commission submitted a 305-page District OEDP to the Chicago EDA office. In June of 1981 a 456-page revised copy of the District OEDP was submitted to the Chicago EDA office.



AGRICULTURE



Considerable time and effort has been expended in this area over the last three years. The commission has targeted the preservation of prime agricultural land as one of its priorities. The other area emphasized was to compile agricultural statistics which can be useful for economic development activities as related to increasing the "value added" of agricultural commodities.



WATER RESOURCES



Since its beginning in 1973, the commission has been concerned about the quality and quantity of water. It was involved with MnPCA and the "208" Nonpoint Pollution Source Program. Also the commission worked closely with the Minnesota Geologic Survey on a well log program. At the present time efforts are being made to draw all relevant existing information together into one report which can be used for making decisions on community and economic development.



AGING



The Six East Regional Development Commission became a partner in a tri-regional 18-county Southwestern Area Agency on Aging on July 1, 1977. During 1979 the Six East Regional Development Commission was approved a separate four-county agency, effective January 1, 1980. As part of this approval, a transition plan was developed which included evaluating and monitoring the nutrition programs being administered by the Six East Community Action Agency. The evaluation and monitoring previously had been conducted by the Minnesota Board on Aging.

Although the Area Agency on Aging is officially the Six East Regional Development Commission, most of the responsibility and credit goes to the 13-member advisory committee. This past year a three-year plan was developed regarding the operation of the agency. Guidelines have been developed for administration of direct service grant money. Priority areas for direct service funds are in-home services, transportation, adult day care, organizational advocacy, multipurpose senior centers, legal services, adult education, counseling and home-delivered meals. Projects funded to date with direct service funds have assisted Meeker and McLeod counties; the cities of Spicer, Franklin, Litchfield, Hector, Atwater, Lake Lillian, Stewart and Glencoe and multi-county non-profit organizations. The total direct service dollars granted to these applicants was \$392,624. An additional \$23,068 of McKnight Foundation funds supplemented these proposals for a total of \$415,692 granted to aid local projects for the elderly.



DEVELOPMENTAL DISABILITIES



The four counties of Region Six East became part of an 18-county Developmental Disabilities Council in 1972. In 1976 it became part of a tri-regional program and on October 1, 1980 a four-county program was formed. A comprehensive plan was adopted on May 27, 1981 which inventories facilities and services, analyzes needs and makes recommendations regarding meeting the needs of certain handicapped individuals.

A - 95 CLEARINGHOUSE PROCESS

On June 4, 1975, Governor Wendell Anderson designated the Six East Regional Development Commission as the official A-95 Clearinghouse Review Agency for the region. The commission has adopted, published and distributed an "A-95 Clearinghouse Procedural Manual."

Section 462.391, Subdivision 3 of the Regional Development Act states in part "The commission shall review all applications of governmental units, independent commissions, boards or agencies and colleges or universities, for public facilities, studies, or any other purposes if the application clearly is related to the region, whether or not such review is required by the Federal Government." In 1976, the commission initiated a policy that it would review and process all applications but would comment only on those which have regional significance.

After the RDC is notified regarding an application, it notifies all local units of government, public agencies and semipublic agencies which may be concerned with or affected by the proposal. Also, the RDC notifies the State Clearinghouse which may be concerned with or affected by the proposal. The RDC does not have the authority to approve or disapprove applications. It acts as a coordinating agency for purposes of review and comment.

Ideally, the commission should base its review and comment on that element of an adopted comprehensive development plan that relates to the application. The commission now has an adopted Comprehensive Development Policy Plan.

The following list of agencies and their acronyms are used in the list of 268 applications processed by the commission for the 18 months prior to July 1, 1981.

GRDC	Governors Rural Development Council	MnDNR	Minnesota Department of Natural Resources
MCCPB	Minnesota Crime Control Planning Board	MnDOT	Minnesota Department of Transportation
CSA	Community Services Administration	NA	Not Applicable
DOE	U.S. Department of Energy	PCA	Pollution Control Agency
DOL	U.S. Department of Labor	SMAHC	Southwest Minnesota Arts and Humanities Council
EPA	Environmental Protection Agency	SPA	State Planning Agency
FmHA	Farmer's Home Administration	USDA	United States Department of Agriculture
HCRS	Heritage, Conservation and Recreation Service	WCCSC	West Central Community Services Center
HEW-HHS	U.S. Department of Health, Education and Welfare	6E CAA	Six East Community Action Agency
HSA-6	Health Systems Agency Six	6E CETC	Six East Comprehensive Employment and Training Center
HUD	U.S. Department of Housing and Urban Development	6E RDC	Six East Regional Development Commission
LAWCON	Land and Water Conservation	CCB	Cable Communication Board
LCMR	Legislative Committee on Minnesota's Resources	MDA	Minnesota Department of Agriculture
LEAA	Law Enforcement Assistance Administration	MHFA	Minnesota Housing Finance Agency
MDH	Minnesota Department of Health	EDA	Economic Development Administration
MHS	Minnesota Historical Society	MnDED	Minnesota Department of Economic Development
MinnARC	Minnesota Association for Retarded Citizens	DOT	U.S. Department of Transportation
MnDES	Minnesota Department of Economic Security	MSAB	Minnesota State Arts Board

A-95 APPLICATIONS PROCESSED

APPLICATION NUMBER	APPLICANT	PROJECT DESCRIPTION	RDC ACTION	FUNDING AGENCY	LOAN OR GRANT	TOTAL COST	AMOUNT REQUESTED	AMOUNT FUNDED
86-80	City of Willmar	Community Development Block Grant Entitlement	Positive	HUD	Grant	\$ 161,000	\$ 161,000	\$ 161,000
87-80	City of Brownton	Corrections to Sewage Collection System	Positive	EPA/PCA	Grant	22,780	20,502	17,100
88-80	Renville County	Bridge Replacement	Positive	MnDOT	Grant	39,500	35,000	Pending
89-80	McLeod County	Bridge Replacement	Positive	MnDOT	Grant	52,000	45,000	Pending
90-80	Buffalo Lake School District	Energy Audit/Energy Conservation Measures	Positive	DOE	Grant	24,000	12,000	Not Funded
91-80	Hutchinson Community Hospital	Energy Audit	Positive	DOE	Grant	5,700	2,850	Not Funded
92-80	Winsted Holy Trinity School	Energy Audit	Positive	DOE	Grant	4,500	2,250	2,250
93-80	Cosmos School District	Energy Conservation Measures	Positive	DOE	Grant	13,807	6,903	Not Funded
94-80	Atwater School District	Energy Audit	Positive	DOE	Grant	26,740	13,370	Not Funded
95-80	Stewart School District	Energy Audit	Positive	DOE	Grant	22,150	11,075	Not Funded
96-80	Hutchinson School District	Energy Audit	Positive	DOE	Grant	70,400	35,200	Not Funded
97-80	Sacred Heart School District	Energy Audit	Positive	DOE	Grant	38,397	17,711	Not Funded
98-80	MN DES	Modification of Master Plan	Positive	DOL	NA	NA	NA	Approved
99-80	MN DES	Modification of Annual Plan Title IIC	Positive	DOL	NA	NA	NA	Approved
100-80	MN DES	Modification of Annual Plan Title VI-PSE	Positive	DOL	Grant	4,104,816	4,104,816	Approved
101-80	MN DES	Modification of Annual Plan Title IV-YCCIP	Positive	DOL	Grant	395,541	395,541	Approved
102-80	MN DES	Modification of Annual Plan Title VII-PSIP	Positive	DOL	Grant	1,296,942	1,296,942	Approved
103-80	MN DES	Modification of Annual Plan Title IID	Positive	DOL	NA	NA	NA	Approved

APPLICATION NUMBER	APPLICANT	PROJECT DESCRIPTION	RDC ACTION	FUNDING AGENCY	LOAN OR GRANT	TOTAL COST	AMOUNT REQUESTED	AMOUNT FUNDED
104-80	MinnARC	Senior Companion Program	Positive	ACTION	Grant	550,254	487,996	487,996
105-80	Meeker County Memorial Hospital	Energy Audit	Positive	DOE	Grant	4,900	2,450	Not Funded
106-80	Brownton Public School	Furnish Energy Conservation Measures	Positive	DOE	Grant	22,380	11,190	Not Funded
107-80	Meeker County Community Health Services	Plan - 1980-81	Positive	MDH	Grant	310,462	117,582	117,582
108-80	MnDOT	Federal Aid for Bridges and Road Surfacing	Positive	MnDOT	Grant	970,000	776,000	Approved
109-80	MN DES	Modification to Annual Plan Titles IIB, C & D, IV-YCCIP & VI	Positive	DOL	Grant	NA	NA	Approved
110-80	MN DES	Modifications to Annual Plan Title III STIP	Positive	DOL	Grant	130,699	130,699	Approved
111-80	MN DES	Modifications to Annual Plan Title VII-PSIP	Positive	DOL	Grant	1,621,177	1,621,177	Approved
112-80	MN DES	Modifications to Annual Plan Administrative Cost Pool	Positive	DOL	Grant	5,032,031	5,032,031	Approved
113-80	City of Willmar	Urban Mass Transit Grant	Positive	DOT	Grant	142,679	86,339	86,339
114-80	Renville County	CDBG - Final Application	Positive	HUD	Grant	844,100	844,100	432,000
115-80	MN DES	Pre-application, Prime Sponsor	Positive	DOL	Grant	NA	NA	Approved
116-80	Southwest Minnesota Emergency Medical Services	1203-1 Implementation Grant	Positive	HHS	Grant	942,041	446,200	380,000
117-80	HUD	Environmental Subdivision Review Portland Acres, Willmar	Positive	HUD	NA	NA	NA	Approved
118-80	West Central Industries	Vocational Rehabilitation	Positive	DES	Grant	5,858	5,272	Not Funded
119-80	City of Willmar	Grantee Performance Report (CDBG)	Positive	HUD	NA	NA	NA	NA
120-80	6E CETC	CETA/Education Summer Program	Negative	DES	Grant	33,163	33,163	33,163
121-80	City of Willmar	CDBG - Small Cities	Positive	HUD	Grant	650,000	500,000	500,000
123-80	HUD	Environmental Subdivision Review Pheasant Run, Willmar	Positive	HUD	NA	NA	NA	Approved

APPLICATION NUMBER	APPLICANT	PROJECT DESCRIPTION	RDC ACTION	FUNDING AGENCY	LOAN OR GRANT	TOTAL COST	AMOUNT REQUESTED	AMOUNT FUNDED
124-80	MN DES	Modification to Annual Plan, Title IIB and C	Positive	DOL	Grant	8,017,235	8,017,235	Approved
125-80	MN DES	Modification to Annual Plan, Title IID	Positive	DOL	Grant	\$5,836,145	\$5,836,145	Approved
126-80	MN DES	Modification to Annual Plan, Title III-STIP	Positive	DOL	Grant	1,590,124	1,590,124	Approved
127-80	MN DES	Modification to Annual Plan, Title IV-YCCIP	Positive	DOL	Grant	440,819	440,819	Approved
128-80	MN DES	Modification to Annual Plan, Title IV-YETP	Positive	DOL	Grant	2,034,588	2,034,588	Approved
129-80	MN DES	Modification to Annual Plan, Title IV-SYEP	Positive	DOL	Grant	2,379,040	2,379,040	Approved
130-80	MN DES	Modification to Annual Plan, Title VI	Positive	DOL	Grant	4,158,412	4,158,412	Approved
131-80	MN DES	Modification to Annual Plan, Administration Cost Pool	Positive	DOL	Grant	4,817,348	4,817,348	Approved
132-80	MN DES	Modification to Annual Plan, Administration Cost Pool	Positive	DOL	Grant	42,931	42,931	Approved
133-80	St. Mary's Hospital and Home, Winsted	Section 202 Housing	Positive	HUD	Loan	1,800,000	1,800,000	1,800,000
134-80	Jim Miller Construction	Section 515 Rural Rental Housing, Eden Valley	Positive	USDA/FmHA	Loan	571,200	542,640	Pending
135-80	City of Eden Valley	Wastewater Treatment Facility	Positive	EPA/PCA	Grant	980,340	882,306	Pending
136-80	Winsted Civic and Commerce Association	Downtown Revitalization	Positive	HUD	Grant	762,850	130,500	Not Funded
136-80 (Revised)	Winsted Civic and Commerce Association	Downtown Revitalization	Positive	HUD	Grant	762,850	130,500	Not Funded
137-80	Dassel Development Corp.	Economic Revitalization	Positive	HUD	Grant	275,050	125,000	Not Funded
138-80	Brownton Housing, Inc.	CBD Improvement Project	Positive	HUD	Grant	448,000	110,000	Not Funded
139-80	Grove City Community Homes, Inc.	Community Revitalization	Positive	HUD	Grant	159,000	62,900	Not Funded
140-80	HSA-6	Renewal of Designation as an HSA	Negative	HHS	Grant	320,044	320,044	320,044

APPLICATION NUMBER	APPLICANT	PROJECT DESCRIPTION	RDC ACTION	FUNDING AGENCY	LOAN OR GRANT	TOTAL COST	AMOUNT REQUESTED	AMOUNT FUNDED
141-80	MN DES	Modification to Annual Plan Title IV SYEP	Positive	DOL	Grant	2,941,604	2,941,604	Approved
142-80	Green Thumb, Inc.	Senior Community Service Employment	Positive	DOL	Grant	88,227,179	79,393,855	3,529,637 (Minnesota)
143-80	City of Hector	Cable Service Territory	Positive	CCB	NA	NA	NA	Approved
144-80	HUD	Envir. Subd. Review, Town & Country Estates, Hutchinson	Positive	HUD	NA	NA	NA	Approved
145-80	HUD	Subdivision Feasibility Analysis, Southgate, Willmar	Positive	HUD	NA	NA	NA	Approved
146-80	HUD	Envir. Subd. Review Valley Brook, Willmar	Positive	HUD	NA	NA	NA	Approved
147-80	Meeker County Council on Aging	Meeker County Freedom and Access	Positive	HHS	Grant	47,100	33,400	33,400
148-80	Hutchinson Area Community Services	Multi Service Program for Elderly Citizens	Positive	HHS	Grant	17,773	13,180	15,839
149-80	Health Central Institute	McLeod County Family Research Project	Negative	HHS	Grant	3,464	2,598	Not Funded
150-80	City of Hector	Hector Community Center	Positive	HHS	Grant	17,727	6,727	6,727
151-80	McLeod Social Service Center	Elderly Homemaking and Chore Service	Positive	HHS	Grant	16,000	12,000	9,600
152-80	WCCSC	Adult Day Care	Positive	HHS	Grant	85,300	45,700	40,649
153-80	6E CAA	Summer Youth Recreation Program	Positive	CSA	Grant	5,051	5,051	5,051
154-80	HUD	Envir. Subd. Review Bregquist Estates, Willmar	Positive	HUD	NA	NA	NA	Approved
155-80	MN DES	Modification to Annual Plan Administration Cost Pool	Positive	DOL	Grant	61,972	61,972	Approved
156-80	MN DES	Modification to Annual Plan Administration Cost Pool	Positive	DOL	Grant	5,097,217	5,097,217	Approved
157-80	MN DES	Modification to Annual Plan Title IV-SYEP	Positive	DOL	Grant	2,941,604	2,941,604	Approved
158-80	SMAHC	Block Grant	Positive	MSAB	Grant	338,000	66,611	66,611

APPLICATION NUMBER	APPLICANT	PROJECT DESCRIPTION	RDC ACTION	FUNDING AGENCY	LOAN OR GRANT	TOTAL COST	AMOUNT REQUESTED	AMOUNT FUNDED
159-80	Jim Miller Construction	FmHA Section 515 - Rural Rental Housing, Darwin	Positive	FmHA/USDA	Loan	352,900	335,255	Pending
160-80	City of Litchfield	Energy Recovery from Methane	Positive	DOE	Grant	124,000	50,000	Not Funded
161-80	Kandiyohi County Historical Society	Historical Interpretation	Positive	MHS	Grant	29,514	14,757	14,757
162-80	H. Eugene Hippe	Street Lighting Energy Savings	Positive	DOE	Grant	50,000	50,000	Not Funded
163-80	City of Willmar	LAWCON/LCMR - South Willmar Pk.	Positive	SPA/HCRS	Grant	46,000	23,000	23,000
164-80	City of Willmar	LAWCON/LCMR - Northwest Park	Positive	SPA/HCRS	Grant	81,000	36,000	Not Funded
165-80	City of Willmar	LAWCON/LCMR - Oslo Heights Park	Positive	SPA/HCRS	Grant	100,000	50,000	Not Funded
166-80	MN DES	Summer Youth Recreation	Positive	CSA	Grant	13,000	13,000	13,000
167-80	U.S. Postal Service	Site Review, Winsted	Positive	USPS	NA	NA	NA	Pending
168-80	Minnesota Waxy Corn Growers Assn.	Ethanol Fuel Production	No Comment	DOE	Grant	682,000	682,000	Not Funded
169-80	McLeod County	LAWCON/LCMR - Piepenburg Park	Positive	SPA/HCRS	Grant	145,900	72,950	72,950
170-80	City of Fairfax	LAWCON/LCMR - Community Park	Positive	SPA/HCRS	Grant	76,713	38,356	Refused by Applicant
171-80	Glencoe Non-Profit Housing Corporation	Section 202 Housing	Positive	HUD	Loan	1,225,000	1,225,000	Pending
172-80	Watkins Area Housing, Inc.	Section 202 Housing	Positive	HUD	Loan	1,192,800	1,192,800	Not Funded
173-80	City of Watkins	LAWCON/LCMR - Civic Park	Positive	SPA/HCRS	Grant	22,450	11,225	11,225
174-80	City of Pennock	LAWCON/LCMR - Westside Park	Positive	SPA/HCRS	Grant	39,200	19,600	Not Funded
175-80	City of Pennock	LAWCON/LCMR - Civic Center Park	Positive	SPA/HCRS	Grant	15,700	7,850	Not Funded
176-80	City of Atwater	LAWCON/LCMR - Atwater Lakes Park	Positive	SPA/HCRS	Grant	32,400	16,200	16,200
177-80	City of Sunburg	LAWCON/LCMR - Community Park	Positive	SPA/HCRS	Grant	12,170	6,085	Not Funded

APPLICATION NUMBER	APPLICANT	PROJECT DESCRIPTION	RDC ACTION	FUNDING AGENCY	LOAN OR GRANT	TOTAL COST	AMOUNT REQUESTED	AMOUNT FUNDED
178-80	MN DES	Modification to Annual Plan Title IIB, IIC	Positive	DOL	Grant	107,833	107,833	Approved
179-80	MN DES	Modification to Annual Plan Title IID	Positive	DOL	Grant	51,469	51,469	Approved
180-80	MN DES	Modification to Annual Plan Title IV-YETP	Positive	DOL	Grant	45,855	45,855	Approved
181-80	MN DES	Modification to Annual Plan Title VI	Positive	DOL	Grant	465,065	465,065	Approved
182-80	MN DES	Modification to Annual Plan Administration Cost Pool	Positive	DOL	Grant	670,222	670,222	Approved
183-80	Canby AVTI	GATE - Growth in Agriculture Through Equality	Positive	GRDC	Grant	38,232	29,842	29,842
184-80	WCCSC	Consultation/Education Grant	Positive	HHS	Grant	82,850	82,850	\$ 82,850
185-80	WCCSC	Staffing Growth Grant	Positive	HHS	Grant	129,222	129,222	129,222
186-80	City of Litchfield	Land Use Planning Grant	Positive	SPA	Grant	NA	NA	Not Approved
187-80	6E RDC	DD Coordinator Program	Positive	HHS	Grant	20,433	15,325	22,125
188-80	HUD	Envir. Subd. Review Oslo Heights, Willmar	Positive	HUD	NA	NA	NA	Approved
189-80	University of Minnesota	Pilot Adzuki Bean Processing Demonstration	Positive	GRDC	Grant	39,463	15,746	15,746
190-80	KMS High School	CETA Special Grant	Positive	DES	Grant	9,689	9,689	Not Funded
190-80 (Revised)	KMS High School	CETA Special Grant	Positive	DES	Grant	9,689	9,689	9,689
191-80	West Central MN Educational Television Co.	Rural Public TV	Positive	GRDC	Grant	133,305	41,380	Withdrawn
192-80	6E CAA	Alcohol Counseling/Referral Center	Negative	HHS	Grant	31,743	31,743	31,743
193-80	City of Hutchinson	UMTA Section 18	Positive	DOT	Grant	52,000	52,000	52,000
194-80	SMAHC	Performing Artists	Positive	GRDC	Grant	31,751	12,500	12,500
195-80	HUD	Subd, Envir. Review Perkins 5th Add., Willmar	Positive	HUD	NA	NA	NA	Approved

APPLICATION NUMBER	APPLICANT	PROJECT DESCRIPTION	RDC ACTION	FUNDING AGENCY	LOAN OR GRANT	TOTAL COST	AMOUNT REQUESTED	AMOUNT FUNDED
196-80	Hutchinson AVTI	Education Vocational Planning	No Comment	DES	Grant	18,437	18,437	Not Funded
196-80 (Revised)	Hutchinson AVTI	Education Vocational Planning	Positive	DES	Grant	18,437	18,437	18,437
197-80	Central MN Coop Center	Youth Employment Project	No Comment	DES	Grant	10,000	10,000	10,000
198-80	HUD	Subd. Envir. Review Welshire Addition, Willmar	Positive	HUD	NA	NA	NA	Approved
199-80	MN DES	Modification of Annual Plan Title VI-SYEP	Positive	DOL	Grant	43,799	43,799	Approved
200-80	MN DES	Modification of Annual Plan Title IV-YCCIP	Positive	DOL	Grant	5,589	5,589	Approved
201-80	MN DES	Modification of Annual Plan Title IV-YETP	Positive	DOL	Grant	150,000	150,000	Approved
202-80	MN DES	Modification of Annual Plan Administration Cost Pool	Positive	DOL	Grant	155,589	155,589	Approved
203-80	MN DES	Modification of Annual Plan Title VI	Positive	DOL	Grant	NA	NA	Approved
204-80	MN DES	Modification of Annual Plan Administration Cost Pool	Positive	DOL	Grant	518,661	518,661	Approved
1-81	North American Communication Corp.	CATV Hector	Positive	USDA	Loan	130,000	117,000	Approved
2-81	Minnesota Migrant Council	Employment and Training Program	Negative	DOL	Grant	1,306,100	1,306,100	1,306,100
3-81	HUD	Subd. Review - Hoffers Rolling Acres, Kandiyohi	Positive	HUD	NA	NA	NA	Approved
4-81	HUD	Subd. Review - Oaks II, Hutchinson	Positive	HUD	NA	NA	NA	Approved
5-81	City of Spicer	Land Use Planning Grant	Positive	SPA	NA	NA	NA	Not Funded
6-81	City of Willmar	Energy Audits	Positive	DOE	Grant	8,955	8,955	Not Funded
7-81	Technical Assessment Center - WAVTI	CETA/Vocational Visions Demonstration Series	Positive	DES	Grant	65,600	65,600	65,600
8-81	MN DES	CETA Master Plan, FY 81-86	Positive	DOL	NA	NA	NA	Approved

APPLICATION NUMBER	APPLICANT	PROJECT DESCRIPTION	RDC ACTION	FUNDING AGENCY	LOAN OR GRANT	TOTAL COST	AMOUNT REQUESTED	AMOUNT FUNDED
9-81	MN DES	BOS-CETA Annual Plan - FY 81 Title IIB, C, (Modified Once)	Positive	DOL	Grant	7,485,000	7,485,000	9,455,116
10-81	MN DES	BOS-CETA Annual Plan - FY 81 Title IID, (Modified Twice)	Positive	DOL	Grant	6,589,800	6,589,800	5,120,216
11-81	MN DES	BOS-CETA Annual Plan - FY 81 Title IV-YCCIP, (Modified Once)	Positive	DOL	Grant	513,835	513,835	513,835
12-81	MN DES	BOS-CETA Annual Plan - FY 81 Title IV-YETP, (Modified Once)	Positive	DOL	Grant	2,040,132	2,040,132	2,040,132
13-81	MN DES	BOS-CETA Annual Plan - FY 81 Title IV-SYEP, (Modified Once)	Positive	DOL	Grant	65,000	65,000	3,430,607
14-81	MN DES	BOS-CETA Annual Plan - FY 81 Title VI-PSE	Positive	DOL	Grant	2,833,900	2,833,900	2,833,900
15-81	MN DES	BOS-CETA Annual Plan - FY 81 Title VII-PSIP, (Modified Twice)	Positive	DOL	Grant	749,036	749,036	1,441,053
16-81	MN DES	BOS-CETA Annual Plan - FY 81 Administration Cost Pool (Modified Three Times)	Negative	DOL	Grant	5,177,395	5,177,395	5,409,620
17-81	MN DES	CETA, Title II, Special Grant to Governor	Positive	DOL	Grant	3,172,000	3,172,000	3,172,000
18-81	Meeker County Historical Society	Historical Interpretation	Positive	MHS	Grant	2,000	1,000	1,000
19-81	Littfin Lumber Co., Inc.	Business & Industrial Loan	Positive	FmHA	Loan	1,700,000	1,700,000	Not Funded
20-81	Buffalo Creek Players, Inc.	Historical Building Acquisition	Positive	MHS	Grant	65,000	12,500	Not Funded
21-81	6E RDC	301(B) Planning Grant	Positive	EDA	Grant	50,000	50,000	50,000
22-81	6E CAA	Senior Volunteer Program	Positive	ACTION	Grant	42,059	34,759	42,773
23-81	HUD	Subd. Review, Pauls Addition, Litchfield	Positive	HUD	NA	NA	NA	Approved
24-81	Willmar Video, Inc.	Cable Service Territory, Dovre Township	Positive	CCB	NA	NA	NA	Approved
25-81	MHFA	Elderly Housing, Hutchinson	Positive	MHFA	NA	NA	NA	Approved
26-81	HUD	Subd. Review, Hokanson's Addition, Litchfield	Positive	HUD	NA	NA	NA	Approved

APPLICATION NUMBER	APPLICANT	PROJECT DESCRIPTION	RDC ACTION	FUNDING AGENCY	LOAN OR GRANT	TOTAL COST	AMOUNT REQUESTED	AMOUNT FUNDED
27-81	6E CAA	Community Action	Positive	CSA	Grant	34,000	27,500	27,500
28-81	Renville County	Bridge Replacement	Positive	MnDOT	Grant	59,000	47,200	Pending
29-81	6E CAA	Nutrition for the Elderly	Positive	HHS	Grant	23,083	17,578	17,578
30-81	City of Atwater	Multipurpose Senior Center	Positive	HHS	Grant	5,866	4,399	4,399
31-81	City of Lake Lillian	Multipurpose Senior Center	Positive	HHS	Grant	11,802	8,852	8,852
32-81	City of Stewart	Senior Citizens Center	Positive	HHS	Grant	29,764	22,323	22,323
33-81	City of Spicer	Transportation Program	Positive	HHS	Grant	6,689	4,882	4,882
34-81	City of Atwater	Nutrition Transportation Program	Positive	HHS	Grant	19,062	14,156	14,156
35-81	City of Glencoe	Elderly Transportation Program	Positive	HHS	Grant	2,303	1,024	1,024
36-81	HUD	Subd. Review, Victorian Estates, Willmar	Positive	HUD	NA	NA	NA	Approved
37-81	City of Hutchinson	Wood Disposal and Utilization	Positive	MDA	Grant	NA	NA	Approved
38-81	MN DES	Rural Housing Coalition	Negative	CSA	Grant	74,740	30,000	Not Funded
39-81	City of Winsted	Wastewater Treatment Facility	Positive	EPA/PCA	Grant	969,000	872,100	Pending
40-81	MN CAP	Citizens Energy Coalition	Negative	CSA	Grant	235,882	235,882	235,882
41-81	6E CETC	YCCIP	Positive	DOL	Grant	44,111	44,111	44,111
42-81	6E CAA	WIC	No Comment	MDH	Grant	32,343	32,343	32,343
43-81	Renville County Historical Society	Historical Interpretation	Positive	MHS	Grant	2,472	1,200	1,200
44-81	Kandiyohi County	Family Intervention & After Care	Positive	MCCPB	Grant	29,860	29,860	Not Funded
45-81	Chippewa County	Family Intervention & After Care	Withdrawn	MCCPB	Grant	33,623	33,623	Withdrawn
46-81	Meeker County	Shelter Care Program	No Comment	MCCPB	Grant	12,750	12,750	Not Funded
47-81	City of Litchfield	Wood Waste Utilization	Positive	MDA	Grant	NA	NA	Approved

APPLICATION NUMBER	APPLICANT	PROJECT DESCRIPTION	RDC ACTION	FUNDING AGENCY	LOAN OR GRANT	TOTAL COST	AMOUNT REQUESTED	AMOUNT FUNDED
48-81	Meeker County DAC	Building Construction	Positive	USDA/ FmHA	Loan	250,000	230,000	230,000
49-81	Region E Advisory Council	Family Violence in Region E	Withdrawn	CCPB	Grant	17,736	16,124	Withdrawn
50-81	WCCSC	Mental Health Center: Distress Grant	Positive	HHS	Grant	216,796	216,796	Pending
51-81	Kandiyohi County	Highway Construction	Positive	DOT	Grant	600,000	456,000	Pending
52-81	6E CAA	Crisis Intervention Program	Positive	CSA	Grant	96,000	96,000	96,000
53-81	6E RDC	Area Development Assistance Planning	Positive	USDA/ FmHA	Grant	31,250	25,000	Not Funded
54-81	Timothy Moses & Assoc.	Statewide CETA Coordination Regarding Affirmative Action	Negative	DOL	Grant	65,175	65,175	Not Funded
55-81	Meeker County	Bridge Replacement	Positive	MnDOT	Grant	152,000	120,000	Pending
56-81	City of Glencoe	Cable Service Territory	Positive	CCB	NA	NA	NA	Approved
57-81	Brownton Housing Corp.	Section 515, Rural Rental Housing	Positive	USDA/ FmHA	Loan	360,000	360,000	Pending
58-81	6E CAA	Senior Nutrition Program Congregate Meals	Positive	HHS	Grant	347,059	264,353	264,353
59-81	6E CAA	Senior Nutrition Program Home Delivered Meals	Positive	HHS	Grant	31,729	24,028	24,028
60-81	City of Bird Island	Municipal Building	Positive	HHS	Grant	4,269	3,202	3,202
61-81	Rural Agri-Energy Products Co.	Energy & Fuels Loan Guarantee	Positive	USDA	Loan	34,000,000	34,000,000	Pending
62-81	6E RDC	Cartographic Mapping	Positive	DOL	Grant	10,712	10,712	Not Funded
63-81	6E CAA	Community Energy Counseling	Positive	DOL	Grant	68,000	68,000	70,000
64-81	Minnesota Valley Senior Federation	Outreach Aid	Negative	DOL	Grant	15,487	15,487	Not Funded
65-81	Norman G. Te Slaa	Prairie Arts Choral Concert Association	No Comment	DOL	Grant	11,898	11,898	11,898
66-81	City of Sunburg	CDBG	Positive	HUD	Grant	736,050	600,000	Not Funded
67-81	City of Brownton	CDBG	Positive	HUD	Grant	540,000	540,000	Not Funded

APPLICATION NUMBER	APPLICANT	PROJECT DESCRIPTION	RDC ACTION	FUNDING AGENCY	LOAN OR GRANT	TOTAL COST	AMOUNT REQUESTED	AMOUNT FUNDED
68-81	Meeker County	CDBG	Positive	HUD	Grant	250,000	230,000	Not Funded
69-81	Kandiyohi County	CDBG	Positive	HUD	Grant	470,000	470,000	Not Funded
70-81	McLeod County	CDBG	Positive	HUD	Grant	593,750	518,750	Not Funded
71-81	MN DES	Weatherization Assistance Program	Positive	DOE	Grant	9,094,000	9,094,000	9,094,000
72-81	HUD	Subdivision Review, Sunnyside, Spicer	Positive	HUD	NA	NA	NA	Approved
73-81	MnDOT	Planning and Research Project 1981	Positive	DOT	Grant	NA	NA	Approved
74-81	City of Litchfield	CDBG	Positive	HUD	Grant	2,600,000	600,000	Not Funded
75-81	City of Hutchinson	Public Transit Aid	Positive	DOT	Grant	61,055	61,055	61,055
76-81	City of Winsted	Wastewater Treatment Facility	Positive	EPA/PCA	Grant	NA	NA	Pending
77-81	City of Olivia	Cable Service Territory	Positive	CCB	NA	NA	NA	Approved
78-81	SW Area Ombudsman Consortium	Nursing Home Ombudsman Program	Positive	HHS	Grant	23,530	20,000	20,000
79-81	Region E Advisory Council	Planning Grant	Positive	CCPB	Grant	17,887	17,887	17,887
80-81	Eden Valley Partnership	Section 515, Rural Rental Housing	Positive	USDA/FmHA	Loan	340,000	323,000	Pending
81-81	Lutheran Social Service	Refugee Employment Resourcing Specialist	Positive	DOL	Grant	14,984	14,984	Not Funded
82-81	HUD	Subdivision Review, Varland Addition, Dassel	Positive	HUD	NA	NA	NA	Approved
83-81	City of Willmar	CDBG Admendment	Positive	HUD	Grant	650,000	500,000	Approved
84-81	MN DES	Notification of Intent FY 82 - CETA	Positive	DOL	NA	NA	NA	NA
85-81	MinnARC	Senior Companion Program	Positive	ACTION	Grant	568,275	487,525	487,525
86-81	Minnesota Crime Prevention Center	Crime Prevention Demonstration Project	Positive	GRDC	Grant	89,444	36,000	Not Funded
87-81	MinnARC	Foster Grandparent Program	Positive	ACTION	Grant	1,041,996	968,722	968,722

APPLICATION NUMBER	APPLICANT	PROJECT DESCRIPTION	RDC ACTION	FUNDING AGENCY	LOAN OR GRANT	TOTAL COST	AMOUNT REQUESTED	AMOUNT FUNDED
88-81	McLeod County	Bridge Replacement	Positive	MnDOT	Grant	288,000	220,000	Pending
89-81	Renville County	Bridge Replacement	Positive	MnDOT	Grant	30,360	29,200	Pending
90-81	Renville County	Bridge Replacement	Positive	MnDOT	Grant	84,900	76,500	Pending
91-81	Kandiyohi County	Bridge Replacement	Positive	MnDOT	Grant	73,000	65,000	Pending
92-81	Ira Kasdan & Assoc.	Chemical Dependence Training	Negative	DOL	Grant	23,915	23,915	23,963
93-81	Hutchinson AVTI	Treatment & Training	Positive	DOL	Grant	22,192	22,192	22,192
94-81	Redwood Falls Hospital	Critical Care Nursing Education	Positive	GRDC	Grant	39,600	15,840	15,840
95-81	6E CAA	Head Start	Positive	HHS	Grant	312,238	249,791	249,791
96-81	SW Minnesota EMS	Basic Life Support Systems Development	Positive	HHS	Grant	1,150,000	575,000	325,000
97-81	City of Willmar	Comprehensive Housing Study and Plan	Positive	HUD	NA	NA	NA	NA
98-81	Rural Agri-Energy Products Co.	Loan Guarantee for Alcohol Fuels	Positive	DOE	Loan	45,000,000	45,000,000	Pending
99-81	Renville County	CDBG Amendment	Withdrawn	HUD	Grant	434,000	434,000	Withdrawn
100-81	MnDOT	FY 82-87 Highway Work Proposal	Positive	DOT	Grant	27,383,000	27,383,000	Approved
101-81	6E CAA	Administration	Positive	CSA	Grant	134,000	134,000	167,500
102-81	City of Willmar	District Heating/Cooling System	Positive	HUD	Grant	62,000	49,500	Not Funded
103-81	Mickelson Media, Inc.	Cable Service Territory - McLeod County	Positive	CCB	NA	NA	NA	Approved
104-81	Renville County	Bridge Replacement	Positive	MnDOT	Grant	25,600	24,000	Pending
105-81	City of Franklin	Community Facilities Loan	Positive	USDA/FmHA	Loan	55,000	50,000	50,000
106-81	Atwater Housing Authority	Section 515, Rural Rental Housing	Positive	USDA/FmHA	Loan	530,000	530,000	Pending
107-81	Northtown Apartments	Section 515, Rural Rental Housing (Dassel)	Positive	USDA/FmHA	Loan	419,000	389,050	Pending
108-81	Nationwide Housing Corporation	Section 515, Rural Rental Housing (Cosmos)	Positive	USDA/FmHA	Loan	675,800	607,315	607,315

APPLICATION NUMBER	APPLICANT	PROJECT DESCRIPTION	RDC ACTION	FUNDING AGENCY	LOAN OR GRANT	TOTAL COST	AMOUNT REQUESTED	AMOUNT FUNDED
109-81	Koosman's Home Sales	Subdivision Feasibility Analysis, Pheasant Run, Willmar	Positive	USDA/FmHA	NA	NA	NA	Pending
110-81	HSA-6	Designation as a HSA	Positive	HHS	Grant	289,303	287,772	287,772
111-81	City of Willmar	Year II, CDBG	Positive	HUD	Grant	848,250	600,000	600,000
112-81	City of Kandiyohi	Wastewater Treatment, Step 2	Positive	EPA/PCA	Grant	16,417	14,775	Pending
113-81	City of Hector	Multipurpose Senior Center	Positive	HHS	Grant	3,028	2,028	504
114-81	City of Cosmos	Multipurpose Senior Center	Positive	HHS	Grant	5,880	4,410	4,410
115-81	City of Hutchinson	Multipurpose Senior Center	Positive	HHS	Grant	46,344	34,758	32,500
116-81	WCI	Vocational Rehabilitation	Positive	MN DES	Grant	68,479	54,783	Not Funded
117-81	6E RDC	Developmental Disabilities	Positive	HHS	Grant	22,125	22,125	22,125
118-81	6E RDC	Co-Location/Co-Generating	Positive	MN DED	Grant	65,335	64,000	64,000
119-81	Heritage Communications	Cable Service Territory, Kandiyohi	Positive	CCB	NA	NA	NA	Withdrawn
120-81	City of Litchfield	LCMR - Park Expansion	Positive	SPA	Grant	59,000	29,500	Pending
121-81	City of Eden Valley	LCMR - Tennis Courts	Positive	SPA	Grant	30,753	15,376	Pending
122-81	McLeod County	LCMR - Park Development	Positive	SPA	Grant	92,000	46,000	Pending
123-81	City of Raymond	LCMR - Tennis Court Lighting	Positive	SPA	Grant	7,350	3,675	Pending
124-81	WCCSC	Consultation and Education Grant	Positive	HHS	Grant	308,847	76,850	Pending
125-81	WCCSC	Staffing Growth Grant	Positive	HHS	Grant	193,701	102,613	Pending
126-81	City of Atwater	LCMR - Atwater Lakes Park	Positive	SPA	Grant	133,259	66,629	Pending
127-81	City of Hutchinson	LCMR - West River Park	Positive	SPA	Grant	292,610	146,305	Pending
128-81	City of Hutchinson	LCMR - McDonald's Park	Positive	SPA	Grant	183,750	91,875	Pending
129-81	City of Lester Prairie	LCMR - City Park	Positive	SPA	Grant	3,000	1,500	Pending
130-81	Renville County	Bridge Replacement	Positive	MnDOT	Grant	64,000	53,474	Pending
131-81	Renville County	Bridge Replacement	Positive	MnDOT	Grant	60,784	53,444	Pending
132-81	City of Willmar	Section 18, Transportation	Positive	DOT	Grant	NA	NA	Pending

APPLICATION NUMBER	APPLICANT	PROJECT DESCRIPTION	RDC ACTION	FUNDING AGENCY	LOAN OR GRANT	TOTAL COST	AMOUNT REQUESTED	AMOUNT FUNDING
133-81	St. Anthony Church, Watkins	Section 202, Housing	Positive	HUD	Loan	1,192,800	1,192,800	Pending
134-81	Meeker County Memorial Hospital	Energy Conservation Measures	Positive	DOE	Grant	23,246	11,623	Pending
135-81	Spicer Homes, Inc.	Subdivision Review, Medayto Hills, Spicer	Positive	USDA/FmHA	NA	NA	NA	Pending
136-80	Green Lake Sanitary Sewer & Water District	Wastewater Treatment Facility, Step 2	Positive	EPA/PCA	Grant	NA	NA	Pending
137-81	City of Glencoe	Elderly Transportation Program	Positive	HHS	Grant	1,692	1,000	1,000
138-81	McLeod County Social Service	Elderly Homemaking and Chore Service	Positive	HHS	Grant	20,000	10,000	10,000
139-81	City of Atwater	Nutrition Transportation Program	Positive	HHS	Grant	5,300	3,060	3,060
140-81	City of Spicer	Whistle Stop Transportation Program	Positive	HHS	Grant	10,384	5,840	5,840
141-81	Meeker County Council on Aging	Transportation/Information/Referral	Positive	HHS	Grant	43,495	24,987	24,987
142-81	City of Watkins	Transportation Project	Positive	HHS	Grant	36,863	23,908	Refused by Applicant
143-81	S. MN Regional Legal Services	Legal Services for Seniors	Positive	HHS	Grant	3,497	2,600	2,600
144-81	W. MN Legal Services	Legal Advocacy for Older Americans	Positive	HHS	Grant	40,027	29,818	29,818
145-81	City of Morton	Comprehensive Development Plan	Positive	None	None	None	None	NA
146-81	City of Franklin	Comprehensive Development Plan	Positive	None	None	None	None	NA
147-81	City of Sacred Heart	Comprehensive Development Plan	Positive	None	None	None	None	NA
148-81	City of Watkins	Comprehensive Development Plan	Positive	None	None	None	None	NA

TECHNICAL ASSISTANCE

According to language in the Regional Development Act, the commission may offer technical assistance to local units of government. It is the purpose of the commission to increase the planning and programming capability of local units of government by working with them to help assess their needs and determine their problems and develop local strategies to meet those needs and overcome or avoid the problems. The existence of the commission has no affect on the authority or responsibility of local units of government to do their own planning and programming to meet the needs and desires of their citizens.

Requests for technical assistance are initiated by local units of government and public/semipublic agencies. The commission provides assistance on a time available basis. Examples of requests for technical assistance follow:

- Help develop zoning ordinances
- Help develop zoning maps
- Help develop subdivision regulations
- Help develop future land use maps
- Assist with Community Development Act preliminary and final applications
- Assist with Bureau of Outdoor Recreation (LAWCON) preliminary and final applications
- Assist with Legislative Committee on Minnesota Resources preliminary and final applications
- Assist with housing program applications
- Assist with water system applications
- Assist with applications oriented to human services
- Advise on applicable state/federal grant and loan programs
- Prepare county Overall Economic Development Plans
- Develop loan applications for economic development
- Prepare tax increment finance district applications
- Assist with applications for manpower program funds
- Assist with applications for aging program funds

Examples of technical assistance completed during the past eighteen months are (1) Comprehensive Land Use Plan, Zoning Ordinances and Subdivision Ordinances for the Cities of Bird Island, Sacred Heart, Morton, Watkins and Franklin, (2) preliminary Community Development Block Grant applications for three counties and two cities, (3) twelve preliminary Open Space/Recreation grant applications for nine different cities, (4) six energy audit applications, and (5) downtown revitalization plan applications for four cities. Various other forms of technical assistance were given including working with state agencies to obtain better communications on local issues.

PROGRAM BUDGET SUMMARY

FISCAL YEARS 1980 AND 1981

July 1, 1979 - June 30, 1981

	SOURCE OF FUNDING			
	Local	State	Federal	Total
100 GENERAL ADMINISTRATION				
101 General Office	\$ -0-	\$ 3,210	\$ -0-	\$ 3,210
102 Fiscal	-0-	-0-	-0-	-0-
103 External Communications	-0-	-0-	-0-	-0-
104 Evaluation & Commission	11,465	13,691	-0-	25,156
200 TECHNICAL ASSISTANCE	122,841	6,088	17,368	146,297
300 COMPREHENSIVE DEVELOPMENT PLAN				
301 Housing	-0-	-0-	-0-	-0-
302 Public Facilities	1,014	488	3,040	4,542
303 Economic Development	17,916	12,106	48,285	78,307
304 Land Use/Related Natural Resources	-0-	1,945	3,941	5,886
305 Transportation	-0-	3,641	-0-	3,641
306 Open Space/Recreation	-0-	6,191	2,165	8,356
307 Agriculture	4,192	2,409	3,717	10,318
308 Water Resources	13,416	2,022	4,043	19,481
309 Energy	-0-	-0-	-0-	-0-
310 Employment and Training	-0-	12,956	57,000	69,956
311 Education	-0-	-0-	-0-	-0-
312 Human Services	-0-	-0-	-0-	-0-
313 Population	-0-	-0-	-0-	-0-
314 Aging	4,911	43,359	462,700	510,970
315 Criminal Justice	-0-	-0-	-0-	-0-
316 Health	-0-	-0-	-0-	-0-
317 Developmental Disabilities	-0-	23,665	47,844	71,509
318 Arts and Humanities	-0-	-0-	-0-	-0-
319 Policy	-0-	6,947	-0-	6,947
TOTALS	\$175,755	\$138,718	\$650,103	\$964,576

The state auditor conducts an annual audit and has always found the financial affairs of the commission in order and has not made any negative comments.

REVENUE - EXPENDITURES SUMMARY

FISCAL YEARS 1980 AND 1981

REVENUES

Two Year
7/1/79 -
6/30/81

\$ 812,824

FEDERAL

Economic Development Administration	\$ 41,666	
Housing and Urban Development "701"	32,893	
Housing and Urban Development "107"	8,000	
DOL - Employment and Training	60,654	
HHS - Developmental Disabilities	52,548	
HHS - Area Agency on Aging	617,063	

STATE APPROPRIATION

132,918

LOCAL

125,946

OTHER

45,690

Minnesota Department of Transportation	3,800	
Waste Management Board	2,500	
Governor's Council on Rural Development	2,500	
City of Franklin, Minnesota - Comprehensive Planning	2,500	
City of Bird Island, Minnesota - Comprehensive Planning	1,255	
Mobile Home and Miscellaneous Tax	1,099	
Interest Earnings	24,235	
Refunds - Reimbursements	231	
In-Kind Contributions	7,570	

TOTAL

\$1,117,378

EXPENDITURES

PERSONAL SERVICES	\$ 404,748	
SUPPLIES	21,875	
OTHER SERVICES: aging contracts, communications, postage, etc.	565,272	
OTHER CHARGES: insurance, professional services, rent, bonds, etc.	29,138	
CAPITAL OUTLAY: xerox machine, office equipment	13,702	
REFUNDS: State of Minnesota, Developmental Disabilities Program	2,060	
DEBT SERVICE: interest, xerox contract	437	
TRAVEL	25,304	
COMMISSION TRAVEL AND PER DIEM	13,944	
IN-KIND SERVICES	7,569	
TOTAL	<u><u>\$1,084,049</u></u>	

PROGRAM BUDGET SUMMARY

FISCAL YEAR 1982

July 1, 1981 - June 30, 1982

100 GENERAL ADMINISTRATION

101 General Office

102 Fiscal

103 Evaluation & Commission

200 TECHNICAL ASSISTANCE

300 COMPREHENSIVE DEVELOPMENT PLAN

301 Housing

302 Public Facilities

303 Economic Development

304 Land Use/Related Natural Resources

305 Transportation

306 Open Space/Recreation

307 Agriculture

308 Water Resources

309 Energy

310 Employment and Training

311 Education

312 Human Services

313 Population

314 Aging

315 Criminal Justice

316 Health

317 Developmental Disabilities

318 Arts and Humanities

319 Policy

TOTALS

SOURCE OF FUNDING			
Local	State	Federal	Total
\$ -0-	\$ 747	\$ -0-	\$ 747
-0-	-0-	-0-	-0-
8,000	-0-	-0-	8,000
61,525	5,570	15,140	82,235
-0-	-0-	-0-	-0-
-0-	-0-	-0-	-0-
1,972	15,057	84,931	101,960
-0-	-0-	-0-	-0-
-0-	6,539	-0-	6,539
-0-	-0-	-0-	-0-
-0-	485	-0-	485
-0-	6,788	-0-	6,788
-0-	-0-	-0-	-0-
-0-	9,144	16,000	25,144
-0-	-0-	-0-	-0-
-0-	-0-	-0-	-0-
-0-	-0-	-0-	-0-
-0-	23,007	523,298	546,305
-0-	-0-	-0-	-0-
-0-	-0-	-0-	-0-
-0-	5,288	22,125	27,413
-0-	-0-	-0-	-0-
-0-	-0-	-0-	-0-
\$71,497	\$72,625	\$661,494	\$805,616

SUMMARY OF STUDIES - REPORTS - PLANS

1981 EMPLOYMENT AND TRAINING PLAN

This is an annual report which the Regional Development Commission adopted on September 24, 1980. This 74-page report contains statistical information helpful in making decisions on "Comprehensive Employment and Training Act" funds.

AREA PLAN FOR PROGRAMS ON AGING: 1981 - 1983

On October 22, 1980 the Regional Development Commission adopted the 162-page three-year plan on aging. This is the first time a three-year plan has been prepared rather than an annual plan. This plan is a combination contract and work program supplemental with statistical information and objectives. Statistical information includes population trends and demographic characteristics of persons age 60 and over. An analysis of needs helped establish the following funding priority areas - - 1) access services, 2) in-home services and 3) community services. Priorities under "access services" are transportation and information and referral. "In-home services" priorities are homemaker/chore service and home delivered meals. The priorities listed under "community services" are congregate nutrition, information and referral, coordination, community health, multipurpose senior centers and legal services.

DEVELOPMENTAL DISABILITIES

A 78-page document on developmental disabilities was adopted by the commission on May 27, 1981. The first two chapters of the document give a background on DD programs and describe governmental, geographic and demographic characteristics of the region. Chapter three deals with services and addresses 1) current resources, 2) needs and issues and 3) problems and capability. Chapter four discusses philosophy and lists six goals, six objectives and seventeen policies.

THE GOLDEN PAGES

This is a directory of services for the elderly which is updated annually. The 1981 edition contains 54 pages. Major categories included are 1) county offices, 2) medical and health services, 3) meals and recreation, 4) education and employment, 5) housing, transportation and volunteer programs and 6) government agencies and representatives.

COMPREHENSIVE DEVELOPMENT POLICY PLAN

June 24, 1981 was a landmark day for the commission. On that day it adopted an 86-page Comprehensive Development Policy Plan. With its formal adoption the commission met a statutory obligation that stated it "shall prepare and adopt, after appropriate study and such public hearings as may be necessary, a comprehensive development plan for the region." The plan addresses the 18 elements which the commission, for six years, has considered as part of its work program. These elements are 1) housing, 2) public facilities, 3) economic development, 4) land use and related natural resources, 5) transportation, 6) open space/recreation, 7) agriculture, 8) water resources, 9) energy, 10) employment and training, 11) education, 12) human services, 13) population, 14) aging, 15) criminal justice, 16) health, 17) developmental disabilities and 18) arts and humanities. A total of 37 goals, 106 objectives and 389 policies have been listed in the plan for the 18 previously named elements.

AGRICULTURAL REPORTS

The commission completed work on two reports after the close of the 1981 fiscal year on June 30. One report is titled "Agricultural Land Preservation" and is 31 pages in length, the other report is titled "Regional Agricultural Profile" and is a 70-page document composed primarily of statistical trends for area crop and livestock production. It is intended to generate interest in exploring opportunities for additional agricultural processing in the region.

COMMISSION EVALUATION

Beginning with this annual report, and every five years thereafter, the commission shall issue a report reviewing its activities, assessing its performance in fulfilling the purpose of the Regional Development Act of 1969 as amended and stating whether or not its existence is in the public welfare and interest.

The principle purposes of the Act are:

- Facilitate intergovernmental cooperation.
- Insure the orderly and harmonious coordination of state, federal and local comprehensive planning.
- Develop programs for the solution of economic, social, physical and governmental problems of the state and its citizens.

Commission performance requirements according to the Act are:

- Prepare and adopt a comprehensive development plan for the region.
- Make comments and recommendations on long-term comprehensive plans for cities, townships, counties, watershed districts and soil conservation districts.
- Review all regionally significant applications of governmental units, independent commissions, boards or agencies for a state or federal loan or grant.
- Develop formal review procedures for reviewing long-term comprehensive plans and requests for state or federal assistance.

The commission may perform the following and similar functions:

- Feasibility studies related to urban and rural research.
- Coordinate civil defense, community shelter planning and flood plain management programs.
- Participate in certain proceedings of the Minnesota Municipal Commission.
- Appoint from its membership a member to serve on certain other groups.
- Organize a center for data collection and storage.
- Provide local units of government with services and technical assistance for planning and development.
- Engage in a continuous program of research and study regarding the following and similar matters.
 - The acquisition and financing of suitable major parks and open spaces within the region.
 - The control and prevention of water and air pollution in conformity with applicable federal and state laws.
 - The examination of the tax structure in the region and consideration of ways to equalize the tax resources and fiscal disparities therein.
 - Flood plain management programs.
 - The possibility of consolidation of common services of local governmental units and the kind of consolidation most suitable in the public interest.
 - A long range capital improvement program for the region.
 - Identification of human, economic, social, physical, governmental problems and opportunities.
 - Assignment of priorities for the development of human, economic and natural resources of the region.
 - Identification of housing problems and planning work programs for housing.
 - Low income and minority group problems and opportunities.
 - Identification of all facets and elements of law enforcement activity, including police, court and correctional programs and systems.

The RDC has conducted a self evaluation five different times. In 1979, 1980 and 1981 there are enough similarities in the methodology to draw some analogies. In all of the last three evaluations there was a satisfaction expressed for the competency of staff, an awareness that public relations need to be improved and acknowledgement that the commissioners themselves need to more frequently and thoroughly discuss and promote the strong points of the commission with their constituents.

The 1981 evaluation was designed to meet legislative requirements. Rules of the State Planning Agency require the RDC to address the following seven items.

- The establishment of an internal evaluation committee.
- The formulation of self evaluation objectives.
- The determination of RDC constituency.
- The development of self evaluation methodology.
- The formulation of an implementation schedule.
- The implementation of the self evaluation methodology.
- The utilization of self evaluation findings.

The Chairman appointed the four-member Executive Committee to act as the internal Evaluation Committee. It was agreed that the following three objectives should be considered in the evaluation process.

- Whether or not the existence of the commission is in the public welfare and interest.
- Assess the RDC's performance in fulfilling the purposes of the Regional Development Act of 1969.
- Analyze specific work requirements of the Act.

Also, it was agreed that the RDC constituency is the total populace in general and local governmental units in specific.

The internal Evaluation Committee recommended an internal evaluation by the commission rather than have an external evaluation team conduct an evaluation. They preferred to focus on the work program similar to their previous evaluations and set a special meeting for this purpose which was held on April 13, 1981 at the Sheep Shedde in Olivia, Minnesota.

Following are the survey questions used at the April 13 meeting and the results by percent for the thirteen participants. Information is included for 1979 when there were eight participants and 1980 when twelve commissioners participated. Occasionally, results will not add up to 100 percent. The reason for this is because some commissioners did not answer a question. The first survey dealt with technical assistance and we are able to compare the results from three different evaluations.

Objective of Local Technical Assistance:

To provide technical assistance to enhance economic development opportunities, assist in providing or expanding community services and facilities, assist in research and analysis which enable local units of government and public and semi-public agencies to plan for future growth, development and capital expenditures, and increase efficiency and effectiveness in the delivery and administration of services and programs.

(See next page for results of Technical Assistance Survey)

PROGRAM: LOCAL (TECHNICAL) ASSISTANCE

1979 1980 1981

1. My knowledge about this program:

0%	8%	8%	very knowledgeable
88%	59%	77%	knowledgeable
12%	33%	15%	somewhat knowledgeable
0%	0%	0%	do not understand

2. I have enough information to explain this program to others:

75%	75%	62%	yes
25%	25%	38%	no

3. I occasionally explain this program to the people I represent:

88%	91%	77%	yes
12%	9%	23%	no

4. My personal interest in this program:

38%	25%	46%	very interested
62%	67%	46%	interested
0%	8%	8%	somewhat interested
0%	0%	0%	not interested

5. In my opinion, the units of government or agencies I represent are:

13%	25%	15%	very interested
50%	50%	46%	interested
37%	17%	39%	somewhat interested
0%	8%	0%	not interested

6. In my opinion, the general public in the region is:

0%	0%	39%	very interested
75%	50%	46%	interested
25%	42%	15%	somewhat interested
0%	8%	0%	not interested

7. My satisfaction with this program:

13%	0%	15%	very satisfied
12%	42%	70%	satisfied
75%	50%	15%	somewhat satisfied
0%	8%	0%	not satisfied

8. In my opinion, the usefulness of this program to local units of government, agencies and the general public in the region is:

13%	33%	46%	very useful
87%	59%	46%	useful
0%	8%	8%	somewhat useful
0%	0%	0%	not useful

9. In my opinion, this program should be:

13%	25%	31%	continued as is
87%	67%	39%	strengthened and continued
0%	0%	0%	de-emphasized but continued
0%	8%	0%	eliminated

10. Program activity should be summarized:

12%	18%	23%	annually
38%	55%	54%	quarterly
25%	0%	15%	monthly
25%	27%	8%	as it happens

11. How should program activity be summarized:

0%	17%	31%	verbally
25%	25%	39%	in writing
50%	33%	15%	both
25%	25%	15%	no response

Indicate your own personal level of interest in each of the following areas.

	Very Interested		Somewhat Interested		Not Interested	
	1980	1981	1980	1981	1980	1981
Strengthening Local Government	83%	85%	8%	15%	0%	0%
Intergovernmental Relations	42%	31%	58%	69%	0%	0%
Assistance to Local Units	58%	85%	42%	15%	0%	0%
Housing	33%	46%	67%	31%	0%	0%
Public Facilities	25%	38%	58%	54%	17%	8%
Economic Development	50%	69%	50%	23%	0%	0%
Land and Natural Resources	50%	31%	33%	54%	17%	15%
Transportation	59%	46%	33%	31%	8%	23%
Open Space/Recreation	33%	8%	42%	62%	25%	31%
Agriculture	83%	69%	9%	15%	8%	8%
Water	50%	46%	42%	54%	8%	0%
Energy	83%	69%	17%	23%	0%	8%
Employment and Training	17%	0%	58%	92%	25%	8%
Education	25%	23%	58%	54%	17%	23%
Human Services	8%	8%	50%	69%	33%	15%
Aging	42%	23%	41%	54%	17%	15%
Criminal Justice	33%	23%	25%	31%	42%	46%
Health	60%	46%	33%	39%	17%	15%
Developmental Disabilities	25%	8%	58%	61%	17%	31%
Arts and Humanities	0%	0%	33%	23%	58%	77%

In general, how would you rate the commission in the following areas.

	Excellent		Good		Poor	
	1980	1981	1980	1981	1980	1981
Advisory Committee Input	33%	54%	59%	46%	8%	0%
Commitment of RDC Members	17%	38%	83%	54%	0%	8%
Information Dissemination	17%	23%	67%	61%	16%	8%
Representation	33%	39%	50%	39%	17%	15%
Community Support	8%	31%	50%	31%	42%	23%
Effectiveness	8%	15%	83%	77%	9%	8%
Quality of Work	33%	39%	67%	38%	0%	0%
Decision-Making Processes	25%	15%	75%	69%	0%	8%
Service Provided	25%	54%	67%	46%	0%	0%
Staff Professional Capabilities	67%	62%	33%	38%	0%	0%
Administration and Management	75%	62%	17%	38%	0%	0%

In your opinion, how satisfied are most of the municipal, township and county governments and organizations with the amount of assistance which the commission has provided?

	Municipal		County		Townships	
	1980	1981	1980	1981	1980	1981
Very Satisfied	25%	15%	0%	8%	0%	8%
Satisfied	25%	62%	58%	15%	0%	0%
Somewhat Satisfied	33%	8%	25%	46%	0%	46%
Not Satisfied	8%	0%	17%	8%	0%	8%

In your opinion, how satisfied are most of the municipal, township and county governments and organizations with the quality of assistance which the commission has provided?

	Municipal		County		Townships	
	1980	1981	1980	1981	1980	1981
Very Satisfied	8%	31%	0%	15%	0%	8%
Satisfied	75%	54%	75%	23%	0%	15%
Somewhat Satisfied	8%	8%	25%	23%	0%	31%
Not Satisfied	0%	0%	0%	8%	0%	8%

How knowledgeable, in your opinion, is the commission of local units of government's problems and needs?

	Municipal		County		Townships	
	1980	1981	1980	1981	1980	1981
Very Knowledgeable	25%	23%	17%	16%	0%	8%
Knowledgeable	50%	62%	58%	46%	0%	23%
Somewhat Knowledgeable	8%	0%	8%	15%	0%	23%
Not Knowledgeable	0%	0%	8%	0%	0%	8%

In your opinion, how useful has the commission been to local units of government in helping the local units carry out their functions and responsibilities?

	Municipal		County		Townships	
	1980	1981	1980	1981	1980	1981
Very Useful	33%	31%	8%	15%	0%	8%
Useful	33%	39%	67%	54%	0%	15%
Somewhat Useful	17%	15%	17%	8%	0%	23%
Not Useful	0%	0%	0%	8%	0%	23%

In your opinion, how useful has the commission been in communicating local concerns to state and federal agencies?

	1980	1981
Very Useful	33%	39%
Useful	50%	38%
Somewhat Useful	17%	15%
Not Useful	0%	0%

Do you believe that the existence of the commission is beneficial to local units of government and the residents of the region?

	1980	1981
Yes	75%	100%
No	8%	0%

Do you believe that the commission addresses the needs of local governments, state and federal agencies or a combination of these governmental levels?

	1980	1981
Local Governments	42%	46%
State and Federal Agencies	16%	0%
Both of the Above	42%	54%

In your opinion, how useful have the following commission programs been to the four-county area.

*Little or nothing has been done in the past for these items.

	Very Useful		Somewhat Useful		Not Useful	
	1980	1981	1980	1981	1980	1981
Assistance to Local Units	75%	77%	17%	23%	0%	0%
Housing	50%	31%	33%	69%	17%	0%
Public Facilities	17%	31%	75%	54%	8%	0%
Economic Development	33%	54%	58%	46%	9%	0%
Land and Natural Resources	25%	23%	75%	54%	0%	8%
Transportation	50%	15%	25%	77%	25%	8%
Open Space/Recreation	25%	15%	67%	77%	8%	8%
Agriculture	25%	0%	50%	69%	25%	31%
Water	17%	23%	67%	62%	8%	15%
Energy *	8%	23%	50%	31%	17%	31%
Employment and Training	25%	31%	58%	61%	17%	8%
Education *	25%	8%	25%	23%	33%	38%
Human Services *	8%	8%	42%	46%	33%	31%
Aging	33%	62%	58%	38%	9%	0%
Criminal Justice *	17%	8%	42%	31%	25%	46%
Health	25%	8%	42%	77%	25%	15%
Developmental Disabilities	17%	31%	75%	54%	8%	8%
Arts and Humanities *	0%	0%	42%	31%	50%	46%

For each of the following commission programs, do you feel there should be more, less or about the same level of commission involvement in the next two years.

*Little or nothing has been done in the past for these items.

**Other agencies address these issues.

	More		About The Same		Less	
	1980	1981	1980	1981	1980	1981
Assistance to Local Units	58%	62%	42%	38%	0%	0%
Housing	50%	31%	42%	69%	8%	0%
Public Facilities	33%	31%	58%	54%	9%	15%
Economic Development	50%	69%	50%	23%	0%	0%
Land and Natural Resources	42%	38%	50%	54%	8%	8%
Transportation	58%	38%	42%	62%	0%	0%
Open Space/Recreation	17%	15%	42%	54%	41%	31%
Agriculture	58%	62%	42%	38%	0%	0%
Water	42%	38%	58%	54%	0%	8%
Energy *	83%	54%	8%	23%	0%	15%
Employment and Training	0%	8%	75%	85%	25%	7%
Education *	17%	8%	42%	54%	33%	23%
Human Services *	0%	0%	58%	54%	33%	31%
Aging	42%	31%	42%	61%	16%	8%
Criminal Justice **	33%	0%	33%	39%	34%	46%
Health	25%	8%	50%	92%	25%	0%
Developmental Disabilities	8%	23%	75%	69%	17%	8%
Arts and Humanities **	0%	0%	58%	39%	33%	46%

Should the commission be involved in any additional programs?

Yes	8%
No	54%
No Reponse	38%

If yes, please specify which programs:

- Preservation of prime agricultural land.
- Anything to increase economics, education and services to residents and governmental entities.

What do you consider to be the strengths of the commission?

- Technical assistance to local units of government.
- A-95 review and comment procedure.
- Helping small towns.
- Representing local problems and concerns to state and federal agencies.
- Coordination of programs.
- An understanding of each other's problems.
- Concern for current issues.
- Expertise of staff.
- Broad representation on the RDC.
- Clearinghouse for programs and information.

What do you consider to be the weaknesses of the commission?

- No power to implement.
- Can only recommend in many instances.
- Not enough discussion on A-95 applications.
- Public relations.
- Name confusion with other agencies.
- Meetings are too long.
- Discussions at meetings vary from the subject matter.
- Inability to explain to cities what the RDC stands for.
- Spend too much time on A-95 applications.
- Locally significant A-95 applications should be more thoroughly discussed.
- Some members are trying to wreck the programs.
- Public image.
- Not enough clout.

How can you as an individual make the commission more effective?

- Be present at meetings.
- Report back to units of government which RDC member represents.
- Explain to people the difference between 6E RDC and 6E CAA.
- Make more information about RDC available to local units of government.
- Help work for the small towns.
- Do homework more thoroughly.
- By being better informed so as to better answer questions.
- By relating what the commission can do for people.
- Prepare for meetings and participate.
- Communicate more with constituents.
- Improve public relations.

How can you as an individual assist in improving the performance and effectiveness of this commission in the following areas?

- Relationship with Cities, Counties, School Districts and Townships:
 - Communicate more with constituents.
 - Provide better public relations.
 - Have an open mind until all points and presentations are made.
 - Share information on how the commission can be of assistance.
 - Try to understand others' problems and help them resolve them.
 - Gather more data.
 - By reporting back to constituents and explaining the RDC.
 - By attending meetings.
 - Have more contact with local officials.
 - Keep local officials informed regarding RDC activities.

- Public Information and Education:
 - Change the name of the RDC.
 - Report back to constituents represented.
 - Publicize technical assistance given to communities.
 - Speak-up.
 - Take part in public discussions.
 - Represent the RDC in civic groups and at public meetings.
 - Attend meetings and participate in discussions -- both pro and con.
 - Make reference to 6E RDC when addressing community groups.
 - Keep local units of government and others advised when RDC staff gives assistance.
 - Improve communications.
 - Give commissioners orientation and provide with brief one line accomplishments.
- Relationship with State Government and Agencies:
 - Become informed.
 - Make personal contacts.
 - Make reference to 6E RDC when visiting with area legislators.
 - Brag about your people in state offices.
 - Gather good information and get it to them.
 - Write congressmen and legislators about problems when legislation is concerned.
 - Raise hell.
- Staff Activities:
 - Utilize the staff more.
 - Give the staff more meaningful work.
 - Commissioners and communities should inform staff of substantial changes.
 - Regard and acknowledge them.
 - Share opinions with staff.
 - Monitor their activities.
 - Don't intimidate staff.
 - Pay better attention to reports at RDC meetings.
 - Talk to staff and ask for help.
 - Give them input.
- Legislative Input:
 - Lobby for programs.
 - Talk to legislators.
 - Work more often with legislators.
 - Invite legislators to RDC meetings.
 - Meet with legislators.
 - Contact legislators on subjects of concern to the RDC.
 - Prepare special newsletter on important issues.
- Commission Meetings:
 - Attend RDC meetings.
 - Vote by paper ballot on certain issues.
 - Keep quiet if you can add nothing of substance.
 - Keep a regional perspective.
 - Shorten the meetings by keeping on the subject.
 - Do homework on agenda items.
 - Take part in discussions.
 - Decide your vote on facts not how others vote.
 - Be on time for meetings.
- Advisory Committee Functions:
 - Appoint good members.
 - Have good attendance at advisory committee meetings.
 - Be more interested in their advice.
 - Share your thinking at their meetings.
 - Do not accept an appointment unless interested.
 - Serve if appointed.
 - Be informed about committee functions.
 - Read committee minutes and reports.

- Work Program Development:
 - Be willing to criticize poorly conceived sections.
 - Support quality proposals.
 - Discuss ineffective programs.
 - Give more input.
 - Point out areas needing improvement.
 - Strive to make it constructive and then support it.
 - Share ideas.
- Work Program Implementation:
 - Accomplish the tasks assigned.
 - Give feedback during the year.
 - Communicate with other units of government.
 - Monitor closely throughout the year.
 - Make sure staff implements adopted work program.
 - By expressing what you think -- right or wrong.
 - Look for areas of utilization in areas represented.
 - Require monitoring comprehensive data.

Evaluation Summary

The principal question that had to be answered as a result of this evaluation was whether or not the existence of the RDC is in the public welfare and interest. In 1981, 100 percent of the commissioners participating in the evaluation indicated they believed the commission is beneficial to local units of government and the residents of the region. The commissioners also believe that municipalities are more satisfied than counties and townships with the amount and quality of assistance provided and finds the commission more useful in helping municipalities than counties and townships in carrying out their function and responsibilities. Commissioners indicated they are most knowledgeable of municipal needs and problems and least knowledgeable of township needs and problems. Eighty-five percent of the evaluation participants stated they thought the commission was very useful or useful in communicating local concerns to state and federal agencies.

Eighty-five percent of the evaluation participants were very interested and 15 percent were somewhat interested in the commission 1) strengthening local government and 2) providing assistance to local units. These were the highest interest levels out of the 20 areas listed. Out of the 18 work program areas listed, 77 percent of the participants believed assistance to local units was very useful and 23 percent believed it was somewhat useful. Assistance to local units and agriculture tied for first place regarding more involvement for the commission over the next two years.

Another set of questions asked for a rating on non-program areas and internal operation. The highest ranking went to the two questions on 1) staff professional capabilities and 2) administration and management. Sixty-two percent of the participants gave these two items an "excellent" rating and 38 percent gave them a "good" rating.

The make-up of the RDC is considered to be representative of the area. Sixteen out of the 17 members of the commission are local elected officials which places an extra level of accountability on them. These people are all knowledgeable regarding the purpose and responsibility of the commission. They also are aware of commission weaknesses, strengths and opportunities. Their consensus, after an evaluation, is that the commission is beneficial and is doing a good job.

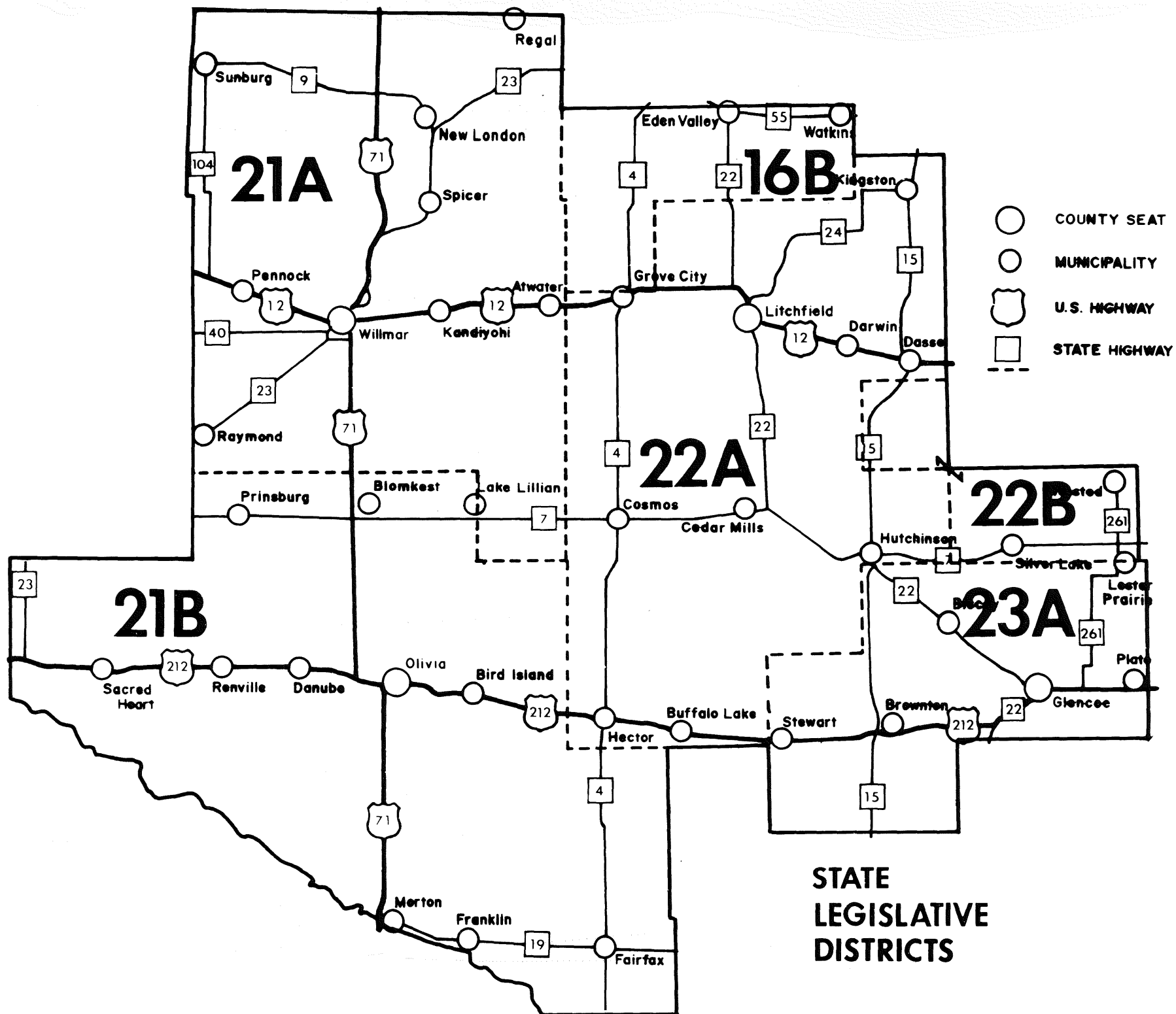
STATE & FEDERAL LEGISLATORS

State

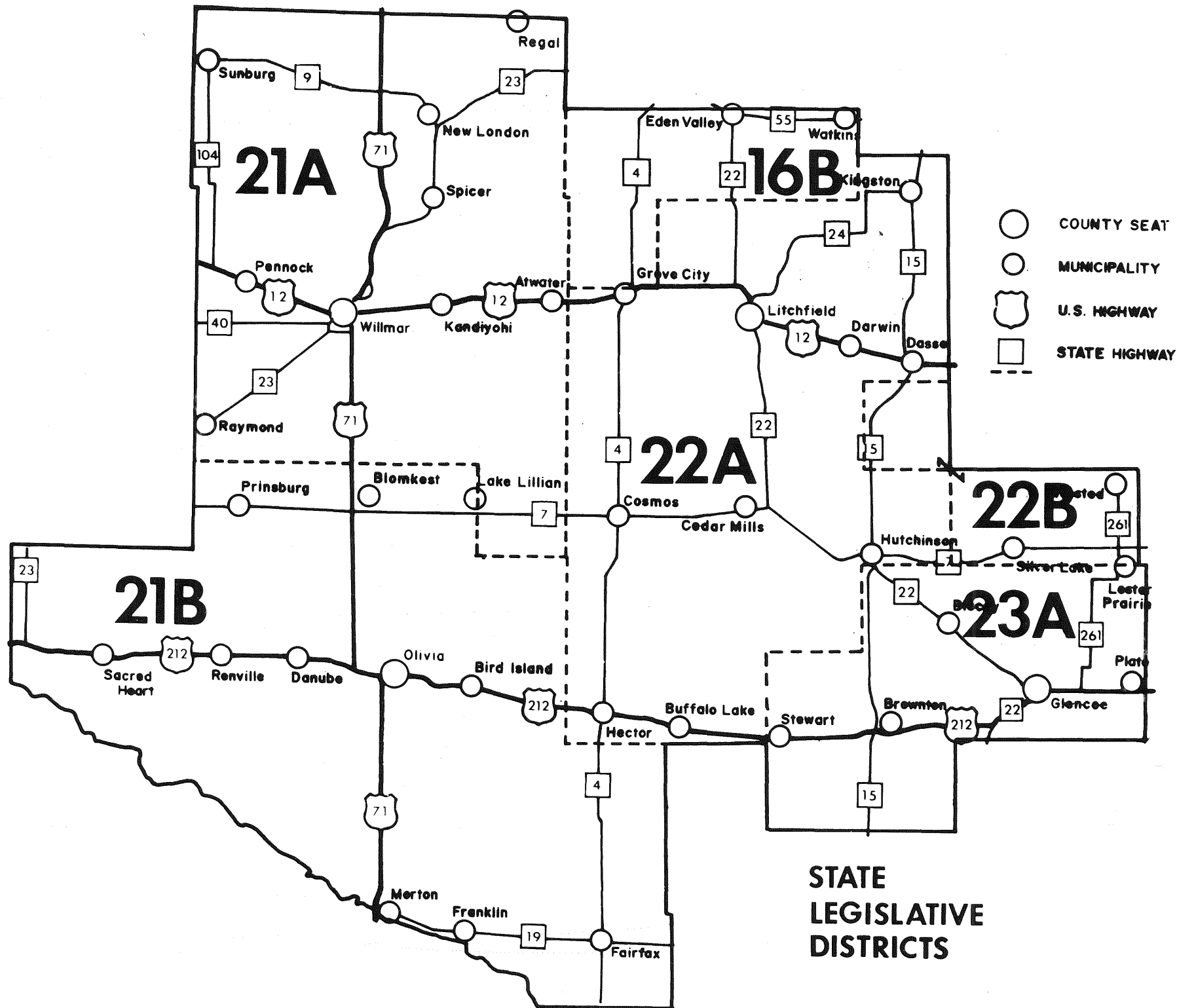
DISTRICT	OFFICIAL	LOCAL ADDRESS	OFFICE ADDRESS	PHONE NUMBERS
21	Senator A.O.H. Setzepfandt	Box 356 Bird Island, MN 55310	Room 246 Minnesota State Capitol St. Paul, MN 55155	296-4184 (B) 365-3333 (H)
22	Senator John Bernhagen	Route 1 Hutchinson, MN 55350	Room 130 State Office Building St. Paul, MN 55155	296-4131 (B) 879-4002 (H)
22A	Rep. Adolph Kvam	25 West Lockerbie Litchfield, MN 55355	Room 369 State Office Building St. Paul, MN 55155	296-4344 (B) 693-8275 (H)
23A	Rep. Gary Schafer	Route 2 Gibbon, MN 55335	Room 399 State Office Building St. Paul, MN 55155	296-8634 (B) 834-6673 (H)
22B	Rep. Tony Onnen	Route 2 Cokato, MN 55321	Room 383 State Office Building St. Paul, MN 55155	296-1534 (B) 286-5472 (H)
23	Senator Earl Renneke	Route 2 LeSueur, MN 56058	Room 121A State Office Building St. Paul, MN 55155	296-4125 (B) 665-2930 (H)
21B	Rep. Gaylin DenOuden	112 Sixth Street Prinsburg, MN 56281	Room 385 State Office Building St. Paul, MN 55155	296-4346 (B) 978-6745 (H)
21A	Rep. Dean Johnson	605 Fourth Street SE Willmar, MN 56201	Room 327 State Office Building St. Paul, MN 55155	296-3826 (B) 235-6388 (H)
16B	Rep. B.J. Brinkman	Box 435 Richmond, MN 56368	Room 296 State Office Building St. Paul, MN 55155	296-4373 (B) 597-2328 (H)

Federal

6	Rep. Vin Weber	720 St. Germain St. Cloud, MN 56301	514 Cannon Office Bldg. Washington, D.C. 20515	225-2331 (Wash. D.C.) 252-7580 (St. Cloud)
2	Rep. Thomas Hagedorn	Box 3148 Mankato, MN 56001	1519 Longworth House Office Building Washington, D.C. 20515	225-2472 (Wash. D.C.) 387-8226 (Mankato)
	Senator Rudy Boschwitz	419 North Robert St. St. Paul, MN 55101	2107 Dirksen Off. Bldg. Washington, D.C. 20510	224-5641 (Wash. D.C.) 221-0904 (St. Paul)
	Senator Dave Durenberger	550 E. Bulter Square 100 North Sixth Street Minneapolis, MN 55403	353 Russell Senate Office Washington, D.C. 20510	224-3244 (Wash. D.C.) 725-6111 (Minneapolis)



**STATE
LEGISLATIVE
DISTRICTS**



STATE
LEGISLATIVE
DISTRICTS