

811542

LEGISLATIVE REFERENCE LIBRARY



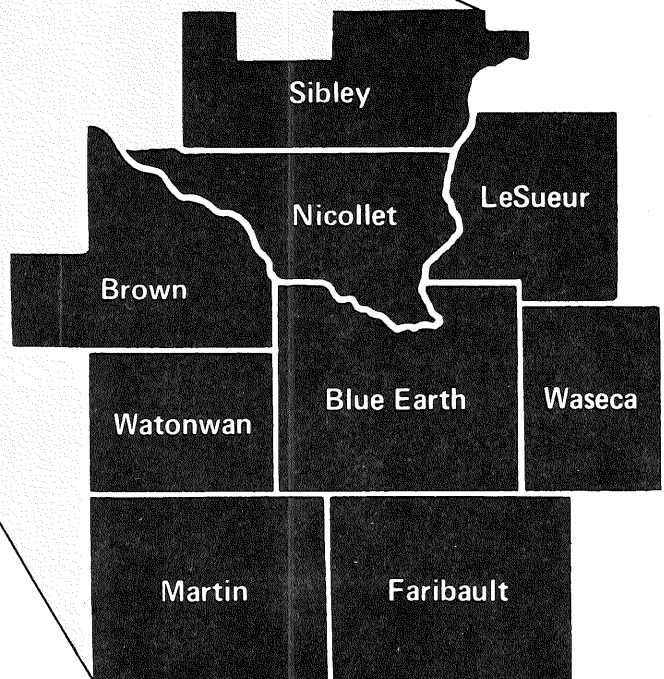
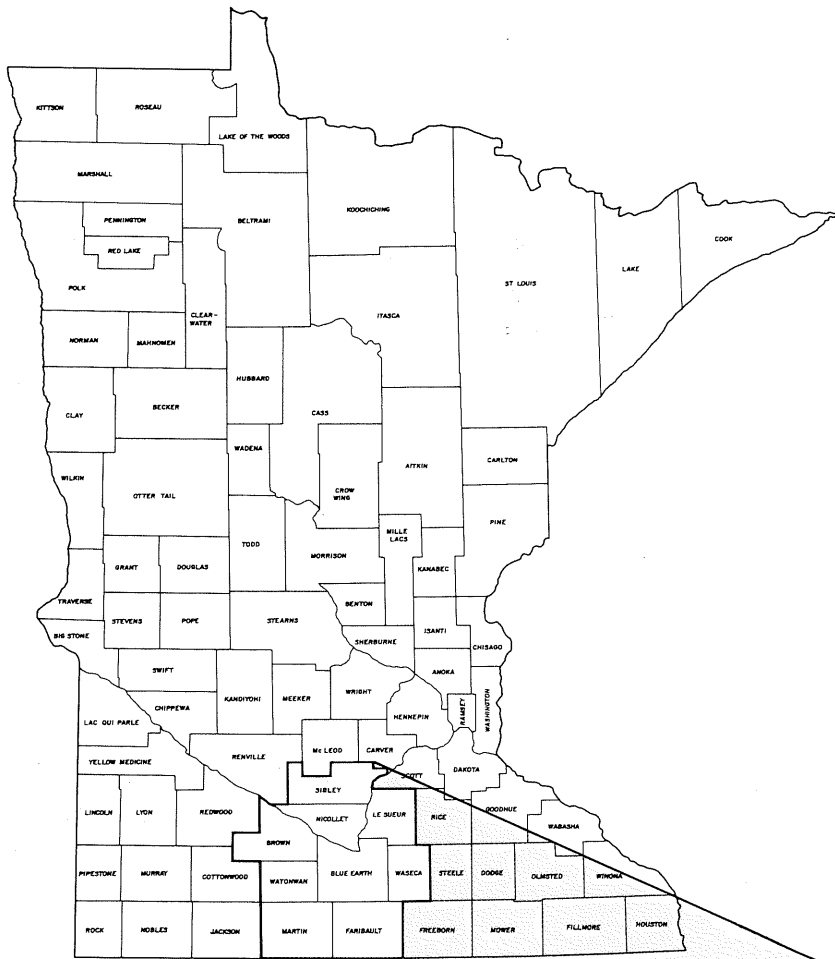
3 0307 00015 3125

# Region Nine Development Commission



HT  
393  
.M62  
R46x  
1981

**FY'81 Annual Report**



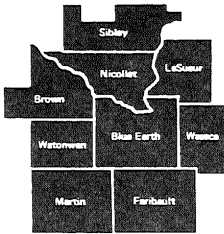
---

LEGISLATIVE REFERENCE LIBRARY  
STATE OF MINNESOTA

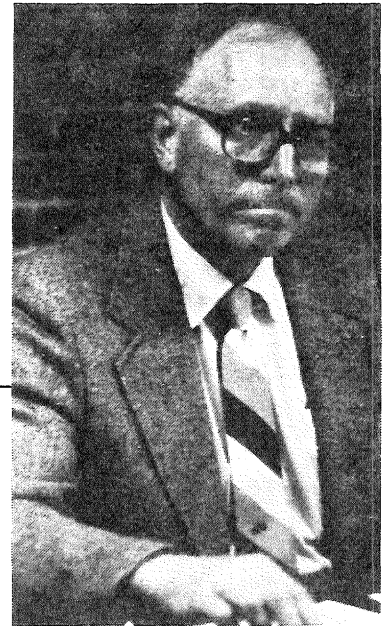
**TABLE OF CONTENTS**

The Chairman's Letter . . . . .	2
The Director's Letter . . . . .	3
Organizational Chart . . . . .	4
Introduction to RNDC . . . . .	5
Physical Development Planning . . . . .	6-17
Physical Development Advisory Committees . . . . .	17
Human Resource Planning . . . . .	18-25
Human Resource Advisory Committees . . . . .	25-26
Studies/Documents . . . . .	27-28
Workshops . . . . .	28-29
Legislative Concerns . . . . .	30
Budget . . . . .	31-33
A-95 Project Review . . . . .	34-42
RNDC Commissioners . . . . .	43-45
Internal Works Committees . . . . .	46
Region Nine Staff . . . . .	47
Region Nine Evaluation Report . . . . .	48-73

---



## region nine development commission




1980 may be remembered as a year of uncertainty for local units of government and the agencies which exist to work with them in their efforts to provide their citizens with the services necessary for the improvement of the quality of life. As financial problems appeared at the state level, and as the national emphasis seemed to be moving toward lessened federal involvement in local problem solving, local units of government could look forward to the time when many of their activities would be curtailed if they continued to rely solely on those diminishing sources of revenue.

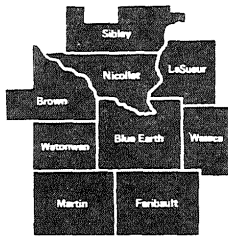
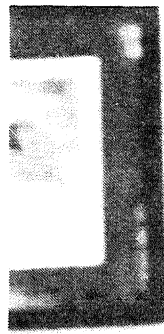
The Region Nine Development Commission sees this challenge as an opportunity for increased cooperation between local units of government - projects which one community alone might find impossible to attempt might be economically accomplished by several communities cooperating with each other. The necessity for planning and coordination will become more critical as the competition for federal, state and private funding becomes more intense. The mechanism for this planning and cooperation is fully operational, with the Region Nine Commission and staff prepared to offer information on funding, coordination of and technical assistance in planning activities, monitoring and commenting on legislative issues, and completing the A-95 review process for regional projects. The Commission's role as a facilitator will improve the chances of success for those communities which are willing to commit time and effort toward local solutions of local problems.

Rather than seeing the years immediately ahead as a time of stringent and restrictive budgets, I see them as an opportunity for imaginative and creative activities, directed toward responsible use of resources in the solution of a wide range of problems.

In my Annual Report letter of 1979, I referred to the "cost effective function inherent in the consolidation of services to the people of Minnesota". In these times of financial unease, there is security in the realization that the vehicle for the economical delivery of those services is functioning in our Region, under local control.

  
Kenneth J. Albrecht  
Chairman  
Region Nine Development  
Commission





## **region nine development commission**

Local units of government, along with all other segments of our society, are experiencing the effects of the financial and economic problems which have developed over the past few years. The dilemma of providing continuing services while anticipating decreasing state and federal assistance is present at all levels: township, city, county and school.

It is becoming increasingly apparent that the local units of government, especially those which are not large enough to require full-time professional staff, may find this dilemma overwhelming if they attempt to address it without the assistance and cooperation of others with similar concerns.

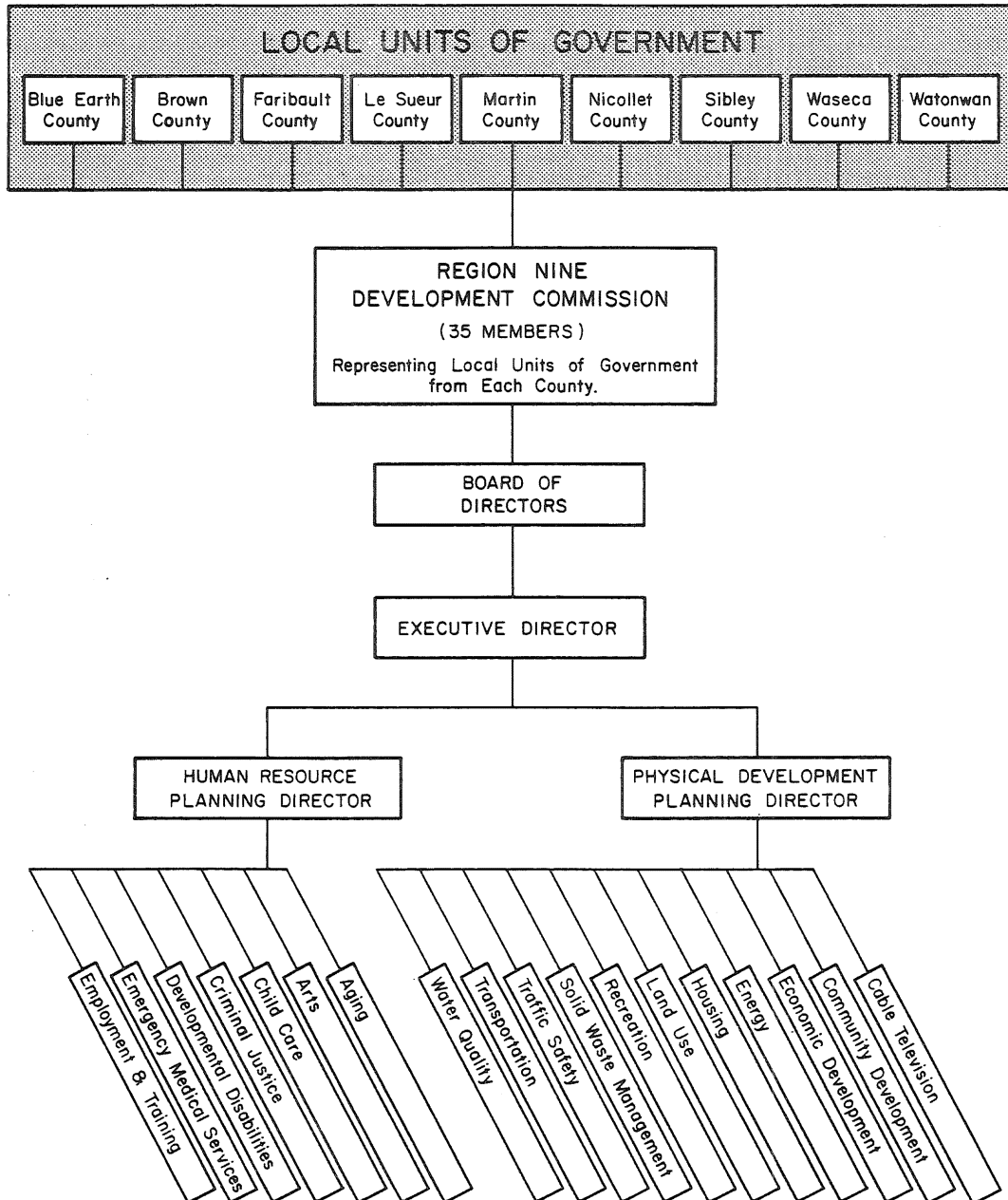
The Region Nine Development Commission, through its members, Board of Directors and staff, exists for this very purpose: to facilitate intergovernmental cooperation and to insure the orderly and harmonious coordination of state, federal and local comprehensive planning and development programs. The Region represents the local units of government and is ready to respond to the needs as expressed by them.

It is our hope that by facing the challenges together, the solutions will be arrived at more easily, and the entire area will progress inspite of the difficult times ahead.

*Terence Stone*

Terence Stone  
Executive Director  
Region Nine Development  
Commission

# Organizational Chart



---

## **INTRODUCTION TO REGION NINE AND THE REGION NINE DEVELOPMENT COMMISSION**

In 1972 the Region Nine Development Commission (RNDC) was organized by local elected officials as authorized by the Regional Development Act of 1969. Its purpose according to the legislation is "to facilitate intergovernmental cooperation and to insure the orderly and harmonious coordination of state, federal and local comprehensive planning and development programs for the solution of economic, social, physical and governmental problems of the state and its citizens." (Minnesota Statutes, Section 462.383; Subdivision 2.)

The nine counties that make up the Region Nine area, specifically Blue Earth, Brown, Faribault, LeSueur, Martin, Nicollet, Sibley, Waseca, and Watonwan, have a population of about 222,000 of the state's 4,077,000 persons according to the 1980 census. The area is stable and prosperous with a strong economy, good facilities and services and has three major cities over 10,000 population, Mankato, New Ulm and Fairmont.

Serving on the RNDC are elected officials who represent 9 counties, 72 cities, 147 townships, 45 school districts, 9 soil and water conservation districts and the Minnesota Valley Council of Governments. They are joined by a representative of the business community organizations in the Region.

The 35 member RNDC meets monthly to respond to the need for counties, cities, townships, school districts, and other groups to work together on a regional basis to address economic, social, physical and environmental problems. About 300 citizens of Region Nine are actively involved in regional planning as advisory council, committee and sub-commission members. Each year since 1972 has noted an increase in citizen and elected official participation as more people discover how they can best assist with the planning programs and be served by the RNDC.

With its many planning functions, the RNDC has a professional planning staff to assist itself, subcommissions and committees in carrying out the activities they have defined. The staff includes: an executive director; specialists in the fields of recreation, land use, community/economic development, housing, transportation, water quality, traffic safety, and manpower; specialists in assisting with meeting the needs of the aging, developmentally disabled, and children; and there are also planning specialists in criminal justice, energy, the arts, and human resources. They are assisted by an accountant, a public information coordinator, a bookkeeper, secretaries, a graphics coordinator and interns working on a semi-annual basis from Mankato State University and Gustavus Adolphus College.

# PHYSICAL DEVELOPMENT PLANNING

---

## PHYSICAL DEVELOPMENT SUBCOMMISSION

The Physical Development Subcommittee is advisory to the Region Nine Development Commission in establishing Physical Development policies and priorities for the region. In this capacity, the Subcommittee reviews plans, policies, and activities in a variety of program areas including land use, housing, community development, economic development, transportation, recreation, water resources, and energy. Membership consists of 14 persons including one representative from each of the nine counties, one representative from each of the cities of Fairmont, Mankato and New Ulm, one representative from the Pioneerland Environmental Education Council, and one representative from the Soil and Water Conservation Districts of Region Nine.

Many diverse physical planning activities were addressed by the Physical Development Subcommittee last year: review of local land use planning grants; development of community energy planning guidelines; analysis of the state water plan; ranking of LAWCON/LCMR grants; discussion of the hazardous waste siting process; the conduct of required A-95 reviews; and review of all of the physical development programs and initiatives.

### Projection

During 1981, the Physical Development Subcommittee will continue its efforts as outlined. These activities will be expanded to include important issues such as energy planning and hazardous waste siting which were added during 1980.

## COMPREHENSIVE PLANNING

The Regional Development Act mandated that regional commissions "shall prepare and adopt, after appropriate study and

such public hearings as may be necessary, a comprehensive development plan for the Region." Region Nine formally commenced its effort in July of 1978.

The Commission has completed its long term goals for the area, and the staff has prepared sub-goals and policies that, if implemented, would ensure the accomplishment of those long term goals. If the Commission should choose to re-emphasize this program area, the staff will define needs through assessing the gap between the sub-goals and the current situation. The formulation of the overall program design would serve as the annual work plan component of the comprehensive plan.



---

## **CABLE TELEVISION**

The Cable program for RNDC is a new project area based on the fact that Regional Development Commissions in Minnesota have the authority to review all new cable territory requests within their respective geographical areas. Since franchising can be a complicated and difficult process for local communities to complete, Regional Development Commissions are in an ideal position to provide technical assistance.

### Region Nine Cable Policy Document

In order to facilitate RNDC's review of territory requests, a major document has been prepared that analyzes the existing cable situation in Region Nine, identifies possible franchise opportunities, new technology advances, and recommends general policy guidelines that should be used when considering territory requests. The policy plan makes recommendations to local jurisdiction concerning potential franchising problems.

### Projection

The cable program in 1981 will be oriented toward assisting communities with the development of their respective franchises. Region Nine staff will be available to discuss new technologies, public access problems, and general concern as franchising ordinances are formulated.

## **COMMUNITY DEVELOPMENT**

The RNDC community development program during 1980 was geared toward facilitating efforts to improve the social, economic, and physical environments of local units of government and their residents. A variety of community development programs administered by agencies such as the Department of Housing and Urban Develop-

ment (HUD) and the Farmers Home Administration (FmHA) are available to address local community development needs.

### Technical Assistance

The primary strategy used to impact on local community development needs is the provision of technical assistance by RNDC staff. This assistance takes many forms including dissemination of program regulations and information, identification of local goals and priorities, preparation of loan and grant applications, and implementation of special studies on a request basis.

Communities with which RNDC staff have worked in the area of Community Development include, Madelia, Brice lyn, Le Sueur, Janesville, Elmore, Wells, Winnebago, Blue Earth, Elysian and Waseca County.

### Projection

The regional community development program in 1981 will be directed toward continued assistance to local units of government as they compete for limited resources to address local needs. With reductions anticipated in federal and state programs, the role of the RNDC in assisting communities to fund their community development needs may expand.

## **ECONOMIC DEVELOPMENT**

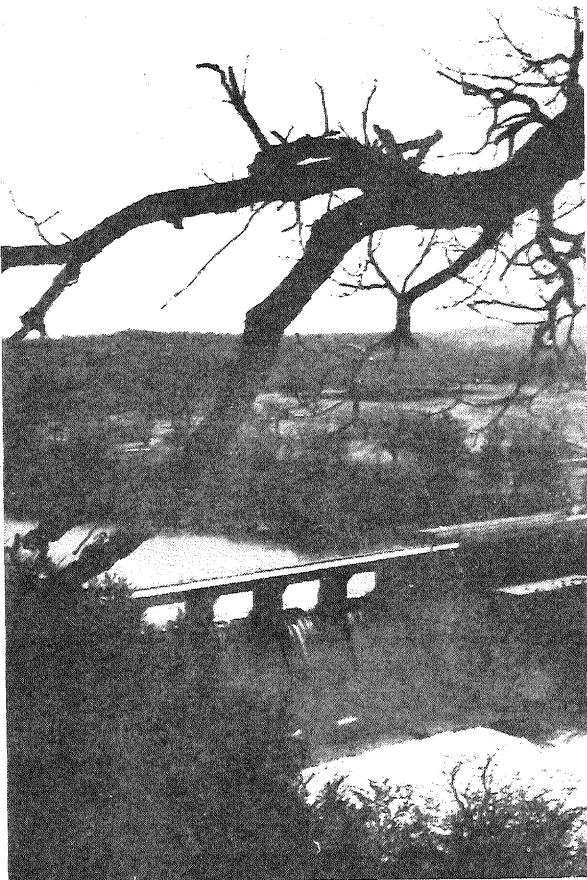
During 1980, the major focus of economic development planning moved away from the federal Economic Development Administration perspective, and became more concerned with assisting local communities in improving their overall economic situation. Efforts were made to encourage local development activities by providing information on funding sources and assisting localities in the recruitment of new business.

Region Nine staff has been working with Farmers Corn Products, Inc., a corporation

---

interested in building a corn wet milling plant. It is anticipated that the fructose plant, which will cost \$120 million to \$150 million to construct, will process twenty million bushels of corn a year and will employ about one hundred-fifty people. Staff has been involved in the project through the development of graphics, recommendations for feasibility studies and organization of meetings.

Region Nine staff has provided assistance to local communities' development efforts by working with Chambers of Commerce, searching for funding sources, devising economic development strategies, reviewing and supporting loan packages and participating in the Department of Economic Development's Star Cities Program.



### Projection

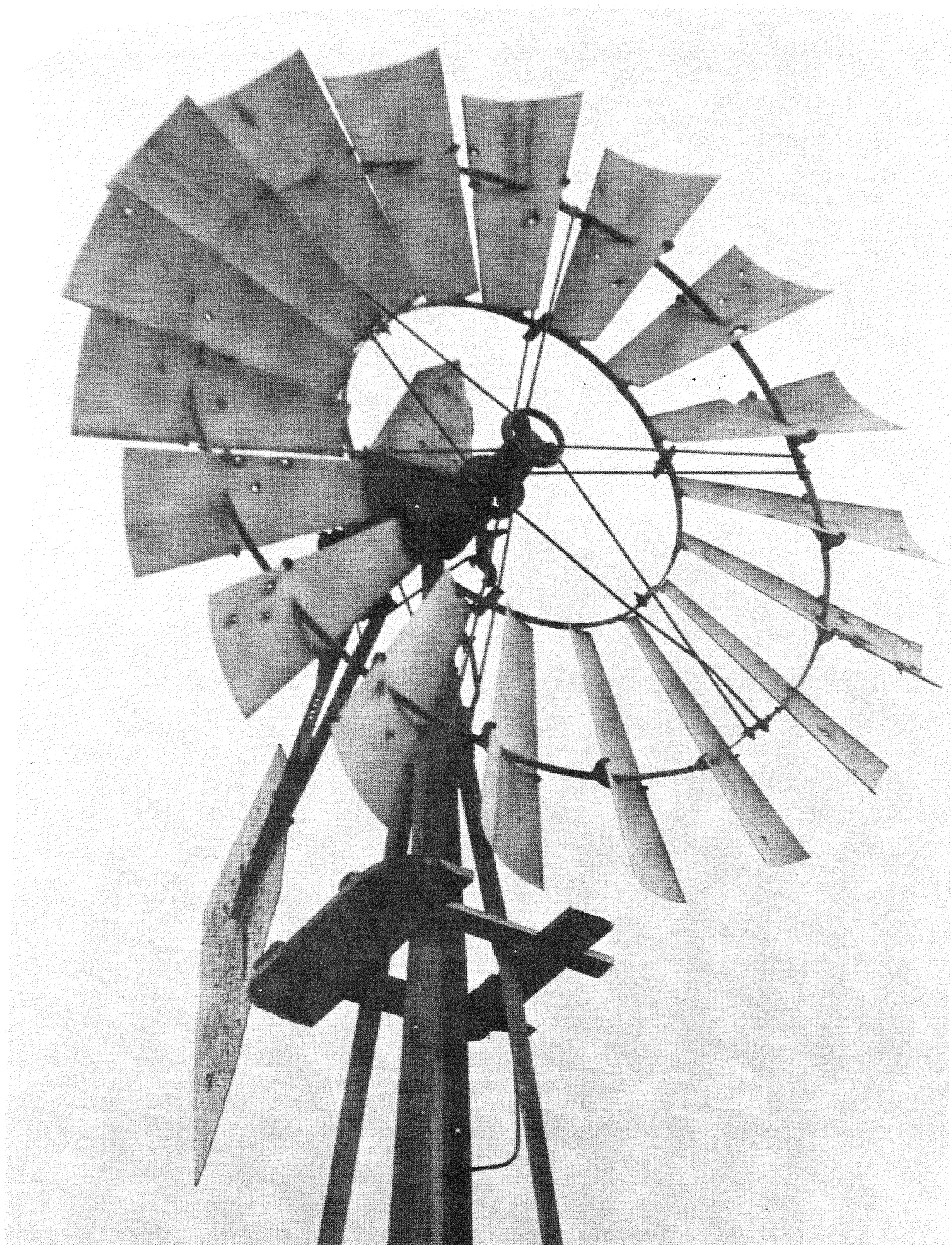
Future activities within the agency's economic development program will be oriented toward assisting industry that is concerned with agricultural processing within the Region Nine area (for example, the corn wet milling plant and the new ethanol facilities). It is also anticipated that the program will continue to cooperate with the Region Nine Community Development efforts in the areas of recruitment of new business and downtown redevelopment.

## **ENERGY PLANNING**

During 1980, the Energy Planning Program has actively assisted over 30 communities in responding to local energy programs. Through the Mini-audit program, staff have conducted energy audits of numerous schools and city owned buildings. A new program instituted by Region Nine has been the provision of technical assistance for the development of community energy plans. Plans have been prepared for Elmore and Fairmont, and staff are currently providing energy planning assistance to seven other cities in the region. The goal of community energy planning is to promote conservation and explore renewable resources, in order to lessen expenditures for energy and assure local availability of energy resources.

Local solutions to energy problems require a community effort. Energy task forces have been established in many cities throughout the region. The energy staff at Region Nine assists these task forces in planning and presenting workshops on conservation and renewable resources, and in formulating energy goals for the municipality and community. Other community education activities have included workshops on super insulated housing, ethanol production, and training for energy auditors, which were presented to regional audiences.





The energy staff have prepared guides to municipal energy management to assist cities or counties in developing zoning for solar and wind, and in reducing government expenditures for energy. The assessment of legislation and regulations that affect energy use in local communities, and the dissemination of information and ideas will continue to represent continuing goals for the energy program in 1981. The energy program will remain a source of technical assistance to local communities as they continue to seek methods of using their energy resources wisely.

## HOUSING

The regional housing program in 1980 primarily focused on activities oriented toward effective implementation of the Region Nine Housing Plan, and on the provision of technical assistance to local units of government and the general public. Greater emphasis has been placed on the availability and utilization of local,

state, and federal housing assistance programs as a result of escalating housing costs and interest rates.

### FY'81 Region Nine Housing Plan Update

The annual revision of the Region Nine Housing Plan was initiated during the last quarter of 1980. As a result of updates to the regional housing data base, three major plan areas were revised. These areas included the assessment of housing assistance needs for lower income households, the regionwide subsidized rental housing inventory, and allocation plans for the recommended distribution of rental housing assistance. Once again, the RNDC has attempted to estimate the relative level of rental assistance need in each community, and to evaluate the appropriateness of available rental assistance programs in meeting local community needs.

With the continued slowdown in the housing market RNDC staff are working with communities in the development of applications for programs such as the FmHA Self Help Housing. Under this program, qualified individuals would provide

"sweat equity" to lower the cost of home construction. For many individuals, participation in a program such as this is the only way they may be able to afford to buy a home.

RNDC staff is continuing to work closely with representatives from Housing and Urban Development (HUD), Minnesota Housing Finance Agency (MHFA), Farmers Home Administration (FmHA) and local housing and redevelopment officials in attempting to satisfy the housing needs of area residents.

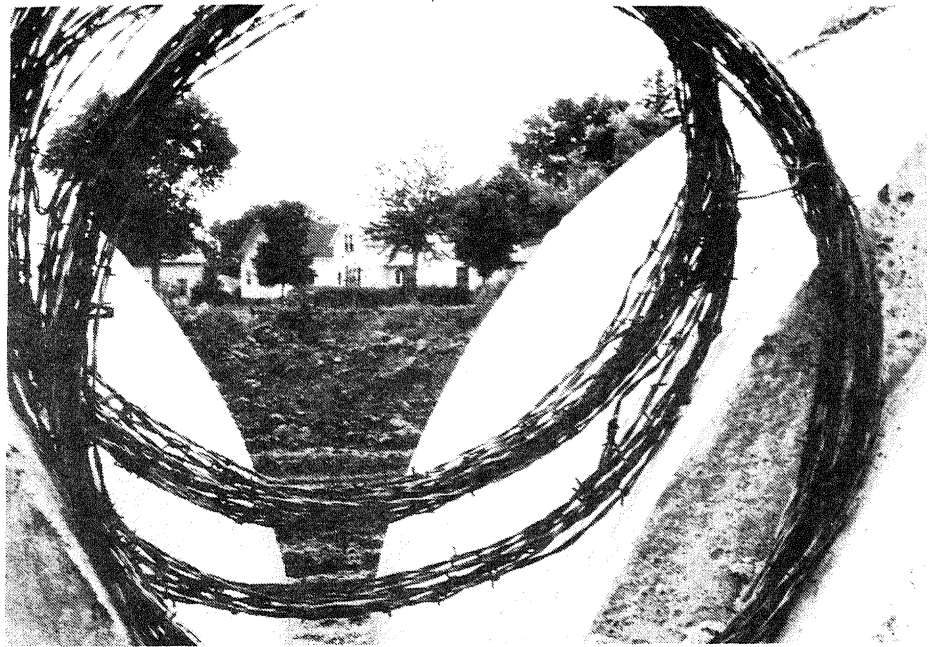




---

## LAND USE

Technical assistance work for local units of government has been the primary role of the physical development staff. In addition to specific technical assistance projects, staff provided information to individuals and units of government who had questions and concerns related to land use. Grant writing assistance, review of land use grants, environmental review and preparation of special studies and reports were also a part of the staff responsibility.



### Technical Assistance

Local units of government were assisted in their land use planning efforts. Major projects requested by and developed for the local governmental units included land use studies, zoning ordinance revisions and updating existing land use and zoning maps.

Technical assistance was also provided in the dissemination of information in response to inquiries from local officials and administrators and by writing grant applications for local units of government.

The staff has also assisted local units of government by coordinating efforts to develop legislation, by keeping abreast of legislative rule changes which impact local units, and by reporting local concerns to the appropriate state agencies.

### Land Use Planning Grant Review

The Physical Development Subcommittee reviewed and ranked preliminary applications for grant monies through the Minnesota Land Use Planning Grant Program. Cities, counties, townships or combinations of those units were

eligible to apply. Those applicants who received funding (through the State Planning Agency) used the grant to alleviate land use planning problems.

January 1981 marked the final funding cycle for this Land Use Planning Grant Program.

### Environmental Review

Region Nine staff worked with a watershed district in Sibley County in the process of scoping the significant issues for an Environmental Impact Statement ordered by the EQB on a proposed stream channelization project.

Region Nine Development Commission has been involved in the review of proposed rules for environmental review which are to be promulgated to reflect the 1980 legislative amendments to the environmental review program.

Because this legislation has placed environmental review authority upon local units of government, Region Nine Development Commission staff has worked to assure that local concerns are addressed in the rule making process. Staff work included review of the draft rules and formulation of the concerns of Region Nine Commissioners as comments on the draft rules which were presented to the Environmental Quality Board.

---

## Projection

Technical assistance to local units of government will continue to constitute primary workload for land use staff. Staff will continue to be involved in the development of the rules for the EQB Environmental Review Program. Legislative concerns of local units of government within Region Nine will be pursued by staff. In addition, studies will be prepared by staff to address specific concerns as directed by the Commission.

## **RECREATION**

The Region Nine recreation program promotes both the usage and public awareness of existing and potential recreational resources in Region Nine. The primary cogs in this effort during 1980 were the continued work on the Regional Recreation Atlas and the ranking of local recreation grant applications.

### Recreation Atlas

The majority of recreation staff time was shifted to other program areas during this calendar year. However, significant efforts were made to compile all available recreation data and put it into a tabular format. This will allow staff to add new information to the atlas as well as double check existing data. The atlas should be ready to go to print in late 1981.

### Recreation Grants

The State Planning Agency continued to offer matching grant money in the form of LAWCON (federal) and LCMR (state) grants. As in the past, the RNDC staff administered technical assistance to most of the grant

applicants. Local ranking criteria were revised to reflect the area's current recreation needs and these criteria were used to rank all local applications. The State Planning Agency then used this ranking on a 50/50 basis with their own ranking to determine the sites to be programmed for funding. The total amount of programmed project costs for Region Nine was \$197,000.

### Minnesota River Corridor Management

RNDC staff provided assistance to Region Nine counties along the Minnesota River (from Franklin to Le Sueur) in the development of an alternative corridor management plan for the river. This plan, if approved by the DNR, would be implemented in place of the management proposal submitted by the DNR in conjunction with the Wild & Scenic Rivers program.

### Projection

Increasing pressure on our existing park base as well as skyrocketing transportation costs should be mitigated in 1981 by the addition of recreation facilities under the LAWCON/LCMR program and the distribution of the Region Nine Recreation Atlas. The completion of a management plan for the Minnesota River should provide needed protection for this excellent recreational resource.

Communication with such agencies as the Office of Local and Urban Affairs (OLUA) and the Department of Natural Resources (DNR) will continue. Technical assistance will be provided where needed, and A-95 reviews will be conducted as required.





which will result in the selection of at least one hazardous waste disposal site in Minnesota. The staff has been working to ensure local representation at the public meetings being conducted by the Board as the Region Nine residents were afforded the opportunity to help develop the criteria to be used for site selection. Other activities of the Commission related to the State's siting project have included a preliminary assessment of the geological factors, the completion of a report which responds to problems with the process itself and the passage of a resolution opposing any hazardous waste disposal site in the Region Nine area.

## **SOLID WASTE**

The 1980 Solid Waste activities were centered principally in the areas of information gathering and dissemination in response to inquiries from interested persons. An inventory of existing resource recovery systems (recycling operations) was begun. Legislation dealing with landfill siting and resource recovery was monitored. The staff assisted Martin County in addressing the problem of its present landfill site, as it is projected to last for approximately one more year. Region Nine staff prepared a planning grant for Martin County and negotiated with the Pollution Control Agency regarding the funding of the application under its planning assistance program for solid waste programs in Minnesota. The application was approved, and Martin County has hired consultants to study the landfill problems.

Region Nine staff has also been monitoring the Waste Management Board's process

### Projection

Contingent upon funding and requests for assistance, plans on a county or regional basis may be developed through implementation of the Solid Waste Management Planning Assistance Program. The Region will continue to ensure local input into the hazardous waste siting process.

## **TRAFFIC SAFETY**

The goals of the Traffic Safety Program are: to reduce accidents, minimize crash injuries, save lives, and reduce consequent economic loss. One of the ways to do this is to involve more individuals and organizations in traffic safety projects.

A study was made of traffic accidents in Region Nine for 1979 and a five year study, 1975-1979. It was learned that one has a much greater chance of being killed in some counties than in others: from one



fatality in every fifty-five accidents in one county to one in every eighty-four accidents in another. All counties have about the same personal injury ratio with one out of every four traffic accidents resulting in a personal injury.

Traffic Safety news was sent to daily and weekly newspapers and radio and television stations. Traffic Safety information was sent to driver training instructors in the Region. Four hundred senior citizens and volunteer drivers of senior citizens were taught the eight hour defensive driving course.

The fifth annual Region Nine Youth Traffic Safety Day was held November 15 at the Mankato Area Vocational Technical Institute. Twenty youth shared their experiences about safety with the one hundred-fifty youth and twenty-five adults who attended. Youth in the Region conducted bicycle rodeos in three counties. Twenty-two youth who were taught at a Region Nine sponsored Mini Pedal Power seminar returned to their communities to teach about 10,000 other youth bicycle safety.

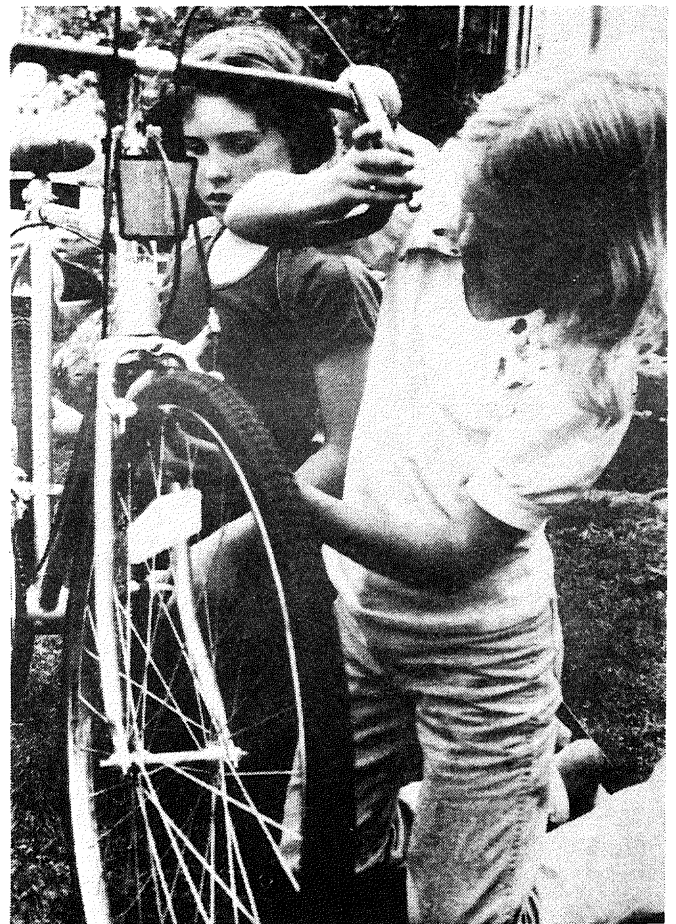
Honors went to Region Nine youth for their safety projects: 1) Cheryl Beranek, 4H club member from Nicollet County won the State of Minnesota 4H club award for safety, and a trip to Chicago. Beranek was one of eight national scholarship winners for traffic safety projects, winning a thousand dollar scholarship from General Motors. 2) The New Ulm FFA chapter received an award from the National Safety Council for their safety projects. Jerry Gieseke of New Ulm, FFA member, won an award from the National Safety Council for his leadership in safety projects. Wendy Renner and Mark Kuehn of the Happy Clovers 4H Club, Sibley County, accepted awards from the National Safety Council for their 4H club safety projects. Mark Kuehn was elected president of the Minnesota Student Traffic Safety Organization, Wendy Renner, secretary and Cheryl Beranek, press secretary.

The Minnesota Departments of Public Safety and Energy sponsored a "50 mph saves energy"

contest (essay, slogan, poster). Region Nine participants won three of the awards. Scott Kuehn of Winthrop won first place and Wendy Renner of Winthrop placed second in the essay contest. Martha Kay Fischer of Sleepy Eye won second place in the slogan contest.

### Projection

The program will encourage and recruit more people to become involved in traffic safety projects by conducting safety seminars about bicycle safety, pedestrian safety, child restraints, and defensive driving for youth until October 1, 1981, when federal funding for the program will be discontinued.



---

## TRANSPORTATION

The Transportation Committee continued to focus its attention on the movement of agricultural and commercial products, on improving the mobility of its citizens and on other issues and concerns of the Region.

At the direction of the Committee, the staff began preparation of the first regional transportation plan, which will provide a framework to be used in identifying needs, determining direction, addressing priorities and promoting a safe, efficient and well balanced transportation system in the Region.

Technical assistance in general transportation areas is a function of the Committee and staff and this assistance produced positive results in the Region's system. Some examples of this technical assistance are: inquiries concerning rail line abandonment procedures and rules; transit options for rural and urban areas; and grants available for transit operations and operators (16(b)(2), Section 18). Other activities included assistance in an analysis of the Northern Border 42" natural gas pipeline and continued involvement with the Pioneerland and Cornbelt Shippers Association in their rail renovation efforts.

Annually, the Committee reviews and updates the State Transportation Plan by setting regional priorities for its five year work program. The Committee is also involved with the analysis of the annually updated state rail plan, the aeronautics plan, and in the areas of bikeways, transit and pipelines. Staff prepared and presented to several groups a program on energy and transportation which included efficient operation and maintenance of vehicles, tips on new and used car purchasing, and ride-sharing. The Region worked closely with Minnesota Rideshare in the ridesharing effort.

### Projection

During 1981, the Committee will be completing its first regional transportation plan and will continue to carry out its responsibilities in the areas noted above. These activities will be expanded to include any emerging issues or areas of concern which the Committee sees as significant to the Region.



## WATER RESOURCES PLANNING

During 1980 the major water planning efforts were directed toward reaction to studies and reports prepared by the State Water Planning Board. The Physical Development Subcommittee and staff reviewed a series of specific studies which were to define and clarify issues and make recommendations in relation to the Water Planning Board's report: "Toward Effective Allocation and Management: A Strategy to Preserve and Protect Water and Related Land Resources," June, 1979.

Comments on these reports were presented to the Water Planning Board by

---

a representative of Region Nine Development Commission and Region Nine staff.

### Projection

Water resources planning will be primarily informational. Studies and reports from the Minnesota Pollution Control Agency, Department of Natural Resources, Water Planning Board and the Upper Mississippi River Basis Commission will be reviewed for possible regional impact. Local concerns will be coordinated by Region Nine to be expressed to the appropriate state agencies.

## **ADVISORY COMMITTEES**

### Physical Development Subcommittee

HARRY TIMM, Mankato  
ERHART STANKE, Janesville  
THOMAS GRAHAM, Henderson  
ORVILLE HANSON, Comfrey  
NEIL SAXTON, Fairmont  
JACK FITZSIMMONS, Waseca  
STEVAN ZOELLER, Truman  
EARL HELGESON, Frost  
ROBERT GUSTAFSON, Madelia  
PAUL FLICK, New Prague  
DALE DARROW, Mankato  
DAVE SCHNOBRICH, New Ulm  
FRANK RODRIGUEZ, Elmore

### Ex Officio

ROY NELSON, Mankato  
PAUL BREMER, Gaylord

### Comprehensive Planning/Evaluation

KENNETH ALBRECHT, Mankato  
LESTER ANDERSON, Mapleton  
ROBERT BARRETT, Mankato  
RAY ECKES, North Mankato  
JAMES STANGLER, Kilkenney  
ALLEN SIGAFUS, Mankato  
LARRY LLOYD, Frost

### Transportation Committee

LESTER ANDERSON, Blue Earth County  
O.G. MOGEN, Brown County  
DON LINDLEY, Brown County  
ROGER OLDFATHER, Faribault County  
ROLAND THIESSE, Martin County  
PAUL HADLEY, Nicollet County  
RODERICK JOYCE, Waseca County  
JAMES F. SOMMER, Brown County  
KEN SAFFERT, Blue Earth County  
HERSHEL KOENIG, Faribault County  
RON SANDVIK, Blue Earth County  
CLAIRE SEIBERT, Watonwan County  
HAROLD WIEST, Le Sueur County  
MICHAEL SCHWERZLER, Le Sueur County

### Traffic Safety Advisory Council

RAY STEPHENS, Blue Earth County  
SHELLI LARSON, Blue Earth County  
PHIL FRISCH, Brown County  
JEAN YAEGER, Faribault County  
VERNON K. JOHNSON, Faribault County  
LAWRENCE MESKAN, Le Sueur County  
MYRON WOLF, Le Sueur County  
ROBERT WITTY, Martin County  
DALE BROUGHTEN, Nicollet County  
MYLES LORENTZ, Nicollet County  
JAMES L. KRUEGER, Watonwan County  
MOE MORAN, Brown County  
ROBERT PARKER, Sibley County  
DON WIEST, Sibley County  
JILL ZELLWEGER, Waseca County  
SHERYL NEFSTEAD, Waseca County  
OBERT JACOBSON, Watonwan County  
TIM PARKER, Martin County

### Recreation Advisory Committee

JIM JACK, Mankato State University  
JOHN ZIMMERMAN, Le Sueur County  
County Office of Planning & Zoning  
PAUL BREMER, Department of Natural Resources  
MARK BARTELT, Waseca

# HUMAN RESOURCE PLANNING

---

## HUMAN RESOURCE SUBCOMMISSION

The Human Resource Subcommission is advisory to the RNDC in planning and policy development related to human resources. In this capacity, the Subcommission reviews plans and policies recommended by the advisory councils on aging, arts, child care, criminal justice, developmental disabilities, emergency medical services, and employment and training. Membership consists of 12 citizens, one from each county and one from each city over 10,000, who are appointed by the RNDC.

### Coordinating Planning

The HRS has been assigned responsibility for coordination of planning efforts in human resources. As part of this responsibility, HRS members regularly attend meetings of the aforementioned advisory councils, as well as the meetings of organizations providing human services in the region, such as Human Service Boards and mental health boards. Specific activities conducted in 1980 under this coordinative role included: monitoring staff activities toward achieving an equitable distribution of social service funds within the state; review of all plans and recommendations developed by RNDC advisory councils in human resources; other grant reviews, i.e., Community Health Service Plans, Community Action Agency grants, etc.; recommendations on appointments to advisory councils.

### Projection

Technical assistance will be provided to local units as requested. Federally funded programs may be subject to change, dependent on actions taken at the state and federal levels, and staff will continue to monitor those actions for the possible effect on programs.

## AREA AGENCY ON AGING

The Region Nine Development Commission has been designated as the Area Agency on Aging (AAA) for the nine counties of south-central Minnesota since 1976. The Area Agency receives its funding from the federal Administration on Aging (under the Older Americans Act) as administered through the Minnesota Board on Aging.

The Region Nine Area Agency on Aging recognizes four major goals:

- 1) the identification of needs and services that benefit older adults;
- 2) the coordination of existing programs, services and funding sources that serve older persons;
- 3) the granting of funds to initiate or expand services for this client group; and
- 4) the monitoring and evaluation of these programs.

It should be pointed out the Area Agency is not a direct service provider except when, in the judgment of the State Aging Agency, it is necessary to assure adequate services. It is a planning and grant-making agency that coordinates a comprehensive network of programs and services for the elderly.

### 1980 Area Plan

The Area Agency on Aging is required by Minnesota's Board on Aging to regularly assess the needs of older persons in the region. The assessment of these needs, and the plan of action that addresses them is known as the Area Plan. The plan acts as a guideline for the Area Agency's activities.

Under the priorities of the 1980 Aging Plan the following grants were awarded by the Region Nine Development Commission:





### 1980 Grant Awards

<u>Grantee</u>	<u>Service</u>	<u>Amount</u>
Title III-B Older Americans Act:		
Le Sueur Co.	Trans.	\$10,312
Mapleton Com. Home	Trans.	13,575
Brown Co.	Trans.	33,569
Sioux Valley Hos.	Health Screen	5,507
Sibley Co.	Health Screen	7,637
Blue Earth Co.	Homemaker	19,588
Mn. Senior Fed.	Organiz. Adv.	15,738
Brown Co.	Organiz. Adv.	21,600
So. MN. Reg. Legal Ser.	Legal Ser.	58,499
Mankato	Senior Cen.	34,000
New Ulm	Senior Cen.	14,863

### Title III-C<sub>1</sub> Older Americans Act:

Mn. Valley Action Council	Congregate Nutrition	\$339,397
---------------------------	----------------------	-----------

### Title III-C<sub>2</sub> Older Americans Act:

Mn. Valley Action Council	Home Delivered Meals	17,092
---------------------------	----------------------	--------

### McKnight Foundation (Private Foundation monies for rural senior centers/clubs):

Amboy Friendly Hour Club	Senior Cen.	375
Bricelyn Multi-purpose Cen.	Senior Cen.	3,397
City of Elysian	Senior Cen.	956
Hanska Senior Cen.	Senior Cen.	3,035
Madison Lake Senior Cen.	Senior Cen.	1,275
Minnesota Lake Senior Cen.	Senior Cen.	1,060
Le Sueur Over 60 Club	Senior Cen.	318
Winthrop Senior Cen.	Senior Cen.	838
Comfrey Senior Cen.	Senior Cen.	658

Sleepy Eye Senior Cen.	Senior Cen.	952
Springfield Senior Cen.	Senior Cen.	2,775

During 1980, the Area Agency assumed full responsibility from the Minnesota Board on Aging for the administration of the congregate nutrition program funded under Title III-C-1 of the Older Americans Act (OAA). Additionally, funds became available for the first time for home delivered meals. addition of these programs has more than doubled the Area Agency's budget and has greatly increased its role as a coordinator of services.

### Projection

The Area Agency on Aging and its Advisory Council will continue to plan, award grants and advocate on behalf of the older persons of Region Nine. The 1981-83 Area Plan on Aging identifies increased service coordination, program evaluation and needs assessments as major work objectives.

## **ARTS**

The Region Nine Arts Council is a volunteer group of citizens encouraging and promoting performing and fine arts in the nine counties. Its present membership, representing a broad base of the regional arts interests, includes one member from each county and one member from each of the 3 cities with populations exceeding 10,000.

The council makes recommendations to the Human Resource Subcommittee in the following areas: in reviewing, evaluating, and recommending grant applications submitted by arts organizations within the region; in forming arts policies, goals, and priorities for the region; in serving as a vehicle for



input to the Minnesota State Arts Board on matters relating to the improvement and development of arts at the local, regional and state level; and in serving as an advocate for local and regional arts development.

In 1980 the major activity of the council centered around the project production assistance grant program which matches local funds on a 50-50 basis. The council funds arts projects based on the following Minnesota State Arts Board criteria: the need for the project within the region, the merit of the project, and the ability of the organization to successfully complete the project.

### Projection

The Arts Council completed its FY'82-83 plan, with priority placed on its service goal. Educational workshops are planned before each grant cycle. Efforts to improve communication among artists and arts organizations will be enhanced by compilation and distribution of a regional arts resource directory. A touring regional art exhibit will be organized through Request for Proposal furthering co-operation and communication among arts groups. In the coming biennium, the council will be processing sponsorship grant applications for less than \$3,000. Previously, all sponsorship applications were made directly to the Minnesota State Arts Board. Sponsor assistance provides funds to schools and community non-profit, tax exempt organizations which present art activities to the general public for their enrichment, education, and enjoyment.

## **CHILD CARE**

The child care program is designed to help coordinate interested persons and groups in planning quality care for children whose parents must be out of the home for part or all of the day. The program offers assistance in training, funding, organization and referrals to day care providers throughout the region.

Region Nine staff contracted with the Mankato Area Vocational Technical Institute, among other resources, to provide trainers, and also developed and presented training in the areas of child development, safety, first aid, and taxes which was offered to the family day care providers in five counties during fifteen training sessions.

Two modules for inservice training to day care centers were developed and two

study guides for home study were offered to providers.

Handouts and filmstrips have been and are available to persons and groups needing child care information.

A newsletter is prepared and distributed to day care providers, child care staff and interested community members. Two groups planning to open day care centers were given information by child care staff.

Two counties allowed for day care grants from the Community Social Services Act grant. Forty grants were processed and reviewed in 1980.

The Region Nine Child Care Advisory Council maintained membership on the MCCDAC with staff acting as the attending member. Two national newsletters are subscribed to and pertinent information disseminated to the child care community.



## CRIMINAL JUSTICE

It is the objective of the Region Nine Criminal Justice Program to provide assistance in determining needs, coordinating local resources, obtaining state, federal and private funds, and monitoring criminal justice projects.

During 1980, the following nine criminal justice projects were funded through the Region Nine Block Grant Program:

1. Blue Earth County Shelter Care Project - temporary placement in local residences for youth who are awaiting disposition hearings or are victims of abuse;

2. Blue Earth County Volunteers in Corrections - recruitment and training of volunteers to aid Court Services and Human Services staff in providing services to clients;

3. Le Sueur County Criminal Investigation Unit - fulltime investigator with specialized skills and training to aid in the curtailment of felony offenses

4. Le Sueur Delinquency Prevention through Family Counseling - a prevention - intervention project using a youth/family counseling approach;

5. North Mankato/YMCA Delinquency Prevention Project - an outreach program for disadvantaged elementary school children;

6. Police Training on Developmental Disabilities - development and implementation of a training curriculum for law enforcement personnel;

7. Records Management in the Courts - provided inventory, destruction, and storage of court records and a plan for on-going destruction and retention of records in six Region Nine counties;

8. Waseca County Jail Treatment Program - counseling and vocational training programs for prisoners;

9. Watonwan County Juvenile Restitution - provides financial means for restitution through employment opportunities for youth under juvenile court jurisdiction; also provides a law-related curriculum to educate juveniles on juvenile justice and the courts.

### Projection

The Region's Criminal Justice program ended June 30, 1981.





## DEVELOPMENTAL DISABILITIES

Recent federal legislation changed the definition of Developmental Disabilities to now include any severe or chronic disability that relates to a mental or physical impairment occurring before age 22 and likely to continue indefinitely. Such a disability would result in substantial limitation in areas of major life activity (employment, mobility etc.).

The Developmental Disabilities Advisory Council is comprised of persons representing the major disability areas. At present Council members include parents, service providers, consumers, and consumer groups representing a wide range of interests.

During the past year, the D.D. Council's activities have included training, information and referral, service development, technical assistance and grant writing.

Training seminars sponsored by the Council have covered a broad range of subjects.

The D.D. Council received a grant under the LEAA Criminal Justice Block Grant for training and curriculum development. A series of six seminars were held through-

out the region for law enforcement and criminal justice personnel, focusing on interactions with D.D. persons.

A regional respite care grant in the amount of \$25,000 was awarded to the Council by the State D.D. Planning Office. Staffed by a respite care coordinator, the grant provides extensive technical assistance to counties in establishing respite care programs and training providers.

The D.D. Program also developed a proposal to establish a regional advocate for developmentally disabled persons and their families. The grant, totaling approximately \$19,000, was approved and is currently administered by the Region 9 Association for Retarded Citizens.

The D.D. Council continues its efforts to promote the development of community residential alternatives for developmentally disabled persons. The D.D. Regional Residential Plan outlines the development of a continuum of services to meet a broad range of needs. In view of the recent *Welsch v. Noot* court decree, the Council has prioritized areas of residential development as follows: 1) community residences for severely/profoundly or multiply handicapped children and adults; 2) semi-independent living units for persons needing less supervision; 3) limited development in major resources areas of Class A ICF-MR residences for moderately handicapped persons.

## RESPITE CARE PROJECT

Region Nine Development Commission and the Developmental Disabilities Advisory Council were granted funds by the State D.D. Planning Office for a respite care project, starting on October 1, 1980. Respite care programs can provide temporary relief to families with handicapped members by making trained respite care providers available. This gives

families time to enhance their own individual development, freeing them from the responsibility of continuous care of a handicapped person, thus preventing possible institutionalization.

The Respite Care Project has worked within six counties to organize community respite care efforts. Following public information efforts, respite care task forces were organized at the county level. A training curriculum was developed as the basis for respite care training sessions within these counties. The training sessions were widespread, making a permanent training package available for future retraining.

Registers of trained persons interested in providing respite care have been compiled and made available. Public information efforts have continued to stimulate the use and expansion of respite care. Local funding has been sought to make respite care available to more families. A system to manage the funds is being developed in cooperation with local ARC groups.

### Projection

By October 1, 1981 training will be completed in the remaining counties. Registers will be made available. Further public information efforts will be made. Technical assistance will be made available to other regions.

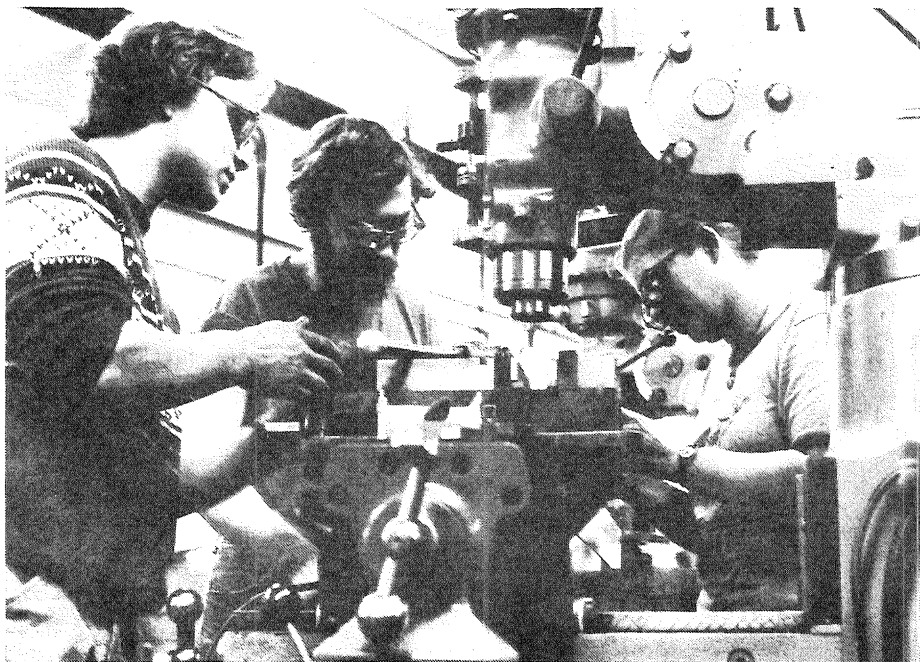
An additional year's funding has been sought from the State D.D. Planning office. If granted, the project would provide technical assistance and limited funding to local communities, allowing them to expand their respite care programs. It would also provide technical assistance to others interested in replicating this rural respite care model.

## EMPLOYMENT AND TRAINING

The Region Nine Development Commission is funded under the federal Comprehensive Employment and Training Act (CETA) to establish and staff the Regional Employment and Training Advisory Council, and to plan for the provision of CETA services in the region. In Minnesota, the state Department of Economic Security serves as Prime Sponsor for 54 rural counties, including Region Nine. The department contracts with regional development commissions to serve as "area planning bodies" required by CETA regulations.

The purpose of CETA is to:

- 1) provide training and employment opportunities to increase the earned income of economically disadvantaged, unemployed, or underemployed persons;
- 2) establish a flexible, coordinated and decentralized system of federal, state, and local programs, so that services will lead to maximum employment opportunities and enhance self-sufficiency; and
- 3) provide for the coordination of programs under CETA with other social



service, employment and training related programs, economic development, community development, and related activities, such as vocational education, vocational rehabilitation, public assistance, self-employment training, and social service programs."

The purpose of the Regional Employment and Training Advisory Council is to provide local input in pursuit of the preceding federal purpose.

The major activity of the Regional Employment and Training Advisory Council is the preparation of an annual plan for utilization of CETA funds in the region. The plan identifies area employment and training needs, recognizes current economic conditions, establishes target groups, selects CETA program deliverers, and determines allocations of CETA funds.

Another major activity of the Advisory Council has been to solicit, review, and make funding recommendations for use of special project funds under CETA Title VI, Public Service Employment. In the past years, the program has funded 97 public and private non-profit agencies within the region. By 1982, Title VI funding may no longer exist, due to federal government budget cuts.

Additional activities have included program evaluations, special employment and training promotions, surveys, and provision of technical assistance to grant applicants.

## **ADVISORY COUNCILS**

### Human Resource Subcommittee

MARCELLA GLAMM, Blue Earth County  
ELDON HORMAN, Brown County  
JOYCE VAUGHN, Fairmont  
LORNA MONTZKA, Faribault County  
JIM ADAMSKI, Le Sueur County  
JOHN MOONAN, Mankato  
BETTY MARTINKA, New Ulm  
PEGGY DAUPHINAIS, Nicollet County  
REV. BERNARD MCLAIN, Sibley County  
MARGARET ZIMMERMAN, Waseca County  
ROY TRULLINGER, Jr., Watonwan County  
VACANT, Martin County

### Regional Employment and Training Advisory Council

SYLVESTER PRIEM, Waseca County  
CALVIN SCHRUPP, Sibley County  
DAYTON MARTINSON, Nicollet County  
BILL FITZSIMMONS, Blue Earth County  
DON FISHER, Waseca County  
CARL MONTZKA, Faribault County  
MARIA WELLMAN, Watonwan County  
MERVIN BLIESMER, Martin County  
SPIKE PIPER, Faribault County  
RAY RAPP, Blue Earth County  
JOHN VOTCA, Mankato Area Voc-Tech  
LEIGH HEILMAN, Brown County  
RON GERMSCHIED, Le Sueur County  
DENIS WARTA, Brown County  
DOROTHY SHEEHAN, Nicollet County  
JOE KURTZMAN, Martin County  
DAVE STEVENS, Blue Earth County  
DENISE HARPER, Nicollet County  
DEBBIE KLOSSNER, Brown County

### Aging Advisory Council Members

CAROLYN CARR, FMW Human Service Board  
KATHIE DAVIS, MVAC Nutrition Coordinator  
ROGER DOOLEY, Blue Earth County  
CONNIE FLOHRS, FMW Human Service Board  
KATHRYN HAAG, Lake Shore Inn Nursing Home  
CARRIE HUFFER, RNDC Full Commission member  
DAVID JANOVY, At-Large, Coordinator  
Gerontological Studies, MSU  
LOREN KNAUSS, Le Sueur County  
ARDIS KOTTKE, Faribault County  
DR. HENRY KUCERA, Nutrition Projects  
JOHN LAUX, Brown County  
ELDRED LOOP, Martin County  
LLOYD MADISON, Waseca County  
HERBERT NOREN, Watonwan County  
ALICE OSBORNE, Nicollet County  
GORDON PATTERSON, Lakeview United Methodist Home  
LAWRENCE PETERSON, Sibley County  
MARY JO REEF, At-Large, Blue Earth County  
CINDY RUPP, Blue Earth County Human Services  
THELMA SCHUELER, At-Large, Le Sueur County  
MARY UTERMOHLEN, At-Large, Blue Earth County  
WANDA WEBSTER, Brown/Nicollet Human Service Board

---

#### Developmental Disabilities Planning Council

JEANNETTE BARSNES, Brown County  
NORMA ELROD, Blue Earth County  
CHARLES JOHNSON, Nicollet County  
TOM HENDERSON, Brown County  
DAVID SCHAETZKE, Brown County  
DOTTIE SPENCER, Watonwan County  
LOUISE FOLEY, Blue Earth County  
CAROLYN ENGQUIST, Le Sueur County  
WINNIE RENNER, Blue Earth County  
GINNY HANEL, Blue Earth County  
MICHAEL SIROVY, Martin County  
MIKE SPECHT, Blue Earth County  
PAMELA J. BROWER, Blue Earth County  
DEB FUCHS, Faribault-Martin-Watonwan  
Counties  
HAROLD W. LYNCH, Sibley County  
CAROL COLE, Faribault County  
CAROL A. LEE, Blue Earth County  
JOY STRACKBEIN, Blue Earth County  
PEGGY LYNGHOLM, Blue Earth County  
MARGARET ZIMMERMAN, Waseca County

#### Child Care Advisory Council Members

MARGE CARLSON, Nicollet County  
RICHARD EMBACHER, Brown County  
JEANNE ZUPFER, Brown County  
SHARON RETKA, Brown County  
MARGE RICHER, Sibley County  
ETHEL BEUCH, Sibley County  
ROXEANNE ROEMHILDT, Le Sueur County  
KRISTYNA MAGOON, Nicollet County  
NANCY WALBEK, Nicollet County

#### Criminal Justice Advisory Council

GORDON BENSHCOTER, Fairmont  
VIRGINIA BURNETT, New Ulm  
GEORGE CAVERS, Martin County  
RANDALL KROENING, Brown County  
ROGER GRAHAM, Sibley County  
JAMES W. PHIPPS, Faribault County  
MIKE ENGDAHL, Watonwan County  
DONALD SCHMIDT, Nicollet County  
PAT W. SMITH, JR., Le Sueur County  
DAVE STEVENS, Blue Earth County  
RUTH EPPELAND, Watonwan County

#### Region Nine Arts Council

JOHN BAERG, Watonwan County  
EILEEN HINES, Blue Earth County  
R. CRAIG MORRIS, Le Sueur County  
SISTER NORLEEN RANS, City of Mankato  
RICHARD P. SCHERER, City of Fairmont  
NANCY K. STEELE, Faribault County  
MICHAEL RYAN, Waseca County  
SHIRLEY SOMMER, Sibley County  
FERNE NELSON, Martin County  
DEE SASSE, Brown County  
PENNEL SOMSEN, City of New Ulm  
REBECCA UELAND, Nicollet County



# STUDIES / DOCUMENTS

---

Elmore Energy Futures: analyzes the energy picture in the city of Elmore: present use, effects of inflation on future use, conservation possibilities and alternatives.

Fairmont Community Energy Plan: result of community survey, energy committee actions, assessment of options for the future.

Guide to Municipal Energy Management: provides information for energy management to local units of government.

Region Nine Respite Care Needs Assessment: demonstrated strong need for respite care.

Materials on Respite Care Available Nationally: a bibliography.

Respite Care Training Manual: produced for use in respite care training workshops.

Project River Bend: draft plan for the Minnesota River Corridor Management, an alternative corridor management plan for the river submitted to DNR.

Downtown Blue Earth Tour: results of a downtown revitalization walking tour of the city of Blue Earth.

Design Concept Plan for Downtown Revitalization of Madelia, Minnesota: incorporation of Madelia's past into the community's plans for the future.

Traffic Accident Study 1979: comparisons of accident rates in the nine counties for the year 1979, and for the five year period, 1975-1979.

Environmental Impact Statement for Le Sueur County Ditch 71: supplement to draft EIS prepared earlier by Region Nine staff.

Region Nine Cable Policy: analyzes the existing cable situation, identifies possible franchise areas, assesses possible technology advances and recommends general policy guidelines

Le Sueur County Jail Feasibility Study: assessed Le Sueur County's jail needs and explored alternatives for meeting those needs.

Family Violence Survey: assessed the attitudes and perceptions of professionals in the family violence network.

1981-83 Area Plan on Aging: includes major work objectives and priorities for the Aging Program, funding priorities under Title III of the Older Americans Act, demographic information on the region's elderly, and an analysis of service needs.

Consumers Guide to Long Term Care: provides information to consumers about long term health care services that are available in the community and in nursing homes, addresses how to assess a person's needs, and how to locate community services. A regional directory of all nursing homes is included.

Guide to Services for Seniors: a comprehensive guide containing information about services available to older persons in Region Nine, with telephone numbers and addresses for the consumer's convenience.

Transportation Resources of Long Term Care Facilities: presents information obtained from a survey conducted by the Area Agency on the transportation resources of the Region's long term care facilities.

# WORKSHOPS

---

Survey Summary-Employment Opportunities For Older Persons: presents employment needs and opportunities of older persons as described in surveys of older persons and employers.

A Source Book of Information - Building Better Advisory Councils: contains information regarding the Older Americans Act, government agencies on aging, Advisory Council purpose and responsibilities, parliamentary procedures and other items of importance to the Aging Advisory Council.

Rail Line Renovation, Alden to Jackson, Minnesota, Rail Line Renovation Project: A Case Study: a history of the successful efforts of rail users to renovate a rail line for use in shipping farm commodities.

Region Nine Area Recycling: aids in the recovery of glass, aluminum, paper and various metals by listing recycling centers and pickup point locations in directory form.

1982-1983 Arts Plan: updates the Region's arts plan and places highest priority on its service goal.

Employment and Training Plan for F.Y. 1982: assesses present employment conditions and specific areas of need.

An Analysis of Hazardous Waste Disposal Study Areas in Le Sueur, Nicollet and Sibley Counties: provides information to local residents, elected officials and the state regarding the effects of a hazardous waste disposal site in rural agricultural lands.

Building for the 1980's: construction of super-insulated homes for energy conservation.

Farm-scale Alcohol Production: practical look at farm-produced alcohol as a possible source of alternative energy.

Residential Conservation Service Workshop: 80 hour course in preparation for licensure as an RCS auditor.

Home Energy Disclosure Workshop: 30 hour course in preparation for licensure as an HED auditor.

Conservation and Renewable Resources: Informational sessions in Elmore, Fairmont and Mankato.

Police Interactions With D.D. Persons: series of six seminars for law enforcement and criminal justice personnel, focusing on interactions with D.D. persons.

Case Management: Client Focus: placed emphasis on the individual in the process of service coordination for developmentally disabled person.

Citizen Advocacy: Minnesota Advocacy Coalition presented sessions for citizens who serve as volunteers and companions to the mentally retarded, in helping them to solve problems arising from living in the community.

D.D. Legal Services: presented information on guardianship laws and other laws affecting vulnerable adults.

---

Welsh vs. Noot Court Decree Regional Forum: provided background information on the Decree; outlined responsibilities of state agencies, institutions and counties; discussed current and future resources; and discussed other issues.

Transportation of the Elderly and Handicapped: for volunteer drivers, transportation coordinators and other interested persons; provided an overview of problems encountered by those who transport the elderly and handicapped and offered some practical suggestions.

Behavior Management of Developmentally Disabled Persons: presented practical applications of behavior management principles and techniques, with focus on a wide range of emotional and behavior problems of children and adults.

Death and Dying: informed those working with elderly persons of the mental and emotional factors associated with the dying and death of friends, families and self.

Respite Care Training: workshops to provide training to potential respite care providers, parents and others, in four counties.

Human Aging Attitude Reassessment Program: goal of this workshop was to help persons working with the elderly to emotionally appreciate the aging process and its problems; to examine feelings about getting old; to desensitize our fears and anxieties about aging; and to provide behavioral change in working relationships with the elderly.

Defensive Driving (Senior Citizens): eight hour course taught to senior citizens and volunteer drivers of senior citizens.

Stress Management Seminar: focused on stress management for the nutrition program employees.

Region Nine Youth Traffic Safety Day: one hundred-fifty youth and twenty-five adults attended fifth annual safety day.

Advisory Council on Aging Effectiveness Training: designed to improve the performance of individual members in their roles as advisors and to upgrade the function of the advisory council as a unit.

Mini Pedal Power Seminar: instructed twenty-two youth who returned to their communities to conduct bicycle safety classes.

Child Care Licensors Conference: day-long conference for family day care licensors coordinated by Child Care Resource and Referral and Region Nine Child Care.

Aging in the 80's - Old Issues and New Challenges: This regional conference focused on a variety of key issues affecting older persons. The conference explored the current status and future goals for the elderly. The individual workshops were designed to both present information to participants and to receive input from them.

Child Protection Workshops: four workshops coordinated for the Mankato Area Vocational Technical Institute.

Communication Problems and Behaviors of the Older American: gave participants a working knowledge of communication impairments associated with aging.

# LEGISLATIVE CONCERNS

---

## Transportation Issues

The RNDC supported 1980 legislation which provided for the state purchase of abandoned railroad rights-of-way for preservation as transportation corridors (rail banking); legislation on pipelines and siting; and truck weight enforcement.

## Industrial Revenue Bonds

The RNDC supports S.F.205 and H.F.577, which would require cities to adopt local guidelines for use of industrial revenue bonds, which have been crucial to the development of cities in the Region. The RNDC opposes S.F.73 and H.F.22, which would eliminate all commercial use of IR bonds.

## Tax Increment Financing

The RNDC opposes all modifications to Minnesota's comprehensive law on tax increment financing except S.F.630, which clarifies the way certain districts are defined.

## Recreation Issues

The RNDC supports continued appropriations for the acquisition and development of local and regional recreation areas via the Legislative Commission on Minnesota Resources (LCMR) grant-in-aid program and renewed appropriations for similar activities via the federal Land and Water Conservation (LAWCON) program.

The RNDC supports additional appropriations to the MN/DOT Bikeways Grant program for the development of bike trails by local units of government.

The RNDC supports additional appropriations to DNR for the development of state trails, recreational unit trails; and its grant-in-aid program for local trail development.

## Environmental Review Process

The RNDC addressed the proposed change in the environmental review process which would increase potential costs to local units of government without provision for assistance in meeting those costs. The RNDC supports the proposal that RDC's provide assistance at no charge to cities under 5,000 (to be reimbursed by the state) and that the state assume litigation costs in excess of \$5,000.

# BUDGET

REVENUES For The Year Ended June 30, 1980	Federal	State	Local	Total
Tax Levy	\$ --	\$ --	\$156,954	\$ --
State General Support	--	102,946	--	--
Physical Planning HUD	45,002	--	--	--
Physical Planning Projects	--	1,643	8,169	--
Traffic Safety	38,738	--	--	--
Health Planning	--	--	1,187	--
Lawsuit	--	--	531	--
Energy Audits	--	--	6,675	--
Transportation Planning	--	1,800	--	--
Child Care	17,194	--	--	--
Education & Training Planning	38,434	--	--	--
Arts	--	7,975	--	--
Aging Planning	59,530	--	--	--
Criminal Justice	33,983	--	--	--
Developmental Disabilities	28,423	--	--	--
Interest	--	--	17,672	--
Other	--	--	2,448	--
TOTAL	\$261,304	\$114,364	\$193,636	\$569,304

EXPENDITURES For the Year Ending June 30, 1980	Personnel	Consultants	Printing & Publication	Travel Staff	Travel Other	Xerox & Supplies	Communi- cations	Other Direct Expenses	Indirect Expense	Total	
General Govt.	\$ --	\$ --	8	\$ --	\$20,353	\$ 24	\$ 5	\$ 959	\$ 33,939	\$ 55,288	
Comp. Planning	22,144	--	47	791	296	156	185	185	9,664	33,468	
Technical Asst.	8,082	--	52	168	--	871	266	3	--	9,442	
Land Use	15,317	--	161	1,031	324	311	284	312	7,152	24,892	
GMO Housing	14,214	--	287	267	--	211	274	582	6,428	22,263	
Water Quality	2,440	--	50	533	410	195	279	30	1,610	5,547	
Traffic Safety	22,559	--	--	2,361	2,001	477	587	739	11,245	39,969	
Water Planning	258	--	--	--	--	--	--	1,141	953	2,352	
Title XX	64	--	--	221	211	5	30	--	--	531	
Emergency Med Service	11	6,554	--	9	92	5	10	(35)	1,236	7,882	
Economic Development	1,883	--	15	126	--	8	62	150	835	3,079	
Aging	43,993	--	428	3,734	2,419	2,246	1,230	2,103	16,852	73,005	
Criminal Justice	20,164	--	--	2,411	78	592	662	604	9,864	34,375	
Developmental	20,933	--	1,306	2,161	518	1,137	913	557	8,427	35,952	
Energy	12,965	--	107	2,272	7	758	416	164	4,833	21,522	
Staff Development	1,720	--	165	666	32	297	156	110	1,287	4,433	
Recreation	6,204	--	--	372	11	118	88	--	2,707	9,500	
Transportation	13,976	1,518	--	1,110	947	185	334	480	7,496	26,046	
Child Care	15,822	20	127	1,459	913	3,992	1,493	1,457	7,420	32,703	
Human Resources	1,683	--	189	310	1,857	145	86	264	1,931	6,465	
Education & Training	21,851	--	130	1,948	1,562	1,147	402	250	11,157	38,447	
Arts	9,972	1,370	41	911	1,594	620	487	176	5,878	21,049	
TOTAL	\$256,255	\$9,462	\$3,113	\$22,861	\$33,625	\$13,500	\$8,249	\$10,231	\$150,914	\$508,210	
										FY'80 REVENUE	569,304
										FY'80 EXPENDITURES	508,210
										EXCESS REVENUE	61,094

REVENUES For The Year Ended June 30, 1981	Federal	State	Local	Total
Tax Levy	\$ --	\$ --	\$183,445	\$ --
State General Support	--	91,703	--	--
Physical Planning HUD	21,775	--	--	--
Physical Planning Projects	--	--	19,581	--
Traffic Safety	36,767	--	--	--
Emergency Energy Project	22,632	--	--	--
Energy Audits	--	--	5,050	--
Transportation Planning	--	2,000	--	--
Criminal Justice - Developmental Disabilities Project	8,254	--	--	--
Criminal Justice	18,864	--	--	--
Respite Care	18,895	--	--	--
Child Care Planning	--	--	28,694	--
Arts	--	11,641	--	--
Education & Training Planning	35,678	--	--	--
Developmental Disabilities	20,708	--	--	--
Aging	73,554	--	--	--
Hazardous Waste Contract	--	2,500	--	--
Rural Development Council	--	1,500	--	--
Interest	--	--	37,734	--
Other	--	--	6,217	--
TOTAL	\$257,127	\$109,344	\$280,721	\$647,192

EXPENDITURES For The Year Ending June 30, 1981	Personnel	Consultants	Communication	Travel Staff	Travel Other	Printing Xerox Supplies	Publication	Other Direct Expense	Indirect Expense	Total
General	\$94,541	\$ 740	\$ 11,161	\$ 8,817	\$ 298	\$ 17,998	\$ 250	\$ 50,568	(\$170,838)	\$ 13,535
General Government	--	--	--	--	20,636	51	--	169	--	20,856
Comprehensive Planning	1,894	--	28	28	61	75	--	--	853	2,939
Physical Development	3,214	--	67	70	310	36	5	80	1,546	5,328
Cable	1,362	4,200	1	13	--	102	--	43	2,339	8,060
HUD	1,671	--	6	274	--	43	20	17	831	2,862
Land Use	17,915	--	413	1,328	--	445	21	1,012	8,644	29,778
Water Quality	186	--	9	--	--	--	--	--	80	275
Transportation	19,132	--	706	1,446	965	927	--	70	9,508	32,754
Economic Development	3,474	--	35	299	--	53	--	195	1,659	5,715
Energy	15,215	--	538	1,855	47	748	478	1,251	8,234	28,366
Energy Audits	4,635	--	44	26	--	18	--	--	--	4,723
Environmental Permit Cnt.	124	--	--	--	--	--	--	--	50	174
Housing	11,721	--	610	954	--	1,189	(4)	204	6,002	20,676
Recreation	6,044	--	74	419	--	98	--	55	2,736	9,426
Traffic Safety	27,162	--	800	2,276	2,625	1,197	575	60	14,190	48,885
Solid Waste	2,423	--	115	112	--	227	--	20	1,185	4,082
Community Development	7,687	172	199	1,016	--	355	9	133	3,915	13,486
Le Sueur County	21	--	--	--	--	7	--	--	--	28
Rural Development	2,491	--	4	22	--	2	--	60	1,055	3,634
Belgrade Township	886	--	2	10	--	9	--	--	370	1,277
Fairmont	5,465	--	123	481	--	76	--	20	2,522	8,687
Hazardous Waste	5,982	--	270	313	19	627	7	--	2,952	10,170
Madelia	999	2,474	11	14	--	1,095	--	--	1,879	6,472
Prime Service	1,852	--	43	196	--	--	--	--	855	2,946
Ormsby	660	--	15	33	--	28	--	108	346	1,190
ECIP	13,588	--	231	706	24	1,312	197	5	6,570	22,633
HUD 107	7,540	--	87	663	--	28	--	--	3,402	11,720
EMS	1,190	--	7	197	144	4	--	15	637	2,194
Human Resources	2,647	--	179	142	1,723	510	10	175	2,203	7,589
Arts	15,556	--	794	1,166	3,554	1,107	12	358	9,222	31,769
4 C's	3,923	--	271	492	221	361	92	199	2,273	7,832
Staff Development	8,071	70	784	658	334	2,052	--	150	4,956	17,075
RETAC	19,221	--	594	2,103	2,202	673	15	515	10,356	35,679
Aging Service Delivery	11,700	--	113	734	15	172	12	--	5,214	17,960
Aging Administrative Pool	35,699	--	1,122	2,596	2,934	2,556	101	1,262	18,924	65,194
Aging Advocacy	9,011	--	48	585	97	137	8	35	4,057	13,978
Ombudsman	1,504	--	47	248	--	1,635	--	--	1,405	4,839
Criminal Justice	17,462	--	510	1,319	28	407	12	104	8,115	27,957
Developmental Disabilities	22,703	25	1,172	2,021	391	1,573	72	547	11,658	40,162
Respite Care	12,857	358	579	1,287	46	872	23	408	6,720	23,150
CJDD Workshop	763	6,616	233	63	294	283	--	--	3,375	11,627
TOTAL	420,191	14,655	22,045	34,982	36,968	39,088	1,915	57,838	0	627,682

FY81 Revenue 647,192  
FY81 Expenditures 627,682  
Excess Revenue 19,510

ANTICIPATED

REVENUES For The Year Ending June 30, 1982

	Federal	State	Local	Total
Tax Levy	\$ --	\$ --	\$188,000	\$ --
State General Support	--	90,000	--	--
Physical Planning Projects	--	--	20,000	--
Traffic Safety	7,000	--	--	--
Emergency Energy Project	21,000	--	--	--
Transportation Planning	--	4,000	--	--
Respite Care	8,000	--	--	--
Child Care Planning	--	--	8,000	--
Arts Planning	--	11,000	--	--
Education & Training Planning	10,285	--	--	--
Developmental Disabilities	25,000	--	--	--
Aging	79,000	--	--	--
Interest	--	--	31,000	--
Other	--	--	--	--
TOTAL	\$150,285	\$105,000	\$247,000	\$502,285
Reserve Fund			15,000	15,000
			\$262,000	\$517,285

ANTICIPATED

EXPENDITURES

For Year Ending  
June 30, 1982

	Personnel	Consultants	Publication	Travel Staff	Travel Other	Printing Xerox & Supplies	Communi- cations	Other Direct Expenses	Indirect Expense	Total
General Gov't	\$ 22,560		\$	\$	\$17,650				\$ 37,304	\$ 77,514
Phys., Development Planning	7,200			500		\$ 200	\$ 50		3,252	11,202
Housing	12,000			200		340	110	\$ 100	5,214	17,964
Transportation	21,600		100	600		490	400	160	9,550	32,900
Community Development	20,928		120	3,600		1,470	480	690	11,161	38,449
Technical Asst.										
Recreation	12,600			400	200	650	150		5,726	19,726
Water Quality	1,200			150			100		593	2,043
Economic Development	13,952		80	2,400		980	320	460	7,440	25,632
Land Use	15,640		50	600		450	310	150	7,034	24,234
Traffic Safety	6,433		100	960	550	350	235	245	3,627	12,500
Energy	26,140		125	1,100		1,448	250	130	11,939	41,132
Human Resource	7,200			500	1,250	200	50		3,762	12,962
Employment & Training	6,000			500	400	175	200	25	2,985	10,285
Developmental Disabilities	17,400		200	2,500	300	1,490	875	300	9,435	32,500
Aging	61,840		467	3,000	2,500	4,000	1,900	1,050	30,576	105,333
Emergency Medical	1,200			150			100		593	2,043
Child Care	8,440		50	600	150	1,600	850	100	4,822	16,612
Arts	12,000			920	2,100	800	900	210	6,924	23,854
Respite Care	4,500	394	100	680	400	638	360	310	3,018	10,400
TOTAL	\$278,833	\$394	\$1,392	\$19,360	\$25,500	\$15,281	\$7,640	\$3,930	\$164,955	\$517,285

# A - 95 PROJECT REVIEW

<u>Applicant</u>	<u>Project</u>	<u>Agency</u>	<u>Funding</u>	<u>Recommendation</u>
So. Minn. Support Coalition	Displaced Homemaker	MN. - DES	\$ 130,000 State 75,000 Federal	A
Delavan	Step I - Funding of Facility Planning Process	EPA	N/A	A
Lewisville	Step I - Funding of Facility Planning Process	EPA	N/A	A
Trimont	Water & Waste Disposal Systems (preapplication)	USDA/FmHome Admin.	170,700	A
Waseca	Waste Water Treatment Facility Plan Review	EPA	N/A	A
Janesville	Waste Water Treatment Facilities Planning Report	EPA	N/A	A
Courtland	Water & Waste Disposal System (Preapplication for water system)	FmHome Admin.	772,00	A
Lewisville	Street Improvement Project	FmHome Admin. Facilities Loan Project	440,000	A
Green Isle	Basic Public Partici- pation Program to Develop Waste-Water Facilities Plan	EPA/MPCA	N/A	A
Independent School Dist. 451, Ceylon	DOE - Institutional Building Grants Program	DOE/MEA	3,900	A
Independent School Dist. 392, Le Center	DOE/MEA Institutional Building Grants Program	DOE/MEA	6,200	A
Independent School Dist. 217, Brice lyn	DOE/MEA Institutional Building Grants Program	DOE/MEA	3,000	A
New Ulm	Airport development aid	DOT	3,800,000	Conference pending
MVAC	Prog. Admin. & Community Organization	CSA	152,500 Federal 38,125 Local	A
Gustavus Adolphus College	DOE/MEA Institutional Bldg. Grants Program	DOE/MEA	21,979 Federal 21,970 Local	A
Mankato State University	DOE/MEA Institutional Bldg. Grants Program	DOE/MEA	57,523 Federal 57,523 Local	A
Independent School Dist. #70, Lake Crystal	DOE/MEA Institutional Bldg. Grants Program	DOE/MEA	25,000 Federal 25,000 Local	A
Mankato Arts Council	CETA Title VI	Dept. of Economic Security	7,903.97	A
Independent School Dist. #836, Butterfield- Odin	DOE Energy Conservation Measures Institutional Building Grants Program	DOE	34,754 Federal 34,754 Local	A
Gibbon	Maxi-audit	DOE/MEA	179 Federal 179 State	A
Madison Lake	Institutional Building Grants Program	DOE/MEA	269 Federal 269 State	A
Independent School Dist. #81, Comfrey	Institutional Building Grants Program - ECM	DOE/MEA	N/A	A
MN Dept. of Economic Security	CETA Annual Plan	USDOL	N/A	A
MN Dept. of Economic Security	CETA Title IID	USDOL	N/A	A
Martin County	Institutional Building Grants Program Energy Conservation Measures	DOE	18,057 Federal 18,057 Local	A
Independent School Dist. #454, Fairmont	Institutional Building Grants Program Maxi- Audit	DOE/MEA	5,025 Federal 5,025 State	A
Independent School Dist. #840, St. James	Institutional Building Grants Program - Energy Conservation Measures	DOE	97,338.97 Fed. 97,338.97 Local	A
Mankato Area Arts Council	Arts Grant	Region Nine	2,400	A
Michael Scullin	Arts Grant	Region Nine	575	D
Bon Bon Clown Club	Arts Grant	Region Nine	795	D
Winthrop Community Theatre	Arts Grant	Region Nine	1,050	A
Civic Summer Theatre, Inc.	Arts Grant	Region Nine	2,215	D
St. Peter Community Choir	Arts Grant	Region Nine	2,550	A
Le Sueur County Historical Society Museum	Arts Grant	Region Nine	900	A
Watonswan County Arts Council Community Education & Recreation Council	Arts Grant	Region Nine	1,220	A



<u>Applicant</u>	<u>Project</u>	<u>Agency</u>	<u>Funding</u>	<u>Recommendation</u>
Mahkato Mdewakanton Club	Arts Grant	Region Nine	\$ 3,376.49	A
New Ulm	Arts Grant	Region Nine	535	D
Trimont Summer Theatre	Arts Grant	Region Nine	1,705	A
Ryan Films	Arts Grant	Region Nine	1,900	D
Le Sueur County Arts Council	Arts Grant	Region Nine	4,000	A
Pioneer Players, Inc.	Arts Grant	Region Nine	3,410	A
Fort Ridgely Historical Assoc.	Arts Grant	Region Nine	2,000	HRS-Reconsider
Pioneer Spinner's Guild	Arts Grant	Region Nine	397	A
Minn. Valley Poetry Series	Arts Grant	Region Nine	935	D
Dr. Hendricks	Cable Territory - Janesville	Cable Board	---	A
Blue Earth County	Dept. of Energy Energy Hydroelectric Feasibility Loan Program	DOE	50,000 Federal 32,930 Loan	A
MN State Criminal Justice Agencies	LEAA	Dept. of Justice	N/A	A
MN State Criminal Justice Agencies	LEAA	Dept. of Justice	N/A	D
MN State Criminal Justice Agencies	LEAA	Dept. of Justice	N/A	NC
St. Peter School Dist. #508	Institutional Building Grants Program Maxi- Audit	DOE/MEA	9,121 Federal 9,121 State	A
John Ireland School, St. Peter	Mini/Maxi-Energy Audits	DOE	200 Fed. Mini 750 Fed. Maxi	A
Dept. of Economic Security	CETA Admin. Modification	D.O.L.	5,032,031 Federal	A
Dept. of Economic Security	CETA Modifications	D.O.L.	5,816,243 Federal 4,104,816 Federal	A
St. Mary's School, New Ulm	Institutional Building Grants Program Maxi- Audit	DOE	950 Federal 950 Applicant	A
Elysian	Maxi-Audit Grant Program	DOE	156 State 156 Federal	A
Multiple Dwellings, Inc. New Ulm	Application for Environ- mental Review	HUD/FHA	N/A	A
Mapleton	Institutional Building Grants Program Maxi- Audit	DOE	388 Federal 388 State	A
Janesville, Nursing Home	Institutional Building Grants Program Maxi- Audit	DOE	465 Federal 465 State	A
Dept. of Economic Security MN/DOT	CETA Modification State Rail Plan	D.O.L. MN/DOT	No Change Approx. 7,000,000	A A
Martin County	Bridge Bonding #L7262	MN/DOT	40,000	A
Martin County	Bridge Bonding #1051	MN/DOT	55,000	A
Martin County	Bridge Bonding #1052	MN/DOT	45,000	A
Martin County	Bridge Bonding #1053	MN/DOT	30,000	A
Martin County	Bridge Bonding #L7276	MN/DOT	20,000	A
Watonwan County	Bridge Bonding #2940	MN/DOT	31,000	A
Watonwan County	Bridge Bonding #L8054	MN/DOT	25,000	A
Watonwan County	Bridge Bonding #L8046	MN/DOT	37,500	A
Watonwan County	Bridge Bonding #L8040	MN/DOT	86,500	A
Watonwan County	Bridge Bonding #L8012	MN/DOT	62,000	A
Watonwan County	Bridge Bonding #L8006	MN/DOT	34,000	A
Watonwan County	Bridge Bonding #L8001	MN/DOT	223,000	A
Watonwan County	Bridge Bonding #1026	MN/DOT	22,500	A
Brown, Martin, Sibley, & Watonwan Counties	Proposed Federal-aid Off System Construction Program Participation	MN/DOT	1,271,000	A
Eagle Lake	Maxi Audit	M.E.A.	182	A
	M.E.A. and D.O.E.	D.O.E.	181	
Welcome Public School Dist. #459	Institutional Building Grants Program Maxi-Audit	Minn. Energy and Aging D.O.E.	1,170 Federal 1,170 State	A
Waterville	CDBG Small Cities Single Purpose Program (final application)	HUD	246,000	A
Blue Earth County	CDBG Small Cities Single Purpose Program (final application)	HUD	450,000	A
Waseca	CDBG Small Cities Single Purpose Program (final application)	HUD	155,000	A
Gaylord	CDBG Small Cities Single Purpose Program (final application)	HUD	472,000	A
Le Sueur County	CDBG Small Cities Single Purpose Program (final back-up application)	HUD	307,500	A
HSA-6	Renewal of Full Designation	HEW	320,044	A

<u>Applicant</u>	<u>Project</u>	<u>Agency</u>	<u>Funding</u>	<u>Recommendation</u>
Mapleton Community Home	Title III-B Older Americans Act (Van)	HEW/AOA	13,575	A
Southern Minn. Regional Legal Services (2nd year)	Title III-B Older Americans Act (legal advocacy)	HEW/AOA	58,499	A
Sioux Valley Hospital, Inc. (3rd year)	Title III-B Older Americans Act (health screening clinic)	HEW/AOA	4,464	A
Minn. Valley Action Council Nutrition Project	Title III-C1 Older Americans Act (congregate meal)	HEW/AOA	348,234	A
Cleveland	Steps 2 & 3 - Construction Grant for Wastewater Treatment Works	EPA	894,637	A
Mankato	Section 18 UMTA	MN/DOT	232,688	A
Frost	Maxi-Audit Grant Application	MEA/DOE	111 Federal 110 State	A
Lake Crystal	CDBG Small Cities Comprehensive Program (back-up final application)	HUD	1,061,471 (3-year)	A
St. Peter & Paul Catholic School	Maxi-Audit Grant Application	D.O.E.	451.50	A
Ind. School Dist. #77 (Mankato Area Schools) includes 14 schools	DOE/MEA Institutional Building Grants Program	MEA/DOE	33,400 State 33,400 Federal	A
Mankato	Maxi-Audit			
Region Nine	Federal-Aid Urban Funding	MN/DOT	3 phases totaling 3,402,000	A
Cities & Counties	Federal-aid High Funding	Federal Highway Administration & MN/DOT	Not yet Authorized	A
Balance of State	CETA Modifications	Dept. of Labor		A
Dept. of Economic Security				
Madelia	Cable Territory	MN Cable Board	N/A	A
Madelia Telephone Company	R.E.A. Loan to set up cable system	R.G.A. (U.S.D.A.)	250,000	A
Le Sueur	Section 18	UMTA MN/DOT	24,000	A
Brown County	Bridge Bonding	MN/DOT	50,775	A
Brown County	Bridge Bonding	MN/DOT	130,000	A
Janesville School	CETA Title VI	MN DES/USDO	2,388.20	A
Le Sueur	CDBG Entitlement Year V (amendment)	HUD	21,000	A
Le Sueur County	CDBG Small Cities Single Purpose Program (back-up--revisions)	HUD	308,000	A
Mankato HRA	Low Rent Public Housing	HUD	1,260,613	A
MN. Waxy Corn Growers Assoc.	Dept. of Energy	D.D.E.	682,000	A
Brown Co. Park Dept.	CETA Title VI	MNDES/USDOL	5,416	A
Waseca	CETA Title VI	MNDES/USDOL	6,233	A
St. Peter Reg. Treatment Ctr.	CETA Title VI	MNDES/USDOL	7,363	A
Waterville Area Medical Services Assn.	Nat'l Health Services Corps.	H&HS	45,000	A
Brown Co. Highway Dept.	CETA Title VI	MNDES/USDOL	8,986	A
Waterville Schools	CETA Title VI	MNDES/USDOL	3,817	A
Butterfield/Odin School	CETA Title VI	MNDES/USDOL	1,837	A
Mankato Area Senior Citizen Center	Title III-B Older Americans Act (Multipurpose Sr. Ctr.)	HEW/Admin. on Aging	34,000	A
Divine Providence Community Home	Title III-B Older Americans Act (van)	HEW/Admin. on Aging	12,390	D
Brown Co. Family Service Center	Title III-B Older Americans Act (bus)	HEW/Admin. on Aging	33,569	A
Brown Co. Family Service Center	Title III-B Older Americans Act (sr. cit. aid program)	HEW/Admin. on Aging	21,600	A
Le Sueur Co. Board of Commissioners	Title III-B Older Americans Act (sr. cit. aid program)	HEW/Admin. on Aging	10,312	A
Sibley Co. PHN Service	Title III-B Older Americans Act (health screening clinic)	HEW/Admin. on Aging	7,668	A
Bricelyn	Maxi-Audit	MN Energy Agency DOE	467	A
Dept. of Economic Security	Title IV Funding	DOL	2,723,707	A
Minnesota Motor Bus, Inc.	Business and Industrial Loan	FmHome Admin.	230,000 (loan guarantee)	A
Big Gain, Inc. (Mankato)	Business and Industrial Loan	FmHome Admin.	1,000,000 (loan guarantee)	A
East Chain - School Dist. #453	Maxi-Audit Application	MN Energy Agency	1,749 Federal 1,749 State	A
Loren Jacobsen (New Ulm)	Section 515 Rural Rental Housing Loan	DOE FmHome Admin.	569,064	A

<u>Applicant</u>	<u>Project</u>	<u>Agency</u>	<u>Funding</u>	<u>Recommendation</u>
MVAC	Summer Youth Recreation	FmHome Admin. CSA	\$ N/A	A
Mankato Rehab. Center	Building Alteration	MN Dept. of Vocational Rehab.	3,433 State 6,867 Local	A
Mankato State University	Law Enforcement Assistance Administration JJD	Dept. of Justice Law Enforcement Assistance Administration	190,000	A
Dept. of Economic Security	S.Y.E.P. Modification	DOL	5,097,217	A
Region Nine Criminal Justice Block Grant - MVFGS - City of Le Sueur, North Mankato - YMCA	L.E.A.A.	Dept. of Justice L.E.A.A.	8,500 City of Le Sueur 8,629 North Mankato	A
Nicollet School Dist.	Title VI CETA	MN DES/USDOL	14,040 Federal 8,000 Local	A
Tolzman Construction, Inc. (St. Peter)	Application for Environmental Review	HUD/FHA	N/A	A
MVAC	Comm. Food & Nutrition	CSA	40,000	A
Blue Earth County	CETA Title VI	MN DES/USDOL	2,000 Local 32,860 Federal	A
New Ulm CETC	Private Sector Initiative Program	MN DES/USDOL	3,439	NC
Joseph Houts	Private Sector Initiative Program	MN DES/USDOL	6,075	NC
Comfrey Development Group	Section 515 Rural Rental Housing Loan	FmHome Admin.	360,000	A
Wells	Urban Development Action Grant (UDAG)	HUD	144,000	A
Region Nine Development Commission	Traffic Safety	Dept. of Public Safety	46,667	A
Le Sueur	EPA Step 2/3 Grant	EPA	2,481,000	A
New Richland	Water Supply System Improvement	FmHome Admin.	120,000	A
Krueger Realty, Inc. (Winnebago)	Section 515 Rural Rental Housing Loan	FmHome Admin.	281,232	A
Mankato	Urban Development Action Grant (UDAG)	HUD	2,800,000	A
Mankato	Urban Development Action Grant (UDAG)	HUD	650,000	A
FMW-HSB	Community Health	MN Dept. of Health	31,217	A
MN/DOT	Emergency T.H. repair (State Funds)	MN/DOT	75,000	A
Region Nine Development Commission	Developmental Disabilities Coordinator/Technical Assistance Grant	DD Planning Office/ HEW, Local Match	35,695	A
Chain of Lakes	CETA Title VI	MN Dept. Economic Secur.	23,574	A
Blue Earth County	Channeling Project	US Dept. of Labor MN Dept. of Health US Dept. of Health & Social Services	305,066 Federal	D
McCleod/Meeker/Sibley Community Health Services	Home Care Demonstration Project	MN Dept. of Health	141,137	A
Job Service, Fairmont	UI/CETA Linkage	MN Dept. of Economic Security	79,513	HRS - Withdrawn
MN Valley Action Council/ Mankato School Dist.	CETA/Educ. Linkage	MN Dept. of Economic Security	18,480	HRS - Withdrawn
Madison Lake	Community Facilities Loan	Farmers Home Admin.	210,000	A
Le Sueur	HUD Innovative Energy Grants	HUD	500,000 - 4 cities 100,000 - for Le Sueur	A
Madison Lake	Community Facilities Loan	FmHome Admin.	210,000	A
Le Sueur	HUD Innovative Energy Grants	HUD	500,000 - 4 cities 100,000 - for Le Sueur	A
Blue Earth	CDBG Small Cities Comprehensive Program (second year application)	HUD	600,000	A
Mankato	CDBG Small Cities Comprehensive Program (second year application)	HUD	600,000	A
New Prague	CDBG Small Cities Comprehensive Program (second year application)	HUD	483,660	A
New Ulm	CDBG Small Cities Comprehensive Program (second year application)	HUD	400,000	A

<u>Applicant</u>	<u>Project</u>	<u>Agency</u>	<u>Funding</u>	<u>Recommendation</u>
Friendly Hour Club Amboy, MN	McKnight Fund Application	McKnight	\$ 375	A
Elysian	McKnight Fund Application	McKnight	956	A
Over 60 Club Le Sueur, MN	McKnight Fund Application	McKnight	318	A
Bricelyn Multi-Purpose Senior Center	McKnight Fund Application	McKnight	3,397	A
Hanska	McKnight Fund Application	McKnight	3,035	A
Minnesota Lake	McKnight Fund Application	McKnight	8,776	A
Madison Lake	McKnight Fund Application	McKnight	1,275	A
Winthrop Senior Center	McKnight Fund Application	McKnight	838	A
Private Developers on Behalf of Cities of Sleepy Eye and New Prague	Section 8 Housing Assistance Payments Program	HUD/MHFA	NA	A
Le Sueur/Waseca Board of Health	Home Care Demonstration	MN Dept. of Health	35,000	A
Brown/Nicollet Human Services Board	Home Care Demonstration	MN Dept. of Health	8,890	A
Blue Earth County	Home Care Demonstration	MN Dept. of Health	73,231	A
MN Migrant Council	Statewide Employ. & Training	USDOL	1,306,100 Federal	A
MN Valley Action Council	Supplement Admin.	MN Dept. of Economic Security	54,432 State	A
Busch Construction, Inc. (New Prague)	Application for Environ- mental Review	HUD/FHA	N/A	A
Brown County Family Service Center	Section 18 - Public Transit Assistance (UMTA)	Urban Mass Transit Association	53,735	A
Fairmont	Urban Mass Transit Assoc. Section 18 - Public Transit Assistance	Urban Mass Transit Association	56,000	A
Faribault County	Bridge Bonding	MN/Dept. of Trans- portation	52,000	A
Brown County	Bridge Bonding	MN/Dept. of Trans- portation	175,000	A
Sleepy Eye	Step II, Sewage Treatment Construction	EPA	59,302 Total 42,295 (Federal) 7,950 (State) 7,057 (Local)	A
Mankato	City Housing Plan and Residential Mortgage Bond Program	Reviewed in Accordance with Minnesota Statutes 462C-Municipal Housing Bond Issues		A
Capital Properties, Inc. (Mankato)	Application for Environ- mental Review	HUD/FHA	N/A	A
Fairmont	Energy Management	League of MN Cities	8,000	A
Elmore School, Springfield School, Viking Coop. Center, Cities of Elmore, Fairmont, Waterville	Mini & Maxi-Energy Audit	MN Energy Assoc./DOE	37,176.68	A
So. Minnesota Area Arts Council	Governors Rural Development Council	Rural Development Council	12,500 State 19,251 Local	D
Blue Earth County	Criminal Justice Block Grant	Law Enforcement Assistance Admin.	1,300	A
New Ulm CETC/School District	CETA/Educ. Linkage	MN DES	19,928 Federal	A
Region 9 Voc. Ctrs./ MVAC/MAVTI	CETA/Educ. Linkage	MN DES	60,000 Federal	A
Region 9 ARC	DD Advocacy Demonstration Project	DD/HEW Local Match	42,184	A
Region 9 Development Commission	Governor's DD Planning Council	Governor's DD Planning Council	25,756 Federal 8,619 Local	A
St. Clair School	CETA Title VI	MSDOL MN DES	21,265	A
Le Sueur School	Dental Health	MNDOH	27,000	A
Committee Against Domestic Abuse	Battered Women's Shelter	MNDOC	62,597	A
Minn. Valley Chorale	Arts Grant	Region IX	4,200 (3,250)	A
Blue Earth Town & Country Players	Arts Grant	Region IX	1,900 (1,900)	A
Winthrop Community Players	Arts Grant	Region IX	1,405	A
St. George School	Arts Grant	Region IX	250	D
Holy Rosary School	Arts Grant	Region IX	250	D
St. Peter Community Choir	Arts Grant	Region IX	900 (500)	A
Mankato Symphony Orchestra	Arts Grant	Region IX	4,505	A
Good Thunder	Arts Grant	Region IX	1,275	A
Summer at Fort Ridgely	Arts Grant	Region IX	2,000	D

<u>Applicant</u>	<u>Project</u>	<u>Agency</u>	<u>Funding</u>	<u>Recommendation</u>
New Ulm Ind. School Dist. #88	Maxi-Audit Application	MEA & DOE	\$ 29,550	A
Immanuel St. Joseph Hospital	Maxi-Audit Application	MEA & DOE	12,804	A
Waterville/Elysian School Dist. #395	Maxi-Audit Application	MEA & DOE	6,465	A
Blue Earth Ind. School Dist. #240	Maxi-Audit Application	MEA & DOE	29,465	A
Henderson Ind. School Dist. #734	Maxi-Audit Application	MEA & DOE	5,700	A
Cleveland Ind. School Dist. #391	Maxi-Audit Application	MEA & DOE	3,382	A
Minnesota Lake Ind. School Dist. #223	Maxi-Audit Application	MEA & DOE	66,083	A
Truman Public Schools	Maxi-Audit Application	MEA & DOE	4,840	A
Waseca Area Memorial Hospital	Maxi-Audit Application	MEA & DOE	3,700	A
Waseca	Maxi-Audit Application	MEA & DOE	1,660	A
New Richland Ind. School Dist. #827	Maxi-Audit Application	MEA & DOE	7,420	A
Trimont Ind. School Dist. #457	Maxi-Audit Application	MEA & DOE	4,400	A
Le Sueur Ind. School Dist. #393	Maxi-Audit Application	MEA & DOE	16,608	A
Winthrop School Dist. #735	Maxi-Audit Application	MEA & DOE	7,120	A
Arlington Ind. School Dist. #731	Maxi-Audit Application	MEA & DOE	7,870	A
Nicollet Ind. School Dist. #507	Maxi-Audit Application	MEA & DOE	3,286	A
Gaylord Ind. School Dist. #732	Maxi-Audit Application	MEA & DOE	7,498	A
Arlington Municipal Hospital	Maxi-Audit Application	MEA & DOE	3,490	A
St. Clair Ind. School Dist. #75	Maxi-Audit Application	MEA & DOE	2,353	A
Amboy-Good Thunder Ind. School Dist. #79	Maxi-Audit Application	MEA & DOE	3,650	A
Gaylord Community Hospital	Maxi-Audit Application	MEA & DOE	5,100	A
St. Mary's Schools (Sleepy Eye)	Maxi-Audit Application	MEA & DOE	2,450 Federal 2,450 Local	A
Faribault, Martin, & Waseca County	Federal aid Off System Highway Construction Program 1980-81	MN/DOT	1,571,000	A
Mankato	Airport and Airway Trust Fund Grant	Fed. Aviation Admin.	Approx. 100,000	A
Faribault County	Bridge #L5330 Bridge Bonding	MN/DOT	98,280	A
Le Sueur	Para-transit Subsidy Program	MN/DOT	38,314	A
Faribault Co.	Bridge Bonding	MN/DOT	72,500	A
Faribault Co.	Bridge Bonding	MN/DOT	84,240	A
Faribault Co.	Bridge Bonding	MN/DOT	97,090	A
Gwen Schueller	Brown County Child Care Grants	Brown Co. Allied Service Board	175 (88)	A
Jeanne Zupfer	Brown County Child Care Grants	Brown Co. Allied Service Board	181.05 (172)	A
Treehouse Preschool	Brown County Child Care Grants	Brown Co. Allied Service Board	150	A
Linda Smasal	Brown County Child Care Grants	Brown Co. Allied Service Board	270	A
Marlis Hildebrandt	Brown County Child Care Grants	Brown Co. Allied Service Board	200	A
Barbara Brown	Brown County Child Care Grants	Brown Co. Allied Service Board	65	A
Mr. & Mrs. Greg Stimpert	Brown County Child Care Grants	Brown Co. Allied Service Board	255 (240)	A
Roxanne Ecker	Brown County Child Care Grants	Brown Co. Allied Service Board	300	A
Diane Melhop	Brown County Child Care Grants	Brown Co. Allied Service Board	250	D
Marri Whittet	Brown County Child Care Grants	Brown Co. Allied Service Board	175	A
Barbara Plath	Brown County Child Care Grants	Brown Co. Allied Service Board	210 (101)	A

<u>Applicant</u>	<u>Project</u>	<u>Agency</u>	<u>Funding</u>	<u>Recommendation</u>
Sandra Anderson	Nicollet Co. Child Care Grants	Nicollet Co. Welfare Board	\$ 358	A
Carla Butcher	Nicollet Co. Child Care Grants	Nicollet Co. Welfare Board	837.81 (573)	A
Mary Braun	Nicollet Co. Child Care Grants	Nicollet Co. Welfare Board	50 (49)	A
Barbara Heintz	Nicollet Co. Child Care Grants	Nicollet Co. Welfare Board	671.88 (270)	A
Wm & Barbara Backstrom	Nicollet Co. Child Care Grants	Nicollet Co. Welfare Board	318.88 (264)	A
Sherry Childs	Nicollet Co. Child Care Grants	Nicollet Co. Welfare Board	450 (202)	A
Locust Street Day Care Center	Nicollet Co. Child Care Grants	Nicollet Co. Welfare Board	1,000 (0)	D
St. James	Urban Development Action Grant (UDAG)	HUD	350,000	A
MVAC	Women, Infants, Children (WIC)	MN Dept. of Health	17,614	A
MN CAP Ass'n	Statewide CAP	CSA	11,786	A
Blue Earth County	Family Planning Special Project	MN Dept. of Health	27,500	A
Twin Cities Natural Family Planning Center	Family Planning Special Project	MN Dept. of Health	3,323	A
MN DES	Low Income State Energy Assistance Plan	MN Dept. of Health	30,567	A
MN CAP Association	Citizen's Energy Coalition	U.S. H & HS	N/A	A
Watonwan County	Bridge Bonding	CSA	235,882	D
Watonwan County	Bridge Bonding	MN/DOT	220,000	A
Watonwan County	Bridge Bonding	MN/DOT	245,000	A
MN Dept. of Economic Security	Bridge Bonding	MN/DOT	110,000	A
Blue Earth County	CETA Master Plan	USDOL	18,672,000	A
Brown County	Youth Intervention	CCPB	9,980	A
MN Migrant Council	Youth Intervention	CCPB	10,000	A
Committee Against Domestic Abuse	Annual Plan	USDOL	3,242,069	A
Atwood Land Company (Eagle Lake)	CETA Title VI Special Project	USDOL	42,192	A
Nicollet County - on behalf of Faribault, Martin and Sibley Counties	Application for Environmental Review	MN DES	N/A	A
Coalition for protection of youth right - legal rights center	Amendment to 1978 CDBG Housing Assistance Plan (HAP)	HUD/FHA	N/A	A
Lorensberg & Wilson Partnership (City of Blue Earth)	Legal Advocacy for Youth OJJDP	HUD	N/A	A
MN Valley Action Council	Section 515 Rural Rental Housing Loan	CCPB	278,880	A
YWCA	Title III-C-2 Older Americans Act (home delivered meals)	FmHome Admin.	199,662	A
St. Peter	CETA Title VI Special Project	HHS/Admin. of Aging	17,092 Federal	A
Harvon and Company	EPA/MPCA Step 2/3 Waste Water Treatment Construction Grant Application	USDOL	51,410	A
Courtland	Cable Service Territory	MN DES	1,576,650	A
MVAC	Emergency Energy Crisis Intervention	EPA/MPCA	N/A	A
MVAC	Community Action Energy Program Administration	Minnesota Cable Communication Board	N/A	A
Lafayette	EPA/MPCA Step 2/3 Construction Grant Application	Minnesota Cable Communication Board	N/A	A
Eagle Lake	FmHA 10.418 Pre-Application for a proposed Water System Improvement Project	DOE/CSA	30,000	A
Le Sueur County DAC	Urban Mass Transit Admin. Sec. 16(b)(2)	DOE/CSA	153,650	A
Mankato Rehab. Center	Urban Mass Transit Admin. - Sec. 16(b)(2)	EPA/MPCA	1,005,186 Federal 201,037 State 278,025 Local	A
Nicollet County	Bridge Bonding	EPA/MPCA	\$1,484,248 Total 1,133,040 (project cost)	A



<u>Applicant</u>	<u>Project</u>	<u>Agency</u>	<u>Funding</u>	<u>Recommendation</u>
Fairmont	Urban Mass Transit Admin. - Sec. 18	UMTA & MN/DOT	\$ 51,200 Sec. 18 20,000 State 10,000 Local	A
Waterville	CDBG Small Cities Single Purpose Grant	HUD	440,000	A
Winnebago	CDBG Small Cities Comprehensive Grant	HUD	400,000 1st yr. 600,000 2nd yr. 700,000 3rd yr.	A
South Central Minnesota Senior Federation	Title III-B Older Americans Act	HHS/Admin. on Aging	14,222 (50%) (3rd year)	A
Blue Earth County Human Services	Title III-B Older Americans Act	HHS/Admin. on Aging	20,045 (50%) (3rd year)	A
Minnesota Lake Sleepy Eye Senior Citizens	McKnight Foundation	MBA/AAA	1,060 (75%)	A
Comfrey Senior Citizens	McKnight Foundation	MBA/AAA	952 (75%)	A
Springfield	McKnight Foundation	MBA/AAA	658 (75%)	A
Truman Senior Citizens MVAC	McKnight Foundation	MBA/AAA	2,775 (75%)	A
	Energy Planning Relating to Problems of the Poor	CSA	799 (75%)	D
			30,000	A
U. of M. Waseca	Rural Development Council	tion Rural Dev. Council	31,979	A
Mankato CETA Center	Youth Community Conser- vation Improvement Project	USDOL MN/DES	105,022	D
Prairie Arts Chorale	CETA Title VI PSE	MN/DES USDOL	11,898	A
Minnesota Valley Action Council	Administration for Children, Youth, and Families (Head Start)	Children, Youth, & Family Unit HHS	460,562	A
Mankato	Urban Development Action Grant (UDAG)	HUD	300,000	A
Mankato	Urban Development Action Grant (UDAG)	HUD	6,000,000	A
Dept. of Economic Security	Weatherization Assistance	DOE	9,094,000	A
Dept. of Economic Security	Training for Weatheriza- tion Assistance	DOE	334,000	A
Fairmont	CDBG Small Cities Single Purpose Grant	HUD	600,000	A
Lake Crystal	CDBG Small Cities Comprehensive Grant	HUD	400,000 1st yr. 269,000 2nd yr. 139,069 3rd yr.	A
Le Sueur	CDBG Small Cities Comprehensive Grant	HUD	400,000 1st yr. 500,000 2nd yr. 500,000 3rd yr.	A
Sibley County	CDBG Small Cities Single Purpose Grant	HUD	284,000	A
Dept. of Economic Assistance	Prime Sponsor Pre-Application, DOL	DOL	-0-	A
Nicollet Public School	CETA Title VI	DOL	17,144	A
Waterville Community Services	CETA Title VI	DOL	6,772	A
Quad Co. CETA Consortium	Prime Sponsor Pre-Application, DOL	DOL	-0-	A
Rothschild Financial Corp. RNDC - for the Southwest Area Ombudsman Consortium	HUD 221(d)(4) Aging - Ombudsman	HUD MN Board on Aging	1,180,700 20,000	A
Fairmont	Wastewater Treatment Facility Pretreatment Program Development	EPA	10,875 Federal 1,450 Applicant 2,175 State 14,500 Total	A
MN/DOT	Annual Work Program	MN/DOT	-0-	A
Brown & Nicollet Counties	Bridge Bonding Environmental Study	MN/DOT	39,750	A
St. Peter Arts & Heritage Council	Historical Preservation	MN His. Society	11,598 Federal 5,557 State 7,007 Local 24,162	A
Comfrey Community Theater	Arts	RNDC	3,000	A
Bend of River Days, Inc.	Arts	RNDC	2,750	D
Gaylord Over 60 Band	Arts	RNDC	850	A
Madelia Community Theater	Arts	RNDC	1,125	A
Mankato Area Arts Council	Arts	RNDC	1,751.60	A
Waterville Area Community Chorus	Arts	RNDC	500	D
Winnebago Area Museum	Arts	RNDC	2,130	A
Lake Washington Band Camp	Arts	RNDC	2,500	D

<u>Applicant</u>	<u>Project</u>	<u>Agency</u>	<u>Funding</u>	<u>Recommendation</u>
Leisure Education for Exceptional People	Arts	RNDC	\$ 1,580	A
Pioneer Players, Inc.	Arts	RNDC	3,305	A
Wasęca Arts Council, Inc.	Arts	RNDC	160	D
Winthrop Community Theater	Arts	RNDC	700	A
Community Services Advisory Council Waterville/Elysian	Arts	RNDC	1,640	D
Janesville.	Farmers Home	FmHome Admin.	600,000 Loan	A
Mankato	UDAG	HUD	1,000,000 Federal 10,000,000 Applicant 500,000 Local	A
Nicollet	Cable Territory Request	MN Board of Cable Communication	N/A	A
Joseph Poehler (Waterville)	FmHA 515 Loan	FmHome Admin.	600,000 Federal 50,000 Loan Applicant	A
Northview Partnership (LeCenter)	FmHA 515 Loan	FmHome Admin.	350,000 Federal Loan	A
Faribault County	Replacement Request for eight township bridges through Bridge Bonding	MN/DOT	315,000	A
Region Nine Counties	1981 Federal Aid Secondary and Federal aid Off System highway construction pro- gram	MN/DOT	1,451,000	A
Centennial Apts. (Winthrop)	FmHA 515	FmHome Admin.	380,000 Loan	A
Elmore	FmHA Public Works Loan	FmHome Admin.	353,851 Loan	A
Brutger Companies on behalf of City of Le Sueur	Section 8 Family Housing	HUD/MHFA	N/A	A
Heritagefest	Arts	MSAB	2,200	D
MVAC	Title III-C-1 Older Americans Act	HHS/Admin. on Aging	281,893 Federal 106,190 State	A
MVAC	Title III-C-2 Older Americans Act	HHS/Admin. on Aging	32,400	A
S. Minn. Regional Legal Services, Inc.	Title III-B Older Americans Act	HHS/Admin. on Aging	58,500	A
Roy Hendricks (Janesville)	Rural Rental Housing 515	FmHome Admin.	389,500 Loan	A
Lorensberg, Lorch & asmussen (Fairmont)	Rural Rental Housing 515	FmHome Admin.	199,500 Loan	A
Arlington Elderly Housing	Rural Rental Housing 515	FmHome Admin.	536,750 Loan	A
Gary Beckman Wehler's Jewelry	Business Loan		175,000 Loan	A
Springfield	Step II - Wastewater Treatment Facility Plans	EPA	150,736 Total 113,052 Federal 22,610 State 15,074 Local	A
Hanska	Step II - III Wastewater Treatment Facility Plans and construction	EPA	1,076,186 Total 772,090 Federal 131,726 State 168,370 Local	A
Mankato	Section 8 Existing Housing	HUD	851,120 Federal 770,000 Other 1,621,120 Total	A
Henderson	Minnesota Historical Society Grants Manager	MN Hist. Society	20,000 Total 10,000 Federal 5,000 State 5,000 Local	A
Michelson Media HSA 6	Cable Territory Renewal of Full Designation	Cable Board DHSS	N/A 287,772 Federal 1,531 Local	A
Mankato YWCA	Hist. Restoration	MN. Hist. Society	4,062 Federal 2,031 State 2,031	A
Brown County	Bridge Bonding	MN/DOT	45,000	A
Blue Earth	FmHA Sec. 502 Self Help Housing	FmHome Admin. FmHome Admin.	115,000	A
Duane Lambrecht	B&I Loan		775,000	A
Region 9 DD Council	DD Technical Assistance Regional Program	SPA/DD	36,190	A
Region 9 DD Council	Regional Respite Care Grant	SPA/DD		A
Hanska	Preapplication: Water & Waste Disposal Systems for Rural Communities	FmHome Admin.	1,390,439 Grant & Loan	A
Delavan	Community Facilities Act	FmHome Admin.	263,724 Loan	A
Brown County	Bridge Bonding	MN/DOT	70,000	A
Le Sueur	Section 18 Transit Grant	MN/DOT	61,157	A
Mankato	Section 18 Transit Grant	MN/DOT	532,826	A



Roger Oldfather, Cities Under 10,000  
Faribault County



Joseph Brandl, County Commissioner  
Brown County



John Paschke, County Commissioner  
Faribault County



Orville Hanson, Township Board  
Brown County



Earl Helgeson  
Township Board  
Faribault County



Jerome Schleis  
County Commissioner  
LeSueur County



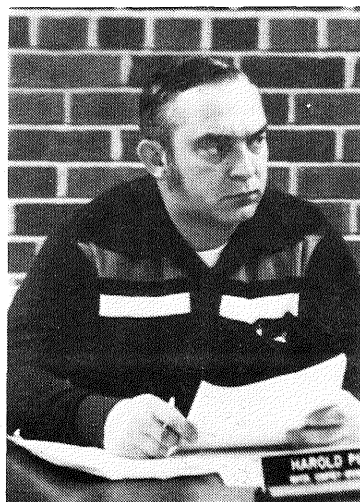
Michael Schwerzler  
Cities Under 10,000  
LeSueur County



Babe Miller, Minnesota Valley COG  
LeSueur County



Carl Wyczawski, Mayor, City of New Ulm  
Brown County



Harold Pidde, Cities Under 10,000  
Brown County



James Stangler, Township Board  
LeSueur County





Paul Hadley  
Region Nine Chamber Association  
Blue Earth County



Erhart Stanke, Township Board  
Blue Earth County



Oscar Campbell, Cities Under 10,000  
Blue Earth County

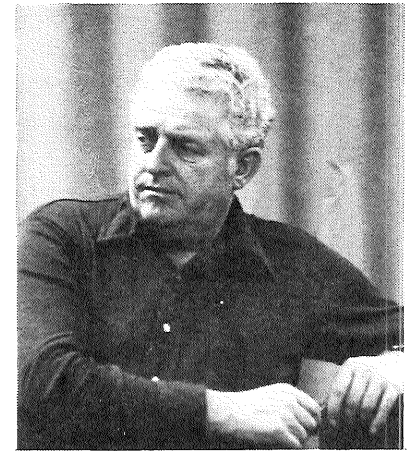


Stevan Zoeller  
County Commissioner  
Martin County



Herbert Mocol, Mayor  
City of Mankato  
Blue Earth County

Lester Anderson  
County Commissioner  
Blue Earth County



Jack Fitzsimmons, County Commissioner  
Waseca County



Robert Malliet, Mayor, City of Fairmont  
Martin County



Katy Olson, School Board,  
Martin County



Elmer Kading, Cities Under 10,000  
Sibley County



Roland Thiesse, Township Board  
Martin County



Douglas Pyan, Cities Under 10,000  
Nicollet County



Kenneth Albrecht  
Township Board  
Nicollet County



Roderick Joyce, Township Board  
Waseca County



Lyle Overson, County Commissioner  
Nicollet County



Robert Gustafson, Township Board  
Watsonwan County



Claire Seibert  
Cities Under 10,000  
Watsonwan County



Avery Hall  
Cities Under 10,000  
Waseca County



Harold Wiest, Township Board  
Sibley County



Carrie Huffer, School Board  
Nicollet County



Gerald Kreger, County Commissioner  
Sibley County



Harry Timm  
Soil and Water Conservation Districts  
Blue Earth County



Vincent Style, County Commissioner  
Watsonwan County

William Lewis (no picture)  
Cities Under 10,000  
Martin County

# INTERNAL WORKS COMMITTEES

---

## Policy and Procedures Review

OSCAR CAMPBELL  
JACK FITZSIMMONS<sup>2</sup>  
LESTER ANDERSON  
JAMES STANGLER  
RAY ECKES<sup>1</sup>  
STEVAN ZOELLER<sup>2</sup>

## Budget

MARGARET ENGESSER<sup>1</sup>  
ROBERT GUSTAFSON<sup>2</sup>  
PAUL HADLEY  
BABE MILLER<sup>2</sup>  
JOHN PASCHKE  
EUGENE POWELL<sup>1</sup>  
DOUGLAS PYAN  
MICHAEL SCHWERZLER<sup>2</sup>  
VINCENT STYLE  
ROLAND THIESSE  
DANIEL KEASLING<sup>1</sup>

## By-Laws

LESTER ANDERSON  
DOUGLAS PYAN  
VINCENT STYLE<sup>2</sup>

## A-95 Review

HERBERT MOCOL  
RAY ECKES  
KATY OLSON<sup>2</sup>  
CARL WYCZAWSKI<sup>2</sup>  
JOHN PASCHKE<sup>2</sup>

## Comprehensive Planning

KENNETH ALBRECHT  
RAY ECKES  
LARRY LLOYD  
HARRY TIMM<sup>2</sup>  
LESTER ANDERSON  
PAUL HADLEY  
ALLAN SIGAFUS  
ROBERT BARRETT  
OSCAR CAMPBELL  
JAMES STANGLER

## Personnel

OSCAR CAMPBELL  
ELMER KADING  
ORVILLE HANSON  
CARRIE HUFFER<sup>2</sup>  
JAMES STANGLER  
DENIS WARTA<sup>1</sup>  
HAROLD WIEST<sup>2</sup>

1. Left Committee 1980
2. New to Committee 1981



# REGION NINE STAFF

---

Terence Stone - Executive Director

Pamela Schmidt - Human Resources Planning Director  
Arts Planner  
Emergency Medical Services Planner

Craig Waldron - Physical Planning Director  
Comprehensive Plan  
Cable TV Planner  
Economic Development Planner  
Solid Waste Planner

Toni Nesheim - Area Agency on Aging Director

Sarah Johnston-Rodriguez - Developmental Disabilities Planner

Bob Finley - Energy Planner

Kristin Juliar - Energy Planner

Jerry Keenan - Traffic Safety Coordinator  
Transportation Planner

Roger Guenette - Community Development Planner  
Housing Planner  
Employment and Training Planner

Lynnette Renneke Wiest - Aging Planner

Joy Strackbein - Respite Care Coordinator

Mary Utermohlen - Aging Planner

Craig Shirk - Recreation Planner  
Graphics  
Land Use

Marliss Johnston - Public Information  
Community Improvement

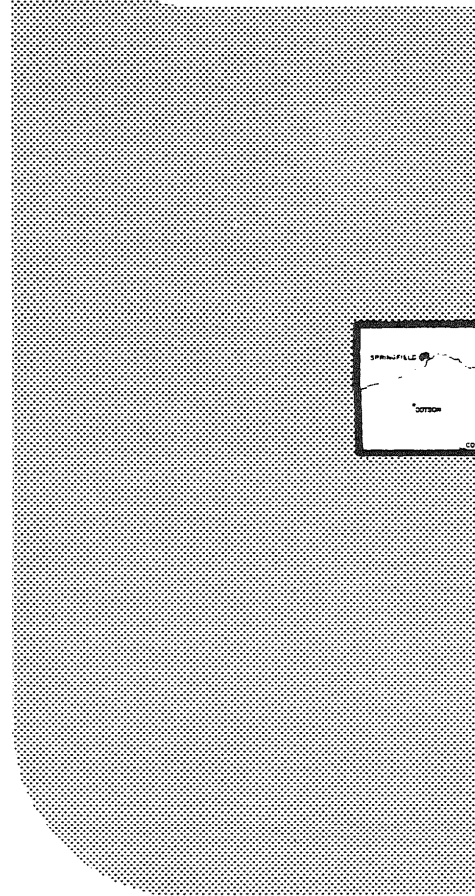
Toni Martin - Accountant

Pat Schumacher - Account Clerk

Cheryl Weston - Secretary

Terry Kalk - Secretary

- The following staff members left Region 9 in the past year: Robbi Hanley, Connie Noterman, Margo Synchych, Shannon Carranza, Bob Zelenka, Susan Jacobson, Joan Lang, Gary Yuva, Pege Jennings, Jackie Henry



## PREFACE

The Regional Development Act of 1969 (amended) states in section 462.393 Subdivision 2 that "In 1981 and every five years thereafter the Commission shall review its activities and issue a report assessing its performance in fulfilling the purposes of the regional development act of 1969. The report shall state whether the existence of the Commission is in the public welfare and interest. The report shall be included in the report required by subdivision 1. "

This particular report is presented as Region Nine's fulfillment of this section of the Regional Development Act. A special thank you is in order for the members of the Evaluation Committee and the Urban and Regional Studies Institute personnel that worked very closely with Region Nine staff in developing this document.

## INTRODUCTION

The Region Nine Development Commission has always supported the concept of self-evaluation. Before the Regional Development Act of 1969 was amended to require self-evaluation, Region Nine was on record as supporting the concept of self-evaluation and was well on its way to completing such an examination as evidenced by the Fiscal Year 1980 Overall Program Design.

The Comprehensive Planning Committee was chosen by the Commission as the most appropriate and logical entity to coordinate and manage the process. The Committee is comprised of the following individuals:

Chairman: Ray Eckes  
Ken Albrecht  
Oscar Campbell  
Robert Barrett  
Larry Lloyd  
Allen Sigafus  
Lester Anderson  
Paul Hadley  
James Stangler

The Committee decided that it would first analyze the model methodology developed by the Minnesota Association of Regional Commissions that was piloted in Region 8. Utilizing the M.A.R.C. questionnaire, Region Nine staff and personnel from the Urban and Regional Studies Institute developed a modified questionnaire more applicable to the needs and concerns of Region Nine. This questionnaire was subsequently reviewed and approved with certain modifications at the Committee's January meeting.

The evaluation in its final form was comprised of both open ended and closed ended questions. Through the use of open ended questions, it was hoped that the Commissioners would develop a broad range of diverse responses relating to their respective concerns. It was also decided that the former Commissioners, dating back as far as five years ago, should be contacted and asked to complete a questionnaire.

The evaluation questionnaire was formally administered at the March Commission meeting. Current members unable to attend the meeting and former Commissioners were mailed the questionnaire. Sixty-two Commissioners received the questionnaire and 43 responded resulting in a 69% return.

During the month of April, the data was computerized by the Urban and Regional Studies Institute. The months of June and July were used to analyze the data and complete a final report for the Commission.

Overall, the evaluation turned out to be extremely positive and a number of very helpful recommendations were generated. The basic conclusion of the Commission was that Region Nine was indeed successful in fulfilling the purposes of the Regional Development Act of 1969 and its continued existence is in public welfare and interest.

SIGNIFICANT FINDINGS -GENERAL FREQUENCY

1. 43 Commissioners completed survey - 69% return.
2. Overall, in terms of interest, the Commissioners were the most interested in the following program areas:

A. Strengthening Local Govt.	97.7%*
B. Intergovernmental Coop.	88.4 *
C. Water Quality	86.1
Land Use	86.1
D. Community Development	86.0
E. Transportation	83.7
F. Energy	81.4
Community Improvement	81.4
G. Parks	79.1
H. Housing	76.7
I. Aging	74.4
Comp. Planning	74.4
J. Employment	72.1
Economic Development	72.1
K. Traffic Safety	69.8
L. EMS	67.4
M. Human Services	65.1
N. Criminal Justice	62.8
Resource Recovery	62.8
O. DD	51.2
Child Care	51.2
P. Arts	37.3
Q. Cable TV	32.6

\* These two items consistently rated high in terms of Commission response.



3. Overall, the Commissioners are least interested in:

A. Cable TV	41.9%
B. Arts	30.2
C. DD	27.9
D. Child Care	20.9
E. Resource Recovery	18.6
F. Human Services	16.3
G. Criminal Justice	14.0
EMS	14.0
H. Comp. Planning	11.6
Traffic Safety	11.6
I. Employment	9.3
J. Aging	7.0
Economic Development	7.0
Parks	7.0
K. Housing	4.7
Comm. Improvement	4.7
L. Transportation	2.3
Water Quality	2.3
Land Use	2.3
Comm. Development	2.3
Intergovt. Cooperation	2.3
M. Energy	0
Strengthening Local Govt.	0

4. In terms of Human Resources, the Commissioners were most interested in:

- A. Aging
- B. Employment
- C. Emergency Medical Services

5. The Commissioners ranked the following programs as most useful:

- A. Land Use
- B. Transportation
- C. Housing
- D. Human Services
- E. Aging

The least useful were:

- A. Cable TV
- B. Employment
- C. Resource Recovery

6. The Commission wanted involvement in the following areas:

- A. Strengthening Local Government
- B. Transportation
- C. Emergency Medical Services

Less involvement in:

- A. Arts
- B. Cable TV
- C. Aging

- 7. 46.5% thought community support of Region Nine was poor, while 48.9% thought it was good to excellent.
- 8. 76.8% of the members ranked the effectiveness of the Commission as good or excellent.
- 9. 93% of the Commissioners ranked the quality of work as good or excellent.
- 10. 93.1% of the members rated the decision-making process as good/excellent.
- 11. 88.3% of the Commissioners rated the service of the Commission as good/excellent.
- 12. 98.3% of the Commissioners rated the staff capability as good/excellent.
- 13. 95.3% of the Commissioners ranked the management as good/excellent.
- 14. 83.7% rated the Commission as useful/very useful in communicating local concerns to state and federal agencies.

15. 69.8% ranked the Commission as very knowledgeable/knowledgeable of local needs.
16. 74.4% felt the Commission was performing a useful role, 7% said it was not.
17. 60.5% are satisfied or very satisfied with quality of Region Nine Development Commission assistance.
18. 67.5% ranked the Commission as very useful-useful in assisting local government carry out its responsibilities.
19. 28 members thought that the Commission should not be in any new programs while 1 thought that it should.

### SIGNIFICANT FINDINGS - CROSSTABS

20. With regard to former Commission members, past board members (10) showed a higher level of interest in the various programs as opposed to past non-board members. Former board members were also much more interested in human service programs.
21. In items 50-60 current non-board members were more supportive than current board members. Current board members also showed less interest in programs as compared to former board members.
22. The political group most represented in the questionnaire was municipal officers. The levels of highest interest by the various groups were as follows:
  - A. Township Officers -  
Strengthening local government followed by human services.
  - B. Municipal Officers -  
Strengthening local government and community improvement.
  - C. County Commissioners -  
Strengthening local government followed by encouraging inter-governmental cooperation.
  - D. School Board Member -  
(only one member completed the survey)
  - E. COG Representatives -  
Intergovernmental cooperation and strengthening local government.
  - F. Public Interest Group -  
Comprehensive planning
23. In groups with over ten representatives - municipal officials, followed by county commissioners were the most supportive of the Region (questions 50-60).
24. Current Commissioners would like to see more involvement in transportation and strengthening local government.
25. Interest of current Commission members from highest level of interest to lowest level of interest:
  - A. Strengthening Local Government
  - B. Intergovernmental Cooperation
  - C. Community Development  
Land Use  
Water Quality  
Transportation

- D. Community Improvement
- E. Energy
- F. Traffic Safety  
Housing
- G. Parks  
Aging  
Employment
- H. Economic Development
- I. Comprehensive Planning
- J. Emergency Medical Services
- K. Human Services
- L. Resource Recovery  
Criminal Justice
- M. Child Care
- N. Developmental Disabilities
- O. Arts
- P. Cable T.V.

### Recommendations

1. The most frequently mentioned item in the "open ended" section of the questionnaire pertained to the fact that local units of government and the general public are not aware of the activities of the Commission and how it operates. It is suggested that Region Nine significantly improve its public information effort in terms of increasing contacts with local governments and the general public.
2. One of the strengths most often mentioned regarding the Commission is that it offers "grass roots" control. Through the opportunity that it offers in terms of cooperative efforts, state and federal programs and policies can be impacted by local government. The Commission should continue to explore ways to encourage cooperative efforts on the part of local governments.
3. Technical assistance to communities lacking the appropriate expertise was mentioned as one of the strengths of Region Nine. Despite the Agency's extensive budget reductions, a high or increased level of local technical assistance should be maintained. To maintain this effort the Region will have to continue to charge for this service.
4. A number of comments were made regarding the high cost of running the Agency's programs and that ways of cutting costs should be explored. Also, more evaluation is needed in terms of the cost effectiveness of the programs. The major budgetary reductions as a result of state and federal cuts have essentially addressed this point.
5. It was mentioned that a number of the Commission programs conform to and closely follow state and federal guidelines. It was suggested that more of a local and regional perspective be integrated into these programs.
6. It was stated that the Commission is too male dominated and that women are under-represented.
7. The Region should not consider any new programs at this point in time. This item was stated before the severity of the budget cuts was ascertained.



## ADDITIONAL RECOMMENDATIONS

8. The Commission should formulate a committee to analyze and evaluate the methods that Region Nine uses to communicate with the public and local units of government. It is expected that the committee will subsequently make recommendation to the Commission regarding the improvement of its communications efforts.
9. The Executive Director should prepare a monthly column depicting the major activities and efforts of the Commission. The column should be disseminated to all of the news media in the area.

### Summary of Frequency Run

- Average years of service was 4.7 years.
- 43 individuals completed the questionnaire
- 31 current Commissioners and 12 former Commissioners completed the survey
- Delineation of officials - 12 Township, 10 County, 1 School Board, 2 Council of Government, 4 Public Interest, and 14 municipal officers
- 11 members served on the Board.
- Committee Membership:
  - A. 11 Physical Development
  - B. 7 Comprehensive Planning
  - C. 1 Recreation Advisory Council
  - D. 8 Transportation
  - E. 1 Human Resources
  - F. 1 Aging Advisory Council
  - G. 0 Child Care
  - H. 3 Criminal Justice
  - I. 1 Emergency Medical Services
  - J. 0 Arts
  - K. 0 Developmental Disabilities

TABLE I

Summary of Level of Interest in Program Areas

<u>Programs</u>	<u>No Opinion</u>	<u>Not Interested</u>	<u>Somewhat Interested</u>	<u>Very Interested</u>
Employment	8 (18.6%)	4 (9.3%)	12 (27.9%)	19 (44.2%)
Aging	8 (18.6%)	3 (7.0%)	17 (39.5%)	15 (34.9%)
Transportation	6 (14.0%)	1 (2.3%)	9 (20.9%)	27 (62.8%)
Criminal Justice	10 (23.3%)	6 (14.0%)	18 (41.9%)	9 (20.9%)
Economic Develop.	9 (20.9%)	3 (7.0%)	13 (30.2%)	18 (41.9%)
Arts	14 (32.6%)	13 (30.2%)	14 (32.6%)	2 (4.7%)
D.D.	9 (20.9%)	12 (27.9%)	16 (37.2%)	6 (14.0%)
Housing	8 (18.6%)	2 (4.7%)	21 (48.8%)	12 (27.9%)
Parks	6 (14.0%)	3 (7.0%)	18 (41.9%)	16 (37.2%)
Comp. Planning	6 (14.0%)	5 (11.6%)	16 (37.2%)	16 (37.2%)
Water Quality	5 (11.6%)	1 (2.3%)	19 (44.2%)	18 (41.9%)
Land Use	5 (11.6%)	1 (2.3%)	15 (34.9%)	22 (51.2%)
EMS	8 (18.6%)	6 (14.0%)	16 (37.2%)	13 (30.2%)
Human Services	8 (18.6%)	7 (16.3%)	17 (39.5%)	11 (25.6%)
Energy	8 (18.6%)		18 (41.9%)	17 (39.5%)
Cable TV	11 (25.6%)	18 (41.9%)	10 (23.3%)	4 (9.3%)
Community Improve.	6 (14.0%)	2 (4.7%)	16 (37.2%)	19 (44.2%)
Community Develop.	5 (11.6%)	1 (2.3%)	20 (46.5%)	17 (39.5%)
Child Care	12 (27.9%)	9 (20.9%)	15 (34.9%)	7 (16.3%)
Resource Recovery	8 (18.6%)	8 (18.6%)	19 (44.2%)	8 (18.6%)
Traffic Safety	8 (18.6%)	5 (11.6%)	22 (51.2%)	8 (18.6%)
Intergov't Coop.	4 (9.3%)	1 (2.3%)	11 (25.6%)	27 (62.8%)
Strengthen Local Gov't.	1 (2.3%)		8 (18.6%)	34 (79.1%)

TABLE II

Summary of Ratings in Certain Areas

<u>Programs</u>	<u>No Opinion</u>	<u>Poor</u>	<u>Good</u>	<u>Excellent</u>
Advisory Comm. Input	1 (2.3%)	2 (4.7%)	24 (55.8%)	16 (37.2%)
Commitment	1 (2.3%)	1 (2.3%)	23 (53.5%)	18 (41.9%)
Information Dissemina- tion	2 (4.7%)	2 (4.7%)	24 (55.8%)	15 (34.9%)
Representation		1 (2.3%)	20 (46.5%)	22 (51.2%)
Community Support	2 (4.7%)	20 (46.5%)	18 (41.9%)	3 (7.0%)
Effectiveness	2 (4.7%)	8 (18.6%)	27 (62.8%)	6 (14.0%)
Quality of Work	1 (2.3%)	2 (4.7%)	21 (48.8%)	19 (44.2%)
Decision-Making Process	2 (4.7%)	1 (2.3%)	26 (60.5%)	14 (32.6%)
Service	3 (7.0%)	2 (4.7%)	21 (48.8%)	17 (39.5%)
Staff Capability	2 (4.7%)		21 (48.8%)	20 (46.5%)
Management	2 (4.7%)		25 (58.1%)	16 (37.2%)

Tabulation of Questions 61-69

## A. Usefulness of Commission in communicating local concerns to State and Federal agencies.

<u>Program</u>	<u>Very Useful</u>	<u>Useful</u>	<u>Somewhat Useful</u>	<u>Not Useful</u>	<u>No Opinion</u>
Local-Federal Liaison	17 (39.5%)	19 (44.2%)	6 (14.0%)	0 (0.0%)	1 (2.3%)

## B. Responsiveness of State Government to local needs as expressed by Region Nine

<u>Very Responsive</u>	<u>Responsive</u>	<u>Somewhat Responsive</u>	<u>Not Responsive</u>	<u>No Opinion</u>
4 (9.3%)	15 (34.9%)	20 (46.5%)	2 (4.7%)	2 (4.7%)

C. Commission's knowledge of Local Needs

<u>Very Knowledgeable</u>	<u>Knowledgeable</u>	<u>Somewhat Knowledgeable</u>	<u>Not Knowledgeable</u>	<u>No Opinion</u>	<u>No Response</u>
8 (18.6%)	22 (51.2%)	11 (25.6%)	1 (2.3%)	0 (0.0%)	1 (2.3%)

D. Is the Commission fulfilling a necessary role?

<u>No</u>	<u>Yes</u>	<u>No Opinion</u>	<u>No Response</u>
3 (7%)	32 (74.4%)	6 (14%)	2 (4.7%)

E. Local government and organizations satisfaction with amount of Commission Assistance

<u>Very Satisfied</u>	<u>Satisfied</u>	<u>Somewhat Satisfied</u>	<u>Not Satisfied</u>	<u>No Opinion</u>
2 (4.7%)	18 (41.9%)	18 (41.9%)	3 (7%)	2 (4.7%)

F. Local governments and organizations satisfaction with quality of Commission assistance.

<u>Very Satisfied</u>	<u>Satisfied</u>	<u>Somewhat Satisfied</u>	<u>Not Satisfied</u>	<u>No Opinion</u>	<u>No Response</u>
7 (16.3%)	19 (44.2%)	12 (27.9%)	3 (7.0%)	1 (2.3%)	1 (2.3%)

G. Which level of Government should the Commission try to assist in terms of meeting their respective needs.

<u>Local Government</u>	<u>State and Federal</u>	<u>Both</u>	<u>None</u>	<u>Neither</u>
25 (58.1%)	1 (2.3%)	15 (34.9%)	0 (0.0%)	1 (2.3%)

H. Usefulness of Commission in assisting local government meet its needs.

<u>Very Useful</u>	<u>Useful</u>	<u>Somewhat Useful</u>	<u>Not Useful</u>	<u>No Opinion</u>
7 (16.3%)	22 (51.2%)	12 (27.9%)	0 (0.0%)	1 (2.3%)

I. Usefulness of State and Federal Agencies to the Commission in its efforts to assist local governments carry out their function.

<u>Very Useful</u>	<u>Useful</u>	<u>Somewhat Useful</u>	<u>Not Useful</u>	<u>No Opinion</u>	<u>No Response</u>
3 (7.0%)	8 (18.6%)	25 (58.1%)	3 (7.0%)	1 (2.3%)	3 (7.0%)

IV. Summary of Usefulness of Commission Programs

<u>Programs</u>	<u>No Opinion</u>	<u>Not Useful</u>	<u>Somewhat Useful</u>	<u>Very Useful</u>
Employment	12 (27.9%)	5 (11.6%)	23 (53.5%)	3 (7.0%)
Aging	8 (18.6%)	1 (2.3%)	18 (41.9%)	16 (37.2%)
Transportation	6 (14.0%)	1 (2.3%)	21 (48.8%)	15 (34.9%)
Criminal Justice	8 (18.6%)	5 (11.6%)	24 (55.8%)	6 (14.0%)
Economic Develop.	8 (18.6%)	8 (18.6%)	26 (60.5%)	1 (2.3%)
Arts	9 (20.9%)	6 (14.0%)	23 (53.5%)	5 (11.6%)
D.D.	11 (25.6%)	5 (11.6%)	22 (51.2%)	5 (11.6%)
Housing	6 (14.0%)	1 (2.3%)	26 (60.5%)	10 (23.3%)
Parks	6 (14.0%)	4 (9.3%)	20 (46.5%)	13 (30.2%)
Comp. Planning	6 (14.0%)	3 (7.0%)	21 (48.8%)	13 (30.2%)
Water Quality	7 (16.3%)	3 (7.0%)	26 (60.5%)	7 (16.3%)
Land Use	5 (11.6%)	1 (2.3%)	28 (65.1%)	9 (20.9%)
EMS	8 (18.6%)	3 (7.0%)	22 (51.2%)	10 (23.3%)
Human Services	5 (11.6%)	3 (7.0%)	21 (48.8%)	14 (32.6%)
Energy	6 (14.0%)	4 (9.3%)	22 (51.2%)	11 (25.6%)
Cable TV	14 (32.6%)	15 (34.9%)	14 (32.6%)	
Community Improve.	9 (20.9%)	3 (7.0%)	25 (58.1%)	6 (14.0%)
Community Develop.	9 (20.9%)	6 (14.0%)	22 (51.2%)	6 (14.0%)
Child Care	8 (18.6%)	5 (11.6%)	21 (48.8%)	9 (20.9%)
Resource Recovery	12 (27.9%)	5 (11.6%)	22 (51.2%)	4 (9.3%)
Traffic Safety	11 (25.6%)	3 (7.0%)	20 (46.5%)	9 (20.9%)

#### IV. Summary of Usefulness of Commission Programs (continued)

<u>Programs</u>	<u>No Opinion</u>	<u>Not Useful</u>	<u>Somewhat Useful</u>	<u>Very Useful</u>
Intergov't Coop.	9 (20.9%)	1 (2.3%)	24 (55.8%)	9 (20.9%)
Strengthen Local Government	7 (16.3%)	3 (7.0%)	23 (53.5%)	10 (23.3%)

#### V. Summary of Future Involvement in Commission Programs

<u>Programs</u>	<u>No Opinion</u>	<u>Less</u>	<u>Same</u>	<u>More</u>
Employment	12 (27.9%)	3 (7.0%)	19 (44.2%)	9 (20.9%)
Aging	10 (23.3%)		23 (53.5%)	10 (23.3%)
Transportation	5 (11.6%)	1 (2.3%)	15 (34.9%)	22 (51.2%)
Criminal Justice	8 (18.6%)	5 (11.6%)	25 (58.1%)	5 (11.6%)
Economic Development	9 (20.9%)	5 (11.6%)	17 (39.5%)	12 (27.9%)
Arts	8 (18.6%)	15 (34.9%)	19 (44.2%)	1 (2.3%)
D.D.	10 (23.3%)	4 (9.3%)	25 (58.1%)	4 (9.3%)
Housing	7 (16.3%)	2 (4.7%)	21 (48.8%)	13 (30.2%)
Parks	9 (20.9%)	4 (9.3%)	21 (48.8%)	9 (20.9%)
Comp. Planning	8 (18.6%)	2 (4.7%)	26 (60.5%)	7 (16.3%)
Water Quality	8 (18.6%)		23 (53.5%)	12 (27.9%)
Land Use	7 (16.3%)	1 (2.3%)	21 (48.8%)	14 (32.6%)
EMS	5 (11.6%)	2 (4.7%)	21 (48.8%)	15 (34.9%)
Human Services	8 (18.6%)	3 (7.0%)	21 (48.8%)	11 (25.6%)
Energy	8 (18.6%)	2 (4.7%)	18 (41.9%)	15 (34.9%)
Cable TV	14 (32.6%)	12 (27.9%)	15 (34.9%)	2 (4.7%)
Community Improve.	6 (14.0%)	3 (7.0%)	24 (55.8%)	10 (23.3%)
Community Develop.	8 (18.6%)	4 (9.3%)	18 (41.9%)	13 (30.2%)
Child Care	9 (20.9%)	4 (9.3%)	23 (53.5%)	7 (16.3%)
Resource Recovery	10 (23.3%)	3 (7.0%)	20 (46.5%)	10 (23.3%)



V. Summary of Future Involvement in Commission Programs (Continued)

<u>Programs</u>	<u>No Opinion</u>	<u>Less</u>	<u>Same</u>	<u>More</u>
Traffic Safety	11 (25.6%)	4 (9.3%)	20 (46.5%)	8 (18.6%)
Intergov't Coop.	7 (16.3%)		16 (37.2%)	20 (46.5%)
Strengthen Gov't.	4 (9.3%)	1 (2.3%)	15 (34.9%)	23 (53.5%)

VI. Summary as to Whether the Commission Should be Involved in New Programs

<u>No Opinion</u>	<u>No</u>	<u>Yes</u>
14 (32.6%)	28 (65.1%)	1 (2.3%)

FREQUENCY

Question 51) - Should the Commission be involved in any additional programs?

(yes/no/no opinion)

(no) 28 (yes) 1 (no opinion) 9

If yes, specify which programs: Only to the extent that new programs are initiated.

Question 52) - What do you consider to be the strengths of the Commission?

Knowledgeable participant

Being run by the full commission

Good staff

Discuss problems at local level

Local people can, with a unified voice, have an impact on state bureaucrats & legislation.

They help counties develop plans to work together, such as Human Services

Variety of people in Commission

Helping to give local governments information in solving their problems.

Being able to give some monetary support

Helping make out applications for local governments

Good

Composition of the member of the Commission

FREQUENCY (continued)

Question 52 (continued)

I feel there is a good mix of elected officials  
Working to aid and assist local governments  
Ability to get people to cooperate together  
The willingness of people to serve on the sub-committees  
The staff  
Good planners  
Expertise of staff  
Getting grass-roots input in evaluating federal & state grant applications.  
Well-rounded representation on Commission  
Transportation planning has been good  
Good committees  
Good overall involvement  
Good staff  
Interest & attendance of Commissioners  
Staff input to local cities & local governments  
Unity of area governments  
Assistance with small communities  
It does represent the Region's interest  
Yes  
Enable local units of government e.g., townships and small villages to partake in state, in federal, and state programs and grants-in-aid where do not have expertise.  
The quality of staff and some Commission members.  
Opportunity to encourage local cooperation  
Opportunity to set local priorities  
Too many men

Question 53) - What do you consider to be the weaknesses of the Commission?

Communication with other counties other than Blue Earth County  
All members have not had experience in some programs.  
Too policial  
Too bureaucratic  
High cost of administration of programs

FREQUENCY (Continued)

Question 53 (continued)

Some of the Commissioners

Really don't know

Costs of expediting any programs

Should notify all units of government in area when you have been successful in helping another unit of government complete a project. Let unit know what's transpired lack of information on some issues.

Knowledge of Region Nine work and duties by general public

People do not understand what the Commission is all about

P.R. among local governments & people

Cover too many areas

Not enough knowledge of subjects covered

Decisions made, too often, in an information vacuum.

No weaknesses

Its willingness to make its decisions in conformity with federal and state decisions so as to get federal and state grants rather than regional values.

Lack of real need for Commission

Not enough women

What specific suggestions do you have for improving the performance and effectiveness of the Commission in the following areas:

Question 54) - Relationships with local governments:

Good

More communication

I wish more programs could be developed to help the townships.

Good

To know what is going on in the Region as far as local and county programs that exist and try to get other local government to do the same.

More contact with local governments

It's O.K.

More frequent contacts with all local governments

Question 54 (continued)

See #53 (Answer on Region's conforming to federal and state ways)  
and find ways to implement.

Yes

Better simplified background on items requiring decisions.

Question 55) - Public Information and Newsletter:

O.K.

Good

Let's get more information to the man on the street.

Good

No opinion

O.K.

There is a need

None

More of it

Monthly T.V. rep. of Commission's activities

More frequent and more news

Any extension of the functions of the Region to the general citizen  
is to be desired.

Yes

Question 56) - Relationships with state and federal government agencies

O.K.

Not too bad

Good

Closed

Need more

Doing excellent job

Good

Yes

Be able to say "No" and have it mean "No" or "Yes"

Stronger representation of local needs

I have found a willingness to conform to state and federal policies  
where focus should be on shaping those state and federal policies.

Question 57) - Staff

Very good

Excellent

We have a good staff

Very good on responding to people that need help.

Quite good

A better overview of what the staff actually accomplishes.

The staff reflects conformity mentioned in #56 and I find them responsive to conforming to state and federal policies to make their record look good which it does, but it also does not enable local decisions to be implemented.

O.K.

O.K. as is

Question 59) - Information provided to you (at meetings or in the mail)

Good

O.K.

Good

Good

Very good

Good as is

Not enough

O.K.

Good

O.K.

O.K.

The staff reflects conformity mentioned in #56 and I find them responsive to conforming to state and federal policies to make their record look good, which it does, but it also does not enable local decisions to be implemented.

Question 60) - Contact with legislators

O.K.

You have been doing a good job

Good

Keeping up good work

More if possible

Question 60 (continued)

Good

O.K.

Good

More needed

O.K.

O.K.

Question 61) - Board and Commission Meetings

Good

Commission meetings are controlled by Commissioners who can shout the loudest. Chair should not allow comments or motions without first getting recognition from the chair.

Very good

They are good as is

Excellent

O.K.

Good

More reporting decisions made by staff takes place, alternatives should be presented instead.

Yes

O.K.

Question 62) - Advisory Committees

Most advisory committees are rubber stamps for the staff

O.K.

Good as is

Good

O.K.

Good

O.K.

Good

Question 63) - By-Laws

O.K.

O.K.

Good and can be amended as needed

Good

O.K.

Question 63 (continued)

O.K.

No opinion

O.K.

O.K.

Question 64) - Work programs

O.K.

No comments

Good as is

O.K.

Good

Need more evaluation to determine how they are working as to comparing what they cost.

No opinion

O.K.

Not enough knowledge of them beyond those in which I participate.

Question 65) - Personnel Policies

Good

O.K.

Good as is

Fair

Need closer review

Excellent

O.K.

O.K.

Quite liberal

Question 66) - Other

The feedback I get from many township officers and city officials is very negative toward the Region concept, unless they have been in some specific tangible way been helped by the Commission.

Many of them have a pretty independent outlook. They like to think they can "go it alone" and look at the Commission as a threat to their local autonomy.

Question 66) Other (continued)

In my opinion, one of the biggest challenges of the Commission is to convince these people that generally the Commission has their overall welfare in mind as issues are decided.

This is no small order in light of the limited attendance at the local meetings to discuss Region and Commission matters. "It has to affect Me personally before I get too excited about an issue."

No opinion.

Staff and Commissioners doing good job

Problem seems to be with people who have not had contact with Region. Continue helping in the areas now active with any new areas that might evolve.

The Region seems to fill the purpose for which it was created. However, I think the cost of running the Region is far too high for the job being done.

Generally, a good professional approach has been followed by the staff. The dedication shown by the staff has been generally excellent. Some of the commission members have done an excellent job. Unfortunately, many commission members do not "do their homework" and consequently, have little idea of what is actually happening.



**Region Nine Development Commission**  
**410 So. 5th St., P.O. Box 3367, Mankato, MN 56001, 507-387-5643**  
**Toll Free: 1-800-722-9389**