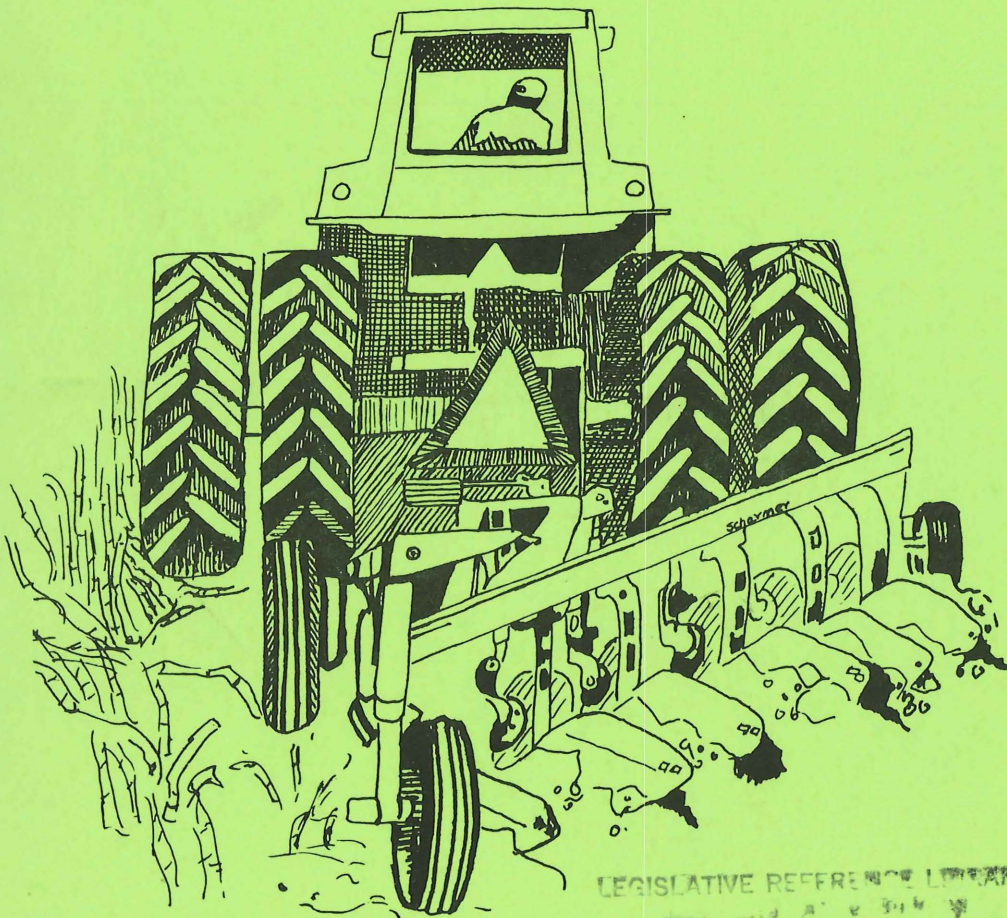




Annual Report 1980

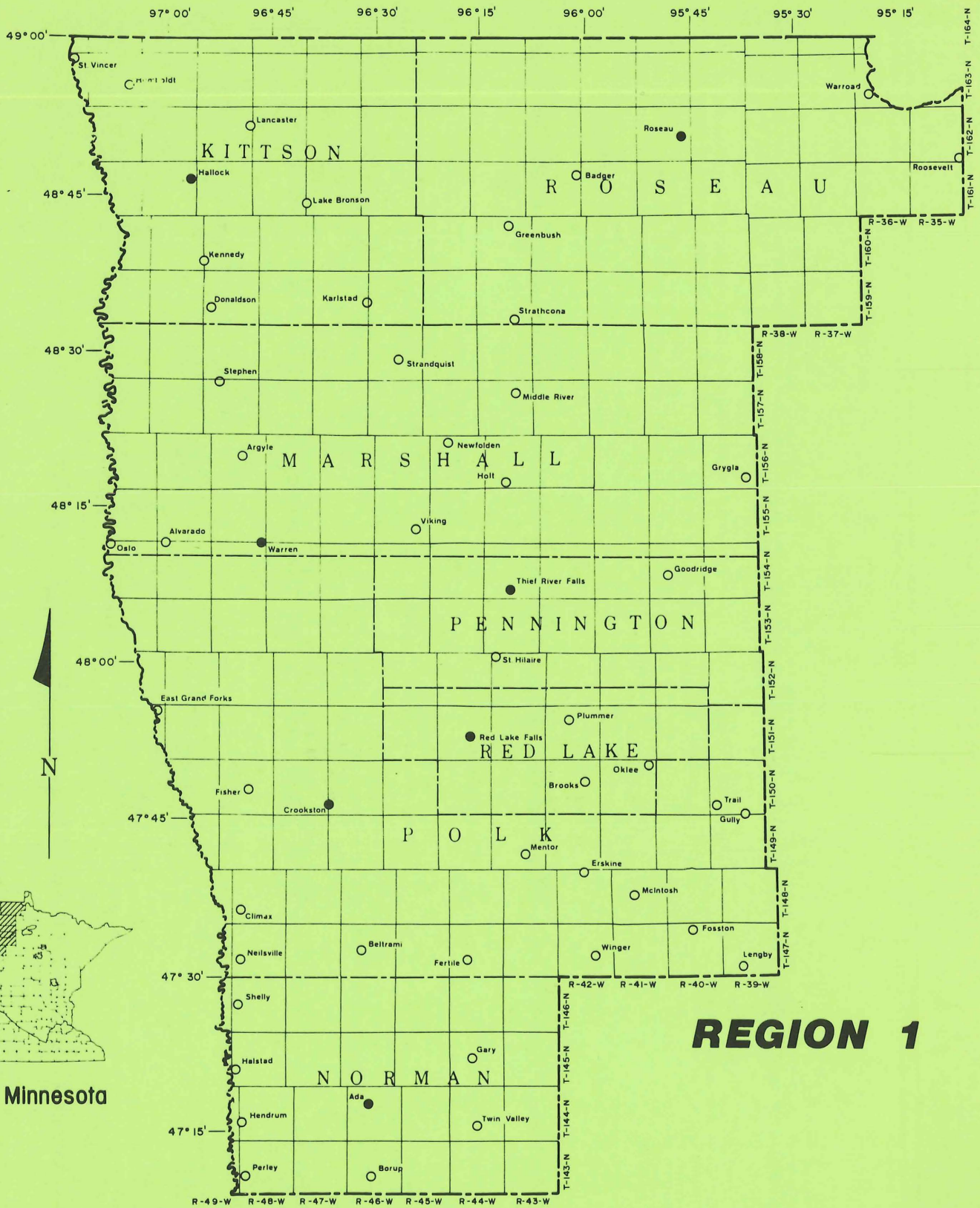


LEGISLATIVE REFERENCE LIBRARY
... ..
... ..

Northwest Regional Development Commission

HT
393
.M62
N67ax
1980

393
.M62
N67ax



REGION 1

**Prepared by the
Northwest Regional Development Commission**



NORTHWEST REGIONAL DEVELOPMENT COMMISSION

425 WOODLAND AVENUE • CROOKSTON, MINN. 56716 • 218-281-1396

The Northwest Regional Development Commission looks back upon the accomplishments of the past year with considerable pride. The Commission's efforts over the past year have contributed to the development of many projects and services that are a part of an improved quality of life for the residents of Northwestern Minnesota. At the same time, we look forward to the many challenges of the future as we continue our efforts to address the opportunities and problems confronting the area.

The major purposes of this report is to inform the elected officials and the general citizens of the area of the activities of the Regional Development Commission during the past year. I am hopeful that you will find this document to be interesting and informative.

Sincerely yours,

Ervin Strandquist
Ervin Strandquist
Chairman

LEGISLATIVE REFERENCE LIBRARY
STATE OF MINNESOTA

Introduction

The passage of the Regional Development Act in 1969 by the State Legislature led to the creation of the Northwest Regional Development Commission on February 8, 1973. The legislation enabled the local units of government to petition the Governor to create a Commission within the officially designated regions.

The purpose of the Commissions was succinctly stated in the legislation: "...to facilitate intergovernmental cooperation and to insure the orderly and harmonious coordination of state, federal and local comprehensive planning and development programs for the solution of economic, social, physical and governmental problems of the state and its citizens..."

The Northwest Region includes Kittson, Marshall, Norman, Pennington, Polk, Red Lake and Roseau Counties. Taking into consideration counties, cities, townships and school districts, there are nearly 330 local units of government covering an area of 8,550 square miles. These units of government are represented on the Commission in the following manner; each county has a county commissioner representing county government, a township supervisor representing the townships in that county, a mayor or city councilman representing city governments from that county and two representatives from school districts across the Region. In addition, the Commission has ten non-elected members representing various public interests such as industry, labor and agriculture.

The staff of the Commission is multi-disciplinary in nature and complements the wide array of advisory committees for the different program areas. This organizational structure lends itself to fulfilling the intent of the legislation.

The full Commission meets on a quarterly basis and serves as the overall policy making body which determines the direction and the role of the agency. The Board of Directors is an eight person body which meets monthly to guide the operations of the agency and to serve as the review board for clearinghouse activities.

The total population of the seven county area is 97,225. The number of people serving on the Commission and its various advisory committees is 136. This gives us an approximate ratio of 715:1 as a measure of public participation. In the next few pages you will read about the various programs of the Commission and the manner in which they contribute toward the successful implementation of the legislation.

It should be noted that the fiscal year of the Northwest Regional Development Commission begins July 1st and ends June 30th. In order to establish a uniform reporting period for this and future Annual Reports, the time period of this Report bridges the conversion from a calendar year to a fiscal year. This 1980 Annual Report, therefore, covers an 18 month period. Information presented herein is for an 18 month period unless otherwise explicitly stated.

Commission Membership

<u>County</u>	<u>County Board</u>	<u>Township Board</u>	<u>Cities</u>
Kittson	Floyd Sanner Lancaster	*William Gatheridge Humboldt	Dr. Joe Bouvette Hallock
Marshall	*Kenneth Price Stephen	*Ervin Strandquist Newfolden	Roy Engh Warren
Norman	*Werner Mahlum Gary	Cary Sip Ada	Kenneth Redland Ada
Pennington	Donald Grabanski Thief River Falls	*Richard Kruse Thief River Falls	Ambrose Wysoski Thief River Falls
Polk	Don Bakken Fertile	Rudy Applequist Crookston	Duane Knutson Fertile
Red Lake	*Orrin Linder Plummer	Ralph Berg Brooks	Vaughn Thorfinnson Red Lake Falls
Roseau	*Wayne Juhl Greenbush	Richard Lorenson Strathcona	Adrian Pulczinski Greenbush

School District Representatives

*Cleo Cleveland
East Grand Forks

Harry Sjulson
Thief River Falls

Public Interest Groups

Agriculture

Norma Hanson
Goodridge

Business

Harold Thomforde
Crookston

Financial Institutions

Fred Sorensen
Grygla

Industry

Jerry Sandstrom
Thief River Falls

Low Income/Minority

Elton Jones
Twin Valley

Soil & Water Conservation

Verne Green
Newfolden

Watershed Districts

Rudee Anderson
Greenbush

Vocational Schools

Marville Magnusson
Argyle

Labor

George Wikstrom, Jr.
Karlstad

Women

Bonnie Folkedahl
Thief River Falls

*Member of Board of Directors

Members Who No Longer Serve But Did Serve During 1980

Don Anderson
Ada

Lois Johnson
Badger

Lowell Anderson
Hallock

Lowell Lindemoen
Newfolden

Irving Beyer
Red Lake Falls

Oris Moen
Fertile

Norman Cruse
Thief River Falls

Marian Olson
Crookston

Duane Ekman
Argyle

Dwayne Otterson
Thief River Falls

Gerald Green
Gary

Joyce Peterson
Thief River Falls

Stan Holmass
Newfolden

Loran Stortroen
Climax



Aging

The Aging Program is designed to carry out the functions and requirements of the Older Americans Act, but with local initiative and involvement. Continued improvement occurred in 1980 in the understanding of the problems which confront the twenty thousand older persons in Northwest Minnesota. With one out of five citizens of the Region being elderly, the NWRDC staff undertook and completed a valuable survey which identified the needs of senior citizens within the Region. The needs survey was enhanced by a series of public forums conducted by the Aging Program staff. Seven county forums plus a regional forum were held.

The Aging Advisory Committee (AAC) continued in the process of developing a new Aging Plan for the Region covering the calendar years of 1981-1983. This three year plan is the first attempt of the Aging Program to consider issues confronting the Region's elderly on a longer term basis. The AAC was instrumental in determining the Plan's priorities and work objectives.

During the course of the year the AAC made recommendations to the full Commission which resulted in the successful implementation of the Aging Plan. The following projects were funded:

- 1) The Roseau County Transit Service Project, whose major purpose is to provide access to medical services for senior citizens in Roseau County (total cost for 1980 is \$16,265 - Grant \$8,400; for 1981 the total is \$25,780 - Grant \$10,890);
- 2) The Kittson County Senior Citizen Transportation Program, similar to #1 above but for Kittson County senior citizens (total cost for 1980 is \$13,405 - Grant \$5,540; for 1981 the total is \$16,239 - Grant \$6,259);
- 3) The Red Lake County Elderly Transit Program, similar to #1 above but for Red Lake County Senior Citizens (total cost for 1980 is \$8,706 - Grant \$5,776; for 1981 the total is \$8,661 - Grant \$4,597);
- 4) The Northwest Minnesota Legal Services Project, to provide limited legal services to the Region's elderly (total cost for 1980 is \$20,000 - Grant \$10,000; for 1981 the total is \$49,000 - Grant \$24,000);
- 5) The Valley Chore Service Project, to provide a range of services from lawn mowing and snow removal to major house cleaning within the homes of senior citizens in Norman, Pennington and Polk Counties (total cost is \$85,710 - Grant \$34,410);

6) The Library Services to Older Adults Program, to provide additional access by older adults to information through the regional library systems (total cost is \$8,773 - Grant \$3,000);

7) The Northwest Chore Service Program, to provide similar services as #5 above but in Kittson, Marshall and Roseau Counties (total cost is \$35,585 - Grant \$22,938);

8) The number of senior citizens' center grew in 1980. The cities which completed their projects from funds allocated the previous year are Badger, Middle River, Newfolden and Red Lake Falls. In 1980, the two funding sources available for the development of senior centers were Title III-B of the Older Americans Act and the McKnight Foundation, a private philanthropic organization. Funds from these sources were allocated to the following cities in the amounts shown: (Title III-B funding) Twin Valley - \$11,447; Hallock - \$5,928; Holt - \$9,111; Fertile - \$34,283; Gary - \$9,101; Goodridge - \$15,576; Lancaster - \$3,630; St. Vincent - \$8,500; Winger - \$14,850; Alvarado - \$14,938; and Halma - \$10,249; (McKnight Foundation) Badger - \$7,153; East Grand Forks - \$6,071; Mentor - \$3,640; Goodridge - \$1,245; and Halma - \$9,750. The total allocation made by the Commission to the development of senior centers was \$165,472.

9) Because the Aging Program funding responsibilities were expanded, 1980 was termed a "Transition Year." Two additional categories, formerly funded directly from the Minnesota Board on Aging, were allocated to the program which are to be used to fund nutrition programs for the elderly within the Region. The new categories of the Older Americans Act as amended are Title III-C-1 and Title III-C-2 which are explained below:

The Region I Senior Meal and Activity Program is funded from Title III-C-1. The purposes of this program is to provide a nutritious meal to older persons in a congregate setting and to provide the opportunity for fellowship (total cost is \$520,530 - Grant \$235,790);

The Region I Home Delivered Meals Project provides the opportunity for homebound older persons, with an identifiable need, to receive a nutritious meal at home (total cost is \$67,807 - Grant \$26,967).

Since the beginning of these projects, the NWRDC's Aging/Nutrition staff person has developed meal site assessment forms, with the assistance of the Nutrition Task Force, and made initial site visits to all congregate and some home-delivered meal sites. These procedures assist the smooth operation to the nutrition projects.

In 1981 the Commission's Aging/Nutrition Program will continue its grants management functions through the advertisement for the review of grant applications for nutrition projects in Region I and the monitoring and assessment of the meal sites. Technical assistance will also be given to the projects on an ongoing basis, as needed. Work will also take place to increase the coordination of nutrition related services to senior citizens and to increase the level of planning to meet nutritional needs within the Region.

The Aging Program of the Commission continued to focus on its educational aspects. With increased "information awareness" as the goal, the Commission sponsored four projects which are explained below with Title IV-A funds of the Older Americans Act. Cardio-pulmonary resuscitation (CPR) training and training in the Heimlich Maneuver for dislodging food caught in a person's windpipe was given to senior citizens and staff of the Senior Meal and Activity Program - \$1,375. A series of workshops using a kit developed by Bi-Folkal Productions for multi-media multi-sensory programming was developed by the Northwest Regional Library - \$2,094. The local development for the 1981 National White House Conference on Aging began in the Region in 1980. In order for the Aging Program to respond to the expressed needs to better understand the concerns of the Region's elderly, the public forums which were mentioned previously were developed. This series of public forums was also a part of the grass root activities for the White House Conference on Aging. The seven county forums were co-sponsored by the Commission's Aging Program and individual county committees on aging. A County Facilitator Training session was conducted - \$1,304. In the fall of 1980, the Regional White House Conference on Aging was held. It was entitled Regional Forum Seniors - Plan for the 80's. The \$2,450 allocated to this activity was granted to the University of Minnesota - Crookston to conduct the Regional Forum.

In 1980 measurable accomplishments occurred in many areas that have been historically identified as areas of need for the elderly in Region I. Improvements have been made in the areas of transportation, nutrition, senior centers, chore services, legal services and educational efforts centered on information awareness. The planning process of the Aging Program, however, continued to find these same areas as areas of concern and need for the elderly. Therefore, improvement in the delivery of these services continues to be a goal. Plans to improve this system will continue to be made locally with the aid of the entire Region I Aging Network.

It is anticipated that 1981 will be similar to 1980 in the high level of activities directed at ameliorating the identified needs of the elderly citizens in Region I.



Arts

The past year's activities in the Commission's Arts Program focused on informing interested persons and organizations within the Region about opportunities and avenues for arts growth and development. Particularly targeted for this effort were the Region's schools. A regional conference entitled "Everything You Always Wanted to Know About Arts Resources and Fun-

ding for the Schools" was held at Thief River Falls, on April 8, 1981. This conference brought together regional and state arts resource and funding agencies with 60 school administrators, teachers and interested community people attending. The Arts Advisory Committee members put forth a significant volunteer effort, making personal appearances at the area school board meetings to publicize and inform the conference's target group. The conference was successful and has generated an increased level of involvement from the schools in accessing the resources and funds available to them.

The Commission published an arts newsletter "Northwestern Arts" in an expanded format with a circulation of over 700 copies. This newsletter served to inform citizens in the Region about cultural resources, arts events, and significant resources available on the local, regional, state and federal level. NWRDC staff, in conjunction with the Minnesota State Arts Board staff produced a brochure on the regional arts program for distribution throughout the State. Information on the regional arts grant program has been made available through use of the media, as well as through two grant writing workshops held one each in the City of Red Lake Falls and Roseau.

A revised Arts Plan for 1981-1983 was the result of regular meetings and work on the part of the Arts Advisory Committee members and the Commission staff.

The regrating activities of the Commission's arts program were carried out with four grant rounds dispersed throughout the fiscal year. A total of \$14,827 was granted for art projects in the Region in Fiscal Year 1981. Following is a listing of the funded projects.

Kittson County

Artists Unlimited of Lake Bronson for two art classes with Marvin Espe and Bunny Humphrey - \$200.

Camp Sunshine, Hallock, for theater for the mentally handicapped - \$800.

Marshall County

Community Arts Board of Warren for two workshops by the Guthrie Theater, one evening performance - \$350.

Norman County

Community Education of Ada for adult art class resulting in a community produced mural - \$400.

Halstad Community Education for a musical theater production of "Rock 'n Roll" - \$550.

Polk County

Tri-Community Corrections for varied arts experience to incarcerated residents - \$1,017.

Fosston Jaycee Women for two days of arts and crafts workshops - \$727.

Crookston Community Theater for an acting/directing workshop - \$430.

Womens Division Red River Valley Winter Shows for art activities during winter shows - \$307.

Crookston Civic Music League for an Easter presentation of Faure's Requiem - \$765.

Crookston Community Theater for a musical theater production of the "Sound of Music" - \$2,796.

Pioneer Memorial Home, Erskine, for art activities in the home with community involvement - \$540.

Community Education of East Grand Forks for a theater production of "Spoon River Anthology" - \$700.

Fosston Public Library for writing and poetry workshops with professional authors and poets - \$170.

Fosston Community Art Center for a theater production of "Fiddler on the Roof" - \$1,125.

Pennington County

Northwest Regional Library for three poetry workshops entitled "Words Well Wrapped II" - \$1,300.

Goodridge Historical Society for a theater production of "Oklahoma" - \$1,175.

Thief River Falls Community Arts Council for community workshops with the Kata Novak Dancers - \$375.

Roseau County

Roseau Historical Society for workshops in acting with the Comedia Theater Troupe - \$300.

TANK Productions, Warroad, for five summer theater productions - \$800.

Criminal Justice

The Criminal Justice Program is designed to assist local criminal justice agencies such as sheriff's offices, police departments, jails, courts and treatment facilities to improve the operation of their programs. During the past year the program concentrated on identifying specific areas where grant funds could have impact. This included developing local recommendations on issues of special interest and attempting to define a planning system which could have the greatest positive influence on the criminal justice system.

Funding through the Law Enforcement Assistance Administration (LEAA) was terminated in 1981, but unobligated funds were available to continue financial assistance to local agencies. Because an updated Criminal Justice Plan was not prepared, due to lack of continued funding, to form the basis for any rearrangement of priorities, the Criminal Justice Advisory Committee (CJAC) decided to use funds to complete the objectives established in past plans. Using this criteria, the following grant recommendations totaling \$19,038 were made:

- 1) Pennington County Jail Treatment for second year continuation of a treatment and education program. The grant provided for staff time and the purchase of mini-computer to be used for automatic educational programs - \$7,833;

- 2) Northwest Regional Alternative Sentencing Program for third year continuation given alternative sentences such as cash restitution or public service work. This program has operated successfully during the past two years and has a high possibility of being continued with local funds - \$7,905.

- 3) Correctional Facilities Tour for one time funding of a jail and treatment facilities tour for local courts and law enforcement personnel. This project is intended to provide the knowledge that local officials need to determine the most effective and appropriate sources of in-

carceration when facilities are not available in the local area. This was the only recommendation for a new grant and the decision was based on the lack of past assistance to an area of indented priority - \$3,300.

A major effort was made in developing local recommendations on Family Violence. A process was completed which included a Family Violence Survey, a Family Violence Public Forum, and a Family Violence Task Force. This process provided a great deal of useful information from local persons which was used as the basis for the identification for several solutions to problems in the area. These solutions centered around providing education to the public, coordinating the use of all resources available, and assisting professionals in gaining the skill necessary to function as the focal point for treatment and prevention of Family Violence.

The CJAC and staff were also involved in developing possible strategies for the continuation of planning and assistance efforts. Recommendations were made for a State/Regional planning combination which could provide for local input into the creation of programs and legislative changes, as well as assistance for the local implementation of these programs.

The CJAC has identified a limited role for the upcoming year which could include a concentration on coordination of local activities, providing regional training sessions, and maintaining information exchange and coordination between all levels of the criminal justice system.



Developmental Disabilities

Special emphasis was placed on the needs of handicapped persons during 1981 which has been proclaimed by the United Nations as the International Year of the Disabled Person. With this increased visibility of handicaps, the mandates of federal agencies, and state judicial decisions, the efforts of local governments and

of direct service providers to plan for the future of these people is becoming more important. These efforts have often been promoted by the technical assistance and coordinative efforts of the Developmental Disabilities Program in Region I.

Four major priority areas have been identified through the efforts of the Developmental Disabilities Advisory Committee (DDAC) and NWRDC staff. These are:

- 1) The needs of the 0-3 age group of disabled persons;
- 2) Respite Care;
- 3) Alternative living situations for young adult and adult disabled persons;
- 4) Parent and community education.

In regard to the first of these priority areas, the Preschool Coordination Task Force, which consists primarily of direct service providers who meet on a regular basis, has developed a referral process and release of information form and is encouraging all direct service agencies to use this process. Widespread use of this system would help parents of handicapped children to get the most from the system of medical, social service, educational and insurance services. There has also been some effort to collect data on the 0-3 handicapped population in Region I. Technical assistance has been provided to Riverview Hospital in the City of Crookston for their Infant Stimulation Project.

With assistance from the DDAC and staff, a Respite Care Project has been started, sponsored by the Region I Association for Retarded Citizens. It covers Polk, Red Lake and Norman Counties. Expansion of this service to cover the remaining counties in Region I is expected in the coming year.

During the past year an important court decision, the Welsh v. Noot Consent Decree, has been handed down. The result of this decision will be a reduction in the state hospital population and consequently, the placement of some of these residents back in their home communities. Since the possibility exists of an increased need for group home and Developmental Achievement Center facilities for a more severely disabled population, the DDAC is working to keep abreast of this situation.

The need for parent and community education has been addressed by several efforts of the DDAC. Two workshops have been sponsored in Crookston (Sex Education for the Handicapped and an Information Sharing Workshop) during the past year. Several groups in Region I have purchased sets of the "Kids on the Block" puppets and had training sessions on how to use them. These puppet shows are presented to third and fourth grade classes to help explain special circumstances and needs of their handicapped classmates.

Committees have been organized to sponsor activities in Region I for the annual Handicapped Awareness Week and for International Year Minnesota. The International Year group is emphasizing a different area during each month, such as, recreation, employment and housing for handicapped individuals.

Another newly organized group in the Crookston area is in the Citizen's Advocacy Project. This group promotes and coordinates personal contacts between a handicapped person and a volunteer. Other methods of disseminating information to the public are in the form of a monthly Developmental Disabilities Newsletter and news release, as appropriate.

Technical assistance has also been provided to the Region I Association for Retarded Citizens on an arts grant to do art and theater at Camp Sunshine and to the Agassiz Health Systems Agency for an issue paper on the needs of the disabled in Region I.



Employment and Training

The Employment and Training Program is designed to analyze labor market problems in Region 1 and make recommendations on solutions which can be implemented through local, state and federal efforts. This analysis of the labor market includes looking at the labor demand, the labor supply, and the process by which the demand and supply are matched through hiring, firing, job turnover, the educational system and training efforts. Through this program, the Commission makes special efforts to provide local direction to Comprehensive Employment and Training Act (CETA) programs. The intent of the federal legislation creating CETA combined with a special effort in Minnesota to obtain local input through the Regional Development Commissions, provided the initiative for the Employment and Training Program's creation.

During 1981 the Regional Employment and Training Advisory Committee (RETAC), which serves as an advisory body for the Employment and Training Program, identified several problem areas and possible methods for dealing with those problems. Problem areas included the following general concerns:

-Special barriers to employment which are faced by certain segments of the population. These groups were identified as:

- Persons 18+ with less than 12 years education
- Public Offenders
- Displaced Homemakers
- Persons involved in Mid-Career Changes
- Handicapped
- Youth out of School
- Female Public Assistance Recipients
- Youth Entering the Labor Market
- Seasonal fluctuations in the demand for labor.
- Recent economic problems which have resulted in layoffs and high unemployment rates.

-The lack of entry level positions.
 -The mismatch between skilled level job openings and the available work force.

-Long distances between employment openings which prevents job mobility.

After examining these problems the following solutions were recommended:

-Providing career education for youth and adults in order to insure the best possible career choice and the fewest number of future mismatches.

-Providing support for career planning at the high school level including testing services and counseling.

-Providing vocational guidance to youth enrolled in CETA job programs.

-Targeting resources towards those areas which are experiencing the highest levels of unemployment.

-Designing programs in CETA and other agencies which consider the special barriers of hard-to-employ groups.

-Assisting area employers to take advantage of resources, including CETA, which could assist them in dealing with short term economic problems.

-Providing training in those areas which present the best future opportunities for workers.

Specific funding recommendations which are based on the problem solving process outlined above were made for the use of CETA funds:

Title IIB

(Classroom Training, On-the-Job Training, Work Experience, Orientation and Assessment, Supportive Services)

Inter-County Community Council	\$115,586
CETA Centers	<u>795,472</u>
Subtotal	\$911,058

Title IID

(Individual Public Service Employment)

CETA Centers by County	
Norman	\$46,144
Polk	201,193
Red Lake	56,277
Kittson	48,981
Marshall	137,687
Pennington	99,718
Roseau	85,598
Training	<u>116,510</u>
Subtotal	\$792,108

Title IV

(Youth Employment and Training Programs)

CETA Centers	\$51,699
Inter-County Community Council	<u>74,009</u>
Subtotal	\$125,708

Title VI Sustaining

(Individual Public Service)

CETA Centers by County	
Norman	\$8,884
Polk	38,737
Red Lake	10,836
Kittson	9,431
Marshall	26,509
Pennington	19,199
Roseau	16,480
Training	<u>21,093</u>
Subtotal	\$151,169

Title VI Special Projects

(Public Service Employment Projects)

Inter-County Summer Youth Supervisors	\$42,450
Inter-County CAC (Weatherization)	30,907
City of Gary Water Superintendent	19,627
Lutheran Homes Volunteer Coordinator	7,493
Housing Outreach Coordinator	9,413
Kittson Museum Upgrade and Renovation	12,898
Agassiz Library Inventory	9,475
Marshall DAC Volunteer Coordinator	4,200
Tri-Valley CAC (Weatherization)	<u>85,075</u>
Subtotal	\$221,538

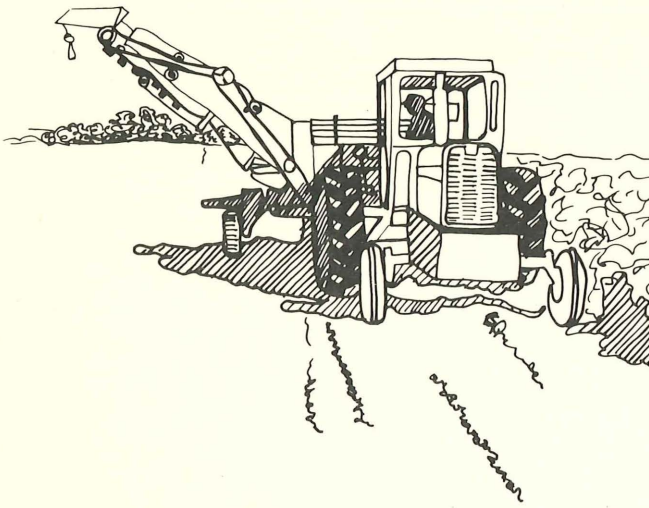
Set Aside Grants

(Special Purpose)

Career Education Center (Operating Budget)	\$27,000
Inter-County Community Council (Youth Employment)	3,890
Career Education Center (Career Planning Tests)	4,329
Career Education Center (Resource Materials)	<u>1,909</u>
Subtotal	\$37,128

TOTAL \$2,238,709

During the upcoming year the RETAC and staff will be attempting to provide a more detailed analysis of both labor supply and demand problems in order to provide greater assistance to local employment and training facilities and the CETA program. The most efficient use of all resources will be of primary importance as the resource limitations at all levels become more apparent.



Economic Development

The measures of economic distress which indicated increasing financial, wage, and unemployment problems during 1979, show that these difficulties have intensified during 1980 and into the first half of 1981. For example, unemployment averaged 9.9 percent for the Region in 1980 and recently jumped to almost 13 percent with some counties in the Region having one out of five (20 percent) of their working people out of work. Other data on employment income place the average wage earned in the Region at a level that is more than 25 percent below the average earnings for the State. In addition, a number of local manufactures and businesses which are important to the economic base of their community and the Region particularly as employers, are experiencing significantly reduced levels of sales and extremely high costs of borrowing. These very apparent economic problems are accompanied by the growing shortcomings of the regional transportation system. Presently planned highway funds will barely maintain the trunk highways in the Region with no monies being available to upgrade these roads to meet the needs of larger, more efficient trucks capable of carrying larger loads of farm commodities at lower costs.

The Technical Advisory Committee on Economic Development (TACED), being acutely aware of the Region's economic distress, has participated in the revision of an Economic Development Strategy as well as the updating of the Overall Economic Development Program (OEDP) of which the Strategy is the most important part. The OEDP serves as the primary document for the Economic Development Administration's (EDA) designation of Region I as an Economic Development District. It should be noted that the Region was so designated in August of 1980. This improves the opportunities for local governments in the Region to obtain EDA grants and loans and increases the level of funds available for many eligible projects. The TACED has improved its geographic and expert representation by increasing its membership from 13 to 18 members. Because the Region and Minnesota lack conventional fuel sources, it was significant that the TACED reviewed and recommended that the Board of Directors of the

Commission support a proposal to conduct a crop residue experimental project to convert residue to fuel pellets.

Technical assistance in the area of economic development was provided to local governments and, with increasing emphasis, to small businesses. NWRDC staff assisted the City of Crookston with its Community Development Block Grant application to improve its downtown business district. Community business surveys were completed for the Cities of Grygla and Red Lake Falls. Also, a comprehensive land use plan is being completed for Grygla. A variety of small businesses have been assisted directly by staff using in-house expertise and by bringing expertise into the Region from the Small Business Assistance Centers at Bemidji State University and Moorhead State University, in addition to other sources such as the Department of Economic Development. The types of businesses provided with help include the following: a flour mill and grain processor, a potato processor, a cement plant, and waste disposal company, and ethanol alcohol plants proposed for construction in two different locations. The Economic Development staff continue to increase the Commission's ability to serve as a directive resource for small business in the Region. Any interested business can contact the NWRDC for information and assistance in the solution of business problems where governmental funding and programs may be available.

The Economic Development staff participate in a comprehensive, interdisciplinary approach to plan and program development within the Region by coordinating with the various other functional sections of the Commission. This includes participation in the preparation of the Regional Comprehensive Plan and coordination between the Director of Human Resource Planning and the Director of Physical and Economic Development Planning.

In addition to the participation of Economic Development staff in the spring Grantswriting Workshop conducted by the NWRDC at Thief River Falls, the staff prepared the Regional Statistical Profile which includes such data as population of cities and counties in the Region, farm income, and school district disbursements. This profile has been published and is now being distributed.

Of the many work program elements scheduled for the next fiscal year, three are highlighted. In order to more effectively benefit from the limited tourism and shopping trip activities in the Region, a recreation facility inventory will be conducted. The inventory design for this study is being developed. To address the problem of highway inadequacies for the movement of farm produce, the background for and an initial proposal dealing with a commodity movement study is being undertaken in conjunction with the Commission's Transportation Committee (see the Transportation section of this Report). Finally, a seminar/conference on economic development is being prepared for the late fall. This will be directed at two separate audiences: local governments and development agencies; and small businesses.

Housing

The highlight of the NWRDC Housing Planning Section for Fiscal Year 1981 has been the formation of the Technical Advisory Committee on Housing (TACH). The TACH is comprised of representatives from lending institutions, real estate and construction firms, local housing authorities, planning and regional funding agencies—such as community action agencies, Farmers Home Administration and NW Multi-County Housing and Redevelopment Authority. The goal of the TACH is to define housing related problems, identify and analyze alternative solutions and seek out resources to assist in solving the housing problems in Region 1. The TACH plays a major role in the Regional Review process, evaluating each proposal based on the needs of the low income persons within the given city, town, (or in some cases townships) and the number of units and type of project being proposed and encouraging the targeting of funds to the area with the greatest need. Then it makes recommendations to the NWRDC Board which has review authority in this case. The Board reviews the proposal, basically in consideration of local and regional plans and programs, and provides a positive, negative or no comment recommendation to the funding agency.

In Fiscal Year 1981, the NWRDC Housing Planning activities included an inventory of subsidized housing which lists the number, type, location and contact person of each subsidized rental unit within each city or town throughout Region I. This inventory coupled with pertinent statistical data for each community has formed the allocation plan for subsidized rental units for the Region.

Considerable emphasis has been placed on housing related technical assistance in the form of planning services, personal coordination and information dissemination to cities and towns, developers, lenders and funding agencies. This technical assistance is essential in order to encourage the needed housing programs to be targeted in selected areas of the Region as well as to facilitate resources from agencies such as Farmers Home Administration, Minnesota Housing Finance Agency and the Department of Housing and Urban Development.

During the year, the Commission has reviewed 14 proposals for subsidized new rental housing amounting to 226 units or 7.1 million dollars. Ninety-eight (98) of these units were actually funded amounting to \$3,038,000. This brings the total stock of new and existing subsidized rental housing in Region I to 2,064 units of which 71% are for the elderly.

With the interest rates soaring, very little new non-subsidized single family housing construction has taken place over the past year in the Region. However, a total of 128 new houses have been constructed utilizing subsidized financing amounting to 4.4 million dollars through Farmers Home Administration and Minnesota Housing Finance Agency. The trend this past year has been to rehabilitate existing housing occupied by low or moderate income elderly and families or to buy older homes and rehabilitate them. Specifically, 306 low in-



terest rehabilitation loans were made to eligible persons through Minnesota Housing Finance Agency and Farmers Home Administration amounting to \$1.7 million.

Energy conservation programs operated by the community action agencies coupled with the Minnesota Housing Finance Agency's grant program, have made weatherization improvements to 1,149 single family dwellings, amounting to approximately \$1.7 million.

A total of 1,767 low or moderate income elderly and families have been assisted by state and/or federal agencies in the amount of \$11 million in the period January 1, 1980 through June 1, 1981.

The areas that the Housing Program will focus on next year will be to continue updating demographic and housing data in order to revise the Housing Allocation Plan as the the 1980 U.S. Census data become available. A study is being conducted of the subsidized rental projects throughout the Region in order to gain a better understanding of the present subsidized housing in each civil division. This study will focus on the demographics of the occupants in subsidized units as well as the vacancy rates for those units. This information will be very helpful in the planning of future housing types and locations and in the Regional Review process required for new subsidized housing and rent subsidy proposals.

To aid in the review process a detailed proposed development project checklist has been created which is being implemented this year. It is designed to assist local governments and developers in evaluating the need for the siting of additional low income housing within a city. It also is designed to be an intergral part of the A-95 review process of the TACH in as much as it provides information and documentation of the parties to the proposed project. This data not only addresses true housing need for low income persons but among other things it also provides for comment by the civil division or city which is directly involved.

Technical assistance to communities, developers and funding agencies will continue to be a significant work element in the Housing Program effort to target very limited resources to those communities and counties having the greatest need.

Land Use, Open Space, Recreation, and Related Natural Resources

A long-term commitment of the Commission toward developing a natural resources management information system in coordination with the Minnesota Agricultural Extension Service has been continued with an inventory of the resources of the cartographic department. As a result of that activity a comprehensive map index was developed. This index serves as a source document for referencing and locating original information that will serve as the basis for the computerized natural resources information file which is under development. Public ownership information for the seven county area was gathered and transferred on a visual basis onto county base maps. This mapping serves as a preliminary step in transferring the information into the computer system. The variables and classes for coding present land use, public ownership and natural areas were developed and used in coding Roseau County and part of Polk County. The coding is based on 1968 and 1979 aerial photographs provided by the Minnesota Department of Transportation. A Land Use Plan was developed using the computerized format for Black River Township. The variables used and coded as the information base for this Plan were: soil type, soil permeability, soil building suitability, soil hazards, present land use 1969, present land use 1978, forested areas and wetlands. Through a study and manipulation of this information, a suitability analysis of land use was developed.

The Commission is developing a set of information in the computerized format in conjunction with the Red Lake Watershed District. This information will be used to analyze water runoff and help determine future plans for Polk County, Ditch #2. This is a pilot project which could lead to future collaboration between the NWRDC and the regional watershed districts.

Assistance was provided to the City of Grygla for preparation of the pre-application and final application of a land use planning grant. Assistance was also given to the City of Fosston in the development of the pre-application and final application for a land use planning grant. Grygla received a grant award and the Commission is presently developing a comprehensive plan, capital improvements plan and zoning ordinance for Grygla. This process is well underway and set for completion before July 1981.

The Commission participated in ranking local park projects applying for Federal Land and Water Conservation funds. For the Commission ranking to be accepted and utilized by the state in the final determination of

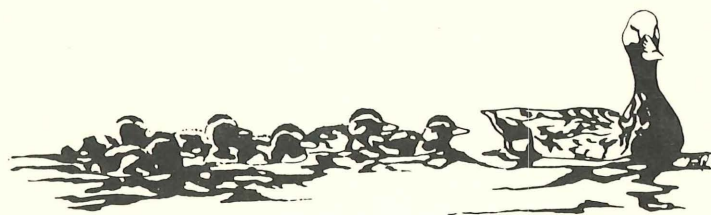
grant awards, regional ranking criteria was developed, along with an improved process for informing the board of the merits of the individual sites. Assistance was given to the City of Stephen, Halstad and Grygla in preparation of the preliminary applications, as well as to Grygla in the final application process. All three of these communities received grant funds.

Hazardous waste

The Commission has been involved in the regional citizen participation process for the statewide search for sites for hazardous waste facilities since it began in November of 1980. NWRDC staff attended meetings with the Waste Management Board and reviewed and commented on the process. All necessary regional citizens meeting arrangements were made by NWRDC staff. Notices of meetings to be held in Region I were mailed from the NWRDC Office to interested key individuals involved in regional natural resource issues as well as the media. Notices were also mailed to governmental units by the Waste Management Board. To date, three regional meetings have been held with attendance ranging from a minimum of 130 to a maximum of 250 participants. Reports on each of the meetings were written by our staff and submitted to the Waste Management Board. Copies are available at the Commission office. As this Annual Report goes to press, the Cities of Crookston, East Grand Forks and Thief River Falls have been notified by the Waste Management Board that they are prospects for a regional waste transfer-processing facility. Waste products would be passing through this facility on their way to final disposition outside the Region. No nuclear (radio-active) substances, however, would be processed by this facility.

Transportation

Continuing to recognize the need for an efficient transportation network to facilitate the movement of goods and people, the Commission completed a multi-modal Regional Transportation Plan during the year. This Plan was developed by the Commission's Technical Advisory Committee on Transportation (TACT) in coordination with the Minnesota Department of Transportation (Mn/DOT). The purpose of the planning process was to provide for more local input into regional transportation planning. With this concern in mind, the Committee was enlarged to include represen-



tatives of various transportation concerns in the Region, including trucking, airports, railroads, and agriculture.

The Plan itself provides a multi-modal development strategy based on the Region's forecast of overall transportation needs. This will help ensure the future economic viability of the Region relative to its transportation network. The Plan involves three primary parts developed in the following order. First, an inventory of the various transport modes in the Region was taken. Second, goals and policies for future development of the various modes were adopted. Third, criteria for prioritizing highway projects for the Plan were established.

A very significant aspect of the planning effort which the TACT dealt with extensively was the development of a 20 year work plan for the maintenance of state trunk highway projects within the Region. These projects were ranked in a priority order as to their maintenance needs and importance to the efficient movement of people and goods, particularly agricultural commodities within the Region.

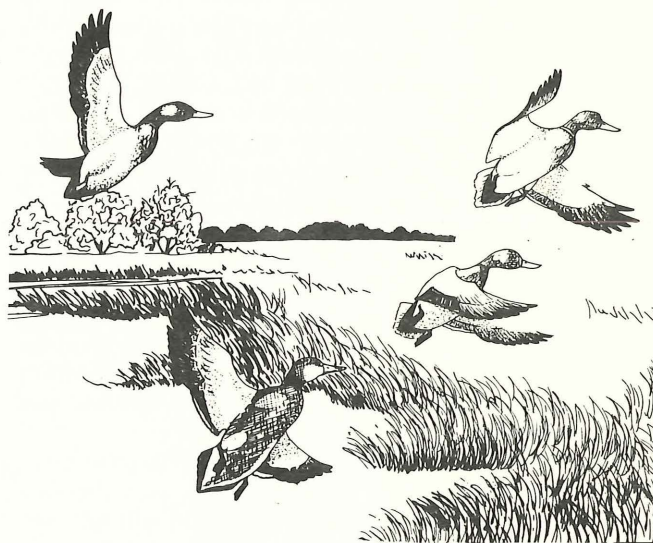
Priority is given to the maintenance and upgrading of existing facilities within the Region due to the current reduced level of state highway funds. Since 1977, when the State Legislature permitted a 10-ton axle weight for trucks on designated routes, there has been 4,162 miles of highway in Minnesota designated as 10-ton for much of the year, with 1,520 miles, primarily on interstate highways, serving as 10-ton all year. A seasonal 10-ton road system is in effect for a portion of the year in Region I. Upgrading the system to a 10-ton status year-round seems to be a very remote possibility. Therefore, emphasis has been placed on establishing a selective year-round 10-ton highway system to facilitate the timely movement of grain to markets on the most cost effective basis possible.

The TACT continued to review and make recommendations to the Board concerning transportation matters which impact the Region. These include maintenance plans by Mn/DOT as well as state legislative actions regarding the funding for future transportation needs in the State. While the TACT is aware of the need for fiscal restraint at the state and federal levels it is also cognizant of the serious long-run problems which will result to the movement of farm commodities if our roads are not maintained at a reasonable level.

The TACT is continuing to make their concerns known to Mn/DOT regarding the inadequacies of the sufficiency rating formula - which is utilized in determining the funding allocation for highway maintenance projects throughout the State. At present, it is felt that the sufficiency rating formula disproportionately weights the absolute vehicular traffic count too high as opposed to the low weighting given to the tonnage carried on the roads. Thus, roads in metro areas with high vehicular traffic counts fare better in qualifying for maintenance funds than do high tonnage roads typically found in rural, agricultural areas, such as Region I. In relation to this, the NWRDC has submitted a proposal to Mn/DOT for the NWRDC staff to conduct a commodity movement study for the Region as was previously mentioned

in the Economic Development section. This study will address the inadequacies of the sufficiency rating formula, as well as making recommendations concerning the most efficient movement of agricultural commodities of the Region.

In the coming year, the TACT will review and comment upon plans and projects contemplated by Mn/DOT and upon legislative proposals relating to transportation. The TACT will also review and make those very important recommendations to the NWRDC Board of Directors regarding transportation problems in relation to the changing structure of transportation development in the Region. The Regional Transportation Plan, of course, will be revised if necessary to reflect these changes.



Technical Assistance

Planning assistance provided by the Commission falls into four general categories: grantsmanship, planning, information dissemination and special projects. Assistance is available upon request within the limits of Commission staff time and financial resources. On large projects it is possible to contract for services with the Commission.

Grant writing assistance was provided in many different programs this past year. In addition to land use planning grants, a historic preservation grant application was written for the Kittson County Historical Society. Most of the seven applicants for the Department of Housing and Urban Development Small Cities Community Development Block Grants were given some assistance with their applications. Through an agreement between the Commission and a city, one grant was written in its entirety by NWRDC staff. Assistance was given many communities and senior citizens groups on senior center grant applications and to individual groups on the development of the arts program.

Information dissemination is an ongoing activity with the primary outlet being the Commission Newsletter. Also, the news media is used wherever possible. A good deal of information is given through personal contact on a day to day basis. The Commission data base has

been significantly increased and is an excellent source of information for units of government and agencies needing statistical information and all other types of data for their planning activities.

NWRDC staff have assisted private industry and small businesses with technical advice and coordination with various business experts as was mentioned in the economic development section. Requests were answered almost daily for information on programs and funding sources and where to find expertise in solving a wide array of community, governmental and small business problems.

A-95 Review and Coordination

In order to meet the requirements of the Regional Development Act of the State of Minnesota and of the Office of Management and Budget of the federal government, the Commission performs the coordinative function through the A-95 Review Process. The review of submitted proposals is to consider regional effects, multi-county effects, or those plans and programs which may have a substantial effect on regional development. That is, even without the mandated review process, the review being conducted by representatives of each of the counties in the Region would be valuable.

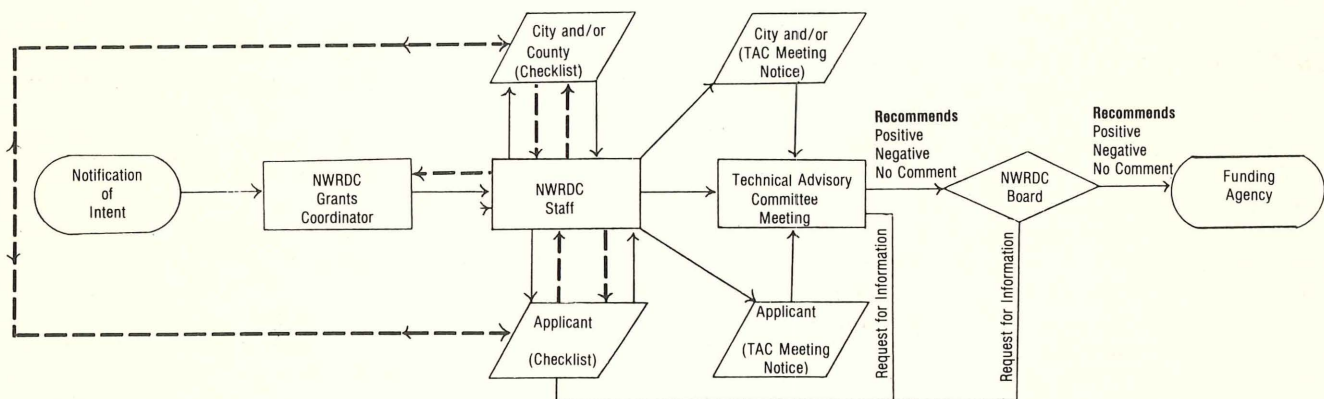
Local decisions having areawide implications would be coordinated, potential problems identified, possible solutions considered, and solutions often implemented.

Upon receiving a project notification, contact is made with local units of government and pertinent agencies which may be affected by or interested in the project and their comments are requested (see A-95 Review Process Flow Chart on this page). Clearinghouse review does not guarantee or deny the funding of a project. Rather, it provides the funding agency with better guidelines on which to base their decisions. One of the objectives of this review process is to prevent unnecessary duplication of services which might be wasteful in nature.

In its capacity as the Regional Clearinghouse for A-95 and other reviews, the Commission reviewed 232 project proposals in the period January 1, 1980 through June 30, 1981. These projects fell into the general categories of physical, social and economic development which are program areas of the Commission. The Commission submits its comments on project applications to the funding agencies and/or the applicants.

Following is a list of all proposed projects reviewed by the Commission in period identified above. The total amount of funds requested was a sizable \$180 million. A key to various funding agency abbreviations is attached at the end of the project list.

NORTHWEST REGIONAL DEVELOPMENT COMMISSIONS REGIONAL REVIEW PROCESS



Legend

- Beginning
- Processing
- ▱ Input/Output
- ◇ Decision
- Paper Flow
- ⟷ Coordination as Needed

Projects reviewed January 1980 through June 30 1981 (A-95)

Applicant	Project	Total Project Cost	Funding Agency
Inter-County Community Council	Administrative grant	164,935	CSA
Halstad School District 524	Energy Audit	2,040	DOE
Fosston	Sewage Facility Plan	NA	EPA
Pennington County	Bridge Replacement	33,500	Mn/DOT
Pennington County	Bridge Replacement	33,500	Mn/DOT
Pennington County	Bridge Replacement	56,000	Mn/DOT
Pennington County	Bridge Replacement	90,000	Mn/DOT
Norman County	Bridge Replacement	470,000	Mn/DOT
Polk County	Bridge Replacement	20,690	Mn/DOT
Norman County	Bridge Replacements	852,000	Mn/DOT
Kittson County	Bridge Replacements	246,000	Mn/DOT
Marshall County	Bridge Replacements	660,000	Mn/DOT
Polk County	Bridge Replacements	1,205,000	Mn/DOT
Red Lake County	Bridge Replacement	215,000	Mn/DOT
Polk County	Day Activity Center	732,000	HUD
Norman County Historical Soc.	Historical Preservation	12,600	MHS
Marshall County	Bridge Replacement	18,500	Mn/DOT
Marshall County	Middle River Improvements	1,314,000	HUD
Mn Association for Retarded Citizens	Foster Grandparent Program	1,063,665	ACTION
Crookston Regional Interdist. Council	CETA/Education Linkage	50,657	CETA
Inter-County Community Council	Summer Youth Recreation Prog.	3,849	CSA
Norman County	Bridge Replacement	75,500	Mn/DOT
Kittson County	Bridge Replacement	75,350	Mn/DOT
Kittson County	Bridge Replacement	93,500	Mn/DOT
Department of Economic Security	CETA Title IV (SYEP)	2,941,604	US DOL
Tri-Valley Opportunity Council	Girl Power Weatherization Prog.	92,474	DES
Region I CETA Center	Older Workers Train/Employ.	101,472	DES
Inter-County Community Council	Rural Home Renovation Program	74,960	DES
Thief River Falls	Streets/Utility Improvements	1,210,000	FmHA
Tri-Valley Opportunity Council	Rural Route Transportation	68,828	Mn/DOT
Green Thumb, Inc.	Senior Employment	88,227,179	DOL
Region I CETA Center	Comp. Chemical Dependency	150,000	DES
Region I CETA Center	Project Reemployment	260,000	DES
NW Education Cooperative Service TRF	Adult Education Linkage	57,297	DES
Kamlog Homes, Inc.	Log Home Building Center	149,845	DES
Region I CETA Center	Displaced Homemakers	134,406	DES
Northwest Community Action Agency	Summer Youth Recreation Prog.	1,906	CSA
Norman County	Grading/Surfacing/Road Design	—	Mn/DOT
Karlstad	Hospital Replacement/Clinic Add.	3,000,000	FmHA
Fertile	Sewage Treatment Plant Plan	NA	EPA
Tri-Valley Opportunity Council	Summer Youth Recreation Program	2,729	CSA
Stephen	Park and Recreation Project	61,500	LAWCON
Northwest Community Action Agency	Head Start Program	21,573	HEW
Karlstad	Park and Recreation Program	57,525	LAWCON
Fosston	Wastewater Treatment Plan & Construct	511,500	EPA
Grygla	Park and Recreation	28,200	LAWCON
Polk County	Bridge Replacements	28,985	Mn/DOT
Polk County	Bridge Replacements	81,136	Mn/DOT
Polk County	Bridge Replacement	50,952	Mn/DOT
Polk County	Bridge Replacement	35,057	Mn/DOT
Fertile	Multi-Purpose Community Center	302,500	FmHA
Crookston Agri Boosters	Sport & Recreation Complex	(withdrawn)	HUD
East Grand Forks	2nd year CDBG Application	310,000	HUD
Tri-Valley Opportunity Council	Administrative Grant	156,000	CSA
Ada	Cable TV Service	NA	MCCB
Warroad	Sewer & Watermain Extension	137,000	FmHA
Marshall/Kittson Co. Nursing Service	Extended Home Care Service	30,000	MDH
University of Minnesota-St. Paul	3rd year Adzuki Bean Project	39,463	MRDC

Applicant	Project	Total Project Cost	Funding Agency
Grygla	Water Tower	120,000	FmHA
Polk County	Comm. Health Serviced Plan Amend.	—	MDH
Grygla	Land Use Plan	7,500	SPA
Thief River Falls Regional Airport	Terminal Bldg. Expansion/apron exp.	176,000	Mn/DOT
Minnesota Migrant Council	Seasonal Farmworker Employ/Train	1,306,100	DOL
Minnesota Balance of State	CETA Master Plan	NA	DOL
Agassiz Health Systems Agency	Rural Health Initiative Plan	459,181	HEW
Argyle	201 Facility Plan	NA	EPA
Goodridge	201 Facility Plan	NA	EPA
Tri-Valley Opportunity Council	Community Food & Nutrition Program	24,000	CSA
Kittson County	Bridge Replacement	71,500	Mn/DOT
Kittson County	Bridge Replacement	53,000	Mn/DOT
Argyle	Cable T.V. Service	NA	MCCB
Minnesota Balance of State	CETA Program Title II	3,172,000	DOL
Tri-Valley Opportunity Council	ParaTransit Program	32,700	Mn/DOT
Inter-County Community Council	State of Mn. Support Program	26,027	DES
Gary	Wastewater Treatment Plan	NA	EPA
Polk Co. Ass'n for Retarded Citizens	Respite Care	16,142	Mn/DDC
Courtney Pulkrabek	16 Low-Income Housing	427,500	FmHA
St. Hilaire	Water System/Street Improvements	597,105	FmHA
Warroad	Wastewater Treatment Plan/Construct	2,161,540	EPA
Marshall County	Bridge Replacement	65,000	Mn/DOT
Norman County	Bridge Replacement	196,000	Mn/DOT
Norman County	Bridge Replacement	425,000	Mn/DOT
Red Lake County	Housing Rehab CDBG	600,000	HUD
Northwestern Hospital, Thief River Falls	Elderly/Handicapped Transportation	23,200	Mn/DOT
Northwest Regional Dev. Comm.	Economic Development Planning	66,000	EDA
Lutheran Memorial Nursing Home	Rehab/Expansion of Nursing Home	2,224,601	HUD
Tim Moses and Associates	CETA Affirmative Action Services	65,175	DES
Fosston	Land Use Planning	7,500	SPA
Dept. of Natural Resources	Thief Lake Wildlife Management Plan	NA	—
Warren	Water Systems Improvement	436,000	FmHA
Region II Resource & Dev. Consv.	Expansion of RC&D to Region I	—	USDA
Goodridge	Wastewater Facility Plan	NA	EPA
Grygla	Water Tower	168,000	FmHA
Minnesota Department of Transportation	Work Program/'81 Hwy Plan	NA	—
Department Economic Security	Assistance to Weatherization Program	334,000	DES
Department Economic Security	Weatherization Program (State)	9,094,000	DOE
Brooks	Sewage Facility Plan	NA	EPA
Lutheran Social Services of Mn	Long term care Ombudsman Program	20,000	MBA
Northwest Community Action Agency	Home Start Program	1,613	HEW
PSRO Foundation	Health Care Evaluation	3,104,956	HEW
Inter-County Community Council	Energy Crisis Intervention	30,000	CSA
Middle River	Wastewater Treatment Facility Plan	536,516	EPA
Red Lake Watershed District	Water Management Planning	61,000	WPB
East Grand Forks	Inter-City Bridge	—	Mn/DOT
Norman County	Bridge Replacement	73,500	Mn/DOT
Norman County	Bridge Replacement	81,000	Mn/DOT
Mar Bel Homes, Inc.	8 Plex Low Rent Senior Housing	204,000	FmHA
Crookston	Sewage Collection Rehab Lift Stat.	NA	EPA
Mn Planned Parenthood, Inc.	Family Planning	2,092,725	HHS
Warren	Hospital purchase	260,000	FmHA
Red Lake County	Bridge Replacement	49,500	Mn/DOT
Red Lake County	Bridge Replacement	47,300	Mn/DOT
Red Lake County	Bridge Replacement	49,500	Mn/DOT
Polk County	East Grand Forks Bridge Deck	324,500	Mn/DOT
East Grand Forks	5th Yr Community Development Prog.	196,000	HUD
Inter-County Community Council	Employment to Chemically Dependent	60,000	DES

Applicant	Project	Total Project Cost	Funding Agency
Balance of State/Dept. of Energy	Bio-Mass Crop Waste Re-Utilization	800,000	DOL/DOE
Ira Kasdan & Associates	CETA Chemical Dependency Training	23,915	DES
Tri-Valley Opportunity Council	Emergency Crisis Intervention	66,000	CSA
Inter-County Community Council	Administration Grant	168,985	CSA
Ass'n for Retarded Citizens, Mn.	Foster Grandparent Program	1,041,996	ACTION
Oklee	201 Wastewater Facility Plan	NA	EPA
Mn Crime Prevention Center	Rural Crime Prevention Demo.	89,444	RDC
Northwest Community Action Agency	Energy Crisis Intervention	53,194	CSA
Norman County	Bridge Replacement	425,000	Mn/DOT
Norman County	Bridge Replacement	40,000	Mn/DOT
Norman County	Bridge Replacement	230,000	Mn/DOT
Polk County	Bridge Replacement	65,000	Mn/DOT
Polk County	Bridge Replacement	30,000	Mn/DOT
Polk County	Bridge Replacement	70,000	Mn/DOT
Polk County	Bridge Replacement	50,000	Mn/DOT
Planned Parenthood of Minnesota	Family Planning	177,544	MDH
Minnesota CAP Association	Statewide Assistance to CAP's	34,000	CSA
Crookston	City Library	1,249,000	FmHA
Mult-County Nursing Service	Family Planning	25,278	MDH
University of Minn.-Crookston	Retired Volunteer Service	42,150	ACTION
Tri-Valley Opportunity Council	Section 18 Transportation Prog.	86,212	Mn/DOT
Plummer	Wastewater Treatment Plan	NA	EPA
Multi-County Nursing Service	Nutrition Program (WIC)	40,104	MDH
Roseau	Wastewater Facility Plan	NA	EPA
Agri-Energy, Inc.	Alcohol Plant	6,300,000	FmHA
M & H Homes	Elderly Housing - Greenbush	310,000	FmHA
Norman County	Bridge Replacement	60,000	Mn/DOT
Norman County	Bridge Replacement	60,000	Mn/DOT
Norman County	Bridge Replacement	30,000	Mn/DOT
Norman County	Bridge Replacement	60,000	Mn/DOT
Norman County	Bridge Replacement	28,000	Mn/DOT
Norman County	Bridge Replacement	40,000	Mn/DOT
Norman County	Bridge Replacement	71,500	Mn/DOT
Norman County	Bridge Replacement	25,000	Mn/DOT
Norman County	Bridge Replacement	250,000	Mn/DOT
Norman County	Bridge Replacement	400,000	Mn/DOT
Thief River Falls CETA Center	Improvement Through Youth	101,594	DES
Middle River	Wastewater Treatment Facility Plan	NA	EPA
Kittson County Historical Society	Interpretation of History	4,000	MHS
NW Regional Corrections Board	Alternative Sentencing	24,192	LEAA
Beltrami	Water System Construction	180,395	FmHA
Red Lake Falls	Neighborhood Revitalization CDBG	1,400,000	HUD
Thief River Falls	Housing Rehabilitation	313,000	HUD
Crookston	Downtown Rivitalization CDBG	3,800,000	HUD
Argyle	Housing Rehabilitation CDBG	2,238,307	HUD
Karlstad	Housing Rehab/Water tower/Streets	1,263,436	HUD
Red Lake Falls	Gasohol Plant	9,000,000	HUD
Quin County Community Health Service	Women, Infant, Childrens Program	30,856	MDH
Warroad Clinic	Primary Medical Care	308,884	HEW
Karlstad Memorial Hospital	Transportation program for Elderly	24,360	Mn/DOT
Multi-County Housing Authority	Housing Rehab Multi-County	(withdrawn)	HUD
Grygla	City Improvement Project CDBG	1,033,524	HUD
Polk County	Bridge Replacement	75,140	Mn/DOT
Polk County	Bridge Replacement	51,900	Mn/DOT
Polk County	Bridge Replacement	51,900	Mn/DOT
Pennington County	Bridge Replacement	60,000	Mn/DOT
Pennington County	Bridge Replacement	40,000	Mn/DOT
Pennington County	Bridge Replacement	45,000	Mn/DOT
Pennington County	Bridge Replacement	45,000	Mn/DOT

Applicant	Project	Total Project Cost	Funding Agency
Pennington County	Bridge Replacement	63,500	Mn/DOT
JST, Inc. East Grand Forks	Potato Alcohol Plant	NA	EPA
Area Emergency Medical Corporation	Basic Life Support Implementation	1,006,000	HHS
Roseau County	Bituminous Overlay	163,000	Mn/DOT
Norman County	Bridge Replacement	184,000	Mn/DOT
Norman County	Bituminous Base & Bit. Surfacing	680,000	Mn/DOT
Polk County	Bridge Replacement	130,000	Mn/DOT
Roseau County	Bridge Replacement	200,000	Mn/DOT
Polk County	Bituminous Resurfacing	130,000	Mn/DOT
Red Lake County	Bridge Replacement	198,600	Mn/DOT
Tri-Valley Opportunity Council	Youth Community Conservation Prog.	10,777	DES
U.S. Dept. of Transportation (FAA)	Instrument Landing System (TRF)	NA	
Fertile	Step 2 + 3 Sewage Facility	NA	EPA
Marshall County	Bridge Replacement	753,900	Mn/DOT
Arnold Gunderson	Elderly Housing (Shelly)	218,000	FmHA
Otterkill/Nelson	Elderly Housing (Middle River)	550,000	FmHA
Northwest Multi-County Housing Auth.	Subsidized Housing	NA	HUD
Halstad Community Homes, Inc.	Elderly Congregate Housing	744,600	FmHA
Mn Migrant Council	Farm Laborer Housing	470,000	FmHA
Julian Gunderson	Low Rent Housing (Stephen)	621,462	FmHA
Polk County	Burnham Creek Bridge Replacement	116,353	Mn/DOT
Polk County	Bridge Replacement	94,680	Mn/DOT
Jerome Erickson, Alvarado	Cable T.V. Franchise	NA	MCCB
Norman County	Bridge Replacement	112,500	Mn/DOT
Polk County	Bridge Replacement	22,011	Mn/DOT
Red Lake County	Community Development Block Grant	600,000	HUD
Thief River Falls	Community Development Block Grant	100,000	HUD
Agassiz Family Health Care	Rural Health Initiative	395,710	HUD
Crookston	Community Development Block Grant	1,400,000	HUD
Marshall County	Bridge Replacement	173,250	Mn/DOT
Kennedy	Fire Hall	99,900	FmHA
Green Thumb, Inc.	Elderly Employment	—	DOL
Tri-Valley Opportunity Council	Transportation Program	58,915	Mn/DOT
Northwest Community Action	Home Start Program	277,704	CSA
Polk County	Bridge Replacement	34,460	Mn/DOT
Polk County	Bridge Replacement	20,550	Mn/DOT
U.S. Postal Service	Relocate Post Office - Trail	NA	
East Grand Forks	Revision 5th Yr CDBG	NA	HUD
East Grand Forks	3rd Year Comprehensive CDBG	330,000	HUD
Alvarado	Loan for Senior Citizens Center	-	FmHA
Red Lake County	Bridge Replacement	53,812	Mn/DOT
Investment Development Company	Family Housing (TRF)	NA	MHFA
Karlstad	Park Development	48,500	LAWCON
Lancaster	Park Development	17,500	LAWCON
Warren	Park Improvements	111,000	LAWCON
Polk County Ass'n Retarded Citizens	Respite Care	37,360	DD
Red Lake Falls	Park Development	25,170	LAWCON
Roseau County	Resurfacing HWY	—	Mn/DOT
Polk County	Bridge Replacement	69,938	Mn/DOT
Hallock	Park Development	24,000	LAWCON
Pennington County	Hwy #59 Road Improvements	—	Mn/DOT
Northwest Community Action Agency	Elderly Transportation Van	13,000	HHS
Middle River	Wastewater Treatment Facility	150,000	FmHA
Tri-Valley Opportunity Council	Transportation Prog. Supplement	101,600	Mn/DOT
Roseau County	Bridge Replacement	30,000	Mn/DOT
Polk County Group Homes, Inc.	Handicap Housing (EGF-Crookston)	753,320	HUD
Mn Migrant Council	Employment & Training Program	1,368,700	DOL

NA: Not Available

Funding Agency Identification

ACTION	Community Service Administration (US)
CETA	Comprehensive Education and Training Act (US)
CSA	Community Service Administration (US)
DD	Minnesota Developmental Disabilities Council
DES	Department of Economic Security (MN)
DOE	Department of Energy (US)
DOL	Department of Labor (US)
EDA	Economic Development Administration (US)
EPA	Environmental Protection Agency (US)
GRDC	Governor's Rural Development Council (MN)
FmHA	Farmers Home Administration (US)
HEW	Department of Health, Education and Welfare (US)
HHS	Health and Human Services (US)
HUD	Department of Housing and Urban Development (US)
LAWCON	Land and Water Conservation (US)
LEAA	Law Enforcement Assistance Administration (US)
MBA	Minnesota Board on Aging
MCCB	Minnesota Cable Commission Board
MDH	Minnesota Department of Health
MHFA	Minnesota Housing Finance Agency
MHS	Minnesota Historical Society
Mn/DOT	Minnesota Department of Transportation
RDC	Rural Development Council (MN)
SPA	State Planning Agency (MN)
USDA	United States Department of Agriculture
WPB	Water Planning Board (MN)

Regional Employment & Training Advisory Committee

June 1981

Bakke, Harvey
Brandt, June
Brown, Doug
*Cavalier, Donald
Cheney, Charles
Christianson, Judith
Gamber, Harl
Gentry, Sally
Gonzalez, Tina
Gomez, Juan
Gunderson, Orley
Jorgenson, Roy
Larson, Ardell
Larson, Joyce
Mosher, Tom
Melgaard, Arlin
Moreno, Juan
Stadum, J.K.
Wikstrom, George Jr., (c)
Wilde, Diane
Wittenberg, Roger

Red Lake Falls
Thief River Falls
Crookston
Crookston
Warren
Ada
Crookston
Middle River
Crookston
East Grand Forks
Thief River Falls
Oklee
Lake Bronson
Thief River Falls
Ada
Bemidji
Crookston
Thief River Falls
Karlstad
Red Lake Falls
Crookston

Criminal Justice Advisory Committee

June 1981

Aaby, Henry
Cherveney, Cindy
Haugen, Curt
Howard, Dennis E.
Huseby, Jason
Jorgenson, Larry
Knutson, Kermit
*Knutson, Duane, (c)
Larson, George
Moen, Oris
Nordling, Duane
Olin, Dave
Richards, Charles
Stoltman, Leonard
Thompson, Roger
Strandquist, Ervin, (c)

Twin Valley
Ada
Roseau
Bemidji
Crookston
Warren
Red Lake Falls
Fertile
Roseau
Fertile
Hallock
Thief River Falls
Thief River Falls
Argyle
Lake Bronson
Newfolden

Aging Advisory Committee

June 1981

Anderson, Orville
Edwards, R.L.
Erickson, Marlin
Green, Verne, (c)
Harney, Vivian
Juneau, Olivine
Mahlum, Werner
Moen Kenny
Pederson, Ernest
Pulkrabek, Sylvia
Rethemeier, Linda
Stenberg, Otto
Swan, LaVerne
*Wysoski, Ambrose, (c)
Zutz, Dale

Karlstad
McIntosh
Pencer
Newfolden
East Grand Forks
Brooks
Gary
Newfolden
Plummer
Menton
Crookston
Thief River Falls
Badger
Thief River Falls
Warren

Arts Advisory Committee

June 1981

Anderson, Ruth
Arvidson, Roger
Cleveland, Cleo, (c)
*Forney, Dee
Hastad, Becky
Haubrich, Jeanette
Juhl, Miriam
Jones, Elton A., (c)
Kuznik, Anthony
Lodahl, Arlene
Miller, Merle
Moen, Michael
Myhre, Evangeline
Price, Kenneth (c)
Saetre, Margaret
Sorenson, Ric
Visser, Luanne

Greenbush
Red Lake Falls
East Grand Forks
Thief River Falls
Halstad
Hallock
Lake Bronson
Twin Valley
Crookston
Warroad
Crookston
Red Lake Falls
Warren
Stephen
Thief River Falls
Fosston
Ada

Technical Advisory Committee On Economic Development

June 1981

Bertilrud, Allen
Belland, Carol
Carpenter, John
Charon, Harlan
Friederichs, Wally
Holland, Vernon
Hatton, Pan
Lee George
Rood, Omar
Siverson, Lynn
Slininger, Russell
*Sorensen, Fred, (c)
Tunheim, Ray
Cleveland, Cleo, (c)
Gatheridge, William, (c)
Sandstrom, Jerome, (c)

Red Lake Falls
Thief River Falls
Hallock
Hallock
Crookston
Ada
Roseau
Oklee
Crookston
Fosston
Twin Valley
Grygla
Newfolden
East Grand Forks
Humboldt
Thief River Falls

Technical Advisory Committee on Transportation

June 1981

Berg, Ralph, (c)	Brooks
*Bouvette, Joe, (c)	Hallock
Engh, Roy, (c)	Warren
Grabanski, Don, (c)	Thief River Falls
Hutchinson, Marvin	Thief River Falls
Juhl, Wayne, (c)	Greenbush
Lieder, Bernie	Crookston
Sip, Cary, (c)	Ada
Thomforde, Harold, (c)	Crookston
Stoffel, Ralph	Thief River Falls
Almen, Harlan	Red Lake Falls

Technical Advisory Committee on Housing

June 1981

Anderson, Bob	Thief River Falls
Beck, Clarence	Hallock
Blake, Percy	Crookston
Bordenkircher, Carole	Crookston
Clark, Al	Middle River
Foss, Ron	Grygla
Geroy, Jan	Badger
Hella, Jim	Twin Valley
*Knutson, Duane, (c)	Fertile
Melby, Bob	Oklee
Nelson, Marilyn	Thief River Falls
Olson, Allan	Roseau
Raebel, Phyllis	Red Lake Falls
Redland, Kenneth, (c)	Ada
Schneider, Donald	East Grand Forks
Seeger, William	Mentor
Stauss, Larry	East Grand Forks
Thorstad, Jan	Thief River Falls
Wikstrom, Geo. Jr., (c)	Karlstad
Wynne, John	Warren

Developmental Disabilities Advisory Committee

June 1981

Erickson, Gary	Thief River Falls
Green, Verne, (c)	Newfolden
Dahlman, Tessie	Hallock
Nellis, Evelyn	Mahnomen
Nyhus, Renae	Red Lake Falls
Rafteseth, Mrs. Merle	Crookston
Sutherland, Harry	Hallock
Irvine, Sherrill	Thief River Falls
*Thorson, Pat	Warren
Westman, Pat	Roseau
Pearson, Ruth	East Grand Forks
Huot, Don	Red Lake Falls

* Committee Chairperson
(c) Member of Commission

NWRDC Publications

1980 Area Plan for Programs on Aging

This Plan includes information about the needs of senior citizens and plans to meet those needs in Region I. It expresses concerns such as long term care, information and referral, advocacy, legal services, transportation and chore services. It explains the grant-making process and lists priority needs, as established by the Aging Advisory Committee to the NWRDC. The goals of meeting these needs are addressed by specific short-term objectives in which the involvement of the Area Agency on Aging is outlined.

1981-1983 Area Plan for Programs on Aging

This Plan outlines the needs of senior citizens in Region I and the demographic characteristics of this group. It includes an inventory of services for seniors which are funded by the Area Agency on Aging. The needs were prioritized through a process which included a needs survey and county forums to get citizen participation. A long-range system of goals and objectives to meet these needs is also described in this Plan.

Arts Plan for FY '81

This Plan identifies the following areas of arts resources: people, places, organizations, contact people and arts advocates. It includes a needs assessment which was developed to permit the Arts Advisory Committee to establish the listed priorities for the arts in Region I. Another important aspect of the Plan is that it explains the grants process and the regranting categories which is necessary information to those interested in applying for arts grants.

A Local Perspective on Family Violence

This report was developed in response to a request from the Minnesota Crime Control Planning Board and the State Legislature for recommendations on what can be done to deal with the problem of violence in the family. In order to make these recommendations the Criminal Justice Advisory Committee (CJAC) and the NWRDC sought, input through three avenues: a survey of family violence professionals, a public forum on family violence, and a short term family violence task force. This input formed a basis for six specific recommendations which outlined an approach based on using existing local resources in a more effective manner and obtaining more public involvement in dealing with family violence.

Region I Developmental Disabilities Plan

This Plan provides information on regional characteristics as they relate to the needs of and the resources available to persons with developmental disabilities. The purpose and use of the Plan is to provide a framework for the Developmental Disabilities System in the region and identify its goals, problems and short-term objectives for 1980.

Directory of Services for Persons with Developmental Disabilities in Region I

This directory contains a list of services available for the handicapped in Region I. These include agencies who provide Advocacy, Education and Daytime Structured Programs, Health and Rehabilitation Services, Mental Health, Recreation, Regional Planning, Residential Services and Social Services. Addresses and names of contact persons are included for each agency.

Senior Citizen Booklets

These books contain a directory of services for senior citizens in each county in Region I. They include information about where chore, transportation, medical and long term care programs are available. The books have been distributed to libraries, senior centers, senior congregate meal sites and other places available to senior citizens.

Directory of Government Units and Service Agencies

This publication contains listings of service agencies which have full time staff and permanent offices from the township level through the legislative level that serve the seven county area of Region I. It also lists a brief description of the agency or office, service area and the name and address and phone number of the key contact people.

Regional Statistical Profile

This Profile provides a board range of statistical and cartographic data in a single source about counties and communities in Region I. The data included is useful to governmental agencies, elected officials and others in fulfilling their responsibilities to plan effectively for the future of their communities. It will be updated as more current data becomes available.

FY 1982 Employment and Training Strategic Plan Updates

The FY 1981 Employment and Training Plan will be used in FY 1982 (October 81 - September 82) with the modifications contained in the Plan Updates. This Plan, with the updates, provides local input and direction for regional implementation of the Comprehensive Employment and Training Act (CETA). The Plan consists mainly of information on the operation of the area labor market and recommendations on how resources can be used to address problem points. The concentration in the upcoming year will be on continuing to provide effective services under the present difficult economic conditions and the recent reductions in the CETA program.

NWRDC Updated OEDP

The Commission's Overall Economic Development Program was updated as required by the Economic Development Administration and by the Commission's Technical Advisory Committee on Economic Development. It includes an "Economic Development Strategy" section which focuses on current problems and gives direction to potential solutions to economic distress in the region.

1979 Annual Report

The NDWRDC's Annual Report for 1979 was prepared and distributed to the members of legislature and to local officials and citizens.

Northwestern Arts Newsletter

This is a newsletter published each year explaining programs in the Arts for Region 1.

NWRDC Newsletter

Commission's newsletter which is published monthly.

FY '81 and FY '82 Work Plans

The Commission's fiscal year 1981 and 1982 Work Plans were published. These documents detail the goals and objectives of the Commission in each of its program and planning areas.

Commission Budget

**FY '81
ACTUAL**

**FY '82
BUDGET**

RECEIPTS

PROJECTED REVENUE

State Appropriation	\$ 66,493.80
Local Tax Levy	66,084.31
HUD 701	13,603.70
HUD 107	7,200.00
DES	38,117.63
EDA	49,500.00
MBA	35,936.00
MBA-Nutrition	8,350.00
CCPB	11,928.40
DDPO	21,713.50
MnDOT	2,900.00
MSAB	8,352.47
Waste Management Board	1,250.00
Governor's Rural Development Council	2,500.00
Other	22,364.89
	\$356,294.70
TOTAL	

State Appropriation	\$ 64,758.
Local Tax Levy	73,413.
HUD 107	8,000.
DES	33,160.
EDA	40,000.
MBA	36,909.
MBA-Nutrition	12,000.
DDPO	24,365.
MnDOT	6,000
MSAB	11,667.
Grygla Contract	5,625.
Other	16,500.
Carryover	10,492.
	\$342,889.
TOTAL	

DISBURSEMENTS

PROJECTED EXPENDITURES

Salaries/Fringe	\$219,901.57
Travel	38,702.70
Per Diem	11,305.00
Office Expenses	76,936.73
	\$346,846.00
TOTAL	

Salaries/Fringe	\$233,333.
Travel	35,000.
Per Diem	10,000
Office Expenses	64,556
	\$342,889.
TOTAL	

NWRDC STAFF

Thomas Jorgens	Executive Director
Wayne Faust	Planning Director for Physical & Economic Development (Economic Development)
Michael Moore	Planning Director for Human Resources (Aging)
Donna Christianson	Administrative Secretary
Mary Jo Crystal	Financial Officer
Wayne Goeken	Planner I (Economic Development & Transportation)
Leon Heath	Planner III (Employment & Training)
Helen Jurchen	Planning Technician (Grants, Information & Data Base)
Donna Myhrer	Planner I (Aging & Developmental Disabilities)
Patricia Scharmer	Planner II (Arts & Natural Resources)
Carol Sorensen	Secretary
Judi Williamson	Planning Technician (Housing)

Eugene Abbott, Sari Clark, and Sushil Kriplani were 1980 staff members but are no longer with the NWRDC.