

hloc #

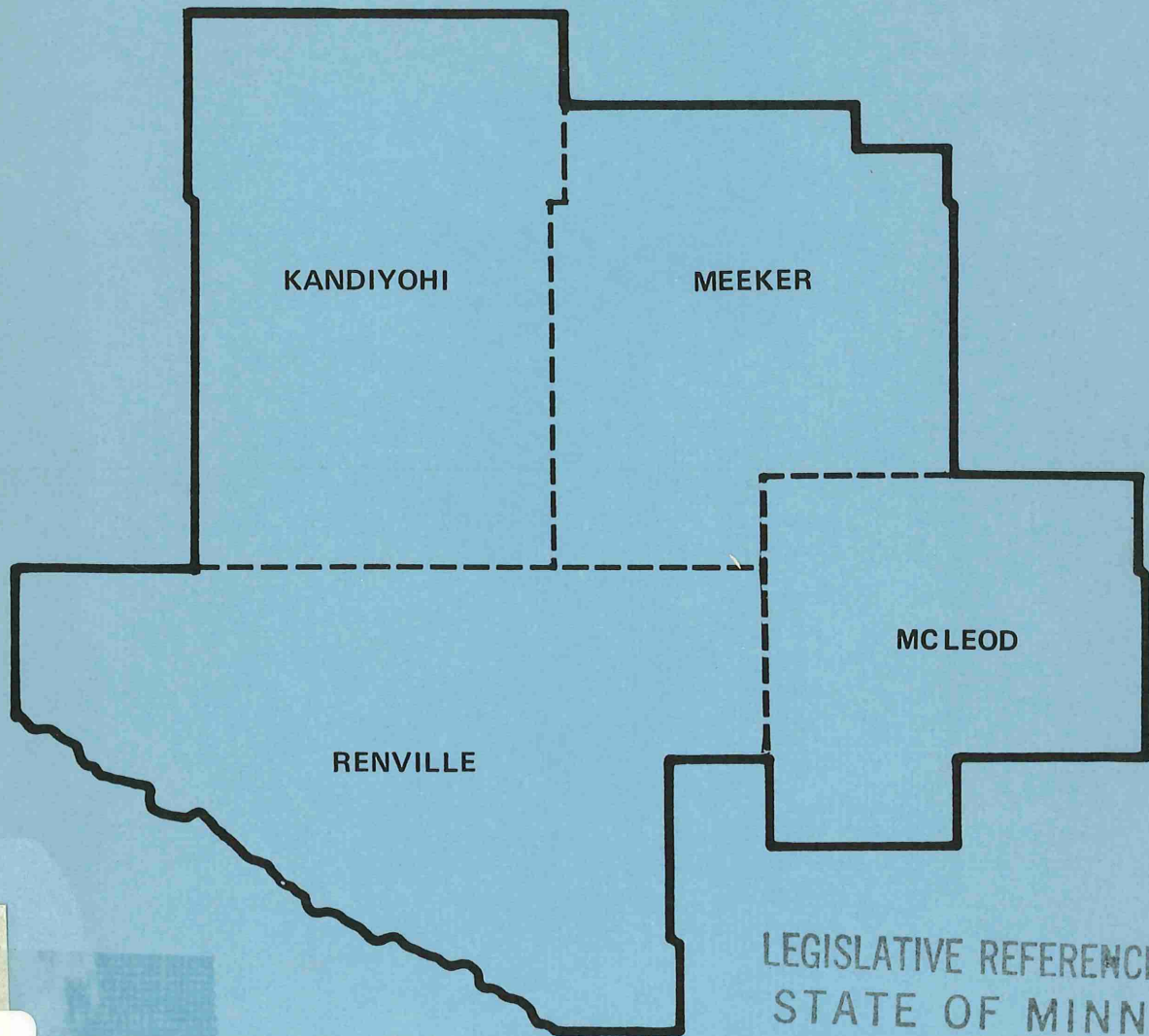
800914

LEGISLATIVE REFERENCE LIBRARY
3 0307 00015 3331

OE RDC

SIX

EAST REGIONAL DEVELOPMENT COMMISSION



LEGISLATIVE REFERENCE LIBRARY
STATE OF MINNESOTA

Annual Report

HT
393
.M62
S59ax
1979

JANUARY 1, 1979 ————— DECEMBER 31, 1979

cite ->



LR

Legislative Reference Library

111 State Capitol

March 5, 1980

10 copies rec'd

Pursuant to MS 462.393

Annual report due Feb 1 each year

Sr. Paul, Minnesota 55155 • (612) 296-3398

CHAIRMAN'S MESSAGE



This annual report marks the end of the 70's and the beginning of a new decade. In the six and one-half years we have been in existence, a few changes have occurred in our four-county area and our commission has been involved in many of those changes.

Our work in the past has been to build for the future. Most of our comprehensive planning research and analysis is completed and can be utilized in making sound decisions for tomorrow. Our commission will continue to emphasize offering technical assistance to local units of government. The focus of this technical assistance will be community and economic development.

Comparatively speaking, our region is fortunate to have a good agricultural economic base. This helps keep people employed, cuts down on poverty and in general allows people to maintain and improve their economic and social condition. Consequently, the condition of private housing and the services and facilities provided by local units of government is of fairly good quality. Therefore, our community and economic development technical assistance efforts will often be directed toward assisting or motivating private enterprise.

A partnership between the public and private sector can stimulate economic opportunities in the region. By all working together, we can manage growth and development and have a positive impact on the future.

EXECUTIVE DIRECTOR'S MESSAGE

Another year has passed and with the dawn of the 80's come new opportunities. I hope the 80's produce a renewed faith in government and allow both elected and appointed officials to function in a positive manner, free from the negative image that clouded government in the 60's and 70's.

In our four-county area there are approximately 800 elected persons representing townships, cities, counties, school districts, watershed districts and soil and water conservation districts. Ten state legislators and two U.S. representatives represent the region on a state and national basis. In addition, there are hundreds of volunteers associated with fire departments and business, industrial and civic organizations. These are the people who make up the majority of the development commission and its committees.

I feel comforted in knowing that our development commission and our local units of government are in good hands. I hope the 80's offer governmental officials the opportunity to cooperate even more in addressing the social and economic concerns of the area.

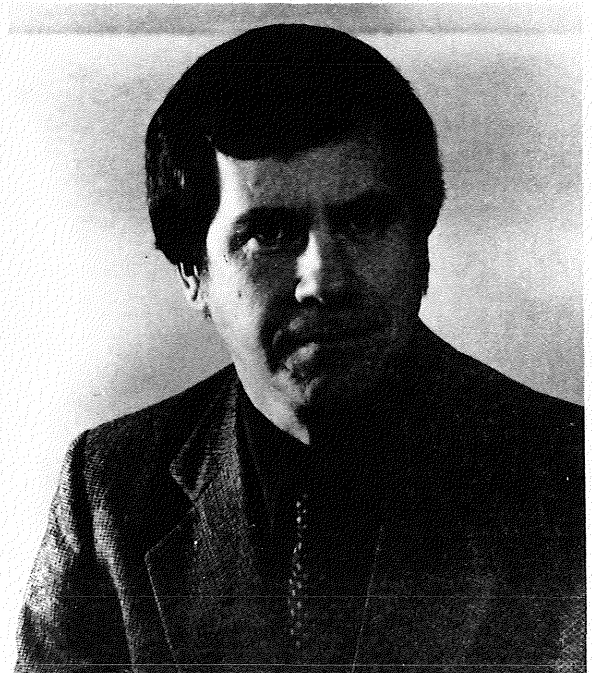


TABLE OF CONTENTS

Commissioners and Staff	3
Committees and Appointments	4 - 5
Comprehensive Development Plan Activities	6 - 10
A - 95	11 - 20
Technical Assistance	21
Budget	22 - 23
Studies, Reports and Plans	24 - 26
Development Region Map	27
State and Federal Legislators	28

COMMISSIONERS AND STAFF

KANDIYOHI COUNTY

Dean Aarvig, Townships
Homer Bach, Municipalities
Earl Larson, County Board

MCLEOD COUNTY

Ed Duesterhoeft, Townships
Clifford Popp, County Board
Chuck Warner, Municipalities

MEEKER COUNTY

Eilert Flemming, Municipalities
George Rice, County Board
Deb Thomas, Townships

RENVILLE COUNTY

Ed Downs, Municipalities
Pat Kubesh, County Board
Wesley Kuske, Townships

NONCOUNTY APPOINTMENTS

Gene Dillon, School Boards
*Al Christopherson, School Boards
*Rene Marguth, School Boards
Irma Peterson, Councilwoman, Willmar
(Community over 10,000)
Andrew Walters, School Boards

PUBLIC INTEREST COMMISSIONERS

Patricia Bonniwell, Chairperson, 6E Employment and Training Advisory Committee
Leonard Pikal, Region 6E Soil and Water Conservation Districts
*Larry Schiller, Chairperson, 6E Manpower Advisory Committee
Carolyn Stevens, Minnesota Association of Voluntary Social Service Agencies

*Positions vacated in 1979.

OFFICERS

Homer Bach, Chairman
Ed Duesterhoeft, Vice Chairman
Chuck Warner, Secretary-Treasurer

STAFF

H. Eugene Hippe, Executive Director
Shirley Brandt, Part-time Secretary
Richard Brouwer, Draftsman
Richard Carlstrom, Planner - Economic Development
Dennis Goldman, Planner - Economic Development
Lee Larson, Planner - Community Development
Kathleen McCormick, Planner - Aging
Lorraine Patton, Financial Officer
Evelyn Peratt, Secretary / Receptionist
Tom Peterson, Planner - Community Development
John Walsh, Planner - Developmental Disabilities
Pam Wiegmann, Secretary

COMMITTEES AND APPOINTMENTS

EXECUTIVE STEERING COMMITTEE

Homer Bach - Atwater
Ed Downs - Morton
Ed Duesterhoeft - Stewart
Deb Thomas - Litchfield

BYLAW COMMITTEE

Wes Kuske - Olivia
Earl Larson - Willmar
George Rice - Watkins
Chuck Warner - Brownnton

BUDGET & WORK PROGRAM COMMITTEE

Irma Peterson, Chairperson - Willmar
Ed Downs - Morton
Ed Duesterhoeft - Stewart
Eilert Flemming - Cosmos

PERSONNEL COMMITTEE

Wes Kuske - Olivia
Earl Larson - Willmar
George Rice - Watkins
Chuck Warner - Brownnton

APPOINTMENTS

Ed Downs, Pioneerland, Inc.
H. Eugene Hippe, Environmental Education Council
Wes Kuske, Criminal Justice Planning Council
Pat Bonniwell, Regional Employment and Training Advisory Committee
Cy Kobbermann, Private Industry Council
Irma Peterson, Governor's Rural Development Council
Leonard Pikal, Statewide "208" Task Force
Bernie Knutson, Health Systems Agency Six
Irma Peterson, Emergency Medical Service Technical Advisory Committee
Pat Kubesh, Emergency Medical Service Corporation
Dennis Goldman, Emergency Medical Service Corporation
Earl Larson, Power Plant Siting Advisory Committee

NATURAL RESOURCES COMMITTEE

Leonard Pikal, Chairman - Brownton
Dwayne Buer - Atwater
Del Carlson - Grove City
Ron Erpelding - Willmar
Leo Grosam - Fairfax
Orlo Hagevold - Fairfax
Clint Haroldson - Renville
Ardis Hoversten - Stewart
Phillip Johnson - Pennock
Don Martens - Hutchinson
Virgil Olson - Willmar
Ed Reed - Silver Lake
Clyde Ruebel - Olivia
Ernest Schafer - Buffalo Lake
John Taatjes - Raymond
Hugh Wagner - Watkins
Jerry Weldy - Franklin

EMPLOYMENT AND TRAINING COMMITTEE

Pat Bonniwell, Chairperson - Dassel
Curt Gander - Hutchinson
Walter Gislason - Willmar
Bonnie Grussing - Willmar
Barbara Gustafson - Litchfield
William Haggerty - Watkins
Kevin Halliday - Olivia
Archie Hansen - Willmar
Roger Iverson - New London
Gary Jorgenson - Willmar
Doug Knutson - Olivia
Dorothy Lindstrom - Grove City
Warren Macemon - Hutchinson
Scott Nelson - Willmar
Margaret Olson - Hutchinson
Jerrel Sharpe - Cosmos
Don Werder - Willmar
Bill Zanin - Willmar
Byron Zuidema - Willmar

TRANSPORTATION COMMITTEE

Chuck Warner, Chairman - Brownton
Kenneth Agren - Litchfield
Reuben Barka - Litchfield
Jim Brazil - Morton
Harold Buscho - Morton
Verne Carlson - Willmar
Mel Faldeboe - Willmar
Roger Gustafson - Glencoe
Dick Hamilton - Willmar
Henry Knief - Litchfield
Bill Martens - Litchfield
Dean Oleson - Litchfield
Leroy Olsen - Hutchinson
Marlow Priebe - Hutchinson
Dennis Stoeckman - Olivia
Leonard Stulen - Spicer
Delbert Thomas - Litchfield

DEVELOPMENT DISABILITIES COMMITTEE

Mildred Paulsen, Chairperson - Steen
Bev Barker - Glencoe
Paula Brandt - Willmar
Janice Carlson - Spicer
Pat Crow - Holland
Robert Dauenhauer - Marshall
Marcia Dewane - Willmar
Clark Guhin - Luverne
Bill Gulbrandsen - Willmar
Irene Holmquist - Worthington
James House - Worthington
Ray Jensen - Springfield
Mick Joyce - Marshall
Kathryn Kelly - Jackson
Eleanor Larson - Hadley
Donna Laue - Worthington
Ludie Mammen - Montevideo
Addie Moonier - Redwood Falls
Frank Moore - Marshall
Louis Nelson - Fulda
Dave Sams - Windom
Ernie Schafer - Buffalo Lake
Norman Slagter - Montevideo
Marylou Smith - Holloway
Norman Tempel - Willmar
Lois Welling - Atwater

ECONOMIC DEVELOPMENT COMMITTEE

Eilert Flemming, Chairman - Cosmos
Dick Arne - Willmar
Russ Bjorhus - Litchfield
Hillard Graupmann - Glencoe
Don Guggemos - Winsted
Gary Hachfeldt - Glencoe
Dick Hamilton - Willmar
Inez Kienholz - Bird Island
Pat Maher - Olivia
Alec Olson - Spicer
Jim Sullivan - Morton
Bea Thompson - Litchfield

AGING COMMITTEE

Irma Peterson, Chairperson - Willmar
Margaret Anderson - Grove City
Beverly Barker - Glencoe
John Doidge - Glencoe
Doris Ginsburg - Hector
Alpha Kragenbring - Atwater
Jackie Michaelson - Darwin
Henriette Nielsen - Buffalo Lake
Michelle Then - Willmar

COMPREHENSIVE DEVELOPMENT PLAN ACTIVITIES

Each year the commission prepares and adopts an annual work program. This work program details the commission's anticipated areas of involvement for the forthcoming twelve months and also gives an indication of involvement from a financial viewpoint for the following two years. The format of the work program for each category of involvement is to list previous work accomplished, show the objective for the area of operation, state some of the more obvious work elements, describe what the expected results are at the end of the fiscal year and describe what the final product will be after the commission has completed all work in a given program area. Each program area in the annual work program breaks down the funding sources as to federal, state and local funds and then show how the funds will be used. The expenditures show how many dollars are anticipated to be used for staff, direct costs, indirect costs and whether or not any consultant fees will be paid. In addition, the commission also makes a projection as to how many manhours will be needed in that given twelve-month period to accomplish the work outlined.

The commission has attempted to set up its work program along the lines or requirements in the State Statutes that require the commission to "prepare and adopt, after appropriate study and such public hearings as may be necessary, a comprehensive development plan for the region." State Statutes go on to say "The plan shall consist of a compilation of policy statements, goals, standards, programs and maps prescribing guides for an orderly and economic development, public and private, of the region. The comprehensive development plan shall recognize and encompass physical, social or economic needs of the region, and those future developments which will have an impact on the entire region including, but not limited to, such matters as land use, parks and open space land needs, the necessity for and location of airports, highway, transit facilities, public hospitals, libraries, schools, public and private housing, and other public buildings."

The commission recognizes that it cannot address all of these issues in depth in any given twelve-month period. However, it also recognizes that eventually these areas will be studied and, therefore, in its annual work program it has broken down eighteen different elements that will comprise the basis of a comprehensive development plan for the region.

The following list of work program categories forms the basis for what will eventually be a comprehensive development plan for the region. Each category will be treated as a separate but integrated component of the plan. Those items identified with an asterisk (*) have been approved and distributed or are being prepared for distribution as the commission begins the 1980 calendar year. Planning in areas of Education, Criminal Justice, Health and Arts and Humanities is presently being coordinated by the agencies identified in parentheses. Planning for these areas by the Six East Regional Development Commission will be undertaken at a later date after other priorities have been met.

COMPREHENSIVE DEVELOPMENT PLAN ELEMENTS

Housing

- *Housing: 1978 Analysis and Policies (177 pages)

- *Housing: Summary Report (25 pages)

Public Facilities

- *Public Facilities: Analysis and Policies (33 pages)

Economic Development

- *Regional Overall Economic Development Plan (305 pages)

Land Use and Natural Resources

- *Growth and Development: Analysis and Policies (156 pages)

- *Growth and Development: Summary Report (24 pages)

- *Wetlands: Analysis, Policies and Recommendations (106 pages)

Transportation

Open Space/Recreation

- *Outdoor Recreation Report (243 pages)

- Outdoor Recreation Report: Summary

Agriculture

- Regional Agricultural Profile

- Farm/Urban Land Use Conflicts

- Cropland Preservation

Water Resources

- Water Resources: Analysis, Policies and Recommendations

Energy

Employment and Training

- *1980 Employment and Training Plan (44 pages)

Education

- (Southwest Minnesota Educational Cooperative Service Unit)

Human Services

- *Multi-County Human Service Agencies Inventory (32 pages)

Population

- *Population Report (69 pages)

Aging

- *1980 Area Plan for Programs on Aging (145 pages)

- *The Golden Pages Directory of Services (50 pages)

Criminal Justice

- (Minnesota Crime Control Planning Board/Region "E")

Health

- (Health Systems Agency Six)

Developmental Disabilities

- *Annual Grant Application Plan (30 pages)

- Comprehensive Plan for Developmental Disabilities

Arts and Humanities

- (Minnesota State Arts Board/Southwest Minnesota Arts & Humanities Council)



PUBLIC FACILITIES



A primary responsibility of local units of government is providing public facilities and services. In July, 1979 the development commission held a public hearing and adopted a report titled "Public Facilities: Analysis and Policies." This report can serve as an inventory of facilities as well as a guide for A-95 review and comment of facilities proposed for upgrading or new construction.



ECONOMIC DEVELOPMENT



Economic development has always been one of the main concerns of the Regional Development Commission. In previous years it supplied the staff necessary to prepare Overall Economic Development Plans (OEDP) for Renville, Kandiyohi and Meeker Counties. The preparation of these OEDP's has qualified these counties to be eligible areas for federal Economic Development Administration (EDA) programs.

On December 1, 1979 the Regional Development Commission submitted a 305-page District OEDP to the Chicago EDA office. The approval of the District OEDP will mean a bonus of ten percent on any EDA grant that might be approved in the region.



LAND USE



AND RELATED NATURAL RESOURCES

Four years of work culminated in 1978 when the development commission held a public hearing and adopted a 156-page report entitled "Growth and Development: Analysis and Policies." The four-year effort was neither full-time nor continuous and was in fact delayed to take advantage of information being compiled by others. A synopsis is contained near the back of this Annual Report. A 26-page summary report was written in an effort to share major aspects of the report with more people.

On May 23, 1979 the development commission held a public hearing and adopted a 106-page report entitled "Wetlands. Analysis, Policies and Recommendations." The need for this report was determined as a result of conflicts and misunderstandings between local units of government and land owners; and the Minnesota Department of Natural Resources and the U.S. Department of the Interior. A synopsis of this report can be found near the back of this Annual Report.



TRANSPORTATION



Past accomplishments of the Regional Development Commission include completing public transit feasibility studies for Hutchinson and the greater Willmar area. Both of these studies have been implemented. The Regional Development Commission also worked in 1974 through 1976 with the University of Minnesota, Department of Applied Economics on a study concentrating on commodity movement.

In 1977 the Regional Development Commission began working with the Minnesota Department of Transportation (MnDOT) to provide citizen input for the MnDOT planning process. It is anticipated the commission will draw together all this information in 1980 and produce a report regarding local transportation needs, problems and recommendations.



OPEN SPACE/RECREATION



The development commission is in an excellent position to make intelligent rational decisions regarding outdoor recreation and open space. In 1978 it adopted "Regional Park/Recreation Criteria" and on December 26, 1979 it held a public hearing and adopted a 243-page "Outdoor Recreation Report." A synopsis of the "Outdoor Recreation Report" is contained near the back of this Annual Report. The report addresses both public and private resources and contains an extensive inventory of facilities and acreage. Private entrepreneurs should be able to use the report to analyze where outdoor recreation needs exist and how to evaluate any economic potential.



AGRICULTURE



The research for three reports was started in 1979. One of them - - "Regional Agricultural Profile" - - was close to completion at the end of the year. A primary purpose of this report is to statistically support agri-business economic development efforts in the area. The analytical aspects of the report should give some direction to those economic development efforts.

The other two reports - - "Farm/Urban Land Use Conflicts" and "Cropland Preservation" - - are in the formative stages and are scheduled for completion in 1980.



WATER RESOURCES



The year 1979 was somewhat of a continuation of certain activities of the previous year. The Minnesota Pollution Control Agency (PCA) had subcontracted with the Regional Development Commission to provide citizen input into the "208" Nonpoint Pollution Source Program. This contract terminated in November, 1979 and the MnPCA has prepared a state-wide report with recommendations. The Regional Development Commission had a similar contractual arrangement with the Minnesota Water Planning Board which ended in 1979. The Water Planning Board has also prepared a state-wide report and recommendations.

The Regional Development Commission has begun to prepare a report entitled "Water Resources: Analysis, Policies and Recommendations." This report will utilize the two previously mentioned studies and applicable information from other reports and studies. It is anticipated the report will be completed in early 1980.



HEALTH



Most health planning for Region Six East is the responsibility of Health Systems Agency Six (HSA-6) located at Redwood Falls. Health Systems Agency Six encompasses 27 counties in a four-region area.

In June of 1979 an Emergency Medical Services (EMS) Board was formed to plan for emergency medical services in an 18-county tri-regional area. The planning activity will continue until June of 1980 and then the 11-member EMS Board is hopeful it will be responsible for administering emergency medical services facility money over a three or four year period.



EMPLOYMENT AND TRAINING



The development commission prepares and adopts an "Employment and Training Plan" on an annual basis. This past year the public hearing was held on September 18, 1979. The annual "Employment and Training Plan" determined the guidelines as to the utilization of \$2,008,237 of CETA funds in the four-county region during 1979.



AGING



The Six East Regional Development Commission has been a partner in a tri-regional 18-county Southwestern Area Agency on Aging. During 1979 the Six East Regional Development Commission was approved as a separate four-county agency, effective January 1, 1980. As part of this approval, a transition plan had to be developed which includes evaluating and monitoring the nutrition programs being administered by the Six East Community Action Agency. The evaluation and monitoring had been conducted by the Minnesota Board on Aging and will be accomplished locally beginning April 1, 1980.

Although the Area Agency on Aging is officially the Six East Regional Development Commission, most of the responsibility and credit goes to the 13-member advisory committee. Each year a plan is developed regarding the operation of the agency and guidelines and developed for administration of direct service grant money. Priority areas for direct service funds were in-home services, transportation, adult day care, organizational advocacy, multipurpose senior centers, legal services, adult education, counseling and home-delivered meals. During 1979 projects funded included McLeod County Social Service Center, Hutchinson Area Community Service and West Central Community Services for a total cost of \$119,073 of which \$70,880 was federal funds.



DEVELOPMENTAL DISABILITIES



Each year the 18-county tri-regional Developmental Disabilities Committee prepares an annual plan for the state funding agency. This plan is a combination of contract and work program. At the present time a comprehensive plan is being developed which will inventory facilities and services, analyze needs and make recommendations regarding meeting the needs of certain handicapped individuals. This plan is being prepared so each of the three regions involved will be a separate part for implementation purposes.

A - 95 CLEARINGHOUSE PROCESS

On June 4, 1975, Governor Wendell Anderson designated the Six East Regional Development Commission as the official A-95 Clearinghouse Review Agency for the region. The commission has adopted, published and distributed an "A-95 Clearinghouse Review Procedural Manual."

Section 462.391, Subdivision 3 of the Regional Development Act states in part, "The commission shall review all applications of governmental units, independent commissions, boards or agencies operating in the region for a loan or grant from the United States of America or any agency, including state agencies and colleges or universities, for public facilities, studies, or any other purposes if the application clearly is related to the region, whether or not such review is required by the Federal Government." In 1976, the commission initiated a policy that it would review and process all applications but would comment only on those which have regional significance.

After the RDC is notified regarding an application, it notifies all local units of government, public agencies and semipublic agencies which may be concerned with or affected by the proposal. Also, the RDC notifies the State Clearinghouse which in turn notifies all applicable state agencies. The RDC does not have the authority to approve or disapprove applications. It acts as a coordinating agency for purposes of review and comment.

Ideally, the commission should base its review and comment on that element of an adopted comprehensive development plan that relates to the application. Where there is no adopted plan, the commission uses the goals and objectives in its Overall Program Design as a measure of consistency.

The following list of funding agencies and their acronyms are used in the list of 158 applications processed by the commission during the Calendar Year 1979.

CSA	Community Services Administration
DOE	U.S. Department of Energy
DOL	U.S. Department of Labor
EPA	Environmental Protection Agency
FmHA	Farmer's Home Administration
HCRS	Heritage, Conservation and Recreation Service
HEW	U.S. Department of Health, Education and Welfare
HSA-6	Health Systems Agency Six
HUD	U.S. Department of Housing and Urban Development
LAWCON	Land and Water Conservation
LCMR	Legislative Committee on Minnesota's Resources
LEAA	Law Enforcement Assistance Administration
MDH	Minnesota Department of Health
MHS	Minnesota Historical Society
MinnARC	Minnesota Association for Retarded Citizens
MN DES	Minnesota Department of Economic Security
MN DNR	Minnesota Department of Natural Resources
MnDOT	Minnesota Department of Transportation
MRDC	Minnesota Rural Development Council
NA	Not Applicable
PCA	Pollution Control Agency
SMAHC	Southwest Minnesota Arts and Humanities Council
SPA	State Planning Agency
USDA	United States Department of Agriculture
WCCSC	West Central Community Services Center
6E CAA	Six East Community Action Agency
6E CETC	Six East Comprehensive Employment and Training Center
6E RDC	Six East Regional Development Commission

APPLICATION NUMBER	APPLICANT	PROJECT DESCRIPTION	RDC ACTION	LOAN OR GRANT	FUNDING AGENCY	TOTAL COST	AMOUNT REQUESTED	AMOUNT FUNDED
116-79	MnDOT	Highway Construction--Kandiyohi, Meeker and Renville Counties	Positive	Grant	MnDOT	936,000	748,800	554,000
117-79	MN DES	Weatherization	Positive	Grant	DOE	9,717,400	9,717,400	9,717,400
118-79	Region E	Criminal Justice Annual Action Plan	Positive	Grant	LEAA	220,443	178,781	129,097
119-79	MN Environmental Education Board	Prairie Woods EE Council Water Management Seminar	Positive	Grant	Office of Education	10,429	9,839	9,839
120-79	City of Kandiyohi	Steps 2 & 3 Wastewater Treatment Facilities	Positive	Grant	EPA/PCA	287,644	258,880	Pending
121-79	6E RDC	FmHA Section 111	Positive	Grant	FmHA/USDA	31,250	25,000	Pending
122-79	City of Bird Island	Steps 2 & 3 Wastewater Treatment Facilities	Positive	Grant	EPA/PCA	90,910	81,819	Pending
123-79	Jerry Harrington	Section 221(d)(3) Housing	Positive	Loan	HUD	\$1,147,000	\$1,147,000	Not Funded
124-79	City of Grove City	Step 1 Wastewater Treatment Facility	Positive	Grant	EPA/PCA	14,295	10,721	Pending
125-79	MN DES	CETA	Positive	NA	DOL	NA	NA	Approved
126-79	MN DNR	Acquisition and Development Program, Region 6E	Positive	Grant	HCRS	1,432,492	1,432,492	\$1,432,492
127-79	City of Pennock	Step 1 Wastewater Treatment Facility	Positive	Grant	EPA/PCA	20,600	18,540	18,540
128-79	6E CAA	Summer Youth Program	Positive	Grant	CSA	8,000	8,000	8,000
129-79	WCCSC	Volunteer Services Program	Positive	Grant	ACTION	45,000	45,000	Not Funded
130-79	MN CAP Association	CSA Grant	Positive	Grant	CSA	47,500	27,500	Pending
131-79	City of Bird Island	HUD 701 Planning Grant	Positive	Grant	HUD	12,100	8,000	8,000
132-79	MN DES	CETA	Positive	Grant	DOL	2,465,303	2,465,303	2,465,303
133-79	McLeod County Social Service Center	Elderly Homemaking and Chore Service	Positive	Grant	HEW	16,000	12,000	12,000
134-79	Hutchinson Area Community Service	Multi-Service Program for Elderly	Positive	Grant	HEW	17,773	13,180	13,180
135-79	WCCSC	Elderly Day Care	Positive	Grant	HEW	85,300	45,700	45,700

APPLICATION NUMBER	APPLICANT	PROJECT DESCRIPTION	RDC ACTION	LOAN OR GRANT	FUNDING AGENCY	TOTAL COST	AMOUNT REQUESTED	AMOUNT FUNDED
136-79	Meeker County	LAWCON/LCMR	Positive	Grant	SPA	33,500	25,125	25,125
137-79	Redwood Falls Hospital	Critical Care Nursing Education in the Rural Area	Positive	Grant	MRDC	49,780	17,224	17,224
138-79	City of Watkins	Steps 2 & 3 Wastewater Treatment Facilities	Positive	Grant	EPA/PCA	1,005,000	904,500	Pending
139-79	University of Minnesota	Pilot Adzuki Bean Demonstration	Positive	Grant	MRDC	\$ 67,078	\$ 40,068	\$ 35,000
140-79	City of Olivia	Land Use Planning Grant	Positive	Grant	SPA	16,000	12,000	Withdrawn
141-79	HSA-6	Regionalization of Perinatal Services in MHSA-6	No Comment	Grant	MRDC	71,900	25,900	Not Funded
142-79	6E CAA	Community Food and Nutrition	Negative	Grant	CSA	17,800	17,800	Not Funded
143-79	City of Lester Prairie	Steps 2 & 3 Wastewater Treatment Facility	Positive	Grant	EPA/PCA	929,674	831,307	Pending
144-79	City of Willmar	Community Development Block Grant	Positive	Grant	HUD	603,000	457,000	457,000
145-79	City of Willmar	LAWCON/LCMR - Tennis Courts	Positive	Grant	SPA	60,000	30,000	Not Funded
146-79	City of Willmar	LAWCON/LCMR - Skating Areas, Civic Center	Positive	Grant	SPA	16,000	8,000	Not Funded
147-79	City of Willmar	LAWCON/LCMR - Park Development, Robbins Island	Positive	Grant	SPA	131,000	65,000	65,000
148-79	Chalet Foods	Loan Guarantee	Positive	Loan	FmHA/USDA	300,000	300,000	Not Funded
149-79	WCCSC	Sixth Year Staffing Growth Grant	Positive	Grant	HEW	102,613	102,613	102,613
150-79	WCCSC	Consultation and Education	Positive	Grant	HEW	72,766	72,766	72,766
1-80	City of Glencoe	Land Use Planning Grant	Positive	NA	SPA	10,000	7,500	7,500
2-80	City of Sunburg	LAWCON/LCMR - Park Development	Positive	Grant	SPA	12,700	6,350	Not Funded
3-80	City of Hector	LAWCON/LCMR - Acquisition and Development	Positive	Grant	SPA	8,550	4,275	Not Funded
4-80	City of Renville	LAWCON/LCMR - Acquisition and Site Preparation	Positive	Grant	SPA	21,150	10,575	Not Funded
5-80	City of Pennock	LAWCON/LCMR - Softball Field Development	Positive	Grant	SPA	\$ 43,660	\$ 21,830	Not Funded

APPLICATION NUMBER	APPLICANT	PROJECT DESCRIPTION	RDC ACTION	LOAN OR GRANT	FUNDING AGENCY	TOTAL COST	AMOUNT REQUESTED	AMOUNT FUNDED
6-80	City of Pennock	LAWCON/LCMR - Volleyball-Skating Rink	Positive	Grant	SPA	9,097	4,548	Not Funded
7-80	City of Pennock	LAWCON/LCMR - Park Acquisition and Development	Positive	Grant	SPA	15,700	7,850	Not Funded
8-80	City of Pennock	LAWCON/LCMR - Park Acquisition and Development	Positive	Grant	SPA	37,700	18,850	Not Funded
9-80	City of Raymond	LAWCON/LCMR - Tennis Courts	Positive	Grant	SPA	30,000	15,000	Not Funded
10-80	Kandiyohi County	LAWCON/LCMR - Games Lake Phase III	Positive	Grant	SPA	40,000	20,000	Not Funded
11-80	Kandiyohi County	LAWCON/LCMR - Diamond Lake Phase II	Positive	Grant	SPA	65,000	37,500	\$ 37,500
12-80	City of Atwater	LAWCON/LCMR - Park Acquisition	Positive	Grant	SPA	14,000	7,000	Not Funded
13-80	City of Atwater	LAWCON/LCMR - Acquisition and Development	Positive	Grant	SPA	70,500	35,250	52,875
14-80	City of Eden Valley	LAWCON/LCMR - Tennis Courts	Positive	Grant	SPA	20,450	10,225	Not Funded
15-80	City of Glencoe	LAWCON/LCMR - Park Development	Positive	Grant	SPA	45,500	27,750	27,750
16-80	City of Fairfax	LAWCON/LCMR - Community Park Development	Positive	Grant	SPA	47,350	23,675	23,675
17-80	City of Franklin	LAWCON/LCMR - Community Park Development	Positive	Grant	SPA	23,512	11,756	Not Funded
18-80	City of Hutchinson	LAWCON/LCMR - MacDonald's Park Development	Positive	Grant	SPA	136,500	68,250	68,250
19-80	MN DES	Title III - CETA	Negative	Grant	DOL	\$ 33,308	\$ 33,308	\$ 33,308
20-80	McLeod County	Bridge Replacement	Positive	Grant	MnDOT	113,000	100,000	Pending
21-80	6E RDC	Developmental Disabilities Funding	Positive	Grant	SPA	44,279	33,209	25,000
22-80	Kandiyohi County DAC	Developmental Achievement Building	Positive	Loan	FmHA/USDA	200,000	150,000	150,000
23-80	MN DES	CETA Title II Special Grant to the Governor	Positive	Grant	DOL	3,831,177	3,831,177	3,831,177

APPLICATION NUMBER	APPLICANT	PROJECT DESCRIPTION	RDC ACTION	LOAN OR GRANT	FUNDING AGENCY	TOTAL COST	AMOUNT REQUESTED	AMOUNT FUNDED
24-80	MN DES	Modification Titles IID & VI CETA	No Comment	Grant	DOL	846,834	846,834	846,834
25-80	6E CAA	Nutrition for the Elderly	Positive	Grant	HEW	117,252	51,810	51,810
26-80	Natural Resources Corporation	Alcohol Plant	Positive	Grant	EDA	3,500,000	200,000	Not Funded
27-80	MN DES	CETA Various Titles	Positive	Grant	DOL	22,869,496	22,869,496	22,869,496
28-80	6E CAA	Weatherization Program	Positive	Grant	DOE	429,592	429,592	429,592
29-80	MN Department of Personnel	Technical Assistance in Personnel Management for Local School Districts	Withdrawn	Grant	Office of Personnel Management	53,524	26,708	Withdrawn
30-80	McLeod-Sibley Community Health Service	Meeker County Community Health Services Plan.	Positive	Grant	MDH	19,830	19,830	19,830
31-80	MN DES	Modification of Title IV, Title III and Administration Cost Pool - CETA	Positive	Grant	DOL	180,598	180,598	180,598
32-80	Region E	FY 1980 Planning Grant	Positive	Grant	LEAA	61,662	61,162	61,162
33-80	6E CAA	Retired Senior Volunteer Program	Positive	Grant	ACTION	\$ 29,460	\$ 21,394	\$ 19,460
34-80	Kandiyohi County Community Nursing Service	Community Health Services Plan 1980-1981	Positive	Grant	MDH	312,567	83,206	83,206
35-80	Eighth Judicial District	Caseflow Management Project	Positive	Grant	LEAA	7,741	6,967	6,967
36-80	Eighth Judicial District	Records Management in the Courts	Positive	Grant	LEAA	15,258	13,732	13,395
37-80	McLeod-Sibley Community Health Services	1980-1981 Health Services Plan	Positive	Grant	MDH	200,533	104,599	104,599
38-80	Professional Services Quality Council	Health Care Financing	No Comment	Grant	Health Care Financing Agency	511,120	511,120	465,825
39-80	MN CAP Association	Citizens Energy Coalition	Negative	Grant	CSA	55,000	55,000	40,000
40-80	MN DES	Title IIA, B & C, Title IID, Title IV YETP; YCCIP, SYEP; STIP II, Titles VI and VII - CETA	Positive	Grant	DOL	22,869,496	22,869,496	22,869,496
41-80	Planned Parenthood	Family Planning Grant	Negative	Grant	HEW	1,719,009	1,399,830	1,159,830

APPLICATION NUMBER	APPLICANT	PROJECT DESCRIPTION	RDC ACTION	LOAN OR GRANT	FUNDING AGENCY	TOTAL COST	AMOUNT REQUESTED	AMOUNT FUNDED
42-80	HUD	Subdivision Review, MacDonald Sixth Addition, Hutchinson	Positive	NA	HUD	NA	NA	Approved
43-80	MN DES	Displaced Homemakers	Negative	Grant	DOL	150,000	150,000	Not Funded
44-80	City of Brownton	Storm Sewer Improvements	Positive	Grant/Loan	FmHA/USDA	643,000	482,000	Pending
45-80	City of Willmar	Comprehensive Community Development Block Grant	Positive	Grant	HUD	2,314,000	1,700,000	1,700,000
46-80	McLeod County	Single Purpose Community Development Block Grant	Positive	Grant	HUD	474,815	474,815	Not Funded
47-80	McLeod County	Comprehensive Community Development Block Grant	Positive	Grant	HUD	\$1,700,000	\$1,700,000	Not Funded
48-80	Meeker County	Single Purpose Community Development Block Grant	Positive	Grant	HUD	250,000	250,000	Not Funded
49-80	Meeker County	Comprehensive Community Development Block Grant	Positive	Grant	HUD	1,700,000	1,700,000	Not Funded
50-80	Kandiychi County	Single Purpose Community Development Block Grant	Positive	Grant	HUD	750,000	750,000	Not Funded
51-80	Kandiyohi County	Comprehensive Community Development Block Grant	Positive	Grant	HUD	1,700,000	1,700,000	Not Funded
52-80	Renville County	Comprehensive Community Development Block Grant	Positive	Grant	HUD	844,100	844,100	\$ 844,100
53-80	MN DES	Title VII Private Sector Initiative Program (PSIP)	Positive	Grant	DOL	1,903,698	1,903,698	1,903,698
54-80	Fifth and Eighth Judicial Districts	Rural Juror Utilization Project	Negative	Grant	LEAA	23,906	22,711	15,581
55-80	Meeker County	Shelter Care Program	Positive	Grant	LEAA	14,074	14,074	7,000
56-80	WCCSC	Batterer Intervention for Family Violence	Positive	Grant	LEAA	25,463	22,916	22,916
57-80	Raynold & Myrtle Allen	MN Historical Society - Restoration of Allen's Octagon Cottage	Positive	Grant	MHS	12,000	6,000	Not Funded
58-80	6E CAA	Outreach Services	No Comment	Grant	MN DES	21,561	21,561	Pending

APPLICATION NUMBER	APPLICANT	PROJECT DESCRIPTION	RDC ACTION	LOAN OR GRANT	FUNDING AGENCY	TOTAL COST	AMOUNT REQUESTED	AMOUNT FUNDED
59-80	Mid-State Cable Co.	Cable Service Territory	Negative	NA	MN Cable Communication Bd	NA	NA	Pending
60-80	Northern Video Cable Co.	Cable Service Territory	Negative	NA	MN Cable Communication Bd	\$ NA	\$ NA	Pending
61-80	MN DES	Administrative Modification CETA	Tabled	Grant	DOL	5,316,820	5,316,820	\$5,316,820
62-80	6E CAA	Administration and Community Services	Positive	Grant	CSA	120,000	100,000	Pending
63-80	City of Hector	Land Transfer	Positive	NA	MnDOT	NA	NA	Approved
64-80	John S. Mahlum	Section 515 Rural Rental Housing, Morton	Positive	Loan	FmHA/USDA	302,400	287,280	Pending
65-80	Renville County Community Residence	Transportation Service	Positive	Grant	MnDOT	24,197	17,438	Pending
66-80	Renville County	Bridge Replacement	Positive	Grant	MnDOT	98,000	90,000	Pending
67-80	MnDOT	Work Program for Highway Planning and Research - 1980	Positive	NA	U.S. DOT	NA	NA	Approved
68-80	MnDOT	1980 Construction Programs	Positive	Grant	U.S. DOT	1,511,000	1,208,000	821,000
69-80	Kandiyohi County	Bridge Replacement	Positive	Grant	MnDOT	85,862	85,862	Pending
70-80	Belview Improvement Corp.	National Health Service Corp Placement	Positive	NA	HEW	NA	NA	Pending
71-80	Meeker County	Land Use Planning Grant	Positive	Grant	SPA	NA	NA	Pending
72-80	City of Litchfield	Land Use Planning Grant	Positive	Grant	SPA	NA	NA	Pending
73-80	City of Hutchinson	Public Transit Aid	Positive	Grant	MnDOT	60,491	34,994	Pending
74-80	MN DES	Modification Title IID	Positive	Grant	DOL	NA	NA	Approved
75-80	MN DES	Modification Titles IIB&C	Positive	Grant	DOL	NA	NA	Approved
76-80	MN DES	Modification Title IV YETP - CETA	Positive	Grant	DOL	\$ NA	\$ NA	Approved
77-80	MN DES	Modification Title IID - CETA	Positive	Grant	DOL	5,486,656	5,486,656	\$5,486,656
78-80	MN DES	Modification Title VI - CETA	Positive	Grant	DOL	4,104,816	4,104,816	4,104,816
79-80	HUD	Subdivision Review, Parkview Addition, Glencoe	Positive	NA	HUD	NA	NA	Pending

APPLICATION NUMBER	APPLICANT	PROJECT DESCRIPTION	RDC ACTION	LOAN OR GRANT	FUNDING AGENCY	TOTAL COST	AMOUNT REQUESTED	AMOUNT FUNDED
80-80	Renville County	Bridge Replacement	Positive	Grant	MnDOT	78,500	72,000	Pending
81-80	Natural Resources Corporation	Alcohol Plant, Atwater	Tabled	Grant	MRDC	44,640	34,800	Pending
82-80	6E CAA	Headstart	Positive	Grant	HEW	292,326	233,861	233,861
83-80	City of Atwater	Citizens Alcohol Distillery	Positive	Grant	MRDC	20,100	16,000	Pending
84-80	City of Franklin	Land Use Planning Grant	Positive	Grant	SPA	NA	NA	Pending
85-80	6E CETC	Special Youth Employment Project	Positive	Grant	DOL	71,713	71,713	71,713

TECHNICAL ASSISTANCE

According to language in the Regional Development Act, the commission may offer technical assistance to local units of government. It is the purpose of the commission to increase the planning and programming capability of local units of government by working with them to help assess their needs, determine their problems and develop local strategies to meet those needs and overcome or avoid the problems. The existence of the commission has no affect on the authority or responsibility of local units of government to do their own planning and programming to meet the needs and desires of their citizens.

Requests for technical assistance are initiated by local units of government and public/semipublic agencies. The commission provides assistance on a time available basis. Examples of requests for technical assistance follow:

- Help develop zoning ordinances
- Help develop zoning maps
- Help develop subdivision regulations
- Help develop future land use maps
- Assist with Community Development Act preliminary and final applications
- Assist with Bureau of Outdoor Recreation (LAWCON) preliminary and final applications
- Assist with Legislative Committee on Minnesota Resources preliminary and final applications
- Assist with housing program applications
- Assist with water system applications
- Assist with applications oriented to human services
- Advise on applicable state/federal grant and loan programs
- Prepare county Overall Economic Development Plans
- Develop loan applications for economic development
- Prepare tax increment finance district applications
- Assist with applications for manpower program funds
- Assist with applications for aging program funds

Examples of technical assistance completed during the past year are (1) Comprehensive Land Use Plans, Zoning Ordinances and Subdivision Ordinances for the cities of Hector, Kandiyohi and Raymond, (2) preparation of preliminary Community Development Block Grant applications for all four counties, (3) preparation of preliminary Open Space/Recreation grant applications for Atwater, Kandiyohi County, city of Renville, Pennock, Sunburg, and Hector and preparation of final applications for Atwater and Kandiyohi County, and (4) assistance on Aging Program grants to McLeod County Social Service Center, Hutchinson Area Community Services and West Central Community Services.

1979 BUDGET SUMMARY

REVENUES

		Year Ending <u>12 - 31 - 79</u>
FEDERAL		\$ 98,837.98
Housing and Urban Development "701"	\$19,684.50	
Housing and Urban Development "107"	2,000.00	
Environmental Protection Section "208"	8,000.00	
DOL - Governor's Manpower	23,563.30	
HEW - Area Agency on Aging	20,590.18	
HEW - Developmental Disabilities	25,000.00	
STATE APPROPRIATION		65,969.08
LOCAL		53,536.38
OTHER		18,463.07
State Water Planning Board	3,000.00	
Interest	6,206.26	
Refunds/Reimbursements	428.00	
Renville County Agri-Energy Contract	2,365.27	
Contributed In-Kind Services	6,463.54	
TOTAL		<u>\$236,806.51</u>

EXPENDITURES

PERSONNEL SERVICES	\$169,840.60
SUPPLIES	15,342.90
OTHER SERVICES: communications, postage, etc.	16,683.70
OTHER CHARGES: insurance, professional services, etc.	5,796.90
CAPITAL OUTLAY	122.13
REFUNDS	2,059.54
TRAVEL	11,596.48
COMMISSION TRAVEL AND PER DIEM	6,772.39
IN-KIND SERVICES	6,463.54
TOTAL	<u>\$234,678.18</u>

1980 PROGRAM BUDGET SUMMARY

July 1, 1979 - June 30, 1980

	SOURCE OF FUNDING			
	LOCAL	STATE	FEDERAL	TOTAL
100 GENERAL ADMINISTRATION				
101 General Office	-0-	-0-	-0-	-0-
102 Fiscal	-0-	-0-	-0-	-0-
103 External Communications	-0-	-0-	-0-	-0-
104 Evaluation & Commission	-0-	\$13,691	-0-	\$ 13,691
200 TECHNICAL ASSISTANCE	\$73,043	-0-	\$12,833	85,876
300 COMPREHENSIVE DEVELOPMENT PLAN				
301 Housing	-0-	-0-	-0-	-0-
302 Public Facilities	1,014	488	3,040	4,542
303 Economic Development	2,072	-0-	4,186	6,258
304 Land Use/Related Natural Resources	-0-	1,945	3,941	5,886
305 Transportation	-0-	-0-	-0-	-0-
306 Open Space/Recreation	-0-	5,109	-0-	5,109
307 Agriculture	4,192	551	-0-	4,743
308 Water Resources	13,416	-0-	-0-	13,416
309 Energy	-0-	-0-	-0-	-0-
310 Manpower	-0-	7,956	25,000	32,956
311 Education	-0-	-0-	-0-	-0-
312 Human Services	-0-	-0-	-0-	-0-
313 Population	-0-	-0-	-0-	-0-
314 Aging	4,911	20,621	22,766	48,298
315 Criminal Justice	-0-	-0-	-0-	-0-
316 Health	-0-	-0-	-0-	-0-
317 Developmental Disabilities	-0-	14,625	25,000	39,625
318 Arts & Humanities	-0-	-0-	-0-	-0-
TOTALS	\$98,648	\$64,986	\$96,766	\$260,400

SUMMARY OF STUDIES — REPORTS — PLANS

OVERALL PROGRAM DESIGN

Each year the commission prepares and adopts an Overall Program Design (OPD) which sets forth the commission's work program in detail for the next 12 months. The OPD outlines goals, objectives, proposed work activities and expected results.

An important part of the OPD includes the budgeting of staff time. There are three general program areas in the OPD which are herein listed along with their respective percentage of staff manhours - Administration, 19.8 percent; Technical Assistance, 28.4 percent; and Comprehensive Planning, 51.8 percent. When the comprehensive planning areas of aging, manpower and developmental disabilities are considered as at least half-time technical assistance, this changes Technical Assistance and Comprehensive Planning to approximately 54.3 percent and 25.9 percent respectively.

PUBLIC FACILITIES: ANALYSIS AND POLICIES

This 33-page report adopted July 25, 1979 provides a current inventory of the major public facilities in the area. Specifically, it contains information on municipal water supplies, sewage treatment facilities, fire protection, public utilities, solid waste disposal, health care facilities and libraries. A brief analysis of these facilities and some general policies provide the necessary guidelines for the Regional Development Commission to make decisions regarding loan and grant applications as related to local governmental bodies.

REGIONAL OVERALL ECONOMIC DEVELOPMENT PLAN

The District Overall Economic Development Plan (OEDP) is a 305-page report containing a factual inventory and indepth analysis of the various related economic components of the region. Examples of some of these components are population characteristics, employment characteristics, industrial sites, agriculture, transportation, education, medical, recreation, sewage collection and treatment, water supply and storage, natural resources, housing and financial resources.

An analysis of the various components is the basis for establishing potential projects. Potential projects typically result from identified problems, identified needs or identified opportunities. This report organizes information desirable for a rational decision-making process.

WETLANDS: ANALYSIS, POLICIES AND RECOMMENDATIONS

This 106-page report was prepared as a result of conflict between state and federal agencies and local government and private land owners. The commission adopted the report on May 23, 1979. It gives a detailed inventory of state wildlife management areas and federal waterfowl production areas. The report analyzes 14 specific issues and makes specific recommendations. It also includes seven actions the Regional Development Commission can take to implement the recommendations.

GROWTH AND DEVELOPMENT: ANALYSIS AND POLICIES

SUMMARY REPORT

The Regional Development Commission worked "on and off" on a 156-page report for four years and in 1978 it was adopted. A 24-page summary report was prepared so as to gain additional distribution and utilization of key information and policies. A considerable amount of the land use inventory information was generated as a result of a 1975 - 1976 cooperative effort between the Regional Development Commission and the University of Minnesota, Department of Agriculture and Applied Economics.

The titles of the eight chapters of the report are herein listed - - (1) Natural Resources and General Land Use, (2) Past and Present Growth and Development Trends, (3) Present Problems Caused by Growth and Development, (4) Projected Future Population Growth, (5) Effects of Projected Population Growth, (6) Potential Problems of Future Growth and Development, (7) Possible Solutions to Present and Future Problems and (8) Suggested Growth and Development Policies.

OUTDOOR RECREATION REPORT

This is the most recent report completed by the Regional Development Commission. It was adopted December 26, 1979 and had 243 pages. It contains a very detailed inventory of outdoor recreation facilities and gives a very accurate account of the natural resources in the area.

The commission can utilize this report when it reviews requests for state and federally assisted projects. Private enterprise can analyze economic opportunities by utilizing information listed. The final 11 pages list a variety of goals, policies, objectives and recommendations.

1980 EMPLOYMENT AND TRAINING PLAN

This is an annual report which the Regional Development Commission adopted on September 18, 1979. It is required as part of a contract with the Minnesota department of economic security. The 44-page report contains statistical information helpful in making decisions on "Comprehensive Employment and Training Act" funds. Four of the final pages contain general goals, specific objectives for the goals and suggested work activities to accomplish the goals and objectives.

GOLDEN PAGES DIRECTORY OF SERVICES

Each year the "Golden Pages" is updated and a new edition made available for the public. The "Golden Pages" is a listing of services available to the elderly. It includes names of agencies, key personnel, addresses and telephone numbers. Also included are the names and addresses of area legislators. This year the "Golden Pages" contains 50 pages and is divided into six parts - (1) county offices, (2) medical and health services, (3) meals and recreation, (4) education and employment, (5) housing, transportation and volunteer services and (6) government agencies and representatives.

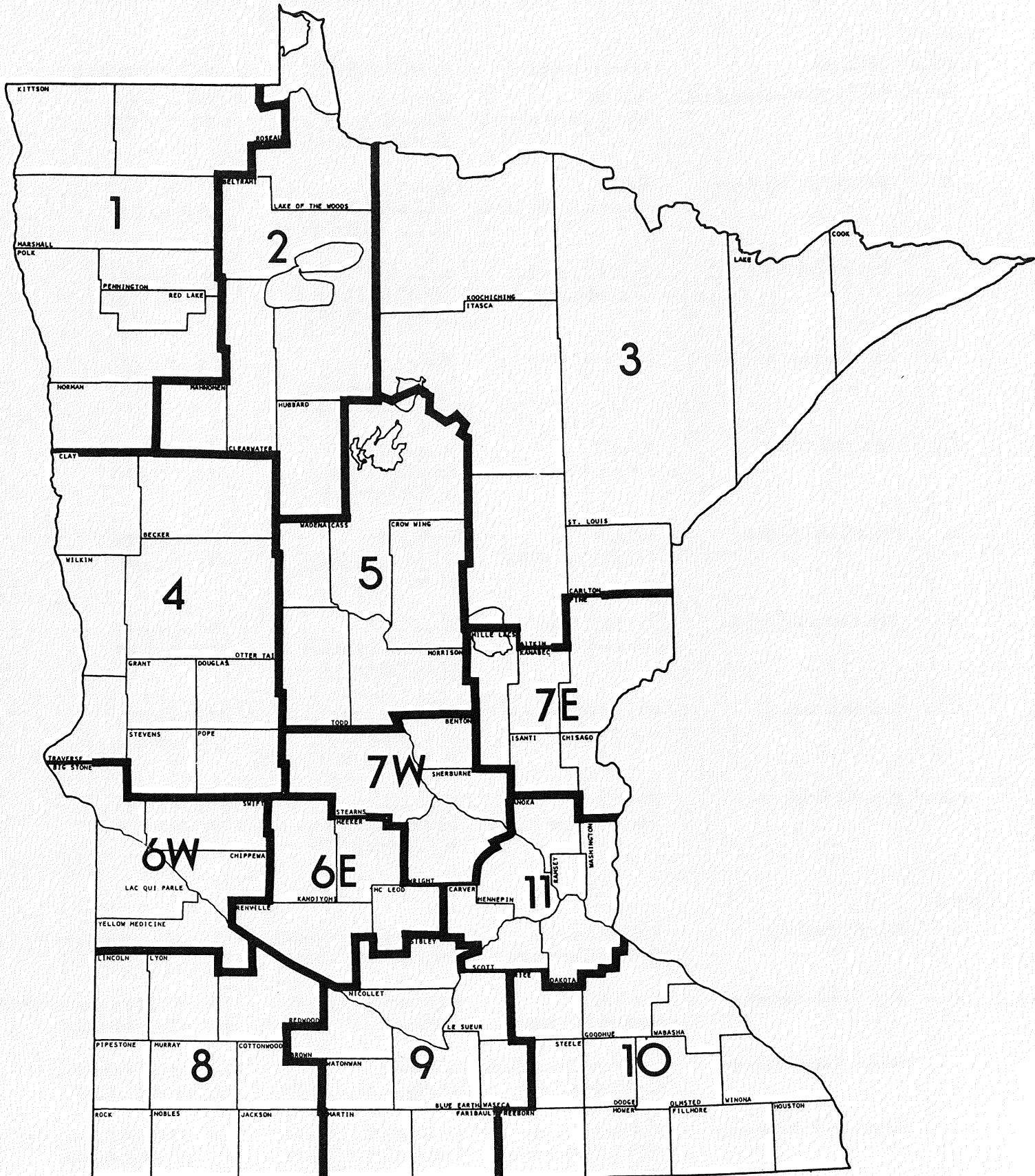
AREA PLAN FOR PROGRAMS ON AGING

On October 10, 1979 the Regional Development Commission adopted the 145-page annual plan for aging. This plan is a combination contract and work program supplemented with statistical information and objectives. Statistical information includes population trends and demographic characteristics of persons age 60 and over. An analysis of needs helped establish the following nine priority Title IIIB funding areas - (1) information and referral, (2) transportation, (3) visiting and telephone reassurance, (4) homemaker/chore service, (5) outreach, (6) home health aid, (7) legal services, (8) multipurpose senior centers and (9) day care.

1980 DEVELOPMENTAL DISABILITIES PLAN

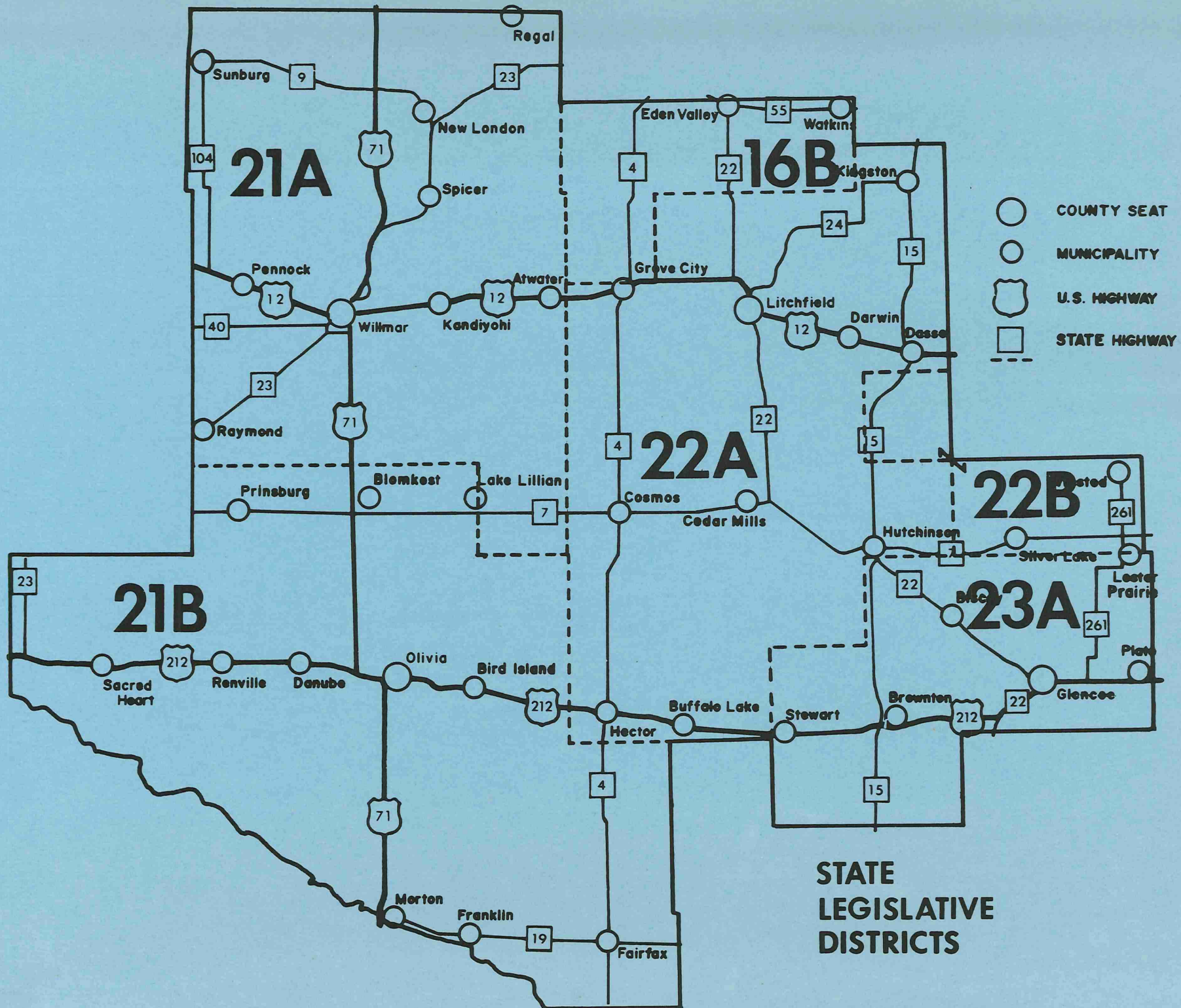
This annual document is basically a contract and contains a work program supporting the developmental disability funding application. It has a total of 46 pages and is not published for general distribution.

Minnesota Development Regions



STATE & FEDERAL LEGISLATORS

State				
DISTRICT	OFFICIAL	LOCAL ADDRESS	OFFICE ADDRESS	PHONE NUMBERS
21	Senator A.O.H. Setzepfandt	Box 356 Bird Island, MN 55310	Room 231 Minnesota State Capitol St. Paul, MN 55155	296 - 4184 (B) 365 - 3333 (H)
22	Senator John Bernhagen	Route 1 Hutchinson, MN 55350	Room 142 State Office Building St. Paul, MN 55155	296 - 4131 (B) 879 - 4002 (H)
22A	Rep. Adolph Kvam	25 West Lockerbie Litchfield, MN 55355	Room 175 State Office Building St. Paul, MN 55155	296 - 4344 (B) 693 - 8275 (H)
23A	Rep. Raymond Albrecht	Brownton, MN 55312	Room 312 State Office Building State Office Building	296 - 4318 (B) 328 - 5375 (H)
22B	Rep. Tony Onnen	Route 2 Cokato, MN 55321	Room 383 State Office Building St. Paul, MN 55155	296 - 1534 (B) 286 - 5472 (H)
23	Senator Earl Renneke	Route 2 LeSueur, MN 56058	Room 140 State Office Building St. Paul, MN 55155	296 - 4125 (B) 665 - 2930 (H)
21B	Rep. Gaylin DenOuden	112 Sixth Street Prinsburg, MN 56281	Room 385 State Office Building St. Paul, MN 55155	296 - 4346 (B) 978 - 6745 (H)
21A	Rep. Dean Johnson	605 Fourth Street SE Willmar, MN 56201	Room 327 State Office Building St. Paul, MN 55155	296 - 3826 (B) 235 - 6388 (H)
16B	Rep. B.J. Brinkman	Box 458 Richmond, MN 56368	Room 296 State Office Building St. Paul, MN 55155	296 - 4373 (B) 597 - 2328 (H)
Federal				
6	Rep. Richard Nolan	720 St. Germain St. Cloud, MN 56301	1019 Longworth Building Washington, D.C. 20515	225 - 2331 (Washington, D.C.) 252 - 7580 (St. Cloud)
2	Rep. Thomas Hagedorn	Box 3148 Mankato, MN 56001	Rayburn Building Washington, D.C. 20515	225 - 2472 (Washington, D.C.) 387 - 8226 (Mankato)
	Senator Rudy Boschwitz	419 North Robert Street St. Paul, MN 55101	443 Russell Washington, D.C. 20510	224 - 5641 (Washington, D.C.) 221 - 0904 (St. Paul)
	Senator Dave Durenberger	550E Bulter Square 100 North Sixth Street Minneapolis, MN 55403	353 Russell Senate Office Washington, D.C. 20510	224 - 3244 (Washington, D.C.) 725 - 6111 (Minneapolis)



**SIX EAST REGIONAL
DEVELOPMENT COMMISSION
City Auditorium
311 West 6th Street
Willmar, MN 56201
Telephone (612) 235 - 8504**