

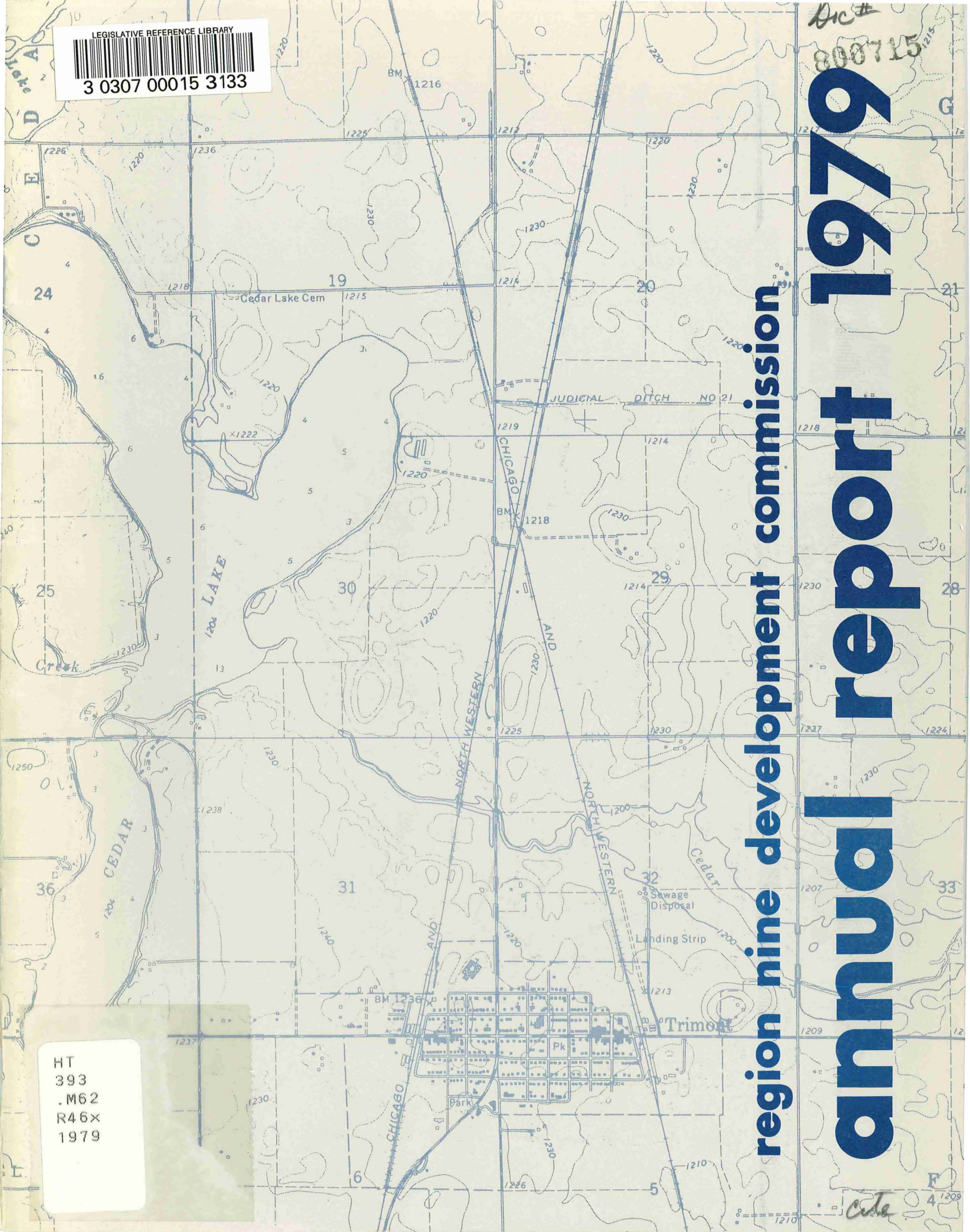


3 0307 00015 3133

HT
393
.M62
R46x
1979

region nine development commission

annual report 1979



MINNESOTA DEVELOPMENT REGIONS

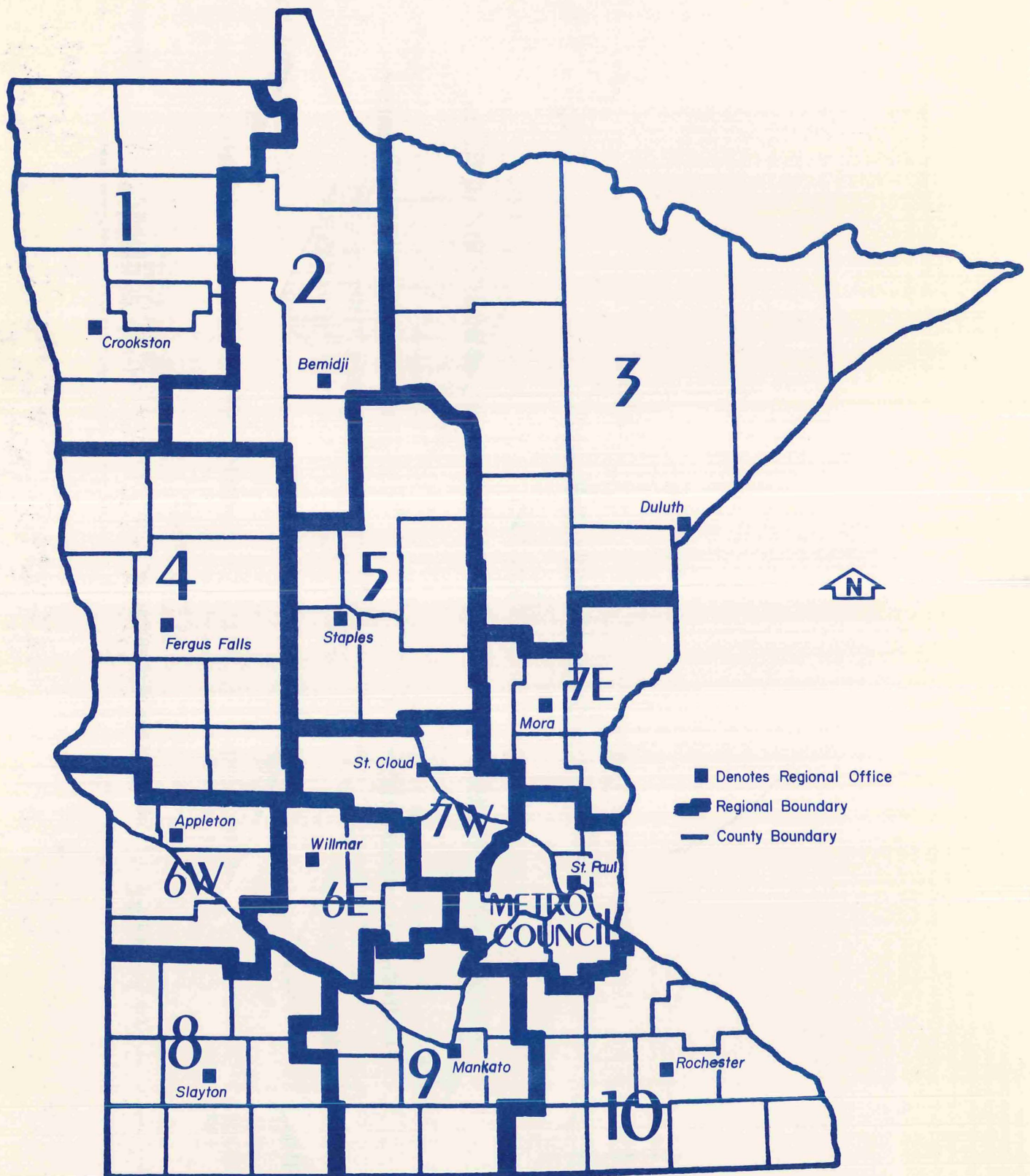
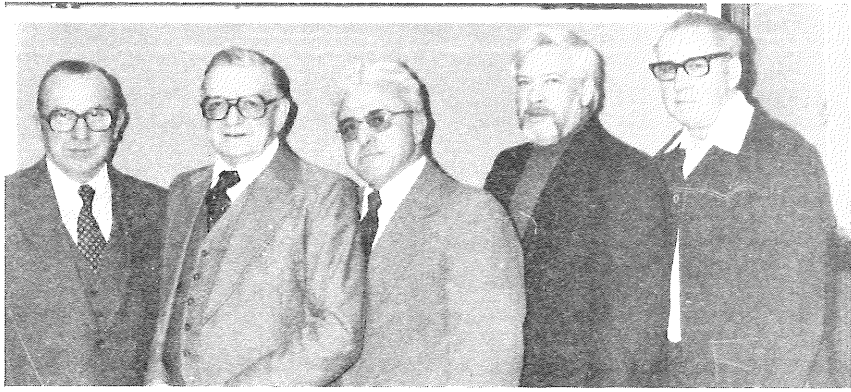
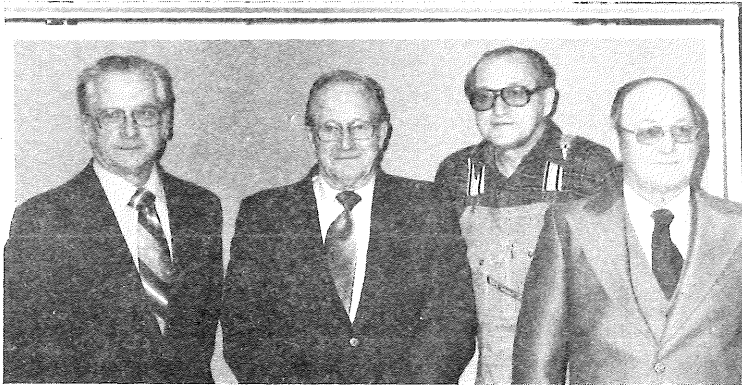


TABLE OF CONTENTS

RNDC Commissioners	2-3
Organizational Structure.....	4
Introduction to RNDC.....	5
Comprehensive Planning	6
Recreation	6
Community Development	6
Water Resources Planning.....	7
Land Use	7
Energy Planning	8
Housing.....	8
Economic Development.....	8
Transportation	9
Physical Development Subcommittee	9
Traffic Safety	10
Developmental Disabilities Planning Council	10
Child Care	11
Criminal Justice	12
Advisory Council on Aging.....	12
Arts Advisory Council.....	13
Human Resource Subcommittee.....	13
Manpower	14
Emergency Medical Services.....	14
Physical Planning Committees	15
Human Resource Planning Committees.....	16
Studies, Workshops.....	17-18
Legislative Concerns	19
Budget	20-21
A-95 Project Review	22-27
Region Nine Staff Members	27
The Chairman's Letter.....	28
The Director's Letter	29



BLUE EARTH COUNTY - Lester Anderson, Commissioner; Oscar Campbell, Cities Under 10,000; Herbert Mocol, Mayor, Mankato; Robert Barrett, MVCOG; Erhart Stanke, Township. Not pictured: Paul Hadley, Chamber Association.



MARTIN COUNTY - Marlin Gratz, Alderman, Fairmont; Daniel Keasling, Commissioner; Bill Lewis, Mayor, Trimont; Roland Thiesse, Township.



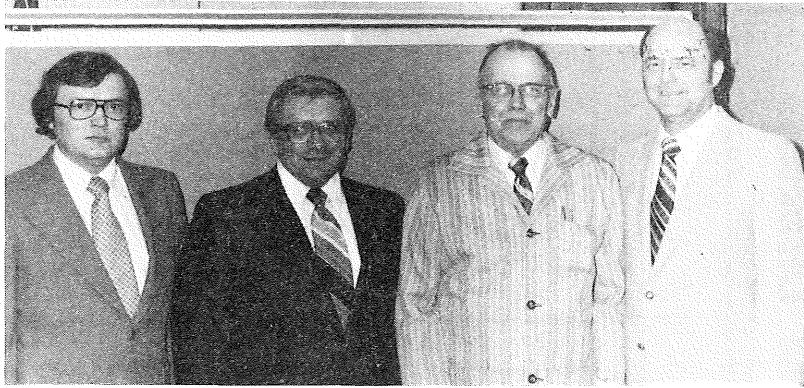
BROWN COUNTY - Donald Lindley, Mayor, Springfield; Dennis Warta, Commissioner; Carl Wyczawski, Mayor, New Ulm; Orville Hanson, Township.



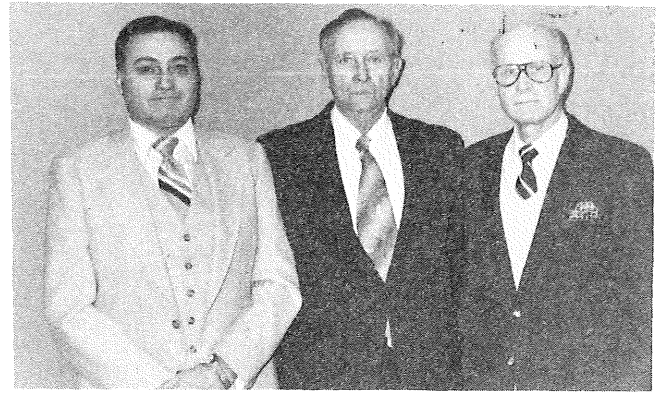
NICOLLET COUNTY - G. Ray Eckes, Commissioner; Doug Pyan, Mayor, St. Peter; Carrie Huffer, School Board; Ken Albrecht, Township; Harry Timm, Soil and Water Conservation Districts.



LE SUEUR COUNTY - Michael Schwertler, Mayor, LeSueur; James Stangler, Township; not pictured, Jerome Schleis, Commissioner.



WATONWAN COUNTY - Gary Sturm, Councilman, St. James; John Baerg, School Board; Robert Gustafson, Township; Vincent Styles, Commissioner.



FARIBAULT COUNTY - D. Roger Oldfather, Mayor, Kiest-er; John Paschke, Commissioner; Earl Helgeson, Township.

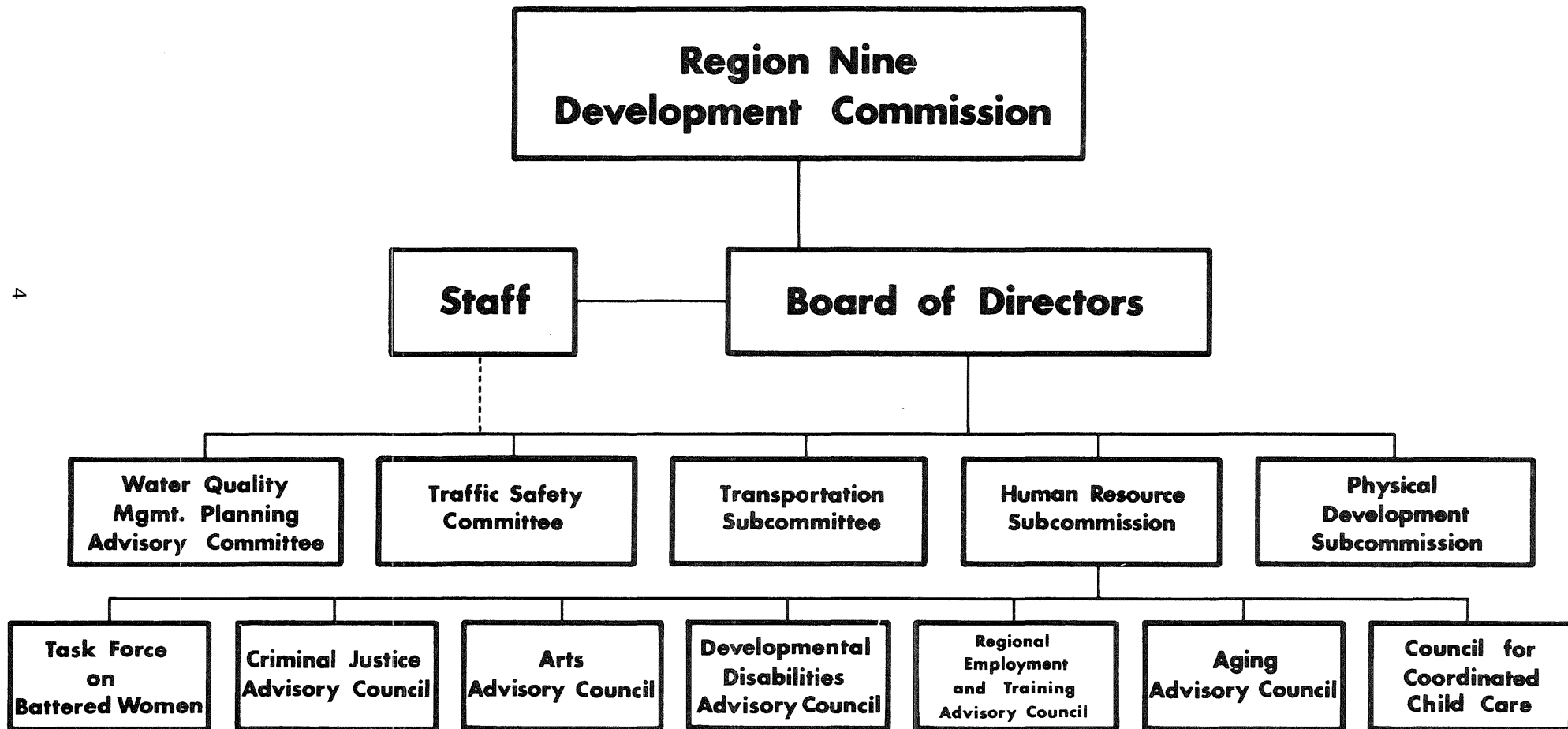


WASECA COUNTY - H. Roderick Joyce, Township; Margaret Engesser, Mayor, New Richland; Eugene Powell, Commissioner.



SIBLEY COUNTY - Gerald Kreger, Commissioner; Elmer Kading, Mayor, Gibbon; Victor Weckwerth, Township.

ORGANIZATIONAL STRUCTURE



Introduction to Region Nine and the Region Nine Development Commission

The nine counties that make up the Region Nine area, specifically Blue Earth, Brown, Faribault, LeSueur, Martin, Nicollet, Sibley, Waseca, and Watonwan, have a population of about 223,000 of the state's 3,921,000 persons according to the 1975 estimated census. The area is stable and prosperous with a strong economy, good facilities and services and has three major cities, over 10,000 population, which are Mankato, New Ulm and Fairmont.

In the 5,064 square miles, about 5.86 percent of the state's (86,332 square miles) the land is primarily agricultural with over 85 percent under cultivation and 12 percent in forest, pasture and open land or water.

In 1972 the Region Nine Development Commission (RNDC) was organized by local elected officials as authorized by the Regional Development Act of 1969. This year notes the Commission's sixth anniversary. Its purpose according to the legislation is - "to facilitate intergovernmental cooperation and to insure the orderly and harmonious coordination of state, federal and local comprehensive planning and development programs for the solution of economic, social, physical and governmental problems of the state and its citizens." (Minnesota Statutes, Section 462.383; Subdivision 2)

Serving on the RNDC are elected officials who represent 9 counties, 76 cities, 147 townships, 45 school districts, 9 soil and water conservation districts and the Minnesota Valley Council of Governments. They are joined by a representative of the business community organizations in the Region.

The 35 member RNDC meets monthly to respond to the need for counties, cities, townships, school districts, and other groups to work together on a regional basis to address economic, social, physical and environmental problems.

Key regional issues, most often include: What can we do to insure our continued quality of life through the appropriate use of land and the environment? How can we best protect and recover the natural resources of our area?

What are the recreational needs of citizens and how can they best be met? What can we do to maintain a good employment base to attract new people plus keep the people who are presently employed and living here? What can be done about our transportation needs? How can we work together for total development of all communities? What should be done to see that people of all ages and capabilities receive equitable and adequate services and funds? What are the needs of children, especially with working mothers? How can we best create an awareness of the artistic needs and abilities in this geographic area? What are the criminal justice and law enforcement priorities? How can we see the most effective delivery of emergency medical services and health care? These are only a portion of the issues which the RNDC planning programs and many subcommission and committees deal with, on a local basis, to best meet the needs of Region Nine citizens.

About 300 citizens of Region Nine are actively involved in regional planning by providing expertise and interest in developing and prioritizing goals and objectives for the region. Each year since 1972 has noted an increase in citizens and elected officials participation as more people discover how they can best assist with the planning programs and be served by the RNDC.

With its many planning functions, the RNDC has a professional planning staff to assist itself, subcommissions and committees in carrying out the activities they have defined. The staff includes: an executive director; specialists in the fields of recreation, land use, community/economic development, housing, transportation, water quality, traffic safety, and manpower; specialists in assisting with meeting the needs of the aging, developmentally disabled, and children; and there are also planning specialists in criminal justice, energy, the arts, and human resources. They are assisted by an administrative assistant, a public information coordinator, a bookkeeper, secretaries, a part-time graphics coordinator and interns working on a semi-annual basis from Mankato State University and Gustavus Adolphus College.

PHYSICAL RESOURCE PLANNING

COMPREHENSIVE PLANNING REQUIREMENTS

The Regional Development Act mandated that regional commissions "shall prepare and adopt, after appropriate study and such public hearings as may be necessary, a comprehensive development plan for the Region." Region Nine formally commenced its effort in July of 1978.

Major Initiatives Completed

The Commission has completed its mission, role, responsibility, and purpose statements; the description of the Region, and its major goals. The majority of planners have completed their sub-goals and policies in terms of their respective programs.

Related Activities

The Region Nine staff has completed and submitted a grant to the Farmer's Home Administration requesting rural development planning funds. If this particular application is approved, the funds will be used in concert with the comprehensive planning effort as it is anticipated that a regional development strategy would be formulated would be formulated through utilization of the Farmer's Home monies.

Minnesota Association of Regional Commissions

Commissioner Les Anderson, Mapleton, and the Region Nine Staff worked with individuals from other RDC's and the State Planning Agency staff in developing a flexible framework and general definitions that other RDC's can use in formulating their respective comprehensive plans.

Self-Evaluation

The Comprehensive Planning Committee was authorized to manage the Commission's self evaluation effort. All appropriate documents were reviewed and staff is waiting for a revised SPA methodology. Additionally, the Commission formally went on record supporting the concept of self-evaluation.

RECREATION

Steps toward a more sound review process and an improved data base were taken in 1979. The primary components established for this purpose were a Recreation Advisory committee and the initiation of a Regional Recreation Atlas.

Recreation Advisory Committee

Expertise in certain areas of the recreation planning process was lacking in the past. To fill this void, a group of recreation professionals from around the Region were solicited to form the Region Nine Recreation Advisory Committee. The Committee's main roles are to provide background data and give direction to the recreation planning process. To date, the Committee's primary contribution has been to assist the Physical Development Subcommittee in the development of sound, valid ranking criteria for the ranking of recreational grant proposals.

Recreation Atlas

An increasing number of inquiries from around the Region concerning the location and availability of various types of recreation facilities has prompted the development of a Regional Recreation Atlas. The atlas will contain pertinent information on all local, county, regional, and state outdoor recreation areas in Region Nine. Maps will also be drafted to aid in the location of these areas. The atlas is targeted for completion in the late spring or early summer. As a by-product of the atlas, a recreation resource data base will be maintained at the Region Nine office.

Recreation Grants

The State Planning Agency continued to offer matching grant money in the form of LAWCON (federal) grants and LCMR (state) grants. The RNDC staff administered technical assistance to most of the grant applicants. The new ranking criteria drafted by the Recreation Advisory Committee and the Physical Development Subcommittee was used to rank all local applications. The State Planning Agency then used this ranking in conjunction with their own ranking to determine the areas to be programmed for funding. The total amount of programmed project costs is \$346,000 in Region 9.

The Department of Natural Resources and the Minnesota Department of Transportation also offered matching grant money for snowmobile and bicycle trails.

Projection

1980 should bring an increased usage of our own recreational resources as a result of new and more well developed recreation areas acquired through grants, and the completion of the recreation atlas. Communication with such agencies as the State Planning Agency and the Department of Natural Resources will continue. Technical assistance will be provided where needed, and A-95 reviews will be conducted as required.

COMMUNITY DEVELOPMENT

The RNDC community development program during 1979 was geared toward facilitating efforts to improve the social, economic, and physical environments of local units of government and their residents. A variety of community development programs administered by agencies such as the Department of Housing and Urban Development (HUD) and the Farmers Home Administration (FmHA) are available to address local community development needs.

Technical Assistance

The primary strategy used to impact on local community development needs is the provision of technical assistance by RNDC staff. This assistance takes many forms including dissemination of program regulations and information, identification of local goals and priorities, preparation of loan and grant applications, and implementation of special studies on a request basis.

Physical Resource Planning

(continued)

Program Utilization

Millions of dollars in community development resources were awarded to local units of government in Region Nine during the past year. Numerous communities were funded through FmHA loan and grant programs such as the Community Facilities Loan Program, Business and Industry Loan Program, and the Sewer and Water Loan and Grant Program. In addition, seven of eleven Region Nine applicants were funded through the HUD Community Development Block Grant Small Cities Program so as to address a variety of housing and community development needs. Successful Small Cities Program applicants included Blue Earth, Blue Earth County, Brown County, Mankato, New Prague, New Ulm, and Waseca County.

Projection

The regional community development program in 1980 will be directed toward continued assistance to local units of government as they compete for limited resources to address local needs. There is some evidence that program resources may be expanded, particularly in selected federal programs. However, emphasis will continue to be placed on the use of public funds to leverage increased private investment in local communities.

WATER RESOURCES PLANNING

During 1979 two major water planning processes were completed. Region Nine, through the work of citizen committees played an important role in this process.

208 Water Quality Management Planning

The primary involvement of Region Nine in water resources planning has been through 208 Water Quality Management Planning (208 refers to Section 208 of the 1972 Federal Clean Water Act).

Through the efforts of many individuals and many groups on the local, regional, and state level, the final phase was attained this year in the development of Minnesota's Water Quality Management Plan.

The Region Nine 208 Water Quality Management Advisory Committee contributed to this process. The Region Nine 208 Committee met each month in 1979 to review and comment on technical and informational packages forwarded to all of the Regional Development Commissions from the Minnesota Pollution Control Agency (MPCA). Best management practices and strategies (Package III's) were the emphasis. The ten topic areas of study where non-point sources of pollution were assumed to exist were: Agriculture, Feedlots, Pesticides, Urban Runoff Construction, Roadside Erosion, Residual Wastes, Highway De-Icing Chemicals, Forestry and Mining. A member from the MPCA staff attended a majority of the monthly Regional meetings.

In addition to meeting with MPCA staff and forwarding written comments to MPCA, Region Nine was represented by a delegate on the State Task Force. The State Task Force (half the membership being representatives from RDC and half from State agencies) made the final compromises and recommendations on the topics for the

final draft Water Quality Management Plan.

The draft Water Quality Management Plan was reviewed by Region Nine in late November.

At the close of the year, final approval of the Minnesota Water Quality Management Plan by the MPCA Board is pending a rewrite of the draft plan.

The development of this plan has completed the public participation involvement of the 208 planning process.

Water Planning Board

Region Nine provided input to the Water Planning Board in efforts to develop a state water and related land resources plan. Recommendations were developed for consideration by the state legislature and the governor beginning in 1980. Intent of the recommendations is to preserve water resources for the future and protect existing water supplies promoted through changes in existing law. The final report is titled: "Toward Efficient Allocation and Management: A Strategy to Preserve and Protect Water and Related Land Resources, June 1979."

Projection

Additional studies resulting from this Plan may involve Region Nine through dissemination of information which relates to waters.

LAND USE

A significant amount of staff work load has involved technical assistance to local units of government of the Region. The Physical Development Subcommittee has advised staff on various land use planning efforts.

Technical Assistance

Local units of government were assisted in their land use planning efforts. Major projects requested by and developed for the local units included land use plans, zoning ordinances, and ordinance updates, subdivision ordinances and a periphery land use plan for interchange development.

Technical assistance was also provided in the form of advisement on inquiries from local officials and administrators and by writing grant applications for local units of government.

Technical assistance to local units of government will continue as a major function again in 1980.

Land Use Planning Grant Review

The Physical Development Subcommittee reviewed and ranked preliminary applications for grant monies through the Minnesota Land Use Planning Grant Program. A city, county, township, or combination of such units may apply. Those applicants which receive funding (through the State Planning Agency) use the grant to alleviate land use planning problems.

Land Use Planning Grant funding cycles will continue in spring and fall of 1980 and spring of 1981.

Environmental Review

Region Nine Development Commission staff completed the research and writing of an Environmental Impact

Physical Resource Planning

(continued)

Statement (EIS) for a proposed drainage ditch in northern Le Sueur County.

The information contained in the EIS, when deemed adequate by the Environmental Quality Board, will be used for evaluation of the proposed action by the agencies involved and by private citizens.

The EIS as compiled, presents a comprehensive perspective of the environmental, hydrologic, topographic, soil landscape, agricultural and wildlife characteristics of the project area.

Criteria included in this EIS was outlined by the Department of Natural Resources and Department of Agriculture and in the Minnesota Code of Agency Rules for the Environmental Quality Board.

The EIS will be filed with the Environmental Quality Board in early 1980.

ENERGY PLANNING

In 1979 a new program was launched at Region Nine in response to the tremendous energy concerns confronting residents of the region and the nation. It is the goal of this program to assist in the dissemination of information and ideas which allow people to better cope with present and future depletion of energy resources.

"Everything Under the Sun: A Conference On Alternative Energy and Energy Conservation" was held on November 1 and 2 with over 400 people in attendance.

A citizens group is presently being formed to pinpoint possible legislative concerns which will be formally acted upon by the Region Nine Development Commission.

HOUSING

The regional housing program in 1979 primarily focused on activities oriented toward effective implementation of the Region Nine Housing Plan, and on the provision of technical assistance to local units of government and the general public. Greater emphasis has been placed on the availability and utilization of local, state, and federal housing assistance programs as a result of escalating housing costs and interest rates.

FY'80 Region Nine Housing Plan Update

The annual revision of the Region Nine Housing Plan was initiated during the last quarter of 1979. As a result of updates to the regional housing data base, three major plan areas were revised. These areas included the assessment of housing assistance needs for lower income households, the regionwide subsidized rental housing inventory, and allocation plans for the recommended distribution of rental housing assistance. For the first time, the RNDC has attempted to estimate the relative level of rental assistance need in each community, and to evaluate the appropriateness of available rental assistance programs in meeting local community needs.

MHFA Accessibility Improvement Program

The Minnesota Housing Finance Agency developed a new housing assistance program which was authorized and funded by the state legislature in 1979. The Acces-

sibility Improvement Program is intended to provide grant and loan assistance to qualifying handicapped residents and/or their families for the purpose of increasing the accessibility of their property to the handicapped occupant. Prior to formal implementation of the program, scheduled for April 1980, three agencies were selected to conduct a demonstration phase of the program. One of the agencies selected was the Le Sueur County Housing and Redevelopment Authority, which tested the program guidelines and components within the Region Nine area. It is hoped that the new program will help fill a serious housing resource gap for this sector of the population.

Projection

The on-going assessment of local and regional housing needs and issues, the development of housing strategies and the implementation of the Region Nine Housing Plan represent continuing goals for the regional housing program in 1980. Technical assistance will remain a high priority so as to facilitate the utilization of all available housing assistance resources.

ECONOMIC DEVELOPMENT

The regional economic development program during 1979 consisted of efforts to assist local communities increase employment opportunities and generate expanded private investment, so as to revitalize their local economies. The RNDC also continued to work with the Economic Development Administration in an attempt to make EDA assistance more widely available throughout the region.

Overall Economic Development Program

In 1978 Le Sueur County was officially designated as an Economic Redevelopment Area. This designation resulted from the approval of an Overall Economic Development Program (OEDP), prepared with the assistance of the RNDC. The OEDP is a locally initiated planning process designed to create employment opportunities, foster more stable and diversified local economies, and provide a mechanism for guiding and coordinating the efforts of local individuals and organizations concerned with the economic development of the area. During the past year, the RNDC has monitored the availability of EDA loan and grant programs, and has offered its assistance to the LeSueur County OEDP Committee.

Economic Development District

As a result of the approval of the Le Sueur County OEDP and subsequent Economic Redevelopment Area designation, potential opportunities have been created to make Economic Development Administration funding more widely available in Region Nine. In particular, the RNDC submitted documentation to the Economic Development Administration in 1979 in an effort to receive provisional authorization as an Economic Development District. If this status is granted to the RNDC, economic development planning and technical assistance funds may become available to be used for the benefit of the entire Region Nine area.

Physical Resource Planning

(continued)

Projection

The identification of alternative economic development programs and techniques as well as technical assistance to local units of government will remain primary goals for the regional economic development program in 1980. Also, the RNDC will continue to monitor progress on its request for provisional authorization as an Economic Development District.

TRANSPORTATION

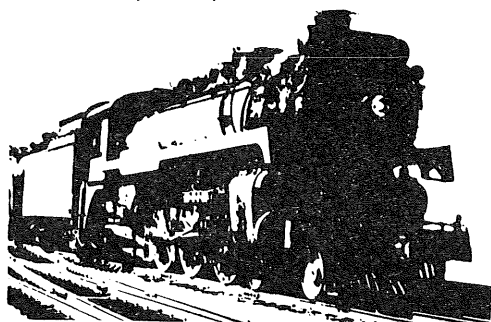
The Transportation Committee continued to address the multitude of transportation issues, needs, and concerns confronting the Region in 1979. The movement of agricultural commodities continued to receive much of the focus of the Committee because of the role agriculture plays in the Region's economic base. The Committee continued its involvement with the two user associations located along the Alden-Jackson rail line in terms of acting as facilitator, locating funding sources, coordinating meetings and functioning as a data base in conjunction with the State Rail Service Improvement Program.

Rail Line Abandonment

The Committee is still opposed to rail line abandonments which could have adverse impacts upon businesses or communities. The Committee is involved in a proposal that would lead to the retention of rail service along a 10 mile segment of a rail line running from Kasota to Farmington which is scheduled for abandonment. Due to the number of abandonments occurring in the Region and the complexities associated with the abandonment rules and procedures, the Committee has sponsored informational meetings for all adjacent land owners and others interested in acquiring the abandoned right-of-way property.

Transportation Committee

The composition of the Committee was changed so as to add an additional four voting members, three county engineers and one municipal engineer. The change was in an effort to expand representation of the Committee in light of the continuing and expanding participation by the Committee in the State Transportation Plan MN/DOT/PLAN and annual plan update.



Technical Assistance

The focus of the Committee in 1979 was not limited to commodity movement alone. RNDC staff was actively involved in providing technical assistance in the form of grant assistance on two Urban Mass Transportation Administration (UMTA) grant programs which provide for equipment and operation assistance for primarily the elderly and handicapped. Three grant applications through the UMTA 16 (B) (2) program submitted from the region were fortunate to receive funding. This type of technical assistance will continue to be a major work item during 1980.

Projection

The focus of 1980 work activities will be toward the development of a regional transportation policy plan. Also, the Committee will pursue its policy of upgrading all trunk highways to a 9-ton capacity, work to mitigate the problems associated with rail line abandonment, and continue to address the issues, needs and concerns that have an impact on the transportation related economics of the region and its citizens.

PHYSICAL DEVELOPMENT SUBCOMMISSION

The Physical Development Subcommittee is advisory to the Region Nine Development Commission in establishing Physical Development policies and priorities for the region. In this capacity, the Subcommittee reviews plans, policies, and activities in a variety of program areas including land use, housing, community development, economic development, transportation, recreation, water resources, and energy. Membership consists of 14 persons including one representative from each of the nine counties, one representative from each of the cities of Fairmont, Mankato and New Ulm, one representative from the Pioneerland Environmental Education Council, and one representative from the Soil and Water Conservation Districts of Region Nine.

Many diverse physical planning activities and issues were addressed by the Physical Development Subcommittee during the past year. Specific activities included review and approval of the annual update to the Region Nine Housing Plan, development of ranking criteria to be used in conjunction with the LAWCON/LCMR Recreation Grant Program, revision of the ranking criteria used in conjunction with the State's Land Use Planning Grant Program, review and approval of the pre-applications and applications submitted under the HUD Community Development Block Grant Program, and the conduct of A-95 reviews on other state and federal loan and grant requests.

Projection

During 1980, the Physical Development Subcommittee will continue to carry out its responsibilities in the areas noted above. These activities will be expanded to include additional issues of importance and interest to residents of Region Nine.

Physical Resource Planning (continued)

TRAFFIC SAFETY

The Traffic Safety program's goal is to reduce accidents, minimize crash injuries, save lives, and reduce economic loss due to traffic accidents.

One of the ways to do this is to get more people and organizations involved in Traffic Safety projects.

Safety Promotions

Ten and thirty second safety spots were compiled and sent to all the radio stations in Region Nine.

Traffic Safety news was sent to daily and weekly newspapers.

Traffic Safety information was sent to driver training instructors in the Region.

Youth

The fourth Region Nine Youth Traffic Safety Day was held November 17th at the Mankato Area Vocational Technical Institute. Twenty youth shared their experiences about safety. 125 youth and 25 adults attended.

Youth in the Region conducted bicycle rodeos in three counties.

Ten youth were taught at a Region Nine sponsored Mini Pedal Power seminar. These 10 youth returned to their communities and taught about 6000 other youth bicycle safety.

Honors went to Region Nine Youth for their safety projects: 1) Wanda Renner, 4-H club member from Sibley County. Renner won the State of Minnesota 4-H Club Award for safety and a trip to Chicago to compete with 49 other state winners for the National Award. 2) Cheri Beranek, 4-H club member and Perry Forst, FFA member, both from Nicollet County, won awards from the National Safety Council for their safety projects. 3) New Ulm FFA Chapter received an award from the National Safety Council for their safety projects.

Projection

The program will encourage and recruit more people to become involved in Traffic Safety projects by conducting safety seminars about bicycle safety, pedestrian safety, child restraints, and defensive driving for youth.



HUMAN RESOURCE PLANNING

DEVELOPMENTAL DISABILITIES PLANNING COUNCIL

The Developmental Disabilities Planning Council is composed of persons with developmental disabilities, parents, representatives of consumer disability groups and professionals from the nine counties. At present, disability areas such as mental retardation, epilepsy, learning disabilities, cerebral palsy, and autism are represented by parent or consumer participation. Professionals represent a wide range of programs including special education, rehabilitation, community residences, developmental achievement centers, and social services.

Training Workshops

The Council's activities during the past year have focused on efforts to sponsor numerous training seminars and workshops. The various titles are listed as follows:

- "Criminal Justice and the Developmentally Disabled Offender"
- "Human Fulfillment Workshop"
- "Parents Are The Key"
- "Human Fulfillment"
- "Increase your AQ - Advocacy Quotient"
- "SCOPE" - Special Concerns on Parent Effectiveness"
- "Try Another Way"
- "Consumer Program Forum"
- "Employers Seminar"

Training Grants

The Region Nine Development Disabilities Program developed an innovative vocational and on-the-job training program for handicapped secondary age students. Funds totaling \$68,000 which were secured through YETP are administered by School District 77 (Mankato) who currently operates the program.

The Council received approval for a training project through the LEAA Criminal Justice Block Grant Funding. The proposal will focus on developing a training curricula and series of training seminars for criminal justice and law enforcement personnel. The emphasis will be to promote understanding of developmental disabilities and increase effective interactions.

Respite Care

As a result of previous success from summer respite programs, the program was offered in Brown County for the second consecutive summer. The Council will be focusing efforts on a region-wide survey to assess the need and feasibility of such a program in all counties.

Residential Services

The Council has continued to be actively involved in the development of community residential facilities. Technical assistance was provided in finalizing efforts to establish a group home (ICF-MR) in Sibley County. In addition, a new residence was also approved for New Ulm in Brown County.

Human Resource Planning

(continued)

Future plans involve the establishment of community residential alternatives for developmentally disabled adults in Watonwan County.

Transportation

In cooperation with the Region Nine Transportation staff, information concerning Section 16B-2 Urban Mass Transit funds was disseminated to residential and day programs providing services for developmentally disabled. The funds would be available for purchasing vehicles for transporting handicapped and elderly persons in the community. Staff provided technical assistance to all interested applicants. All three proposals submitted from Region Nine were approved by MN/DOT.

Projection

The D.D. Council will be involved in various training and public information activities during the next year. Efforts to develop the state and regional D.D. Comprehensive Plan will be finalized during the year. The Council will also be actively involved in D.D./Criminal Justice training project which will include region wide workshops.

CHILD CARE

The child care program is designed to help coordinate interested persons and groups in planning quality care for children whose parents must be out of the home for part or all of the day. The program offers assistance in training, funding, program organization and referrals to day care providers throughout the region.

CCFA

The Child Care Facilities Act Grant was the main source of financial assistance to day care providers in Minnesota. The grant was on a July - June fiscal year. Throughout January of 1979 workshops were held in each county of the Region to explain the grant process to providers and aid in filling out application forms. In March the grant applications were reviewed by the Child Care Advisory Council and recommendations made to the Dept. of Public Welfare through an Umbrella proposal. By August award letters were sent to those applicants receiving funds. In 1979 CCFA was absorbed by the Community Social Services Act "block grant" and grantees were only funded at 60% of their original allocation. There were 20 grantees in 1979 under CCFA.



Mini-Grant

The Child Care Advisory Council also applied for a CCFA grant in order to make available to Family Day Care providers small grants of less than \$200. These smaller grants are administered through the Region IX program. Mini-grants were reviewed on August 2. There were 19 grantees under the mini-grant program.

Training

March, April, and May Child Care staff contracted with the Mankato Area Vocational-Technical Institute to provide training workshops for Family Day Care providers. The topics provided were Creativity (homemade toys), Growth and Development Through Creative Experiences, and Child Abuse.

Beginning in September the method was changed to a county by county training program. Region IX staff met with the FDC licensor's individually to determine what topics and the number of workshops desired. Blue Earth county had four workshops, including Program Planning, Creative Learning Experiences in the Home and Discipline and Taxes. Brown County's three workshops were First Aid, Discipline and Taxes. Faribault, Martin, and Watonwan counties joined together and had three workshops. Their topics were First Aid, Recordkeeping, and Children with Special Needs. Le Sueur county offered one workshop on First Aid. Nicollet County had two workshops, First Aid and Assertiveness. Providers from Nicollet also often attended workshops offered in Blue Earth County. Sibley County joined with Brown County. Waseca County offered one workshop on Creativity in the Home.

Day Care Center Directors have joined together and have met two times. One of those times there was a speaker to offer training. Child Care staff offered an inservice workshop to one center.

Technical Assistance

There have been numerous requests for information on how to go about starting a day care center. Several groups have felt secure enough to follow through. There have been four groups that Region IX staff have worked with extensively and two of those groups have been successful in starting centers.

There have been a number of days spent in helping the Madelia center to reorganize after falling into financial difficulties.

There is currently a survey being conducted to collect material to develop a startup manual for centers.

Newsletter

There is a monthly newsletter which is received by all day care providers, licensors, and many interested parties. There have been close to 600 people on the mailing list in 1979. The newsletter includes current events in child care, child development information, teaching techniques for providers and regional activities.

Community Activities

Staff has developed a manual for adolescents who baby-sit in other peoples homes and has offered two workshops on request from the Mrs. Jaycees.

Human Resource Planning

(continued)

Many calls have come requesting referrals from parents looking for day care for their children.

Region IX staff helped the Blue Earth/Nicollet County Day Care Association organize a state-wide day care association conference which was held in Mankato.

MCCDAC

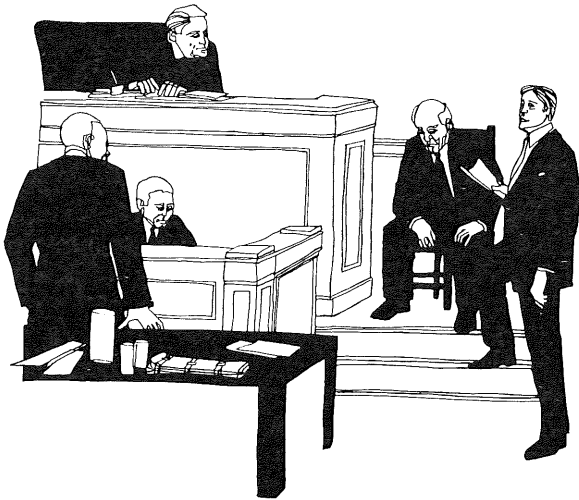
Region IX staff represent the CCAC and the counties of the region on the state advisory council on child care.

Projection

1980 should bring a greater emphasis on providing training to day care providers. There will be assistance to individual counties for funding to providers under CSSA.

CRIMINAL JUSTICE

It is the objective of the Region Nine Criminal Justice Program to determine community needs, coordinate local resources, provide assistance in obtaining state and federal funds and monitor regional projects which relate to criminal justice.



Throughout 1979 eight criminal justice projects were funded in Region Nine:

1. Independent School District No. 77 Youth Development Project - an alternative learning program for students who have special needs and/or difficulties conforming to traditional classroom approaches.
2. Blue Earth County Shelter Care Project - Temporary placement in local residences for youth who are awaiting disposition hearings or are victims of neglect.
3. Sibley County Criminal Investigation Unit - Fulltime investigator with specialized skills and training to aid in the curtailment of felony offenses.

4. Le Sueur County Criminal Investigation Unit - Fulltime investigator with specialized skills and training to aid in the curtailment of felony offenses.
5. New Ulm Crime Prevention Unit - Grant funds provided equipment to the police for making presentations within the community on how to effectively combat crime.
6. Blue Earth County Volunteers In Corrections - Recruitment and training of volunteers to aid Court Services and Human Services staff in providing services to clients.
7. Waseca County Jail Treatment - Establishment of counseling and vocational training programs for jail prisoners.
8. Rural Law Library - To create a consolidated comprehensive law library among fifteen rural counties in south central Minnesota.

Projection

In 1980 the following grants will be funded through the Region Nine Criminal Justice Program: Blue Earth County Shelter Care, Watonwan County Juvenile Restitution Project, Police Training For Interactions With Developmentally Disabled Individuals, Le Sueur County Investigation Unit, Records Management in the Courts, Blue Earth County Volunteers In Corrections and Waseca Jail Treatment Program.

ADVISORY COUNCIL ON AGING

Area Agencies on Aging were established under the Older Americans Act to carry out on the local level the planning, funding, training and advocacy functions as specified within the Act. The RNDC has served the nine counties as the Area Agency on Aging since July of 1976.

Advisory Council

The eighteen member Advisory Council on Aging is composed of nine senior citizen county representatives (one from each county) one congregate nutrition project representative, three public agency representatives, two representatives from private agencies (nursing homes), and three "at-large" representatives. The Council meets on the fourth Wednesday of every month, at 9:30 a.m. Agendas are available through the RNDC office.

Serving in an advisory capacity to the Human Resource Subcommittee and the Region Nine Full Commission, the Council makes recommendations for aging service priorities, reviews and funds grant applications, and directly administers and monitors grants for community services under Title III of the Older American Act. Additionally, training workshops for persons working with elderly persons are contracted for by the Area Agency on Aging.

The service priorities for 1979 as stated in the approved 1979 Area Plan on Aging were as follows: transportation, health assessment clinics, legal services, individual advo-

Human Resource Planning

(continued)

cacy, home health aides, homemaker, home repair, day care, home delivered meals, and multi-purpose senior centers.

Grants

In accordance with these service priorities, the following grants were awarded during 1979:

GRANTEE	SERVICE	AMOUNT
Faribault-Martin-Watonwan	Transportation	\$13,026
Nicollet-LeSueur-Waseca	Transportation	15,058
Union Hospital	Health screening	5,271
Sibley County	Health screening	7,668
Blue Earth County	Homemaker/Home health aide	22,546
MN. Senior Federation	Organizational advocacy	18,683
So. MN. Reg. Legal Services	Legal Services	37,000
So. MN. Reg. Legal Services	Long term care ombudsman	3,000
Springfield	Senior Center	12,500
Hanska	Senior Center	14,994
New Ulm	Senior Center	8,000

Projection

Funding priorities for 1980 are transportation, homemaker, home health aides, legal services, health assessment clinics, organizational advocacy, multi-purpose senior centers, congregate nutrition, home delivered meals, housing assistance, and employment. Grants will be awarded for April and July 1st start up dates. For further information, contact the RNDC.

ARTS ADVISORY COUNCIL

The Region Nine Arts Council formally commenced its activities in September of 1977. The Council is comprised of 12 members representing each county, including one member from cities of the region with a population base exceeding 10,000. With its present membership, the Council represents a broad base of the regional interests ranging from visual to performing arts.

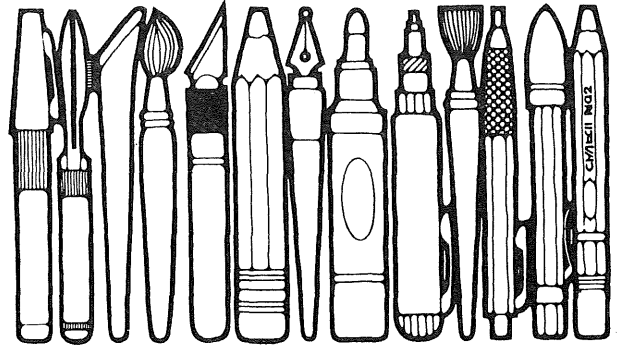
Local Arts Development

The major activity for the year centered around local arts development through the Arts Council grants program. The Council funds programs that enhance arts at the local level on a 50-50 basis. A major initiative was taken last year to publicize the program and encourage a wide variety of programming. The initiative was quite successful as applications far in excess of the Region's allocation of \$37,060 were received. Projects were funded ranging from the Winthrop Community Theatre to a regional crafts festival.

Plan Development

The Arts Council completed its plan for FY'79 in June and received approval from the Minnesota State Board in July. The priorities, in terms of the council's activities, were similar to the previous year's except in two areas. One new area receiving priority is that of direct programming. A total of \$1,500 has been allocated to fund a visiting artist program in four of the smaller cities in the

region. Also, the Council has placed a priority on compiling a directory of local arts resources in the nine county area. The effort is being accomplished through a joint project with the Ft. Ridgely Historical Association. The plan also placed an emphasis on assistance to local arts councils in terms of their formation and activities.



Projection

The Arts Council plans to receive applications in excess of funds available in 1980. Grants will be offered to projects which involve the maximum number of persons in participation of the arts.

HUMAN RESOURCE SUBCOMMISSION

The Human Resource Subcommittee is advisory to the RNDC in planning and policy development related to human resources. In this capacity, the Subcommittee reviews plans and policies recommended by the advisory councils on aging, arts, child care, criminal justice, developmental disabilities, emergency medical services, and employment and training. Membership consists of 12 citizens, one from each county and one from each city, over 10,000 who are appointed by the RNDC.

Coordinating Planning

The HRS has been assigned responsibility for coordination of planning efforts in human resources. As part of this responsibility, HRS members regularly attend meetings of the aforementioned advisory councils, as well as the meetings of organizations providing human services in the region, such as Human Service Boards and mental health boards. Specific activities conducted in 1979 under this coordinative role included: monitoring staff activities toward achieving an equitable distribution of social service funds within the state, culminating in passage of the Community Social Services Act; review of all plans and recommendations developed by RNDC advisory councils in human resources grant requests, i.e., Community Health Service Plans, Community Action Agency grants, etc.; recommendations on appointments to advisory councils.

Projection

1980 will bring a continuation of aforementioned activities plus special projects identified by the RNDC or the counties in the region.

Human Resource Planning

(continued)

MANPOWER

The Regional Employment and Training Advisory Council is advisory to the Region Nine Development Commission and the State Department of Economic Security on Comprehensive Employment and Training Acts programs in the region. The 19 member council includes one citizen from each county and one representative of each of the following: Community Service Agencies, Job Services, Area Vocational Technical Institutes, Region Nine Chamber Association, Social Service Agencies, Labor Unions, Comprehensive Employment and Training Centers, Youth ages 14-21, Handicapped and Veterans.

Employment & Training Plan

The FY'81 Employment and Training Plan identifies unemployed heads of households as the top priority target group. Secondary priorities are youths, women, persons over 60, and veterans. The plan also designates agencies to deliver various employment and training services, and determines allocation of funds to those agencies. In Region Nine, Comprehensive Employment and Training Centers in Fairmont, Mankato and New Ulm provide most of the adult CETA programs, while the Minnesota Valley Action Council provides most youth and older workers CETA programs.

Special Project Reviews

The RETAC reviews special public service employment projects and makes recommendations to the Department of Economic Security for funding, modification or denial. Project funds are utilized for staffing short term special projects of unity of local government or non-profit organizations. In 1979, funds totalled \$313,781. Additionally, the council reviews all other employment and training related grant applications, making recommendations to the Human Resource Subcommittee and the Region Nine Development Commission.

Projection

In 1980, the council anticipates a continuation of previous annual planning processes with an expansion of responsibilities for monitoring and evaluation of employment and training programs. Also important in the coming year will be increased emphasis on private sector employment, rather than the public sector.

information facilities within the region were added to the directory.

Regional EMS Communications Plan

A plan was prepared to provide ambulance services, hospitals and public service agencies with recommendations regarding local and region-wide communications equipment. The plan can be utilized as a guide for any future equipment purchases by these entities.

Projection

In 1980, even though not refunded, the council will continue to meet on a quarterly basis to monitor EMS developments in the region and to share ideas for further improvement.

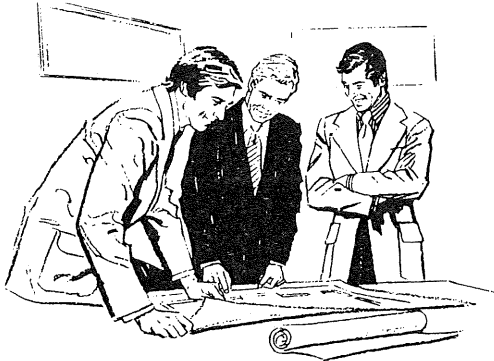
EMERGENCY MEDICAL SERVICES

The Emergency Medical Services Advisory Council is a 14 member council responsible for planning toward an improved system of medical care for critically ill or injured patients in the region. The council received federal funding for the first six months of 1979 at which time funding was not renewed.

Physicians' Critical Care Directory

The directory includes information for physicians regarding transfer of critical patients to specialized hospitals in the metropolitan area and in Rochester. In 1979,

PHYSICAL PLANNING COMMITTEES



COMPREHENSIVE PLANNING COMMITTEE

KENNETH ALBRECHT, Mankato
LESTER ANDERSON, Mapleton
ROBERT BARRETT, Mankato
RAY ECKES, North Mankato
PAUL HADLEY, North Mankato
JAMES STANGLER, Kilkenny
ALLEN SIGAFUS, Mankato
LARRY LLOYD, Frost

TRANSPORTATION COMMITTEE

LES ANDERSON, Blue Earth Co.
JOHN BAERG, Watonwan Co.
AUGUST MUELLER, Sibley Co.
DON LINDLEY, Brown County
VICTOR WECKWERTH, Sibley Co.
ROGER OLDFATHER, Faribault Co.
ROLAND THIESSE, Martin Co.
PAUL HADLEY, Nicollet Co.
RODERICK JOYCE, Waseca Co.
JEROME SCHLEIS, LeSueur Co.
GERRY ENSTROM, Watonwan Co.
KEN SAFFERT, City of Mankato
HERSHEL KOENIG, Faribault Co.
RON SANDVIK, LeSueur Co.

208 WATER QUALITY MANAGEMENT ADVISORY COMMITTEE

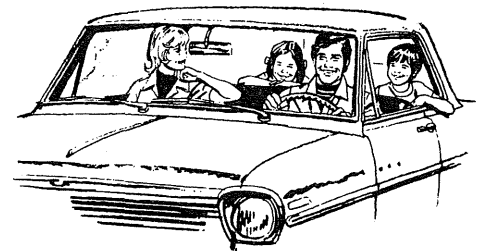
RAY WORDEN, Martin Co.
DAVID STEVENS, Blue Earth Co.
ROBERT KLINGBIEL, Faribault Co.
JOHN SALLSTROM, Township of Sibley Co.
CARL PETTIS, Township of LeSueur Co.
PAUL SAWATSKY, Township of Watonwan Co.
PAUL HADLEY, Region Nine Chamber Association
AVERY "DOC" HALL, Waseca
MARLIN GRATZ, Fairmont
JERRY RODNING, Soil & Water Conservation Dist.- Nicollet County
NORBERT HOHENSTEIN - SWCD - Blue Earth Co.
NEIL SAXTON - SWCD - Martin County - Chairman
W.C. BECKER - Watershed District - Sibley Co.
RICHARD CLARKE - Southern Minn. Conservation Assoc., Elysian
JAMES ZIMMERMAN - Regional Environmental Education Council-Waseca
ELMER GOODRICH, Farm Bureau - Mapleton
WAYNE FEIL, Arlington
DR. JACK HOLDEN, Mankato

RECREATION ADVISORY COMMITTEE

JIM JACK, Mankato
DAVE SEARS, Mankato
JOHN ZIMMERMAN, LeCenter
PAUL BREMER, Gaylord

PHYSICAL DEVELOPMENT SUBCOMMISSION

HARRY TIMM, Mankato
EUGENE POWELL, Waseca
CLARENCE WELTER, New Prague
LAVERN WILLIAMS, Lake Crystal
PHIL SHEALY, Mankato
THOMAS GRAHAM, Henderson
EARL HELGESON, Frost
DAVE SCHNOBRICH, New Ulm
ORVILLE HANSON, Comfrey
ROBERT GUSTAFSON, Madelia
FRANK A. RODRIGUEZ, Elmore
NEIL SAXTON, Fairmont
PAUL CHILDERS, Fairmont
KEN SCHOSTAG, Mankato
KEN ALBRECHT, North Mankato
GERALD CLARK, Ceylon



TRAFFIC SAFETY ADVISORY COMMITTEE

RAY STEPHENS, Blue Earth Co.
SHELLI LARSON, Blue Earth Co.
PHIL FRISCH, Brown Co.
JEAN YAEGER, Faribault Co.
VERNON K. JOHNSON, Faribault Co.
MOE MORAN, Brown Co.
LAWRENCE MESKAN, LeSueur Co.
MYRON WOLF, LeSueur Co.
ROBERT WITTY, Martin Co.
DALE BROUGHTEN, Nicollet Co.
MYLES LORENTZ, Nicollet Co.
JAMES L. KRUEGER, Watonwan Co.
ROBERT PARKER, Sibley Co.
BRAD FERRIS, Sibley Co.
JILL ZELLWEGER, Waseca Co.
SHERY NEFSTEAD, Waseca Co.
MRS. BILL BLANCHFIELD, Watonwan Co.
TIM PARKER, Martin Co.

HUMAN RESOURCE PLANNING COMMITTEES

AGING ADVISORY COUNCIL MEMBERS

KATHERINE HAAG, Waseca
WANDA WEBSTER, Nicollet
ALICE OSBORNE, St. Peter
JACK LAUX, Sleepy Eye
LLOYD MADISON, Waseca
LAWRENCE PETERSON, Winthrop
DAVID JANOVY, Mankato
GORDON PATTERSON, Fairmont
LOREN KNAUSS, Waterville
CINDY RUPP, Blue Earth
ELDRED LOOP, Fairmont
ROGER DOOLEY, Mankato
ARDIS KOTTKE, Wells
HERBERT NOREN, St. James
MARY UTERMOHLEN, Mankato
CAROLYN CARR, Blue Earth
KATHIE DAVIS, Amboy
THELMA SCHUELER, LeCenter
JANE WATSON, Mankato
JOANNE KENDALL, St. Peter
GERRY BERGLIN, Mankato
CHARLOTTE JOHNSON, St. James
PATRICIA HESCH, Waseca

REGIONAL EMPLOYMENT AND TRAINING ADVISORY COUNCIL

SYLVESTER PRIEM, Janesville
CALVIN SCHRUPP, Gaylord
DAYTON MARTINSON, St. Peter
JAMES TIERNEY, Mankato
DON FISHER, Waseca
CARL MONTZKA, Blue Earth
WILLIAM BEAM, St. James
MERVIN BLIESMER, Sherburn
SPIKE PIPER, Blue earth
RAY RAPP, Mankato
JOHN VOTCA, North Mankato
LEIGH HEILMAN, New Ulm
RON GERMSCHIED, LeCenter
BRUCE FAHEY, New Ulm
DOROTHY SHEEHAN, St. Peter
JOE KURTZMAN, Fairmont
MIKE BUDACH, Madison Lake
CRAIG PETERSON, Mankato
WENDY JONES, Mankato
BETH HILLER, Amboy
DON BENSON, St. James

COUNCIL FOR COORDINATED CHILD CARE

JAN MARTINSON, Chair, Blue Earth Co.
MARGE CARLSON, Vice Chair/Chair, Nicollet Co.
RICHARD COYLE, Secretary, Blue Earth Co.
JULIE ANN WARNER, Vice-Chair, Watonwan Co.
PAT FOSTER, Secretary, Blue Earth Co.
KRYSS MAGOON, Nicollet Co.
JUDY EMKE, Blue Earth Co.
RICHARD EMBACHER, Brown Co.
PAT SHORTALL, Blue Earth Co.
KATHY WESTERMANN, LeSueur Co.
JANE BUNKER, Watonwan Co.
JENNY MILLER, Faribault Co.
VIRGINIA TISDALE, LeSueur Co.
RITA ANDROS, Nicollet Co.
ROSALIE TATRO, Watonwan Co.
KATHY HENRIKSON, Nicollet Co.
SUE BERG-FODNESS, Brown Co.
BARB TURNER, Blue Earth Co.
DIANNA BRANDENBERG, Blue Earth Co.
MARGARET ZIMMERMAN, Human Resource Subcommission - Liason
JOHN BAERG, Full Commission - Liason

CRIMINAL JUSTICE ADVISORY COUNCIL

GORDON BEITO, City of Mankato
GORDON BENSCHOTER, City of Fairmont
VIRGINIA BURNETT, City of New Ulm
GEORGE CAVERS, Martin Co.
RANDALL KROENING, Brown Co.
MERTON SCHWARZ, Waseca Co.
ROGER GRAHAM, Sibley Co.
JAMES W. PHIPPS, Faribault Co.
MIKE ENGDAHL, Watonwan Co.
DONALD SCHMIDT, Nicollet Co.
PAT W. SMITH JR., LeSueur Co.
DAVE STEVENS, Blue Earth Co.,
RUTH EPELAND, At Large

EMERGENCY MEDICAL SERVICES ADVISORY COUNCIL

DON JOHNSON, St. James
DR. JOHN ANDERSON, Blue Earth
JOANN ARVIDSON, North Mankato
BRAD REEVES, Mankato
DR. M.W. DOBSON, Mankato
JUNE OLSTAD, Janesville
DR. ANN VOGEL, New Ulm
GLEN HOREJSI, Mankato
TOM TALLANT, Trimont
DR. DAVID NEIDHART, Mankato
E.R. SPANNAUS, Arlington
RICHARD WILBRECHT, New Ulm
DR. D.K. OHRT, Mankato
PHYLLIS PETERSON, New Richland

HUMAN RESOURCE SUBCOMMISSION

MARY BERNER, Madelia
MARY GOVER, St. Peter
ELDON HORMAN, Comfrey
IRENE JACOBSON, Gaylord
BEVERLY KROLL, LeCenter
FRANK RODRIGUEZ, Elmore
MARCELLA GLAMM, St. Clair
BETTY MARTINKA, New Ulm
FRANK BISEL, Sherburn
JOYCE VAUGHN, Fairmont
MARGARET ZIMMERMAN, Waseca
QUENTIN MARSH, Mankato
HELEN VICKNER, St. Peter
QUENTIN SCHOENBAUER, LeSueur
PEGGY DAUPHINAIS, North Mankato

ARTS ADVISORY COUNCIL

DEE SASSE, Sleepy Eye
NANCY K. STEELE, Blue Earth
PENNEL SOMSEN, New Ulm
REBECCA UELAND, No. Mankato
SUZANNE DeWAR, Fairmont
SISTER NORLEEN RANS, Mankato
JOHN BAERG, Butterfield
EILEEN HINES, Eagle Lake
R. CRAIG MORRIS, LeSueur
EILEEN STEWARD, Welcome

DEVELOPMENTAL DISABILITIES ADVISORY COUNCIL

JEANNETTE BARSNESS, New Ulm
MICHAEL SIROVY, Sherburn
WINNIE RENNEN, Mankato
CHARLES JOHNSON, Chairperson, St. Peter
CHRISTINA SHERAN, Mankato
CAROL COLE, Blue Earth
EARL HENSLIN, New Ulm
DEB FUCHS, Blue Earth
NORMA ELROD, Mankato
PAM BROWER, Mankato
MARY BERNER, Madelia
MICHAEL SPECHT, Good Thunder
HAL SANDBERG, Madelia
DOTTIE SPENCER, Madelia
BARB SCHULTZ, Mankato
YVONNE KRENIK, Mankato
TOM HENDERSON, New Ulm
LOUISE FOLEY, Mankato
CAROLYN ENGQUIST, Waterville

STUDIES WORKSHOPS

COMMUNITY DEVELOPMENT BLOCK GRANTS

The Region Nine Development Commission and Department of Housing and Urban Development co-sponsored a workshop on the HUD Community Development Block Grant Small Cities Program. Local elected officials throughout Region Nine were invited to attend to learn more about the purposes, requirements, and application process associated with the Small Cities Program.

URBAN DEVELOPMENT ACTION GRANTS

The Region Nine Development Commission sponsored an informational workshop on the HUD Urban Development Action Grant (UDAG) Program. Representatives of the RNDC, HUD, and local communities which have used the UDAG Program provided insights on how to stimulate private investment through public-private sector partnerships. There are currently 39 "distressed cities" in Region Nine which are potentially eligible to use the UDAG Program.

REGION NINE HOUSING PLAN

The Region Nine Housing Plan serves as both a policy plan and an action plan with regard to regional housing issues. Utilizing available socio-economic data as a basis for identifying a variety of housing needs, a framework of regional goals, policies, and strategies is presented as a means of addressing these needs and issues. Regional allocation plans are also presented as tools to assure the equitable distribution of limited housing resources provided by selected housing assistance programs. The latest annual update of the plan will be available in early 1980.

ENERGY CONFERENCE - "Everything Under The Sun"

A comprehensive two-day conference was held in Mankato to provide instruction and education concerning the technical aspects of alternative energy and energy conservation. Over 400 persons were in attendance to participate in the sessions and hear keynote speakers Don Anderson, Mid-America Solar Energy Complex and Barry Commoner, Washington University, St. Louis.

GOOD THUNDER - LAND USE PLAN

In response to and in anticipation of future residential, commercial, and industrial development within the City of Good Thunder, the city council appointed an eight member planning commission in March, 1978, to direct the formulation of a land use plan. The plan is intended to serve as a guide as well as an official policy position in the development of the planning area. It approaches growth on an orderly basis in order to help avoid the economic and environmental problems associated with non-continuous leap-frog development.

GOOD THUNDER - ZONING ORDINANCE

The ordinance is enacted for the following purposes: to promote the health safety and general welfare of the inhabitants of the City of Good Thunder, by lessening congestion in the streets, securing safety from fire; preventing the overcrowding of land; avoiding undue concentration of population; facilitating the adequate provision of transportation, water, sewage disposal facilities, schools, parks and other public requirements; conserving the value of properties; and encouraging the most appropriate use of land.

MADELIA - SUBDIVISION ORDINANCE

The document is an ordinance establishing regulations for the subdivision and platting of land within the corporate limits of the City of Madelia; providing for the preparation of plats; providing for the installation of streets, utilities and other improvements; establishing procedures for the approval and the recording of plats; and providing penalties for the violation of the ordinance.

MADELIA - PERIPHERY LAND USE PLAN

The Madelia Planning Commission recognized that the future growth and development of the city will be greatly influenced by the newly constructed Trunk Highway 60 bypass and relocated Trunk Highway 15. In an effort to analyze the impact of the highway and the resulting future development patterns, a commitment was made

STUDIES WORKSHOPS (continued)

to initiate a land use planning study for the city's periphery. This document is the result of efforts by the Region Nine Development Commission staff and the Madelia Planning Commission.

1979 AREA PLAN ON AGING

The plan states major work objectives and priorities of the Region Nine Area Agency on Aging. Funding priorities under Title III of the Older Americans Act are identified. The plan also includes demographic information on the region's elderly and an analysis of service needs.

DEVELOPMENTAL DISABILITIES - ON GOING WORKSHOPS

Parents and professionals concerned with persons who have developmental disabilities were welcome to attend various training workshops, some of which were entitled; Criminal Justice and the Developmentally Disabled Offender; Human Fulfillment Workshop; Increase your AQ - Advocacy Quotient; SCOPE - Special Concerns on Parent Effectiveness; Try Another Way; Consumer Program Forum; and Employers Seminar. Similar workshops will be conducted during 1980.

ENVIRONMENTAL REVIEW

A study has been compiled to consider the effects of a drainage ditch five miles in length in LeSueur County. The Department of Natural Resources will examine the proposed changes in hydraulics, physical features, land use and wildlife described in the report to determine if the dredging should be permitted.

MANPOWER

FY'81 Employment and Training Plan - The document contains a regional assessment of employment and training needs and establishes goals and priority target groups to meet those needs. Service deliverers are identified and their allocations established as part of the planning process.

EMERGENCY MEDICAL SERVICES

Region Nine Development Commission's Application for Federal Support to Establish a Regional System of Emergency Medical Care - The application identifies needed improvements in emergency medical services and establishes priorities for funding.

Region Nine Emergency Medical Services Communications Plan - The plan recommends equipment necessary for improved local and regional EMS communications capability.

Physician's Critical Care Directory - The directory was updated to include regional resource hospitals.

COMPREHENSIVE PLANNING

In 1979 three important statements were constructed. These include a draft Mission Role, Responsibility and Purpose Statement for the Region Nine Development Commission, a draft Region Nine Development Commission Goal and a draft Region Nine Description. All provide an overview of the intent of the Region Nine Development Commission.

REGION NINE ARTS PLAN

The plan is formulated to qualify Region Nine for funding from the Minnesota State Arts Board block grant. It discusses regional arts problems, existing resources, the Arts Council goals and the council work plan for 1979. A separate section of the document is designed to explain the types of grants funded through the Arts Council and the eligibility requirements for such grants.

REGION NINE ARTS COUNCIL PROGRAM INFORMATION

A booklet provides information to potential arts grants applicants. Covered are descriptions on eligibility, fiscal agents, application restrictions, assistance to organizations, deadlines and instructions to the applicant on how to file an application.

LEGISLATIVE CONCERNS

TRANSPORTATION

The RNDC supports legislation to provide additional funding for highway purposes.

The RNDC supports legislation to provide additional funding for the Minnesota Rail Service Improvement Program.

The RNDC supports legislation to increase truck weight enforcement (S.F. 1368).

The RNDC supports special legislation which would assist the LeCenter Railway Terminal Company Inc. acquire the rail line between LeCenter and Montgomery to provide common carrier railroad service to users along the segment which will otherwise be abandoned.

COMMUNITY SOCIAL SERVICES ACT

The RNDC urges continued support for Community Social Services Act emphasis on county board authority and block grant funding.

HOUSING

The RNDC supports the continuation of state and federal housing assistance programs so as to assure lower-income households access to a decent, safe, and sanitary home in a suitable living environment. In particular, state programs administered by the Minnesota Housing Finance Agency for home mortgages, home improvements and accessibility improvements should be continued and expanded, where possible.

COMMUNITY DEVELOPMENT

The RNDC supports block grant funding to local units of government in preference to categorical funding so as to provide maximum flexibility in addressing local community development needs.

DEVELOPMENTAL DISABILITIES

The Region Nine DDPC supports legislation which would promote establishment of semi-independent living alternatives for developmentally disabled adults residing within the community. The Council also takes the position of supporting further development and provision of in-home services to families of developmentally disabled persons.

RECREATION

The RNDC supports continued appropriations for the acquisition and development of local and regional recreation areas via the federal Land and Water Conservation (LAWCON) program and the Legislative Commission on Minnesota Resources (LCMR) Grants-in-aid program. These appropriations should continue at the present level of funding.

Department of Transportation Bikeways Program

The RNDC supports additional appropriations to the Mn/DOT Bikeways Grant Program for the development of bike trails by local units of government.

WATER QUALITY

The RNDC encourages voluntary controls on non-point sources of pollution and the influence on agriculture.

LAND USE

The RNDC favors legislation which will contribute to the preservation of agricultural land.

TRAFFIC SAFETY

The RNDC supports adequate finance to repair and maintain rural roads.

CHILD CARE

The RNDC supports legislation for a sliding fee to offer a partial subsidy program for moderate income families who need but can't afford the full cost of child care. This year a pilot program started and two counties from Region IX are taking advantage of it.

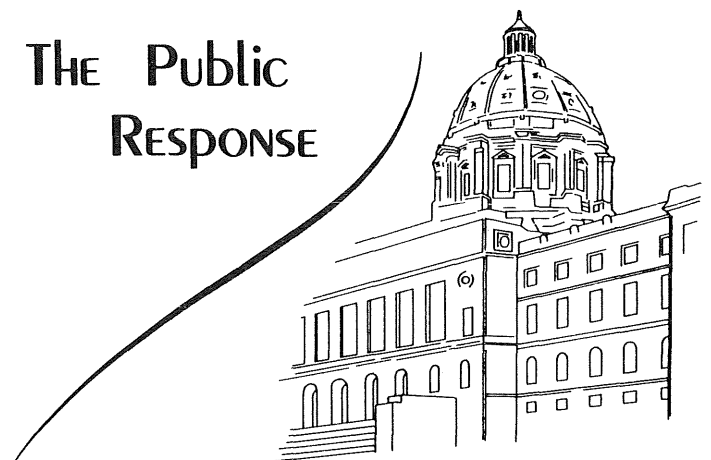
STATE FUNDING

The RNDC takes the position that all state mandated programs for counties, cities and townships in Minnesota be supported by state funding sources, not local revenues.

LAW ENFORCEMENT TRAINING

The RNDC supports the continuation of a state funded Bureau of Criminal Apprehension police skills training course to offset the shortage of available licenses peace officers who will work in rural communities. The Commission urges that such a training program be 17 weeks in length and state reimbursement for officer training should be included in the program.

The Public Response



BUDGET

Funding of the RNDC is derived from three main sources. Approximately 70 percent of the operating budget is received from state and federal sources through grants for regional activities as the programs are determined by need and then developed. Approximately 30 percent is assessed by counties.

REVENUES For The Year Ended June 30, 1979	Federal	State	Local	Total
Physical Planning - HUD	\$ 24,956	\$ --	\$ --	\$ --
Physical Planning Projects	--	--	21,293	--
Environmental Permit	--	766	--	--
Traffic Safety	31,082	--	--	--
Water Planning	--	3,786	--	--
Health Planning	86,675	--	--	--
Title XX	--	6,754	--	--
Child Care	22,815	--	--	--
Manpower	21,755	--	--	--
Arts	--	6,209	--	--
Aging	46,618	--	--	--
Criminal Justice	31,311	--	--	--
Developmental Disabilities	28,525	--	--	--
State General Support	--	85,019	--	--
Tax Levy	--	--	147,017	--
Interest	--	--	5,383	--
Other	--	--	2,528	--
TOTAL	\$293,737	\$102,534	\$176,221	\$572,492

The difference between the expenditures in each program and the revenues received from the granting agencies is allocated to each program from State General Support and Local Tax Levy.

EXPENDITURES For The Year Ended June 30, 1979	Personnel	Consultants	Printing & Publication
Physical Planning	\$ 23,797	\$ --	\$ 918
Rural Innovative Housing	14,918	--	--
"208" Water Quality	4,915	--	6
Traffic Safety	20,478	--	68
Water Planning	1,804	--	--
Title XX	505	--	--
Emergency Medical Services	37,541	--	416
Economic Development	1,407	--	--
General Health	365	--	--
Recreation	4,646	--	--
Transportation	12,168	--	73
Child Care	13,889	--	182
Human Resources	1,858	--	--
Manpower	10,458	61	--
Arts	7,512	--	102
Aging	32,654	--	408
Criminal Justice	18,541	--	85
Developmental Disabilities	18,902	100	472
Energy	2,030	--	34
Community Development	7,883	--	--
Comprehensive Planning	21,957	2,562	40
RNDC General Support	--	--	--
Other	23	--	--
TOTAL	\$258,251	\$2,723	\$2,804

PROJECTED EXPENDITURES For The Year Ended June 30, 1980	Personnel	Consultants	Printing & Publication
Physical Planning	\$ 28,250	\$ --	\$1,500
Housing	16,500	--	250
Traffic Safety	22,550	--	25
208 Water Quality	3,400	--	50
Transportation	12,200	--	75
Economic Development	1,100	--	--
HUD	15,575	--	75
Recreation	4,300	--	--
Child Care	13,880	--	245
Human Resources	1,500	--	50
Manpower	17,040	--	100
Arts	6,025	--	125
Aging	46,275	--	525
Criminal Justice	23,535	--	250
Developmental Disabilities	19,333	--	150
Energy	3,800	--	--
Community Development	7,900	--	50
Water Planning	800	--	--
Comprehensive Planning	17,875	--	75
RNDC General Support	--	--	--
TOTAL	\$261,838	--	\$3,545

The nine counties local share of the fiscal year 1979-1980 budget is about 78 cents per person. This is derived by using the revenues of \$176,221 and the 1975 estimated population figure of 223,200 based on the .17 mill tax levy.

REVENUES For The Year Ended June 30, 1980	Federal	State	Local	Total
"208" Water Quality	\$ --	\$ 4,000	\$ --	\$ --
Water Planning	--	2,000	--	--
Aging	50,534	--	--	--
Traffic Safety	--	35,000	--	--
HUD	20,716	--	--	--
Criminal Justice	40,000	--	--	--
Developmental Disabilities	30,000	--	--	--
Manpower	30,000	--	--	--
Arts	--	7,175	--	--
Contracts	--	--	20,000	--
Child Care	35,000	--	--	--
General Support	--	93,466	--	--
Tax Levy	--	--	164,853	--
Technical Assistance Grant	--	4,000	--	--
TOTAL	\$206,250	\$145,641	\$184,853	\$536,744

Travel Staff	Travel Other	Xerox & Supplies	Communications	Other Direct Expenses	Indirect Expenses	Total
\$ 809	\$ 58	\$ 921	\$ 341	\$ 100	\$ 11,020	\$ 37,964
314	--	15	372	1,853	7,146	24,618
242	653	338	368	30	2,680	9,232
1,847	1,979	641	660	551	10,725	36,949
197	--	380	50	--	994	3,425
772	548	404	344	2,105	1,914	6,592
5,237	5,569	1,458	1,630	1,265	21,725	74,841
16	38	58	107	--	665	2,291
--	--	50	13	--	175	603
292	--	98	135	--	2,115	7,286
977	870	1,489	562	154	6,664	22,957
1,707	1,246	2,025	1,381	953	8,745	30,128
338	1,714	154	133	106	1,760	6,063
1,440	1,689	833	847	161	6,310	21,799
287	985	448	336	35	3,969	13,674
4,451	2,365	1,606	1,060	1,501	18,015	62,060
1,925	21	777	549	389	9,116	31,403
1,467	3,362	819	1,023	369	10,804	37,318
242	--	47	26	151	1,035	3,565
202	299	164	191	--	3,574	12,313
1,416	577	459	599	368	4,418	32,396
58	21,672	12	4	1,453	35,210	58,409
--	--	23	--	--	18	64
\$24,236	\$43,645	\$13,219	\$10,731	\$11,544	\$168,797	\$535,950
FY 79 Revenue						\$572,492
FY 79 Expenditures						535,950
Excess Revenue						\$ 36,542

Travel Staff	Travel Other	Xerox & Supplies	Communications	Other Direct Expenses	Indirect Expenses	Total
\$ 5,000	\$ 4,200	\$ 2,200	\$ 2,500	\$ 1,495	\$ 18,467	\$ 63,612
800	400	750	1,000	300	8,180	28,180
2,250	1,600	810	850	300	11,615	40,000
350	300	250	275	375	2,045	7,045
1,100	1,000	400	225	--	6,135	21,135
150	50	100	100	--	613	2,113
1,200	900	800	950	500	8,180	28,180
300	--	125	150	125	2,045	7,045
1,600	1,200	3,150	1,675	500	9,100	31,350
400	1,750	150	150	--	1,636	5,636
3,048	4,058	300	600	50	10,310	35,506
500	1,200	600	500	50	3,681	12,681
3,875	3,525	2,400	1,200	1,200	24,131	83,131
2,820	700	1,400	1,000	795	12,474	42,974
1,667	600	667	800	117	10,000	33,334
1,200	--	300	400	300	2,454	8,454
425	350	800	325	150	4,090	14,090
100	--	50	20	30	409	1,409
1,700	650	700	600	400	8,998	30,998
--	18,000	--	--	9,750	11,350	39,100
\$28,485	\$40,483	\$15,952	\$13,320	\$16,437	\$155,913	\$535,973

A-95 PROJECT REVIEW

Applicant Agency	Project	Funding Agency	Amount Requested	Recommendation
Blue Earth County	Community Health Services	Minn. Dept. of Health	\$ 115,889 state	A
Brown/Nicollet HSB	Community Health Services	Minn. Dept. of Health	319,080 local	A
Blue Earth County	CDBG Small Cities Single Purpose Grant	HUD	150,430 state	A
Gaylord	CDBG Small Cities Single Purpose Grant	HUD	443,190 local	A
Lake Crystal	CDBG Small Cities Comprehensive Grant	HUD	600,000	A
Le Sueur County	CDBG Small Cities Single Purpose Grant	HUD	472,000	A
Mapleton	CDBG Small Cities Single Purpose Grant	HUD	448,050 1st year	A
Nicollet Co. (joint)	CDBG Small Cities Single Purpose Grant	HUD	242,621 2nd year	A
Waseca	CDBG Small Cities Single Purpose Grant	HUD	370,800 3rd year	A
Waterville	CDBG Small Cities Single Purpose Grant	HUD	307,500	A
Waseca	City Housing Plan		In accordance with Minn. Statutes Chapter 306, Municipal Bond Issues	A
City of Blue Earth	Step I - Facilities Plan, Wastewater Treatment	EPA	167,521	A
Fairmont	Historical Preservation (Opera House)	Historical Society	10,000	A
McCleod/Sibley	Community Health Services	Minn. Dept. of Health		A
Minn. Dept. of Economic Secur.	Weatherization Assistance Statewide	U.S. Dept. of Energy	9,498,000	A
Heritage Acres	CETA Title VI	MN. Dept. Economic Security	9,130	A
Trimont Housing Assoc.	Section 515 Rural Rental Housing Loan	FmHA	837,900	A
Personal Effectiveness Foundation	CETA Title VI	MN. Dept. Economic Security	9,889 federal	A
Committee Against Domestic Abuse	Battered Women Shelter	MN. Dept. Corrections	4,703 other	M
RNDC	Community Organizer	MN. Dept. Corrections	8,000	A
Carney Insulation Corp. (Mankato)	Battered Women Shelter	MN. Dept. Corrections	8,000 state	A
Legal Rights Center	Community Organizer	FmHA	6,377 local	A
Pemberton	Business & Industry Loan	FmHA	1,500,000 (loan guarantee)	A
MN. Valley Action Council	Law Enforcement Assistance Administration	LEAA	278,297	A
Mankato	Water and Waste Disposal Grant Program	FmHA	179,000	A
Mankato	Alcohol Counseling	National Institute of Health	22,500	A
Nicollet County	Urban Develop. Action Grant	HUD	560,000	A
City of Fairmont	Urban Develop. Action Grant	HUD	300,000	A
MN/DOT	LAWCON/LCMR	SPA, HCRS	74,850	A
Faribault County	Public Transit Aid Grant	MN/DOT	21,000	A
Faribault County	Annual Work Program	MN/DOT		A
Faribault County	Bridge Bonding	MN/DOT	65,000	A
Faribault County	Bridge Bonding	MN/DOT	75,600	A
Faribault County	Bridge Bonding	MN/DOT	97,600	A
Faribault County	Bridge Bonding	MN/DOT	75,600	A
Faribault County	Bridge Bonding	MN/DOT	75,600	A
Faribault County	Bridge Bonding	MN/DOT	216,000	A
Faribault County	Bridge Bonding	MN/DOT	48,000	A
Faribault County	Bridge Bonding	MN/DOT	191,000	A
Faribault County	Bridge Bonding	MN/DOT	270,000	A
Faribault County	Bridge Bonding	MN/DOT	48,000	A
Faribault County	Bridge Bonding	MN/DOT	48,000	A
MN/DOT	Updated Trunk Highway Const. Program	MN/DOT	N/A	A
Region Nine Counties	Federal Aid Off System Const. Program 1980	MN/DOT	N/A	A
Mankato Rehab. Center, Inc.	Urban Mass Transit Administration-16(B)(2)	Urban Mass Transit Admin.	33,768	A
Le Sueur Co. Day Activity Ctr.	Urban Mass Transit Admin. 16(B)(2) Capital Grant	Urban Mass Transit Admin.	20,911	A
High Island Creek Shelter, Inc.	Urban Mass Transit Administration-16(B)(2)	Urban Mass Transit Admin.	19,480	A

Applicant Agency	Project	Funding Agency	Amount Requested	Recommendation
Mankato State Univ. Art Dept.	Arts	Minn. State Arts Board	4,510	D
MSU Liturgical Dance	Arts	Minn. State Arts Board	690	A
MSU Dance Residency	Arts	Minn. State Arts Board	1,250	D
Dept. of Economic Opportunity, Balance of State	CETA	U.S. Dept. of Labor	\$22,869,496	A
Minn. Valley Action Council	Community Services Admin.	Minn. Dept. of Health	N/A	A
Blue Earth County Historical Society	Historical Society	Minn. Historical Society	36,125	A
City of Hanska	Aging Title III-B Senior Center	Administration on Aging/HEW	12,000	A
City of Springfield	Title III-B Senior Center	Administration on Aging/HEW	14,994	A
Workers Opportunity Resources Corp. Comm. Development Corp. RNDC	Community Development	Dept. of Economic Development	67,000	M
	Criminal Justice Planning Grant	Crime Control Planning Board	40,000	A
Dept. of Corrections	District-County Restitution	Crime Control Planning Board	32,033	A
Southern Minn. Support Coalition	Dept. of Correction Family Violence	Dept. of Corrections	85,500	A
Kilkenny	Step 1 Grant for Wastewater Treatment Facilities	EPA	16,300	A
City of Le Sueur	Paratransit Demonstration Grant Program	DOT	32,662	A
Blue Earth County	Housing Assistance Plan (free standing)	HUD	N/A	A
LeSueur/Waseca	Community Health Service Plan	Dept. of Health	95,589 state 169,700 local	A
Faribault/Martin/Watonwan	CommunitH Health Service Plan	Dept. of Health	153,280 state 258,641 local	A
Minnesota Valley Action Council	Weatherization	Dept. of Energy - Minn. Dept. of Economic Security	829,814 federal 231,075 state	A
RNDC	Day Care Mini Grants	Dept. of Public Welfare	3,102.56	A
Donald Moore	FmHA Business & Industry Loan (loan guarantee)	FmHA	169,000	A
City of Elysian	LAWCON/LCMR	SPA	5,500	A
City of Waterville	LAWCON/LCMR	SPA	30,700	A
City of Odin	LAWCON/LCMR	SPA	9,490	A
Blowers Wildlife Park	LAWCON/LCMR	SPA	20,800	A
Waseca County				
Ray Eutice Co. Park	LAWCON/LCMR	SPA	17,345	A
Waseca County				
Le Sueur County	LAWCON/LCMR	SPA	13,500	A
City of Winnebago	LAWCON/LCMR	SPA	300,000	A
Watonwan County	LAWCON/LCMR	SPA	18,000	A
Blue Earth County	LAWCON/LCMR	SPA	111,300	A
City of Mankato (Hiniker Pond)	LAWCON/LCMR	SPA	226,000	A
City of Montgomery	LAWCON/LCMR	SPA	41,500	A
City of Walters	LAWCON/LCMR	SPA	3,500	A
City of Mankato (River Bike Trail)	LAWCON/LCMR	SPA	113,600	A
City of New Ulm	LAWCON/LCMR	SPA	67,200	A
City of New Ulm	Minn. Historical Society	State & Federal Historical Society	73,693 state 147,385 federal	A
City of New Ulm	Minn. Historical Society	State & Federal Historical Society	17,235 state 34,470 federal	A
Brown County				
Le Sueur-Waseca Group Home, Blue Earth County, Brown County Youth Services	Youth Intervention Grants	Crime Control Planning Board	58,287	A
Faribault/Martin/Watonwan (Shelter Care)	Juvenile Justice & Delinquency Prevention	Law Enforcement Assistance Admin.	10,426	A
Martin County	Criminal Justice Block Grant (1978 Reverted Funds)	Law Enforcement Assistance Admin.	9,121	A
RNDC	Farmers Home (III)	Farmers Home	35,629	A
Sibley County	Supplemental Food - Women, Infants, Children	Minn. Dept. of Health	46,417	A
MN. Planned Parenthood	Family Planning - 61 Counties	U.S. Dept. of Health, Education and Welfare	1,399,830	A
Prof. Services Quality Council - Rochester	Prof. Services Review Organization (PSRO)	U.S. Dept. of Health, Education, and Welfare	511,120	A
MN. CAP Association	Citizen Energy Coalition Project	Community Services Administration	55,000	A
Minn. Valley Action Council	Minn. Economic Opportunity Grant	Dept. Economic Security	34,690	A
Minn. Depart. Economic Security	CETA Title VII - 54 Counties	U.S. Dept. of Labor	1,903,698	A

Applicant Agency	Project	Funding Agency	Amount Requested	Recommendation
New Ulm	Bridge Bonding	MN/DOT	\$ 650,000	A
Ceylon	Facility Plan/Wastewater	EPA	N/A	A
Lewisville	Facility Plan/Wastewater	EPA	N/A	A
Amboy	Facility Plan/Wastewater	EPA	N/A	A
Sherburn	Facility Plan/Wastewater	EPA	N/A	A
Waldorf	Facility Plan/Wastewater	EPA	N/A	A
Sleepy Eye	Facility Plan/Wastewater	EPA	N/A	A
Brown County	Bridge Bonding	MN/DOT	116,275	A
Blue Earth, Faribault	Federal Aid Safer Off	DOT	N/A	A
Sibley & Watonwan County	System Highway Construction			
Springfield	Wastewater Facility Plan	EPA	48,200	A
Individual/Le Center	Business/Industry Loan	FmHA	715,000	A
Montgomery	Wastewater Treatment 2-3	EPA	N/A	A
Individual/Trimont	Business & Industry Loan	FmHA	250,000	A
Minnesota Lake	Wastewater Facility Plan	EPA		A
Trimont	Wastewater Treatment 2-3	EPA	N/A	A
New Richland	Wastewater Facility Plan	EPA	34,600	A
HSA-6	HSA Designation	HEW	262,150	A
Individual/New Prague	Section 515 Housing	FmHA	1,100,000	A
Blue Earth Co. (Fair Board)	Community Facility Loan	FmHA	65,000	A
Ceylon	Wastewater Facility Plan	EPA	N/A	A
Watonwan 4-H	Arts Instruction/Show Hall	RNDC	2,225	A
Trimont	Summer Theatre	RNDC	1,065	A
YWCA	Puppet Workshop	RNDC	401.50	D
Mankato ARC	Art Center	RNDC	3,750	A
Blue Earth	Summer Musical Production	RNDC	2,220	M
Watonwan Arts Council	Theatre Production	RNDC	995	A
Mah-Kato Club	Pow Wow Festival	RNDC	2,302	A
Madelia Theatre	Theatre Production	RNDC	1,000	A
Pioneer Players	Theatre	RNDC	3,060	A
Waterville Community Ed.	Classes/exhibit	RNDC	1,900	A
New Ulm/Cottonwood	Photographic exhibition	RNDC	2,000	A
RNDC	Child Care	HEW	32,269	A
MN/DOT	County Federal Aid Projects	MN/DOT	3,710,300	A
MN/DOT	Resurfacing/Improvements 79-81	MN/DOT	5,054,859	A
Fort Ridgely	Arts	RNDC	1,450	A
Brown County	Bridge Bonding	MN/DOT	60,000	A
Brown County	Bridge Bonding	MN/DOT	17,000	A
Brown County	Bridge Bonding	MN/DOT	75,000	A
Brown County	Bridge Bonding	MN/DOT	75,000	A
Brown County	Bridge Bonding	MN/DOT	140,000	A
Brown County	Bridge Bonding	MN/DOT	45,000	A
Brown County	Bridge Bonding	MN/DOT	45,000	A
Brown County	Bridge Bonding	MN/DOT	85,000	A
Minn. Valley Action Council	Rehab/Renovation Housing	DOL	28,250	A
Sleepy Eye	Maintenance Parks	DOL	9,911	A
Blue Earth S.D. #216	Community & School Activities Coordinator	DOL	14,545	A
Winthrop	Wastewater Facilities Plan	EPA	N/A	A
Hanska	Wastewater Facilities Plan	EPA	N/A	A
Lake Crystal	CDBG Imminent Threat	HUD	N/A	A
Easton	Wastewater Facilities Plan	EPA		A
Minn. Valley Action Council	Summer Youth Program	CSA	6,000	A
Dept. Economic Security	Weatherization Housing	Dept. of Energy	9,717,000(federal)	A
Dept. Economic Security	Prime Sponsorship	DOL	N/A	A
Minn. Valley Action Council	Head Start	CSA	394,165(federal)	A
Nicollet/LeSueur/Waseca	Senior City Transportation	HEW	15,058(federal)	A
			35,134(local)	
Mankato	Management Tool Program	SPA	23,907(state)	
	Perform Budgeting		23,907(local)	
DNR	Acquisition Land (150 acres)	LAWCON	45,000	A
DNR	Scientific & Natural Acres	LAWCON	No cost/lease	A
	-Kasota Prairie-40 acres			
	-Ottawa Bluffs-62 acres			
Mankato	701 Grants	HUD	23,907	A
Blue Earth County	HUD Small Cities Single Purpose Grant Approval	HUD	600,000	A
Mankato	Sewer System Rehab.	EPA	N/A	A
Trimont	Wastewater Works	EPA	N/A	A
Sleepy Eye	701	SPA	N/A	A
Waterville	701	SPA	N/A	A
Department Economic Security	Summer Youth Employ. Program	DOL	298,882	A
Gaylord	Wastewater Facility	EPA	N/A	A
Department Economic Security	Hire II	DOL	N/A	A

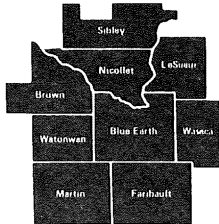
Applicant Agency	Project	Funding Agency	Amount Requested	Recommendation
New Prague, Company Dist. 393, Le Sueur	Expansion Study To Help Gifted Students In Regular Classrooms	Department Economic Development \$ HES	11,700 72,000 fed. 1,650 local	A A
Truman	Wastewater Facilities Plan	EPA	29,780	A
Watonwan County	Bridge Bonding	MN/DOT	165,000 state 7,500 local	A
Watonwan County	Bridge Bonding	MN/DOT	40,000 state 3,500 local	A
Individual/Elysian	Business/Industry Loan	FmHA	650,000	A
Watonwan County	Bridge Bonding	MN/DOT	91,000 state 6,300 local	A
Individual/Lake Crystal	30 Units Section 515	FmHA	689,900	A
Watonwan County	Bridge Bonding	MN/DOT	27,000 state 4,000 local	A
Watonwan County	Bridge Bonding	MN/DOT	67,000 state 4,750 local	A
Watonwan County	Bridge Bonding	MN/DOT	40,250 state 4,000 local	A
Individual/Mankato	Business/Industry Loan	FmHA	2,050,000	A
Le Sueur County	Bridge Bonding	MN/DOT	87,500 state 18,000 local	A
Faribault County	LEAA Discretionary Grant	LEAA	75,000 state 37,000 local	A
Minn. Valley Action Council	Adm. & Outreach	Community Serv. Administration	N/A	D
City of Butterfield	Water and Waste Disposal	FHA	N/A	A
MN/DOT	Work Program for Highway Planning	Dept. of Transportation	N/A	A
Waseca County	Developmental Activity Ctr.	HUD	85,107	A
Mankato	Neighborhood Revitalization	HUD	1,700,000	A
New Prague	Housing Opportunities/ Neighborhood Improvement	HUD	499,700	A
Janesville	Housing Rehab/Downtown Redevelopment	HUD	153,175	A
Mankato	5th Year Entitlement	HUD	649,000	A
Le Sueur	Entitlement	HUD	21,000	A
Mapleton	Storm Sewer Project	HUD	587,000	A
Blue Earth	Housing/Rehab/Public Facility Improvement	HUD	1,691,000	A
New Ulm	Housing Rehab/Sewer Separation/Senior Center, Land Ag.	HUD	1,436,000	A
Montgomery	Housing Rehab/Site Develop./ Assessment Relief	HUD	600,000	A
Blue Earth County (joint)	Housing Rehabilitation	HUD	600,000	A
Brown County	Sheltered Workshop	HUD	384,000	A
Le Sueur	Industrial Park Development	HUD	600,000	A
Le Sueur County	Bridge Bonding	MN/DOT	35,000	A
Le Sueur County	Bridge Bonding	MN/DOT	35,000	A
Le Sueur County	Bridge Bonding	MN/DOT	75,000	A
Watonwan County	Bridge Bonding	MN/DOT	92,000	A
Watonwan County	Bridge Bonding	MN/DOT	32,500	A
Springfield	Wastewater Facilities Plan	EPA		A
So. Minn. Regional Legal Serv.	Legal Advocacy for Older Americans	HEW/AoA	37,000	A
Minn. Dept. of Education	EMS Training	HEW	224,001 federal 189,584 state 97,000 local	A
Faribault/Martin/Watonwan Human Service Board	F-M-W Sr. Citizen Transp. Program	HEW/AoA	20,956	A
Union Hospital - Brown County	Health Info/Screening Clinic for Retired Persons		5,499	A
Waseca County	Bridge Bonding	MN/DOT	100,000	A
Waseca County	Bridge Bonding	MN/DOT	50,000	A
Waseca County	Bridge Bonding	MN/DOT	100,000	A
Waseca County	Bridge Bonding	MN/DOT	75,000	A
Waseca County	Bridge Bonding	MN/DOT	75,000	A
Waseca County	Bridge Bonding	MN/DOT	50,000	A
Waseca County	Bridge Bonding	MN/DOT	175,000	A
Waseca County	Bridge Bonding	MN/DOT	175,000	A
Brown County	Bridge Bonding	MN/DOT	80,797	A
RNDC	EMS Program	HEW	1,130,409 in-kind 140,000 cash 846,939 federal	A
Hanska	Facility Plan/Wastewater	EPA	N/A	A
Green Isle	Facility Plan/Wastewater	EPA	N/A	A
New Prague	Facility Plan/Wastewater	EPA	N/A	A
Sleepy Eye	Facility Plan/Wastewater	EPA	N/A	A
Henderson	Facility Plan/Wastewater	EPA	360,000	A
Delavan	Facility Plan/Wastewater	EPA	N/A	A

Applicant Agency	Project	Funding Agency	Amount Requested	Recommendation
Brown County	CDBG Final Approval	HUD	\$ 384,600	A
Blue Earth	CDBG Final Approval	HUD	500,000(first year)	A
			1,691,000(3rd year)	
U. of M.	Adzuki bean	Gov. Rural Development Council	40,068	A
St. John's	Rural Institute	Gov. Rural Development Council	21,364	A
RNDC	Dev. Disabilities Planning	SPA	N/A	A
Mankato	CDBG Final Approval	HUD	500,000(first year)	A
			1,691,000(3rd year)	
Nicollet County	Bridge Bonding	MN/DOT	32,000	A
Watonwan County	Bridge Bonding	MN/DOT	52,500	A
Waseca County	CDBG Final Approval	HUD	66,855	A
New Ulm	CDBG Final Approval	HUD	500,000(first year)	A
			1,436,000(3rd year)	
New Prague	CDBG Final Approval	HUD	499,700(first year)	A
			1,214,560(3rd year)	
RNDC	Criminal Justice Block Grant	LEAA	est. 141,000	A
HSA-6	Perinatal Grant	Gov. Rural Development Council	25,000	A
Corresponding Health Care Assoc.	Critical Care Nursing Ed.	Gov. Rural Development Council	17,224	A
Waterville	Wastewater Treatment Facilities	EPA	N/A	A
Lake Crystal	Wastewater Treatment Facilities	EPA	N/A	A
Janesville	Municipal Wastewater Treatment Works	EPA	N/A	A
Mankato	Airport Development Aid Program	FAA	736,445	A
Southern MN. Crisis Support Center	Sexual Assault Victim Assistance	Dept. of Corrections	5,540	A
Winthrop	Wastewater Treatment Facilities	EPA	842,025 - federal	A
			277,070 - App.	
			168,405 - state	
Watonwan County	Bridge Bonding	MN/DOT	18,500	A
Watonwan County	Bridge Bonding	MN/DOT	32,500	A
Watonwan County	Bridge Bonding	MN/DOT	105,000	A
Watonwan County	Bridge Bonding	MN/DOT	49,000	A
Watonwan County	Bridge Bonding	MN/DOT	47,000	A
Watonwan County	Bridge Bonding	MN/DOT	38,000	A
Blue Earth County	Bridge Bonding	MN/DOT	17,000	A
Blue Earth County	Bridge Bonding	MN/DOT	17,000	A
Blue Earth County	Bridge Bonding	MN/DOT	130,000	A
Blue Earth County	Bridge Bonding	MN/DOT	60,000	A
Blue Earth County	Bridge Bonding	MN/DOT	60,000	A
Blue Earth County	Bridge Bonding	MN/DOT	192,000	A
Blue Earth County	Bridge Bonding	MN/DOT	85,000	A
Kilkenny	Facilities Plan for Wastewater Treatment	EPA	N/A	A
St. James	Research Assistant	CETA-Title VI	6,174	A
Petrie Development Corp.	MHFA Section 8	HUD	N/A	A
	Multi Family Housing			
RNDC	DDPC Planning Grant	SPA	42,247	A
Minn. Board on Aging	Coop Dining	Gov. Rural Develop. Council	18,850	A
Sibley County	Park Personnel	CETA Title VI	3,250	A
St. Clair School District	St. Clair School Project	CETA Title II	24,038	A
Department Economic Security	Program for Ex-Offenders	U.S. Dept. of Labor	33,308	A
Gaylord	Construction of Wastewater Treatment Facilities	Environmental Protection Agency	1,660,900 - fed.	
			175,860 - state	
City of Mankato	Airport Dev. Aid Program	FAA	736,445	A
Minn. Valley Poetry	Arts	Minn. State Arts Board	935	D
Winthrop Community Theatre	Arts	Minn. State Arts Board	1,011	A
Mankato Symphony	Arts	Minn. State Arts Board	5,965	A
Waterville Community Chorus	Arts	Minn. State Arts Board	700	A
City of Good Thunder	Arts	Minn. State Arts Board	3,000	D
Civic Summer Theatre Inc.	Arts	Minn. State Arts Board	2,347	A
Cherry Creek	Arts	Minn. State Arts Board	4,792	A
Friends of the Library	Arts	Minn. State Arts Board	2,950	A
Madelia High School	Arts	Minn. State Arts Board	1,280	A
Winnebago Museum	Arts	Minn. State Arts Board	2,095	A
Mankato State University	Arts	Minn. State Arts Board	3,850	A
Gustavus Art Department	Arts	Minn. State Arts Board	400	A
Ft. Ridgely	Arts	Minn. State Arts Board	3,000	A
Le Sueur Community Theatre	Arts	Minn. State Arts Board	850	A
Mankato Fine Arts Dance Company	Arts	Minn. State Arts Board	3,000	D

Applicant Agency	Project	Funding Agency	Amount Requested	Recommendation
New Ulm Senior Citizen Activities Center	Title III-B Older Americans Act Grant	Admin. on Aging HEW	\$ 8,000	A
Faribault Co. Historical Soc.	CETA Title VI	Dept. Economic Security	16,782	A
So. Minn. Crisis Support Ctr.	Community Education	MN. Dept. of Corrections	13,775	D
	Advocacy Domestic Abuse			
Minn. Dept. of Economic Security	CETA Title IID & VI	USDOL	4,014,816	A
MN. Dept. Economic Security	CETA Title IID	USDOL	5,816,243	A
MN. Dept. Economic Security	CETA Title VI	USDOL	2,052,408	A
MN. Dept. Economic Security	CETA Title IV	USDOL	395,541	A
MN. Dept. Economic Security	CETA Admin. Cost Pool	USDOL	4,547,397	A
MN. Dept. Economic Security	CETA Title IIB,C	USDOL	7,418,887	A
MN. Dept. Economic Security	CETA Title VI	USDOL	2,052,408	A
MN. Dept. Economic Security	CETA-YETP	USDOL	1,946,519	A
MN. Dept. Economic Security	CETA Title IID	USDOL	Waiver	A
MN. Senior Fed. #309-9	Title III-B	HEW - Admin. on Aging	15,738 (2nd year)	A
	Older Americans Act			
Blue Earth Co. HSB	Title III-B	HEW - Admin. on Aging	19,588 (2nd year)	A
Home Care Expansion #309-8	Older Americans Act			

REGION NINE STAFF MEMBERS

TERRY STONE	Executive Director
CRAIG WALDRON	Physical Planning Director, Comprehensive Planning
PAM SCHMIDT	Human Resources Director, Manpower
BOB ZELENKA	Transportation, Recreation
GARY YUVA	Housing, Community Development, Economic Development
JERRY KEENAN	Traffic Safety
ROGER GUENETTE	Criminal Justice, Energy
CRAIG SHIRK	Graphics, Recreation
CONNIE NOTERMAN	Area Agency on Aging Director
TONI NESHEIM	Aging
LYNNETTE RENNEKE-WIEST	Land Use, Water Quality
SARAH JOHNSTON-RODRIGUEZ	Development Disabilities
SHANNON CARRANZA	Child Care, Arts
STEVE ANDERSON	Public Information
JACKIE HENRY	Office Manager
JULIE FLINTROP	Secretary
JOAN LANG	Secretary
LEE ENGSTROM	Accountant



region nine development commission



Regional development commissions are growing. Effectiveness is expanding as cooperation between units of local government increases and the general public becomes more aware of the cost effective function inherent in the consolidation of services to the people of Minnesota.

In Region Nine, an attitude of community interest has come to override special interest. Cities, counties and townships have demonstrated that cooperation between units of government is a key to the solution of complicated and difficult problems of administration, economics and resource allocation. Officials in touch with the regional concept now realize that an entity of nine counties in southern Minnesota has the capability to wield constructive and beneficial power in an orderly and appropriate manner.

While RDC's are not in competition with state government, they demonstrate a local contact which is invaluable for the purposes of providing service to small and intermediate sized communities. The needs of rural citizens must be represented at all levels of government planning and administration. Through a regional development commission, a cross sectional representation of communities and other interests can address the issues and create an organized approach to the development of the quality of life for citizens.

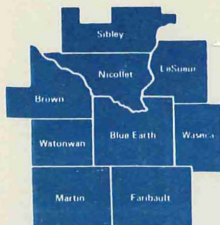
This clearinghouse function of regional commissions had been successfully applied in Region Nine. A maze of intricate proposals, concerns and services are examined and reviewed by advisory committees, professional staff and the full commission of 35 officials.

The key to competency has been cooperation. Region Nine will continue to thrive with an attitude of helpful work relationships created between agencies in an effort to maintain and improve conditions of the area.

I look forward to my first year as chairman with a head-on approach to problem solving. I know our staff, our commissioners and our constituents share my thinking. We have developed a process which will continue to contribute, at a financial savings, to the channeling of essential resources to the people of the Region. Let us continue our work together.

Kenneth J. Albert

120 S. BROAD STREET / P.O. BOX 3367 / PHONE 507 387-5643 / MANKATO, MINNESOTA 56001



region nine development commission



When we start each new year it is always with the thought in our minds; "What will this year bring to challenge our imagination as we serve our member units of government?"

1979 was not different in this regard. We find that with state administration the attitudes and the expectations of the state agencies are changing.

The new administration is a strong supporter of the concept of regional commissions. There is a difference, however. This administration very clearly wants it understood that commissions are extensions of local units of government. That means that more true decision-making is being encouraged at the local level. Along with that privilege are coming added responsibilities. We are expected to be able to clearly identify to state agencies what role we can fulfill in dealing with their particular program. Regions are no longer able to comfortably conduct a program because it is their "right". If we are not cost-effective or if there is a better way for agencies to conduct their business, I feel that we will have to prove our desire to continue a program and also be able to justify the relationship that we have with specific state agencies.

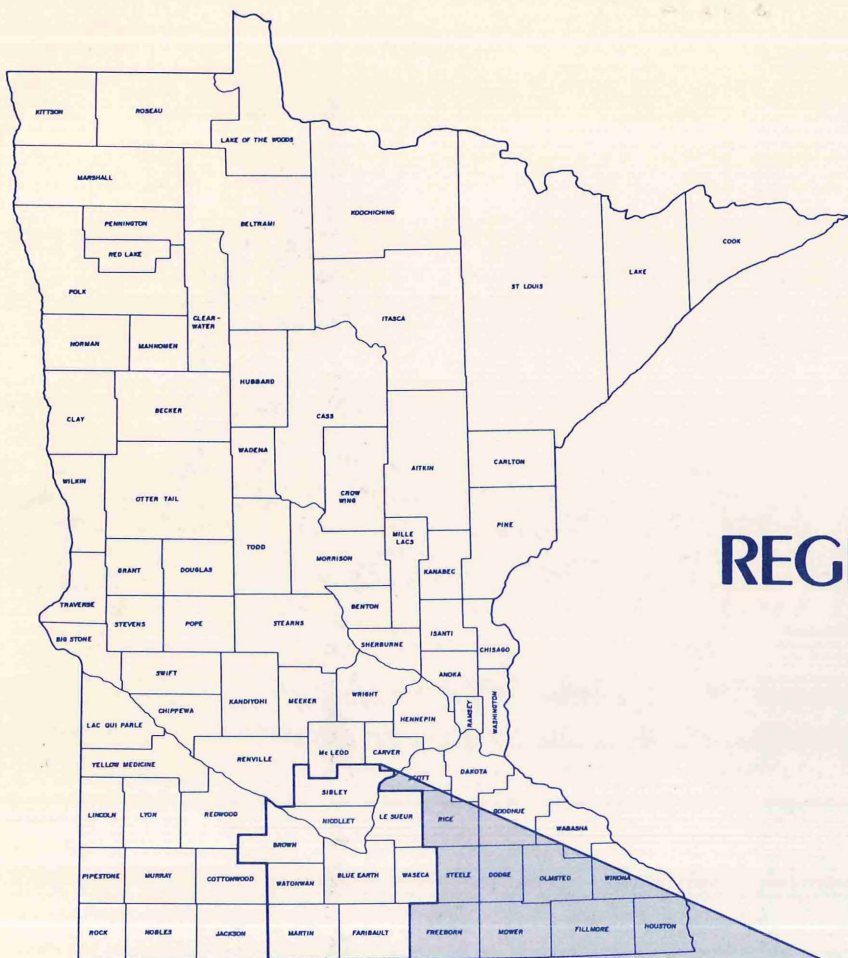
I personally feel that this is a healthy environment for an agency such as our own to operate under. It makes our local decisions about our activities much more meaningful.

1979 was a year of education for the new administration and a large number of new legislators. Every time there is a change we go through the same process again. It takes time and a good flow of information from the commission to these people.

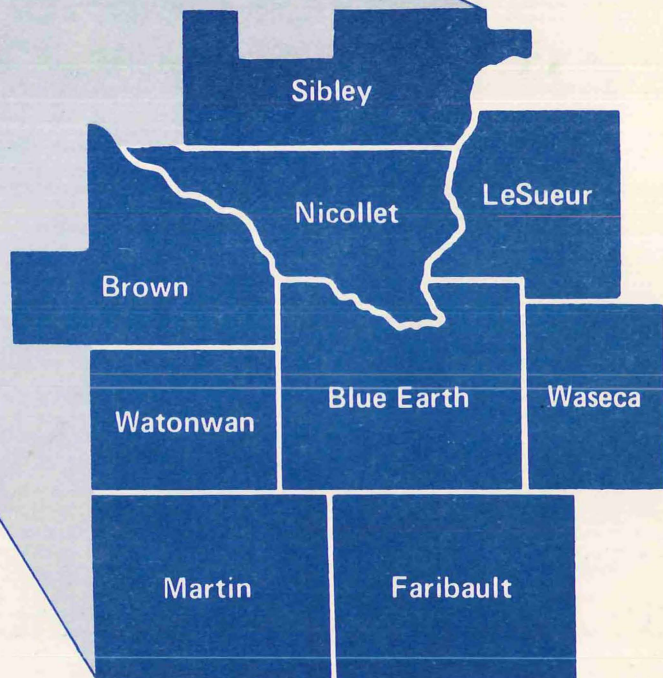
The challenge is always there and I know the commission and the staff always welcome it. It makes our job very interesting.

Terence Stone

120 S. BROAD STREET / P.O. BOX 3387 / PHONE 507 387-5843 / MANKATO, MINNESOTA 56001



REGION NINE DEVELOPMENT COMMISSION



410 so. 5th st.
p.o. box 3367
MANKATO, MN 56001
507-387-5643