



791491

Northwest Regional Development Commission

HT
393
.M62
N67ax
1978

LEGISLATIVE REFERENCE LIBRARY
STATE OF MINNESOTA
Annual Report 1978

NWRDC Board of Directors



Members serving on the Board of Directors for 1979 are, from left to right: Dwayne Otterson, Kennedy; Wayne Juhl, Greenbush; Kenneth Price, Stephen; Harvey Tripp, East Grand Forks; Richard Kruse, Thief River Falls; and Vaughn Thorfinnson, Red Lake Falls. Not shown is Werner Mahlum of Gary.

Board members who served in 1978 but no longer serve: Cleighton Hastad, Halstad; Albert Koop, Thief River Falls; and Lawrence Sundahl, Stephen.

LEGISLATIVE REFERENCE LIBRARY
STATE OF MINNESOTA



NORTHWEST REGIONAL

DEVELOPMENT COMMISSION

425 Woodland Avenue • Crookston, Minn. 56716 • 218-281-1396



Chairman's Letter

As Chairman of the Northwest Regional Development Commission, it is my pleasure to submit this report for your perusal. It indicates some of the efforts and accomplishments of the Northwest Regional Development Commission.

If 1977 was a year of expansion, then 1978 was one of consolidation. Our Board of Directors in conjunction with the full Commission has made many decisions in the area of socio-economic development. Most of our programs are entering their second and third years and are well on their way in the maturing process.

Future successes in socio-economic development will continue to depend on a cooperative and coordinated approach to problem solving by local units of government. Always bearing in mind that it is the local people that matter, this report indicates some of the challenges posed by the legislative mandate as well as our responsibilities in meeting them.

Respectfully submitted,

Ervin Strandquist
Ervin Strandquist, Chairman

Commission Membership

County Board

Floyd Sanner
Lancaster

Dale Zutz
Warren

* Kenneth Price
Stephen

** Si Strand
Ada

* Werner Mahlum
Gary

** Roger Hoffman
Thief River Falls

Donald Grabanski
Thief River Falls

Oris Moen
Fertile

Irving Beyer
Red Lake Falls

* Wayne Juhl
Greenbush

Township Board

** Phillip Lambert
Hallock

William Gatheridge
Humboldt

* Ervin Strandquist
Newfolden
Chairman

Gerald Green
Gary

** Albert Koop
Thief River Falls

* Richard Kruse
Thief River Falls

Loran Stortroen
Climax

Ralph Berg
Brooks

Richard Lorensen
Strathcona

Cities

Dr. Joe Bouvette
Hallock

** Lawrence Sundahl
Stephen

Stan Holmaas
Newfolden

** Cleighton Hastad
Halstad

Don Anderson
Ada

Ambrose Wysoski
Thief River Falls

** Harold Thomforde
Crookston

Duane Knutson
Fertile

* Vaughn Thorfinnson
Red Lake Falls

** Richard Roberts
Warroad

Lois Johnson
Badger

* Member of Board of Directors

** Members who no longer serve but did serve during 1978

EX-OFFICIO MEMBERSHIP

Senator Marvin Hanson, Hallock
Senator Roger D. Moe, Ada
Representative Tony Stadum, Ada

Representative Myron Nysether, Roseau
Representative John Corbid, Oklee
Representative Willis Eken, Twin Valley

PUBLIC INTEREST GROUP

Agriculture

**** Otto Anderson
Newfolden**

**Lowell Anderson
Hallock**

Business

**** Roger Eckstein
Red Lake Falls**

**Harold Thomforde
Crookston**

Financial Institutions

**Fred Sorensen
Gryla**

Industry

**** Glen Bergland
Roseau**

**Norman Cruse
Thief River Falls**

Low Income/Minority

**Marian Olson
Crookston**

School Districts

*** Dwayne Otterson
Badger**

*** Harvey Tripp
East Grand Forks**

Soil & Water Conservation

**Verne Green
Newfolden**

Watershed Districts

**** Otto Anderson
Newfolden**

**Lowell Lindemoen
Newfolden**

Vocational Schools

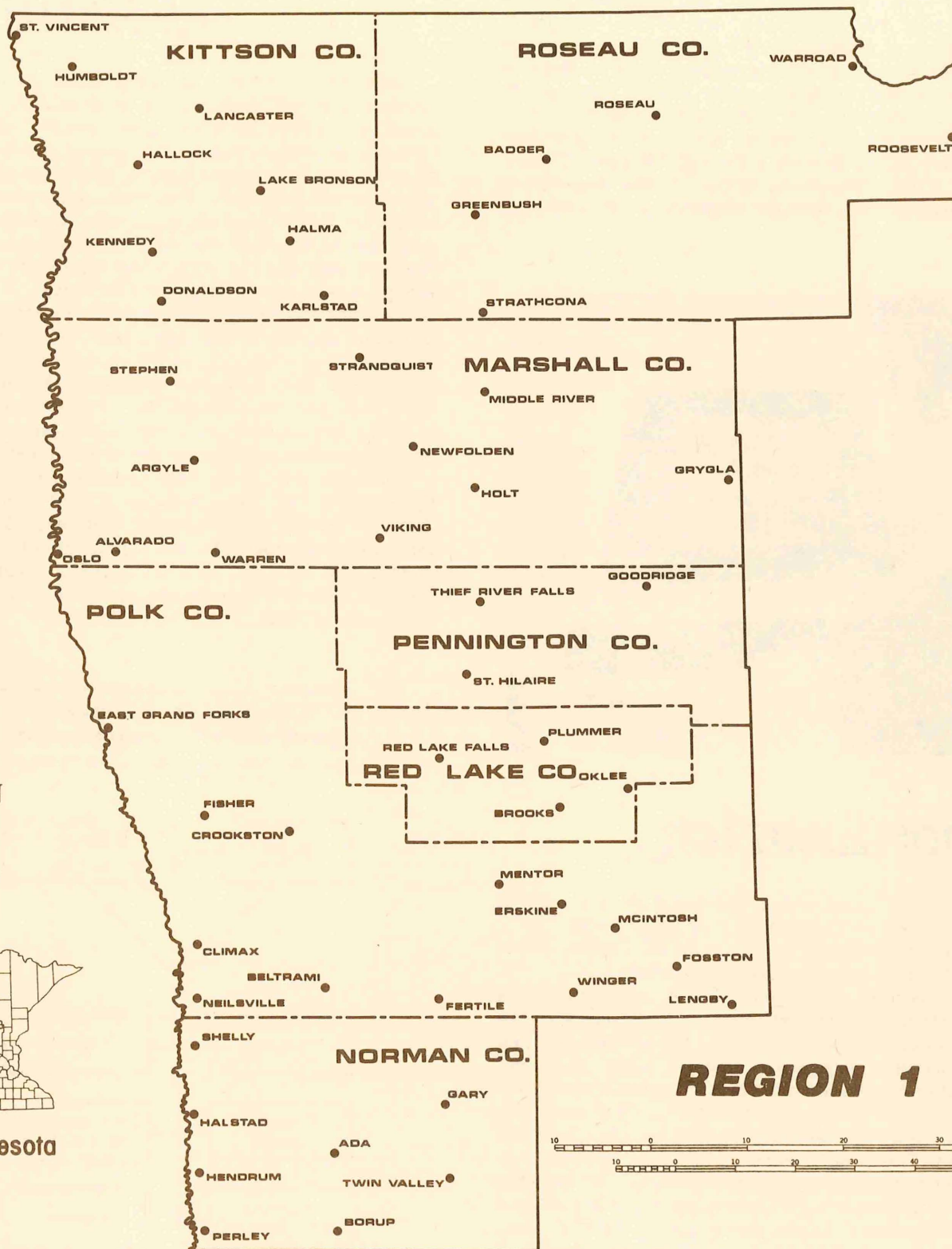
**Cleo Cleveland
East Grand Forks**

Labor

**Joyce Peterson
Thief River Falls**

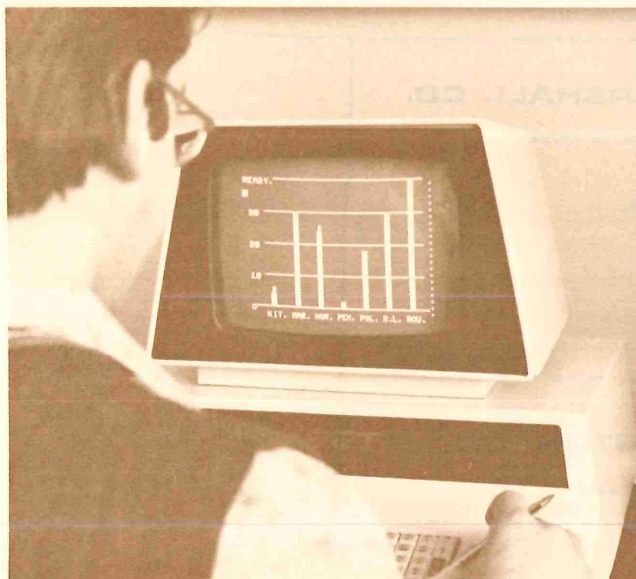
Women

**Jacqueline Bergan
Crookston**



Administration

There have been some administrative changes during the past year. Specifically, Gene Abbott was granted a leave of absence by the Commission to pursue graduate studies at the Kennedy School of Government, Harvard University. Stan Wieber resigned to take a position with the Midwest Minnesota Community Development Corporation and Sushil Kriplani was appointed Acting Executive Director. A possible addition of a word processing system in the near future could lead to more efficient operation of the Commission.



Coordination

Regional Development Commissions are granted certain review/coordination powers under M.S. 462.391 and under Parts I and IV of the Federal Office of Management and Budget Circular A-95.

In this area, the Commission is continuing on its past efforts but not resting on any past laurels. The A-95 review process continues to be refined with time and increased interaction between local, state and federal units of government should continue to improve public policy decision making. The NWRDC continues to serve as a regional clearinghouse for grant and loan reviews. The general purpose of these reviews is to attempt to bring programs and services with regional impact into harmony with each other. Most of these are funded by state or federal grants and/or loans. In addition, these reviews attempt to minimize duplication of programs and services which may prove costly to the taxpayer.

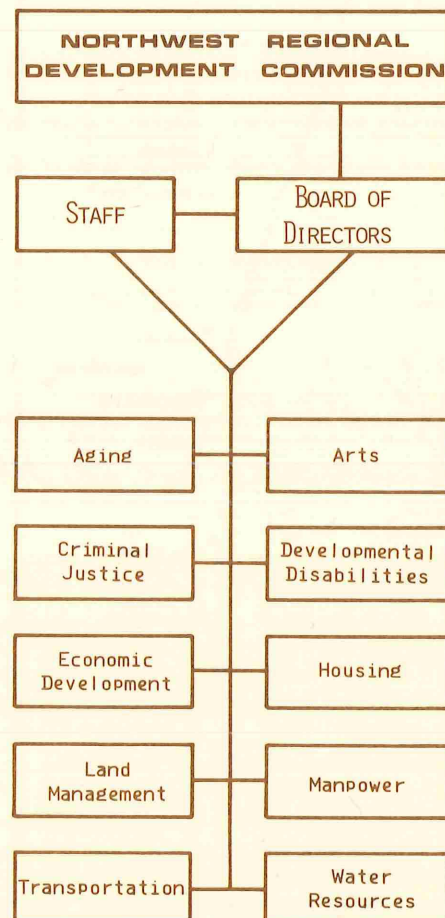
The NWRDC Clearinghouse reviewed 133 projects during 1978. The Clearinghouse can make either a positive or a negative review on projects. A detailed listing of the projects reviewed is included in the back of this report.

Technical Assistance

As in previous years, the Commission continues to provide technical assistance to local units of government in the form of aid in grant writing, planning, information dissemination and special project assistance. As the information base of the Commission improves so will the quality of technical assistance. Workshops for certain program areas were held during the past year keying in on the fact that providing information and education to people has significant benefits though they may seem intangible at times.

The Commission's grantsmanship activities involve providing applicants with grant and loan program information including application forms, technical requirements and submittal deadlines. Applicants in some cases are also provided with socio-economic data to insert into application forms. Commission staff reviews forms for completeness and quality if requested.

Planning assistance was provided to Marshall, Roseau and Red Lake Counties in developing their Overall Economic Development Programs. Similarly, assistance was provided to the community of McIntosh in acquiring funds for park development. These are a couple of examples of technical assistance provided and it is a process which is ongoing in nature.



Aging

Under the Older Americans Act as amended in 1973, the Federal Government encourages regional planning for programs on aging. The regional agencies that carry out such planning are termed Area Agencies on Aging (AAA's). The Northwest Regional Development Commission (NWRDC) officially became the Region One Area Agency on Aging as of January 1, 1978. Acting as the Area Agency on Aging the Northwest Regional Development Commission has instituted a program that includes comprehensive planning for aging programs, research on problems related to aging, information dissemination, encouragement of inter-agency cooperation and making grants for direct services for senior citizens programs.

In order to establish its Aging Program the Commission was required to submit an Area Plan for Programs on Aging to the Minnesota Board on Aging (MBA). The MBA approved the Commission's Plan in December 1977. The approved Area Plan was implemented in 1978.

The Commission's Aging Program is carried out upon the recommendations by the Commission's Advisory Committee on Aging. That Committee is made up of 16 members representing various agencies and units of government from throughout the Region.

One of the activities of the Commission's Aging Program in 1978 was to establish and carry out a grants making program. The Commission directly grants funds through two programs, the first program is for social services (Title III). Under this program the Commission granted funds to the following agencies:

Agency	Project	Amount
Kittson County Social Services	Senior Citizen's Transportation	\$6,742
Lake Agassiz Regional Library	LARL Large Print Books	\$3,620
Tri-Valley Opportunity Council	Valley Chore Services	\$16,000
Northwest Minnesota Legal Services	Senior Services Project	\$13,714
Tri-Valley Opportunity Council	Ombudsman for Older Persons	\$18,600

The Commission also establishes contracts to expend funds for education and training of older persons, the general public and agency staff. In 1978, \$3,308 were available to the Commission to carry out education programs in the area of aging (Title IV-A). The funds were used to fund two workshops in August and a conference in September. The educational programs were carried out through a contractual agreement with the University of Minnesota at Crookston.

In addition to the two direct grant programs the Commission made recommendations to the Minnesota Board on Aging for funding two senior citizens' centers. The funds (\$37,636) will be used to renovate and equip senior citizens' centers in Roseau and Oklee.

In addition to making the funding recommendations the Commission has provided assistance to numerous communities interested in establishing senior citizens' centers.

The Commission has carried out two research activities in 1978 as part of its Aging Program. Both of these research efforts will be continued in 1979. To support its planning function, surveys of selected elderly populations and service providers have been conducted. The objective of this survey research is to assess the needs of the Region's senior citizens. Specific research on transportation has also been conducted to assess transportation needs. The transportation research, however, was also initiated to assess current service levels and the perceived effectiveness of the services.



Another activity of the Commission's Aging Program in 1978 was community development. This was carried out through providing local communities with technical assistance. An important aspect of the community development effort was assisting the county committees on aging. By mid 1978 an effective system of county committees had been developed. The county committees have assessed needs and developed objectives for their respective counties and provided a planning link for the Commission's Aging Program.

The Aging Program in 1979 will continue to focus on grants making, research and community development. Specific activities in 1979 will also include focusing on disaster preparedness, housing problems and employment.

Arts

The year 1978 saw the formulation of an initial Regional Arts Plan. Upon its acceptance by the Minnesota State Arts Board, the NWRDC became eligible to administer a \$22,000 block grant. These monies are intended to be used for projects which enhance the further development of local art and artists.

Initial steps have been taken to implement the Arts Plan. Workshops to explain grants procedures and community arts development were held in Lake Bronson and Ada. The enthusiastic support received by the workshops set the stage for conducting similar ones in the future.

Promotion of the arts in the Region is dependent upon public information efforts such as the aforementioned workshops. In addition, the first issue of the Northwestern Arts Newsletter was published in November. Future issues will continue to focus on the arts activities in the Region and potential opportunities for various artists.

Following is a list of the projects funded in Region One during 1978.

State-Wide/Multi-Region Grants \$10,360.00

Thief River Falls Community Arts Council, \$325.
"Performance of Jim Thorpe, All American by the Performing Arts Repertory Theater"

Thief River Falls Community Arts Council, \$200
"Performance of The Belle of Amherst of Chimera Theater"

Community Education Department, East Grand Forks, \$325
"Performance of Jim Thorpe, All American by the Performing Arts Repertory Theater"

Northwest Regional Library, Thief River Falls, \$200
"Two Art Exhibits from the University of Minnesota Gallery"

Valley Crossing Arts Council, Crookston, \$410
"Two Art Exhibits from the University of Minnesota Gallery and a Costume Exhibit from the Guthrie Theater"

Sculpture Committee - University of Minnesota Technical College, Crookston, \$8,900
"Granite Sculpture by Stanley Johnson on the University of Minnesota Campus"

Local/Regional Grants \$6,270.15

Northwest Regional Development Commission, Crookston, \$1,000
"For the completion of a comprehensive regional arts plan for Region I"

Crookston Community Theater, \$1,890
"Production of the play, Cinderella"

Roseau County Historical Society, \$235
"Community Theater Workshop"

Tri-Valley Opportunity Council, Inc., Crookston, \$320
"Woodcarving Workshops for Senior Citizens"

Thief River Falls Community Arts Council, \$165
"Two workshops as part of the community Arts Festival"

Lancaster Public Schools, \$291.25
"Support for two Painting Workshops"

West Polk County 4-H Leaders Council, Crookston, \$167.40
"Photography Workshop"

East Polk County 4-H Leaders Council, McIntosh, \$231.50
"Photography Workshop"

West Polk County 4-H, Crookston, \$610
"Series of Performing Arts and Visual Arts Workshops"

Crookston Civic Music League, \$1,000
"Educational services by the St. Paul Chamber Orchestra"

Artists Unlimited of Lake Bronson, Lancaster, \$360
"Series of Oil Painting Workshops"

Criminal Justice

The past year has been an exploratory year for regional criminal justice planning. The Northwest Regional Development Commission was designated by the Governor as Region One's criminal justice planning agency in late 1977. The Commission authorized an 18 member advisory committee for criminal justice composed of locally elected officials, criminal justice officials, and citizen representatives. As neither the Commission nor the Advisory Committee are tied to any one particular component of the criminal justice system (e.g. police, courts, corrections, etc.) they are in an excellent position to take a cross-jurisdictional, cross-system look at the criminal justice needs of this Region.

The Advisory Committee met throughout 1978 conducting a preliminary needs and resource assessment prior to setting regional goals and policies for criminal justice. After ascertaining the present status of criminal justice within the Region through surveying the criminal justice agencies, the Committee began addressing the issues raised by this assessment. These issues included: improving and modernizing techniques used by law enforcement officers, possible alternatives to traditional correctional sentences imposed on adults (e.g. fines and/or incarceration), lack of knowledge concerning programming alternatives available for juvenile offenders, and lack of public information and/or awareness about the criminal justice system.

Some of the above issues were reflected as funding priorities in the FY '79 Criminal Justice Plan. A program was designed to improve the investigative capabilities of all major law enforcement agencies within Region I through cooperation among agencies during investigations. This project also includes limited monies for purchase of needed equipment. An assessment of correctional programming needs for juvenile offenders within the Region is to be conducted during the early months of 1979 and should present some viable options in terms of possible programming. A third project is an alternative sentencing program for adult offenders, involving restitution to either the victim or society at large rather than incarceration.

Region I also gained funding for two additional programs in 1978. These were a police radio/recorder communications program involving all major law enforcement agencies, and a supplemental award to the Polk County Sheriff's Department to expand their contract police protection to include Fisher as well as Fosston.

In addition to the above funding efforts, other activities included general information dissemination to the public and technical assistance to various groups (both criminal justice agencies and citizens groups). These technical assistances ranged from aid in writing grant applications in several cases to assistance with research and evaluation problems. The Committee and Commission also took public positions on several issues involving criminal justice in efforts to assist local agencies.

A more in-depth needs assessment was begun in November of 1978 and will continue throughout 1979 as the Committee and Commission attempt to become more and more familiar with the criminal justice system.

Developmental Disabilities

Developmental disabilities include cerebral palsy, epilepsy, and dyslexia. The Commission's Developmental Disabilities Planning Program underwent incremental changes in 1978. Much of the year was spent on reorganization and self-education. The joint utilization of an Advisory Board by the Northwest Regional Development Commission and the Northwestern Mental Health Center has resulted in a very rewarding working relationship between the two agencies.

The DD Advisory Board expanded its membership to include representation from Roseau County. To improve its perspective of the problems of the developmentally disabled, the Board also added more consumer members, i.e. members who have a family member with one of the developmental disabilities. The Advisory Board had previously concentrated on the needs of the mentally retarded. Therefore, time was spent on strengthening its awareness of other disabilities and specific DD Legislation.

The joint working relationship between the Commission and the Mental Health Center has contributed to the streamlining of the A-95 review process and eliminated the duplication of efforts in plan development.

Some of the other activities of the Advisory Board included:

- provision of information on needs of the Region to the Minnesota Governor's Council on Developmental Disabilities.
- development of a service directory for Region One (soon to be published)
- co-sponsorship of a Parent Advocacy Coalition for Educational Rights workshop on the rights and responsibilities of parents under the new education legislation
- review of grant proposals relating to DD concerns for the A-95 review process and encouraging the development of the Valley Epilepsy League.

The latter part of the year found the Advisory Board working on the initial stages of formulating a DD Plan. The Board members spent a session using the nominal group technique for identifying some goals and objectives for the 1979 work plan. High priorities include looking at:

- prevention of developmental disabilities
- residential alternatives to institutionalization
- respite care for parents
- public information and training

Specific implementation strategies for carrying out these and other goals of the Board will be developed and the plan completed early in 1979.

Dissemination of information both to the general public and to specific target groups such as parents and teachers and other professionals about services available is a priority which cuts across all other topic areas. It is very important for making people aware of the things disabled people can do rather than only focusing on what they cannot do.

Economic Development

Entering into its third year, the Economic Development Program continues to grow and mature. The prospects of a sunflower oil-processing plant being located in Region One are much brighter today than they were a year ago. The Economic Development Advisory Committee has spent considerable amounts of time on the "sunflower project" and the benefits from these efforts may not be far in the future. The establishment of a sunflower oil-processing plant would significantly transform the entire landscape of the Region's econ-

omy. It would create as many as five hundred new jobs and the increases in incomes would aid in further community and regional development.

Given the broad scope of economic development the program has continued to move on other fronts also. Considerable emphasis is being placed on reliable research. A regional housing study is in the process of being finished. This study was designed to measure the housing attitudes and needs of the low income households in the Region. The study consisted of personally interviewing 700 low income households in the Region in conjunction with surveys of the Region's lending institutions and building contractors. The above effort intends to provide a comprehensive data base with regard to housing in Region One.

Under a grant from the Minnesota State Planning Agency, the NWRDC staff undertook a Regional Agricultural Study. Copies of this will be available within a few months. Efforts such as these continue to build not only the economic data base but also the research capacity of the NWRDC. Technical assistance in the form of economic information continues to be provided to counties and other units of local government to enable them to conduct economic development planning.

The NWRDC has continued in its role as an Associate Office of the U.S. Department of Commerce and in doing so, has catalogued much information available for dissemination to interested parties and agencies. The Commission continues to be funded by the U.S. Department of Commerce, Economic Development Administration and expects a slight increase in funds for 1979. The introduction of computerization should not only enhance the economic development program but all other program areas as well. The State requires that regional commissions undertake comprehensive planning. In this connection the NWRDC has been developing the organizational capability to undertake comprehensive planning using a holistic approach and to a large extent, the economic development program will serve as a nucleus for this effort.

Housing

Following the formulation of the Northwest Housing Plan the Regional Commission has been working with the Farmer's Home Administration, the Department of Housing and Urban Development and Minnesota Housing Finance Agency, to develop methods to secure low and moderate income housing for the Region. Together with area housing authorities, community action agencies and the Northwest Multi-County Housing Authority, regionwide work has occurred to weatherize homes, make homes accessible to handicapped persons and develop a more accurate inventory of area housing needs.

The development of a more accurate data base has been enhanced through the cooperative efforts of the Regional Commission and the Northwest Community Action, Inc. Under contract with Northwest Community Action, Inc., the Regional Commission developed a housing survey similar to one done by Farmer's Home

Administration and Iowa State University, in Iowa communities less than 10,000 population. The Commission's sample was based upon information from weatherization, winterization, emergency fuel and MHFA files compiled by community action agencies of the Region. Through a search of these files, CAP personnel eliminated duplicative names and summarized the low income population served by the CAP agencies under these housing programs to the township level. From these numbers the Commission developed a number for each township to be sampled. A total of 700 households were surveyed in the seven-county area.

Additionally, two surveys were prepared directed at financial institutions and builders. The basis of these two surveys was to determine who was supplying what type of housing and where; and who was supplying the dollars and how market decisions were being made. The overall intent of the surveys was to determine what information was being used to forecast demand and how supplies were meeting the demand.

The purposes of these surveys were five fold. First, the surveys are anticipated to report on the methods used in the Region by builders and financiers to fill demand for housing, both current and projected.

Second, the attitude and needs survey will be a pilot using low income persons, CAP staff and the RDC to test the ability of area agencies interested in housing to work together and to strengthen that working relationship.

Third, the information gleaned from the attitude survey will be used to push for appropriate changes in the housing market in the Region.

Fourth, the data compiled will become the source and basis for further housing study and resource allocation through a housing opportunity plan.

Fifth, the information may lead to the development of a similar survey to be conducted for all income groups.

The Region will benefit directly through the preparation of an area Housing Opportunity Plan. These benefits include bonus funds for community development block grants, documentation of area housing conditions to HUD, FmHA and state agencies, and perhaps increased housing subsidies in the Region. This is the biggest plus because recent surveys conducted in the Region indicate employer hesitancy resulting from inadequate housing in the Region.

Land Management

In May of 1978, the Commission adopted a Land Management Guide which documented several land management related problems or potential problems and set forth Commission goals, policies and programs to address these problems from the regional perspective. Problem areas which were identified for Region I include: increasing frequency of flooding; clearance of wooded areas; "wisest" use of undedicated public land; conversion of Region I's agricultural lands to non-agricultural uses; local government adoption of land management regulatory strategies without first estab-

lishing a legal foundation for such action; and uncertainty to what extent an energy shortage would effect Region I land management decisions.

Initial efforts to implement the policies set forth in the Land Management Guide consisted of: 1) inventorying the status of local governmental planning and regulatory activities; 2) collection and summarization of data relative to the public lands classification issue; and 3) in cooperation with the University of Minnesota Agricultural Extension Service a framework was outlined for the development of a comprehensive natural resource data base which when completed will be available for use by local units of government within the Region.



During 1978 the Commission was also involved in three land management related planning efforts which were coordinated at the state level. The efforts pertained to Regional Significant Park Sites, Critical Areas Planning and the Northern Minnesota Peat Study.

The purpose of identification and prioritization of Regional Park Sites was to provide guidance to the State in the future allocation of regional park acquisition and/or development monies. The 12 sites agreed upon for Region I were:

Faith Flour Mill, Fossum Natural and Recreational Area, Strand Township Site - Norman County; Tamarac Swamp - Pennington County; Fertile Wilderness Sanctuary, Maple Lake Park, Natural Prairie Chicken Habitat, Sandhill River Site at Climax, Union Lake - Polk County; Clearwater River (from Terrebone to Red Lake Falls) - Red Lake County; Pelan Park, Warroad Campground &

Recreational Area - Roseau County; Pembina Trail - Kittson, Marshall, Pennington, Red Lake, Polk and Norman Counties; Red Lake River (from St. Hilaire to Huot) - Pennington, Polk and Red Lake Counties.

Commission involvement in the Critical Areas Planning process consisted of identifying areas which are: 1) of significant public interest, 2) subject to development pressures, and, 3) cannot be protected other than by the provisions of the Critical Areas Act. In Region I, the only nominated area to survive initial screening at the state level was the Pembina Trailing Crossing on the Middle River. If this area receives official designation, a land management plan will be required to provide for the "wise use" of the resource. Notification of all official designations is expected in mid-1979.

The Northern Minnesota Peatland's Study was undertaken to provide a well documented framework from which the State Legislature can establish policies for the wise use(s) of peatlands throughout the State of Minnesota. The eastern portion of Region I contains sizable acreages of peatlands which are suitable for several potentially competitive uses - horticulture, agriculture, forestry, chemical/industrial production and preservation. As such the Commission will continue to provide a vehicle for local involvement in the development of peatland policy. Policy recommendations are expected to be finalized by mid-1979.

Finally, the Commission co-sponsored a seminar at the 1978 Winter Shows entitled "Managing Local Growth and Development." Attendance was excellent and interest was expressed in attending future such seminars.

Manpower

Manpower planning in Region One is carried on by the Commission using the Regional Manpower Advisory Committee. During 1978 the Commission and Committee established policies which resulted in the establishment of the Career Education Center at the University of Minnesota, Crookston; increased youth participation in CETA programs; provided additional training opportunities for all 2,600 CETA participants; and established more local autonomy in program management.

The Career Education Center was established as a direct result of information the RMAC had at hand from local education agencies. It was learned that local students did not have uniform access to job counseling or career guidance. Youth program monies became available through the Youth Employment Demonstrations Project Act of 1977. Together with project funds from Title VI CETA, equipment was purchased to operate the Career Education Center. The Center is operated by two full time employees and has been utilized by over 400 CETA youth program participants and another 50 to 75 area employment and training counselors.

Youth participation in CETA training programs increased over the 1977 levels primarily as a result of the Youth Employment Demonstrations Project Act.

Through the policies established by the Commission and Committee, nearly 150 young adults received specialized instruction, career guidance and employment in closely supervised public and private sector jobs. Additionally, 166 full time students got work after school during the school year and another 550 youths were employed in the Summer Program for Economically Disadvantaged Youth. Many of these youths participated in career guidance seminars provided by the Career Education Center of the University.



Area students operating career awareness laboratory of the Career Education Center. Center Director Bob Bastyr (standing) assisting.

The RMAC, together with program operators, has developed a policy of jobs in the private sector where possible. This provides needed additional training in specialized jobs and technical skills. Many of the privately employed persons find permanent full time employment with their training employer.

The Commission has also increased its monitoring of CETA activities in the Region. Public Service Projects receive close monitoring to help eliminate undue expenditures and keep enrollments at planned levels. RMAC has also established a system to help evaluate personal preferences among CETA participants and to find out what programs are most effective in providing needed training and employment. In all, CETA participants are more closely monitored by the Commission to help develop alternative programs which more closely fit area citizens' life styles and needs.

Transportation

Region One's economy is predominantly agricultural which means a lot of business in the Region is either directly or indirectly tied to the agricultural sector. On that basis, the livelihood of the Region's residents is dependent, not only on the ability to raise agricultural products each year, but also on the ability to transport them to their respective markets. The transportation network, in addition to allowing people to move about

freely, must fulfill this task.

Considering the different needs for the transportation system within the Region, and all of the different modes of the system to fulfill those needs, i.e., highway, rail, aeronautics, public transit, and even bike-ways, it is evident that the network cannot operate in a haphazard manner. A planned, coordinated effort is needed to keep the system operating efficiently. This is accomplished through transportation planning at the national, state, and regional levels. Obviously the planning at these different levels must also be coordinated.

The efforts of the NWRDC Transportation Advisory Committee this past year have revolved around assisting the Minnesota Department of Transportation with the development of the Mn/DOT Plan. The Mn/DOT Plan is a transportation plan designed to provide a framework for making transportation decisions in Minnesota in order to address present as well as future transportation needs in a coordinated, efficient, and effective manner. The Committee participated in a continuous review and comment process throughout the development of the Plan in order to insure representation of the concerns of the citizens in Region One.

The coming year will carry the planning process directly to the regional level. The Committee will be responsible for developing a regional transportation policy plan to augment the Mn/DOT Plan. This Plan will contain a strategy to maintain the transportation network in the Region, keep it functioning effectively, and insure its ability to accommodate growth. The Minnesota Department of Transportation will use the regional transportation policy plans to update the Mn/DOT Plan and keep it coordinated with the regional efforts.

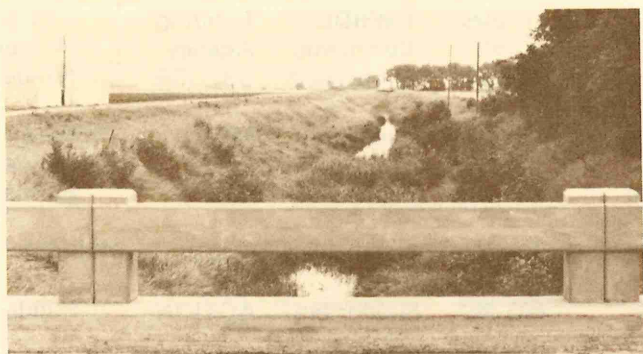


Water Resources

The NWRDC's Water Quality Committee is completing its second year of activity as an advisor to statewide water resources policy making.

Potential sources of non-point source water pollution, which have been evaluated to date by the Committee include: highway deicing chemicals; feedlots; urban stormwater runoff; and residual wastes (wastes which

are produced by air and water pollution control devices). Topic areas which will be considered in coming months include: agricultural runoff (sedimentation,



erosion and nutrients), agricultural drainage, roadside erosion, pesticides, forestry, and construction activities. In analyzing each of these areas and developing recommendations on how to deal with them, questions such as the following are raised by the Committee in providing input to the development of comprehensive and equitable statewide policy: To what extent, if any, do each of these forms of non-point source pollution effect Northwest Minnesota? Which best management practice(s) would be most effective in dealing with a given non-point source pollutant? Who should be in charge of implementation? Where programs currently exist where can improvements be made? Once a consensus among the Committee members is arrived at regarding these and other questions, the Committee forwards its recommendations to the State Water Quality Plan Development Task Force through its delegate, Chairman Irving Beyer.

Two very important ingredients which are essential to making this process meaningful and reflective of the needs of Northwestern Minnesota are: 1) Committee decisions must be based upon reliable information and, 2) communication of the ideas and desires of the citizens of Northwestern Minnesota to the State Water Plan Development Task Force.

In addressing the first item, staff has been involved in the summarization of available water quality monitoring information which is available for the seven county area. Also, based upon Soil Conservation Service information, soil susceptibility to wind and water erosion is in the process of being portrayed in usable form. Each of these projects is expected to be completed early in 1979 and available for Committee use.

With regard to the second item, prior to every meeting, approximately 250 persons are informed of the Committee's proposed activities. Also, meetings are held at convenient times and locations with ample time set aside on each agenda for citizen input. Another way the Committee attempted to stimulate local citizen involvement was to co-sponsor a booth and seminar with the Agassiz Regional Environmental Education Council at the 1978 Red River Valley Winter Shows. A similar function is being planned for the 1979 Winter Shows.

The Water Quality Management Committee was also involved in the development of a statewide "Framework Water and Related Land Resources Plan"

throughout 1978. This effort is being coordinated at the state level by the Minnesota Water Resources Board.

The ultimate objective of the Water Planning Board effort is to outline for the Legislature, alternatives for the best use(s) of Minnesota's water resources. At this writing the Water Quality Management Advisory Committee has been called upon to provide input as to the major water resource related problems affecting the Region, rural water systems and the accuracy of preliminary water demand forecasts for the Region. The Water Planning Board is obligated to submit its recommendations to the Legislature by July 1, 1979. As such, Committee activity regarding this effort is expected to continue through the first half of 1979.

Comprehensive Planning

M.S. 462.39 outlines the planning functions of Regional Development Commissions; one of which being the preparation and adoption of a comprehensive development plan for the Region.

The NWRDC has engaged and continues to engage in physical, social and economic development planning. The time has arrived for comprehensive development planning using a "holistic" approach. This entails progressing from a compartmentalized planning approach to one which emphasizes an understanding of the linkages between the various functional planning areas. For example, the establishment of a plant necessitates taking into consideration the impact on say the transportation and housing sectors.

The NWRDC places considerable emphasis on the planning process and the actors involved. A Comprehensive Planning Committee has been formed. Approximately, 38 percent of the Board of Directors and 44 percent of the full Commission will serve on it. The chairpersons of the various advisory committees will serve on the Comprehensive Planning Committee (CPC), since they are well qualified to articulate the issues in their respective areas. Overlap of functions enables us to limit the CPC's membership to 14-16 people. In addition, the composition is such that it has a balanced geographic representation. The above organizational structure should lead to improved analytical decision-making.

Initially, much time will be spent on defining the purpose and UTILITY of comprehensive planning. Utility in terms of the NWRDC as well as various local, state and federal units of government. This will be followed by defining the linkages between the various physical, social and economic problems confronting the Region and means of resolving these.

The aforementioned is a partial conceptual framework within which the NWRDC will undertake the formulation of a comprehensive development plan. This process should take approximately 12-18 months. Comprehensive development planning is an ongoing process a portion of which is the formulation of a comprehensive development plan.

Projects Reviewed in 1978 (A-95)

Applicant	Project	Project Cost	NWRDC Comments	Funding Agency	Agency Action
Mn Dept of Economic Security	Home Weatherization Program (Statewide)	3,055,400	Supportive	US/DOE	Funded
Argyle	Senior Citizen Center (Renovation)	3,500	Supportive	MBA	Withdrawn
Stephen	Centennial Train	2,800	Supportive	MHS	Funded
Tri Valley Opportunity Council	Experimental Windpower System	84,000	Supportive	CSA	Funded
E. Polk Co. Day Activity Center	Renovation/Expansion DAC	100,000	Supportive	FmHA	Withdrawn
Mn Ass'n for Retarded Citizens	Foster Grandparent Program	803,993	Supportive	ACTION	Funded
Inter County Community Council	Agency Operations	170,600	Supportive	CSA	Funded
Roseau Area Senior Citizens Center, Inc.	Renovate Bldg. for Senior Citizens Center	16,383	Supportive	MBA	Funded
Roseau County Historical Society	Audio Equipment	652	Supportive	MHS	Funded
Dept of Economic Security	Housing Expediter Program	375,000	Supportive	CSA	Funded
NW Regional Corrections Board	Juvenile Residential Assessment	6,000	Supportive	CCPB	Funded
NW Regional Corrections Board	Alternative Sentencing Program	19,102	Supportive	CCPB	Funded
NW Regional Corrections Board	DWI Program Evaluation	18,000	Supportive	CCPB	Withdrawn
NW Regional Corrections Board	Offender Recreation Program	7,000	Supportive	CCPB	Withdrawn
Polk County	Multi-County Law Enforcement	44,000	Supportive	CCPB	Funded
Institute for Effective Living	Specialized Treatment for Criminal Offenders		Supportive	CCPB	Withdrawn
Northland Community College	Library Materials	5,000	Supportive	HEW	Funded
Borup	Well and Well House	21,000	Supportive	FmHA	Funded
Multi County Nursing Service	Women, Infant, Children Supplement Program	243,293	Supportive	MDH	Funded
Marshall/Polk Group Homes	Vans for Handicapped	66,301	Supportive	Mn/DOT	Funded
Occupation Dev. Center	Wheelchair lifts				
Crookston DAC					
Tri Valley Opportunity Council, Inc.	Transit Vehicle replacement	66,000	Supportive	Mn/DOT	Pending
Dept of Economic Security	Prime Sponsorship	2,459,962	Supportive	DOL	Funded
Tri Valley Opportunity Council	CETA Titles I,II,III,VI Weatherization Assistance	68,180	Supportive	US/DOE	Funded
Tri Valley Opportunity Council	Rural Public Transportation Serv.	86,200	Supportive	Mn/DOT	Funded
Riverview Hospital Association	Health Underserved Area Grant	499,323	Supportive	HEW	Funded
Four County Early Periodic Screening Serv.	Women, Infant, Children Nutrition Program	104,000	Supportive	MDH	Funded
Northwest Community Action Agency	Weatherization Assistance	63,562	Supportive	CSA	Funded
Inter County Community Council	Weatherization Assistance	65,694	Supportive	CSA	Funded
Tri Valley Opportunity Council	Senior Employment Program	91,930	Supportive	DOL	Funded
Tri Valley Opportunity Council	Para-Transit Demonstration	123,250	Supportive	Mn/DOT	Pending
Inter County Community Council	Senior Citizen Employment	194,856	Supportive	DOL	Funded

Projects Reviewed

Applicant	Project	Project Cost	NWRDC Comments	Funding Agency	Agency Action
Northwest Community Action Agency	Senior Citizen Employment	84,586	Supportive	DOL	Rejected
Tri Valley Opportunity Council	Summer Youth Recreation	1,695	Supportive	CSA	Funded
Warren UMC Women's Resource Center	Street Improvements	500,000	Supportive	FmHA	Pending
	Battered Womens Program	2,800	Supportive	Mn/DOC	Funded
Northwest Community Action Agency	Agency Operations	147,000	Supportive	CSA	Funded
Green Thumb, Inc.	Senior Community Service Employment Program	69,896,127	Supportive	DOL	Funded
Warren	Waterline Replacement/ Sewer Extension	274,000	Supportive	FmHA	Pending
Northwest Regional Community Dev. Corp.	Organizational Development of CDC	52,629	Negative	FmHA	Rejected
Tri Valley Opportunity Council	Chore Services	49,000	Supportive	HEW	Funded
Tri Valley Opportunity Council	Operation Involvement	25,000	Supportive	CSA	Rejected
Middle River McIntosh	Tennis Courts	18,000	Supportive	SPA	Rejected
Perley	Tennis Courts	23,000	Supportive	SPA	Funded
Hallock	Park Development	12,000	Supportive	SPA	Funded
Warren	Park & Swimming Pool	72,000	Supportive	SPA	Rejected
Warroad	Recreation Trail	115,000	Supportive	SPA	Funded
Strandquist School	Regional Recreational Center	250,000	Supportive	SPA	Funded
Northwest Telecom, Inc.	Tennis Court	18,000	Supportive	SPA	Rejected
Lancaster Farmers Coop Elevator	Adult Education Services	69,300	Supportive	HEW	Rejected
Hendrum	Elevator Construction and Renovation of present facilities	600,000	Supportive	FmHA	Funded
Professional Standards Review Organization	Tot Park, Park Benches	4,200	Supportive	SPA	Rejected
Grygla	Health Care Evaluation	1,400,000	Supportive	HEW	Funded
Warroad	Fire Hall	140,000	Supportive	FmHA	Pending
Dept of Economic Security	Section 8 Housing Assistance	NA	Supportive	HUD	
Oslo	Skilled Training Improvement Program (STIP)	2,676,839	Supportive	DOL	Funded
Mn Board on Aging	Street Improvements	1,230,000	Supportive	FmHA	Pending
	Older Americans Advisory Assistance	50,000	Supportive	HEW	Funded
Inter County Community Council	Self Help Nutrition Improvement Program	16,000	Supportive	CSA	Rejected
UMC, Crookston	Retired Senior Volunteer Program	37,001	Supportive	ACTION	Funded
Tri Valley Opportunity Council	Agency Operations	136,000	Supportive	CSA	Funded
Tri Valley Opportunity Council	Senior Meals	341,579	Supportive	MBA	Funded
Tri Valley Opportunity Council	Local Initiative Program	31,000	Supportive	CSA	Funded
Northwest Community Action Agency	Expansion/Coordination of Region I Nutrition Program	15,700	Supportive	CSA	Rejected
Karlstad Memorial Hospital	Service Information Referral & Transportation Services for Seniors	31,376	Supportive	HEW/OAA	Rejected
Polk County Historical Society	Reconstruct Log House	6,000	Supportive	MHS	Funded
Northwest Community Action Agency	Citizen Participation	25,000	Negative	CSA	Rejected
Allwood, Inc.	Feasibility Study	NA	Supportive	HUD	
Marshall County	Single Family Dwellings				
	Community Development/Rehabilitation Final Application	750,000	Supportive	HUD	Funded

Projects Reviewed

Applicant	Project	Project Cost	NWRDC Comments	Funding Agency	Agency Action
East Grand Forks	Community Development/ Comprehensive Final Application	1,445,000	Supportive	HUD	Funded
Dept of Economic Security (BOS)	CETA Title I	491,235	Supportive	DOL	Funded
Inter County Community Council	Work Experience Disadvantaged Cooperative Program	202,585	Supportive	DES	Rejected
Northwest Regional Development Commission	Developmental Disabilities Planning Grant	22,702	Supportive	SPA	Funded
Tri-River Cooperative Center #936	Special Needs/Handicapped Experience Program	32,000	Supportive	DES	Rejected
Dept of Economic Security/BOS	CETA Title I	6,883,301	Supportive	DOL	Funded
Dept of Economic Security/BOS	CETA Title III	370,876	Supportive	DOL	Funded
Kittson, Marshall, Penn., Red Lake Counties	Community Health Services 1979 Plan	498,037	Supportive	MDH	Funded
Alvarado	Street Improvements	784,000	Supportive	FmHA	Pending
UMC, Crookston	Industry-Education Council	51,447	Supportive	DES	Rejected
Dept of Economic Security/BOS	Young Offenders Employment	150,000	Supportive	DOL	Rejected
Dept of Economic Security/BOS	CETA Title VI	5,512,608	Supportive	DES	Rejected
Dept of Economic Security	CETA Title III	2,072,987	Negative	DOL	Funded
Polk County	Community Health Service Plan	310,005	Supportive	MDH	Funded
Northwest Regional Development Commission	Economic Development Planning	60,000	Supportive	EDA	Pending
Karlstad	Installation of Water Main and Sewer	100,000	Supportive	FmHA	Pending
Dept of Economic Security/BOS	CETA Title II	1,245,036	Supportive	DOL	Funded
Roseau County	Community Health Services	126,882	Supportive	MDH	Pending
Thief River Falls	Land Use Planning Grant		Supportive	SPA	Pending
Mn Midwest Community Development Corporation	FY '79 Agency Funding	1,000,000	No Comment	CSA	Pending
Northland Community College	Library Materials	5,000	Supportive	US/OOE	Pending
East Grand Forks	5th Year Community Development	196,000	Supportive	HUD	Pending
NW Multi Co. Housing Authority	Section 8 Housing (Trail)	95,000	Supportive	HUD	Rejected
NW Multi Co. Housing Authority	Section 8 Housing (Gully)	134,000	Supportive	HUD	Rejected
NW Multi Co. Housing Authority	Section 8 Housing (Middle River)	135,000	Supportive	HUD	Rejected
NW Multi Co. Housing Authority	Section 8 Housing (Oklee)	289,000	Supportive	HUD	Pending
NW Multi County Housing Authority	Section 8 Housing (Fosston)	396,000	Supportive	HUD	Pending
NW Multi Co. Housing Authority	Section 8 Housing (Winger)	134,000	Supportive	HUD	Pending
NW Multi Co. Housing Authority	Section 8 Housing (Lancaster)		Supportive	HUD	Pending
Goodridge	Land Use Planning	20,000	Supportive	SPA	Pending
P&P Properties	Low Income Housing Project	550,000	Supportive	FmHA Loan	Pending
Occupation Development Center, Thief River Falls	Purchase & Remodel Building	100,000	Supportive	DES	Pending
Red River Distributing	Refinancing	700,000	Supportive	FmHA	Pending
Crookston					
Fertile	Land Use Planning	24,000	Supportive	SPA	Pending

Projects Reviewed

Northwest Community Action	Talent Search	65,400	Supportive	US/OOE	Pending
Mult Co. Nursing Service, (Norman, Becker Mahnomen)	Family Planning Service	5,422	Supportive	MDH	Pending
Inter Co. Community Council	Home Start	142,616	Supportive	CSA	Pending
Polk County Occupational Development Center	Sheltered Workshop Building	242,500	Supportive	Mn/DVR	Funded
Fertile	Community/Medical Center	209,500	Supportive	HUD	Rejected
East Grand Forks	Comprehensive Community Development Program	1,445,000	Supportive	HUD	Funded
Crookston	Center for DAC/Senior Citizens	880,000	Supportive	HUD	Rejected
Lake Bronson	Street/Sidewalk Improvements	239,500	Supportive	HUD	Rejected
St. Hilaire	Water Systems Improvements	366,000	Supportive	HUD	Rejected
Greenbush	Water Main/Sewer Extensions	344,000	Supportive	HUD	Rejected
Plummer	Street Improvements	400,000	Supportive	HUD	Rejected
Gary	City Water System	393,021	Supportive	HUD	Rejected
Red Lake Falls	Housing Assistance	720,500	Supportive	HUD	Rejected
	Recreational Improvements				
Roseau	Water/Sewer Improvements	100,000	Supportive	HUD	Rejected
Middle River	Waste Water Collection/Treatment System	800,000	Supportive	HUD	Rejected
Goodridge	Community Center/Water & Sewer Improvements	860,000	Supportive	HUD/FmHA	Rejected
Grygla	Housing Rehab/Street & Misc. Improvements	325,000	Supportive	HUD	Rejected
Warroad	Housing Rehab/Senior Citizen Center/Street Improvements	1,700,000	Supportive	HUD	Rejected
Marshall County	Housing Rehabilitation	750,000	Supportive	HUD	Funded
Northwest Community Action Agency	Home Start Program	212,204	Supportive	HEW	Funded
Inter County Community Council	School Youth Program Development	425,000	Negative	DOL	Rejected
Tri Valley Opportunity Council	Food and Nutrition Program	20,000	Supportive	CSA	Rejected
R&T Properties	New Building for	380,000	Supportive	FmHA Loan	Pending
Thief River Falls	Thomas Motors, Inc.				
Goodridge Area	Renovation of Historical Site	1,945	Supportive	MHS	Pending
Historical Society					
RRJ Leasing Co.	New Chrysler-Plymouth Auto Dealership Building	415,000	Supportive	FmHA	Pending
Thief River Falls	Community & Neighborhood Crime Prevention	30,000		CCPB	Withdrawn
Warren Jaycees	Opportunities for Underprivileged	35,561	Supportive	MnRDC	Rejected
KIDS, Inc.					
St. Paul, Mn	Child Abuse & Neglect Prevention & Treatment	105,000	Supportive	HEW	Pending
The Center for Parents & Children, Moorhead, Mn	Pilot Adzuki Bean Processing Demonstration	37,130	Supportive	MnRDC	Funded
Dept. of Food & Science & Nutrition, U of M					
St. Paul					
Mn Dept of Economic Security	Help Through Industry Retraining & Employment	592,000	No Comment	US/DOL	Funded
Plummer	Sewer Systems Replacement & Impr.	32,000	No Comment	FmHA	Funded
Grygla	Fire Dept Building	80,000	Supportive	FmHA	Pending
Garden Valley Telephone Co. McIntosh	Cable Service	NA	Supportive	MCCB	Pending
Stephen	Cable Service	NA	Supportive	MCCB	Approved
Gunderson Electric Inc.	Housing Project	522,700	Supportive	FmHA	Rejected
McIntosh Housing, Inc.	Housing Project	210,000	Supportive	FmHA	Approved
City of Climax	Bike Hike Trail	80,000	Supportive	SPA	Rejected
Tri Valley Opportunity Council	Woodcarving Workshop	1,200	Supportive	MSAB	Funded

FUNDING AGENCY IDENTIFICATION

CCPB	Crime Control Planning Board
CSA	Community Service Administration
DES	Department of Economic Security
DOC	Department of Corrections
DOE	Department of Energy
DOL	Department of Labor
DVR	Department of Vocational Rehabilitation
EDA	Economic Development Administration
FmHa	Farmers (Mn) Home Administration
HEW	Health Education & Welfare
HUD	Housing and Urban Development
MBA	Minnesota Board on Aging
MDH	Minnesota Department of Health
MHS	Minnesota Historical Society
MCCB	Minnesota Cable Communications Board
MnRDC	Minnesota Rural Development Council
Mn/DOT	Minnesota Department of Transportation
MSAB	Minnesota State Arts Board
OAA	Older Americans Act
SPA	Minnesota State Planning Agency
US OOE	United States Office of Education

Citizen Participation

Name	Address	Advisory Committee
Aaby, Henry	Twin Valley	Criminal Justice
Aanes, David	Fergus Falls	Developmental Disabilities
Axvig, Keith	Red Lake Falls	Economic Development
Benesh, Ken	Ada	Regional Manpower
* Berg, Ralph	Red Lake Falls	Transportation
*** Beyer, Irving	Red Lake Falls	Water Quality
Bodell, Mary Ann	Warren	Developmental Disabilities
*** Bouvette, Joe	Hallock	Transportation
Bradham, Doug	East Grand Forks	Telecommunications
Brinkman, Bill	Crookston	Developmental Disabilities
Bridgeford, Lil	Crookston	Regional Manpower
Brovald, Sanna	Gully	Developmental Disabilities
Brunelle, Willard	Crookston	Water Quality
Carlson, Mark	Newfolden	Arts
Carpenter, John	Hallock	Economic Development
Cavalier, Donald	Crookston	Regional Manpower
Charon, Harlan	Hallock	Economic Development
Cheney, Charles	Warren	Regional Manpower
Christianson, Judith	Ada	Regional Manpower
Dahlman, Tessie	Hallock	Developmental Disabilities
Desrosier, Ella Mae	Red Lake Falls	Developmental Disabilities
Dodds, Mrs. Robert	Thief River Falls	Arts
Edwards, R.L.	McIntosh	Aging
Erickson, Gary	Thief River Falls	Developmental Disabilities
Erickson, Marlin	Pencer	Aging
Flakney, Barbara	Bejou	Developmental Disabilities
Folland, Stu	Karlstad	Telecommunications
Fore, Alvin	Oklee	Water Quality
** Forney, Dee	Thief River Falls	Arts
Fuglie, Alan	Twin Valley	Aging
Gibbons, Sam	Warroad	Regional Manpower
Gosen, Charles	Badger	Regional Manpower
Gravseth, Steve	East Grand Forks	Arts
Green, Gerald	Gary	Transportation
Green, Verne	Newfolden	Aging
Gullekson, Rolland	Fertile	Water Quality
Gunderson, Orley	East Grand Forks	Regional Manpower
Gustafson, Allan	Lancaster	Water Quality
Hanson, Harry J.	Hallock	Aging
** Harney, Vivian	East Grand Forks	Aging
Harman, Marilyn	Twin Valley	Developmental Disabilities
Hastad, Becky	Halstad	Arts
Hastad, Rusty	Halstad	Telecommunications
Hauger, Curt	Roseau	Criminal Justice
* Hoffman, Roger	Goodridge	Transportation
Holland, Vernon	Ada	Economic Development
Holm, Manfred	Roseau	Criminal Justice
Howard, Dennis E.	Bemidji	Criminal Justice
Huseby, Jason	Crookston	Criminal Justice
Jamison, Richard	Ada	Criminal Justice

Citizen Participation

Name	Address	Advisory Committee
Johnston, John	Roseau	Developmental Disabilities
Jorgenson, Larry	Warren	Criminal Justice
Jorgenson, Roy	Oklee	Regional Manpower
Juhl, Miriam	Lake Bronson	Arts
* Juhl, Wayne	Greenbush	Transportation
Juneau, Olivine	Brooks	Aging
Kapphahn, Ellen	Greenbush	Arts
Kelly, Rep. Wm. A.	East Grand Forks	Telecommunications
Kiewel, Bill	Crookston	Telecommunications
Kinane, Mary Anne	East Grand Forks	Arts
*** Knutson, Duane	Fertile	Criminal Justice
Knutson, Kermit	Red Lake Falls	Criminal Justice
Kostrzewski, Bernice	Warren	Criminal Justice
Kremer, Jim	Thief River Falls	Criminal Justice
Kuznik, Anthony	Crookston	Arts
Lee, George	Oklee	Economic Development
Lieder, Bernie	Crookston	Transportation
Lundeen, Darrow	Trail	Water Quality
Mahlum, Werner	Gary	Aging
Maruska, Carol	Thief River Falls	Economic Development
Miller, Merle	Crookston	Arts
Moen, Kenny	Newfolden	Aging
Moen, Michael	Red Lake Falls	Arts
Mosbeck, Mable	Red Lake Falls	Developmental Disabilities
Myers, Wayne	Hallock	Water Quality
Nelson, Rodney	Crookston	Regional Manpower
Neilson, Harvey	Hallock	Regional Manpower
Nordling, Duane	Hallock	Criminal Justice
Overend, Pat	Hallock	Criminal Justice
Panek, Henry	Goodridge	Water Quality
Payne, Ron	Roseau	Economic Development
Pederson, Walter	Roseau	Regional Manpower
Phillion, Lawrence	Red Lake Falls	Aging
Potter, Charles	Crookston	Telecommunications
Powell, Brad	Thief River Falls	Regional Manpower
Prenevost, Pete	Red Lake Falls	Criminal Justice
Pulkrabek, Sylvia	Mentor	Aging
Ramberg, Chester	Mentor	Water Quality
Richards, Charles	Thief River Falls	Criminal Justice
Rivard, Donald	Argyle	Water Quality
Roadfeldt, Stanley	Badger	Water Quality
* Roberts, Richard	Warroad	Economic Development
Ross, Gerhard	Fisher	Water Quality
Šahlstrom, Dr. Stanley	Crookston	Telecommunications
Schwartz, George	Thief River Falls	Economic Development
Siverson, Lynn	Fosston	Economic Development
Slininger, Russell	Twin Valley	Economic Development
Smith, Howard	Crookston	Economic Development
Solum, Nancy	Argyle	Arts
*** Sorensen, Fred	Grygla	Economic Development

Citizen Participation

Name	Address	Advisory Committee
Sorenson, Ric	Fosston	Arts
Stadum, J.K.	Thief River Falls	Regional Manpower
Stenberg, Otto	Thief River Falls	Aging
Stoltman, Leonard	Argyle	Criminal Justice
* Stortroen, Loran	Climax	Telecommunications
* Strandquist, Ervin	Newfolden	Criminal Justice
* Sundsahl, Lawrence	Stephen	Transportation
Sutherland, Harry	Hallock	Developmental Disabilities
Swan, LaVerne	Badger	Aging
Swift, Hugh	Crookston	Regional Manpower
Thomforde, Harold	Crookston	Transportation
* Thorfinnson, Vaughn	Red Lake Falls	Regional Manpower
Tovar, Effren	East Grand Forks	Regional Manpower
Tunheim, Ray	Newfolden	Economic Development
Visser, Don	Ada	Water Quality
Waters, Roy	Crookston	Telecommunications
Wilson, Dan	Crookston	Regional Manpower
Wittenberg, Roger	Crookston	Regional Manpower
Wold, Lloyd	Trail	Criminal Justice
* Wysoski, Ambrose	Thief River Falls	Aging
* Zutz, Dale	Warren	Aging

* Member of Regional Development Commission

** Chairman of Committee

*** Chairman of Committee and RDC Member

Bylaws Committee

Irving Beyer, Red Lake Falls
William Gathridge, Humboldt
Cleighton Hastad, Halstad
Oris Moen, Fertile
Richard Roberts, Warroad
Fred Sorensen, Grygla
Ervin Strandquist, Newfolden

Personnel Committee

Oris Moen, Fertile
Harvey Tripp, East Grand Forks
Ambrose Wysoski, Thief River Falls
Ervin Strandquist, Newfolden
Fred Sorensen, Grygla

Work Development Committee

Joe Bouvette, Hallock
Richard Lorensen, Strathcona
Fred Sorensen, Grygla
Loran Stortroen, Climax
Si Strand, Ada

Commission Budget

CALENDAR YEAR 1978

REVENUES

State	\$ 77,439.50
Local	55,992.21
HUD	19,033.50
UGLRC	4,779.48
LCMR	3,676.00
GMO	22,730.80
EDA	45,000.00
Aging	13,910.00
LEAA	25,000.00
DEV DIS	12,150.00
PEAT/DNR	1,084.21
WQM '208'	4,273.48
WPB	234.42
Mn/DOT	4,000.00
Arts	5,000.00
Multi-Cty CHS	221.83
TOTAL	\$294,525.43

EXPENDITURES

Staff and Fringe	\$152,891.92
Consultants	4,587.84
Transportation	41,244.47
Office Expense	92,754.52
TOTAL	\$291,478.75
1978 Revenue	\$294,525.43
1978 Expenditures	291,478.75
Balance	3,046.68

CALENDAR YEAR 1979

PROJECTED REVENUES

State	\$ 65,773.00
Local	54,000.00
HUD	19,369.00
Mn/DES (GMO)	25,000.00
EDA	45,000.00
Aging	22,824.00
LEAA	25,000.00
DEV DIS	12,500.00
WQM '208'	9,800.00
WPB	3,500.00
Arts	4,000.00
TOTAL	\$286,766.00

PROJECTED EXPENDITURES

Staff and Fringe	\$162,064.00
Consultants	5,000.00
Transportation	42,000.00
Office Expense	77,702.00
TOTAL	\$286,766.00

1978 Commission Report

LAND MANAGEMENT ACTIVITY INVENTORY: INVOLVEMENT OF REGION I LOCAL GOVERN- MENT

This report summarizes the current status of local government (county, township and city) land management activities in Region I. The purpose of the inventory was to provide focus and redirection as necessary to the Commission's technical and informational assistance efforts in the area of land management planning.

AGRICULTURAL DEVELOPMENT IN REGION I

This study was funded by the State Planning Agency. It looked at data related to agricultural development in the seven county area during the past 25 years. Special emphasis was laid on land use and changing cropping patterns. Copies of this report are available from the NWRDC on request.

NORTHWESTERN ARTS COUNCIL WORK PLAN FY'79

The Arts Plan was done to qualify the Commission to act as the Regional Arts Council and administer grant monies for use in local/regional arts development. The Plan outlines the work program to be implemented in FY'79, to promote and develop artists and arts resources of Region I.

1978 AREA PLAN FOR PROGRAMS ON AGING

This was the first full year for the Northwest Regional Development Commission as the Area Agency on Aging. In order to establish its Aging Program the Commission was requested to submit an Area Plan to the Minnesota Board on Aging (MBA). The MBA approved the Commission's Plan in December of 1977. With implementation beginning in 1978. The Commission's Aging Program is carried out upon the recommendations of the Commission's Advisory Committee on Aging. Highlights of the Plan are: the implementation of a grants making program; the funding of several projects under Title III; the funding of contracts to educate and train older persons and service providers; and the funding of two senior citizens centers.

REGION I 1979 CRIMINAL JUSTICE PLAN

This Plan presents a demographic profile of Region I, and an overview of the existing criminal justice system of the Region. The service gaps of this system are explored and potential programs to meet some of these needs are introduced.

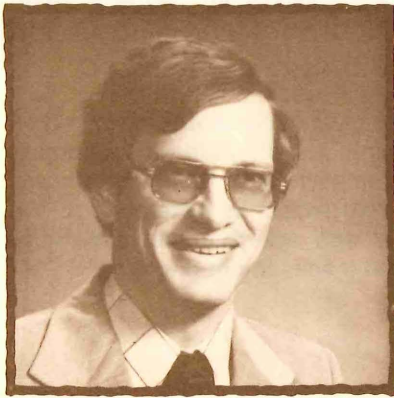
The information presented in this Plan was provided by state agencies, members of the Region I Criminal Justice Advisory Committee, local criminal justice practitioners and other interested persons.

CETA MANPOWER PLAN FY'79

The Fiscal 1979 CETA Manpower Plan briefly describes the manpower characteristics of the Region, area manpower needs, CETA and non-CETA manpower resources of the Region, and provides for priority groups and goals, policies and programs of the Regional Commission's Manpower programming for 1979. The priority groups established in this year's Plan include ten significant segments of the Department of Labor, plus two regional target groups. The regional target groups include: displaced homemakers, those women who have either been widowed, divorced or separated from their husbands and have been out of the labor market for ten or more years, and; public offenders, with special emphasis being placed on the youthful offenders.

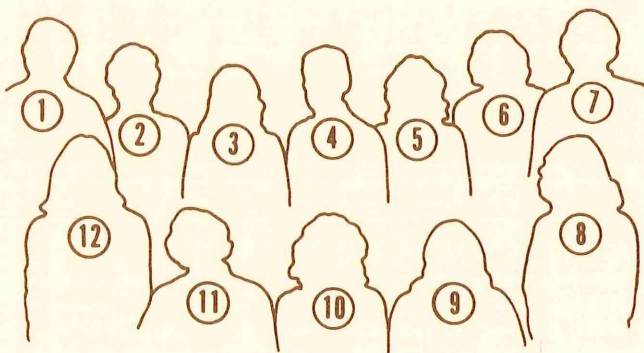
SUMMER YOUTH QUESTIONNAIRE RESULTS

This report summarizes the attitudes of enrollees, supervisors and parents toward the Summer Youth Employment Program implemented within Region I in 1978.



Eugene Abbott, Executive Director (on leave of absence until July 1, 1979)

NWRDC Staff



1. Randall Johnson, Land Use, Water Quality
2. Helen Jurchen, Secretarial
3. Donna Christianson, Secretarial
4. Robert Bussard, Manpower, Housing
5. Carol Deschene, Secretarial
6. Dale Lindekugel, Transportation
7. John Jenny, Cartographer
8. Mary Jo Crystal, Accounting
9. Beverly Schulke, Criminal Justice
10. Luanne Visser, Telecommunications
11. Sushil Kriplani, Acting Executive Director
12. Sari Clark, Developmental Disabilities, Arts

Not Shown: Gerald Berglin, Aging