

LEGISLATIVE REFERENCE LIBRARY



3 0307 00010 4813

790811

1978 ANNUAL REPORT

FOR THE
REGION V

AL DEVELOPMENT COMMISSION

HT
393
.M62
R42x
1978

NG CASS, CROW WING, MORRISON, TODD, AND WADENA COUNTIES

FROM THE CHAIRMAN . . .

The year, 1978, was a year of interest and change for Region 5. Robert Benner, our Executive Director since mid-1974, resigned to take a position with the environmental division of State Planning Agency and Dave Loch was selected to become Executive Director. Mr. Loch has been with Region 5 since late 1974 and served as Deputy Director. The transition has been accomplished effectively and efficiently. Other staff changes include the loss to state agencies of Jim Sims, formerly our Director of the Area Agency on Aging, and Harry Rosefelt, Economic Development Program Manager. We have moved cautiously in the recruitment of new staff both for budgetary reasons and because we wish to employ persons who have professional qualifications and who have a sensitivity to local concerns.

Early in the year, we volunteered our Commission to serve as "guinea pig" for an evaluation process that was the result of many hours of work by State Planning Agency and a MN Association of Regional Commissions (MARC) task force committee. As part of that process, we were evaluated from "within" by our own Commission members and by both elected and non-elected persons in Region 5. An "outside" evaluation team then spent several days in the area in late September interviewing people and discussing the work of the Commission. The results indicate both strengths and weaknesses of the Commission, and we will be addressing these in efforts to improve our capabilities and responses. Many Commission members reported that they took a "new look" at their own role on the Commission as a result of the evaluation process. It is our hope that this process can be defined and refined so that other Commissions will find it a useful tool in the whole planning process.

During the past year we have established a foundation for the beginnings of our Regional Comprehensive Plan. Basically this has involved extensive work by Commission Committees, including Housing, Overall Economic Development, Land Use, Aging, Manpower and Criminal Justice. This Comprehensive Plan will be taking shape in the months ahead and should provide a framework for area development.



Perhaps nothing is so constant as change and 1979 promises change too - the new State administration, revised regulations in federal agencies, significant new dollars available for some programs, extreme reductions in others. All provide a challenge to the Region - the challenge to understand our goals and to aim high for achievement. Not only are we aware of the broadening mandate for better use of tax dollars and less proliferation of government agencies - some of us have taken an active part in projecting that mandate!

We must now assume responsibility in leadership that reflects a consensus of our constituencies and works to strengthen local government and grass roots ability to shape its own destiny.

A special word of appreciation to Dave Loch for his thoughtful, patient, and most capable work and to our entire staff. A sincere "thank-you" to Burt Teig, our helpful and gracious State Planning Agency liason.

And last, but not least, a personal "thank-you" to all Commission and Committee members for your assistance and advice.

Sincerely,

Mary Koep

REGION 5 REGIONAL DEVELOPMENT COMMISSION

MEMBERS

Board of Directors

Mary Koep, Chairman
Neil Christenson
Eugene Host
Ray Ackerson
Felix Kujawa
Ross Kunkel
Paul Richter

Commissioners

Mary Koep, Chairman
Raymond Ackerson
Roger Aitkin
Robert Turner
William Andrews
Gordon Berg
Neil Christenson
Willmar Holmquist
Eugene Host (Vice-Chrmn.)
John Johnsen
Martin Nier
William Kern
Colin Kivi
Felix Kujawa
Ross Kunkel
Royal Loven
Fred Martin
Paul Richter
Monroe Sletta
Jack Wilson
Howard Tyrrell
Melfred Venske
Steve Wentworth
John Hanson

REPRESENTING

City of Brainerd
Regional 5 School Boards
Todd County Town Boards
Cass County Commissioners
Morrison County Commissioners
Crow Wing County Commissioners
Wadena County Municipalities

City of Brainerd
Cass County Commissioners
Leech Lake Indian Reservation
Region 5 School Boards
Cuyuna Range Council of Government
Wadena County Commissioners
Region 5 School Boards
Little Falls Council of Government
Todd County Town Boards
Crow Wing County Municipalities
Cass County Municipalities
Wadena County Town Boards
Region 5 Ecumenical Council
Morrison County Commissioners
Crow Wing County Commissioners
Morrison County Municipalities
Cass County Town Boards
Wadena County Municipalities
Todd County Commissioners
Todd County Municipalities
Soil & Water Conservation Society
Morrison County Town Boards
Crow Wing County Town Boards
Lake Region Council of Government

LEGISLATIVE REFERENCE LIBRARY
STATE OF MINNESOTA

REGION 5 REGIONAL DEVELOPMENT COMMISSION

ADVISORY COMMITTEES

COMMITTEE

CITY

COUNTY

Area Agency on Aging Advisory Committee

Ray Ackerson (Chairman)	Pillager	Cass
George Buck	Sebeka	Wadena
Mary Ann Erckenbrack	Sebeka	Wadena
Lyle Evers	Grey Eagle	Todd
Alfred Gunderson	Walker	Cass
Dagmar Johnson	Little Falls	Morrison
Voilet Krych	Little Falls	Morrison
Irene Kukko	Brainerd	Crow Wing
Darryl Meyer	Long Prairie	Todd
Howard Pattison	Staples	Todd
Irene Rudie	Upsala	Morrison
Margaret Smith	Deerwood	Crow Wing
Dora Washington	Squaw Lake	Cass
Agnes Winkels	Verndale	Wadena
Viola Swenson	Crosby	Crow Wing

Five Wings Arts Resources Council Directors

Virginia MacArthur (Chairman)	Brainerd	Crow Wing
Susan Rathke	Brainerd	Crow Wing
Patti Cloud	Menahga	Wadena
Beverly Vanzo	Pequot Lakes	Cass
Charles Stone	Little Falls	Morrison
Jeanette Hansen	Eagle Bend	Todd
Fred Hilts	Browerville	Todd
Marlene Johnson	Wadena	Wadena

Housing Advisory Committee

Willmar Holmquist (Chairman)	Little Falls	Morrison
Steve Beck	Browerville	Todd
Charles Bedore	Brainerd	Crow Wing
Jerome Graba	Sebeka	Wadena
Gilbert Gustafson	Little Falls	Morrison
Mrs. Jeanne Kline	Pine River	Cass
George Jagush	Browerville	Todd
Glenn M. Otteson	Backus	Cass
Robert Biddle	Sebeka	Wadena

Land Use/Water Quality Advisory Committee

Howard Tyrrell (Chairman)	Browerville	Todd
Don Anderson	Merrifield	Crow Wing
Newman Bolstad	Deerwood	Crow Wing
Lester Erickson	Sebeka	Wadena
Ed Fiarbanks	Cass Lake	Cass
Joe Gilson	Fort Ripley	Crow Wing
Fay Harrington	Hackensack	Cass

ADVISORY COMMITTEES (CONTINUED)

COMMITTEES

CITY

COUNTY

Land Use/Water Quality Advisory Committee

Terry McGaughey	Pine River	Cass
Walter Robert Olson	Little Falls	Morrison
Lawrence Pederson	Staples	Todd
Robert Siegel	Little Falls	Morrison
Monroe Sletta	Osakis	Todd
Birney Wilkins	Brainerd	Crow Wing

Manpower Advisory Committee

Gordon Berg (Chairman)	Staples	Wadena
Ray LaVoie	Clarissa	Todd
Bob Stewart	Little Falls	Morrison
Ralph Collette	Brainerd	Crow Wing
R. W. Curtis	Pequot Lakes	Crow Wing
Mrs. Charles Hector	Osakis	Todd
Roger Larson	Eagle Bend	Todd
Everett Lick	Brainerd	Crow Wing
Stan Edin	Staples	Todd
Mrs. Richard Mick	Pine River	Cass
Marvin Stangl	Pierz	Morrison

Transportation Advisory Committee

Ross Kunkel (Chairman)	Fort Ripley	Crow Wing
Elmer Beto	Little Falls	Morrison
Duane Blanck	Brainerd	Crow Wing
S. O. Edmon	Mn/Dot	
Robert Elleraas	Long Prairie	Todd
George Engstrom	Little Falls	Morrison
George Kriha	Brainerd	Crow Wing
Claud Stuard	Wadena	Wadena
James Worcester	Walker	Cass

Social Service Directors

James Atkinson	Little Falls	Morrison
John Fjelstul	Walker	Cass
Dennis O. Johnson	Wadena	Wadena
Wayne Larson	Brainerd	Crow Wing
Darryl Meyer	Long Prairie	Todd

TRANSPORTATION TASK FORCE

CASS COUNTY

Mahlon Swentkofske
John Johnsen
Ed Switaski
Jim Worcester

REPRESENTING

County Board
Municipalities
Townships
County Highway Department

CROW WING COUNTY

Ross Kunkel
Joseph Kaspar
Steve Wentworth
Duane Blanck

County Board
Municipalities
Townships
County Highway Department

MORRISON COUNTY

Felix Kujawa
Royal Loven
Melfred Venske
Elmer Beto

County Board
Municipalities
Townships
County Highway Department

TODD COUNTY

Ray Schultz
Harlan Dixon
Eugene Host
Robert Elleraas

County Board
Municipalities
Townships
County Highway Department

WADENA COUNTY

Gordon Berg
Ione Ellingson
Richie Oehlenschlager
C. A. Stuard

County Board
Municipalities
Townships
County Highway Department

MAJOR MUNICIPALITIES

George Kriha
G. LeRoy Engstrom

City of Brainerd
City of Little Falls

REGION 5 AIRPORTS

John Riedl

Mn/DOT DISTRICT OFFICE

Darryle Durgin

District Engineer - Mn/DOT

OEDP ADVISORY TASK FORCE

<u>NAME</u>	<u>CITY</u>	<u>COUNTY</u>
Marguerite Anderson	Sebek	Wadena
Gene Bromenshenkel	Wadena	Wadena
Lisette Callahan	Backus	Cass
Nancy Christensen	Little Falls	Morrison
Joe Elston	Long Prairie	Todd
Eugene Host	Browerville	Todd
Bill Jenkins	Wadena	Wadena
Mike Kneeland	Deerwood	Crow Wing
Felix Kujawa	Buckman	Morrison
Wayne Mitchell	Brainerd	Crow Wing
Roma Rosenow	Grey Eagle	Todd
Edward Switaski	Pine River	Cass
Steve Wentworth	Merrifield	Crow Wing
Pete Zimny	Royalton	Morrison

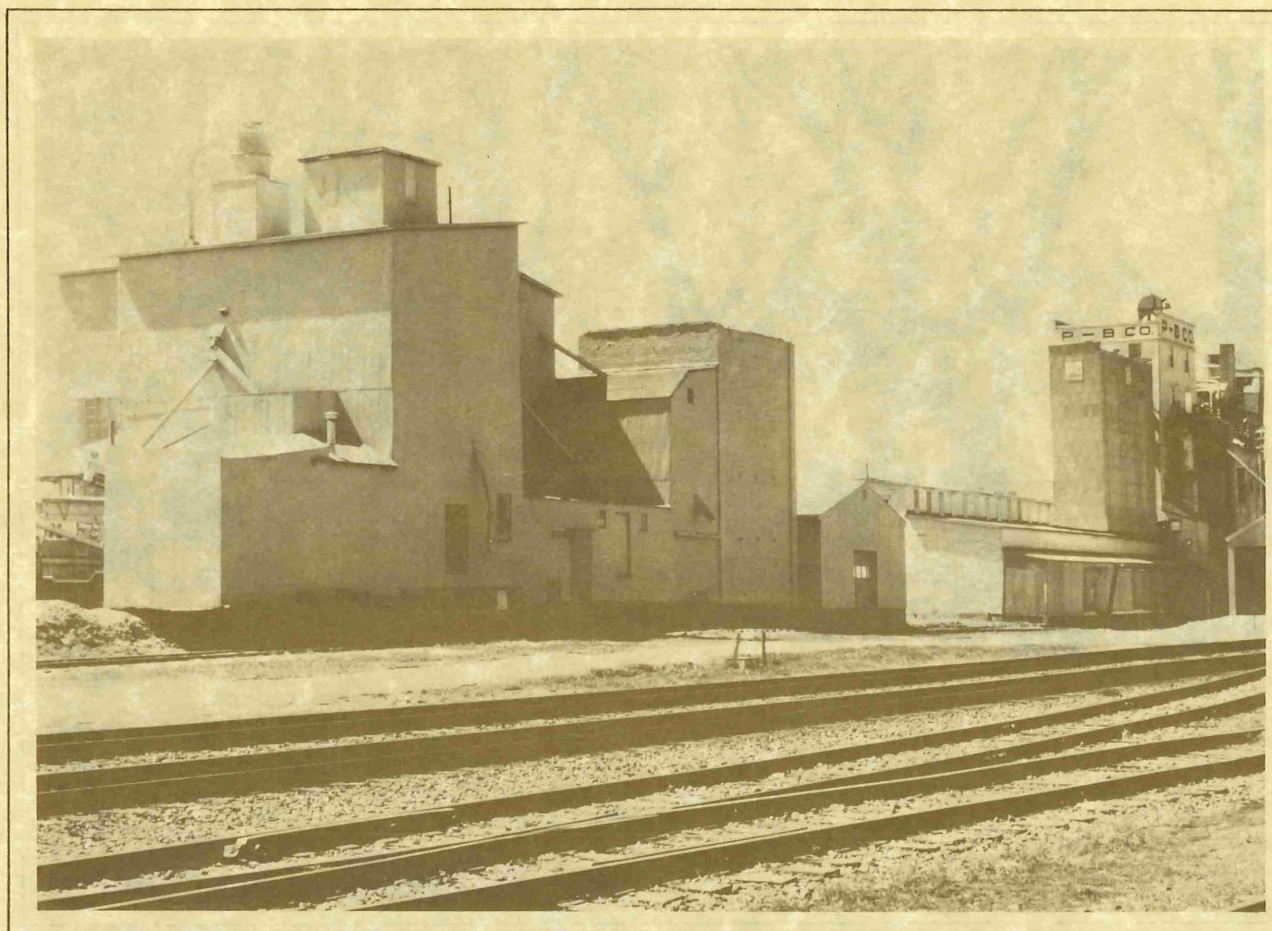
THE REGION

The area included in Region 5 is Cass, Crow Wing, Morrison, Todd and Wadena Counties. The topography, land cover and economic base is as varied as the heritage of its citizens. The land and its natural amenities has attracted people since the early 1800's. Fur trade, forestry and agriculture formed the basis for the first migration into the area. While forestry and agriculture continue as viable economic activities, tourism has emerged as another strong contribution to the region's economic growth.

There is still another change taking place in the region. Again based on the area's natural amenities, there is a migration of families back to the rural setting, particularly to the lakes, streams and sylvan lands of the five counties.

The pressures of inevitable change, whether by growth or decline, place a heavy burden on the citizens and natural resources of the area. It is in light of this burden that the Region 5 Regional Development Commission strives to serve its citizens through the local governments, as a resource for interlocal co-operation to preserve the natural character and strength of the region.

ECONOMIC PLANNING AND DEVELOPMENT



Under contract with the Department of Commerce, Economic Development administration, Region 5 has assisted Cass, Crow Wing, Morrison, Todd and Wadena Counties in renewing their Overall Economic Development Program (OEDP) Plans. Each county reconstituted their OEDP committees to provide guidance in updating the county OEDP's. Members of each county committee selected representatives to form a regional OEDP committee.

Using the local OEDP, a regional economic plan, or OEDP, was completed and forwarded to the Economic Development Administration (EDA) in May 1978. Approval is expected early in 1979. The approval of the regional OEDP will result in designation of the Region 5 area as an Economic Development District by EDA and increase federal match for funding local development projects by 10 percent.

Since the OEDP identifies areas of need to strengthen the local and regional economy, the Regional Development Commission is pro-

viding assistance to both the public and private sectors in procuring financing for local development. Such assistance is being provided in Todd County to a small city seeking to aid a farm machinery manufacturer in expansion; and in Crow Wing and Cass Counties, guidance is being provided to a consortium attempting to procure financing for modernization and upgrading of small resorts and the tourism industry in general. There is also an effort being made to establish a mechanism for manufacturing and marketing of a wood burning furnace used in turkey production.

The Commission has also completed an initial study of the potential for processing of agricultural products in the region. The results indicated that milk production may be the only product in the region, but additional information may show that specialty crop production has increased greatly as another potential for agricultural processing and marketing.

HOUSING



Housing planning and development has been a major emphasis of Region 5 over the past year. A Regional Housing Plan was approved in January of 1978, under the auspices of the State Planning Agency with support from the HUD Section 701 Planning Assistance. In May of the same year, the Housing Plan was submitted to HUD as an Areawide Housing Opportunity Plan in accord with the Housing and Community Development Act of 1974. A decision is expected from HUD before the end of February, 1979.

If the Housing Opportunity Plan is accepted, the cities and counties in the region which approved the plan may receive bonus funds for housing and community development.

Since early 1977, there has been an increase of approximately 500 units of apartment type assisted housing in the region. The most recent housing projects completed, under construction, or in final phases of approval are:

<u>CITY</u>	<u># OF UNITS</u>	<u>TYPE</u>
Hackensack	19	Elderly
Longville	8	Elderly
Pine River	30	Elderly
Remer	19	Elderly
Walker	30	Elderly
Brainerd	113	Elderly/Family
Crosby	61	Elderly
Deerwood	20	Elderly
Motley	20	Elderly
Pierz	30	Elderly
Royalton	25	Elderly
Upsala	16	Elderly
Wadena	103	Elderly/Family

TRANSPORTATION/TRANSIT

During 1978, the Region 5 Transportation Task Force completed their work on the new MN/DOT/Plan. The Task Force completed the phase II activities in January and began the issue review during subsequent meetings in February and March. A draft MN/DOT/Plan was completed in April for review by the Task Force during May. The final plan was distributed in July and the Task Force met once again in October to prepare for formal public hearings on the plan held November 13, 1978.

It is the intention of MN/DOT to continue to use the Regional Task Forces in annual review of the plan. The Task Force certainly demonstrated their value in the statewide transportation planning process by dealing with urgent problems, needs and solutions in a manner that should serve as an example of cooperation to other statewide functions.

The Paratransit Program, initiated in 1977, was a big success within Region 5. A total of six projects were funded, representing a variety of sponsors and types of projects. The applicants were genuinely concerned about the transportation needs of the elderly and poor in their areas. Hopefully these projects can demonstrate that rural transit is a legitimate rural concern. These are the projects that are underway:

SPONSOR

BEGAN OPERATION

Charles Grisamore

April

City of Pine River

July

Crow Wing County Vanpool

September

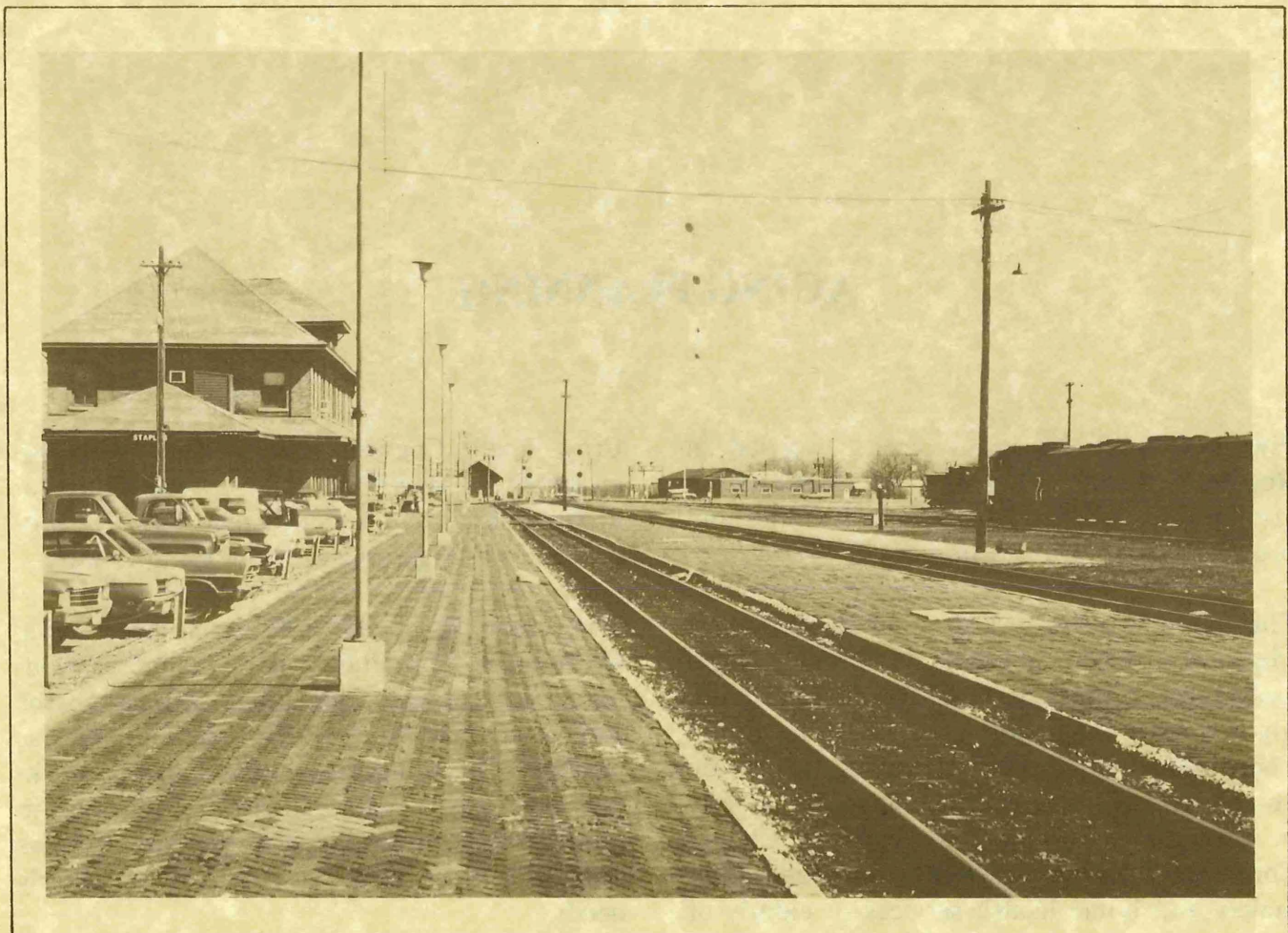
Leech Lake Reservation

November

Upsala Over 50 Club, Inc.

December

Little Falls School District #482 January 1979





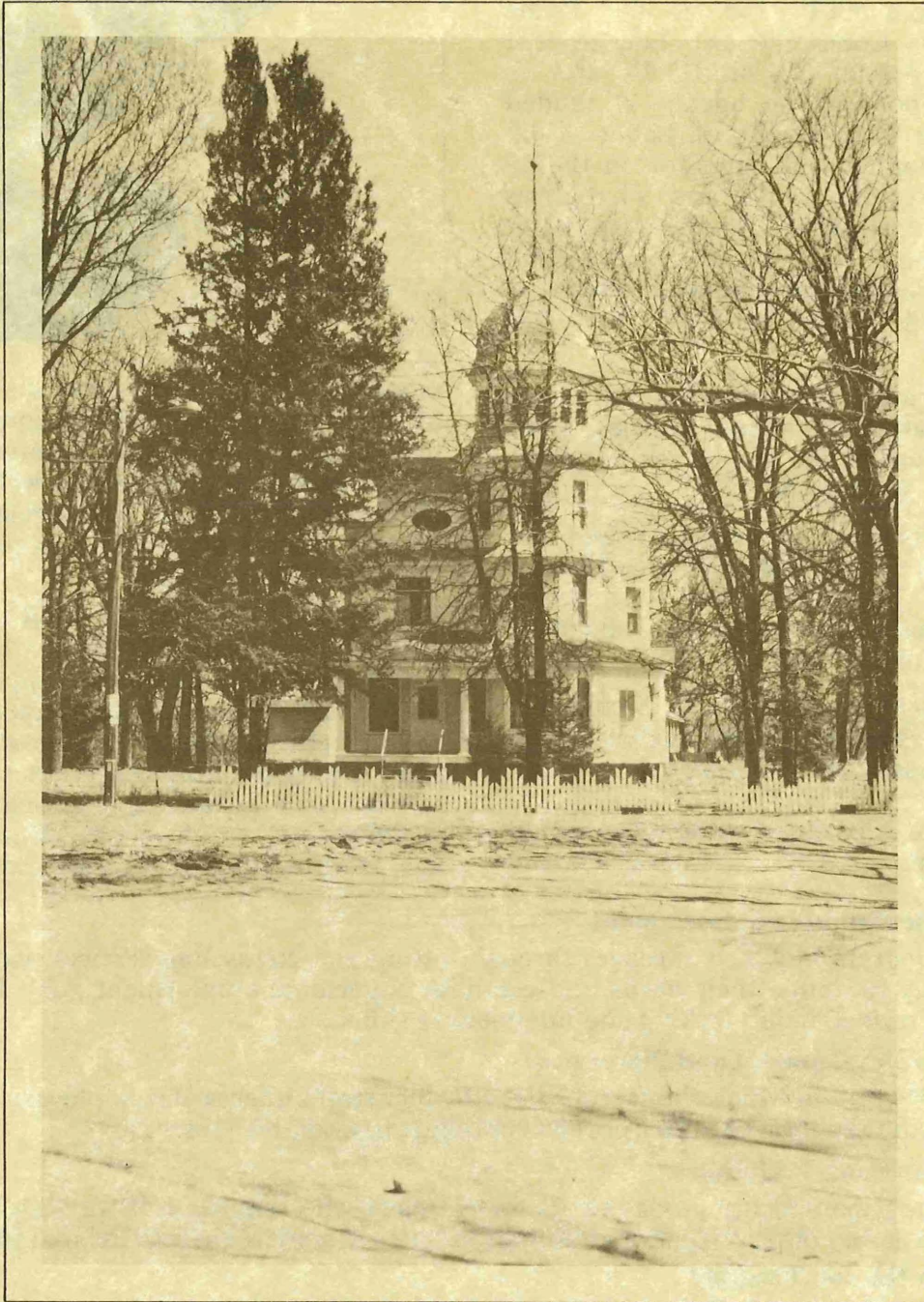
AGING PLANNING

Five new Title III grants were awarded in Region 5 during 1978 and six continuation grants were awarded to carry on activities and projects started prior to January 1, 1978.

The five new grant awards went to Northwest Minnesota Legal Services to provide legal assistance to the elderly of Wadena County; Todd County to support activities of an Aging Coordinator; St. Joseph's Hospital to provide home delivered meals to homebound elderly in Crow Wing County; Crow Wing County Community Health Services to provide home-maker and home health services to elderly of

Crow Wing County; grant money was also awarded to Merrifield Lakes Area Chamber of Commerce to provide Senior Citizens programs for a large area of Crow Wing County.

The major thrust of Tri-Regional Area Aging on Aging's 1979 Plan will be to increase in-home services with the intent of keeping the elderly in their home environment as long as possible. The aging program will also be working very closely with Nutrition Programs in establishing multi-purpose Senior Centers that will serve a greater variety of elderly needs.



ARTS PLANNING

In the summer of 1977 a staff person was hired to devote full time to Arts Planning in Region 5. Over the next year a strong Regional Arts Organization was developed, a Newsletter was initiated, and the process of assessing needs was begun.

During the summer of 1978 organizational goals were set, By-Laws adopted, an arts needs assessment was completed and priorities were set. In the fall, a plan was submitted to, and accepted by the Minnesota State Arts Board which resulted in the awarding of a Block Grant to the RDC for the purposes of providing services and grants to the Arts Organizations of the Region.

MANPOWER PLANNING

Rural Minnesota CEP, Inc. is the Prime Sponsor for the Comprehensive Employment and Training Act in Region II, IV and V. As a Prime Sponsor, the agency is funded directly by the Department of Labor. Each Regional Development Commission in the 19 county area (Regions II, IV and V) receives funds from Rural MNCEP, Inc. for Manpower Planning. The Region 5 Regional Development Commission under its sub-grant agreement with Rural MNCEP, Inc. has contracted:

- a) To prepare a recommended manpower plan stating the plans, policies, goals and priorities for manpower programming in the region.
- b) To monitor in conjunction and co-operation with the Prime Sponsor (Rural MNCEP, Inc.) manpower programs in the region as defined by legislation.
- c) To perform continued manpower needs assessment of the region during the course of the program year.

The Commission has vested these responsibilities in its Manpower Advisory Committee and



required that the Committee make its recommendations to the Commission. Every year the Manpower Advisory Committee recommends goals and objectives as well as segments of the population in the region in need of priority service in terms of employment and training.

The purpose of the Rural MNCEP, Inc. program is to provide individualized service, training, and employment opportunities to economically disadvantaged, unemployed and underemployed people. The goal of the program is to provide these services so that people enrolled can achieve self-sufficiency through unsubsidized employment. Rural MNCEP, Inc. provides the following services:

- Orientation and Assessment

A program in which enrollees through testing and counseling services, have an opportunity to define their needs and establish a personal employment goal. Enrollees are also trained in job seeking and interviewing skills.

- Job Development and Placement

A program in which the Rural MNCEP, Inc. staff either seeks employers who will hire specific program enrollees or refers enrollees to available jobs.

- Classroom Training

A program which provides funds for enrollees who require skill training in vocational schools and other educational settings in order to achieve their individual job goals.

- On-the-Job Training

A program which places enrollees in private businesses and pays up to one-half of the enrollee's salary while he or she is being trained on-the-job.

- Work Experience

A program which funds the placement of enrollees on jobs with public agencies in order that the enrollee may develop basic job skills and a work record. Enrollees are paid the federal minimum wage.

- Public Service Employment

A program which funds the placement of enrollees on jobs with public agencies in order that these enrollees may develop advanced job skills and experience leading to unsubsidized employment.

- Supportive Services

This component of the program provides funds for medical, counseling, and other services which will result in the elimination of barriers to the unsubsidized employment of an enrollee.

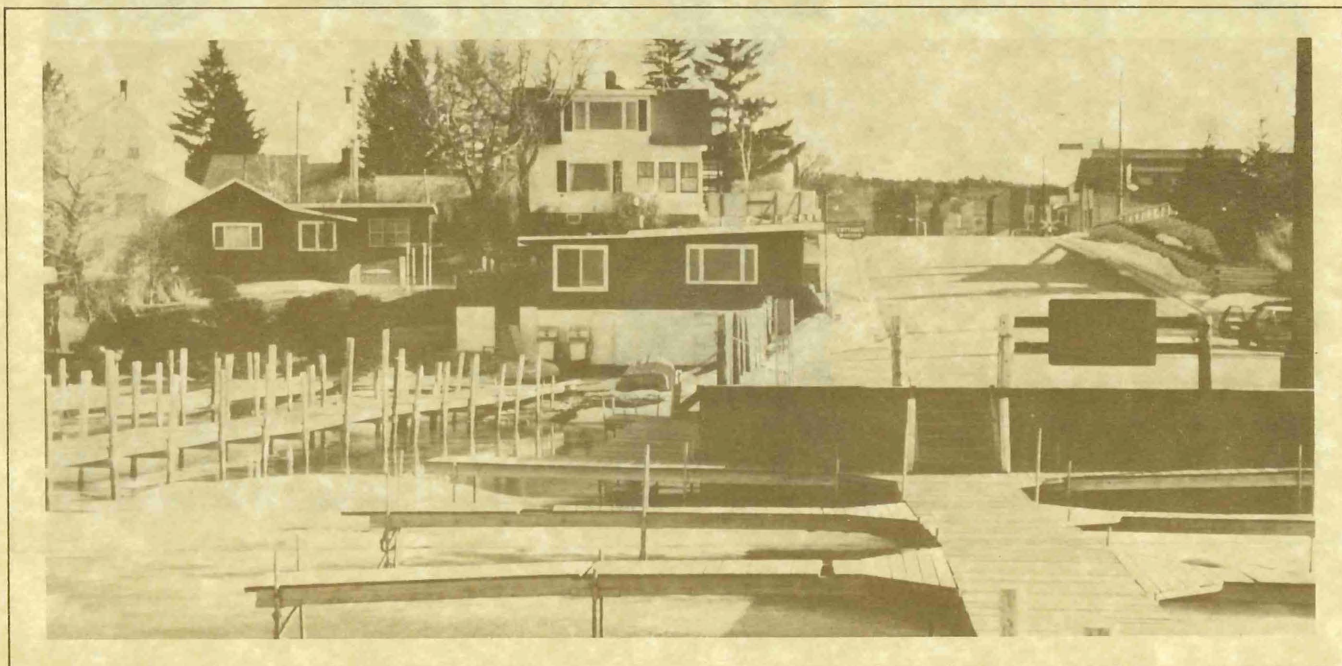
Enrollees working under the public service employment, on-the-job training and work experience components of the program in local governments, private businesses and public agencies are employees of those agencies and businesses and not employees of Rural MNCEP, Inc.

LAND USE/WATER QUALITY PLANNING

The committee continued to review and comment on elements of the State 208 Water Quality Management Plan as well as material received from the Minnesota Water Planning Board. Regionally significant parks and park sites within Region 5 were identified by the Land Use Committee. The list was then used by State Planning Agency to assist in determining the awarding of LAWCON/LCMR Grants. The Regional Land Use Plan was completed and presented to the Commission in March, 1978.

Remote Sensing Projects

The report "Identification of Irrigated Corn and Potatoes in Region 5 Using LANDSAT Digital Data" was completed in August and the paper "Mapping of Chlorophyll \bar{a} Concentrations and Secchi Disc Depth of Lakes Within Region 5 Using LANDSAT Digital Data" was presented at the Fall Convention of the American Society of Photogrammetry.



LAND USE PLANNING

Local Planning Assistance

The Commission provided Land Use Planning Assistance to the following local units of government:

Wolford Township	
City of Randall	City of Pillager
City of Pierz	City of Backus
City of Upsala	City of Hackensack
City of Menahga	City of Lakeshore
City of Verndale	Woodrow Township
City of Long Prairie	City of Crosslake
Todd County	City of Breezy Point

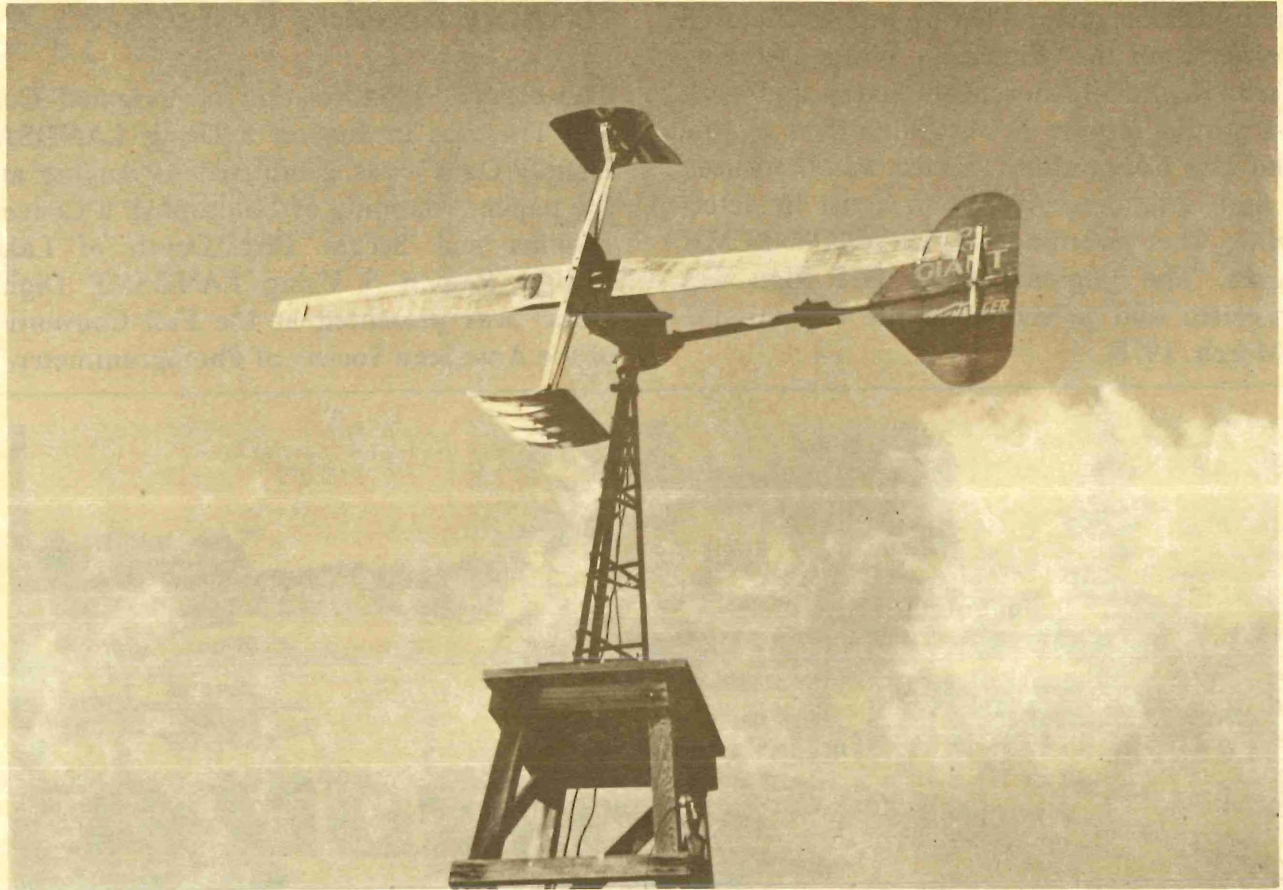
The following local units of government and/or organizations were provided assistance regarding the LAWCON/LCMR Grant Program:

City of Pequot Lakes	
Mission Township	Paul Bunyan Arboretum
Morrison County	Deep Portage
City of Swanville	City of Pillager
City of Browerville	City of Backus
Todd County	City of Lakeshore
City of Menahga	City of Emily

The following local units of governments received assistance in preparation of the State of Minnesota Land Use Planning Grant Program:

	Todd County
Cass County	City of Breezy Point

FUTURE DIRECTIONS



In the early days, the Regional Development Commission placed heavy emphasis on technical assistance, particularly local planning and implementation of growth management. At the same time, work began in completion of single purpose, categorical plans such as, land use, housing, economic development, transit, transportation, aging assistance programs, manpower/CETA programs, and arts development. The only categorical program which remains incomplete at the present time is transportation.

It is the intent of the Commission over the next several months to begin a synthesis of the various single purpose plans in order to consolidate the goals, objectives and programs into a comprehensive development guide. The process to be used in arriving at a compre-

hensive plan includes local participation as early as possible.

The benefits envisioned in a regional comprehensive development guide establish the basis for the effort. The Regional Commission must decide on the use of its scarce resources to provide maximum impact in areas of greatest need. Technical assistance, direct service programs for the elderly, economic and social development programs, and the preservation of the regions' physical characteristics are among the more serious issues to be addressed. Local jurisdictions are required to make immediate decisions having long range effects. It is hoped that a regional comprehensive development guide will provide insight and direction to the Commission in its role of service to its local governments and citizens.

FY78 BUDGET

REVENUES

State Planning Agency	68,949.
LCMR	6,790.
HUD	13,302.
EDA	45,000.
PCA	6,000.
DNR	5,000.
Mn/DOT	2,500.
Area Agency on Aging	34,000.
CEP	24,000.
Gov. Manpower Office	20,000.
SPA - Public Safety	22,000.
Carry Over (estimated)	30,000.
Local Levy	40,000.
Health	13,215.
Transit	25,000.

355,756.

EXPENDITURES

Personnel	214,860.
Consultants	25,502.
Travel	27,000.
Per Diem	16,000.
Office Costs	40,000.
Miscellaneous	2,080.
Fund Balance	30,314.

355,756.

FY79 BUDGET

REVENUES

State Planning Agency	69,949.
LCMR	4,000.
HUD	19,369.
EDA	45,000.
SPA/EDA (302)	2,500.
Area Agency on Aging	39,600.
CEP	25,000.
Transit	9,000.
GMO	2,500.
Public Safety	6,000.
Health	3,500.
Local Levy	40,000.
PCA	8,000.
Criminal Justice	3,500.
Carry Over (estimated)	18,000.

295,918.

EXPENDITURES

Personnel	181,940.
Consultants	9,521.
Travel	38,300.
Per Diem	9,000.
Office Costs	51,000.
Miscellaneous	2,500.
Fund Balance	3,657.

295,918.

VI. REGIONAL CLEARINGHOUSE REVIEW

The Region 5 Regional Development Commission in 1975 was designated by the Governor of Minnesota as the "clearinghouse" for the five county area of Central Minnesota. Regional clearinghouses are required by the Federal Office of Management and Budget

under Circular A-95, and are set up to facilitate the coordination of state, regional and local planning and development efforts. As a clearinghouse, the Commission is empowered to review and comment on local project applications requesting, federal and state grants and loans.

The A-95 review process has been developed by the federal government to:

- a) encourage the coordination of state and federally funded and assisted programs with local and area-wide plans and programs
- b) eliminate duplication and inefficiencies in proposals
- c) provide an opportunity to local persons/agencies to review and comment on proposals before they are funded

In addition to the authority granted the Commission under Circular A-95, the Commission is also granted the following powers under the Regional Development Act of 1969:

- a) review and comment on long-term comprehensive plans of local governmental units within the Region
- b) review and comment on plans of independent boards and commissions having multi-county or multi-community impacts, for conformance with regional plans and policies
- c) review and comment on applications for federal and state grants or loans made by governmental units, independent commissions, boards or agencies within the Region by governmental units, independent commissions, boards or agencies within the Region

The procedure utilized by the Commission in carrying out its review function is referred to as the Regional Clearinghouse Review. On the following pages is a listing of all projects reviewed by the Commission during 1978 through the Regional Clearinghouse procedure.

Any local unit of government, agency or other entity applying for federal/state funds must send a copy of their application to the Region 5 Regional Development Commission.

Upon receipt of a project notification, the Commission contacts local units of govern-

ment, agencies and individuals that may be affected by or interested in the project, and requests their comments. Once these comments are received, the Commission provides a final review of the project. The project applicant is then responsible for sending the application, along with all comments, to the potential federal or state funding agency.

The Regional Clearinghouse Review procedure does not guarantee or deny the funding of a project; rather, it provides the potential funding sources with an idea of the impact that the project may have within the Region.

CHRONOLOGICAL A-95 LISTING

Applicant	Project Title	Source of Funds	Amount
Central Mn. Irrigators Corp.	Alfalfa Dehydration Plant Feasibility Study	Economic Development Administration	11,500
Northern Minnesota Public TV	Noncommercial, public television	DHEW, Office of Education	600,000
City of Staples	Phase I Energy Rehab./Staples Government Center	Economic Development Administration	200,000
HDK Partnership	Swanville Apartments	Farmers Home Administration	320,000
James Andrews	Remer Elderly Housing	Farmers Home Administration	425,000
City of Wadena	Step II Grant/Plans & Specification (City of Wadena) Wastewater Treatment		88,000
Morrison County	Morrison County Bridge Replacement Project	Mn/Dot Office of State Aid	195,800
Mn/DOT Office of Environmental Affairs	Great River Road Project Development Report/Environmental Assessment	Mn/Dot Office of Environmental Affairs	N/A
Wadena County	Wadena County/Replacement of Blueberry River Bridge	Mn/Dot Office of State Aid	
Grey Eagle Housing Assoc.	Grey Eagle Apartments	FmHA	480,000
Otter Tail-Wadkena Comm. Action Council	RSVP Todd-Wadena	Action State Office	27,702.00
Mn. Association for Retarded Citizens, Inc.	Senior Companion Program	Action	471,376.00
Mn. Association for Retarded Citizens	Foster Grandparent	Action	803,993
Longville Rental Housing	Apts.	FmHA	152,000
Economic Security Department State of Minnesota	Rural Housing Development and Rehabilitation	Community Services Ad.	375,000
Todd County	Todd Co./Federal Aid Secondary Hwy. Construction Program	Office of State Aid	561,220
Earl LeMieur	Randall Apartments	Farmers Home Administration	156,000

CHRONOLOGICAL A-95 LISTING

Applicant	Project Title	Source of Funds	Amount
Earl LeMieur	Swanville Apartments	Farmers Home Administration	156,000
North Central Mn. Forestry Development Committee	NCMFDC/Sawmill Technician		36,500
Cass County	Master Planning Fire Protection in Cass County	FmHA	30,000
Tri-County Community Action Program	Head Start	Dept. of Health, Ed. & Welfare	174,427
Rural Minnesota CEP, Inc.	CETA Title I, II, VI, III (YETP, YCCIP, SPEDY)	U.S. Dept. of Labor, Employment & Training, Admin.	25,000,000
Otter Tail-Wadena Comm. Action	Emergency Energy Ass. Program		
Rural Mn. CEP, Inc.	Comprehensive Employment & Training Act, Title III	Employment & Training Adm.	1,221,652
City of Pillager	Pillager Wastewater Treatment Facility	FmHA	231,530
City of Pillager	Pillager Wastewater & Water Supply System	Department of Housing & Urban Development	989,564
Todd-Wadena Community	Concern for Youth	LEEA	66,834
Brainerd School - Community Coordinator	City of Brainerd	LEEA	31,729
Cass Co. Misdemeanor Prosecutor	Cass County Attorney's Office	LEEA	28,233
Crow Wing Misdemeanor Prosecutor	Crow Wing Co. Attorney's Office	LEEA	34,145
Crow Wing Indian Deputies	Cass County Sheriff's Office	LEEA	35,804
Crow Wing Co. Contract Law Enforcement	Crow Wing County Sheriff's Office	LEEA	20,797
Crow Wing Co. Crime Prevention Unit	Crow Wing County Sheriff's Office	LEEA	22,401
Leech Lake Conservation Cadets	Leech Lake Reservation Bus. Committee	LEEA	68,093
Nat'l. Endowment for the Arts	Center for the Study of Mn. Folklife		24,860

CHRONOLOGICAL A-95 LISTING

Applicant	Project Title	Source of Funds	Amount
State "701" Housing Element			
Tri-County Community Action	Region 5 Senior Citizens Nutrition Project	HEW Administration on Aging	441,479
City of Little Falls	Urban Development Action Grant	U.S. Dept. of Housing & Urban Dev.	730,000
Rural Mn. CEP, Inc.	1978 Summer Youth Recreation Program	Community Service Adm.	18,013
City of Brainerd	Brainerd Comprehensive Plan Update		
Rural Mn. CEP, Inc.	Modification of Comprehensive Employment & Training Program	U.S. Dept. of Labor	
Todd County	Todd County Comprehensive Plan	Minn. State Planning Agency	11,737.50
Rural Mn. CEP, Inc.	STIP MODIFICATION SPEDY Grant Application		
Central Todd Housing	Browerville Housing Project	Farmers Home Adm.	530,000
Rural Mn. CEP, Inc.	STIP CETA Title III	U.S. Dept. Labor Employment & Training Admin.	693,413
Rural Mn. CEP, Inc.	CETA Title III SPEDY	U.S. Dept. Labor, Employment & Training Administration	1,221,652
Cass County Board of Commissioners	Cass County Home Rehabilitation Grant Program	Dept. of Housing & Urban Development	500,000
City of Clarissa	Clarissa/HRPC Economic Development Project	Dept. of Housing & Urban Development	839,784
City of Hackensack	Hackensack Municipal Well and Water Extension Project	Dept. of Housing & Urban Dev.	327,200
Long Prairie Packing Co.	Refinancing of Long Prairie Packing		2,700,000.00
Crow Wing County	Mille Lacs Lake Watershed Analysis	State Planning Agency	18,000
Rural Mn. CEP, Inc.	1978 Senior Community Service Employment Project	Dept. of Economic Security	200,553.00
City of Menahga	Sewer & Water Extensions to the East Area of Menahga	Dept. of Housing & Urban Dev.	404,300

CHRONOLOGICAL A-95 LISTING

Applicant	Project Title	Source of Funds	Amount
City of Wadena	Water Filtration & Treatment Plant	Dept. of Housing & Urban Dev.	400,000.00
City of Little Falls	Housing Rehabilitation, Land Acquisition, Demolition, Relocation and Economic Dev./Industrial Expansion Comprehensive Program	Dept. of Housing & Urban Dev.	750,000.00
City of Crosby	Comprehensive One-Year Program for NSA 40	HUD	750,000.00
City of Walker	Water & Sewer Extensions	Dept. of Housing & Urban Dev.	348,308.00
City of Brainerd	Beech Street Area Rehabilitation Project	Dept. of HUD	1,851,700.00
City of Remer	Remer Sanitary Sewer & Water Main Replacement	HUD	212,200.00
Tri-CAP	Tri CAP/Administration & Community Organization	Community Services Adm.	40,072.00
City of Garrison	Sanitary Sewer and Collection System	HUD	1,600,000.00
City of Breezy Point	Breezy Point Management/Planning Study	Mn. Land Use Planning Grant	N/A
City of Pillager	Pillager Area Fire Protection Assoc.	USDA/FmHA	47,000
Pequot Lakes	Comprehensive Plan	HUD 701	9,062.50
Tri-County Action Program	Emergency Energy Ass. Program	Community Services Adm.	462,343.00
Otter Tail-Wadena Community	Head Start		35,143.00
Mn/DOT	Rebuilding of Wadena Co. Bridges #89409, #3284, #89402 & #80503		
Staples Public School	Staples Irrigation Mgmt. Course	Mn. State Planning Agency	62,000.00
	Forest Industry Coordinating Representative		
Region 5 RDC	EDA Planning Assistance Grant		

CHRONOLOGICAL A-95 LISTING

Applicant	Project Title	Source of Funds	Amount
City of Royalton	Center Street Rehabilitation	U.S.D.A./Farmers Home Adm.	337,870
KID, Inc.	Opportunities for the Under-privileged		35,561
Dept. of Food Science and Nutrition U of Mn.	Pilot Adzuke Bean Processing Demonstration		46,931
City of Grey Eagle	Grey Eagle/Municipal Water System	U.S.D.A./Farmers Home Adm.	338,000
City of Little Falls	Budget Change - Community Development Block Grant/Discretionary Grants	U.S. Housing & Urban Dev.	265,100
City of Menahga	Menahga/Sewer and Water Main Extensions	U.S.D.A./Farmers Home Adm.	809,800
Mn/Dot	Rebuilding of Wadena Bridges #L7127, #89412	Office of State Aid	
Mn/Dot	Rebuilding of Todd Co. Bridge #L8810	Office of State Aid	50,000
Otter Tail-Wadena CAP, Inc.	Conduct and Administration	Community Services Administration	235,600
Crow Wing County	C.W.C. Jail Treatment	LEAA	68,940
Rural Mn/CEP	Round II Skill Training Improvement Program	U.S. Dept. of Labor	489,218
City of Pine River	Wastewater Disposal System Improvement Project	FmHA	700,000
Diamond Water Wells	Diamond Water Wells/Commercial Development	FmHA	750,000
Leech Lake Reservation Business Committee	Youth Development Project	LEAA	51,445.00
Emett Johnson	27 East	Mn. Housing Finance Agency	
Crow Wing County Social Services	R.S.V.P. (Retired Senior Volunteer Program)	Action	44,044
Todd County	Replacement of Harris Creek Bridge in Browerville	Mn/Dot	40,000
Todd County	Battle Point County Park	LAWCON	31,000

CHRONOLOGICAL A-95 LISTING

Applicant	Project Title	Source of Funds	Amount
Todd County	Battle Point Trails	LAWCON	11,000
City of Brainerd	Paul Bunyan Arboretum/Phase II	LAWCON	72,915
Cass County	Deep Portage Conservation Reserve	LAWCON & LCMR	91,135
City of Breezy Point	Breezy Point City Park	LAWCON & LCMR	20,500
City of Little Falls	Little Falls Tennis Court Dev.	LAWCON & LCMR	\$2,500
Crow Wing County	Public Access(es) Improvements & Acquisition	LAWCON & LCMR	\$34,410
City of Brainerd	Boom Lake	LAWCON & LCMR	15,000
Mission Township	Mission Township Recreation Area	LAWCON & LCMR	12,000
City of Browerville	Browerville City Park	LAWCON & LCMR	12,500
City of Lakeshore	Fritz Loven Park	LAWCON & LCMR	20,000
City of Crosslake	Crosslake Recreational Area	LAWCON & LCMR	30,000
City of Staples	Dower Lake Recreation Area	LAWCON & LCMR	56,515.16
City of Backus	Rocky Dock Park	LAWCON & LCMR	45,750
City of Grey Eagle	Grey Eagle Community Recreational Facility	LAWCON & LCMR	56,210
Wadena County	Wadena County Parks/Access Road Improvements	LAWCON & LCMR	39,625
City of Wadena	Sunnybrook Park/Phase IV	LAWCON & LCMR	43,000
City of Menahga	Menahga Memorial Forest Park	LAWCON & LCMR	10,750
City of Clarissa	Clarissa City Park	LAWCON & LCMR	20,500

CHRONOLOGICAL A-95 LISTING

Applicant	Project Title	Source of Funds	Amount
Morrison County	Morrison Co. Mississippi River Park	LAWCON & LCMR	145,453
Pine Villa, Co-partnership	Pine Villa, Co-partnership	FmHA	N/A
Tri-County CAP	Community Food & Nutrition	Community Services Ad.	20,000
Tri-County CAP Program	Ad. and Community Organization	Community Services Ad.	150,571
Otter Tail-Wadena Com. Action Council	Community Food & Nutrition Project	Community Services Adm.	20,000
City of Pillager	Pillager City Park	LAWCON & LCMR	12,500
Ind. School Dist. #793	Staples Tri-County Dental Project	Mn. Dept. of Health	65,381
N/A	Bertha Manor	USDA Farmers Home Adm.	320,000
Tri-County CAP, Inc.	Citizens Participation Mini Grant	Community Services Ad.	25,000
City of Browerville	Browerville U.D.A.G.	HUD	840,000
City of Menahga	Menahga Senior Citizens Center	Adm. Office on Aging	27,328
Todd County Senior Citizen Day Care Center	Alteration of Senior Center for Nutrition Program	Adm. Office on Aging	11,317.50
Rural Mn. CEP, Inc.	Titles I, II and VI Annual Plan	U.S. Dept. of Labor	5,738,418
Rural Mn. CEP, Inc.	CETA - YEDPA	U.S. Dept. of Labor	N/A
Rural Mn. CEP, Inc.	Title III Youth Employment & Training Program (YETP)	U.S. Dept. of Labor	626,443
Rural Mn. CEP, Inc.	Title III Youth Community Conservation & Improvement Projects (YCCIP)	U.S. Dept. of Labor	112,578
Cass-Todd-Wadena-Morrison Board of Health	Multi-County Community Health Services Program FY 1979	Mn. Dept. of Health	629,073
Mn/DOT	Rebuilding of 22 Bridges in Morrison County	Mn. Dept. of Transportation	

CHRONOLOGICAL A-95 LISTING

Applicant	Project Title	Source of Funds	Amount
Mn/DOT	Rebuilding of Bridge #2384	Mn. Dept. of Transportation	
Crow Wing County Historical Society	Restoration/Preservation of C.W. County Jail Building	Mn. State Historical Society	12,556
Morrison County Public Health Services	Multi-County Community Health Service (Mor. Co. Budget Revision)	Mn. Dept. of Health	
Wadena County Nursing Service	Multi-County CHS (Wena Co. Budget Revision)	Mn. Dept. of Health	
Mn/DOT	1979 Federal Aid Secondary & Federal Aid Safer Off System Highway Construction Prog.	Mn/DOT	
Mn/DOT	1979 Regular Trunk Highway Construction and Bridge Replacement Program	Mn/DOT	
City of Brainerd	Brainerd Comprehensive Plan Update	Mn. State Planning Agency	
City of Ironton	City of Ironton/Municipal Well Construction	U.S. Dept. of Agriculture	\$50,000.00
Cass County Historical Society	Cass County Historical Society Equipment Purchase	Mn. State Historical Society	\$10,000
Otter Tail-Wadena Community Action Council, Inc.	Energy Efficient Production of Greenhouse Vegetables	Governor's Rural Dev. Council	\$70,865
Otter Tail-Wadena Community Action Council, Inc.	Promoting Agriculture for Rural Youth	Governor's Rural Dev. Council	\$67,789

LEGISLATIVE REFERENCE LIBRARY
STATE OF MINNESOTA

HT 393 .M62 R42x 1978
Region 5 Regional
Development Commission (Mi
Annual report - Region 5

HT 393 .M62 R42x 1978
Region 5 Regional
Development Commission (Mi
Annual report - Region 5

LEGISLATIVE REFERENCE
LIBRARY

Keep date card in book pocket.