

LEGISLATIVE REFERENCE LIBRARY
3 0307 00015 3141

790690

ANNUAL REPORT



1978

LEGISLATIVE REFERENCE LIBRARY
STATE OF MINNESOTA

REGION NINE DEVELOPMENT COMMISSION

HT
393
.M62
R46x
1978

TABLE OF CONTENTS

	Page
RNDC Commissioners	2-3
Organizational Structure	4
Introduction to RNDC	5
Comprehensive Planning	6
Recreation	6
Community Development	6
Water Resources Planning	6
Environmental Review	7
Energy Planning	7
Land Use	7
Transportation	7
Economic Development	8
Housing	8
Traffic Safety	9
Economic Development	9
Physical Planning Committees	10
Human Resources Planning Committees	11
Criminal Justice Planning	12
Regional Manpower Advisory Council	12
Developmental Disabilities Planning Council	12
Aging	13
Arts Advisory Council	13
Human Resources Subcommission	14
Region IX Advisory Council for Coordinated Child Care	14
Emergency Medical Services	15
Legislative Concerns	16
Staff	17
Studies, Workshops	18-19
Budgets	20-21
A-95 Review	22-25
The Chairman's Letter	26
The Director's Letter	27

RNDC COMMISSIONERS

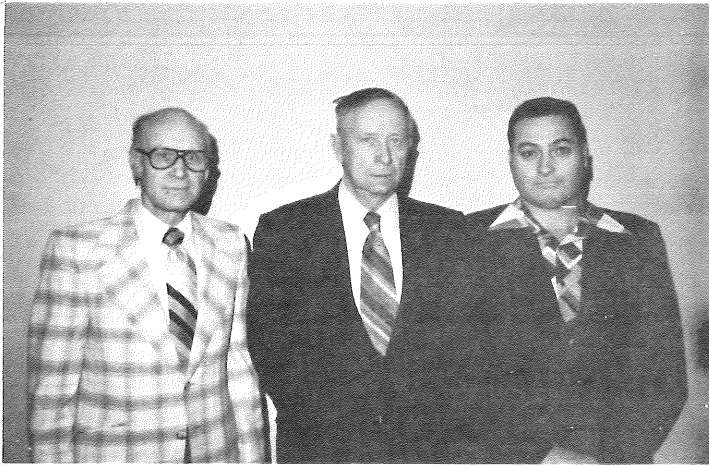
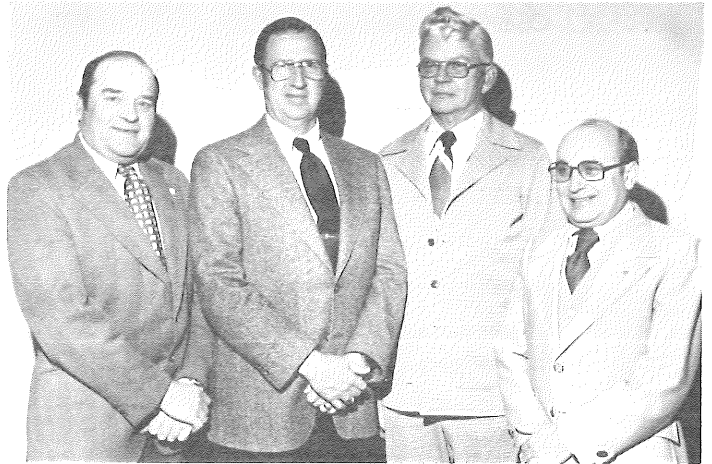


BLUE EARTH COUNTY

KENNETH SCHOSTAG,
Township
OSCAR CAMPBELL,
Councilman, Eagle Lake
HERB MOCOL,
Mayor, Mankato
LESTER ANDERSON,
County Commissioner
ROBERT BARRETT,
MVCOG

BROWN COUNTY

ORVILLE HANSON,
Township
CARL WYCZAWSKI,
Mayor, New Ulm
DONALD LINDLEY,
Mayor, Springfield
DENIS WARTA,
County Commissioner



FARIBAULT COUNTY

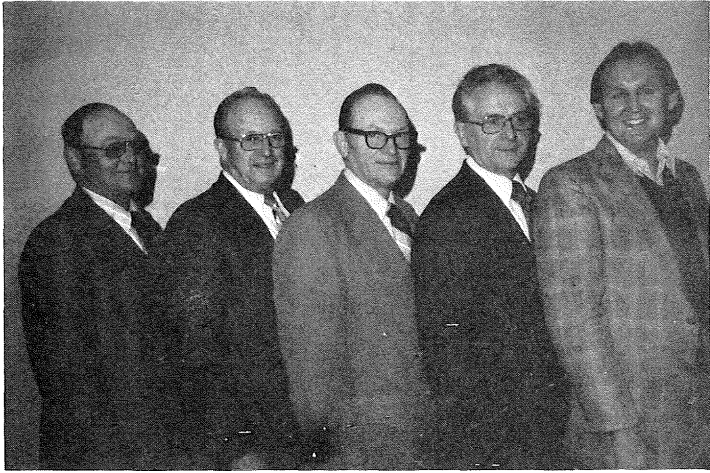
EARL HELGESEN,
Township
JOHN PASCHKE
County Commissioner
ROGER OLDFATHER,
Mayor, Kiester

LESUEUR COUNTY

JEROME SCHLISS,
County Commissioner
JAMES STANGLER,
Township
WALTER VETTER,
Mayor, Kasota
(not on picture)

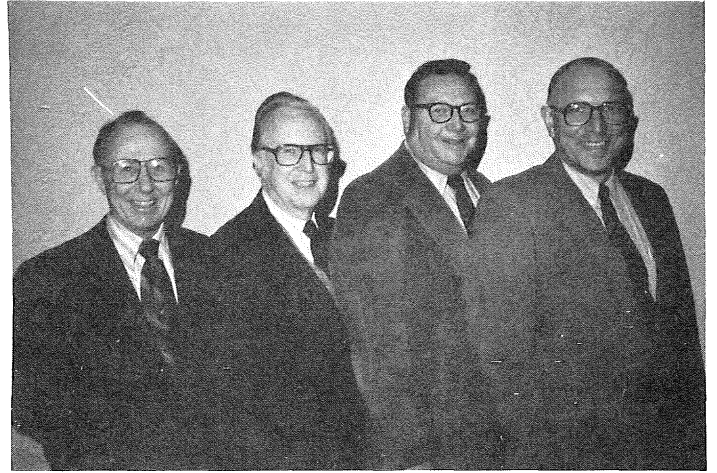


RNDC COMMISSIONERS

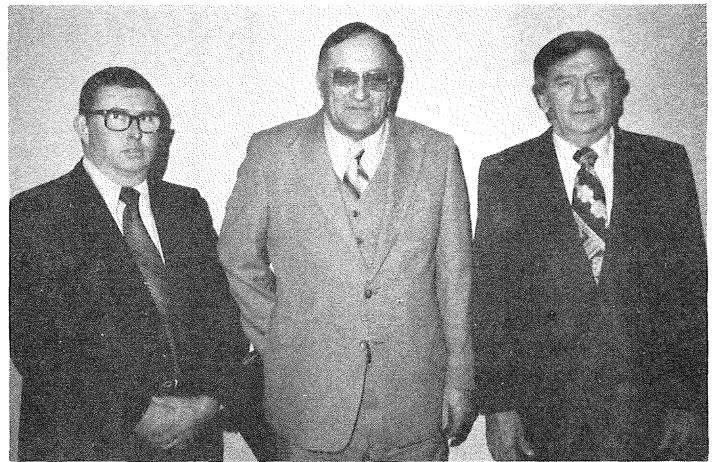


MARTIN COUNTY

ROLAND THIESSE,
Township
DANIEL KEASLING,
County Commissioner
NEIL SAXTON,
Soil & Water Conservation
Districts
MARLIN GRATZ,
Alderman, Fairmont
GERALD CLARK,
Councilman, Ceylon



NICOLLET COUNTY - RAY ECKES, Commissioner; PAUL HADLEY, Region Nine Chamber Association; DOUGLAS PYAN, Mayor, St. Peter; KENNETH ALBRECHT, Township



SIBLEY COUNTY - GERALD KREGER, County Commissioner; VICTOR WECKWORTH, Township; ELMER J. KADING, Mayor, Gibbon



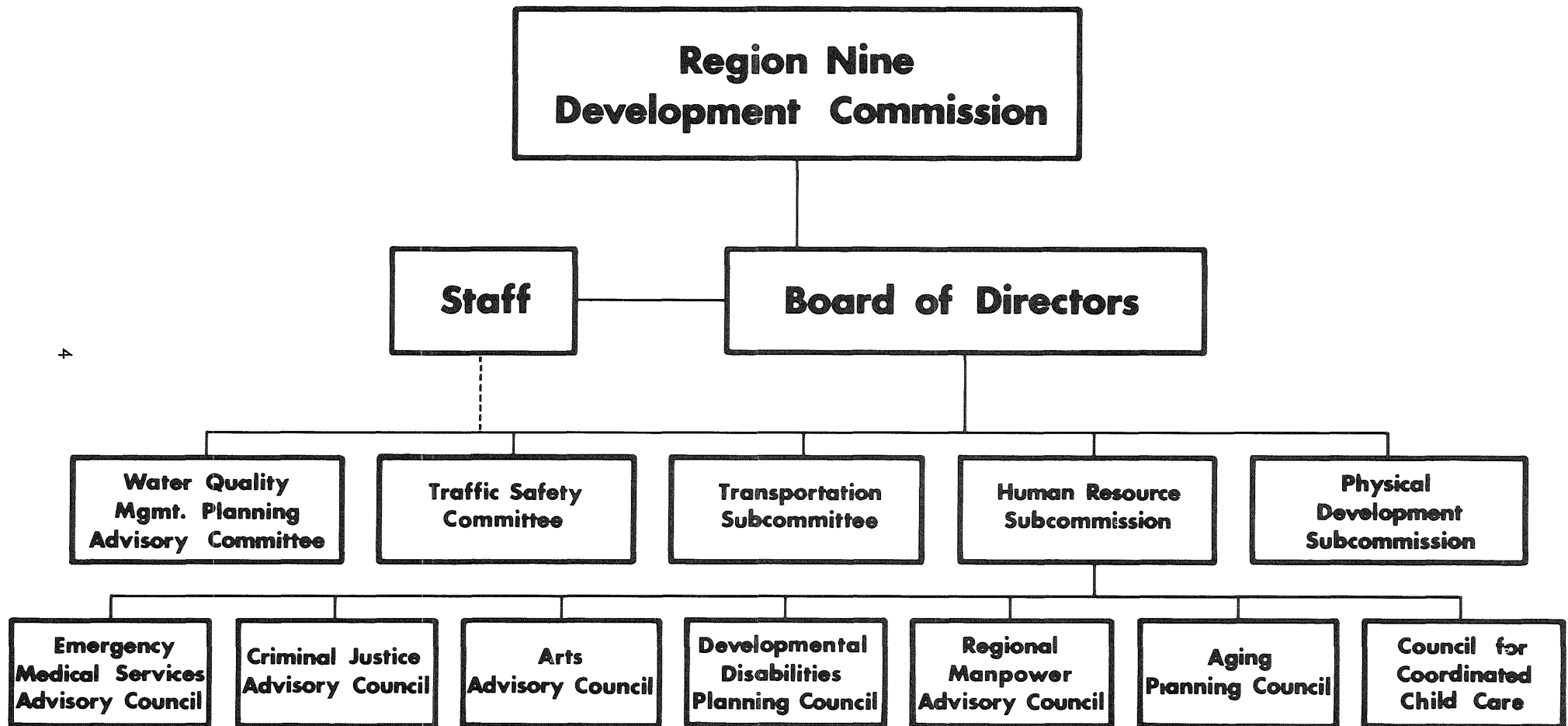
WASECA COUNTY

EUGENE POWELL,
County Commissioner
MARGARET ENGESSER,
Mayor, New Richland
RODERICK JOYCE,
Township



WATONWAN COUNTY - OBERT JACOBSON, School Board; JOHN BAERG, School Board; VINCE STYLES, County Commissioner; ROBERT GUSTAFSON, Township; CLAIRE SIEBERT, Councilman, Madelia (not on picture)

ORGANIZATIONAL STRUCTURE



Introduction to Region Nine and the Region Nine Development Commission

The nine counties that make up the Region Nine area, specifically Blue Earth, Brown, Faribault, LeSueur, Martin, Nicollet, Sibley, Waseca, and Watonwan, have a population of about 223,000 of the state's 3,921,000 persons according to the 1975 estimated census. The area is stable and prosperous with a strong economy, good facilities and services and has three major cities, over 10,000 population, which are Mankato, New Ulm and Fairmont.

In the 5,064 square miles, about 5.86 percent of the state's (86,332 square miles) the land is primarily agricultural with over 85 percent under cultivation and 12 percent in forest, pasture and open land or water.

In 1972 the Region Nine Development Commission (RNDC) was organized by local elected officials as authorized by the Regional Development Act of 1969. This year notes the Commission's sixth anniversary. Its purpose according to the legislation is - "to facilitate intergovernmental cooperation and to insure the orderly and harmonious coordination of state, federal and local comprehensive planning and development programs for the solution of economic, social, physical and governmental problems of the state and its citizens." (Minnesota Statutes, Section 462.383 ;Subdivision 2)

Serving on the RNDC are elected officials who represent 9 counties, 76 cities, 147 townships, 45 school districts, 9 soil and water conservation districts and the Minnesota Valley Council of Governments. They are joined by a representative of the business community organizations in the Region.

The 35 member RNDC meets monthly to respond to the needs for counties, cities, townships, school districts, and other groups to work together on a regional basis to address economic, social, physical and environmental problems.

Key regional issues most often include: What can we do to insure our continued quality of life through the appropriate use of land and the environment? How can we best protect and recover the natural resources of our area? What are

the recreational needs of citizens and how can they best be met? What can we do to maintain a good employment base to attract new people plus keep the people who are presently employed and living here? What can be done about our transportation needs? How can we work together for total development of all communities? What should be done to see that people of all ages and capabilities receive equitable and adequate services and funds? What are the needs of children, especially with working mothers? How can we best create an awareness of the artistic needs and abilities in this geographic area? What are the criminal justice and law enforcement priorities? How can we see the most effective delivery of emergency medical services and health care? These are only a portion of the issues which the RNDC planning programs and many subcommission and committees deal with, on a local basis, to best meet the needs of Region Nine citizens.

About 300 citizens of Region Nine are actively involved in regional planning by providing expertise and interest in developing and prioritizing goals and objectives for the Region. Each year since 1972 has noted an increase in citizens and elected officials participation as more people discover how they can best assist with the planning programs and be served by the RNDC.

With its many planning functions, the RNDC has a professional planning staff to assist itself, subcommissions and committees in carrying out the activities they have defined. The staff includes: an Executive Director - specialists in the fields of recreation, land use, community/economic development, housing, transportation, water quality, traffic safety, and manpower; specialists in assisting with meeting the needs of the aging, developmentally disabled, and children; and there are also planning specialists in criminal justice, emergency medical services, the arts, and human resources. They are assisted by an administrative assistant, a public information coordinator, a bookkeeper, secretaries, a part-time graphics coordinator and interns working on a semi-annual basis from Mankato State University and Gustavus Adolphus College.

PHYSICAL RESOURCE PLANNING

COMPREHENSIVE PLANNING REQUIREMENTS

The Regional Development Act mandated that regional commissions "shall prepare and adopt, after appropriate study and such public hearings as may be necessary, comprehensive development plan for the region. The plan shall consist of a compilation of policy statements, goals, standards, programs, and maps prescribing guides for an orderly and economic development, public and private, of the Region.

Region Nine formally commenced its comprehensive planning effort in July. The Board of Commissioners approved a two-phased planning process. The first phase entails the formulation of the Commission's overall, framework goals for the Region. Once this effort is completed, the categorical and functional program planners will develop sub-goals and policies that are oriented to the Commission's framework goals. The second phase will involve an examination and ranking of the needs by program and the drafting of specific work plans which could replace the annual overall program design effort.

Initiatives Completed

The Commission expanded the Policies and Procedures Committee to manage the development of the plan. Additional positions on the Committee include slots for business, welfare, zoning, and university personnel. By the end of the year the Commission will have approved mission, role, purpose, and responsibility sections. More importantly, the Commission framework goals will be well on their way to completion thus enabling staff from the functional and categorical program areas to formulate sub-goals and policies relating directly to the Commission's overall goals.

Minnesota Association of Regional Commission's Task Force

In another related activity, Les Anderson and regional staff have been working with the MARC Comprehensive Plan Task Force to develop uniform, yet flexible definitions and format to ensure consistency between regional plans statewide and to facilitate state agency review of the document.

RECREATION

Local input into regional planning and funding decision in recreation reached a new plateau in 1978. This was primarily achieved by the completion of the Regionally Significant Recreation Area list and the set of ranking criteria for local projects and trails.

The Regionally Significant Recreation Area list was completed by Region Nine and implemented by the State Planning Agency on July 1, 1978. Preservation and further development of the areas on this list should greatly enhance the Region's recreation base. The development of the set of local ranking criteria by Region Nine has already resulted in greater local input into regional funding decisions.

The State Planning Agency continued to offer matching grant money in the form of LAWCON (federal) grants and LCMR (state) grants. Grant money for the development of trails also continued to be offered. The RNDC staff administered technical assistance to a number of applicants vying for this grant money. The Physical Development Sub-

commission subsequently ranked all the local and trail applications. The State Planning Agency then used this ranking in conjunction with their own ranking to help determine the areas to be programmed for funding. The result was \$477,041.50 of grant money coming into Region Nine for 18 programmed parks and trails.

This ranking process will continue to be improved upon during Fiscal Year 1980. Movement toward a regional recreation policy plan will also be made.

The staff also assisted in an inventory of recreation facilities in Region Nine. This will aid the Minnesota Department of Natural Resources in the completion of the 1979 State Comprehensive Outdoor Recreation Plan (SCORP).

Communication with such agencies as the State Planning Agency, the Office of Local and Urban Affairs, and the Department of Natural Resources will continue. Technical assistance will be provided where needed, and the A-95 reviews will be conducted as required.

COMMUNITY DEVELOPMENT

The Department of Housing and Urban Development (HUD) initiated its Community Development Block Grant Small Cities Program in 1978. Region Nine received a significant amount of available Fiscal Year 1978 funds. Grants were awarded to Nicollet County, Mankato and Wells. The Nicollet County project was particularly innovative as it will provide funds for housing rehabilitation within 6 counties and 31 communities. Other activities related to community development occurred throughout the Region and were funded through programs such as the Farmers Home Administration Community Facilities Loan Program, Business and Industry Loan Program, and the Sewer and Water Loan and Grant Program. The RNDC staff presented program information through workshops and mailings, assisted local governments prepare grant applications, and provided other technical assistance on a request basis. These services will again be provided to local units of government during 1979.

WATER RESOURCES PLANNING

1978 was a year of expansion for water resource planning efforts in the State of Minnesota. This was due in large part to the role played by Regional Development Commissions.

208 planning (so named because it is the result of Section 208 of Federal Public Law 92-500) evolved out of the preparation stage and into the actual committee participation stage. Technical work packages began arriving right after the first of the year. The Region Nine Water Quality Management Planning Advisory Committee reviewed the packages and offered comments to be sent to the Minnesota Pollution Control Agency (MPCA) for inclusion in the final plan. It was anticipated that the 208 planning process would be completed by November, 1978. However, due to problems with the availability of work packages, review of these packages will continue on into 1979. The final phase of the work package review is the development of Best Management Practices by the Committee to deal with each of the identified non-point source pollution topics. 1979 will see the Committee continuing their review of work packages issued by the MPCA. Best Management Practices proposed by the committee will be carried by the Region Nine representative to the State Task Force to be included in the statewide Water Quality Management Plan.

Physical Resource Planning

(continued)

The Committee meetings are open to the public and citizen participation is welcomed. Meeting notices will appear in area newspapers prior to the meetings, which will be held on an as-needed basis.

Another form of water planning the RNDC became involved with in 1978 is the planning effort being conducted by the Minnesota Water Planning Board. Whereas the 208 program deals with water quality, the Water Planning Board program deals with the supply, allocation, and use of water resources within the State of Minnesota. Technical papers are being prepared and distributed to RDC's for local review and input into the planning process. In Region Nine, these technical papers are reviewed by the Physical Development Subcommittee, whose members offer comments which are subsequently sent to the Water Planning Board. In 1979, Physical Development Subcommittee review of Water Planning Board technical papers will continue until all papers have been reviewed and comments offered for inclusion in the final plan.

Like the 208 program, Physical Development Subcommittee meetings are open to the public and local involvement is appreciated.

ENVIRONMENTAL REVIEW

In the summer of 1978, the RNDC contracted with the LeSueur County Board to prepare an Environmental Impact Statement (EIS) for a proposed drainage project in northern LeSueur County. It is hoped that the preparation of the EIS will be the final step in a review process that has already witnessed the preparation of an Environmental Assessment and several years of litigation in the courts. From factual information contained in the EIS, state agencies having permit authority over the proposed project will make a determination of whether or not to grant the permits. In the course of preparing the EIS, staff of the RNDC are responding to concerns voiced by the Minnesota Department of Natural Resources and the Minnesota Department of Agriculture. The major concern appears to be the debate over the value of the land for agricultural purposes vs. the value of the land for wildlife habitat and recreational purposes. It is anticipated that the EIS will be completed in early 1979.

ENERGY PLANNING

Energy planning was a new planning area to receive attention by the RNDC in 1978. Although energy planning activities were limited, the importance of these activities must be noted. The first step taken was to become aware of what is happening in energy legislation and planning nationwide and statewide. By doing this, it became clear what options were available to the Commission as it began actual planning and related work. The RNDC with the assistance of the City of New Ulm's Energy Coordinator, prepared a grant application which was submitted to the United States Department of Energy (DOE). This was done under the U. S. DOE Midwest Appropriate Technology Grant Program. Funds were requested to finance a demonstration project in the City of New Ulm. The proposed project consists of mounting a wind-powered generator on a tower to provide part of the electrical needs of the new community center. The effectiveness of the project would be monitored and the feasibility of its widespread application would be investigated.

As energy planning becomes increasingly important, the RNDC anticipates becoming involved at an even greater level. One area to receive attention in 1979 will be the study of how energy conservation measures can be incorporated into land use plans, zoning ordinances, and subdivision regulations.

LAND USE

The Physical Development Subcommittee directed the staff towards the preparation of the first regional land use plan. This document, the Region Nine Land Use Policy Plan, provides guidance to all local units of government when conducting land use planning activities. The adopted policies of the plan set forth a framework which is intended to reduce land use conflicts and promote sound physical development of the Region.

In addition to the regional plan a significant amount of staff effort was devoted to technical assistance to local governments of the Region. On-going technical assistance to planners and zoning administrators, and writing grant applications for local governments was continued. Major technical assistance projects consisted of planning studies for interchange development, land use plans for specific municipalities, zoning and subdivision ordinances for two counties, assistance to counties on environmental studies, etc. These major technical assistance projects resulted in planning reports which were directly requested by local governments. This type of technical assistance will continue to be a major work item during 1979.

TRANSPORTATION

The Transportation Subcommittee continued to focus its attention on the movement of agricultural and commercial products and issues and concerns relevant to the Region's needs.

The State Transportation Planning Process - The planning process used to develop the State Transportation Plan (MN/DOT/PLAN) was divided into three phases. Phase I involved the identification of problems, issues and concerns the plan should address through public meetings. Phase II involved expanding the list of issues and projects and discussion of alternatives through a regional task force established in Region Nine. Phase III resulted in a draft plan. The regional task force, consisting of Subcommittee members and county and city engineers, reviewed the draft for consistency with the Region's needs and priorities.

The MN/DOT/PLAN was subjected to a public hearing (Nov. 29) under the Administrative Procedure Act, Minnesota Statutes (1976), Chapter 15, instituted for the purpose of allowing more effective public input to MN/DOT rule-making. The Subcommittee presented testimony at the hearing submitting that the proposed rules and regulations did not adequately provide for a specific and meaningful role for the Regional Development Commissions in the on-going MN/DOT/PLAN process.

Trunk Highway 60 - The Commissioner of MN/DOT made a commitment to re-evaluate the needs in the T.H. 60 corridor from St. James to Worthington. In as much as the T.H. 60 corridor was of inter-regional significance, the re-evaluation was done by a 10 member Citizens' Advisory Commit-

Physical Resource Planning

(continued)

tee composed of members appointed by the Southwest Regional Development Commission and the RNDC. The committee addressed the issues relevant to improving the T.H. 60 corridor, analyzed logical alternative solutions and arrived at a 6-4 vote in favor of a four-lane alternative. The minority or dissenting voters, all of whom were from Region Nine, elected to submit a minority report outlining their reasoning for selecting a two-lane alternative.

The Department of Transportation, in the final decision, committed itself to construct two new lanes from St. James to Worthington beginning as early as 1983, with isolated sections of four-lane roadway in built-up areas and to preserve land for ultimate four lanes. The construction of the remaining two lanes of the ultimate four-lane highway will be dependent upon continued surveillance of growth in travel in the T.H. 60 corridor and the availability of funds.

Railroad Abandonment - The Subcommittee focused much of its attention to the abandonment issue, being opposed to all of those where the abandonment has an adverse impact on a business or community. The RNDC staff has worked with rail users by analyzing their needs, options, and railroad. The RNDC staff was involved in setting up and conducting several meetings on options available to rail users for preserving rail service and fighting abandonment.

Rail line abandonments are slowly becoming commonplace in Region Nine. The railroads claim that, for a number of reasons, they can no longer afford to keep up the numerous branch lines which have served the Region for over 100 years. To help adjacent land owners buy back the railroad right-of-way, the RNDC sponsored an informational meeting in which over 120 land owners living adjacent to the abandoned Lake Crystal-Winnebago rail line attended, listened and offered comments concerning the abandonment.

Railroad Rehabilitation - The RNDC was involved in the promotion of options available to rail users for preservation of their rail service. The Minnesota Rail Service Improvement Program was created to encourage the rehabilitation of economically viable but deteriorating rail lines in order to upgrade service to rail users. The RNDC set up and conducted meetings and assisted in the development of the Pioneerland Shippers Association and Cornbelt Shippers Association which culminated in contracts being signed by the two Associations, the Milwaukee Road and State for rehabilitation of the Alden-Jackson rail line.

Highway - The Subcommittee continued its efforts toward upgrading all trunk highways and roads serving communities and businesses to a minimum of 9-ton capacity. For example, the Subcommittee was very instrumental in T. H. 83 being promoted to the program stage for upgrading to 9-ton capacity and Blue Earth County Road 10 serving Good Thunder being upgraded due to the loss of rail service resulting in adverse impacts upon commercial interests.

The Subcommittee reviewed and approved over fifty requests by Region Nine Counties for bridge replacement grants through the state bridge bonding program.

The Subcommittee is and will continue to be involved in the analysis of pertinent information relating to an improvement study being conducted on Trunk Highway 14 from Owatonna to Sleepy Eye by MN/DOT.

The RNDC and its Subcommittee will continue to address the multitude of transportation issues and concerns of the people in the Region Nine area. All meetings are open to the public and attendance is encouraged.

ECONOMIC DEVELOPMENT

In 1978 LeSueur County was officially designated as an Economic Development Area. This designation resulted from the approval of the Overall Economic Development Program (OEPD). The OEPD is a locally initiated planning process designed to create employment opportunities, foster more stable and diversified local economies, improve local conditions, and provide a mechanism for guiding and coordinating the efforts of local individuals and organizations concerned with the economic development of the area.

LeSueur County, with the assistance of the RNDC, has compiled and prepared an OEPD document which describes the county's Overall Economic Development Program and charts the course for development action. LeSueur County OEPD provides the basis for meeting the statutory requirement that public works and business development projects funded by the Economic Development Administration (EDA) be consistent with an approved overall program for the economic development of the county.

Other Economic Development projects undertaken in 1978 included applications for Farm Home Administration Section 111 Rural Planning Grants and Department of Economic Development Technical Assistance Grants for Small Business.

HOUSING

During 1978, a significant portion of physical development staff time was devoted to addressing regional housing needs and issues. The Region's first comprehensive regional housing plan was completed and adopted by the RNDC. The plan identifies regional housing needs, and sets forth region-wide goals, policies and implementation activities designed to effectively meet those needs.

The equitable distribution of housing assistance resources within the Region has been a high priority concern of the RNDC for several years. Cooperative efforts by the RNDC and its local jurisdictions to address this issue culminated in the recently completed Region Nine Housing Opportunity Plan. This plan represents a coordinated areawide strategy for the distribution of housing assistance so as to provide a broader geographical choice of housing opportunities for lower income households throughout Region Nine. Approval of the plan by the Department of Housing and Urban Development (HUD) is expected in the near future. This will allow the RNDC and its local jurisdictions to have greater impact on state and federal funding decisions, and will place localities in a better competitive position for housing and community development funds.

The primary focus in housing during 1979 will be oriented toward effective implementation of the Region Nine Housing Opportunities Plan through the joint efforts of the RNDC and its local jurisdictions. Technical assistance will continue to be provided to local units of government so as to identify and address their particular housing needs.

Human Resource Planning

(continued)

TRAFFIC SAFETY

A traffic safety program was established in Region Nine in 1976 as a three year pilot project funded partially by the State Department of Public Safety. Region Nine was one of two areas in the state selected for the pilot project.

An 18 member Traffic Safety Committee was established in 1976 and continues to oversee the staff activities and recommend projects. It also makes recommendations to the RNDC, MN/DOT, and the Governors.

The program's priorities are to reduce accidents, minimize crash injuries, save lives and reduce economic loss. Thus a number of programs have been developed to meet these priorities.

Region Nine Youth Traffic Safety Day - Over 120 youth attended the third annual Region Nine Youth Traffic Safety Day at the Mankato Area Vocational-Technical Institute. Twenty youth taught bicycle safety, farm machinery safety, school bus safety and alcohol and youth.



Bicycle Safety - Is one area where youth from the Region have become more involved. Over 120 youth have attended a bicycle safety workshop and then returned to their communities and taught bicycle safety to about 16,000 youth. The past two years a total of 20 youth have attended the three day Pedal-power workshop at Brainerd and then returned to their communities and taught bicycle safety.

Defensive Driving - Eight youth from the Region have taken the eight-hour defensive driving instructor course and are qualified teachers who have taught the course to other youth in the Region.

With reducing the number of traffic accidents being a major concern, there has been a wide-spread effort to teach the defensive driving course. The two target groups this year were vocational students and senior citizens. At the Mankato Area Vocational-Technical Institute over 500 students were taught the eight-hour course. The Region Nine Aging program received a grant to teach senior citizens defensive driving. This course, taught at least twice in every county, reached a total of 400 senior citizens, many of whom are volunteer drivers for the senior citizens transportation program.

Awards - The staff continues to work with youth in achieving local, state and national awards for their participation in safety programs. A 4-H club member from Sibley County won the State 4-H Club Federation Safety Award, while 4-H club members from Faribault County and Blue Earth County won national awards from the National Safety Council. A Watowan County youth has been selected as the first youth representative on the Minnesota Safety Council board of directors. The New Ulm FFA chapter has won awards from the National Safety Council and the National FFA organization for safety projects.

ECONOMIC DEVELOPMENT

In 1978 LeSueur County was officially designated as an Economic Development Area. This designation resulted from the approval of the Overall Economic Development Program (OEPD). The OEPD is a locally initiated planning process designed to create employment opportunities, foster more stable and diversified local economies, improve local conditions, and provide a mechanism for guiding and coordinating the efforts of local individuals and organizations concerned with the economic development of the area.

LeSueur County, with the assistance of the RNDC, has compiled and prepared an OEPD document which describes the county's Overall Economic Development Program and charts the course for development action. LeSueur County OEPD provides the basis for meeting the statutory requirement that public works and business development projects funded by the Economic Development Administration (EDA) be consistent with an approved overall program for the economic development of the county.

Other Economic Development projects undertaken in 1978 included applications for Farm Home Administration Section III Rural Planning Grants and Department of Economic Development Technical Assistance Grants for Small Business.

PHYSICAL PLANNING COMMITTEES

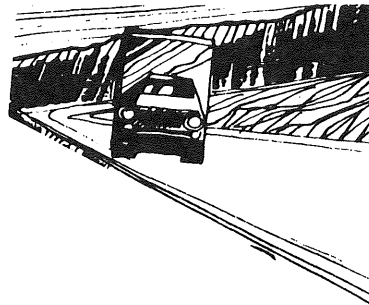
PHYSICAL DEVELOPMENT SUBCOMMISSION

KEN SCHOSTAG, Mankato
GEORGE DVORAK, Montgomery
THOMAS GRAHAM, Henderson
ORVILLE HANSON, Comfrey
EUGENE POWELL, Waseca
KENNETH ALBRECHT, Mankato
EARL HELGESON, Frost
ROBERT GUSTAFSON, Madelia
GERALD CLARK, Ceylon
PHIL SHEALY, Mankato
DAVE SCHOBRIK, New Ulm
HARRY TIMM, Mankato
FRANK RODRIGUEZ, Elmore



TRANSPORTATION SUBCOMMITTEE

LES ANDERSON, Mapleton
OBERT JACOBSON, Madelia
AUGUST MUELLER, Arlington
VICTOR WECKWORTH,
Arlington
ROLAND THIESSE, Fairmont
RODERICK JOYCE, Waseca
JEROME SCHLEIS, Montgomery
DON LINDLEY, Springfield
ROGER OLDFATHER, Kiester
RAY ECKES, North Mankato



208 WATER QUALITY ADVISORY COMMITTEE

VIRGIL WELLNER, Sanborn
DAVID STEVENS, Amboy
ROBERT KLINGBIEL, Bricelyn
JOHN SALLSTROM, Winthrop
CARL PETTIS, JR., Kasota
PAUL SAWATSKY, St. James
AVERY "DOC" HALL, Waseca
MARLIN GRATZ, Fairmont
CLARENCE WENDT, Sleepy Eye
NORBERT HOHENSTEIN, Amboy
NEIL SAXON, FAIRMONT
W. C. BECKER, Brownton
DON DARLING, North Mankato
JACK JONES, Mankato
ELMER GOODRICH, Mapleton
WAYNE FEIL, Arlington
DR. JACK HOLDEN, Mankato

COMPREHENSIVE PLANNING COMMITTEE

KENNETH ALBRECHT, Mankato
LESTER ANDERSON, Mapleton
ROBERT BARRETT, Mankato
OSCAR CAMPBELL, Eagle Lake
RAY ECKES, North Mankato
PAUL HADLEY, North Mankato
JAMES STANGLER, Kilkenny
ALLEN SIGAFUS, Mankato
LARRY LLOYD, Blue Earth



TRAFFIC SAFETY COMMITTEE

RAY STEPHENS, Mankato
JEAN YAEGER, Blue Earth
LAWRENCE MESKAN,
Waterville
HAROLD REHLING, Fairmont
BRAD FERRIS, Gaylord
SHELLI LARSON, AMBOY
STEVEN SMITH, Springfield
MYRON WOLF, Cleveland
DALE H. BROUGHTEN,
North Mankato
MRS. BILL BLANCHFIELD,
St. James
SHERYL NEFSTEAD, Waseca
GARY A. THOMES, New Ulm
BILL GROSKRETUZ, JR., Wells
DE NAWROCKI, Fairmont
MYLES LORENTZ, St. Peter
BOB PARKER, Winthrop

HUMAN RESOURCE PLANNING COMMITTEES

REGIONAL MANPOWER ADVISORY COUNCIL

MICHAEL BUDACH, St. Peter
DAYTON MARTINSON,
St. Peter
DONALD FISHER, Waseca
CARL MONTZKA, Blue Earth
C. I. "SPIKE" PIPER, Blue Earth
JAMES P. TIERNEY, Mankato
MARVIN BLIESMER, Sherburn
RON GERMSCHIED, LeCenter
CALVIN SCHRUPP, Gaylord
SYLVESTER PRIEM, Janesville
JOHN VOTCA, North Mankato
WILLIAM C. BEAM, St. James
LEIGH HEILMAN, New Ulm
DON BENSON, St. James
BETH HILLER, Amboy
DOROTHY SHEEHAN, St. Peter
BRUCE FAHEY, New Ulm
RAY RAPP, Mankato

EMERGENCY MEDICAL SER- VICES ADVISORY COUNCIL

DON JOHNSON, St. James
DR. JOHN ANDERSON,
Blue Earth
JOANN ARVIDSON,
North Mankato
BRAD REEVES, Mankato
DR. M. W. DOBSON, Mankato
JUNE OLSTAD, Janesville
DR. ANN VOGEL, New Ulm
GLEN HOREJSI, Mankato
TOM TALLANT, Trimont
DR. DAVID NEIDHART, Mankato
E. R. SPANNAUS, Arlington
RICHARD WILBRECHT,
New Ulm
DR. D. K. OHRT, Mankato
PHYLLIS PETERSON,
New Richland

ARTS COUNCIL

DEE SASSE, Sleepy Eye
NANCY STEELE, Blue Earth
LARA BROWNING, Le Sueur
EILEEN STEWART, Welcome
REBECCA UELAND,
North Mankato
DR. M. H. BAUER, Winthrop
ELAINE SCHWARZ, Waseca
SUZANNE DEWAR, Fairmont
RON EYRICH, New Ulm
SISTER NORLEEN RANS,
Mankato
JOHN BAERG, Butterfield

COUNCIL FOR COORDINATED CHILD CARE

MARGE CARLSON, St. Peter
JAN MARTINSON, Mankato
ROSALIE TATRO, Madelia
RICHARD COYLE,
North Mankato
RITA ANDROS, St. Peter
JUDY EHMKE, Mankato
RICHARD EMBACHER, New Ulm
KATHRYN WESTERMAN,
Montgomery
KRYN MAGOON, St. Peter
PAT SHORTHALL, Mankato
ARLINE DODD, St. James
PATRICIA FOSTER, Mankato
JANE BUNKER, Madelia
VIRGINIA TISDALE, LeSueur
JENNY MILLER, Wells
JULIE ANN WARNER, Madelia
JOHN BAERG, Butterfield

HUMAN RESOURCE SUBCOMMISSION

MARY BERNER, Madelia
MARY GOVER, St. Peter
BEVERLY KROLL, LeCenter
FRANK RODRIGUEZ, Elmore
ELDON HORMAN, Comfrey
IRENE JACOBSON, Gaylord
BETTY MARTINKA, New Ulm
MARCELLA GLAMM, Janesville
FRANK BISEL, Sherburn
JOYCE VAUGHN, Fairmont
MARGARET ZIMMERMAN,
Waseca

CRIMINAL JUSTICE ADVISORY COUNCIL

GORDON BEITO, Mankato
GEORGE CARVERS, Fairmont
ROGER GRAHAM, Henderson
VINCE STYLE, St. James
DAVE STEVENS, Amboy
GORDON BENSCHOTER,
Fairmont
TERRENCE DEMPSEY, New Ulm
DONALD SCHMIDT, St. Peter
BEVERLY KROLL, LeCenter
VIRGINIA BURNETT, New Ulm
MERTON SCHWARZ, Waseca
JAMES W. PHIPPS, Blue Earth
PAT W. SMITH, JR., LeCenter
RUTH EPELAND, St. James
CAROL LEMCKE, Mankato

ADVISORY COUNCIL ON AGING

LLOYD MADISON, Waseca
CHARLOTTE JOHNSON,
St. James
ARDIS KOTTKE, Wells
LAWRENCE PETERSON,
Winthrop
ELDRED LOOP, Fairmont
ALICE OSBORNE, St. Peter
LOREN KNAUSS, Waterville
JACK LAUX, Sleepy Eye
ROGER DOOLEY, Mankato
JOHN HUISMAN, Frost
WANDA WEBSTER, St. Peter
KATHLEEN HAAG, Waseca
DR. DAVID JANOVY, Mankato
BONNIE MERTESDORF, Mankato
CRAIG LANGDON, Blue Earth
JANE WATSON, Mankato
GORDON PATTERSON,
Fairmont
BETTY MCGOWAN, Blue Earth

Alternates:

Wayne Williams, Ted Larson,
Marie Kuehn, Nowal Otsea,
Bernard Michaels, Rodney
Oahlberg, Sally Forest, Eugene
Meyers

DEVELOPMENTAL DISABILITIES COUNCIL

PAM BROWER, Mankato
HAL SANDBERG, Madelia
BARB SCHULTZ, Mankato
DOTTIE SPENCER, Madelia
TOM HENDERSON, New Ulm
CAROLYN ENGQUIST,
Waterville
WINNIE RENNER, Mankato
DEB FUCHS, Blue Earth
LEROY WENDT, Springfield
CAROL COLE, Blue Earth
NORMA ELROD, Mankato
JOE HARDING, Mankato
CHARLIE JOHNSON, St. Peter
LOUISE FOLEY, Mankato
JEANETTE BARSNESS, New Ulm
EARL HENSLIN, New Ulm
YVONNE KRENIK, Mankato
MIKE SIROVY, Sherburn
CHRISTINA SHERAN, New Ulm
MARY BERNER, Madelia

HUMAN RESOURCE PLANNING

CRIMINAL JUSTICE PLANNING

The Criminal Justice Advisory Council is composed of 13 members: one from each county and the cities of New Ulm, Fairmont and Mankato. One additional member representing the 5th Judicial District has been added since 1977. A majority of the members are elected officials.

The Council reviews applications submitted by local units of government for state and federal funding in the areas of courts, law enforcement, corrections and juvenile justice. It also serves as an advisor to the Human Resource Subcommittee and the RNDC recommending policies and priorities for the Region.

In response to the priorities established for the Region, several grants were recommended and funded through the region mini-block funds for FY 1979. Other grants outside the mini-block allocation were also received within the Region. These projects include: District No. 77 Youth Development in School, third year; Sibley County Felony Investigation Unit, third year; LeSueur County Felony Investigation Unit, second year; Blue Earth County Volunteers in Corrections, first year; Waseca Jail Program, first year; Waseca Jail Remodeling, first year; New Ulm Crime Prevention Unit, one year; 5th District Law Library, one year; Blue Earth County Youth Service Bureau, one year; Brown County Youth Service Bureau, one year; Faribault/Martin/Watonwan Shelter Care Project, second year; Nicollet/Sibley Shelter Care, second year; and Nicollet/Brown Juvenile Treatment Center, one year.

REGIONAL MANPOWER ADVISORY COUNCIL

The Regional Manpower Advisory Council is advisory to the RNDC and the state Department of Economic Security on Comprehensive Employment and Training Act programs in the region. The 19 member council includes one citizen from each county, three representatives of social service

agencies and one representative from each of the following: Community Action Agencies, Region Nine Chamber Association, Employment Services, Area Vocational-Technical Institutes, labor unions, Comprehensive Employment and Training Centers, and youth employment programs.

RMAC Responsibilities - The primary responsibilities of the RMAC include: identifying and documenting manpower needs and problems within the region; recommending a comprehensive system of manpower services designed to meet identified needs; identifying and examining potential agents for the delivery of manpower services within the region; monitoring and evaluating on-going manpower services; recommending appropriate changes in services or sponsors based upon changes in needs or evaluations of effectiveness; providing leadership in coordinating and improving all manpower and manpower related services offered within the region; fostering public awareness of, and participation in, manpower planning activities; and recommending new or changed statewide manpower planning activities.

Manpower Planning Accomplishments - In 1978, the Council prepared the 1979 Manpower Plan; evaluated the summer youth program, and prepared recommendations based upon the evaluation; provided technical assistance to more than sixty applicants for CETA Title VI Special Projects; participated in development of review criteria for Youth Employment Training Program (YETP); assisted in writing of applications for Vocational Training and Competitive Employment Placement for Handicapped Students.

DEVELOPMENT DISABILITIES PLANNING COUNCIL

The 20 members of the Developmental Disabilities Planning Council are representative of consumer disability groups and service agencies from the nine counties. Consumer membership draws from the four disability groups of autism, mental retardation, epilepsy, and cerebral palsy. Service providers represent a wide range of programs, such as rehabilitation, education, social services, community residential, and developmental.

The Council meets monthly on the second Monday at 1:30 p.m. at the RNDC office.

Each year the Council determines major goals and objectives for its work plan. The Council's activities during the past year are outlined below.

Advocacy - Funding for the Region Nine Citizen Advocacy Program was procured through a Title VI CETA grant. The project, under supervision of the Region Nine Association for Retarded Citizens, has been on-going during the past year, serving in an advocacy role for developmentally disabled individuals. Through the efforts of the project staff, programs have been offered in the Region pertaining to legal rights, staff training, and public information.

In Home Family Services - The Council, in conjunction with the Urban Studies Department at Mankato State University, conducted a regional survey in relation to in-home services. The research was conducted to assess the need for such programs and provide information as to recommendations for specific services required to enable a family to keep an individual in the home. One of the major findings resulting from the study was the glaring need for the provision of res-



Human Resource Planning

(continued)

pite care to families of developmentally disabled individuals. Upon further analysis of the survey findings, the Council will outline priorities and develop recommendations for services.

Respite Care - During the past summer, a pilot respite care project was established in Brown County through Summer CETA funding. The program was utilized by several families of developmentally disabled individuals, enabling them to receive "respite" from their demanding duties as parents. Due to the success of the project, and the increasing need to provide such support services, efforts are now focusing on continuation of the project in Brown County and replication in other interested counties in the region. Staff is working toward coordination of training for Brown County and Faribault - Martin - Watonwan Human Services Board Area. It is the Council's hope that such programs will be available region wide in the future.

Training - Activities of the Developmental Disabilities Planning Council during the past few months have also been characterized by its efforts to facilitate various training workshops relating to advocacy, community organizing, legislation. A conference scheduled for late January will be co-sponsored with Criminal Justice and will address the issues of the Developmentally Disabled and the Criminal Justice Program.

A comprehensive vocational training program for handicapped students will be established in District 77 Schools. The program, funded through the Youth Employment Training Program (YETP) will serve as a demonstration model for the state. Staff will assist in recruiting trainers and provide on-going technical assistance.

Systems Plan - Currently, the State Developmental Disabilities office is involved in developing a comprehensive plan for providing services in both the areas of residential and day programming. Efforts to develop such a plan were cooperative and included collaboration between Department of Public Welfare, Division of Vocational Rehabilitation, State Developmental Disabilities Office and regional planning offices. At present, data received from throughout the regions pertaining to developmentally disabled, is being received. Analysis of such data should result in the formulation of recommendations for remediating current service gaps and provisions for projected service needs. Staff will continue to serve on the state comprehensive planning committee in relation to developing the service plans.

AGING

Area Agencies on Aging were established under the Older Americans Act to carry out on the local level the planning, funding and advocacy functions as specified within the Act. The RNDC has served as the Area Agency on Aging for the nine counties since July of 1976.

The Agency's Advisory Council on Aging is an 18 member group composed of nine senior citizen county representatives, one nutrition project program representative, three public agency representatives, two representatives from private agencies (Nursing Homes) and three "at large" representatives. The Council meets on the fourth Wednesday of every month, at 9:30 a.m. Agendas are available through the RNDC office.

Serving in an advisory capacity to the Human Resource Subcommittee and the RNDC, the Council makes recommendations for aging service priorities, reviews and funds grant applications, and directly administers and monitors grants for community services under Title III of the Older Americans Act.

The funding priorities for 1978 as stated in the adopted 1978 Area Plan are as follows: transportation, health assessment clinics, individual advocacy, and home repair. In accordance with these funding priorities, the following grants were awarded: Faribault-Martin-Watonwan Senior Transportation Program, \$28,580; Nicollet-LeSueur-Waseca Senior Transportation Program, \$38,370; Sibley County Health Information & Screening Clinics, \$7,468; Health Information & Screening Clinic (Union Hospital, New Ulm), \$5,699; Mankato Advocacy Program for Seniors, \$5,765; Region Nine Residential Repair & Renovation Project, \$70,000. In addition, separate funding was made available under Title V of the Older Americans Act for Multi-Purpose Senior Centers. A total of \$60,587 was awarded the following communities: for the alteration and renovation of senior centers to Bricelyn, \$18,241; Blue Earth, \$4,149; Winthrop, \$7,688; St. James, \$5,639; St. Peter, \$7,426; and Cleveland, \$17,444.

The funding priorities for 1979 are transportation, home health care, individual and organizational advocacy, legal services, health assessment clinics, and multi-purpose senior centers. Grants are awarded for January, April, and July 1st funding. For further information, contact the RNDC.

ARTS ADVISORY COUNCIL

The Region Nine Arts Council formally began its activities in September of 1977. The Council is comprised of 12 members representing each County, including one member from the cities with a population base exceeding 10,000. With its present membership, the Council represents a broad base of the regional arts interests ranging from local actors to painters.

Responsibilities - As depicted in the by-laws, the Council serves in an advisory capacity to the Human Resource Subcommittee in the following areas: in recommending arts policies, goals and priorities for the Region; in reviewing, evaluating, and recommending grant applications submitted by arts organizations within the Region; in serving as a vehicle for input to the Minnesota State Arts Board on matters relating to the improvement and development of the arts at the local, regional, and state levels and; in serving as an advocate for local and regional arts development throughout the Region.

Primary Work Efforts - The major activity for the year entailed the development of an arts plan for the Region Nine Area. The staff conducted community forums in each county to assess the needs as defined by the area residents. Once a general listing of the needs was obtained, a refinement and categorization process was initiated. The essential categories of needs were thus defined as follows: increased organization pertaining to local arts organizations and activities is needed; enhanced community support for the arts is a concern; more artist programs such as demonstrations and workshops should be offered; exchange programs between arts

Human Resource Planning

(continued)

organizations would be useful; promotion programs for local artists are needed; a fully equipped regional arts center should be considered; present community theatre facilities are inadequate; adolescents need more exposure to the arts and subsequently, goals and a work program were formulated to address the majority of the aforementioned concerns and integrated into a comprehensive arts plan. In July the Minnesota State Arts Board formally approved the plan. Thus, all local arts development movies were decentralized to the Region placing all funding, constructing, and monitoring authority with Region Nine. During the latter part of July, the Council received its first set of grants under this new authority and approved requests totaling \$8,449 for the Mankato Symphony, Waterville Community Chorus, Fairmont Branch of A.A.U.W., LeSueur Community Education, and Madelia Community Theatre.

Additional initiatives during the year entailed the use of informational meetings with community theatre groups and local arts councils, organizing the arts and the handicapped conference with M.S.U., the formulation of C.E.T.A. grants to staff county arts councils, and the consideration and ranking of potential areas for workshops and/or direct programming.

HUMAN RESOURCE SUBCOMMISSION

The Human Resource Subcommittee is advisory to the RNDC in planning and policy development related to human resources. In this capacity, the Subcommittee reviews plans and policies recommended by the advisory councils on aging, arts, child care, criminal justice, developmental disabilities, emergency medical services and manpower. Membership consists of 12 citizens, one from each county and one from each city over 10,000, who are appointed by the RNDC.

Coordinating Planning - The HRS has been assigned responsibility for coordination of planning efforts in human resources. As part of this responsibility, HRS members regularly attend meetings of the aforementioned advisory

sources; A-95 review and comment on human resource grant requests, i.e., Community Health Service Plans, Community Action Agency grants, etc.; recommendations on appointments to advisory councils.

REGION IX ADVISORY COUNCIL FOR COORDINATED CHILD CARE

The Region IX Advisory Council for Coordinated Child Care (4-C's) has formally operated as a part of the RNDC since May 1, 1977. As a part of the RNDC, the Child Development Planning Program serves as a model for the State of Minnesota in that it is the first to be based on a regional level and financially supported by the individual counties.

In Region Nine, the 4-C's is composed of 18 members: one-third parent consumers of child care services, child care providers, county welfare representatives and at-large members.

The Region IX 4-C's recommends child care policies for the Region, develops the Annual Child Care Plan for presentation to the counties, sets regional priorities for Child Care Facilities Act funding and recommends child care applications for funding.

As a result of the local assessment of child care needs, the staff and the Council developed a regional child care plan covering four main areas: public information and education, training sessions, continued development of the 4-C Resource Library, and technical assistance to individuals seeking funding for child care activities.

Public Information - The staff developed and disseminated 1,000 brochures outlining the Family Day Care licensing process to encourage unlicensed providers to seek licensure. As a result of heightened awareness of the need for quality child care services, newspapers in the counties have published articles describing types of child care services available locally. Staff has also met within individual groups and county welfare/human services boards to provide information regarding child care services within Region, Nine.



councils, as well as the meetings of organizations providing human services in the region, such as Human Service Boards and mental health boards. Specific activities conducted in 1978 under this coordinative role included: preliminary work toward obtaining a waiver which would permit federal reimbursement for in-home services provided by the counties, as an alternative to nursing homes; extensive activities toward achieving an equitable distribution of social service funds within the state, administratively, legislatively, and judicially, including obtaining financial support from six counties for expenses in these efforts; review of all plans recommendations, developed by RNDC advisory councils in human re-



Human Resource Planning

(continued)

Training - Staff coordinated the following training resources for child care in Region Nine. Region Nine Child Care Association, which met nine times for group day care providers, Waseca County and Blue Earth/Nicollet County Child Day Care Association met for Family Day Care providers to fulfill their inservice training requirements. Licensed family day care providers want and need training, so staff coordinated efforts with the Mankato Area Vocational-Technical Institute and developed a six session training package for the 78-79 school year. Eight out of the nine counties are participating in this program.

Training for the region's family day care licensors began on a quarterly basis early in 1979. These workshops have served to develop a comprehensive understanding of the process of licensing.

Resource Library - The 4-C Resource Library flourished after utilizing the Traverse de Sioux Courier transport system throughout the Region. Staff did not allow for the increased attention the library demanded. After negotiations, the reading materials were transferred to the library where they receive proper care and see a greater rate of utilization.

Funding Tech Assistance - Technical assistance was offered by staff to applicants of Child Care Facilities Act (FFCA) Grants. Grants writing workshops were held in Blue Earth, Brown, Faribault, LeSueur, Sibley, Waseca, and Watonwan counties. Additionally, individual assistance was provided when requested.

In Region Nine the Region IX 4-C's Council has been designated by the Commissioner of the Department of Public Welfare as the local Child Care Advisory Committee. The Committee Council determined the FY 78-79 regional priorities for disbursement of Child Care Facilities Act monies as follows: full day care; maintenance of part day or part week programs; establishment of new programs for infants, group day care, latch key, seasonal, and others and education and training.

In Fiscal Year 1978-1979, the Council reviewed over 60 applications for funds and allocated \$43,723 to activities and programs involved in the direct services to children.

EMERGENCY MEDICAL SERVICES

The Region Nine Emergency Medical Services (EMS) program provides planning and funding toward an improved system of medical care for critically ill or injured patients in the Region. Major accomplishments have been achieved in 1978, under the direction of the Emergency Medical Services Advisory Council.

Treatment at the Scene - The EMS grant provided funds for equipment purchases to several ambulance services in the Region. Additionally, RNDC staff worked with Community Health Services Boards to encourage the establishment of First Response Squads in these communities lacking an ambulance service. First Response Squads are trained Emergency Medical Technicians who can respond quickly and provide care until the ambulance arrives. As a result of these efforts, two Community Health Services Agencies provided equipment funding for five new First Response Squads.

Hospital Treatment - Almost all Region Nine hospitals received funds for emergency room equipment under the EMS grant. Remote Cardiac Monitoring was implemented in 1978 at Gaylord and Arlington hospitals, in which cardiac patients at those hospitals are simultaneously monitored by the coronary care unit at Immanuel-St. Joseph's Hospital in Mankato, providing an invaluable back-up to local hospital staffs. A Physician's Critical Care Directory was developed and distributed to the hospitals in the Region. The directory contains information for local physicians regarding transfer of critical patients to Immanuel-St. Joseph's or to specialty treatment centers in the metro area or Rochester. With partial assistance from the EMS grant, Immanuel-St. Joseph's Hospital has expanded its capabilities in providing care to newborns to an intermediate level and has expanded emergency room physician coverage to 24-hour weekend coverage, through the Mankato Physicians Emergency Services corporation.

Training - This has been an important part of the EMS program. The Region Nine Heartsaver Program, conducted by the Mankato Area Vocational-Technical Institute, has trained approximately 8,000 citizens in cardiopulmonary resuscitation. At least four saved lives have been documented as a result of that citizen training. The training is currently being evaluated by RNDC in order to further increase its effectiveness. The EMS grant provided funding to develop a training curriculum for emergency room nurses in rural hospitals, and the Mankato State University Nursing Department piloted the course in the fall of 1978.



LEGISLATIVE CONCERNS

TRANSPORTATION REVENUES

The RNDC strongly supports raising transportation revenues or, at least, inflation-proofing the existing allocation formula. Some alternatives include: reallocate existing taxes to transportation (sales tax on autos and auto parts), increase the present state motor fuel tax, or fund the Department of Public Safety out of general funds rather than from revenues from the State Trunk Highway Fund.

RAIL SERVICE IMPROVEMENT PROGRAM

The RNDC supports an additional three (3) million dollar appropriation to the Minnesota Rail Service Improvement Program.

BRIDGE BONDING

The RNDC supports renewing the appropriation for the state bridge bonding program.

RAIL DEMONSTRATION PROGRAM

RNDC supports the establishment of a rail demonstration program, similar in design to the para-transit demonstration program.

RECREATION GRANTS

The RNDC supports continued appropriation the next biennium to the Legislative Commission on Minnesota Resources (LCMR) Grants-in-Aid Program for local and regional recreation and natural areas as established by Minnesota Laws 1965, ch. 810, section 23, as amended and Minnesota Extra Session Laws 1971, ch. 3, section 48, subd. 7, paragraph h, as amended. This appropriation should continue at present level of funding.

DEPARTMENT OF NATURAL RESOURCE TRAIL DEVELOPMENT

The RNDC supports a funding level of \$1.8 million for the Department of Natural Resources State Trail System (Development).

DEPARTMENT OF NATURAL RESOURCE TRAIL ACQUISITION

The RNDC supports a funding level of \$1.8 million for the Department of Natural Resources State Trail System (Acquisition).

JAIL CONSTRUCTION OR REMODELING FUNDS

The RNDC, in examining the status of county jails, especially in relation to State Department of Corrections evaluations, has determined that improvement of these facilities is essential. It would hope that the Legislature would prioritize jail renovation and provide funding assistance to those counties in need of remodeling or construction to maintain their jail service.

BLOCK GRANT FUNDING

The RNDC supports block grant funding to local units of government in preference to categorical funding.

JUVENILE JUSTICE AND DELINQUENCY PREVENTION FUNDS

The RNDC, anticipating a drastic reduction in Juvenile Justice and Delinquency Prevention funds, urges the Minnesota State Legislature to compensate for that anticipated reduction by establishing a comparable fund for the continuation of such programs within the state.

SOCIAL SERVICE AID FORMULA

The RNDC supports an equitable distribution of social service funds based upon measurable factors, such as clients and population, rather than county manipulable factors, such as past expenditures. For Title XX of the Social Security Act, the RNDC supports legislative determination of the formula, based upon general population and public assistance caseloads as the sole factors.

EQUALIZATION AID REVIEW COMMITTEE (EARC)

Because the EARC land valuations seriously distort the value of agricultural land, the RNDC is opposed to use of EARC valuations as a factor in any formula distributing funds to local units of government.

EMERGENCY MEDICAL SERVICES SYSTEMS ACT

The RNDC supports enactment of the EMS Systems Act, which would provide state funding for EMS planning in those regions not funded by the federal EMS program.

MEDICAL ASSISTANCE FOR NEEDY

The RNDC supports an appropriation for chapter 312 which was passed by the 1976 legislature with no appropriation.

The Act allows the cost of certain home care services provided by public health nurses to be paid by medical assistance, and also authorizes an experimental program for the cost of home care of the physically disabled or elderly.

208 WATER QUALITY PLANNING PROGRAM

Because the Minnesota Pollution Control Agency (MPCA) has failed to expediently administer the 208 program, the RNDC requests that MPCA become more responsive to out-state committees aiding MPCA in the development of statewide plans and policies.

LAND USE PLANNING GRANT PROGRAM

The Land Use Planning Grant Program has provided funds to local units of government to undertake much needed land use planning activities. This program, which has had positive results in Region Nine and has been strongly supported by local governments, is in need of refunding. The RNDC encourages the Legislature to reappropriate funding for the program so local governments may continue problem-solving land use planning activities.

LEGISLATIVE CONCERNS (continued)

MHFA AFFORDABLE HOME MORTGAGE PROGRAM

The RNDC supports the continuation of the Minnesota Housing Finance Agency Affordable Home Mortgage Program so as to assure homeownership opportunities for moderate-income households. Expansion of the resources available through this program is strongly encouraged. Additionally, it is recommended that the feasibility of existing program criteria be evaluated, particularly the \$37,500 ceiling on sales price or construction cost of eligible homes.

STATE FUNDING

The RNDC strongly supports the local units of government concern that the State should fund any programs it mandates. It also feels an Economic Impact Statement could be of much value in deciding what the costs of programs versus its benefits.

DEPARTMENT OF ECONOMIC DEVELOPMENT

The RNDC supports strengthening the State Department of Economic Development because it is viable to have an agency which can assist in industrial development throughout the state.

STAFF

TERRY STONE
DON STEGER
PAM SCHMIDT
CRAIG WALDRON
BOB ZELENKA
GARY YUVA
JERRY KEENAN
ROGER GUENETTE
CRAIG SHIRK
CONNIE NOTERMAN
CHARLES BURNS
BRUCE PETERSON
DENNIS GOLDMAN
SARAH JOHNSTON-RODRIGUEZ
KATIE COLLINS
KATHIE DAVIS
JACKIE HENRY
JULIE MILLER
JOAN LANG
DEBRA SENNHAUSER
LINDA ARNESEN

Executive Director
Physical Planning Director
Emergency Medical Services Director
Comprehensive Planning Director
Transportation, Recreation
Housing
Traffic Safety
Economic Development, Manpower
Graphics, Recreation
Aging
Criminal Justice
Water Quality
Emergency Medical Services
Developmental Disabilities
Child Care
Public Information
Administrative Assistant
Secretary
Secretary
Secretary
Bookkeeper

STUDIES WORKSHOPS

Written copies of reports, plans, or studies are available from the RNDC office.

NEWLY ELECTED OFFICIALS WORKSHOP

About 60 persons attended the first workshop designed specifically for newly elected city officials and county commissioners. The information presented was on the role of elected officials and assistance they may receive from the League of Cities, Association of Counties, and RNDC. This was hosted by the RNDC and the Urban Studies Department, Mankato State University.

INTERGOVERNMENTAL COOPERATION WORKSHOP

About 35 persons attended the second Intergovernmental Cooperation Workshop hosted by the RNDC and the State Planning Agency. The one and a half day workshop focused on understanding each unit of governments role and how they can best cooperate for effective service.

COUNTY INFORMATIONAL MEETINGS AND REPORT

Nine meetings were held in the Region with the RNDC members hosting the discussion. The reports, used as written information, included: RNDC formation and selection of members, and funding and planning activities.

EVALUATION OF THE 1978 SUMMER YOUTH PROGRAM

Narrative of the results of a survey of summer youth supervision, with recommendations for subsequent programs.

1979 MANPOWER PLAN

The plan includes a regional profile identification of needs and priorities, establishment of goals and recommended allocations and deliverers for manpower programs in the Region.

1978 AREA PLAN ON AGING

The plan states major work objectives and priorities of the Region Nine Area Agency on Aging. Funding priorities under Title III of the Older Americans Act are identified. The plan also includes demographic information on the region's elderly and an analysis of service needs.

AN ASSESSMENT OF HOME DELIVERED MEALS

This document lists the home delivered meal programs available throughout the nine counties. Information regarding special diets, cost, sponsors, contact person and eligibility are included.

SENIOR SERVICES - A Region Nine Guide

This booklet contains information about services available to senior citizens in Region Nine. The agencies providing the services are listed separately and explanations of the type of services available to the elderly are provided when it is not self-explanatory. The agencies' phone numbers and addresses are also provided. Copies of the guide are available upon request.

FARIBAULT COUNTY ZONING ORDINANCE AND MAPS

The RNDC assisted the County Planning Commission and Zoning Administrator prepare a new County-wide zoning ordinance which is intended to control and guide the physical development of the County.

WATONWAN COUNTY SUBDIVISION REGULATIONS

The RNDC prepared this county-wide regulatory ordinance for Watonwan County so as to control and guide residential subdivision development in the County.

SUBDIVISION DESIGN MANUAL

This manual, prepared by the RNDC, presents an analysis of acceptable and nonacceptable design techniques for residential subdivisions. The primary function of the manual is to serve as an educational tool and guideline for local planning commissions, planners, and zoning administrators.

REGION NINE ARTS PLAN

This particular document was formulated to qualify Region Nine for the Minnesota State Arts Board block grant. The plan discussed the areas arts problems, existing resources, the Arts Council goals, and the Council's work plan for the year. Additionally, a section was developed in the plan to depict the types of grants funded by the Council and the areas of eligibility. This particular section is now available as a separate document and is available upon request.

STUDIES WORKSHOPS

(continued)

A-95 MANUAL FOR LOCAL UNITS OF GOVERNMENT AND LOCAL AGENCIES

This manual was developed to assist local officials and agencies better understand the responsibilities, requirements, and processes relating to A-95 review. All of the applicable forms are included and a step by step process is depicted.

PHYSICIAN CRITICAL CARE DIRECTORY

During the last program year, a number of essential documents were produced which contributed towards improved coordination and accessibility of all existing emergency medical and public safety agencies. Foremost among these is the Physician's Critical Care Directory, which provides updated emergency patient referral information and synopses of receiving hospital capabilities. This directory will be located in each emergency room throughout Region Nine.

The program abstracts provide a summary of activity and achievements in each of the 15 programmatic and 7 clinical components of this region's EMS system. These documents are on file in Washington (Dept. of HEW), the Minnesota Department of Health (EMS-Section), and Region Nine in Mankato. All EMS advisory council members also receive complete sets.

911 SYSTEM PLANS FOR REGION NINE COUNTIES

The Region Nine EMS program has provided coordination and technical assistance in the development of preliminary plans for 911 (Universal emergency telephone number) systems in each county. These plans have been completed and are on file with the Minnesota Department of Administration-Communications Division, Region Nine in Mankato, as well as each county auditor's office. These plans will be reviewed and finalized by December, 1979.

OEDP -LESUEUR COUNTY

This past year the Region Nine Development Commission completed and submitted an Overall Economic Development Program (OEDP) Plan on behalf of LeSueur County. The OEDP plan describes the problems, needs, and resources of the area and sets forth the goals of the development program, together with the strategy devised to achieve these goals.

LAND USE POLICY PLAN

This provides guidance to all units of government when conducting land use planning activities. It sets forth a framework which is intended to reduce land use conflicts and promote sound physical development of the Region.

HOUSING PLAN

This identifies regional housing needs and sets forth region-wide goals, policies, and implementation activities to effectively meet these needs.

'78 CRIMINAL JUSTICE PLAN

The '78 Criminal Justice Plan is a general overview of the planning process intent and goals for the year. The Plan serves to identify problems, address those problems within the Criminal Justice System, and, further, to prioritize the Regional effort to deal with the problems.

INVENTORY OF COUNTY EMPLOYEES, 1978

The report provides an inventory of personnel employed by Region Nine counties, including position classification, length of service, and salaries.

REGION NINE HOUSING OPPORTUNITY PLAN

The Region Nine Housing Opportunity Plan was recently completed, adopted by the RNDC, and submitted to the Department of Housing and Urban Development (HUD) for its final approval. The HOP represents a strategy for providing a broader geographical choice of housing opportunities for lower income households throughout Region Nine. Allocation plans and implementation activities have been developed so as to facilitate achievement of this program objective. The Region Nine Housing Opportunity Plan will be updated annually.

1978 DEVELOPMENTAL DISABILITIES PLAN

The 1978 plan includes the primary work objectives that have been determined to be priority areas in Region Nine. Major problem areas delineated were: early identification, advocacy, respite care, and residential and day programs plan. A directory listing services available to pre-school handicapped children in the region was disseminated to parents, consumer groups, schools, and service agencies.

BUDGET

Funding of the RNDC is derived from three main sources. Approximately 70 percent of the operating budget is received from state and federal sources through grants for regional activities as the programs are determined by need and then developed. Approximately 30 percent is assessed by counties.

REVENUES For The Year Ended June 30, 1978	Federal	State	Local	Total
Physical Planning-HUD	\$23,360	\$ --	\$ --	\$ --
Physical Planning Projects	--	--	36,959	--
Environmental Permit	--	869	--	--
Traffic Safety	28,564	--	--	--
Resource Recovery	--	3,397	--	--
Emergency Medical Services	137,326	--	--	--
Recreation	--	7,682	--	--
Transportation	--	5,000	--	--
Child Care	23,623	--	--	--
Manpower	20,983	--	--	--
Arts	--	2,803	--	--
Aging	33,546	--	--	--
Criminal Justice	32,342	--	--	--
Developmental Disabilities	20,772	--	--	--
State General Support	--	94,799	--	--
Tax Levy	--	--	115,330	--
Interest	--	--	4,345	--
Other	--	--	991	--
TOTAL	\$320,516	\$114,550	\$120,666	\$555,732

The difference between the expenditures in each program and the revenues received from the granting agencies is allocated to each program from State General Support and Local Tax Levy.

EXPENDITURES For The Year Ended June 30, 1978	Personnel	Consultants	Printing & Publication
Physical Planning	\$ 62,159	\$ 10,000	\$ 748
Rural Innovative Housing	7,664	7,500	--
"208" Water Quality	4,522	--	--
Traffic Safety	17,803	--	--
Resource Recovery	62	--	325
Emergency Medical Service	43,616	*51,373	67
General Health	3,561	--	137
Recreation	5,021	--	--
Transportation	3,124	--	--
Child Care	17,280	--	250
Human Resources	936	--	7
Manpower	13,284	--	92
Arts	3,304	--	--
Aging	23,020	--	1,745
Criminal Justice	19,300	--	661
Developmental Disabilities	17,890	421	--
RNDC General Support	589	--	--
Other	--	--	--
TOTAL	\$243,101	\$69,294	\$4,032

*Pass Thru Funds

PROJECTED EXPENDITURES For The Year Ended June 30, 1978	Personnel	Consultants	Printing & Publication
Physical Planning	\$ 29,744	\$ --	\$1,415
Rural Innovative Housing	14,975	--	200
"208" Water Quality	11,794	--	110
Traffic Safety	20,880	--	--
Resource Recovery	4,687	--	--
Emergency Medical Service	56,556	--	260
General Health	4,640	--	150
Recreation	5,228	--	--
Transportation	8,036	--	175
Child Care	18,096	--	590
Human Resources	1,160	--	--
Manpower	12,180	--	215
Arts	3,480	--	--
Aging	22,040	--	640
Criminal Justice	22,620	--	275
Developmental Disabilities	16,240	--	200
Comprehensive Planning	18,560	--	--
RNDC General Support	--	--	--
TOTAL	\$252,356	\$ --	\$4,230

Indirect expenses include: administrative salaries and fringe, printing & publication, Xerox, office space, and other expenses.

The nine counties local share of the fiscal year 1978-1979 budget is about 55 cents per person. This is derived by using the revenues of \$122,513 and the 1975 estimated population figure of 223,200 based on the .17 mill tax levy.

REVENUES For The Year Ended June 30, 1979	Federal	State	Local	Total
Arts	\$ --	\$ 6,209	\$ --	\$ --
Traffic Safety	25,000	--	--	--
HUD 701	20,716	--	--	--
"208" Water Quality	8,000	--	--	--
Transportation	--	2,500	--	--
Physical Planning Projects	--	--	10,000	--
Rural Innovative Housing	7,000	--	--	--
Development Disabilities	19,500	--	--	--
Manpower	25,000	--	--	--
Emergency Medical Services	84,000	--	--	--
Aging	26,000	--	--	--
Criminal Justice	34,000	--	--	--
Child Care	24,500	--	--	--
State General Support	--	93,466	--	--
Tax Levy	--	--	145,149	--
TOTAL	\$273,716	\$102,175	\$155,149	\$531,040

Travel Staff	Travel Other	Xerox Supplies	Communications	Other Direct Expenses	Indirect Expenses	Total
\$ 1,885	\$ 1,878	\$ 4,046	\$ 1,650	\$ 1,266	\$ 29,316	\$110,824
194	--	266	69	382	3,516	19,591
212	589	293	430	66	2,506	8,618
1,008	743	607	842	363	8,759	30,125
3	--	4	16	50	188	648
8,562	2,048	1,583	1,741	4,859	24,122	137,971
173	--	326	361	218	1,995	6,861
126	--	194	239	--	2,288	7,868
97	156	116	268	45	1,560	5,366
1,843	993	1,241	1,437	895	9,814	33,753
223	1,842	208	175	406	1,560	5,357
1,162	1,498	741	934	307	7,387	25,405
205	834	300	277	14	2,023	6,957
1,945	1,346	1,328	1,538	1,216	13,149	45,287
1,709	--	868	928	932	10,001	34,399
1,045	157	468	857	675	8,647	30,160
--	20,373	66	--	4,767	10,276	36,071
132	178	31	54	593	172	1,160*
\$20,524	\$32,635	\$10,686	\$11,816	\$17,054	\$137,279	\$546,421

FY 78 Revenue \$592,691
FY 78 Expenditures 546,421
Excess Revenue \$ 46,270

Travel Staff	Travel Other	Xerox Supplies	Communications	Other Direct Expenses	Indirect Expenses	Total
\$ 2,700	\$ 2,500	\$ 1,800	\$ 2,000	\$ 1,545	\$ 17,212	\$ 58,916
400	250	250	500	690	7,113	24,378
300	500	200	500	375	5,676	19,455
1,000	800	550	900	400	10,106	34,636
200	200	150	150	100	2,259	7,746
5,000	3,000	600	1,700	1,275	28,177	96,568
500	100	400	600	55	2,665	9,110
200	100	150	250	--	2,442	8,370
300	200	150	350	50	3,824	13,085
1,800	1,500	800	1,600	955	10,440	35,781
300	2,000	250	250	740	3,936	8,636
1,500	1,600	500	1,000	205	7,800	25,000
500	400	250	450	75	2,123	7,278
1,500	1,500	2,000	1,500	800	12,351	42,331
2,000	150	820	925	475	11,236	38,501
1,200	400	400	900	375	8,122	27,837
500	--	150	200	--	7,996	27,406
--	32,000	--	--	1,206	12,800	46,006
\$19,400	\$15,200	\$9,270	\$13,575	\$8,115	\$134,785	\$456,931

postage, telephone, memberships and subscriptions, insurance, travel, office supplies, audit, depreciation,

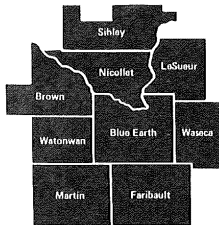
A-95 PROJECT REVIEW

Applicant Agency	Project	Funding Agency	Amount Requested	Recommendation
Frost Senior Citizens	Multi-purpose Senior Center	HEW	\$ 7,688	M
City of St. Peter	Multi-purpose Senior Center	HEW	7,688	M
Senior Citizens-Bricelyn	Multi-purpose Senior Center	HEW	7,688	A
Winthrop Sr. Citizens Inc.	Multi-purpose Senior Center	HEW	7,688	A
City of Blue Earth	Multi-purpose Senior Center	HEW	7,677.49	A
McCleod/Sibley	CHS	State Dept. of Health	81,728	A
Elysian	8-plex Rural Rental Housing	USDA (FmHA)	129,200	A
Lafayette	8-plex	USDA (FmHA)	129,200	A
St. Clair	20-unit Rural Rental Housing	USDA (FmHA)	380,000	A
Mankato	CDBG	HUD	1,310,000	A
Mankato	CDBG	HUD	750,000	A
LeSueur	CDBG	HUD	42,000	A
Watonswan County	Bridge Bonding	DOT	219,900	A
LeSueur County	Bridge Bonding	DOT	183,000	A
Nicollet County	Bridge Bonding	DOT	110,000	A
Martin County	Bridge Bonding	DOT	76,000	A
LeSueur County DAC, Inc.	Developmental Achievement	FmHA	120,000	A
New Ulm Union Hospital	Health Info/screening clinic	HEW	5,499	A
Mankato	Para-Transit Demon. Program	Mn/DOT	36,966.68	A
Faribault/Martin/Watonswan Cty	Senior Transportation	HEW	28,580	A
Sibley County	Criminal Invest. Unit	LEAA	16,131	A
Waseca County	Crime Prevention Unit	LEAA	11,806.19	A
Dist. 77 City of Mankato	Youth in School Program	LEAA	20,086.19	A
LeSueur County	Criminal Invest. Unit	LEAA	18,338.73	A
Blue Earth County	Volunteers in Correction	LEAA	23,570.10	A
Waseca	Jail Program	LEAA	22,500	A
New Ulm	Crime Prevention Unit	LEAA	2,219	A
5th Dist. Martin County	Law Library Study	LEAA	8,221.95	A
LeSueur County	Day Activity Center	Department Economic Security	4,292	A
Southcentral Ed. Coop. Serv.	Region Nine Media Service	Department Economic Security	9,009	A
Fairmont	Management Aide/Special Ed.	Department Economic Security	7,535	A
Blue Earth County	Foster Care Division	Department Economic Security	9,057	A
City of Blue Earth	Ed. Living Space Project	Department Economic Security	15,000	A
Watonswan County	Watonswan Cty. Achieve. Ctr.	Department Economic Security	5,026	A
City of Henderson	Henderson Comm. Development	Department Economic Security	12,450	A
Mankato	CDBG Grant	HUD	Pending	
Comfrey	Water Treatment	HUD	N/A	
Truman (individual)	16-unit (two 8-plexes)	FmHA	332,000	A
Mankato	HOP Application/CDBG	HUD	340,996	A
LeSueur Cheese Co, Inc.	Industrial Loan	FmHA	770,000	A
Northrup (individual)	8-plex	FmHA	164,260	A
New Auburn	8-plex	FmHA	142,500	A
Region Nine Dev. Comm.	Rural Development Grant	FmHA	\$ 20,000	A
Madelia (individual)	Two 8-plexes	FmHA	281,200	A
Cleveland	Waste Treatment Plant	HUD	N/A	
Mankato	CDBG - UDAG	HUD	2,850,000	A
SPA - OLUA	State '701' Housing Element	HUD	N/A	
Mankato	CDBG - UDAG	HUD	500,000	A
Mapleton	CDBG (single purpose)	HUD	587,000	A
SCCAC	Emergency Energy Conserv.	CSA	63,069	A
Lakeview Home, Fairmont	Paratransit Vehicle Grant	UMTA	16,044	A
Mankato Rehabilitation Ctr.	Paratransit Vehicle Grant	UMTA	15,200	A
Winthrop	Waste Treatment Facility	EPA	24,300	
Janesville	CDBG (comprehensive)	HUD	500,000	A
St. Peter	CDBG (single purpose)	HUD	525,220	A
Waseca City/County	CDBG (single purpose)	HUD	654,900	A
Mn. Valley Action Council	Nutrition Program	A/O/A-HEW	390,478	A
Wells	CDBG (single purpose)	HUD	392,000	A
Blue Earth	CDBG (single purpose)	HUD	215,000	A
HSA-6	HSA-6 Plan	HEW	261,000	A
Mn. Valley Action Council	Service Employment Program	Department of Labor	41,000	A
Fairmont (individual)	Business and Industry Loan	FmHA	1,800,000	A
Mankato Rehabilitation Ctr.	Sheltered Workshop	DVR	46,112	A
New Prague	CDBG (single purpose)	HUD	389,000	A
Montgomery	CDBG (comprehensive)	HUD	699,450	A
B/N Human Service Board	CDBG (single purpose)	HUD	374,600	A
North Mankato	CDBG (single purpose)	HUD	232,900	A
Nicollet County (MVAC)	CDBG (single purpose)	HUD	750,000	A
Mankato	CDBG (single purpose)	HUD	600,000	A
Blue Earth County	CDBG (single purpose)	HUD	300,000	A
Waseca	Wastewater Facility Plan	EPA	28,350	A
Montgomery	FmHA Housing (32 units)	FmHA	585,000	A
Watonswan County	Bridge Bonding	Mn/DOT	83,677	A
Martin County	Bridge Bonding	Mn/DOT	110,000	A
LeSueur County	Bridge Bonding	Mn/DOT	113,000	A
Mankato	Comprehensive 701 Planning	SPA	22,000	A
Wells	Comprehensive 701 Planning	SPA	7,853	A
Mankato	Neighborhood Strategy Area	HUD	465,960	A
	110 elderly units			

Applicant Agency	Project	Funding Agency	Amount Requested	Recommendation
Small World Center/Henderson	Start-up	CCFA	1,800	M
Candace Cole/Waseca	Interim financing	CCFA	2,625	M
Pauline Holmen/Waseca	Interim financing	CCFA	513	M
Marlys Monohan/Waseca	Interim financing	CCFA	916	D
Marion Strauss/Janesville	Interim financing	CCFA	621	M
Mary DeBough/Janesville	Interim financing	CCFA	698	M
Madelia Child Dev. Ctr.	Title XX Match	CCFA	4,500	A
Joy G. Miller/St. James	Enrichment	CCFA	876.83	M
Marilyn Hedlund/St. James	Interim financing	CCFA	1,162.30	M
Watson Co. Human Service Ctr.	Start-up	CCFA	1,141.85	M
Annabell Hendrickson/Mankato	Operating costs/equipment	CCFA	1,500	M
City of Madelia	Repair of Municipal Bldg.	Department of Labor	\$ 1,887	A
Human Effectiveness Found.	Chemical Awareness	Department of Labor	24,445	A
City of LeSueur	Maintenance of Pub. Util.	Department of Labor	1,467	D
Watsonwan County	Maintenance of Pub. Roads	Department of Labor	2,560	A
Madelia School	Drop-out Prevention	Department of Labor	11,720	A
St. Clair School	St. Clair Pub. Serv. Employ.	Department of Labor	21,812	A
Mn. Valley Action Council	MVAC-PSE	Department of Labor	97,300	A
Welcome School	Public Relations	Department of Labor	3,560	A
Sleepy Eye Bib Brother/Sister	Project Interact	Department of Labor	6,489	A
City of Waseca	Energy Conservation	Department of Labor	10,000	A
University of Mn./Waseca	Univ. of Mn/Waseca PSE	Department of Labor	71,514	A
Brown County	Park Maintenance	Department of Labor	5,237	A
Madelia Child Develop. Ctr.	Speech Development	Department of Labor	13,506	D
YWCA	Program Directors	Department of Labor	27,880	A
Sherburn Schools	Drop-out Prev./Environ. Aide	Department of Labor	22,734	A
City of LeSueur	Paratransit Coordinator	Department of Labor	11,842	A
Watsonwan County DAC	DAC Service Expansion	Department of Labor	7,065	A
City of Amboy	Community ED/REL	Department of Labor	19,608	A
Lake Crystal School	Cataloging Materials	Department of Labor	8,074	A
Mn. Valley Regional Library	Library Project	Department of Labor	20,640	A
Mapleton School	Teaching Tutors	Department of Labor	14,157	A
Watsonwan County	Youth Worker	Department of Labor	11,348	A
Blue Earth School District	Activities Coordinators	Department of Labor	14,546	A
Traverse Des Sioux Lib. System	Library Services	Department of Labor	26,490	A
St. James	Downtown Redevelopment/Plan.	Department of Labor	9,479	A
Southern Mn. Crisis Support Center/Fairmont	Program Facilitator	Department of Labor		A
St. Mary's School/Sleepy Eye	School Service Conservation	Department of Labor	33,813	D
Chain-O'-Lakes Halfway House/Fairmont	Counselor Trainee	Department of Labor	30,975	A
Watsonwan Co. Hist. Society	Watsonwan Hist. Investigation	Department of Labor	18,678	A
Sibley Co. Bus. & Prof. Women	Sibley Co. Arts. Coordinator	Department of Labor	10,305	P
LeSueur Comm. Theater	Coordinator LeSueur Co. Arts	Department of Labor	10,093	P
Madelia	FmHA Indus. Dev. Program	FmHA	194,900	A
SCCAC	Headstart	OCD/HEW	67,840	A
SCCAC	Headstart	OCD/HEW	9,142	A
MVAC	Comm. Food & Nutrition Prog.	CSA	40,000	A
Region 9 Child Care Adv. Comm.	MN Child Care Facilities Act	Region 9 CCAC	11,445	A
LeSueur/Waseca Board of Health	Community Health Serv. Plan	State Department of Health	83,625	A
Blue Earth Hum. Serv. Ctr.	Community Health Service	State Department of Health	103,000	A
Region 9 Communities	Park/Recreation Projects	LAWCON	N/A	
Sibley County	Bridge Bonding	Mn/DOT	\$ 46,200	A
Individual, Mankato	Business & Industry Loan	FmHA	325,000	
Mn. Senior Federation	Sr. City in Advocacy Proj.	Older Am. Act.	18,683	A
Human Serv./Blue Earth Co.	Home Care Expansion	Older Am. Act.	22,546	A
St. Peter	Industrial Dev. Grant	FmHA	420,400	A
Watsonwan Co. Civil Defense	Weather Alert System	Gov. Rural Dev. Council	12,600	A
Mn. Crime Prevention Center	Rural Crime Prevention	Gov. Rural Dev. Council	36,000	A
U of M Waseca	Rural Family Life Ctr.	Gov. Rural Dev. Council	48,153	A
Region 9 Counties	Federal Aid Construction Program	Mn/DOT	N/A	A
Mn/DOT	5 year work program	Mn/DOT	N/A	A
Watsonwan Co.	Bridge Bonding	Mn/DOT	46,500	A
Sibley Co.	Bridge Bonding	Mn/DOT	83,160	A
Sibley Co.	Bridge Bonding	Mn/DOT	55,440	A
Sibley Co.	Bridge Bonding	Mn/DOT	101,640	A
LeCenter Ind. Dev. Co.	Medical Clinic	FmHA	166,000	A
McLeod/Sibley CHS Plan	Comm. Health Services	State Department of Health	87,871	A
Cottonwood-Springfield Co-op	Job Oppor. for Women	Gov. Rural Dev. Council	30,300	
Mankato Symphony Orchestra	John Alexander, concert	MSAB	4,900	A
Waterville Community Chorus	Musical performances	MSAB	700	A
Up the Walls with Art	Wall graphic	MSAB	1,339	A
LeSueur Community Education	The Roger Tenney Chorale	MSAB	270	A
Madelia Comm. Theatre Inc.	Continuing Comm. theatre	MSAB	1,240	A
Sleepy Eye Comm. Ed. Dept.	Concert Series	MSAB	500	D

Applicant Agency	Project	Funding Agency	Amount Requested	Recommendation
Walters	Waste Water System Plan	USDA-FMHA	112,500	A
Mn. Valley Action Council	Comm. Food and Nutrition	NA	NA	
Mn. Valley Action Council	CSA for Martin/Watonwan Co.	NA	NA	
Individual/Waterville	16 units Section 515	FmHA	NA	
Watonwan Co.	Bridge Bonding	NA	NA	
Nicollet County	31 cities, 5 counties	CDBG/SC	2,348,789	A
	Housing rehab. program	HUD		
Brown/Nicollet Counties	Juvenile Treatment Center-9 counties	LEAA	152,577	A
RNDC	Criminal Justice Plan. Grant	LEAA	39,950	A
Mn/DOT	Mankato Airport	FAA	\$270,000	A
School District #77	Employment Training-Job Placement/Handicapped	Department Economic Security		
Mankato	Housing Acquisition & Reloc.	DCBG/SC HUD	600,000	A
Mankato	Development Residential Fac.		11,845,000	A
Region IX 4-C's	Interim financing	CCFA	2,620	M
Child Care Ctr./Mapleton	Purchase rug	CCFA	1,382	M
BL/E (FDC)	Interim financing	CCFA	605	M
Benco	Interim financing	CCFA	336	M
YWCA Latch Key	Operating Costs	CCFA	3,000	D
Patricia Meyer	Purchase equipment	CCFA	1,898	M
Tender Years, Elmore	Operating Costs	CCFA	933	M
Nicholson/Johnson, Blue Earth	Enrichment, operating costs	CCFA	1,084	M
Children's Learning Ctr./LeCenter	Interim financing	CCFA	1,855	A
Joan Brose, LeCenter	Enrichment, maintenance	CCFA	168	M
Kathy Westerman, Montgomery	Interim financing	CCFA	221	A
LeSueur Co. Welfare Dept.	Enrichment toys	CCFA	1,050	M
Trimont Learning Center	Interim financing	CCFA	1,867	A
Karen Oldenkamp, Fairmont	Expansion	CCFA	339	D
Lena Gaemelke, St. Peter	Interim Financing	CCFA	954	M
Trinity Chris. Daycare Ctr./No. Mankato	Operating costs	CCFA	795	M
St. Peter Toy Lending Libr.	Start-up	CCFA	550	M
Small World Ctr./Henderson	Operating expenses	CCFA	750	M
Germaine Shult/Winthrop	Interim financing	CCFA	1,179	M
Mary Cords	Enrichment	CCFA	450	D
Marlys Monahan/Waseca	Interim financing	CCFA	425	M
Carmen Klomp/Waseca	Enrichment	CCFA	980	D
Mrs. Paul Olsen/Madelia	Expansion & enrichment	CCFA	363	M
Brown/Nicollet Human Service Board	Criminal Justice Juvenile Ctr	LEAA(JJDP)	152,577	A
Individual Mn/DOT	Business and Industrial Loan	FmHA	875,000	A
YWCA Latchkey/Summer Activity	Expansion	CCFA	7,000	M
The Children's House/Mankato	Enrichment Costs	CCFA	1,374.41	M
Early Childhood & Family Ed Program, Ind. School Dist.77	Expansion of Enrichment	CCFA	2,500	M
Charley Brown Nursery School/Mankato	Expansion-Operating Costs	CCFA	4,444	M
Rainbow's End Nursery Pre-School/Mankato	Start-up costs	CCFA	875	M
Child Care Ctr./Mapleton	Operating Costs	CCFA	5,557	M
Carol Haas/New Ulm	Interim Financing	CCFA	948.50	M
Lois Stadick/New Ulm	Interim Financing	CCFA	1,033.42	M
Jeanne Zupfer/New Ulm	Interim Financing	CCFA	2,179.47	M
Brown Co. Family Service Ctr.	Expansion & enrichment	CCFA	2,523	M
Good Shephard Church/Wells	Operating Costs	CCFA	1,185.66	M
Tender Years Enrichment Inc.	Operating Costs	CCFA	1,332	M
Carol Bidwell	Expansion or Enrichment	CCFA	360	M
Francine Grant	Enrichment	CCFA	586.55	M
Charline Nicholson/Maggie Johnson-Blue Earth	Interim Financing	CCFA	5,270	M
Human Service Ctr/Faribault	Expansion of Toy Lending Library	CCFA	507.60	M
Nancy Willette/Delavan	Enrichment Cost	CCFA	170	M
LeSueur Social Service Agency	Enrichment	CCFA	757	M
Cty Welfare Dept.				
Small Wonders of New Prague	Interim Financing	CCFA	1,000	A
Martin Co.-Early Childhood & Family Ed	Operating Expansion	CCFA	1,396	M
Small World Nursery/Fairmont	Start-up	CCFA	450	M
Children's Ctr./Fairmont	Enrichment	CCFA	2,000	M
Karen Oldenkamp/Fairmont	Sliding fee-expansion or enrichment	CCFA	700	M
St. Peter Toy Lending Library	Start-up costs	CCFA	700	M
Little People's Learning Ctr./Gibbon	Operating Costs	CCFA	1,700	M
Zion Learning & Child Dev. Center/Arlington	Sliding fee	CCFA	340	D

Applicant Agency	Project	Funding Agency	Amount Requested	Recommendation
Fairmont	HUD Mortgage Insurance Program 23 units	HUD	1,137,014	A
PSRO	PSRO		75,000	A
LeCenter (individual)	Business Loan	FmHA	415,000	A
St. James	Wastewater Facilities Plan	EPA	70,875	A
Winnebago	Wastewater Facilities Plan	EPA	\$ 20,850	A
Waseca County	Jail Remodeling Project	LEAA	57,400	A
Arlington	EPA Wastewater Treatment Facilities Plan	EPA	N/A	
Mankato	Senior Citizens Advocate	HEW	7,686	A
Sibley Cty. Public Health	Screening Clinic	CCFC	10,000	A
Montgomery	FHA Area Assistance Planning Grant	FHA	35,000	A
Blue Earth Ag. Society	FmHA Comm Facilities Loan	FmHA	15,000	A
Individual Given	FmHA Section 515 Housing (8 plex)	FmHA	163,750	A
LaSalle	HUD-CDBG Small Cities	HUD	92,000	A
RNDC	Developmental Disab. Plan	HEW	35,000	A
LaSalle	CDBG Small Cities	HUD	92,000	A
RNDC	Developmental Disab. Grant	State DD Office	25,000	A
Arlington	Wastewater Treatment Facilities Plan	EPA	N/A	
Nicollet County	Bridge Bonding	Mn/DOT	156,000	A
Individual/Mankato	70 units family housing rehab.	HUD/MHFA	N/A	
Individual	Arlington Group Home	HUD loan	140,000	A
Individual	8-plex housing, Waldorf	FmHA	159,000	A
Cleveland	Addition to building	HEW/AA	20,572	A
St. Peter	Renovation project/Sr. Citizens Center	HEW/AA	4,900	A
Bricelyn	Renovation project/Sr. Citizens Center	HEW/AA	9,540	A
St. James	Kitchen Update/Equip. Sr. Citizens Center	HEW/AA	5,639	A
MVAC	Repair and Renov. Project	HEW/AA	70,000	A
RNDC				
RNDC	4-C's Plan	Region 9 RNDC	34,767	A
Mankato	CDBG/UDAG Southeast Village	HUD	1,223,000	A
Wells	CDBG/UDAG Wells Fam. Housing	HUD	198,447	A
Montgomery	CDBG Budget Revision	HUD	N/A	
Blue Earth	Park Development	LAWCON-LCMR	32,000	A
Blue Earth County	Park Development	LAWCON-LCMR	101,974	A
Blue Earth County	Park Development	LAWCON-LCMR	23,100	A
Bricelyn	Park Development	LAWCON-LCMR	29,900	A
Comfrey	Park Development	LAWCON-LCMR	8,000	A
Courtland	Park Development	LAWCON-LCMR	12,325	A
Delevan	Park Development	LAWCON-LCMR	8,441	A
Dunnell	Park Acquisition/Development	LAWCON-LCMR	11,650	A
Easton	Park Development	LAWCON-LCMR	10,500	A
City of Gaylord & Gaylord Public School	Park Acquisition/Development	LAWCON-LCMR	49,900	A
Good Thunder	Park Development	LAWCON-LCMR	19,439	A
Madison Lake	Park Development	LAWCON-LCMR	20,750	A
Montgomery	Park Development	LAWCON-LCMR	32,000	A
New Ulm	Park Development	LAWCON-LCMR	80,000	A
North Mankato	Park Development	LAWCON-LCMR	78,830	A
Odin	Park Development	LAWCON-LCMR	3,500	A
Ormsby	Park Development	LAWCON-LCMR	45,000	A
Sleepy Eye	Park Development	LAWCON-LCMR	48,200	A
Watsonwan County	Park Acquisition/Development	LAWCON-LCMR	25,500	A
Waseca	Park Development	LAWCON-LCMR	7,700	A
Waseca County	Park Acquisition	LAWCON-LCMR	9,000	A
Waterville-Elysian Pub. School	Park Acquisition/Development	LAWCON-LCMR	135,000	A
Wellcome Memorial Pub. School	Park Development	LAWCON-LCMR	28,000	A
U of M-Waseca	Trail Development	LAWCON-LCMR	24,622	A
Sleepy Eye	Trail Development	LAWCON-LCMR	2,000	A
Truman & Martin Co.	Trail Development	LAWCON-LCMR	10,400	A
North Mankato	Trail Development	LAWCON-LCMR	16,800	A
Blue Earth Co.	Trail Development	LAWCON-LCMR	65,450	A
Blue Earth (City)	Trail Development	LAWCON-LCMR	9,000	A
Blue Earth Co.	Trail Development	LAWCON-LCMR	1,000	A
Wells	Housing Rehabilitation			
	Acquisition Relocate Res.	CDBG-SC HUD	352,000	A
Watsonwan County	Bridge Bonding	NA	NA	
Watsonwan County	Bridge Bonding	NA	NA	
Watsonwan County	Bridge Bonding	NA	NA	
Blue Earth County	Community Health Services	NA	NA	
Blue Earth County H.S.B.	Youth Intervention	LEAA	NA	
Brown County	Youth Intervention	LEAA	21,988	A
Faribault/Martin/Watsonwan	J.J.D.P. (Shelter Care Proj)	LEAA	14,139.95	A



region nine development commission



We can proudly recall 1978 as a year when the Region Nine Development Commission (RNDC) further strengthened and facilitated intergovernmental cooperation. This is exactly what regional commissions were authorized to do in the Regional Development Act of 1969.

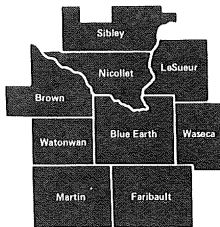
A greater number of counties, cities, townships and school districts are effectively cooperating in programs which cause increased benefits and cost savings. This could very well be a direct result of the RNDC's efforts to encourage cooperative planning projects and its promotion of such activities which often receive funding priority from state and national programs.

The RNDC continues to increase its commitment to offer technical assistance. This effort supports units of government in more effectively solving their individual and joint needs. It further expands their knowledge of how to develop the skills to achieve their goals. It also strengthens units of government in learning to work cooperatively as the technical assistance offered by the RNDC causes a realistic, comprehensive look at the entire area when assisting on a project.

We can foresee planning efforts in the future bringing about even greater understanding and cooperation. The RNDC committees and staff are now not only looking at their own program areas, but are looking at how that particular program relates to and can work with other programs of the agency. An example showing this cooperative attitude is the joint conference scheduled for early 1979 by the developmental disabilities and criminal justice planning units.

We encourage you to join us in the commitment to strengthen the cooperation of not only units of government in Region Nine but also special interest groups such as civic/business organization and others. By working together we can best identify and solve the problems of the Region. This will cause a direct benefit to you and your neighbors at a reduced cost.

Carl L. Papzanski



region nine development commission

1978 - A Year of Change

One thing that we can always predict for the Region Nine Development Commission is change. To remain a viable organization we must constantly be changing to meet the needs of our local units of government.

Federal programs change, state programs change, the requests for help from our member units change. We must stay flexible enough with our staff so that we can meet these changes.

We are getting more requests for help from local communities. Grants are being prepared for some communities. Plans are being prepared or revised for other communities. We are now at a point in time where communities call us when they have a problem. This is very encouraging to the Commission and its staff. The more people realize how helpful we can be to them the less negative feeling they have toward our activities.

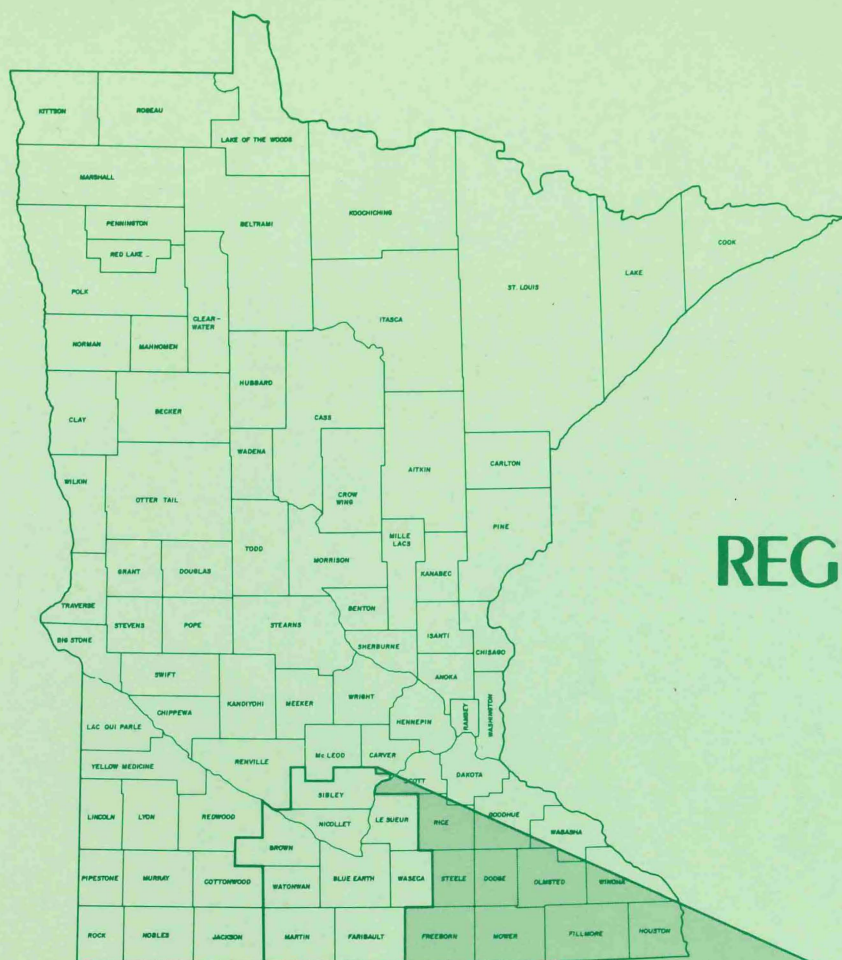
Our activities are responsive and change to meet the needs expressed by our local units of government.

I feel this is one of the most important things that we must remember about the Regional Development Commissions. They are here to serve the local units of government. When the Commissions help a community they are also training the local officials so there is a lasting effect in the community.

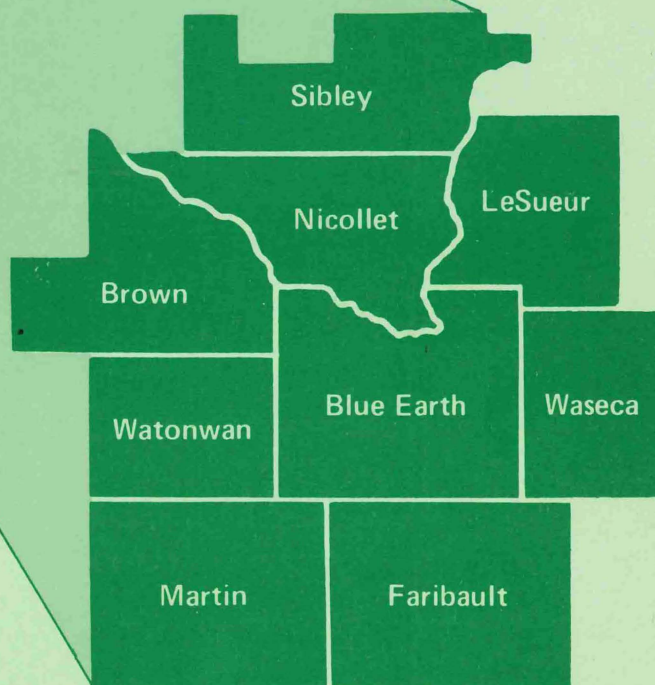
The RNDC has now established a Community Development Task Force made up of staff people. When a community has a problem it can call for assistance. We will send the necessary staff people to help.

I feel that this is as new and very useful tool and look forward to seeing the Community Development Task Force assist communities in the coming year.

Terence Stone



REGION NINE DEVELOPMENT COMMISSION



120 SOUTH BROAD STREET
MANKATO, MN 56001
507-387-5643