

44
LEGISLATIVE REFERENCE LIBRARY
3 0307 00010 8079

NWRDC

1977 ANNUAL REPORT

HT
393
.M62
N67ax
1977

LEGISLATIVE REFERENCE LIBRARY
STATE OF MINNESOTA

NORTHWEST REGIONAL DEVELOPMENT COMMISSION

780274

LOCATION of MINNESOTA DEVELOPMENT REGION ONE



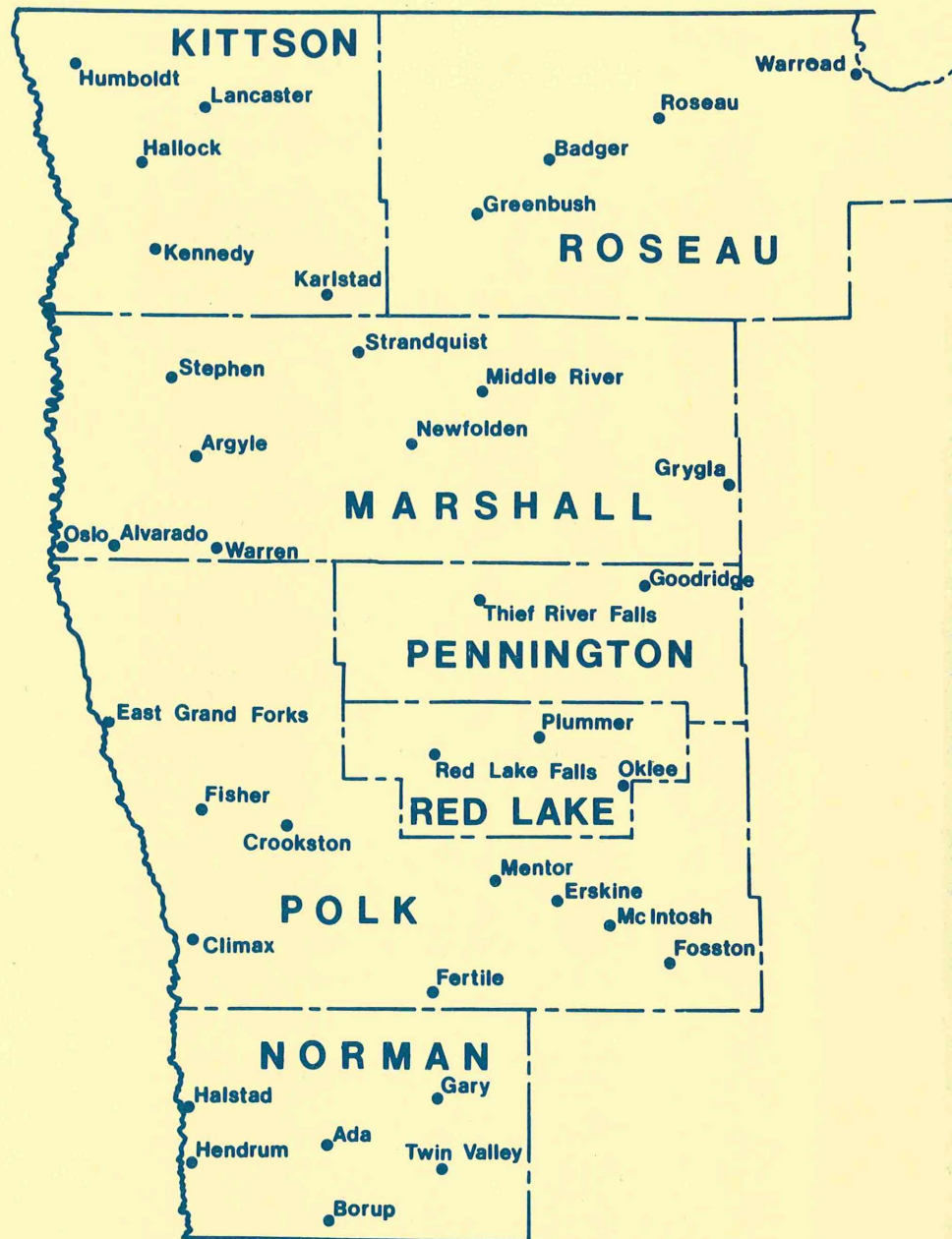
NWRDC

The Northwest Regional Development Commission was created, February 8, 1973, by the Governor, in response to petitions from local units of government with the Region representing nearly 80% of the regional population. The Commission is organized under the Regional Development Act of 1969 which allows local units of government to petition the Governor to create a Commission within the officially designated regions.

The Northwest Region includes Kittson, Marshall, Norman, Pennington, Polk, Red Lake and Roseau Counties. This Region has some 288 units of local government including 7 counties, 58 cities, 229 townships and 37 school districts. These units of government are represented on the Commission in the following way: Each county has a county commissioner representing county government, a township supervisor representing the townships in the county, a mayor or councilman representing city governments in the county and in addition there are two people representing school districts in the Region. The NWRDC has also created ten commission positions for citizens representing various public interests.

The full Commission serves as the overall policy making body which determines what the role of NWRDC will be and how the statutory responsibility of the Commission will be carried out. The Board of Directors is responsible for the Commission operations on a month to month basis and functions as the review board for clearinghouse activities. Planning and development activities of the commission are carried out by committees which are organized to provide for geographic representation and to draw upon the expertise that exists within the area.

The Regional Development Act is the tool local governments use to expand their involvement into areawide planning, coordination of areawide programs, research, and to shift the orientation of areawide decisions from a state/federal program perspective to a local perspective addressing locally identified needs and blending these areawide programs into the ongoing programs of local governments.



LEGISLATIVE REFERENCE LIBRARY
STATE OF MINNESOTA

NORTHWEST REGIONAL DEVELOPMENT COMMISSION MEMBERS

* Members of the Board of Directors.

** Members who no longer serve but did serve during 1977.

Full Commission Membership

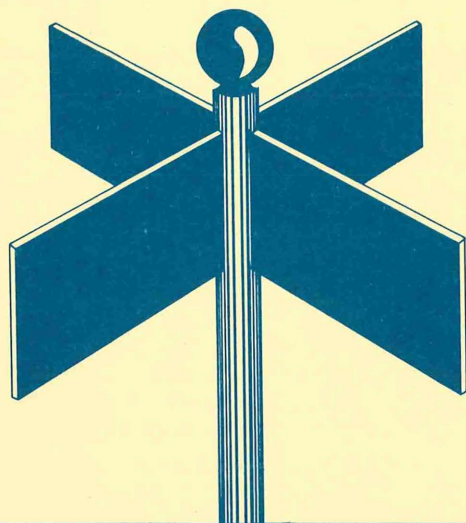
County	County Board	Township Board	Cities
Kittson	Floyd Sanner Lancaster	Phillip Lambert Hallock	Dr. Joe Bouvette Hallock
Marshall	Dale Zutz Warren	*Ervin Strandquist Newfolden Chairman	*Lawrence Sundahl Stephen
Norman	Si Strand Ada	Gerald Green Gary	*Cleighton Hastad Halstad
Pennington	Roger Hoffman Goodridge	*Albert Koop Thief River Falls	Ambrose Wyoski Thief River Falls
Polk	Oris Moen Mentor	Loran Stortroen Climax	Harold Thomforde Crookston
Red Lake	Irving Beyer Red Lake Falls	Ralph Berg Oklee	*Vaughn Thorfinnson Red Lake Falls Vice Chairman
Roseau	*Wayne Juhl Greenbush	**Donald Landin Warroad	**Norrell Erickson Roseau
		Richard Lorensen Strathcona	Richard Roberts Warroad

Public Interests Group

Watershed Districts	Otto Anderson Newfolden
Soil & Water Conservation	Verne Green Newfolden
Financial Institutions	Fred Sorensen Grygla
Labor	Joyce Peterson Thief River Falls
Women	Jacqueline Bergan Crookston
Vocational Schools	Cleo Cleveland East Grand Forks
Low Income, Minorities	Marian Olson Crookston
Business	Roger Eckstein Red Lake Falls
Agriculture	Terry Fladeland Red Lake Falls
Industry	Glen Bergland Roseau
School Districts	*Dwayne Otterson Badger
	*Harvey Tripp East Grand Forks Treasurer

Ex-Officio Membership

Senator Marvin Hanson, Hallock
 Senator Roger D. Moe, Ada
 Representative Art Braun, Greenbush
 Representative John Corbid, Oklee
 Representative Willis Eken, Twin Valley
 Representative William Kelly, East Grand Forks



REGIONAL DEVELOPMENT GUIDE

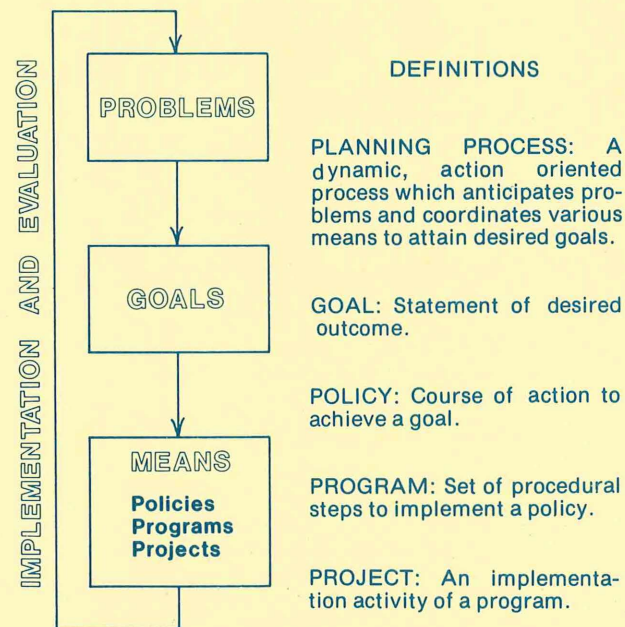
In 1977 the Commission completed work on its initial Regional Development Guide. This report contains a compilation of the goals, policies and programs of the Commission and a development strategy to address major identified problems or needs of Region I. The Guide sets forth an orderly approach that outlines long range development goals to improve the living environment in the Region in addition to short range actions that address the immediate problems at hand.

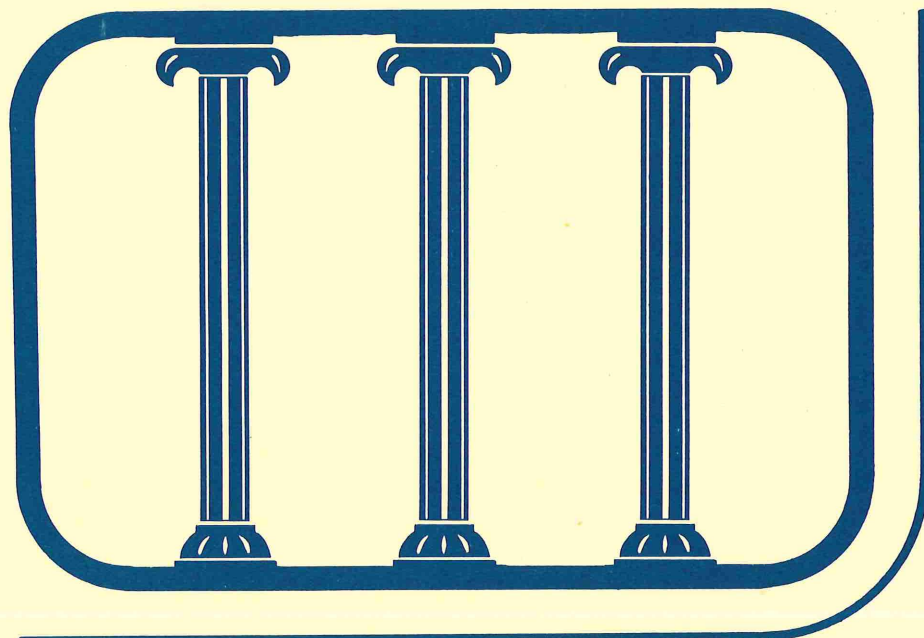
The Guide is the Commission's first step toward meeting the legislative mandate for a "comprehensive development plan" for the Region required under the 1969 Regional Development Act (M.S. 462.39, Subd. 3). This legislation is designed to facilitate effective use of government programs to solve economic, physical and social problems in Minnesota in addition to providing a means (RDC) to allow local units of government to cooperate in addressing areawide problems or issues. The Commission will be updating and expanding the Guide annually as new

information is generated and experience is gained from program implementation activities.

Aside of the Commission's use of the Guide as a basis for their action it also is intended to serve as an easy to understand informational source for local governments and other interested agencies. During 1978 the Commission will disseminate the Regional Development Guide to local governments, libraries and other interested agencies within the Region for review and comment. Their input along with comments from state and federal agencies will be considered by the Commission in future revisions of the Guide.

The NWRDC Planning Process





Aging

Under the Older Americans Act as amended in 1973, the Federal Government encourages regional planning for programs on aging. The regional agencies that carry out such planning are termed Area Agencies on Aging (AAA's). The Northwest Regional Development Commission (NWRDC) officially became the Regional I Area Agency on Aging as of January 1, 1978. Acting as the Area Agency on Aging the Northwest Regional Development Commission will institute a program that will include comprehensive planning for aging programs, research on problems related to aging, information dissemination, encouragement of interagency cooperation and making grants for direct services for senior citizens programs.

In order to establish its aging program the Commission was required to submit an Area Plan for Programs on Aging to the Minnesota Board on Aging (MBA). The Minnesota Board on Aging initially insisted that the Commission combine its efforts with Headwaters Regional Develop-

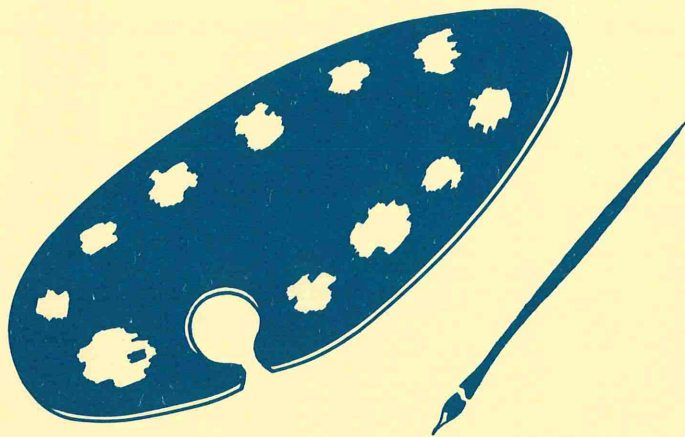
ment Commission (Region II) to establish a bi-regional Area Agency on Aging. After considering the probable impact of establishing a bi-regional aging program both Regional Development Commissions rejected the idea and insisted that separate aging programs be instituted. Therefore, the Minnesota Board on Aging agreed to accept a plan for establishing a separate aging program from the Northwest Regional Development Commission.

In order to accomplish the establishment of an aging program the Commission hired a staff planner as of July 15, 1977. The decision by the Minnesota Board on Aging to allow the submission of a separate Area Plan from Region I was not finalized until September 19, 1977. The Area Plan, was however, submitted to the Minnesota Board on Aging by its October 1, 1977 deadline and was officially accepted at its December 16, 1977 meeting.

In the process of establishing its Aging Program the Northwest Regional Development Commission carried out several activities. A 16 member Advisory Committee on Aging began meeting in August. The Committee met on a monthly basis through 1977. Its activities centered around a process of needs assessment and the setting of priorities, goals and work plans. Priorities established included transportation, legal services, and in-home services (chore, homemaker, nursing and meals). Some of these priorities are reflected in the Area Plan budget for the expenditure of Title III direct service grant funds.

In addition to the above efforts other activities included technical assistance to various groups, particularly county committees on aging and helping in the establishment of county committees on aging in Red Lake, Pennington and Roseau Counties. Additionally, a determination of the need to carryout a transportation study was made and steps were taken to initiate that study as of January 1, 1978.

By mid 1978 the Commission will have developed and adopted grant making procedures and will be in a position to begin awarding grant funds to projects.



ARTS

The NWRDC established a Regional Arts Task Force in cooperation with the Minnesota State Arts Board during 1976. The role of the Arts Task Force is to facilitate local arts development, to assess the need for the interest in various types of arts programming in the Region, to assist the communities in Region I in gaining access to state and federal funds for the arts and to review and make recommendations on grant applications for arts projects serving the Region.

The process for developing the capability to carry out this arts development program was divided into three phases. Phase I was devoted to developing the Arts Task Force, recruiting members, writing bylaws and other organizational details and was completed early in 1977. Phase II is the process of developing an initial program plan for the Region including a goal setting process.

The Arts Task Force of the Regional Development Commission is well into Phase II of its development at the end of 1977. The major goals of the Task Force in 1977 were to assess the needs and resources of the Region, and to review and make recommendations to the Minnesota State Arts Board on grant applications for arts projects having a regional origin and impact. The needs and resource assessment was carried out by means of a regionwide survey of 103 producers and arts sponsors and

over 900 consumers. The response to the survey showed both an interest in arts development by Region I residents, and the presence of potential sponsors and arts producers whose aid and expertise can be helpful in local arts development.

After the acceptance of the plan developed in Phase II the Commission's arts program goes into the fully operational stage, Phase III. In Phase III the Region will administer a block grant program for arts development and certain responsibilities now being handled by the Minnesota State Arts Board will be decentralized to the Region.

In 1977 Region I was awarded a total of \$15,625 from the Minnesota State Arts Board for arts programming. The following is a list of the projects funded.

Valley Crossing Arts Council, Crookston, \$2140

"Residency by the Minnesota Dance Theatre"

Thief River Falls Community Arts Council, \$1300

"Residency by the Minnesota Dance Theatre"

Thief River Falls Concert Association, \$1250

"Performance by the St. Paul Chamber Orchestra"

Northland Community College, Thief River Falls, \$225

"Chimera Theatre production Mark Twain Revisited"

Community Education, East Grand Forks, \$375

"Young Mark Twain as performed by the Performing Arts Repertory Theatre"

Thief River Falls Community Arts Council, \$375

"Young Mark Twain as performed by the Performing Arts Repertory Theatre"

Crookston Civic Music League, \$1500

"For performances by the Roger Wagner Chorale and violinist Endre Granat"

Local or Regional Grants

Crookston Civic Music League, \$530

"Audience development project for the coming season"

Thief River Falls Community Arts Council, \$200

"Theatre performance during city arts festival"

Valley Crossing Arts Council, Crookston, \$1175

"Feasibility study of local theatre"

University of Minnesota Technical College, Crookston, \$3000

"Continuation of composer-in-residence"

West Polk County 4-H Leaders Council, Crookston, \$330

"Photography and pottery workshops"

Crookston Civic Music League, Crookston, \$2000

"Workshop and performance by the St. Paul Chamber Orchestra during 78-79 series"

Crookston Civic Music League, Crookston, \$500

"Guest conductor for annual oratorio"

Thief River Falls Community Arts Council, \$350

"One-day residency by Musica Antiqua with performance"

Wolf Zone 10, Crookston, \$375

"One-day of workshops and reading by novelist Frederick Manfred"



Criminal Justice

The Northwest Regional Development Commission became formally involved in criminal justice planning October 1, 1977. Criminal justice planning prior to this date was administered for an area comprising development Regions I and II.

In late November, 1977, a staff planner was hired and the process of establishing a Criminal Justice Advisory Committee was begun. Representatives from each of the seven counties within the Region and from each of the criminal justice subsystems (law enforcement, courts, corrections and juvenile justice) make up the membership of the Advisory Committee.

The Criminal Justice Advisory Committee met for the first time in December, 1977, and began their planning tasks. Over the next several months, the Advisory Committee will be identifying needs and problems

in the criminal justice sphere in Region I. A comprehensive plan for the Region will be completed in April, 1978.

The 1978 criminal justice work program also includes research and technical assistance components. It is expected at this time that the research will concentrate on assessing the Region's criminal justice system.

CRIMINAL JUSTICE PROJECTS FUNDED THROUGH REGION "A" CRIME COMMISSION 1970-1976

County	Year	Title of Project	LEAA Amount
Kittson	1972	Radio Grant (statewide)	\$34,644
Marshall	1972	Radio	39,829
	1975	Jail Program	27,212
	1976	Contract Policing	59,821
Norman	1972	Radio	Region C Award
Pennington	1970	Crime Prevention through Public School Ed.	
			7,878
	1971	Youth Employment Subsidy	13,266
	1971	Crime Prevention through Public School Ed.	8,576
	1972	Radio	34,408
	1973	Crime Prevention through Public School Ed.	9,048
	1975	Juvenile Crime Prevention Program	22,172
	1976	Pennington/Thief River Falls Joint Records Program	18,521
	1976	Pennington In-Service Training Program	16,372
Polk	1970	Area Jail and Lockup Feasibility Study	22,125
	1972	NW Minnesota Law Enforcement Task Force	8,360
	1972	Radio Equipment	97,275
	1973	Adult Corrections Center (Director Hired)	19,545
	1974	Adult Correction Center (Construction & Program)	221,868
	1975	Polk County Joint Records	16,623
	1975	Adult Corrections Center (Construction)	219,450
	1975	Adult Corrections Center (Program)	109,905
	1976	Polk County Contract Police	35,821
	1976	Adult Corrections Center (Program)	117,315
Red Lake	1972	Radio	17,888
Roseau	1972	Radio	36,104
	1975	Community Awareness Training	2,018



DEVELOPMENTAL DISABILITIES

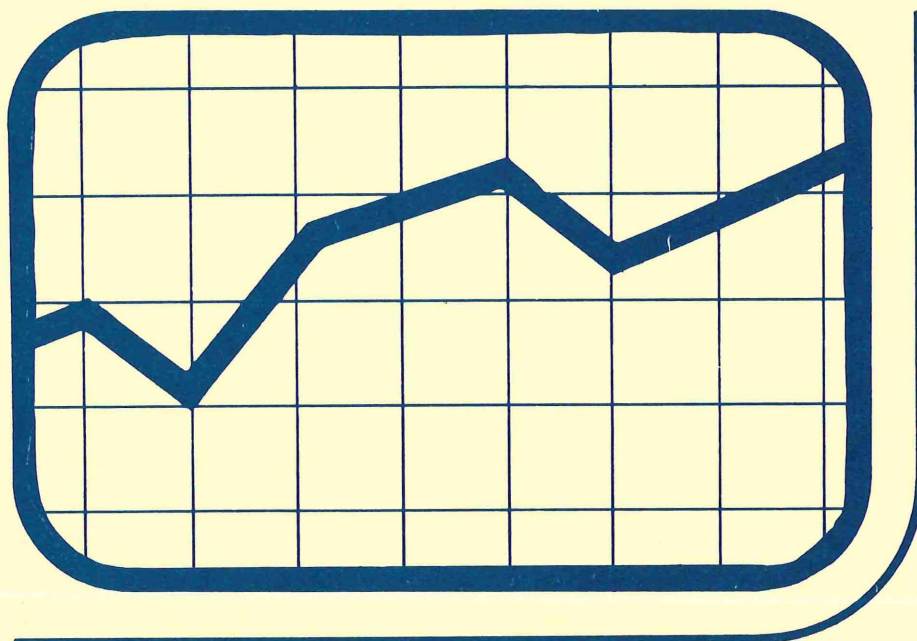
In October of 1977 the Northwest Regional Development Commission became the host agency for the regional Developmental Disabilities Planning Program which had previously been administered through Agassiz Health Systems Agency on a two region basis. The initial efforts of the D.D. planning program through the Regional Development Commission were aimed at making the transition between the two agencies. In December a memo of agreement was developed between the NWRDC and the Northwestern D.D. Advisory Board which also serves in an advisory capacity to the Northwestern Mental Health Center to use that group as the Advisory Committee for the D.D. planning program. The memo is expected to be signed in early 1978. The joint utilization of one advisory board will serve to promote the goals of the Developmental Disabilities Legislation which are to create a comprehensive approach to D.D. planning and promote coordination of services for persons with developmental disabilities. Developmental Disabilities are defined as disabilities which:

- Are attributable to mental retardation, cerebral palsy, epilepsy, autism or dyslexia or another neurological condition...closely related to mental retardation;
- Originated before age 18;
- Are expected to continue indefinitely, and;
- Constitutes a substantial handicap to the individual.

The Region is expected to include in its local planning efforts, on behalf of persons with developmental disabilities, the following activities:

- Defining and determining the population in need of services;
- Identifying local gaps in and needs for services;
- Establishing locally appropriate priorities for planning, developing, and evaluating efforts to make available comprehensive services to all persons with developmental disabilities, and
- Submitting annual comprehensive plans to the State DD Council and staff.

Among the work activities anticipated for early 1978 are the development of a joint work program with the Northwestern Mental Health Center, so that the research and planning activities of the NWRDC will be integrated with the NWMHC services and programs, and the provision of assistance to the State D.D. Office in its data collection efforts and the publication of a service directory of resources in Region I for the developmentally disabled. A services plan will be developed during 1978.



Economic Development

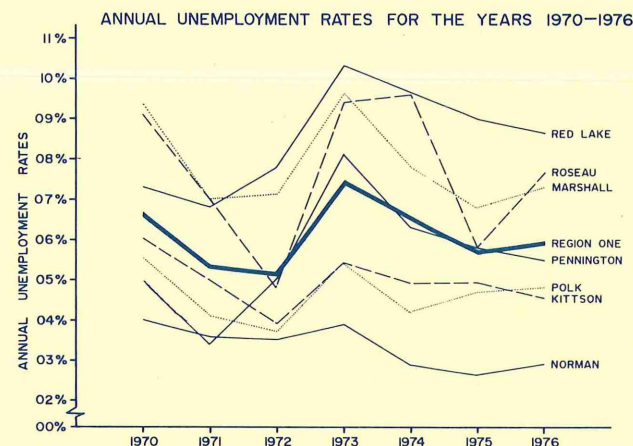
1977 saw the establishment of the Economic Development Committee whose members represent each of the seven counties and various economic interest groups such as farmers, businesses, bankers, public officials and industry. The Committee has done an analysis of the state of the Region's economy and has formulated an initial district Overall Economic Development Program. The OEDP was completed in November and submitted for review to local, state and federal agencies. The review process was successfully completed by various agencies and public hearings were held in Greenbush and Red Lake Falls. This was followed by the adoption of the OEDP by the Northwest Regional Development Commission at its meeting of January 24, 1978.

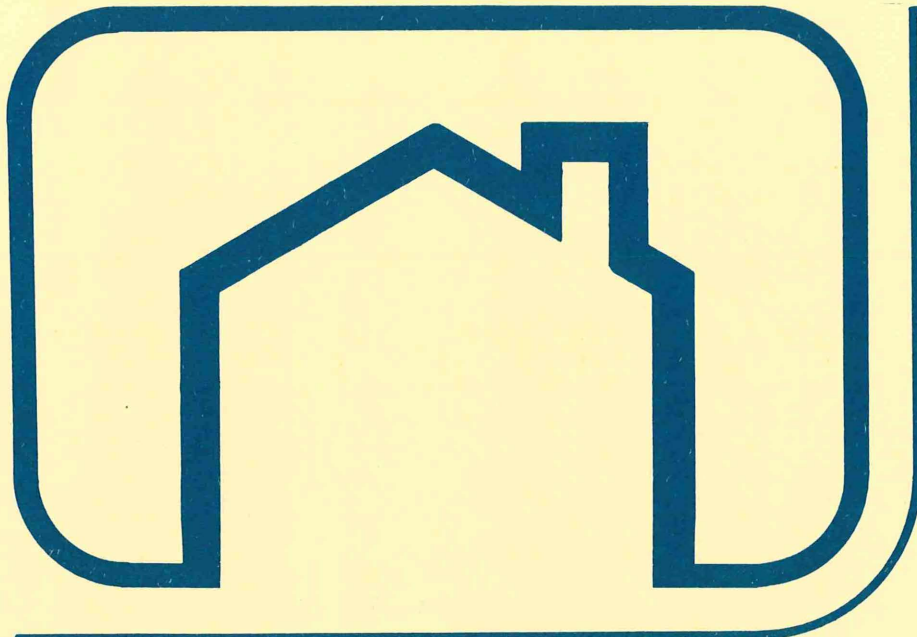
Issues addressed in the OEDP included the problems related to fluctuating farm incomes, energy, housing, unemployment, transportation, tourism, land use, capital outflow, health, water and public participation in economic development planning. The chief goal set was the need to

diversify and expand the Region's predominantly agricultural economy so that it proceeds along a stable and healthy growth path. The structural nature of the population calls for increased emphasis on job creation in the next few years, otherwise, high unemployment could result, which in turn could lead to population out-migration and debilitate the economic base of the Region.

Some specific economic development projects include the very strong possibility of establishing a sunflower oil processing plant in the area, helping farmers improve their marketing skills by conducting workshops, helping small businesses by conducting workshops, with the assistance of the U.S. Department of Commerce, improving the Commission's data system, increasing public awareness of economic development planning and, continuously monitoring the Region's economy via special studies so as to improve our understanding of the dynamics of economic development. Lastly, technical assistance is provided on an on-going basis to local governments and other economic development agencies.

The Commission is funded by the U.S. Department of Commerce, Economic Development Administration to establish an economic development program in the Region.





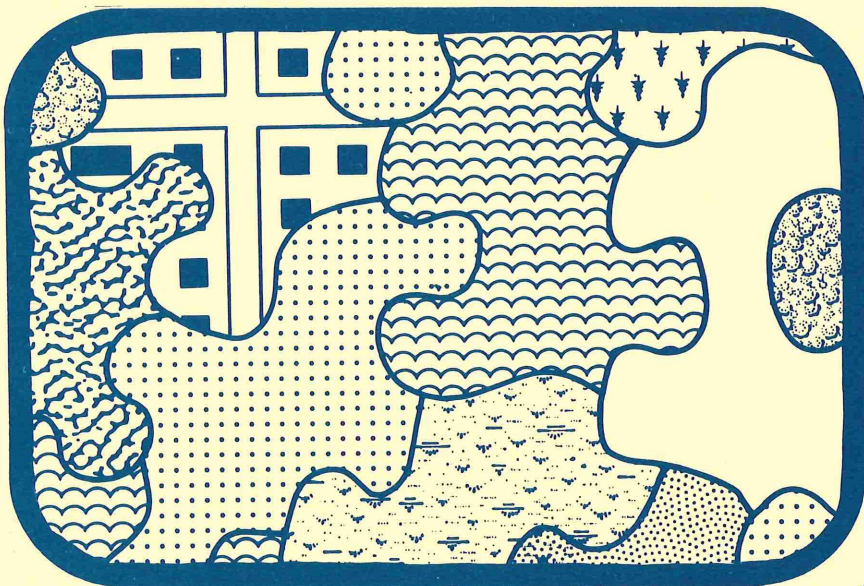
The housing planning activity of the Commission has been funded in part by the comprehensive planning grants from the Department of Housing and Urban Development (701's) program. During this next year the plan will undergo careful monitoring to determine its overall effectiveness in addressing the Region's housing needs.

SUBSIDIZED HOUSING IN REGION ONE October, 1977

Housing

During 1977 the Commission completed its first comprehensive housing policy plan which describes activities of the Commission designed to help alleviate housing problems in the Region. The document contains a series of allocation plans which have been established to allocate funds for the following programs: HUD Section 8 rental assistance programs, Minnesota Housing Finance Agency's Home Improvement loans and grants, as well as Farmers Home Administration loans for Single Family (Section 502) and Multi-Family (Section 515) housing. Together with the allocation plans, distributions have been established which estimate the number of housing units which will be needed to fill the needs within each of these programs. These distributions also provide a measure by which the effectiveness of programs can be compared. The distribution and allocation plans also provide the Commission with a tool to review project applications and to coordinate assistance programs in the Region's housing market.

	Units for Elderly	Units for Family
Kittson County	36	0
Marshall County	102	10
Norman County	48	40
Pennington County	179	72
Polk County	214	188
Red Lake County	76	4
Roseau County	44	0
Region One	699	314



Land Use

The Regional Commission's role in land use planning is limited to an analysis of changing land use patterns, identifying competing land uses and estimated total land needed for new development. The Commission has no regulatory authority but serves as a source of information and technical assistance.

During 1977 the Commission was funded by the U.S. Department of Housing and Urban Development "701" program to complete a land use plan for the Region. This plan describes areawide land use problems within the Region and recommends alternatives for their solution. The plan also assesses the impact of growth and development on the land and includes policies to guide decision making regarding areawide land use issues.

In addition to development of the Land Use Component the NWRDC

entered into a contract agreement with the State Planning Agency to establish and maintain an Environmental Permit Information Center. The purpose of the Permit Center is to provide the citizens of Region I with a "one-stop" information service on all permits which are required for various development projects. The Commission also entered into a contract with the Department of Natural Resources, to assist in the Socio/Economic Phase II study associated with the potential development of Northern Minnesota peat reserves as a possible energy source.

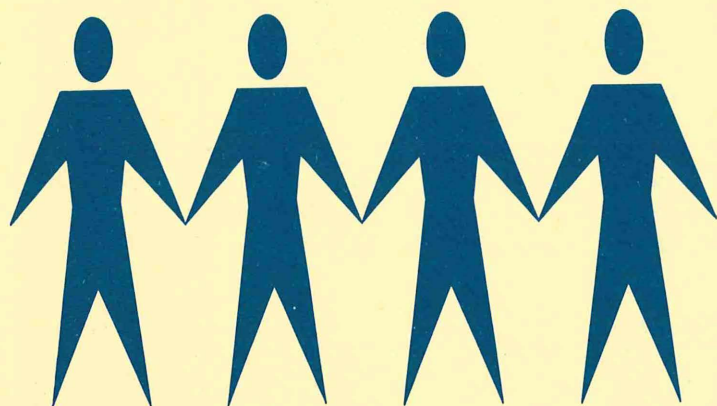
In addition the Commission assisted Crookston Township in its effort to obtain and implement a land use planning grant. Crookston Township was successful and the resultant comprehensive plan and accompanying zoning ordinance is scheduled for implementation spring 1978.

COMPOSITION OF EXISTING LAND USE

Land Use Category	Kittson	Marshall	Norman	Pennington	Polk	Red Lake	Roseau	Region I
Cultivated	67.2%	65.5%	90.0%	81.4%	86.8%	81.9%	42.7%	70.8%
Forested	9.5	11.5	4.6	6.5	5.1	9.9	28.6	11.9
Pastured/Open	14.2	16.1	3.6	9.5	5.0	6.6	14.4	10.7
Marsh	8.2	5.1	.2	1.6	.6	.9	13.2	5.1
Water	.3	1.4	*	*	1.3	*	.8	.8
Urban	.4	.3	.5	.8	1.1	.6	2	.6
Extractive	.1	*	*	.1	.1	.1	*	.1
Transportation	.1	*	*	*	.1	.1	*	*

* - less than .1 percent

SOURCE: 1975 Pocket Data Book, Minnesota State Planning Agency, St. Paul. (Land use information based upon 1969 information.)



MANPOWER

The NWRDC does manpower planning under a contract with the Minnesota Department of Economic Security. The purpose of this agreement is to decentralize manpower planning functions from the state to the local level. During 1977 the Regional Commission planned for the expenditure of approximately \$2.9 million dollars for manpower needs. These 2.9 million dollars roughly break down into: \$700,000 for Title I training and employment programs; \$800,000 programmed for counties for public service employment through Title II and Regular VI; \$900,000 for special projects which were begun during 1977 under Title VI Special Programs by area nonprofit organizations and government; some \$390,000 for Summer Youth employment programs; \$90,000 for the In School Youth employment program. These programs provided employment and manpower services for over 2,000 persons.

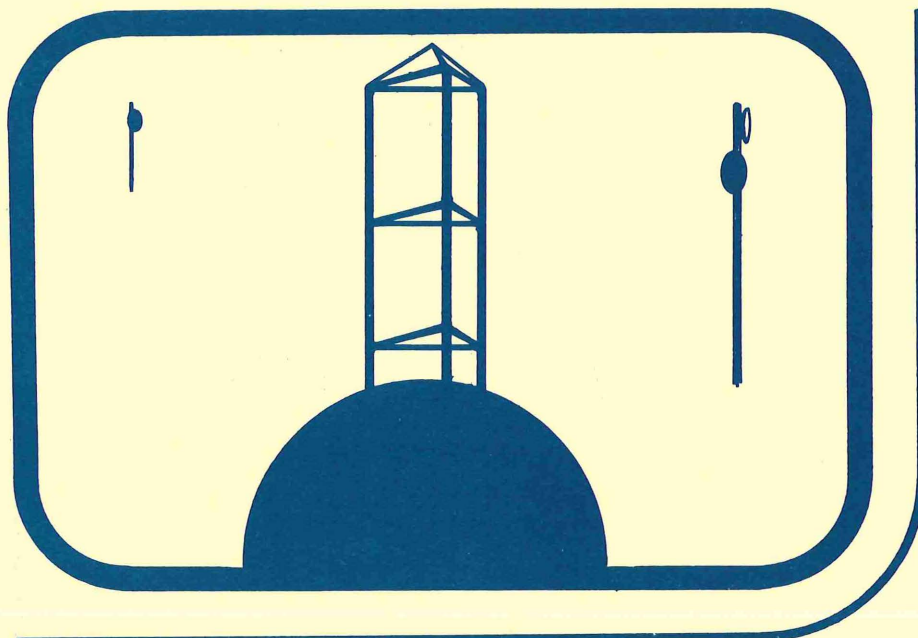
The Commission has appointed a Regional Manpower Advisory Committee (RMAC) which serves as the planning group for manpower

programs. The RMAC role is to: 1) identify and document area manpower needs, 2) recommend a system of manpower servers designed to meet local identified needs on a priority bases within the limits of available resources, and 3) to monitor and evaluate ongoing manpower programs.

For 1978 the RMAC has recommended that the following groups receive priority for CETA services. Veterans, minorities, female head of household, youth (14-21), older workers (55+), public offenders and Welfare recipients.

CETA TITLE VI SPECIAL PROJECTS FUNDED 1977

Persons Employed	Project Description
2	Mentor-Maintenance Man
12	Warroad Indian Village
7	Chemical Dependency Counselors
25	CAP's Winterization Crews
3	Repair of Public Facilities-Middle River
4	School Grounds-East Grand Forks
1	Community Service Person-McIntosh
6	Clean Up in Red Lake Falls
4	City Government-Fertile
1	English Instructor-UMC
1	UMC Career Education Lab
6	Roadside Clearing-Red Lake County
6	Public Building Repair-Marshall County
3	Hall Reconstruction-Skime
3	Youth Counselors-Inter-County
5	Head Start Program-Tri-Valley
3	Adult Day Care Program-Riverview Hospital
2	Effective Living Center-Crookston
1	Continuing Education Coordinator-NW Educational Coordinating Service Unit
6	Maintenance Program-Grygla
5	Park Clean Up-Pelan Park



TELECOMMUNICATIONS

In March of 1974, the Northwest Regional Development Commission and the Headwaters Regional Development Commission organized a non-profit corporation, Northwest Minnesota Telecommunications, Inc., to develop telecommunications services in the two-region area. Both Regions view communications as a vital link in rural development activities and established Northwest Telecom to address three basic issues: 1) the cause, extent, and solution of the commercial television voids, where the people are not getting any Minnesota or American signals; 2) the expansion of public television service to include everyone in the 12 county Project Area; 3) the establishing of a broadband telecommunication capability as a service delivery network for health, education, mental health, business, criminal justice, government, and others.

It is believed that the potential impact of telecommunications services will be comparable to that of rural electrification and rural telephones - - perhaps much greater.

The year 1977 saw significant, additional progress made in the telecommunications project.

The organization has become a member of the Public Service Satellite Consortium of San Diego, an organization that is jointly sponsored by the Department of HEW and by the National Aeronautics and Space Administration. The Public Service Satellite Consortium acts as a broker in scheduling satellite time on the CTS, public service satellite.

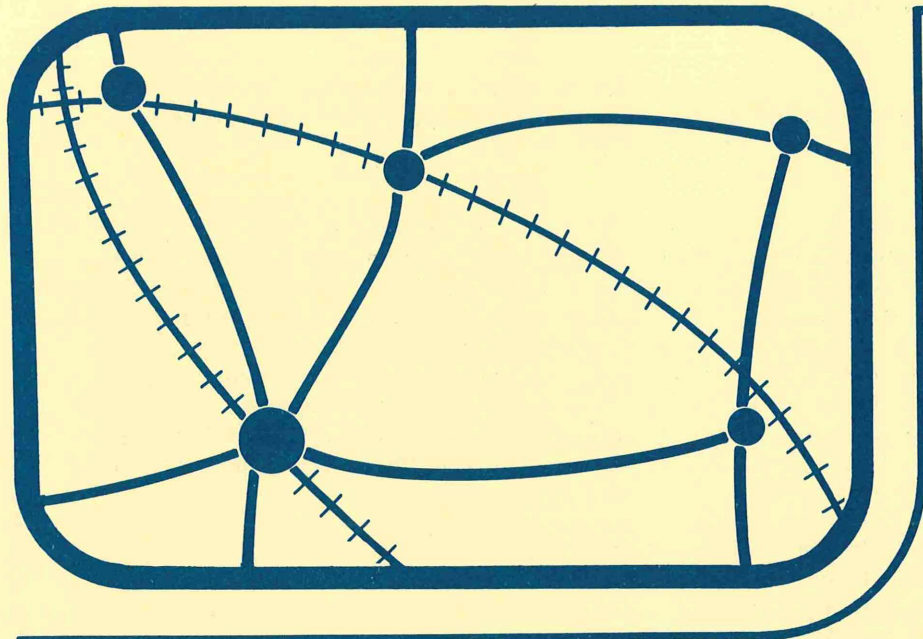
Northwest Telecom is continuing in its efforts to schedule and to execute a satellite demonstration in continuing medical education, but only if the cost of the demonstration can be kept reasonable. Due to some scheduling conflicts on the CTS satellite, the project has been delayed.

In July of 1977, Northwest Telecom received a call from the Executive Office of the President, Washington, D.C. The call was to notify the organization that it had been placed on the list of five organizations from throughout the country to be used to develop demonstration options and cost estimates for using telecommunications in rural development. The results will be included in a recommended legislative package that would call for five, five-year pilot projects with budgets of \$2-20,000,000 each. Northwest Telecom stands to be included as a recipient of such legislation if it is passed.

In August of 1977, the Executive Director of Northwest Telecom went to Washington to assist in the drafting of the Interagency Report on Rural Communications. When the report was completed, it contained a proposal originally developed by Northwest Telecom. The concept called for the establishing of some conference/studios that would be linked by two-way video, and which would allow people to attend some of their regional meetings without having to drive long distances. The energy and time savings resulting from such a system could be rather substantial.

As a prelude to the conference/studio concept being available on a regular basis, the Board of Directors of Northwest Telecom has conducted a number of its regular Board meetings using two-way video. The Board was divided into two groups who met in different locations and whose only link was two-way video. They were pleasantly surprised at the effectiveness of the concept when being used, and can visualize some of the many benefits that would accrue to the people of the Region if such a service were to be available on a regular basis.

In 1978, efforts will continue to establish the capability to deliver services using telecommunication systems. In addition, funding will be sought to conduct demonstration projects to give people experiences in using new concepts and new equipment.



TRANSPORTATION

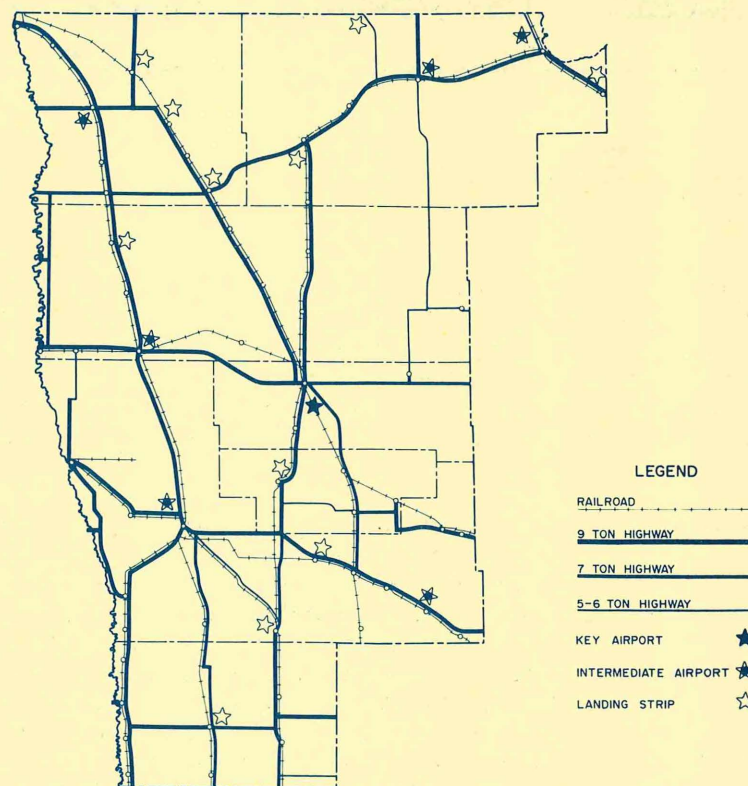
The Regional Transportation Advisory Committee has actively served in two major roles in 1977. First, the Committee in its advisory role to the Commission has conducted numerous reviews of transportation projects and federal/state program documents to determine their impact on the Region and recommend action the Board should take in their capacity as the non-metro A-95 clearinghouse. Secondly, the Committee has continued to assist the Minnesota Department of Transportation (Mn/DOT) in developing the Statewide Transportation Plan that is scheduled to be completed in July of 1978.

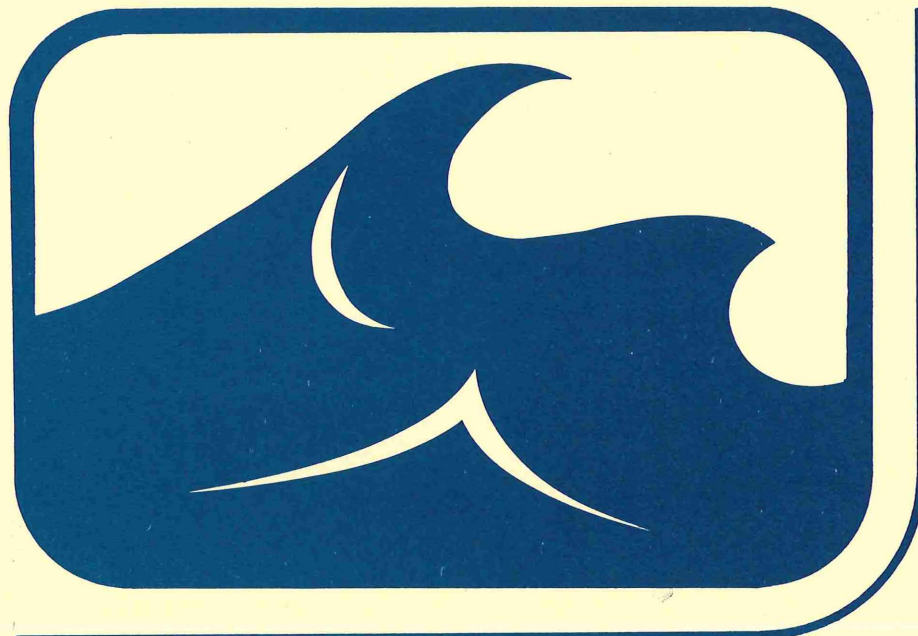
During 1977 the Committee has sponsored four public informational meetings to present the results of their planning work on the state plan and to solicit comments on transportation problems or needs within the Region. The Committee presented testimony on the Region's transportation concerns to the Senate Subcommittee on Transportation. In addition the Committee fulfilled the Phase II inter-agency work contract

between the Commission and Mn/DOT by completing a report outlining selective statewide transportation policies and transportation projects needed within Region I.

In addition to the ongoing work with Mn/DOT the Committee is responsible for developing a regional transportation policy plan mandated by the Legislature in 1976 in the legislation creating the State Department of Transportation. This plan will contain a strategy to develop and maintain the transportation network to accommodate growth and change in Region I and will provide additional input to Mn/DOT.

TRANSPORTATION NETWORK





WATER RESOURCES

In 1972, the Water Pollution Control Act Amendments, Public Law 92-500, set a national goal of restoring and maintaining the "chemical, physical and biological integrity of the Nation's waters." Section 208 of the law provides for state and areawide planning which will result in water quality programs designed to help state and local officials make decisions and implement plans related to water pollution control.

The NWRDC's role in 208 WQM planning began in late 1976 with the establishment of the Regional Water Quality Management Committee, in accordance with a contract with MPCA. The Committee consists of 17 voting members representing cities, counties, townships, soil and water conservation, watersheds, Farmers Union, Farm Bureau, NFO and other public interest groups in the Region and numerous ex officio members. The Committee, chaired by Commission member Irving Beyer of Red Lake Falls, is responsible for facilitating and coordinating local citizen involvement throughout the 208 planning process (scheduled for completion in the fall of 1979) as well as serving as an advocate for

the water quality needs of Northwestern Minnesota by providing recommendations to MPCA on the control of "non-point"* sources of water pollution which affect Region I.

During the past year, major accomplishments of the Committee include: the development and implementation of the regional citizen participation program, authorization of Agassiz Regional Environmental Education Council to develop a localized slide presentation, initial familiarization with the water quality needs and existing water management authorities and programs which affect Region I, prioritization of non-point source categories of pollution as they affect Region I and participation in review and comment activities as requested by MPCA. For the next year the Committee will be evaluating the following for impact on the Northwest Region:

- 1) Agricultural operations
- 2) Irrigation of agricultural lands
- 3) Drainage of agricultural lands
- 4) Roadside erosion
- 5) Confined animal feed operations
- 6) Pesticide application
- 7) Forestry
- 8) Urban stormwater runoff
- 9) Construction activities in urban areas
- 10) Chemicals for highway snow and ice removal
- 11) Residual waste from industrial air and water pollution control process
- 12) Mines

In addition to 208 WQM planning the NWRDC entered into a contract in November 1977 with the State Water Planning Board to provide assistance in the preparation of the statewide "Water Resources Study." The objective of this study is to outline for the Legislature, alternatives for the best use of Minnesota's water resources. Commission involvement has been delegated to the established 208 Committee and will consist of providing a mechanism for local citizen involvement and review-comment activities throughout the effort. The Commission co-sponsored a public information meeting in this regard in November 1977. Involvement with the Water Planning Board is expected to continue through FY 1979.

* Non-point sources of water pollution are those which enter waters indirectly by washing off land or seeping through soil into ground water.



Fergus Falls Hospital Study

In 1975 the Minnesota State Legislature authorized and funded two citizens Advisory Task Forces to study the future utilization of Fergus Falls State Hospital. The Northwest Task Force representing the counties of Region I - Kittson, Marshall, Norman, Pennington, Polk, Red Lake, and Roseau - and Mahnomen County, was paralleled by a similar Task Force in Region IV. Combined the two Task Forces represented the service area of Fergus Falls State Hospital. The Northwest Task Force was appointed by the Northwest Regional Development Commission and functions as a committee of the Commission.

In carrying out its mandate the Northwest Task Force adopted six objectives consistent with the Department of Public Welfare's Comprehensive Plan which called for these regional studies to be done. Summarized, the objectives were to:

1. Identify current chemically dependent, developmentally disabled, and mentally ill populations in the study area.
2. Project future populations in the three disability groups.
3. Determine the most appropriate manner of providing community-based services to the populations.

4. Develop innovative approaches to deinstitutionalization in addition to community-based care.
5. Develop recommendations on the funding and administration of service/treatment programs.
6. Establish recommendations on the future utilization of Fergus Falls State Hospital.

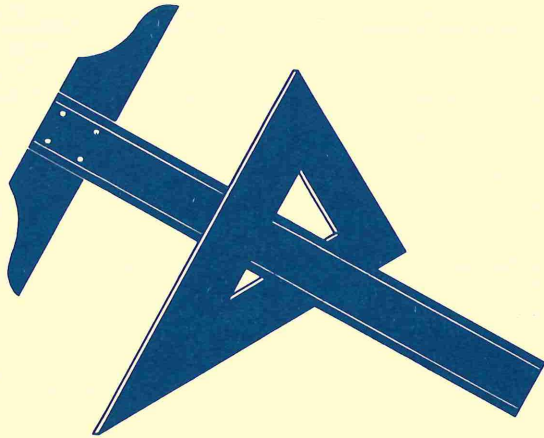
Recommendations were developed for improving the mental health delivery system which focused on mental health programs/services, program funding, and on the future utilization of Fergus Falls State Hospital. These recommendations are made in the context of improving upon what the Task Force found to be an already good service delivery system.

Major problems identified with the in-place system of mental health services were: 1) fragmentation of services due primarily to categorical funding; and 2) the inability of the system to be flexible enough to be able to respond to local priorities.

In its report to the Legislature, submitted January 2, 1977, the Northwest Task Force recommended that: community-based programs be expanded as an effective alternative to institutionalization. Funding should flow to the counties for purchasing non residential services for the chemically dependent, developmentally disabled and mentally ill according to local priority needs; and categorical funding for programs should be integrated at the state level and passed on to the counties in block grants for this purpose. Services should be offered on an "open market" basis under user fees covering all costs and funds following the person rather than flowing to the institution. Planning for the services and the allocation of funds should be done under the policy control of the counties consistent with a state system of standards/guidelines for services.

In June 1977 a second report was released which compiled the rather extensive data which was collected for the study into a format usable by other agencies. The Committee officially terminated June 30, 1977, with the expiration of authorizing legislation.

The Task Force presented testimony on the study in St. Paul to committees of the House of Representatives and the Senate during the 1977 Legislature session. In November additional testimony was presented in Crookston to Representative Clawson's Subcommittee studying state institutions.



Technical Assistance

The technical assistance provided by the Commission falls into four general categories: grantsmanship, planning, information dissemination and special project assistance. Assistance is available upon request within the limits of Commission staff time.

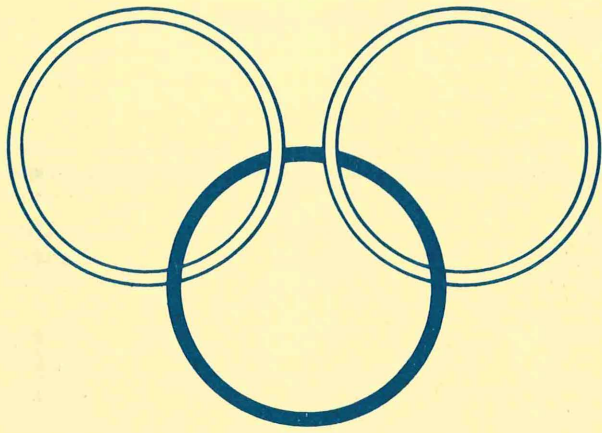
The Commission's grantsmanship activities involve providing applicants with grant and loan program information including application forms, technical requirements and submittal deadlines. Applicants in some cases are also provided with socio-economic data to insert into application forms. Commission staff reviews forms for completeness and quality if requested. During 1977 approximately 50 applicants were given assistance by the Commission.

During 1977 Polk County and Kittson, Marshall, Pennington and Red Lake Counties as a multi-county system contracted with the Commission

to perform research and coordination work to develop community health service plans to qualify for Community Health Service Subsidy from the State. Polk County's plan was completed in March and the multi-county plan involving Kittson, Marshall, Pennington and Red Lake Counties was completed in August of 1977. These plans were subsequently approved by the State Health Department and the Counties qualified for a total of over \$214,000 in State Health Subsidies.

Other planning assistance involved advising local units of government on zoning ordinances, upgrading overall economic development programs, etc. For example, Commission staff served as a liaison between consultants and the Crookston Township Board in developing growth policies and a zoning ordinance for the Township. In addition, staff met periodically with Board members and staff from Marshall, Red Lake and Roseau Counties to advise them how EDA planning requirements could be met so the counties could remain eligible to receive federal funds for economic development.

The Commission has made significant progress in expanding its information resources to better serve local government and residents of Region I. An environmental permit information center has been established within the Commission office to service as a one stop source for information on local, state and federal permit-issuing programs. The Commission also became designated as an Associate Office of the U.S. Department of Commerce. This designation allows the Commission access to useful business and industrial information which is then made available to interested firms and individuals in the Region.



COORDINATION

Regional Development Commissions are granted certain review/coordination powers under M.S. 462.391 and under Parts I and IV of the Federal Office of Management and Budget Circular A-95.

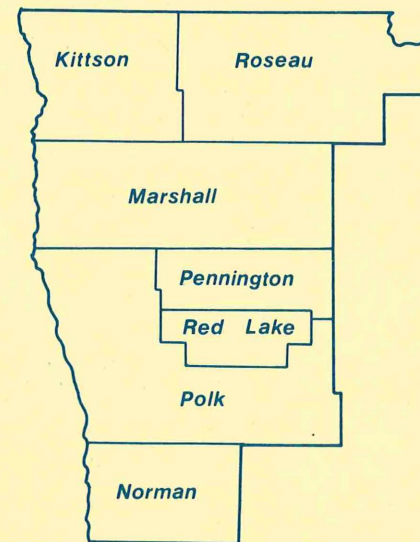
The general purpose of these reviews is to attempt to bring programs and services with regional impact which are funded by the State or Federal Government grants or loans into harmony with each other, to prevent duplication, and to make those programs consistent with the programs of local governments.

During 1977 NWRDC operated as a regional clearinghouse for grant and loan review. This system is to review all applications for state and federal grants or loans to determine the extent to which a proposed project duplicates, runs counter to, or needs coordination with other projects or programs; the extent to which it might be revised to increase

its effectiveness or efficiency and to determine the program's consistency with state and federal environmental policy.

The Commission uses a project notification system for the review process in which notifications are sent out to agencies, groups or individuals who are or may have an interest in the proposed program, soliciting their comments. If there are negative comments the clearinghouse can call a conference between the applicant and others interested in the program to attempt to resolve the problems. This function provides for agency and public input into the development of new programs in the Region.

During 1977 the NWRDC strengthened its review function considerably by expanding the number of contacts made on projects and by conducting a more thorough analysis by Commission staff. NWRDC Clearinghouse reviewed 128 projects during 1977. The Clearinghouse can make either a positive or a negative review on projects. NWRDC has chosen in many cases to write detailed comments which describe the findings of the Clearinghouse. Included in this Report is a listing of projects reviewed.



PROJECT REVIEWED BY

THE NORTHWEST REGIONAL DEVELOPMENT COMMISSION

IN 1977

Applicant	Project	Project Cost	NWRDC Comments	Funding Agency	Agency Action
Argyle	Sewage Collection System	\$437,000	Supportive	HUD	Rejected
Crookston	Storm Sewer/Housing Rehab	500,000	Supportive	HUD	Awarded 500,000
St. Vincent	Water & Sewer	480,000	Supportive	HUD	Rejected
Karlstad	Upgrading/Surfacing Streets	400,000	Supportive	HUD	Rejected
Migrant Health Services	Migrant Health Services Mn/N. Dak.	675,000	Conditionally Supportive	HEW	Awarded 450,000
NW Telecommunications, Inc.	Agency Operations	25,000	Supportive	GRDC	Awarded 25,000
Tri Valley Opportunity Inc.	Senior Citizen Employment	273,330	Supportive	GMO	Awarded 91,803
Inter County Community Council, Inc.	Senior Employment	246,000	Supportive	GMO	Awarded 60,000
Inter County Community Council, Inc.	Weatherization Program	165,071	Supportive	MEA	Rejected
Inter County Community Council, Inc.	Agency Operation	170,000	Supportive	CSA	Awarded 119,000
Inter County Community Council, Inc.	Home Start Program	124,559	Supportive	HEW	Awarded 98,891
Governors Manpower Office	Public Service Employment	4,429,141	Supportive	DOL	Awarded 4,429,141
Agassiz Health Systems Agency	Agency Operations	197,905	Supportive	HEW	Awarded 175,000
Inter County Community Council	Pre-School Health Screening	15,000	Supportive	HEW	Awarded 9,000
Hallock	Street/Utility Improvements	285,000	Supportive	FmHA	Awarded 285,500
Kittson County	Multi-County Health Services Planning	25,000	Supportive MDH	MDH	Awarded 25,000
NW Community Action Agency	Rural Housing Plan	30,000	Supportive	GMO	Awarded 30,000
NW Telecommunications, Inc.	Delivery Demonstration	223,000	Supportive	MEA	Rejected
Wild Rice Watershed District	Energy Saving Demonstration	2,226,420	Supportive	FmHA	Awarded 448,700
Northland Community College	Flood Prevention	5,000	Supportive	Loan HEW	Awarded 3,930
	Library Resources				

Applicant	Project	Project Cost	NWRDC Comments	Funding Agency	Agency Action
Thief River Falls	Airport Improvements	126,000	Supportive	MN/DOT Federal State Local FmHA	Awarded 106,650 5,000 14,350 Awarded 260,000 Approved
Roseau	Utilities/Street Imp.	260,000	Supportive	FmHA	
Sand Hill Watershed District	Watershed Program	NA	Supportive	NA	
Governor's Manpower Office	Crisis Intervention	8,500,000	Non-Supportive	CSA	Awarded 8,500,000
Kittson County	Rural Water System	211,300	Supportive	FmHA	Awarded 211,300 Rejected
Agassiz Health Systems Agency	Emergency Medical Services Planning	44,916	Supportive	HEW	
Polk Co. Hwy. Dept.	Tri Valley Transit Program	90,000	Conditionally Supportive	MN/DOT	Awarded 52,666
Riverview Hosp. Ass'n.	Health Personnel Recruitment	197,547	Supportive	HEW	Awarded 197,547
Crookston	Bridge Replacement	900,000	Supportive	MN/DOT	Awarded 675,000 Pending
Northern Mn Public Television	Public Television	150,000	Supportive	UGLRC	
Newfolden	Sanitary Sewer Extension	80,000	Supportive	FmHA	Pending
NW Community Action Agency	Agency Operation	150,000	Supportive	CSA	Awarded 98,000
Marshall County	Land Use Planning	26,000	Supportive	SPA	Rejected
Polk County	Community Health Services	441,670	Supportive	MDH	Awarded 137,270 Rejected
Hallock	Land Use Planning	22,000	Supportive	SPA	
Charles A. Lent	Remodeling/Expansion Drug Store	80,000	Supportive	FmHA Loan	Rejected
Northwest Community Action Agency	Head Start Program	161,672	Supportive	HEW	Awarded 184,012
Tri Valley Opportunity Council	Summer Youth Recreation	1,712	Supportive	CSA	Awarded 1,712
Becker/Mahnomen/ Norman Counties	Community Health Services	530,919	Supportive	MDH	Awarded 187,144
NW Community Action Agency	Home Winterization Program	83,650	Supportive	CSA	Awarded 35,700
Inter County Community Council, Inc.	Weatherization Program	59,780	Supportive	CSA	Awarded 54,480
Ross Seed Company	Seed Processing Plant	470,000	Supportive	FmHA Loan	Awarded 470,000
NW Multi Co. Housing Authority	Public Housing Project Planning Project	10,000	Supportive	HUD	Awarded 4,800
Thief River Falls HRA	Public Housing	3,000	Supportive	HUD	Awarded 3,000

Applicant	Project	Project Cost	NWRDC Comments	Funding Agency	Agency Action
Argyle	Street Improvement/ Storm Sewer	100,000	Supportive	FmHA	Rejected
Kahbaykahnong Youth Center	Youth Center	113,058	Supportive	CCPB	Rejected
Marshall Co. Sheriff	Contract Policing	85,000	Supportive	CCPB	Rejected
Pennington Co. Sheriff	Policing Drug Abuse	38,550	Supportive	CCPB	Rejected
Pennington Co. Sheriff	Police in-service training	39,937	Supportive	CCPB	Rejected
Thief River Falls	Crime Prevention	52,000	Supportive	CCPB	Rejected
Polk Co. Sheriff	Contract Policing	60,000	Non-supportive	CCPB	Rejected
9th Judicial District Public Defender	Legal Defense Services	61,839	Supportive	CCPB	Rejected
Tri Valley Opportunity Council	Agency Operation	64,280	Supportive	CSA	Awarded 81,000
Inter County Community Council	Senior Citizen Employment	267,000	Supportive	CSA	Awarded 60,000
University of Mn. Crookston	Retired Senior Citizen Volunteer Program	33,543	Supportive	ACTION	Awarded 23,143
Mn Soil & Water Conservation	Rainfall Monitoring Program	24,072	Supportive	GRDC	Awarded 24,072
Dept. of Natural Resources	Lake Bronson State Park Outdoor Recreation	17,000	Supportive	BOR	Awarded 8,500
McIntosh	Tennis Courts	20,000	Supportive	SPA	Rejected
Governor's Manpower Office	Concentrated Outreach to Older People	620,481	Supportive	HEW	Pending
Governor's Manpower Office	Older Workers Manpower Support	264,306	Supportive	HEW	Pending
Alvarado	Tennis Courts	6,000	Supportive	SPA	Awarded 4,300
MN Nutrition Campaign Inc.	Community Food & Nutrition Program	80,000	Non-Supportive	GRDC	Rejected
Thief River Falls Area Vo-Tech	Beef Specialist	28,500	Supportive	GRDC	Rejected
Tri Valley Opportunity Council	Community Food & Nutrition	15,000	Supportive	CSA	Awarded 9,000
Newfolden Community Homes Corp.	Rural Rental Housing	145,000	Supportive	FmHA	Pending
Oklee School District	Basketball Court	5,137	Supportive	SPA	Rejected
Polk County Attorney	Courts Victim/Witness Program	20,000	Supportive	CCPB	Rejected
Holt	Tennis Court	9,089	Supportive	SPA	Rejected
Brooks	Tennis Court	16,068	Supportive	SPA	Rejected
Winger	Tennis Court	16,700	Supportive	SPA	Rejected
East Grand Forks	Tennis Court	20,050	Supportive	SPA	Awarded 10,025
NW Community Action	Supplemental Food & Nutrition Program	12,800	Supportive	CSA	Awarded 10,000
Inter County Community Council	Community Food, Nutrition	16,000	Supportive	CSA	Rejected

Applicant	Project	Project Cost	NWRDC Comments	Funding Agency	Agency Action
University of Mn Crookston Hallock School Dist.	Tennis Courts	48,950	Supportive	CSA	Rejected
Erskine	Tennis Court	19,950	Supportive	SPA	Awarded 9,975
Newfolden	Tennis Court	16,130	Supportive	SPA	Awarded 8,065
Grygla	Tennis & Basketball Court	20,000	Supportive	SPA	Awarded 10,000
Thief River Falls	Tennis Court	31,153	Supportive	SPA	Rejected 8,150
Tri Valley Opportunity Council	Tennis Court	16,300	Supportive	SPA	Awarded 330,454
Governors Manpower Office	Senior Meals	330,454	Supportive	GCCA	Awarded 7,646,263
Tri Valley Opportunity Council	CETA Title I	7,646,263	Supportive	DOL	Awarded 34,300
Tri-Valley Opportunity Council	Long Term Care Ombudsman Program	25,725	Non-Supportive	GCCA	Awarded 50,000
Kittson, Marshall, Pennington, Red Lake Co.	Valley Chore Service	50,000	Supportive	GCCA	Awarded 123,464
NW Regional Dev. Comm.	Community Health Service Subsidy Program	379,770	Supportive	MDH	Awarded 12,500
NW Regional Dev. Comm.	Developmental Disabilities Planning	17,900	Supportive	GDDC	Awarded 25,000
NW Telecom, Inc.	Criminal Justice Planning	28,450	Supportive	CCPB	Pending
Middle River Crookston Hendrum	Adult Education Services	56,000	Supportive	HEW	Rejected
Climax	Tennis Courts	16,650	Supportive	SPA	Rejected
Holt Ada	Softball Fields	100,000	Supportive	SPA	Awarded 70,540
Twin Valley Twin Valley	Water Supply Distribution	70,540	Supportive	FmHA	Awarded 72,000
Hendrum	Recreation Trails	80,000	Supportive	SPA	Rejected Awarded 9,000
Ada	Tennis Courts	14,700	Supportive	SPA	Rejected Awarded 4,250
Lancaster	Tennis Courts	19,000	Supportive	SPA	Awarded 25,125
Plummer	Tennis Courts	9,000	Supportive	SPA	Rejected Awarded 12,500
Karlstad	Facility Development	8,500	Supportive	SPA	Rejected Rejected
Roseau	Park Development	33,500	Supportive	SPA	Rejected
	Facility Development	25,000	Supportive	SPA	
	Recreation Field	25,000	Supportive	SPA	
	Tennis Court/ Ice Rink	17,855	Supportive	SPA	
	Tennis Court	19,800	Supportive	SPA	
	Horseshoe Court	4,500	Supportive	SPA	

Applicant	Project	Project Cost	NWRDC Comments	Funding Agency	Agency Action
NWRDC	Economic Development Planning	60,000	Supportive	EDA	Awarded 45,000
Lancaster	Street/Utility Improvements	529,000	Supportive	FmHA Loan	Awarded 529,000
Lake Bronson Homes, Inc.	Elderly Housing Units	164,000	Supportive	FmHA Loan	Awarded 164,000
Red Lake Falls	Wastewater Treatment Facility Planning	37,000	Supportive	MPCA	Awarded 37,000
Roseau County Museum	Historical Publication	10,000	Supportive	MHS	Awarded 5,000
Nelson, Otterkill, Otterkill, Governor's Manpower Office	North Star Apartments	NA	Supportive	MHFA	Pending
East Grand Forks	Skill Training Improvements (STIP)	1,911,566	Supportive	USDOL	Rejected
Marshall Co. SCS	Community Development (4th Year)	177,000	Supportive	HUD	Awarded 177,000
Migrant Health Services, Inc.	Middle River Stream Bank Stabilization	60,500	Supportive	MN/SCS	Pending
Marshall County	Migrant Health Program	610,213	Supportive	HEW	Pending
Pennington Co. SCS	Home Care Expansion Into Kittson County	33,590	Supportive	HEW	Awarded 20,590
Fosston	Self Contained Water Management Pilot Project	53,400	Supportive	GRDC	Rejected
Agassiz Health Systems Agency	Wastewater Treatment Facility Planning	40,100	Supportive	MPCA	Awarded 30,075
Fosston	Agency Operation	201,743	Supportive	HEW	Pending
Thief River Falls	Water Systems Improvement	1,298,400	Supportive	FmHA Grant	Awarded 900,000
Bennett Hamre	Land Use Planning	11,000	Supportive	Loan	398,400
NWRDC	Auto Repair Shop Addition	150,000	Supportive	SPA	Pending
NWRDC	Overall Economic Development Program	NA	Supportive	FmHA Loan	Pending
NWRDC	Housing Plan	NA	Supportive	NA	Adopted
Polk Co. Historical Society	Land Use Plan	NA	Supportive	NA	Adopted
NW Community Action Agency	Historical Restoration	10,000	Supportive	MHS	Awarded 5,000
Stuart Folland	Paratransit	238,020	Supportive	MN/DOT	Pending
State Planning Agency	Low Rent Housing	NA	Supportive	MHFA	Pending
Warroad	Energy Efficiency Task Force	19,100	Non-Supportive	GRDC	Pending
	Wastewater Treatment Planning	40,770	Supportive	MPCA	Awarded 30,578

Applicant	Project	Project Cost	NWRDC Comments	Funding Agency	Agency Action
Roseau Co. Board	Community Health Services Planning	7,000	Supportive	MDH	Awarded 7,000
Tri-Valley Opportunity Council	Paratransit	255,000	Supportive	MN/DOT	Pending
NW Regional Community Development Corporation	Agency Operation	80,000	Conditionally	SPA	Pending
Karlstad Farmers Elevator Co.	Renovation	275,000	Supportive	FmHA Loan	Awarded 275,000
Tri Valley Opportunity Council	Program Planner for Rural Development	19,885	Non-Supportive	GRDC	Rejected
Karlstad	Land Use Planning	9,000	Supportive	SPA	Rejected
Tri Valley Opportunity Council	Community Food And Nutrition	15,000	Supportive	CSA	Awarded 9,000

Funding Agency Identification

		Funds Awarded In Region I
BOR	Bureau of Outdoor Recreation	\$ 8,500
CCPB	Crime Control Planning Board	25,000
CSA	U.S. Community Service Administration	8,977,892
DOL	U.S. Department of Labor	12,075,404
MN/DOT	Minnesota Department of Transportation	853,666
EDA	U.S. Economic Development Administration	45,000
GCCA	Governor's Citizen Council on Aging	414,754
GDDC	Governor's Developmental Disabilities Council	12,500
GMO	Governor's Manpower Office	181,803
GRDC	Governor's Rural Development Council	49,072
HEW	U.S. Dept. of Health, Education & Welfare	1,138,970
HUD	U.S. Dept. of Housing & Urban Development	234,800
FmHA	U.S. Dept. of Agriculture, Farmers Home Administration	4,012,440
MDH	Minnesota Department of Health	629,878
MEA	Minnesota Energy Agency	-0-
MHFA	Minnesota Housing Finance Agency	-0-
MHS	Minnesota Historical Society	10,000
MPCA	Minnesota Pollution Control Agency	97,653
MN/SCS	Minnesota Soil & Water Conservation Service	-0-
SPA	Minnesota State Planning Agency	173,390
UGLRC	Upper Great Lakes Regional Commission	-0-
	ACTION	23,143
	Total	\$28,963,865

NOTE: These figures represent only the grant and loan applications that were reviewed by the NWRDC.

NWRDC Advisory Committees

* Member who no longer serve but did serve during 1977.

NORTHWEST TELECOMMUNICATIONS, INC.

This group is responsible for the planning and development of telecommunications services for rural development.

REGION I BOARD MEMBERS

NAME	ADDRESS	AFFILIATION
Fred Sorensen, Chairman	Grygla	Commission
Rusty Hastad	Halstad	Commission
Loran Stortroen	Climax	Commission

EX-OFFICIO MEMBERS

David Bakke	Newfolden	School Board
Doug Bradham	East Grand Forks	Agassiz Health Council
Stu Folland	Karlstad	Business
Ken Johnson	East Grand Forks	Area Vocational Technical Institute
Representative William Kelly	East Grand Forks	District Representative
Bill Kiewel	Crookston	Communications
*Bill Marvin	Warroad	Business
Charles Potter	Crookston	Crookston School System
Dr. Stan Sahlstrom	Crookston	University of Minnesota
Lilja Snyder	Crookston	Polk County Nursing Service
Ervin Strandquist	Newfolden	Commission
Roy Waters	Crookston	NW Mental Health Center

REGIONAL MANPOWER ADVISORY COMMITTEE

This Committee is responsible to advise the Commission on the allocation of Manpower Training and development funds and the evaluation of Manpower programs in Region I.

NAME	ADDRESS	REPRESENTING
Vaughn Thorfinnson, Chairman	Red Lake Falls	NWRDC
Kenneth Benesh	Ada	General Public
June Brandt	Thief River Falls	Labor
Lil Bridgeford	Crookston	Agency
Don Cavalier	Crookston	Colleges
Charles Cheney	Warren	General Public
Judy Christianson	Ada	Agency
Jame Foster	Fosston	Agency
Sam Gibbons	Warroad	Consumer
Charles Gosen	Badger	Consumer
Ken Johnson	East Grand Forks	General Public
Roy Jorgenson	Oklee	Agency
Grace Lindquist	Newfolden	General Public
Rod Nelson	Crookston	Business
*Dale Neppel	East Grand Forks	Agency
Harvey Nielsen	Hallock	Veterans
Walter Pederson	Roseau	General Public
Joyce Peterson	Warroad	Labor
Brad Powell	Thief River Falls	Business
Al Rouse	Thief River Falls	Business
*Earl Ryden	Kennedy	General Public
J.K. Stadum	Thief River Falls	Agency
*Chester Stengrim	Greenbush	Business
*John Tofte	Thief River Falls	Consumer
Efren Tovar	East Grand Forks	Agency
*Ed Williamson	Thief River Falls	Business
Roger Wittenberg	Crookston	Agency
*J.J. Womack	Thief River Falls	Business

NWRDC Advisory Committees

* Member who no longer serve but did serve during 1977.

Water Quality Management Committee

Water Quality Management Planning is being done under Section "208" of the Federal Water Pollution Control Act of 1972. This Committee will advise the NWRDC on the extent of water pollution problems in the Northwest Region and will recommend action to improve water quality. Committee members are:

NAME	ADDRESS	REPRESENTING
Irving Beyer, Chairman	Red Lake Falls	County
Willard Brunelle	Crookston	Public Interest
Alvin Fore	Oklee	Farmers Union
Roland Gullekson	Fertile	Watershed
Allen Gustafson	Lancaster	Soil Conservation Service
Richard Lorensen	Greenbush	Township
Darrow Lundeen	Trail	County
Howard Lunsetter	Gatzke	National Farmer's Organization
Werner Mahlum	Gary	County
Wayne Myers	Hallock	ASCS
Henry Panek	Goodridge	Township
Chester Ramberg	Mentor	Soil Conservation Service
Donald Rivard	Argyle	Watershed
Stanley Roadfeldt	Badger	Public Interest
Gerhard Ross	Fisher	Farm Bureau
Authur Rud	Newfolden	City
*Lee Selnes	Alvarado	City
Don Visser	Ada	City

Regional Criminal Justice Advisory Committee

This Committee was created to advise the Commission on Criminal Justice matters. They are responsible for developing a comprehensive justice plan addressing regionwide needs and problems.

NAME	ADDRESS	REPRESENTING
Duane Knutson, Chairman	Fertile	Municipality
Henry Aaby	Twin Valley	Citizens
Curt Hauger	Roseau	Law Enforcement
Manfred Holm	Roseau	County
Jason Huseby	Crookston	Courts
Richard Jamison	Ada	County
Kermit Knutson	Red Lake Falls	Law Enforcement & Corrections
Bernice Kostrzewski	Warren	County
Jim Kremer	Thief River Falls	County & Mental Health
Duane Nordling	Hallock	County
Pat Overend	Hallock	Law Enforcement
Pete Prenevost	Red Lake Falls	County & Corrections
Charles Richards	Thief River Falls	Law Enforcement
Ervin Strandquist	Newfolden	NWRDC
Lloyd Wold	Trail	County

Work Development Committee

This Committee is responsible for developing and recommending a program of work to the full Commission. This work program is a description of proposed work activities, objectives and a time frame for accomplishment.

Committee members are: *Norrell Erickson, Roseau County; Phillip Lambert, Kittson County; Fred Sorensen, Marshall County; Loran Stortroen, Polk County; Lawrence Sundahl, Marshall County; Si Strand, Norman County.

NWRDC Advisory Committees

* Member who no longer serve but did serve during 1977.

Regional Advisory Committee On Aging

The Committee is responsible to advise the Commission on matters relating to aging and on the allocation of Older Americans Act funds to be used for social services (Title III) education (Title IV A) and senior citizen's centers (Title V).

NAME	ADDRESS	REPRESENTING
Verne Green, Chairman	Newfolden	NWRDC
*Velda Bodahl	Fosston	Inter-County Community Council
R.L. Edwards	McIntosh	Inter-County Community Council
Marlin Erickson	Pencer	Roseau County
George Fricker	Middle River	Marshall County
Alan Fuglie	Twin Valley	Nursing Homes
Harry Hanson	Hallock	Kittson County
Vivian Harney	East Grand Forks	Older Consumer
Olivine Juneau	Brooks	Older Consumer
Werner Mahlum	Gary	Norman County
Lawrence Phillion	Red Lake Falls	Red Lake County
Sylvia Pulkrabek	Mentor	Polk County
Otto Stenberg	Thief River Falls	Pennington County
LaVerne Swan	Badger	Northwest Community Action Agency
Kathleen Treb	Crookston	Tri-Valley Opportunity Council
Ambrose Wysoski	Thief River Falls	NWRDC
Dale Zutzy	Warren	NWRDC

PERSONNEL COMMITTEE

The Personnel Committee advises the Commission on matters relating to staff. The Committee interviews candidates for employment with the Commission, recommends salary levels and makes recommendations to the Commission on policy relating to personnel.

Committee members are: *Norrell Erickson, Roseau County; Ambrose Wysoski, Pennington County; Oris Moen, Polk County; Harvey Tripp, Polk County; Fred Sorensen, Marshall County; and Ervin Strandquist, Marshall County.

REGIONAL ARTS Task Force

The Arts Task Force was created to identify needs and opportunities for arts programming in Region I and to develop a plan to meet those needs. Task Force membership:

NAME	ADDRESS	REPRESENTING
*Mrs. James Cameron	Red Lake Falls	Red Lake County
Mark Carlson	Newfolden	Marshall County
Mrs. Robert Dodds	Red Lake Falls	Red lake County
*Mrs. Lloyd Duffney	Ada	Norman County
Lloyd Fandrich	Humboldt	Kittson County
Dee Forney	Thief River Falls	Pennington County
Becky Hastad	Halstad	Norman County
David Johnson	Ada	Norman County
Ellen Kapphahn	Greenbush	Roseau County
*Mrs. Francis Karlsson	Roseau	Roseau County
*Roger Kemp	Crookston	Polk County
Mary Anne Kinane	East Grand Forks	Polk County
Anthony Kuznjik	Crookston	Polk County
*Eileen McDonald	Crookston	Polk County
Michael Moen	Red Lake Falls	Red Lake County
*John Pearson	Crookston	Polk County
*Kay Rosengren	Hallock	Kittson County
*Mrs. Faith Rud	Warren	Marshall County
Leah Schmirler	Roseau	Roseau County
*Mrs. Robert Severson	Hallock	Kittson County
Nancy Solum	Argyle	Marshall County
Ric Sorenson	Fosston	Polk County
*Leah Strandquist	Roseau	Roseau County
Les Torgerson	Thief River Falls	Pennington County
*Mike Trudeau	Thief River Falls	Pennington County

NWRDC Advisory Committees

* Member who no longer serve but did serve during 1977.

Economic Development Advisory Committee

The Committee is responsible for advising the NWRDC on matters of economic development planning and implementation.

NAME	ADDRESS	REPRESENTING
Fred Sorensen, Chairman	Grygla	Banking
Bob Carlson	Karlstad	Public Official
Bob Carlson	Thief River Falls	Public Official
*Peter Carlson	Argyle	Banking
John Carpenter	Hallock	Banking
Keith Driscoll	East Grand Forks	Agriculture
Roger Eckstein	Red Lake Falls	Business
Terry Fladeland	Red Lake Falls	Agriculture
Vernon Holland	Ada	Business
*Rose Johnson	Warroad	Minorities
George Lee	Oklee	Banking
Ray Malmlov	Shelly	Agriculture
Dennis Mills	St. Hilaire	Public Official
Ron Payne	Roseau	Industry
Richard Roberts	Warroad	Public Official
*Glen Sanner	Lancaster	Business
George Schwartz	Thief River Falls	Banking
Russell Slininger	Twin Valley	Agriculture
Lynn Siverson	Fosston	Banking
Howard Smith	Crookston	Local Development Corporation
Ray Tunheim	Newfolden	Agriculture

Development Disabilities Committee

This group is responsible to advise the Commission on planning and coordinating services for the developmentally disabled in Region I.

NAME	ADDRESS	REPRESENTING
*Agnes Aanden	Beltrami	ARC
David Aanes	Fergus Falls	Fergus Falls State Hospital
*Nellie Anderson	Middle River	Welfare
*Delores Bienek	Warren	Consumer
Mary Ann Bodell	Warren	Group Homes
Bill Brinkman	Crookston	High Schools
Sanna Brovold	Gully	Consumer
Charles Cheney	Warren	Public Official
*Kevin Clementson	Bemidji	ARC
Ella Mae Derosier	Red Lake Falls	Consumer
Gary Erickson	Thief River Falls	Welfare
Marylyn Hartman	Twin Valley	Consumer
John Johnston	Roseau	Children's Homes
Bernice Kostrzewski	Warren	Community
Mabel Mosbeck	Red Lake Falls	Consumer
Harry Sutherland	Hallock	Consumer
Dan Wilson	Crookston	Mental Health

Transportation Advisory Committee

Created to advise the Commission on all modes of transportation in the Region and to formulate a Regional Transportation Policy Plan which will address area wide transportation needs and development problems.

NAME	ADDRESS	REPRESENTING
Joe Bouvette, Chairman	Hallock	Cities
Ralph Berg	Brooks	Township
Gerald Green	Gary	Township
Roger Hoffman	Goodridge	County
Wayne Juhl	Greenbush	County
Bernie Lieder	Crookston	Polk Co. Hwy. Dept.
Lawrence Sundahl	Stephen	Cities
Harold Thomforde	Crookston	Cities

NWRDC Budget

Calendar Year 1977

REVENUES

Year Ending December 31, 1977

State	\$ 74,769.83
Local	57,231.91
HUD	14,151.00
UGLRC	10,000.00
LCMR	3,676.00
GMO	23,206.74
EDA	30,000.00
Polk Co. CHS	5,760.00
Env. Permit	5,000.00
Aging	9,180.00
Dev. Disabilities	3,150.00
Peat-DNR	238.75
WQM "208"	3,402.58
Multi-Co. CHS	4,326.36
Arts	1,000.00
FFHS	15,000.00
TOTAL	\$260,093.17

EXPENDITURES

Year Ending December 31, 1977

Staff & Fringe	\$ 147,160.74
Consultants	5,445.00
Office Expense	61,230.87
Transportation	31,631.91
TOTAL	245,468.52
1977 Revenues	260,093.17
1977 Expenditures	245,468.52
Balances	14,624.65

Calendar Year 1978

PROJECTED REVENUES*

State	\$ 68,500.00
Local	51,000.00
HUD	13,500.00
GMO	25,000.00
EDA	45,000.00
Aging	20,000.00
LEAA	25,000.00
Dev. Disabilities	12,500.00
WQM "208"	6,000.00
MN/DOPT	5,000.00
Arts	2,000.00
TOTAL	\$ 273,500.00

* Includes January, 1978 Balance

PROJECTED EXPENDITURES

Staff & Fringe	\$161,000.00
Consultants	5,500.00
Office Expense	66,000.00
Transportation	41,000.00
TOTAL	\$ 273,500.00

1977 Commission Reports

A REPORT OF THE TRANSPORTATION CONCERNS IN REGION I:

This report is a summary of the work completed by the NWRDC Transportation Advisory Committee during the Phase II development of the Statewide Transportation Plan. Major provisions of the report are: a description of the Region's transportation network; a transportation projects needs list; prioritized criteria for selecting transportation projects and; the Region's position on statewide transportation issues.

AREA PLAN FOR PROGRAMS ON AGING:

This document is the initial aging plan developed for the seven county Region by the NWRDC Aging Advisory Committee. Highlights of the plan are: an analysis of the characteristics of the Region's senior citizen population; major problems or needs of the elderly and; a first year course of action for the Commission to follow in addressing prioritized needs of the elderly.

FERGUS FALLS STATE HOSPITAL STUDY - FINAL RECOMMENDATION TO THE MINNESOTA STATE LEGISLATURE:

The Northwest Citizens Advisory Task Force prepared this report in response to the State Legislature's request to study the future utilization of the Fergus Falls State Hospital. The Task Force recommendations address: alternatives to institutionalized care; financial considerations in funding treatment programs and; the long-term operation of the Fergus Falls State Hospital.

FERGUS FALL STATE HOSPITAL STUDY VOL. II - DATE COLLECTION REPORT:

During the process of addressing the utilization of the FFSH the Northwest Citizens Advisory Task Force collected extensive data on the mental health delivery system in Northwest Minnesota. This report contains the methodology of the data collection process, a definition of terms and the data itself.

K-M-P-RL COMMUNITY HEALTH SERVICES FIRST YEAR PLAN:

The results of the multi-county community health services planning are described in the plan. Significant portions of the plan are: an assessment of health service needs; a local strategy for providing or expanding prioritized health services; and estimated costs for implementing a community health service program within the counties of Kittson, Marshall, Pennington and Red Lake. This plan was done to qualify the counties for Community Health Subsidy funds from the State of Minnesota.

LAND USE COMPONENT, PART I: POLICY PLAN:

The Policy Plan outlines the Commission's responsibilities and role in the management and development of the Region's public and private land. This document also described major land use problems within the Region along with a strategy to address these problems through inter-governmental cooperation.

LAND USE COMPONENT, PART II: SUPPORT DOCUMENTATION:

A profile of the Region's land cover, land ownership and existing land management practices is contained in this document. Overall this report provides substantiating information for the Commission's goals, policies and programs.

NWRDC ANNUAL REPORT 1976:

The Commission's work activities during 1976 are described in this document.

NORTHWEST HOUSING PLAN:

The Housing Plan outlines the Commission's responsibilities and role in facilitating housing development within the Region. Major components of the plan are: a description of housing conditions in the Region; Commission goals and policies to facilitate housing development; allocation plans to distribute units available through various public housing programs and; a course of action that the Commission will pursue to coordinate housing development and to increase citizen awareness of housing assistance programs.

OVERALL ECONOMIC DEVELOPMENT PROGRAM:

This report was prepared by the NWRDC Economic Development Advisory Committee and describes what the Commission will do to promote the expansion and diversification of the Region's economy. The OEDP contains a description and evaluation of the Region's economy, problems affecting economic growth and a development strategy to address selected problems and to establish a framework for continued economic planning and development activities within Region I. This program will be updated annually.

OVERALL PROGRAM DESIGN - FISCAL YEAR 1978:

The OPD describes in detail the Commission's work program to be implemented during the period: July 1, 1977 to June 30, 1978. The Commission cooperates with local, state and federal agencies in preparing this report in order to achieve greater inter-governmental cooperation in implementing Commission work programs.

POLK COUNTY COMMUNITY HEALTH SERVICES PLAN:

This plan was done to qualify the County for State funds under Community Health Services Program. The plan outlines the significant health care needs of Polk County including a course of action that the County Board will follow during the first year as part of their agreement with the Minnesota Department of Health.

REGION I DEVELOPMENT GUIDE - DECEMBER 1977:

The Development Guide represents the Commission's first step in response to the Legislative mandate for the "Comprehensive Development Plan" for the Region. Contained in the Guide is a compilation of the highlights of various Commission programs. In addition the Guide sets forth a development strategy which is designed to address regional physical, social and economic issues in an orderly manner recognizing the inter-relationships between various development issues or problems.

SUMMER YOUTH QUESTIONNAIRE RESULTS:

This report summarizes the attitudes of enrollees, supervisors and parents toward the Summer Youth Employment Program implemented within Region I in 1977.