

LEGISLATIVE REFERENCE LIBRARY



3 0307 00015 3158

2181

-77

Scopies

annual report

1977

REGION NINE

LEGISLATIVE REFERENCE LIBRARY
STATE OF MINNESOTA

DEVELOPMENT

COMMISSION

HT
393
.M62
R46x
1977

annual report

1977

**REGION NINE
DEVELOPMENT
COMMISSION**

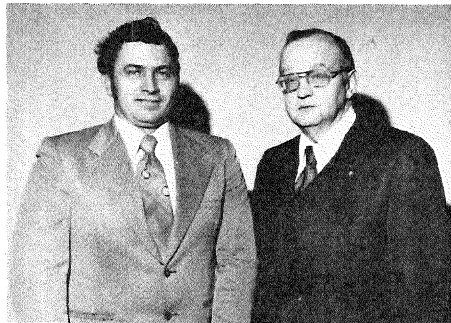


Martin County

Marlin Gratz,
Alderman, Fairmont
Daniel J. Keasling,
County Commissioner
Neil C. Saxton,
Soil & Water Conservation Districts
Donald Stahn,
Mayor, Welcome
Roland Thiesse, *
Township

LeSueur County

James O'Meara,
County Commissioner
James Stangler, *
Township
Walter B. Vetter,
Mayor, Kasota



Waseca County

Margaret Engesser, *
Mayor, New Richland
Roderick Joyce,
Township
Eugene Powell,
County Commissioner

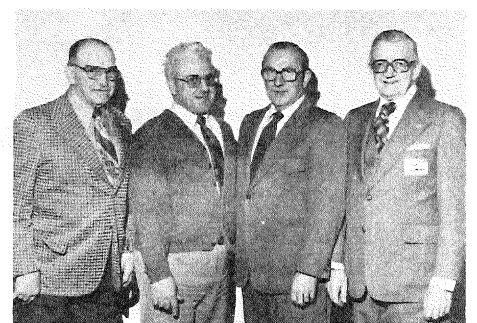


Faribault County

Gunnar Frey,
Mayor, Wells
John Paschke, *
County Commissioner
John Wettlaufer,
Township

Brown County

Orville D. Hanson,
Township
Donald Lindley,
Mayor, Springfield
Denis J. Warta,
County Commissioner
Carl Wyczawski,
Mayor, New Ulm



Watonwan County

Robert Gustafson,
Township
Obert Jacobson,
School Board
Wayne Kevan, *
County Commissioner
Claire Seibert,
Councilman, Madelia

Sibley County

Elmer J. Kading, *
Mayor, Gibbon
Gerald Kreger,
County Commissioner
Victor Weckwerth,
Township



Nicollet County

Kenneth Albrecht,
Township
Wayne Comstock, MVCOG
Ray Eckes,
County Commissioner
Douglas Pyan,
Mayor, St. Peter
Howard Vetter,*
Region Nine Chamber Association



Blue Earth County

Lester Anderson,*
County Commissioner
Oscar Campbell,
Councilman, Eagle Lake
Marcella Glamm,
School Board
Herbert Mocol,*
Mayor, Mankato
Earle C. Schmidt,*
Township



Carl Wyczawski

The year 1977 has been rewarding for the RNDC as we have pursued planning activities which will strengthen local units of government bringing benefits to you, the citizens of the Region Nine area.

There has been a strong commitment to offering technical assistance, which supports units of government in more effectively solving their individual problems and needs. It also strengthens them in working cooperatively.

We are seeing visible results from the planning efforts undertaken in the physical and social planning areas. It is gratifying to learn of the many programs being delivered in our Region which are a direct benefit of this planning.

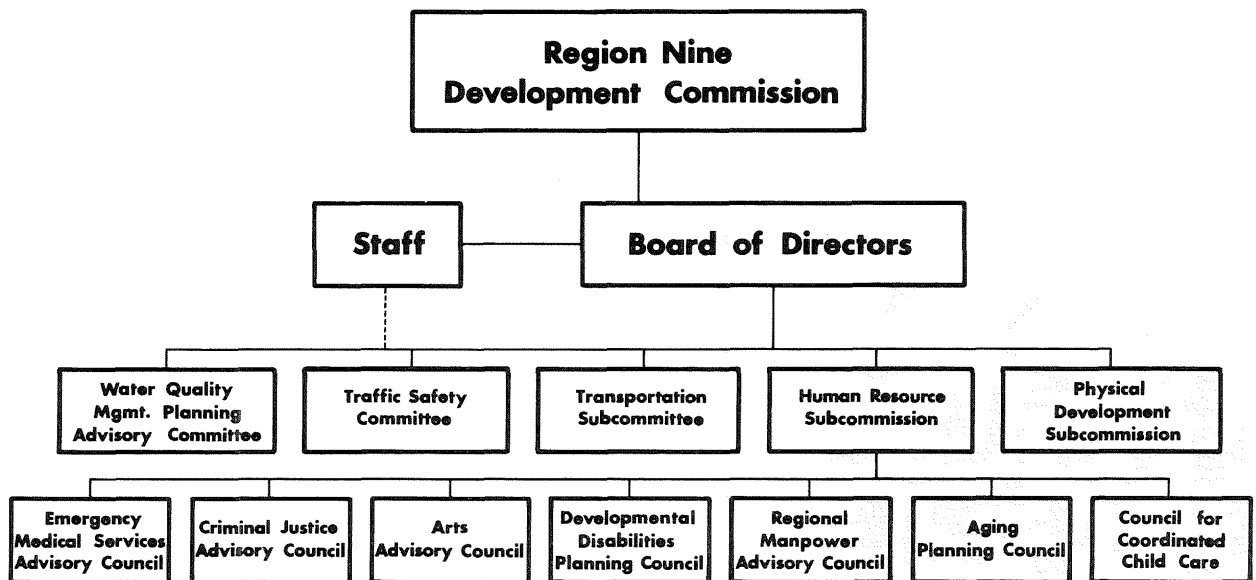
Especially noteworthy this year has been the program for the aging, which was a prime priority of the Commission since its inception and the emergency medical services program. As you are probably aware, the RNDC was the only regional development commission, outside the metropolitan area, funded with federal EMS dollars this past year. It is also important to inform you that the child development program which was originally a separate agency is working well under the RNDC program structure, and is being administered at an effective cost savings.

In closing, I would strongly encourage your participation and commitment to the RNDC planning activities as the Commission relies upon you, the local elected officials and citizens of Region Nine, to identify the problems that should be addressed.

Sincerely,

Carl H. Wyczawski

ORGANIZATIONAL STRUCTURE



region nine development to region nine and the commission

The nine counties that make up the Region Nine area, specifically Blue Earth, Brown, Faribault, LeSueur, Martin, Nicollet, Sibley, Waseca and Watonwan, have a population of about 223,000 of the state's 3,921,000 persons according to the 1975 estimated census. The area is stable and prosperous with a strong economy, good facilities and services and has three major cities, over 10,000 population, which are Mankato, New Ulm and Fairmont.

In the 5,064 square miles, about 5.86 percent of the states (86,332 square miles) the land is primarily agricultural with over 85 percent under cultivation and 12 percent in forest, pasture and open land or water.

In 1972 the Region Nine Development Commission (RNDC) was organized by local elected officials as authorized by the Regional Development Act of 1969. This year notes the Commission's fifth anniversary. Its purpose according to the legislation is — "to facilitate intergovernmental cooperation and to insure the orderly and harmonious coordination of state, federal and local comprehensive planning and development programs for the solution of economic, social, physical and governmental problems of the state and its citizens." (Minnesota Statutes, Section 462.383; Subdivision 2)

Serving on the RNDC are elected officials who represent 9 counties, 76 cities, 147 townships, 45 school districts, 9 soil and water conservation districts and the Minnesota Valley Council of Governments. They are joined by a representative of the business community organizations in the Region.

The 35 member RNDC meets monthly to respond to the needs for counties, cities, townships, school districts, and other groups to work together on a regional basis to address economic, social, physical and environmental problems.

Key regional issues most often include: What can we do to insure our continued quality of life through the appropriate use of land and the environment? How can we best protect and recover the natural resources of our area? What are the recreational needs of citizens and how can they best be met? What can we do to maintain a good employment base to attract new people plus keep the people who are presently employed and living here? What can be done about our transportation needs? How can we work together for total development of all communities? What should be done to see that people of all ages and capabilities receive equitable and adequate services and funds? What



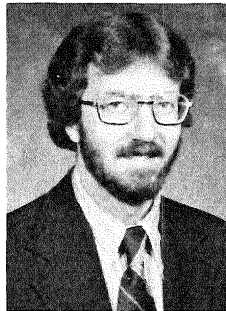
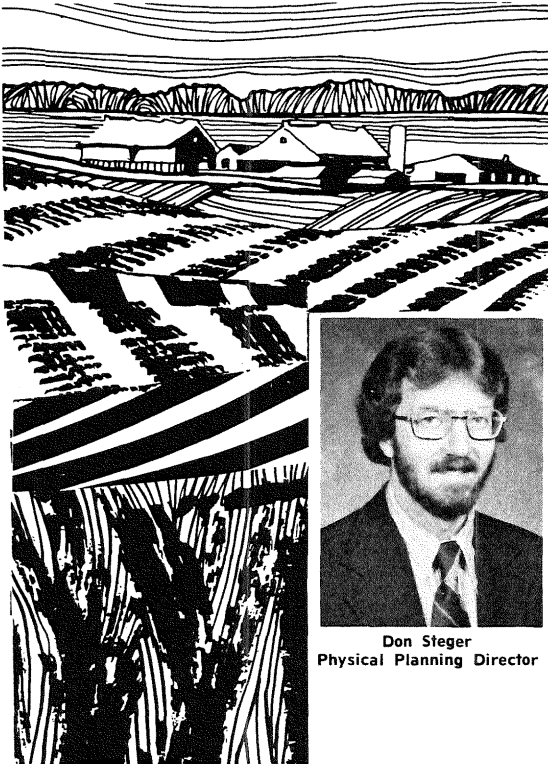
are the needs of children, especially with working mothers? How can we best create an awareness of the artistic needs and abilities in this geographic area? What are the criminal justice and law enforcement priorities? How can we see the most effective delivery of emergency medical services and health care? These are only a portion of the issues which the RNDC planning programs and many subcommission and committees deal with, on a local basis, to best meet the needs of Region Nine citizens.

About 300 citizens of Region Nine are actively involved in regional planning by providing expertise and interest in developing and prioritizing goals and objectives for the Region. Each year since 1972 has noted an increase in citizens and elected officials participation as more people discover how they can best assist with the planning programs and be served by the RNDC.

With its many planning functions, the RNDC has a professional planning staff to assist itself, subcommissions and committees in carrying out the activities they have defined. The staff includes: an Executive Director — specialists in the fields of recreation, land use, community/economic development, housing, transportation, water quality, traffic safety, and manpower; specialists in assisting with meeting the needs of the aging, developmentally disabled and children; and there are also planning specialists in criminal justice, emergency medical services, the arts, and human resources. They are assisted by an administrative assistant, a public information coordinator, a bookkeeper, secretaries, a part-time graphics coordinator and interns working on a semi-annual basis from Mankato State University and Gustavus Adolphus College.



physical development subcommission



Don Steger
Physical Planning Director

land use

During 1977, the Physical Development Subcommittee (PDS) initiated one of its most important tasks, i.e. formulating a land use policy plan for the Region Nine area. Although mandated by the U.S. Department of Housing and Urban Development (HUD), the local importance and significance of the land use plan should not be understated. For the first time, all units of government within Region Nine will have specific guidelines to be used to effectively promote land use development. The regional land use policies, if used by local governments, will set forth a framework which will reduce land use conflicts and promote sound physical development of the Region.

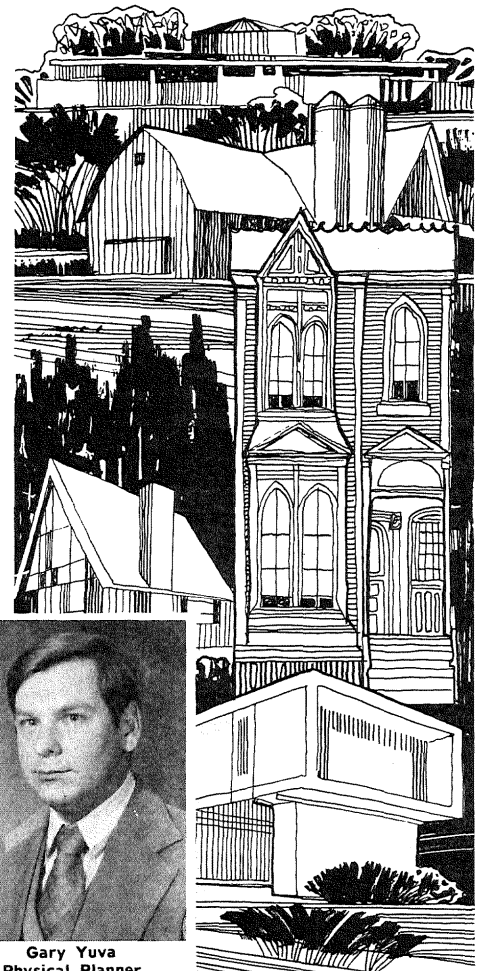
The formulation of the regional land use policy plan has served as a major work item during 1977, with completion expected in early 1978. During the upcoming year and subsequent years, the RNDC will be undertaking specific activities which will promote effective land use planning in the Region and assist local units of government with their land use planning functions.

housing

Housing constituted a high priority work item for the Physical Development Subcommittee (PDS) in 1977, particularly during the later part of the year. Substantial progress was made toward preparation and approval of a regional housing plan, which is expected to be completed and adopted by the Full Commission in early 1978. Although the preparation of the plan in its present format was mandated by HUD, the significance of the plan as a tool for housing planning throughout the Region cannot be overstated. The regional housing plan represents the most comprehensive effort to date by the RNDC to identify housing problems and needs throughout Region Nine, and to formulate goals, objectives and strategies which effectively address those problems and needs.

In conjunction with the development of this housing policy document, the PDS and staff took steps to update housing allocation plans which had previously been adopted by the Full Commission. The intent of the two major housing allocation plans is to assure that government housing subsidy funds made available through the HUD Section 8 Housing Assistance Payments Program and the Minnesota Housing Finance Agency Home Improvement Grant Program are distributed throughout the Region in an equitable manner on the basis of relative need. Implementation of these housing allocation plans has resulted in a positive impact on the distribution of housing subsidy funds in Region Nine. These plans will be updated on at least an annual basis as part of the continuing planning process in housing to assure that changes in subsidy need or changes in state and federal program operations are reflected in RNDC housing strategies.

Efforts during the upcoming year will be directed toward monitoring changes in the regional housing environment and toward generating housing activities which will lead to improvement of the overall quality of life for citizens of Region Nine.



Gary Yuva
Physical Planner



Bruce Peterson
Physical Planner

technical assistance

As in previous years, a significant amount of staff effort was devoted to assisting local governments. The most prevalent type of technical assistance included the training of local planning commissions, writing grant applications (land use planning grants), assisting communities and townships with orderly annexation programs, and providing information and assistance to local governments on the topics of zoning and subdivision ordinances. Of significance this past year, however, is the expansion of the RNDC technical assistance program. Considerable staff time has been spent assisting local governments with major planning studies, such as formulating land use plans for specific geographic areas, drafting zoning and subdivision regulations, preparing environmental assessments, etc. This type of technical assistance is expected to continue to be a major work item in 1978.

recreation

During the past year, local prioritization and input in dealing with recreation has become a strong focus. In addition, programs to broaden our recreation base have also been initiated.

The State Planning Agency has continued to offer matching grant money in the form of LAWCON (federal) grants and LCMR (state) grants. Separate programs which fell under the LAWCON heading in the past were also offered. These were: Outdoor Court Games grants and Trails grants. Of these two, the Trails grants will continue to be offered with the Outdoor Court Games grants going back to LAWCON.

The RNDC staff administered technical assistance to approximately six grant applicants for various recreation grants. The staff was also given the opportunity to relay local ideas into the state prioritization process. We feel this was, in part, successful. However, we will be establishing a system of prioritization in the Region during 1978 to be used in conjunction with the state's prioritization process.

The RNDC staff was delegated by State Planning during the past summer to compile an all inclusive list of Regionally Significant Recreation Areas. This program was designed basically to protect these areas which are in danger of encroachment by incompatible forms of land use. Also, this program was designed to give the local units of government within the Region, along with the Region Nine staff, the opportunity to decide which areas are Regionally Significant as opposed to areas the state deems significant.

Areas on this list will be eligible for a 25 percent local match as compared to the normal 50 percent local match, and these areas will also be guaranteed much less competition because of fewer potential applicants. The RNDC staff has compiled criteria to aid in the determination of these sites, and is now in the process of contacting local officials, park personnel, and local recreation experts to solicit help in formulating this list. The target date for completion of the list is July 1, 1978.

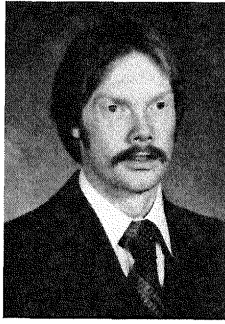
In Fiscal Year 1979 the RNDC staff will begin to formulate regional recreation priorities to be used to determine recreation policies. Also, work will continue to develop a parks and recreation element which will identify and address the recreational needs of the Region.

Communication with such agencies as the State Planning Agency, the Office of Local and Urban Affairs, and the Department of Natural Resources will continue.

Technical assistance will be provided where needed, and A-95 reviews will be conducted as required.

community development

Because of delays in the 1977 HUD Community Development program, staff involvement will primarily occur during the early part of 1978. As in past years, the RNDC staff will disseminate information on the program through mailings and workshops in order to provide sufficient information to local governments. In addition, the staff will continue to provide technical assistance, in the form of grant writing, to local governments which participate in the program. It is the intent of the RNDC to stimulate interest in the HUD Community Development program and to assist local units of government utilize the program so as to attain the greatest local benefit.



Craig Shirk
Physical Planner -
Graphics Coordinator

traffic safety committee

A Traffic Safety Program was established in Region Nine in 1976. As a pilot project funded partially by the State Department of Public Safety, Region Nine was one of two areas in the state selected for the three year pilot project.

The program's priority goal is to reduce accidents, minimize crash injuries and save lives. A number of safety projects to meet this priority were initiated in 1976 and continued in 1977.

An 18-member Traffic Safety Committee was established which met and made recommendations to the RNDC, MN / DOT and the Governor. It also presented the Region Nine Traffic Safety Coordinator with suggestions as to what projects they would like to see accomplished.

One of the major project areas was bicycle safety. Over 80 youth from the Region attended an All About Bikes Workshop and then returned to their communities and taught bicycle safety to about 10,000 youth.

To continually increase the awareness of traffic safety in the Region, there have been news releases and safety messages sent to the over 50 news media.

With reducing the number of traffic accidents being a major concern, there has been a widespread effort to teach Defensive Driving courses. The target groups this past year have been public employees, youth, senior citizens and adult education classes.

Noting the federal money available for radar equipment, yet the number of local agencies not requesting such funds, the RNDC staff assisted units in learning about and applying for them.

The RNDC recommended to MN / DOT that rumble strips be installed on Highway 99 at its junction with Highway 13 in LeSueur County. This was achieved in the fall of 1977.

Over 140 persons attended the Region Nine Youth Traffic Safety Day which focused on defensive driving, school bus safety, farm and tractor safety and youth and drinking.

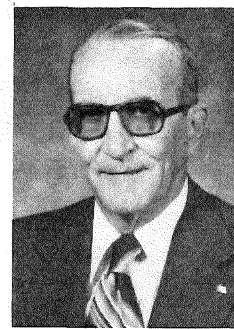
Technical assistance will continue to be provided to community organizations and units of government in the coming year.

economic development

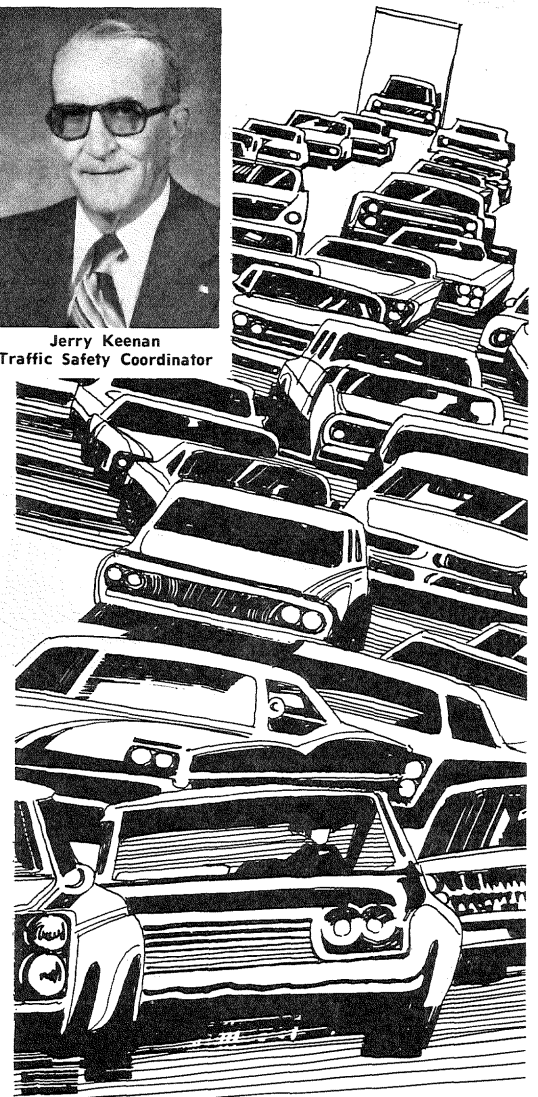
The Overall Economic Development Program (OEDP) is a locally initiated planning process designed to create employment opportunities, foster more stable and diversified local economies, improve local conditions, and provide a mechanism for guiding and coordinating the efforts of local individuals and organizations concerned with the economic development of the area.

LeSueur County, with the assistance of the RNDC, has compiled and prepared an OEDP document which describes the county's Overall Economic Development Program and charts the course for development action. LeSueur County OEDP provides the basis for meeting the statutory requirement that public works and business development projects funded by the Economic Development Administration (EDA) be consistent with an approved overall program for the economic development of the county. The pending EDA approval of the LeSueur County OEDP is one of the prerequisites for official designation of the county as a redevelopment area.

Sibley County has also been involved in preparing an OEDP, but has not yet completed the document. The RNDC is providing these two counties with staff assistance in order to collect and prepare statistical data for the OEDP documents.



Jerry Keenan
Traffic Safety Coordinator



resource recovery

The RNDC considers resource recovery as a method of solid waste management and resource conservation. During the year 1977, the staff has provided technical assistance in three areas of resource recovery: paper and can recycling, the Fairmont Project, and the Abandoned Auto Program.

Final reports were written on the Greater Mankato Area Paper and Can Recycling Project. This project, first initiated in 1975, is an ongoing front-end source separation recycling program for approximately 8,500 homes in the Mankato area.

The RNDC has continued providing technical assistance to the Fairmont Solid Waste Management Board. The Board has been developing a solid waste alternate fuel system for the Fairmont Municipal Power Plant.

Six counties in Region Nine have completed the Abandoned Auto Program. Aerial surveys were taken of each county and the resulting maps were used by local car salvage dealers to remove the abandoned vehicles.

The RNDC does not anticipate being involved in future resource recovery programs, but will, however, continue to monitor present projects and provide technical assistance to local officials.

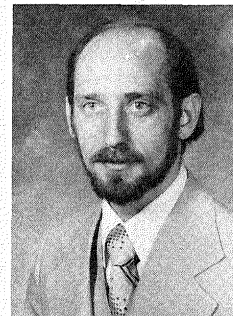
water quality management planning (208)

Initial efforts to clean up the Nation's waters commenced in 1972 when Congress passed the Federal Water Pollution Control Act Amendments (Public Law 92-500). The Act set tentative water quality standards and established provisions for abating and eliminating water pollution. Section 208 of this Act deals with non-point source pollution, which is pollution caused by activities that allow pollutants to enter runoff, which flows into surface and ground water. The Environmental Protection Agency (EPA) delegated these responsibilities to the Minnesota Pollution Control Agency (MPCA), who in turn passed the responsibility on to the regional development commissions. Each region through its 208 Water Quality Management Planning Advisory Committee (WQMPAC) is to identify water quality problems and pollution sources existing in its particular area. Then, with the aid of technical studies produced by other state agencies, the regions are to recommend guidelines for locally developed Best Management Practices, recommend regulatory programs, and recommend local and state agencies needed to implement long-range Water Quality Management Plans. These recommendations will be carried to the State Task Force, and then to the MPCA where the final plan will be drafted. The final plan will be sent to the EPA for review before implementation procedures begin.

1977 was a year of preparation for the actual planning process. A continuing activity throughout the year was the implementation of the public participation plan, developed in January. Activities performed through the plan have included speaking engagements, locating information centers at county fairs, and placing informational materials at libraries, SCS offices, extension services, and agricultural centers. Informing the public of the 208 Planning Process has proven to be a difficult, but necessary, part of water quality planning.

The year 1978 will see the WQMPAC handling the bulk of the planning workload. Work packages will begin arriving from the MPCA at the beginning of the year, and are scheduled to be completed by late fall. Products generated by the committee will be carried to the State Task Force for inclusion in the final plan.

All WQNPAC meetings are open to the public and citizens attendance is welcomed. Meeting notices will appear in the news media prior to the meetings, which will probably be held on a monthly basis.



Bob Zelenka
Physical Planner

transportation subcommittee

The Transportation Subcommittee (TS) was established in November, 1973. Since that time, it has addressed a multitude of issues and concerns relevant to the Region's needs and problems.

During the past year, the TS continued to focus its attention on the movement of agricultural and commercial products. Special emphasis was given to upgrading roads to a minimum of 9 ton capacity with 24-foot pavement width; upgrading posted bridges on 9 ton roads and direct involvement in bridge improvements through the bridge bonding program review; safety improvements; and, alleviating limitations on all highways, railroads and barges.

State Transportation Planning Process — the planning process being used to develop the state transportation plan (MN / DOT / Plan) is divided into three phases. Phase I involved the identification of problems, issues and concerns the plan should address. In order to gain public help, letters were sent and public meetings were held in each regional development commission. Phase II, which was recently completed, involved expanding the list of issues and projects identified in Phase I and discussing alternative ways to deal with them. A task force was established in Region Nine to discuss the various problems and issues as they relate to Region Nine and the state as a whole. Phase III, will result in a draft plan. The Region Nine Task Force, made up of TS members and county and city engineers, will be directly involved in first review of the draft plan to see if it is consistent with the Region's needs and priorities.

Rail — the TS has focused much of its attention to the abandonment issue being opposed to all of those where the abandonment has an adverse impact on a business or community; i.e., not served by a 9 ton road. The Region has worked with rail users by analyzing their needs and concerns and representing these concerns to the state and railroad. The Region was involved in setting up and conducting several meetings on programs available to rail users for preserving their rail service and fighting the abandonment. Rail lines not pending for abandonment but needing rehabilitation also received TS attention. The Region assisted users in setting up and coordinating meetings concerning the state rail rehabilitation program, forming an association and researching financing available for their share of the rehabilitating costs. The Region has worked closely with the Rail Section of the Minnesota Department of Transportation in alleviating and coping with rail rehabilitation and abandonment problems.

Trunk Highway 60 — The Commissioner of MN / DOT has made a commitment to re-evaluate the needs in the Trunk Highway 60 corridor from St. James to Worthington. Inasmuch as the Trunk Highway 60 corridor is of inter-regional significance, this re-evaluation is being done by a 10 member Citizens Advisory Committee composed of members appointed by the Southwest Regional Development Commission and the RNDC. The committee is addressing the issues relevant to improving the Trunk Highway 60 corridor, analyzing logical alternative solutions, and will make a recommendation to the Commissioner of MN / DOT by July 1, 1978.

committees

physical development subcommission

Earle C. Schmidt, Mankato
George Dvorak, Montgomery
Thomas Graham, Henderson
Orville Hanson, Comfrey
Eugene Powell, Waseca
Kenneth Albrecht, Mankato
John Wettlaufer, Easton
Robert Gustafson, Madelia
Gerald Clark, Ceylon
Phil Shealy, Mankato
Dr. George Kuehner, New Ulm

transportation subcommittee

Les Anderson, Mapleton
Obert Jacobson, Madelia
August Mueller, Arlington
Victor Weckwerth, Arlington
James O'Meara, LeCenter
Roland Thiesse, Fairmont
Roderick Joyce, Waseca

208 water quality committee

Virgil Wellner, Sanborn
David Stevens, Amboy
Robert Klingbiel, Bricelyn
John Sallstrom, Winthrop
Carl Pettis, Jr., Kasota
Paul Sawatsky, St. James
Wayne Comstock, North Mankato
Avery "Doc" Hall, Waseca
Marlin Gratz, Fairmont
Clarence Wendt, Sleepy Eye
Norbert Hohenstein, Amboy
Neil Saxton, Fairmont
W. C. Becker, Brownton
Don Darling, North Mankato
Jack Jones, Mankato
Elmer Goodrich, Mapleton
Wayne Fell, Arlington
Dr. Jack Holden, Mankato

traffic safety committee

Ray Stephens, Mankato
Jean Yaeger, Blue Earth
Lawrence Meskan, Waterville
Harold Rehling, Fairmont
Brad Ferris, Gaylord
Lawrence J. Zilliox, Arlington
Shelli Larson, Amboy
Steven Smith, Springfield
Myron Wolf, Cleveland
Dale H. Broughten, North Mankato
Mrs. Bill Blanchfield, St. James
Milton Clemons, Waseca
Gary A. Thome, New Ulm
Bill Groskreutz, Jr., Wells
DeNawrocki, Fairmont
Myles Lorentz, St. Peter
H. M. Dykstra, Madelia
Marilyn Nelson, Waseca

human resource planning

human resource subcommission

The Human Resource Subcommission (HRS) is advisory to the RNDC in planning and policy development related to human resources. In this capacity, the HRS reviews plans and policies recommended by the advisory councils on aging, arts, child care, criminal justice, developmental disabilities, emergency medical services and manpower.

Membership consists of twelve citizens, one from each county and one from each city over 10,000, who are appointed by the RNDC.



Pam Schmidt
Human Resource Planning Director

coordinating planning

The HRS has been assigned responsibility for coordination of planning efforts in human resources. As part of this responsibility, HRS members regularly attend meetings of the aforementioned advisory councils, as well as the meetings of organizations providing human services in the region, such as Human Service Boards and mental health boards. Specific activities conducted in 1977 under this coordinative role included: reorganization of Region Nine Council for Coordinated Child Care from private non-profit organization to RNDC advisory council, at the request of the counties in the region; extensive activities toward achieving an equitable distribution of social service funds within the state, administratively, legislatively and judicially, including obtaining financial support from more than fifty counties for legal expenses in these efforts; examination of feasibility and establishment of regional arts advisory council; review of all plans, recommendations, developed by RNDC advisory councils in human resources; A-95 review and comment on human resource grant requests, i.e., Community Health Services Plans, Community Action Agency grants, etc.; recommendations on appointments to advisory councils.

regional manpower advisory council



The Regional Manpower Advisory Council (RMAC) is advisory to the RNDC and the state Department of Economic Security on Comprehensive Employment and Training Act programs in the region. The nineteen member council includes one citizen from each county, three representatives of social service agencies and one representative from each of the following; Community Action Agencies, Region Nine Chamber Association, Employment Services, Area Vocational Technical Institutes, labor unions, Comprehensive Employment and Training Centers and youth employment programs.

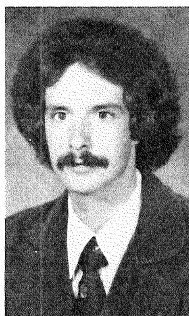
rmac responsibilities

The primary responsibilities of the RMAC include: identifying and documenting manpower needs and problems within the region; recommending a comprehensive system of manpower services designed to meet identified needs; identifying and examining potential agents for the delivery of manpower services within the region; monitoring and evaluating on-going manpower services; recommending appropriate changes in services or sponsors based upon changes in needs or evaluations of effectiveness; providing leadership in coordinating and improving all manpower and manpower related services offered within the region; fostering public awareness of, and participation in, manpower planning activities; and recommending new or changed statewide manpower planning activities.

manpower plan

In 1977, the RMAC prepared the 1978 Manpower Plan; evaluated the summer youth program and prepared recommendations based upon the evaluation; provided technical assistance to more than eighty applicants for Comprehensive Employment and Training Act special projects; reviewed and prioritized all special projects; initiated an examination of locally initiated welfare reform activities, including participation in development of a Displaced Homemaker grant, which was funded as one of two pilot projects in the state.

Craig Waldron
Developmental Disabilities
Planner and Arts Planner



development disabilities planning council

The Developmental Disabilities Planning Council (DDPC) is comprised of thirty-three members from the nine counties in the Region. Consumer representation for each disability (mental retardation, epilepsy, autism, and cerebral palsy) is required as is representation for service providers associated with such areas as education, social services, rehabilitation, developmental achievement, residential care, etc.

The Council's major activities and program initiatives for the year are depicted as follows:

advocacy

Through the assistance of the DDPC, the Region Nine Association for Retarded Citizens obtained a Title VI CETA grant to fund an advocacy position for the developmentally disabled. The DDPC has assisted the association in developing the contract with CETA, recruiting the advocate, and will provide on-going technical assistance to the project.

respite care

The DDPC has delineated the formulation of respite care programming for parents of the developmentally disabled as a high priority in Region Nine. Based on a staff survey assessing potential interest on the part of service providers in the area, it was decided that pilot programs should be developed in the Brown County and Faribault - Martin - Watonwan Human Service Board Area. If these programs come to fruition and are deemed a success, staff will attempt to replicate these programs in other interested counties during subsequent years.

system plan

Presently, the State Developmental Disabilities Planning Office is in the process of developing a comprehensive residential and day program plan for the State of Minnesota. The current project is a collaborative effort between the Department of Public Welfare, the State DD Office, and the regional planning units. Each region will conduct an assessment of the actual number of developmentally disabled individuals in the area, analyze the existing services network, and formulate residential and day programming recommendations based on the observed service gaps when comparing the individual needs and the existing services structure. During the past year, staff has served on the State's comprehensive planning committee with regard to the development of the needs assessment format and the overall operational strategies.

in-home family services

Initially, the DDPC wanted to facilitate the development of in-home service programs in the area to assist families in keeping developmentally disabled individuals in the home environment as opposed to out of home placement. However, the Family Service Committee, after a careful analysis of the situation, decided that more information regarding the dynamics of out of home placement was needed before specific programming could be encouraged. Thus, the committee is negotiating with Mankato State University to conduct the desired research with regard to the following:

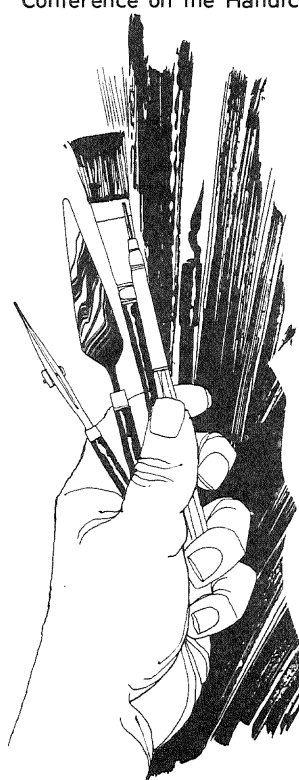
- What are the reasons for the placements and what are the barriers to the provision of home services?

- What are the attitudes of solient people involved?

It is envisioned that once an agreement between the DDPC and the University is established, the research report should be available by the end of the summer.

region nine conference for the handicapped

In collaboration with six other agencies, the DDPC sponsored the Region Nine Conference for the Handicapped in October. The two hundred conferees were provided an update regarding the access Minnesota project, the White House and Governor's Conference on the Handicapped, and recent state legislation substantially impacting persons with a handicap. Commissioner Michael O'Donnell addressed the conference regarding the new Department of Economic Security and his vision of the agency's role and responsibilities relating to the needs of individuals with a handicap. Issue sessions pertaining to advocacy, financial assistance, physical education, and transportation were also presented. The information and concerns emanating from this particular conference will be integrated into a statewide platform to be presented at the next Governor's Conference on the Handicapped.



arts advisory council

The Region Nine Arts Council formally commenced its activities in September. The thirteen member council is comprised of a representative from each county and one citizen from the cities with a population base exceeding 10,000. The membership reflects a cross-section of the arts spectrum including teachers, artists, and interested individuals involved in various arts disciplines.

responsibilities

The council acts in an advisory capacity to the Human Resource Subcommittee in the following areas:

- In recommending arts policies, goals, and priorities for the Region.
- In reviewing, evaluating, and recommending grant applications submitted by arts organizations within the Region.
- In serving as a vehicle for input to the Minnesota State Arts Board on matters relating to the improvement and development of the arts at the local, regional and state levels.
- In serving as an advocate for local and regional arts development throughout the Region.

major work initiatives

The primary work efforts to date have been oriented toward bringing the council to an operational stage. Council By-Laws have now been approved and the Chairman and Vice-Chairman have been selected. The council reviewed its first set of applications in October recommending funding for the Watonwan County Arts Council and the LeSueur Community Theatre projects.

The major activity scheduled for the remainder of the year will entail the formulation of a comprehensive regional arts plan which, if approved by the Minnesota State Arts Board, will allow the Region total funding autonomy with regard to regional arts applications.



emergency medical services

In early 1977 an Emergency Medical Service (EMS) grant request for first year system implementation funds was approved by the Region Nine Emergency Medical Service Systems Committee. \$475,000 was awarded by the federal department of Health, Education and Welfare (HEW) in July, 1977, to begin system development for the first of four years.

Major features of the grant included hiring of part-time medical director and evaluation consultants, updating of emergency coronary care and resuscitative equipment at hospitals in New



R. J. Reding
Emergency Medical
Services Planner

Ulm, LeSueur, Blue Earth, Sleepy Eye, St. Peter, Trimont, St. James, Gaylord and Mankato; implementation of remote cardiac monitoring between Gaylord, Arlington and Mankato, developing the first portion of an areawide medical command and control radio system and providing continued and expanded training for EMT's, first responders, critical care nurses, physicians and paramedics.

The Region Nine Heart Saver Program designed to provide training to the general public in cardio-pulmonary resuscitation also began full scale operations in January, 1977, and succeeded in training over 3,500 persons throughout the Region by early fall. National recognition of this program was received in a feature article in the November, 1977 Farm Journal magazine. Additional program support in the form of a \$5,000 grant was also received from the Green Giant Corporation. These funds will be used to purchase additional training manikins and promotional materials. The Heart Saver Program will continue and will have reached over 5,000 persons by mid 1978. Under contract through the HEW grant, Mankato Area Vocational - Technical Institute now provides complete operation of the Heart Saver Program.

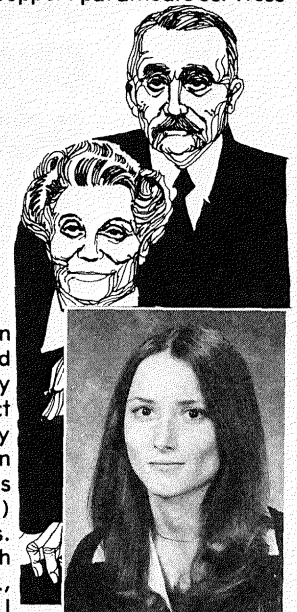
In continued cooperation with the Minnesota Department of Health, the Region also recommended the Communities of LeCenter, St. James, and Lafayette for grant assistance in purchase of new ambulance vehicles during 1977. Through local resources and Community Health Service funds the Cities of Winnebago, LeSueur, and Montgomery also upgraded their ambulance vehicles.

The most far-reaching development in part the result of the EMS program will be an expansion of in-hospital physician coverage of the Emergency Department at Immanuel - St. Joseph Hospital, Mankato. When fully operational 24-hour per day in-hospital physician coverage will allow through the region-wide radio system, director doctor to ambulance medical direction on the care of the critically ill or injured patient. This medical control will also provide the basis for more sophisticated pre-hospital care and the eventual development of advanced life support paramedic services in some areas of the Region.

advisory council on aging

The Region Nine Advisory Council on Aging is an 18-member group composed of nine senior citizen county representatives, one nutrition project representative, three public agency representatives (one from each Human Service Board), two representatives from private agencies (nursing homes) and three "at large" representatives. The Council meets on the fourth Wednesday of every month, at 1:30 p.m., at the Minnesota Valley Regional Library in Mankato.

Serving in an advisory capacity to the Human Resource Subcommittee (HRS), the Council makes recommendations for aging service priorities, reviews and ranks grant applications, and directly administers and monitors grants for community services under Title III of the Older Americans Act. The HRS in turn makes formal recommendations to the RNDC.



Connie Noterman
Planner for the Aging

annual area plan on aging

In the 1977 Annual Plan, the Advisory Council on Aging set forth transportation as the priority service need of the region's older persons. In light of this determination three separate grants were awarded to continue and / or implement senior transportation services. The grants were awarded to the following agencies:

— Brown County Family Services Center (serves Brown County),

— Faribault / Martin / Watonwan Human Service Board (serves Faribault, Martin and Watonwan counties),

— Minnesota Valley Action Council (serves Waseca, Nicollet and LeSueur counties).

In developing the 1978 Annual Plan, the Council utilized data received from two public hearings and three senior surveys to determine priority service needs. The Council will continue to fund existing senior transportation programs and will solicit grant applications for health information and assessment clinics and senior advocates programs.

Katie Collins
Child Development Planner



region nine coordinated child care advisory council



The Region Nine Council for Coordinated Child Care (4-C) was formally integrated into the RNDC on May 1, 1977. The thirteen member Advisory Council is comprised of one-third parent / consumers of child care services, child care providers, county welfare representatives and interested individuals from the Region Nine area.

child care plan

In 1977, as a result of the local assessment of child care needs, the staff and the Council developed a regional child care plan. This plan covered four main areas: public information and education; the provision of training sessions for licensed family day care providers and group day care providers; the continued development of the 4-C resource library; and technical assistance to individuals seeking funding for child care activities.

grants

As a means of implementing existing and newly organized child care programs in Region Nine, the Advisory Council has been designated by the Commissioner of the Department of Public Welfare as the local Child Care Advisory Committee. This CCAC reviews and recommends proposals for funding for Minnesota Child Care Facilities Act monies.

In Fiscal Year 1977-78, \$39,300 were allocated in the Region Nine area to activities and programs involved in the direct services to children.

criminal justice advisory council

The regional criminal justice planning function formally came under the State Crime Control Planning Board as of August 1, 1977, with the passage of state legislation that removed the program from the Governor's office to one responsible to the legislature.

In Region Nine the Criminal Justice Advisory Council (CJAC) is comprised of 12 members: one from each county and the Cities of Fairmont, New Ulm and Mankato. The majority of the CJAC are elected officials and serve as advisory to the Human Resource Subcommittee, the RNDC and the State Crime Control Planning Board.

The CJAC recommends criminal justice policies and priorities for the Region and reviews and evaluates grant applications submitted by local criminal justice agencies for state and federal funds including: courts, law enforcement, corrections and juvenile justice.

criminal justice plan

In 1977, the staff and the Council updated and modified the 1976 Criminal Justice Plan for FY 1978 as required by the Crime Control Planning Board (CCPB). The plan identifies and prioritizes the region's predominate criminal justice problems and outlines potential programs to address these problem areas.

grants

As a means of implementing the programs and priorities envisioned in the plan, grants were recommended by the Criminal Justice Council and funded by the RNDC through the new mini-block concept developed for Fiscal Year 1978. The Region received an allocation of \$119,953 from which a number of projects were funded for FY 1978 with federal funds. These projects include:

Waseca County Crime Prevention Unit, (2nd year),	\$17,838;
District No. 77 Youth Development in School, (2nd year),	\$26,705;
Blue Earth County Rape Crisis Center, (3rd year),	\$26,124;
Minnesota Valley Council of Governments Peace Officer Recruitment and Selection Guidelines for Southern Minnesota, (2nd year and last year),	\$7,236;
Sibley County Felony Investigation Unit, (2nd year),	\$17,820;
LeSueur County Felony Investigation Unit, (1st year),	\$24,228;

In addition to the programs funded by the Regional allocation, several juvenile justice projects were funded from money made available through the Federal Office of Juvenile Justice and Delinquency Prevention (JJDP). These projects for a total of \$80,536 include:

Blue Earth County Grouphome, (3rd year),	\$23,283;
Faribault / Martin / Watonwan Grouphome, (3rd year),	\$29,927;
Faribault / Martin / Watonwan Shelter Care, (1st year),	\$13,064;
Nicollet / Sibley Shelter Care, (1st year),	\$14,262;
	\$80,536

juvenile justice

Region Nine counties are participating in a statewide effort to reduce the number of status offenders (juveniles held for crimes that would not be crimes if they were adults, i.e., truancy, run-aways, etc.) being held in secure detention, particularly jails. This effort is in response to state legislation generally referred to as the Nelson Bill. Status offenders are now being placed in "shelter care" facilities — home recruited especially for this purpose.

human resource subcommission

Mary Berner Madelia
Mary Gover St. Peter
Beverly Kroll LeCenter
Mrs. Gene Amley New Richland
Mr. Sam Walz Fairmont
Betty Munson Sherburn
James P. Tierney Mankato
Frank Rodriguez Elmore
Ernie Silbernagel Mankato
Charles Gould Fairmont
Eldon Horman Comfrey
Irene Jacobson Gaylord
Jane Seifert New Ulm
Marcella Glamm Janesville

disabilities developmental

Pam Brower Mankato
Ann Newman Blue Earth
Mrs. Mike Hanson New Ulm
Hal Sandberg Madelia
Barb Schultz Mankato
Dottie Spencer Madelia
Wayne Prichard Mankato
Tom Henderson New Ulm
Carolyn Engquist Waterville
Dale Else Winthrop
Mary Berner Madelia
Winnie Renner Mankato
Mimi Carr Blue Earth
Deb Fuchs Blue Earth
LeRoy Wendt Springfield
Janice K. Feely New Prague
MN Department of Health Mankato
Anita Hoffman New Ulm
Carol Cole Blue Earth
Norma Elrod Mankato
Joe Harding Mankato
Martha Seiber Mankato
Ann Ekse Blue Earth
Charlie Johnson St. Peter
Louise Foley Mankato
Jan Munz Lake Crystal
Carol Lee Mankato
Jeanette Barsness New Ulm
Earl Henslin New Ulm
Roz Skillman Mankato

region manpower advisory council

Lester Schwarz Mankato
Dayton Martinson St. Peter
Shawn Nimps Kasota
Donald Fisher Waseca
Carl Montzka Blue Earth
Jim Dalton Blue Earth
C. I. "Spike" Piper Blue Earth
James P. Tierney Mankato
Marvin Bliesmer Sherburn
George Bahr Mankato
James Stevens Nicollet
Ted Waknitz Mankato
Ron Germscheid LeCenter
Mike Neely New Ulm
Calvin Schrupp Gaylord
Sylvester Priem Janesville
John Votca North Mankato
William C. Beam St. James
Leigh Heilman New Ulm
Helen Klose Fairmont

region 9 coordinated child care advisory council

Jan Martinson, Mankato
Sue Reinders, Madelia
Richard Coyle, North Mankato
Rita Andros, St. Peter
Judy Ehmke, Mankato
Richard Embacher, New Ulm
Don Foley, Eagle Lake
Dan Hislop, Arlington
Nancy Hislop, Arlington
Kristen Skulstad, Elmore
Sharol Ostlund, Mankato
Kathryn Westerman, Montgomery
Luetta Yotter, New Ulm
Katie Collins, Mankato

emergency medical services task force

Don Johnson St. James
Vince Style St. James
John Anderson Blue Earth
Joan Arvidson Madison Lake
Brad Reeves Mankato
Dr. M. W. Dobson Mankato
Martin F. Sears, M.D. Fairmont
June Olstad Mankato
Ann Vogel, M.D. New Ulm
Glenn Horejsi Mankato
David Neidhart, M.D. Mankato
Mildred Martinson New Richland
E. R. Spannaus Arlington
Richard Wilbrecht New Ulm
Warren Gaare Gaylord

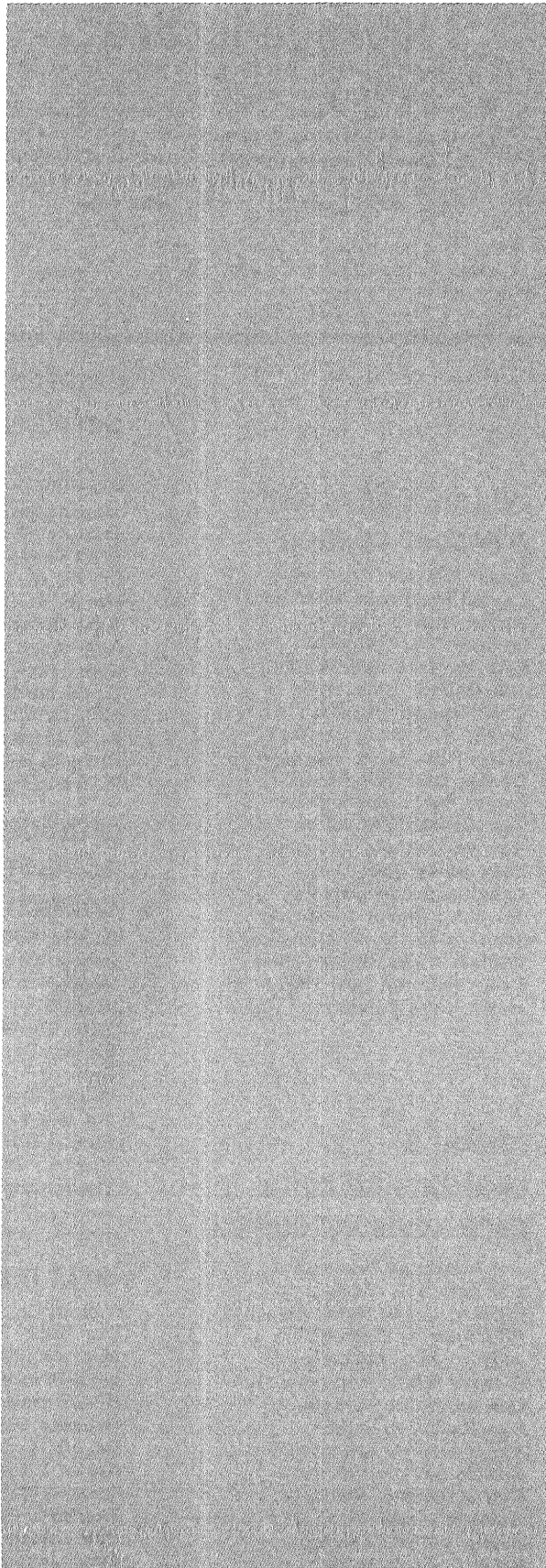
criminal justice - advisory council members

Gordon Beito Mankato
George Cavers Fairmont
Roger Graham Henderson
Vince Style St. James
Dave Stevens Amboy
Gordon Benschoter Fairmont
Terrence Dempsey New Ulm
Donald Schmidt St. Peter
Beverly Kroll LeCenter
Carol Lemcke Mankato
Virginia Burnett New Ulm
Sheriff Merton Schwarz Waseca
James W. Phipps Blue Earth
Pat W. Smith, Jr. LeCenter

arts task force

William Cassel Lake Crystal
Dee Sasse Sleepy Eye
Nancy K. Steele Blue Earth
Lara Browning LeSueur
Eileen Stewart Welcome
Rebecca Ueland North Mankato
Dr. M. H. Bauer Winthrop
Elaine Schwarz Waseca
Suzanne DeWar Fairmont
Theodore Paul, Jr. Mankato
Ron Eyrich New Ulm
Glen Linscheid Butterfield

legislative concerns



social service aid formula

The RNDC supports an equitable distribution of social service funds based upon measurable factors, such as clients and population, rather than county - manipulable factors, as in past expenditures and social service caseload. For Title XX of the Social Security Act, the RNDC supports an allocation based fifty percent on general population, fifty percent on public assistance clients population.

medical assistance for needy Chapter 312 —

Home Care Services, S.F. No. 2175

The RNDC supports an appropriation for chapter 312 which was passed by the 1976 legislature with no appropriation.

The Act, allows the cost of certain home care services provided by public health nurses to be paid by medical assistance, and also authorizes an experimental program for the cost of home care of the physically disabled or elderly.

nursing home rates No. 256B.48

The RNDC supports this act which required by July, 1978, the same nursing home rates to be charged to both medical assistance and private-pay patients. This law is currently being challenged in the courts. Should it be declared illegal, the RNDC supports a similar act to protect the private pay patients.

ems systems act

This act would provide direct state support, about \$200,000 statewide to regional entities for Emergency Medical Services (EMS) system development. The problem, however, is that Health Systems Agencies (HSA's) would be eligible under this act though they would be excluded from any EMS system development under Federal law. HSA involvement could also conflict or hinder Regional Development Commission involvement in EMS system planning.

land use planning grants

The RNDC feels that such grants are part of an effective program, but more emphasis should be placed on building local capability.

revisions of the con laws

Under P.L. 93-641 states are required to either pass new or amend existing certificate of need legislation to comply with HEW requirements. These requirements direct all authority for certificate of need review through local HSA's and the Statewide Health Coordinating Council.

tax increment

The RNDC supports the continuation of tax increment financing as a development tool.

federal extension of hsa law

By July, 1978, Congress must either extend the existing P.L. 93-641 or produce new legislation to continue HSA's. At least one of the proposed extension amendments would give local HSA's authority to close "unneeded facilities."

review authorization

The RNDC feels that Regional Development Commission review authorization should be part of all new legislation.

block grant funding

The RNDC supports block grant funding to local units of government in preference to special interest categorical funding.

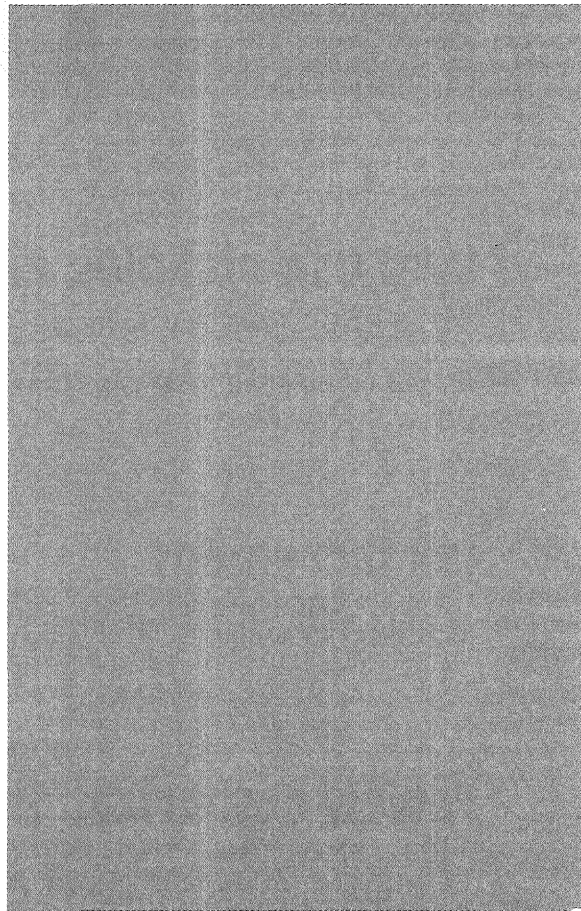
criminal justice

—Legislative concerns of local criminal justice agencies will be related to the appropriate legislators.

—Legislative concerns will include:

- 911 funding of
- jail construction and renovation - funding of
- commitment of status offenders to correctional institutions
- financial assistance for state and regional criminal justice planning units in FY 1979.

plans, reports and studies



implications of national guidelines for health planning

The report analyzed the potential impact of federal health planning guidelines issued on Sept. 23, 1977. The predicted effect of the standards of four beds per 1000 residents and 80 percent occupancy would be the reduction of over 900 hospital beds in the Region Nine and Southwestern Minnesota area resulting in the possible closing of thirty area hospitals. The Commission after deliberating on the report at the regular November meeting unanimously resolved to reject these guidelines. The Commission's position was presented at a public hearing sponsored by HSA-6 and also sent to HEW and the Minnesota Congressional Delegation.

1978 manpower plan

The plan includes a regional profile identification of needs and priorities, establishment of goals and recommended allocations and deliverers for manpower programs in the Region.

overall program design 1978

The OPD outlines the goals, objectives and work activities which will be executed by RNDC over a one-year and three-year period. Anticipated FY 1978 costs to complete the work elements are provided for five major functions: physical plans; social plans; health plans; economic development and operation, coordination and administration.

evaluation of the 1976 summer youth program

Narrative of the results of a survey of summer youth supervision, with recommendations for subsequent programs.

housing allocation plan update

The Housing Allocation Plan was developed to insure that subsidized housing units would be distributed in an orderly manner so that all areas of the Region show the responsibilities and benefits associated with housing for low income persons. The plan, based on the need for housing in each county, has been updated annually since being implemented in 1976.

1978 plan for Program on aging

The plan states major work objectives and priorities of the Region Nine Area Agency on Aging for 1977. It also identifies the priority service needs eligible for funding under Title III of the Older Americans Act. The 1978 priority services are transportation, health assessment clinics and Individual (senior) Advocates.

senior services - a region nine guide

This booklet contains information about services available to senior citizens in Region Nine. The agencies providing the services are listed separately and explanations of the type of services available to the elderly are provided when it is not self-explanatory. The agencies' phone numbers and addresses are also provided. Copies of the guide are available upon request.

reports for annual report

1) St. James Background Study

The RNDC conducted a background study for a land use plan in conjunction with the new T.H. 60 by-pass. The physical and existing characteristics of the area were analyzed in terms of potential land use development.

2) Environmental Assessment — Nicollet County Ditch No. 93

The RNDC prepared an environmental assessment on proposed county drainage ditch No. 93. This report served as the environmental review document by the Minnesota Environmental Quality Board.

3) Faribault County Interchange Plans

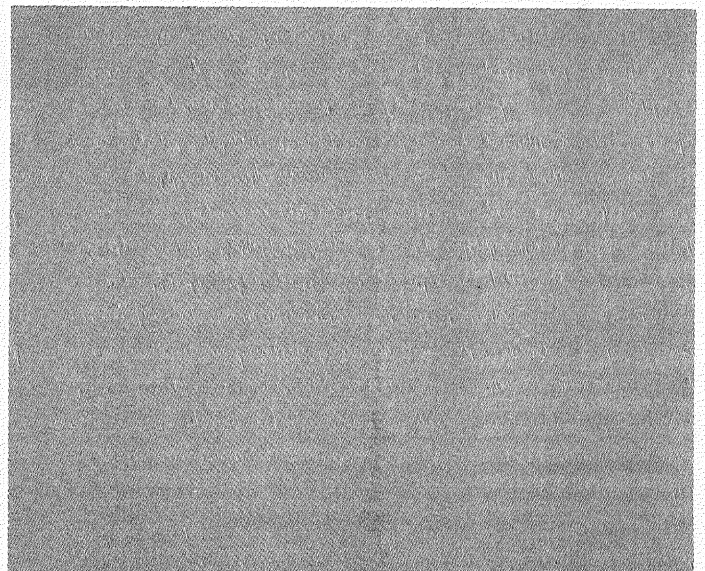
These RNDC prepared plans serve to guide future land use development adjacent to the five I-90 interchanges in Faribault County. The report contains the five plans and an in-depth analysis of the physical characteristics of each interchange.

4) Faribault County Subdivision Regulations

The RNDC prepared this regulatory ordinance for Faribault County so as to control and guide residential subdivision development in the county.

Project report, region nine heart saver program

The Region Nine Heart Saver Program report was prepared as the summary of project activities for its funding source, the Governor's Rural Development Council (GRDC). Initial program funding of \$22,000 by the GRDC was supplemented by \$5,000 from the Green Giant Corporation. It reports from January to May 1977 the program was successful in reaching nearly 3,000 persons in the Region in cardiopulmonary resuscitation training and is being continued by the Mankato Area Vocational Technical Institute.



Funding of the RNDC is derived from three main sources. Approximately 70 percent of the operating budget is received from state and federal sources through grants for regional activities as the programs are determined by need and then developed. Approximately 30 percent is assessed by counties.

revenues

For The Year Ended June 30, 1977	Federal	State	Local	Other	Total
Physical Planning	\$ 23,360	\$ 34,360	\$ 35,745	\$ —	\$ 93,465
Traffic Safety	—	25,176	4,103	—	29,279
Resource Recovery	—	37,021	8,494	—	45,515
"208" Water Quality	—	6,257	842	—	7,099
Rail Service Improvement	—	3,454	992	—	4,446
Rural Innovative Housing Project	2,927	—	—	—	2,927
Technical Assistance—Physical Planning	—	890	4,418	—	5,308
Developmental Disabilities	21,998	3,157	3,285	—	28,440
Manpower	27,893	524	546	—	28,963
Emergency Medical Services	10,220	6,691	6,963	—	23,874
General Health	—	5,564	5,788	—	11,352
Human Resources	—	3,049	3,172	—	6,221
Aging	16,495	4,385	4,561	—	25,441
Criminal Justice	37,317	461	479	—	38,257
Child Care	—	7,943	1,160	—	9,103
Technical Assistance—Health Projects	—	3,307	17,002	170	20,479
RNDC General Support	—	22,124	23,017	2,830	47,971
TOTAL	\$140,210	\$164,363	\$120,567	\$3,000	\$428,140

expenditures

For The Year Ended June 30, 1977	Personnel	Consultants	Printing & Publication
Physical Planning	\$49,068	\$10,773	\$ 539
Traffic Safety	17,248	—	10
Resource Recovery	15,333	2,000	454
"208" Water Quality	3,779	—	—
Rail Service Improvement	2,429	—	—
Rural Innovation Housing Project	305	2,500	—
Technical Assistance — Physical Planning	3,282	—	199
Developmental Disabilities	16,412	87	675
Manpower	15,740	—	—
Emergency Medical Services	13,521	—	109
General Health	5,499	—	97
Human Resources	1,219	—	1
Aging	13,633	—	30
Criminal Justice	22,821	—	11
Child Care	4,202	46	167
Technical Assistance—Health	12,091	—	23
RNDC General Support	150	3,058	—
TOTAL	\$196,732	\$18,464	\$2,315

projected expenditures

For The Year Ended June 30, 1978	Personnel	Consultants	Printing & Publication
Physical Planning	54,600	10,000	600
Traffic Safety	19,000	—	50
Transportation	8,100	—	100
Recreation	5,500	—	100
"208" Water Quality	9,900	—	100
Rural Innovative Housing	11,900	—	100
Environmental I & R	1,150	—	—
Developmental Disabilities	16,000	—	100
Manpower	17,000	—	—
Emergency Medical Services	35,000	—	250
General Health	6,000	—	—
Human Resources	1,500	—	—
Aging	16,240	—	200
Criminal Justice	20,000	—	50
Child Care	10,000	—	—
RNDC General Support	—	—	—
TOTAL	\$231,890	\$10,000	\$1,650

Indirect expenses include: administrative salaries and fringe, printing & publication, Xerox, office space, postage, telephone, memberships and subscriptions.

The nine counties local share of the fiscal year 1977-78 budget is about 54 cents per person. This is derived by using the revenues of \$120,567 and the 1975 estimated population figure of 223,200 based on the .17 mill tax levy.

projected revenues

For The Year Ended June 30, 1978

	Federal	State	Local	Other	Total
Physical Planning	\$ 20,716	\$ 40,245	\$ 54,445	—	\$115,406
Traffic Safety	24,000	—	9,373	—	33,373
Transportation	—	14,172	—	—	14,172
Recreation	—	11,528	—	—	11,528
"208" Water Quality	—	18,461	—	—	18,461
Rural Innovative Housing	20,000	—	—	—	20,000
Environmental I & R	—	5,000	—	—	5,000
Developmental Disabilities	24,500	4,189	—	—	28,689
Manpower	25,000	6,339	—	—	31,339
Emergency Medical Services	60,000	3,558	—	—	63,558
General Health	—	—	13,662	—	13,662
Human Resources	—	—	6,173	—	6,173
Aging	26,000	6,579	—	—	32,579
Criminal Justice	39,378	—	—	—	39,378
Child Care	12,000	3,556	—	—	15,556
RNDC General Support	—	5,521	45,347	—	50,868
TOTAL	\$251,594	\$119,148	\$129,000	—	\$499,742

Travel Staff	Travel Other	Xerox Supplies	Communi-cations	Other Direct Expenses	Indirect Expenses	Total
\$ 2,952	\$ 1,261	\$ 1,251	\$ 1,961	\$ 2,074	\$ 23,586	\$ 93,465
1,429	523	556	891	270	8,352	29,279
1,071	—	6,843	967	9,326	9,521	45,515
244	456	274	241	80	2,025	7,099
207	36	110	386	10	1,268	4,446
—	—	—	—	—	122	2,927
113	52	98	49	—	1,515	5,308
421	693	513	870	657	8,112	28,440
1,794	987	947	1,162	72	8,261	28,963
1,203	256	620	1,243	112	6,810	23,874
794	311	324	581	508	3,238	11,352
600	2,028	27	204	366	1,776	6,221
1,765	837	561	561	797	7,257	25,441
2,160	88	766	1,159	340	10,912	38,257
146	100	177	409	1,260	2,596	9,103
65	192	909	830	528	5,841	20,479
—	25,498	—	5	1,644	10,366	40,721
\$14,964	\$33,318	\$13,976	\$11,519	\$18,044	\$111,558	\$420,890

FY 77 Revenue	\$428,140
FY 77 Expenditures	420,890
Excess Revenue	\$ 7,250

Travel Staff	Travel Other	Xerox Supplies	Communi-cations	Other Direct Expenses	Indirect Expenses	Total
2,700	1,200	6,200	2,100	7,039	30,967	115,406
1,500	700	550	825	944	9,804	33,373
350	150	750	250	308	4,164	14,172
350	150	800	300	941	3,387	11,528
450	250	1,000	400	937	5,424	18,461
450	200	1,050	375	49	5,876	20,000
—	—	1,000	200	1,181	1,469	5,000
350	700	500	800	1,811	8,428	28,689
2,000	850	925	1,150	207	9,207	31,339
2,500	1,250	2,475	1,875	1,536	18,672	63,558
1,000	—	1,000	500	1,148	4,014	13,662
1,000	1,000	250	250	359	1,814	6,173
1,500	1,000	560	500	3,003	9,576	32,579
2,100	200	800	1,000	3,659	11,569	39,378
—	—	—	—	986	4,570	15,556
—	26,000	—	—	9,924	14,944	50,868
\$16,250	\$33,650	\$17,860	\$10,525	\$34,032	\$143,885	\$499,742

insurance, travel, office supplies, audit, depreciation, and other expenses.

Applicant Agency	Project	Funding Agency	Amount Requested	Recommendation
------------------	---------	----------------	------------------	----------------

[illegible]

[illegible]

Applicant Agency	Project	Funding Agency	Amount Requested	Recommendation
Watonwan County	Bridge Bonding	Department of Transportation	63,000	A
Watonwan County	Bridge Bonding	Department of Transportation	116,000	A
Watonwan County	Bridge Bonding	Department of Transportation	111,400	A
Watonwan County	Bridge Bonding	Department of Transportation	68,750	A
Watonwan County	Bridge Bonding	Department of Transportation	36,700	A
Watonwan County	Bridge Bonding	Department of Transportation	39,200	A
New Ulm / Brown County	Land Use Planning Grant	State Planning Agency (SPA)	21,900	A
Milford Township-758				
Martin County	Land Use Planning Grant	State Planning Agency (SPA)	15,000	A
Sibley County	Land Use Planning Grant	State Planning Agency (SPA)	22,500	A
City of Wells	Land Use Planning Grant	State Planning Agency (SPA)	9,000	A
City of Lake Crystal	Land Use Planning Grant	State Planning Agency (SPA)	18,000	A
City of Truman	Land Use Planning Grant	State Planning Agency (SPA)	5,250	A
City of Winthrop	Land Use Planning Grant	State Planning Agency (SPA)	9,500	A
City of LeCenter	Land Use Planning Grant	State Planning Agency (SPA)	15,750	A
City of Montgomery	Land Use Planning Grant	State Planning Agency (SPA)	9,000	A
City of Gaylord	Land Use Planning Grant	State Planning Agency (SPA)	15,000	A
City of Madelia	Land Use Planning Grant	State Planning Agency (SPA)	11,250	A
City of Lafayette	Land Use Planning Grant	State Planning Agency (SPA)	3,000	A
Minnesota Valley Action Council	Land Use Planning Grant	State Planning Agency (SPA)	94,000	A
City of Eagle Lake	Land Use Planning Grant	State Planning Agency (SPA)	12,000	A
City of Wells	Land Use Planning Grant	State Planning Agency (SPA)	9,000	A
City of St. James	Land Use Planning Grant	State Planning Agency (SPA)	20,625	A
City of New Ulm / Brown County	Land Use Planning Grant	State Planning Agency (SPA)	21,900	A
City of St. Peter / Nicollet County	Land Use Planning Grant	State Planning Agency (SPA)	15,000	A
City of Madelia	Land Use Planning Grant	State Planning Agency (SPA)	11,250	A
City of Montgomery	Land Use Planning Grant	State Planning Agency (SPA)	9,000	A
LeSueur County	Land Use Planning Grant	State Planning Agency (SPA)	17,250	A
Sibley County	Land Use Planning Grant	State Planning Agency (SPA)	22,500	A
Lake Crystal	Land Use Planning Grant	State Planning Agency (SPA)	4,500	A
Blue Earth County / Mankato Twp. / Mankato	Land Use Planning Grant	State Planning Agency (SPA)	21,000	A
City of LeCenter	Land Use Planning Grant	State Planning Agency (SPA)	15,750	A
Waseca County	Land Use Planning Grant	State Planning Agency (SPA)	15,000	A
Martin County	Land Use Planning Grant	State Planning Agency (SPA)	15,000	A
City of Gaylord	Land Use Planning Grant	State Planning Agency (SPA)	15,000	A
City of Truman	Land Use Planning Grant	State Planning Agency (SPA)	5,250	A
City of Winthrop	Land Use Planning Grant	State Planning Agency (SPA)	9,500	A
Blue Earth	Park Acquisition / Development	SPA (LAWCON)	20,000	A
Blue Earth County (Mankato)	Park Acquisition / Development	SPA (LAWCON)	29,000	A
Blue Earth County (Mankato)	Park Acquisition / Development	SPA (LAWCON)	41,500	A
Blue Earth County (Mankato)	Park Acquisition / Development	SPA (LAWCON)	7,500	A
Ceylon	Park Acquisition / Development	SPA (LAWCON)	7,950	A
Cleveland	Park Acquisition / Development	SPA (LAWCON)	4,500	A
Dunnet	Park Acquisition / Development	SPA (LAWCON)	5,825	A
Eagle Lake	Park Acquisition / Development	SPA (LAWCON)	22,000	A
Faribault County (Blue Earth)	Park Acquisition / Development	SPA (LAWCON)	22,550	A
Sibley County	Park Acquisition / Development	SPA (LAWCON)	5,750	A
Gibbon	Park Acquisition / Development	SPA (LAWCON)	27,500	A
Green Isle	Park Acquisition / Development	SPA (LAWCON)	15,250	A
Janesville	Park Acquisition / Development	SPA (LAWCON)	37,500	A
LeSueur County (LeCenter)	Park Acquisition / Development	SPA (LAWCON)	95,250	A
LeSueur County (LeCenter)	Park Acquisition / Development	SPA (LAWCON)	18,500	A
Madelia	Park Acquisition / Development	SPA (LAWCON)	43,000	A
Mankato	Park Acquisition / Development	SPA (LAWCON)	56,850	A
Mankato	Park Acquisition / Development	SPA (LAWCON)	127,525	A
New Ulm	Park Acquisition / Development	SPA (LAWCON)	66,875	A
Nicollet County (St. Peter)	Park Acquisition / Development	SPA (LAWCON)	3,750	A
North Mankato	Park Acquisition / Development	SPA (LAWCON)	20,000	A

Applicant Agency	Project	Funding Agency	Amount Requested	Recommendation
St. James Dept. of Public Works	Park Acquisition / Development	SPA (LAWCON)	11,600	A
Sleepy Eye	Park Acquisition / Development	SPA (LAWCON)	1,500	A
Waseca County (Waseca)	Park Acquisition / Development	SPA (LAWCON)	6,000	A
Waseca County (Waseca)	Park Acquisition / Development	SPA (LAWCON)	15,000	A
Good Thunder	Park Acquisition / Development	SPA (LAWCON)	9,673	A
Fairmont	Park Acquisition / Development	SPA (LAWCON)	16,250	A
Blue Earth County (Mankato)	Park Acquisition / Development	SPA (LAWCON)	7,400	A
Mankato	Park Acquisition / Development	SPA (LAWCON)	32,667	A
New Ulm	Park Acquisition / Development	SPA (LAWCON)	6,800	A
North Mankato	Park Acquisition / Development	SPA (LAWCON)	19,845	A
Dept. of Public Works (St. James)	Park Acquisition / Development	SPA (LAWCON)	8,000	A
City of Blue Earth	Courts	LCMR	5,250	A
Blue Earth County (Mankato)	Courts	LCMR	11,900	A
Butterfield-Odin Ind. School Dist. No. 836	Courts	LCMR	9,000	A
City of Ceylon	Courts	LCMR	6,675	A
City of Comfrey	Courts	LCMR	1,427	A
City of Elysian	Courts	LCMR	2,325	A
City of Garden City	Courts	LCMR	6,000	A
LeCenter Public School	Courts	LCMR	13,778	A
LeSueur Ind. School Dist. No. 393	Courts	LCMR	2,500	A
City of Madelia	Courts	LCMR	11,000	A
Mankato Ind. School Dist. No. 77	Courts	LCMR	9,000	A
Minnesota Lake School Dist. No. 223	Courts	LCMR	2,250	A
City of Montgomery	Courts	LCMR	10,458	A
New Richland	Courts	LCMR	9,500	A
Recreation Board				
City of New Ulm	Courts	LCMR	8,700	A
City of Sleepy Eye	Park Acquisition / Development	SPA (LAWCON)	11,000	A
City of Waseca	Park Acquisition / Development	SPA (LAWCON)	1,370	A
Waseca Ind. School Dist. No. 829	Park Acquisition / Development	SPA (LAWCON)	8,266	A
City of Winthrop	Park Acquisition / Development	SPA (LAWCON)	2,900	A
City of Fairmont	Park Acquisition / Development	SPA (LAWCON)	25,116	A
Shortall FDC Home	Child Care	Minn. Child Care Facilities Act - MCCFA	800	A
Small Wonders, Inc.	Child Care	Minn. Child Care Facilities Act - MCCFA	1,000	A
Madelia Child Development Center	Child Care	Minn. Child Care Facilities Act - MCCFA	4,500	A
Parkview Preschool	Child Care	Minn. Child Care Facilities Act - MCCFA	3,100	A
Small World	Child Care	Minn. Child Care Facilities Act - MCCFA	1,600	A
Child Care Center of Mapleton	Child Care	Minn. Child Care Facilities Act - MCCFA	5,428	A
YWCA	Child Care	Minn. Child Care Facilities Act - MCCFA	5,000	A
Little Tykes Play School	Child Care	Minn. Child Care Facilities Act - MCCFA	935	A
Charlie Brown Nursery School	Child Care	Minn. Child Care Facilities Act - MCCFA	1,980	A
St. Peter Play Group	Child Care	Minn. Child Care Facilities Act - MCCFA	1,105	A
Tender Year's Enrichment Center	Child Care	Minn. Child Care Facilities Act - MCCFA	4,225	A
Little Peoples Learning Center	Child Care	Minn. Child Care Facilities Act - MCCFA	1,360	A
Faribault / Martin / Watonwan Human Service Board	Child Care	Minn. Child Care Facilities Act - MCCFA	5,217	A
Dist. No. 77 Family Education Project	Child Care	Minn. Child Care Facilities Act - MCCFA	1,000	A
FDC "Mini-Grants"	Child Care	Minn. Child Care Facilities Act - MCCFA	2,050	A
Blue Earth County Court	Standardization appeal transcript preparation & recording	Justice Dept. (LEAA)	15,069	A

Applicant Agency	Project	Funding Agency	Amount Requested	Recommendation
Faribault / Martin / Watonwan Human Service Board	Senior Transportation Board	HEW	29,730	A
Blue Earth	Senior Citizens — multi-purpose project	HEW	9,823	A
South Central Community	Winterization	HEW (CSA)	19,560	A
South west State University	Manpower study of S.W. Minn.		19,648	D
YMCA	Youth Employment Advocate Program	Justice Dept. (LEAA)	75,362	A
St. James	Industrial Park Improvements	USDA (FmHA)	165,000	A
Minn. State Planning Agency	Lenny's Frozen Food Locker	USDA (FmHA)	148,000	A
Fairmont	K-9 Patrol	Justice Dept. (LEAA)	24,639.06	A
RNDC	See 1203 EMS Grant	HEW	475,000	A
Lake Crystal	Industrial Parks Improvements "77"	USDA (FmHA)	149,500	A
Brown / Nicollet Human Service Board	Community Health Service Subsidy	Minn. Department of Health	130,653	A
Southern Minn. Corp. for Public Broadcasting	Mankato Public Radio Station	HEW (Office of Education)	157,843	A
Nicollet / Sibley	Sheltered Care Program	Justice Department (LEAA)	14,262	A
Blue Earth County Human Services Board	Community Health Services Plan	Minn. Department of Health	69,446	A
McCleod / Sibley Cty.	Community Health Services Plan	Minn. Department of Health	17,449	A
Faribault / Martin / Watonwan Human Services Board	Sheltered Care Program	Justice Dept. (LEAA)	13,064	A
Minn. Department of Transportation	Bikeway BW-F 063-1 (32)	DOT	25,500	A
City of Fairmont MN / DOT	Municipal Airport Improvement	DOT (FAA)	420,210	A
Mankato State University	Southern Minn. Self Help Epilepsy	HEW (Office of Viewpoint)	82,000	A
St. James	Airport Master Plan and EIAR	FFA	NA	A
South Central Community	Crisis Intervention	Dept. of Labor	99,085	A
Mankato	Crime Opportunity for Mankato Mall	Justice Dept. (LEAA)	41,931	M
RNDC	Developmental Disabilities	HEW (Office of Human Development)	7,000	A
Minn. Valley Action Council	Emergency Energy Conservation Services	CSA	80,000	A
RNDC	Mini-Block Plan	Justice Dept. (LEAA)	14,909	A
Region Nine (Individual)	Rehabilitation Services and Facilities	HEW (Office of Rehabilitation)	30,876	A
Minn. Nutrition Campaign	Minn. Nutrition Campaign	Dept. of Labor	296,958	M
Minn. Nutrition Campaign	Minn. Nutrition Campaign	Dept. of Labor	276,958	M
Minn. Migrant Council	Year Round Manpower Aide	Dept. of Labor	105,000	A
Community Services Adminin. / 6 MO	Concentrated out-reach to older people	Dept. of Labor	520,652	D
Hanska	Well Improvements	USDA (FmHA)	25,000	A
South Central Community	Community Food & Nutrition	HEW (ESA)	8,000	A
MN / DOT	St. James Airport Renovation	DOT (FAA)	NA	A
LeSueur / Waseca Board of Health	Community Health Services Application	Dept. of Health	128,040	A
Mankato	Community Emergency Drought Relief	Dept. of Commerce (EDA)	475,000	A

Applicant Agency	Project	Funding Agency	Amount Requested	Recommendation
Dice Development, Inc.	12 unit Apartment House	FHA	175,000	A
South Central Community	Community Action	CSA	58,000	M
South Central Community	Head Start	HEW (OLD)	61,529	M
Madelia	Rental Housing	USDA (FmHA)	215,400	A
Elysian	Emergency Drought Relief Funds	USDA (FmHA)	21,700	A
St. James	Emergency Drought Relief Funds	USDA (FmHA)	23,000	A
Welcome	Emergency Drought Relief Funds	USDA (FmHA)	80,000	A
LaSalle	Emergency Drought Relief Funds	USDA (FmHA)	103,500	A
New Ulm (Modual)	Rural Rental Housing	USDA (FmHA)	433,200	A
State of Minnesota	Pre-school Incentive Grant	Office of Education	253,000	A
Cleveland	Plan for Waste Treatment Facilities	Environmental Protection Agency	NA	A
St. James	Plan for Waste Treatment Facilities	Environmental Protection Agency	NA	A
Winthrop	Plan for Waste Treatment Facilities	Environmental Protection Agency	NA	A
Lafayette	Plan for Waste Treatment Facilities	Environmental Protection Agency	NA	A
LeCenter	Plan for Waste Treatment Facilities	Environmental Protection Agency	NA	A
Brown / Nicollet Human Services Board	Community Health Services Plan	Dept. of Health	243,074	A
Blue Earth (HSB)	County Health Services	Dept. of Health	258,798	A
Blue Earth	EPA Facilities Planning Grant	EPA	NA	A
Eagle Lake	EPA Facilities Planning Grant	EPA	NA	A
City of Wells	EPA Facilities Planning Grant	EPA	NA	A
City of St. Peter	EPA Facilities Planning Grant	EPA	NA	A
City of Winnebago	EPA Facilities Planning Grant	EPA	NA	A
City of Kiester	Community Facilities	FmHA	330,000	A
Lake Crystal Development	Elderly Housing	HUD	Unknown	A
City of LeSueur	EPA-Facilities Plan	EPA	NA	A
Watonwan County Arts Council	Regional Art	MSAB	300	A
LeSueur Community Theatre	Regional Art	MSAB	2,490	D
South Central Community	Regional Art	MSAB	13,055	A
Minn. Valley Action Council	CAA	CSA	7,500	A
City of Waseca	Facilities Planning Report (Sewage)	EPA	NA	
City of Janesville	Facilities Planning Report (Sewage)	EPA	NA	A
Minnesota Lake	FmHA Sec. 515 Rural Rental Housing	USDA (FmHA)	215,900	A
Faribault / Martin Watonwan Rehabilitation Center	Sheltered Workshop	DUR	40,000	
Welcome (individual)	Sec. 515 Rural Rental Housing	USDA (FmHA)	205,200	A
City of Granada	Water Collection & Treatment Center	USDA (FmHA)	262,500	A
Minn. Valley Action Council	NIAA Alcohol Counseling	NIAAA	22,500	A
Minn. Valley Action Council	Goal Community Conservation Improvements Projects	Dept. of Labor		A

Applicant Agency	Project	Funding Agency	Amount Requested	Recommendation
Cable Service Territory	City of Sherburn	NA	NA	A
Sec. 515 Rural Rental Housing	Eagle Lake (individual)	FmHA	281,200	A
City of LeSueur	Para-transit Demonstration	MN / DOT	44,688	A
Amboy (individual)	Rural Rental Housing	FmHA	Unknown	A
Faribault / Martin	Community Health Services Board	Minn. Department of Health	133,432	A
Watonwan Human Services Board				
LeCenter (individual)	Rural Rental Housing	FmHA	421,800	A
YWCA	Battered Women's Support Center	D e p t . o f Corrections	59,029	A
Waseca (individual)	Rural Rental Housing	USDA (FHA)	220,020	A
Blue Earth (partnership)	Rural Rental Housing	USDA (FHA)	296,000	A
St. James (partnership)	Rural Rental Housing	USDA (FHA)	440,040	A
St. Peter	Industrial Park Utility Extension	USDA (FHA)	200,000	A
Governor's Manpower Office (GMO)	Concentrated out-reach to older people	HEW (OHD)	250,000	A
Fairmont (individual)	Restaurant	FmHA (Loan)	350,000	A
Mankato Fine Arts Dance Co.	Project Grant	Minn. State Arts Board	2,200	A
Butterfield Community Choir	Project Grant	Minn. State Arts Board	225	A
Traverse des Sioux Library System	Project Grant	Minn. State Arts Board	9,960	A
Civic Summer Theatre, Inc.	Project Grant	Minn. State Arts Board	2,000	A
Gustavus Adolphus College	Project Grant	Minn. State Arts Board	2,810	A
School Sisters of Notre Dame	Project Grant	Minn. State Arts Board	1,500	A
Frost Public School Dist. No. 220	Project Grant	Minn. State Arts Board	400	A
Mankato State University	Project Grant	Minn. State Arts Board	8,640	A
Wells / Easton Public Schools Dist. No. 224	Project Grant	Minn. State Arts Board	4,450	A
Trinity Lutheran Senior Choir	Sponsor Assistance	Minn. State Arts Board	400	A
Gustavus Adolphus College	Sponsor Assistance	Minn. State Arts Board	1,900	A
Minn. Valley Regional Library	Sponsor Assistance	Minn. State Arts Board	260	A
U of M, Waseca	Sponsor Assistance	Minn. State Arts Board	257.80	A
U of M, Waseca	Sponsor Assistance	Minn. State Arts Board	1,375	A
Bethany Lutheran College	Sponsor Assistance	Minn. State Arts Board	2,150	A
Bethany Lutheran College	Sponsor Assistance	Minn. State Arts Board	2,150	A
Mankato State University (individual)	Sponsor Assistance	Minn. State Arts Board	1,225	A
Mankato State University (individual)	Sponsor Assistance	Minn. State Arts Board	1,062	A
Minn. Valley Action Council	Community Food & Nutrition	Community Services Adm. (CSA)	18,000	M
Wells, HRA	Section 8 Housing	HUD	1 million	A
Fairmont	Community Emergency Drought Relief	Development Administration	486,000	A
South Central Community	Emergency Energy Conservation	CSA	94,785	A
Government Manpower Office	Crisis Intervention	Dept. of Labor		A
		HEW		

Applicant Agency	Project	Funding Agency	Amount Requested	Recommendation
Minn. Valley Action Council	Elderly Volunteer Services	HEW (CSA)	47,580	A
Minn. Nutrition Campaign	Community Food & Nutrition Training		26,274	A
Henderson	City and Recreation Development	Dept. of Labor	9,750	A
Brown County - Lake Hanska Park	Park Improvement	Dept. of Labor	24,300	A
Mankato	YMCA	Dept. of Labor	16,132	A
Janesville	City Improvement	Dept. of Labor	27,301	
Minnesota Lake	Energy & Remodeling	Dept. of Labor	8,231	A
North Mankato	Riverbank Improvement	Dept. of Labor	13,000	A
Blue Earth City	Park & River Improvement	Dept. of Labor	23,700	A
Mankato	Public Library	Dept. of Labor	10,175	A
Springfield	St. John's Building Repair	Dept. of Labor	20,005	A
Fairmont	Chemical Dependency	Dept. of Labor	9,384	A
St. Clair	St. John's RMT Project	Dept. of Labor	17,393	
Blue Earth City	Environmental & Recreation	Dept. of Labor	13,120	A
LeCenter	Beautification & Park Maintenance	Dept. of Labor	3,007	A
Welcome	Welcome Park	Dept. of Labor	4,248	A
Sleepy Eye	Service to School	Dept. of Labor	12,006	A
Nicollet	Winterize & Paint	Dept. of Labor	12,377	A
Mankato Region 9 MVAC	SST	Dept. of Labor	22,072	
Montgomery	Renovate Grandstand	Dept. of Labor	5,000	A
Wells	Community Center Supervisor	Dept. of Labor	6,858	A
Jay Township Martin County	Bridge Repair	Dept. of Labor	1,800	A
Sleepy Eye	Sleepy Eye Schools Painting	Dept. of Labor	8,172	A
Amboy	Community Education Recreation	Dept. of Labor	7,350	A
Madelia	Madelia Child Development Attendance Officer Grounds Beautification	Dept. of Labor	6,912	A
Mankato	YWCA Latch Key	Dept. of Labor	6,600	A
Elmore	Tender Years Community Service	Dept. of Labor	8,900	A
Waterville	Landscaping Hope Residence	Dept. of Labor	34,945	A
Welcome	Welcome School Project	Dept. of Labor	10,121	
Nicollet City	Improve City Parks	Dept. of Labor	16,000	
Gaylord	Renovation of Hospital & Athletic Field	Dept. of Labor	11,508	
St. James	Tourist Coordinator / Secretary	Dept. of Labor	18,354	
Fairmont / Martin	Tri-County Detox Technicians	Dept. of Labor	17,188	
Watsonwan	Eclipse Outreach	Dept. of Labor	4,410	
Blue Earth / LeSueur	Caretaker / Custodian	Dept. of Labor	18,750	
Arlington	S.E. LeSueur County Beautification	Dept. of Labor	20,040	
Waterville / Elysian				
Mapleton	Mapleton Public Schools	Dept. of Labor	7,280	
Mankato	Public Facilities Maintenance	Dept. of Labor	33,695	
LeSueur	Intergovernment Service Development	Dept. of Labor	62,267	
LeSueur	Park & Recreation	Dept. of Labor	46,695	
LeSueur County	County-wide Rehabilitation	Dept. of Labor	19,000	

Applicant Agency	Project	Funding Agency	Amount Requested	Recommendation
Fairmont	Lakeshore Restoration	Dept. of Labor	30,893	
Faribault / Martin / Watonwan	Youth Workers	Dept. of Labor	46,064	
Faribault / Martin / Watonwan	Therapists	Dept. of Labor		
Faribault / Martin / Watonwan	Aging Coordinators	Dept. of Labor		
Region	MRC - Developer, Designer, Typist	Dept. of Labor	30,459	
Mankato	Christian Concern	Dept. of Labor	5,482	
Blue Earth County	Public Land Survey	Dept. of Labor	35,000	
Region	Southern Minnesota Legal Services	Dept. of Labor	15,978	
Region	Advocate for DD	Dept. of Labor	11,140	
Faribault / Martin / Watonwan	Energy Conservation	Dept. of Labor	3,611	
New Ulm	Dutch Elm Removal	Dept. of Labor	15,480	
Region	ECSU	Dept. of Labor	2,485	
LeSueur County	Dutch Elm	Dept. of Labor	15,000	
LeSueur County	Cannon River Clean-up	Dept. of Labor		
Lake Fremont	Cemetery Maintenance & Township Ditch	Dept. of Labor	2,650	
Lewisville	Building Demolition & Street Repair	Dept. of Labor	2,500	
St. James	Street & Park Maintenance	Dept. of Labor	23,759	
Blue Earth / Nicollet	Camp Tanowaha	Dept. of Labor	5,704	
St. Peter	Diseased Tree Removal	Dept. of Labor	15,020	
Waterville	MR Community Day Program	Dept. of Labor	12,000	
Cleveland	Summer Recreation	Dept. of Labor	3,200	
LeSueur County	Dutch Elm Control	Dept. of Labor	14,700	
Nicollet County	Maintenance Fairgrounds	Dept. of Labor	2,415	
Nicollet County	Improve Parks	Dept. of Labor	6,500	
Lake Crystal	Beautification & Tree Planting	Dept. of Labor	20,520	
Eagle Lake	Park Development & Management	Dept. of Labor	6,000	
Good Thunder	Village Water Survey	Dept. of Labor	2,000	
St. Clair	City Improvements	Dept. of Labor	6,720	
Mankato	Dutch Elm Control	Dept. of Labor	65,000	
Blue Earth County	Dutch Elm Control	Dept. of Labor	50,000	

rndc staff

Terence Stone, Executive Director
Don Steger, Physical Planning
Director and Land Use
Bob Zelenka, Transportation and Recreation
Bruce Peterson, Water Quality
Gary Yuva, Housing and
Community Development
Jerry Keenan, Traffic Safety
Craig Shirk, Recreation and
Graphics Coordinator
Pam Schmidt, Human Resource
Director & Manpower
Craig Waldron, Developmental
Disabilities and Arts
Marie DeVries, Criminal Justice
Connie Noterman, Aging
R. J. Reding, Health and Emergency
Medical Services
Katie Collins, Child Care
Helen Watkins, Administrative Assistant
Kathie Davis, Public Information
Marcia Holt, Bookkeeper
Judy Menk, Secretary
Judy Cunningham, Secretary

1977 - a year of growth



Terence Stone
Executive Director

This has been a year of growth for the Region Nine Development Commission. Not one of growth in size of staff but rather one of maturing as an organization.

We have made some significant progress in a number of areas. Our move to the former Mankato library was finally completed. It gives us much needed space at a cost advantage that benefits the entire region.

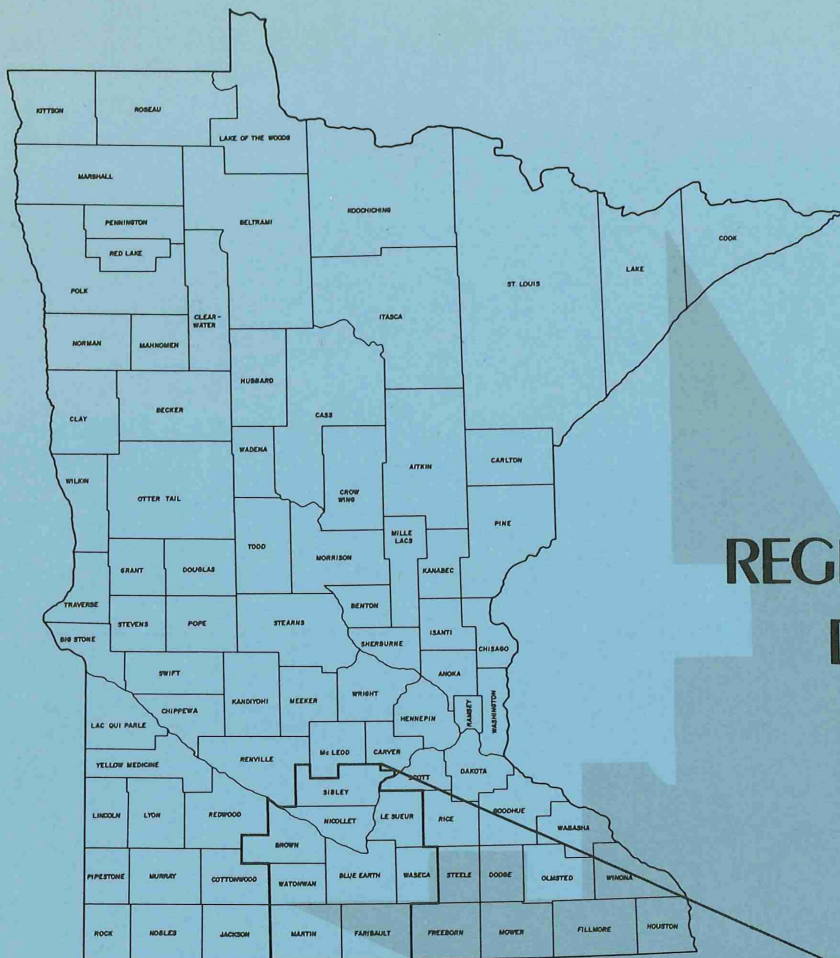
Our staff is working hard to remain among the front runners in all programs that we are involved in.

We, as a Commission, are facing the hard decision of ranking and prioritizing all grant applications from within the region. This process is finally having a definite positive impact with the state agencies that we work with. We are firmly expressing the needs of our local units of government to the state and federal agencies which we are working with.

The commission took positive actions in establishing a position that has been primarily delivering technical assistance to local units of government. When a community needs help we are here to assist in whatever way possible.

I feel that our stature as a commission is one of very positive performance and certainly look forward to the coming year's activities of service to local units of government.

Terence Stone



REGION NINE DEVELOPMENT COMMISSION

120 SOUTH BROAD STREET
MANKATO, MN 56001

