

1



PORT

5525

# REGION NINE DEVELOPMENT COMMISSION



LEGISLATIVE REFERENCE LIBRARY  
STATE OF MINNESOTA

HT  
393  
.M62  
R46x  
1975



# RNDC BOARD



Lester Anderson



Margaret Engesser



Elmer Kading



Wayne Kevan



John Paschke



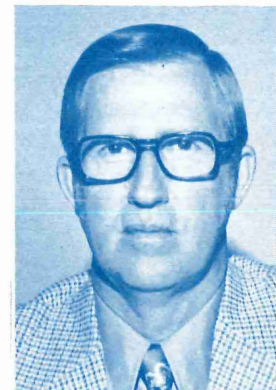
James Stangler



Roland Thiesse



Howard Vetter



Carl Wyczawski



Cover Photo Courtesy of Mankato State College

# REGION NINE COMMISSIONERS

## BLUE EARTH COUNTY

Lester Anderson, County Commissioner\*  
H. W. Boening, Mayor, Mapleton  
Herbert Mocol, Mayor, Mankato  
Earle Schmidt, Township

## BROWN COUNTY

Orville Hanson, Township  
Donald Lindley, Mayor, Springfield  
Denis Warta, County Commissioner  
Carl Wyczawski, Mayor, New Ulm\*

## FARIBAULT COUNTY

Casimer Chirpich, School Board  
Gunnar Frey, Mayor, Wells  
John Paschke, County Commissioner\*  
John Wettlaufer, Township

## LE SUEUR COUNTY

Veronica Anderson, School Board  
James O'Meara, County Commissioner  
James Stangler, Township\*  
Walter Vetter, Mayor, Kasota

## MARTIN COUNTY

Marlin Gratz, City Councilman, Fairmont  
Daniel Keasling, County Commissioner  
Neil Saxton, Soil & Water Conservation Districts  
Donald Stahn, Mayor, Welcome  
Roland Thiesse, Township\*

## NICOLLET COUNTY

Wayne Comstock, MVCOG  
Ray Eckes, County Commissioner  
Douglas Pyan, Mayor, St. Peter  
Kenneth Albrecht, Township  
Howard Vetter, Region 9 Chamber Association\*

## SIBLEY COUNTY

Richard Hebeisen, County Commissioner  
Elmer Kading, Mayor, Gibbon\*  
Victor Weckwerth, Township

## WASECA COUNTY

Margaret Engesser, Mayor, New Richland\*  
Roderick Joyce, Township  
Eugene Powell, County Commissioner

## WATONWAN COUNTY

Robert Gustafson, Township  
Wayne Kevan, County Commissioner\*  
Terence Stone, Mayor, Madelia\*

\*Board Members



Terence Stone, RNDC Chairman

LEGISLATIVE REFERENCE LIBRARY  
STATE OF MINNESOTA

As the Region Nine Development Commission completes its third annual report, those of us who helped organize the Commission can see many of the activities we planned beginning to take shape. These activities have been based on well-thought-out recommendations to the Commission from the many dedicated persons who serve on its subcommittees.

Individuals from all over Region Nine have contributed their time and interest to making the Commission responsive to the needs and desires of their fellow citizens. This is the way that the best interests of local communities are served by the Commission.

My personal thanks goes to all of you who have made the Commission the working organization that it is. I can only hope to serve the region with the same ability and dedication of all its members and my predecessor, Dan Keasling, so that the coming year will be as productive as prior ones have been.

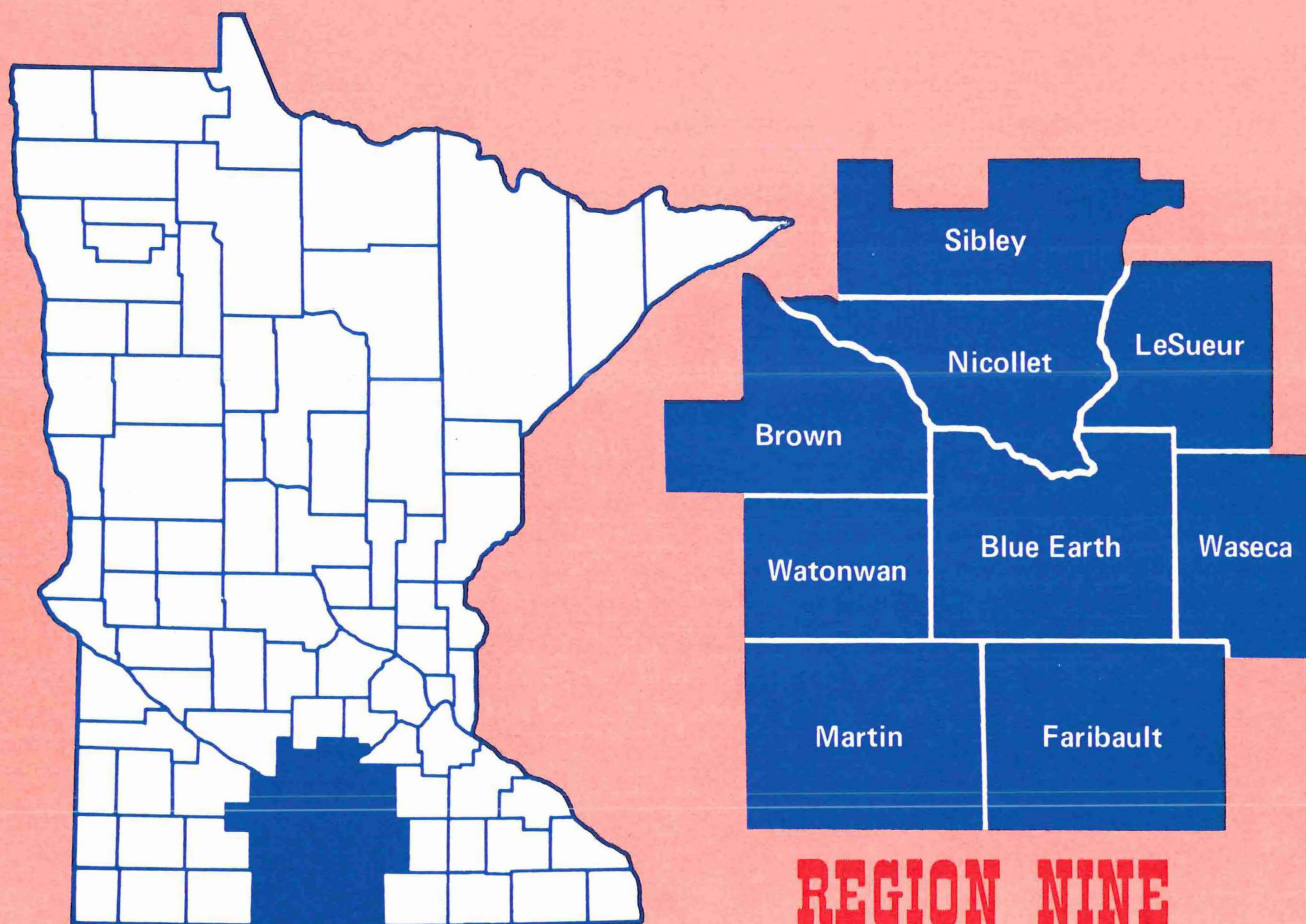
*Terence Stone*

P66.18  
871  
1975



# INTRODUCTION

The Region Nine area is composed of nine counties: Blue Earth, Brown, Faribault, LeSueur, Martin, Nicollet, Sibley, Waseca and Watonwan. The nine counties are stable and prosperous with a strong economy and good facilities and services. Basically agriculturally oriented, the region encompasses 5,064 square miles with over 85% of the land area under cultivation and 12% in forest, pasture and open land or water. Many of the region's industries are directly related to its agricultural base. Of the state's 1970 population, 5.7% reside within the region (218,077). There are three major cities of over 10,000 people in the region: Fairmont, Mankato and New Ulm. Additionally, more persons are being attracted to these and other urban centers in the region.



## REGION NINE



# BACKGROUND

In most areas of the country today, people's lives are touched by a number of local communities. They may be employed in one city, live in a different community and their favorite recreation area may be in still another city or county.

We are living in a mobile age where problems facing local communities, like their residents, cross local boundaries. These are problems which most often can best be solved on a cooperative basis rather than by a single city or county. Regional development commissions are the instruments of local and state government to assure such cooperation.

The Region Nine Development Commission (RNDC), authorized by the Regional Development Act of 1969, was organized in 1972. The Commission's purpose, according to the legislation, is "...to facilitate intergovernmental cooperation and to insure the orderly and harmonious coordination of state, federal and local comprehensive planning and development programs for the solution of economic, social, physical and governmental problems of the state and its citizens." (Minnesota Statutes, Section 462.383, subd. 2)

Businessmen, farmers and other interested persons providing leadership as elected officials in the counties of Region Nine first served on the Commission. In order to insure equal representation each of the nine counties designated three members, one representing cities, one townships and one the county. Cities having over 10,000 population, i.e., Fairmont, Mankato and New Ulm, also had a voting seat on the Commission. School districts in the region were represented by two members and the Minnesota Valley Council of Governments by one member.

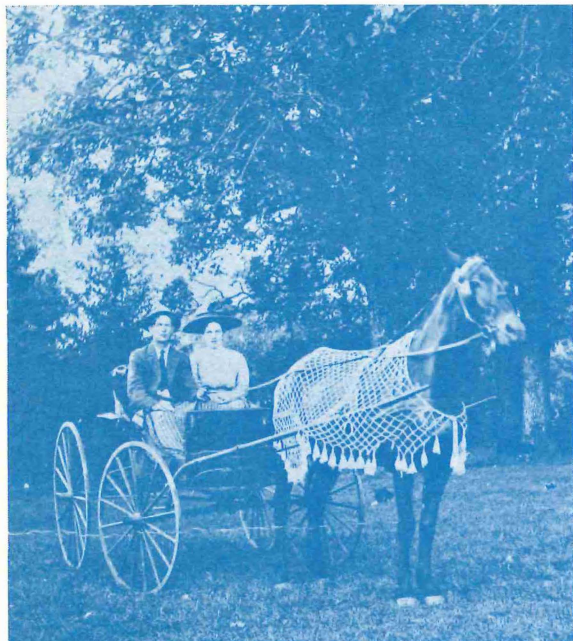
Commission membership has since been expanded to include a voting representative from the business community (Region Nine Chamber Association) and the Soil and Water Conservation Districts. According to RNDC bylaws, citizens representing public interest groups within the region, such as health and human welfare, crime prevention, labor, minority and low income, tourism and recreation and agriculture, may also serve as members of the Commission.

At present this diversity of interest is sought from councils and subcommittees advisory to the Commission. Over 250 citizens of Region Nine are actively involved in regional planning by providing expertise and interest in developing and prioritizing goals and objectives for the region. This is approximately a 660% increase over the 33 members involved when the Commission was organized in 1972.

As a direct result of input from participating citizens, the Commission has initiated planning in a number of areas to encourage further growth and development in the region. Priorities have been established, which address both physical and human needs in the nine counties, and a professional planning staff has been hired to carry out the planning activities of the Commission.

The RNDC staff includes: an executive director, a director of regional planning, planners for transportation and rural development, solid waste and resource recovery, housing and community development, health and emergency medical services, human resources and manpower, and developmental disabilities, an executive secretary/bookkeeper, a stenographer/typist and a public information coordinator. They are assisted on a semi-annual basis by three interns from Mankato State University and Gustavus Adolphus College.







# SYNOPSIS

## Physical Planning

In physical planning, RNDC staff and committee members have focused on:

1. transportation planning by working with the State Highway Department on a portion of the statewide plan, that plan to provide for long-range improvements to the trunk highways of this region and the balance of the state. Attention has also been given to railroad transportation which affects industrial and agricultural businesses and farmers located within the region.
2. housing planning to determine the quality of housing within the region and to develop a strategy for future allocation of publicly sponsored housing to those sections of the region with the greatest need.
3. solid waste and resource recovery planning to study the use and market of recyclable items including burning refuse to provide fuel, paper products recycling and the possibility of lumbering elm trees in southern Minnesota. A can recovery project is also being developed and will begin in a pilot area in early 1976.
4. rural, industry and community development planning to analyze use of land in the rural areas of the region and to develop policies to protect and enhance agricultural and open space and examine land uses. Technical assistance was provided to a number of localities in determining and assessing local community resources, and needs and in preparation of Community Development Block Grant and LAWCON applications.

## Social Planning

In social planning, RNDC staff and councils have focused on:

1. human resource planning by coordinating related planning efforts in the region; assisting the pilot, later operational, Human Service Boards; providing technical assistance to counties in joint actions protesting state allocation of social service funds and initiation of a mental health reorganization study.
2. manpower planning by defining regional manpower needs and priorities and allocating available resources according to the needs identified.
3. developmental disabilities planning to ultimately insure better resources for the developmentally disabled, i.e., individuals who are mentally retarded, cerebral palsied, epileptic and autistic. Planning activities have been concentrated on developing an allocation plan for dispersment of residential facilities and associated day programs throughout the region; early identification and homebound programs to benefit young children; and an advocacy system for the developmentally disabled.
4. health planning by assisting communities in evaluating their potential for obtaining or maintaining physician services. Negotiations have also been undertaken to develop a health systems agency. Ambulance services, coronary monitoring facilities and hospital emergency rooms have been surveyed for emergency medical service planning.





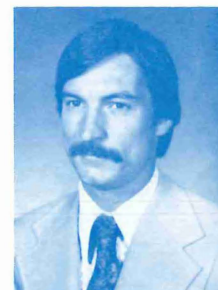
Courtesy of Farmfest '76



Courtesy of Farmfest '76



**George Brophy**  
Director of Physical Planning



**Jim Degiovanni**  
Community Development



# PHYSICAL PLANNING

## Transportation Subcommittee

The Transportation Subcommittee of Region Nine continued to undertake activities which support its assumption that regional planning for a multi-model transportation system is warranted. Adequate highway, railroad and air traffic systems are needed to provide a transportation network which will serve agribusiness, industrial-commercial interests and the orderly growth of the Region Nine area.

In order to develop a transportation plan to accomplish the stated needs, the Subcommittee took action on several current issues. A major objective accomplished in 1975 was the identification of highway problems as perceived by area businessmen and interested citizens. Region Nine, in cooperation with Chamber of Commerce organizations, organized a series of five highway informational meetings throughout the region. The purpose of the meetings was to inform the general public of existing conditions and improvements planned by the highway department in the near future. With this information known, the participants were asked to comment on which other improvements they felt were warranted. The results of the meetings will be used by the Subcommittee in making recommendations to the State Highway Department.

The Subcommittee continued to study the problem of rail abandonment by working closely with the State Planning Agency in the development of a program which will mitigate the problems resulting from continued abandonment of rail lines. The results of the study will be made available to legislators who are considering alternative methods of meeting the problems resulting from abandonment.

Other studies initiated during 1975 included: a report on the impact of multiple-loading facilities on grain transportation; an evaluation of the computerized bridge priority replacement program developed by the Minnesota Highway Department; and a report on the revisions planned for the functional classification system of the federal aid secondary network.

## Community Development Subcommission

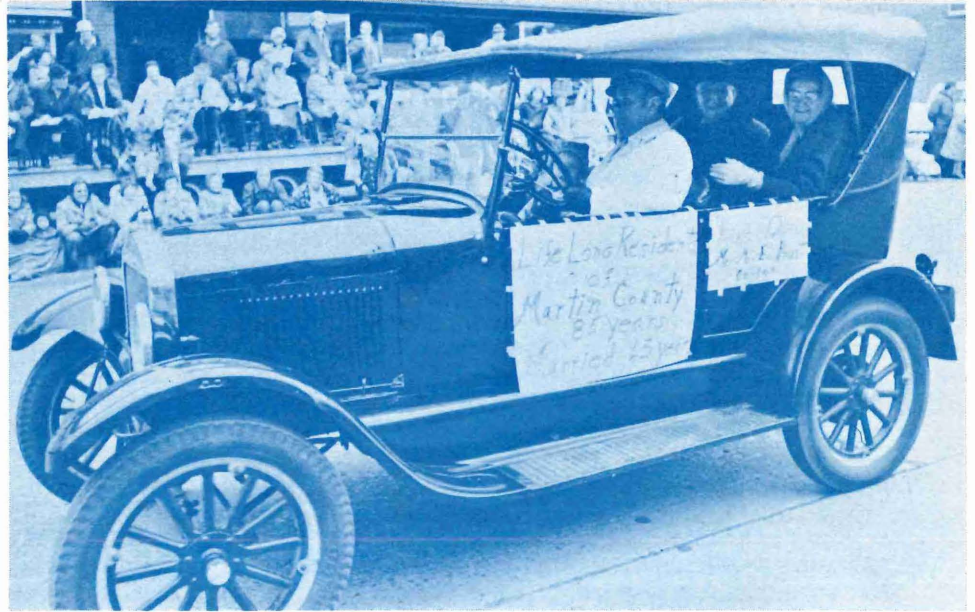
For the second consecutive year, housing was a major area of concern for the Community Development Subcommission. Information and data, which was collected and analyzed in the previous year, was structured into a regional housing analysis. The analysis addresses the region's housing stock in terms of vacancy rates, substandard housing, growth projections and income limitations of families residing in the region.

One of the problems identified in the housing analysis is the fact that a large proportion of the families residing in the region and expected to be formed in the region cannot afford the high price of new houses or apartments. An existing shortage of government subsidized housing for low and moderate income families is a related problem. Because of the high demand for subsidized units and the relatively limited supply available, it was determined that an allocation plan be developed to insure that subsidized units be distributed in an equitable manner. A draft of that allocation plan was completed and public hearings on the plan were scheduled for 1976.

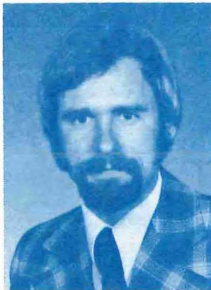
In addition to the time devoted to housing, a significant amount of staff effort was devoted to assisting local governments. Assistance included developing and leading training seminars for local planning commissions and writing grant applications for local capital improvement projects. Assistance to local governments will continue to be a major work item in 1976.

The Community Development Subcommission will focus its attention on additional areas in the forthcoming year. One work element will be to thoroughly research the Joint Powers Act and to define the range of applicability to Region Nine units of government. Another work element will be to evaluate the management needs of small cities and, when requested, to make recommendations for improvements.





Courtesy of Fairmont Daily Sentinel



**Ted Halter**  
Resource Recovery



**Virgil Nelson**  
Transportation



Courtesy of Farmfest '76



## Rural Development Subcommittee

Improvement of the quality of rural life was established as the primary goal of the Rural Development Subcommittee. Problem identification became the first objective in the work program developed by the RDS to attain that goal. Accordingly, 1975 was spent developing techniques which could be used to collect data and identify problems. A "Community Report Card" was formulated, and it will be distributed and analyzed early in 1976. The Community Report Card is a survey designed to be administered to residents of a community to determine the attitudes and perceived needs of those persons living both in and around a city. Results of the survey will be used to evaluate rural needs and to develop policies and plans to accommodate those needs.

The Subcommittee also established a sound working relationship with other agencies and groups affecting the quality of life in Region Nine. Ties with University of Minnesota Technical College-Waseca were solidified in 1975 by cooperating on such projects as a rural development seminar and the review of agricultural land use policies. The RDS reviewed and commented on three grant applications, made to the Governor's Rural Development Commission, for improvements to the rural library system, rural housing and rural education. All three applications were funded. Legislation and programs affecting agricultural and ecological problems of rural areas were researched and evaluated.

In 1976 the RDS will focus its attention on rural land use problems. A technical advisory group has been established to evaluate land use problems and begin to make policy recommendations.

## Resource Recovery

RNDC efforts in the area of resource recovery were expanded in 1975, and programs initiated in 1974 were evaluated, documented and continued. A report summarizing the Mankato paper recycling program was drafted in the form of a handbook which can be utilized by cities interested in instituting similar programs. A separate report was drafted which describes fourteen resource recovery projects which were investigated, developed and in some cases initiated.

Major accomplishments in 1975 included the development of a can and metal recovery program for the greater Mankato area. Major industries and businesses, as well as federal, state and local governments, were brought together to support the project and to provide the needed funds. Grant applications were submitted to the Minnesota Pollution Control Agency and the Federal Department of Interior. MPCA has approved the grant request and designated \$22,500 to the project, which will be implemented in 1976.

Another accomplishment was the formulation and development of a roadside utilization project. The project, which is designed to more fully utilize newly upgraded roadsides for agricultural production, was adopted and utilized by Blue Earth County.

Other resource recovery activities included initiation of pilot tests, through the Twin Cities Metallurgy Branch of the Bureau of Mines to explore utilization of rubber tires as foundry fuel. Initial tests have proved successful. Another project was a Bicentennial roadside clean-up program for abandoned autos. The emphasis of the program is on public education for the clean-up and recycling of junk cars, which have been abandoned and are visible from any public right-of-way.



Courtesy Art Hanson and New Ulm Daily Journal





# HUMAN RESOURCES

## Human Resource Subcommission

The Human Resource Subcommission is advisory to the Region Nine Development Commission in planning and policy development related to human resources. In this capacity, the HRS reviews plans and policies recommended by the Developmental Disabilities Planning Council, the Criminal Justice Planning Council, the Health Planning Council and the Manpower Advisory Committee. Membership consists of twelve citizens, one from each county and one from each city over 10,000 who are appointed by the RNDC's Board of Directors.

The HRS has assumed primary responsibility for coordination of planning efforts in human resources. Accordingly, HRS representatives regularly attend the meetings of the aforementioned groups, as well as the three Human Service Boards and the Council for Coordinated Child Care, and report monthly on the activities of those planning bodies. Specific activities in 1976 related to this coordinative role included: development of a position on the relationships between Human Service Boards and the RNDC; review of Human Service Board plans; adoption of a letter of agreement with the Council for Coordinated Child Care; participation in Health Systems Agency negotiations; review of Title XX social service plans; development of a position paper on state allocations of federal social service funds and consequently participation in a lawsuit for a more equitable formula; an examination of pre-school screening in the region and recommendations on their expansion; and initiation of a mental health reorganization study.

Anticipated activities to be undertaken in 1976 include a demonstration project to expand in-home services for the elderly, an examination of the RNDC role in education planning, culmination of the mental health reorganization study and assumption of criminal justice planning.

## Regional Manpower Advisory Committee

The Regional Manpower Advisory Committee is advisory to the RNDC and the Governor's Manpower Office on Comprehensive Employment and Training Act programs in Region Nine. The sixteen-member committee includes one citizen from each county, one representative from each of the three Human Service Board Advisory Committees, one representative of community action agencies, one representative of the Region Nine Chamber Association, one representative from Employment Services and one representative of Area Vocational-Technical Institutes.

The primary responsibilities of the RMAC include: identifying and documenting manpower needs and problems within the region; recommending a comprehensive system of manpower services designed to meet identified needs on a priority basis and within the limits of available resources; determining local objectives for manpower services in conformance with statewide goals and objectives; identifying and examining potential agents for the delivery of manpower services within the region; monitoring and evaluating on-going manpower services; recommending appropriate changes in services or sponsors based upon changes in needs or evaluations of effectiveness; providing leadership in coordinating and improving all manpower and manpower related services offered within the region; fostering public awareness of, and participation in, manpower planning activities; and recommending new or changed statewide manpower policy, goals and/or procedures.

In establishing 1975 planning priorities, the RMAC identified unemployed heads of households as the priority target group. Other target groups specified for concentrated manpower programming were in-school youth, 18-24 year olds, public assistance recipients and older workers.

Toward the end of the year, the Governor's Manpower Office provided funding for staff assistance to the committee. Having its own staff resources will enable the committee, in 1976, to conduct a more detailed, in-depth inventory of regional manpower needs.



## Developmental Disabilities Planning Council

The principal work activity of the Region Nine Developmental Disabilities Planning Council (DDPC) during 1975 has been development of a plan for community-based resources for the developmentally disabled. The purpose of the plan is to recommend locations for programs and facilities which will be dispersed throughout Region Nine.

The needs of the developmentally disabled, those who are cerebral palsied, epileptic, mentally retarded and autistic, have been considered by the DDPC in its planning efforts. For example, the Council conducted a survey of 779 developmentally disabled individuals to determine what community-based residential facilities and day programs should be developed in the region. The resulting recommendations for residences and programs are as varied as the individuals surveyed. Residential recommendations range from those facilities serving persons with severe handicaps to those for persons who are capable of caring for themselves; day program recommendations range from those which teach individuals basic skills to those for persons able to work in competitive job situations.

Following adoption of this residential and program plan, the DDPC will work with communities to implement it during 1976. The Council's activities will focus on helping those, who wish to develop such resources, complete the necessary steps to the ultimate opening of a facility to clients. This would include technical assistance in identifying and pursuing funding sources and in meeting the requirements for licensure.

Other Council activities during 1975 centered on early identification of problems which impair the physical, mental, and emotional growth of children. A task force, composed of doctors, public health nurses, special education directors and citizens, was created especially to examine the worth of screening for such problems. Following the directive of the task force, the DDPC provided a forum for interested persons to air their ideas and offered assistance to counties wishing to initiate screening activities. During 1976 the Council will concentrate on strategies to educate parents, school children, health care professionals and public officials about the worth of early identification of problems.

The Council's planning efforts in homebound teaching programs for pre-schoolers successfully concluded in 1975 with the completion of their Portage model pilot project. Final testing of the project's participants showed a much higher rate of development than had been originally predicted. Based on such results, the DDPC decided to encourage further expansion of the program into additional counties and with additional children served by each program.

Another work activity of the DDPC involved disseminating information about the Student Fair Dismissal Act. The Council intends to develop additional methods in 1976 for informing the public of the needs and rights of the developmentally disabled.



**Pam Schmidt**  
Human Resources



**Carole Boese**  
Developmental Disabilities



**Paul Brye**  
Health



**Richard Reding**  
Emergency Medical Services



## Health Planning Council

Major changes in federal law occurred on January 4, 1975, when President Ford signed the "National Health Planning and Resources Development Act of 1974." This new health planning mandate builds upon the experience gained under previous federal health planning programs commonly referred to as: the Hill-Burton Program begun in 1946 to assist communities with health facilities construction; the Regional Medical Programs begun in 1965 to assist, through education, special projects attacking the medical problems of heart disease, cancer and stroke; and the Comprehensive Health Planning Program begun in 1966 to provide areawide planning for the health care industry.

As a result of this law, the Health Planning Council has been involved in transitional activities leading to the development of a health systems agency covering the Region Nine area, as well as Regions 8, 6W and 6E. When this new agency is designated and funded in 1976, the Council will terminate its activities.

The new health planning organization will be a non-profit corporation, whose purpose is to develop and implement plans designed to improve the health of residents of the area by increasing accessibility to services while restraining costs of service delivery and preventing unnecessary duplication of health resources. The agency will be required to establish written working relationships with each of the four regional development commissions in its service area as well as other related health planning agencies in the area.

In addition to these activities, organizational health planning accomplishments include: successful completion of work with the Sibley County communities of Gibbon, Winthrop and Gaylord to establish a two-man medical practice; sponsorship of a one-day seminar for leaders from eighteen communities on the subject of physician recruitment; initiating an emergency medical services planning and development program; and completion of an analysis of patient origin patterns at the request of the Waseca area Memorial Hospital in order to advise the hospital on patient flow patterns in their area.

## Emergency Medical Service Task Force

The Region Nine Emergency Medical Service Task Force was organized in July, 1974, as a special advisory group to the Health Planning Council. As its first project, the Task Force worked in conjunction with the State Department of Health, conducting a survey to categorize all Region Nine hospital emergency facilities. Part of this information was later incorporated into a grant application to fund continued emergency medical service planning under the Emergency Medical Service Systems Act of 1973. Funds were received in July and a planner was hired.

As part of an assessment of the region's EMS resources, a survey and on-site visit of all ambulance services was completed delineating needs in training, vehicles, and equipment, as well as a list of priority areas for possible funding.

In December the Task Force approved the hiring of a nurse consultant to survey and assess all Region Nine hospital coronary care facilities. When complete, the assessment will serve as a guide for funding improvements in coronary care and the continued expansion of remote cardiac monitoring.

Other Task Force activities included: support of the creation of expanded emergency service at Immanuel-St. Joseph Hospital, Mankato, including development of an emergency physician service; and stimulation of initial discussion of remote cardiac monitoring between St. Peter Community Hospital and Immanuel-St. Joseph Hospital. This patient care concept is potentially applicable to other interested hospitals in the area.

Close coordination was maintained with agencies involved in EMS delivery such as the Mankato State University and Mankato Area Vocational-Technical Institute advisory groups for emergency medical technician and paramedic training programs. A Task Force representative also served on the State EMS Advisory Committee.

In 1976 a grant will be submitted which will be used to implement the regionwide EMS plan by providing matching funds for new ambulance vehicles, hospital emergency equipment and training emergency personnel.

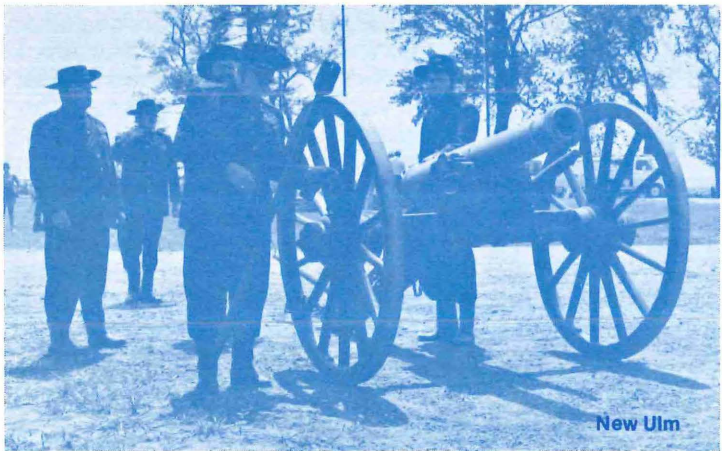




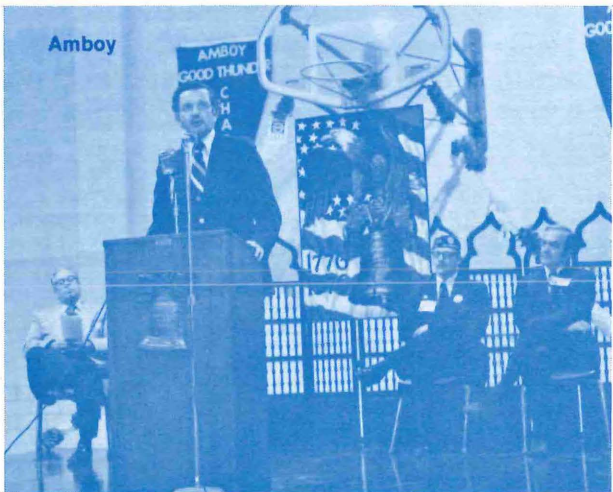
Winnebago



Lake Crystal



New Ulm



Amboy



# REGION NINE BICENTENNIAL COMMUNITIES

AS OF DECEMBER 1, 1975



Fairmont

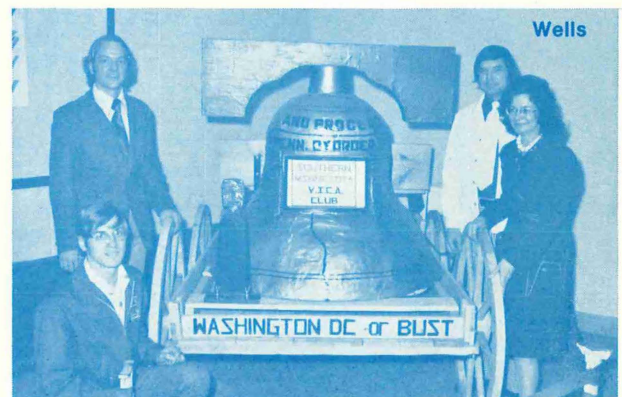


Madelia

Amboy  
Blue Earth  
Bricelyn  
Brown County  
Cleveland  
Easton  
Fairmont  
Frost  
Green Isle  
Henderson  
Janesville  
Kasota  
Kilkenny  
Lake Crystal  
LeCenter  
LeSueur County  
LeSueur  
Madelia  
Mankato  
Mapleton  
Minnesota Lake  
Montgomery  
New Prague  
New Ulm  
Nicollet County  
St. James  
Walters  
Waseca  
Waterville  
Wells  
Winnebago



Farmfest '76



Wells



# A-95 PROJECT NOTIFICATION AND REVIEW

The Federal Office of Management and Budget Circular A-95 established state and areawide "clearinghouses" which are supposed to review most applications for assistance under federal programs that have some impact on the local community and all direct federal development projects within the geographic area of the clearinghouse. Programs under which applications must be reviewed include housing programs, community development programs, transportation programs, law enforcement programs, and many education, social service and health programs.

The Project Notification and Review System (PNRS) established by Circular A-95 serves as an early warning system, so that agencies which have decided to apply for assistance under one of the covered programs must notify both an areawide and state clearinghouse of their projects as early as possible. Region Nine, as the areawide clearinghouse, uses a special form (Form 505) which applicants are directed to use when notifying the Commission of proposed projects or programs. As soon as Form 505 is received by RNDC, agencies and officials which might be interested in the proposal are notified and asked to comment on it. Region Nine then uses those comments in conjunction with its own plans and policies to review the proposal and make a recommendation to the funding agency. The funding agency considers the recommendation made by Region Nine in making the decision regarding approval or disapproval of the application.

The RNDC was not officially designated as an areawide clearinghouse until 1974. 1975 was the first full year that PNRS was administered by Region Nine and the number of proposals reviewed increased significantly. In 1976, the review procedures utilized by the Commission will be further refined and utilized more effectively. A manual has been developed which is now being used as a guideline in the administration of PNRS. Copies are available at the Region Nine office upon request.

## SUMMARY OF NOTIFICATIONS OF INTENT RECEIVED IN 1975

| Applicant Agency                  | Project                             | Funding Agency                | Amount Requested |
|-----------------------------------|-------------------------------------|-------------------------------|------------------|
| City of Mankato                   | Greater Mankato Area Transit Center | Dept. of Transportation       | \$150,000        |
| City of Amboy                     | Community Development               | HUD                           | 99,550           |
| City of Trimont                   | Community Development               | HUD                           | 400,000          |
| City of Fairmont                  | Community Development               | FmHA                          | 235,500          |
|                                   |                                     | HUD                           | 328,075          |
| City of N. Mankato                | Community Development               | HUD                           | 65,600           |
| City of Truman                    | Community Development               | HUD                           | 300,000          |
| Mankato Rehab. Center             | Vehicle for Handicapped             | Urban Mass Transportation Act | 24,135           |
| Waseca County Day Activity Center | Vehicle for Handicapped             | Urban Mass Transportation Act | 12,809           |
| City of Montgomery                | Community Development               | HUD                           | 56,595           |
| City of Winthrop                  | Community Development               | HUD                           | 57,715           |
| City of Kasota                    | Community Development               | HUD                           | 247,500          |
| City of Elysian                   | Community Development               | HUD                           | 110,335          |
| City of Kiester                   | Community Development               | HUD                           | 119,205          |
| City of Lewisville                | Community Development               | HUD                           | 279,000          |
| City of Gaylord                   | Community Development               | HUD                           | 60,000           |
| City of St. James                 | Community Development               | HUD                           | 302,800          |
| City of Lake Crystal              | Community Development               | HUD                           | 274,000          |
| City of Madelia                   | Community Development               | HUD                           | 380,600          |
| City of St. Peter                 | Community Development               | HUD                           | 374,000          |
| City of New Ulm                   | Community Development               | HUD                           | 395,270          |
| City of Wells                     | Community Development               | HUD                           | 320,100          |
| City of Mapleton                  | Community Development               | HUD                           | 112,200          |
| City of Courtland                 | Community Development               | HUD                           | 295,703          |
| City of Janesville                | Community Development               | HUD                           | 148,500          |
| City of Eagle Lake                | Community Development               | HUD                           | 290,085          |
| City of Sleepy Eye                | Community Development               | HUD                           |                  |
| City of Springfield               | Community Development               | HUD                           | 100,000          |



| Applicant Agency                                    | Project  | Funding Agency                        | Amount Requested |
|---|--|---------------------------------------|------------------|
| City of Kilkenney                                   | Community Development                            | HUD                                   | 135,000          |
| City of Sherburn                                    | Community Development                            | HUD                                   | 364,000          |
| City of Madison Lake                                | Community Development                            | HUD                                   | 125,918          |
| City of Winnebago                                   | Community Development                            | HUD                                   | 150,000          |
| Sibley County Cities                                | Community Development                            | HUD                                   | 40,000           |
| City of Gibbon                                      | Community Development                            | HUD                                   | 60,000           |
| City of LeCenter                                    | Community Development                            | HUD                                   | 93,600           |
| City of Waseca                                      | Community Development                            | HUD                                   | 336,500          |
| Region Nine Development Commission                  | Emergency Medical Services                       | HEW                                   | 45,000           |
| Mankato Township                                    | Community Development                            | HUD                                   | 85,000           |
| St. Luke's Lutheran Home, Blue Earth                |  | FmHA                                  | 1,100,000        |
| City of St. James                                   | Municipal Airport                                | Department of Transportation          | 17,027           |
| City of LeCenter                                    | Community Development                            | HUD                                   | 65,000           |
| City of Fairmont                                    | Resource Recovery System                         | Environmental Protection Agency (EPA) | 114,000          |
| City of Mankato                                     | Resource Recovery                                | EPA                                   | 39,000           |
| Sibley County/MN Highway Dept.                      | Bridge Improvement                               |                                       | 133,600          |
| City of Trimont                                     | Street & Storm Sewer Construction                | FmHA                                  | 1,610,000        |
| City of St. Peter/MN Highway Dept.                  | Five-Year Federal Aid Urban Program              |                                       |                  |
| MN Valley Action Council                            | Rural Housing Loan Assistance                    | Governor's Rural Development Council  | 19,180           |
| Martin County                                       | Park Acquisition/Development                     | LAWCON                                | 20,250           |
| City of Mankato                                     | Mass Transit                                     | Dept. of Transportation               | 20,000           |
| City of N. Mankato                                  | Park Acquisition/Development                     | LAWCON                                | 20,575           |
| G. M. Pieschel & Charles Pederson                   | Cedar Manor Apartments                           | FmHA                                  | 247,100          |
| City of Fairmont                                    | Park Acquisition/Development                     | LAWCON                                | 82,080           |
| City of St. James                                   | Community Development                            | HUD                                   | 63,000           |
| City of St. James                                   | Park Acquisition/Development                     | LAWCON                                | 47,575           |
| City of Cleveland                                   | Park Acquisition/Development                     | LAWCON                                | 18,000           |
| City of Green Isle                                  | Park Acquisition/Development                     | LAWCON                                | 6,200            |
| City of Montgomery                                  | Park Acquisition/Development                     | LAWCON                                | 45,000           |
| City of Blue Earth                                  | Park Acquisition/Development                     | LAWCON                                | 40,250           |
| City of New Richland                                | Park Acquisition/Development                     | LAWCON                                | 9,000            |
| City of Janesville                                  | Park Acquisition/Development                     | LAWCON                                | 65,000           |
| City of Minnesota Lake                              | Park Acquisition/Development                     | LAWCON                                | 6,270            |
| Sibley County                                       | Park Acquisition/Development                     | LAWCON                                | 12,500           |
| Brown County  | Park Acquisition/Development                     | LAWCON                                | 30,000           |
| City of Gaylord                                     | Park Acquisition/Development                     | LAWCON                                | 19,500           |
| LeSueur County                                      | Park Acquisition/Development                     | LAWCON                                | 50,000           |
| City of St. Peter                                   | Park Acquisition/Development                     | LAWCON                                | 36,878           |
| Blue Earth County                                   | Park Acquisition/Development                     | LAWCON                                | 750              |
| Blue Earth County                                   | Park Acquisition/Development                     | LAWCON                                | 3,500            |
| Blue Earth County                                   | Park Acquisition/Development                     | LAWCON                                | 22,815           |
| Faribault County                                    | Park Acquisition/Development                     | LAWCON                                | 44,795           |
| Blue Earth County                                   | Park Acquisition/Development                     | LAWCON                                | 6,500            |
| Waseca County                                       | Park Acquisition/Development                     | LAWCON                                | 48,000           |
| City of Arlington                                   | Waste Water Treatment Facility                   | EPA                                   | 21,000           |
| City of Montgomery                                  | Waste Water Treatment Facility                   | EPA                                   | 24,000           |
| City of Comfrey                                     | Waste Water Treatment Facility                   | EPA                                   | 40,000           |
| Atwood Associates                                   | Centennial Plaza—Housing for the Elderly         | HUD                                   |                  |
| City of Lafayette                                   | Waste Water Treatment Facility                   | EPA                                   | 3,713            |
| City of St. James                                   | Water Treatment Plant Improvement                | FmHA                                  | 1,000            |
| City of Mankato                                     | Airport Planning                                 | Dept. of Transportation               | 25,000           |
| Blue Earth County Information and Referral Services | Information & Referral Continuum                 | HEW                                   | 20,000           |
| City of N. Mankato                                  | Community Development                            | HUD                                   | 75,500           |
| City of Waterville                                  | Community Development                            | HUD                                   | 415,000          |
| Cambria Township                                    | Community Development                            | HUD                                   | 250,000          |
| SEMCAC, Inc.  | Dodge-Steele-Waseca Center for Drinking Problems | HEW                                   | 21,001           |
| City of Mankato                                     | Community Development                            | HUD                                   | 358,550          |
| City of Kasota                                      | Community Development                            | HUD                                   | 155,000          |
| City of Madelia                                     | Community Development                            | HUD                                   | 133,200          |
| City of Lake Crystal                                | Community Development                            | HUD                                   | 230,000          |
| City of Kilkenney                                   | Community Development                            | HUD                                   | 150,000          |
| City of Janesville                                  | Community Development                            | HUD                                   | 310,000          |
| City of Henderson                                   | Community Development                            | HUD                                   | 250,000          |
| MN Valley Action Council                            | Poverty Alcoholism Project                       | HEW                                   | 27,260           |
| City of Waseca                                      | Community Development                            | HUD                                   | 500,000          |



## REVENUES

### Year Ending June 30, 1975

|   | Federal  | State    | Local     | Other   | Total     |
|---|----------|----------|-----------|---------|-----------|
| Department of Housing and Urban Development .....             | \$32,000 | ----     | ----      | ----    | \$32,000  |
| State Planning Agency .....                                   | ----     | 35,000   | ----      | ----    | 35,000    |
| Developmental Disabilities .....                              | 21,953   | ----     | ----      | ----    | 21,953    |
| Tri-County Human Service Boards .....                         | ----     | ----     | 23,975    | ----    | 23,975    |
| Minnesota Pollution Control Agency and Private Industry ..... | ----     | 19,338   | ----      | 5,000   | 24,338    |
| Comprehensive Health Planning .....                           | 15,111   | ----     | ----      | ----    | 15,111    |
| Northlands Regional Medical Program .....                     | 24,182   | ----     | ----      | ----    | 24,182    |
| Child Development Planning Project .....                      | 2,623    | ----     | ----      | ----    | 2,623     |
| Department of Economic Development .....                      | ----     | 542      | ----      | ----    | 542       |
| Region Nine Welfare Departments .....                         | ----     | ----     | 4,236     | ----    | 4,236     |
| Tax Levies and Replacement Taxes .....                        | ----     | 8,024    | 87,883    | ----    | 95,907    |
| Total Revenues .....  | \$95,869 | \$62,904 | \$116,094 | \$5,000 | \$279,867 |

## EXPENDITURES

| Year Ending June 30, 1975     | Department of Housing & Urban Development | Planning for Developmental Disabilities | Comprehensive Health Planning | NRMP     | Tri-County Human Service Boards | Child Development Planning Project | Other Programs | Minnesota Pollution Control Agency | Total     |
|-------------------------------|---|---|-------------------------------|----------|---------------------------------|------------------------------------|----------------|------------------------------------|-----------|
| Personnel .....               | \$42,801                                  | \$13,896                                | \$ 4,562                      | \$14,756 | \$16,288                        | \$ ----                            | \$ 2,952       | \$13,819                           | \$109,074 |
| Consultants .....             | 10,885                                    | 600                                     | 686                           | ----     | 569                             | 2,400                              | 4,870          | ----                               | 19,980    |
| Travel, Per Diems, etc. ....  | 4,697                                     | 1,592                                   | 1,723                         | 5,601    | 2,344                           | 60                                 | 382            | 1,051                              | 17,450    |
| Printing & Publications ..... | 1,690                                     | 178                                     | 701                           | 677      | 618                             | ----                               | 82             | 2,892                              | 6,838     |
| Office Expenses .....         | 1,349                                     | 1,104                                   | 990                           | 2,251    | 1,364                           | 148                                | 661            | 1,246                              | 9,113     |
| Supplies .....                | 18  | 11                                      | ----                          | 7        | 15                              | 2                                  | 32             | 7,740                              | 7,825     |
| Equipment .....               | ----                                      | 647                                     | ----                          | ----     | ----                            | ----                               | ----           | ----                               | 647       |
| Other Direct Expenses .....   | 393                                       | 155                                     | 176                           | 890      | 162                             | 13                                 | 62             | 100                                | 1,951     |
| Indirect Expenses .....       | 35,666                                    | 13,488                                  | 3,783                         | 12,394   | 13,595                          | ----                               | 2,247          | 11,828                             | 93,001    |
| Total Expenditures ..         | \$97,469                                  | \$31,671                                | \$12,621                      | \$36,576 | \$34,955                        | \$2,623                            | \$11,288       | \$38,676                           | \$265,879 |

Equipment for general use .....

3,104

\$268,983

Revenues FY75

\$279,867

Expenditures FY75

268,983

Balance

\$ 10,884

## PROJECTED REVENUES

### Year Ending June 30, 1976

|   | Federal  | State     | Local     | Other    | Total     |
|---|----------|-----------|-----------|----------|-----------|
| Department of Housing and Urban Development .....                           | \$32,000 | ----      | ----      | ----     | \$32,000  |
| State Planning Agency/Comprehensive Planning .....                          | ----     | 99,500    | ----      | ----     | 99,500    |
| Department of Health, Education & Welfare/Developmental Disabilities .....  | 24,045   | ----      | ----      | ----     | 24,045    |
| Department of Health, Education & Welfare/Comprehensive Health (1122) ..... | 7,200    | ----      | ----      | ----     | 7,200     |
| Northlands Regional Medical Program .....                                   | 16,500   | ----      | ----      | ----     | 16,500    |
| Governor's Manpower Office .....  | ----     | 9,000     | ----      | ----     | 9,000     |
| Tax Levies & Carryover .....  | ----     | ----      | 113,902   | 29,679   | 143,581   |
| Total Projected Revenues .....  | \$79,745 | \$108,500 | \$113,902 | \$29,679 | \$331,826 |

## PROJECTED EXPENDITURES

### Year Ending June 30, 1976

|   | Personnel | Consultants | Equipment | Travel   | Other    | Total     |
|---|-----------|-------------|-----------|----------|----------|-----------|
| Department of Housing and Urban Development .....           | \$ 20,177 | \$10,000    | \$ ----   | \$ 1,000 | \$ 823   | \$ 32,000 |
| State Planning Agency/Comprehensive Planning .....          | 61,164    | 2,000       | ----      | 16,605   | 19,731   | 99,500    |
| Developmental Disabilities .....                            | 16,115    | ----        | ----      | 3,690    | 4,240    | 24,045    |
| Health Planning (1122) .....                                | 3,050     | ----        | ----      | 1,640    | 2,510    | 7,200     |
| Health Planning (Northlands Regional Medical Program) ..... | 7,500     | ----        | ----      | 4,100    | 4,900    | 16,500    |
| Manpower Planning .....                                     | 4,660     | ----        | ----      | 3,690    | 650      | 9,000     |
| Human Services/Resource Recovery/Regional Support .....     | 70,724    | 10,000      | 7,000     | 10,275   | 45,582   | 143,581   |
| Total Projected Expenditures .....                          | \$183,390 | \$22,000    | \$7,000   | \$41,000 | \$78,436 | \$331,826 |

Funding of the RNDIC is derived from three main sources. Approximately 70 percent of the operating budget is received from state and federal sources through grants for regional activities as the programs are determined by need and then developed. Approximately 30 percent is assessed by counties. Local funding, based on .17 mill tax levy, has not increased since the region was organized. The nine counties' local funding share of the Fiscal Year 1975-76 budget is approximately 45.6 cents per person.



# STUDIES, REPORTS AND CLASSES

## **Overall Program Design, 1976**

The OPD outlines the goals, objectives and work elements which will be executed by RNDC over a three-year period. Anticipated FY 1976 costs to complete the work elements are provided for five major functions: physical plans; social plans; health plans; economic development; and operation, coordination and administration.

## **Region Nine Report**

A monthly publication highlighting activities of Region Nine committees, councils and staff was published during the last half of 1975. Direct contact with regional news media has been intensified in an effort to inform more Region Nine citizens.

## **Inventory of County Employees, 1975**

With the help of county auditors of Region Nine, an inventory of personnel employed by the counties, including position, classification and length of service, was prepared and distributed.

## **1990 Functional Highway Classification System**

As a result of the Federal Highway Act of 1973, a new functional classification system has been developed. This report explains the new system, i.e., the process used to group roads and highways into classes or systems according to the service they are intended to provide. The report also analyzes the impact of this system on federal funding for highway improvements.

## **Position Paper on Region Nine Highway Needs**

The State Highway Department is currently developing a new concept in highway planning called the "Action Plan." This plan will be the result of a four-step system planning process, in which the RNDC is participating. For example, highway informational meetings were held to insure early and effective citizen input so that goals and objectives of the plan address the region's needs. The position paper summarizes the results of these meetings and includes other information regarding the region's transportation needs.

## **Report from the Region Nine Early Identification Task Force**

The purpose of this report is to document the organizational and planning process in the attempted development of a regional service project for early screening and identification of problems in children. It also examines available and potential resources for screening and alternative early identification models.

## **The Region Nine Portage Project**

The final evaluation of the Portage Project includes information regarding initiation of this pilot homebound teaching model. It also details the results of the program based on the developmental growth rate of the participating children, who are handicapped preschoolers.

## **Ambulance Service Survey**

An on-site survey of all Region Nine ambulance services was conducted. The survey collected information on the type of ambulance service provided, the number of annual service calls, the number and training level of ambulance attendants and the type of vehicle and equipment used by the service. From this survey data, reports were generated for the EMS Task Force outlining needs and priorities for training and vehicle and equipment replacement.

## **Workshop on Regionalism**

Believed to be a "first" in education, in 1975 the RNDC and Mankato State University presented a 10-hour workshop on regionalism for Region Nine educators. The intent of the workshop was to develop both an understanding of the concerns of the nine-county area and the organization and operation of the RNDC. It also provided an information base from which educators could expand and develop their total teaching program. With the response shown, further workshops will be scheduled in 1976.



# COMMITTEES

## Community Development Subcommittee

Lloyd Volling, Chairman, LeSueur,  
LeSueur County  
Wilmer Ziemann, Welcome, Martin County  
Phil Shealy, Mankato  
Morris Sheppard, Madison Lake,  
Blue Earth County  
Gary Weedman, Springfield, Brown County  
Jim Berg, Elmore, Faribault County  
Lin Wilker, N. Mankato, Nicollet County  
Gary Lee, Gaylord, Sibley County  
Willis Owen, Madelia, Watonwan County  
Tom Yuzer, Waseca, Waseca County  
Robert Seidel, Fairmont  
Dr. George Kuehner, New Ulm

## Transportation Subcommittee

Gunnar Frey, Chairman, Wells,  
Faribault County  
Les Anderson, Mapleton, Blue Earth County  
James O'Meara, LeCenter, LeSueur County  
Marlin Gratz, Fairmont, Martin County  
Don Lindley, Springfield, Brown County  
Roderick Joyce, Waseca, Waseca County  
Ray Eckes, N. Mankato, Nicollet County  
Victor Weckworth, Arlington, Sibley County  
Wayne Kevan, Madelia, Watonwan County  
August Mueller, Arlington

## Developmental Disabilities Planning Council

Ernie Silbernagel, Chairman, St. Peter  
Lyle Bailey, Blue Earth  
Tom Henderson, New Ulm  
Barb Schultz, Mankato  
Faith Reinhart, New Ulm  
LeRoy Wendt, Springfield  
Hal Sandberg, Madelia  
Dottie Spencer, Madelia  
Verna Markert, New Ulm  
Roger Paquin, Mankato  
Louise Foley, Eagle Lake  
Carolyn Engquist, Waterville  
Lois Jorgenson, St. Peter  
Helen Kuehl, Ormsby  
Joe Harding, Mankato  
Donna Simmonds, Mankato  
DeWayne Hamlin, LeSueur  
Audrey Nelson, Sherburn  
Stu Miller, Waseca  
Norma Elrod, Mankato  
Jean Olson, N. Mankato  
Anita Hoffman, New Ulm  
Carol Cole, Blue Earth  
Joe Doshan, St. James  
Rita Dranginis, N. Mankato  
Roselyn Skillman, New Ulm  
Katherine Jenkins, Mankato

## Human Resource Subcommittee

Betty Munson, Chairman, Sherburn,  
Martin County  
Frank Rodriguez, Elmore, Faribault County  
Mary Gover, St. Peter, Nicollet County  
Mary Berner, Madelia, Watonwan County  
Ann Knewton, Good Thunder,  
Blue Earth County  
Charles Gould, Fairmont  
Donald Harrer, Mankato  
Eldon Horman, Comfrey, Brown County  
Beverly Kroll, LeCenter, LeSueur County  
Pat Querna, New Richland, Waseca County  
Jane Seifert, New Ulm

## Rural Development Subcommittee

Richard Hebeisen, Chairman, Gaylord,  
Sibley County  
Robert Gustafson, Madelia,  
Watonwan County  
Margaret Engesser, New Richland,  
Waseca County  
H. W. Boening, Mapleton, Blue Earth County  
Don Lindley, Springfield, Brown County  
John Wettlauger, Easton, Faribault County  
Walter Vetter, Kasota, LeSueur County  
Don Stahn, Welcome, Martin County

## Regional Manpower Advisory Committee

Sylvester Priem, Chairman, Janesville,  
Waseca County  
Lester Schwarz, Mankato, Blue Earth County  
LeRoy Rix, Sleepy Eye, Brown County  
Joann Olson, Kasota, LeSueur County  
Glenn Johnson, Sherburn, Martin County  
Father Albert Blatz, St. Peter, Nicollet County  
Calvin Schrupp, Gaylord, Sibley County  
William C. Beam, St. James,  
Watonwan County  
Dayton Martinson, St. Peter  
Donald Fisher, Waseca  
Jim Dalton, Blue Earth  
James P. Tierney, Mankato  
Frank Kalin, North Mankato  
George Chase, Mankato

## Minnesota Health Service Area Six—Steering Committee Representatives

Donald Stordahl, Mankato  
Lester Anderson, Mapleton  
E. R. Spannaus, Arlington  
Betty Munson, Sherburn

## Health Planning Council

Donald Stordahl, Chairman, Mankato,  
Blue Earth County  
E. R. Spannaus, Arlington, Sibley County  
June Swanson, Dunnell, Martin County  
Alvin Lewis, Mapleton, Blue Earth County  
Monroe Purrier, Mankato, Blue Earth County  
Mary Lou White, Lake Crystal,  
Blue Earth County  
Oyler Bruderie, Hanska, Brown County  
Monica Donnelly, New Ulm, Brown County  
Walter Hoffman, Wells, Faribault County  
Raymond Bidne, Wells, Faribault County  
Betty Mueller, LeCenter, LeSueur County  
David Miller, Fairmont, Martin County  
Carol Menk, St. Peter, Nicollet County  
Gisela Meyer, Winthrop, Sibley County  
Mildred Martinson, New Richland,  
Waseca County  
John Husby, St. James, Watonwan County  
Patricia Anderson, Madelia,  
Watonwan County  
Jo E. Anderson, M.D., LeSueur,  
LeSueur County  
S. T. Norman, M.D., Waseca  
John Robson, Blue Earth  
Arnold Rodvik, LeCenter  
Tom Henderson, New Ulm  
William Lightburn, St. Peter  
Yvonne Krenik, LeCenter  
Dr. David Dehen, N. Mankato  
Rod Church, Mankato  
Gordon Patterson, Fairmont  
Dr. John Anderson, Mankato  
Dr. Joe Sheehan, St. Peter  
Charles Frost, N. Mankato  
Lyle Overson, N. Mankato  
Wayne Kevan, Madelia  
James Stangler, Kilkenny

## Emergency Medical Services Task Force

Don Johnson, Chairman, St. James  
John Anderson, M.D., Blue Earth  
Brad Reeves, Mankato  
Dean Frances Pyne, Mankato  
Arthur Stone, New Ulm  
Mildred Martinson, New Richland  
E. R. Spannaus, Arlington  
M. W. Dobson, M.D., Mankato  
Joan Arvidson, Madison Lake

NOTE: Those persons representing counties are listed by local community and county.

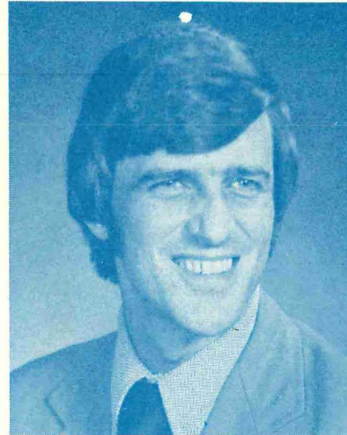


# RNDC STAFF

The year 1975 saw the accomplishment of projects that were initiated in 1974. In 1974, the Region Nine Development Commission was just beginning major work efforts in health planning, human services, local technical assistance, physical planning and transportation planning. In 1975, Human Service Boards were put in place, highway priorities established, testimony given on railroad abandonment, applications completed for twenty-five cities for Community Development monies, doctors located in Gaylord and Winthrop plus priorities established for other doctor shortage areas. The counties, through Region Nine, brought legal action against the Department of Public Welfare and also compromised on a formula money distribution, thereby gaining an additional \$230,000 annually.

It would be impossible to list all the accomplishments in this letter, so suffice it to say that 1975 was extremely gratifying. But what about 1976? The year 1976 must be a continuation of effort but, more importantly, it must continue to build the strong intergovernmental relationships that have been developed. There is nothing more pleasing and financially rewarding than to watch the strong cooperation developed between units of government. Today people from throughout Region Nine are working together on mutual problems.

The Region Nine Development Commission will continue in its efforts to work with and through local units of government to cause overall improvements in governmental operations and response to public concerns. We will rely on local elected officials for establishing work programs and policies. We will continue to build a strong relationship between units of government so mutually we can solve problems that individually were beyond our scope.



**Dean Doyscher**, Executive Director  
**George Brophy**, Director of Physical Planning  
**Helen Watkins**,

Executive Secretary/Bookkeeper

**Linda Wedge**, Stenographer/Typist

**Jim Degiovanni**, Planner—

Community Development

**Virgil Nelson**, Planner—Transportation

**Ted Halter**, Planner—Resource Recovery

**Paul Brye**, Planner—Health

**Richard Reding**, Planner—

Emergency Medical Services

**Carole Boese**, Planner—

Developmental Disabilities

**Pam Schmidt**, Planner—Human Resources

**Jim Dahmen**, Regional Representative,  
Industrial Division, Minnesota Department  
of Economic Development

**Kathie Davis**,

Public Information Coordinator

*Dean M. Doyscher*

LEGISLATIVE REFERENCE LIBRARY

STATE OF MINNESOTA



# region nine development commission

709 North Front Street  
Mankato, Minnesota 56001

