

LEGISLATIVE REFERENCE LIBRARY



3 0307 00010 2858

STATE AGRICULTURAL SOCIETY



LEGISLATIVE REFERENCE LIBRARY

STATE OF MINNESOTA

Minnesota State Fair

1974

S

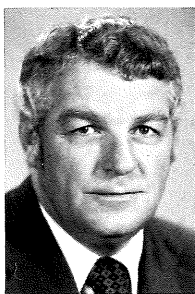
77

.A2

1974

ANNUAL REPORT

## INTRODUCTION



Little was it realized when the promotional slogan "A Fair to Remember" was adopted for the 1974 Minnesota State Fair that it would turn out to be prophetic. A new record attendance was established in 1974 and this in large measure was due to a fortunate combination of circumstances. Excellent weather plus a varied and comprehensive program of education and entertainment had much to do with our success.

Other ingredients, particularly the involvement of people, certainly played a major role in the '74 Fair. Not unnoticed were the dedicated efforts of volunteer workers, department superintendents and their personnel and the Board of Managers headed by Leo Keskinen, plus the loyal and hard-working permanent staff. In addition, splendid cooperation and assistance was received from the press, radio and television media.

The financial summary reveals that the 1974 Minnesota State Fair generated record high receipts. Unfortunately, it also shows that the Fair's production required record expenditures. The expense of maintaining the Fair's comprehensive physical plant is constantly going up. Moreover, the cost of labor and materials has greatly increased in recent years. In view of these circumstances, we are faced with the serious responsibility of devising means to increase revenue. These means must, and will be reasonable, in proportion to the Fair's public responsibility.

I would like to take this opportunity to publicly acknowledge and thank all of the people who played a part in making the 1974 Fair an all-time record breaker. It takes many people working together to stage and operate the Minnesota State Fair, and to each and everyone involved, go my sincere and genuine thanks. Following such a record breaking year presents a tremendous challenge to all of us, but records are made to be broken and with your continued support, good weather and God's help, it is a challenge to which we eagerly look forward.

Respectfully

JOHN E. LIBBY

Secretary-General Manager

LEGISLATIVE REFERENCE LIBRARY  
STATE OF MINNESOTA

117-70,300  
12165  
1974

## BOARD OF MANAGERS

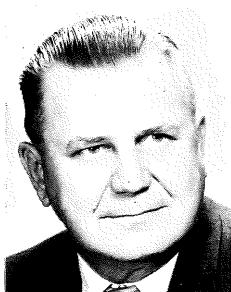
The Minnesota State Agricultural Society is charged by statute with the conduct of an annual state fair and with the control and management of the Fairgrounds. The Agricultural Society, categorized as a semi-state agency, was established as a public corporation in 1860. It is organized on the basis of nine regions which are identical to the nine Minnesota congressional districts as established in 1933. Membership includes representatives from county and district fair organizations and various statewide agricultural societies and associations.

The Society's Board of Managers is comprised of an elected representative from each region plus the Society president. Board members representing the fourth and fifth districts (roughly St. Paul and Minneapolis) serve as vice-presidents while the balance of the members have the title of manager.

In 1974, the board of the State Agricultural Society consisted of: **Leo Keskinen**, Grand Rapids educator, president; **Ty W. Sincock**, Owatonna businessman, manager representing the first district; **Arthur Sprengeler**, Plato farmer, manager representing the second district; **Lawrence F. Haeg**, Minneapolis businessman residing in Robbinsdale, manager representing the third district; **Norris K. Carnes**, retired St. Paul businessman, vice-president representing the fourth district; **Leonard F. Ramberg**, retired Minneapolis businessman, vice-president representing the fifth district; **Logan O. Scow**, Long Prairie jurist, manager representing the sixth district; **J. G. "Gib" Tiffany**, Redwood Falls farmer, manager representing the seventh district; **Sulo Ojakangas**, Hibbing educator, manager representing the eighth district; **Harveydale Maruska**, Warren businessman, manager representing the ninth district.



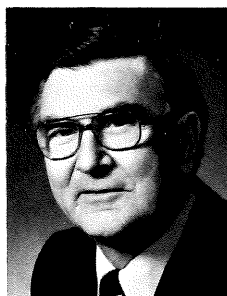
Ramberg



Keskinen



Carnes



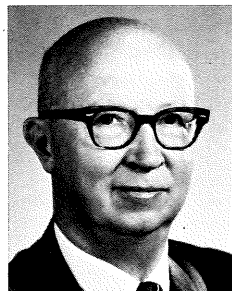
Sincock



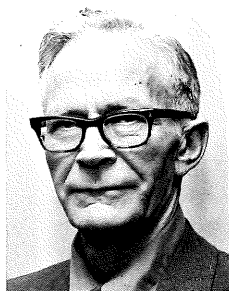
Sprengeler



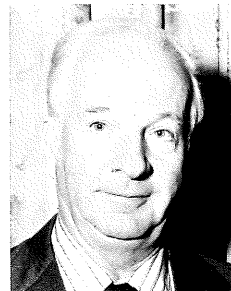
Haeg



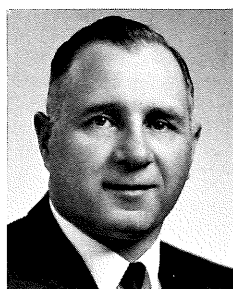
Scow



Tiffany



Ojakangas



Maruska

## *A Fair to Remember*

### **1974 MINNESOTA STATE FAIR HIGHLIGHTS**

The many diverse and sometimes unpredictable elements which go into staging the Minnesota State Fair fell into place in nearly perfect order in 1974 and the result was the most successful exposition in the 113-year history of the event.

Outside gate admissions during the 11-day Fair, Friday, August 23 through Labor Day, September 2, and on Preparation Day, August 22, totalled 1,596,214. The figure, an all-time high for the Fair, included 1,014,139 adults, 388,577 children (15 years of age and under), and 193,498 vehicles.

Individually or as families, in couples and groups, more people than ever before enjoyed the State Fair. In addition to tallying records for total adult attendance and total vehicles parked, single day admission marks were set for the first Friday (95,129), first Saturday (176,356), Thursday (125,249), second Friday (129,996), and second Saturday (211,690).

Many factors contributed to the attendance surge — not the least of which was excellent weather. Daily temperatures were generally in the 60's and 70's and the average reading at 4 p.m. was 12 degrees cooler than in 1973.

It has been said that the four cornerstones of a fair are entertainment, competition, commerce and education. The 1974 Minnesota State Fair rested firmly on this foundation as, complimented by the beautiful weather, a comprehensive schedule of events awaited visitors to the Fairgrounds.

In a broad sense, entertainment was an important element of most aspects of Fair-time activity, but specific entertainment features included night Grandstand shows, horse shows, rodeos, auto races, circuses, Bandshell concerts, talent contests, wild animal shows, marionette performances, parades, Mexican Village, Royal American Shows and Youth Expo '74.

State Fair competition was keen in 20 different departments encompassing exhibits showcasing the products of some of the country's most skilled farmers, students, homemakers, artists and craftspersons.

Upper Midwest commerce and industry was on display as well. There were 1,145 exhibits or concessions on the Fairgrounds in 1974, and commercial exhibits included the booths and buildings of 150 farm implement and garden supply dealers on 80-acre Machinery Hill.

Admission rate was \$1.50 for adults and vehicle parking in 1974, and the regular charge was 50c for persons five through 15 years of age. Children under five years were admitted free every day as was anyone under 16 on the two Children Days (August 23 and 30), and persons 65 years and over on Senior Citizens Day (August 29). There was a 50c charge for everyone on Preparation Day.

Gates opened daily at 6 a.m.; exhibit buildings and barns were open from 9 a.m. to 9 p.m., except on Labor Day when they closed at 8 p.m.

There was also a host of activity at the exposition center during the off-season. More than 300,000 persons utilized State Agricultural Society grounds and buildings during the 50-week non-Fair period.

Day, Date and Designation	Admissions	4 P.M. Temp.	Weather Conditions
Thursday, Aug. 22—Preparation Day	17,449	68°	Clear
Friday, Aug. 23—Mexico, Children and Band Day	95,129	72°	Clear
Saturday, Aug. 24—Twin Cities Day	176,356	80°	Clear
Sunday, Aug. 25—Duluth and Veterans Day	189,875	82°	Clear a.m.; partly cloudy p.m.
Monday, Aug. 26—South Dakota and Education Day	101,138	80°	Clear a.m. cloudy p.m.
Tuesday, Aug. 27—North Dakota and Pioneer Day	109,473	70°	Clear, cool and windy a.m.; overcast p.m.
Wednesday, Aug. 28—Wisconsin and Farm Equipment Day	114,008	69°	Clear and cool a.m.; light shower p.m.
Thursday, Aug. 29—St. Cloud and Senior Citizens Day	125,249	69°	Clear a.m.; windy and cool p.m.
Friday, Aug. 30—Iowa, Children, Bicycle, Mayors, Legislators, News Media Day	125,996	68°	Cloudy and cool, light showers
Saturday, Aug. 31—Rural Minnesota, 4-H and FFA Day	211,690	65°	Clear, cool and windy
Sunday, Sept. 1—Rochester and Natural Resources Day	213,381	63°	Cloudy, cool and breezy
Monday, Sept. 2—Canada and Family Day	112,470	58°	Cold and windy, showers

## NIGHT GRANDSTAND

As early as May, and continuing through August, a frequent remark heard around the Twin Cities and across the state was "Have you seen the talent lineup for this year's State Fair?"

Perhaps the most impressive array of variety stars ever assembled for a fair's entertainment schedule, the 1974 night show roster demonstrated its strength by setting a new advance ticket sale record and by drawing a cumulative total of 122,330 patrons to the Grandstand for 16 performances. Minnesotans, who have come to expect a standard of excellence at the State Fair, were not disappointed with the quality and diversity of talent, including country, contemporary and traditional musical artists, and comedy and dance stars of television, Broadway and film.

A different show was staged each night over a 10-day period with several shows repeated the same evening. Included were Liza Minnelli, August 23; Redd Foxx with Slappy White, Demond Wilson and the Little Steps, August 24; Charlie Rich with Jim Stafford, August 25; demolition derby, August 26; Jerry Reed, Tanya Tucker, Judy Lynn, Hank Snow and Jerry Clower, August 27; Bob Hope with Danny Davis and the Nashville Brass, and Dian Hart, August 28; Jim Nabors with The Hagers, August 29; Mac Davis and The 5th Dimension, August 30; Roy Clark with Diana Trask and The Spurrllows, August 31; Helen Reddy and Jose Feliciano, September 1.

## RACE TRACK

United States Auto Club (USAC) and National Association for Stock Car Auto Racing (NASCAR) competition attracted 37,484 fans during four days of track action at the 1974 State Fair—a healthy average of 9,371 per race date.

Chauffeurs from USAC's "thunder and lightning" division, driving their open-wheel sprint cars, were given the green flag on Saturday and Sunday, August 24 and 25. Rollie Beale, Toledo, Ohio, and Duane "Pancho" Carter, Huntington Beach, California, triumphed in the two 40-lap features Saturday while Tom Bigelow, Whitewater, Wisconsin, swept both 75-lap races the next day.

On Sunday, September 1, and Labor Day, September 2, the thrills were served up by the drivers of NASCAR late-model sportsman stock cars. Rich Somers of Stevens Point, Wisconsin, and Tom Maier of Midland, Michigan, raced to victories in the twin 75-lap features Sunday afternoon. Butch Lindley, Greenville, South Carolina, out-dueled defending champion Dick Trickle in a 400-lap grind, Monday. Trickle, from Wisconsin Rapids, Wisconsin, had won the Labor Day race at the Fair each of the prior two years, but finished second in 1974.

Demolition derbies exploded on the Fair's track Monday evening, August 26 and Saturday afternoon, August 31. Monday's winner was Jeff Vitale, St. Paul, and Jim Hegge, Minneapolis, won on Saturday. Total demo derby attendance was 11,636.

## HORSE SHOWS

Minnesota, with an extremely large horse population, is a state whose citizens have an obvious high regard for the equestrian art.

Horse shows at the 1974 State Fair reflected this interest. A total of 740 exhibitors entered 1,697 horses from 18 states and Canada, in English and western-style performance classes and halter competition. Premiums totalling \$47,398 were awarded in addition to trophies and ribbons.

More than 125 performance classes were judged during the English shows which started Thursday afternoon, August 22, and continued through Wednesday evening, August 28. Included were five-gaited, three-gaited, fine harness and American Saddlebred horses; parade horses; walking horses; hunters; jumpers; roadster and farmer's hitch competition; and harness, hackney, roadster and Shetland ponies.

Western horse shows, starting August 30 and running through Labor Day, September 2, featured some 30 individual performance classes as well as saddle club drill teams, square dances on horseback, barrel races for men and women, tandem bareback riders, pole weaving for men and women, rescue races and trailer races.

American Saddlebreds, Belgians, Percherons, Appaloosas, Arabians, Morgans, Palominos, and Quarter Horses were shown to halter as were hackney and Shetland ponies.

Three complete championship rodeos, produced by Bob Barnes, Peterson, Iowa, were presented Thursday and Friday, August 29 and 30. Total attendance at paid horse shows and rodeos was 49,043.

## **SPECIAL ENTERTAINMENT EVENTS ABOUNDED**

In addition to the entertainment provided by night Grandstand and Hippodrome shows, auto races, commercial exhibits, and competitive judging and displays, 1974 Fairgoers found sources of diversion in many other events on the grounds.

The free Bandshell program in Administration Park was particularly attractive as Billy ThunderKloud and the Chieftones, Jack D'Johns, Don Cavitt's Sounds of the 30's and 40's and Kithara played return engagements and the Conti Family, Main Street Singers and Larry and Lorrie Collins with the Oklahoma River Bottom Band made first-time State Fair appearances.

Evenings at the Bandshell, 100 Amateur Talent Contest semi-finalists, chosen from nearly 300 entrants, competed for the opportunity to perform in Labor Day finals. Mom's Apple Pie Inc., a St. Cloud comedy troupe, was the winner and, as part of their grand prize, will return to the Bandshell for a six-day paid engagement in 1975.

In the Natural Resources Building, there were movies, a walk-through facsimile of Minnesota's various topographical features, and a "touch and see" room, with furs, animal skulls and rocks. Outside the building, wildlife ponds were stocked with fish and fowl and, in another area of Natural Resources Park, the Mitchell Marionette Show was presented to enthusiastic audiences three times each day.

Across one street from the park, Future Farmers of America operated their popular Barnyard, while across another, Holter's Wild Animal Show was the attraction four times daily.

In the Hippodrome exhibit area, the Ted Johnson Trio performed, and in the Creative Activities Building, Jan Biley and his symphonic ensemble were featured. In the Education Building's Baldwin Hall, an all-day program was presented which included the Rex Accordion Band, high school bands, chor-



uses, International Institute folk dancers, Aloha Studios Polynesian dancers, tumblers, gymnasts, Jhoon Rhee Karate demonstrations, square dancers, Reedy Family singers, and David Dance Studio dancers.

The Fair also included a youth-oriented rock entertainment area called Youth Expo '74, and the complete three-ring Tommy Hanneford Circus, which was presented weekday afternoons in front of the Grandstand. Also in the Grandstand, the traditional free Children Days shows were offered and starred Texas humorist Randy Brown.

Other celebrity entertainers at the exposition were the Fair's own Goodwill Ambassador, Candy Candido; State Fair Statesman, Randy Merriman, and official gopher mascot, "Fairchild."

Ethnic entertainment was part of the busy Territorial Pioneers Log Cabin schedule, while next door, at the Senior Citizens Building, folk singers were featured.

Participating in mall parades and special concerts were the Alberta All-Girls Drum and Bugle Band, Alberta, Saskatchewan; Minnesota State Employees Band, St. Paul; Chatfield Brass Band, Inc., Chatfield; Beresford High School Band, Beresford, So. Dakota; Wahpeton High School Band, Wahpeton, No. Dakota; St. Paul Police Band Mounties Drum and Bugle Corps, St. Paul; New Richmond High School Band, New Richmond, Wisconsin; St. Cloud Technical High School Band, St. Cloud; Minnesota Over-60 Band, Gaylord; and Osage High School Band, Osage, Iowa.

## **COMPETITION REMAINED BASIC FAIR INGREDIENT**

Open, public competition, a most fundamental Minnesota State Fair tradition, was one of the essential elements of the 1974 edition. The Fair awarded cash prizes totalling \$303,776 to 11,669 exhibitors who entered 30,196 animals, articles, acts or demonstrations.

As with its other programs, State Fair competition fulfilled more than one basic function. In addition to being a place where artists, farmers, homemakers, students and handicrafters were given an opportunity to test their skills, the Fair's competitive arenas and exhibit halls were a significant portion of the aggregate entertainment and education offered by the exposition. When brought together, competitive exhibits in any one of a wide variety of areas became unusual displays of individual endeavor as well as being a source of recognition for their owners or creators.

Two factors contributed to making the Fair's competitive sector particularly important in 1974. First, there are fewer farms in this country today, and many urban and suburban-dwelling adults as well as children found the Fair's displays to be their only chance to become acquainted with the animals and crops of the rural Upper Midwest. Second, an increased public awareness of such "old-fashioned" virtues as self-reliance and conservation gave additional impact to State Fair exhibits of preserved foods, garden products, hand crafts, meat cuts and natural foods.

Department	Exhibitors	Entries	Premiums
Agriculture, Open Classes	54	323	\$ 1,140
Bee Culture	39	169	\$ 702
Beef Cattle, Open Classes	110	660	\$14,813
Beef, Quality	40	64	\$ 825
Butter and Cheese	47	50	\$ 1,173
Christmas Trees	21	87	\$ 785
County Booths	12	12	\$ 6,120
Creative Activities	1,624	4,833	\$ 3,793
Dairy Cattle, Open Classes	164	1,012	\$21,708
Education	1,246	1,678	\$19,190
Farm Crops	719	1,447	\$ 4,793
FFA Beef	77	160	\$ 2,015
FFA Commercial Gilts	63	123	\$ 580
FFA Crops	175	387	\$ 676
FFA Dairy Cattle	135	344	\$ 3,754
FFA Market Hogs	125	317	\$17,028
FFA Market Lambs	45	121	\$ 3,096
FFA Purebred Sheep	83	465	\$ 3,280
FFA Purebred Swine	100	430	\$ 2,712
Fine Arts	618	1,546	\$ 2,425
4-H	4,234	5,114	\$35,449
Horses	740	1,697	\$47,398
Horticulture	176	2,296	\$ 6,381
Lambs, Market	22	63	\$ 560
Lambs, Quality	23	33	\$ 448
Poultry	128	3,640	\$ 6,632
Races & Demolition Derby	262	335	\$56,100
Sheep, Open Classes	91	724	\$ 8,214
Swine, Market	51	125	\$ 1,727
Swine, Open Classes	135	1,631	\$15,216
Talent Contest (groups or individuals)	300	300	\$ 2,500

## EXHIBITS AND CONCESSIONS

Well over one million persons were the receptive clientele\* for 1,145 different commercial entities operating on the Fairgrounds during the 1974 State Fair.

Space rental fees represented a significant percentage of the Fair's income in 1974 as exhibitors and concessionaires paid a total of \$983,105 to do business on the grounds. This space rental figure was the highest in the Fair's history and the second largest source of Society revenue for the year.

Because exposition attendance has been excellent for many years (more than one million admissions yearly since 1955), selling or exhibiting products at the Fair has become a very desirable and competitive business practice. The annual exposition resembles a huge marketplace with concessions and exhibits contributing to a great diversity of entertainment and education. Concessionaires supplied Fairgoers with food, drink, souvenirs, rides and products, often at bargain prices, while the many commercial exhibitors gave them "food for thought" regarding future purchases of goods and services. At the same time, the demand for space generated income of vital importance in making the Fair an economical family outing.

Examination of the Space Rental Department's classification system will illustrate the variety of enterprise found at the 1974 Fair. Classes of concessions included: dining halls; lunch and refreshment stands; confections and tobacco; popcorn; sno-cones; pronto pups; candy floss; imports; clothing; kitchen aids; books; weight guessers; shooting galleries; jewelry; photo galleries; auto accessories; arcades; official programs; Grandstand and Hippodrome concessions; merchandise permits (off-grounds suppliers); sign and card painting; carnival and independent rides (midway, space tower); and carnival and independent shows.

Exhibits were classified based on location. Outdoor exhibit space included 80-acre Machinery Hill, and commercial exhibits were also found in the Hippodrome concourse, Natural Resources complex, Dairy and Animal Products Building, Merchandise Mart, Agriculture-Horticulture Building, Modern Living Building, Food Building, Creative Activities Annex, Education Building, Grandstand, Machinery Hall and State Exhibits Building.

Metropolitan-area media at the Fair, acting in the dual role of exhibitors, and reporters or broadcasters, included the Minneapolis Star and Tribune; St. Paul Dispatch and Pioneer Press; Farmer Magazine; KMSP, KSTP, WCCO and WTCN television; KDWB, KSTP, WCCO, WWTC and WYOO radio; and the State College Radio Network.

## RECOGNITION PROGRAMS

The 1974 exposition recognized various groups and individuals with special day designations. Parades and special programs were usually part of the festivities.

Senior Citizens Day saw the culmination of a selection process sponsored by the Governor's Citizens Council on Aging, the Minnesota Federation of County Fairs and the State Fair, when Mrs. Lois Vollmer, Le Center, and Charles Gordon, Villard, were honored as the state's outstanding senior citizens.

\*If vehicle admissions of 193,498, plus a liberal estimate of 100,000 for persons attending the Fair only because they were employees, concessionaires, exhibitors, etc., are subtracted from total admissions, the 1974 net is 1,302,716.

The annual Teacher of the Year awards luncheon took place on the Fair's first Sunday, and Robert G. Heyer, a Mounds View district physical science teacher, was chosen as representative of Minnesota's many fine educators. The Fair cosponsored the program with the Minnesota Education Association.

The Agricultural Society also honors its friends and supporters in two ways not directly connected with the annual State Fair. Honorary members, so named because of their eminent service to the Society, are Robert Lund, Henry Swenson, Ted Arens, Harry Frost, Kindy Wright, Fred Lammers, James Libby, Deke Grussendorf, Edwin Gruber, Stanley Muckle, Birney Wilkins and Roy Sorenson.

The State Fair Hall of Fame was established in 1965 to honor persons who have made significant contributions to the well-being of the State Fair and to Minnesota agriculture and agri-business. Plaques picturing these individuals and summarizing their achievements are on display in the Senior Citizens Building on the Fairgrounds.

## OFF-SEASON SPECIAL EVENTS

Community utilization of Minnesota State Fair facilities, during periods other than the annual exposition, continued its upward trend during 1974.

A composite of Fair-period and off-season attendance shows that 1.7 million Minnesotans made use of the Fairgrounds during the year (ending November 30). No other state or metropolitan facility can boast of such concentrated usage. This is of particular note when one takes into account that Fair buildings are not heated and can be used for shows and special events only between April 1 and October 31.

Off-season attendance of 302,625 during 1974, compared with 236,195 in 1973; 243,977 in 1972; 239,975 in 1971 and 166,900 in 1970. (The 1973 Billy Graham Crusade has been excluded from this comparison as it was an unusual and non-recurring event.) The five-year growth factor is 80%.

The Society's effort towards encouraging greater community use of its facilities is predicated upon three important criteria: (1) the Board of Manager's awareness that Minnesota citizens have the right to see that this public resource is used fully and properly; (2) special events of this type, for the most part, serve the Fair's statutory mandate in areas of education, youth development, stock-breeding, industry and the arts (3) income derived by the Society from these events provides an important hedge against Fair-period weather problems and economic shortfall.

Off-season income, including winter warehousing, has become an integral part of the exposition's operational budget. In 1974, these activities produced gross revenue of \$163,088, which represents 4.3 per cent of the Society's total operating income.

## 1974 Grounds and Building Use

	Attendance
Dec.28-Jan. 25	Mpls. Auto Club Driving School (East Como Lot) ..... 200
Jan. 28-Feb. 22	Minneapolis Police Training (Carnival Lot) ..... 200
March 7-10	Goodyear Tire & Appliance Sale (Merchandise Mart) ..... 1,500
March 20	3M Company Highway Sign Tests (Machinery Hill) ..... 25
March 29	Butler Mfg. Truck Photo Session (Carnival Lot) ..... 25
April 15	Boy Scout Bicycle Rodeo (Carnival Lot) ..... 50
April 15-July 31	Mounties Drum & Bugle Corps Practice (Carnival Lot) ..... 1,200
April 20	Central Lutheran Church Kite Fly (Carnival Lot) ..... 100
April 24-25	U. of M. Fire Fighters School (Hippodrome & Block 49) ..... 700
April 27-28	State Quarter Horse Show (Hippodrome & Horse Barn) ..... 4,000
April 29	FFA Livestock Judging (Hippodrome & Judging Arena) ..... 750
May 3-5	Shady Acres Arabian Horse Show (Hippodrome & Horse Barn) ..... 800
May 8-12	Wards Carpet & Drapery Sale (Dairy Building) ..... 3,000
May 10-12	AIM Indian Dance & Pow-Wow (Hippodrome) ..... 7,200
May 11-12	Minn. Street Rod Show & Swap (Merchandise Mart) ..... 6,500
May 13	United Truckers Meeting (Carnival Lot) ..... 25
May 15-June 16	KTCA-TV Action Auction (Dairy Building) ..... 7,500
May 18-19	Indianhead Boy Scout Show (Hippodrome & Block 49) ..... 35,000
May 19-21	United Hardware Trade Show (Education Bldg. & Annex) ..... 3,600
May 20-31	U. of M. Agronomy Classes Parking (West Lot) ..... 50
May 22-31	Wards Warehouse Parking (East Como Lot) ..... 100
May 24	Sussel Personnel Training (Livestock Lot) ..... 25
June 6-13	Rotary Convention Camping (Campgrounds) ..... 250
June 7	Shetland Sheepdog Show (Merchandise Mart) ..... 150
June 9	Land O'Lakes Dog Show (Hippodrome) ..... 3,500
June 13-16	State Arabian Horse Show (Hippodrome & Horse Barn) ..... 9,000
June 15	U. of M. Commencement Ceremonies (Grandstand) ..... 7,500
June 17-20	4-H Junior Leader Conference (4-H Building) ..... 800
June 17-July 26	Minn. Highway Patrol Training (Carnival Lot) ..... 200
June 22	Conklin Company Trade Show (Hippodrome) ..... 5,000
June 26	American Bicycle League Bike Races (Grandstand) ..... 75
July 10	Minneapolis Police Training (Machinery Hill) ..... 25
July 12, 30 & 31	Honeywell Radio Testing (Grandstand) ..... 25
July 12-14	State Half Arabian Horse Show (Hippodrome & Horse Barn) ..... 750
July 16-18	St. Paul Firefighters Exams (Hippodrome) ..... 1,000
July 18-21	National Street Rod Show (Machinery Hill) ..... 40,500
July 20-21	No. Central Morgan Horse Show (Hippodrome & Horse Barn) ..... 550
July 30	Alberta Girls Band Housing (4-H Building) ..... 150
AUG. 23-SEPT. 2	MINNESOTA STATE FAIR ..... 1,596,214
Sept. 14	Hamline Church Rummage Sale (Dining Hall) ..... 150
Sept. 16-17	State 4-H Horse Show (Hippodrome & Horse Annex) ..... 2,500
Sept. 17-18	State 4-H Market Livestock Show (Hippodrome & Swine Barn) ..... 2,000
Sept. 19-Nov. 17	In-Town Apple Sale (Dog Exhibit Building) ..... 12,000
Sept. 20-21	Kruse Classic Car Auction (Livestock Lot) ..... 3,000
Sept. 20-21	State Thoroughbred Horse Sale (Judging Arena) ..... 700
Sept. 24-Oct. 29	Ramsey County Truck Training (Carnival Lot) ..... 75
Sept. 26	U. of M. Intramural Bicycle Races (Grandstand) ..... 75
Sept. 27	Mpls. Camp Fire Girls Overnight (4-H Building) ..... 400
Sept. 27-29	Nordic Ski Equipment Sale (Food Bldg. Auditorium) ..... 4,500
Oct. 1	Young Life Barbeque (4-H Building) ..... 800
Oct. 4-5	National Ski Patrol Ski Swap (Merchandise Mart) ..... 9,000
Oct. 10-13	Aid to the Zoo Horse Show (Hippodrome & Horse Barn) ..... 6,000
Oct. 19	St. Bernard Dog Show (Young America Center) ..... 200
Oct. 19-20	Western Saddle Horse Clinic (Hippodrome & 4-H Bldg.) ..... 1,300
Nov. 8-20	Falcon Heights Community Leaf Dump (North Lot) ..... 200
Nov. 15-Dec. 31	School District 916 Truck Training (East Como Lot) ..... 200
Summer Season	Miniature Golf & Driving Range (West Como Lot) ..... 40,000
Winter Season	Recreational Equipment Storage (Misc. Buildings) ..... 1,000
Yearly	U. of M. Student Parking (West Lot) ..... 76,500

## STATE FAIR PERSPECTIVE

The need to find room for 200,000 vehicles during the Fair period, and the necessity of parking them in orderly rows without a space being wasted, were not among the difficulties encountered in the Fair's early years; neither were long-range off-season utilization plans, weekends on which close to one-quarter million persons wished to attend the Fair, nor community impact problems. In order for the Fair to remain a viable forum for education, competition, commerce and entertainment in a fast-moving social environment, the State Agricultural Society has been required to grapple with these and similar puzzles while at the same time remaining particularly sensitive and responsive to public needs.

With this feeling for the public as a guide, and with a keen eye to its statutory obligation to conduct a representative annual Fair, the Society has ample latitude to face the demands of the last quarter of the twentieth century as well as the challenge of "century three."

Basic planning designed to deal with the complex questions now being faced by the Society includes the decision to extend the Fair's term from 11 to 12 days. Feeling that another day will alleviate some of the pressure caused by heavy weekend attendance, the Fair Board of Managers, on the final day of the 1974 exposition, set Thursday, August 21 through Labor Day, September 1, as the official dates for the 1975 Minnesota State Fair.

To provide input for coming to grips with the increasingly important issue of Fairgrounds' utilization, the board and management have commissioned an independent study team to assess the economic and social benefits of the Fair, and explore the potential for expanded utilization of the Fairgrounds. The completed study, to be ready early in 1975, will serve as the basis for a master plan of State Fair development.

The charts on the following pages have been included in this report to exhibit some of the trends which bear on planning decisions.

The chart showing operating income and operating expenses indicates that, while both have risen drastically, the amount by which income exceeded expense in 1974 was at the lowest level since 1969. Permanent plant improvements, which totalled \$342,532 in 1974, are not included in the expense figures on this chart nor in the operating statement. The ticket sales chart shows a generally rising level of income from this source, but also illustrates that poor weather, such as was experienced in 1973, cuts into this vital revenue.

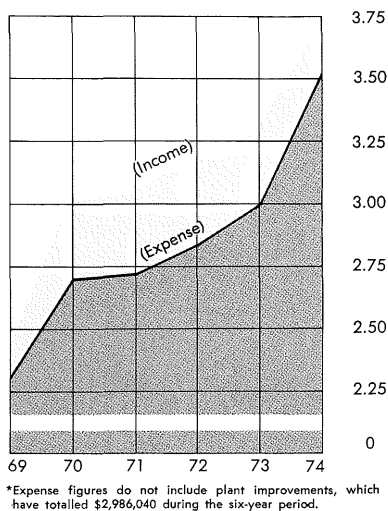
The next graph, showing competitive premiums paid, indicates a reduction in 1974 as compared to 1973. This is the result of lower auto race purses due to fewer racing programs. The six-year total for premiums in all departments is \$1,702,753.

A significant aspect of the Fair-time attendance graph is that, while overall admissions have risen almost steadily, the "people only" line nearly parallels the total of adults, children and vehicles. This indicates that number of vehicles parked has remained reasonably constant over the past six years and the real increase is due to more people attending the Fair.

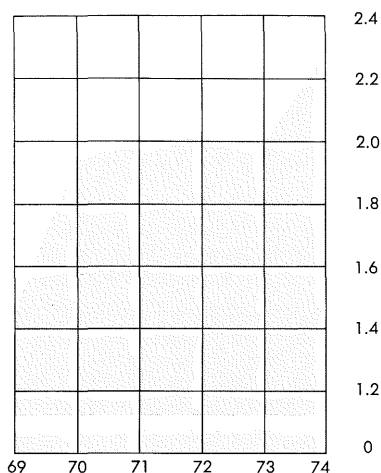
Night show attendance was higher than ever before in 1974, as was off-season utilization. Each figure caps a general-rising curve, broken in the case of night show attendance by a performer's illness in 1973. As is shown in the maintenance and operation chart, the amount spent for these necessities (less depreciation) fluctuated around the \$500-\$550,000 mark for five years, but took a tremendous jump to more than \$775,000 in 1974, primarily due to the cost of labor and materials.

Finally, space rental income, second largest source of Society revenue, has shown a steady increase during the six-year period.

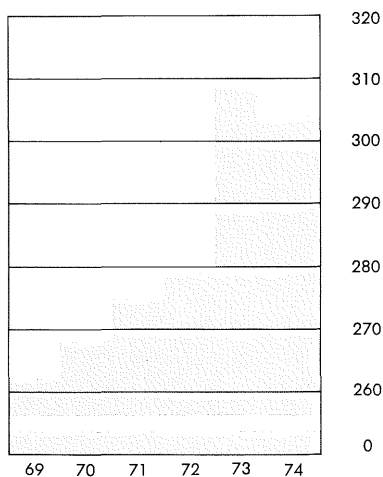
OPERATING INCOME & EXPENSE\*  
(Millions of Dollars)



TICKET SALES  
(Millions of Dollars)



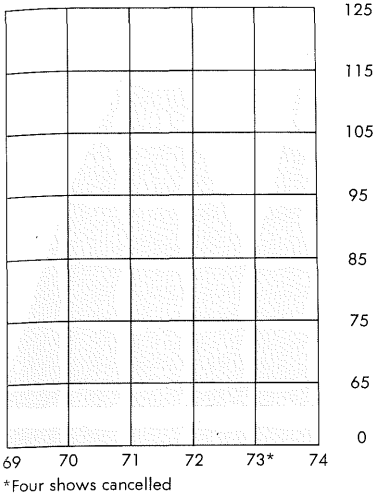
COMPETITIVE PREMIUMS  
(Thousands of Dollars)



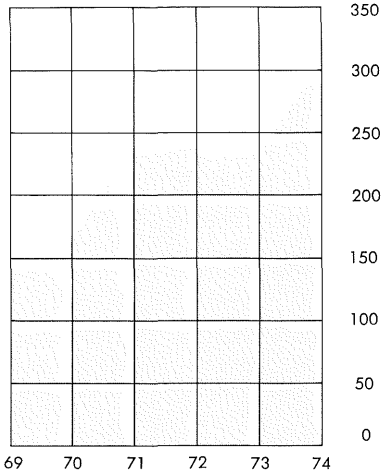
ATTENDANCE  
(Millions of Admissions)



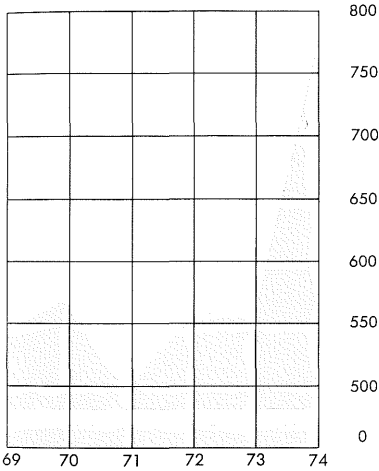
NIGHT SHOW ATTENDANCE  
(Thousands of Persons)



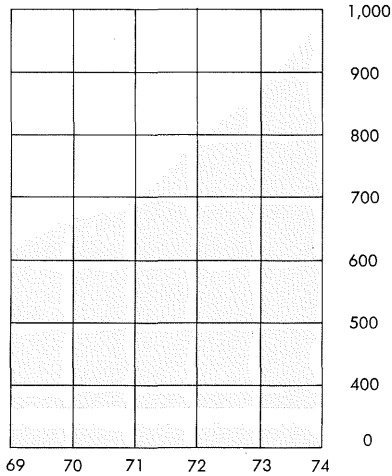
OFF-SEASON UTILIZATION  
(Thousands of Persons Attending)



MAINTENANCE & OPERATION  
(Thousands of Dollars)



SPACE RENTAL  
(Thousands of Dollars)





# OPERATING STATEMENT

## INCOME

For Fiscal Year Ending November 30.....	1973	1974
Ticket Sales:		
Outside Gates .....	\$1,552,594.26	\$1,744,679.00
Day Grandstand .....	148,271.50	105,004.00
Night Grandstand .....	291,438.00	452,121.00
Horse Show and Rodeo .....	78,943.00	79,208.00
Gross Ticket Sales .....	2,071,246.76	2,381,012.00
Less: Minnesota Sales Tax .....	79,062.60	93,765.55
Net Ticket Sales .....	1,992,184.16	2,287,246.45
Departmental:		
Agriculture .....	1,100.00	1,100.00
Amusement—Talent Contest .....	2,099.00	2,920.00
Cattle .....	4,485.00	4,092.00
Dairy .....	767.14	1,014.72
Fine Arts .....	2,096.15	2,520.42
Forage .....	19,049.10	21,809.05
F.F.A. ....	2,474.50	2,489.00
Gas and Electric* .....	21,343.66	12,822.72
Gopher Club* .....	3,023.06	3,635.42
Horse .....	47,042.75	50,414.00
Meats .....	54.15	45.16
Poultry .....	1,983.25	1,793.00
Public Safety .....	1,930.50	1,924.75
Race .....	2,461.50	1,118.00
Sanitation .....	204.00	139.00
Sheep .....	1,031.00	825.00
Space Rental .....	874,388.12	983,104.62
Swine .....	1,270.00	1,759.00
Young America* .....	45,501.48	68,677.57
Gross Departmental .....	1,032,304.36	1,162,203.43
*Less: Minnesota Sales Tax .....	2,392.85	2,577.62
Net Departmental .....	1,029,911.51	1,159,625.81
Off-Season Rentals .....	193,644.81	163,087.83
Sale of Materials .....	184.63	2,434.67
Sale of Market Lambs and Barrows .....	19,158.31	18,748.58
Sale of Bulk Milk .....	6,206.86	6,732.32
Campgrounds .....	9,702.00	10,416.00
U. of Minnesota Budget .....	12,850.30	17,022.70
Interest Income .....	44,646.14	59,067.32
Miscellaneous Receipts .....	7,585.50	9,078.59
TOTAL OPERATING INCOME .....	\$3,316,074.22	\$3,733,460.27

# EXPENSE

	1973	1974
Administration:		
Annual Meeting .....	\$ 3,378.81	\$ 3,711.93
Clerical Salaries .....	112,671.98	127,944.72
Expense Accounts .....	10,390.87	11,337.45
Officers Salaries .....	39,799.98	39,919.20
Postage .....	16,791.33	17,900.78
Telephones/Telegrams .....	15,625.16	11,859.27
Total Administration .....	198,658.13	212,673.35
Departmental:		
Admissions .....	46,572.90	53,369.62
Agriculture-Horticulture		
Bee Culture .....	3,013.22	2,909.32
Christmas Trees .....	1,928.42	2,480.34
Farm Crops .....	5,253.36	4,844.58
Flowers .....	4,232.62	3,472.20
Fruit .....	4,062.99	3,624.83
Vegetables-Potatoes .....	4,046.94	4,227.98
Miscellaneous-Custodial .....	14,591.92	16,426.79
Amusement .....	378,407.68	532,679.36
Cattle .....	12,729.39	15,837.47
Creative Activities .....	16,367.46	15,318.51
Dairy .....	545.90	730.95
Education .....	19,405.44	19,610.64
Farm Boys' Camp .....	17,200.31	17,329.64
Fine Arts .....	7,626.03	8,080.25
Forage .....	18,612.83	23,509.48
4-H Club .....	20,837.48	29,468.40
F.F.A. ....	8,177.10	9,289.63
Gas and Electric .....	68,830.14	79,076.31
Gopher Club .....	9,498.63	11,930.94
Horse and Rodeo .....	50,839.58	53,632.00
Hospital .....	3,588.02	2,947.10
Legislative - Editorial .....	705.15	4,521.95
Meats .....	2,110.90	2,556.13
Natural Resources .....	1,076.40	995.80
Parking .....		24,968.59
Plants and Flowers .....	50,672.28	37,738.19
Poultry .....	4,943.44	3,106.37
Publicity .....	202,182.26	204,845.57
Public Safety .....	119,507.06	118,565.66
Race .....	31,267.46	18,386.19
Sanitation .....	118,444.12	158,198.26
Sheep .....	2,415.02	2,342.36
Space Rental .....	92,318.28	110,101.75
Swine .....	3,542.06	3,487.89
Ticket Audit .....	2,173.49	2,609.37
Treasurer .....	66,831.37	78,108.89
Young America .....	40,913.58	49,821.08
Total Departmental .....	1,455,471.23	1,731,150.39
Premiums:		
Agriculture - Horticulture		
Bee Culture .....	994.00	701.50

## EXPENSE (continued)

Christmas Trees .....	725.00	785.00
Farm Crops .....	11,909.00	12,653.00
Flowers .....	1,851.96	1,808.67
Fruit .....	1,299.50	1,566.50
Vegetables-Potatoes .....	2,773.00	3,006.00
Amusement - Talent Contest .....	1,500.00	2,500.00
Cattle .....	36,302.75	37,487.75
Creative Activities .....	3,779.00	3,793.00
Dairy .....	994.13	1,172.74
Education .....	16,317.50	16,940.00
Fine Arts .....	2,300.00	2,425.00
4-H Club .....	36,556.49	42,039.31
F.F.A. ....	12,224.00	13,520.00
Horse and Rodeo .....	46,943.00	47,398.50
Market Sales — F.F.A. ....	20,027.12	19,621.47
Milk Sales - Bulk .....	5,129.53	5,210.69
Music - Band Day .....	1,950.00	2,250.00
Poultry .....	7,188.25	6,631.75
Race .....	75,865.00	56,110.00
Sheep .....	10,663.00	9,222.00
Swine .....	14,228.00	16,943.00
Total Premiums .....	311,520.23	303,775.88
Printing and Office Supplies .....	34,578.03	41,897.19
Medical Insurance Contribution .....	6,197.96	7,974.62
Retirement Fund Contribution .....	15,964.85	20,003.21
Social Security Contribution .....	27,468.44	29,263.81
Unemployment Compensation .....	17,934.68	9,663.59
Water and Sewer .....	12,680.78	18,125.28
Off-Season Rentals .....	55,116.68	34,362.37
Miscellaneous Expenses .....	5,765.51	4,336.47
Sundry Fair:		
Accident, Illness, etc. ....	356.09	2,222.03
Bonds, Insurance .....	8,305.50	8,754.00
Dues .....	1,381.00	1,292.00
Exhibit Expense .....	6,638.16	7,869.42
Fire Protection .....	15,765.71	18,207.63
Hippodrome Custodial .....	2,403.85	2,948.90
Laundry Services .....	612.91	1,603.60
Legal Services .....	8,172.58	8,354.31
Signs .....	2,527.74	2,340.93
Territorial Pioneers .....	1,023.32	1,238.20
U. of Minnesota Budget .....	12,850.30	17,022.70
Public Examiner .....	5,393.75	6,054.78
Child Care Center .....	844.33	896.00
Total Sundry Fair .....	66,275.24	78,804.50
Maintenance and Operation:		
Labor General:		
General Maintenance .....	124,297.05	156,382.80
Vacation, Welfare, Pension .....	8,618.24	6,840.22
Watchmen Service .....	23,188.87	20,404.85
Fair Labor - Set-up/Tear-down .....	142,918.80	175,839.85

# EXPENSE (continued)

Vehicle & Personal Prop. Maint. ....	40,959.60	47,771.05
Electric Plant Maintenance .....	13,067.05	17,289.58
Fuel, Oil, Gas .....	14,411.91	21,830.08
Repairs to Structures .....	110,666.30	238,907.64
Supplies .....	11,040.27	6,813.76
Land Maintenance:		
Fence and Guard Rail .....	2,741.48	3,613.63
Gas Distribution System .....	229.08	
Grading, Sod, Trees .....	32,618.05	20,739.15
Sewer System .....	6,076.16	3,655.18
Street and Sidewalk .....	16,264.62	49,354.59
Water Distribution System .....	11,931.78	9,540.81
Electric Plant Depreciation .....	26,008.52	28,457.80
Personal Property Depreciation .....	30,182.99	32,994.03
Structure Depreciation .....	169,757.56	177,570.76
Storm Damage .....		917.67
Total Maintenance and Operation .....	784,978.33	1,018,923.45
TOTAL OPERATING EXPENSE .....	\$2,992,610.09	\$3,510,954.11
NET OPERATING GAIN .....	\$ 323,464.13	\$ 222,506.16

## STATEMENT OF APPLICATION OF FUNDS

Year Ended November 30

	1973	1974
Funds Provided by:		
Operations—		
Net Income .....	\$323,464.13	\$222,506.16
Depreciation .....	225,949.07	239,022.59
Total Operations .....	549,413.20	461,528.75
Decrease in Working Capital .....	54,542.22	
Total Funds Provided .....	\$603,955.42	\$461,528.75
Funds Applied to:		
Additions to Plant—		
Electric Plant .....	\$ 74,994.10	\$214,531.99
Fences and Guard Rails .....	238.00	1,033.09
Gas Distribution System .....	63.95	
Personal Property .....	58,293.37	45,613.28
Sewer System .....	45.12	538.23
Sidewalks .....	7,871.59	6,435.66
Streets, Curbs and Gutters .....	53,518.00	6,006.03
Structures .....	375,401.65	65,559.35
Water Distribution System .....	33,529.64	2,814.61
Total Additions .....	603,955.42	342,532.24
Increase in Working Capital .....		118,996.51
Total Funds Applied .....	\$603,955.42	\$461,528.75

# BALANCE SHEET

November 30, 1974

## RESOURCES

### Real Estate:

Land .....	\$ 744,822.43	
Structures .....	\$11,051,650.49	
Less: Reserve for Depreciation .....	1,651,980.64	9,399,669.85
Fence and Guard Rails .....	72,701.52	
Flag Poles .....	961.89	
Gas Distribution System .....	70,763.87	
Sewer System Inventory .....	285,251.78	
Sidewalk Inventory .....	105,757.14	
Stonework Inventory .....	39,767.39	
Streets, Curbs, Gutters .....	411,487.54	
Water Distribution System .....	301,741.57	\$11,432,924.98
Electric Plant Inventory .....		755,230.15
Personal Property Inventory .....		342,559.55
Postage Inventory .....		116.78
Petty Cash .....		100.00
Deposits & Securities:		
General Fund .....	\$ 40,452.91	
Contingent Fund .....	1,000.00	
Farmer's Home Admin. Bills .....	760,000.00	801,452.91
Accounts Receivable .....		54,979.63
		<u>\$13,387,364.00</u>

## LIABILITIES AND CAPITAL

Accounts Payable .....	\$ 20,337.92
Surplus Available .....	834,601.77
Investment in Plant .....	12,532,424.31
	<u>\$13,387,364.00</u>

## REPORT OF THE TREASURER

To the Governing Board, State Agricultural Society:

Gentlemen:

Herewith find my report as Treasurer of the State Agricultural Society for the fiscal year ending November 30, 1974.

Balance in the General Fund December 1, 1973.....\$30,989.61

Balance in the Contingent Fund Dec. 1, 1973..... 1,000.00

Balance in Farmer's Home Admin. Bills, December 1, 1973 .....	735,000.00	
		<hr/> \$766,989.61
Total Cash Receipts .....	\$3,781,288.58	
Total Cash Disbursements .....	3,746,825.28	
		<hr/>
Excess of Receipts over Disbursements .....		34,463.30
Cash Balance, November 30, 1974		
General Fund, 1st National Bank, St. Paul.....	\$40,452.91	
Contingent Fund, North Star State Bank, St. Paul....	1,000.00	
Farmer's Home Admin. Bills, 1st National Bank, St. Paul .....	760,000.00	
		<hr/> \$801,452.91

Respectfully submitted,

GERALD J. FRANKE, Treasurer

St. Paul, Minnesota  
November 30, 1974

## ANNUAL MEETING — 1974

The Minnesota State Agricultural Society, governing body of the State Fair, assembled for its 115th annual meeting at the Hilton Hotel in St. Paul on Monday, January 21, 1974. Business sessions were conducted in conjunction with the Minnesota Federation of County Fairs, cosponsors of the yearly convention.

Tuesday afternoon, January 22, Society delegates met to hear reports on the 1973 State Fair, including those of the president, secretary and treasurer. Credential and resolution committee reports were presented and accepted, as well as a report of nomination by the Hall of Fame committee. A long-time employee of the Society, James L. Libby, was duly elected to membership in the Hall of Fame. Short presentations were made by representatives of 4-H and Future Farmers of America. The afternoon's featured speaker was Minnesota "Teacher of the Year," Thomas F. Stoltzman from Winona Senior High School.

Immediately following this meeting, delegates from the second and eighth districts met in separate caucuses for the purpose of certifying nominees for election to the Society's Board of Managers with elections to be held the following morning as prescribed by law.

Tuesday evening, the annual combined banquet and ball of the Federation, Society and Midwest Showmen's Association was held in the main ballroom of the Hilton Hotel with over 875 persons in attendance.

Wednesday morning, January 23, the Society conducted its final business session with the following elections taking place: president—Leo Keskinen, Grand Rapids (one-year term); vice-president—Leonard Ramberg, Minneapolis (two-year term); second district board member—Arthur Sprengeler, Plato (three-year term) eighth district board member—Sulo Ojakangas, Hibbing (three-year term).

After adjournment of the annual meeting, the Board of Managers, including its newly elected members, met and reelected John E. Libby to the position of secretary-general manager for a one-year term.

## STAFF AND MANAGEMENT

With a cast of nearly 2,000 seasonal employees, the Minnesota State Fair is highly dependent upon the talents and management skills of its department superintendents. This cadre comes to the Fair from a wide range of occupations in order to put their experience to work in a varied set of competitive, administrative and public service applications.

The Fair's year-around staff, serving under the direction of the secretary-general manager, provides middle-management guidance and assistance for part-time departmental superintendents. A young, but experienced crew, the 14 administrative and 18 plant management employees set themselves daily to the task of operating a \$4 million business and to the demands of a 300-acre, \$11 million physical plant.

Literally thousands of man-hours are spent after the Fair during the late fall and winter months in providing maintenance to the exposition's buildings, property and equipment. Bookkeeping details, including bill payment, collection, book closing, fiscal reporting, cost distribution and budget preparation, must be undertaken before moving ahead to the next season.

Special off-season events are another major responsibility of the permanent staff. Equipped and qualified to serve every possible need in trade show and special event production, Fair employees now handle as many as three shows concurrently. On any summer weekend, as many as 40,000 spectators might be participating at events on the grounds.

The Fair's 20 competitive departments, which collectively handle over 10,000 entries and distribute better than \$300,000 in prize money, are provided administrative guidance by Gerald Franke and Steven Pooch. These two analyze exhibit trends and work out preliminary details of premium allocation, as well as revising competitive rules, with resource from exhibitor groups and in concert with specific superintendents and supervisors. The bulk of this detail must be undertaken prior to January 1, so that budget impact might be measured and adjusted. Franke, as Fair treasurer, also superintends ticket sales which each year channel some \$2.25 million through the books of the Society.

The Fair's second largest source of revenue is commercial space sale, managed by Kenneth Wenzel and assistant superintendent, Mary Sue McGuire. In addition to rental and allocation of indoor and outdoor real estate, Wenzel must see to exhibit building management and outdoor equipment shows, plus employment and supervision of the ticket takers used on rides and shows. During the winter season, Space Rental Department responsibilities include a warehousing function which serves over 1,000 owners of boats and recreational vehicles. As with competitive departments, concessions and commercial exhibits must be finalized early in the year so that all available space is fully and properly utilized on a timely basis.

Plant management departments include Service and Grounds, under the guidance of Joseph Fischler; Construction and Maintenance, headed by William Jents; and Greenhouse, supervised by William Hermes. Planning, as well as physical coordination and work on the grounds, is channeled through these departments on a year-around basis.

Staff functions, such as publicity, purchasing, accounting, communications, mailing, publications, legal and budget control, though more highly concentrated during the late summer months just prior to the Fair, go on at a measured pace throughout the year.

## 1974 State Fair Departments

Department	Superintendent	Occupation
Admissions	Donald Pittelkow	Customer Service Representative, Northern States Power Company
Bee Culture	Percy Johnson	Maintenance Dispatcher, Minnesota Mining and Manufacturing Company
Cattle	Raymond Arthaud	Extension Animal Husbandman, Univ. of Minn.
Christmas Tree	Alvin Krueger	Department Foreman, Anderson Corporation
Const. & Maintenance	William Jents	Year-Around Staff, Minnesota State Fair
Creative Activities	Evelyn Hagen	Homemaker
Crops	Orris Shulstad	Seed Certification Specialist, Minnesota Crop Improvement Association
Dairy	Cliff Markuson	Manager, American Dairy Association
Education	Forrest Bear	Professor of Agricultural Engineering, U. of M.
Farm Boys' Camp	Robert Mayne	Manager, Lexington Municipal Liquor Store
Farm Machinery	John True	Extension Agricultural Engineer, Univ. of Minn.
Fine Arts	Otto Theuer	Chairman of Corporate Service, Staff Designer, Minnesota Museum of Art
Flower	Harold Nelson	Retired
Food Show, Dairy/Animal Products, Merchandise Mart,		
Modern Living Buildings	George Trussell	Manager, Auto Glass Depot
Forage	Dan Elmer	Salesman, Stead Textile Drapery Sales
4-H	Leonard Harkness	Program Director of 4-H Development, U. of M.
Fruit	Roger Conklin	Instructor of Landscaping, Hennepin Technical Center
Future Farmers of America	Odell Barduson	Adult Vocational Program Supervisor, State Department of Education
Greenhouse	William Hermes	Year-Around Staff, Minnesota State Fair
Horse	Harold Arneman	Professor of Soil Science, University of Minn.
Infield Services	Mark Markson	Employee Safety Coordinator, Minnesota Highway Department
Meats	David Plath	Supervisor of Meats Processing Lab, U of M.
Mechanical Services	Edward LaPointe	Year-Around Staff, Minnesota State Fair
Music	John Geisler	Legislative Liaison, St. Paul Chamber of Commerce
Natural Resources	Albert Bramstedt	Office Manager, Minnesota Department of Natural Resources
Parking	Ron Vannelli	Administrator, Municipal Accounts, Northern States Power Company
Poultry	Harold Thomforde	Owner and Manager, Thomforde Garden Center
Publicity	James Frost	Year-Around Staff, Minnesota State Fair
Public Safety	Chuck McGuire	Captain of Police, Cottage Grove Police Dept.
Race	Leonard Dobbs	Supervisor of Claims, Iowa National Mutual Insurance Company
Sanitation	James Libby	Retired
Senior Citizens	Harry Frost	Year-Around Staff, Minnesota State Fair
Service	Joseph Fischler	Year-Around Staff, Minnesota State Fair
Sheep	Robert Jordan	Professor of Animal Science, Livestock Specialist, University of Minnesota
Space Rental	Kenneth Wenzel	Year-Around Staff, Minnesota State Fair
Stage & Production	Robert Potter	Staff Announcer, WCCO Television
Swine	Robert Jacobs	Extension Animal Husbandman, Univ. of Minn.
Ticket Audit	Richard Reinhardt	Supervisor of Premium Audit Department, Federated Insurance Company
Treasurer	Gerald Franke	Year-Around Staff, Minnesota State Fair
Varied Industries	Elmer Fisher	Retired
Vegetables-Potatoes	Henry Hammer	Agri-Business and Natural Resources, Anoka School District



# LAND INVENTORY — STATE FAIR GROUNDS

November 30, 1974

FAIR GROUNDS—Inside of fences:

## ITEMS

1. SE $\frac{1}{4}$  Section 21, Twp. 29N R. 23W—160 Acres, less approximately 1.69 acres (more or less) abutting the west side of Highway 51 (Snelling Ave.) between Commonwealth Ave. and Como Ave. which was acquired by the State Highway Department in 1964 for the improvement of said Highway 51.
2. S $\frac{1}{2}$  - E $\frac{1}{2}$  - SW $\frac{1}{4}$  Section 21, Twp. 29N, R. 23W—(40 Acres less approximately 33,558 sq. ft. abutting the west side of Highway 51 from Randall Ave. to Hoyt Ave. acquired by the State Highway Department in 1948 for widening of Highway 51.
3. E $\frac{1}{2}$  - E $\frac{1}{2}$  - SW $\frac{1}{4}$  Section 21, Twp. 29N, R. 23W—(40 Acres).
4. E $\frac{1}{2}$  - W $\frac{1}{2}$  - E $\frac{1}{2}$  - S $\frac{1}{2}$  - SW $\frac{1}{4}$  Section 21, Twp. 29N, R. 23W—(10 Acres).
5. Also commencing at a point on the North line of Section 28, Twp. 29N, R. 23W, where said line is intersected by the center line of Como Avenue, being 195 feet west from the northwest corner of the NW $\frac{1}{4}$  of said section 28, thence along the center line of Como Avenue in a westerly direction to a point where southerly extension of west line of the east one-half of the west one-half of the east one-half of the south one-half of the southwest quarter of Section 21, Twp. 29N, Range 29W, intersects the center line of Como Avenue, thence northerly on the aforesaid extended line to the north line of Section 28, thence due east along the North line of Section 28, to the point of beginning, containing two and one-half acres, more or less—2 $\frac{1}{2}$  Acres.  
Total inside fences—252 $\frac{1}{2}$  Acres.  
Of the above property, Items 1 and 3 (200 Acres) were the original gift from the County of Ramsey in 1885.  
Item 2 was acquired by purchase in 1907.  
Items 4 and 5 were acquired by exchange of real estate with the University of Minnesota in 1936.
6. Parcel "A." The easterly 415 feet of the SE $\frac{1}{4}$  of the NE $\frac{1}{4}$  of Section 21, Twp. 29N, R. 23W, of the fourth principal Meridian, Ramsey County, Minnesota, except that portion taken by the State of Minnesota for highway purposes and except that part lying southerly of a line parallel and distant 33.0 feet North of the South Line of the NE $\frac{1}{4}$  of Section 21, Twp. 29N, R. 23W.  
This plot was acquired by purchase from the University in 1959 and contains approximately 4.82 Acres.
7. The East 300 feet of the West one-half (W $\frac{1}{2}$ ) of the Northeast quarter (NE $\frac{1}{4}$ ) of the Northeast quarter (NE $\frac{1}{4}$ ) of Section twenty-one (21), Township twenty-nine (29), Range twenty-three (23), excepting the North 500 feet of the East 250 feet thereof, subject to the right of way of Larpenteur Avenue and—all of the Southeast quarter (SE $\frac{1}{4}$ ) of the Northeast quarter (NE $\frac{1}{4}$ ) of Section twenty-one (21), Township twenty-nine (29), Range twenty-three (23), except the East 415 feet thereof (approximately 7.8 acres).

ITEMS

1. Property South of Como Ave. consisting of:  
E $\frac{1}{2}$  of Lots 2 and 9, and Lots 3 and 8, Block 1.  
E $\frac{1}{2}$  of Lots 2 and 9, and Lots 3 and 8, Block 2.  
Lots 1, 2, 3, 4, and 9 to 23 both inclusive, Block 3 (St. Anthony Park, St. Paul) Lots 1 to 11, both inclusive, Mitchell's addition to St. Paul. Lots 1 to 28, both inclusive, Block 4, St. Anthony Park, St. Paul. These lots and parts of lots, were the original terminal property. The Great Northern and Northern Pacific Railway own jointly the West  $\frac{1}{2}$  of Lots 2 and 9, Block 1, St. Anthony Park, St. Paul. These lots were acquired at various dates from 1885 through 1918 by purchase and by condemnation from about ten different owners. The plot contains approximately 10.88 Acres.
2. Property South of Como Ave. consisting of: Lots 1 to 13, and 16 to 30 inclusive, Block 2, Long's addition to St. Paul. Lots 4 to 7, Block 1 and Lots 4 to 7, Block 2, St. Anthony Park. Lots 1 to 30, inclusive, Block 2, Wynne's Addition to St. Paul, together with any portion of any vacated street or alley lying adjacent thereto. Bounded on the north by Como Avenue, east by Winston, south by Wynne, west by State Fair Grounds property. This is the parcel of ground known as "The Street Railway Dump." It was acquired by purchase from Transit Supply Company in 1954, and contains approximately 10.8 Acres.
3. Property South of Como Ave. consisting of:  
That part of the South  $\frac{1}{2}$  of the NW $\frac{1}{4}$  of the NW $\frac{1}{4}$  of Section 28, Twp. 29N, R. 23W, east of the extended center line of Packard St. and West of the joint right of way of the Great Northern and Northern Pacific Railways State Fair Spur. South of Wynne St. and North of the Main Line of the Great Northern Railway. This property was tax forfeited and was acquired from the City of St. Paul through the forfeited tax land department in 1955. Contains 10.96 Acres.
4. Property South of Como Ave. consisting of:  
That part of the South Half of the North Half of the Northeast Quarter (S $\frac{1}{2}$  N $\frac{1}{2}$  NE $\frac{1}{4}$ ) of Section Twenty-eight (28), Township Twenty-nine (29) North, Range Twenty-three (23) West, Fourth Principal Meridian, according to the United States government survey, more particularly described as follows:  
Beginning at a point in the south line of said subdivision, distant two hundred eighty-one (281) feet westerly, measured along said south line, from the southwest corner of that certain sixty (60) foot wide strip of land conveyed to the St. Paul, Minneapolis and Manitoba Railway Company, by deed dated October 7, 1885, filed for record in the office of the Register of Deeds of Ramsey County, Minnesota, on October 21, 1885, in Book 132 of Deeds, page 474; thence easterly along said south line a distance of two hundred eighty-one (281) feet to said southwest corner of sixty (60) foot wide strip of land, thence northerly along the west line of said sixty (60) foot wide strip of land a distance of four hundred sixty-two (462) feet to a point; thence to the point of beginning along a line curving south-westerly and having a radius of five hundred forty-eight and seven-tenths (548.7) feet. Contains approximately .62 Acre.

By Sale, approved by the Board on January 27, 1971 and by the Minnesota Executive Council on June 23, 1961, the following parcel of land (approximately 14,000 sq. ft.) "Outside the Fair Grounds, Proper" was transferred to Burlington Northern, Inc. Sale price, \$100.00.

That part of the South Half of the North Half of the Northeast Quarter ( $S\frac{1}{2}N\frac{1}{2}NE\frac{1}{4}$ ) of Section Twenty-eight (28), Township Twenty-nine (29) North, Range Twenty-three (23) West, Fourth Principal Meridian, according to the United States government survey, more particularly described as follows:

Beginning at a point in the south line of said subdivision, distant one hundred fifty-five (155) feet westerly, measured along said south line, from the southwest corner of that certain sixty (60) foot wide strip of land conveyed to the St. Paul, Minneapolis & Manitoba Railway Company, by deed dated October 7, 1885, filed for record in the office of the Register of Deeds of Ramsey County, Minnesota, on October 21, 1885, in Book 132 of Deeds, page 474; thence easterly along said south line a distance of one hundred fifty-five (155) feet to said southwest corner of said sixty (60) foot wide strip of land, thence northerly along the west line of said sixty (60) foot wide strip of land a distance of two hundred fifty-five (255) feet to a point; thence to the point of beginning along a line curving southwesterly and having a radius of four hundred fifty-three (453) feet. Contains approximately .29 Acres.

5. Property East of Snelling Ave.:

Lots 13 and 14 in Block 3, Lake Park Addition, St. Paul. This parcel of land, two city lots on the corner of Snelling Ave. and Canfield St., is a part of the so called "Saunders Property." Originally the whole block was owned by the Society, acquired in 1903 or 1907 because the tenant at that time was said to have run a "blind pig" during the period of the Fair. In 1917 all of the block except these two lots was sold to the Jewish Home Society and a Home for the Aged built. In 1923 by agreement with the Fire Department of the City of St. Paul, the Fair built a Fire Station on this property. Under the agreement the City maintains the station, with extra equipment assigned during Fair Week, and regular equipment the entire year. The Fair furnished the building and the site. Approximately .166 Acres.

Originally, the State Fair Grounds was in Rose Township of Ramsey County, Minnesota, within the corporate limits of neither St. Paul nor Minneapolis. In 1954, when Falcon Heights voted to become a village, that part of the grounds which lies north of Como Avenue was included in the Village of Falcon Heights. All that part of the grounds lying South of Como Ave., the  $2\frac{1}{2}$  acres within the fence (Item 5 inside fence); and the two lots numbered thirteen and fourteen in Block 3, Lake Park addition, (Item 5 outside fence) are within the corporate limits of the City of St. Paul.

# 1974 ANNUAL REPORT

Structure No.	Value 11/30/73	Deducted or Added for Improvement	11/30/74 Present Val. Approved	Depre. Value
111 Farm Boys Camp...\$	54,183.29	\$..... \$	54,183.29 \$	45,710.20
121 Warehouse .....	24,169.34	.....	24,169.34	19,550.37
122 Unloading Pit .....	3,536.24	.....	3,536.24	3,536.24
151 Toilet .....	12,408.14	.....	12,408.14	12,408.14
171 Asst. Sec. Garage....	536.32	.....	536.32	536.32
172 Camp Grnds. Toilet	16,360.89	.....	16,360.89	13,497.69
173 Asst. Sec. Residence	26,872.27	902.98	27,775.25	23,162.70
174 Camp Grnds. Kitchen	223.00	.....	223.00	223.00
176 Camp Grnds. Office	1,493.05	.....	1,493.05	1,493.05
181 Camp Grnds. Turnstile	136.00	.....	136.00	136.00
183 State Exhibit Bldg...	86,373.20	740.20	87,113.40	87,113.40
211 Supt. Residence .....	21,086.72	.....	21,086.72	17,720.03
241 Toilet .....	6,952.30	.....	6,952.30	6,952.30
242 Machine Dept. Office	478.00	.....	478.00	478.00
251 Chinese Arch .....	1,996.32	.....	1,996.32	1,996.32
261 Machinery Hall .....	74,434.95	.....	74,434.95	74,434.95
262 4-H Building .....	542,491.68	9,823.16	552,314.84	453,234.47
271 Ticket Audit .....	24,788.34	.....	24,788.34	22,118.22
272 Blacksmith Shop ....	953.00	.....	953.00	953.00
273 Youth Expo '74.....	105,047.65	.....	105,047.65	90,515.46
279A Race Office .....	1,640.25	.....	1,640.25	1,640.25
281 Race Track .....	228,305.64	1,485.00	229,790.64	229,790.64
282 Stage .....	109,640.95	.....	109,640.95	91,488.52
283 Underpass to Race Track .....	11,960.00	.....	11,960.00	11,960.00
284 East Bleachers .....	164,330.20	5,372.09	169,702.29	140,311.16
285 Ticket Booth .....	3,793.89	.....	3,793.89	3,793.89
286 Grandstand .....	1,173,226.95	6,124.21	1,179,351.16	980,068.80
287 West Bleachers .....	72,844.32	644.80	73,489.12	59,833.36
288 Check Room .....	2,497.01	.....	2,497.01	2,497.01
289 Sanitation Bldg. ....	13,791.54	.....	13,791.54	11,169.23
289A Dog Show Bldg.....	18,633.33	453.40	19,086.73	15,922.16
289B Infield Scoreboard ..	15,750.60	.....	15,750.60	15,750.60
301 Toilet .....	15,614.52	.....	15,614.52	12,668.76
311 Home Improvement Bldg. ....	114,802.80	1,772.62	116,575.42	114,548.30
312 Old F.M. Bldg. ....	2,007.13	.....	2,007.13	1,656.77
321 Education Bldg. ....	237,379.30	32.24	237,411.54	212,562.68
322 Creative Act. Annex	123,047.95	3,801.03	126,848.98	109,908.51
323 Creative Act. ....	318,135.07	2,658.01	320,793.08	303,259.65
324 E. Commonwealth Gate .....	99,408.67	.....	99,408.67	94,190.70
331 Service Bldg. ....	320,064.72	5,816.30	325,881.02	270,971.57
332 Admin. Bldg. ....	161,496.24	.....	161,496.24	138,079.83
341 Gopher Statue .....	5,530.74	.....	5,530.74	5,530.74
342 Merchandise Mart ..	134,876.50	3,472.55	138,349.05	135,686.66
343 Post Office .....	1,788.56	.....	1,788.56	1,788.56
344 Band Shell .....	168,429.89	66.00	168,495.89	158,849.65
351 Food Show Bldg....	353,395.25	2,467.49	355,862.74	289,307.97
361 Modern Living Bldg.	100,227.16	.....	100,227.16	80,933.92
362 Child Care Center..	23,499.54	.....	23,499.54	19,287.64
365 Toilet .....	15,577.08	.....	15,577.08	12,578.49
366 Sign Shop .....	510.00	.....	510.00	510.00
371 Toilet .....	12,800.01	.....	12,800.01	12,800.01

Structure No.	Value 11/30/73	Deducted or Added for Improvement	11/30/74 Present Val. Approved	Depre. Value
372 Ramp to Grandstand	84,022.64		84,022.64	67,826.68
401 Toilet	11,951.77		11,951.77	9,644.25
402 Police Station	16,278.44		16,278.44	14,075.56
411 Horse Barn	700,809.89	412.75	701,222.64	573,757.99
412 Outside Horse Stalls	20,263.86	1,577.31	21,841.17	21,841.17
421 Arcade Bldg.	114,878.69		114,878.69	93,600.99
422 Commissary Bldg. ..	181,370.92		181,370.92	148,246.80
423 Sheep-Poultry Bldg.	254,402.52		254,402.52	206,382.03
431 Natural Resources Bldg.	112,049.97		112,049.97	91,709.84
432 Natural Resources Pool	76,847.74		76,847.74	76,847.74
433 Ticket Booth	11,990.71		11,990.71	11,990.71
441 Senior Citizens Bldg.	36,302.84	880.63	37,183.47	30,937.42
444 Toilet	24,734.84		24,734.84	19,975.08
445 Information Bldg. ..	335.63	918.84	1,254.47	1,254.47
446 Territorial Cabin ..	11,307.51		11,307.51	9,130.83
447 WCCO Bldg.	4,650.10		4,650.10	4,650.10
451 Agric.-Hort. Bldg. ..	599,961.94	829.92	600,791.86	486,262.66
461 Greenhouse Residence	40,304.34	1,637.57	41,971.91	41,971.91
462 Greenhouse	56,005.59		56,005.59	54,272.71
463 Como-Snelling Gate	11,295.18		11,295.18	9,749.75
464 Toilet	17,529.51	69.44	17,598.95	14,265.18
466 Officer's Cottage ....	42,905.11		42,905.11	38,102.23
471 Mexican Village ....	127,550.88	30.24	127,581.12	125,348.98
474 Degree of Honor Bldg.	1,417.26		1,417.26	1,417.26
476 Parking Dept. Headquarters	2,503.57		2,503.57	2,503.57
481 Dairy-Animal Products Bldg. ....	199,540.28	45.01	199,585.29	176,557.97
491 Loop Pedestrian Gate	8,972.97		8,972.97	8,972.97
492 Ticket Booth	1,430.34		1,430.34	1,430.34
501 Hippodrome	1,315,248.22	11,800.76	1,327,048.98	1,078,336.34
502 Hippodrome Gate ..	1,955.00		1,955.00	1,955.00
511 Livestock Pavilion..	878,691.17		878,691.17	715,673.58
512 Livestock Arch	154,174.08		154,174.08	125,027.66
513 Cattle Barn	157,550.51		157,550.51	157,550.51
521 Swine Barn	478,035.45	1,567.00	479,602.45	389,164.85
522 Swine Barn Annex..	42,050.72		42,050.72	33,957.87
531 W. Commonwealth Gate	785.00		785.00	785.00
532 Canfield Gate	1,910.00		1,910.00	1,910.00
533 Judging Arena	61,477.18	127.80	61,604.98	51,162.32
534 Toilet	9,500.86		9,500.86	9,500.86
535 Forage Bldg.	31,514.23		31,514.23	28,756.73
541 Como Bridge No. 1	12,799.50		12,799.50	10,809.29
542 Como Lot Maint. Bldg.	427.43		427.43	427.43
551 Como Bridge No. 2..	14,583.09		14,583.09	12,562.18
552 Como Entrance	1,026.15		1,026.15	1,026.15
601 Fire Station	12,059.00		12,059.00	12,059.00
602 Transportation Office	909.00		909.00	909.00
603 Freight Terminal ..	10,253.00		10,253.00	10,253.00
TOTALS	\$10,986,091.14	\$65,559.35	\$11,051,650.49	\$9,399,669.85

**— SUMMARY OF DEPRECIATED INVENTORIES —**

Land .....	\$ 744,822.43
Structures .....	9,399,669.85
Utilities .....	2,043,682.85
Personal Property .....	342,559.55
Postage .....	116.78

**TOTAL LAND VALUE APPROVED NOVEMBER 30, 1974**

	Value Dec. 1, 1973	Added for Improvement	Dec. in Val. or Depre.	Nov. 30, 1974 P.V. Approved
Utilities:				
Electric Plant .....	\$ 569,155.96	\$214,531.99	\$28,457.80	\$ 755,230.15
Fence & Guard Rail .....	71,668.43	1,033.09		72,701.52
Flag Poles .....	961.89			961.89
Gas Distribution System ....	70,763.87			70,763.87
Sewer System .....	284,713.55	538.23		285,251.78
Sidewalks .....	99,321.48	6,435.66		105,757.14
Stonework .....	39,767.39			39,767.39
Streets, Curbs, & Gutters....	405,481.51	6,003.03		411,487.54
Water Distribution System..	298,926.96	2,814.61		301,741.57
Inventories:				
Personal Property .....	329,940.30	45,613.28	32,994.03	342,559.55
Postage .....	395.19		278.41	116.78
<b>TOTALS .....</b>	<b>\$2,171,096.53</b>	<b>\$276,972.89</b>	<b>\$61,730.24</b>	<b>\$2,386,339.18</b>

**TABLE I — SUMMARY OF OUTSIDE GATE ADMISSIONS — 1974**

	Thurs. Aug. 22	Fri. Aug. 23	Sat. Aug. 24	Sun. Aug. 25	Mon. Aug. 26	Tues. Aug. 27	Wed. Aug. 28	Thurs. Aug. 29
<b>PAID ADMISSIONS</b>								
Adults, 50¢ tickets .....	8,002							
Adults and Auto, \$1.50 tickets .....		50,958	113,622	121,282	59,191	65,176	71,473	65,506
Adults and Auto, 75¢ discount tickets .....		9,518	19,078	26,689	13,345	13,345	13,345	14,803
Round-up, Adult and Auto, \$1.50 .....		215	1,379	1,442	501	522	430	585
Children, 50¢ tickets .....		2,081	35,576	33,223	23,881	26,401	23,616	19,349
Adults, \$1.00 tickets .....								
Total Paid .....	8,002	62,772	169,655	182,636	96,918	105,444	108,864	100,243
<b>NON-PAID</b>								
Adults .....	8,619							*19,932
Children .....	828	32,357	6,701	7,239	4,220	4,029	5,144	5,074
Total Non-paid .....	9,447	32,357	6,701	7,239	4,220	4,029	5,144	25,006
<b>GRAND TOTALS</b>								
Paid and Non-paid .....	17,449	95,129	176,356	189,875	101,138	109,473	114,008	125,249

\*Senior Citizens' Day

Table 1 — SUMMARY OF OUTSIDE GATE ADMISSIONS — 1974 (Continued)

	Fri. Aug. 30	Sat. Aug. 31	Sun. Sept. 1	Mon. Sept. 2	Total Paid	Total Non-Paid	Total Paid and Non-Paid
PAID ADMISSIONS							
Adults, 50¢ tickets .....					8,002		
Adults and Auto, \$1.50 tickets .....	72,267	133,167	138,860	66,525	958,027		
Adults and Auto, 75¢ discount tickets .....	17,158	26,689	25,407	22,854	202,231		
Round-up, Adult and Auto, \$1.50 .....	663	1,707	2,119	1,090	10,653		
Children, 50¢ tickets .....	4,465	41,555	40,133	17,952	268,235		
Adults, \$1.00 tickets .....	173				173		
Total Paid .....	94,726	203,118	203,522	108,421	1,447,321		
NON-PAID							
Adults .....						28,551	
Children .....	35,270	8,572	6,859	4,049		120,342	
Total Non-paid .....	35,270	8,572	6,859	4,049		148,893	
GRAND TOTALS							
Paid and Non-paid .....	129,996	211,690	213,381	112,470			1,596,214



**TABLE II — SUMMARY OF ADMISSIONS TO GRANDSTAND — MINNESOTA STATE FAIR, 1974**

	Friday August 23			Saturday August 24			Sunday August 25		Monday August 26		Tuesday August 27		Wednesday August 28	
	Early Nite	Late Nite	Day	Early Nite	Late Nite	Day	Early Nite	Late Nite	Day	Nite	Day	Nite	Day	Nite
PAID ADMISSIONS														
Reserved .....	6,036	8,729	3,188	3,620	3,591	3,478	9,230	5,822	222	2,596	302	5,448	278	9,220
Unreserved .....	158	232	1,922	387	385	1,621	368	197	233	1,681	855	287	103	234
Children .....	.....	.....	914	.....	.....	686	.....	.....	311	.....	570	.....	105	.....
Total Paid .....	6,194	8,961	6,024	4,007	3,976	5,785	9,598	6,019	766	4,277	1,727	5,735	486	9,454
Total Day and Nite	15,155			14,007			21,402		5,043		7,462		9,940	
NON-PAID ADMISSIONS														
Tax Free .....	2	.....	38	3	.....	73	.....	.....	12	91	5	57	29	162
Plaza Box .....	101	160	47	102	134	59	157	133	47	101	47	143	27	225
Statistical .....	232	324	499	233	277	469	351	239	142	473	147	380	106	432
Total Non-paid ..	335	484	584	338	411	601	508	372	201	665	199	580	162	819
Total Day and Nite	819			1,333			1,481		866		779		981	
Grand Total														
Paid & Non-paid	6,529	9,445	6,608	4,345	4,387	6,386	10,103	6,391	967	4,942	1,926	6,315	648	10,273
Grand Total														
Day & Nite .....	15,974			15,340			22,883		5,909		8,241		10,921	

**TABLE II — SUMMARY OF ADMISSIONS TO GRANDSTAND — MINNESOTA STATE FAIR (Continued)**

	Thursday August 29		Day	Friday August 30		Day	Saturday August 31		Day	Sunday Sept. 1		Day	Monday Sept. 2		Totals		Totals Day & Nite
	Day	Nite		Early	Nite		Early	Nite		Early	Nite		Day	Nite	Day	Nite	
PAID ADMISSIONS																	
Reserved ....	402	5,303	53	9,080	11,033	3,377	6,317	4,980	6,548	9,300	7,418	5,250	23,098	107,703	130,801		
Unreserved	276	261	148	331	399	1,653	387	140	4,764	543	256	2,929	14,504	6,249	20,753		
Children ....	35	.....	74	.....	.....	1,149	.....	.....	1,841	.....	.....	1,018	6,703	.....	6,703		
Total Paid	713	5,564	275	9,391	11,432	6,179	6,704	5,120	13,153	9,846	7,674	9,197	44,305	113,952	158,257		
Total Day & Nite ....	6,277			21,098			18,003			30,673			9,197		158,257		
NON-PAID ADMISSIONS																	
Tax Free ....	20	3	24	155	312	76	1	102	117	10	6	228	622	904	1,526		
Plaza Box ..	35	194	48	175	191	102	152	133	99	161	181	120	631	2,443	3,074		
Statistical ..	85	331	105	297	339	337	202	179	634	440	302	942	3,467	5,031	8,498		
Total																	
Non-paid	141	528	177	627	842	515	355	414	850	611	489	1,290	4,720	8,378	13,098		
Total																	
Day & Nite	669			1,646			1,284			1,950			1,290		13,098		
Grand Total																	
Paid & Non-Paid	854	6,092	452	10,018	12,274	6,694	7,059	5,534	14,003	10,457	8,163	10,487	49,025	122,330	171,355		
Grand Total																	
Day & Nite	6,946			22,744			19,287			36,623			10,487		171,355		

**TABLE III — SUMMARY OF ADMISSIONS TO HIPPODROME — MINNESOTA STATE FAIR, 1974**

	Fri. Aug. 23 Nite	Saturday August 24 Day	Nite	Sunday August 25 Day	Nite	Monday Aug. 26 Nite	Tuesday Aug. 27 Nite	Wednesday Aug. 28 Nite	Thursday August 29 Day	Nite
PAID ADMISSIONS										
Ringside Box Seats.....	205	215	218	212	220	219	218	222	167	175
Upper Box Seats .....	218	295	447	317	365	399	401	453	363	368
Reserved .....	270	338	855	431	550	705	620	1,145	1,412	1,819
Unreserved .....	600	800	1,500	900	1,400	800	900	1,100	1,200	1,700
Total Paid .....	1,293	1,648	3,020	1,860	2,535	2,123	2,139	2,920	3,142	4,062
Total Day and Nite .....	1,293	4,668		4,395		2,123	2,139	2,920	7,204	
NON-PAID ADMISSIONS										
Tax Free .....	81	46	105	52	106	123	87	125	28	115
Exhibitor (Complimentary) .....	190	207	264	189	212	184	179	204	1	1
Total Non-paid .....	271	253	369	241	318	307	266	329	29	116
Total Day and Nite .....	271	622		559		307	266	329	145	
Grand Total Paid and Non-paid .....	1,564	1,901	3,389	2,101	2,853	2,430	2,405	3,249	3,171	4,178
Grand Total Day and Nite .....	1,564	5,290		4,954		2,430	2,405	3,249	7,349	

TABLE III — SUMMARY OF ADMISSIONS TO HIPPODROME — MINNESOTA STATE FAIR, 1974 (Continued)

	Day	Friday August 30 Nite	Saturday Aug. 31 Nite	Day	Sunday Sept. 1 Nite	Monday Sept. 2 Day	Day	Totals Nite	Totals Day & Nite
PAID ADMISSIONS									
Ringside Box Seats .....	223	208	223	219	215	181	1,217	2,123	3,340
Upper Box Seats .....	462	432	452	387	445	272	2,096	3,980	6,076
Reserved .....	1,514	738	1,815	570	1,243	359	4,624	9,760	14,384
Unreserved .....	1,200	1,200	2,300	1,200	2,000	950	6,250	13,500	19,750
Total Paid .....	3,399	2,578	4,790	2,376	3,903	1,762	14,187	29,363	43,550
Total Day and Nite .....		5,977	4,790		6,279	1,762		43,550	
NON-PAID ADMISSIONS									
Tax Free .....	60	104	124	71	140	75	332	1,110	1,442
Exhibitor (Complimentary) .....		425	468	476	584	467	1,340	2,711	4,051
Total Non-paid .....	60	529	592	547	724	542	1,672	3,821	5,493
Total Day and Nite .....		589	592		1,271	542		5,493	
Grand Total Paid and Non-paid .....	3,459	3,107	5,382	2,923	4,627	2,304	15,859	33,184	49,043
Grand Total Day and Nite .....		6,566	5,382		7,550	2,304		49,043	

## SUMMARY OF RECEIPTS FROM PERCENTAGE ATTRACTIONS

### MINNESOTA STATE FAIR — 1974

#### OTHER THAN CARNIVAL:

Carousel .....	\$ 8,107.82
Giant Slide .....	13,859.12
Antique Cars .....	4,183.54
Skyride .....	39,846.15
Space Tower .....	15,523.79
Ye Olde Mill .....	11,342.43
Prison Show .....	1,943.06
Fat Woman Show .....	5,263.24
Animal Rides .....	2,684.16
Cinemaglobe .....	7,825.56
Electric Circus .....	1,043.76
Reptile Show .....	812.07
	\$112,434.70
Royal American Rides .....	\$255,974.52
Royal American Shows .....	\$ 94,675.51
Grand Total Royal American Rides and Shows .....	350,650.03
Grand Total Percentage Attractions and Royal American Shows..	463,084.73

## 1974 EXHIBITORS

A-1 CONCRETE UNIT STEP CO., INC., Rosemount, Mn.—Steps and Wrought Iron Railings

ABLE BUILDING SYSTEMS, Lino Lakes, Mn.—Building

ABORTION COUNSELING SVC. OF MN., Golden Vly, Mn.—Info. on Abortion

ABORTION RIGHTS COUNCIL OF MN., Minneapolis, Mn.—Educ. Information, physical and mental

ACTION, Minneapolis, Mn.—Action, Peace Corps, Vista, RSVP Information

ADVENTISTS FOR BETTER LIVING, Wayzata, Mn.—Health and Visual Presentation

AGGREGATE READY-MIX OF MN., St. Paul, Mn.—Ready Mix Concrete

AIR ELECTRIC MACH. CO., INC., Lohrville, Ia.—Aero-Mill Lawn Ornaments, Windmills

ALLIED FARM EQUIPMENT CORP., Eagan, Mn.—Allied Loaders, Augers, Mixers

ALLIS CHALMERS CORP., Minneapolis, Mn.—Farm Machinery, Outdoor and Leisure Products Line

AMERICAN ASSN. OF RETIRED PERSONS, Mpls., Mn.—Info. on Assn.

AMERICAN BREEDERS SVC., INC., Almelund, Mn.—Information

AMERICAN HEARING AID CENTER OF MN., Minneapolis, Mn.—Qualitone Hearing Instruction and Testing

ANDERSON DAIRY SUPPLY OF LONG LAKE, INC., St. Paul, Mn.—Zero Milk House Equipment, Bulk Coolers

ASSN. OF NON-SMOKERS RIGHTS, Minneapolis, Mn.—Association

ARPS CORPORATION, New Holstein, Wi.—Loaders

ARTIC MIDWEST DISTRIBUTORS, White Bear, Mn.—Arctic Cat Snowmobile, Silverline, Shakespeare and Ranger Boats

ARTS-WAY MFG. COMPANY, Armstrong, Ia.—Hammermill and Mixer Units

ASSOCIATED MILK PRODUCERS, INC., New Ulm, Mn.—A.M.P.I. Info.

AVCO NEW IDEA FARM EQUIP. CO., Fort Dodge, Ia.—Farm Machinery

AUTOMATIC EQUIP. MFG. CO., Pender, Nb.—Cattle Oilers, Roller Mills, Scales, Mixers

B & L MANUFACTURING, INC., Winnebago, Mn.—Meterman Fencers, Acreage Counters, Pig Drinkers  
 BABSON BROTHERS CO., Oak Brook, Il.—Water Conditioning Equip.  
 BADGER NORTHLAND, INC., Kaukauna, Wi.—Silo Unloader, Manure Disposal, Forage Equipment  
 BALZER MFG. CORP., Mountain Lake, Mn.—Balzer Feeder Forage Boxes, Spreaders, Mixers  
 BARRETT GYRO COPTERS, St. Paul, Mn.—Gyro-Copters  
 BEAR CAT DISTR., INC., Minneapolis, Mn.—Farm Equipment  
 BEHLEN MFG. CO., Columbus, Nb.—Farm Machinery, Grain Equip., Storage Sys., Bldgs., Dryers  
 BENDER MACHINE WORKS, INC., Hayward, Wi.—Dairy Equipment  
 BERG EQUIPMENT CORP., Marshfield, Wi.—Barn Equip., Cleaner, Silo Unloader  
 BIRTH RIGHT, INC., Blaine, Mn.—Information  
 BLANEY FARMS, INC., Madison, Wi.—Seed Corn  
 BLOMQUIST DESIGNING, St. Paul, Mn.—Waterfalls and Patios, Landscaping  
 BLUE CROSS & BLUE SHIELD OF MN., St. Paul, Mn.—Info. on Coverage  
 BODINES, INCORPORATED, Minneapolis, Mn.—Hammond, Yamaha, Thomas, Cable, Chickering  
 BORCHERT CONTRACTORS, INC., New Richland, Mn.—Multi-Flo Home Waste Treatment  
 MILTON BORGEN, Wayzata, Mn.—Shaklee Info. and Display  
 BROOKLYN CENTER CHURCH OF CHRIST, Mpls., Mn.—Holy Bible, Lit.  
 BROWN SEED FARMS, Bay City, Wi.—Seed Corn  
  
 CANTON MILLS, INC., Minn. City, Mn.—ShurGro Fertilizer, Rath Feed, Calphos Phosphate Fertilizer  
 CAPP HOMES, Minneapolis, Mn.—Home Packages  
 CARGILL NUTRENA FEED DIV., Minneapolis, Mn.—Liquid Supplement, Nutrena Feed  
 IVER H. CARLSON & SON, INC., St. Paul, Mn.—Roofing, Siding, Porch Enclosures, Doors, etc.  
 CARNATION GENETICS, Canby, Mn.—Breeding Service  
 CASWELL MFG. CO., Cherokee, Ia.—Scales, Chutes, Farro Crates  
 CEDAR & LOG HOMES OF MN., INC., Elk River, Mn.—Scale Model Home  
 CENTURY CAMPER CENTER, INC., St. Paul, Mn.—Coleman & Grand Prix Trailers, Acme Toppers, Grumman Canoes  
 CHAR-DEN POOLS, INC., Burnsville, Mn.—Swimming Pools, Whirlpool Bath, Raider Snomobile  
 CHASE HOME IMPROVEMENT CO., St. Paul, Mn.—Aluminum and Steel Siding, Windows, Trim Covering  
 CHIEF IND., INCORPORATED, Fort Dodge, Ia.—Grain Bins and Steel Bldgs.  
 CHRISTENSEN SALES, St. Paul, Mn.—El Dorado Stone  
 CHRISTIAN BUS. MEN'S COMM., Minneapolis, Mn.—Literature  
 CHRISTIANSON EVACUATOR SVC., Blomkest, Mn.—Evacuator Service  
 CITY OF SAINT PAUL DEPT. OF HUMAN RIGHTS, St. Paul, Mn.—Info.  
 CLAY EQUIPMENT CO., Cedar Falls, Ia.—Farm Equipment  
 COCA COLA BOTT. MIDWEST, St. Paul, Mn.—Advertising on Scoreboard  
 COFFEY'S POWER EQUIP., Hopkins, Mn.—Bolens Agric. Lawn and Garden Equipment  
 COLUMBUS MFG. CO., Brooklyn Park, Mn.—Farm Wagons, Cooper Tires, Stewart Paint  
 CONTOUR CHAIR SHOP, Minneapolis, Mn.—Chairs and Free Form Chairs  
 CORCHRAN, INCORPORATED, Waseca, Mn.—Vaughn Farm Loaders  
 R. L. COTTEN & ASSOCIATES, St. Paul, Mn.—Perma Fence  
 CRISAFULI PUMP CO., INC., Glendive, Mt.—Pumps  
 CRYSTEEL MFG., INC., Lake Crystal, Mn.—LeBoy Truck Hoists, Jones Trailer Tow, Farm Bodies

CUMBERLAND, ASSOCIATES, Collegedale, Tn.—Water Purifier, Distiller, etc.  
CURTISS BREEDING SVS., INC., Brainerd, Mn.—Breeding Service  
CUSTOM PRODUCTS OF LITCHFIELD, Litchfield, Mn.—Cozy Cabs, Johnson Waterer, Metro Hitch

DAIRY EQUIPMENT CO., Madison, Wi.—Dari-Kool Coolers, Milkers, Truck Tanks  
DAIRYLAND SEED CO., INC., Kewaskam, Wi.—Seeds  
DAKON, Sioux Falls, S.D.—Farm Implements  
DAKOTA MFG. COMPANY, INC., Mitchell, S.D.—Trail-eez Trailers  
DEERE, JOHN, COMPANY, Minneapolis, Mn.—Implements and Tractors, Agric. and Consumer Products, Equipment  
DEERE, JOHN, COMPANY, Minneapolis, Mn.—Implements and Tractors, Agric. and Consumer Products, Equipment  
DEERE, JOHN, COMPANY, Minneapolis, Mn.—Implements and Tractors, Agric. and Consumer Products, Equipment  
DEKALB RESEARCH, INC., DeKalb, Il.—Corn and Sorghums  
DELAVAL SEPARATOR CO., Chicago, Il.—Dairy Equipment  
DFL STATE CENTRAL COMMITTEE, Minneapolis, Mn.—Headquarters  
DIVERSIFIED DISTR., INC., Minneapolis, Mn.—Recreational Vehicles, Rupp Snomobile, Cycles  
DRIALL, INC., Attica, Ind.—Grain Drying Equipment  
DU-AL MANUFACTURING CO., Sioux Falls, S.D.—Front End Loaders, Manure Spreaders  
DYNAMIC HOMES, INC., Detroit Lks., Mn.—Factory Built Homes, (Modular)

E&M SEWING & VACUUM CLEANER, St. Paul, Mn.—Pfaff Sewing Machines  
EFFECTIVE LEARNING SYSTEMS, Bloomington, Mn.—Self Improvement Courses, Memory, etc.  
ELECTROLUX, St. Paul, Mn.—Electrolux and Supplies  
ELECTRO-MAGIC DIV. OF DURA CORP., Vermillion, S.D.—Space Heaters, Steam Cleaners, Alternators  
ENESTVEDT BROTHERS, Sacred Heart, Mn.—MinHybrid Seed Corn, Seed Grains  
ERICKSON AWNING CO., Minneapolis, Mn.—Hastings Awnings  
ERICKSON MFG. COMPANY, INC., Eagle Grove, Ia.—Farrowing Crates, Slat Floors, Finishing House  
ERSKINE MFG. COMPANY, INC., Erskine, Mn.—Snow Blowers, Bale Elevators, Glass Tite Campers  
GERALD A. FABER, Alexandria, Mn.—Grain Dryers, York Bucket Elevators

FAIRVIEW HOSPITAL VOL. DEPT., Minneapolis, Mn.—Detection Booth for Scoliosis (Curvature of the Spine)  
FAITH CHRISTIAN REFORMED CHURCH, New Brighton, Mn.—Free Home Study Bible Course  
FARMHAND, INC., Hopkins, Mn.—Tractors, Loaders, Rakes, Bale Handling Systems, Feed Mixer  
FARM SYSTEMS, INC., Mankato, Mn.—Neca Equip., Spr. B Grain Dryers, Chicago Storage Bins, Speed King Augers  
FARMWAY COMPANY, INC., Manawa, Wi.—Bunk Feeders, Barn Equip. and Cleaners  
FAWN SALES CO., INC., Minneapolis, Mn.—Vending Machines  
FEDERAL CROP INS. CORP., Franklin, Mn.—Insurance  
FERMA GRO DISTRIBUTION CO., LeSueur, Mn.—Ferma Kel Feed Additive  
FETERL MANUFACTURING CO., Salem, S.D.—Grain Auger, Rotary Screen Grain Cleaner Rufeeder

FIBERDOME, INC., Lake Mills, Wi.—Roof, Wollin Silos, Fiberglass Feed Bin  
FIELD ENTERPRISES EDUC. CORP., Shakopee, Mn.—World Book-Childcraft  
FIELD ENTERPRISES EDUC. CORP., Shakopee, Mn.—World Book-Childcraft  
FIELD ENTERPRISES EDUC. CORP., Shakopee, Mn.—World Book-Childcraft  
FIELD ENTERPRISES EDUC. CORP., Mpls., Mn.—World Book-Childcraft  
FIELD ENTERPRISES EDUC. CORP., Mpls., Mn.—World Book-Childcraft  
FIELD QUEEN INC./HESSTON, Rochester, Mn.—Forage Harvester & Heads  
FIRESIDE CORNER-FIREPLACE SYS., St. Paul, Mn.—Heatalator Fireplaces,  
Toivo Saunas, etc.

FLORIDA REALTY, INC., Kansas City, Mo.—Promotion of Real Estate in  
Florida

FORAGE KING INDUSTRIES, Ridgeland, Wi.—Manure Spreader, Forage Box  
on Tandem Wagon, Rear Mount Utility Scoop

FORD MOTOR CO.-NW DISTRICT, Minneapolis, Mn.—Farm Mach., Lawn  
and Garden Tractors

FRIEDMAN & KING, St. Paul, Mn.—Insurance

FRIENDS OF ARLEN ERDAHL COMM., St. Paul, Mn.—Promotion for re-  
election

G & K BUILDERS, St. Louis Park, Mn.—Building Material

G.S.T. HOME ENT. CENTER, Lake Elmo, Mn.—Fireplace Stereo-Bar, Grand-  
father Clock Stereo

GANDY COMPANY, Owatonna, Mn.—Gandy Applicators

GEHL COMPANY, West Bend, Wi.—Forage Harvesting Equip., Boxes, Mixers,  
Blowers

GENERAL DRYER CORP., Clarkfield, Mn.—Dryer, Tox-O-Wik II Dryer

THE GIDEONS INTERNATIONAL, Excelsior, Mn.—Bibles, Testaments &  
Tracts

GRAVELY TRACTORS, Minneapolis, Mn.—Tractors, Mowers, Mighty Mac  
Shredder

GREIF BROS. CORP., St. Paul, Mn.—Wood Barrels, (Wine, Strawberry, etc.)

THE GUY AGENCY, Minneapolis, Mn.—Gen. Insurance Agency

HABERER DAIRY & FARM EQUIP., Bowdle, S.D.—Vacqu-Mer Dairy Equip.

HANSON SILO COMPANY, Lake Lillian, Mn.—Hauser Silo Unloaders

HAWKEYE STEEL PRODS., INC., Waterloo, Ia.—Pride of the Farm Feeding  
& Watering Equipment

HAYER, F. C., CO., Minneapolis, Mn.—RCA TV, Stereos, Whirlpool Appli.

HEDLUND MFG. CO., Boyceville, Wi.—Manure and Feed Handling Equipment

HEIDER MFG. CO., Carroll, Ia.—Wagon & Auger Boxes, Grain Hand. Equip.

HENKE MACHINE, INC., Columbus, Nb.—Roller Mill and Livestock Ration  
Auger-Mixer Wagon

HESSTON, Minneapolis, Mn.—Farm Equipment

HINIKER CO., INC., Mankato, Mn.—Tractor Cab, Planter Attach., Combine  
Tank-topper, etc.

HOME FARMERS MUTUAL INS. ASSN., Minneapolis, Mn.—Benefits of Crop  
Hail Insurance

HOSKINS MFG. CO., Hoskins, Nb.—Red Top Livestock Equip., Utility Car-  
riers, Lemco Scales, Hog Oilers

HOUSING & REDEV. AUTHORITY, St. Paul, Mn.—Promote and Inform  
About Activities of Authority

HOWE, INC., Minneapolis, Mn.—Best Bet Fertilizers and Chemicals

HUDSON PROFI-MATIC DIV., Chicago, Il.—Dairy, Hog & Poultry Equipment

HUMAN RIGHTS DEPT., St. Paul, Mn.—Public Relations & Info. on Services

HUTCH AND MANTLE, Minneapolis, Mn.—Amer. Manor China, Hand Cut  
Crystal, Oneida Gold Electroplate

HYDRA-MAC, INCORPORATED, Thief River Falls, Mn.—Mitey Mac and Big  
Mac Front End Loaders



HYDRO ENGINEERING, INC., Young America, Mn.—Hydro Sprinkle Winch  
HYDRO MASSAGE, INC., Minneapolis, Mn.—Percusso Whirl and Bath

I D S, St. Paul, Mn.—Model IDS Center and Financial Information  
IDE, R. J., INC., Bloomington, Mn.—Deltona Corp., (Florida Real Estate)  
INTERNATIONAL HARVESTOR CO., St. Paul, Mn.—Farm Machinery

JACKSON MFG., INC., Chickasha, Ok.—Horse Trailers  
JACQUES SEED CO., Prescott, Wi.—Seed, Liquid Fertilizer  
JACUZZI WHIRLPOOL BATH, Minneapolis, Mn.—Portable Whirlpool Bath  
(Jacuzzi, Daisy Massage-A-Bath)  
JAMESWAY DIV.-BUTLER MFG. CO., Ft. Atkinson, Wi.—Silo Unloader,  
Cattle Feeders, Ventilator, Barn Cleaner  
JANSEN DISTRIBUTORS, INC., Minneapolis, Mn.—Cleaning Products (Basic  
H) Cosmetics  
JET COMPANY, INC., Humboldt, Ia.—Truck Boxes, Post Driver, Wire Roller,  
Tractor Wagon  
JOHNSON BLDG. MART, INC., Minneapolis, Mn.—Aluminum Siding, Win-  
dows and Doors

KDWB RADIO, St. Paul, Mn.—Display Pem-Tom Model and Broadcasting  
KSTP HUBBARD BROADCASTING, St. Paul, Mn.—Radio & TV Broadcasting  
KEWANEE MACH. & CONVEYOR CO., Kewanee, Il.—Discs, Auger, Roller  
Mill, Rotary Hoe, Elevator  
JAY KLINE CHEVROLET, Minneapolis, Mn.—Trucks (Farm, Camper and  
Sport Type Vehicles), Pick Up Truck  
KLINZING, A. F., CO., INC., Fond du Lac, Wi.—Agromatic Silo Unloaders,  
Bunk Feeders, Barn Equip.  
KOEHN MFG., INC., Watertown, S.D.—Electric Drive Thru Gate, Tractor  
Cab, Sauna Hut  
KOEHRING FARM DIVISION, Appleton, Wi.—Fox Forage Harvesting and  
Brady Tillage Equipment  
KOVAR, JOHN R., MFG. CO., INC., Anoka, Mn.—Harrows and Attachments  
KRETZSCHMAR, ERNIE, Janesville, Mn.—Katolight Standby Alternator  
KUEMPEL CHIME CLOCK WORKS, Excelsior, Mn.—Grandfather Clocks

L-Z COMPANY, INC., St. Paul, Mn.—Thomas Skid-Steer Loader Truck Equip-  
ment, etc.  
LARSON BERNINA CORP., Minneapolis, Mn.—Bernina Sewing Machines  
LARSON BERNINA CORP., Minneapolis, Mn.—Bernina Sewing Machines  
LARSEN-OLSON COMPANY, Minneapolis, Mn.—Lawn Boy, Sylvania, Cush-  
man, Pioneer, Polaris, GMC  
LEAR SIEGLER, INC./CUCKLER DIV., Monticello, Ia.—Steel Bldg.  
LEE, H. D., COMPANY, INC., Minneapolis, Mn.—Jumbo Riders  
LEGION OF MARY, Mpls.-St. Paul, St. Paul, Mn.—Catholic Literature  
LENZ, JOHN, & SONS, INC., Alexandria, Mn.—Super B & Mordige Grain  
Dryers, Speed King Augers  
LESTERS, INC., Lester Prairie, Mn.—Agricultural Bldgs.  
LIBERTY METALS, INC., Minneapolis, Mn.—Precious Metals (silver, gold  
bullion)  
LIFE TIME FARM PRODUCTS, Kewanee, Il.—Farrowing Crates, Waterers,  
Slat Floors, Stalls  
LINDSAY BROTHERS CO., Minneapolis, Mn.—Farm Machinery  
LINDSAY, THE, DIV., St. Paul, Mn.—Water Softeners, Filters  
LIVESTOCK MARKET INSTITUTE, South St. Paul, Mn.—Information  
LONG MFG. CO., INC., Davenport, Ia.—Harrows, Tractors, Grain Equipment

LORENZ MFG. COMPANY, Benson, Mn.—Farm Equipment  
LUNDELL MFG. CO., INC., Cherokee, Ia.—Shredders, Plows, Wagons  
LUTHERAN BROTHERHOOD INSURANCE, Minneapolis, Mn.—Insurance  
LUTHERAN CAMPUS MINISTRY OF MN., Minneapolis, Mn.—Display of  
Lutheran Ministry in Minnesota Campus

M & M SALES, St. Paul, Mn.—Serta Dump (Hydraulic Dump Trailer) for Car  
or Truck

MADISON SILOS-DIV. MARTIN MARIETTA CORP., Winona, Mn.—Cement  
Stave Silo

MADONNA CORPORATION, Navarre, Mn.—Dome, Convertible Car (Room  
Divider Showcase)

MADSEN SERVICE, INC., Minneapolis, Mn.—Oil Burners, Furnace Units

MALLARD SEED CO., INC., Plainview, Mn.—Seed Corn

MARLOW, J. C., MILKING MACHINE CO., Mankato, Mn.—Conde Dairy  
Equip.

MASSEY-FERGUSON, INC., Hopkins, Mn.—Farm and Industrial Equipment

MATHEWS COMPANY, Marshall, Mn.—Dryers, Hay Equipment

McDANIEL, BILL, Excelsior, Mn.—Load King, Dickey John Equipment

MELROE FG. CO. (CLARK EQUIP.), Gwinner, N.D.—Harrows, Windrow,  
Pick Up, Loaders

MENARD AGRI-BUILDINGS, Eau Claire, Wi.—Pole Buildings

METAL PRODUCTS CO., Cokato, Mn.—Superior All Purpose Cart, Sleigh  
Buggy, E-Z Step

METRO GUN CLUBS, INC., Minneapolis, Mn.—Winchester Products, Pacific  
Re-loading Equipment

MFA MUTUAL INSURANCE CO., White Bear, Mn.—Info, on Insurance

MIDWEST BREEDERS COOPERATIVE, Shawano, Wi.—Breeding Service

MIDWEST FENCE & MFG. CO., South St. Paul, Mn.—Chain Link Fence and  
Dog Kennels

MIDWEST SKI AREAS ASSN., St. Paul, Mn.—Ski Area Promotion

MIDWESTERN SCHOOL OF LAW, Minneapolis, Mn.—Promotion of School

MILLER SUPPLY CO., St. Nazianz, Wi.—Layland Tractors, Rex Forage Boxes  
and Other Implements

MINNEAPOLIS POLICE DEPT., Minneapolis, Mn.—Recruiting Display

MINNEAPOLIS STAR & TRIBUNE, Minneapolis, Mn.—Information Booth and  
Minneapolis Chamber of Commerce

MINNESOTA AFL-CIO, St. Paul, Mn.—Union Label Displays

MINNESOTA BEEF RESEARCH & PROMOTION BOARD, Morris, Mn.—Beef  
Exhibit, Demonstration of Meat Cookery

MINNESOTA BLUE FLAME STATE FAIR EXHIBIT, Hastings, Mn.—All Gas  
Home

MINNESOTA BOWLING COUNCIL, Minneapolis, Mn.—A.M.F. & Brunswick  
Bowling Supplies

MINNESOTA BUTLER-AGRI-BUILDERS, Litchfield, Mn.—Bins, Dryers,  
Bldgs.

MINNESOTA CATHOLIC CONFERENCE, St. Paul, Mn.—Public Relations

MINNESOTA CHIROPRACTIC ASSN., St. Paul, Mn.—Public Relations

MINNESOTA COUNCIL ON ALCOHOL PROBLEMS, Minneapolis, Mn.—Pub-  
lic Relations

MINNESOTA CULLIGAN DEALERS, S. St. Paul, Mn.—Water Cond. Info.

MINNESOTA DEPARTMENT OF HEALTH, Minneapolis, Mn.—Health and  
Family Displays

MINNESOTA FARM BUR. FEDERATION, St. Paul, Mn.—Headquarters for  
Members

MINNESOTA FARMERS UNION, St. Paul, Mn.—Public Relations

MINNESOTA HEART ASSN., Minneapolis, Mn.—Heartmobile

MINNESOTA JAYCEES, St. Paul, Mn.—Info. Booth, Slides, Photos, Murals,  
etc.

MINNESOTA LEAGUE OF CREDIT UNIONS, St. Paul, Mn.—Services (Info.)  
 MINNESOTA LIONS EYE BANK, St. Paul, Mn.—Information  
 MINNESOTA LP GAS ASSOCIATION, Minneapolis, Mn.—LP Gas Equipment  
 MINNESOTA MAINE/ANJOU ASSN., Mankato, Mn.—Maine/anjou Cattle  
 MINNESOTA MEDICAL ASSOCIATION, St. Paul, Mn.—Info. on Association  
 MINNESOTA NFO, Pine City, Mn.—NFO Exhibit  
 MINNESOTA NATIONAL GUARD, St. Paul, Mn.—Info. and Recruiting  
 MINNESOTA OPTOMETRIC ASSN., St. Paul, Mn.—Public Relations  
 MINNESOTA POLLUTION ENGINEERING, St. Paul, Mn.—Filtairmatic Elec-  
 tronic Air Cleaner  
 MINNESOTA POLLUTION ENGINEERING, St. Paul, Mn.—Filtairmatic Elec-  
 tronic Air Cleaner  
 MINNESOTA PORK PRODUCERS ASSN., Albert Lea, Mn.—Info. on Industry  
 MINNESOTA REPUBLICAN STATE CENTRAL COMMITTEE, St. Paul, Mn.  
 —Headquarters Advertising Sign  
 MINNESOTA REPUBLICAN STATE CENTRAL COMMITTEE, St. Paul, Mn.  
 —Headquarters Advertising Sign  
 MINNESOTA RUSCO, INC., Minneapolis, Mn.—Windows, Doors, Siding  
 MINNESOTA SHEEP BREEDERS, Rochester, Mn.—Public Relations and Info.  
 MINNESOTA SIMMENTAL ASSN., Lake Benton, Mn.—Simmental Cattle  
 MINNESOTA SOCIETY OF ARCHITECTS, St. Paul, Mn.—Info. and Quiz on  
 Conservation of Energy  
 MINNESOTA STATE ASSN. OF LIFE UNDERWRITERS, Minneapolis, Mn.—  
 Consumer Info. on Life and Health Insurance  
 MINNESOTA STATE BAR ASSN., Minneapolis, Mn.—Exhibit on Association  
 MINNESOTA TURKEY GROWERS ASSN., St. Paul, Mn.—Display and Info.  
 MINNESOTA VALLEY BREEDERS ASSN., New Prague, Mn.—Info. on Svc.  
 MODERN WOODMEN OF AMERICA, Hopkins, Mn.—Fraternal Life and Dis-  
 ability Income Insurance  
 MON-RAY WINDOWS, INC./SUBS., INC., Minneapolis, Mn.—Aluminum Win-  
 dows  
 MONTEVIDEO MFG. & METAL CO., Montevideo, Mn.—Fiesta City Tandem  
 Axles, Ski-moe Snomobile Trailers  
 MORK AND ASSOCIATES, Minneapolis, Mn.—Arrowhead Aluminum and  
 Benada Aluminum  
 MORTON BUILDINGS, INC., Janesville, Mn.—Morton Bldgs.  
 MOULTON IRRIGATION CO., Somerset, Wi.—Pipe Valves, Fittings, Pumps  
 MUELLER, PAUL, CORP., Springfield, Mo.—Coolers and Washers  
 MUTUAL OF OMAHA UNITED OF OMAHA, St. Paul, Mn.—Insurance  
  
 NATIONAL FEDERATION OF THE BLIND OF MINN., INC., St. Paul, Mn.—  
 Public Relations and Information  
 NATIONAL FOUNDATION/MARCH OF DIMES, Minneapolis, Mn.—Public  
 Relations  
 NATIONAL R.R. PASSENGER CORP., Washington, D.C.—Amtrak Information  
 NATIONWIDE DISTRIBUTORS, Minneapolis, Mn.—Riccar & Necchi Sewing  
 Machines  
 NATVIK SUPPLY, INC., Willmar, Mn.—Acorn Barn Cleaners, Silo Unloaders,  
 etc.  
 NELSON, JERRY, CONSTRUCTION CO., St. Paul, Mn.—Home Remodeling  
 NIAGARA OF MINNEAPOLIS, Hopkins, Mn.—Massage Chairs and Portable  
 Massage Equipment  
 NORLING BROS. SILOS, INC., Svea, Mn.—Silos, Pole Barn  
 NORTHRUP KING & CO., Minneapolis, Mn.—Field, Lawn and Garden Seeds  
 NPS, INCORPORATED, Coon Rapids, Mn.—Safety Products, Alarms, Fire  
 Extinguishers, etc.  
 NPS, INCORPORATED, Coon Rapids, Mn.—Safety Products, Alarms, Fire  
 Extinguishers, etc.

O'S GOLD SEED COMPANY, Parkersburg, Ia.—Seed Corn and Alfalfa  
OFFERMAN & COMPANY, INC., Minneapolis, Mn.—Various Kinds of Investments  
OFFERMAN & COMPANY, INC., Minneapolis, Mn.—Bonds, Stocks, etc.  
OLSON MANUFACTURING CO., Albert Lea, Mn.—Dairy Barn Equip., Farm Implements  
O'REILLY MFG., Goodhue, Mn.—Orbilt Manure Spreader  
OWATONNA MFG. CO., INC., Owatonna, Mn.—Loaders, Windrowers, Mixer Mills, Elevators

P & D MFG. COMPANY, INC., Plainfield, Il.—Silo Unloaders and Feed Handling Equipment  
PACESETTER PRODUCTS, INC., Bloomington, Mn.—Fibreglass Awnings, Patio Covers, Doors, etc.  
PALCO, INC., Belle Plaine, Ia.—Head Gates, Holding Chutes, Hitches, etc.  
PALO ALTO MFG. CO., Emmetsburg, Ia.—Pamline Oilers, Waterer, Pressure Sprayers, etc.  
PATZ COMPANY, Pound, Wi.—Barn Cleaners, Silo Unloaders, Bunk Feeders  
PAULSON SUPPLY CO., St. Paul, Mn.—Torrent Floating Pump  
PEARSON BROS. CO., INC., Galva, Il.—Better Bilt Liquid Spreaders, Farrow Crates  
PERIODICAL PUBLISHERS SERVICE BUR., Duluth, Mn.—Good Housekeeping Magazine and Cookbook  
PETERSON, C. J., SEEDS, INC., Dassel, Mn.—Payco Seed Corn  
PIONEER SEED COMPANY, Des Moines, Ia.—Pioneer Alfalfa, Seed Corn, Sorghum  
PLYWOOD MINNESOTA, INC., Minneapolis, Mn.—Cabinets, Appliances, Floor Tiles, Paneling, etc.  
POULTRY INDUSTRY COUNCIL, St. Paul, Mn.—Egg Exhibit  
POWER TOOLS, INC., St. Paul, Mn.—Simplicity Lawn Equipment, McCulloch Chain Saws, Raider Snomobile  
PRIDE SEED COMPANY, Glen Haven, Wi.—Seed Corn  
PRUDENTIAL INSURANCE CO., St. Paul, Mn.—Information

R & M CO., Rochester, Mn.—Ritchie & Trojan Equip. (Livestock Equip.)  
RAMY SEED CO., Mankato, Mn.—Embro & Ramy Seed Corn, Lawn and Garden Products  
REYNOLDS METALS CO., White Bear Lake, Mn.—Information and Display  
RITE WAY WATERPROOFING, INC., Minneapolis, Mn.—Basement Waterproofing  
ROSEMOUNT DODGE, Rosemount, Mn.—Winnebago Motor Homes  
ROUTSON-CHEV-OLDS, INC., Delano, Mn.—Schuster Trailers, (Fifth Wheel Grain Box and Hoist)

ST. PAUL DISPATCH/PIONEER PRESS, St. Paul, Mn.—Newspaper and Civic Displays  
SALVATION ARMY, Minneapolis, Mn.—Display of Services  
SAUNA SUITES, INC., Osseo, Mn.—Information  
SCHAFFER, KENNETH L., LeSueur, Mn.—Driall Grain Drying Equipment  
SCHAPER MFG. CO., Minneapolis, Mn.—U-Fly-It, Sky Crane Toy Sets  
SCHMITT MUSIC CO., Minneapolis, Mn.—Kimball Pianos and Organs  
SCHMITT MUSIC CO., Minneapolis, Mn.—Conn Organs  
SCHMITT MUSIC CO., Minneapolis, Mn.—Conn Organs  
SCHMITT MUSIC CO., Minneapolis, Mn.—Kimball, Everett, Sohmer, Steinway Pianos  
SCHMITT MUSIC CO., Minneapolis, Mn.—Kimball, Everett, Sohmer, Steinway Pianos

SCHMITT MUSIC CO., Minneapolis, Mn.—Kimball, Everett, Sohmer, Steinway Pianos  
 SCHWARTZ MFG. CO., Lester Prairie, Mn.—Hoist, Front End Loader, Wagon Box Hoists, Axles  
 SECURE-ALL SYSTEMS, INC., St. Paul, Mn.—Ronaar Sys. (Fire and Intrusion Sys.)  
 SMITH, A. O., HARVESTORE, Wyoming, Mn.—Harvestore  
 SOKOTA HYBRID PRODUCERS, Brookings, S.D.—Hybrid Seed Corn  
 SPERRY NEW HOLLAND, St. Paul, Mn.—Farm Machinery  
 STA-RITE INDUSTRIES, INC., Delavan, Wi.—Dairy Equipment  
 STARLINE, INC., Harvard, Il.—Barn and Farm Equipment  
 STEIGER TRACTOR, INC., Wayzata, Mn.—Tractors  
 STENSRUD AGRI-SYSTEMS, INC., Freeborn, Mn.—Cablevey Feed Conveyor  
 STERLING ENTERPRISES, Minneapolis, Mn.—Custom Craft Whirlpool Bath  
 STORMOR, INC., Fremont, Nb.—Steel Grain Bins, Dryer, Steel Buildings  
 SUDENGA INDUSTRIES, INC., George, Ia.—Grain Handling Equipment  
 SUN CONTROL PRODS. OF ROCHESTER, Rochester, Mn.—Modern-Aire Transparent Reflective Shades  
 SUNSET EQUIPMENT CO., St. Paul, Mn.—Bulk Milk Coolers

TASCO, INC., Shell Rock, Ia.—Pig and Calf Brooders  
 TATGE CHEMICAL CO., Herington, Ks.—Tox-O-Wik Cattle and Hog Oilers, Feed Bunks, Hi Pressure Washers  
 TEBBEN MFG. COMPANY, Clara City, Mn.—Tractor Cabs  
 TECHNICAL SVC. DIV.-CONKLIN, Lake City, Mn.—Impreglon (Metal Treatment) and Conklin Products  
 TECHNI-FAB, INC., Mankato, Mn.—Mobile Home Access. (Roller Rooms, Add-A-Room, Portable Off.)  
 TOP LINE CORPORATION, Janesville, Wi.—Transfer Equipment  
 TRIGGS MFG. COMPANY, Belmond, Ia.—Tractor Cabs, Hy Gravity Box, Tillage Tools, Loaders  
 TRIPLE "F" FEEDS, Chippewa Falls, Wi.—Livestock Feeds, Preservatives and Machinery to Manufacture Feed Ingredients  
 TROJAN SEED COMPANY, Olivia, Mn.—Seed Corn  
 TUFFY'S INCORPORATED, Perham, Mn.—Pet Food

UNIQUE INDOOR COMFORT INC., Minneapolis, Mn.—Space Pak Central Air Conditioner  
 UNITED DYN-A-VAC, INC., Columbus, Oh.—Vacu-forming Equip. and Info.  
 UNIVERSAL MILKING MACH. DIV., Albert Lea, Mn.—Milking Equipment

VALLEY SALES, Lexington, Nb.—Big Valley Livestock Equipment  
 VAN DALE, INC., Long Lake, Mn.—Silo Unloader, Bunk Feeder, Conveyor  
 VAN DUSEN & COMPANY, INC., Wayzata, Mn.—Silo-Matic Silo Unloaders and Feeding Equipment  
 VIKING WHOLESALERS, INC., Minneapolis, Mn.—Building Materials  
 VINTON HYBRID CORN CO., Vinton, Ia.—Seed Corn

WCCO-RADIO, Minneapolis, Mn.—Advertising  
 WCCO-TV, Minneapolis, Mn.—Personalities and Info., Broadcasting  
 WWTC RADIO, Minneapolis, Mn.—Broadcasting and Exhibit  
 WALL MFG. COMPANY, Mountain Lake, Mn.—Automatic Water Equip., Hogs and Calf Equipment  
 WALSH MFG. COMPANY, Charles City, Ia.—Washers, Field Sprayers  
 WATER INDUSTRIES, St. Paul, Mn.—Water Conditioners

WAUSAU HOMES, INC., Wausau, Wi.—Model Home Display  
WEBER, A. C., & CO., INC., Chicago, Il.—Pfaff Sewing Mach., Passop Knitting Mach.  
WESTERN RANCHHAND PICKUP DUMPS, Boise, Id.—Pick-up Dumps  
WESTGO INDUSTRIES, INC., West Fargo, N.D.—Augers, McKee Hay Mach.  
WHITE FARM EQUIPMENT CO., Oak Brook, Il.—Farm Machinery  
WILDERNESS PARK, INC., Bloomington, Mn.—Recreational Property, Near Brainerd, Mn.  
WINPOWER MFG. CO. (IDSO SALES), Fargo, N.D.—Winpower Standby Alternators  
WINPOWER MIDWEST, INC., Minneapolis, Mn.—Generator, Waldon Loader  
WOMAN'S CHRISTIAN ASSN., Minneapolis, Mn.—Info. on Housing for Students, Careerists, Mature Men and Women, etc.  
WONDRA'S PIANO & ORGAN, St. Paul, Mn.—Organs and Pianos  
WOOD AND CONN, INC., Redwood Falls, Mn.—Hutchinson Augers, Brillion Implements, Wood & Conn Sprayers  
WURLITZER MUSIC STORES, INC., Minneapolis, Mn.—Pianos and Organs  
WYOO RADIO, St. Paul, Mn.—Broadcasting

XL LABORATORIES, INC., Des Moines, Ia.—Water Purification Equipment

YALE LIBMAN PIANO & ORGAN, St. Paul, Mn.—Baldwin Pianos and Organs  
YEAR AROUND CAB CORP., Mankato, Mn.—Tractor Cabs and Accessories

BIG BROTHERS OF GREATER ST. PAUL, St. Paul, Mn.—Public Relations

CAMP NATCH, INC., Minneapolis, Mn.—Public Relations  
COLLEGE OF ST. TERESA, Winona, Mn.—Public Relations  
CORPS OF ENGINEERS, St. Paul, Mn.—Information  
CYSTIC FIBROSIS, Minneapolis, Mn.—Information on Organization

DEPT. OF CORRECTIONS, St. Paul, Mn.—Information  
DUNWOODY INDUSTRIAL INST., Minneapolis, Mn.—Activities

FED. EXECUTIVE BD. OF T.C., St. Paul, Mn.—Public Relations

GEOLOGICAL SOC. OF MINN., St. Paul, Mn.—Public Relations  
THE GROVES SCHOOL, Hopkins, Mn.—Public Relations

HOUSE OF REP. INFO. OFFICE, St. Paul, Mn.—Information

LALECHE LEAGUE OF MIN., Minneapolis, Mn.—Public Relations

MECCA, St. Paul, Mn.—Information  
MILITARY DEPARTMENT, St. Paul, Mn.—Information  
MINNEAPOLIS BIRD CLUB, Minneapolis, Mn.—Public Relations  
MINNESOTA ACADEMY OF SCIENCE, Minneapolis, Mn.—Exhibits and Info.  
MINN. COMMUNITY COLLEGES, Minneapolis, Mn.—Information  
MINN. EDUCATION ASSOCIATION, St. Paul, Mn.—MEA Information  
MINN. ENVIRONMENTAL HEALTH ASSN., St. Louis, Park, Mn.—Info.  
MINN. EPILEPSY LEAGUE, St. Paul, Mn.—Information  
MINN. FOSTER PARENTS ASSN., Bloomington, Mn.—Information  
MINN. HIGHWAY DEPARTMENT, St. Paul, Mn.—Information  
MINN. IRON RANGE RESOURCES & REHABILITATION, St. Paul, Mn.—Information  
MINN. NATIONAL GUARD, St. Paul, Mn.—Public Relations

MINN. PRISONERS UNION, Minneapolis, Mn.—Information  
MINN. PUBLIC INTEREST RESEARCH GROUP, Minneapolis, Mn.—Info.  
MINN. PUBLIC SAFETY DEPT., St. Paul, Mn.—Information and Theatre  
MINN. STATE DENTAL ASSN., Minneapolis, Mn.—Information  
MINN. UNIVERSITY RELATIONS, Minneapolis, Mn.—Public Relations  
MINN. VOCATIONAL ASSN., St. Paul, Mn.—M.V.A. Information  
MRS. JC'S OF MINNESOTA, Owatonna, Mn.—Information  
OFF. OF THE SECRETARY OF STATE, St. Paul, Mn.—Information

PRISON INDUSTRIES, Bayport, Mn.—Information

RUNESTONE MUSEUM, St. Paul, Mn.—Information

ST. PAUL AUDUBON SOCIETY, St. Paul, Mn.—Information  
ST. PAUL CAMP FIRE GIRLS, St. Paul, Mn.—Public Relations  
SELECTIVE SVC. DEPARTMENT, St. Paul, Mn.—Information  
SOCIAL SECURITY ADMIN., St. Paul, Mn.—Information  
STATE COLLEGE BOARD, St. Paul, Mn.—SCBO Information  
STATE DEPT. OF EDUCATION, St. Paul, Mn.—Information  
STATE GRANGE OF MINNESOTA, Elk River, Mn.—Public Relations  
STUDENTS INTL. MEDITATION SOC., Minneapolis, Mn.—Information

TWIN CITIES DIABETES ASSN., Minneapolis, Mn.—Public Relations

UNITED NATIONS, Minneapolis, Mn.—Public Relations  
UNITED STATES AIR FORCE, Minneapolis, Mn.—Information  
U.S. ARMY RECRUITING SERVICE, St. Paul, Mn.—Literature  
U.S. ARMY RESERVE RECRUITING OFF., Ft. Snelling, Mn.—Information  
U.S. COAST GUARD RECRUITING OFF., Minneapolis, Mn.—Opportunities  
and Information  
U.S. MARINE CORPS, Minneapolis, Mn.—Recruiting Display  
UNITED STATES NAVY, Minneapolis, Mn.—Recruiting Display  
UNIV. OF MINNESOTA (MORRIS), Morris, Mn.—Information  
UNIV. OF MINN. TECHNICAL COLLEGE, Waseca, Mn.—Public Relations

VARIETY CLUB, Minneapolis, Mn.—Information  
VET. MEDICINE-UNIV. OF MINN., Veterinary Science Bldg., St. Paul, Mn.—  
Chapter Activities

WEBB PUBLISHING CO., St. Paul, Mn.—The Farmer Magazine  
WINCEK, TOM, DIRECTOR OF VETS. PROGRAMS, Minneapolis, Mn.—Info.

JUNIOR ACHIEVEMENT OF GREATER MINNEAPOLIS, Minneapolis, Mn.—  
JA Products and Information  
KMSP-TV, Minneapolis, Mn.—Programs  
15-KSTP RADIO, St. Paul, Mn.—Radio and Promotion  
LIVESTOCK INFORMATION EXCHANGE, Ft. Collins, Colo.—Information  
MARY KAY COSMETICS, Minneapolis, Mn.—Cosmetics  
SAINT THOMAS COLLEGE, St. Paul, Mn.—Information on Schools (Ham-  
line, St. Catherine, Macalester, Augsburg)  
SEASONS OF LEISURE, INC., Blomington, Mn.—Snowaski  
UNIV. OF MINN. (MORRIS), Morris, Mn.—Information  
WALLMASTER, INC., St. Paul, Mn.—Aluminum Products  
YOUTH EMERGENCY SVC., Minneapolis, Mn.—Information  
BUTLER, HOWEL & LEE, Minneapolis, Mn.—Monetary Consultants  
HENNEPIN COUNTY COURT SERVICES, Minneapolis, Mn.—Information  
MINN. DEPT. OF PUBLIC SAFETY, St. Paul, Mn.—Fallout Shelter

## 1974 CONCESSIONAIRES

- A & B SPECIALTY CO., INC., Minneapolis, Mn.—Seal-O-Matic Cookware, Reynolds China, Wm. Rogers Tableware, etc.
- A.R.E., INCORPORATED, St. Paul, Mn.—Swedish Crescent Bicycle
- ABDALAH, INCORPORATED, Burnsville, Mn.—Sale of Fudge
- ABOSCH IMPORT CO., Hollywood, Ca.—“Swiffy” Spot Remover
- ADAM'S IMPORTS, Minneapolis, Mn.—African Wood Carvings, Art Objects
- ADVENTISTS FOR BETTER LIVING, Minnetonka, Mn.—Meatless Foods
- AFRICAN IMPORTS, Milwaukee, Wi.—Imports
- AMERICAN DAIRY ASSN. OF MINN., St. Paul, Mn.—Milk Bar “All You Can Drink 15¢”
- AMERICAN DAIRY ASSN. OF MINN., St. Paul, Mn.—Ice Cream, Cheese Items
- AMERICAN DAIRY ASSN. OF MINN., St. Paul, Mn.—Ice Cream, Cheese Items
- AMERICAN PARTY OF MINN., Minneapolis, Mn.—Information
- AMERICA, INC., Minneapolis, Mn.—Leather Handicraft from South America, Handbags, Sandals, etc.
- ANDERSON'S SALT WATER TAFFY, Greendale, Wi.—Salt Water Taffy
- ANDREW, MARK, St. Paul, Mn.—S-Mores
- ANDY'S SNACK SHOP, St. Paul, Mn.—Stewart Sandwiches, Soft Drinks, Ice Cream, Coffee, Candy, etc.
- ARCHERY CHAMPIONS, INC., Medford, Mn.—Archery Range, Bows and Arrows
- ARK PRODUCTS, INC., Minneapolis, Mn.—Character Bldg. Name Plaques (Wood Decoupage)
- ARNDT'S FRAME SERVICE, St. Cloud, Mn.—Rustic Picture Frames, Crafts, Homemade Art
- ASSOCIATED COMPANIES, INC., Minneapolis, Mn.—Hanna Barbera Books, Records, Posters, etc.
- ASSN. OF EVANGELICALS OF ST. PAUL, St. Paul, Mn.—Religious Films and Literature, etc.
- ATMOSPHERE SEATING & MFG., Minneapolis, Mn.—Breakfast Nooks, Custom Made Seating
- ATWOOD & BONNIWELL FLOWERS, Minneapolis, Mn.—Fresh Cut Flowers (Roses, Carnations, etc.)
- B&J SEWING CENTER, Faribault, Mn.—New Home-Sewing Mach.
- BABY RENTS OF AMERICA, Kansas City, Mo.—Stroller Rental
- BAHAI FAITH, Minneapolis, Mn.—Information on Faith
- BAKER, JEFF, St. Paul, Mn.—Pizza
- BAKER, NEIL E., West St. Paul, Mn.—Fingerprint Drawing, Frames and Wooden Easels
- BALDWIN MUSIC CENTERS, Minneapolis, Mn.—Pianos, Organs and Kohler Campbell and Thomas
- BALZART, MRS. IRENE, and CLARA RUHLAND, Forest Lake, Mn.—Hand Sewn Clothes, Recycled Dolls, Cradles, Wardrobes, Bonnets, etc.
- BARBERS, THE, Minneapolis, Mn.—Information and Demonstrations
- BARBERIO CHEESE HOUSE, Minneapolis, Mn.—Hickory Smoked Sausage
- BARBERIO CHEESE HOUSE, Minneapolis, Mn.—Hickory Smoked Sausage and Cheese
- BARBERIO CHEESE HOUSE, Minneapolis, Mn.—Beer Sticks
- BARBERIO CHEESE HOUSE, Minneapolis, Mn.—Fudge
- BARBERIO CHEESE HOUSE, Minneapolis, Mn.—Paper Flowers
- BENSON, BENJAMIN, Minneapolis, Mn.—Bratwurst, Soft Drinks
- BENSON, BENJAMIN, Minneapolis, Mn.—Bratwurst
- BENTZ, KENNETH, Oklahoma City, Ok.—Floating Candles and Closet Balls



BERMAN BUCKSKIN CO., Minneapolis, Mn.—Jackets, Gloves, etc.  
 BETHANY FELLOWSHIP, INC., Minneapolis, Mn.—Camping Trailers, Books, Equipment and Accessories  
 BEVER BROS. LANDSCAPE DESIGN, White Bear Lake, Mn.—Garden Merchandise, Nursery Stock, Landscape Material  
 BIG BASH BARBECUE INC., South St. Paul, Mn.—Commercialized Barbeque for Organizations, etc .  
 BIG PEPPER, THE, St. Paul, Mn.—Meatballs, Ravioli, Stuffed Peppers  
 BIRCH FARM FOODS, INC., Lamberton, Mn.—Spices for Cottage Cheese, Salad, etc., Weight Watchers Book  
 BONNIE WOOD CRAFTS, St. Louis Park, Mn.—Plaques (Wood, Stone, etc.)  
 BOSTROM DIV. UOP, Milwaukee, Wi.—Suspension Seats for Tractors, Trucks  
 BRIGHTER CORPORATION, Hutchinson, Mn.—Lunch and Refreshments and Mex. Novels  
 BROADWAY SEWING CENTER, Minneapolis, Mn.—Viking Sewing Mach.  
 BROADWAY SEWING CENTER, Minneapolis, Mn.—Viking Sks. Fabrics  
 BRONSON SHOE CO., Minneapolis, Mn.—Shoes and Boots  
 BUDGET MOTELS & HOTELS OF AMERICA, St. Paul, Mn.—Directory of Budget Motels and Hotels U.S.  
 BURKE, ARTHUR C., Springfield, Mo.—Sale of Salt Water Taffy

CADS SALES CO., St. Paul, Mn.—Orange Treet  
 CAMPUS JEWELERS, Minneapolis, Mn.—Imports from Poland  
 CAPT. KEN'S FIREHOUSE BEANS, St. Paul, Mn.—Lunch and Refreshments  
 CARLSON, A. C., Crystal, Mn.—Earl Nightingale Communications  
 CENTER FOR UNDERSTANDING MEDIA, New York, N.Y.—Cinemaglobe "Expo Film Theater"  
 CENTRAL ART SALES, Perris, Ca.—Sewing Mach. Attachments  
 CHARLES, RUSSEL Z., St. Cloud, Mn.—Sea Shells, Corals  
 CHARLES, RUSSEL Z., St. Cloud, Mn.—Sea Shells, Corals  
 CHENG, WM., IMPORTS, Portland, Or.—Taiwan, China, etc., Jewelry, Brassware, China Wares, etc.  
 CHENG, WM., IMPORTS, Portland, Or.—Taiwan, China, etc., Jewelry, Brassware, China Wares, etc.  
 CHINA PALACE ENTERPRISES CO., Minneapolis, Mn.—Chinese Pottery Vases, Lamps, Furniture, etc.  
 CHRISTIAN EDUCATIONAL SERVICE, Thonotosassa, Fl.—Cassettes & Records, Hertel Bibles  
 CHRISTIAN RESEARCH, INC., Minneapolis, Mn.—Anti-Subversion Literature, Emergency Foodstuff  
 CHURCH OF THE EPIPHANY, Coon Rapids, Mn.—Fish and Chips  
 CHURCH OF THE EPIPHANY, Coon Rapids, Mn.—Dining Hall  
 CITY OF HOPE, Minneapolis, Mn.—Small Gifts, Jewelry  
 CLARA'S DINER, Stillwater, Mn.—Dining Hall  
 CLERSITE COMPANY, White Bear Lake, Mn.—Eye Glass Cleaner  
 CLEWORTH, KENNETH E., Minneapolis, Mn.—Lunch and Refreshments, 3.2 Minnesota Beer  
 CONCRETE CARE CONTRACTORS, St. Paul, Mn.—Jodal Concrete Sealer  
 CONKLIN PRODUCTS, St. Louis Park, Mn.—Fuel and Oil Conditioners, Cleaner and Wetting Agents  
 CONVEY, MAURICE M., St. Paul, Mn.—Lunch and Refreshments  
 CONVEY, MAURICE M., St. Paul, Mn.—Popcorn and Refreshments  
 CONVEY, MAURICE M., St. Paul, Mn.—Popcorn and Root Beer  
 COOLIDGE, JOHN, CO., Marine on St. Croix, Mn.—Shells, Jewelry, etc.  
 COOLIDGE, JOHN, CO., Marine on St. Croix, Mn.—Shells, Jewelry, etc.  
 COOLIDGE, JOHN, CO., Marine on St. Croix, Mn.—Glass Items  
 CORD-A-WAY INDUSTRIES, INC., Minneapolis, Mn.—Cord Valet, Handi-lite Storage Reels

CORDON BLEU, Minneapolis, Mn.—Cookware, China, Crystal, Silverware, Chests

COURAGE HOMECRAFTERS COURAGE CENTER, Golden Valley, Mn.—

Handmade Craft Items by Handicapped, Toys, Furniture, etc.

COX, WILLIAM G., St. Paul, Mn.—Jewelry Display

CRIPPER DIPPER, Rice Lake, Wi.—Candle Dipping, Small Candles

CROCKER, JAMES W., Minneapolis, Mn.—Root Beer

CROCKER, JAMES W., Minneapolis, Mn.—Root Beer

CROCKER, JAMES W., Minneapolis, Mn.—Root Beer

CROWTHER, RICHARD A., Universal City, Ca.—Solid and Liquid Perfume

CRUMP, RAY, ATHLETIC SUPPLIES, Minneapolis, Mn.—Jerseys w/Personal Imprints (Football and Hockey)

CRYSTAL CLEAR CO., Webb City, Mo.—Eye Glass Cleaner

CRYSTAL CLEAR CO., Webb City, Mo.—Eye Glass Cleaner

CURRAN & HALLIGAN, Minneapolis, Mn.—Pine Air Freshner

CURRAN & HALLIGAN, Minneapolis, Mn.—Bowmaker

CURTIS MATHES SHOWROOM, Minneapolis, Mn.—Color TV

CUSTOM BEDS, Minneapolis, Mn.—Bed Frames, Wood Canopy Bed Frames

DADSON'S, St. Paul, Mn.—Surplus Steel Products and Misc.

DAFKA POTTERY, Minneapolis, Mn.—Handmade Stoneware and Porcelain

DAIRY BAR, St. Louis Park, Mn.—Malts, Sundaes, Floats, Cheese Sandwiches, etc.

DALE'S DESIGNS, Inver Grove Heights, Mn.—Jewelry Using Minn. Stones

DANIELSON, WILLIAM F., St. Paul, Mn.—Pizza

DANIELSON, WILLIAM F., St. Paul, Mn.—French Fried Onions

DANIELSON, WILLIAM F., St. Paul, Mn.—Spin-O-Paint

DAVIS, JAMES A., Minneapolis, Mn.—SnoCones/Apples( Candied)

DAVIS, JAMES A., Minneapolis, Mn.—Lunch and Refreshments

DAVIS, JAMES A., Minneapolis, Mn.—Belgian Waffles

DAVIS, JAMES A., Minneapolis, Mn.—Ice Cream/Sno Cones

DAVIS, JAMES A., Minneapolis, Mn.—Headquarters-Office

DAVIS, JAMES A., Minneapolis, Mn.—Sno Cones

DAVIS, JAMES A., Minneapolis, Mn.—Cheerios

DAVIS, JAMES A., Minneapolis, Mn.—Refreshments

DAVIS, JAMES A., Minneapolis, Mn.—Refreshments

DAVIS, JAMES A., Minneapolis, Mn.—Refreshments

DAVIS, JAMES A., Minneapolis, Mn.—Refreshments

DAVIS, JAMES A., Minneapolis, Mn.—Ice Cream Novelties

DAVIS, JAMES A., Minneapolis, Mn.—Sno Cones, Candy Apples

DAVIS, JAMES A., Minneapolis, Mn.—Ice Cream and Coke

DAVIS, JAMES A., Minneapolis, Mn.—3.2 Beer

DEERE, JOHN, COMPANY, Minneapolis, Mn.—Toys and Hats

DEGNAN, LORRAINE A., Minneapolis, Mn.—Soft Drinks, Popcorn, Ice Cream

DELRIK ENTERPRISES, Minneapolis, Mn.—Popcorn and Refreshments

DESPLENTER CONCESSIONS, Chicago, Il.—Novelty Stands

DESPLENTER CONCESSIONS, Chicago, Il.—Storeroom

DIVERSIFIED PRODUCTS, INC., Wyoming, Mn.—Snomobiles, Boats, Benelli Motorcycles, Gator Trailers, etc.

DOLL, NELLIE E., Minneapolis, Mn.—Fur Toys, Punch Needle

DOLL, NELLIE E., Minneapolis, Mn.—Pine Toys, Punch Needle

DOLL, NELLIE A., Minneapolis, Mn.—Pine Toys, Punch Needle

DOLL, NELLIE A., Minneapolis, Mn.—Fur Toys, 3D Pictures

DUERR'S, BOB, SNAKE ZOO, Stacy, Mn.—Snakes, Buttons

DUIS ENTERPRISES, Minneapolis, Mn.—Fake Fur and Colored Feather Novelties

DUNA, WILLIAM, Minneapolis, Mn.—Gypsy Crepes, Soft Drinks

EATON'S BOOT & SADDLE SHOP, Apple Valley, Mn.—Western Merchandise  
E GAD ENTERPRISES, Minneapolis, Mn.—Meerschaum Pipes, Misc. Smoking  
Supplies

ELM, RICHARD, St. Paul, Mn.—Popcorn and Soft Drinks

EL SOL MEXICAN FOOD, St. Paul, Mn.—Tacos, Buritos, Tostados, Refresh.

EMMAUS LUTHERAN CHURCH, St. Paul, Mn.—Lunch and Refreshments

ENCYCLOPEDIA BRITANNICA, INC., Chicago, Il.—Encyclopedias

ENCYCLOPEDIA BRITANNICA, INC., Chicago, Il.—Encyclopedias

ERB, BILL, St. Paul, Mn.—Candy, Carmelcorn, Cold Drinks, Slush

ERICKSON, R. C., COMPANY, Minnetonka, Mn.—Puppets, Bend Me Dolls,  
Stationery, etc.

ERICKSON, R. C., COMPANY, Minnetonka, Mn.—Gifts and Xmas Decoration

ESKIMO SHOPS, Anchorage, Alaska—Eskimo Fur Parkas and Mukluks

ESKIMO SHOPS, Anchorage, Alaska—Carvings, Jewelry

FAB U LES, INC., Minneapolis, Mn.—Fabrics and Notions

FAIR ENTERPRISES, INC., Minneapolis, Mn.—Horse Show Programs

FAIR ENTERPRISES, INC., Minneapolis, Mn.—Buttons, Programs, etc.

FAIR ENTERPRISES, INC., Minneapolis, Mn.—Antique Car Show

FALCON HTS. CONGREGATIONAL CHURCH, St. Paul, Mn.—Lunch and  
Refreshments

FARAGHER, RICHARD & LIL, St. Paul, Mn.—Popcorn, Carmelcorn, Carmel  
Apples, etc.

FINS & FEATHERS, INC., North St. Paul, Mn.—Subscriptions to Magazine  
and Fishing Lures

FIRESTONE PHOTOGRAPHS, INC., Columbus, Oh.—Photos of Bands

FISH & CHIPS, St. Paul, Mn.—Fish and Chips

FOLEY MFG. COMPANY, Minneapolis, Mn.—Kitchen Utensils

FOREMAN & CLARK, St. Paul, Mn.—Men's Clothing

FOREMAN & CLARK, St. Paul, Mn.—Clothing

FOURTH DISTRICT DFL, St. Paul, Mn.—Display and "Frosty Freeze"

FRESH FRUIT, St. Paul, Mn.—Grapes, Oranges, etc.

FRESH FRUIT, St. Paul, Mn.—Grapes, Oranges, etc.

GASTHAUS EDELWEISS, St. Paul, Mn.—Bratwurst, German Potato Salad,  
Beer Sticks, etc.

GEMS OF INDIA, Foster City, Ca.—Imports from India

GENERAL HOBBY PRODUCTS, INC., Bloomington, Mn.—Yarnbender/  
Thread, Weaving Loom, etc.

GEORGE, DANIEL, II, Lawrence, Ks.—Air Brush Painting, Shirts Printed

GIANT SUBMARINE SANDWICH, St. Paul, Mn.—Sandwiches

GIFT O RAMA SHOPS, Minneapolis, Mn.—Gifts and Novelties

GLADD, THE, COMPANY, Minneapolis, Mn.—Houseware Specialties

GLASS BLOWER GALLERY, St. Paul, Mn.—Glass Novelties

GLORIA DEI LUTHERAN CHURCH, St. Paul, Mn.—Lunch and Refreshments

GOLD MEDAL BEVERAGE CO., St. Paul, Mn.—Diet Rite Cola and RC

GRAND COURT ORDER OF AMARANTH, St. Paul, Mn.—Lunch and Refresh.

GROUP HEALTH SPECIALTIES, Berkeley, Il.—Rug Cleaner

GUNNARD, THE, CO., Minneapolis, Mn.—Canning Sets, Christmas Tree  
Stand, Turkey Lifters, Meat Roasting Racks

H & H CRAFTS, St. Paul, Mn.—Christmas Tree Ornaments, Gift Items, Can-  
dles, etc.

HAMER, RAY O., Minneapolis, Mn.—Hi Striker

HAMER, RAY O., Minneapolis, Mn.—Hi Striker

HAMLIN METHODIST CHURCH, St. Paul, Mn.—Dining Hall

HANIAN, CONNIE, Scottsdale, Az.—Lemonade Shakeup, Bratwurst, Tacos, French Fries, etc.

HANNASCH & LAVAQUE, Minneapolis, Mn.—Sno Cones

HANNASCH & LAVAQUE, Minneapolis, Mn.—Sno Cones (12)

HARDING HOME COMFORT, INC., Chisago City, Mn.—Rapco Foam Insulation

HEDBERG, GUST V., St. Paul, Mn.—Wood Craft (Bowls, Key Chains, etc.)

HEL-MAC DISTRIBUTING CO., Riverview, Mich.—Portable Massage Units, Bench Vise

HEMISPHERE SOUNDS, St. Petersburg, Fl.—8-Track Stereo Tapes

HICKORY FARMS OF OHIO, Toledo, Oh.—Beef Stick, Cheese, Mustard

HICKORY FARMS OF OHIO, Toledo, Oh.—Beef Stick, Cheese, Mustard

HIXON GLASS BLOWERS, Phoenix, Az.—Demo. and Sale of Articles

HIXON GLASS BLOWERS, Phoenix, Az.—Demo. and Sale of Articles

HIXON GLASS BLOWERS, Phoenix, Az.—Demo. and Sale of Articles

HOBBY CRAFT, Morongo Valley, Ca.—60 Million Year Old Geodes, Gemstone, Pen Sets, Book Ends, etc.

HOHENWOLD, AL, ENTERPRISES, St. Paul, Mn.—Lunch and Refreshments

HOHENWOLD, AL, ENTERPRISES, St. Paul, Mn.—Lunch and Refreshments

HOLMES ENTERPRISES, Hackensack, Mn.—Leather Goods

HOLMES ENTERPRISES, Hackensack, Mn.—Leather Goods

HOLMES ENTERPRISES, Hackensack, Mn.—Texas Longhorns, etc.

HOLTE, A. W., South St. Paul, Mn.—Dairy Vac-Cleaner

HOLTER ANIMAL SHOW, Bloomington, Ca.—Animal Rides

HOLYLAND HANDICRAFTS, St. Paul, Mn.—Olive Wood Carvings, Mother of Pearl Jewelry, etc.

HOOD'S COLORAMA, Minneapolis, Mn.—Tri Chem

HOOD'S COLORAMA, Minneapolis, Mn.—Tri Chem

HORSEFEATHERS CO., Minneapolis, Mn.—Resin Process Jewelry

HOSANNAH LUTHERAN CHURCH, St. Paul, Mn.—Lunch and Refreshments

HOT DOG HOUSE, New Richland, Mn.—Hot Dogs, Refreshments

HOUSE OF LACHOY, Minneapolis, Mn.—Chun King Chow Mein

HOUSE OF LEATHER, Minneapolis, Mn.—Sheepskin Coats, Slacks, Leather Coats, Skirts, Dresses, etc.

HOWE FIGURETTE SALES, Minneapolis, Mn.—Under Fashions, Pantyhose, Swimwear

HUMANE SOCIETY OF THE U.S., Minneapolis, Mn.—Lit., I.D. Tags for Dogs

HYDRO AIRE DISTR., St. Paul, Mn.—Rexair Rainbow Air Treatment, Cleaning Equipment

HYSON, F. A., Minneapolis, Mn.—English Foil Pictures

HYSON, F. A., Minneapolis, Mn.—English Foil Pictures

ICEE OF MINNESOTA, INC., Minneapolis, Mn.—Frozen Carbonated Beverage

ICEE OF MINNESOTA, INC., Minneapolis, Mn.—Frozen Carbonated Beverage

ILLIANA PRODUCTS, Indianapolis, Ind.—Floating Candles, Party Flavors, etc.

IMPORT COVE, St. Paul, Mn.—Baskets, Ceramics, Statues, Glass from Italy

INDIA BAZAAR, Minneapolis, Mn.—Imports of India, Pipes, Tapestries, etc.

INDUSTRIAL ENGRAVED NAMEPLATE, St. Paul, Mn.—Nameplates, Badges, Plaques and Trophies

INDUSTRIAL SPRAYING, North Mankato, Mn.—Plastic Roofing & Insulation

INS. LIQUIDATORS OF ROCKFORD, Rockford, Il.—Clothing, Stereo Equipment, Luggage

INS. LIQUIDATORS OF ROCKFORD, Rockford, Il.—Clothing, Stereo Equipment, Luggage

INTERNATIONAL HARVESTER CO., St. Paul, Mn.—Toys

INTERNATIONAL TRAVEL ARRANGERS, St. Paul, Mn.—Promote Charter Travel

ISAAC, MRS. PETER M., St. Paul, Mn.—Lunch and Refreshments

ISAAC, MRS. PETER M., St. Paul, Mn.—Lunch, Popcorn Machine, Root Beer Barrel  
ISAAC, MRS. PETER M., St. Paul, Mn.—Cold Drinks, Sandwiches  
ISAKSEN'S NORD HUS, St. Paul, Mn.—Swedish Clogs and Norwegian Embroidery Kit  
I.S.K.C.O.N., Brooklyn, N.Y.—Incense, Oils, Books, Shampoo, Posters

JAGOE-MERRIMAN, St. Paul, Mn.—Twins Souvenirs, Vikings, North Stars, Saints  
JAGOE-MERRIMAN, St. Paul, Mn.—Twins Souvenirs, Vikings, North Stars, Saints  
JAGOE-MERRIMAN, St. Paul, Mn.—Twins Souvenirs, Vikings, North Stars, Saints  
JEHOVAH LUTHERAN CHURCH, St. Paul, Mn.—Dining Hall  
JENCO, Chicago, Il.—“Pantsboy,” Pants Hanger, Shirt Hanger, Needle Threader  
JESNESS CONCESSIONS, Morris, Mn.—Gold Wire Jewelry  
JOHNSON, BURTON, Minnetonka, Mn.—Bum, Charm and Ring Machines  
JOHNSON, CHRIS, West St. Paul, Mn.—Cotton Suede Coats, Comforters  
JOHNSON, LLOYD E., Dodge Center, Mn.—Hand Painted Mirrors  
JONES, McLAUGHLIN & GALE, St. Paul, Mn.—Turquoise Jewelry and Indian Jewelry  
JOVANOVICH, JERROLD J., Forest Lake, Mn.—Flower Pictures, Garden Under Glass, Shaklee Products  
JUNKIN CONCESSION CO., Minnetonka, Mn.—Food and Refreshments  
JUNKIN CONCESSION CO., Minnetonka, Mn.—3.2 Beer

KALEIDOSKOPE, Minneapolis, Mn.—Gift Items (Candles, Jwlr., Posters, etc.)  
KEHR, TIMOTHY D., Minneapolis, Mn.—Popcorn and Carmel Corn  
KEHR, TIMOTHY D., Minneapolis, Mn.—Soft Drinks, Popcorn  
KEHR, TIMOTHY D., Minneapolis, Mn.—Soft Drinks, Popcorn  
KEHR, TIMOTHY D., Minneapolis, Mn.—Popcorn  
KIDNEY FOUNDATION UPPER MIDWEST, INC., St. Paul, Mn.—Preservation Machine and Candy  
KIMBALL WOODPRODUCTS, INC., Annandale, Mn.—Wood Homes and Garden Planter and Ornaments  
KINGEN, JAMES B., Minneapolis, Mn.—Lunch and Refreshments  
KINGEN, JAMES B., Minneapolis, Mn.—Lunch and Refreshments  
KIRBY CO. OF ST. CLOUD, INC., St. Cloud, Mn.—Kirby Products  
KIRBY CO. OF SOUTH MINNEAPOLIS, Minneapolis, Mn.—Kirby Vacuum Maintenance System  
KITTEN KRAFT, El Sobrante, Ca.—Dried Flowers and Arrangements, Coins, Stamps  
KLOSS & KLOSS, Tucson, Az.—Wood and Jewelry, Souvenirs  
KOHMANN, E. F., Seattle, Wash.—“Quick Sketch”

L & M ENTERPRISES, St. Paul, Mn.—Plastic Novelties  
LADY ISABEL'S KANDY KITCHEN, Sandstone, Mn.—Fudge and Bard  
LAND O'LAKES, INC., Minneapolis, Mn.—Ice Cream Cones  
LAND O'LAKES, INC., Minneapolis, Mn.—Ice Cream Cones  
LARRY'S TRAILER SALES, St. Paul, Mn.—Horse and Stock Trailers, Handy Horse, etc.  
LARSON, JODEEN M., St. Paul, Mn.—Popcorn, Carmelcorn, Cheese Corn  
LARSON, GARY, St. Paul, Mn.—Popcorn and Root Beer  
LARSON, GARY, St. Paul, Mn.—Popcorn and Root Beer  
LEE'S CANDIES, San Francisco, Ca.—Candies  
LEE'S CANDIES, San Francisco, Ca.—Candies

LEE'S WORLD WIDE TREASURERS, Minneapolis, Mn.—Imported Carvings, Handicrafts, etc.  
 LEMKE, OTTOMAR E., Buffalo, Mn.—Watkins Products  
 LIBERTARIAN PARTY OF MINN., THE, Minneapolis, Mn.—Books and Booklets on Party, Buttons, Pins, Plaques, Flags, etc.  
 LIF-O-GEN, INCORPORATED, St. Paul, Mn.—Emergency Oxygen Units for Home and Industry  
 LISTEN INN, THE, St. Paul, Mn.—Stereo and Component Parts, Hatachi, IMC, Sylvania)  
 LITTLE, MRS. KATIE R., Dallas, Tex.—Game I Ball  
 LITTLE, MRS. KATIE R., Dallas, Tex.—Game Basket Pitch  
 LITTLE, MRS. KATIE R., Dallas, Tex.—Dining Hall  
 LITTLE, MRS. KATIE R., Dallas, Tex.—Storage and Warehouse  
 LITTLE, MRS. KATIE R., Dallas, Tex.—Games of Skill  
 LITTLE, MRS. KATIE R., Dallas, Tex.—Candy Floss (10)  
 LITTLE, MRS. KATIE R., Dallas, Tex.—Lunch and 3.2 Beer  
 LLAMA LINE - GEN. IMPORT CORP., St. Paul, Mn.—South American Handicrafts, Pewter, Silver Jewel, Wall Hangings, etc.  
 LOGOS BOOKSTORE, Minneapolis, Mn.—Books, Posters, Plaques  
 LO-RU ENTERPRISES, Studio City, Ca.—Living Desert (Reptiles & Animals)  
 LUCKY "H", La Crosse, Wi.—Buckskin Jackets, Gloves, Western Wear  
 LUND SALES, Wayzata, Mn.—Tim (Toy Bird), Lund Lures, German Porcelain Beer Steins  
 LUTHERAN COLPORTAGE SERVICE, Minneapolis, Mn.—Bibles, Books, etc., Missionary Supplies  
 LYNN'S MADE RITE, Minneapolis, Mn.—Lunch and Refreshments  
 LYON SECURITY WEAPONRY, Rosemount, Mn.—Non Lethal Weapons, TV Security Systems  
  
 M & D ENTERPRISES, Carpentersville, Il.—Fudge  
 M & D ENTERPRISES, Carpentersville, Il.—Fudge  
 M & T SALES, Anoka, Mn.—H.P. Vacu Flo (Central Vacuum)  
 MADISON MICRO-WAVE, Madison, Wi.—Astro Chef Micro Wave Oven  
 MAHARAJA ENTERPRISES, St. Paul, Mn.—Handicrafts, Sandlewood, Ivory, Brass, Rosewood, Carving, etc.  
 MAIZIE'S DOLL CLOTHES, Minneapolis, Mn.—Hand Made Doll Clothes  
 MALONE, JERRY, PRODUCTIONS, INC., Visalia, Ca.—Fat-Man Show  
 MALONE, JERRY, PRODUCTIONS, INC., Visalia, Ca.—Prison on Wheels  
 MANN'S WOOD WORLD, Wayzata, Mn.—Vermont Wooden Toys, Carved Coconuts  
 MANNING ICE CO., Anoka, Mn.—Ice  
 MARBLE IMPORTS, Wayzata, Mn.—Bookends, Ashtrays, Vases, Bowls, etc.  
 MARTY'S CHAR-BROIL CHICKEN, St. Paul, Mn.—Barbeque Chicken Sandwiches, Beverages  
 MATERIAL GRAPHICS, INC., St. Paul, Mn.—T-Shirts and Patches, Emblems for Clubs, etc.  
 McCOMAS, ANN, Waterloo, Ia.—Lunch and Refreshments  
 McLAWS MFG. CO., Pacoima, Ca.—Massage Equipment  
 METCALFE, RUTH, Minneapolis, Mn.—Ti-Logs  
 METCALFE, RUTH, Minneapolis, Mn.—Ti-Logs  
 MIDLAND PRODUCTS CO., Minneapolis, Mn.—Wholesale Popcorn Supplies and Equipment  
 MID STATE SALES CO., Minneapolis, Mn.—Laurel Hi Tec Water Softeners and Central Vac Systems  
 MIDDLE STATES DISTR. CO., Minneapolis, Mn.—Toys, Dolls, Stuffed Animals  
 MIDDLE STATES DISTR. CO., Minneapolis, Mn.—Spin Painting, Boutique  
 MIDDLE STATES DISTR. CO., Minneapolis, Mn.—Stuffed Toys  
 MIDDLE STATES DISTR. CO., Minneapolis, Mn.—Toys, Dolls, etc.

MIDDLE STATES DISTR. CO., Minneapolis, Mn.—Spin Painting, Boutique  
 MIDDLE STATES DISTR. CO., Minneapolis, Mn.—Spin Painting, Boutique  
 MIDDLE STATES DISTR. CO., Minneapolis, Mn.—Boutique Shop  
 MIDDLE STATES DISTR. CO., Minneapolis, Mn.—Dolls, Stuffed Animals  
 MIDWAY MEN'S CLUB, St. Paul, Mn.—3.2 Beer, Food  
 MIDWAY SIGN CO., INC., St. Paul, Mn.—Sign and Card Painting  
 MIDWEST WIRE & STEEL PRODUCTS CO., South St. Paul, Mn.—Steel Sid-  
 ing and Roofing for Pole Barns, Fences, Posts, etc.  
 MILES, JIM, INDEPENDENT FOR GOVERNOR, Minneapolis, Mn.—Literature  
 and Buttons  
 MILLS, ROSS C., Vista, Ca.—Dining Hall, "Adeline's Scand."  
 MILNER & JOHNSON, Minneapolis, Mn.—Novelties  
 MINNESOTA ANISHINOBE CRAFTS, Bemidji, Mn.—Indian Products  
 MINNESOTA APPLES, INC., Stillwater, Mn.—Sale of Minnesota Apples  
 MINNESOTA BAPTIST ASSOCIATION, Minneapolis, Mn.—Books and Lit.  
 MINNESOTA BEEKEEPERS ASSN., Crystal, Mn.—Honey & Honey Products  
 MINNESOTA CITIZENS CONCERN FOR LIFE, Minneapolis, Mn.—Info. on  
 Abortion Issue, Books  
 MINNESOTA CONSERVATION FEDERATION, St. Paul, Mn.—Memberships,  
 Newspaper Subscriptions  
 MINNESOTA FIGHTING SAINTS, St. Paul, Mn.—Promotion and Tickets  
 MINNESOTA TURKEY GROWERS ASSN., St. Paul, Mn.—Lunch & Refresh.  
 MINNESOTA & WESTERN RAILROAD MUSEUM, Annandale, Mn.—Model  
 Railroad  
 MINNESOTA/WISCONSIN LIVESTOCK PRODUCTS, Wayzata, Mn.—Sittner  
 Livestock, J-K Products, Cattle and Hog Oilers, etc.  
 MINNETONKA MOCCASIN CO., Minneapolis, Mn.—Moccasins and Related  
 MINNETONKA MOCCASIN CO., Minneapolis, Mn.—Moccasins and Related  
 MINNETONKA MOCCASIN CO., Minneapolis, Mn.—Moccasins and Related  
 MIRACLE MAID - DIV. WEST BEND, Rosemount, Mn.—Cookware - West  
 Bend Products  
 MIRACLE MAID - DIV. WEST BEND, Rosemount, Mn.—Cookware - West  
 Bend Products  
 MISTER SOFTEE, Janesville, Wi.—Cones (1 Flavor), Malts, Shakes, etc.  
 MIRACLE CAPE, Minneapolis, Mn.—Weedless Fishing Lures, Snagless Sink-  
 ers  
 MOBILE SIGNS OF MINNESOTA, Wayzata, Mn.—Portable Signs for Rent or  
 Sale  
 MOHAVE CANDLES, Bullhead, Az.—Sand, Shell and Glass Candles, Resin  
 Orna., Floral Baskets  
 MULTIPLE SCLEROSIS SOCIETY, Minneapolis, Mn.—Services, Game for  
 Lower Age Groups  
 MURALMASTERS, INC., Bloomington, Mn.—"Paint by Numbers" (Wall  
 Murals)  
 MURATA PEARL CO. OF CALIF. INC., Gardena, Ca.—Pearl Bearing Oysters  
 and Settings to be Placed  
 MY IMPORTS, Culber City, Ca.—Sandals and Burl Tables

NAIRNE, CHESTER H., CO., Livonia, Mich.—Juicer Signature Blender  
 NAIRNE, CHESTER H., CO., Livonia, Mich.—Rug Cleaner  
 NATIONAL SERVICE CO., Bloomington, Ca.—Jewelry Cleaner  
 NATIONAL SERVICE CO., Bloomington, Ca.—Jewel Joy  
 NELLER, ROBERT, Appleton, Wi.—Crazytune Whistles  
 NESSETH, INC., Dafer, Mich.—Manure System  
 NEVITT CATERING CO., INC., Louisville, Ky.—Marlboro Exhibit (Chuck-  
 wagon)  
 NOCTURNAL AVIONICS, Minneapolis, Mn. — Marionettes, Cars, Trucks,  
 Hobby Horses, Golf Sets (Handmade)  
 NORCO OIL CORPORATION, Minneapolis, Mn.—Rough and Polished Jade

NORTH SUBURBAN ST. PAUL KIWANIS, St. Paul, Mn.—Malts and Cones  
 NORTHLAND EMBLEM, INC., Saukville, Wi.—Emblems  
 NORTHWEST GALLERIES, White Bear Lake, Mn.—Long Range Shooting  
 Gallery  
 NORTHWEST ORGAN CO., Minneapolis, Mn.—Electronic Organs, Guitar and  
 Accessories  
 NORTHWESTERN PRODUCTS, INC., Minneapolis, Mn.—Religious Plaques,  
 Greeting Cards, Napkins, Stationery, Records  
 NORTHWESTERN PRODUCTS, INC., Minneapolis, Mn.—Religious Plaques,  
 Greeting Cards, Napkins, Stationery, Records  
 NOVELTY SPORTSWEAR, INC., Pittsburgh, Pa.—Imported Sportswear

ODDEN SALES, Burnsville, Mn.—Berg Store Fixtures  
 OLSON, MS. LOREN, Minneapolis, Mn.—Dolls, Doll Clothes, Art Foam, etc.  
 O'NEIL, FRED C., St. Paul, Mn.—Warehouse  
 O'NEIL, FRED C., St. Paul, Mn.—Sale of Plush  
 O'NEIL, FRED C., St. Paul, Mn.—T-Shirts  
 O'NEIL, FRED C., St. Paul, Mn.—Lunch and Refreshments  
 O'NEIL, FRED C., St. Paul, Mn.—Hot Dog on Stick (10)  
 ORANGE TREET, Castro Valley, Ca.—Soft Drink  
 ORIENTAL CHICKEN WINGS, Edina, Mn.—Chicken Wings, Legs, Cole Slaw,  
 Hot Cider and Cold Cider  
 ORR, RAY, New Brighton, Mn.—Dish Sets, Hair Brush, Plug Kit, Puzzles, etc.  
 OXFORD, EDDIE, Versailles, Mo.—Hot Apple Pie (Ala-Mode)

PACKAGED FURNITURE & CARPET CO., St. Paul, Mn.—Lees, Bigelow,  
 Hollytex, etc., Samples  
 PATTERSON RESIN PRODUCTS, LaMirada, Ca.—Resin Products for the  
 Home, Flowers, etc.  
 PATTERSON RESIN PRODUCTS, LaMirada, Ca.—Resin Products  
 PATIO VILLAGES, INC., Minneapolis, Mn.—Victor Awnings and Canopies,  
 Shrubbery  
 PATIO VILLAGES, INC., Minneapolis, Mn.—Awnings, etc.  
 PATTEN, JAMES P., Davenport, Ia.—Tiny Tim Donuts  
 PATZNER NOVELTY CO., Dubuque, Ia.—Fake Fur Novelties for Walls and  
 Refrigerators  
 PATZNER NOVELTY CO., Dubuque, Ia.—Fake Fur Novelties for Walls and  
 Refrigerators  
 PETERS, JAMES, Green Bay, Wi.—Coke, Wieners  
 PETERS, JAMES, Green Bay, Wi.—Coke, Wieners  
 PICO, CHARLES, Irving, Tx.—Portrait Artist, Frames  
 PIONEER MICRO-WAVE OF MINN., St. Paul, Mn.—Micro Wave Oven  
 PIXIE AIRWAYS, Minneapolis, Mn.—Spin-O-Painting  
 PLANNED PARENTHOOD OF MN., St. Paul, Mn.—Sale of Booklets, Lit., etc.  
 PLAYHOUSE TOY CO., Minneapolis, Mn.—Toy Party Plan  
 PLETAN, BURTON G., Hill City, S.D.—“Artist”  
 POJARS PANTRY, St. Paul, Mn.—Lunch and Refreshments  
 PONY EXPRESS RIDERS OF MIN., White Bear Lake, Mn.—Pony Express  
 Letter Route (\$1.00 per letter)  
 POULSON'S HOME STYLE FUDGE, Hammond, Ind.—Fudge  
 PRIME STEAK HOUSE, St. Paul, Mn.—Steak House  
 PRUDENTIAL INSURANCE COMPANY, Minneapolis, Mn.—Life, Health,  
 Auto and Casualty

RANI-SONIA INDIA IMPORTS, North St. Paul, Mn.—Handcrafts from India  
 RED HORSE SADDLE SHOP, St. Paul, Mn.—Western Hats



RESTAD, EVERETT AND KAY, Minneapolis, Mn.—Paradise Jewelry, Costume Jewelry  
 RESULTS, INCORPORATED, Edina, Mn.—Portable Signs  
 RISHER AIRE PURIFIER CO., Minneapolis, Mn.—Portable Unit for Home (Air Purifiers)  
 R-O ENTERPRISES, Minneapolis, Mn.—“Hush Puppies”  
 ROBBINSDALE CHAPTER NO. 238 O.E.S., Minneapolis, Mn.—Lunch and Refreshments  
 ROBINSON ENTERPRISES, Chicago, Il.—Guess Your Weight  
 ROBINSON ENTERPRISES, Chicago, Il.—Warehouse and Headquarters  
 ROBINSON ENTERPRISES, Chicago, Il.—3.2 Beer- Food  
 ROBINSON, JACK L., Roseville, Mn.—Lunch and Refreshments  
 ROBINSON, JACK L., Roseville, Mn.—Pancake House  
 ROBINSON, JACK L., Roseville, Mn.—Waffle Shop  
 ROBINSON, JACK L., Roseville, Mn.—Smorgasbord  
 ROBINSON, JOHN H., St. Paul, Mn.—Pizza Palace  
 ROCK & STONE SHOP, St. Paul, Mn.—Lapidary Jewelry and Stones, etc.  
 ROCK & STONE SHOP, St. Paul, Mn.—Lapidary Jewelry and Stones, etc.  
 ROGERS & O'CONNOR, St. Paul, Mn.—Hot Dogs, Suckers  
 ROGERS, JAMES C., St. Paul, Mn.—Lunch Stand  
 ROLLA CHAPTER NO. 254 O.E.S., Minneapolis, Mn.—Dining Hall  
 ROOB STUDIOS, INC., Milwaukee, Wi.—Photos  
 ROOB STUDIOS, INC., Milwaukee, Wi.—Photos  
 ROUND BOBBIN SEWING CENTER, St. Paul, Mn.—White and Elna Sewing Machines, Related Items  
 ROYAL AMERICAN SHOWS, Tampa, Fl.—Giant Slide  
 ROYAL AMERICAN SHOWS, Tampa, Fl.—Carnival

ST. ANTHONY PARK UNITED METHODIST CHURCH, St. Paul, Mn.—Dining Hall

SAINT BERNARD'S CHURCH, St. Paul, Mn.—Dining Hall, Fancy Work

SAINT JOHN'S CAFETERIA, W. St. Paul, Mn.—Lunch Counter

SAINT JOHN'S CAFETERIA, W. St. Paul, Mn.—Dining Hall

ST. MARY'S GREEK ORTHODOX CHOIR, Minneapolis, Mn.—Baklava and Coffee, Lemonade

SAINT WILLIAM'S DINETTE, Minneapolis, Mn.—Meals and Refreshments

SALEM LUTHERAN CHURCH, Minneapolis, Mn.—Meals and Lunches

SANDAK OF CALIFORNIA, Anaheim, Ca.—Sandak Shoes

SCHLOUGH, WESLEY E., Minneapolis, Mn.—Lunch and Refreshments

SCHNEIDER POPCORN, St. Paul, Mn.—Popcorn

SCHNEIDER, KATHLEEN, St. Paul, Mn.—Popcorn and Carmel Corn

SCHON PRODUCTIONS, Minneapolis, Mn.—Photo Buttons/Photo Gallery

SCHOOL FOR SOCIAL DEV., INC., Minneapolis, Mn.—Handcrafted Items by Mentally Retarded and Physically Handicapped

SCHOOL FOR SOCIAL DEV., INC., Minneapolis, Mn.—Handcrafted Items by Mentally Retarded and Physically Handicapped

SCHRODER CONCESSIONS, Faribault, Mn.—Carmelcorn, Popcorn

SCHRODER CONCESSIONS, Faribault, Mn.—Carmelcorn, Popcorn

SCHRODER CONCESSIONS, Faribault, Mn.—Carmelcorn, Popcorn

SCHRODER CONCESSIONS, Faribault, Mn.—Carmelcorn, Popcorn

SECURITY SEED COMPANY, Williamsburg, Ia.—Corn, Sorghum, Soybeans, Alfalfa

SEGAL, JAMES, St. Paul, Mn.—Tobacco Products, Candy and Gum

SENTI-METAL CO., OF MINN., Minneapolis, Mn.—Bronzing of Baby Shoes, etc.

SERVICES FOR THE BLIND, St. Paul, Mn.—Lunch and Refreshments

SHOGREN, A. V. - TODD ERICKSON, Minneapolis, Mn.—Penny Arcade and Games

SHOGREN, A. V. - TODD ERICKSON, Minneapolis, Mn.—Game

SHOGREN, A. V. - TODD ERICKSON, Minneapolis, Mn.—Pig Race  
 SHOGREN, A.V. - TODD ERICKSON, Minneapolis, Mn.—Metro Derby Race  
 SHOGREN, A. V. - TODD ERICKSON, Minneapolis, Mn.—Rabbit Race  
 SHOPPE OF FRAGRANCE, Marine on St. Croix, Mn.—Invisible Dog, Perfume, Cosmetics  
 SHOPPE OF FRAGRANCE, Marine on St. Croix, Mn.—Perfume, Curlers, etc.  
 SHOPPE OF FRAGRANCE, Marine on St. Croix, Mn.—Perfume, Curlers, etc.  
 SHOPPER'S PRODUCTS CO., Garland, Tx.—Jewelry and Leather Goods, Stretched Bottles  
 SHOPPER'S PRODUCTS CO., Garland, Tx.—Jewelry and Leather Goods, Stretched Bottles  
 SIGN LANGUAGE, St. Paul, Mn.—Custom Carved Wooden Signs, Plaques, etc.  
 SOCIALIST LABOR PARTY OF MINN., Minneapolis, Mn.—Lit. and Books  
 SONBOL, AHMED A., Minneapolis, Mn.—Ethnic Food from Middle Eastern and Handmade Crafts  
 SOUND INN, Minneapolis, Mn.—Utility Shed  
 S. P. COMPANY, Minneapolis, Mn.—Tapes, Albums and Accessories  
 SPECIALTY PRODUCTS, No. Wildwood, N.J.—Household Rubber Mop  
 SPIESS, WM. F., & SONS, St. Paul, Mn.—Redwood Nameplates  
 SPIESS, WM. F., & SONS, St. Paul, Mn.—Lunch and Refreshments  
 SPIESS, WM. F., & SONS, St. Paul, Mn.—Carved Redwood  
 STANTONS STALL, W. St. Paul, Mn.—Lunch and Refreshments  
 STAT-TITE CORPORATION, Plymouth, Mn.—FE-2 Fence Energizer, Electric Fence Insul. and Related  
 STATE ZOOLOGICAL BOARD, St. Paul, Mn.—Promote and Publicize Zoo in Apple Valley  
 STEICHEN FOOD MARKET, St. Paul, Mn.—Food Market  
 STEWART INFRA-RED COMMS., Eden Prairie, Mn.—Lunch and Refreshments  
 STONE, ALAN B., Minneapolis, Mn.—Kosher Lunch and Refreshments  
 SULLIVAN, MRS. JANICE, Lakeville, Mn.—Kitchen Supplies  
 SUNDERLAND, DAVID K., New Brighton, Mn.—Popcorn and Refreshments  
 SVENGALI, L & S, Minnetonka, Mn.—Trick Playing Cards  
 SWEDISH GIFT SHOP, Minneapolis, Mn.—Scandinavian Imports, Gifts, etc.  
 SYNDICATE SALES, Minneapolis, Mn.—T-Fal Pans  
 SYNDICATE SALES, Minneapolis, Mn.—10-in 1 Beater  
 SYNDICATE SALES, Minneapolis, Mn.—Bowmaker  
 SYNDICATE SALES, Minneapolis, Mn.—Patty Shell Molds  
 SYNDICATE SALES, Minneapolis, Mn.—Glass Cutter  
 SYNDICATE SALES, Minneapolis, Mn.—T-Fal Cookware  
 SYNDICATE SALES, Minneapolis, Mn.—T-Fal Cookware  
 SYNDICATE SALES, Minneapolis, Mn.—Salad Maker  
 SYNDICATE SALES, Minneapolis, Mn.—Rainbo Art Colors  
 SYNDICATE SALES, Minneapolis, Mn.—Bowmaker  
 SYNDICATE SALES, Minneapolis, Mn.—Salad Maker  
  
 TEDSON COMPANY, Minneapolis, Mn.—Malgard Smoke Detection & Amzoil Oil  
 TENTH WARD AND RURAL RAMSEY DFL, St. Paul, Mn.—Tom Thumb Donuts  
 THESLOF PRODUCTIONS, INC., Minneapolis, Mn.—Giant Color Enlargements (Visual Prods.)  
 THOMPSON, DONALD F., Levittown, Pa.—Indian Flute, Irish Flute and Instructions  
 TOLCHINOR, NORM, Minneapolis, Mn.—Billfolds  
 TOM THUMB DONUT CORP., Minneapolis, Mn.—Donuts, Fried Goods, Coffee  
 TOM THUMB DONUT CORP., Minneapolis, Mn.—Donuts, Fried Goods, Coffee  
 TOWNSEND & JOHNSON, Fergus Falls, Mn.—Foot Long Hot Dogs

TOWNSEND & SPRANGER, Fergus Falls, Mn.—Lunch and Refreshments  
TRAIN HOUSE, Harrisburg, Ark.—Antique Trains and Toys  
TREAT CENTER CO., Maple Plain, Mn.—Bomb Pop (3 Flavors)  
TULP, WILLIAM, JR., St. Paul, Mn.—Carpet Remnants, Vinyl Remnants  
TURNCRAFT CLOCKS, Minneapolis, Mn.—Grandmother Clocks, Shelf Clocks  
TWIN CITIES EXPRESS, Minneapolis, Mn.—Magazine Sell Subscriptions  
TWIN CITY NOVELTY CO., Minneapolis, Mn.—Games  
TWIN CITY NOVELTY CO., Minneapolis, Mn.—Playland Arcade  
TYSK CONCESSION, St. Paul, Mn.—Popcorn, Drinks, etc.  
TYSK CONCESSION, St. Paul, Mn.—Boxed Candy  
TYSK CONCESSION, St. Paul, Mn.—Candy and Miscellaneous

UNIQUE CANDLEHOLDERS, St. Paul, Mn.—Holders Out of Recycled Materials

UNITED STATES BENCH CORP., Minneapolis, Mn.—Bench Advertising

UNITED STORES, St. Paul, Mn.—Tents, Down Prods., Snowsuits, Helmets, etc.

UNIVERSAL DISCOUNT, INC., St. Paul, Mn.—Discount Merchandise

UNIVERSAL DISCOUNT, INC., St. Paul, Mn.—T-Shirts

UNIVERSAL DISCOUNT, INC., St. Paul, Mn.—Discount Merchandise

UNIVERSAL DISCOUNT, INC., St. Paul, Mn.—Discount Merchandise

VANGUARD TRAVEL UNLIMITED, INC., St. Louis Park, Mn.—Tours to Hawaii, Acapulco and Caribbean

VARELA COMPANY, INC., Columbus, Oh.—Sewing Machines (Elna, White, Dayton Brand)

VERMONT TABLES & HANDICRAFTS, Groton, Vt.—Sale of Handmades

VESCIO'S INCORPORATED, Minneapolis, Mn.—Lunch and Refreshments

VIKING RUG, San Francisco, Ca.—Swedish Rugs and Clogs

VIRNIG, ARDIS, Minneapolis, Mn.—“Sketch Artist”

VITA CRAFT VIKING SALES, St. Paul, Mn.—Morse/Electo, Stereos, Cookware, Cutlery, etc.

VITA MIX CORPORATION, Cleveland, Oh.—Vita Mix Blender

VOGT APPLIANCE CO., Champlin, Mn.—Polorator

VOLIN, CHARLES J., Newport, Mn.—Cigarettes, Cigars, etc.

VOTEL, SHARON, CERAMICS, St. Paul, Mn.—Terrariums, etc., Clay Sculpture

VOYAGER VILLAGE, Edina, Mn.—Land Development

WCCO RADIO, Minneapolis, Mn.—“Good Neighbor to the N.W.” Book

WAGNER CAKE DECORATING INST., St. Paul, Mn.—School and Supplies

WALT'S HAMBURGER SHOPS, Alexandria, Mn.—Lunch and Refreshments

WARD, PAUL S., Costa Mesa, Ca.—Lunch and Refreshments

WARD, PAUL S., Costa Mesa, Ca.—Lunch and Refreshments

WARD, PAUL S., Costa Mesa, Ca.—Lunch and Refreshments

WARD, PAUL S., Costa Mesa, Ca.—General Food Stand

WARD, PAUL S., Costa Mesa, Ca.—General Food Stand

WARNEL'S PENNYRICH, Minneapolis, Mn.—Bras and Bathing Suits

WATER KING WATER CONDITIONING, Anoka, Mn.—Conditioners, Softeners

WHEEL GOODS CORP., Minneapolis, Mn.—Bicycles, Parts, Tools & Access.

WHIRL-A-BATH CO., St. Paul, Mn.—Hydro Jet Whirlpool Bath

WOLDORSKY, JERRY, Minneapolis, Mn.—T-Shirts

WOLDORSKY, JERRY, Minneapolis, Mn.—Mini-Arcade

WOLFE'S, St. Paul, Mn.—Social Security Plates, Door Plates, etc.

WOODIN, C. A., Joplin, Mo.—Roman Target Game

WOODIN, C. A., Joplin, Mo.—Roman Target Game  
WOODIN, C. A., Joplin, Mo.—Roman Target Game  
WOZNIAK, GEORGE, St. Paul, Mn.—Kosher Dill Pickles  
WOZNIAK, GEORGE, St. Paul, Mn.—Pickles  
WRIGHT, DICK, Van Nuys, Ca.—Fantastic Fish from Around the World

Y.W.C.A., Minneapolis, Mn.—Information and Posters  
YAHR, JOSEPH H., Minneapolis, Mn.—Jewelry and Engraving  
YE OLD MILL COMPANY, Apple Valley, Mn.—Canal Boat Ride

ADAM'S IMPORTS, Minneapolis, Mn.—Clothing, Jewelry  
ADAM'S IMPORTS, Minneapolis, Mn.—Tapestries, etc.  
ADAM'S IMPORTS, Minneapolis, Mn.—Tapestries, etc.  
AFRICAN BAZAAR, Brooklyn Center, Mn.—Exotic Handicrafts, Curios from  
Africa  
AVANTI, Brooklyn Center, Mn.—Info. of Hair Replacement and Sale

BUTWIN, St. Paul, Mn.—Lemonade and Popcorn

EARTH SHOE, Minneapolis, Mn.—Earth Shoe

FUNK & ROSE, Minneapolis, Mn.—Leather Goods

HANNASCH & LAVAQUE, Minneapolis, Sno Cones

INLAND AQUATICS, Minneapolis, Mn.—Scuba Diving Lessons, Tanks, etc.

JHOON RHE INST. OF KOREAN KARATE, Bloomington, Mn.—Posters,  
T-Shirts

MARY KAY COSMETICS, Eden Prairie, Mn.—Cosmetics, Facial  
MELLOW ROUTINES, INC., Minneapolis, Mn.—Yogurt, Juices, etc.  
MINNEAPOLIS STONEWARE, Minneapolis, Mn.—Stoneware Pottery  
MORGAN, WILLIAM R., Minneapolis, Mn.—Caricature Artist

NORTHWEST JUPITER INC., Excelsior, Mn.—Jupiter Bikes and Accessories

PETERS, JAMES, Green Bay, Wi.—Weiners, Coke

RUSH COMPANY, Minneapolis, Mn.—Milk Shakes, etc.

SAVE OUR UNWANTED LIFE, INC., Minneapolis, Mn.—Button, Patches, etc.  
SIERRA CLUB, Minneapolis, Mn.—Environmental Products  
SMITH'S LEATHER SHOP, Minneapolis, Mn.—Making and Selling Leather  
Goods

TEENY WEENY DONUTS, Cloquet, Mn.—Miniature Donuts  
THINK SOFT, St. Paul, Mn.—Doodle Art Poster

WAY OUT, Hamel, Mn.—Religious Literature and Sell Books

BART BLINSTRUP, Waconia, Mn.—3.2 Beer - Food  
BREDE, WILLIAM S., Minneapolis, Mn.—Pronto Pups  
BREDE, WILLIAM S., Minneapolis, Mn.—3.2 Beer - Food

BREDE, WILLIAM S., Minneapolis, Mn.—Giant Carrousel  
BREEN, LAWRENCE, St. Paul, Mn.—Art Pottery, India, Germany and Japan  
BREEN, LAWRENCE, St. Paul, Mn.—“Bit & Bridle” (Food)  
BROWN PHOTO COMPANY, St. Louis Park, Mn.—Films and Clown Photos

CENAIKO ENTERPRISES, Minneapolis, Mn.—Floating Candles  
CENAIKO ENTERPRISES, Minneapolis, Mn.—Lint Brushes  
CENAIKO ENTERPRISES, Minneapolis, Mn.—Configuration Molds  
CENAIKO ENTERPRISES, Minneapolis, Mn.—Corn on Cob  
CHRISTENSEN SALES, St. Paul, Mn.—Lunch and Refreshments  
CHRISTENSEN SALES, St. Paul, Mn.—Lunch and Refreshments  
CHRISTENSEN SALES, St. Paul, Mn.—Lunch and Refreshments  
CHRISTENSEN SALES, St. Paul, Mn.—Soft Drinks  
CHRISTENSEN SALES, St. Paul, Mn.—Hot Dagos  
CHRISTENSEN SALES, St. Paul, Mn.—Lunch and Refreshments  
CHRISTENSEN SALES, St. Paul, Mn.—Lunch and Refreshments  
CHRISTENSEN SALES, St. Paul, Mn.—Lunch and Refreshments  
CHRISTENSEN SALES, St. Paul, Mn.—Lunch and Refreshments  
CHRISTENSEN SALES, St. Paul, Mn.—Lunch and Refreshments  
CHRISTENSEN SALES, St. Paul, Mn.—Lunch and Refreshments  
CHRISTENSEN SALES, St. Paul, Mn.—Warehouse  
CHRISTENSEN SALES, St. Paul, Mn.—Lunch and Refreshments

DONALDSON'S, Minneapolis, Mn.—Piercing of Ears, and Jewelry

GROUP AMUSEMENT OWNERSHIP PLAN, Minneapolis, Mn.—Lunch and Refreshments  
GROUP AMUSEMENT OWNERSHIP PLAN, Minneapolis, Mn.—Lunch and Refreshments  
GROUP AMUSEMENT OWNERSHIP PLAN, Minneapolis, Mn.—Skyride

HANSON, DICK, St. Paul, Mn.—Shirts, Patches  
HENRY'S BAR-B-QUE, St. Paul, Mn.—Barbeque Ribs, etc.

MOSS SKIL GAME, Hot Springs, Ark.—“Diggers”  
MOSS SKIL GAME, Hot Springs, Ark.—“Diggers”

NORTH STATE AMUSEMENTS, INC., Minneapolis, Mn.—Space Tower

ROGERS, JAMES C., St. Paul, Mn.—Salted in Shell Peanuts  
ROGERS, JAMES C., St. Paul, Mn.—Salted in Shell Peanuts  
ROGERS, JAMES C., St. Paul, Mn.—Warehouse  
ROGERS, JAMES C., St. Paul, Mn.—Salted in Shell Peanuts  
ROGERS, JAMES C., St. Paul, Mn.—Lunch and Refreshments  
ROGERS, JAMES C., St. Paul, Mn.—Salted in Shell Peanuts  
ROMAR, INTERNATIONAL, Minneapolis, Mn.—Bike Parts, Belts, Gloves, Patches

STAN'S TRUCK REF. SVC., INC., New Brighton, Mn.—Catalytic Heaters

TELEVAC COMPUTER CO., Versailles, Mo.—Personality Computer and Horoscope  
TELEVAC COMPUTER CO., Versailles, Mo.—Personality Computer and Horoscope  
TELEVAC COMPUTER CO., Versailles, Mo.—Personality Computer and Horoscope

# REPORT OF LEGISLATIVE AUDITOR

on the

FINANCIAL AFFAIRS

of

STATE AGRICULTURAL SOCIETY

Year Ended November 30, 1974

## AUDITOR'S REPORT

This report on an audit of the State Agricultural Society covers the year ended November 30, 1974.

The audit was made in accordance with generally accepted auditing standards, and accordingly included such tests of the accounting records and such other auditing procedures as we considered necessary in the circumstances.

Depreciation has been taken on certain structures, the electric plant, and personal property. Depreciation is not taken on some structures, the gas, sewer, and water systems, and other improvements such as fences, sidewalks, streets, curbs, and gutters.

It is our opinion, subject to the foregoing paragraph, that the balance sheet and statements of income and changes in financial position in this report present fairly the financial position of the State Agricultural Society at November 30, 1974, and the results of its operation and changes in its financial position for the year then ended, in conformity with generally accepted accounting principles applied on a basis consistent with that of the preceding year.

## COMMENTS

The State Agricultural Society is a public corporation with the right of perpetual succession. Its membership is composed of the following:

1. Three delegates from each agricultural society or association in the state which maintains an active existence, holds annual fairs, and is entitled to state aid under Minn. Stat. Section 38.02.
2. One delegate to be appointed by the county board of each county in the state in which no county or district agricultural society exists.
3. Individuals, who by reason of eminent service to agriculture, horticulture, or in the arts and sciences connected therewith, or by long and faithful service to the society, have been elected as honorary members.
4. Delegates from qualified state societies and associations as listed in Minn. Stat. Section 37.03 (4).
5. Members of the Board of Managers of the State Agricultural Society.

The management of the affairs of the State Agricultural Society is vested in a Board of Managers. The president is elected for a one-year term, the two vice-presidents for two-year terms alternately. The other managers are elected from each of seven regional districts not represented by a vice-president for terms of three years.

The year-around business is conducted under the stewardship of a secretary-general manager, elected by the board.

All employees serve at the pleasure of the board and the secretary-general manager who is authorized by the board to make adjustments in the assignments and compensation of employees as he deems advisable.

Activities of the society are financed by receipts from the annual fair and from rental of buildings and grounds.

## Admissions

Total outside gate admissions including vehicles, and grandstand admissions at the last four annual fairs were as follows:

	1971	1972	1973	1974
Outside gate admissions ....	1,370,210	1,448,977	1,440,330	1,596,214
Grandstand admissions .....	174,516	166,694	141,470	171,450

## Operations

Income and expense for the year ended November 30, 1974 are shown in Exhibit B. A comparative summary of income and expense for the years ended November 30, 1974 and 1973 follows:

	Year Ended November 30	
	1974	1973
Income .....	\$3,735,371	\$3,314,170
Expense .....	3,512,387	2,992,915
Net Income .....	\$ 222,984	\$ 321,255

## Statement of Changes in Financial Position

A statement of sources and applications of funds appears in Exhibit C. Funds provided from net income and depreciation for the year were applied to increases in plant and working capital.

## Accounts Receivable

The accounts receivable account in the general ledger and the accounts receivable subsidiary records were not in agreement as of November 30, 1974. We recommend that the general ledger and the subsidiary records be reconciled on a quarterly basis.

The amount shown on the balance sheet for accounts receivable includes an amount for "accounts receivable — bad debts." This account is currently listed in the general ledger with a debit balance. The account consists of receivable balances submitted to the Executive Council for approval to be written off as uncollectible. We recommend that an "allowance for uncollectible accounts" be established in the general ledger as a contra-asset to accounts receivable for such amounts.

## Payroll

Salary expense for the pay period including the final days of fiscal year 1974 and the first days of fiscal year 1975 was charged to fiscal year 1975. This procedure does not result in the allocation of all salary expense to the correct fiscal year. Therefore, we recommend that the salary expense for the pay period at the end of fiscal year 1975 and subsequent years be prorated so that salary expense for each fiscal year will be accurately stated.

Pay schedules for fair period employees are determined by the board members responsible for the various departments. For the 1974 State Fair, the pay schedules were not in writing, and we were therefore not able to verify the accuracy of the rates paid. Payments were made on the basis of hourly, daily, and flat rates. We recommend that the pay schedules be prepared in writing and signed by the board members responsible for each department. We also recommend that all fair period pay rates be stated on an hourly basis in order to standardize the manner in which the payroll is computed.

## Depreciation Expense

Depreciation is not taken on certain depreciable fixed assets including some structures, the gas, sewer, and water systems, and other improvements such as fences, sidewalks, street, curb, and gutters. We recommend that annual depreciation on these assets be included in the accounting records.

## **Employees Leasing Automobiles from Person Having Contract With State Agricultural Society**

John E. Libby, Secretary-General Manager, and Michael D. Heffron, Assistant Secretary-General Manager, presently are leasing automobiles from Larson Leasing of Blue Earth, Inc., Blue Earth, Minnesota. This company is owned by Neil J. Larson. According to Libby "the lease terms enjoyed by Mr. Heffron and myself are, without question, better than those established at retail, but in no instance, would I understand them to be less than 'breakeven' for Mr. Larson."

At a regular meeting on June 1, 1974 of the State Agricultural Society's Board of Managers, Libby recommended and the board approved, Neil J. Larson as racing manager for the 1974 fair. At that time Libby informed the board of the automobile lease arrangements, and that he and Larson had been close friends for over 15 years. In a letter to Richard Keenan, the society's attorney, Libby stated that the personal relationships "shall, in no instance, be allowed to infringe upon our 'arm's length' posture with respect to any and all contractual, business dealings undertaken with Mr. Larson on behalf of the Minnesota State Fair."

On June 7, 1974 the State Agricultural Society entered into a contract with Pace, Inc., Blue Earth, Minnesota, to manage, supervise and conduct at the Minnesota State Fairgrounds, two programs of professional automobile racing. The president of Pace, Inc. is Neil J. Larson. Heffron told auditors that this contract was necessitated by the death of the previous supervisor of the professional automobile racing program in May 1974, and that Larson was the best qualified individual available to assume the duties.

Minn. Stat. Section 15.43 provides in part:

No employee of the state . . . in direct contact with suppliers or potential suppliers to the state . . . , or who may directly or indirectly influence a purchasing decision or contract by establishing specification, testing purchased products, evaluating contracted services, or otherwise has official involvement in the purchasing or contracting process may:

(2) Accept directly or indirectly from a person, firm, or corporation to which a contract or purchase order has been or may be, awarded, a rebate, gift, money, or anything of value other than advertising novelties having wide distribution and are of nominal value. No such employee may further accept any promise, obligation or contract for future reward.

### **Reemployment of Retired Employee**

A retired employee of the society, who receives a pension from the Minnesota State Retirement System has been reemployed each year although he has passed the mandatory retirement age specified in Minn. Stat. Section 43.051. There is some question of the applicability of this law to employees of the State Agricultural Society. Therefore we recommend that legislative action be sought to determine the mandatory retirement age of employees of the society.

ROBERT A. WHITAKER  
Legislative Auditor

Date field work completed: April 4, 1975

Date audit report signed: September 29, 1975



# ORGANIZATION

November 30, 1974

	District Number		Elected	Term Expires
Managers:				
Leo Keskinen		President	Jan. 23, 1974	1975
Tyrus Sincok	1		Jan. 19, 1972	1975
Arthur Sprengeler	2		Jan. 23, 1974	1977
Lawrence F. Haeg	3		Jan. 19, 1972	1975
Norris K. Carnes	4	Vice-President	Jan. 17, 1973	1975
Leonard F. Ramberg	5	Vice-President	Jan. 23, 1974	1976
Logan O. Scow	6		Jan. 19, 1972	1975
J. G. Tiffany	7		Jan. 17, 1973	1976
Sulo Ojakangas	8		Jan. 23, 1974	1977
Harveydale Maruska	9		Jan. 17, 1973	1976
Secretary-General Manager:				
John E. Libby			Jan. 23, 1974	1975
Treasurer:				
Gerald J. Franke			Jan. 23, 1974	1975

## BALANCE SHEET

November 30, 1974

### ASSETS

#### Cash and Treasury Bills:

General fund .....	\$ 40,133.77
Contingent fund .....	1,000.00
Imprest fund .....	100.00
Treasury bills .....	760,000.00

Total Cash and Treasury Bills .....\$ 801,233.77

Postage ..... 116.78

Accounts receivable ..... 54,362.69

#### Property, Plant and Equipment:

Structures .....	\$11,051,650.49
Less allowance for depreciation .....	1,651,980.64

Total Structures .....\$ 9,399,669.85

Land ..... 744,822.43

Electric plant ..... 755,230.15

Fences ..... 72,701.52

Flagpoles ..... 961.89

Gas distribution system ..... 70,763.87

Personal property ..... 342,559.55

Sewer system ..... 285,251.78

Sidewalks ..... 105,757.14

Stonework ..... 39,767.39

Streets, curbs, and gutters ..... 411,487.54

Water distribution system ..... 301,741.57

Total Property, Plant and Equipment..... 12,530,714.68

Total Assets .....\$13,386,427.92

## LIABILITIES AND SURPLUS

### Liabilities:

Accounts payable .....	\$ 20,212.92
------------------------	--------------

### Surplus:

Surplus December 1, 1973 .....	\$13,143,231.41
Net income — Exhibit B .....	222,983.59

Surplus November 30, 1974 .....	\$13,366,215.00
---------------------------------	-----------------

Total Liabilities and Surplus .....	\$13,386,427.92
-------------------------------------	-----------------

## INCOME STATEMENT

Year Ended November 30, 1974

### Income:

#### Admissions—

Outside gate .....	\$1,674,222.57
Grandstand .....	534,840.00
Horse show .....	80,830.08
Total admissions .....	\$2,289,892.65

#### Departmental—

Agriculture .....	\$ 1,100.00
Amusement .....	2,920.00
Cattle .....	4,092.00
Dairy .....	1,014.72
Fine arts .....	2,520.42
Forage .....	21,809.05
F.F.A. ....	2,489.00
Gas and electric .....	12,477.99
Gopher club .....	3,529.60
Horse .....	50,414.00
Meats .....	45.16
Poultry .....	1,793.00
Public safety .....	1,924.75
Publicity .....	1,175.00
Race .....	1,118.00
Sanitation .....	139.00
Sheep .....	825.00
Space rental .....	982,503.42
Swine .....	1,759.00
Young America .....	64,505.50

Total departmental .....	\$1,158,154.61
--------------------------	----------------

### Sales, rentals, and other income—

Interest income .....	\$ 59,067.32
Non-fair rental .....	163,087.83
Sale of milk .....	6,732.32
Sale of lambs and barrows .....	18,748.58
Sale of material .....	2,434.67

University of Minnesota — 4-H reimbursement .....	17,022.70
Campgrounds .....	10,416.00
Other income .....	9,814.32

Total sales, rentals, and other income .....	\$ 287,323.74
--	---------------

Total Income .....	\$3,735,371.00
--------------------	----------------

Expense:

Administrative—

Annual meeting .....	\$ 3,711.93
Clerical salaries .....	127,944.72
Expense accounts .....	11,337.45
Officers' salaries .....	39,919.20
Postage .....	17,900.78
Telephone and telegrams .....	11,859.27

Total administrative .....	\$ 212,673.35
----------------------------	---------------

Maintenance and operation—

Depreciation—

Electric plant .....	\$ 28,457.80
Personal property .....	32,994.03
Structures .....	177,570.76
Electric plant .....	17,289.58
Fences .....	3,613.63
Fuel, oil, and gasoline .....	21,830.08
General labor .....	359,467.72
Land .....	20,739.15
Structures .....	238,907.64
Sewer system .....	3,655.18
Sidewalks .....	819.59
Storm damage .....	917.67
Streets, curbs, and gutters .....	48,535.00
Supplies .....	6,813.76
Vehicle and personal property .....	47,771.05
Water distribution system .....	9,540.81

Total maintenance and operation .....	\$1,018,923.45
---------------------------------------	----------------

Departmental—

Admissions .....	\$ 53,369.62
Agriculture .....	35,076.72
Amusement .....	532,679.36
Bee .....	2,909.32
4-H club .....	29,468.40
Cattle .....	15,837.47
Creative activities .....	15,323.51
Dairy .....	730.95
Education .....	19,610.64
Farm boys' camp .....	17,329.64
Fine arts .....	8,080.25
Forage .....	23,509.48
F.F.A. ....	9,289.63
Gas and electric .....	79,076.31
Gopher club .....	11,930.94
Horse .....	53,632.00
Hospital .....	2,947.10
Legislative - editorial day .....	4,521.95

Meats .....	2,556.13
Natural resources .....	995.80
Plants and flowers .....	37,738.19
Poultry .....	3,106.37
Public safety .....	118,565.66
Publicity .....	206,020.57
Race .....	18,386.19
Sanitation .....	158,198.26
Sheep .....	2,342.36
Space rental .....	110,101.75
Swine .....	3,487.89
Ticket audit .....	2,609.37
Treasurer .....	78,108.89
Young America .....	49,821.08
Parking .....	24,968.59
Total departmental .....	<u>\$1,732,330.39</u>
Premiums .....	<u>\$ 303,775.88</u>
Other—	
FICA contribution .....	\$ 29,263.81
Insurance contribution .....	7,974.62
Miscellaneous .....	4,589.77
Non-fair rentals .....	34,362.37
Printing and office supplies .....	41,897.19
Retirement contributions .....	20,003.21
Sundry fair .....	78,804.50
Unemployment compensation .....	9,663.59
Water and sewer .....	18,125.28
Total other .....	<u>\$ 244,684.34</u>
Total Expense .....	<u>\$3,512,387.41</u>
Net Income .....	<u>\$ 222,983.59</u>

## STATEMENT OF CHANGES IN FINANCIAL POSITION

Year Ended November 30, 1974

### SOURCE OF FUNDS

#### Operations:

Net income — Exhibit B .....	\$222,983.59
Depreciation .....	239,022.59
Total .....	<u>\$462,006.18</u>

### APPLICATION OF FUNDS

#### Additions to Plant:

Electric plant .....	\$214,531.99
Fences .....	1,033.09
Personal property .....	45,613.28
Sewer system .....	538.23

Sidewalks .....	6,435.66
Streets .....	6,006.03
Structures .....	65,559.35
Water distribution system .....	2,814.61
Increase in working capital .....	119,473.94
Total .....	<u>\$462,006.18</u>

Sources of Net Increase in Working Capital:

General fund .....	\$ 7,727.91
Treasury bills .....	25,000.00
Postage .....	278.41
Accounts receivable .....	28,079.45
Accounts payable .....	58,944.99
Total .....	<u>\$119,473.94</u>

# ANNUAL MEETING

## MINNESOTA STATE AGRICULTURAL SOCIETY

LEAMINGTON HOTEL — MINNEAPOLIS, MINNESOTA

JANUARY 20-21-22, 1975

The 116th Annual Meeting of the Minnesota State Agricultural Society was called to order by President Keskinen, Monday morning, January 20, 1975, at the Leamington Hotel in Minneapolis, with a short business session to appoint resolution and credential committees. Said committees met to conduct business on Tuesday morning, January 21.

Utilization Committee members (Ramberg, Chairman; Carnes; Haeg; Maruska; Sincock; Libby) met Monday afternoon with Mr. Chris Chapin of Booz, Allen & Hamilton to discuss problem areas, as well as refinement of the "Fairgrounds Impact & Utilization Report" prepared by said firm on a commission from the Society. Mr. Chapin indicated a transmittal summary would be forwarded to the Board by the end of January with the final, refined report due on or about February 15.

Tuesday afternoon, the Society presented a program of reports and speakers as follows:

Report of the Secretary — John E. Libby

Report of the Treasurer — Gerald J. Franke

The afternoon's featured speaker was Minnesota "Teacher of the Year" Robert G. Heyer, from Johanna Junior High School in Mounds View.

Short addresses were presented by Dawn Covert (Faribault), President, Minnesota 4-H and by DeLon Clarksean (Canby), President, Minnesota Future Farmers of America.

State Fair Bicentennial Coordinator, Karen Annexstad Humphrey reported on some of the projects which would be undertaken during both 1975 and 1976 as a part of the Fair's involvement in the Bicentennial celebration.

A report of the Hall of Fame Committee was given jointly by Messrs. Norris Carnes and Leonard Ramberg. A long-time employee of the Society, Mr. Harry J. Frost, was nominated and elected to membership in the Hall of Fame.

Credentials and Resolutions Committee reports were submitted to the delegates by W. G. Schroeder of Long Lake (Credentials) and Ted Nowicki of Fairmont (Resolutions). Said reports were accepted by the membership.

Immediately following the 2:00 p.m. meeting, caucuses of the delegates from the first, third, and sixth districts were held for the purpose of certifying nominees for election to the Society's Board of Managers on Wednesday morning.

On Tuesday evening, the annual combined banquet and ball of the County Fair Federation and State Agricultural Society was held in the main ballroom of the Leamington Hotel. Over 690 individuals attended this function.

On Wednesday morning, January 22, the Society conducted its final business session. The following elections took place:

Tyrus Sincock, Owatonna—President, one-year term;

Norris K. Carnes, St. Paul—Vice President, two-year term;

William Korff, Faribault—Manager, 1st Regional District, three-year term;

Lawrence Haeg, Robbinsdale—Manager, 3rd Regional District, three-year term;

Logan Scow, Long Prairie—Manager, 6th Regional District, three-year term;

Leo Keskinen, Grand Rapids—Honorary Life Member.

Its business being completed, the 116th Annual Meeting of the Minnesota State Agricultural Society was declared adjourned.

## MEETING OF THE GOVERNING BOARD

### MINNESOTA STATE AGRICULTURAL SOCIETY

#### LEAMINGTON HOTEL — MINNEAPOLIS, MINNESOTA

10:00 A.M., WEDNESDAY, JANUARY 22, 1975

Members present: Ty Sincok, President; Norris Carnes and Leonard Ramberg, Vice President(s) Lawrence Haeg; Harveydale Maruska; Sulo Ojakangas; Logan Scow; Arthur Sprengeler; J. G. Tiffany; John Libby, Secretary.

Also present: Harry Frost; James Frost; Gerald Franke; Kenneth Wenzel; Gerald Hladky; Michael Heffron.

Oaths of office were administered to the newly elected officers and board members.

It was moved by Mr. Carnes, seconded by Mr. Maruska and carried that John E. Libby be re-appointed Secretary-General Manager of the Society, fixing his salary for the year at \$30,000 plus \$1,500 designated as additional salary to cover unreimbursable expense. In addition thereto, it was specified that he be required to live upon the State Fairgrounds for the convenience and to the benefit of the Society with free rent, utilities and telephone and that he be furnished the free use of an automobile, leased by the Fair, for both his business and personal purposes. (The portion of this motion pertaining to lease of automobile was made contingent upon study by and approval of the Society's Special Attorney. Subsequent to the meeting, said Attorney (R. J. Keenan) issued findings to the effect that such a provision would be inappropriate and/or outside the purview of a state agency. It was therefore negated.) Further, that he furnish a bond in the sum of \$200,000, the premium for said bond to be paid by the Society. (Aye—8; Nay—0)

Gerald J. Franke was re-appointed to the position of Treasurer of the Society upon a motion by Mr. Ramberg, seconded by Mr. Scow and carried. It was specified that he be required to furnish a bond in the sum of \$200,000, the premium of said bond to be paid by the Society. It was further specified that Mr. Franke's salary be set by the Secretary. (Aye—8; Nay—0)

A motion for approval of the Minutes in Vacation for the period November 16, 1974 through January 16, 1975, and the executive action noted therein, was moved by Mr. Haeg, seconded by Mr. Tiffany and carried. (Aye—8; Nay—0)

Minutes of the November 16, 1974 Board meeting (previously mailed to the members) were approved upon a motion by Mr. Scow, seconded by Mr. Maruska and carried. (Aye—8; Nay—0)

Secretary presented the financial statement of December 31, 1974 as follows:

Cash Balance — November 30, 1974 .....	\$ 40,327.91
Farmer's Home Administration Bills cashed .....	760,000.00
Interest Income .....	5,721.11
December Receipts .....	29,898.58
	<hr/>
	\$835,947.60

**Disbursements during December**

Bi-weekly payroll, Nov. 25-Dec. 8.....	\$ 15,284.33	
Bi-weekly payroll, Dec. 9-22.....	16,585.28	
Farmer's Home Admin. Bills purchased .....	730,000.00	
Miscellaneous Bills paid .....	37,339.18	\$799,208.79
		<hr/>
		\$ 36,738.81

**Cash Balance—December 31, 1974**

General Fund .....	\$ 36,738.81
Contingent Fund .....	1,000.00
Farmer's Home Admin. Bills—mature 2/11/75 .....	730,000.00
	<hr/>
	\$767,738.81

**Cash Balance—December 31, 1973**

General Fund .....	\$ 5,747.93
Contingent Fund .....	1,000.00
Farmer's Home Admin. Bills—mature 2/4/74 .....	660,000.00
	<hr/>
	\$666,747.93

Upon a motion by Mr. Maruska, seconded by Mr. Tiffany and carried, the financial statement as presented was approved. (Aye—8; Nay—0)

It was moved by Mr. Ramberg, seconded by Mr. Carnes and carried that the First National Bank of St. Paul be designated as depository for the Society's General Fund Account; Payroll Fund Account; Premium Fund Account and Treasurer's Account and that the North Star State Bank of Roseville be designated as the depository for the Society's Contingent Fund account. (Aye—8; Nay—0)

Upon a motion by Mr. Sprengeler, seconded by Mr. Scow and carried, check signatures for the various Society accounts were approved as follows (Aye—8; Nay—0):

General Fund—John E. Libby or Michael D. Heffron; Tyrus Sincock; Norris K. Carnes or Leonard F. Ramberg and; Gerald J. Franke, Floyd W. Brown or Donald R. Lindeman.

Payroll Fund—John E. Libby or Harry J. Frost or Michael D. Heffron.

Premium Fund—John E. Libby (including machine signature plate for IBM processed checks), Harry J. Frost or Michael D. Heffron.

Treasurer's Account—Gerald J. Franke, Floyd W. Brown or Donald R. Lindeman.

Contingent Fund—John E. Libby.

The Payroll Fund, Premium Fund, Contingent Fund and Treasurer's Account require only one of the specified signatures; whereas, the General Fund requires a combination of three specified signatures as follows: Secretary or Assistant Secretary; a member of Executive Committee (other than Secretary) and; Treasurer or one of his two deputies.

It was moved by Mr. Haeg, seconded by Mr. Ojakangas and carried to approve a bonding schedule (at \$200,000 each) for John E. Libby; Gerald J. Franke; Michael D. Heffron; Floyd W. Brown and; Donald R. Lindeman. (Aye—8; Nay—0)

Upon a motion by Mr. Tiffany, seconded by Mr. Sprengeler and carried, the following Standing Committee assignments were made for 1975 (Aye—8; Nay—0):

ADMISSIONS—Scow, Chairman; Carnes; Maruska; Ojakangas; Korff; Sincock, ex officio; Libby, ex officio.



ADVERTISING—Ramberg, Chairman; Carnes; Maruska; Haeg; Scow; Sincok, ex officio; Libby, ex officio.

AMUSEMENT—Libby, Chairman; Ojakangas; Scow; Maruska; Haeg; Sincok, ex officio.

BUDGET—Sincok, Chairman; Ramberg; Carnes; Haeg; Maruska; Scow; Korff; Libby, ex officio.

GOVERNMENTAL AFFAIRS—Maruska, Chairman; Carnes; Ramberg; Haeg; Scow; Sincok, ex officio; Libby, ex officio.

HALL OF FAME—Carnes, Chairman; Muckle, Vice Chairman; Maruska; Keskinen; Grussendorf; Sincok, ex officio; Libby, ex officio; Harry Frost, Secretary.

PLANNING—Carnes, Chairman; Ramberg; Haeg; Maruska; Sincok, ex officio; Libby, ex officio.

RULES & PREMIUM LIST—Carnes, Chairman; Ojakangas; Haeg; Maruska; Scow; Sprengeler; Tiffany; Sincok, ex officio; Libby, ex officio.

SPACE RENTAL—Libby, Chairman; Ramberg; Scow; Haeg; Maruska; Sincok, ex officio.

UTILIZATION—Ramberg, Chairman; Carnes; Haeg; Maruska; Sincok, ex officio; Libby, ex officio.

Upon a motion by Mr. Sprengeler, seconded by Mr. Scow and carried, the following Supervisor/Superintendent appointments were made for 1975 (Aye—8; Nay—0):

ADMISSIONS—Scow, Supervisor; Don Pittelkow, Superintendent.

AGRICULTURE-HORTICULTURE—Haeg, Supervisor; Ward Marshall, Assistant Supervisor; Duane Smith, Superintendent, Division of Crops; Harold Nelson, Superintendent, Division of Flowers; Eldred Hunt, Superintendent, Division of Fruits; Henry Hammer, Superintendent, Division of Vegetable-Potatoes; Percy Johnson, Superintendent, Division of Bee Culture; Alvin Krueger, Superintendent, Division of Christmas Trees.

AMUSEMENT—Libby, Supervisor; Bob Potter, Superintendent of Stage & Production Coordinator; Mark Markson, Superintendent of Infield Services; Leonard Dobbs, Superintendent of Race; John Geisler, Superintendent of Music.

CATTLE—Carnes, Supervisor; Raymond Arthaud, Superintendent.

CREATIVE ACTIVITIES—Ramberg, Supervisor; Evelyn Hagen, Superintendent.

DAIRY—Korff, Supervisor; Cliff Markuson, Superintendent.

EDUCATION—Ojakangas, Supervisor; Forrest Bear, Superintendent.

FARM BOYS CAMP—Sprengeler, Supervisor; Larry Hillesland, Superintendent.

FARM MACHINERY—Maruska, Supervisor; John True, Superintendent.

FINE ARTS—Maruska, Supervisor; Otto Theuer, Superintendent.

4-H CLUB—Maruska, Supervisor; Len Harkness, Superintendent

FFA—Ojakangas, Supervisor; Odell Barduson, Superintendent.

HORSE—Carnes, Supervisor; Harold Arneman, Superintendent.

LEGISLATIVE-EDITORIAL—Maruska, Supervisor; (No Superintendent).

MEATS—Carnes, Supervisor; David Plath, Superintendent.

NATURAL RESOURCES—Korff, Supervisor; Marlene Mielke, Superintendent.

**PLANT MANAGEMENT**—Libby, Supervisor; Joe Fischler, Superintendent of Service Department; William Jents, Superintendent of Construction and Maintenance; William Hermes, Superintendent of Greenhouse; Dan Elmer, Superintendent of Forage; James Libby, Superintendent of Sanitation; Ed LaPointe, Superintendent of Mechanical Services; Ronald Vanelli, Superintendent of Parking.

**POULTRY**—Tiffany, Supervisor; Harold Thomforde, Superintendent.

**PUBLICITY**—Heffron, Supervisor; Jim Frost, Superintendent.

**PUBLIC SAFETY**—Libby, Supervisor; Chuck McGuire, Superintendent.

**SENIOR CITIZENS**—Ramberg, Supervisor; Harry Frost, Acting Superintendent.

**SHEEP**—Tiffany, Supervisor; Robt. Jordan, Superintendent.

**SPACE RENTALS**—Libby, Supervisor; Ken Wenzel, Superintendent; Elmer Fisher, Superintendent of Varied Industries; George Trussell, Superintendent of Food Show, Dairy/Animal Products Building and Merchandise Mart.

**SWINE**—Sprengeler, Supervisor; Robert Jacobs, Superintendent.

**TICKET AUDIT**—Korff, Supervisor; Dick Reinhardt, Superintendent.

**TREASURER**—Franke, Supervisor; Floyd Brown, Deputy; Donald Lindeman, Deputy.

President Sincock recessed the regular Board session so that meetings of Standing Committees might be held. Secretary announced that in keeping with precedent, all members of the Board were invited to sit in on the deliberations of the various committees so that they might have full knowledge of the matters taken up at these meetings. While voting on committee business is limited to the membership of the particular committee, participation by all Board members is desirable during deliberations.

#### **ADMISSIONS COMMITTEE MEETING**

Members present: Scow, chairman; Carnes; Maruska; Ojakangas; Sincock; Libby.

It was moved by Mr. Libby, seconded by Mr. Carnes and carried that Admission Regulations (Division A, Section 4, Rules 4.01 through 4.07) should remain the same with the following exceptions which are herewith filed with the Secretary. (Aye—5; Nay—0):

“RULE 4.05. The following schedule of outside gate admission prices shall be in effect during the period of the Fair or as indicated:

Adult, 16 years of age and over .....	\$2.00
Child, 5 thru 15 years of age .....	.50
Child, under 5 years of age .....	Free
Vehicle, on Grounds or in So. Como Parking Lots .....	2.00

“On Preparation Day (Wednesday immediately prior to opening Thursday of Fair) a gate admission charge of 50¢ will be made for each adult, child or vehicle entering the grounds between the hours of 8:00 a.m. and 10:00 p.m. (For purposes of this rule, the first regular day of the Fair, Thursday, shall begin Wednesday evening at 10:00 p.m.). Children under 16 years of age will not be allowed to enter the grounds on Preparation Day unless in the company of an adult. No Preparation Day charge will be assessed exhibitors and concessionaires engaged in setting up their displays or in bringing in animals, however, gratis tickets for this purpose must be obtained, in advance, from the Space Rental or Entry Department(s). Exhibits and/or exhibit buildings will not be open for public inspection on Preparation Day.

"On the two (2) days during Fair-week which shall be designated "Children's Days," all persons under 16 years of age will be admitted to the grounds without charge between the hours of 6:00 a.m. and 6:00 p.m.

"On the two (2) days during Fair-week which shall be designated "Senior Citizens' Days," all persons 65 years of age and over will be admitted to the grounds without charge between the hours of 6:00 a.m. and 6:00 p.m. (1-22-75)."

"RULE 4.06. The Minnesota State Fair, as a service to its exhibitors, concessionaires and employees, offers a reduced rate for outside gate adult pedestrian and/or vehicle admission. Said discount may be taken advantage of by any exhibitor, concessionaire and/or employee only, in the following manner: Discount admission tickets and/or punch-card season tickets, purchased in advance in lots of twelve (12) only at \$15.00 for twelve (12) tickets. Sales of said discount tickets will cease at 12:00 noon on the last day of the Fair (Labor Day). Tickets purchased in this manner will be non-refundable. Odd lots (less than twelve tickets) must be paid for at the regular rate as per RULE 4.05 (1-22-75)."

As a means of anticipating variance in show production costs and other problems relating to scheduling and/or contract negotiations, Secretary was authorized by motion of Mr. Maruska, seconded by Mr. Carnes and carried, to implement admission policies and/or ticket scales for the Grandstand and Hippodrome as he might deem advisable. (Aye—5; Nay—0)

There being no further business on the table, Admission Committee meeting was declared adjourned.

#### **ADVERTISING COMMITTEE MEETING**

Members present: Ramberg, chairman; Carnes; Maruska; Haeg; Scow; Sincok; Libby.

Upon a motion by Mr. Scow, seconded by Mr. Carnes and carried, it was decided to implement the following general advertising policy for 1975: Make use of all daily and weekly newspapers, as well as selected radio and television outlets in the State of Minnesota, and selected newspapers, radio and television outlets in surrounding states as the Fair's basic advertising area; also to continue issuance of the State Fair newsletter and roto brochure. Above motion also specifies that the firm of M. R. Bolin Advertising, Inc., be retained to handle the Fair's 1975 advertising campaign. (Aye—6; Nay—0)

There being no further business on the table, Advertising Committee meeting was declared adjourned.

#### **RULES AND PREMIUM LIST COMMITTEE MEETING**

Members present: Carnes, chairman; Ojakangas; Haeg; Maruska; Scow; Sprengeler; Tiffany; Sincok; Libby.

It was moved by Mr. Sprengeler, seconded by Mr. Tiffany and carried that department supervisors and superintendents, in consultation with the Entry Department, be authorized to make minor adjustments in the rules and/or premiums of their respective departments in accordance with the general provisions of the 1975 Society budget, (Aye—8 Nay—0)

There being no further business on the table, Rules and Premium List Committee meeting was declared adjourned.

#### **BUDGET COMMITTEE MEETING**

Members present: Sincok, chairman; Ramberg; Carnes; Haeg; Scow; Maruska; Libby.

Secretary presented the complete budget for 1975 stating that same had been set in as realistic a form as possible with allowance for bad weather and other contingencies. He further reported that recommendations assembled during a joint meeting of the Admissions and Planning Committee(s) on January 14 with respect to outside gate pricing as well as improvement/maintenance projects for 1975 were included in said budget.

Upon a motion by Mr. Ramberg, seconded by Mr. Carnes and carried, the 1975 budget as presented and discussed (including the Planning Committee's maintenance/improvement program) was approved. (Aye—6; Nay—0)

There being no further business on the table, Budget Committee meeting was declared adjourned.

## RECONVENED MEETING OF THE BOARD

Discussion was undertaken relative to the Hippodrome ice, heat and air conditioning project, previously approved as a part of the Society's 1975 budget and how such work might be best scheduled. It was moved by Mr. Carnes, seconded by Mr. Scow and carried that, if still-date events booked for the Hippodrome during October would cause construction delays and/or penalties, said October events should be rescheduled or cancelled. (Aye—8; Nay—0)

Action(s) taken by the Admissions, Advertising, Rules & Premium List and Budget Committee(s), which met previously, were approved upon a motion by Mr. Maruska, seconded by Mr. Scow and carried. (Aye—8; Nay—0)

It was moved by Mr. Scow, seconded by Mr. Tiffany and carried that Secretary be authorized to make adjustments in staff salaries as he deems advisable. (Aye—8; Nay—0)

Secretary indicated that the expanded Fair schedule for 1975 would most likely allow for one additional rodeo performance, but that the matter had not been entirely resolved as yet. It was moved by Mr. Carnes, seconded by Mr. Ojakangas and carried that the Secretary be authorized to negotiate terms of a rodeo performance contract with Barnes Championship Rodeo. (Aye—8; Nay—0)

A management group, under the auspices of the Guadalupe Area Project, submitted a written proposal to the Board indicating their interest in operating the "Mexican Village" complex on the State Fairgrounds. After thorough inspection of the proposal and lengthy discussion, it was moved by Mr. Carnes, seconded by Mr. Haeg and carried that, absent a valid reason to do otherwise, the Secretary be instructed to negotiate an exhibit/concession contract with Mexican Village, Inc. for 1975. (Aye—8 Nay—0)

It was moved by Mr. Haeg, seconded by Mr. Ojakangas and carried that the Society's 1977 annual meeting be held at the Leamington Hotel in Minneapolis on January 16, 17 and 18. (As per earlier action, the 1976 meeting is scheduled for January 19, 20 and 21 at the Hilton Hotel in St. Paul.) (Aye—8; Nay—0)

Upon a motion by Mr. Scow, seconded by Mr. Tiffany and carried, Secretary was authorized to negotiate a 1975 fireworks contract with the Zambelli Fireworks Company of New Castle, Pa. (Aye—8; Nay—0)

Secretary outlined several problems which had arisen relative to the night show schedule. As a result, certain day designations, previously set by the Board, might become inappropriate for the show booked on that day. It was moved, therefore, by Mr. Ramberg, seconded by Mr. Scow and carried that

Secretary be granted authority to re-designate, if necessary, those days established for children and seniors. (Aye—8; Nay—0)

Secretary presented a tentative outline of the Grandstand talent currently under consideration, as well as a breakdown of the auto race, thrill show and demolition derby schedule(s) for 1975.

Adjournment was moved by Mr. Maruska, seconded by Mr. Tiffany and carried.

Meeting adjourned.

#### **NOTE**

A record book containing the complete minutes for the year is on file at the Administration Office, State Fairgrounds, St. Paul, MN 55108.