



## Investing in Our Facilities to Secure and Strengthen a World-Class University for Minnesota

University facilities need continuous investment to stay competitive. **State support is essential to modernize our five campuses** and keep them vibrant, future-ready places to learn and work. These upgrades help us attract and retain top students, faculty and staff — and deliver the world-class teaching and research that builds Minnesota’s future workforce.

Project	State	University Match	Total
Higher Education Asset Preservation and Replacement	\$100M	-	\$100M
St. Paul Campus Center	\$84M	\$42M	\$126M
Dentistry Clinical Renovation	\$100M	\$50M	\$150M
<b>Subtotal</b>	<b>\$284M</b>	<b>\$92M</b>	<b>\$376M</b>

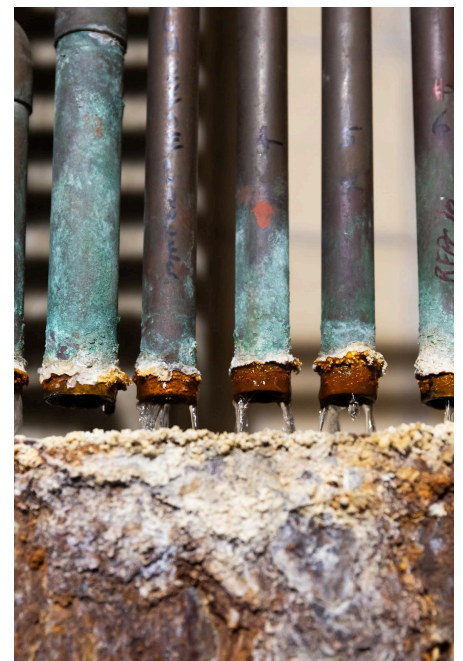
### Investing In Our Infrastructure: Higher Education Asset Preservation and Replacement (HEAPR)

We must invest in the research, learning and student-focused spaces that support the needs of our state well into the future. Unpredictable state investment has left nearly one-third of the University’s roughly 33 million square feet of facilities statewide in poor or critical condition.

HEAPR (\$100M) will fund **50 projects in at least 45 buildings across Minnesota**. With over \$6 billion in facility needs, \$200 million a year would be required just to keep our backlog from growing. In research spaces, **the lack of investment costs Minnesota dearly in federal reimbursements** — between \$80-\$90 million a year when compared to peers who have invested more fully.

HEAPR projects include:

- **Crookston:** Lysaker Gym foundation, various electrical and fire panel updates
- **Duluth:** Humanities HVAC, various elevator and electrical updates
- **Morris:** Cougar Sports Center safety upgrades, Briggs Library code improvements
- **Twin Cities:** Eddy Hall renewal, Moos Tower code improvements, campus-wide safety updates





## Transforming St. Paul to Power Minnesota’s Future: The New St. Paul Campus Center

The University of Minnesota’s St. Paul campus is a powerhouse for the state’s strength in agriculture, food systems, veterinary medicine, environmental science and applied research. But decades-old facilities are limiting competitiveness, innovation and the ability to attract top students, faculty and industry partners. With 26% of the University’s total facility needs concentrated on a campus that represents just 18% of its space, **modernizing St. Paul is essential to keep Minnesota at the forefront of discovery, support all 87 counties and prepare the state’s future workforce.**

State investment will jump-start this transformation through a **next-generation Campus Center that replaces outdated buildings with a vibrant hub for learning, collaboration and student success.** The new facility will offer a state-of-the-art student center, a modern library, student health services, refreshed dining amenities and flexible community spaces that spark connection and drive innovation. This project will reinvigorate the St. Paul campus — strengthening Minnesota’s critical industries and fueling the talent pipeline the state needs to thrive.



## Modernizing Minnesota’s Only Dental School: Dentistry Clinical Renovation

**As Minnesota’s only dental school, the University of Minnesota trains 73% of the state’s oral health workforce** and provides essential care to patients statewide. But outdated, 1970s-era facilities limit enrollment, slow adoption of new technology and make it harder to recruit and retain top talent. With a widening workforce gap and rising demand for dental care, modernizing Moos Tower is critical to strengthening education, expanding access to patients and ensuring Minnesota remains competitive.

**State investment will transform Moos Tower into a modern, patient-centered hub for dental care and learning.** Updated clinics, digital and 3D-printing technology, flexible teaching labs and improved spaces for complex-care patients will elevate training and enhance the experience at 100,000+ patient visits each year. These upgrades will boost clinical efficiency, support innovative team-based care that reflects real-world experiences, and equip students, faculty and providers to meet Minnesota’s evolving oral health needs for decades to come.

