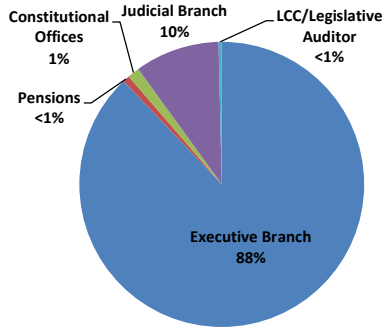


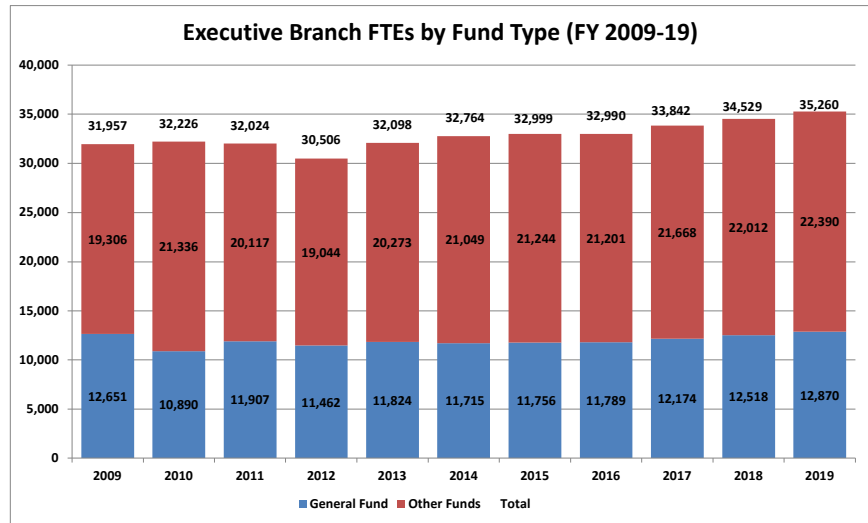
Annual FTE Count by State of MN Branch (FY 2009-19)											
FY	2019	2018	2017	2016	2015	2014	2013	2012	2011	2010	2009
Executive Branch	34,732	33,993	33,293	32,447	32,482	32,259	31,609	30,017	31,507	31,693	31,403
Pensions	305	301	295	294	280	276	267	260	258	257	251
Constitutional Offices	527	536	548	543	517	504	488	489	517	534	554
Judicial Branch	3,802	3,721	3,669	3,534	3,466	3,366	3,283	3,156	3,115	3,022	3,100
LCC/Legislative Auditor	146	144	142	144	141	141	138	140	144	147	148
<b>Total</b>	<b>39,513</b>	<b>38,695</b>	<b>37,947</b>	<b>36,961</b>	<b>36,887</b>	<b>36,546</b>	<b>35,785</b>	<b>34,061</b>	<b>35,541</b>	<b>35,653</b>	<b>35,456</b>

### FY 2019 FTEs by Government Branch



Source: SEMA4 Query BIAA\_FTE\_HISTORY\_FY\_AGENCY

Executive Branch FTEs by Fund Type (FY 2009-19)			
Year	General	Other Funds	Total
2009	12,651	19,306	31,957
2010	10,890	21,336	32,226
2011	11,907	20,117	32,024
2012	11,462	19,044	30,506
2013	11,824	20,273	32,098
2014	11,715	21,049	32,764
2015	11,756	21,244	32,999
2016	11,789	21,201	32,990
2017	12,174	21,668	33,842
2018	12,518	22,012	34,529
2019	12,870	22,390	35,260

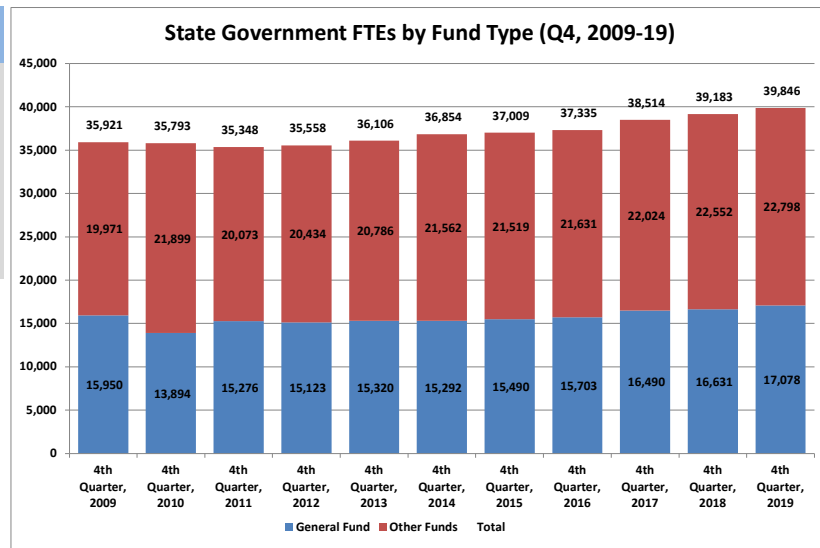


The Executive Branch includes about 75 agencies, commissions and boards as well as four constitutional offices. Minnesota State and the retirement agencies are not included.

Around 40% of FTEs are paid through the state's General Fund. "Other Funds" summarizes about 90 funds including the Trunk Highway Fund, State Lottery, State Park user fees and various other license fees and special revenue funds.

Source: SEMA4 Query BIAA\_FTE\_HISTORY\_FY\_AGENCY

State Government FTEs by Fund Type (Q4, 2009-19)			
Quarter/Year	General Fund		Total
	Fund	Other Funds	
4th Quarter, 2009	15,950	19,971	35,921
4th Quarter, 2010	13,894	21,899	35,793
4th Quarter, 2011	15,276	20,073	35,348
4th Quarter, 2012	15,123	20,434	35,558
4th Quarter, 2013	15,320	20,786	36,106
4th Quarter, 2014	15,292	21,562	36,854
4th Quarter, 2015	15,490	21,519	37,009
4th Quarter, 2016	15,703	21,631	37,335
4th Quarter, 2017	16,490	22,024	38,514
4th Quarter, 2018	16,631	22,552	39,183
4th Quarter, 2019	17,078	22,798	39,846



State Government represents all branches of Minnesota state government including the Executive Branch, Constitutional Offices, Judicial Branch, Legislative Coordinating Commission, Legislative Auditor and three retirement agencies. Minnesota State is not included. Around 40% of FTEs are paid through the state's General Fund. "Other Funds" summarizes about 90 funds including the Trunk Highway Fund, State Lottery, State Park user fees and various other license fees and special revenue funds.

Source: SEMA4 Query BIAA\_FTE\_HISTORY\_FY\_AGENCY



**Fulltime Equivalent Employment by State Agency- Fiscal Year 2019 Fourth Quarter (April-June)**

Executive Summary This report identifies Full Time Equivalencies (FTEs) from a specified quarter. The number does not reflect a headcount, but rather all hours recorded by state employees divided by 40 hours for each week.

Executive Branch	FY 2019- 4th Quarter			FY 2018- 4th Quarter			Change from FY 2018- 4th Quarter		
	General Fund	Other Funds	Total	General Fund	Other Funds	Total	General Fund	Other Funds	Total
Accountancy Board	5.5	0.0	5.5	5.3	0.0	5.3	0.2	0.0	0.2
Administration Dept	89.7	426.4	516.1	89.2	423.2	512.4	0.5	3.2	3.7
Administrative Hearings	1.3	62.5	63.8	1.4	60.8	62.2	-0.1	1.7	1.6
African American Heritage Bd.	3.9	0.0	3.9	2.0	0.0	2.0	1.9	0.0	1.9
Agriculture Dept	188.6	284.4	473.1	160.5	315.8	476.3	28.2	-31.4	-3.2
Amateur Sports Comm	2.3	0.6	3.0	2.6	0.4	3.0	-0.3	0.3	0.0
Animal Health Board	38.1	1.3	39.4	36.2	2.8	39.0	1.9	-1.5	0.3
Architecture, Engineering Bd	6.4	0.0	6.4	6.6	0.0	6.6	-0.2	0.0	-0.2
Arts Board	8.2	10.5	18.7	5.7	13.5	19.2	2.5	-3.0	-0.5
Asian-Pacific Council	4.0	0.0	4.0	3.6	0.0	3.6	0.4	0.0	0.4
Barber Examiners Board	2.9	0.0	2.9	2.9	0.0	2.9	-0.1	0.0	-0.1
Behavioral Hlth &Therapy Bd		4.9	4.9		4.0	4.0	0.0	0.9	0.9
Bureau of Mediation Services	12.4	0.0	12.4	11.2	0.0	11.2	1.2	0.0	1.2
Campaign Fin & Public Discl Bd	9.0	0.0	9.0	8.4	0.0	8.4	0.6	0.0	0.6
Capitol Area Architect	3.3	0.0	3.3	2.8	0.0	2.8	0.5	0.0	0.5
Chiropractors Board		4.7	4.7		4.7	4.7	0.0	0.0	0.0
Commerce Dept	162.0	181.1	343.0	161.7	183.5	345.2	0.3	-2.5	-2.2
Corrections Dept	4065.0	320.4	4385.4	4066.6	314.8	4381.4	-1.7	5.6	3.9
Cosmetologist Exam Board	25.3	0.0	25.3	25.7	0.0	25.7	-0.4	0.0	-0.4
Dentistry Board		9.2	9.2		9.7	9.7	0.0	-0.6	-0.6
Dietetics & Nutrition Practice		0.9	0.9		0.9	0.9	0.0	0.0	0.0
Disability Council	8.8	0.0	8.8	8.5	0.0	8.5	0.3	0.0	0.3
Education Department	142.0	243.5	385.6	137.6	238.0	375.5	4.5	5.6	10.1
Emergency Medical Services Bd	3.7	0.0	3.7	6.1	0.4	6.6	-2.4	-0.4	-2.9
Employ & Econ Development Dept	106.8	1190.2	1297.0	96.5	1208.5	1305.0	10.3	-18.2	-8.0
Explore Minnesota Tourism	47.5	0.0	47.5	44.6	0.0	44.6	2.8	0.0	2.8
Gambling Control Board		31.0	31.0		31.1	31.1	0.0	-0.1	-0.1
Health Department	171.4	1337.2	1508.7	144.4	1335.8	1480.3	27.0	1.4	28.4
Higher Ed Facilities Authority		2.0	2.0		2.0	2.0	0.0	0.0	0.0
Housing Finance Agency		251.3	251.3		246.3	246.3	0.0	5.0	5.0
Human Rights Dept	38.4	8.2	46.6	37.9	5.6	43.5	0.5	2.6	3.0
Human Services Dept	4160.5	2866.6	7027.1	4000.4	2811.0	6811.5	160.0	55.6	215.6
Indian Affairs Council	4.0	1.1	5.0	2.7	2.0	4.7	1.3	-0.9	0.3
Investment Board		21.3	21.3		23.4	23.4	0.0	-2.1	-2.1
Iron Range Resources & Rehab		43.2	43.2		42.5	42.5	0.0	0.7	0.7
Labor & Industry Dept	19.7	407.1	426.8	18.3	409.3	427.6	1.4	-2.2	-0.8
Latino Affairs Council	4.4	0.0	4.4	3.6	1.1	4.7	0.8	-1.1	-0.2
Lottery		150.1	150.1		145.3	145.3	0.0	4.8	4.8
Marriage & Family Therapy		3.0	3.0		3.0	3.0	0.0	0.0	0.0
Medical Practice Board		25.7	25.7		24.5	24.5	0.0	1.2	1.2
Military Affairs Dept	41.4	362.0	403.4	41.4	326.6	368.1	0.0	35.4	35.4
Mn.IT Services	13.3	2370.2	2383.5	15.8	2290.3	2306.1	-2.5	79.9	77.5
Mn Management & Budget	146.5	108.0	254.5	145.8	104.4	250.3	0.6	3.6	4.3
Mn State Academies	127.3	52.1	179.4	130.8	58.4	189.1	-3.5	-6.3	-9.8
MN Zoological Garden	115.9	129.2	245.1	81.7	157.3	239.0	34.2	-28.0	6.2
MNSure		156.2	156.2		174.2	174.2	0.0	-18.0	-18.0
Natural Resources Dept	789.2	2022.0	2811.2	781.9	2030.7	2812.6	7.3	-8.6	-1.4
Nursing Board		31.7	31.7		29.1	29.1	0.0	2.5	2.5
Nursing Home Admin Board		12.2	12.2		11.0	11.0	0.0	1.2	1.2
Occup. Therapy Practice Bd.		2.0	2.0		1.9	1.9	0.0	0.1	0.1
Office of Higher Education	26.1	39.4	65.5	23.7	38.2	62.0	2.4	1.2	3.5
Ombud Mental Health & Dev Dis	20.0	0.0	20.0	19.6	0.0	19.6	0.4	0.0	0.4
Ombudsperson for Families	5.0	0.0	5.0	4.9	0.0	4.9	0.1	0.0	0.1
Optometry Board		0.9	0.9		0.8	0.8	0.0	0.1	0.1
Peace Officers Board (POST)		10.3	10.3		7.7	7.7	0.0	2.6	2.6
Perpich Ctr for Arts Education	54.8	0.3	55.1	52.9	1.5	54.4	2.0	-1.2	0.7
Pharmacy Board		19.4	19.4		20.1	20.1	0.0	-0.7	-0.7
Physical Therapy Board		2.9	2.9		2.7	2.7	0.0	0.2	0.2
Podiatric Medicine Board		0.5	0.5		0.5	0.5	0.0	0.0	0.0
Pollution Control Agency	13.1	839.2	852.3	10.2	830.1	840.3	2.9	9.1	12.0
Private Detective Board	2.9	0.0	2.9	2.1	0.0	2.1	0.8	0.0	0.8
Prof. Educator Licensing Std. Bd.	19.0	0.0	19.0	16.2	0.0	16.2	2.7	0.0	2.7
Psychology Board		7.1	7.1		6.7	6.7	0.0	0.3	0.3
Public Facilities Authority		10.9	10.9		9.8	9.8	0.0	1.2	1.2
Public Safety Dept	425.0	1684.0	2109.0	430.3	1643.8	2074.1	-5.3	40.2	34.9
Public Utilities Comm	50.0	0.5	50.5	47.7	0.4	48.1	2.3	0.0	2.4
Racing Commission		17.4	17.4		17.6	17.6	0.0	-0.2	-0.2
Revenue Dept	1409.9	102.6	1512.5	1372.7	76.0	1448.6	37.2	26.6	63.9
Sentencing Guidelines Comm	6.0	0.0	6.0	6.0	0.0	6.0	0.0	0.0	0.0
Social Work Board		11.7	11.7		10.8	10.8	0.0	0.9	0.9
Tax Court	8.5	0.0	8.5	9.0	0.0	9.0	-0.5	0.0	-0.5
Transportation Dept	18.9	5094.2	5113.0	9.6	5055.0	5064.7	9.2	39.1	48.4
Veterans Affairs Dept	100.8	1182.7	1283.4	95.9	1157.4	1253.3	4.9	25.2	30.1
Veterinary Medicine Board		1.9	1.9		2.0	2.0	0.0	-0.1	-0.1
Water & Soil Resources Board	37.0	82.4	119.4	43.8	77.0	120.8	-6.9	5.4	-1.4
Workers Comp Court of Appeals		10.7	10.7		10.6	10.6	0.0	0.0	0.0
<b>Total- Executive Branch</b>	<b>12,765.6</b>	<b>22,253.2</b>	<b>35,018.7</b>	<b>12,435.3</b>	<b>22,017.0</b>	<b>34,452.2</b>	<b>330.3</b>	<b>236.2</b>	<b>566.5</b>
<b>Constitutional Offices</b>									
Attorney General	278.8	47.3	326.0	276.5	44.6	321.1	2.3	2.6	4.9



### Fulltime Equivalent Employment by State Agency- Fiscal Year 2019 Fourth Quarter (April-June)

Executive Summary This report identifies Full Time Equivalencies (FTEs) from a specified quarter. The number does not reflect a headcount, but rather all hours recorded by state employees divided by 40 hours for each week.

	FY 2019- 4th Quarter			FY 2018- 4th Quarter			Change from FY 2018- 4th Quarter		
	General Fund	Other Funds	Total	General Fund	Other Funds	Total	General Fund	Other Funds	Total
<b>Executive Branch</b>									
Governors Office	31.6	14.6	46.2	23.7	20.6	44.3	7.9	-6.0	1.9
Secretary of State	51.4	34.8	86.2	52.3	32.5	84.9	-0.9	2.2	1.3
State Auditor	70.0	5.3	75.3	75.0	5.1	80.1	-5.0	0.2	-4.8
<b>Total- Constitutional Offices</b>	<b>431.8</b>	<b>101.9</b>	<b>533.7</b>	<b>427.6</b>	<b>102.9</b>	<b>530.4</b>	<b>4.3</b>	<b>-1.0</b>	<b>3.3</b>
<b>Total Executive Branch Including Constitutional Offices</b>	<b>13197.4</b>	<b>22355.1</b>	<b>35552.5</b>	<b>12862.8</b>	<b>22119.8</b>	<b>34982.7</b>	<b>334.6</b>	<b>235.2</b>	<b>569.8</b>
<b>Judicial Branch</b>									
Court of Appeals	90.2	0.0	90.2	87.7	0.0	87.7	2.6	0.0	2.6
Guardian ad Litem Board	201.0	0.0	201.0	195.6	0.0	195.6	5.4	0.0	5.4
Judicial Standards Board	2.6	0.0	2.6	2.6	0.0	2.6	0.0	0.0	0.0
Public Defense Board	721.2	0.0	721.2	705.7	0.2	705.9	15.4	-0.2	15.3
Supreme Court	234.5	81.2	315.7	232.3	81.7	314.0	2.1	-0.5	1.6
Trial Courts	2455.9	42.4	2498.3	2405.2	35.3	2440.5	50.7	7.1	57.8
<b>Total- Judicial Branch</b>	<b>3,705.4</b>	<b>123.6</b>	<b>3,829.0</b>	<b>3,629.2</b>	<b>117.2</b>	<b>3,746.3</b>	<b>76.2</b>	<b>6.4</b>	<b>82.6</b>
<b>Legislative Branch</b>									
Legislative Auditor	58.6	1.8	60.4	60.9	0.0	60.9	-2.3	1.8	-0.5
Legislative Coord. Commission	86.6	8.5	95.1	78.2	8.2	86.4	8.4	0.3	8.7
<b>Total- Legislative Branch</b>	<b>145.2</b>	<b>10.3</b>	<b>155.5</b>	<b>139.1</b>	<b>8.2</b>	<b>147.3</b>	<b>6.1</b>	<b>2.1</b>	<b>8.2</b>
<b>Retirement Agencies</b>									
Minn State Retirement System		123.7	123.7	0.0	122.1	122.1	0.0	1.6	1.6
Public Employees Retire Assoc		99.6	99.6	0.0	99.2	99.2	0.0	0.4	0.4
Teachers Retirement Assoc		85.7	85.7	0.0	85.3	85.3	0.0	0.4	0.4
<b>Total- Retirement Agencies</b>	<b>0.0</b>	<b>309.0</b>	<b>309.0</b>	<b>0.0</b>	<b>306.5</b>	<b>306.5</b>	<b>0.0</b>	<b>2.5</b>	<b>2.5</b>
<b>State Total</b>	<b>17,047.9</b>	<b>22,798.0</b>	<b>39,845.9</b>	<b>16,631.1</b>	<b>22,551.8</b>	<b>39,182.8</b>	<b>416.9</b>	<b>246.2</b>	<b>663.1</b>

Source: SEMA4 Query BIAA\_FTE\_HISTORY\_FY\_AGENCY