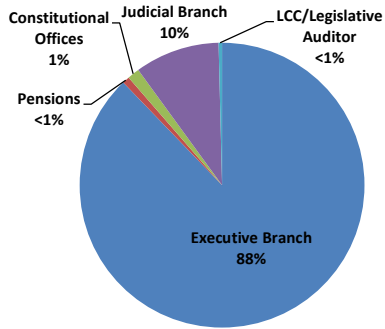


Annual FTE Count by State of MN Branch (FY 2008-18)											
FY	2018	2017	2016	2015	2014	2013	2012	2011	2010	2009	2008
Executive Branch	33,933	33,293	32,447	32,482	32,259	31,609	30,017	31,507	31,693	31,403	31,239
Pensions	301	295	294	280	276	267	260	258	257	251	251
Constitutional Offices	536	548	543	517	504	488	489	517	534	554	556
Judicial Branch	3721	3,669	3,534	3,466	3,366	3,283	3,156	3,115	3,022	3,100	3,148
LCC/Legislative Auditor	144	142	144	141	141	138	140	144	147	148	147
Total	38,695	37,947	36,961	36,887	36,546	35,785	34,061	35,541	35,653	35,456	35,341

FY 2018 FTEs by Government Branch



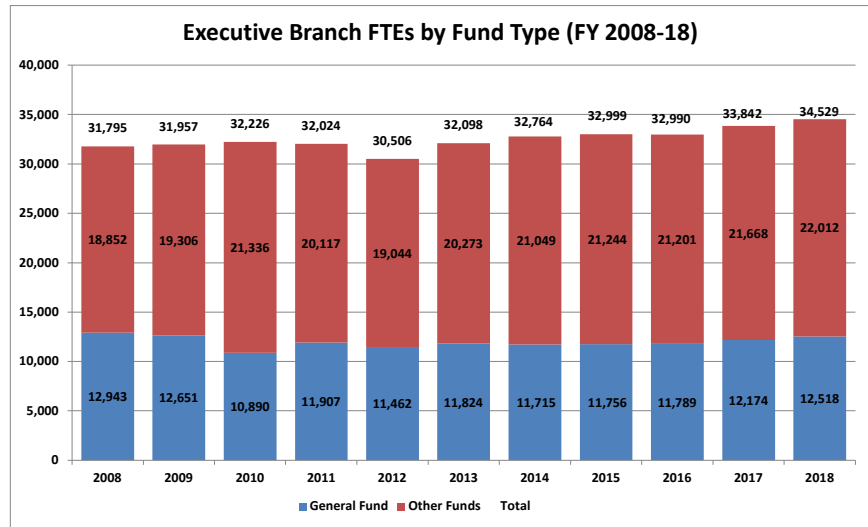
Source: SEMA4 Query BIAA_FTE_HISTORY_FY_AGENCY

Executive Branch FTEs by Fund Type (FY 2008-18)			
Year	General	Other Funds	Total
2008	12,943	18,852	31,795
2009	12,651	19,306	31,957
2010	10,890	21,336	32,226
2011	11,907	20,117	32,024
2012	11,462	19,044	30,506
2013	11,824	20,273	32,098
2014	11,715	21,049	32,764
2015	11,756	21,244	32,999
2016	11,789	21,201	32,990
2017	12,174	21,668	33,842
2018	12,518	22,012	34,529

The Executive Branch includes about 75 agencies, commissions and boards as well as four constitutional offices. Minnesota State and the retirement agencies are not included.

Around 40% of FTEs are paid through the state's General Fund. "Other Funds" summarizes about 90 funds including the Trunk Highway Fund, State Lottery, State Park user fees and various other license fees and special revenue funds.

Source: SEMA4 Query BIAA_FTE_HISTORY_FY_AGENCY

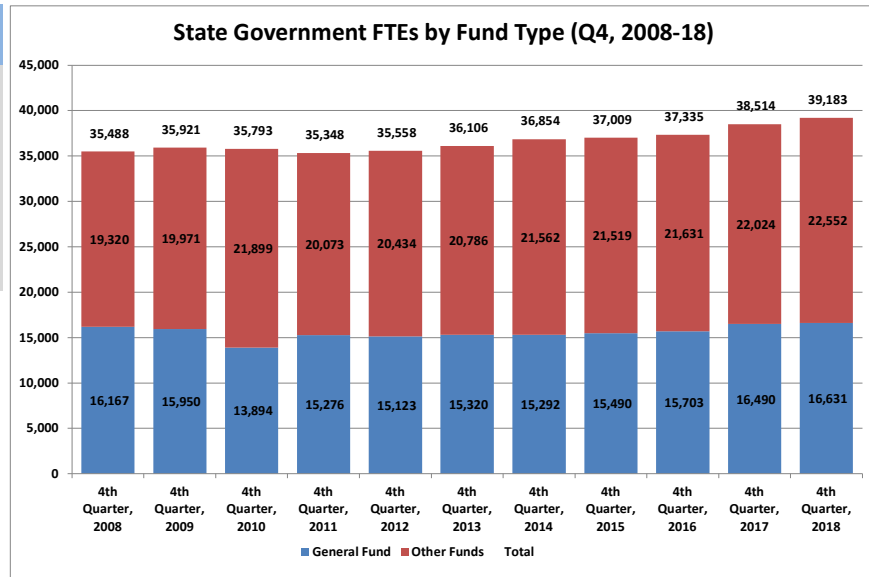


State Government FTEs by Fund Type (Q4, 2008-18)			
Quarter/Year	General Fund	Other Funds	Total
4th Quarter, 2008	16,167	19,320	35,488
4th Quarter, 2009	15,950	19,971	35,921
4th Quarter, 2010	13,894	21,899	35,793
4th Quarter, 2011	15,276	20,073	35,348
4th Quarter, 2012	15,123	20,434	35,558
4th Quarter, 2013	15,320	20,786	36,106
4th Quarter, 2014	15,292	21,562	36,854
4th Quarter, 2015	15,490	21,519	37,009
4th Quarter, 2016	15,703	21,631	37,335
4th Quarter, 2017	16,490	22,024	38,514
4th Quarter, 2018	16,631	22,552	39,183

State Government represents all branches of Minnesota state government including the Executive Branch, Constitutional Offices, Judicial Branch, Legislative Coordinating Commission, Legislative Auditor and three retirement agencies. Minnesota State is not included.

Around 40% of FTEs are paid through the state's General Fund. "Other Funds" summarizes about 90 funds including the Trunk Highway Fund, State Lottery, State Park user fees and various other license fees and special revenue funds.

Source: SEMA4 Query BIAA_FTE_HISTORY_FY_AGENCY





Fulltime Equivalent Employment by State Agency- Fiscal Year 2018 Fourth Quarter (April-June)

Executive Summary

This report identifies Full Time Equivalencies (FTEs) from a specified quarter. The number does not reflect a headcount, but rather all hours recorded by state employees divided by 40 hours for each week.

Executive Branch	FY 2018- 4th Quarter			FY 2017-4th Quarter			Change from FY 2017- 4th Quarter		
	General Fund	Other Funds	Total	General Fund	Other Funds	Total	General Fund	Other Funds	Total
Accountancy Board	5.3	0.0	5.3	5.6	0.0	5.6	-0.3	0.0	-0.3
Administration Dept	89.2	423.2	512.4	85.4	405.2	490.6	3.8	18.0	21.8
Administrative Hearings	1.4	60.8	62.2	2.6	63.2	65.8	-1.2	-2.4	-3.6
African American Heritage Bd.	2.0	0.0	2.0	3.8	0.0	3.8	-1.8	0.0	-1.8
Agriculture Dept	160.5	315.8	476.3	177.5	283.0	460.5	-17.0	32.8	15.8
Amateur Sports Comm	2.6	0.4	3.0	2.6	0.4	3.0	0.0	0.0	0.0
Animal Health Board	36.2	2.8	39.0	40.2	0.0	40.2	-4.0	2.8	-1.2
Architecture, Engineering Bd	6.6	0.0	6.6	6.8	0.0	6.8	-0.2	0.0	-0.2
Arts Board	5.7	13.5	19.2	6.0	13.0	19.0	-0.3	0.5	0.2
Asian-Pacific Council	3.6	0.0	3.6	4.5	0.0	4.5	-0.9	0.0	-0.9
Barber Examiners Board	2.9	0.0	2.9	2.8	0.0	2.8	0.1	0.0	0.1
Behavioral Hlth &Therapy Bd		4.0	4.0	0.0	5.0	5.0	0.0	-1.0	-1.0
Bureau of Mediation Services	11.2	0.0	11.2	12.2	0.0	12.2	-1.0	0.0	-1.0
Campaign Fin & Public Discl Bd	8.4	0.0	8.4	7.4	0.0	7.4	1.0	0.0	1.0
Capitol Area Architect	2.8	0.0	2.8	3.3	0.0	3.3	-0.5	0.0	-0.5
Chiropractors Board		4.7	4.7	0.0	4.7	4.7	0.0	0.0	0.0
Commerce Dept	161.7	183.5	345.2	219.5	122.3	341.8	-57.8	61.2	3.4
Corrections Dept	4066.6	314.8	4381.4	4084.1	306.7	4390.8	-17.4	8.1	-9.3
Cosmetologist Exam Board	25.7	0.0	25.7	21.3	0.0	21.3	4.4	0.0	4.4
Dentistry Board		9.7	9.7	0.0	9.8	9.8	0.0	-0.1	-0.1
Dietetics & Nutrition Practice		0.9	0.9	0.0	0.9	0.9	0.0	0.0	0.0
Disability Council	8.5	0.0	8.5	6.4	1.4	7.8	2.1	-1.4	0.8
Education Department	137.6	238.0	375.5	152.7	227.6	380.3	-15.1	10.4	-4.8
Emergency Medical Services Bd	6.1	0.4	6.6	8.3	0.5	8.8	-2.2	-0.1	-2.2
Employ & Econ Development Dept	96.5	1208.5	1305.0	111.1	1212.3	1323.4	-14.6	-3.8	-18.4
Explore Minnesota Tourism	44.6	0.0	44.6	48.4	0.9	49.2	-3.7	-0.9	-4.6
Gambling Control Board		31.1	31.1	0.0	30.9	30.9	0.0	0.3	0.3
Health Department	144.4	1335.8	1480.3	151.1	1352.1	1503.2	-6.6	-16.3	-22.9
Higher Ed Facilities Authority		2.0	2.0	0.0	2.0	2.0	0.0	0.0	0.0
Housing Finance Agency		246.3	246.3	0.0	244.9	244.9	0.0	1.4	1.4
Human Rights Dept	37.9	5.6	43.5	39.5	2.5	42.0	-1.6	3.1	1.5
Human Services Dept	4000.4	2811.0	6811.5	3806.7	2693.8	6500.6	193.7	117.2	310.9
Indian Affairs Council	2.7	2.0	4.7	5.1	0.0	5.1	-2.4	2.0	-0.4
Investment Board		23.4	23.4	0.0	25.0	25.0	0.0	-1.7	-1.7
Iron Range Resources & Rehab		42.5	42.5	0.0	63.1	63.1	0.0	-20.6	-20.6
Labor & Industry Dept	18.3	409.3	427.6	13.5	415.5	429.0	4.7	-6.2	-1.4
Latino Affairs Council	3.6	1.1	4.7	4.7	0.0	4.7	-1.1	1.1	-0.1
Lottery		145.3	145.3	0.0	148.9	148.9	0.0	-3.6	-3.6
Marriage & Family Therapy		3.0	3.0	0.0	2.0	2.0	0.0	1.0	1.0
Medical Practice Board		24.5	24.5	0.0	17.6	17.6	0.0	6.9	6.9
Military Affairs Dept	41.4	326.6	368.1	40.3	321.9	362.2	1.1	4.7	5.9
Mn.IT Services	15.8	2290.3	2306.1	20.0	2221.4	2241.4	-4.2	68.9	64.7
Mn Management & Budget	145.8	104.4	250.3	145.8	95.2	241.0	0.0	9.2	9.2
Mn State Academies	130.8	58.4	189.1	129.2	55.2	184.4	1.6	3.1	4.7
MN Zoological Garden	81.7	157.3	239.0	76.4	160.5	236.9	5.3	-3.2	2.1
MNSure		174.2	174.2	0.0	184.1	184.1	0.0	-9.8	-9.8
Natural Resources Dept	781.9	2030.7	2812.6	785.0	2048.3	2833.4	-3.1	-17.7	-20.8
Nursing Board		29.1	29.1	0.0	30.2	30.2	0.0	-1.1	-1.1
Nursing Home Admin Board		11.0	11.0	0.0	8.4	8.4	0.0	2.6	2.6
Occup. Therapy Practice Bd.		1.9	1.9				0.0	1.9	1.9
Office of Higher Education	23.7	38.2	62.0	25.3	37.8	63.2	-1.6	0.4	-1.2
Ombud Mental Health & Dev Dis	19.6	0.0	19.6	16.1	0.0	16.1	3.5	0.0	3.5
Ombudsperson for Families	4.9	0.0	4.9	4.8	0.0	4.8	0.1	0.0	0.1
Optometry Board		0.8	0.8	0.0	0.6	0.6	0.0	0.2	0.2
Peace Officers Board (POST)		7.7	7.7	0.0	8.7	8.7	0.0	-1.0	-1.0
Perpich Ctr for Arts Education	52.9	1.5	54.4	60.2	31.6	91.8	-7.4	-30.1	-37.4
Pharmacy Board		20.1	20.1	0.0	20.3	20.3	0.0	-0.2	-0.2
Physical Therapy Board		2.7	2.7	0.0	10.5	10.5	0.0	-7.8	-7.8
Podiatric Medicine Board		0.5	0.5	0.0	0.5	0.5	0.0	0.0	0.0
Pollution Control Agency	10.2	830.1	840.3	24.8	828.6	853.3	-14.6	1.5	-13.1
Private Detective Board	2.1	0.0	2.1	3.3	0.0	3.3	-1.2	0.0	-1.2
Prof. Educator Licensing Std. Bd.	16.2	0.0	16.2	5.8	0.0	5.8	10.5	0.0	10.5
Psychology Board		6.7	6.7	0.0	6.7	6.7	0.0	0.0	0.0
Public Facilities Authority		9.8	9.8	0.0	10.0	10.0	0.0	-0.2	-0.2
Public Safety Dept	430.3	1643.8	2074.1	398.4	1620.8	2019.2	31.9	23.0	54.9
Public Utilities Comm	47.7	0.4	48.1	47.5	0.5	47.9	0.2	-0.1	0.2
Racing Commission		17.6	17.6	0.4	15.1	15.5	-0.4	2.5	2.1



Fulltime Equivalent Employment by State Agency- Fiscal Year 2018 Fourth Quarter (April-June)

Executive Summary

This report identifies Full Time Equivalencies (FTEs) from a specified quarter. The number does not reflect a headcount, but rather all hours recorded by state employees divided by 40 hours for each week.

Executive Branch	FY 2018- 4th Quarter			FY 2017-4th Quarter			Change from FY 2017- 4th Quarter		
	General Fund	Other Funds	Total	General Fund	Other Funds	Total	General Fund	Other Funds	Total
Revenue Dept	1372.7	76.0	1448.6	1397.3	59.4	1456.6	-24.6	16.6	-8.0
Sentencing Guidelines Comm	6.0	0.0	6.0	6.0	0.0	6.0	0.0	0.0	0.0
Social Work Board		10.8	10.8	0.0	11.6	11.6	0.0	-0.8	-0.8
Tax Court	9.0	0.0	9.0	9.0	0.0	9.0	0.0	0.0	0.0
Transportation Dept	9.6	5055.0	5064.7	6.7	4824.1	4830.9	2.9	230.9	233.8
Veterans Affairs Dept	95.9	1157.4	1253.3	98.1	1112.7	1210.7	-2.2	44.7	42.6
Veterinary Medicine Board		2.0	2.0	0.0	2.0	2.0	0.0	0.0	0.0
Water & Soil Resources Board	43.8	77.0	120.8	41.4	65.0	106.4	2.4	12.0	14.4
Workers Comp Court of Appeals		10.6	10.6	0.0	11.6	11.6	0.0	-1.0	-1.0
Total- Executive Branch	12,435.3	22,017.0	34,452.2	12,374.7	21,458.7	33,833.4	60.5	558.3	618.8
Constitutional Offices									
Attorney General	276.5	44.6	321.1	286.1	45.2	331.4	-9.6	-0.6	-10.2
Governors Office	23.7	20.6	44.3	39.3	8.0	47.3	-15.6	12.6	-3.0
Secretary of State	52.3	32.5	84.9	47.7	32.6	80.3	4.7	-0.1	4.6
State Auditor	75.0	5.1	80.1	17.7	67.6	85.4	57.3	-62.5	-5.3
Total- Constitutional Offices	427.6	102.9	530.4	390.9	153.5	544.3	36.7	-50.6	-13.9
Total Executive Branch Including Constitutional Offices	12862.8	22119.8	34982.7	12765.6	21612.2	34377.8	97.2	507.7	604.9
Judicial Branch									
Court of Appeals	87.7	0.0	87.7	90.6	0.0	90.6	-3.0	0.0	-3.0
Guardian ad Litem Board	195.6	0.0	195.6	197.9	0.0	197.9	-2.3	0.0	-2.3
Judicial Standards Board	2.6	0.0	2.6	2.6	0.0	2.6	0.0	0.0	0.0
Public Defense Board	705.7	0.2	705.9	695.9	0.1	696.0	9.8	0.0	9.8
Supreme Court	232.3	81.7	314.0	223.9	74.2	298.1	8.4	7.5	16.0
Trial Courts	2405.2	35.3	2440.5	2375.9	35.3	2411.3	29.3	-0.1	29.2
Total- Judicial Branch	3,629.2	117.2	3,746.3	3,586.9	109.7	3,696.6	42.2	7.5	49.7
Legislative Branch									
Legislative Auditor	60.9	0.0	60.9	56.7	0.0	56.7	4.2	0.0	4.2
Legislative Coord. Commission	78.2	8.2	86.4	80.6	7.6	88.2	-2.3	0.6	-1.8
Total- Legislative Branch	139.1	8.2	147.3	137.2	7.6	144.9	1.8	0.6	2.4
Retirement Agencies									
Minn State Retirement System		122.1	122.1	0.0	116.4	116.4	0.0	5.7	5.7
Public Employees Retire Assoc		99.2	99.2	0.0	94.0	94.0	0.0	5.1	5.1
Teachers Retirement Assoc		85.3	85.3	0.0	84.4	84.4	0.0	0.9	0.9
Total- Retirement Agencies	0.0	306.5	306.5	0.0	294.7	294.7	0.0	11.8	11.8
State Total	16,631.1	22,551.8	39,182.8	16,489.8	22,024.2	38,514.0	141.3	527.6	668.9

Source: SEMA4 Query BIAA_FTE_HISTORY_FY_AGENCY