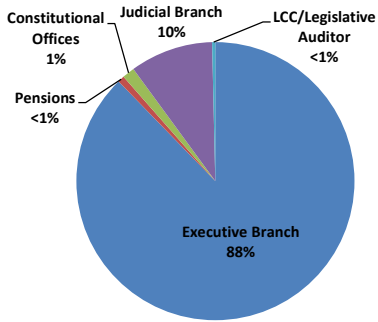


Annual FTE Count by State of MN Branch (FY 2007-17)											
FY	2017	2016	2015	2014	2013	2012	2011	2010	2009	2008	2007
Executive Branch	33,293	32,447	32,482	32,259	31,609	31,432	31,480	31,670	31,376	31,220	30,618
Pensions	295	294	280	276	267	268	258	257	251	251	246
Constitutional Offices	548	543	517	504	488	493	517	534	554	556	571
Judicial Branch	3,669	3,534	3,466	3,366	3,283	3,226	3,115	3,022	3,100	3,148	3,046
LCC/Legislative Auditor	142	144	141	141	138	140	144	150	148	147	138
Total	37,947	36,961	36,887	36,546	35,785	35,558	35,514	35,634	35,429	35,322	34,619

FY 2017 FTEs by Government Branch



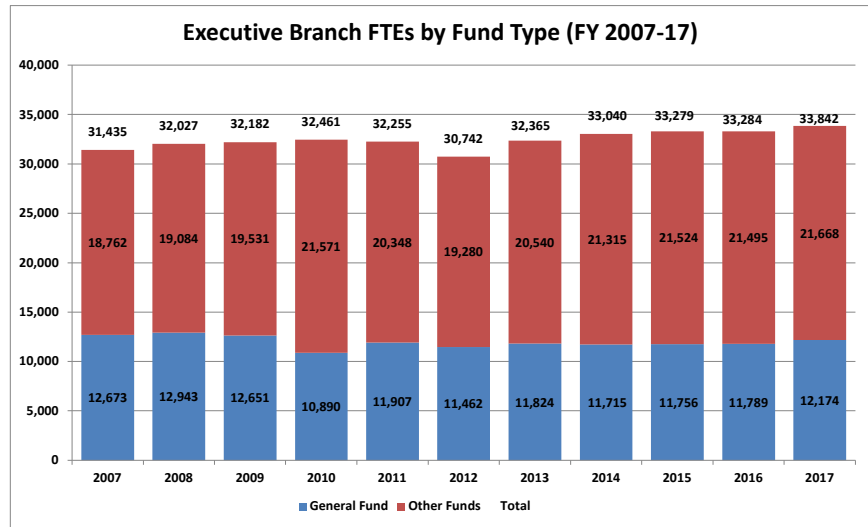
Source: SEMA4 Query BIAA_FTE_HISTORY_FY_AGENCY

Executive Branch FTEs by Fund Type (FY 2007-17)			
Year	General	Other Funds	Total
2007	12,673	18,762	31,435
2008	12,943	19,084	32,027
2009	12,651	19,531	32,182
2010	10,890	21,571	32,461
2011	11,907	20,348	32,255
2012	11,462	19,280	30,742
2013	11,824	20,540	32,365
2014	11,715	21,315	33,040
2015	11,756	21,524	33,279
2016	11,789	21,495	33,284
2017	12,174	21,668	33,842

The Executive Branch includes about 75 agencies, commissions and boards as well as four constitutional offices. Minnesota State and the retirement agencies are not included.

Around 40% of FTEs are paid through the state's General Fund. "Other Funds" summarizes about 90 funds including the Trunk Highway Fund, State Lottery, State Park user fees and various other license fees and special revenue funds.

Source: SEMA4 Query BIAA_FTE_HISTORY_FY_AGENCY

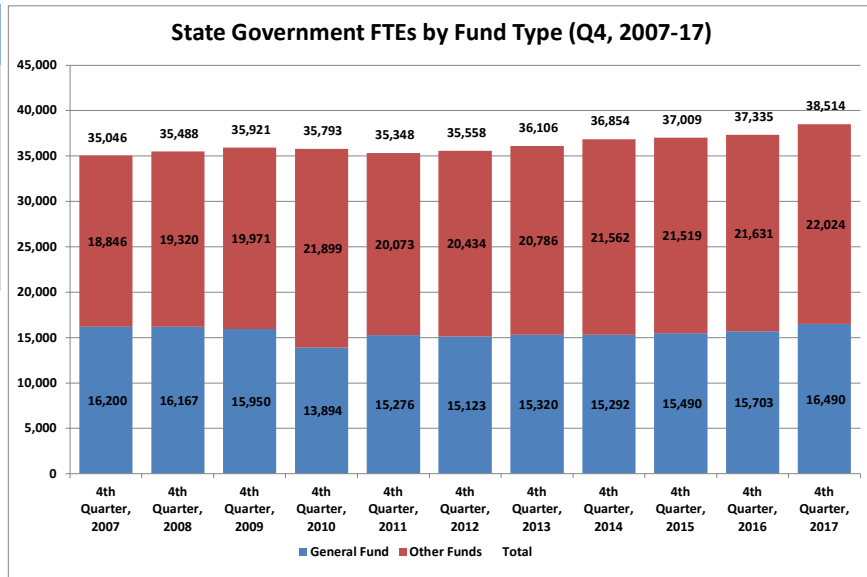


State Government FTEs by Fund Type (Q4, 2007-17)			
Quarter/Year	General	Other Funds	Total
4th Quarter, 2007	16,200	18,846	35,046
4th Quarter, 2008	16,167	19,320	35,488
4th Quarter, 2009	15,950	19,971	35,921
4th Quarter, 2010	13,894	21,899	35,793
4th Quarter, 2011	15,276	20,073	35,348
4th Quarter, 2012	15,123	20,434	35,558
4th Quarter, 2013	15,320	20,786	36,106
4th Quarter, 2014	15,292	21,562	36,854
4th Quarter, 2015	15,490	21,519	37,009
4th Quarter, 2016	15,703	21,631	37,335
4th Quarter, 2017	16,490	22,024	38,514

State Government represents all branches of Minnesota state government including the Executive Branch, Constitutional Offices, Judicial Branch, Legislative Coordinating Commission, Legislative Auditor and three retirement agencies. Minnesota State is not included.

Around 40% of FTEs are paid through the state's General Fund. "Other Funds" summarizes about 90 funds including the Trunk Highway Fund, State Lottery, State Park user fees and various other license fees and special revenue funds.

Source: SEMA4 Query BIAA_FTE_HISTORY_FY_AGENCY





Fulltime Equivalent Employment by State Agency- Fiscal Year 2017 Fourth Quarter (April-June)

Executive Summary

This report identifies Full Time Equivalencies (FTEs) from a specified quarter. The number does not reflect a headcount, but rather all hours recorded by state employees divided by 40 hours for each week. In analyzing the report, it is important to know that most quarters include 6 pay periods. The fourth quarter of 2017 included 7 pay periods.

Executive Branch	FY 2017- 4th Quarter			FY 2016-4th Quarter			Change from FY 2016- 4th Quarter		
	General Fund	Other Funds	Total	General Fund	Other Funds	Total	General Fund	Other Funds	Total
Accountancy Board	5.6	0.0	5.6	5.7	0.0	5.7	-0.1	0.0	-0.1
Administration Dept	85.4	405.2	490.6	90.3	369.1	459.4	-4.9	36.1	31.2
Administrative Hearings	2.6	63.2	65.8	2.0	65.5	67.4	0.6	-2.2	-1.6
African American Heritage Bd.	3.8	0.0	3.8	2.6	0.0	2.6	1.2	0.0	1.2
Agriculture Dept	177.5	283.0	460.5	134.9	304.0	438.8	42.6	-21.0	21.6
Amateur Sports Comm	2.6	0.4	3.0	2.6	0.4	3.0	0.0	0.0	0.0
Animal Health Board	40.2	0.0	40.2	41.1	4.0	45.1	-0.9	-4.0	-4.9
Architecture, Engineering Bd	6.8	0.0	6.8	6.8	0.0	6.8	0.0	0.0	0.0
Arts Board	6.0	13.0	19.0	5.2	12.8	18.0	0.8	0.2	1.0
Asian-Pacific Council	4.5	0.0	4.5	3.1	0.0	3.1	1.3	0.0	1.3
Barber Examiners Board	2.8	0.0	2.8	3.0	0.0	3.0	-0.1	0.0	-0.1
Behavioral Hlth &Therapy Bd	0.0	5.0	5.0	0.0	5.0	5.0	0.0	0.0	0.0
Board of Teaching	5.8	0.0	5.8	0.0	0.0	0.0	5.8	0.0	5.8
Bureau of Mediation Services	12.2	0.0	12.2	12.1	0.0	12.1	0.1	0.0	0.1
Campaign Fin & Public Discl Bd	7.4	0.0	7.4	8.6	0.0	8.6	-1.2	0.0	-1.2
Capitol Area Architect	3.3	0.0	3.3	2.5	0.0	2.5	0.9	0.0	0.9
Chicano/Latino Affairs Council	4.7	0.0	4.7	3.0	0.0	3.0	1.7	0.0	1.7
Chiropractors Board	0.0	4.7	4.7	0.0	4.6	4.6	0.0	0.1	0.1
Commerce Dept	219.5	122.3	341.8	199.7	137.9	337.6	19.8	-15.5	4.3
Corrections Dept	4084.1	306.7	4390.8	4023.5	308.6	4332.1	60.5	-1.9	58.6
Cosmetologist Exam Board	21.3	0.0	21.3	15.5	0.0	15.5	5.8	0.0	5.8
Dentistry Board	0.0	9.8	9.8	0.0	10.0	10.0	0.0	-0.2	-0.2
Dietetics & Nutrition Practice	0.0	0.9	0.9	0.0	1.1	1.1	0.0	-0.2	-0.2
Disability Council	6.4	1.4	7.8	6.4	0.0	6.4	0.0	1.4	1.3
Education Department	152.7	227.6	380.3	146.0	234.0	380.0	6.7	-6.4	0.3
Emergency Medical Services Bd	8.3	0.5	8.8	8.3	1.0	9.4	0.0	-0.5	-0.6
Employ & Econ Development Dept	111.1	1212.3	1323.4	108.9	1323.1	1431.9	2.2	-110.8	-108.6
Explore Minnesota Tourism	48.4	0.9	49.2	47.1	1.0	48.1	1.2	-0.1	1.1
Gambling Control Board	0.0	30.9	30.9	0.0	30.9	30.9	0.0	0.0	0.0
Health Department	151.1	1352.1	1503.2	150.7	1284.5	1435.1	0.4	67.7	68.1
Higher Ed Facilities Authority	0.0	2.0	2.0	0.0	2.0	2.0	0.0	0.0	0.0
Housing Finance Agency	0.0	244.9	244.9	0.0	239.1	239.1	0.0	5.8	5.8
Human Rights Dept	39.5	2.5	42.0	32.5	3.8	36.3	7.0	-1.2	5.7
Human Services Dept	3806.7	2693.8	6500.6	3427.8	2735.3	6163.1	379.0	-41.5	337.5
Indian Affairs Council	5.1	0.0	5.1	4.4	0.4	4.9	0.7	-0.4	0.2
Investment Board	0.0	25.0	25.0	0.0	25.1	25.1	0.0	-0.1	-0.1
Iron Range Resources & Rehab	0.0	63.1	63.1	0.0	66.1	66.1	0.0	-3.0	-3.0
Labor & Industry Dept	13.5	415.5	429.0	14.5	410.5	425.0	-1.0	5.0	4.0
Lottery	0.0	148.9	148.9	0.0	148.5	148.5	0.0	0.4	0.4
Marriage & Family Therapy	0.0	2.0	2.0	0.0	2.4	2.4	0.0	-0.4	-0.4
Medical Practice Board	0.0	17.6	17.6	0.0	18.1	18.1	0.0	-0.5	-0.5
Military Affairs Dept	40.3	321.9	362.2	39.3	313.9	353.2	1.1	8.0	9.0
Mn.IT Services	20.0	2221.4	2241.4	15.6	1787.8	1803.4	4.4	433.6	438.0
Mn Management & Budget	145.8	95.2	241.0	139.3	93.6	232.9	6.5	1.6	8.2
Mn State Academies	129.2	55.2	184.4	125.8	56.1	181.9	3.3	-0.9	2.5
MN Zoological Garden	76.4	160.5	236.9	92.4	130.1	222.5	-16.1	30.4	14.3
MNSure	0.0	184.1	184.1	0.0	169.9	169.9	0.0	14.2	14.2
Natural Resources Dept	785.0	2048.3	2833.4	763.3	2208.8	2972.2	21.7	-160.5	-138.8
Nursing Board	0.0	30.2	30.2	0.0	30.6	30.6	0.0	-0.4	-0.4
Nursing Home Admin Board	0.0	8.4	8.4	0.0	8.2	8.2	0.0	0.2	0.2
Office of Higher Education	25.3	37.8	63.2	22.1	41.0	63.1	3.2	-3.1	0.1
Ombud Mental Health & Dev Dis	16.1	0.0	16.1	16.4	0.0	16.4	-0.3	0.0	-0.3
Ombudsperson for Families	4.8	0.0	4.8	4.8	0.0	4.8	0.0	0.0	0.0
Optometry Board	0.0	0.6	0.6	0.0	0.9	0.9	0.0	-0.3	-0.3
Peace Officers Board (POST)	0.0	8.7	8.7	0.0	10.5	10.5	0.0	-1.8	-1.8
Perpich Ctr for Arts Education	60.2	31.6	91.8	58.3	31.7	89.9	2.0	-0.1	1.9
Pharmacy Board	0.0	20.3	20.3	0.0	17.9	17.9	0.0	2.4	2.4
Physical Therapy Board	0.0	10.5	10.5	0.0	10.8	10.8	0.0	-0.3	-0.3
Podiatric Medicine Board	0.0	0.5	0.5	0.0	0.3	0.3	0.0	0.2	0.2
Pollution Control Agency	24.8	828.6	853.3	17.7	824.6	842.3	7.0	4.0	11.0
Private Detective Board	3.3	0.0	3.3	2.0	0.0	2.0	1.3	0.0	1.3
Psychology Board	0.0	6.7	6.7	0.0	8.3	8.3	0.0	-1.5	-1.5
Public Facilities Authority	0.0	10.0	10.0	0.0	9.0	9.0	0.0	1.0	1.0
Public Safety Dept	398.4	1620.8	2019.2	427.8	1663.6	2091.4	-29.4	-42.8	-72.2
Public Utilities Comm	47.5	0.5	47.9	44.8	0.5	45.3	2.6	0.0	2.7
Racing Commission	0.4	15.1	15.5	1.3	13.5	14.7	-0.8	1.6	0.7



Fulltime Equivalent Employment by State Agency- Fiscal Year 2017 Fourth Quarter (April-June)

Executive Summary

This report identifies Full Time Equivalencies (FTEs) from a specified quarter. The number does not reflect a headcount, but rather all hours recorded by state employees divided by 40 hours for each week. In analyzing the report, it is important to know that most quarters include 6 pay periods. The fourth quarter of 2017 included 7 pay periods.

Executive Branch	FY 2017- 4th Quarter			FY 2016-4th Quarter			Change from FY 2016- 4th Quarter		
	General Fund	Other Funds	Total	General Fund	Other Funds	Total	General Fund	Other Funds	Total
Revenue Dept	1397.3	59.4	1456.6	1304.6	63.4	1368.1	92.6	-4.1	88.5
Sentencing Guidelines Comm	6.0	0.0	6.0	5.2	0.0	5.2	0.8	0.0	0.8
Social Work Board	0.0	11.6	11.6	0.0	11.4	11.4	0.0	0.2	0.2
Tax Court	9.0	0.0	9.0	8.0	0.0	8.0	1.0	0.0	1.0
Transportation Dept	6.7	4824.1	4830.9	5.8	4644.9	4650.7	1.0	179.2	180.2
Veterans Affairs Dept	98.1	1112.7	1210.7	95.0	1071.9	1166.9	3.1	40.7	43.8
Veterinary Medicine Board	0.0	2.0	2.0	0.0	2.0	2.0	0.0	0.0	0.0
Water & Soil Resources Board	41.4	65.0	106.4	37.4	60.9	98.2	4.1	4.1	8.2
Workers Comp Court of Appeals	0.0	11.6	11.6	0.0	11.5	11.5	0.0	0.1	0.1
Total- Executive Branch	12,374.7	21,458.7	33,833.4	11,735.8	21,046.3	32,782.1	639.0	412.4	1051.4
Constitutional Offices									
Attorney General	286.1	45.2	331.4	286.3	44.9	331.2	-0.1	0.4	0.2
Governors Office	39.3	8.0	47.3	26.0	17.8	43.7	13.4	-9.8	3.6
Secretary of State	47.7	32.6	80.3	49.6	33.3	83.0	-2.0	-0.7	-2.7
State Auditor	17.7	67.6	85.4	19.2	70.3	89.5	-1.4	-2.7	-4.1
Total- Constitutional Offices	390.9	153.5	544.3	381.0	166.3	547.4	9.8	-12.9	-3.0
Total Executive Branch Including Constitutional Offices	12765.6	21612.2	34377.8	12116.8	21212.6	33329.4	648.8	399.5	1048.4
Judicial Branch									
Court of Appeals	90.6	0.0	90.6	89.3	0.0	89.3	1.3	0.0	1.3
Guardian ad Litem Board	197.9	0.0	197.9	184.0	1.1	185.1	13.9	-1.1	12.8
Judicial Standards Board	2.6	0.0	2.6	2.6	0.0	2.6	0.0	0.0	0.0
Public Defense Board	695.9	0.1	696.0	667.3	0.0	667.3	28.6	0.1	28.7
Supreme Court	223.9	74.2	298.1	222.6	74.9	297.5	1.3	-0.7	0.6
Trial Courts	2375.9	35.3	2411.3	2280.6	36.1	2316.8	95.3	-0.8	94.5
Total- Judicial Branch	3,586.9	109.7	3,696.6	3,446.5	112.2	3,558.7	140.4	-2.5	137.9
Legislative Branch									
Legislative Auditor	56.7	0.0	56.7	54.3	0.0	54.3	2.4	0.0	2.4
Legislative Coord. Commission	80.6	7.6	88.2	79.1	7.9	87.0	1.4	-0.3	1.2
Total- Legislative Branch	137.2	7.6	144.9	133.4	7.9	141.3	3.8	-0.3	3.6
Retirement Agencies									
Minn State Retirement System	0.0	116.4	116.4	0.0	111.8	111.8	0.0	4.5	4.5
Public Employees Retire Assoc	0.0	94.0	94.0	0.0	89.1	89.1	0.0	4.9	4.9
Teachers Retirement Assoc	0.0	84.4	84.4	0.0	82.4	82.4	0.0	1.9	1.9
Total- Retirement Agencies	0.0	294.7	294.7	0.0	283.4	283.4	0.0	11.3	11.3
State Total	16,489.8	22,024.2	38,514.0	15,490.4	21,518.7	37,009.1	999.4	505.5	1504.9

Source: SEMA4 Query BIAA_FTE_HISTORY_FY_AGENCY