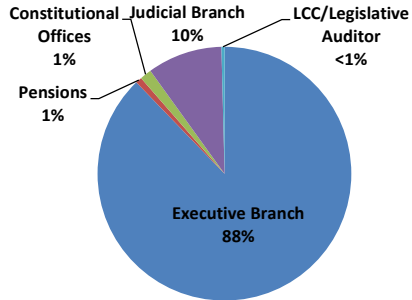


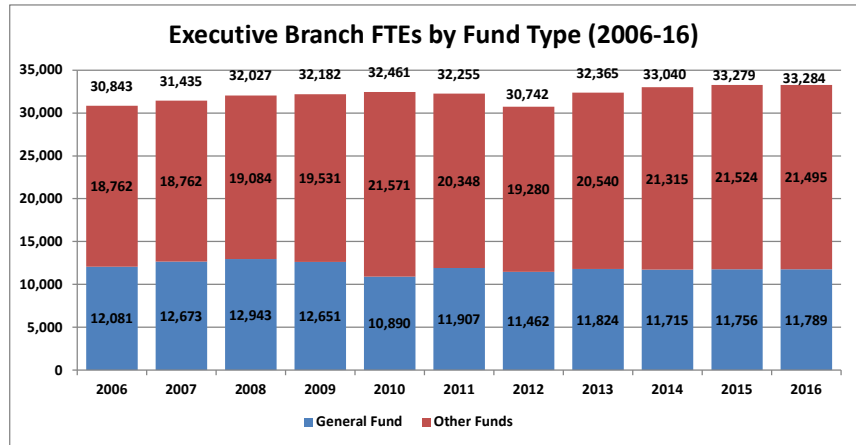
Annual FTE Count by State of MN Branch (FY 2006-16)											
FY	2016	2015	2014	2013	2012	2011	2010	2009	2008	2007	2006
Executive Branch	32,447	32,482	32,259	31,609	31,432	31,480	31,670	31,376	31,220	30,618	30,009
Pensions	294	280	276	267	268	258	257	251	251	246	251
Constitutional Offices	543	517	504	488	493	517	534	554	556	571	584
Judicial Branch	3,534	3,466	3,366	3,283	3,226	3,115	3,022	3,100	3,148	3,046	2,858
LCC/Legislative Auditor	144	141	141	138	140	144	150	148	147	138	136
Total	36,961	36,887	36,546	35,785	35,558	35,514	35,634	35,429	35,322	34,619	33,836

FY 2016 FTEs by Government Branch



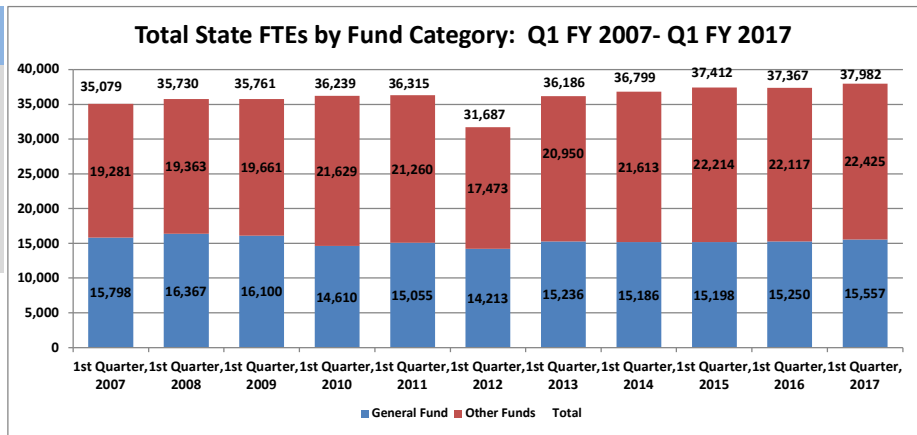
Source: SEMA4 Query BIAA_FTE_HISTORY_FY_AGENCY

Executive Branch FTEs by Fund Type (2006-16)			
Quarter/Year	General Fund	Other Funds	Total
2006	12,081	18,762	30,843
2007	12,673	18,762	31,435
2008	12,943	19,084	32,027
2009	12,651	19,531	32,182
2010	10,890	21,571	32,461
2011	11,907	20,348	32,255
2012	11,462	19,280	30,742
2013	11,824	20,540	32,365
2014	11,715	21,315	33,040
2015	11,756	21,524	33,279
2016	11,789	21,495	33,284



Source: SEMA4 Query BIAA_FTE_HISTORY_FY_AGENCY

Full Time Equivalents by Fund			
Quarter/Year	General Fund	Other Funds	Total
1st Quarter, 2007	15,797.5	19,281.1	35,078.6
1st Quarter, 2008	16,367.4	19,362.7	35,730.1
1st Quarter, 2009	16,099.8	19,660.8	35,760.6
1st Quarter, 2010	14,610.2	21,628.8	36,238.9
1st Quarter, 2011	15,055.4	21,259.9	36,315.3
1st Quarter, 2012	14,213.4	17,473.4	31,686.7
1st Quarter, 2013	15,236.0	20,949.9	36,185.9
1st Quarter, 2014	15,186.4	21,612.8	36,799.2
1st Quarter, 2015	15,197.6	22,214.4	37,412.0
1st Quarter, 2016	15,250.4	22,117.1	37,367.5
1st Quarter, 2017	15,557.0	22,425.1	37,982.0



Source: SEMA4 Query BIAA_FTE Data by FY & Qtr & Agency

Fulltime Equivalent Employment by State Agency- First Quarter (July-September) FY 2016-2017

Executive Branch	FY 2017- 1st Quarter			FY 2016- 1st Quarter			Change from FY 2016 1st Quarter		
	General	Other	Total	General	Other fund	Total	General	Other fund	Total
	Fund	fund		Fund			Fund		
Accountancy Board	6.3	0.0	6.3	6.1	0.0	6.1	0.3	0.0	0.3
Administration Dept	88.8	381.7	470.5	75.7	373.1	448.8	13.1	8.6	21.7
Administrative Hearings	2.3	66.6	68.9	1.9	63.1	65.0	0.4	3.5	3.9
African Heritage Council	2.3	0.0	2.3	2.0	0.1	2.1	0.3	-0.1	0.2
Agriculture Dept	140.6	333.5	474.1	138.8	325.2	464.0	1.8	8.3	10.0
Amateur Sports Comm	2.6	0.4	3.0	2.3	0.7	3.0	0.3	-0.3	0.0
Animal Health Board	34.0	5.7	39.8	33.8	20.8	54.5	0.2	-15.0	-14.8
Architecture, Engineering Bd	7.5	0.0	7.5	5.5	0.0	5.5	2.0	0.0	2.0
Arts Board	5.0	13.0	17.9	4.7	11.6	16.3	0.3	1.4	1.7
Asian-Pacific Council	3.1	0.0	3.1	3.6	0.0	3.6	-0.5	0.0	-0.5
Barber Examiners Board	2.6	0.0	2.6	2.6	0.0	2.6	0.1	0.0	0.1
Bd of Podiatric Medicine	0.0	0.7	0.7	0.0	0.5	0.5	0.0	0.2	0.2
Board Behavioral Hlth&Therapy	0.0	5.0	5.0	0.0	5.0	5.0	0.0	0.0	0.0
Board of Teaching	4.9	0.0	4.9	0.0	0.0	0.0	4.9	0.0	4.9
Bureau of Mediation Services	11.5	0.0	11.5	13.0	0.0	13.0	-1.5	0.0	-1.5
Campaign Fin & Public Discl Bd	8.3	0.0	8.3	8.6	0.0	8.6	-0.3	0.0	-0.3
Capitol Area Architect	2.6	0.0	2.6	2.2	0.0	2.2	0.4	0.0	0.4
Chicano/Latino Affairs Council	1.5	0.0	1.5	4.3	0.0	4.3	-2.8	0.0	-2.8
Chiropractors Board	0.0	4.4	4.4	0.0	4.6	4.6	0.0	-0.2	-0.2
Commerce Dept	209.3	138.2	347.6	210.4	140.8	351.2	-1.1	-2.6	-3.7
Corrections Dept	4001.4	309.8	4311.1	4013.1	315.0	4328.2	-11.8	-5.2	-17.0
Cosmetologist Exam Board	16.3	0.0	16.3	14.7	0.0	14.7	1.5	0.0	1.5
Dentistry Board	0.0	9.9	9.9	0.0	17.6	17.6	0.0	-7.7	-7.7
Dietetics & Nutrition Practice	0.0	0.9	0.9	0.0	0.9	0.9	0.0	0.0	0.0
Disability Council	7.6	0.2	7.8	8.6	1.5	10.1	-1.0	-1.3	-2.3
Education Department	141.4	229.5	370.9	151.7	236.4	388.1	-10.3	-6.8	-17.2
Emergency Medical Services Bd	8.1	1.0	9.1	9.6	1.1	10.7	-1.5	0.0	-1.6
Employ & Econ Development Dept	106.9	1257.8	1364.7	112.4	1377.6	1489.9	-5.4	-119.8	-125.2
Explore Minnesota Tourism	50.8	0.9	51.8	48.5	0.0	48.5	2.4	0.9	3.3
Gambling Control Board	0.0	30.9	30.9	0.0	29.8	29.8	0.0	1.1	1.1
Health Department	140.4	1317.5	1457.9	153.8	1283.3	1437.0	-13.4	34.2	20.8
Higher Ed Facilities Authority	0.0	2.0	2.0	0.0	2.0	2.0	0.0	0.0	0.0
Housing Finance Agency	0.0	243.0	243.0	0.0	236.1	236.1	0.0	6.9	6.9
Human Rights Dept	32.5	5.6	38.1	35.2	1.4	36.6	-2.7	4.2	1.5
Human Services Dept	3491.1	2803.2	6294.3	3342.0	2802.1	6144.1	149.1	1.1	150.2
Indian Affairs Council	4.0	1.0	5.0	5.1	1.0	6.1	-1.1	0.0	-1.1
Investment Board	0.0	24.5	24.5	0.0	26.0	26.0	0.0	-1.5	-1.5
Iron Range Resources & Rehab	0.0	59.4	59.4	0.0	58.5	58.5	0.0	0.9	0.9
Labor & Industry Dept	13.6	415.3	428.9	12.7	403.5	416.2	0.9	11.8	12.7
Lottery	0.0	150.9	150.9	0.0	153.3	153.3	0.0	-2.3	-2.3
Marriage & Family Therapy	0.0	2.1	2.1	0.0	2.2	2.2	0.0	-0.1	-0.1
Medical Practice Board	0.0	18.6	18.6	0.0	18.5	18.5	0.0	0.1	0.1
Military Affairs Dept	39.9	325.1	365.1	41.0	308.5	349.4	-1.0	16.7	15.6
Mn Management & Budget	141.8	94.4	236.2	142.1	89.7	231.7	-0.3	4.7	4.5
Mn State Academies	70.4	33.1	103.6	55.0	25.9	80.9	15.4	7.2	22.6
MN Zoological Garden	92.3	167.5	259.8	79.5	176.3	255.8	12.8	-8.8	4.1
MN.IT Services	18.1	2096.8	2114.8	16.0	1585.3	1601.4	2.0	511.4	513.4
MNSure	0.0	160.2	160.2	0.0	154.7	154.7	0.0	5.5	5.5
Natural Resources Dept	664.7	2367.8	3032.5	643.9	2535.8	3179.7	20.9	-168.0	-147.1
Nursing Board	0.0	29.6	29.6	0.0	32.5	32.5	0.0	-2.9	-2.9
Nursing Home Admin Board	0.0	8.1	8.1	0.0	8.5	8.5	0.0	-0.4	-0.4
Office of Higher Education	24.6	38.9	63.4	22.1	38.3	60.5	2.4	0.5	2.9
Ombud Mental Health & Dev Dis	17.0	0.0	17.0	16.3	0.0	16.3	0.7	0.0	0.7
Ombudsperson for Families	4.8	0.0	4.8	4.6	0.1	4.7	0.2	-0.1	0.1
Optometry Board	0.0	0.9	0.9	0.0	0.8	0.8	0.0	0.1	0.1
Peace Officers Board (POST)	0.0	9.2	9.2	0.0	10.7	10.7	0.0	-1.5	-1.5
Perpich Ctr for Arts Education	41.5	27.3	68.8	39.1	26.1	65.2	2.4	1.2	3.6
Pharmacy Board	0.0	18.8	18.8	0.0	18.6	18.6	0.0	0.3	0.3
Physical Therapy Board	0.0	10.7	10.7	0.0	2.7	2.7	0.0	8.0	8.0
Pollution Control Agency	18.6	832.9	851.5	18.9	889.9	908.8	-0.3	-56.9	-57.3
Private Detective Board	2.0	0.0	2.0	1.0	0.0	1.0	1.0	0.0	1.0
Psychology Board	0.0	8.7	8.7	0.0	9.1	9.1	0.0	-0.5	-0.5
Public Facilities Authority	0.0	9.2	9.2	0.0	9.0	9.0	0.0	0.2	0.2
Public Safety Dept	389.2	1615.7	2004.9	399.8	1646.8	2046.6	-10.6	-31.1	-41.8
Public Utilities Comm	48.0	0.4	48.5	48.8	0.6	49.4	-0.8	-0.2	-0.9
Racing Commission	0.4	22.4	22.9	0.2	24.4	24.6	0.2	-2.0	-1.7
Revenue Dept	1258.9	71.4	1330.3	1245.2	81.2	1326.4	13.7	-9.9	3.8
Sentencing Guidelines Comm	5.6	0.0	5.6	6.0	0.0	6.0	-0.4	0.0	-0.4
Social Work Board	0.0	10.8	10.8	0.0	9.8	9.8	0.0	1.1	1.1
Tax Court	7.9	0.0	7.9	7.2	0.0	7.2	0.7	0.0	0.7
Transportation Dept	7.4	4854.7	4862.1	8.4	4766.5	4774.9	-1.0	88.3	87.2
Veterans Affairs Dept	95.3	1105.0	1200.3	82.9	1123.5	1206.4	12.3	-18.5	-6.1
Veterinary Medicine Board	0.0	2.0	2.0	0.0	2.0	2.0	0.0	0.0	0.0
Water & Soil Resources Board	36.4	63.9	100.3	33.5	58.2	91.7	2.9	5.7	8.6
Workers Comp Court of Appeals	0.0	12.0	12.0	0.0	11.6	11.6	0.0	0.4	0.4
Total Executive Branch Agencies	11531.9	21830.9	33362.8	11334.5	21560.1	32894.5	197.4	270.9	468.3
Constitutional Offices									
Attorney General	287.1	44.7	331.8	283.1	43.3	326.4	4.0	1.4	5.4
Governors Office	28.0	15.3	43.3	32.7	11.6	44.2	-4.7	3.7	-0.9
Secretary of State	49.6	34.8	84.4	53.0	24.9	77.9	-3.4	10.0	6.5
State Auditor	19.7	72.3	92.0	21.5	71.7	93.3	-1.9	0.6	-1.2
Total- Constitutional Offices	384.4	167.2	551.6	390.3	151.5	541.8	-5.9	15.7	9.8

Fulltime Equivalent Employment by State Agency- First Quarter (July-September) FY 2016-2017

	FY 2017- 1st Quarter			FY 2016- 1st Quarter			Change from FY 2016 1st Quarter		
	General	Other	Total	General	Other fund	Total	General	Other fund	Total
	Fund	fund		Fund			Fund		
Executive Branch									
Judicial Branch									
Court Of Appeals	88.4	0.0	88.4	85.6	0.0	85.6	2.8	0.0	2.8
Guardian ad Litem Board	194.5	0.0	194.5	176.2	0.0	176.2	18.3	0.0	18.3
Judicial Standards Board	2.6	0.0	2.6	2.6	0.0	2.6	0.0	0.0	0.0
Board Of Public Defense	706.3	0.8	707.1	640.5	0.0	640.5	65.8	0.8	66.6
Supreme Court	222.2	76.8	299.0	218.3	75.7	294.0	4.0	1.1	5.0
Trial Courts	2294.2	44.7	2338.9	2273.0	33.3	2306.4	21.2	11.4	32.6
Total- Judicial Branch	3508.3	122.3	3630.6	3396.2	109.0	3505.2	112.1	13.3	125.4
Legislative Branch									
LCC-Leg Coordinating Comm	76.0	9.0	85.0	69.2	8.8	78.0	6.8	0.2	7.0
Legislative Auditor	56.3	0.0	56.3	60.2	0.0	60.2	-3.9	0.0	-3.9
Total- Legislatve Branch	132.3	9.0	141.3	129.4	8.8	138.3	2.9	0.2	3.1
Retirement Agencies									
MN State Retirement System	0.0	116.6	116.6	0.0	112.6	112.6	0.0	4.0	4.0
Public Employees Retire Assoc	0.0	93.2	93.2	0.0	88.3	88.3	0.0	4.9	4.9
Teachers Retirement Assoc	0.0	85.8	85.8	0.0	86.7	86.7	0.0	-0.8	-0.8
Total- Retirement Agencies	0.0	295.7	295.7	0.0	287.6	287.6	0.0	8.1	8.1
State Government Total	15557.0	22425.1	37982.0	15250.4	22117.1	37367.5	306.5	308.0	614.6

[]

Source: SEMA4 Query BIAA_FTE Data by FY & Qtr & Agency