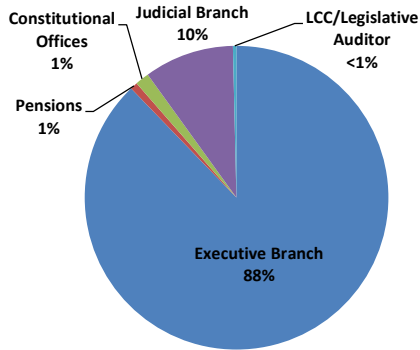


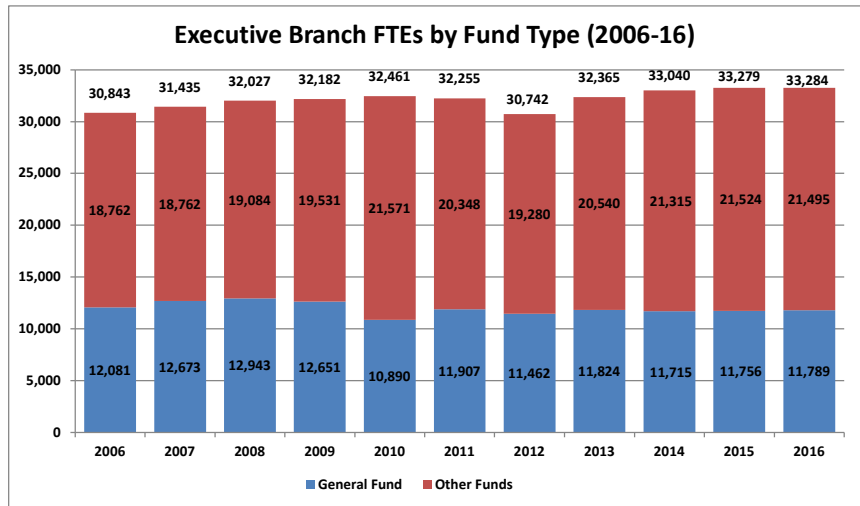
Annual FTE Count by State of MN Branch (FY 2006-16)											
FY	2016	2015	2014	2013	2012	2011	2010	2009	2008	2007	2006
Executive Branch	32,447	32,482	32,259	31,609	31,432	31,480	31,670	31,376	31,220	30,618	30,009
Pensions	294	280	276	267	268	258	257	251	251	246	251
Constitutional Offices	543	517	504	488	493	517	534	554	556	571	584
Judicial Branch	3,534	3,466	3,366	3,283	3,226	3,115	3,022	3,100	3,148	3,046	2,858
LCC/Legislative Auditor	144	141	141	138	140	144	150	148	147	138	136
Total	36,961	36,887	36,546	35,785	35,558	35,514	35,634	35,429	35,322	34,619	33,836

FY 2016 FTEs by Government Branch



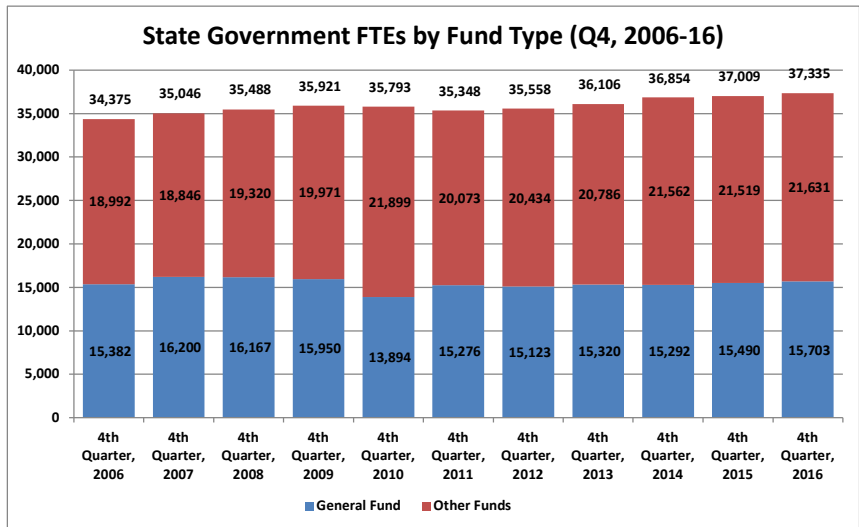
Source: SEMA4 Query BIAA_FTE_HISTORY_FY_AGENCY

Executive Branch FTEs by Fund Type (2006-16)			
Quarter/Year	General Fund	Other Funds	Total
2006	12,081	18,762	30,843
2007	12,673	18,762	31,435
2008	12,943	19,084	32,027
2009	12,651	19,531	32,182
2010	10,890	21,571	32,461
2011	11,907	20,348	32,255
2012	11,462	19,280	30,742
2013	11,824	20,540	32,365
2014	11,715	21,315	33,040
2015	11,756	21,524	33,279
2016	11,789	21,495	33,284



Source: SEMA4 Query BIAA_FTE_HISTORY_FY_AGENCY

State Government FTEs by Fund Type (Q4, 2006-16)			
Quarter/Year	General Fund	Other Funds	Total
4th Quarter, 2006	15,382	18,992	34,375
4th Quarter, 2007	16,200	18,846	35,046
4th Quarter, 2008	16,167	19,320	35,488
4th Quarter, 2009	15,950	19,971	35,921
4th Quarter, 2010	13,894	21,899	35,793
4th Quarter, 2011	15,276	20,073	35,348
4th Quarter, 2012	15,123	20,434	35,558
4th Quarter, 2013	15,320	20,786	36,106
4th Quarter, 2014	15,292	21,562	36,854
4th Quarter, 2015	15,490	21,519	37,009
4th Quarter, 2016	15,703	21,631	37,335



Source: SEMA4 Query BIAA_FTE_HISTORY_FY_AGENCY

Fulltime Equivalent Employment by State Agency- Fourth Quarter (April-June)

Executive Branch	FY 2016- 4th Quarter			FY 2015-4th Quarter			Change from FY 2015- 4th Quarter		
	General Fund	Other Funds	Total	General Fund	Other Funds	Total	General Fund	Other Funds	Total
Accountancy Board	5.7	0.0	5.7	5.7	0.0	5.7	0.0	0.0	0.0
Administration Dept	90.3	369.1	459.4	75.3	364.2	439.4	15.0	5.0	20.0
Administrative Hearings	2.0	65.5	67.4	1.9	61.7	63.6	0.0	3.8	3.8
Agriculture Dept	134.9	304.0	438.8	135.7	301.2	436.9	-0.8	2.8	2.0
Amateur Sports Comm	2.6	0.4	3.0	2.2	0.8	3.0	0.4	-0.4	0.0
Animal Health Board	41.1	4.0	45.1	39.9	5.1	45.0	1.2	-1.1	0.1
Architecture, Engineering Bd	6.8	0.0	6.8	6.3	0.0	6.3	0.5	0.0	0.5
Arts Board	5.2	12.8	18.0	4.3	12.3	16.6	0.9	0.5	1.4
Asian-Pacific Council	3.1	0.0	3.1	4.6	0.0	4.6	-1.5	0.0	-1.5
Barber Examiners Board	3.0	0.0	3.0	2.6	0.0	2.6	0.4	0.0	0.4
Behavioral Hlth &Therapy Bd	0.0	5.0	5.0	0.0	5.0	5.0	0.0	0.0	0.0
Black Minnesotans Council	2.6	0.0	2.6	2.9	0.0	2.9	-0.2	0.0	-0.2
Bureau of Mediation Services	12.1	0.0	12.1	12.8	0.0	12.8	-0.7	0.0	-0.7
Campaign Fin & Public Disc Bd	8.6	0.0	8.6	9.0	0.0	9.0	-0.4	0.0	-0.4
Capitol Area Architect	2.5	0.0	2.5	1.9	0.0	1.9	0.6	0.0	0.6
Chicano/Latino Affairs Council	3.0	0.0	3.0	4.2	0.0	4.2	-1.2	0.0	-1.2
Chiropractors Board	0.0	4.6	4.6	0.0	4.9	4.9	0.0	-0.3	-0.3
Commerce Dept	199.7	137.9	337.6	212.8	131.4	344.2	-13.1	6.4	-6.6
Corrections Dept	4023.5	308.6	4332.1	3910.7	339.7	4250.4	112.8	-31.1	81.8
Cosmetologist Exam Board	15.5	0.0	15.5	15.1	0.0	15.1	0.4	0.0	0.4
Dentistry Board	0.0	10.0	10.0	0.0	17.2	17.2	0.0	-7.2	-7.2
Dietetics & Nutrition Practice	0.0	1.1	1.1	0.0	0.9	0.9	0.0	0.2	0.2
Disability Council	6.4	0.0	6.4	7.2	1.5	8.7	-0.8	-1.5	-2.3
Education Department	146.0	234.0	380.0	179.5	250.3	429.8	-33.5	-16.3	-49.8
Emergency Medical Services Bd	8.3	1.0	9.4	9.1	1.0	10.1	-0.7	0.0	-0.7
Employ & Econ Development Dept	108.9	1323.1	1431.9	116.0	1382.8	1498.7	-7.1	-59.7	-66.8
Explore Minnesota Tourism	47.1	1.0	48.1	44.9	0.7	45.5	2.3	0.3	2.6
Gambling Control Board	0.0	30.9	30.9	0.0	30.8	30.8	0.0	0.1	0.1
Health Department	150.7	1284.5	1435.1	166.1	1367.1	1533.2	-15.4	-82.7	-98.1
Higher Ed Facilities Authority	0.0	2.0	2.0	0.0	2.0	2.0	0.0	0.0	0.0
Housing Finance Agency	0.0	239.1	239.1	0.0	231.8	231.8	0.0	7.2	7.2
Human Rights Dept	32.5	3.8	36.3	38.3	0.0	38.3	-5.8	3.8	-2.0
Human Services Dept	3427.8	2735.3	6163.1	3359.3	3354.7	6714.0	68.4	-619.3	-550.9
Indian Affairs Council	4.4	0.4	4.9	4.8	1.0	5.8	-0.4	-0.6	-1.0
Investment Board	0.0	25.1	25.1	0.0	26.0	26.0	0.0	-0.9	-0.9
Iron Range Resources & Rehab	0.0	66.1	66.1	0.0	67.7	67.7	0.0	-1.6	-1.6
Labor & Industry Dept	14.5	410.5	425.0	13.5	404.3	417.8	1.0	6.2	7.2
Lottery	0.0	148.5	148.5	0.0	153.4	153.4	0.0	-5.0	-5.0
Marriage & Family Therapy	0.0	2.4	2.4	0.0	2.3	2.3	0.0	0.1	0.1
Medical Practice Board	0.0	18.1	18.1	0.0	18.3	18.3	0.0	-0.2	-0.2
Military Affairs Dept	39.3	313.9	353.2	41.1	301.9	342.9	-1.8	12.0	10.2
Mn.IT Services	15.6	1787.8	1803.4	31.4	697.2	728.5	-15.8	1090.7	1074.9
Mn Management & Budget	139.3	93.6	232.9	154.7	95.6	250.3	-15.5	-2.0	-17.5
Mn State Academies	125.8	56.1	181.9	125.7	45.6	171.4	0.1	10.5	10.6
MN Zoological Garden	92.4	130.1	222.5	55.9	165.6	221.5	36.5	-35.5	1.0
MNSure	0.0	169.9	169.9	0.0	152.6	152.6	0.0	17.3	17.3
Natural Resources Dept	763.3	2208.8	2972.2	757.8	2210.9	2968.7	5.5	-2.1	3.4
Nursing Board	0.0	30.6	30.6	0.0	31.4	31.4	0.0	-0.7	-0.7
Nursing Home Admin Board	0.0	8.2	8.2	0.0	7.7	7.7	0.0	0.5	0.5
Office of Higher Education	22.1	41.0	63.1	23.5	37.1	60.6	-1.4	3.8	2.5
Ombud Mental Health & Dev Dis	16.4	0.0	16.4	17.0	0.0	17.0	-0.6	0.0	-0.6
Ombudsperson for Families	4.8	0.0	4.8	4.3	0.4	4.7	0.5	-0.4	0.0
Optometry Board	0.0	0.9	0.9	0.0	0.9	0.9	0.0	0.0	0.0
Peace Officers Board (POST)	0.0	10.5	10.5	0.0	10.2	10.2	0.0	0.3	0.3
Perpich Ctr for Arts Education	58.3	31.7	89.9	66.7	30.9	97.5	-8.4	0.8	-7.6
Pharmacy Board	0.0	17.9	17.9	0.0	19.1	19.1	0.0	-1.2	-1.2
Physical Therapy Board	0.0	10.8	10.8	0.0	2.7	2.7	0.0	8.0	8.0
Podiatric Medicine Board	0.0	0.3	0.3	0.0	0.5	0.5	0.0	-0.2	-0.2
Pollution Control Agency	17.7	824.6	842.3	19.5	926.6	946.1	-1.8	-102.0	-103.8
Private Detective Board	2.0	0.0	2.0	1.0	0.0	1.0	1.0	0.0	1.0
Psychology Board	0.0	8.3	8.3	0.0	9.0	9.0	0.0	-0.7	-0.7
Public Facilities Authority	0.0	9.0	9.0	0.0	8.9	8.9	0.0	0.1	0.1
Public Safety Dept	427.8	1663.6	2091.4	388.1	1652.8	2040.9	39.7	10.8	50.5
Public Utilities Comm	44.8	0.5	45.3	49.4	0.6	50.0	-4.6	-0.1	-4.7
Racing Commission	1.3	13.5	14.7	0.0	14.5	14.5	1.3	-1.0	0.2
Revenue Dept	1304.6	63.4	1368.1	1339.8	84.1	1423.9	-35.2	-20.6	-55.8
Sentencing Guidelines Comm	5.2	0.0	5.2	6.0	0.0	6.0	-0.8	0.0	-0.8
Social Work Board	0.0	11.4	11.4	0.0	9.8	9.8	0.0	1.6	1.6
Tax Court	8.0	0.0	8.0	7.0	0.0	7.0	1.0	0.0	1.0
Transportation Dept	5.8	4644.9	4650.7	5.2	4758.5	4763.7	0.6	-113.6	-113.0
Veterans Affairs Dept	95.0	1071.9	1166.9	83.3	1092.7	1176.0	11.7	-20.8	-9.1
Veterinary Medicine Board	0.0	2.0	2.0	0.0	2.0	2.0	0.0	0.0	0.0
Water & Soil Resources Board	37.4	60.9	98.2	33.4	57.4	90.8	4.0	3.5	7.5
Workers Comp Court of Appeals	0.0	11.5	11.5	0.0	11.4	11.4	0.0	0.1	0.1

Fulltime Equivalent Employment by State Agency- Fourth Quarter (April-June)

	FY 2016- 4th Quarter			FY 2015-4th Quarter			Change from FY 2015- 4th Quarter		
	General Fund	Other Funds	Total	General Fund	Other Funds	Total	General Fund	Other Funds	Total
Executive Branch									
Total- Executive Branch	11,735.8	21,046.3	32,782.1	11,597.2	20,978.5	32,575.7	138.6	67.8	206.4
							1.2%	0.3%	0.6%
Constitutional Offices									
Attorney General	286.3	44.9	331.2	271.1	37.8	308.9	15.2	7.1	22.3
Governors Office	26.0	17.8	43.7	36.8	7.9	44.8	-10.9	9.8	-1.0
Secretary of State	49.6	33.3	83.0	58.6	19.6	78.2	-9.0	13.7	4.8
State Auditor	19.2	70.3	89.5	18.5	69.2	87.7	0.7	1.1	1.8
Total- Constitutional Offices	381.0	166.3	547.4	384.9	134.5	519.5	-3.9	31.8	27.9
							-1.0%	23.6%	5.4%
Judicial Branch									
Court of Appeals	89.3	0.0	89.3	88.6	0.0	88.6	0.7	0.0	0.7
Guardian ad Litem Board	184.0	1.1	185.1	180.1	0.0	180.1	3.9	1.1	5.1
Judicial Standards Board	2.6	0.0	2.6	2.5	0.0	2.5	0.1	0.0	0.1
Public Defense Board	667.3	0.0	667.3	635.3	0.1	635.4	32.0	-0.1	32.0
Supreme Court	222.6	74.9	297.5	213.1	64.9	278.0	9.6	9.9	19.5
Trial Courts	2280.6	36.1	2316.8	2255.3	49.4	2304.7	25.4	-13.3	12.1
Total- Judicial Branch	3,446.5	112.2	3,558.7	3,374.8	114.4	3,489.2	71.7	-2.3	69.4
							2.1%	-2.0%	2.0%
Legislative Branch									
Legislative Auditor	81.4	9.7	91.0	54.3	0.0	54.3	27.1	9.7	36.8
Legislative Coord. Commission	58.7	0.0	58.7	79.1	7.9	87.0	-20.4	-7.9	-28.3
Total- Legislative Branch	140.1	9.7	149.8	133.4	7.9	141.3	6.7	1.8	8.4
							5.0%	22.4%	6.0%
Retirement Agencies									
Minn State Retirement System	0.0	116.9	116.9	0.0	111.8	111.8	0.0	5.1	5.1
Public Employees Retire Assoc	0.0	94.6	94.6	0.0	89.1	89.1	0.0	5.5	5.5
Teachers Retirement Assoc	0.0	85.2	85.2	0.0	82.4	82.4	0.0	2.8	2.8
Total- Retirement Agencies	0.0	296.8	296.8	0.0	283.4	283.4	0.0	13.4	13.4
							0.0%	4.7%	4.7%
Grand Total	15,703.4	21,631.2	37,334.6	15,490.4	21,518.7	37,009.1	213.0	112.5	325.5
							1.4%	0.5%	0.9%

Source: SEMA4 Query BIAA_FTE_HISTORY_FY_AGENCY