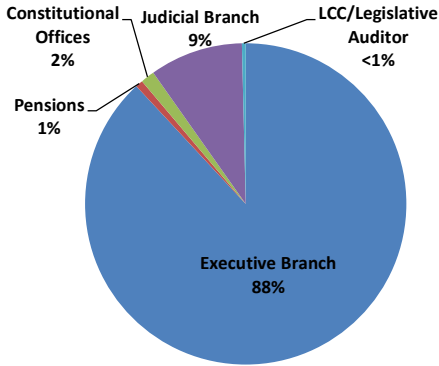


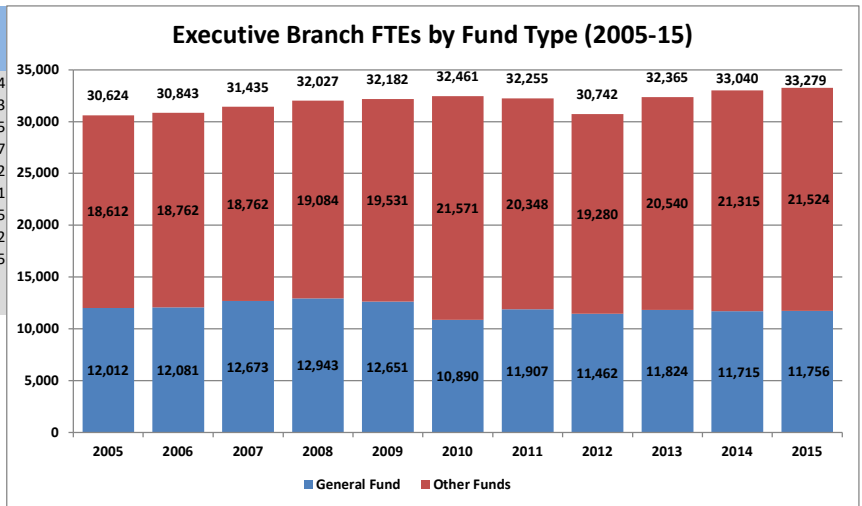
Annual FTE Count by State of MN Branch (FY 2005-15)											
FY	2015	2014	2013	2012	2011	2010	2009	2008	2007	2006	2005
Executive Branch	32,482	32,259	31,609	31,432	31,480	31,670	31,376	31,220	30,618	30,009	29,780
Pensions	280	276	267	268	258	257	251	251	246	251	252
Constitutional Offices	517	504	488	493	517	534	554	556	571	584	592
Judicial Branch	3,466	3,366	3,283	3,226	3,115	3,022	3,100	3,148	3,046	2,858	2,603
LCC/Legislative Auditor	141	141	138	140	144	150	148	147	138	136	144
Total	36,887	36,546	35,785	35,558	35,514	35,634	35,429	35,322	34,619	33,836	33,370

FY 2015 FTEs by Government Branch



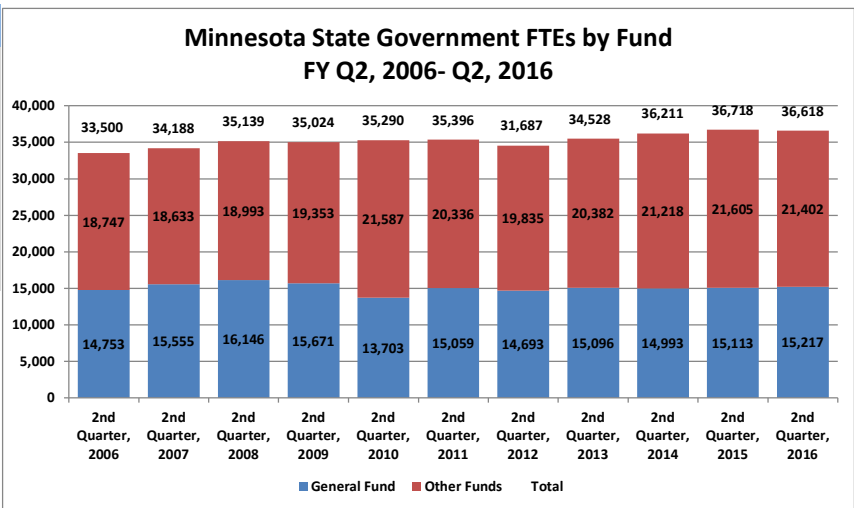
Source: SEMA4 Query BIAA_FTE_HISTORY_FY_AGENCY

Executive Branch FTEs by Fund Type (2005-15)			
Year	General Fund	Other Funds	Total
2005	12,012	18,612	30,624
2006	12,081	18,762	30,843
2007	12,673	18,762	31,435
2008	12,943	19,084	32,027
2009	12,651	19,531	32,182
2010	10,890	21,571	32,461
2011	11,907	20,348	32,255
2012	11,462	19,280	30,742
2013	11,824	20,540	32,365
2014	11,715	21,315	33,040
2015	11,756	21,524	33,279



Source: SEMA4 Query BIAA_FTE_HISTORY_FY_AGENCY

Quarter/Year	General Fund	Other Funds	Total
2nd Quarter, 2006	14,752.7	18,747.3	33,500.1
2nd Quarter, 2007	15,554.7	18,633.3	34,187.9
2nd Quarter, 2008	16,146.3	18,992.8	35,139.1
2nd Quarter, 2009	15,671.3	19,353.2	35,024.5
2nd Quarter, 2010	13,702.6	21,587.2	35,289.8
2nd Quarter, 2011	15,059.4	20,336.4	35,395.8
2nd Quarter, 2012	14,692.7	19,834.8	31,686.7
2nd Quarter, 2013	15,095.6	20,382.2	34,527.5
2nd Quarter, 2014	14,992.7	21,218.1	36,210.8
2nd Quarter, 2015	15,113.2	21,604.5	36,717.7
2nd Quarter, 2016	15,216.9	21,401.5	36,618.4



Source: SEMA4 Query: BIAA_FTE_HISTORY_FY_QTR_AGENCY

Fulltime Equivalent Employment by State Agency- Second Quarter (October-December)

Agency	FY 2016-2nd Quarter			FY 2015-2nd Quarter			Change from FY 2015		
	General	Other	Total	General	Other	Total	General	Other	Total
Accountancy Board	4.6	0.0	4.6	4.8	0.0	4.8	-0.2	0.0	-0.2
Administration Dept	81.6	365.5	447.1	79.2	357.8	437.0	2.4	7.7	10.1
Administrative Hearings	2.0	67.2	69.2	1.9	64.7	66.6	0.0	2.5	2.6
Agriculture Dept	122.1	329.5	451.6	120.7	323.2	443.8	1.5	6.3	7.8
Amateur Sports Comm	2.5	0.5	3.0	2.6	0.6	3.2	-0.1	-0.1	-0.2
Animal Health Board	35.9	14.6	50.5	32.4	4.4	36.8	3.5	10.2	13.6
Architecture, Engineering Bd	5.9	0.0	5.9	5.3	0.0	5.3	0.5	0.0	0.5
Arts Board	4.8	12.1	16.9	4.9	11.6	16.5	-0.1	0.5	0.4
Asian-Pacific Council	3.0	0.0	3.0	4.0	0.0	4.0	-1.0	0.0	-1.0
Barber Examiners Board	2.9	0.0	2.9	3.0	0.0	3.0	-0.1	0.0	-0.1
Bd of Podiatric Medicine	0.0	0.5	0.5	0.0	0.5	0.5	0.0	0.0	0.0
Black Minnesotans Council	2.1	0.0	2.1	2.6	0.7	3.3	-0.4	-0.7	-1.2
Board Behavioral Hlth&Therapy	0.0	5.0	5.0	0.0	5.0	5.0	0.0	0.0	0.0
Bureau of Mediation Services	12.7	0.0	12.7	11.7	0.0	11.7	1.1	0.0	1.1
Campaign Fin & Public Discl Bd	8.6	0.0	8.6	8.6	0.0	8.6	0.0	0.0	0.0
Capitol Area Architect	2.8	0.0	2.8	2.9	0.0	2.9	-0.1	0.0	-0.1
Chicano/Latino Affairs Council	4.0	0.0	4.0	3.5	0.0	3.5	0.4	0.0	0.4
Chiropractors Board	0.0	4.9	4.9	0.0	5.1	5.1	0.0	-0.2	-0.2
Commerce Dept	199.9	133.3	333.2	204.2	127.7	331.9	-4.3	5.5	1.2
Corrections Dept	4033.0	315.2	4348.2	3860.4	348.6	4208.9	172.7	-33.3	139.3
Cosmetologist Exam Board	14.6	0.0	14.6	15.2	0.0	15.2	-0.6	0.0	-0.6
Dentistry Board	0.0	8.9	8.9	0.0	17.8	17.8	0.0	-9.0	-9.0
Dietetics & Nutrition Practice	0.0	0.9	0.9	0.0	0.9	0.9	0.0	0.0	0.0
Disability Council	6.1	1.4	7.5	5.7	2.0	7.7	0.4	-0.6	-0.2
Education Department	148.7	229.2	377.9	157.0	264.5	421.5	-8.3	-35.3	-43.6
Emergency Medical Services Bd	8.7	1.0	9.7	9.1	1.1	10.1	-0.3	-0.1	-0.4
Employ & Econ Development Dept	112.6	1351.3	1463.8	116.6	1392.6	1509.2	-4.0	-41.3	-45.3
Explore Minnesota Tourism	44.6	0.9	45.4	44.9	0.9	45.8	-0.4	0.0	-0.4
Gambling Control Board	0.0	29.5	29.5	0.0	31.5	31.5	0.0	-2.0	-2.0
Health Department	130.0	1267.0	1397.0	153.6	1367.1	1520.6	-23.6	-100.0	-123.6
Higher Ed Facilities Authority	0.0	2.0	2.0	0.0	2.0	2.0	0.0	0.0	0.0
Housing Finance Agency	0.0	235.4	235.4	0.0	226.6	226.6	0.0	8.7	8.7
Human Rights Dept	32.5	5.0	37.4	38.8	1.1	40.0	-6.4	3.8	-2.5
Human Services Dept	3368.1	2679.1	6047.2	3526.0	3408.1	6934.1	-157.9	-729.0	-886.9
Indian Affairs Council	4.6	0.7	5.4	4.1	1.0	5.1	0.5	-0.3	0.2
Investment Board	0.0	25.3	25.3	0.0	21.2	21.2	0.0	4.1	4.1
Iron Range Resources & Rehab	0.0	72.7	72.7	0.0	74.8	74.8	0.0	-2.1	-2.1
Labor & Industry Dept	13.8	401.3	415.0	14.2	406.2	420.4	-0.4	-4.9	-5.3
Lottery	0.0	148.5	148.5	0.0	153.3	153.3	0.0	-4.7	-4.7
Marriage & Family Therapy	0.0	2.4	2.4	0.0	2.3	2.3	0.0	0.1	0.1
Medical Practice Board	0.0	18.7	18.7	0.0	19.1	19.1	0.0	-0.3	-0.3
Military Affairs Dept	40.1	305.2	345.3	39.2	284.1	323.3	0.9	21.1	22.0
Mn Management & Budget	139.5	94.1	233.6	156.0	97.4	253.4	-16.5	-3.3	-19.8
Mn State Academies	128.7	61.3	190.0	136.9	51.6	188.5	-8.2	9.7	1.5
MN Zoological Garden	86.3	116.2	202.5	57.1	150.0	207.1	29.2	-33.8	-4.6
MN.IT Services	16.3	1775.8	1792.1	23.8	701.7	725.5	-7.5	1074.1	1066.7
MNsure	0.0	163.2	163.2	0.0	183.0	183.0	0.0	-19.9	-19.9
Natural Resources Dept	506.7	2124.9	2631.6	501.1	2099.3	2600.5	5.6	25.5	31.1
Nursing Board	0.0	31.6	31.6	0.0	35.3	35.3	0.0	-3.8	-3.8
Nursing Home Admin Board	0.0	7.8	7.8	0.0	6.6	6.6	0.0	1.2	1.2
Office of Higher Education	22.5	37.7	60.2	21.2	37.6	58.7	1.3	0.2	1.4
Ombud Mental Health & Dev Dis	15.9	0.4	16.3	14.7	0.0	14.7	1.2	0.4	1.5
Ombudsperson for Families	4.5	0.0	4.5	4.0	0.5	4.5	0.5	-0.5	0.0
Optometry Board	0.0	0.9	0.9	0.0	0.9	0.9	0.0	0.0	0.0
Peace Officers Board (POST)	0.0	9.7	9.7	0.0	9.5	9.5	0.0	0.2	0.2
Perpich Ctr for Arts Education	55.7	31.9	87.6	61.3	38.6	99.9	-5.6	-6.8	-12.3
Pharmacy Board	0.0	18.9	18.9	0.0	18.0	18.0	0.0	0.9	0.9
Physical Therapy Board	0.0	9.4	9.4	0.0	2.7	2.7	0.0	6.7	6.7
Pollution Control Agency	19.6	833.9	853.4	20.3	920.9	941.2	-0.7	-87.0	-87.8
Private Detective Board	1.6	0.0	1.6	1.5	0.0	1.5	0.1	0.0	0.1
Psychology Board	0.0	8.2	8.2	0.0	8.2	8.2	0.0	0.0	0.0
Public Facilities Authority	0.0	9.0	9.0	0.0	8.6	8.6	0.0	0.4	0.4
Public Safety Dept	411.2	1632.1	2043.3	361.9	1659.6	2021.5	49.3	-27.5	21.8
Public Utilities Comm	49.3	0.4	49.7	49.4	0.6	50.0	-0.1	-0.2	-0.3
Racing Commission	0.4	9.1	9.5	0.0	10.7	10.7	0.4	-1.6	-1.2
Revenue Dept	1218.9	74.4	1293.2	1297.0	78.7	1375.7	-78.1	-4.3	-82.4
Sentencing Guidelines Comm	5.4	0.0	5.4	5.0	0.0	5.0	0.4	0.0	0.4
Social Work Board	0.0	11.4	11.4	0.0	9.3	9.3	0.0	2.1	2.1
Tax Court	8.7	0.0	8.7	8.0	0.0	8.0	0.7	0.0	0.7
Transportation Dept	7.1	4575.9	4583.0	3.7	4795.0	4798.7	3.4	-219.1	-215.8
Veterans Affairs Dept	85.8	1099.5	1185.3	78.1	1098.9	1177.0	7.7	0.6	8.3

Fulltime Equivalent Employment by State Agency- Second Quarter (October-December)

Agency	FY 2016-2nd Quarter			FY 2015-2nd Quarter			Change from FY 2015		
	General	Other	Total	General	Other	Total	General	Other	Total
Veterinary Medicine Board	0.0	2.0	2.0	0.0	2.0	2.0	0.0	0.0	0.0
Water & Soil Resources Board	33.0	58.0	91.0	35.9	59.4	95.2	-2.8	-1.4	-4.2
Workers Comp Court of Appeals	0.0	12.0	12.0	0.0	12.5	12.5	0.0	-0.5	-0.5
Total- Executive Branch	11,269.8	20,844.0	32,113.8	11,314.1	21,025.2	32,339.2	-44.3	-181.2	-225.4
Constitutional Offices									
Attorney General	290.6	43.0	333.7	268.7	38.0	306.7	22.0	5.0	27.0
Governors Office	30.4	12.7	43.0	27.3	12.7	40.1	3.0	-0.1	3.0
Secretary of State	50.7	27.3	78.0	48.4	32.6	81.1	2.3	-5.4	-3.1
State Auditor	21.7	65.8	87.5	20.8	67.1	87.9	0.9	-1.4	-0.4
Total- Constitutional Offices	393.4	148.7	542.1	365.2	150.5	515.7	28.2	-1.8	26.4
Judicial Branch									
Court of Appeals	89.3	0.0	89.3	88.8	0.0	88.8	0.5	0.0	0.5
Judicial Standards Board	2.6	0.0	2.6	2.0	0.0	2.0	0.6	0.0	0.6
Public Defense Board	643.5	0.4	644.0	624.3	0.2	624.5	19.2	0.3	19.5
State Guardian ad Litem Board	177.4	0.0	177.4	174.7	0.0	174.7	2.6	0.0	2.6
Supreme Court	221.6	72.0	293.6	216.3	62.4	278.7	5.3	9.6	14.9
Trial Courts	2289.5	31.3	2320.8	2199.9	81.4	2281.3	89.7	-50.1	39.5
Total- Judicial Branch	3,423.9	103.7	3,527.6	3,306.0	144.0	3,450.0	117.9	-40.3	77.7
Legislative Branch									
Legislative Coord. Commission	73.2	9.7	82.9	72.7	9.4	82.0	0.5	0.3	0.8
Legislative Auditor	56.6	0.0	56.6	55.3	0.0	55.3	1.3	0.0	1.3
Total- Legislative Branch	129.8	9.7	139.5	128.0	9.4	137.3	1.8	0.3	2.1
Retirement Agencies									
Minn State Retirement System	0.0	115.2	115.2	0.0	105.5	105.5	0.0	9.7	9.7
Public Employees Retire Assoc	0.0	93.0	93.0	0.0	89.7	89.7	0.0	3.4	3.4
Teachers Retirement Assoc	0.0	87.2	87.2	0.0	80.4	80.4	0.0	6.8	6.8
Total- Retirement Agencies	-	295.4	295.4	-	275.5	275.5	0.0	19.9	19.9
State Total	15,216.9	21,401.5	36,618.4	15,113.2	21,604.5	36,717.7	103.7	-203.0	-99.3

Source: SEMA4 Query: BIAA_FTE_HISTORY_FY_QTR_AGENCY