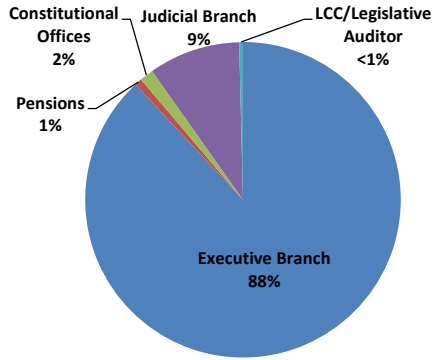


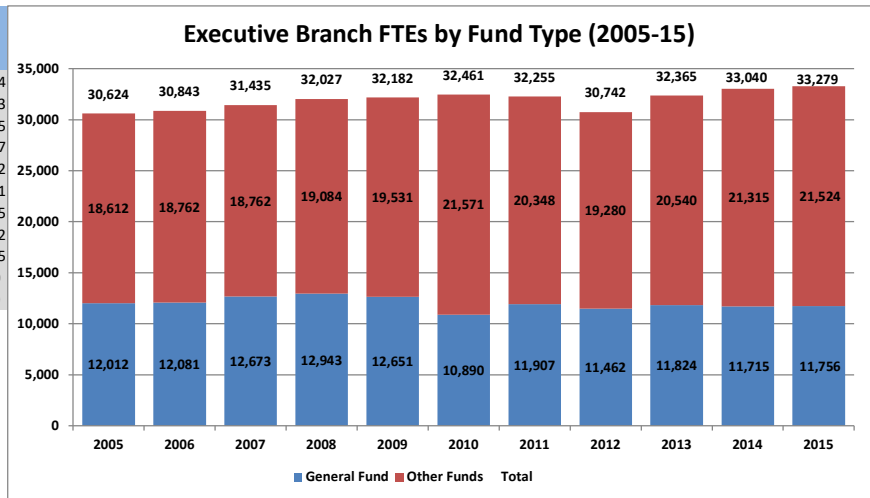
FY	Annual FTE Count by State of MN Branch (FY 2005-15)										
	2015	2014	2013	2012	2011	2010	2009	2008	2007	2006	2005
Executive Branch	32,482	32,259	31,609	31,432	31,480	31,670	31,376	31,220	30,618	30,009	29,780
Pensions	280	276	267	268	258	257	251	251	246	251	252
Constitutional Offices	517	504	488	493	517	534	554	556	571	584	592
Judicial Branch	3,466	3,366	3,283	3,226	3,115	3,022	3,100	3,148	3,046	2,858	2,603
LCC/Legislative Auditor	141	141	138	140	144	150	148	147	138	136	144
Total	36,887	36,546	35,785	35,558	35,514	35,634	35,429	35,322	34,619	33,836	33,370

FY 2015 FTEs by Government Branch



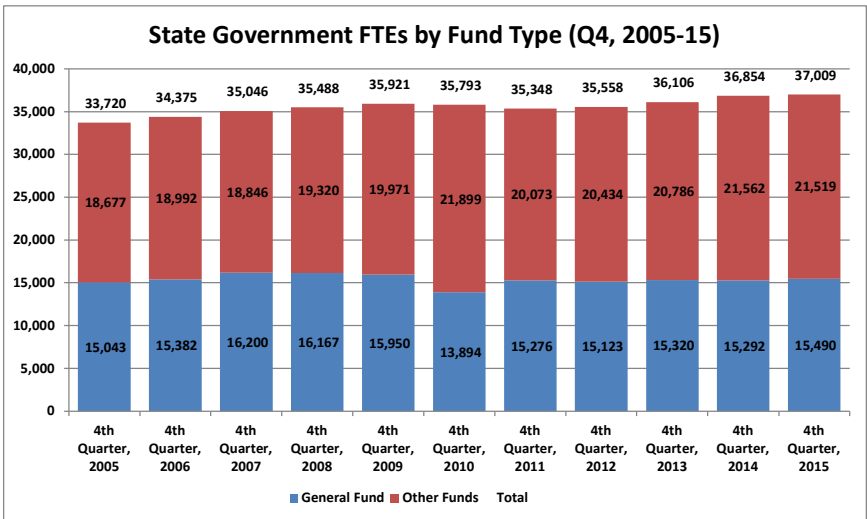
Source: SEMA4 Query BIAA_FTE_HISTORY_FY_AGENCY

Executive Branch FTEs by Fund Type (2005-15)			
Quarter/Year	General Fund	Other Funds	Total
2005	12,012	18,612	30,624
2006	12,081	18,762	30,843
2007	12,673	18,762	31,435
2008	12,943	19,084	32,027
2009	12,651	19,531	32,182
2010	10,890	21,571	32,461
2011	11,907	20,348	32,255
2012	11,462	19,280	30,742
2013	11,824	20,540	32,365
2014	11,715	21,315	33,040
2015	11,756	21,524	33,279



Source: SEMA4 Query BIAA_FTE_HISTORY_FY_AGENCY

State Government FTEs by Fund Type (Q4, 2005-15)			
Quarter/Year	General Fund	Other Funds	Total
4th Quarter, 2005	15,043	18,677	33,720
4th Quarter, 2006	15,382	18,992	34,375
4th Quarter, 2007	16,200	18,846	35,046
4th Quarter, 2008	16,167	19,320	35,488
4th Quarter, 2009	15,950	19,971	35,921
4th Quarter, 2010	13,894	21,899	35,793
4th Quarter, 2011	15,276	20,073	35,348
4th Quarter, 2012	15,123	20,434	35,558
4th Quarter, 2013	15,320	20,786	36,106
4th Quarter, 2014	15,292	21,562	36,854
4th Quarter, 2015	15,490	21,519	37,009



Source: SEMA4 Query BIAA_FTE_HISTORY_FY_AGENCY

Fulltime Equivalent Employment by State Agency- Fourth Quarter (April-June)

Agency	FY 2015- 4th Quarter			FY 2014-4th Quarter			Change from FY 2014- 4th Quarter		
	General	Other	Total	General	Other	Total	General	Other	Total
Accountancy Board	5.7	0.0	5.7	5.1	0.0	5.1	0.7	0.0	0.7
Administration Dept	75.3	364.2	439.4	81.4	350.9	432.3	-6.2	13.3	7.1
Administrative Hearings	1.9	61.7	63.6	2.1	64.6	66.6	-0.1	-2.9	-3.0
Agriculture Dept	135.7	301.2	436.9	123.2	302.0	425.2	12.5	-0.9	11.7
Amateur Sports Comm	2.2	0.8	3.0	2.4	0.6	3.0	-0.2	0.2	0.0
Animal Health Board	39.9	5.1	45.0	33.5	4.8	38.3	6.4	0.3	6.7
Architecture, Engineering Bd	6.3	0.0	6.3	6.6	0.0	6.6	-0.3	0.0	-0.3
Arts Board	4.3	12.3	16.6	4.6	14.3	18.9	-0.3	-2.1	-2.3
Asian-Pacific Council	4.6	0.0	4.6	3.0	0.0	3.0	1.6	0.0	1.6
Barber Examiners Board	2.6	0.0	2.6	2.4	0.0	2.4	0.2	0.0	0.2
Bd of Podiatric Medicine	0.0	0.5	0.5	0.0	0.5	0.5	0.0	0.0	0.0
Black Minnesotans Council	2.9	0.0	2.9	3.4	0.0	3.4	-0.5	0.0	-0.5
Board Behavioral Hlth&Therapy	0.0	5.0	5.0	0.0	4.5	4.5	0.0	0.5	0.5
Bureau of Mediation Services	12.8	0.0	12.8	13.0	0.0	13.0	-0.2	0.0	-0.2
Campaign Fin & Public Discl Bd	9.0	0.0	9.0	7.9	0.0	7.9	1.1	0.0	1.1
Capitol Area Architect	1.9	0.0	1.9	3.0	0.0	3.0	-1.1	0.0	-1.1
Chicano/Latino Affairs Council	4.2	0.0	4.2	4.8	0.0	4.8	-0.6	0.0	-0.6
Chiropractors Board	0.0	4.9	4.9	0.0	4.8	4.8	0.0	0.1	0.1
Commerce Dept	212.8	131.4	344.2	211.6	129.8	341.4	1.1	1.6	2.8
Corrections Dept	3910.7	339.7	4250.4	3844.9	340.2	4185.1	65.8	-0.5	65.2
Cosmetologist Exam Board	15.1	0.0	15.1	16.4	0.0	16.4	-1.3	0.0	-1.3
Dentistry Board	0.0	17.2	17.2	0.0	17.6	17.6	0.0	-0.5	-0.5
Dietetics & Nutrition Practice	0.0	0.9	0.9	0.0	0.9	0.9	0.0	0.0	0.0
Disability Council	7.2	1.5	8.7	6.1	1.1	7.1	1.1	0.4	1.6
Education Department	179.5	250.3	429.8	165.2	260.0	425.3	14.2	-9.7	4.5
Emergency Medical Services Bd	9.1	1.0	10.1	7.7	0.8	8.5	1.4	0.2	1.6
Employ & Econ Development Dept	116.0	1382.8	1498.7	108.7	1386.5	1495.2	7.3	-3.7	3.6
Explore Minnesota Tourism	44.9	0.7	45.5	43.6	0.5	44.1	1.3	0.1	1.4
Gambling Control Board	0.0	30.8	30.8	0.0	31.2	31.2	0.0	-0.4	-0.4
Health Department	166.1	1367.1	1533.2	138.2	1356.4	1494.6	27.9	10.7	38.6
Higher Ed Facilities Authority	0.0	2.0	2.0	0.0	2.0	2.0	0.0	0.0	0.0
Housing Finance Agency	0.0	231.8	231.8	0.0	227.5	227.5	0.0	4.3	4.3
Human Rights Dept	38.3	0.0	38.3	32.6	2.0	34.6	5.7	-2.0	3.7
Human Services Dept	3359.3	3354.7	6714.0	3478.8	3286.9	6765.7	-119.5	67.7	-51.8
Indian Affairs Council	4.8	1.0	5.8	4.7	1.3	6.0	0.1	-0.3	-0.2
Investment Board	0.0	26.0	26.0	0.0	20.1	20.1	0.0	6.0	6.0
Iron Range Resources & Rehab	0.0	67.7	67.7	0.0	65.9	65.9	0.0	1.8	1.8
Labor & Industry Dept	13.5	404.3	417.8	10.0	418.1	428.1	3.4	-13.8	-10.4
Legislative Auditor	54.3	0.0	54.3	56.6	0.0	56.6	-2.4	0.0	-2.4
Legislative Coord. Commission	79.1	7.9	87.0	80.1	8.3	88.4	-1.0	-0.4	-1.3
Lottery	0.0	153.4	153.4	0.0	151.7	151.7	0.0	1.7	1.7
Marriage & Family Therapy	0.0	2.3	2.3	0.0	2.3	2.3	0.0	0.0	0.0
Medical Practice Board	0.0	18.3	18.3	0.0	17.9	17.9	0.0	0.4	0.4
Military Affairs Dept	41.1	301.9	342.9	39.7	266.9	306.6	1.4	35.0	36.3
Minn State Retirement System	0.0	111.8	111.8	0.0	107.0	107.0	0.0	4.8	4.8
Mn.IT Services	31.4	697.2	728.5	14.6	639.9	654.6	16.7	57.3	74.0
Mn Management & Budget	154.7	95.6	250.3	175.9	130.4	306.3	-21.1	-34.8	-55.9
Mn State Academies	125.7	45.6	171.4	134.7	43.1	177.8	-8.9	2.5	-6.4
MN Zoological Garden	55.9	165.6	221.5	0.3	239.7	240.1	55.6	-74.1	-18.6
MNSure	0.0	152.6	152.6	0.0	162.5	162.5	0.0	-10.0	-10.0
Natural Resources Dept	757.8	2210.9	2968.7	653.4	2198.6	2852.0	104.5	12.3	116.7
Nursing Board	0.0	31.4	31.4	0.0	32.9	32.9	0.0	-1.6	-1.6
Nursing Home Admin Board	0.0	7.7	7.7	0.0	6.4	6.4	0.0	1.3	1.3
Office of Higher Education	23.5	37.1	60.6	22.9	39.2	62.1	0.5	-2.0	-1.5
Ombud Mental Health & Dev Dis	17.0	0.0	17.0	16.9	0.0	16.9	0.0	0.0	0.0
Ombudsperson for Families	4.3	0.4	4.7	4.5	0.0	4.5	-0.2	0.4	0.2
Optometry Board	0.0	0.9	0.9	0.0	0.7	0.7	0.0	0.2	0.2
Peace Officers Board (POST)	0.0	10.2	10.2	0.0	10.0	10.0	0.0	0.2	0.2
Perpich Ctr for Arts Education	66.7	30.9	97.5	76.0	27.5	103.5	-9.4	3.4	-6.0
Pharmacy Board	0.0	19.1	19.1	0.0	18.0	18.0	0.0	1.1	1.1
Physical Therapy Board	0.0	2.7	2.7	0.0	2.7	2.7	0.0	0.0	0.0
Pollution Control Agency	19.5	926.6	946.1	20.8	923.7	944.6	-1.4	2.9	1.5
Private Detective Board	1.0	0.0	1.0	1.3	0.0	1.3	-0.3	0.0	-0.3
Psychology Board	0.0	9.0	9.0	0.0	9.8	9.8	0.0	-0.8	-0.8
Public Employees Retire Assoc	0.0	89.1	89.1	0.0	89.5	89.5	0.0	-0.3	-0.3

Fulltime Equivalent Employment by State Agency- Fourth Quarter (April-June)

Agency	FY 2015- 4th Quarter			FY 2014-4th Quarter			Change from FY 2014- 4th Quarter		
	General	Other	Total	General	Other	Total	General	Other	Total
Public Facilities Authority	0.0	8.9	8.9	0.0	8.0	8.0	0.0	0.9	0.9
Public Safety Dept	388.1	1652.8	2040.9	357.9	1677.3	2035.2	30.2	-24.5	5.7
Public Utilities Comm	49.4	0.6	50.0	53.4	0.6	54.0	-4.0	0.0	-4.0
Racing Commission	0.0	14.5	14.5	0.0	13.2	13.2	0.0	1.3	1.3
Revenue Dept	1339.8	84.1	1423.9	1428.7	79.2	1507.9	-88.9	4.9	-84.0
Sentencing Guidelines Comm	6.0	0.0	6.0	4.5	0.0	4.5	1.5	0.0	1.5
Social Work Board	0.0	9.8	9.8	0.0	10.4	10.4	0.0	-0.7	-0.7
Tax Court	7.0	0.0	7.0	8.0	0.0	8.0	-0.9	0.0	-0.9
Teachers Retirement Assoc	0.0	82.4	82.4	0.0	85.0	85.0	0.0	-2.6	-2.6
Transportation Dept	5.2	4758.5	4763.7	3.7	4820.1	4823.8	1.5	-61.6	-60.1
Veterans Affairs Dept	83.3	1092.7	1176.0	79.3	1100.4	1179.7	4.0	-7.7	-3.7
Veterinary Medicine Board	0.0	2.0	2.0	0.0	2.0	2.0	0.0	0.0	0.0
Water & Soil Resources Board	33.4	57.4	90.8	35.2	60.7	96.0	-1.8	-3.4	-5.2
Workers Comp Court of Appeals	0.0	11.4	11.4	0.0	12.6	12.6	0.0	-1.2	-1.2
Total- State Agencies	11,730.6	21,269.8	33,000.4	11,633.6	21,294.1	32,927.7	97.0	-24.3	72.7
							0.8%	-0.1%	0.2%
Constitutional Offices									
Attorney General	271.1	37.8	308.9	268.3	35.9	304.1	2.8	1.9	4.7
Governors Office	36.8	7.9	44.8	29.3	10.6	40.0	7.5	-2.7	4.8
Secretary of State	58.6	19.6	78.2	48.5	28.7	77.2	10.1	-9.1	1.0
State Auditor	18.5	69.2	87.7	19.4	75.5	94.9	-0.9	-6.3	-7.2
Total- Constitutional Offices	384.9	134.5	519.5	365.5	150.7	516.2	19.4	-16.1	3.3
							5.3%	-10.7%	0.6%
Judicial Branch									
Court of Appeals	88.6	0.0	88.6	89.3	0.0	89.3	-0.7	0.0	-0.7
Guardian ad Litem Board	180.1	0.0	180.1	172.9	0.0	172.9	7.2	0.0	7.2
Judicial Standards Board	2.5	0.0	2.5	2.0	0.0	2.0	0.5	0.0	0.5
Public Defense Board	635.3	0.1	635.4	615.2	0.5	615.7	20.1	-0.4	19.7
Supreme Court	213.1	64.9	278.0	221.2	59.5	280.7	-8.2	5.5	-2.7
Trial Courts	2255.3	49.4	2304.7	2192.5	56.9	2249.4	62.8	-7.5	55.2
Total- Judicial Branch	3,374.8	114.4	3,489.2	3,293.1	116.9	3,410.0	81.7	-2.4	79.2
							2.5%	-2.1%	2.3%
Grand Total	15,490.4	21,518.7	37,009.1	15,292.2	21,561.7	36,853.9	198.2	-42.9	155.2
							1.3%	-0.2%	0.4%

Source: SEMA4 Query BIAA_FTE_HISTORY_FY_AGENCY