

GREATER MINNESOTA REGIONAL PARKS & TRAILS COMMISSION

# POLICY & PLANNING REPORT FOR 2025



Sunrise over the Big Fork River at Big Falls Campground and Horse Camp



Winter biking at Isanti County Springvale Park



CLEAN  
WATER  
LAND &  
LEGACY  
AMENDMENT

# LETTER FROM THE CHAIR

---

Friends,

As I reflect on 2025, I'm mindful once again of the importance of spending time in nature and the outdoors as a way to support our mental and physical health and wellbeing. Studies cite the importance of kids being outside in nature and enjoying activities as simple as playing in the dirt and running through fields. In the last two decades, children have moved indoors and now spend as few as 30 minutes in unstructured outdoor play and as much as seven hours (!) daily in front of electronic screens.<sup>1</sup>

Here in Minnesota, we are fortunate. No matter where you live, beautiful natural spaces are just a short distance away. However, we must acknowledge that these spaces are not equally welcoming or accessible to everyone. For those with limited mobility or other disabilities, accessing a park or trail can be a significant challenge, though by all rights, it shouldn't be.

This year marks the 35th anniversary of the Americans with Disabilities Act, signed into law in July 1990 by President George H.W. Bush. The ADA is a landmark civil rights advancement, ensuring that people with disabilities have the same opportunities as everyone else. As the Department of Justice states, it "prohibits discrimination against people with disabilities in everyday activities."

Yet physical, logistical, and perceptual barriers remain, preventing some from fully enjoying the natural spaces many of us take for granted.

In 2025, the Greater Minnesota Regional Parks and Trails Commission hired an access specialist to enhance inclusivity and accessibility in parks and trails. Well-attended quarterly forums – covering playground access, facilities, and Q&A sessions – are open to anyone interested in improving access, not only those connected to the 84 designated parks and trails in the Greater Minnesota System.

Everyone should have access to outdoor experiences, whether it involves engaging in a strenuous hike or simply enjoying nature from a park bench. We remain committed to ensuring that opportunities to enjoy the outdoors are available to all.



**Rick Anderson – Chair**



---

<sup>1</sup> National Wildlife Foundation

# TABLE OF CONTENTS

District Commissioners	3-4
Funding Recommendation Selection Process	5
FY27 Legacy Funding Recommendations	6
Greater Minnesota Grant Funding Opportunities	7
GIS Mapping Initiative Update	8
What Clean Water, Land and Legacy Funding Creates	9-10
Advancing Accessibility and Inclusion	11
Track Wheelchair Grant	12
Milestones	13-14
Minnesota Parks Artists in Residence (MNPiR)	15-17
System Map	18-20
<b>District 1</b>	<b>21-22</b>
<b>District 2</b>	<b>23-24</b>
<b>District 3</b>	<b>25-26</b>
<b>District 4</b>	<b>27-28</b>
<b>District 5</b>	<b>29-30</b>
<b>District 6</b>	<b>31-32</b>

**Executive Director – Renee Mattson, Duluth**  
**System Plan Coordinator – Joe Czapiewski, Bemidji**  
**Special Projects Coordinator – Karen Umphress, Jordan**  
**Administrative Assistant – Tess Dandrea, Hermantown**



Commissioners at work

# DISTRICT COMMISSIONERS

The 13 Greater Minnesota Commissioners, appointed by the Governor, represent a range of work and life experiences. All share an interest in the outdoors, nature, and enhancing parks and trails in Greater Minnesota for the enjoyment of residents and visitors.

To help the public learn about their backgrounds and perspectives, each Commissioner was asked to answer one of seven questions. The questions and corresponding answers are below.

## Questions:

1. What inspired you to get involved as a Commissioner for Greater Minnesota Regional Parks and Trails Commission?
2. Do you have a favorite Minnesota park or trail — and what makes it special to you?
3. How do you enjoy the outdoors personally — hiking, biking, birdwatching, paddling, something else?
4. The Legacy amendment has enabled Greater Minnesota to build a system of designated parks and trails that can rival the Metropolitan and the State systems. Do you have a funding project that has particularly touched you, and why?
5. In your view, how do parks and trails benefit local communities beyond just recreation?
6. What are you most excited to help achieve in your role on the GMRPTC?
7. If you could encourage someone who doesn't visit parks and trails often to try one thing, what would it be and why?

## DISTRICT 1



Executive Committee Vice Chair

**Tim Engrav** | *Britt*

(6) The GMRPTC is a unique, nimble, and highly effective organization that has quickly developed a framework and process for both designating regionally significant parks and trails as well as making recommendations to the State Legislature on Parks and Trails Legacy funded projects. The Commission as an organization is unique, and you likely won't find anything like it in other states. I am both honored and excited to continue to help champion this work on behalf of our implementing agencies, the counties, cities, and tribal nations in greater Minnesota. Through initiatives both started by the Commission and several cities and counties, we are improving outdoor experiences as well as accessibility and access to parks and trails with a momentum and energy that hasn't been seen in many decades.



**Beth Pierce** | *Hibbing*

(1) I was inspired to become involved as a commissioner because I believe in the transformative power of parks and trails, especially in rural areas. Parks and trails contribute to the overall health and well-being of communities, serve as gathering places for events and activities that build relationships and connectedness, and provide opportunities for people of all ages to learn and grow. For many rural towns, parks or trails are the features that attract new residents, investment, entrepreneurs and visitors.



**Reid Huttunen** | *East Grand Forks*

(2) My favorite Greater Minnesota Regional Park or Trail is an easy choice. It's right in my back yard in East Grand Forks, the Red Lake River Corridor! The access to nature through the Red Lake River water trail and its supporting amenities like kayak/canoe access or paved multi-use trails is readily accessible on a daily basis and can be used for a quick one-hour hike or paddle, or you can make it a full day on the river. Having parks and trails offerings like this, so near our home, makes it so easy for all people to enjoy!

## DISTRICT 2



**Rob Mason** | *East Gull Lake*

(5) Parks and trails offer great amenities for resort guests, local residents and other visitors. The real estate industry loves the additional value parks and trails provide.

### DISTRICT 3



Executive Committee At-Large

**Peg Furshong** | *Sacred Heart*

**(3)** I love walking through the tallgrass prairie and photographing and identifying various plants, insects, animals, birds etc. I also enjoy walking in our rivers and looking for freshwater mussels. I love the colors, textures, smells and sounds of natural places.

### DISTRICT 4



Executive Committee Secretary/Treasurer

**Barry Wendorf** | *Cambridge*

**(4)** An easy answer for me is Springvale County Park in Isanti County where I have the opportunity to ride mountain bike trails, play disc golf, and hike on a weekly basis. Without the Legacy amendment I would have to drive a ways in order to enjoy these opportunities, so I am very grateful.

### DISTRICT 5



Executive Committee Chair

**Rick Anderson** | *Balaton*

**(6)** The thing I get most excited about is that the process we have developed from nothing is pretty amazing. We have also been able to pull off some projects that our partners may not have been able to. Another great thing is that the commission is recognized as a pretty amazing organization. I will be most proud of all the great things that we have done for the citizens of greater Minnesota!

### DISTRICT 6



**Tom Stoa** | *Winona*

**(3)** In spring and summer, I enjoy cycling, kayaking and trout fishing. In the fall, it's hiking in the crisp colorful woods. In the winter, I enjoy downhill and cross-country skiing as well as snowshoeing. There is always something!



**Jen Foley** | *St. Cloud*

**(3)** In the past few years, mobility issues have limited my abilities to get out and hike or canoe as much as I would like or had done earlier in my life. As a result, I have taken up birding and animal watching as a newer hobby. We live a few blocks from the Mississippi River in St. Cloud and have many different feeders in our backyard that attract a large variety of birds and critters. I love my squirrels, ducks and watching the blue



**Brad Bonk** | *Alexandria*

**(3)** I am an outdoor junkie, so all of the above. My wife and three young children spend a lot of our free time recreating outdoors, and our list of activities is pretty long. We love the change in seasons and the change in activities we have in Minnesota.



**Jonathan Wolf** | *St. Cloud*

**(2)** While it is hard to pick just one, I think I'd have to go with the Lake Wobegon Trail. It is a lovely trail featuring idyllic rural scenery as well as several fun little towns to explore. But what really makes it stand out to me are the friends I've spent time with on it while running the Lake Wobegon Trail Marathon.



**Tom Schmitz** | *New Ulm*

**(7)** Simply walking or bicycling trails; because it gets you outdoors, is healthy, and helps you appreciate nature.



**Karlin Ziegler** | *Hayfield*

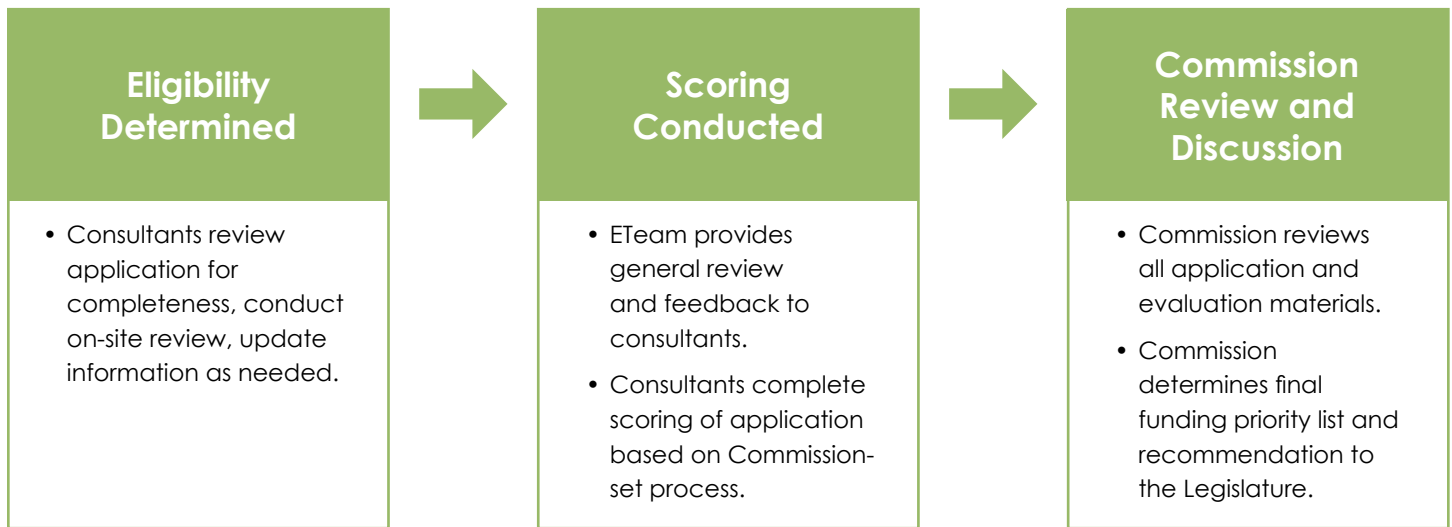
**(1)** I wanted to be involved in parks and trails at a statewide level, to learn best practices from other agencies. To be part of helping other agencies make improvements and reach their goals by providing amazing amenities around the state is truly an honor and so much fun to see.

### AT-LARGE

jays dive-bomb the peanut-feeder. Our yard is alive with birds and animals every morning and evening and it is a lot of fun to watch, especially when something new arrives.

I also like to get to the many parks in the St. Cloud area and beyond to people-watch, to see how others enjoy our parks.

# FUNDING RECOMMENDATION SELECTION PROCESS



## SCORING CRITERIA

Park Criteria	Trail Criteria	Connecting People to the Outdoors Criteria
Completes a regionally substantial component in the applicant's Master Plan.	Completes a regionally substantial component in the applicant's Master Plan.	Supports the programming and marketing components in the applicant's Master Plan.
Fills a gap and provides an outdoor recreation benefit of regional significance for that district.	Fills a gap and provides connectivity to users. Could also provide connectivity to a larger trail system to create a recreation benefit of regional significance.	Fills a gap and provides a proven outdoor recreation benefit of regional significance for that district.
Is significantly linked to one or more of the four pillars in the 25-Year Legacy Plan.	Is significantly linked to one or more of the four pillars in the 25-Year Legacy Plan.	Is significantly linked to the Connecting People to the Outdoors pillar objectives as well as additional pillars in the 25-Year Legacy Plan.
Project is a critical acquisition or critical rehabilitation and repair of a park facility or feature.	Project is a critical acquisition or critical rehabilitation and repair of a trail, trailhead facility or trail feature.	Provides significant and locally sustainable recruitment, retention or reactivation of outdoor recreation participation.
Provides access to quality natural and cultural resources within the district.	Provides access to quality natural and cultural resources within the district.	Provides access for underserved populations to quality natural and cultural resources within the district.
Has a financial match. A higher match will receive greater point awards.	Has a financial match. A higher match will receive greater point awards.	Has a financial match. A higher match will receive greater point awards.
Includes a fully detailed budget, implementation, and sustainability plan.	Includes a fully detailed budget, implementation, and sustainability plan.	Includes a fully detailed budget, implementation, and sustainability plan.

# FY27 LEGACY FUNDING RECOMMENDATIONS

START DATE - JULY 1, 2026 | END DATE - JUNE 30, 2029

PROJECT	AWARD	DIST.
<b>Duluth Traverse</b> Trailhead infrastructure improvements and construction of a beginner and intermediate bike skills development area and tot pump track at the far Eastern Traverse in Lester Park. The trailhead improvements include a safer, reconfigured parking lot, wayfinding and signage and a dedicated trailhead plaza with appropriate site amenities.	\$1,318,978	1
<b>Grand Marais Recreation Area</b> Construction of a new, family-friendly bathhouse, replacing a 50-year-old structure with an accessible, energy-efficient building in a more strategic location. New gateway entrance signage and wayfinding signage.	\$1,066,750	1
<b>Mille Lacs County Soo Line Trail</b> Improvements to the 2.2 mile Segment 3 to include reconstruction of a trail crossing, install trail and roadway crossing signage and improve the 20-foot-wide gravel trail surface.	\$600,000	1
<b>Roseau River Water Trail</b> First phase of projects for the water trail includes an accessible trail and viewing/fishing platform at the Roseau Rapids Park as well as paving roads at the Roseau City Park campground and boat launch access road. The project will also upgrade six campsites and add kayak/canoe racks, picnic tables/shelters and interpretive signage in the campground.	\$1,112,254	2
<b>Detroit Mountain Recreation Area</b> Acquisition of 32.6 acres of adjacent land for site of future campground development.	\$821,700	3
<b>Lac qui Parle County Park</b> The grant is for supplemental funds to construct a pedestrian bridge across the Lac qui Parle River which separates the park.	\$368,202	3
<b>Otter Tail County Phelps Mill County Park</b> Rebuild the historic parking lot for better flow and more parking spaces. Construction of 4,000 feet of accessible paved trails connecting two boardwalks and the parking lot, construction of an amphitheater and seating area as well as building a new nature scape playground area. The project will also repurpose the existing playground equipment to the campsite area to provide amenities for campers.	\$713,747	3
<b>Willmar Robbins Island Regional Park</b> Phase II of the unique two-sided amphitheater project at Robbins Island Regional Park. This phase completes the project with the construction of the walls and roof, rest rooms, storage and ADA accessible spectator areas. Improves existing trails and creates rain gardens to reduce mud and increase pollinator activity.	\$1,327,945	3
<b>Chisago County Swedish Immigrant Trail</b> The grant will provide for the complete reconstruction of Segment E of the trail. The reconstruction will allow for a smoother transition to the newer existing trail corridor segments and provide a safer route access.	\$477,441	4
<b>Lincoln County Hole in the Mountain Park</b> Funding to expand the East Campground at the park. The project will include the installation of electric, water and sewer service to accommodate 16 campsites. Each campsite will include a pad, picnic table, fire pit and power pedestal. The project also includes the installation of a new restroom and shower facility to expand access and outdoor recreational opportunities on the east side of the park.	\$901,890	5
<b>Olmstead County Oxbow Park and Zollman Zoo</b> The project involves the critical replacement of two bridges, each over fifty years old, which have experienced substantial deterioration as a result of decades of seasonal flooding. The new bridges will feature accessible design improvements, unlike the existing structures, and will facilitate enhanced access to the park's interior for emergency response teams. The new design is flood resilient and expected to minimize debris accumulation during high water events, helping to prevent erosion, reduce flow diversion and eliminate potential hazards for river-based recreation.	\$2,040,000	6
<b>Rochester Gamehaven Park</b> Construction of a mountain bike skills area and jump park, extension of power service for snowmaking equipment and an automated towing system for the snow tubing area.	\$577,938	6
<b>TOTAL</b>	<b>\$11,326,845</b>	

# GREATER MINNESOTA GRANT FUNDING OPPORTUNITIES

The Commission has developed a process of continual review and evaluation to ensure that the granting opportunities offered **meet** the needs of the designated facilities eligible to apply for a Legacy Parks and Trails grant.

**The current funding options available to apply for are these:**

## Legacy Development and Acquisition Grants

The development and acquisition grant is the standard grant administered by the GMRPTC since its inception. This grant supports major infrastructure projects for parks, building development, trail construction or reconstruction, playgrounds and nature scape play areas, land or easement acquisition, campground development, and significant building rehabilitation. The grant addresses most facility and trail needs in Greater Minnesota.

## Connect People and the Outdoors (CPO) Grants

The CPO grant is designed to foster new, innovative outdoor recreation programs, recreation equipment, or projects that improve access to underserved communities. Examples include developing novel approaches to programming to engage youth and young adults, equipment for loan that encourages people to learn about new activities, and outreach to communities that are not regular park users.

## Environmental/Archeological Grants

This grant category is designated for environmental or archaeological review prior to submitting a request for a Legacy Development and Acquisition Grant. The grant fund becomes available each year on July 1 and remains open until all funds are allocated. Applications are accepted on a rolling basis, with grants reviewed and awarded as they are received. Awards have a maximum limit of \$50,000, and recipients are required to provide a minimum 20% match. **\$238,471 available for Fiscal Year 2026.**

## Access and Inclusion Grants

This grant aims to increase accessibility and inclusivity for users of varying abilities and ages. Inclusion ensures equitable access to recreational opportunities and resources for individuals who may otherwise face exclusion or marginalization, such as those with physical or intellectual disabilities. The access grant supports the removal of physical barriers to facilities by implementing universal access design and addressing obstacles in existing buildings. Grant funds are available starting July 1 and remain accessible until all funds are allocated. Matching funds are not required but are encouraged. **\$238,471 available for Fiscal Year 2026.**



Chisholm Redhead Mountain Bike Park



Isanti County Irving and John Anderson Park

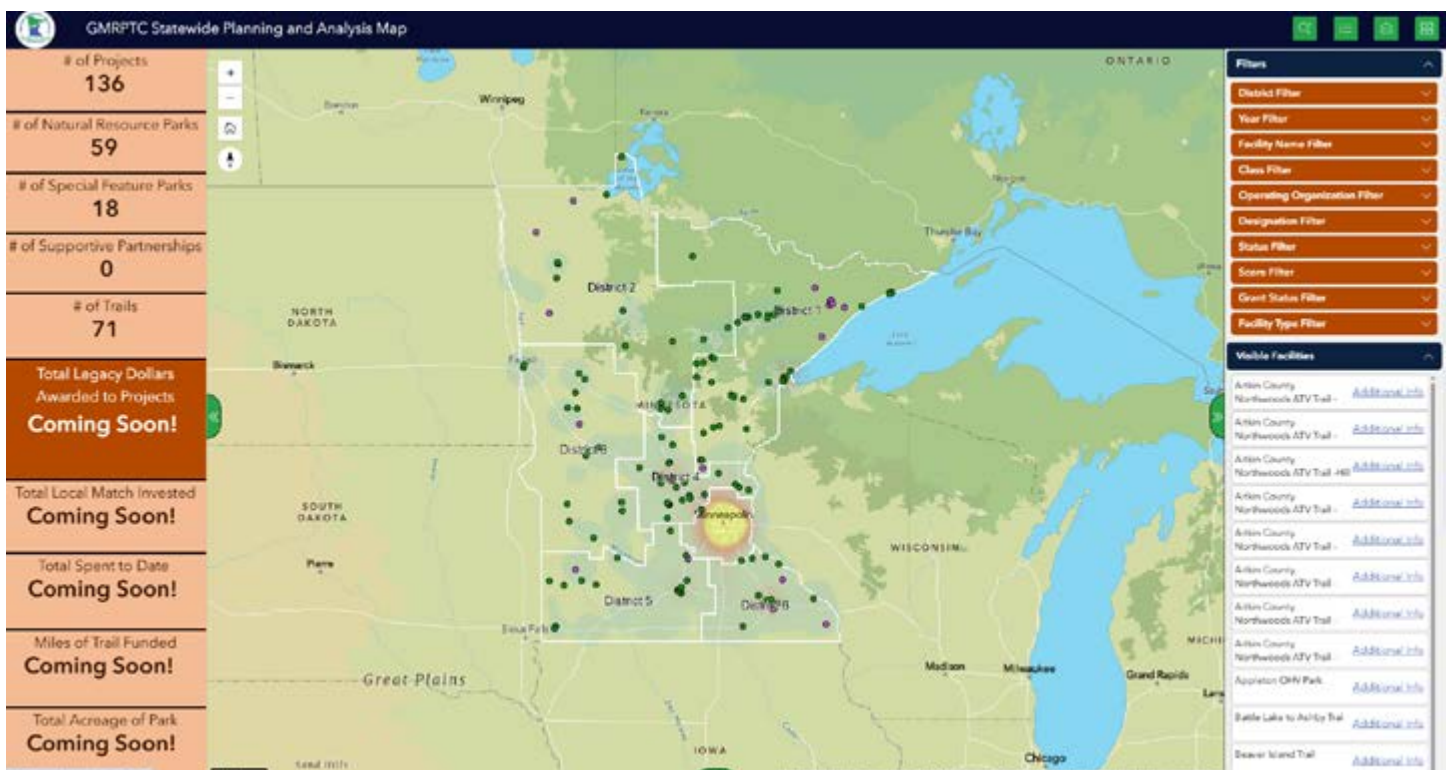
# 2025 – 2026 UPDATES TO THE COMMISSION DATA MANAGEMENT SYSTEM

Over the past seven years, working with our partners at the Full Circle Group and Widseth, the Data Management System (DMS) has been developed with an explicit goal of providing applicants seeking designation and grant funding with a user-friendly portal. The system has undergone continuous enhancements based on user feedback, allowing for improved analytics that assist consultants and Commissioners in reviewing data, understanding system development, and identifying gaps in service.

The newest update is an interactive, data-driven visualization platform designed to provide a comprehensive overview of Greater Minnesota's regional parks and trails system. Built on the ArcGIS framework, and located on the Commission website, ([www.gmrptcommission.org](http://www.gmrptcommission.org)) the dashboard consolidates spatial, operational, and performance data into a single, intuitive interface. The interface empowers stakeholders, policymakers, and the public to explore, analyze and act on real-time insights.

## Features Include:

- **Interactive Map Interface** - a display of the statewide network of designated regional parks and trails with detailed location data, site descriptions and access points.
- **Funding and Project Tracking** – monitors grant distributions, project progress and outcomes, ensuring transparency and accountability.
- **Regional Insights** – enables filtering by geographic region, county, or facility type to assess equity, accessibility and regional impact.
- **Public Access and Engagement** – provides stakeholders and citizens with an accessible view of the Commission's ongoing work and the broader impact of the Legacy Amendment funds.



# THE IMPACT OF CLEAN WATER, LAND AND LEGACY FUNDING IN GREATER MINNESOTA

In 2008, Minnesota voters passed the Clean Water, Land and Legacy Amendment to the Minnesota Constitution. This bold choice ensured that for the next 25 years we made a conscious decision to protect water and restore wetlands, prairies and forests; to protect fish, game, and wildlife habitats; to preserve arts and cultural heritage; and to support and enhance parks and trails. The amendment created four funding categories: Outdoor Heritage, Clean Water, Arts & Cultural Heritage, and Parks and Trails. Of those funds, the Parks and Trails Fund receives 14.25% and of that, Greater Minnesota receives 20% while the Minnesota DNR and Metropolitan Council Regional Parks receive 40% each.

The Legacy dollars have had a significant and beneficial impact on facilities across the 80 counties of Greater Minnesota. Investments have led to the construction of new parks and trails, rehabilitation and repair of existing areas and facilities, and the development of programs to connect and welcome people to the outdoors. These improvements have provided lasting benefits for Minnesota residents and visitors alike.



Isanti County Irving and John Anderson Park



Ice fishing at Olmsted County Chester Woods Park



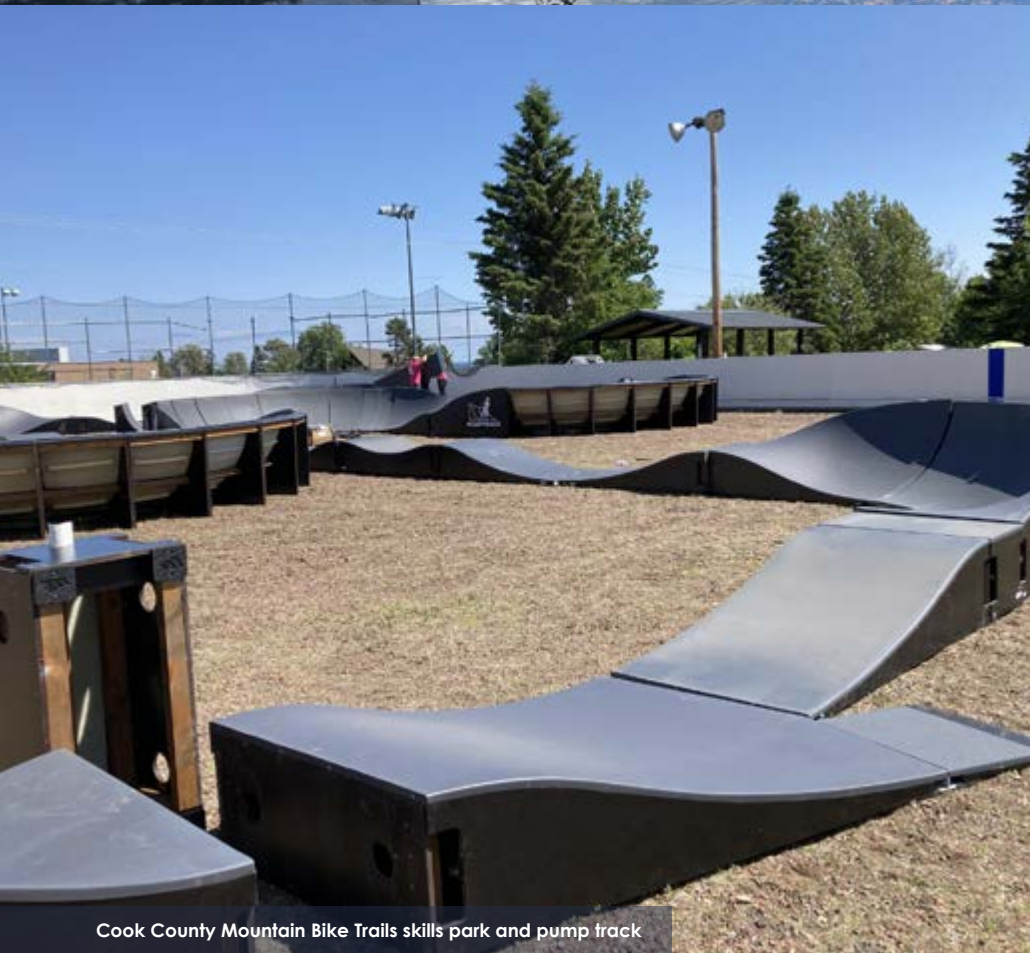
ADA access at He Mni Can Park Red Wing



Chisago County Swedish Immigrant Trail



Hubbard County Deep Lake Park



Cook County Mountain Bike Trails skills park and pump track



Isanti County Irving and John Anderson Park



Winter Fun at Wright County Robert Ney Park



Kids at Wright County Robert Ney Park

# ADVANCING ACCESSIBILITY AND INCLUSION

Accessibility and inclusion in parks and on trails are more than a legal requirement—it is a reflection of a community's commitment to access, inclusion and equity. The Greater Minnesota Regional Parks and Trails Commission recognizes that the ability to access and enjoy natural and recreational spaces should be universal, regardless of age, ability, or background. To further this mission, the Commission has engaged the expertise of Bill Botten, a recently retired accessibility specialist at the US Access Board where he was part of a team that developed the new combined guidelines for the Americans with Disabilities Act and the Architectural Barriers Act. Bill specializes in access issues related to recreation facilities and outdoor developed areas.



The Commission expects applicants for grant funding to meet ADA requirements but also asks that applicants exceed those requirements. To help understand how to go beyond the basics, in 2025 the Commission hired Bill to lead accessibility forums on a variety of topics and provide consultation for regional parks and trails. His expertise helps managers understand not only what needs to be done to meet legal standards, but also how to create spaces that are truly welcoming and usable for people with disabilities. Recommendations may cover accessible pathways, parking, signage, restrooms, playgrounds, picnic areas, and trail surfaces.

Each of the four quarterly forums was open to anyone interested in making their park more accessible, and strong attendance underscored the value of this information. The Commission plans to continue working with Bill and benefit from his expertise in 2026.

## Our Commitment to Inclusion:

- 1. Universal Design:** We promote universal design principles in all projects to ensure parks and trails are navigable and enjoyable for people of all abilities. This includes well-maintained pathways, accessible restrooms, and appropriate signage.
- 2. Inclusive Experiences:** We encourage our facilities to provide diverse recreational opportunities that accommodate the needs of everyone, from adaptive sports to sensory-friendly activities, ensuring everyone can connect with nature in a meaningful way.
- 3. Community Engagement:** We encourage active conversations with the community, including individuals of all abilities and advocacy groups, to gather feedback to continuously improve the accessibility of facilities and programs.
- 4. Education and Training:** Our designated facilities educate their staff and volunteers about the importance of inclusion and provide them with the tools and training needed to support all visitors effectively.
- 5. Connection to Nature and the Outdoors:** We believe facilitating opportunities to connect people of all abilities with nature fosters an appreciation for the outdoors and the environment.
- 6. Continuous Improvement: Inclusion is an ongoing process.** We encourage facilities to regularly assess and upgrade their facilities and programs to meet evolving standards and the diverse needs of their community. We are committed to staying informed about best practices and innovative solutions to ensure everyone can participate.

# TRACK WHEELCHAIR GRANTS

*Jenna Udenberg recently experienced the freedom of exploring Hartley Nature Center in Duluth thanks to a specialized Trackchair, an all-terrain wheelchair made possible by a grant from the Greater Minnesota Regional Parks and Trails Commission. This innovative device is part of an ongoing effort to enhance accessibility, allowing individuals of all abilities to enjoy the beauty and adventures the park has to offer.*

A bright sunshine day in the Northland was full of warmth, new adventure, and friendships - both brand new and long-trusted. It was a day to explore Hartley Nature Center, a place until now that was just a magical place shared by others, stories of the great pines and trails, but out of reach for me as a manual wheelchair user. As a college student, I heard of this mysterious place and all of its wonder. As an educator and regional resident, I heard friends and co-workers tell of the amazing programming and events they attended at Hartley.

On this bright sun-filled day, I was being welcomed into the stories and wonder-filled trails all because of this amazing device called a Trackchair. I met wonderful Hartley and City of Duluth Parks and Recreation staff who were great at asking curious questions and went over the needed safety tutorial of the chair and the park. I had trusted friends help me transfer from my manual wheelchair into this taller and cumbersome rubberized "tank". Once we got the safety harnesses secured, it was time to venture where I had not gone before!

We traversed the Tunnel Trail out into the Pine Loop, discussing the accessibility that is increased with this amazing device as well as other mobility device possibilities that visitors might bring with them. Being on the grass-covered foot trails was so fun as we felt the sun's warmth on our skin with the gentle breeze that Duluth so often offers. Driving around and over small boulders in the path as well as the different foot bridges was definitely a favorite. I was also able to literally hug a tree on one foot bridge! The short quiet time we had in the tall pines was beyond words. The smells of childhood from the pines to the sounds of the woodland critters busy doing life brought joy to the depths where I didn't know still had memories.

Since I had staff with me, we were testing out some of the functionality of the Trackchair in this particular park. This is my favorite connection time as it is SO important to involve the disability community and culture in decision making processes continually. Offering suggestions for more trail options and locations for the Trackchair to go was priceless. We traversed up to the yurt and pavilion where the views are spectacular. The tour ended by going into the Playschool area where the children and children at heart transform the forest floor into creative and imaginative play spaces. The laughter and learning in this area can be heard at all times.

Returning to the nature center was bitter sweet as my brain was full of new neural pathways after driving a new device on new terrain, and all of my senses were heightened thanks to the precious time being out in nature. Relationships with my friends, city staff, and nature center staff were strengthened. My sense of adventure and wonder were left wanting more, especially in having more adventures in all the seasons at Hartley and beyond! I look forward to our region and beyond increasing these opportunities and welcome any inquiries to partner together in making nature more accessible and full of wonder for every body.

**Jenna Udenberg -**



Duluth Hartley Park with the new track wheelchair

# 2025 MILESTONES

---

## IMBA Trail Lab Foundations

In 2025, Greater Minnesota was proud to welcome the International Mountain Bicycling Association (IMBA) Trail Lab Foundations workshops to Winona and Duluth. These intensive two-day sessions featured IMBA professionals, trail experts, and local leaders guiding participants through the process of creating an ideal community trail network. Previously, Bentonville, Arkansas had hosted most of these labs, with only occasional events elsewhere. Greater Minnesota took the initiative to invite IMBA and successfully pitched the idea of holding the workshops in the state. Hosting in Minnesota brings economic benefits to the local communities and offers a more affordable way for Minnesota organizations to access expert knowledge about building trails. Duluth is scheduled to host the fall Foundations once again in 2026.

## Minnesota Parks Artists in Residence (MNPaiR)

In 2025, the Minnesota Parks Artists in Residence (MNPaiR) program was hosted in 13 parks throughout the state, seven within the Greater Minnesota system, in collaboration with the Minnesota DNR and Metropolitan Regional Parks. The project brought together artists and community members for a year-long journey of creative engagement under a theme of "Belonging". Throughout the year, resident artists collaborated with local communities and their host parks, drawing inspiration from the natural landscapes and cultural heritage of each park. This extensive community involvement culminated in a series of unique art installations at each location, celebrating the connection between art, nature, and the people of Minnesota. The installations now serve as lasting testaments to the collaboration and creativity fostered by the MNPaiR program, enriching the visitor experience and deepening the bond between parks and their communities.

## Accessibility Expert Serving Greater Minnesota Parks and Trails

Bill Botten, a nationally recognized accessibility expert, has played a pivotal role in helping Greater Minnesota parks and trails advance their understanding and implementation of universal access. Drawing from his extensive experience with accessibility standards and inclusive design, Botten has provided guidance, training sessions, and technical support to local park leaders and planners. His collaborative approach ensures that facilities and trails are designed to be welcoming and usable for people of all abilities, fostering a culture of inclusion and equal opportunity across the region. Through his work, Greater Minnesota has made significant strides toward creating outdoor spaces that everyone can enjoy, regardless of physical or sensory challenges.

## Geographic Information System Analysis and Reporting

As the Greater Minnesota system continues to develop, it's becoming more important to find new ways to tell our Legacy story. An effort to merge the information in our Data Management System (DMS) with a user-friendly Geographic Information System (GIS) online platform will provide just such a venue. Online users will be able to browse parks and trails Legacy investments and outcomes for individual facilities, districts, and across the entire system. By spring 2026, this new system will provide critical transparency and analysis that highlights the incredible impact of Legacy for all Minnesotans.

## Location Based Analytics

Following up on a previous two-year joint research project with the Parks and Trails Legacy Partners, the Commission continues to utilize modern technology to learn about visitor demographics and collecting visitation numbers. By contracting with Placer.ai, a company that compiles aggregated and anonymized mobile device data, we are building a robust user demographic picture. This data helps improve the system by showing how and when investments impact park and trail use, which types of facilities generate demand, and how use patterns vary across Greater Minnesota's varied landscape. Future updates to the Greater Minnesota System Plan will be better informed by this data.

## Greater Minnesota Park and Trail System Expansion

In 2025, the Greater Minnesota System reached an important milestone by increasing its designated facilities from 80 to 84. This expansion demonstrates an ongoing dedication to improving outdoor recreation throughout Greater Minnesota's 80 counties, giving more communities access to excellent parks and trails. The new additions boost local amenities while promoting tourism, public health, and enhancing the quality of life for both residents and visitors.

## Strategic Planning

In 2025, Commissioners and consultants began the initial phase of updating both the GMRPTC's future work plan and the Strategic Plan for designation and master planning. Although it was last updated in 2021, the plan is designed to be revised as processes improve and stakeholder feedback is integrated.

## Summary

The parks and trails encompassed within the State, Metropolitan, and Greater Minnesota systems provide exceptional environments for relaxation, recreation, and exploration. These spaces serve as important resources accessible to all, accommodating both those seeking serenity and those pursuing active experiences.

The commitment to this enduring Legacy investment in Greater Minnesota Regional Parks and Trails alone totals more than \$115 million dollars with an additional community investment match of nearly \$42 million.

We are so fortunate to live in a state that highly values and invests in building and maintaining our beautiful park and trail systems for the enjoyment of all.

Fall morning at Big Falls Campground and Horse Camp



# MINNESOTA PARKS ARTISTS IN RESIDENCE (MNPAiR)

**Minnesota Parks Artists in Residence (MNPAiR)** is a collaborative initiative involving the Greater Minnesota Regional Parks and Trails Commission, the Minnesota Department of Natural Resources, and the Metropolitan Council Regional Parks, aimed at hosting artist residencies in 13 parks throughout Minnesota. The program partners engaged Forecast Public Art for assistance with artist selection and facilitation. Over a twelve-month period, MNPAiR artists worked closely with the park managers at their facilities and the public, to create artworks designed to foster a sense of welcome and belonging among park visitors. The program's objectives included public engagement, attracting new park users, promoting enthusiasm through interactive art experiences, and strengthening community connections with local parks. This unique partnership is Minnesota's first statewide artist-in-residence program and was only possible with funding from the Clean Water, Land and Legacy Amendment.



## DISTRICT 3

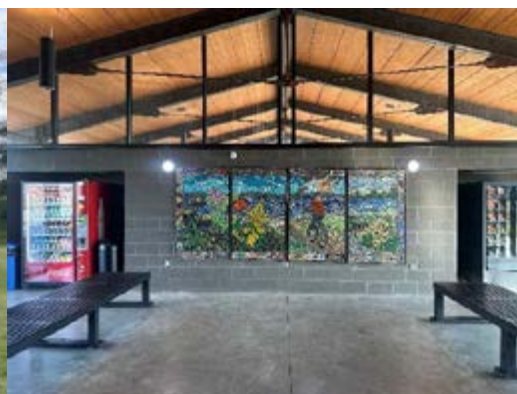


### Tamara Isfeld and John Sterner - Douglas County Lake Brophy Park and Granite Falls Memorial Park

Both parks were looking for ways that Tamara and John would work with the community to engage the public in the project and participate in art creation. Each project aimed to reflect the area community; through their history, principles, plans for the future or other community ideas. This summer, Tamara and John led a series of free, all-ages-welcome community workshops at Granite Falls Memorial Park and Douglas County Lake Brophy Park, offering participants hands-on experiences in mosaics, plein air painting, and ceramics.

The artists conducted classes outside in the parks to fuel participant creativity in a natural environment. Mosaic class participants produced permanent murals in each park to leave a beautiful, lasting legacy of the MNPAiR experience.

Carved wooden sculptures at Memorial Park represent the four elements of earth, wind, sky and fire. When viewed in groups of three or four, the sculptures look like people welcoming visitors to enjoy the trails. Additionally, a curved metal sculpture serves as a visual focal point at the start of Lake Brophy Park's mountain bike trails.





## Lindsay Buck – Sherburne County Two Inlets at Bde Hehaka – Omaskkooz Zaaga’igaans Regional Park and Wright County Robert Ney Park

Lindsay is a landscape architect and an artist. Her approach for the parks is a joint project tying the past to the future around culture and nature. She also developed a mobile phone app that pairs with the new signage she developed for both parks.

Through the app, called heart+land, interpretive information integrates botanical knowledge to communicate the following themes:

- History: Giving voice to the past and honoring the present within the cultural landscape
- Language: Connecting Indigenous names to landforms, plants, and animals, and learning how naming systems reflect relationships between people and nature
- Respect: Centering an attitude of reciprocity over extraction - exploring the lessons plants can teach us above their utilitarian uses.
- Interconnection: Exploring relationships between land, people, plants, and animals





## Cassandra Buck – Rochester Quarry Hill Nature Center, Rochester Cascade Lake Park and Olmsted County Oxbow Park and Zollman Zoo

Cassandra held a series of community workshops to learn what the participants felt was their connection to the parks and encouraged them to express those connections through various creative outlets from kits she provided the participants. The resulting artworks informed Cassandra's public art installations for all three parks which were installed and unveiled from July–September of 2025. These include a series of collage signs at Oxbow Park, two beautiful murals at Cascade Park, and at Quarry Hill, a cross-stitch installation as well as painted artwork along with two community murals.

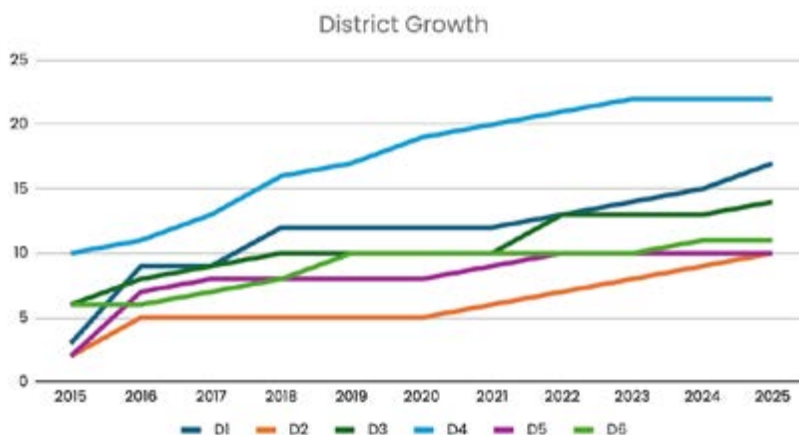


## FUNDING AWARDS BY DISTRICT FY16-FY26

District	Designated Facilities	Applications	Projects Funded	Projects Funded (%)	Total Awarded \$	Average Award	Community Match
1	17	39	24	61.54%	\$20,270,513	\$844,604.71	\$6,362,194
2	10	24	18	75%	\$16,761,488	\$931,193.78	\$4,264,695
3	14	39	23	58.97%	\$16,655,649	\$724,158.65	\$6,265,817
4	22	53	40	75.47%	\$28,606,903	\$715,172.58	\$6,926,367
5	10	25	19	76%	\$11,312,590	\$595,399.47	\$6,263,921
6	11	39	30	76.92%	\$21,770,719	\$725,690.63	\$11,872,300
ALL	84 Designated	219	154	70.32%	\$115,377,862	\$749,206.90	\$41,955,294

## SYSTEM DEVELOPMENT OVER TIME

District	2015	2016	2017	2018	2019	2020	2021	2022	2023	2024	2025	All Growth	Last 5 Yrs.
1	3	9	9	12	12	12	12	13	14	15	17	460%	42%
2	2	5	5	5	5	5	6	7	8	9	10	400%	100%
3	6	8	9	10	10	10	10	13	13	13	14	133%	40%
4	10	11	13	16	17	19	20	21	22	22	22	120%	15%
5	2	7	8	8	8	8	9	10	10	10	10	400%	25%
6	6	6	7	8	10	10	10	10	10	11	11	83%	10%
	29	46	51	59	62	64	67	74	77	80	84		

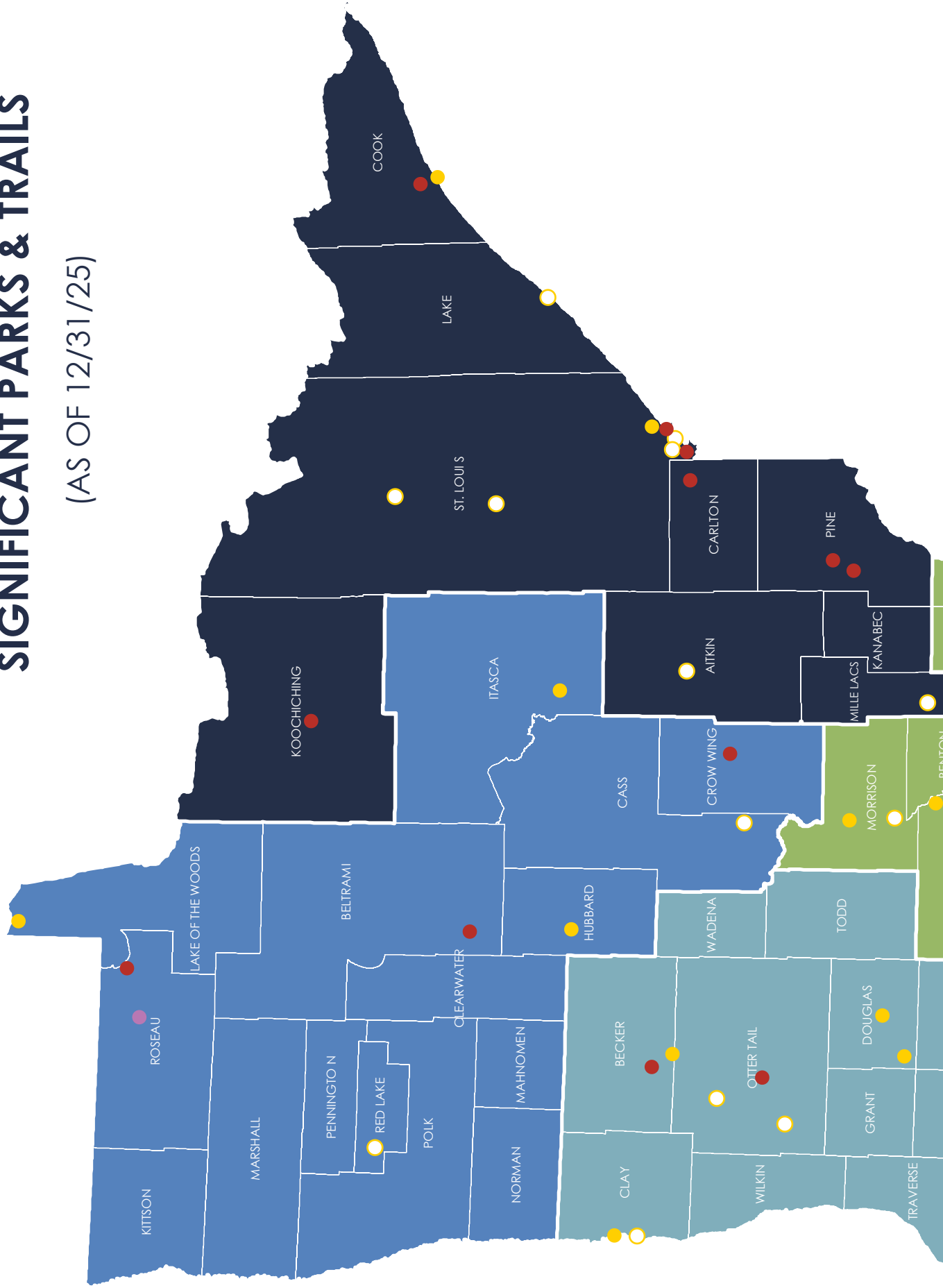


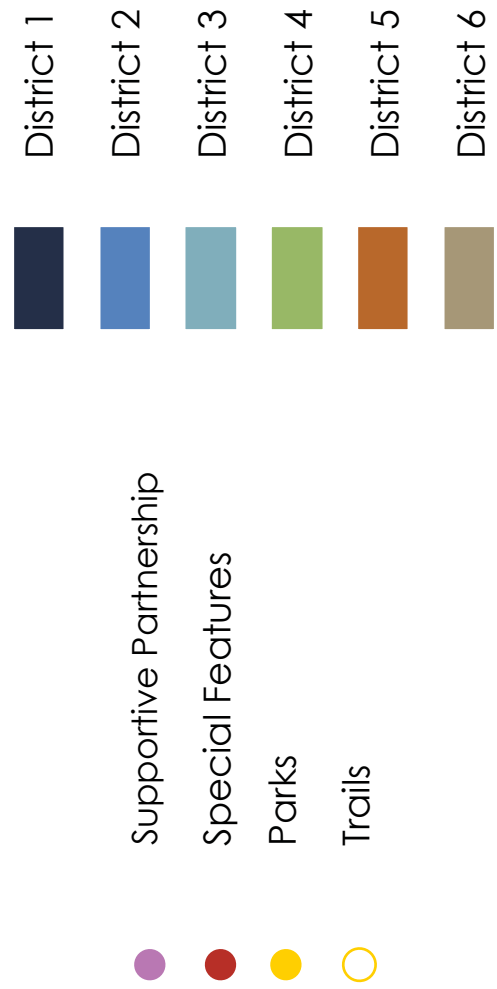
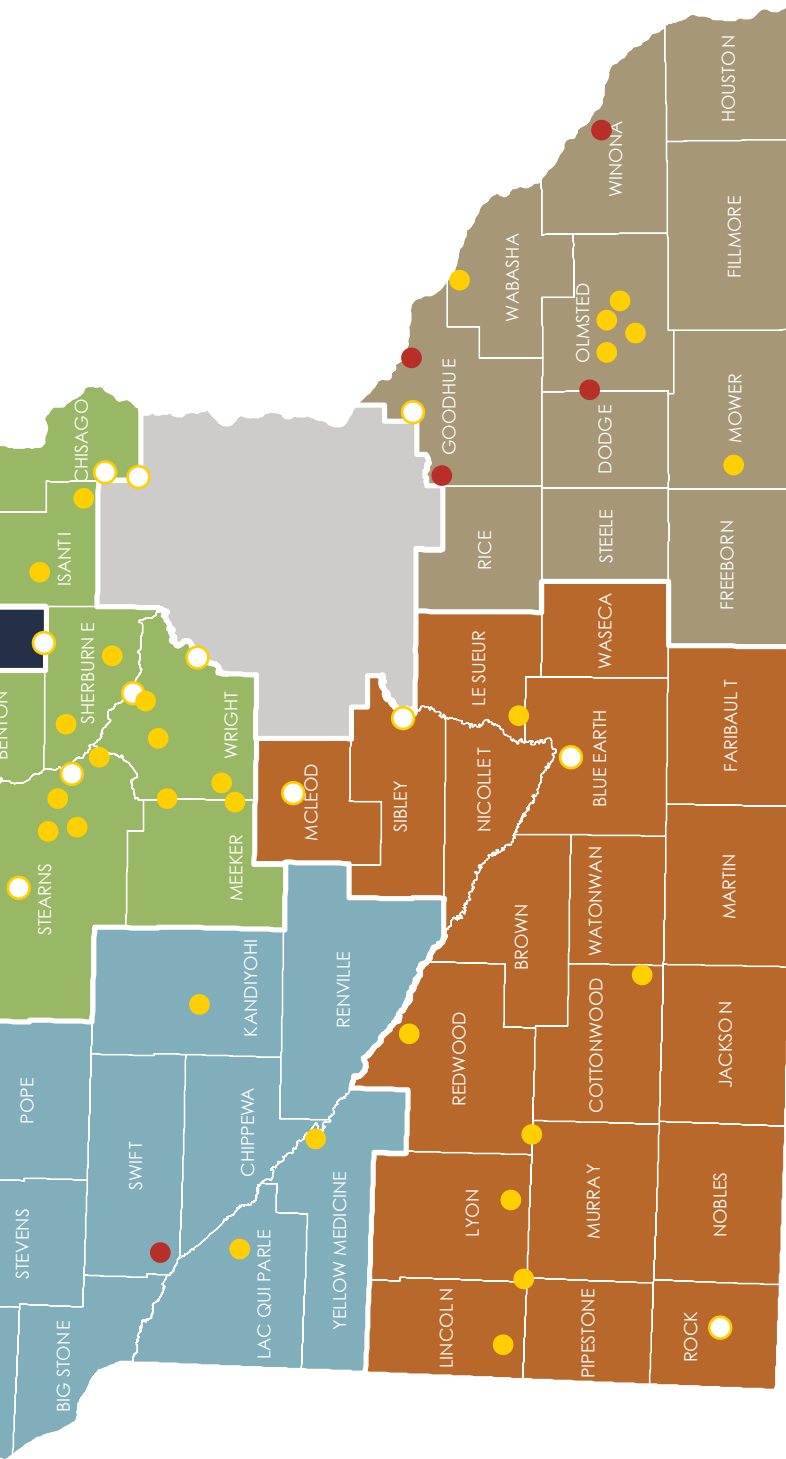
### Growth Factors to Consider

- Population Growth
- Population Density
- Public Land Availability
- Agency Structure
- Public Support
- Recreation Density
- Diversity of Rec Opportunity

# DESIGNATED REGIONALLY SIGNIFICANT PARKS & TRAILS

(AS OF 12/31/25)







# DISTRICT 1

## Take Care of What We Have

### Mesabi Trail

The Mesabi Trail, a paved route extending 150 miles through the Iron Range, links 28 communities and traverses woodlands, lakes, and historic mining sites. Renowned for its historical significance and scenic vistas, the trail is anticipated to reach 165 miles upon completion in the coming years. Greater Minnesota Legacy grants have helped this amazing trail project reach the finish line. As some sections of the trail approach 30 years in age and the overall project nears completion, rehabilitation and maintenance have become the primary focus. The most recent Legacy grant from the GMRPTC is allocated for rehabilitating one of the oldest stretches—from Buhl to Kinney. Beyond serving as a recreational asset, the Mesabi Trail fosters connections between communities and historic landmarks while contributing positively to the regional economy.

## Connect People and the Outdoors

### Big Falls Campground and Horse Camp

The town of Big Fork, with a population of 175, has undertaken significant improvements to its city campground and horse camp, including the addition of new camping sites and upgraded shower and restroom facilities. These enhancements were primarily funded through Greater Minnesota Legacy grants. Building on the Master Plan's next phase, the city secured another Legacy grant for the construction of a Riverside Pavilion along the Big Fork River. The Pavilion will serve both campers and residents for various events, gatherings, and large activities. Additionally, the grant facilitated the creation of a much-needed kayak and canoe launch in a tranquil section of the river. These initiatives demonstrate that small communities can achieve substantial progress when supported by Legacy grants and local determination.

DESIGNATION ELIGIBLE		CLASSIFICATION
1	Milaca Gateway to the North Park	N
2	Mille Lacs County Great Northern Trail	T
3	Lake County Prospector Loop Trail	T
4	Lake County Regional Trail	T
5	Lake County Superior Soo Line Trail	T
6	Grand Marais Sawtooth Bluffs	N
DESIGNATED		CLASSIFICATION
1	Aitkin County Northwoods ATV Trail	T
2	Big Falls Campground and Horse Camp	S
3	Chisholm Redhead Mountain Bike Park	S
4	Cloquet Pine Valley Recreation Area	S
5	Cook County Mountain Bike Trail System	S
6	Duluth Hartley Park	N
7	Duluth Spirit Mountain Recreation Area	S
8	Duluth Traverse	S
9	Duluth Waabizheshikana/The Marten Trail	T
10	Grand Marais Recreation Area	N
11	Hermantown/Proctor Munger Trail Spur	T
12	Lake County Mountain Bike Trails	T
13	Lake Vermilion Trail	T
14	Mesabi Trail	T
15	Mille Lacs County Plains to Port Trail	T
16	Mille Lacs County Soo Line Trail	T
17	Sandstone Robinson Quarry Park	S

**N = Natural Resource Based Park   S = Special Features   T = Trail   SP = Supportive Partnership**

# TOTAL FUNDING AWARDED

## DISTRICT 1 (FY16-FY26)

This notes the total number of applications and the total amount of grants made to this district over time.

**24** Projects Funded

**39** Applications

**\$20,270,513** Awarded

**\$6,362,194** Community Match



Duluth Spirit Mountain Recreation Area



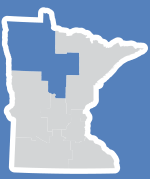
Cook County Mountain Bike Trails new portable pump track/skills park.



Riding the Mesabi Trail



New pavilion at Sandstone Robinson Quarry Park



# DISTRICT 2

## Coordinate Among Partners

### *Crow Wing County Northland Arboretum*

The Northland Arboretum is an interesting ecological and recreational hub in Central Minnesota, a former landfill transformed into a mosaic of trails, prairies, wetlands, and savannas. The 413-acre site connects directly to the Paul Bunyan Trail and features the region's largest bike skills park, adaptive cycling trails, gardens, natural playscape, and year-round education. The Arboretum is a biodiversity corridor and inclusive recreation site that serves all ages and abilities in a regional capacity. The facility, a partnership between Crow Wing County, the nonprofit Northland Arboretum, and The Nature Conservancy, shows how a strong master plan can foster a mixed ownership property's success under a joint vision and consistent management. The partnership formalizes a sustainable model, public ownership secures investment and access, while nonprofit stewardship maintains the integrity of the land. This, in turn, benefits people, wildlife, and the region for generations to come.

## Connect People with the Outdoors

### *Warroad Point Park*

Warroad Point Park is nestled on the shores of Lake of the Woods where the park offers access to both the natural beauty and recreational opportunities unique to the region. As a community focal point for boat access to the lake, the park attracts residents and visitors alike. Its proximity to the Canadian border and stunning sunsets over the lake add to the park's appeal as a destination for outdoor relaxation and adventure.

With support from a Greater Minnesota Legacy Grant, Warroad Point Park is embarking on an ambitious phased plan of expansion and enhancement. A central element of these plans is the development and improvement of the park's harbor facilities, which will offer upgraded docking, enhanced accessibility, and better services for boaters and anglers. The harbor project aims to foster greater connection with the lake, stimulate local tourism, and provide a welcoming gateway for those arriving by water. With a new parking area, marine boat wash, restroom facilities, boat launch, and docks, the harbor project will set the stage for future phases of development in the long-term plans for the park and the community.

DESIGNATION ELIGIBLE		CLASSIFICATION
1	Fertile Sand Hill Recreation Area	N
2	Marshall County Marshall Kittson Trail	T

DESIGNATED		CLASSIFICATION
1	Beltrami County Northland Regional Sports Park	S
2	Cohasset Tioga Recreation Area	N
3	Crow Wing County Milford Mine Memorial Park	S
4	Crow Wing County Northland Arboretum	N
5	Hubbard County Deep Lake Park	N
6	Lake of the Woods County Northerly Park	N
7	Lake Shore Gull Lake Trail	T
8	Red Lake River Corridor	T
9	Roseau River Water Trail	SP
10	Warroad Point Park	S

**N = Natural Resource Based Park   S = Special Features   T = Trail   SP = Supportive Partnership**

# TOTAL FUNDING AWARDED

**DISTRICT 2** (FY16-FY26)

This notes the total number of applications and the total amount of grants made to this district over time.

**18** Projects Funded

**24** Applications

**\$16,761,488** Awarded

**\$4,264,695** Community Match



Red Lake River Corridor, LaFave Park in East Grand Forks



Cohasset Tioga Recreation Area



New section of Gull Lake Trail in Nisswa



# DISTRICT 3

## Acquire Land, Create Opportunities

### *Detroit Mountain Recreation Area*

The ongoing growth and development of Detroit Mountain Recreation Area (DMRA) is exemplified by its recent successful grant application, which will fund the acquisition of 32.6 acres directly south of the main facilities and parking area. This strategic acquisition provides the foundation for future campground development, addressing a significant need at this highly frequented recreational destination. In recent years, DMRA has implemented key improvements that align with its Master Plan, which was recently updated with considerable feedback from the community and stakeholders. The principle of connecting people with the outdoors, as outlined in the 25-Year Parks and Trails Legacy Plan, continues to guide the resort's efforts to expand recreational opportunities for new user groups and to help advance skills and development of alpine and Nordic skiing, as well as mountain biking.

## Connect People and the Outdoors

### *Willmar Robbins Island Regional Park*

The 120-acre Willmar Robbins Island Regional Park serves as a prominent destination for outdoor recreation, offering a wide range of activities. Positioned between two high-quality recreational lakes, which are connected by a channel, the park provides numerous access points for shoreline fishing and swimming. Building on the appeal of its natural amenities, the City of Willmar is advancing an innovative, dual-sided open-air amphitheater project. Upon completion, this venue will accommodate a large audience on one side and provide smaller seating capacity on the other. This design features a shared backstage area through the center of the facility, equipped with ADA-compliant restrooms, a green room, and storage space. Substantial investment from the local Rotary Club has furnished the project match, ensuring the continuation of their free summer concert series, Rockin' Robbins, in an enhanced venue. Additionally, the new amphitheater will offer two distinct venue options for a variety of events and entertainment.

DESIGNATION ELIGIBLE		CLASSIFICATION
1	Battle Lake to Ashby Trail	T

DESIGNATED		CLASSIFICATION
1	Detroit Lakes Detroit Mountain Recreation Area	S
2	Douglas County Lake Brophy Park	N
3	Douglas County Kensington Park	N
4	Fergus Falls Glacial Edge Trail	T
5	Frazee Wannigan Park	N
6	Granite Falls Memorial Park	N
7	Lac qui Parle County Park	N
8	Moorhead MB Johnson Park	N
9	Moorhead River Corridor Trail	T
10	Otter Tail County Heart of the Lakes Trail	T
11	Otter Tail County Phelps Mill County Park	S
12	Prairie Woods Environmental Learning Center	N
13	Swift County Appleton OHV Park	S
14	Willmar Robbins Island Regional Park	N

**N = Natural Resource Based Park   S = Special Features   T = Trail   SP = Supportive Partnership**

# TOTAL FUNDING AWARDED

## DISTRICT 3 (FY16-FY26)

This notes the total number of applications and the total amount of grants made to this district over time.

**23** Projects Funded

**39** Applications

**\$16,655,649** Awarded

**\$6,265,817** Community Match



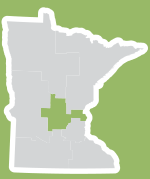
Thomas Dambo Golden Rabbit at Detroit Mountain Recreation Area



New boardwalk at Otter Tail County Phelps Mill Park



Granite Falls Memorial Park MNPAir mosaic



# DISTRICT 4

## Connect People with the Outdoors

### Wright County Robert Ney Park

A recent Legacy grant funded two upgrades at Robert Ney Park. The improvements include new lighting for the Nordic ski trails and an accessible route from the parking lot to the lower level of the Nature Center, allowing visitors with mobility challenges to reach the facility rental center. The illuminated Pond Loop Trail is 1.5 miles long and will extend Nordic skiing opportunities during winter mornings and evenings. Additionally, the ski loop features the Minnesota Parks Artist in Residence project, heart+land by Lindsay Buck, which uses colorful signs to present information about the history, cultural relevance, and environmental aspects of the central Minnesota landscape.

## Acquire Land, Create Opportunities

### Chisago County Swedish Immigrant Trail

The Swedish Immigrant Trail offers year-round recreational opportunities and transportation options. Recently secured Legacy grant funding will enable acquisition of right-of-way and facilitate construction of the final segment, D, as well as reconstruction of segment E. Completing the remaining 2.5 miles will establish a direct connection between Center City and Shafer, thereby finalizing the continuous Swedish Immigrant Trail route from Taylors Falls to Chisago City. Furthermore, completion of this essential trail segment will allow the Chisago Trail to link with the Sunrise Prairie Regional Trail, Hardwood Creek Trail, and the Gateway Trail corridor.

DESIGNATION ELIGIBLE		CLASSIFICATION
1	St. Cloud River Bluffs Park	N
DESIGNATED		CLASSIFICATION
1	Chisago County Sunrise Prairie Trail	T
2	Chisago County Swedish Immigrant Trail	T
3	Elk River Woodland Trails Park	N
4	Isanti County Irving & John Anderson Park	N
5	Isanti County Springvale Park	N
6	Morrison County Belle Prairie Park	N
7	Morrison County Soo Line Trail	T
8	Sherburne County Two Inlets at Bdé Heháka - Omashkooz Zaaga'igaans Regional Park	N
9	Sherburne County Great Northern Trail	T
10	St. Cloud Beaver Island Trail	T
11	Stearns County Kraemer Lake Park	N
12	Stearns County/Benton County Great River Park Complex	N
13	Stearns County Lake Wobegon Trail	T
14	Stearns County Rockville Park	N
15	Stearns County Quarry Park	N
16	Stearns County Warner Lake Park	N
17	Wright County Bertram Chain of Lakes Park	N
18	Wright County Collinwood Park	N
19	Wright County Crow River Trail	T
20	Wright County Great River Trail	T
21	Wright County Robert Ney Park	N
22	Wright County Stanley Eddy Park Reserve	N

N = Natural Resource Based Park   S = Special Features   T = Trail   SP = Supportive Partnership

# TOTAL FUNDING AWARDED

**DISTRICT 4** (FY16-FY26)

This notes the total number of applications and the total amount of grants made to this district over time.

**40** Projects Funded

**53** Applications

**\$28,606,903** Awarded

**\$6,926,367** Community Match



Isanti County Irving and John Anderson Park



Stearns County Quarry Park erosion control project



Sherburne County Two Inlets at Bde Hehaka Omashkooz  
Zaaga'igaans County Park MNPAir project



# DISTRICT 5

## Connect People with the Outdoors/Take Care of What We Have

### Lyon County Garvin Park

Garvin Park, situated in Lyon County along the Cottonwood River and spanning 748 acres, is a significant asset for Southwest Minnesota. The park draws a diverse range of visitors, including recreational day users, campers, and equestrian enthusiasts. In recent years, considerable investments—supported by successful Legacy funding applications—have enhanced the park's amenities and overall appeal. Notable improvements include the installation of accessible shower and restroom facilities, a large pavilion, a fire pit, a gazebo, and updated landscaping within the lower campground. These enhancements have substantially improved the visitor experience. Garvin Park offers year-round recreational opportunities, featuring a prominent sledding hill as well as trails suitable for snowshoeing and cross-country skiing. Plans for future development include the addition of camper cabins, which are increasingly popular among families with young children who want to experience camping but don't want to start with traditional tent accommodations.

## Take Care of What We Have

### Redwood Falls Ramsey Park

A beautiful park located within the city limits of Redwood Falls, Ramsey Park has a stunning location, beautiful views, and amenities to appeal to a wide range of visitors. Over the past several years, the park has undertaken projects to ensure that the park continues to appeal to a wide range of visitors and is appropriately cared for. There are two unique features of the park – the Zeb Gray Picnic Shelter and the Swaybacked Bridge. Both have distinctive looks that set them apart from other shelters and bridges. The Zeb Gray Shelter has a rounded roof and, when standing in the center of the shelter, one can hear a whisper on the far end of the shelter. The Swayback Bridge was built in 1938 by the Works Progress Administration (WPA) using locally quarried granite and featuring a swayback design that allowed ice and debris-filled water to flow over the bridge during flooding and high flow seasons.

DESIGNATION ELIGIBLE		CLASSIFICATION
1	Le Sueur County Ney Nature Center	N
2	Lyon County Camden Regional Trail	T
DESIGNATED		CLASSIFICATION
1	Greater Mankato River Valley Trail System	T
2	Le Sueur County Lake Washington Park	N
3	Lincoln County Hole in the Mountain Park	N
4	Luverne Loop & Blue Mounds Trail	T
5	Lyon County Garvin Park	N
6	Lyon County Twin Lakes Park	N
7	McLeod County Dakota Rail Trail	T
8	Redwood County Plum Creek Park	N
9	Redwood Falls Ramsey Park	N
10	Sibley County Henderson Scenic Byway Trail	T

**N = Natural Resource Based Park   S = Special Features   T = Trail   SP = Supportive Partnership**

# TOTAL FUNDING AWARDED

**DISTRICT 5** (FY16-FY26)

This notes the total number of applications and the total amount of grants made to this district over time.

**19** Projects Funded

**25** Applications

**\$11,312,590** Awarded

**\$6,263,921** Community Match



Redwood County Plum Creek Park waterfront improvements



Redwood Falls Ramsey Park Zeb Gray Shelter sign



Garvin County Lyon Park new pavilion and landscaping



## DISTRICT 6

### Acquire Land, Create Opportunities

#### *Winona Bluffs Traverse*

The city of Winona has an amazing location along the Mississippi River, with towering limestone bluffs offering miles of scenic views from the top and the meandering river below the bluffs. Famous for Sugar Loaf, a landmark that resulted from limestone quarrying operations in the 1880s, Winona has wide appeal for outdoor enthusiasts. One way in which the city has chosen to capitalize on its bountiful outdoor recreation opportunities is through development of the Bluffs Traverse, a linkage of three parks – Bluffs Park, Garvin Heights Park, and Sugar Loaf Park – all destination parks, unique in their own way and linked by a trail system that offers variety for all levels of riders. In the past several years, Winona has acquired land and recreational easements to enable them to expand the trail system with new trails as well as rehabilitating older trails for better alignment and sustainability.

### Take Care of What We Have

#### *Rochester Quarry Hill Park and Nature Center*

With 320 acres of prairie, oak savanna, a creek and pond, sandstone caves, a fossil quarry, and hiking, skiing and paved trails, Quarry Hill Park and Nature Center is an amazing resource in the heart of Rochester. The Nature Center was constructed in the 1970s and is heavily visited year-round by school groups and the general public. With popularity and high visitation numbers, the park has been well used and, as a result, has rehabilitation needs beyond annual maintenance and general repairs. A recent Legacy grant from Greater Minnesota will enable the Nature Center to complete a number of projects that will enhance the visitor experience and sustain and preserve the park. From addressing trail erosion to a new boardwalk around the pond to enhanced security, the grant will provide necessary funds to ensure this popular resource is available and in good repair into the future.

DESIGNATION ELIGIBLE		CLASSIFICATION
1	Houston County Trail	T
2	Olmstead County Root River Park	N
3	Oronoco Zumbro River Water Trail	T
4	Owatonna Regional Park	N
5	Rice County Cannon River Wilderness Area	N

DESIGNATED		CLASSIFICATION
1	Austin Jay C. Hormel Nature Center	N
2	Cannon Valley Trail	T
3	Goodhue County Byllesby Park	S
4	Lake City Hok Si La Park	N
5	Olmsted County Chester Woods Park	N
6	Olmsted County Oxbow Park/Zollman Zoo	S
7	Red Wing He Mni Can - Barn Bluff Park	S
8	Rochester Cascade Lake Park	N
9	Rochester Gamehaven Park	N
10	Rochester Quarry Hill Park	N
11	Winona Bluffs Traverse	S

**N = Natural Resource Based Park   S = Special Features   T = Trail   SP = Supportive Partnership**

# TOTAL FUNDING AWARDED

**DISTRICT 6** (FY16-FY25)

This notes the total number of applications and the total amount of grants made to this district over time.

**30** Projects Funded

**39** Applications

**\$21,770,719** Awarded

**\$11,872,300** Community Match



New bridge at Winona Mountain Bike Trails



Olmsted County Oxbow Park and Zollman Zoo nature center



Views of Winona from the Mountain Bike Trails



[gmrptcommission.org](http://gmrptcommission.org)

[@gmrptc](https://twitter.com/gmrptc)

[@greaterminnesota](https://twitter.com/greaterminnesota)

[mn.gov/greatoutdoors/](http://mn.gov/greatoutdoors/)



Enjoying Chisago County Swedish Immigrant Trail



Ice Fishing at Olmsted County Chester Woods Park