

1992

Annual

Report

DISCOVERING OUR HERITAGE,
FULFILLING OUR DREAMS.



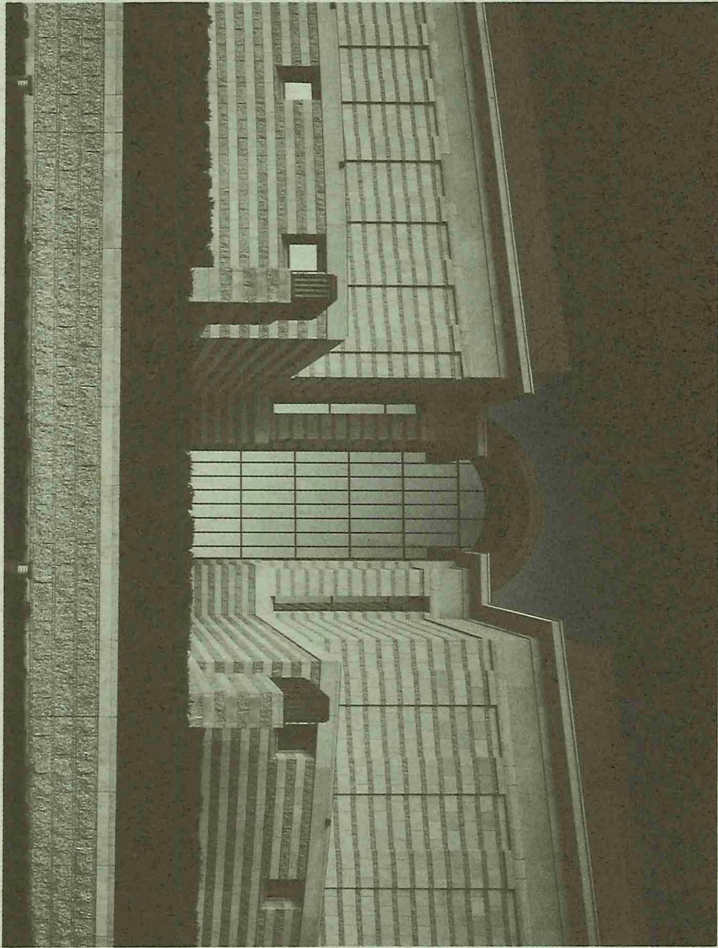
MINNESOTA
HISTORICAL
SOCIETY

F
601
.M58x
1992

RECEIVED
JUL 06 1993
LEGISLATIVE REFERENCE LIBRARY
STATE CAPITOL
ST. PAUL, MN. 55455

IF WE CAN MOVE INTO AN OPEN HORIZON
WHERE WE CAN LIVE IN OUR MODERN WORLD
WITH THE ANCIENT DREAMS THAT HAVE ALWAYS STIRRED US,
THEN OUR WORK WILL HAVE BEEN DONE.

-SIGURD OLSON



MESSAGE FROM THE PRESIDENT AND DIRECTOR

Few people involved in community activity have been as privileged as I. For six years, I have worked with board and staff members who have been energetic, committed to the Society's work, responsive to the call of the chair, demanding of one another but always civil, and, additionally, intellectually stimulating. I have had a very good time. The pleasure has been intensified, of course, by seeing so much accomplished. My thanks to Nina Archabal and her staff and to the members of the board for their overriding devotion to the interests of our membership and the citizens of Minnesota. In a time when projects such as the History Center had to get done, board and staff, in my opinion, never wavered in their commitment to program — the people's work.

Finally, thanks to our membership for its interest in the work we do. I urge continued expression of your expectation for high performance in the Society's services and programs. I believe that the board, its new officers, and the staff and volunteers are eager to fulfill your expectations.



Kennon V. Rothchild
President

For the past several years our annual message has been about change. I have reported about planning and building the History Center, preparing staff and collections for "the move of the century," raising the money needed to complete the project, and striving to strengthen the programs and services that have earned the Society a national reputation for excellence. On the eve of the dedication of the History Center, I am happy to report to you that this project was completed on schedule, within budget, and that our programs both for the new building and across the state at our historic sites are thriving.

Each year our annual report looks back on the challenges and successes of the year. But this is not a message about an ending. Rather, we are at the moment of commencement — celebrating a significant event as we begin a new era of service to the people of Minnesota. Trustees, staff members, volunteers and members — all of us are rededicating ourselves to the programs and services that we anticipate at the History Center, in our historic sites, and in the county and local historical organizations who are our partners in the preservation of Minnesota's heritage.

In 1984 the Society challenged the History Center architects to respond with "distinguished architecture" that would "enable the Society to fulfill its ongoing mission to collect, preserve, and interpret Minnesota's history." As we move into the History Center, we are increasingly aware of how the building can enable us to fulfill our longtime mission, while presenting us with new and exciting challenges. We understand now what Arthur Erickson, distinguished architect and juror for the History Center competition, meant in 1986 when he said, "this building will change your institution in ways you cannot possibly imagine."



As the dust cleared, and the construction equipment was hauled away, the History Center emerged as a truly magnificent public building — perhaps the most outstanding public building in this state since the Capitol. Stone from Minnesota's earth, glass, tile, polished bronze and steel, and white oak were composed to create a gracious building that will provide the space to present history in a fuller way. Here history will come to life in three dimensions as well as through the written and spoken word. Festivals and workshops, computer screens, sounds, and games in the galleries will be part of the History Center experience. You will be able to reach out and put your hands around history.

The Society means different things to different people. The experience of researchers using our collections last year was different from that of the people who visited our historic sites, or the people who bought and read our books. The History Center reflects this variety in our program. The building has been described as having several different faces. The fortress like facade on the north side reminds us of Fort Snelling and reflects the Society's mission to preserve and safeguard the collections in our care. The formal entrance flanked by the State Capitol and the Cathedral of Saint Paul suggests the Society's official responsibility to collect the state's history. The wings of the building extending toward downtown St. Paul reach out to a larger and more diverse audience than we have ever served before.

I hope that you will visit the History Center soon and draw your own conclusions. See for yourself what has been accomplished and what the History Center has to offer to enhance every aspect of our work.

The Society's mission is to preserve and tell the story of Minnesota's people, and it is people who enable us to fulfill our mission. While there

are many who work toward this purpose, no one has worked more diligently, creatively, and effectively than our president Kennon Rothchild. He has given us leadership of the most distinguished kind — gracious, fair, consistent, and inspired. He has taken us from architectural drawings to completed History Center. As Ken steps down as the Society's 42nd president after six years of service in this office and 29 years of service on our governing board, I know I can speak for the entire Society in expressing thanks and appreciation to him.

Working with Ken, other members of the governing board have strengthened the Society's long-standing tradition of volunteer leadership. At no time in our history have our trustees been asked to do more. Marney Brooks has given exemplary service leading our first-ever capital campaign to success.

The call for high service has been no less demanding for our staff members whose ideas and energy create the multifaceted program that distinguishes the Society. Their work has been assisted by nearly 500 volunteers. All of this is made possible with funds provided by the generous people of Minnesota through their legislature and by the gifts of individuals, foundations, and corporations.

As the Society enters a new era of service to Minnesota, I invite all of our members and friends to become more involved in the life of the Society. These are exciting times, and there is much both to celebrate and to anticipate.

Nina Archabal

Nina M. Archabal
Director



THE MINNESOTA HISTORICAL SOCIETY successfully completed the three-year Minnesota Newspaper Project supported by a National Endowment for the Humanities grant of \$868,135. The Microfilm Laboratory microfilmed 4,144,105 pages of Minnesota newspapers, exceeding the project goal by more than 1 million pages. This effort ensures that future generations of Minnesotans will have access to the precious information contained in Minnesota newspapers. The Processing Department catalogued the collection for inclusion in national data bases, and it is available for public use in the History Center's new microfilm reading room.

DURING THE YEAR, the Society's *Northern Lights* history curriculum was used by 5th, 6th and 7th graders in nearly half of the state's school districts. Reflecting the growing popularity of this innovative curriculum among students and teachers, 31,753 sets of student books were purchased as of June 30, 1992.



This birch basket, made in the early 1930s by an Ojibwe artist living near the Kathio site on Mille Lacs Lake, was collected by Neva Williams who founded a company to market Indian-made products and became an advocate for legislation that prohibited using an Indian label on any items that were not made by Indian people.



THE MINNESOTA HISTORICAL SOCIETY PRESS had an active year with the publication of three new books: *Watchdog of Loyalty: The Minnesota Commission of Public Safety During World War I*, by Carl H. Chrislock; *Testaments in Wood: Finnish Log Structures at Embarrass, Minnesota*, with photos by Wayne Gudmundson; and *The Grand Portage Story*, by Carolyn Gilman. The Press also published *The Story of Minnesota's Past*, a trade edition of Rhoda Gilman's *Northern Lights* narrative text.

A RECORD-SETTING 6,000 secondary school students and their teachers from throughout the state created special history projects for the annual Minnesota History Day. Two groups and one individual from Minnesota were finalists in the national History Day competition in Washington, D.C.

THE HISTORICAL SOCIETY'S 31 traveling exhibits circulated to a total of 87 borrowing sites that

included museums, colleges, schools, businesses, and community groups in 26 different counties. More than 242,000 visitors viewed the exhibits at these locations.

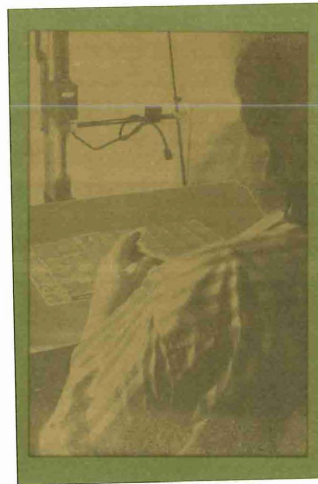
.....

FIFTEEN SCHOLARS USED GRANTS totaling nearly \$41,000 from the Minnesota Historical Society to do research on topics that ranged from right-wing women's organizations in the 1940s to Dutch-American land promoter Theodore Koch. Other research topics included documenting Dakota elder Eli Taylor, the Cutlerite group of Mormons in Otter Tail County, and architect Cass Gilbert.

.....

NOTABLE ACQUISITIONS to the Society's Library and Archives collections included a fine first edition of Thorstein Veblen's *Theory of the Leisure Class*. Letters found in a bottle near the Lake Street Bridge that chronicle the hopes and dreams of three young women in 1929, and the papers of prominent African-

All of the Minnesota newspapers in the Society's collection are now preserved on microfilm and are available for sale, interlibrary loan,



and public use at the History Center.

The project was completed with funds from the National Endowment for the Humanities.



Americans James Griffin, Richard Greene, and Kwame and Mary MacDonald were other important additions. A spectacular colored map of western New France (today's Great Lakes region) created by Father Vincenzo Maria Coronelli in Paris in 1688 is one of the new treasures of the Society's distinguished map collection.

.....

THE SOCIETY'S ARCHAEOLOGY STAFF uncovered the remains of fences, porches, a garden, and an 1850s brick kitchen at the Historic Forestville site in Fillmore County. Archaeologists analyzed more than 28,000 Indian artifacts housed at Myre-Big Island State Park. In Aitkin County, information was recovered at the Cedar Creek Site about Native American people who lived there from 9,000 to 1,000 years ago.

*With the opening
of the Research
Center on
June 1, 1992, the
Society inaugurated
centralized reference
access to all of
its collections. The
opening also marked
the move of Library
and Archives
collections to the
History Center,
including:
550,000 books
and pamphlets;
5,500 works of art;
37,000 maps and
1,500 atlases;
70,000 rolls of
microfilm, mainly
of newspapers;
42,000 cubic feet of
government records,
38,000 cubic feet
of manuscripts;
and 250,000
photographs.*



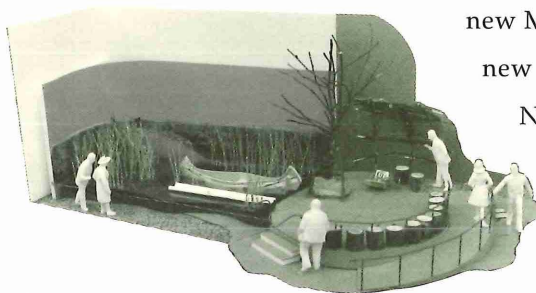
THE SOCIETY'S GRANTS-IN-AID PROGRAM received a \$100,000 appropriation from the 1992 Legislature to support the heritage preservation efforts of county and local historical organizations across the state.

.....

A LAKE SUPERIOR SHIPWRECKS research project was undertaken by the Society's State Historic Preservation Office with funds provided by the Legislative Commission on Minnesota Resources. The Lake Superior project establishes the Society as a major contributor to shipwreck research and management in the Great Lakes region.

.....

THE SOCIETY OPERATED A NETWORK of 18 historic sites that reached people throughout Minnesota. At these sites, more than 600,000 visitors touched and experienced Minnesota history firsthand. Significant developments included the restoration of Split Rock Lighthouse and the installation of new exhibits in the



Exhibitions at the Historical Society are being developed using a team approach that combines the skills of curators, designers, educators, collections and content specialists, conservators, and production staff.

fog signal building. Planning was begun for restoration of the trading post and construction of a new Mille Lacs Indian Museum near Onamia, and for a new facility to tell the story of the fur trade at the North West Company Fur Post near Pine City.

Historic Forestville (formerly called Meighen Store) near Preston reopened July 1, 1992. Members of the National Grange from around the country supported the installation and attended the dedication of the new Grange Hall room at the Oliver H. Kelley Farm near Elk River.

.....

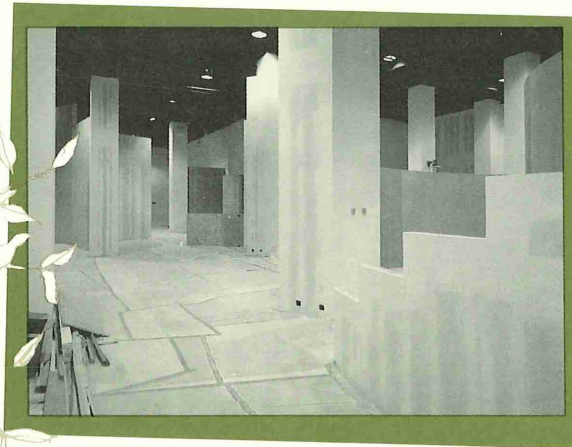
THE SOCIETY INITIATED a program of walking tours in the Saint Anthony Falls Heritage Zone in Minneapolis. The 1992 Legislature transferred ownership of the historic Stone Arch Bridge from Hennepin County to the Minnesota Department of Transportation. The Society looks forward to the restoration of the bridge and to the day when the bridge can be included on the walking tours.



THE JAMES J. HILL HOUSE in Saint Paul celebrated its centennial with an open house on August 1, 1991, that attracted a record-breaking 5,181 visitors. Visitors flocked to see *Homecoming: the Art Collection of James J. Hill*, a major exhibition cosponsored by the Society and the Minneapolis Institute of Arts. Art works from Hill's collection were on view in his historic Summit Avenue home from May through September, 1991 to celebrate the anniversary.

THE SOCIETY'S STAFF at Grand Mound historic site worked with Ojibwe and Dakota spiritual leaders who chose one of the site's burial mounds for a reburial ceremony to reinter the remains of 350 individuals excavated during archaeological investigations at various sites during the 1930s and 1950s.

With more than six times the gallery space previously available, the new History Center provides an



opportunity to exhibit a fuller representation of Minnesota's past and utilize more of the Society's extensive collections.

DOZENS OF OBJECTS that help to tell the story of Minnesota were added to the collections. Among the many outstanding items acquired were a turn-of-the-century, horse-drawn Dayton Company

delivery wagon, 1991 Minnesota Twins World Series items, the Neva Williams Indian crafts collection, Oscar Howard materials relating to Meals on Wheels and Chef Oscar, Tonka Corporation toy collection, Will Steger expedition materials, Special Olympics items, Saint Paul Athletic Club equipment, and Soo Line Railroad items. The Society received a \$1 million National Endowment for the Humanities grant

for collections storage units and for staff to transfer the collections from warehouse-style boxed storage to museum-quality cabinet storage in the History Center. This project will help preserve the Society's three-dimensional historical collections



and make them more accessible for research and study in years to come.

.....

VOLUNTEERS have always played a key role in Society activities, donating thousands of hours of skilled and dedicated service. This year the Society benefited from the work of nearly 500 individuals. Building on this foundation, the Society established and filled the position of volunteer coordinator to expand the role of volunteers involved in the work of the Society.

.....

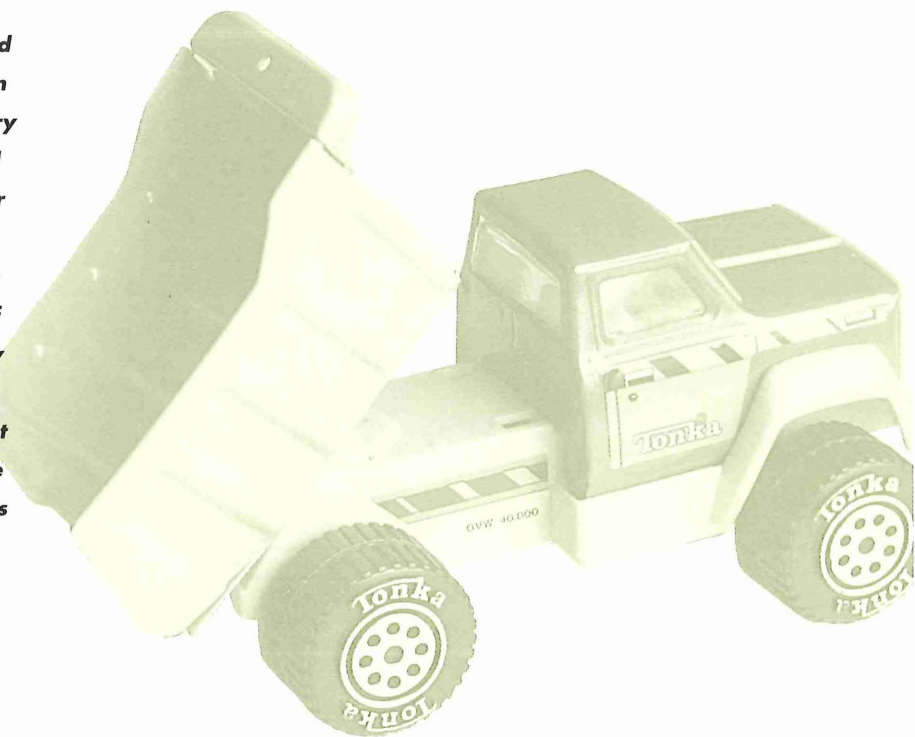
GENEROUS INDIVIDUALS, foundations and corporations gave or pledged \$3.4 million in new gifts for the History Center, including a \$500,000 challenge grant from The Kresge Foundation. These gifts brought the total raised for the History Center Campaign to more than \$13 million by June 30, 1992. Donors responded enthusiastically to the campaign publication titled *Minnesota's History: A Story Worth*



Maija Brown, a senior at South High School in Minneapolis, earned fourth place and an AFL-CIO labor history award at National History Day for her display on the Strutwear Knitting Company strike of 1935. History Day is creating a new audience of student researchers for the Society's collections and resources.



Preserving and Sharing and to the campaign film titled *Windows in Time: a Portrait of the Minnesota Historical Society*. Both won national awards for excellence from the American Association of Museums. A new and enhanced membership program, initiated to coincide with the opening of the Society's History Center, will invite more people to participate in and support the Society's programs.



Minnesota Historical Society
CONDENSED BALANCE SHEET
 June 30, 1992 (000's omitted)

	Unrestricted Funds	Restricted Funds State Appropriations	Other	Plant Fund	Endowment Funds	Total
Cash and Investments	\$2,095	\$1,068	\$2,709	-	\$4,357	\$10,229
Receivables	222	164	4,765	-	19	5,170
Museum Shop Inventories	589	-	-	-	-	589
History Center property and equipment - net	-	-	-	61,450	-	61,450
Total Assets	\$2,906	\$1,232	\$7,474	\$61,450	\$4,376	\$77,438
Payables and Accrued Amounts	470	739	756	-	-	1,965
Deferred Amounts	-	493	6,718	-	-	7,211
Total Liabilities	470	1,232	7,474	-	-	9,176
Fund Balances	2,436	-	-	61,450	4,376	68,262
Total Liabilities and Fund Balances (note A)	\$2,906	\$1,232	\$7,474	\$61,450	\$4,376	\$77,438

Note A: The History Center was placed in service late in 1992. Accordingly, the Center was capitalized in a new Plant Fund in 1992, and depreciation will be recognized beginning in 1993. These statements are excerpts from the Society's audited financial statements, which are available upon request.

Minnesota Historical Society
**STATEMENT OF SUPPORT AND REVENUE, EXPENSES, CAPITAL ADDITIONS,
 AND CHANGES IN FUND BALANCES**
 Year Ended June 30, 1992 (000's omitted)

	Unrestricted Funds	Restricted Funds		Plant Fund	Endowment Funds	Total
		State Appropriations	Other			
Support and Revenue						
Support						
Private gifts and grants	\$ 133	\$ -	\$ 82	\$ -	\$ -	\$ 215
History Center gifts and grants	-	-	7,653	-	-	7,653
Federal grants and contracts	-	-	741	-	-	741
State grants and contracts	-	-	995	-	-	995
County and local grants	-	-	74	-	-	74
State appropriations						
History Center	-	5,220	-	-	-	5,220
Other	-	12,890	-	-	-	12,890
Total support	133	18,110	9,545	-	-	27,788
Revenue						
Membership	94	-	5	-	-	99
Admissions	181	305	-	-	-	486
Publication sales	511	-	-	-	-	511
Museum shop sales	612	-	-	-	-	612
Other sales and fees	498	-	7	-	26	531
Investment earnings	424	-	127	-	18	569
Total revenue	2,320	305	139	-	44	2,808
Total support and revenue	2,453	18,415	9,684	-	44	30,596

(continued on page 11)

Minnesota Historical Society
STATEMENT OF SUPPORT AND REVENUE, EXPENSES, CAPITAL ADDITIONS,
AND CHANGES IN FUND BALANCES
Year Ended June 30, 1992 (000's omitted)

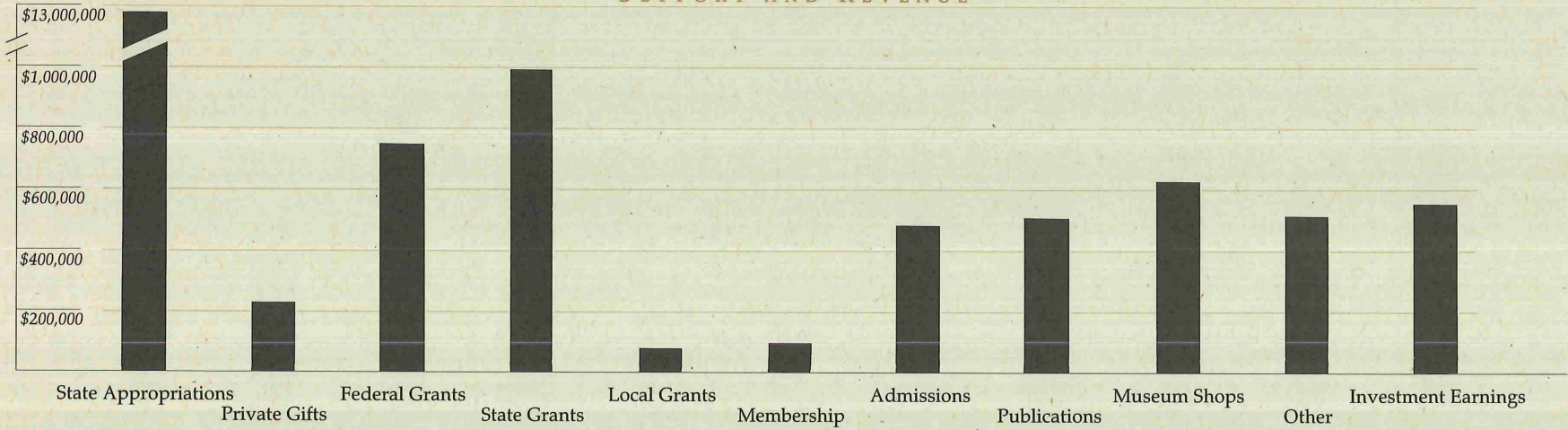
(continued from page 10)

	Unrestricted Funds	Restricted Funds State Appropriations	Other	Plant Fund	Endowment Funds	Total
Expenses						
Program services						
Library collections and archival services	\$ 278	\$ 3,235	\$ 180	\$ -	\$ -	\$ 3,693
Publications and research	315	681	46	-	-	1,042
Museum operations, exhibits and education	135	1,874	30	-	-	2,039
Historic sites and field programs	783	4,211	1,324	-	-	6,318
Historic preservation grants	-	-	316	-	-	316
Special subsidies and grants	-	295	8	-	-	303
History Center	-	-	552	-	-	552
Other	-	1	-	-	-	1
Total program services	1,511	10,297	2,456	-	-	14,264
Supporting services						
Administration and general support	934	2,753	127	-	-	3,814
Development	-	176	107	-	-	283
Total expenses	2,445	13,226	2,690	-	-	18,361
Excess of support and revenues over expenses before capital additions	8	5,189	6,994	-	44	12,235
Capital additions - contributions and bequests	-	-	-	-	197	197
Excess of support and revenues and capital additions over expenses	8	5,189	6,994	-	241	12,432
Fund balances at beginning of year	2,892	-	-	-	4,138	7,030
Fund balance restatements and transfers						
History Center property and equipment at beginning of year (note A)	-	-	-	48,795	-	48,795
History Center property and equipment current year acquisitions (note A)	(472)	(5,189)	(6,994)	12,655	-	-
Other transfers including those from deferred amounts	8	-	-	-	(3)	5
Fund balances at end of year	<u>\$2,436</u>	<u>\$ -</u>	<u>\$ -</u>	<u>\$61,450</u>	<u>\$4,376</u>	<u>\$68,262</u>

Note A: The History Center was placed in service late in 1992. Accordingly, the Center was capitalized in a new Plant Fund in 1992, and depreciation will be recognized beginning in 1993.

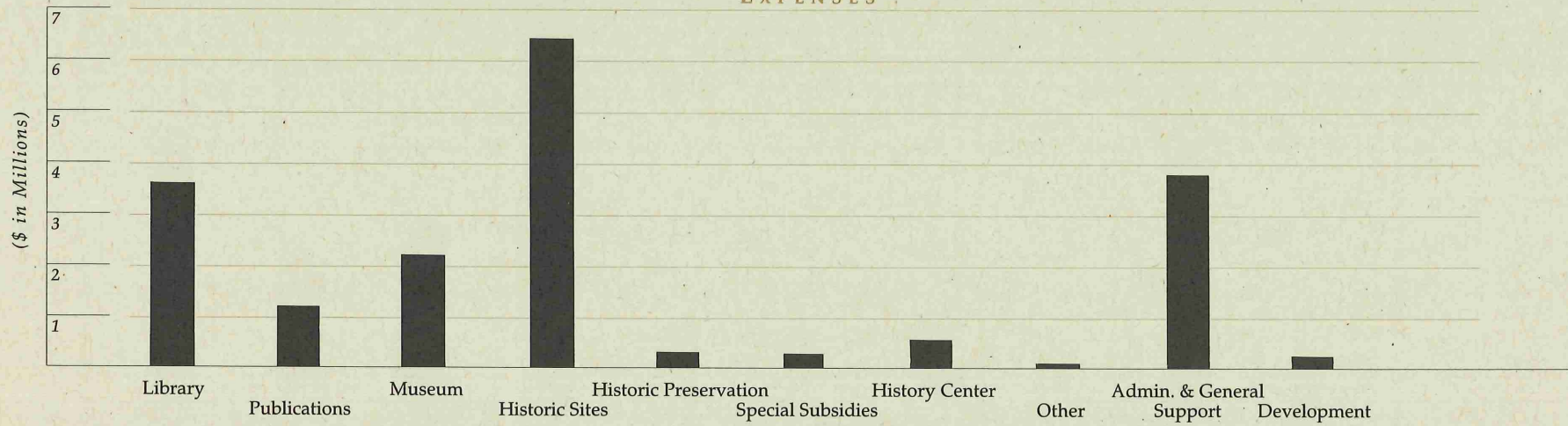
Minnesota Historical Society

SUPPORT AND REVENUE



12

EXPENSES



GOVERNING BOARD AND MANAGEMENT STAFF

GOVERNING BOARD

As of June 30, 1992

Executive Committee

Kennon V. Rothchild
President

Charles W. Arnason
Vice President

Marshall R. Hatfield
Vice President

Jean M. Chesley
Vice President

Marney B. Brooks
Vice President

Ronald M. Hubbs
Vice President

Nina M. Archabal
Secretary

Raymond A. Reister
Treasurer

Joseph S. Micallef
Immediate Past President

Karen A. Humphrey

Peter R. Reis

Curtis L. Roy

Executive Council

Arnold C. Anderson

D.H. Ankeny Jr.

Edward W. Asplin

Bruce W. Bean

Thomas C. Buckley

Carl B. Drake Jr.

James S. Griffin

Rosalie H. Hall

Karen A. Humphrey

Richard L. Husband

Martha M. Kaemmer

Sylvia C. Kaplan

Elizabeth S. MacMillan

Margaret W. Marvin

Malcolm W. McDonald

Joseph S. Micallef

Richard T. Murphy Sr.

Thomond R. O'Brien

Peter R. Reis

Curtis L. Roy

Vicenta D. Scarlett

Donald B. Shank

Emily Anne Staples

Lee Ann TallBear

Paul A. Verret

Lorenzo D. Williams

Eleanor C. Winston

Edward J. Zapp

Ex-Officio Council Members

Arne Carlson

Mark Dayton

Joanell Dyrstad

Joan Anderson Growe

Hubert H. Humphrey III

Michael McGrath

Honorary Council

Elmer L. Andersen

Norbert Arnold

Sam Barr

Mabel Barsness

Marie Brodwolf

Marney B. Brooks

Mary Burke

Leonard G. Carpenter

Clarke A. Chambers

Carl H. Chrislock

John J. Costello

M.E. Dirlam

Hiram M. Drache

Elizabeth S. Driscoll

Jeanne Dunsworth

Michael F. Ettel

Ardene L. Flynn

Theodore R. Fritsche

Margaret L. Gunther

Reuel D. Harmon

Robert E. Hess

Robert E. Hoag

Ronald M. Hubbs

Lucile M. Kane

William G. Kirchner

Thomas J. Lamphier

Rodney C. Loehr

Robert E. Matteson

E. Neil Mattson

Eugene P. McCahill

Mary Ann McCoy

Louis M. Moore

Stephen A. Osborn

Donald G. Padilla

John Parker

Paul L. Parker

Peter S. Popovich

Rhoda K. Raasch

Ramedo J. Saucedo

Rodney N. Searle

James P. Shannon

Samuel Singer

Robert J. Sivertsen

George A. Smith

F. L. Spanier

Walter N. Trenerry

Vernell Wabasha

Lyman E. Wakefield

MANAGEMENT STAFF

Director
Nina M. Archabal

Deputy Director, Interpretive Programs
Ian R. Stewart

Director of Development
Mark Haidet

Assistant Director, Publications and Research
Jean A. Brookins

Minnesota Historical Society Press
Ann Regan

Research
Deborah Miller

Assistant Director, Historic Sites and Field Programs
Donn Coddington

Archaeology
Robert Clouse

Historic Preservation, Field Services and Grants
Britta Bloomberg

Historic Sites
(vacant)

Assistant Director, Museums
Barbara Franco

Education
Maureen Otwell

Exhibitions
Paul Martin

Museum Collections
Marcia Anderson

Information Office
George Ryan

Assistant Director, Library and Archives
Lila J. Goff

Conservation
Robert Herskovitz

Acquisitions and Curatorial Collections
James E. Fogerty

Processing
Michael J. Fox

Reference
Denise Carlson

State Archives
Duane Swanson (acting)

Assistant Director, Finance and Administration
John B. Lilja

Accounting Operations
Deborah Mayne

Human Resources
Patricia Gaarder

Institutional Services
James Froeber

SOCIETY DONORS

DONORS TO THE CAPITAL CAMPAIGN

The Minnesota Legislature, on behalf of all of Minnesota's citizens, has committed over \$59 million for the Society's Minnesota History Center, and many corporations, foundations, and individuals have made significant contributions. Major gifts received through September 8, 1992, are listed below.

Guarantors

(\$500,000 and over)

Anonymous
F.R. Bigelow Foundation
The Bush Foundation
The Kresge Foundation
3M Foundation
Whitney and Elizabeth MacMillan
The MAHADH Foundation
National Endowment for the Humanities

Benefactors

(\$100,000 - \$499,999)

Anonymous
Andersen Foundation
Elmer L. and Eleanor J. Andersen Foundation
Athwin Foundation
Terry and Sharon Avent
Virginia and Jim Binger

Conley and Marney Brooks
The Cargill Foundation
Chadwick Foundation
Edwin W. and Catherine M. Davis Foundation
Mrs. Edwin W. Davis
Mr. and Mrs. Frederick W. Davis
Mr. and Mrs. Albert J. Moorman

Judy and Kenneth Dayton
Deluxe Corporation
Foundation

Olivia Irvine Dodge
Mr. and Mrs. W. John Driscoll
Alfred P. Gale
General Mills Foundation
Rosalie H. and Ted Hall
Honeywell Foundation
Edgar F. and Ethel Johnson
Knight Foundation
Mr. and Mrs. W. Duncan MacMillan, II
Marbrook Foundation
Mardag Foundation
Minnesota Fraternal Congress

Mrs. John M. Musser
The Laura Jane Musser Fund
Alice M. O'Brien Foundation
Red Wing Shoe Company Foundation
Ken and Nina Rothchild
Saint Croix Foundation
The St. Paul Companies

The Saint Paul Foundation, Inc.
Mr. and Mrs. Robert J. Sivertsen
Emily Anne Staples
Loring M. Staples
Carl A. Weyerhaeuser
Charitable Trusts

Sponsors

(\$50,000 - \$99,999)

The Ankeny Family
Archer Daniels Midland Company
Elly and Ed Asplin
Alexandra and Warren Bjorklund
Patrick and Aimee Butler Family Foundation
Jean and Frank Chesley
John and Martha Daniels
Stanley Ray and Lynn Weyerhaeuser Day
Ruth and Bruce Dayton
Mary Lee and Wallace Dayton
Margaret W. Harmon
Reuel Harmon
Ebba C. Hoffman
Ronald and Margaret Hubbs
Norwest Foundation
Curt and Joan Roy
The Southways Foundation
Tozer Foundation

Patrons

(\$10,000 - \$49,999)

Anonymous
ADC Telecommunications
John E. Andrus, III
Nina and John Archabal
Charles and Peggy Arnason
Mr. and Mrs. John B. Bean
Captain William D. Bowell, Sr.
Bozell, Inc.
Edward and Virginia Brooks
Markell Brooks
CP Rail System (Soo Line Railroad)
Carolyn Foundation
Leonard and Geraldine Carpenter
Horace F. and Esther J. Chamberlain
ConAgra, Inc.
Arthur and David Cosgrove Memorial Fund
Sage and John Cowles
Ella P. Crosby
Judson and Elisabeth Dayton
Mr. and Mrs. Richard V. DeLeo
Elisabeth W. Doermann
Dorsey & Whitney Foundation
Joseph C. and Lillian A. Duke Foundation
David R. and Elizabeth P. Fesler

Andrew Fuller
Mrs. Richard P. Gale
Mr. and Mrs. Bernard M. Granum
Marshall and Elizabeth Hatfield
Lucy Rosenberry Jones
The Jostens Foundation, Inc.
Samuel and Sylvia Kaplan
Leonette M. and Fred T. Lanners Foundation
Richard Coyle Lilly Foundation
Mary D. and George A. Mairs
Alan and Susan Snyder McDowell
Meadowood Foundation
Joseph Stephen and Jane Yungers Micallef
Clinton and Mary Morrison
Jane and John Morrison
Murphy Warehouse Company
Naegele Outdoor Advertising Inc.
Constance S. Otis
Dr. and Mrs. Julien V. Petit
The Family of Philip W. Pillsbury
George C. Power, Jr.
Mr. and Mrs. Raymond A. Reister
Mrs. Joseph L. Rose
Ramedo and Catalina Saucedo

Elizabeth Z. Savage
Don and Millie Shank
George C. Stees
Sheldon and Ellen Sturgis
Bill and Evelyn Sweasy
Mr. and Mrs. F.T. Weyerhaeuser
Whitney Foundation
Eleanor C. and Frederick Winston
Frederick S. Winston Family
Women's Organization of the Minnesota Historical Society
Mr. and Mrs. James T. Wyman

Builders

(\$5,000 - \$9,999)

Marion Hanes Andrus
Louise B. Christianson
David and Kitty Crosby
Tom and Ellie Crosby, Jr.
Henry Doerr
Mr. and Mrs. William Driscoll
Ted and Lois Fritsche
Mr. and Mrs. A.J. Huss, Jr.
Marjorie and Irving Kreidberg
Helen and Albert W. Lindeke, Jr.
Jean R. Ljungkull
Mr. and Mrs. H. William Lurton
Louise McCannel
Lucy C. Mitchell

SOCIETY DONORS

Samuel Morgan
Angus T. and Virginia
G. Morrison
The Nash Foundation
Cole and Betty Oehler
Pilot Foundation
Roger B. Shepard, Jr.
Kristine Smith
John P. Snyder, III
George and Irene Steiner
J. Kimball and Helen W.
Whitney
Edward J. Zapp

Sustainers (\$1,000 - \$4,999)

Roger E. Anderson
Sam and Helga Barr
Mrs. Mabel Barsness
Margaret M. Bradley
Thomas C. Buckley
Sarah Ann Cassidy
Georgia R. DeCoster
Mr. and Mrs. John
deLaittre
Bill and Mary Dolan
Everett and Ruth Drake
Mr. and Mrs. Philip Duff
Mr. and Mrs. Richard
Dunsworth
Litton and Nancy Field
Charlotte M. Forsythe
Joan and James Gardner
General Service
Foundation
Grant Thornton
Mr. and Mrs. Preston C.
Haglin
Mark and Kathryn Haidet

William and Helen
Hartfiel
Richard L. Husband
Lucile Kane
Mr. and Mrs. William A.
King
Kinnard Investments, Inc.
Mr. and Mrs. Robert R.
Martin
Mr. and Mrs. E. Neil
Mattson
Robert W. Maynard
Donald and Anne
McCarthy
Grant Merritt and
Associates
Stevenson R. Miller
National Society of
Colonial Dames of
America in the State of
Minnesota
Mr. and Mrs. Dean Randall
Mr. and Mrs. Walter S.
Rosenberry, III
Ryland J. Rothschild
Barbara M. Ryan
Vicenta Donnelly Scarlett
Wallace J. Schutz
Nancy Shepard
Henry N. Somsen
F.L. "Flip" and Pat Spanier
TCF Foundation
Cynthia Tunncliff
Mr. and Mrs. Paul A.
Verret
Mr. and Mrs. Frederick B.
Wells
William and Shirley
Whitlock
John and Renata Winsor

Friends

(\$500 - \$999)
Anonymous
Mr. and Mrs. William R.
Anderson, Jr.
Bernard L. and Phyllis
Brommer
Jim and Connie Buelow
J.B. Clarkson
George and Marjorie
Dixon
Florence E. Doyle
Mr. and Mrs. William P.
Everts, Jr.
Mr. and Mrs. George P.
Flannery
Ardene Flynn
Mr. and Mrs. Harold
Fredrikson
Timothy C. Glines
Betty B. Grambsch
Louis and Beth Grendahl
Nancy Ottis Harris
John and Sandy Hey
Mr. and Mrs. Harold L.
Holden
Roy and Marjorie Hoover
Karen A. and Charles W.
Humphrey
Rodney C. Loehr
Robert and Jane Matteson
Mary Ann McCoy
Janis K. Obst
Catherine and William
Randall
Peter R. Reis
James and Sandra Rutzick
George and Elizabeth
Smith

SOCIETY DONORS

Private support is essential to maintaining high quality programs. The Society gratefully acknowledges annual contributions from individuals, corporations, and foundations. Donors listed made contributions between July 1, 1991 and June 30, 1992. The Development Office makes every effort to record gifts accurately; if you wish to report an error please call 296-3385. In addition to the contributors below, we thank everyone who made a donation during the fiscal year.

INDIVIDUALS AND PRIVATE FOUNDATIONS

\$5,000 plus

Anonymous
Phyllis D. Bentley Estate
Isabella H. Capser Estate
William G. and Garnett
Kirchner
George A. MacPherson
Fund
Fred Mathison Family
Trust
Onan Family Foundation
Casey Albert T. O'Neil
Foundation
E.M. Pearson Foundation
Margaret Rivers Fund

\$1,000 - \$4,999

Anonymous
Athwin Foundation
James Ford Bell
Foundation
Peter Berkey Foundation
E. Thomas Binger
Conley and Marney
Brooks
Patrick and Aimee Butler
Family Foundation
Chadwick Foundation
George M. and Frances F.
Comstock Estate
John and Martha Daniels
Judy and Kenneth Dayton
Dellwood Foundation
Mr. and Mrs. Carl B.
Drake, Jr.
The Hubbard Foundation
Elsie A. Keasling
Mr. and Mrs. Irving B.
Kreidberg
Whitney and Elizabeth
MacMillan
Mr. and Mrs. Thomas G.
Mairs
Mr. and Mrs. Donald
McNeely
The Honorable and Mrs.
James C. Otis
St. Croix Foundation
Sarah-Maud W. Sivertsen
Charitable Trusts
Tozer Foundation
Mrs. Owen Wangenstein
H.E. and Helen R. Warren
Foundation

David S. and Patricia C.
Williams Fund of the
Minneapolis Foundation

\$500 - \$999

Roger E. Anderson
Paul Carpenter
Jean and Frank Chesley
Raymond Dopmeyer
Philip and Carol Duff
Alfred Harrison
Lucile M. Kane
Lee Loevinger
Mr. and Mrs. George A.
Mairs, III
Mary Ann McCoy
Dr. Genevieve Nelson
Lawrence O'Shaughnessy
The Phillips Foundation
Mrs. Joseph L. Rose
Ken and Nina Rothchild
Robert Rulon-Miller and
B.J. Carpenter
Reverend and Mrs. George
Smith
Kristine Smith
Mr. and Mrs. Marvin J.
Sonosky
Beth and Tim Sullivan
Ralph Warner
Mr. and Mrs. F.O. Watson

\$100 - \$499

Arthur and Alice Aamodt
Mr. and Mrs. James Alcott
Mr. and Mrs. E. Stephen
Alnes

SOCIETY DONORS

Mr. and Mrs. Robert W. Alwin	Elsie Boosalis	Henry Doerr	Mr. and Mrs. David Gray	Mr. and Mrs. John Q. Imholte	Mr. and Mrs. Robert R. Martin
Anthony L. Andersen	Mr. and Mrs. M.J. Brewster	Elizabeth S. Driscoll	Greystone Foundation	Elden and Mary Johnson	Margaret W. Marvin
Governor and Mrs. Elmer L. Andersen	Gladys S. Brooks	Mr. and Mrs. John B. Driscoll	Mr. and Mrs. Roger B. Griffin	Gary M. Johnson	Mr. and Mrs. Robert E. Matteson
Sarah J. Andersen	Ethel M. Brown	Mr. and Mrs. Nicholas E. Duff	Mr. and Mrs. Roger Grundman	Mr. and Mrs. Harry B. Johnson	Mary and Harold Mattlin
Dr. and Mrs. David W. Anderson	Christine Bunker	James Taylor Dunn	Alpha M. Gustafson	Jacqueline N. Jones	Louise W. McCannel
Janet Anderson and Thom Willkomm	Mary Griggs Burke	Mr. and Mrs. Harold S. Elliott	Dr. and Mrs. R.W. Gustafson	Lucy Rosenberry Jones	Mr. and Mrs. Donald McCarthy
Mr. and Mrs. Ronald Anfinson	James and Irene Butler	James W. Emison	Mark and Kathryn Haidet	Dr. and Mrs. Charles Jorgensen	Mr. and Mrs. Sam McCullough
Mrs. D.H. Ankeny, Sr.	Janine D. Butler	Christie Englund	Mr. and Mrs. James Haining	Samuel and Sylvia Kaplan	Mr. and Mrs. Thomas W. McKeown
Pete and Margie Ankeny	Charles I. Buxton, II	William Erickson	Rosalie H. and Ted Hall	Wiliam J. and Mary Keefer	Michael and Judy McLaughlin
Sally and Peter Anson	Dr. Ruth H. Cadwell	David R. and Elizabeth P. Fesler	Mr. and Mrs. Glenn Hanson	Martin and Esther Kellogg	Richard and Mary McMillan
Nina and John Archabal	Bradford Cannon, M.D.	Mr. and Mrs. Litton E.S. Field	Reuel D. Harmon	Mr. and Mrs. Shigaya Kihara	William C. Melton
Joanne M. Argue	Leonard G. Carpenter	Mr. and Mrs. James S. Fish	Nancy Ottis Harris	Tom and Jean King	Mr. and Mrs. Joseph S. Micallef
Mr. and Mrs. Charles W. Arnason	H. Mead Cavert	John T. Flanagan	Hartzell Foundation	Kate S. Klein	Ray Mithun
Norbert Arnold	Mrs. Horace Chamberlain	Mr. and Mrs. George Flannery	Margaret R. Hastings	Mary C. Koehler	J. Neil Morton
Mr. and Mrs. Edward W. Asplin	Mr. and Mrs. Guy B. Chase	Ardene L. Flynn	Marshall and Elizabeth Hatfield	Kathryn and Dean Koutsky	Mr. and Mrs. Frank C. Mullaney
Walter L. Bailey	Mr. and Mrs. J.B. Clarkson	Mr. and Mrs. William H. Fobes, Jr.	John and Nancy Hauschild	Thomas J. Lamphier	Mr. and Mrs. Edward L. Murphy, Jr.
Mrs. Robert Orr Baker	Frieda H. Claussen	Representative and Mrs. Sal Frederick	Mary Jane Hedstrom	A. Scheffer Lang and Pat Hart	Mr. and Mrs. Richard T. Murphy, Sr.
Earl and Doris Bakken	Mrs. Charles Cleveland	Mr. and Mrs. H.R. Galbraith	Mrs. George Heffelfinger	Donald B. Lawrence	Mrs. John M. Musser
Roger Spooner Barrett	John A. Cochrane	Natalie Gallagher	Mark J. Heistad	Mrs. Harold LeVander	Dr. Elizabeth Mussey
Mabel Barsness	Ralph J. Coffman	Mr. and Mrs. Robert F. Garland	Joseph F. Helkamp	Bernard and Shirley Lieder	Mendes J. Napoli
John and Lou Barwise	Ogden P. and Elizabeth A. Confer Family Charitable Trust	Dr. and Mrs. N.L. Gault, Jr.	Mr. and Mrs. Roger Hertzberg	Mrs. Frank Lindig	Gerald Nelson
The Bayport Foundation	Mrs. Thomas M. Crosby	Mrs. Zarm Keljik Geisenhoff	Mrs. Harold L. Holden	Erma G. Lipschultz	Cole and Betty Oehler
Bruce Bean	Tom and Ellie Crosby, Jr.	David J. Gerdes	Anne M. Holey	Ruth Lipschultz	Mr. and Mrs. Richardson B. Okie
Mr. and Mrs. Charles T. Behrens	Robert Crump and Patricia Kennedy Crump	Mr. and Mrs. James Gesell	Mr. and Mrs. John S. Holl	Lillian Livingston	Stephen and Lilian Osborn
Gene and Gretchen Beito	Andrew and Carol Currie	Kalman and Maxine Goldenberg	Roy and Marjorie Hoover	Jean R. Ljungkull	Mr. and Mrs. Charles Osborne
Mr. and Mrs. Richard H. Benson	Carol Daniels and Richard Jacker	Betty B. Grambsch	Charles and Dorothy Howard	Rodney C. Loehr	Mr. and Mrs. Paul L. Parker
Mr. and Mrs. G. Allen Bergholm	Mr. and Mrs. Bruce B. Dayton	Mr. and Mrs. Bernard M. Granum	Richard and Nancy Huart	Mr. and Mrs. Donald Loizeaux	
Madeline Betsch	Mr. and Mrs. Richard V. DeLeo		F.B. Hubachek, Jr.	Dorothy Longfellow	
Arley R. Bjella	Mr. and Mrs. Charles M. Denny, Jr.		Ronald and Margaret Hubbs	Mr. and Mrs. Walter Lorshbough	
Mr. and Mrs. Paul Boening	Mr. and Mrs. George Dixon		Hubert H. Humphrey Foundation	Mr. and Mrs. H.W. Lurton	
				Lester A. Malkerson	

SOCIETY DONORS

Ruth S. Pegelow
 Evelyn and Julien V. Petit
 George and Sally Pillsbury
 John S. Pillsbury, Jr.
 Frank and Mary Plant
 Peter S. Popovich
 Ann and Dean Randall
 Robert and Louise
 Rathburn
 Marie Bremer Reim
 Peter R. Reis
 Ruth and Ray Reister
 Mr. and Mrs. Edwin Riege
 Richard E. Riis
 Ortha D. Robbins
 Mr. and Mrs. Donald
 Rockenbach
 Reverend and Mrs. Glen E.
 Rodgers
 Mr. and Mrs. Thomas A.
 Rohde
 Mr. and Mrs. Alan K.
 Ruvelson
 R.T. Rybak and Megan
 O'Hara
 Vicenta Donnelly Scarlett
 Arthur B. Schaefer, Jr.
 Mrs. Paul F. Schlick
 R.P. Schlingerman
 Otto and Martha Schmaltz
 Mr. and Mrs. Eugene
 Schnabel
 Joyce and James
 Schnobrich
 William W. Scott
 Mr. and Mrs. Rodney N.
 Searle
 Marion Soderstrom

Matthew B. Seltzer
 James P. Shannon
 Dan and Ellen Sherry
 Samuel Singer
 Mr. and Mrs. Earl Sjobeck
 Mr. and Mrs. G. Richard
 Slade
 Mr. and Mrs. Bruce D.
 Smith
 Mr. and Mrs. William K.
 Smith
 Henry N. Somsen
 John S. Sonnen
 Mr. and Mrs. Ivan
 Sorensen
 Mr. and Mrs. Edson W.
 Spencer
 Mr. and Mrs. Edward B.
 Stanford
 Emily Anne Staples
 John Strauss
 Helen Subak
 Tom and Arlene Swain
 Mr. and Mrs. Donald J.
 Swanson
 Mrs. William D. Sweasy
 Mr. and Mrs. Henry L.
 Sweatt
 Richard and Ruth Thouin
 Mr. and Mrs. Walter
 Trenerry
 Eugene J. Vader, Jr.
 Paul and Carolyn Verret
 John R. Wald
 Lyman E. Wakefield
 Mr. and Mrs. Charles S.
 Ward
 Ann and Dale Warner
 Dr. and Mrs. Bruce
 Wasserman

L.A. Watson and R.D.
 Anderson
 Ralph Wayne
 Mr. and Mrs. Bob Weden
 Wendy Weden
 Mr. and Mrs. Ronald T.
 Welch
 Frederick and Ellen Wells
 Charlotte Wentzell
 Mr. and Mrs. F.T.
 Weyerhaeuser
 Mr. and Mrs. William A.
 Whitlock
 Benson K. and Mary
 Whitney
 The Whitney Foundation
 Mr. and Mrs. Lee S.
 Whitson
 Mr. and Mrs. Frank S.
 Wilkinson
 Lorenzo D. Williams
 Terence Williams and
 Patricia Hampl
 Frederick and Eleanor
 Winston
 Mr. and Mrs. Charles
 Withers
 Mr. and Mrs. Robert Witte
 Cyrus G. Wright
 Donald P. and Jan-
 Suzanne Yaeger

Memorials

Arnold E. Anderson
 Horace F. Chamberlain
 Richard Dunsworth
 Guy Stanton Ford
 Lewis Israel Garrard
 Henry M. Harren

Nancy Loehr
 Gordon Rosenmeier
 Elina Saari
 William D. Sweasy

CORPORATIONS AND ORGANIZATIONS

\$5,000 plus

Charles K. Blandin
 Foundation
 General Mills Foundation
 National Endowment for
 the Arts
 St. Paul Pioneer Press
 Jeffrey Slocum and
 Associates, Inc.

\$1,000 - \$4,999

Anonymous
 American Legion Post 39
 American Legion Post 39
 Auxiliary
 American Legion Post 59
 American Legion Post 580
 Andersen Foundation
 Archer Daniels Midland
 Company
 The Cargill Foundation
 Deluxe Corporation
 Foundation
 The Donaldson
 Foundation
 Honeywell Foundation
 Lake Bank Shares, Inc.
 Lutheran Brotherhood
 3M Foundation
 Mayo Foundation

Northern States Power
 Company
 Richfield Bank and Trust
 Company
 Rosemount, Inc.
 Saum Community Club
 Tennant Foundation
 US WEST Communication
 Systems - Grand Rapids
 Office
 Kraus Hartig VFW
 Post 6587
 Grothe Jacobson VFW
 Post 6692
 Evert R. McClay VFW
 Post 1296
 Winona Aerie #1243 F.O.E.
 Women's Organization of
 the Minnesota Historical
 Society

\$500 - \$999

American Crystal Sugar
 Company
 American Legion Post 71
 American Legion Post 1776
 McVeigh-Dunn American
 Legion Post 60
 T.C. Field and Company
 H.B. Fuller Company
 Laird, Norton Foundation
 Land O'Lakes, Inc.
 National Society of
 Colonial Dames of
 America in the State of
 Minnesota
 The Leonard Parker
 Associates Architects

Pokegama Lake
 Association
 Valley National Bank
 VFW Post 7050

\$100 - \$499

American Legion
 Auxiliary
 American Legion Post 20
 American Legion Post 43
 American Legion Post 150
 American Legion Post 182
 American Legion Post 241
 American Legion Post 303
 American Legion and
 Auxiliary 377
 American Legion Post 424
 American Legion
 Auxiliary 428
 American Legion Post 617
 American Legion
 Auxiliary 1776
 John Bridges American
 Legion Post 15
 Anderson-Claffly
 American Legion
 Post 109
 Eugene Early American
 Legion Post 121
 Clifford Larson American
 Legion Post 189
 Fraser Nelson American
 Legion Post 613
 Walter Riley American
 Legion Post 307
 St. Stephen American
 Legion Post 221
 The Beard Art Galleries
 Boy Scouts of America

SOCIETY DONORS

BPOE #1003
The Brainerd Daily
Dispatch
Brooklyn Park Lions Club
Builders Exchange of
St. Paul
Cambridge State Bank
Crow Wing Disabled
American Veterans
Crown Holdings, Inc.
Delta Kappa Gamma
Society International
Dorsey & Whitney
Fraternal Order of Eagles
Duluth Elks Lodge
Federated Insurance
Foundation
First National Bank of
Wayzata
Fridley State Bank
Grand Rapids State Bank
Hakala Associates, Inc.
Lakeland Engineering
Equipment Company
Leonard, Street and
Deinard
Liberty State Bank
Lindquist and Vennum
Dilworth Lions Club
Lakers Lions Club
Watkins Lions
Malt-O-Meal Company
Marsh and McLennan, Inc.
Medtronic
Meyer, Scherer and
Rockcastle
Mills Fleet Farm
Minnesota Genealogical
Society

Minnesota Title
Foundation
Loyal Order of Moose
Lodge 226
Loyal Order of Moose
Lodge 963
Loyal Order of Moose
Lodge 1180
The NCR Foundation
Norwest Bank Minnesota
South, N.A. (Owatonna
Office)
Peoples State Bank of
Slayton
Military Order of the
Purple Heart
Quadion Corporation -
Minnesota Rubber and
Tool Products
Rahr Foundation
Reserve Officer
Association Chapter 021
Rogers Pioneer Power
Association, Inc.
H.M. Smyth Company,
Inc.
TapeMark Company
TCF Foundation
U.S. Lighthouse Society
VFW Post 5115
VFW Post 6992
Fort Chippewa VFW
Post 936
Gilman VFW Post 1558
Marinoff Miskovich VFW
Post 8831
Rice County VFW
Post 1562
Roseville VFW Post 7555
VFW Rum River Post 2735

Woman's Club of St. Louis
Park

*Matching gifts were received
from the following
organizations:*

Archer Daniels Midland
Company
Deluxe Corporation
Foundation
IBM Corporation
IDS Financial Services, Inc.
The Jostens Foundation,
Inc.
McGraw-Hill Foundation,
Inc.
The St. Paul Companies,
Inc.
U S WEST Foundation

DONORS TO SOCIETY COLLECTIONS

*The Minnesota Historical
Society gratefully
acknowledges and sincerely
thanks the following
individuals, companies,
agencies, and organizations
that made donations to the
Society's collections during
the period July 1, 1991 to
June 30, 1992.*

Division of Library and Archives 1992 Donors

Mel Aaserude
Dorwatha Helen Woods
Adderley

Curtis B. Akenson
Marjorie S. Aldrich
Algonquian & Iroquoian
Linguistics
Earl Allumbaugh
American Chemical
Society
American Society of
Appraisers
Amherst H. Wilder
Foundation
Elmer L. Andersen
Dennis Anderson
Marcia Anderson
Robert F. Anderson
Anoka County Historical
Society
Arkansas State University
Mrs. Ella L. Arsenault
Ascension Church,
Minneapolis
Stan Asch Estate
Dorothy Atkinson
Ray Aune
Faustino Avaloz
Karen H. Avaloz

Carol E. Baer
Carolyn Bailey
Fred Bair, Jr.
Mary Hawker Bakeman
Tracey Baker
The Balch Institute For
Ethnic Studies
Camille Bangs
Allan Bartlett
Atherton Bean
Carole R. Becker
Harry M. Bedbury Family
Charles H. Bell

Jill Bemis
Jim Bemis
Bemis Company, Inc.
Richard H. Benson
Dalton C. Bergan
Nancy Bergh
Linda Berglin
Lynn Bergstrom
Nancy F. Berry
Margaret Bevan
Dave Biljan
Birth Community, Inc.
Emily Moore Bishop
Louise Foss Bjelland
Blandin Foundation
Harry Blumenthal Family
Catherine Boehlke
Mrs. Helen Bohon
Stanley Boland
Rudy Boschwitz
Dee Ann Boulger
Robert M. Bowen
Boyd Film Company
Elizabeth Boyle
Beatrice Bradley
Joyce M. Brady
Harry E. Bray
Neil Brede
Maybelle Brekken
Kenneth G. Brill, Jr.
Jean Brookins
Geoffrey A. Brown
Ruth Brown
Mrs. Thomas M. Brown
Herbert R. Brunell
Frank E. Brust
Charles Burback
H. L. Buck
Barb Burleigh
Randy Burns

Edith Smith Cable
Dick Cain
Joe Campbell
Barbara Campbell-Buse
Bruce B. Cannady
George P. Carlson
Grace Carlson
Mary A. Carroll
Marian Carroll
Nancy A. Carter
Carson Pirie Scott, Inc.
Cass County Historical
Society
Center For Urban &
Regional Affairs,
University of Minnesota
The Center For Western
Studies
Central Community
College
Central Michigan
University
William Charboneau
Blanche Reardon Childs
Connee L. Chivers
Cindy Christian
Rosemary Church
Clan Blair Society
Margaret Clark
William L. Clements
Library
Nick Cocchiarella
John A. Cochrane
Fred Cogelow
Deirdre Coleman
Nicolas D. Coleman
Patrick K. Coleman
The College of St.
Scholastica
A. "Ace" H. Collier, Jr.

SOCIETY DONORS

Comon Cause Minnesota
Mr. and Mrs. Bob
Connolly
Conservators Plus, Inc. for
Margaret Baker
Betty J. Corley
John W. Covey
Betty Cowie
Brian J. Coyle
Raymond A. Crippen
Crane Island Association
James Crnkovich
Maurice M. Crowley
Pat Kennedy Crump
Jerald A. Cunningham
Philip J. Currier
Nicholas A. Curry
Edwin Cutting
Patricia Cutting

Dacotah Prairie Museum
Kathleen Darley
Josephine Harper Darling
R. J. Dassett
Maurine Davidson
Bessie R. Day
Patty Dean
Frank O. Deimel
Margaret Dekko
Susan DeLattre
Terry Dempsey
Bernice Deponti
Robert Desjarlait
Damian L. Dietlein
Helene Reibestein Dill
Diversified Dynamics
George E. Dizard
Ray Djuff
W. John Driscoll
Susan Druskin

N. E. Duff
Henry K. and Mary L.
Dugarm
Richard L. Duncan
Dorothy Duncanson
James Taylor Dunn
Maria Bach Dunn
Reverend Gerry Dyste

Mark Eccles
Reverend Harvey Egan
El Colegio De Mexico, A.C.
Daniel J. Elazar
Electric Railroaders
Association
Wilbur Elston
Mr. and Mrs. Bert
Enestvedt
Mrs. Mary B. Engstrom
Earl T. Esse
Dolores Ethier
Beverly Ophoven Ewing

Thomas H. Fahey
Wesley A. Fales, Sr.
Christopher C. Faust
Harold D. Field, Jr.
Arthur Louis Finnell
First United Methodist
Church, Stillwater
Roger Fischer
Steven P. Fjestad
John C. Flaherty
Regina Flanagan
James E. Fogerty
Alma Foley
Fond Du Lac Reservation
Business Committee
Clarence Forester

Bernice Fossum
John Franey
Donald M. Fraser
William J. Fraser
Mel Frederick
William G. Frenzel
Friends of the Chaska
Public Library
Friends of the St. Paul
Library
Paula Frohnauer
Mrs. J. S. Futcher

Richard Gamradt
Joy Ganyo
Mary Lee Meyer Garbe
Geo. A. Hormel & Co.
German Historical
Institute
German Interest Group,
Minnesota Genealogical
Society
Millie B. Gignac
Eleanor S. Gillam, In
Memory of Cornelius
Willet Gillam
Carolyn Gilman
Timothy Glines
George L. Glotzbach
Harriett Gobert
Lila J. and Robert E. Goff
Tom Goldstein
Estate of Bruce Goldstein
Irene Gomez-Bethke
Joseph A. Goodhue
Horace R. Goodhue
Don Grant
Grant County Historical
Society

Great Lakes Indian Fish &
Wildlife Commission
Gwendolyn Green
Mark A. Greene
John Gregor
Louise B. Griffen
James S. Griffin
Peggy Rice Grosser
Joan Anderson Growe

Mark Haidet
Alice Eugenia Norma Hall
Marian D. and Douglas
Hall
Harvey J. Hanggi, Jr.
Mrs. F. R. Harkness
Patricia Harpole
Lawrence W. Harrington
Helen Hartwich
Ellen Hawley
Gerald W. Heaney
David Heberlein
Mrs. Leo Hedin
Ruth D. Hein
David Heinz
Marlin Heise
Kenneth Heitz
Martha E. Hellander
Botolv Helleland
Rachel Brin Helstein
Fred Herschler
Jeffrey A. Hess
Mr. and Mrs. Gareth
Hiebert
Esther A. Hietala
Helen Hynes Hill
Reverend Richard L.
Hillstrom
Katie M. Himanga
Daniel C. Hinkley

Hoffman Centennial
Committee
Terry Hoffman
Sonya M. Hofner
Ed Hogan
Ortrude Holte
Beth Ann Horner
Kathleen M. Hotchkis
Marguerite Hoversten
Ronald M. Hubbs
Mary Benton Hummel
Karen A. Humphrey
Karen Rae Huppert
Margaret Hutcheson
Helen Ford Hutchison
Estate of Arthur D. Hyde

Immigration History
Research Center
Instituto De Arte Y Cultura
International Polar
Expedition, Inc.
International Special
Olympics
The Irish Genealogical
Society, Minnesota
Genealogical Society
Iron Range Research
Center
ISO Commercial Risk
Services, Inc.

Lloyd J. Jackson
Claes-Hakan Jacobson
Ken Jandl
Clifford C. Japs
Carol E. Johnson
Darrell E. Johnson
Donald D. Johnson
Liz Holum Johnson

Mabel L. Johnson
Robert Leland Johnson
Ruby S. Johnson
William Johnson
Barbara Jones
Josiah Edson Chapter,
N.S.D.A.R.
Darlene Cruikshank Joyce

Max M. Kampelman
John Kass
Steve Keefe
James E. Kelley
W. R. Kelley
Charles A. Kelly
James Kern
Harold Kittleson
John I. Kolehmainen
Leon Kramer
Charlet Kratoska
Irving and Marjorie
Kreidberg
Penelope Krosch
Helen Kruth
KSTP-TV
KTCA-TV
Charles Kucharik
Tom Kuseshe
Mary E. Kyle

La Salle County Historical
Society
Labour of Love
Productions
Lake Superior Paper
Industries
Janet Thielen Lamkin
Stanley G. Langland
Dr. and Mrs. John E.
Larkin, Jr.

SOCIETY DONORS

Larkin, Hoffman, Daly & Lindgren
 Karen V. Larsen
 Michael D. Larson
 Peter Latner
 Roger A. Laufenburger
 Delores V. Lautman
 Tim Layeux
 Mary E. Lea
 League of Women Voters of Minneapolis
 Maura K. LeClair
 Donald Legato
 Edna Leidinger Estate
 Richard R. Lemke
 Lerner Publications Company
 Rachel G. Levitt
 Rhoda Lewin
 David W. Lime
 Dallas Lindgren
 Daniel T. Lindsay
 Harley Lindus
 Nick Linsmayer
 Ora Hopkins Litterer
 Little Canada Historical Society
 Little Cedar Lutheran Church, Adams
 Llewellyn Worldwide, Ltd.
 The Loft
 Mrs. Beata Loken
 Mrs. Lucille V. Ludescher
 William M. Lumel
 June Luschen
 John R. Lyght
 Jerome F. Machamer
 George E. MacKinnon
 W. Duncan MacMillan

Gregory Maddox
 Mahnom County Historical Society
 Edward J. Maki, Jr.
 Lucille, M. Maloney
 Malt-O-Meal Company
 Mary Mann
 Edwin E. Manni
 Anna M. Maranda
 Ted Markey
 Elisabeth P. Martin
 Maryland State Archives
 Margaret Mason
 Mr. and Mrs. Gerald Matejka
 Vera Mathson
 Chris Matteson
 Jane P. Matteson
 Robert E. Matteson
 Martha Mau
 Carl Mautz Publishing
 Louise W. McCannel
 Anne and Donald McCarthy
 Viola McConnell
 John Robert McDermott
 Kwame and Mary McDonald
 Mary McEuoy
 Marge McGee
 Scott McGinnis
 Marilyn McGriff
 Gabrielle McIver
 W. A. McKenzie
 Peter McLaughlin
 Pat and Mary McQuillan
 Linda McShannock
 Rhoda Mead
 Peg Meier

Mr. and Mrs. Francis Meisch
 Ann Melgaard
 Linda Menzel
 Meriden Engineering
 Leslie Mettler
 Paul Meyer
 Mrs. Phyllis Mild
 Milkweed Editions
 Dana Miller
 Deborah Miller
 Richard Miller
 Willis H. Miller
 Minitex Library Information Network
 Minneapolis Club
 Minneapolis Fire Department
 Minneapolis Municipal Building Commission
 Minneapolis Public Library
 Minnesearch
 Minnesota Adult Literacy Campaign
 Minnesota Association of Cooperatives
 Minnesota Association of Detectives and Protective Agents, Inc.
 Minnesota Association of Volunteer Directors
 Minnesota Audubon Council
 Minnesota Civil Liberties Union
 The Minnesota Composers Forum
 Minnesota Genealogical Society

Minnesota Newspaper Association
 Minnesota Occupational Therapy Association
 Minnesota Power
 The Minnesota Society of the Sons of the American Revolution
 Minnesota State Arts Board
 Minnesota State Senate
 Minnesota Super Bowl Task Force
 Minnesota Taxpayers Association
 Minnesota Technology
 Minnesota Twins
 Minnesota Valley Country Club
 Minnesota Women's Consortium
 Minnesota Women's Press
 Jim Mitchell
 Maurice Moe
 Richard Moe
 Joan A. Mondale
 Walter F. Mondale
 Bergetta Monroe
 Montana Historical Society
 Mrs. Albert J. Moorman
 Clinton Morrison
 Reverend Paul F. Morrissey
 W. A. Mortenson
 Andrea Mugnier
 Ms. Pat Mullen
 Walter James Murray
 Elizabeth W. Musser
 Judith Myers

National Archives Trust Fund
 National Geographic Society, Book Division
 National Park Service
 National Society, Daughters of the American Revolution
 Judie Nelson
 Merlin E. Nelson
 Robert M. Nelson
 Newberry Library
 David A. Newkirk
 Launa Newman
 Eric Nickolauson
 Brad Niehorster
 Joel and Irene Njus
 Rod and Marie Nordberg
 North Dakota Institute for Regional Studies
 North Dakota State University, English Department
 The Norwegian-American Historical Association
 George Nuamoff
 Ken O'Brien
 Jeri O'Donnell
 Mr. and Mrs. D. R. O'Keefe
 Thomas O'Sullivan
 Oak Terrace Nursing Home
 Harriet A. Nelson Odden
 Office of the Governor
 Sally Olsen
 Herbert and Donna Opp
 Terry Oscarson
 Stephen E. Osman
 Mrs. Oliver Ossanna

Ron Ott
 James L. Owens
 Ken Owens
 Alfred Owre, Jr.
 Oxford Press
 Oxhead Press
 Park Genealogical Books
 Barbara Parke
 Lloyd Peabody
 Mrs. Harrison W. Pells
 Pennock Centennial Committee
 Pepsi Cola, Inc.
 Jacqueline S. Petersen
 Mrs. Burton K. Peterson
 David B. Peterson
 Joseph Peterson
 Dr. Ralph C. E. Peterson
 Arlene J. Pettersen
 Evelynne Peugh
 Phalen Area Community Council
 John S. Pillsbury, Jr.
 Plains Art Museum
 Leila Poullada
 Richard Pranke
 Princeton University Press
 Project For Pride In Living, Inc.
 The Pseudonymphs
 Pearl Quinnild
 Mrs. Herman P. Radeck
 Ramaley Printing Company
 Harold H. Ramer Family
 Ramsey County Public Library

SOCIETY DONORS

Ramsey Hill Association Gertrude Rassman City of Red Wing T. H. Reed Lauren A. Reese Reflections In Video Al Rehder Burton D. Reinfrank John L. Relf Colonel and Mrs. Lester F. Rentmeester, U.S.A.F. (Retired) John D. and Louise Rewey Barbara Rich Helen Richardson Marjorie Wilson Richison Mrs. John C. Rieg Charles T. Rinkel, Jr. Florence Nylin Robinson Joanne "Ruff" Robinson Rochester Community College, Goddard Library Walter J. Rock, Sr. Peter Rodosovich Theodore J. Roemer Evan Benjamin Rogers Sarah Finch Rollins Herbert W. Rosch Alexander G. Rose, III Mack Rose Nancy Rose Roger C. Rosenbaum Roseville Public Library George A. Rossman Ruthton Book Committee Robert Rulon-Miller Anne Runtledge Martin Olav Sabo Joan Salmon	Michael Sanchelli Elizabeth Leclair Sanders Grace Sandness Jeff Savage Mrs. Thomas C. Savage Henry J. Savelkoul Paula C. Schmid Marlene Schoenberg Henry Scholberg Peggy Schroeder Othild M. Schwartzkopff- Gohl, M.D. Elizabeth Scobie Mavis V. Scott John E. Scott, Jr. Jere Sears Jean Seeker Seward Community Cafe Reverend Kevin Shanley James P. Shannon Donna L. Shellum Rich Shelton Shiloh Museum Joy L. Shreyer Alberta Sigurdson Rita M. Simmons Lyle and Ellen Siverson Matt A. Slettedahl Charlotte N. Smith Clarence Smith Grace and W. Wyman Smith Mrs. Lyle G. Smith Mary Castleberg Smith Valerie Sonstenes South Dakota State Historical Society Kay Spangler Linda M. Spearman Spicer Historical Society	The Sports Collection Robert Sprague Spring Valley Community Historical Society St. Joseph's House St. Paul Companies, Inc. St. Paul Downtown Community Development Council St. Paul Foundation St. Paul Lutheran Church St. Paul Public Library St. Paul Tenants Union St. Paul's Church-On-The- Hill St. Paul-Nagasaki Sister City Committee St. Thomas Technology Press Audrey E. Stafford Mrs. Clayton P. Stanton Hollis Stauber Stearns County Historical Society Kay Self Stevens Ian R. Stewart Lorraine Stewart Stockholm Lutheran Church Hazel S. Stoeckeler Charles Stone Raymond M. Stover, M.D. Hayden Straight Don Strand Jeanne Strand Ed Stringer Ruth Ann Strouse Paula Stuart Studio 11 Rowland Sullivan	Charles Sundby Susstones Records Susstones/Prospective Records Mrs. Audrey Swanson Deborah Swanson Duane Swanson J. Everett Swanson Estate of Stuart Swanson Thomas M. Swenson Carla Teetzel Tom Terning Cheryl Norenberg Thies Joyce Thiss Ben Thoma Michael Thompson James S. Thompson, Jr. Thunder Bay Art Gallery Katherine Virginia Gillespie Geary Togerson Rachel Tooker William D. Trethewey Steve Trimble Elton Triplett Charles W. True, Jr. Joan Tschida Twin Cities Archives Round Table Twin Cities Habitat For Humanity Union Gospel Mission United Church of Christ, Minnesota Conference Unity Church-Unitarian, St. Paul University of Iowa Press	University of Minnesota, Twin Cities University of Minnesota, Duluth University of Minnesota, Department of Sociology University of Wisconsin Press Carol Urness Betty Beissel Vachon Harold Van Alstine Robert Vanasek Marian Vaughan Bruce Vento Voices of Rupert's Land Mrs. Nancy H. Wade Mrs. A. Walck James M. Wallace Mrs. Richard E. Wallace Jon Walstrom James W. Warren Alma Waschek Washington State Historical Society WCCO Radio WCCO-TV WDSE-TV Beverly Ann Lanning Webster Magnus Wefald Charles Weldin Western Hennepin County Pioneers Association Mr. and Mrs. B.F. Westman Richard Whitmore John Wickre	Gary S. Wiggins Paula Wilhelm Leona Willette Owen E. Williams Philip H. Willkie Willmar Municipal Utilities Commission Ben Wilson Bonnie G. Wilson Dr. Paula Wilson Winona County Historical Society Mason Witt Areta Schmoker Wold Women In Communications, Inc. Women's Art Registry of Minnesota (WARM) Womenventure Alan R. Woolworth Mr. and Mrs. Toua Yang Yeager Pine & Mundale Yellow Medicine Historical Society Lean A. J. Young Sylvester Young Jack Youngquist Joanne Youngstrom Dr. Carl A. Zapffe Charles Zelle Robert C. Zosel
--	--	--	--	---	---

SOCIETY DONORS

MUSEUM COLLECTIONS DONORS

Bill Acker
Bruce W. Anderson
Carolyn Bailey
Margaret F. Baker
Eleanor L. Bathke
Ruth Ellen Bauer
Patricia A. Becker
George S. Bergh, Sr., M.D.
Nancy A. Bergh
Blue Fox Tackle Company
Adel Brendemuhl
Frank E. Brust
Barbara J. Burleigh and
Toni Kuehn
Marty & Julia Byrnes
Capitol Gears
June Carney
Jean Chadwick Estate
and Gail Griffin Obbarius
Shari Cornish
Pat Kennedy Crump
Phyllis J. Cyson
Maurine L. Davidson
Dayton's, The Department
Store Division of Dayton
Hudson Corporation
Detroit Historical Museum
Elizabeth Drake
Craig Dunn
Katharine R. Fournier
Colleen Fox
Jim Frost Estate
Sherri Gebert Fuller
Mrs. Arthur B. Geer
Elizabeth S. Gepson

Judith C. Glasmann and
Sandy Goetze
Rita Glynn
Cheryl M. Gold In
Memory of Frank H.
Kratka and Guynoir
McConnell Kratka
Steve Granger
Donald A. Griffith
Jodi Griffith
Alice Norman Hall
Mary Jane Hedstrom
Marlin L. Heise
High Self-Esteem Toys
Corp.
Douglas C. Holen
John S. Holl
Oscar C. Howard
Robert Howe
B.E. Hume
A.B. Humrickhouse
Norma J. Johnson
Anne R. Kaplan
Monroe P. Kilby
W.G. Kirchner
Marceline R. Kogler
Frances P. Kuchenbecker
Charlann Kulvich
Tim Layeux
Stephen Lee
Karen B. Lehman
Bill Leigh
Loren R. Leslie, M.D.
Dallas R. Lindgren
Bertha Lundin
Frank and Karen Marie
Marano
Elizabeth Martin-Hinton
Viola C. McConnell

Scott D. McGinnis
Jackie McIntyre
Mary Hedlund McNeive
Linda McShannock
Metropolitan Transit
Commission
Midwest Trophy
Manufacturing Co., Inc.
Deborah L. Miller
Minnesota Department of
Administration
Minnesota Department of
Natural Resources
Minnesota Department of
Public Welfare
Minnesota Department of
Transportation
Minnesota Society for the
Prevention of Blindness
& Preservation of
Hearing
Minnesota Twins
Maurice S. Moe
James Morehouse
Andrea Mugnier
John R. Mullner, Sr.
Nebraska State Historical
Society
North Stars, National
Hockey League
Arloueen Nyman
Jeri O'Donnell
Office of the Secretary of
State
Office of the State
Treasurer
Alice L. Olmstead
Anna Dellastrada O'Neill
Thomas O'Sullivan

Maureen Otwell
Bonnie Palmquist
Deborah F. Patterson
Mary E. Patton
Rhonda Peske
Pat Pipenhagen
Herman P. Radeck
Charles W. Ramsey
Dawn Rasmussen
Mildred Shaw Rideaux
Nancy Rose
S.A. Schack
Paula C. Schmid
W.O. Schubert
Patricia D. Scott
Nancy A. Searles
Mr. and Mrs. Roger Shay
Dan Shindelar
F. Hampton Smith
Timothy L. Smith
Fran Sontag
Soo Line Railroad Co.
G. Howard Spaeth Estate
The Sports Collection, St.
Paul
Robert Spottswood
St. Paul Public Library
Evelyn T. Stanley
Mrs. Audrey A. Stanton
Star Tribune
Lorraine G. Stewart
Marx Swanholm
Deborah Swanson
Duane P. Swanson
Cheryl Thies
James A. Thies
Thomas C. Thul
James C. Tillitt
Tonka Corporation

Jeffrey P. Tordoff
Steve Trimble
Triune Lodge No. 190, A.F.
& A.M.
Stephen M. Trusten
Joan C. Tschida
Twin Cities Festival
Organizing Co., Inc.,
U.S. Olympic Festival
1990
University of Minnesota,
Department of Civil &
Mineral Engineering
Dorothy Van de Steeg
Joan K. Varholdt
Ceil T. Victor
David Walstrom
Maurice L. and Hertha J.
Walstrom Estate
Jim Westberg
Helen M. White
J.M. Wickre
Wilder Foundation
Calverna B. Wilfahrt
Bonnie G. Wilson
Alan R. Woolworth
Edward K. Yoshikawa
Joan R. Youngstrom





MINNESOTA HISTORICAL SOCIETY

345 Kellogg Boulevard West

Saint Paul, Minnesota 55102