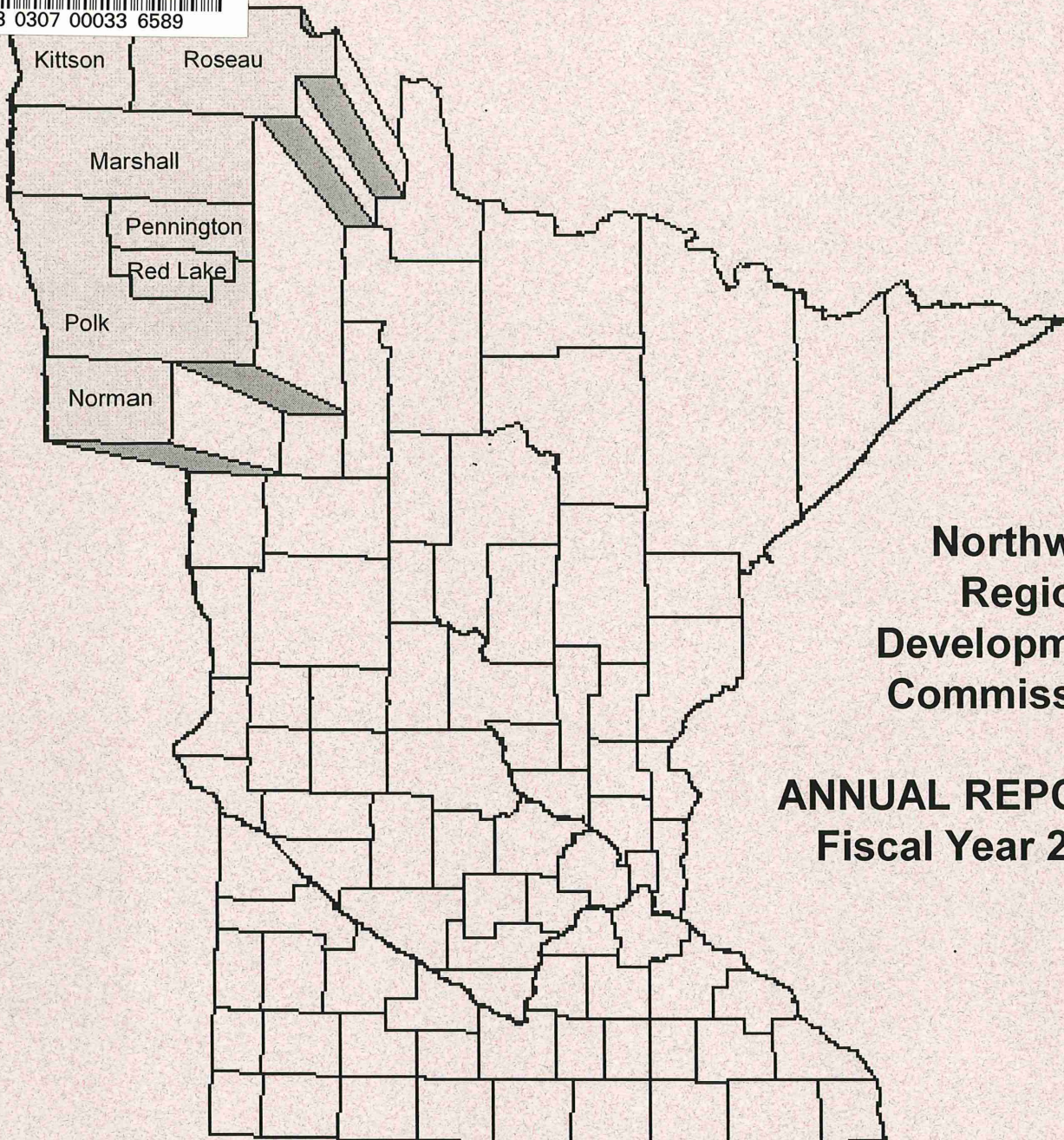




3 0307 00033 6589



**Northwest
Regional
Development
Commission**

**ANNUAL REPORT
Fiscal Year 2002**

Working for Local Units of Government in Kittson, Marshall, Norman,
Pennington, Polk, Red Lake and Roseau Counties

HT393
.M62
N67ax
2002

NWRDC • 115 South Main, Suite 1 •
Warren, MN 56762 • 218-745-6733
E-mail Address: nwrdc@nwrdc.org
Agency Web Site Address: www.nwrdc.org

Table of Contents

General Highlights

Introduction and NWRDC Staff List 2

Commission Membership List 3

Budget 4

Program Highlights 5

Aging 6-7

Arts 8

Economic Development 9-10

Housing 10

Enterprise Fund 11

Farm & Flood Recovery 12

Local Issues 13

Special Projects 14

Transportation 15

Publications 16

Committee Lists 17

Regional Project Listings 18

County Project Listings 23

Kittson 24

Marshall 27

Norman 32

Pennington 35

Polk 38

Red Lake 44

Roseau 45

Multi-County 48

Abbreviations Listed Throughout the Document 49

Audit Letter 50

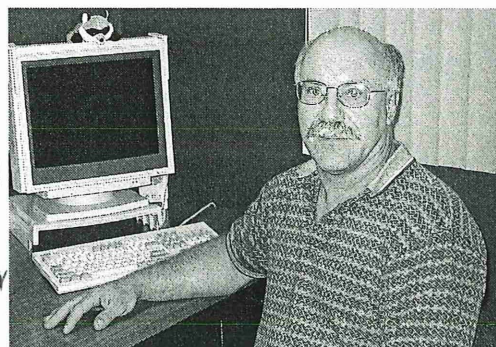


NW Regional Development Commission

RECEIVED

SEP 03 2002

LEGISLATIVE REFERENCE LIBRARY
STATE OFFICE BUILDING
ST. PAUL, MN 55155



Above: Leon Heath, Executive Director

What The NWRDC is All About . . .

Regional Development Commissions were created by the State Legislature through the Regional Development Act of 1969. The intent of the Act was to create an option for rural units of government to supplement existing public services and coordinate specific activities of mutual concern. Although created by the State, Regional Development Commissions were left in the hands of local representatives to insure that the final design would reflect area needs and preferences.

The Northwest Regional Development Commission was created on February 2, 1973 by the joint actions of local units of government. Programs were set up to reflect priority work items of the time; and relationships were established with the state and federal agencies that could provide assistance with local projects. Programs and work priorities have changed in response to economic

and social trends; but the central mission of supporting efforts by cities, counties, townships, businesses and individuals to improve living, working and natural resource conditions in Northwest Minnesota has remained the same.

The Commission has worked to establish a manner of operation which reflects and compliments the independent, progressive style of Northwest Minnesota. Technical assistance, specialized program delivery, public participation, direct funding, access to information and formalized planning services are the basic materials which we can contribute to the construction of your project.

Please look over our Annual Report and stop by or call if you have any questions, comments or suggestions.

Right: Carol Sorensen,
Financial Officer



Left: Brenda Solberg,
Front Office Manager/
Arts Associate

Staff Listing

NWRDC Staff

Cameron Fanfulik, Farm Wrap Assistant
Kay Hegge, Econ. Development Planner/Farm Coord.
Leon Heath, Executive Director
Coralie Jones, Health Insurance Coordinator
Linda Nelson, Loan Fund Manager
Rose Reed, Aging Program Technician/Senior LinkAge Specialist
Danica Robson, Aging Program Director
Troy Schroeder, Transportation Planner
Brenda Solberg, Front Office Manager/Arts Associate
Carol Sorensen, Financial Officer
Mara Wittman, Arts Council Director

Northwest Regional Development Commission



NWRDC Board of Directors

Back Row: Left to Right - Delray Larson, Charles Lindberg, Dr. Joe Bouvette, Warren Olson. Front Row: Left to Right - Velma Oakland, Warren Strandell, and John Erickson. Not Pictured: Orris Rasmussen.

Martha Hurtado	Crookston	Minorities
Gerald Jacobson	Fertile	Labor
Bill Montague	Crookston	Financial Instituti
Bernie Solberg	Gully	Women
*Warren Strandell	EGF	County
Arlene Tucker	Euclid	School Boards
Kathleen Twite	EGF	Business
Katya Zepeda	Crookston	Minorities

Red Lake County

Betty Halvorson	Plummer	School Board
Genevieve Knott	RLF	Townships
Robert Melby	Oklee	Low Income
*Velma Oakland	RLF	County
Arnold Paradis	Brooks	Municipalities
Vaughn Thorfinnson	RLF	Vocational Schools
Ronald Weiss	RLF	Watershed Dist.

Roseau County

Bruce Olson	Badger	Townships
*Orris Rasmussen	Roseau	County
Charles Walsh	Badger	Municipalities

*Board Members

**Chairperson

Members who served for part of FY'2002: Marlene Baatz

COMMISSION MEMBERSHIP

Kittson County

**Dr. Joe Bouvette	Hallock	County
Kimberley Johnson	Kennedy	Townships
*Charles Lindberg	Kennedy	Industry
George Wikstrom, Jr.	Karlstad	Municipalities

Marshall County

Sandra Hapka	Warren	Agriculture
*Delray Larson	Gatzke	County
Ruth Magnusson	Argyle	Townships
Ole Soltvedt	Oslo	Municipalities

Norman County

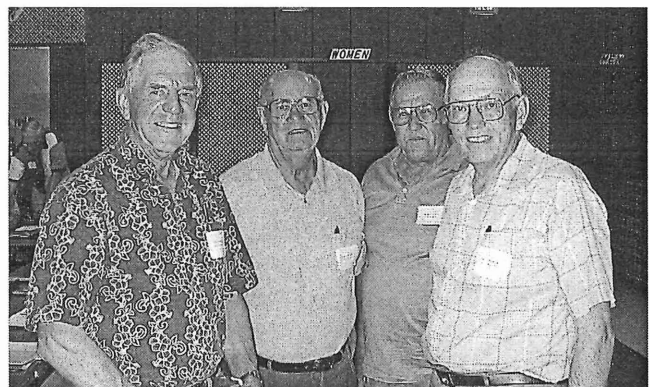
Glen Brookshire	Halstad	Municipalities
Fred Jamison	Ada	Townships
*Warren Olson	Halstad	County

Pennington County

Elvera Cullen	TRF	Municipalities
*John Erickson	RLF	Townships
Daniel Johnson	Goodridge	SWCD
Roy Jorgenson	TRF	Seniors
Oliver Swanson	TRF	County

Polk County

Arvid Clementson	Fosston	Municipalities
Eugene Dufault	Crookston	Townships

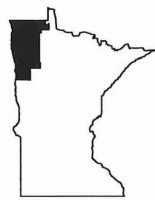


Above: Left to Right - Commission members Oliver Swanson, Roy Jorgenson, Daniel Johnson, and John Erickson caucusing at the Annual Commission meeting.

COMMISSION BUDGET

<u>REVENUES</u>	<u>ACTUAL FY' 2002</u>	<u>PROJECTED FY' 2003</u>
FEDERAL		
ECONOMIC DEVELOPMENT ADMIN.	\$122,708	\$53,000
	\$122,708	\$53,000
STATE		
MN/DOT	\$50,000	\$50,000
STATE ARTS BOARD	\$132,151	\$123,988
MINNESOTA BOARD ON AGING	\$754,460	\$931,912
DHS QMB/SLMB	\$4,400	\$0
MINNESOTA HOUSING FINANCE AGENCY	\$1,483,563	\$842,075
DHS- GAPS ANALYSIS	\$5,000	\$2,500
	\$2,429,574	\$1,950,475
PRIVATE FOUNDATIONS		
MCKNIGHT FOUNDATION - ARTS	\$26,950	\$23,000
NW MN FOUNDATION	\$39,226	\$6,150
RIVERVIEW	\$11,421	\$36,666
OTTO BREMER FOUNDATIONS	\$26,269	
	\$103,866	\$65,816
LOCAL GOVERNMENTAL		
LOCAL LEVY	\$149,403	\$166,119
MISCELLANEOUS LOCAL CONTRACT	\$28,772	\$25,460
LOCAL PROJECTS - HOUSING	\$85,000	
HEADWATERS RDC	\$5,909	
	\$269,084	\$191,579
MISCELLANEOUS		
NORTHWEST ENTERPRISE FUND	\$887,152	\$673,792
INTEREST	\$36,684	\$15,000
PRINCIPAL LIFE INSURANCE	\$18,870	
CONFERENCE REGIST./MISC.	\$7,596	\$7,220
	\$950,302	\$696,012
TOTAL REVENUES	<u><u>\$3,875,534</u></u>	<u><u>\$2,956,882</u></u>
 <u>EXPENDITURES</u>	 <u>ACTUAL FY'02</u>	 <u>PROJECTED FY'02</u>
SALARY/FRINGE	\$478,143	\$470,159
STAFF TRAVEL & REGISTRATIONS	\$35,268	\$35,273
COMMISSION/COMMITTEE TRAVEL/PER DIEM	\$30,343	\$37,321
PROFESSIONAL FEES	\$115,804	\$16,974
PRINTING & POSTAGE	\$28,106	\$31,479
RENT & MAINTENANCE	\$12,860	\$11,800
WORKSHOP/CONFERENCE COSTS	\$9,805	\$10,177
TELEPHONE & INTERNET COSTS	\$11,214	\$13,139
SUPPLIES	\$8,116	\$9,076
MATCH FOR NEW PROGRAMS		\$22,180
OTHER OFFICE EXPENSES	\$26,961	\$23,688
TOTAL ADMINISTRATIVE	\$756,620	\$681,266
REGRANTED	\$701,589	\$833,541
BUSINESS LOANS	\$844,840	\$600,000
HOUSING PASS THROUGH FUNDS	\$1,568,563	\$842,075
FIXED ASSETS/RESTRICTED FUND	\$4,651	\$9,000
DEPRECIATION	(\$10,745)	(\$8,000)
	(\$6,094)	\$1,000
TOTAL EXPENDITURES	<u><u>\$3,865,518</u></u>	<u><u>\$2,957,882</u></u>
INCREASE (DECREASE) TO FUND BALANCE	<u><u>\$10,016</u></u>	<u><u>\$0</u></u>

Program Highlights



NW Regional Development Commission

Program Highlights Fiscal Year 2002

*Kittson, Marshall, Norman, Pennington
Polk, Red Lake, Roseau
Multi-County*

Aging

AREA AGENCY ON AGING

Purpose: To build a proactive, comprehensive and coordinated system of advocacy and services that ensures the rights and benefits of all older people.

Program Funding Sources: Older Americans Act through the Minnesota Board on Aging - \$89,550; State Legislature - \$5,000; Local Contracts - \$12,490; RDC Tax Levy - \$33,488; Miscellaneous - \$8,722.

Regrant Funding Sources: Older Americans Act - \$334,639; U.S. Department of Agriculture Nutrition Program - \$177,780; State Nutrition Program - \$95,138.

Service Priorities: Regrant priorities are: nutrition, congregate and home delivered meals, legal service, transportation, chore/home repair, housekeeping, visiting and medical forms assistance. Support priorities are advocacy, education, support of county committees on aging and senior centers, inter-agency linkages, and information/referral.

Aging Highlights

Area Agency on Aging Roles Meeting •••

Participated in a two day retreat sponsored by the Minnesota Board on Aging to examine and identify future roles for Area Agencies on Aging.



Right: Danica Robson,
Aging Program Director

Stakeholder Meeting •••

Facilitated a Stakeholder Meeting which provided Minnesota Board on Aging staff the opportunity to discuss future roles with local stakeholders.



Above: Grand Opening of "The Station", Hallock's Senior Center.

Area Plan •••

Completed the Aging amendments for the 2002 Area Plan and submitted to the Minnesota Board on Aging and coordinated Public Hearing.

IRIS Program Maintenance •••

Implemented the use of the IRIS statewide Information and Assistance database program for Senior LinkAge Line calls. Calls are entered and data is collected for statistical purposes and disseminated. Programs and services are updated regularly.



Right: Rose Reed, Aging
Program Technician/
Senior LinkAge Specialist

I&A - Out of Region •••

Provided information and assistance to 315 callers from the Region Two area for the time period 1/1/02 to 6/30/02 on the Senior LinkAge line. The counties served included Beltrami, Clearwater, Hubbard, Lake of the Woods and Mahnommen.

Transportation Service Expansion •••

Convened staff from Polk & Norman County as well as Tri-Valley to discuss the potential of Tri-Valley expanding current transit services through the addition of volunteer drivers. A grant was submitted to DHS and received funding.

Norman County Service Development Committee •••

Participated in meetings with the Norman County Service Development Committee. Discussed the need for coordinated transportation services, assisted living, and adult day care as additional community based options for Norman County seniors.

Regional Analysis of Long Term Care Services •••

Completed Regional Analysis of Long Term Care Services based on information from each County's Gaps Analysis.

Marshall County Elderly Services Collaborative •••

Participated on Marshall County Elderly Services Collaborative planning committee, and developed a program plan and grant application to submit to potential funders.

County Gaps Analysis Process •••

Assisted Marshall, Pennington, and Polk counties with completing Gaps Analysis and Service Development Plans.



Your connection to the services near you.

1-800-333-2433

Aging Continued

Purpose: The Health Insurance Counseling Program offers older adults, Medicare beneficiaries and their family members assistance in obtaining appropriate health care coverage and entitled Medicare/Medicaid or insurance benefits.

Funding Sources: Health Care Access - \$11,421; Minnesota Board on Aging - \$57,353; Department of Human Services - \$4,400; RDC Tax Levy - \$22,436; and Miscellaneous - \$3,424.

Service Priorities: Specially trained volunteer health insurance counselors are available to assist all seniors, free of charge, with information and assistance on a confidential one-to-one basis. The program also serves to educate the public about the health care reimbursement systems and increase awareness of the program to seniors and family members.

Health Insurance Counseling Highlights

Surf Days •••

Trained staff from Regional Libraries to conduct Senior Surf Day Sessions. Also worked with Marshall County Extension Agent to assist high school students in conducting sessions.

Information and Assistance •••

Provided information and assistance to 1,095 beneficiaries and caregivers about Medicare programs.

Non-Government Site Outreach •••

Conducted outreach sessions at non-governmental site to provide information about publicly funded senior health care programs.

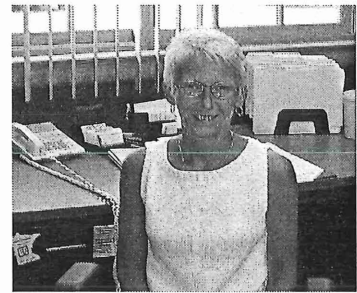
County Partnership •••

Worked with counties in Regions I & II to forward applications for seniors that are eligible for State health care programs.



Above: Everyone is enjoying the Fall Conference on Aging.

Right: Cory Jones,
Health Insurance
Counseling Program Coord.



Home Visits •••

Conducted home visits to seniors and assisted them in completing applications for health care assistance.

Education •••

Reached out to isolated and uninformed seniors to educate and enroll them in State Health Care Assistance Programs.

Volunteers •••

A total of 15 Health Insurance Counseling volunteers have been recruited to provide one-on-one assistance.

Outreach •••

A total of 42 outreach contacts were made with organizations who serve people receiving Medicare.

Client Services •••

Provided services to 1,236 clients. Clients served are verified using IRIS database requirements.

Collaboration •••

Collaborated with agencies about health care options for seniors who are isolated or disabled. These agencies included: Respite, Senior Companion, Living at Home Block Nurse, RSVP, Legal Services and Ombudsman.

Marketing •••

Worked with the North Region Health Alliance to market the Health Care Access Program and identify potential participants.

Screening •••

Conducted pre-screenings analysis for potential applicants.

Application Assistance •••

Scheduled appointments to assist clients with applications for health care assistance.

Client Liaison •••

Assisted clients, counties, and the state to implement and maintain health care plans for area residents.

Arts

NORTHWEST REGIONAL ARTS COUNCIL

Purpose: To promote, develop and encourage artistic growth and excellence of arts organizations and individual artists in northwestern Minnesota by awarding funds and conducting programs and services.

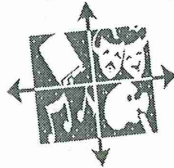
Program Funding Sources: MN State Arts Board - \$53,574 and Interest - \$905; McKnight Foundation - \$11,495; RDC Tax Levy - \$3,542; Miscellaneous - \$5,184.

Re-Grant Funding Sources: MN State Arts Board - \$78,577; McKnight Foundation - \$15,455.

Re-Grant Programs: *State Funds:* Production Assistance/Sponsorship; Artist in the Schools; Public Art Projects. *McKnight Funds:* Individual and Student Artist Grants; Small Capital; Training & Development.

Service Priorities: Direction setting, grants to organizations, grants to individual and student artists, information including newsletter, training/workshops.

Arts Highlights



Production Assistance/Sponsorship •••

In fiscal year 2002, we re-granted \$41,005 to 15 different productions and 10 sponsorship projects throughout the region. Nine of the projects were specifically aimed at children. An estimated 17,990 adults attended and over 3,987 youth participated.

Artists in the Schools Grant Program •••

In the third year of this program \$14,870 was re-granted to area schools. Twelve projects were awarded serving 4,430 students.

Public Arts •••

Four \$5,500 awards were made this year. Three installations and openings occurred in Crookston, Thief River Falls, and Fosston.

Small Capital Grants •••

\$7,470 was granted to arts organizations to purchase mainly light and sound equipment. Five organizations received awards.

2002 McKnight Artist Grants •••

Seven adult artists and ten student artists received awards this year. In the Individual Artist category \$5,015 was granted. In the Student Artist category \$4,860 was granted. Most awards were for technical training.



Left: Mara Wittman,
Arts Council Director

Web Site Development-Arts •••

Updated web pages for the arts to include on-line application forms as well as downloadable pdf forms. Also added more information on arts organizations and artists.

Advocacy Conference •••

Coordinated three one-day conferences on advocating for the arts in your school and community. The closest conference was on October 27, 2001 in Fergus Falls. An additional half day session will be held in Thief River Falls on September 5, 2002.

Newsletter •••

Northwest Arts continued to provide a list of our grants as well as opportunities for artists, schools and arts organizations. Every other month the newsletter is printed and distributed to 650 arts constituents.

McKnight Artist Awards •••

This is a new program to recognize an outstanding artist and arts advocate with a \$500.00 award. The awards were presented to Larry Damico of East Grand Forks, and Elwyn Ruud of Karlstad at the Northwest Minnesota Art Exhibition in April 2002, in Red Lake Falls.

Northwest Minnesota Art Exhibition •••

Coordinated the weekend of the 2002 exhibit in Red Lake Falls including the jury process, registration, hanging, and artist reception.



Above: David Hammond, Kennedy, received the People's Choice Award at this year's exhibit.

Economic Development

Purpose: To assist in creation of new jobs by providing general planning guidance, technical assistance for specific industrial projects and services to local units of government.

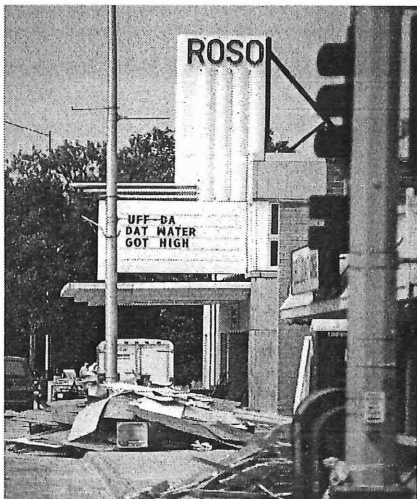
Program Funding Sources: United States Economic Development Administration (EDA) - \$50,708; RDC Tax Levy - \$19,821; Miscellaneous Income - \$2,651.

Service Priorities: Regional Economic Analysis and Planning, Local Planning, Technical Assistance to Local Development Groups, Grant Writing, Business Counseling and Referral, Information on other Development Programs and Resources, Data and Statistics, and Tourism.

Economic Development Highlights

Flood Recovery •••

We provided Staff support to the County on establishing a flood recovery program including: damage assessments, administration of programs, and political action. Supplied direct assistance to families, farmers, businesses, and towns. We also provided staff support to the City of Roseau on establishing a flood recovery program including damage assessments, administration of programs, accessing federal funds, and grant writing. We provided staff support to the Minnesota Recovers Task Force, which consists of agency representatives from state and federal agencies. The Task Force was established to identify short and long term solutions to flooding in Roseau. The Roseau group has defined a \$20 Million dollar short term solution and a number of options for long term program ranging from \$50 to \$100 million. We also coordinated with the Minnesota Flood Disaster Response Team for damage assessments in other counties.



Above: The Roso Theatre will rebuild after the June 9 Roseau Flood.

Right: Kay Hegge,
Economic Development/
Housing Program Director



Wireless Broadband Projects •••

Regional high-speed internet services involving Polk and Marshall Counties spread through the rural communities and farms of the Red River Valley. The service providers are Rural Access, Inc. now called Invisimax, Inc., and the Halstad Telephone Cooperative. The new high-speed, two-way internet connectivity works through ""fixed wireless"" technology. The connection offers speeds of up to 1,024kbs and the projects received grants totaling \$51,600 from the Minnesota Department of Trade and Economic Development. This project received a NADO 2002 Innovation Award.

Red River Basin Planning •••

Organized a County information session with key organizations involved in Red River water management including, The International Coalition, the Red River Basin Board, and the Red River Watershed Management Board. Worked with Red River water management groups to develop a formal connection to Counties. Counties agreed to have at least an annual informational meeting, and to continue working with the Comprehensive Local Water Planning Joint Powers Board on county issues.

Grant Applications •••

Several grant applications were prepared. A USDA Sustainable Agriculture grant was written to aid the compost project by adding fan separation equipment for better quality compost. Two grant proposals were submitted to USDA Rural Business Opportunity Grant. One was "Capture the Value", in which we propose to assist in the formation of value-added and energy related ag-business clusters. "Capture the Value" will also be submitted to the Northwest Minnesota Foundation for their consideration. Another application, conditionally approved by the NMF has been submitted to USDA also. It is for an "Ethnic Pasta Feasibility Study."

Vacant Building Survey •••

As a matter of enhancing land use planning, smart growth implementation, and economic planning and targeting brownfields redevelopment; the Northwest Regional Development Commission is on track with a Vacant Building Survey project. The survey is compiling a list of all vacant, abandoned or underused buildings, from gas stations to churches, in the seven-county region. This survey received a National Association of Development Organization (NADO) 2002 Innovation

Economic Development Continued



Above: Steaming compost comes out of our first test batch.

Community Plans •••

Assisted with the completion of a comprehensive plan for the Cities of Fertile and Fisher, including the development of zoning ordinances. Assisted with the completion of a comprehensive plan for Sanders township, including the revisions to zoning ordinances.

Housing

HOUSING PROGRAM

Purpose: To increase the housing stock in the region.

Program Funding Sources: NW MN Foundation - \$17,500; RDC Tax Levy - \$6,780; Miscellaneous - \$327.

Service Priorities: Assisting communities, lenders, consumers, and agencies to access available programs that repair, rehab and build affordable homes.

Housing Highlights

We participated in the Region One Housing Development Alliance (ROHDA) which consists of the NWRDC, Tri-Valley Opportunity Council, Northwest Community Action Agency, and Inter-County Community Council. With support from the Northwest Minnesota Foundation, we gathered information from communities on possible Buy, Fix, Sell opportunities, new construction, rehab, emergency repair, and other affordable housing needs. This information went into two regional community rehabilitation applications to the Minnesota Housing Finance Agency. Coordination between the ROHDA group and the Institution Community Work Crew (ICWC) Housing Advisory Group aided in the construction of two new homes in Thief River Falls, two new homes in Middle River, and two in St. Hilaire scheduled for the summer of 2002. Also completed were four new homes in East Grand Forks, two in Warren, two in Twin Valley and two planned for the fall of 2002 in Halstad.

Compost Project •••

We coordinated monthly meetings to move this project forward. We purchased and refabricated a Total Ration Mixer into a small rotary drum composter. Jerome Burkel, Burkel Grain, under contract from the NWRDC, experimentally produced 30 batches of compost. The best product was applied to two test plots, one at Representative Maxine Penas' organic farm in Badger, and one at the Klawitter Dairy's soybean field. Test plots will be continued under a grant from the Minnesota Department of Agriculture, and will include testing the use of compost as a biofilter in road ditches. The Compost Marketing Cooperative Plan has been completed for the future Coop and copies are available upon request.

2002 CEDS •••

Completed the 2002 update of the Comprehensive Economic Development Strategy (CEDS) including obtaining County Boards Approvals. This plan concentrates on economic development efforts which can help offset trends which are creating population loss.



Above: Two ICWC homes were built in Middle River, despite heavy spring rains.

Discussion of a potential partnership between Homark Homes, Inc., Red Lake Falls, and the ICWC Housing Advisory Group revolved around building a \$60,000 modular home that would have ICWC-built basements and garages. Further discussion involved the potentials of the new Uniform Building Code, approved modular homes, that can now be built in any size and added on to later. In addition, a new project is developing that will involve ICWC and/or Sentence to Serve work crews to build modular ramps for Options, the Resource Center for Independent Living.

We completed twelve more community housing and economic development assessments. Most communities have affordable housing and community marketing issues. Strategic planning sessions were coordinated in two towns with the aid of USDA Rural Development. We served on the Northwest Minnesota Housing Coalition, that provides feedback to the Minnesota Housing Finance Agency. Last, we provided hours of direct assistance to people who want to own their own home.

Enterprise Fund

Purpose: To strengthen and diversify the economy by providing a source of low interest financing to businesses when credit is not otherwise available from other sources to ensure the successful completion of activities to be financed.

Program Funding Sources: Loan Interest and Loan Fees - \$66,351; RDC Tax Levy - \$160.

Loan Funding Sources: Loan Repayments and Loan Interest - \$853,602.

Service Priorities: Financing for-profit businesses which create or retain jobs, especially for the long term underemployed or unemployed.



Above: Linda Nelson, Loan Fund Manager

Standard Revolving Loan Fund

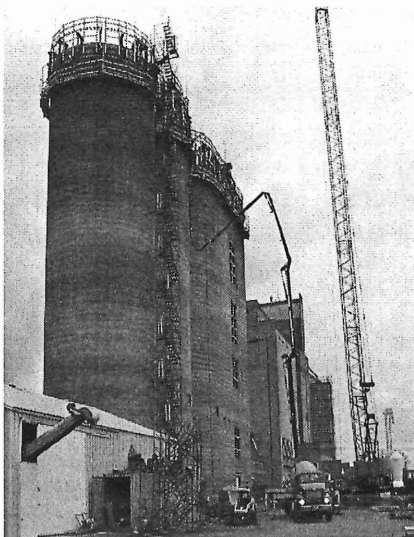
The following businesses received approval for financing through the Northwest Regional Enterprise Fund, Inc. in fiscal year 2002:

Heatmor, Inc., Warroad	\$ 150,000
Valley Motel, Hallock	\$ 30,000
Oslo Valley West Cafe, Oslo	\$ 30,000
East Grand Forks Development LLC (Howard Johnson Hotel)	\$ 150,000
Valley Hardware & Supply, Halstad	\$ 19,500
Advanced Tire & Auto Service, Crookston	\$ 39,800
Garden Cafe, Middle River	\$ 18,500
Horner Plumbing & Excavation, Warroad	\$ 20,335
TOTAL LOANS	\$ 458,135

To date, one hundred fifteen business loans have been approved for financing for a total amount of \$7,163,450. The program has assisted forty-six new businesses, forty-one businesses with expansions, and twenty-eight businesses with retention. Fifty-one of the loans are currently active, forty-nine are fully repaid, twelve loans have been written off, and closing is pending on three approved loans.

In addition to using the Enterprise Fund to support new and expanding businesses, the loan funds may be used for disaster relief. As a result of the flooding in June of 2002, loan funds will continue to be used to assist businesses with financing for working capital and other needs so they can survive the economic stresses brought on by weather-related and other disasters.

The Enterprise Fund's administrative budget for the year is \$66,511. The loan fees collected and one-half of the interest earned on the loans and on accounts are used for administrative costs. The other one-half of the interest payments, along with the principal repaid on loans, becomes available for relending.



Above: Alvarado Elevator Barley Expansion.



Farm & Flood Recovery

FARM RECOVERY PROGRAM

Purpose: To continue the farm recovery efforts in northwest Minnesota through a coordinated range of services designed to assist the farm family in a holistic manner.

Program Funding Sources: Otto Bremer Foundation - \$26,269; Local Tax Levy - \$1,808; Other Miscellaneous - \$566.

Service Priorities: Grant program for financial, tax implication, and legal counseling concerning exit or restructuring strategies for the farm family and individual assistance.

Farm & Flood Recovery Highlights

The Farm Recovery Program, which started as a result of the 1997 flood, low farm prices, and on-going poor weather was completed in 2002. Although difficulties in the agricultural sector continued, the number of farmers seeking intervention level assistance had declined to the point where services existing prior to 1997 could provide adequate help.

Flood recovery work related to the 2002 Flood began immediately following the flood event and will continue for several years. A revival of the Farm Recovery Program will depend on a number of factors including farmer demand.

Casework • • •

Casework continued with both, farmers who are trying to restructure and those who need assistance transitioning to another occupation or supplemental sources of income. The program worked with approximately 70 farmers over the past year.

Outreach • • •

Funding was provided to Rural Life Outreach to work with farm families on the entire range of difficulties. Outreach was done in the home by other farmers who had gone through similar difficulties. Other agencies involved with the Farm Wrap Network were also brought in to address specific problems or to continue casework. \$165,000 was provided over the project period.

Emergency Services • • •

Rural Life Outreach was provided a grant of \$97,500 to provide emergency assistance in the 15 county area. Assistance included items such as food, shelter, utility payments, transportation, and medical services.

Right: Cam Fanfulik,
Farm Wrap Assistant



Accounting and Legal Services • • •

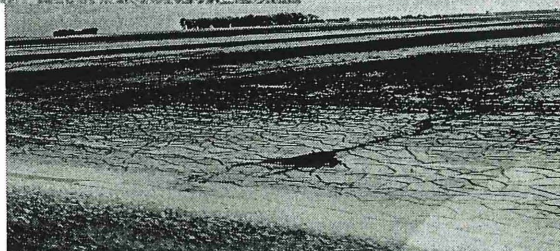
This program provided funding to farmers for legal/accounting fees related to financial work-outs. \$90,000 in direct grants was provided to farmers in a 15 county area of Northwest and West Central Minnesota, since the beginning of the program.

Mental Health Services • • •

State funding was used to provide specialized services to farm families undergoing the extreme financial and emotional stress related to both, transitioning out of farming and continuing under difficult financial situations. \$152,000 in funding was provided to mental health providers, including Northwest Mental Health.

Mediation Services • • •

\$145,000 was provided to Minnesota Extension and the University of Minnesota Crookston to help farmers through an informal mediation process with creditors.



Local Issues

NORTHWEST REGIONAL DEVELOPMENT COMMISSION AND BOARD OF DIRECTORS

Purpose: Discuss and develop solutions to rural issues and problems which are held common in Northwest Minnesota.

Funding Source: Local Tax Levy - \$29,092; and interest - \$18,298; Misc. - \$1,487.

Service Priorities: Consensus building, planning, research, information, new program development, legislative advocacy.

Local Issues Highlights

Tourism Directory •••

Updated the 2002 version of the Northwest Minnesota Visitor and Recreation Guide. Published the guide to our visitnwminnesota.com web site. Printed 1500 copies of the 48 page guide for distribution.



Above: First Night Activity at the YMCA. (Photo by Ken McDonald)

Web Site Promotion of NW Minnesota •••

Actively promoted the Visit Northwest Minnesota website www.visitnwminnesota.com. Updated any changes to the seven county section of the website based on their requests.

MN Historic Northwest •••

Nine county historical groups worked together to complete joint projects. The NWRDC helps coordinate their meetings and format their newsletter and brochure. Helped plan mini conference on Arts and Cultural Tourism scheduled April 12, 2002 in Crookston.

Development of Kittson County Trails •••

Assisted Don Burton with Agri-Sports on the development of an ATV trail network. The trail system will link existing and future trails to the DNR proposal for Off Highway Vehicles in Northwestern Minnesota.

Developed a GIS Database for the Basin •••

Attended the Red River Basin meetings to assist with the development of a GIS database. This database will be used by the watersheds to store information collected during routine sampling to compile statistical information for each site.

GIS Data Collection for the RLRC •••

Developed a GIS database of information along the Red Lake River Corridor to incorporate existing and future recreation interests into the river trail corridor.

Flood Recovery •••

The Commission provided special funding for the start-up of the recovery effort, including \$5,000 in matching funds for a grant from the Federal Economic Development Administration to support Wynne Consulting's effort, and \$7,000 to provide extra staff assistance with damage estimates. Matching funds will also be provided for programs through the Area Agency on Aging, designed to support seniors impacted by the flood.

Fosston Wastewater Treatment •••

An extra effort was made to assist Fosston with wastewater treatment problems, which threatened the vegetable processing operation at Minnesota Dehydrated Vegetables. Staff worked with the City and MDV to secure a \$960,000 grant from the Federal Economic Development Administration for an anaerobic, methane producing pre-treatment facility. The methane gas will eventually be used for electrical generation by the City.



Above: Presentation of President Roosevelt at the Historical Conference.

Special Projects

A variety of sources provided funding for special projects which supplemented services in our regular programs. We wish to thank each of these organizations for the opportunity to do more for Northwest Minnesota over the past year. The following is a summary of each project:

LABOR MARKET SURVEY

Funding Sources: MN Legislature/MN Department of Trade and Economic Security, NW MN Foundation, local match.

A Labor Market Study was completed for a twelve county area in Northwest Minnesota including all seven counties in Region 1. The study contains information on the number of workers available, worker skills, underemployed workers, worker training needs, employer labor needs, and employment preferences of local students. The information will be used to recruit businesses to labor surplus areas and assist employers to find or train workers in labor shortage areas.

REGIONAL ASSESSMENT

Funding Source: Northwest Minnesota Foundation

Staff worked with the Northwest Minnesota Foundation, the Headwaters Regional Development Commission, and the Red River Trade Corridor to complete a comprehensive study of economic trends in the twelve county area covered by the Foundation. Results of the study will be used by the Foundation to complete a planning process for future direction setting, and by all the participants to refine economic development programs.

MHFA HOUSING FUNDS

Funding Sources: Minnesota Housing Finance Agency and local match.

We continued administration of a two and one half million dollar grant for housing construction, home repairs, and home purchases. Funds will be re-granted to Inter County Community Council, Multi-County HRA, Northwest Community Action Agency, and Tri-Valley Opportunity Council.

ENVIRONMENTAL LEARNING CENTER

Funding Sources: City of Fertile through a grant from the Northwest Minnesota Foundation and local match.

Completed a planning process and an Overall Strategic Plan for the Environmental Learning Center in Fertile. The Plan examined the history of the Center, current programming, existing facilities, potential markets, and possible partnerships with nearby nature based attractions. The Plan contains recommendations for upgrades, improving marketing efforts, and addressing the changing needs of educational and recreational users.

ANIMAL WASTE COMPOSTING

Funding Sources: Federal Economic Development Administration, NW MN Foundation, local match.

The Composting Project was moved close to completion during the year. The project was able to partner with Burkel Grain to build a composter, identify potential markets for compost, and gain local support for the application of high quality composting to manure management. The next step for the project will be the establishment of a for-profit company to produce and sell compost on a small scale basis. Future plans include expansion to larger scale operations connected with large dairy and hog production.

HOUSING COALITION

Funding Sources: NW Minnesota Foundation

The Northwest Minnesota Housing Coalition, made up of housing agencies from Region One and Two, is continuing its efforts to develop local and regional strategies to meet affordable housing needs across the NW region. Originally called the Organizational Investment Program (OIP), the group has worked together since 1995 to build knowledge across organizational lines, in order to create new ways to build affordable housing units. The NW MN Housing Coalition sets the regional Economic Vitality Housing Investment (EVHI) guidelines that state and federal agencies use to rank project proposals.

OTTO BREMER FARM WRAP

Funding: Otto Bremer Foundation and Local Match

Funding from the Otto Bremer Foundation was used to finish-up work with the farm recovery programs, including follow-up with farmers served by the Farm Wrap program. This effort was part of a five year effort which was set in motion by a previous grant funding from the Foundation. Over two thousand farm families received some type of help from the overall effort.

Transportation

Purpose: To insure safe efficient movement of people and commodities in the region. Provide an ongoing forum for important transportation issues in the region. Assist MN/DOT and provide input with it's planning efforts and programs.

Funding Sources: MN Department of Transportation - \$50,000; RDC Tax Levy - \$17,397; and Miscellaneous - \$1,932.

Service Priorities: Direction setting, comprehensive regional planning, legislative advocacy, MN/DOT project coordination.

Transportation Highlights

Reviewed Transit Grant Applications •••
Reviewed the 2002 public transit participation program application process. Reported deficiencies to the transit committee and submitting agency for clarification.

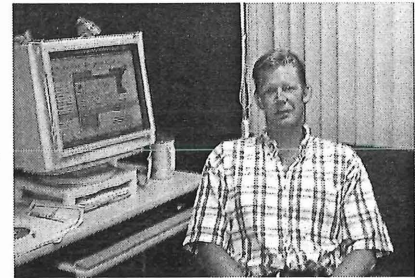
ATP Funding Allocation •••
Assisted the Area Transportation Partnership in the planning processes for selecting projects to fund. Developed a database of ATP inter-regional projects that have received funding since the start of TEA-21 in 1997.

Tri-County Shipping Corridor •••
Attended the Transportation Alliance Washington D.C. Fly-In to discuss the Tri-County 10-Ton Shipping Corridor with Congressman Peterson. Discussed the needs for a north-south 10-ton corridor with Senator Dayton and Congressman Oberstar's staff.



Above: The Tri-County 10-Ton Coalition holds an informative meeting with Congressman Peterson and Senator Stumpf.

Right: Troy Schroeder, Transportation Planner



TAC Meeting with Regional Representatives •••
Hosted three Transportation Advisory Committee meetings with Senator Stumpf, Senator Moe, Representative Finseth, and Representative Skoe, to discuss transportation issues and state funding for various state programs.

Assisted with Development of an ITN •••
Assisted in the development of an Integrated Transportation Network, which coordinates local, district, state, and federal transportation systems that serve the area.

City Support for Planning •••
Assisted the City of Hallock with mapping projects. Incorporated the cities infrastructure of sewer, water lines and gas mains from Autocad into an Arcview project.

Scenic Byway Planning •••
Assisted the counties within the scenic byway on transportation development, planning, and promotion tactics for the Waters of The Dancing Sky Scenic Byway. Worked with the Office of Tourism on the designation of the byway through Kittson County to I-29.

Red River Bridge Study •••
Continued gathering structural and flood frequency information for the Red River bridges. This data helps to determine highway and bridge maintenance programing.

ATV Trail Development •••
Used a Geographic Positioning System (GPS) to incorporate data gathered into a Geographic Information System (GIS). Maps generated with the GIS are being used to plan an inter-connecting trail system for Northwestern Minnesota.

Plan a Super 2 Design for USTH 59 •••
Studied the possibility of a Super 2 design on USTH 59 between Fergus Falls and Thief River Falls. Two Mn/DOT districts and three RDC's are currently studying the needs for this corridor.

Plans, Studies and Publications

Prepared by NWRDC

Plans

Area Plan on Aging - The Area Plan on Aging examines senior input and demographic data to establish priorities for the use of Title III Older Americans Act funds. Includes budget information, an Executive Summary and work activities.

FY 2002 Work Program - Details the goals and objectives of the Commission in each of the program and planning areas.

2001 Comprehensive Economic Development Strategy (CEDS) - This document examines economic, social, and physical information about the seven counties in Northwest Minnesota and makes recommendations on activities to enhance and improve the economy. The recommendations concentrate on job creation, agriculture, housing, and infrastructure activities which can help address population loss.

Regional Arts Plan - Goals, strategies and work activities for State Arts Funds and McKnight Arts Funds are included in these plans.

Revolving Loan Fund Plan - Describes the program elements and guidelines for the loan fund. Updated in 2000.

Studies

Red River Basin Natural Resource Planning - "A Strong Voice for Northwest Minnesota Counties" - A report prepared with funding from the Minnesota Legislature and MN Planning. The report outlines several strategies for counties to keep an active involvement in Basin wide natural resources issues. Strategies focus on information and education supplemented by strong advocacy on key county issues.

Red River Bridge Study - The Transportation Advisory Committee has formed a subcommittee to study the economic impacts and importance the Red River bridge crossings have on the region. Results of the study will be presented to MnDOT for future planning.

Agassiz Environmental Learning Center Development Plan - Details, goals and steps related to increasing users partnering with area groups and generating income, based on a series of interviews and meetings.

Publications

Commission Chronicle - NWRDC Newsletter - Printed on a quarterly basis and distributed to government units, service agencies and interested persons. Contains current items of interest to local communities and Commission activities.

Directory of Artists and Arts Organizations - The directory contains listings of regional artists, arts organizations, school district offices and public libraries.

Directory of Government Units of Service Agencies - The directory contains listings of service agencies and governmental offices from the township level through the legislative level.

FY 2001 Annual Report - Information on the funding and work activities of the Commission over the past year. Published and distributed to local officials and legislators.

Northwest Arts - Quarterly newsletter developed for the artists, arts organizations and schools in northwest Minnesota.

Senior News - Newsletter developed for the Senior Citizens and service providers of Region One.

Senior Service Directory - Resources for Region 1 seniors, consumers and professionals in the field of aging. It provides a brief description of programs, resources and agencies.

www.nwrdc.org - Published updates of program information changes to our agency website.

www.visitnwmnnesota.com - Web site devoted to the services, resources and recreational opportunities of our seven counties. Includes a on-line version of the Northwest Minnesota Visitor & Recreation Guide.

Northwest Minnesota Visitor and Recreation Guide - A comprehensive listing of attractions and facilities which offer opportunities and services to local and outside visitors to area communities.

NW Minnesota Economic Profile - A current and historical profile of economic trends in the seven county area of NW Minnesota served by the NWRDC. Includes population, employment, business, and farm information.

County Profiles - Individual profiles of Kittson, Norman, Marshall, Pennington, Polk, Red Lake, and Roseau Counties. Information includes economic, recreational, governmental, and geographical topics.

Resources for Economic Development - Descriptions of agencies and both technical assistance and financial programs for economic development. Includes special sections on labor force and housing resources. Lists community revolving loan funds and economic development contacts.

Northwest Minnesota Labor Force Assessment - A Survey of Northwest Minnesota's Labor force, Employers and Students.

GEO - Global Environment Optimization - Producers of natural, Organic Fertilizers and Environment Improvement Products.

Committee Membership List

Aging Advisory Committee

Sharon Bring	Strandquist
Terence Blacklance	Thief River Falls
Bob Carlson	Thief River Falls
* Richard Dahlin	Ada
Matthew Edman	Alvarado
Gerald Jacobson	Fertile
Jamie Hennen	Ada
Beverly HewittLancaster	
Roy Jorgenson	Thief River Falls
Charles Lindberg	Kennedy
Allen Ducharme	Red Lake Falls
Warren Olson	Halstad
Julie Pahlen	Roseau
Orris Rasmussen	Roseau
Lorraine Strand	Erskine
Ronald Weiss	Red Lake Falls

Regional Arts Council

Karen Bang	Erskine
Dawn Bly	Fosston
Larry Braford	East Grand Forks
Rob Conwell	Red Lake Falls
Pat Dunning	Thief River Falls
Amy Filpula	Middle River
Mary Follett	Thief River Falls
* Dorothy Gehrke	Roseau
Anne Granitz	Roseau
Ruth Halverson	Karlstad
Betty Halvorson	Plummer
Kimberley Johnson	Kennedy
Gen Knott	Red Lake Falls
Joyce Wikstrom	Karlstad

Transportation Advisory Committee

Milton Alm	Norman County
Kelly Bengtson	Kittson County
Sharon Bring	Marshall County
Mike Flaagan	Pennington County
* Donald Jensen	Pennington County
Courtney Kleven	Red Lake County
Jeff Langan	Marshall County
Charles Lindberg	Kittson County
Bob Marvin	Roseau County
Ed Miller	Norman County
Lee Nielson	Red Lake County
Rodney Richmond	Roseau County
Rich Sanders	Polk County
Warren Strandell	Polk County

Enterprise Fund Loan Committee/

Economic Development Planning Committee

Allen Bertilrud	Red Lake Falls
Perry Kolnes	Hendrum
Noel Labine	Argyle
Stuart McFarlane	Roseau
Ray Safranski	Thief River Falls
Kari Thompson	Crookston
* Ed Turn	Roseau

Enterprise Fund Members

Betty Arvidson	Crookston
Allen Bertilrud	Red Lake Falls
Tracy Boman	Thief River Falls
John Erickson	Thief River Falls
Duane Finney	East Grand Forks
Stephen Fisher	Warroad
Mark Foldesi	Greenbush
Perry Kolnes	Hendrum
Lee Ann Konkin	Ada
Noel Labine	Argyle
Charles Lindberg	Kennedy
Stuart McFarlane	Roseau
William Montague	Crookston
Velma Oakland	Red Lake Falls
Leo Olson	Oklee
Terry Potucek	Warren
Gary Rice	Lancaster
Jim Richter	East Grand Forks
Ray Safranski	Thief River Falls
Brenda Sather	Greenbush
James Snyder	Crookston
Kari Thompson	Crookston
* Ed Turn	Roseau
Dean Vikan	Fosston

Rural Recovery Task Force (Energy)

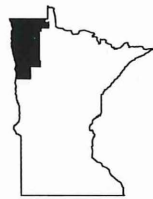
Heidi Dehn	Oklee Rural Resident
Kay Hegge	Economic Dev. Planner
Linda Kingery	Sustainable Dev. Partnership
Curt Nygaard	U of M, Ext. Educator, Roseau
Howard Person	U of M, Extension Educator
Tom Schmidt	Wild Rice Electric Coop.
*John Schmidt	Pembina Trail RC&D

Composting Task Force

Larry Amundson	Dairy Farmer
Jerome Burkel	Burkel Grain
John Burkel	Turkey Farmer
Don Christianson	Dairy Farmer
Neil Doty	Business Consultant
Paul Driscoll	American Crystal Sugar
*Karl Frigaard	NW Community Action
*Kay Hegge	Economic Development
Greg Hilgeman	Beef Farmer
Curt Nygaard	U of M, Extension Educator
Howard Person	U of M, Extension Educator
John Schmidt	Pembina Trail RC & D
Wayne Vetteson	Dairy Farmer
Roger Walter	Dairy Farmer

*Chair

Regional Project Listings



**NW Regional
Development
Commission**

Regional Project Listings Fiscal Year 2002

*Kittson, Marshall, Norman, Pennington
Polk, Red Lake, Roseau
Multi-County*

Management and Support

Participate in MRDO Program Support Activities • • •
Assisted in setting up statewide training and support activities which will benefit NWRDC program areas.

Local Issues

ICWC Crew Administration • • •
Administered the Northern Institutional Community Work Crew out of Thief River Falls in conjunction with Inter County Community Council. The crew consists of low risk offenders who will build six to eight low cost homes each year.

MRDO • • •
Participated in activities of the Minnesota Association of Regional Development Organizations including development of statewide legislative approaches.

MRDO Conference and Retreat • • •
Assisted in the organization of the Minnesota Regional Development Organizations Annual Conference and Retreat.

Housing Community Building

Homark Home Addition • • •
Promoted the concept of a half home on a foundation, and add the second half later.

Regional Multi-faceted MHFA Grants • • •
Gathered information from communities on possible Buy, Fix, Sell, construction, rehab, emergency repair, and other housing needs. This information will go into regional applications to the MN Housing Finance Agency every six months.

ROHDA Network • • •
Coordinated and facilitated regular meetings of the Region One Housing Development Alliance.

Farm Wrap/RHODA Rural Repair Grants • • •
Developed one application that can be used by all four housing agencies to help in emergencies, and to track for groups who possibly need Small Cities Block Grants for townships or counties.

ICWC • • •
Worked with the ICWC Advisory Group and helped line up new projects for the crews.

Homark/ICWC Built Homes • • •
Homark and ICWC are going to consider a \$60,000 modular home in which ICWC will build basements and garages for.

STS/ICWC Built Ramps • • •

Approached Options about administering a program that will provide modular wood ramps for people experiencing the effects of aging. STS and ICWC will be the labor. Shallow Steps are an option too.

Economic Development

Economic Developers Group • • •
Provided staff support and participated in the Northwest Economic Developers group to share information and complete area wide development projects.

NW MN Foundation Survey • • •
Assisted the Headwaters RDC with the NWMNF regional assessment of resources. Helped with high speed broadband, tourism, waste water treatment types, and industrial parks.

EDA Planning Grant Application and Reporting • • •
Prepared and submitted the annual EDA Planning Grant Application and subsequent semi-annual and annual narrative reports.

Minnesota Recovers • • •
Assisted the Minnesota Recovers Task Force to establish region wide systems for delivering assistance to local units of government related to the 2002 flood recovery. MN Recovers consists of agency representatives from state and federal agencies.

Data Requests • • •
Number of data requests from 07/01/01 to 06/30/02: 108.

Ag Tourism • • •
Attended the Rural Tourism meeting in Grafton, ND, and the Greenway restructuring meeting in Grand Forks.

Small Business Development Center • • •
Assisted in the start-up and operation of the new Region I and II Small Business Development Center, Bemidji.

Ethanol • • •
Assisted with the potential for a small ethanol plant in our region.

Business Development TA for Farmers • • •
Prepared applications to USDA for "Capture the Value," outreach technical assistance for developing businesses on the farm and value-added ventures. Applied to the NWMF also.

State Rural Development Policy • • •

Worked with local and other Legislators on the development of a plan to support changes to state programs that will improve access and use, encourage ag value added, and encourage work in rural poverty issues. Attended AFL/CIO/MFU coalition planning meeting.

Energy Task Force • • •

Explored more options for energy production. Methane Digestion, wind, and other biomass are feasible here.

Compost Animal Mortalities • • •

Worked with Pembina Trail RC & D, and Extension to expand their once a year pick-up to regular pick-ups bringing to a central composting site.

Compost Closed Loop System Chart • • •

Designed a color chart showing how composting fits in with methane digestion, growers needs to break disease cycles, dead animal composting, encouraging ethanol production, and other initiatives. Worked with Heidi Dehn on the project.

Compost - MN Board of Animal Health • • •

Worked with Don Myren from the State Board of Animal Health to clear up misconceptions on sterilizing and disinfecting and type of vehicles required.

Compost Coordination • • •

Coordinated monthly meetings to move projects forward. Purchased and refabricated a Total Ration Mixer into a small rotary drum composter. Made many batches of compost. Applied to two test plots.

Direct Assistance • • •

Provided direct assistance to people who wanted to own their own home.

Housing Construction Loan Fund • • •

Worked with Northwest Community Action Agency, Inter County Community Council, Northwest Multi County HRA, and Tri-Valley Opportunity Council on a 1.8 million dollar application for construction and rehabilitation. Funded for 1.5 million.

Sewer/Water/Roads • • •

Assisted local communities to finance infrastructure which is needed to maintain economic vitality, especially those which are directly linked to business development and housing development.

Transportation

Transportation Project Review • • •

Discussed county and state construction projects with members of the State Legislature and the Transportation Advisory Committee. The information provided helps in the development of regional transportation plans.

Input to Subcommittee • • •

Developed strategies for the implementation of new Mn/DOT subcommittee for the funding of safety projects. \$300,000 of ATP inter-regional funds will be designated for this pot of money.

Mn/DOT Commissioner Meeting • • •

Attended the November special session on the 10-ton North-South corridor. Updated Commissioner Tinklenberg with the needs for a shipping corridor in Northwestern Minnesota.

Develop Regional Transportation Plan • • •

Drafted the 2003-2006 regional transportation plan for approval by the Transportation Advisory Committee. The plan will be submitted to Mn/DOT for incorporation into district planning.

Visit County Boards • • •

Visited with each county board to discuss transportation issues occurring within each county and region wide. Informed the boards of transportation issues the TAC is studying and projects Mn/DOT will be pursuing within their jurisdiction.

Issues Analysis/GIS • • •

Continued development of a Geographic Information System that can store and analyze transportation planning information.

OHV Trail Development • • •

Developed maps of potential Off Highway Vehicle (OHV) recreation areas. These OHV trail maps are used as deliberating tools for the designation of trails through the consolidated conservation lands within Roseau, Marshall, and Beltrami Counties.

Grygla-Gully 10-ton corridor • • •

The ATP inter-regional subcommittee has obligated \$1.3 million for the construction of the 10-ton corridor. The first construction phase for this corridor will take place in Pennington County on CSAH 27.

Enterprise Fund

UMC/Corel Presentation • • •

Developed Corel Presentation on NWRDC Economic Development programs. Gave presentation to UMC class on January 25, 2002.

SBDC / TAG • • •

Worked with Bemidji SBDC and Region I and II Technical Assistance Group to coordinate and provide services to businesses.

Applicant Assistance • • •

Assisted businesses with financial packaging and business planning. Number of businesses assisted from 07/01/01 to 06/30/02: 143.

Pre-Information Assistance • • •

Assisted businesses with preliminary loan information. Number of Pre-Information Forms received from 07/01/01 to 06/30/02: 26.

Final Application Assistance • • •

Assisted businesses with final loan fund applications. Number of final applications received from 07/01/01 to 06/30/02: 10.

2002 Disaster Relief Loan Fund • • •

Assisted businesses with flood recovery efforts.

Loan Servicing/Monitoring • • •

Maintained approved loan portfolios and monitored approved loans. Worked on legal remedies for defaulted loans. Number of active loans as of 06/30/02: 53.

Arts Development

Directory • • •

Regional Artist and Art Organizations Directory was updated throughout the year. Parts of the Directory are published on the web site. Our focus is to provide more information and work samples by area artists on our web site by next spring.

Public Art Development • • •

Encouraged applications from communities for the Public Art Program in order to award four grants in fiscal year 2002. We increased the number of sculptors listed in the registry in order to help communities find artists to work on their projects.

MCA Meetings • • •

Attended Minnesota Citizens for the Arts Meetings as a board member. Advocated on behalf of the arts for increases in legislative funds.

McKnight Arts

Training Workshops • • •

Professional development for area artists including training on mnartists online project to help artists display their art on the Internet.

Aging-Admin

Fall Conference on Aging • • •

Planned, prepared information and held the Conference on Aging on August 15, 2001. 350 seniors and service providers enjoyed the stress free day of education. Evaluation comments indicated great satisfaction with the event.

2001 Senior Legal Services Project • • •

Granted Legal Services of NW Minnesota a IIIB grant to provide legal services and legal education to seniors in all seven counties of the region. Provided 696 hours of legal services and 9 educational sessions in 2001.

2001 Senior LinkAge Information & Assistance • • •

Granted the NW Area Agency on Aging a IIIB grant to provide information and assistance to seniors and family members in all seven counties through the Senior LinkAge line. Provided information and assistance to 1,299 callers in 2001.

2001 Health Insurance Counseling Program • • •

Granted the NW Area Agency on Aging IIIB grant to recruit and train volunteers to provide assistance to seniors in all seven counties. This included help sorting through medical and hospitalization bills, filing Medicare appeals, and advocacy for the rights of seniors.

2001 Senior Nutrition Program • • •

Extended contract with Lutheran Social Services to provide congregate and home delivered meals to seniors in Region One. Funds compiled of Federal, USDA Reimbursement, State, State Expansion, and Nutrition Support Services.

Lutheran Social Service • • •

Granted 2001 III-D funds to Lutheran Social Services to conduct Health Promotion Fairs at nutrition sites for 2001.

LSS Health & Wellness Fairs • • •

Granted Lutheran Social Services IIID funds to provide health fairs and medication management session at senior centers and meal sites throughout Region 1.

Respite & Caregiver Program • • •

Granted Lutheran Social Services IIIE funds to develop and expand the Respite and Caregiver Support services to all seven counties in Region 1 for the time period 7/1/02 to 12/31/03.

Minority Outreach • • •

Met with American Indians and minority organizations to develop plans for their involvement in future programming.

MBA Administrative Meeting • • •
Participated in MBA Administrative Meetings.

Aging-Senior Link

Answer Phone • • •
Answered general Senior LinkAge Calls and made referrals to other staff on calls needing follow-up.

Newsletter • • •
Over 900 newsletters, which promote and educate seniors on healthy benefits of aging, are distributed on a quarterly basis. There are Senior LinkAge Line and Health Insurance Counseling issues presented in each issue.

Resource Materials • • •
Developed and disseminated new resource materials for seniors and service providers. In cooperation with Legal Services and the NW Ombudsman for Older Minnesotans, we developed a Personal Data and Records booklet for distribution.

Information and Assistance • • •
Information and assistance is provided to seniors and others who utilize the Senior LinkAge Line. Services and programs within the region are referred to help seniors with their needs.

Aging-PD&C

Caregiver Resource List • • •
Developed inventory of formal and informal caregiver services in the seven county area. Utilized this information in the development of the Caregiver RFP for Region 1 funds.

Caregiver Work Group • • •
Established a work group to examine Caregiver needs/issues and create a regional model for Caregiver resources. Input will be used to help allocate new funding for caregiver support.

Aging-Outreach

Senior Surf Days • • •
Thirteen Senior Surf Day Events have been completed. The sessions promote the Medicare websites for beneficiaries to use as resources for health care information.

Volunteer Maintenance • • •
Volunteers are updated monthly on changes to the Medicare program, Health Insurance Counseling program and all other new resources for seniors.

Education and Outreach • • •
Conducted 4 educational outreach sessions.

Phone and One-on-One Assistance • • •
Provided assistance to callers and on-site visitors about health care assistance programs.

Home Visits • • •
Conducted home visits to potential program eligible seniors to assist with applications for health care assistance.

Aging-Health Insurance

Evaluation • • •
85%+ of surveys returned indicated client satisfaction with services received.

Aging-Health Care Access

Client Tracking • • •
Evaluated information about seniors served through the IRIS database program.

Application Review • • •
Distributed applications and reviewed completed applications prior to submittal to the counties or state.

County Coordination • • •
Worked with counties to provide assistance upon health plan approval.

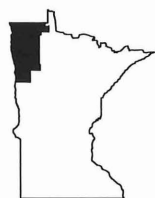
Aging-Regional Gaps Analysis

Department of Human Services Legislative Mtg. • • •
Coordinated site location for the Department of Human Services Information Session to discuss Long-Term Care Reform Legislation. Scheduled Coffee Time presentation for DHS staff to provide information about changes.

Department of Human Services Training • • •
Participated in a DHS sponsored teleconference which provided information about Gaps Analysis, Regional Analysis, and Service Development Plan timelines. Training provided technical assistance to AAA's and SAIL programs for assisting counties.

Assistance to Counties Proposal • • •
Developed proposal for assisting counties with completing Gaps Analysis. Met with Social Service Directors to discuss proposal and interest in AAA assistance.

County Project Listings



NW Regional Development Commission

Project Listings by County Fiscal Year 2002

*Kittson, Marshall, Norman, Pennington
Polk, Red Lake, Roseau
Multi-County*

Kittson County

Economic Development	Dried Technology	Assisted the business and county economic developer to develop a business plan, and loan applications for a project to dry and process local plants for use in crafts and home decoration. About \$350,000 will be needed for equipment, buildings, and capital.	
Transportation	Kittson Assistance	Assisted the City of Hallock with mapping the cities infrastructure. Developed maps illustrating the city gas, sewer, and water lines.	
Transportation	Scenic Byway Planning	Assisted the counties within the scenic byway on transportation development, planning, and promotion tactics for the Waters of The Dancing Sky Scenic Byway. Worked with the Office of Tourism on the designation of the byway through Kittson County to I-29.	
Enterprise Fund	Kittson County Loan Summary	Fourteen loans have been made to businesses in Kittson County, totaling \$722,620. One loan has been written off and 2 loans have been repaid.	\$722,620
Aging-Admin	Senior Transportation Program	Granted Kittson County Social Services IIIB funds to provide volunteer based medical transportation services to seniors in Kittson County.	\$4,000
Aging-Admin	Senior Center Funding	Granted the Hallock Area Senior Citizen's Center IIIB Senior Center funding for 2001 to purchase kitchen equipment.	\$5,094
Aging-Admin	2001 LSS Nutrition Program	Extended nutrition contract to include the purchase of a single deck convection oven for the Karlstad Nutrition Site for 2001.	\$4,260
Aging Senior Link	I&A - Kittson County	Provided information and assistance to 90 Kittson county Senior LinkAge line callers for the time period 7/1/01 to 6/30/02.	
Economic Development	G Family Hallock	This is one of the most difficult cases to date, in which multiple problems need to be solved in order to fix or rebuild their modular home which its twisting and cracking up may be due to flood.	
Transportation	City Support for Planning Hallock	Assisted the City of Hallock with mapping projects. Incorporated the cities infrastructure of sewer, water lines and gas mains from Autocad into an Arcview project.	
Enterprise Fund	Valley Motel Hallock	Closed Standard Loan for \$30,000.00 on September 7, 2001.	\$30,000
Enterprise Fund	Hallock Plumbing & Heating, Inc. Hallock	Closed Standard Loan for \$34,000.00 on August 29, 2001.	\$34,000
Enterprise Fund	Rural Access, Inc. Hallock	Closed Standard Loan for \$60,000.00 on September 12, 2001.	\$60,000

Arts Development	Artist in the Schools Grant Hallock	Funded Kittson Central School for the sponsorship of a poetry residency with Margo Fortunato Gault in October 2002.	\$1,385
Arts Development	Artist in the Schools Grant Hallock	Funded Kittson County Central for the sponsorship of Prairie Fire Children's Theater workshop and production of "Robin Hood" on July 28-29, 2002.	\$1,125
Arts Development	Exhibit Participants Hallock	Beth Blomquist, Lucas Roach, Kayla Schwenzfeier	
Aging-Admin	Kittson Memorial Healthcare Hallock	Provided technical assistance to Kittson Memorial Healthcare Center in the development of a grant application to the Department of Human Service. KMHC proposes to purchase and renovate an apartment building in Hallock to provide assisted living services.	
Aging-Admin	First Meal Served at "The Station" Hallock	Attended the first congregate meal served at "The Station" - the new Senior Center building in Hallock.	
Aging-Admin	Aging Advisory Committee - Hallock Hallock	The Aging Advisory Committee held their meeting at "The Station" in Hallock. Committee Members ate lunch at congregate site, toured the building, and received a report on the progress of developing the building and senior programs in Hallock.	
Aging-Admin	LSS Senior Nutrition Program Hallock	Provided 3,156 Congregate and Home Delivered Meals to 118 persons in Hallock (Senior Center and Hallock West Side apartments) in 2001.	
Aging-PD&C	Heritage House Apartments Hallock	Coordinated visits with apartment managers and ARDC Sail Housing Developer to discuss interest in providing assisted living services to apartment residents.	
Aging-PD&C	Service Development Plan Hallock	Met with Director of Kittson County Social Services to discuss AAA assistance with implementation of Kittson County's Service Development Plan. AAA will provide assistance with the development of a chore program for seniors.	
Economic Development	Dried Technologies, Inc. Humboldt	Worked with the business to determine interest in participation in regional compost development program. Business was not interested in project with this wide of a scale, but is interested in composting focused on a narrower market.	
Economic Development	L Family Karlstad	Assisted this family who runs a business out of her home with finding the right agency to repair her well and septic system. Her business depended on well and septic, because farming was no longer an option.	
Aging-Admin	LSS Senior Nutrition Program Karlstad	Provided 11,908 Congregate and Home Delivered Meals to 372 persons in Karlstad in 2001.	
Arts Development	Exhibition Award Kennedy	People's choice adult award to David Hammond.	\$100

Arts Development	Exhibit Participants Kennedy	Kirsten Gunnarson, David Hammond, Bernie Wlebski	
Arts Development	Exhibition Award Kennedy	Drawing merit award to David Hammond for "Reflections in the Rain" graphite drawing.	\$50
McKnight Arts	Individual Artist Grant Kennedy	Funded Kim Nelson to create a multi-lingual book on tape from her original children's book.	\$750
Aging-Admin	LSS Senior Nutrition Program Kennedy	Provided 3,109 Congregate and Home Delivered Meals to 81 persons in Kennedy in 2001.	
Local Issues	Technical Assistance Kittson County	Discussed with Kittson County Economic Development Coordinator the web assistance that our office can offer them.	
Arts Development	Exhibit Tour Lake Bronson	Displayed the traveling art tour at the Lake Bronson Historical Museum from July 23 - August 3, 2001.	
Arts Development	Exhibit Participant Lake Bronson	Audrey Sandahl	
Arts Development	Traveling Exhibition Lake Bronson	A small tour of the 2002 Northwest Minnesota Art Exhibition was on display at the Kittson County Historical Museum from June 3 - 14, 2002.	
Aging-Admin	LSS Senior Nutrition Program Lake Bronson	Provided 3,816 Congregate and Home Delivered Meals to 128 persons in Lake Bronson in 2001.	
Local Issues	Development of Kittson County Trails Lancaster	Assisted Don Burton with Agri-Sports on the development of an ATV trail network. The trail system will link existing and future trails to the DNR proposal for Off Highway Vehicles in Northwestern Minnesota.	
Economic Development	Compost - River Ridge Dairy Lancaster	Worked with River Ridge Dairy on dead animal composting.	
Economic Development	New Housing Construction Lancaster	Assisted the city in developing strategies for the construction of new affordable housing.	
Arts Development	Exhibit Participants Lancaster	Barbara Hansson, Bev Hewitt	
Arts Development	Exhibition Award Lancaster	Painting merit award to Bev Hewitt for "Contentment" oil painting.	\$50
Aging-Admin	LSS Senior Nutrition Program Lancaster	Provided 3,143 Congregate and Home Delivered Meals to 91 persons in Lancaster in 2001.	
Arts Development	Exhibition Award St. Vincent	Photography/digital merit award to Amy Webster for "Euphoria" digital photo.	\$25
Arts Development	Exhibit Participant St. Vincent	Amy Webster	

Marshall

Enterprise Fund	Farmers Elevator Company Alvarado	Closed retention loan for \$150,000 on January 23, 2002.	\$150,000
Enterprise Fund	Farmers Elevator Company Alvarado	Closed expansion loan for \$150,000 on January 23, 2002.	\$150,000
Arts Development	Exhibit Participants Alvarado	Nikki Boman, Marissa McDowell	
Arts Development	Exhibition Award Alvarado	Mixed media drawing merit award to Nikki Boman for "Movement".	\$25
McKnight Arts	Student Artist Grant Alvarado	Funded Jenna Schroeder to study voice with mentor Maria Williams.	\$500
Aging-Admin	Aging Advisory Committee Alvarado	Aging Advisory Committee held meeting in Alvarado. Committee members evaluated Diner's Club program operating in Alvarado restaurant and discussed program use with restaurant owner.	
Aging-Admin	LSS Senior Nutrition Program Alvarado	Provided 1,815 Congregate and Home Delivered meals to 94 persons in Alvarado in 2001.	
Arts Development	Exhibit Participant Angus	Kathleen Barrett	
Arts Development	Exhibition Award Angus	Painting merit award to Kathleen Barrett for "Tranquility" acrylic painting.	\$25
McKnight Arts	Individual Artist Grant Angus	Funded Mary Novacek to attend the Beyond Structure screenwriting workshop, then to market her completed screenplays.	\$750
Arts Development	Artist in the Schools Grant Argyle	Funded Stephen/Argyle School for the sponsorship of Prairie Fire Children's Theaters workshop and production of "Jack and the Beanstalk" on August 5-11, 2002.	\$1,075
Arts Development	Exhibit Participant Argyle	Cale Bergeron	
McKnight Arts	Student Artist Grant Argyle	Funded Bryce Henrickson to attend Summer Performing Arts camp in Grand Forks.	\$500
McKnight Arts	Student Artist Grant Argyle	Funded Beth Radeke to attend Summer Performing Arts camp in Grand Forks.	\$500
Economic Development	Compost Excel Dairy	Assisted Larry Amundson by finding additional composting funding for equipment. Needs two to three composters, and one fan separator.	

Transportation	Grygla-Gully 10-ton Corridor	The ATP interregional subcommittee has obligated \$1.3 million for the construction of the 10-ton corridor. The first construction phase for this corridor will take place in Pennington County on CSAH 27.	
Transportation	Marshall Assistance	Developed land-use maps for land owners in New Maine and West Valley townships for planning purposes. Created maps to assist the Marshall County Posse in tracking geological features. Developed maps for the Stephen/Argyle emergency services.	
Enterprise Fund	Marshall County Loan Summary	Twenty-two loans have been made to businesses in Marshall County, totalling \$1,343,393. Five loans have been written off and 6 loans have been repaid.	\$1,343,393
Aging-Admin	2001 LSS Nutrition Program	Extended nutrition contract to include the purchase of an under counter dishwasher for Stephen Nutrition Site for 2001.	\$3,750
Aging-Admin	Warren Senior Meal Site	Granted Lutheran Social Service a supplement to purchase the following equipment for the Warren Senior Meal Site: dry storage shelving, stainless steel hand sink, steam table and six burner stove.	\$7,281
Aging Senior Link	I&A - Marshall County	Provided information and assistance to 175 Marshall County Senior LinkAge callers for the time period 7/1/01 to 6/30/02.	
Aging-Regional Gaps Analysis	Marshall County Gaps Analysis	Completed Gaps Analysis for Marshall County, submitted to Marshall County Commissioners and Department of Human Service.	
Aging-Regional Gaps Analysis	Marshall County Elderly Services Collaborator	Participated on Marshall County Elderly Services Collaborative planning committee. Developed a program plan, grant application, and submitted to potential funders.	
Aging-Regional Gaps Analysis	Service Development Plan	Completed Service Development Plan for Marshall County, submitted to Marshall County Commissioners and Department of Human Service.	
Arts Development	Technical Assistance Florian	Worked with people from Florian Park on possible public art project proposal.	
Economic Development	Grygla Loan Assistance Grygla	Assisted the city with loan agreements, terms, collateral and other items related to loans from the City Economic Development Loan Fund.	
Aging-Admin	LSS Senior Nutrition Program Grygla	Provided 7,950 Congregate and Home Delivered meals to 293 persons in Grygla in 2001.	
Aging-Regional Gaps Analysis	Meeting on Service Gaps Grygla	Convened meeting in Grygla to gather input on perceived service gaps for seniors. The 42 people who attended, provided information on services that are needed to help seniors remain at home and independent.	
Aging-Admin	LSS Senior Nutrition Program Holt	Provided 1,638 Congregate and Home Delivered meals to 49 persons in Holt in 2001.	

Housing Community Bldg.	Old Creamery Middle River	Assisted with planning for potential apartment building.	
Housing Community Bldg.	New Homes Middle River	Helped the City of Middle River with ICWC homes and held a housing informational meeting with local people.	
Economic Development	Community Visit Middle River	Visited with the City of Middle River regarding housing and other concerns.	
Economic Development	Cafe Visit Middle River	Small business loan packaging assistance for new owner.	
Economic Development	Housing Construction Middle River	Assisted City and Inter County Community Council with the financing for construction of 2 new homes which will sell for about \$70,000. Labor from the Institutional Community Work Crew will be used for the project.	
Enterprise Fund	Garden Cafe Middle River	Closed Small Loan for \$18,500 on June 6, 2002.	\$18,500
Arts Development	Arts Grant Middle River	Funded Middle River Community Theater for the production of "Arsenic and Old Lace" from September 25-29, 2002.	\$875
Arts Development	Arts Grant Middle River	Funded Middle River Community Theater for four performances of "The Quilters" on September 26, 27, 29 and 30, 2001.	\$1,550
Arts Development	Arts Grant Middle River	Funded Middle River Community Theater for the production of the children's play "Pocahontas" on June 23-26, 2002.	\$1,575
Aging-Admin	LAH/BNP Program Middle River	Provided technical assistance to Middle River/Thief Lake LAH/BNP program in the development of a grant application to the Department of Human Services. This proposal received funding from DHS.	
Aging-Admin	LSS Senior Nutrition Program Middle River	Provided 6,443 Congregate and Home Delivered meals to 82 persons in Middle River in 2001.	
Economic Development	E Family Newfolds	Assisted this aging family with housing improvements through USDA.	
Economic Development	Community Visit Newfolds	Completed a community assessment and attended a City Council meeting about housing issues and programs.	
Economic Development	S Family Newfolds	Assisted this elderly person to get into the right agency for repairs to her home to prevent water seepage.	
Arts Development	Artist in the Schools Grant Newfolds	Funded Marshall County Central School for a media arts residency with Kris Sorenson in February and March 2002 in creating and editing video.	\$2,035

Aging-Admin	Newfolden Health Fair Newfolden	Provided information on Area Agency on Aging and services available during Health Fair sponsored by Newfolden Senior Meals Program.	
Aging-Admin	LSS Senior Nutrition Program Newfolden	Provided 7,905 Congregate and Home Delivered meals to 241 persons in Newfolden in 2001.	
Aging-Regional Gaps Analysis	Meeting on Service Gaps Newfolden	Convened meeting in Newfolden to gather input on perceived service gaps for seniors. The 20 people in attendance provided input on services that are needed to help seniors remain in their own home and independent.	
Economic Development	Cafe Oslo	Visited with a possible new owner for the Oslo Cafe about programs and possibilities.	
Economic Development	Community Visit Oslo	Visited with the the Mayor and City Clerk about housing and assisted living and block nurse programs. Attended a City council meeting.	
Economic Development	Econ. Dev. & Housing Task Force Oslo	Assisted the City with the formation of a small group to address economic development and housing concerns. Applied for a TA grant for Housing Planning, and invited Kathy Coyle to lead community visioning process.	
Enterprise Fund	Oslo Valley West Cafe Oslo	Closed loan for \$30,000.00 on February 21, 2002.	\$30,000
Arts Development	Exhibit Participant Oslo	Angela Ecklund	
Arts Development	Exhibition Award Oslo	Mixed media merit award to Angela Ecklund for "Black Leafs".	\$50
Aging-Admin	LSS Senior Nutrition Program Oslo	Provided 3,077 Congregate and Home Delivered meals to 167 persons in Oslo in 2001.	
Local Issues	Technical Assistance Stephen	Assisted JMS Motorsports in updating their web site in November 2001.	
Economic Development	Housing and Business Incubator Stephen	Assisted the City of Stephen in project development. Applied for a Technical Assistance grant for costing out options for the Nyland building, and the Hjelle Apartment building.	
Economic Development	Cafe Visit Stephen	Visited with the owner of the cafe regarding improvements to the building that could be included in a block grant.	
Arts Development	Exhibition Award Stephen	1st place high school student award to Kat Anderson for "Impatient Whispers" mixed media piece.	\$150

Arts Development	Artist in the Schools Grant Stephen	Funded Stephen/Argyle School for the sponsorship of an opera residency by Karen Bradley called "Opera on Our Own" in February 2002. Students in grades 5 and 6 will write and then perform their own opera.	\$2,500
Arts Development	Exhibit Participant Stephen	Kat Anderson, Alicia Pietruszewski	
McKnight Arts	Student Artist Grant Stephen	Funded Lisa Widner for a voice mentorship with Maria Williams ending in a recital from September 2001 - May 2002.	\$500
Aging-Admin	LSS Senior Nutrition Program Stephen	Provided 8,931 Congregate and Home Delivered meals to 236 persons in Stephen in 2001.	
Economic Development	Development in Strandquist Strandquist	Applied for a TA grant from the NVMF for planning a new playground and restrooms. Applied for a DNR grant for building it. Kathy Coy le led an envisioning session. John Wy nne wrote a Small Cities Block Grant which includes a commercial rehab for the cafe.	
Economic Development	Community Visit Strandquist	Met with community leaders regarding housing and other matters.	
Economic Development	Cafe Visit Strandquist	Visited with the owner of the cafe regarding improvements to the building that could be included in a block grant.	
Aging-PD&C	Strandquist Diner's Club Strandquist	Contacted owner of Irene's Cafe in Strandquist to determine interest in participating in Diner's Club for Senior Meals.	
McKnight Arts	Student Artist Grant Viking	Funded Kim Swanson for a voice mentorship with Maria Williams ending in a recital from September 2001 - May 2002.	\$500
Aging-Admin	LSS Senior Nutrition Program Viking	Provided 3,019 Congregate and Home Delivered Meals to 123 persons in Viking in 2001.	
Economic Development	Community Visit Warren	Visited with Phil Thompson and Bob Brooks about housing and other concerns such as rehabbing the three group homes.	
Economic Development	New Housing Construction Warren	Assisted the City and Tri-Valley Opportunity Council with financing for construction of 2 new homes which will sell for about \$75,000. Labor from the Institutional Community Work Crew will be used for the project.	
Arts Development	Technical Assistance Warren	Worked with the Warren Chamber of Commerce on their public art grant proposal.	
Arts Development	Exhibit Participants Warren	Jennifer Hill, Dustin Kalt, Mandy Kuznia, Polly Peterson	
Arts Development	Exhibition Award Warren	1st place adult award to Polly Peterson for "Being" a lithograph print.	\$500

Arts Development	Exhibition Award Warren	Photography /digital merit award to Dustin Kalt for "Crack" digital photo.	\$25
Arts Development	Public Art Grant Warren	Funded Warren Chamber of Commerce for a wood relief carving in the new community center building.	\$5,500
McKnight Arts	Artists Online Warren	Held informational meeting for artists at the school.	
McKnight Arts	Student Artist Grant Warren	Funded Dustin Kalt for the purchase of digital photography supplies including a digital camera in order to produce images for a private show in the Spring of 2002.	\$500
Aging-Admin	Adult Day Care Development Warren	Provided technical assistance to an individual from Warren looking into the possibility of developing adult day care services for seniors in Warren. Provided a letter of support for funding request to the City of Warren.	
Aging-Admin	Warren Health Fair Warren	Provided information on Area Agency on Aging and services available during the Health Fair sponsored by the Warren Senior Meals Program.	
Aging-Admin	LSS Senior Nutrition Program Warren	Provided 12,841 Congregate and Home Delivered meals to 292 persons in Warren in 2001.	
Aging-PD&C	Landmark Apartment Visit Warren	Coordinated visits with apartment managers and ARDC Sail Housing Developer to discuss interest in providing assisted living services to apartment residents.	
Aging-Regional Gaps Analysis	Meeting on Service Gaps Warren	Convened meeting in Warren to gather input on perceived service gaps for seniors. The 15 people in attendance provided input on services that are needed to help seniors remain in their own homes and independent.	

Norman

Economic Development	Development Incentives Ada	Contacted City Clerk to determine what range of incentives the City would consider in relationship to possible new job creation.	
Economic Development	Comprehensive Planning Ada	Provided information of available assistance with city planning.	
Arts Development	Exhibit Tour Ada	Displayed the traveling art exhibit at the Ada Public Library from August 20 - 31, 2001.	
Arts Development	Exhibit Participants Ada	Sheila Capistran, Kristi Kramlich	
McKnight Arts	Artists Online Ada	Held an informational meeting for artists at the school.	

Aging-Admin	Ada Health Fair Ada	Provided information on Area Agency on Aging and services available during the Health Fair sponsored by the Ada Senior Meals Program.	
Aging-Admin	Ada Nutrition Site Council Ada	Participated in the meeting of Ada Nutrition Site Council to address concerns with staffing, program operator, and other site issues.	
Aging-Admin	LSS Senior Nutrition Program Ada	Provided 8,851 Congregate and Home Delivered Meals to 269 persons in Ada in 2001.	
Aging-PD&C	Service Development Committee Ada	Participated in meetings of Norman County Service Development Committee. Discussed the need for coordinated transportation services, assisted living, and adult day care as additional community based options for Norman County seniors.	
Economic Development	Agricultural Development	Contacted MN Extension Service to determine if there is an interest in developing coordinated approaches to promoting new agricultural based businesses such as ethanol production, animal waste composting, or large scale animal production.	
Transportation	Norman Assistance	Attended the May County Board meeting to discuss construction projects occurring within the county. The RDC will reconstruct the county township district maps to reflect the changes from redistricting.	
Enterprise Fund	Norman County Loan Summary	Eleven loans have been made to businesses in Norman County, totalling \$451,560. One loan has been written off and 5 loans have been repaid.	\$451,560
Aging-Admin	Gary Senior Meal Site	Granted Lutheran Social Service a supplement to purchase a steam table for the Gary Senior Meal Site.	\$1,180
Aging-Admin	2001 LSS Nutrition Program	Extended nutrition contract to include the purchase of an under counter dishwasher for Shelly Nutrition Site for 2001.	\$3,750
Aging-Admin	Twin Valley Senior Meal Site	Granted Lutheran Social Services a supplement to purchase a dishwasher and steam table for the Twin Valley Senior Meal Site.	\$5,980
Aging Senior Link	I&A - Norman County	Provided information and assistance to 175 Norman County Senior LinkAge callers for the time period 7/1/01 to 6/30/02.	
Aging-Admin	LSS Senior Nutrition Program Gary	Provided 3,069 Congregate and Home Delivered meals to 82 persons in Gary in 2001.	
Economic Development	Community Visit Halstad	Visited with the City of Halstad regarding housing, wastewater treatment and other concerns.	
Economic Development	New Housing Construction Halstad	Assisted the City and Tri-Valley Opportunity Council with the financing for construction of 2 new homes which will sell for about \$75,000. Labor from the Institutional Community Work Crew will be used for the project.	

Enterprise Fund	Valley Hardware & Supply Halstad	Approved Loan for \$19,500. Closing is pending.	\$19,500
Arts Development	Arts Grant Halstad	Funded Valley Community Theatre for the production of "Lonestar Love Potion" on March 7-9, 14-16, 2002.	\$1,220
Arts Development	Exhibit Participant Halstad	Ben Schlaht	
Arts Development	Arts Grant Halstad	Funded Valley Community Theater for the production "Mousetrap" on May 11-12, 16-18, 2002.	\$1,880
Arts Development	Arts Grant Halstad	Funded Norman County East School for the sponsorship of three visual artist residencies in calligraphy, painting, and clay dolls in October and November 2001; and January 2002.	\$1,260
Aging-Admin	Aging Advisory Committee Halstad	The Aging Advisory Committee held their meeting in Halstad at the Heritage House apartments attached to the Halstad Memorial Nursing Home. Committee members toured the apartment building as well as the nursing home.	
Aging-Admin	Halstad Site Council Meeting Halstad	Participated in meeting of Halstad Nutrition Site Council. Helped strategize planning efforts to deal with site deficit and caterer contract.	
Aging-Admin	LSS Senior Nutrition Program Halstad	Provided 4,412 Congregate and Home Delivered Meals to 93 persons in Halstad in 2001.	
Economic Development	Community Visit Hendrum	Visited about Hendrum's needs which are mostly housing.	
Arts Development	Arts Grant Hendrum	Funded Valley Community Theater for the sponsorship of Prairie Fire Children's Theater workshop and production of "Wizard of Oz" from June 3-8, 2002.	\$840
Local Issues	Technical Assistance Norman County	Offered Norman County assistance in creating a web site.	
Economic Development	B Family Shelly	This farm family has been unable to receive help from any agency regarding their well.	
Aging-Admin	LSS Senior Nutrition Program Shelly	Provided 2,372 Congregate and Home Delivered meals to 95 persons in Shelly in 2001.	
Economic Development	ICWC Homes Twin Valley	Assisted Tri-Valley Opportunity Council with the financing of constructing four new homes targeted towards low and moderate income persons.	
Arts Development	Technical Assistance Twin Valley	Helped artist/painter Gene Ly saker get his images displayed on the Minnesota Artists Online web site.	

Aging-Admin	Lutheran Memorial Retirement Center Twin Valley	Provided technical assistance to Lutheran Memorial Retirement Center in the development of a grant application to the Department of Human Services. LMRC proposes to renovate the existing facility to assisted living apartments.
Aging-Admin	LSS Senior Nutrition Program Twin Valley	Provided 8,422 Congregate and Home Delivered meals to 197 persons in Twin Valley in 2001.

Pennington

Economic Development	St. Hilaire Rural Fire Department	Assisted with gathering information and maps for an application to fund department improvements.	
Transportation	Pennington Assistance	Attended the May County Board meeting to discuss the Transportation Alliance Washington D.C. Fly-In. Discussed the county redistricting efforts from the 2000 census. Viewed maps illustrating construction projects occurring within the county.	
Enterprise Fund	Pennington County Loan Summary	Six loans have been made to businesses in Pennington County, totalling \$464,600. One loan has been written off and 5 loans have been repaid.	\$464,600
Aging Senior Link	I&A - Pennington County	Provided information and assistance to 179 Pennington County Senior LinkAge line callers for the time period 7/1/01 to 6/30/02.	
Aging-Regional Gaps Analysis	Pennington County Gaps Analysis	Completed Gaps Analysis for Pennington County, submitted to Pennington County Commissioners and Department of Human Service.	
Aging-Regional Gaps Analysis	Service Development Plan	Completed Service Development Plan for Pennington County, submitted to Pennington County Commissioners and Department of Human Service.	
Economic Development	Community Visit Goodridge	Met with community leaders and infrastructure is needed for pent-up demand for single-wides.	
Arts Development	Arts Grant Goodridge	Funded Goodridge Area Historical Society, Inc. for the production of "Mama's Quilting Party" on July 5, 2002.	\$585
Housing Community Bldg.	New Homes St. Hilaire	Helped the City of St. Hilaire with ICWC homes and down-payment assistance programs, and the Council voted to be on the waiting list for two new homes this spring.	
Economic Development	Community Visit St. Hilaire	Visited with the City of St. Hilaire regarding housing and other concerns.	
Economic Development	New Housing Construction St. Hilaire	Worked with City and Inter County Community Council to secure lots and support for the construction of two new homes using the Institutional Community Work Crews from Corrections and financing from Minnesota Housing Finance.	

Economic Development	New Housing Construction St. Hilaire	Assisted the City and Inter County Community Council with the financing for construction of 2 new homes which will sell for about \$75,000. Labor from the Institutional Community Work Crew will be used for the project.	
Local Issues	Technical Assistance Thief River Falls	Discussed with the Red Lake Watershed District the web assistance that our office can provide for them.	
Economic Development	ICWC Housing Thief River Falls	Assisted Inter County Community Council in the financing of constructing three new homes targeted towards low and moderate income persons.	
Arts Development	Technical Assistance Thief River Falls	Helped artist/painter Vi Barr get her images displayed at the Minnesota Artists Online web site.	
Arts Development	Technical Assistance Thief River Falls	Provided advice on two percent for art commissions at Northland Community Technical College.	
Arts Development	Exhibit Participants Thief River Falls	Stacy Kleinwachter, Shaun McGrath, Alissa Norland, Amanda Olson, Lance Pearson, Tiffany Peterson, Ali Wheeler, C Jay Wojciechowsk	
Arts Development	Traveling Exhibition Thief River Falls	A small tour of the 2002 Northwest Minnesota Art Exhibition was on display at the Northwest Regional Library from June 17 - 28, 2002.	
Arts Development	Exhibition Award Thief River Falls	Photography merit award to Ken Kalsnes for "The Path" black and white photo.	\$50
Arts Development	Arts Grant Thief River Falls	Funded Northwest Service Cooperative for the Young Author's Conference: Igniting Our Imaginations on March 19, 2002.	\$2,500
Arts Development	Exhibition Award Thief River Falls	Drawing merit award to David E. Edwards for "Jamie" marker drawing.	\$25
Arts Development	Public Art Project Thief River Falls	Funded the Occupational Development Center for the creation of an artistic waterfall and pond by Jim Brieland in the summer of 2002.	\$5,500
Arts Development	Arts Grant Thief River Falls	Funded Thief River Falls Community Arts Council for the production of "Oklahoma!" on June 11-16, 2002.	\$2,000
Arts Development	Arts Grant Thief River Falls	Funded Thief River Falls Community Arts Council for the production of "Noises Off!" on July 10-13, 2002.	\$2,000
Arts Development	Exhibit Participants Thief River Falls	Claire Allan, Joelle Bauter, Alicia Biever, Cory Braastad, Jared Daley, Rebecca Delmore, Anna DeMars, David E. Edwards, LaVonne Forsberg, Loreen Hanson, Alissa Holmaas, James Howard, Beth Iliff, Alberto Johnson, Betty Jorde, Ken Kalsnes, Andy Kalsnes	
McKnight Arts	Small Capital Grant Thief River Falls	Thief River Falls Community Arts Council to purchase a portable Lighting system.	\$1,290

McKnight Arts	Student Artist Grant Thief River Falls	Funded Philip Hoks for a theater tech/lighting mentorship with Jim Rock ending in a final performance in the summer of 2002.	\$500
McKnight Arts	Small Capital Grant Thief River Falls	Thief River Falls Community Arts Council to purchase a fog machine and blue scrim curtain.	\$1,755
Aging-Admin	Thief River Falls Health Fair Thief River Falls	Provided information on Area Agency on Aging and services available during the Health Fair sponsored by Thief River Falls Senior Meals Program.	
Aging-Admin	Aging Advisory Committee Thief River Falls	The Aging Advisory Committee held their meeting in Thief River Falls, at the Heritage Community Center.	
Aging-Admin	LSS Senior Nutrition Program Thief River Falls	Provided 24,901 Congregate and Home Delivered meals to 1,114 people in Thief River Falls in 2001. The four sites were the Senior Center, Riverside Terrace Apts., Skylight Apts., and Greenwood Apts.	
Aging-PD&C	Riverside Terrace/Greenwood Ave. Apartments Thief River Falls	Coordinated visits with apartment managers and ARDC Sail Housing Developer to discuss interest in providing assisted living services to apartment residents.	
Aging-PD&C	Inter-County Nursing Service Meeting Thief River Falls	Met with the Director of Inter-County Nursing Service and ARDC SAIL Housing developer to discuss interest in providing assisted living services to apartment residents.	
Aging-Regional Gaps Analysis	Oakland Park Nursing Home Thief River Falls	Met with members of Oakland Park Nursing Home Board of Directors. Provided suggestions on possible renovations to the facility to allow for the addition of assisted living apartments. This could include construction of additional apartments.	
Aging-Regional Gaps Analysis	Valley Home Site Visit Thief River Falls	Met with the Director of Valley Home to discuss possible construction of apartments on Valley Home campus to provide additional assisted living options for residents of Thief River Falls. Discussed with consultants to conduct market study and financing options.	
Aging-Regional Gaps Analysis	Oakland Park Nursing Home Visit Thief River Falls	Coordinated visit to Oakland Park Nursing Home as part of Pennington County Gaps Analysis process. Gathered information on operation of facility and any proposed changes which could include assisted living services or reduction in nursing home beds.	
Aging-Regional Gaps Analysis	Valley Home Visit Thief River Falls	Coordinated visit to Valley Home as part of Pennington County Gaps Analysis process. Gathered information on operation of facility and the transition to Housing with Services/Assisted Living licensure.	
Aging-Regional Gaps Analysis	Meeting on Service Gaps Thief River Falls	Convened meeting in Thief River Falls to gather information on service gaps for seniors. The 15 people in attendance provided input on services that are needed to help seniors remain in their own homes and independent.	

Aging-Regional Gaps Analysis	CNC Nursing Home Visit Thief River Falls	Coordinated visit to CNC Nursing home as part of Pennington County Gaps Analysis process. Gathered information on operation of facility and any proposed changes which could include assisted living services or reduction in nursing home beds.
Economic Development	Sanders Township Plan and Zoning Ordinance Township	Assisted with the completion of a comprehensive plan including the revisions to zoning ordinances.

Polk

McKnight Arts	Student Artist Grant Beltrami	Funded Genesis Gast to attend a printmaking seminar in Amsterdam in February 2002.	\$500
Arts Development	Artist in the Schools Grant Climax	Funded Climax/Shelly School for the sponsorship of a fiber banner residency with Vickie Bogart on April 15-19, 2002.	\$1,460
Aging-Admin	Individual Client Assistance Climax	Met with a senior living in Climax who needed assistance with financial matters. Provided information on services available and encouraged seniors to contact an attorney for assistance.	
Economic Development	Farm World	Explored the feasibility of developing an agricultural theme park. Possible sites include East Grand Forks or Crookston.	
Transportation	Polk Assistance	Attended the May County Board meeting to discuss the Washington D.C. Fly-In, and the importance of a 10-ton shipping corridor for East Polk County. Provided maps of county construction projects, and discussed the redistricting efforts from the 2000 census.	
Enterprise Fund	Polk County Loan Summary	Thirty-eight loans have been made to businesses in Polk County, totalling \$2,726,725. Three loans have been written off and 19 loans have been repaid.	\$2,726,725
Aging-Admin	Winger Senior Meal Site	Granted Lutheran Social Service a supplement to purchase a steam table for the Winger Senior Meal Site.	\$1,180
Aging Senior Link	I&A - Polk County	Provided information and assistance to 512 Polk County Senior LinkAge line callers for the time period 7/1/01 to 6/30/02.	
Aging-Regional Gaps Analysis	Polk County Gaps Analysis	Completed Gaps Analysis for Polk County, submitted to Polk County Commissioners and Department of Human Service.	
Aging-Regional Gaps Analysis	Polk County Service Development Plan	Completed Service Development Plan for Polk County, submitted to Polk County Commissioners and Department of Human Service.	
Local Issues	Technical Assistance Crookston	Helped the Polk Soil and Water Conservation office create a basic web site on their programs and services.	

Economic Development	C Family Crookston	This family has a 5 year old single wide with no insulation and no recourse from the manufacturer. They have not received help from any program they applied for.	
Economic Development	Equine Event Center Crookston	Assisted the group developing a non-profit equine event center in the old Red River Valley Winter Shows building in Crookston.	
Economic Development	Community Visit Crookston	Visited with the economic developer and the City Clerk to share information on Brownfields funding, and to do a community assessment.	
Economic Development	K Family Crookston	This rural person has been unable to receive help with his well and septic from any agency.	
Economic Development	Historic Downtown Crookston Crookston	Re-organized the Skyline Preservation Foundation.	
Enterprise Fund	Advanced Tire and Auto Service Crookston	Approved Standard Loan for \$39,800. Closing is pending.	\$39,800
Arts Development	Exhibit Tour Crookston	Displayed the traveling art exhibit at the Crookston Library from August 6-17, 2001.	
Arts Development	Arts Grant Crookston	Funded Impressions Dance Company for two performances of "Swan Lake" on December 1-2, 2001.	\$2,120
Arts Development	Arts Grant Crookston	Funded the Ox Cart Days Festival for the sponsorship of their arts portion of the festival on August 17-18, 2002.	\$2,500
Arts Development	Arts Grant Crookston	Funded Crookston Community Theater for the production of "Swinging on a Star" on June 6-7, 9-10, 2002.	\$2,500
McKnight Arts	Artists Online Crookston	Held informational meeting for artists at the school.	
McKnight Arts	Small Capital Grant Crookston	Crookston Community Theater to purchase sound and light equipment.	\$1,710
Aging-Admin	LSS Senior Nutrition Program Crookston	Provided 30,460 Congregate and Home Delivered meals to 694 people in Crookston in 2001. The three sites were the Senior Center, and Nimens and Oak Court Apartments.	
Aging-Regional Gaps Analysis	Villa St. Vincent Nursing Home Visit Crookston	Coordinated visit to Villa St. Vincent Nursing Home as part of Polk County Gaps Analysis process. Gathered information on operation of nursing home and any proposed changes including Assisted Living services or reduction in nursing home beds.	
Aging-Regional Gaps Analysis	Riverview Nursing Home Visit Crookston	Coordinated a visit to Riverview Nursing Home as part of Polk County Gaps Analysis process. Gathered information on operation of nursing home and any proposed changes including Assisted Living services or reduction in nursing home beds.	

Aging-Regional Gaps Analysis	Meeting on Service Gaps Crookston	Convened meeting in Crookston to gather information on service gaps for seniors. The 16 people in attendance provided input on services that are needed to help seniors remain in their own home and independent.	
Economic Development	N Family East Grand Forks	This elderly lady has left over work from the flood.	
Economic Development	Compost Beet Tailings East Grand Forks	Assisted the chemist at American Crystal Sugar to find the correct recipe to use for making compost out of beet tailings, sludge, and identify a dry matter source.	
Economic Development	ICWC Homes East Grand Forks	Assisted Tri-Valley Opportunity Council with the financing of constructing six new homes targeted towards low and moderate income persons.	
Enterprise Fund	East Grand Forks Development LLC East Grand Forks	Approved Standard Loan for \$150,000 for Howard Johnson Hotel. Closing is pending.	\$150,000
Enterprise Fund	River Bend Country Club, Inc. East Grand Forks	Closed Disaster Relief Loan for \$150,000 on August 28, 2001.	\$150,000
Arts Development	Exhibition Award East Grand Forks	Painting merit award to Adam Pape for "Portrait #01" airbrush painting.	\$25
Arts Development	Arts Grant East Grand Forks	Funded Summer Arts STAGES for a high school theater camp Upstagers from May 20-31, 2002.	\$500
Arts Development	Exhibition Award East Grand Forks	Second place high school student award to Jeff Sanden and Curt Bjerke for "Fire at Night" photography series.	\$75
Arts Development	Arts Grant East Grand Forks	Funded Summer Arts STAGES for their start-up clinic to prepare two tour productions of "Aladdin" and "The Emperor's New Clothes" to communities in our region in the summer of 2002.	\$1,000
Arts Development	Exhibit Participants East Grand Forks	Cindy Bridges, Andrea Kroll, Mary Ann Laxen, Adam Lindquist, Bernie Overbo, Adam Pape, Jarrod Pribula, Jessica Pribula, Jeff Sanden, Jason Soli, Kristen Dufault	
Arts Development	Arts Grant East Grand Forks	Funded Heritage Foundation for artists at their Heritage Days Festival on August 17-18, 2002.	\$2,000
Arts Development	Exhibition Award East Grand Forks	Drawing merit award to Jason Soli for an untitled charcoal drawing of a small child.	\$50
Arts Development	Arts Grant East Grand Forks	Funded Summer Arts STAGES for their summer theater youth workshops ending in a production of "The Emperor's New Clothes" from June 3-14, 2002.	\$2,500
McKnight Arts	Artists Online East Grand Forks	Held informational meeting for artists at the school.	

McKnight Arts	Individual Artist Grant East Grand Forks	Funded Michael Wade Hanson for the production of a music CD of his saxophone music for promotional purposes from October 2001 - April 2002.	\$750
McKnight Arts	Individual Artist Grant East Grand Forks	Funded Judi Wilson to attend the International Education Symposium in vocal techniques.	\$750
McKnight Arts	Small Capital Grant East Grand Forks	Twin Forks Sweet Adelines Chorus to purchase six back rails for their risers for safety purposes.	\$1,540
McKnight Arts	Student Artist Grant East Grand Forks	Funded Karisa Kovar to attend Steps on Broadway dance studio workshops in New York City.	\$500
Aging-Admin	LSS Senior Nutrition Program East Grand Forks	Provided 8,290 Congregate meals to 418 persons in East Grand Forks in 2001. The three sites were the Senior Center, Sunshine Terrace and Townsquare Apartments.	
Aging-Regional Gaps Analysis	Meeting on Service Gaps East Grand Forks	Convened meeting in East Grand Forks to gather information on service gaps for seniors. The 8 people in attendance provided input on services that are needed to help seniors remain in their own homes and independent.	
Aging-Regional Gaps Analysis	Heritage Pines Assisted Living East Grand Forks	Coordinated visit to Heritage Pines Assisted Living provided by Good Samaritan Society as part of the Polk County Gaps Analysis process. Gathered information on operation of assisted living facility, proposed changes, and potential for additional units.	
Economic Development	Erskine Manufacturing Erskine	Participated in a technical assistance team meeting with potential new owners.	
Aging-Admin	LSS Senior Nutrition Program Erskine	Provided 6,646 Congregate and Home Delivered meals to 155 persons in Erskine in 2001.	
Aging-Regional Gaps Analysis	Pioneer Memorial Nursing Home Erskine	Coordinated visit to Pioneer Nursing Home as part of Polk County Gaps Analysis process. Gathered information on operation of nursing home and any proposed changes including Assisted Living services or reduction in nursing home beds.	
Economic Development	Technology Catalyst Grant Euclid	Judged grant applications for wireless broadband equipment for rural Euclid, based on need, job creation, and business or farm growth. Met reporting requirements.	
Arts Development	Exhibit Participants Euclid	Christie Ketrang, Marie Ketrang, Anna Kliner, Jamie Pulkrabek, Kayla Sherry	
AELC	Planning Fertile	Coordinated planning processes including meetings, a survey, and phone calls to increase the facilities useage. Completed a Development Plan for Agassiz Environmental Learning Center.	

Economic Development	Comprehensive Planning and Zoning Ordinance Fertile	Assisted with the completion of a comprehensive plan for the City. Included the development of zoning ordinances.	
Arts Development	Artist in the Schools Grant Fertile	Funded Fertile/Beltrami School for the sponsorship of Rolling Plains Gallery in the fall of 2002.	\$450
Arts Development	Arts Grant Fertile	Funded Fertile Area Arts Council for the sponsorship of Safari children's theater workshops and production of "The Emperor's New Clothes" from July 29-Aug 2, 2002.	\$1,035
McKnight Arts	Individual Artist Grant Fertile	Funded Cathy Forgit to attend the fiber arts conference SOAR 2001 in September in Salt Lake City, Utah.	\$750
Aging-Admin	Polk County Fair Fertile	Provided information on the history of Polk County Committee on Aging during Senior Day at the Polk County Fair.	
Aging-Admin	LSS Senior Nutrition Program Fertile	Provided 5,158 Congregate meals to 163 persons in Fertile in 2001.	
Aging-Regional Gaps Analysis	Fair Meadow Nursing Home Visit Fertile	Coordinated visit to Fair Meadow Nursing Home as part of Polk County Gaps Analysis process. Gathered information on operation of nursing home and any proposed changes which could include Assisted Living services or reduction in nursing home beds.	
Economic Development	Comprehensive Planning and Zoning Ordinance Fisher	Assisted with the completion of a comprehensive plan for the City. Included the development of zoning ordinances.	
Economic Development	Minnesota Dehydrated Vegetables Fosston	Assisted the city and MDV develop a funding package for a wastewater treatment system which can deal with wastewater related to vegetable processing including an application for federal funding. A pre-application for \$960,000 was completed and in review stage.	
Arts Development	Arts Grant Fosston	Funded Fosston Community Library Arts Association for the production of "Into the Woods" on July 25-28, 2002.	\$2,500
McKnight Arts	Student Artist Grant Fosston	Funded Leigh Bailie to study visual art techniques with Ric Sorenson from June - August 2002.	\$500
Aging-Admin	First Care Assisted Living Fosston	Provided technical assistance to First Care Home Care in the development of a grant application to the Department of Human Service for the provision of Assisted Living Services in Fosston. This proposal received DHS funding.	
Aging-Admin	LSS Senior Nutrition Program Fosston	Provided 3,081 Congregate and Home Delivered Meals to 135 persons in Fosston in 2001.	

Aging-Regional Gaps Analysis	First Care Nursing Home Visit Fosston	Coordinated visit to First Care Nursing Home as part of Polk County Gaps Analysis process. Gathered information on operation of nursing home and any proposed changes including Assisted Living services or reduction in nursing home beds.
Aging-PD&C	Gully Senior Meals Gully	Identified a partner for the delivery of Congregate/Home Delivered Meals services to seniors in the Gully area.
Arts Development	Exhibit Participant Lengby	Vera Pearson
Aging-PD&C	Congregate/Home Delivered Meals Lengby	Convened meetings as a follow-up to the Polk County Gaps Analysis to determine interest in the provision of Congregate/Home Delivered Meals to residents in Lengby. The site opened and began providing service in the first quarter of 2002.
Aging-Admin	LSS Senior Nutrition Program McIntosh	Provided 8,160 Congregate and Home Delivered Meals to 141 persons in McIntosh in 2001.
Aging-Regional Gaps Analysis	Meeting on Service Gaps McIntosh	Convened meeting in McIntosh to gather information on service gaps for seniors. The 24 people in attendance provided input on services that are needed to help seniors remain in their own homes and independent.
Aging-Regional Gaps Analysis	McIntosh Manor Nursing Home Visit McIntosh	Coordinated visit to McIntosh Manor Nursing Home as part of Polk County Gaps Analysis process. Gathered information on operation of nursing home and any proposed changes which could include Assisted Living services or reduction in nursing home beds.
Economic Development	Horse Rescue Non-Profit Mentor	Assisted the group developing a non-profit horse rescue program and location.
Aging-Admin	LSS Senior Nutrition Program Mentor	Provided 2,503 Congregate and Home Delivered Meals to 39 persons in Mentor in 2001.
Arts Development	Exhibit Participant Trail	Lindsay Bergeson
Housing Community Bldg.	Vacant Commercial to Housing Winger	Helped the City with rehabbing 5 vacant commercial buildings in the old downtown of Winger to create affordable housing.
Economic Development	Strategic Plan Winger	Worked with the City of Winger developing a long-range plan for the town.
Aging-Admin	LSS Senior Nutrition Program Winger	Provided 2,332 Congregate and Home Delivered meals to 59 persons in Winger in 2001.

Red Lake

Enterprise Fund	Red Lake County Loan Summary	Seven loans have been made to businesses in Red Lake County , totalling \$333,115. One loan has been written off and 4 loans have been repaid.	\$333,115
Aging-Admin	LSS Senior Nutrition Program Brooks	Provided 951 Congregate and Home Delivered Meals to 114 persons in Brooks in 2001.	
Aging-Admin	2001 LSS Nutrition Program	Extended nutrition contract to include the purchase of a two door refrigerator for Red Lake Falls Nutrition Site for 2001.	\$2,195
Aging Senior Link	I&A - Red Lake County	Provided information and assistance to 121 Red Lake County Senior LinkAge line callers for the time period 7/1/01 to 6/30/02.	
Arts Development	Exhibit Participant Oklee	Cynthia Raiter	
Aging-Admin	LSS Senior Nutrition Program Oklee	Provided 4,329 Congregate and Home Delivered meals to 214 persons in Oklee in 2001.	
Arts Development	Exhibit Participants Plummer	Jessica Dulka, Kelsey Rewertz	
Housing Community Bldg.	Homark and Private Developer Red Lake Falls	Helped the City to combine programs to create an enhanced modular home development in Red Lake Falls creating growth for Homark Homes and Red Lake Falls.	
Economic Development	Community Visit Red Lake Falls	Visited with the City of Red Lake Falls regarding housing and other concerns.	
Arts Development	Artist in the Schools Grant Red Lake Falls	Funded Red Lake Falls School for the sponsorship of a folk dance residency with Terrence Smith on April 29, 30, and May 1, 2002.	\$995
Arts Development	Arts Grant Red Lake Falls	Funded Two Rivers Area Theatre for the production of "While the Lights Were Out" on April 4-7, 2002.	\$1,500
Arts Development	Arts Grant Red Lake Falls	Funded the Association of the French of the North for the sponsorship of Cajun Hot Soles musical entertainment at their Chautauqua and Arts Festival on August 24-25, 2002.	\$2,500
Arts Development	Arts Grant Red Lake Falls	Funded Two Rivers Area Theater for the production of "Honk!" on June 19-23, 2002.	\$2,500
Arts Development	Arts Grant Red Lake Falls	Funded Two Rivers Area Theater for the production of "Faith County" on April 4-7, 2002.	\$1,500
Arts Development	Exhibition Award Red Lake Falls	People's choice high school student award to Leonard LaCoursiere.	\$50

Arts Development	Exhibition Award Red Lake Falls	Third place high school student award to Leonard LaCoursiere for "Spring Kestral" clay sculpture.	\$50
Arts Development	Exhibition Award Red Lake Falls	Pottery merit award to Robin Foster for "Pit Fired Vase".	\$50
Arts Development	Exhibit Participants Red Lake Falls	Robin Bodie, Robin Foster, Amy Hagen, Leonard LaCoursiere, Ann Piersol, Bruce Reeves, Marjorie Schafer, Theodore Schindler, Mary Jo Schmitz, Sharon Weiss	
Arts Development	Exhibition Award Red Lake Falls	Third place adult award to Ted Schindler for "Winter Solace" clay sculpture.	\$100
McKnight Arts	Individual Artist Grant Red Lake Falls	Funded Marjorie Schafer for the purchase of raku supplies and a kiln to create more raku pieces to be sold in their local gallery, and the increase her ability to provide raku workshops for others.	\$750
Aging-Admin	Sunview Center Assisted Living Red Lake Falls	Provided technical assistance to Sunview Center staff and Board in the selection of Assisted Living Service provider. Provided ideas for the review and scoring of proposals. Riverview Home Care was selected as the provider.	
Aging-Admin	LSS Senior Nutrition Program Red Lake Falls	Provided 10,198 Congregate and Home Delivered Meals to 98 persons in Red Lake Falls in 2001.	

Roseau

Arts Development	Artist in the Schools Grant Badger	Funded Badger School for a visual art residency with Jean Honl for "Our Earth" from October-December 2001.	\$1,875
Arts Development	Artist in the Schools Grant Badger	Funded Badger School for an embossing residency with Martina Johnson in February 2002.	\$390
Arts Development	Artist in the Schools Grant Badger	Funded Badger School for a painting/collage residency with Annette Hermansen in February - March 2002.	\$610
Aging-Admin	LSS Senior Nutrition Program Badger	Provided 3,897 Congregate and Home Delivered Meals to 321 persons in Badger in 2001.	
Economic Development	Compost Beef Manure	Helped find funding for additional equipment for two beef producers.	
Economic Development	Compost Hog and Turkey Manure	Assisted Mike Baumgartner with composting hog manure with possible turkey growers in Roseau County.	
Economic Development	Roseau County Flood Recovery	Provided Staff support to the County on establishing a flood recovery program including damage assessment, administration of programs and political action.	

Economic Development	Flood Protection Task Force Roseau	Provided staff support to the Task Force established to identify short and long term solutions to flooding in Roseau. Group has defined a \$20 Million dollar short term solution and a number of options for long term program ranging from \$50 to \$100 million.	
Transportation	Roseau County Highway s	Studied the intersection of Roseau County 5 with MNTH 11. The Scenic By way Infrastructure Committee will study this route and suggest a redesign of CSAH 5 or alternative to remove the blind spots at the intersection.	
Enterprise Fund	Roseau County Loan Summary	Fourteen loans have been made to businesses in Roseau County , totalling \$912,264. No loans have been written off and 8 loans have been repaid.	\$912,264
Aging-Admin	Roseau Co. Senior Medical Travel	Granted Roseau County Committee on Aging a IIIB grant to provide senior medical transportation to seniors in Roseau county . Provided 447 one-way trips to 72 persons in 2001.	\$8,000
Aging-Admin	Roseau County STS Chore Program	Contracted with Roseau County Sheriff's Department with IIIB funds to provide outside heavy chore services to seniors in Roseau county .	\$6,000
Aging-Admin	Roseau County Sr. Medcial Travel	Granted Roseau County Committee on Aging IIIB funds to provide volunteer based medical transportation services to seniors in Roseau County .	\$8,000
Aging-Admin	Roseau Co. STS Chore Program	Extended contract with Roseau County Sheriff's Department to provide chore services to seniors in Roseau County utilizing the Sentencing to Service Program. Provided 2,116 hours of chore services to 42 clients in 2001.	\$6,000
Aging Senior Link	I&A - Roseau County	Provided information and assistance to 146 Roseau County Senior LinkAge line callers for the time period 7/1/01 to 6/30/02.	
Economic Development	Compost - Christianson Dairy Greenbush	Made compost from dairy bedding, without a lagoon system.	
Economic Development	Community Visit Greenbush	Visited with the City of Greenbush regarding housing and other concerns. Kathy Coyle led a visioning session.	
Economic Development	Custom Meat Processing Business Greenbush	Helped with marketing and a business plan for expansion of a custom meat processing plant.	
Arts Development	Exhibit Participant Greenbush	Kristen Wollin	
Aging-Admin	LSS Sr. Nutrition Program Greenbush	Provided 3,845 Congregate and Home Delivered Meals to 141 persons in Greenbush in 2001.	
Economic Development	College Classrooms Roseau	Assisted the city in developing strategies for housing the training post-secondary classes in Roseau, in partnership with Northwest Technical College	

Economic Development	City of Roseau Flood Recovery Roseau	Provided staff support to the City on establishing a flood recovery program including damage assessment, administration of programs and accessing federal funds and grant writing.	
Enterprise Fund	Reed River Trading Co. Roseau	Closed Standard Loan for \$150,000 on April 3, 2002.	\$150,000
Arts Development	Exhibit Tour Roseau	Displayed the traveling art exhibit at the Roseau Library from July 2 - 20, 2001.	
Arts Development	Arts Grant Roseau	Funded Roseau Area Arts Association for the sponsorship of Prairie Fire Children's Theater workshop and production of "Beauty and the Beast" from August 11-17, 2002.	\$1,370
Arts Development	Arts Grant Roseau	Funded Roseau Area Friends of the Library for the production of Regional Ramblings "Home of the Brave" publication in August 2002.	\$1,355
Arts Development	Exhibit Participant Roseau	David Danielson	
Arts Development	Exhibition Award Roseau	Second place adult award to David Danielson for "One Secret Society with New World Energy" a digital photomontage.	\$250
Arts Development	Public Art Grant Roseau	Funded Pioneer Farm and Village for a mural by Marv Espe.	\$5,500
McKnight Arts	Artists Online Roseau	Held informational meeting for artists at the school.	
Aging-Admin	LSS Senior Nutrition Program Roseau	Provided 15,151 Congregate and Home Delivered Meals to 608 persons in Roseau in 2001.	
Economic Development	Exit Planning Warroad	Provided exit planning assistance to businesses.	
Enterprise Fund	Heatmor, Inc. Warroad	Closed Standard Loan to Heatmor, Inc. for \$150,000 on Jan. 17, 2002.	\$150,000
Arts Development	Exhibit Participant Warroad	James Garber	
Arts Development	Public Art Project Warroad	Funded Warroad Public School District for the creation of a mural in the middle school by Robert Kay kageesick, Jr. in the summer of 2002.	\$5,500
Arts Development	Arts Grant Warroad	Funded Warroad Summer Theatre for the production of "Kiss the Bride" on March 21-24, 2002.	\$1,700
McKnight Arts	Individual Artist Grant Warroad	Funded James Garber to purchase computer art supplies in order to create more art then promote his art to various exhibits.	\$750

McKnight Arts	Small Capital Grant Warroad	Warroad Summer Theater to purchase lighting equipment, a CD player speakers, and muslin.	\$1,175
Aging-Admin	Zion Lutheran Church Health Fair Warroad	Provided information about Area Agency on Aging and services available during the Health Fair sponsored by Zion Lutheran Church's Parish Nurse.	
Aging-Admin	LSS Senior Nutrition Program Warroad	Provided 10,259 Congregate and Home Delivered Meals to 414 persons in Warroad in 2001.	

Multiple County Projects

Kittson, Marshall, Norman, Pennington, Polk, Red Lake, and Roseau Counties

Aging Senior Link	Multi-County -Regional	Provided information and assistance to 101 Senior LinkAge callers from various counties outside of our region, and out of state family members of seniors living in Region One. These calls were for the time period 7/1/01 to 6/30/02.	
----------------------	------------------------	---	--

Kittson, Marshall, and Pennington Counties

Aging-Admin	NW STS Chore Program	Contracted with Pennington County Sheriff's Department to provide outside heavy chore services to seniors in Pennington, Marshall and Kittson counties.	\$15,000
-------------	----------------------	---	----------

Kittson, Marshall, and Pennington Counties

Aging-Admin	2001 NW STS Chore Program	Extended contract with Northwest Sentencing to Service to provide chore services to seniors in Kittson, Marshall and Pennington counties. Provided 4,280 hours of chore service to 214 people in 2001.	\$15,000
-------------	---------------------------	--	----------

Kittson, Pennington, Red Lake and Roseau Counties

Aging-Admin	2001 Respite & Caregiver Support	Granted Lutheran Social Service a IIIB grant to provide respite services and coordinate caregiver support groups for seniors and their families in Pennington, Red Lake, Roseau and Kittson counties. Provided 171.5 hours of respite to 2 clients in 2001.	\$14,062
-------------	----------------------------------	---	----------

Kittson, Pennington, Red Lake and Roseau Counties

Aging-Admin	LSS Respite & Caregiver Support	Granted Lutheran Social Service IIIB funds to provide respite services and coordinate caregiver support groups in Pennington, Red Lake, Kittson and Roseau counties.	\$14,062
-------------	---------------------------------	--	----------

Kittson, Marshall, Norman, Pennington, Polk, Red Lake, and Roseau Counties

Aging Senior Link	I&A - Out of Region	Provided information and assistance to 315 callers from the Region Two area for the time period 1/1/02 to 6/30/02 on the Senior LinkAge line. The counties served include Beltrami, Clearwater, Hubbard, Lake of the Woods and Mahanomen.	
----------------------	---------------------	---	--

Kittson and Marshall Counties

Economic Development	Technology Catalyst Grant	Assisted with final reports on the DTED Technology Catalyst Grant which created new access points for wireless broadband in St. Vincent, Lancaster, Lake Bronson, Strandquist, Argyle, and Angus.	
-------------------------	---------------------------	---	--

Marshall, Norman, Pennington, Polk, and Roseau Counties

Aging-Admin	Valley Housekeeping Program	Contracted with Tri-Valley Opportunity Council with IIIB funds to provide homemaker services to seniors in Norman, Polk, Pennington, Marshall and Roseau counties.	\$29,750
-------------	-----------------------------	--	----------

Norman, Polk, and Red Lake Counties

Aging-Admin	2001 Tri-County STS Chore Program	Extended contract with Tri-County Community Corrections to provide chore services to seniors in Norman, Polk and Red Lake counties utilizing the Sentencing to Service program. Provided 3,483 hours of chore service to 151 persons in 2001.	\$13,469
-------------	-----------------------------------	---	----------

Norman, Polk, and Red Lake Counties

Aging-Admin	Tri-County STS Chore Program	Contracted with Tri-County Community Corrections with IIIB funds to provide outside heavy chore services to seniors in Polk, Red Lake, and Norman counties.	\$13,469
-------------	------------------------------	---	----------

Norman, Pennington, Polk, and Roseau Counties

Aging-Admin	2001 Valley Housekeeping Program	Extended contract with Tri-Valley Opportunity Council to provide homemaker services to seniors in Roseau, Pennington, Polk and Norman counties. Provided 8,495 hours of housekeeping to 200 people for 2001.	\$29,750
-------------	----------------------------------	--	----------

Abbreviations

Following is a Listing of the Abbreviations Used Throughout This Document

AAA - Area Agency on Aging
 AELC - Agassiz Environmental Learning Center
 AFL - American Federation of Labor
 ARDC - Arrowhead Regional Development Commission
 ATV - All Terrain Vehicle
 ATP - Area-wide Transportation Partnership
 CIO - Congress of Industrial Organizations
 CPA - Certified Public Accountant
 CSAH - County State Aid Highway
 DHS - Department of Human Services
 DNR - Department of Natural Resources
 DTED - Department of Trade & Economic Development
 EDA - Economic Development Administration
 HRA - Housing Redevelopment Authority
 ICC - Inter County Community Council
 ICWC - Institution Community Work Crews
 ITN - Integrated Transportation Network
 IRIS - Information & Referral Software
 KMHC - Kittson Memorial Healthcare
 LAH/BNP - Living at Home/Block Nurse Program
 LLC - Limited Liability Company
 LMRC - Lutheran Memorial Retirement Center
 LSS - Lutheran Social Services
 MBA - Minnesota Board on Aging
 MCA - Minnesota Citizens for the Arts
 MDV - Minnesota Dehydrated Vegetables

MFU - Minnesota Farmers Union
 MHFA - Minnesota Housing Finance Agency
 MN/DOT - Minnesota Department of Transportation
 MNTH - Minnesota Trunk Highway
 MRDO - Minnesota Association of Regional Development Organizations
 NWCAA - Northwest Community Action Agency
 NWMCHRA - Northwest Multi-County Housing and Redevelopment Authority
 NWMF - Northwest Minnesota Foundation
 NWRDC - Northwest Regional Development Commission
 PD&C - Program Development & Coordination
 RC&D - Resource Conservation & Development Association
 RFP - Request For Proposal
 RLRC - Red Lake River Corridor
 RSVP - Retired and Senior Volunteer Program
 SAIL - Senior Agenda for Independent Living
 SBDC - Small Business Development Corporation
 STS - Sentence to Serve
 TAC - Transportation Advisory Committee
 TAG - Technical Assistance Group
 TEA - Transportation Equity Act
 TVOC - Tri Valley Opportunity Council
 UMC - University of Minnesota, Crookston
 USDA - United States Department of Agriculture
 USTH - United States Trunk Highway

INDEPENDENT AUDITORS' REPORT

Board of Directors
Northwest Regional Development Commission
Warren, Minnesota 56762

We have audited the accompanying general purpose financial statements of Northwest Regional Development Commission as of June 30, 2001, and for the year then ended, as listed in the Table of Contents. These general purpose financial statements are the responsibility of Northwest Regional Development Commission, management. Our responsibility is to express an opinion on these general purpose financial statements based on our audit.

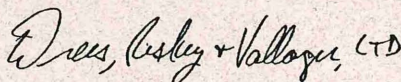
We conducted our audit in accordance with auditing standards generally accepted in the United States of America and *Government Auditing Standards*, issued by the Comptroller General of the United States. Those standards require that we plan and perform the audit to obtain reasonable assurance about whether the general purpose financial statements are free of material misstatement. An audit includes examining, on a test basis, evidence supporting the amounts and disclosures in the general purpose financial statements. An audit also includes assessing the accounting principles used and significant estimates made by management, as well as evaluating the overall general purpose financial statement presentation. We believe that our audit provides a reasonable basis for our opinion.

In our opinion, the general purpose financial statements referred to above present fairly, in all material respects, the financial position of Northwest Regional Development Commission, as of June 30, 2001, and the results of its operations for the year then ended in conformity with accounting principles generally accepted in the United States of America.

In accordance with *Government Auditing Standards*, we have also issued a report dated October 3, 2001 on our consideration of the Northwest Regional Development Commission's internal control over financial reporting and our test of compliance with certain provisions of laws, regulations, contracts and grants.

Our audit was conducted for the purpose of forming an opinion on the general purpose financial statements taken as whole. The individual fund statements and schedules listed in the table of contents are presented for purposes of additional analysis and are not a required part of the general purpose financial statements of Northwest Regional Development Commission. The accompanying Schedule of Expenditures of Federal Awards is presented for purposes of additional analysis as required by U.S. Office of Management and Budget Circular A-133, "Audits of States, Local Governments and Non-Profit Organizations", and is also not a required part of the general purpose financial statements of Northwest Regional Development Commission. Such information has been subjected to the auditing procedures applied in the audit of the general purpose financial statements and, in our opinion, is fairly presented in all material respects in relation to the general purpose financial statements taken as a whole.

DREES, RISKEY & VALLAGER, LTD.



Certified Public Accountants

October 3, 2001
Crookston, Minnesota

*Members of National Associated CPA Firms
Members of Minnesota Society of CPA's
Members of American Institute of Certified Public Accountants*