

**Northwest
Regional
Development
Commission**

**ANNUAL REPORT
Fiscal Year 2000**

Working for Local Units of Government in Kittson, Marshall, Norman,
Pennington, Polk, Red Lake and Roseau Counties

HT393
.M62
N67ax
2000

NWRDC • 115 South Main, Suite 1 • Warren, MN 56762 • 218-745-6733
E-mail Address: nwrdc@nwrdc.org
Web Site Address: www.nwrdc.org

Table of Contents

General Highlights

Introduction and NWRDC Staff List	1
Commission Membership List	2
Budget	3

Program Highlights

Aging	4
Arts	6-7
Special Projects	7
Economic Development	8
Enterprise Fund	9
Farm Recovery	10
Local Issues	12
Transportation	13
Publications	14
Committee Lists	15

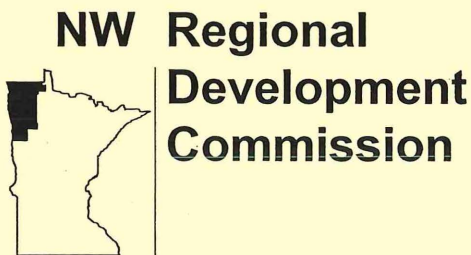
Regional Highlights

	16
--	----

County Projects Listings

Kittson	A1
Marshall	A2
Norman	A4
Pennington	A5
Polk	A6
Red Lake	A9
Roseau	A11
Multi-County	A13

Audit Letter



What The NWRDC is All About . . .

Regional Development Commissions were created by the State Legislature through the Regional Development Act of 1969. The intent of the Act was to create an option for rural units of government to supplement existing public services and coordinate specific activities of mutual concern. Although created by the State, Regional Development Commissions were left in the hands of local representatives to insure that the final design would reflect area needs and preferences.

The Northwest Regional Development Commission was created on February 2, 1973 by the joint actions of local units of government. Programs were set up to reflect priority work items

of the time; and relationships were established with the state and federal agencies that could provide assistance with local projects. Programs and work priorities have changed in response to economic and social trends; but the central mission of supporting efforts by cities, counties, townships, businesses and individuals to improve living, working and natural resource conditions in Northwest Minnesota has remained the same.

The Commission has worked to establish a manner of operation which reflects and compliments the independent, progressive style of Northwest Minnesota. Technical assistance, specialized program delivery, public participation, direct funding, access to information and formalized planning services are the basic materials which we can contribute to the construction of your project.

Please look over our Annual Report and stop by or call if you have any questions, comments or suggestions.

Staff Listing

NWRDC Staff

Karl Frigaard, Economic Development Planner
 Leon Heath, Executive Director
 Kay Hegge, Farm/Flood Recovery Coordinator
 Coralie Jones, Health Insurance Coordinator
 Brenda LaFond, Front Office Manager/Arts Associate
 Linda Nelson, Loan Fund Manager
 Rose Reed, Aging Technician
 Danica Robson, Aging Program Director
 Troy Schroeder, Transportation Planner
 Carol Sorensen, Financial Officer
 Mara Wittman, Arts Council Director



NWRDC Staff

(Above) Back Row: Leon Heath, Troy Schroeder, Linda Nelson. Front Row: Brenda LaFond, Mara Wittman, Coralie Jones, Danica Robson.

Not Pictured: Karl Frigaard, Kay Hegge, Rose Reed, Carol Sorensen.

Northwest Regional Development Commission

RECEIVED

SEP 06 2000

LEGISLATIVE REFERENCE LIBRARY
STATE OFFICE BUILDING
ST. PAUL, MN 55155



NWRDC Board of Directors

Left to Right: Delray Larson, Glenn Brookshire (alternate), Kevin Amiot, Charles Lindberg, Dr. Joe Bouvette, John Erickson, Warren Strandell.

Not Pictured: Warren Olson and Orris Rasmussen.

COMMISSION MEMBERSHIP

Kittson County

**Dr. Joe Bouvette	Hallock	Industry
Kimberley Johnson	Kennedy	Township
*Charles Lindberg	Kennedy	County
George Wikstrom, Jr.	Karlstad	Municipalities

Marshall County

*Delray Larson	Gatzke	County
Marville Magnusson	Argyle	Townships
Ole Soltvedt	Oslo	Municipalities

Norman County

Glen Brookshire	Halstad	Municipalities
Fred Jamison	Ada	Townships
*Warren Olson	Halstad	County

Pennington County

Elvera Cullen	TRF	Municipalities
*John Erickson	RLF	Townships
Daniel Johnson	Goodridge	SWCD
Roy Jorgenson	TRF	Seniors
Gajen Ramanathan	TRF	Minorities
Oliver Swanson	TRF	County

Polk County

Marlene Baatz	Nielsville	Townships
Don R. Cavalier	Crookston	Labor
Arvid Clementson	Fosston	Municipalities
Bernie Solberg	Gully	Women
*Warren Strandell	EGF	County
Arlene Tucker	Euclid	School Boards
Kathleen Twite	EGF	Business

Red Lake County

*Kevin Amiot	RLF	County
Betty Halvorson	Plummer	School Board
Genevieve Knott	RLF	Townships
Robert Melby	Oklee	Low Income
Arnold Paradis	Brooks	Municipalities
Vaughn Thorfinnson	RLF	Vocational Schools
Ronald Weiss	RLF	Agriculture

Roseau County

Bruce Olson	Badger	Townships
Jeff Pelowski	Roseau	Municipalities
*Orris Rasmussen	Roseau	County

*Board Members

**Chairperson

Members who served for part of FY'2000: Susan Schuler, Jean Heinrichs, and Rudee Anderson.

COMMISSION BUDGET

<u>REVENUES</u>	<u>PROJECTED FY'2001</u>	<u>ACTUAL FY'2000</u>	
FEDERAL			
ECONOMIC DEVELOPMENT ADMIN.	\$111,113	\$91,423	
DHHS - AREA AGENCY ON AGING	\$524,917	\$459,916	
USDA - NUTRITION FUNDS	\$126,865	\$123,593	
		\$762,895	\$674,932
STATE			
MN/DOT	\$50,000	\$50,000	
STATE ARTS BOARD	\$132,750	\$133,826	
STATE NUTRITION	\$95,138	\$96,561	
STATE HEALTH INSURANCE COUNSELING		\$17,000	
NORTHERN COUNTIES PROJECT		\$106,193	
RED RIVER PLANNING		\$15,000	
HOUSING PROJECTS		\$6,122	
		\$277,888	\$424,702
PRIVATE FOUNDATIONS			
MCKNIGHT FOUNDATION - ARTS	\$19,000	\$22,112	
NW MN FOUNDATION	\$17,000	\$61,166	
RED CROSS	\$0	\$81,477	
CENTRAL MN FOUNDATION	\$0	\$5,000	
		\$36,000	\$169,755
LOCAL GOVERNMENTAL			
LOCAL LEVY	\$144,284	\$143,798	
MISCELLANEOUS LOCAL CONTRACTS	\$33,183	\$29,793	
LOCAL MATCH FOR LOAN FUND	\$1,376	\$1,349	
		\$178,843	\$174,940
MISCELLANEOUS			
NORTHWEST ENTERPRISE FUND	\$520,000	\$458,545	
INTEREST	\$13,300	\$19,279	
CONFERENCE REGIST./MISC.	\$7,063	\$7,754	
		\$540,363	\$485,578
TOTAL REVENUES	\$1,795,989		\$1,929,907

<u>EXPENDITURES</u>	<u>PROJECTED FY'2001</u>	<u>PROJECTED FY'2001</u>	
SALARY/FRINGE	\$432,576	425,011	
STAFF TRAVEL & REGISTRATIONS	\$29,186	28,925	
COMMISSION/COMMITTEE TRAVEL/PER DIEM	\$36,851	27,809	
PROFESSIONAL FEES	\$18,500	247,421	
OFFICE EXPENSES	\$99,271	92,000	
TOTAL ADMINISTRATIVE		\$616,384	\$821,166
REGRANTED		\$710,155	\$408,900
BUSINESS LOANS		\$469,450	\$674,560
FIXED ASSETS/RESTRICTED FUND	\$9,000	\$27,153	
DEPRECIATION	(\$10,100)	(\$9,561)	
		(\$1,100)	\$17,592
TOTAL EXPENDITURES	\$1,794,889		\$1,922,218
INCREASE (DECREASE) TO FUND BALANCE	\$0		\$25,281

Program Highlights



**NW Regional
Development
Commission**

Program Highlights Fiscal Year 2000

*Kittson, Marshall, Norman, Pennington
Polk, Red Lake, Roseau
Multi-County*

Aging

AREA AGENCY ON AGING

Purpose: To build a proactive, comprehensive and coordinated system of advocacy and services that ensures the rights and benefits of all older people.

Program Funding Sources: Older Americans Act through the Minnesota Board on Aging - \$117,941; RDC Tax Levy - \$39,309; Miscellaneous - \$6,047.

Regrant Funding Sources: Older Americans Act - \$358,975; U.S. Department of Agriculture Nutrition Program - \$123,593; State Nutrition Program - \$96,561.

Service Priorities: Regrant priorities are: nutrition, congregate and home delivered meals, legal service, transportation, chore/home repair, housekeeping, visiting and medical forms assistance. Support priorities are advocacy, education, support of county committees on aging and senior centers, inter-agency linkages, and information/referral.

Aging Highlights

Senior Coordinating Committee •••

Provided a regular forum for regional senior service agencies to meet and share information on activities, program changes, and updates. Converted the meeting notices and legislative alerts to an e-mail system.

Farm Wrap Meeting •••

Discussed senior issues and the farm crisis as part of a legislative meeting with Senator Moe in Erskine.

Marvin Windows Health Fair •••

Provided information to 800+ employees, family members, and recent retirees at Marvin Windows Health Fair. Provided information on Senior Linkage Line, Health Insurance Counseling Program, and AAA activities.

Nutrition Survey •••

Provided information during Nutrition Survey conducted by the Minnesota Board on Aging. A white paper will be developed to provide AAA's and Nutrition Programs with information and recommendations for future program changes.

Dining Manager Training •••

Provided information about NAPIS, future changes for nutrition program, and answers to questions during regional training of Nutrition Program Dining Managers.

Senior Linkage Collaborative •••

Facilitated conference calls between Northern and Central Minnesota AAA's to examine the feasibility of extended hours of service for Senior Linkage Line. Participated in a statewide work group to determine the opportunities for extending hours on a statewide basis.

Assisted Living/Adult Foster Care Development •••

Coordinated ongoing meetings with Social Services, Housing with Service Providers and Nursing Homes to discuss housing with service options for seniors. Technical assistance was provided by the Arrowhead AAA SAIL program during a two day visit to Roseau Hospital, Eventide Home, and Kittson Memorial Healthcare Center in Hallock.

Senior Center Development •••

Participated in task force meetings of a group of seniors interested in building a Community Senior Center in Hallock. Coordinated site visits of regional senior centers, facilitated technical assistance visits from resource agencies, and participated in membership meetings to share information.

SAIL Dissemination •••

Provided a forum for discussion of products created by SAIL programs in Minnesota. SAIL is an acronym for Seniors Agenda for Independent Living and is an effort by the state of Minnesota to assist communities with developing their capacity to provide services that will help seniors remain independent for as long as possible.

Caregiver Newsletters •••

Served on committee to select items of interest for newsletters and distribute to interested persons in region. Distribute newsletter quarterly.

Grandparents Raising Grandchildren •••

Prepared series of newsletters on Kinship Caregiving with Extension Educator from Red Lake County. Newsletter is distributed to regional schools for grandparents and other family members to use as a resource.



Aging Health Insurance Counseling Highlights

Health Insurance Counseling • • •

The Health Insurance Counseling Program offers older adults, Medicare beneficiaries and their family members assistance in obtaining appropriate health care coverage and entitled Medicare/Medicaid or insurance benefits. Specially trained volunteer health insurance counselors are available to assist all seniors free of charge, with information and assistance on a confidential, one-to-one basis. The program also serves to educate the public about the health care reimbursement systems and increase awareness of the program to seniors and family members. The health insurance counseling program along with Darlene Weber of the Office of Ombudsman for Older Minnesotans and Karla Abdo of Legal Services of Northwest Minnesota have partnered to present educational sessions to Senior Centers, health care providers, community action agencies and church members throughout the seven county area.

Information Provided • • •

Provided information and assistance services to 661 persons. Of the 661 calls received, 975 contacts have been made. The Senior Linkage Line continues to be the central access for all Health Insurance Counseling calls.

Volunteer/Direct Assistance • • •

Volunteers provided assistance to 243 individuals for a total of 546 hours of assistance. A total of \$93,098.64 was recovered/saved for Medicare Beneficiaries.

Recovery of Entitled Benefits • • •

Health care provider overcharged client \$2,500. Insurance agent sold two supplemental policies to one client, paid premiums for 5 months, reimbursed \$560. Average time spent on each client case is two and a half hours.

Volunteer Recruitment • • •

Currently have 16 volunteers. Recruiting of volunteers is an ongoing process.

Volunteer Information Training • • •

Volunteer trainings and updates are ongoing. Health Insurance staff and volunteers from Region 2 will also attend.

Educational Sessions • • •

Audio tapes for the vision impaired. Tapes have all the information that is presented at the educational sessions. Legal Services and Ombudsman continue to do one presentation per county with the HIC presentation.



Additional Outreach Activities • • •

Provided information on Medicare Fraud and Abuse, Medicare Education and Awareness, and Senior Drug Program during outreach presentations to seniors, family members, health care providers, and agencies that provide additional assistance to seniors.

Publicity Activities • • •

Periodic press releases, newsletters, flyers at health care facilities, Pharmacy's and participation in radio talk shows is ongoing to increase awareness of the program.

Senior Linkage Publicity • • •

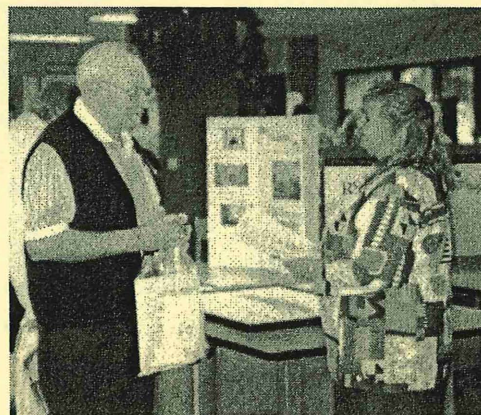
The Senior Linkage Line is the phone number given to seniors to call for assistance needed with medical forms. Senior Linkage Line brochure is given out at all presentations.

Quarterly Reports • • •

Provided quarterly reports and other reports as requested by MBA and HCFA. MBA reports include volunteer hours, number of persons served, and amount of dollars recovered/saved for beneficiaries.

Networking Meetings • • •

Participated in 4 networking meetings per quarter, such as Senior Coordinator Committee, RSVP, and others to maintain visibility and share information.



Arts

NORTHWEST REGIONAL ARTS COUNCIL

Purpose: To promote, develop and encourage artistic growth and excellence of arts organizations and individual artists in northwestern Minnesota by awarding funds and conducting programs and service.

Program Funding Sources: MN State Arts Board - \$60,489 and Interest - \$3,720; McKnight Foundation - \$4,300; RDC Tax Levy - \$2,140; Miscellaneous - \$3,670.

Re-Grant Funding Sources: MN State Arts Board - \$73,337; McKnight Foundation - \$17,812.

Re-Grant Programs: *State Funds:* Production Assistance/Sponsorship; Artist in the Schools; Public Art Projects. *McKnight Funds:* Individual and Student Artist Grants; Small Capital; Training & Development.

Service Priorities: Direction setting, grants to organizations, grants to individual artists, grants to student artists, information/education including newsletter, training/workshops.

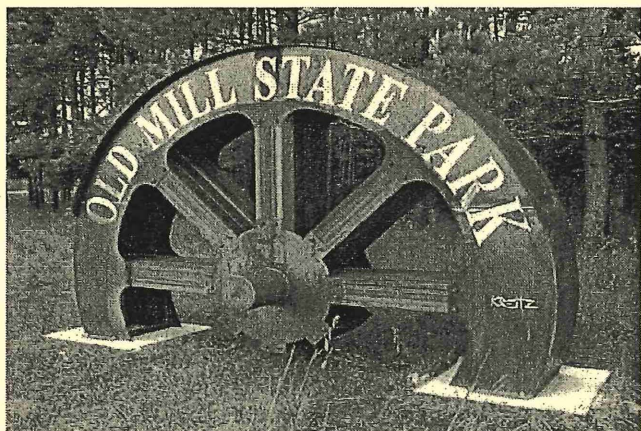
Arts Highlights

Artists in the Schools Grant Program • • •

In the first year of this program \$16,955 was regranted to area schools to bring in artists or touring workshops for youth. Twelve grants were awarded to nine school districts. Approximately 1,350 students participated, and about 4,960 people viewed their art displays or performances.

Public Arts • • •

Three awards were made this year. Each award was \$5,500 totaling \$16,500. Several previous projects were completed throughout the region this year. Openings occurred in Fosston, Old Mill State Park, and Roseau.



Production Assistance/Sponsorship

This year we re-granted \$40,115 to 15 different productions and 6 sponsorship projects throughout the region. Seven of the projects were specifically aimed at children. An estimated 12,000 adults and youth were audience members, and over 1,200 people participated.

Web Site Development-Arts • • •

Creation of web pages for the arts that include our grant forms, a grant application request form, and more information on our arts organizations and artists. The Arts Council information is located within the agency site at www.nwrdc.org

Functional Art Exhibit • • •

Help plan a statewide art exhibit for artists who create pieces such as furniture, clothing, quilts, etc. A second goal was to help Art Centers work with group booking issues while the exhibit travels across each of the eleven regions in Minnesota. The Forum of Regional Arts Councils is the sponsor of this exhibit.

Small Capital Grants • • •

Granted \$9,520 to arts organizations to purchase capital items such as lighting and sound equipment. Five organizations received awards. \$5,000 of the awards were specifically to help arts organizations who lost equipment in the flood.

MCK Student Artist Grants • • •

Granted \$4,685 for ten projects. High school and college students living in our seven county region could apply for up to \$500.00 for career development projects such as mentorships and training opportunities often in other states or countries.



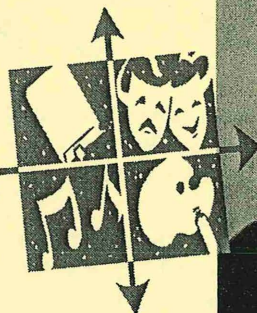
Arts Continued

Exhibit Program Development •••

Researched a new regional exhibit program. Staff contacted other Regional Arts Councils who currently administer regional exhibits and asked for feedback and information on their programs. This information has served as a model while developing the program.

Northwest Minnesota Art Exhibition •••

Hosted the first annual regional visual exhibit at Central Middle School, April 29-30, 2000. Co-sponsored by the East Grand Forks Arts and Crafts Council. Coordinated the call for entries, registration, hanging, greeting, artist reception, and check-out related to the exhibit.



Above: Heather Sabian of Fosston stands beside her mixed media self portrait that won first place in the adult category.



Far left: This Funeral Urn was created by Robin Foster of Red Lake Falls who received a Merit award for Pottery.

Left: Jessica Pribula of East Grand Forks stands beside her drawing that won the first place in the high school student category.

Special Projects

Purpose: Support the efforts of local units of government to address high priority issues or problems.

Funding Source: State Planning - \$121,193; Marshall Co. - \$9,997; Pennington Co. - \$4,798; and RDC Tax Levy - \$10,935.

MARSHALL COUNTY LAND USE PLAN

Worked with Denver Tolliver and Associates to complete a land use plan for the County. The plan addresses both natural resource and economic issues. Visioning sessions, data analysis, public input and the planning committee identified key issues and solutions.

PENNINGTON COUNTY LAND USE PLAN

Completed a land use plan for the county in conjunction with Denver Tolliver and Associates in Fargo. The planning process identified issues such as feedlot location and suggested ways the County and townships can work together to find solutions.

RED RIVER BASIN PLANNING

Completed work with the Red Lake Watershed District and local counties on an educational process, improved information systems, and recommendations on how to increase county participation and influence over natural resource and water planning in the Red River.

NORTHERN COUNTIES CONTRACT MANAGEMENT

Completed all administrative duties related to the grant from MN Planning to the Northern Counties Land Use Coordinating Board for the development of a county land-use planning model and draft land use plans for 10 counties including Pennington and Marshall.

BUSINESS FINANCING NEEDS ASSESSMENT

Donna Christianson, Christianson Consulting, Fertile, completed an assessment of business financing needs in the area. The results were used to change and improve loan fund and development services offered by the NWRDC.

Economic Development

Purpose: To assist in creation of new jobs by providing general planning guidance, technical assistance for specific industrial projects and services to local units of government.

Program Funding Sources: United States Economic Development Administration (EDA) - \$46,745; NW MN Foundation - \$27,743; RDC Tax Levy - \$17,336; MN Housing Partnership - \$6,122.

Service Priorities: Regional Economic Analysis and Planning, Local Planning, Technical Assistance to Local Development Groups, Grant Writing, Business Counseling and Referral, Information on other Development Programs and Resources, Data and Statistics, and Tourism.

Economic Development Highlights

NW MN Economic Developers Network •••

Provided staff support for regional network. Issues included workforce development. Attracting or creating jobs, and sharing information.

Lake Township Water System •••

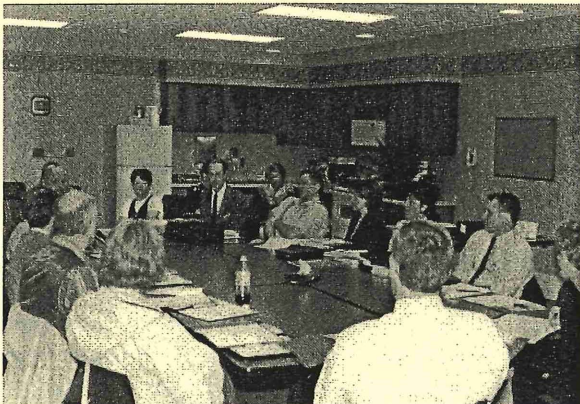
Assisted in a study group to examine the possibility of a sewer district to serve densely populated areas around Warroad.

Manure Pilot Project •••

Wrote grants for a pilot project to demonstrate the use of compost of farmers fields utilizing manure from the large dairy, beef feedlot, turkey, swine operations along with industrial wood waste from the region. \$130,000 approved.

Alvarado Elevator Expansion •••

Assisted with development of funding packages for expansion to grade and sort barley for malting.



Above: Economic Developers Mtg. in Ada's new medical center.

Greenway Recreational Area •••

Assisted in the development of a proposal to the legislature for a recreational area in the area left vacant by the 1999 flood. Prepared basic cost benefit analysis for the proposal. EGF was successful in obtaining \$1,000,000. for the project.

Kittson Down Payment Assistance •••

Assisted in the development of a loan pool program to assist home buyers with the purchase of a new or existing home in Kittson County.

Marshall County Housing Loan Pool •••

Assisted in the completion of an application for funding of a down payment loan pool to assist new home buyers.

Roseau Down Payment Assistance Program •••

Developed loan requirements, program guidelines and housing fair to promote program. Red Lake and Kittson Counties.

Red Lake County Down Payment Assistance •••

Helped Red Lake County Develop a \$500,000 housing loan pool with \$175,000 raised locally.

Polk County Down Payment Assistance •••

Worked with several communities to raise money for a CRF application. Waiting to hear if we were funded.

Red River Basin Planning •••

Assisted counties in developing a more active involvement in Red River Basin planning related to natural resource planning.

Red River Water Quality Plan •••

Assisted in the establishment and operation of a Red River Water Quality Plan advisory committee to provide input into the planning process.

County Loan Pools •••

Started the process of examining the need for a housing down payment assistance program in Norman and Pennington Counties. Application will be completed if match can be raised.

Regional Data Requests •••

Responded to 52 requests for data.

Census 2000 •••

Promoted Census 2000. Sent information to 450+ people representing local units of government, economic development, etc. to encourage participation.

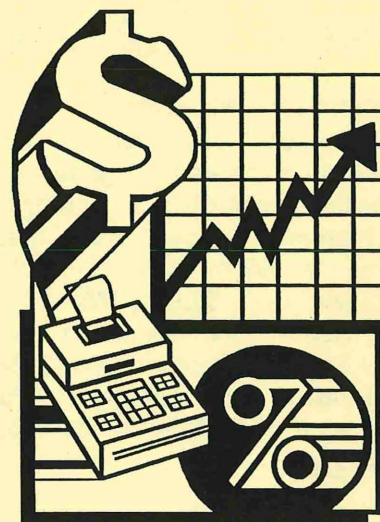
Enterprise Fund

Purpose: To strengthen and diversify the economy by providing a source of low interest financing to businesses when credit is not otherwise available from other sources to ensure the successful completion of activities to be financed.

Program Funding Sources: Loan Interest and Loan Fees - \$55,861.

Loan Funding Sources: Loan Repayments and Loan Interest - \$370,985.

Service Priorities: Financing for-profit businesses which create or retain jobs, especially for the long term under-employed or unemployed.



Standard Revolving Loan Fund

The following businesses received approval for financing through the Northwest Regional Enterprise Fund, Inc. in fiscal year 2000:

QC Techniques, Inc., Roseau	\$ 35,000
Clay's Family Market, Inc., McIntosh	\$ 75,000
NW Manufacturing, Inc., Red Lake Falls	\$ 150,000
Phoenix Industries, Ltd., Crookston	\$ 150,000
JB's Market, Badger	\$ 75,000
Thunder Road Diner, Lancaster	\$ 32,500
TOTAL LOANS	\$ 517,500

To date, eighty-five business loans have been approved for financing for a total amount of \$5,256,690. The program has assisted thirty-seven new businesses, thirty-five businesses with expansions, and thirteen businesses with retention. Forty-one of the loans are currently active, thirty-three are fully repaid and eleven loans have been written off.

In fiscal year 2000, the Enterprise Fund marketed the Revolving Loan Fund and conducted needs assessment of businesses in the region. As a result, the application and review process was made less complex and a Small Loan Sub-Committee was developed. The Small Loan Sub-Committee uses a simplified process to review and approve loans under \$30,000.

The Enterprise Fund's administration budget for the year is \$55,861. The loan fees collected and one-half of the interest earned on the loans and on accounts are used for administrative costs. The other one-half of the interest payments, along with the principal repaid on loans, becomes available for relending.

Disaster Relief Loan Fund

Purpose: The primary purpose of the Disaster Relief Loan Fund (DRLF) is to assist formerly healthy businesses with financing for working capital and other needs so they can survive the economic stresses brought on by weather related and other disasters.

Program Funding Source: Loan Interest and Loan Fees - \$6,438.

Loan Funding Source: Economic Development Administration - \$13,636, NWRDC - \$1,349, Loan Repayment and Loan Interest - \$25,261.

Service Priorities: Business eligibility is dependent upon economic viability prior to the disaster and demonstrated loss of sales or other financial damage as a result of the disaster.

The DRLF can provide businesses with working capital for loss of income while the business was closed during the disaster, funds to replace inventory and fixed assets lost as a result of the disaster, and other assistance.

The following businesses received approval for Disaster Relief Loans in fiscal year 2000:

Roger's Auto and Truck Repair, Halstad	\$ 13,900
Triangle Tire Sales and Auto Service, Red Lake Falls	\$ 25,000
Nepstad Oil Company, Hendrum	\$ 60,000
TOTAL LOANS	\$ 98,900

Farm Recovery

FARM RECOVERY PROGRAM

Purpose: To expedite the farm recovery effort in the region by building a coordinated, integrated, regional effort that helps the farm family in a wholistic manner.

Program Funding Sources: Red Cross - \$81,477; Economic Development Administration (EDA) - \$31,042; Tax Levy - \$5,981; NW MN Foundation - \$31,923; Central MN Foundation - \$5,000; Local Contract - \$12,298; Miscellaneous - \$656.

Service Priorities: Regrant program for Farm financial, tax, and legal counseling for developing exit or restructuring plans.

Farm Recovery Highlights

Nomination for Legal Advocate Award •••

Legal Services of Northwest Minnesota nominated Kay Hegge, Farm Wrap™ Coordinator, for her leadership in developing Project Farm Wrap™ to fill the technical assistance gaps for farmers in distress.

Farm Wrap™ Coordination •••

Supplied the overall coordination of the informal network for both the funding and management issues.

Farm Wrap™ Case Conferences •••

Supplied the coordination of the team meetings needed to solve our more difficult situations.

New This Year: Farm Resumes •••

Helped families develop a "farm (skills) resume." These resumes break the rules, they go back to the time when the farmer worked for his/her parents and proceed chronologically all the way up to the time where the farmer may have supervised several farm employees.

Individual Assistance •••

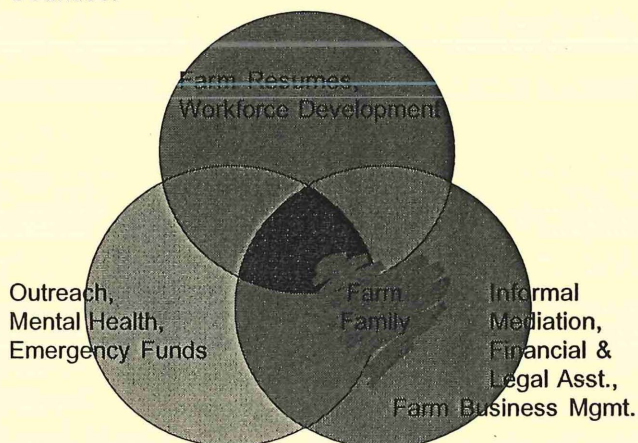
Helped Farm Wrap™ Network members find solutions to problems which ranged from housing to shared appreciation mortgages to selling hay to unconventional markets.

Farm Rally in Washington D.C. •••

Participated with 4000 other farmers to help put "a face on the family farmer", in Washington D.C. Organized the Bus Number One Reunion in which over 60 farmers attended and wrote letters to those Congressmen who weren't there.

Rural Help Network •••

Assisted the West Central Initiative Fund in developing a "group of groups" modeled after Farm Wrap™. The "Rural Help Network" serves Clay, Becker, Wilkin, Otter Tail, Traverse, Grant, Douglas, Stevens, and Pope Counties.



Farm Wrap™ Coverage Expanded •••

Expanded the coverage of Farm Wrap™ grants to include the Headwaters region: Lake of the Woods, Beltrami, Clearwater, Hubbard and Mahnomen.

Farm Wrap™ Brochure •••

Developed a new brochure that represents all the pieces of Farm Wrap™: outreach and mental health, complete technical assistance, and workforce development. Developed a new logo to represent these themes and trademarked the name, Farm Wrap™. This brochure was sent to all agencies, institutions, schools, churches and grain elevators.

Farm Wrap™ Network Newsletter •••

Sent bimonthly newsletters to the Farm Wrap™ Network, the Rural Crisis, Rural Action, NWRDC Commission, County Commissioners and Economic Developers.

Farm Wrap™ Technical Assistance Grants •••

Administered the grants program. Farmers now choose two out of three possible grants: Ag-CPA consultation, Ag-Attorney consultation, and Farm Business Management tuition. Grants are made through team recommendations made in the field.

Legislative Meetings •••

Meetings were held throughout the region with each of our State Legislators regarding the farm and rural crisis and its local impact.

Farm Recovery Continued

2000 Legislative Proposal •••

Senator Leroy Stumpf invited us to submit a Farm Wrap™ funding plan for the northwest corner of the State. With everyone's help and all our Legislators, the proposal was successful and makes \$250,000 available for mental health and emergency services, \$300,000 available for Ag-CPA, Ag-Attorney, informal mediation services, and outreach services, and \$250,000 available to further reduce Farm Business Management tuition and supply more instructors who travel out to the farm.

2000 "Dislocated Worker" Law Change •••

Testified several times regarding the need to change this law which had required farmers to show a "pink slip" from their lender in order to access the tuition program. The law was successfully changed to allow farmers to access the program while still actively farming only showing a decline in farm income due to the economy, natural disasters, or low prices.

Revived the Rural Recovery Task Force •••

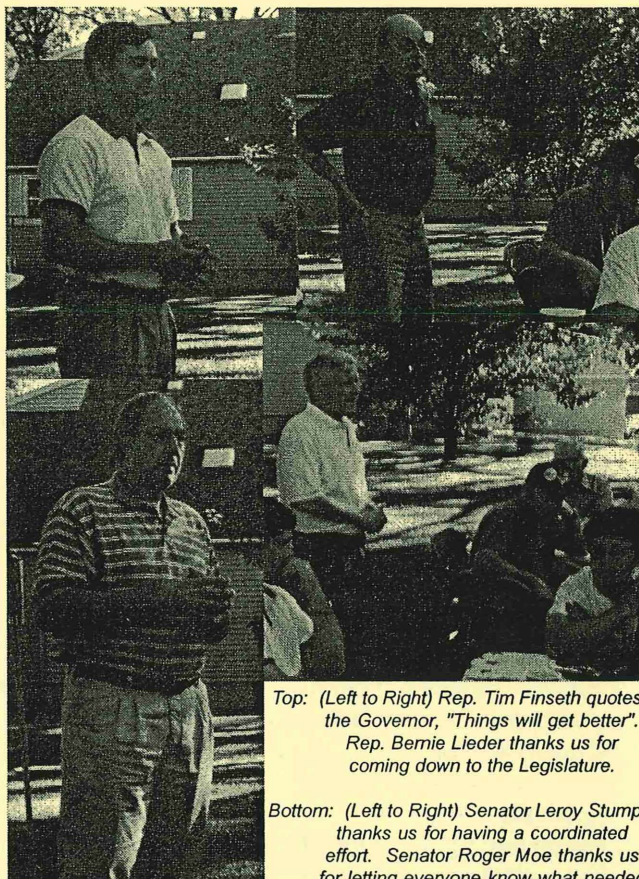
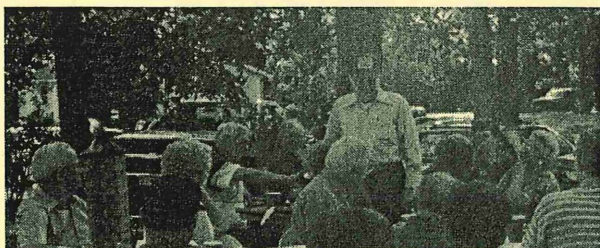
Old members, Howard Person and Jeanette Kliner, are joining up with new faces to develop a rural value-added technology cooperative. The draft plan has begun which will include a wireless cable feasibility study, and figuring out how to enhance existing outreach endeavors with a computer loan (grant) program run by kids in the K-12 educational system.

The "Last Hurrah" Flood Recovery Effort Funded by the American Red Cross •••

The Outreach effort reached 6,257 families; 2,813 by phone and 3,444 by letter. Those identified as needing follow-up, 796 received "The Last Letter", and follow-up calls were made to these folks also to make sure they got into the "system".

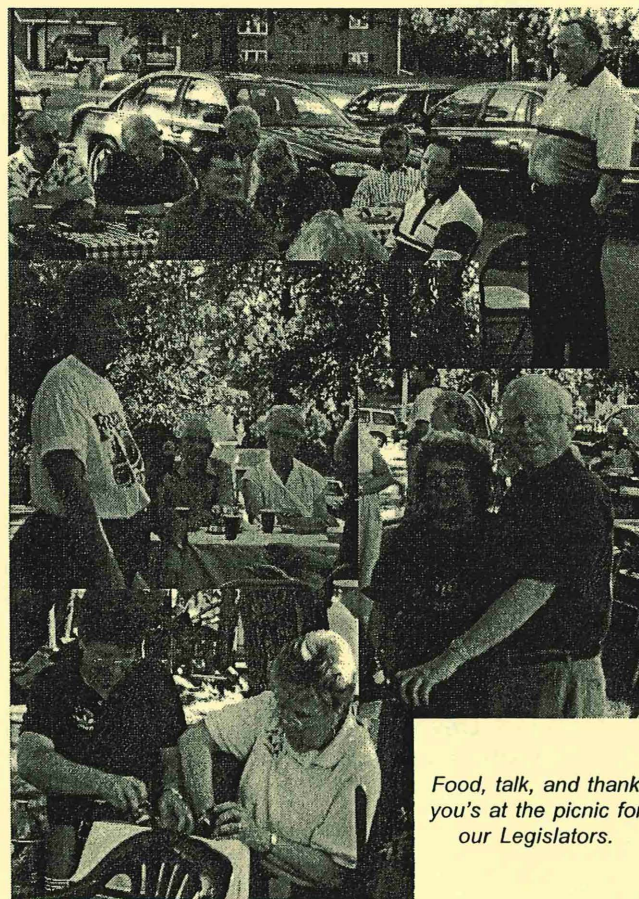
Work Crews •••

Institution Community Work Crews (ICWC) and new Sentence to Serve Work Crews helped 46 families who "fell through the cracks" repair their flood and ice storm damaged homes. Ninety-eight were identified for service out of 256 that still needed flood recovery help, either needed to be in a buy-out, needed a ring dike, or other.



Top: (Left to Right) Rep. Tim Finseth quotes the Governor, "Things will get better". Rep. Bernie Lieder thanks us for coming down to the Legislature.

Bottom: (Left to Right) Senator Leroy Stumpf thanks us for having a coordinated effort. Senator Roger Moe thanks us for letting everyone know what needed to be done.



Food, talk, and thank you's at the picnic for our Legislators.

Local Issues

NORTHWEST REGIONAL DEVELOPMENT COMMISSION AND BOARD OF DIRECTORS

Purpose: Discuss and develop solutions to rural issues and problems which are held common in Northwest Minnesota.

Funding Source: Local Tax Levy - \$30,851; and interest - \$15,549; Misc. - \$81.00.

Service Priorities: Consensus building, planning, research, information, new program development, legislative advocacy.

Local Issues Highlights

Agricultural Issues • • •

Assisted in the operation of farmer assistance efforts including examining the feasibility of agricultural value added approaches including alfalfa processing, hemp, and ag based fiber.

Tourism Directory • • •

Updated the 2000 version of the Northwest Minnesota Visitor and Recreation Guide. Publish the guide to the Minnesota's Great Northwest web site at www.mngreatnw.org.

MN Historic Great Northwest • • •

Eight county historical groups worked together to complete joint projects. The NWRDC helps coordinate their meetings and format their newsletter and brochure.

Snowmobile Initiative • • •

Worked with snowmobile groups to print and distribute the new snowmobile map for the area extending from our region down through Detroit Lakes that was created at the NWRDC last year. The maps are now laminated and displayed in the area.

Institutional Work Crews • • •

Assisted in the reorganization of the Institutional Work Crews with the Department of Corrections and Community Action Agencies to re-focus on new housing construction and to expand activity to the entire region.

MRDO • • •

Participated in activities of the Minnesota Association of Regional Development Organizations including development of statewide legislative approaches, sharing program ideas and providing information on RDC activities.

Local Legislative Advocacy • • •

Assisted in efforts to secure funding for Farm Wrap program and Regional Development Commissions to provide planning assistance to local units of government. Farm Wrap was funded at \$925,000 for Region 1 and 4. Planning was funded at \$200,000 statewide.

Commission Chronicle - NWRDC Newsletter • • •

Printed on a quarterly basis and distributed to government units, service agencies and interested persons. Contains current items of interest to local communities and Commission activities.

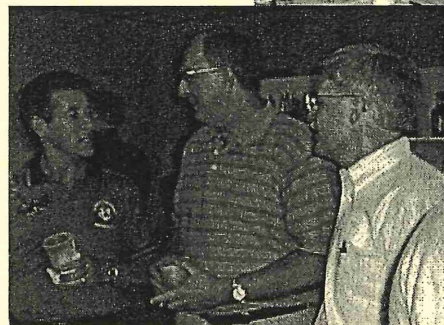
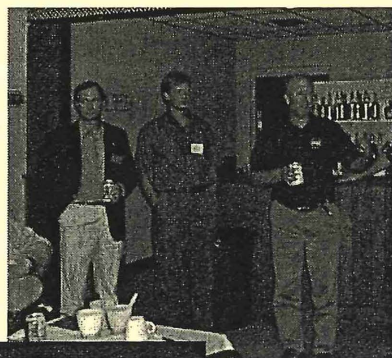
NWRDC Mail List • • •

Current updated mail lists of County Units, City Units, Township Units, Law Enforcement, Regional Services, Department of Natural Resources, NWRDC Committee's and etc.

NWRDC Web Site • • •

New pages and links were added to the agency web site at www.nwrdc.org including a legislative information page, a farm wrap page, and new links to service agencies and city web sites. Downloads of application guidelines and maps are also available in the arts, transportation, and county sections. Many more additions and changes happened throughout the year, please check out our site for continual updates.

Top: (Left to Right) David Fisher, Commissioner of Administration; Troy Schroeder, NWRDC Transportation Planner; and Gene Hugoson, Commissioner of Agriculture. The Commissioners attended the NWRDC annual meeting reception hour as a break in Governor Ventura's tour of the region.



Bottom: (Left to Right) Clarence Gagner, Mayor of Brooks; Sen. Leroy Stumpf, and Bob Melby, Commission member; at the NWRDC Annual meeting.

Transportation

Purpose: To insure safe efficient movement of people and commodities in the region. Provide an ongoing forum for important transportation issues in the region. Assist MN/DOT and provide input with it's planning efforts and programs.

Funding Sources: MN Department of Transportation - \$50,000; and RDC Tax Levy - \$11,964.

Service Priorities: Direction setting, comprehensive regional planning, legislative advocacy, MN/DOT project coordination.

Developed a Bridge Committee Plan •••

Developed a plan for the Red River bridges that will be amended into the regional transportation plan.

Region 1 Input into District ATP Plan •••

Formulated Region One transportation goals and priorities for incorporation into the district ATP plan.

Assisted with Development of an ITN •••

Assisted and supported the development of an Integrated Transportation Network, which coordinates local, district, state, and federal transportation systems that serve the area.

County Meetings •••

Met with TAC members in each county to discuss the reorganization of the TAC and to begin the process of identifying key transportation issues.

Issues Analysis/GIS •••

Continued development of a Geographic Information System that can store and analyze transportation planning information.

Followed Up County Bridge Issues •••

Identified the first steps in addressing the long term issue of replacing bridges over the Red River.

Transportation Highlights

Review/Comment Inter-Regional Proj. Applications •••
Reviewed and commented on inter-regional project applications, enhancement, and transit applications in Area Transportation Partnership (ATP).

Input to Subcommittee •••

Provided input to transit, inter-regional, and enhancement subcommittee on funding of county-state highway construction projects.

Committee Reorganization •••

Helped reorganize the Transportation Advisory Committee to improve local input into the expenditure of state funds and to assist in addressing issues which cross jurisdictional boundaries.

Regional Transportation Plan •••

Completed initial work on updating the transportation plan to input into the state funding process and to identify local issues which cross jurisdictional boundaries.

Develop Regional Transportation Plan •••

Drafted the 2001-2004 regional transportation plan for approval by the Transportation Advisory Committee.

Elected A Bridge Committee •••

Elected a TAC bridge subcommittee to study the funding issue of bridges on the Red River system.

Bridge Survey •••

Distributed a survey on bridge usage and the importance the bridges have on the economics of the region.



Above: Commercial Trucks transporting agricultural products across the Halstad Bridge.

Plans, Studies and Publications

Prepared by NWRDC

Area Plan on Aging - The Area Plan on Aging examines senior input and demographic data to establish priorities for the use of Title III Older Americans Act funds. Includes budget information, an Executive Summary and work activities.

Commission Chronicle - NWRDC Newsletter - Printed on a quarterly basis and distributed to government units, service agencies and interested persons. Contains current items of interest to local communities and Commission activities.

Directory of Artists and Arts Organizations - The directory contains listings of regional artists, arts organizations, school district offices and public libraries.

Directory of Government Units and Service Agencies - The directory contains listings of service agencies and governmental offices from the township level through the legislative level.

FY 1999 Annual Report - Information on the funding and work activities of the Commission over the past year. Published and distributed to local officials and legislators.

FY 2000 Work Program - Details the goals and objectives of the Commission in each of the program and planning areas.

Northwest Arts - Quarterly newsletter developed for the artists, arts organizations and schools in northwest Minnesota.

Red River Bridge Study - The Transportation Advisory Committee has formed a subcommittee to study the economic impacts and importance the Red River bridge crossings have on the region. Results of the study will be presented to MnDOT for future planning.

1999 Comprehensive Economic Development Strategies (CEDS) - Background information and statistics about Northwest Minnesota are examined to produce economic development strategies and work activities for the upcoming year.

"Farm Wrap Network" newsletters - Tracks 18 months of farm recovery decisions and progress.

Regional Arts Plans - Goals, strategies and work activities for State Arts Funds and McKnight Arts Funds are included in these plans.

Resources for Economic Development - Descriptions of agencies and both technical assistance and financial programs for economic development. Includes special sections on labor force and housing resources. Lists community revolving loan funds and economic development contacts.

Revolving Loan Fund Plan - Describes the program elements and guidelines for the loan fund. Updated in 2000.

Senior News - Newsletter developed for the Senior Citizens and service providers of Region One.

Senior Service Directory - Resources for Region I seniors, consumers and professionals in the field of aging. It provides a brief description of programs, resources and agencies.

Committee Membership List

Aging Advisory Committee

Sharon Bring	Strandquist
Bob Carlson	Thief River Falls
* Richard Dahlin	Ada
George Derosier	Red Lake Falls
Matthew Edman	Alvarado
Pam Erickson	Roseau
Jamie Hennen	Ada
Beverly Hewitt	Lancaster
Roy Jorgenson	Thief River Falls
Charles Lindberg	Kennedy
Carrie Michalski	Red Lake Falls
Warren Olson	Halstad
Julie Pahlen	Roseau
Lorraine Strand	Erskine
Henry Vasek	Warren

Regional Arts Council

Marlene Baatz	Nielsen
Mavis Benson	Stephen
Dawn Bly	Fosston
Larry Braford	East Grand Forks
Rob Conwell	Red Lake Falls
Pat Dunning	Thief River Falls
Mary Follett	Thief River Falls
* George French	Crookston
Dorothy Gehrke	Roseau
Ruth Halverson	Karlstad
Betty Halvorson	Plummer
Kimberley Johnson	Kennedy
Gen Knott	Red Lake Falls
Charlene Kuznia	Argyle
Linda Short	Halstad
Joyce Wikstrom	Karlstad

Transportation Advisory Committee

Milton Alm	Ada
Kelly Bengtson	Hallock
Sharon Bring	Strandquist
Roger Diesen	Crookston
* Donald Jensen	Goodridge
Charles Lindberg	Kennedy
Bob Marvin	Warroad
Ed Miller	Perley
Lee Nielson	Erskine
Tara Ratzlaff	Red Lake Falls
Rodney Richmond	Roseau
Delton Schultz	Thief River Falls
Warren Strandell	East Grand Forks
Rod Teigen	Warren

Enterprise Fund Members

* Randall Aarestad	Halstad
Betty Arvidson	Crookston
Brenda Berg	Greenbush
Allen Bertilrud	Red Lake Falls
Tracy Boman	Thief River Falls
Duane Finney	East Grand Forks
Stephen Fisher	Warroad
Cecil Fossell	Kennedy
Lee Ann Konkin	Ada
Ronald Laqua	Halstad
Stuart McFarlane	Roseau
Vanessa Page	Crookston
Milt Peterson	Plummer
Terry Potucek	Warren
Ray Safranski	Thief River Falls
Sandra Simonson	Oslo
Kari Thompson	Crookston
Ed Turn	Warren
Dean Vikan	Fosston
Fred Wilebski	Lancaster
Scott Wilson	Karlstad

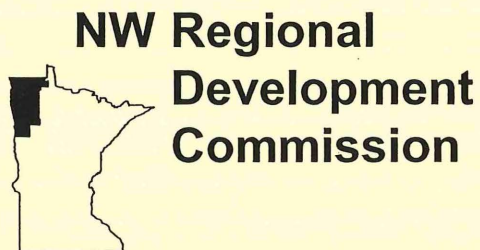
Enterprise Fund Loan Committee/ Economic Development Planning Committee

* Randall Aarestad	Halstad
Allen Bertilrud	Red Lake Falls
Ronald Laqua	Halstad
Stuart McFarlane	Roseau
Ray Safranski	Thief River Falls
Kari Thompson	Crookston
Ed Turn	Warren
Scott Wilson	Karlstad

Rural Recovery Task Force

Jim Foster	Congressman Peterson's Office
Carol Gregorson	Adult Basic Education Coord.
Steve Hannah	Information Technology, RRTC
* Kay Hegge	Farm Recovery Coordinator
Jean Heinrichs	NW Service Cooperative
Mary Heisler	White Earth Tribal Council
Kari Howe	DTED
Dean Johnson	City Clerk, Mahanomen
Jeanette Kliner	Rural Life Outreach
Howard Person	U of M, Extension Educator
Sandra Peterson	ECFE Community Ed Director
Brent Sorenson	Farm Connect

Regional Highlights



Regional Highlights Fiscal Year 2000

*Kittson, Marshall, Norman, Pennington
Polk, Red Lake, Roseau
Multi-County*

Health Insurance Counseling

Volunteer Outreach Contacts •••

Continued to encourage volunteers to make outreach contacts with neighbors, friends, relatives and church members in their respective communities on the services available through the Health Insurance Counseling Program.

Local Issues

Tourism Web Site •••

Met with members of Riverland, Borderland Trails, Northern Gateway, and MN Office of Tourism to help update the web site created to promote area tourism. This site contains our NWRDC tourism information. See the site at www.mngreatnw.org.

GIS Update •••

Keep county GIS data updated with the newest available data.

Economic Development

99 CEDS UPDATE •••

Completed the 1999 Comprehensive Economic Development Strategy and obtained approval of the seven county boards. This document sets the direction for NWRDC economic development activities and also helps local effort to set their own priorities.

Local Developers/Clerks Contacts •••

Meeting with local developers to see what projects they are currently working on and discuss with them projects in agriculture that could effect their towns.

Roseau/Kittson/Pennington/Red Lake Co. Alfalfa •••

Worked with farmers to explore the different uses for alfalfa from organic fertilizer to leaf meal feed pellets for turkeys.

Fiber to Paper •••

Participated with the Red River Trade Corridor and the University of Minnesota in development of process and processing to use agricultural fiber in paper production.

NW Housing Coalition •••

Worked with NW Coalition (NW MN Foundation, Multi County HRA, Tri Valley, NWRDC) to promote construction of affordable housing.

Lot Development •••

Coordinated legal and professional services on lot development throughout the region. Utilizing architect to design concepts on lot layout.

Housing Marketing Assistance •••

Helped communities with developing marketing plans to build housing capacity with concept drawings of affordable townhomes, modern mobile home park and affordable housing clusters.

MN State Data Center Affiliate •••

Served as affiliate to Minnesota State Data Center. Attended annual data conference.

Transportation

Application Prioritization •••

Assisted in application prioritization and reported to the committee.

Develop Regional Transportation Plan •••

Drafted the 2001-2004 regional transportation plan for approval by the Transportation Advisory Committee.

Highway 89 Roseau County Route •••

Identified a process for planning a Highway 89 alternative or southern outlet from Roseau County.

Enterprise Fund

Loan Servicing/Monitoring •••

Maintained approved loan portfolios and monitor approved loans. Worked on legal remedies for defaulted loans. Current number of active loans: 48.

Farm Wrap™ Coordination

Farm Wrap™ Network Funding Meetings •••

Coordinated a regular schedule of Farm Wrap™ Network meetings for funding the mental health outreach, technical assistance, and workforce development pieces of Farm Wrap™.

Farm Wrap™, Region 6W •••

Helped with the development of Laq qui Parle, Yellow Medicine area's Farm Crisis Response system.

Farm Wrap™, Southwestern MN •••

Helped the Southwest Minnesota Initiative Fund region to develop their own Farm Crisis Response system.

Employment Barriers •••

Worked with other Network members to identify employment barriers such as high expectations, mental health, and lack of computer skills. The "hows" of getting a good job are a problem.

Meetings with Legislators •••

Set up meetings with each Legislator regarding the farm changes we'd like to see happen this session.

Alternative Crops • • •

Identified farm groups that are working on alternative crops or commodity based processing facilities that can provide new income sources for farm families.

Cooperatives • • •

Helped in the formation of cooperatives or other business structures needed to pursue new alternatives.

Assistance with Applications • • •

Helped in the development of business plans, loan applications, grant applications and other items needed to support projects. Assisted with "Black Gold," the in-vessel composting project.

Out of Region Individual Assistance • • •

Assessed and referred farm families who call in from out of our region.

Unmet Needs • • •

Worked with Network to identify unmet needs and possible solutions. The decline of rural housing quality and lack of rural rehab programs is an example.

Flood Acres • • •

Encouraged an easement program for acres continually under water.

Work Crews • • •

Helped to keep work crews in the area for rural housing needs.

High Speed Rural Internet Access • • •

Developed a wireless plan for high speed rural internet access which the Rural Recovery Task Force will work on regarding feasibility. The plan will bring up the quality of the workforce, by increasing educational and teleworking opportunities.

Rural Health Insurance Problems • • •

Found out what's not working. Four months without insurance is a problem with MN Care, asset test is a problem with Medical Assistance and the Senior Drug program, adding back depreciation and losses to income is another problem with MN Care.

Lack of State and National Farm Cohesiveness • • •

Attended the Rally in Washington D.C. Took the bus, organized Bus Number One Reunion. Over 60 participants in the Reunion.

Statistics • • •

Kept basic statistics on the scope of the farm crisis problems such as estimates of farm loss, estimates of business loss, decreases in property value, loss of income, decreases in farm production or decreases in acres farmed.

Rural Action • • •

Wrote letters and included comparisons to non-farm circumstances and developed a list of folks who would send these letters, a Rural Action list. Including mailings to churches who can represent farm families.

Farm Meeting with Tom Meiem, Wellstone's Aide • • •

Arranged a meeting of farmers and Farm Wrap Network to talk about federal issues with Tom Meium.

Rural Finance Authority • • •

Encouraged the Rural Finance Authority to make guidelines higher and make other changes to their programs to make them more usable by beginning farmers, ag-coops, and restructuring finances. Done.

Flood Recovery

The Last of Last Hurrah • • •

Phone outreach ended December 1, 1999, however, calls still come in and are handled as needed. 2,813 calls were made, 3,444 letters were sent for a total reach of more than 6,257.

Information/Referral • • •

Provided information to individuals on flood recovery options. Referrals and contacts are made to flood recovery agencies for those who continue to have unmet needs from the 1997 diaster.

Clay/Cass County Last Hurrah • • •

Helped Lutheran Rural Response develop their own Last Hurrah flood recovery effort.

Red River Basin

Train Water Planners in Data Collection • • •

Visited each county water planner to establish a Standard Operating Procedure for water data collection and how to input the data to a central data collector.

Arts Development

Newsletter • • •

Northwest Arts continued to provide a list of our grants as well as opportunities for artists, schools and arts organizations. Every other month the newsletter is printed and distributed to 650 arts constituents.

Directory • • •

Regional Artist and Art Organizations Directory was updated throughout the year. Parts of the Directory are published on the web site. Our focus is to provide more information and work samples by area artists on our web site by the end of the summer.

Accessibility Development Program • • •

Worked with Options to provide arts organizations with developing their accessibility plans for both their programming and facilities.

Public Art Development • • •

Encouraged applications from communities for the Public Art Program in order to award three grants in fiscal year 2001. We increased the number of sculptors listed in the registry in order to help communities find artists to work on their projects.

Arts workshops • • •

Hands-on arts activities for area artists and high school students to learn new techniques as well as hear about grant opportunities and learn to write better grants.

Data Entry/Access Conversion • • •

Continued to problem solve in new arts database in Access.

MCA Meetings • • •

Attended Minnesota Citizens for the Arts Meetings as a board member. Advocate on behalf of the arts for increases in legislative funds.

McKnight Arts

MCK Training & Development Grants • • •

One award for \$750 was granted this year. This program is intended to help groups afford training opportunities in the arts and in board development.

MCK Individual Artist Grants • • •

Three adult artists were awarded \$750 grants each totaling \$2,250. Grants ranged from voice training/recital costs to marketing new drawings on the internet.

MCK Planning • • •

Plan update for FY 2001 to the McKnight Foundation. New plan includes small changes to current programs to meet changing needs in the region.

Aging Administration

2000 Legal Services • • •

Granted Legal Services of NW Minnesota \$22,500 in III-B funds to provide legal services and education to seniors in Region One.

2000 Senior LinkAge Information and Assistance • • •

Granted NW Area Agency on Aging \$13,661 in III-B funds to provide information and assistance to seniors and family members through the Senior LinkAge line.

2000 Health Insurance Counseling Program • • •

Granted NW Area Agency on Aging \$18,564 in III-B funds to recruit and train volunteer Health Insurance Counselors to provide assistance to seniors with medical bills, appeals, and advocacy of rights.

2000 Strike Out Stroke Initiative • • •

Granted Quin County Community Health Services \$11,558 in III-F funds to provide stroke education sessions and risk assessments by collaborating with all Public Health Agencies in the region.

2000 Senior Nutrition Program • • •

Contracted with Lutheran Social Services with III-C1 funds to provide congregate meal services to seniors in region.

2000 Senior Nutrition Program • • •

Contracted with Lutheran Social Services with III-C2 funds to provide Home Delivered Meals to seniors in the region.

2000 - 2002 Area Plan on Aging • • •

Developed 2000 - 2002 Area Plan on Aging. Conducted public hearing, submitted plan to MBA Program Operations Committee for approval.

Aging Program Development and Coordination (PD&C)

Mid-Minnesota Aging Advisory Committee • • •

Provided information regarding Nutrition Program initiatives and new programs to Aging Advisory Committee from Mid-Minnesota Area Agency on Aging.

Review of 5310 Grant Applications • • •

Assisted MN Department of Transportation with the Regional Review of Section 5310 Grant Applications.

Senior Housing Options • • •

Coordinated workshop in TRF to provide information about housing options for seniors including assisted living in public housing, adult foster care, and other residential options.

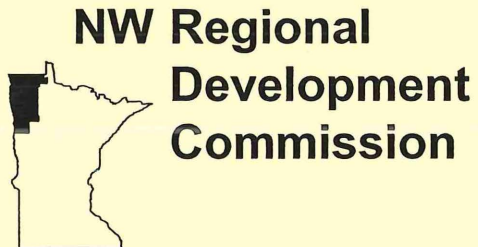
The Last Hurrah: Assistance to Seniors • • •

"Adopted" seniors identified as still needing assistance with flood recovery through The Last Hurrah. These people will receive individual assistance from the AAA.

Consumer Support Grant Training • • •

Coordinated regional training for individuals interested in learning more about the Consumer Support Grant program. This allows individuals to choose a cash option for receiving services and to contract with individuals rather than agencies.

County Projects Listings



Projects Listings by County Fiscal Year 2000

*Kittson, Marshall, Norman, Pennington
Polk, Red Lake, Roseau
Multi-County*

Technical Assistance Hours

Multi-County	44
Kittson	32
Marshall	119
Norman	89
Pennington	66
Polk	223
Red Lake	108
Roseau	<u>69</u>
Total	915

Kittson County

Health Ins. Counseling	Outreach Contacts County	Two informational sessions conducted to increase awareness of the Health Insurance Counseling program. The 40 attendee's were seniors, family members, health care providers and agencies.	
Housing Comm. Bldg.	Housing Assessment County	Kittson County housing assessment and long range housing plans. Develop a housing strategy for the county, based on housing surveys completed. Developed strategies with communities on how to use CRF funds in their communities on new housing construction.	
Economic Development	Downpayment Assistance	Assisted in the development of a loan pool program to assist home buyers with the purchase of a new or existing home in Kittson County.	
Transportation	Kittson Assistance County	Developed maps for county and public display.	
Enterprise Fund	Enterprise Fund Loans County	Nine loans have been made to businesses in Kittson County, totalling \$523,821. Six of the loans are active, two loans were repaid and one loan was written off.	\$523,821
Farm Wrap Coordination	Family WL County	Wants to get through low dairy price. Dairy Diagnostic Team had no answers. Wife has part-time job, can't go full-time because then can't help with dairy. See Ag-CPA about tax consequences of switching to beef. Use FBM grant first to project cash flows.	
Aging Admin	Karlstad Site Council County	Provided information on equipment policies and federal funds during site council meeting at Karlstad Nutrition Site.	
Aging Admin	Senior Meals	Answered questions regarding site sponsorship, allocation of costs and funding amounts to members from Kennedy, Lake Bronson, Hallock and Lancaster sites.	
Aging Admin	2000 Sr. Medical Travel	Granted Kittson County Social Services III-B funds to provide medical transportation to seniors in Kittson county.	\$4,000
SENIOR LINKAGE	I&A County	Provided Information and Assistance to 52 persons in Kittson County from July 1999 to June 2000.	
Aging PD&C	Hallock Senior Center County	Provided information, technical assistance, and linking resources to a group of Seniors interested in the development of a Senior Center for Hallock.	
Housing Comm. Bldg.	Hallock Community Assessment	Community housing surveys and long range housing planning. Work on developing a loan pool to be used by Hallock residents and employees of Kittson County Memorial Hospital. Evaluated housing surveys to determine strategy for loan pool funds.	
Arts Development	Artists in Schools Grant Hallock	Funded Kittson County Central School for the sponsorship of a workshop by Prairie Fire Children's Theater ending in a performance of "Wizard of Oz" on July 28-29, 2000.	\$705
Housing Comm. Bldg.	Karlstad Community Assessment	Karlstad housing survey and long range planning. Evaluated housing surveys to determine what will be the best strategy to use housing loan pool funds.	

Arts Development	Artists in Schools Grant Karlstad	Funded Tri-County School District for the sponsorship of Prairie Fire Theaters workshop and production of "Alice in Wonderland" from June 12-17, 2000.	\$1,470
Farm Wrap Coordination	Family R	Finpak shows time to exit or restructure. Grant to see Ag-CPA to prevent tax consequences, needs retraining while exiting.	
Housing Comm. Bldg.	Lancaster Housing Assessment	Lancaster housing survey and long range planning. Developed a housing loan pool to be used with the city to develop new housing for the expanding dairy operation.	

Marshall County

Economic Development	Alvarado Elevator Expansion	Assist with development of funding packages for expansion to grade and sort barley for malting.	
Arts Development	TA Argyle	Worked with the Old Mill State Park on their public art project.	
Arts Development	Artists in Schools Grant Argyle	Funded Stephen/Argyle School District for the sponsorship of Prairie Fire Theater's workshop and production of "Beauty and the Beast" from August 7-12, 2000.	\$2,445
McKnight Arts	Student Artist Grant Argyle	Funded Andrea Rivard for voice lessons in Italian singing with Maria Williams from October 1999 - June 2000.	\$500
Landuse Planning	Staff County	Provide a variety of staffing duties for DTA. Attend meetings, scheduling, mailings, prepare/present reports to landuse committee.	
Landuse Planning	Demographic County	Prepare demographic and economic data package for landuse committee.	
Landuse Planning	Data County	Prepare data package outlined in the landuse planning proposal. Prepare and package GIS data.	
Landuse Planning	Training County	Organize and tailor GIS training based on survey of local GIS capacity and staff training suggestions.	
Health Ins. Counseling	Outreach Contacts County	Five informational sessions conducted to increase awareness of the Health Insurance Counseling program. The 147 attendee's were seniors, family members, health care providers and agencies.	
Housing Comm. Bldg.	Housing Loan Pool County	Developing a housing loan pool in Marshall County like the loan pool developed in Roseau County.	
Economic Development	TA Marshall County County	Discussion with townhome developers for the region.	
Economic Development	Housing Loan Pool County	Assisted in the completion of an application for funding of a downpayment loan pool to assist new home buyers.	
Transportation	Marshall Assistance County	Developed county maps for rural fire departments, Florian County Park, Old Mill State Park, and Marshall County employees.	
Enterprise Fund	Enterprise Fund Loans County	Fifteen loans have been made to businesses in Marshall County, totalling \$880,542. Five of the loans are active, five loans were repaid and five loans were written off.	\$880,542

Marshall & Penn. LUP	Land Use Plan	Worked with Denver Tolliver and Associates to complete a land use plan for the County. The plan addresses both natural resources and economic issues. Visioning sessions, data analysis, public input and the planning committee identified key issues and solutions.	
Farm Wrap Coordination	Family B County	Only time to reach this family is after 9 pm or on weekends. Both working off the farm and cannot be contacted on the job. Did use Ag-CPA grant to structure an exit.	
Marshall Feedlot	Operation of Feedlot County	Trained Marshall County staff on the operation of the GIS feedlot information.	
Aging Admin	Public Forum	Provided information about AAA funding activities and gathered information regarding senior needs and service gaps for Area Plan on Aging.	
Aging Admin	Welfare Board	Provided information about AAA activities including grantee accomplishments during 1999 to members of the Marshall County Welfare Board.	
Aging Admin	Viking Site Assessment County	Conducted site assessment of Viking Nutrition Site. This new site is a Diner's Club site, with the Tri-Community Living at Home/Block Nurse Program operating as the contact for customers who want to purchase coupons.	
SENIOR LINKAGE	I&A County	Provided Information and Assistance to 160 persons in Marshall County from July 1999 to June 2000.	
Aging PD&C	Viking Meal Expansion County	Provided information about the Nutrition Program, funding, and other options during the board meeting of Tri-Community LAH/BNP program.	
Aging PD&C	Tri-Comm. LAH/BNP Project	Provided information and technical assistance to Tri-Community Living at Home/Block Nurse Program in the development of a Title III-B grant for start up funds.	
Housing Comm. Bldg.	Comm. Housing Ass. Middle River	Meeting with city council about housing needs in Middle River on October 7, 1999. They pledged lots and cash for a new CRF grant application round. We will hear in May if we were awarded a grant for Polk and Marshall counties.	
Arts Development	Arts Grant Middle River	Funded Middle River Community Theatre for a children's theater production of Charlotte's Web on June 25-28, 2000.	\$1,750
McKnight Arts	Small Capital Grant Middle River	Funded Middle River Community Theater for the purchase of lighting equipment.	\$940
Arts Development	Artists in Schools Grant Newfolden	Funded Marshall County Central School F.L.A.G. program for the sponsorship of a workshop by Prairie Fire Children's Theater ending in the performance of "Robin Hood" on September 1-2, 2000.	\$1,485
Arts Development	Artists in Schools Grant Stephen	Funded Stephen/Argyle School District for the sponsorship of a dance residency with Maggie Bergeron on May 1-12, 2000.	\$1,200
McKnight Arts	Student Artist Grants Stephen	Funded Tara Rusling for piano and voice lessons to prepare for community performances from October 1999 - April 2000.	\$500

Arts Development	TA Warren	Worked with the school district on their possible public art project.	
Arts Development	TA Warren	Worked with Warren Arts Board on their possible public art project.	
Arts Development	Artists in Schools Grant Warren	Funded Warren/Alvarado/Oslo School District for the sponsorship of Prairie Fire Theaters workshop and production of "Wizard of Oz" from August 20-26, 2000.	\$1,200

Norman County

Health Ins. Counseling	Outreach Contacts County	Three informational sessions conducted to increase awareness of the Health Insurance Counseling program. The 43 attendee's were seniors, family members, health care providers and agencies.	
Economic Development	TA Norman County County	Working with Halstad on housing survey. EDA is formed and projects are being identified. A firehall and clinic have been discussed as a need. Suggested looking at USDA Facilities.	
Transportation	Norman Assistance County	Incorporate Norman County data into the regional GIS inventory.	
Enterprise Fund	Enterprise Fund Loans County	Nine loans have been made to businesses in Norman County, totalling \$323,560. Six of the loans are active and three loans were repaid.	\$323,560
Enterprise Fund	Roger's Auto & Truck Repair	Closed Disaster Relief Loan for \$13,900.	\$13,900
Farm Wrap Coordination	Family C County	Using both Ag-CPA and Ag-Attorney grants to reduce IRS tax debt on land sale. Still not enough to live on. Consulted Medical Forms Counseling to reduce medical expenses. Used Village to reduce credit card debt. These are Seniors who will have to find work.	
SENIOR LINKAGE	I&A County	Provided Information and Assistance to 143 persons in Norman County from July 1999 to June 2000.	
Aging PD&C	Volunteer Coordinator County	Provided technical assistance to Norman County Nursing Service in the development of Title III-B grant proposal for the implementation of a Norman County Volunteer Coordinator position.	
Arts Development	Artists in Schools Grant Gary	Funded Norman County East School for the sponsorship of visual artists Mary LaFrance and Charlotte Lewis for a combined residency in October 2000.	\$1,500
McKnight Arts	Student Artist Grants Gary	Funded Annika Reynolds to attend the Ambassadors of Music European Tour in July 2000. Ms. Reynolds will be performing vocally and on flute for the tour.	\$500
Flood Recovery	Person M Halstad	Helped this person with what to do with moldy house outside of dike. She would be a good candidate for a work crew house on a free lot in town and crew could demolish old home, but mental attachment to old home is overpowering any decision making.	
Arts Development	Arts Grant Halstad	Funded Valley Community Theater for five performances of "An Evening of Culture" from October 1-3 & 9-10, 1999.	\$2,000

Arts Development	Arts Grant Halstad	Funded Valley Community Theatre for the production of "Weekend Comedy" from March 10-12, 18-19, 2000.	\$1,000
Arts Development	Arts Grant Halstad	Funded Valley Community Theater for the sponsorship of Missoula Children's Theater workshop and production of "Cinderella" from July 31 - August 4, 2000.	\$1,000
McKnight Arts	Small Capital Grant Halstad	Funded Valley Community Theater for the purchase of lighting equipment.	\$3,065
Flood Recovery	Family S Twin Valley	Good candidate for stress panel home in country. Farm stress has delayed progress on this one.	

Pennington County

Landuse Planning	Staff County	Provide a variety of staffing duties for DTA. Attend meetings, scheduling, mailing, prepare/present reports to landuse committee.	
Landuse Planning	Training County	Organize and tailor GIS training session based on survey of local GIS capacity and staff training suggestions.	
Landuse Planning	Data County	Prepare data package outlined in the Landuse planning proposal. Prepare and package available GIS data.	
Landuse Planning	Demographic County	Prepare demographic and economic data package for Landuse committee.	
Health Ins. Counseling	Outreach Contacts County	One informational session conducted to increase awareness of the Health Insurance Counseling program. The 7 attendee's were seniors.	
Enterprise Fund	Enterprise Loan Funds County	Six loans have been made to businesses in Pennington County, totalling \$464,600. Two of the loans are active, three loans were repaid and one loan was written off.	\$464,600
Marshall & Penn. LUP	Land Use Plan	Completed a land use plan for the county in conjunction with Denver Tolliver and Associates in Fargo. The planning process identified issues such as feedlot location and suggested ways the County and townships can work together to find solutions.	
Pennington Feedlot	Feedlot & Well Projects County	Trained Pennington County staff on the operation of the GIS database for the feedlot and well inventories.	
Pennington Feedlot	Research County	Pennington County feedlot inventory.	
Farm Wrap Coordination	Family P County	Not enough collateral to cover all the loans on a forced liquidation. IRS and lender want a lien on home. Son working 8.00/hour job which can't help much. We try an offer and compromise with IRS.	
Aging Admin	Welfare Board Meeting County	Provided information on AAA activities including program grants during 1999 to members of Pennington County Welfare Board.	
Aging Admin	Anniversary Celebration County	Provided information on community-based alternatives and resources to seniors at Heritage Community Center anniversary celebration.	

Aging Admin	Council Meeting County	Provided information on site sponsorship, cost allocations, and federal funds during Heritage Center Nutrition Council meeting.	
SENIOR LINKAGE	I&A County	Provided Information and Assistance to 108 persons in Pennington County from July 1999 to June 2000.	
Arts Development	Arts Grant Thief River Falls	Funded Thief River Falls Arts Council for the production of "On Golden Pond" on June 30-31, July 1, 2000.	\$1,900
Arts Development	Arts Grant Thief River Falls	Funded Northwest Service Cooperative for the Young Author's Conference: Telling a Story, Write from Where You Are on March 16, 2000.	\$2,500
Arts Development	Arts Grant Thief River Falls	Funded Thief River Falls Community Arts Council for the production of "Greater Tuna" from June 8-10, 2000.	\$2,100
McKnight Arts	Student Artist Grant Thief River Falls	Funded Chris Krapohl for visual art supplies and framing materials needed to complete a mentorship with John Leopold that will end in a visual art display.	\$500
McKnight Arts	Student Artist Grant Thief River Falls	Funded Kelsi Holland for voice lessons with Maria Williams from April 2000 - April 2001 and a voice recital.	\$500
McKnight Arts	Individual Artist Grant Thief River Falls	Funded Vanessa Anderson to work with Maria Williams to prepare vocal solo pieces for her recital from October 1999 - August 2000.	\$750
McKnight Arts	Student Artist Grant Thief River Falls	Funded Ashley Hammer for voice mentorship with Diane Johnson from October 1999 - May 2000.	\$500

Polk County

Health Ins. Counseling	Outreach Contacts County	Eight informational sessions conducted to increase awareness of the Health Insurance Counseling Program. The 264 attendee's were seniors, family members, health care providers and agencies.	
Housing Comm. Bldg.	Housing Assessments	Worked with McIntosh Economic Development, Fosston Economic Development and Fertile to develop a housing loan pool with major employers and cities to prepare a CRF application to MNHFA.	
Housing Comm. Bldg.	Crookston Housing Assessment	Work with Crookston to develop a housing loan pool to help working families get into affordable housing in Crookston.	
Housing Comm. Bldg.	Fertile Housing Assessments	Fertile housing assessment and development of a county wide housing loan pool. Identified lots and locations to build new housing and apartments on. Fertile pledged lots and cash towards a CRF application.	
Housing Comm. Bldg.	Housing Loan Pool County	Developed a housing loan pool for Polk County modeled after Roseau County's fund. Application to CRF funds are being applied for.	
Economic Development	TA Polk County County	Working with Fertile and Fosston on developing apartments. A comprehensive housing study is being done this summer with a private developer looking at both communities to build apartments.	
Economic Development	Downpayment Asst. County	Worked with several communities to raise money for a CRF application. Waiting to hear if funded.	

Transportation	Polk Assistance County	Provided assistance to the Polk County public. Provided county and regional maps for housing development.	
Enterprise Fund	Enterprise Fund Loans County	Thirty-five loans have been made to businesses in Polk County, totalling \$2,396,725. Twenty of the loans are active, twelve loans were repaid and three loans were written off.	\$2,396,725
Farm Wrap Coordination	Family B County	Grant from us for FBM showed time to restructure or exit. Turned down for loan guarantee, appealed and won, grant for tax counsel to plan sell down.	
Farm Wrap Coordination	Family M County	This is a difficult situation to work on as the severity of the mental health issues are hard to assess. The bank has sent two foreclosure notices, seized the government disaster payments, checkbook and personal savings. A family conference may help.	
Farm Wrap Coordination	Family W County	Only a straight cash settlement with FHA is acceptable, bankruptcy filed 2 years ago, prevents any other loans. IRS has garnished 25% of both 8.00/hour jobs. Grant to see about offer and compromise with IRS, and new IRS agent is resolving this case.	
Aging Admin	Public Forum County	Gathered information from seniors in Fertile regarding service needs and gaps as part of Area Plan development process.	
Aging Admin	Committee on Aging	Polk County Committee on Aging provided an appreciation plaque to Henry Gredvig for his years of service and assistance to the committee.	
SENIOR LINKAGE	I&A County	Provided Information and Assistance to 390 persons in Polk County from July 1999 to June 2000.	
Aging PD&C	Grocery Shopping Assistance	Met with city clerk, nutrition site manager, and interested community members in Winger to determine interest and need for the development of a Grocery Shopping Assistance program. Convenience store will soon open that hopes to meet seniors' needs.	
Enterprise Fund	Phoenix Ind. , Ltd. Crookston	Approved Standard Loan for \$150,000. Closing is pending.	\$150,000
Arts Development	TA Crookston	Helped the Friends of the Library group prepare to submit a public art application.	
Arts Development	TA Crookston	Worked with the University of Minnesota on their public art project.	
Arts Development	Arts Grant Crookston	Funded the Ox Cart Festival for the sponsorship of Gary Tyson and Ken Sutherland to perform during the festival on August 17-20, 2000.	\$2,500
Arts Development	Arts Grant Crookston	Funded Crookston Community Theater for the production of "Blame it on the Movies" from June 1-4, 2000.	\$2,500
Arts Development	Arts Grant Crookston	Funded Impressions Dance Company for two performances of "Romeo & Juliet" on December 18-19, 1999.	\$2,205
Arts Development	Public Art Project Crookston	Funded Crookston Public School for the creation of a sculpture for the front entrance to the school.	\$7,500

Arts Development	Public Art Project Crookston	Funded the Friends of the Library in Crookston for a outdoor sculpture by David Badman of Grand Forks.	\$5,500
Arts Development	Arts Grant Crookston	Funded the University of Minnesota Crookston for the sponsorship of the production of "The Tenderland Opera" on a farm in rural Red Lake Falls on June 24, 2000.	\$2,500
McKnight Arts	Student Artist Grant Crookston	Funded Kelsey Christensen to attend the Dakota Chamber Music Camp in July 2000.	\$500
McKnight Arts	Student Artist Grant Crookston	Funded Therese Noel for reimbursement of expenses due to participation in Dance Olympus VIP program from April - Sep., 2000.	\$500
McKnight Arts	Individual Artist Grant Crookston	Funded Kristi Kramlich-Kuball to attend the Photographers Institute in June 2000.	\$750
McKnight Arts	Small Capital Grants Crookston	Funded Crookston Civic Music League for the purchase of 100 vocal scores.	\$495
Economic Development	Greenway Rec. Area East Grand Forks	Assist in the development of a proposal to the legislature for a recreational area in the area left vacant by the 1999 flood. Prepared basic cost benefit analysis for the proposal. EGF was sucessful in obtaining \$1,000,000. for the project.	
Flood Recovery	Family J East Grand Forks	Good candidate for a work crew stress panel home in rural area. Existing wrecked home could be used for storage, and old barns need to come down first. Winter has delayed this project.	
Flood Recovery	Family T East Grand Forks	This family made repairs to their home, but later realized they really would have rather gotten out of the flood area. Claim that they did not hear about the buyout program. Husband and wife will have to agree on where they want to live before anyone can help.	
Flood Recovery	Family M East Grand Forks	This family had lost rental properties, stuffed things from those properties into their damaged basement which combined with the need for privacy, did not allow any agency to help, although, at last, he did make an appointment with Salvation Army before Dec. 1.	
Flood Recovery	Family N East Grand Forks	This family had work done which wasn't code. The contractor and all the agencies participated in juggling things so that the work will be corrected and everyone will be satisfied.	
Flood Recovery	Family O East Grand Forks	This person had bought a flood damaged house on contract for deed and was angered when the owner would not sign for him to get help from Wynne Consulting. He had charged a lot of material in hopes of qualifying. We could not help him because of his anger.	
Arts Development	NW MN Art Exhibition East Grand Forks	Exhibit at Central Middle School, April 29-30, 2000. Co-sponsored by the East Grand Forks Arts and Crafts Council. Coordinate the registration, hanging, greeting, artist reception, and check-out related to the exhibit itself.	
Arts Development	TA East Grand Forks	Presented information on the Arts Council at the evening of arts and artists at the Senior Center sponsored by the Library.	
Arts Development	Arts Grant East Grand Forks	Funded Summer Arts STAGES for the children's theater workshop & production of "Jack and the Beanstalk" from July 24 - Aug. 5, 2000.	\$2,500

Arts Development	Arts Grant East Grand Forks	Funded Summer Arts STAGES group Prairie Dog Players for the production of a play for Heritage Days August 18-20, 2000.	\$2,500
Arts Development	Arts Grant East Grand Forks	Funded the Twin Forks Sweet Adelines for a barbershop production on October 1, 2000 at the Community Performing Arts Center in EGF.	\$2,210
McKnight Arts	Small Capital Grant East Grand Forks	Funded the Community Performing Arts Council for the purchase of drapery legs for their auditorium.	\$3,125
McKnight Arts	Small Capital Grant East Grand Forks	Funded Summer Arts STAGES for the purchase of a keyboard.	\$1,895
McKnight Arts	Training & Dev. Grant East Grand Forks	Funded Twin Forks Sweet Adelines for the sponsorship of a training by Harriet Walters in February 2001.	\$750
Aging PD&C	Nutrition Asst. Program East Grand Forks	Assisted with the development of Nutrition Assistance Program for Seniors, to be offered to seniors through the East Grand Forks Senior Center. Program provides supplemental foods to low income seniors.	
Arts Development	Arts Grant Fertile	Funded Fertile Area Arts Council for the sponsorship of Prairie Fire Theater's workshop and production of "Aladdin" from May 29 - June 2, 2000.	\$900
Flood Recovery	Family N and K Fosston	This family lost a barn and homes in the '97 storms. All agencies are participating to finish a partially built home on the property and fix a mobile home. The work crew is helping too.	
Arts Development	Arts Grant Fosston	Funded Fosston Library Arts Center for the sponsorship of author Gary Harbo on April 14-15, 2000.	\$600
Arts Development	Arts Grant Fosston	Funded Fosston Library Arts Center for the production of "Oliver" from July 26-30, 2000.	\$2,500
Arts Development	Public Art Project Fosston	Funded The City of Fosston for the creation of a mural by artist Andy Nelson to document the changing of the millennium in 2000.	\$5,500
Housing Comm. Bldg.	Comm. Housing Asses. McIntosh	Working with community leaders to develop a housing program that fits communities needs. Survey of community has been completed with 55% response rate. Meeting held with community leaders on developing a housing strategy and a loan pool for housing.	
Enterprise Fund	Clay's Family Market McIntosh	Closed Standard Loan for \$75,000.	\$75,000

Red Lake County

Housing Comm. Bldg.	Community Assesment Brooks	Brooks Community Assessment and housing strategy development. Developed a housing development strategy with Paradis Trucking and the City of Brooks. The MNHFA awarded the county \$500,000 for CRF housing administrated by NW Multi County HRA.	
Health Ins. Counseling	Outreach Contacts County	Two informational sessions conducted to increase awareness of the Health Insurance Counseling program. The 64 attendee's were seniors, family members, health care providers and agencies.	

Housing Comm. Bldg.	Housing Assessment County	Red Lake County housing assessment and long range housing plan. Developed a strategy with housing loan pool investors to develop guidelines for new housing loan pool. Red Lake County was awarded \$500,000 from MNHFA for forgivable home loans.	
Economic Development	TA County	Working with county and cities on a housing loan pool modeled after Roseau County's Affordable Housing Fund. Paradis and Homark have invested in the loan pool along with cities and county. Helping Pierre's bakery with some customized training issues.	
Economic Development	NW Manufacturing County	Introduced NW Manufacturing to a Canadian Inventor about manufacturing parts in Red Lake Falls.	
Economic Development	Downpayment Asst. County	Help Red Lake County Develop a \$500,000 housing loan pool with \$175,000 raised locally.	
Transportation	Red Lake Assistance County	Created maps of the county water sampling sites and instructed county employees on GIS usage.	
Enterprise Fund	Enterprise Loan Funds County	Seven loans have been made to businesses in Red Lake County, totalling \$333,115. Three of the loans are active, three loans were repaid, and one loan was written off.	\$333,115
Farm Wrap Coordination	Family S County	FBM grant showed only way is to sell cows down, saw Ag-CPA about tax consequences. Needs to sell down more, needs off-farm job, and counseling. Use case conference to determine if more FBM is needed.	
Aging Admin	Oklee Site Council Mtg. County	Attended Oklee Nutrition Site Council meeting. Oklee is interested in piloting a Diner's Club site in addition to the operation of a regular site.	
Aging Admin	Oklee Site Council County	Attended the site council meeting for Oklee Nutrition Site. The site ended 1999 with a gain and was able to purchase items for use by the program.	
SENIOR LINKAGE	I&A County	Provided Information and Assistance to 70 persons in Red Lake County from July 1999 to June 2000.	
Housing Comm. Bldg.	Comm. Assessment Oklee	Oklee housing assessment and long range planning. Evaluate housing for seniors in community, based on the need for assisted living services. Developed a housing development strategy to utilize the Red Lake County Affordable Housing Loan Pool.	
Housing Comm. Bldg.	Plummer Community Assessment	Plummer housing assessment and long range housing plan. Work with Plummer on developing a housing loan pool for their community that can access the Red Lake County loan pool funds from MNHFA. School built a home which will be sold with this program.	
Housing Comm. Bldg.	Comm. Assessment Red Lake Falls	Red Lake Falls housing assessment and long range housing plan. Develop a housing loan pool to be used for employees of Homark and the people in the community that are interested in building or buying a new home. Loans are being made & a lot of interest shown.	
Economic Development	Housing Loan Pool Red Lake Falls	Developed a loan pool for down payment and gap financing for residents of Red Lake Falls. Loans have been made in Red Lake Falls using the CRF program. Loan advisory committee meetings have been started and loan procedures developed.	

Economic Development	Community Center Red Lake Falls	Assisted the community in planning the development of a multi function community events center. An agreement was reached to complete a renovation of the existing hockey arena which would do necessary upgrades and provide for non-hockey uses.	
Enterprise Fund	Triangle Tire Sales Red Lake Falls	Closed Disaster Relief Loan for \$25,000.	\$25,000
Enterprise Fund	NW Manufacturing Red Lake Falls	Approved Standard Loan for \$150,000. Closing is pending.	\$150,000
Arts Development	TA Red Lake Falls	Worked with the city on their public art project.	
Arts Development	Arts Grant Red Lake Falls	Funded Two Rivers Area Theater for the production of "Brigadoon" on July 26-30, 2000.	\$2,500
Arts Development	Artists in Schools Grant Red Lake Falls	Funded Red Lake Falls School District for the sponsorship of a saxophone workshop and performance in Thief River Falls by the Mazzomi's on April 3-14, 2000.	\$1,875
Arts Development	Artists in Schools Grant Red Lake Falls	Funded Red Lake Falls School District for the sponsorship of a folk dance residency with Terrence Smith on Nov. 27 - Dec. 1, 2000.	\$1,400
Arts Development	Arts Grant Red Lake Falls	Funded Two Rivers Area Theater for the production of "Odd Couple" from February 18-20, 2000.	\$1,500
McKnight Arts	Individual Artist Grant Red Lake Falls	Funded Linda Shoemaker to purchase art supplies, computer hardware and software for a drawing project for display on the internet from October 1999 - October 2000.	\$750

Roseau County

Enterprise Fund	Supermarket Badger	Approved Standard Loan for \$37,500. Closing is pending.	\$37,500
Arts Development	Artists in Schools Grant Badger	Funded Badger Public School for a pen/ink/painting residency with Shelly Wokasch from March 6, 7, 13-15, 2000.	\$880
Arts Development	Artists in Schools Grant Badger	Funded Badger School District for the sponsorship of a embossing residency with Martina Johnson in April 2000.	\$480
McKnight Arts	Student Artist Grant Badger	Funded Andrea Von Ende to study visual art techniques with mentor Annette Hermansen in July 2000.	\$185
McKnight Arts	Student Artist Grant Badger	Funded Jonathan Kaml for a visual art mentorship with Paulette Christianson from April 2000 - April 2001.	\$500
Health Ins. Counseling	Outreach Contacts County	Two informational sessions conducted to increase awareness of the Health Insurance Counseling program. The 42 attendee's were seniors, family members, health care providers and agencies.	
Economic Development	Downpayment Asst. County	Discussion of down payment program developed in Roseau County with other communities and counties interested in duplicating this program. Developed loan requirements, program guidelines and housing fair to promote program.	

Economic Development	TA Roseau County County	Working with city on a snowmobile museum and supper club. Also working with the Alfalfa Coop to determine what is feasible. Looking at an animal waste facility which would compost animal waste with wood chips and other carbon sources.	
Economic Development	Township Water Sys. County	Assisted in a study group to examine the possibility of a sewer district to serve densely populated areas around Warroad. A facilities plan for an \$8.4 million dollar joint system to serve the township and to expand Warroads capacity was submitted to MPCA.	
Enterprise Fund	Enterprise Fund Loans County	Twelve loans have been made to businesses in Roseau County, totalling \$612,264. Six of the loans are active and six loans have been repaid.	\$612,264
Farm Wrap Coordination	Family WG County	Not enough collateral to cover all the creditors. Can't get loan to seed CRP, lender wants lien against truck, which is the only source of income. These folks are in their sixties.	
Aging Admin	Laotian Outreach County	Made outreach contact to members of Laotian community living in Warroad. Visit was a cooperative effort between Legal Services staff and staff from OPTIONS.	
Aging Admin	Warroad Senior Meals County	Provided information about the Area Agency on Aging, services available, and use of the Senior Linkage Line during evening meal at Warroad Community Center.	
Aging Admin	Public Forum	Gathered information on senior needs and service gaps as part of the 2000 - 2002 Area Plan development process.	
Aging Admin	Marvin Windows Health Fair	Provided information to 800+ employees, family members, and recent retirees at Marvin Windows Health Fair. Provided information on Senior Linkage Line, Health Insurance Counseling Program, and AAA activities.	
Aging Admin	2000 STS Chore Prog. County	Contracted with Roseau County Sentencing to Service with III-B funds to provide chore services to seniors in Roseau county.	\$6,000
Aging Admin	2000 Sr. Med. Travel County	Granted Roseau County Committee on Aging III-B funds to provide senior medical transportation in Roseau county.	\$8,000
SENIOR LINKAGE	I&A County	Provided Information and Assistance to 121 persons in Roseau County from July 1999 to June 2000.	
Enterprise Fund	QC Techniques, Inc. Roseau	Closed Standard Loan for \$35,000.	\$35,000
Arts Development	TA Roseau	Worked with the Roseau Convention and Visitors Bureau on their public art project.	
Arts Development	Artists in Schools Grant Roseau	Funded Roseau School District for the sponsorship of folk artists Ross Sutter & Maren Hinderlee for a residency from May 15-19, 2000.	\$2,315
Arts Development	Arts Grant Warroad	Funded Warroad Summer Theatre for the production of "On Golden Pond" from March 23-26, 2000.	\$1,850
Arts Development	Arts Grant Warroad	Funded Warroad Summer Theatre for the production of "Oklahoma!" from August 2-6, 9-13, 2000.	\$2,100

Multiple County Projects

Kittson, Marshall, Norman, Pennington, Polk, Red Lake and Roseau Counties

SENIOR LINKAGE	Multi-County-Regional	Provided Information and Assistance to 13 persons of a Multi-County Regional nature from July 1999 to June 2000.
-------------------	-----------------------	--

Kittson, Marshall and Pennington Counties

Aging Admin	2000 NWSTS Chore Program	Contracted with NW Sentencing to Service Program with III-B funds to provide chore services for seniors in Kittson, Marshall and Pennington counties.	\$15,000
----------------	-----------------------------	---	----------

Kittson, Marshall, Norman, Pennington, Polk, Red Lake and Roseau Counties

SENIOR LINKAGE	I&A - Out of Region	Provided Information and Assistance to 93 out of region persons from July 1999 to June 2000.
-------------------	---------------------	--

Marshall and Pennington Counties

Community Development	GIS Inventory	Complete a county-wide inventory of GIS resources for Marshall and Pennington Counties. Inventory is part of the NCLUCB Land Use Planning process.
--------------------------	---------------	--

Marshall and Pennington Counties

Northern Counties	Northern Co. Contract Management	Completed all administrative duties related to the grant from MN Planning to the Northern Counties Land Use Coordinating Board, for the development of a county land-use planning model and draft land use plans for 10 counties including Pennington and Marshall.
----------------------	-------------------------------------	---

Norman and Pennington Counties

Economic Development	County Loan Pools	Started the process of examining the need for a housing downpayment assistance program in Norman and Pennington Counties. Application will be completed if match can be raised.
-------------------------	-------------------	---

Marshall, Norman, Pennington, Polk and Roseau Counties

Aging Admin	2000 Valley Housekeeping	Contracted with Tri-Valley Opportunity Council with III-B funds to provide housekeeping services to seniors in Norman, Pennington, Polk, Roseau and Marshall counties.	\$29,750
----------------	-----------------------------	--	----------

Kittson, Pennington, Red Lake and Roseau Counties

Aging Admin	2000 Respite & Caregiver Support	Granted Lutheran Social Service III-B funds to provide respite services and caregiver support groups for seniors and family members in Pennington, Red Lake, Roseau and Kittson counties.	\$14,062
----------------	-------------------------------------	---	----------

Norman, Polk and Red Lake Counties

Aging Admin	2000 Tri-Co STS Chore Program	Contracted with Tri-County Corrections Sentencing to Service Program with III-B funds to provide chore services to seniors in Polk, Red Lake and Norman counties.	\$13,469
----------------	----------------------------------	---	----------

Pennington and Red Lake Counties

Aging Admin	2000 Home Repair for Seniors	Granted Inter-County Community Council III-D funds to provide assistance with minor home repair and modification services to remove safety hazards in seniors homes.	\$6,582
----------------	---------------------------------	--	---------

Certified Public Accountants

-3-

117 South Broadway

Crookston, Minnesota 56716

Telephone (218) 281-3789

FAX (218) 281-5245

INDEPENDENT AUDITORS' REPORT

Board of Directors
Northwest Regional Development Commission
Warren, Minnesota 56762

We have audited the accompanying general purpose financial statements of Northwest Regional Development Commission as of June 30, 1999, and for the year then ended, as listed in the Table of Contents. These general purpose financial statements are the responsibility of Northwest Regional Development Commission, management. Our responsibility is to express an opinion on these general purpose financial statements based on our audit.

We conducted our audit in accordance with generally accepted auditing standards and Government Auditing Standards, issued by the Comptroller General of the United States. Those standards require that we plan and perform the audit to obtain reasonable assurance about whether the general purpose financial statements are free of material misstatement. An audit includes examining, on a test basis, evidence supporting the amounts and disclosures in the general purpose financial statements. An audit also includes assessing the accounting principles used and significant estimates made by management, as well as evaluating the overall general purpose financial statement presentation. We believe that our audit provides a reasonable basis for our opinion.

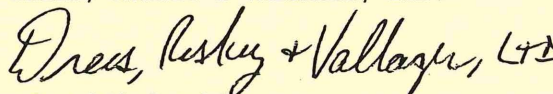
In our opinion, the general purpose financial statements referred to above present fairly, in all material respects, the financial position of Northwest Regional Development Commission, as of June 30, 1999, and the results of its operations for the year then ended in conformity with generally accepted accounting principles.

Northwest Regional Development Commission has not presented the disclosure required by Governmental Accounting Standards Board Technical Bulletin 98-1, Disclosure about Year 2000 Issues, as amended by Governmental Accounting Standards Board Technical Bulletin 99-1, that Governmental Accounting Standards Board has determined are necessary to supplement, although not be a part of, the basic financial statements. In addition, we do not provide assurance that Northwest Regional Development Commission is or will become year 2000 compliant, that Commission's year 2000 remediation efforts will be successful in whole or in part, or that parties with which Northwest Regional Development Commission does business are or will become year 2000 compliant.

In accordance with Government Auditing Standards, we have also issued a report dated September 14, 1999 on our consideration of the Northwest Regional Development Commission's internal control over financial reporting and our test of compliance with certain provisions of laws, regulations, contracts and grants.

Our audit was conducted for the purpose of forming an opinion on the general purpose financial statements taken as whole. The individual fund statements and schedules listed in the table of contents are presented for purposes of additional analysis and are not a required part of the general purpose financial statements of Northwest Regional Development Commission. The accompanying Schedule of Expenditures of Federal Awards is presented for purposes of additional analysis as required by U.S. Office of Management and Budget Circular A-133, "Audits of States, Local Governments and Non-Profit Organizations", and is also not a required part of the general purpose financial statements of Northwest Regional Development Commission. Such information has been subjected to the auditing procedures applied in the audit of the general purpose financial statements and, in our opinion, is fairly presented in all material respects in relation to the general purpose financial statements taken as a whole.

DREES, RISKEY & VALIAGER, LTD.



Certified Public Accountants

September 14, 1999
Crookston, Minnesota

Members of National Associated CPA Firms
Members of Minnesota Society of CPAs
Members of American Institute of Certified Accountants