



3 0307 00010 7881

*Kittson*

*Roseau*

*Marshall*

*Pennington*

*Red Lake*

*Polk*

*Norman*

**NW Regional  
Development  
Commission**



**ANNUAL REPORT  
Fiscal Year 1997**

HT  
393  
.M62  
N67ax  
1997

RECEIVED

SEP 29 1997

LEGISLATIVE REFERENCE LIBRARY  
STATE OFFICE BUILDING  
ST. PAUL, MN 55155



Working for Local Units of Government in Kittson, Norman,  
Pennington, Polk, Red Lake and Roseau Counties

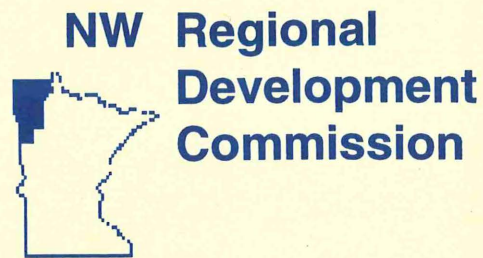
NWRDC • 115 South Main, Suite 1 • Warren, MN 56762 • 218-745-6733



# TABLE OF CONTENTS •

Letter from the Chairperson . . . . .	2
Commission Membership List . . . . .	3
Budget . . . . .	4
Audit Letter . . . . .	5
Community Development . . . . .	7
Regional Forum . . . . .	10
1996 Evaluation Summary . . . . .	12
Enterprise Fund Annual Report . . . . .	13
Economic Development . . . . .	14
Arts . . . . .	16
Aging . . . . .	18
Transportation . . . . .	22
Publications . . . . .	24
Committee Lists . . . . .	25
Projects Listings	
Kittson . . . . .	A1
Marshall . . . . .	A2
Norman . . . . .	A5
Pennington . . . . .	A7
Polk . . . . .	A8
Red Lake . . . . .	A11
Roseau . . . . .	A12
Multi-County . . . . .	A15





## *What The NWRDC is All About . . .*

Regional Development Commissions were created by the State Legislature through the Regional Development Act of 1969. The intent of the Act was to create an option for rural units of government to supplement existing public services and coordinate specific activities of mutual concern. Although created by the State, Regional Development Commissions were left in the hands of local representatives to insure that the final design would reflect area needs and preferences.

The Northwest Regional Development Commission was created on February 2, 1973 by the joint actions of local units of government. Programs were set up to reflect priority work items of the time; and relationships were established with the state and federal agencies that could provide assistance with local projects. Programs and work priorities have changed in response to economic and social trends; but the central mission of supporting efforts by cities, counties, townships, businesses and individuals to improve living, working and natural resource conditions in Northwest Minnesota has remained the same.

The Commission has worked to establish a manner of operation which reflects and compliments the independent, progressive style of Northwest Minnesota. Technical assistance, specialized program delivery, public participation, direct funding, access to information and formalized planning services are the basic materials which we can contribute to the construction of your project.

Please look over our Annual Report and stop by or call if you have any questions, comments or suggestions.

### **NWRDC Staff**

Rose Carriere, Aging Program Assistant  
 Carolyn Eeg, Housing Consultant  
 Leon Heath, Executive Director  
 Brenda LaFond, Secretary/Receptionist  
 Steve Lorch, Transportation Planner  
 Mara Lunde, Arts Council Director  
 Linda Nelson, Loan Fund Manager  
 Steven Neuharth, Physical Resource Technician  
 Danica Robson, Aging Program Director  
 Carol Sorensen, Financial Officer  
 Kathy McGlynn, Economic Development Planner

Staff who worked at the NWRDC this past year but no longer work at the RDC:

Arllys Korynta

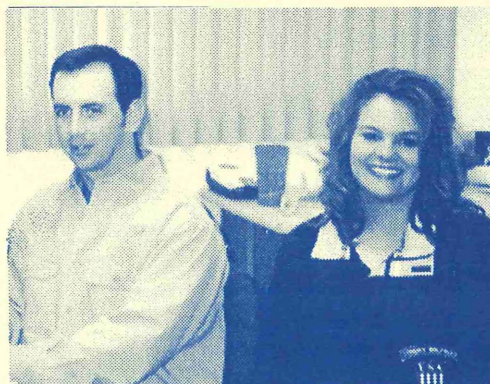


### **NWRDC Staff**

(Above) Back Row: Leon Heath, Linda Nelson,  
 Carol Sorenson, Steve Lorch, Mara Lunde.  
 Front Row: Kathy McGlynn, Arlys Korynta,  
 Rose Carriere, Danica Robson

### **New NWRDC Staff**

(Right) Steven Neuharth, Brenda LaFond





# NORTHWEST REGIONAL DEVELOPMENT COMMISSION •

Letter from the Chairperson

## "Changing Priorities"

Each year we all start out with an idea of where things will go, and each year the end result is somewhat different. Improving economic conditions in Northwest Minnesota have shifted our thoughts towards new issues like housing shortages, making it almost difficult to remember the harsh days of 20% unemployment. Dealing with increasingly complex natural resource issues brings back fond memories of the days when rural Minnesota was considered sparsely populated rather than under-regulated. The Commission's programs have adjusted to these trends with an increased emphasis on the housing and natural resource issues mentioned above, along with many other changes in our service mix.

Looking at last year's Annual Report, however, pointed out the one issue that we most expected would change, but did not. Our 1993 Flood Recovery effort was closed out early in 1996, with absolutely no regret that the program and related funding was gone. The most unfortunate circumstance in our 1997 Annual Report will be including a section on the 1996 Flood Recovery Program. Although we are happy to be a part of the assistance effort, the personal and business misery created by this flood is the saddest event in our experience.

1997 was in many ways a positive year for the Commission, with a variety of funding sources coming forward with resources to assist us with our work. An effort, originated by the Governor, endorsed by the legislature and nurtured by the arts community, resulted in a very significant increase in funding for our Arts Program. The related support for school arts, community theater, individual artists, arts workshops and community

festivals will boost the quality of many local efforts in the arts. An increase in funding for our transportation program and increased duties in planning the future transportation network, reflects a confidence that the Commission can help local and state interests work together. Local leadership by the Chair of our business loan fund has resulted in a simplified process, more suited to the small retail businesses that are again growing in small towns. A partnership between the Aging program and the Sentence to Serve effort has successfully addressed the heavy chore issue which had eluded a solution for many years.

We hope that the Commission can have success during the upcoming year in both fulfilling the responsibilities given us in our regular programs and in helping with the flood recovery effort. We are looking forward to a future annual report which outlines the close out of efforts by the Commission, as one part of a local, state and federal team which worked together to help those now suffering economically and emotionally from the flood.

I would like to end by thanking the staff, commission members, committee members and funding sources that contributed so much to the Commission during the past year.

Joe Bouvette, Chair





NWRDC Board of Directors

Left to Right, Back Row: Charles Lindberg, Warren Olson, Dr. Joe Bouvette, Warren Strandell. Front Row: Rudee Anderson, Oliver Swanson, Delray Larson, Kevin Amiot



Kittson County Commission members caucus during the NWRDC annual meeting.

Left to Right: Charles Lindberg, Dr. Joe Bouvette, George Wikstrom (back), John Holland, and Kimberley Johnson.

## Commission Membership

### Kittson County

**Dr. Joe Bouvette	Hallock	Industry
John Holland	Karlstad	Financial Inst.
Kimberley Johnson	Kennedy	Township
*Charles Lindberg	Kennedy	County
George Wikstrom, Jr.	Karlstad	Municipalities

### Marshall County

*Delray Larson	Gatzke	County
Marville Magnusson	Argyle	Townships
Susan Schuler	Grygla	School Boards
Ole Soltvedt	Oso	Municipalities

### Norman County

Glen Brookshire	Halstad	Municipalities
Fred Jamison	Ada	Townships
*Warren Olson	Halstad	County

### Pennington County

John Erickson	RLF	Townships
Jean Heinrichs	TRF	Municipalities
Daniel Johnson	Goodridge	SWCD
Roy Jorgenson	TRF	Seniors
*Oliver Swanson	TRF	County

### Polk County

Marlene Baatz	Nielsville	Townships
Don R. Cavalier	Crookston	Labor
Dan Chapa	EGF	Minorities
Bernie Solberg	Gully	Women
*Warren Strandell	EGF	Business
Gary Willhite	Crookston	Municipalities

### Red Lake County

*Kevin Amiot	RLF	County
Betty Halvorson	Plummer	School Board
Genevieve Knott	RLF	Townships
Robert Melby	Oklee	Low Income
Arnold Paradis	Brooks	Municipalities
Vaughn Thorfinnson	RLF	Vocational Schools
Ronald Weiss	RLF	Agriculture

### Roseau County

*Rudee Anderson	Greenbush	Watershed Dist.
Bernie Burggraf	Roseau	Municipalities
Glenn Darst	Greenbush	County
Bruce Olson	Badger	Townships

\*Board Members

\*\*Chairperson

Members who served for part of FY'97: Bruce Anderson, Lyle Eisert, Jon Rustad, Duane Knutson and Carol Kofstad.



# COMMISSION BUDGET

<u>REVENUES</u>	<u>ACTUAL FY'97</u>	<u>PROJECTED FY'98</u>	
<b>FEDERAL</b>			
ECONOMIC DEVELOPMENT ADMIN.	\$131,183	\$502,871	
DHHS - AREA AGENCY ON AGING	\$386,944	\$440,352	
USDA - NUTRITION FUNDS	\$139,212	\$131,872	
		\$657,339	\$1,075,095
<b>STATE</b>			
MN/DOT	\$38,910	\$54,902	
STATE ARTS BOARD	\$72,882	\$133,760	
MN CENTER FOR ARTS EDUCATION	\$8,628	\$0	
MN DEPT. TRADE & ECONOMIC DEV.	\$7,399	\$0	
MN HOUSING FINANCE AGENCY	\$6,584	\$16,070	
MN HOUSING PARTNERSHIP	\$2,171	\$0	
STATE NUTRITION	\$95,138	\$95,138	
		\$231,712	\$299,870
<b>PRIVATE FOUNDATIONS</b>			
MCKNIGHT FOUNDATION - ARTS	\$17,373	\$19,500	
NWMIF	\$19,611	\$74,483	
		\$36,984	\$93,983
<b>LOCAL GOVERNMENTAL</b>			
LOCAL LEVY	\$133,531	\$133,531	
MISCELLANEOUS LOCAL CONTRACTS	\$5,771	\$4,250	
NORTHERN COUNTIES PROJECT	\$30,391	\$40,418	
COUNTY AND RDC MATCH FOR LOAN FUND	\$39,585	\$108,822	
		\$209,278	\$287,021
<b>MISCELLANEOUS</b>			
NORTHWEST ENTERPRISE FUND	\$324,385	\$358,896	
INTEREST	\$23,905	\$12,050	
CONFERENCE REGIST./MISC.	\$8,869	\$5,500	
		\$357,159	\$376,446
<b>TOTAL REVENUES</b>		<u>\$1,492,472</u>	<u>\$2,132,415</u>
<b>EXPENDITURES</b>	<b>ACTUAL FY'97</b>	<b>PROJECTED FY'98</b>	
SALARYFRINGE	\$310,388	\$367,060	
STAFF TRAVEL & REGISTRATIONS	\$24,939	\$39,079	
COMMISSION/COMMITTEE TRAVEL/PER DIEM	\$25,385	\$39,688	
PROFESSIONAL FEES	\$53,764	\$120,689	
OFFICE EXPENSES	\$81,909	\$105,364	
<b>TOTAL ADMINISTRATIVE</b>		<b>\$496,385</b>	<b>\$671,880</b>
REGRANTED		\$589,614	\$668,558
BUSINESS LOANS		\$388,100	\$792,977
FIXED ASSETS/RESTRICTED FUND	\$10,401	\$11,000	
DEPRECIATION	(\$9,674)	(\$12,000)	
		\$727	(\$1,000)
<b>TOTAL EXPENDITURES</b>		<u>\$1,474,826</u>	<u>\$2,132,415</u>
<b>INCREASE (DECREASE) TO FUND BALANCE</b>		<u>\$17,646</u>	<u>\$0</u>



*Certified Public Accountants*

117 South Broadway  
Crookston, Minnesota 56716  
Telephone (218) 281-3789  
FAX (218) 281-5245

-3-

INDEPENDENT AUDITORS' REPORT

Board of Directors  
Northwest Regional Development Commission  
Warren, Minnesota 56762

We have audited the accompanying general purpose financial statements of Northwest Regional Development Commission as of June 30, 1996, and for the year then ended, as listed in the Table of Contents. These general purpose financial statements are the responsibility of Northwest Regional Development Commission, management. Our responsibility is to express an opinion on these general purpose financial statements based on our audit.

We conducted our audit in accordance with generally accepted auditing standards and Government Auditing Standards, issued by the Comptroller General of the United States; and Office of Management and Budget (OMB) Circular A-128 Audits of State and Local Governments. Those standards and Circular A-128 require that we plan and perform the audit to obtain reasonable assurance about whether the general purpose financial statements are free of material misstatement. An audit includes examining, on a test basis, evidence supporting the amounts and disclosures in the general purpose financial statements. An audit also includes assessing the accounting principles used and significant estimates made by management, as well as evaluating the overall general purpose financial statement presentation. We believe that our audit provides a reasonable basis for our opinion.

In our opinion, the general purpose financial statements referred to above present fairly, in all material respects, the financial position of Northwest Regional Development Commission, as of June 30, 1996, and the results of its operations for the year then ended in conformity with generally accepted accounting principles.

In accordance with Government Auditing Standards, we have also issued a report dated September 20, 1996 on our consideration of the Northwest Regional Development Commission's control structure and a report dated September 20, 1996 on its compliance with laws and regulations.

*Members of National Associated CPA Firms  
Members of Minnesota Society of CPA's  
Members of American Institute of Certified Public Accountants*



Our audit was made for the purpose of forming an opinion on the general purpose financial statements taken as whole. The individual fund statement and the Schedule of Federal Financial Assistance are presented for purposes of additional analysis and are not a required part of the general purpose financial statements of Northwest Regional Development Commission. Such information has been subjected to the auditing procedures applied in the audit of the general purpose financial statements and, in our opinion, is fairly presented in all material respects in relation to the general purpose financial statements taken as a whole.

DREES, RISKEY & VALLAGER, LTD.

*Drees, Risky + Vallager, LTD*

Certified Public Accountants

September 20, 1996  
Crookston, Minnesota



# Community Development •

## COMMUNITY DEVELOPMENT

**Purpose:** Provide local units of government, community organizations and governmental agencies with professional services which will support and encourage projects designed to improve the quality of life in the area.

**Funding Sources:** RDC Tax Levy - \$25,509; Misc. - \$144.

**Service Priorities:** Information Services, Planning, Grant Writing, New Technology.

Community Development activities concentrate on providing help to local groups in completing a wide variety of improvement projects. This program has been moving more and more toward information services both in terms of raw data and specialized computer services. These services make it easier for local groups to promote attractions, to plan out a course of action or to complete a grant application. In many cases the development of increased capacity at the community or county level has resulted in NWRDC staff providing information where we would once have provided more direct assistance on projects.

Efforts in Community Development for the year continued to focus on information processing, but with continued movement towards more practical use of the information. Work on putting together the software, hardware, data and staff skills necessary to operate a basic Geographical Information System (GIS) was completed, including addition of a technical staff position. Application of the GIS system to real problems and the real world quickly pointed out some flaws and limitation in the system, allowing us to correct some, identify necessary improvements and gain a better understanding.

### **GIS Services**

*The NWRDC can provide basic mapping services for both public and private entities. Many public projects can be done at little or no cost. Contact us for examples or more information.*

The Regional GIS Workshop helped to focus our effort, as local users described their efforts and how the NWRDC could support them. The primary change in direction will be to focus more on the organization of training opportunities in our area, while maintaining technical support to other agencies.

## Mapping Highlights

### - Polk County Comp. Plan Mapping

Provided mapping for the Polk County Sustainable Development Comprehensive Plan.

### - Data Development, Mapping

Worked with LMIC and EPPL7 personnel on data conversion problems. Developed maps for aging program. Made maps for Oslo Cenex/Land- O-Lakes Chemical Express Center's service area. Provided data for Pennington County to TRF engineering services. Produced a general area map for the Northern Counties Land Use Coordinating Board.

### - Township Planning/Mapping

Work with local township associations to determine the information needs of townships in relationship to land use planning or other township activities. Produce maps or other products according to township priorities.

### - County Land Use Planning Information/Mapping

Work with county staff to determine information needs for land use planning and other activities. Produce maps or other products according to county priorities.

### - Program Maps

Update the maps in the Overall Economic Development Program and other program plans to include the most recent information.

### - Block Number Area Maps

Provided Block Numbering Area maps of Norman and Polk counties for Red River State Bank in Halstad, Minnesota. Also completed block number area maps for the rest of the region.



# Community Development • con't

## **NORTHERN COUNTIES**

**Purpose:** Assist with the Northern Counties Land Use Coordinating Board's (Northern Counties) effort to develop a model for comprehensive county land use planning. Includes Pennington and Marshall Counties.

**Funding Sources:** Northern Counties - \$28,263.

**Service Priorities:** Project Administration, Workplan and Budget development, Selection of Contractors.

The Northern Counties group contracted with the NWRDC to provide administrative and project management support to a \$375,000 project with the following objectives:

- A. Develop a scientifically sound model for county based land use planning.
- B. Design and complete a public participation process to establish a natural resource planning round table in Northern Minnesota.
- C. Develop a GIS system to support the planning model
- D. Complete draft land use plans for the ten member counties.

The Northern Counties group completed a very long and thoughtful process during the year to select a contractor for development of a county land use planning model in the ten county area. The final selection by the group resulted in a change in direction towards introducing new planning methods rather than following the traditional land use plan approach. This should be an exciting process over the next year, especially when the each of the member counties starts on an individual draft land use plan.

NWRDC staff and Commission members hope to gain experience and knowledge during this process to participate in additional natural resource planning effort in our area.

## **PENNINGTON WATER PLANNING**

**Purpose:** Assist with Pennington Counties effort to plan for a sustainable system of water resources which can safely support the economic, social and natural systems in the County.

**Funding Sources:** Local Contract - \$5,772; and RDC Tax Levy - \$462.

**Service Priorities:** Implementation of Initiatives, Plan Administration, Workplan and budget development.

The Pennington County Water Planning project is part of the effort by the Commission to support an expanded role for counties in natural resource issues. County water planning has grown over the past few years to include key issues such as wetlands, feedlots, septic systems, shorelands and more. Hopefully, activities in water planning, land use planning, data systems and statewide planning coordination will come together in an informed decision making process.

A draft County Water Plan update for 1996 was completed during the year and submitted to local and state agencies for review and comment. This involved the introduction of new planning methods, using GIS information and attempting to focus on issues resolution rather than conflict. This effort should assist the County in the next step in natural resource planning which will consist of the development of a comprehensive land use planning process and draft plan.

## **FLOOD RECOVERY PROGRAM - 1993**

**Purpose:** Develop recovery strategies based on the identified damages and implement strategies to correct the damage, and assist with many flood related projects due to the 1993 flood.

**Funding Sources:** Economic Development Administration - \$0.

**Service Priorities:** Capital needs of business including emphasis on a Disaster Revolving Loan Fund, public facilities construction; especially community infra-structure projects, long-term mitigation and flood plain management, and individual assistance.

The Flood Recovery Program of 1993 was closed out at the beginning of FY 97. The program resulted in the creation of a Disaster Loan Fund for the area of \$652,500, and also provided communities assistance in securing \$3.2 million in grant funds.



## *Community Development Highlights*

### **Information and Data Services**

- Updated and distributed the 1997 version of the Northwest Minnesota Tourism Directory based on an electronic database.
- Established a basic Geographical Information System to support natural resource planning, program planning and other local uses of this growing technology.
- Held a regional workshop to provide information on computer systems for mapping and information storage and to obtain input on the best information direction for the RDC.
- Completed a variety of mapping projects including the Polk County Land Use Plan, a township base map, Pennington County Water Plan, bank service areas, Cenex service area, ambulance service areas, Northern Counties service area and a variety of RDC program plan maps.
- Started the process and background work for a internet site which would contain information on NWRDC program areas and services. This would eventually include detailed information such as the governmental service directory, tourism directory, arts directory, aging directory, demographic information and natural resources information.
- Maintained a set of current economic and demographic information and responded to requests for information.

### **Flood Coordination**

- Completed applications for funding to assist in recovery efforts from the 1996 Flood.
- Worked with local, state and federal representatives to put together a joint effort to address flood issues.
- Worked with local communities including Ada, East Grand Forks, Kittson County and others to help set up local recovery efforts.

### **Flood Loan Fund**

- Assisted with effort to put a regional disaster loan fund in place to address both blizzard and flood related business problems in the area.
- Worked with state and local officials on the special needs of business related to the severity of the 1996 weather season. This included deferred interest loans, housing development loans and support of labor force related programs such as daycare.





# REGIONAL FORUM

"There are tons of jobs available." *Pat Ueland, MN Job Service following 1996 flood.*

**Purpose:** To create a consensus between policy makers, service providers and the public on the most cost effective approaches to resource development and improving the quality of life in Northwest Minnesota; and to assist in implementing those approaches that are most appropriate to the Commission's role as a service provider.

**Funding Source:** Local Tax Levy - \$24,264; and interest - \$11,693; Misc. - \$2,100.

**Service Priorities:** Consensus building, planning, research, information, new program development, legislative advocacy.

Regional Forum describes the activities which support the operation of the Commission and the place where resources are allocated to emerging concerns in the area. Priorities tend to change in this program on a fairly regular basis as new issues come to the forefront.

Activities under Regional Forum continued to reflect efforts by the Commission to respond to changing priorities. The year started out with eight county meetings which were conducted as part of the 1996 Commission Evaluation and ended with a major shift to assist with flood recovery efforts.

Results of the 1996 Evaluation indicated that the general public is not very well aware of the activities of the Commission and that continued development the Commission's role as a supplement to local units of government is a positive direction. During county public meetings, a small but vocal number of complaints about RDC services seemed to indicate that a better feedback system could help prevent frustration by consumers. There appeared to be a high level of comfort with the Commission by those who use RDC services or participate in program activities on a regular basis.

Statewide efforts by the Minnesota Association of Regional Development Organizations to revise the RDC Act also led to considerable discussion on the role of RDCs and how they should support local and state efforts. Legislation was passed which cleaned up many parts of the RDC Act, but the effort seemed to stir up questions about the proper function of RDCs in the growing effort to encourage or support county land use planning. These questions were timely in relationship to the NWRDC's efforts in local land use planning; and in encouraging RDCs statewide to examine this issue.

The Commission expects a very busy year in 1998 based on added responsibilities in existing program areas and the addition of flood related activities and less shifting of priorities. However every year seems to bring it's own surprises, both good and bad.



Pictured left to right: At the NWRDC annual meeting, Henry Vasck and Lyle Eisert, two Polk County Commissioners, talk with Aging Program Director Danica Robson. Allen Chesley, an Enterprise Fund member, talks with Linda Nelson, Loan Fund Manager.



## *Regional Forum Highlights*

- **Service Directory**

Maintain extensive mailing list of all Governmental and Service Agencies in Region I. Provide mailing lists on a request basis to appropriate agencies. Published updated Directory of Government Units and Service Agencies.

- **MRDO**

Served as the Executive Vice Chair of the organization for the year. Completed draft revisions to the RDC Act and obtained passage of the revisions with the exception of changes to the local tax levy. Assisted with efforts to obtain additional transportation planning funds.

- **1996 Commission Evaluation**

Completed the 1996 Evaluation of the Commission including holding eight public meetings to obtain input. See page 12 of this report for more details.

- **Flood Recovery**

Started the process of assisting local communities with flood recovery.

- **Natural Resources**

Continued efforts to define an appropriate role for RDC in natural resource planning and issues with an emphasis on technical support and the development of new planning methods.

- **Local Performance Aid**

Examined the possibility of assisting in development of a format to complete local performance aid planning for counties and cities. Complete a preliminary draft of easy approaches to LPA.

- **Legislative Advocacy**

Completed a listing of legislative priorities. Work with area and statewide legislators to revise the Regional Development Commission Act and secure increased funding for transportation planning.



## 12



# Enterprise Fund Annual Report •

**Purpose:** To strengthen and diversify the economy by providing a source of lower interest financing to businesses when credit is not otherwise available from other sources to ensure the successful completion of activities to be financed.

**Program Funding Source:** Loan Interest and Loan Fees - \$69,744; NWRDC Tax Levy - \$2,173.

**Loan Funding Source:** Loan Repayments and Loan Interest - \$324,385; Economic Development Administration - \$79,183; Local Contributions - \$39,585.

**Service Priorities:** Financing for-profit businesses which create or retain jobs, especially for the long term underemployed or unemployed.

In 1985, the Northwest Regional Enterprise Fund, Inc. was established to operate a revolving loan fund in northwestern Minnesota. Financing for this program originated through federal funding from the Economic Development Administration (EDA) and with local matching funds.

In fiscal year 1997 the Disaster Revolving Loan Fund (DRFL), which was established to assist businesses affected by flooding in 1993, was merged with Revolving Loan Fund to create one loan pool. The loan pool is comprised of EDA funds totaling \$1,825,000; funds from the State of Minnesota in the amount of \$58,000; and local matching funds totaling \$392,000.

The Northwest Regional Development Commission, Northwest Minnesota Initiative Fund, Kittson County, Marshall County, Norman County, Pennington County, Polk County, Red Lake County, Roseau County, City of Crookston, City of East Grand Forks, City of Red Lake Falls, and the City of Thief River Falls contributed the local funds.

Revisions to the Revolving Loan Fund Plan of the Northwest Regional Enterprise Fund, Inc. were approved by EDA in fiscal year 1997. The priority of the Plan remains support of business creation, expansion and retention. In the new plan, additional emphasis is placed on retaining viability of communities by providing financial support for essential services,

The following businesses received approval for financing through the Enterprise Fund in fiscal year 1997:

Snowflake Products Coop., Oslo	\$ 75,000
Wentzel Farms, Crookston	\$ 59,100
Oak Grove Nursery, Erskine	\$ 49,900
Quilt Hus, Inc., Roseau	\$ 50,000
T & T Motor Sports, Greenbush	\$ 54,000
C & M Ford Sales, Inc., Hallock	\$150,000
All Seasons Lube Center, Crookston	\$ 57,000
D and R Grocery, Oklee	\$ 22,000
Cactus Lanes, Warren	\$ 30,000
<b>TOTAL LOANS</b>	<b>\$547,000</b>

such as the only grocery store, restaurant, etc. in a community. Additionally, funds are available through the on-going RLF for businesses impacted by weather related and other disasters.

An application for another Disaster Relief Loan Fund is in process with the Economic Development Administration. If the application is approved, funds will be used to assist businesses affected by the flooding that occurred in the spring of 1997.

To date, 71 business loans have been approved for financing in a total amount of \$4,018,737. The program has assisted 29 new businesses, 31 business expansions, and 11 businesses with retention. Ninety one percent of the active loans are current, sixteen are fully repaid and six loans have been written off.

The Enterprise Fund's administration budget for the year is \$71,917. The loan fees collected and one-half of the interest earned on the loans and on accounts is used for administrative costs. The other one-half of the interest payments, along with the principal repaid on loans, becomes available for relending.





# Economic Development •

**Purpose:** Improve the economic base in the Region by providing general planning guidance and technical assistance to local units of government and specific industrial projects that will result in increased job opportunities, an enlarged tax base, and a more positive economic image for the area.

**Funding Sources:** United States Economic Development Administration (EDA) - \$48,158; and the RDC Tax Levy - \$16,956.

**Service Priorities:** Regional direction setting, county/local direction setting, grant writing, encouraging innovation, financing industry, agricultural value added, tourism, international trade, environmental sustainable methods, and telecommunity development.

The counties of the region have been designated as an Economic Development Planning District of the US Economic Development Administration (EDA). This designation entitles communities to participate in funding programs provided through EDA that can assist in the creation or expansion of businesses that provide jobs in the region.

Additionally, this designation requires an annual update of the region's Overall Economic Development Program (OEDP). The OEDP provides insights into the economic potentials of Northwestern Minnesota and outlines approaches which can lead to increased job opportunities and economic activity. In 1997 these approaches concentrate on supporting the economic development efforts of local communities, encouraging local innovation and providing direct assistance to industry, agricultural processing, tourism and increased trade with Canada. Each approach recognizes that the long term creation of jobs starts with a good local idea which is helped through the process of becoming an industry or a business.

Economic Development services provide for direct technical assistance to your community in a variety of projects such as grant writing, provision of data and statistics and local planning. Services also include research and information packaging and projects that will benefit all communities in the region.

As a result of region wide communications, a major focus of the Economic Development program during the past two year, has been to address the lack of affordable housing for the region's labor force. This emphasis will continue for the next two years during which time we will strive to increase local housing capacity throughout the region.

## *Economic Development Projects*

### - **Overall Economic Development Program**

Prepared the annual OEDP Update and presented to County Commissioners. The OEDP is required to maintain status as a Federal Economic Development District. EDA has funded over \$17 million for projects in Region One since its inception.

### - **The RED Book**

Distributed over 400 copies of the Resources for Economic Development Directory over the past two years.

### - **NW MN Economic Developers Network**

Provided coordination/organization/information dissemination for the regionwide organization of economic development professionals. The Network meets three times per year and members receive information regarding funding opportunities and events.

### - **Region I Program Participation List**

Maintained listing of federal and state programs in which communities and businesses in Region I participate.

### - **DTED Projects/Assistance**

Responded to Department of Trade and Economic Development requests for assistance in projects and contacts in the Region. -

### - **Community Planning**

Began development of a method to assist communities in developing a written plan through review of problems and needs, development of goals and indicators, a review process and data and mapping information.

### - **MHFA Projects/Assistance**

Responded to Minnesota Housing Finance Agency request to assist in the development of "Investment Guidelines" for the 12-County MHFA Region.



# Housing •

**Purpose:** Improve the quality of life for the people who live and work in the region by upgrading and maintaining existing housing stock, encouraging construction of new affordable housing, creating additional opportunities for home ownership and increasing the availability of decent, safe and affordable rental housing

**Funding Sources:** MN Housing Finance Agency - \$6,584; NW MN Initiative Fund - \$19,611; MN Department Trade & Economic Development - \$7,399; MN Housing Partnership \$2,171; and RDC Tax Levy - \$103.

**Service Priorities:** Local Capacity Building, Housing Project Development, Home Buyer Training and Counseling, Assisting Communities to identify and access resources, and Increase Home ownership Opportunities.

Increased employment opportunities, natural disasters, decreased number of persons per household, the region's aging housing stock and the rising cost of building construction have contributed to a lack of available housing for the region's labor force. Historically, housing opportunities have been provided by the federal government and the State of Minnesota through financial resources and a delivery system to implement their programs. With federal and state resources becoming scarce, we are seeing a shifting of responsibility to the local units of government.

In the spring of 1995, in response to requests from the Northwest Minnesota Economic Developers Network and funding from the NWMIF and DTED, the NWRDC Economic Development Committee established housing as a major strategy to address the region's economic development needs. The NWRDC invited key staff of leading nonprofit organizations that have traditionally delivered housing related services to participate in a regional housing development effort. The Region One Housing Development Alliance (ROHDA) was formed as a result of the collaborative effort of these organizations.

The ROHDA is committed to working with local communities to build their capacity to engage in providing opportunities for affordable housing.



## *Housing Project Highlights*

### **- Northwest Minnesota Housing Coalition**

NWRDC, Headwaters RDC, Northwest Minnesota Foundation, Greater MN Housing Network and MN Multi-County HRA continued to participate in a regional effort to encourage and assist in affordable housing development which is needed to house the region's growing labor force.

The Coalition participated in the first of a three-year project entitled the Organizational Investment Program (OIP). This program is funded through the Minnesota Housing Partnership and the Northwest Minnesota Foundation. Five major programs are being investigated and developed through the OIP:

- School and Community Partnerships - Efforts are being made to assist schools and communities in working together to provide affordable housing through the schools' building trades programs and the communities' efforts to build incentive packages to encourage new construction.
- Modular Home Development - The goal of this project is to increase the use of Quality Modular Homes manufactured in northwest Minnesota for affordable single family home and mobile home park development.
- Capacity Building - This project involves finding a way to increase capacity within the region to develop, own and manage housing projects.
- Multi-Family Rental Housing - The goal of this project is to increase the capacity within communities to develop multi-family rental housing.
- Project Five is designed to address the lack of opportunities for low-income working families to access quality affordable housing.

### **- Full Cycle Home Ownership Program**

NWRDC received funding from the Northwest Minnesota Foundation and the Minnesota Housing Finance Agency for delivery of education and counseling programs for potential home buyers. The services are being delivered through the CAP agencies and the Extension service. The NWRDC administers and coordinates this project for the 12 county region which includes Headwaters and Northwest RDC counties.



# ARTS •

## NORTHWEST REGIONAL ARTS COUNCIL

**Purpose:** To promote, develop and encourage artistic growth and excellence of arts organizations and individual artists in northwestern Minnesota by awarding funds and conducting programs and service.

**Program Funding Sources:** MN State Arts Board - \$37,992 and Interest - \$987; McKnight Foundation - \$5,568 and Interest - \$495; MN Center for Arts Education \$8,613; RDC Tax Levy - \$2,537; Miscellaneous - \$345.

**Re-Grant Funding Sources:** MN State Arts Board - \$34,890; McKnight Foundation - \$11,805.

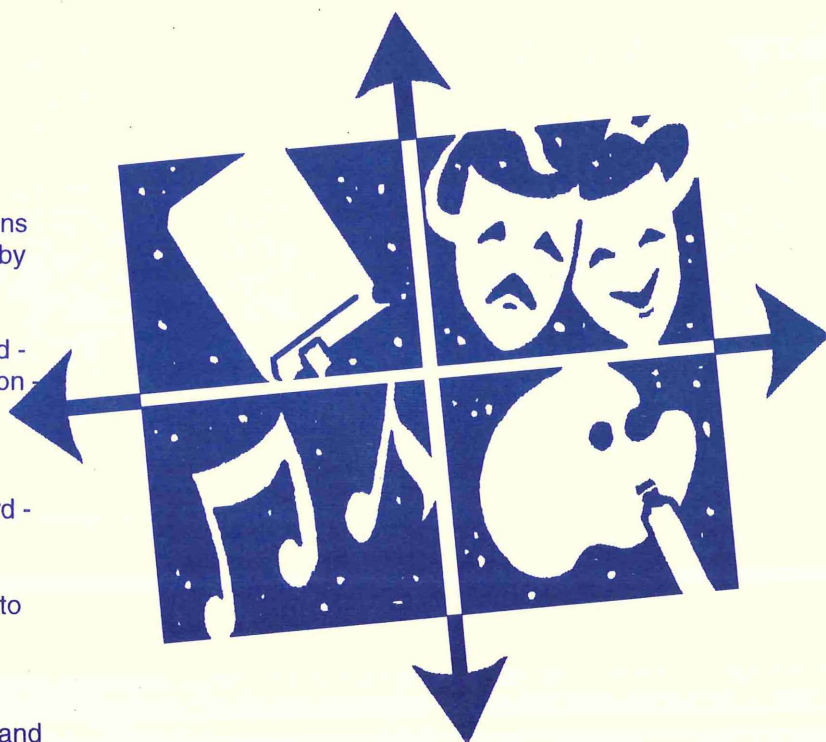
**Service Priorities:** Direction setting, grants to organizations, grants to individual artists, grants to student artists, information/education including newsletter, training/workshops.

The arts are active and strong in our communities and schools. The Northwest Regional Development Commission strives to meet the growing needs of our area through grant support, workshops, publications and technical assistance.

The Minnesota State Legislature provides funding for regrant, technical assistance and program administration. Most arts projects consist of either a production or a sponsorship activity. This year many of our area schools received funds for artist in residency grants. Community theater was very active in requesting assistance for their local productions.

McKnight Foundation funds were used for two grant programs and one workshop this past year. Support was given for the first time to both adult and student individual artists for career development projects. Grants were also awarded to non-profit arts organizations for small capital purchases. The workshop "Arts Immersion Day" was a successful day of hands-on arts activities for artists including acting, poetry writing, folk dancing and song writing.

Minnesota Center for Arts Education funding was used this year to pilot the new InterART artist/school program. One team from our area participated in the program. Two artists were teamed with two arts teachers to provide a 40 hour collaboration in the school.



Rob Conwell a composer from Red Lake Falls leads a session on song writing during Arts Immersion Day.



## Regional Arts Highlights

- **Northwest Arts Newsletter**

Quarterly newsletter listing information on the arts programs and grants awarded by the NWRDC. Also lists opportunities for artists, schools and artists organizations.

- **Northwest Regional Artist and Art Organizations Directory**  
lists a variety of area artists, over 35 area arts organizations, schools, and libraries. The 1997 Directory is available free.

- **InterART Program**

Implement new program that links two artists with two teachers for training and a 40 hour residency. Coordinate the two planning retreats for the participating four Regions.

- **NWRDC/McKnight Artist Residency Grant Program**

Administer the program in eight area schools. Schools could choose between a folk dance or literary residency.

- **Biennial Arts Planning**

Develop the next two year proposal for the State Arts Board including conducting an extensive needs assessment. Highlights included: Increasing amount of funds available for regrant and offering more training and workshops for artists and arts groups.

- **Needs Assessment**

Conducted two surveys, one for individual artists, and one for arts organizations, schools, libraries and senior groups to assess their needs for arts programming and services. Held three multi-community meetings inviting all arts groups to participate and share their needs.

- **Forum Activities**

Participate as President of the statewide group of Regional Arts Council Directors. Activities include: preparing for and conducting business meetings, advocating on behalf of the Forum, developing the state-wide arts funding formula, updating the Forum policy manual.

- **Arts Advocacy**

Serve as the primary contact for the Carlson Arts Initiative for the Regional Arts Councils. Provide testimony at the Capitol during the MN Legislative Session to help support the Carlson Arts Initiative.

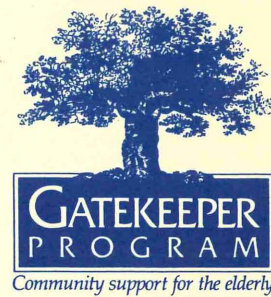
- **Minnesota Citizens for the Arts**

Member of the Board of Directors that works on issues related to arts advocacy and the legislature. Attend Arts Advocacy Day in February and encourage all area artists organizations to write and thank our representatives for supporting the arts.



# AGING •

"Older Americans deserve our respect and support for they have worked diligently in so many ways to enrich and preserve the way of life we all enjoy. Our senior citizens have woven the fabric of our Nation to exemplify the values and beliefs that have made our country great." *William J. Clinton, President of the United States of America*



## AREA AGENCY ON AGING

**Purpose:** To build a proactive, comprehensive and coordinated system of advocacy and services that ensures the rights and benefits of all older people.

**Program Funding Sources:** Older Americans Act through the Minnesota Board on Aging - \$74,531; RDC Tax Levy - \$25,053; Miscellaneous - \$6,280 and Interest - \$440.

**Regrant Funding Sources:** Older Americans Act - \$312,413; U.S. Department of Agriculture Nutrition Program - \$139,212; State Nutrition Program - \$95,138.

**Service Priorities:** Regrant priorities are: nutrition, congregate and home delivered meals, legal service, transportation, chore/home repair, housekeeping, visiting and medical forms assistance. Support priorities are advocacy, education, support of county committees on aging and senior centers, inter-agency linkages, and information/referral.

The mission of Area Agencies on Aging, as articulated in the Older Americans Act, is *to develop a comprehensive, coordinated service delivery system for older people*. This service delivery system will allow individuals, age 60 and older, to maintain their independence and dignity, potentially avoiding hospitalization or placement in a nursing facility. Through the use of needs assessments, key informant surveys, and focus groups, the Area Agency on Aging gathers information which will identify services needed to fill this mission.

Through the use of grants, and contracts, the Area Agency on Aging works with agencies to develop or maintain the system of services to meet identified needs.

In addition to this, the Area Agency on Aging serves as the local advocate for senior needs, the educator on emerging trends, and the provider of information on aging issues.



Above: Seniors in East Grand Forks discussed their options for rebuilding the Senior Center.

During the flood, contacts were made to FEMA, Red Cross, Salvation Army, and the Small Business Administration, to provide information about services available and the types assistance available to individuals displaced by the flood. Information packets were developed and disseminated at Disaster Recovery Centers, providing information about the Area Agency on Aging, Senior Linkage, and other resources for Seniors.

Area Agency on Aging staff provided individual advocacy assistance to individuals and families experiencing difficulty navigating their way through the maze of flood recovery services.



## *Aging Regional Highlights*

### **- Gatekeeper Program**

The Gatekeeper Program works to increase public awareness of the needs characteristic of the vulnerable elderly before a crisis occurs. The program works to identify and train Gatekeepers, people who are in contact with the public during the course of their regular work activities. They are called Gatekeepers because they "open the gates" between isolated older people and sources of assistance. Working in conjunction with Electric Cooperatives serving Region I, the Area Agency on Aging developed materials to be utilized during Gatekeeper Program trainings. These trainings will seek to provide an increased safety net for isolated older people living in Region I.

### **- Senior Linkage Line**

What services are available to support the independence and dignity of someone age 60 and older? The Senior Linkage Line, as operated by the Minnesota Board on Aging and Minnesota Area Agencies on Aging, is your connection to the services near you. The Area Agency on Aging assisted 309 callers during calendar year 1996 with finding questions to answers or concerns about services available for seniors in Region I. In addition, 376 referrals or additional contacts were made on behalf of the callers to follow-up and make sure the people received the services they needed. During the months of April and May, calls made to the Senior Linkage Line increased by 125% over the previous two months. Callers were provided information ranging from how to contact FEMA for disaster assistance to who to contact for assistance with cleaning fuel oil from basements.

### **- Older Americans Month**

Each year, May is proclaimed as Older Americans Month, highlighting the contributions made to communities, families, churches, and civic groups by individuals 60 and older. Press releases are prepared and sent out, sharing information about the accomplishments and contributions of seniors in the northwest region of Minnesota.

### **- Senior Focus Week**

Governor Arne Carlson proclaimed February 10-15, 1997 as "Senior Focus Week." Information compiled addressing the amount of volunteer time donated by seniors in Region I was shared during radio talk shows.

### **- Fall Conference on Aging**

1996 Fall Conference on Aging was held in Crookston, with seniors and service providers in attendance. The theme, "Making the Best Years Better", provided sessions on healthy aging, legislative information, and advance directives for healthcare.

### **- Health Insurance Counseling Expansion**

Area Agencies on Aging, with support from the Minnesota Board on Aging, authored legislation to provide state funding which would allow for the expansion of Health Insurance Counseling Programs to provide assistance to all ages. This legislation was funded at \$400,000 for the biennium.

### **- Community Building Workgroup**

Participate on a workgroup of Area Agency on Aging directors and staff from the Aging and Adult Services Division to develop strategies for "making communities good places in which to live and grow old." This workgroup will look at development of informal systems to provide the support communities need to take care of their own.



## *Aging Regional Highlights*

### **- County Committees on Aging**

One of the Area Agency on Aging's link to seniors in local communities is the County Committee on Aging. Members of County Committees on Aging are seniors, with a concern for local and national issues which affect them. The Area Agency on Aging provides support to County Committees on Aging, keeping them informed of legislative issues, and Area Agency on Aging activities.

### **- Chore Service Expansion**

In 1996, the Area Agency on Aging partnered with the Northwest Sentencing to Service program to provide chore services to seniors living in Kittson, Marshall, and Pennington counties. This mechanism for providing services to seniors is unique to this area of Minnesota, and met with great success. The program provided over 3500 hours of chore services to 189 seniors in Kittson, Marshall, and Pennington counties in 1996. Building on the tremendous success of this partnership, the Area Agency on Aging worked with the Sentencing to Serve programs serving Roseau, and Polk, Norman, and Red Lake counties to increase the availability of chore services to seniors in all seven counties. Over 10,000 hours of flood related chore services were provided by the Sentencing to Service Programs to seniors during April, May, and June. This included sandbagging, cleaning out basements, senior centers, and cleaning up sandbags when the flood waters subsided.

### **- Elder Abuse Prevention Project**

Staff from the Region 9 Development Commission was "on loan" to the Area Agency on Aging for the implementation of the Elder Abuse Prevention Project. Contacts were made with banking and financial institutions, churches, and the medical community to provide professionals with the tools to identify, report, and prevent the abuse, neglect, and financial exploitation of older adults.

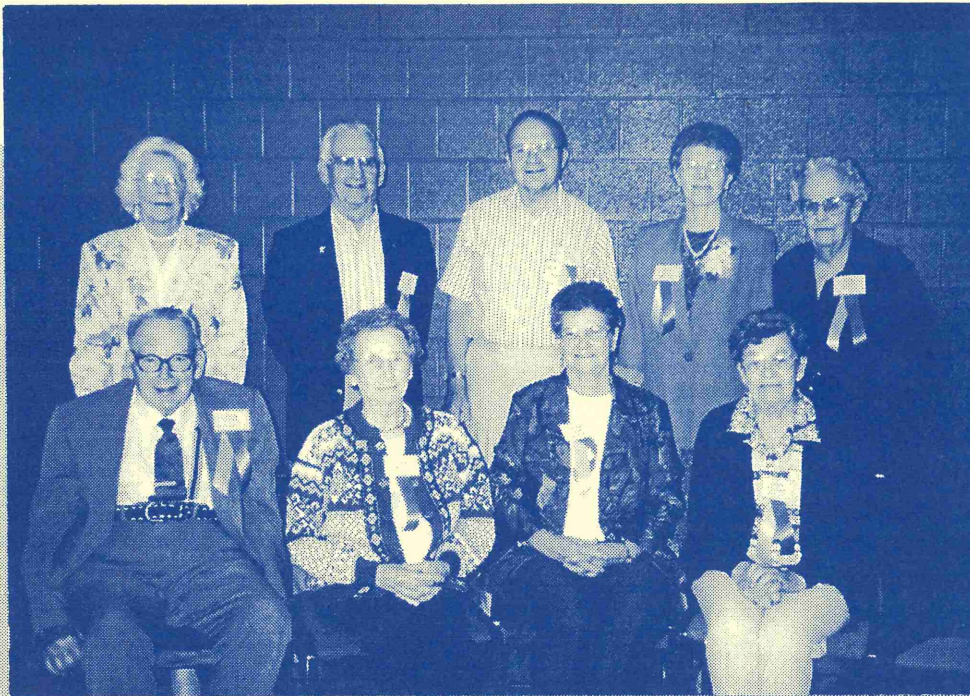
### **- Outstanding Seniors**

Each year the Minnesota Board on Aging, in conjunction with Area Agencies on Aging, encourage communities to identify seniors who are active in volunteering and giving of themselves. These seniors are then recognized during Senior Day activities at county fairs, and two seniors from each county are chosen to be recognized during Senior Day at the Minnesota State Fair. From this process, two seniors are identified as the Minnesota Outstanding Seniors. This past year, Marion Gusa from Middle River, and Cliff Larson from Thief River Falls, were selected as the Minnesota Outstanding Seniors! Congratulations!! This is the third year in a row that someone from Northwest Minnesota has been selected as the Minnesota Outstanding Senior!

### **- TRIAD Program**

Participated in the development of the TRIAD Program in Crookston. TRIAD is a cooperative effort between the seniors of Crookston and the law enforcement agencies, with a purpose of increasing crime prevention and awareness among seniors. The TRIAD program recruited volunteers to operate telephones at the law enforcement center in Crookston during the flood fighting efforts.





Outstanding Seniors for 1996 were recognized at the Fall Conference on Aging. From left to right:  
 Back row: Mildred Hughes, Cliff Larson, William Lindell, Marion Gusa, Bette Gysland.  
 Front row: Leland Hughes, Beatrice Wilson, Florence Cyr, Elaine Tureson.



Above: Appliance mountain during flood clean-up outside the East Grand Forks Senior Citizens Center.



Above: Booths were set up for Senior Health Fair in Argyle. Seniors received information and enjoyed the day.



# Transportation •

"Regional Development Commissions are valuable members of the state's transportation coalition, helping to identify and set priorities for investments in transportation. Their involvement has expanded and diversified the body of transportation thinkers in Minnesota." James N. Denn, Transportation Commissioner

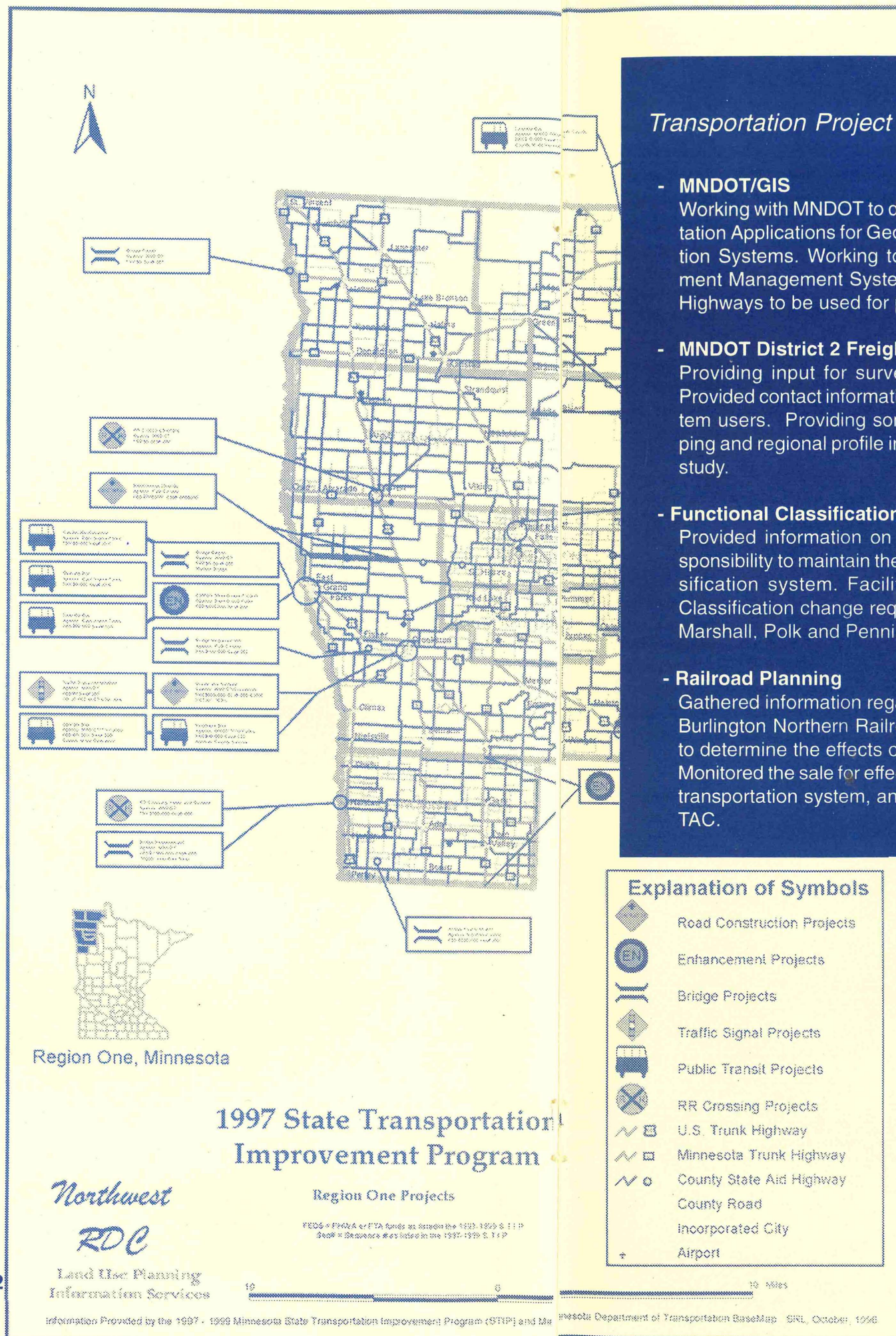
**Purpose:** To insure and improve the safe and efficient movement of people and commodities in the region. Provide an ongoing regional forum addressing significant transportation issues and to facilitate local input to MNDOT plans and programs.

**Funding Sources:** \$38,910 from the MN Department of Transportation and \$7,143 from the RDC Tax Levy.

**Service Priorities:** Regional direction setting, highway planning, transit planning, legislative advocacy, project coordination with MnDOT.

The NWRDC transportation planning work program addresses all modes of transportation (trails, rail, airports, bike, pedestrians, highway and transit) for townships, cities and counties in Region 1. The NWRDC Transportation Planner works closely with a Transportation Advisory Committee consisting of local government representatives in program development and planning. The Transportation Program is designed to coordinate the transportation planning process of townships, cities, counties, other local groups involved in regional transportation concerns and MNDOT. The second goal of the program is to identify and analyze short and long term transportation problems in NW Minnesota. The third goal of the program is to coordinate transportation planning with other program areas of the NWRDC.

Under a separate contract with MNDOT, the NWRDC transportation planner conducts a record audit and visual vehicle review of the Section 5310 program vehicles in Region 1. Section 5310 is a capital assistance program for the purchase of vehicles that organizations use to serve elderly and disabled persons. There are currently 19 Section 5310 vehicles operating within Region 1.



## Transportation Project Highlights

### - MNDOT/GIS

Working with MNDOT to develop Transportation Applications for Geographic Information Systems. Working to map the Pavement Management System data for Trunk Highways to be used for planning.

### - MNDOT District 2 Freight Flow Study

Providing input for survey development. Provided contact information for freight system users. Providing some general mapping and regional profile information for the study.

### - Functional Classification

Provided information on the Region's responsibility to maintain the Functional Classification system. Facilitated Functional Classification change requests for Kittson, Marshall, Polk and Pennington Counties.

### - Railroad Planning

Gathered information regarding the sale of Burlington Northern Railroad in the region to determine the effects on freight service. Monitored the sale for effects on the regions transportation system, and reported to the TAC.

### - Highway Corridor Studies

Special Transportation Advisory Committee meeting located in Grygla to address concerns/issues related to T.H. 89. Working with Joe River Watershed District and MNDOT to raise the grade of TH 171 near St. Vincent to maintain access during a flood.

### - Regional Road Prioritization

Working with the TAC and MNDOT to better our public information gathering efforts with respect to Regional Road Prioritization. Gathering input from township assn's and the RDC Evaluation Mtg's. 1997 RRP was approved and submitted to MNDOT.

### - Enhancement Subgroup Staff

Provided Enhancement application information to Crookston Trails Committee. Acting as chair to the ATP Enhancement Subcommittee; facilitated meeting to rank two resubmitted proposals. Presented recommendations to the full ATP.

### - Keep all levels of government informed

Provided ATP process information to the National Association of Development Organizations. Requested Bernie Lieder's support of increased funding for RDC Transportation Programs.

### - Technical assistance for Section 5310 Applicants

Provided application information to potential section 5310 applicants. Reviewed the applications of two Region 1 applicants and submitted scores to MNDOT for consideration.

### - Other transit technical assistance and referral

Working with MNDOT Office of Transit to identify special transit needs as a result of the flooding and resources to meet them.

### - Geographic Information Systems Information

Working to develop several GIS applications within the NWRDC. Developing a proposal with HRDC to partner with MNDOT in GIS planning activities centered around the Trunk Highway system and flood routing.



# Plans, Studies and Publications

## Prepared by NWRDC

**Area Plan on Aging** - The Area Plan on Aging examines senior input and demographic data to establish priorities for the use of Title III Older Americans Act funds. Includes budget information, an Executive Summary and work activities.

**Commission Chronicle** - NWRDC Newsletter - Printed on a quarterly basis and distributed to government units, service agencies and interested persons. Contains current items of interest to local communities and Commission activities.

**County Economic Summaries** - Statistical facts about each of the seven counties in the Northwest Region. Includes population, employment, sales, income and housing data plus short comments on trends. Limited information on individual cities included.

**Directory of Artists and Arts Organizations** - The directory contains listings of regional artists and arts organizations.

**Directory of Government Units and Service Agencies** - The directory contains listings of service agencies and governmental offices from the township level through the legislative level.

**Overall Economic Development Program** - Background information and statistics about Northwest Minnesota are examined to produce economic development strategies and work activities for the upcoming year.

**FY 1996 Annual Report** - Information on the funding and work activities of the Commission over the past year. Published and distributed to local officials and legislators.

**FY 1997 Work Program** - Details the goals and objectives of the Commission in each of the program and planning areas.

**Senior News** - Newsletter developed for the Senior Citizens and service providers of Region One.

**Senior Service Directory** - Resources for Region I seniors, consumers and professionals in the field of aging. It provides a brief description of programs, resources and agencies.

**Directory of Community Focal Points** - This directory contains information about programs and services available at the Senior and Community Centers in Region 1.

**Northwest Minnesota Visitor and Recreation Guide** - A comprehensive listing of attractions and facilities which offer opportunities and services to local and outside visitors to area communities.

**IdeaNet: Turning Ideas into Jobs** - A handbook to assist community leaders, economic developers, and anyone interested in creating jobs in Northwestern Minnesota through turning homegrown ideas into jobs.

**Resources for Economic Development** - Descriptions of agencies and both technical assistance and financial programs for economic development. Includes special sections on labor force and housing resources. Lists community revolving loan funds and economic development contacts.

**Regional Arts Plans** - Goals, strategies and work activities for State Arts Funds, McKnight Arts Funds and MN School for Arts Funds (Arts Mentoring) are included in these plans.

**Revolving Loan Fund Plan** - Describes the program elements and guidelines for the loan fund. Updated in 1997.

**Transportation Plan** - Examines all transportation systems in the Region and recommends approaches to meeting identified need.

**Transit Needs Assessment** - The purpose of the Transit Needs Assessment is to identify unmet transit needs in Region 1 and develop approaches to better meet those needs. There are separate documents for each county and one document summarizing the entire region.

**Region 1 Transit Service Directory** - This directory is the compilation of the results of a Transit Service Provider Survey which was conducted in conjunction with the Transit Needs Assessment. This document identifies service providers, types of service they provide, types of vehicles they operate, and potentials for coordination.

**Disaster Revolving Loan Fund Plan** - Describes the program elements and guidelines for the Disaster Revolving Loan Fund.

**Pennington County Water Plan** - 1996 Update - Revisions to the 1990 Plan to reflect changes in water issues and new information on water systems.



# Committee Membership List

## Aging Advisory Committee

Jenny Amon	Crookston
Bob Carlson	Thief River Falls
* Richard Dahlin	Ada
Matthew Edman	Alvarado
Ben Garcia	East Grand Forks
Marcella Gonsorowski	Newfolden
Harriet Heinen	Warroad
Jamie Hennen	Ada
Beverly Hewitt	Lancaster
Roy Jorgenson	Thief River Falls
Sue Klabo	Mentor
Charles Lindberg	Kennedy
Joan Miller	Roseau
Warren Olson	Halstad
Mildred Thorfinnson	Red Lake Falls

## Regional Arts Council

Janet Haak Aarness	Thief River Falls
Linda Axvig	Red Lake Falls
Marlene Baatz	Nielsenville
Pat Dunning	Thief River Falls
Deb Elhard	Kennedy
George French	Crookston
Carol Hallan	Warroad
Betty Halvorson	Plummer
Rev. Louis Hermansen	Roseau
Patricia Jacklitch	East Grand Forks
Kimberley Johnson	Kennedy
Gen Knott	Red Lake Falls
Charlene Kuznia	Argyle
Edna Rude	Gary
* Ric Sorenson	Fosston
Bardulf Ueland	Halstad
Joyce Wikstrom	Karlstad

## Transportation Advisory Committee

Milton Alm	Ada
Dr. Joe Bouvette	Hallock
Sharon Bring	Strandquist
George Broadwell	Thief River Falls
Glenn Darst	Greenbush
Lyle Eisert	Crookston
Donald Jensen	Goodridge
Charles Lindberg	Kennedy
Jeff Langan	Warren
* Bob Marvin	Warroad
Lee Nielson	Erskine
Tara Ratzlaff	Red Lake Falls
Warren Strandell	East Grand Forks
Earl Visser	Ada

## Enterprise Fund

* Randall Aarestad	Halstad
Bernie Anderson	Roseau
Susan Anderson	Greenbush
Michelle Benton	Thief River Falls
Brenda Berg	Greenbush
Allen Chesley	Crookston
Tim Fairchild	East Grand Forks
Cecil Fossell	Kennedy
Brent Guenther	Red Lake Falls
Ronald Laqua	Halstad
Steve Linder	Oklee
Duane Lyberg	Hallock
Jason McCollum	Warren
Calvin Melgard	Warren
Darrell Nelson	Crookston
Galen Nordine	Lancaster
Velma Oakland	Red Lake Falls
Wayne Oberg	East Grand Forks
DeWayne Ostenaar	McIntosh
Vanessa Page	Crookston
Jim Richter	East Grand Forks
Sandra Simonson	Oslo
Darlene Smith	Warroad
Delray Sparby	Thief River Falls
Oliver Swanson	Thief River Falls

## Economic Development Planning Committee

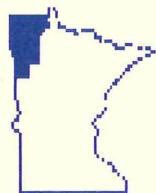
Michelle Benton	Thief River Falls
Glenn Darst	Greenbush
Brent Guenther	Red Lake Falls
* Jim Richter	East Grand Forks
Sandra Simonson	Oslo
Cindy Spilde	Kennedy
Dennis Thorson	Twin Valley

## Innovations Committee

Cecil Fossell	Kennedy
* Dr. Steve Levinson	Thief River Falls
Jim Richter	East Grand Forks
Deb Salberg	Oklee
Sandra Simonson	Oslo
David Tommerdahl	Hendrum
Karen Young	St. Hilaire

\* Chair





**NW Regional  
Development  
Commission**

**Projects Listings  
by County  
Fiscal Year 1997**

*Kittson  
Marshall  
Norman  
Pennington  
Polk  
Red Lake  
Roseau  
Multi-County*



## Kittson County

Economic Development	Economic Summary for <i>Kittson County</i>	Provide summary of demographic and economic statistics for the county. Copies available upon request.	
Enterprise Fund	Enterprise Fund Loans <i>Kittson County</i>	Six loans were made to businesses in Kittson County, totaling \$296,000.00. Five loans are active. Disaster relief loans were given to three of the businesses.	\$296,000
Aging Admin.	Senior Transportation <i>Kittson County</i>	Granted \$5,000 to Kittson County Senior Transportation Program to assist seniors access transportation to medical services in 1997. To date: 8 drivers provided 3,380 miles of driving for 22 persons for medical purposes.	\$5,000
Community Development	Brochure Development <i>Hallock</i>	Work with the city of Hallock to create a promotional brochure that includes a complex map of the city and its businesses.	
Community Development	Kittson County Folder <i>Hallock</i>	Did some ground work for Kittson County in the creation of a promotional folder to bring new business to the county.	
Housing Technical Assist	Housing Partnership Public Forum <i>Hallock</i>	Attended meeting of the Star City Commission to discuss housing priorities. Hallock is requesting assistance through the Housing Partnership TA program; however, a specific project has not yet been identified.	
Housing Technical Assist	Housing Partnership Project <i>Hallock</i>	To provide assistance in locating and developing land that can be purchased and used for housing development.	\$2,000
Economic Development	Grant Application to MHFA <i>Hallock</i>	Hallock Grant Application to MHF Worked with Kittson County Office of Economic Development to prepare a grant application to Minnesota Housing Finance Agency's Community Rehab Fund program requesting \$90,000 to provide gap financing for purchase of 5 "to-be-constructed" single family homes.	\$90,000
Enterprise Fund	C and M Ford Sales, Inc. <i>Hallock</i>	Approved Standard RLF Loan for \$150,000.00 Loan closing is pending.	\$150,000
Aging Admin.	LSS Sr. Nutrition Program <i>Hallock</i>	Provided 4,605 Congregate and Home Delivered Meals to 125 persons in Hallock (Senior Center and Hallock West Side apartments) in 1996.	
Aging PD&C	Minnesota Recovers Meeting <i>Hallock</i>	Attended a meeting in Hallock to learn about the Minnesota Recovers Disaster Task Force. Provided Senior Linkage magnets to community members from St. Vincent.	
InterART	InterART <i>Karlstad</i>	Kathy Englund, a music teacher in Karlstad, attended the InterART retreat as a extra participant.	
Aging Admin.	LSS Senior Nutrition Program <i>Karlstad</i>	Provided 7,014 Congregate and Home Delivered Meals to 96 persons in Karlstad in 1996.	
Aging Admin.	LSS Senior Nutrition Program <i>Kennedy</i>	Provided 2,860 Congregate and Home Delivered Meals to 38 persons in Kennedy in 1996.	
Aging PD&C	Gatekeeper Program <i>Kennedy</i>	Provided Gatekeeper Program training to seniors at the Kennedy Senior Center.	



Arts Development	Arts Grant <i>Lake Bronson</i>	Funded Kittson County Historical Society for the sponsorship of the Skalmusik Quartet on June 21, 1997.	\$500
Aging Admin.	LSS Senior Nutrition Program <i>Lake Bronson</i>	Provided 4,022 Congregate and Home Delivered Meals to 96 persons in Lake Bronson in 1996.	
Aging Admin.	LSS Senior Nutrition Program <i>Lancaster</i>	Provided 2,358 Congregate and Home Delivered Meals to 55 persons in Lancaster in 1996.	

## Marshall County

Economic Development	Economic Summary for <i>Marshall County</i>	Provide summary of demographic and economic statistics for the county. Copies available upon request.	
Economic Development	Land Use Planning <i>Marshall County</i>	Assist in the development of a land use planning process that can be used in Marshall County.	
Enterprise Fund	Enterprise Fund Loans <i>Marshall County</i>	Twelve loans were made to businesses in Marshall County, totaling \$634,810.00. Seven of the loans are active	\$634,810
Transportation	Marshall County T.A. <i>Marshall County</i>	Working with Warren Ambulance Corps and the Warren Volunteer Fire Department to produce detailed route maps of their respective service areas.	
Aging PD&C	Committee on Aging <i>Marshall County</i>	Provided information to the Marshall County Committee on Aging regarding implementation of the Gatekeeper Program, chore services utilizing the STS programs, and legislative issues.	
McKnight Arts	Individual Artist Grant <i>Alvarado</i>	Funded Jennifer Patterson to attend the National Polymer Clay Conference in Tennessee.	\$500
Aging Admin.	LSS Senior Nutrition Program <i>Alvarado</i>	Provided 313 Congregate and Home Delivered meals to 42 persons in Alvarado in 1996.	
Housing Technical Assist	Housing Partnership Public Forum <i>Argyle</i>	Conducted public meeting with residents to discuss housing needs and potential projects. Argyle has requested technical assistance dollars to hire John Wynne, NWCAA, to help with a non-owner occupied rehab project.	
Housing Technical Assist	Housing Partnership Project <i>Argyle</i>	To provide for the upgrading of its current housing stock through acquisition and rehabilitation of vacant or abandoned homes to make more homes available for sale in the middle price ranges (\$30-40,000) and to assist in demolition of dilapidated structures	\$750
Housing Technical Assist	Housing Partnership Project <i>Argyle</i>	To assist the City in purchasing the necessary technical assistance to develop a Redevelopment Plan and create a Tax Increment District for housing development.	\$1,250
Housing Technical Assist	Housing Partnership Public Forum <i>Grygla</i>	Conducted public meeting with residents to discuss current housing needs and potential projects. Grygla has requested dollars from the technical assistance program to hire Joan Abercrombie, Multi-County HRA, and Kathy McGlynn, NWRDC to help with multi-family program.	



Housing Technical Assist	Housing Partnership Project <i>Grygla</i>	To assist the City in the development of a project that will provide for the building of affordable multi-family housing.	\$2,000
Aging Admin.	LSS Senior Nutrition Program <i>Grygla</i>	Provided 5,441 Congregate and Home Delivered meals to 131 persons in Grygla in 1996.	
Aging Admin.	Marshall County Homemaker <i>Holt</i>	Provided information about the Area Agency on Aging, Senior Linkage Line, and other resources to members of the Marshall County Homemakers group.	
McKnight Arts	Small Capital Arts Grant <i>Middle River</i>	Funded Middle River Community Theater for the purchase of a make-up light table and other backstage misc.	\$1,300
Aging Admin.	LSS Senior Nutrition Program <i>Middle River</i>	Provided 5,230 Congregate and Home Delivered meals to 157 persons in Middle River in 1996.	
Aging Admin.	LSS Senior Nutrition Program <i>Newfolden</i>	Provided 6,384 Congregate and Home Delivered meals to 202 persons in Newfolden in 1996.	
Enterprise Fund	Snowflake Products Cooperative <i>Oslo</i>	Closed Standard RLF Loan for \$75,000.00.	\$75,000
Aging Admin.	LSS Senior Nutrition Program <i>Oslo</i>	Provided 3,576 Congregate and Home Delivered meals to 114 persons in Oslo in 1996.	
Housing Technical Assist	Housing Partnership Public Forum <i>Stephen</i>	Attended public meeting to discuss housing projects with residents. Stephen is requesting assistance from Tri-Valley Opportunity Center to develop a project which will provide for assisted living units.	
Housing Technical Assist	Housing Partnership Project <i>Stephen</i>	To assist the City in purchasing the technical support needed to develop information on cost projections, legal advice and other preliminary plans required for the development of congregate housing for senior citizens.	\$2,000
Arts Development	Arts Needs Meeting <i>Stephen</i>	Met with arts groups around Stephen to discuss their long-term needs for programming and services. Meeting was April 3, 1997.	
Arts Development	Arts Grant <i>Stephen</i>	Funded Stephen Arts Council for the sponsorship of Prairie Fire Theater's production of "Snow White" on May 26 - 31, 1997.	\$500
Arts Development	Arts Grant <i>Stephen</i>	Funded Stephen/Argyle School for the sponsorship of visual artist Bernie Wilebski for a residency in April and May 1997,	\$780
McKnight Arts	Student Arts Grant <i>Stephen</i>	Funded Ben Hendricks, Stephen, for a trumpet mentorship this will also involve two other members of a jazz trio.	\$250
McKnight Arts	Student Arts Grant <i>Stephen</i>	Funded Phil Jensen, Stephen, for a trombone mentorship with Tom Hagen.	\$250
McKnight Arts	Small Capital Arts Grant <i>Stephen</i>	Funded Stephen Arts Council for the purchase of lighting fixtures.	\$1,860



McKnight Arts	Small Capital Arts Grant <i>Stephen</i>	Funded Stephen Arts Council for the purchase of lighting equipment for their theater.	\$850
Aging Admin.	LSS Senior Nutrition Program <i>Stephen</i>	Provided 5,784 Congregate and Home Delivered meals to 113 persons in Stephen in 1996.	
Housing Technical Assist	Housing Partnership Public Forum <i>Warren</i>	Conducted public meeting with the Star City Committee to discuss housing needs and potential projects. Warren is requesting technical assistance dollars to hire John Wynne, NWCAA, to help in a non-owner occupied rehab project.	
Housing Technical Assist	Housing Partnership Project <i>Warren</i>	To assist the City in purchase of technical assistance that will provide for disaster recovery. The effort will include a Community Development Block Grant for housing relocation and reconstruction and a Housing Relocation Devel. Tax Increment District	\$1,250
Housing Technical Assist	Housing Partnership Project <i>Warren</i>	To provide for the upgrading of its current housing stock through acquisition and rehab of vacant homes to make more homes available for sale in the middle price ranges (\$30-40,000) and to assist in the demolition of dilapidated vacant structures.	\$750
Enterprise Fund	Cactus Lanes Bowling Alley <i>Warren</i>	Approved Standard RLF Loan for \$30,000.00. Loan Committee review is pending.	\$30,000
Arts Development	Arts Grant <i>Warren</i>	Funded Warren/Alvarado/Oslo Community Education for the sponsorship 'of Prairie Fire Theater's production of "Robin Hood" on August 18 - 23, 1997.	\$500
Arts Development	Arts Grant <i>Warren</i>	Funded Warren/Alvarado/Oslo school for the sponsorship of visual artist Bernie Wilebski for a residency in May 1997.	\$325
Arts Development	Arts Grant <i>Warren</i>	Funded the Warren/Alvarado/Oslo school for a week long visual art residency with Bernie Wilebski from February 24 - 28, 1997.	\$325
Aging Admin.	Advance Directives <i>Warren</i>	Provided information and education on Advance Directives and Advance Planning for members of Warren Senior club.	
Aging Admin.	LSS Senior Nutrition Program <i>Warren</i>	Provided 17,880 Congregate and Home Delivered meals to 335 persons in Warren in 1996.	



## Norman County

Community Development	Township Mapping <i>Norman County</i>	Provided mapping of townships for Norman County	
Economic Development	Halstad, Hendrum, Perley, and Shelly <i>Norman County</i>	Assisted Halstad, Hendrum, Perley, and Shelly with development of a shared resources program to address the cost of development issues including public utilities, police, housing and others.	
Economic Development	Economic Summary for <i>Norman County</i>	Provide summary of demographic and economic statistics for the county. Copies available upon request.	
Enterprise Fund	Enterprise Fund Loans <i>Norman County</i>	Six loans were made to businesses in Norman County, totaling \$253,260.00. All six loans are active. Disaster relief loans were given to two businesses.	\$253,260
Aging PD&C	Social Service Meeting <i>Norman County</i>	Provided information about new services for seniors in Norman county, as well as the implementation of the Gatekeeper program during 1997.	
Community Development	Township Mapping <i>Norman County</i>	Mapping Good Hope Township, Norman County. We anticipate the general format could be used to map other townships as requested.	
Community Development	School Residency <i>Ada</i>	Working with the Ada-Borup school district to develop a fiber art residency in their school and community. Many delays because of weather conditions. Will be rescheduled in the fall.	
Housing Technical Assist	Housing Partnership Agreement <i>Ada</i>	To assist the City in providing affordable single family housing and in demolition and rehab of dilapidated existing housing stock.	\$2,000
Aging Admin.	LSS Senior Nutrition Program <i>Ada</i>	Provided 11,445 Congregate and Home Delivered Meals to 291 persons in Ada in 1996.	
Aging Admin.	LSS Senior Nutrition Program <i>Gary</i>	Provided 2,432 Congregate and Home Delivered meals to 93 persons in Gary in 1996.	
Housing Technical Assist	Housing Partnership Public Forum <i>Halstad</i>	Conducted public meeting with residents to discuss housing needs and potential projects. Halstad is requesting technical assistance dollars to hire Joan Abercrombie, Multi-County, to help develop programs to address homebuyer assistance and develop town homes.	
Housing Technical Assist	Housing Partnership Project <i>Halstad</i>	To assist the City in the development of programs to address home buyer assistance and for housing planning.	\$1,750
Economic Development	Housing Meeting <i>Halstad</i>	Complete a public meeting to discuss housing issues and possible solutions. Recommendations were to examine a marketing program the construction of low cost townhomes.	
Economic Development	Rehabilitate Senior/LMI Duplexes <i>Halstad</i>	Coordinate preparation of grant/loan application to MHFA on behalf of the non-profit development corporation in Halstad to request funds to rehabilitate 5 duplexes (10 units) that are Economic Development	
Arts Development	Arts Grant <i>Halstad</i>	Funded the American Legion for the sponsorship of Prairie Fire Theater from July 29 - August 2, 1997.	\$590



Arts Development	Arts Grant <i>Halstad</i>	Funded Valley Community Theater of Halstad for the production of "Nunsense" on April 4 - 6, 1997.	\$1,750
InterART	InterART Grant <i>Halstad</i>	Norman County West High School was selected to participate in the 1997 InterART program. Two teachers were linked with two artists to provide a forty hour collaboration in the school from February to May 1997.	\$4,050
Aging Admin.	LSS Senior Nutrition Program <i>Halstad</i>	Provided 5,179 Congregate and Home Delivered Meals to 68 persons in Halstad in 1996.	
Housing Technical Assist	Housing Partnership Public Forum <i>Hendrum</i>	Attended a town meeting to discuss housing priorities. Hendrum has requested assistance to support a project that will provide for demolition of dilapidated homes and construction of new single and multi-family affordable housing.	
Housing Technical Assist	Housing Partnership Project <i>Hendrum</i>	To assist the City in coordination of a demolition and redevelopment project that will provide for affordable single family housing and potentially multi-family housing if it is found to be a priority need.	\$2,000
Aging Admin.	LSS Senior Nutrition Program <i>Hendrum</i>	Provided 820 Home Delivered Meals to 8 persons in Hendrum in 1996.	
Aging Admin.	LSS Senior Nutrition Program <i>Shelly</i>	Provided 3,898 Congregate and Home Delivered meals to 179 persons in Shelly in 1996.	
Housing Technical Assist	Housing Partnership Public Forum <i>Twin Valley</i>	Attended a meeting with the Twin Valley Housing Committee. TV has requested housing technical assistance to support a project that will promote the City's incentives for new home builders.	
Housing Technical Assist	Housing Partnership Project <i>Twin Valley</i>	To assist the City in development and completion of a project that will provide for the promoting of the City's housing development incentive program. To assist in payment for legal advice in the transfer of private property to public ownership for housing.	\$2,000
Aging Admin.	LSS Senior Nutrition Program <i>Twin Valley</i>	Provided 6,712 Congregate and Home Delivered meals to 198 persons in Twin Valley in 1996.	



## Pennington County

Economic Development	Economic Summary for <i>Pennington County</i>	Provide summary of demographic and economic statistics for the county. Copies available upon request.	
Economic Development	Land Use Planning <i>Pennington County</i>	Assist in the development of a land use planning process for Pennington County	
Transportation	Pennington County T.A. <i>Pennington County</i>	Working with Pennington County Transit Committee and Tri-Valley Heartland Express on recommendations to improve transit service.	
Enterprise Fund	Enterprise Fund Loans <i>Pennington County</i>	Six loans were made to businesses in Pennington County, totaling \$464,600.00. Three of the loans are active.	\$464,600
Penn Water 1995	1996 Report and 1997 Grant Application <i>Pennington County</i>	Completed 1996 Natural Resources Block Grant Annual Report and 1997 Block Grant Application for Water Planning, Feedlot, Wetlands and Shoreland funding	
Penn Water 1995	Water Plan Update <i>Pennington County</i>	Complete update of the Pennington County Water Plan	
Pennington Water 1996	PWRAC <i>Pennington County</i>	Provide staff support to the Pennington County Water Resources Advisory Committee	
Pennington Water 1996	Data Updating <i>Pennington County</i>	Updating 55 data items for county water plan	
Aging Admin.	Frail Elderly Assistance Program <i>Pennington County</i>	Granted \$6,355 in III-D funds to Inter-County Community Council to provide home modifications, repairs, and renovations to remove safety hazards for frail, low income seniors in 1997. To date: 14 persons provided home mod/repair. 37 hours of service provided.	\$6,355
Aging PD&C	Welfare Board Presentation <i>Pennington County</i>	Provided information about the implementation of the Gatekeeper Program during 1997 as well as chore services for seniors to the Pennington County Welfare Board.	
Aging Admin.	Advance Directives Workshop <i>Pennington County</i>	Provided information on Advance Directives for Health Care and Living Wills to 15 seniors at the Heritage Center in Thief River Falls.	
SENIOR LINKAGE 1997	Homemakers <i>Pennington County</i>	Provided information about the Area Agency on Aging, Senior Linkage Line and other resources to the Pennington County Homemakers group.	
Housing Technical Assist	Housing Partnership Project <i>Goodridge</i>	To assist the City in purchasing the technical support needed to design a manufactured home park and obtain cost estimates for the development of the park's infrastructure.	\$2,000
Arts Development	Arts Grant <i>Goodridge</i>	Funded Goodridge Historical Society for the production of "Saturday Night Barn Dance" on July 5, 1997.	\$475
Community Development	Snowmobile Meeting <i>St. Hilaire</i>	Informal meeting of all snowmobile clubs in NW Minnesota to hear what they are doing and what the RDC and the MN Office of Tourism can do for them.	
Economic Development	St. Hilaire City Planning <i>St. Hilaire</i>	Assist community in developing a written plan through review of problems and needs, development of goals and indicators, a review process and data and mapping information.	



Aging Admin.	LSS Senior Nutrition Program <i>St. Hilaire</i>	Provided 232 Congregate and Home Delivered meals to 28 persons in St. Hilaire in 1996.	
Arts Development	Arts Grant <i>Thief River Falls</i>	Funded the Northwest Minnesota Service Cooperative for the sponsorship of the Young Author's Conference on March 5, 1997.	\$1,700
Arts Development	Arts Grant <i>Thief River Falls</i>	Funded Challenger Elementary School for the sponsorship of twelve artists for their Very Special Arts Festival day for children with disabilities in Fall of 1997.	\$2,500
Arts Development	Arts Grant <i>Thief River Falls</i>	Funded the TRF Centennial Committee for the production of "Beautiful City" on October 23 - 26, 1996.	\$2,000
InterART	InterART Follow-up Workshop <i>Thief River Falls</i>	Organize and attend the follow-up workshop for participants on April 11, 1997 at the Vacationaire Resort in Park Rapids.	
McKnight Arts	Individual Artist Grant <i>Thief River Falls</i>	Funded Beverly Dekkers for a voice mentorship with Diane Johnson of Thief River Falls, from October 1, 1996 - September 30, 1997.	\$500
McKnight Arts	Student Arts Grant <i>Thief River Falls</i>	Funded Brad Dekkers of Thief River Falls for a trumpet mentorship with Einar Einarson of Grand Forks from February - November 1997.	\$250
Aging Admin.	Senior Day <i>Thief River Falls</i>	Provided information about Area Agency on Aging and Senior LinkAGE at Pennington county fair.	
Aging Admin.	LSS Senior Nutrition Program <i>Thief River Falls</i>	Provided 25,724 Congregate and Home Delivered meals to 945 persons in Thief River Falls in 1996. (4 Sites - Sr. Center, Riverside Terrace Apts., Skylight Apts., Gunderson Apts.)	

## Polk County

Economic Development	Economic Summary for <i>Polk County</i>	Provide summary of demographic and economic statistics for the county. Copies available upon request.	
Economic Development	Poplar/Animal Waste <i>Polk County</i>	Assist Forest Service and University of Minnesota on preliminary discussions of a possible project to use animal waste to fertilize commercial poplar trees.	
Enterprise Fund	Enterprise Fund Loans <i>Polk County</i>	Twenty-four loans were made to businesses in Polk County, totaling \$1,512,375.00. Disaster relief loans were made to two businesses. Fifteen of the loans are active.	\$1,512,375
Aging PD&C	Committee on Aging <i>Polk County</i>	Provided information about the expansion of chore service to seniors utilizing the Sentencing to Service program, as well as the implementation of the Gatekeeper Program during 1997.	
Economic Development	Crookston Business Incubator <i>Crookston</i>	Assisted with development of Valley Ventures. Valley Ventures would house agricultural value added businesses during the initial stages of development and function in close contact with the AURI and UMC.	
Enterprise Fund	All Seasons Car Wash and Quick Lube Centre <i>Crookston</i>	Approved Standard RLF Loan for \$57,000.00. Closing is pending.	\$57,000



Enterprise Fund	Dee, Inc. <i>Crookston</i>	Closed Standard RLF loan for \$75,000.00.	\$75,000
Arts Development	Arts Needs Meeting <i>Crookston</i>	Met with arts groups around Crookston to discuss their long-term needs for programming and services. Meeting was April 1, 1997.	
Arts Development	Arts Grant <i>Crookston</i>	Funded Impressions Dance Company for the production of "Rodeo" on November 23-24, 1996.	\$925
Arts Development	Arts Grant <i>Crookston</i>	Funded Impressions Dance Company, Crookston, for the sponsorship of James Sewell Ballet Company of Minneapolis for a week long workshop and performance from February 24 - 28, 1997.	\$2,500
Arts Development	Arts Grant <i>Crookston</i>	Funded Crookston Community Theater for the production of "Quilters" on June 5 - 9, 1997.	\$1,970
McKnight Arts	Small Capital Arts Grant <i>Crookston</i>	Funded Crookston Community Theater for the purchase of file cabinets and a workstation.	\$1,305
McKnight Arts	Small Capital Arts Grant <i>Crookston</i>	Funded Impressions Dance Company for the purchase of sound equipment and men's dance pants.	\$1,110
Aging Admin.	LSS Senior Nutrition Program <i>Crookston</i>	Provided 25,999 Congregate and Home Delivered meals to 556 persons in Crookston in 1996. (3 sites - Sr. Center, Nimens Apts., Oak Court Apts.)	
Aging PD&C	TRIAD Training on Scams <i>Crookston</i>	Coordinated a TRIAD sponsored training on scams and how to avoid being ripped off by contractors at the Golden Link Senior Center in Crookston. This training will be replicated throughout Crookston in an effort to reach as many seniors as possible.	
Aging PD&C	Polk County Social Service Meeting <i>Crookston</i>	Met with staff from Polk County Social Services to discuss chore, Gatekeeper, and other programs. Discussed the development of a guardianship program.	
Aging PD&C	TRIAD Implementation <i>Crookston</i>	Serving as co-chair of Speakers Bureau Committee for Crookston TRIAD program. TRIAD will man telephones at Law Enforcement Center during flood in Crookston.	
Housing Technical Assist	Housing Partnership Project <i>East Grand Forks</i>	The City has not requested these dollars; however, the money will be used to provide technical assistance that will likely be needed over the period of disaster recovery relative to housing development.	\$2,000
Arts Development	Arts Grant <i>East Grand Forks</i>	Funded Twin Forks Sweet Adelines for the production of a Halloween show on November 2, 1996.	\$1,840
Arts Development	Arts Grant <i>East Grand Forks</i>	Funded the Community Performing Arts Council for the sponsorship of a Children's Summer Drama/Arts Camp from August 4 - 15, 1997.	\$500
Arts Development	Arts Grant <i>East Grand Forks</i>	Funded the Community Performing Arts Council for a production of a Rogers and Hammerstein musical revue on February 7-9, 1997.	\$2,385
Aging Admin.	LSS Senior Nutrition Program <i>East Grand Forks</i>	Provided 12,140 Congregate meals to 461 persons in East Grand Forks in 1996. (3 sites - Sr. Center, Sunshine Terrace Apts., Townsquare Apts.)	
Aging PD&C	Flood Recovery Assistance <i>East Grand Forks</i>	Met with Director of EGF Senior Center and Aging Service Coord. from Grand Forks to discuss outreach program implemented in GF, and how that program could be replicated for EGF residents.	



Aging PD&C	Good Samaritan Center Strategic Planning <i>East Grand Forks</i>	Participated in a strategic planning process to assist the Good Samaritan Center in East Grand Forks with examining needs, trends, and making decisions about facility renovation and program change	
Aging PD&C	Flood Assistance <i>East Grand Forks</i>	Provided individual assistance to family displaced by floods. Made contacts to social service, Legal Service, FEMA, Red Cross, other agencies to make sure their needs will be met.	
Enterprise Fund	Oak Grove Nursery, Inc. <i>Erskine</i>	Closed Standard RLF Loan for \$49,900.00	\$49,900
Aging Admin.	Site Assessment <i>Erskine</i>	Conducted Nutrition Site Assessment in Erskine. Site manager is bringing people from Mentor to Erskine if they are interested in eating.	
Aging Admin.	LSS Senior Nutrition Program <i>Erskine</i>	Provided 6,033 Congregate and Home Delivered meals to 159 persons in Erskine in 1996.	
Community Development	Central Cities Brochure <i>Fertile</i>	Did some ground work on a new promotional brochure for the cities.	
Arts Development	Arts Grant <i>Fertile</i>	Funded Fertile Area Arts Council for the sponsorship of the Prairie Fire Theater's production of "Alice in Wonderland" on August 4 - 9, 1997.	\$600
Aging Admin.	LSS Senior Nutrition Program <i>Fertile</i>	Provided 2,212 Congregate meals to 92 persons in Fertile in 1996.	
Enterprise Fund	Wentzel Farms <i>Fisher</i>	Closed Standard RLF Loan for \$59,100.00.	\$59,100
Economic Development	Library Planning <i>Fosston</i>	Complete a planning session with the library and arts center committee to establish goals and work activities to complete a project for addition to the existing building	
Arts Development	Arts Center Conference <i>Fosston</i>	Help plan a statewide conference for Arts Centers. Topics include staffing issues, security, access and sharing of resources.	
Arts Development	Arts Grant <i>Fosston</i>	Funded Fosston Library Art Association for the production of "Crazy for You" on July 24 - 27, 1997.	\$2,385
McKnight Arts	Student Arts Grant <i>Fosston</i>	Funded Michael Anderson of Fosston to create a visual art cover for a cassette tape from February - May, 1997.	\$250
Aging Admin.	LSS Senior Nutrition Program <i>Fosston</i>	Provided 4,461 Congregate and Home Delivered Meals to 158 persons in Fosston in 1996.	
Housing Technical Assist	Housing Partnership Project <i>McIntosh</i>	To assist the City in determining the potential of reuse of their existing school building once the new Win-E-Mac building is built thereby vacating the school in town. Potential reuse to be investigated is conversion to affordable housing.	\$2,000
Enterprise Fund	Riverside Board and Lodging <i>McIntosh</i>	Closed Standard RLF Loan for \$61,600.00	\$61,600



Aging Admin.	LSS Senior Nutrition Program <i>McIntosh</i>	Provided 7,595 Congregate and Home Delivered Meals to 141 persons in McIntosh in 1996.	
Aging Admin.	LSS Senior Nutrition Program <i>Winger</i>	Provided 3,098 Congregate and Home Delivered meals to 81 persons in Winger in 1996.	

## Red Lake County

Transportation	Red Lake County T.A. <i>Red Lake County</i>	Provided information on public transit funding (Section 5311) and application information to Red Lake Falls Housing and Redevelopment.	
Enterprise Fund	Enterprise Fund Loans <i>Red Lake County</i>	Four loans were made to businesses in Red Lake County, totaling \$136,115.00. Two of the loans are active.	\$136,115
Housing Technical Assist	Housing Partnership Public Forum <i>Oklee</i>	Conducted public meeting with residents to discuss housing needs and potential projects. Oklee is requesting technical assistance dollars to hire Jim Steenerson, Inter County, to help in getting affordable single family homes and to complete a market study.	
Housing Technical Assist	Housing Partnership Project <i>Oklee</i>	To assist the City in completion of a project that will provide for affordable single family housing opportunities and for housing planning.	\$2,000
Enterprise Fund	D and R Grocery <i>Oklee</i>	Approved Small RLF Loan for \$22,000.00. Closing is pending.	\$22,000
Aging Admin.	Community Based Budgeting Nutrition Issue <i>Oklee</i>	Provided information to the Oklee City Council on potential changes to improve cost effectiveness of meal site operation in Oklee.	
Aging Admin.	LSS Senior Nutrition Program <i>Oklee</i>	Provided 5,863 Congregate and Home Delivered meals to 261 persons in Oklee in 1996.	
Housing Technical Assist	Housing Partnership Project <i>Plummer</i>	To assist the City in completion of a project that will provide incentives for building single family housing construction. The school's Building Trades program is interested in building a home during the summer months and utilizing past students to build	\$1,000
Housing Technical Assist	Housing Partnership Public Forum <i>Plummer</i>	Conducted public meeting with residents to discuss housing needs and potential projects. Plummer is requesting dollars from the technical assistance program to hire the NWRDC to assist in locating funding to have students build a house this summer.	
Economic Development	Housing Meeting <i>Plummer</i>	Complete a public input session to define the housing needs in the community and possible steps to meet those needs. Session resulted in recommendation for a summer student home building project	
Aging Admin.	LSS Senior Nutrition Program <i>Plummer</i>	Provided 1,098 Congregate and Home Delivered meals to 37 persons in Plummer in 1996.	



Economic Development	Economic Summary for <i>Red Lake County</i>	Provide summary of demographic and economic statistics for the county. Copies available upon request.	
Community Development	Snowmobile Map <i>Red Lake Falls</i>	Project will involve a map of the trails throughout Red Lake County and parts of Pennington and Polk Counties. Did some initial ground work on the map. They are deciding how to proceed.	
Arts Development	Arts Grant <i>Red Lake Falls</i>	Funded Two Rivers Area Theater for the production of "Fiddler on the Roof" on June 19 - 22, 1997.	\$2,500
Arts Development	Arts Grant <i>Red Lake Falls</i>	Funded the Association of the French of the North for the sponsorship of the Linda Brietag folk music group on August 23 - 24, 1997.	\$2,045
Arts Development	Arts Grant <i>Red Lake Falls</i>	Funded Clayworks, a new organization in Red Lake Falls that works through the public school for a raku workshop and the research and development of a local clay that will be used in the workshop in May 1997.	\$1,480
McKnight Arts	Small Capital Arts Grant <i>Red Lake Falls</i>	Funded Two Rivers Area Theater for the purchase of sound equipment.	\$3,930
Aging Admin.	LSS Senior Nutrition Program <i>Red Lake Falls</i>	Provided 10,598 Congregate and Home Delivered meals to 271 persons in Red Lake Falls in 1996.	
Aging PD&C	Red Lake County Welfare Board Presentation <i>Red Lake Falls</i>	Provided information about the Gatekeeper Program as well as the implementation of chore services for seniors and flood assistance efforts to the Red Lake County Welfare Board.	
Aging PD&C	Transit <i>Red Lake Falls</i>	Provided information about possible transportation systems to a committee working on the feasibility of developing transportation for the city of Red Lake Falls.	

## Roseau County

Housing Technical Assist	Housing Partnership <i>Roseau County</i>	To provide assistance in establishing a mechanism to be used that will allow for a county housing loan fund. Monies would be available to help make home ownership more affordable for residents.	\$2,000
Economic Development	Economic Summary for <i>Roseau County</i>	Provide summary of demographic and economic statistics for the county. Copies available upon request.	
Transportation	Roseau County T.A. <i>Roseau County</i>	Providing technical assistance for Roseau County Area Transit's expanded service management plan. A second vehicle has been approved and will provide better service to Warroad and the eastern part of the county.	
Enterprise Fund	Enterprise Fund Loans <i>Roseau County</i>	Six loans were made to businesses in Roseau County, totaling \$329,577.00. Four of the loans are active. Three disaster relief loans were made.	\$329,577
Aging Admin.	Friends and Neighbors <i>Roseau County</i>	Provided information about the Area Agency on Aging, services for seniors, and the chore program for seniors in Roseau County on a radio broadcast.	



Aging PD&C	Chore Service Expansion <i>Roseau County</i>	Met with representatives from the Roseau County Sentencing to Service program to discuss referral process, provision of service, and implementation of program to provide chore services to seniors in Roseau County.	
Aging Admin.	Sr. Transportation Program <i>Roseau County</i>	Granted \$7,980 to Roseau County Senior Transportation Program to assist seniors access transportation to medical services in 1997. To date: 73 participants; 12 new this 1st quarter. 304 trips made and drivers drove a total of 14,156 miles.	\$7,980
Aging Admin.	Housekeeping Program <i>Roseau County</i>	Granted \$5,225 to Roseau County Home Health Care Housekeeping program to assist seniors with housecleaning and other home care needs in 1997. To date: 128 hours of service provided to 31 persons.	\$5,225
Aging Admin.	STS Chore Program <i>Roseau County</i>	Granted \$9,000 to Roseau County Sentencing to Service Program to assist seniors with heavy chore services in 1997. To date: 508 hours of service provided to 13 clients.	\$9,000
Housing Technical Assist	Housing Partnership Public Forums <i>Badger</i>	Conducted public meeting with residents to discuss housing needs and potential projects. Badger is requesting technical assistance dollars to hire the NWRDC to investigate the potential for affordable stick built and manufactured homes on in-fill lots in town.	
Housing Technical Assist	Housing Partnership Project <i>Badger</i>	To assist the City in completion of a project that will provide for affordable single family housing opportunities and for housing planning.	\$1,500
Arts Development	Arts Grant <i>Badger</i>	Funded Badger School for the sponsorship of Jean Honl residency "Beauty in My World" from September 15 - December 20, 1997.	\$1,875
McKnight Arts	Student Arts Grant <i>Badger</i>	Funded Kristina Nelson of Badger for a voice mentorship with Niccole Goulet of Thief River Falls from February - May 1997.	\$250
Aging Admin.	LSS Sr. Nutrition Program <i>Badger</i>	Provided 2,096 Congregate and Home Delivered Meals to 45 persons in Badger in 1996.	
Community Development	Brochure Development <i>Greenbush</i>	Work with the city of Greenbush to update their city brochure.	
Enterprise Fund	T & T Motor Sports, Inc. <i>Greenbush</i>	Approved Standard RLF Loan for \$54,000.00. Closing is pending.	\$54,000
Enterprise Fund	Wahl Brothers Racing, Inc. <i>Greenbush</i>	Closed RLF loan for \$67,500.00	\$67,500
Aging Admin.	LSS Sr. Nutrition Program <i>Greenbush</i>	Provided 3,466 Congregate and Home Delivered Meals to 128 persons in Greenbush in 1996.	
Housing Technical Assist	Housing Partnership Public Forum <i>Roseau</i>	Conducted public meeting to discuss housing issues with residents. Roseau is requesting assistance from John Wynne to provide for a survey of employees. The results of the survey will help in determining the most pressing housing needs in Roseau.	
Housing Technical Assist	Housing Partnership Project <i>Roseau</i>	To assist the City in completion of a project that will provide for the surveying of employees and resident of Roseau County that will help to identify the most prominent housing needs.	\$2,000
Economic Development	Housing Meeting <i>Roseau</i>	Completed a public meeting to discuss housing needs in the city and surrounding area. Recommendations were to complete a county wide housing survey if other cities are interested.	



Enterprise Fund	The Quilt Hus <i>Roseau</i>	Approved Standard RLF Loan for \$50,000.00 Loan closing is pending.	\$50,000
Arts Development	Arts Needs Meeting <i>Roseau</i>	Met with arts groups around Roseau to discuss their long-term needs for programming and services. Meeting was March 27, 1997.	
Aging Admin.	STS Chore Service Application <i>Roseau</i>	Provided technical assistance to Roseau Co. Sentencing to Service program in the development of a grant application to provide chore services to seniors.	
Aging Admin.	Malung-Pencer Nutrition Expansion <i>Roseau</i>	Met with residents from Malung-Pencer area of Roseau County to discuss development of a survey to determine interest in a senior nutrition program in the area.	
Aging Admin.	LSS Sr. Nutrition Program <i>Roseau</i>	Provided 11,041 Congregate and Home Delivered Meals to 232 persons in Roseau in 1996.	
Arts Development	Arts Grant <i>Warroad</i>	Funded Warroad Summer Theater for the production of "The Lion, the Witch, and the Wardrobe" on July 24 - 26, 1997.	\$500
Arts Development	Arts Grant <i>Warroad</i>	Funded Warroad Summer Theater for the production of "Annie Get Your Gun" on August 1 - 4, 7 - 11, 15 - 17, 1997.	\$1,940
McKnight Arts	Individual Artist Grant <i>Warroad</i>	Funded Lea Soltis to attend a painting workshop with Mr. Covino on July 28 - August 1, 1997.	\$500
Aging Admin.	Senior Issues Day <i>Warroad</i>	Provided information to seniors and family members from Warroad, Williams, and Roseau county on services available from Area Agency on Aging.	\$0
Aging Admin.	LSS Sr. Nutrition Program <i>Warroad</i>	Provided 8,433 Congregate and Home Delivered Meals to 274 persons in Warroad in 1996.	\$0



## Multiple Counties

Aging Admin.	Caregiver Conference <i>Multi-County: Polk Marshall, Norman</i>	Assisted with the planning and development for the Caregiver Conference in conjunction with the Respite Care Program.	
Aging PD&C	Chore Service Expansion <i>Multi-County: Polk Red Lake, Norman</i>	Met with staff from the Tri-County Community Corrections to discuss telephone referral procedures, reporting requirements, and program implementation. Chore service grant began January 1, 1997	
Aging Admin.	NW STS Chore Program <i>Multi - County: Kittson Marshall, Pennington</i>	Granted \$23,500 to Northwest Sentencing to Service Program to assist seniors with heavy chore services in 1997. To date: 135 clients served; 107 new this quarter. 961 hours of service provided in 241 visits.	\$23,500
Aging PD&C	Respite Care Program <i>Multi-County: Polk Marshall, Norman</i>	Participated in a planning session to examine ways the Respite Care Program can best implement Robert Wood Johnson Foundation grant.	
Aging Admin.	Tri-County Corrections STS Chore Program <i>Multi-County: Norman Polk, Red Lake</i>	Granted \$13,705 to Tri County Corrections Sentencing to Service program to assist seniors with heavy chore services in 1997.	\$13,705
Aging Admin.	Valley Housekeeping Program <i>Multi-County: Norman Pennington, Polk</i>	Granted \$32,025 to Valley Housekeeping to assist seniors with housecleaning and other home care needs in 1997. To date: Provided 5,823 hours of service to: 88 housekeepers employed, 38 over 55 years of age.	\$32,025
Northern Counties	Contract Management <i>Multi-County Pennington, Marshall</i>	Complete all administrative duties related to the grant from MN Planning to the Northern Counties Land Use Coordinating Board	