

HT  
393  
:H62  
M67A  
1989



# Regional Development Commission

## FISCAL YEAR

## 1989

## ANNUAL

## REPORT

LEGISLATIVE REFERENCE LIBRARY  
615 State Office Building  
Saint Paul, Minnesota 55155

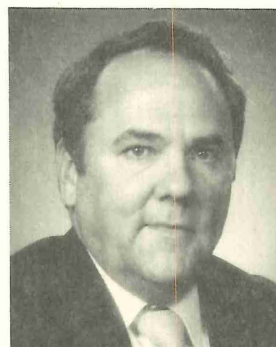
*Making The Best of Our Resources*

3 0307 00010 7964



LEGISLATIVE REFERENCE LIBRARY

On behalf of the Northwest Regional Development Commission I am pleased to present to you our Annual Report for Fiscal Year 1989. This report provides you with a summary of the Commission's activities during the past year and of our financial condition. We are trying something new this year, a calendar format. We hope you will hang this calendar on your wall in order to enjoy the beautiful photographs of Northwest Minnesota and as a reminder of the services of NWRDC.



**Dr. Joe Bouvette**  
Chairperson  
NWRDC Bd. of Directors

The past year has been another busy one for us. We have reviewed and updated all

of the agency's various program, policy and management guidelines or manuals. This effort not only helps each of us Commissioners to better manage the NWRDC, it also keeps the NWRDC current with new laws and a changing workplace.

The NWRDC has had a very successful program year. In August we began a new senior leadership development program with funding from the Northwest Minnesota Initiative Fund. The program is designed to help expand senior citizen activities in our region by providing leadership training to senior groups. The program has had great success. We will begin a second year with additional funding from the NWMIF in August.

In October we hired Ms. Heidi Falk to be our natural resource/transportation planner. Heidi was immediately immersed in the comprehensive local water plans that we were preparing. The quality of the plans is a testament to the good work of Heidi and Carol Sorensen. Their hard work and dedication has been an important service to the region.

In December the NWRDC entered into a contract with the Northwest Minnesota Initiative Fund to provide loan development services to their Challenge Grant Program. This is an important program for our region and a welcome complement to the services we provide through the Enterprise Fund. It is always a pleasure to see two good programs working together for the region.

As usual, our economic/community development division has been very busy. In January we hired John Wynne. He is a welcome addition to our excellent staff. In May we began working with Roseau County on their growth management project. NWRDC worked hard for several months to help the Northern Pride group put together its financing for purchase of the Land O' Lakes turkey processing facility in Thief River

Falls. The package includes \$500,000 in State and Federal loan funds that will remain in the region.

The frosting to a great development year for the region was the announcement of block grant funding for Minnesota on June 1. Our region received over \$2.5 million in funds. NWRDC staff provided assistance when requested to many of the communities that received funding. (Greenbush - \$440,700; Hallock - \$348,000; Karlstad - \$343,500; Lengby - \$114,000; Roseau - \$904,000; and Twin Valley - \$366,550).

At the June 1, 1989 Capitol-for-a-Day in Thief River Falls Governor Rudy Perpich presented us with a proclamation commending and complementing the NWRDC for "a job well done." When presenting the proclamation Gov. Perpich remarked that this was the first time he had ever presented such a proclamation to a Regional Development Commission. It was a great honor for all of us Commissioners that were at the presentation to receive such recognition for the work of our RDC.

Our Executive Director continues to provide the management we expect from him. We appreciate having a Director who values the advice and guidance of the NWRDC, its Board, and local elected officials. Jerry's election into membership of the Society of International Business Fellows and his selection by other RDC Directors to serve as the MARC Executive Vice Chair in FY '89 contributes to the professional character of NWRDC.

One thing in particular that indicates to me how things have changed and improved at the NWRDC in the past two years is the interest of the Commission members. We have gone from having a difficult time getting a quorum at meetings to nearly 100% attendance at FY 1989 meetings. This active involvement by Commission members reflects how important the NWRDC is to our region.

Through all this activity, one thing remains certain. The NWRDC is a service agency for the local units of government in Northwest Minnesota. It is and remains your agency. We will continue to provide the best services we can to the people of our region.

Respectfully Submitted,

A handwritten signature in dark ink, appearing to read "Joe Bouvette", written over a light blue horizontal line.

Joseph E. Bouvette, Chairperson



## Commission Membership

County	County Board	Township Board	Cities
Kittson	*Charles Lindberg Kennedy	William Gatheridge Humboldt	George Wikstrom, Jr. Karlstad
Marshall	*Delray Larson Gatzke	Marville Magnusson Argyle	Vernon Gunderson Newfolden
Norman	Don Anderson Ada	Cary Sip Ada	*Floyd Hovland Ada
Pennington	Donald Grabanski Thief River Falls	Kermit Finstad Thief River Falls	Karen Young St. Hilaire
Polk	*Eugene Mattson East Grand Forks	Gary Letnes Crookston	Duane Knutson Fertile
Red Lake	Alvin Jensen Oklee	Ralph Berg Brooks	*Russell Pahlen Plummer
Roseau	Glenn Darst Greenbush	Donald Fast Warroad	Gary Hendrickson Warroad

### School District Representatives

Sue Jevning  
Warren

\*Harry Sjulson  
St. Hilaire

### Public Interest Groups

Agriculture  
Business  
Financial  
Institutions  
Industry  
Low Income  
Labor  
Minorities  
Soil & Water  
Conservation  
Vocational  
Schools  
Watershed  
District  
Women  
Senior  
Citizens

Norma Hanson, Goodridge  
Harold Thomforde, Crookston

John Carpenter, Hallock  
\*\*Dr. Joe Bouvette, Hallock  
Lowell Enerson, Oklee  
Ray Beauchamp, TRF  
Geri Sollom, TRF

Ronald Anderson, RLF

Harvey Tripp, EGF

\*Rudee Anderson, Greenbush  
Judith Erickson, RLF

Roy Jorgenson, Oklee

\*Member of Board of Directors

\*\*Chairperson

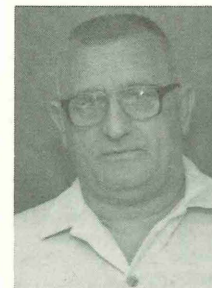
## NWRDC Board of Directors



Charles Lindberg  
Kittson County



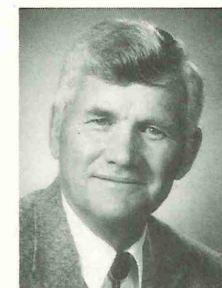
Delray Larson  
Marshall County  
Vice-Chaiperson



Floyd Hovland  
Norman County



Harry Sjulson  
Pennington County



Eugene Mattson  
Polk County  
Treasurer



Russell Pahlen  
Red Lake County



Rudee Anderson  
Roseau County



ARNE H. CARLSON  
STATE AUDITOR

# STATE OF MINNESOTA

OFFICE OF THE STATE AUDITOR  
SUITE 400  
525 PARK STREET  
SAINT PAUL 55103

296-2551

## Commission Budget

### INDEPENDENT AUDITOR'S OPINION

<u>REVENUE</u>	<u>FY'89</u>	<u>PROJECTED FY'90</u>
State Appropriations	\$ 40,976	\$ 40,976
Local Levy	101,308	106,400*
MnDOT FY'90	25,000	27,000
MnDOT FY'89 Extension		4,103
Economic Development Admin.	53,994	50,750
Water Planning	56,783	
205J Abandon Well Study	11,246	6,744
State Arts Board	19,500	22,500
MN Resource Center for Arts	14,335	9,382
MN Board on Aging	73,988	75,218
Northwest Enterprise Fund	23,048	24,000
McKnight Foundation-Arts	1,081	900
McKnight Leadership Project	21,910	29,180
NWMIF Revolving Loan Fund	24,852	47,600
Roseau County Growth Management		13,920
Thief River Falls Block Grant		5,000
County Social Service/ Mental Health Plans		7,800
St. Vincent Township	1,353	
NW Private Industry Council	3,000	3,000
Red Lake Riverlands	1,176	
Interest	11,726	11,300
Conference Regist./Misc.	8,962	6,009
<b>SUBTOTAL</b>	<b>\$494,238</b>	<b>\$491,782</b>
<b>RESERVE FUNDS</b>	<b>9,502</b>	
<b>TOTAL REVENUES</b>	<b>\$503,740</b>	<b>\$491,782</b>
*Actual levy to be determined by Commission on 7/25/89		
<u>EXPENDITURES</u>	<u>FY'89</u>	<u>FY'90</u>
Salary/Fringe	\$277,358	\$297,287
Staff Travel & Registrations	36,098	32,003
Commission/Committee Travel		
Per Diem, Expenses	29,766	32,363
Professional Fees	62,282	55,555
Office Expenses	95,017	74,574
Fixed Assets	3,219	
<b>TOTAL</b>	<b>\$503,740</b>	<b>\$491,782</b>

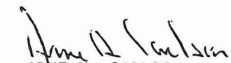
Dr. Joe Bouvette, Chairman  
Northwest Regional Development  
Commission  
P.O. Box E  
525 Brooks Avenue South  
Thief River Falls, Minnesota 56701

We have audited the general purpose financial statements of Region I, Northwest Regional Development Commission, Thief River Falls, Minnesota, as of and for the year ended June 30, 1988, as listed in the table of contents. These general purpose financial statements are the responsibility of the Commission's management. Our responsibility is to express an opinion on these general purpose financial statements based on our audit.

We conducted our audit in accordance with generally accepted auditing standards. Those standards require that we plan and perform the audit to obtain reasonable assurance about whether the general purpose financial statements are free of material misstatement. An audit includes examining, on a test basis, evidence supporting the amounts and disclosures in the general purpose financial statements. An audit also includes assessing the accounting principles used and significant estimates made by management, as well as evaluating the overall financial statement presentation. We believe that our audit provides a reasonable basis for our opinion.

In our opinion, the general purpose financial statements referred to above present fairly, in all material respects, the financial position of Region I, Northwest Regional Development Commission at June 30, 1988, and the results of its operations for the year then ended, in conformity with generally accepted accounting principles.

Our audit was made for the purpose of forming an opinion on the general purpose financial statements taken as a whole. The combining and individual fund financial statements listed in the table of contents are presented for purposes of additional analysis and are not a required part of the general purpose financial statements of the Commission. Such information has been subjected to the auditing procedures applied in the audit of the general purpose financial statements and, in our opinion, is fairly presented in all material respects in relation to the general purpose financial statements taken as a whole.

  
ARNE H. CARLSON  
State Auditor

September 22, 1988



### **Aging Advisory Committee**

William Gatheridge, Humboldt  
Charles Lindberg, Kennedy  
Leonard Olson, Warren  
Kenneth Price, Stephen  
Bette Gysland, Ada  
Lloyd Hovelson, Gary  
Kermit Finstad, Thief River Falls  
William Penning, Thief River Falls  
Emil Bagley, Crookston  
Lil Snyder, Crookston  
Pearl Hotvedt, East Grand Forks  
Lorraine Strand, Erskine  
Howard Greenwald, Plummer  
Roy Jorgenson, Oklee  
Phyllis Raebel, Red Lake Falls  
Marie Comstock, Roseau  
June Hagen, Roseau  
Monica Douglas, Moorhead

### **Regional Arts Council**

Sharon Fannin, Karlstad  
LaDonna Truedson, Kennedy  
KayDell Super, Middle River  
June Troskey, Middle River  
Gene Lysaker, Twin Valley  
Ken Swanson, Ada  
Jack Davidson, Thief River Falls  
Lowell Enerson, Thief River Falls  
Mike Trudeau, Thief River Falls  
Harry Sjulson, St. Hilaire  
George French, Crookston  
Ric Sorenson, Fosston  
Roy Jorgenson, Oklee  
Mike Swenson, Oklee  
Carol Hallan, Warroad  
Louis Hermanson, Roseau

### **Economic Development Planning Committee**

Cindy Spilde, Kennedy  
Kim Kraska, Lancaster  
Lawrence Sundahl, Stephen  
Clayton Troskey, Middle River  
Harris Garberg, Twin Valley,  
Rollin Bergman, Ada  
Steve Levinson, Thief River Falls  
Arve Moser, Thief River Falls  
Arvid Clementson, Fosston  
Del Olson, East Grand Forks  
William Muldoon, Red Lake Falls  
Vaughn Thorfinnson, Red Lake Falls  
Milt Arneson, Sr., Roseau  
Bernie Bergraff, Roseau

### **Transportation Advisory Committee**

Joe Bouvette, Hallock  
Adrian Johnson, Kennedy  
Delray Larson, Gatzke  
John B. Rustling, Sr., Stephen  
Ron Rasumsson, Ada  
Cary Sip, Ada  
Tom Kozojed, Thief River Falls  
Donald Grabanski, Thief River Falls  
Eugene Mattson, East Grand Forks  
Harold Thomforde, Crookston  
Clarence Vathauer, Red Lake Falls  
Glenn Darst, Greenbush  
Charles Marvin, Warroad

### **NWRDC Staff**



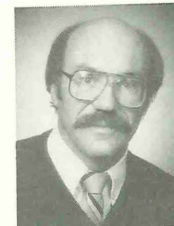
Jerry Nagel  
Executive Director



Faith Rud  
Area Agency on Aging  
Program Director



Linda Nelson  
Arts Planner  
Aging Grants Manager



Leon Heath  
Economic Development  
Program Manager



Suzan Kozojed  
Economic Development /  
Rev. Loan Fund Planner



John Wynne  
Economic and Community  
Development Planner



Donna Christianson  
Financial Officer  
Loan Monitor



Carol Sorensen  
Management Information  
Systems Manager



Rose Carriere  
Receptionist/  
Secretary



Heidi Falk  
Transportation and  
Natural Resource Planner

## Arts - Northwest Regional Arts Council

Promoting, stimulating, and supporting arts activities are the goals of the multi-disciplinary Arts Council of the Northwest Regional Development Commission. Technical Assistance and financial resources are provided to non-profit tax-exempt organizations, schools, and units of government for art projects. The Council's mission to expand the skills and capabilities of arts organizations is supported by funding from the Minnesota State Legislature and the McKnight Foundation's Arts Funding Plan. Local/Regional Arts Development funds totalling \$13,228 were granted to area arts organizations with funding from the State of Minnesota.

Grantee	Activity	Award
Crookston Civic Music League	Shanghai String Quartet	\$ 615
Warroad Summer Theater	Production of <u>On the Air!</u>	835
Fosston Library & Art Center	Rosemaling Workshop	170
Northwest Educational Coop. Services Unit, Thief River Falls	Minnesota Educational Theater's Production of <u>An Introduction to Edgar Allen Poe</u>	1,610
Community Performing Arts Council East Grand Forks	Production of <u>Barn Dance</u>	2,240
Middle River Community Theater	Production of <u>Blithe Spirit</u>	700
Middle River Community Theater	Production of <u>Hansel and Gretel</u>	740
Northland Community College	Concert and Clinic by Miles Johnson	323
North Country Traditional Music & Dance Society, East Grand Forks	Sponsorship of The Wild Goose Cloggers	375
Warroad Summer Theater	Production of <u>A Gentleman and a Scoundrel</u>	797
Northland Community College	Jazz Festival	310
Crookston Civic Music League	Minnesota Opera's <u>Tintypes</u>	888
Fosston Library & Art Center	Production of <u>Bye, Bye, Birdie</u>	2,535
Warren Arts Board	Concert by Arthur Houle	195
Thief River Falls Arts Council	Production of <u>The Timid Dragon</u> and <u>The Golden Goose</u>	445
Twin Valley School District	Photography Workshop	200
North Country Traditional Music & Dance Society, East Grand Forks	Banjo Workshop	250

The McKnight Foundation Arts funding Plan provided \$ 181.00 to assist with capacity building of regional arts organizations and \$ 5,535.00 in support for capital expenditures to four organizations:

Grantee	Activity	Award
Warroad Summer Theater	Purchase of Equipment for Construction of Sets	370
Northland Community College Gallery	Purchase of a Video Camera and Tri-Pod	1,065
Community Performing Arts Council of East Grand Forks	Purchase of Lighting Equipment	1,125
42nd Street Song and Dance Company, Kennedy	Purchase of Sound Equipment	2,975



Photo by David Searles, June 1989

Fosston's Production of Bye, Bye, Birdie



**July  
1989**

Sunday	Monday	Tuesday	Wednesday	Thursday	Friday	Saturday
						1
2	3	4	5	6	7	8
9	10	11	12	13	14	15
		Regional Arts Council Mtg.	Aging Advisory Committee Mtg.	Sr. Coordinating Comm. Mtg.		
16	17	18	19	20	21	22
23	24	25	26	27	28	29
		NWRDC Board & Commission Annual Meeting				
30	31					

Meeting dates are based on regular Aging, Arts, Transportation, and NWRDC Board and Commission meetings. The NWRDC should be contacted for any potential changes in meeting dates.

### **Economic Development - Economic Development Planning Committee**

The Economic Development Program of the Commission is intended to assist area communities and businesses in activities which will create or support the creation of jobs. Funding for this program comes from the Federal Economic Development Administration (EDA) and the Local Tax Levy. Priority areas for the program are established each year in the Overall Economic Development Program which is approved by the Economic Development Planning Committee, the NWRDC, each of the seven counties in the Region and EDA.

1989 was a busy year for economic development with a variety of major projects completed during the year. These projects ranged from assistance in the management of the results of fast paced growth in Roseau County to helping with the retention of jobs through the re-opening of the Land-O-Lakes turkey processing plant by Northern Pride Inc. Progress was seen in the goal of promoting agricultural value-added industries with the start up of modern vegetable growing, processing and marketing in a multi-county effort. Significant industrial park expansions were well along the way in two local communities and a variety of business and industrial projects got underway around the area. Commission staff were involved in

projects in 19 different communities covering topics such as the start up of local loan funds, accessing grant programs and setting up local development groups.

Staff also provided assistance in the establishment of a regional tourism promotion organization and in the expansion of the Minnesota Marketplace program to Region One. A variety of training programs were provided for persons interested in economic development including a regional conference on the legalities of conducting economic development, a session on using Small Business Administration programs and a workshop on using a new computer market analysis program developed by the State.

Plans for next year will include more direct support to community based economic development programs and efforts to support improved marketing of the retail sector.



Photo by David Searles, June 1989

Prairie Processing, Ada, MN



**August  
1989**

Sunday	Monday	Tuesday	Wednesday	Thursday	Friday	Saturday
		1	2	3	4	5
6	7	8	9 Aging Advisory Committee Mtg.	10 Sr. Coordinating Committee Mtg.	11	12
13	14 Transportation Adv. Comm. Mtg.	15	16	17	18	19
20	21 Small Grant Application Due	22 NWRDC Board Meeting	23	24	25	26
27	28	29	30	31		

Meeting dates are based on regular Aging, Arts, Transportation, and NWRDC Board and Commission meetings. The NWRDC should be contacted for any potential changes in meeting dates.

## Aging - NW Area Agency on Aging

The amended Federal Older American's Act of 1965 provides the philosophical base and fundamental guidelines for the NWRDC's Area Agency on Aging. It defines our purpose of working for a coordinated and comprehensive system of community options that help older persons maintain independence and dignity in a home environment. With this as the goal, the NWAAA examines and plans for the needs of local older persons, and assists local governments and service providers through the provision of technical assistance and the allocation of funds for services.

Advocacy on behalf of senior citizens through review and comment on policies that affect older persons was a focus in FY'89. Technical assistance was provided to seniors interested in the development of transit services.

The Legislative Subcommittee on Aging Issues was active in analysis, development and support of state legislation for seniors. Two receptions were held jointly with Headwaters AAA Legislative Task Force to allow seniors to discuss issues with legislators from the two regions.

### "Energize Your Future Years"

Boyd Christenson of Fargo, ND, provided the keynote address on memories of growing up on a North Dakota farm at the 14th Annual Fall Conference on Aging. Music and humor were presented by the North Forty, a women's quartet from Minot, following the noon luncheon. Workshop topics included: Volunteerism, Self-esteem, Medication and Activity, Commu-

nity Productions, Develop A Life Plan, Reminiscing, Political Communication, Games, Keeping Visits Positive, and Leadership. A sale of Senior Craft items was available as well as a service providers resource display. Local training and education opportunities are provided by the AAA to enhance the development and provision of services and expand understanding of aging issues.

## Aging Funds Granted

In FY1989, the following aging funds were obligated to support community-based services:

### Access Services

Kittson Co. Sr. Transportation	\$ 1,538
Roseau Senior Medical Travel	7,369

### Advocacy Service

NW MN Legal Services-Region I	14,089
Northwest Minnesota Insurance Advocacy Project	23,437

### In-Home Supportive Services

Inter-County Home Health Aide	4,932
Marshall Co. Home Health Aide	6,755
Polk Co. Home Health Aide	9,500
Roseau Co. Chore Program	6,000
Roseau Co. Home Health Aide	2,293
Valley Chore Service-Polk, Norman, Pennington	36,067
Multi-County Extended Hour Home Health Care-Norman County	1,951

### Nutrition Services

Sr. Congregate Nutrition Program	194,500
State Nutrition Funds	77,559
Home Delivered Meals	68,500

### Senior Center

Erskine Senior Community Center	8,400
---------------------------------	-------



Photo by David Searles, June 1989

Newfolden Senior Center - Home Delivered Meals



**September  
1989**

Sunday	Monday	Tuesday	Wednesday	Thursday	Friday	Saturday
					1	2
3	4	5 Regional Arts Council Mtg.	6	7	8	9
10	11	12	13 Aging Advisory Committee Mtg.	14 Sr. Coordinating Committee Mtg.	15	16
17	18	19	20 Sponsor/Production/ Small Grant Appli- cations Due	21	22	23
24	25	26 NWRDC Board Meeting	27	28	29	30

Meeting dates are based on regular Aging, Arts, Transportation, and NWRDC Board and Commission meetings. The NWRDC should be contacted for any potential changes in meeting dates.

## **Transportation - Transportation Advisory Committee**

### **Road Construction**

Numerous highway construction projects began around the region this past year. Seventeen projects, highway and bridge improvements, were planned for 1989 at a cost of \$17 million. This year's program included 12 miles of complete reconstruction, 73 miles of resurfacing or reconditioning work, 3 bridge replacement projects, and 3 bridge repair projects. The NWRDC assists MNDOT in determining the regional highway construction priorities.

The 3 largest and most significant projects in northwest Minnesota are: Highway 11 from Warroad to Baudette, Highway 32 from Highway 2 to Red Lake Falls, and Highway 75 from Climax to Crookston.

### **Transit**

NWRDC staff and MNDOT staff continued to meet with Roseau County and Kittson County to assist in determining the need for transit service. The availability of transit is an important issue for rural Minnesota. With reduced private transit services being offered and fewer dollars for public transit assistance, the NWRDC recognizes the need for greater emphasis on transit planning.

### **Market Artery System**

NWRDC Transportation Advisory Committee also helped MNDOT determine a market artery system for the Northwest Region of Minnesota. This system includes significant centers, commercial places, and trunk highway market artery routes. It is assumed that MNDOT will maintain the trunk highway market artery routes, once it has final approval, as 10 ton routes year round.



Photo by David Searles, June 1989

Highway 32 Road Construction



**October  
1989**

Sunday	Monday	Tuesday	Wednesday	Thursday	Friday	Saturday
1	2	3 Regional Arts Council Mtg.	4	5	6	7
8	9 Transportation Adv. Committee Mtg.	10	11 Aging Advisory Committee Mtg.	12 Sr. Coordinating Committee Mtg.	13	14
15	16	17	18	19	20 Small Arts Application Due	21
22	23	24 NWRDC Board & Commission Meeting	25	26	27	28
29	30	31				

Meeting dates are based on regular Aging, Arts, Transportation, and NWRDC Board and Commission meetings. The NWRDC should be contacted for any potential changes in meeting dates.

## Parks and Recreation Planning

The NWRDC provides assistance to Communities in both the planning of and obtaining of funding for parks and recreational areas. Staff worked closely with local units of government and community groups in efforts to improve services to residents. Much of the work is done in conjunction with the Parks and Recreation Grant program available from the Minnesota Department of Trade and Economic Development.

During the past year four communities received help in the preparation of grant applications and two groups received help with planning park expansions or examining the adequacy of existing facilities. Communities applying for funds must prepare a five year recreation plan and provide matching funding for the project.

As the Region has come to identify itself more and more as a good place to visit or vacation, parks and recreation has become an active area for the Commission over the past few years. Many communities have found that local residents like to have good quality recreational opportunities close to home and that park visitors also make good shoppers. One of the primary attractions of many of the parks in the area is the pleasant, friendly, quiet and safe atmosphere which exists in small towns throughout the Region.

A number of communities are looking at the creation or expansion of recreational areas next year. NWRDC staff expect this to continue in future years as the demand for services increases and more groups begin to see the social and economic value of good parks.



Photo by David Searles, June 1989



**November  
1989**

Sunday	Monday	Tuesday	Wednesday	Thursday	Friday	Saturday
			1	2	3	4
5	6	7	8 Aging Advisory Committee Mtg.	9 Sr. Coordinating Committee Mtg.	10	11
12	13	14 Regional Arts Council Mtg.	15	16	17	18
19	20	21	22	23	24	25
26	27	28 NWRDC Board Meeting	29	30		

Meeting dates are based on regular Aging, Arts, Transportation, and NWRDC Board and Commission meetings. The NWRDC should be contacted for any potential changes in meeting dates.



1989 Artist Mentor Program - George French and Eric Swanson

Photo by David Searles, June 1989

## Artist/Mentor Program for Performing and Visual Arts

Twenty-seven students from ten schools participated in the 1988 Artist/Mentor Program for Performing and Visual Arts. The students study with a practicing artist during the summer, then present a sample of their work at a "Summer's End Event". This project was supported by the Minnesota School and Resource Center for the Arts' MAX (Minnesota Arts eXperience) Program.

School	Student	Discipline
Argyle	Dana Haggan Nelson	Voice
	Tony Deschene	Photography
Badger	John Walsh	Oil Painting
	Sam Hanson	Voice
Erskine	Erin Hammer	Theater
	Stuart Ingman	Piano
Hallock	Travis Giffen	Drawing
Middle River	Nathan Dyrud	Theater
	Brett Myer	Commercial Design
Newfolden	Tammy Strandberg	Voice
	Kari Lokstad	Voice
	Carol Waterworth	Creative Writing
	Lori Engelsrud	Piano
	Darcy Gonsorowski	Voice
Oklee	Tricia Olson	Voice
	Amy Haugen	Theater
Plummer	Kristi Wichterman	Saxophone
Roseau	Tammy Olson	Drawing
	Tanya Nelson	Creative Writing
Twin Valley	Erica Furuseth	Watercolor
	Janet Moser	Sketching
	Theresa McCabe	Creative Writing
	Diane Strandlund	Drawing
	Kregg Weispfenning	Drawing
	June Spielman	Voice
	Gavin Thorsrud	Piano
	Collette Tjon	Piano



**December  
1989**

Sunday	Monday	Tuesday	Wednesday	Thursday	Friday	Saturday
					1	2
3	4	5	6	7	8	9
10	11 Transportation Adv. Committee Mtg.	12	13 Aging Advisory Committee Mtg.	14 Sr. Coordinating Committee Mtg.	15	16
17	18	19	20 McKnight & Small Arts Appli- cations Due	21	22	23
24	25	26	27	28	29	30
31		NWRDC Board Meeting				

Meeting dates are based on regular Aging, Arts, Transportation, and NWRDC Board and Commission meetings. The NWRDC should be contacted for any potential changes in meeting dates.

## Community Development

Community Development programs of the Commission are directed towards the goals of assisting local communities to improve the quality of life in the area and to assist units of government to increase their technical and service capabilities. These activities are supported primarily by state funds allocated to the Commission and by service contracts with local units of government. Priorities are set each year by the Economic Development Planning Committee and the Commission in a process which allocated specific amounts of staff time to areas such as grant writing, technical assistance, community planning or providing statistical information.

A major emphasis in the program is assistance to units of government with application for Community Development Block Grants through the Small Cities Development Program operated by the State. 1989 was a banner year for the Region with six local communities submitting successful applications. Commission staff assisted with five of these applications and were very happy to see the efforts of the communities rewarded.

Other work during the year included assistance to three communities on the preparation of Parks and Recreation Grants, developing a new system for keeping track of listings of local

organizations and units of government, assisting with the purchase and use of computer equipment, completing Affirmative Action Plans, finding statistical data, administering grant programs, setting community priorities, and accessing state self help programs such as Star Cities or the Governors Design Team. 27 Communities in the Region received direct assistance during the year and a variety of informational pieces were provided to each community in the Region.

Activities for next year will include much of this same type of work as well as responses to a variety of unique community needs. Each year Community Development solutions always change to fit the new problems.



Photo by David Searles, June 1989

Fosston Mall, Fosston, MN



**January  
1990**

Sunday	Monday	Tuesday	Wednesday	Thursday	Friday	Saturday
	1	2 Regional Arts Council Mtg.	3	4	5	6
7	8 Transportation Adv. Committee Mtg.	9	10 Aging Advisory Committee Mtg.	11 Sr. Coordinating Committee Mtg.	12	13
14	15	16	17	18	19	20
21	22 Small Arts Application Due	23	24	25	26	27
28	29	30 NWRDC Board & Commission Mtg.	31			

Meeting dates are based on regular Aging, Arts, Transportation, and NWRDC Board and Commission meetings. The NWRDC should be contacted for any potential changes in meeting dates.



Sr. Leadership Training Workshop

## Senior Center Leadership Development Project

A Leadership Development program for seniors began in August of 1988 with funding provided by the Northwest Minnesota Initiative Fund (NWMIF) and the NWRDC. The project compliments Area Agency on Aging efforts to enhance senior advocacy skills. Jane Croeker, Leadership Trainer, has provided educational presentations to interested groups and clubs, as well as intensive technical assistance and information on effective group interaction. Training materials have been distributed extensively to groups throughout the region.

Two training and information sessions were held during the year. The first session emphasized components of effective leadership as well as information on fund-raising techniques and successful senior centers. A workshop for all County Committees on Aging members provided the opportunity to share ideas and strategies with similar committees in the region.

Senior Citizens involved in the Leadership Project have accomplished a variety of goals throughout the year including:

- \*organization of a volunteer transportation project
- \*sponsorship of a cholesterol awareness day
- \*conducting a community interest and needs survey
- \*hosting a county-wide medicare/insurance panel
- \*expansion of senior center program options
- \*initiating 55 Alive drivers training
- \*drafting personnel policies
- \*distribution of information on available resources.

Older persons in the region have responded enthusiastically to the opportunity for planning and organizational skill building assistance. A second year of funding from the NWMIF begins September 1, 1989.



**Jane Croeker**  
Senior Leadership  
Project Consultant



**February  
1990**

Sunday	Monday	Tuesday	Wednesday	Thursday	Friday	Saturday
				1	2	3
4	5	6 Regional Arts Council Mtg.	7	8	9	10
11	12	13	14 Aging Advisory Committee Mtg.	15 Sr. Coordinating Committee Mtg.	16	17
18	19	20 Small Arts Application Due	21	22	23	24
25	26	27 NWRDC Board Meeting	28			

Meeting dates are based on regular Aging, Arts, Transportation, and NWRDC Board and Commission meetings. The NWRDC should be contacted for any potential changes in meeting dates.

## Tourism

NWRDC Economic and Community Development Programs have been involved in a wide variety of activities related to the promotion and development of tourism in Northwest Minnesota. Five years ago addressing the idea of Northwest Minnesota as a tourist area was likely to create some funny looks. Today there are discussions in many communities on how to take advantage of the tourist potential and the Minnesota Department of Tourism has identified promotional efforts in the area as creating one of the highest potential for increased traffic in the State.

NWRDC staff have assisted in efforts to establish a regional organizational structure for promotional efforts and in the securing of funds for new parks and attractions. An analysis of tourism activity in the Region was completed which showed increase activity in variety of tourism areas and a large untapped source of shoppers for local business.

The variety of natural habitats, seasons and wildlife in the area combined with a relaxed rural atmosphere have a proven appeal to many people and most especially to our Canadian neighbors. The more people take a close look around the more it becomes clear that the Great Northwest Minnesota is a good place to visit.

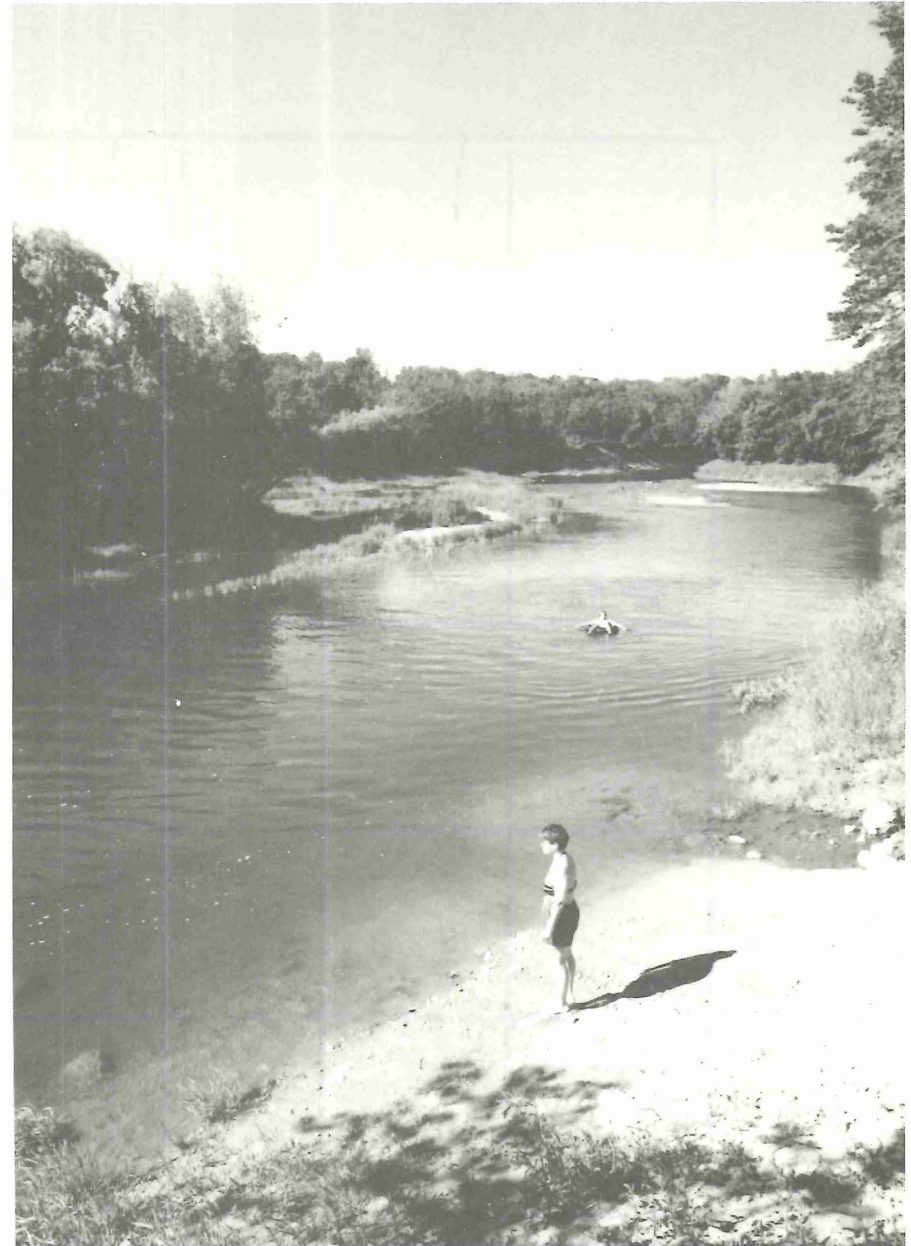


Photo by David Searles, June 1989

Red Lake River, Red Lake Falls, MN



**March  
1990**

Sunday	Monday	Tuesday	Wednesday	Thursday	Friday	Saturday
				1	2	3
4	5	6 Regional Arts Council Mtg.	7	8	9	10
11	12 Transportation Adv. Committee Mtg.	13	14 Aging Advisory Committee Mtg.	15 Sr. Coordinating Committee Mtg.	16	17
18	19	20 Sponsor/Production/ Small Arts Appli- cation Due	21	22	23	24
25	26	27 NWRDC Board Meeting	28	29	30	31

Meeting dates are based on regular Aging, Arts, Transportation, and NWRDC Board and Commission meetings. The NWRDC should be contacted for any potential changes in meeting dates.

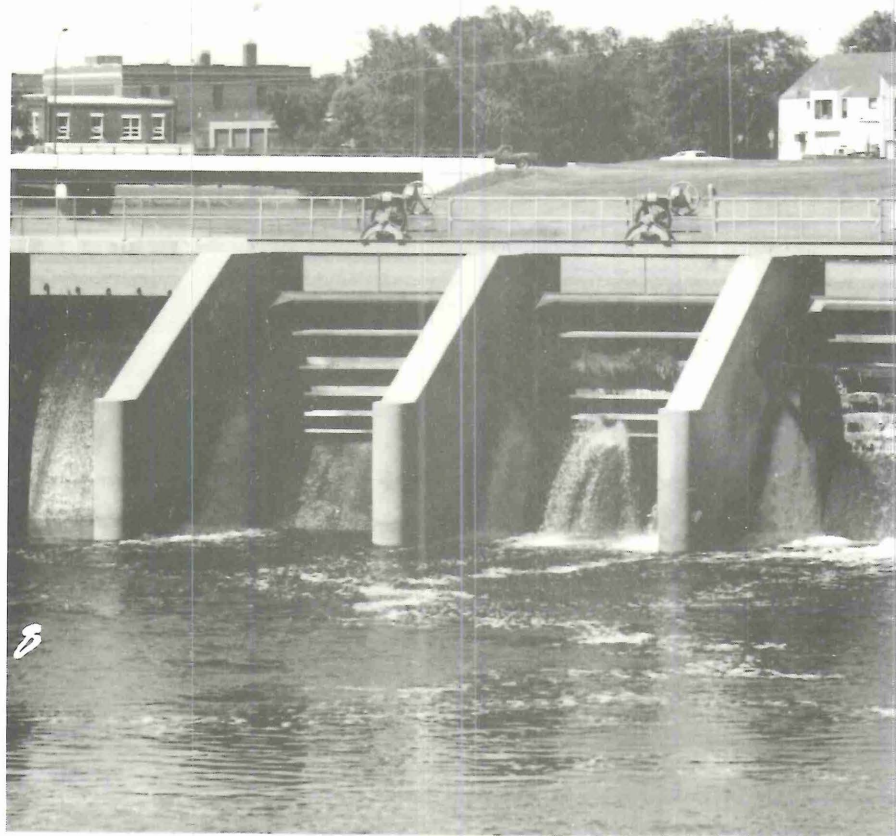


Photo by David Searles, June 1989

Thief River Falls Dam

## Natural Resources

### Comprehensive Water Planning

The fifteen county Comprehensive Water Planning Process was just about completed this year. The seven counties in Region 1, along with one county from Region 2 and seven counties to the south of Region 1, through a joint powers agreement, received a grant from the Legislative Commission on Minnesota Resources to participate in 110b Comprehensive Local Water Planning.

For the past 2 years the 15 counties have worked diligently at developing their comprehensive water plans. NWRDC staff assisted the eight northern county task forces in developing their Comprehensive Water Plans along with getting input into the Comprehensive Water Bill of 1989.

The highest priority implementation strategy in most plans was education on water stewardship. Most of the counties felt this was the first step toward protection of their ground and surface water resources.

This project represented the most comprehensive examination of water issues and has been an incredible learning experience for all.

### Abandoned Well Project

The NWRDC received a grant in

January from the Minnesota Pollution Control Agency to design a model program for local units of government to use in locating and identifying abandoned wells. The study is being conducted in selected townships and cities in Polk and Norman Counties.

The model program involves a public information program, an investigation of techniques to locate abandoned wells, and the development of public policy options for local governments.

The Polk and Norman County Soil and Water Conservation Districts are assisting the project with development of maps that identify abandoned wells in the selected study areas. A variety of tools including aerial photographs, USGS topographical maps, old highway maps, Department of Health records, on-site surveys and interviews with senior residents and well drillers are being used to help identify well locations.

As part of the project demonstration well closings were held near Fosston, Crookst and Ada. Prior to the demonstrations a workshop on abandoned wells was held. A brochure has also been developed.

Eric Evenson from St. Hilaire has been working on the project for the NWRDC.



**April  
1990**

Sunday	Monday	Tuesday	Wednesday	Thursday	Friday	Saturday
1	2	3 Regional Arts Council Mtg.	4	5	6	7
8	9	10	11 Aging Advisory Committee Mtg.	12 Sr. Coordinating Committee Mtg.	13	14
15	16	17	18	19	20 Small Arts Application Due	21
22	23	24 NWRDC Board & Commission Mtg.	25	26	27	28
29	30					

Meeting dates are based on regular Aging, Arts, Transportation, and NWRDC Board and Commission meetings. The NWRDC should be contacted for any potential changes in meeting dates.

**NORTHWEST  
REGIONAL ENTERPRISE FUND  
ANNUAL REPORT**

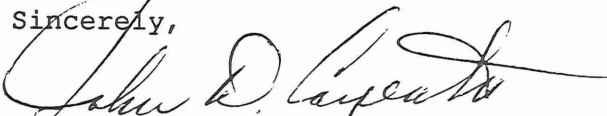
The Enterprise Loan Fund has had a very busy and productive year. Since our last report six additional projects have been provided with financing and we have received recapitalization of our fund to include an additional \$400,000. Time was spent this past year revising and updating the policies of the Fund and the application forms. These changes and improvements were completed in an effort to strengthen the Fund and simplify the process.

In January of 1989, we entered into a new relationship with the Northwest Minnesota Initiative Fund involving the operation of their Revolving Loan Program in our region. We are pleased to be involved in this program, and look forward to being able to encourage more business start-ups and expansions with the use of this new tool for development.

I would like to thank the NWRDC staff and all the members who have served on the Loan Committee and the the Enterprise Fund for the many hours of dedicated service. We can all be proud of the progress that has been made and look forward to the new opportunities in the coming year.

Please review this report and feel free to contact any of the Board members or staff for more information.

Sincerely,

  
John D. Carpenter, Chairperson  
Northwest Regional Enterprise Fund

## Northwest Regional Enterprise Fund

### Member

Harlan Charon, Hallock  
John Carpenter, Hallock  
Delray Larson, Gatzke  
Ray Tunheim, Newfolden  
Cleighten Hastad, Halstad  
Ron Johnson, Ada  
Karen Young, St. Hilaire  
Fred Grant, TRF  
Rollie Boldt, TRF  
Richard Anderson, TRF  
Orville Botner, TRF  
Roger Philipp, TRF  
Mike Moore, Fertile  
John Nelson, Gully  
James Richter, EGF  
Robert Sobolik, Crookston  
Jerry Wendorff, Crookston  
Steve Mercil, Crookston  
William Muldoon, RLF  
Vaughn Thorfinnson, RLF  
David Paulson, Warroad  
Carolyn Eeg, Greenbush  
Norman Hayes, Roseau

### Representing

Cities  
County  
County  
Business  
Business  
County  
Women  
Econ. Dev. Organizations  
Minorities  
Thief River Falls  
County  
Banking  
Econ. Dev. Organizations  
County  
East Grand Forks  
Banking  
Polk County  
Crookston  
Red Lake Falls  
County  
Econ. Dev. Organizations  
Women  
County



**May  
1990**

Sunday	Monday	Tuesday	Wednesday	Thursday	Friday	Saturday
		1 Regional Arts Council Mtg.	2	3	4	5
6	7	8	9 Aging Advisory Committee Mtg.	10 Sr. Coordinating Committee Mtg.	11	12
13	14 Transportation Adv. Committee Mtg.	15	16	17	18	19
20	21 Small Arts Application Due	22 NWRDC Board Meeting	23	24	25	26
27	28	29	30	31		

Meeting dates are based on regular Aging, Arts, Transportation, and NWRDC Board and Commission meetings. The NWRDC should be contacted for any potential changes in meeting dates.

## NORTHWEST REGIONAL ENTERPRISE FUND ANNUAL REPORT

### Northwest Regional Enterprise Fund

#### History

The Northwest Regional Enterprise Fund was created in 1986 to provide gap financing to new and expanding businesses in Northwest Minnesota. Initial funding for the program totaled \$567,000 (\$425,000 Economic Development Administration (EDA) - \$142,000 local funds contributed from Polk County and the Cities of Crookston, East Grand Forks, Thief River Falls and Red Lake Falls).

In 1988, an application for recapitalization of the Enterprise Fund was approved by EDA for an additional \$400,000 (\$300,000 EDA - \$100,000 local matching funds). The local funds were contributed from the Northwest Minnesota Initiative Fund (\$64,000) and each eligible county within the Region (\$6,000 each). In addition, EDA determined that the Enterprise Loan Fund could finance projects in Norman county. Previously, the county had been designated ineligible based on EDA's evaluation of economic conditions in the county.

The 23 members of the Northwest Regional Enterprise Fund form the policy making body. The Board of Directors serve as the Loan Committee and are responsible for policy and credit analysis of loan applications and monitoring of existing loans.

Currently, 16 projects have received loans totalling \$830,777. Over 175 new jobs have been created as a result of these projects. (Please refer to the loan listing for more detail information.) An application from Norman county for a start-up business has been approved for funding, but the loan has not closed as of the date of this report.

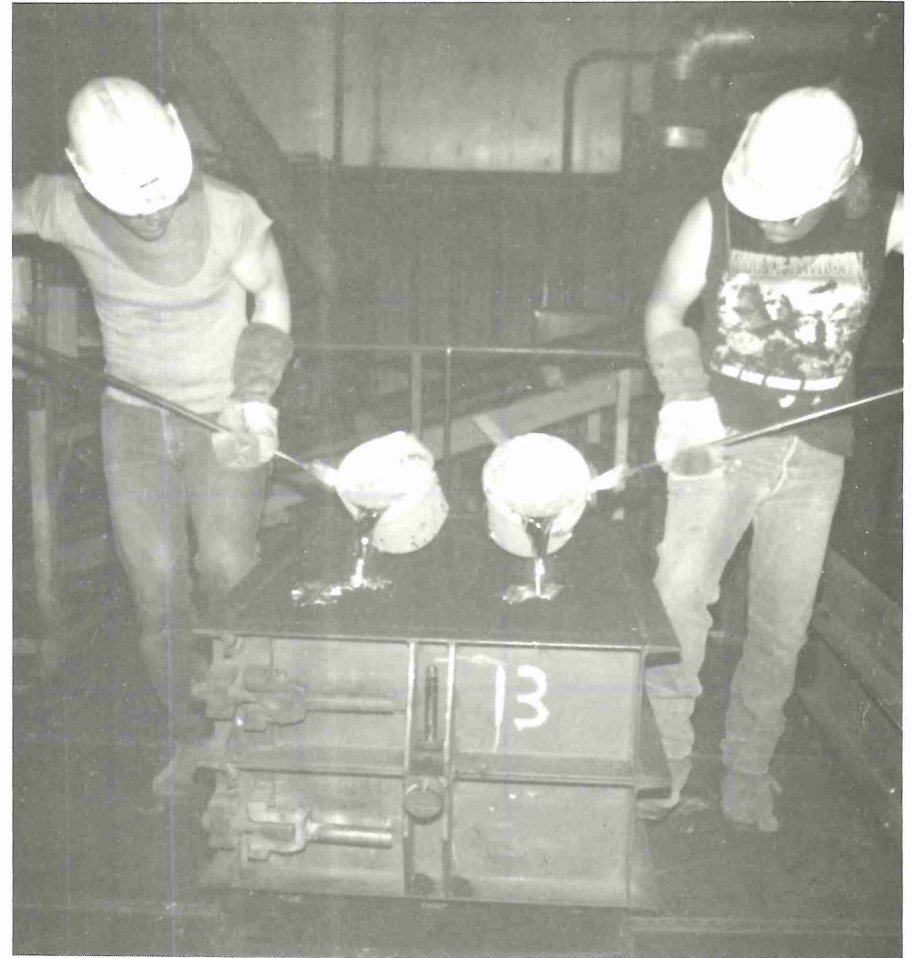


Photo by David Searles, June 1989

Dee, Inc., Crookston, MN



**June  
1990**

Sunday	Monday	Tuesday	Wednesday	Thursday	Friday	Saturday
					1	2
3	4	5 Regional Arts Council Mtg.	6	7	8	9
10	11	12	13 Aging Advisory Committee Mtg.	14 Sr. Coordinating Committee Mtg.	15	16
17	18	19	20	21	22	23
24	25	26 NWRDC Board Meeting	27	28	29	30

Meeting dates are based on regular Aging, Arts, Transportation, and NWRDC Board and Commission meetings. The NWRDC should be contacted for any potential changes in meeting dates.

**NORTHWEST  
REGIONAL ENTERPRISE FUND  
ANNUAL REPORT**



Photo by David Searles, June 1989

Prairie Processing, Ada, MN

The following budget summarizes the capitalization and lending activity of the Enterprise Fund:

EDA Grant Funds	\$ 725,000
Local Match	184,000
NWMIF Match	64,000
Recap Funds*	178,510
<b>TOTAL FUNDS AVAILABLE</b>	<b>\$1,151,510</b>
<b>TOTAL LOANS MADE</b>	<b>830,777</b>
<b>BALANCE AVAILABLE</b>	<b>\$ 320,733</b>

\* Loan money that has been repaid; one-half the interest earned on the loans and on the savings account.

The Fund's administration budget for the year is \$23,000. One-half the interest earned on the loans and on the account can be used for covering administration costs in addition to the loan fees collected. The Northwest Regional Development Commission subsidizes this budget with local dollars designated as technical assistance.



# **NORTHWEST REGIONAL ENTERPRISE FUND PROJECTS FUNDED**

Loan Recipients	Financing By Sources (specify)	Jobs Created	Jobs Committed	Loan Recipients	Financing By Sources (specify)	Jobs Created	Jobs Committed
<b>MARSHALL COUNTY</b>				Miller Building Center Fosston, MN Lumber Yard	RLF Funds: \$58,000 Total Project Cost: \$175,000	4.5	5
Mischel Grain & Seed Warren, MN Commodity Processing & Marketing	RLF Funds: \$13,000 Total Project Cost: \$39,000	1	2	Mr. Carrot, Inc. Fosston, Mn Carrot Dehydration	RLF Funds: \$75,000 Total Project Cost: \$815,000	4.6	15
Valley Spuds, Inc. Stephen, MN Ag Processing	RLF Funds: \$75,000 Total Project Cost: \$455,000	3.75	5	Northern Quilters Crookston, MN Mfgs. Draperies, Bedspreads/Quilts	RLF Funds: \$75,000 Total Project Cost: \$275,000	0	25
<b>PENNINGTON COUNTY</b>				S & S Development Trail, MN Ag Processing Plant (Vegetables)	RLF Funds: \$75,000 Total Project Cost: \$395,840	7.1	6.6
Amundgaard's Sausage Thief River Falls, MN Potato Sausage & Meat Processing	RLF Funds: \$23,000 Total Project Cost: \$73,132	2.3	2.3	V & V Sales, Inc. East Grand Forks, MN Assembles Farm Machinery/Sales	RLF Funds: \$25,000 Total Project Cost: \$295,000	2.1	2
Northern Pride Thief River Falls, MN Turkey Processing	RLF Funds: \$75,000 Total Project Cost: \$2,600,000		82	<b>RED LAKE COUNTY</b>			
Sorvig Partnership St. Hilaire, MN Wholesale Plumbing & Marketing of Tanks	RLF Funds: \$36,600 Total Project Cost: \$110,000	2.6	5	Homark Co. Inc. Red Lake Falls, MN Mobile Home Mfg.	RLF Funds: \$75,000 RLF Funds: \$ 6,700 Total Project Cost: \$1,419,700	80	72
TIC General Thief River Falls, MN Market/Mfg. Antenna Rotor System	RLF Funds: \$50,000 Total Project Cost: \$110,000	1	5	<b>ROSEAU COUNTY</b>			
<b>POLK COUNTY</b>				DeMolee Communications Warroad, MN FM Radio Station	RLF Funds: \$47,077 Total Project Cost: \$150,582		5
Dee Mfg., Inc. Crookston, MN Aluminum Casting	RLF Funds: \$65,000 Total Project Cost: \$219,000	60	10				
Don's Machine Co. Fosston, MN Remanufactures Engines & Diesel Motors	RLF Funds: \$26,400 Total Project Cost: \$80,000	3	4				
Fashion Haus East Grand Forks, MN Retail Women's Clothing	RLF Funds: \$30,000 Total Project Cost: \$94,000	5.5	3				