



ANNUAL REPORT

Fiscal Year 1987



LEGISLATIVE REFERENCE LIBRARY
645 State Office Building
Saint Paul, Minnesota 55155

NORTHWEST REGIONAL DEVELOPMENT COMMISSION

HT
393
.M62
N67bx
1987

CHAIRMAN'S LETTER

It is with great pleasure that I present the Annual Report of the Northwest Regional Development Commission to the local governments and citizens of northwestern Minnesota. The Commission has been very successful in initiating and strengthening programs throughout the region. Significant progress was made in all program areas. Commission activities have and will continue to improve the quality of life for the residents of the region.

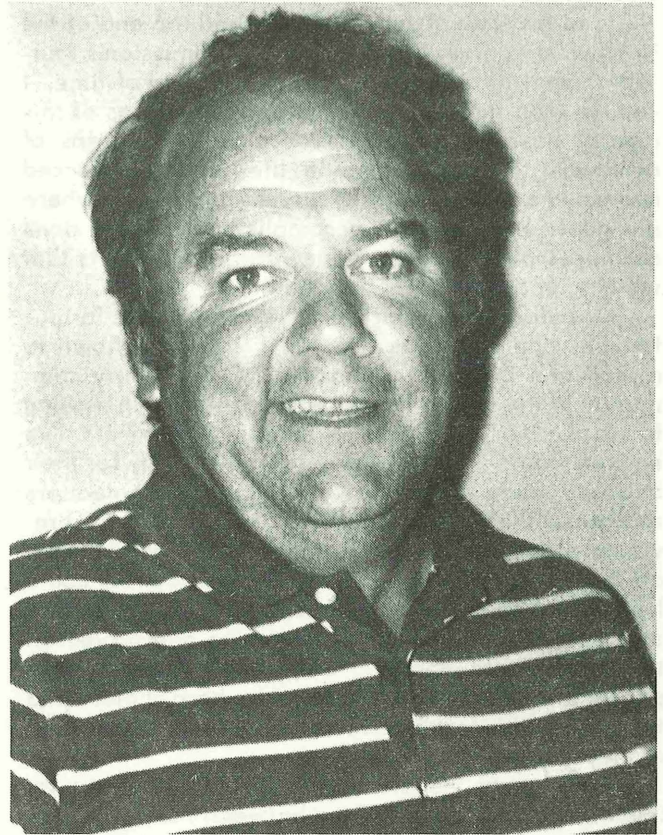
I want to thank members of the Commission, its committees and the staff for their dedication over the past year. A number of excellent Commission members have retired and a special thanks goes to them for their contributions over the years. I want to also recognize those members who have joined the Commission this year. Let it never be said that regional commissions are stagnant.

Let me mention some specific program areas that have assisted the region's quality of life. The region's Aging Program continues to monitor the welfare of the senior citizens of the area. Through the regranting program, technical assistance and coordination efforts, the program consistently works to aid the region's senior population. The Arts Program initiated the artist mentor program to promote art education in the region. The Economic Development Program has assisted a number of businesses through the regional enterprise loan fund. The Transportation Program completed the Regional Highway Jurisdictional Study for the Department of Transportation. Community Development has helped the region's tourism industry through technical assistance. The list could go on for quite a while, but I'll stop.

Where do we go from here? Admittedly, the future is never easy to predict. My vision is that with the mixture of new and old, cooperative efforts and ideas, both great and small, we can help the region move towards a brighter future. While the region is indeed made up of parts, the whole is greater than the sum of those parts because of the willingness to work together in order to maintain and improve the welfare of its citizens. I hope we will all continue to work together.

Respectfully submitted,

Joseph E. Bouvette
Chairman
Northwest Regional Development Commission



DIRECTOR'S LETTER

July 1, 1987

Dear Reader:

The last day of June 1987 marked the end of the Northwest Regional Development Commission's fourteenth year of operation. Over that period of time, it can be seen that the activities and operations of this agency have made a difference to the citizens of northwest Minnesota. As in life, we experienced events where we had great success and events where our goals exceeded our accomplishments. That does not necessarily indicate failure, rather it reflects that we are, above all else, very human.

We all seek to improve the quality of life for our families and ourselves. This past year has shown to myself and the staff of the NWRDC that every community in the region has a genuine interest in moving forward. Every community leader with whom I've spoken would like to see greater opportunity for their citizens, young and elderly alike. Community leaders recognize that there are costs associated with providing these opportunities. These costs include time on the job, time away from family, energy that could have been used for greater personal gain, and the commitment of financial resources to one project at the expense of another. Community leaders have shown that they are willing to make hard choices and to set priorities for the investment of time, energy and money.

Community leaders have shown continued willingness to enter partnerships between the public and private sectors so that all partners can prosper. The emerging opportunities resulting from a changing economy require that we examine new methods to achieve success, both large and small.

This past year presented challenges to all of us who work at NWRDC. The challenges presented an excellent backdrop against which we could conduct an evaluation of the function and performance of this agency. Briefly I would like to discuss some of the findings of our evaluation. In regards to the Commission, the strengths of the organization can serve as the foundation upon which future building can occur. For example:

1. There is a willingness to address differences
2. Very positive relationships exist with NWRDC clients
3. There exists an active committee membership

These conditions provide an environment in which progress can occur quickly and with positive results.

The staff of the NWRDC is another strength of this Commission. As a newcomer to this organization, I was quickly impressed by their willingness to work diligently and work long hours if necessary. Some of the many strengths of the staff are:

1. A strong sense of commitment and professionalism
2. A diversity of talent and skills
3. A sense of optimism about the future

These strengths are vital to the success of an organization as diverse as the Northwest Regional



Development Commission. Over the past year, we have attempted to combine the strengths of the Commission and the staff. If we have been successful, we will see and hear about many success stories in the coming months and years.

The dynamics of the world in which we live require that cooperation occurs almost automatically. We must work to make cooperation a reality rather than rhetoric. The combining of efforts and ideas will improve the chances of success. This agency is in an excellent position to foster the attitude of cooperation. I hope through all of your efforts it will continue to do so.

Finally, there are many, many people who deserve to be recognized for their efforts to assist their communities, agencies and constituents. I hope their success stories will be sufficient compensation for a job well done. Some special recognition is in order for those persons who serve on the Commission and our Advisory Committees. Through their involvement, improvement is made throughout the region. Their labor results in small and large gains, each and every one significant. This Commission is intended to represent the best interest of the citizens of northwest Minnesota, and it is only through the involvement of those persons who sit on the Commission that those regional interests can be heard and acted upon.

I hope that the coming year will bring each of you a large measure of success.

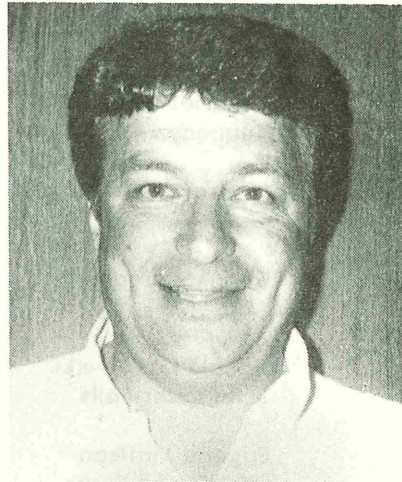
Sincerely,

Jay A. Brunner
Executive Director

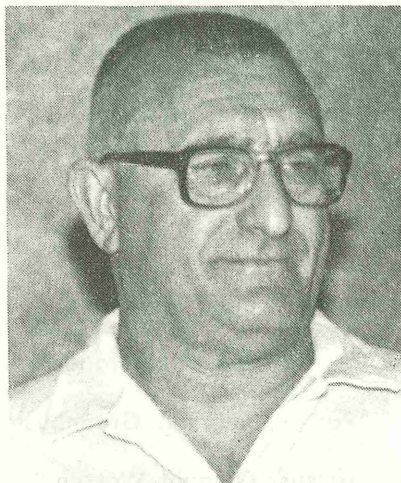
BOARD OF DIRECTORS



Rudee Anderson
Greenbush



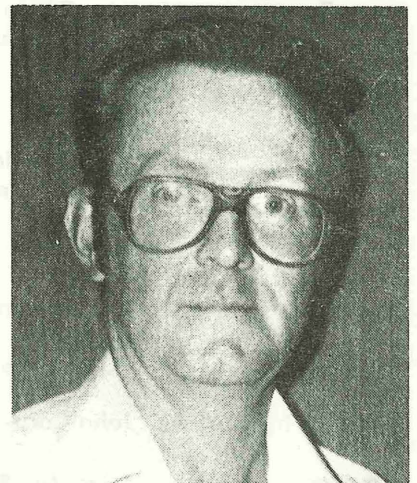
Lowell Enerson
Oklee



Floyd Hovland
Ada



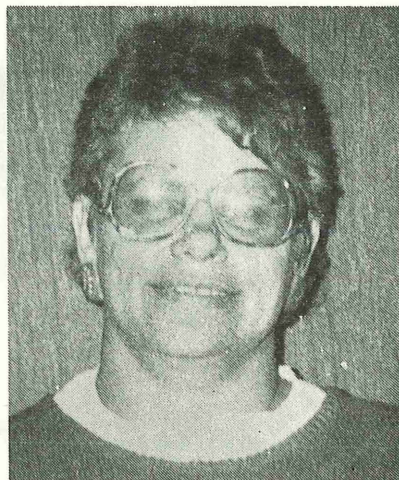
Duane Knutson
Fertile



Delray Larson
Gatzke



Charles Lindberg
Kennedy



Karen Young
St. Hilaire

COMMISSION MEMBERSHIP

COUNTY	COUNTY BOARD	TOWNSHIP BOARD	CITIES
Kittson	*Charles Lindberg Kennedy	William Gatheridge Humboldt	George Wikstrom, Jr. Karlstad
Marshall	*Delray Larson Gatzke	Ervin Strandquist Newfolden	Vernon Gunderson Newfolden
Norman	Don Anderson Ada	Cary Sip Ada	*Floyd Hovland Ada
Pennington	Donald Grabanski Thief River Falls	Kermit Finstad Thief River Falls	*Karen Young St. Hilaire
Polk	Eugene Mattson East Grand Forks	Gary Letnes Crookston	*Duane Knutson Fertile
Red Lake	Willard Purath Red Lake Falls	Ralph Berg Brooks	Russell Pahlen Plummer
Roseau	Glenn Darst Greenbush	Donald Fast Warroad	Gary Hendrickson Warroad

SCHOOL DISTRICT REPRESENTATIVES

Sue Jevning
Warren

Harry Sjulson
St. Hilaire

PUBLIC INTEREST GROUPS

Agriculture	Norma Hanson, Goodridge	Soil & Water Conservation	Verne Green, Newfolden
Business	Harold Thomforde, Crookston	Vocational Schools	Harvey Tripp, East Grand Forks
Financial Institutions	John Carpenter, Hallock	Watershed District	*Rudee Anderson, Greenbush
Industry	**Dr. Joe Bouvette, Hallock	Women	Treasure Omdahl, Warren
Low Income	*Lowell Enerson, Oklee		
Labor	Ray Beauchamp, TRF		
Minorities	Melody Winans, TRF		



*Member of Board of Directors

**Chairman

Members Who Did Serve During FY '87 But No Longer Serve:
Wayne Juhl, Greenbush
John Strosved, Ada

ADVISORY COMMITTEES

AGING ADVISORY COMMITTEE

Emil Bagley, Crookston
Norbert Bertek, Fosston
Monica Douglas, Moorhead
Kermit Finstad, Thief River Falls
William Gatheridge, Humboldt
Verne Green, Newfolden
Howard Greenwald, Plummer
Curt Hanson, Halstad
Pearl Hotvedt, East Grand Forks
Lloyd Hovelson, Gary
Charles Lindberg, Kennedy
Calvin Melgard, Warren
John Nowacki, Warren
William Penning, Thief River Falls
Phyllis Raebel, Red Lake Falls
Wilmer Rugland, Roseau
Lilja Snyder, R.N., Crookston
JoAnne Thompson, Roseau

ARTS ADVISORY COMMITTEE

Ruth Anderson, Greenbush
Sharon Fannin, Karlstad
George French, Crookston
Carol Hallan, Warroad
Diane Krepp, Thief River Falls
Judith Landin, Warroad
Marie Scott, Red Lake Falls
Mary Sjaheim, Thief River Falls
Ric Sorenson, Fosston
Ron Storaker, Red Lake Falls
Betsy Sunram, Grygla
June Troskey, Thief River Falls
Mike Trudeau, Thief River Falls
Ladonna Truedson, Kennedy

ECONOMIC DEVELOPMENT COMMITTEE

Richard Anderson, Thief River Falls
Rollie Boldt, Thief River Falls
Orville Botner, Thief River Falls
John D. Carpenter, Hallock
Harlan Charon, Hallock
Steve Gorman, East Grand Forks
Fred Grant, Thief River Falls
Cleighten Hastad, Halstad
Norman Hayes, Roseau
Ron Johnson, Ada
Delray Larson, Gatzke
Steve Mercil, Crookston
Michael Moore, Fertile
William Muldoon, Red Lake Falls
John Nelson, Trail
David Paulson, Warroad
Laurie Polansky, Grygla
Jim Rogalla, Thief River Falls
Mary Beth Sargeant, Crookston
Robert Sobolik, Crookston
Vaughn Thorfinnson, Red Lake Falls
Ray Tunheim, Newfolden
Steve Wright, Crookston
Karen Young, St. Hilaire

NORTHWEST REGIONAL

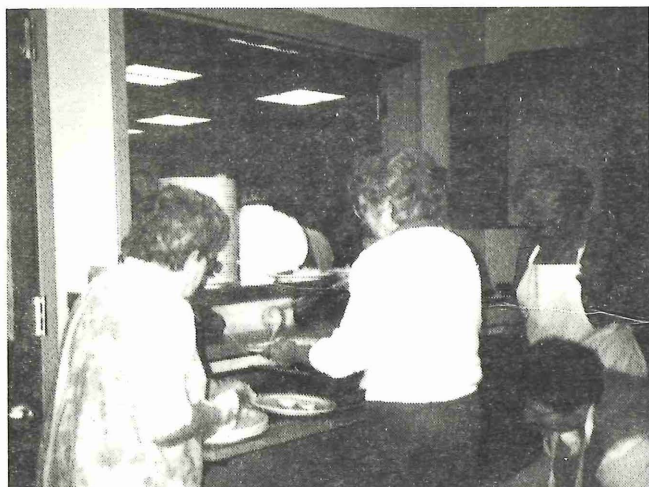
ENERGY COUNCIL

Dan Juhl, Crookston
Herb Mauritsen, Shelly
Gene Miller, Crookston
Renee Murray, Hallock
Jerry Nagel, Crookston
Dave Nelson, Wannaska
Steve Nordhagen, Thief River Falls
Earl Radi, Crookston
Charles Riesen, Warren
Tom Sweetland, Ada
Clarence Vathhauer, Red Lake Falls

TRANSPORTATION ADVISORY COMMITTEE

Dr. Joe Bouvette, Hallock
Glenn Darst, Greenbush
Donald Grabanski, Thief River Falls
Adrian Johnson, Kennedy
Delray Larson, Gatzke
Charles Marvin, Warroad
Eugene Mattson, East Grand Forks
Wayne Olson, Thief River Falls
Ronald Rasmusson, Ada
John Rusling, Stephen
Cary Sip, Ada
Harold Thomforde, Crookston
Clarence Vathhauer, Red Lake Falls

AGING



The Regional Nutrition Program for seniors requires cooperation and coordination.

The amended Federal Older Americans Act of 1965 provides the philosophical base and fundamental guidelines for the Northwest RDC's Area Agency on Aging. It defines our purpose of working for a coordinated and comprehensive system of community options that help older persons maintain independence and dignity in a home environment. With this as the goal, the Commission examines and plans for the needs of local older persons, assists local governments and service providers through the provision of technical assistance and allocates funds for services.



An attentive James Merrill (far right), keynote speaker at the 12th Annual Fall Conference, and other participants focus attention on Humorist Merrilyn Belgum, luncheon speaker.

The NWRDC held its 12th Annual Fall Conference on Aging, "The Best Is Now," at the University of Minnesota, Crookston. Topics included: Prescription Management, Supplemental Insurance, Adaptive Equipment, Games, Widowhood, Travel, Self-Esteem, Vulnerable Adults, Intimacy and Alzheimer's. A film room and display room were also open for the entire day. The conference was attended by 265 seniors and service providers. Education on current issues remains an ongoing need in Region I.

In FY 1987, the following aging funds were obligated to support community-based services.

ACCESS SERVICES

Kittson County Senior	
Transportation	\$ 3,350
Roseau Senior Medical Travel	9,000

ADVOCACY SERVICE

Northwest Minnesota Legal Services -	
Region I	22,332

IN-HOME SERVICES

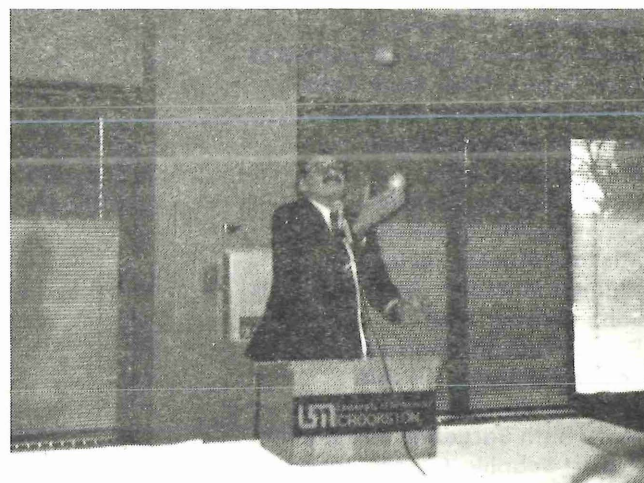
Inter-County Home Health Aide	
Care	5,619
Marshall County Home Health Aide	
Service	4,255
Polk County Home Health Aide	
Program	9,500
Roseau County Home Care	
Maintenance Program	13,190
Valley Chore Service -	
Polk, Norman, Pennington	39,750
Multi-County Extended Hour Home	
Health Care, Norman County	2,000

NUTRITION SERVICES

Senior Congregate Nutrition	
Program	180,194
State Nutrition Funds	77,559
Home Delivered Meals	57,057

SENIOR CENTERS

Crookston Senior Center	19,000
East Grand Forks Senior	
Center	8,420



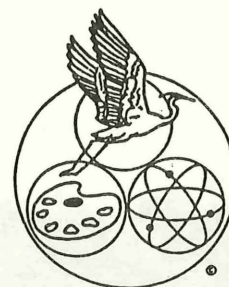
Jay Brunner, Executive Director, illustrates the challenge faced in balancing a family and career in his introduction of Merrilyn Belgum.

ARTS

Twenty-six students from ten of the region's high schools were given the opportunity to study their chosen art with a practicing artist during the summer of 1987 through the Artist/Mentor Program. Students from Ada, Argyle, Badger, Fosston, Karlstad, Kennedy, Oklee, Red Lake Falls, Thief River Falls and Warroad School Districts participated in the project, which was supported by the Minnesota School and Resource Center for the Arts MAX (Minnesota Arts eXperience) Program and the Arts Council of the Northwest Regional Development Commission.



Arts activities in six schools were enhanced by the 1986-87 Artist-in-Residence Program sponsored by the Northwest Regional Arts Council. Students in Red Lake Falls and Twin Valley participated in creative movement with Susan Delatre. Carolyn Petty, Bemidji, worked with pupils in Ada, Badger, Fosston and Roseau on "Integrating Science and Art".



Local/Regional Arts Development funds totalling \$20,087.00 were granted to area arts organizations

with funding from the Minnesota State Arts Board and the Minnesota State Legislature.

GRANTEE

Association of the French of the North (Red Lake Falls)
Valley Crossing Arts Council (Crookston)
Retired Seniors Volunteer Program (Crookston)
Middle River Community Theatre
Warroad Summer Theatre
Northland Community College (Thief River Falls)
Northland Community College (Thief River Falls)
Fosston Library and Art Center
Warroad Summer Theatre
Two Rivers Area Theatre
Kittson County Anniversary Committee
Northern Prairie Artists Assoc. (Thief River Falls)
Community Performing Arts Council (East Grand Forks)
Oklee Community Theatre
Crookston Community Theatre

ACTIVITY

Performances by La Famille Dandean and Winston Wuttenee
Performance of "The Emperor's New Clothes" by the Minneapolis Children's Theatre
Art Awareness and Instruction for Senior Citizens
Productions of "Our Town" and "Let It Rain"
Production of "The Foreigner"
Exhibits from the University of Minnesota and the Plains Arts Museum
Jazz Concert and Clinic by Rio Nido
Production of "Camelot"
Production of "Some Enchanted Evening"
Production of "My Fair Lady"
Original Production of Kittson County History
Visual Art Workshops by Marvin Espe and Russell Norberg
Production of "The Music Man"
Production of "Arsenic and Old Lace"
Production of "The King and I"

GRANT

\$ 529
\$1,790
\$ 428
\$ 775
\$ 972
\$ 850
\$ 892
\$2,780
\$ 975
\$2,509
\$1,360
\$ 583
\$2,550
\$1,292
\$1,802

McKnight Foundation Arts Funding Program provided support for four area theatres.

GRANTEE

Fosston Library and Art Center
Crookston Community Theatre
Thief River Falls Recreational Skating Program
Community Performing Arts Council (East Grand Forks)

ACTIVITY

Purchase of lighting and intercoms
Purchase of lighting, sound and production equipment
Purchase of sound equipment
Purchase of intercom equipment

GRANT

\$1,420
\$1,162
\$ 300
\$ 400

COMMUNITY DEVELOPMENT BLOCK GRANTS



Strathcona Before

The NWRDC has been directly involved in assisting the City of Red Lake Falls, the City of Strathcona and St. Vincent Township with the administration and implementation of Block Grants. Staff were originally involved in helping these communities obtain grants and have followed through right to completion. The Commission has provided these services on a contract basis and it has been a real opportunity to gain an understanding of the everyday operation. The following sections outline the current status and the major activities in each community.

Red Lake Falls — The Red Lake Falls grant will be finished on June 30, 1987, ending six years of work on a variety of activities. This grant has covered almost all areas of community development including street improvements, housing rehabilitation, housing removal, computerization, construction of a new library, sewer and water improvements, park improvements, community planning, job expansion, business improvements and many smaller projects. As direct involvement of the Commission has begun to phase out, the city has continued to move forward with an economic development grant, participation in the Minnesota Star Cities Program, application for an Energy Council Grant, approval of participation in the Governor's Design Team and development of tourism attractions, such as tubing. Faced with difficult economic times, Red Lake Falls has responded with an active program to maintain and improve both economic and social conditions. The Commission will continue to assist Red Lake Falls in these efforts and will encourage other communities to use Red Lake Falls as an example of how to go about community development.

Strathcona — The NWRDC has been involved in helping Strathcona complete a very aggressive community redevelopment program for about four years. Four years ago, the community was faced with the same situation hanging over many small towns: the fact that nothing new had developed in town for a long time and all the old things were gone. Community members established the goals of re-establishing basic retail services and completing a program



Strathcona After

of basic public facilities improvements needed to support those services. A Community Development Block Grant was obtained to provide the foundation for these efforts and with an equal amount of private funding and a great deal of sweat equity, the Strathcona Mini-Mall was completed. Named Paradise, the cafe, grocery store and gas station are now operating and the Post Office will be moving in soon. Business has been above original projections and the final grant activities will be finished in late summer. Everyone's definition of paradise is different and reality often falls short of dreams, but in many ways Strathcona has made at least some of their visions a reality.

ECONOMIC DEVELOPMENT

The NWRDC faced many challenges this past year in economic development. The depression in farming in some areas of the region led to generalized economic decline in many communities. Lack of money from the farming sector means less money to spend on Main Street. Many youths left the area to go to the larger metro areas for job opportunities.

Despite the reverses in the economy, some communities met the challenges head on with stronger public commitment to private enterprises.

NWRDC encouraged the use of Economic Development Administration funds for infrastructure support where economic growth had job potential. The communities of Warroad and Ada submitted applications for infrastructure assistance in manufacturing and ag-processing projects that could result in several hundred more jobs for the region. Other communities took advantage of the state's economic development funds to assist start-up and expansion projects. To name a few, the Cities of Ada, Trail Red Lake Falls and Grygla made use of these funds. When these funds are repaid to the city, they will go into a revolving loan fund for that community to assist other expansion or start-up projects.

NWRDC has also implemented the Northwest Regional Enterprise Fund, Inc. Revolving Loan Fund (RLF). The RLF is under the jurisdiction of a board of directors as follows:

John Carpenter - Hallock, Chairman
Ron Johnson - Ada
Robert Sobolik - Crookston
Norm Hayes - Roseau
William Muldoon - Red Lake Falls
Harlan Charron - Hallock
Ray Tunheim - Newfolden

The RLF is designed to promote private-sector job creation and capital formation. The fund provides gap financing at a lower rate of interest by reducing risk for commercial lenders and by taking subordinate positions on collateral. The fund can take greater risks than banks are traditionally prepared to take when the economic development will create jobs. As the funds are repaid, they are reloaned to other economic development projects.

Projects assisted in FY 1986 were Homark of Red Lake Falls, Dee, Inc. of Crookston, V&V Sales of East Grand Forks, Valley Spuds at Stephen and the Miller Building Center in Fosston. Approximately 130 initial jobs were created and the potential for more exists.

Tourism was established by the Economic Development Committee as a potential area for future expansion. Initial efforts by staff, plus contacts with local communities, have indicated that there is a great deal of interest in this possibility. A reorganization of the Minnesota Office of Tourism, the expansion of tubing on the Red Lake River and a number of significant recreational developments around the region have produced an awareness that tourism may very well be an area where diversification of the economic base can take place. Staff have completed initial work on a listing of tourism and recreational at-

tractions, provided grant writing assistance and helped organize promotional programs in an effort to support communities working in generating more tourism activity.

Staff have started working to update economic development planning documents and to complete a re-examination of current economic trends and policy. This has uncovered some basic changes in the economic characteristics of the region and pointed to the need to closely monitor local trends.

During the examination of current conditions, staff also looked into new methods for using economic data and discovered a number of practical tools for analyzing business markets and following local economic trends. These methods involve using computer analysis and may provide a convenient way to follow the economy and develop appropriate responses without the time-consuming hand work previously required.

Staff members assist communities in packaging loans, leveraging funds, provide referral service for business plans, financial projections, etc. NWRDC is responsible for updating the Overall Economic Development Plan for the region and maintain Economic Development District status for the region, which make the applicants eligible for ten percent more EDA funds than otherwise.

FY 1988 will be devoted to building a better network of resources to assist business start-ups and expansions, developing more home-grown industry and building a bigger revolving loan fund. This will offer more risk capital for new entrepreneurs and assist communities in economic development in the tourism field.

TRANSPORTATION PROGRAM



Region I Highway Jurisdictional Study

The Transportation Advisory Committee (T.A.C.) has recently completed the **Region I Highway Jurisdiction Study** for the Minnesota Department of Transportation (Mn/DOT). The study examines the functions of all roads in the region, establishes criteria for each road system and determines the potential impact resulting from road transfers.

The report recommends few road transfers due to the unnecessary shifting of costs to lower levels of government. The T.A.C. believes that the local governments are least able to handle increased road maintenance costs, due to the limited tax base in most rural areas. The study will become part of a state-wide Highway Jurisdictional Plan.

Road Construction

Numerous highway construction projects began around the region this past year, including the Minnesota Trunk Highway 75 truck route west of Crookston. The NWRDC assists Mn/DOT in determining the regional highway construction priorities. These priorities help to direct limited construction dollars to roads most needing repair. The last construction season saw more than \$6,800,000 spent on trunk highway improvements in Region I.

Road Restrictions

Three years ago, eighteen percent of the State Trunk Highway system was rated 10 ton routes during the spring. Through better and more frequent testing, Mn/DOT now allows 10 ton per axle on eighty-five percent of the trunk system. The rapid growth of the 10 ton system will help foster economic development in smaller communities not previously served by year-round 10 ton routes, as well as place added pressure on local units of government to offer more 10 ton roads.

JOIN THE Designated Driver MOVEMENT



One person in your group
agrees not to drink alcoholic
beverages . . . and to drive
everyone home safely.



Designated Driver Program

The NWRDC Transportation Program is assisting the Minnesota State Highway Patrol with efforts to develop and implement a regional designated driver program. A large number of traffic accidents can be directly attributed to over-consumption of alcohol. Reducing the number of drunk drivers will help to increase the safety of the region's road system. Local beverage distributors, media representatives and public officials will be working together to provide a designated driver program to restaurant and bar owners. The Northwestern Minnesota Designated Driver Program will be one of the first such programs in Minnesota.

REGIONAL REVIEWS

The Northwest Regional Development Commission serves as the clearinghouse for applications for federal and state financial assistance on proposed projects and programs in northwest Minnesota (seven counties, Region I).

The review process is an effort to reduce waste, by avoiding duplications of efforts; and to reduce public expenditures, through cooperation and communication between applicants and funding agencies.

The number of reviews performed is not an indication of applications which are eventually funded; nor, is it an indication of all requests for funding from the region because not all agencies submit their projects for review, and the Commission does not review all applications.

FEDERAL AGENCIES

No. Of
Projects

Economic Development

Administration

3 \$1,573,717

Land and Water Conservation (LAWCON)

3 362,995

ACTION

1 61,470

Federal Aviation

Administration

1 1,348,000

STATE AGENCIES

Department of Energy &

Economic Development

4 787,995

MN Department of

Transportation

1 *69,586

MN Waste Management

Board

1 789,810

MN Pollution Control

Agency

1 23,161

Legislative Commission on

MN Resources

5 462,050

MN Farmers Home

Administration

1 788,190

MN Department of Health

(WIC Program)

2 NA

*Road projects are not included for review

DATA MANAGEMENT

The Data Management program concentrated on maintaining basic informational and statistical services to persons, agencies and units of government, while improving the agency's capacity to handle data. The agency answers from 50-60 data requests each year, providing census data, unemployment data, maps, economic statistics and any other facts needed. The work involved in these responses varies from the preparation of detailed reports to simply giving a population number over the phone. Much of the information is used in making grant applications, completing agency plans, studying business expansions and examining changes in local communities, but there are times when someone is just curious.

NWRDC staff are probably the biggest users of data based on the ease of access and the technical

nature of many of our planning functions. Efforts to improve services in this area have included the addition of a new computer, purchase of mapping software and completing hook-up with a newly-created computer database at the State. A new area of services to local communities this year has been technical assistance on the use or purchase of computers. This was offered based on requests from a number of cities and the availability of staff with the right background. Additional improvements are planned for the upcoming year, including involvement with an informational mapping and platting program being made available from the State Planning Office. New technologies have greatly impacted areas such as Data Management making information much more readily available to everyone.

TECHNICAL ASSISTANCE

The Commission has worked with a number of communities over the past year providing assistance and advice in areas where the community lacks previous experience or simply needs an outside opinion. The biggest demands for help are in the areas of grant writing and community planning, but there is also a variety of one-time problem areas which appear each year. Assistance can range from a telephone call or community visit to in-depth assistance with a long-

term community project. Many times, communities or agencies will contract with the Commission to assist with projects which go beyond the time normally available for an individual project. Staff worked with twelve communities on the more in-depth projects over the last year, completing grant applications, developing community surveys, assisting in the use of state programs and providing help in planning for the future.

NWRDC PUBLICATIONS

1987-1990 AREA PLAN FOR PROGRAMS ON AGING

The Area Plan presents the results of a regional senior citizen needs assessment and a demographic profile of the 60 plus population. It also is an inventory of services available and goals and objectives for meeting the identified needs of the older population of Region I.

DIRECTORY OF RESOURCES AND PROGRAMS FOR OLDER PERSONS IN NORTHWEST MINNESOTA UPDATE

This Directory has been developed as a resource for Region I senior citizens, consumers and professionals in the field of aging. It provides a brief description of programs, resources and agencies. It describes the service areas, the primary contact person, as well as the addresses and phone numbers. The Directory is updated regularly as information changes.

DIRECTORY OF GOVERNMENT UNITS AND SERVICE AGENCIES

This Directory was updated as an easily available resource of information on governmental agencies and services in Region I.

The Directory contains listings of service agencies which have full-time staff and governmental offices from the township level through the legislative level. It also contains a brief description of the agency or office, the phone number and key contact person. The Directory is updated periodically to keep current with ongoing changes.

OVERALL ECONOMIC DEVELOPMENT PROGRAM

During the year, this required document was rewritten. Sections were updated using available statistics. The Economic Development Committee reviewed and revised the "Economic Development Strategy" section of the Overall Economic Development Program (OEDP). The acceptance of the OEDP by the Economic Development Administration, following its adoption by the seven counties in Region I and the NWRDC, is required for the Region to retain its designation as the Economic Development District.

NWRDC NEWSLETTER

The Commission's newsletter, which is published bi-monthly, keeps units of government and agencies abreast of Commission happenings and funding resources.

FY 1986 ANNUAL REPORT

The NWRDC's Annual Report for FY 1986 was prepared and distributed to the members of the legislature and local officials and citizens.

ARTS PLAN FOR FY 1988-89

The Arts Plan outlines the services provided by the Regional Arts Council to enhance artistic development in northwestern Minnesota. Program information contained in the plan describes the process for applying for arts grants.

REGIONAL TRANSPORTATION PLAN UPDATE

This Plan involves two primary parts: 1) an inventory of various transportation modes in the region, and 2) goals and policies to guide transportation planning in the region. The plan provides a multi-model development strategy based on the region's perceptions of its future transportation system needs — primarily reflecting the region's needs for efficient movement of agricultural commodities. The plan was initially developed in 1981 with updates occurring bi-annually.

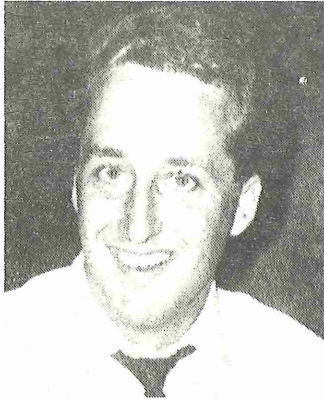
REGION I HIGHWAY JURISDICTION STUDY

The State-mandated study is a comprehensive review of road functions and jurisdiction. It establishes criteria for each road level — state, county, municipal and township roads — and highlights potential road exchanges between levels of government. The study also analyzes the changing financial burden for local governments.

FY 1988 WORK PLAN

The Commission's Fiscal Year 1988 Work Plan was published. The document details the goals and objectives of the Commission in each of the program and planning areas.

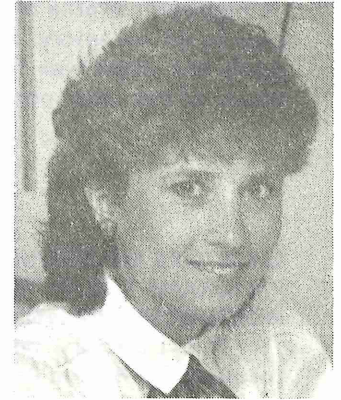
NORTHWEST REGIONAL DEVELOPMENT COMMISSION STAFF



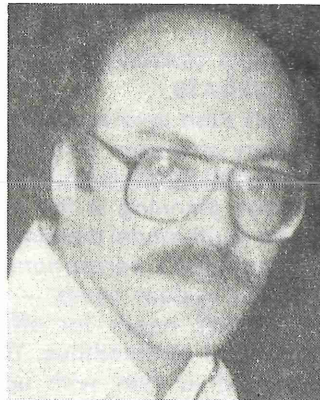
Jay Blake
**Transportation &
Community Development**



Rose Carriere
Secretary/Receptionist



Donna Christianson
Financial Officer



Leon Heath
**Economic Development,
Community Development,
Data Management**



Helen Jurchen
**Economic Development &
Revolving Loan Fund**



Linda Nelson
Arts, Aging Grants Management



Faith Rud
Aging Program



Carol Sorensen
**Administrative Secretary &
Financial Assistant**

COMMISSION BUDGET

FY '87 BUDGET

REVENUE

State Appropriation	\$ 40,981
Local Levy	102,405
Minnesota Department of Transportation	16,000
Economic Development Administration	56,810
State Arts Board	19,083
Minnesota School & Resource Center for Arts	3,157
McKnight Foundation	2,140
Minnesota Board on Aging	59,550
Northwest Enterprise Fund	8,198
Regional Energy Council	16,025
Biomass Energy Project	26,294
Highway Jurisdictional Study	10,650
State Job Training Office	4,263
City of Ada	700
City of Oklee	1,420
City of Crookston	2,078
City of Red Lake Falls	9,774
City of Strathcona	6,267
St. Vincent Township	4,380
Interest	9,870
Miscellaneous	3,300
TOTAL	*\$403,345

EXPENDITURES

Salary/Fringe	\$197,663
Staff Travel & Registrations	19,325
Commission/Committee Travel, Per Diem, Expenses	24,960
Professional Fees	73,350
Office Expenses	47,510
Fixed Assets	12,200
TOTAL	*\$375,008

Excess Revenue Over

Expenditures\$ 28,337

FY '88 BUDGET

PROJECTED REVENUE

State Appropriation	\$ 40,976
Local Levy	*104,413
Minnesota Department of Transportation	25,000
Economic Development Administration	52,680
State Arts Board	19,557
Minnesota School & Resource Center for Arts	10,941
Minnesota Board on Aging	69,364
Northwest Enterprise Fund	11,500
McKnight Foundation	900
KAWE Northern Minnesota Public TV	4,450
City of Strathcona	2,000
St. Vincent Township	6,850
City of Trail Contract	2,500
Interest	7,274
Miscellaneous	1,800
TOTAL	\$360,205

*Based on levy remaining at the same level as last year.

PROJECTED EXPENDITURES

Salary/Fringe	\$244,172
Staff Travel & Registrations	17,882
Commission/Committee Travel, Per Diem, Expenses	21,760
Professional Fees	23,068
Office Expense	53,323
TOTAL	\$360,205

*Unaudited totals — subject to change.



ARNE H. CARLSON
STATE AUDITOR

STATE OF MINNESOTA

OFFICE OF THE STATE AUDITOR

SUITE 400
555 PARK STREET
SAINT PAUL 55103

296-2551

AUDITOR'S OPINION


Dr. Joe Bouvette, Chairman
Northwest Regional Development
Commission
P.O. Box E
525 Brooks Avenue South
Thief River Falls, Minnesota 56701

We have examined the general purpose financial statements of Region I, Northwest Regional Development Commission, Thief River Falls, Minnesota, as of and for the year ended June 30, 1986, as listed in the table of contents. Our examination was made in accordance with generally accepted auditing standards and, accordingly, included such tests of the accounting records and such other auditing procedures as we considered necessary in the circumstances.

In our opinion, the general purpose financial statements referred to above present fairly the financial position of Region I, Northwest Regional Development Commission, at June 30, 1986, and the results of its operations for the year then ended, in conformity with generally accepted accounting principles applied on a basis consistent with that of the preceding year.

Our examination was made for the purpose of forming an opinion on the general purpose financial statements taken as a whole. The combining and individual fund financial statements and supporting schedules listed in the table of contents are presented for purposes of additional analysis and are not a required part of the general purpose financial statements of Region I, Northwest Regional Development Commission. That information has been subjected to the auditing procedures applied in the examination of the general purpose financial statements and, in our opinion, is fairly stated in all material respects in relation to the general purpose financial statements taken as a whole.

We have also examined the schedules of direct and indirect costs, schedules 1 through 3, for the year ended June 30, 1986. In our opinion, these schedules are fairly presented in accordance with the Commission's cost allocation plan and the provisions of the Office of Management and Budget's Circular A-87, "Cost Principles for State and Local Governments."


ARNE H. CARLSON
State Auditor

September 11, 1986

