



Direct Admissions Report

February 1, 2024

Authors

Aaron Salasek

Coordinator of Direct Admissions Minnesota

Tel: 651-259-3915

aaron.salasek@state.mn.us

Meredith Fergus

Director of Research

Tel: 651-259-3963

meredith.fergus@state.mn.us

Wendy Robinson

Assistant Commissioner for Programs,
Policy, and Grants

Tel: 651-259-3903

wendy.robinson@state.mn.us

Sally Krager

Research Assistant

sally.krager@state.mn.us

About the Office of Higher Education

The Minnesota Office of Higher Education is a cabinet-level state agency providing students with financial aid programs and information to help them gain access to postsecondary education. The agency also serves as the state's clearinghouse for data, research and analysis on postsecondary enrollment, financial aid, finance and trends.

The Minnesota State Grant Program is the largest financial aid program administered by the Office of Higher Education, awarding more than \$224 million annually in need-based grants to Minnesota residents attending eligible colleges, universities and career schools in Minnesota. The agency oversees other state scholarship programs, tuition reciprocity programs, a student loan program, Minnesota's 529 College Savings Plan, licensing and early college awareness programs for youth.

About This Report

This is a legislative-mandated report. As requested by Minnesota Statutes, section 3.197, this report cost approximately \$5,759.48 to prepare, including staff time.

Minnesota Office of Higher Education

1450 Energy Park Drive, Suite 350

Saint Paul, MN 55108-5227

Tel: 651.642.0567 or 800.657.3866

TTY Relay: 800.627.3529

Fax: 651.642.0675

Email: info.ohe@state.mn.us

Contents

Executive Summary 1

Introduction and Program Design 2

Implementation in Minnesota 4

Program Outcomes..... 13

Understanding Participation and Impact of Direct Admissions 15

Challenges and Recommendations 32

Appendix A. Direct Admissions’ Participating High Schools, Community-based Partner Direct Service High Schools, and Colleges’ Tables..... 36

Appendix B. Direct Admissions’ High School Communication Metrics 48

Appendix C. Resources for High Schools and Students 52

Appendix D. Direct Admissions Student Letters Tiers 1 through 6 59

Appendix E. Legislation for Direct Admissions Minnesota..... 66

Executive Summary

All students graduating from Minnesota high schools are “college material.” This core belief drives the Office of Higher Education's Direct Admissions Minnesota program. The Direct Admissions program ensures that students from participating high schools will receive a notification early in the fall of their senior year that informs them that there are multiple colleges and universities committed to admitting them, based on their academic performance and anticipated high school graduation. Through a personalized communication, co-signed by their high school and the Office of Higher Education, this program allows students to apply for free to colleges and universities on their letter with confidence, knowing that the “*will I get in?*” question has already been answered with a “*YES!*”

The 2021 Minnesota Legislature funded Direct Admissions Minnesota which offers admission into Minnesota public and private colleges to Minnesota public high school students based on a student's academic performance through their junior year in high school. Direct Admissions Minnesota has great potential to reduce equity gaps by providing important college-going information to high school students, and eliminating the need for extensive college-going knowledge to navigate the college admissions process. A direct admissions system jump starts the typical college admissions process by proactively admitting students to college. Direct Admissions Minnesota is a partnership project between K-12 and higher education, led by the Minnesota Office of Higher Education. Minnesota is leading the way with this growing national higher education approach and public policy movement, and has firmly situated the program as a common good benefit to students and families in the state.

The challenges and recommendations highlighted in the following report represent important lessons learned so far in the development and implementation of this important new program. With planning and assistance from K-12 and postsecondary partners, the Office of Higher Education anticipates evolving Direct Admissions into a more effective and successful program with each successive year. It is possible to expand Direct Admissions to all 800 of Minnesota's public high schools, and the agency recommends scaling the program on a voluntary basis over the next three to five years due to the set-up work required at the local level.

This report fulfills the legislative reporting mandate included in the legislation. By February 1, 2024, the Office of Higher Education shall report to the chairs and ranking minority members of the legislative committees with jurisdiction over kindergarten through grade 12 education finance and policy, and higher education on activities occurring. The report must include but is not limited to information about the program design, implementation challenges and recommendations, outcomes, and the feasibility of scaling the program to all public high schools. The full text of the legislation is included in the appendices.

Introduction and Program Design

The process of applying for college can be one filled with stress and anxiety, especially for first generation, low income, and historically underserved populations. Some students self-select out of the process due to perceived barriers or the complexity of the college search process. Many students and families may not be aware that they have multiple college options within the state of Minnesota. Direct Admissions seeks to change this by shifting the paradigm of college admissions to empower students with the knowledge that they are college material and that multiple institutions are ready to admit them. Through a personalized communication, co-signed by their high school and the Office of Higher Education, students are given a list of no less than 29 higher education institutions (and up to 55) that have affirmed that they will admit the student upon application and will waive any application fees. This program allows students to apply for free with confidence to their participating college selections of choice, knowing that the *"will I get in?"* question has already been answered with a *"YES!"*.

Direct Admissions Minnesota aims to reduce self-selection bias in college admissions' practices while reducing equity gaps in college enrollment using four strategies:

- Promoting a college-going culture throughout the state;
- Connecting students, families, and schools with colleges and universities earlier, giving families time to consider their options and plan;
- Promoting awareness of financial aid and the importance of completing the FAFSA or the MN DREAM Act application; and
- Showing students that they have access to a certificate, associate degree, or bachelor's degree if they choose to further their education.

The work of Direct Admissions is conducted collaboratively by high schools, OHE, and colleges via seven critical steps described below.

1. High schools and colleges/universities opt-in to participating in the Direct Admissions program on an annual basis. High schools complete mandatory Data Sharing and Joint Powers Agreements, and colleges/universities complete mandatory Data Sharing Agreements.
2. High schools notify families of the school's participation in the program and give a Tennessee/FERPA notice to opt-out, per local directory/data processes. Excluding students whose families choose to opt-out, high school counselors review end of junior year unweighted cumulative GPA and course grades in three core areas (math, science, and English) to assign the student to one of the six admission tiers which have been set in consultation with participating colleges and universities.
3. High schools notify students and their parents or guardians by formal letter, email, and/or portal notification of their "acceptance" for Direct Admissions and available college options.
4. Students respond to the notification and choose the institution(s) they wish to be directly admitted to as a next step in the admissions process. Responses are collected by the high school.
5. High schools securely transmit that data to OHE.
6. OHE compiles and securely transmits the data and the student's GPA to colleges. If a student chooses to supply optional supplemental information, that gets transferred as well.

7. Colleges contact the student to inform them of next steps and engage students as early as possible.

Students are not required to apply to any of the colleges listed on their Direct Admissions letter, nor are students limited to applying to just those colleges they qualify to through Direct Admissions. The program does not limit student choices or minimize the importance of maintaining academic success in the senior year. As such, Direct Admissions materials communicate the following expectations:

- Students are expected to maintain their approximate academic performance level during their senior year;
- Students are expected to graduate in spring or early summer 2024;
- Students must complete admissions applications and submit any requested additional materials for colleges they are interested in according to the college's application deadlines; and,
- Students should complete the FAFSA or MN DREAM Act application for financial aid consideration.

Upon applying, Direct Admissions students then move through the same enrollment, financial aid, and orientation processes as any other students at the college of their choice.

Implementation in Minnesota

The 2022-2023 pilot year of the program had 46 high schools representing 28 different counties throughout the state notify the Office of Higher Education of their desire to participate in Direct Admissions. In assessing work required, staff availability, and timing, seven high schools chose to delay participation until the 2023-2024 school year. The 39 participating high schools enrolled an estimated 6,989 students, and almost half of enrolled seniors (47%) at participating schools identified as Black, Indigenous, and students of color. Almost a quarter of enrolled seniors (23%) were eligible for free and reduced-price meals. The pilot year also had 50 colleges and universities participating.

The program saw a significant expansion in academic year 2023-2024. Implementation requires coordination of several key participant groups: (1) K-12 secondary high schools; (2) postsecondary colleges and universities; (3) MDE-approved K-12 technology Student Information Systems (SIS) platforms; and (4) Office of Higher Education.

For the current 2023-2024 year of the program, the Office of Higher Education issued a call to high schools to participate in Direct Admissions Minnesota in March 2023. Nominations were encouraged from guidance counseling offices locally or at the district level, with the support of an administrator. For high schools, OHE assured there would be no cost to participate. OHE also offered additional funding to offset costs for high school staff time, e-transcript costs, high school technology changes, and/or related program expenses.

OHE also invited public and private non-profit colleges and universities to participate in Direct Admissions. Postsecondary institutions were asked to waive all applications fees regardless of the date of application and to choose a specific academic tier for which they would directly admit students. Colleges were also asked to proactively follow-up with students shortly after receiving data from the agency, to build early relationships and capacity with students and families. Figure A1 in the Appendices details the organization schema and interplay for the program. This includes:

- The college and K-12 advisory workgroups' counsel around recommendations and decisions for program implementation to OHE (membership of which is comprised of partners from each sector);
- OHE's recruitment of new, as well as support to existing, high schools and colleges around technical implementation within local SIS platforms (Infinite Campus, jmc, Synergy/Edupoint, Skyward, and PowerSchool); assisting staff with academic review criteria and questions; creating and disseminating communication and marketing material that supports the program; shaping the timeline for survey/letter notifications being sent; the overall transfer of data between high schools/SIS systems and college and university partners; and distributing funding to high schools and districts;
- Districts and high schools coordinating necessary Data Sharing and Joint Powers contractual agreements; staffing and coordinating the program's FERPA notification to families, the academic review and letter notification processes; following up with colleges and universities on behalf of students regarding transcripts or additional admissions' materials requests; and providing feedback to OHE;
- Public, tribal, and private colleges, universities, and higher education system offices' promoting new membership and supporting existent institutions in the work; coordinating necessary Data Sharing

agreements; selecting a respective academic tier; staffing and coordinating the program's data retrieval and follow-up communication to students and families; and providing feedback to OHE;

- All the above is to the benefit of students and families, who receive the program notifications and letter surveys; select colleges and universities of choice; and complete any necessary admissions requirements prior to ultimately enrolling in an institution of choice.

Each partner group's primary goals are expounded upon in the following sections, with OHE serving as the primary collaborator and organizer of program logistics and execution.

Advisory Working Groups – K-12 and Postsecondary

In spring 2023, OHE convened two working groups of subject matter experts to assist with program design, anticipating barriers and challenges, and for providing on-going feedback about the Direct Admissions program. Volunteers agreed to serve on one of two working advisory groups, one K-12 and the other postsecondary, depending on the area of expertise. These two groups meet every other month or on an as-needed basis (if an immediate need arises), and help Direct Admissions be successful, innovative, partner-balanced, and student-centered by making recommendations ranging from the work required of participating schools, technology needs, and other logistics that arise throughout the year.

Implementation work group representation includes volunteers from the agency; Minnesota State institutions and the system office; University of Minnesota institutions; the Minnesota Private College Council and member institutions; the Minnesota Department of Education; the Minnesota School Boards Association; and SIS technology partners. A full list of K-12 advisory committee representatives can be found in Table A1 and the Postsecondary advisory committee in Table A2.

The K-12 Working Group focus for implementation included the following tasks:

- Determining criteria for selecting pilot high schools and districts;
- Identifying the target student population;
- Identifying measures of success;
- Integrating the Direct Admissions program with other college preparation and planning activities; and,
- Documenting the work required for participating schools and districts.

The Postsecondary Working Group focus for implementation included the following tasks:

- Identifying the target student population;
- Identifying measures of success;
- Selecting academic benchmarks;
- Integrating the Direct Admissions program with existing admissions processes and systems; and,
- Documenting the work required for participating colleges.

Identifying Target Students and High Schools for Direct Admissions

This program seeks to facilitate the transition of high school seniors, particularly students of color, American Indian students, lower-income students, and students with disabilities to a postsecondary program by creating a direct admissions pathway. Per the legislation, the participating high schools should be geographically and demographically diverse. In the information sent to high schools, OHE noted that should more high schools be interested in participating than could be financially supported by the program, preference would be given to schools that are above 30% for free and reduced lunch participation and/or have 30% or more students who were Black, Indigenous, and persons of color. To date, no high school that has had interest in participating has been turned away in any program year, pilot or current. Direct Admissions’ program goals include eliminating disparities in college admissions and enrollment resulting from college knowledge, parent educational attainment, and other factors. Therefore, the program’s target student population includes demographic groups with a lower than average college-going rate. Direct Admissions is designed to spark and supplement other college exploration activities offered by a high school and is not designed to tell students which college or university they should attend. The program’s participating high schools include schools with a significant number of students of color, low-income students, and English language learners from across the state to achieve statewide representation.

Participating high schools were asked to complete six tasks:

1. Review end of junior year unweighted GPA and course grades to see if the student meets the admission criteria of the participating colleges and universities.
2. Notify high school seniors and their parents or guardians of their “acceptance” and encourage them to learn more about the programs offered throughout the participating colleges.
3. Prompt students to respond to the notification and choose the institutions to which they wish to be directly admitted to. Students can choose one or more of Minnesota’s colleges or universities. Once selected, the specified colleges are to reach out with admissions information, and request that students complete the next institutional application step.
4. Collect the student responses and securely transfer that data to the Office of Higher Education.
5. Send each student’s transcript to each college they selected.
6. Collaborate with and provide feedback to OHE regarding implementation, student experience, and opportunities for process and program improvement.

The developing future cohort for 2024-2025 proves exciting. In addition to those schools choosing to delay or unable to implement in the current 2023-2024 fiscal year, but wanting to remain in the program for the next, the current waitlist for the program includes another 18 high schools who plan to nominate for 2024-2025 fiscal year’s start, bringing the initial interest for schools up to 52.

2023-2024 Participating High Schools and Community-based Organizations – Geographic and Demographic Representation

For the current program year, 142 high schools notified the Office of Higher Education of their desire to participate in Direct Admissions, as detailed in Table A3 of the Appendix. After reviewing the work needed to be

ready to participate in 2023-2024, 22 schools from the original pool of nominations chose to delay participation until the 2024-2025 school year. By early fall 2023, OHE had 120 total high schools set to participate in the program's school year. By the end of the fall semester, four additional high schools chose to formally delay to next year. An additional five high schools were encouraged by the agency to delay participation to 2024-2025 after multiple conversations. Most of these high schools failed to complete the data and financial contractual agreements with the agency, and one was unresponsive to the agency's outreach. This dropped the total list down to 111 total high schools who could fulfill the program's requirements by late January, of which we have 98 reporting data as of submission of this report. For reporting purposes, OHE is using the 120 schools whose intent was to complete the program at the school year's outset to discuss outcomes from this year of the program.

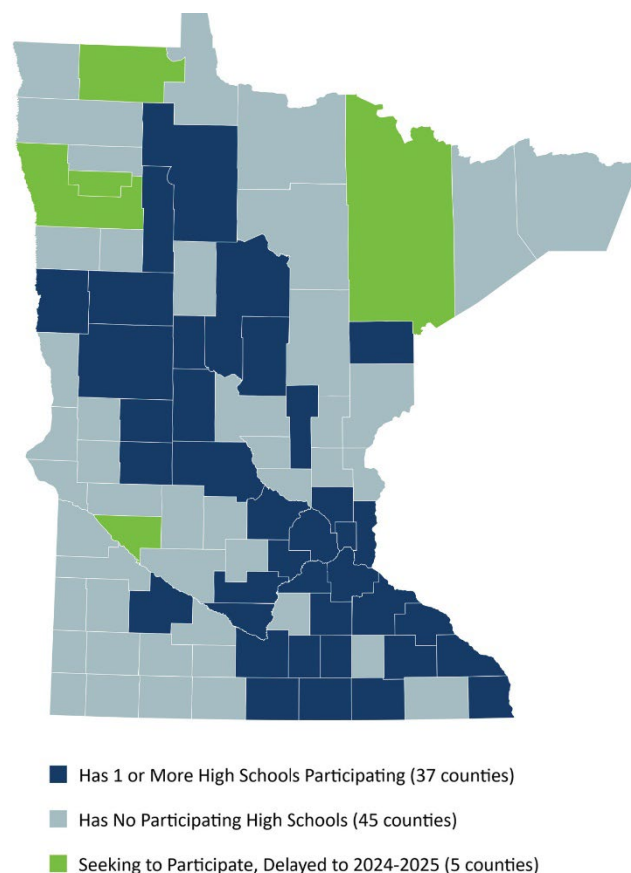
New this year was participation by the nonprofit college access organization College Possible Minnesota, who amplified the reach of the program to students in 31 of their direct service high schools that were not already participating through the intake process. Through their use of technology, their organization's coaches communicate with students about their Direct Admissions status, built out college lists, and complete other features of the college search process. These College Possible-serving high schools are detailed in detailed in Table A4 of the Appendix.

Student Demographics

The 120 participating high schools enroll an estimated 22,505 students. Almost half of enrolled seniors (46%, detailed in Table 1) at participating schools are Black, Indigenous, and students of color. Over a third of enrolled seniors (35%, detailed in Table 2) at participating schools are eligible for free and reduced-price meals.

- Of those 120 participating high schools, 71 were located in the seven county Twin Cities region comprised of Anoka, Carver, Dakota, Hennepin, Ramsey, Scott and Washington counties.
- High schools who indicated interest at the outset of summer came from 42 counties across the state. By August, participating high schools represented 37 counties throughout the state. Anticipated and current participation by county is detailed in Figure 1. This data is outlined in Table A3's Participating High Schools for 2023-24.

Figure 1. Participating Schools by County for Academic Year 2023-2024



- Among students enrolled in grade 12 at a participating high school in 2023-2024, 59% of students attended a school in the 7-county Twin Cities region.

Table 1. Number of Enrolled Seniors at Direct Admissions Participating High Schools by Race and Ethnicity, 2023-2024

Race and Ethnicity	Count of Enrolled Seniors	Percent of Total Enrolled Seniors
Black or African American	3,376	15%
American Indian or Native American (Federal Definition)	579	3%
Asian	2,375	11%
Hispanic or Latino	2,891	13%
White	12,204	54%
Native Hawaiian or Pacific Islander	17	0%
Two or More Races	1,063	5%
Total	22,505	100%

Note: Count of enrollment at end of students' junior year of June 2023 was provided by the Minnesota Department of Education.

Table 2. Number of Enrolled Seniors at Direct Admissions Participating High Schools by Free and Reduced-Price Meals, 2023-2024

Free and Reduced-Price Meals	Count of Enrolled Seniors	Percent of Total Enrolled Seniors
N	14,530	65%
Y	7,975	35%
Total	22,505	100%

Note: Count of enrollment at end of students' junior year of June 2023 was provided by the Minnesota Department of Education.

Requests for Direct Admissions

As of January 25, 2024, 98 high schools reported 31,292 individual requests for Direct Admissions by 4,512 students (or about 20% of students receiving info about the program).

Of those requests, 60% were requests for admissions to a Minnesota State college (42%) or university (18%). The remaining 40% were distributed to private non-profit colleges and universities (28%), the University of Minnesota (10%, including the Crookston, Duluth, Morris, or Rochester campuses), and tribal colleges (2%), as shown in Table 3.

Table 3. Number of Students Requesting Direct Admissions by Sector

Sector	Count of Admissions Requests	Percent of Admissions Requests
Minnesota State 2-Year Colleges	13,103	42%
Minnesota State Universities	5,727	18%
University of Minnesota	3,023	10%
Private Colleges and Universities	8,933	28%
Tribal Colleges	506	2%
Total	31,292	100%

Based on an academic review, students could be eligible for direct admissions to up to 55 colleges (postsecondary participants are detailed in Table A5 of the Appendix). Each participating college opted into one of six academic thresholds or tiers at which they would directly admit students, and the percentage of student distribution requesting information by tier is detailed in Table 4. The process for establishing these academic tiers is described in the next section.

A little over 40% of students requesting direct admissions at one or more participating colleges were in Tier 6 (cumulative unweighted grade point average of 3.50 or higher and a C average in all math, English, and science core courses taken in 10th and 11th grades) as shown in Table 6. The next largest group was students in Tier 5 (24%, cumulative unweighted grade point average of 3.0 or higher), followed by the open-access Tier 1 (18%, cumulative unweighted grade point average lower than 2.50).

Table 4. Number of Students Requesting Direct Admissions by Academic Tier

Academic Tier	Unweighted Grade Point Average (4.0 scale; must include Pass/No Pass Grades)	Course Grades: Math, English, and Science Courses Taken in 10 th and 11 th Grades	Number of Colleges Selecting this Academic Tier	Unduplicated Count of Students Requesting Direct Admissions	Percent of Total Students Requesting Direct Admissions
1	Less than 2.50 GPA	No course grade requirements	29	814	18%
2	2.50-2.74	No course grade requirements	3	321	7%
3	2.75-2.99	No course grade requirements	4	153	3%
4	2.75-2.99	C average or higher in all 3 course subject areas	6	323	7%
5	3.00-4.00	No course grade requirements	10	1,075	24%
6	3.50-4.00	C average or higher in all 3 course subject areas	3	1,826	41%
All	n/a	n/a	55	4,512	100%

Inviting Colleges to Participate in Direct Admissions

OHE invited public and private non-profit colleges and universities to participate in Direct Admissions. In order to participate, institutions were required to complete six tasks:

1. Waive all Direct Admissions’ students’ application fees regardless of the date of application.
2. Choose a specific academic tier for which they would directly admit students. Students were matched to the chosen academic tiers based on a review of their end of junior year unweighted GPA and average core course grades in 10th and 11th grade English, math, and science courses.
3. Receive data from OHE identifying the students choosing to be directly admitted to their institution.
4. Follow-up with the student in a timely manner with information regarding completion of the institution’s application. In order to minimize the amount of data each high school needs to share with OHE and the participating colleges, students were asked to complete the institution’s application for admissions or additional information requested via forms by published deadlines to secure their spot.
5. Work with the student and their high school counselor should unusual circumstances occur. Should a college have concerns regarding the admissibility of a Direct Admissions student the college would work with OHE, the high school, and student to address unusual circumstances and challenges to the best of their ability.
6. Collaborate with and provide feedback to OHE regarding implementation, student experience, and opportunities for process and program improvement.

Colleges were not asked to admit the student into a specific academic program or to lower their academic standards.

Academic Measures

The academic tiers were set during the pilot year and remained the same for the 2023-2024 academic year. Colleges chose one of six academic tier options for Direct Admissions. The tiers consisted of unweighted cumulative Grade Point Average (GPA) bands on a 4.0 scale, and within two sets of tiers, a student’s course grades in 10th and 11th grade math, English, and science core areas. Participating colleges were required to “opt into” one of the academic tiers or groupings as shown in Table 5. Between last year’s pilot and the current year’s launch, the percentage of admissions requests and of total students requesting Direct Admissions to institutions has been nearly proportional by tiers and to institutional types.

Table 5. Direct Admissions Academic Tiers

Academic Tier	Unweighted Grade Point Average (4.0 scale; must include Pass/No Pass Grades)	Course Grades: Math, English, and Science Courses Taken in 10 th and 11 th Grades	Number of Colleges Selecting this Academic Tier	Total Colleges appearing on the Student’s Notification
1	Less than 2.50 GPA	No course grade requirements	29	29
2	2.50-2.74	No course grade requirements	3	32

Academic Tier	Unweighted Grade Point Average (4.0 scale; must include Pass/No Pass Grades)	Course Grades: Math, English, and Science Courses Taken in 10 th and 11 th Grades	Number of Colleges Selecting this Academic Tier	Total Colleges appearing on the Student's Notification
3	2.75-2.99	No course grade requirements	4	36
4	2.75-2.99	C average or higher in all 3 course subject areas	6	42
5	3.00-4.00	No course grade requirements	10	52
6	3.50-4.00	C average or higher in all 3 course subject areas	3	55

K-12 Technology Infrastructure

One of the goals of Direct Admissions has been to use technology to ease the burden on K-12 and college staff. High schools were encouraged to leverage their existing Student Information System (SIS) vendor if possible. The Minnesota Department of Education (MDE) currently lists five approved SIS vendors that are compliant with the requirements of technology from the U.S. Department of Education referred to as “Ed-Fi”. Ed-Fi data submission involves uploading student-level data from a district, high school, or charter school's SIS directly to MDE's Ed-Fi servers. The steps to complete this process are unique to each SIS vendor. SIS vendors provide specific set-up guidance to their districts and charters on uploading data. The five vendors include: Infinite Campus, jmc, PowerSchool, Skyward, and Synergy/Edupoint. Building this functionality into existing K-12 SIS technologies minimizes the need for additional data sharing while also allowing the program to leverage existing K-12 communications through functionality in the SIS platforms.

At the year's outset, OHE contacted the five SIS vendors and discussed compatibility of their SIS system and the school needs for Direct Admissions. The distribution of schools across the five platforms is detailed in Table 6.

Table 6. Participating High Schools in Direct Admissions by Student Information System

Student Information System	Number of Direct Admissions High Schools
Infinite Campus	72
jmc	14
PowerSchool	7
Skyward	12
Synergy/Edupoint	12
Unknown	3
Total	120

The Direct Admissions program within the Infinite Campus SIS was operational for the 2022-2023 and 2023-2024 academic years (currently 70 schools for 2023-2024). Another vendor, jmc, finished documentation and piloted implementation with two high schools in early January 2024. PowerSchool is currently working with OHE's data team on integration, to launch in the fall of 2024. Synergy/Edupoint and Skyward are both in initial

conversations with the agency. OHE staff provided the technical specifications required for the project to all SIS vendors, who in turn identified or are working on identifying existing functionality within their system to meet the requirements as well as functionality that would need to be developed. The technology developed was integrated into their software platform and made available to all of their contracted high schools, not just those participating in Direct Admissions.

In the event the high school felt they were unable to utilize their SIS due to staffing or other mitigating factors, a workaround was developed by the agency. OHE worked with school and district staff to first identify similar functionality within their local SIS, usually a report or query that had the data needed to execute the program's academic review. Schools were then given the option of completing the academic review via calculating results using an Excel spreadsheet that OHE created, or by manual review. Notifications to students were also distributed via an SIS survey, or Google Sheets surveys, both of which collected student responses. Responses were collected manually by school staff opting for a mailed letter or direct-to-student email. The Google Sheets survey also collected student survey responses and downloaded them into a file for counselor review. Data files were created as part of the SIS software for transfer to OHE. OHE provided templates and instructions for creating the data file and uploading their student responses via secure web portal. The secure data portal served as the main hub for the exchange of data between high schools, OHE, and colleges. OHE monitored program activity via the data uploads to ensure fidelity of implementation and troubleshoot participation at a student or school level. Figure A2 in the Appendices details the overall Direct Admissions' data flow for the program, including the transitions between the various program partners:

- OHE has Joint Powers and Data Sharing Agreements in place for high schools, as well as Data Sharing Agreements with colleges, to securely transfer the data received via the student selection process;
- OHE's has contracts in place for software module development with several of the K-12 SIS vendors (Infinite Campus, jmc, Synergy/Edupoint, Skyward, and PowerSchool), who service the participating high schools and districts in utilizing the local platform and providing technical support;
- Districts and high schools use local technology to generate a FERPA notification to families to opt-out of the program, as well as the means by which students and families should do so;
- Districts and high schools use their local SIS platform to produce a Direct Admissions report in conducting the academic review for student tier placement; generate the student survey notification via their communication modality of choice (email, letter, etc.); and encourage students to respond within the platform or technology being utilized to select institution(s) of preference;
- Districts and high schools use local technologies to send transcripts or work with students in submitting additional admissions' materials requested;
- Public, tribal, and private colleges and universities securely retrieve transferred student data in a timely manner and contact students through local communication and follow-up efforts regarding any specific next steps or applications needs.

Program Outcomes

Measures of Success: Implementation in current 2023-2024 program year

Success for Direct Admissions in 2023-2024 is measured by fidelity of implementation as well as student outcomes. Success in implementation of the program is achieved when the milestones shown in Table 7 were met, and overall, success in implementation was achieved for 2023-2024.

Table 7. Milestones of Successful Implementation and Results for 2023-2024

Milestone	Success Threshold	Results
College Participation	Participation by 50 or more Minnesota colleges	55 colleges participated in 2023-2024
High School Participation	87 or more high schools agree to participate	142 high schools sought to participate; 120 participated and 111 have the potential to fulfill program outcomes (with 98 schools reporting data as of submission of this report)
High School Participation	Geographic distribution achieved	High schools who indicated interest at the outset of summer comprised 42 counties across the state. By August, participating high schools represented 37 counties throughout the state. Among students enrolled in grade 12 at a participating high school in 2023-2024, 59% of students attended a school in the 7-county Twin Cities region, and 41% were from among the remaining 35 counties.
High School Participation	More than 30% of students enrolled in 12 th grade at a participating high school are: 1) Eligible for free and reduced-price meals, OR 2) Are students from historically underserved populations	Of students enrolled in 12th grade at a participating high school, 46% identify as Black, Indigenous, and students of color, and 35% are eligible for free and reduced-price meals
Academic Tiers	Academic tiers are agreed to by all colleges and understood by participating high schools	Tiers agreed to by colleges opting in, and academic tier distribution results remained statistically proportional to pilot year; College survey data to follow in Spring 2024
Academic Tiers	Academic tiers understood by participating high schools	Academic tier distribution results remained statistically proportional to pilot year; High school survey data to follow in Spring 2024

Milestone	Success Threshold	Results
Work Required	Work required of participating high schools and colleges is reasonable	High school survey data to follow in Spring 2024
Launch date	First letters go to students in October 2023	First letters went out in August 2023

In terms of the current program year’s measurable student outcomes, the number of enrolled seniors requesting Direct Admissions info by high school for Fall 2023 is detailed in Table B1 of the Appendices. While this table is a point-in-time update on deliverables and student impact, there are numerous components the agency is gauging. The Office of Higher Education will shortly be surveying both high school and college staff participating in the program to determine if the program met its implementation goals in the areas of academic tier thresholds, the reasonableness of work required, and program launch timing. In terms of program awareness and development as outcomes, 2023-2024 also saw a good deal of collaboration within the working groups for both K-12 and higher education partners; national coverage and phenomenal student stories; and a good deal of progress with SIS technology vendors for future program success. Measures of student success derive from the prior 2022-2023 pilot year’s program.

Understanding Participation and Impact of Direct Admissions

Measures of Success: Student Outcomes from prior 2022-2023 pilot year

The success of Direct Admissions will be measured by the following student outcome indicators:

- the number of admissions inquiries between October-July,
- the FAFSA Completion rate (indirect outcome),
- the high school completion rate of seniors (indirect outcome),
- the immediate college enrollment rate of seniors, and
- the immediate in-state college enrollment rate of seniors.

When possible and appropriate, outcome indicators will be disaggregated by race and ethnicity, gender, free and reduced-price meals eligibility, English language learner status, school and district, and geography.

The following section presents data on two outcome metrics for Direct Admissions. These outcome metrics include:

- FAFSA Filing, and
- Enrollment in a Minnesota College in Fall after High School (preliminary data).

To evaluate the impact of the Direct Admissions program, outcome metrics are shown for participating 12th grade students, 12th grade students at participating high schools, and all 12th grade students in the state enrolled in 2022-2023. In addition, outcomes for students enrolled at a participating high school during the two years immediately preceding participation in Direct Admissions (2020-2021, 2021-2022) is shown. This data is shown for comparison purposes. However, given the impact of the COVID-19 pandemic on high school enrollment, high school graduation, and college enrollment, it should be noted that these comparisons do not control for all other forces potentially impacting the outcomes measured during this time period.

Summary of Outcomes

Overall, students participating in Direct Admissions generally had higher FAFSA filing rates and higher college enrollment rates as compared to non-participants. This remained true when data was disaggregated by sex, race and ethnicity, and eligibility for free or reduced-price meals. In addition, high schools participating in Direct Admissions during the 2022-2023 academic year had higher FAFSA filing rates and higher college enrollment rates as compared to the two years immediately preceding participation in Direct Admissions. While this evaluation is at its earliest stage, results are promising.

During the first pilot year of Direct Admissions, the 2022-2023 academic year, 36 high schools and 1,947 students participated in the program by engaging student letters/surveys. The 1,947 students represent 28% of 12th grade students enrolled in participating high schools in 2022-2013. Participation rates varied by timing of the student notification. Schools with a participation rate of 50% or more all sent student notifications in October.

As more schools participate in Direct Admissions and as schools participate longer, it is expected that the participation rate will increase due to better awareness of the program and improved integration with district-sponsored college and career exploration activities. Statistics about participation by school can be found on Table 8.

Data Sources

Data to determine outcomes of students participating in Direct Admissions comes from the following sources:

- Direct Admissions participation data was collected by OHE from the participating high schools for students who chose to be directly admitted to one or more participating colleges.
- Enrollment data for all 12th graders enrolled at a Minnesota public or charter school and their demographics was provided by the Minnesota Department of Education. This is the same file used by OHE for Minnesota's FAFSA Completion Goal reporting.
- FAFSA information was provided the U.S. Department of Education to the Office of Higher Education for all Minnesota residents. This is a file OHE receives in order to administer state financial aid programs.
- Data on preliminary college enrollment was drawn from the Office of Higher Education's MN Aid system which includes all students enrolled in college between July 1, 2023 and December 31, 2023 and eligible for a Minnesota State Grant by having enrolled in a Minnesota institution participating in state financial aid and completing the FAFSA or other state aid application.
- Data on college enrollment in Minnesota is drawn from the Office of Higher Education's student-level enrollment database. This data is submitted by colleges following the end of each academic term. Fall term data is not yet available for students enrolled in grade 12 in 2022-2023.
- Data on college enrollments outside of Minnesota will be drawn from Minnesota's Statewide Longitudinal Education Data System (SLEDs) which receives data on Minnesota students enrolling in college outside of Minnesota from the National Student Clearinghouse. This data is not yet available for students enrolled in grade 12 in 2022-2023.

Table 8. Students Participating in Direct Admissions by High School 2022-2023

Participating High School Name	District	Number of 12 th Grade Students	Percent of 12 th Grade Students Participating	Date First Data Transferred to OHE
Beacon ALP*	Bloomington Public School District	120	16%	10-Nov-2022
Blue Earth Area Secondary	Blue Earth Area School District	83	19%	4-Jan-2023
Buffalo Senior High	Buffalo-Hanover-Montrose Schools	456	34%	25-Oct-2022
Cannon Falls Secondary	Cannon Falls Public School District	86	15%	9-Nov-2022
Clearbrook-Gonvick Secondary	Clearbrook-Gonvick School District	29	Fewer than 10	16-Nov-2022

Participating High School Name	District	Number of 12 th Grade Students	Percent of 12 th Grade Students Participating	Date First Data Transferred to OHE
Cloquet Senior High	Cloquet Public School District	175	59%	26-Oct-2022
Dassel-Cokato Alternative Center*	Dassel-Cokato Public School District	71	15%	1-Nov-2022
Dassel-Cokato Senior High	Dassel-Cokato Public School District	89	25%	1-Nov-2022
Detroit Lakes Senior High	Detroit Lakes Public School District	205	19%	28-Oct-2022
Eden Prairie Senior High	Eden Prairie Public School District	762	20%	30-Nov-2022
Falcons Online Academy*	Faribault Public School District	21	Fewer than 10	14-Oct-2022
Faribault Senior High	Faribault Public School District	225	60%	14-Oct-2022
Fertile-Beltrami Secondary	Fertile-Beltrami School District	33	Fewer than 10	1-Nov-2022
Henry High School	Minneapolis Public School District	208	7%	17-Nov-2022
Highland Park Senior High	Saint Paul Public Schools	297	6%	3-Mar-2023
Hmong College Prep Academy	Hmong College Prep Academy	172	31%	1-Dec-2022
Hopkins Senior High	Hopkins Public School District	509	23%	8-Nov-2022
Jefferson Senior High	Bloomington Public School District	380	43%	10-Nov-2022
Johnson Senior High	Saint Paul Public Schools	262	12%	26-Jan-2023
Kennedy Senior High	Bloomington Public School District	348	12%	10-Nov-2022
Pequot Lakes Senior High	Pequot Lakes Public Schools	148	12%	1-Nov-2022
Phoenix Learning Center*	Buffalo-Hanover-Montrose Schools	21	Fewer than 10	25-Oct-2022
Red Rock Central Secondary	Red Rock Central School District	31	61%	14-Oct-2022
Richfield Senior High	Richfield Public School District	314	37%	21-Oct-2022
Rockford Secondary	Rockford Public School District	110	25%	27-Oct-2022
Roosevelt High School	Minneapolis Public School District	200	51%	24-Oct-2022

Participating High School Name	District	Number of 12 th Grade Students	Percent of 12 th Grade Students Participating	Date First Data Transferred to OHE
Spectrum High School	Spectrum High School	105	Fewer than 10	1-Nov-2022
Spring Lake Park Senior High	Spring Lake Park Public Schools	457	32%	14-Nov-2022
St. Louis Park Senior High	St. Louis Park Public School District	394	19%	14-Nov-2022
SW Metro ALC	Southwest Metro Intermediate 288	44	Fewer than 10	25-Oct-2022
TrekNorth High School	TrekNorth High School	29	66%	1-Nov-2022
Venture Academy High School	Venture Academy	52	56%	21-Oct-2022
Waseca Senior High	Waseca Public School District	152	28%	20-Oct-2022
Washburn High School	Minneapolis Public School District	394	43%	20-Oct-2022
Zumbrota-Mazeppa Senior High	Zumbrota-Mazeppa School District	87	60%	25-Oct-2022
Total	All	7,069	28%	

*Note that students at the identified alternative learning centers and programs participated in Direct Admissions via their local high school, but are shown here by alternative learning center or program name in order to allow the comparison with other students in the same program or location.

Demographics of Participants

The following section presents data on the demographics of 12th grade students participating in Direct Admissions.

Gender

Among first year participants, 55% identified as female, and 45% as male as shown in Table 9. This distribution varies from all enrolled 12th grade students, of whom 49% identified as female and 54% as male. As a result, the participation rate in Direct Admissions was lower for students identifying as male (24%) as compared to those students identifying as female (31%).

Table 9. 12th Grade Students Participating in Direct Admissions by Sex 2022-2023

Sex	Number of Participants	Percent of Participants	Number of Students	Percent of Students	Percent of Students Participating 2022-2023
Male	879	45%	3,635	51%	24%
Female	1,068	55%	3,434	49%	31%
Total	1,947	100%	7,069	100%	27%

Race and Ethnicity

Among first year participants, 59% identified as white, 13% as Hispanic or Latino, 12% as Black, 9% as Asian, 5% as two or more races, and 2% as American Indian or Alaskan Native (per federal definitions of American Indian and Alaskan Native) as shown in Table 10. Fewer than 10 students identified as Native Hawaiian or Pacific Islander. This distribution varies from all 12th grade students of whom 53% identified as white. The slight overrepresentation of students identifying as white compares to underrepresentation of students identifying as Hispanic or Latino (15%), Black or African American (15%), and Asian (11%). As a result, the participation rate in Direct Admissions was lower for students identifying as Hispanic or Latino (25%), Black or African American (23%), and Asian (23%) as compared to those students identifying as white (31%).

Table 10. Students Participating in Direct Admissions by Race and Ethnicity 2022-2023

Race and Ethnicity	Number of Participants	Percent of Participants	Number of Students	Percent of Students	Percent of Students Participating 2022-2023
American Indian / Alaskan Native	30	2%	93	1%	32%
Asian	178	9%	773	11%	23%
Black or African American	240	12%	1063	15%	23%
Native Hawaiian or Pacific Islander	Fewer than 10	n/a	n/a	n/a	n/a
Hispanic or Latino	258	13%	1024	15%	25%
Two or More Races	92	5%	380	5%	24%
White	1,146	59%	3731	53%	31%
Total	1,947	100%	7069	100%	27%

Free or Reduced-Price Meal Benefit Eligibility

Among first year participants, 19% of 12th grade students were eligible for free or reduced-price meal benefits, and 82% as not eligible as shown in Table 11. This distribution varies slightly from all 12th grade students of whom 24% were eligible for free or reduced-price meal benefits, and 76% as not eligible. As a result, the

participation in Direct Admissions was lower for eligible students (21%) as compared to ineligible students (30%). One note of caution is that 12th graders are less likely to apply for free or reduced-priced meal benefits as compared to students in lower grades.

**Table 11. Students Participating in Direct Admissions
by Free or Reduced-Price Meal Benefit Eligibility 2022-2023**

Student was Eligible for Free or Reduced- Price Meal Benefits	Number of Participants	Percent of Participants	Number of Students	Percent of Students	Percent of Students Participating 2022-2023
No	1,587	82%	5,379	76%	30%
Yes	360	18%	1,690	24%	21%
Total	1,947	100%	7,069	100%	27%

Filed the FAFSA

One measure of intent to enroll in college is if a student completes the Free Application for Federal Student Aid (FAFSA) or state aid application. While not all students complete the FAFSA or state aid application, it is a requirement to be eligible for federal and state financial aid. It may also be required by the college to receive institutional grants and scholarships. Approximately 6,000 12th graders statewide or 8% of high school students entering a Minnesota college in the fall after high school graduation do not complete the FAFSA or a state aid application. To allow appropriate comparisons given the limitations discussed, data from the two preceding years was included in Table 13.

Among first year participants, 77% filed a FAFSA as compared to 51% of non-participating 12th grade students at a participating high school, as shown in Table 12. Overall, 58% of 12th grade students at a participating high school in 2022-2023 filed as FAFSA, which compares to 47% and 50% in the preceding two years as shown in Table 13.

Table 12. 12th Grade Students at a Participating High School Filing a FAFSA 2022-2023

FAFSA Filing	Number of Participants	Percent of Participants	Number of Non- Participants	Percent of Non- Participants	Number of Total Students	Percent of Total Students
Did not File a FAFSA	440	23%	2,526	49%	2,966	42%
Filed a FAFSA	1,507	77%	2,596	51%	4,103	58%
Total	1,947	100%	5,122	100%	7,069	100%

Table 13. 12th Grade Students at a Participating High School Filing a FAFSA Over Time

Students Enrolled at a Participating High School	Did not File a FAFSA	Filed a FAFSA	Total	Percent Filing a FAFSA
2020-2021	3,654	3,240	6,894	47%
2021-2022	3,451	3,500	6,951	50%
2022-2023	2,966	4,103	7,069	58%

FAFSA Filing by Sex

Among students at participating high schools, 73% of students identifying as male and participating in Direct Admissions filed a FAFSA as compared to 43% of non-participating 12th grade students identifying as male at a participating high school, as shown in Table 14. This compares to 81% of 12th grade students identifying as female and participating in Direct Admissions as compared to 59% of non-participating 12th grade students identifying as female at a participating high school

Overall, 51% of 12th grade students identifying as male at participating high school in 2022-2023 filed a FAFSA, which compares to 44% and 41% in the preceding two years, as shown in Table 15. In comparison, 66% of 12th grade students identifying as female at participating high school in 2022-2023 filed a FAFSA, which compares to 57% and 53% in the preceding two years.

Table 14. Students at a Participating High School Filing a FAFSA 2022-2023 by Sex

Sex	Direct Admissions Participant Status	Did not File a FAFSA	Filed a FAFSA	Total	Percent Filing a FAFSA
Male	Did Not Participate	1,558	1,198	2,756	43%
Male	Participated	236	643	879	73%
Male	Total	1,794	1,841	3,635	51%
Female	Did Not Participate	968	1,398	2,366	59%
Female	Participated	643	864	1,068	81%
Female	Total	1,611	2,262	3,434	66%
Total	Did Not Participate	2,526	2,596	5,122	51%
Total	Participated	440	1,507	1,947	77%
Total	Total	2,966	4,103	7,069	58%

Table 15. 12th Grade Students at a Participating High School Filing a FAFSA Over Time by Sex

Sex	12 th Grade Students Enrolled	Did not File a FAFSA	Filed a FAFSA	Total	Percent Filing a FAFSA
Male	2020-2021	2,092	1,468	3,560	41%
Male	2021-2022	1,985	1,590	3,575	44%

Sex	12 th Grade Students Enrolled	Did not File a FAFSA	Filed a FAFSA	Total	Percent Filing a FAFSA
Male	2022-2023	1,794	1,841	3,636	51%
Female	2020-2021	1,562	1,772	3,334	53%
Female	2021-2022	1,466	1,910	3,376	57%
Female	2022-2023	1,172	2,262	3,434	66%
Total	2020-2021	3,654	3,240	6,894	47%
Total	2021-2022	3,451	3,500	6,951	50%
Total	2022-2023	2,966	4,103	7,069	58%

FAFSA Filing by Race and Ethnicity

Among students at participating high schools, 88% of students identifying as Asian and participating in Direct Admissions filed a FAFSA, as compared to 59% of non-participating 12th grade students identifying as Asian at a participating high school as shown in Table 16. Higher completion rates were found across all race and ethnicity groups among participants as compared to non-participants. Participants identifying as white, Black or African American, two or more races or Hispanic or Latino also had FAFSA filing rates (78%, 83%, 72%, and 63% respectively) that exceeded those of their non-participating peers (56%, 51%, 47%, and 28% respectively).

Overall, 66% of 12th grade students, both participants and non-participants, identifying as Asian at participating high school in 2022-2023 filed a FAFSA, which compares to 62% and 53% in the preceding two years, as shown in Table 17. In comparison, the increase over time in FAFSA filing rates is seen for all races and ethnicity groups except for Hispanic or Latino students, for whom the rates remained stable for the last two years.

Table 16. Students at a Participating High School Filing a FAFSA by Race and Ethnicity, 2022-2023

Race and Ethnicity	Direct Admissions Participant Status	Did not File a FAFSA	Filed a FAFSA	Total	Percent Filing a FAFSA
American Indian / Alaskan Native	Did Not Participate	45	18	63	29%
American Indian / Alaskan Native	Participated	Fewer than 10	n/a	n/a	n/a
American Indian / Alaskan Native	Total	53	40	n/a	43%
Asian	Did Not Participate	244	351	595	59%
Asian	Participated	22	156	178	88%
Asian	Total	266	507	773	66%
Black or African American	Did Not Participate	406	417	823	51%
Black or African American	Participated	41	199	240	83%
Black or African American	Total	447	616	1,063	58%

Race and Ethnicity	Direct Admissions Participant Status	Did not File a FAFSA	Filed a FAFSA	Total	Percent Filing a FAFSA
Native Hawaiian or Pacific Islander	Did Not Participate	Fewer than 10	n/a	n/a	n/a
Native Hawaiian or Pacific Islander	Participated	Fewer than 10	n/a	n/a	n/a
Native Hawaiian or Pacific Islander	Total	Fewer than 10	n/a	n/a	n/a
Hispanic or Latino	Did Not Participate	548	218	766	28%
Hispanic or Latino	Participated	95	163	258	63%
Hispanic or Latino	Total	643	381	1,024	37%
Two or More Races	Did Not Participate	154	134	288	47%
Two or More Races	Participated	26	66	92	72%
Two or More Races	Total	180	200	380	53%
White	Did Not Participate	1,128	1,457	2,585	56%
White	Participated	248	898	1,146	78%
White	Total	1,376	2,355	3,731	63%
Total	Did Not Participate	2,526	2,596	5,122	51%
Total	Participated	440	1,507	1,947	77%
Total	Total	2,966	4,103	7,069	58%

**Table 17. 12th Grade Students at a Participating High School
Filing a FAFSA Over Time by Race and Ethnicity**

Race and Ethnicity	Direct Admissions Participant Status	Did not File a FAFSA	Filed a FAFSA	Total	Percent Filing a FAFSA
American Indian / Alaskan Native	2020-2021	77	33	110	30%
American Indian / Alaskan Native	2021-2022	72	31	103	30%
American Indian / Alaskan Native	2022-2023	53	40	93	43%
Asian	2020-2021	343	390	733	53%
Asian	2021-2022	271	440	711	62%
Asian	2022-2023	266	507	773	66%
Black or African American	2020-2021	592	399	991	40%
Black or African American	2021-2022	521	537	1058	51%
Black or African American	2022-2023	447	616	1063	58%
Native Hawaiian or Pacific Islander	2020-2021	Fewer than 10	n/a	n/a	n/a
Native Hawaiian or Pacific Islander	2021-2022	Fewer than 10	n/a	n/a	n/a
Native Hawaiian or Pacific Islander	2022-2023	Fewer than 10	n/a	n/a	n/a

Race and Ethnicity	Direct Admissions Participant Status	Did not File a FAFSA	Filed a FAFSA	Total	Percent Filing a FAFSA
Hispanic or Latino	2020-2021	577	266	843	32%
Hispanic or Latino	2021-2022	603	356	959	37%
Hispanic or Latino	2022-2023	643	381	1024	37%
Two or More Races	2020-2021	137	97	234	41%
Two or More Races	2021-2022	180	159	339	47%
Two or More Races	2022-2023	180	200	380	53%
White	2020-2021	1,926	2,051	3,977	52%
White	2021-2022	1,802	1,976	3,778	52%
White	2022-2023	1,376	2,355	3,731	63%
Total	2020-2021	3,654	3,240	6,894	47%
Total	2021-2022	3,451	3,500	6,951	50%
Total	2022-2023	2,966	4,103	7,069	58%

FAFSA Filing by Free or Reduced-Price Meal Benefit Eligibility

Among students at participating high schools, 74% of students eligible for free or reduced-price meals and participating in Direct Admissions filed a FAFSA, as compared to 40% of non-participating 12th grade students eligible for free or reduced-price meals at a participating high school, as shown in Table 18. This compares to 78% of 12th grade students not eligible for free or reduced-price meals and participating in Direct Admissions, as compared to 54% of non-participating 12th grade students not eligible for free or reduced-price meals at a participating high school.

Both students eligible for free or reduced-price meals and those not eligible showed increases in FAFSA filing over the most recent three years. Overall, 61% of 12th grade students not eligible for free or reduced-price meals at participating high school in 2022-2023 filed a FAFSA, which compares to 54% and 51% in the preceding two years, as shown in Table 19. In comparison, 47% of 12th grade students eligible for free or reduced-price meals at participating high school in 2022-2023 filed a FAFSA, which compares to 43% and 37% in the preceding two years.

Table 18. Students at a Participating High School Filing a FAFSA by Free or Reduced-Price Meal Benefit Eligibility, 2022-2023

Student was Eligible for Free/Reduced-Price Meal Benefits	Direct Admissions Participant Status	Did not File a FAFSA	Filed a FAFSA	Total	Percent Filing a FAFSA
No	Did Not Participate	1,731	2,061	3,792	54%
No	Participated	347	1,240	1,587	78%
No	Total	2,078	3,301	5,379	61%

Student was Eligible for Free/Reduced-Price Meal Benefits	Direct Admissions Participant Status	Did not File a FAFSA	Filed a FAFSA	Total	Percent Filing a FAFSA
Yes	Did Not Participate	795	535	1,330	40%
Yes	Participated	93	267	360	74%
Yes	Total	888	802	1,690	47%

Table 19. 12th Grade Students at a Participating High School Filing a FAFSA Over Time by Free or Reduced-Price Meal Benefit Eligibility

Student was Eligible for Free/Reduced-Price Meal Benefits	Direct Admissions Participant Status	Did not File a FAFSA	Filed a FAFSA	Total	Percent Filing a FAFSA
No	2020-2021	2,374	2,503	4,877	51%
No	2021-2022	2,234	2,579	4,813	54%
No	2022-2023	2,078	3,301	5,379	61%
Yes	2020-2021	1,280	737	2,017	37%
Yes	2021-2022	1,217	921	2,138	43%
Yes	2022-2023	888	802	1,690	47%

Enrollment in a Minnesota College in Fall after High School (Preliminary Data)

Preliminary fall enrollment in college is measured by presence of a State Grant record for the student. All Minnesota high school graduates who are Minnesota residents and whose families meet income requirements are eligible for a Minnesota State Grant if enrolling at a participating college. This number would not include students who choose to enroll in college in another state, or who enroll in college but did not apply for state financial aid using the FAFSA or state aid application. Approximately 20% of all Minnesota high school graduates enroll in college in another state. In addition, approximately 6,000 12th graders statewide or 8% of high school students entering a Minnesota college in the fall after high school graduation do not complete the FAFSA or a state aid application. To allow appropriate comparisons given the limitations discussed, data from the two preceding years was included in Table 21.

Among first year participants, 50% were found enrolled in a Minnesota college in fall after high school graduation as compared to 26% of non-participating 12th grade students at a participating high school, as shown in Table 20. Overall, 33% of 12th grade students at participating high school in 2022-2023 were found enrolled in a Minnesota college in fall after high school graduation, which compares to 31% and 28% in the preceding two years, as shown in Table 21.

Table 20. 12th Grade Students at a Participating High School Enrolling in a Minnesota College (Preliminary Data) 2022-2023

Enrolled in a Minnesota College in Fall Following High School Graduation	Number of Participants	Percent of Participants	Number of Non-Participants	Percent of Non-Participants	Number of Total Students	Percent of Total Students
Not Found Enrolled	966	50%	3,779	74%	4,745	67%
Found Enrolled (Preliminary)	981	50%	1,343	26%	2,324	33%
Total	1,947	100%	5,122	100%	7,069	100%

Table 21. Students at a Participating High School Enrolling in a Minnesota College (Preliminary Data) Over Time

Enrolled in a Minnesota College in Fall Following High School Graduation	Not Found Enrolled	Found Enrolled	Total	Percent Found Enrolled (Preliminary)
2020-2021	4,964	1,930	6,894	28%
2021-2022	4,796	2,155	6,951	31%
2022-2023	4,736	2,333	7,069	33%

Enrollment in a Minnesota College in Fall after High School (Preliminary Data) by Sex

Among students at participating high schools, 49% of students identifying as male and participating in Direct Admissions were found enrolled in a Minnesota college in fall after high school graduation as compared to 24% of non-participating 12th grade students identifying as male at a participating high school, as shown in Table 22. This compares to 52% of 12th grade students identifying as female and participating in Direct Admissions as compared to 29% of non-participating 12th grade students identifying as female at a participating high school

Overall, 30% of 12th grade students identifying as male at participating high school in 2022-2023 were found enrolled in a Minnesota college in fall after high school graduation, this compares to 28% and 25% in the preceding two years, as shown in Table 23. In comparison, 36% of 12th grade students identifying as female at participating high school in 2022-2023 were found enrolled in a Minnesota college in fall after high school graduation, which compares to 34% and 31% in the preceding two years.

Table 22. Students at a Participating High School Enrolling in a Minnesota College (Preliminary Data) by Sex 2022-2023

Sex	Direct Admissions Participant Status	Not Found Enrolled	Found Enrolled (Preliminary)	Total	Percent Enrolled in a Minnesota College in Fall Following High School Graduation
Male	Did Not Participate	2,102	654	2,756	24%
Male	Participated	450	429	879	49%
Male	Total	2,552	1,083	3,635	30%
Female	Did Not Participate	1,677	689	2,366	29%
Female	Participated	516	552	1,068	52%
Female	Total	2,193	1,241	3,434	36%

Table 23. 12th Grade Students at a Participating High School Enrolling in a Minnesota College (Preliminary Data) Over Time by Sex

Sex	12 th Grade Students Enrolled	Not Found Enrolled	Found Enrolled (Preliminary)	Total	Percent Enrolled in a Minnesota College in Fall Following High School Graduation
Male	2020-2021	2,673	887	3,560	25%
Male	2021-2022	2,584	991	3,575	28%
Male	2022-2023	2,552	1,083	3,635	30%
Female	2020-2021	2,287	1,047	3,334	31%
Female	2021-2022	2,227	1,149	3,376	34%
Female	2022-2023	2,193	1,241	3,434	36%

Enrollment in a Minnesota College in Fall after High School (Preliminary Data) by Race and Ethnicity

Among students at participating high schools, 60% of students identifying as Asian and participating in Direct Admissions were found enrolled in a Minnesota college in fall after high school graduation as compared to 37% of non-participating 12th grade students identifying as Asian at a participating high school, as shown in Table 24. Higher preliminary enrollment rates were found across all race and ethnicity groups among participants as compared to non-participants. Participants identifying as white, Black or African American, two or more races or Hispanic or Latino also had preliminary enrollment rates (48%, 64%, 41%, and 46% respectively) that exceeded those of their non-participating peers (25%, 34%, 23%, and 15% respectively).

Table 24. Students at a Participating High School Enrolling in a Minnesota College (Preliminary Data) by Race and Ethnicity, 2022-2023

Race and Ethnicity	Direct Admissions Participant Status	Not Found Enrolled	Found Enrolled (Preliminary)	Total	Percent Enrolled in a Minnesota College in Fall Following High School Graduation
American Indian / Alaskan Native	Did Not Participate	50	13	63	21%
American Indian / Alaskan Native	Participated	20	10	30	33%
American Indian / Alaskan Native	Total	70	23	93	25%
Asian	Did Not Participate	372	223	595	37%
Asian	Participated	72	106	178	60%
Asian	Total	444	329	773	43%
Black or African American	Did Not Participate	547	276	823	34%
Black or African American	Participated	87	153	240	64%
Black or African American	Total	634	429	1,063	40%
Native Hawaiian or Pacific Islander	Did Not Participate	Fewer than 10	n/a	n/a	n/a
Native Hawaiian or Pacific Islander	Participated	Fewer than 10	n/a	n/a	n/a
Native Hawaiian or Pacific Islander	Total	Fewer than 10	n/a	n/a	n/a
Hispanic or Latino	Did Not Participate	652	114	766	15%
Hispanic or Latino	Participated	140	118	258	46%
Hispanic or Latino	Total	792	232	1,024	23%
Two or More Races	Did Not Participate	221	67	288	23%
Two or More Races	Participated	54	38	92	41%
Two or More Races	Total	275	105	380	28%
White	Did Not Participate	1,936	649	2,585	25%
White	Participated	593	553	1,146	48%
White	Total	2,529	1,202	3,731	32%
Total	Did Not Participate	3,779	1,343	5,122	26%
Total	Participated	966	981	1,947	50%
Total	Total	4,745	2,324	7,069	33%

Overall, 40% of 12th grade students, both participants and non-participants, identifying as Black or African American at participating high school in 2022-2023 were found enrolled in a Minnesota college in fall after high school graduation, which compares to 38% and 30% in the preceding two years, as shown in Table 25. In comparison, the increase over time in preliminary enrollment rates is seen for all races and ethnicity groups

except students identifying as Asian for whom the rates remained stable for the last two years and for students identifying as Hispanic or Latino for whom the rate declined slightly.

Table 25. 12th Grade Students at a Participating High School Enrolling in a Minnesota College (Preliminary Data) Over Time by Race and Ethnicity

Race and Ethnicity	Direct Admissions Participant Status	Not Found Enrolled	Found Enrolled (Preliminary)	Total	Percent Enrolled in a Minnesota College in Fall Following High School Graduation
American Indian / Alaskan Native	2020-2021	89	21	110	19%
American Indian / Alaskan Native	2021-2022	79	24	103	23%
American Indian / Alaskan Native	2022-2023	70	23	93	25%
Asian	2020-2021	451	282	733	38%
Asian	2021-2022	407	304	711	43%
Asian	2022-2023	444	329	773	43%
Black or African American	2020-2021	697	294	991	30%
Black or African American	2021-2022	651	407	1,058	38%
Black or African American	2022-2023	634	429	1,063	40%
Native Hawaiian or Pacific Islander	2020-2021	Fewer than 10	n/a	n/a	n/a
Native Hawaiian or Pacific Islander	2021-2022	Fewer than 10	n/a	n/a	n/a
Native Hawaiian or Pacific Islander	2022-2023	Fewer than 10	n/a	n/a	n/a
Hispanic or Latino	2020-2021	652	191	843	23%
Hispanic or Latino	2021-2022	707	252	959	26%
Hispanic or Latino	2022-2023	792	232	1,024	23%
Two or More Races	2020-2021	179	55	234	24%
Two or More Races	2021-2022	254	85	339	25%
Two or More Races	2022-2023	275	105	380	28%
White	2020-2021	2,890	1,087	3,977	27%
White	2021-2022	2,711	1,067	3,778	28%
White	2022-2023	2,529	1,202	3,731	32%
Total	2020-2021	4,960	1,934	6,894	28%
Total	2021-2022	4,811	2,140	6,951	31%
Total	2022-2023	4,745	2,324	7,069	33%

Enrollment in a Minnesota College in Fall after High School (Preliminary Data) by Free or Reduced-Price Meal Benefit Eligibility

Among students at participating high schools, 53% of students eligible for free or reduced-price meals and participating in Direct Admissions were found enrolled in a Minnesota college in fall after high school graduation as compared to 25% of non-participating 12th grade students eligible for free or reduced-price meals at a participating high school, as shown in Table 26. This compares to 50% of 12th grade students not eligible for free or reduced-price meals and participating in Direct Admissions as compared to 27% of non-participating 12th grade students not eligible for free or reduced-price meals at a participating high school.

Both students eligible for free or reduced-price meals and those not eligible showed increases in preliminary enrollment over the most recent three years. Overall, 34% of 12th grade students not eligible for free or reduced-price meals at participating high school in 2022-2023 filed a2 FAFSA, which compares to 31% and 28% in the preceding two years, as shown in Table 27. In comparison, 31% of 12th grade students eligible for free or reduced-price meals at participating high school in 2022-2023 were found enrolled in a Minnesota college in fall after high school graduation, which compares to 31% and 27% in the preceding two years.

Table 26. Students at a Participating High School Enrolling in a Minnesota College (Preliminary Data) by Free or Reduced-Price Meal Benefit Eligibility, 2022-2023

Student was Eligible for Free/Reduced-Price Meal Benefits	Direct Admissions Participant Status	Not Found Enrolled	Found Enrolled (Preliminary)	Total	Percent Enrolled in a Minnesota College in Fall Following High School Graduation
No	Did Not Participate	2,776	1,016	3,792	27%
No	Participated	795	792	1,587	50%
No	Total	3,571	1,808	5,379	34%
Yes	Did Not Participate	1,003	327	1,330	25%
Yes	Participated	171	189	360	53%
Yes	Total	1,174	516	1,690	31%
Total	Did Not Participate	3,779	1,343	5,122	26%
Total	Participated	966	981	1,947	50%
Total	Total	4,745	2,324	7,069	33%

Table 27. 12th Grade Students at a Participating High School Enrolling in a Minnesota College (Preliminary Data) Over Time by Free or Reduced-Price Meal Benefit Eligibility

Student was Eligible for Free/Reduced-Price Meal Benefits	Direct Admissions Participant Status	Not Found Enrolled	Found Enrolled (Preliminary)	Total	Percent Enrolled in a Minnesota College in Fall Following High School Graduation
No	2020-2021	3,491	1,386	4,877	28%
No	2021-2022	3,343	1,470	4,813	31%
No	2022-2023	3,571	1,808	5,379	34%

Student was Eligible for Free/Reduced-Price Meal Benefits	Direct Admissions Participant Status	Not Found Enrolled	Found Enrolled (Preliminary)	Total	Percent Enrolled in a Minnesota College in Fall Following High School Graduation
Yes	2020-2021	1,469	548	2,017	27%
Yes	2021-2022	1,468	670	2,138	31%
Yes	2022-2023	1,174	516	1,690	31%
Total	2020-2021	4,960	1,934	6,894	28%
Total	2021-2022	4,811	2,140	6,951	31%
Total	2022-2023	4,745	2,324	7,069	33%

Future Research

Additional data elements will be added as the identified data sources are made available to OHE for use in evaluating Direct Admissions. These future additional indicators will include:

- the high school completion rate of seniors (indirect outcome),
- the immediate college enrollment rate of seniors (final data), and
- the immediate in-state college enrollment rate of seniors (final data).

In addition, OHE will add information disaggregated by English language learner status, school and district, and geography when possible and appropriate. In addition, a full program evaluation will be undertaken by external researchers in collaboration with the State Higher Education Executive Officers (SHEEO), which is assisting numerous states including Minnesota, Idaho, and Hawaii in evaluating its Direct Admissions efforts.

Challenges and Recommendations

The Successes of the 2023-2034 program year reflect sustained, engaged, and collaborative work led by OHE and our key collaborators. The year was not without its challenges, which primarily occurred in four areas: administration, communications with students, technology, and fidelity of implementation.

Administration

One of the greatest challenges in administering the program is K-12 staffing. Direct Admissions is not an expensive program to administer, but its success relies on high school counselors and related staff finding approximately 40 to 80 additional hours to set up and execute the program at the local level. Implementation of Direct Admissions requires that high schools complete their assessment of students' on-track for graduation status, and the assignment of each student to an academic tier between June and early September. In addition, staff ensure FERPA notifications/Tennessee warnings are sent to families prior to testing and calibrating the software used in notifying students. Given that most staff are contracted through June of the academic calendar year, and then do not return until August, this adds work to the end of the school year or immediately at the beginning of the next. For schools with limited staffing, finding the extra hours needed can be a challenge. Schools have the option of contracting for work in July but not all staff are available. Funding provided by the state could be utilized for reimbursing schools for the extra hours required of staff. Once a school has completed its first year in the program, the need for staff time is reduced in subsequent years as set-up tasks only need to be maintained, particularly if done within the SIS. However, hours are still required to complete their assessment of students' on-track for graduation status, and the assignment of each student to an academic tier. In addition, key staff unplanned outages or turnover set back a few schools or districts that were otherwise initially on track to meet the preferred October send timeline.

In addition to staffing bandwidth and program needs, given the richness and variety of secondary schools across the state, another administrative challenge is inconsistent implementation at the school level which led to occasional challenges and unexpected situations. This included schools still using Pass/No Pass grades; high schools governed by boards requiring "opt-in" policies; and more. In each of these instances, this led to delays in students receiving their Direct Admissions letter.

A final administrative challenge was delays in completing the necessary contractual documents to allow for data sharing and fund transfers. Both Joint Powers and Data Sharing Agreements are needed to ensure secure data transfer and compliance are met, in addition to remuneration for program costs. For this year, four high schools were discontinued as they did not have the contractual obligations in place to fulfill the program's promise. The sheer number and volume of contracts for the program also merit a great deal of agency time. Streamlining these processes will be critical as the program scales.

Communications with Students

The success of Direct Admissions relies on strategically timed communication with students and their parents. In this area, several challenges occurred, largely around getting the Direct Admissions letters and information to

students in the early fall. Numerous web-based, print, and social media assets were created and translated to support the initial Direct Admissions communication to students. In spite of these tools, and even with program staff support, a number of high schools and districts were late in getting their communications out to students prior to the end of October. This was largely due to understanding the technology involved in sending out initial communications. Sometimes this was due to ignorance around SIS updates, and other times, loss of key staff in technology or communications' areas of the secondary schools themselves.

A second communication challenge that remains in spite of this year's efforts is ensuring that students understand what their next steps should be after initial communications are sent. Behavioral "nudging" of students to act on colleges of choice remains key. Overall, the agency has started to build out better brand awareness and is thinking of expanding program outreach and resources to earlier grades, particularly with tools around types of participating higher education institutions and ways to pay for college. This year, the most successful high schools leveraged every channel available to them, including print and social media; advisory meetings for seniors; press releases; and more.

There's also more work to do in collaborating on the college side of communications with students. High school staff have requested that communications following the initial notification be standardized on a set timeline (e.g., prompts 3-5 days after sending the initial notification). Students were confused about institution-specific next steps, ranging from applying for free to the college with a promo code to confirming their data in a college-specific portal. On the college side of communications with students, there is a clear need to build out more resources to aid students and families in understanding the program and its nuances across institutions. As such, the agency has already started working on building a toolkit for our postsecondary partners in the upcoming program year.

Technology

Direct Admissions uses local SIS platforms and data sharing agreements with high schools and districts to assess and share the data needed to ensure students get their program survey notifications in a timely fashion. The success of the program is dependent on high schools having implemented and being aware of information and processes within their local SIS technology to complete the academic review and send notifications to students. Without the ability to produce these reports, technology workarounds and manual review are needed at the high school. Thus, another anticipated challenge is for the Office of Higher Education to onboard and create additional training manuals for the remaining SIS vendors to Direct Admissions who will be rolling out the program in the next school year. This set-up can be quite substantial at the outset as there are multiple steps involved. First, a school must assess if the student is on-track for graduation through the academic planner tool. The academic planner details the graduation requirements for the district, the courses that meet those requirements, and the student's course enrollments and grade information. Once set up, on-track for graduation is assessed via a report. Next is the assignment to academic tiers for Direct Admissions. The system should have a pre-programmed report that reviews the students unweighted cumulative GPA and course grades in English, math, and science to assign the academic tiers. Both of these reports are then reviewed and quality assured by counselors for accuracy and student placement. Without the ability to produce these reports, high school counselors must manually review the on-track for graduation status, likely in an Excel spreadsheet, and manually

review the unweighted grade point average and course grades to assign tiers. The manual review process increases the time needed for staff to set-up the program prior to the start of each academic year. At the moment, two of the five MDE-approved SIS vendors have built Direct Admissions into their technology platforms. A third has begun production. The remaining two have been engaged in dialogue with the agency.

Fidelity of Implementation

The final area of program challenges involves fidelity of implementation. For Direct Admissions to be successful, it is critical that the program provide information to the student as soon as possible once the student begins their senior year. Ideally, seniors in the 2023-2024 academic year should have received their Direct Admissions notifications between August and October, depending on the school. In reality, these notifications were sometimes delayed when schools were not able to complete set up tasks during the summer. Additionally, several schools did not complete the initial contractual steps, and several more failed to implement the sending of communications altogether in 2023. A goal for future years will be to ensure that all notifications are sent to students and parents by October 31st at the latest to take full advantage of program benefits (including application fee waivers and connecting to college staff early in senior year), building upon College Knowledge month momentum in October. This also ensures that students have the program information prior to participating in events planned at or by their school in early fall.

An additional challenge in this area is that pandemic related grading policies have resulted in cumulative grade point averages that could not be used accurately in the existing Direct Admissions tier system. Specifically, the use of “No Pass, No Credit” and “Pass” grades in calculating the student’s unweighted cumulative GPA requires high school counselors to calculate a specific “Direct Admissions GPA”. If high schools used a “No Pass, No Credit” grade in place of “F” and a “Pass” grade in place of “D” or “C” grades during the 2020-2021, 2021-2022, and/or 2022-2023 academic years, the unweighted cumulative GPA would have been calculated by only using “A” and “B” letter grades. This would result in an unweighted GPA of 3.0 or higher for all students and not accurately reflect the student’s academic performance for college admissions’ purposes. This issue should fade over time as the policies have largely been reversed since the pandemic’s ebbing, but still played a feature in several schools and districts this year.

Recommendations

The challenges discussed in the prior section are not insurmountable, and with planning and assistance from K-12 staff, SIS technology vendors, and postsecondary partners, OHE anticipates evolving Direct Admissions into a more effective and successful program each year. Recommendations to address these challenges include the following:

- Double the number of participating high schools to around 200 in 2024-2025, and explore incorporating private/parochial high schools;
- Work with new schools earlier in the year to ensure key benchmarks and deliverables are met for initial program set-up prior to November 1st;

- Work with schools to ensure full use of existing SIS technology to support Direct Admissions, including on-boarding additional SIS vendors and leveraging manuals and supplemental tools to actualize the program;
- Continue to standardize student communications and communication timelines with regards to initial prompts for follow-up at specified times from high school staff; initial contact from colleges; and integrated follow-up messaging with FAFSA, MN DREAM Act, Pell Grant, State Grant information;
- Expand upon and create new marketing content. Such content and assets are already in development, ranging from student testimonials to companion toolkits for students and families and college partners. Emphasis will also be given to sharing the program with younger audiences in 9th and 10th grades;
- Create communities of practice for secondary partners that support the work and allow for organic best practices' sharing. These communities can also serve as a "mentor program" for newly joining high schools to connect with veteran high school participants;
- Integrate more intentional crossover time between the two working advisory groups, in addition to a few optional all-participant virtual gatherings throughout fall months;
- In terms of prospective program partners, continue to expand to include longstanding community-based college-access organizations (CBOs), hopefully including: Get Ready, Achieve, and MN TRIO (and, more particularly, Upward Bound and Educational Talent Search programs);
- For calendar outreach events and avenues (both virtual and off-site), establish an OHE Direct Admissions' presence and brand-awareness at the following hallmarks of the admissions' calendar year: the Minnesota State Fair; the fall's Minnesota School Counselors Association annual conference; Minnesota's National College Fair in October; the Minnesota Association for College Admissions Counseling's fall and spring Minnesota Education Fairs; and the Minnesota Association for Counselors of Color fall and spring college fairs;
- Collaborate with the Minnesota Department of Education in College Knowledge Month/Minnesota Goes to College Efforts throughout October.

Scaling Direct Admissions Statewide

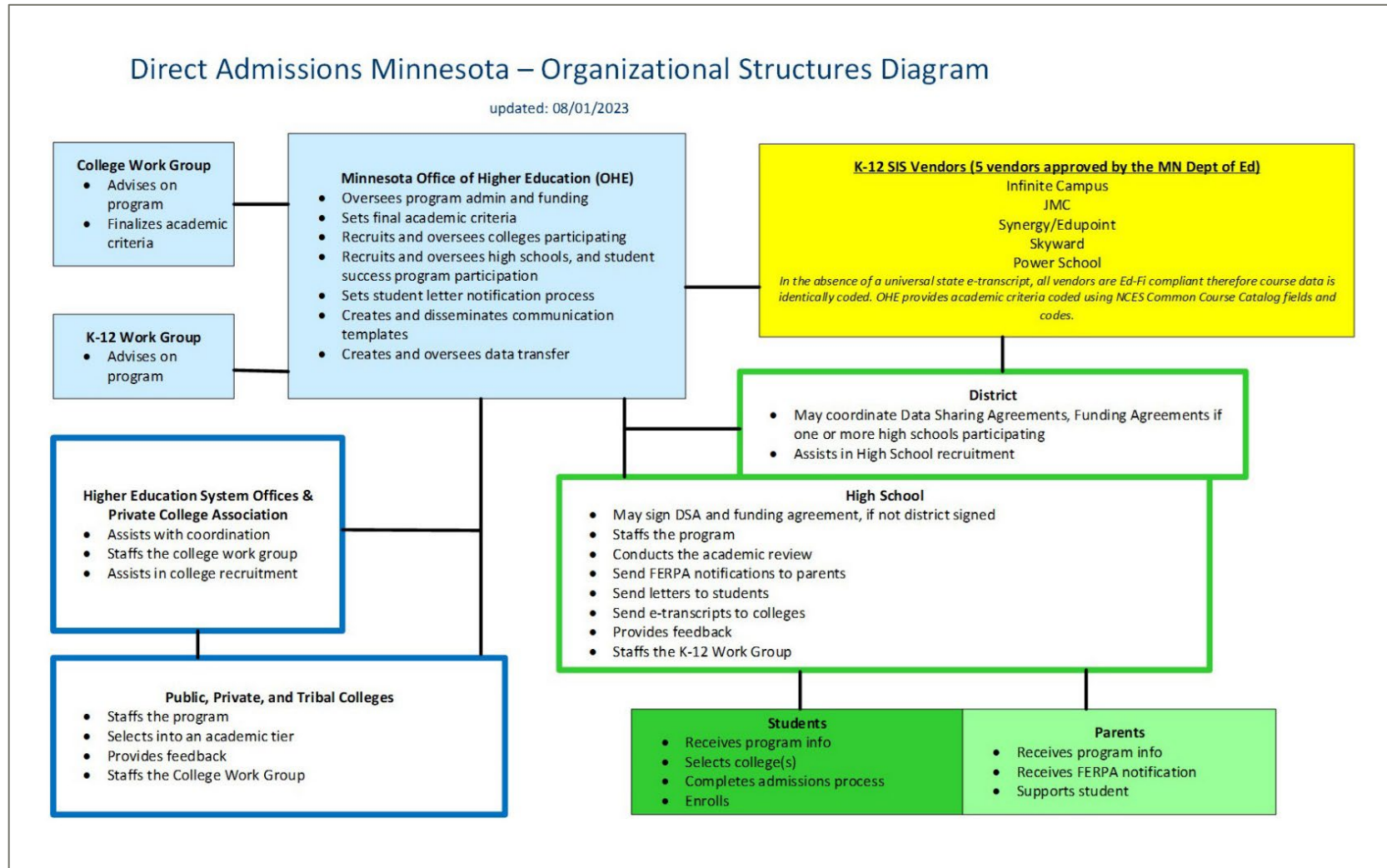
It is possible to scale Direct Admissions to all 800 of Minnesota's public high schools (approximately 70,000 high school seniors). The Office of Higher Education recommends scaling the program over three to five years to all high schools due to the set-up work required, and maintaining it as a voluntary program for schools to opt into.

Next Report

The next report on Direct Admissions Minnesota is due to the Legislature by February 1, 2025.

Appendix A. Direct Admissions' Participating High Schools, Community-based Partner Direct Service High Schools, and Colleges' Tables

Figure A1. Direct Admissions Minnesota – Organizational Structures Diagram 2023-2024



The organizational structure of the Direct Admissions program shows how each stakeholder group plays a key role in the implementation of the program. Each section of the diagram includes the organization, working group, school, or partner within the program and lists the roles that each are responsible for.

The Minnesota Office of Higher Education:

- Oversees program administration and funding
- Sets final academic criteria
- Recruits and oversees colleges participating
- Recruits and oversees high schools, and student success program participation
- Sets student letter notification process
- Creates and disseminates communication templates
- Creates and oversees data transfer.

OHE partners with two work groups comprised of member partners from each sector, the College Work Group and K-12 Work Group, to gather recommendations, feedback and decisions for program implementation to OHE.

The College Work Group:

- Advises on program
- Finalizes academic criteria

The K-12 Work Group:

- Advises on program

Local School Information System (SIS) platforms, which includes Infinite Campus, jmc, Synergy/Edupoint, Skyward, and PowerSchool are five vendors approved by the Minnesota Department of Education. The SIS platforms are used to streamline academic review of students at participating high schools. In the absence of a universal state e-transcript, all vendors are Ed-Fi compliant, therefore course data is identically coded. OHE provides academic criteria coded using NCES Common Course Catalog fields and codes.

OHE works closely with school districts and high schools to coordinate necessary Data Sharing and Joint Powers contractual agreements; staffing and coordinating the program's FERPA notification to families, the academic review and letter notification processes; following up with colleges and universities on behalf of students regarding transcripts or additional admissions' materials requests; and providing feedback to OHE.

School districts:

- May coordinate Data Sharing Agreements and funding agreements if one or more high school is participating
- Assist in high school recruitment

High schools:

- May sign Data Sharing Agreement (DSA) and funding agreement, if not district signed
- Staffs the program
- Conducts the academic review
- Sends FERPA notification to parents
- Sends letters to students
- Sends e-transcripts to colleges
- Provides feedback
- Staffs the K-12 Work Group

Public, tribal, and private colleges, universities, and higher education system offices promote new membership and support existent institutions in the work.

The Higher Education System Offices and Private College Association:

- Assists with coordination
- Staffs the college work group
- Assists in college recruitment

Public, Private and Tribal Colleges:

- Staffs the program
- Selects into an academic tier
- Provides feedback
- Staffs the College Work Group

All the above is to the benefit of students and families, who receive the program notifications and letter surveys; select colleges and universities of choice; and complete any necessary admissions requirements prior to ultimately enrolling in an institution of choice.

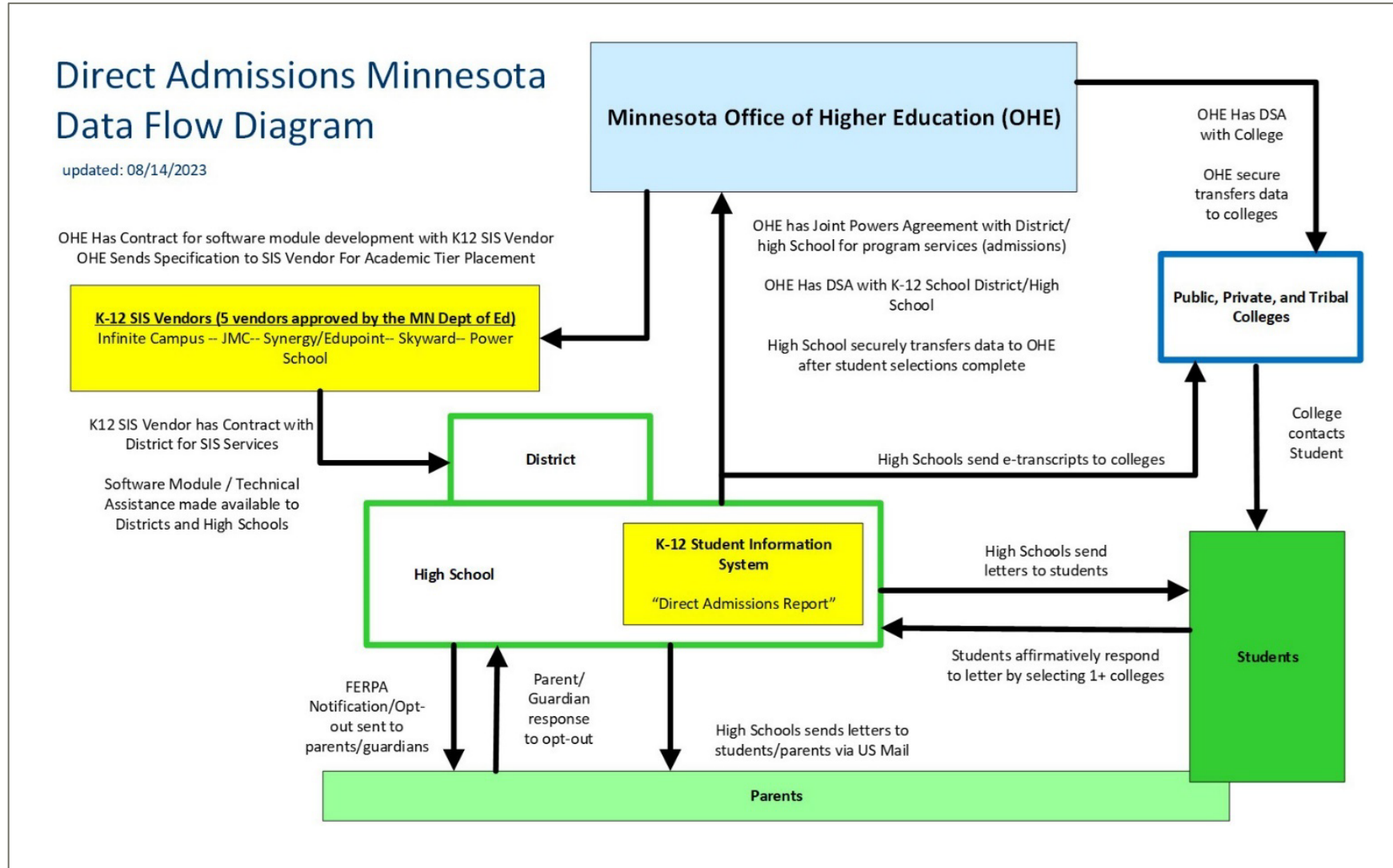
Students:

- Receive the program info
- Selects college(s)
- Completes admissions process
- Enrolls

Parents:

- Receives program info
- Receives FERPA notification
- Supports student

Figure A2. Direct Admissions Minnesota – Data Flow Diagram 2023-2024



The data flow diagram of the Direct Admissions program displays the data and communication transitions between the various program partners. The data flow diagram begins with the Minnesota Office of Higher Education.

OHE has contracts in place for software module development with several of the K-12 SIS vendors (Infinite Campus, jmc, Synergy/Edupoint, Skyward, and PowerSchool), who service the participating high schools and districts in utilizing the local platform and providing technical support.

- K-12 SIS vendors have a contract with district for SIS services.
- Software module/technical assistance is made available to districts and high schools.

Districts and high schools use local technology to generate a FERPA notification to families to opt-out of the program, who may choose to not participate. Following this notification, districts and high schools use their local SIS platform to produce a Direct Admissions report in conducting the academic review for student tier placement; generate the student survey notification via their communication modality of choice (email, letter, etc.).

High school sends letters to students and parents via U.S. mail, and students are encouraged to respond within the platform or technology being utilized to select institution(s) of preference. This data is transferred back to the high school’s SIS, which will inform OHE of students’ selections.

- OHE has Joint Powers Agreement with district/high school for program services (admissions)
- OHE has Data Sharing Agreement (DSA) with K-12 school district/high school
- High school securely transfers data to OHE after student selections complete

OHE has DSAs with participating public, private and tribal colleges and securely transfers the data to the colleges. Public, tribal, and private colleges and universities securely retrieve transferred student data in a timely manner.

- Districts and high schools use local technologies to send transcripts or work with students in submitting additional admissions’ materials requested to selected public, private and tribal colleges.
- The colleges and universities then contact students through local communication and follow-up efforts regarding any specific next steps or applications needs.

Table A1. Members of K-12 Secondary Advisory Workgroup of Direct Admissions

Member	Affiliation
Joshua Omang	Detroit Lakes Senior High
Kim Esso	Highland Park Senior High School
Samina Ali	Johnson High School
Emily Owens	Venture Academy High School
Brooke McGuire	Waseca Public Schools
Eric Gordee	Infinite Campus
Tiffany Gustin	Minnesota School Boards Association

Member	Affiliation
Beth Barsness	Minnesota Department of Education
Patrick Milton	Get Ready Program, Office of Higher Education
Meredith Fergus	Research, Office of Higher Education
Sally Krager	Research, Office of Higher Education
Sarah Burghardt	Marketing and Communications, Office of Higher Education
Wendy Robinson	Assistant Commissioner, Office of Higher Education
Aaron Salasek	Direct Admissions Coordinator, Office of Higher Education

Table A2. Members of Postsecondary Advisory Workgroup of Direct Admissions

Member	Affiliation
Robert Gould	Augsburg University
Stephanie Ruckel	Augsburg University
Jeff Lemke	Bethany Lutheran College
Kristen Hatfield	University of Saint Thomas
John Manning	Minnesota Private College Council
Alison Groebner	Minnesota Private College Council
Cynthia Olson	Dunwoody College of Technology
Jennifer Hewerdine	Ridgewater College
Gabby Miller	Saint Paul College
Tia Miles	Bemidji State University
John Brown	Saint Cloud State University
Tania Schmidt	Winona State University
Chris Halling	MN-State System Office
Sue Erickson	University of Minnesota Crookston
Melissa Bert	University of Minnesota Morris
Brian Studebaker	University of Minnesota Morris
Keri Zweig Riscic	University of Minnesota Twin Cities
Meredith Fergus	Research, Minnesota Office of Higher Education
Sally Krager	Research, Minnesota Office of Higher Education
Wendy Robinson	Assistant Commissioner, Minnesota Office of Higher Education
Aaron Salasek	Direct Admissions Coordinator, Minnesota Office of Higher Education

**Table A3. Participating High Schools for 2023-2024
(County Indicated, Alpha Order by High School)**

County Name	School Name	Direct Admissions Status
Ramsey	622 Online High School	Participating 2023-2024
Ramsey	A. G. A. P. E. Teen Parent High School	Participating 2023-2024

County Name	School Name	Direct Admissions Status
Saint Louis	Academic Excellence Online	Deferred start to 2024-2025 before launch
Freeborn	Albert Lea Senior High School	Participating 2023-2024
Ramsey	ALC Gateway to College	Participating 2023-2024
Freeborn	Alden-Conger Secondary	Deferred start to 2024-2025 before launch
Stearns	Apollo Senior High School	Participating 2023-2024
Mower	Austin Online Academy	Participating 2023-2024
Mower	Austin Senior High School	Participating 2023-2024
Hennepin	Banaadir Academy	Participating 2023-2024
Clay	Barnesville Secondary	Participating 2023-2024
Faribault	Blue Earth Area Secondary	Participating 2023-2024
Douglas	Brandon-Evansville High School	Participating 2023-2024
Hennepin	Brooklyn Center Early College Academy	Participating 2023-2024
Hennepin	Brooklyn Center High School	Participating 2023-2024
Wright	Buffalo Senior High School	Participating 2023-2024
Goodhue	Cannon Falls Secondary	Participating 2023-2024
Anoka	Centennial High School	Deferred start to 2024-2025 before launch
Ramsey	Central Senior High School	Participating 2023-2024
Olmsted	Century Senior High School	Participating 2023-2024
Carver	Chanhassen High School	Participating 2023-2024
Carver	Chaska High School	Participating 2023-2024
Clearwater	Clearbrook-Gonvick Secondary	Participating 2023-2024
Carlton	Cloquet Senior High School	Participating 2023-2024
Ramsey	Como Park Senior High School	Participating 2023-2024
Ramsey	Creative Arts Secondary School	Participating 2023-2024
Hennepin	CVA Fusion High School	Participating 2023-2024
Hennepin	CVA PASCAL Middle & High School	Participating 2023-2024
Saint Louis	Denfeld High School	Deferred start to 2024-2025 before launch
Becker	Detroit Lakes Senior High School	Participating 2023-2024
Saint Louis	Duluth Area Learning Center	Deferred start to 2024-2025 before launch
Polk	East Grand Forks Senior High School	Deferred start to 2024-2025 before launch
Saint Louis	East High School	Deferred start to 2024-2025 before launch
Washington	East Ridge High School	Participating 2023-2024
Hennepin	Eden Prairie Senior High School	Participating 2023-2024
Hennepin	Edina Senior High School	Participating 2023-2024
Hennepin	Edison High School	Participating 2023-2024
Hennepin	FAIR High School	Participating 2023-2024
Ramsey	Fairview Alternative High School	Deferred start to 2024-2025 before launch
Rice	Faribault Senior High School	Participating 2023-2024
Polk	Fertile-Beltrami Secondary	Deferred start to 2024-2025 before launch
Sibley	GFW High School School	Participating 2023-2024
Goodhue	Goodhue Secondary	Participating 2023-2024
Ramsey	Gordon Parks High School	Participating 2023-2024

County Name	School Name	Direct Admissions Status
Ramsey	Harding Senior High School	Participating 2023-2024
Hennepin	Harrison Education Center	District Deferred start to 2024-2025 after launch
Clay	Hawley Secondary	Participating 2023-2024
Otter Tail	Henning Secondary	Participating 2023-2024
Hennepin	Heritage Academy High School	Participating 2023-2024
Ramsey	Highland Park Senior High	Participating 2023-2024
Ramsey	Hmong College Prep Academy High School	Participating 2023-2024
Hennepin	Hopkins Senior High	Participating 2023-2024
Houston	Houston Secondary	Deferred start to 2024-2025 before launch
Ramsey	Humboldt High School	Participating 2023-2024
Hennepin	Insight School of Minnesota	Participating 2023-2024
Carver	Integrated Arts Academy	Participating 2023-2024
Hennepin	Jefferson Senior High School	Participating 2023-2024
Olmsted	John Marshall Senior High School	Participating 2023-2024
Ramsey	Johnson Senior High School	Participating 2023-2024
Scott	Jordan High School	Participating 2023-2024
Hennepin	Kennedy Senior High (Bloomington)	Participating 2023-2024
Otter Tail	Kennedy High School (Fergus Falls)	Participating 2023-2024
Washington	Lakes International Language Academy Upper School	Participating 2023-2024
Ramsey	LEAP High School	Participating 2023-2024
Winona	Lewiston-Altura Secondary	Participating 2023-2024
Blue Earth	Mankato East Senior High School	Participating 2023-2024
Blue Earth	Mankato West Senior High School	Participating 2023-2024
Blue Earth	Maple River Secondary	Deferred start to 2024-2025 before launch
Olmsted	Mayo Senior High School	Deferred start to 2024-2025 before launch
Steele	Medford Secondary	Participating 2023-2024
Mille Lacs	Milaca 7-12 Online	Participating 2023-2024
Mille Lacs	Milaca Area Learning Center	Participating 2023-2024
Mille Lacs	Milaca Secondary High School	Participating 2023-2024
Ramsey	Minnesota Online High School	Deferred start to 2024-2025 before launch
Houston	Minnesota Virtual Academy High School	Participating 2023-2024
Hennepin	Minnetonka Senior High School	Participating 2023-2024
Pope	Minnewaska Secondary	Participating 2023-2024
Chippewa	Montevideo Senior High School	Deferred start to 2024-2025 before launch
Hennepin	MPS Online 6-12	Participating 2023-2024
Hennepin	MTS High School	OHE Deferred start to 2024-2025
Hennepin	New Code Academy High School	Participating 2023-2024
Hennepin	North High School (MPS)	Participating 2023-2024
Ramsey	North Senior High (North St. Paul)	Participating 2023-2024
Cass	Northland Secondary	Participating 2023-2024

County Name	School Name	Direct Admissions Status
Ramsey	Open World Learning Secondary	Participating 2023-2024
Anoka	PACT Charter Secondary	Participating 2023-2024
Washington	Park High School	Participating 2023-2024
Hennepin	Parnassus Preparatory School-Rhetoric	Deferred start to 2024-2025 before launch
Crow Wing	Pequot Lakes Senior High School	Participating 2023-2024
Hennepin	PIM Arts High School	Participating 2023-2024
Wabasha	Plainview-Elgin-Millville High School	Participating 2023-2024
Hennepin	Prairie Seeds High School Academy	OHE Deferred start to 2024-2025
Scott	Prior Lake High School	Participating 2023-2024
Ramsey	Quora Secondary School	Deferred start to 2024-2025 before launch
Red Lake	Red Lake County Central High School	Deferred start to 2024-2025 before launch
Beltrami	Red Lake Secondary	Participating 2023-2024
Redwood	Red Rock Central Secondary	Participating 2023-2024
Hennepin	Richfield Senior High School	Participating 2023-2024
Hennepin	Robbinsdale Armstrong Senior High School	OHE Deferred start to 2024-2025
Hennepin	Robbinsdale Virtual Academy	OHE Deferred start to 2024-2025
Olmsted	Rochester Alternative Learning Center	Participating 2023-2024
Hennepin	Rockford Secondary	Participating 2023-2024
Hennepin	Roosevelt High School	Participating 2023-2024
Ramsey	Roseville Area Senior High School	Participating 2023-2024
Olmsted	RPS Online High School	Participating 2023-2024
Hennepin	SAGE Academy Charter School	Participating 2023-2024
Ramsey	Saint Paul Online High School	Participating 2023-2024
Dakota	School of Environmental Studies	Deferred start to 2024-2025 before launch
Wadena	Sebeka Secondary	Deferred start to 2024-2025 before launch
Ramsey	Sejong Academy Upper School	Deferred start to 2024-2025 before launch
Scott	Shakopee High School	Participating 2023-2024
Sibley	Sibley East-Arlington Senior High School	Deferred start to 2024-2025 before launch
Dakota	Simley Senior High School	Participating 2023-2024
Hennepin	South High School	Participating 2023-2024
Dakota	South St. Paul High School	Participating 2023-2024
Washington	South Washington Alternative High School	Participating 2023-2024
Washington	SoWashCo Online	Participating 2023-2024
Houston	Spring Grove Secondary	Participating 2023-2024
Anoka	Spring Lake Park Senior High School	Participating 2023-2024
Hennepin	St. Louis Park Senior High School	Participating 2023-2024
Nicollet	St. Peter High School	Participating 2023-2024
Todd	Staples-Motley Senior High School	Participating 2023-2024
Carver	SWMetro ALC	HS Deferred start to 2024-2025 after launch
Washington	Tartan Senior High School	Participating 2023-2024

County Name	School Name	Direct Admissions Status
Stearns	Technical Senior High School	Participating 2023-2024
Wright	Terra Nova School	Participating 2023-2024
Beltrami	TrekNorth High School	Participating 2023-2024
Faribault	United South Central High School	Participating 2023-2024
Hennepin	Venture Academy High School	Participating 2023-2024
Wadena	Verndale Secondary	Participating 2023-2024
Hennepin	VOA High School	District Deferred start to 2024-2025 after launch
Carver	Waconia High School	Participating 2023-2024
Wadena	Wadena-Deer Creek Senior High School	Participating 2023-2024
Roseau	Warroad High School	OHE Deferred start to 2024-2025
Waseca	Waseca Area Learning Center	District Deferred start to 2024-2025 after launch
Waseca	Waseca Senior High School	Participating 2023-2024
Hennepin	Washburn High School	Participating 2023-2024
Ramsey	Washington Tech Secondary Magnet	Participating 2023-2024
Hennepin	Watershed High School	Participating 2023-2024
Carver	Watertown Mayer High School	Deferred start to 2024-2025 before launch
Washington	Woodbury High School	Participating 2023-2024
Goodhue	Zumbrota-Mazeppa Senior High School	Participating 2023-2024

Table A4. Participating College Possible-serving High Schools 2023-2024 Academic Year

High School Name	High School Name (continued)
Columbia Heights Senior High	Ubah Medical Academy Charter School
Coon Rapids High School	Wayzata High
Fridley Senior High	Metro College Prep
Frazee Secondary	Orono Senior High
Dilworth-Glyndon-Felton Senior High	Cambridge-Isanti High School
Moorhead High School	RTR Secondary School
Burnsville High School	LeRoy Secondary
Farmington High School	Worthington Senior High
Triton High School	Perham Senior High
Red Wing Senior High	Community of Peace Academy High School
Champlin Park High School	Faribault Senior High
Henry High (now Camden)	Eveleth-Gilbert Secondary
Park Center IB World School	Mountain Iron-Buhl Secondary
Robbinsdale Armstrong	Sartell Senior High
Robbinsdale Cooper Senior High	Blooming Prairie Secondary
St. Charles Secondary	

**Table A5. Participating Colleges and Universities 2023-2024 Academic Year
(Fall 2024 Admissions) Sorted by Sector and Name**

Sector	Institution
Minnesota State Colleges and Universities	Alexandria Technical & Community College
Minnesota State Colleges and Universities	Anoka Technical College
Minnesota State Colleges and Universities	Anoka-Ramsey Community College
Minnesota State Colleges and Universities	Bemidji State University
Minnesota State Colleges and Universities	Central Lakes College
Minnesota State Colleges and Universities	Century College
Minnesota State Colleges and Universities	Dakota County Technical College
Minnesota State Colleges and Universities	Fond du Lac Tribal & Community College
Minnesota State Colleges and Universities	Hennepin Technical College
Minnesota State Colleges and Universities	Inver Hills Community College
Minnesota State Colleges and Universities	Lake Superior College
Minnesota State Colleges and Universities	Metropolitan State University
Minnesota State Colleges and Universities	Minneapolis College
Minnesota State Colleges and Universities	Minnesota North College
Minnesota State Colleges and Universities	Minnesota State College Southeast
Minnesota State Colleges and Universities	Minnesota State Community and Technical College
Minnesota State Colleges and Universities	Minnesota State University Moorhead
Minnesota State Colleges and Universities	Minnesota State University, Mankato
Minnesota State Colleges and Universities	Minnesota West Community & Technical College
Minnesota State Colleges and Universities	Normandale Community College
Minnesota State Colleges and Universities	North Hennepin Community College
Minnesota State Colleges and Universities	Northland Community & Technical College
Minnesota State Colleges and Universities	Northwest Technical College
Minnesota State Colleges and Universities	Pine Technical & Community College
Minnesota State Colleges and Universities	Ridgewater College
Minnesota State Colleges and Universities	Riverland Community College
Minnesota State Colleges and Universities	Rochester Community and Technical
Minnesota State Colleges and Universities	Saint Paul College
Minnesota State Colleges and Universities	South Central College
Minnesota State Colleges and Universities	Southwest Minnesota State University
Minnesota State Colleges and Universities	St. Cloud State University
Minnesota State Colleges and Universities	St. Cloud Technical & Community College

Sector	Institution
Minnesota State Colleges and Universities	Winona State University
Private College	Augsburg University
Private College	Bethany Lutheran College
Private College	Bethel University
Private College	College of Saint Benedict
Private College	College of St. Scholastica, The
Private College	Concordia College
Private College	Concordia University St. Paul
Private College	Dunwoody College of Technology
Private College	Gustavus Adolphus College
Private College	Hamline University
Private College	Minneapolis College of Art and Design
Private College	Saint John's University
Private College	Saint Mary's University of Minnesota
Private College	St. Catherine University
Private College	University of St. Thomas
Private College	Northwestern Health Sciences University
Tribal College	Red Lake Nation College
Tribal College	White Earth Tribal & Community College
University of Minnesota	University of Minnesota Crookston
University of Minnesota	University of Minnesota Duluth
University of Minnesota	University of Minnesota Morris
University of Minnesota	University of Minnesota Rochester

Appendix B. Direct Admissions' High School Communication Metrics

Table B1. Number of Students Enrolled and Requesting Direct Admissions for Fall 2023, as of January 25, 2023

High School Name	Unduplicated Count of Students Requesting Direct Admissions	Count of Enrolled Seniors	Percent of Enrolled Seniors Requesting Direct Admissions
622 Online High School	9	29	31%
A. G. A. P. E. Teen Parent High School	0	7	0%
Albert Lea Senior High School	63	208	30%
ALC Gateway to College	10	14	71%
Apollo Senior High School	has not reported	305	has not reported
Austin Online Academy	7	23	30%
Austin Senior High School	183	292	63%
Banaadir Academy	9	12	75%
Barnesville Secondary	9	75	12%
Blue Earth Area Secondary	29	89	33%
Brandon-Evansville High School	6	32	19%
Brooklyn Center Early College Academy	has not reported	11	has not reported
Brooklyn Center High School	has not reported	146	has not reported
Buffalo High School	104	438	24%
Cannon Falls Secondary	16	84	19%
Central Senior High School	82	383	21%
Century Senior High School	has not reported	420	has not reported
Chanhassen High School	34	346	10%
Chaska High School	48	381	13%
Clearbrook-Gonvick Secondary	16	28	57%
Cloquet High School	99	209	47%
Como Park Senior High School	33	284	12%
Creative Arts Secondary School	13	39	33%
CVA Fusion High School	4	12	33%
CVA Pascal High School	1	17	6%
Detroit Lakes Senior High School	23	221	10%
East Ridge High School	60	528	11%
Eden Prairie Senior High School	144	668	22%
Edina High School	121	661	18%
Edison High School	42	219	19%
FAIR High School	9	71	13%

High School Name	Unduplicated Count of Students Requesting Direct Admissions	Count of Enrolled Seniors	Percent of Enrolled Seniors Requesting Direct Admissions
Faribault High School	59	239	25%
GFW High School	has not reported	65	has not reported
Goodhue Secondary	13	44	30%
Gordon Parks High School	5	22	23%
Harding Senior High School	61	412	15%
Hawley Secondary	12	70	17%
Henning Secondary	7	17	41%
Heritage Academy High School	1	25	4%
Highland Park Senior High School	60	361	17%
Hmong College Prep Academy High School	160	179	89%
Hopkins High School	105	481	22%
Humboldt Secondary High School	18	176	10%
Insight School of Minnesota	has not reported	82	has not reported
Integrated Arts Academy	2	24	8%
Jefferson Senior High School	109	413	26%
John Marshall Senior High School	has not reported	374	has not reported
Johnson Senior High School	91	284	32%
Jordan High School	66	180	37%
Kennedy High School (Bloomington)	71	367	19%
Kennedy High School (Fergus Falls)	23	156	15%
Lakes International Language Academy Upper School	17	58	29%
LEAP High School	10	21	48%
Lewiston-Altura Secondary	26	70	37%
Mankato East Senior High School	66	299	22%
Mankato West Senior High School	90	296	30%
Medford Secondary	11	61	18%
Milaca Secondary High School*	107	150	71%
Minnesota Virtual Academy High School	31	232	13%
Minnetonka Senior High School	14	884	2%
Minnewaska Secondary	36	97	37%
MPS Online 6-12	has not reported	52	has not reported
New Code Academy High School	3	13	23%
North High School (MPS)	5	129	4%
North Senior High School	93	388	24%
Northland Secondary	1	32	3%
Open World Learning Community	17	64	27%

High School Name	Unduplicated Count of Students Requesting Direct Admissions	Count of Enrolled Seniors	Percent of Enrolled Seniors Requesting Direct Admissions
PACT Charter Secondary	7	60	12%
Park High School	125	470	27%
Pequot Lakes Senior High School	8	159	5%
PIM Arts High School	39	94	41%
Plainview-Elgin-Millville Schools	has not reported	109	has not reported
Prior Lake High School	17	688	2%
Red Lake Secondary	5	71	7%
Red Rock Central Secondary	15	40	38%
Richfield Senior High School	107	336	32%
Rochester ALC	has not reported	102	has not reported
Rockford Secondary	35	133	26%
Roosevelt High School	91	237	38%
Roseville Area Senior High School	190	626	30%
RPS Online High School	has not reported	44	has not reported
SAGE Academy Charter School	0	12	0%
Saint Paul Online High School	9	79	11%
Shakopee High School	98	676	14%
Simley Senior High School	66	260	25%
South High School	78	396	20%
South Saint Paul High School	23	228	10%
SoWashCo Online**	83	1 to 99	see note
Spring Grove Secondary	has not reported	18	has not reported
Spring Lake Park Senior High School	40	485	8%
St. Louis Park Senior High School	85	364	23%
St. Peter High School	71	183	39%
Staples-Motley Senior High School	6	83	7%
Tartan High School	187	423	44%
Technical Senior High School	has not reported	379	has not reported
Terra Nova School	6	23	26%
TrekNorth High School	28	40	70%
United South Central High School	8	51	16%
Venture Academy High School	32	54	59%
Verndale Secondary	1	53	2%
Waconia High School	90	345	26%
Wadena-Deer Creek Senior High	11	79	14%
Waseca Senior High School	53	125	42%
Washburn High School	159	432	37%
Washington Technology High School	72	250	29%

High School Name	Unduplicated Count of Students Requesting Direct Admissions	Count of Enrolled Seniors	Percent of Enrolled Seniors Requesting Direct Admissions
Watershed High School	2	9	22%
Woodbury High School	54	499	11%
Zumbrota-Mazeppa High School	33	105	31%


*Includes Milaca Area Learning Center and Milaca 7-12 Online as the parent school.

** May include South Washington Alternative High School in count as still resolving export file data.

Note: Anticipated count of enrolled seniors as of June 2023 was provided by the Minnesota Department of Education and projected from Grade 11 enrollment numbers. High schools or districts who indicated deferring to 2024-2025 are excluded.

Appendix C. Resources for High Schools and Students

Figure C1. Direct Admissions Frequently Asked Questions for High School Partners



Direct Admissions Frequently Asked Questions for High School Partners

1. What is Direct Admissions?

The Direct Admissions pilot is designed to encourage all high school seniors on track to graduate in Spring 2024 to view themselves as “college material”. This pilot will hopefully help alleviate some of the anxiety around the college application process by proactively informing students of colleges/universities who are committed to admitting them. Students will receive a personalized letter indicating that they have met the academic criteria for guaranteed general admission to participating colleges and outlines the steps required for students to select their institution(s).

2. Who is in charge of Direct Admissions?

The Direct Admissions program is coordinated by the Minnesota Office of Higher Education and funded by the State of Minnesota. The pilot is a partnership between the selected high schools, participating colleges and universities and the Office of Higher Education.

3. How will individual students find out about Direct Admissions?

High school staff are encouraged to begin conversations about Direct Admissions Minnesota with seniors at the beginning of the school year. Students will receive the official Direct Admissions communication in early October, co-signed by their high school and the Office of Higher Education, that notifies them that they have direct admissions opportunities to a specific list of schools.

High schools will be provided with an FAQ document designed for students and parents, a printed and digital fact sheet for students and parents, promotional posters, and promotional swag items to be used by staff and/or students. They will also receive optional social media graphics, newsletter copy, and website copy that high schools can use to share information about Direct Admissions with their students and families.

4. Are there financial aid, scholarships, or grants associated with Direct Admissions?

No, there are not scholarships or grants associated with Direct Admissions, though participating colleges have agreed to waive application fees for participating students. All students will be encouraged to complete the FAFSA as part of their college search process.

11. Can students opt out of this program?

Yes, parents or students can let their student's counselor (or the Minnesota Office of Higher Education) know that they (or their student) do not wish to receive college planning information from Direct Admissions Minnesota. If emailing DHE directly, emails should include the student's name, high school, and counselor name (if known).

12. Are we allowed to share student data (names, addresses, high school transcript data) with you?

Yes. Participating high schools and the Minnesota Office of Higher Education will complete the necessary data sharing agreements and memorandums of understanding to ensure compliance with all applicable data privacy and security regulations.

13. Why was our school selected to participate?

The Office of Higher Education and the Direct Admissions workgroup sought participation from high schools that represent the geographic and demographic diversity of Minnesota as well as schools that identified increasing college going rates for their students as a priority or part of their strategic plan.

14. Which colleges/universities are participating in this program?

Over 50 Minnesota colleges and universities are participating, including all of the Minnesota State community and technical colleges; tribal colleges; the University of Minnesota campuses at Crookston, Rochester, Morris, and Duluth; Dunwoody College of Technology; and many of the state's private, non-profit colleges. The University of Minnesota Twin Cities, Macalester, and Carleton are not participating.

15. Will this include information for students who want to go into trade programs?

Yes, all of Minnesota's community and technical colleges and Dunwoody College of Technology were invited to participate. The Minnesota Office of Higher Education recognizes that any and all forms of education and training beyond high school are important. If there is a specific college or technical school you have questions about, please let the Minnesota Office of Higher Education know.

16. What happens if a student's grades drop or they don't graduate as expected?

Direct Admissions options will be available for students who graduate in Spring 2024. If a student fails to graduate or has a significant decline in academic performance, a college or university may rescind their acceptance. In accordance with their usual admissions process.

5. What do student do once they get their letter?

Students will be encouraged to select the college or colleges/universities that they are interested in by marking the 'yes' box in their digital letter. Those schools will then be informed of the student's interest and will send the student more information directly. Students who are not interested in participating do not need to do anything to follow up. No student's information will be shared with the participating colleges and universities without the student expressing interest via the Direct Admission process.

6. Do students still have to submit an admissions application?

Yes, students must still complete an admissions application and supply any additional documents required (essay, test scores, letters of recommendation, etc.) by the institution.

7. What happens after the student applies for admissions?

While the student is guaranteed admission to the colleges and universities on their list (provided that they complete their application by the school's application deadlines), we anticipate that they will get their admissions notification/acceptance letter in the same cycle as non-Direct Admissions students. Once admitted, the rest of the admissions process (orientation, enrollment, financial aid) happens in the same time as for newly admitted students. It can be helpful to think of Direct Admissions as a way into the front door... but once in the front door they are a part of the applicant and admit pool as usual.

8. Are other schools participating in this program?

Yes, during the 2023-2024 school year, over 120 high schools will be participating. We aim to continue to expand the program to all public and charter high schools in the state in future years.

9. Was there any cost to the school or students for participating in this program?

No, funding for the staff time require to prepare for Direct Admissions was covered by the Office of Higher Education. There is no cost for students or families to participate.

10. Does Direct Admissions mean students get accepted into all programs or majors a college or university may offer?

Direct Admissions guarantees students will have general admission into an institution. Some programs or majors may have additional admissions criteria or require an additional application, submission of a portfolio, or other steps as determined by the college or university. Students interested in space limited programs should work with the college or university to find out more about additional steps required.

17. Who is responsible for sending the letters? Are they physical letters?

In order to maximize the privacy of students, high schools will be sending the letters (or emails or portal notifications) using the means of communication the high school feels is most effective. We've received feedback from schools that some prefer physical letters, some prefer emails, and some prefer portal notifications. Direct Admissions is seeking to use the method that will have the highest level of student responsiveness and trust that schools know their students best.

18. Are undocumented students eligible for the direct admissions program?

Yes, undocumented Minnesota residents are eligible.

19. How does Direct Admissions work with the U of M ShareMyApp program?

Here's how the U of M ShareMyApp program works:

- Students who submit a complete freshman admission application to the Twin Cities campus can request to have their application materials shared with one or more of the Greater MN campuses (Crookston, Duluth, Morris and Rochester) with no additional fee (or fee waiver) required.
- Students wishing to be considered for freshman admission to the Twin Cities campus must still complete the Twin Cities admission application.

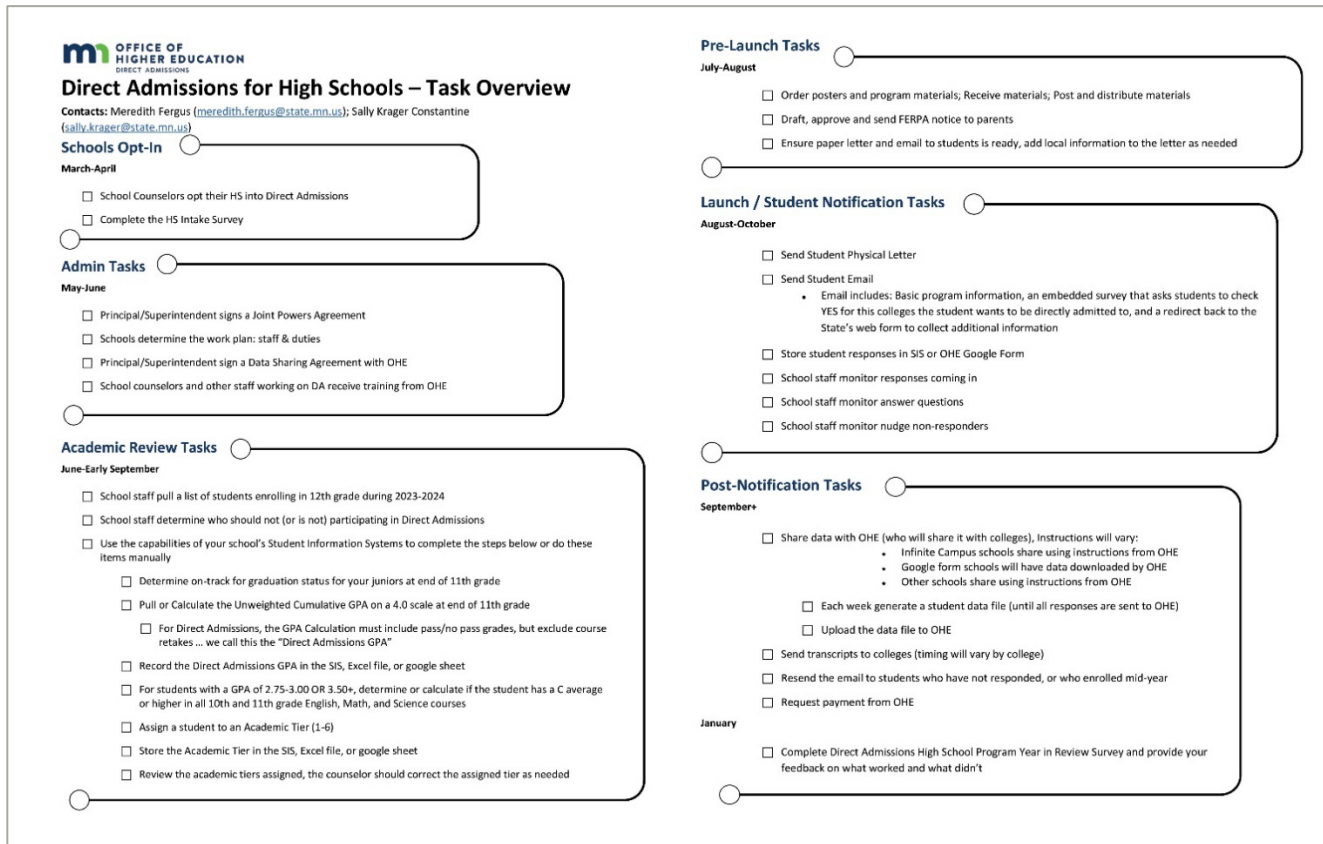
The U of M ShareMyApp opens in mid-October. The University of Minnesota doesn't want to prevent students from applying earlier if they're ready (especially if they'll be eligible for the fee waiver). It is a preference to have students apply directly to their college(s) of interest; eligible students interested in applying to the University of Minnesota Crookston, Duluth, and/or Morris campuses are encouraged to take advantage of Direct Admissions to facilitate those applications.

20. How will the Direct Admissions process work for students that are attending a pilot high school, studying abroad in the U.S. (considered international students) and wanting to attend a participating institution?

Students who are classified as international students are not eligible for the Direct Admissions pilot. These students must work directly with colleges or universities they are interested in to apply for admissions and to submit additional required documents.

The Frequently Asked Questions for High School Partners document was sent to participating high schools to assist with program implementation.

Figure C2. Direct Admissions Task Overview for High Schools



The Direct Admissions Task Overview is a checklist and timeline of tasks that high school counselors and other school and district staff members should complete for a successful Direct Admissions implementation.

To begin in March-April of the school year prior, "Schools Opt-In" to the program. In May-June, "Administrative Tasks" must be completed, which includes several contractual agreements and training. In June-Early September, "Academic Review Tasks" are completed by school staff, which determines academic tiers for students participating in the program. In July-August, "Pre-Launch Tasks" include ordering promotional materials, sending FERPA notification to parents and ensuring letters are prepared. The "Launch/Student Notification Tasks" occur in August-October, in which students receive and respond to the Direct Admissions notification. "Post-Notification Tasks" inform school staff on next steps, which includes sharing the data back to OHE, sending transcripts to selected colleges, requesting payment from OHE and completing feedback survey.

Direct Admissions Marketing Checklist and Timeline for High School Partners

The Direct Admissions Marketing Checklist and Timeline for High School Partners was created as a guide to assist high school counselors, administration and staff in the marketing and promotion of the Direct Admissions

program at their schools. The checklist can be used to keep track of tasks and recommended timeframe and use of various program materials.

The following figures are samples of the marketing collateral developed:

Figure C3. Direct Admissions Student Fact Sheet

Direct Admissions Minnesota

Your higher education journey starts with Direct Admissions

The Direct Admissions program is designed to make it easier for you to know that you have multiple college options in the state. With Direct Admissions, you no longer have to wonder "if" you'll be accepted. You will be pre-accepted by one of the participating colleges and universities in the state. You will be accepted to a college you want to go to. In fact, you will receive a letter from the college you want to go to. You will receive a letter from the college you want to go to. You will receive a letter from the college you want to go to.

Our goal: We want all Minnesota graduating seniors to know that you have multiple college options in the state. We want you to know that you have multiple college options in the state. We want you to know that you have multiple college options in the state.

Student Checklist:

To take full advantage of the Direct Admissions program, use the checklist to stay on track!

OCTOBER OF YOUR SENIOR YEAR

- Receive and review your Direct Admissions communication! Be ready! You will receive a letter from the college you want to go to. You will receive a letter from the college you want to go to. You will receive a letter from the college you want to go to.

FALL TO SPRING OF YOUR SENIOR YEAR

- Explore your options. Consider the best fit for you! Visit mydirectadmissions.org to explore your options. Consider the best fit for you! Visit mydirectadmissions.org to explore your options. Consider the best fit for you! Visit mydirectadmissions.org to explore your options.

Complete FAFSA and explore financial aid options! The Free App is out now! Download the Free App. The Free App is out now! Download the Free App. The Free App is out now! Download the Free App.

Make your final decision. Consider your options. Consider your options. Consider your options. Consider your options. Consider your options. Consider your options. Consider your options. Consider your options.

Direct Admissions AT A GLANCE

"Direct Admissions" means a student has pre-accepted to a college or university. The student has pre-accepted to a college or university. The student has pre-accepted to a college or university. The student has pre-accepted to a college or university.

Participating Institutions

- 100+ participating high schools
- 200+ participating colleges
- Many colleges and universities
- Many colleges and universities
- Many colleges and universities
- Many colleges and universities

Paying for college

There are many ways to pay for college. There are many ways to pay for college. There are many ways to pay for college. There are many ways to pay for college. There are many ways to pay for college.

Complete the FAFSA

We strongly encourage you to apply for financial aid through the FAFSA. We strongly encourage you to apply for financial aid through the FAFSA. We strongly encourage you to apply for financial aid through the FAFSA. We strongly encourage you to apply for financial aid through the FAFSA.

Where do I submit?

The Direct Admissions Fact Sheet is available at mydirectadmissions.org. The Direct Admissions Fact Sheet is available at mydirectadmissions.org. The Direct Admissions Fact Sheet is available at mydirectadmissions.org. The Direct Admissions Fact Sheet is available at mydirectadmissions.org.

Frequently Asked Questions

How did I get selected for the colleges and universities on my list?

You are a Minnesota high school senior. You are a Minnesota high school senior. You are a Minnesota high school senior. You are a Minnesota high school senior. You are a Minnesota high school senior.

Do I still need to take a placement test to take the ACT or SAT?

Many colleges and universities participating in the Direct Admissions program do not require placement tests. Many colleges and universities participating in the Direct Admissions program do not require placement tests. Many colleges and universities participating in the Direct Admissions program do not require placement tests.

Do I still need to complete an admissions application?

The Direct Admissions program is designed to make it easier for you to know that you have multiple college options in the state. The Direct Admissions program is designed to make it easier for you to know that you have multiple college options in the state. The Direct Admissions program is designed to make it easier for you to know that you have multiple college options in the state.

What if I already applied to colleges or universities on my list? Will this affect my application?

You need to re-apply to any colleges or universities you have already applied to. You need to re-apply to any colleges or universities you have already applied to. You need to re-apply to any colleges or universities you have already applied to.

I don't see the name of a college that I'm interested in on this list.

Does that mean I can't be admitted there?

You may not see a college you are interested in on your list. You may not see a college you are interested in on your list. You may not see a college you are interested in on your list. You may not see a college you are interested in on your list.

The Direct Admissions fact sheet was created for students to outline the program, a checklist of next steps, and frequently asked questions to understand how to take full advantage of the program.

Figure C4. Direct Admissions Translated Student Fact Sheet

Direct Admissions Minnesota

귀하의 고등학교 교육 여정은 Direct Admissions로 시작됩니다.

Direct Admissions이란 무엇인가? Direct Admissions이란 무엇인가? Direct Admissions이란 무엇인가? Direct Admissions이란 무엇인가? Direct Admissions이란 무엇인가?

우리의 목표: 우리는 모든 미네소타 졸업생이 여러 대학에서 선택할 수 있는 기회를 알고 싶어 합니다. 우리는 모든 미네소타 졸업생이 여러 대학에서 선택할 수 있는 기회를 알고 싶어 합니다. 우리는 모든 미네소타 졸업생이 여러 대학에서 선택할 수 있는 기회를 알고 싶어 합니다.

학생 체크리스트: Direct Admissions 프로그램에 참여하려면 다음 사항을 확인하십시오. Direct Admissions 프로그램에 참여하려면 다음 사항을 확인하십시오. Direct Admissions 프로그램에 참여하려면 다음 사항을 확인하십시오.

Direct Admissions 간략의 보기

"Direct Admissions"은 학생이 대학에 미리 수락된 것을 의미합니다. "Direct Admissions"은 학생이 대학에 미리 수락된 것을 의미합니다. "Direct Admissions"은 학생이 대학에 미리 수락된 것을 의미합니다.

참고 교육 기관

- 100개 이상의 고등학교
- 200개 이상의 대학
- 많은 대학과 대학원
- 많은 대학과 대학원
- 많은 대학과 대학원
- 많은 대학과 대학원

무료 지원

Direct Admissions은 참여 대학에서 지원하는 것은 무료입니다. Direct Admissions은 참여 대학에서 지원하는 것은 무료입니다. Direct Admissions은 참여 대학에서 지원하는 것은 무료입니다.

학자금

학자금이란 무엇인가? 학자금이란 무엇인가? 학자금이란 무엇인가? 학자금이란 무엇인가? 학자금이란 무엇인가?

자주 묻는 질문

귀하는 대학에 갈 준비가 되었습니다.

미네소타의 대학은 매년 가을에 귀를 열기 시작합니다. 미네소타의 대학은 매년 가을에 귀를 열기 시작합니다. 미네소타의 대학은 매년 가을에 귀를 열기 시작합니다.

Fact sheets were available in the following languages: Amharic, Anuak, Arabic, Chinese, French, Hmong, Japanese, Karen, Korean, Nuer, Oromo, Somali, Spanish, and Vietnamese.

Figure C5. Direct Admissions Poster



Promotional posters were available for order for high schools to promote the program locally. Posters were available in the additional following languages: Hmong, Spanish and Somali.

The Marketing Checklist and Timeline included the following information:

Month	Task
July 2023	<ul style="list-style-type: none"> • Submit order form for Communications Materials • Receive Welcome Packet with Communications Materials • ICYMI: If you were unable to attend the Direct Admissions Kick-Off, watch the May 2023 Kick-Off here: www.youtube.com/watch?v=33cKid0yFTI
August 2023	<ul style="list-style-type: none"> • Hang Direct Admissions posters in student common areas • Add Direct Admissions Summary in Back-to-School Parent Newsletter • Share You Are College Ready - Direct Admissions Intro video with students and parents via Back-to-School Parent Newsletter • Use printed or digital Student Fact Sheets to promote Direct Admissions program at Back-to-School events • Use Social Media Graphic - August to promote Direct Admissions on school or district social media
September 2023	<ul style="list-style-type: none"> • Provide Student Fact Sheets to seniors • Provide MyHigherEd resources in counselor's office • Add Direct Admissions Summary in September Parent Newsletter • Add digital versions of Direct Admissions Communications Materials into your high school's online platform for Class of 2024 seniors • Use Social Media Graphic - September to promote Direct Admissions on school or district social media
October 2023	<ul style="list-style-type: none"> • Send physical and digital Direct Admissions Letter to seniors • Use provided Direct Admissions swag items to promote the program at your school; School staff can use/wear items to promote program OR provide swag items as incentive for students to complete letter/application portal and/or submit applications to their selected colleges • Note: Promotion using Direct Admissions swag items is up to high schools individually. High schools are encouraged to share photos of students or your high school staff wearing swag items. • Use Social Media Graphic - October to promote Direct Admissions on school or district social media
November 2023	<ul style="list-style-type: none"> • Post Social Media Graphic - November
December 2023	<ul style="list-style-type: none"> • Post Social Media Graphic - December
January 2024	<ul style="list-style-type: none"> • Post Social Media Graphic - January
February 2024	<ul style="list-style-type: none"> • Share Introducing Direct Admissions – You Are College Ready video with current juniors (Class of 2025)

Figure C6. Direct Admissions Participating High School and College Flyer





All students are
COLLEGE MATERIAL

DIRECT ADMISSIONS
MINNESOTA

**WE ARE A
DIRECT ADMISSIONS
Minnesota Institution**



MN high school seniors no longer have to wonder "Will I get in?"

With Direct Admissions, seniors are proactively notified of which participating colleges and universities they are accepted to - before they even apply!

Now, seniors can apply with confidence.

Learn more at www.ohe.state.mn.us/directadmissions

2023-2024

DIRECT ADMISSIONS PARTICIPATING COLLEGES AND UNIVERSITIES

Arrowhead

Fond du Lac Tribal & Community College
Lake Superior College
Minnesota North College
The College of St. Scholastica
University of Minnesota Duluth

Central

College of Saint Benedict/Saint John's University
Saint John's University
St. Cloud State University
St. Cloud Technical & Community College

East Central

Pine Technical and Community College

Headwaters

Benild State University
Northwest Technical College
Red Lake Nation College
White Earth Tribal & Community College

North Central

Central Lakes College
Minnesota State Community & Technical College
Northwest Technical College

Northwest

North and Community & Technical College
University of Minnesota Crookston

South Central

Bethany Lutheran College
Custalus Adolphus College
Minnesota State University, Mankato
South Central College

South East

Minnesota State College Southeast
Riverland Community College
Rochester Community & Technical College
Saint Mary's University of Minnesota
University of Minnesota Rochester
Winona State University

South West

Southwest Minnesota State University
Ridgewater College
Minnesota West Community & Technical College

Twin Cities Metro Area

Anoka Technical College
Anoka-Ramsey Community College
Augsburg University

Upper Minnesota Valley

Minnesota West Community & Technical College

West Central

Alexandria Technical & Community College
Concordia College
Minnesota State University Moorhead
Minnesota State Community & Technical College
University of Minnesota Morris

West

Bethel University
Bethel University Online
Century College
Concordia University, St. Paul
Dakota County Technical College
Dunwoody College of Technology
Hamline University
Hennepin Technical College
Inver Hills Community College
Metropolitan State University
Minneapolis College
Minnesota College of Art & Design
Normandale College
North Hennepin Community College
Northwestern Health Sciences University
Saint Paul College
St. Catherine University
University of St. Thomas

Learn more at www.ohe.state.mn.us/directadmissions



The Direct Admissions Minnesota program is designed to encourage all graduating seniors to consider themselves "college material" by proactively notifying them of the colleges and universities that are eager to admit them. Students will receive a letter at the beginning of the academic year that lists which participating Minnesota colleges and universities will grant them admission, information about how to apply, and other essential next steps.

2023-2024

DIRECT ADMISSIONS PARTICIPATING HIGH SCHOOLS

Arrowhead

Cloquet Senior

Central

Apollo Senior High
Buffalo Senior High
Rockford Secondary
Technical Senior High
Terra Nova School

East Central

Mitaca Secondary High

Headwaters

Clearbrook-Convick Secondary
Red Lake Secondary
TrekNorth High School

North Central

Northland Secondary
Pequot Lakes Senior High
Staples-Motley Senior High
Verndale Secondary
Wadena-Deer Creek Senior High

Northwest

Red Lake County Central High School
Warroad High School

South Central

Blue Earth Area Secondary
GFW High School
Mankato East Senior High
Mankato West Senior High
St. Peter High School
United South Central High School
Waseca Area Learning Center
Waseca Senior High

South East

Albert Lea Senior High
Austin Online Academy
Austin Senior High
Century Senior High
Fairbault Senior High
Goodhue Secondary
John Marshall Senior High
Lewiston-Altura Secondary
Mayo Senior High
Medford Secondary
Minnesota Virtual Academy
Plainville-Edin-Milville High
Spring Grove Secondary
Zumbrota-Mazeppa Senior High

South West

Red Rock Central Secondary

2023-2024

DIRECT ADMISSIONS PARTICIPATING HIGH SCHOOLS

Twin Cities Metro Area

622 Online High School
A. G. A. R. E. Tech Prep
AJC Gateway to College
Banaadri Secondary
Brooklyn Center Early College Academy
Brooklyn Center High School
Central Senior High
Chanhassen High School
Chaska High School
Como Park Senior High
Creative Arts Secondary School
CVA Fusion High School
CVA PASCAL Middle & High School
East Ridge High School
Eden Prairie Senior High
Edina Senior High
Edison High
FAIR High
Gordon Parks High School
Harding Senior High
Harrison Education Center Heritage Academy High
Highland Park Senior High
Hmong College Prep Academy High
Hopkins Senior High
Humboldt High School

Insight School of Minnesota

Integrated Arts Academy
Jefferson Senior High
Johnson Senior High
Jordan High School
Kennedy Senior High
Lakes International Language Academy Upper School
LEAP High School
Minnetonka Senior High
MPS Online (6-12)
MPS High School
New Code Academy High School
North Senior High
Open World Learning Secondary
PACT Charter Secondary
Park High School
PIM Arts High School
Prairie Seeds High School Academy
Prior Lake High School
Ritchfield Senior High
Robbinsdale Armstrong Senior High
Robbinsdale Virtual Academy
Roosevelt High
Rooseville Area Senior High
SAGE Academy Charter School

Saint Paul Online High School

Shakopee High School
Simley Senior High
South High
South St. Paul High School
South Washington Alternative High School
SoWashCo Online
Spring Lake Park Senior High
St. Louis Park Senior High
SW Metro ALC
Tartan Senior High
Venture Academy High School
VOA High
Washburn High
Washington Tech Secondary Magnet
Watershed High School
Woodbury High School


West Central

Barnesville Secondary
Brandon Evansville High School
Detroit Lakes Senior High
Hawley Secondary
Henning Secondary
Kenney High School
Minnewaska Secondary

Learn more at www.ohe.state.mn.us/directadmissions

The Direct Admissions Participating High School and College Flyer is a printable resource that is available to participating colleges or high schools to provide to students and parents. The flyer lists the names of the participating postsecondary institutions and participating high schools during the 2023-24 school year.

Figure C7. Direct Admissions Frequently Asked Questions for Students and Families



DIRECT ADMISSIONS

MINNESOTA

Direct Admissions Frequently Asked Questions for Students and Families

Q: What is Direct Admissions?

The Direct Admissions program is designed to promote college access by ensuring that all graduating high school students know that they qualify for admission to a variety of Minnesota colleges and universities. Direct Admissions is designed to make sure student know that the answer to the "will I get in?" question is going to be YES! This program is coordinated by the Minnesota Office of Higher Education and is a partnership between the Minnesota Department of Education, selected high schools, and participating colleges and universities. This program is funded by the State of Minnesota.

Q: What is the goal of the Direct Admissions program?

Direct Admissions starts with the belief that all students who have graduated from Minnesota high schools are "college material". The goal of the program is to make sure all graduating seniors know that they have multiple college options in Minnesota. We want to reduce anxiety around accessing higher education by making sure students don't have to worry about getting accepted once they have applied, because they have already met the admissions standards for the colleges identified on their letter.

Q: What kinds of colleges and universities are participating in Direct Admissions?

Minnesota has a variety of great of colleges and universities, both public and private, non-profit institutions, that are represented in the Direct Admissions program. Direct Admissions schools include:

- Community, technical, and tribal colleges that offer certificates and associates degrees (sometimes called "two-year degrees") in career fields as well as general education credits designed to prepare a student to transfer to a university to complete a bachelor's degree.
- Public universities that offer bachelor's degree (sometimes called "four-year degrees") options in a variety of academic programs and also offer options for on-campus housing for students who want a residential experience.
- Private, non-profit universities that offer certificates, associates degrees and bachelor's degrees in a variety of academic programs and generally also offer options for on-campus housing as well.

materials by each college's application deadline to secure a spot through the Direct Admissions program. You will receive your official acceptance letter after you have submitted your application and it has been processed according to the institution's timeline.

Q: Can I apply to more than one college or university from my Direct Admissions list?

Yes! Applying to more than one college or university can be a great idea, especially if you aren't totally sure where you want to go or what you want to study yet. Be sure to list all of the colleges you have applied for when you submit your FAFSA to ensure you get financial aid information to compare the schools you are interested in.

Q: Are there application fees to apply to Direct Admissions colleges and universities?

No, participating colleges and universities are waiving application fees for participating in the Direct Admissions pilot.

Q: What if I already applied for some colleges or universities? Will this affect my application?

No need to worry about any applications you may have already submitted! Your application will still be processed and there is no need to re-apply. Please note that if you've already submitted an application fee, it will not be refunded.

Q: What if I don't want to attend a school listed on my letter?

If the schools you are most interested in are not on this list, no problem! You'll simply want to follow the standard application process for those schools. Please refer to those college's websites for application and admissions information. There is no need to respond to this email or to notify the schools listed on your letter that you are not interested.

Q: When will I get my official admissions acceptance letter from the schools I've applied to?

Once you have applied, your application will be processed according to the timeline indicated by each college or university's website. Please contact the school directly if you have questions about the status of your application.

Please note that both public and private universities happily accept transfer students from community and tribal colleges! All colleges and universities participating in the Direct Admissions pilot are [Minnesota State Grant](#) eligible for students who qualify.

Q: How did I get selected for Direct Admissions?

Your high school volunteered to participate in the Direct Admission program and you were included because a review of your academic record showed that you met the specific academic criteria for general admission to each school on your list and are on-track to graduate. Your academic information and contact information were shared through a data sharing agreement between your high school and the Minnesota Office of Higher Education.

Q: Where can I go for more information about Direct Admissions?

Check out the [Direct Admissions website](#) for more information!

Q: Do I have to participate in Direct Admissions?

Participating in Direct Admissions is optional but encouraged. If you choose not to apply to any of the schools on the list, you don't need to do anything further. Your information will not be shared with participating colleges and universities unless you choose to by selecting that college or university on your list. Applying to a Direct Admissions college or university doesn't obligate you to attend – you still get to choose the college that works best for you!

Questions About Next Steps

Q: Do I still need to take a placement test or standardized test like ACT or SAT?

While many colleges and universities participating in the Direct Admissions program do not require students to submit ACT or SAT scores, students should still consult the website of their top choice institutions to find out more about their current testing recommendations. You may be asked to submit ACT or SAT scores if required by the institution.

Q: Do I still need to complete an admissions application?

Yes! The Direct Admissions program lets you know what colleges and universities are ready to accept you, but you must complete the admission process to officially receive admission. Please check the college's website for application deadlines and a list of application materials required. You must supply all the requested application

2

Questions about Choosing a College

Q: Do I have to attend one of the schools listed on my letter?

Nope! Direct Admissions doesn't limit your choices and we encourage you to apply to all the schools you are interested in, regardless of their participation in the Direct Admissions pilot.

Q: How can I learn more about a school I'm interested in?

The best place to get more information about specific programs or to learn more about campus life is to visit each college's website or get started on Minnesota's [My Higher Ed](#) website. If you select the name of the school or schools you are interested in on your Direct Admissions letter, you'll also have the option to have your contact information shared with the college or university so they can send you more information as well. Campus visits are also a great way to learn more about a specific school!

Q: I don't see the name of a college that I'm interested in on this letter? Does that mean I can't be admitted there?

Some colleges and universities in Minnesota chose not to opt-in for the Direct Admission pilot, so you may not see a college you are interested in on the list. If there are other colleges you are interested in, you'll want to apply through their standard admissions processes.

Questions about Paying for College

Q: How can I get help with paying for college? Do I still need to apply for financial aid?

We strongly encourage all students to apply for financial aid through the [Free Application for Federal Student Aid](#) which is used to determine eligibility for both federal and state financial aid programs. The federal Pell Grant and the Minnesota State Grant provide grants to more than 120,000 students each year. Half of all students who apply receive a Pell Grant or Minnesota State Grant. Grants are based on the cost of the college chosen, family size, and income.

Q: Can I get a scholarship or financial aid for attending a Direct Admission school on my list?

There is not a scholarship connected with your Direct Admissions offer, but we encourage all students to complete their FAFSA and college applications as soon as possible to determine all financial aid they may be

4

The Frequently Asked Questions for Students and Families document was sent to participating high school students and their parents/guardians, along with the Tennessean warning notice, to inform them about the Direct Admissions program.

Appendix D. Direct Admissions Student Letters Tiers 1 through 6

Direct Admissions Student Letter Text

Dear [Name],

Congratulations! Based on a review of your high school transcript, you are on track to graduate in 2023-2024 and are eligible to participate in the Minnesota Direct Admissions* program! As you begin planning for your future, we want to make sure you know that **you are college material** and have met the admissions criteria for many colleges and universities in Minnesota. The next step is to decide which colleges and universities from the list below you want to admit you via Direct Admissions.

The Direct Admissions program has taken the worry out of knowing where you stand. You can choose to apply to one or more of the schools listed on this letter and know that you'll be granted admissions. You can also look into the other great higher education options in Minnesota if the college or university you are most interested in doesn't appear on this list (check out myhighered.mn.gov to learn more).

You have a couple of next steps:

1. Check your high school email to review your personalized list of colleges and universities. The next step is to confirm your interest in one or more of the colleges and universities to which you have been directly admitted. Select "yes," to be directly admitted for Fall 2024. After you confirm your choices, the colleges or universities will follow up with you with more information. Remember to hit the "submit" button at the end of the form!
2. Review your institution's application deadlines and submit the FREE admissions applications. If you are ready to apply, check out the websites for your potential institutions to make sure you have all your application materials prepared (some schools may require an essay, test scores, or other materials). Please note: Although your application fees will be waived, you must still meet the application deadlines, even if you are applying through Direct Admissions.
3. Get help paying for college! You can apply for financial aid by completing your Free Application for Federal Student Aid (FAFSA). Remember to fill out the FAFSA when it opens in December 2023 or check out our FAQ for more information!

*Please see website: www.ohs.state.mn.us/directadmissions and program FAQ for more information. Some restrictions may apply or additional information may be required for admission into specific majors or programs.

Based on your academic record, you qualify for Direct Admissions at the following colleges and universities:

[List of tier-specific colleges and universities]

Your future is bright and on behalf of the Minnesota Office of Higher Education, we congratulate you for being on the right track for college in the fall of 2024!

Sincerely,

Dennis W. Olson, Commissioner, Office of Higher Education

School Official, Title

Tier 1 Letter

Based on your academic record, you qualify for Direct Admissions at the following colleges and universities:

Public and Tribal Two-Year Colleges

- ✓ Alexandria Community and Technical College
- ✓ Anoka Technical College
- ✓ Anoka-Ramsey Community College
- ✓ Central Lakes College
- ✓ Century College
- ✓ Dakota County Community and Technical College
- ✓ Fond Du Lac Tribal and Community College
- ✓ Hennepin Technical College
- ✓ Inver Hills Community College
- ✓ Lake Superior College
- ✓ Minneapolis College
- ✓ Minnesota North College
- ✓ Minnesota State College Southeast
- ✓ Minnesota State Community and Technical College
- ✓ Minnesota West Community and Technical College
- ✓ Normandale College
- ✓ North Hennepin Community College
- ✓ Northland Community and Technical College
- ✓ Northwest Technical College
- ✓ Pine Technical and Community College
- ✓ Red Lake Nation College
- ✓ Ridgewater College
- ✓ Riverland Community College
- ✓ Rochester Community and Technical College
- ✓ St. Cloud Technical and Community College
- ✓ St. Paul College
- ✓ South Central College
- ✓ White Earth Tribal and Community College

Private Colleges and Universities

- ✓ Northwestern Health Sciences University

Tier 2 Letter

Based on your academic record, you qualify for Direct Admissions at the following colleges and universities:

Public and Tribal Two-Year Colleges

- ✓ Alexandria Community and Technical College
- ✓ Anoka Technical College
- ✓ Anoka-Ramsey Community College
- ✓ Central Lakes College
- ✓ Century College
- ✓ Dakota County Community and Technical College
- ✓ Fond Du Lac Tribal and Community College
- ✓ Hennepin Technical College
- ✓ Inver Hills Community College
- ✓ Lake Superior College
- ✓ Minneapolis College
- ✓ Minnesota North College
- ✓ Minnesota State College Southeast
- ✓ Minnesota State Community and Technical College
- ✓ Minnesota West Community and Technical College
- ✓ Normandale College
- ✓ North Hennepin Community College
- ✓ Northland Community and Technical College
- ✓ Northwest Technical College
- ✓ Pine Technical and Community College
- ✓ Red Lake Nation College
- ✓ Ridgewater College
- ✓ Riverland Community College
- ✓ Rochester Community and Technical College
- ✓ St. Cloud Technical and Community College
- ✓ St. Paul College
- ✓ South Central College
- ✓ White Earth Tribal and Community College

Public Four-Year Universities

- ✓ St. Cloud State University

Private Colleges and Universities

- ✓ Bethel University Online
- ✓ The College of St. Scholastica

✓ Dunwoody College of Technology

✓ Northwestern Health Sciences University

Tier 3 Letter

Based on your academic record, you qualify for Direct Admissions at the following colleges and universities:

Public and Tribal Two-Year Colleges

- ✓ Alexandria Community and Technical College
- ✓ Anoka Technical College
- ✓ Anoka-Ramsey Community College
- ✓ Central Lakes College
- ✓ Century College
- ✓ Dakota County Community and Technical College
- ✓ Fond Du Lac Tribal and Community College
- ✓ Hennepin Technical College
- ✓ Inver Hills Community College
- ✓ Lake Superior College
- ✓ Minneapolis College
- ✓ Minnesota North College
- ✓ Minnesota State College Southeast
- ✓ Minnesota State Community and Technical College

- ✓ Minnesota West Community and Technical College
- ✓ Normandale College
- ✓ North Hennepin Community College
- ✓ Northland Community and Technical College
- ✓ Northwest Technical College
- ✓ Pine Technical and Community College
- ✓ Red Lake Nation College
- ✓ Ridgewater College
- ✓ Riverland Community College
- ✓ Rochester Community and Technical College
- ✓ St. Cloud Technical and Community College
- ✓ St. Paul College
- ✓ South Central College
- ✓ White Earth Tribal and Community College

Public Four-Year Universities

- ✓ Bemidji State University
- ✓ Metropolitan State University

- ✓ Southwest Minnesota State University
- ✓ St. Cloud State University

Private Colleges and Universities

- ✓ Bethel University Online
- ✓ The College of St. Scholastica
- ✓ Concordia University St. Paul

- ✓ Dunwoody College of Technology
- ✓ Northwestern Health Sciences University

Tier 4 Letter

Based on your academic record, you qualify for Direct Admissions at the following colleges and universities:

Public and Tribal Two-Year Colleges

- ✓ Alexandria Community and Technical College
- ✓ Anoka Technical College
- ✓ Anoka-Ramsey Community College
- ✓ Central Lakes College
- ✓ Century College
- ✓ Dakota County Community and Technical College
- ✓ Fond Du Lac Tribal and Community College
- ✓ Hennepin Technical College
- ✓ Inver Hills Community College
- ✓ Lake Superior College
- ✓ Minneapolis College
- ✓ Minnesota North College

- ✓ Minnesota State College Southeast
- ✓ Minnesota State Community and Technical College
- ✓ Minnesota West Community and Technical College
- ✓ Normandale College
- ✓ North Hennepin Community College
- ✓ Northland Community and Technical College
- ✓ Northwest Technical College
- ✓ Pine Technical and Community College
- ✓ Red Lake Nation College
- ✓ Ridgewater College
- ✓ Riverland Community College
- ✓ Rochester Community and Technical College

- ✓ St. Cloud Technical and Community College
- ✓ St. Paul College

Public Four-Year Universities

- ✓ Bemidji State University
- ✓ Metropolitan State University
- ✓ Minnesota State University Moorhead
- ✓ Southwest Minnesota State University

Private Colleges and Universities

- ✓ Bethany Lutheran College
- ✓ Bethel University Online
- ✓ The College of St. Scholastica
- ✓ Concordia University St. Paul

- ✓ South Central College
- ✓ White Earth Tribal and Community College

- ✓ St. Cloud State University
- ✓ University of Minnesota, Crookston
- ✓ Winona State University

- ✓ Dunwoody College of Technology
- ✓ Hamline University
- ✓ Northwestern Health Sciences University
- ✓ Saint Mary's University of Minnesota

Tier 5 Letter

Based on your academic record, you qualify for Direct Admissions at the following colleges and universities:

Public and Tribal Two-Year Colleges

- ✓ Alexandria Community and Technical College
- ✓ Anoka Technical College
- ✓ Anoka-Ramsey Community College
- ✓ Central Lakes College
- ✓ Century College
- ✓ Dakota County Community and Technical College
- ✓ Fond Du Lac Tribal and Community College
- ✓ Hennepin Technical College
- ✓ Inver Hills Community College
- ✓ Lake Superior College
- ✓ Minneapolis College
- ✓ Minnesota North College
- ✓ Minnesota State College Southeast
- ✓ Minnesota State Community and Technical College

- ✓ Minnesota West Community and Technical College
- ✓ Normandale College
- ✓ North Hennepin Community College
- ✓ Northland Community and Technical College
- ✓ Northwest Technical College
- ✓ Pine Technical and Community College
- ✓ Red Lake Nation College
- ✓ Ridgewater College
- ✓ Riverland Community College
- ✓ Rochester Community and Technical College
- ✓ St. Cloud Technical and Community College
- ✓ St. Paul College
- ✓ South Central College
- ✓ White Earth Tribal and Community College

Public Four-Year Universities

- ✓ Bemidji State University
- ✓ Metropolitan State University
- ✓ Minnesota State University Mankato
- ✓ Minnesota State University Moorhead
- ✓ Southwest Minnesota State University

- ✓ St. Cloud State University
- ✓ University of Minnesota, Crookston
- ✓ University of Minnesota, Duluth
- ✓ University of Minnesota, Morris
- ✓ Winona State University

Private Colleges and Universities

- ✓ Augsburg University
- ✓ Bethany Lutheran College
- ✓ Bethel University
- ✓ Bethel University Online
- ✓ College of Saint Benedict
- ✓ The College of St. Scholastica
- ✓ Concordia University St. Paul

- ✓ Concordia College
- ✓ Dunwoody College of Technology
- ✓ Hamline University
- ✓ Minneapolis College of Art and Design
- ✓ Northwestern Health Sciences University
- ✓ Saint John's University
- ✓ Saint Mary's University of Minnesota

- ✓ St. Catherine University

Tier 6 Letter

Based on your academic record, you qualify for Direct Admissions at the following colleges and universities:

Public and Tribal Two-Year Colleges

- | | |
|---|--|
| ✓ Alexandria Community and Technical College | ✓ Minnesota West Community and Technical College |
| ✓ Anoka Technical College | ✓ Normandale College |
| ✓ Anoka-Ramsey Community College | ✓ North Hennepin Community College |
| ✓ Central Lakes College | ✓ Northland Community and Technical College |
| ✓ Century College | ✓ Northwest Technical College |
| ✓ Dakota County Community and Technical College | ✓ Pine Technical and Community College |
| ✓ Fond Du Lac Tribal and Community College | ✓ Red Lake Nation College |
| ✓ Hennepin Technical College | ✓ Ridgewater College |
| ✓ Inver Hills Community College | ✓ Riverland Community College |
| ✓ Lake Superior College | ✓ Rochester Community and Technical College |
| ✓ Minneapolis College | ✓ St. Cloud Technical and Community College |
| ✓ Minnesota North College | ✓ St. Paul College |
| ✓ Minnesota State College Southeast | ✓ South Central College |
| ✓ Minnesota State Community and Technical College | ✓ White Earth Tribal and Community College |

Public Four-Year Universities

- | | |
|--|--------------------------------------|
| ✓ Bemidji State University | ✓ University of Minnesota, Crookston |
| ✓ Metropolitan State University | ✓ University of Minnesota, Duluth |
| ✓ Minnesota State University Mankato | ✓ University of Minnesota, Morris |
| ✓ Minnesota State University Moorhead | ✓ University of Minnesota, Rochester |
| ✓ Southwest Minnesota State University | ✓ Winona State University |
| ✓ St. Cloud State University | |

Private Colleges and Universities

- | | |
|----------------------------------|---|
| ✓ Augsburg University | ✓ Gustavus Adolphus College |
| ✓ Bethany Lutheran College | ✓ Hamline University |
| ✓ Bethel University | ✓ Minneapolis College of Art and Design |
| ✓ Bethel University Online | ✓ Northwestern Health Sciences University |
| ✓ College of Saint Benedict | ✓ Saint John's University |
| ✓ The College of St. Scholastica | ✓ Saint Mary's University of Minnesota |
| ✓ Concordia University St. Paul | ✓ St. Catherine University |
| ✓ Concordia College | ✓ University of St. Thomas |
| ✓ Dunwoody College of Technology | |

Appendix E. Legislation for Direct Admissions Minnesota

136A.84 DIRECT ADMISSIONS PROGRAM.

Subdivision 1. **Authorization.** The commissioner shall administer the direct admissions program in consultation with stakeholders, including Minnesota State Colleges and Universities, the University of Minnesota, the Student Advisory Council under section 136A.031, the Minnesota Department of Education, the Minnesota Association of Secondary School Principals, and the Minnesota School Board Association, to automatically offer conditional admission into an eligible public or nonprofit institution as defined under section 136A.103, paragraph (a), located in Minnesota, to Minnesota high school seniors based on a student's high school grade point average, high school and college transcript information, standardized tests, statewide assessments, and other measures as determined by stakeholders.

Subd. 2. **Implementation.** The program shall establish and, to the extent feasible, implement a process for leveraging existing kindergarten through grade 12 and higher education student information systems to automate the admissions process for students. The program must specifically evaluate the impact this process has on outcomes for students with lower levels of college knowledge, low-income students, and students from populations underserved in higher education. The office shall attempt to achieve statewide representation and may prioritize program participants to include high schools with a significant number of students of color, low-income students, or both.

Subd. 3. **Information.** The commissioner shall provide information about the Minnesota state grant program and the North Star Promise and encourage students to determine their eligibility for financial aid based on FAFSA and state financial aid application completion.

Subd. 4. **Report.** Annually, by February 1, the Office of Higher Education shall report to the legislative committees with jurisdiction over kindergarten through grade 12 education finance and policy and higher education on activities occurring under this section. The report must include but is not limited to information about implementation, recommendations, and outcomes.

History: 2023 c 41 art 2 s 25



2024