

LEGISLATIVE REFERENCE LIBRARY



3 0307 00010 2932

STATE AGRICULTURAL SOCIETY



LEGISLATIVE REFERENCE LIBRARY
STATE OF MINNESOTA

MINNESOTA STATE FAIR

1963

ANNUAL REPORT

S
77
.A2
1963

ANNUAL REPORT

MINNESOTA STATE AGRICULTURAL SOCIETY

DECEMBER 1, 1962 TO NOVEMBER 30, 1963

Officers

President—Albert E. Thompson, Spicer
First Vice President—Robert R. Andrews, Minneapolis
Second Vice President—Norris K. Carnes, St. Paul
Secretary, General Manager—John E. Libby, St. Paul
Treasurer—R. C. Sorenson, Minneapolis

Managers

	Regional District	Term Expires
Albin Johnson, Fertile	9	1964
Frank L. Mitchell, Canby	7	1964
Anton C. Geiger, Jackson	2	1965
D. T. Grussendorf, Duluth	8	1965
Stan Muckle, Owatonna	1	1966
Fred S. Lammers, Stillwater	3	1966
Birney C. Wilkins, Brainerd	6	1966

Standing Committees

Admissions—Muckle, Chairman; Andrews; Carnes; Sorenson; Lammers; Thompson, ex officio; Libby, ex officio.

Advertising—Lammers, Chairman; Johnson; Wilkins; Mitchell; Muckle; Thompson, ex officio; Libby, ex officio.

Amusement—Libby, Chairman; Andrews; Carnes; Geiger; Johnson; Grussendorf; Lammers; Mitchell; Muckle; Sorenson; Wilkins; Thompson, ex officio.

Budget—Thompson, Chairman; Andrews; Lammers; Carnes; Grussendorf; Muckle; Sorenson; Libby, ex officio.

Executive—Andrews, Chairman; Carnes; Thompson, ex officio; Libby ex officio.

Planning—Andrews, Chairman; Grussendorf; Lammers; Thompson, ex officio; Libby, ex officio.

Reception—Thompson, Chairman; Geiger; Muckle; Wilkins; Libby, ex officio.

Rules and Premium List—Carnes, Chairman; Grussendorf; Lammers; Wilkins; Thompson, ex officio; Libby, ex officio.

Space Rentals—Thompson, Chairman; Andrews; Carnes; Muckle; Johnson; Libby, ex officio.

LEGISLATIVE REFERENCE LIBRARY
STATE OF MINNESOTA
1963

Department Supervisors and Superintendents

Admissions—Muckle, Supervisor; Ty Sincock, Owatonna, Superintendent.

Agriculture-Horticulture-Bee Culture—Wilkins, Supervisor; Ward Marshall, Assistant Supervisor; O. H. Shulstad, Superintendent, Division of Crops; Eldred Hunt, Superintendent, Division of Flowers; Roger Conklin, Superintendent, Division of Fruits; O. C. Turnquist, Superintendent, Division of Vegetables-Potatoes; C. D. Floyd, Superintendent, Division of Bee Culture.

Amusements—Libby, Supervisor; Clarence R. Hajney, St. Paul, Superintendent of Music.

Boys' and Girls' 4-H Club Work—Lammers, Supervisor; Leonard L. Harkness, St. Paul, Superintendent.

Cattle—Carnes, Supervisor; Ramer D. Leighton, St. Paul, Superintendent.

Conservation—Geiger, Supervisor; Carl W. Moen, St. Paul, Superintendent.

Dairy—Lammers, Supervisor; Al Sjowal, St. Paul, Superintendent.

Education—Grussendorf, Supervisor; Milo J. Peterson, St. Paul, Superintendent.

Farm Boys' Camp—Lammers, Supervisor; Harold A. Mullen, Chicago, Superintendent.

Fine Arts—Geiger, Supervisor; Foster Kienholz, St. Paul, Superintendent.

Future Farmers of America—Grussendorf, Supervisor; G. R. Cochran, St. Paul, Superintendent.

Home Activities—Mitchell, Supervisor; Mrs. Mildred Harrington, Minneapolis, Superintendent.

Horse—Carnes, Supervisor; Dr. Harold Arneman, St. Paul, Superintendent.

Legislative-Editorial—Lammers, Supervisor.

Meat Exhibit—Carnes, Supervisor; W. J. Aunan, Superintendent.

Poultry—Mitchell, Supervisor; Harold Thomforde, Crookston, Superintendent.

Publicity—Libby, Supervisor; David J. Speer, Minneapolis, Superintendent.

Public Safety—Andrews, Supervisor; George Cockriel, St. Paul Park, Superintendent.

Race—Libby, Supervisor.

Services—Libby, Supervisor; James L. Libby, Minneapolis, Superintendent of Grounds and Sanitation; Albert Keller, Superintendent of Greenhouses.

Sheep and Wool—Grussendorf, Supervisor; Robert Jordan, St. Paul, Superintendent.

Space Rentals—Libby, Supervisor; H. D. Johnston, St. Paul, Superintendent; Concessions and Commercial Exhibit Space, Thompson, Advisor; Farm Machinery, Johnson, Advisor; Carl O. Linnee, St. Louis Park, Superintendent, Farm Machinery Division; Elmer Fisher, St. Paul, Superintendent, Varied Industries Division.

Swine—Grussendorf, Supervisor; Robert Jacobs, St. Paul, Superintendent.

Ticket Audit—Geiger, Supervisor; A. H. Winkel, St. Paul, Superintendent.

SECRETARY'S REPORT

The 1963 Minnesota State Fair, a venerable ten day exposition making its 102nd appearance as Minnesota's showcase, attracted 1,181,845 admissions through its gates.

This marked the ninth consecutive year that more than a million admissions are reported. The 1963 attendance is the second largest in history and enables your Minnesota State Fair to maintain its enviable position as the largest ten day exposition on the North American continent. Only in 1958 when Minnesota celebrated its Statehood Centennial, did admissions exceed those of this past year. It should also be noted that in 1958 the admission price at the outside gates was lower.

Generally speaking, the 1963 Minnesota State Fair was blessed with favorable weather. It is commonly felt, however, that the heavy rains which curtailed attendance on Labor Day were largely responsible for preventing an all-time record attendance. Attendance exceeded 100,000 on all but two days of the Fair and new attendance records were set on three days. These three days were Wednesday, August 28 when 109,693 admissions were reported (the first time in history that admissions on a Wednesday went over the 100,000 mark); the second Saturday, August 31 when 147,032 admissions were reported and on the final Sunday, September 1 when an all-time record attendance of 183,018 admissions jammed Fairgrounds facilities to their capacity. It was necessary to close the vehicular gates for a three hour period on the final Sunday afternoon and in spite of this, people were parking over a mile away and walking to the Fairgrounds. Admission prices at the outside gates remained the same as in 1962. The prices were 75c for adults and \$1.00 for automobiles with children under 12 admitted free on all days. On the two Children's Days (first Monday, and Friday) all youngsters under 15 were admitted without charge.

The considerable amount of work done to the parking areas on the grounds proved to be very worthwhile as on two days of the Fair, when rain was experienced, no difficulty whatsoever was encountered by the cars parked in these areas. It is planned to further improve these parking areas to insure against the effects of adverse weather conditions in future years. Again this year the tremendous physical plant of the Minnesota State Fair was maintained and improved directly from earnings of the Society without any appropriations or financial assistance from the State of Minnesota. Its operation is not, and has not been for many years, a burden on the taxpayers of this state. Although several new buildings are badly needed, it is the sincere desire and aim of your board to continue to improve the facilities of this great institution and thus provide a very important service to the citizens of this state.

The closing of the streets in the central section of the grounds (commonly referred to as the Mall Area) to vehicular traffic from 6:00 a.m. to 10:00 p.m. each day was continued this year with splendid success. This improvement has proved to be very satisfactory and received many favorable comments from Fair visitors. Even with an all-time record attendance of more than 183,000 admissions on the second Sunday this area was not opened to vehicle traffic. This elimination of vehicular traffic in the heaviest populated part of the grounds has made it much safer for pedestrians and enabled them to better enjoy the facilities. It has further enabled the Fair to provide better fire protection in these areas and makes the night cleanup job a quicker and more efficient operation.

"Youth must be served" was the general theme of the 1963 Minnesota State Fair. Towards this end, several new features were initiated for the benefit of the younger element. A new Kiddie-land area was provided by relocating more than 20 riding devices for younger children to an area outside the present carnival lot. This Kiddie-land, which occupied most of a square block directly across the street from Royal American Shows, proved to be very successful. It is intended to improve this Kiddie-land area in 1964.

An American Indian Village replete with a stockade and northern pines was staked out on the western edge of the Conservation Building. Chief John

Bigtree, an ancient Iroquois Indian whose profile is reputed to be on the Buffalo Nickel, was on hand to meet youngsters. Other activities in the Indian Village included Indian dancing and various handicrafts such as bead making, canoe building, basket weaving, etc.

Free grandstand programs were again provided for young people on each of the Children's Days, Monday, August 26 and Friday, August 30. Name acts and entertainers were provided free of charge at these special shows which were climaxed by special daylight fireworks. The regular age limit for free outside gate admission of 12 years was lifted to 15 years on these two days.

More than 5,000 youngsters from all of Minnesota's 87 counties exhibited in a variety of departments in 1963 through the programs of 4-H and Future Farmers of America. Your Minnesota State Fair continues to provide through these traditional organizations one of the biggest and best youth programs in the nation.

Commonwealth Avenue echoed to a new sound this year—the beat of rock n' roll music as young dance enthusiasts from the Twin Cities and across the upper midwest flocked to "Teen Danceland." Initiated this year, Teen Danceland hosted more than 20,000 teen-agers who in turn were entertained by local rock n' roll bands and guest celebrities. Teen Danceland's proven acceptance has encouraged your Board to initiate expansion into a complete "Teen Age Fair" which will include teen exhibits, entertainment, fashion shows, talent contests, etc. for the 1964 Fair. For the second year the Minnesota All-State Youth Orchestra provided music for Fair-goers on August 30 and 31. This orchestra included the best young musicians from every part of the state.

Again this year the commercial exhibits and farm implement displays taxed the facilities of the Minnesota State Fair to their utmost. It was necessary to turn down many requests for exhibits and concessions because of a shortage of space. Exhibit facilities for livestock were also very crowded and it was necessary in some departments to return late entries for want of stalling room. Temporary stalling facilities were constructed in the Livestock Pavilion basement to accommodate additional livestock, but in spite of this, facilities were not adequate to house all the animals entered.

The night grandstand show, commonly labeled the "North Star Spectacular" proved to be the most successful since prior to World War II. A format, adopted in 1962, of opening with a special one-half hour thrill show, followed with a variety type program featuring name stars is considered to be one of the contributing factors to the success of this year's show. Name personalities who entertained this year were Buster Keaton who appeared all ten nights; Rosemary Clooney who appeared the first five nights and the Smothers Brothers who appeared the last five nights. A new portable "zoom up" stage, designed to bring the night show staging area 100 feet closer to the audience, was another major reason for the success of the show. The second Saturday and Sunday nights each marked all-time receipts for any night grandstand show in the history of the Fair.

A new Electric Building which housed some 70 electrical exhibits was built on the State Fairgrounds by the North Central Electric League at the corner of Underwood and Commonwealth. This beautiful new building, appropriately entitled "Electri-City" and dedicated to the memory of D. K. Baldwin proved to be one of the most popular buildings on the Fairgrounds and was trafficked to the limits of its capacity nearly every day of the Fair. It is through the cooperation and continued support of such groups as the Electrical Industry that your Minnesota State Fair can continue to provide the people of this great state with the type exhibits that help portray the rapidly changing economy of Minnesota.

Immediately following the 1963 Fair, the combination toilet and shower building which served the Fairgrounds Tourist Area was razed. This building which had passed the point of repair and adequacy to service the increased number of campers was damaged the day before the opening of the Fair by

a fire. The fire was caused by an overheated coal burning heater which supplied heat for the hot water tank. Temporary repairs were made to the structure in an attempt to accommodate the campers for 1963, but it is intended to replace it with a modern new structure for 1964.

Because of adverse weather conditions encountered in recent years with the staging of the automobile races and because the loss of revenue from a canceled race cannot be recovered, your Board has decided to have installed an asphalt surface on the race track for the 1964 Fair. Although this improvement will involve a considerable amount of money, it is felt that because the automobile races are a major source of revenue to the Society it is a very necessary one. Upwards of \$15,000 had been spent annually in recent years for maintenance, calcium chloride, etc. to the old dirt track. This annual expenditure will be eliminated with an asphalt track.

Total operating receipts of \$1,710,970.87 represents an increase over the 1962 receipts as well as the figure anticipated in the budget. This is largely due to the increased amount of money received at the outside gate through increased admissions plus the fact that no grandstand performance had to be canceled due to inclement weather.

Operating expenses of \$1,431,266.63 are more than the amount anticipated in the budget and also slightly more than in 1962. This was due in large measure to extensive roof repairs made necessary by a severe hail storm in 1962. Many roof leaks, presumably caused by this storm, were not discovered until after the budget for 1963 was set up.

Premiums paid totaled \$247,652.17. This figure is over the amount provided in the budget by approximately \$2,000 and also exceeds the 1962 premiums by approximately \$9,000. This increase reflects the fact that most of the livestock departments experienced one of the biggest years in the history of the Society. Record number of entries in many of the competitive departments of the Fair were reported in 1963.

A total of \$112,609.44 was expended this last year for improvements and additions to structures on the Fairgrounds. Some of the major items include \$15,069.33 for a new accoustical ceiling and lighting in the first floor of the 4-H Building; \$18,966.49 for the new portable stage, sound system and electrical connections for the Grandstand; \$9,347.18 for improvements to the Administration-Service Building; \$17,885.50 for improvements in the Beer Garden and Teen Age Danceland; \$5,377.35 for paneling the clere story area of the Livestock Pavilion and installation of additional electrical outlets. The amount of \$27,545.85 was expended this past fall on the concrete stage, race track, and infield in preparation for the blacktopping program to the race track scheduled for the spring and summer of 1964.

The amount of \$88,276.62 was expended for repairs to structures on the Fairgrounds. The major portion of this amount includes repairs to roofs on the Agriculture-Horticulture Building, Hippodrome, Livestock Pavilion, Sheep-Poultry Barn, Swine Barn and Swine Barn Annex. These roof repairs were of major proportion and were the second of a two year program of roof repairs to buildings on the Fairgrounds. Also included in the above amount were minor roof repairs to other buildings on the grounds such as the Home Activities Building, several of the wooden horse barns, a new cedar shingle roof on the Territorial Pioneer Building and repairs to the electrical facilities in several buildings.

At the close of the fiscal year, November 30, 1963, the cash balance of the Society was \$546,598.31 against which must be credited accounts payable in the amount of \$31,611.12 leaving a net cash balance of \$514,987.19. This figure represents a balance increase of approximately \$120,000 over a year ago. It should be pointed out, however, that although this balance is more than it was a year ago, one or two additional days of rain could have substantially reduced this amount and stresses the importance of maintaining an adequate cash balance as insurance against adverse weather conditions and other unexpected emergencies which could be encountered.

A resume of the day to day events of the 1963 Minnesota State Fair follows:

FRIDAY, AUGUST 23 PREPARATION DAY

Following a heavy rain which lasted most of the day on Thursday, the day dawned heavily overcast with light rain. It was still raining at 1:00 p.m. with the weather forecast calling for continued precipitation throughout the day.

Because of weather conditions it was necessary to cancel the sprint car time trials scheduled for the Grandstand in the afternoon. They were rescheduled for Saturday morning at 11:00 a.m.

Junior Equestrian classes were judged at a free English Style Horse Show in the Hippodrome during the afternoon.

The members of the Board and department superintendents of the Fair were guests of the Minneapolis Tribune at their annual luncheon held on the Agriculture-Horticulture lawn.

Again this year a Preparation Day charge of 25c at the outside gates went into effect at 5:00 p.m. in an effort to reduce the number of sight-seers who interfere with the last minute preparation of concessionaires and exhibitors. Authorized persons were given a special pass into the grounds. The Preparation Day attendance is not included in the total attendance figures of the Fair.

"On the Hoof" judging of steers for the Beef Carcass Contest was held in a special area south of the Livestock Pavilion and the animals were immediately transferred to South St. Paul for slaughter and carcass judging. The winning carcass was returned to the Meat Exhibits Building for exhibition purposes for the remainder of the Fair.

A special party for radio, newspaper and television personnel was jointly sponsored by the Minnesota State Fair and Royal American Shows and held on the lawn area of the Agriculture-Horticulture Building. Following a smorgasbord type dinner they were given a complete tour of the Fairgrounds concluded by a special prevue of Royal American Shows in the evening.

SATURDAY, AUGUST 24 DAIRY PRINCESS AND SAINT PAUL DAY

It was cool and cloudy in the morning. The temperature at 7:00 a.m. was 69 degrees. It warmed up very little during the day with the temperature reaching a high of 71 degrees at 3:00 p.m. and by 9:00 p.m. was back down to 66. Skies were overcast throughout the day.

The judging program began at 8:00 a.m. with the judging of poultry in the Poultry Building; wool in the Sheep Building; exhibits and booths in the 4-H Building and live carcass and market barrows in the Swine Building.

Special events of the day included athletic events and an honor captain assembly at the Farm Boys Camp and special square dancing and folk dancing at the Pioneer Building.

Princess Kay and Princess Kay contestants appeared at the Dairy Cattle Showmanship Contest which was staged in the Hippodrome during the morning.

The Minnesota Gladiolus Society show opened in the morning at the Agriculture-Horticulture Building.

The Indianhead Council Drum and Bugle Corps paraded on the Mall Area in the center of the Fairgrounds at 1:30 p.m. and again at 5:30 p.m.

Afternoon and evening horse shows featuring English classes were held in the Hippodrome at 1:00 p.m. and at 7:00 p.m. These shows were augmented by special entertainment.

The afternoon Grandstand program featured International Motor Contest Association sprint car races plus aerial and circus acts.

In the evening just prior to the opening of the night grandstand show,

Princess Kay of the Milky Way was crowned. The 1964 Princess Kay is Audrey Meyer of Clarks Grove.

The evening grandstand show featured "The North Star Spectacular" headlining Rosemary Clooney and Buster Keaton. Featured acts included Warren Covington's Orchestra, the Rhythm Masters, Zacchini the Human Cannonball, the Amandis, the Appletons, Nip Nelson, as well as many other outstanding comedy and thrill acts. A beautiful fireworks display commemorating Gordon Cooper's orbital flight made a spectacular finale to the show. Again this year a format of what might be termed moderate priced names was used in the night show. Rosemary Clooney was featured the first five nights of the Fair and the Smothers Brothers the last five nights. Buster Keaton appeared all ten nights.

A completely new portable stage which brought the entertainment more than 100 feet closer to the people was a tremendous success and evoked much favorable comment from the night show patrons.

SUNDAY, AUGUST 25 AVIATION AND VETERANS DAY

It was mostly fair and cool all day. The temperature at 7:00 a.m. was 60 degrees. It warmed up to a high of 76 at 3:00 p.m.

The second largest opening Sunday in the history of the Fair necessitated closing the outside gates to vehicular traffic for a one hour period in the afternoon.

The Minnesota Flying Farmers in cooperation with the St. Paul Junior Chamber of Commerce conducted their annual "State Fair Fly In." Bus service to and from Holman Airport was provided by the Fair.

Non-denominational worship services were held at the Farm Boys Camp Building in the morning.

At noon a reunion of former National 4-H Conference Delegates was held at the 4-H Building. Veterans of all American wars were joined by special guests from the Old Soldiers Home at a special get-together at the Pioneer Portrait Hall.

Life Members of the State Agricultural Society and their wives were guests of the Minnesota State Fair Board at a noon luncheon in the Gopher Club.

Special afternoon events at the Pioneer Building included the White Bear High School Square Dancing Club, the American Indian Club Pow-wow, and German, Swiss and Austrian folk dancers.

The Peters Drum and Bugle Corps paraded on the Mall at 1:30 p.m. and 5:30 p.m.

English style horse shows which were held at the Hippodrome in both the afternoon and evening, featured gaited horses, jumpers and hunters. The afternoon grandstand featured IMCA sprint car races plus various circus and aerial acts.

The evening grandstand show was preceded by a special one-half hour thrill show presented by Trans World Auto Daredevils. This special attraction was presented each of the remaining nights of the Fair as a part of the night show.

MONDAY, AUGUST 26 CHILDREN'S, EDUCATIONAL RECOGNITION, LIVESTOCK AND NORTH DAKOTA DAY

It was cool and cloudy in the morning with the temperature in the low sixties. Showers were predicted throughout the day but did not actually

materialize until approximately 4:30 p.m. The high temperature of the day was 78 at 3:00 p.m.

The annual free Children's Day morning grandstand program played to a near capacity crowd. The program featured folk music stars the Rooftop Singers, songstress Libby Horne, and Paul and Paula. Also included in the program were the Rhythm Masters, a teen comedy band, and the Yoeman. The program was concluded with the ever popular daylight fireworks.

Judging programs in all livestock departments continued.

The annual quiz contest staged by the Education Department was again held in Lee Auditorium in the Agriculture-Horticulture Building. Special recognition was again given outstanding Minnesota educators. This year the State Fair honored school superintendents and their day started with an educational recognition luncheon in the Agriculture-Horticulture Building followed by a complete tour of the Fairgrounds and a special banquet at the Saint Paul Hotel at which the guest speaker was Governor Karl Rolvaag. Following the banquet they were special guests at the evening grandstand show where they were introduced and paid special tribute for their many years of service to the educational system of Minnesota.

The Peters Drum & Bugle Corps paraded on the Fairgrounds mall at 1:30 and 5:30 p.m.

Other special events of the day included a special assembly at the Farm Boys Camp Building which featured an address by A. E. Thompson, President of the State Fair, who spoke on "What Is the Minnesota State Fair?"

The afternoon grandstand featured IMCA grand championship sprint car races combined with the Trans World Auto Daredevils Thrill Show and other aerial and circus acts.

The English type horse show continued in the Hippodrome with an evening performance.

The evening grandstand show included a special concert by the Mapleton High School Pep Band preliminary to the regular program.

The Fair entertained the Seifert Quadruplets of Sleepy Eye, Minnesota, children of Mr. and Mrs. Art Seifert, who had been a feature attraction at the 1951 and 1953 Fairs, and the Bussmann quadruplets of Roseville, Korean children adopted by Mr. and Mrs. E. H. Bussmann.

TUESDAY, AUGUST 27

WISCONSIN AND ROTARY DAY

It was raining lightly in the morning with the temperature in the upper sixties. Intermittent showers were predicted throughout the day, and, although little rain fell on the Fairgrounds, it was reported that precipitation was prevalent in all directions within 50-mile radius of the Fairgrounds. The high temperature of the day was 75 degrees at 3:00 p.m.

Judging programs continued in all livestock departments with the judging of Holstein, Jersey and Guernsey cattle in the Hippodrome; Yorkshire and Hampshire swine in the Swine Building; Percheron horses in the Horse Barn and Shropshire sheep in the Sheep Building. The afternoon judging program included Landrace, Poland China and Tamworth swine in the Swine Building and Suffolk and Corriedale sheep in the Sheep Building.

Special events of the day included an assembly at the Farm Boys Camp which featured an address by Paul Giel, sports director of WCCO radio, who spoke on "Professional Sports." The Forest Lake High School Singers staged a concert in the Education Building at 11:00 a.m. At noon a special

4-H Key Award Luncheon was held at the Student Center on the St. Paul Campus of the University of Minnesota. A dress revue program was staged at the 4-H Club Building in the afternoon. Minnesota Square Dancers performed at the Pioneer Building in the afternoon.

The Eau Claire Boys Drum and Bugle Corps paraded on the Fairgrounds Mall at 1:30 and again at 5:30 p.m.

The afternoon grandstand featured IMCA late-model stock car races as well as aerial and circus acts.

Officials of the Northwestern National Bank of Minneapolis were guests of the Minnesota State Board at dinner.

The English type horse show program continued in the Hippodrome in the evening featuring gaited, hunter, hackney, shetland, harness, roadsters, jumpers, parade horses and farmers' teams augmented by special entertainment.

The North Star Spectacular was again presented in front of the grandstand in the evening following a special concert by the Burnsville High School Pep Band.

WEDNESDAY, AUGUST 28 **IOWA, IMPLEMENT DEALERS AND DULUTH DAY**

The day dawned heavily overcast with a light mist and temperatures again in the lower sixties. By 1:00 p.m. it became partly cloudy and remained that way throughout the late afternoon until early evening when it completely cleared. The high temperature of the day was 82 degrees at 4:00 p.m.

An all-time record Wednesday attendance of 109,693 was enjoyed.

The judging program for the day included Aberdeen Angus, Hereford, Milking Shorthorn and Shorthorn cattle in the Hippodrome; Shetland ponies in the Horse Barn and Hampshire and Oxford Down sheep in the Sheep Building.

An assembly at the Farm Boys' Camp featured an address by Leonard L. Harkness, State 4-H Club Leader. He spoke on "Making Choices."

Other special events included the annual Safe Tractor Driving Contest sponsored by the Minnesota JayCees and the Minnesota Implement Dealers Association in the North Parking Lot, a dress revue in the 4-H Building, and the appearance of the Checkerboard Dancers from Mabel, Minnesota, in the Pioneer Building.

The St. Francis de Sales Drum and Bugle Corps paraded in the Mall Area at 1:30 and again at 5:30 p.m.

A special "Share the Fun Festival" was held in Erickson Hall at the 4-H Building in the evening.

Members of the Board of the Minnesota Implement Dealers Association were luncheon guests of the State Fair Board. Special commemorative plaques were presented to Mr. Loyal Jones, President of the Minnesota Implement Dealers Association, in recognition of their cooperation and their service to the Minnesota State Fair. The Implement Dealers were guests of the Fair at the night grandstand show.

Sargent Shriver, Director of the Peace Corps, was on the Fairgrounds and addressed 4-H Club members at their building.

The afternoon grandstand featured IMCA late-model stock car races and the Trans World Auto Daredevils Thrill Show. The evening grandstand

show was marked by the last appearance of Rosemary Clooney as featured star and was preceded by a concert by the Hoffman High School Pep Band.

The English style horse show continued in the Hippodrome and included a parade of the prize winning cattle.

THURSDAY, AUGUST 29 **TERRITORIAL PIONEERS AND SOUTH DAKOTA DAY**

It was very cool and clear in the early morning with the temperature at 7:00 a.m. being 57 degrees. It remained fair to partly cloudy throughout the day and by 4:00 p.m. the temperature had risen to 77 degrees.

Officers and directors of the Minnesota Livestock Breeders Association were guests of the State Fair Board for breakfast. Following breakfast the Board of the Minnesota Livestock Breeders held a meeting.

Special events of the day included an assembly at the Farm Boys' Camp Building addressed by Governor Karl F. Rolvaag.

Other events were the 4-H Livestock Judging Contest in the Hippodrome; Checkerboard Square Dancers, St. Paul American Indian Club Pow-wow, and Minnesota Square Dancers at the Pioneer Building; a dress revue program at the 4-H Building and a special picnic for Territorial Pioneers at the Log Cabin and Portrait Hall.

The afternoon grandstand featured a 200-lap IMCA late-model stock car race.

All open class livestock were released at 5:00 p.m. in order to prepare and disinfect the buildings for the Friday arrival of junior livestock.

The English type horse show continued in the Hippodrome and featured the senior stakes and hunter, gaited, harness, shetland, parade, roadster and hackney pony classes. King Agazzi, representing the Red River Valley Winter Shows, was introduced to the Hippodrome audience.

The night grandstand show continued and marked the initial appearance of the Smothers Brothers as the featured act. The show was preceded by a special concert by the Elk River High School Pep Band.

FRIDAY, AUGUST 30 **CHILDREN'S, LEGISLATIVE-EDITORIAL, RADIO-TV** **and INTERNATIONAL DAY**

The weather was mostly cloudy throughout the day. The temperature at 7:00 a.m. was 62 degrees and reached a high of 71 degrees at 3:00 p.m.

Again, a special free grandstand program was staged for the children. This special program featured singing stars Bobby Vinton, Libby Horne, the Rooftop Singers, Yeoman and the Rhythm Masters. The program was again concluded with daylight fireworks.

An open house was held for legislators, editors, radio and television personnel at Publicity Headquarters. They were guests of the Fair for lunch as well as the afternoon and evening grandstand shows.

The arrival of junior livestock started early in the morning and continued up until noon. Again this year the judging of the FFA cattle began at 5:00 p.m. in the Hippodrome.

Special events of the day included the initial appearances by the Minnesota All-State Youth Orchestra in the 4-H Building auditorium. This orchestra is made up of 125 musicians from high schools throughout the

state. The costs of presenting this orchestra such as housing, meals and music are financed by the State Fair.

Other special events of the day included the Indianhead Council (Junior) Drum and Bugle Corps which paraded in the Mall Area at 1:30 and again at 5:30 p.m. The Minnesota Square Dancers appeared at the Pioneer Building. Special recreation games were held at the 4-H Building in the evening.

The afternoon grandstand featured a 100 lap late-model stock car race in conjunction with a special semi-modified "Race of Champions."

The night grandstand show was preceded by a concert by the Minnesota All-State Youth Orchestra and the Owatonna High School Pep Band. King Agazzi was introduced to the grandstand audience.

SATURDAY, AUGUST 31 FOUR-H CLUB, FUTURE FARMERS OF AMERICA AND MINNEAPOLIS DAY

It was clear to partly cloudy all day with the temperature ranging from a low of 60 degrees at 7:00 a.m. to a high of 77 degrees at 2:00 p.m.

The judging of 4-H and FFA sheep, poultry and livestock got into full swing in all the livestock buildings.

Highlights of special events on this day were: The "Honor Camper Stunt Show" at the Farm Boys Camp Building and a special parade by the Grain Belt Diamond Drum and Bugle Corps in the Mall Area at 1:30 and again at 5:30 p.m. The All-State Youth Orchestra presented a 1:00 p.m. concert in Plaza Park.

The afternoon grandstand show featured IMCA grand championship sprint car races highlighted by the Minnesota State Championship race.

The first western style horse show of the 1963 Fair was staged in the Hippodrome to a large crowd.

The All-State Youth Orchestra and the Fairmont High School Pep Band played concerts preliminary to the night grandstand show. The turnout at this show exceeded the attendance for any single night grandstand performance since before World War II and set an all time record in actual receipts.

SUNDAY, SEPTEMBER 1 CONSERVATION DAY

The weather was partly cloudy to cloudy most of the day with rain coming immediately following the fireworks which concluded the night grandstand show. The temperature ranged from 63 degrees at 7:00 a.m. to a high of 81 degrees at 1:00 p.m.

An all-time record attendance for a single day was experienced with 183,018 people jamming through the outside gates. This necessitated closing all gates to vehicular traffic at 1:25 p.m. All gates were reopened again at 3:55 p.m. and remained open the rest of the day.

Non-denominational worship services were held at the Farm Boys Camp Building.

Special events of the day included the judging of Arabian horses in the Horse Barn; the opening of the Minnesota Dahlia Society Show in the Agriculture-Horticulture Building; and the White Bear High School Square Dancers appearance at the Pioneer Building. Ukrainian, Czechoslovakian and Polish folk dancers also appeared at the Pioneer Building in the afternoon. This day also marked the final appearance of the Minnesota All-State Youth

Orchestra for 1963 as they presented a special concert preceding the Horse Show in the Hippodrome.

The afternoon grandstand featured IMCA grand championship sprint car races including the special 50-lap International Sweepstakes feature race and IMCA compact (midget) sprint car events.

The short-lived evening grandstand attendance record of the previous night was broken by a crowd which overflowed into several sections of the bleachers.

The western style horse show continued in the Hippodrome with afternoon and evening performances.

MONDAY, SEPTEMBER 2 NORTH STAR 350 AND LABOR DAY

The rain which had started the night before continued throughout most of the night and morning hours and did not let up until after 12 o'clock noon. Intermittent showers throughout the day severely curtailed outside gate attendance although better than 100,000 people were in attendance in spite of the weather.

It is generally agreed that if it had not been for the rain on this day that an all-time new attendance record would most certainly have been obtained for the ten days. It is most fortunate that in spite of the adverse weather conditions we were able to stage the afternoon grandstand races without having to make a refund.

Palomino, Morgan and Quarter horses were judged in the Hippodrome and Horse Barns. FFA market swine was judged in the Swine Building.

Special events of the day included a 4-H livestock demonstration and presentation of the Herdsmanship Trophy in the Sheep Building and a recognition assembly at the Farm Boys Camp honoring the top campers for the 1963 Fair. Swedish folk dancing was staged at the Pioneer Building in the afternoon. The Twin City Federal Drum and Bugle Corps paraded on the Mall area at 1:30 and again at 5:30 p.m.

Special groups from the U. S. Peace Corps and International Marketing Institute visited the Fair and were conducted on a tour of the grounds. They also attended the afternoon auto races.

The final western style horse show and the final horse show of the 1963 Fair was held in the afternoon in the Hippodrome.

The final night grandstand show was preceded by a special concert by the St. Cloud High School Pep Band. In spite of the weather a good crowd was in attendance at the night show. The largest 10 day night grandstand attendance in more than 25 years was recorded with this the final performance.

ORGANIZATION

The one hundredth and fourth annual meeting of the State Agricultural Society was held in conjunction with the annual meeting of the Minnesota Federation of County Fairs on January 7, 8 and 9 at the Hotel Radisson in Minneapolis. The meeting was officially called to order the morning of January 7 and the resolutions and credentials committees were appointed. These committees met on Tuesday morning.

The opening formal meeting of the State Agricultural Society was held on Tuesday afternoon with opening remarks by President A. E. Thompson and the reports of R. C. Sorenson, Treasurer, and John E. Libby, Acting

Secretary-General Manager. The program included addresses by Joe Erickson, Vice President, State 4-H Federation, and Daniel Von Bank, Reporter, State FFA. The program was concluded with an address from M. H. Baker, President, M. H. Baker Company, Minneapolis, on "Your Life in 1980."

The State Agricultural Society and the Minnesota Federation of County Fairs held their joint annual banquet that evening.

On Wednesday morning the final business session of the Society was held at which time the Resolutions Committee report was adopted and the following elections took place:

A. E. Thompson, Spicer, President, one year term.

Norris K. Carnes, St. Paul, Vice President, two year term.

Stan Muckle, Owatonna, from the First Regional District for a term of three years.

Fred S. Lammers, Stillwater, from the Third Regional District for a term of three years.

Birney C. Wilkins, Brainerd, from the Sixth Regional District for a term of three years.

Harry J. Frost, a long time employee of the Fair and former Superintendent of Space Rentals, was elected Life Member of the Society.

Following these elections a board meeting was held at which John E. Libby was elected Secretary-General Manager for a term of one year and Roy C. Sorenson was re-elected for a term of one year as Treasurer. The standing committees of the board and most of the department superintendents were then appointed.

FINANCES

PART I—BALANCE SHEET

Resources and Liabilities

Real Estate—\$9,555,367.47. This represents an increase of approximately \$240,000 over 1962 and is shown in more detail in another portion of this report. Of the total real estate figure \$593,852.54 is credited to land value. This represents an increase of approximately \$30,000 over 1962 and is brought about by the extensive grading and stabilization of parking lots on the Fairgrounds.

Electric Plant—\$233,289.65. This is an increase of approximately \$2,000 over last year. Although more than this amount was expended on improvement to the electric plant, much of the amount expended was offset by the 5% depreciation taken on this plant each year.

Personal Property—\$160,964.12. This represents an increase of approximately \$6,000 over the 1962 figure.

Inventories—\$601.18. This figure represents the amount of postage on the meter machine. An amount of \$22,666.86 had previously been credited to Inventories for "Post War Planning." This figure represented maps, plans, diagrams, specifications, etc., for future construction on the grounds. Many of these plans have become obsolete and outdated, therefore it was the opinion of your Board by previous action that this amount be written off the books as an inventory item.

Cash—\$546,598.31, of which \$192,199.31 is in the General Fund of the Society; \$1,000.00 in the Contingent Fund; \$10,000.00 in the Payroll Fund Account to insure against over drafts for payrolls and \$343,399.00 invested in U. S. Treasury Bills. This cash balance represents an increase of approximately \$120,000 over 1962.

Accounts Receivable—\$10,346.21. This figure has been materially re-

duced from the \$20,337.25 of 1962 due to extra efforts in the office and Board action permitting the write-off of some uncollectable accounts.

Total Resources of the Society—\$10,507,166.94. It is generally conceded that this figure is less than half, probably about one-third the replacement cost.

PART II—OPERATING STATEMENT

The Operating Statement includes only the receipts and disbursements directly accruing from and due to the operation and staging of the 1963 State Fair and the maintenance of the real estate and other properties of the Society during the fiscal year.

Operating Income—\$1,710,970.87. As stated earlier in this report, this amount is over last year's figure as well as being greater than the amount budgeted.

Operating Expense—\$1,431,266.63. This figure is also over the amount proposed in the budget and the amount expended in 1962.

Net Operating Gain—\$279,704.24. This amount is substantially larger than any in recent years but points up the importance of favorable weather conditions. As mentioned in other portions of this report, one or two days of rain causing the cancellation of a grandstand performance, would materially reduce this amount.

PART III—LEGISLATIVE

Two bills which directly affect the affairs of the Society were passed during the 1963 session of the Minnesota legislature.

One bill, which amends Minnesota Statutes 1961, Section 37.04 provides that the State Agricultural Society Board of Managers shall be elected from nine Regional Districts rather than Congressional Districts. These Regional Districts represent the same areas which were represented by the Congressional District prior to the last reapportionment act. This means that any further change or reapportionment by the legislature in future years will not affect the organizational setup of the State Agricultural Society. It is generally felt that it is desirable to maintain as much rural representation as possible on the Board of Managers of the Society. This bill also provides that the annual meeting of the Society may be held anytime after January 2 and before January 31. (This was to provide more flexibility in obtaining hotel facilities in the Twin City area to accommodate this annual meeting and avoid, if possible, conflicts with annual meeting dates of other state and county fairs.)

Another bill amending Minnesota Statutes 1961, Sections 37.05, 37.06 and 37.07 and repealing Sections 37.08, 37.09, 37.10 and 37.12 principally provides that all funds of the Society shall remain in the possession of the Society for the whole year rather than for a 60 day period as previously provided for in the law. It is generally felt that this will allow much more flexibility in handling the cash transactions of the Society. Other changes provided in this bill are: Election date of the Secretary-General Manager, from the third Tuesday in January to the last day of the annual meeting each year (In keeping with the bill discussed in preceding paragraph); Provides for adequate bonds for the Secretary-General Manager and the Treasurer of the Society; Changes the reporting date of the Secretary-General Manager-Treasurer Report to the Governor of the State from the 15th of December to the 31st of December each year; Provides for an annual audit by the Public Examiner's Office to be paid for from Society funds; Provides that monthly statements covering the disbursements and receipts shall be supplied to the State Audit-

or, State Public Examiner and each member of the Board of the State Agricultural Society.

*

This report would not be complete without giving due recognition to the press, radio and television people who through their wholehearted support and cooperation, played such an important part in the success of this past year's operation. Your Secretary-General Manager also humbly acknowledges that the record of accomplishment realized in 1963 was achieved only through the sincere cooperation of all members of the Governing Board, the loyal and devoted services of the permanent staff, and the dedicated efforts of department heads. It is to them, that whatever measure of success was realized this past year, the credit rightfully belongs. It is through the combined dedicated efforts of these people that your Minnesota State Fair continues to be pre-eminent among the great agricultural and industrial fairs of the world.

In December, 1962, D. K. Baldwin was fatally stricken with illness. Doug, before his untimely death, had spent better than 40 years of his life (the last 12 as Secretary-General Manager) building an organization that has made your Fair what it is today. That organization, still intact, built and operated under the sound business principles of fair management which were instituted by him, labors with devotion and loyalty to the traditions established by him. Your Secretary-General Manager is proud and honored to be a part of that organization.

JOHN E. LIBBY,
Secretary-General Manager

December 30, 1963

Approved by Executive Committee

Robert R. Andrews, Chairman

Norris K. Carnes

A. E. Thompson

1 9 6 3
ATTENDANCE, OUTSIDE GATES, MINNESOTA STATE FAIR

Day	1963	1962	1961	1960	1959
Saturday	105,605	100,559	109,058	70,135	101,189
Sunday	153,690	140,044	128,901*	108,049*	152,947
Monday	100,814	102,440	110,019	122,739	104,072
Tuesday	87,858*	84,929*	89,306	98,277*	81,983*
Wednesday	109,693	100,190	88,835	99,340	103,875*
Thursday	101,919	67,040*	90,498	92,628	98,124*
Friday	91,705	77,072	88,649	93,508	79,535
Saturday	147,032	143,263	130,560*	123,827	131,364
Sunday	183,018	162,726	170,686	164,871	166,643
Monday	100,511*	91,941*	113,083	105,034	110,006
Totals	1,181,845	1,070,204	1,119,595	1,078,408	1,129,738
Friday (Preparation Day) not included in above totals	12,885	15,666	15,148	13,648	14,873
ADMISSION: 1959—50c, Autos 50c; 1960—50c, Autos 75c; 1961—50c, Autos \$1; 1962—75c, Autos \$1; 1963—75c, Autos \$1.					

* Rain

RECEIPTS FROM SALE OF TICKETS AND CASH ADMISSIONS
AT OUTSIDE GATES, GRANDSTAND AND HORSE SHOWS
MINNESOTA STATE FAIR

Day	1963	1962	1961	1960	1959
Friday\$	2,671.25	\$ 5,111.75	\$ 4,670.75	\$ 4,831.50	\$ 4,360.75
Saturday ..	82,675.93	75,248.42	72,518.64	32,583.37	62,276.52
Sunday	144,550.65	138,482.80	77,787.59	56,451.50	112,729.13
Monday	65,459.17	64,287.03	55,747.27	59,949.51	51,761.02
Tuesday	69,552.69	67,714.02	65,404.74	66,085.04	49,513.57
Wednesday ..	89,295.90	85,801.87	65,526.44	64,922.85	66,213.83
Thursday ..	98,255.66	54,861.08	71,968.70	77,531.45	79,239.40
Friday	72,971.15	46,688.81	54,067.95	53,286.90	51,756.23
Saturday ..	136,344.80	130,542.53	104,274.24	85,620.94	97,952.86
Sunday	192,911.20	172,868.61	144,281.90	134,273.57	139,759.27
Monday	118,539.50	124,899.14	124,671.87	121,715.30	123,393.74
Jobbers Strip	15,329.00	13,523.75	11,509.00	11,334.00	10,016.50
Cash Admissions	5,849.75	6,198.75	5,502.50	4,944.75	4,489.50
Cancelled Grandstand Shows Unclaimed Re-funds		118.93	1,389.85	673.20	2.50
Totals	\$1,094,406.65	\$986,347.49	\$859,321.44	\$774,203.88	\$853,464.82
Less Reserved Seat Coupons Exchanged	819.00	1,585.00	3,367.00	3,796.00	4,094.00
Net Totals	\$1,093,587.65	\$984,762.49	\$855,954.44	\$770,407.88	\$849,370.82

SCALE—HORSE SHOW—1959 through 1963—\$1.00, \$1.50, \$2.00.

SCALE—GRANDSTAND—1959-1960—1.00, 1.46, 1.91, 2.36, 2.82, 3.27 net
1961-1963—.50, 1.00, 1.46, 1.91, 2.36, 2.82, 3.27 net

STATEMENT OF TOTAL RECEIPTS AND DISBURSEMENTS
STATE AGRICULTURAL SOCIETY (MINNESOTA STATE FAIR)
For the past ten years — 1954 to 1963 incl.

Year	Cash Balance Beginning of Fiscal Year	State Appropriations	Receipts	Grand Total Includ- ing Balance at Be- ginning of Year	Total Disbursements for Year	Cash Balance at end of Fiscal Year
1954	\$ 374,317.02	None	\$ 1,226,648.20	\$ 1,600,965.22	\$ 1,268,707.36	\$ 332,257.86
1955	332,257.86	"	1,256,971.65	1,589,229.51	1,152,714.90	436,514.61
1956	436,514.61	"	1,340,986.17	1,777,500.78	1,215,815.65	561,685.13
1957	561,685.13	"	1,317,919.71	1,879,604.84	1,463,648.50	415,956.34
1958	415,956.34	"	1,342,239.73	1,758,196.07	1,352,624.11	405,571.96
1959	405,571.96	"	1,405,067.94	1,810,639.90	1,498,792.11	311,847.79
1960	311,847.79	"	1,304,650.18	1,616,497.97	1,387,375.84	229,122.13
1961	229,122.13	"	1,458,977.08	1,688,099.21	1,330,104.65	357,994.56
1962	357,994.56	"	1,567,016.93	1,925,011.49	1,510,537.71	414,473.78
1963	414,473.78	"	1,730,073.64	2,144,547.42	1,597,949.11	546,598.31
Totals	<u>\$3,839,741.18</u>	None	<u>\$13,950,551.23</u>	<u>\$17,790,292.41</u>	<u>\$13,778,269.94</u>	<u>\$4,012,022.47</u>
Average	\$ 383,974.11	None	\$ 1,395,055.12	\$ 1,779,029.24	\$ 1,377,826.99	401,202.24

1963 — ATTENDANCE, GRANDSTAND — MINNESOTA STATE FAIR

1963			1962		1961		1960		1959	
	After-noon	Eve-ning	After-noon	Eve-ning	After-noon	Eve-ning	After-noon	Eve-ning	After-noon	Eve-ning
Friday*	1,859	1,574	1,882	1,597
Saturday	10,970	5,133	8,578	5,793	11,824	5,831	3,937*	3,026	11,685	5,947
Sunday	13,023	7,064	14,087	5,867*	3,015**	15,269	5,338
Monday	7,686	3,943	7,385	4,542	8,123	3,752	10,755	4,501	8,375	3,748
Tuesday	6,288	4,674	5,667*	4,332	8,575	4,146	8,917*	4,799	7,567*
Wednesday ..	9,810	6,327	9,624	5,369	8,767	4,801	9,064	4,966	9,396	6,070
Thursday	9,733	9,683*	2,390*	11,063	4,184	13,703	5,205	15,786	4,645
Friday	8,255	8,425	4,704*	5,612	8,904	4,721	7,557	4,472	7,276	4,449
Saturday	14,529	13,259	15,142	10,222	17,777**	5,708*	13,600	6,780	20,370	6,780
Sunday	18,607	14,422	18,389	11,310	19,674	6,300	20,676	7,856	22,378	7,631
Monday	16,770	3,416	19,245	1,613*	22,590	1,739	22,958	2,370	26,726	2,550
Totals	115,671	76,346	104,680	57,050	118,871	44,197	113,049	43,975	146,425	47,158
Grand Totals	192,017		161,730		163,068		157,024		193,583	

* Rain

** Rain—Postponed and rescheduled for Saturday Morning

PART I
STATE AGRICULTURAL SOCIETY
BALANCE SHEET
November 30, 1963

RESOURCES

Real Estate		
Land	\$ 593,852.54	
Structures	8,200,256.65	
Fences and Guard Rails....	29,863.59	
Flag Poles	961.89	
Gas Distribution System..	68,355.78	
Sewer System Inventory....	239,948.65	
Sidewalks Inventory	63,431.82	
Stonework Inventory	39,767.39	
Streets, Curbs & Gutters	247,551.69	
Water Distribution System	71,377.47	\$ 9,555,367.47
<hr/>		
Electric Plant Inventory.....	233,289.65	
Personal Property (Furniture, Fixtures and Equipment	160,964.12	
Inventories:		
Postage Meter Machine	601.18	
Cash:		
General Fund	192,199.31	
Contingent Fund	1,000.00	
Payroll Fund Account	10,000.00	
U. S. Treasury Bills	343,399.00	546,598.31
<hr/>		
Accounts Receivable	10,346.21	
		<hr/>
		\$10,507,166.94

LIABILITIES AND CAPITAL

Accounts Payable	\$ 31,611.12	
Surplus:		
State Appropriations for Land, Improvements, Maintenance and Expenses on Books since 1949.	\$ 3,635,099.90	
Emergency Relief Appropriations	100,063.01	
Increase in value of Real Estate and Profits of Fair re-invested in Permanent Improvements.	6,740,392.91	
<hr/>		
		10,475,555.82
		<hr/>
		\$10,507,166.94

PART II
OPERATING STATEMENT
For Fiscal Year Ending November 30, 1963

INCOME

FAIR:

Refund, Labor General	\$ 8,143.34
Premium List Advertising	1,834.50
Rent of Barns and Stalls	6,150.00
Rent of Buildings and Grounds	28,895.75
Rent of Personal Property	298.40
Sale of Manure	240.00
Sale of Old Material	2,006.90
Income from Special Premiums	4,560.00
Tax on Admissions	15,785.35
Ticket Sales	1,094,319.65
4-H Club, Share of Ceiling	9,837.82
University of Minnesota, 4-H Budget	8,184.75
Camp Grounds Receipts	2,773.50
Sale of Lambs and Barrows	8,198.57
Sale of Bulk Milk	2,266.75
Court Fines—Other than Fair Period	810.00
Sundry	401.52

DEPARTMENTAL:

Agriculture	1,200.00
Cattle	3,523.00
Dairy	2,186.56
Fine Arts	507.50
Forage	12,824.23
Future Farmers of America	2,429.75
Gas and Electric	71,869.81
Horse	30,331.15
Plants and Flowers	312.00
Poultry	2,225.50
Public Safety	845.00
Sanitation	417.47
Sheep and Wool	556.50
Space Rentals	384,831.10
Swine	2,204.50

TOTAL INCOME **\$1,710,970.87**

EXPENSE

FAIR:

Administration:

Annual Meeting	\$ 1,550.97
Clerical Salaries	52,305.86
Officers' Expense	7,989.20
Officers' Salaries	19,591.67
Postage	1,583.38
Telephones and Telegrams	9,564.78
	\$ 92,585.86

Departmental:

Admissions	16,141.35
Agriculture	4,402.96
Amusement	132,502.59
Bee	1,020.50
Boys' and Girls' 4-H Club	9,989.35
Cattle	6,417.58

Conservation	285.00	
Dairy	1,073.71	
Education	11,339.18	
Farm Boys' Camp	8,715.52	
Fine Arts	3,215.66	
Forage	12,696.87	
Future Farmers of America	4,580.28	
Gas and Electric	94,810.16	
Gopher Club	3,221.51	
Home Activities	7,733.59	
Horse	26,897.76	
Horticulture	6,889.17	
Hospital	1,782.76	
Legislative Headquarters	792.45	
Meat Exhibit	863.55	
Mink Show	474.10	
Plants and Flowers	31,366.17	
Poultry	2,604.39	
Public Safety	37,784.84	
Publicity	97,404.33	
Race	37,492.17	
Sanitation	35,162.64	
Sheep and Wool	1,294.50	
Space Rentals	39,119.83	
Swine	2,289.29	
Teen Danceland	3,390.45	
Ticket Audit	1,668.50	
Treasurer	19,374.52	664,797.23

Exhibit Expense	5,768.63
Premiums:	

Agriculture	11,696.00	
Bee	724.25	
Boys' and Girls' 4-H Club....	23,260.59	
Cattle	27,050.50	
Dairy	3,298.68	
Education	9,138.50	
Fine Arts	675.00	
Future Farmers of America	23,148.69	
Home Activities	2,253.75	
Horse Show	40,855.20	
Horticulture	4,226.25	
Mink	700.00	
Poultry	6,542.00	
Race	64,430.00	
Sheep	7,792.91	
Swine	19,593.10	
Milk Sales	2,266.75	247,652.17

Printing and Office Supplies.....	27,968.01
Tax on Admissions	15,785.35
Water	6,086.02
Retirement Fund Contributions.....	8,849.02
Social Security Contributions	8,116.07
Sundry Fair:	

Accidents, Illness, etc.	5,183.78
Ag-Hort Building Custodial	2,461.00
Bond and Insurance Pre- miums	3,133.93
Carpenters Welfare Fund.....	1,237.40
Dues	895.00
Hippodrome Custodial.....	1,175.75
Legal Services	3,404.18

Level and Fill Dumps	423.00	
Matron Service	608.00	
Laundry Service	128.18	
Operate Camp Grounds	930.25	
Painters Welfare, Vacations and Apprentice Training Funds	632.57	
Signs	1,685.47	
Territorial Pioneers Expense	1,456.98	
Technical Services — Wright and LaPointe	1,670.00	
Unemployment Compensation	5,234.51	
Land Appraisals and Sur- veying	649.00	
University of Minnesota Budget	8,184.75	
Vacations	2,972.81	
Miscellaneous	1,885.76	43,952.32

MAINTENANCE AND OPERATION

Labor General:

Superintendence	7,763.80	
Janitor	1,840.00	
Storekeepers	6,969.59	
Timekeepers	1,412.25	
Watchman Service	17,306.72	
Cleaning Buildings and Grounds	18,507.32	
Grounds Department and W.A.F.	21,583.62	
Labor Rendered for Refund	6,335.51	
Mowing and Raking Lawns	5,106.33	
Cutting and Baling Hay	3,100.55	
Place and Store Chairs and Benches	608.12	
Snow Removal	153.08	
Plumbing Service.....	24,368.36	
Close Up Buildings.....	1,417.53	116,472.78

Auto, Truck and Tractor Maintenance.....	6,819.27	
Electric Plant Maintenance	8,104.68	
Fuel	1,467.84	
Personal Property Maintenance.....	10,789.52	
Painting Structures	11,134.56	
Pest Control	2,894.77	
Repairs to Structures	88,276.62	
Supplies	11,627.67	

Land Maintenance:

Fences and Guard Rails.....	1,815.23	
Gas Distribution System.....	2,218.47	
Grading and Sodding.....	3,180.77	
Sewer System	734.26	
Sidewalks	719.37	
Streets, Curbs and Gutters	10,246.50	
Trees and Shrubs.....	5,277.86	
Water Distribution System....	787.48	24,979.94

Electric Plant Depreciation.....	11,594.30	
Personal Property Depreciation.....	15,427.81	
Storm Damage	116.19	

Total Expense	\$1,431,266.63
Operating Gain	279,704.24

REPORT OF THE TREASURER 1963

To the Governing Board, State Agricultural Society:

Gentlemen:

Herewith find my report as Treasurer of the State Agricultural Society for the fiscal year ending November 30, 1963.

Balance in General Fund, December 1, 1962.....	\$413,473.78	
Balance in Contingent Fund, December 1, 1962.....	1,000.00	
		<hr/>
		\$414,473.78
Total Cash Receipts	\$1,730,073.64	
Total Cash Disbursements	1,597,949.11	
		<hr/>
Excess of Receipts over Disbursements.....		\$132,124.53
Cash Balance, November 30, 1963.....		\$546,598.31
General Fund Cash, Northwestern National Bank....	\$192,199.31	
Contingent Fund, Midway National Bank of St. Paul	1,000.00	
Payroll Fund Account, Northwestern National Bank	10,000.00	
U. S. Treasury Bills, Northwestern National Bank	343,399.00	\$546,598.31
		<hr/>

Respectfully submitted,

ROY C. SORENSON, Treasurer

Minneapolis, Minnesota

November 30, 1963

PART V **LAND INVENTORY—STATE FAIR GROUNDS** **November 30, 1963**

Fair Grounds Proper—252½ Acres inside fences:

SE¼ Section 21, Twp. 29, R. 23 W.—(160 Acres)
 S½—E½—NE¼ Sec. 21, Twp. 29 N., R. 23 W.—(40 Acres)
 E½—E½—SW¼ Sec. 21, Twp. 29 N., R. 23 W.—(40 Acres)
 E½—W½—E½—S½—SW¼ Sec. 21, Twp. 29 N., R. 23 W.—(10 Acres)

Also commencing at a point on the north line of Section 28, Twp. 29 N., Range 23 W., where said line is intersected by the center line of Como Avenue, being 195 feet west from the northwest corner of the NW¼ of said Section 28, thence along the center line of Como Avenue in a westerly direction to a point where southerly extension of west line of the east one-half of the west one-half of the east one-half of the south one-half of the southwest quarter of Section 21, Twp. 29 N., Range 23 W. intersects the center line of Como Avenue, thence northerly on the aforesaid extended line to the north line of Section 28, thence thence due east along the north line of said Section 28, to the point of beginning, containing two and one half acres, more or less.

Parcel "A"—North of Grounds, along Snelling Ave.

Easterly 415 feet of SE¼—NE¼—NE¼ Sec. 21, Twp. 29 N., Range 23 West. Purchased April 1959—4.82 Acres.

Property South of Como Avenue:

E½ of Lots 2 and 9, and Lots 3 and 8, Block 1

E½ of Lots 2 and 9, and Lots 3 and 8, Block 2

Lots 1, 2, 3, 4, and 9 to 23, both inclusive, Block 3, St. Anthony Park, Saint Paul

Lots 1 to 11, both inclusive, Mitchell's Addition to St. Paul

Lots 1 to 28, both inclusive, Block 4, St. Anthony Park, St. Paul

Additional Property South of Como Avenue—10.807 Acres.

Lots 1 to 13, and 16 to 30, inclusive, Block 2, Longs Addition to St. Paul

Lots 4 to 7, Block 1 and Lots 4 to 7, Block 2, St. Anthony Park

Lots 1 to 30, inclusive, Block 2 Wynne's Addition to St. Paul, Minnesota together with any portion of any vacated street or alley lying adjacent thereto. Bounded on the north by Como Avenue, east by Winston, south by Wynne, and west by State Fair Grounds property. Alley between Breda and Wynne Streets—Vacated, October 2, 1959

Additional property South of Como Avenue—10.96 Acres

Part east of extended center line of Packard Street and west of joint right-of-way of Great Northern and Northern Pacific Railways of south ½ of northwest ¼ of northeast ¼ of Section 28, Township 29, Range 23.

Property East of Snelling Avenue:

Lots 13 and 14, Block 3, Lake Park Addition, St. Paul

Property at Northeast corner of Raymond and Como Avenues, West:

All of Block 50, St. Anthony Park North, St. Paul, except parts of

Lots 1, 2, 3, 4, 14, 15, 16, Condemned by City for new streets, and

Lots 17 & 18, sold to City for pumping station.

TOTAL LAND VALUE APPROVED NOVEMBER 30, 1963.....\$593,852.54

UTILITIES:	Value Dec. 1, 1962	Added for Improvements	Decrease in Value or Depreciation	Nov. 30, 1963 Present Value Approved
Electric Plant	\$231,885.98	\$ 12,997.97	\$ 11,594.30	\$ 233,289.65
Fences and Guard Rails	28,702.44	1,161.15	29,863.59
Flag Poles	961.89	961.89
Gas Distribution System	68,355.78	68,355.78
Sewer System	239,713.01	235.64	239,948.65
Sidewalks	63,431.82	63,431.82
Stonework	39,767.39	39,767.39
Streets, Curbs and Gutters	247,551.69	247,551.69
Water Distribution System	71,174.53	202.94	71,377.47
Personal Property Inventory	154,278.12	22,113.81	15,427.81	160,964.12
Inventories:				
Postage	601.18	601.18

STRUCTURES INVENTORY, MINNESOTA STATE FAIR, NOVEMBER 30, 1963

Structure No.	Value Dec. 1, 1962	Deducted or Added for Improvements	Nov. 30, 1963 Present Value Approved
111 Farm Boys Camp Bldg.....	\$ 38,392.02	\$ 38,392.02
121 Warehouse	23,681.17	23,681.17
122 Unloading Pit	3,536.24	3,536.24
151 Toilet	11,999.50	11,999.50
171 Secretary's Garage	499.04	37.28	536.32
172 Camp Grounds Toilet	1,300.00	1,300.00
173 Secretary's Residence	24,289.56	155.51	24,445.07
174 Camp Grounds Kitchen	223.00	223.00
175 Camp Grounds Shower	1,279.00	1,279.00
176 Camp Grounds Office	1,493.05	1,493.05
181 Camp Grounds Turnstile	136.00	136.00
183 State Exhibits Bldg.	77,654.61	531.20	78,185.81

		Value Dec. 1, 1962	Deducted or Added for Improvements	Nov. 30, 1963 Present Value Approved
241	Toilet	3,269.00		3,269.00
242	Machinery Dept. Office	478.00		478.00
261	Dairy Bldg.	60,262.28		60,262.28
262	4-H Club Bldg.	488,930.68	15,069.33	504,000.01
271	Paddock	8,669.93		8,669.93
272	Blacksmith Shop	953.00		953.00
273	Barn No. 1	4,070.00		4,070.00
274	Barn No. 2	4,070.00		4,070.00
275	Barn No. 3	4,070.00		4,070.00
276	Barn No. 4	4,070.00		4,070.00
277	Barn No. 5	4,070.00		4,070.00
278	Barn No. 6	6,072.44		6,072.44
279	Animal Hospital	1,702.62		1,702.62
281	Race Track	68,813.96	27,545.85	96,359.81
282	Stage	49,345.22	18,966.49	68,311.71
283	Underpass to Race Track	11,960.00		11,960.00
284	East Bleachers	144,598.41		144,598.41
285	Ticket Booth	2,608.44		2,608.44
286	Grandstand	958,894.31	9,457.81	967,852.12
287	West Bleachers	70,174.32		70,174.32
288	Check Room	2,497.01		2,497.01
289	Sanitation Bldg.	13,346.43		13,346.43
289A	Mink Bldg.	15,695.15		15,695.15
289B	Infield Score Board	15,643.37		15,643.37
301	Toilet	15,172.30		15,172.30
302	Industrial Bldg.	2,565.85		2,565.85
311	Industrial Bldg.	30,425.08		30,425.08
321	Education Bldg.	47,295.27	(131.48)	47,163.79
322	Home Activities Annex	9,213.97		9,213.97
323	Home Activities Bldg.	97,429.07		97,429.07
331	Service-Administration Bldg.	262,074.58	9,347.18	271,421.76
342	Crossroads Bldg.	27,845.65		27,845.65
351	Concessions & Exhibits Bldg.	328,557.99	17,885.50	346,443.49
361	N.S.P. Bldg.		100,197.00	100,197.00
362	Police Station	19,197.40		19,197.40
364	Postoffice	539.00		539.00
365	Toilet	15,577.08		15,577.08
366	Sign Shop	510.00		510.00
368	Pizza Parlor	10,055.00		10,055.00
371	Toilet	3,662.00		3,662.00
372	Ramp to Grandstand	83,478.85		83,478.85
401	Toilet	11,862.18		11,862.18
411	Horse Barn	687,208.64		687,208.64
412	Outside Horse Stalls	20,010.16		20,010.16
421	Arcade Bldg.	114,878.69		114,878.69
422	Commissary Bldg.	178,420.11	119.00	178,539.11
423	Sheep Poultry Bldg.	245,086.20		245,086.20
431	Conservation Bldg.	89,640.77		89,640.77
432	Conservation Pool	4,928.19		4,928.19
433	Ticket Booth	1,317.37		1,317.37
441	Pioneer Portrait Hall	31,174.59		31,174.59
442	Meat Exhibit Bldg.	8,223.49		8,223.49
443	United Temperance Bldg.	134.00		134.00
444	Toilet	24,715.52		24,715.52
445	Information Bldg.	147.00		147.00
446	Territorial Log Cabin	11,307.51		11,307.51
447	WCCO Bldg.	1,500.00	1,057.46	2,557.46
451	Agriculture-Horticulture Bldg.	590,521.71	560.20	591,081.91
461	Officers Cottage	7,566.27		7,566.27
462	Greenhouse	11,906.26		11,906.26
463	Como-Snelling Gate	7,495.66		7,495.66
464	Toilet	16,491.90		16,491.90
471	Publicity Bldg.	2,975.10		2,975.10
472	Rest Cottage	14,022.15		14,022.15
473	Hospital	1,491.89		1,491.89
474	Degree of Honor Bldg.	1,394.26		1,394.26
475	I.O.F. Bldg.	400.00		400.00
476	Boy Scout Shower Room	2,116.00		2,116.00

	Value Dec. 1, 1962	Deducted or Added for Improvements	Nov. 30, 1963 Present Value Approved
491 Loop Pedestrian Gate	8,347.20	8,347.20
501 Hippodrome	1,271,196.46	1,272.92	1,272,469.38
502 Hippodrome Gate	1,955.00	1,955.00
511 Livestock Pavilion	843,893.76	5,377.35	849,271.11
512 Livestock Arch	149,171.77	149,171.77
513 Outside Cattle Pens	11,727.45	3,208.74	14,936.19
521 Swine Barn	462,693.16	462,693.16
522 Swine Barn Annex	42,007.07	43.65	42,050.72
531 West Commonwealth Gate	785.00	785.00
532 Canfield Gate	1,910.00	1,910.00
601 Fire Station	12,059.00	12,059.00
602 Transportation Office	909.00	909.00
603 Freight Terminals	10,253.00	10,253.00
604 Storebuilding	3,865.32	3,865.32
	<u>\$7,989,555.66</u>	<u>\$210,700.99</u>	<u>\$8,200,256.65</u>

SUMMARY OF INVENTORIES

Land	\$ 593,852.54
Structures	8,200,256.65
Utilities	994,547.93
Personal Property	160,964.12
Postage	601.18
	<u>\$9,950,222.42</u>

TABLE A MINNESOTA STATE FAIR SUMMARY OF RECEIPTS from TICKET SALES AND CASH ADMISSIONS

Outside Gates	\$ 727,074.50
Grandstand, Bleachers, Concourse:	
Afternoon	\$208,990.31
Evening	114,925.34
	<u>323,915.65</u>
Total	\$323,915.65
Horse Show	42,597.50
	<u>366,513.15</u>
Total Horse Show and Grandstand.....	366,513.15
GRAND TOTAL	<u>\$1,093,587.65</u>

TABLE I SUMMARY OF OUTSIDE GATE ADMISSIONS, MINNESOTA STATE FAIR, 1963

	Friday Aug. 23	Saturday Aug. 24	Sunday Aug. 25	Monday Aug. 26	Tuesday Aug. 27	W'day Aug. 28	Thursday Aug. 29	Friday Aug. 30	Saturday Aug. 31	Sunday Sept. 1	Monday Sept. 2	Total Paid	Total Non-paid	Total Paid & Non-paid
PAID ADMISSIONS														
Adults, 25c tickets.....	10,285	415	72,029	108,275	46,231	70,343	67,751	51,884	100,528	127,353	60,836	10,700		
Adults, 75c tickets.....		13,391	16,975	9,897	11,315	13,508	12,990	10,372	17,695	17,432	12,076	761,304		
Auto, \$1.00 tickets.....		1,210	2,610	1,061	1,059	1,331	1,270	924	1,602	2,791	964	136,151		
Auto, \$.50 tickets.....		65	141	129	378	358	412	946	44	13	12	14,822		
4-H Club.....	1	180	978	582	397	537	513	480	807	1,075	592	2,499		
Round-up, Adults.....		60	144	102	88	102	96	84	155	255	136	6,141		
Round-up, Autos.....												1,222		
Totals, Paid	10,286	87,350	129,123	58,002	69,311	86,179	83,032	65,190	120,831	148,919	74,616	932,839		
NON-PAID														
Adults—free.....	958	46											1,004	
Children—free.....	1,641	17,589	24,567	42,812	18,547	23,514	18,387	26,515	26,201	34,099	27,795		262,167	
Totals, Non-Paid	2,599	17,635	24,567	42,812	18,547	23,514	18,387	26,515	26,201	34,099	27,795		263,171	
GRAND TOTALS														
Paid & Non-Paid.....	12,885	104,985	153,690	100,814	87,858	109,693	101,919	91,705	147,032	183,018	102,411			1,196,010

TABLE II SUMMARY OF ADMISSIONS TO GRANDSTAND, MINNESOTA STATE FAIR, 1963

	Friday Aug. 23	Saturday Aug. 24	Sunday Aug. 25	Monday Aug. 26	Tuesday Aug. 27	Wednesday Aug. 28	Thursday Aug. 29
	After- noon	Eve- After- ning noon	Eve- After- ning noon	Eve- After- ning noon	Eve- After- ning noon	Eve- After- ning noon	Eve- After- ning noon
PAID ADMISSIONS							
Grandstand—Box	Rain	355 438	404 485	189 220	101 357	315 491	293 522
Grandstand—Reserved	Rain	5,387 2,842	6,418 3,945	3,151 1,603	2,725 2,382	4,435 3,474	4,911 5,798
Grandstand—General Admission	Rain	4,245 1,330	5,075 1,815	2,969 888	2,472 1,253	3,911 1,675	3,109 2,304
Grandstand—Children	Rain			582			
Total Paid	Rain	9,987 4,610	11,897 6,245	6,309 3,293	5,298 3,947	8,661 5,640	8,313 8,624
Totals Day & Night	Rain	14,597	18,142	9,602	9,245	14,301	16,937
NON-PAID ADMISSIONS							
Grandstand—Tax free	Rain	86 55	89 50	532 82	108 52	130 72	127 144
Grandstand—Statistical	Rain	820 401	907 600	744 474	814 504	851 436	1,164 639
Grandstand—Plaza Box	Rain	77 67	130 169	101 94	68 171	168 179	129 226
Total Non-paid	Rain	983 523	1,126 819	1,377 650	990 727	1,149 687	1,420 1,059
Total Day & Night	Rain	1,506	1,945	2,027	1,717	1,836	2,479
Grand Total—Paid or Non-paid	Rain	10,970 5,133	13,023 7,064	7,686 3,943	6,288 4,674	9,810 6,327	9,733 9,683
Grand Total—Day & Night	Rain	16,103	20,087	11,629	10,962	16,137	19,416

TABLE II SUMMARY OF ADMISSIONS TO GRANDSTAND—MINNESOTA STATE FAIR, 1963
(continued)

	Friday Aug. 30	Saturday Aug. 31	Sunday Sept. 1	Monday Sept. 2	Totals Paid	Totals
	After- noon	Eve- After- ning noon	Eve- After- ning noon	Eve- After- ning noon	Eve- After- ning noon	Day & Night
PAID ADMISSIONS						
Grandstand—Box	176 481	492 511	696 533	456 243	3,477 4,281	7,758
Grandstand—Reserved	3,960 4,179	7,264 7,788	9,730 7,827	8,913 1,246	56,894 41,034	97,928
Grandstand—General Admission	3,048 1,953	5,391 3,793	7,030 5,128	5,857 804	48,107 20,948	64,055
Grandstand—Children	707	1			1,290	1,290
Total Paid	7,184 7,320	13,148 12,092	17,456 13,488	15,226 2,293	103,478 67,553	
Totals Day & Night	14,504	25,240	30,944	17,519		171,031
NON-PAID ADMISSIONS						
Grandstand—Tax Free	179 247	360 427	77 3	10 3	1,698 1,135	2,833
Grandstand—Statistical	791 670	835 541	868 741	1,428 1,019	9,222 6,075	15,297
Grandstand—Plaza Box	101 188	186 199	206 190	106 101	1,272 1,534	2,856
Total Non-Paid	1,071 1,105	1,381 1,167	1,151 934	1,544 1,123	12,192 8,794	20,986
Total Day & Night	2,176	2,548	2,085	2,667	115,671 76,346	
GRAND TOTALS						
Paid and Non-Paid	8,255 8,425	14,529 13,259	18,607 14,422	16,770 3,416		
Day & Night	16,680	27,788	33,029	20,186		192,017

TABLE III SUMMARY OF ADMISSIONS TO HIPPODROME — MINNESOTA STATE FAIR, 1963

	Saturday Aug. 24		Sunday Aug. 25		Monday Aug. 26		Tuesday Aug. 27		Wednesday Aug. 28		Thursday Aug. 29	
	Day	Night	Day	Night	Day	Night	Day	Night	Day	Night	Day	Night
PAID ADMISSIONS												
Box Seats	177	348	176	319	280	445	532	643
Reserved Seats	258	528	543	667	464	834	852	1,130
General Admission Seats	691	944	1,134	932	857	1,066	1,180	1,139
Total Paid	1,126	1,820	1,853	1,918	1,601	2,345	2,564	2,912
Total Day & Night	2,946		3,771		1,601		2,345		2,564		2,912	
NON-PAID ADMISSIONS												
Tax Free	5	61	21	88	93	106	98	163
Statistical
Total Non-paid	5	61	21	88	93	106	98	163
Totals—Day & Night	66		109		193		106		98		163	
GRAND TOTALS												
Paid & Non-Paid	1,131	1,881	1,874	2,006	1,694	2,451	2,662	3,075
Day & Night	3,012		3,880		1,694		2,451		2,662		3,075	

TABLE III SUMMARY OF ADMISSIONS TO HIPPODROME — MINNESOTA STATE FAIR, 1963
(continued)

	Saturday Aug. 31		Sunday Sept. 1		Monday Sept. 2		Total		Total	
	Day	Night	Day	Night	Day	Night	Day	Night	Day	Night
PAID ADMISSIONS										
Box Seats	758	412	750	258	1,023	4,055	5,078	
Reserved Seats	1,815	1,217	1,806	567	2,583	8,096	10,681	
General Admission Seats	2,269	1,752	1,987	1,056	4,633	10,374	15,007	
Total Paid	4,822	3,381	4,543	1,881	8,241	22,525		
Total Day & Night	4,822		9,924		1,881				30,766	
NON-PAID ADMISSIONS										
Tax Free	261	83	202	112	221	1,072	1,293	
Statistical
Total Non-Paid	261	83	202	112	221	1,072		
Totals—Day & Night	261		285		112				1,293	
GRAND TOTALS										
Paid & Non-Paid	5,083	8,209	1,993	8,462	23,597	32,059	
Day & Night	5,083		8,209		1,993					

SUMMARY OF RECEIPTS FROM PERCENTAGE ATTRACTIONS, MINNESOTA STATE FAIR, 1963

	Friday Aug. 23	Saturday Aug. 24	Sunday Aug. 25	Monday Aug. 26	Tuesday Aug. 27	W'day Aug. 28	Thursday Aug. 29	Friday Aug. 30	Saturday Aug. 31	Sunday Sept. 1	Monday Sept. 2	TOTAL
Other than Carnival:												
Trackless Train.....		103.10	153.95	115.10	90.45	129.80	119.48	84.60	162.33	232.05	124.94	1,315.80
Ye Olde Mill	88.19	504.56	523.24	505.29	489.55	570.96	536.30	417.98	682.11	678.99	243.94	5,241.11
Carousel		390.00	552.50	406.25	325.00	406.25	406.25	325.00	528.13	560.62	10.73	3,910.73
Helicopter		300.75	477.80	233.40	147.75	363.30	232.20	209.10	572.70	755.25	168.60	3,460.35
Am. Indian Village		406.25	650.00	243.75	243.75	487.50	243.75	243.75	731.25	650.00	109.69	4,009.69
R.A. Dark Rides	51.80	518.20	591.10	554.90	394.30	468.00	424.40	382.00	590.70	485.10	235.60	4,696.10
Teen Age Dance		702.00	1,044.00	1,040.50	850.00	950.50	966.50	954.50	1,083.50	1,413.50	436.50	9,441.50
Total, other than Carnival	139.99	2,924.86	3,992.09	3,099.19	2,540.80	3,376.31	2,928.88	2,616.93	4,350.72	4,775.51	1,330.00	32,075.28
ROYAL AMERI- CAN SHOWS												
Side Show	69.71	703.79	1,095.74	672.91	555.91	672.42	634.24	607.10	1,055.11	1,386.35	553.00	8,006.28
Side Show Inside	11.54	120.57	150.80	105.87	73.29	94.42	78.32	124.07	194.68	245.18	95.81	1,294.55
Glass House	34.85	230.35	272.11	261.51	190.21	222.46	205.73	195.10	284.29	325.32	128.80	2,350.73
Motordrome	85.56	669.26	863.60	471.17	437.85	545.10	513.09	499.93	855.34	1,083.52	438.03	6,462.45
Harlem Review	122.28	688.43	783.32	304.28	279.91	448.83	355.14	392.03	906.76	1,269.71	465.15	6,016.34
Club Lido	129.02	840.78	1,039.19	478.24	499.52	591.74	583.14	497.33	1,024.80	1,519.00	529.55	7,732.31
Fun House	25.68	230.26	333.33	371.15	185.25	238.88	243.10	266.50	344.75	434.00	118.47	2,796.37
Pirate Ship	18.20	117.40	178.01	215.85	94.82	128.70	106.11	126.58	177.02	215.51	62.57	1,440.77
Ghost Trail	28.66	244.14	366.99	471.31	206.90	283.82	258.76	269.78	441.00	477.23	150.36	3,198.95
Monkey Speedway	59.70	344.84	391.90	268.08	222.92	265.07	289.41	267.33	470.94	535.72	217.93	3,333.84
Midget House	10.89	104.84	134.91	108.84	62.46	74.42	77.06	84.17	172.59	172.59	59.04	1,048.29
Aquarium	37.24	165.56	210.79	187.20	109.06	130.99	128.65	129.53	216.72	226.69	107.10	1,649.53
Missing Link	23.74	282.85	349.23	269.54	155.83	232.66	199.35	216.01	417.57	520.72	159.17	2,826.67
Penny Arcade	47.47	191.45	217.50	272.05	156.49	163.68	149.44	159.89	217.69	250.96	128.45	1,955.07
Total Shows, Carnival	\$ 704.54	4,934.52	6,392.92	4,458.00	3,230.42	4,093.19	3,821.54	3,835.35	6,765.74	8,662.50	3,213.43	50,112.15

SUMMARY OF RECEIPTS FROM PERCENTAGE ATTRACTIONS, MINNESOTA STATE FAIR, 1963—Continued

	Friday Aug. 23	Saturday Aug. 24	Sunday Aug. 25	Monday Aug. 26	Tuesday Aug. 27	W'day Aug. 28	Thursday Aug. 29	Friday Aug. 30	Saturday Aug. 31	Sunday Sept. 1	Monday Sept. 2	TOTAL
ROYAL AMERI- CAN RIDES												
Old Mill	42.81	367.18	460.11	512.95	315.41	395.95	368.07	398.09	568.47	540.54	200.44	4,170.02
Merry Go Round	51.81	157.95	268.25	154.76	125.84	171.60	168.29	141.04	250.18	302.75	112.00	1,904.47
Ferris Wheels	32.58	205.07	315.09	276.55	153.24	226.11	192.24	141.67	208.51	216.12	64.40	2,031.58
Dodgem	120.12	666.61	713.02	769.17	559.85	622.25	640.28	643.20	813.75	789.71	425.67	6,763.63
Tilt-A-Whirl	61.23	396.43	420.03	461.86	336.67	366.40	364.75	354.95	495.29	470.71	247.17	3,975.49
Caterpillar	20.28	155.71	249.50	231.17	131.23	169.65	151.12	168.68	249.90	328.86	84.00	1,940.10
Fly-O-Plane	35.49	267.64	297.28	341.35	248.92	274.66	231.66	246.77	329.28	287.91	137.34	2,698.30
Rock N Roll	31.00	242.97	320.09	463.22	232.63	279.92	293.67	318.63	385.98	406.98	162.54	3,137.63
Rolloplane	46.51	282.94	296.60	391.47	237.32	282.66	222.79	221.42	332.43	339.05	158.34	2,811.53
Octopus	28.67	233.71	338.91	460.20	208.94	308.39	265.78	313.07	349.86	418.53	121.00	3,047.06
Roundup	44.94	285.58	373.32	497.15	217.04	333.06	314.44	346.13	431.44	470.71	168.94	3,482.75
Scrambler	64.55	404.23	525.92	607.72	364.84	477.55	417.79	443.04	616.88	639.03	242.55	4,804.10
Twister	18.72	188.94	211.09	230.41	100.52	103.74	149.56	182.42	259.24	293.16	86.94	1,824.74
Flying Coaster	20.96	177.55	271.83	393.80	150.54	214.21	199.39	244.34	344.93	411.08	96.71	2,525.34
Paratrooper	38.90	254.46	237.85	448.63	117.28	380.48	389.42	127.27	1,994.29
Calypso	83.04	561.24	715.03	791.02	455.68	610.61	582.51	606.51	953.30	1,066.37	341.78	6,767.09
Trabant	4.21	179.16	285.40	377.08	168.69	210.21	181.43	69.73	91.26	114.29	20.58	1,702.04
Bavarian Express	42.77	301.43	453.63	513.47	189.62	143.67	162.78	460.23	299.27	131.93	2,698.80
Pony Ride	28.93	97.50	139.43	123.25	85.64	111.39	101.16	109.44	159.60	163.53	77.61	1,197.48
Wild Mouse	111.47	957.45	1,163.34	1,218.91	855.73	1,007.66	596.05	876.20	1,315.12	1,220.63	715.58	10,038.15
Roller Coaster	36.17	287.53	412.32	489.55	250.96	344.08	329.74	334.13	437.85	161.70	179.44	3,263.47
Kiddie Land	96.79	393.25	843.57	512.51	355.68	544.12	507.39	446.20	948.43	1,057.49	302.68	6,008.11
Space Wheels	221.32	1,429.51	1,906.45	1,431.46	1,147.90	1,395.71	1,246.38	981.98	1,570.27	2,025.80	734.48	14,091.26
Swinging Gym	120.03	101.50	142.26	125.58	128.99	140.79	143.33	173.36	162.75	106.58	1,345.17
Total Rides	\$1,233.27	8,564.07	11,319.56	11,889.92	7,135.75	8,722.59	7,665.28	7,893.75	12,126.05	12,576.39	5,045.97	94,222.60
Total Carnival Rides & Shows.....	1,987.81	13,498.59	17,712.48	16,347.92	10,866.17	12,815.78	11,486.82	11,729.10	18,891.79	21,238.89	8,259.40	144,334.75
Grand Total— All rides & shows	2,127.80	16,423.45	21,704.57	19,447.11	12,906.97	16,192.09	14,415.70	14,346.03	23,242.51	26,014.40	9,589.40	176,410.03

EXHIBITORS

- AAA PFAFF SEWING CENTER, Minneapolis. Pfaff sewing machines.
 AAA SEWING MACHINE CO., Minneapolis. Viking sewing machines.
 A & K FARM SUPPLY, Minneapolis. Polaris Snow Travelers, wagons, bale elevators.
 ADAIR DISTRIBUTING CO., Minneapolis. Portable Starter-Generator.
 ADVANCE METALWORKING CO., Kewanee, Ill. Watering equipment, hog troughs.
 ALBER'S MILLING CO., Kansas City, Mo. Calf feeds and feeding equipment.
 ALLIED ALUMINUM MANUFACTURERS, Minneapolis. Aluminum doors, windows and awnings.
 ALLIED STORES, Minneapolis. Organs and pianos.
 ALLIS CHALMERS MFG. CO., Minneapolis. Farm and light industrial equipment.
 AMERICAN LEGION CLUB, MIDWAY POST, St. Paul. Trophies, literature.
 AMERICAN SUNDAY SCHOOL UNION, Minneapolis. Information and literature.
 AMERICAN WAR MOTHERS ASSN., St. Paul. Headquarters for members.
 ANDERSON DAIRY SUPPLY, Long Lake, Minn. Milk house equipment and bulk cooler.
 ARISTO CRAFT, Minneapolis. Stainless steel cookware.
 ART'S-WAY MFG. CO., Armstrong, Iowa. Hammer mill and mixer units.
 AUTO-CON ELECTRONICS, Minneapolis. Two-way radio.
 AUTOMATIC FEEDING SYSTEMS CO., Luverne, Minn. Tube feeder, silo unloader, conveying equipment.
 AUTOMATIC GATES, INC., South St. Paul. Automatic gate opener.
- BABSON BROS. CO., Chicago. Surge dairy equipment.
 BADGER NORTHLAND, INC., Kaukauna, Wis. Silo unloader, barn cleaner, feeder.
 BADGER NORTHLAND, INC., Owatonna, Minn. Silo unloaders, tube and auger feeders, barn cleaners.
 BALZER MFG. CORP., Mountain Lake, Minn. Unloading boxes, rear mounted swathers.
 BARRY & SEWALL INDUSTRIAL SUPPLY CO., Minneapolis. Marquette welders, Black & Decker tools, Rust-o-leum.
 BARGEN OF MINNEAPOLIS, Inc., Minneapolis. Seeds.
 BARZEN OF MINNEAPOLIS, Minneapolis. Seed grain.
 BEHLEN MFG. CO., Columbus, Nebraska. Corn crib, grain dryer, tanks, steel buildings.
 BELLAND HOME MODERNIZING, Minneapolis. Aluminum siding, windows, doors.
 BENNIS CONSTRUCTION CO., Minneapolis. Building materials.
 BERG EQUIPMENT CORP., Marshfield, Wis. Barn equipment, cleaners, silo unloaders.
 BERNINA SEWING CENTER, Minneapolis. Bernina sewing machines, Swiss magic knitters.
 BETHANY FELLOWSHIP, Inc., Minneapolis. Camping trailers and equipment.
 BLEND A LIFE, Inc., Green Isle, Minn. Display panels and cattle.
 BLUE WAY, INC., New Prague, Minn. Harvestore, bunk feeder.
 BODINE'S, INC., Minneapolis. Organs and pianos.
 BOOK HOUSE FOR CHILDREN, Des Moines. Books for children.
 BRIGGS POWER EQUIPMENT CO., Minneapolis. Kohler engines and Hahn Eclipse mowers.
 BUILDERS AND REMODELERS, Minneapolis. Building materials.
 BURKHARDT-LARSEN CO., Minneapolis. Farm and light industrial equipment.
 BUTLER MFG. CO., Kansas City, Mo. Grain and storage equipment, steel buildings.
 BUREAU OF HOME IMPROVEMENT, INC., Minneapolis. Home Improvements.
 BURGESS VIBROCRRAFTERS, INC., Minneapolis. Insect defoggers.
- CALHOUN MFG. CO., INC. Cedar Falls, Iowa. Fertilizer spreaders, wagon gears, wagons.
 CANTON REDWOOD YARD, Inc., Minneapolis. Redwood Building Materials.
 A. C. CARLSON, INC., Minneapolis. Appliances, TV, Stereo.
 IVER H. CARLSON & SON, INC., St. Paul. Siding, aluminum doors and windows, roofing, screen home.
 CASCADE HUMIDIFIERS, INC., Minneapolis. Residential humidifiers.
 J. I. CASE CO., St. Paul. J. I. Case farm machinery.
 CHILD EVANGELISM FELLOWSHIP, St. Paul. Teaching materials.
 CHRISTIAN BUSINESSMEN'S LEAGUE, Minneapolis. Headquarters.
 CHRISTIAN SCIENCE MONITOR, Minneapolis. Christian Science Monitor.
 GEORGE CLARK AND SON, INC., Minneapolis. Hardware, paints, light machinery.
 CLARK MFG. CO., Atherton, Mo. Harrowing equipment, sprayers.
 CLAY EQUIPMENT CORP., Cedar Falls, Iowa. Barn cleaner, silo unloader, bunk feeder.
 E. G. CLINTON CO., Minneapolis. Pole type building, farm equipment.
 P. F. COLLIER & SON CORP., Oklahoma City, Okla. Collier encyclopedia.
 CONN ORGAN STUDIOS, INC., Minneapolis. Conn organs.
 CONTINENTAL INDUSTRIES, INC., St. Paul. Water conditioners.
 COCHRAN BROS. MFG. CO., Waseca, Minn. Farm implements.
 COUNCIL OF EV. CHURCHES OF ST. PAUL, St. Paul. Religious films, literature, recordings.
 CRANE AND ORDWAY CO., St. Paul. Plumbing and heating, pumps.
 CUCKLER STEEL SPAN COMPANY, St. Cloud, Minn. Circle C Farm & Ranch buildings.
 CULLIGAN SOFT WATER, South St Paul. Water conditioning equipment.
 CURTISS BREEDING SERVICE, Inc., Willmar, Minn. Curtiss Breeding Service.
 THE CUSTOM CRAFT CO., Minneapolis. Dining nook.
- D.B.A. AUTOMATIC, Minneapolis. Starter for trucks, tractors and autos, etc.
 DFL STATE CENTRAL COMMITTEE, Minneapolis. Headquarters.
 DAKOTA IRON STORE, Minneapolis. Farm implements and storage.
 JOHN DEERE CO., Minneapolis. Implements and tractors.
 DeKALB AGRICULTURAL ASSOC., INC., DeKalb, Illinois. DeKalb corn and sorghum, chix.
 DeLAVAL SEPARATOR CO., Chicago. Farm dairy equipment.

DENESEN COMPANY, THE, Minneapolis. Awnings, combination windows, doors and
DENISON CONCRETE PRODUCTS CO., Denison, Iowa. Concrete stock waterers.
porches.

DeVRY TECHNICAL INSTITUTE, Chicago. Technical training in electronics.

DODGEN INDUSTRIES, INC., Humboldt, Iowa. Grain-O-Vator.

DOUGLAS TRAILER SALES AVION, Minneapolis. Avion Trailers.

DOWNTOWN CHRYSLER-PLYMOUTH, Minneapolis. 4 cars—Chrysler, Plymouth,
Imperial, Valiant.

DUAL MANUFACTURING CO., Sioux Falls, S. D. Front-end loaders, forage boxes, un-
loading wagons.

EASTMAN KODAK PROCESSING LABORATORY, Chicago. Eastman Kodak Products.

ELECTRONIC DISTRIBUTING CO., St. Paul. Television.

ELSTON CO., INC., Minneapolis. "Gopher Getter" machine.

ENCYCLOPEDIA AMERICANA, Kansas City, Mo. Encyclopedia.

ENCYCLOPEDIA BRITANNICA, INC., Minneapolis. Encyclopedia Britannica.

ENESTVEDT BROS., Sacred Heart, Minnesota. Minnesota hybrid seed corn and grains.

ERICKSON STYLING CO., Minneapolis. Awnings.

ERSKINE MFG. CO., INC., Erskine, Minnesota. Farm equipment.

ESCO PRODUCTS, St. Paul. Vertical drapes, fibre glass awnings, windows, doors.

FAIRBANKS, MORSE AND CO., Chicago. Domestic and farm water systems.

FALLS TOOL CO., INC., Iowa Falls, Iowa. Aeration equipment.

FARGO FARM EQUIPMENT CO., Fargo, N. D. Grain auger elevator, bale loader,
combine attachments.

FARM SYSTEMS, INC., Mankato, Minnesota. Feed lot systems, harvest control systems,
supplies.

FARMER SEED AND NURSERY CO., Faribault, Minnesota. Seed, hybrid corn, nursery.

FARMHAND COMPANY, Hopkins, Minn. Farm equipment.

FARMWAY COMPANY, Manawa, Wisconsin. Bunk feeders, barn equipment, cleaners.

FEDERAL CROP INSURANCE CORP., Redwood Falls, Minn. Insurance.

FIBERTON CORPORATION, Rochester, Minn. Grain storage unit.

FIELD ENTERPRISES EDUC. CORP., Minneapolis. World Book encyclopedia, Childcraft.

FIELD ENTERPRISES EDUC. CORP., St. Paul. World Book Encyclopedia, Childcraft.

FLOOD MASTER ENGINEERING CORP., St. Paul. Building materials, stone.

FORD MOTOR COMPANY, Hopkins, Minn. Farm machinery.

FORNEY ARC WELDERS, Mankato, Minn. Arc welders and supplies.

FOX RIVER TRACTOR CO., Appleton, Wis. Farm implements.

FREMONT MFG. CO., Fremont, Nebr. Steel grain bins and dryer.

GANDY COMPANY, Owatonna, Minn. Farm machinery.

GARLAND EZ WAY STEP UNITS, Minneapolis. EZ Way Step Units.

GENL BROS. MFG. CO., West Bend, Wis. Farm equipment.

GIDEONS INTERNATIONAL OF MINNESOTA, Minneapolis. Bibles.

GOODWILL INDUSTRIES, Minneapolis. Goodwill Industries activities.

GRACIOUS LIVING PRODUCTS, Minneapolis. Stainless steel cookware and china.

GRAIN KING INDUSTRIES, INC., St. Paul. Swathers, harrows, harvesters, windrowers,
grinders, mixers.

GRAVELY TRACTOR STATION, Minneapolis. Exhibit Gravelly power equipment.

GREATER TWIN CITY FLOOR COVERING ASSN., Minneapolis. Floor coverings.

GREENE BROS., Minneapolis. Hardwood flooring and camping trailers.

GROLIER SOCIETY, Inc., St. Louis Park. Book of Knowledge.

LEVI HAAPALA AND SONS, INC., Dassel, Minn. Haapala hybrid seed.

HACKENSACK CHAMBER OF COMMERCE, Hackensack, Minn. Resort area promotion.

HALE TRAILERS, White Bear Lake. Horse Trailers.

HAMILTON MANAGEMENT CORP., St. Paul. Mutual fund investments.

HANSON SILO CO., Lake Lillian, Minnesota. Silos, unloaders, silage chipper.

IVAN HARDER and DELL WALL, Minneapolis. Great Books of the Western World.

HAWK BILT MFG. CORP., Vinton, Iowa. Farm equipment.

HAWKEYE STEEL PRODUCTS, Waterloo, Iowa. Livestock feeding and watering
equipment.

F. C. HAYER CO., Minneapolis. RCA Victor, RCA Whirlpool.

HEIDER MFG. CO., Carroll, Iowa. Wagons, boxes, feed mixers, hog feeders.

HEN MADE EQUIPMENT CO., Mapleton, Minn. Nests.

HERMANN SISTERS OF MINNESOTA, St. Paul. Headquarters for members.

HILEX COMPANY, St. Paul. Hilex products.

HILLTOP SEED CO., Milwaukee. Seed grain.

HOLSTAD MUSIC HOUSE, Minneapolis. Pianos, radio and tape recorders, organs.

ALTON HOLTE, South St. Paul. Industrial vacuum cleaners.

HOMELITE DIV. OF TEXTRON, INC., St. Paul. Chains, saws, pumps, riding lawn
mowers, kart engines.

HOPE CHEST CO., Minneapolis. China, silverplate, stainless steel flatware.

HOUSE CLINIC STORE, INC., Minneapolis. Victor sun control awnings.

HOWE, INC., Minneapolis. Fertilizer and insecticides.

HUDSON EQUIPMENT CO., Minneapolis. Steel tanks, poultry equipment, sprayers.

HUTCHINSON TRAILER SALES, Hutchinson, Minn. Pathfinder trailers.

HY-LINE POULTRY FARMS, Des Moines, Iowa. Laying hens and seed corn.

INTERNATIONAL HARVESTER CO., St. Paul. Tractors, farm equipment.

JACQUES SEED COMPANY, Prescott, Wisconsin. Corn and alfalfa seed, liquid fertilizer.

JACUZZI RESEARCH, INC. Minneapolis. Whirlpool bath and accessories.

JAMES MANUFACTURING CO., Ft. Atkinson, Wis. Silo unloader, bulk tanks, milking machines.
 JANDY DISTRIBUTING, Minneapolis. Winfield China.
 JENNINGS & YEAGER, St. Paul. Dolphin canoes.
 JIM AND AL'S CAMPER SALES, Remer, Minnesota. Camper coaches.
 JOHNSON HYDRAULIC EQUIPMENT CO., Minneapolis. Hydraulic loaders.
 JOSCO, INC., Bloomington Station, Minneapolis. STP Magic oil additive.

THE K COMPANY, Austin, Minn. Decker mills and blenders, Westgo auger systems.
 K & K MANUFACTURING CO., Minneapolis. Nursette automatic calf feeder.
 KMSP-TV, Minneapolis. Personalities and programs.
 KRAGER KUSTOM COACH, Osseo, Minn. Pick-up coaches, trailers.
 KRSI RADIO SUBURBAN, INC., Minneapolis. Radio broadcasting.
 KSTP, INC., St. Paul. Radio and TV.
 KEWANEE MACHINERY & CONVEYOR CO., Kewanee, Illinois. Elevators, discs, wagons, mulchers.
 KLEWENOS HEARING AID SERVICE, St. Paul. Vicon Hearing Aid.
 A. F. KLINZING CO., INC., Fond du Lac, Wis. Farm equipment.
 JOHN R. KOVAR MFG. CO., INC., Anoka, Minn. Harrows and drawbars.
 KRETZSCHMAR VENTILATION, Mankato, Minn. Fan-Pac ventilation.
 O. W. Kromer Co., Minneapolis. Sprayers and accessories, farm machinery.

LEO KUELBS CO., Minneapolis. Garden tractors.
 LANDEYS CAMPING CENTER, Minneapolis. Tradewinds Campers.
 LAND O' LAKES CREAMERIES, INC., Minneapolis. Dairy display.
 H. D. LEE COMPANY, Minneapolis. Jumbo size Lee bib overall.
 LESTER'S, INC., Lester Prairie, Minn. Farm buildings.
 YALE LIBMAN, St. Paul. Magnavox and Kinsman organs, Chickering pianos.
 LINCOLN ELECTRIC CO., Cleveland, Ohio. Welding equipment, supplies.
 LINCOLN NATIONAL LIFE INSURANCE CO., Minneapolis. Information.
 LIND PIANO & ORGAN CO., St. Paul. Pianos and organs.
 LINDSAY BROTHERS CO., Minneapolis. Farm implements.
 LINDSTROM CANNON SILO WORKS, Lindstrom, Minnesota. Concrete stave silo.
 LOUDON MFG. AND SALES, INC. Minneapolis. Freezers and refrigerators.
 LUTHERAN BROTHERHOOD LIFE INSURANCE SOCIETY, Minneapolis. Insurance information and public relations.
 LUTHERAN BRAILLE EVANGELISM ASSN., St. Paul. Distribution of literature, display of articles of the blind.
 LUTHERAN LAYMEN'S LEAGUE, Minneapolis. Religious literature.
 LYONS UTILITY CO., St. Paul. Armstrong building materials, millwork and general manufacturing.

McMASTER FAHLSTROM ASSOCIATES, Minneapolis. Viking sewing machines.
 M & W GEAR CO., INC., Anchor, Illinois. Dynamometer, tractor, piston display.
 MADISON SILOS, Winona, Minn. Cement stave silo.
 MADSEN SERVICE, INC., Minneapolis. Madsen oil burners and furnace units.
 MAICO ELECTRONICS, INC., Minneapolis. Hearing aids.
 MALLARD SEED CO., Plainview, Minn. Seed corn.
 MALLEABLE IRON RANGE CO., Beaver Dam, Wisconsin. Monarch ranges and heaters.
 MARBLOX OF MINN., Rochester, Minn. Hog slats.
 J. C. MARLOW MILKING MACHINE CO., Mankato, Minn. Dairy equipment.
 MARVY REALTY CO., Minneapolis. Deltona, Florida, Real Estate.
 MASSEY-FERGUSON, INC., Hopkins, Minn. Farm and industrial equipment.
 MELROSE MFG. CO., Minneapolis. Harrows, windrow pickup, self propelled loaders.
 METAL PRODUCTS CO., Cokato, Minnesota. Superior feed, all purpose carts.
 MEYER MFG. CO., Morton, Illinois. Bucket, portable elevators, bale loaders, Meyer Driall.
 MIDWEST CONSTRUCTION CO., St. Paul. Building materials (on trailer)
 MIDWEST PLANNED INVESTMENTS, INC., Minneapolis. Investment information.
 MIDWEST WONDER WARE DISTR. Co., Minneapolis. Cookware, china.
 MILEY TRAILER CO., Savage, Minn. Miley horse trailer.
 MILLS CONSTRUCTION CO., Minneapolis. Window, doors, etc.
 MILSCO IRRIGATION ENGINEERS, Minneapolis. Irrigation equipment and pumps.
 MINNEAPOLIS BLACK SHEEP CLUB, Minneapolis. Club promotion.
 MINNEAPOLIS CURIA OF LEGION OF MARY, Minneapolis. Catholic literature.
 MINNEAPOLIS FREEMAN MFG. CO., Minneapolis. Front end loaders and allied farm equipment.
 MINNEAPOLIS-MOLINE FARM EQUIPMENT, Hopkins, Minn. Farm machinery.
 MINNEAPOLIS STAR AND TRIBUNE, Minneapolis. Information booth.
 MINNESOTA AFL-CIO, St. Paul. Public relations.
 MINNESOTA BREWERS ASSN., St. Paul. Barley exhibit.
 MINNESOTA CHIROPRACTIC ASSN., St. Paul. Chiropractic health education.
 MINN. COMMITTEE FOR ECONOMIC FREEDOM, Minneapolis. Educational.
 MINNESOTA CONFERENCE OF SEVENTH DAY ADVENTISTS, St. Paul. Religious materials, motion picture.
 MINNESOTA COUNCIL ON ALCOHOL PROBLEMS, Minneapolis. Educational material.
 MINNESOTA DEPARTMENT OF CIVIL DEFENSE, St. Paul. Fallout shelter.
 MINNESOTA FARM BUREAU FEDERATION, St. Paul. Headquarters.
 MINNESOTA FARM BUREAU SERVICE CO., St. Paul. Farm production supplies, hardware, chemicals.
 MINNESOTA FARMERS UNION, St. Paul. Educational display.
 MINNESOTA FEDERATION OF WOMEN'S CLUBS, Owatonna, Minn. Public relations.
 MINNESOTA FORTY AND EIGHT, St. Paul. Merci Boxcar.

MINNESOTA HEARING AND OPTICAL CENTER, Minneapolis. Willodyne Audiometer, United Hearing Aid.

MINNESOTA LEAGUE OF CREDIT UNIONS, St. Paul. Credit union information.

MINNESOTA LIQUIFIED PETROLEUM GAS ASSN., Wayzata, Minn. LP gas equipment.

MINNESOTA PAINTS, INC., Minneapolis. Paints and varnishes.

MINNESOTA PETROLEUM COUNCIL, Minneapolis. "Energy for America."

MINNESOTA PRE-CAST CONCRETE STEP CO., St. Paul. Concrete steps and wrought iron railings.

MINNESOTA RUSCO, INC., St. Paul. Rusco products, porch enclosures, windows, doors.

MINNESOTA SOC. FOR PREVENTION OF BLINDNESS, Minneapolis. General eye care.

MINNESOTA STATE BAR ASSOCIATION, St. Paul. Public relations booth.

MINNESOTA TUBERCULOSIS & HEALTH ASSN., St. Paul. Educational.

MINNESOTA WOOLEN CO., Minneapolis. Wearing apparel.

MOBILE HOME SERVICE, INC. St. Paul. Pickup campers.

LAWRENCE MOLINE, KNAPP SHOES, St. Paul. Knapp Aerotred shoes and boots.

MONARCH CHEMICALS, INC., Minneapolis. Dairy industry chemicals.

MONTEVIDEO MANUFACTURING & METAL, Montevideo, Minnesota. Truck with tandem axle.

J. STUART MOORE CO., Minneapolis. Randal folding aluminum awnings, windows, doors.

MORNINGSIDE MEMORIAL GARDENS, Minneapolis. Above ground cemetery.

MOULTON IRRIGATION CO., Withrow, Minn. Irrigation pipe, valves, pumps, fittings.

PAUL MUELLER CO. & MURPHY SURGE & SERVICE, Springfield, Mo. Bulk milk tanks.

F. E. MYERS & BROS. CO., Ashland, Ohio. Pumps, water systems, etc.

NATIONAL CITY BANK OF MINNEAPOLIS, Minneapolis. Bank exhibit—model display "Gateway Center."

NATIONAL FARMERS ORGANIZATION, Owatonna, Minn. Public relations.

NATIONAL FOUNDATION, INC., Minneapolis. Polio, arthritis, birth defect exhibits.

NATIONAL HOMES CORP., Lafayette, Ind. Model cabin.

NATIONAL MFG. & STAMPING CO., Jefferson, Iowa. Hog feeders, waterers.

NATVIK AND CO., Columbus, Wis. Barn cleaners, silo unloaders.

KARL M. NEUFELD CO., Mountain Lake, Minn. Motor Bikes.

NEW HOLLAND MACHINE CO., Minneapolis. Farm machinery.

NEW IDEA FARM EQUIPMENT CO., Minneapolis. Farm machinery.

NIAGARA THERAPY MFG. CORP., Minneapolis. Massage equipment for home and professional use.

NIENAS GARDEN CENTER, St. Paul. Garden and lawn equipment, power mowers, tractors.

NORLING BROS. SILO, INC., Svea, Minnesota. Silo, corn crib.

NORTH CENTRAL ELECTRICAL LEAGUE, Minneapolis. Equipment and appliances.

NORTHLAND GREEN STAMPS, Rockville, Minn. Stamps and gifts.

NORTHWEST HEARING AID CO., Minneapolis. Hearing Aids "Otarion."

NORTHWEST FIBRE GLASS CO., St. Paul. Fibreglass awnings and patios.

ODD FELLOWS GRAND LODGE OF MINNESOTA, St. Paul. Rest cottage and headquarters.

OLIVER CORPORATION, Minneapolis. Farm and industrial equipment.

OLSON MFG. CO., Albert Lea, Minn. Dairy barn equipment and farm implements.

OLSON RUG CO., Chicago. Rugs and carpets.

OWATONNA MFG. CO., INC., Owatonna, Minn. Farm equipment.

OXFORD FURNITURE DIST. CO., Los Angeles, Calif. Vibration massage and heat chairs.

P & D SALES & MFG. CO., Plainfield, Illinois. Silo unloaders, auger and tube feeders.

PALCO MFG. CO., Maynard, Iowa, Waterville, Minn. Palco Face Fly Control Oiler, Palco Black Oiler.

PAPEC MACHINE CO., Hopkins, Minn. Crop blowers, hammer mills, food mixer.

PAPER CALMENSEN CO., St. Paul. Iron and steel products.

PARA TROL DIV. OF GEO. A. ROLFES CO., Morris, Minn. Cattle oiler.

PATZ COMPANY, Pound, Wis. Barn cleaners, silo unloaders, bunk feeders.

PENN MUTUAL LIFE INSURANCE CO., St. Paul. Insurance information.

PETERSON IMPLEMENT CO., New Ulm. Snow plow & plow cleaner.

PPAFF DISCOUNT SEWING CENTER, Minneapolis. Sewing machines, chord organ.

PILLSBURY COMPANY, Minneapolis. "Our Daily Bread."

PIONEER HI-BRED CORN CO., Des Moines, Iowa. Alfalfa, seed corn and chicks.

PLAINES MFG. CO., Lexington, Nebr. Cattle oilers and livestock.

POWER TOOLS, INC., St. Paul. Chainsaws, mowers, garden tractors, go-karts.

PRESTO WATER CONDITIONERS, INC., Minneapolis. Presto water softeners.

MAYNARD RASMUSSEN, St. Paul. Model homes and cabins.

RATH DAIRY SALES, INC., Janesville, Wis. Wash tanks, milkhouse fans, equipment.

RED RIVER VALLEY POTATO COMMITTEE, East Grand Forks, Minn. Potatoes.

RELAX-4-LIFE CO., SANTA ROSA, CALIF. Relax-4-Life chairs.

REPUBLICAN STATE CENTRAL COMMITTEE, St. Paul. Headquarters, Advertising sign.

REYNOLDS IMPROVEMENT CO., Minneapolis. Koolmaster awnings, etc.

RITCHIE MFG. CO., Conrad, Iowa. Livestock waterers.

ROADERICK & LUNDELL, Cherokee, Iowa. Farm machinery and equipment.

GEORGE A. ROLFES CO., Boone, Iowa. Grain aeration equipment, grain drying and hay drying equipment.

ROTO-HOE, St. Paul Park. Roto-Hoe tiller and other attachments.

ROWELL, INC., St. Paul. Silos.

ROYAL ALUMINUM PRODUCTS, INC., Minneapolis. Windows, porch enclosures, roofing, etc.

ROYAL NEIGHBORS OF AMERICA, St. Paul. Headquarters for members.

RUTHERFORD'S, Minneapolis. Mowers, garden tractors.

S & H MFG. CO., Winthrop, Minn. Silage chippers and unloaders.
 S & H MANUFACTURING CO., Sioux Falls, S. D. Material handling equipment, bunk feeders, forage boxes.
 S & S MANUFACTURING CO., Fairmont, Minn. Hog farrowing crates.
 ST. JOHN CO., Dresser, Wisconsin. Attachment for farm mower.
 ST. PAUL DISPATCH-PIONEER PRESS, St. Paul. Newspaper exhibits.
 SAFEWAY STEEL SCAFFOLDS, Minneapolis. Car part and contractors equipment.
 SALVATION ARMY, Minneapolis. Religious display.
 SAMPSON GRIP-HITCH Co., Esterville, Ia. Tractor hitches.
 SANDERS-KIRBY, Minneapolis. Kirby vacuum cleaners.
 SCHMITT MUSIC CO., Minneapolis. Wurlitzer pianos and organs.
 SCHOMMER, RAY, CONSTRUCTION CO., St. Paul. Futura Swimming Pools.
 SCHORN TV AND APPLIANCE, St. Paul. Stereo and TV.
 SCHWARTZ MANUFACTURING CO., Lester Prairie, Minnesota. Hydraulic truck hoists, tractor loaders, axles.
 SELF HELP, Waverly, Iowa. FFA activities.
 SEW-EASY COMPANY, St. Paul, Necchi, Phoenix, Adler, Sew-matic, and Good House-keeping sewing machines.
 SILVER STAR CHINCHILLA, Alexandria, Minn. Live chinchillas.
 SINGER SEWING MACHINE CO., Minneapolis. Sewing machines, vacuum cleaners.
 SNELLER MUSIC CO., Minneapolis. Hammond organs.
 SOKOTA HYBRID PRODUCERS, Brookings, S. D. Hybrid seed corn, sorghum.
 SOLMICA-MIDWEST, INC. Minneapolis. Aluminum siding.
 SOUTHWEST TRAILERS, INC., Minneapolis. Deluxe Vacation trailers.
 SPRING CO., FLORIDA SALES, Minneapolis. Florida real estate.
 STANDARD DRY WALL PRODUCTS, INC., New Eagle, Pa. Waterplug, Thoroseal, Quickseal, Thorosheen, etc.
 STARLINE, INC., Harvard, Illinois. Barn and farm equipment.
 STATE GRANGE OF MINNESOTA, Minneapolis. Headquarters, publicity.
 STROLL-O-CHAIR, Minneapolis. Baby furniture.
 SUDENGA INDUSTRIES, INC., George, Iowa. Grain auger, wagons, etc.
 SUWANEE-FLORIDA CORP., Lexington, Illinois. Florida real estate.
 TALCOTT TRAILER SALES, Lakeland, Minn. Hi-Lo Camping Trailers.
 TALK-EASE CO., Minneapolis. Telephone amplifier.
 TEMP-HEAT CO., Minneapolis. Infra Red Unit Heater.
 TOCONITA HEARING AID SERVICE, St. Paul. Hearing Aid Service.
 TOLL, H. R., CO., Minneapolis. A. O. Smith and Linde Products.
 TOMCO, INC., Belmond, Iowa. Seed corn.
 TRACTOR SUPPLY CO., St. Paul. Agricultural machinery, parts.
 TRAVELINER COACH SALES, North St. Paul. Traveliner Coach (motor home).
 TROJAN SEED CO., Olivia, Minnesota. Trojan seed corn.
 TROY COMPANY, Bloomington, Minn. "Hastings" aluminum awnings, windows, doors.
 TWENTIETH CENTURY MFG. CO., Minneapolis. Welders, compressors, charger.
 TWIN CITY PRECISION HEARING, INC., St. Paul. Hearing aids.
 TWIN CITY HOMING PIGEON CLUB, South St. Paul. Headquarters for members.
 U. S. COAST GUARD AUX. FLOTILLA, St. Paul. Water safety education.
 U. S. COAST GUARD RECRUITING, Minneapolis. Recruiting booth.
 U. S. NAVY, Minneapolis. Recruiting and U. S. Naval Air Station.
 UNITED HAGIE HYBRIDS, INC., Des Moines, Iowa. Seed corn, twine, sorghum.
 U. S. ROOFING & SIDING CO., St. Paul. Siding and building materials.
 UNIVERSAL MILKING MACHINE DIVISION, Albert Lea, Minn. Milking systems and dairy equipment.
 UNIVERSAL SALES, INC., Minneapolis. Reynolds aluminum windows and doors.
 JOHN W. UNTEN, Minneapolis. Hydraulic loader, mowers.
 VAN DALE, INC., Wayzata, Minn. Silo unloader, bunk feeder, barn cleaner.
 VAN DUSEN & CO., INC., Wayzata, Minn. Silo-matic unloader, Scru-feeder, bunk feeder.
 PAUL VENZE ASSOCIATES, INC., Baltimore, Md. Cape Coral, Florida, real estate.
 VETERANS OF FOREIGN WARS, MINNESOTA, St. Paul. Rest cottage.
 VIKING ALUMINUM PRODUCTS, St. Paul. Home improvements.
 VINTON HYBRID CORN CO., Vinton, Iowa. Seed.
 VOGT HEALTH APPLIANCE CO., St. Paul. Prolator Massager.
 VULCAN BASEMENT WATERPROOFING CO., Minneapolis. Basement waterproofing.
 WCCO RADIO, Minneapolis. WCCO radio personalities.
 WCCO-TV, Minneapolis. TV programs and personalities.
 WALL, CARL T., Hutchinson, Minn. Farrowing house or garage.
 WALL MFG. CO., Mountain Lake, Minn. Automatic water equipment.
 WEBB PUBLISHING CO., St. Paul. "The Farmer" publication.
 WETMORE PULVERIZER AND MACHINERY CO., Tonkawa, Okla. Farm feed grinders.
 WILLYS-JEEP EXHIBIT, St. Paul. Willys Jeeps.
 WINPOWER MFG. CO., Minneapolis. Tractor driven standby generator.
 WOMEN'S BENEFIT ASSOCIATION, St. Paul. Headquarters for members.
 WOMEN'S CHRISTIAN TEMPERANCE UNION, Minneapolis. Headquarters, literature.
 WOMEN'S RELIEF CORPS., St. Paul. Headquarters.
 KENNETH M. WRIGHT STUDIOS, INC., St. Paul. Educational photography.
 YORK MFG. CO., Henderson, Nebr. York grain bin.

CONCESSIONS

ABRAMSON AND WOLFSON, St. Paul. Candy and ice cream cones.
 ACE NOVELTY CO., INC., Seattle, Wash. Toy "Bubbling Saxophone."

AIRWAY OF ST. PAUL, St. Paul. Airway Sanitizer.
 ALFA INTERNATIONAL CORP., New York. Kitchen gadgets and cutlery.
 AMARANTH, ORDER OF, St. Paul. Lunch and refreshment.
 THE AMERICAN INDIAN VILLAGE, Staten Island, N. Y. Indian Village.
 AMWAY PRODUCTS, White Bear Lake. Amway Products.
 ANDERSON'S OF MINNESOTA, Minneapolis. Your name in headlines, old-fashioned candy.
 W. R. ANDERSON, St. Paul. Tent rentals, milk and bread.
 ANDRIESEN, TINA, Minneapolis. Portrait Artist.
 ANTHONY, MRS. RUTH, Miami, Florida. Pail and salt and pepper sets.
 ARCHWAY HOME STYLE COOKIES, Boone, Iowa. Bake and sell cookies.
 ARTEX SALES CO., Lima, Ohio. Embroider with paint. Artex stamped goods.
 ATTERBURY-HORNBECK, Springfield, Mo. Helicopter rides.
 B & L COMPANY, Grand Rapids, Mich. English foil pictures.
 BACHMAN FLORIST, Minneapolis. Flower specialties.
 L & T BACON, Columbus, Ohio. Pastry and cookie cutters.
 MYER M. BADINER, Minneapolis. Kosher sandwiches, ice milk, cold drinks, novelty toys.
 DANIEL BARBERIO, Minneapolis. Hickory smoked sausage, handwriting analyzer.
 MURIEL BAUGHN, Minneapolis. Art materials, hobby goods.
 BEE LINE PRODUCTS, White Bear Lake. Rocks and minerals, portable geological equipment.
 BERMAN BUCKSKIN CO., Minneapolis. Buckskin jackets, gloves.
 MRS. HELENE BLACKMORE, St. Paul. English lavender sachet.
 T. J. Bowyer, Duluth. Jewelry.
 WILLIAM S. BREDE, Minneapolis. Giant carousel, Beer garden, Pronto pups.
 FRED BREWITZ, St. Paul. Sun helmets, styrofoam.
 LOUIS BRIXON, Minneapolis. Hi-Striker and short range gallery.
 BRONSON SHOE COMPANY, Minneapolis. Shoes and boots.
 BROWN PHOTO CO., Minneapolis. Films and photo finishing.
 ARTHUR C. BURKE, Springfield, Mo. Black walnut salt water taffy.
 CADDY, c/o DAVID EVANS, Minneapolis. Milk carton caddy.
 CAKE DECORATING INSTITUTE, St. Paul. Cake decorating school and supplies.
 CALHOUN STAMPS, Minneapolis. Stamps, coins and collectors' accessories.
 MRS. G. V. CANNON, St. Paul. Lunch and refreshment, Mexican novelties.
 CEDAR SANITARY ICE CO., Minneapolis. Wholesale and retail ice service.
 CENTRAL ART SALES, Ferris, Calif. Sewing machine attachment.
 CENTURY CAMERA SHOPS, Minneapolis. Photographic supplies, auto equipment, miscellaneous trick and toy.
 CENTURY THEATRE, Minneapolis. Advertising and programs.
 RUSSELL Z. CHARLES, St. Cloud. Sea shell, coral, etc.
 PEARL CHELMO, Minneapolis. Cake decorating books, supplies.
 CHEM-TRON LABORATORIES, North Hollywood, Calif. "Chem-Mist" Concentrate safety cleaner.
 CHICK-N-Q, St. Paul. Barbeque chicken sandwiches, beverages.
 THE CHILDREN'S SHOP, St. Paul. Toys, children's wear.
 MARTIN J. CHRISTENSEN, St. Paul. Lunch, refreshment, drinks, soft drinks, hot dogs, juice.
 CHRISTENSEN POTATO CO., St. Paul. Wholesale vegetables, fruit-warehouse.
 FRED C. O'NEIL & CHRISTENSEN, St. Paul. Lunch, refreshment.
 CHRISTIAN RESEARCH, Minneapolis. Anti-subversion literature.
 CITY OF HOPE, St. Paul. Jewelry, gift items.
 COCA-COLA BOTTLING CO. OF MINNEAPOLIS, St. Paul. Advertising on totalizer scoreboard.
 CONSTITUTION PARTY OF MINNESOTA, St. Paul. Political display sale of books and pamphlets.
 MRS. JOHN COOLIDGE, St. Croix, Minn. Linen towels and corsages.
 WM. M. CROUSE SALES, Granite City, Illinois. "Tru-Fold" rug braider demonstration.
 CURRAN & HALLIGAN, Hopkins. Pie crimper, cookie cutter, iron board covers, etc.

CHURCHES AND RELIGIOUS GROUPS

BETHEL LUTHERAN CHURCH, St. Paul. Lunch and refreshments.
 BIBLE HOUSE OF MINNESOTA, Minneapolis. Miscellaneous Catholic items.
 CENTRAL PRESBYTERIAN CHURCH, St. Paul. Lunch and refreshment.
 CHRIST LUTHERAN CHURCH, St. Paul. Lunch and refreshments.
 CHURCH OF ST. JOHN VIANNEY, South St. Paul. Donuts, coffee, milk, soft drinks.
 CHURCH OF ST. JOSEPH, West St. Paul. Dining hall.
 CLEVELAND AVENUE METHODIST CHURCH, St. Paul. Lunch and refreshment, dining hall.
 COMO PARK LUTHERAN CHURCH, St. Paul. Lunch and refreshment.
 JOHN A. DICKSON PUBLISHING, North St. Paul. Bible and religious study course.
 EMMAUS LUTHERAN CHURCH, St. Paul. Lunch and refreshment.
 FALCON HEIGHTS CONGREGATIONAL, St. Paul. Dinners, lunches, drinks.
 THE FAMILY ALTAR BOOK STORE, St. Paul. Religious items.
 GLORIA DEI LUTHERAN CHURCH, St. Paul. Lunch and refreshment.
 HAMLINE METHODIST CHURCH, St. Paul. Dining hall, lunch and refreshment.
 IMMANUEL LUTHERAN CHURCH, Minneapolis. Lunch and refreshment.
 JEHOVAH LUTHERAN CHURCH, St. Paul. Lunch and refreshment, dining hall.
 K.I. GIRL'S CLUB, ST. PETRI, Minneapolis. Lunch and refreshment.
 LUTHERAN COLPORTAGE SERVICE, Minneapolis. Bibles, books, Christian supplies.
 MATERNITY OF MARY CATHOLIC CHURCH, St. Paul. Sale of aprons.
 NORTHWESTERN PRODUCTS, INC., Minneapolis. Religious plaques, cards, Religious supplies.

PATTON & GROFF, Minneapolis. Catholic and Protestant Bibles.
 ST. ANTHONY PARK METHODIST, St. Paul. Lunch and refreshment.
 ST. BERNARD'S CHURCH, St. Paul. Dining hall.
 ST. JOHNS CHURCH OF LITTLE CANADA, St. Paul. Dining hall.
 ST. OLAF LUTHERAN CHURCH, Minneapolis. Dining hall.
 SALEM EV. LUTHERAN CHURCH, Minneapolis. Meals and lunches.
 TRINITY LUTHERAN CHURCH, St. Paul. Lunch and refreshment.
 ZION LUTHERAN CHURCH, St. Paul. Lunch and refreshment, dining hall.
 DAVID & GARY DACHIS, St. Louis Park. Lunch and refreshment.
 DABSON'S FARMERS & MFGS. STEEL CO., Minneapolis. Suppl's steel products & misc.
 DARYL PAIR EXHIBIT FUND, St. Paul. Dairy bar, cheese, sandwiches.
 DALLMAN, JULIUS, St. Paul. Antique trains and toys.
 WILLIAM F. DANIELSON, St. Paul. Pizza pie, French fried onions.
 J. P. DART, Chicago. Drawing instruments, eyeglass cleaner, gifts metal renovator.
 JAMES A. DAVIS, Minneapolis. Ice cream, candy, apples, snow cones, lunch and refreshment, rainbow cones, sweet cider, ice cream, headquarters, peddling privilege, dairy products.
 DECOR GIFT SHOWS, St. Paul. Home party plan.
 DEBEAUX'S WESTERN STORE, South St. Paul. Western merchandise.
 JOHN DEERE CO., Minneapolis. John Deere toys and hats.
 MRS. ROBERT DENNEN, Lapidary, jewelry and stones.
 DESPLEINTER BROTHERS, Chicago. Hats, balloons, store room, jewelry, novelties, pennant and hat sewing.
 D. R. DEZELL, St. Paul. Popcorn trailer, caramel corn, peanuts, root beer.
 ARNOLD DIRICKSON, Wausau, Wis. Profile portrait artist.
 NETTIE E. DOLL, Minneapolis. Punch needle, burlap rugs, fancywork.
 DOWNTOWN Y'S MEN'S CLUB, Minneapolis. Lunch and refreshments.
 JOSEPH DUFFY & ROBERT BLONS, Minneapolis. Twins and Viking souvenirs.
 WALTER E. DUFFY, Minneapolis. Lunch and refreshments.
 DUKE PROMOTIONS, Opa-Locka, Florida. Ball point pens.
 OTIS J. DYPWICK PUBL. CO., Minneapolis. Horse show programs.
 EAST SIDE AGATE AND MFG. CO., St. Paul. Lapidary, tumbler, jewelry.
 EAST SIDE POST No. 858, AMERICAN LEGION, St. Paul. Lunch and refreshments.
 ELEANOR'S ANTIQUE SHOP, Winona, Minn. Antiques, china, glassware.
 MARIE ELSTROM, Minneapolis. Lapidary.
 R. C. ERIKSSON, Hopkins, Minn. Bend Me Dolls.
 PHIL FAGERSTROM, Hinckley, Minn. Carved redwood name plates.
 FAIR ENTERPRISES, Minneapolis. Programs, buttons, etc., four machines.
 JAMES FANELLI, Minneapolis. Reproductions of paintings, toy parachutes.
 RICHARD & LILLIAN FARAGHER, St. Paul. Lunch and refreshments.
 ROBERT FISCHER, St. Paul. Salted-in-shell peanuts.
 FLAVORITE CO., Minneapolis. Cookware, cutlery, etc.
 FLEX-O-SWEEP, New Richmond, Wis. Stills.
 FOLEY MANUFACTURING CO., Minneapolis. Foley kitchen utensils, baby ware.
 FORD MOTOR CO. (TRACTOR & IMPL. DIV.), Hopkins, Minn. Hats & miniature tractors.
 INA M. FORSMAN ESTATE, St. Paul. Lunch and refreshments, 3.2 beer.
 FORTUNE ENTERPRISES, Los Angeles, Calif. Handwriting analysis.
 MRS. PATRICIA M. FOSTER, North Kansas City. Jewelry and gifts, Indian jewelry.
 FRENCH AMERICAN WIG CO., St. Paul. Wigs.
 FRYE, BRUCE, New Brighton, Minn. Self-adhesive clip.
 THE FURNITURE BARN, Minneapolis. Furniture.
 GALLIVAN & RILEY, St. Paul. Bratwurst and kraut, moonburgers, coffee and drinks.
 GATES SALES, Minneapolis. Ironing specialties and supplies.
 GIFFLAND, Minneapolis. Imports from Japan, China, India.
 GIFT-O-RAMA SHOPS, Minneapolis. Gifts and novelties.
 THE GLAD COMPANY, Minneapolis. Houseware specialties.
 MRS. IDA GLENN, St. Paul. Studio knitter, knit goods and accessories.
 GOLD MEDAL BEVERAGE, St. Paul. Diet-Rite and Royal Crown Cola.
 ROBERT M. GOOD, Chicago, Ill. Apples.
 GRATEFUL NEEDLE CRAFT, Minneapolis. Graftex rug needle.
 GRANTEE SALES CO., Minneapolis. Promotional paper novelty hats.
 GREAT BOOKS OF THE WESTERN WORLD, Chicago. Great Books with Synoptic.
 GORDON I. GREENE, White Bear. Long range shooting gallery.
 THE GUNNARD CO., Minneapolis. Gunnard canning set and Christmas tree stand.
 H & H SALES, Sanford, Florida. Rainbo Art Color.
 HADASSAH ST. PAUL CHAPTER, St. Paul. Kosher lunch and refreshment.
 HALPER-MEYER ENTERPRISES, Minneapolis. Coca-Cola and ice cream.
 ROY O. HAMER, Minneapolis. Hires root beer barrel, Hi-striker, popcorn and caramel corn.
 DANNY & CONNIE HANAN, Phoenix, Arizona. Lemonade shake-up.
 MRS. DANNY HANAN, Phoenix, Arizona. Lunch and refreshment.
 JAMES HANNASCH, Minneapolis. Sno cones.
 HANZLEY & LATRUS, Minneapolis. Lunch and refreshments.
 EDDIE HARROW, Corpus Christi, Texas. Midget car ride.
 E. J. HEGGERMAN, Minneapolis. Cleaning concentrator.
 HEL-MAC DISTRIBUTING CO., Detroit, Mich. Portable therapy equipment.
 R. C. HENNINGER, St. Paul. Lunch and refreshment.
 DONALD C. HENRIKSEN, Minneapolis. Tastee Freez truck.

HICKORY FARMS OF OHIO, Toledo. Hickory beef stick and Ohio cheese.
 ELMER HACKETT, Minneapolis. Mister Softee cones and malts.
 LYNN M. HOLMBERG, Minneapolis. Lunch, refreshment.
 HAROLD HOLMES, Hackensack, Minn. Leather goods.
 HOLOUBEK STUDIOS, Lincoln, Nebraska. Painting on sweatshirts.
 HOME, HEALTH, EDUCATION SERVICE, Hopkins, Minn. Bible stories and medical books.
 HONG KONG TRADER, Phoenix, Arizona. Plastic flowers.
 HOOD'S COLORAMA, St. Paul. Tri-Chem (liquid embroidery).
 THE HOPE CHEST, Minneapolis. China, flatware, etc.
 DONALD HUSNIK, West St. Paul. Cold drinks, hot dogs, suckers.

INDIA IMPORTS, Minneapolis. India imports of brass, wood, horn and ivory.
 INTER. GRAPHO ANALYSIS SOCIETY, St. Paul. Handwriting analysis books.
 INTERNATIONAL HARVESTER CO., St. Paul. Toys.
 MRS. JENNIE IRRTHUM, Minneapolis. Soft drinks, popcorn.
 MRS. RICHARD JAHNKE, Minneapolis. Hand-made articles, aprons, gifts.
 MR. AND MRS. TED JAMBECK, Marine-on-the-St. Croix, Minn. Perfume, Cologne.

JAYWINDEE AMUSEMENT CORP., Minneapolis. Kids u-drive-em rides in quarter midget cars.

RAY L. JORDAN & SONS, INC., Minneapolis. Lawn furniture and ornaments.
 JORGESON, A. M. CO., Minneapolis. Berger Humid Gas Saver.
 JOYCE MFG. CO., St. Paul. Johnson iron cord holders, plastic milk carton holders.
 JUNG AND HAUER, West St. Paul. Lunch and refreshment.
 JUNKIN & DICKINSON, Glen Lake, Minn. Food and refreshment.
 CHESTER D. JUNKIN, Minnetonka, Minn. 3.2 Minnesota beer, lunch and refreshment.

KARM & ASSOCIATES, Minneapolis. NuSew Fabric Mender.
 KEYSTONE READERS SERVICE, Minneapolis. Magazine subscriptions.
 RAYMOND KIEVES, Winnipeg, Manitoba. Remington Rand Horoscope Machine.
 JAS. B. & JOSEPHINE KINGEN, Minneapolis. Lunch and refreshment.
 E. F. KOHMANN, Seattle, Wash. Quick sketch.
 KORN KABIN SPECIALTY, Minneapolis. Popcorn and root beer, Root beer barrel, soft drinks, lunch and refreshment.
 GORDON H. KRAMER, St. Paul. Popcorn and caramel corn.
 EMMETT KRUG, Normal, Illinois. Demonstration toys, flying satellite toys.
 JOHN KUEFLER, St. Paul. Model railroad display.
 JAMES KUGLER, LeFeria, Texas. Hand painted mirrors.
 JAS. M. & MRS. C. W. KUHN, Minneapolis. Gold wire jewelry engraving.
 MRS. LEE S. KYLE, St. Paul. Lunch and refreshment.

LaVERNE M. LARSEN, Minneapolis. Kome-Klean Brush and Fuse twist out.
 LEE'S CANDIES, Minneapolis. Candies.
 RALPH LEFEBVRE, Minneapolis. Ti Logs, eyeglass cleaner.
 VERNON G. LEITTE, Excelsior, Minn. Cork shooting gun gallery.
 LEMON, BOB, Minneapolis. Mist Master Lens Cleaner.
 LIFETIME COOKWARE CORP., Minneapolis. Stainless steel cookware.
 LIONS CLUB OF TWIN CITIES, Minneapolis. Public relations and gum vending machines.
 LITTERID COMPANY, Duluth. Litterbags accessories.
 MRS. KATIE R. LITTLE, Dallas, Texas. Game, guess your weight, dining hall, jewelry, spindle, lunch and refreshment, storage and warehouse, candy floss.
 LODEN CORPORATION OF AMERICA, New York. Sportswear imported from Europe.
 LOEFFLER'S SAFETY SHOE SERVICE, St. Paul. Safety Shoes-O-Trailer.
 MRS. J. LUSK, Dallas, Texas. Lunch and refreshment.
 LYON, HAL, Chicago. Gyroscope toys.
 H. A. McLINDEN, Palm Springs, Calif. Candy butcher shop.

LEO MAGEL AND SONS, Minneapolis. Toys and miscellaneous.
 MARVEL FOODS, INC., Minneapolis. Marvel Chow Mein.
 MASTER TOUCH, INC., Grantsburg, Wis. Plastic articles.
 MRS. MARY S. MAXWELL, Webb City, Mo. Crystal clear eye glass cleaner.
 MERRIAM PARK CHAPTER No. 199, OES, St. Paul. Cook books, kitchen novelties.
 MEMORY METCALFE, Minneapolis. Fine sachet.
 MICKMAN AND SONS, INC., Minneapolis. Rides on Mexican burros.
 MIDDLE STATES DISTRIBUTING CO., Minneapolis. Toys, hats, dolls, stuffed animals, games.
 MIDLAND POPCORN CO., Minneapolis. Wholesale popcorn supplies and equipment.
 MIDWEST AUDIO VISUAL CO., Minneapolis. Service and supplies.
 MIDWAY MEN'S CLUB, St. Paul. Lunch and refreshment including 3.2 beer.
 MIDWAY SIGN CO., St. Paul. Sign and card painting.
 MIDWEST CONCESSION CO., Minneapolis. Long range shooting gallery, Pitch til you win.
 MIDWEST ENTERPRISES, Minneapolis. Mo skeet range, dining hall and miscellaneous.
 MIDWEST SPACEBALL CO., Edina, Minn. Spaceball "Amusement" no prizes.
 MATT AND ALICE MILNER, Minneapolis. Novelties.
 MINNESOTA APPLES, INC., Stillwater, Minn. Sale of Minnesota apples.
 MINNESOTA ASSOCIATION FOR BRAIN INJURED, Minneapolis. Fabric cement, hand-made articles.
 MINNESOTA BEEKEEPER'S ASSN., St. Paul. Honey for sale.
 MINNESOTA DAIRY INDUSTRY COMMITTEE, St. Paul. Milk bar.
 MINNESOTA KNIT KING SALES CO., St. Paul. Home knitting machines.
 MINNESOTA ORGANIZATION OF THE BLIND, St. Paul. Articles by the blind.

MINNESOTA TURKEY GROWERS ASSN., St. Paul. Lunch and refreshment.
 MINNETONKA MOCCASIN CO., Minneapolis. Indian moccasins, etc.
 MISSISSIPPI RESTAURANT, Minneapolis. German lunch and refreshment.
 MISTLETOE CHAPTER No. 96, O.E.S., St. Paul. Aprons, stationery, etc.
 LOUIS MITCHELL, Minneapolis. Glass engravings on goblets and dishes.
 MOLD A RAMA, Hopkins, Minn. 25c souvenir machine.
 MYRTLE MOLINE, St. Paul. Menda Plastic Ware.
 MRS. ELLA MORRISON, Minneapolis. Lunch and refreshment.
 JOHN S. MORTON, St. Paul. Kitchen gadgets, cooking gadgets, whipper for eggs, cream, kitchen gadgets and misc.
 ALFRED J. MUNN, White Bear Lake, Minn. Tobacco, cigarettes, gum.
 MURIEL'S FOOD PRODUCTS, Lambertson, Minn. Salad dressing—three kinds.
 G. C. MURPHY CO., St. Paul. Lunch and refreshments.

NADISCO OF MINNESOTA, St. Paul. Aerosol tire inflater.
 CHESTER NAIRNE CO., Livonia, Michigan. Kleen-Rite mops, Blender Queen juicer.
 FRANK NARDUCCI, St. Paul. Mechanical toys.
 NATURAL FOODS, Olmstead Falls, Ohio. Electric juice faster, Vita Mix juicer.
 MRS. SADIE NAUSS, Minneapolis. Cake decorator and knives, Ti logs.
 HOWARD NETHMER, Minneapolis. Needle threader.
 ROBERT NELLER, Appleton, Wis. Crazytune whistles.
 MAY L. NERNEY, Pontiac, Michigan. Eye glass cleaner.
 EUNICE NESHEIM, Robbinsdale, Minn. Viking sewing machine, handmade gifts, imports, small imports, Italian.
 JOHN NILES, St. Paul. Jarts—game.
 HOWARD NORMAND, Minneapolis. Gum, candy machines.
 NORTHERN MINNESOTA NOVELTIES, St. Paul. Postcards, slides.
 NORTHERN OUTDOOR NEWS, Minneapolis. Northern Outdoor News.
 N. W. KLEEN-RITE CO., St. Paul. Sponge mop and waxer.
 NORTHWEST ORGAN CO., Minneapolis. Electronic organs, music, and accessories.
 NOVELTY SALES, Cedar, Minn. Cake decorating devices.
 NOVELTY SPORTSWEAR IMPORTS, New York. Imported travel and sports wear.
 NOVELTY VENDING SERVICE, Minneapolis. Novelty vending machines.

OLD MILL CO., Oklahoma City. Ye Olde Mill—canal boat ride.
 FRED C. O'NEIL, St. Paul. Stick Dog, Bear Pitch, Games, Warehouse.
 GEORGE J. O'NEIL, Minneapolis. T shirts, aprons, scarfs.
 ORIENTAL GIFT SHOP, St. Paul. Oriental imported goods.

JAMES A. PERRAULT, St. Paul Park. Soft drinks, popcorn, ice cream.
 BEN PETERS AND ASSOC., Minneapolis. Rubber plumbing supplies and plastic materials.
 PETERS MEAT PRODUCTS, INC., St. Paul. Wieners, Pepsi Cola, Coffee.
 RUSSELL PHIPPS, Chinook, Montana. Miniature three-ring circus.
 HAROLD PICKETT, Joplin, Mo. Root beer barrel.
 PLANNED PARENTHOOD—MINNEAPOLIS-ST. PAUL, Minneapolis. Educational materials.
 POJAR'S PANTRY, St. Paul. Lunch and refreshment.
 PAUL PRATT, Fort Madison, Iowa. Trackless train bus service.

R AND S SALES, Minneapolis. Toys, appliances and miscellaneous.
 RAINBOW JEWELS CORP., Baltimore, Md. Diffraction jewelry.
 RED WING POTTERIES, INC., St. Paul. Pottery.
 REIBOLD DISTR. CO., Minneapolis. Wholesale beer.
 REO MUSIC CO., Minneapolis. Sell records.
 ROBINSDALE CHAPTER No. 238, O.E.S., Robbinsdale, Minn. Lunch and refreshment.
 JACK L. ROBINSON, Minneapolis. Lunch and refreshment, cafeteria, pancake house, waffle shop-lunch, pizza palace.
 ROBINSON ENTERPRISES, Chicago, Illinois. Game of skill, lunch and refreshments, storage space and headquarters, basketball, dining hall-lunch.
 ROGOZA, NICHOLAS, Ellendale, Minn. Remington Rand handwriting analysis machine.
 FRED ROHLANDER, Tampa, Florida. Jewelry and engraving, jewelry and flowers.
 ROLLA CHAUTER No. 254, O.E.S., Minneapolis. Dinners and luncheon, soft drinks, etc.
 CLARENCE ROSENTHAL, St. Paul. Candy, caramels, cold drinks, slush.
 RUSCO ENTERPRISES, INC., Fort Worth, Texas. Dial-O-Matic.

SANDRA-LEE, INC., St. Paul. Phoneclips and card holders.
 SANDRA-LEE, INC. (L. T. DUNHAM), St. Paul. Phoneclips & card holders.
 SOL ROSENZWEIG, Dallas, Texas. Jewelry and leathergoods.
 ROWE MFG. & SALES, INC., Fargo, N. D. Rowe Soni-Guard.
 ROYAL AMERICAN SHOWS, Tampa, Florida. Carnival.
 MRS. OHAS. RUDIGER, St. Paul. Ceramics by Dee.
 SALES ORGANIZING SERVICE CO., White Bear Lake, Minn. Amway Products.
 WALTER SARVIE, Alexandria, Minn. Lunch and soft drinks.
 NICHOLAS SCHNEIDER, JR., St. Paul. Popcorn.
 MRS. ROSLYN SCHOONOVER, St. Paul. Wall plaques, various.
 SCHRODER CONCESSIONS, Faribault, Minn. Caramels, popcorn and peanuts.
 ROBERT E. SCHUPPEL, Minneapolis. Lunch and refreshment, "Barney's Lunch."
 SCHWEDA, ROSALIE, St. Paul. Caramel Corn, popcorn, coke, caramel apples.
 SEIDL DISTRIBUTING COMPANY, Shakopee, Minn. Garment hangers.
 PETER SEVICH, West Middlesex, Pa. Hitler's Armoured Car.
 GEORGE P. SHAW, Minneapolis. Jewelry.
 TED SHIELDS, St. Paul. Sweat shirts with air-brush painted designs and names.

- SHIMADA, ISAMU "SAM," Minneapolis. "Thrift" Home Products (liquid and paste menders).
- A. V. SHOGREN, Minneapolis. Penny Arcade, pizza, Metro Debry Race, game (rabbit).
- HARRY SLOAT, c/o BURT SWANSON, St. Paul. Spin-O-Painting.
- SOCIALIST LABOR PARTY OF MINNESOTA, Minneapolis. Literature and books.
- WM. F. SPIESS & SONS, St. Paul. Lunch and refreshment.
- STARR SHELLCRAFT NOVELTIES, Davenport, Iowa. Sea Shell lamps, novelties, driftwood, etc.
- STEICHEN ASSOCIATED SALES, St. Paul. General merchandise, food market.
- STEINMAN, PAUL, St. Paul. General merchandise.
- STEWART INFRA-RED COMMISSARY, Hopkins, Minn. Lunch and refreshment.
- MRS. CLARA A. STRAND, Stillwater. Dining hall.
- JOHN SUNDSETH, Halsted, Minn. Lunch and refreshment.
- SUPERB-O-FOOD SPECIALTIES, St. Paul. Lunch and refreshments.
- SURMAN HOME PRODUCTS, North Hollywood, Calif. Temple Snuggers.
- SWEDISH AGENCY, Minneapolis. Swedish imports and household items.
- SWEDISH GIFT SHOP, Minneapolis. Scandinavian imports, gifts.
- SYNDICATE SALES CO., Minneapolis. Vegomatic and health pan, Kitchen gadgets, Foot-ease, Glass cutter, Handwriting analysis machine, Fry pan, Dial-O-Matic gadget, Beef sticks and gadget.
- TEASLEY'S, St. Paul. Imported candies.
- TEEN AGE REPUBLICAN LEAGUE, St. Paul. Sale of Goldwater buttons, sweatshirts and New Frontier Game.
- TENTH WARD & RURAL RAMSEY FAIR COMMITTEE, St. Paul. Tom Thumb Donuts, drink.
- C. J. THIES, Minneapolis. Oil filters.
- MARTIN F. THORL, St. Paul. Lunch and refreshment.
- THORNTON'S KIDDIE LAND, Duluth. Kiddie Ride- little autos, steam train ride.
- TINY TIM DONUTS, Minneapolis. Donuts.
- WAYNE TJADE, Minneapolis. Pitching and batting machine.
- TOM THUMB DONUT CORP., Minneapolis. Donuts, fried goods, coffee, soft drinks.
- TOWNSEND & SPRANGER, Fergus Falls, Lunch and refreshment, foot long hot dogs.
- TROPICAL SHELL SHOP, Marine-on-the St. Croix. Shell jewelry, shell pictures and shells.
- TWIN CITIES PEACE COUNCIL, Stillwater, Minnesota. Headquarters and literature.
- TWIN CITY NOVELTY CO., Minneapolis. Coin operated machine gun, Playland amusement arcade.
- TYROLEAN LODEN CO., New York. Sportswear from Austria.
- ARTHUR L. TYSK, St. Paul. Popcorn, soft drinks, choc. milk, candy, gum, cigars.
- UKRAINIAN GIFT SHOP, Minneapolis. Gift items from many lands.
- UNIFORMS UNLIMITED BY WEITZMAN, St. Paul. "English" riding equipment and apparel.
- UNITED AUTOMOTIVE MFG., Miami, Florida. New Jet Ignition unit.
- UNITED CEREBRAL PALSY OF MINNESOTA, St. Paul. Public relations and sale of merchandise made by the handicapped.
- UNITED STATES BENCH CORP., Minneapolis. Courtesy bench advertising, 15 benches.
- UNIVERSAL SALES, INC., Minneapolis. Mylar adjustable belts.
- VI-KING CAMPER SUPPLIES, Hopkins. Blueprints for trailers, trailer parts & supplies.
- LEONARD AND RUTH VINOKOUR, St. Louis Park, Minn. Dairy bar, malts, sundaes, floats, cheese sandwiches, milk.
- VISION AIDS COMPANY, North Miami Beach, Florida. "Temple Huggers."
- CHAS. J. VOLIN, Newport, Minn. Official State Fair Check Room, Cigarettes, cigars.
- WAHKON VENEER MILL, Wahkon, Minnesota. Display of boxes, crates, baskets, etc.
- PAUL S. WARD, Costa Mesa, Calif. Lunch and refreshment, general food stand.
- WEET, L. J., CO., St. Paul. Ornamental lawncraft.
- TILLIE N. WESTMAN, Center City, Minnesota. Meal and refreshments.
- WILD LIFE PLAQUES, St. Paul. Plaques.
- MRS. VERA D. WOODIN, Joplin, Missouri. Roman target.
- MARIE YANDELL, Dallas, Texas. Embroidery attachment.
- EARL ZACHARIAS, Minneapolis. Caramel corn, popcorn, cheese corn.
- WILLIAM K. ZITZER, St. Paul. Relax-A-Lator (foot vibrator).

REPORT OF PUBLIC EXAMINER
on the
FINANCIAL AFFAIRS
of
STATE AGRICULTURAL SOCIETY
Years Ended November 30, 1962 and 1963

COMMENTS AND RECOMMENDATIONS

The State Agricultural Society is a public corporation with the right of perpetual succession. Its membership is composed of the following:

1. Three delegates from each agricultural society or association in the State which maintains an active existence, holds annual fairs, and is entitled to state aid.
2. One delegate from each county in the State in which no county or district agricultural society exists, to be appointed by the county board.
3. Individuals, who by reason of eminent service in agriculture, horticulture, or in the arts and sciences connected therewith, or by long and faithful service to the Society, have been elected as honorary members.
4. Delegates from qualified State societies and associations as listed in M.S.A. Section 37.03(4).
5. Members of the Board of Managers of the State Agricultural Society.

The Board of Managers consists of a president, two vice-presidents, and one member from each of seven regional districts not represented by a vice-president. Board members are elected at the annual meeting from the membership of the Society.

Activities of the Society during the past years have been financed by receipts from annual fairs, and from rental of buildings and grounds.

The 1963 Legislature made several changes in the laws affecting the State Agricultural Society.

Laws 1963, Chapter 141, changed the names of the districts from which members of the Board of Managers are elected from congressional districts to regional districts. The regional districts, for purposes of electing members of the Board of Managers, are identical with the former nine congressional districts and are so numbered. The date of the annual meeting was changed by Chapter 141 to commence not earlier than January 2, and not later than January 31.

Laws 1963, Chapter 388, provides for the withdrawal of Society funds from the State Treasury and the delivery of the same to the Society. This was done during July, 1963.

In this department's prior reports it had been stated that the accounting procedures prescribed by the laws then in effect required much unnecessary paper work, that they were cumbersome to operate, and that some change should be authorized.

The change authorized by Laws 1963, Chapter 388, will simplify the accounting procedures.

Attendance

The following is a record of attendance at the last three annual fairs:

	1961	1962	1963
Admitted through outside gates.....	1,119,595	1,070,204	1,181,845
Admitted to grandstand	163,068	161,730	192,017

The drop in attendance during the 1962 Fair can be attributed to inclement weather. The number admitted through the outside gates during the 1963 Fair is exceeded only by the 1958 Fair. Admissions through the outside gates were increased from 50 cents for the 1961 Fair to 75 cents for the 1962 and 1963 Fairs.

Balance Sheet

A balance sheet on November 30, 1962 and 1963 is shown in Exhibit A.

Cash, temporarily not needed for operations, was invested in United States Treasury bills having a maturity value of \$350,000.00 on April 1, 1964.

The Postwar Planning Account was charged to Surplus during 1963 because it was felt that the plans and specifications for future construction had become outdated and obsolete.

The Society entered into an agreement with the North Central Electrical League, Inc., whereby the League would construct a building on the Fairgrounds, costing the League approximately \$75,000.00, for electrical displays, at no cost to the Society. Title is to be vested in the State of Minnesota for the benefit of the State Agricultural Society. The North Central Electrical League, Inc., in turn will be entitled to occupy the building rent free, collect rent for rented space, pay the operating expenses, and furnish the Society yearly with a report on receipts and disbursements. When the net income from the operation equals the cost of the building or after eighteen years, whichever occurs first, the Society will operate the concessions and the North Central Electrical League, Inc., will no longer be able to occupy the building rent free. The building was constructed in time for occupancy during the 1963 Fair. The building was entered on the books at the architect's appraised value.

Application of Funds

The following shows how the profits from the Society's operations were applied during the years ended November 30, 1962 and 1963. Additions to the plant have been financed from profits in amounts as shown, and the balance has produced an increase in the working capital.

	Year Ended 1962	November 30 1963
Funds Provided by:		
Net income per statement of income and expense.....	\$135,589.98	\$279,704.24
Depreciation charges not requiring funds.....	26,488.92	27,022.11
Correction of prior years' profits.....	1,593.11	10,424.06
Total Funds Provided.....	\$163,672.01	\$317,150.41
Funds Applied to:		
Land improvements	\$ 29,661.90	\$ 30,106.88
Additions to—		
Structures	45,829.32	112,609.44
Electric plant	8,093.06	12,997.97
Fences and guardrails		1,161.15
Sewer system	4,499.83	235.64
Water distribution system		202.94
Purchase of personal property.....	21,885.03	22,113.81
Increase in working capital	53,702.87	137,722.58
Total Funds Applied	\$163,672.01	\$317,150.41

Operations

A statement of income and expense for the years ended November 30, 1962 and 1963 is shown in Exhibit B. The increase in net income for the year ended November 30, 1963 was due mainly to increased attendance.

The operating statements shown in the exhibit are the same as those published by the Society except that some of the accounts and amounts are arranged in a different manner, and the Federal tax on admissions has been eliminated from both income and expense. The tax on admissions is collected for the Federal government and it is therefore neither income nor an expense to the Society so long as the amount paid to the Federal government is the same as the amount collected.

Percentage attractions added during the 1963 Fair were the American Indian Village, Dark Ride, and Teen Danceland, while Dancing Waters was dropped for lack of sufficient attraction. Man in Space was intended only as a one-year attraction in 1962.

The Society was advised by the Federal government that the Helicopter Ride was not subject to Federal excise tax, and that a request for refund of taxes collected and paid to the government would not be honored because the Society would have to make refunds to the patrons from whom the taxes were collected. This would not be possible, because the Society has no record showing from whom these taxes were collected.

Accounts Receivable

Accounts receivable determined to be uncollectible by the Society and totaling \$18,203.15, were charged to surplus during the year ended November 30, 1963.

Since the Society is a department of the State government, accounts should be canceled in the manner prescribed by M.S.A. Sections 10.12 to 10.15.

The sections provide, in effect, that when any account due the State is found to be uncollectible by any department, it shall report such fact to the Executive Council and the Executive Council may cancel such account upon the approval of the Attorney General.

No account for a sum in excess of \$25.00 shall be canceled until more than six years after the due date of the account, and nothing in the sections shall be construed as abandonment of the State's claim.

Security for Deposits

There is apparently no law requiring banks to furnish collateral to secure Society deposits. The banks in which Society funds are presently deposited are covered by Federal deposit insurance to a maximum amount of \$10,000.00, but this is not sufficient to cover all of the Society's deposits.

It is recommended that the Society obtain Legislative authority to designate depositories, and to secure collateral for funds deposited therein.

Accounting Procedures

The suggestion was made by this department that punched card accounting be used in connection with Fair premiums. A pilot operation was installed for the 1963 Fair, which was successful, and it is estimated that there were savings in excess of \$3,000.00 in the clerical payroll. The procedure will be extended this coming year to account for all premiums, except in one or two areas having special problems.

Robert A. Whitaker
Acting Public Examiner

Date field work completed: January 14, 1964
Date audit report signed: February 28, 1964

BALANCE SHEET
November 30, 1962 and 1963

EXHIBIT A

	Assets	November 30	
		1962	1963
Cash and Treasury Bills:			
General Fund—			
Cash on hand	\$	5,147.04	
Cash with State Treasurer		369,746.90	
Cash in bank		38,579.84	\$ 192,199.31
Contingent Fund		1,000.00	1,000.00
Payroll Fund			10,000.00
United States Treasury bills			343,399.00
Total Cash and Treasury Bills	\$	414,473.78	\$ 546,598.31
Postage	\$	459.66	\$ 601.18
Accounts receivable	\$	20,337.25	\$ 10,346.21
Accounts receivable suspense		9,038.34	
Total Accounts Receivable	\$	29,375.59	\$ 10,346.21
Plant:			
Land	\$	563,745.66	\$ 593,852.54
Structures		7,989,555.66	8,200,256.65
Electric plant		231,885.98	233,289.65
Fences and guardrails		28,702.44	29,863.59
Flagpoles		961.89	961.89
Gas distribution system		68,355.78	68,355.78
Sewer system		239,713.01	239,948.65
Sidewalks		63,431.82	63,431.82
Stonework		39,767.39	39,767.39
Streets, curbs, and gutters		247,551.69	247,551.69
Personal property		154,278.12	160,964.12
Water distribution system		71,174.53	71,377.47
Total Plant	\$	9,699,123.97	\$ 9,949,621.24
Postwar Planning	\$	22,207.20	
Total Assets	\$	10,165,640.20	\$10,507,166.94
Liabilities and New Worth			
Accounts payable	\$	37,893.88	\$ 31,611.12
Surplus—Schedule A-1		10,127,746.32	10,475,555.82
Total Liabilities and Net Worth	\$	10,165,640.20	\$10,507,166.94

SCHEDULE A-1

ANALYSIS OF SURPLUS
Years Ended November 30, 1962 and 1963
Year Ended November 30, 1962

Surplus Invested in Plant and Postwar Planning:			
Balance December 1, 1961	\$	9,637,850.95	
Additions—			
Transfer from available surplus		83,480.22	
Balance November 30, 1962			\$ 9,721,331.17
Available Surplus:			
Balance December 1, 1961	\$	352,712.28	
Additions—			
Net income year ended November 30, 1962	\$	135,589.98	
Net adjustment of previous year's operations		1,593.11	
Total additions	\$	137,183.09	
Total additions and beginning balance	\$	489,895.37	
Deductions—			
Transfer to Surplus Invested in Plant and Postwar Planning		83,480.22	
Balance November 30, 1962			406,415.15
Total Surplus—Exhibit A			\$10,127,746.32

Year Ended November 30, 1963

Surplus Invested in Plant:		
Balance December 1, 1962.....	\$ 9,721,331.17	
Additions—		
Building constructed by North Central Elec- trical League, Inc.	\$ 98,091.55	
Transfer from available surplus.....	152,405.72	
Total additions	\$ 250,497.27	
Total beginning balance and additions	\$ 9,971,828.44	
Deductions—		
Postwar Planning Account.....	22,207.20	
Balance November 30, 1963.....		\$ 9,949,621.24
Available Surplus:		
Balance December 1, 1962.....	\$ 406,415.15	
Additions—		
Net income year ended November 30, 1963	\$ 279,704.24	
Adjustment of prior year's operations.....	10,424.06	
Total additions	\$ 290,128.30	
Total beginning balance and additions	\$ 696,543.45	
Deductions—		
Accounts receivable suspense and other un- collectible accounts	\$ 18,203.15	
Transfer to investment in plant.....	152,405.72	
Total deductions	\$ 170,608.87	
Balance November 30, 1963.....		525,934.58
Total Surplus—Exhibit A		\$10,475,555.82

EXHIBIT B

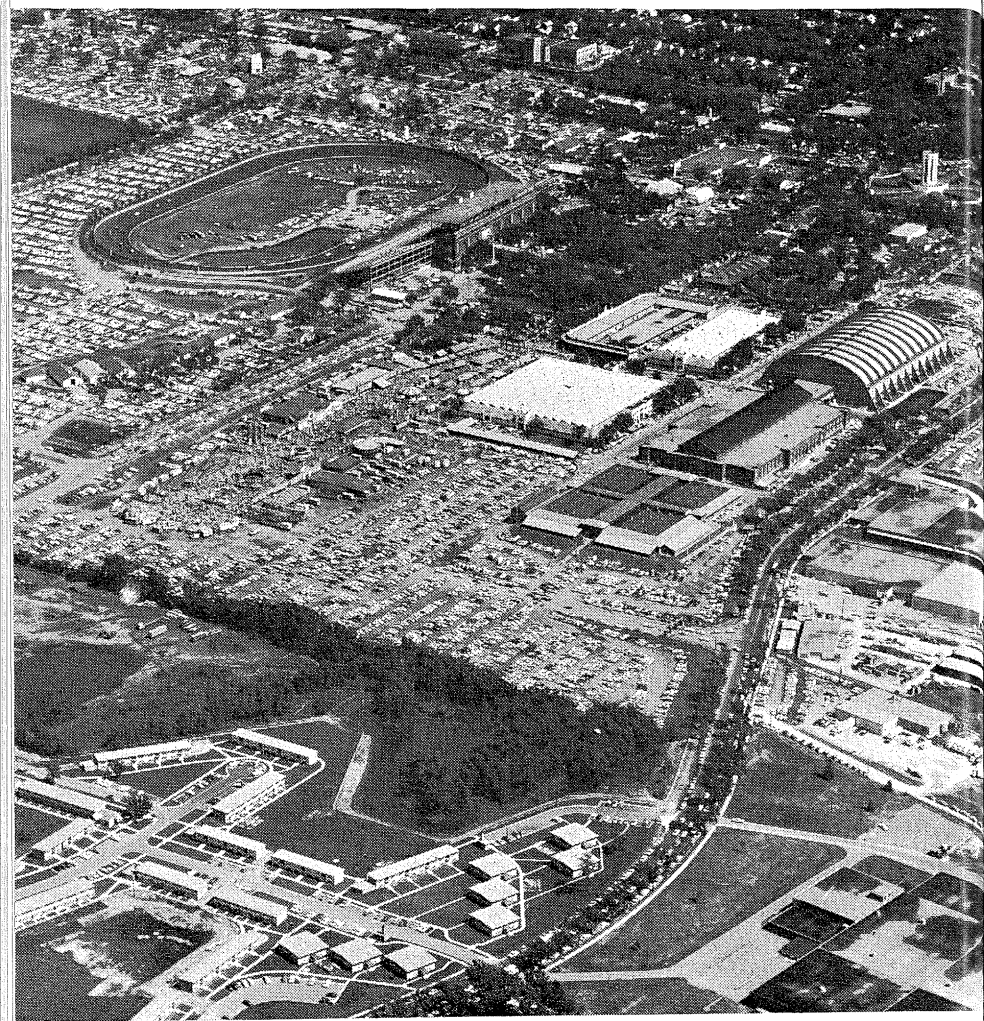
STATEMENT OF INCOME AND EXPENSE
Years Ended November 30, 1962 and 1963

	Year Ended November 30	
	1962	1963
Income:		
Admissions—		
Outside gates	\$ 660,712.50	\$ 726,999.50
Grandstand	281,509.74	324,722.65
Horseshow	42,540.50	42,597.50
Total Admissions—Schedule B-1.....	\$ 984,762.74	\$ 1,094,319.65
Concessions, Attractions, and Exhibits—		
Space and stand rentals.....	\$ 149,412.15	\$ 154,670.26
Percentage concessions—Schedule B-3	10,140.87	10,351.61
Percentage attractions—Schedule B-2	159,834.54	175,094.23
Exhibits	41,960.00	44,715.00
Total Concessions, Attractions, and Exhibits	\$ 361,347.56	\$ 384,831.10
Entry Fees—		
Cattle	\$ 3,138.00	3,523.00
Dairy	482.50	495.00
Horse	28,431.50	30,331.15
Poultry	1,988.25	2,225.50
Sheep and wool	615.00	556.50
Swine	1,939.00	2,204.50
Future Farmers of America	2,733.50	2,429.75
County fair exhibits	1,200.00	1,200.00
Total Entry Fees	\$ 40,527.75	\$ 42,965.40
Rents—		
Buildings and grounds	\$ 5,180.00	\$ 6,150.00
Barns and stalls	27,546.50	28,895.75
Equipment	156.50	298.40
Campgrounds	2,257.02	2,773.50
Total Rents	\$ 35,140.02	\$ 38,117.65

	Year Ended November 30	
	1962	1963
Sales—		
Old material	\$ 263.70	\$ 2,006.90
Plants and flowers	281.00	312.00
Labor services	10,422.11	8,143.34
Premium list advertising	1,814.50	1,834.50
Butter and cheese	2,108.17	2,186.56
Market swine and sheep	11,304.24	8,198.57
Manure	163.00	240.00
Forage	12,523.73	12,824.23
Gas and electricity	63,045.80	71,869.81
Sanitation	417.19	417.47
Milk	2,017.36	2,266.75
Fine arts, catalogs	464.36	507.50
Miscellaneous	177.98	
Total Sales	\$ 105,003.14	\$ 110,807.63
Miscellaneous—		
Special premiums	\$ 4,522.34	\$ 4,560.00
Fines and towing charges	1,130.00	1,655.00
4-H Club reimbursement of expenses		8,184.75
Reimbursement for decorating and new ceiling in 4-H Building		9,837.82
Other		401.52
Total Miscellaneous	\$ 5,652.34	\$ 24,639.09
Total Income	\$ 1,532,433.55	\$ 1,695,680.52
Expense:		
Administrative—		
Officers salaries	\$ 20,900.00	\$ 19,591.67
Officers expense	8,776.80	7,989.20
Clerical salaries	59,595.04	52,305.86
Postage	1,859.46	1,533.38
Telephone and telegraph	9,738.69	9,564.78
Annual meeting	1,363.49	1,550.97
Printing and office supplies	25,172.93	27,968.01
FICA contributions	7,214.06	8,116.07
SERA contributions	8,557.25	8,849.02
Total Administrative	\$ 143,177.72	\$ 137,518.96
Maintenance and Operation—		
Auto, truck, and tractor maintenance	\$ 6,773.49	\$ 6,819.27
Depreciation, electrical plant and personal property	26,488.92	27,022.11
Electrical plant maintenance	9,681.71	8,104.68
Exhibit expense	13,328.40	5,768.63
Fences and guardrail maintenance	3,856.39	1,815.23
Fuel	1,928.50	1,467.84
Gas distribution maintenance	997.22	2,218.47
Labor, general	108,298.49	116,472.78
Land maintenance	9,534.81	8,458.63
Painting structures	10,274.23	11,134.56
Personal property maintenance	8,337.46	10,789.52
Pest control	2,886.66	2,894.77
Repairs to structures	66,955.04	88,276.62
Sewer system maintenance	2,565.19	734.26
Sidewalk maintenance	1,541.84	719.37
Streets, curbs and gutter maintenance	7,133.17	10,246.50
Sundry fair expense	33,098.19	43,952.32
Supplies	11,955.61	11,627.67
Storm damage	9,739.64	116.19
Water distribution maintenance	3,553.24	787.48
Water	6,765.53	6,086.02
Stonework maintenance	583.73	
Total Maintenance and Operation	\$ 346,277.46	\$ 365,512.92
Departmental—		
Admissions	\$ 15,686.01	\$ 16,141.35
Agriculture	4,246.04	4,402.96
Amusement	132,165.39	132,502.59
Bee	1,090.94	1,020.50
Boys and girls club work	9,977.28	9,989.35
Cattle	5,354.06	6,417.58
Conservation	277.50	235.00
Dairy	1,063.61	1,073.71
Education	11,589.05	11,339.18
Farm boys camp	8,139.11	8,715.52
Fine arts	3,866.73	3,215.66
Forage	12,905.58	12,696.87

Year Ended November 30

	1962	1963
Future Farmers of America.....	4,801.08	4,580.28
Gas and electric.....	94,561.16	94,810.16
Gopher club.....	2,569.74	3,221.51
Home activities	7,634.20	7,733.59
Horse	27,070.11	26,897.76
Horticulture	6,432.76	6,889.17
Hospital	1,550.72	1,782.76
Ice	835.15	
Legislative Headquarters	785.65	792.45
Meat exhibit	1,181.85	863.55
Mink show	544.44	474.10
Plants and flowers	30,869.74	31,366.17
Poultry	2,444.60	2,604.39
Public safety.....	37,549.63	37,784.84
Publicity	90,367.28	97,404.33
Race	38,579.91	37,492.17
Sanitation	36,389.01	35,162.64
Sheep and wool	1,256.15	1,294.50
Space rentals	37,243.55	39,119.83
Swine	2,631.38	2,289.29
Ticket audit	1,697.80	1,668.50
Treasurer	19,491.96	19,374.52
Teen Danceland		3,390.45
Total Departmental	\$ 652,849.17	\$ 664,797.23
Premiums	\$ 238,851.04	\$ 248,147.17
Prior years' expense—		
Audit expense for years 1957 through 1959	\$ 6,065.00	
Unemployment compensation—1960	4,654.23	
Unemployment compensation—1961	4,968.95	
Total prior years' expense.....	\$ 15,688.18	
Total Expense	\$ 1,396,843.57	\$ 1,415,976.28
Net Income Year Ended November 30.....	\$ 135,589.98	\$ 279,704.24



1963 Aerial View of Minnesota State Fair Grounds

PROCEEDINGS

of the

105th ANNUAL MEETING

of the

MINNESOTA

STATE AGRICULTURAL SOCIETY

January 6-7-8, 1964

HOTEL ST. PAUL

St. Paul, Minnesota

MONDAY MORNING, JANUARY 6, 1964
MINNESOTA STATE AGRICULTURAL SOCIETY

The First Session of the One Hundred Fifth Annual Meeting of the Minnesota State Agricultural Society was called to order at 10:35 o'clock a.m., Continental Room, Saint Paul Hotel, St. Paul, Minnesota, Albert E. Thompson, President, presiding.

PRESIDENT THOMPSON: Good morning, ladies and gentlemen. I want to welcome you to the 105th Annual Meeting of the State Agricultural Society. At the same time, I think it is not too late to extend to each of you a most Happy New Year and best wishes to each of the county fairs that you represent that you may have one of the best county fairs in your history.

My brief announcements will be very similar to those President Scow has made. Each district will caucus, as he stated, starting with 1, 2, 3, etc., around the room to the nine districts. Each district of the State Agricultural Society will select a member to the Credentials Committee and a member to the Resolutions Committee.

The State Agricultural Society Credentials Committee will meet tomorrow morning, Tuesday Morning, at 11:00 a.m. in Minnesota Suite "B." The Resolutions Committee will meet at the same time, 11:00 a.m. tomorrow morning, in Minnesota Suite "C." This is printed on your program so that any of you so elected or appointed as a member of the Credentials or Resolutions Committee will keep in mind the meeting you will be required to attend tomorrow morning.

If there are no further comments or further business at this time as far as the State Agricultural Society is concerned the Agricultural Society will be adjourned until 2:00 o'clock p.m. tomorrow afternoon.

As soon as your Committee members have been selected by the various districts, turn in the cards here to us. There is one type of card for the Federation of County Fairs and another type for the State Agricultural Society. Please turn those cards in to Hubert Ranson, the Secretary of the Federation, and the Agricultural Society cards to John Libby. The names will be posted on the blackboard at the rear of the room.

Thank you, gentlemen.

. . . The districts met in their respective caucuses . . .

PRESIDENT THOMPSON: I will call on John Libby, our Secretary, to give you the names of the Committee members of the Credentials Committee and the Resolutions Committee of the State Agricultural Society.

. . . John Libby, Secretary, read the following names as presented by the various districts:

CREDENTIALS COMMITTEE

District 1, Clem Noll, Wabasha
 District 2, Everett Oleson, Hutchinson
 District 3, Mary Schuette, Osseo
 District 4, Clarence Siefert, St. Paul
 District 5, I. B. Byers, Minneapolis
 District 6, R. L. Fossen, Wadena
 District 7, Clark Sponaugle, Marshall
 District 8, Mrs. Margaret Larvien, Little Fork
 District 9, H. E. Swenson, Fergus Falls

This Committee will meet in Minnesota Suite "B" tomorrow at 11:00 a.m.

RESOLUTIONS COMMITTEE

District 1, Art Maloney
 District 2, Roy Hunt
 District 3, George Rerat, Edina
 District 4, Tony Schmidt, St. Paul
 District 5, R. R. Andrews, Minneapolis
 District 6, Verner Anderson, Brainerd
 District 7, Pete Touw, Worthington
 District 8, Kenneth Hayes, Duluth
 District 9, Benton Rindahl, Fertile

PRESIDENT THOMPSON: That is the extent of the Agricultural Society Meeting this morning. We will recess until tomorrow at 2:00 o'clock p.m. in the Casino Room.

. . . The State Agricultural Society Meeting recessed at 11:10 o'clock a.m. to reconvene at 2:00 o'clock p.m. Tuesday, January 7, 1964 . . .

TUESDAY AFTERNOON, JANUARY 7, 1964

Minnesota State Agricultural Society

The Second Session of the State Agricultural Society was called to order at 2:05 o'clock p.m. by the President, Albert E. Thompson, in the Casino Room of the Saint Paul Hotel, St. Paul, Minnesota.

PRESIDENT THOMPSON: Ladies and gentlemen: It now is shortly after two o'clock, so the 105th Annual Meeting of the State Agricultural Society will be reconvened.

I want to read a telegram to you first:

To the Members of the Minnesota Federation of
 County Fairs and the State Agricultural Society:

Best wishes for a successful 1964 Convention and a profitable fair year. Greetings to each and everyone. Sorry I can't be with you.

Clyde E. Kelsey.

In accordance with the program, it is the duty of your President to make a few short remarks. This is my final appearance before you as your President. I am sure that I express the sentiments of all previous Presidents in that it brings some mixed emotions. I have had the privilege of serving on the Board of Governors for ten years and as your President for the past two years. Naturally, your thoughts go back to the Presidents you have served with and under, and the Board members you have been associated with.

The first President I served under was Mr. Ralph Thornton of Alexandria, whom I succeeded as a member of the Board from the Seventh District. Ralph Thornton succeeded William O. Johnson of Willmar, who, incidentally, was the first Secretary of the Kandiyohi County Fair which held its sixty-third fair last year, and of which I am the second Secretary.

The second President I served under was Henry Swenson of Chisago City who succeeded our good friend, Bill Moscrip.

The third President I served under was our good friend, Ted Arens, of Aitken, who succeeded George Hanscom of St. Cloud. George Hanscom resigned from the Board due to ill health.

The fourth President I served under was Chet Moore of Hutchinson, who succeeded William A. Lindemann of New Ulm.

The fifth President I served under and with was our good friend, Charley Christianson, of Roseau, who succeeded Bob Lund of Thief River Falls.

The present Board of Governors that I have had the privilege of serving with is: Tom Lammers of Stillwater, who succeeded Henry Swenson and is now the senior member; my good friend, Deke Grussendorf, of Duluth, who became a member of the Board of Governors after the death of J. J. McCann; from the First District we have our good friend, Stan Muckle, of Owatonna, who succeeded Pete Holland of Austin when Pete was promoted to the position of Senator in our State Legislature; from the Sixth District we have our good friend, Birney Wilkins, of Brainerd, who succeeded Ted Arens; in the Second District there is Anton Geiger who succeeded Chet Moore of Hutchinson; from the Ninth District, way up in the cold northwest portion of our State, we have our good friend, Albin Johnson, of Fertile, who succeeded Charley Christianson of Roseau; finally, but not least, is Frank Mitchell of Canby, who succeeded me on the Board of Managers from the Seventh District. All of these are important and influential men.

On the Board of Governors there are two other individuals that alternate as First and Second Vice President from the Fourth and Fifth Districts of our State. These two Vice Presidents are most important in the functions and the administration of the Minnesota State Fair, constantly working closely with the Secretary-General Manager.

Our First Vice President is Robert Andrews of Minneapolis, who succeeded Earl Brown. Earl served on this Board of Governors for a number of years, and I had the privilege of serving with him for a period of two years.

Our Second Vice President is Norris K. Carnes of St. Paul who has worked with and for the Minnesota State Fair for nearly half a century in several positions and capacities. I believe he succeeded Lee Warner. It is so many years back that I fail to recall the exact date.

Now, finally, to each and every one that I have named, and to each of you present here, I want to express my sincere heartfelt thanks and appreciation. Having served with you and for you toward the constant development of the great Minnesota State Fair has been a great privilege and a great honor.

Over the years our meetings have included many hard-headed topics requiring some very hard-headed resolutions, but each and every one is working for the betterment and for the future progress of the great Minnesota State Fair.

To all of you official Delegates of this One Hundred and Fifth Annual Meeting of the State Agricultural Society, I also wish to extend my sincere thanks and appreciation for all that you have done. You represent the various County Fairs in the State, and the various State-wide organizations so vital and so important to the future conduct of the Minnesota State Fair. It is my sincere hope and heartfelt prayer that this interest will continue, be ever prevalent and keep pace with the economy of our great State of Minnesota.

I have expressed my sentiments to you, the Board of Governors, your predecessors and to you, the Delegates, on this seventh day of January, 1964, and I certainly want to include our Secretary-General Manager, John E. Libby.

I had the privilege of serving with and for Douglas K. Baldwin, who passed away a year ago. He had earned and lived the name, "Mr. Minnesota State Fair." However, we were fortunate in having with us, and under the tutelage of our good friend, Doug, for a period of 11 years our present Secretary-General Manager, John Libby. John Libby was born and raised in the City of Minneapolis. Like all young boys he attended elementary

school and South High School, graduating in 1942. He enlisted in the Marine Corps and served through the major campaigns in the South Pacific. He received his degree from Hamline University in Business Administration and Sociology in 1949. John worked with the Hennepin County Welfare Service, and a civilian employee of the Air Force followed. He became Office Manager for the Fair in 1951; Purchasing Agent in 1952; in 1958 he was named Assistant Secretary.

He and his wife, Colleen, were married in 1942. They and their two children—Jack, who is now in his third year at Mankato State College, and Kathleen, who is attending Alexander Ramsey High School—have a home on the Fairgrounds.

For the record, I would also like to mention that John's good father, Jim Libby, has worked for the Minnesota State Fair for the past 45 years and has been the Superintendent of Grounds and Buildings for the past 5 years. Consequently, our good friend, our Secretary-General Manager, John Libby, has been brought up in the atmosphere of the Minnesota State Fair. He has the feel and the intuition of the organization. He has the ability to cope with the tremendous number of details involved in the staging of the Annual Exhibition.

I want to say to John, personally, as I have said to the members of the Board of Governors, a sincere thank you and appreciation for the Association, for your cooperation and the magnificent manner in which you have assumed the obligations and duties of your office. I will always remember it with sincere heartfelt thanks.

Every organization requires a Treasurer. This State Agricultural Society is blessed with one of the most qualified and efficient Treasurers. To Roy Sorenson I want to extend my sincere thanks and appreciation for your cooperation and efficiency in the duties of your office. I know that you succeeded M. O. Grangaard, known to many of us as "Granny." However, to us in the Willmar area, he was known as "Melly." He was born and raised on a farm just a half mile from my home farm. In fact, I took my first piano lessons at the age of twelve from "Granny's" sister. Consequently, our families were very close. To Roy and his good wife, Thelma, I want to say thank you. I want each of you to know that my wife, Edith, and I appreciate much the association with you. As a Treasurer, you have done a great job.

There is one other individual that I would like to name and place in the records of this meeting. That is Harold Johnston, who has worked for the Minnesota State Fair for the past 42 years. For the past seven years he has been Superintendent of the Space Rentals Department. It has been a pleasure to work with Harold as Supervisor of that Department, and, together, I believe we have made a few accomplishments. I have enjoyed working with Harold very much, and for the record, I want him to know it. I express my sincere thanks to him, as well as appreciation for the years that we have been associated.

It has always been my opinion that a fair is judged or held for the purpose of promoting good exhibits, and the premiums paid are indicative of the progress of the fair. After all, the fair is held for the purpose of securing the finest and most valuable exhibits, and, certainly, your Minnesota State Fair has kept pace with the times and is offering the greatest amount of premiums for exhibits in the entire Northwest.

In checking the records, during my short term on the Board of Governors for the past 12 years, I find that in 1952 the total premiums paid were \$131,392.52, whereas in 1963 we paid total premiums in the amount of \$247,652.17. This is certainly an indication of the growth of the number of entries and the number of exhibits, although the various classes have not been increased to any great extent.

For instance, in the Cattle Department in 1952 there were 1,800 cattle exhibited in the open class Junior Division. In 1963 there were 2,473 head, an increase of 40 per cent. In the Swine Department there were 1,063 hogs in 1952, whereas in 1963 there were 2,116. That is over 100 per cent increase.

In the Sheep Department there were 371 in 1962. In 1963 there were 641 head, another increase of 100 per cent. In the Horse Department, under the able supervision of Norris Carnes, in 1952 we had only 778 head, whereas in 1963 we had 1,860. That is 150 per cent increase. What they will do with the horses in the future, I do not know.

This should be an indication to each of you that the Minnesota State Fair is on the road to constant progress. We know that premiums paid are classified in the financial statement as expenditures. However, by the same token we have also increased our revenues, which you will note from the financial statement that each of you have.

As a comparative figure, I would like to take one department, which is especially close to me, the Space Rentals Department. I had the privilege of serving as its supervisor for a period of eight years. In 1952, the first year that I was privileged to serve on this Board, the total revenue from the Space Rentals Department amounted to \$190,024.17. In 1963, twelve years later, the total revenue from all Space Rentals amounted to \$383,871.55, which represents 100 per cent increase in the past twelve years. I predict that in the next ten years the total revenue in the Space Rentals Department will be \$500,000.

In closing, I want to extend to each of you, the present members of the Board of Governors, to each of you representing a State-wide organization, to each of you representing the various county fairs in the State, my sincere best wishes for the future progress of fairs, wherever they may be, because fairs are a combination of agriculture, business, entertainment and "old home week," and presented at moderate prices, they will continue to flourish. Thank you. (Applause)

The next order of business is the Report of the Treasurer, Mr. R. C. Sorenson.

TREASURER'S REPORT

MR. R. C. SORENSON (Report of Treasurer): Members and friends of the Society: Before I read my report, I would like to, on behalf of the Treasurer's Department, thank our retiring President for the wonderful cooperation we have had from him these many years. I mean that.

If you will turn to the last page, you will find my report:

Balance in General Fund, December 1,		
1962	\$413,473.78	
Balance in Contingent Fund, December		
1, 1962	1,000.00	
		\$414,473.78
Total Cash Receipts	\$1,730,073.64	
Total Cash Disbursements ..	1,597,949.11	
Excess of Receipts over Disbursements		\$132,124.53
Cash Balance, November 30, 1963.....		\$546,598.31
General Fund Cash, Northwestern Na-		
tional Bank	\$192,199.31	

Contingent Fund, Midway National Bank, St. Paul	1,000.00
Payroll Fund Account, Northwestern Na- tional Bank	10,000.00
U. S. Treasury Bills, Northwestern Na- tional Bank	343,399.00

\$546,598.31

I may give you a little story on this. That has not shown up in our report in past years due to the fact that the State required that we turn over all funds after the Fair is over to the State Treasurer. They, in turn, invested these funds, and we did not get interest on them. Each month we would have to put in our request for so much money to cover our bills.

The State Legislature in the last year changed that statute to read that all funds are now under the control of the Society. The Board of Governors decided to invest \$343,399.00 in Government Bonds, Treasury Bills, which will net us the fifteenth of April \$350,000, or almost \$7,000 in interest. That makes a total of \$546,598.31.

Mr. President, I move the acceptance of this report.

PRESIDENT THOMPSON: Ladies and gentlemen, you have heard the Treasurer's Report. It has been moved that the Report be accepted.

MR. CHARLES CHRISTIANSON (Roseau): I second the motion.

PRESIDENT THOMPSON: All those in favor say "Aye"; those opposed same sign? Report is accepted.

... The motion was carried. . .

Next is the Report of the Secretary and General Manager, John Libby.

REPORT OF THE SECRETARY

MR. JOHN E. LIBBY (Report of Secretary-General Manager): Mr. President, ladies and gentlemen: Al, thank you for those kind words. If I could live up to them, I would be very happy, indeed.

I would like to say on behalf of the Board of Managers of the Society that your service to the Board for the past twelve years has been an inspiration to all of us, and I, for one, consider it an honor and privilege to have worked with you. I am sure your leadership and ability will be sorely missed by all of us when you graduate to the status of an elder statesman.

The printed report which has been distributed among you covers in detail the operation of the 1963 Minnesota State Fair. I am not going to read the entire report, but I would like to point out a few items contained in it, and I suggest you take it home and study it carefully at your leisure.

Generally speaking, the weather man was very good to us in 1963, although there were several showers during the period of the ten-day operation. It was only on Labor Day that rain fell in deluge proportions. It was felt, generally, that had it not been for this rain on Labor Day, an all time record attendance would have been realized. The first nine days of the '63 Fair, which was through Sunday night, had attracted a record number of admissions for that period and was high-lighted by the second Sunday of better than 183,000 who jammed the Fairgrounds to capacity. It was necessary on this day to close the outside gates for a period of several hours, and although the gates were closed to vehicular traffic, people were parking a long way from the Fairgrounds and walking in on foot. This

day was an all-time record, I might add, for one single day in the history of the Fair. The total attendance of 1,181,845 in 1963 marked the ninth consecutive year that your Minnesota State Fair exceeded the one millionth mark in attendance. It was second only to the year of 1958 when Minnesota celebrated its Centennial of Statehood.

The Minnesota State Fair maintains the distinction of being the largest ten-day exposition on the North American continent.

The net operating gain of \$279,704.87 represents an increase over 1962 but points up the importance of favorable weather conditions. One or two days of additional rain, causing cancellation of a grandstand performance or curtailed outside gate receipts, would reduce this figure materially. Although this operating gain will permit some improvements to the already existing structures, it is inevitable that any major improvements to be made in the way of new buildings will require funds from other sources. To maintain a plant of the magnitude of that operated by this Society, with an operation of ten days' duration which is entirely dependent on the elements of the weather, it is necessary, in keeping with good business practices, to maintain an adequate cash balance to cope with adverse weather conditions or other emergencies which could be encountered.

This report would certainly not be complete without giving due recognition to the press, radio and television people who, through their support and cooperation, played such an important part in the success of this past year's operation.

Your Secretary-General Manager also humbly acknowledges that the record of accomplishment realized in 1963 was achieved only through the sincere cooperation of all members of the Governing Board, the loyal and devoted members of the permanent staff, and the very fine efforts of the department heads. It is through the combined efforts of these people that your Minnesota State Fair continues to be pre-eminent among the great industrial fairs of the world.

In December, 1962, D. K. Baldwin was fatally stricken with illness. Before his very untimely death, Doug had spent more than 40 years of his life, the last twelve as Secretary-General Manager, building an organization that has made your Fair great. That organization is still intact, built and operated under sound business principles of fair management, which were instituted by him, labor with devotion and loyalty to the traditions established by him. I, for one, am proud and honored to be a part of that organization. Thank you. (Applause)

PRESIDENT THOMPSON: Thank you, John Libby, for a fine report.

The next order of business is the Report of the Credentials Committee. Is the Chairman of that Committee present?

CREDENTIALS COMMITTEE REPORT

MR. I. B. BYERS (Report of Credentials Committee): Delegates: The following members of the Credentials Committee met: Clem Noll, District Number One; Everett Oleson, Second District; I. B. Byers, Chairman, from the Fifth District; R. L. Fossen, Sixth District; Clark Sponaugle, Seventh District; Mrs. Margaret Laurin, Eighth District; H. E. Swenson, Ninth District. The members from the Third and Fourth Districts were not present.

The following was the action of the Committee:

The following Societies and Associations were not certified by the State Auditor:

Hubbard County Agricultural Society
Scott County Agricultural Society (Shakopee)

The Minnesota Shorthorn Association was not approved because alterations were not properly initialed by President and Secretary.

The Minnesota Milking Shorthorn Breeders' Association was not approved because they were not listed on the approved list of the State-wide Associations.

The following State-wide organizations submitted credential blanks but were not certified by the Secretary of State:

Minnesota Farmers' Union

Minnesota Beekeepers' Association

All other County Agricultural Society and State-wide Association credential blanks submitted to the State Agricultural Society have been approved.

I move the adoption of this report.

MR. NORRIS K. CARNES (St. Paul): I second the motion.

PRESIDENT THOMPSON: All those in favor say "Aye"; those opposed the same sign. The Credential Committee's Report is accepted.

... The motion was carried. ...

I will call on our Secretary and General Manager, John Libby, who has a few comments to make.

MR. JOHN LIBBY (Secretary-General Manager): The caucuses which will follow this meeting this afternoon will be as follows: The Third District caucus will be held in this room following this meeting. The Seventh District caucus will be held in the Queen's Room on the main floor down the long hallway. The Ninth District will meet in Room 234. I think those will be all the caucuses we will hold this afternoon.

PRESIDENT THOMPSON: All of you Districts that are required to caucus this afternoon all know where you will meet, I am sure. I do not believe there is anything further to come before this meeting. We will meet again tomorrow morning at ten-thirty when we will finish the business of the State Agricultural Society for this year. Unless there is further business to come before this meeting, we now stand adjourned. Thank you, ladies and gentlemen.

... The second session of the State Agricultural Society recessed at 3:25 o'clock p.m., to reconvene Wednesday Morning, January 8, 1964, at 10:30 o'clock a.m. ...

WEDNESDAY MORNING, JANUARY 8, 1964 Minnesota State Agricultural Society

The Third Session of the Minnesota State Agricultural Society was called to order at 10:35 o'clock a.m. by the President, Albert E. Thompson, in the Casino Room of the Saint Paul Hotel, St. Paul, Minnesota.

PRESIDENT THOMPSON: Good morning, ladies and gentlemen. Everyone appears to be well rested.

We have some important business to take care of this morning. First is the report of the Resolutions Committee. I will call on George Rerat for that.

STATE OF MINNESOTA

RESOLUTIONS COMMITTEE REPORT

CHAIRMAN GEORGE RERAT (Report of Resolutions Committee): Thank you, Mr. President. Officers and Members: The Resolutions Committee recommends the adoption of the following Resolutions. I will read them right straight through first.

RESOLUTION No. 1. Resolved that we express our special thanks to the St. Paul Area Chamber of Commerce and to the Hotel Saint Paul for its valuable services and cooperation rendered to our 1964 Annual Meeting.

RESOLUTION No. 2. Resolved that we acknowledge the support received from the Chamber of Commerce of Minnesota each year in promoting the welfare and success of the State Fair and county fairs.

RESOLUTION No. 3. Resolved that we express to the Minnesota Editorial Association, the daily and weekly press, the radio and television stations of Minnesota, our sincere appreciation of their efforts in publicizing the worth and scope of our various State and county fairs.

RESOLUTION No. 4. Resolved that we endorse and continue to support the school in Fair Management so successfully conducted by the Agricultural Short Course Department of the University of Minnesota. Further, to support the action of the Federation of County Fairs to designate sites for holding regional meetings in the State.

RESOLUTION No. 5. Resolved that we extend our thanks and appreciation to all individuals and institutions who cooperated to make the 1963 Fair, which for the ninth consecutive year reached 1,000,000 attendance, to the Board of Managers who, with John E. Libby, Secretary-General Manager and the office staff, planned the strategy, to the Publicity Department for a well directed campaign, to the department superintendents and their assistants, to the Minnesota County Fairs and the thousands of exhibitors, 4-H Club members, F.F.A. members, to the various State departments for their interesting story of the State's resources and activities, to the farm equipment manufacturers and dealers for their most elaborate show, and to the multitude of commercial firms who displayed their products so effectively, all these combined with the splendid amusement features offered, made this one of the State's great Fairs.

RESOLUTION No. 6. Resolved that the Planning Committee continue to give top priority to the construction of a new Educational Building.

RESOLUTION No. 7. Be it resolved that if annual banquets of the Showmen's League and Minnesota Federation of County Fairs and the State Agricultural Society continues to be a joint activity, that adequate facilities be provided to seat those wishing to attend.

RESOLUTION No. 8. Resolved that in the death of Life Members, Earl Brown, March 12, and T. A. Erickson, January 30, 1963, the Society suffered a severe loss. Their contributions meant much to the development of our Society.

Be it further resolved that our sympathy be extended to the members of their families and that this Resolution be spread upon the Minutes of the Society.

Respectfully submitted, Resolutions Committee, First District, Art Maloney; Second District, Roy Hunt; Third District, George Rerat; Fourth District, Tony Schmidt; Fifth District, R. R. Andrews; Sixth District, Verner

Anderson; Seventh District, Pete Touw; Eighth District, Kenneth Hayes; Ninth District, Benton Rindahl. Thank you.

PRESIDENT THOMPSON: You have heard the Report of the Resolutions Committee. Do I hear a second to that Report?

MR. I. B. BYERS (Minneapolis): I second it.

PRESIDENT THOMPSON: All those in favor say "Aye"; those opposed the same sign. The Report is adopted.

. . . The motion was carried. . .

In accordance with your program, the next bit of business—a very important part of the business—is the election of a President for a term of one year.

ELECTION OF OFFICERS

MR. NORRIS K. CARNES (St. Paul): Mr. Chairman, Ladies and Gentlemen of the Fair Fraternity: It affords me a great deal of pleasure, and I consider it a rare privilege to offer in nomination for the office of President of the Minnesota State Agricultural Society the name of a man who has been a member of the Board of Managers of this illustrious institution since 1954. Prior to becoming a member of the Minnesota State Fair Board, he served with distinction as a member of the Board of Directors of the Minnesota Federation of County Fairs from the Third Regional District. He has been a member of the Board of Directors of the Washington County Agricultural Society since 1933 and has served as its efficient and effective Secretary for the past 25 years. In that position he has been largely responsible for the organization, the development and operation of one of the most successful horse shows staged annually in this Northwest area of the United States.

Although he is a comparatively young man, perhaps the youngest that has ever been considered for this important assignment and responsibility, he has been in fair business practically all of his working years. He has the ability, the capacity and the experience, gentlemen, to make an excellent President of the Minnesota State Fair. I am happy to place in nomination the name of Fred S. Lammers, Washington County, as President of the Minnesota State Agricultural Society, for the year 1964.

PRESIDENT THOMPSON: Thank you, Mr. Carnes. We have the nomination of Mr. Fred S. Lammers for President for the year 1964. Are there any other nominations?

MR. ALVIN KRUEGER (Washington County): I move that nominations be ceased, the rules be suspended and the Secretary cast a unanimous ballot for Mr. Fred Lammers. Mr. Lammers has worked with the Washington County Fair for many years. In the past 15 years I have enjoyed working with him, and I know he is well qualified for this important job. Thank you.

MR. HARRY SWANSON (Washington County): I second the motion.

PRESIDENT THOMPSON: It has been moved and seconded that the rules be suspended and nominations be closed and a unanimous ballot cast for Fred S. Lammers of Stillwater. Those in favor say "Aye"; opposed same sign? So ordered.

. . . The motion was carried. . .

Fred S. Lammers, you are the new President of the Minnesota State Agricultural Society. (Applause)

MR. FRED S. LAMMERS (Newly Elected President): Mr. President,

Ladies and Gentlemen, Delegates to the Convention, my good wife, Janet Lammers, and friends: I certainly appreciate the honor that has just been bestowed upon me. I am very much aware of the responsibility and the privilege that it provides, the privilege of working with a fine Board of Managers, a very fine and capable Secretary and General Manager, John Libby, the office staff and the many, many people that work together in the staging of a great Fair in their various capacities.

I shall be deeply grateful for your continued support so that I may accomplish what past Presidents have accomplished in this office. You certainly will have my best, so help me, God. (Applause)

PRESIDENT THOMPSON: Thank you, Fred. Like all organizations, we have Vice Presidents. The next order of business is the election of a Vice President from the Fifth Regional District.

MR. JOHN LIBBY (Secretary-General Manager): In keeping with past precedent, we have a letter from the Minneapolis Chamber of Commerce, signed by its President, Phillip B. Harris, recommending that Mr. Robert Andrews of Minneapolis succeed himself in the Fifth Regional District.

PRESIDENT THOMPSON: Mr. Robert Andrews has been certified to this meeting. Are there any further nominations?

MR. I. B. BYERS (Minneapolis): I move that the rules be suspended, the nominations close and the Secretary be instructed to cast a unanimous ballot for Mr. Andrews.

MR. NORRIS K. CARNES (St. Paul): I second the motion.

PRESIDENT THOMPSON: All those in favor say "Aye"; those opposed same sign? Robert Andrews, you are elected.

. . . The motion was carried. . . .

You have been demoted. You are a Second Vice President now. Do you have a few words.

MR. ROBERT ANDREWS (Newly Elected Second Vice President): Al, I hate to see you retire. We have had a few differences, but I am going to miss you, and I wish you the best of luck.

PRESIDENT THOMPSON: It would not be a good Board unless we had a few differences now and then.

The next order of business is the election to the Board of Governors from the Seventh Regional District for a term of three years.

MR. JOHN LIBBY (Secretary-General Manager): Mr. Chairman, I have a certificate of nomination from the Delegates of the Seventh District who, in accordance with the statutes, caucused yesterday and named Frank L. Mitchell of Canby to succeed himself for a period of 3 years.

PRESIDENT THOMPSON: We have the certificate from the Seventh Regional District caucus placing in nomination our good friend, Frank Mitchell. Are there any further nominations?

MR. NORRIS K. CARNES (St. Paul): I move that the rules be suspended and the Secretary be instructed to cast a unanimous ballot for Mr. Frank Mitchell to succeed himself.

MR. ROBERT ANDREWS (Minneapolis): I second the motion.

PRESIDENT THOMPSON: You have heard the motion. All in favor say "Aye"; those opposed same sign? Mr. Frank Mitchell, you are re-elected for a term of 3 years.

. . . The motion was carried. . .

MR. FRANK L. MITCHELL (Seventh District): I appreciate your support, and I will do the best I can to work with these good gentlemen of the Minnesota Agricultural Society.

PRESIDENT THOMPSON: It has been good to work with you these past 2 years.

Then we come to the election of a Manager from the Ninth Regional District.

MR. JOHN LIBBY (Secretary-General Manager): Mr. Chairman, in accordance with the statutes, the Ninth Regional District caucused yesterday, and I have a certificate of nomination from that District placing in nomination Mr. Albin Johnson of Fertile to succeed himself on the Board for a term of 3 years.

MR. "CY" MATTSON (Warren): I would like to make the same motion, that the rules be suspended and the Secretary be requested to cast a unanimous ballot in favor of Mr. Johnson to succeed himself as Manager from the Ninth Regional District. I have known Mr. Johnson for 30 years, and he is a terrific Fair man and Fair worker.

MR. RAND (Ninth District): I second the motion.

PRESIDENT THOMPSON: It has been moved and seconded that Mr. Johnson continue for another 3 years. All in favor say "Aye"; opposed the same sign?

. . . The motion was carried. . .

Albin Johnson, you are re-elected for 3 years.

MR. ALBIN JOHNSON (Ninth District): My words will be few but very sincere. I appreciate the support of my good friends in our area which gives me the opportunity and the honor of serving on this Board with a wonderful Secretary and Manager and a wonderful group of Board members. Thank you very much.

PRESIDENT THOMPSON: Thank you, Albin. For the benefit of you ladies and gentlemen, we are not picking out Albin Johnson particularly, but I want you to know that he is one terrific figure around Machinery Hill and has a lot of influence with the implement dealers of this State. He is very important to the Minnesota State Fair.

Due to the promotion of our good friend, Tom Lammers, to the presidency of this institution, we have a vacancy on the Board of Governors from the Third Regional District. We will elect one now to fill the unexpired term of 2 years.

MR. JOHN LIBBY (Secretary-General Manager): Mr. Chairman, anticipating the election of Mr. Lammers to the presidency, the Delegates of the Third District caucused yesterday, and I have a certificate of nomination placing in nomination the name of Loring M. Staples to fill the unexpired term of 2 years in the Third Regional District.

PRESIDENT THOMPSON: You have heard the nomination certified by the Third Regional District caucus. Are there any other nominations?

MR. FRED LAMMERS (Washington County): I move that we dispense with the rules and cast a unanimous ballot for our good friend and welcome him to the Board of Managers.

MR. GEORGE RERAT (Minneapolis): I second the motion.

PRESIDENT THOMPSON: You have heard the motion made and seconded. All in favor say "Aye"; those opposed the same sign?

. . . The motion was carried. . . .

Mr. Staples, you are elected for a term of 2 years. Do you have a few words for us?

MR. LORING M. STAPLES (Third District): Perhaps, as a newcomer, I should keep my mouth shut. I appreciate the honor that you bestowed on me here. I will do everything I can for the welfare of the Board.

PRESIDENT THOMPSON: Thank you, Mr. Staples. According to the sheet here, I haven't much to do, unless there is some unfinished business.

MR. CHARLES CHRISTIANSON (Past President): It is rather customary each year that we elect a life member to the State Agricultural Society. This type of an honor should go to some one who is vitally interested in the activities of the Minnesota State Fair. It has to be someone who has put his "hand to the plow" and has seen that the plow is going to the end of the field. It should be someone that is imbued with the vastness and scope of the Minnesota State Fair and all of its activities. It should be someone that has been very dedicated to the Minnesota State Fair.

I remember so well one life member who did not live long after we gave him this honor, Dr. J. O. Christianson. I have never seen a man who felt so honored as he did when he received a life membership to the Minnesota State Agricultural Society. There was a man who had given many years of service to this institution and to the vastness of its activities.

Today, then, I would like to place in nomination a man who has breathed the very life of the Minnesota State Fair in connection with the Space Rental Department of the State Fair and many other activities. He has lived with the Fair for the years he served on the Board of Managers. I place in nomination the name of Al Thompson of Spicer to be a life member of this Society.

MR. WILLIAM LINDEMANN: As a life member of this great institution, I second the nomination of Al Thompson to join our exclusive Society. We really have an exclusive Society. We are a wonderful group of men, and I endorse the nomination.

MR. CHARLES CHRISTIANSON (Past President): I suppose, technically, the First Vice President should handle this motion.

MR. NORRIS K. CARNES (First Vice President): You have heard the motion, ladies and gentlemen. Is there any discussion on the motion? If not, all in favor say "Aye"; those opposed same sign?

. . . The motion was carried. . . .

I am happy to be one of the first to congratulate you, Mr. Thompson. I want to say this in the retirement of Al Thompson. I have been connected with the Minnesota State Fair for many years, starting with riding an old white horse around the wooden barns in the horse department. I can truthfully say this, that Al Thompson is as well-balanced a Fair man as I have ever contacted. We are sorry to see him retire from the Board, but we know he is going to continue to manifest a great interest in the future welfare of this institution.

Al, we are happy to have you as one of our honorary members.

MR. CHARLES CHRISTIANSON (Past President): As a material witness of the fact that he does have a life membership, the State has provided a beautiful inscription which says, "In sincere appreciation for the valuable and devoted services rendered by him to this organization and its member-

ship, Albert E. Thompson is hereby named a life member of the Minnesota State Agricultural Society and entitled to all the privileges and honors pertaining thereto by order of the Governing Board."

Al, I am happy to present it to you at this time. Let me congratulate you by hand, being the first to do so at this time. I am happy to do this as a President following in my footsteps. Some "joker" put at the bottom here, "Not good at the outside gate." This goes into a beautiful case, and his name is on the outside.

PRESIDENT THOMPSON: Ladies and gentlemen, certainly this is something that I will cherish as long as I shall live. This little quirk at the bottom, "Not good at the outside gate," reminds me when I was on the Board I had come in and had not taken time to wash my car, get a grease change and all of that. I went to the Mobile Station on the corner of Snelling and Como. When I came back, I had to buy another ticket to go back in, even though I had this prominent badge. About two hours later I went back to get my car, and I had to pay admission again, not only for myself but for my car, too. I went over to Doug Baldwin and said, "What kind of a business is this? It has cost me about \$2.50 just to get my car washed." He said, "What are you crabbing about? You made the rules." That ended that.

Ladies and gentlemen, I am deeply appreciative of this honor. As Billie Lindemann said, I know I am now a member of a great fraternity. The privilege and the honor of serving as the President of this organization comes to very few men. In our 105 years' history, I suppose there have been only 52 or 53 men over the years throughout this entire State of Minnesota, so it is indeed a great honor.

Certainly, I will come back to the Fair. I have not missed one since 1918 or 1919. I know I will always have a deep interest in the progress and the future of this great State Fair.

I want to thank you, ladies and gentlemen, for the honor you have bestowed upon me today. I appreciate it very, very much. Thank you. (Applause)

According to the program, I have no further business, unless someone has something to bring before this meeting. If not, the 105th Annual Meeting of the State Agricultural Society is now adjourned. Thank you.

. . . The 105th Annual Meeting of the Minnesota State Agricultural Society adjourned at 11:10 o'clock a.m. . . .

MINUTES OF MEETINGS OF THE GOVERNING BOARD
AND
REPORTS OF MEETING OF COMMITTEES OF THE GOVERNING BOARD
of the
MINNESOTA STATE AGRICULTURAL SOCIETY
and
"MINUTES IN VACATION"
During the
FISCAL YEAR BEGINNING DECEMBER 1, 1963 and
ENDING NOVEMBER 30, 1964

MEETING OF THE GOVERNING BOARD OF THE
MINNESOTA STATE AGRICULTURAL SOCIETY
Hotel Saint Paul, St. Paul, Minnesota
1:30 P.M., Wednesday, January 8, 1964

Present—

Fred S. Lammers, President
Norris K. Carnes, Vice President
Robert R. Andrews, Vice President
D. T. Grussendorf
Stan Muckle
Birney C. Wilkins
Albin Johnson
Anton C. Geiger
Frank L. Mitchell
Loring M. Staples
Roy C. Sorenson, Treasurer
John E. Libby, Secretary-General Manager

The first order of business was administering the Oath of Office to the newly elected officers and Board Members as follows:

Fred S. Lammers, President for a term of one year.

Robert R. Andrews, Vice President from the 5th Regional District for a term of two years.

Loring M. Staples, Manager from the Third Regional District for a term of two years.

Frank L. Mitchell, Manager from the Seventh Regional District for a term of three years.

Albin Johnson, Manager from the Ninth Regional District for a term of three years.

After the officers and Board Members were sworn in the Board went into Executive Session and re-appointed John E. Libby as Secretary-General Manager, and stated in addition thereto, that he be required to live upon the State Fairgrounds, with free rent, water, light, fuel and use of a car, further that he be required to furnish bond in the sum of \$200,000 the premium to be paid by the State Agricultural Society, said bond to be subject to approval by the Attorney General as to form and execution and to acceptance by the Board.

Roy C. Sorenson, Minneapolis, was re-appointed Treasurer and required that he furnish a bond in the sum of \$200,000, premiums of said bond to be paid by the State Agricultural Society and said bond to be subject to approval by the Attorney General as to form and execution and to acceptance by the Board.

Messrs. Libby and Sorenson were called back into the meeting, advised of their re-election and signed the Oaths of Office.

MINUTES IN VACATION

1964—January 6-7-8—The 105th Annual Meeting of the Minnesota State Agricultural Society was held at the Hotel Saint Paul.

The morning of Monday the 6th, a short business session was held at which time the Credentials and Resolutions Committees were appointed. These committees met the morning of Tuesday, January 7.

The afternoon of Monday was given over to the speakers' and business sessions of the Minnesota Federation of County Fairs.

The morning of Tuesday the 7th, the Federation of County Fairs held a breakfast session, the program agenda consisted of: Reports of Resolutions Committee and the International Association of Fairs and Expositions, plans for the 1964 Fair Managers Short Course.

The afternoon of Tuesday, the State Agricultural Society presented its program of speakers as follows:

Opening remarks by the President
ALBERT E. THOMPSON

Report of the Treasurer
ROY C. SORENSON

Report of the Secretary-General Manager
JOHN E. LIBBY

Address
DR. LOYAL E. TALLAKSON, President, Eastern North District of the American Lutheran Church, Fargo, North Dakota

Report of the Credentials Committee.

The evening of Tuesday was the combined banquet and ball of the Minnesota Federation of County Fairs, State Agricultural Society and the Midwest Showman's Association.

At the State Agricultural Society's business session the morning of Wednesday, the 8th, the Resolutions Committee's Report was presented of which the following resolution was to be spread upon the Minutes of the Society.

"Resolved that in the death of Life Members Earl Brown, March 12 and T. A. Erickson, January 30, 1963 the Society suffered a severe loss.

"Be it further resolved that our sympathy be extended to the members of their families and that this resolution be spread upon the Minutes of the Society."

The following elections then took place.

Fred S. Lammers, Stillwater, President, one year term.

Robert R. Andrews, Minneapolis, Vice President, two year term.

Loring M. Staples, Excelsior, Manager, two year term (filling the unexpired term of Fred S. Lammers who was elected president.)

Frank L. Mitchell, Canby, Manager, three year term.

Albin Johnson, Fertile, Manager, three year term.

Albert E. Thompson, Spicer, was elected Life Member of the Society.

Upon motion by Mr. Wilkins, seconded by Mr. Mitchell and carried the Minutes in Vacation were approved.

The Minutes of the previous meeting of the Board held November 23 as mimeographed and sent to the board members was approved upon motion by Mr. Grussendorf and seconded by Mr. Geiger.

The Secretary-General Manager presented the financial statement as of December 31.

SUMMARY

RECEIPTS

Cash Balance—General Fund—		
November 30, 1963.....	\$160,588.19	
U. S. Treasury Bills.....	343,399.00	\$503,987.19
	<hr/>	
Receipts during December, 1963.....		6,362.12
		<hr/>
		\$510,349.31

DISBURSEMENTS

Mid-month Payroll—December 1-15	\$ 6,159.26	
Premium Fund Deposit	7,652.17	13,811.43
	<hr/>	
		\$496,537.88
Cash Balance—December 31, 1963		
General Fund	\$153,138.88	
U. S. Treasury Bills.....	343,399.00	\$496,537.88
	<hr/>	
Payroll Fund Deposit		10,000.00
Contingent Fund		1,000.00
		<hr/>
		\$507,537.88

Cash Balance—December 30, 1962	
General Fund	\$362,681.41
Contingent Fund.....	1,000.00
	<hr/>
	\$363,681.41

Upon motion by Mr. Wilkins, seconded by Mr. Muckle and carried the financial statement as presented was approved.

It was moved by Mr. Geiger, seconded by Mr. Wilkins and carried (Mr. Staples abstained from voting) that the Northwestern National Bank of Minneapolis be designated as the depository of the General Fund, Payroll Fund, Premium Fund and Treasurers Account. The Midway National Bank of St. Paul was also approved as depository for the Contingent Fund.

The officers and employees of the State Agricultural Society who were authorized to sign checks for the various funds are as follows:

Payroll Fund:	John E. Libby, Harry J. Frost, Michael D. Heffron
General Fund:	John E. Libby, Norris K. Carnes or Robert R. Andrews or Fred S. Lammers and Roy C. Sorenson or Harry Jensen
Premium Fund:	John E. Libby, Harry J. Frost, Michael D. Heffron
Contingent Fund:	John E. Libby

R. C. Sorenson Treasurer Account: R. C. Sorenson, Harry J. Jensen and other signatures as authorized by the Treasurer.

The Payroll Fund, Premium Fund, Contingent Fund and R. C. Sorenson Treasurer Account require only one signature, whereas the General Fund requires three signatures.

The above signatures were approved upon motion by Mr. Wilkins and seconded by Mr. Johnson.

The \$200,000 bond required by both the Secretary-General Manager and Treasurer as well as the \$50,000 bond required for the Deputy Treasurer was approved upon a motion by Mr. Wilkins and a second by Mr. Mitchell.

Upon motion by Mr. Andrews, seconded by Mr. Wilkins and carried the following Standing Committees were approved.

ADMISSIONS—Muckle, Chairman; Andrews; Carnes; Sorenson; Grussendorf; Lammers, ex officio; Libby, ex officio.

ADVERTISING—Muckle, Chairman; Grussendorf; Wilkins; Johnson; Mitchell; Lammers, ex officio; Libby, ex officio.

AMUSEMENT—Libby, Chairman; Andrews; Carnes; Grussendorf; Muckle; Wilkins; Johnson; Geiger; Mitchell; Staples; Sorenson; Lammers, ex officio.

BUDGET—Lammers, Chairman; Andrews; Carnes; Grussendorf; Muckle; Wilkins; Sorenson; Libby, ex officio.

EXECUTIVE—Carnes, Chairman; Andrews; Lammers, ex officio; Libby, ex officio.

PLANNING—Andrews, Chairman; Grussendorf; Muckle; Lammers, ex officio; Libby, ex officio.

RECEPTION—Lammers, Chairman; Muckle; Wilkins; Geiger; Mitchell; Libby, ex officio.

RULES and PREMIUM LIST—Carnes, Chairman; Grussendorf; Muckle; Wilkins; Lammers, ex officio; Libby, ex officio.

SPACE RENTALS—Libby, Chairman; Andrews; Carnes; Muckle; Johnson; Lammers, ex officio.

Upon motion by Mr. Wilkins, seconded by Mr. Grussendorf and carried the following appointments were made for Supervisors and Superintendents of the Departments.

ADMISSION—Muckle, Supervisor; Ty Sincock, Superintendent.

AGRICULTURE-HORTICULTURE-BEE CULTURE—Wilkins, Supervisor; Ward Marshall, Assistant Supervisor; O. H. Shulstad, Superintendent, Division of Crops; Eldred Hunt, Superintendent, Division of Flowers; Roger Conklin, Superintendent, Division of Fruits; O. C. Turnquist, Superintendent, Division of Vegetables-Potatoes; C. D. Floyd, Superintendent, Division of Bee Culture.

AMUSEMENT—Libby, Supervisor; Clarence R. Hajney, Superintendent of Music.

BOYS' and GIRLS' 4-H CLUB WORK—Mitchell, Supervisor; Leonard L. Harkness, Superintendent.

CATTLE—Carnes, Supervisor; Raymond L. Arthaud, Superintendent.

CONSERVATION—Geiger, Supervisor; Carl W. Moen, Superintendent.

DAIRY—Staples, Supervisor; Al Sjewal, Superintendent.

EDUCATION—Grussendorf, Supervisor; Milo J. Peterson, Superintendent.

FARM BOYS' CAMP—Mitchell, Supervisor; Harold A. Mullen, Superintendent.

FINE ARTS—Geiger, Supervisor; Foster Kienholz, Superintendent

FUTURE FARMERS OF AMERICA—Grussendorf, Supervisor; G. R. Cochran, Superintendent.

HOME ACTIVITIES—Staples, Supervisor; Mrs. Mildred Harrington, Superintendent.

HORSE—Carnes, Supervisor; Dr. Harold Arneman, Superintendent.

LEGISLATIVE-EDITORIAL—Mitchell, Supervisor.

MEAT EXHIBIT—Carnes, Supervisor; Woodrow J. Anan, Superintendent.

POULTRY—Mitchell, Supervisor; Harold Thomforde, Superintendent.

PUBLICITY—Libby, Supervisor; David J. Speer, Superintendent.

PUBLIC SAFETY—Andrews, Supervisor; George Cockriel, Superintendent.

RACE—Libby, Supervisor.

SERVICES—Libby, Supervisor; James L. Libby, Superintendent of Grounds and Sanitation; Joseph Fischler, Assistant Superintendent of Grounds; Albert J. Keller, Superintendent of Greenhouses.

SHEEP and WOOL—Grussendorf, Supervisor; Robert Jordan, Superintendent.

SPACE RENTALS—Libby, Supervisor; Harold D. Johnston, Superintendent; Farm Machinery Division, Johnson, Advisor; Carl O. Linnee, Superintendent; Varied Industries Division, Elmer Fisher, Superintendent.

SWINE—Grussendorf, Supervisor; Robert Jacobs, Superintendent.

TICKET AUDIT—Geiger, Supervisor; A. H. Winkel, Superintendent.

The contract for Thearle-Duffield Fireworks, Inc., for the 1964 Fair was approved upon a motion by Mr. Mitchell and a second by Mr. Wilkins.

Following a short discussion salary adjustments were authorized for several permanent employees upon a motion by Mr. Carnes, seconded by Mr. Mitchell and carried.

The employment of Mr. Joe Fischler as Assistant Superintendent of Grounds was approved upon a motion by Mr. Grussendorf and a second by Mr. Staples.

The dates of the 1965 Annual Meeting were set for January 4, 5 and 6 at the Radisson Hotel in Minneapolis upon motion by Mr. Muckle, seconded by Mr. Mitchell and carried.

Upon motion by Mr. Mitchell, seconded by Mr. Carnes and carried a request for ticket refund for \$4.00 for the afternoon auto races was refused.

The Secretary-General Manager read a newspaper article stating that the Iowa State Fair was losing approximately 200 Elm trees due to the Dutch Elm Disease. He told of the treatment we had given our trees and that we were watching our trees very closely in an effort to save them from this disease.

The Secretary-General Manager informed the Board of an article in which the final audit of the books of the World's Fair at Seattle showed a loss of \$598,000 for this operation.

February 1, 1964 was decided upon as the date for the Budget Meeting, time and place being left to the Secretary-General Manager.

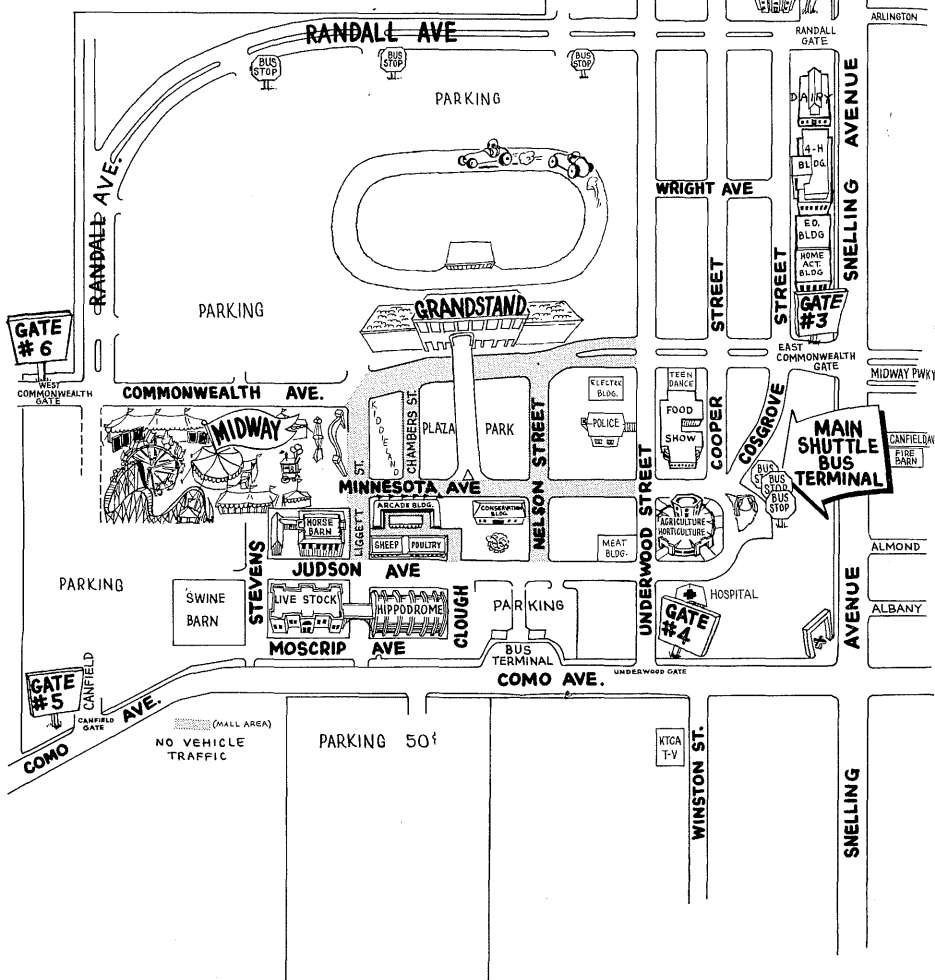
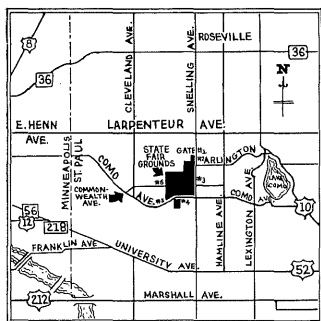
Meeting adjourned.

Fred S. Lammers,
President

John E. Libby,
Secretary-General Manager

NOTE

A record book containing the complete minutes for the year is on file at the Administration Office, State Fair Grounds, St. Paul, Minnesota.



INDEX

	Page
Officers and Managers	1
Standing Committees	1
Department Superintendents and Supervisors.....	2
Secretary's Report	3
Five year Attendance Report	16
Five Year Receipts Report	16
Statement of Total Receipts and Disbursements.....	17
Five year Grandstand Attendance Report.....	18
Finances	
Part 1—Balance Sheet	19
Part 2—Operating Statement	20
Part 3—Inventory	24
Ticket Audit Summary	
Table A—Ticket Sales and Cash Admissions.....	26
Table 1—Summary outside gate Admissions.....	27
Table 2—Summary Grandstand, bleachers, etc.	28
Table 3—Summary admissions to Hippodrome	29
Table 4—Summary percentage attractions	30 & 31
Exhibitors List	32
Concessionaires List	36
Public Examiner's Report	42
State Agricultural Society	
Proceedings of the 105th Annual Meeting.....	49
Report of Treasurer	54
Report of Secretary	55
Report of Credentials Committee	56
Resolutions Committee Report	58
Election of Officers	59
Executive Session — Annual Meeting	
Minutes in Vacation.....	64