

ANNUAL REPORT

July 1, 1990 - June 30, 1991
MID-MINNESOTA DEVELOPMENT COMMISSION

CHAIRMAN'S MESSAGE



Charles Warner

None of us enjoys witnessing funding cuts. When we realize it is impossible to continually spend more than what is taken in, however, we must be realistic.

Governor Carlson DID NOT create the more than one billion dollar shortfall in the state budget. Input and output must be equal. Until additional funding is uncovered, cuts in spending (and programs) are necessary.

State government, like private business, can spend only what it has. (What it has collected from the people, what it is in the process of collecting from the people or what it will eventually collect.)

Because of the conservative efforts of its staff and commission members, the Mid-Minnesota Development Commission has been able to continue its present level of services -- even in the face of losing its state appropriation -- without an increase in county levies. Through the years commission members have held the line on spending and the staff, under the guidance of its executive director, has sought additional means of funding and operated in a businesslike manner.

The commission pledges to provide first-class delivery of services and programs in the same spirit of cooperation and coordination as it has since its inception.

And I'd like to personally thank the commission members and the staff for their constant striving toward this goal.

JAN 22 1992

STATE OF THE REGION

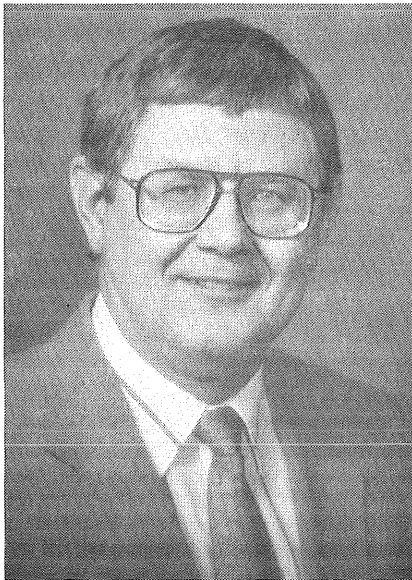


H. Eugene Hippe

One hundred and fifty bushels per acre of corn doesn't happen by accident. A combination of sufficient resources, favorable environmental conditions and proper management must be present at the right time in the right amounts in order to obtain the desired outcome. Last year, the MMDC had a 150-bushel per acre type of year. Our financial and staff resources were adequate, the socio-economic conditions of the area were favorable and the management was easy because we have worthwhile programs, good staff and a great group of commissioners and advisory committee members.

The single disappointment of the year came in May. After both bodies of the Legislature restored an appropriation previously deleted in the governor's budget, Governor Carlson vetoed the appropriation and delivered a setback to regional efforts of intergovernmental cooperation. I will not try to rationalize that decision. However, I will argue that the State of Minnesota should be willing to pay for services rendered and the commission does in fact render a service as it works with various state agencies and their programs. Also, it provides a service in helping to avoid duplication of programs and by encouraging cooperative ventures.

ECONOMIC DEVELOPMENT



Lee Larson

The Mid-Minnesota Development Commission's Economic Development Program is intended to assist local units of government and businesses in the region with activities that will create or support the creation of jobs. Activities for this program are funded by a grant from the U.S. Department of Commerce, Economic Development Administration and the local tax levy.

A major portion of the staff time in economic development is technical assistance. Businesses, residents and governmental units in over one-half of the communities in the region have requested and received economic development related assistance in the past year. Requests ranged from business assistance information, to business finance analysis, infrastructure improvements, tax increment districts, and grant and loan writing.

Loan and grant applications make a large portion of the commission's workload. A score of businesses were directed to the loan program of the Southwest Minnesota Initiative Fund. The commission staff assisted with six applications with three eventually receiving funding. Applications to Opportunities Minnesota, Inc., and the Small Cities Economic Development Grant Program were also completed and are being processed by the Minnesota Department of Trade and Economic Development.

The commission submitted a preapplication to the Economic Development Administration to capitalize a regional revolving loan fund. At present, only Renville County is eligible for the program, but the fund will be designed to accommodate Kandiyohi, McLeod and Meeker Counties should they become eligible in the future.

STAFF

Executive Director H. Eugene Hippe

Secretary/Receptionist/
Office Manager Pam Wiegmann

Parttime Secretary Diane Schroeder (July-Sept)
Mary Bock (Oct.-Dec.)

Account Clerk Kay Ruhl

Aging Program Director Lorraine Patton

Minnesota Marketplace Broker Bernard Schulte

Small Business
Development Center Counselor Greg Bergman

Economic Development Specialist Lee Larson

Community Development Specialists Gerald Grinde
Donn Winckler

Student Draftsperson Chad Kohls

Aging Intern Peter Lindstrom (June)

Development continued

The commission continues to serve as an information source for businesses. This past year, the commission office became a public access site for the Minnesota Project Outreach (MPO) program. MPO provides telephone/computer access to an information system that allows companies to obtain answers to technical and business questions. Companies can access experts in science and technology, search for printed material, pursue licensable technologies available from the University of Minnesota and receive business planning assistance. The commission is also an affiliate member of the State Data Center and the Economic Business Information Network (EBIN). Through the Data Center and EBIN, the commission has access to all data generated by the U.S. Census and Department of Commerce. We have ready access to demographic and economic information needed by the business community.

COMMISSION MEMBERS

KANDIYOHI COUNTY

Townships Howard Larson

Municipalities Lorraine Browne

County Earl Larson

City of Willmar Steven Ahmann

MCLEOD COUNTY

Townships Harold Sanken

Municipalities Ray Wilkins

County Grant Knutson

City of Hutchinson Paul Ackland

Public Interest Charles Warner

MEEKER COUNTY

Townships Wilfred Hendrickson

Municipalities Marlin Lietzau (July-Dec)
Ron Ebnert (Jan-June)

County George Rice

School Districts Keith Ackman

Public Interest Andrew Walters

RENVILLE COUNTY

Townships Wesley Kuske

Municipalities Carlyle Harried

County Pat Kubesh (July-Dec)
Mary Page (Jan-June)

School Districts Kathryn Kelly

Public Interest Dick Loftness

Public Interest James Schafer

OFFICERS

Chairman Pat Kubesh (July-Dec)
Charles Warner (Jan-June)

Vice Chairman Charles Warner (July-Dec)
Wilfred Hendrickson (Jan-June)

Secretary/Treasurer Marlin Lietzau (July-Dec)
Kathryn Kelly (Jan-June)

EXECUTIVE COMMITTEE

Pat Kubesh, Chairman (July-Dec)

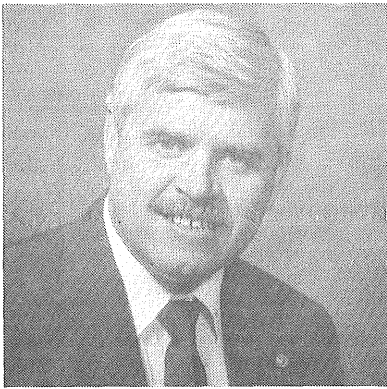
Charles Warner, Chairman (Jan-June)

Wilfred Hendrickson (Jan-June)

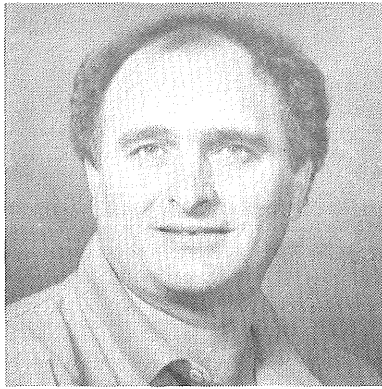
Marlin Lietzau (July-Dec)

Kathryn Kelly (Jan-June)

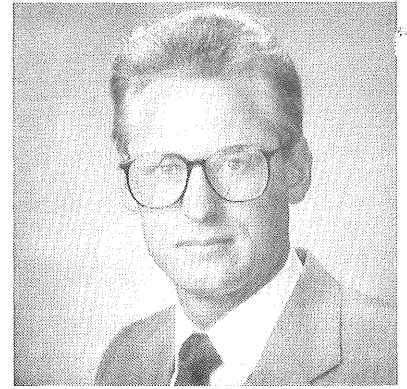
Wesley Kuske



PAUL ACKLAND
Hutchinson



KEITH ACKMAN
Cosmos



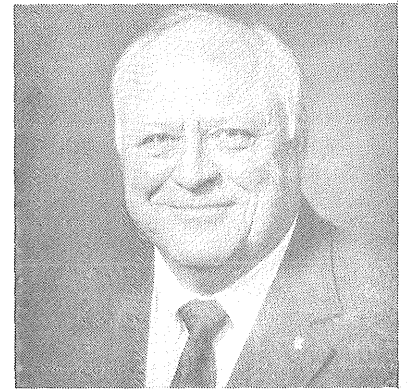
STEVEN AHMANN
Willmar



LORRAINE BROWNE
Atwater



RON EBNET
Litchfield



CARLYLE HARRIED
Sacred Heart



WILFRED HENDRICKSON
Eden Valley



KATHRYN KELLY
Olivia



GRANT KNUTSON
Hutchinson



PAT KUBESH
Olivia



WESLEY KUSKE
Olivia



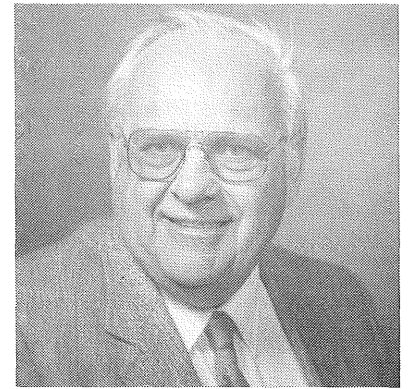
EARL LARSON
Willmar



HOWARD LARSON
Willmar



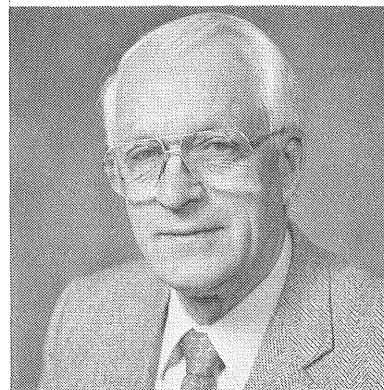
MARLIN LIETZAU
Cosmos



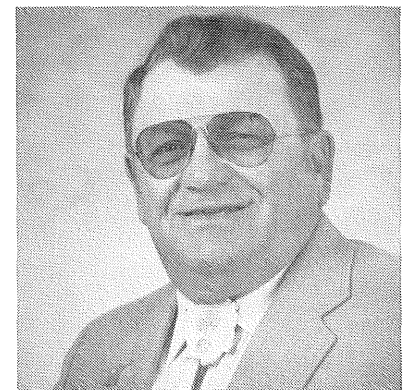
DICK LOFTNESS
Hector



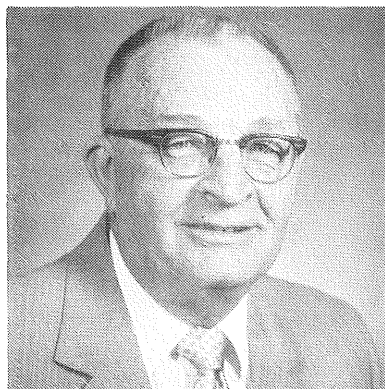
MARY PAGE
Olivia



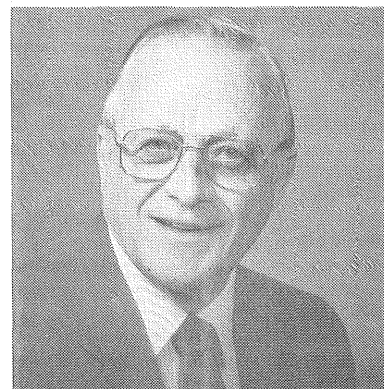
HAROLD SANKEN
Brownton



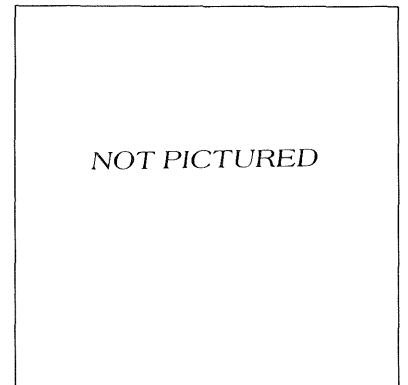
JAMES SCHAFER
Buffalo Lake



ANDREW WALTERS
Watkins



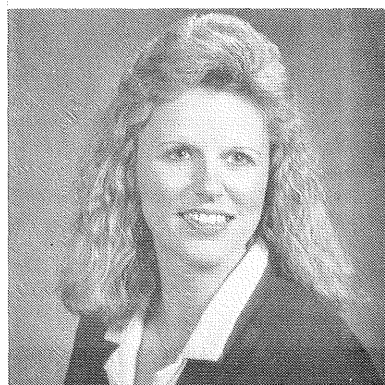
RAY WILKINS
Glencoe



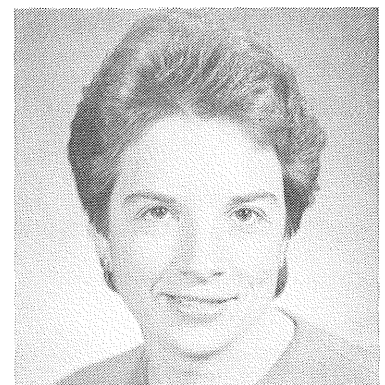
GEORGE RICE
Watkins

IN OUR OFFICE

PAM WIEGMANN
Secretary/Receptionist
Office Manager



KAY RUHL
Account Clerk



REVENUE AND EXPENDITURE SUMMARY FISCAL YEAR 1991

REVENUES

FEDERAL	\$ 632,412
Economic Development Administration	\$ 48,205
HHS - Area Agency on Aging	<u>584,207</u>
STATE	\$ 198,382
Legislative Appropriation	\$ 41,340
Homestead Taxes/Credits	44,763
Department of Transportation	27,000
State Nutrition	<u>85,279</u>
PRIVATE FOUNDATIONS	79,936
Southwest Minnesota Initiative Fund	<u>\$ 79,936</u>
CHARGES FOR SERVICES	15,900
Small Business Development Center	\$ 15,000
Accounting Service	<u>900</u>
LOCAL	130,777
Property Taxes	\$ 78,587
Interest Earnings	30,852
In-Kind Contributions	20,603
Miscellaneous	<u>735</u>
TOTAL REVENUES	<u>\$1,057,407</u>

EXPENDITURES

PERSONAL SERVICES	\$ 329,090
SUPPLIES AND PRINTING	10,572
OTHER SERVICES: Communication, Postage, Conference, Subscriptions	28,234
CONTRACTED SERVICES	601,373
OTHER CHARGES: Rent, Insurance, Professional Services	20,684
CAPITAL OUTLAY	7,101
TRAVEL: Staff and Advisory Committees	22,167
COMMISSIONERS: Travel and Per Diem	12,503
IN-KIND SERVICES	<u>20,603</u>
TOTAL EXPENDITURES	<u>\$1,052,327</u>

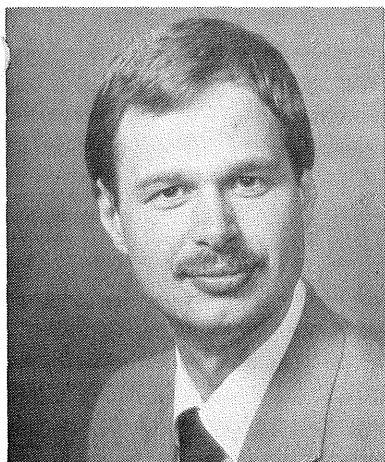
PROPOSED BUDGET SUMMARY FISCAL YEAR 1992

REVENUES

FEDERAL	\$ 632,608
Economic Development Administration	\$ 50,000
HHS - Area Agency on Aging	<u>582,608</u>
STATE	\$ 177,102
Legislative Appropriation	\$ -0-
Homestead Taxes/Credits	41,908
Department of Transportation	29,115
State Nutrition	85,279
Rural Rehabilitation Program	<u>20,800</u>
PRIVATE FOUNDATIONS	15,000
Southwest Minnesota Initiative Fund	<u>\$ 15,000</u>
CHARGES FOR SERVICES	33,400
Small Business Development Center	\$ 32,500
Accounting Service	<u>900</u>
LOCAL	189,480
Property Taxes	\$104,677
Interest Earnings	21,000
In-Kind Contributions	4,200
Reserve From Prior Years	<u>59,603</u>
TOTAL REVENUES	<u>\$1,047,590</u>

EXPENDITURES

PERSONAL SERVICES	\$ 306,402
SUPPLIES AND PRINTING	12,265
OTHER SERVICES: Communication, Postage, Conference, Subscriptions	30,452
CONTRACTED SERVICES	631,338
OTHER CHARGES: Rent, Insurance, Professional Services	24,248
CAPITAL OUTLAY	4,000
TRAVEL: Staff and Advisory Committees	17,770
COMMISSIONERS: Travel and Per Diem	13,415
OTHER USES	3,500
IN-KIND SERVICES	<u>4,200</u>
TOTAL EXPENDITURES	<u>\$1,047,590</u>



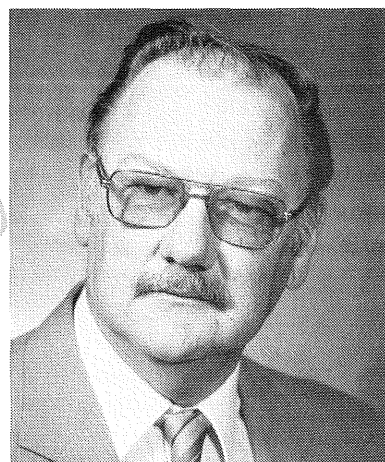
Greg Bergman

SMALL BUSINESS DEVELOPMENT CENTER

A Small Business Development Center (SBDC) was opened on January 1, 1991. Located in the Mid-Minnesota Development Commission office, the new SBDC serves Kandiyohi, McLeod, Meeker, Renville and northeastern Swift Counties. Greg Bergman has been assigned to staff the new SBDC.

SBDC's work one-on-one with individuals interested in starting or expanding a business. SBDC's provide counseling, training, information, referral, technology transfer and other assistance to small business owners and managers. Counseling services provided include recordkeeping techniques, marketing strategies, financial packaging and analysis, business planning and entrepreneurial training. There is no fee for counseling and many other services. A fee may be charged for seminars, workshops and specialized services.

During the first six months of operation, business counseling was provided to nearly 50 clients. Counselor Bergman also spoke to various civic and business groups on the functions of an SBDC. Workshops were also provided on federal procurement, venture capital and complying with the Americans With Disabilities Act. Outreach offices have also been established in Olivia and Hutchinson. The SBDC also plays an active role in the Willmar Area Chamber of Commerce, Kandiyohi County Economic Development Partnership, Renville County Economic Development Commission, Litchfield Chamber of Commerce and other development organizations.



Bernard "Butch" Schulte

MINNESOTA MARKETPLACE

The Minnesota Marketplace was in operation for two years, terminating on June 30, 1991 because the Legislature failed to continue funding the program. The objective of the program was to bring together Minnesota firms needing products and services with other state firms capable of supplying those needs. Jobs would be created and tax revenues would thereby be enhanced in Minnesota.

The Marketplace broker for the 18-county area of southwestern Minnesota was Butch Schulte. The program experienced considerable success in southwestern Minnesota. More action, more business and more matches were developed in or through the 18-county area than in any other region in Minnesota. Perhaps more important, effective networking among firms has been established. These are profitable relationships that will continue after the demise of Marketplace.

Funding for the program was provided by the Legislature and the Southwest Minnesota Initiative Fund in Granite Falls. Additional support was provided by the three regional development commissions serving the 18-county area: Mid-Minnesota Development Commission in Willmar, Upper Minnesota Valley Regional Development Commission in Appleton, and Southwest Regional Development Commission in Slayton.



Lorraine Patton

AREA AGENCY ON AGING

The Mid-Minnesota Area Agency on Aging (AAA) assists older Americans by providing financial assistance to service providers and senior centers. Each year the AAA is accountable for a budget of approximately \$650,000 and is responsible for monitoring and evaluating a variety of projects in an effort to insure maximum program benefits for the dollars allocated. In addition, the AAA coordinates training and workshops and is the primary advocate for senior citizens in the region.

The AAA has an advisory council composed of 13 members chaired by Andrew Walters of Watkins. The advisory council meets once a month and has a primary responsibility of establishing priorities and reviewing and recommending projects for funding. Although priorities and projects change, the following list of priority areas and projects funded last year is representative of a typical year.

Transportation: Meeker County, Spicer, Atwater, Glencoe Area Health Center and Heartland Community Action Agency

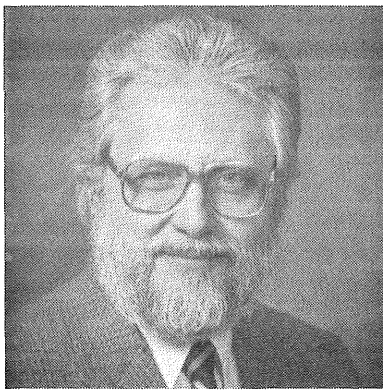
Legal Services/Education: Western Minnesota Legal Services and Southern Minnesota Regional Legal Services

Respite Care: Counties of Kandiyohi, Meeker and McLeod

Multipurpose Senior Centers: Hector, Lake Lillian, Sunburg, Olivia and Kandiyohi County/Willmar

Telephone Reassurance: Augustana Lutheran Homes

Congregate Dining and Home Delivered Meals: Heartland Community Action Agency



Jerry Grinde



Donn Winckler

TECHNICAL ASSISTANCE

All of the commission's programs are involved with technical assistance because the commission's purpose is directly associated with being of service. However, this particular program area is not tied to any state or federally funded program and in fact is made possible because of the commission's authority to raise a limited amount of taxes. Consequently, the commission can establish its own priorities and objectives.

Each year the staff works with local units of government to develop or update comprehensive land use plans, zoning ordinances and subdivision regulations. Other areas where technical assistance is provided are the preparation of tax increment finance districts, community development block grant applications and open space/recreation grant applications. Other projects include helping record township roads, updating maps, responding to requests for census data, assisting with preparation of Star City and Star County applications, and researching both public and private funding sources. This past year, considerable assistance was given to counties and cities with grant applications, land use planning and water management planning.

TRANSPORTATION

Over the course of the past fiscal year, the Mid-Minnesota Development Commission has been active with a number of transportation projects and events. The following is a brief overview of the major transportation activities that have taken place during the 1991 fiscal year.

On August 18, 1990, the Highway 212 Wildflower Route Dedication Day was held with activities throughout the route's length. Staff took the lead in assisting local community organizers plan and publicize the event and helped run the activities for the day.

This year, staff has become much more active with transit issues and planning. In November, staff attended a Mid-Minnesota Area Agency on Aging (AAA) advisory council meeting to discuss transit issues and needs within the region. Staff also put in considerable time conducting a regionwide transit provider inventory. Other information was also collected to help start analyzing transit needs in the four counties. In June, 1991, staff (with assistance from the AAA program director) planned and held a meeting in each of the four counties of the region. County transit task force members were chosen to attend the meetings. Transit need identification was started at these meetings, along with ideas on how to address those needs. Further meetings of these task forces will be held during the 1992 fiscal year.

Staff supplied information to a couple of non-profit organizations on the 16(b) (2) application process and inventory questions. Staff also attended a meeting in Slayton in early summer that discussed a statewide transit survey form that is being developed at the Minnesota Department of Transportation (Mn/DOT) Office of Transit.

Assistance was given to four townships that are going through the road recording process. Staff wrote a long article for the region's newsletter on township road recording that identified which townships have recorded their roads in the region, and described the process and why it's important to have roads recorded. All four county courthouses were visited to determine which townships recorded their roads. Twenty-five of the 82 townships have recorded their roads.

Staff took the lead in planning, and made arrangements for, the RDC transportation planners winter meeting held in Brooklyn Center on March 3, 1991. The Mn/DOT transit workshop was held at the same location the following day.

A staff person continues to sit on the T.H. 12 advisory committee that is the "public input" group for Mn/DOT's investigation of what should be done to Highway 12 through the city of Litchfield. An in-progress study is investigating if a bypass is needed. A route for the bypass has been selected. A number of meetings have been held with a couple more to come.

A staff person is also a member of the T.H. 212 task force that has a goal of an improved Highway 212 corridor. Staff has attended a couple of the meetings of the Southern Chapter of the Transportation Alliance.

A staff person is a member of a City of Glencoe task force that is studying transportation needs for the community. The major area of study is how to best re-route Highway 22 through the community.

Within the commission's aging program activities, transportation for senior citizens was, as always, a major activity. The AAA, which is administered by the commission, funded five transportation programs and gave technical assistance to senior citizen transportation organizations.

Mid-Minnesota Development Commission
333 SW 6th St. • Willmar, MN 56201

Bulk Rate
U.S. Postage
PAID
Permit No. 478
Willmar, MN