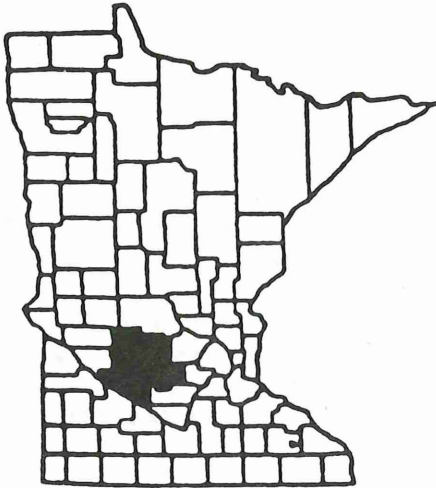


950606



# ANNUAL REPORT

July 1, 1994 - June 30, 1995  
MID-MINNESOTA DEVELOPMENT COMMISSION

## CHAIRMAN'S MESSAGE



**Charles Warner**

Each year, at this time, we look back at what has taken place with Mid-Minnesota Development Commission, what has been accomplished, and what lies ahead.

The last year has witnessed changes in personnel--both on the commission and staff--and changes in programs.

If that wasn't enough to cause one to spend more than a few moments considering our gains and losses, rumblings from Washington and St. Paul remind one we're not in a world which stands still. Many, many changes are forecast. RDC's won't be doing business in the same manner in the future as in the past.

While many of us may view change as a setback, it should be kept in mind if we exercise positive thinking and continually seek out new programs, new funding sources, new opportunities, change may bring with it gains as well as cutbacks.

This year, while attending the National Association of Development Organizations' conference, I observed our director, Gene Hippe, working overtime attempting to line up new programs, new funding, new direction for Mid-Minnesota. This type of dedication and initiative is applauded and encouraged.

Nothing stands still. Either we come up with programs to take the place of those no longer in place or in a period of time we're out of business.

Our RDC had a number of things go our way this past year. Let's keep moving forward!

HT  
393  
.M62  
S59ax  
1994/95

## Commission Members

### KANDIYOHI COUNTY

Townships . . . . . DuWayne Underthun  
 Municipalities . . . . . Lorraine Browne  
 County . . . . . Earl Larson (July-Dec.)  
                                  Bruce Shuck (Jan.-June)  
 City of Willmar . . . . . Steven Ahmann (July-Dec.)  
                                  Les Heitke (Jan.-June)

### MCLEOD COUNTY

Townships . . . . . Harold Sanken  
 Municipalities . . . . . Noel Phifer (July-Dec.)  
                                  Edward Mlynar (Apr.-June)  
 County . . . . . Eloi Hamre (July-Dec.)  
                                  Sheldon Nies (Jan.-June)  
 City of Hutchinson . . . . . John Mlinar  
 Public Interest . . . . . Charles Warner

### OFFICERS

Chairman . . . . . Charles Warner  
 Vice Chairperson . . . . . Steve Ahmann (July-Dec.)  
                                  Mary Page (Mar.-June)  
 Secretary/Treasurer . . . . . Lorraine Browne

### RENVILLE COUNTY

Townships . . . . . Wesley Kuske  
 Municipalities . . . . . Ron Degner  
 County . . . . . Mary Page  
 School Districts . . . . . Peggy Sietsema  
 Public Interest . . . . . Dick Loftness  
                                  James Schafer

### MEEKER COUNTY

Townships . . . . . Archie Peters  
 Municipalities . . . . . Ron Ebnet  
 County . . . . . George Rice  
 School Districts . . . . . Sherron Reilly (Dec.-June)  
 Public Interest . . . . . Andrew Walters  
                                  Ramona Haag

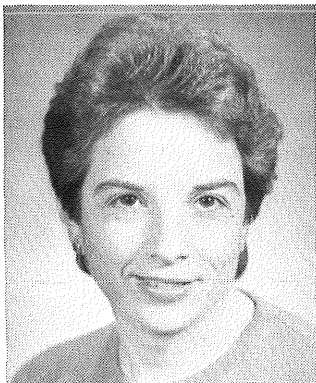
### EXECUTIVE COMMITTEE

Charles Warner, Chairman  
 Ron Ebnet (July-May)  
 Wesley Kuske (July-May)  
 Lorraine Browne  
 Steven Ahmann (July-Dec.)  
 Sherron Reilly (May-June)  
 Mary Page (May-June)

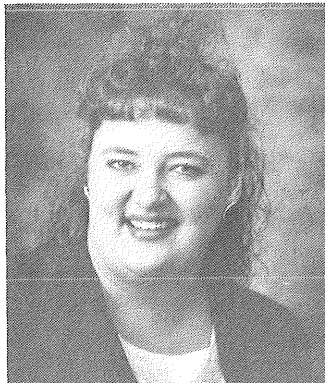
## Staff

Executive Director . . . . . H. Eugene Hippe  
 Office Manager . . . . . Kristen Nelson  
 Part-time Secretary . . . . . Karen Burau  
 Account Clerk . . . . . Kay Ruhl  
 Aging Program Director . . . . . Lorraine Patton  
 Economic Development Specialist . . . Rebecca Clayton (July)  
                                  Nan Anderson (Aug.-June)

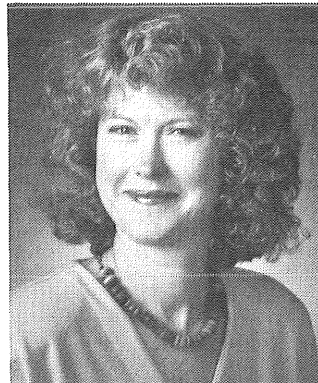
Flood Coordinator . . . . . Mary Minnick-Daniels  
 Community Development Specialists . . . . . Gerald Grinde  
                                  Lee Larson  
                                  Donn Winckler  
 Special Projects Administrator . . . . . Jayme Trusty  
 SCDP Grants Administrator . . . . . Bernard F. "Butch" Schulte  
 Student Draftsperson . . . . . Eric Helmke



**Kay Ruhl**  
Account Clerk



**Kristen Nelson**  
Secretary/Receptionist



**Karen Burau**  
Secretary

## REVENUE AND EXPENDITURE SUMMARY FISCAL YEAR 1995

### REVENUES

FEDERAL	\$1,219,490
Economic Development Administration	\$107,965
HHS - Area Agency on Aging	611,920
Small Cities Development Grant	<u>499,605</u>
STATE	\$ 184,017
Homestead Taxes/Credits	\$ 48,091
Department of Transportation	37,000
State Nutrition	84,126
Rural Rehabilitation Program	<u>14,800</u>
LOCAL	\$ 238,428
Property Taxes	\$138,898
Interest Earnings	18,029
In-Kind Contributions	5,823
Miscellaneous	<u>75,678</u>
TOTAL REVENUES	<u>\$1,641,935</u>

### EXPENDITURES

PERSONAL SERVICES	\$ 382,389
SUPPLIES & PRINTING	14,091
OTHER SERVICES: Communication, Postage, Conference, Subscriptions	63,889
CONTRACTED SERVICES	1,098,638
OTHER CHARGES: Rent, Insurance, Professional Services	31,030
CAPITAL OUTLAY	10,132
TRAVEL: Staff and Advisory Committees	21,131
COMMISSIONERS: Travel and Per Diem	10,186
IN-KIND SERVICES	<u>5,823</u>
TOTAL EXPENDITURES	<u>\$1,637,309</u>

## PROPOSED BUDGET SUMMARY FISCAL YEAR 1996

### REVENUES

FEDERAL	\$1,317,245
Economic Development Administration	\$ 65,600
HHS - Area Agency on Aging	597,237
Small Cities Development Grant	<u>654,408</u>
STATE	\$ 173,169
Homestead Taxes/Credits	\$ 48,091
Department of Transportation	40,952
State Nutrition	<u>84,126</u>
LOCAL	\$ 231,590
Property Taxes	\$136,209
Interest Earnings	10,000
In-Kind Contributions	3,500
Miscellaneous	<u>81,881</u>
TOTAL REVENUES	<u>\$1,722,004</u>

### EXPENDITURES

PERSONAL SERVICES	\$ 387,220
SUPPLIES & PRINTING	19,464
OTHER SERVICES: Communication, Postage, Conference, Subscriptions	43,869
CONTRACTED SERVICES	1,194,458
OTHER CHARGES: Rent, Insurance, Professional Services	26,353
CAPITAL OUTLAY	7,000
TRAVEL: Staff and Advisory Committees	23,917
COMMISSIONERS: Travel and Per Diem	11,413
OTHER USES	4,810
IN-KIND SERVICES	<u>3,500</u>
TOTAL EXPENDITURES	<u>\$1,722,004</u>

## SCDP GRANT ADMINISTRATION

The Mid-Minnesota Development Commission is administering four Small Cities Development Program (SCDP) grants in the cities of Raymond, Litchfield, Fairfax and Grove City. Funding for the program comes from the U.S. Department of Housing and Urban Development (HUD) and is administered at the state level by the Minnesota Department of Trade and Economic Development (DTED). SCDP grant funds are providing for rehabilitation of housing units for families with low and moderate incomes in all four cities, and for rehabilitation of commercial structures in Litchfield and Fairfax. SCDP funding in the amount of \$395,211 is providing rehabilitation of 30 single family units and 5 rental units in Raymond. Litchfield received \$411,586 to rehabilitate 23 single family units and 12 downtown businesses. Fairfax received \$496,726 to rehabilitate 24 housing units and 13 downtown businesses. Grove City received \$443,873 to rehabilitate 22 single family units and 5 rental units. The Raymond and Litchfield projects will be closed out in late summer 1995, and the Fairfax project will be closed out in early 1996.

The four cities contracted with the MMDC to administer the grants. This arrangement provides the local units of government with experienced grant administrators and relieves the cities of a staggering amount of paperwork. The MMDC has a person trained in HUD Section 8 Rental Assistance guidelines, which are the rehabilitation standards used in the SCDP program. Other MMDC personnel are involved in the financial and project administration of the program.

## AREA AGENCY ON AGING

The Mid-Minnesota Area Agency on Aging (AAA) participated in developing a multi-generational national policy on aging through a series of local forums leading to the 1995 White House Conference on Aging (WHCoA). The unique feature of grassroots involvement will assist in setting the nation's social policies to better meet the diverse needs of an aging population which includes the aging of 76 million babyboomers. Two hundred persons in Region Six East identified local concerns, with recommendations addressing health care reform to include long-term care with preventative health care services, social security stability, value of volunteerism, home and community-based services as a less costly alternative to nursing home placement, and education and awareness of retirement planning.

Mid-Minnesota AAA was the first in the state of Minnesota to implement a performance-based contract for nutrition services to 3,000 older Minnesotans in Region Six East. The change from yearly service grants to Heartland Community Action Agency to a contract with Augustana Lutheran Homes of Litchfield has resulted in a cost savings of \$.37 per congregate meal and \$.26 per home delivered meal. The dollar savings along with maintaining a quality meal service to its consumers in Region Six East has generated statewide interest in the contracting model.

Two new health promotion projects, supporting early detection of health problems through hearing and health screenings, were provided during 1995. Other ongoing funded projects included the nutrition meal program, transportation, respite care, legal services, and an information and referral system.

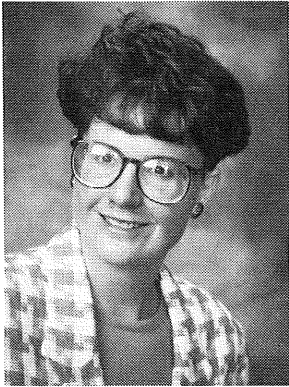
The Mid-Minnesota AAA distributed over 250 copies of the 1995 updated Golden Pages, a directory of services for the elderly in Region Six East. The directory, dedicated to the older people of Kandiyohi, McLeod, Meeker and Renville Counties, provides information and awareness of the wide range of services available that can be accessed to assist in maintaining their quality of life.

The Mid-Minnesota AAA's dedication to helping older persons live independent lives in the Region is supported by the Mid-Minnesota Development Commission/Area Agency on Aging governing board as listed in this report. The 13-member Advisory Council, which is composed of two representatives from each county and an appointed Chairperson, meet regularly to review priorities and funding recommendations. Current membership includes: Andrew Walters, Chairperson; Connie Feig, John Thell, Stan Block, Kandiyohi County Representatives; John Beneke, William Piehl, Herbert Zaske, McLeod County Representatives; Richard Brooks, Jane Larson, Borghild Gabrielson, Meeker County Representatives; Vernon Fousek, Carolyn Tasker, Albert Nicolai, Renville County Representatives.

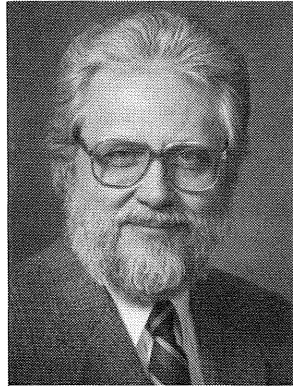
The AAA's annual budget of approximately \$650,000, in cooperation and partnership with local support, has provided the administration and direct services to approximately 40-50 percent of the Region's elderly population.



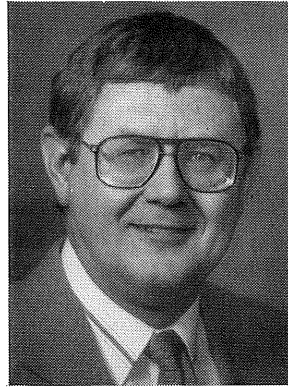
## Program Staff



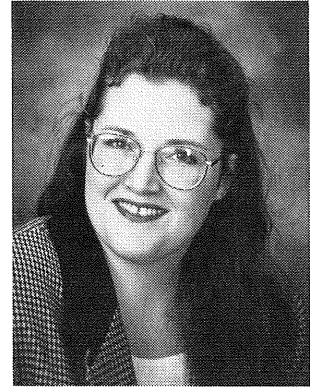
**Nan Anderson**  
Economic Development  
Specialist



**Jerry Grinde**  
Community Development  
Specialist



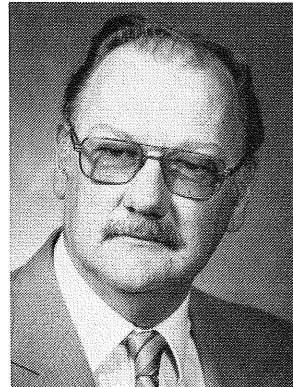
**Lee Larson**  
Community Development  
Specialist



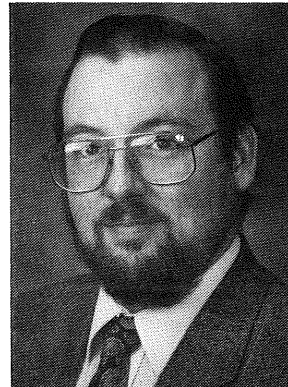
**Mary Minnick-Daniels**  
Flood Coordinator



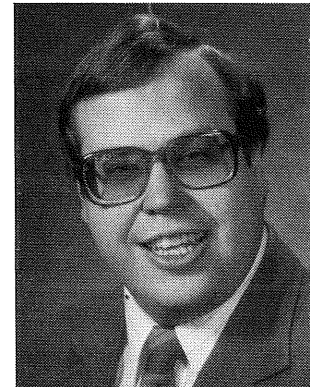
**Lorraine Patton**  
Aging Program  
Director



**Bernard Schulte**  
SCDP Grants  
Administrator



**Jay Trusty**  
Special Projects  
Administrator



**Donn Winckler**  
Community Development  
Specialist  
Transportation

## TECHNICAL ASSISTANCE

Providing services to local units of government has always been a major part of the commission's work. In its formative years, the commission was able to direct considerable staff resources into this activity. In recent years, funding flexibility has become limited and consequently the commission has less resources to commit to this popular component of its work program. A considerable amount of staff time this past year has been devoted to assisting cities explore and prepare grant applications for Small Cities Development Program grants. Time constraints and the complexity of the applications limit staff to being able to work with only four or five cities per year. Recent recipients of grant application assistance are Brownton, Franklin, New London, Sunburg, and Watkins. Several other cities received exploratory type assistance.

Larger technical assistance projects this past year have included a McLeod County Market Rate Housing Study, a Meeker County/Litchfield HRA Housing Study and a Regional Housing Study. MMDC staff also completed a feasibility analysis for a new golf course in the City of Raymond, a statistical analysis of the Hutchinson community survey, house numbering systems in Blomkest and Eden Valley, and recreation grant applications for the Cities of Blomkest and Litchfield.

Other types of technical assistance include preparation of statistics from the computerized census data base or from other data sources. Requests range from information on hospitals and nursing homes to data on housing, minorities, elderly and businesses. The commission publishes a newsletter to keep local units of government and others informed regarding relevant grant and loan programs and recent legislative changes.

## TRANSPORTATION

Transit planning and participation continued to be an important activity during the past year. Staff met with each of the Region's four County Boards of Commissioners in October to give the findings of the transit need studies that were completed in mid-1994. MMDC will continue to work with the counties and the MnDOT Office of Transit to help implement county-wide transit programs within the region. Staff gave a presentation on the process of doing the Transit Need Studies to the Minnesota Transit Conference and the Minnesota Regional Development Organization conference. Assistance was given to the City of Atwater on a successful application for a vehicle for transporting handicapped and elderly individuals.

The MMDC continues to be an active participant with the Southwest Minnesota Area Transportation Partnership (ATP). The ATP both solicits and ranks transportation projects for federal funding under the Intermodal Surface Transportation Efficiency Act (ISTEA). MMDC's Transportation Advisory Committee Chairman, Harold Sanken, is the Commission's representative on the Partnership. Staff attends the meetings of the ATP and serves on the ATP's Technical Advisory Committee.

A major role played by the MMDC's Transportation Advisory Committee (TAC) in the project ranking of submitted projects for the Area Transportation Improvement Program (ATIP) is to score projects on their "Regional Significance". The factors used to score projects as to their regional significance include a number of economic factors as well as health, social, environmental, access, growth and other factors.

During this past fiscal year, the ATP's Enhancement Program Coordinator position was assigned to MMDC staff. This program provides federal funding for projects which are historic, scenic or environmental in nature and/or focus on facilities for bicycles or pedestrians. The Enhancement Coordinator assembles the committee that reviews and makes ranking recommendations to the ATP, sets up the meeting, guides the process and is one of the reviewers.

Another major transportation activity that has begun in the 1995 Fiscal Year was work on a Regional Transportation Plan. The Southwest Minnesota ATP and District 8 MnDOT has requested that each of the three RDC's that are members of the ATP look at regional significance factors for all its major collector highways and determine which of these roads should be included in a regionally significant route system. Before any final route system is acted upon, staff will seek the input from each of the four County Engineers and bring this information back to the TAC. It is hoped that this information can be placed on computer mapping during the next fiscal year. Information gathered will also be shared with each county's planning/zoning department.

Staff was appointed to serve the State Transportation Plan "Customer Team" Committee. This Committee assisted with developing strategic directions, goals, policies and objectives for the State Transportation Plan. Staff continues to attend meetings of the Highway 12 Task Force, the Highway 7 /Task Force and the Highway 212 Task Force. Staff testified before a Legislative Committee meeting held in Glencoe to discuss TH212.

MID-MINNESOTA DEVELOPMENT COMMISSION  
333 W 6TH STREET  
WILLMAR MN 56201

"ADDRESS CORRECTION REQUESTED"

BULK RATE U.S. POSTAGE PAID PERMIT NO. 478 WILLMAR, MN 56201
--------------------------------------------------------------------------