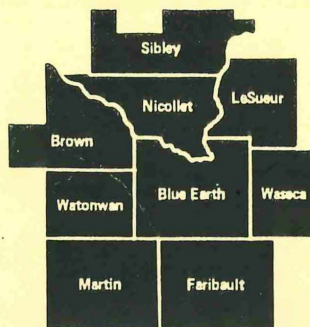




3 0307 00015 3075



24-1496

**Region Nine
Development Commission**



**Annual Report
FY 1987**

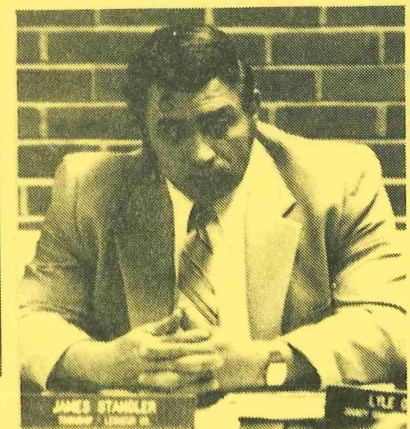
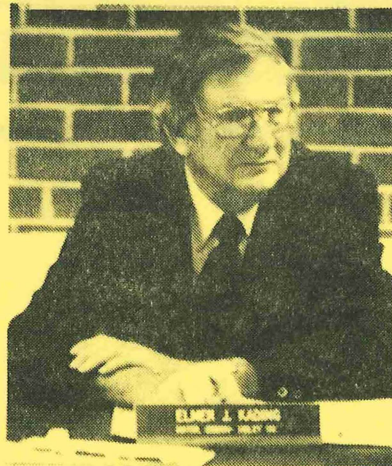
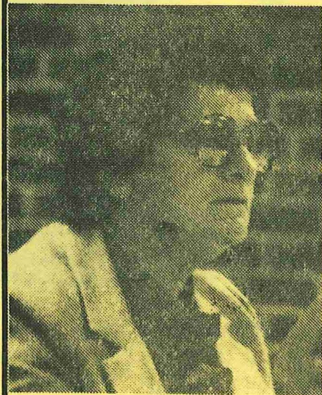
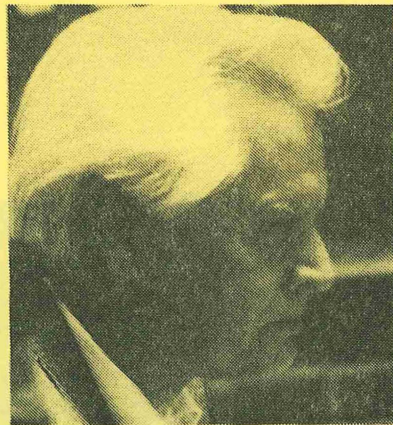
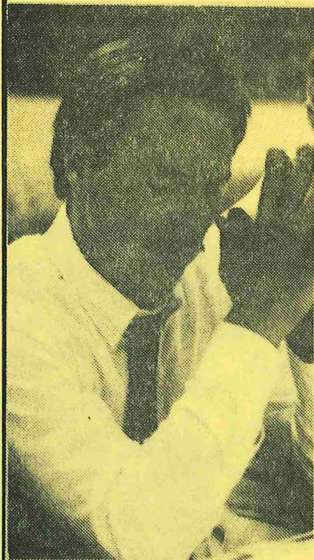
**Celebrating 15 Years of
Intergovernmental Cooperation**

410 S. 5th St., P.O. Box 3367/(507) 387-5643 or 1-800-722-9389. Mankato, Mn. 56001

HT
393
.M62
R46x
1987

LEGISLATIVE REFERENCE LIBRARY
645 State Office Building
Saint Paul, Minnesota 55155

15 Years of The Region Nine Development Commission



Region Nine

DEVELOPMENT COMMISSION

410 S. 5th St., P.O. Box 3367, Mankato, Minnesota 56001



Regional development commissions were formed in Minnesota to support intergovernmental cooperation and people working together on the local, state and regional level. I feel the first fifteen years of the Region Nine Development Commission's history has proven how rewarding it is to complete a project with your neighbor. Whether it be in emergency medical services, aging, transportation, economic development or on other issues, the commission and the units of government it serves have worked well together.

I believe the Region Nine Development Commission has fostered and often initiated successful projects which mean so much to the vitality of this region and its quality of life.

We are continually facing new challenges as change occurs almost on a daily basis. It is very important for all of us to be pro-active to change rather than looking back at the way things were. The Region Nine Development Commission has gone through many changes in program areas since its inception. I feel it will continue to meet today and tomorrow's opportunities in a way that best serves the nine county area.

It has been my pleasure to serve as chairman of the Commission the past four years. I have enjoyed the opportunity this has given me for personal growth. I will continue to serve on the Commission always looking out for your needs.

Sincerely,

Jim Stangler
Chairman



Outgoing Chairman James Stangler (left), and incoming chairman John King

Region Nine

DEVELOPMENT COMMISSION **R9**

410 S. 5th St., P.O. Box 3367, Mankato, Minnesota 56001

15 YEARS

Isn't it wonderful? Haven't we done a good job? Aren't we great? It makes you warm all over.

SO? WHAT'S NEXT?

Remember that every moment before this is history. As units of government or agencies we cannot live on our past accomplishments.

What's gone before has been a good learning experience for all of us. As units of government we have learned to respect each other and cooperate with each other. People from other parts of the state often ask how the communities in a county can work together on programs. That only follows naturally as we all have become used to working with each other not only within our counties but within the nine county area.

NOW we need to keep our minds concentrated on the needs of the Region (who is going to define Region - how many counties?). Does the commission need to be more involved in human service areas? Maybe by working together on a more than one county basis, each county could be making their dollars go farther.

Does the commission need to be offering administrative assistance to small communities? This is not a new idea, but is now the time to try it.

How much involvement should the commission continue in the area of economic development? What is the most effective use of our staff in helping small businesses and communities?

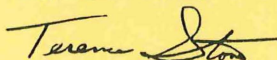
These are only examples of a few of the questions that we as a commission need to look at.

I don't have the answers to these questions. All of us in local units of government need to identify areas of concern, the questions we should ask ourselves, and even some of the tentative answers. These should come to the commission so we can continue to assist each of you in the way that you see as appropriate.

Remember that the success of the Region Nine Development Commission lies with each of you in our area who serves as a volunteer, works as an elected official, or in any way gives us support.

YOU ARE THE COMMISSION

Terence Stone
Executive Director



A Commission member when the Region Nine Development Commission was first formed in 1972, Terry Stone has served as the executive director for 11 years. He was the Region Nine Development Commission chairman from 1975 to 1976.

The Region Nine Development Commission - 15th Anniversary

The Commission, authorized by the Regional Development Act of 1969, was organized by local officials in 1972 "to facilitate intergovernmental cooperation and to insure the orderly and harmonious coordination of state, federal and local comprehensive planning and development programs for the solution of economic, social, physical and governmental problems of the state and its citizens." (Minnesota Statutes, Section 462.383; Subdivision 2.)

The Region Nine Development Commission (RNDC) celebrates its fifteenth year of assisting regional counties, cities, townships, school districts and special-interest groups and addressing their economic, social, physical and environmental concerns. As an intergovernmental body, it combines state assistance with the resources of local government to offer its citizens the most effective private, local, state and federal programs.

The Region Nine area is comprised of nine south-central Minnesota counties: Blue Earth, Brown, Faribault, LeSueur, Martin, Nicollet, Sibley, Waseca and Watonwan. Their combined population is 220,914 of the state's 4,192,973 people, according to estimates made by the Minnesota State Planning Agency in 1985/86. Fairmont, New Ulm and Mankato are the three largest regional cities with populations respectively from 11,000 to nearly 30,000.

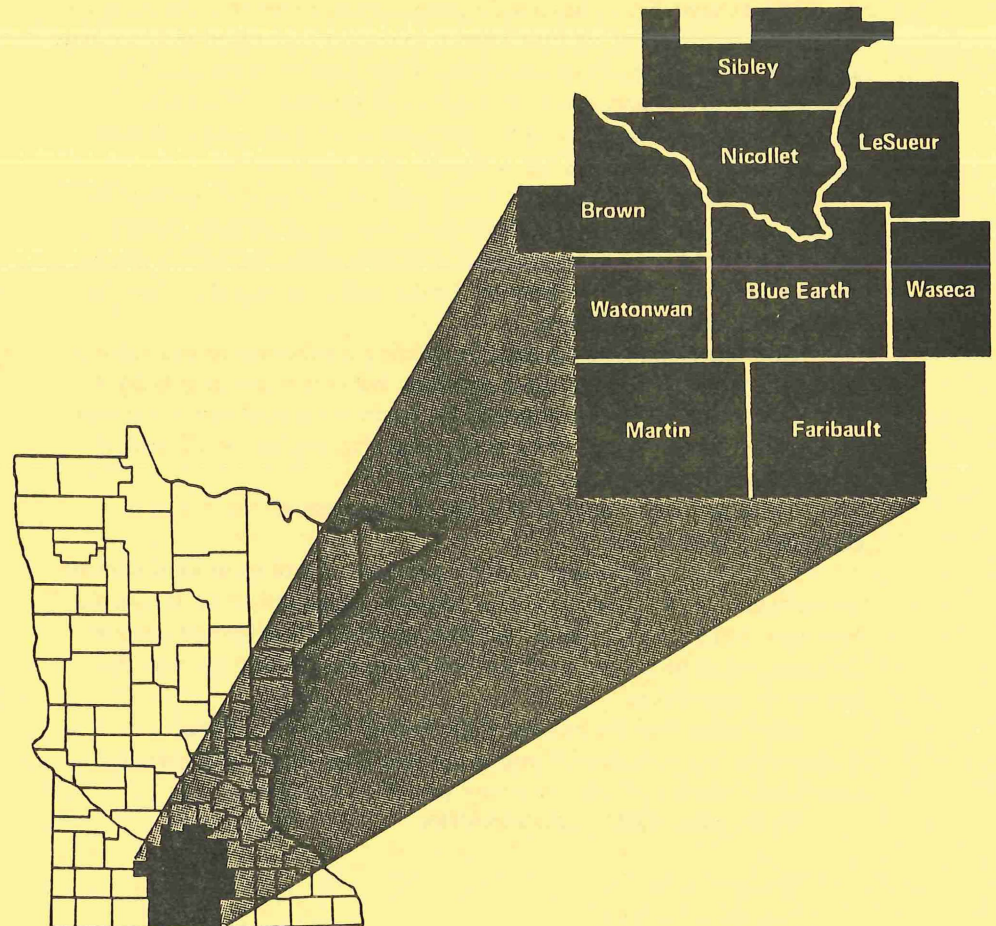
The counties' facilities and services support a diverse business community. The area's economy is centered around agriculture and agriculture-related industries, but diversification has become increasingly important to its economic growth and stability.

The 35 elected officials serving on the Commission represent nine counties, 72 cities, 147 townships, 45 school districts, nine soil and water conservation districts and the Minnesota Valley Council of Governments. A representative of the region's businesses and industries also serves on the Commission.

Approximately 300 citizens of Region Nine are active volunteers involved in regional planning as advisory council, committee and subcommission members. From the Commission's beginning, every year more citizens and elected officials participate and discover better ways to assist in planning programs that serve their communities.

The Commission has a professional planning staff to carry out the many diverse activities defined internally, or by the subcommissions and committees. The Region Nine staff consists of the executive director and specialists in the fields of recreation, land use, community/economic

development, housing, transportation, water quality, energy, solid/hazardous waste, cable television, aging, arts and developmental disabilities. They are assisted by an accountant, a public information coordinator, a bookkeeper, a graphics coordinator, secretaries and interns. Industries also serve on the Commission.



Region Nine Development Commission

- * Lester Anderson, County Commissioner, Blue Earth County
- * Vernon Carstensen, Mayor, City of Mankato, Blue Earth County
 - * Quentin Marsh, Business & Industry, Blue Earth County
- Herbert Mocol, Mayor, City of Mankato, Blue Earth County
 - * Adlor Olsen, Cities Under 10,000, Blue Earth County
 - * Erhart Stanke, Township Board, Blue Earth County
 - Dennis Myers, Cities Under 10,000, Brown County
 - Orville Olson, Township Board, Brown County
 - * John Rickers, Cities Under 10,000, Brown County
 - * Virgil Wellner, County Commissioner, Brown County
- * Carl Wyczawski, Mayor, City of New Ulm, Brown County
- * Thomas Brown, County Commissioner, Faribault County
- * Roger Oldfather, Cities Under 10,000, Faribault County
 - * Donald Toppin, Township Board, Faribault County
 - * John King, Cities Under 10,000, Le Sueur County
- * Clarence Mager, County Commissioner, Le Sueur County
 - "Babe" Miller, Minnesota Valley COG, Le Sueur County
- * Terry Overn, Minnesota Valley COG, Le Sueur County
- Jerome Schleis, County Commissioner, Le Sueur County
 - * James Stangler, Township Board, Le Sueur County
- * Leighton Hugoson, County Commissioner, Martin County
 - * Bob Lee, Cities Under 10,000, Martin County
- * Robert Malliet, Mayor, City of Fairmont, Martin County
 - Katy Olson, School Board, Martin County
 - Phil Theobald, County Commissioner, Martin County
 - * Roland Thiesse, Township Board, Martin County
- * Kenneth Albrecht, County Commissioner, Nicollet County
 - Carrie Huffer, School Board, Nicollet County
 - * John Prosch, Township Board, Nicollet County
- Harry Timm, Soil & Water Conservation, Nicollet County
- * William Wettergren, Cities Under 10,000, Nicollet County
 - * Robert Bade, County Commissioner, Sibley County
 - Elmer Kading, Cities Under 10,000, Sibley County
 - * Luverne Kent, Cities Under 10,000, Sibley County
 - * Harold Wiest, Township Board, Sibley County
- * Eldo Brandenburg, Township Board, Waseca County
- * Cal Condon, County Commissioner, Waseca County
- Jack Fitzsimmons, County Commissioner, Waseca County
 - * Avery Hall, Cities Under 10,000, Watonwan County
 - * Janet Frosan, Township board, Watonwan County

Art Kunz, Township Board, Watonwan County

- * Wilton Sulflow, Cities Under 10,000, Watonwan County
- * Olav Thormodson, School Board, Watonwan County
- * Ed Wentzlaff, County Commissioner, Watonwan County

* Present Commissioner Members

Region Nine Board of Directors

Lester Anderson, County Commissioner, Blue Earth County
Vernon Carstensen, Mayor, City of Mankato, Blue Earth County
Virgil Wellner, County Commissioner, Brown County
Roger Oldfather, Cities Under 10,000, Faribault County
John King, Cities Under 10,000, Le Sueur County
James Stangler, Township Board, Le Sueur County
Robert Malliet, Mayor, City of Fairmont, Martin County
Kenneth Albrecht, County Commissioner, Nicollet County
Luverne Kent, Cities Under 10,000, Sibley County
Eldo Brandenburg, Township Board, Waseca County
Wilton Sulflow, Cities Under 10,000, Watonwan County

Internal Works Committees

Personnel

John King
Eldo Brandenburg
Carrie Huffer
Ken Albrecht
Harold Wiest
Carl Wyczawski
Jim Stangler

Budget

Ken Albrecht
Les Anderson
Robert Bade
Eldo Brandenburg
John King
Adlor Olsen
John Prosch
James Stangler
Roland Thiesse
Carl Wyczawski

JULY 1987

SUNDAY	MONDAY	TUESDAY	WEDNESDAY	THURSDAY	FRIDAY	SATURDAY
			1 CANADA DAY	2	3	4 INDEPENDENCE DAY
5	6	7	8 Physical Development Subcommission - 2:30 (as needed) RNDC Board - 4:00 Full Commission - 7:15	9 EMS Advisory Committee - 7:00	10	11
12	13	14 Human Resource Subcommission - 9:30	15	16	17	18
19	20	21	22 Area Agency on Aging Advisory Council - 9:30 Arts Council - 7:00	23 EMS Joint Powers Board - 3:30	24	25
26	27	28	29	30	31	

Physical Development Subcommission

The Physical Development Subcommission assists the Commission in a variety of program areas including housing, community development, economic development, transportation and outdoor recreation. The Physical Development Subcommission provides input to region wide plans, prepares statements of goals, policies and priorities and reviews and comments on grant applications.

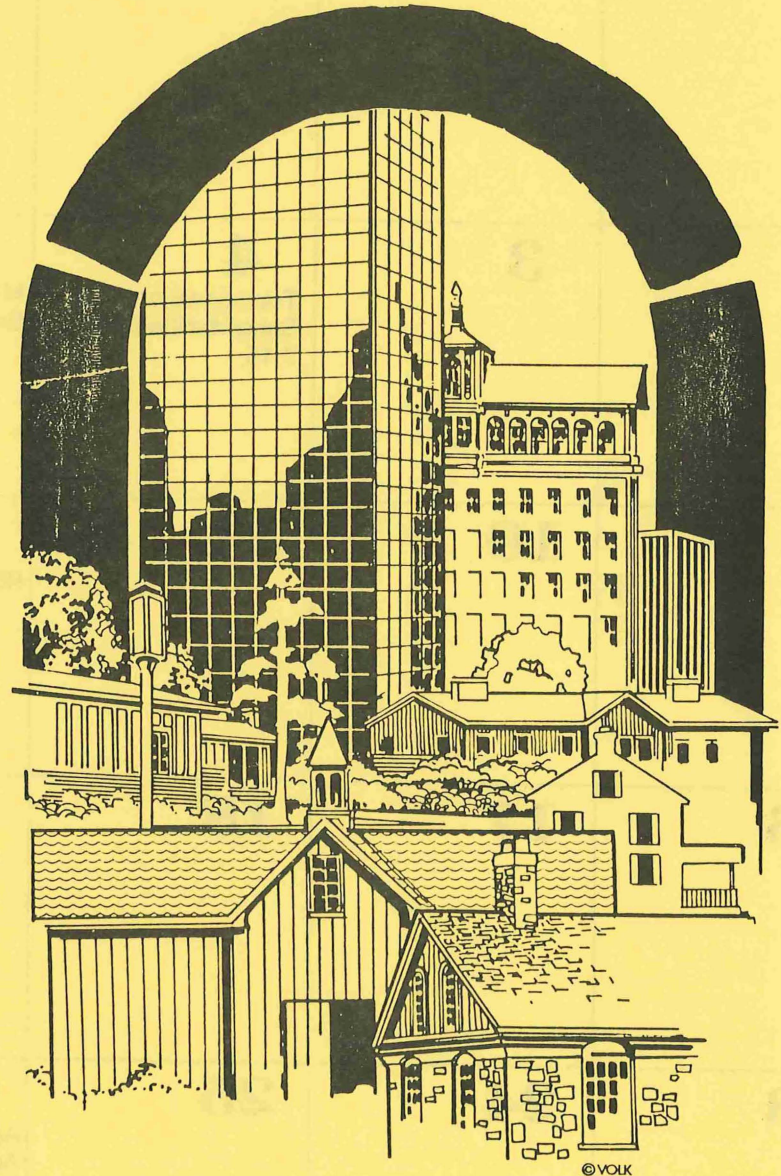
Fourteen persons sit on the Subcommission including one from each of the nine counties and one representing each city over 10,000 - Mankato, New Ulm and Fairmont. Don Toppin, Faribault County representative serves as the Subcommission Chairman.

During FY '87 the Subcommission addressed a variety of issues. It reviewed grant applications for LAWCON/LCMR grants and Small Cities Development grants. In addition, the Subcommission coordinated efforts to resist the Department of Energy's attempt to place a high level radioactive waste depository in the region.

In FY '88 the Subcommission will continue to assist the Commission in the Physical Development process through grant application review and comment.

Physical Development Subcommission Members FY '87/'88

Jack Fitzsimmons, Waseca County
Jim Harberts, City of Mankato
Leighton Hugoson, Martin County
Pete Johnson, Watonwan County
Art Kunz, Watonwan County
Miles McGrath, Le Sueur County
Roy Nelson, Department of Natural Resources
Frank A. Rodriguez, Regional Environmental Education Council
Neil Saxton, Soil and Water Conservation Districts
Dave Schnobrich, City of New Ulm
Erhart Stanke, Blue Earth County
Harry Timm, Nicollet County
Don Toppin, Faribault County
Virgil Wellner, Brown County
Bill Wells, Nicollet County
Harold Wiest, Sibley County



AUGUST 1987

SUNDAY	MONDAY	TUESDAY	WEDNESDAY	THURSDAY	FRIDAY	SATURDAY
						1
2	3	4 Transportation Subcommittee (tent.) 7:15	5 MARC Conference, Brainerd	6 MARC Conference, Brainerd	7 MARC Conference, Brainerd	8
9	10	11	12 RNDC Board - 4 p.m.	13	14 Myers-Briggs Training 9 a.m. - 2 p.m.	15
16	17	18	19	20 Myers-Briggs Training 5p.m. - 9p.m.	21	22
23	24	25	26 Area Agency on Aging Advisory Council - 9:30 Arts Council - 6:30	27 EMS Joint Powers Board - 3:30	28	29
30	31					

Comprehensive Planning

The Regional Development Act, the legislative authority for the regional development commissions, mandates the Commission to "prepare and adopt, after appropriate study and after such hearings as may be necessary, a comprehensive development plan for the region." The Region Nine Development Commission (RNDC) has responded by conducting a variety of studies and preparing plans on issues and problems that cross county boundaries. These studies and plans are used as a basis for action by the Commission and by county and municipal governments.

Recreation

The Region Nine Recreation Program is focused primarily on the development and promotion of the area's outdoor recreation resources. Development is achieved through grant programs such as the LAWCON/LCMR program which provides matching grant monies to local jurisdictions for parks and open space. Promotion of the area's outdoor recreation facilities is accomplished primarily through tourism advertising.

Recreation Grants

The Department of Energy and Economic Development offered matching grant money to local units of government in the form of the LAWCON/LCMR grant program. (LAWCON stands for the Federal Land and Water Conservation Act and LCMR stands for the Legislative Commission on Minnesota Resources.)

The LAWCON/LCMR program funds traditional natural resource-based facilities such as beaches, trails, and boat launches. It also funds, using strictly state monies obtained through a bonding program, a number of athletic facilities. These include ball fields, tennis courts and skating rinks.

Region Nine staff advertised the program, provided technical assistance to many of the grant applicants, and completed applications for Sibley and Nicollet counties.

Recreation Promotion

Region Nine continues to explore new sources of funding and new ways to promote the area's fine outdoor recreation base. Sources such as the Minnesota Joint Venture Tourism Marketing Fund and the Southeastern Minnesota Initiative Fund could supply funds for a variety of tourism promotions. High transportation costs coupled with increasing pressure on our existing outdoor recreation areas is a recreation problem of regional significance. Region Nine will continue to promote the addition of facilities in this area through grant

programs such as LAWCON/LCMR while promoting our local parks and culture through various tourism methods. This will not only reduce pressure on heavily used areas by directing people to lesser used facilities, but will decrease the amount of travel out of the Region for outdoor recreational activities which duplicate similar activities existing here in our own backyard.

Communication with agencies such as the Trade and Economic Development Department, the Department of Natural Resources (DNR), and the Department of Tourism will continue and technical assistance will be provided where needed or requested.

Land Use

Cities and counties are often faced with land-based problems in natural resource development, long-range planning, zoning or provision of sewer and water services. Communities often do not have the time or the expertise to effectively deal with these problems. The Region Nine Development Commission has always been ready to assist communities in these situations.

During FY '86 and '87 RNDC has continued to assist its local communities with land use issues including advice on zoning matters, subdivision plats and mapping projects. Projects include the city of Nicollet Zoning Ordinance and the St. Peter Comprehensive Strategic Plan.

In 1987 the Nicollet County Board requested the services of the Commission to conduct a study on the impact of the proposed Swan Lake DNR Project. The study included a look at the project's impact on population growth, taxes, and economic development. The result was a clearer understanding of the significance of project completion.

Housing

Recently, the RNDC staff completed the Region Nine Housing Analysis and Policy Plan, which was approved by the full Commission. The Plan reviews population, housing units and household characteristics in order to complete a housing needs analysis and resulting goals and policies. The information will be useful to developers and other housing providers in addition to housing regulators.

RNDC staff continues to work closely with public agencies concerned with housing issues including the Department of Housing and Urban Development (HUD), Minnesota Housing Finance Agency (MFHA), Farmers Home Administration (FmHA), and the State Department of Energy and Economic Development (DEED). The staff completed a FmHA Housing Market Study in St. James and a Housing plan in Sleepy Eye that was associated with a Municipal Housing Revenue Bond.

SEPTEMBER 1987

SUNDAY	MONDAY	TUESDAY	WEDNESDAY	THURSDAY	FRIDAY	SATURDAY
		1 Human Resource Subcommission - 9:30	2	3	4	5
6	7 LABOR DAY	8 Full Commission - 5 p.m. Legislative Reception 7:30-9:00	9 House of Representatives Mini Session	10 House of Representatives Mini Session	11 House of Representatives Mini Session Local Elected Officials Luncheon - Noon	12
13	14	15	16	17	18	19
20	21	22 Stave Training	23 Stave Training Area Agency on Aging Advisory Council - 9:30 Arts Council - 6:30	24 ROSH HASHANAH Stave Training EMS Joint Powers Board - 3:30	25 Stave Training	26
27	28	29	30			

Solid/Hazardous Waste

The environmentally sound disposal of solid and hazardous waste is an increasing problem in Minnesota. The Commission can provide technical and coordination assistance on an as needed basis and is currently involved in the effort of the South Central Joint Powers Board to complete county solid waste plans. The last half of FY '86 is slated for most area counties for a joint planning project. In addition to solid/hazardous waste, the issue of nuclear waste reoccurs from time to time.

Transportation

The Transportation Committee assists the Commission by reviewing funding requests (12372) and engaging in transportation related planning. In addition to developing and maintaining a regional transportation plan which addresses priorities, classifications and market needs, the Committee works on current transportation issues on a continuing basis. In FY '87 the Commission completed a Regional Road Jurisdictional Study.

Twenty two projects went through the intergovernmental review process. Local applicants were provided with technical assistance and coordination services with their elderly and handicapped transit van applications. Research, marketing and coordination services were provided to the Southern Grain Belt Shippers Association in their effort to help in the rehabilitation of the DM & E rail lines. Special MN/DOT funds were secured in order to perform transportation studies for 8 pilot townships. Also efforts were initiated to review and respond to the transportation funding cuts. This included a special meeting followed by the creation of a special task force that would include a wide variety of transportation professionals in addition to the Transportation Committee members.

Transportation Committee

Don Lindley, At-Large
Earl Cunningham, Brown County
Les Anderson, Blue Earth County
Ed Wentzlaff, Watonwan County
Tom Brown, Faribault County
Robert Bade, Sibley County
Doc Hall, Waseca County
Paul Hadley, Nicollet County
Roland Thiesse, Martin County
Clarence Mager, Le Sueur County
Mike Wagner, Le Sueur, Nicollet, Sibley Engineers
Jerry Engstrom, Blue Earth, Brown, Watonwan Engineers
Bob McPartlin, Martin, Waseca, Faribault Engineers
Orlin Ortloff, Municipal Engineers

Community/Economic Development

Perhaps the most pressing problem in Region Nine today is the need for increased economic development in our cities. Throughout their history, Region Nine's communities have been dependent on farm-produced income. As farmers spent their earnings locally on supplies, equipment and machinery, towns prospered and grew. Much of the local industry was likely to be agriculture-oriented - food processing or machinery manufacturing.

Now the number of farms and farm families is declining. With farm prices low, the amount of money spent by farmers in the local economy is also declining. Communities must look to other sources for the jobs and wages necessary to provide prosperity and growth.

The RNDC has a strong commitment to assist communities in economic assistance. A two pronged approach is used - assistance to communities and direct assistance to individual businesses. Various types of assistance are given, but all have the common goal of increased economic vitality.

Listed are several of the tools used by the RNDC staff to promote economic/community development.

Small Cities Development Grant - The State of Minnesota's Small Cities Development Program Awards competitive grants to communities for public facility improvements and for economic development. RNDC staff assist communities in the preparation of grant applications and administration for grant funds once received. In FY '87 RNDC closed out public facility grants in Elysian and LeHillier.

In addition, RNDC prepared successful small cities economic development grants for New Ulm (Tachtronic \$250,000) and New Prague (\$145,000).

Business Assistance Program - RNDC staff offers assistance to persons who own successful businesses and wish to expand or who have technical knowledge and wish to start a business. This assistance is provided on an individual basis. Although the specific types of help vary, the most common are marketing studies, business plans or financing searches. If RNDC staff lack the specific knowledge needed, business persons are referred to other governmental programs or educational institutions. In FY '87 over 200 businesses from throughout the Region were assisted.

Tax Increment Financing - Tax increment financing is a tool used by communities to generate public funds needed to enhance private business expansion. For example, TIF generated money can be used for sewer, water and street improvements necessary for the expansion of an industrial plant. The increased taxes on the industrial plant are used to pay off the bonds on the public

OCTOBER 1987

SUNDAY	MONDAY	TUESDAY	WEDNESDAY	THURSDAY	FRIDAY	SATURDAY
				1	2	3 YOM KIPPUR NADO Conference
4 NADO Conference	5 NADO Conference Transportation Subcommittee (tent.) - 7:15	6 NADO Conference Human Resource Subcommission - 9:30	7 Physical Development Subcommission - 2:30 RNDC Board - 4 p.m. Full Commission - 7:15	8 EMS Advisory Committee - 7:00	9	10 State EMT Conference
11 State EMT Conference	12 COLUMBUS DAY THANKSGIVING DAY (CANADA) "Learning is for Life" Conference 8:30-4:00	13	14	15	16	17
18	19	20	21 Area Agency on Aging Advisory Council - 9:30 Arts Council - 6:30	22 EMS Joint Powers Board MCIP State Conference	23 MCIP State Conference MSSA Conference	24 Caregiving for the Elderly Conference
25	26	27	28	29	30	31 HALLOWEEN "Reminder - Get Your Next Year's At-A-Glance® Calendar Now" AT-A-GLANCE® OCTOBER

improvement. In FY '87 RNDC staff assisted several communities in the TIF planning and administration process.

Business Loan Packaging - In order for a business to expand, long-term financing at reasonable rates is necessary. Often local lending institutions are not in a position to offer acceptable terms and rates. The small Business Administration, the State of Minnesota and other government agencies seek to alleviate this problem by offering loan guarantees for sound businesses. The RNDC staff works with local business owners to prepare and package loan proposals to meet the criteria of the guaranteeing agencies and lending institutions.

In FY '87 staff assisted businesses obtain loans from the SBA 7 (a) and direct loan programs, Farmers Home Administration guaranteed loans and Industrial Revenue Bonds.

Miscellaneous Studies and Reports - The RNDC stands ready to assist communities and businesses on an as needed basis with research studies and reports necessary for community and economic development projects. In FY '87 staff prepared housing studies. Communities having problems getting specific projects off the ground should contact the staff for assistance.

Census - Data Center Affiliate

In October, 1982, the Region Nine Development Commission was designated an affiliate of the Minnesota State Data Center, as part of a national Census Bureau program to increase access by the public to census information.

As an affiliate, Region Nine receives printed census documents upon release by the Census Bureau, and makes this information available to anyone needing information from the 1980 or past censuses.

The Region Nine office has access to DATANET through its IBM computer system. DATANET provides ten different databases containing facts, figures and information for Minnesota. The DATANET system is a part of the State Planning Agency's Planning Information Center. DATANET is frequently used by various users of public data including many governmental jurisdictions and private individuals.

Region Nine will continue to provide census data and assistance to users throughout the nine county area. Frequent users of this service include cities, students and developers. The staff will also analyze census data as it relates to various planning issues such as housing and transportation. The staff will be available for local training and speaking engagements related to census data and trends from one period to another.

Community Assessments

With the agricultural crisis, most communities in the region are experiencing a downturn in economic activity. Businesses have closed or are experiencing a decline in sales and profits. Reduction in state and federal grant programs means fewer outside resources from which communities can draw.

In response to this problem, RNDC has initiated a community assessment program. Program RNDC staff meet with community leaders, chambers of commerce and interested citizens. A group process is used to ascertain a community's strengths and weaknesses and devise a program to meet the most pressing needs. Once a strategy has been implemented, citizens can work together to achieve community goals.

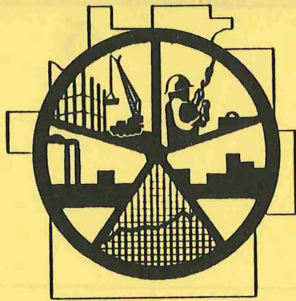
Contact Region Nine
Development Commission

For Census Information Useful for Business
Research

Wes Judkins 507-387-5643

NOVEMBER 1987

SUNDAY	MONDAY	TUESDAY	WEDNESDAY	THURSDAY	FRIDAY	SATURDAY
1	2 Transportation Subcommittee (tent.) 7:15	3 <small>ELECTION DAY</small> Human Resource Subcommission - 9:30	4	5	6 Full Commission Meeting 4 p.m. RNDC 15th Anniversary Banquet - 6 p.m.	7
8	9	10	11 <small>VETERANS DAY</small> Office Closed	12 EMS Advisory Committee - 7:00	13	14
15	16 Arts Showcase - 7:00	17	18	19 EMS Joint Powers Board - 3:30 (tent.)	20	21
22	23	24	25 Area Agency on Aging Advisory Council - 9:30 Arts Council - 6:30	26 <small>THANKSGIVING DAY</small>	27	28
29	30					



SBA 503/504 Loan Program

The SBA 503/504 Program is provided to the nine counties of south central Minnesota by the Region Nine Development Corporation. The staffing of the Corporation is provided by the Commission.

The program provides a needed source of long-term financing for physical plant expansions. A second mortgage is provided which attracts additional private sector financing. In addition, jobs must be created in order for the business to receive SBA funds. The original SBA 503 Program was changed on 7/1/86 to the 504 Program, based on private sale of debentures to replace the previous public sales.

The essence of the 504 Program is to provide financing with long term (10 or 20 years), low down payment (10 percent), reasonable rates and second mortgage incentives to banks. By overcoming the long term financing gap faced by many small and medium sized businesses, this program permits the business community to better realize its full growth potential.

Through FY '87, the Region Nine Development Corporation has completed the following loan activity:

No. of Loans Approved -- 18
 Dollar Volume -- \$2,194,000
 No. of Loans Funded -- 15
 Dollar Volume -- 1,672,000

These loans have leveraged over \$3 million in additional private funds, and helped to create and retain over 200 jobs.

1987 Fiscal Year Loans Region Nine Financing Assistance

	Financing Provided	Project Cost
Blue Earth County		
SBA 7(a) Loan	\$140,000	\$140,000
SBA 7 (a) Loan	35,000	70,000
SBA 503 Loan	96,000	271,569
Brown County		
DEED Grant	\$250,000	\$1,064,768
Faribault County		
SBA 7 (a) Loan	\$35,000	\$35,000
Le Sueur County		
DEED Grant	\$145,500	\$434,500
Tax Incement	94,000	434,500
Nicollet County		
SBA 7(a) Loan	\$171,000	\$171,000
Sibley County		
SBA 7 (a) Loan	\$102,435	\$102,435
Waseca County		
SBA 7 (a) Loan	\$71,100	\$71,100

Region Nine Development Corporation Board of Directors

Ken Albrecht, Nicollet County
 Robert Anderson, Watonwan County
 William Cowell, Sibley County
 Richard Danielson, Martin County
 Joe Finley, Waseca County
 Paul Hadley, Nicollet County
 Norb Harrington, Blue Earth County
 Earl Henderson, Watonwan County
 Arlen Krugerud, Le Sueur County
 Michael Mulder, Martin County
 Roger Nygaard, Blue Earth County
 Roger Oldfather, Faribault County
 Frank Rodriguez, Faribault County
 Richard Salvati, Brown County
 Jerome Schleis, Le Sueur County
 Harry Sorenson, Sibley County
 William Tuttle, Waseca County
 Denis Warta, Brown County

DECEMBER 1987

SUNDAY	MONDAY	TUESDAY	WEDNESDAY	THURSDAY	FRIDAY	SATURDAY
		1 Human Resource Subcommission - 9:30	2	3	4	5
6	7 Grass Roots Fundraising Conference Transportation Subcommittee - (tent.) 7:15	8	9 RNDC Board - 4 p.m. Physical Development Subcommission (as needed)	10 EMS Advisory Committee and Joint Powers - 6:00	11	12
13	14	15	16 HANUKKAH	17	18	19
20	21	22	23 Area Agency on Aging Advisory Council 9:30 Arts Council - 6:30	24	25 CHRISTMAS DAY Office Closed	26
27	28	29	30	31		

Human Resource Planning

Human Resource Subcommittee

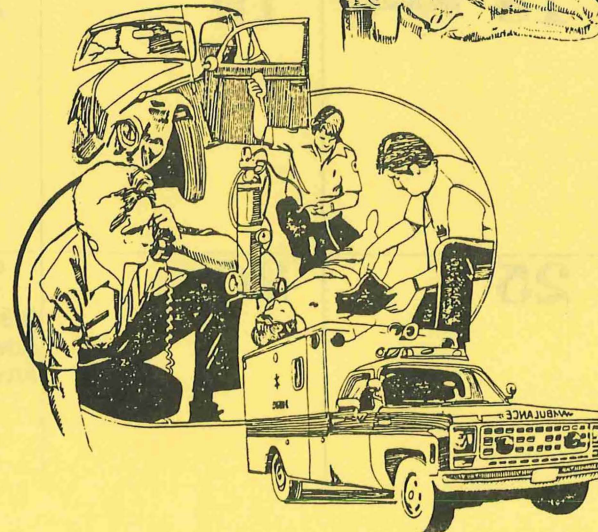
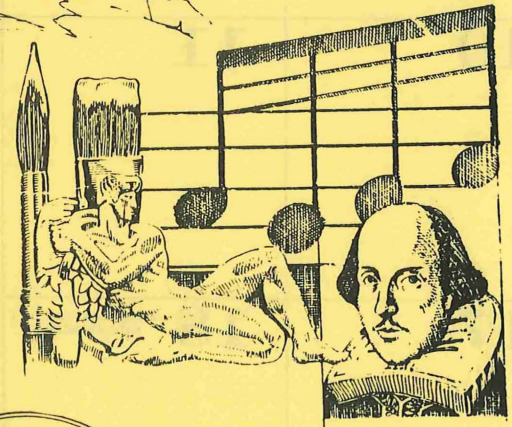
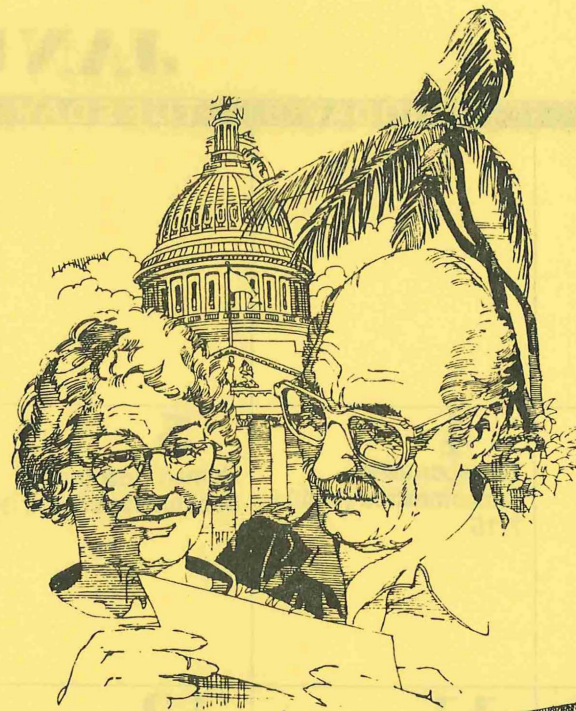
The Human Resource Subcommittee is advisory to the RNDC in planning and policy development related to human resources. In this capacity, the Subcommittee reviews plans and policies recommended by the advisory councils on aging, arts, and emergency medical services. Membership consists of 12 citizens, one from each county and one from each city of 10,000 who are appointed by the RNDC.

The HRS has been assigned responsibility for coordination of planning efforts in human resources. As part of this responsibility, HRS members regularly attend meetings of the aforementioned advisory councils, as well as the meetings of organizations providing human services in the region, such as human service boards and mental health boards. Specific activities conducted in FY '86 under this coordinative role included: review of all plans and recommendations developed by RNDC advisory councils in human resources; other grant reviews, i.e., Community Health Service Plans and community action agency grants, as well as recommendations on appointments to RNDC advisory councils.

Human Resource Subcommittee Members

- *AUDREY ANNIS, Blue Earth County
- *MYRTLE TURBES, Brown County
- DONNA DUFFEY, City of Fairmont
- *MARJORIE NAWROCKI, City of Fairmont
- LORNA MONTZKA, Faribault County
- *PEG JOHNSON, Faribault County
- *BEVERLY BLASCHKO, Le Sueur County
- *CAROL MENK, Nicollet County
- *BERNARD MCLAIN, Sibley County
- MARGARET ZIMMERMAN, Waseca County
- *FRANCES KUNZ, Waseca County
- RICHARD BRANDT, Watonwan County
- *MARIANN TREML, Watonwan County
- *CAROLYN SHREWSBURY, City of Mankato
- *BETTY MARTINKA, City of New Ulm

*Present Members



JANUARY 1988

SUNDAY	MONDAY	TUESDAY	WEDNESDAY	THURSDAY	FRIDAY	SATURDAY
					1 <small>NEW YEAR'S DAY</small>	2
3	4 Transponation Subcommittee (tent.) - 7:15	5 Human Resource Subcommission - 9:30	6	7	8	9
10	11	12	13 Physical Development Subcommission (as needed) RNDC Board - 4 p.m. Full Commission - 7:15	14 EMS Advisory Committee - 7:00	15	16
17	18 <small>MARTIN LUTHER KING, JR.'S BIRTHDAY OBSERVED</small>	19	20	21	22	23
24	25	26	27 Area Agency on Aging Advisory Council - 9:30 Arts Council - 6:30	28 EMS Joint Powers Board - 3:30	29	30
31						

Area Agency on Aging

The Region Nine Development Commission has been designated as the Area Agency on Aging (AAA) for the nine counties of south central Minnesota since 1976. The Area Agency receives its funding from the Federal Administration on Aging under the Older Americans Act as administered through the Minnesota Board on Aging.

The Area Agency on Aging is expected to fulfill the many responsibilities outlined in the Older Americans Act:

- to serve as a focal point on aging
- to disseminate information on aging in the nine county area
- to coordinate and co-locate services to older people
- to seek private financial and human resources
- to provide training to the aging network
- to advocate on behalf of older people
- to plan for services by identifying needs and matching resources to those needs
- to make grants for new expanded services
- to ensure the maintenance of priority services in the Region

1987-1990 Area Plan

The Region Nine Area Agency on Aging is required under the Older Americans Act and by the Minnesota Board on Aging to regularly assess the needs of older persons in the Region. The assessment of these needs and the plan for action that addresses them is known as the Area Plan on Aging. The Plan acts as the guideline for the AAAs activities.

January 1, 1987 marked the beginning of the new 1987-1990 Area Plan on Aging. Some of the key objectives for the next four years include:

1. To facilitate the communication of aging service providers by developing a pilot aging network group in at least one county.
2. To effectively promote and encourage a wide variety of public and private services/resources that will support and improve the system of family and informal caregivers.
3. To conduct a thorough needs assessment of elderly persons, their patterns of knowledge and utilization and willingness to use services and disseminate as widely throughout the Region.
4. To implement a program of public information and education regarding the AAA, its programs and activities.
5. To develop a pilot regional guardianship/conservatorship service and to seek ongoing funds

Advisory Council on Aging

SANDRA ALLAIRE, Public Agency; U of M Technical College

DAVID JANOVY, At-Large

BETTY KING, Le Sueur County

ETHEL MEDALEN, Blue Earth County

CARL OSLUND, Waseca County

ROBERT PETERSON, County Social Service Agency

BEN PORTNER, Sibley County

T.R. SCHAFFLER, At-Large

MICHAEL SHEA, County Social Service Agency

*EDGAR ANDERSON, Watonwan County

*KEN BROWN, At-Large

*RAY ECKES, At-Large

*LILLIAN HANSEN, At-Large

*FRANK HECK, Brown County

*ARTHUR MUESING, Nicollet County

*ROSEMARY MURPHY, Martin County

*GLORIA PEARSON, Public Health Nursing

*MARY UTERMOHLEN, At-Large

*CALVIN WARD, Private Non-Profit Agency - Mapleton Community Home

*ALICE WEYDT, Public/Private Agency-Immanuel-St. Joseph's Hosp.

*HELEN NEULIEB, Le Sueur County

*DR. HARRY BRAUER, Blue Earth County

*JANET JOHANSEN, At-Large

*TODDY KROELLS, At-Large

*SR. LORETTA KLINKHAMMER, Waseca County

*ARLENE FELTER, Sibley County

*GAIL GILMAN WALDNER, Public Agency-Brown Co. Extension

*JULIE MILOW, County Social Services Agency

#AUDREY ANNIS, HRS Liaison

#REV. BERNARD MCLAIN, HRS Liaison

+ERHART STANKE, RNDC Liaison

*Current Advisory Council Members

#Ex-officio member serving as liaison between Advisory Council and Human Resource Subcommission.

+Ex-officio member serving as liaison between Advisory Council and the RNDC.

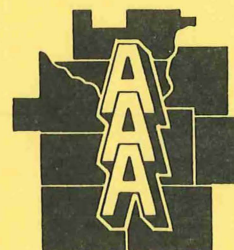
FEBRUARY 1988

SUNDAY	MONDAY	TUESDAY	WEDNESDAY	THURSDAY	FRIDAY	SATURDAY
	1 Transportation Subcommittee (tent.) - 7:15	2 Human Resource Subcommission 9:30	3	4	5	6
7	8	9	10 Physical Development Subcommission (as needed) RNDC Board - 4 p.m. Full Commission - 7:15 State Tourism Conference	11 State Tourism Conference EMS Advisory Committee - 7:00	12 LINCOLN'S BIRTHDAY	13
14 VALENTINE'S DAY	15 WASHINGTON'S BIRTHDAY OBSERVED President's Day - Office Closed	16	17 ASH WEDNESDAY	18	19	20
21	22 WASHINGTON'S BIRTHDAY	23	24 Area Agency on Aging Advisory Council - 9:30 Arts Council - 6:30	25 EMS Joint Powers Board - 3:30	26	27
28	29					

Under the priorities of the Area Plan on Aging, the following grants were awarded by the RNDC effective July 1, 1986:

Project Name/Grant	Amount
South Central Ombudsman Program	\$31,687 (85%)
Southern Mn. Regional Legal Services	\$26,806
St. Paul, Mn.	
Legal Advocacy for Older Americans	\$87,333
Southern Mn. Regional Legal Services	\$65,500 (75%)
St. Paul, Mn.	
SMILINE Information Referral Project	\$30,670 (75%)
Southcentral Mn. Interlibrary Exchange	\$23,000
Mankato, Mn.	
Brown County Chore/Home Maintenance	\$72,700
Brown County Family Service Center	\$28,800 (50%)
New Ulm, Mn.	
Nicollet County Senior Health Screening Clinics	\$16,200
Nicollet County Public Health Nursing	\$7,900 (50%)
St. Peter, Mn.	
Immanuel-St. Joseph's Hospice Program	\$27,843
Mankato, Mn.	\$16,706 (60%)
Nicollet County Direct--Care Hospice	\$8,600
Nicollet County Public Health Nursing	\$5,040 (60%)
St. Peter, Mn.	
Sioux Trails Mental Health Center--	
Peer Counseling	\$25,268
New Ulm, Mn.	\$15,100 (60%)
Sibley County In-Home Respite Service	\$16,446
Meeker-McLeod-Sibley Comm. Health Services	\$9,568 (60%)
Gaylord, Mn	

Mapleton Community Home	\$4,776
Adult Day Care	\$3,132 (75%)
Mapleton, Mn.	
Waseca Area Hospice	\$12,160
Waseca, Mn.	\$9,120 (75%)
Le Sueur Co. Volunteer Advocacy	\$28,619
Catholic Charities	\$20,175 (75%)
St. Paul, Mn.	
Nutrition for the Elderly	\$847,467
Mankato, Mn.	\$328,488
	\$279,215
MVAC Home Delivered Meals	\$118,956
Mankato, Mn.	\$93,271
	\$79,280



**Area Agency on Aging
Region Nine Development Commission
410 S. 5th St. Box 3367, Mankato, Mn.
Phone: 1-800-722-9389 or 507-387-5643**

MARCH 1988

SUNDAY	MONDAY	TUESDAY	WEDNESDAY	THURSDAY	FRIDAY	SATURDAY
		1 Human Resource Subcommission - 9:30	2	3	4	5
6	7 Transportation Subcommittee (tent.) 7:15	8	9 Physical Development Subcommission (as needed) RNDC Board - 4 p.m. Full Commission - 7:15	10 EMS Advisory Committee - 7:00	11	12
13	14	15	16	17 ST. PATRICK'S DAY	18	19
20	21	22	23 Area Agency on Aging Advisory Council - 9:30 Arts Council - 6:30	24 EMS Joint Powers Board - 3:30	25	26
27	28	29	30	31		

South Central Minnesota Emergency Medical Services

The South Central Minnesota Emergency Medical Services Joint Powers Board contracted with the RNDC in December, 1982, for technical assistance and staffing to plan and implement a regional emergency medical services system in the nine county area. Implementation of the system began in April, 1984, and continues through the present.

The Joint Powers Board is comprised of one county commissioner from each of the nine counties, and is responsible for the use of EMS implementation funds available from the Minnesota Department of Health. The source of those funds include Federal Preventative Health Block Grants and the Minnesota EMS Systems Support Act.

To advise it in its activities, the Board has established an EMS Advisory Committee which is composed of a broad cross section of EMS personnel representing each county in the Region. Represented in the membership of this committee are ambulance services, first responder/rescue squads, dispatchers, administrators, hospital administrators, law enforcement and civil defense.

Major projects undertaken during the 1986-87 grant period included:

- * The implementation of a regional multiple victim incident triage program, 211 people.
- * The training of 64 people (physicians, nurses, paramedics) in advanced cardiac life support.
- * The training of 36 ambulance squad members in emergency vehicle driving.
- * The training of 14 physicians in advanced trauma life support.
- * The training of 44 EMS providers in basic trauma life support.
- * Provision of first responder training grants totaling \$2,280 and training 56 people.
- * Provided 96,300 911 telephone stickers.
- * Provided 946 911 reflectiveness vehicle stickers.
- * Prepared application for Department of Natural Resources Fire Department grant which resulted in the award of \$7,000 to 7 Faribault County fire department and \$2,000 to 2 Le Sueur County fire departments.
- * Prepared ambulance specifications for the cities of Montgomery, New Ulm, Sherburn and Wells.
- * Trained 4 ambulance services in use of regional run report system.
- * Provided staff for South Central MN EMS Joint Powers Board
- * Awarded \$9,847 in grants for equipment
- * Awarded \$3,160 in grants for First Responder training
- * Awarded \$9,250 in grants for miscellaneous training**
- * Trained 700 volunteers through staff in services and training sessions

* Assisted with preparation of Department of Natural Resources Fire Department grant applications resulting in the award of \$10,000 for 2 communities.

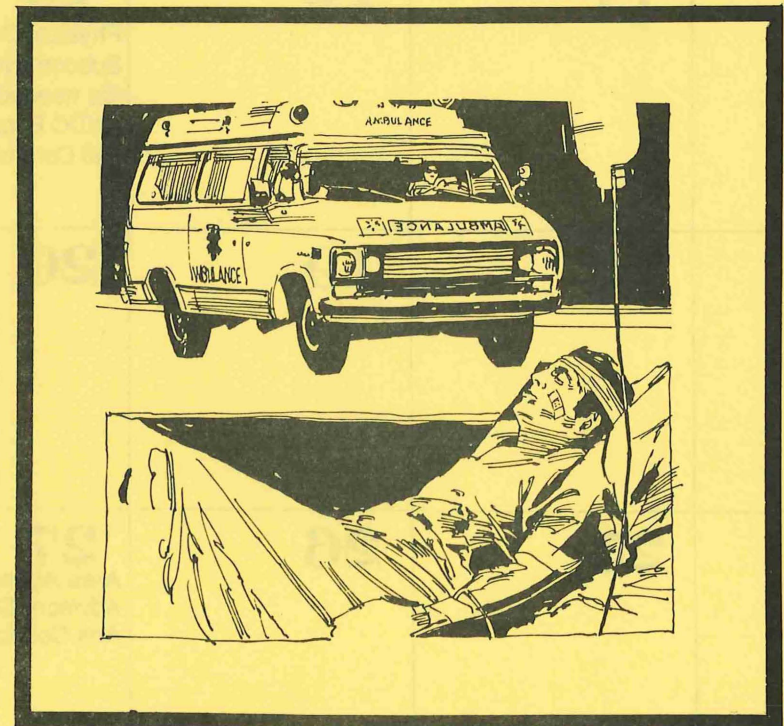
* Wrote ambulance specifications for 6 community ambulance services

* Involved 25 citizens in program through Advisory Committee participation.

** Advanced Cardiac Life Support, Basic Trauma Life Support, Emergency Vehicle Driving, Advanced Trauma Life Support, Emergency Nursing.

Numerous forms of technical assistance have also been provided, including the preparation of ambulance purchase specification for 5 ambulance services, completion of several FCC radio communications license applications and renewals, reassignment of ambulance primary service areas in three counties, and a variety of other consulting services.

The 1987-88 implementation plan is now being prepared, which will identify the tasks to be completed during the next phase of the project.



APRIL 1988

SUNDAY	MONDAY	TUESDAY	WEDNESDAY	THURSDAY	FRIDAY	SATURDAY
					1 <small>GOOD FRIDAY</small>	2 <small>PASSOVER</small>
3 <small>EASTER</small>	4 Transportation Committee (tent.) 7:15	5 Human Resource - 9:30	6	7	8	9
10	11	12	13 Physical Development Subcommission - 2:30 (as needed) RNDC Board - 4 p.m. Full Commission - 7:15	14 EMS Advisory Committee - 7:00	15	16
17	18	19	20	21	22	23
24	25	26	27 Area Agency on Aging Advisory Council - 9:30 Arts Council - 6:30	28 EMS Joint Powers Board - 3:30	29	30

Emergency Medical Services Joint Powers Board

- * LUVERNE BERGMANN, Blue Earth County
- BILL MAHER, Blue Earth County
- *CHARLES GRIEBEL, Brown County
- *CHUCK PINGRY, Faribault County
- *ROBERT CULHANE, Le Sueur County
- BABE MILLER, Le Sueur County
- *LEIGHTON HUGOSON, Martin County
- STEVAN ZOELLER, Martin County
- KEN ALBRECHT, Nicollet County
- *KEITH CONNOR, Nicollet County
- JOHN BACH, Sibley County
- *RUEBEN MEYER, Sibley County
- *CAL CONDON, Waseca County
- *NOREN DURHEIM, Watonwan County
- GERALD GIDEON, Watonwan County
- *Present Members

The Joint Powers Board meets the 4th Tuesday of each month, in the Region Nine Development Commission Office.

Emergency Medical Services Advisory Board

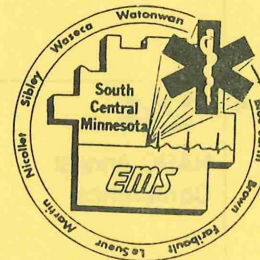
- GLEN GABRIEL, (law enforcement), Blue Earth County
- *JEAN JAVENS, (nurses), Blue Earth County
- *KEVIN PAAP, (rescue squads), Blue Earth County
- *JIM SINKBEIL, (training), Blue Earth County
- *ANITA HOFFMAN, (CHS agencies), Brown County
- *DUANE LARSON, (radio), Brown County
- *JUDY LODES, (nurses), Brown County
- *DICK HULL, (law enforcement), Faribault County
- JERRY ANDERSON, (law enforcement), Faribault County
- *FRANK LAWATSCH, (hospitals), Faribault County
- *SANDY SPRENGER, (nurses), Faribault County
- HAROLD CHRISTIANSON, (rescue squad) Le Sueur County
- *JIM FELMLEE (ambulance services), Le Sueur County
- *BRIAN SMITH, (CHS agencies), Le Sueur County
- *PETE FRIEDERICH, (city administration), Martin County
- *NANCY MILBRANDT, (dispatchers), Martin County
- *DOUG SCHMIDKE, (ambulance), Martin County

- LES ENNIS, (law enforcement), Nicollet County
- *TED WILCOX, (ambulance services), Nicollet County
- *DR. WILLIAM SHORES, (physicians), Nicollet County
- MARY NELSON, (dispatchers), Sibley County
- *RANDY TIEGS, (rescue squads), Sibley County
- *MAXINE ZELLMAN, (city administration), Sibley County
- *DR. JAMES DEY, (physicians), Waseca County
- JOE FRITZ, (radio), Waseca County
- *THERESA ROESSLER, (training), Waseca County
- *JOHN BAERG, (ambulance services), Watonwan County
- *CAROL ETTER, (ambulance services), Watonwan County
- *COLLEEN OLSON, (civil defense), Watonwan County
- *Present Members

The Advisory Committee meets the 2nd Thursday of each month, in the RNDC office.

EMS Proposed Conference Schedule

- Regional Emergency Care Conference: Spring 1988
- Ambulance Management Workshop: Fall 1987
- Ambulance Medical Directors Workshop: Spring, 1988 (tent.)
- EMS Radio Dispatchers Workshop: Winter, 1987-88



South Central Emergency Medical Service
Region Nine Development Commission
410 S. 5th St. Box 3367, Mankato, Mn.
Phone: 1-800-722-9389 or 507-387-5643

MAY 1988

SUNDAY	MONDAY	TUESDAY	WEDNESDAY	THURSDAY	FRIDAY	SATURDAY
1	2 Transportation Committee (tent.) 7:15	3 Human Resources Subcommission 9:30	4	5	6	7
8 MOTHER'S DAY	9	10	11 Physical Development Subcommission 2:30 (as needed) RNDC Board - 4 p.m. Full Commission - 7:15	12 EMS Advisory Committee - 7:00	13	14
15	16	17	18	19	20	21 ARMED FORCES DAY NARC Annual Conference
22 NARC Annual Conference	23 VICTORIA DAY (CANADA) NARC Annual Conference	24 NARC Annual Conference	25 Area Agency on Aging Advisory Council - 6:30	26 EMS Joint Powers Board - 3:30	27	28
29	30 MEMORIAL DAY Office Closed	31				



Arts

The Region Nine Arts Council is a volunteer group of citizens representing a broad base of regional arts interests from each county and from each city of 10,000 in the region. The Council reviews grant applications submitted by arts organizations with the region and forms arts policies, goals and priorities in the region. The Councilmembers also provide technical assistance to those local arts organizations and serves as advocates for local and regional arts development.

The regranting of funds allocated by the Minnesota State Legislature was again the major activity of the Arts Council in FY '87. Two production and sponsorship grant rounds and one McKnight grant round were conducted. The grant applications were judged on the artistic merit of the project, the ability of the applicant to carry out the project and the need for the project within the designated area.

Region Nine Arts Council

Kathleen Gates, Blue Earth County
 Sandra Walworth, Brown County
 Diane Helgeson, Faribault County
 Thomas Engquist, Le Sueur County
 Viva Jean Bosshart, Marting County
 Steven Griffith, Nicollet County
 Charles Lundgren, Sibley County
 Pat Beckmann, Waseca County
 Floyd Johnson, Watonwan County
 Charles Draper, City of Fairmont
 Tony Filipovitch, City of Mankato
 Sylvia Salvati, City of New Ulm
 Audrey Annis, HRS Liaison

Production and Sponsorship Grants

Applicant	County	Amount
St. Peter Community Choir	Nicollet	\$2,150
Waterville Community Choir	Le Sueur	500
Minnesota Valley Chorale	Blue Earth	2,500
Frost Community Club	Faribault	375
Fairmont Opera house	Martin	3,000
Mankato Ballet Company	Blue Earth	1,200
Minnesota Valley Brass Qt.	Blue Earth	1,810
Waseca Arts Council	Waseca	3,500
Original German Band	Brown	566
*Mankato Ballet Company	Blue Earth	770
*Southern Minnesota Poets	Blue Earth	2,450
*MAYSO	Blue Earth	1,820
Cherry Creek Theatre	Blue Earth	2,450
Le Sueur Historical	Le Sueur	271
Civic Summer Theatre	Martin	700
*Mankato Symphony	Blue Earth	2,450
Le Sueur Concert Association	Le Sueur	700
Fairmont Opera House	Martin	350
Good Thunder Development Corp.	Blue Earth	2,450
*KMSU Radio	Blue Earth	1,190

McKnight

*Traverse Des Sioux Library System	Blue Earth	9,560
*Mankato Symphony Orchestra	Blue Earth	1,741

* Region wide or multi-county projects

JUNE 1988

SUNDAY	MONDAY	TUESDAY	WEDNESDAY	THURSDAY	FRIDAY	SATURDAY
			1	2	3	4
5	6 Transportation Committee (tent.) 7:15	7 Human Resource Subcommission - 9:30	8 Physical Development Subcommission - 2:30 (as needed) RNDC Board - 4p.m. Full Commission - 7:15	9 EMS Advisory Committee 7:00	10	11
12	13	14 FLAG DAY	15	16	17	18
19 FATHER'S DAY	20	21	22 Area Agency on Aging Advisory Council - 9:30 Arts Council - 6:30	23 EMS Joint Powers Board - 3:30	24	25
26	27	28	29	30		

Workshops/Seminars/Special Events

South Central Emergency Medical Services annual conference.

It focused on Basic Advanced Cardiac Life Support changes, how to deal with infection control, self-defense techniques, professional malpractice in emergency medical services, EMT defibrillation and mechanism of injury. September, 1986

Learning is for Life conference sponsored by Region Nine Area Agency on Aging. Workshops included: housing options; caring for older persons; practical applications; lighting and the aging eye; coping with arthritis. Surviving rising health care costs was Helen Leonard, Washington, D.C., the keynote speakers theme. October 1986

Are You Ready for Economic Development was the conference theme. where are the prospects, what are key businesses searching for, preparing your community for economic development and building on a community's assets were the issues addressed. October, 1986

The conference, **Attracting Visitors to Your Community**, drew an estimated 75 persons to New Ulm. Topics ranged from 'what the tourism industry can mean to your community'; to 'what makes a memorable experience and a satisfied visitor.' November, 1986

"Developing Leaders - Farmer to Farmer Conference" drew persons actively involved in farming from a 10 county area. It was co-hosted by each of the nine counties within the region. The ground rules for the conference were persons should not come with preconceived ideas and there would be no discussion of federal or state agricultural programs. March, 1987

The Hospitality for Sale Workshop was co-hosted with the Blue Earth County Extension Office and the Mankato Technical Institute. It guided home and farm owners through the complexities of starting on in-home guest business. Financial sources, rules and regulations, marketing strategies and tips for meal planning were presented. March, 1987

Marketing research, developing a marketing plan, the difference between marketing, selling and advertising plus fund investment were the major topics at the two-day marketing seminar. M. Gene Aldridge of Aldridge & Associates, Denver, Colorado, presented the seminars for economic development professionals and non-profit agencies. April and May, 1987.

Economic development professionals were brought together on a monthly basis to focus on **targeted marketing** and exploring ideas for regional economic development success.

Aging Network meeting focusing on senior citizens issues. February, 1987 and May, 1987

Newly elected officials workshop drew a large crowd as ideas were shared about serving as an elected official and ways to use RNDC services. November, 1986.

Preparing for the legislative session was the topic as advisory council and other RNDC representatives discussed issues prior to the 1987 legislative session. November, 1986

Defensive Driving Course for Seniors, Developed by the National Safety Council, was offered once in each of the nine counties to assist with seniors receiving auto insurance discount.

Making News was the topic when area media representatives explained how to best work with them to develop the greatest media exposure. It focused on preparing news releases, the needs of radio, television and newspapers (weekly and daily), the value of newsletters, planning for public relations. May, 1987

Economic Developers + Librarians = Information Exchange drew two different groups into working together. Issues discussed at the workshop were economic vitality is important to libraries; what is available to assist economic developer and sharing your economic development activities. May 1987

Small Business Administration/Region Nine Financing workshop was designed for financial institutions. Speakers discussed financing tools and ways the RNDC can assist in financial packaging. September, 1986

The Minnesota Community Improvement Program, Minnesota Beautiful, Governor's Design Team and Main Street were tools for community improvement explained at workshop for chambers, city staffs and others. February, 1987.

Numerous workshops were facilitated in individual communities to assist in identifying needs, **developing leadership and planning projects**. July, 1986 - June, 1987

A series of workshops were hosted for non-profits in cooperation with the **District Nine Minnesota Agri-Women** and for Region Nine Arts Council. Understanding your leadership style, planning for the future of your organization, fundraising, asking for money face to face and getting the most from our board of directors were the four seminar topics. June, 1987

Minnesota Women for Agriculture cosponsored a series of 18 sessions. The leadership workshops addressed leadership styles, public relations and marketing, fundraising, planning ahead, making the most of your time and meetings that work. February, 1987

Hometown or Ghost Town: how rural communities in south central Minnesota are changing during the farm crisis. The District Nine Chapter of the Minnesota Women for Agriculture co-sponsored this informative session with the State Demographer's Office and RNDC. September, 1986

Emergency care providers attended "hands on sessions" on various farm machinery, auto and pickup extrications during the **Farm Machinery/Extrication Conference**. It was sponsored by the South Central Emergency Medical Services Joint Powers Board, Mankato Technical Institute and the Region Nine Development Commission. September, 1986

The second **emergency care providers** workshop was designed to familiarize them with equipment and hazards when responding to farm emergencies. It was sponsored by the South Central Emergency Medical Services Joint Powers Board, the Region Nine Development Commission and Mankato Technical Institute April, 1987

Advanced cardiac life support was offered in six locations by the South Central Emergency Medical Services Joint Powers Board in conjunction with the Mankato Technical Institute and Queen of Peace Hospital, New Prague. April, May, June, 1987

The Northeast Metro Technical Institute **Emergency Driving Program** was offered to emergency vehicle drivers. January, February, March, April, May, 1987

Basic Trauma Life Support was an intensive program designed to train emergency medical care providers in the latest trauma care techniques. It was offered by the Region Nine Development Commission, Mankato Technical Institute and the Wadena Area Vocational Institute. April, 1987

Studies/Documents

Emergency Medical Services

EMS Salary Survey (1987)

EMS Consumer Survey (1987)

Ambulance Purchase Specifications (1985-87) - Le Sueur, Wells, Le Center, Gaylord, Montgomery, New Prague, Blue Earth, Elmore, Winnebago, Sherburn, New Ulm, Springfield

Quarterly Reports - Ambulance Data (1987)

Physical/Economic Development

St. Peter Comprehensive Strategic Plan (1987)

Nicollet Land Use Plan & Zoning Ordinance (1987)

Swan Lake Feasibility Study (1987)

Farmer to Farmer Conference Report (1987)

Kiester Community Assessment (1987)

Transportation

Region Nine Road Jurisdiction Study (1987)

Arts

Arts Policy Manual (1987)

Arts Sponsorship File (1987)

Fiscal Year 1988-89 Arts Plan (1987)

Aging

1987-1990 Area Plan on Aging

Directory of Senior Clubs and Centers - update

Staff

Carol Bishop - Director, Area Agency on Aging

Bob Dahm - Director, Emergency Medical Services

* Kathie Davis - Public Information Coordinator, Conference Coordinator

Russ Frantum - Bookkeeper

Linda Giersdorf - Area Agency on Aging Administrative Assistant;
Conference Coordinator

* Wes Judkins - Director, Physical Planning

Kris Juliar - Economic Development Planner

Dwayne Lee - 503/504 Development Corporation Financial Specialist

Tom McBride - Planner, Emergency Medical Services

* Roxann Moeller - Accountant

Steve Moline - Planner, Economic Development

* Toni Nesheim - Director, Human Resources Planning

Diane Pettipiece - Secretary

Sherry Ristau - Planner, Area Agency on Aging and Grants Manager

Eileen Roesner - Office Aid

Mark Scheidel - Planner, Transportation; Water Quality; Land Use

Craig Shirk - Planner, Recreation; Graphics Coordinator; Cartography

* Terry Stone - Executive Director

Sharen Goeman - Secretary

Cheryl Weston - Senior Secretary

*Management Team

**Phone: 1-800-722-9389
507-387-5643**

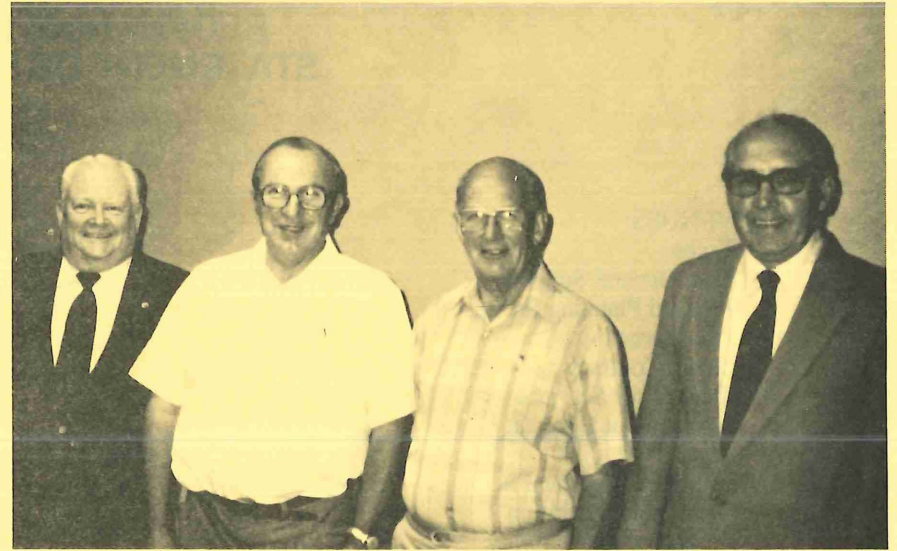
REGION NINE DEVELOPMENT COMMISSION

STATEMENT OF REVENUES AND EXPENDITURES

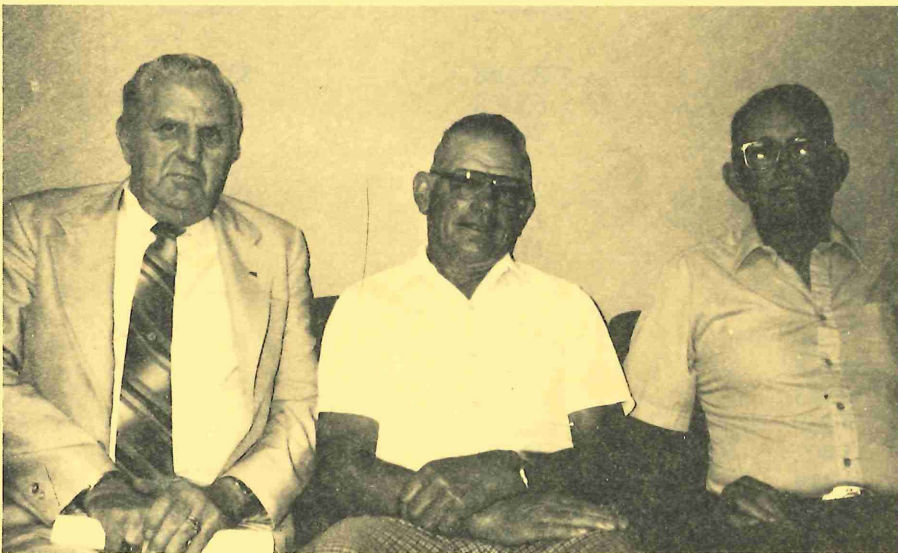
	FY 1986 <u>Actual</u>	Rev. 6/87 Budget <u>FY 1987</u>	Proposed Budget <u>FY 1988</u>
REVENUES:			
Taxes	\$189 907	\$234 428	\$230 000
State General Support	98 699	43 586	43 586
Physical Planning Project	25 014	30 000	25 000
Transportation	19 274	21 000	25 000
IISAC Contract	15 865		
Charges for Services	1 876		10 000
Procurement Contract		20 000	
Arts	23 556	20 000	22 000
Emergency Medical Services	101 185	115 000	115 000
Aging Administration	110 899	120 000	145 000
Development Disability	3 170		
Rural Development Council	7 434		
Interest and Miscellaneous	36 540	32 000	29 000
Carryover/Reserve	1 492	40 628	31 385
Total Revenues	<u>\$634 911</u>	<u>\$676 642</u>	<u>\$675 971</u>
EXPENDITURES:			
Salary	\$351 845	\$385 088	\$377 671
Burden	60 463	65 478	72 000
Printing and Xerox	28 921	24 708	26 000
Public Notice	1 709	1 135	2 000
Office Space	25 763	26 541	27 000
Postage	13 650	15 339	14 500
Telephone	16 286	17 409	16 500
Membership and Subscription	4 063	4 269	5 000
General Insurance	638	2 685	2 500
Miscellaneous	3 980	960	1 500
Travel Staff	34 618	33 102	34 000
Travel Others	36 143	38 728	38 000
Registration	9 260	7 963	9 000
Supplies	11 402	12 523	11 000
Publications	1 419	1 296	1 800
Equipment and Maintenance	8 276	8 191	4 500
Legal	-0-	1 000	1 000
Audit	8 168	4 972	6 000
Depreciation/New Equipment	3 986	9 400	6 000
Consultant	14 321	15 855	20 000
Total Expenditures	<u>\$634 911</u>	<u>\$676 642</u>	<u>\$675 971</u>



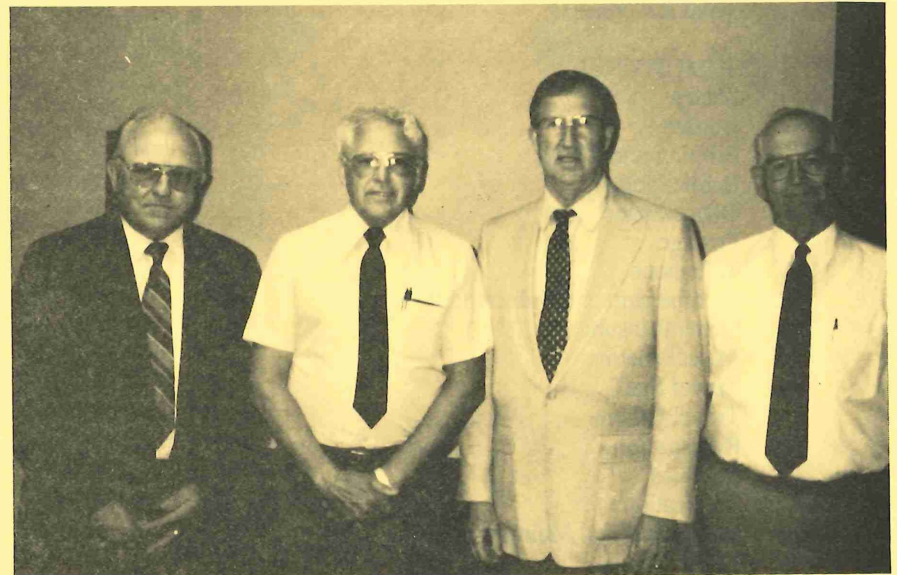
Martin County. Left to Right: Robert Malliet, Bob Lee, Leighton Hugoson, Roland Thiesse.



Blue Earth County. Left to Right: Vernon Carstenson, Lester Anderson, Adlor Olsen, Erhart Stanke.

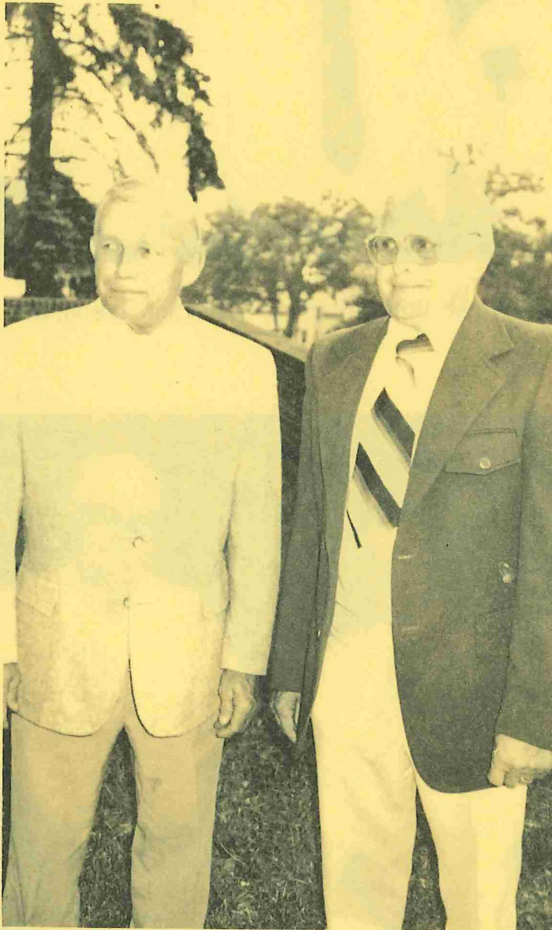


Waseca County. Left to Right: Cal Condon, Eldo Brandenburg, Avery "Doc" Hall.



Brown County. Left to Right: Virgil Wellner, John Rickers, Carl Wyczawski, Lynn Balbach.

Commission Continued

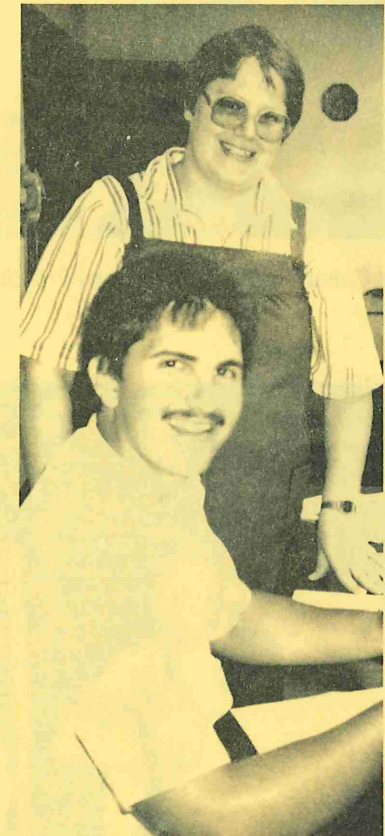


Sibley County. Left to Right: Robert Bade, LuVerne Kent, Harold Wiest (not pictured).

Region Nine Staff



Arts Planner Kristin Juliar was recently selected as the new economic development planner. She also serves as executive director of the District Nine Minnesota Women for Agriculture.

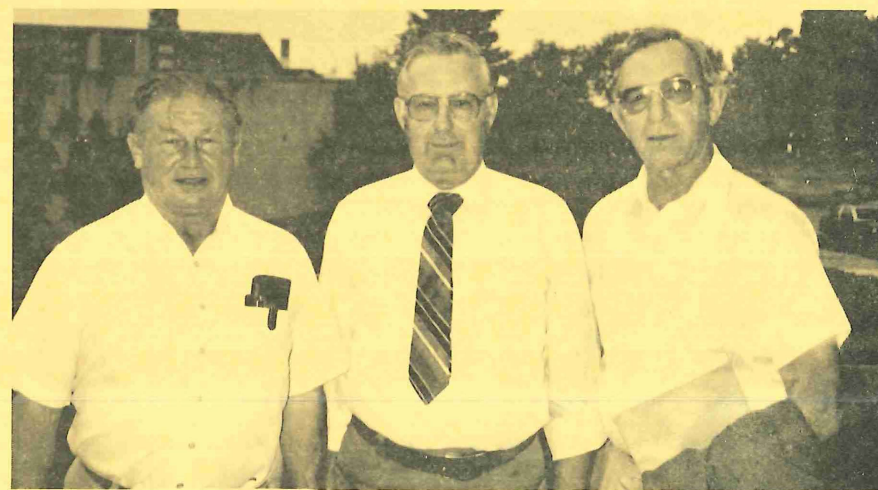


Accountant Roxann Moeller checks with bookkeeper Russ Frantum about a financial issue.

More Region Nine Staff



Nicollet County. Left to Right: John Prosch, William Wettergren, Carrie Huffer, Kenneth Albrecht.



Watonwan County. Left to Right: Wilton Sulflow, Olav Thormodson, Ed Wentzlaff



Le Sueur County. Left to Right: James Stangler, John King, Terry Overn, Clarence Mager



Faribault County. Left to Right: Roger Oldfather, Donald Toppin and Tom Brown



Toni Nesheim, Human Resource Planning Director responds to a citizen phone call.



Emergency Medical Services staff members are Bob Dahm (left) and Tom McBride



Secretarial staff includes: (front) Cheryl Weston, head secretary; (second row left to right) Eileen Roesner, office assistant; Sharen Goeman, secretary and Diane Pettipiece, executive



Kathie Davis, public information coordinator is often on the phone as she talks with the news media.

Region Nine Staff Continued



Physical Planning Team members include: lower l. to r. - Dan Rogness, economic development; Mark Scheidel, transportation; Dwayne Lee, business financial specialist and back l. to r. - Steve Moline, economic development planner; Craig Shirk, cartographer and Wes Judkins, physical development director.



Area Agency on Aging staff includes (front) Sherry Ristau, grants manager; (back) Linda Giersdorf, administrative assistant and Carol Bishop, director.

12372 REVIEWS

<u>APPLICANT</u>	<u>PROJECT</u>	<u>AGENCY</u>	<u>FUNDING</u>	<u>RECOMMENDATION</u>
City of Easton	LAWCON/LCMR Athletic Field	DEED	\$ 4,000	Staff-A PDS- RNDC-
City of Waldorf	LAWCON/LCMR Athletic Field	DEED	\$ 4,954	Staff-A PDS- RNDC-
City of Waldorf	LAWCON/LCMR	DEED	\$ 6,191.75	Staff-A PDS- Staff-
City of Eagle Lake	LAWCON/LCMR	DEED	\$ 19,400	Staff-A PDS- RNDC-
City of North Mankato	LAWCON/LCMR Athletic Field	DEED	\$ 57,200	Staff-A PDS- RNDC-
City of St. Peter	LAWCON/LCMR	DEED	\$ 16,900	Staff-A PDS- RNDC-
Nicollet County	LAWCON/LCMR	DEED	\$ 83,500	Staff-A PDS- RNDC-
Sibley County	LAWCON/LCMR	DEED	\$ 7,585	Staff-A PDS- RNDC-
City of New Ulm	LAWCON/LCMR	DEED	\$ 10,000	Staff-A PDS- RNDC-
City of Fairmont	LAWCON/LCMR	DEED	\$ 19,965	Staff-A PDS- RNDC-
City of St. James	LAWCON/LCMR	DEED	\$ 37,335	Staff-A PDS- RNDC-
City of Vernon Center	LAWCON/LCMR	DEED	\$ 57,950	Staff-A PDS- RNDC-
Watonwan County	Bridge Replacement	Federal Highway	\$ 82,000	Staff-A RNDC-

12372 REVIEWS

<u>APPLICANT</u>	<u>PROJECT</u>	<u>AGENCY</u>	<u>FUNDING</u>	<u>RECOMMENDATION</u>
LeSueur County	LAWCON/LCMR	DEED	\$ 3,250	Staff-A RNDC-
City of New Prague	LAWCON/LCMR	DEED	\$ 35,437	Staff-A PDS-A RNDC-
City of Fairmont	Transit Program	Mn/DoT	\$ 59,964	Staff-A RNDC-
Sibley County	Bridge Funds	Mn/DOT	\$ 26,540	TAC-A RNDC
Watonwan County	Bridge Funds	Mn/DOT	\$ 60,000	TAC-A RNDC-
Watonwan County	Bridge Funds	Mn/DOT	\$ 130,000	TAC-A RNDC-
Sibley County	Bridge Funds	Mn/DOT	\$ 29,466	TAC-A RNDC-
City of LeSueur	1987 Transit Assistance	Mn/DOT	\$	TAC-A RNDC-
City of Mankato	1987 Transit Assistance	Mn/DOT	\$	TAC-A RNDC-
City of New Prague	Housing Revenue Bond	MHFA	\$ 1,850,000	Staff-A RNDC-
City of Mankato	Small Cities Economic Development Grant	DEED	\$ 150,000	Staff-A RNDC-
St. Peter Community Choir	Art Development (Production)	RNDC	\$ 2,150	RNAAC-A HRS-A RNDC-
Waterville Community Chorus	Art Development (Production)	RNDC	\$ 500	RNAAC-A HRS-A RNDC-
Prairie Arts Chorale	Art Development (Production)	RNDC	\$ 1,907	RNAAC-D HRS-D RNDC-
Dance Conservancy of Southern Minnesota	Art Development (Production)	RNDC	\$ 1,370 (-0-)	RNAAC-A HRS-A RNDC-
Minnesota Valley Chorale	Art Development (Production)	RNDC	\$ 3,500 (2,500)	RNAAC-A HRS-A RNDC-
Frost Area Community Club	Art Development (Production)	RNDC	\$ 525 (375)	RNAAC-A HRS-A RNDC-
Fairmont Opera House	Art Development (Production)	RNDC	\$ 3,500 (3,000)	RNAAC-A HRS-A RNDC-

12372 REVIEWS

<u>APPLICANT</u>	<u>PROJECT</u>	<u>AGENCY</u>	<u>FUNDING</u>	<u>RECOMMENDATION</u>
Original German Band of New Ulm	Art Development (Production)	RNDC	\$ 3,400 (566)	RNAAC-A HRS-A RNDC-
Springfield Area Nativity Theater Assn.	Art Development (Production)	RNDC	\$ 3,500 (-0-)	RNAAC-A HRS-A RNDC-
Blue Earth County Community Corrections	Justice Grant Program/ Youth Intervention	MN Jobs & Training	\$ 10,000 State 35,344 County	Staff-A RNDC-
Mankato Ballet	Art Development (Production)	RNDC	\$ 1,200	RNAAC-A HRS-A RNDC-
Minnesota Valley Brass Quintet	Art Development (Production)	RNDC	\$ 1,810	RNAAC-A HRS-A RNDC-
Waseca Arts Council	Art Development (Production)	RNDC	\$ 3,500	RNAAC-A HRS-A RNDC-
Diocese of New Ulm	Art Development (Production)	RNDC	\$ 1,150 (-0-)	RNAAC-A HRS-A RNDC-
Sibley County Choral Society	Art Development (Production)	RNDC	\$ 1,940	RNAAC-A HRS-A RNDC-
Madelia Community Theater	Art Development (Production)	RNDC	\$ 2,400 (-0-)	RNAAC-A HRS-A RNDC-
MN Valley Action Council- Nutrition for the Elderly	Title III-C-1 Older Americans Act Nutrition/ Congregate	HHS/Admin. on Aging	\$ 279,215 (Fed. 85%) 49,273 (15% match)	ACA- HRS- RNDC-
MN Valley Action Council- Home Delivered Meals	Title III-C-2 Older Americans Act H.D.M.- Nutrition	HHS/Admin. on Aging	\$ 79,280 (Fed. 85%) 13,991 (15% match)	ACA- HRS- RNDC-
Southern MN Regional Legal Services Ombudsman Program	Title III-B Grant for Ombudsman Services	HHS/Admin. on Aging	\$ 34,635 (Fed. 85%) 6,112 (15% match)	ACA-A HRS- RNDC
South Bend Township	FmHA Community Facilities Loan	FmHA	\$ 140,000	Staff-A RNDC-
MnDOT	Planning Program for 1987 (Statewide)	Federal	\$ 5,622,200	TAC-A RNDC-
Watsonwan County	Federal Highway Bid- Bridge	Federal/MnDOT	\$ 200,000	RNDC-
Watsonwan County	Bridge Funds	Federal Highway/\$ MnDOT	255,000	RNDC-

12372 REVIEWS

<u>APPLICANT</u>	<u>PROJECT</u>	<u>AGENCY</u>	<u>FUNDING</u>	<u>RECOMMENDATION</u>
Mn/DOT	Addition to Hwy Imp. Work Program	Mn/DOT	\$ 2,720,000	TAC-A RNDC-
Mankato Summit Center	So. Central MN RSVP Project	RSVP Action HHS/AoA	\$ 33,278	Staff-A RNDC-
Assoc. for Retarded Citizens Minnesota (Mpls.)	Foster Grandparents	Action HHS/AoA	\$ 11,682 1,213,101	Staff-A Statewide RNDC-
MN/DoT	Special-MN Aviation System Plan	State/Federal	\$ 45,000 405,000	State Federal Staff-A RNDC-
New Ulm	Small Cities Dev. Grant	DEED	\$ 1,400,000	Staff-A Subc- RNDC-
Elysian	Small Cities Dev. Grant	DEED	\$ 273,401	Staff-A Subc- RNDC-
Henderson	Small Cities Dev. Grant	DEED	\$ 297,700	Staff-A Subc- RNDC-
Martin County	Small Cities Dev. Grant	DEED	\$ 402,200	Staff-A Subc- RNDC-
Cherry Creek Theater	McKnight Arts Dev.	RNDC	\$ 7,900 (-0-)	AAC-A HRS- RNDC-
Dance Conservancy of Southern Minnesota	McKnight Arts Dev.	RNDC	\$ 2,980 (-0-)	AAC-A HRS RNDC-
Mankato Ballet Company	McKnight Arts Dev.	RNDC	\$ 3,154 (-0-)	AAC-A HRS- RNDC-
Mankato Suzuki School of Music	McKnight Arts Dev.	RNDC	\$ 3,000 (-0-)	AAC-A HRS- RNDC-
Mankato Symphony Orchestra	McKnight Arts Dev.	RNDC	\$ 5,760 (1,741.86)	AAC-A HRS- RNDC-
Traverse Des Sioux	McKnight Arts Dev.	RNDC	\$ 9,560	AAC-A HRS- RNDC-
Watonwan County Concert Assn.	McKnight Arts Dev.	RNDC	\$ 500 (-0-)	AAC-A HRS- RNDC-

12372 REVIEWS

<u>APPLICANT</u>	<u>PROJECT</u>	<u>AGENCY</u>	<u>FUNDING</u>	<u>RECOMMENDATION</u>
St. James	Wastewater Treatment Step 2	MPCA	\$ 342,000	Staff-A RNDC-
Mapleton	Wastewater Treatment Step 2	MPCA	\$ 53,900	Staff-A RNDC-
Mankato Ballet Company	Arts (Production)	RNDC	\$ 1,100	Arts-A HRS-A RNDC-
Fort Ridgely State Park	Arts (Sponsorship)	RNDC	\$ 3,500	Arts-D HRS-D RNDC-
Southern MN Poet's Society	Arts (Sponsorship)	RNDC	\$ 3,500	Arts-A HRS-A RNDC-
Blue Earth Town & Country Players & Blue Earth Parent Comm. Network	Arts (Sponsorship)	RNDC	\$ 1,525	Arts-A HRS-A RNDC-
Nicollet County 4-H Federation	Arts (Production)	RNDC	\$ 805	Arts-A HRS-A RNDC-
Blue Earth Comm. Education Program	Arts (Production)	RNDC	\$ 350	Arts-A HRS-A RNDC-
Mankato Area Youth Symphony Orchestra	Arts (Production)	RNDC	\$ 2,600	Arts-A HRS-A RNDC-
Cherry Creek Theatre	Arts (Production)	RNDC	\$ 3,500	Arts-A HRS-A RNDC-
LeSueur county Historical Society Museum	Arts (Sponsorship)	RNDC	\$ 3,500	Arts-A HRS-A RNDC-
Springfield Community Theatre	Arts (Production)	RNDC	\$ 3,200	Arts-A HRS-A RNDC-
The New Ulm Noteables	Arts (Sponsorship)	RNDC	\$ 3,500	Arts-A HRS-A RNDC-
Civic Summer Theatre	Arts (Sponsorship)	RNDC	\$ 3,500	Arts-A HRS-A RNDC-

12372 REVIEWS

<u>APPLICANT</u>	<u>PROJECT</u>	<u>AGENCY</u>		<u>FUNDING</u>	<u>RECOMMENDATION</u>
The Original German Band of New Ulm, Inc.	Arts (Production)	RNDC	\$	2,920	Arts-A HRS-A RNDC-
Mankato Symphony Orchestra	Arts (Production)	RNDC	\$	3,500	Arts-A HRS-A RNDC-
LeSueur Concert Association	Arts (Sponsorship)	RNDC	\$	2,200	Arts-A HRS-A RNDC-
The Fairmont Opera House	Arts (Sponsorship)	RNDC	\$	500	Arts-A HRS-A RNDC-
St. Peter Community Choir	Arts (Production)	RNDC	\$	500	Arts-A HRS-A RNDC-
Good Thunder Development Corporation	Arts (Production)	RNDC	\$	3,500	Arts-A HRS-A RNDC-
KMSU Radio	Arts (Production)	RNDC	\$	1,700	Arts-A HRS-A RNDC-
Sibley County	Mn/DOT Bridge Funds	Mn/DOT	\$	75,000	TAC-A RNDC-
Hope Residence, Inc. & LeSueur County DAC	16(b)(2) Transit (Wheel Chair Van)	Mn/DOT	\$	21,560	TAC-A RNDC-
Martin County DAC	16(b)(2) Transit (Wheel Chair Van)	Mn/DOT	\$	25,620	TAC-A RNDC-
Lakeview Methodist (Fairmont)	16(b)(2) Transit (Wheel Chair Van)	Mn/DOT	\$	24,360	TAC-A RNDC-
Winnebago Baptist Home	16(b)(2) Transit (Wheel Chair Van)	Mn/DOT	\$	20,580	TAC-A RNDC-
Mankato Rehab Center	16(b)(2) Transit (Wheel Chair Van)	Mn/DOT	\$	20,580	TAC-A RNDC-
City of Granada	FmHA Community Facilities Loan	FmHA	\$	300,000	Staff-A RNDC-
City of St. James	FmHA 515 Housing Project	FmHA	\$	672,600	Staff-A RNDC-
Waseca County	Federal Highway Funds Twp. Rd.	MN/DoT	\$	100,800	TAC-A RNDC-
Sibley County	Federal Highway Funds CSAH 10	MN/DoT	\$	92,967	TAC-A RNDC-
Waseca County	Federal Highway Funds Twp. Bridge	MN/DoT	\$	60,000	TAC-A RNDC-
Sibley County	Bridge Funds 2 Twp. Bridges	MN/DoT	\$	74,000	TAC-A RNDC-

12372 REVIEWS

<u>APPLICANT</u>	<u>PROJECT</u>	<u>AGENCY</u>	<u>FUNDING</u>	<u>RECOMMENDATION</u>
Catholic Charities	Title III-B OAA Funding	HHS/AOA	\$ 22,788	ACA-A HRS-A RNDC-
Summit Center	Title III-B OAA Funding	HHS/AOA	\$ 16,900	ACA-A HRS-A RNDC-
LeSueur County Public Health	Title III-B OAA Funding	HHS/AOA	\$ 15,669	ACA-A HRS-A RNDC-
Blue Earth United Hospital	Title III-B OAA Funding	HHS/AOA	\$ 9,053	ACA-A HRS-A RNDC-
Immanuel-St. Joseph's Hospital	Title III-B OAA Funding	HHS/AOA	\$ 8,640	ACA-A HRS-A RNDC-
Nicollet County Public Health	Title III-B OAA Funding	HHS/AOA	\$ 3,856	ACA-A HRS-A RNDC-
Nicollet County Public Health	Title III-B OAA Funding	HHS/AOA	\$ 4,495	ACA-A HRS-A RNDC-
Sioux Trails Mental Health Center	Title III-B OAA Funding	HHS/AOA	\$ 15,100	ACA-A HRS-Tabled RNDC-
Meeker-McLeod-Sibley Community Health Services	Title III-B OAA Funding	HHS/AOA	\$ 7,556	ACA-A HRS-A RNDC-
Southcentral MN Inter-Library Exchange	Title III-B OAA Funding	HHS/AOA	\$ 23,399	ACA-A HRS-A RNDC-
Southern MN Regional Legal Services	Title III-B OAA Funding	HHS/AOA	\$ 67,607	ACA-A HRS-A RNDC-
Westerman Lumber Company	FmHA Loan Guaranty	FmHA	\$ 1,800,000	Staff-A RNDC-
South Bend Township	FmHA Community Facilities Loan	FmHA	\$ 234,440	Staff-A RNDC-
City of New Ulm	Small Cities Economic Development Grant	DEED	\$ 250,000	Staff-A RNDC-
Mn/DOT	Interstate Preservation Program	Mn/DOT	\$ 246,000	Staff-A RNDC-

12372 REVIEWS

<u>APPLICANT</u>	<u>PROJECT</u>	<u>AGENCY</u>	<u>FUNDING</u>	<u>RECOMMENDATION</u>
Meeker-McLeod-Sibley Community Health Services	MnDH Women, Infants and Childrens Food Program	Mn Dept. of Health	\$ Est. 12,000 as funding varies by quarter	Staff-A RNDC-
MN Valley Action Council	MnDH Women, Infants and Childrens Food Program	Mn Dept. of Health	\$ Est.127,000 as funding varies by quarter	Staff-A RNDC-
Fairmont	DEED Econ. Dev. Grant	DEED	\$ 500,000	Staff-A RNDC-