



Report: Emergency Response to Disease Outbreaks in Wildlife

Covering the Period January 1 –March 31, 2022

As required by Minnesota Session Law 2021, 1st Special Session, Chapter 6

7/31/2022

Report to the Minnesota Legislature

Minnesota Department of Natural Resources
500 Lafayette Road
Saint Paul, Minnesota 55155
651-259-5024
bob.meier@state.mn.us
mndnr.gov

Pursuant to Minnesota Statutes, Section 3.197, we estimate that it cost approximately \$320 to produce this report. This includes staff time for drafting and reviewing the report.

Upon request, this material will be made available in an alternative format such as large print, Braille or audio recording. Printed on recycled paper.

DNR CWD Spending Legislative Report

This report fulfills the quarterly reporting requirement of Minnesota Session Law 2021, 1st Special Session, Chapter 6, Article 1, Section 3, Subdivision 6(b) “\$1,529,000 the first year and \$2,532,000 the second year are from the general fund and \$2,425,000 the first year and \$2,425,000 the second year are from the game and fish fund for planning for and emergency response to disease outbreaks in wildlife. Of the game and fish fund appropriation, \$750,000 the first year and \$750,000 the second year are from the heritage enhancement account and are onetime (Table 1). The commissioner and the Board of Animal Health must each submit quarterly reports on chronic wasting disease activities funded in this biennium to the chairs and ranking minority members of the legislative committees and divisions with jurisdiction over environment and natural resources and agriculture.”

CWD Activities, January 1 – March 31, 2022

The Minnesota Department of Natural Resources (DNR) spent approximately \$988,000 during the third quarter of FY22 on Chronic Wasting Disease (CWD)-related activities (Figure 1, Table 2). This spending includes staff salary for CWD surveillance and management work, contract payments for student labor at fall check stations, invoices for fall dumpsters, fleet costs, diagnostic testing, and agency culling activities. New activities that occurred this past quarter focused on agency culling activities in southeast and north central Minnesota. A detailed list of activities include:

- From Jan 1 to March 31, a total of 1,099 samples were collected and submitted for CWD testing:
 - Opportunistic sampling (e.g., 51 vehicle-killed deer, 11 sick deer, 28 found dead, 111 depredation permits, and 3 other): 204 samples, collected statewide; two of these deer were CWD-positive.
 - Targeted sampling: 895 samples; 18 of these deer were CWD-positive. These samples were collected from 8 areas of the state through late hunts, agency culling and shooting permits, including:
 - 4 from the East Central CWD Surveillance Zone
 - 25 from the West Central CWD Surveillance Zone
 - 4 from the Northwest CWD Surveillance Zone
 - 12 from the North Central CWD Management Zone
 - 701 from the Southeast CWD Management and Control Zones
 - 69 from the South Metro CWD Management and Surveillance Zones
 - 48 from Climax area (Deer Permit Areas 261 and 262), northwestern Minnesota
 - 32 from Grand Rapids area (Deer Permit Area 179), north central Minnesota
- The 20 new cases of CWD were detected in wild deer during this quarter. This included 2 found dead deer, including the first case ever found in DPA 179, in the city limits of Grand Rapids. The remainder were all deer harvested through agency culling efforts to reduce local prevalence of CWD where it was recently found.

- There were 49 new detections of CWD in wild deer in fall 2021 – winter 2022: 28 hunter-harvested, 19 agency-culled, and two found dead (Figure 2). As of April 20, 2022, Minnesota has detected 164 positive wild deer since 2010 (Figure 3).
- DNR contracted with USDA-Wildlife Services for \$425,000 to conduct targeted culling in management zones in southeast MN and in a new detection area within the city limits of Grand Rapids, MN. The southeast effort took place from January 31, 2022 to April 8, 2022; 415 deer were removed, 17 tested CWD-positive (Figure 4). Throughout the project, 51 private landowners allowed access to their properties, totaling 8,987 private acres for deer removal. An additional 5,598 state owned acres were available in focus areas for deer removal. The Grand Rapids efforts took place from March 23, 2022 thru April 21, 2022 with 54 deer removed; one male (yearling or adult, tbd) tested suspect on ELISA (Figure 5). All culled deer went to the Share the Harvest public donation program after receiving a not-detected test result.
- Agency staff met with tribal biologists to discuss results of fall CWD sampling efforts in areas near tribal lands. Federal funding was available to support collection and testing efforts for tribal hunters and these efforts were coordinated through University of Minnesota staff. Approximately 400 samples were collected by tribes in the northwest; all were not detected for CWD.

Planning efforts for fall 2022 CWD surveillance began, as staff summarized and analyzed results from fall 2021 efforts. The footprint of CWD has expanded in Minnesota, with the discovery of two new areas of disease, and this will require increased efforts to meet these challenges as well as improve our understanding of CWD risk across the state. Discussions are underway to expand testing opportunities statewide by fall 2022 and offer hunters new options to participate in surveillance efforts.

Table 1. Chronic Wasting Disease Appropriation Allocation FY22-23.

Fund	FY22 Appropriated	FY23 Appropriated	Total App FY22-23
General Fund	1,529,000	2,532,000	4,061,000
Game and Fish-Emergency Response	1,675,000	1,675,000	3,350,000
Heritage	750,000	750,000	1,500,000
Total	3,954,000	4,957,000	8,911,000

Figure 1. Quarterly spending activity of the Chronic Wasting Disease Appropriation Allocation FY22-23.

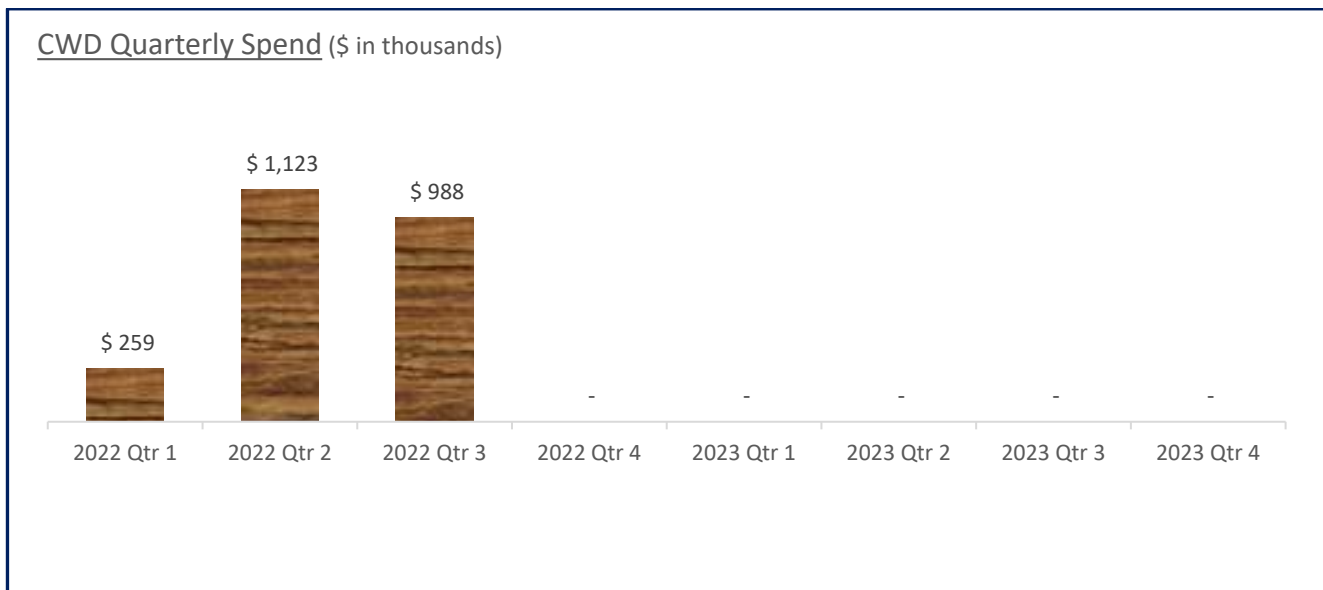


Table 2. Detailed spending by expense type for Chronic Wasting Disease Appropriation, July 1, 2021 through March 31, 2022.

Expense Type	General Fund	Game and Fish-Emergency Response	Heritage	Other**	Total Spend
Salary	618	883,757	-	174,653	1,059,028
CWD Sample Testing	321,980	-	-	42,000	363,980
Contracts: CWD Tissue Sampling	128,063	-	-	9,704	137,767
USDA-Culling Contract	-	-	744	-	744
CWD Office - Rushford	28,042	-	-	-	28,042
Dumpsters	225,808	37,653	-	33	263,494
Supplies	132,691	9,939	-	5,028	147,658
Travel/Fleet	43,546	207,085	-	175	250,806
Printing & Advertising	22,218	6,287	-	9,687	38,192
Equipment	-	7,834	-	-	7,834
Other	30,973	497	-	41,840	73,310
Total	933,939	1,153,052	744	283,121	2,370,855
\$ Encumbered	359,761	236,630	424,256	-	
% of Budget Spent	61.1%	68.8%	0.1%		
% of Budget Encumbered	23.5%	14.1%	56.6%		
% of Budget Spent/Enc	84.6%	83.0%	56.7%		

** Other includes Game and Fish Operating Account, Deer Management Account, Deer/Bear Account, Cervid Health Account, and Heritage Fund.

Figure 2. Locations of CWD positive wild deer (n=49) in Minnesota, fall 2021 – winter 2022.

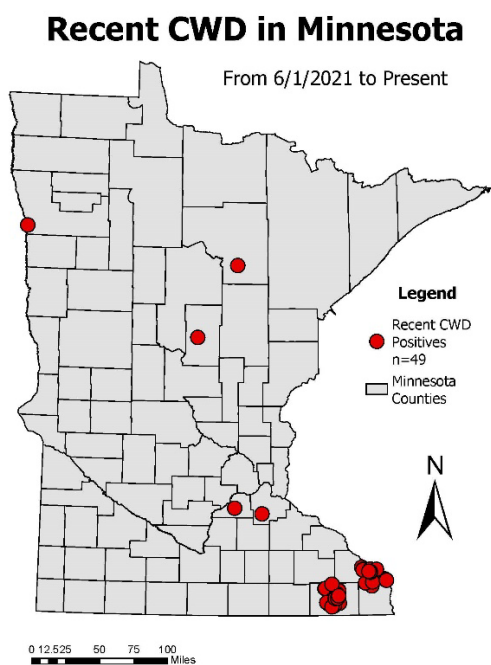


Figure 3. Locations of CWD positive wild deer (n=164) in Minnesota, 2010 – April 20, 2022.

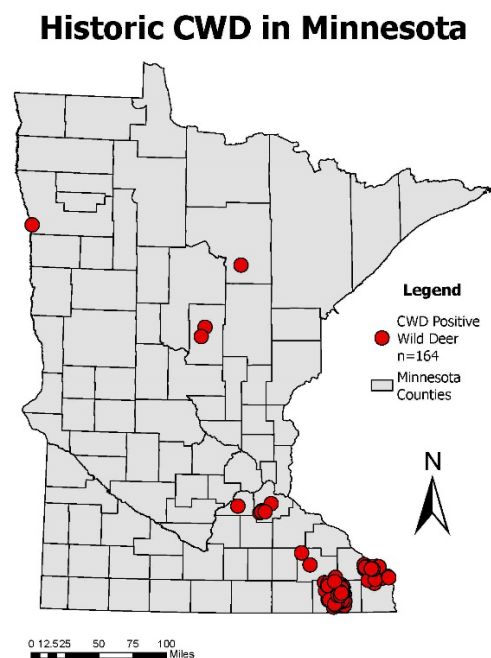


Figure 4. Locations of deer culled (n=415) during targeted efforts by USDA-WS in southeast and south metro areas of Minnesota, winter 2022.

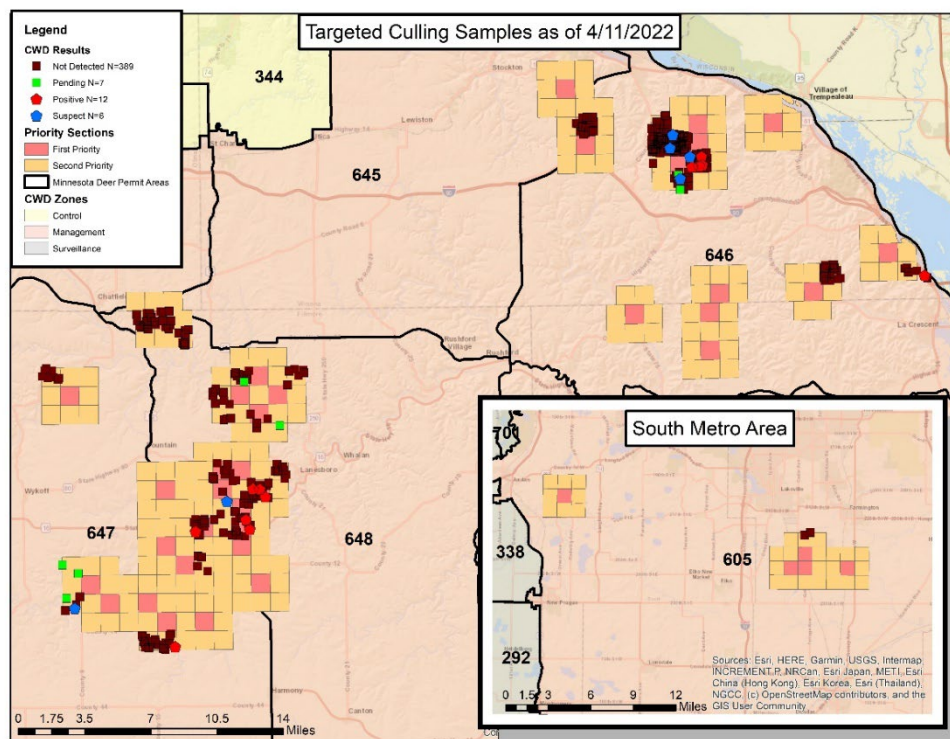


Figure 5. The approximate area where USDA-Wildlife Services targeted culling efforts occurred and test results for Chronic Wasting Disease (CWD) within the city of Grand Rapids, Minnesota, winter 2022.

