

# ***Study Memorials / Monuments Capitol Complex***



***August 2013  
RECS #: 02CP0034***

**Consultant's Report**

# **BII** BUETOW 2 ARCHITECTS, INC.

August, 2013

Real Estate and Construction Services  
309 Administration Building  
50 Sherburne Avenue  
St. Paul, MN 55155

Attn: Paul Gannon, AIA  
State Project Manager

Re: Study Memorials / Monuments, Capitol Complex  
RECS # : 02CP0034

Dear Paul,

The enclosed Study represents the work effort to determine the cost of bringing the Memorials/ Monuments at the Capitol Complex "to good condition" as responsible caretakers. The costs are not to enhance the Memorials but to best preserve them to their original installation and intent. The Memorials/ Monuments like Minnesota's Capitol Building are irreplaceable. The Memorials require corrective work for the art and the art's immediate environment such as the pedestal it is placed on. **The capital cost to bring the Memorials "to good condition" is \$2,926,000+/- or \$2.93 M including inflation.**

Annual maintenance must be performed on the Memorials to keep them in "good condition". This cost is for the art and the art's environment.

**The annual maintenance budget cost would be \$124,000+/- or \$1.43M for 10 years including inflation** for the twenty-three Memorials studied.

**Total request for Conservation and Maintenance should be \$4.4M**

A consensus was reached by the project stakeholders that the corrective work would be done over a desired 10 year time frame in the priority order noted in the Study.

We look forward to viewing the successful conservation of these historic Memorials.

Sincerely,  
**BUETOW 2 ARCHITECTS, INC.**



Modris M. Feders, AIA, CID  
Principal

# **BII BUETOW 2 ARCHITECTS, INC.**

## **Table of Contents – Memorials / Monuments**

**page number**

Memorial/ Monument Executive Summary	1-2
Project Stakeholders (graphic)	3
Minnesota Historical Society Map/Phone Tour of the Capitol Mall	4
23 Memorials/Monuments- Priority Order/ Schedule/ Capital Cost	5
23 Memorials/Monuments-Annual Maintenance Cost	6
23 Memorials/Monuments Costs	7
<u>Order of Priority for Repair</u>	
1-Christopher Columbus*	8-10
2-Woman Suffrage	11-13
3-Roy Wilkins	14-16
4-Monument to the Living	17-19
5-MN Korean War	20-22
6-USS Ward Gun	23-25
7-“Millie” Fountain	26-28
8-MN Vietnam Veterans	29-31
9-Liberty Bell	32-34
10-Court of Honor (plaques)	35-37
11-Peace Officers	38-40
12-Charles A. Lindbergh	41-43
13-Hubert H. Humphrey	44-46
14-John A. Johnson	47-49
15-Knute Nelson	50-52
16-Floyd B. Olson	53-55
17-MN Firefighters	56-58
18-Leif Erickson	59-61
19-Earthbound	62-64
20-MN Workers	65-67
21-MN Transportation (inside building)	68-70
22-ManNam at Governor’s Residence	71-73
23-World War II Veterans	74-76
Consultant Team Chart	

\* Photographs, Memorial/ Monument Needs Summary, Matrix page\*\* typical for each

\*\*Matrix page denotes the following conditions:

Excellent- almost as “just installed”

Good- preferred viewing condition

Fair- some corrective work required

Poor- item in decline requires corrective work

Very Poor- needs immediate attention to prevent deterioration



# ***Memorial / Monument Executive Summary***

The State Capitol Mall Historic Site at the bottom of the front steps of the Capitol building is eighteen acres of open space. On Minnesota's front lawn you will discover the rich history behind the Memorials. Public works of art-sculptures, plaques and gardens that remember important events, honor individuals and groups of Minnesotans worthy to be remembered.

**Background** –*The purpose of this Study is to analyze all Capitol Complex Memorials and Monuments to assess their current condition. Twenty-two Memorials at the Capitol Complex were reviewed and one at the Governor's residence. The Study scope of work included the following: corrective work descriptions required for each Memorial including safety issues, a budget for restoration of each Memorial and yearly maintenance plan with associated budget. The Memorials are also listed in order of need within a desired 10 year time frame for conservation of all. Conservation treatment is the proper course of care given a sculpture by Conservators experienced in understanding the historical context, through research in materials, techniques, artists intent and prior interventions.*

## **Study Process**

A consultant team that included Conservation specialists reviewed their observations with project stakeholders. Scheduled meetings were held with Department of Administration, Capitol Area Architectural and Planning Board and the Minnesota Historical Society together and consensus was reached on the needs.

## **Memorial/ Monument Needs**

The needs for each Memorial are separated into two areas- Art and the Environment (setting for the Art). The Art or sculpture addressed appearance, structural integrity and surface condition. The setting for the Art addressed issues of civil engineering, landscape, structural, electrical, mechanical and architectural. The Art was deferred to since it can sometimes be irreplaceable when the priority ranking of Memorials was put together.

## **Cost For Conservation**

The cost to bring each Memorial to good condition was determined for the Art and the Environment. The stated budget for each Memorial includes the hard costs for corrective work and soft costs for fees (preparation of bid documents), particulars (items necessary to prepare bidding specifications such as investigative dis-assembly, surface testing of existing finish, mock-up samples, etc.), inflation and a 15% contingency (for unknown conditions which maybe uncovered during the course of Conservation).

***Total Cost for 23 Memorials Conservation     \$2,448,000 +/- or \$2.5M***



## **Schedule For Conservation**

The desire and goal is to bring all Memorials to good condition within a 10 year time frame. The monuments were divided into three groups: the first being a priority for Conservation since deterioration could continue that would be hard to reverse (corrective work in years 1-3), secondary for Conservation (corrective work in years 4-6) and the third group being least distressed for Conservation (in years 7-10).

## **Maintenance Budget**

A yearly budget was also determined to help with the preservation of the Memorials once they have been brought to good condition.

*Total Annual Budget for 23 Memorials Maintenance \$124,000+/-*

## **Funding Request**

The cost for Conservation of the 23 Memorials for them to be brought 'to good condition' and to have annual maintenance performed to keep them in good condition for the next 10 years is **\$4,400,000**.

# *Memorials / Monuments Project Stakeholders*



*Minnesota Department of Administration*

**People of the State of Minnesota**

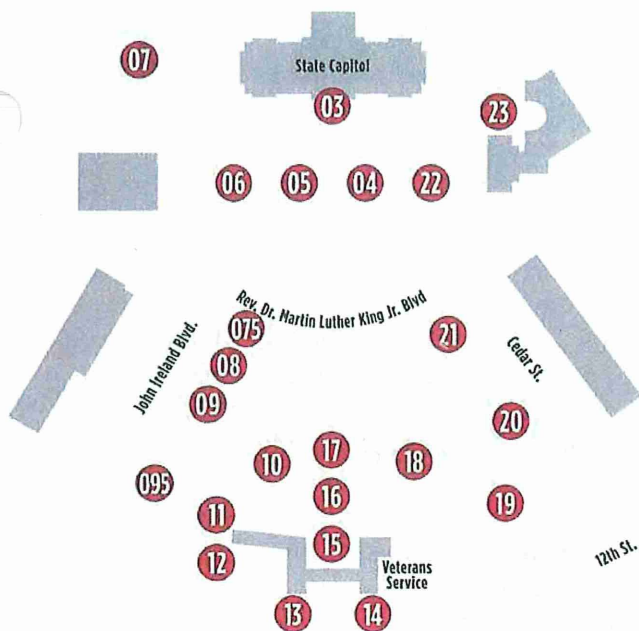


**CAPITOL AREA ARCHITECTURAL AND PLANNING BOARD**  
204 ADMINISTRATION BUILDING  
50 SHERBURNE AVENUE  
SAINT PAUL, MINNESOTA 55155



**Minnesota Historical Society**  
Minnesota State Capitol  
75 Rev. Dr. Martin Luther King Blvd.  
Saint Paul, Minnesota 55155

University Ave.



To begin your self-guided tour, dial 877-411-4123.

Press the \* key at any time to return to the menu and select another stop. You can hang-up and redial at any time between stops.

- 01 — Instructions
- 02 — History of the Mall
- 03 — Quadriga
- 04 — Knute Nelson
- 05 — John Johnson
- 06 — Floyd B. Olson
- 07 — Leif Erikson
- 075 — Hubert H. Humphrey
- 08 — Charles Lindbergh
- 09 — Roy Wilkins Memorial
- 095 — Minnesota Firefighters Memorial
- 10 — Minnesota Vietnam Memorial
- 11 — Monument to the Living
- 12 — U.S.S. Ward Gun
- 13 — Earthbound
- 14 — Liberty Bell
- 15 — Promise of Youth
- 16 — Minnesota WWII Veterans Memorial
- 17 — Court of Honor
- 18 — Korean War Veterans Memorial
- 19 — Peace Officers Memorial
- 20 — Minnesota Workers Memorial
- 21 — Women's Suffrage Memorial Garden
- 22 — Christopher Columbus
- 23 — Judicial Plaza

# History on the Spot

## Phone Tour of the Capitol Mall

Minnesota State Capitol



Minnesota Historical Society



# BII BUETOW 2 ARCHITECTS, INC.

August, 2013

02CP0034

## Study Memorials/ Monuments, Capitol Complex

### Ranking of Monuments Per Need/ Schedule

The following groupings are in order of requiring most attention to least attention. The Priority group would be worked on and completed in the first 3 years. The Secondary in years 4 through 6 and Least Distressed in years 7 through 10. Maintenance is annual and would begin the following year after conservation. Maintenance costs were derived based on the Memorial being in good condition.

#### Priority for Conservation ( Years 1-3)

	Capital Cost
1. Christopher Columbus	\$105,000
2. Woman Suffrage	\$163,000
3. Roy Wilkins	\$245,000
4. Monument to the Living (Soldier)	\$55,000
5. MN Korean War	\$145,000
6. USS Ward Gun	<u>\$68,000</u>
Total	\$781,000 or \$830,000(inflation)

#### Secondary for Conservation (Years 4-6)

7. Millie Fountain	\$150,000
8. MN Vietnam Veterans	\$160,000
9. Liberty Bell	\$40,000
10. Court of Honor (plaques)	\$60,000
11. Peace Officers	\$420,000
12. Charles A. Lindbergh	\$55,000
13. Hubert H. Humphrey	<u>\$40,000</u>
Total	\$925,000 or \$1,085,000(inflation)

#### Least Distressed for Conservation (Years 7-10)

14. John A. Johnson	\$136,000
15. Knute Nelson	\$136,000
16. Floyd B. Olson	\$125,000
17. MN Firefighters	\$65,000
18. Leif Erickson	\$75,000
19. Earthbound	\$50,000
20. MN Workers	\$45,000
21. MN Transportation (inside building)	\$0
22. ManNam at Governor's Residence	\$45,000
23. World War II Veterans	<u>\$65,000</u>
Total	\$742,000 or \$1,011,000(inflation)

---

<b>Total</b>	<b>\$2,448,000 +/- or \$2.5+/-M</b>
<b>Total with inflation</b>	<b>\$2,926,000+/- or \$2.93 +/-M</b>

# **BII BUETOW 2 ARCHITECTS, INC.**

August, 2013

**02CP0034**

## **Study Memorials/ Monuments, Capitol Complex**

### **Ranking of Monuments Per Need/ Schedule**

The following groupings are in order of requiring most attention to least attention. The Priority group would be worked on and completed in the first 3 years. The Secondary in years 4 through 6 and Least Distressed in years 7 through 10.

<b>Priority for Conservation ( Years 1-3)</b>	<b>Annual Maintenance Cost</b>
1. Christopher Columbus	\$4,500
2. Woman Suffrage	\$7,000
3. Roy Wilkins	\$5,500
4. Monument to the Living (Soldier)	\$5,000
5. MN Korean War	\$10,000
6. USS Ward Gun	<u>\$4,500</u>
Total	\$36,500
<b>Secondary for Conservation (Years 4-6)</b>	
7. Millie Fountain	\$6,000
8. MN Vietnam Veterans	\$5,000
9. Liberty Bell	\$4,000
10. Court of Honor (plaques)	\$5,500
11. Peace Officers	\$4,000
12. Charles A. Lindbergh	\$6,000
13. Hubert H. Humphrey	<u>\$6,000</u>
Total	\$36,500
<b>Least Distressed for Conservation (Years 7-10)</b>	
14. John A. Johnson	\$8,500
15. Knute Nelson	\$8,500
16. Floyd B. Olson	\$4,500
17. MN Firefighters	\$6,000
18. Leif Erickson	\$7,000
19. Earthbound	\$2,000
20. MN Workers	\$4,000
21. MN Transportation (inside building)	\$1,000
22. ManNam at Governor's Residence	\$3,500
23. World War II Veterans	<u>\$6,000</u>
Total	\$51,000
<b>Total</b>	<b>\$124,000+/- Annual</b>
<b>Total with inflation for 10 years</b>	<b>\$1.43 +/-M</b>

# BII BUETOW 2 ARCHITECTS, INC.

August, 2013

02CP0034

Study Memorials/ Monuments, Capitol Complex

## COSTS

	Design Fee*	Hard ( Bid )	Soft**	Capital Cost
1. Christopher Columbus	\$9,000	\$74,000	\$22,000	\$105,000
2. Woman Suffrage	\$14,000	\$114,000	\$35,000	\$163,000
3. Roy Wilkins	\$20,000	\$172,000	\$53,000	\$245,000
4. Monument to the Living	\$5,000	\$39,000	\$11,000	\$55,000
5. MN Korean War	\$12,000	\$102,000	\$31,000	\$145,000
6. USS Ward Gun	\$6,000	\$48,000	\$14,000	\$68,000
7. Millie Fountain	\$13,000	\$105,000	\$32,000	\$150,000
8. MN Vietnam Veterans	\$13,000	\$112,000	\$35,000	\$160,000
9. Liberty Bell	\$4,000	\$28,000	\$8,000	\$40,000
10. Court of Honor	\$5,000	\$42,000	\$13,000	\$60,000
11. Peace Officers	\$35,000	\$294,000	\$91,000	\$420,000
12. Charles A. Lindbergh	\$5,000	\$39,000	\$11,000	\$55,000
13. Hubert H. Humphrey	\$4,000	\$28,000	\$8,000	\$40,000
14. John A. Johnson	\$11,000	\$95,000	\$30,000	\$136,000
15. Knute Nelson	\$11,000	\$95,000	\$30,000	\$136,000
16. Floyd B. Olson	\$10,000	\$88,000	\$27,000	\$125,000
17. MN Firefighters	\$5,000	\$46,000	\$14,000	\$65,000
18. Leif Erickson	\$6,000	\$53,000	\$16,000	\$75,000
19. Earthbound	\$4,000	\$35,000	\$11,000	\$50,000
20. MN Workers	\$4,000	\$32,000	\$9,000	\$45,000
21. MN Transportation	\$0	\$0	\$0	\$0
22. ManNam	\$4,000	\$32,000	\$9,000	\$45,000
23. World War II Veterans	\$5,000	\$46,000	\$14,000	\$65,000
<b>Total</b>			<b>\$2,448,000 +/-</b>	<b>or \$2.5+/--M</b>
<b>Total with inflation</b>			<b>\$2,926,000+/-</b>	<b>or \$2.93 +/--M</b>

\* Minnesota Historical Society participates in preparing the specifications for Art conservation that would be part of the RFP issued for the work. MHS cost is internal and not included in the fee noted above.

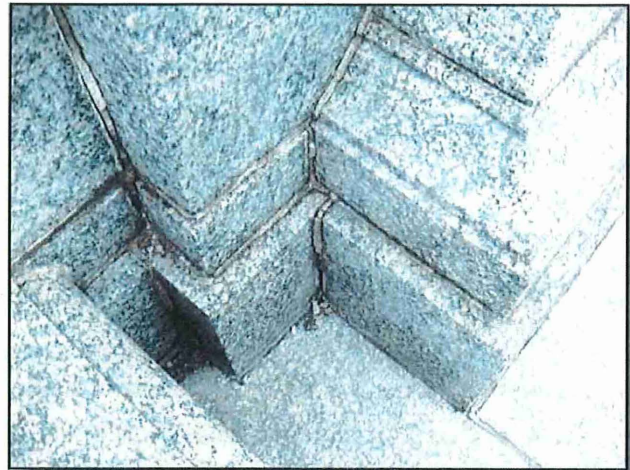
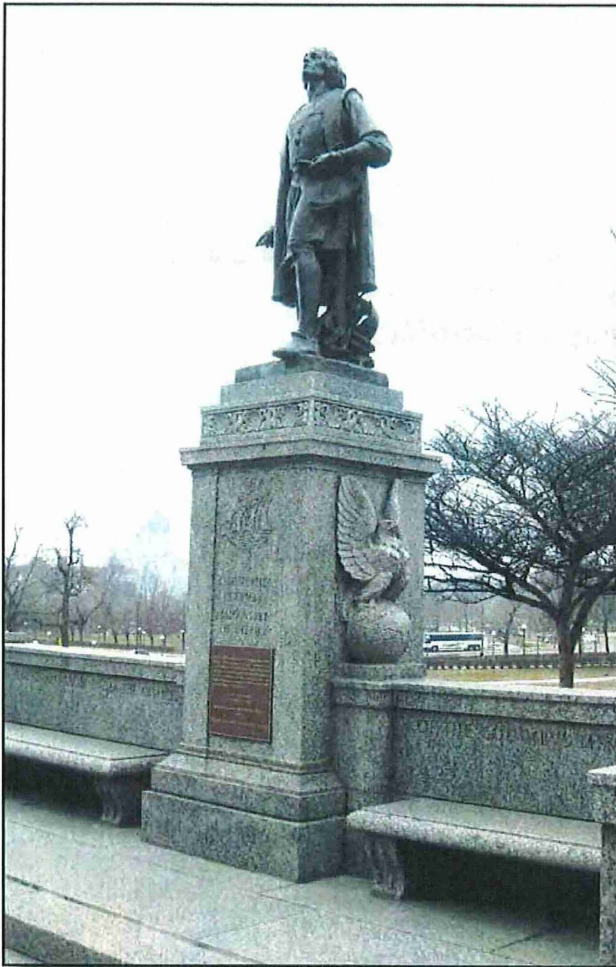
\*\*Soft costs include investigative dis-assembly, surface testing of existing finish, mock-up samples, contingency, etc. Design fees have been broken out separately as they are usually an included soft cost.

7

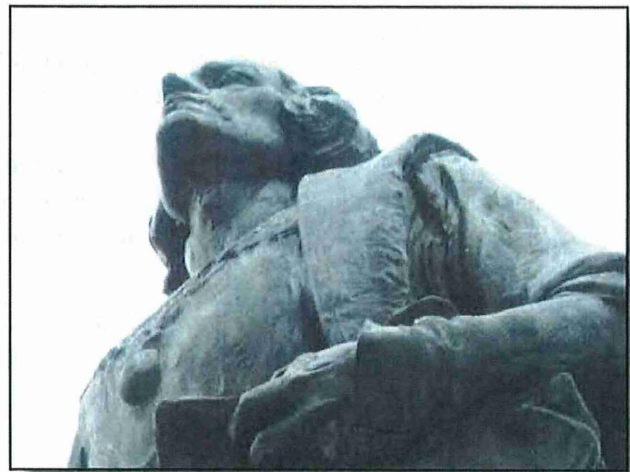


# Memorial / Monument

## 1. Christopher Columbus (MN 101)



*Detail of failed caulking and mortar joints*

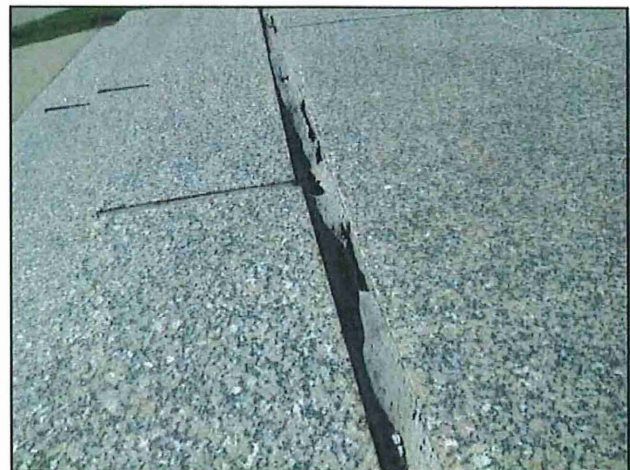


*Detail of streaking and wax separation*

**Sculptor:** Carlo Brioschi  
**Dedicated:** 1931



*Only stairs need resetting.*



*Detail of hazard in stairs. Stone needs to be reset and pinned at stairs.*

# **Memorial / Monument Needs Summary**

**1. Christopher Columbus** -*The sculpture, unveiled in 1931, was a gift to the State from Minnesota's Italian- Americans. The eagles resting on world spheres represent American patriotism.*

## **Overall Condition**

Number one priority since it is so close in proximity to the Capitol and one of the earliest installations (1931). The bronze sculpture has a dark chocolate brown patina that has discoloration of the coating. The wax is separating and very distracting. The granite base at the steps is coming apart and the mortar and caulking have failed.

## **Tasks to bring monument to good condition**

Art-

- 1.Repair lacquer and scratched areas.
- 2.Sculpture treatment plan of new wax.(\$15,000 for 1&2)

Environment-

- 2.Reset loose granite stair pieces only including adding pinning to prevent separation.\*  
The rest of the stone monument base does not need reassembly.(\$45,000)
- 3.Tuckpoint all mortar joints.
- 4.Remove all caulking and caulk all sealant joints.
- 5.Clean stone when complete.(\$26,000 for 3,4,5)
6. Landscape shrub replacement at perimeter of Monument.(\$19,000)

## **Cost**

(Cost to bring Monument to good condition for items noted above)

Art, Environment, Safety related items\* and soft costs which include (fees, particulars and 15% contingency)

---

Total	\$105,000+/-
-------	--------------

## **Maintenance Plan**

Art-

- 1.Annual treatment plan of new wax. Re-new lacquer every 10 years.

Environment-

2. Re-caulk every 7 years.
3. Inspect/ tuckpoint joints every 10 years.
- 4.Clean stone at least every 2 years.

Yearly Maintenance Budget-

Art-

\$4,000

Environment-

\$500

---

Total	\$4,500+/-
-------	------------

<b>Memorial / Monument</b>					
	<b>CONDITION</b>				
	<b>EXC.</b>	<b>GOOD</b>	<b>FAIR</b>	<b>POOR</b>	<b>V. POOR</b>
<b>1. Christopher Columbus</b>					
<b>CRITERIA</b>					
<b>PART 1. Art - Sculpture</b>					
1. Appearance				✓	
2. Structural Integrity		✓			
3. Surface Condition				✓	
<b>CRITERIA</b>					
<b>PART 2. Environment - Setting for the Art</b>					
<b>Civil:</b>					
4. Proper Drainage			✓		
5. Accessible grade/slope for walking - trip hazards					✓
<b>Landscape:</b>					
6. Replacement of dead, diseased, overgrown plants		✓			
7. "Intensive Landscaping" maintenance hardship	N/A				
8. Irrigation	N/A				
<b>Structural:</b>					
9. Foundation		✓			
10. Frost heave paving liability trip hazards	N/A				
11. Material Failure - cracked conc., cracked stone, rusted/fractured mtl., rotted wd.	N/A				
<b>Electrical:</b>					
12. Light fixture failure	N/A				
13. Light fixture efficiency	N/A				
<b>Mechanical:</b>					
14. Water features performance	N/A				
<b>Architectural:</b>					
15. Appearances of finishes including paint			✓		
16. Appearance of details		✓			
17. Tuckpointing of masonry					✓
18. Caulking / sealant of masonry					✓
19. Cleaning of stone			✓		
20. Roof / ledge of all surfaces		✓			

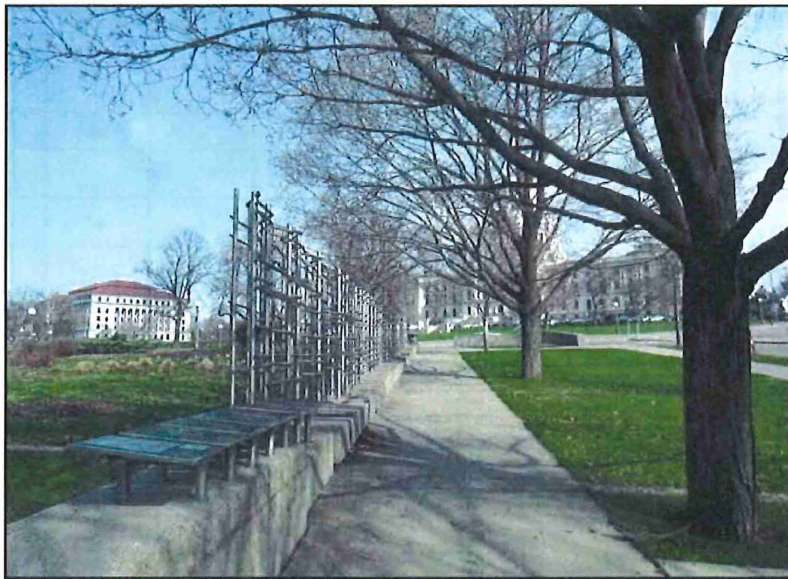
**Notes:**

16, 17 & 18 - The Granite Stairs need to be reset as wide gaps have developed. These pieces could possibly be pinned together during restoration. Need tuckpointing and caulking.



# Memorial / Monument

## 2. The Women's Suffrage Memorial; Garden of Time: Landscape of Change (MN 126)



*Landscape needs attention and some replacement.*

**Designer:** Raveevarn Choksombatchi,  
Ralph Nelson,  
Aloha Landscape  
**Dedicated:** 2000



*Failed concrete support, typical at post wall.*



*Trip hazard at adjacent podium.*



*Wall has cracked and needs granite replacement for inscription.*



*Rusting surface needs protective coating.*

## **Memorial / Monument Needs Summary**

**2. Woman Suffrage Memorial Garden** –Dedicated to the many women who fought for the right to vote, it includes a trellis that lists the names of Minnesota suffrage leaders and the associated plaques that tell their story.

### **Overall Condition**

The Memorial has a number of issues. The lattice steel wall is embedded in concrete that has cracked and failed at supports and inscriptions. The lattice framework is rusting, plaques need to be renewed with wax for readability. Pavement requires work to eliminate trip hazards and landscape needs annual attention to maintain its intent.

### **Tasks to bring monument to good condition**

Art-

1. Treatment plan of cleaning and multiple coats of new wax starting with black wax.(\$15,000)

Environment-

2. Replace broken concrete(see photo) with granite at supports and inscription.(\$90,000)

3. Remove rust from lattice and provide protective finish.(\$20,000)

4. Provide concrete flat work\* and caulking.(\$20,000)

5. Revitalize landscape with the same plant types.(\$18,000)

### **Cost**

(Cost to bring Monument to good condition for items noted above)

Art, Environment, Safety related items\* and soft costs which include (fees, particulars and 15% contingency)

---

Total	\$163,000+/-
-------	--------------

### **Maintenance Plan**

Art-

1. Annual treatment plan of cold wax and re-new black wax every five years.

2. Re-new lattice finish every five years.

Environment-

2. Re-caulk every 7 years.

3. Annual 'Master Gardener' landscape correction.

Yearly Maintenance Budget-

Art-

\$4,000+/-

Environment-

\$3,000+/-

---

Total	\$7,000+/-
-------	------------

<b>Memorial / Monument</b>					
	<b>CONDITION</b>				
<b>CRITERIA</b>	<b>EXC.</b>	<b>GOOD</b>	<b>FAIR</b>	<b>POOR</b>	<b>V. POOR</b>
<b>2. Women's Suffrage Memorial Garden</b>					
<b>CRITERIA</b>					
<b>PART 1. Art - Sculpture</b>					
1. Appearance				✓	
2. Structural Integrity					✓
3. Surface Condition				✓	
<b>CRITERIA</b>					
<b>PART 2. Environment - Setting for the Art</b>					
<b>Civil:</b>					
4. Proper Drainage			✓		
5. Accessible grade/slope for walking - trip hazards				✓	
<b>Landscape:</b>					
6. Replacement of dead, diseased, overgrown plants			✓		
7. "Intensive Landscaping" maintenance hardship			✓		
8. Irrigation		✓			
<b>Structural:</b>					
9. Foundation				✓	
10. Frost heave paving liability trip hazards				✓	
11. Material Failure - cracked conc., cracked stone, rusted/fractured mtl., rotted wd.				✓	
<b>Electrical:</b>					
12. Light fixture failure	N/A				
13. Light fixture efficiency	N/A				
<b>Mechanical:</b>					
14. Water features performance	N/A				
<b>Architectural:</b>					
15. Appearances of finishes including paint				✓	
16. Appearance of details				✓	
17. Tuckpointing of masonry				✓	
18. Caulking / sealant of masonry				✓	
19. Cleaning of stone				✓	
20. Roof / ledge of all surfaces				✓	

**Notes:**

11 - The concrete Memorial is breaking apart and the metal is rusting.

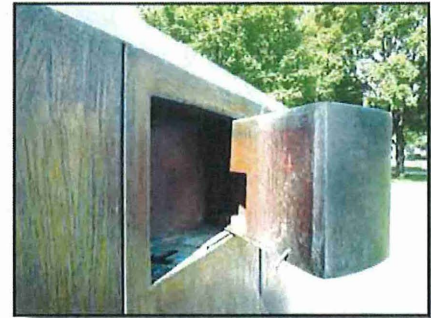


# Memorial / Monument

## 3. Roy Wilkins Memorial; Spiral of Justice (MN 124)



*Sculptor: Curtis Patterson  
Dedicated: 1995*



*Doors of memorial need repair to avoid personal injury.*



*Irregular finish needs conservation treatment.*



*Metal pin is a trip hazard.*



*Granite pavers need to be reset to eliminate trip hazard.*

## **Memorial / Monument Needs Summary**

**3. Roy Wilkins Memorial** –Entitled “Spiral of Justice”, the Memorial celebrates the life of the civil rights activist who grew up in St.Paul and led the NAACP.

### **Overall Condition**

This Memorial has a large footprint and is very visible because of its many pieces. It also has many issues. The moveable books/doors on the large wall have structural damage and are hazardous to the viewers hands. The wood benches need replacement and paving requires reconstruction. The irregular finish on the Memorial needs conservation.

### **Tasks to bring monument to good condition**

Art-

- 1.Weld doors open( can be reversed for conservation).\*
- 2.Clean and re-wax plaque.(\$18,000 for 1&2)
3. Conservation treatment (strip and repatinate) of Memorial wall finish.(\$122,000)

Environment-

4. Replace 8 wood benches.\*((\$40,000)
5. Reset granite paver plaza and replace broken pieces.\*((\$65,000)

### **Cost**

(Cost to bring Monument to good condition for items noted above)

Art, Environment, Safety related items\* and soft costs

---

Total	\$245,000+/-
-------	--------------

### **Maintenance Plan**

Art-

1. To be determined for the wall. Plaque should be re-waxed.

Environment-

2. Wood finish treatment for benches.

Yearly Maintenance Budget-

Art-

\$5,000+/-

Environment-

\$500

---

Total	\$5,500+/-
-------	------------

<b>Memorial / Monument</b>					
	<b>CONDITION</b>				
<b>CRITERIA</b>	<b>EXC.</b>	<b>GOOD</b>	<b>FAIR</b>	<b>POOR</b>	<b>V. POOR</b>
<b>PART 1. Art - Sculpture</b>					
1. Appearance					✓
2. Structural Integrity			✓		
3. Surface Condition				✓	
<b>CRITERIA</b>					
<b>PART 2. Environment - Setting for the Art</b>					
<b>Civil:</b>					
4. Proper Drainage			✓		
5. Accessible grade/slope for walking - trip hazards			✓		
<b>Landscape:</b>					
6. Replacement of dead, diseased, overgrown plants	N/A				
7. "Intensive Landscaping" maintenance hardship	N/A				
8. Irrigation	N/A				
<b>Structural:</b>					
9. Foundation		✓			
10. Frost heave paving liability trip hazards		✓			
11. Material Failure - cracked conc., cracked stone, rusted/fractured mtl., rotted wd.				✓	
<b>Electrical:</b>					
12. Light fixture failure	N/A				
13. Light fixture efficiency	N/A				
<b>Mechanical:</b>					
14. Water features performance	N/A				
<b>Architectural:</b>					
15. Appearances of finishes including paint				✓	
16. Appearance of details				✓	
17. Tuckpointing of masonry	N/A				
18. Caulking / sealant of masonry	N/A				
19. Cleaning of stone	N/A				
20. Roof / ledge of all surfaces			✓		

**Notes:**

3 - Coating was not properly applied.

16 - Temporary chain fence detracts visually. Doors need repair.

17 - Paving mortar disintegrating.

11 - Some pavers are cracked. Eight (8) wood benches need replacement.

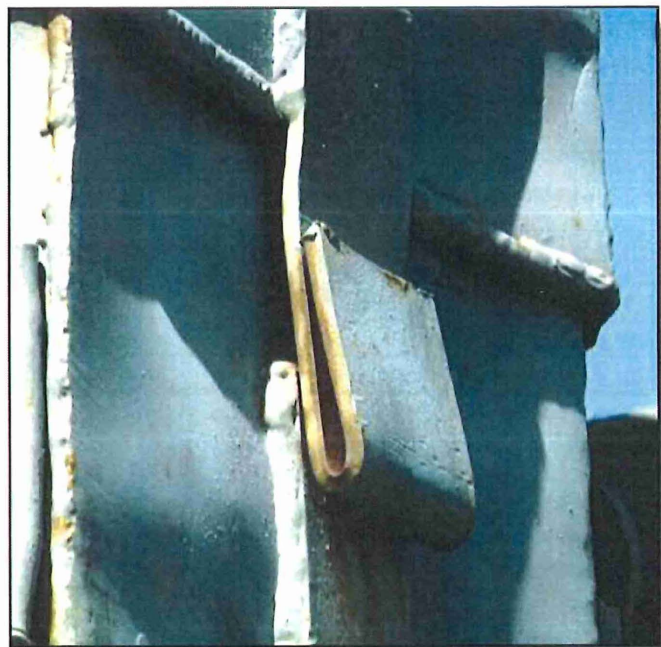


# Memorial / Monument

## 4. Monument to the Living (MN 117)



*Sculptor: Rodger M. Brodin*  
*Dedicated: 1982*



*Memorial requires repainting.  
Wax treatment*

## **Memorial / Monument Needs Summary**

**4. Monument to the Living** – *This sculpture represents all returning Minnesota veterans and is intended to preserve the memory of their fallen comrades.*

### **Overall Condition**

This sculpture is a galvanized steel figure that is obscured by rust spots and is fading. The plaque on the base needs its patina renewed. Pests/ wasps have found their way inside and need to be removed. These openings will be closed.

### **Tasks to bring monument to good condition**

Art-

1. Prep for new finish including repairing bondo on the head. Paint with epoxy.
2. Re-patina plaque.
3. Cold wax and buff.(\$35,000 for 1,2 &3)

Environment-

4. Contour grade to allow water to flow away from Memorial.(\$19,000)
5. Pest removal of wasps and fill holes.\*(\$1000)

### **Cost**

(Cost to bring Monument to good condition for items noted above)

Art, Environment, Safety related items\* and soft costs

---

Total	\$55,000+/-
-------	-------------

### **Maintenance Plan**

Art-

1. Wash, cold wax and buff. Re-paint every 8 years.

Environment-

2. Pest/ insect control.

Yearly Maintenance Budget-

Art-

\$5,000+/-

Environment-

\$500

---

Total	\$5,000+/-
-------	------------

<b>Memorial / Monument</b>					
	<b>CONDITION</b>				
	EXC.	GOOD	FAIR	POOR	V. POOR
<b>CRITERIA</b> <b>PART 1. Art - Sculpture</b>					
1. Appearance				✓	
2. Structural Integrity			✓		
3. Surface Condition				✓	
<b>CRITERIA</b> <b>PART 2. Environment - Setting for the Art</b>					
<b>Civil:</b>					
4. Proper Drainage			✓		
5. Accessible grade/slope for walking - trip hazards		✓			
<b>Landscape:</b>					
6. Replacement of dead, diseased, overgrown plants	N/A				
7. "Intensive Landscaping" maintenance hardship	N/A				
8. Irrigation	N/A				
<b>Structural:</b>					
9. Foundation		✓			
10. Frost heave paving liability trip hazards	N/A				
11. Material Failure - cracked conc., cracked stone, rusted/fractured mtl., rotted wd.				✓	
<b>Electrical:</b>					
12. Light fixture failure	N/A				
13. Light fixture efficiency	N/A				
<b>Mechanical:</b>					
14. Water features performance	N/A				
<b>Architectural:</b>					
15. Appearances of finishes including paint					✓
16. Appearance of details				✓	
17. Tuckpointing of masonry	N/A				
18. Caulking / sealant of masonry	N/A				
19. Cleaning of stone	N/A				
20. Roof / ledge of all surfaces			✓		

**Notes:**

4 - Drain away from base.

11 & 15 - Current paint is rusting.



# Memorial / Monument

## 5. Korean War (MN 113)

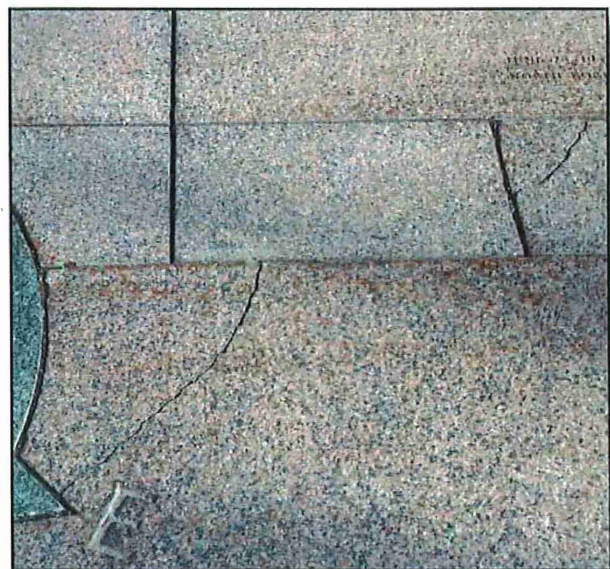


*Overgrown landscaping requires replacement and pruning to improve security.*

*Sculptor: Art Norby  
Site Design: Ben Sporer and Dean Olson  
Dedicated: 1998*



*Requires cleaning and removal of haze on wax coating.*



*Eliminate trip hazards and replace broken granite pavers.*

## **Memorial / Monument Needs Summary**

**5. Korean War** – *The bronze soldier searches for his lost comrades and the cut-out silhouette "missing man" represents all American soldiers missing in action.*

### **Overall Condition**

This Memorial like the Roy Wilkins has a large footprint. The two piece sculpture requires a treatment plan to restore the appearance of the even brown patina. The landscaping is overgrown and poses a security risk.\* Trip hazards in the paving need to be removed along with replacement of broken granite and ashlar granite pavers.\* Typical caulking of joints needs replacement. The existing lighting to remain as is.

### **Tasks to bring monument to good condition**

Art-

1. Get rid of haze.
2. 2 coats of wax, hot/cold and buff.(\$45,000 for 1&2)

Environment-

3. New landscape surround. The new plants could match the original intent but not be as tall when mature.\*(\$60,000)
4. Repair paving and new caulking.\*
5. Clean stone.(\$40,000 for 4&5)

### **Cost**

(Cost to bring Monument to good condition for items noted above)

Art, Environment, Safety related items\*and soft costs

---

Total	\$145,000+/-
-------	--------------

### **Maintenance Plan**

Art-

1. Wash and wax lower annually -\$3750.
- Wash and wax top every 3 years- \$8045

Environment-

2. Clean stone, landscape care.

Yearly Maintenance Budget-

Art-

\$8,000+/-

Environment-

\$2,000+/-

---

Total	\$10,000+/-
-------	-------------

<b>Memorial / Monument</b>					
	<b>CONDITION</b>				
	EXC.	GOOD	FAIR	POOR	V. POOR
<b>CRITERIA</b> <b>PART 1. Art - Sculpture</b>					
1. Appearance				✓	
2. Structural Integrity		✓			
3. Surface Condition			✓		
<b>CRITERIA</b> <b>PART 2. Environment - Setting for the Art</b>					
<b>Civil:</b>					
4. Proper Drainage		✓			
5. Accessible grade/slope for walking - trip hazards			✓		
<b>Landscape:</b>					
6. Replacement of dead, diseased, overgrown plants					✓
7. "Intensive Landscaping" maintenance hardship				✓	
8. Irrigation		✓			
<b>Structural:</b>					
9. Foundation		✓			
10. Frost heave paving liability trip hazards				✓	
11. Material Failure - cracked conc., cracked stone, rusted/fractured mtl., rotted wd.		✓			
<b>Electrical:</b>					
12. Light fixture failure					
13. Light fixture efficiency					
<b>Mechanical:</b>					
14. Water features performance	N/A				
<b>Architectural:</b>					
15. Appearances of finishes including paint			✓		
16. Appearance of details			✓		
17. Tuckpointing of masonry			✓		
18. Caulking / sealant of masonry			✓		
19. Cleaning of stone			✓		
20. Roof / ledge of all surfaces			✓		

**Notes:**

6 - Needs new planting at existing overgrown arborvitae and landscape pruning.

16 - Replacement of some granite and granite paving.

18 - Caulking required.



# Memorial / Monument

## 6. *USS Ward Gun; Forward Gun* (MN 127)



*From: USS Ward*  
*Dedicated: 1958*



*Repair rusted areas and repaint entirely.*

## **Memorial / Monument Needs Summary**

**6. USS Ward Gun** – *This naval historic artifact was manned by St. Paul reservists and fired the first American shot in WWII outside Pearl Harbor.*

### **Overall Condition**

The World War II destroyer gun requires repair of rust damage. The concrete base surround should be replaced as it has cracked. The barrel should have a permanent welded plug installed as the existing one is temporary.

### **Tasks to bring monument to good condition**

Art-

1. Strip existing paint entirely, repair rust, prime and paint entirely.
2. Wax coat to help finish.(\$51,000 for 1&2)

Environment-

3. Replace concrete base surround.\*(\$15,000)
4. Plug barrel end.(\$2,000)

### **Cost**

(Cost to bring Monument to good condition for items noted above)  
Art, Environment, Safety related items\* and soft costs

---

Total	\$68,000+/-
-------	-------------

### **Maintenance Plan**

Art-

- 1.Reapply finish coat to preserve paint.

Environment-

2. Wash.

Yearly Maintenance Budget-

Art-

\$4,000+/-

Environment-

\$500+/-

---

Total	\$4,500+/-
-------	------------

# Memorial / Monument

## 6. USS Ward Gun

### CRITERIA

#### PART 1. Art - Sculpture

1. Appearance
2. Structural Integrity
3. Surface Condition

### CRITERIA

#### PART 2. Environment - Setting for the Art

#### Civil:

4. Proper Drainage
5. Accessible grade/slope for walking - trip hazards

#### Landscape:

6. Replacement of dead, diseased, overgrown plants
7. "Intensive Landscaping" maintenance hardship
8. Irrigation

#### Structural:

9. Foundation
10. Frost heave paving liability trip hazards
11. Material Failure - cracked conc., cracked stone, rusted/fractured mtl., rotted wd.

#### Electrical:

12. Light fixture failure
13. Light fixture efficiency

#### Mechanical:

14. Water features performance

#### Architectural:

15. Appearances of finishes including paint
16. Appearance of details
17. Tuckpointing of masonry
18. Caulking / sealant of masonry
19. Cleaning of stone
20. Roof / ledge of all surfaces

### CONDITION

EXC.    GOOD    FAIR    POOR    V. POOR

	EXC.	GOOD	FAIR	POOR	V. POOR
1. Appearance				✓	
2. Structural Integrity		✓			
3. Surface Condition				✓	
<b>CRITERIA</b>					
<b>PART 2. Environment - Setting for the Art</b>					
<b>Civil:</b>					
4. Proper Drainage		✓			
5. Accessible grade/slope for walking - trip hazards		✓			
<b>Landscape:</b>					
6. Replacement of dead, diseased, overgrown plants	N/A				
7. "Intensive Landscaping" maintenance hardship	N/A				
8. Irrigation	N/A				
<b>Structural:</b>					
9. Foundation		✓			
10. Frost heave paving liability trip hazards	N/A				
11. Material Failure - cracked conc., cracked stone, rusted/fractured mtl., rotted wd.				✓	
<b>Electrical:</b>					
12. Light fixture failure	N/A				
13. Light fixture efficiency	N/A				
<b>Mechanical:</b>					
14. Water features performance	N/A				
<b>Architectural:</b>					
15. Appearances of finishes including paint					✓
16. Appearance of details		✓			
17. Tuckpointing of masonry	N/A				
18. Caulking / sealant of masonry	N/A				
19. Cleaning of stone	N/A				
20. Roof / ledge of all surfaces	N/A				

#### Notes:

- 11 - Concrete band around gun should be replaced.
- 15 - Paint required to stop rusting.
- 16 - Plug at barrel end should be removed and welded shut.



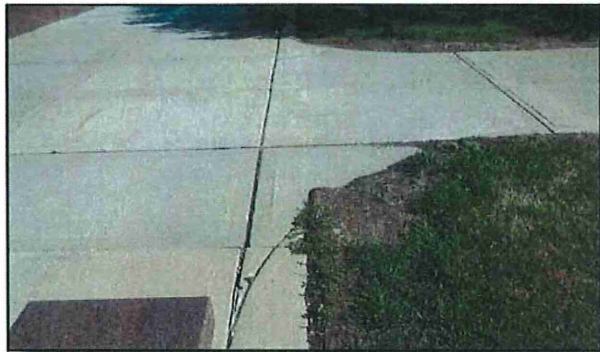
# Memorial / Monument

## 7. Promise of Youth - Millie Fountain (MN 120)



*Former fountain area  
needs an aesthetic finish.*

*Sculptor: Alonzo Hauser  
Dedicated: 1958*



*Sidewalk and turf need replacement.*



*Cracked granite bench support  
needs replacement.*



*Raised concrete walk trip hazard and  
granite corner need correction at foundation.*

## **Memorial / Monument Needs Summary**

**7. "The Promise of Youth" Fountain or Millie Fountain** – *It symbolizes the youth of the nation searching for the promise of peace that follows war.*

### **Overall Condition**

This prominent Memorial requires rejuvenation. The sculpture has been stabilized and petals "fixed in place". The sculpture finish needs a conservation treatment. The inoperable fountain (not being activated due to leaking) needs a permanent aesthetic finish that will complement the sculpture. The surrounding bench seating needs rehab of the granite, tuckpointing and caulking. Sidewalk trip hazards need to be eliminated.

### **Tasks to bring monument to good condition**

Art-

1. Treatment of wash, stabilize rust, repair patina, 2 coats wax- warm/cold and buff.(\$25,000)

Environment-

2. Provide aesthetic "hardscape" surface for interior of fountain.(\$75,000)

3. Skateboard deterrence and replace broken granite pieces.\*( \$30,000)

4. Tuckpoint and caulk.

5. Replace heaved concrete walk.\*( \$20,000 for 4&5)

### **Options**

1. Sod/ shrubs surface (additional \$70,000)

### **Cost**

(Cost to bring Monument to good condition for items noted above)

Art, Environment, Safety related items\* and soft costs

---

Total	\$150,000+/-
-------	--------------

### **Maintenance Plan**

Art-

1. Wash and wax. Re-new lacquer every 10 years (\$5480).

Environment-

2. Wash.

3. Periodic caulking.

Yearly Maintenance Budget-

Art-

\$5,000+/-

Environment-

\$1,000+/-

---

Total	\$6,000+/-
-------	------------

<b>Memorial / Monument</b>					
	<b>CONDITION</b>				
	EXC.	GOOD	FAIR	POOR	V. POOR
<b>7. Millie Fountain</b>					
<b>CRITERIA</b>					
<b>PART 1. Art - Sculpture</b>					
1. Appearance			✓		
2. Structural Integrity		✓			
3. Surface Condition			✓		
<b>CRITERIA</b>					
<b>PART 2. Environment - Setting for the Art</b>					
<b>Civil:</b>					
4. Proper Drainage	N/A				
5. Accessible grade/slope for walking - trip hazards			✓		
<b>Landscape:</b>					
6. Replacement of dead, diseased, overgrown plants	N/A				
7. "Intensive Landscaping" maintenance hardship	N/A				
8. Irrigation	N/A				
<b>Structural:</b>					
9. Foundation		✓			
10. Frost heave paving liability trip hazards			✓		
11. Material Failure - cracked conc., cracked stone, rusted/fractured mtl., rotted wd.			✓		
<b>Electrical:</b>					
12. Light fixture failure					
13. Light fixture efficiency					
<b>Mechanical:</b>					
14. Water features performance					✓
<b>Architectural:</b>					
15. Appearances of finishes including paint				✓	
16. Appearance of details				✓	
17. Tuckpointing of masonry				✓	
18. Caulking / sealant of masonry				✓	
19. Cleaning of stone			✓		
20. Roof / ledge of all surfaces				✓	

**Notes:**

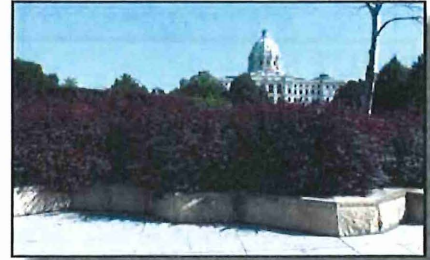
14 - A permanent aesthetic surface should be installed since the fountain is no longer functioning.

18 - Joints need to be caulked at the perimeter.



# Memorial / Monument

## 8. Vietnam Memorial; Lakefront DMZ Fountain (MN 130)



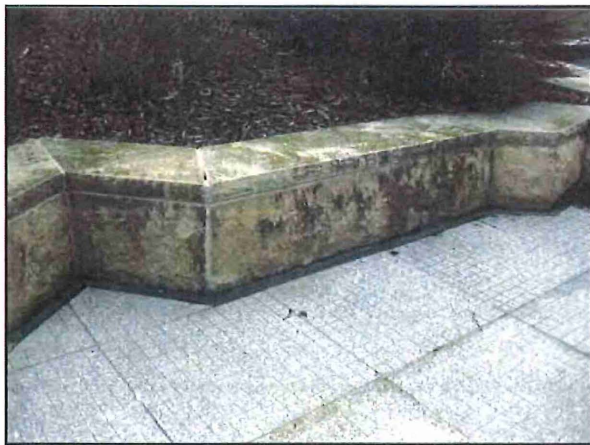
*Landscaping is overgrown and needs pruning/replacement.*

*Designers: Rich Laffin  
Stanton Sears  
Nina Ackerberg  
Jake Castillo*

*Dedicated: 1992*



*Failed ground lighting needs replacement with overhead wall wash lighting.*



*Kasota stone needs cleaning.*



*Paving trip hazard needs correction.*

## **Memorial / Monument Needs Summary**

**8. Minnesota Vietnam Veterans** – *It honors the more than 1,100 Minnesotans that were killed or reported MIA in the war and their names are etched into the granite wall.*

### **Overall Condition**

This Memorial also covers a large area near Roy Wilkins and has a number of components. The stone wall of names needs cleaning, bronze flag base needs wax to prevent further oxidation, as does the lectern/ display case. The landscape is overgrown and kasota stone wall/seats need to be cleaned. The paving trip hazards (10%) need correction along with typical caulking of joints. The in ground lighting needs replacement with an above ground layout. The street style light poles to remain.

### **Tasks to bring monument to good condition**

Art-

1. Clean names on stone memorial wall.
2. Wash and warm wax lectern and bronze flag poles.(\$15,000 for 1&2)

Environment-

2. Replace distressed/ overgrown landscape.(\$55,000)
3. Replace/ repair trip hazards and install paving at removed ground lights.\*(15,000)
4. Clean Kasota stone, tuckpoint and caulk.(\$25,000)
5. Replace lighting with above grade LED fixtures at wall of names.\*(50,000)

### **Cost**

(Cost to bring Monument to good condition for items noted above)  
Art, Environment, Safety related items\* and soft costs

---

Total	\$160,000+/-
-------	--------------

### **Maintenance Plan**

Art-

1. Wash and wax.

Environment-

2. Wash and periodic caulking.
3. Landscape care.

Yearly Maintenance Budget-

Art-

\$3,000+/-

Environment-

\$2,000+/-

---

Total	\$5,000+/-
-------	------------

<b>Memorial / Monument</b>					
	<b>CONDITION</b>				
	EXC.	GOOD	FAIR	POOR	V. POOR
<b>8. Vietnam Memorial</b>					
<b>CRITERIA</b>					
<b>PART 1. Art - Sculpture</b>					
1. Appearance			✓		
2. Structural Integrity		✓			
3. Surface Condition			✓		
<b>CRITERIA</b>					
<b>PART 2. Environment - Setting for the Art</b>					
<b>Civil:</b>					
4. Proper Drainage			✓		
5. Accessible grade/slope for walking - trip hazards			✓		
<b>Landscape:</b>					
6. Replacement of dead, diseased, overgrown plants				✓	
7. "Intensive Landscaping" maintenance hardship				✓	
8. Irrigation	N/A				
<b>Structural:</b>					
9. Foundation		✓			
10. Frost heave paving liability trip hazards				✓	
11. Material Failure - cracked conc., cracked stone, rusted/fractured mtl., rotted wd.					
<b>Electrical:</b>					
12. Light fixture failure				✓	
13. Light fixture efficiency				✓	
<b>Mechanical:</b>					
14. Water features performance		✓			
<b>Architectural:</b>					
15. Appearances of finishes including paint				✓	
16. Appearance of details		✓			
17. Tuckpointing of masonry				✓	
18. Caulking / sealant of masonry				✓	
19. Cleaning of stone				✓	
20. Roof / ledge of all surfaces			✓		

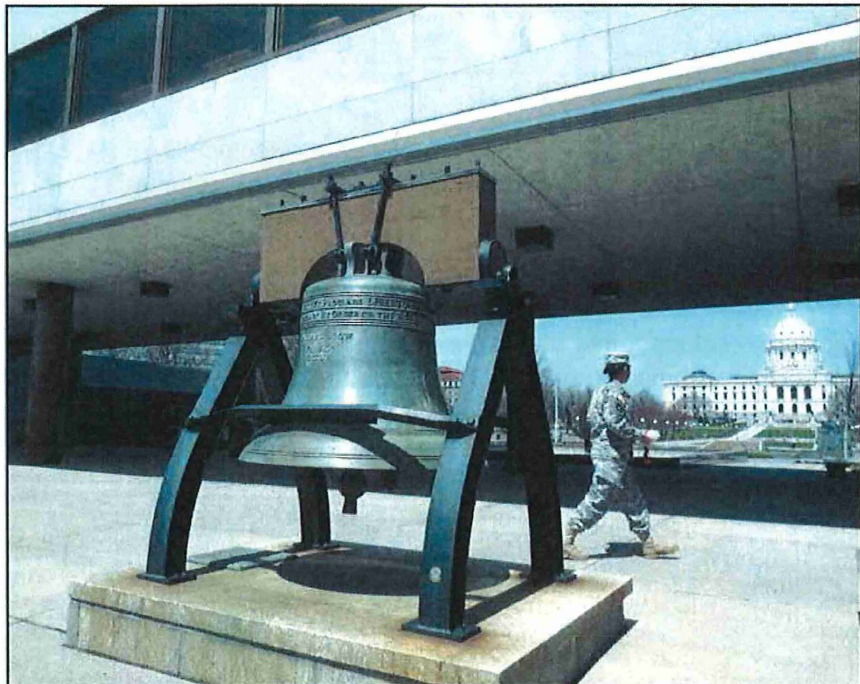
**Notes:**

- 5 - Several trip hazards in paving.
- 6 - Overgrown plants need replacement.
- 12 - In ground lights need to be replaced with above / overhead lighting.
- 18 - Caulking of joints required.
- 19 - Kasota Stone is stained and needs cleaning.

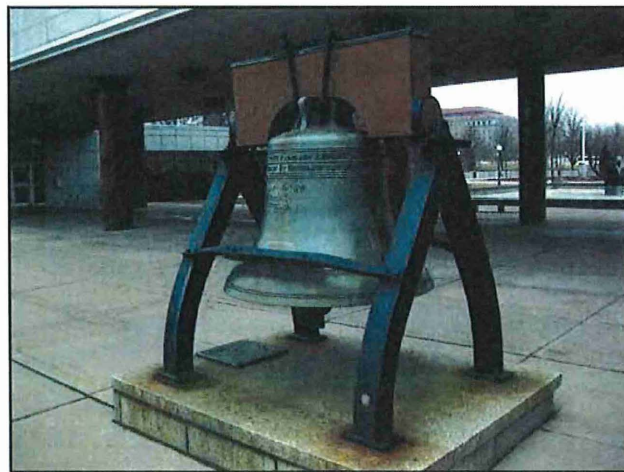


# Memorial / Monument

## 9. Replica of the Liberty Bell (MN 123)



French Government  
Dedicated: 1950



Stain removal and conservation of bell  
required.



Conservation of plaque required.

## **Memorial / Monument Needs Summary**

**9. Liberty Bell** – *The replica symbolizes the Liberty Bell that rang out from the tower of Independence Hall summoning citizens to hear the first public reading of the Declaration of Independence.*

### **Overall Condition**

The Memorial needs the rust stabilized on the clapper and iron. The surface needs a conservation treatment. The wood yolk needs to be sealed. Rust spots removed and the black iron painted along with replacement of cracked sidewalks.

### **Tasks to bring monument to good condition**

Art-

1. Stabilize rust using tannic acid on clapper and iron.
2. Refine readability with blue/black patina solution.
3. Wash and 2 coats wax-warm/cold and buff.(\$25,000 for 1,2 and 3)

Environment-

4. Replace cracked sidewalks.\* (\$10,000)
5. Provide prep and painting in conjunction with conservation treatment.(\$5,000)

### **Cost**

(Cost to bring Monument to good condition for items noted above)

Art, Environment, Safety related items\* and soft costs

---

Total	\$40,000+/-
-------	-------------

### **Maintenance Plan**

Art-

1. Wash and wax.

Environment-

2. Wash.
3. Landscape care.

Yearly Maintenance Budget-

Art-

\$3,000+/-

Environment-

\$1,000+/-

---

Total	\$4,000+/-
-------	------------

<b>Memorial / Monument</b>		<b>CONDITION</b>				
		EXC.	GOOD	FAIR	POOR	V. POOR
<b>9. Liberty Bell</b>						
<b>CRITERIA</b>						
<b>PART 1. Art - Sculpture</b>						
1. Appearance				✓		
2. Structural Integrity			✓			
3. Surface Condition			✓			
<b>CRITERIA</b>						
<b>PART 2. Environment - Setting for the Art</b>						
<b>Civil:</b>						
4. Proper Drainage			✓			
5. Accessible grade/slope for walking - trip hazards			✓			
<b>Landscape:</b>						
6. Replacement of dead, diseased, overgrown plants	N/A					
7. "Intensive Landscaping" maintenance hardship	N/A					
8. Irrigation						
<b>Structural:</b>						
9. Foundation			✓			
10. Frost heave paving liability trip hazards			✓			
11. Material Failure - cracked conc., cracked stone, rusted/fractured mtl., rotted wd.				✓		
<b>Electrical:</b>						
12. Light fixture failure	N/A					
13. Light fixture efficiency	N/A					
<b>Mechanical:</b>						
14. Water features performance	N/A					
<b>Architectural:</b>						
15. Appearances of finishes including paint					✓	
16. Appearance of details				✓		
17. Tuckpointing of masonry	N/A					
18. Caulking / sealant of masonry	N/A					
19. Cleaning of stone	N/A					
20. Roof / ledge of all surfaces				✓		

**Notes:**

- 6 - Correct plant material in adjacent planter boxes.
- 11 - Replace cracked sidewalk.
- 15 - Seal wood yolk, prep rust spots and paint black iron.



# Memorial / Monument

## 10. Court of Honor (Plaques) (MN 104)



*Wall and Rose Garden Built in 1955.  
Plaques individually dedicated thereafter.*



*Grout joints need to be reworked along  
with conservation of all plaques.*



*Conservation of plaque required.*



# **Memorial / Monument Needs Summary**

**10. Court of Honor (Plaques)** – *The bronze plaques honor the participation of Minnesotans in all U.S. and world conflicts, from the Civil war through Vietnam.*

## **Overall Condition**

The Memorial needs conservation treatment of the 15 plaques to increase readability. The curved granite walls need cleaning, tuckpointing of joints and sealant. The surrounding landscaping requires care and some new plant material.

## **Tasks to bring monument to good condition**

Art-

1. Wash, sand letters and patina letters to existing gold/brown.
2. 2 coats wax- warm/cold wax and buff.(\$20,000 for 1&2)

Environment-

3. Tuckpoint and sealant at joints. (\$25,000)
4. Install some new plant material including mulch.(\$15,000)

## **Cost**

(Cost to bring Monument to good condition for items noted above)  
Art, Environment, Safety related items\* and soft costs

---

Total	\$60,000+/-
-------	-------------

## **Maintenance Plan**

Art-

1. Wash and wax.

Environment-

2. Wash.
3. Landscape care.

Yearly Maintenance Budget-

Art-

\$3,500+/-

Environment-

\$2,000+/-

---

Total	\$5,500+/-
-------	------------

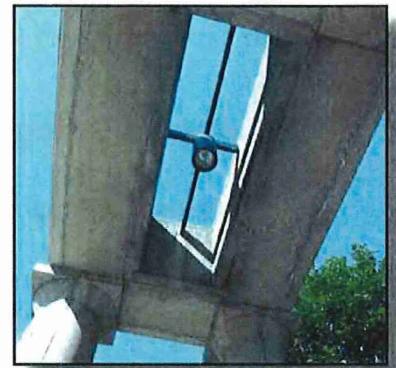
<b>Memorial / Monument</b>					
	<b>CONDITION</b>				
<b>CRITERIA</b>	EXC.	GOOD	FAIR	POOR	V. POOR
<b>10. Court of Honor (Plaques)</b>					
<b>CRITERIA</b>					
<b>PART 1. Art - Sculpture</b>					
1. Appearance				✓	
2. Structural Integrity		✓			
3. Surface Condition			✓		
<b>CRITERIA</b>					
<b>PART 2. Environment - Setting for the Art</b>					
<b>Civil:</b>					
4. Proper Drainage		✓			
5. Accessible grade/slope for walking - trip hazards		✓			
<b>Landscape:</b>					
6. Replacement of dead, diseased, overgrown plants			✓		
7. "Intensive Landscaping" maintenance hardship			✓		
8. Irrigation		✓			
<b>Structural:</b>					
9. Foundation		✓			
10. Frost heave paving liability trip hazards		✓			
11. Material Failure - cracked conc., cracked stone, rusted/fractured mtl., rotted wd.			✓		
<b>Electrical:</b>					
12. Light fixture failure	N/A				
13. Light fixture efficiency	N/A				
<b>Mechanical:</b>					
14. Water features performance	N/A				
<b>Architectural:</b>					
15. Appearances of finishes including paint			✓		
16. Appearance of details		✓			
17. Tuckpointing of masonry				✓	
18. Caulking / sealant of masonry				✓	
19. Cleaning of stone				✓	
20. Roof / ledge of all surfaces			✓		

**Notes:**

- 7 - Landscape needs attention.
- 17 & 18 - Typical tuckpointing and caulking required.
- 19 - Granite needs to be cleaned.

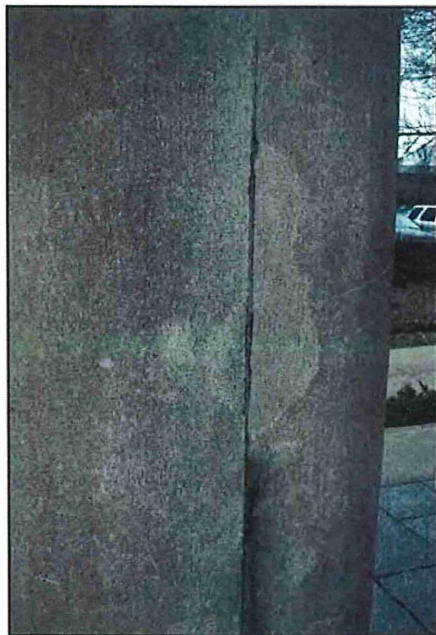
# Memorial / Monument

## 11. Peace Officer's Memorial Plaza and Fountain (MN 118)

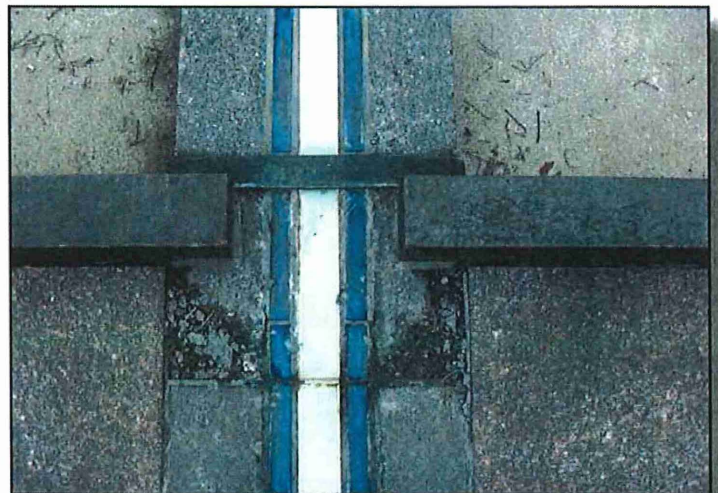


*A translucent roof cover could eliminate staining.*

**Designers:** Fred Richter and Mark Wentzel  
**Dedicated:** 1995



*Pre-cast columns need cleaning and joint repair.*



*Paving needs reconstruction in some areas.*

# **Memorial / Monument Needs Summary**

**11. Peace Officers Memorial** – *The memorial is dedicated to Minnesota police officers killed in the line of duty.*

## **Overall Condition**

The Memorial completed in 1995 has some issues that need to be corrected for longevity. The precast concrete(not stone) colonnade has an open roof that contributes to the deterioration/ discoloration of the columns below. The anchorage of the pieces was not able to be viewed to see what condition they are in. The roof should be waterproofed and a new drip edge installed to prevent staining of the colonnade below. The paving at the “thin blue line” has deteriorated and a more permanent solution needs to be installed. Some turf areas need work as they are a trip hazard.\*

## **Tasks to bring monument to good condition**

Art-

1. Wash and continue cleaning granite at fountain.(\$8,000)

Environment-

2. Waterproof roof over colonnade to minimize staining to below including a new drip edge detail.(\$300,000)

3. Restore colonnade surface and some concrete areas.(\$80,000)

4. Install new plant material /turf.\* (\$32,000)

## **Cost**

(Cost to bring Monument to good condition for items noted above)

Art, Environment, Safety related items\* and soft costs

---

Total	\$420,000+/-
-------	--------------

## **Maintenance Plan**

Art-

1. Wash.

Environment-

2. Wash.

3. Landscape care.

Yearly Maintenance Budget-

Art-

\$1,000+/-

Environment-

\$3,000+/-

---

Total	\$4,000+/-
-------	------------



<b>Memorial / Monument</b>					
	<b>CONDITION</b>				
<b>CRITERIA</b>	<b>EXC.</b>	<b>GOOD</b>	<b>FAIR</b>	<b>POOR</b>	<b>V. POOR</b>
<b>11. Peace Officers Memorial</b>					
<b>CRITERIA</b>					
<b>PART 1. Art - Sculpture</b>					
1. Appearance		✓			
2. Structural Integrity		✓			
3. Surface Condition		✓			
<b>CRITERIA</b>					
<b>PART 2. Environment - Setting for the Art</b>					
<b>Civil:</b>					
4. Proper Drainage		✓			
5. Accessible grade/slope for walking - trip hazards			✓		
<b>Landscape:</b>					
6. Replacement of dead, diseased, overgrown plants			✓		
7. "Intensive Landscaping" maintenance hardship			✓		
8. Irrigation		✓			
<b>Structural:</b>					
9. Foundation		✓			
10. Frost heave paving liability trip hazards			✓		
11. Material Failure - cracked conc., cracked stone, rusted/fractured mtl., rotted wd.			✓		
<b>Electrical:</b>					
12. Light fixture failure			✓		
13. Light fixture efficiency			✓		
<b>Mechanical:</b>					
14. Water features performance		✓			
<b>Architectural:</b>					
15. Appearances of finishes including paint				✓	
16. Appearance of details			✓		
17. Tuckpointing of masonry			✓		
18. Caulking / sealant of masonry			✓		
19. Cleaning of stone					✓
20. Roof / ledge of all surfaces					✓

**Notes:**

12 - Light fixtures are not effective.

19 & 20 - Collonade should have a waterproofed roof with a drip edge to prevent staining of pediment and columns.

## Memorial / Monument

### 12. Charles Lindbergh: The Boy and the Man (MN 100)



*Sculptor:* Paul Granlund  
*Dedicated:* 1985



*Landscape fabric under pea gravel is a trip hazard.*



*Sculpture requires conservation treatment.*

## **Memorial / Monument Needs Summary**

**12. Charles Lindbergh** – *The memorial of the Little Falls, Minnesota native who became an American icon after completing his first solo trans-Atlantic flight in 1927 is shown as a boy with dreams of flight and later as having accomplished that.*

### **Overall Condition**

The bronze Memorial of the two figures patina is aging towards the very dark due to less than ideal maintenance of the wax coating. The sculptures require conservation treatment. The walk areas consisting of pea gravel with a metal edging needs attention. Typical caulking at joints. An aesthetic solution to adjacent trash cans is desired.

### **Tasks to bring monument to good condition**

Art-

1. Wash and 2 coats wax, hot/cold and buff.
2. Extra coat of wax on horizontal surfaces of base.(\$10,000 for 1&2)

Environment-

3. Revise pea gravel/ metal edging details.\*(\$20,000)
4. Provide required caulking.(\$10,000)
5. Landscape/turf attention.\*(\$15,000)

### **Cost**

(Cost to bring Monument to good condition for items noted above)

Art, Environment, Safety related items\* and soft costs

---

Total	\$55,000+/-
-------	-------------

### **Maintenance Plan**

Art-

1. Wash.
2. 2 coats wax, hot/cold and buff.

Environment-

2. Wash.
3. Landscape care.

Yearly Maintenance Budget-

Art-

\$3,000+/-

Environment-

\$3,000+/-

---

Total	\$6,000+/-
-------	------------

<b>Memorial / Monument</b>					
	<b>CONDITION</b>				
<b>CRITERIA</b>	<b>EXC.</b>	<b>GOOD</b>	<b>FAIR</b>	<b>POOR</b>	<b>V. POOR</b>
<b>PART 1. Art - Sculpture</b>					
1. Appearance				✓	
2. Structural Integrity			✓		
3. Surface Condition			✓		
<b>CRITERIA</b>					
<b>PART 2. Environment - Setting for the Art</b>					
<b>Civil:</b>					
4. Proper Drainage			✓		
5. Accessible grade/slope for walking - trip hazards		✓			
<b>Landscape:</b>					
6. Replacement of dead, diseased, overgrown plants			✓		
7. "Intensive Landscaping" maintenance hardship		✓			
8. Irrigation		✓			
<b>Structural:</b>					
9. Foundation		✓			
10. Frost heave paving liability trip hazards		✓			
11. Material Failure - cracked conc., cracked stone, rusted/fractured mtl., rotted wd.		✓			
<b>Electrical:</b>					
12. Light fixture failure	N/A				
13. Light fixture efficiency	N/A				
<b>Mechanical:</b>					
14. Water features performance	N/A				
<b>Architectural:</b>					
15. Appearances of finishes including paint			✓		
16. Appearance of details			✓		
17. Tuckpointing of masonry	N/A				
18. Caulking / sealant of masonry				✓	
19. Cleaning of stone	N/A				
20. Roof / ledge of all surfaces			✓		

**Notes:**

16 - Pea gravel at benches with metal edging needs correction. Trash cans are unsightly.

18 - Typical caulking of joints required.



# Memorial / Monument

## 13. *Hubert Horatio Humphrey Memorial* (MN 148)



**Sculptors:** Anna Koh and Jeffrey Varilla  
**Site Designer:** Geoff Martin  
**Dedicated:** 2009



*Plaque requires cleaning and waxing.*



*Sculpture requires conservation.*

## **Memorial / Monument Needs Summary**

**13. Hubert H. Humphrey Memorial** – *The memorial of one of the state's best known political figures pictures Humphrey in an informal speaking pose. He served as mayor of Minneapolis, a U.S. Senator for Minnesota and Vice President of the United States.*

### **Overall Condition**

The bronze Memorial has a warm ferric golden brown patina with the wax coating peeling and pulling off from the winter. The plaque also requires cleaning and waxing. The turf area needs some work.

### **Tasks to bring monument to good condition**

Art-

1. Wash and 2 coats wax, hot/cold and buff.(\$10,000)

Environment-

2. Caulk required joints.(\$15,000)

3. Landscape attention and replacement of some turf and plants.(\$15,000)

### **Cost**

(Cost to bring Monument to good condition for items noted above)

Art, Environment, Safety related items\* and soft costs

---

Total	\$40,000+/-
-------	-------------

### **Maintenance Plan**

Art-

1. Wash.

2. 2 coats wax, hot/cold and buff.

Environment-

2. Wash.

3. Landscape care.

Yearly Maintenance Budget-

Art-

\$3,000+/-

Environment-

\$3,000+/-

---

Total	\$6,000+/-
-------	------------

<b>Memorial / Monument</b>					
	<b>CONDITION</b>				
<b>CRITERIA</b>	<b>EXC.</b>	<b>GOOD</b>	<b>FAIR</b>	<b>POOR</b>	<b>V. POOR</b>
<b>13. Hubert H. Humphrey Memorial</b>					
<b>CRITERIA</b>					
<b>PART 1. Art - Sculpture</b>					
1. Appearance			✓		
2. Structural Integrity		✓			
3. Surface Condition		✓			
<b>CRITERIA</b>					
<b>PART 2. Environment - Setting for the Art</b>					
<b>Civil:</b>					
4. Proper Drainage		✓			
5. Accessible grade/slope for walking - trip hazards		✓			
<b>Landscape:</b>					
6. Replacement of dead, diseased, overgrown plants	N/A				
7. "Intensive Landscaping" maintenance hardship	N/A				
8. Irrigation	N/A				
<b>Structural:</b>					
9. Foundation		✓			
10. Frost heave paving liability trip hazards		✓			
11. Material Failure - cracked conc., cracked stone, rusted/fractured mtl., rotted wd.		✓			
<b>Electrical:</b>					
12. Light fixture failure	N/A				
13. Light fixture efficiency	N/A				
<b>Mechanical:</b>					
14. Water features performance	N/A				
<b>Architectural:</b>					
15. Appearances of finishes including paint			✓		
16. Appearance of details		✓			
17. Tuckpointing of masonry		✓			
18. Caulking / sealant of masonry		✓			
19. Cleaning of stone			✓		
20. Roof / ledge of all surfaces		✓			

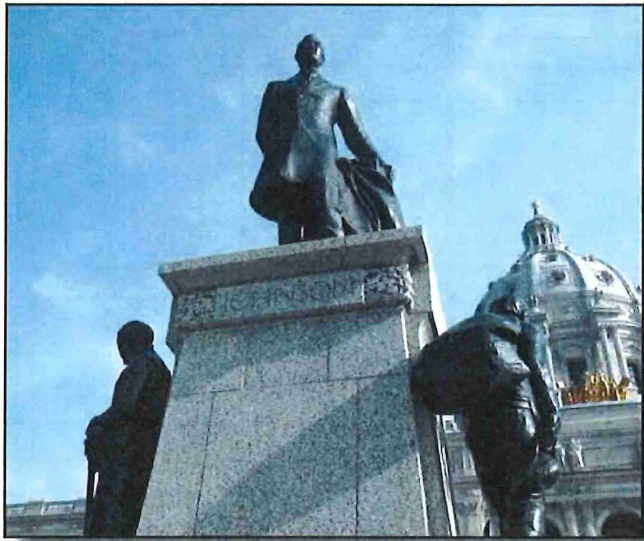
**Notes:**

18 - Will require caulking of joints in the future.



# Memorial / Monument

## 14. John Johnson Memorial (MN 109)



*Sculptor: Andrew O'Conner  
Dedicated: 1912*



*Stone needs to be reset.*



*Grout needs to be redone at base of sculpture.*



*Joints need to be reworked.*



*Plaque needs conservation.*



## **Memorial / Monument Needs Summary**

**14. John A. Johnson Memorial** – *The memorial to the first Minnesota born governor was completed in 1912 and was the first to be installed on the Capitol Mall. The four figures on the base represent the state's major industries during his time in office: iron mining, agriculture, manufacturing and lumbering.*

### **Overall Condition**

The bronze Memorial has a possibly original black patina and a pigmented lacquer has been used overall. There are minor stains and dirt/ dust on the horizontal surfaces. The plaque requires a conservation treatment. The stone bases (planter box) has to be rebuilt as freeze thaw has pushed the piece out of square. A "winter cover" for the planter is recommended as this would lessen the movement at joints. The mortar and caulking has failed at all joints and needs to be tuckpointed.

### **Tasks to bring monument to good condition**

Art-

1. Correct lacquer issues.
2. Wash and 2 coats wax, hot/cold and buff.(\$30,000 for 1&2)

Environment-

3. Rebuild/ reset only the planter box with existing stone.(\$61,000)
4. Install an aesthetic cover at the planter for the winter season.(\$20,000)
5. Tuckpoint and caulk required joints.(\$25,000)

### **Cost**

(Cost to bring Monument to good condition for items noted above)

Art, Environment, Safety related items\* and soft costs

---

Total	\$136,000+/-
-------	--------------

### **Maintenance Plan**

Art-

1. Wash.
2. 2 coats wax, hot/cold and buff.

Environment-

3. Wash.

Yearly Maintenance Budget-

Art-

\$7,000+/-

Environment-

\$1,500+/-

---

Total	\$8,500+/-
-------	------------

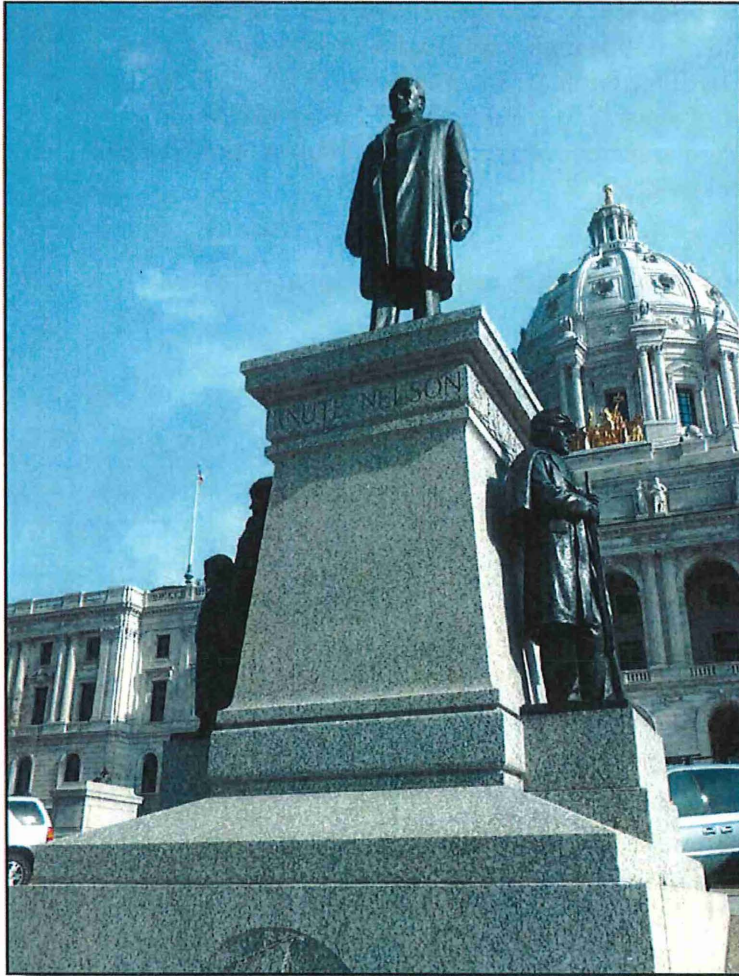
<b>Memorial / Monument</b>					
	<b>CONDITION</b>				
	<b>EXC.</b>	<b>GOOD</b>	<b>FAIR</b>	<b>POOR</b>	<b>V. POOR</b>
<b>14. John Johnson</b>					
<b>CRITERIA</b>					
<b>PART 1. Art - Sculpture</b>					
1. Appearance			✓		
2. Structural Integrity		✓			
3. Surface Condition			✓		
<b>CRITERIA</b>					
<b>PART 2. Environment - Setting for the Art</b>					
<b>Civil:</b>					
4. Proper Drainage				✓	
5. Accessible grade/slope for walking - trip hazards			✓		
<b>Landscape:</b>					
6. Replacement of dead, diseased, overgrown plants			✓		
7. "Intensive Landscaping" maintenance hardship			✓		
8. Irrigation	N/A				
<b>Structural:</b>					
9. Foundation		✓			
10. Frost heave paving liability trip hazards		✓			
11. Material Failure - cracked conc., cracked stone, rusted/fractured mtl., rotted wd.				✓	
<b>Electrical:</b>					
12. Light fixture failure	N/A				
13. Light fixture efficiency	N/A				
<b>Mechanical:</b>					
14. Water features performance	N/A				
<b>Architectural:</b>					
15. Appearances of finishes including paint			✓		
16. Appearance of details				✓	
17. Tuckpointing of masonry				✓	
18. Caulking / sealant of masonry				✓	
19. Cleaning of stone				✓	
20. Roof / ledge of all surfaces				✓	

**Notes:**

11 - Stone planter bases have to be rebuilt. Potential for a cover in winter to prevent water infiltration into planter box.

## ***Memorial / Monument***

### ***15. Knute Nelson (MN 111)***



***Sculptor: John Karl Daniels  
Dedication: 1928***



***Sculpture requires conservation treatment  
and work at stone joints.***

## **Memorial / Monument Needs Summary**

**15. Knute Nelson Memorial** – *This memorial placed in 1928 is for the first foreign born governor and later the longest serving Minnesotan in the U.S. Senate. On one side you see Nelson as a child with his mother and the opposite side remembered for his service in the Civil War.*

### **Overall Condition**

This bronze Memorial is very similar in issues as the adjacent John A. Johnson Memorial. There are minor stains and dirt/ dust on the horizontal surfaces. The plaque requires a conservation treatment. The stone bases (planter box) has to be rebuilt as freeze thaw has pushed the piece out of square. A “winter cover” for the planter is recommended as this would lessen the movement at joints. The mortar and caulking has failed at all joints and needs to be tuckpointed.

### **Tasks to bring monument to good condition**

Art-

1. Correct lacquer issues.
2. Wash and 2 coats wax, hot/cold and buff.(\$30,000 for 1&2)

Environment-

3. Rebuild/ reset planter box only with existing stone.(\$61,000)
4. Install an aesthetic cover at the planter for the winter season.(\$20,000)
5. Tuckpoint and caulk required joints.(\$25,000)

### **Cost**

(Cost to bring Monument to good condition for items noted above)

Art, Environment, Safety related items\* and soft costs

---

Total	\$136,000+/-
-------	--------------

### **Maintenance Plan**

Art-

1. Wash.
2. 2 coats wax, hot/cold and buff.

Environment-

3. Wash.

Yearly Maintenance Budget-

Art-

\$7,000+/-

Environment-

\$1,500+/-

---

Total	\$8,500+/-
-------	------------



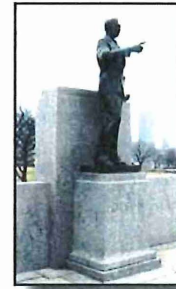
<b>Memorial / Monument</b>					
	<b>CONDITION</b>				
<b>CRITERIA</b> <b>PART 1. Art - Sculpture</b>	EXC.	GOOD	FAIR	POOR	V. POOR
1. Appearance			✓		
2. Structural Integrity		✓			
3. Surface Condition			✓		
<b>CRITERIA</b> <b>PART 2. Environment - Setting for the Art</b>					
<b>Civil:</b>					
4. Proper Drainage				✓	
5. Accessible grade/slope for walking - trip hazards			✓		
<b>Landscape:</b>					
6. Replacement of dead, diseased, overgrown plants			✓		
7. "Intensive Landscaping" maintenance hardship			✓		
8. Irrigation	N/A				
<b>Structural:</b>					
9. Foundation		✓			
10. Frost heave paving liability trip hazards		✓			
11. Material Failure - cracked conc., cracked stone, rusted/fractured mtl., rotted wd.				✓	
<b>Electrical:</b>					
12. Light fixture failure	N/A				
13. Light fixture efficiency	N/A				
<b>Mechanical:</b>					
14. Water features performance	N/A				
<b>Architectural:</b>					
15. Appearances of finishes including paint			✓		
16. Appearance of details				✓	
17. Tuckpointing of masonry				✓	
18. Caulking / sealant of masonry				✓	
19. Cleaning of stone				✓	
20. Roof / ledge of all surfaces				✓	

**Notes:**

11 - Stone planter bases have to be rebuilt. Freeze/thaw has "pushed" granite pillars out.

# Memorial / Monument

## 16. Floyd B. Olson (MN 106)



**Sculptor:** Charles Brioschi  
**Dedicated:** 1958



*Joints need to be reworked.*



*Sidewalk and pavers need replacement.*



*Phone box needs relocation and memorial needs landscape buffer*



*Joint needs work to prevent additional spalling of stone.*

## **Memorial / Monument Needs Summary**

**16. Floyd B. Olson Memorial** – *This popular governor was the first to be elected from the up and coming Farmer-Labor Party and the first to make regular radio addresses at the height of the Great Depression.*

### **Overall Condition**

This Memorial has an even blue/black patina that requires treatment. The mortar and caulking has failed at all stone joints and needs to be tuckpointed. The south side shoulder of the monument base has heaved and needs work so that it does not continue to spall off stone on the base of the sculpture. The sidewalks and pavers require replacement of the cracked pieces.

### **Tasks to bring monument to good condition**

Art-

1. Wash and 2 coats wax, hot/cold and buff.
2. Extra wax coat on horizontal surfaces of base.(\$10,000 for 1&2)

Environment-

3. Correct south stone base movement. Reinstall the same stone.(\$70,000)
4. Sidewalk/paver replacement. \*(\$25,000)
5. Add a landscape mulch edge at rear of Memorial. Utility to relocate phone terminal.
6. Tuckpoint and caulk required joints. (\$20,000 for 4&5)

### **Cost**

(Cost to bring Monument to good condition for items noted above)

Art, Environment, Safety related items\* and soft costs

---

Total	\$125,000+/-
-------	--------------

### **Maintenance Plan**

Art-

1. Wash.
2. 2 coats wax, hot/cold and buff. Extra wax on horizontal.

Environment-

3. Wash.

Yearly Maintenance Budget-

Art-

\$3,000+/-

Environment-

\$1,500+/-

---

Total	\$4,500+/-
-------	------------

<b>Memorial / Monument</b>					
	<b>CONDITION</b>				
<b>CRITERIA</b>	<b>EXC.</b>	<b>GOOD</b>	<b>FAIR</b>	<b>POOR</b>	<b>V. POOR</b>
<b>PART 1. Art - Sculpture</b>					
1. Appearance			✓		
2. Structural Integrity		✓			
3. Surface Condition			✓		
<b>CRITERIA</b>					
<b>PART 2. Environment - Setting for the Art</b>					
<b>Civil:</b>					
4. Proper Drainage		✓			
5. Accessible grade/slope for walking - trip hazards			✓		
<b>Landscape:</b>					
6. Replacement of dead, diseased, overgrown plants			✓		
7. "Intensive Landscaping" maintenance hardship		✓			
8. Irrigation	N/A				
<b>Structural:</b>					
9. Foundation			✓		
10. Frost heave paving liability trip hazards			✓		
11. Material Failure - cracked conc., cracked stone, rusted/fractured mtl., rotted wd.				✓	
<b>Electrical:</b>					
12. Light fixture failure	N/A				
13. Light fixture efficiency	N/A				
<b>Mechanical:</b>					
14. Water features performance	N/A				
<b>Architectural:</b>					
15. Appearances of finishes including paint			✓		
16. Appearance of details			✓		
17. Tuckpointing of masonry				✓	
18. Caulking / sealant of masonry				✓	
19. Cleaning of stone				✓	
20. Roof / ledge of all surfaces			✓		

**Notes:**

- 9 - Granite heave on south side should be corrected.
- 11 - Replace cracked concrete walks.
- 18 - Typical caulking of all joints.



## **Memorial / Monument**

### ***17. Minnesota Fallen Firefighter's Memorial (MN 168)***



***Designer: Leo A. Daly  
Sculptor: Doug Freeman  
Dedicated: 2012***



***Sculpture needs conservation treatment.***



***Oculus needs rust removed.***

# **Memorial / Monument Needs Summary**

**17. Minnesota Fallen Firefighter's Memorial**– *The memorial honors the sacrifice of firefighters killed in the line of duty while serving Minnesota communities.*

## **Overall Condition**

The Memorial is a pavilion structure with a sculpture of a firefighter saving a child at the center. The sculpture requires conservation treatment. The installation is recent and a number of items will need to be done to keep it presentable. Cleaning of stainless steel oculus, finish of wood bench, etc. The cor-ten steel used in the design rusts as it ages and that was the design intent to present a rusted surface.

## **Tasks to bring monument to good condition**

Art-

1. Wash and 2 coats wax, hot/cold and buff.(\$20,000)

Environment-

2. Removal of oculus rust and cleaning at pavilion.(\$20,000)

3. Caulking as required.(\$15,000)

4. Turf replacement.(\$10,000)

## **Cost**

(Cost to bring Monument to good condition for items noted above)

Art, Environment, Safety related items\* and soft costs

---

Total	\$65,000+/-
-------	-------------

## **Maintenance Plan**

Art-

1. Wash.

2. 2 coats wax, hot/cold and buff. Extra wax on horizontal.

Environment-

3. Wash.

Yearly Maintenance Budget-

Art-

\$4,000+/-

Environment-

\$2,000+/-

---

Total	\$6,000+/-
-------	------------

<b>Memorial / Monument</b>					
	<b>CONDITION</b>				
<b>17. Minnesota Fallen Firefighter's Memorial</b>	EXC.	GOOD	FAIR	POOR	V. POOR
<b>CRITERIA</b>					
<b>PART 1. Art - Sculpture</b>					
1. Appearance			✓		
2. Structural Integrity			✓		
3. Surface Condition			✓		
<b>CRITERIA</b>					
<b>PART 2. Environment - Setting for the Art</b>					
<b>Civil:</b>					
4. Proper Drainage			✓		
5. Accessible grade/slope for walking - trip hazards			✓		
<b>Landscape:</b>					
6. Replacement of dead, diseased, overgrown plants		✓			
7. "Intensive Landscaping" maintenance hardship		✓			
8. Irrigation	N/A				
<b>Structural:</b>					
9. Foundation		✓			
10. Frost heave paving liability trip hazards		✓			
11. Material Failure - cracked conc., cracked stone, rusted/fractured mtl., rotted wd.			✓		
<b>Electrical:</b>					
12. Light fixture failure	N/A				
13. Light fixture efficiency	N/A				
<b>Mechanical:</b>					
14. Water features performance	N/A				
<b>Architectural:</b>					
15. Appearances of finishes including paint			✓		
16. Appearance of details			✓		
17. Tuckpointing of masonry	N/A				
18. Caulking / sealant of masonry			✓		
19. Cleaning of stone			✓		
20. Roof / ledge of all surfaces					✓

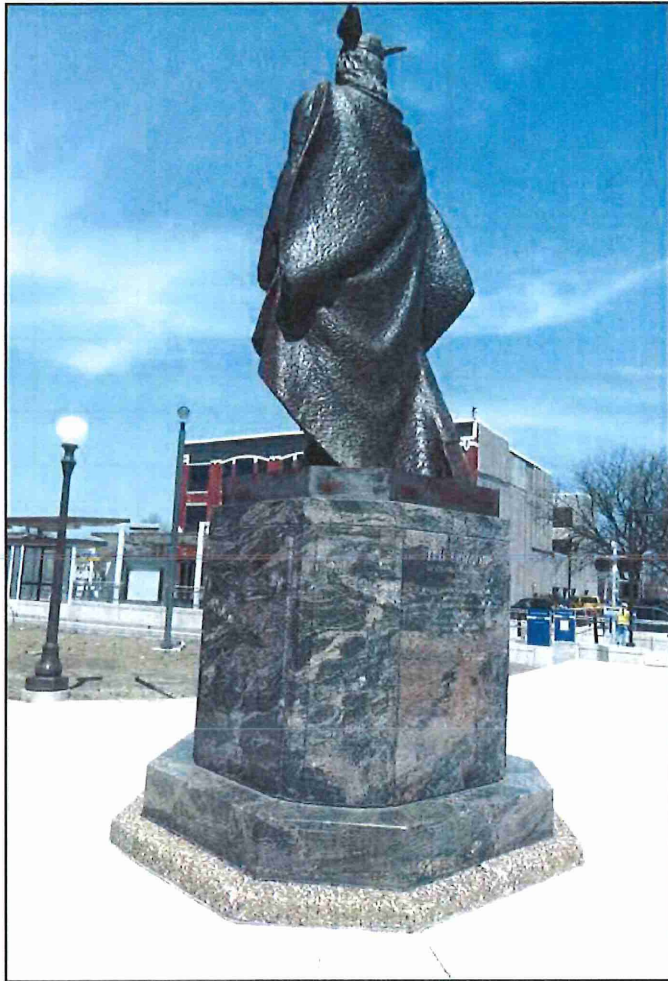
**Notes:**

- 11 - Wood benches require finish.
- 18 - Caulking of joints will be required.
- 20 - Roof will require maintenance.

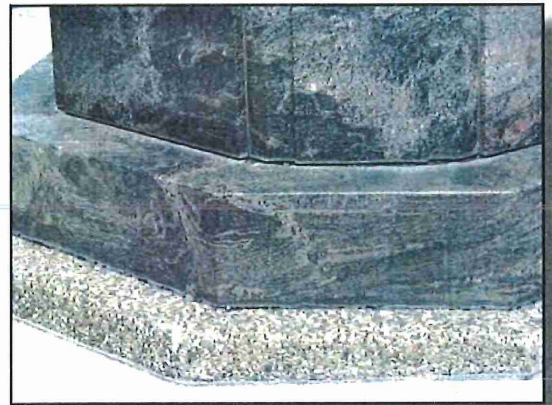


# Memorial / Monument

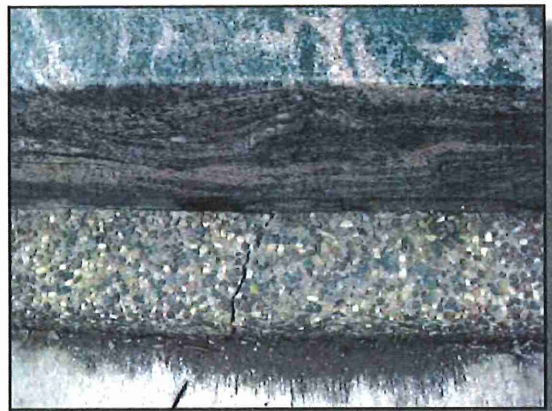
## 18. Leif Erickson (MN 114)



*Sculptor: John Karl Daniels  
Dedicated: 1949*



*Grout joints need to be reworked.*



*Base needs to be replaced as it is cracked.*



## **Memorial / Monument Needs Summary**

**18. Leif Erickson**— *The memorial of the Viking who arrived in 1000 A.D. is considered to be the first European to reach the North American continent. It depicts the explorer standing at the stern of his ship, his hand on the ship's tiller.*

### **Overall Condition**

The bronze sculpture is in good condition but needs a conservation treatment. The stone base joints need to be tuckpointed as the mortar and caulking have failed. The existing curb aggregate base needs replacement as it has cracked and should be replaced with a complementary stone base that would hold up better to maintenance of the adjacent sidewalk. A buffer should be created at the base of the monument.

### **Tasks to bring monument to good condition**

Art-

1. Wash and 2 coats wax, hot/cold and buff.(\$15,000)

Environment-

2. Tuckpointing and caulking of all joints.(\$15,000)

3. Replace curb base with stone.

4. Wash stone.(\$25,000 for 3&4)

5. Landscape/ monument fence buffer at base.(\$20,000)

### **Cost**

(Cost to bring Monument to good condition for items noted above)

Art, Environment, Safety related items\* and soft costs

---

Total	\$75,000+/-
-------	-------------

### **Maintenance Plan**

Art-

1. Wash.

2. 2 coats wax, hot/cold and buff. Extra wax on horizontal.

Environment-

3. Wash.

Yearly Maintenance Budget-

Art-

\$6,000+/-

Environment-

\$1,000+/-

---

Total	\$7,000+/-
-------	------------

<b>Memorial / Monument</b>					
	<b>CONDITION</b>				
<b>CRITERIA</b> <b>PART 1. Art - Sculpture</b>	EXC.	GOOD	FAIR	POOR	V. POOR
1. Appearance		✓			
2. Structural Integrity		✓			
3. Surface Condition		✓			
<b>CRITERIA</b> <b>PART 2. Environment - Setting for the Art</b>					
<b>Civil:</b>					
4. Proper Drainage		✓			
5. Accessible grade/slope for walking - trip hazards		✓			
<b>Landscape:</b>					
6. Replacement of dead, diseased, overgrown plants	N/A				
7. "Intensive Landscaping" maintenance hardship	N/A				
8. Irrigation	N/A				
<b>Structural:</b>					
9. Foundation		✓			
10. Frost heave paving liability trip hazards		✓			
11. Material Failure - cracked conc., cracked stone, rusted/fractured mtl., rotted wd.				✓	
<b>Electrical:</b>					
12. Light fixture failure	N/A				
13. Light fixture efficiency	N/A				
<b>Mechanical:</b>					
14. Water features performance	N/A				
<b>Architectural:</b>					
15. Appearances of finishes including paint			✓		
16. Appearance of details			✓		
17. Tuckpointing of masonry				✓	
18. Caulking / sealant of masonry				✓	
19. Cleaning of stone				✓	
20. Roof / ledge of all surfaces			✓		

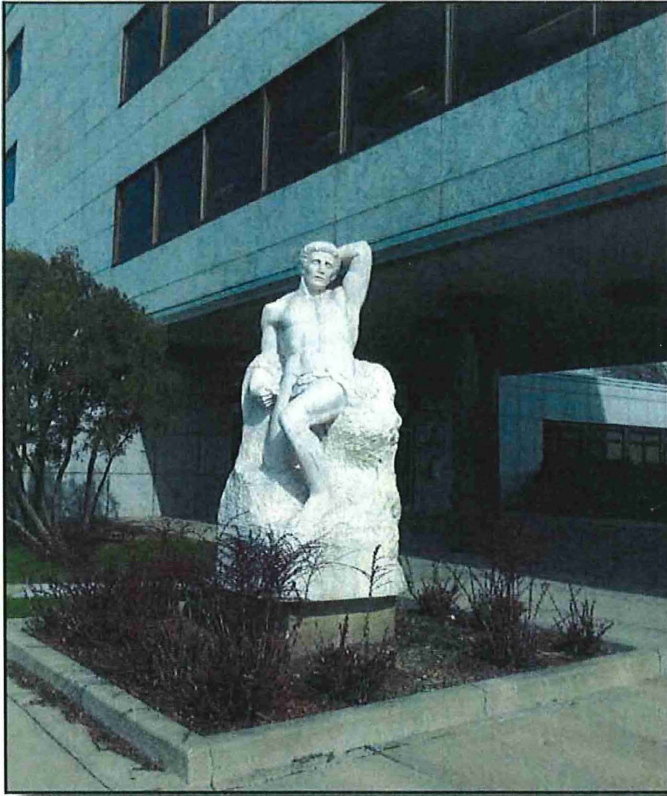
**Notes:**

11 - Aggregate curb at base needs to be replaced with a complementary stone.

17, 18 & 19 - Tuckpointing and caulking of joints needs to be done. Clean stone when complete.

## **Memorial / Monument**

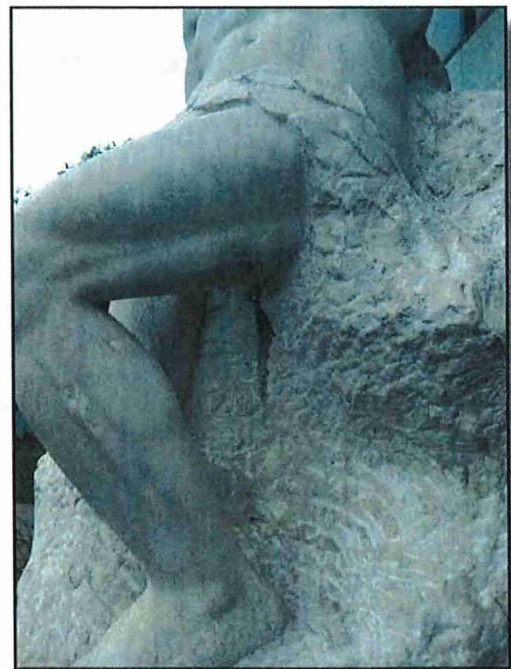
### **19. *Earthbound* (MN 105)**



***Sculptor: John Karl Daniels***  
***Dedicated: 1956***



***New concrete curb surround should be constructed.***



***Cleaning of marble sculpture required.***

## **Memorial / Monument Needs Summary**

**19. Earthbound** – *The memorial honors those who served the nation in war. The base has a quotation from the English poet John Milton: “Earthbound, Made Captive, Yet Deserving Freedom More.”*

### **Overall Condition**

The 1956 white marble sculpture is in good condition but needs to be cleaned. The concrete curb surround is cracked and needs replacement. The landscape needs replacement including mulch.

### **Tasks to bring monument to good condition**

Art-

1. Clean with solvents and poultice to reduce staining.(\$10,000)

Environment-

2. Replace curb base/ walk.(\$30,000)

3. Landscape/ mulch at base.(\$10,000)

### **Cost**

(Cost to bring Monument to good condition for items noted above)

Art, Environment, Safety related items\* and soft costs

---

Total	\$50,000+/-
-------	-------------

### **Maintenance Plan**

Art-

1. Wash/clean.

Environment-

2. Wash.

Yearly Maintenance Budget-

Art-

\$1,000+/-

Environment-

\$1,000+/-

---

Total	\$2,000+/-
-------	------------



<b>Memorial / Monument</b>						
		<b>CONDITION</b>				
<b>CRITERIA</b>		EXC.	GOOD	FAIR	POOR	V. POOR
<b>PART 1. Art - Sculpture</b>						
1. Appearance			✓			
2. Structural Integrity			✓			
3. Surface Condition			✓			
<b>CRITERIA</b>						
<b>PART 2. Environment - Setting for the Art</b>						
<b>Civil:</b>						
4. Proper Drainage			✓			
5. Accessible grade/slope for walking - trip hazards			✓			
<b>Landscape:</b>						
6. Replacement of dead, diseased, overgrown plants					✓	
7. "Intensive Landscaping" maintenance hardship				✓		
8. Irrigation		N/A				
<b>Structural:</b>						
9. Foundation			✓			
10. Frost heave paving liability trip hazards			✓			
11. Material Failure - cracked conc., cracked stone, rusted/fractured mtl., rotted wd.					✓	
<b>Electrical:</b>						
12. Light fixture failure		N/A				
13. Light fixture efficiency		N/A				
<b>Mechanical:</b>						
14. Water features performance		N/A				
<b>Architectural:</b>						
15. Appearances of finishes including paint				✓		
16. Appearance of details				✓		
17. Tuckpointing of masonry		N/A				
18. Caulking / sealant of masonry		N/A				
19. Cleaning of stone				✓		
20. Roof / ledge of all surfaces		N/A				

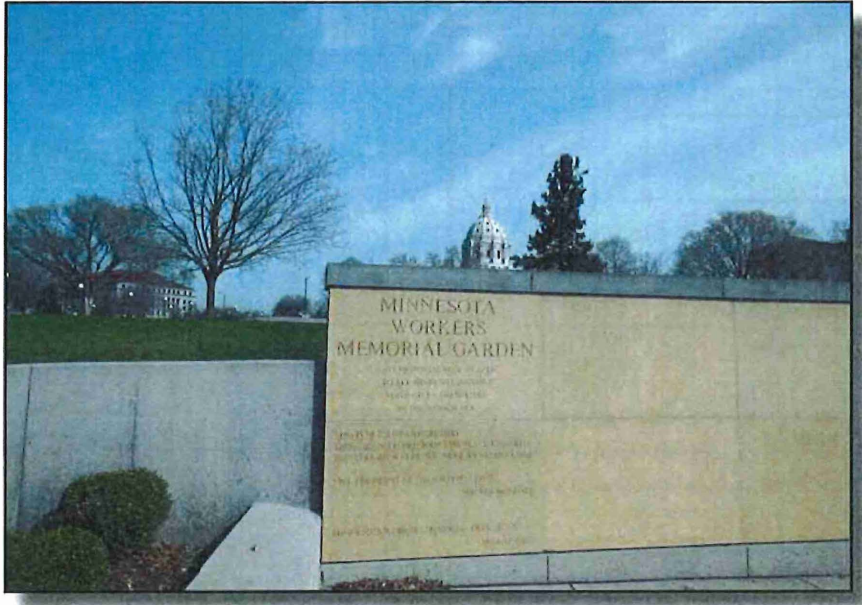
**Notes:**

6 - Existing shrubs are overgrown and need to be replaced including the mulch.

11 - The concrete curb surrounding needs to be replaced including adjacent sidewalk.

# Memorial / Monument

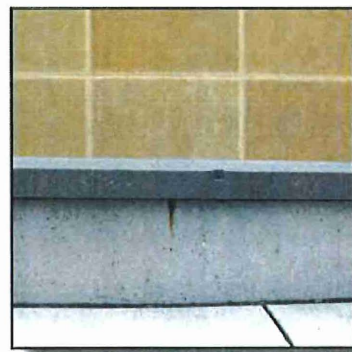
## 20. Minnesota Workers Memorial Garden (MN 147)



**Designers:** Jean Garbarini, Close Landscape  
**Sculptor:** Mark Wickstrom  
**Dedicated:** 2010



*Landscape requires attention and plant material replaced where it has died.*



*Remove staining from stone and concrete.*

## **Memorial / Monument Needs Summary**

**20. Minnesota Workers Memorial** – *The memorial garden and wall is dedicated to all of Minnesota's workers past, present and future in recognition of their contributions to society and the building of the great state of Minnesota. The gently curving sculpted limestone wall and related artwork pays tribute to all workers who have lost their lives on the job.*

### **Overall Condition**

The 2010 installation is in good condition but needs some attention. The landscaping needs work, some caulking of joints and removal of some staining at the wall.

### **Tasks to bring monument to good condition**

Art-

1. None required at this time.(\$0)

Environment-

2. Landscape detailing.(\$20,000)

3. Caulking of joints as required.(\$10,000)

4. Stain removal at the wall.(\$15,000)

### **Cost**

(Cost to bring Monument to good condition for items noted above)

Art, Environment, Safety related items\* and soft costs

---

Total	\$45,000+/-
-------	-------------

### **Maintenance Plan**

Art-

1. Wash/clean.

Environment-

2. Wash.

3. Landscape detailing.

Yearly Maintenance Budget-

Art-

\$1,000+/-

Environment-

\$3,000+/-

---

Total	\$4,000+/-
-------	------------

<b>Memorial / Monument</b>					
	<b>CONDITION</b>				
<b>CRITERIA</b>	<b>EXC.</b>	<b>GOOD</b>	<b>FAIR</b>	<b>POOR</b>	<b>V. POOR</b>
<b>20. Minnesota Workers Memorial</b>					
<b>CRITERIA</b>					
<b>PART 1. Art - Sculpture</b>					
1. Appearance		✓			
2. Structural Integrity		✓			
3. Surface Condition		✓			
<b>CRITERIA</b>					
<b>PART 2. Environment - Setting for the Art</b>					
<b>Civil:</b>					
4. Proper Drainage		✓			
5. Accessible grade/slope for walking - trip hazards		✓			
<b>Landscape:</b>					
6. Replacement of dead, diseased, overgrown plants			✓		
7. "Intensive Landscaping" maintenance hardship			✓		
8. Irrigation	N/A				
<b>Structural:</b>					
9. Foundation		✓			
10. Frost heave paving liability trip hazards		✓			
11. Material Failure - cracked conc., cracked stone, rusted/fractured mtl., rotted wd.		✓			
<b>Electrical:</b>					
12. Light fixture failure	N/A				
13. Light fixture efficiency	N/A				
<b>Mechanical:</b>					
14. Water features performance	N/A				
<b>Architectural:</b>					
15. Appearances of finishes including paint		✓			
16. Appearance of details		✓			
17. Tuckpointing of masonry		✓			
18. Caulking / sealant of masonry			✓		
19. Cleaning of stone			✓		
20. Roof / ledge of all surfaces			✓		

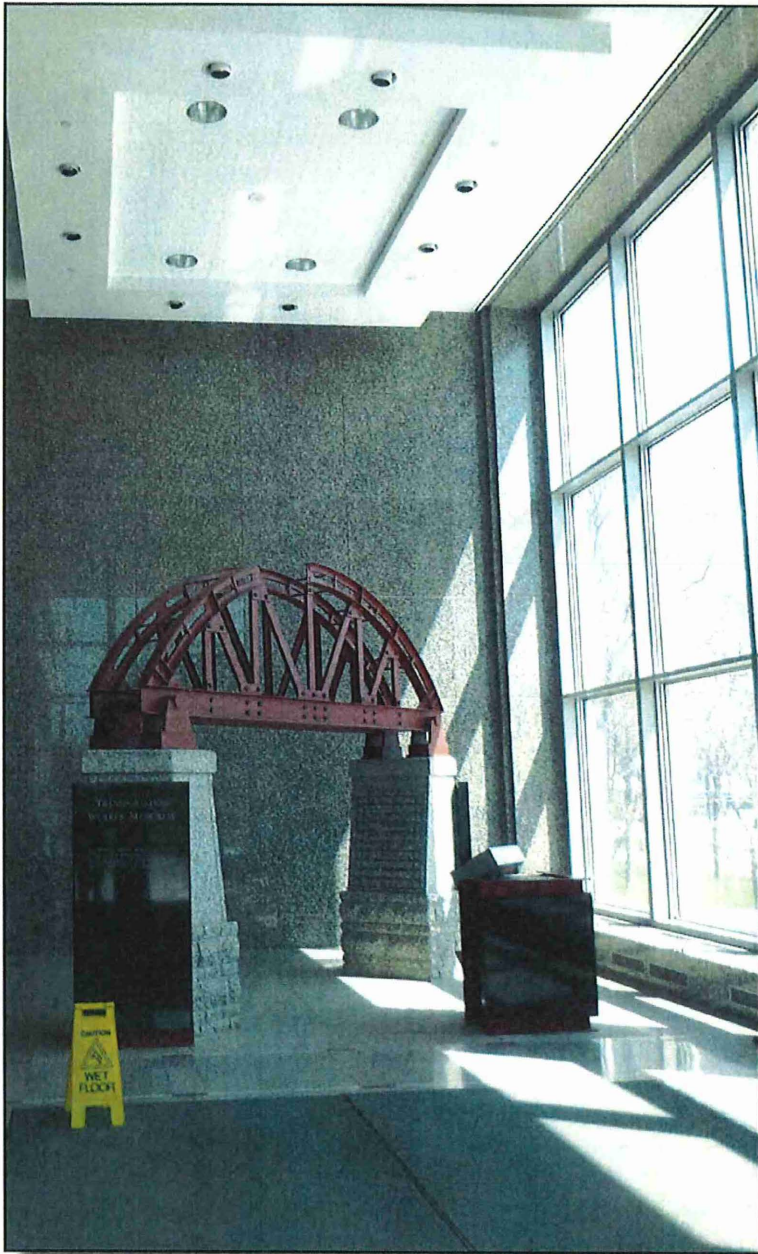
**Notes:**

- 7 - Landscape requires attention.
- 15 - Paint inside lettering may need future touch-up.
- 18 - Caulking will be required.



## ***Memorial / Monument***

### ***21. Minnesota Transportation Workers Memorial (Inside Building)***



***Designer:*** Trent Weber (MNDOT Competition)  
***Dedicated:*** 2011

## **Memorial / Monument Needs Summary**

### **21. Minnesota Transportation Workers Memorial (Inside Building)**

*– The memorial honors those who lost their lives while working to construct and maintain highway projects across the state of Minnesota.*

#### **Overall Condition**

The 2011 installation is in good condition since it is located inside and was recently dedicated.

#### **Tasks to bring monument to good condition**

Art-

1. None required at this time.

#### **Cost**

(Cost to bring Monument to good condition for items noted above)

Art, Environment, Safety related items\* and soft costs

---

Total	\$0+/-
-------	--------

#### **Maintenance Plan**

Art-

1. Dust/wash/clean.

Environment-

2. Wash/clean.

Yearly Maintenance Budget-

Art-

\$500+/-

Environment-

\$500+/-

---

Total	\$1,000+/-
-------	------------

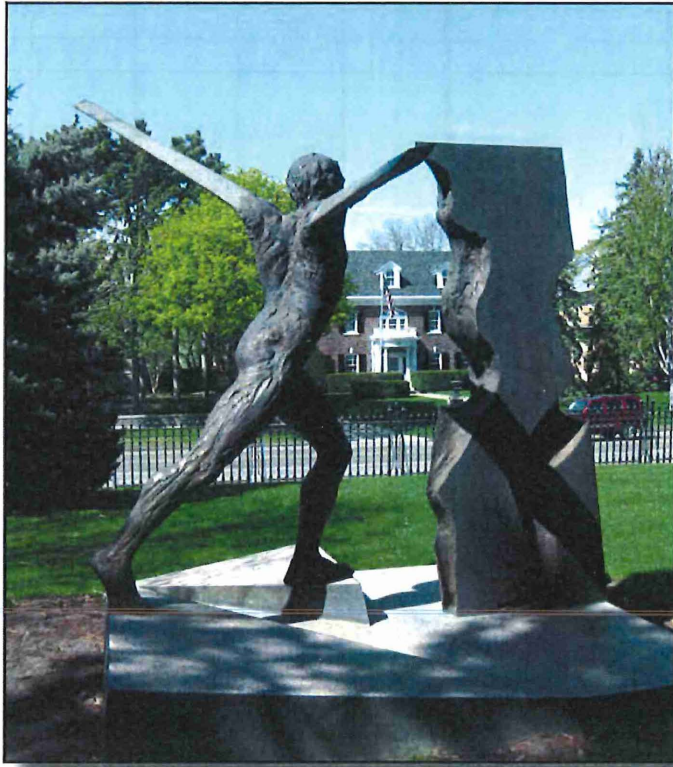
<b>Memorial / Monument</b>					
	<b>CONDITION</b>				
<b>21. Minnesota Transportation Workers Memorial</b>	EXC.	GOOD	FAIR	POOR	V. POOR
<b>CRITERIA</b>					
<b>PART 1. Art - Sculpture</b>					
1. Appearance		✓			
2. Structural Integrity		✓			
3. Surface Condition		✓			
<b>CRITERIA</b>					
<b>PART 2. Environment - Setting for the Art</b>					
<b>Civil:</b>					
4. Proper Drainage	N/A				
5. Accessible grade/slope for walking - trip hazards	N/A				
<b>Landscape:</b>					
6. Replacement of dead, diseased, overgrown plants	N/A				
7. "Intensive Landscaping" maintenance hardship	N/A				
8. Irrigation	N/A				
<b>Structural:</b>					
9. Foundation	N/A				
10. Frost heave paving liability trip hazards	N/A				
11. Material Failure - cracked conc., cracked stone, rusted/fractured mtl., rotted wd.	N/A				
<b>Electrical:</b>					
12. Light fixture failure	N/A				
13. Light fixture efficiency	N/A				
<b>Mechanical:</b>					
14. Water features performance	N/A				
<b>Architectural:</b>					
15. Appearances of finishes including paint		✓			
16. Appearance of details		✓			
17. Tuckpointing of masonry	N/A				
18. Caulking / sealant of masonry	N/A				
19. Cleaning of stone	N/A				
20. Roof / ledge of all surfaces	N/A				

**Notes:**

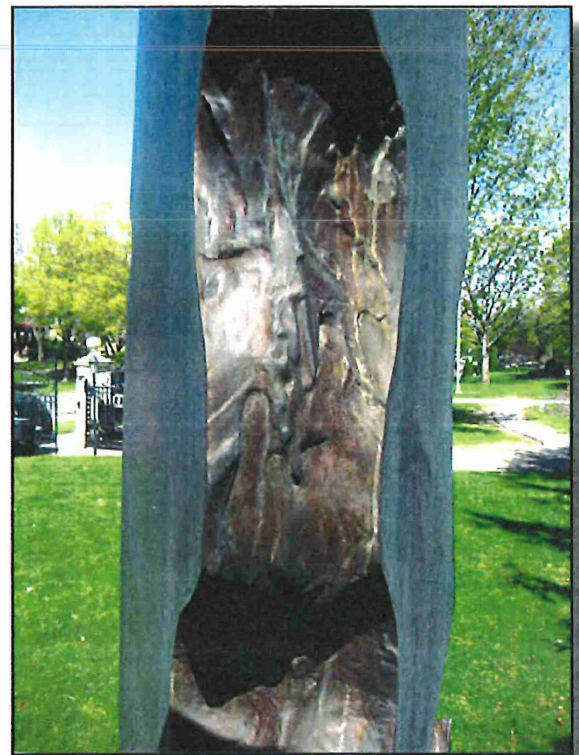
1 - This memorial is inside a building and therefore has protection from the elements.

## ***Memorial / Monument***

### ***22. ManNam Sculpture (Governor's Residence) (MN 169)***



***Sculptor: Paul Granlund  
Dedicated: 1970***



***Sculpture requires conservation  
treatment.***



# **Memorial / Monument Needs Summary**

## **22. ManNam at Governor's Residence.**

### **Overall Condition**

The second priority of all the sculptures is the most distressed as to appearance and surface condition. The 1970 Paul Granlund work has overall corrosion and some patina loss. The sculpture is on the front lawn of the Governor's residence and its finish can be easily viewed from the sidewalk.

### **Tasks to bring monument to good condition**

Art-

1. Sculpture treatment plan of removing mineral deposits, thin corrosion layer manually by hand, loosen around base to ensure coating reaches below grade, touch up patina in areas of loss and even out existing patina specifically on the flat areas.
2. Hot wax, buff, apply cold wax twice and final buff.(\$45,000 for 1&2)

### **Cost**

(Cost to bring Monument to good condition for items noted above)

Art, Environment, Safety related items\* and soft costs

---

Total	\$45,000+/-
-------	-------------

### **Maintenance Plan**

Art-

1. Annual treatment plan of new wax.

Yearly Maintenance Budget-

Art-

\$3500+/-

---

Total	\$3500+/-
-------	-----------

**Memorial / Monument**

**22. Man Nam at Govenor's Residence**

**CRITERIA**

**PART 1. Art - Sculpture**

1. Appearance

2. Structural Integrity

3. Surface Condition

**CRITERIA**

**PART 2. Environment - Setting for the Art**

**Civil:**

4. Proper Drainage

5. Accessible grade/slope for walking - trip hazards

**Landscape:**

6. Replacement of dead, diseased, overgrown plants

7. "Intensive Landscaping" maintenance hardship

8. Irrigation

**Structural:**

9. Foundation

10. Frost heave paving liability trip hazards

11. Material Failure - cracked conc., cracked stone, rusted/fractured mtl., rotted wd.

**Electrical:**

12. Light fixture failure

13. Light fixture efficiency

**Mechanical:**

14. Water features performance

**Architectural:**

15. Appearances of finishes including paint

16. Appearance of details

17. Tuckpointing of masonry

18. Caulking / sealant of masonry

19. Cleaning of stone

20. Roof / ledge of all surfaces

**CONDITION**

EXC. GOOD FAIR POOR V. POOR

✓

✓

✓

✓

✓

N/A

N/A

N/A

✓

N/A

✓

N/A

N/A

N/A

✓

✓

N/A

N/A

N/A

N/A

**Notes:**

1 & 3 - Need to trim corrosion layer manually by hand, touch up patina and even out patina.

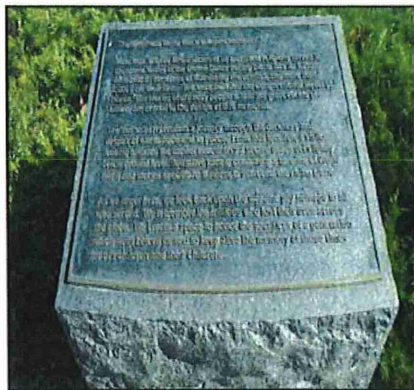
# Memorial / Monument

## 23. World War II Veteran's Memorial Plaza (MN 134)

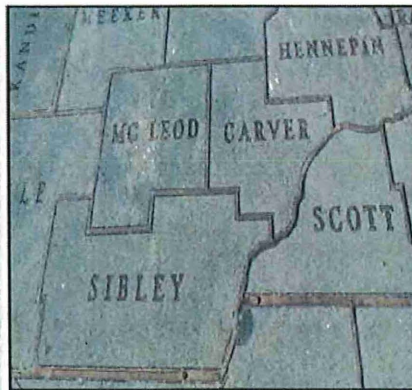


**Designers:** Andrea Myklebust, Stanton Sears  
Ben Sporer, Bryan Carlson

**Dedicated:** 2007



**Plaque needs conservation treatment.**



**Plaza "Counties" need to be leveled/  
repaired and recaulked.**



**Wall needs tuckpointing.**

## **Memorial / Monument Needs Summary**

**23. World War II Veterans Memorial-** *This Memorial represents the journey of Minnesota's veterans in the Second World War. Ten glass panels tell the stories of the 326,000 Minnesota veterans who made the journey from 1941 through 1945.*

### **Overall Condition**

The centerpiece of the Capitol Mall Memorials dedicated in 2007 is in good condition but does need attention in some areas. The paving stones that form the map of the State and show all Counties have settled and cracked for some pieces. The caulking between needs to be redone. The granite walls need tuckpointing. The plaque requires a conservation treatment. The glass panels and bases need cleaning .

### **Tasks to bring monument to good condition**

Art-

1. Conservation treatment of plaque, patina letters and wax, buff.
2. Recondition panels.(\$15,000 for1 and 2)

Environment-

3. Replace some stone pavers, level surface\* and caulk joints.(\$25,000)
4. Tuckpoint the stone walls.(\$25,000)

### **Cost**

(Cost to bring Monument to good condition for items noted above)  
Art, Environment, Safety related items\* and soft costs

---

Total	\$65,000+/-
-------	-------------

### **Maintenance Plan**

Art-

1. Annual treatment plan of new wax.

Environment-

2. Re-caulk every 7 years.
3. Inspect/ tuckpoint joints every 10 years.
4. Clean panels/ stone every 2 years.

Yearly Maintenance Budget-

Art-

\$3,000+/-

Environment-

\$3,000+/-

---

Total	\$6,000+/-
-------	------------



## Memorial / Monument

### 23. World War II Veteran's Memorial

#### CRITERIA

#### PART 1. Art - Sculpture

1. Appearance
2. Structural Integrity
3. Surface Condition

#### CRITERIA

#### PART 2. Environment - Setting for the Art

##### Civil:

4. Proper Drainage
5. Accessible grade/slope for walking - trip hazards

##### Landscape:

6. Replacement of dead, diseased, overgrown plants
7. "Intensive Landscaping" maintenance hardship
8. Irrigation

##### Structural:

9. Foundation
10. Frost heave paving liability trip hazards
11. Material Failure - cracked conc., cracked stone, rusted/fractured mtl., rotted wd.

##### Electrical:

12. Light fixture failure
13. Light fixture efficiency

##### Mechanical:

14. Water features performance

##### Architectural:

15. Appearances of finishes including paint
16. Appearance of details
17. Tuckpointing of masonry
18. Caulking / sealant of masonry
19. Cleaning of stone
20. Roof / ledge of all surfaces

#### CONDITION

EXC.    GOOD    FAIR    POOR    V. POOR

✓

✓

✓

✓

✓

✓

✓

N/A

✓

N/A

✓

N/A

N/A

N/A

✓

✓

✓

✓

✓

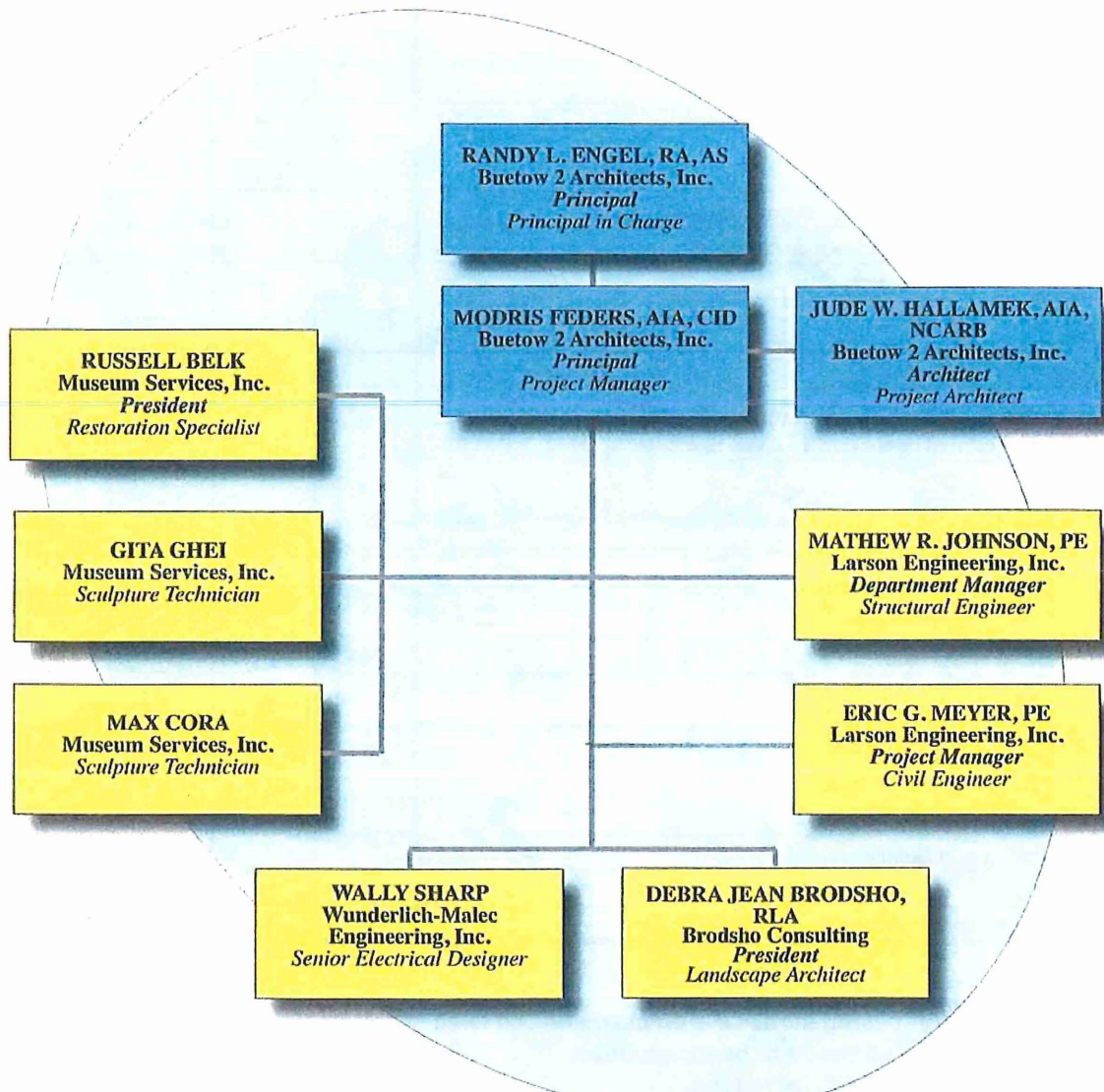
✓

#### Notes:

11. Some of the "County" paving stones are cracked and will need replacement.
17. The decorative stone wall needs to be tuckpointed.
18. Caulk joints in paving need to be redone.

# BII BUETOW 2 ARCHITECTS, INC.

## STATE OF MINNESOTA DEPARTMENT OF ADMINISTRATION Consultant Services for Study Memorials Monuments Project No. G02RC02CP0034



### Project Team Chart

