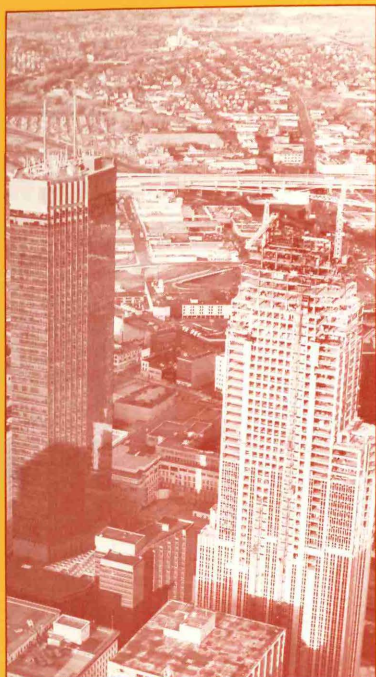
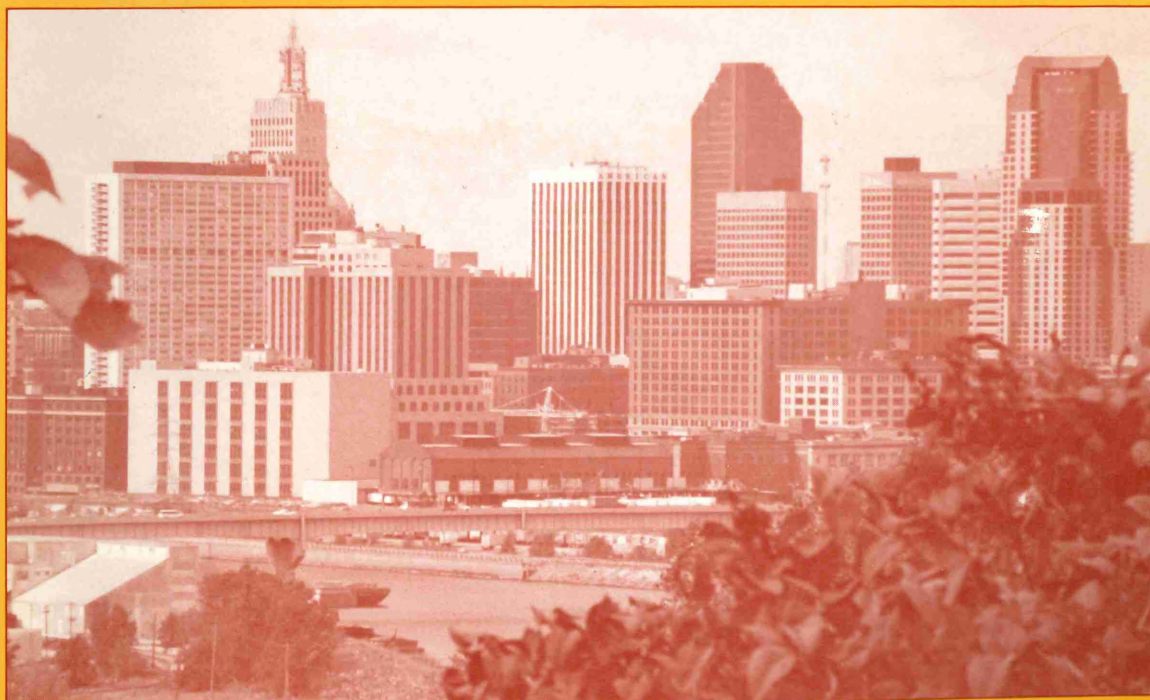




3 0307 00015 4164



METROPOLITAN COUNCIL



1987 Annual Report

HT
394
.T9
M47a
1987

Pursuant to Mn Stat 473.245

METROPOLITAN COUNCIL
1987 ANNUAL REPORT
TO THE
MINNESOTA STATE LEGISLATURE



January 15, 1988

Metropolitan Council of the Twin Cities Area
300 Metro Square Building, 7th and Robert Sts.
St. Paul, Minnesota 55101 Tel. 612 291-6359 TDD 291-0904

Publication No. 310-88-001

CONTENTS

	Page
About This Report	1
CHAIR'S MESSAGE	3
THE COUNCIL AT A GLANCE	15
LEGISLATIVE ITEMS	9
PRIORITY PLANNING PROGRAMS	13
1987 Priorities	13
Airport Land-Use Compatibility	13
Long-Term Care	14
Metro Governance	16
1988 New or Continuing Priorities	17
Strategic Planning for the 21st Century	17
A Human Resources Framework	17
Water Quality and Supply	18
Economic Research	20
Transportation	21
Solid Waste	22
SPECIAL STUDIES	25
Proposed National Basketball Association Arena	25
Adequacy of Minneapolis-St. Paul International Airport	26
Air Quality Standards, Interstate Highways	27
CONTINUING PLANNING PROGRAMS	29
Aging	29
Arts	29
Health	29
Housing	30
Metro Housing and Redevelopment Authority	30
Parks and Open Space	30
Research	31
CITIZEN PARTICIPATION	33
REGIONAL DATA CENTER	35

BUDGET AND ADMINISTRATION	37
---------------------------------	----

APPENDICES

1987-88 Revenue and Expenditures Tables	39
Table 1. Metropolitan Agencies 1987 and 1988 Operating Expenses	39
Table 2. Metropolitan Council 1987 Budgeted Revenue and Other Sources of Funds for Agency Operations	40
Table 3. Metropolitan Council 1987 Budgeted Expenditures, by Department	42
Table 4. Metropolitan Council 1987 Actual Revenues and Expenditures (Nov. and Dec. Estimated)	42
Table 5. Metropolitan Council 1988 Budgeted Revenue and Other Sources of Funds for Agency Operations	44
Table 6. Metropolitan Council 1988 Budgeted Expenditures, by Department	46
1987 Publications	47

About This Report

This report summarizes the activities of the Metropolitan Council during 1987 and describes proposed activities during 1988. It includes a description of the Council's work on priority issues in the Twin Cities Metropolitan Area and special studies undertaken during the year. The report describes how the Council has responded to mandates from the Minnesota State Legislature, and contains budget information to give a picture of the Council's

financial sources and expenditures.

This report fulfills the requirements of Minn. Stat. 473.249, which requires the Council to prepare a report to the legislature and specifies the nature of its contents. A separate *Appendix to the 1987 Annual Report to the Minnesota State Legislature* contains a list of local government plans and projects the Council reviewed in 1987.



CHAIR'S MESSAGE

Members of the Legislature:

This annual report to you from the Metropolitan Council meets all legal requirements and summarizes the areas in which the Council has a legislative interest in the 1988 session.

It also affords me a chance to tell you about a subject that has been the chief focus of my first year as Council chair: strategic planning.



The Council, as you know, is primarily engaged in long-range planning. We don't have the job of handling day-to-day operations of a specific system, such as sewers or buses. Because of this, our job is never simply to work again on last year's issues; it is to anticipate the issues of the future.

To help me, and the Council members, think through the Council's priorities for 1988, we engaged in a year-long strategic-planning process—parts of which had been done before I came to the agency, parts of which I introduced to help us concentrate even more on the big picture.

In carrying out the process, the Council members and I:

- Extensively discussed the implications of the Council's research on long-range trends such as population forecasts and projected travel behavior.
- Identified important future trends we think are going to affect the Metropolitan Area and that require government attention.
- Took those issues and trends to a wide cross-section of the community: local units of government, public-interest organizations like the Citizens League and the League of Women Voters, advisory committees to the Council, and many more.
- Using that input, developed a series of goals and strategies that reflected the new trends—while still dealing with our existing programs in transportation, solid waste, health, human services, the environment and others.
- Went through a careful ranking process to establish which goals were the most important and most urgent.

That process led to our 1988 budget and work program, and the six priorities described there—found on p.17 in this report.

An interesting aspect of the Council's strategic-planning process is that it works on two levels. While most organizations use strategic planning to focus better on their mission, we are in the unique position of having, as part of our mission, what amounts to the task of strategic planning for the entire region. So we use strategic planning to accomplish strategic planning. And that's why we chose planning for the 21st century as our first priority for 1988.

Our long-range look at the region is also crucial to our role as coordinator of some of the region's most basic services. If we just try to tell other units of government what they should be doing, it sounds too much as if we think we know their jobs better than they do, and most of the time we don't.

But what we can and must do is help ourselves and others put today's decisions in the context of their long-range implications.

If we want to get things to happen in a way that reinforces coordination and looking at long-term implications, we have to rely on the good will of the people we work with. And that good will is strongest when a) those people are involved in deciding how to respond to each problem or opportunity as it arises; and b) they understand how their decisions affect other units of government, and the long-term future of the community and region.

We believe this strategic focus of the Metropolitan Council was a key part of our mandate from the legislature. And we hope legislators will continue to use us as a resource, research arm, and source of information and data to address Metropolitan-Area issues. We appreciate your partnership in these matters.

Sincerely,

A handwritten signature in dark ink, reading "Steve Keefe". The signature is written in a cursive, flowing style with a long horizontal stroke at the end.

Steve Keefe Chair

THE COUNCIL AT A GLANCE

The Metropolitan Council was created by the Minnesota legislature two decades ago to coordinate the planning and development of the Twin Cities Metropolitan Area. It is a government agency with a regional perspective. Minnesota Stat. 473.121-249 contains most of the legislation under which the Council operates.

The Council provides a forum where consensus is developed on how to solve the region's current problems and avoid future ones through long-range planning. But it is more than a forum. The legislature has also given the Council some unique authority to bring about needed change.

First, the Council prepares an overall plan for the region's growth called the Metropolitan Development Guide and more detailed regional-level plans for such services as airports, transportation, sewers and parks.

Second, the Council oversees several metropolitan agencies that provide the services so the agencies will make decisions that are consistent with the Council's policies and plans.

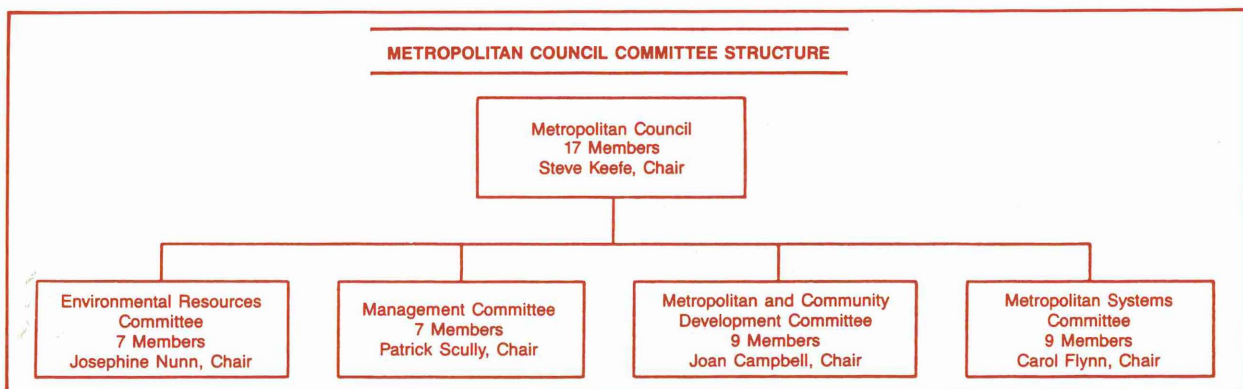
Third, the Council reviews how the long-range

plans and development decisions of the region's 189 cities and townships fit with region-wide plans.

Fourth, the Council may involve itself in any major development proposed in the region in order to ensure that the regional perspective is taken into account in the decision.

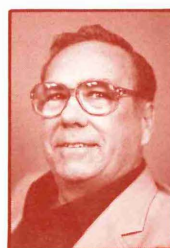
The Council also conducts planning for air and water quality, solid waste, land use, aging, arts, health, housing and developmental disabilities.

The Council has 17 members, 16 appointed by the governor to four-year terms from districts within the region that are roughly equal in population. The 17th member is a full-time chair, who is appointed by the governor and serves at the governor's pleasure. The organization has a full-time professional staff. The full Council meets on the second and fourth Thursday afternoon of each month. Four standing committees meet weekly. Council business is conducted at the committee level first. Committee recommendations are then considered by the full Council.



COUNCIL MEMBERS AND THEIR DISTRICTS

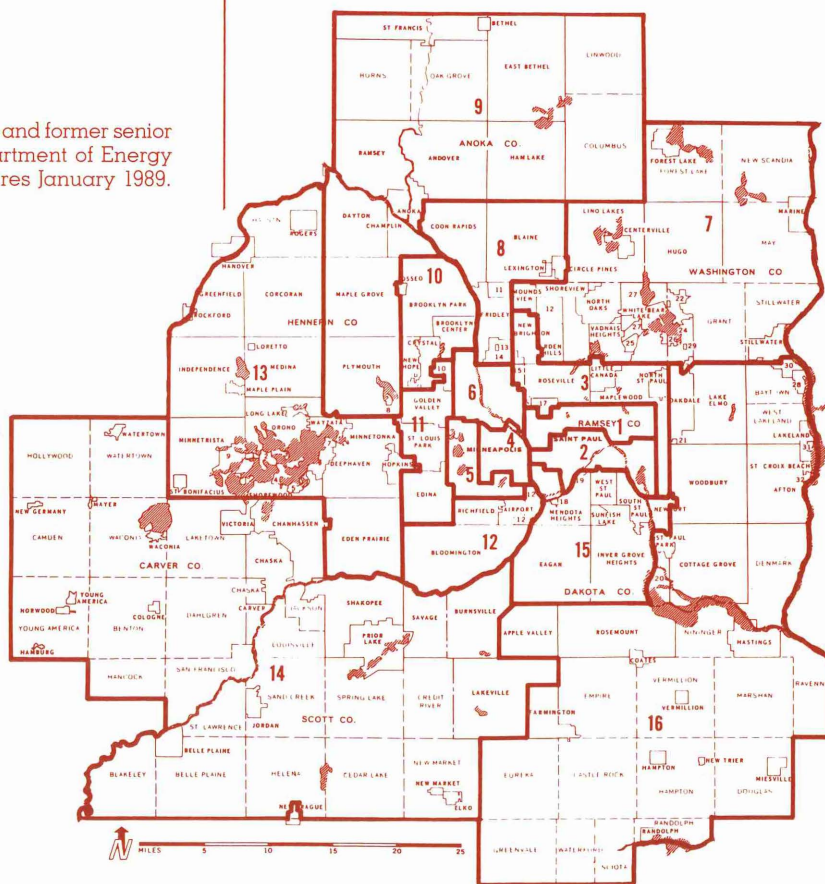
Chair **Steve Keefe**. A Minneapolis resident and former commissioner of the state Department of Labor and Industry and member of the Minnesota Senate. Keefe also has been chair of the Minneapolis Community Development Agency and government relations officer for Norwest Corp. Council chairs serve at the governor's pleasure.

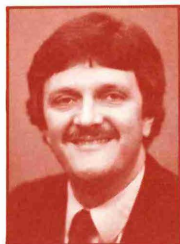


District 2 **Mike McLaughlin**. A St. Paul resident and owner and manager of Summit Manor, a catering business. January 1991.

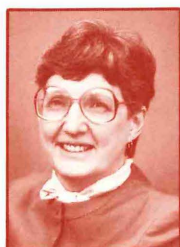


District 1 **Liz Anderson**. A St. Paul resident and former senior administrative officer for the state Department of Energy and Economic Development. Term expires January 1989.





District 3 **Charles William Wiger.** A North St. Paul resident, attorney in private practice and former chair of the North St. Paul Solid Waste Commission. January 1989.



District 4 **Carol Flynn.** A Minneapolis resident and former member of the Metropolitan Waste Control Commission. January 1991.



District 5 **David Fisher.** A Minneapolis resident, attorney with Pillsbury Co., and former member, Minneapolis Civil Service Commission. January 1989.



District 6 **Joan Campbell.** A Minneapolis resident and head nurse of the Referral Center and the Employee Health Service at the University of Minnesota Hospitals. January 1991.



District 7 **Mary Hauser.** A Birchwood resident and former Birchwood City Council member. January 1989.



District 8 **Donald E. Stein.** A Coon Rapids resident and Vice Chair, First State Bank in Spring Lake Park and Chair, First Bank of Coon Rapids. January 1991.



District 9 **Josephine D. Nunn.** A Champlin resident, former Champlin mayor and former president of the League of Minnesota Cities. January 1989.



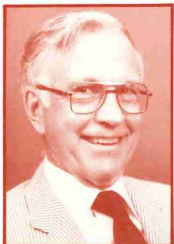
District 10 **John Evans.** A New Hope resident, IBM Corporation public affairs consultant and member of the Hennepin County Board of Equalization. January 1991.



District 11 **Dottie Rietow**. A St. Louis Park resident and president of Consensus, a governmental relations, public affairs and affirmative action consultant firm. January 1989.



District 12 **Gertrude Ulrich**. A Richfield resident and former chair of the Minnesota Cable Communications Board. January 1991.



District 13 **Dirk deVries**. A Minnetonka resident, realtor and former member of the Minnetonka Zoning Appeals Board. January 1989.



District 14 **Marcy J. Waritz**. A Chanhassen resident, former public service volunteer, Dist. 112 School Board member and former member of the state Council on Quality Education. January 1991.



District 15 **Mary K. Martin**. A South St. Paul resident and attorney in private practice in West St. Paul. January 1989.



District 16 **Patrick J. (Pat) Scully**. A Hastings resident and former Dakota County commissioner. January 1991.

LEGISLATIVE ITEMS

The statute under which this report is prepared calls for a report on the Council's legislative recommendations. The Council believes the 1988 legislature should consider the following issues in the 1988 session:

1. The need for an ongoing funding source for the metropolitan parks and open space system.
2. Whether current statutes are adequate to provide coordination of the development of light rail transit in the region.
3. How to finance needed highway and transit improvements.

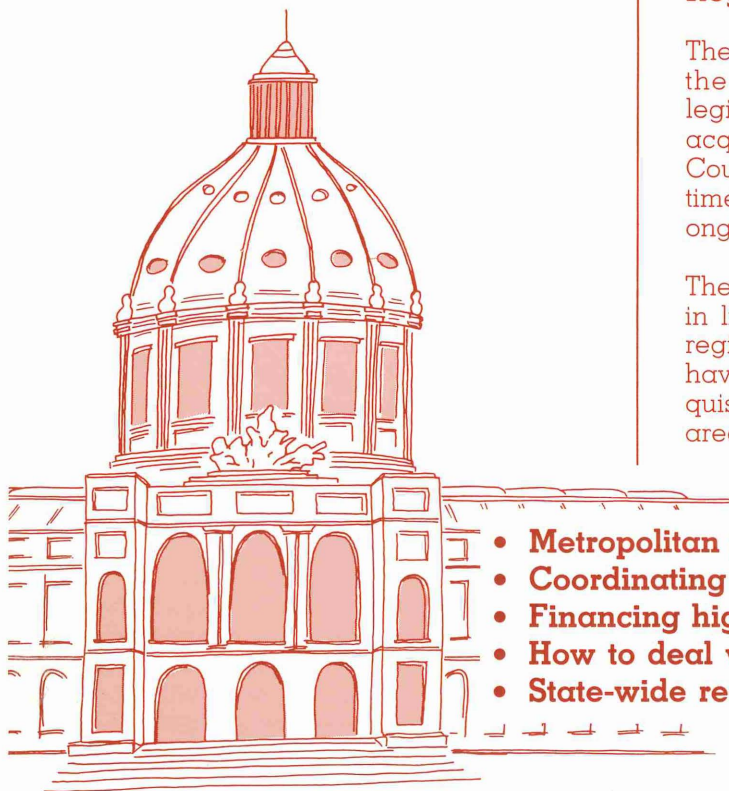
4. The need for a mandatory vehicle inspection and maintenance program to meet carbon monoxide-related air quality standards if ongoing monitoring clearly demonstrates that such a program is needed.
5. The need for state-wide recycling programs that will encourage recycling and fit within the framework of plans and programs currently under way in the metropolitan area.

A brief background and summary of each issue follows.

Regional Parks Funding

The Council will make a request for funds for the 1989-90 biennium to continue the legislature's long-standing commitment to acquire and develop regional parks. The Council does not have a specific request at this time, but will likely be recommending some ongoing source of funding for the parks system.

The Council has been evaluating the program in light of declining state appropriations for regional parks in recent years. The cutbacks have forced the delay of a number of park acquisitions and improvements in the outlying areas and in the central cities. This may be



- **Metropolitan parks.**
- **Coordinating light rail transit.**
- **Financing highways and transit.**
- **How to deal with carbon monoxide violations.**
- **State-wide recycling programs.**

leading to overcrowding and deterioration of some of the inner-city parks. Use of the park system has grown by 42 percent during the last five years. Some of the cities and counties that own and operate the regional parks have decided to seek special appropriations from the legislature for highly visible park projects.

The Council continues to support acquisition and development of Lake Minnetonka Regional Park. It is concerned about lack of progress toward agreement on a plan for the park. The proposed park is the last chance for a large park on the lake.

Light Rail Transit Coordination

Because of a request by the 1987 legislature, the Council has been reviewing whether state statutes need to be amended to make sure there is adequate coordination of the planning and development of light rail transit in the region. Regional railroad authorities have been formed in each metro area county to plan for light rail transit in the region.

The coordination question was reviewed by our Transportation Advisory Board, which is made up of city and county officials, in addition to citizen representatives. The board recommended using existing tools to encourage metropolitan coordination rather than seeking approval authority. At year's end, the Council was considering the board's recommendation.

Highway and Transit Funding

Major parts of the Twin Cities transportation network are getting increasingly congested. In about a decade, the amount of clogged freeways and highways has grown from 24 to 72 miles. People are traveling more, and forecasts estimate that the growth will continue. In addition, the system is getting old. Over the longer term, there is a need to rebuild a large

part of 560 miles of the system by the year 2010 just to avoid obsolescence.

In response to this situation and to decreased funding for highways and transit, the Council is preparing a new regional transportation policy plan that recognizes that congestion can't be solved by simply adding lanes to highways. The plan, now in draft form, says available highway funds should be largely used to improve the safety and effectiveness of the existing highway system.

That means management of the system through car pooling and other forms of ride sharing, freeway metering, and other improvements, such as exclusive lanes for buses and car pools, that increase the people-moving capacity of highways.

That also means that transit and highways need to be integrated to complement each other. Transit service, which has levelled off due to declining funds and ridership, needs to be enriched, not impoverished.

The Council's Metropolitan and Development and Investment Framework plan contains criteria the Council uses to review the financial proposals of the metropolitan commissions. Early in 1988, the Council will look at the criteria to see how they might help evaluate transportation—and other metropolitan system—funding proposals for the Twin Cities region.

Mandatory Vehicle Inspection

Beginning Jan. 1, the region was in violation of federal standards for carbon monoxide. Car emissions are the source of the problem. The violations have been verified at several intersections in St. Paul and one in Minneapolis. Violations are probably occurring at other busy intersections throughout the Twin Cities Area.

Carbon monoxide is a serious health threat, particularly for older people, children or people with health problems. Steps need to be taken to remove the threat as quickly as possible. In addition, the federal Environmental Protection Agency (EPA) can impose harsh sanctions, such as withholding federal grants in a number of areas and prohibiting new development, in the absence of plans and programs to clean up the air.

It appears that a mandatory vehicle inspection and maintenance program is needed for the region. The Minnesota Pollution Control Agency may recommend it for action in the 1988 legislative session. Given the apparently widespread nature of the violations, it is not feasible to remedy the problem by taking corrective actions at each intersection, as has been tried in the past. Under the program, car owners likely would have their cars inspected annually to see if they are exceeding emission limits. Cars failing the inspection could be required to get a tuneup or needed repairs.

The mandatory approach would be part of a plan to bring the region into compliance. The EPA requires a plan to do so by September 1988. The Council is involved in this air quality issue because its transportation plans must meet air quality standards.

State-Wide Recycling Programs

The Council supports legislative initiatives proposed by the Minnesota Pollution Control Agency, the Minnesota Waste Management Board or others that will increase the amount of recycling that takes place in Minnesota. At this point in time, it is open to workable alter-

natives that will accomplish this goal. However, the region's counties, cities and businesses have made extensive commitments to resource-recovery plants and to recycling. The Council wants to assure itself that such programs will be consistent with those commitments.

Other

The five items above make up the Council's legislative items for 1988. Also, however, the Council has been looking at the impediments the private sector faces in offering long-term care insurance. A privately funded plan might reduce the costs of current publicly funded long-term care and give people a way to protect some of their assets. Currently, people must "spend down" their assets to near impoverishment to qualify for public assistance. It is not uncommon for a retired person to pay \$35,000 a year for long-term care. On the average, a person would be out of personal funds within six months.

Private insurers need statutory changes to eliminate legal obstacles and provide incentives. These include eliminating the "spend down" requirement for people who have used the insurance to its maximum, returning unused premiums to the estate if the insured dies before using the insurance and making the plans tax deductible.

The Council is not recommending these changes for legislative consideration at this time. It will seek broad community involvement on the question in 1988, and may make the insurance program part of its 1989 request to the legislature.

PRIORITY PLANNING PROGRAMS

1987 PRIORITIES

Each year, the Council identifies several priority issues and focuses more of its resources on the issues. In 1987, the Council worked on six priority areas. Three of the activities, airport land-use compatibility, long-term care and metro governance, were not continued as priorities for 1988. However, the Council will continue to work on these important issues in 1988.

A summary of the activities in each area follows. In addition, the Council selected six new—or continuing—issues for 1988. Those issues are summarized beginning on page 17.

Airport Land-Use Compatibility

Continuing Council efforts to achieve land uses compatible with aircraft noise around the region's airports received a boost during the year when the legislature made changes in the state's uniform building code.

The law (Chapter 155 1987 Session Laws) allows communities to adopt noise attenuation ordinances in areas impacted by aircraft noise.



Under the legislation, communities can develop local building codes designed to reduce inside noise levels to a point that allows sleep and normal levels of conversation.

The legislation is in line with the Council's *Aviation Policy Plan*, which urges cities around both the region's major airport and its smaller airports to use the Council's land-use compatibility guidelines in planning for future development.

The guidelines have been incorporated into local comprehensive plans and drafted into a model noise ordinance, which Mendota Heights has adopted.

The Council is currently assisting other communities in carrying out the ordinance, and providing technical assistance in how to apply it. A noise code workshop with local governments is being planned for spring 1988 as a basis for coordination of land use planning measures with Minneapolis-St. Paul International Airport (MSP). The model ordinance has also been included in the Metropolitan Airports Commission's proposed land-use compatibility program for MSP.

Long-Term Care

The Council's interest and priority in long-term care fits a time of unprecedented concern in the region over the long-term care system. Questions are being raised regarding the nature of that system: Who is being served? With what services? And at what costs? During 1987, the Council focused on researching the questions and proposing improvements at key points in the system.

The Council published a consultant's report on possible changes to the mechanisms used in public financing of long-term care. The report, prepared by the Humphrey Institute of Public

Affairs under contract with the Council, explored ways to make public monies more flexible and responsive to the needs of older people.

Strategies explored in the report include: expanding personal care services; increased use of case management and service coordination; raising the Medicaid income standard; providing case management services to people with chronic mental illness; increasing use of individual or independent care providers; support for informal caregivers; increasing policy coordination and model projects; and

Long-Term Care: Where the Money Would Come From

Uninsured

Insurance Premiums	\$ 0
Home Care	8,300
Insurance reimbursement	0
Out-of-pocket	8,300
Nursing-Home Care	90,000
Insurance reimbursement	0
Out-of-pocket	15,000
Medicare	0
Medicaid	75,000

Insured

Insurance Premiums	\$ 9,600
Home Care	8,300
Insurance reimbursement	6,200
Out-of-pocket	2,100
Nursing-Home Care	90,000
Insurance reimbursement	88,000
Out-of-pocket	2,000
Medicare	0
Medicaid	0



dedicated revenues from, for example, lotteries, surcharges, personal income tax checkoffs and casino gambling.

The feasibility of private insurance as a way to prevent the often catastrophic costs of paying for long-term care services was explored by the Council's Metropolitan Health Planning Board during 1987. A report recommended legislative changes and the creation of new private insurance options to protect older people from "spending down" their assets to an impoverishment level in order to qualify for long-term care services.

The report said such plans would redistribute who pays away from taxpayers and the state. The state spends more than \$600 million annually in Medicaid support for people whose funds have been exhausted. The Council will

investigate ways to contain or decrease costs in the long-term care system.

The Council published a report calling for five major changes in the area's long-term care system. They are: making better use of existing resources; promoting better assessment of individual needs and coordination of services; restructuring the financing of long-term care; filling identified gaps in the system; and further delineating the role each level of government should play in long-term care.

The report provided policy direction for issues likely to come up in the 1987 legislature. To help avoid a future crisis in long-term care, the report also provided policy direction for longer-range issues facing the state.

The Council worked on guidelines designed to help area communities address housing and service needs of their older people and others who are chronically ill or disabled. The guidelines for long-term care planning emerged from a Council task force of local elected officials, planners and local government staff.

The Council prepared a consumer's guide to the region's long-term care services. Intended as a quick, overall view of the growing variety of services available, the guide helps older people remain in their homes and be as independent as possible. Though not a directory of specific service organizations, it provides a general overview of senior centers, at-home service options, housing alternatives, help for the caregiver and professional assessment. (See Appendices for a list of the long-term care reports.)

In 1988, the Council will continue long-term care planning for the region by combining the efforts of three human service programs—health, housing and aging. The Council will focus on long-term care insurance issues and publish guidelines to help communities address their housing and service needs for people who need long-term care.

Metro Governance

In 1987, the Council continued to work toward two goals. The first goal was improving the accountability of special-purpose metropolitan agencies. The second was ensuring the long-term financial viability of regional systems for which these agencies are responsible, such as the transportation network and sewer system. The effort is in response to Minn. Laws Chapter 460, 1986.

The goal of these efforts was to make sure that long-range planning done by the Council is linked to the agencies' short-range financial and budgetary decisions.

Part of the effort in 1987 involved revising its policy plans for the regional sewer and transportation systems, and incorporating performance measures that help clarify its expect-

tations for those systems. This effort reflects a shift in the Council's policy plans to a performance-audit approach that focuses more on the results to be achieved and less on how they should be accomplished by the metropolitan agencies.

The Council expanded the participation by metropolitan agencies in drafting its revised policy plans, and set guidelines for the format and content of its plans and those of metropolitan agencies.

The Council also drafted a report that examined the short- and long-term financial implications of spending by metropolitan agencies, and established a new procedure to determine at an early stage whether bonding is needed and, if so, how to coordinate such bond issues.



1988 NEW OR CONTINUING PRIORITIES

Strategic Planning for the 21st Century

In 1987, the Council undertook a greatly expanded strategic planning process which played a key role in shaping the development of its 1988 priorities and work program (see Chair's Message, P.3). That process, which formally began in 1983, was given special emphasis at the beginning of the year. Its basic purpose was to help the Council anticipate and prepare itself to address future challenges facing the Metropolitan Area. Through strategic planning, the Council identified its six priorities for 1988, as well as a set of goals and strategies to accomplish work on these priorities and other elements of the 1988 work program.

The priorities include:

- Planning for the 21st century. The aim is to anticipate and define regional issues.
- Solid waste management. The focus is to continue moving the regional system in new directions set forth in Council policy and legislative action. The directions call for encouraging resource-recovery activities.
- Water. The focus will be on improved management of the region's water supply and quality. This will involve identifying issues and defining the coordination of work among affected agencies.
- Transportation. The focus will be on more balance in the regional system through new policy direction and transit strategies. The work includes updating the regional transportation policy plan.
- Human resources framework. The work will focus on developing more-integrated policies that address human needs in the region.
- Regional economy. The goal is a better understanding of the regional economy and

how it relates to state, national and international economic activity.

The Council's strategic planning effort in 1987 was aimed at achieving four major objectives. First, the Council decided to introduce a longer-range time horizon into its thinking. Second, it started planning earlier and reserved greater time at each step to discuss the issues and provide direction for staff work to prepare for the next stage. Third, the Council focused on clarifying the real purpose of proposed new and ongoing activities of the organization. And, finally, it made a concerted effort to communicate emerging ideas to Council constituencies to get timely and specific feedback.

As the Council developed goals and strategies to address the issues it identified, it assessed the financial and staff resources likely to be available in 1988. It also looked at its three-year financial forecast and its legal mandates, then decided which goals and strategies should be pursued in 1988. It also decided what ongoing work would be continued, and deferred attention to some long-range issues until sufficient resources could be made available.

A Human Resources Framework

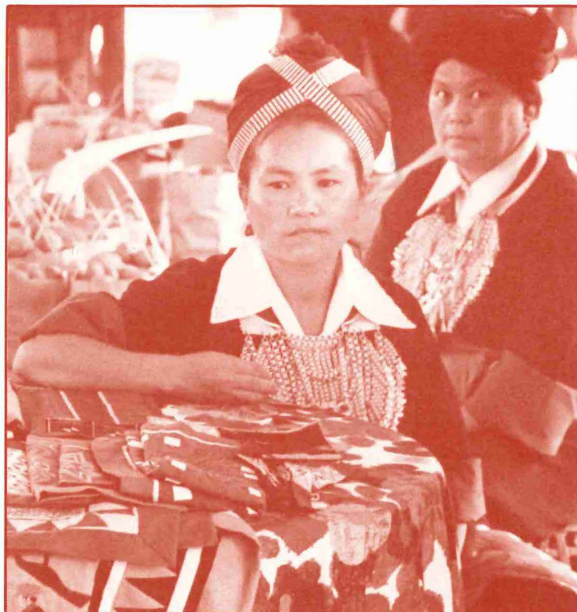
One of the priorities the Council set for itself in 1987 was to incorporate its human service planning into its overall policy plan for development of the region, the *Metropolitan Development and Investment Framework*.

Initial work on the priority led to the realization that integrating the Council's human services planning into the existing development and investment framework would not yield the best results. So the Council changed the priority to

developing a "human resources framework" for the region, similar to the physical development and investment framework it already has. The Council still intends to do the integrative planning, but after the new framework is established.

Until now, the Council's major plans for the region's development have concentrated on the physical side, such as sewers, roads, parks and airports. But human services—arts, health care, housing and services for older people—also need to be coordinated and integrated. The Council has set out to do this knowing that, at bottom, everything the government does is for people—be it building an airport, sewer or transit system, or creating programs in health, education or welfare.

In 1988 the Council will hold a series of public forums on human-resource issues. Participants will come from many groups—governmental units, human service providers, voluntary agencies, business and labor. The Council ex-



pects this diverse group of people to "cross-fertilize" their ideas and come up with the seeds of future policies for the region. Those policies will be used to develop integrated approaches to social problems that to date have resisted solution. The process will also help the Council determine its role in the human resources area.

Four forums have been planned. They will address the region's needs in family structure, voluntary versus paid caregiving, the future work force, and the region's poverty conditions.

A second step, which will extend into 1989, is to take the ideas generated at the forums and develop a human-resources framework document. A third step, beginning in 1990, is to merge the human-resources framework with the Council's existing physical framework.

The Council's objectives in this process are to:

- Encourage investment in the region's most important resource, its people;
- Provide the basis for a systematic, long-range look at the region's human-resource needs;
- Promote quality, equity and economy in the planning and delivery of human services;
- Promote region-wide agreement on the major human-service goals in the region;
- Provide the basis for coordinating the region's human-resource program; and
- Assist the Council and other decision-makers, including local governments, in making human-resource decisions.

The Council expects this process will help it identify areas where human-resource plans and projects are needed.

Water Quality and Supply

A new regional sewer policy plan was drafted during 1987. The proposed plan analyzes the effect of projected population increases on the

existing metropolitan sewer system through the year 2010. The plan addresses water quality, future service, financing and the relationship of the Council to the various levels of government.

It is now clear that improving the quality of discharges from sewage treatment plants is not enough to meet water quality goals. The revision suggests focusing on integrating management of sewage and stormwater runoff from urban and agricultural lands. The Council's plan also calls for reducing surface water and groundwater inflow and infiltration into the sewer system, which lowers the capacity and raises the costs of sewage treatment.

The plan addresses financial planning, management issues and investment priorities, and provides direction to the region and local units of government for sharing costs for sewer facilities. The plan suggests a stronger relationship with the Minnesota Pollution Control Agency (MPCA) to integrate the Council's goal for growth management and the MPCA's goal for water quality protection.

The plan will meet the requirements of the Metropolitan Governance Law (Minn. Laws Chapter 460, 1986), which defines the relationship of the Council to the Metropolitan Waste Control Commission (MWCC). The draft policy plan is currently being reviewed by the MWCC. The Council will then make necessary changes in the plan, hold a public hearing and adopt the plan in mid-1988.

Early in the year, the Council decided that there were alternatives to disposing of ash generated by the MWCC's incineration of sludge at the Metro and Seneca sewage treatment plants, and there was no need for a landfill. The Minnesota Pollution Control Agency agreed, and the Council lifted the development moratorium on the three sites that had been set aside for ash landfilling. The action was taken under Minn. Laws Chapter 425, 1986. The MWCC sub-

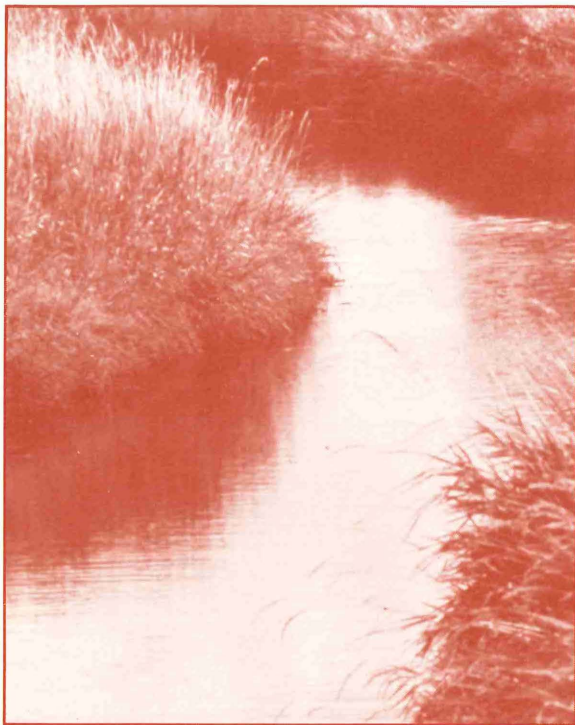
sequently contracted with a private firm to take the ash stored at the plant to South Dakota, where a new processing facility will reclaim the metals from the ash.

The Council reviewed and approved the MWCC's 1988-1992 *Development Program* and approved MWCC's 1988 budget. The approval included an increase in the MWCC's service availability charge (SAC) from \$525 in 1987 to \$550 in 1988. The Council said the fee increase was consistent with Council forecasts. The SAC fee is charged to new homes and businesses at the time they hook up into the central sewer system in order to pay for the extra capacity built into the line during construction.

During 1987 the Council also reviewed nine watershed plans under provisions of the Metropolitan Stormwater Management Act. Over a third of the watershed management organizations have submitted a plan to the Council. As part of its annual lakes survey, the Council monitored 10 lakes in 1987, and prepared a report on their water quality and characteristics.

Finding solutions to pollution of the region's lakes and rivers through improved water management will be a Council priority for 1988. During the year the Council will assess non-point source pollution problems (pollution from urban or agricultural runoff) in the Metropolitan Area to meet the requirements of the federal Water Quality Act of 1987. This information will help the Council assist local watershed management organizations in developing non-point source pollution abatement plans, and will open the door for state and federal grants to local governments to implement these plans.

The Council will continue to assist the city of Roseville with the Lake McCarrons restoration project. The Council is monitoring the effectiveness of the stormwater treatment system built by the city to improve the quality of the runoff discharging into the lake. When the



study is finished in June 1988, the Council will make recommendations to the city and to water resources managers in the region for increasing the efficiency of runoff management systems.

The Council received a \$385,000 grant from the Legislative Commission on Minnesota Resources to study the effectiveness of wetlands and holding ponds for treating runoff, and is now monitoring runoff at four sites. The study will be completed in mid-1989, and will provide direction to watershed management organizations on runoff and lake management techniques.

In 1988, the Council intends to look at the need to define water as a metropolitan system and identify the shortcomings of the existing water management structure.

Economic Research

How is the region's economy changing, particularly in relation to the state, nation and world economy? The question will be researched by the Council in 1988. The effort will entail 1) diagnosing the regional economy, 2) analyzing government investments that support the economy and 3) studying the changing work force.

The Council will analyze the economy by looking at industries, resources, the labor force, markets and the region's competitive advantages. It will also look at how the region is changing economically in response to outside forces.

The Council does not have a program to stimulate economic development directly; it believes that the private sector should be the major force behind economic growth in the region. However, government does play a role in supporting the economic foundations of a strong private sector. Those foundations include such factors as the work force, the infrastructure of public facilities, natural resources, knowledge and technology, capital, the quality of life and the region's fiscal base. The Council will analyze government programs that represent investments in these economic building blocks and determine new ways such investments might be used to strengthen the economy.

The age structure of the region's work force is changing as the "baby boom" generation gets older. The work force has more older workers and a smaller proportion of entry-level ones. At the same time, the structure of the economy is shifting from a manufacturing base to a service and information orientation. The Council will examine the implications of these shifts for the economy. How will jobs change? How will workers shift from one sector to another? What will happen with the supply and demand for labor over time? Is the region's economy

healthy enough to handle all the forecasted change?

In 1987, the Council brought economic and fiscal analysis into its planning and review functions. It incorporated the economic indicators and criteria established in its *Metropolitan Development and Investment Framework* into two major guide plans it began drafting—one on transportation, the other on water resources management. These guides will be completed in 1988.

Economic analysis played a major role in the Council's review of the proposed Minneapolis professional-basketball arena to determine its metropolitan significance (see page 25). With reviews of this type, the Council is gaining experience in using economics in its review process and is defining the Council's role with respect to the private sector and the economy.

Maintaining basic economic data and publishing regular reports make up another part of this effort. The Council continued work on its regional fiscal data base, begun in 1986, and continued publishing periodic reports on such topics as residential building permits, income, employment, fiscal disparities, quarterly economic indicators and quarterly housing forecasts (see page 31 for description of other research activities).

Transportation

During 1987, the Council began a review of its Transportation Policy Plan, which will result in adoption of a new plan in 1988. The plan gives policy direction to the region's transportation implementing agencies and identifies the transportation needs of the Metropolitan Area for the next 20 or 25 years.

The draft of the plan identifies four major problems that need to be taken into account. They are:

- An increase in travel demand that will exceed population and employment growth is anticipated in the next 20 years. The growth in demand will create severe congestion in parts of the transportation system.
- Additional capacity to satisfy demand will be necessary in the next 20 years.
- Costs of maintaining an aging highway system will continue to increase.
- Anticipated funding, based on existing funding mechanisms, will not be sufficient to maintain and upgrade the highway system.

Congested Metropolitan Area Roads in 1984

Highway	Location
Interstate Hwy. 694	Hwy. 47 to Mississippi River
Hwy. 12	Winnetka Av. to Theodore Wirth Pkwy
Hwy. 100	Hwy. 12 to Hwy. 7
I-94	Lowry Hill Tunnel to Cretin/Vandalia
I-94	I-94/35W interchange to Lafayette Bridge
County Rd. 62	Hwy. 100 to I-35W
I-35W	County Rd. 62 to 46th St.
I-494	County Rd. 18 to I-35W
Hwy. 5	78th St. to Mitchell Rd.
Hwy. 212	Eden Prairie shopping mall to Pioneer Trail

Congested Metropolitan Area Roads in the Year 2000

Highway	Location
Interstate Hwy. 94	County Rd. 18 to Brooklyn Blvd.
Hwy. 100	Robbinsdale's northern boundary to Hwy. 55
County Rd. 18	south of Rockford Rd. to County Rd. 62
Hwy. 7	I-494 to Hwy. 101
I-494	Hwy. 55 to County Rd. 62
County Rd. 62	Hwy. 100 to I-35W
I-494	north of Hwy. 5 to 24th Av.
I-35W	south of Lake St. to 50th St.
I-35W	Broadway Av. to I-94
Hwy. 36	I-35W to Dale St.
Hwy. 52	south of West St. Paul boundary to Sunfish Lake

The plan is premised on the view that the Twin Cities cannot build its way out of congestion because environmental, social and financial costs would be prohibitive. As a result, the proposed plan emphasizes managing existing resources, protecting the metropolitan highway system, expanding the role of transit and reducing the need for major highway capital improvements.

To minimize highway capital investments, the plan proposes enhancing the role of transit and ridesharing. The goal is to get the most "people-moving" capacity from highways rather than the most "vehicle-carrying" capacity. The techniques might include incentives for car pooling and for more travel outside peak traffic periods. There would be disincentives for the single-occupant vehicle and for short trips on freeways during the rush hour.

Before adopting the plan, the Council will modify the draft based on responses from the Regional Transit Board and from testimony during public hearings, to be held in 1988. The present schedule calls for adoption in August 1988.

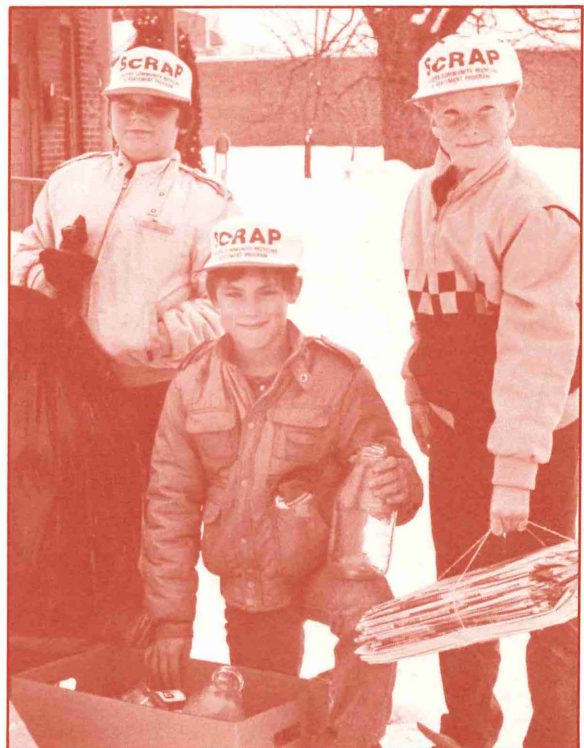
Solid Waste

The focus of this multi-year Council priority continues to be on leading the region toward a new solid waste system that protects the environment. To bring the system into being, the Council has a grant and loan program that encourages development of effective low-technology alternatives to landfills.

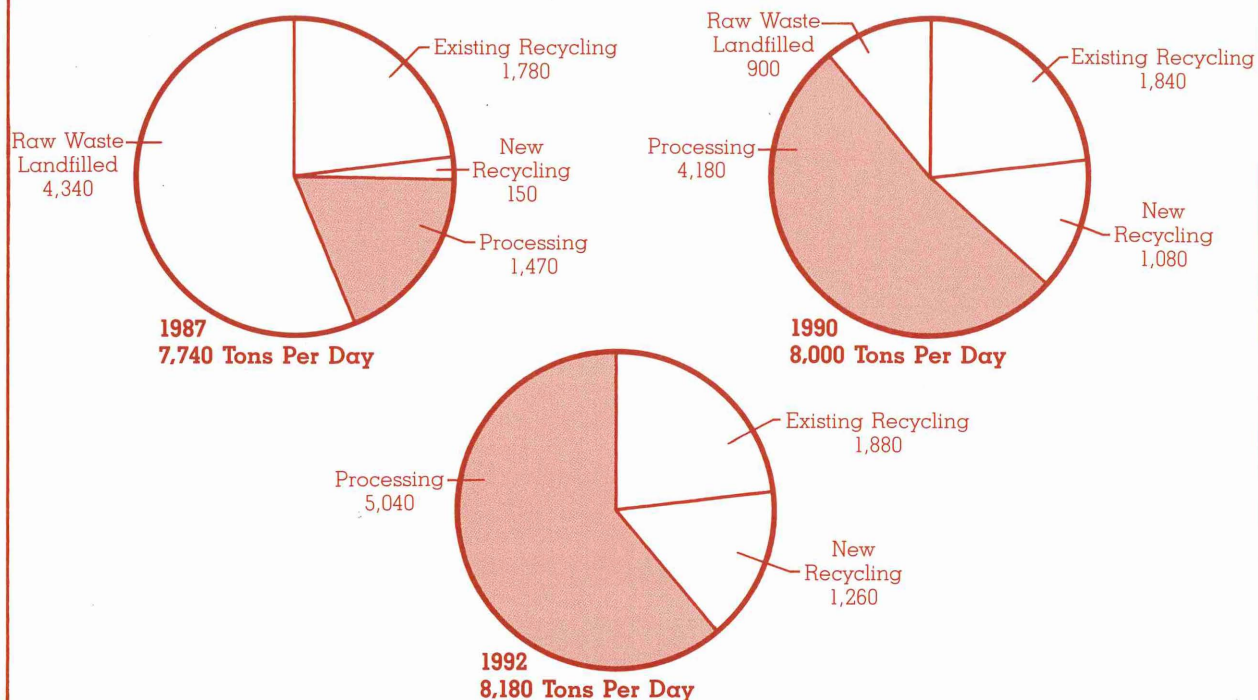
The Council is continuing to assist the region's counties and cities in meeting the requirements of the state Waste Management Act (Minn. Stat. 473:801848). The law requires the local governments to have alternative programs, such as recycling, composting and centralized processing plants, to reduce much of the 2.1 million tons of trash that is buried in landfills every year.

During 1987, the Council reviewed and approved the seven counties' solid waste master plans and 1986 annual reports. To date, the counties' plans have focused on building resource recovery plants to meet the mandated 1990 deadline. In July, Washington and Ramsey Counties opened a shared facility in Newport, and expect to process 30 percent of the trash from the two counties in 1987. The privately financed Reuter, Inc., plant in Hennepin County is currently processing 200 tons of trash a day. In 1987 the region processed 11.8 percent of its trash, which is 7.8 percent better than the Council's 1987 goal of four percent.

Anoka County plans to open a processing plant in Elk River in 1989 and Hennepin County is constructing a mass-burn plant in Minneapolis that should be in use by 1990. Scott and Carver



Ending Dependence on Landfills, 1987-1992



Counties are planning a shared facility to be operating in 1990 or 1991, and Dakota County is planning a processing plant that will be operating in 1992. The region will be processing an estimated 80 percent of its trash by 1992.

In 1987 the Council awarded more than \$700,000 in grants to stimulate programs in recycling and yard waste composting. These grants were matched by \$880,000 from the counties and the cities; they are expected to increase the amount of recycled materials by about 18,000 tons and yard waste composting by more than 500 cubic yards.

Under its local recycling and development program, the Council distributed \$617,000 to the seven counties for planning, developing and

operating composting and recycling programs. Tonnage payments totaling \$97,000 were made to 66 cities and towns for recycling more than 24,000 tons of residential materials. The Council reimbursed cities a total of \$310,000, a 24 percent increase over last year. Sixty two cities and towns shared the money, a 48 percent increase over the previous year.

The Council's goals call for the region to recycle or compost an additional 16 percent of its trash by 1990, on top of the 23 percent that had been achieved by 1985. A second goal is to eliminate another 4 percent by generating less trash. The counties expect to achieve these goals by 1992. In 1987, the region recycled and composted an estimated 2.5 percent more wastes than in 1985, short of the Council's 1987 goal of 6 percent.

While the Council's management plan emphasizes alternative uses for solid waste, it recognizes the need for some additional landfill capacity in the future. This year the Council evaluated landfill capacity in the region through 1986. It found that 11,891 acre-feet of permitted space was available and was being used at the rate of 1,886 acre-feet per year. The Council approved the expansion of the Flying Cloud Sanitary Landfill in Eden Prairie and began preparation of an environmental impact statement for a proposed expansion of the Anoka County Sanitary Landfill in Ramsey.

The Council produced the *1987 Abatement Progress Report* for the legislature to keep it apprised of the region's progress in meeting its solid waste mandates, along with the *Landfill Abatement Fund Expenditures and Activities Report*.

The Council also provided information and technical assistance to the counties, and participated with the Waste Management Board on task forces for commercial and industrial

waste, recyclable materials promotion and used oil.

During the year, the Council also began to revise its *Solid Waste Policy Plan*, and expects to adopt the plan in December 1988. The Council will consider the need for future changes in the law to meet abatement goals and will study other alternatives for waste abatement. It will revise forecasts for how much waste the region will generate through 2020, and project how much landfill space will be needed. It will prepare recommendations for the 1989 legislature on the solid waste management system.

In 1988 the Council will continue environmental reviews for proposed facilities, including the Anoka landfill, the Hennepin County transfer station and the Dakota County resource recovery facility. It will continue the grants program for abatement activities and evaluate the results of the program.

SPECIAL STUDIES

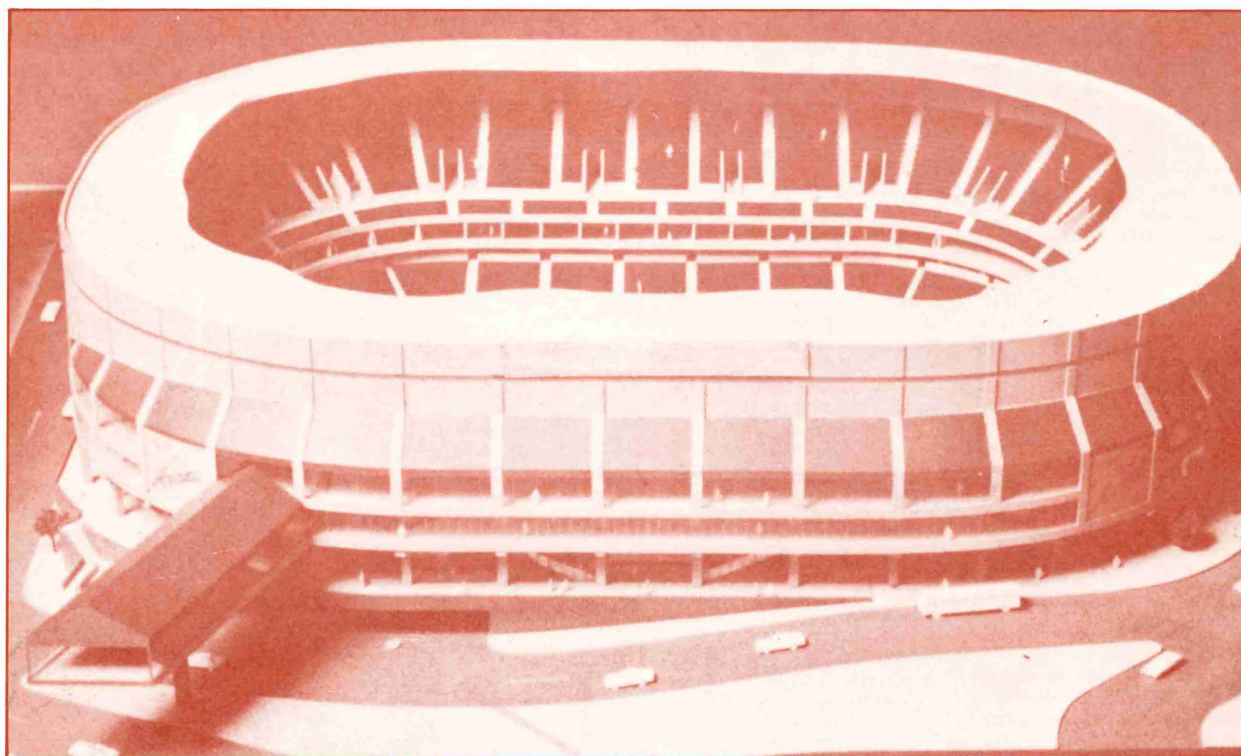
Proposed National Basketball Association Arena

The Council conducted a metropolitan significance review of the Minnesota Timberwolves' proposal to build a National Basketball Association (NBA) Arena in downtown Minneapolis. The Council found no compelling reason to place a moratorium on the arena's development and gave a green light to an 18,000-seat basketball arena and health club just off Hennepin Ave. in downtown Minneapolis.

St. Paul requested the review because of concerns that competition for non-NBA events,

such as high school tournaments and concerts, would have an adverse economic impact on the St. Paul Civic Center. The Council found that the NBA arena would reduce Civic Center revenues, but not by a margin substantial enough to be of metropolitan significance and threaten the Civic Center's financial viability. The Council also urged the Minnesota Timberwolves and the University of Minnesota to share a new basketball facility, either downtown or on the University campus.

The review was conducted under the



"metropolitan significance" law (Minn. Stat. 473:173), which allows communities concerned about a development proposal in another community to ask the Council to study the development's impact on the metropolitan region. The Council has the authority to stop construction for up to one year or to require modifications before the suspension is removed. The basketball arena review was precedent setting in that it addressed economic effects on development, rather than physical effects on highways sewers or other metropolitan systems.

During 1987, the Council also began an extensive examination of metropolitan significance rules. Proposed changes include revisions to make the process less legalistic and more open to negotiated settlements. Another proposed change would set certain criteria for when economic impact could trigger a review. A review would also be in order if a development involves a substantial public subsidy or affects regional or subregional markets. The proposed changes will be the subject of an administrative hearing in 1988.

Adequacy of Minneapolis-St. Paul International Airport

Airline deregulation in 1978 and more travel have resulted in doubling the number of flights at Minneapolis-St. Paul International Airport. The growth is part of a national trend. The increased activity raises concerns about aircraft noise, airspace safety, and airport congestion and delays. With continued growth, the airport's runways, taxiways, terminals and park-

ing ramps— and the roads to the airport—may reach capacity limits.

As a result, the 1987 state legislature told the Council to study the airport's physical and environmental capacity to assess whether it will meet the region's transportation needs during the next 30 years.



In May, the Council formed a 35-member Airport Adequacy Task Force. The advisory group members represent business, community, airline, neighborhood and agency interests.

The study, which is being coordinated with the Metropolitan Airports Commission's long-term comprehensive planning activity, has five major objectives. They are:

- To analyze the forecasts made for the airport.

- To define the physical, operational and environmental capacity.
- To define the economic costs and benefits of the airport.
- To evaluate alternative ways to meet long-term demand.
- To develop a decision-making and monitoring process.

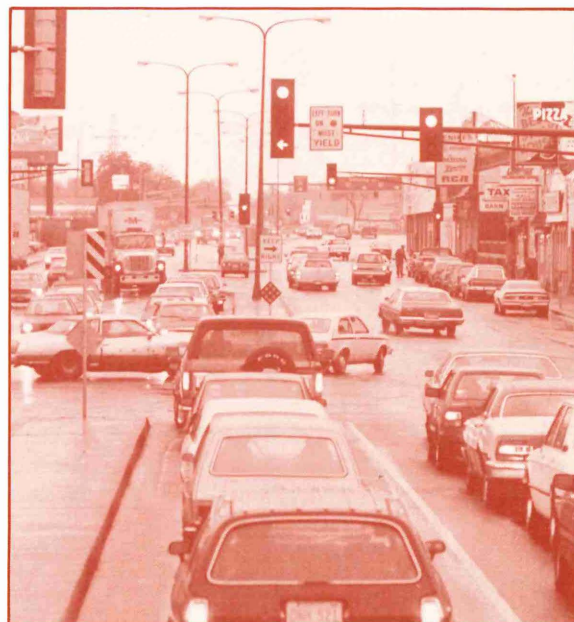
The task force report will be completed by the end of 1988.

Air Quality Standards, Interstate Highways

Transportation planning in 1987 included a review of how to meet transportation-related air quality standards and studies of two interstate highway corridors.

During the year, the Council, together with the Minnesota Pollution Control Agency, started to develop a region-wide strategy to address air quality violations. In the middle of the year, it was discovered that carbon monoxide levels were exceeding federal standards at several intersections in St. Paul. At the end of the year, violations were reported at one site in Minneapolis. The problem is believed to be widespread and is likely to increase as intersection congestion occurs more frequently and in more locations throughout the seven-county area. It appears that a mandatory vehicle inspection and maintenance program may be needed to bring the region into compliance.

The Council was the lead agency in the Interstate Hwy. 494 corridor study, completed in September. The resulting plan covers the area from the airport to Minnetonka, and makes recommendations for road and transit improvements. Importantly, it also focuses on ways to change the travel demand on the road and on making development decisions based on the road's capacity. The study resulted in an initiative by the businesses in the corridor to

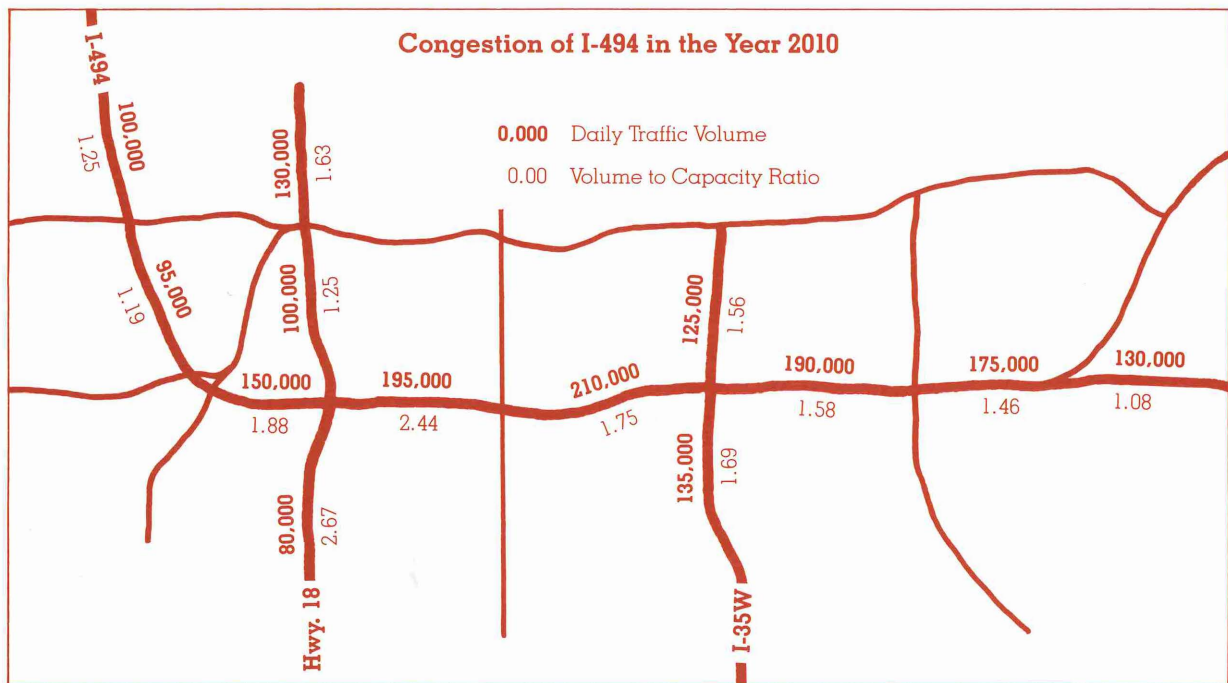


carry out programs to reduce demand, such as employee car and van pools and staggered work times. The study concluded that such steps are necessary in order to keep the freeway relatively congestion free until funds are available for highway improvements, and are part of the recommended long-term solution as well.

A study of the I-35W corridor, which runs from downtown Minneapolis to Burnsville, is scheduled for completion in early 1988. It involves extensive travel forecasting and data collection, including new information on auto occupancy and ramp delays. The data shows there will be continued difficulty in providing sufficient peak-hour road capacity for single-occupant vehicles in the corridor. As a result, all proposed alternatives under discussion in-

volve transit service improvements as well as alternative roadway designs. Near the end of the year, it was determined that several transit alternatives could meet future demand.

The Council also completed a corridor study of Hwy. 7 and began a \$300,000 joint study of Hwy. 212 with the Minnesota Department of Transportation and several local governments.



The large figure (ex. 195,000) is the number of vehicles using roads in the Bloomington, Richfield, Edina and Eden Prairie area. The smaller number (ex. 2.44) is an index of congestion. 1.0 means the road is operating at capacity. All the roads shown will be over capacity.

CONTINUING PLANNING PROGRAMS

Aging

In 1987, the Council distributed \$4 million in federal and state funds to support programs for nutrition, transportation, senior center administration and other social services for the area's elderly people.

A major Council study, completed this year, identified elderly nutritional needs and assessed available services in the Metropolitan Area. From this study, the Council developed a plan to guide improvement of nutritional services for elderly people. The Council also evaluated the effectiveness of the seven metropolitan counties' plans for services.

To improve information and referral services, the Council published a directory of the 54 designated "community focal points," which are centers for seniors, and coordinated regular meetings of focal point staff. The Council also updated its *Guide to Housing Options for Seniors* and made more than 50 home safety presentations to organizations serving elderly people.

Arts

In 1987 the Council, as the area's Regional Arts Council, distributed more than \$291,000 in public and private funds to arts and community organizations throughout the Metropolitan Area. Grants were awarded to help organizations develop and create new art, and to help community organizations bring touring arts groups into local communities and schools.

The Council completed an assessment of the needs of artists, art organizations and art audience members, and then developed a biennial plan that addresses those needs.

Respondents said that "promotion by the media" and "funding sources for organizations" were most needed by the arts community. Respondents also expressed interest in a demographic study of arts audiences.

With the cooperation of the state's other Regional Arts Councils, the Council organized a conference showcasing touring arts. Sponsors from four states attended and booked Minnesota artists for performances in 1987 and 1988. The Council also developed a public awareness campaign using posters on buses and bus stops to raise awareness of the region's diverse artistic offerings.

Health

In 1987 the Council and its Metropolitan Health Planning Board continued its focus on providing research data to shape public policy and to provide information to the public on the health care system so people can be effective "shoppers" for health services.

The Council published a report showing that 25 percent of all households with incomes less than \$10,000 had no insurance coverage.

The fourth report in a 10-year study analyzing the effects of hospital consolidations and closings was nearly completed, as was a report recommending long-term care insurance to protect personal assets. In addition, the Council sponsored a forum focusing on how cost controls affect the quality of care.

The Council published a policy report that recommends legislative changes to expand insurance eligibility to the low-income, uninsured population. The report also recommends ways to improve cultural, geographic and physical

access to health services.

In 1988 the Council will continue to research, monitor and define regional policies to build a concept of the desired health care system. A full list of the reports can be found in the *Appendices*.

Housing

The Council, as mandated by the 1987 Legislature, studied the feasibility of establishing a development fund for mobile home parks in the region. Most mobile home parks, which provide a low-cost housing option, are at or nearing capacity. New parks are not being developed.

The study identified a number of barriers to the development of the parks, and concluded a development fund would not by itself lead to more parks. In addition to funding, the study identified perceptions of parks, quality issues and zoning policies as other barriers to mobile home park development.

A task force began a study of the effect of changing demographics on the future housing market. The Council also sponsored a forum examining the effect of federal tax reform on the region's housing development.

In addition, the Council reviewed more than 160 applications for federal housing mortgage insurance and more than 60 community comprehensive plan amendments.

Metro Housing and Redevelopment Authority

The Council's Housing and Redevelopment Authority (Metro HRA) awarded \$13.9 million in rent-assistance payments to provide affordable housing opportunities to 4,041 low-income households in 92 metropolitan communities.

Funding came through the Section 8 program of the U.S. Department of Housing and Urban Development.

The Metro HRA provided \$94,230 in home improvement and accessibility loans to 19 low-income homeowners. The funds came from the Minnesota Housing Finance Agency. Also, the Metro HRA's administrative support helped Brooklyn Center provide \$99,443 in rehabilitation assistance to 14 low- and moderate-income households.

In 1987, the number of communities participating in Metro HRA programs rose by eight, to 90. In many of the smaller communities, HRA programs provide the only housing assistance available.

Parks and Open Space

The Council disbursed more than \$8 million in grants during the year to counties, cities and special park districts so they could acquire regional parks and develop park facilities. It approved more than \$4 million in future grants for the regional park system, which currently contains 45,000 acres, 29 parks, 10 park reserves and 4 regional trail corridors. The Council also distributed \$2 million in state funds as supplemental funding for operations and maintenance.

The Council requested \$25 million for parks from the legislature for fiscal year 1988-89 plus \$6 million for the initial acquisition and development of the new Lake Minnetonka Regional Park. The legislature authorized \$9.5 million plus \$6 million for Lake Minnetonka, and the Council revised its capital improvement program to reflect the reduced amount of funding available.

The Council continued to make Lake Minnetonka Regional Park a reality, and approved plans and an initial \$2 million acquisition

grant for the new North Mississippi Regional Park in Minneapolis and Brooklyn Center.

A four-year study showed that park use is increasing rapidly. Almost 12 million visits were made to regional parks in 1987, a 42-percent increase over five years ago, when the last estimates were made.

The Council also initiated a strategic planning process for the regional park system at the end of the year. It produced and distributed 60,000 copies of a four-color road map showing the regional park system and its facilities.

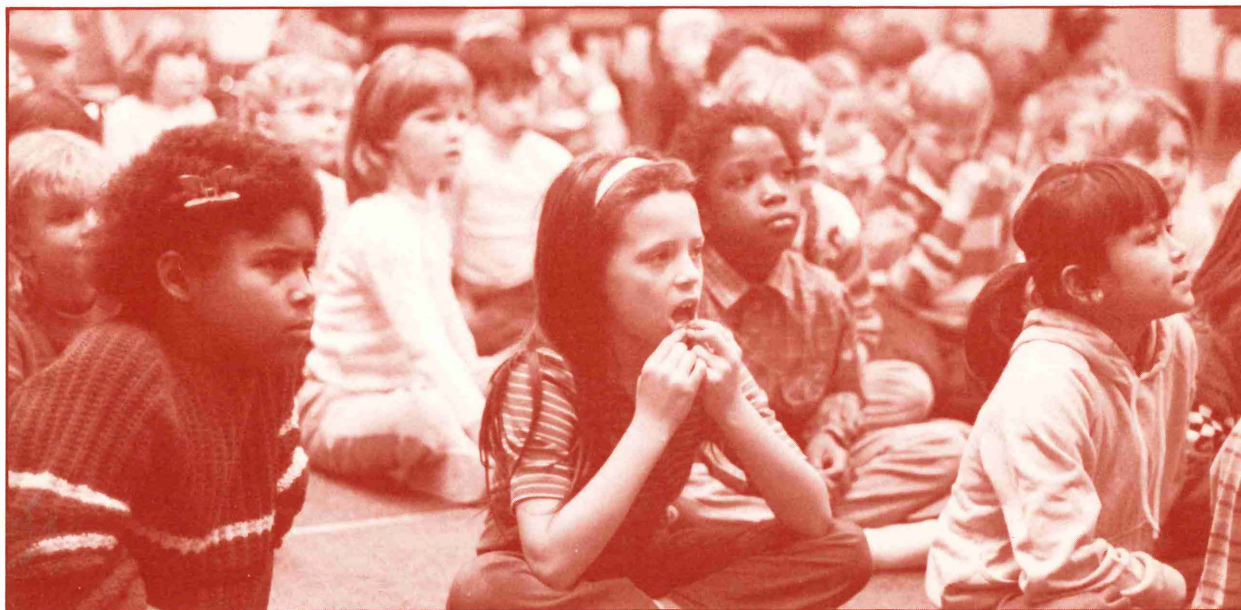
Research

The Council's research activities provide important information that supports its decision-making and planning work. The Council prepared annual population and housing estimates, which are used to help set municipal levy limits, determine the distribution of

property-tax revenue under the fiscal disparities program and prepare municipal budgets.

The Council continued monitoring trends to determine variations from its forecasts of population, households and employment, and to assess the effectiveness of policies in its *Metropolitan Development and Investment Framework*. It compiled social-demographic data, such as school enrollment trends, that supports its population and housing estimates and its forecasting work.

In 1988, the Council will continue to track trends that have implications for regional policies. It will anticipate future regional issues through an ongoing monitoring process, and ensure that its policy decisions are sensitive to economic and fiscal considerations. It will also coordinate its economic research and policy development with comparable efforts of state agencies (see page 20 for a description of economic research activities).



CITIZEN PARTICIPATION

Citizen participation continues to be an integral part of the Council's planning and decision-making process. The effort involves keeping the planning process open so planning here reflects the shared values of Twin Citians and the best available information.

An extensive network of citizen advisory committees assists the Council in carrying out its work activities. The committees, with representation from the general public, professionals and interest groups, conduct studies and advise the Council on major policy matters. Currently, more than 200 citizens voluntarily participate in the advisory process through nine advisory committees. A roster of members is included in a separate Appendix to this report.

In addition to the committee process, the Council builds citizen participation tools directly into its planning studies. It conducts workshops and forums, holds regional meetings and hearings on policy matters, and provides speakers and resource materials on relevant topics. It also prepares background papers, brochures and other printed materials. Council members and staff go out to groups that will be affected by Council decisions to involve them right from the start. A public participation event was held almost every three work days this year. Such events will continue throughout 1988.

As part of the Council's strategic planning process initiated this year, special efforts were made to encourage participation of the region's citizens in developing a vision for the future of the Twin Cities. Expanded citizen involvement also took place in policy development activities, such as transportation and solid waste. Policy work will continue into next year, with a major focus on developing a human resources framework for the region.



Arthur Naftalin, Minneapolis, was named the 1987 "Regional Citizen of the year" by the Council.

Information about regional issues, Council work activities, coming events and new publications is provided to the public through the *Metro Monitor*, a Council newspaper published eight times a year. Summary information about Council activities is also made available to local officials and community leaders through the Council's monthly newsletter, the *Metro Digest*. In 1988, the Council, together with the other metropolitan agencies, will publish a consolidated bulletin. It will contain meeting and hearing schedules and official notices. The publication is a response to Chapter 278 1987 Session Laws.

During 1987, the Council held two special events—the State of the Region and a 20th Anniversary celebration. This year's State of the Region focused on the changing economy and its implications for the region's work force. The 1988 event will take a close look at the transportation issues affecting the region. The 20th Anniversary event helped the Council recognize the people who have contributed to the success of regional government in the Twin Cities.

REGIONAL DATA CENTER

The mission of the Council's Regional Data Center is to help make sure that decisions affecting the region are based on useful, accessible and accurate information.

The data center is the marketing arm and distribution point for data the Council produces. It also serves as a catalyst to improve other information resources in the region, and it provides information resources—computerized data analysis and library services—to help the Council develop regional plans.

In 1987, the data center distributed more than 2,200 Council publications each month in response to requests from local governments, businesses and others. It also responded to an average of 20 requests daily for information in the form of data tables, computer-generated maps and floppy computer disks.

Examples of Council products marketed extensively in 1987 were a computerized land-use map, aerial photos and a map of regional

parks. The data center also produced a directory of economic data for use by chambers of commerce.

The data center played a role in organizing a forum that explored the challenges facing the region in the "Information Age." It also provided staff support to a newly formed regional mapping consortium, made up of cities, counties, utility companies and others. In addition, it worked with the region's minority community to identify problems with the annual minority-student counts produced by school districts.

In 1988, the data center will continue to improve its marketing and distribution of Council information. It will focus its information activities—marketing services, technological support, library services and client workshops and forums—on addressing long-term needs. The center will also focus on priority Council programs, such as transportation and human resources, local governments and the business community.

BUDGET AND ADMINISTRATION

The Council's budget has stabilized at around \$12 million for the last several years. The money pays for the agency's planning, grant and bond administration and operation of the Metropolitan Housing and Redevelopment Authority. The largest single revenue source is the local property tax, which has grown in importance to the Council as federal grants have been reduced. The local levy is 8/30ths of a mill, and amounts to about \$3 on a home valued at \$75,000. Tables in the Appendices section of this report contain detailed information on Council revenues and expenditures for 1987 and 1988.

For most of 1987 the Council had a staff reduction/attrition program in place, due to a decrease in revenues compared with previous years. As a result, the Council did not set affirmative action hiring goals. Through limited hiring, the Council increased its minority staff by one.

During the year, the Council changed its women and minority business enterprise goals for vendors. Twenty percent of expenditures covered by the goals went to these groups. The Council, together with other regional commissions and the Metropolitan Economic Development Association, jointly sponsored a day for vendors to learn how to bid for work.

The Council streamlined its referral process, under which it reviews a variety of projects and plans. It also waived review of some types of projects, and saw a further reduction under a decision by Gov. Rudy Perpich to eliminate a number of federal programs from Council review.

The Council, the Regional Transit Board and the Metropolitan Waste Control Commission decided to move to new quarters in 1988. The move will enable the three agencies to share more facilities and services. After a bidding process, the three agencies decided to stay in downtown St. Paul, and to lease space in two historic buildings in the Lowertown area that are being restored.

APPENDIX

1987-88 Revenue and Expenditures Tables

Table 1
METROPOLITAN AGENCIES
1987 AND 1988 OPERATING EXPENSES

	<u>1987</u>	<u>1988</u>
Metropolitan Council*	\$ 12,143,000	\$ 12,175,000
Metropolitan Waste Control Commission	66,836,000	71,559,000
Regional Transit Board**	2,474,000	7,284,000
Metropolitan Transit Commission	99,868,000	103,035,000
Metropolitan Airports Commission	51,799,000	54,024,000
Metropolitan Sports Facilities Commission	13,193,000	13,285,000

*Agency operations only. Excludes passthrough grants of \$23,488,000 in 1987 and \$23,882,000 in 1988.

**Agency operations only. Excludes passthrough grants to the Metropolitan Transit Commission and other transit providers of \$69,200,000 in 1987 and \$71,300,000 in 1988.

Table 2
METROPOLITAN COUNCIL
1987 BUDGETED REVENUE AND OTHER SOURCES OF FUNDS FOR
AGENCY OPERATIONS

Revenues

Federal Revenues:

Department of Transportation	
Federal Highway Administration	\$ 425,000
Urban Mass Transit Administration	170,000
Federal Aviation Administration	72,830
Department of Housing & Urban Development.....	1,491,592
Department of Health & Human Services	
Area Agency on Aging	441,390
Developmental Disabilities.....	51,300
Corp of Engineers	2,000
Federal Subtotal	\$ 2,654,112

State Revenues:

Regional Parks Planning	\$ 200,000
Regional Arts Planning.....	60,00
Landfill Abatement Administration.....	85,000
Legislative Commission on Minnesota Resources	97,419
Department of Transportation	58,301
Developmental Disabilities	7,000
Housing Finance Agency	12,000
State Subtotal	\$ 519,720

Regional Agency Reimbursements:

Waste Control Commission.....	\$ 771,220
Regional Transit Board	306,056
Airports Commission	128,820
Sports Facilities Commission.....	5,400
Transit Board — Office Services.....	91,000
Regional Agencies Subtotal	\$ 1,302,496

Local Government Revenues:

Lake Study — Roseville.....	\$ 8,000
Housing Program — Brooklyn Center	9,000
I-494 Study — 5 units	64,025
Local Government Subtotal.....	\$ 81,025

Interest Income:

General Fund	\$ 160,000
Aging Funds	25,000
Metro HRA Reserve Fund	17,000
McKnight Fund	4,000
Interest Income Subtotal.....	\$ 206,000

Other Miscellaneous:	
Health Expenditure Survey	\$ 50,500
Highway ROW Administration	13,000
McKnight Program Administration	10,000
JAM Income and Support	10,000
Anoka County Landfill EIS	60,090
Park Audit Fees	45,000
Publication Sales	20,000
State of Region/Other Event Income	8,000
Office Escrow Funds	82,335
Other Miscellaneous	5,000
Miscellaneous Subtotal	\$ 303,925
Property Tax Levy	\$ 6,888,593
Total Revenues	\$ 11,955,871
Other Sources of Funds:	
Designated for Consultant Carryover	\$ 130,356
Designated for Office Improvements	29,272
Designated for Employee Leave	155,000
Transfer — Parks Fund	20,000
Total Other Sources of Funds	\$ 334,628
Total Revenues and Other Sources of Funds	\$ 12,290,499
Total Expenditures	\$ 12,142,750
Additions to Reserves:	
General Fund — Undesignated Reserves	\$91,845
HRA Operating Reserve	\$ 55,904

Table 3
METROPOLITAN COUNCIL
1987 BUDGETED EXPENDITURES, BY DEPARTMENT

	Direct Salaries, Benefits	Direct Consultant	Other Direct Costs	Indirect Costs	Total Expenditures
Research and Long-Range Planning					
Research	\$ 500,623	\$ 77,750	\$ 94,791	\$ 278,323	\$ 951,487
Long-Range Planning	305,862	25,000	52,301	173,975	557,138
Department Management	104,227	0	23,992	54,374	182,593
Metro Systems					
Metro Governance	284,684	15,000	42,230	148,454	490,368
Parks and Natural Resources	582,716	301,466	236,427	313,792	1,434,401
Solid Waste Management	614,187	52,140	114,849	342,320	1,123,496
Transportation Planning	531,323	314,386	151,590	298,825	1,296,124
Human Services					
Aging, Housing, Arts	627,226	11,021	193,600	355,384	1,187,231
Health Planning	288,012	77,100	101,025	151,810	617,946
Metro HRA	748,253	0	229,518	465,682	1,443,453
Department Management	80,266	0	31,311	46,770	158,348
Community Services					
Regional Data Center	263,925	10,000	139,072	147,762	560,759
Community Outreach	168,026	0	76,709	97,903	342,638
Publications Support	54,495	0	0	30,191	84,686
Administration					
General Administration	88,145	105,607	375,591	50,258	619,601
Chair's Office					
Chair and Council	291,191	5,000	172,263	150,880	619,334
Legal Counsel	191,929	0	89,337	99,768	381,034
Transportation Coordinator	56,688	0	7,236	28,189	92,113
Total	\$ 5,781,778	\$ 994,470	\$ 2,131,842	\$ 3,234,660	\$ 12,142,750

Table 4
METROPOLITAN COUNCIL
1987 ACTUAL REVENUES AND EXPENDITURES
(November and December Estimated)

Revenues:	
Federal Revenue	\$ 2,579,116
State Revenue	512,301
Regional Agencies:	
Metropolitan Waste Control Commission	413,376
Regional Transit Board	221,907
Metropolitan Airports Commission	157,761

Metropolitan Sports Facilities Commission	12,938
Regional Transit Board — Office Services.....	136,129
Subtotal — Regional Agencies	\$ 942,111
Local Governments.....	\$ 69,025
Interest Income.....	225,120
Other Miscellaneous	273,500
Property Taxes:	
Anoka County.....	373,300
Carver County	84,900
Dakota County.....	614,300
Hennepin County	2,983,200
Ramsey County.....	1,123,000
Scott County	110,000
Washington County	308,100
State of Minnesota — Homestead Credit	1,223,600
Subtotal — Property Taxes	\$ 6,820,400
Total Revenue	\$ 11,421,573
Other Sources.....	305,356
Total Revenue and Other Sources.....	\$11,726,929
Expenditures:	
Research and Long-Range Planning	
Research.....	\$ 902,904
Long-Range Planning.....	531,658
Department Management	147,604
Metro Systems	
Metro Governance	465,684
Parks and Natural Resources	1,180,886
Solid Waste Management	990,147
Transportation Planning	1,308,220
Human Services	
Aging, Housing, Arts	1,195,233
Health Planning	618,428
Metro HRA	1,431,839
Department Management	154,270
Community Services	
Regional Data Center.....	580,520
Community Outreach	334,701
Publications Support.....	38,319
Administration	592,068
Chair's Office	
Chair and Council	644,448
Legal Counsel	359,185
Transportation Coordinator.....	94,898
Total Expenditures	\$ 11,571,012
Additions to Reserves:	
General Fund Undesignated Reserve	\$ 120,213
Metro HRA Operating Reserve	35,704

Table 5
METROPOLITAN COUNCIL
1988 BUDGETED REVENUE AND OTHER SOURCES OF FUNDS FOR
AGENCY OPERATIONS

Revenues:

Federal Revenues:

Department of Transportation	
Federal Highway Administration	\$ 427,500
Urban Mass Transit Administration	171,000
Federal Aviation Administration	93,600
Department of Housing and Urban Development	1,504,493
Department of Health & Human Services	
Area Agency on Aging	471,000
Developmental Disabilities	60,500
Environmental Protection Agency	60,000
Federal Subtotal	\$ 2,788,093

State Revenues:

Regional Parks Planning	\$ 200,000
Regional Arts Planning	63,000
Landfill Abatement Administration	220,000
Legislative Commission on Minnesota Resources	219,419
Developmental Disabilities	6,400
Housing Finance Agency	16,000
State Subtotal	\$ 724,819

Regional Agency Reimbursements:

Waste Control Commission	\$336,100
Regional Transit Board	225,700
Airports Commission	195,000
Sports Facilities Commission	35,900
Transit Board — Office Services	48,000
Regional Agencies Subtotal	\$ 800,700

Local Government Revenue:

Lake Study — Roseville	\$ 3,000
Housing Program — Brooklyn Center	9,000
Local Government Subtotal	\$ 12,000

Interest Income:

General Fund	\$ 170,000
Aging Funds	25,000
Metro HRA Reserve Fund	22,000
McKnight Fund	4,000
Interest Income Subtotal	\$ 221,000

Other Miscellaneous:	
Health Expenditure Survey	\$ 45,000
Highway ROW Administration	13,520
McKnight Program Administration	12,000
Park Audit Fees.....	45,000
Investment Management Fees	41,800
Publication Sales.....	22,000
State of Region/Other Event Income	10,000
Other Miscellaneous.....	<u>10,000</u>
Miscellaneous Subtotal.....	\$ 199,310
Property Tax Levy	\$ 7,416,023
Total Revenues.....	\$ 12,161,955
Other Sources of Funds:	
HRA Operating Reserve	\$ 74,944
Transfer — Arts Funds	<u>26,000</u>
Total Other Sources of Funds.....	\$ 100,944
Total Revenues and Other Sources of Funds	\$ 12,262,899
Total Expenditures	\$ 12,175,134
Additions to Reserves:	
General Fund — Undesignated Reserves.....	\$ 87,765

Table 6
METROPOLITAN COUNCIL
1988 BUDGETED EXPENDITURES, BY DEPARTMENT

	Direct Salaries, Benefits	Direct Consultant	Other Direct Costs	Indirect Costs	Total Expenditures
Research and Long-Range Planning					
Research	\$ 555,975	\$ 51,500	\$ 96,396	\$ 299,009	\$ 1,002,880
Long-Range Planning	339,680	20,000	53,187	193,833	606,700
Department Management	115,751	0	24,398	64,353	204,502
Metro Systems					
Metro Governance	293,225	20,000	42,258	151,569	507,052
Parks Planning	175,240	37,000	127,899	93,547	433,686
Natural Resource Management	470,958	17,000	58,650	251,409	798,017
Solid Waste Management	598,147	5,000	114,924	328,948	1,047,019
Transportation Planning	602,754	135,000	151,688	336,025	1,225,467
Human Services					
Aging, Housing, Arts	683,730	13,000	185,427	389,284	1,271,441
Health Planning	313,958	65,500	96,760	159,249	635,467
Metro HRA	862,606	25,000	215,034	519,974	1,622,614
Department Management	87,497	0	29,989	46,729	164,215
Community Services					
Regional Data Center	285,552	6,000	141,866	155,886	589,304
Community Outreach	181,795	5,000	78,250	103,135	368,180
Publications Support	58,960	0	0	31,862	90,822
Administration					
General Administration	91,671	0	350,300	51,854	493,825
Chair's Office					
Chair and Council	292,900	10,000	175,951	151,449	630,300
Legal Counsel	193,055	6,500	91,249	100,146	390,950
Transportation Coordinator	57,021	0	7,391	28,281	92,693
Total	\$ 6,260,475	\$ 416,500	\$ 2,041,617	\$ 3,456,542	\$ 12,175,134

1987 Publications

The following is a list of 1987 Metropolitan Council publications, by category. Copies are available from the Council's data center by calling 291-6464. Single copies of many publica-

tions are free; others are available at nominal charge. A complete list of Council publications is also available.

METROPOLITAN COUNCIL GENERAL INFORMATION

Metro Digest, a monthly summary of Council actions.
 Metro Monitor, a monthly newspaper.
 Brochures describing each commission, board or advisory committee associated with the Metropolitan Council.
 Metropolitan Council 1987 Annual Report to the Minnesota State Legislature. No. 310-88-001.
 Metropolitan Council Appendix to the 1987 Annual Report to the Minnesota State Legislature. No. 310-88-002.
 Annual Financial Report. No. 216-87-065.
 Proposed 1988 Work Program and Budget. No. 222-87-072.
 Unified Planning Work Program. No. 550-87-103.
 Metropolitan Council Policymaking Structure Chart. No. 310-87-005.
 Citizen's Guide to the Metropolitan Council. No. 310-87-020.
 Metropolitan Council Staff Directory. No. 310-87-034.
 Publications Directory: August Update. No. 320-87-075.

METROPOLITAN DEVELOPMENT GUIDE

Chapters, Amendments

Health Development Guide/Policy Plan Chapter. No. 420-87-008.
 Amendment to Water Resources Management Development Guide. No. 590-87-012.
 Implementation Plan for the Fiscal Year 1988-1989 Parks Capital Improvement Program.
 Draft, Water Resources Management Development Guide Policy Plan. No. 590-87-132

AGING

Long-Term Care Policy Directions. No. 460-87-026.
 Consumer's Guide to Services for Older People. No. 460-87-033.

A Study of Public Long-Term Care Financing. No. 460-87-077.
 Washington Co. Service Delivery System. No. 460-87-023.
 Directory of Community Focal Points. No. 460-87-092.

ARTS

Art Town. No. 470-87-003.
 Live! Minnesota Touring Arts Brochure. No. 470-87-071.

DEVELOPMENT FRAMEWORK

Fiscal Profile. No. 620-87-009.
 Government Finance & Service Study. No. 620-87-013.
 Directory of Planners. No. 640-87-018.
 Establishing Local Economic Development Guidelines: A Kit. No. 640-87-031.
 Consistency Between Comprehensive Plans and Zoning Ordinances. Capital Improvements Programming. No. 224-87-086.
 1970-1984 Land Use Trends. No. 620-87-097.
 Overview of Proposed Changes in Metropolitan Significance Rules. No. 640-87-109.
 1988-90 Local Planning Assistance Loan Guidelines. No. 640-87-125.

ECONOMIC REPORTS

Quarterly Economic Indicators, Fourth Quarter, 1986. No. 620-87-042.
 Quarterly Economic Indicators, First Quarter, 1987. No. 620-87-066.
 Quarterly Economic Indicators, Second Quarter, 1987. No. 620-87-100.
 1986 Construction Activity in Twin Cities Metropolitan Area, July-Dec. 1986. No. 620-87-046.
 1986 Commercial Construction. No. 620-87-047.
 1986 Industrial Construction. No. 620-87-048.
 First Quarter 1987 Building Permits. No. 620-87-057.

Second Quarter 1987 Building Permits Increase for Eighth Consecutive Year. No. 620-87-078.
 Third Quarter 1987 Building Permits up by \$85 Million. No. 620-87-117.
 Construction Activity and Major Construction, Jan.-June 1987. No. 620-87-098.
 Growth In Fiscal Disparities. No. 620-87-056.
 Retail Sales for 1985. No. 620-87-043.
 National Ranking of Major Twin Cities Area Firms, 1986. No. 620-87-067.
 Regional Economy: Taking Stock & Taking Charge. No. 310-87-073.

ENVIRONMENT

Abatement Fund Expenditure Report: Report of the Metropolitan Council to Legislative Commission, 1987. No. 522-87-024.
 1987 Abatement Progress Report. No. 522-87-118.
 Landfill Abatement Fund Expenditure & Activities. No. 522-87-119.
 Curbside Collection Survey, Profiles of Curbside Recycling Programs in the Twin Cities Metropolitan Area and Selected National Programs.
 Landfill Capacity Evaluation. A staff issue paper. No. 521-87-059.
 Flying Cloud Sanitary Landfill Expansion Preliminary Environment Report.
 Flying Cloud Sanitary Landfill Expansion Preliminary Environment Appendices
 Densified Refuse-Derived Fuel (dRDF) Plant, Hopkins, EAW Guidelines. No. 521-87-124.
 Solid Waste System Map. No. 521-87-120.
 Water Quality Issue Paper.

HEALTH

Smoking, Twin Cities Health Risk. No. 420-87-014.
 Quality Health Care Transcript: Public Hearing Sponsored by Sen. Dave Durenberger and the Metropolitan Council, 1987. No. 420-87-016.

Expanding Access to Health Care for the Low-Income Population. No. 420-87-055.

Implications of Health Plan Coverage: A Consumer Survey. No. 420-87-114.
Saving Your Assets: Protection Through Long-Term Care Insurance. No. 420-87-116.

HOUSING

Residential Building Permits Issued Jan.-Sept. 1986. No. 620-87-029.

Residential Building Permits, Oct. 1986. No. 620-87-035.

Residential Building Permits, Nov. 1986. No. 620-87-036.

1986 Residential Building Permits. No. 620-87-037.

Residential Building Permits Issued in January 1987. No. 620-87-051.

Residential Building Permits Issued in February 1987. No. 620-87-053.

Residential Building Permits, Jan.-March 1987. No. 620-87-069.

Residential Building Permits Issued in the TCMA, April 1987. No. 620-87-090.

Residential Building Permits, May 1987. No. 620-87-091.

Residential Building Permits Jan.-June 1987. No. 620-87-102.

Housing Vacancy and Turnover in the Twin Cities Metropolitan Area. No. 450-87-030.

Housing Vacancy & Turnover Jan.-March, 1987. No. 620-87-058.

Housing Vacancy & Turnover, April-June. No. 620-87-082.

Housing Vacancy and Turnover, July-Sept. 1987. No. 620-87-123.

Metro HRA Rent Assistance Brochure. No. 434-87-044.

Housing Under Tax Reform: Tough Times Ahead. No. 450-87-076.

The Feasibility of Establishing a Manufactured Home Park Development Fund. No. 450-87-104

PARKS AND OPEN SPACE

1986 Water Access Annual Report. No. 580-87-007.

Fees and Charges in the Regional Recreation Open Space System. No. 580-87-021.

Regional Park System: Legislative History Process, Capital, & Operations/Maintenance Financing. No. 580-87-039.

Public Boat Launch Guide. No. 580-87-050.

Annual Use of the Regional Recreation Open Space System. No. 580-87-112.

The Future of the Regional Park System in the Twin Cities Metropolitan Area. No. 580-87-096.

POPULATION

1987 Population Estimates. No. 620-87-084.

1987 Household Estimates. No. 620-87-085.

Minority Data Brochure. No. 320-87-038.

Racial-Ethnic Enrollment Trends 1985-1986. No. 620-87-089.

A Detailed Analysis of 1980 Census Income Data. No. 620-87-093.

TRANSPORTATION

Regional Highway Jurisdiction Study Report. No. 550-87-054.

Highway Planning: Policy Considerations. No. 550-87-060A.

Highway Planning: Demand/Capacity Relationship. No. 550-87-060B.

Process to Rank Highway Needs. No. 550-87-060C.

Highway System Scenario Comparisons. No. 550-87-060D.

I-494 Corridor Study Summary. No. 550-87-126.

Definition & Role of Transit. No. 550-87-061A.

Transit Markets. No. 550-87-061B.

Economics of Transit. No. 550-87-061C.

Transit Service Concepts. No. 550-87-061D.

Transit Finance. No. 550-87-061E.

Transit Roles & Responsibilities. No. 550-87-061F.

Suburban Transit. No. 550-87-061G.

Preferential Treatments for Transit & Rideshare Vehicles. No. 550-87-061K.

Transit Strategies & Potential Evaluation Measures. No. 550-87-061J.

Model Ordinance for Aircraft Noise Attenuation. No. 640-87-010.

OTHER

A Case Study of Teenage Pregnancy. No. 450-81-015.

Aerial Photos.

Address Code Guide.

An Overview of the Target Population Reports. No. 450-87-041.

Metropolitan Significance-Review Report on Proposed Arena of the NBA Franchise in Minneapolis. No. 640-87-064.

NBA Consultant Report—Ramifications of the Development of a New Arena in Downtown Minneapolis.

Thanks for Making it Work! Members of the Metropolitan Council and its advisory bodies, 1967-1987. No. 310-87-094.

MAPS

Legislative District Map, 1987. No. 100-87-028.

Metropolitan Council District Map. No. 310-87-006.

Metropolitan Commission Members and Districts Map. No. 310-87-040.

Revised Metropolitan Airports Commission Map. No. 310-87-083.

1984 Computerized Land-Use Map. No. 320-87-079.

Regional Parks: Map and Guide to Regional Parks in the Twin Cities Metropolitan Area. No. 580-87-052.

HT 394 .T9 M47a 1987
Metropolitan Council of the
Twin Cities Area.
Annual report to the

HT 394 .T9 M47a 1987
Metropolitan Council of the
Twin Cities Area.
Annual report to the

DATE	ISSUED TO
8-19-88	[REDACTED]
SEP 7 '88	[REDACTED]
FEB 22 '89	[REDACTED]
OCT 30 '91	[REDACTED]

LEGISLATIVE REFERENCE LIBRARY
645 State Office Building
Saint Paul, Minnesota 55155



3 0307 00015 4156

JANUARY 1988

APPENDIX TO THE

METROPOLITAN COUNCIL**1987 ANNUAL REPORT TO THE
MINNESOTA STATE LEGISLATURE**LEGISLATIVE REFERENCE LIBRARY
645 State Office Building
Saint Paul, Minnesota 55155HT
394
.T9
M47a
1987
appendix

Pursuant to Mn Stat 473.245

ABOUT THIS APPENDIX

This document is an appendix to the Metropolitan Council's 1987 Annual Report to the Minnesota State Legislature. The report and appendix have been prepared to fulfill requirements in Minn. Stats. 473.245. The law requires that a list of referrals be included in the annual report.

This appendix also contains a roster of Council advisory committee members.

REFERRALS

The listing that follows contains all plans and projects the Metropolitan Council received for review under its referral process from Nov. 1, 1986, to Oct. 31, 1987. Some 533 referrals were received for review during the period. This contrasts to 984 received during the previous year.

The referral process is a system of review and evaluation carried out by the Council under responsibilities assigned to it by state and federal law and regulation. The purpose of the review is generally to ensure the coordination of project proposals with local and regional planning.

The types of "referrals," or projects and plans, that undergo regional review vary widely, as the listing suggests and changes over the years. Two events in 1987 have had considerable impact on the review process and the number of referrals reviewed by the Council.

After Council action in Dec. of 1986, and effective Jan. 1, 1987, the definition of "referral" was changed and summary procedures were established for quick staff review and waiver of certain types of matters previously listed. A summary of these changes follows.

1. Applications for funds where the Council is the funding agency are no longer considered referrals.
2. By resolution, 38 federal grant programs were pre-waived.
3. Environmental assessments are waived unless issues are identified by staff.
4. Certain types of NPDES and Corps of Army Engineer permits are pre-waived.

The second event of significance was an action by Governor Perpich on Sept. 10, 1987, eliminating 47 additional federal grant programs from review by the Council as well as 85 programs for other regional agencies.

Other state and federal law and rules were in effect that overlapped some of the previous review authority and still leaves the Council with considerable review authority over the most important matters.

In the referral process, the Council can generally take two kinds of actions, depending on the type of referral. It can 1) recommend a certain course of action to another approving or implementing agency, or it can 2) approve or disapprove a referral with no further consideration by another governmental unit. The law or regulation granting the review prescribes the Council's authority and scope of review.

CONTENTS

	Page
Referrals	1
I. Federal Grant and Loan Requests	1
II. State Grant and Loan Requests	10
III. Metropolitan Significance	11
IV. Independent and Metro Agency Plans and Programs	11
V. Local Government Plans and Projects	13
VI. Miscellaneous Referrals	18
VII. Special Referrals	25
Advisory Committee Membership in 1987	27

I. Federal Grant and Loan Requests
A. U.S. Department of Agriculture

Referral Number	Applicant	Description	Amount	Action Code
14043-1	Hamburg	Storm Sewer and Water Main Construction	\$ 145,328	01
14295-1	Bethel	Sewer Collection and Treatment System	458,560	01
14007-1	Peace Villa Apartments	Elderly Housing, 24 Units, Norwood	Unknown	01
14098-1	Cologne	Fire Hall/City Hall	350,000	01
14327-1	Vitalis, George Partnership	Rural Rental Housing, Moderate Income, 32 Units, Farmington	1,001,196	01

I. Federal Grant and Loan Requests
B. U.S. Department Of H.U.D.
1. Housing Subdivision Programs

Referral Number	Applicant	Description	Amount	Action Code
10265-2	Klingelhutz, John	SF 177-87-DC, Hundertmark Heights 2nd, 40 Lots, Chaska	N/A	01
13242-2	Franklin, J.B. Corp.	SF 104-87-DC, Rose Hill Estates, 42 Lots, Lauderdale	N/A	01
13790-3	Parkview, Inc.	SF 171-87-DC, O'Leary's Hill 3rd, 23 Lots, Rosemount	N/A	01
13991-1	Carlson, Lawrence B.	SF 10-87-DC, Woodland Terrace 4th, 86 Lots, Andover	N/A	01
13992-1	Cyro Associates	SF 12-87-DC, Earl Brown Farm Townhouses, 12 Lots, Brooklyn	N/A	01
13993-1	Tandem Corporation	SF 18-87-DC, Westover Woods, 39 Lots, Eden Prairie	N/A	01
13995-1	Rottlund Co., Inc.	SF 20-87-DC, Lake Park, 98 Lots, Eden Prairie	N/A	01
14016-1	Bruggeman Construction Co.	SF 29-87-DC, Brandlwood Farms 7th, 56 Lots, White Bear	N/A	01
14018-1	Meritor Development Corporation	SF 30-87-DC, Briar Oaks Of Apple Valley, 135 Lots, Apple Valley	N/A	01
14019-1	Interlachen Company	SF 31-87-DC, Interlachen Hills 2nd, 39 Lots, Stillwater	N/A	01

Action Codes and Description

01 Favorable	09 Default
02 Qualified Favorable	10 Funded Prematurely
03 Unfavorable	11 No Action
04 No Comment	12 Staff Information
05 Returned	13 Superseded
06 Suspended Review	14 Letter Of Intent Only
07 Non-Reviewable	15 Other, Reason Given in Notes
08 Withdrawn	16 Referral 'In Process' On October 31
	17 Void

14025-1	Enterprise Properties	SF 28-87-DC, Chanhassen Vista, 32 Lots, Chanhassen	N/A	01
14026-1	Barthel Construction, Inc.	SF 35-87-DC, Twin Barns Estates 2nd, 32 Lots, Corcoran	N/A	02
14030-1	Lund Estates, Inc.	SF 36-87-DC, Westwood North 2nd, 101 Lots, Champlin	N/A	01
14041-1	Roseland Development Co.	SF 41-87-DC, Meadowbrook Estates, 53 Lots, Coon Rapids	N/A	01
14042-1	Amg Developers	SF 40-87-DC, Huntington Estates, 44 Lots, Savage	N/A	01
14048-1	Duoos, Les & Associates	SF 48-47-DC, Blackhawk 2nd, 32 Lots, Eagan	N/A	01
14052-1	Zachary Lane Development Corp.	SF 57-87-DC, Woodlands 2nd, 25 Lots, Plymouth	N/A	01
14053-1	Crow / Chasewood Minnesota	SF 58-87-DC, Summerfield, 94 Lots, Apple Valley	N/A	01
14055-1	Carmody, Thomas L.	SF 59-87-DC, Deer Creek Two, 31 Lots, Eden Prairie	N/A	01
14056-1	RDC Properties	SF 52-87-DC, Burnsville 34S Addition, 8 Lots, Burnsville	N/A	01
14057-1	Building Coordinators, Inc.	SF 53-87-DC, Selle Happe, 25 Lots, White Bear Lake	N/A	01
14058-1	Donnay, L.A.	SF 54-87-DC, Donnay's Round Lake Estates, 20 Lots, Eden Prairie	N/A	01
14058-2	Donnay, L.A.	SF 55-87-DC, Donnay's Round Lake Estates (Townhomes), 32 Lots	N/A	01
14061-1	Graham Development Co.	SF 62-87-DC, Steep Wood, 16 Lots, Burnsville	N/A	01
14062-1	Graham Development Co.	SF 60-87-DC, Parkway Place, 68 Lots, Burnsville	N/A	01
14063-1	Graham Development Co.	SF 61-87-DC, Parkwood Estates, 20 Lots, Burnsville	N/A	01
14064-1	Graham Development Co.	SF 26-87-DC, Fish Lake West Plat 7, 43 Lots, Maple Grove	N/A	01
14065-1	Graham Development Co.	SF 27-87-DC, Gleason Estates 2nd, 86 Lots, Maple Grove	N/A	01
14066-1	Nettleton, Mack	SF 63-87-DC, Woodlyn Heights Townhomes, No. 2, 28 Lots, Maplewood	N/A	01
14069-1	Good Value Homes, Inc.	SF 71-87-DC, Foxborough Place - Townhomes, 48 Lots, Oakdale	N/A	01
14070-1	Good Value Homes, Inc.	SF 72-87-DC, Foxborough Place - Quad Homes, 68 Lots, Oakdale	N/A	01
14073-1	Tri-Land Properties, Inc.	SF 68-87-DC, Lexington Pointe, 61 Lots, Eagan	N/A	01

14073-2	Tri-Land Properties, Inc.	SF 118-87-DC, Lexington Pointe 2nd, 169 Lots, Eagan	N/A	01
14074-1	Tri-Land Properties, Inc.	SF 69-87-DC, Summerfield Addition, 16 Lots, Eagan	N/A	01
14075-1	Tri-Land Properties, Inc.	SF 70-87-DC, Park Knoll Addition, 15 Lots, Eagan	N/A	01
14076-1	Good Value Homes, Inc.	SF 74-87-DC, Summit Pointe, 134 Lots, Woodbury	N/A	01
14077-1	Kempf, Albert C.	SF 75-87-DC, Lemay Lake Hills Townhomes, 40 Lots, Eagan	N/A	01
14081-1	Good Value Homes, Inc.	SF 73-87-DC, Oakdale Meadows 10th, 70 Lots, Oakdale	N/A	01
14084-1	Brook Park Realty, Inc.	SF 78-87-DC, Engel & Olkin's Additions, 26 Lots, Brooklyn Park	N/A	01
14088-1	Good Value Homes, Inc.	SF 80-87-DC, Hidden Creek East, 160 Lots, Andover	N/A	01
14089-1	Aradco, Inc.	SF 82-87-DC, Oakdale Ponds 3rd, 50 Sgle & 9 Dble Lots, Oakdale	N/A	01
14090-1	Swager Bros. Realty, Inc.	SF 81-87-DC, Swager Brothers 9th, 89 Lots, Oak Park Heights	N/A	01
14094-1	Aradco, Inc.	SF 83-87-DC, Oakdale Ponds 4th, 50 Lots, Oakdale	N/A	01
14100-1	Peck, Dennis F.	SF 93-87-DC, Pineview Overlook, 36 Lots, Vadnais Heights	N/A	01
14101-1	Gonyea, Dennis D.	SF 86-87-DC, Keller Lake Hills 2nd & 3rd, 56 Lots, Burnsville	N/A	01
14103-1	Sunrise Properties, Inc.	SF 89-87-DC, Pine Grove Estates, 2nd & 3rd, 152 Lots, Maple Grove	N/A	01
14104-1	Franklin, J.B. Corp.	SF 91-87-DC, Sun Meadows 3rd, 21 Lots, Oakdale	N/A	01
14105-1	Billy Goat Ventures	SF 95-87-DC, Sunset Lake I, 143 Lots, Burnsville	N/A	01
14108-1	Goff Construction	SF 99-87-DC, Evergreen Hills 2nd, 22 Lots, Vadnais Heights	N/A	01
14109-1	Builders Development, Inc.	SF 101-87-DC, Meadows West 2nd, 23 Lots, Lakeville	N/A	01
14109-2	Builders Development, Inc.	SF 102-87-DC, Meadows West 3rd, 21 Lots, Lakeville	N/A	01
14110-1	Brook Park Realty, Inc.	SF 103-87-DC, Royal Oak Heights, 96 Lots Brooklyn Park	N/A	01
14116-1	Billy Goat Ventures	SF 106-87-DC, Sunset Lake Heights, 24 Lots, Burnsville	N/A	01
14122-1	Roseland Development Co.	SF 108-87-DC, Shady Oaks, 65 Lots, Blaine	N/A	01

14123-1	Wrolstad, Steven D.	SF 110-87-DC, Erickson Meadows, 68 Lots, Blaine	N/A	01
14127-1	Straus Construction, Inc.	SF 109-87-DC, Oak Park Preserve, 39 Lots, Champlin	N/A	01
14128-1	Jasper Development	SF 111-87-DC, Clearwater Cove, 8 Lots, Waconia	N/A	01
14130-1	Lundgren Brothers Construction, Inc.	SF 116-87-DC, Steeplechase 3rd, 31 Lots, Plymouth	N/A	01
14131-1	Reynolds, Vern Construction	SF 117-87-DC, Champlin Estates, 105 Lots, Champlin	N/A	01
14136-1	Continental Development	SF 119-87-DC, Red Oak Park, 16 Lots, Mounds View	N/A	01
14143-1	Gaughan Land, Inc.	SF 121-87-DC, Sunset Meadows, 64 Lots, Blaine	N/A	01
14144-1	Kenco Construction, Inc.	SF 122-87-DC, Center Oaks II, 44 Lots, Centerville	N/A	01
14153-1	Carlson, David	SF 124-87-DC, Cherry Hill 2nd, 63 Lots, Minnetonka	N/A	01
14156-1	U.S. Home Corp.	SF 125-87-DC, Highland Heights 1st, 117 Lots, Woodbury	N/A	01
14164-1	CMG, Inc.	SF 127-87-DC, Glendale TH, 8 Lots, Inver Grove Heights	N/A	01
14165-1	CMG, Inc.	SF 128-87-DC, Highland Estates, 52 Lots, Inver Grove Heights	N/A	01
14166-1	Meritor Development Corporation	SF 130-87-DC, Lexington Square 7th, 61 Lots, Eagan	N/A	01
14167-1	Meritor Development Corporation	SF 126-87-DC, Lexington Square 6th, 59 Lots, Eagan	N/A	01
14168-1	Delta Development, Inc.	SF 131-87-DC, Stafford Place, 180 Lots, Eagan	N/A	01
14179-1	Graham Development Co.	SF 133-87-DC, Hidden Valley, 24 Lots, Eagan	N/A	01
14180-1	Meritor Development Corporation	SF 135-87-DC, Fountain Park West, 74 Lots, Maple Grove	N/A	01
14181-1	Nationwide Housing Corp.	SF 132-87-DC, Linden Hills Drive TH, 54 Lots, Burnsville	N/A	01
14182-1	Regan, Robert J.	SF 137-87-DC, Regan's Teal Lake Estates, 107 Lots, Maple Grove	N/A	01
14192-1	Progress Development	SF 139-87-DC, Country Hollow, 99 Lots, Eagan	N/A	01
14197-1	Heritage Development	SF 140-87-DC, Heritage Estates, 82 Lots, Cottage Grove	N/A	01
14198-1	Delta Development, Inc.	SF 141-87-DC, Rolling Oaks South Plat 7 & 8, 124 Lots, Lakeville	N/A	01

14199-1	Almac, Inc.	SF 142-87-DC, Island View 4th, 42 Lots, Prior Lake	N/A	01
14200-1	J.B.J. Co., Inc.	SF 143-87-DC, Shadow View Estates, 13 Lots, Maple Grove	N/A	01
14201-1	Wesley, Raymond & Jean	SF 144-87-DC, Marwenlynndea-Michray, 27 Lots, Maple Grove	N/A	01
14202-1	Walnut Ridge Development Corp.	SF 146-87-DC, Walnut Ridge, 86 Lots, Lakeville	N/A	01
14203-1	Argus Development, Inc.	SF 149-87-DC, Southwood, 44 Lots, Savage	N/A	01
14205-1	Benedict, John A. & Assoc., Inc.	SF 148-87-DC, Dakota County Estates 4th, 64 Lots, Farmington	N/A	01
14207-1	Almac, Inc.	SF 152-87-DC, Island View 5th, 31 Lots, Prior Lake	N/A	01
14208-1	Cahill Petricka Bldrs.	SF 154-87-DC, Pinehill Acres 4th, 36 Lots, Cottage Grove	N/A	01
14209-1	Progress Development, Inc.	SF 155-87-DC, Creek View 1st & 2nd, 27 Lots, Lakeville	N/A	01
14210-1	Good Value Homes, Inc.	SF 156-87-DC, Oakdale Meadows 11th, 48 Lots, Oakdale	N/A	01
14211-1	Good Value Homes, Inc.	SF 157-87-DC, Oakdale Meadows 12th, 22 Acres, Oakdale	N/A	01
14216-1	Gagnan Development, Inc.	SF 158-87-DC, Northaven, 14 Lots, Blaine	N/A	01
14217-1	Cave, Ed & Sons, Inc.	SF 159-87-DC, Caves Nebraska, 45 Lots, Maplewood	N/A	01
14219-2	Wensmann Homes, Inc.	SF 9-88-DC, Wensmann Addition, 208 Lots, Rosemount	N/A	16
14223-1	Miles, James Development, Ltd.	SF 150-87-DC, Townhomes At Wildwood Ponds, 19 Lots, Apple Valley	N/A	01
14225-1	United Mortgage Corp.	SF 167-87-DC, Huntington, 102 Lots, Apple Valley	N/A	01
14226-1	United Mortgage Corp.	SF 168-87-DC, Hunters Ridge, 60 Lots, Apple Valley	N/A	01
14230-1	Sienna Corporation	SF 169-87-DC, Sunset Pond Preserve, 121 Lots, Burnsville	N/A	01
14232-1	Good Value Homes, Inc.	SF 173-87-DC, Homestead Creek, 292 Lots, Lakeville	N/A	01
14233-1	Good Value Homes, Inc.	SF 172-87-DC, Parkway Ponds Plat Two, 67 Lots, White Bear Twp.	N/A	01
14237-1	Muske W.H.	SF 175-87-DC, Bittersweet, 92 Lots, Forest Lake Twp.	N/A	01
14238-1	Heritage Development, Inc.	SF 176-87-DC, Heritage Place, 71 Lots, Shakopee	N/A	01

14246-1	Washington County HRA	SF 178-87-DC, Stevens Ridge Estates, 200 Lots, St. Paul Park	N/A	01
14248-1	Brighton Development	SF 179-87-DC, The Greenway Townhomes, 13 Lots, Minneapolis	N/A	01
14249-1	Reynolds Homes, Inc.	SF 181-87-DC, Oak Creek Estates, 27 Lots, Brooklyn Park	N/A	01
14253-1	Meritor Development Corporation	SF 182-87-DC, Chapel Hills, 59 Lots, Lakeville	N/A	01
14254-1	Meritor Development Corporation	SF 183-87-DC, Bluebill Bay Estates, 97 Lots, Lakeville	N/A	01
14266-1	U.S. Home Corp.	SF 187-87-DC, Country Hills 2nd, 160 Lots, Rosemount	N/A	01
14267-1	American Heartland Homes Of Dakota County, Inc.	SF 188-87-DC, Valley Meadows, 32 Lots, Apple Valley	N/A	01
14268-1	Swanson Homes, Inc.	SF 189-87-DC, Woodland Ponds 3rd, 4th & 5th, 81 Lots, Maple Grove	N/A	01
14270-1	Lundgren Bros. Construction, Inc.	SF 190-87-DC, McKinley Place At Near Mountain 3rd, 26 Lots, Shorewood	N/A	01
14273-1	Tri-Land Partnership Of Eagan	SF 191-87-DC, Lexington Parkview, 53 Lots, Eagan	N/A	01
14274-1	Sienna Corporation	SF 193-87-DC, Bridle Ridge 1st, 104 Lots, Eagan	N/A	01
14276-1	Scotland, Inc.	SF 194-87-DC, Windemere TH, 80 Lots, Burnsville	N/A	01
14280-1	United Mortgage Corp.	SF 195-196-197-87-DC, Lake Forest Blocks 1,2 & 3, 34 SF & 81 TH, Minnetonka	N/A	01
14281-1	Gaughan Land, Inc.	SF 198-87-DC, Tralee Terrace, 148 Lots, Coon Rapids	N/A	01
14282-1	Erickson D. Home Builders	SF 199-87-DC, D. Erickson 2nd, 81 Lots, Lino Lakes	N/A	02
14302-1	New Horizon Homes, Inc.	SF 203-87-DC, Windwood Plat IV, 84 Lots, Woodbury	N/A	01
14303-1	Centex Homes Corp.	SF 206-87-DC, Curry Farms, 53 Lots, Chanhassen	N/A	01
14307-1	Tim-Hank Development	SF 204-87-DC, Scheffler Estates, 25 Lots, Champlin	N/A	01
14308-1	Eibensteiner, Marcel	SF 207-87-DC, Sofie Peterson, 44 Lots, Little Canada	N/A	01
14310-1	Gonyea Development Co.	SF 210-87-DC, Gonyea's Oak Heights 1st, 39 Lots, Maplewood	N/A	01
14311-1	Middlemist Properties	SF 212-87-DC, Scott Middlemist Addition, 22 Lots, Maple Grove	N/A	01
14319-1	Harstad Companies	SF 213-87-DC, Hugo Meadows, 57 Lots, Hugo	N/A	01

14320-1	Franklin, J.B. Corp.	SF 215-87-DC, Waterbury Cove, 65 Lots, White Bear Lake	N/A	01
14321-1	Franklin, J.B. Corp.	SF 214-87-DC, Sun Meadows 4th, 64 Lots, Oakdale	N/A	01
14323-1	Brook Park Realty, Inc.	SF 216-87-DC, Stonehenge Of Edinburgh, 68 Lots, Brooklyn Park	N/A	01
14324-1	Graham Development Co.	SF 218-87-DC, Cutters Ridge, 45 Lots, Eagan	N/A	01
14325-1	Meritor Development Corporation	SF 220-87-DC, Parkland Manor, 41 Lots, Brooklyn Park	N/A	01
14326-1	G.M. Development, Inc.	SF 221-87-DC, Reshanau Lake Estates South, 38 Lots, Lino Lakes	N/A	01
14328-1	Liberty Development Corp.	SF 219-87-DC, Liberty Heights 5th, 38 Lots, Chaska	N/A	01
14329-1	Laurent Development Company	SF 222-87-DC, Silverthorne 3rd, 22 Lots, Plymouth	N/A	01
14331-1	Builders Development, Inc.	SF 1-88-DC, Saddlebrook, 140 Lots, Chanhausen	N/A	01
14332-1	United Mortgage Corp.	SF 2-88-DC, Hills Of Stonebridge, 222 Lots, Eagan	N/A	16
14333-1	Ulmer Construction, Inc.	SF 3-88-DC, Knollwood, 56 Lots, Cottage Grove	N/A	16
14334-1	Rosemount Partners	SF 5-88-DC, Carrollton 2nd, 126 Lots, Rosemount	N/A	16
14339-1	Bruggeman Construction Co.	SF 4-88-DC, Brandlwood Farms 8th, 38 Lots, White Bear	N/A	16
14340-1	Ground Development, Inc.	SF 10-88-DC, Cedarglen, 25 Lots, Lakeville	N/A	16
14343-1	Frontier Co.	SF 12-88-DC, Manchester Village, 51 Lots, Minnetonka	N/A	16
14344-1	Rehbein, El & Son, Inc.	SF 11-88-DC, Diamond Ridge, 77 Lots, Oakdale	N/A	16

I. Federal Grant and Loan Requests

B. U.S. Department Of H.U.D.

2. Multiple, Public, Elderly and Handicapped Housing Programs

Referral Number	Applicant	Description	Amount	Action Code
12912-2	South Washington County Senior and Handicapped Housing,	202, Addition to Red Rock Manor, 24 Units, Newport	885,600	01
13694-2	Minnetonka Highpointe Partnership	221D4, Woodland Apartments, 248 Units, Minnetonka	12,388,000	01
13733-4	Carver Lake Park Company	221D4, Carver Lake Apartments, 228 Units, Woodbury	10,627,200	01

13961-2	Meritor Mortgage Corp.	221D4, Regency Woods, 282 Units, Minnetonka	16,592,300	01
14012-1	Fraser, Louise Whitbeck Community Services, Inc.	202, W. Fraser Independent Living Project, 30 Units, Richfield	1,039,700	01
14092-1	Archdiocese Of St. Paul and Minneapolis	202, Mount Carmel Manor, 60 Units, West St. Paul	2,212,800	01
14117-1	Rezac, C.S. Gene	221D4, Majestic Pines, 67 Units, White Bear Lake	2,674,500	01
14133-1	First American Development Corp.	221D4, Chanhassen Project, 60 Units, Chanhassen	2,167,900	01
14152-1	Hall, S.E. - Whitney Young Housing Corp.	202, S.E. Hall-Whitney Young, 45 Units, St. Paul	1,667,200	01
14183-1	River Road Associates	221D4, River Road Apartments, 400 Units, Minneapolis	30,407,200	01
14222-1	Teamster Retiree Housing Of Minneapolis, Inc.	202 Teamster Retiree Housing Corp., 24 Units	1,012,000	01
14224-1	Brown Meadows Partnership	221D4, Brown Meadow Manor, 123 Units, Coon Rapids	5,467,200	01
14260-1	Minneapolis	Jack Frost Flats	850,000	01
14304-1	Minneapolis	Public Housing, Scattered Sites	1,889,430	01
14306-1	Whittier Alliance	Whittier Studio Homes, 6 Lots, Minneapolis	N/A	01

I. Federal Grant and Loan Requests
C. U.S. Department of Transportation
1. Airport Programs

Referral Number	Applicant	Description	Amount	Action Code
14082-1	Minn. Department Of Transportation	Minnesota Aviation System Plan	\$ 405,000	01
14083-1	South St. Paul	Airport Improvements	432,000	01
14155-1	US Department Of Transportation	Install Instrument Landing System and Malsr	Unknown	01
14204-1	Metropolitan Airports Commission (MAC)	150 Noise Compatibility Program	Unknown	01

I. Federal Grant and Loan Requests
C. U.S. Department of Transportation
2. Transit Programs

Referral Number	Applicant	Description	Amount	Action Code
14003-1	Regional Transit Board (RTB)	Demonstration Of Competitive Transit Project	350,000	01
14245-1	Hastings	Paratransit Assistance	41,104	16
14250-1	Carver County	Paratransit Assistance	27,280	16

14119-1	Ebenezer Society	E & H Transportation, One Bus	20,580	01
14134-1	Accessible Space, Inc.	E & H Transportation Services, One Van	16,800	01
14135-1	Dakota, Inc.	E & H Transportation Services, One Bus	20,580	01
14145-1	Courage Center	E & H Transportation Services, One Bus	20,580	01
14146-1	Healthhome Corp.	E & H Transportation Services, One Bus	24,360	01
14149-1	White Bear Lions Club	E & H Transportation Services, One Bus	20,580	01
14150-1	American Red Cross, St. Paul Chapter	E & H Transportation Services, One Van	18,480	01
14151-1	Chicanos Latinos Unidos En Servicios	E & H Transportation Services, One Bus	Unknown	01
14169-1	West Seventh Community Center	E & H Transportation Services, One Van	18,480	01
14170-1	Wilder, Amherst H. Foundation	E & H Transportation Services, One Van	19,600	01
14171-1	Gideon Pond Center, Inc.	E & H, Transportation Services, One Bus	20,580	01
14172-1	Indian Family Services, Inc.	E & H Transportation Services, One Bus	23,200	01
14173-1	Lions Club Of Fridley	E & H Transportation, One Bus	24,360	01
14174-1	Minneapolis Urban League	E & H Transportation, One Van	18,480	01
14175-1	Delano Area Senior Center	E & H Transportation, One Bus	18,480	01
14176-1	Southshore Senior Center	E & H Transportation, One Bus	20,580	01

I. Federal Grant and Loan Requests
C. U.S. Department of Transportation
3. Highway Programs

Referral Number	Applicant	Description	Amount	Action Code
13999-1	Transportation Advisory Board (TAB)	FAU Evaluation Report	N/A	01
14000-1	Minn. Department Of Transportation	Bridge Replacements, TH100 W FR RD Over C&N RR, TH55/TH100 Interchange	2,627,000	02
14006-1	TAB	FAU Functional Classification Changes, Miscellaneous	N/A	01
14006-2	TAB	Functional Classification Changes, Fairview Ave., CR D and CR B2	N/A	01
14008-1	TAB	1987-89 Transportation Improvement Program (TIP)	N/A	01

14008-2	TAB	1987-89 TIP Amendment, Miscellaneous	N/A	01
14008-3	TAB	1987-89 TIP Amendment, Loop Detectors	N/A	01
14008-4	TAB	1987-89 TIP Amendment, Sand Filled Median Barrier - I-35W	N/A	01
14008-5	TAB	1987-89 TIP Amendment, Rice Street Channelization and Signals	N/A	01
14008-6	TAB	1987-89 TIP Amendment, UMTA Section 16 (b)(2)	N/A	01
14008-7	TAB	1987-89 TIP Amendment, Interstate Preservation Projects	N/A	01
14008-8	TAB	1987-89 TIP Amendment, Traffic Signal TH-494 At Robert Street	N/A	01
14014-1	Minn. Department Of Transportation	District 9 Twenty Year Plan	N/A	12
14033-1	TAB	1989-91 FAU Criteria	N/A	01
14033-2	TAB	Additions to 1989-91 FAU Program	N/A	16
14067-1	Minn. Department Of Transportation	Larpenteur Ave. (CSAH 30) From I-35E to Edgerton Street	144,800	01
14124-1	TAB	I-335 Interstate Substitution Funding FY 88(87-3)	N/A	01
14290-1	TAB	Transportation Policy Plan Functional Classification Review (87-15)	N/A	17
14292-1	Minn. Department Of Transportation	Resurface CR 13a Between CSAH 20 and CSAH 18	429,744	01
14309-1	Metropolitan Council	1988 UPWP	N/A	02

I. Federal Grant and Loan Requests
D. U.S. Environmental Protection Agency

Referral Number	Applicant	Description	Amount	Action Code
14287-1	Prior Lake - Spring Lake Watershed District	Prior Lake Diagnostic-Feasibility Study Phase I	\$30,405	01

II. State Grant and Loan Requests
A. State Department Of Transportation

Referral Number	Applicant	Description	Amount	Action Code
14044-1	Washington County	Replace Four Bridge, 603, 4611, L8168, and L8173	\$ 389,500	01
14045-1	Washington County	Replace Bridge L8179, Harrow Ave. N.	46,800	01

14188-1	Dakota County	Replace Bridge L3233, Over Vermillion River	89,000	01
14251-1	Dakota County	Replace Bridge L3255, Over Vermillion River, 235th St.	58,022	01
14252-1	Dakota County	Replace Bridge L3246, Over Vermillion River, Hamburg Ave.	56,900	01
14256-1	Carver County	Replace Bridge L2816, Over Carver Creek, Benton Twp.	55,000	01
14291-1	Minneapolis	Replace Bridge 4016, Burnham Rd Bridge Over C & NW RR	670,000	01

III. Metropolitan Significance

Referral Number	Applicant	Description	Action Code
14141-1	Minneapolis	NBA Arena, Minneapolis	03
14154-1	St. Paul	NBA Arena, Minneapolis	02
14318-1	Lino Lakes	Pheasant Ridge Music Center	16

IV. Independent & Metro Agency Plans and Programs

A. Independent Agency Plans and Programs

Referral Number	Applicant	Description	Action Code
14038-1	Pioneer - Sarah Creek Watershed District	Watershed Management Plan	01
14039-1	Elm Creek Watershed District	Watershed Management Plan	01
14080-1	Richfield-Bloomington Watershed Management Organization	Watershed Management Plan	01
14102-1	Six Cities Watershed Management Organization	Watershed Management Plan	01
14194-1	Coon Creek Watershed District	Watershed Management Plan	01
14239-1	East Mississippi Watershed Management Organization	Watershed Management Plan	02
14264-1	Bassett Creek Water Management Commission	Watershed Management Plan	16
14265-1	Rice Creek Watershed District	Watershed Management Plan	16
14316-1	Prior Lake - Spring Lake Watershed District	Stormwater Runoff and Water Quality Management Plan	16

IV. Independent and Metro Agency Plans and Programs
B. Metropolitan Agency Plans and Programs

Referral Number	Applicant	Description	Action Code
13098-4	Metropolitan Waste Control Commission (MWCC)	1986-1990 Development Program Amendments, Additional Proj.	01
13098-5	MWCC	1986-90 Development Program Amendment, RBS Improvement, Project #87-5	16
13426-2	MWCC	New Brighton Interceptor, 84-51, Revised	01
13871-2	MWCC	1987 Capital Budget Amendment, Seneca WWTP & Plymouth Interceptor	01
13871-3	MWCC	1987 Capital Budget Amendment, Beaver Lake Interceptor	01
13871-4	MWCC	1987 Capital Budget Amendment, New Brighton Interceptor	01
13871-5	MWCC	1987 Capital Budget Amendment, RBS Improvements, Proj. No 87-55	01
13871-6	MWCC	1987 Capital Budget Amendment, Eagan Interceptor Improvements, Proj	01
13914-2	RTB	1987 RTB (MTC) Capital Budget Amendment	01
13914-3	RTB	1987 RTB (MTC) Capital Budget Amendment, TIP Amendment Nicollet	01
13996-1	RTB	Implementation and Financial Plan	02
13996-2	RTB	Revisions to Implementation and Financial Plan	01
14027-1	MAC	1987 Capital Budget Improvement Projects, 1988 CIP	02
14068-1	MWCC	P & S, Savage Interceptor, Construct Lift Station/forcemain, No. 85	01
14087-1	MWCC	1988-1992 Development Program	01
14162-1	MWCC	P & S, Eagan Interceptor Improvements, Project No. 85-68	01
14257-1	MWCC	1988 Capital Budget	02
14259-1	Metropolitan Sports Facilities Commission (MSFC)	1988 Budget	01
14279-1	RTB	1988 RTB (MTC) Capital Budget	02
14335-1	MAC	Comprehensive Airport Development Plan, Airlake Airport	16

V. Local Government Plans & Projects

Referral Number	Applicant	Description	Action Code
11327-5	Rosemount	CP Amendment, 40 Acre Addition to MUSA	01
11327-6	Rosemount	CP Amendment, 70 Acre Addition to MUSA	01
11327-7	Rosemount	CP Amendment, 42 Acre Addition to MUSA, 128 SF Lots	01
11347-3	Mahtomedi	CP Amendment, 24 Acres to Sewer Plan/MUSA Line	01
11347-4	Mahtomedi	CP Amendment, Sewer Staging Plan	16
11347-5	Mahtomedi	CP Amendment, Land Use Issues For Property Annexed From Oakdale	16
11594-9	Chanhassen	CP Amendment, Year 2000 MUSA Amendment, 16 Lots	02
11609-8	Woodbury	CP Amendment, Valley Creek Apartments	01
11609-9	Woodbury	CP Amendment, MUSA Change, Wedgewood Estates 4th Addition	01
11627-3	Lake Elmo	CP Amendment, Update Goal and Policy Sections	02
11666-7	Mendota Heights	CP Amendment, Land Use Change - Southeast Area	01
11666-8	Mendota Heights	CP Amendment, 11 Acres, TH 55 & Mendota Heights Rd., B-1A Zoning	01
11793-2	Stillwater	CP Amendment, Annexation Of Areas	02
11793-3	Stillwater	CP Amendment, Industrial Park to Residential Multi-Family, Duplex	01
11801-8	Roseville	CP Amendment, Industrial to Business	01
11801-9	Roseville	CP Amendment, Residential to Business, Super America	01
11804-2	Dayton	CP Amendment, Brockton Lane, Commercial/Industrial	01
12057-4	Linwood Twp.	CP Amendment, Rezone From R-A to R-1	03
12057-5	Linwood Twp.	CP Amendment, Rezone R-1 to B-General Business Dist. Shekinah Ministries	01
12092-8	Oakdale	CP Amendment, Update Sewer Plan With Year 2000 Projection	01
12092-9	Oakdale	CP Amendment, Zoning/Land Use Dist. Transmission Towers, N.W. College, KTIS	16
12134-2	Victoria	CP Amendment, MUSA Year 2000	01
12153-3	Farmington	CP Amendment, Agriculture	01

12153-4	Farmington	CP Amendment, Hardees Restaurant & 37 Unit Elderly Apt. Bldg.	01
12207-2	Independence	CP Amendment, Add 17 Acre Tract Of Land Into Non-Urban Planning Dist.	01
12207-3	Independence	CP Amendment, Add Tract Of Land to Commercial/Industrial Planning	01
12494-5	Apple Valley	CP Amendment, Open Area & Visitors Bureau - Minn. Zoological Gard	01
12494-6	Apple Valley	CP Amendment, Emporium Sportcenters	01
12494-7	Apple Valley	CP Amendment, 83.8 Acres Residential	01
12638-4	Cottage Grove	CP Amendment, Commercial and Industrial Development	02
12872-5	Eagan	CP Amendment, Update 1980 Comprehensive Guide Plan	02
13075-2	Centerville	CP Amendment, Rezoning From Commercial To Industrial, Sunrise Plastic	01
13075-3	Centerville	CP Amendment, Rezoning From Industrial To Rural Residential, 10 Acres	01
13075-4	Centerville	CP Amendment, Expand Urban Service Area	02
13113-3	Wayzata	CP Amendment, Fazendin	01
13137-4	White Bear Twp.	CP Amendment, 2000 MUSA Line	01
13137-5	White Bear Twp.	CP Amendment, Rezone Residential to Multi-Family, Parkway Ponds	01
13187-6	Maple Grove	CP Amendment, Rezone From R-2 SF to R-3 PUD, Hajder Heights	01
13187-7	Maple Grove	CP Amendment, Revisions, Land Use, Housing, Community Facilities	02
13187-8	Maple Grove	CP Amendment, Low Density to Medium Density, Timberwood	01
13187-9	Maple Grove	CP Amendment, Gravel Mining Area	16
13382-3	Inver Grove Heights	CP Amendment, Service Area Expansion, 524 Acres	02
13382-4	Inver Grove Heights	CP Amendment, Salem Square Shopping Center	01
13382-5	Inver Grove Heights	CP Amendment, Revised Sanitary Sewer Plan Map	01
13398-4	Plymouth	CP Amendment, Update Capital Improvement Program	01
13398-5	Plymouth	CP Amendment, Revise Language to Park Element	01
13398-6	Plymouth	CP Amendment, Update Waste Control Element	01

13398-7	Plymouth	CP Amendment, Staged Development Plan (Growth Element)	01
13398-8	Plymouth	CP Amendment, Groves I.T.T. Mixed Planned Unit Development (MPUD)	16
13398-9	Plymouth	CP Amendment, Plymouth Point Shopping Center	16
13414-2	Blaine	CP Amendment, Sewer Policy Plan - Year 2000 MUSA Line Clarification	01
13414-3	Blaine	CP Amendment, Music Center	02
13506-2	Fridley	CP Amendment, Redevelopment District to Multiple Dwellings, 358 Units	01
13599-2	Carver	CP Amendment, 18.5 Acre Zoning Change To Parks Recreation	01
13601-2	Hastings	CP Amendment, TH 316 Annexation	01
13696-6	Lakeville	CP Amendment, Dodd Ridge 2nd	01
13696-7	Lakeville	CP Amendment, Bluebill Bay Estates	01
13696-8	Lakeville	CP Amendment, Meadows West 2nd and 3rd Addition	01
13696-9	Lakeville	CP Amendment, Cherrywood Heights 3rd Addition	01
13848-4	Maplewood	CP Amendment, Hmong Christian & Missionary Alliance Church	01
13848-5	Maplewood	CP Amendment, Medium to Density, Residential to Church, Salvation Army	01
13848-6	Maplewood	CP Amendment, Baumann Dental Clinic	01
13848-7	Maplewood	CP Amendment, Search Area For Elementary School Site	01
13848-8	Maplewood	CP Amendment, Gonyea's Oak Heights	01
13848-9	Maplewood	CP Amendment, Limited Service Commercial Center (LSC)	01
13849-3	Prior Lake	CP Amendment, Natural Features Policies	02
13849-4	Prior Lake	CP Amendment, Raspberry Ridge	01
13855-3	Bloomington	CP Amendment, Land Use Change, Normandale & 84th	01
13855-4	Bloomington	CP Amendment, Roadway Classification, Killebrew Dr. & E. 82nd St.	01
13855-5	Bloomington	CP Amendment, Reprint Land Use Map	01
13855-6	Bloomington	CP Amendment, Industrial to High-Density Residential, Bush Lake Road	01
13855-7	Bloomington	CP Amendment, High-Density Residential Development	01

13855-8	Bloomington	CP Amendment, High Density Residential To Service-Oriented Mixed Use	01
13855-9	Bloomington	CP Amendment, Medium Density to Low Density, Minnesota Bluff Drive	01
13904-5	Eden Prairie	CP Amendment, Park to Low Density Residential, Meadow Park 3rd	01
13904-6	Eden Prairie	CP Amendment, Super America	07
13904-7	Eden Prairie	CP Amendment, Public Open Space to Low Density Residential, Tree Farm	01
13904-8	Eden Prairie	CP Amendment, Medium Density Residential to Low Density Residential (39 acres)	01
13904-9	Eden Prairie	CP Amendment, Medium Density Residential & Public Open Space	02
13983-2	Minnetonka	CP Amendment, Low Density to Med. Density Res./Institutional, Sr. Citizen Unit	01
13983-3	Minnetonka	CP Amendment, Highway 12/I-394 Corridor	01
14023-1	Orono	CP Amendment, (Area 14) Fulmer Property	01
14032-1	Forest Lake Township	CP Amendment, Harstad Properties	01
14032-2	Forest Lake Twp.	CP Amendment, Rezone 10 Acre Parcel From A-1 to R-4	01
14032-3	Forest Lake Twp.	CP Amendment, Rezone 40 Acres From R-1 To R-4	01
14046-1	Rosemount School District #196	Capital Improvement Program 1987-1992	01
14054-1	Castle Rock Twp.	CP Amendment, Improvements to Dakota County Fairgrounds	02
14118-1	Chanhassen	CP Amendment, 8.2 Acres Residential Low Density to High Density	01
14118-2	Chanhassen	CP Amendment, 24.3 Acre Park & Open Space to Residential Low Density	02
14118-3	Chanhassen	CP Amendment, PUD and MUSA Boundary	16
14120-1	Lino Lakes	CP Amendment, 5 Year Update, 1987	02
14120-2	Lino Lakes	CP Amendment, MUSA Additions For Erickson 2nd & South Reshanau	01
14158-1	Eden Prairie	CP Amendment, Med. Density to Low Density Res., Cardinal Creek Ridge	01
14158-2	Eden Prairie	CP Amendment, Low Density to Comm. Commercial, Anderson's Garden	01
14158-3	Eden Prairie	CP Amendment, Low Density to Church, Faith Nazarene Church	01
14158-4	Eden Prairie	CP Amendment, Fountain Place Project	02

14158-5	Eden Prairie	CP Amendment, Auto Mall	16
14185-1	Circle Pines	CP Amendment, Comprehensive Sewer Policy Plan	01
14206-1	Andover	CP Amendment, Expand Municipal Services Beyond Current Boundary	02
14213-1	Lakeville	CP Amendment, Lynwood South	01
14213-2	Lakeville	CP Amendment, Barrett 3rd Addition	01
14213-3	Lakeville	CP Amendment, Walnut Ridge	01
14213-4	Lakeville	CP Amendment, Meadows 6th Addition	01
14213-5	Lakeville	CP Amendment, NE Area MUSA	07
14213-6	Lakeville	CP Amendment, Chapel Hills	01
14234-2	Lakeville	CP Amendment, Woodridge 4th Addition	01
14240-1	Bloomington	CP Amendment, 5.C Acres, Old Shakopee Road and Normandale	01
14241-1	St. Paul	CP Amendment, Mississippi River Corridor	01
14255-1	Lakeville	CP Amendment, Brackett Townhomes & Estates	01
14255-2	Lakeville	CP Amendment, Rolling Oaks 7 & 8	01
14255-3	Lakeville	CP Amendment, Lynwood North	01
14255-4	Lakeville	CP Amendment, Crystal Ridge Estates	01
14255-5	Lakeville	CP Amendment, Brackett's Townhomes 2nd Addition	01
14255-6	Lakeville	CP Amendment, Lynwood North 2nd Addition	01
14255-7	Lakeville	CP Amendment, Cedar Glen	01
14255-8	Lakeville	CP Amendment, Homestead Creek, 63 Lots	01
14255-9	Lakeville	CP Amendment, Meadows 7th Addition, 27 Lots	01
14286-1	Lexington	CP Amendment, Update Land Use and Zoning	01
14317-1	Maplewood	CP Amendment, Harmony School	01
14317-2	Maplewood	CP Amendment, Lakewood Drive Realignment	01
14336-1	Camden Twp.	CP Amendment, Adopt The Wooded Lot Provision	01

VI. Miscellaneous Referrals
A. Special Transportation Projects

Referral Number	Applicant	Description	Action Code
12203-4	Maple Grove	Preliminary Application, TH 610 ROW, Parcel A, Fountain Park West	01
12203-5	Maple Grove	ROW Application, TH 610 Parcel A	01
12634-2	Brooklyn Park	Final Application, TH 610/252 ROW, Parcel K	01
12740-3	Minn. Department Of Transportation	Controlled Access, I-694 Between TH 152 & I-35W	01
14107-1	Minn. Department Of Transportation	New TH 10, Egret Blvd. to I-35W	01
14187-1	Minn. Department Of Transportation	Layouts For Shakopee Bypass	01

VI. Miscellaneous Referrals
B. Environmental Assessments, Scopings, and Statements

Referral Number	Applicant	Description	Action Code
10946-2	Hennepin County	CSAH 18, I-494 to TH 13	02
11335-5	Minn. Department Of Transportation	TH 3 (Lafayette Freeway), From Jct. TH 55 to Jct. I-494	02
13066-2	Minn. Department Of Transportation	Final EIS, TH 61 in Minn. to Jct Hwy 29 & 10 in Wisc.	01
13109-3	Minn. Department Of Transportation	Draft EIS, TH 77 & I-494	02
13109-4	Minn. Department Of Transportation	Final EIS, TH 77 & I-494	12
13128-3	St. Paul	EIS Scoping Decision, Shephard/Warner/ECBD Bypass	01
13200-2	Minn. Dept. Of Transportation	Final Scoping Document, TH 36 in Minn. & TH 64/35 in Wisc.	02
13367-2	St. Louis Park HRA	St. Louis Centre	02
13405-3	Champlin	Final EIS, Elm Creek PUD	11
13784-2	Minneapolis	Draft EIS, Lasalle Plaza	02
13784-3	Minneapolis	Final EIS, Lasalle Plaza	01
13790-2	Rosemount	O'Leary's Hills Residential PUD	01
13955-2	Mounds View	Draft EIS, Mounds View Business Park	02
13955-4	Mounds View	Final EIS, Mounds View Business Park	02
14001-1	Minneapolis Park & Recreation Board	Roberts Bird Sanctuary Restoration	01

14002-1	Woodbury	Valley Creek Apartments, 40 Acres, PUD	01
14021-1	Burnsville	Burnsville Town Square	01
14028-1	Savage	Valley Glen	01
14031-1	Dakota County	CR 43, CR 28 to 1.75 Miles South	01
14034-1	White Bear Lake	White Bear Woods	03
14036-1	Washington County	Bischoff Mining Area	01
14049-1	Minn. Department Of Transportation	TH 101/169 (First Avenue)	01
14059-1	Minneapolis	Scoping EAW, Nicollet Mall Project	03
14059-2	Minneapolis	Draft EIS, Nicollet Mall Project	02
14059-3	Minneapolis	Final EIS, Nicollet Mall Project	02
14071-1	Woodbury	Scoping EAW, Wooddale Park Planned Unit Development	02
14097-1	Minneapolis	Scoping EAW, Normandy Block Project	01
14097-2	Minneapolis	Draft EIS, Normandy Block Project	01
14097-3	Minneapolis	Final EIS, Normandy Block Project	12
14177-1	Savage	River Bluff Music Center, 140 Acres	02
14184-1	Andover	Hills Of Bunker Lake	02
14189-1	Shakopee	O'Dowd Lake Estates and Golf Course	02
14219-1	Rosemount	Wensmann Addition	01
14227-1	Shakopee	Starwood Music Center	02
14231-1	Minn. Pollution Control Agency	Scoping EAW, Koch Refining Company's New Land Treatment Facility	01
14234-1	Lakeville	Cherry View Development	01
14235-1	Minn. Environmental Quality Board	Minnesota Intrastate Transmission Systems Project	02
14243-1	Maple Grove	Wedgewood Commerce Centre	02
14247-1	Minneapolis	IDS Data/Service Center	01
14272-1	Blaine	Pheasant Ridge Music Center	03
14296-1	Minneapolis	Royalston Avenue Between Glenwood Avenue and Holden Street	01
14297-1	Minn. Pollution Control Agency	J.V.J. Strip Retail Center	01
14314-1	Chanhassen	Lake Susan Hills West PUD	02
14315-1	Edina	Hedberg, EAW	02
14337-1	Minn. Department Of Transportation	EA/Draft Section 4(f) Evaluation, TH 55 To TH 61 West Of City Limits	16

VI. Miscellaneous Referrals
C. Critical Area Plans

Referral Number	Applicant	Description	Action Code
14242-1	St. Paul	Critical Area Plan Amendment	01

VI. Miscellaneous Referrals
D. Solid Waste Matters
1. Solid Waste Plans and Reports

Referral Number	Applicant	Description	Action Code
10246-8	Anoka County	Site D, Dev. Limitation Abrogation, Egan Trust	16
10246-9	Anoka County	Site Q, Dev. Limit. Abrogation, Radio Antenna	16
10306-4	Washington County	Site G, Dev. Limit. Abrogation, O'Connor	03
10435-7	Koecher, Donald	Site J, Dev. Limit. Abrogation Request, Evergreen School	01
14005-1	Hennepin County	Solid Waste Master Plan	01
14050-1	Washington County	Solid Waste Management Master Plan (Intermediate Draft)	01
14132-1	Hennepin County	1986 Solid Waste Annual Report	01
14138-1	Anoka County	1987 Solid Waste Annual Report	01
14139-1	Scott County	1986 Solid Waste Annual Report	01
14140-1	Washington County	1986 Solid Waste Annual Report	01
14147-1	Ramsey County	1986 Solid Waste Annual Report	01
14147-2	Ramsey County	Solid Waste Master Plan	01
14148-1	Dakota County	1986 Solid Waste Annual Report	16
14157-1	Scott County	Solid Waste Master Plan	02
14178-1	Carver County	1986 Solid Waste Annual Report	01
14191-1	Hennepin County	Landfill Site J, Independence	01
14214-1	Dakota County	Solid Waste Master Plan	16
14236-1	Carver County	Solid Waste Master Plan	02
14293-1	Anoka County	Solid Waste Master Plan	01

VI. Miscellaneous Referrals**D. Solid Waste Matters****2. Solid Waste Projects, Permits, Ordinances, and Contracts**

Referral Number	Applicant	Description	Action Code
10377-7	Woodlake Sanitary Services, Inc.	Flying Cloud Landfill Expansion, SW-14 (Revised)	16
11240-4	Ramsey County	Amend Hazardous Waste Management Ordinance	01
12402-4	Ramsey/Washington Counties	Amend Designation Ordinance	01
13178-3	Fabcon, Inc.	Expand Fabcon Industrial Waste Landfill	16
13692-2	Anoka County	Amend Hazardous Waste Management Ordinance No. 85-4	01
13901-2	Scott County	Amend Hazardous Waste Management Ordinance No. 12	01
13394-5	Anoka County	Amendment to Design & Construction & Service Agreements, Elk River	01
14015-1	Celar Systems, Inc.	Pine Bend Ash Processing Plant	06
14072-1	Bellaire Sanitation, Inc.	Bellaire Resource Recovery System	04
14078-1	Hennepin County	S.W. Contract, Hennepin County/Northern States Power Co. (Elk River)	01
14244-1	Dakhue Landfill, Inc.	Dakhue Demolition Landfill	01
14258-1	Bituminous Roadways, Inc.	Rich Valley Demolition Landfill	01

VI. Miscellaneous Referrals**E. Special Permits****1. Air Quality Permits**

Referral Number	Applicant	Description	Action Code
11744-2	Cargill, Inc.	Modify Soybean Oil Processing Plant	16
14342-1	Told Development Co.	Wedgewood Commerce Centre	16

VI. Miscellaneous Referrals**E. Special Permits****2. National Pollution Discharge Elimination System and State Disposal System Permits**

Referral Number	Applicant	Description	Action Code
13054-3	Blount Energy Resource Corp.	Hennepin County Large Scale Energy Recovery Project	01
13998-1	New Prague	Wastewater Treatment Facility	04
13998-2	New Prague	Wastewater Treatment Facility	12

14017-1	Heileman, G. Brewing Co., Inc.	Cooling Water Discharge, Jacob Schmidt Brewing Co.	04
14022-1	Lake Elmo	Wastewater Treatment Facility	02
14037-1	Northern States Power Co.	Cooling Water Discharge, Blackdog Generating Plant	04
14040-1	Honeywell, Inc.	Hazardous Waste Facility	01
14051-1	McGowan, R.B. Co.	Wastewater Treatment Facility, McGowan Quarry Area	04
14085-1	Minneapolis	29 Wastewater Collection System Bypasses and Overflows	01
14086-1	St. Paul	47 Wastewater System Collection System Bypasses and Overflows	01
14095-1	Rogers	Wastewater Treatment Facility	04
14096-1	Shiely, J. L. Co.	Drainage Discharge, Shakopee Quarry Area	04
14115-1	Honeywell, Inc.	Hazardous Waste Facility	01
14121-1	Kraemer, Edward & Sons, Inc.	Wastewater Treatment Facility, Kraemer Quarry Area	02
14125-1	Twin Cities Ammunition Plant	Wastewater Treatment Facility	04
14129-1	FMC Corporation	Hazardous Waste Facility	01
14142-1	Northern States Power Co.	Hazardous Waste Facility, Chestnut Service Center	01
14215-1	Associated Transportation Service	Wastewater Treatment Facility	04
14221-1	Honeywell, Inc.	RCRA Permit, Hazardous Waste Storage Facility	07
14228-1	Iacarella, John	Linwood Terrace Mobile Home Park	01
14229-1	Hamm, Donald J.	KOA Twins Campground	01
14263-1	MWCC	Municipal (MWCC) Wastewater Treatment Facility Sludge Landspreading	01
14269-1	Watertown	Wastewater Treatment Facility	01
14275-1	Honeywell, Inc.	Hazardous Waste Storage Facility	01
14294-1	Vermillion	Municipal Wastewater Treatment Facility	01
14299-1	MWCC	Seneca Wastewater Treatment Facility	16
14300-1	MWCC	Blue Lake Wastewater Treatment Facility	16
14322-1	Hay, Bruce	Wastewater Treatment Facility, Maple Hills Estates Mobile Home Park	04
14330-1	US Navy / FMC Corp.	Naval Industrial Reserve Ordnance Plant/Northern Ordnance Div. P	01

14338-1	Minnesota Pipe Line Company	Land Treatment Facility	04
14341-1	Williams Pipe Line Co.	Wastewater Treatment Facility, Rosemount Pumping Station	04

VI. Miscellaneous Referrals

E. Special Permits

3. Corps of Army Engineer Permits

Referral Number	Applicant	Description	Action Code
11206-3	Bloomington	Barge Fleeting Area	01
11319-2	Bayport Marina	Modify and Construct Marina	04
13990-2	University Avenue Associates	Fill Discharge, 1.60 Acres Adjacent State Wetland (North Park Estates)	01
13997-1	East Bethel	Discharge Fill, Wetland Adjacent to State Protected Water No. 2-64	01
14013-1	Minneapolis Park & Recreation Board	Place Rip-Rap, Minnehaha Creek - Hiawatha Golf Course	01
14016-2	Bruggeman, Homer	Fill Material, Wetland Adjacent to Otter Lake, Brandlewood Farms	01
14020-1	Williams / O'Brien Associates, Inc.	Complete Private Boat Harbor On St. Croix River	01
14035-1	Lunak, Robert	Fill Material, Adjacent to Assumption Creek	02
14035-2	Lunak, Robert	Fill Material, Adjacent to Assumption Creek	01
14047-1	Gullickson, John	Discharge Fill, Adjacent to Medina Lake	02
14093-1	Kraabel, Burton & Gloria	Discharge Fill, 3.2 Acres Of Wetland Adjacent to Ham Lake	02
14099-1	Begin Development	Discharge Fill, Wetlands Adjacent to Pike Lake	02
14106-1	Laukka Development	Discharge Fill, Wetland Adjacent to Forest Lake	01
14114-1	Anoka County	Discharge Fill, Construct CSAH 22	04
14159-1	Plymouth	Wetland Fill, Amhurst 3rd Addition	01
14160-1	Independent School District #110	Fill Material, 0.25 Acre Wetland Adjacent to Stream	01
14161-1	Erickson, Dennis	Discharge Fill Material, Wetlands Adjacent to Rice Creek, 2.75 A	01
14163-1	Dahlke Jr., W.H.	Fill Material, Wetlands Adjacent to Minnesota River, Parking Area	01
14186-1	Pederson, Harold	Discharge Material, Adjacent to State Protected Wetland #7, 3.2 Acre	01

14195-1	Hastings	Discharge Fill Material, Wetlands Adjacent to Lk Isabelle & Verm	01
14196-1	Hastings	Discharge Fill Material Into Vermillion Slough	01
14212-1	Houle, Henry G.	Fill Material in Wetland, Westline Center Parking Lot	01
14220-1	J.L.S., Inc.	Discharge Fill, Expand Parking Lot, Perkins Restaurant	01
14305-1	Leibel, Curt & Dupre, Lenny	Discharge Fill Material, Highway 61 and Division Street	16

VI. Miscellaneous Referrals
F. Regional Park Master Plans

Referral Number	Applicant	Description	Action Code
09211-4	Ramsey County	Bald Eagle-Otter Lake Regional Park Master Plan	02
09216-3	St. Paul - Ramsey County	Battle Creek RP Amendment, Map 6 Acquisition - Parcel A 3.5 Acr	01
09222-3	Dakota County	Lake Byllesby Regional Park Master Plan	16
09236-3	Hennepin Parks	Bryant Lake Regional Park Master Plan	02
09236-4	Hennepin Parks	Bryant Lake Regional Park Amend. - International School Of Minnes	01
09248-2	Hennepin Parks	Fish Lake Regional Park Master Plan	02
09254-1	Hennepin Parks	Lake Minnetonka Regional Park Master Plan	02
09256-1	Anoka County/ Hennepin Parks/ Minneapolis Park & Recreation	North Mississippi Regional Park Master Plan	01
09270-3	Anoka County	Acquire 2.5 Acre Parcel, Rice Creek North Regional Trail	01

VI. Miscellaneous Referrals
G. Housing Bond Plans and Programs

Referral Number	Applicant	Description	Action Code
13845-2	Coon Rapids	Housing Bond Program (Revised), Washburn-Brown's Meadow Manor	01
14004-1	Golden Valley	Housing Bond Program, Bradley D. Stark & Assoc., 125 Units	01
14009-1	Brooklyn Center	Housing Bond Program, Single Family Housing Program	01
14010-1	Columbia Heights	Housing Bond Program, Single Family Housing Program	01

14011-1	Savage	Housing Bond Program, Single Family Housing Program	01
14024-1	Oakdale	Housing Bond Plan, 462 C	01
14029-1	Oakdale	Housing Bond Program, Single Family	01
14079-1	Washington County HRA	Housing Bond Program	02
14091-1	Dakota County HRA	Housing Bond Program	01
14137-1	Columbia Heights	Housing Bond Program, Glenwood Nursing Home	07
14190-1	Crystal	Housing Bond Progm, 80 Units, Becker Park Redevelopment Area	01
14218-1	Minneapolis	Housing Bond Program, Mount Olivet Residence, 5536 Lyndale Ave. S	01
14261-1	White Bear Lake	Housing Bond Program, Majestic Pines - Phase II, 67 Unit Apartment	01
14262-1	Minneapolis	Housing Bond Program, Augustana Home Of Mpls., 231 Apts.	07
14271-1	Chaska	Housing Bond Program, Lake Auburn Home	01
14277-1	Dakota County HRA	Housing Bond Program, Low & Moderate Income Single Family Housing	01
14278-1	Oakdale	Housing Bond Program, Low & Moderate Income Single Family Housing	01
14283-1	Anoka	Housing Bond Program, Multi-Family Housing, 82 Units	01
14284-1	Anoka	Housing Bond Program, Low & Moderate Income Single Family Housing	01
14288-1	Washington County HRA	Housing Bond Program, Low & Moderate Single Family Housing	01
14298-1	Apple Valley	Housing Bond Program, Low & Moderate Single Family Housing	01
14301-1	Chaska	Housing Bond Program, Multi-Family Housing, 168 Units, Hazeltine	01
14312-1	Minneapolis	Family Housing Program, Phase V	16
14313-1	St. Paul	Family Housing Program, Phase V	16

VII. Special Referrals

Referral Number	Applicant	Description	Action Code
11734-2	Minn. Department Of Natural Resources	Minnesota Valley National Recreation Plan	01
13994-1	TAB	Prospectus For Transportation Planning Process (86-12)	01

14126-1	TAB	Regional Highway Jurisdiction Study - 1987	01
14289-1	TAB	1987 Annual Air Quality Report (87-9)	01

ADVISORY COMMITTEE MEMBERS
1987

ADVISORY COMMITTEE ON AGING

Chairperson James Malley

Members Royal B. Bakke, Carl Carlson, Betty Carr, Elizabeth Ebbott, Sally Evert, David Fesler, Anthony Finell, Etta Furlow, Betty Greene, Dolores Hastings, Marvel R. Heath, John Heimel, Dee Knaak, Dwight Larson, Connie Lindahl, Todd Monson, Mary Jane Partyka, John Pribyl, Betty Ristow, Dorothy L. Rose, Paul Steen, Yoshi Tani, Karen Webster, Jack Wieczorek

Council Member Liaison
Mary Hauser

ARTS ADVISORY BOARD

Chairperson Phyllis J. Campbell

Members Lucinda R. Anderson, Michael J. Aubert, Vicki Bacal, Jeffrey Bartlett, John Barnier, Athea Benton, Alice Bloch, Tom Borup, Joan P. Chalmers, Bruce DeJong, Michael Engel, Kathleen Fitzgibbons, Carol Grams, Beverly Hammett, Robert Jewett, Leslie Johnson, Mary L. Lamp, Margaret Lee, Eunice McClurg, Ann W. Miller, Douglas Niska, Mary Ann Nord, Barbara O'Brien, Alexis Pate, Jerry Rubino, Anne Strasser, Marcia J. Taubr, Werner D. Tismer, Dawn Varda, Donna Vidas, Patricia Vomhof, Scott Walker

Council Member Liaison
Dottie Rietow

DEVELOPMENTAL DISABILITIES ADVISORY COMMITTEE

Chairperson Dorothy J. Skarnulis

Members Sally E. Anderl, Gerald H. Biese, Diane Carr, Karen L. Dove, Gerald Glomb, Betty L. Goodman, Eileen Harris, James R. House, Steven Holmstoen, Donald Kreftling, William Lamson, Marijo McBride, Shannon L. McCarthy-Bicha, J. Renee Moen, Marcia Moore-Foster, Alfred Morin, Diane S. McNearney, Linda Rother, Eileen Schmokel, Nancy A. Seiler, Rebecca Smith, Barbara Southworth, Katherine A. Svanda, Claudia K. Swanson, Karen Thimm

Council Member Liaison
Mike McLaughlin

METROPOLITAN HEALTH PLANNING BOARD

Chairperson Margit Berg

Members Jerry M. Blume, Li Broberg, William Burnes, Sunthi P. Chookiatsirichai, Roberta J. Davis, Susan G. Flygare, Benjamin Fuller, Robert Geist, Sue Grosse-Macemon, A. Stuart Hanson, Maureen A. Kunshier, Tobey Lapakko, Jane A. Legwold, Russell Lucas, Bea Ludens, David P. Lutes, Gayl Madigan, Jan Malcolm, Steven R. Mosow, Gladys P. Murray, Jerrald B. Olson, William J. Quinn, Dean B. Randall, Beverly Marie Scalze, A. Frank Smart, James P. Smith, Mary Stapleton, Frances S. Strong, Florence Wermerskirchen

Ex-officio Veteran's Hospital

Council Member Liaison
Mary Martin

METROPOLITAN HOUSING AND REDEVELOPMENT AUTHORITY ADVISORY COMMITTEE

Chairperson Philip Q. Cohen

Members Joan Archer, Larry Blackstad, Majel Carroll, German don Alvarado, Thomas Duffy, Sally Garber, Marilyn Spensley, Josey Warren

Council Member Liaison
Gertrude Ulrich

LAND USE ADVISORY COMMITTEE

Chairperson Gerald Stelzel

Members Brad Bjorklund, William Casey, Marylyn T. Deneen, Bill Dix, Larry Donlin, John Doyle, James Filippi, Edwina Garcia, Donald Hoese, Margaret Langfeld, Ray Leek, Richard Little, Bryan McGinnis, Mugs (Margaret) Nardini, Rosemary Thorsen, Bill Wilson, Elizabeth Witt

Council Member Liaison
Mary Hauser

MINORITY ISSUES ADVISORY COMMITTEE

Chairperson William J. Davis

Members Eugene Begay, Jill Beaulieu, Connie Brandenburg, Mary Jo Brooks, Erlinda Davis, Geri F. Evans, Jo Ann Cardenas Enos, F. Lou Fuller, Albert A. Garcia, Beverley Oliver Hawkins, Robert Hickman, Ellery July, John H. Lee, LaVon M. Lee, Gloria Kumagai, Carlos Mariani, Dr. Ronald McGinnis, Larry A. McKenzie, Rafael Ortega, Amy Stade, Patricia Thomas, Thomas Tran, Daniel E. Warner, Chia Vang, Pao Vang

Council Member Liaison
Joan Campbell

TRANSPORTATION ADVISORY BOARD

Chairperson Alton (Joe) Gasper

Members George Bentley, Roger Blessum, Frederick Corrigan, Douglas Differt, Joseph Finley, Ruth Franklin, Sam Graiss, James Heig, Barbara Hughes, Carol Johnson, James Krautkremer, Margaret Langfeld, Russ Larkin, Len Levine, Robert Lewis, Steve Loeding, Kenneth Mahle, Jr., R. E. Mertz, Duane McCarty, Robert Owens, Robert C. Owens, Todd Paulson, Barbara J. Savanick, Tony Scallon, Darrell F. Schneider, Sam Sivanich, Bernard Krebes, Mary Kiki Sonnen, Tracy D. Swanson, James Tennesen, Charlotte Wasiluk

Council Member Liaison
Dirk deVries

METROPOLITAN WASTE MANAGEMENT ADVISORY COMMITTEE

Chairperson Richard Beens

Members Mary Ayde, Thor Bank, James Bryan, Burnell Beerman, Kim Boyce, Don Chmiel, Del Edwards, Phillip Fisher, Floyd Forsberg, Stephen A. Gross, Zack Hansen, Kenneth Haselberger, Mary Heitzig, Laurence Hunter, Charles Kutter, John Leadholm, Julie MacKenzie, Rodney E. Massey, Terry Miller, Bruce Nawrocki, Luther Nelson, Laura Oatman, Jim Orange, Rick Person, Norman Schiferl, Betty Sindt, Erika Sitz, Barry Tilley, Michael Trdan, Carolyn Voss, Peter Yearneau

Council Member Liaison
Josephine Nunn

AIRPORT ADEQUACY STUDY TASK FORCE

Chairperson Josephine Nunn

Members Bea Blomquist, John Borchert, Ben Bowles, Steve Cramer, Doug Culhane, Carl (Buzz) Cummins, III, Maynard Eder, Joseph Finley, Carol Flynn, Benjamin Griggs, Robert Huber, Virginia Johnson, Brig. Gen. Joseph Kazek, Stephen King, Todd Lefko, Dr. Wilbur Maki, Jerome Mann, John Norman, John Pidgeon, James Prosser, Raymond J. Rought, Tom Rulland, Dick Severson, Barbara Lindsay Sims, Dave Swanburg, Ben Swenson, Gertrude Ulrich, Wilfred Viitala, Bruce Wagoner

Council Member Liaison
Josephine Nunn

CHAIR'S ADVISORY COMMITTEE

Chairperson Mary Anderson

Members Dick Asleson, Bill Barnhart, Linda Barton, Mark Bernhardson, Marilyn Cochran, Phil Cohen, John Derus, Edwina Garcia, Natalie A. Haas-Steffen, William Koniarski, Duane McCarty, Phillip McMullen, Bruce Nawrocki, Robert Orth, Vern Peterson, Thomas P. Spies, Gerald Splinter, Harold Trende, Gloria Vierling, Duane Zaun