

Mississippi Headwaters Board Biennial Report 2019-2021



Director's Report

PIVOT

I think if there was one word to describe our work these past 2 years it would be “**PIVOT.**” When an organization makes a pivot, it doesn't change their mission, only the way they perform it. 2020 brought many changes in the way we interacted and conducted business. Whether it was video conferencing or teleworking, everyone was affected. In this issue we will discuss how the Mississippi Headwaters Board (MHB) pivoted and brought new and enhanced opportunities to the help protect the Mississippi River. Click [here](#) to watch a short video about the formation and history of the Mississippi Headwaters Board.

Mississippi River Signage and Resourcetainment

Learn how a signage project turned into an economic generator for the local area.

Minnesota Traditions

See how attitudes are changing through this social media program.

Bemidji Lake Irving Stormwater Project

With a regional stormwater study completed in 2014 by the MHB, cities are now implementing pollution prevention practices in the city of Bemidji.

Easement & Acquisition Program

Working with the Board of Water & Soil Resources and The Trust for Public land, permanent protection of land is being completed to protect the Mississippi River.

Regulatory Actions

View the zoning actions that have taken place over the past few years to protect America's River.

Mississippi River Signage Program

Connecting with the Mississippi requires that you experience it. The MHB placed signage at various stretches on the River so that paddlers could navigate and enjoy the natural beauty it offers.



Signage Kiosk at Kiwanis Park in Brainerd Minnesota

Resourcetaintment: Providing a natural resource experience with an economic, entertainment incentive to synergistically boost the experiences of both activities and be intentional about both. This biennium we implemented the Resourcetaintment idea with our signage program and offered canoe & kayak rental from local outfitters. The event generated over \$1,500 because 2 people bought kayaks after the event.

Canoe day is an annual Resourcetaintment event held in August where people experience the Mississippi River by paddling from Kiwanis Park in Brainerd, MN to Crow Wing State Park. The paddlers experience the fun of paddling with a group and are able to visit a fur-traders encampment when they reach their destination.



Minnesota Traditions Social Media Program

Producing a change in attitude about Aquatic Invasive Species and how we interact with our lakes, rivers, and streams.

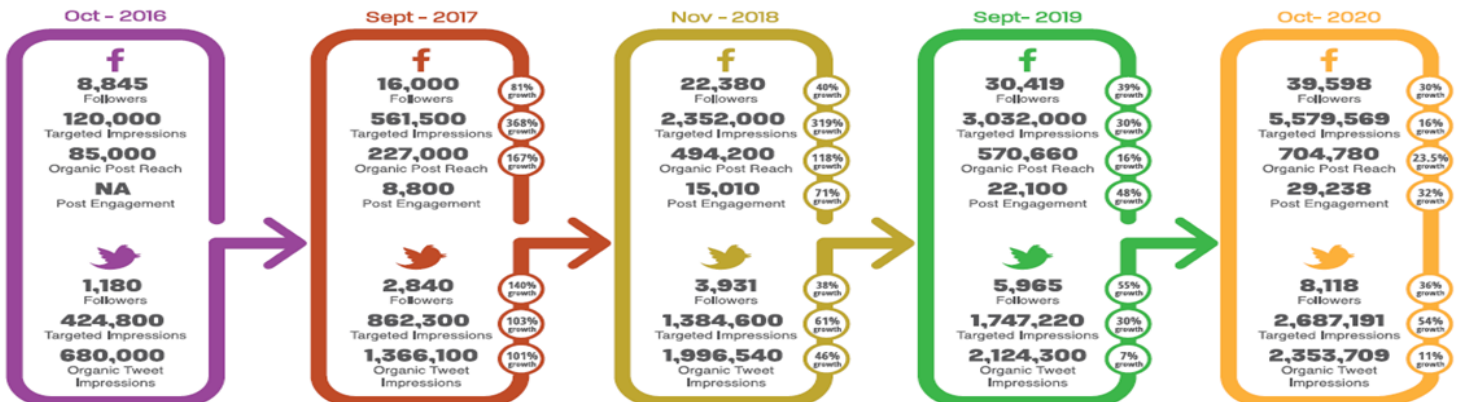


"In order to get a behavioral change, you need to have an attitude change. The best way to change an attitude is by talking about it with friends. Social media is one of the best tools to do that because it is engaging and influencing at the same time."

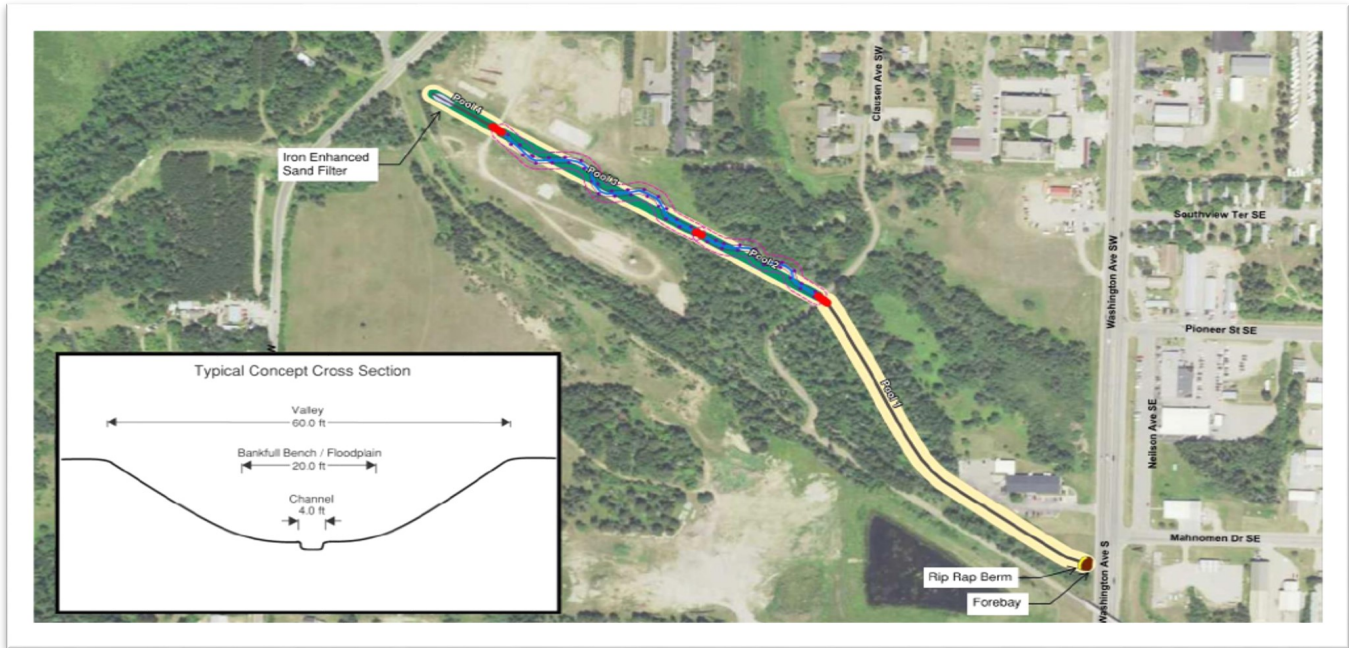
-Tim Terrill



Social Media Campaign Since April, 2016
 Minnesota Traditions Has Generated:



STORMWATER POLLUTION PREVENTION PRACTICES IN BEMIDJI HELP THE CITY MEET ITS WATER QUALITY GOALS



Bemidji Stormwater Project Design

Before Construction: Ditch in natural condition by lake Irving





Before Construction: Ditch by lake Irving



During Construction: Oil containment plug



During Construction: Main basin at outlet to Lake Irving

[Click here for: Project Drone Footage](#)





Mississippi Headwaters Habitat Corridor Project

Protecting Critical Fish and Wildlife Habitat in the Mississippi Headwaters

This Program offers private landowners along or near the first 400 miles of the Mississippi River or on a major tributary or Headwaters lake an opportunity to protect critical fish and wildlife habitat by permanently protecting the natural resource value of their land.



Partners

- Mississippi Headwaters Board
- The Trust for Public Land
- MN Board of Water and Soil Resources and Headwaters County SWCDs
- With stakeholder support from:
The MN DNR
The Nature Conservancy



Program Goal

Funded by the Outdoor Heritage Fund created from the 2008 Clean Water Land & Legacy Constitutional Amendment, the Program goal is to create and expand contiguous habitat complexes of permanently protected uplands and shoreland for the benefit of fish and wildlife habitat, migratory waterfowl, reduction of forest fragmentation, enhanced public recreational opportunities and the protection of water quality.

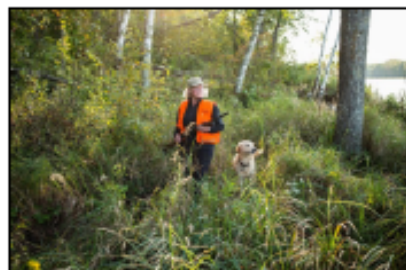
Land protection is achieved via fee-title acquisition or by enrolling land in The Reinvest in Minnesota (RIM) conservation easement program.

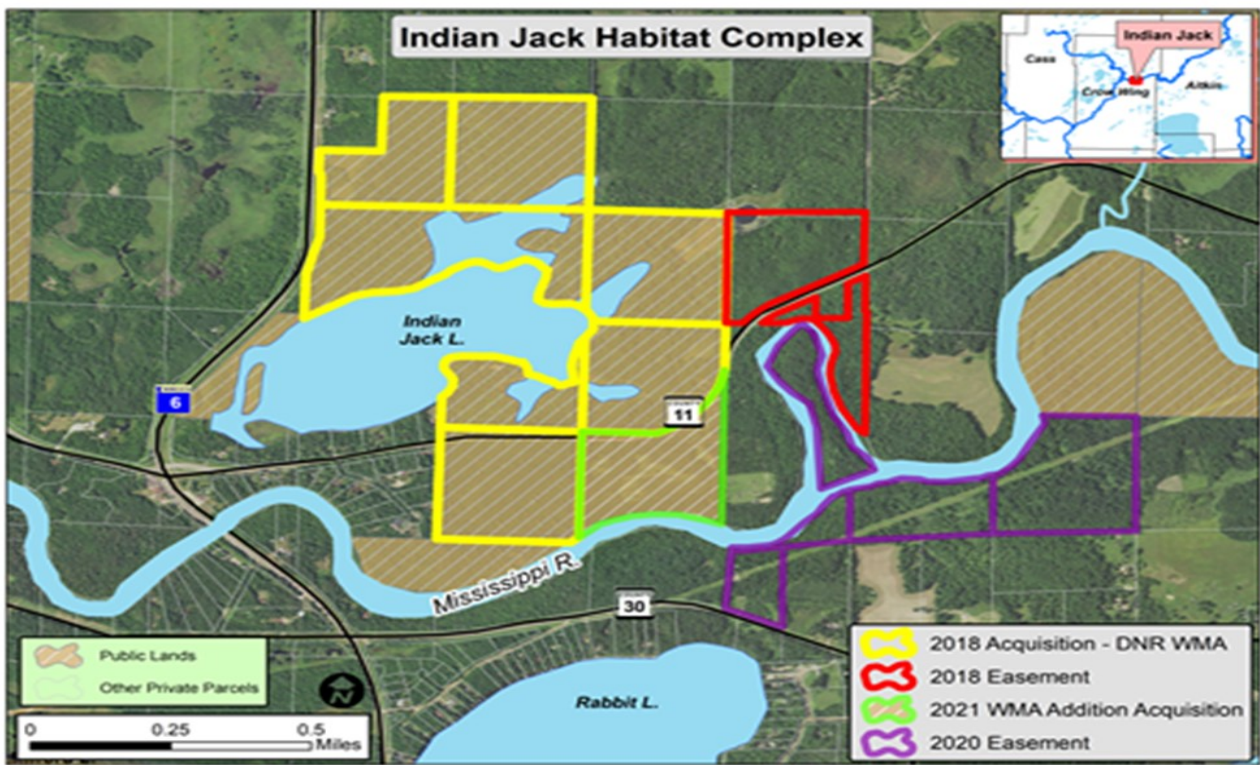
Why Create Habitat Complexes?

- To meet the basic needs of game and non-game wildlife such as cover from predators, water, safe places to raise young, and adequate area to move around during different life stages and the protection of water quality and spawning areas for fish.
- To insure good water quality for fish and as a source of drinking water for the Twin Cities and beyond.
- To provide migratory waterfowl food and cover along the Mississippi Flyway.
- To reduce land use changes that result in fragmentation of critical habitats such as forests, shorelands, grasslands, and wetlands.

Accomplishments:

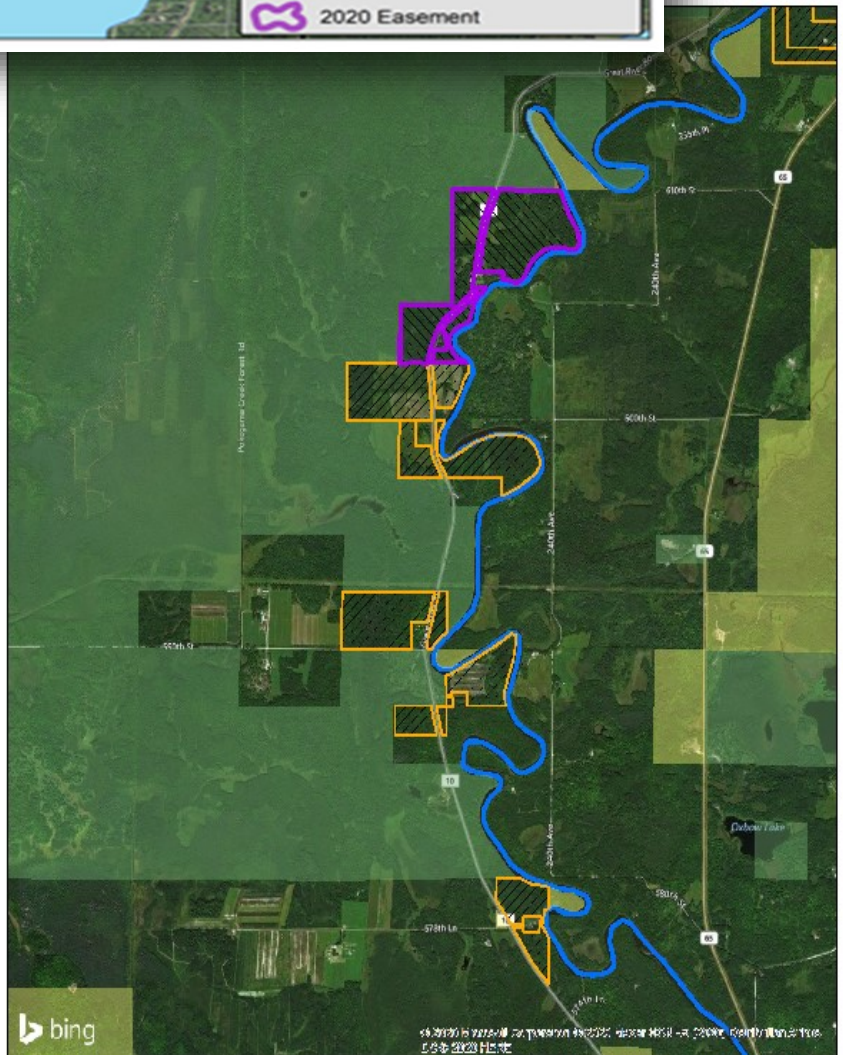
Since this program began in 2016, over 3,441 acres and 31 miles of shoreland have been protected. Projects on 2,000 additional acres and 15 miles of shoreland will be completed soon.



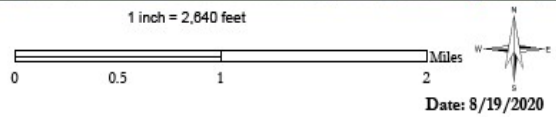


Indian Jack Habitat Complex –Crow Wing
 594 acres, 2.5 miles of lakeshore, and 3 miles of river

Savanna State Forest Complex- Aitkin County Addition to Savanna State Forest
 172 acres, 1.5 miles shoreland

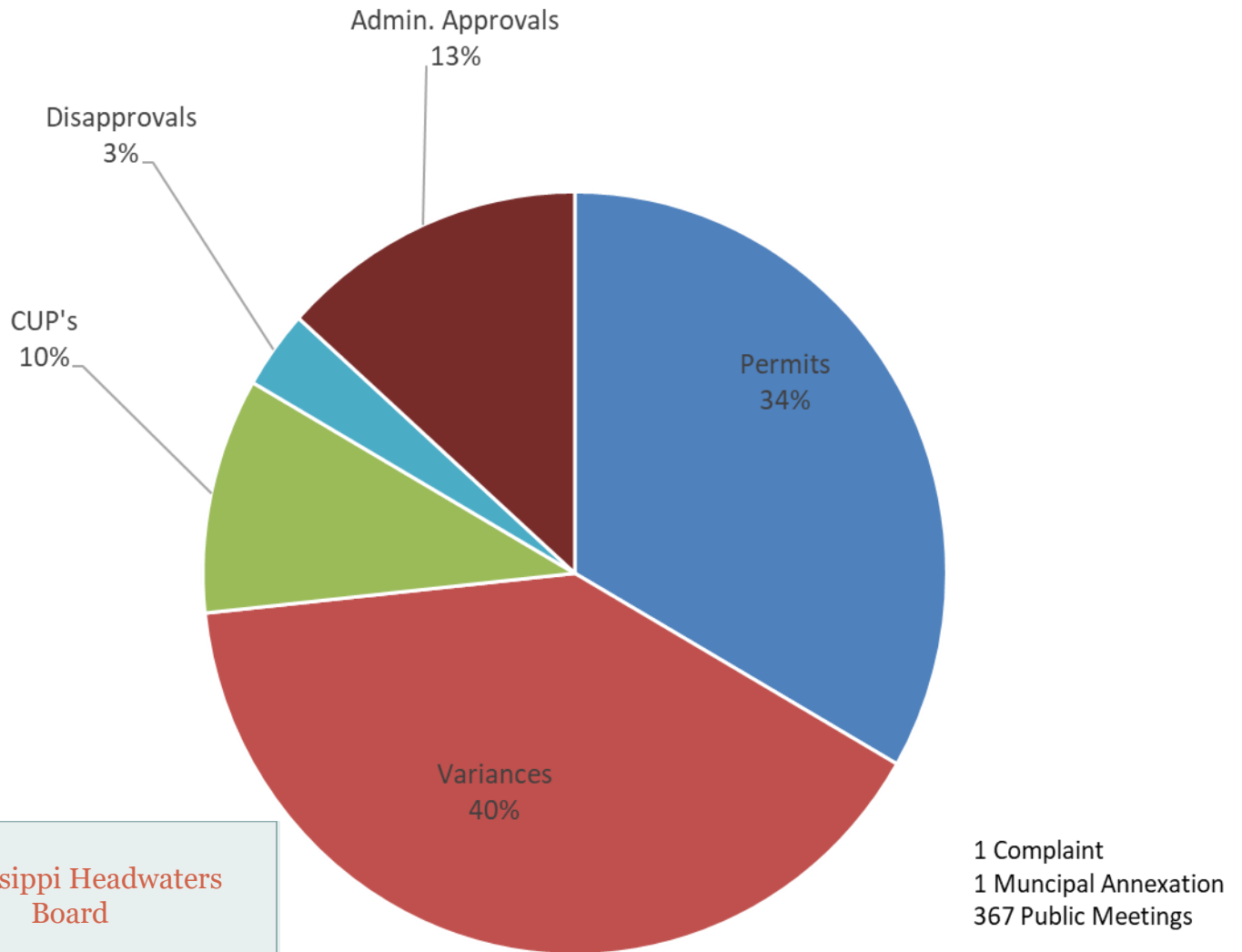


- Acquisitions
- Easements
- State Land
- Aitkin County Land
- Mississippi_River



Date: 8/19/2020
 Maps are for graphical purposes only. They do not represent a legal survey.

REGULATORY ACTIONS



Mississippi Headwaters Board

Land Services Building
322 Laurel St.
Brainerd, MN 56401

Phone: 218-824-1189

Web:

www.mississippiheadwaters.org

E-mail:

timt@mississippiheadwaters.org



PROTECTING THE FIRST 400 MILES

County in-kind Contributions:
\$545,048

Click Here for a more in-depth look at presentations from the [2021 MHB Biennial Conference](#)