

# 2021–2022 Guide to your 37 STATE COLLEGES AND UNIVERSITIES

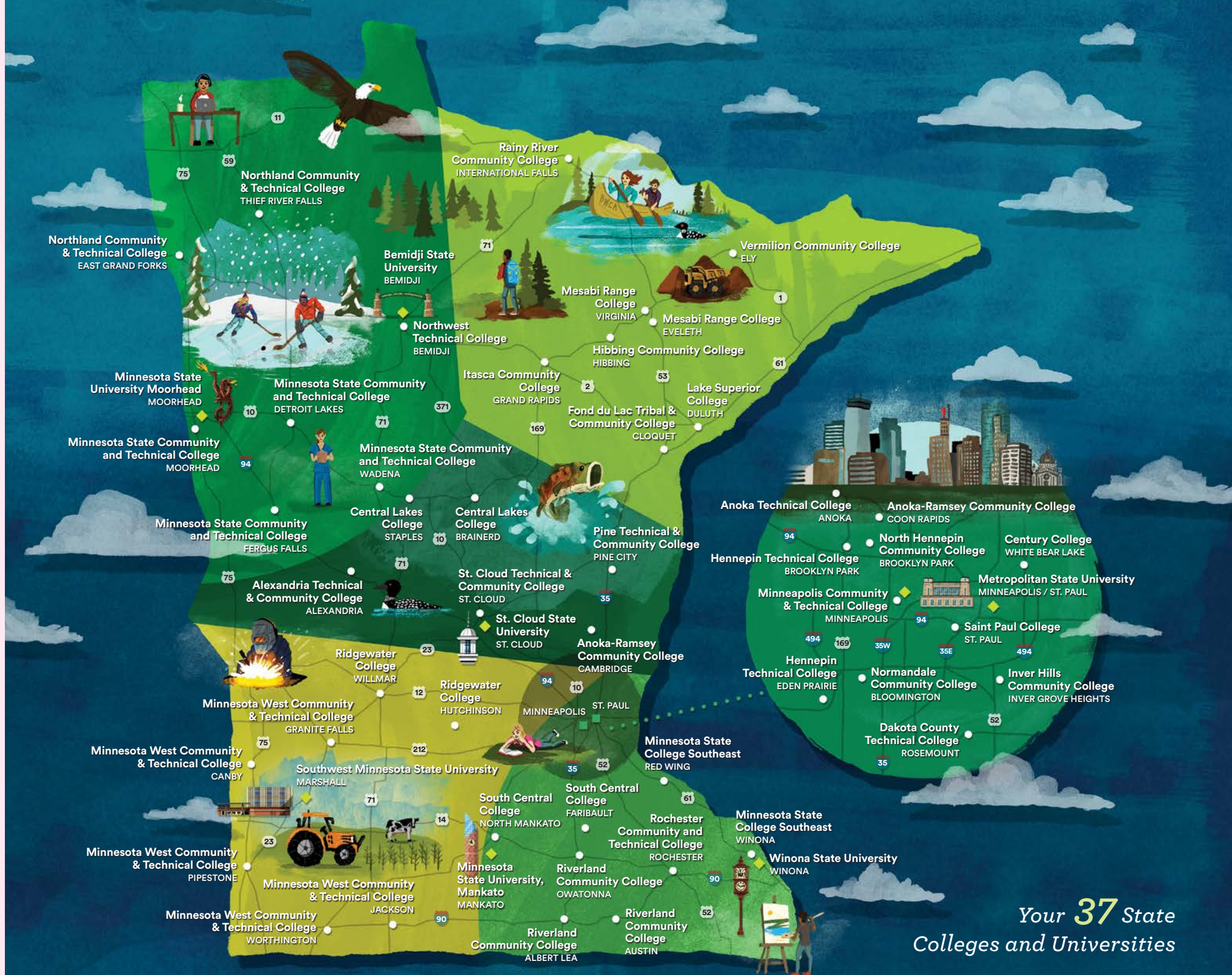


**MINNESOTA STATE**

Extraordinary Education. Exceptional Value.

[MinnState.edu](https://MinnState.edu)





Your **37** State  
Colleges and Universities





# Extraordinary Education. Exceptional Value.

Nestled amidst the lakes, forests, and scenic landscapes of Minnesota are the 37 state colleges and universities of Minnesota State, your state college and university system.

More than 340,000 students choose your state colleges and universities each year, creating a brighter future to become the talent needed for Minnesota businesses and communities to grow and prosper. Minnesota State offers thousands of academic programs at the lowest tuition in the state. With our 54 campuses located in 47 Minnesota communities, you can choose to continue your educational journey close to home or across the state. We also offer a vibrant array of student life activities and experiential learning options. That's what extraordinary education at an exceptional value is all about.

# Extraordinary Impact

Minnesota State is making a difference. From the students we serve, to our business partners, to those we employ, chances are good you or someone you know has benefited from the work of your state colleges and universities.



**37,000+**

degrees, certificates,  
and diplomas awarded  
each year

**802**   
online programs to choose from


**third**

largest system of colleges  
and universities in the  
United States

**8,800** 

veterans and service members  
attend a Minnesota State college  
or university each year

**13,500** customized training,  
occupational, and  
professional classes

Job placement in a  
related field of study **86.8%** 

**340,000** students attend our colleges  
and universities each year

**fifty-four**

convenient campuses  
across Minnesota



**63%**

STATE COLLEGES

**70%**

STATE UNIVERSITIES

Percent of students who receive financial aid



7,000

employer partnerships  
across Minnesota State  
colleges and universities



3,885

academic programs to choose from



64%

of Minnesota resident  
students who are pursuing an undergraduate  
credential are doing so at a Minnesota  
State college or university

32–59%

of Minnesota State  
students graduate with  
no debt at all, depending  
on the academic award  
received

We serve more

**BLACK AND  
INDIGENOUS  
STUDENTS,**

as well as students  
of color, than all other  
higher education  
providers in Minnesota  
combined

## MINNESOTA STATE GRADUATES' DEBT

Fiscal Year 2020

*\*Note the median for all graduates with certificates/diplomas is \$0 as over half did not borrow*

DEGREE	MINNESOTA STATE GRADUATES WITH NO DEBT	MEDIAN DEBT FOR ALL GRADUATES	MEDIAN DEBT FOR GRADUATES WHO BORROWED
Certificates/Diplomas	58.9%	\$0	\$10,250
Associate Degrees	50.0%	\$5	\$14,196
Baccalaureate Degrees	32.2%	\$14,250	\$24,236



A photograph of three dental students in a clinical setting. They are wearing masks and gloves, practicing on a dental model. The student on the left is wearing a blue mask and a blue scrub top. The student in the middle is wearing a black top and a colorful patterned shirt. The student on the right is wearing a purple mask and a blue scrub top. They are all looking at the dental model with interest.

# *World-class* EDUCATION



# Extraordinary Education

Your state colleges and universities offer more than 3,800 superior academic programs taught by seasoned faculty who know you by name. Take a few classes to retool your skills. Earn a certificate, diploma, or associate degree. Or, start working on or complete your bachelor's, master's, or doctorate. Minnesota State will help you build a plan that's right for you.



## » Move Quickly

Your state colleges offer options that allow you to take classes or earn a certificate, diploma, or associate degree in two years or less.

## » Personalized Attention

Class sizes are small, campuses are friendly, and you are taught by faculty, not teaching assistants.

## » Graduation Options

Start and finish your bachelor's degree at one of your state universities, or complete two years at a state college and transfer to one of your state universities.

## » Stay Local or Explore

Minnesota State has 54 campuses in 47 Minnesota communities. Choose the one that is right for you.

## » Exceptional Value

Your 37 state colleges and universities offer the lowest tuition and fees in Minnesota and a first-class education employers respect.

## » Work-School-Life Balance

Explore flexible scheduling options, accelerated options, or online classes and programs that work with your schedule and fit into your life.

## » Retool or Advance Your Career

Check out non-credit, short-term training options designed to help you get quick and specialized training through any Minnesota State continuing education or customized training program.

## » Find Your Path

Work one-on-one with staff at any of our colleges and universities to find the program and path that is right for you.





# *Lowest tuition in* **MINNESOTA**

Your 37 state colleges and universities offer the lowest tuition and fees in Minnesota, giving you access to first-rate education options throughout the state and the ability to avoid or limit debt.

## ESTIMATED FULL-TIME NET TUITION COSTS AFTER STATE AND PELL GRANTS

Academic Year 2021–22

\*30 credits for a year, 15 credits per semester at spring semester rates. Estimates based on overall grant amounts per income group.

INCOME LEVELS FOR STATE GRANT RECIPIENTS*	AVERAGE 2021–22 STUDENT TUITION COST	
	STATE COLLEGES	STATE UNIVERSITIES
Less than \$20,000	\$879	\$2,178
\$20,000 to \$39,999	\$1,353	\$2,673
\$40,000 to \$59,999	\$1,322	\$3,740
\$60,000 and above	\$3,171	\$5,929
Average for all state grant recipients	\$1,499	\$3,649
Non-state grant recipients	\$5,740	\$8,918

# Exceptional Value

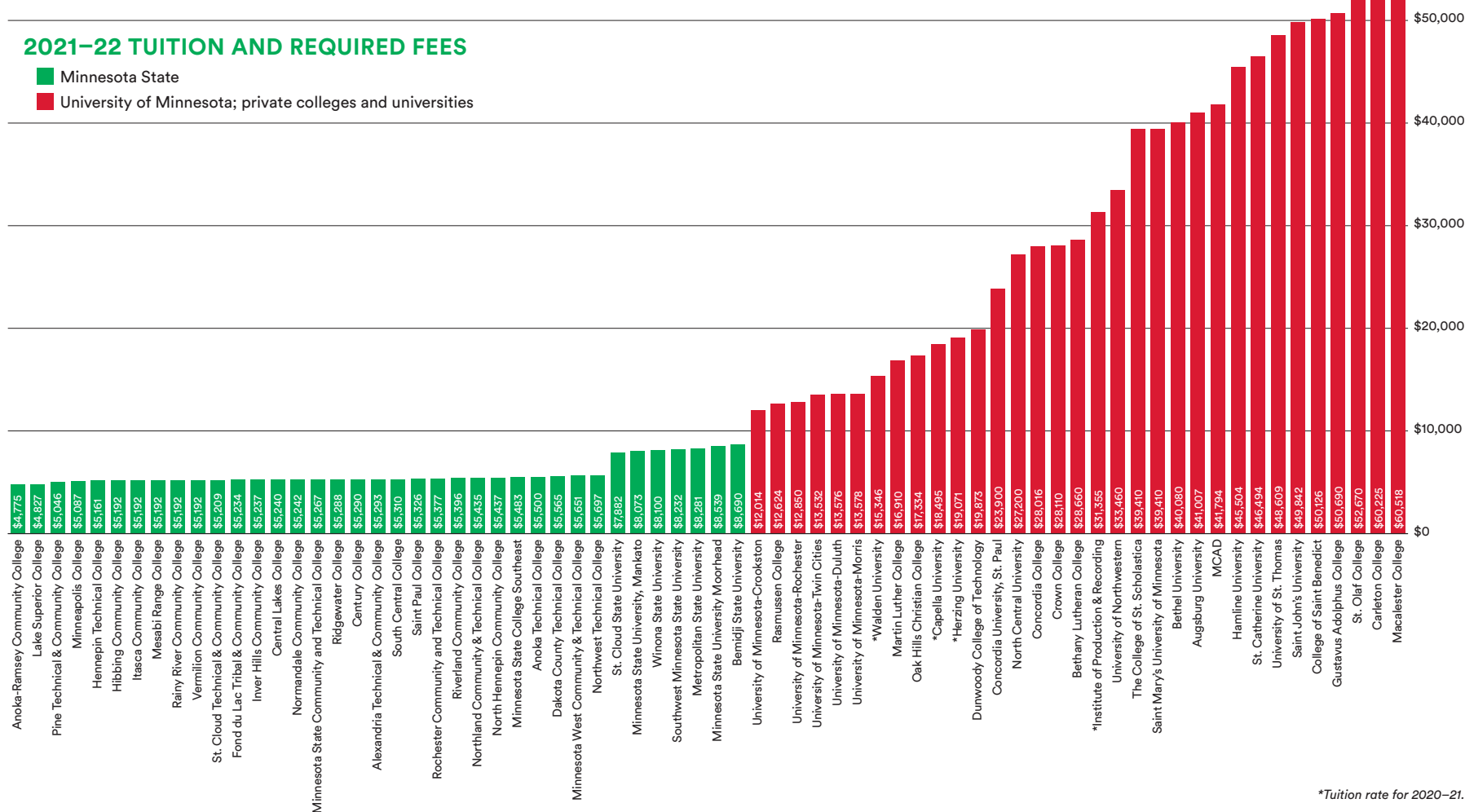
The 37 state colleges and universities that comprise Minnesota State offer the lowest tuition in all of Minnesota.

Not from Minnesota? Most colleges and universities that are part of Minnesota State offer in-state tuition rates to residents of other states. Check with the college or university you wish to attend for details. All veterans, service members, and their families receive in-state tuition.

## 2021–22 TUITION AND REQUIRED FEES

■ Minnesota State

■ University of Minnesota; private colleges and universities



\*Tuition rate for 2020–21.



## Extraordinary Experiences

# STUDENT LIFE

Choosing a state college or university also means you have access to a vibrant social scene. Check out the variety of clubs, organizations, and events. Explore varsity athletics options on **PAGES 61** and **68**. Learn about study abroad and service learning opportunities available at the college or university you are interested in attending. Or, get involved with student government on your campus or at the state level as part of Students United (*representing public state university students*) and LeadMN (*representing public community and technical college students*). Learn more at ***MinnState.edu/admissions/studentlife.html***.





Exceptional Talent

# A BRIGHT FUTURE

Your state colleges and universities are a vital resource to Minnesota employers. Not only do we help prepare students to become talented and skilled individuals, but we also work hand-in-hand with business and industry to develop relevant programs and curriculum.

**GAIN RELEVANT EXPERIENCE.** Employers from across the state work with your colleges and universities to offer internships and job opportunities. These same professionals also serve as advisors who help shape curriculum, obtain equipment, and develop new programs and classes.

**BE THE TALENT OF TOMORROW.** Your state colleges and universities award more than 37,000 certificates, diplomas, and degrees each year, and 86.8 percent of those graduates begin working in their field of study within one year.

**FIND SOLUTIONS TO CHANGING BUSINESS NEEDS.** All 37 state colleges and universities offer non-credit learning options through a network of experienced instructors who work with employers to develop training and education programs that allow employees to thrive in the ever-changing global marketplace and keep skills competitive.

**UPDATE YOUR SKILLS AND KNOWLEDGE WITH CONTINUING EDUCATION.**

Advance your career by gaining new knowledge or skills, retraining, or attaining critical certification and licensures.





# *Transfer* OPTIONS

## Extraordinary Pathways

Starting at a Minnesota State college and considering transfer? Plan now to save time and money later. Check out a few of the transfer programs available through Minnesota State, or visit [\*MinnState.edu\*](https://www.mnstate.edu) for details.

---

### WANT TO LEARN MORE?

Our colleges and universities are staffed with many people who can help you find a direction that is right for you. Talk to a transfer specialist, visit a college or university in person, or visit [\*MinnState.edu/admissions/transfer.html\*](https://www.mnstate.edu/admissions/transfer.html) to learn more.

# WHAT WILL TRANSFER?

**EXPLORE TRANSFER PATHWAYS:** Minnesota State offers transfer pathways that allow you to complete a specific associate degree and transfer to any of the seven Minnesota State universities.\* If you complete a Transfer Pathway degree at a Minnesota State college and are admitted to a state university, you will be guaranteed junior status and given assurance that all 60 college credits will count toward the related bachelor's degree.\*\* See **PAGE 62** for program details and options.

**GET TO KNOW THE BACHELOR'S DEGREE PARTNERSHIP PROGRAM:** The seven state universities offer selected bachelor degree programs that can be completed at various community colleges, allowing you to earn your degree from a university without leaving the comfort of the college campus setting. See the complete inventory of degree programs and participating colleges and universities on **PAGE 64**.

## FIND OUT ABOUT OUR TRANSFER AGREEMENT WITH THE TRIBAL COLLEGES IN MINNESOTA:

Minnesota State and the four tribal colleges of Minnesota have developed an articulation agreement between each college and all seven state universities, paving the way for seamless transfer between the two-year tribal colleges and any of the Minnesota State universities. Learn more at [MinnState.edu](http://MinnState.edu).

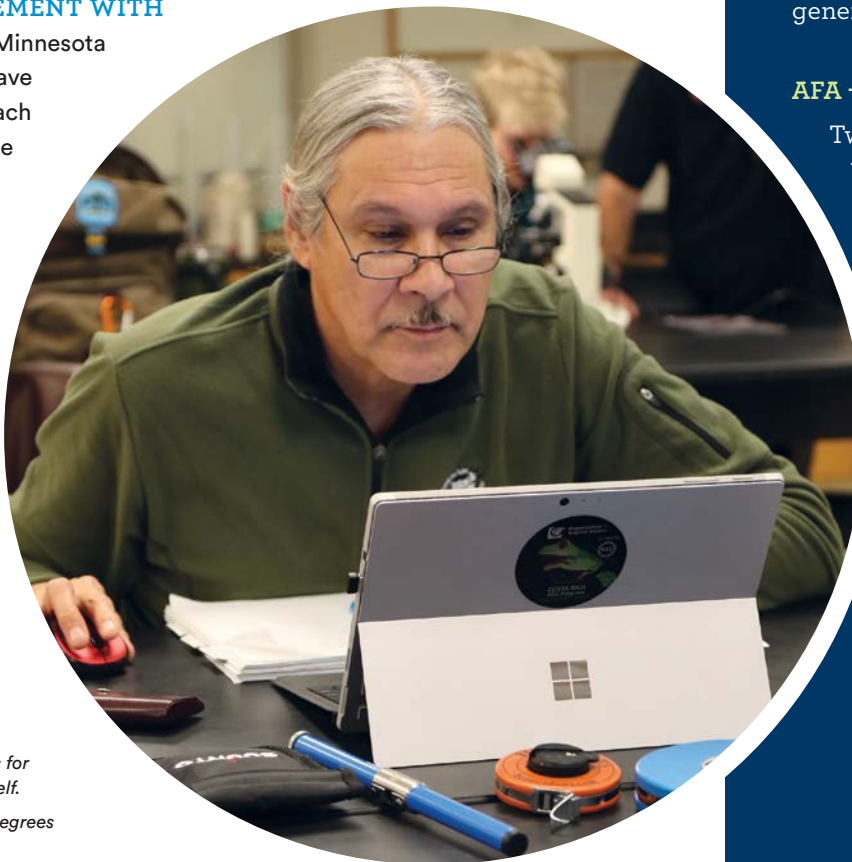
## LEARN ABOUT THE MINNESOTA STATE TRANSFER GUARANTEE:

If you complete the Minnesota Transfer Curriculum and earn an associate of arts (AA) degree from any Minnesota State college with a minimum 2.0 GPA<sup>‡</sup>, you are guaranteed admission to any of the seven state universities with junior year status.\*\*

\* Universities within the Minnesota State system include Bemidji State University; Metropolitan State University; Minnesota State University, Mankato; Minnesota State University Moorhead; Southwest Minnesota State University; St. Cloud State University; and Winona State University.

\*\* A student must still meet any special admission requirements for the major and is not guaranteed admission into the major itself.

‡ Winona State University requires a minimum 2.4 GPA for AA degrees to be accepted.



### AA – ASSOCIATE OF ARTS DEGREE

Designed to transfer into liberal arts four-year majors.

### AS – ASSOCIATE OF SCIENCE

Two-year program designed for transfer into a specific four-year major and will likely require completing additional general education courses at a university.

### AFA – ASSOCIATE OF FINE ARTS

Two-year program designed for transfer into a specific four-year major and will likely require completing additional general education courses at a university.

### AAS – ASSOCIATE OF APPLIED SCIENCE

Two-year program for a specific occupation. Not designed for transfer.††

### DIPLOMAS AND CERTIFICATES

Industry-driven and defined programming designed for immediate entry into the workplace. Not designed to transfer.

†† While not primarily designed for transfer, individual colleges and universities may accept these courses.



# Exceptional Opportunities

# ACCELERATE *your degree*



**CREDIT FOR PRIOR LEARNING:** Students who demonstrate college- or university-level learning gained through non-credit or experiential settings may be eligible to earn college credit (*i.e.*, CLEP examinations, military training or service, Advanced Placement exams, International Baccalaureate diplomas). Inquire with the college or university you are considering for more information.

**POSTSECONDARY ENROLLMENT OPTIONS (PSEO)\*:** PSEO are college courses offered to high school students. The courses are taught by college or university faculty and allow students to earn both high school and college

credit for successfully completing the course. Contact your local state college or university for eligibility requirements and information.

**CONCURRENT ENROLLMENT\*:** Students can complete college courses at their high school while fulfilling high school course requirements at the same time. If you are interested in this option, speak to your high school guidance counselor.

**TECHNICAL COURSE OPTIONS\*\*:** Students in 10th grade may take one technical college-level course taught on a college campus. You must be enrolled in a public school and meet requirements for reading proficiency and other assessments related to the course in which you wish to enroll.

**ADVANCED PLACEMENT (AP) AND INTERNATIONAL BACCALAUREATE**

**(IB) OPTIONS:** AP or IB courses are offered at many high schools and provide a rigorous curriculum that prepares students to take college-level courses. Students who pass an AP test or the IB exam with acceptable scores will be awarded college credit at any Minnesota State college or university.

\* To be eligible for PSEO or concurrent enrollment with a Minnesota State college or university, high school juniors must be in the upper one-third of their class or earn a score at or above the 70th percentile on a test such as the ACT or SAT. Seniors must be in the upper one-half of their class or earn a score at or above the 50th percentile on a test such as the ACT or SAT. Students who do not meet these requirements may still be eligible if they can meet other college readiness standards determined by the college or university. Students in 9th or 10th grade may also be eligible to take PSEO or concurrent enrollment courses if they rank in the upper one-tenth of their class or attain a score at or above the 90th percentile on a nationally standardized, norm-referenced test, or if they have a favorable recommendation from designated high school officials. All high school students enrolling in PSEO or concurrent enrollment, regardless of grade level, must also meet all college course prerequisites.

\*\* A student who first completed technical courses while in 10th grade and wishes to enroll in general education courses as an 11th or 12th grade student must take assessment tests and achieve the required scores prior to enrollment in additional PSEO courses. Learn more at [MinnState.edu/admissions/pseo](https://MinnState.edu/admissions/pseo).

Whether you are seeking help paying for college or could use help as you prepare for an exam, your 37 state colleges and universities offer a variety of resources to help you along the way. We are staffed with professionals who know and understand the process of enrolling and can help you reach your goals.

# AID AND SUPPORT

## Extraordinary Resources

### Financial Resources

**FINANCIAL AID:** The Free Application for Federal Student Aid (FAFSA) is the first step in applying for assistance in financing your college education. Submit this information as soon as possible to determine your eligibility for aid. Visit [fafsa.ed.gov](https://fafsa.ed.gov) for more information.

**SCHOLARSHIPS:** Scholarships are a great financial resource to students. They typically do not have to be paid back and can help offset tuition and other costs associated with college.

**TAX CREDITS:** Some students may benefit from federal tax credit programs. Consult with a tax professional or visit the IRS website at [irs.gov](https://irs.gov) for more information.

### Academic Resources

**ON-CAMPUS ACADEMIC ASSISTANCE:** Most colleges and universities offer services such as tutors, a writing center, a math center, counseling, and more to support you. Contact the college or university you are interested in attending to learn about the resources available.

**TRIO SERVICES:** The federal TRIO programs are outreach and student services programs designed to identify and provide help to students from disadvantaged backgrounds.

**ACCESSIBILITY SERVICES:** Your state colleges and universities offer accessible facilities and provide accommodations to students with documented disabilities.

**SUPPORT FOR VETERANS AND SERVICE MEMBERS:** Most of your colleges and universities offer services for veterans and service members, including help to identify resources to pay for college, and have received Yellow Ribbon or military-friendly designations. Learn more at [MinnState.edu/military](https://MinnState.edu/military).

**CAREER PLANNING:** Check out career services at your college or university campus, or use [MinnState.edu/careers](https://MinnState.edu/careers) to explore careers, take an assessment, find programs and courses—including short-term and continuing education options—get tips for a successful job search, and more.

» **GET STARTED TODAY!** Contact the college or university you are interested in to meet with staff who can help you find the resources right for you.



# NEXT STEPS

1

Speak to friendly staff at the college or university you are considering.

2

Get to know your state colleges and universities using this guidebook or by visiting [MinnState.edu](https://www.mnstate.edu).

3

Check out the hundreds of programs available on your campuses at [MinnState.edu/programs](https://www.mnstate.edu/programs) or use the program grid found in the “Endless Opportunities” section of this book, starting on [PAGE 55](#).

4

Visit campuses to find the college or university that is the right fit for you.



## READY TO APPLY?

1. **CONTACT OR VISIT** the college or university you are considering to get specific admission requirements.

2. **SUBMIT YOUR APPLICATION.** The state universities typically accept applications in the fall, and the state colleges generally accept applications up until the start of the new semester. Visit [MinnState.edu/admissions/index.html](https://www.mnstate.edu/admissions/index.html).

3. **APPLY FOR FINANCIAL AID** by visiting [fafsa.ed.gov](https://fafsa.ed.gov) and access the Free Application for Federal Student Aid (FAFSA).

4. **LOOK FOR SCHOLARSHIPS** by contacting the college or university you plan to attend for information and resources to begin the scholarship application process.

5. **START PLANNING** to achieve your goals by looking at the academic calendar for the college or university you wish to attend and getting to know staff that can assist you throughout your time on campus.

# 30 STATE COLLEGES

Minnesota State is home to 30 community, technical, and comprehensive colleges. These colleges are a great place to earn a degree and immediately start your career, or you can complete an associate degree and transfer to earn a bachelor's degree.

## INTERESTED?

- » **CHECK OUT THE OPTIONS.** The profile pages that follow provide you a glimpse of all 30 colleges.
- » **VISIT CAMPUS.** The best way to find the college that is right for you is to visit.
- » **UNDERSTAND WHAT YOU NEED TO ENROLL.** Each college has an open admissions policy, meaning you need only a high school diploma or a GED to enroll. If you do not have a high school diploma or GED, you may qualify to be admitted through an approved Ability to Benefit test and may apply to enroll in a career pathway program. Details for program-specific admissions requirements can be found on the website of the college you are considering.
- » **KEEP TRANSFER IN MIND.** If you are thinking about transfer, take note of the pathway options and programs designed to ease the process. Planning ahead may save you time, money, and stress later.
- » **LET OUR STAFF AND FACULTY HELP.** You are strongly encouraged to contact the admissions department and get to know the faculty and staff at the college you plan to attend.



# Alexandria Technical & Community College



[alextech.edu](http://alextech.edu)

2021-22 Tuition and Fees: \$5,293



## ALEXANDRIA

Admissions: 320-762-0221

1601 Jefferson St.  
Alexandria, MN 56308

FAFSA Code: 005544



**2,614** Students Served  
**45%** Full-time // **55%** Part-time  
**10%** Students of Color

**52%** Female  
**46%** Male  
**2%** Unknown/Other



STUDENT  
ACTIVITIES



INTERCOLLEGIATE  
ATHLETICS

## DEGREES OFFERED

Advanced Technical Certificate, Associate of Applied Science, Associate of Arts, Associate of Science, Certificate, Diploma

## PROGRAM HIGHLIGHTS

Law enforcement, nursing, diesel mechanics, cybersecurity, machine tool, mechatronics, welding, powersports, business, communication art and design, early childhood education, exercise science, interior design, liberal arts and sciences, medical laboratory technician, paralegal, speech language pathology assistant, transfer pathways

## STUDENT ACTIVITIES

Championship clay target league, esports, men's and women's golf, and competitive fishing varsity athletics. Baseball, volleyball, and men's

and women's soccer coming soon. In addition, experience 15+ student clubs and Alexandria area lakes and recreation. Visit [alextech.edu](http://alextech.edu) or [MinnState.edu](http://MinnState.edu) for a complete list.

## CAMPUS HIGHLIGHTS

- » ATCC creates legendary experiences and careers with 98 percent related job placement rate and a growing portfolio of programs and student life opportunities
- » 44 in-demand programs with flexible options including 19 online, 15 fast-track, and 12 Transfer Pathways programs
- » Live and learn in the heart of lake country, with abundant year-round recreation. Outdoor sports storage available on campus for ATVs, boats, and other equipment



- » Apartment-style student campus housing
- » \$350,000 in scholarships awarded annually by the ATCC Foundation
- » Best-in-class student retention, graduation, and job placement rates

## VISIT

Visit [alextech.edu/tour](http://alextech.edu/tour) to schedule a program visit with one of our friendly enrollment specialists and program instructors, or register for a general campus tour. Open House events are held the last Sunday in October and the first Saturday in April.

# Anoka Technical College

[anokatech.edu](http://anokatech.edu)

2021-22 Tuition and Fees: \$5,500



ANOKA

**Admissions:** 763-576-7710

**TTY:** 7-1-1

1355 W. Highway 10  
Anoka, MN 55303

**FAFSA Code:** 007350



**1,844** Students Served

**45%** Full-time // **55%** Part-time

**28%** Students of Color

**54%** Female

**45%** Male

**1%** Unknown/Other



STUDENT  
ACTIVITIES

## DEGREES OFFERED

Associate of Applied Science, Certificate, Diploma

## PROGRAM HIGHLIGHTS

Paramedic, robotic and laser welding, robotics and electronic engineering, automotive technician, welding, practical nursing, quality technician, construction electrician, architectural 2D CAD, biomedical equipment technician, broadcast captioning, business data analyst, CNC manufacturing technology, information technology, health information technology/medical coding, judicial reporting, occupational therapy assistant, surgical technology, behavioral health and human services

## STUDENT ACTIVITIES

Several student clubs, organizations, and

activities available. Visit [AnokaTech.edu](http://AnokaTech.edu) or [MinnState.edu](http://MinnState.edu) for a complete list.

## CAMPUS HIGHLIGHTS

- » 70+ in-demand career programs
- » 100 percent job placement: machine technology, pipe welder, robotic and electronic engineering technology, welding fabricator
- » Last year, the Anoka Technical College Foundation disbursed \$176,500 in student scholarships and more than \$10,000 in student crisis grants
- » Variety of student support services available, including counseling, career services, tutors, disability services, enrollment and success coaches, and veterans support. All services available with virtual options



- » Designated a Hunger Free Campus with a campus food shelf that distributed more than 20,000 pounds of food to students last year
- » 10 programs offered completely online: administrative office specialist, behavioral health and human services, office communication specialist, office software specialist, legal assistant, medical coding specialist, health information technology, health unit coordinator, medical office specialist, medical receptionist
- » Options to get started in most programs completely online with part-time and evening options also available
- » Hands-on practical education with experience using industry-leading equipment, unique to Anoka Tech, including a new five-axis mill from Matsuura Industries
- » Automotive technology program facilities updated with new hoists, lighting, vehicle exhaust system with carbon monoxide detection, and a virtual vehicle diagnostic lab
- » Remodeled surgical technology lab and classroom with industry-leading equipment, giving students training in an environment that reflects the workplace
- » Partnerships with local, state, and national businesses and industries connect students with real-world opportunities
- » Partnerships with Bemidji State University, Minnesota State University Moorhead, and Metropolitan State University offer paths from associate degree programs to four-year degrees

## VISIT

Visit [AnokaTech.edu/visit](http://AnokaTech.edu/visit) for information on campus tours and virtual visits.

*Anoka Technical College is aligned with Anoka-Ramsey Community College.*



# Anoka-Ramsey Community College

[anokaramsey.edu](http://anokaramsey.edu)

2021-22 Tuition and Fees: \$4,775



**CAMBRIDGE  
COON RAPIDS**



**Admissions: 763-433-1300**

**TTY: 7-1-1**

11200 Mississippi Blvd. NW  
Coon Rapids, MN 55433

**FAFSA Code: 002332**



**8,865** Students Served

**38%** Full-time // **62%** Part-time

**27%** Students of Color

**61%** Female

**38%** Male

**1%** Unknown/Other



**BACHELOR'S  
DEGREE PARTNER**



**STUDENT  
ACTIVITIES**



**INTERCOLLEGIATE  
ATHLETICS**

## DEGREES OFFERED

Associate of Applied Science, Associate of Arts, Associate of Fine Arts, Associate of Science, Certificate, Diploma

## PROGRAM HIGHLIGHTS

Accounting, alcohol and drug counseling studies, American Sign Language, biological sciences, biomedical technology, business, communication studies, creative writing, cybersecurity, engineering, environmental science/sustainability, entrepreneurship, exercise science, fine arts, glassblowing, integrative health and healing, liberal arts and sciences, nursing, pharmacy technician, physical therapist assistant, therapeutic massage

## STUDENT ACTIVITIES

125+ student clubs, organizations, and activities available. Visit [AnokaRamsey.edu](http://AnokaRamsey.edu) or [MinnState.edu](http://MinnState.edu) for a complete list.

## CAMPUS HIGHLIGHTS

- » Lowest-cost tuition in Minnesota
- » Anoka-Ramsey offers 100+ transferable courses and programs, eight available completely online, and 17 transfer pathways to seamlessly transition to a bachelor's degree
- » Anoka-Ramsey was named one of 150 Top U.S. Community Colleges by the 2019 Aspen Prize for Community College Excellence



- » Two campuses, beautifully situated on riverbanks: study at the Cambridge Campus near the Rum River, or at the Coon Rapids Campus on the Mississippi River
- » Together, the Anoka-Ramsey Cambridge Campus and Coon Rapids Campus Foundations disbursed nearly \$260,000 in student scholarships last year and more than \$53,000 in crisis grants
- » Variety of student support services available, including academic advising, disability services, career services, veterans support, counseling, and tutoring. All services available with virtual options
- » Unique undergraduate research opportunities in several academic areas, including biology, chemistry, communication studies, geology, philosophy, political science, and sociology
- » New programs and transfer pathways: integrative health and wellness coaching, business crisis and emergency management certificate, entrepreneurship certificate, integrative health and wellness coaching certificate, international business certificate, social media marketing certificate, sustainability certificate
- » Anoka-Ramsey is a fully accredited member of the Higher Learning Commission and

home to nationally accredited nursing, business management and accounting, and physical therapy assistant programs

- » The Coon Rapids Campus offers a 28,976-square-foot Visual Arts Center with a glassblowing studio, photography studio, ceramics, computer labs, and classrooms
- » Both campuses are home to proscenium-style theatres that help support the theater program and multiple student performances annually
- » The Coon Rapids Campus Music Building offers three large rehearsal spaces, six practice rooms with SmartMusic notation and recording software, and a dual Yamaha keyboard/Macintosh music technology lab
- » The Coon Rapids Campus 5,000-square-foot Health and Wellness Center features a fitness center, walking track, batting cages, and several gymnasiums

## VISIT

Visit [AnokaRamsey.edu/visit](http://AnokaRamsey.edu/visit) for information on campus tours and virtual visits or take a virtual tour.

*Anoka-Ramsey Community College is aligned with Anoka Technical College.*

# Central Lakes College

[clcmn.edu](http://clcmn.edu)

2021-22 Tuition and Fees: \$5,240



## BRAINERD STAPLES

**Admissions:** 218-855-8000

**TTY:** 218-855-8224

501 W. College Dr.  
Brainerd, MN 56401

**FAFSA Code:** 002339



**4,049** Students Served

**41%** Full-time // **59%** Part-time

**11%** Students of Color

**59%** Female

**41%** Male

**0%** Unknown/Other



STUDENT  
ACTIVITIES



INTERCOLLEGIATE  
ATHLETICS



ON-CAMPUS  
HOUSING

## DEGREES OFFERED

Associate of Applied Science, Associate of Arts,  
Associate of Science, Certificate, Diploma

## PROGRAM HIGHLIGHTS

Liberal arts and sciences, several transfer pathways, honors program, culinary arts, nursing, law enforcement, natural resources, computer network administration, sustainable greenhouse production, videography production, American Sign Language, heavy equipment operations and maintenance, robotics and automated systems

## SPECIAL OPTIONS

**Certificates** – Deaf studies, entrepreneurship, environmental studies, global studies, Latin American studies, robotic welding, wildlife tourism, and law enforcement skills

## STUDENT ACTIVITIES

Numerous student clubs, organizations, sports, and activities available. An active Student Senate body on each campus. Strong student life program and opportunities for international studies. Get the four-year college experience at the two-year college price. Visit [clcmn.edu](http://clcmn.edu) or [MinnState.edu](http://MinnState.edu) for a complete list.

## CAMPUS HIGHLIGHTS

- » Live Online lets students attend and participate in class in real time from anywhere across the nation
- » Affordable tuition while you begin work toward a bachelor's degree or choose from over 70 career and technical programs to start earning faster



- » Earn your AA degree without ever buying a commercial textbook with the Z-degree
- » CLC is a leader in offering online classes, with more than 250 offerings each academic year
- » Learn and live surrounded by lakes and trees near Minnesota's premier vacation destination. With campus on the banks of the Mississippi, the region boasts more than 500 lakes and rivers, as well as beautiful parks and forests
- » 95 percent of CLC graduates find jobs related to their program of study
- » Small class sizes with expert instructors who know your name and care about you as an individual
- » CLC Foundation awards \$325,000 in scholarships each year; last spring semester, 420 scholarships were awarded
- » A Veterans Resource Center, awarded "Military Friendly" and "Military Advanced Education & Transition College" honors
- » Free tutoring services available for all students, in addition to TRIO Student Support Services
- » Convenient, newly renovated student housing available adjacent to campus
- » Home of the Central Lakes Community Performing Arts Center, providing theatre entertainment with the Cultural Arts Series and Brainerd Community Theatre, and Verse Like Water, a series that brings in world-renowned poets for a reading and craft talk
- » Nine-hole disc golf course located on campus
- » Students regularly outscore their peers on state and national skills tests
- » Raider athletics is home to six NJCAA DIII varsity sport teams and known nationwide for excellence, boasting four national championships
- » Ranked #2 in the nation by Great Value Colleges for an Associate's in Computer Engineering/Computer Information Science Online
- » A University Center, with five university partners, that lets students earn their bachelor's degree while staying at CLC and using the campus resources

## VISIT

Campus tours are offered each week both virtually and in person. To schedule a tour, visit [clcmn.edu](http://clcmn.edu).



# Century College

[century.edu](http://century.edu)

2021-22 Tuition and Fees: \$5,290



## WHITE BEAR LAKE

**Admissions:** 651-773-1700

**TTY:** 651-779-3354

3300 Century Ave. N.  
White Bear Lake, MN 55110

**FAFSA Code:** 010546



**8,891** Students Served

**39%** Full-time // **61%** Part-time

**42%** Students of Color

**56%** Female

**43%** Male

**1%** Unknown/Other



**BACHELOR'S  
DEGREE PARTNER**



**STUDENT  
ACTIVITIES**



**INTERCOLLEGIATE  
ATHLETICS**

## DEGREES OFFERED

Associate in Applied Science, Associate in Arts, Associate in Fine Arts, Associate in Science, Certificate, Diploma

## PROGRAM HIGHLIGHTS

Liberal arts and science transfer degrees, applied career and technical degrees, diplomas and certificates in nursing, paramedic, medical assistant, dental hygiene, automotive service technology, radiologic technology, law enforcement, cybersecurity, orthotic and prosthetic technology, solar and renewable energy, additive and digital manufacturing, engineering, computer science, HVACR, mental health and behavioral worker, translation and interpreting, interior design, kitchen and bath design, visual communications technologies, and more

## STUDENT ACTIVITIES

30+ student clubs, organizations, and activities available in areas such as fine and performing arts, recreation, and career development. Visit [century.edu](http://century.edu) or [MinnState.edu](http://MinnState.edu) for a complete list.

## CAMPUS HIGHLIGHTS

- » Save thousands on your bachelor's degree—seven associate in arts degrees, three associate in fine arts degrees, 18 Minnesota State Transfer Pathways degrees, and hundreds of general education courses in the liberal arts and sciences disciplines provide a variety of transfer options to four-year universities
- » Gain immediate employment in high-demand career fields. 34 associate in applied science degrees, 24 diplomas, and 67 certificates



are offered in a wide variety of high-demand program areas. Areas include applied design, business, health sciences, human services, science, technology, engineering and mathematics (STEM), and trade and industry

- » College is affordable at Century College. With low tuition rates, financial aid, and scholarship opportunities, students can earn a degree and avoid student debt
- » Maintain work-life balance through flexible course options, including multiple semester start dates, online, hybrid/blended, day, evening, part-time, and credit for prior learning
- » Learn in state-of-the-art classrooms and laboratories with cutting-edge technology to meet industry demands, including a new Applied Technology Center and laboratories for Digital Fabrication (Fab Lab), solar and renewable energy, orthotics and prosthetics, and health sciences simulation
- » Receive personalized and innovative student support services, including advising, academic tutoring, career counseling, wellness, veteran, disability, and technology services, and an on-campus student resource center
- » Experience a vibrant campus community through a variety of student clubs and

organizations, collegiate athletic teams, campus recreation, art, music, and theatre experiences, discipline-specific competitions, guest speakers, and LGBTQ, Veterans, and Multicultural Centers

- » Strong community and business partnerships enhance academic curriculum and provide experiential student learning opportunities such as internships, service learning, and career exploration
- » Enhance your job skills or retrain for a new career through a wide range of non-credit, short-term continuing education courses offered through the Century College Continuing Education and Customized Training department
- » A Leader College and member since 2011 in Achieving the Dream, a national, nonprofit network that champions evidence-based institutional improvements around student success and innovative strategies to bridge the equity gap

## VISIT

Attend a "Discover Century" information session, program information session, or campus event. Learn more at [century.edu/visit](http://century.edu/visit).

# Dakota County Technical College

[dctc.edu](http://dctc.edu)

2021-22 Tuition and Fees: \$5,565



## ROSEMOUNT

**Admissions:** 651-423-8000

**TTY:** 651-627-3529

1300 E. 145th St.  
Rosemount, MN 55068

**FAFSA Code:** 010402



**2,527** Students Served

**53%** Full-time // **47%** Part-time

**26%** Students of Color

**40%** Female

**55%** Male

**5%** Unknown/Other



BACHELOR'S  
DEGREE PARTNER



STUDENT  
ACTIVITIES



INTERCOLLEGIATE  
ATHLETICS

## DEGREES OFFERED

Associate of Applied Science, Associate of Science, Certificate, Diploma

## PROGRAM HIGHLIGHTS

DCTC delivers cutting-edge education that gives you the knowledge and skills for employment. Our programs include: GM Automotive Service Educational Program, heavy duty truck tech, electrical lineworker, biomedical equipment tech, heavy construction equipment tech, health care, brewing and beer stewardship, business administration, civil engineering tech, multicultural management, early childhood and youth development, veterinary technician, and more.

## STUDENT ACTIVITIES

25+ student clubs, organizations, and activities available in areas such as career development, programming for veterans, student leadership, and culture. Visit [dctc.edu](http://dctc.edu) or [MinnState.edu](http://MinnState.edu) for a complete list. DCTC offers NJCAA athletics, including baseball, softball, volleyball, men's basketball, and men's and women's soccer. Visit [goblueknights.com](http://goblueknights.com) to learn more about DCTC athletics.

## CAMPUS HIGHLIGHTS

» DCTC provides collegiate-level education for employment that empowers individuals to enhance their opportunities for career advancement and success in a global economy. When students choose DCTC, they



discover the Blue Knight life is more than just a college; it's a realm of possibility

- » DCTC credits are about 1/3 the cost of a private two-year school
- » DCTC offers 40 degree programs and more than 60 certificate and diploma programs in virtually every professional sector imaginable, from business to brewing, high tech to health care, and beyond
- » Learning options: DCTC offers a rich learning experience by offering a variety of course delivery methods including in-person, online, hybrid, and blended courses
- » Take advantage of free in-person and virtual student services like tutoring, advising, career advising, computer resources, and more
- » DCTC offers a true college experience, with countless student life and leisure opportunities to connect with our campus
- » Welcoming, student-centric campus with newly remodeled central commons area
- » Flexible learning options, including credit for prior learning, short-term programs, online classes, and an Individualized Studies AS degree

- » Small class sizes, hands-on labs, real-world learning, and instructors who care
- » Strong business and industry partnerships that bring modern equipment and relevant coursework

## VISIT

Discover all that DCTC has to offer during our weekly info sessions. Learn more at [dctc.edu/visit](http://dctc.edu/visit).



# Fond du Lac Tribal & Community College

[fdltcc.edu](http://fdltcc.edu)

2021-22 Tuition and Fees: \$5,234



## CLOQUET

**Admissions:** 218-879-0800

**TTY:** 800-627-3529

2101 14th St.  
Cloquet, MN 55720

**FAFSA Code:** 031291



**1,982** Students Served

**30%** Full-time // **70%** Part-time

**24%** Students of Color

**56%** Female

**43%** Male

**1%** Unknown/Other



STUDENT  
ACTIVITIES



INTERCOLLEGIATE  
ATHLETICS



ON-CAMPUS  
HOUSING

## DEGREES OFFERED

Associate of Applied Science, Associate of Arts, Associate of Fine Arts, Associate of Science, Certificate, Diploma

## PROGRAM HIGHLIGHTS

Law enforcement, nursing, human services, environmental science, geographic information systems, American Indian studies, electrical utilities technology, clean energy technology, business, multimedia production, early childhood development, and elementary education

## STUDENT ACTIVITIES

Our engaging campus life programming provides meaningful connections to campus and student success. Opportunities are available for roles in student government and campus

leadership, plus participation in student clubs based on program areas, academic excellence, intercollegiate athletics, and special interests. Visit [fdltcc.edu](http://fdltcc.edu) or [MinnState.edu](http://MinnState.edu) for a complete list.

## CAMPUS HIGHLIGHTS

- » Reputation for friendly service and a comfortable campus atmosphere
- » Convenient daytime, evening, weekend, hybrid, and online courses
- » ACEN-accredited in nursing, MN POST-Board approved in law enforcement, WINHEC-accredited in American Indian Studies
- » A faculty practiced in and focused on serving students through teaching, research, and publication

- » Cultural center, fitness areas, and law enforcement and nursing training facilities
- » Ranked #4 Most Beautiful Community College Campus in the United States
- » Emphasis on uniting cultures and creating individual and community awareness
- » Students can earn a bachelor's degree on campus through partnership programs with the College of St. Scholastica
- » Unique transfer programs with four-year universities and unique employment potential with area employers
- » Scholarships awarded through the FDLTCC Foundation and the American Indian College Fund

- » Paid internship opportunities in GIS, environmental science, electrical utilities, human services, law enforcement, and multimedia production
- » Free professional and peer tutoring available, plus TRIO Student Support Services

## VISIT

The best way to learn more about FDLTCC is to get a personalized tour. Visit campus anytime, during a Campus Visit Day, or schedule your individual tour. Visit [fdltcc.edu/visit-us](http://fdltcc.edu/visit-us) for details.





# Hennepin Technical College

[hennepintech.edu](http://hennepintech.edu)

2021-22 Tuition and Fees: \$5,161



**BROOKLYN PARK  
EDEN PRAIRIE**

**Admissions: 952-995-1300  
TTY: 800-627-3529**

Visit [HennepinTech.edu](http://HennepinTech.edu) for  
directions to our Brooklyn Park  
and Eden Prairie locations.

**FAFSA Code: 010491**



**4,776** Students Served  
**39%** Full-time // **61%** Part-time  
**45%** Students of Color

**38%** Female  
**61%** Male  
**1%** Unknown/Other



**BACHELOR'S  
DEGREE PARTNER**



**STUDENT  
ACTIVITIES**

## DEGREES OFFERED

Associate of Applied Science, Associate of  
Science, Certificate, Diploma

## PROGRAM HIGHLIGHTS

Automation robotics, fluid power engineering,  
business, IT, accounting, engineering CAD,  
interactive design/video production, audio  
production, dental assistant, practical nursing,  
medical assistant, culinary arts, manufacturing  
and engineering technology, plastics technology,  
HVACR, automotive technician, welding  
and metal fabrication, cabinetmaking, law  
enforcement, public works, Ford ASSET

## STUDENT ACTIVITIES

Many student clubs and activities, including  
Phi Beta Kappa, SkillsUSA, BREA (Blacks Rising  
in Education and Academics), and an active

student senate. Special support services for  
low-income students, first-generation college  
students, and students with disabilities.  
Strengths-based leadership development builds  
students' leadership in education, career, and  
life. Visit [HennepinTech.edu](http://HennepinTech.edu) or [MinnState.edu](http://MinnState.edu)  
for a complete list.

## CAMPUS HIGHLIGHTS

- » 99 percent job placement rate
- » A college committed to equity and inclusion
- » Ranked nationally on Diverse Top 100 list  
for associate degrees conferred to minority  
students in engineering technology fields
- » Among the lowest tuition in the state
- » Convenient class offerings with in-person,  
online, and hybrid options



- » Close relationships with industry partners  
create many scholarship, internship, and  
career opportunities
- » Hands-on learning using state-of-the-art  
equipment. Labs and curriculum aligned to  
industry standards
- » "Beyond The Yellow Ribbon" college with  
resources for military veterans
- » Ranked on 2021 Best Colleges for Earning  
Potential (GradReports)
- » Hunger Free Campus designation

- » Students can earn a bachelor's degree at  
the Eden Prairie campus in partnership with  
Metropolitan State University

## VISIT

Discover Hennepin Technical College with an  
in-person or virtual campus tour or attend an  
open house for a specific program. For more  
information, visit [HennepinTech.edu](http://HennepinTech.edu).

# Hibbing Community College

Part of the Northeast Higher Education District (NHED)

[hibbing.edu](http://hibbing.edu)

2021-22 Tuition and Fees: \$5,192



HIBBING



Admissions: 218-262-7200

TTY: 800-627-3529

1515 E. 25th St.  
Hibbing, MN 55746

FAFSA Code: 002355



**1,118** Students Served  
**52%** Full-time // **48%** Part-time  
**17%** Students of Color

**57%** Female  
**42%** Male  
**1%** Unknown/Other



STUDENT  
ACTIVITIES



INTERCOLLEGIATE  
ATHLETICS



ON-CAMPUS  
HOUSING

## DEGREES OFFERED

Associate of Applied Science, Associate of Arts, Associate of Fine Arts, Associate of Science, Certificate, Diploma

## PROGRAM HIGHLIGHTS

IT networking and security, law enforcement, medical lab technician, nursing, nursing assistant, automotive technician, diesel mechanic, electrical maintenance, heating and cooling technician, dental assistant, culinary arts, pastry artist

## STUDENT ACTIVITIES

Several student clubs, organizations, and activities available in a variety of areas, including recreation, student leadership, and culture. Visit [hibbing.edu](http://hibbing.edu) or [MinnState.edu](http://MinnState.edu) for a complete list.

## CAMPUS HIGHLIGHTS

- » On-campus housing features two-bedroom, two-bathroom suites with full kitchen, living space, and on-site laundry
- » The state-of-the-art Simulation Center for nursing (RN) students is equipped with high fidelity manikins that function with all the capabilities of a human without the repercussions, allowing students to learn in a safe and controlled environment as a supplement to off-site clinical rotations
- » 16-week programs available such as Certified Nursing Assistant
- » "Yellow Ribbon Campus" proudly serving military members and their families



- » Located in the heart of the Iron Range; gorgeous scenery, outdoor recreation, and an abundance of trails and lakes
- » Program in nursing ranked among the top nursing schools in the state of Minnesota
- » Law enforcement program with over 40 years of history in training excellence
- » 10-month programs such as dental assisting and heating and cooling technician
- » Associate of fine arts program allows students to take classes with a focus in drawing, painting, sculpting, and ceramics alongside general requirements
- » Culinary arts program includes opportunities to work in a commercial-style kitchen and showcase skills by providing food service to the entire campus for breakfast and lunch
- » Athletics opportunities in volleyball, softball, men's and women's basketball, baseball, and trap league
- » New Pipe Bending Lab and recently updated state-of-the-art Motor Control Lab for electrical maintenance allows students to learn and practice hands-on application of the function, operation, installation, protection, maintenance, and

troubleshooting of motor controls, various starting circuits, and motors according to applicable National Electrical Code articles

- » New student-centered Academic Center, Library, Bookstore, Student Services, and Resource Center
- » Free access to all campus fitness centers, including weight room, bike/running room, and CrossFit training gym
- » HCC Foundation awards student scholarships annually in amounts ranging between \$500 and \$3,000
- » Dental assisting students learn and practice skills in a shared on-campus fully functioning dental clinic

## VISIT

Visit [hibbing.edu](http://hibbing.edu) to schedule a tour anytime Monday-Friday, 9 a.m. to 3 p.m.



# Inver Hills Community College

[inverhills.edu](http://inverhills.edu)

2021-22 Tuition and Fees: \$5,237

Inver Hills  
Community College



## INVER GROVE HEIGHTS

**Admissions:** 651-450-3000

**TTY:** 800-627-3529

2500 E. 80th St.  
Inver Grove Heights, MN  
55076

**FAFSA Code:** 006935



**4,776** Students Served  
**39%** Full-time // **61%** Part-time  
**34%** Students of Color

**60%** Female  
**39%** Male  
**1%** Unknown/Other



BACHELOR'S  
DEGREE PARTNER



STUDENT  
ACTIVITIES

## DEGREES OFFERED

Associate of Applied Science, Associate of Arts, Associate of Fine Arts, Associate of Science, Certificate, Diploma

## PROGRAM HIGHLIGHTS

Launch your degree or career with Inver Hills Community College. Our campus, less than 10 miles southeast of St. Paul, offers network technology and security, emergency medical services, computer science, accounting, biology, psychology, Minnesota Alliance for Nursing Education (MANE) BSN, law enforcement, Adult Success through Accelerated Learning (ASAP), Concurrent Enrollment, PSEO, engineering fundamentals, paralegal, criminal justice, project management, and more.

## STUDENT ACTIVITIES

25+ student clubs, organizations, and activities available in areas such as music, theater, culture, and student leadership. Visit [inverhills.edu](http://inverhills.edu) or [MinnState.edu](http://MinnState.edu) for a complete list.

## CAMPUS HIGHLIGHTS

- » Why Inver Hills? Inver Hills offers the perfect setting for students looking for a balance of personal attention and opportunities to get involved. With 40 academic programs and a low faculty-to-student ratio, Inver Hills students know their instructors and fellow students
- » Inver Hills prepares students for career success through challenging courses, access to internships and community-based



learning, and career development support along the way

- » Committed to student success, we provide students a variety of services, including advising, counseling, financial aid, tutoring, and more. We support our students in person and online to meet all of their needs
- » From New Student Orientation to First Year Experience courses, we set our students up for success from day one
- » Our financial aid department and scholarship programs help thousands of students per year reach their goals while reducing their student loan debt. We are committed to making college possible for all
- » Through our Student Life and student clubs, Inver Hills offers opportunities to get involved and take on campus leadership roles. Check out the Student Life calendar for upcoming events and activities
- » Adult learners thrive at Inver Hills. The idea of "going back to college" can seem overwhelming. That's why we are here to help you succeed! We offer a broad range of adult learner services

» Known for our gorgeous grounds, the Inver Hills campus features multiple ponds, a community garden, and distinctive architecture. See campus for yourself by contacting the admissions department to schedule a personal or group visit

» Inver Hills students are prepared to transfer to the four-year college of their choice and our students can go anywhere with easy credit transfer and advising from our well-connected team

## VISIT

Campus visits are offered weekly and last about one hour. Visit [inverhills.edu](http://inverhills.edu) for details.



# Itasca Community College

Part of the Northeast Higher Education District (NHED)

[itascacc.edu](http://itascacc.edu)

2021–22 Tuition and Fees: \$5,192



## GRAND RAPIDS



**Admissions:** 218-322-2340

**TTY:** 218-322-2438

1851 E. Highway 169  
Grand Rapids, MN 55744

**FAFSA Code:** 002356



**1,195** Students Served

**56%** Full-time // **44%** Part-time

**21%** Students of Color

**56%** Female

**43%** Male

**1%** Unknown/Other



STUDENT  
ACTIVITIES



INTERCOLLEGIATE  
ATHLETICS



ON-CAMPUS  
HOUSING

## DEGREES OFFERED

Associate of Applied Science, Associate of Arts,  
Associate of Science, Certificate, Diploma

## PROGRAM HIGHLIGHTS

Engineering, natural resources (forestry,  
law enforcement, geospatial, and wildland  
firefighting tracks), K–12 education (Class Act),  
early childhood education, child development,  
applied psychology/human services,  
environmental studies, geography and GIS,  
American Indian studies, liberal arts, health  
sciences, practical nursing

## STUDENT ACTIVITIES

20+ student clubs, organizations, and activities  
available in areas such as culture, recreation,  
volunteerism, and academics. Visit [itascacc.edu](http://itascacc.edu)  
or [MinnState.edu](http://MinnState.edu) for a complete list.

## CAMPUS HIGHLIGHTS

- » 1,000+ lakes in beautiful Itasca County plus  
easy access to thousands of acres of public  
land for outdoor activities
- » New Student Center constructed in 2021 with  
coffee shop, fireplace lounge, game rooms,  
club meeting space, and more
- » One-year option for high school seniors who  
have earned a variety of college credits
- » More than \$300,000 in scholarships awarded  
each year complement already low tuition
- » Small classes in highly rated programs for  
less money—enter the workforce or transfer  
to earn your bachelor's degree
- » On-campus housing plus a variety of nearby  
off-campus options



- » Transfer seamlessly to a wide variety of  
colleges and universities with personalized  
advising
- » Women's volleyball, basketball, softball;  
men's football, basketball, wrestling,  
baseball; co-ed trap shooting (Itasca hosts  
the MCAC championship)
- » Itasca is a learning community college  
where students get real-world, hands-on  
experience, and instructors' full attention is  
devoted to teaching

- » Known as the “Best Place to Start”—advisors,  
faculty, tutors, and support services staff get  
to know you and guide you every step of the  
way

## VISIT

Schedule a visit any weekday 9 a.m. to 3 p.m.  
or sign up for a Campus Preview Day. Visit  
[itascacc.edu/visit](http://itascacc.edu/visit) for details.



# Lake Superior College

[lsc.edu](http://lsc.edu)

2021-22 Tuition and Fees: \$4,827



**DULUTH**

**Admissions:** 218-733-7601

2101 Trinity Rd.  
Duluth, MN 55811

**FAFSA Code:** 005757



**5,281** Students Served  
**36%** Full-time // **64%** Part-time  
**13%** Students of Color

**53%** Female  
**45%** Male  
**2%** Unknown/Other



**BACHELOR'S  
DEGREE PARTNER**



**STUDENT  
ACTIVITIES**



**INTERCOLLEGIATE  
ATHLETICS**

## DEGREES OFFERED

Associate of Applied Science, Associate of Arts, Associate of Fine Arts, Associate of Science, Certificate, Diploma

## PROGRAM HIGHLIGHTS

LSC has over 90 program offerings, including allied health and nursing, auto service technology, aviation, cybersecurity, dental hygiene, EMT, fire technology and administration, integrated manufacturing, liberal arts and sciences, paralegal studies, physical therapist assistant, truck driving, and much more.

## SPECIAL OPTIONS

- » LSC collaborates with many four-year institutions, including Bemidji State University; Metropolitan State University; St. Cloud State University; Minnesota State

University, Mankato; Southwest Minnesota State University; College of St. Scholastica; the University of Minnesota Duluth; and the University of Wisconsin-Superior, to provide seamless pathways for students to transition to four-year degree programs

- » LSC has 38 high school partners for the Postsecondary Enrollment Options (PSEO), Honors Online (HOL), and the College in the Schools (CIS) programs
- » LSC serves as a regional Economic Opportunity Center through the U.S. Department of Education to help marginalized individuals plan for and attend college
- » LSC and Hibbing Community College offer a dual campus partnership to provide a dental assisting program for students who live in the Twin Ports area



## STUDENT ACTIVITIES

30+ student clubs, organizations, and activities available in areas such as arts, recreation, intercollegiate athletics, student leadership, and career development. Visit [lsc.edu](http://lsc.edu) or [MinnState.edu](http://MinnState.edu) for a complete list.

## CAMPUS HIGHLIGHTS

- » Generous and growing scholarship funding through the LSC Foundation awarded more than \$250,000 to students in 2020-21
- » Athletics programs include intercollegiate men's and women's soccer, co-ed cycling, and co-ed clay target
- » On-site specialized veterans services available through the Veterans Resource Center, Higher Education Veterans Program, and Minnesota Department of Veterans Affairs
- » LSC is the only two-year college in Minnesota designated as a National Center of Academic Excellence in Cyber Defense by the National Security Agency/Department of Homeland Security
- » Collaborative partnership with Southwest Minnesota State University provides four-year bachelor's degrees available on LSC's campus in marketing, community psychology and health promotion, and agriculture solutions

- » LSC's numerous community partnerships include connections with local, regional, and state agencies and nonprofits through workforce development grant-sharing and customized training and active advisory councils for technical and allied health programs

- » Hangar facilities for the Center for Advanced Aviation at the Duluth International Airport house both LSC's professional pilot and aviation maintenance technician programs
- » The Emergency Response Training Center provides world-class training for emergency response professionals
- » The college provides dental hygiene, massage therapy, and physical therapy services to students and uninsured residents of the region through faculty-supervised student clinics

## VISIT

Campus tours are offered daily or by appointment. Visit [lsc.edu](http://lsc.edu) for additional details and events.



# Mesabi Range College

Part of the Northeast Higher Education District (NHED)

[mesabirange.edu](http://mesabirange.edu)

2021-22 Tuition and Fees: \$5,192



EVELETH  
VIRGINIA



Admissions: 218-749-0313

TTY: 800-627-3529

1001 W. Chestnut St.  
Virginia, MN 55792

FAFSA Code: 004009



1,188 Students Served

51% Full-time // 49% Part-time

20% Students of Color

57% Female

42% Male

1% Unknown/Other



STUDENT  
ACTIVITIES



INTERCOLLEGIATE  
ATHLETICS



ON-CAMPUS  
HOUSING

## DEGREES OFFERED

Associate of Applied Science, Associate of Arts,  
Associate of Science, Certificate, Diploma

## PROGRAM HIGHLIGHTS

Liberal arts and sciences (AA degree), business, industrial mechanical technology (IMT-Millwright), accredited nursing and paramedic programs, EMT, welding technology—AWS accredited, accredited graphic design media program, electrical controls and maintenance, human services, addiction studies, carpentry, construction trades, construction management, early childhood/early childhood special education, business operations and management, and Iron Range engineering (partnership with Itasca Community College)

## SPECIAL OPTIONS

**Z-degree** – (Zero – Textbook – Cost – AA Degree) – Mesabi Range College students are saving in textbook costs.

**Online Learning** – Mesabi Range College also offers an associate of arts degree and Minnesota Transfer Curriculum online, allowing students to earn their degree at home. Additional online programs: business diploma and AS, business operations and management diploma and AAS, early childhood/early childhood special education AAS, teacher's assistant AAS, and construction management and graphic design media AS. Some career programs are offered online, remotely, or a combination of both.

## STUDENT ACTIVITIES

Student clubs: gaming, welding, nursing, human services, multicultural, and Phi Theta Kappa Honor Society Club. Activities available in areas such as Student Senate, student life, and the Diversity Committee provide student leadership opportunities. Student competitions and events allow students to showcase their skills, such as critical thinking and their ingenuity. Examples include Welding Behind the Mask competition, SkillsUSA competition, and a technical skills fair for high school students. The Eveleth and Virginia campuses are located on the beautiful Iron Range, with activities ranging from hiking, biking, fishing, skiing, curling, snowboarding, ATV trails, and so much more. Students can enjoy exciting outdoor activities located close to the campuses, including Giants Ridge Recreation Area, Boundary Waters Canoe Area, and the Iron Range Off-Highway Vehicle State Recreation Area.

## CAMPUS HIGHLIGHTS

- » Personalized and innovative student support services, including advising, academic tutoring, career counseling, veteran, disability, and technology services. Student success centers (tutoring, computer access, food shelf, and other student services) are located on both campuses

- » Athletics – Women's volleyball, basketball, and softball; men's football, basketball, and baseball. Go Norse!
- » Small class sizes lead to personal attention and interaction with faculty and other students; student-to-teacher ratio of 20:1
- » Strong student life and student senate programs
- » Over \$105,000 in scholarships awarded annually
- » Semi-furnished housing at the Virginia campus
- » Excellent placement rates and high-paying jobs in many career programs
- » Strong relationships with area businesses and industry that provide students with internships
- » Ranked in top five best community colleges in Minnesota by BestColleges.com (2020)

## VISIT

Contact the admissions office to schedule a campus visit with a personal guide. Visit [mesabirange.edu](http://mesabirange.edu) for additional details and events.



# Minneapolis College

[minneapolis.edu](http://minneapolis.edu)

2021-22 Tuition and Fees: \$5,087



**MINNEAPOLIS**  
COMMUNITY & TECHNICAL  
COLLEGE™



## MINNEAPOLIS

**Admissions:** 612-659-6200

**TTY:** 800-627-3529

1501 Hennepin Ave.  
Minneapolis, MN 55403

**FAFSA Code:** 002362



**6,981** Students Served  
**35%** Full-time // **65%** Part-time  
**56%** Students of Color

**55%** Female  
**41%** Male  
**4%** Unknown/Other



**STUDENT  
ACTIVITIES**



**BACHELOR'S  
DEGREE PARTNER**

## DEGREES OFFERED

Associate of Applied Science, Associate of Arts, Associate of Fine Arts, Associate of Science, Certificate, Diploma

## PROGRAM HIGHLIGHTS

Eight schools within the college provide simplicity in choosing a major and guidance for which courses to take first to save time and money; programs within these schools include biology, psychology, theater, business, liberal arts, nursing, and more.

## STUDENT ACTIVITIES

70+ student clubs, organizations, and activities available. Visit [minneapolis.edu](http://minneapolis.edu) or [MinnState.edu](http://MinnState.edu) for a complete list.

## CAMPUS HIGHLIGHTS

- » Nationally accredited programs in high-demand fields
- » Courses are taught by industry experts, committed to student success
- » Students from around the world who represent a broad range of ages and backgrounds
- » One of the most diverse college campuses in the state
- » Small class sizes allow students to connect with faculty and classmates
- » State-of-the-art technical, science, and world language labs
- » Award-winning Student Support Center
- » Minneapolis College collaborates with many four-year institutions, including Metropolitan



State University, Augsburg University, and the University of Minnesota, to provide seamless pathways for students to transition to four-year degree programs

- » Minneapolis College is the first college in Minnesota to offer exploratory majors for undecided students, allowing you to start making immediate progress on your educational journey while keeping your options open
- » The Academic Success Center offers a state-of-the-art learning environment to enhance student success
- » The Power of YOU program covers tuition and fees (after state and federal grants) for eligible public high school graduates; 2,400 students benefited from the program over the last 10 years
- » About half a million dollars was awarded to students last year in scholarships and emergency assistance through the Minneapolis College Foundation
- » Offering over \$500,000 in scholarships, including Last Dollar Scholarships that cover the remaining cost of tuition that financial aid does not cover
- » An anchor partner in the Cedar Riverside Opportunity Center and 800 W. Broadway, a collaboration between public sector and private non-profit partners to provide access to educational, workforce, and career pathway services to the community
- » The Student Support Center received the Minnesota State Innovative Student Affairs Program Award for providing services for and responding to the needs of the college's diverse population
- » Instructors are frequently recognized by Minnesota State as Outstanding Educators, including four faculty receiving the top award, Educator of the Year, in 2016-17, 2017-18, 2019-20, and 2020-21
- » Dual credit programs are an opportunity for high school students to earn college credit while working toward their high school diploma. We offer three programs: Postsecondary Enrollment Options (college courses on our campus), concurrent enrollment (college courses at your high school), and Destination to Diploma for students enrolled in alternative high schools taking college courses on our campus

## VISIT

Visit [minneapolis.edu](http://minneapolis.edu) to find details about Minneapolis College and the admissions process.



# Minnesota State College Southeast

[southeastmn.edu](http://southeastmn.edu)

2021-22 Tuition and Fees: \$5,483



**RED WING  
WINONA**



**Admissions: 877-853-8324**

**TTY: 507-453-2785**

1250 Homer Rd.  
Winona, MN 55987

**FAFSA Code: 002393**



**1,856** Students Served

**38%** Full-time // **62%** Part-time

**16%** Students of Color

**52%** Female

**46%** Male

**2%** Unknown/Other



**BACHELOR'S  
DEGREE PARTNER**



**STUDENT  
ACTIVITIES**

## DEGREES OFFERED

Associate of Arts, Associate of Applied Science, Associate of Science, Certificate, Diploma

## PROGRAM HIGHLIGHTS

Accounting, associate of science in nursing, auto body collision, automotive and light duty diesel, bicycle design and fabrication, band instrument repair, biomedical equipment technology, CNC machine tool, construction technology, creative writing, early childhood education, electrical engineering technology, guitar repair and building, health science broad field, liberal arts and sciences (AA), practical nursing, radiography, software development and support, transfer pathways, truck driving, violin repair, welding technology

## STUDENT ACTIVITIES

Red Wing Student Association, Winona Student Senate, Student Music Association, cosmetology club, chess club, cycling club, equestrian club, Phi Theta Kappa (PTK), SkillsUSA, Student Guitar Show, and the annual Strings, Winds & Brass concert at The Sheldon Theatre in Red Wing. Visit [southeastmn.edu](http://southeastmn.edu) or [MinnState.edu](http://MinnState.edu) for a complete list.

## CAMPUS HIGHLIGHTS

- » 95 percent of graduates in career programs find employment in their chosen fields
- » 19:1 student-teacher ratio means small class sizes where instructors know you by name
- » 100 percent online programs available in accounting, accounting transfer pathway,



administrative support careers, business transfer pathway, computer aided design (CAD) drafting, creative writing, cyber and information security, early childhood education, software development and support

- » Fully operational trade/technical labs simulate real-world work environment; new mechatronics and advanced manufacturing lab facilities
- » Health care programs (practical nursing and radiography) accredited by respective national agencies
- » 2021 Practical Nursing First Quarter NCLEX-PN® First Time Success Rate: 91.3 percent
- » Transfer pathways in accounting, business, English, exercise science, history, political science, pre-social work, sociology, and psychology lead directly to related bachelor's degrees at Minnesota State universities
- » Unique bicycle design and fabrication program provides hands-on engineering technology and design curriculum
- » Construction technology emphasizes sustainability, energy conservation, ecofriendly building practices, and partnership with Winona Habitat for Humanity

- » Musical instrument repair and building programs on Red Wing campus attract national and international students
- » Health and wellness benefits, including access to Red Wing YMCA and Winona State University Integrative Wellness Center
- » Military Friendly School™ and Hiawatha Valley Beyond the Yellow Ribbon Company
- » More than \$175,000 in MSC Southeast Foundation and Workforce Development scholarships available
- » Free bus transportation and on-campus food pantries support students in financial need

## VISIT

Schedule a personal campus tour with an admissions advisor by calling 877-853-8324 or email [enrollmentservices@southeastmn.edu](mailto:enrollmentservices@southeastmn.edu).

# Minnesota State Community and Technical College

[minnesota.edu](https://minnesota.edu)

2021–22 Tuition and Fees: \$5,267



**DETROIT LAKES  
FERGUS FALLS  
MOORHEAD  
WADENA**

**Admissions:** 877-450-3322  
**TTY:** 800-627-3529

Visit [minnesota.edu/about/campuses](https://minnesota.edu/about/campuses) for directions to our four campus locations.

**FAFSA Code:** 005541



**6,222** Students Served  
**39%** Full-time // **61%** Part-time  
**20%** Students of Color

**60%** Female  
**39%** Male  
**1%** Unknown/Other



**BACHELOR'S  
DEGREE PARTNER**



**STUDENT  
ACTIVITIES**



**INTERCOLLEGIATE  
ATHLETICS**

## DEGREES OFFERED

Associate of Applied Science, Associate of Arts, Associate of Fine Arts, Associate of Science, Certificate, Diploma, Transfer Pathways

## PROGRAM HIGHLIGHTS

Autism spectrum disorder, cardiovascular technology-invasive, child and adolescent therapeutic behavioral health, cosmetology, cybersecurity, database administration, dental assisting and hygiene, digital marketing, electrical lineworker, electrical technology, limited scope radiography, medical laboratory technology, music, nursing, phlebotomy technician, powersports technology, radiologic technology, social media management, sport management, surgical technology, theater, and visual arts; transfer pathways are available in accounting, art, biology, business, early

childhood, education, history, political science, psychology, and theater arts

## STUDENT ACTIVITIES

The four M State campuses have more than 30 student clubs, organizations, and activities focused on career skills, theatre, art, culture, recreation, entertainment, and student leadership. Visit [minnesota.edu/m-state-life](https://minnesota.edu/m-state-life) or [MinnState.edu](https://MinnState.edu) for a complete list.

## CAMPUS HIGHLIGHTS

- » Prepare for transfer to a four-year college or university or choose from 70 career programs
- » Choose from on-campus, online, or blended
- » More than 300 classes and 30 programs and majors can be completed entirely online
- » M State is the top transfer institution



for students attending Minnesota State University Moorhead, North Dakota State University, University of North Dakota, and Concordia College

- » In 2019, M State nursing students had a licensure exam pass rate of 91 percent for the associate degree and a 95 percent pass rate for the practical nursing program. Radiologic technology students have a licensure exam pass rate of 100 percent
- » College foundations award more than \$280,000 in scholarships each year
- » The Detroit Lakes campus is located at the center of a variety of outdoor activities and unique entertainment venues; the campus offers an impressive selection of hands-on technical programs that prepare you to launch your dream career
- » Experience a university-like atmosphere at our two-year college campus in Fergus Falls, which includes on-campus housing and dining, fine arts performance opportunities, collegiate athletics, a robust Student Government Association, and engaging student life activities
- » In Moorhead, you'll experience a diverse campus in a vibrant metropolitan setting. Get involved with more than a dozen active clubs and organizations, and take advantage of

the on-campus fitness center. Our innovative programs can prepare you for high-demand careers in emerging technologies

- » Our Wadena campus, with its recently renovated student services center, is known for its warm, welcoming atmosphere. Learn from experts in their fields in real-world classroom environments that prepare you for success in the job market in as little as nine months

## VISIT

Our friendly enrollment managers are ready to provide an on-campus or virtual campus tour, assist you with your college and financial aid applications, and answer any questions you (or your family!) may have. Sign up at [minnesota.edu/visit](https://minnesota.edu/visit). If you're planning to be an online-only student, get started by contacting our Support Center at [enroll@minnesota.edu](mailto:enroll@minnesota.edu).



# Minnesota West Community & Technical College



[mnwest.edu](http://mnwest.edu)

2021-22 Tuition and Fees: \$5,651



**CANBY  
GRANITE FALLS  
JACKSON  
PIPESTONE  
WORTHINGTON**

**Admissions: 800-658-2330**

**TTY: 800-658-2330**

1450 Collegeway  
Worthington, MN 56187

**FAFSA Code: 005263**



**3,363** Students Served

**33%** Full-time // **67%** Part-time

**22%** Students of Color

**56%** Female

**43%** Male

**1%** Unknown/Other



**STUDENT  
ACTIVITIES**



**INTERCOLLEGIATE  
ATHLETICS**

## DEGREES OFFERED

Associate of Applied Science, Associate of Arts, Associate of Science, Certificate, Diploma, Transfer Pathways

## PROGRAM HIGHLIGHTS

Nursing, mechatronics, wind energy, electrician, powerline, welding, radiology tech, medical lab tech, law enforcement, agriculture, biofuels, carpentry, diesel, dental, surgical tech, computers, cosmetology, child development, automotive, liberal arts, computer science, solar, plumbing, elementary education pathway, early childhood, farm business management, lamb and wool, customized training

## STUDENT ACTIVITIES

Intercollegiate athletics, numerous student clubs, organizations, and activities available in areas

such as student leadership, academics, career programs, and recreation. Visit [mnwest.edu](http://mnwest.edu) or [MinnState.edu](http://MinnState.edu) for a complete list.

## CAMPUS HIGHLIGHTS

- » Leader in online and distance delivery for over 20 years
- » Numerous course offerings for flexible and accessible learning such as on-campus, online, and hybrid
- » Minnesota West has five campuses and two learning centers, which span a total of 19 counties and 21,000 square miles
- » \$2.55 million Powerline Technology Training Facility at the Jackson campus
- » Student housing available at the Canby and Worthington campuses



- » Student success with high graduation and persistence rates
- » Collaboration with business/workforce leaders to meet workforce demands with technical training and scholarship opportunities
- » Leader in allied health programming with learning opportunities in a hospital setting
- » Named one of the top 150 colleges in the country by the Aspen Institute (three times)
- » Military Friendly School and "Beyond the Yellow Ribbon" organization
- » Practical nursing program holds the top Minnesota State licensure passing rates

- » Over \$100,000 awarded in scholarships annually
- » Home to Bluejay and Lady Jay NJCAA Athletics
- » Number of online degree options, including AA degree 100 percent online
- » Last year we served students from 39 states and eight countries. Be a part of Minnesota West, and Learn With Purpose!

## VISIT

To schedule a visit call us at 800-658-2330 or get details at [www.mnwest.edu/get-started/visit-us](http://www.mnwest.edu/get-started/visit-us).

# Normandale Community College

[normandale.edu](http://normandale.edu)

2021-22 Tuition and Fees: \$5,242



## BLOOMINGTON

**Admissions:** 952-358-8201

**TTY:** 952-358-8625

9700 France Ave. S.  
Bloomington, MN 55431

**FAFSA Code:** 007954



**9,835** Students Served  
**42%** Full-time // **58%** Part-time  
**40%** Students of Color

**55%** Female  
**40%** Male  
**5%** Unknown/Other



**BACHELOR'S  
DEGREE PARTNER**



**STUDENT  
ACTIVITIES**

## DEGREES OFFERED

Associate of Applied Science, Associate of Arts, Associate of Fine Arts, Associate of Science, Certificate

## PROGRAM HIGHLIGHTS

Liberal arts, business, computer science, science and engineering, nursing, dental hygiene, teacher education, law enforcement, music, theater, art, psychology, vacuum technology, world languages; advanced degree programs in business, communications, computer science, dental hygiene, education, engineering, exercise science, nursing, theater

## STUDENT ACTIVITIES

50+ student clubs, organizations, and activities available in areas such as arts, recreation, student leadership, and career development.

## CAMPUS HIGHLIGHTS

- » Prepares students for full participation in diverse communities, creates pathways to other college programs, and builds community connections. Normandale is committed to quality, affordability, student access, and success
- » Normandale offers 70+ associate degree and certificate options with a number of course options available as in-person, online or hybrid formats
- » Over 14,000 students from diverse backgrounds attend classes at the college each year, making it Minnesota's largest community college
- » Normandale offers accredited music, theater, art, and business programs—rare



among two-year colleges in Minnesota and nationwide

- » Normandale is a top transfer institution to Metropolitan State University; Minnesota State University, Mankato; University of Minnesota; University of St. Thomas; and many other state colleges and universities
- » Normandale's College Services Renovation will modernize 27 classrooms, provide state-of-the-art labs, add small group spaces for student collaboration, and create a centralized and integrated Student Services model to make it easier for students to find the services and support they need
- » Normandale's Partnership Center provides access to bachelor's degree programs through partnering institutions (Metropolitan State, Minnesota State Mankato, and Southwest Minnesota State) on the Normandale campus. Students can obtain an associate degree at Normandale and complete their bachelor's degree in a variety of majors
- » Normandale's Continuing Education offers courses for in-demand skills and collaborates with community industry partners through grants from the Minnesota Department of Employment and Economic Development (DEED) to make an impact
- » Support services are provided for second language and developmental education students as well as students with disabilities
- » Normandale Tutoring Center provides services to students through the Writing Center, embedded tutors in historically difficult courses, walk-in peer tutoring, and tutoring for non-native English speakers
- » The college provides a community dental clinic that accepts public assistance and offers dental services on a sliding fee scale for those living in the southwest metro area
- » Normandale expanded its Campus Cupboard and works with on-campus food vendor Tiffin Mann to provide fresh meals for students without the financial means to eat every day
- » Normandale is a "Beyond the Yellow Ribbon" military friendly organization. Normandale has one of the largest veteran populations in the Minnesota State system
- » Normandale has one of the few authentic Japanese Gardens in the state

## VISIT

Campus visits are available at different times during the year. Please check [normandale.edu/visit](http://normandale.edu/visit) to get the schedule and any information about campus visits.



# North Hennepin Community College

[nhcc.edu](http://nhcc.edu)

2021-22 Tuition and Fees: \$5,437



## BROOKLYN PARK

Admissions: 763-424-0724

TTY: 800-627-3529

7411 85th Ave. N.  
Brooklyn Park, MN 55445

FAFSA Code: 002370



**6,298** Students Served

**33%** Full-time // **67%** Part-time

**49%** Students of Color

**59%** Female

**40%** Male

**1%** Unknown/Other



STUDENT  
ACTIVITIES



BACHELOR'S  
DEGREE PARTNER

## DEGREES OFFERED

Associate of Applied Science, Associate of Arts, Associate of Fine Arts, Associate of Science, Certificate

## PROGRAM HIGHLIGHTS

Liberal arts, accounting, American Sign Language, business, computer science, construction management, corrections, creative writing, criminal justice, data science, economics, education, entrepreneurship, environmental science, exercise science, film, gender and women's studies, health, health sciences, history, human services, graphic design, law enforcement, literature, management, marketing, music, nursing, paralegal, pre-engineering, phlebotomy, psychology, racial justice and social transformation, studio arts, theater

## SPECIAL OPTIONS

- » Bachelor's degrees available on campus through NHCC's University Center partners; degrees offered include biology, business, data science, exercise science, medical laboratory science, nursing, and special education. Select universities also offer classes in business, economics, human services, communication, and psychology
- » Honors program and Phi Theta Kappa (PTK) available for qualifying students
- » Undergraduate research opportunities in biology, chemistry, geology, and psychology
- » Internship opportunities in business, exercise science, graphic design, human services, paralegal, and more



## STUDENT ACTIVITIES

75+ student clubs and organizations, recreational sports, wellness activities, diversity and equity initiatives, and leadership development opportunities available. Visit [nhcc.edu](http://nhcc.edu) or [MinnState.edu](http://MinnState.edu) for a complete list.

## CAMPUS HIGHLIGHTS

- » Diverse, inclusive, global-minded culture
- » More than 70 academic programs on campus and online
- » Accredited by the Higher Learning Commission
- » Accessible and engaged faculty
- » Individual support for student success
- » Low student-to-faculty ratio
- » Flexible class schedules for full- or part-time credit loads
- » Options to pursue bachelor's degree at NHCC and through transfer credits
- » Mentoring, internship, and apprenticeship opportunities
- » Academic advising, tutoring, and career services

- » Confidential personal counseling services at no charge
- » Student support and access services
- » English Language for Academic Purposes (EAP)
- » TRIO programs for eligible students
- » Yellow Ribbon Institution with a Veterans Resource Center
- » More than 100 scholarship opportunities available plus financial aid

## VISIT

Virtual Information Sessions: Mondays, Tuesdays, and Fridays. In-person information sessions may resume in spring 2022. In-person or virtual individual appointments available. Go to [nhcc.edu](http://nhcc.edu) for updates on info sessions, appointments, and admissions events.

# Northland Community & Technical College

[northlandcollege.edu](http://northlandcollege.edu)

2021-22 Tuition and Fees: \$5,435



## EAST GRAND FORKS THIEF RIVER FALLS

**Admissions:** 218-793-2388

**TTY:** 800-627-3529

1101 Highway One E.  
Thief River Falls, MN 56701

**FAFSA Code:** 002385



**3,500** Students Served  
**39%** Full-time // **61%** Part-time  
**19%** Students of Color

**59%** Female  
**40%** Male  
**1%** Unknown/Other



STUDENT  
ACTIVITIES



INTERCOLLEGIATE  
ATHLETICS

## DEGREES OFFERED

Associate of Applied Science, Associate of Arts,  
Associate of Science, Certificate, Diploma

## PROGRAM HIGHLIGHTS

Liberal arts transfer pathways, aviation maintenance, unmanned aircraft systems technician, agriculture education, animal science, auto service, auto body, architectural technology, carpentry, construction electricity, HVAC, plumbing, accounting, administrative professional, business, digital marketing, marketing and management, early childhood and paraprofessional, dietetic technician, medical office, nursing, occupational therapy assistant, paramedic, phlebotomy, pharmacy, physical therapist assistant, radiologic technology, respiratory therapy, surgical technology, computer and network technology,

cybersecurity, fire technology, law enforcement, electronics technology, mechatronics, welding, and a new exercise science transfer pathway

## STUDENT ACTIVITIES

Northland offers 20+ student clubs and organizations in various areas, including fine arts, music, theater, athletics, leadership, program-related clubs, and more. Visit [northlandcollege.edu/clubs](http://northlandcollege.edu/clubs) for a complete list.

## CAMPUS HIGHLIGHTS

- » A national study ranked Northland among the best two-year colleges in the nation for its combination of affordability and educational excellence
- » Northland's liberal arts program is ranked #24 in the nation by GradReports for



delivering impressive earning potential and the second-lowest tuition cost

- » With 80+ program options, Northland can be your path to thousands of job openings around the country. It's why we offer fast-paced, real-world training that prepares you for these in-demand careers
- » Northland Z-degree allows you to earn an AA degree while spending nothing on textbooks. Even if an AA isn't your current degree plan, taking individual Z-degree courses offers you an opportunity to save money. Learn more at [northlandcollege.edu/zdegree](http://northlandcollege.edu/zdegree)
- » With Northland's new Competency-Based Education you can earn a full two-year degree or any number of certificates—or you can simply sign up to learn a specific new skill to advance your career or take your hobby to a new level of expertise
- » Over \$150,000 in scholarships awarded each year
- » Getting your generals out of the way at Northland is an affordable and time-friendly way to get to the next level
- » A leader in healthcare education offering over 17 high-demand career programs in health and human services
- » On-campus. Online. We offer a range of flexible learning options that allow you to customize a schedule that fits your life
- » Intercollegiate athletic programs—learn more at [northlandpioneers.com](http://northlandpioneers.com)
- » Two great campus locations and a state-of-the-art aerospace training facility
- » Make yourself at home in the fully furnished student housing units located near the Thief River Falls campus
- » Free access to our campus fitness centers
- » The Academic Success Center provides students with free learning resources, including tutoring and disability services
- » Explore our digital viewbook, the introductory guide to the Northland experience at [northlandcollege.edu/viewbook](http://northlandcollege.edu/viewbook)

## VISIT

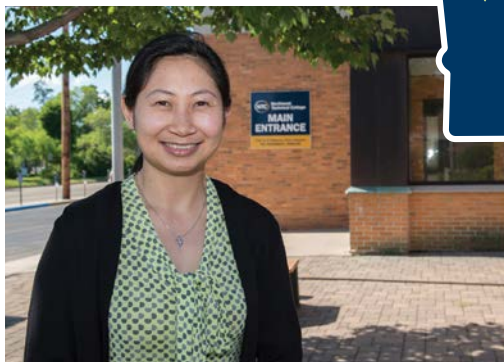
We'd love to meet you! Schedule your visit today at [northlandcollege.edu/visit](http://northlandcollege.edu/visit). If you can't visit us in person, our guided virtual tour is the next best thing to being on campus. Take a virtual tour now at [northlandcollege.edu/360](http://northlandcollege.edu/360).



# Northwest Technical College

[ntcmn.edu](http://ntcmn.edu)

2021-22 Tuition and Fees: \$5,697



## BEMIDJI

Admissions: 218-333-6600

905 Grant Ave. SE  
Bemidji, MN 56601

FAFSA Code: 005759



**1,022** Students Served  
**32%** Full-time // **68%** Part-time  
**20%** Students of Color

**72%** Female  
**27%** Male  
**1%** Unknown/Other



STUDENT  
ACTIVITIES



ON-CAMPUS  
HOUSING

## DEGREES OFFERED

Associate of Applied Science, Associate of Science, Certificate, Diploma

## PROGRAM HIGHLIGHTS

Nursing (Practical Nursing, LPN Step-In Track, RN), dental assisting, community health worker, health sciences, medical coding, automotive service and performance, electrical construction, plumbing/HVAC, accounting, commercial refrigeration, computer support, general business, human resources, administrative assistant, child care and young child education, gerontology and aging studies

## STUDENT ACTIVITIES

Numerous student clubs, organizations, and activities available. Visit the college's website or [MinnState.edu](http://MinnState.edu) for a complete list.

## CAMPUS HIGHLIGHTS

- » Academic programs, both on campus and online, closely match career opportunities
- » State-of-the-art technology resources and labs offer students an in-depth, hands-on learning experience
- » Labs for programmable logic controls, automotive, nursing, and commercial refrigeration all received significant upgrades during the summer of 2020
- » Most NTC students spend four hours in hands-on labs for every one hour spent in lectures
- » Dental assisting (Commission on Dental Accreditation) and nursing (Accreditation Commission for Education in Nursing) programs are fully accredited



- » Programs are guided by industry partners through active and engaged Program Advisory Committees
- » Students experience personal attention, small classes, supportive faculty, and well-equipped labs, as well as abundant parking and an on-campus café
- » Students are enabled to succeed in both the classroom and workplace through support from the Student Success Center, which offers tutoring, library assistance, academic coaching, career services, and academic advising
- » 90 percent of students who access NTC's tutoring services pass their classes and 75 percent have received letter grades of A or B
- » Through a partnership with Bemidji State University, students can live in BSU student housing and enjoy the benefits of an on-campus college experience
- » Internships and similar types of hands-on experiences are woven into program requirements, ensuring that students graduate with the skills they need to succeed
- » A comfortable student lounge called "The Roost" provides a casual spot to relax, play a game, study, or just hang out and socialize
- » Opportunities for fun and engagement through activities such as Free Coffee Thursdays and Free Popcorn Tuesdays at the Student Success Center, and through student clubs and organizations such as Student Senate and program-specific clubs for students in automotive, child care, nursing, and more
- » The Student Center for Diversity, Equity, and Inclusion and American Indian Resource Center support students through events and programming meant to increase both the understanding of diversity and inclusion and appreciation for its benefits

## VISIT

Campus visits are highly encouraged for students and their families. Visits may be scheduled by calling 218-333-6600 or by visiting the college's website, [ntcmn.edu](http://ntcmn.edu).

# Pine Technical & Community College

[pine.edu](http://pine.edu)

2021-22 Tuition and Fees: \$5,046



Pine Technical & Community College



## PINE CITY

**Admissions:** 320-629-5100

**TTY:** 320-629-1030

900 Fourth St. SE  
Pine City, MN 55063

**FAFSA Code:** 005535



**2,020** Students Served

**21%** Full-time // **79%** Part-time

**13%** Students of Color

**58%** Female

**42%** Male

**0%** Unknown/Other



STUDENT  
ACTIVITIES



INTERCOLLEGIATE  
ATHLETICS

## DEGREES OFFERED

Associate of Applied Science, Associate of Arts, Associate of Science, Certificate, Diploma

## PROGRAM HIGHLIGHTS

American Sign Language, applied engineering, associate of science degree in nursing (RN), automated systems technology, automotive technology, business transfer pathway, computer programming, construction technology, cybersecurity, early childhood development, emergency medical services, gunsmithing and firearms technology, human services eligibility worker, licensed practical nursing, management information systems, precision machining, and welding technology

## STUDENT ACTIVITIES

Numerous student clubs, organizations, and activities are available at the college and in the community in areas of academics, leadership, and career development. Visit [pine.edu](http://pine.edu) or [MinnState.edu](http://MinnState.edu) for a complete list.

## CAMPUS HIGHLIGHTS

- » Online courses available for distance learning and convenience
- » Nationally accredited programs
- » The associate of arts degree and several associate of science degree programs provide students the opportunity to pursue a four-year degree and take advantage of lower tuition rates and smaller class sizes while immediately focusing on a chosen major



- » Technical programs prepare students for job placement and employment
- » High-tech, state-of-the-art simulation labs support all nursing and health science programs
- » Vibrant student life environment provides opportunities for students from all disciplines
- » PTCC is conveniently located about an hour north of the Twin Cities, surrounded by lakes, rivers, and state forests, providing an excellent balance of access to metro opportunities, while retaining the feel of being up north
- » Small campus and friendly learning environment, where faculty and staff know students by name
- » An on-site daycare facility allows for easy pick-up and drop-off for PTCC student parents

- » PTCC's unique gunsmithing program attracts students from across the nation and abroad
- » There are many scholarship opportunities available to students, including over \$240,000 in scholarship dollars awarded annually from the PTCC Foundation
- » Campus has been newly renovated to provide more comfortable spaces for students to study and hang out

## VISIT

The best way to learn about PTCC is to visit campus and get a personalized tour with a PTCC admission specialist. Check out [pine.edu/visit](http://pine.edu/visit) to schedule your one-on-one PTCC Experience.



# Rainy River Community College

Part of the Northeast Higher Education District (NHED)



[rainyriver.edu](http://rainyriver.edu)

2021-22 Tuition and Fees: \$5,192



## INTERNATIONAL FALLS

Admissions: 218-285-7722

TTY: 800-627-3529

1501 Highway 71  
International Falls, MN 56649

FAFSA Code: 006775



**236** Students Served

**75%** Full-time // **25%** Part-time

**28%** Students of Color

**58%** Female

**42%** Male

**0%** Unknown/Other



STUDENT  
ACTIVITIES



INTERCOLLEGIATE  
ATHLETICS



ON-CAMPUS  
HOUSING

## DEGREES OFFERED

Associate of Arts, Associate of Science,  
Certificate, Diploma, Transfer Pathways

## PROGRAM HIGHLIGHTS

Communication studies transfer pathway AA,  
English transfer pathway AA, history transfer  
pathway AA, liberal arts and sciences AA,  
exercise science transfer pathway AS, coaching  
certificate, fitness specialist certificate,  
health sciences broad field AS, health care  
pre-professional certificate, nursing assistant  
certificate

## STUDENT ACTIVITIES

Phi Theta Kappa, Student Senate, outdoor  
activities, disc golf, and more. Visit [rainyriver.edu](http://rainyriver.edu)  
or [MinnState.edu](http://MinnState.edu) for a complete list.

## CAMPUS HIGHLIGHTS

- » Located just five minutes from Voyageurs National Park and the Canadian border
- » More than 90 percent of students receive some form of financial aid
- » Over \$200,000 in scholarships awarded annually
- » Continue to play the sport you love: volleyball, basketball, hockey, softball, baseball
- » Disc golf course and lighted cross country ski trail located on the campus grounds

## VISIT

Visit [rainyriver.edu/visit-request](http://rainyriver.edu/visit-request) to schedule a campus visit and get details on upcoming events.



# Ridgewater College

[ridgewater.edu](http://ridgewater.edu)

2021-22 Tuition and Fees: \$5,288



**HUTCHINSON  
WILLMAR**

**Admissions:** 320-222-5971

**TTY:** 800-627-3529

2101 15th Ave. NW  
Willmar, MN 56201

**FAFSA Code:** 005252



**3,298** Students Served

**56%** Full-time // **44%** Part-time

**17%** Students of Color

**57%** Female

**42%** Male

**1%** Unknown/Other



**BACHELOR'S  
DEGREE PARTNER**



**STUDENT  
ACTIVITIES**



**INTERCOLLEGIATE  
ATHLETICS**

## DEGREES OFFERED

Associate of Applied Science, Associate of Arts,  
Associate of Science, Certificate, Diploma

## PROGRAM HIGHLIGHTS

Accountant, activity director, administrative support, agribusiness, agricultural science and technology, agriculture power and equipment technician, agronomy applicator technician, agronomy technology, auto body collision repair, automation and robotics systems technology, automotive service technology, business, communication studies, computer aided drafting and design, computer programmer, computer support technician, cosmetology, dairy management, early childhood education, early childhood special education, electrician/electrical technology, elementary education foundations, entrepreneurship, estheology, farm

operations and management, global studies, health information technology, health sciences broad field, healthcare administrative assistant, legal assistant, liberal arts and sciences, machine tool, marketing and design, marketing and sales management, massage therapy, medical assistant, medical coding, multimedia design technology, nail care, network administration and security, nondestructive testing technology, nursing (practical, registered, and bachelor's degree partnership), occupational skills, paramedic, peace officer, phlebotomy, photography and design, poultry management, precision agriculture, professional photography, veterinary technology, web developer, and welding



## STUDENT ACTIVITIES

Dozens of student clubs and activities are available. Both campuses offer active Student Senates, Phi Theta Kappa honor societies, nine-hole disc golf courses, fitness centers, multicultural clubs, and art galleries. Theater is in Willmar. Warrior varsity sports include combined men's and women's clay target trap shooting, volleyball, men's and women's basketball, wrestling, baseball, and softball. Several programs compete in leadership and skills competitions. Visit [ridgewater.edu/student-services-activities/](http://ridgewater.edu/student-services-activities/) or [MinnState.edu](http://MinnState.edu) for a complete list.

## CAMPUS HIGHLIGHTS

- » 100+ degrees, diplomas, and certificates, with more than two dozen convenient, fully online programs, including U.S. #2 ranked Online Computer Aided Drafting and Design associate degree (bestcolleges.com)
- » Nine Minnesota State Transfer Pathways available: business, communication studies, criminal justice, early childhood education, elementary education foundations, English, law enforcement, psychology, and special education
- » #1 ranked Minnesota Community College and U.S. Top 20, 2020 and 2021 (niche.com)

- » Education to learn a trade and get a great internship or job in two years or less
- » Take the first two years of a four-year degree in small, affordable classes
- » Extensive partnerships with local, state, and national businesses, industries, and organizations
- » Job placement in many technical programs at or near 100 percent
- » More than \$350,000 in scholarships awarded annually
- » Outstanding support services, including academic support centers, online tutoring, personal counseling, and TRIO Student Support Services
- » Career and program counseling for students who are undecided on an academic path
- » Personalized advising for students transferring to and from Ridgewater
- » On-site specialized veterans services available

## VISIT

Campus tours available in person or virtually. Schedule an appointment by visiting [ridgewater.edu/visit](http://ridgewater.edu/visit) or calling 320-222-5971.



# Riverland Community College

[riverland.edu](http://riverland.edu)

2021-22 Tuition and Fees: \$5,396



ALBERT LEA  
AUSTIN  
OWATONNA

Admissions: 507-433-0600

TTY: 800-627-3529

1900 8th Ave. NW  
Austin, MN 55912

FAFSA Code: 002335



**3,262** Students Served

**36%** Full-time // **64%** Part-time

**25%** Students of Color

**58%** Female

**41%** Male

**1%** Unknown/Other



BACHELOR'S  
DEGREE PARTNER



STUDENT  
ACTIVITIES



INTERCOLLEGIATE  
ATHLETICS

## DEGREES OFFERED

Advanced Technical Certificate, Associate of Applied Science, Associate of Arts, Associate of Fine Arts, Associate of Science, Certificate, Diploma

## PROGRAM HIGHLIGHTS

Liberal arts and sciences, nursing, human services, business, supervisory management, criminal justice—law enforcement, computer technology, accounting, business, office technology, global studies, agricultural sciences, music or theater, musical theater, production technician, agribusiness, food science, biotechnology, supervisory management online

## STUDENT ACTIVITIES

25+ student clubs, organizations, and activities available in areas such as fine arts, recreation,

and career development. Visit [riverland.edu](http://riverland.edu) or [MinnState.edu](http://MinnState.edu) for a complete list.

## CAMPUS HIGHLIGHTS

- » Earn your AA degree or complete one of more than 50 career programs
- » More than 350 Riverland courses are offered entirely/partially online
- » Personalized student support services
- » Experience our best-in-class simulation learning centers for law enforcement, truck driving, nurses, radiographers, and lab technicians
- » Offers an associate of fine arts degree
- » Riverland offers multi-term registration, allowing students to register for more than one term at a time. It's possible for students to register for all three terms of the academic



year at once; this will allow students to plan, register, and secure their class schedule for a full academic year

- » The Honors Program at Riverland offers enhanced learning opportunities and activities to students who demonstrate academic excellence and a high level of interest and initiative and consists of 12 honors credits plus a three-credit Honors Leadership Development course
  - » Riverland's radiography program is a nationally ranked program, accredited by the Joint Review Committee on Education in Radiologic Technology (JRCERT). The program has celebrated 100 percent job placement in the last five years. Nearly 60 percent of all radiologic technologists in the region are graduates of the Riverland radiography program. The board certification exam pass rate is above 95 percent for each of the past six years
  - » Enrollment is growing in the criminal justice program; statewide law enforcement departments actively recruit Riverland students and come to observe the training program
  - » The carpentry program is the student chapter of Rochester Area Builders. The program also receives additional hours
- toward a journeyman's credential from the Carpenters Local Union 1382. The program is the only DeWalt-tool-sponsored college program in the nation. The first year focuses on residential carpentry and builds a home with Freeborn/Mower Habitat for Humanity. The second year focuses on commercial carpentry: partnering with Habitat on the house build, and with industry partners for commercial projects
- » The demand for Riverland graduates remains at an all-time high in the truck driving program. Spend less time in the classroom and more time on the road with this high-demand career
  - » Human services two-year programs are no longer available at many colleges, but Riverland has an established program where students complete the associate degree at Riverland and continue their bachelor's degree with the College of St. Scholastica

## VISIT

Schedule an individual appointment and learn about other visit opportunities by visiting [riverland.edu](http://riverland.edu).

# Rochester Community and Technical College

[rctc.edu](http://rctc.edu)

2021-22 Tuition and Fees: \$5,377



## ROCHESTER

**Admissions:** 507-285-7210

**TTY:** 800-627-3529

851 30th Ave. SE  
Rochester, MN 55904

**FAFSA Code:** 002373



**5,143** Students Served  
**44%** Full-time // **56%** Part-time  
**29%** Students of Color

**61%** Female  
**38%** Male  
**1%** Unknown/Other



BACHELOR'S  
DEGREE PARTNER



STUDENT  
ACTIVITIES



INTERCOLLEGIATE  
ATHLETICS

## DEGREES OFFERED

Associate of Applied Science, Associate of Arts, Associate of Fine Arts, Associate of Science, Certificate, Diploma

## PROGRAM HIGHLIGHTS

RCTC offers nearly 70 programs in 10 academic pathways including: liberal arts and sciences, aviation pilot, nursing, health information technology, business, accounting, cardiovascular invasive specialist, cancer registry management, clinical neurophysiology technology, radiography, Magnetic Resonance Imaging (MRI), dental hygiene, environmental science, histology technician, intensive care paramedic, surgical technology, veterinary technology, mass communication, and many more. Many programs hold national certifications and accreditations. RCTC is accredited by the Higher Learning Commission.

## STUDENT ACTIVITIES

40+ student clubs, organizations, and activities, including student government, special interest groups, honor societies, and service organizations. RCTC is home to eight varsity athletic teams, including Yellowjacket football, baseball, wrestling, men's and women's basketball, volleyball, and softball. Find out more about RCTC's athletic teams and opportunities at [rctcyellowjackets.com](http://rctcyellowjackets.com). The college also offers several performing and fine arts opportunities for students, including theatre productions, vocal and instrumental music programs, and an art gallery for student exhibitions. For a full list of student organizations, clubs, and events, visit [rctc.edu/studentlife](http://rctc.edu/studentlife).



## CAMPUS HIGHLIGHTS

- » Founded in 1915 on a motion by Dr. Charles Mayo (co-founder of the world-renowned Mayo Clinic) to the Rochester School Board, RCTC is Minnesota's oldest public two-year college and one of the nation's oldest original community colleges
- » 518-acre campus with 20 buildings, including the Rochester Regional Stadium which features an inflatable bubble used during winter months
- » Rochester is one of the nation's "Most Livable Cities," the third-largest city in Minnesota, and home to Mayo Clinic and IBM Rochester
- » RCTC offers more than 350 online classes and 62 credit-based programs with more than 90 credential options
- » Innovative academic partnership with Mayo Clinic—with six collaborative programs offered, including cardiovascular invasive specialist, clinical neurophysiology technology, histology technician, intensive care paramedic, radiography, and MRI
- » Multiple articulation and transfer agreements with four-year universities, so RCTC credits will seamlessly transfer
- » The college has partnerships with dozens of local organizations, including Rochester

Public Schools/CTECH and PTECH, Mayo Clinic, Olmsted Medical Center, Rochester Area Chamber of Commerce, plus many more

- » More than 240 scholarships are awarded to over 220 students by the RCTC Foundation
- » Access to support services, including student health clinic, mental health practitioners, Hive Supply food cupboard, student emergency fund, winter clothing closet, plus much more
- » Beyond the Yellow Ribbon distinction for offering student veterans resources and support services

## VISIT

Individual/small group visits and tours are offered weekly. Preview Days are held throughout the academic year. Go to [rctc.edu/visit](http://rctc.edu/visit) for details.



# Saint Paul College

## A Community and Technical College

[saintpaul.edu](http://saintpaul.edu)

2021–22 Tuition and Fees: \$5,326



ST. PAUL

Admissions: 651-846-1555

TTY: 7-1-1

235 Marshall Ave.  
St. Paul, MN 55102

FAFSA Code: 005533



**6,920** Students Served

**35%** Full-time // **65%** Part-time

**66%** Students of Color

**58%** Female

**41%** Male

**1%** Unknown/Other



BACHELOR'S  
DEGREE PARTNER



STUDENT  
ACTIVITIES

### DEGREES OFFERED

Associate of Applied Science, Associate of Arts, Associate of Fine Arts, Associate of Science, Certificate, Diploma

### PROGRAM HIGHLIGHTS

Liberal and fine arts, STEM, geographic information science (GIS), engineering, business, accounting, finance, global trade, human resources, marketing, coding/programming, IT/computer science, cybersecurity, computer networking, data science, science and engineering technology, electromechanical systems, manufacturing, welding, skilled trades, transportation, health sciences, exercise sciences, healthcare administration, health information technology, practical nursing, medical lab technician, pharmacy technician, public health, surgical

technology, culinary arts, cosmetology, child development, sign language interpreter

### SPECIAL OPTIONS

**MnTC Curriculum** – General education curriculum courses offered include American Sign Language, anthropology, Arabic, art, Chinese, communication, drama/theater, economics, English, geography, history, humanities, music, philosophy, photography, political science, psychology, sociology, Spanish, women's and gender studies

**Transfer Pathways Degree Programs** – Biology AS, Business AS, Chemistry AS, Communication Studies AA, Computer Science AS, Criminal Justice AS, Early Childhood Education AS, Economics AA, English AA, History AA, Political Science AA, Psychology AA, Sociology AA, Spanish AA



### STUDENT ACTIVITIES

20+ student clubs, organizations, and activities in areas such as culture, student leadership, and career development. Visit [SaintPaul.edu](http://SaintPaul.edu) or [MinnState.edu](http://MinnState.edu) for a complete list.

### CAMPUS HIGHLIGHTS

- » Student-oriented campus with One Stop services, free tutoring, computer labs, pathway advising, transfer services, TRIO Student Support Services program, and career/placement services
- » One of America's Top 150 community colleges by the Aspen Institute, the only Twin Cities metro community college honored with this distinction
- » Ranked one of the Top 10 Best Community Colleges in the U.S. by TheBestSchools.org in 2017, 2019, and 2020
- » 2019 Top Associate Degree Producer by Diverse Issues in Higher Education
- » 400+ business and industry partnerships benefit students through scholarships, state-of-the-art equipment and product donations, internships, and immediate employment for our graduates
- » 87 percent of first-time full-time students receive financial aid or scholarships

- » 1,100+ high school students are enrolled in Postsecondary Enrollment Options (PSEO), Career Pathways Academy, concurrent enrollment, and other readiness programs
- » Transfer agreements with four-year private and public colleges and universities
- » Saint Paul College's esthetician program makes it a CIDESCO school—one of only 11 colleges in the U.S. and the only college in Minnesota with this internationally recognized esthetics credential
- » Supply chain logistics AAS degree program is ACBSP-accredited—the only associate degree program of its kind in Minnesota
- » Health and Science Alliance Center provides students with state-of-the-art classroom and lab facilities and the Simulation Center with specialized training rooms: ICU, isolation, long-term care, medical surgical, operating room, and pharmacy clinic
- » Health science students train on high fidelity manikins, including newborn, infant, and adult manikins, and the SynDaver (a sophisticated synthetic surgical stimulation and anatomy model)

### VISIT

Connect with us and we will help you get started: [SaintPaul.edu/StartHere](http://SaintPaul.edu/StartHere).

# South Central College

[southcentral.edu](http://southcentral.edu)

2021-22 Tuition and Fees: \$5,310



**FARIBAULT  
NORTH MANKATO**

**Admissions:** 507-389-7200

**TTY:** 507-389-7200

1920 Lee Blvd.  
North Mankato, MN 56003

**FAFSA Code:** 005537



**2,749** Students Served  
**50%** Full-time // **50%** Part-time  
**21%** Students of Color

**47%** Female  
**52%** Male  
**1%** Unknown/Other



**STUDENT  
ACTIVITIES**

## DEGREES OFFERED

Associate of Applied Science, Associate of Arts,  
Associate of Science, Certificate, Diploma

## PROGRAM HIGHLIGHTS

Agribusiness and farm business management, architectural drafting and design, auto body and collision technology, automotive service, business, carpentry, civil engineering technology, culinary arts, dental assisting, early childhood education, emergency medical services, family services, geographic information systems, graphic design, HVAC/R, intensive care paramedic technician, machine tool technology, mechatronics, medical assisting, medical laboratory technician, multimedia technology, nursing, phlebotomy, welding

## SPECIAL OPTIONS

- » Associate degree programs that enable students to complete the first two years of a bachelor's degree at South Central College and then transfer to a four-year university as a junior, including associate of arts, biology transfer pathway, business transfer pathway, communication studies transfer pathway, early childhood education transfer pathway, economics transfer pathway, pre-social work transfer pathway
- » Arts and sciences offerings that satisfy university general education requirements and Minnesota transfer curriculum goal areas, with a wide variety of courses available in areas such as American Indian studies, art, biology, chemistry,



communication, economics, English, ethnic studies, geography, foreign language, health and wellness, history, humanities, mathematics, philosophy, physics, political science, psychology, sociology

- » Online, on-campus, and hybrid (combination of online and campus) course options

## STUDENT ACTIVITIES

SCC provides students with growth opportunities inside and outside the classroom, offering a wide variety of student life activities to nurture the whole person. Student clubs and organizations focus on leadership development, personal interests, and career advancement. They include: Business Professionals of America (BPA), campus activities board, Collegiate DECA, dental assisting club, diversity club, film club, Iqra Al-Quaran Student Association, Phi Theta Kappa, Postsecondary Agricultural Student Organization (PSA), PRIDE, psychology club, SkillsUSA, Student Nurses Association, and Student Senate. Visit [southcentral.edu/studentlife](http://southcentral.edu/studentlife) or [MinnState.edu](http://MinnState.edu) for a complete list.

## CAMPUS HIGHLIGHTS

- » Since 2016, SCC has been one of 220 colleges selected to be part of Achieving the Dream, a nationwide network focused on improving student success and narrowing the achievement gap
- » The Center for Business and Industry, a division of SCC, has provided workforce education for more than 40 years, with more than 12,000 individuals receiving customized training and continuing education through the center each year
- » Students receive \$500,000+ in scholarships each year from SCC's campus foundations
- » SCC has strong relationships with area businesses that provide students with internships and apprenticeships while in school and permanent employment after graduation

## VISIT

Visit [southcentral.edu/explore](http://southcentral.edu/explore) to take an in-person or virtual tour.



# St. Cloud Technical & Community College

[sctcc.edu](http://sctcc.edu)

2021-22 Tuition and Fees: \$5,209



ST. CLOUD

Admissions: 320-308-5000

TTY: 320-308-5988

1540 Northway Dr.  
St. Cloud, MN 56303

FAFSA Code: 005534



4,330 Students Served

50% Full-time // 50% Part-time

28% Students of Color

58% Female

42% Male

0% Unknown/Other



STUDENT  
ACTIVITIES



INTERCOLLEGIATE  
ATHLETICS

## DEGREES OFFERED

Advanced Technical Certificate, Associate of Applied Science, Associate of Arts, Associate of Fine Arts, Associate of Science, Certificate, Diploma

## PROGRAM HIGHLIGHTS

Liberal arts and sciences, cardiovascular technology, culinary arts, cybersecurity, diesel mechanic, early childhood and special education, land surveying/civil engineering, energy technology specialist, medical coding, sonography, water environment technologies

## SPECIAL OPTIONS

**Transfer Degree Programs** – Liberal arts and sciences AA, biology transfer pathway AS, business transfer pathway AS, psychology transfer pathway AA, elementary education

foundations transfer pathway AS, mathematics transfer pathway AA, theater transfer pathway AFA, Spanish transfer pathway AA, special education transfer pathway AS, engineering broad field AS, environmental science AS. Transfer Pathways programs are designed to fully transfer to Minnesota State universities that offer the corresponding bachelor's degree. Environmental science and engineering transfer via articulation agreements.

**Online Programs** – SCTCC offers five programs completely online: liberal arts AA, business, finance, health information technology/medical coding, and psychology.

### New Manufacturing Lab Will Meet Job

**Demand** – With a recent investment from the U.S. Department of Commerce's Economic Development Administration, a new



manufacturing lab is set to be built to serve more students, offer new skills training, and support cross-training across manufacturing programs. The increase in graduates will help meet current and future needs of area manufacturers and train workers for high-demand jobs in energy and electronics and machine tool.

**Online Programs** – Twenty-five percent of SCTCC's liberal arts classes will offer textbooks at no cost starting fall 2021, with the goal of students earning an AA with no textbook charges. The Z-degree classes offer textbooks as a digital copy that can be accessed and downloaded online for free, as well as a physical copy in the bookstore that can be purchased if students prefer that option.

## STUDENT ACTIVITIES

More than 25 student clubs, organizations, and activities. The SCTCC Cyclones participate in five intercollegiate sports: volleyball, men's and women's basketball, baseball, and softball. The Cyclones are members of the Minnesota College Athletic Conference (MCAC) and the National Junior College Athletic Association (NJCAA). The Cyclones are consistently ranked in NJCAA polls. Students in auto body, automobiles, medium/heavy truck, HVACR, electrical, plumbing, welding, and culinary compete in SkillsUSA competitions and regularly place in

the top three at the state level, often moving on to national-level competitions. Visit [sctcc.edu](http://sctcc.edu) or [MinnState.edu](http://MinnState.edu) for a complete list.

## CAMPUS HIGHLIGHTS

- » With a 96 percent job placement rate, our grads get jobs
- » At SCTCC we are committed to diversity, equity, and inclusion and strive to foster a culture where every member of our community feels valued and supported
- » Students know their instructors with small class sizes: average of 18 students per class
- » Cutting-edge simulation labs that include equipment used in area industries
- » Highly involved advisory boards mean SCTCC is aligned for area industry needs
- » In 2020, more than \$218,000 in scholarships was awarded to 375+ students
- » Child care facility on campus
- » Yellow Ribbon Company designation for service member and military family support
- » Named a Best Community College by Value Colleges in 2021

## VISIT

Schedule a meeting with our admissions team for a campus tour or to learn more about your program of interest today at [sctcc.edu/visit](http://sctcc.edu/visit).



# Vermilion Community College

Part of the Northeast Higher Education District (NHED)

[vcc.edu](http://vcc.edu)

2021-22 Tuition and Fees: \$5,192



ELY

Admissions: 218-235-2191

TTY: 800-627-3529

1900 E. Camp St.  
Ely, MN 55731

FAFSA Code: 002350



660 Students Served

67% Full-time // 33% Part-time

21% Students of Color

45% Female

54% Male

1% Unknown/Other



STUDENT  
ACTIVITIES



INTERCOLLEGIATE  
ATHLETICS



ON-CAMPUS  
HOUSING

## DEGREES OFFERED

Associate of Applied Science, Associate of Arts,  
Associate of Science, Certificate, Diploma

## PROGRAM HIGHLIGHTS

Natural resources technology, fisheries and  
wildlife, wildlife/wildland law enforcement,  
outdoor leadership, outdoor recreation therapy,  
veterinary technician, wilderness and park  
management, business, water quality, watershed  
science, environmental technology, land  
surveying, liberal arts

## STUDENT ACTIVITIES

Outdoor equipment rental, seven varsity sports,  
20+ clubs, campus organizations, intramural  
sports, and residential campus activities. Visit  
[vcc.edu](http://vcc.edu) or [MinnState.edu](http://MinnState.edu) for a complete list.

## CAMPUS HIGHLIGHTS

- » Located on the edge of the Boundary Waters Canoe Area Wilderness
- » Wide variety of natural resource programming with outdoor, hands-on experiences
- » On-campus housing with residential student life and full meal plan
- » Varsity athletics (football, men's and women's basketball, baseball, fast-pitch softball, volleyball, and co-ed clay target shooting)
- » Optional outdoor orientation trip into the Boundary Waters
- » Applied, small class, hands-on learning environment

## VISIT

Schedule a visit at [vcc.edu/campus-visit](http://vcc.edu/campus-visit). Explore our open house options in fall and winter!







# 7 STATE UNIVERSITIES

Seven state universities are part of Minnesota State. Each provides an excellent pathway to earning your bachelor's degree or beyond and can help you launch your career.

## INTERESTED?

The seven state universities will generally accept you as a first-year student if you can answer YES to at least one of these questions:

- » Did you graduate in the top half of your high school class?
- » Did you receive a combined score of 1,000 or higher on the SAT standardized test, or a corresponding score on the redesigned SAT standardized test?
- » Did you score 21 or higher on the ACT standardized test?

Were you able to answer YES to one of the above questions and are you planning on attending a Minnesota State university?

- » **CHECK OUT THE OPTIONS.** The profile pages that follow provide you a glimpse of the seven state universities.
- » **KNOW THE ADMISSION REQUIREMENTS.** Some state universities may have slightly different admission requirements. Check with the admissions office at the university you are interested in for details. If you do not meet the minimum admission requirements, you may be considered for admission under special provisions.
- » **ASK QUESTIONS AND VISIT CAMPUS.** There's no better way to figure out which university is the right fit. Contact a member of the university's admissions office to set up a visit.



# Bemidji State University

[bemidjistate.edu](http://bemidjistate.edu)

2021-22 Tuition and Fees: \$8,690



## BEMIDJI

**Admissions:** 218-755-2040

**TTY:** 800-627-3529

1500 Birchmont Dr. NE  
Bemidji, MN 56601

**FAFSA Code:** 002336



**5,125** Students Served

**65%** Full-time // **35%** Part-time

**14%** Students of Color

**57%** Female

**42%** Male

**1%** Unknown/Other



STUDENT  
ACTIVITIES



INTERCOLLEGIATE  
ATHLETICS



ON-CAMPUS  
HOUSING

## DEGREES OFFERED

Associate of Arts, Bachelor of Applied Science, Bachelor of Arts, Bachelor of Fine Arts, Bachelor of Science, Certificate, Graduate Certificate, Master of Arts, Master of Arts in Teaching, Master of Business Administration, Master of Professional Accountancy, Master of Science, Master of Special Education

## PROGRAM HIGHLIGHTS

Nursing, business administration, biochemistry/cellular and molecular biology, accounting, computer information systems, music, education, psychology, criminal justice, design, environmental studies, marketing communications, history, indigenous sustainability studies, Ojibwe language, biology, wildlife biology, aquatic biology, wilderness management and outdoor recreation, chemistry, mathematics, economics, English, Spanish,

creative and professional writing, political science, international studies, sociology, exercise science, project management

## SPECIAL OPTIONS

**Minors** – Leadership, applied public policy, studio arts, sustainability, engineering technology, communication studies, computer forensics, fraud examination, developmental/adapted physical education, digital writing, Earth science, fisheries biology, gender and women's studies, geographic information systems, health promotion and education, human performance, indigenous sustainability studies, international relations, management information systems, music, Ojibwe language, physics, philosophy, Spanish, substance and behavior addictions, wetlands ecology, aquatic systems

**Emphases** – Management, human resource management, finance, entrepreneurship, accounting information systems, exhibit design, international studies, writing, environmental health and toxicity, industrial ecology, construction management, wetlands ecology, fisheries biology, vocal performance, computer forensics, victimology, tribal justice, manufacturing technology, indigenous business

**Preprofessional** – 14 programs, including chiropractic, dentistry, engineering, law, medicine, mortuary science, occupational therapy, optometry, osteopathy, pharmacy, physical therapy, physician assistant, podiatry, veterinary medicine

## STUDENT ACTIVITIES

Bemidji State offers 80+ student organizations and activities related to professional development, fine arts, culture, academics, and leadership, as well as intercollegiate and intramural athletics. Visit [bemidjistate.edu](http://bemidjistate.edu) or [MinnState.edu](http://MinnState.edu) for a complete list.

## CAMPUS HIGHLIGHTS

- » BSU serves 5,000 students with a student-to faculty ratio of 20:1
- » U.S. News & World Report has ranked BSU as a top-tier Midwest University for the past 12 years

- » Our campus is located on the shore of Lake Bemidji in the beautiful north woods, with year-round outdoor recreation that includes world-class hunting and fishing and an Outdoor Program Center for canoeing, camping, skiing, bicycling, and sailing
- » In partnership with Mitchell Hamline School of Law, students can complete their undergraduate and law degrees in six years
- » Accelerated programs allow students to complete a bachelor's plus a Master of Business Administration or Master of Professional Accountancy degree in five years
- » The Student Center for Diversity, Equity & Inclusion offers educational, social, and cultural programming
- » Our American Indian Resource Center supports American Indian students and preserves indigenous language, culture, and traditions

## VISIT

Contact Admissions ([admissions@bemidjistate.edu](mailto:admissions@bemidjistate.edu)) for up-to-date information on campus tours. Information on upcoming Campus Preview events and more is available on the university's website.

# Metropolitan State University

[metrostate.edu](http://metrostate.edu)

2021–22 Tuition and Fees: \$8,281



**ST. PAUL  
MINNEAPOLIS**

**Admissions:** 651-793-1302

**TTY:** 651-772-7687

700 E. Seventh St.  
St. Paul, MN 55106

**FAFSA Code:** 010374



**7,880** Students Served

**40%** Full-time // **60%** Part-time

**49%** Students of Color

**58%** Female

**41%** Male

**1%** Unknown/Other



**STUDENT  
ACTIVITIES**

## DEGREES OFFERED

Bachelor of Applied Science, Bachelor of Arts, Bachelor of Human Services, Bachelor of Science, Bachelor of Science-Dental Hygiene, Bachelor of Science-Nursing, Bachelor of Science-Urban Early Childhood Education, Bachelor of Social Work, Certificate, Doctor of Business Administration, Doctor of Nursing Practice, Graduate Certificate, Master of Advocacy and Political Leadership, Master of Arts, Master of Business Administration, Master of Management Info Systems, Master of Nonprofit Leadership Management, Master of Public Administration, Master of Public and Nonprofit Administration, Master of Science, Master of Science-Advanced Dental Therapy, Master of Science-Nursing, Master of Science-Urban Education, Professional Science Master's

## PROGRAM HIGHLIGHTS

Individualized studies (graduate and undergraduate), business administration, accounting, psychology, human services, cybersecurity, criminal justice, data science, nursing RN-BSN, entry-level MSN, alcohol and drug counseling, computer science, applied doctorate in nursing practice, computer forensics, nurse anesthetist, law enforcement, oral health care practitioner, supply chain and operations management, screenwriting, technical communication, theater, urban elementary education, urban early childhood, K–6 and secondary education licensures

## SPECIAL OPTIONS

**Minors** – Advertising, applied math, applied statistics, biology, business admin, civic engagement, community organizing, computer



forensics, criminal justice, cybersecurity, digital media, entrepreneurship, environmental communication, experimental intermedia arts, gerontology, HR admin, international business, MIS, media literacy, org comm, research and info studies, UX design

**Emphases** – Metropolitan State's science-related programs prepare future professionals for careers in applied scientific endeavors and health care, graduate studies in science, and science teaching in K–12 schools. Programs include natural sciences, applied mathematics, computer science, and cybersecurity.

## STUDENT ACTIVITIES

Metropolitan State offers 50+ student activities, clubs, and organizations related to fine arts, culture, academics, leadership, professional development, and more. Visit [metrostate.edu](http://metrostate.edu) or [MinnState.edu](http://MinnState.edu) for a complete list.

## CAMPUS HIGHLIGHTS

- » Twin Cities' only public, urban, comprehensive state university
- » High-quality, affordable educational programs and services
- » More than 60 undergraduate programs (including individualized degree programs) and more than 25 graduate programs

- » Faculty bring both practical and theoretical knowledge to their instruction
- » Area's rich diversity reflected in students, faculty, staff, and community partnerships
- » Unwavering commitment to civic engagement
- » Daytime, evening, online, and weekend classes, smaller class sizes to allow greater faculty contact, and flexible scheduling
- » Credit assessment for learning gained through non-classroom experience
- » Among the top 2.7 percent in CollegeNet's 2020 "Social Mobility Index," and number one in Minnesota
- » Top 11 percent of 4,500 ranked U.S. colleges in Georgetown University's Center on Education and the Workforce return on investment analysis in November 2019
- » Partners with Hennepin Technical College at the Law Enforcement and Criminal Justice Education Center
- » Federally recognized Minority-Serving Institution, as an Asian American and Native Pacific Islander-Serving Institution

## VISIT

Set up a campus visit or make a phone appointment. Get details at [metrostate.edu/apply/learn-more](http://metrostate.edu/apply/learn-more).



# Minnesota State University, Mankato

[mnsu.edu](http://mnsu.edu)

2021–22 Tuition and Fees: \$8,073



## MANKATO

**Admissions:** 507-389-1822

**TTY:** 800-627-3529

122 Taylor Center  
Mankato, MN 56001

**FAFSA Code:** 002360



**14,405** Students Served

**78%** Full-time // **22%** Part-time

**17%** Students of Color

**56%** Female

**43%** Male

**1%** Unknown/Other



STUDENT  
ACTIVITIES



INTERCOLLEGIATE  
ATHLETICS



ON-CAMPUS  
HOUSING

## DEGREES OFFERED

Associate of Arts, Bachelor of Applied Science, Bachelor of Arts, Bachelor of Electrical Engineering, Bachelor of Fine Arts, Bachelor of Science, Bachelor of Science–Civil Engineering, Bachelor of Science–Computer Engineering, Bachelor of Science in Engineering, Bachelor of Science–Mechanical Engineering, Bachelor of Science in Social Work, Certificate, Doctor of Education, Doctor of Nursing Practice, Doctor of Psychology, Graduate Certificate, Master of Accounting, Master of Arts, Master of Arts in Teaching, Master of Business Administration, Master of Fine Arts, Master of Music, Master of Public Administration, Master of Science, Master of Science Nursing, Master of Social Work, Professional Science Master's, Specialist

## PROGRAM HIGHLIGHTS

Nursing, psychology, elementary education, law enforcement, management, art, finance, alcohol and drug studies, American indigenous studies, automotive engineering technology, aviation, dance, ethnic studies, gender and women's studies, music industry, recreation, parks and leisure services, Scandinavian studies, Spanish for professions

## SPECIAL OPTIONS

**Minors** – Highlights include astronomy, aviation management, community health education, creative writing, database technologies, entrepreneurship and innovation, environmental science, ethnic studies, financial planning, human resource management, military science/Army ROTC, theater arts, urban and regional studies

**Emphases** – Certificates in geographic information science, information security, law enforcement management, music industry, networking technologies, nonprofit leadership, software development, technical communication

**Preprofessional** – Athletic training, chiropractic medicine, dentistry, engineering, law, medicine, mortuary science, occupational therapy, optometry, osteopathic medicine and surgery, pharmacy, physical therapy, podiatric medicine and surgery, teaching, veterinary science

## STUDENT ACTIVITIES

Minnesota State Mankato offers 200+ student activities, clubs, and organizations related to arts, culture, academics, leadership, professional development, and more, as well as intercollegiate and intramural athletics. Visit [mnsu.edu](http://mnsu.edu) or [MinnState.edu](http://MinnState.edu) for a complete list.

## CAMPUS HIGHLIGHTS

- » Beautiful campus overlooking the Minnesota River Valley
- » More than \$127 million available in scholarships, assistantships, grants, workstudy, and student loans
- » Four applied doctorate programs: nursing practice, educational leadership, counselor education, school psychology

» Recognized by the Council on Undergraduate Research as one of the top 20 universities in undergraduate research in the United States

» Indoor rock climbing facility, outdoor rock climbing pinnacle, and full ropes and challenge course

» Large student weight room, basketball and volleyball courts, indoor student walking and running track, racquetball and handball courts, group fitness and dance studios, and a martial arts room

» State's premiere college theater: 10 musicals and plays per academic year, two dance concerts, two touring productions, and four professional summer stock productions

» Nationally renowned men's and women's basketball, NCAA Division I hockey, as well as football, softball, baseball, wrestling, track, and swimming

## VISIT

Campus tours are offered every weekday at 9:30 a.m., 10:30 a.m., 1 p.m., and 2 p.m. Visit [mnsu.edu](http://mnsu.edu) for details and other admissions events and information.

# Minnesota State University Moorhead

[mnstate.edu](http://mnstate.edu)

2021–22 Tuition and Fees: \$8,539



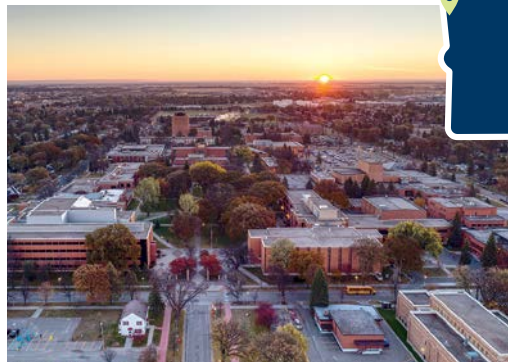
## MOORHEAD

**Admissions:** 218-477-2161

**TTY:** 800-627-3529

1104 7th Ave. S.  
Moorhead, MN 56563

**FAFSA Code:** 002367



**5,864** Students Served  
**70%** Full-time // **30%** Part-time  
**13%** Students of Color

**62%** Female  
**37%** Male  
**1%** Unknown/Other



STUDENT  
ACTIVITIES



INTERCOLLEGIATE  
ATHLETICS



ON-CAMPUS  
HOUSING

## DEGREES OFFERED

Associate of Arts, Bachelor of Arts, Bachelor of Fine Arts, Bachelor of Science, Bachelor of Science in Nursing, Bachelor of Social Work, Certificate, Doctor of Education, Graduate Certificate, Master of Business Administration, Master of Health Care Administration, Master of Science, Specialist

## PROGRAM HIGHLIGHTS

Elementary inclusive education, business, social work, biology, psychology, exercise science, accounting, speech/language/hearing science, biotechnology, business analytics, construction management, criminal justice, digital media management, entertainment industries and technology, entrepreneurship, film production, geosciences, gerontology, health services administration, medical physics,

operations management, project management, sustainability, global supply chain management, animation, early childhood education, nursing (BSN and RN-BSN), secondary education

## SPECIAL OPTIONS

**Minors** – Art therapy, astronomy, coaching, commercial music, communication studies, cybersecurity, entrepreneurship, entertainment business, graphic interactive design, health and medical sciences, human resources, juvenile justice, media analysis, medical physics, neuroscience, public health, social innovation and entrepreneurship, sports communication, sports medicine

**Emphases** – Archaeology, astrophysics, ceramics, communication training and development, event planning, geospatial analysis



**Preprofessional** – Athletic training, audiology, chiropractic, dentistry, engineering, law, medicine, occupational therapy, optometry, pharmacy, physical therapy, physician assistant, veterinary science

## STUDENT ACTIVITIES

115+ student activities, clubs, and organizations in fine arts, culture, academics, leadership, and professional development, as well as intercollegiate and intramural athletics and club sports. Visit [mnstate.edu/dragoncentral](http://mnstate.edu/dragoncentral) or [MinnState.edu](http://MinnState.edu) for a complete list.

## CAMPUS HIGHLIGHTS

- » 94.6 percent success rate (88.7 percent graduates employed in their field + 5.9 percent graduates continuing their education) (2019 Graduate Follow-up Survey)
- » Students regularly win national awards in film, education, music, art and design, business, and journalism
- » Recent accolades: U.S. News & World Report Best Online Programs; 20 Best Online Bachelor's in Project Management Programs; 10 Most Affordable Nursing Degrees in Minnesota; Top Online Supply Chain Management Degree; Top 50 Best Value Bachelor's in Construction Management

- » Graduate programs and certificates in the areas of education, business, healthcare, counseling, and more
- » Student-to-faculty ratio of 18:1 encourages undergraduate participation in faculty-mentored research and creative projects
- » Paseka School of Business maintains prestigious AACSB International accreditation; project management is accredited by the Project Management Institute
- » Success in athletics includes an All-American in track and field, national qualifiers in wrestling and track and field, men's basketball qualifying for the NCAA tournament for the fifth time in 10 years, women's basketball recording a 21st straight winning season, women's tennis advancing to the NSIC tournament semifinals for a third consecutive year, and more than a dozen all-conference performers

## VISIT

We're excited to show you our beautiful campus and to create a personalized visit that meets your needs. We offer in-person visits, online conversations, and meetings with faculty. Please go to [mnstate.edu/visit](http://mnstate.edu/visit) to schedule your visit.



# Southwest Minnesota State University



[smsu.edu](https://smsu.edu)

2021-22 Tuition and Fees: \$8,232



## MARSHALL

**Admissions:** 507-537-6286

**TTY:** 800-627-3529

1501 State St.  
Marshall, MN 56258

**FAFSA Code:** 002375



**7,170** Students Served

**30%** Full-time // **70%** Part-time

**12%** Students of Color

**61%** Female

**39%** Male

**0%** Unknown/Other



STUDENT  
ACTIVITIES



INTERCOLLEGIATE  
ATHLETICS



ON-CAMPUS  
HOUSING

## DEGREES OFFERED

Associate of Arts, Associate of Science, Bachelor of Applied Science, Bachelor of Arts, Bachelor of Science, Bachelor of Science in Nursing, Certificate, Education Specialist, Graduate Certificate, Master of Business Administration, Master of Science

## PROGRAM HIGHLIGHTS

Business management, early childhood education, elementary teacher education, exercise science, biology, agricultural education, RN to BSN, culinology, hospitality management, agronomy, agricultural solutions, broadcasting and digital media, professional writing and communication, supply chain management, environmental science, creative writing, teachers of English as a second language, community psychology and health promotion,

data science, social work; 13 degrees offered totally online; Graduate: Physical Education-Coaching of Sport; Certificate: cybersecurity

## SPECIAL OPTIONS

**Minors** – Advertising design, art/graphic design, criminal justice, pre-law, developmental adapted PE, coaching, physics, public administration, social welfare, acting/directing, hotel/lodging management, indigenous nations and Dakota studies, nutrition, public relations, design technical theater, writing, Hispanic studies, human resource management, supply chain management, reading, religious studies, women's studies, filmmaking, health communication

**Emphases** – Sports management, recreation, public relations, farm management, ag finance, graphic design, human resource management,

supply chain management, music management, culinary management, hotel management, event planning, allied health, financial planning and investments, health care administration, exercise specialist

**Preprofessional** – Chiropractic, dentistry, engineering, law, medicine, nursing, occupational therapy, optometry, pharmacy, physical therapy, veterinary medicine, entrepreneurship, health care administration

## STUDENT ACTIVITIES

SMSU offers 90+ student activities, clubs, and organizations related to fine arts, culture, academics, leadership, professional development, as well as intercollegiate athletics, intramural athletics, and esports. Visit [smsu.edu](https://smsu.edu) or [MinnState.edu](https://MinnState.edu) for a complete list.

## CAMPUS HIGHLIGHTS

- » SMSU ranked #1 in the country for General Education and Teaching English/French by Teachingdegreeseearch.com
- » SMSU ranked third in the U.S. for 2021-22 Military Friendly® Schools/Military Friendly® Spouse Schools
- » One tuition rate for 12 to 18 credits; out-of-state students pay in-state tuition
- » The only Research Chefs Association-approved culinology degree in the U.S.

» Exercise science degree offered at three community colleges: Normandale, Anoka-Ramsey, and North Hennepin

» Undergraduate Research Conference allows 35 percent of students to present scholarly work

» Center of Innovation and Entrepreneurship encourages experiential learning through collaboration with the Southwest Marketing Advisory Center and Small Business Development Center

» Residential Living and Learning communities let house residents share academic or special interests, including: agriculture; culinology; access, opportunity, success; fine arts; exercise science; and Mustang Traditions

» The Honors Program allows qualified students to build their own rigorous curriculum

» 99 percent of recent grads are employed; 10 percent continue to grad school

» Our Mustang Promise: You'll find a job, or your first semester of SMSU graduate school is free

## VISIT

You may visit any time during the week, on a Mustang Saturday, or on a special visit day throughout the year. Visit [smsu.edu](https://smsu.edu) for details.

# St. Cloud State University

[stcloudstate.edu](http://stcloudstate.edu)

2021–22 Tuition and Fees: \$7,882



## ST. CLOUD

**Admissions:** 320-308-2244

**TTY:** 800-627-3529

720 4th Ave. S.

St. Cloud, MN 56301

**FAFSA Code:** 002377



**13,937** Students Served

**61%** Full-time // **39%** Part-time

**19%** Students of Color

**54%** Female

**45%** Male

**1%** Unknown/Other



STUDENT  
ACTIVITIES



INTERCOLLEGIATE  
ATHLETICS



ON-CAMPUS  
HOUSING

## DEGREES OFFERED

Associate of Arts, Associate of Science, Bachelor of Arts, Bachelor of Elective Studies, Bachelor of Fine Arts, Bachelor of Music, Bachelor of Science, Bachelor of Science in Engineering, Certificate, Doctor of Education, Executive Masters in Engineering Management, Graduate Certificate, Master of Arts, Master of Business Administration, Master of Engineering Management, Master of Public Administration, Master of Science, Master of Science Electrical Engineering, Master of Social Work, Professional Science Master's, Specialist

## PROGRAM HIGHLIGHTS

Applied behavior analysis, applied clinical research, biological sciences, business administration, criminal justice, cultural resource management (applied archaeology),

cybersecurity, education, engineering management, finance and accounting, film studies, geography, gender and women's studies, gerontology, hospitality and tourism, hydrology, management, marketing, mass communications, meteorology, nursing (RN-to-BSN completion), psychology, public administration, radiologic technology (X-ray and diagnostic imaging), real estate, regulatory affairs and services, small business management, social work, software engineering, statistics, environmental engineering, addiction counseling

## SPECIAL OPTIONS

**Minors** – African studies, American Indian studies, art entrepreneurship, Chicano/Chicana studies, Asian Pacific American studies, East Asian studies, ethnic studies, geographic

information science, German, gerontology, human relations, military science, religious studies, technology studies, optics, teaching English as a second language, heritage preservation, forensic science

**Emphases** – Community counseling, astrophysics, linguistics, creative writing, construction management, electro-optics, critical applied sociology, graphic design, journalism, strategic communications, creative media production, piano performance, data analytics, biochemistry, human resources management, engineering science

**Preprofessional** – Chiropractic, dentistry, law, medicine, optometry, physical therapy, physician assistant, veterinary medicine, pharmacy, occupational therapy, mortuary science

## STUDENT ACTIVITIES

200+ student activities, clubs, and organizations, as well as intercollegiate and intramural athletics, including NCAA Division I and II teams built on success. Visit [stcloudstate.edu](http://stcloudstate.edu) or [MinnState.edu](http://MinnState.edu) for a complete list.

## CAMPUS HIGHLIGHTS

- » 95 percent of graduates employed in a related field within one year of graduation
- » More than 200 undergraduate programs and 60 graduate programs

- » A top investment in PayScale's "Best Value Colleges in Minnesota" study
- » 2021 Military Friendly Designated school— #4 in the nation
- » 20:1 student-to-faculty ratio
- » 500+ scholarships available through Huskies Scholarships
- » Indoor rock climbing wall, fitness center, pool, and fieldhouse with a 200-meter indoor track
- » More than 1,200 international students from more than 90 countries in 2020–21
- » More than 30 Education Abroad opportunities on six continents
- » Five-time Division II Huskies Wrestling national champions
- » Nationally renowned NCAA Division I hockey at the Herb Brooks National Hockey Center
- » Located on the banks of the Mississippi River

## VISIT

Go to [stcloudstate.edu/visit](http://stcloudstate.edu/visit) to schedule a campus visit, check out an upcoming Preview Day, or take a virtual tour to see how you'll unleash amazing at St. Cloud State. Daily campus visits are at 9:30 a.m. and 1:30 p.m., Monday–Friday.



# Winona State University

[winona.edu](http://winona.edu)

2021–22 Tuition and Fees: \$8,100



WINONA



Admissions: 507-457-5100

TTY: 877-627-3848

P.O. Box 5838

Winona, MN 55987

FAFSA Code: 002394



**7,804** Students Served

**83%** Full-time // **17%** Part-time

**14%** Students of Color

**66%** Female

**33%** Male

**1%** Unknown/Other



STUDENT  
ACTIVITIES



INTERCOLLEGIATE  
ATHLETICS



ON-CAMPUS  
HOUSING

## DEGREES OFFERED

Associate of Arts, Bachelor of Applied Science, Bachelor of Arts, Bachelor of Music, Bachelor of Science, Bachelor of Science-Teaching, Bachelor of Social Work, Doctor of Education, Doctor of Nursing Practice, Graduate Certificate, Master of Arts, Master of Science, Master of Social Work, Professional Science Master's, Specialist

## PROGRAM HIGHLIGHTS

Popular programs include: nursing, elementary education/K–6, business administration, biology, exercise and rehabilitative science, psychology, social work, marketing; other highlights include: composite materials engineering, clinical laboratory science, computer science, criminal justice, data science, geoscience, global studies, healthcare leadership and administration, individualized studies, management information

systems, mass communication, music, public administration, public health, recreation and tourism, RN-BSN, special education, statistics, theater arts, therapeutic recreation

## SPECIAL OPTIONS

**Minors** – Highlights include: adventure tourism, arts administration, bilingual/bicultural education, coaching, dance, entrepreneurship, international business, professional selling, and women's, gender, and sexuality studies

**Emphases** – Highlights include: advertising, biochemistry, clinical exercise science, creative digital media, ecology, environmental science, epidemiology, exercise science, I-Design, leadership and advocacy, nutrition, movement science, public relations

**Preprofessional** – Athletic training, chiropractic



medicine, dentistry, engineering, forensics, law, medicine, occupational therapy, optometry, pharmacy, physical therapy, physician assistant, podiatry, veterinary medicine

## STUDENT ACTIVITIES

Winona State offers 160+ student clubs and organizations related to a variety of interests, as well as intercollegiate and intramural athletics. Visit [winona.edu](http://winona.edu) or [MinnState.edu](http://MinnState.edu) for a complete list.

## CAMPUS HIGHLIGHTS

- » Results – 97 percent of graduates are hired in a field related to their degree
- » Student Success – with the #1 student success rate within the Minnesota State system, our faculty and staff go above and beyond to ensure students achieve their goals
- » Affordable – one of America's 100 Best College Buys for 25 consecutive years, 98 percent of first-year students also benefit from some form of financial aid
- » Technology – committed to technology in the classroom, our eWarrior program provides students with a laptop and full-service tech support
- » Internships – all of our degree programs offer opportunities for internships with some of the Midwest's most prestigious organizations

- » Service Learning – community engagement is important at Winona State, with most of our programs providing students a chance to use what they've learned to help others
- » Reputation – the oldest member of the Minnesota State system, our classes are small in size and taught by expert faculty
- » Athletics – home to 14 NCAA Division II and one NCAA Division III varsity sports teams
- » Health and Wellness – our Integrated Wellness Complex aligns health, wellness, academic, and recreational programs and services into a single facility
- » Scenic Beauty – widely known for our stunning natural setting, Winona State is nestled between picturesque bluffs and the Mississippi River—meaning that rock climbing, paddle boarding, hiking, kayaking, and more are within a mile of campus
- » Winona – the city is home to a wide range of art, music, and theatre opportunities, as well as museums, local boutiques, and festivals

## VISIT

Experience the beauty of WSU's campus for yourself. We offer various opportunities to see campus and connect with an admissions counselor—both in person and online. Learn what options are currently available at [winona.edu/visit](http://winona.edu/visit).

# ENDLESS OPPORTUNITIES

The following pages offer charts that show the academic program opportunities available at your state colleges and universities.

## » Name Abbreviations for Minnesota State Colleges

ATCC – Alexandria Technical & Community College  
CLC – Central Lakes College  
DCTC – Dakota County Technical College  
FDLTCC – Fond du Lac Tribal & Community College  
HTC – Hennepin Technical College  
HCC – Hibbing Community College  
ICC – Itasca Community College  
LSC – Lake Superior College  
Minneapolis College – Minneapolis Community and Technical College  
MSC Southeast – Minnesota State College Southeast  
M State – Minnesota State Community and Technical College  
NHCC – North Hennepin Community College  
NCTC – Northland Community & Technical College  
NTC – Northwest Technical College  
PTCC – Pine Technical & Community College  
RCTC – Rochester Community and Technical College  
SCTCC – St. Cloud Technical & Community College  
SCC – South Central College

## INTERESTED?

### COLLEGE ACADEMIC PROGRAM GRID [PAGES 56–60](#)

Check out the academic programs available at your state colleges that may lead to an associate degree, certificate, or diploma. These are great programs to launch a new career or get started on the path to a bachelor's degree.

### BACHELOR'S DEGREE PARTNERSHIP PROGRAM [PAGE 64](#)

The seven state universities offer a selection of bachelor's degree programs that can be completed at various community college campuses, allowing you to earn your degree from a university without leaving the comfort of the college setting. This grid will help you see the programs available and locations where they are offered.

### UNIVERSITY ACADEMIC PROGRAM GRID [PAGES 66–67](#)

Learn about the programs available at your state universities that may lead to a bachelor's degree and beyond, or help you launch your career.

### ATHLETICS PROGRAM GRIDS [PAGES 61, 68](#)

Many of your state colleges and universities have an array of sports that provide you the opportunity to enjoy a student-athlete experience. These grids will help you quickly identify which colleges and universities offer your sport.



# State College PROGRAMS

For a complete list of programs, visit [MinnState.edu/programs](https://www.mnstate.edu/programs).

See page 64 for the bachelor's degree programs available on college campuses.

For a complete list of programs, visit <a href="https://www.mnstate.edu/programs">MinnState.edu/programs</a> .																																																		
See page 64 for the bachelor's degree programs available on college campuses.																																																		
		ATCC, Alexandria	Anoka Tech, Anoka	Anoka-Ramsey, Cambridge	Anoka-Ramsey, Coon Rapids	CLC, Brainerd	CLC, Staples	Century, White Bear Lake	DCTC, Rosemount	FDLTCC, Cloquet	HCC, Hibbing	HTC, Brooklyn Park	HTC, Eden Prairie	ICC, Grand Rapids	Inver Hills, Inver Grove Heights	LSC, Duluth	MSC Southeast, Red Wing	MSC Southeast, Winona	M State, Detroit Lakes	M State, Fergus Falls	M State, Moorhead	M State, Wadena	Mesabi Range, Eveleth	Mesabi Range, Virginia	Minneapolis College	Minnesota West, Canby	Minnesota West, Granite Falls	Minnesota West, Jackson	Minnesota West, Pipestone	Minnesota West, Worthington	Normandale, Bloomington	NHCC, Brooklyn Park	NCTC, East Grand Forks	NCTC, Thief River Falls	NTC, Bemidji	PTCC, Pine City	Rainy River, International Falls	Ridgewater, Hutchinson	Ridgewater, Willmar	Riverland, Albert Lea	Riverland, Austin	Riverland, Owatonna	RCTC, Rochester	Saint Paul College	SCTCC, St. Cloud	SCC, Faribault	SCC, North Mankato	Vermilion, Ely	MinnState.edu/online	
AGRICULTURAL AND FOOD INDUSTRIES	Agribusiness Service Technician																																																	
	Agricultural Business and Production																																																	
	Agricultural Science and Technology																																																	
	Culinary Arts and Food Service																																																	
	Farm Business Management																																																	
	Food Processing Safety																																																	
	Food Sciences																																																	
	Golf Course/Turf Management																																																	
	Horticulture, Landscaping, and Greenhouse																																																	
Veterinary Technology																																																		
ARCHITECTURE AND CONSTRUCTION	Building Inspection																																																	
	Building/Property Maintenance																																																	
	Cabinetmaking and Interior Finishing																																																	
	Carpentry and Building Trades																																																	
	Concrete/Masonry/Bricklaying																																																	
	Construction Management																																																	
	Drafting – Architectural																																																	
	Electrician and Electrical Maintenance																																																	
	Heating, Ventilation, Air Conditioning, and Refrigeration																																																	
	Heavy Equipment Operation																																																	
	Interior Design																																																	
	Plumbing/Pipefitting																																																	
	Sheet Metal																																																	
BUSINESS AND MANAGEMENT	Accounting																																																	
	Administrative Assistant and Support																																																	
	Banking and Finance																																																	
	Business Administration and Management																																																	
	Computer Software Specialist																																																	

For a complete list of programs, visit [MinnState.edu/programs](https://www.mnstate.edu/programs).

## Endless Opportunities



For a complete list of programs, visit [MinnState.edu/programs](https://www.minnstate.edu/programs).

58 // Minnesota State





For a complete list of programs, visit [MinnState.edu/programs](https://www.minnstate.edu/programs).

For a complete list of programs, visit [MinnState.edu/programs](https://www.minnstate.edu/programs).

# INTERCOLLEGIATE ATHLETICS – COLLEGES

Athletics programs at our colleges provide opportunities for many student-athletes to compete in their favorite sports and for all students to participate as fans and to show their school spirit! To learn more about the opportunities and affiliations at a particular institution, please visit its website.



		ATCC	Anoka-Ramsey	Central Lakes College	Century College	DCTC	FDLTCC	Hibbing Community College	Itasca Community College	Lake Superior College	Mesabi Range College	M State	Minnesota West	NCTC	PTCC	Rainy River	Ridgewater College	Riverland Community College	RCTC	SCTCC	Vermilion Community College
MEN'S ATHLETICS	Baseball	♦	♦	♦	♦	♦		♦	♦		♦	♦	♦	♦		♦	♦	♦	♦	♦	♦
	Basketball		♦	♦		♦	♦	♦	♦		♦	♦	♦	♦		♦	♦	♦	♦	♦	♦
	Football			♦			♦		♦		♦	♦	♦						♦		♦
	Golf	♦										♦									
	Soccer		♦			♦				♦			♦					♦			
	Wrestling								♦				♦	♦			♦		♦		
WOMEN'S ATHLETICS	Basketball		♦	♦			♦	♦	♦		♦	♦	♦	♦		♦	♦	♦	♦	♦	♦
	Golf	♦										♦	♦								
	Soccer		♦			♦				♦			♦	♦		♦	♦	♦	♦		
	Softball		♦	♦		♦		♦	♦		♦	♦	♦	♦		♦	♦	♦	♦	♦	♦
	Volleyball		♦	♦	♦	♦	♦	♦	♦		♦	♦	♦	♦		♦	♦	♦	♦	♦	♦
CO-ED	Clay Target	♦						♦	♦	♦		♦	♦	♦	♦		♦				♦
	Cycling									♦											
	Esports	♦																			
	Fishing	♦																			

120

different athletic teams are offered across 15 different sports at our participating colleges.







# TRANSFER PATHWAYS

Minnesota State Transfer Pathways make it easy to complete a specific associate degree at a Minnesota State college and transfer to a Minnesota State university to earn a bachelor's degree without losing credits or taking extra courses.\* Transfer Pathways can be a great way to save time and money as you work toward graduation.

\*Students must meet special admission requirements for the major and are not guaranteed admission into the major itself. Call or visit the college or university you're interested in to learn more.



# TRANSFER PATHWAYS

	DEGREE START																												DEGREE FINISH												
	ATCC	Anoka Tech	Anoka-Ramsey	CLC	Century	DCTC	FDLTCC	HCC	HTC	ICC	Inver Hills	LSC	MSC Southeast	M State	Mesabi Range	Minneapolis College	Minnesota West	Normandale	NHCC	NCTC	NTC	PTCC	Rainy River	Ridgewater	Riverland	RCTC	Saint Paul College	SCTCC	SCC	Vermilion	Bemidji State	Metropolitan State	Minnesota State Mankato	MSU Moorhead	St. Cloud State	Southwest Minnesota State	Winona State				
Accounting	♦		♦		♦				♦	♦	♦		♦	♦		♦		♦	♦						♦	♦						♦	♦	♦	♦	♦	♦	♦	♦		
Art			♦	♦	♦			♦			♦	♦		♦		♦		♦	♦						♦								♦	♦	♦	♦	♦	♦	♦		
Biology	♦		♦	♦	♦			♦			♦	♦		♦		♦		♦	♦							♦	♦	♦	♦	♦	♦			♦	♦	♦	♦	♦	♦	♦	
Business	♦		♦		♦			♦	♦	♦	♦	♦	♦	♦		♦		♦	♦	♦	♦	♦	♦				♦	♦	♦	♦	♦	♦	♦		♦	♦	♦	♦	♦	♦	♦
Chemistry			♦	♦	♦			♦			♦	♦				♦		♦	♦						♦	♦	♦								♦	♦	♦	♦	♦	♦	
Communication Arts and Literature Education																							♦											♦	♦	♦	♦	♦	♦		
Communication Studies					♦			♦			♦	♦	♦			♦		♦	♦					♦	♦	♦	♦	♦							♦	♦	♦	♦	♦	♦	
Computer Science			♦		♦						♦					♦		♦	♦			♦				♦	♦	♦							♦	♦	♦	♦	♦	♦	
Criminal Justice											♦					♦		♦						♦	♦	♦	♦	♦							♦	♦	♦	♦	♦	♦	
Early Childhood Education	♦								♦	♦			♦	♦		♦				♦					♦	♦	♦	♦				♦			♦	♦	♦	♦	♦	♦	
Economics	♦			♦				♦			♦	♦	♦			♦		♦	♦	♦	♦							♦						♦	♦	♦	♦	♦	♦	♦	
Elementary Education			♦								♦					♦	♦	♦						♦					♦						♦	♦	♦	♦	♦	♦	
English	♦		♦					♦			♦	♦	♦			♦		♦	♦				♦	♦	♦		♦	♦							♦	♦	♦	♦	♦	♦	
Exercise Science			♦	♦	♦	♦					♦	♦	♦			♦		♦	♦				♦	♦	♦											♦	♦	♦	♦	♦	
History	♦				♦			♦			♦	♦	♦	♦		♦		♦	♦	♦	♦			♦	♦	♦	♦	♦								♦	♦	♦	♦	♦	♦
Law Enforcement	♦				♦			♦			♦					♦	♦	♦	♦					♦	♦	♦	♦	♦								♦	♦	♦	♦	♦	♦
Mass Communication			♦																						♦	♦										♦	♦	♦	♦	♦	
Management Information Systems																																						♦	♦	♦	
Mathematics					♦			♦			♦	♦				♦		♦	♦							♦				♦						♦	♦	♦	♦	♦	♦
Political Science			♦								♦		♦	♦		♦		♦	♦										♦								♦	♦	♦	♦	
Pre-Social Work	♦			♦							♦		♦			♦											♦									♦	♦	♦	♦	♦	
Psychology	♦		♦	♦	♦			♦			♦	♦	♦	♦		♦		♦	♦					♦	♦	♦	♦	♦	♦	♦							♦	♦	♦	♦	♦
Sociology	♦		♦	♦	♦			♦			♦	♦	♦			♦		♦		♦							♦	♦									♦	♦	♦	♦	♦
Spanish			♦	♦							♦					♦		♦											♦								♦	♦	♦	♦	♦
Special Education			♦								♦					♦		♦						♦													♦	♦	♦	♦	
Theater, Musical Theater, Production and Design			♦		♦						♦			♦		♦		♦	♦						♦												♦	♦	♦	♦	♦

For a complete list, visit [MinnState.edu/pathways](https://www.mnstate.edu/pathways).





# Bachelor's Degree Partnership Program

The state universities offer a selection of bachelor's degree programs that can be completed at some two-year colleges. See **PAGE 11** for more details.

PROGRAM TITLE	PROGRAM LOCATION	UNIVERSITY
<b>BUSINESS AND MANAGEMENT</b>		
Accounting	Minneapolis College	Metropolitan State
Applied Leadership	Normandale	Minnesota State Mankato
Business	Anoka-Ramsey	St. Cloud State
Business Administration	Century College	Metropolitan State
Business Administration	Minneapolis College	Metropolitan State
Business Administration	Normandale	Metropolitan State
Business Administration	NHCC	Metropolitan State
Business Administration	RCTC	Winona State
Economics (General)	Minneapolis College	Metropolitan State
Economics (General)	NHCC	Metropolitan State
Finance	Minneapolis College	Metropolitan State
Human Resource Management	Minneapolis College	Metropolitan State
Human Resource Management	RCTC	Winona State
International Business	Minneapolis College	Metropolitan State
International Commerce	Minneapolis College	Metropolitan State
Management	Minneapolis College	Metropolitan State
Organizational Administration	HTC	Metropolitan State
Organizational Administration	Minneapolis College	Metropolitan State
<b>EDUCATION</b>		
Education	RCTC	Winona State
Education	Riverland	Winona State
Elementary Education	Anoka-Ramsey	Bemidji State
Elementary Education	Normandale	Minnesota State Mankato
Special Education	Normandale	Minnesota State Mankato
Special Education	NHCC	St. Cloud State
<b>ENGINEERING AND ENGINEERING SCIENCE</b>		
Integrated Engineering	Normandale	Minnesota State Mankato
Integrated Engineering	Mesabi Range	Minnesota State Mankato
Software Engineering	Anoka-Ramsey	St. Cloud State
Software Engineering	Normandale	St. Cloud State
<b>HEALTH</b>		
Dental Hygiene	Century College	Metropolitan State
Dental Hygiene	Lake Superior College	Metropolitan State
Dental Hygiene	M State	Metropolitan State
Dental Hygiene	Normandale	Metropolitan State
Exercise Science	Anoka-Ramsey	SMSU
Exercise Science	Normandale	SMSU
Exercise Science	NHCC	SMSU
Medical Laboratory Science	NHCC	St. Cloud State

PROGRAM TITLE	PROGRAM LOCATION	UNIVERSITY
<b>HEALTH</b>		
Nursing	Century College	Bemidji State
Nursing	Anoka-Ramsey	Metropolitan State
Nursing	Century College	Metropolitan State
Nursing	Inver Hills	Metropolitan State
Nursing	Normandale	Metropolitan State
Nursing	NHCC	Metropolitan State
Nursing	Ridgewater College	Metropolitan State
Nursing	RCTC	Winona State
Nursing	Anoka-Ramsey	Bemidji State
<b>HUMAN AND PERSONAL SERVICES</b>		
Alcohol and Drug Counseling	Minneapolis College	Metropolitan State
Human Services	Minneapolis College	Metropolitan State
Human Services	NHCC	Metropolitan State
Psychology	Normandale	Metropolitan State
Psychology	NHCC	Metropolitan State
Social Work	RCTC	Winona State
<b>INFORMATION TECHNOLOGY</b>		
Computer Science	Normandale	Metropolitan State
Computer Science	RCTC	Winona State
Management Information Systems	Minneapolis College	Metropolitan State
<b>LAW, PUBLIC ADMINISTRATION AND SAFETY</b>		
Criminal Justice	HTC	Metropolitan State
Law Enforcement	HTC	Metropolitan State
<b>LIBERAL ARTS AND SCIENCES</b>		
Individualized Studies	HTC	Metropolitan State
Individualized Studies	Minneapolis College	Metropolitan State
Individualized Studies	Normandale	Metropolitan State
Individualized Studies	RCTC	Winona State
Individualized Studies	Normandale	Metropolitan State
Individualized Studies – Transportation Management Focus	DCTC	Metropolitan State
Theater	Minneapolis College	Metropolitan State
Theater	Normandale	SMSU
<b>MEDIA AND COMMUNICATIONS</b>		
Communication Studies	Normandale	Minnesota State Mankato
Marketing	Minneapolis College	Metropolitan State

For a complete list, visit [MinnState.edu](http://MinnState.edu).



# State University UNDERGRADUATE PROGRAMS

For a complete list of programs,  
visit [MinnState.edu/programs](http://MinnState.edu/programs).

	Benidji State	Metropolitan State	Minnesota State Mankato	MSU Moorhead	St. Cloud State	Southwest Minnesota State	Winona State	MinnState.edu/online
Accounting	◆	◆	◆	◆	◆	◆	◆	
Advertising and Public Relations				◆	◆	◆	◆	◆
Agricultural Business and Production			◆			◆		
Agricultural Science and Technology			◆			◆		
Aircraft Pilot and Navigator			◆					
American Indigenous Studies	◆							
Anthropology/Archaeology			◆	◆	◆			
Art History			◆	◆				
Art/Studio Arts	◆	◆	◆	◆	◆	◆	◆	
Audio Technology/Sound Arts				◆				
Aviation Management and Airway Science			◆					
Banking and Finance		◆	◆	◆	◆	◆	◆	◆
Biological and Natural Sciences	◆	◆	◆	◆	◆	◆	◆	
Biotechnology/Biochemistry		◆	◆	◆	◆			
Broadcasting, Radio, and Television	◆		◆	◆	◆	◆		
Business Administration and Management	◆	◆	◆	◆	◆	◆	◆	◆
Chemistry	◆	◆	◆	◆	◆	◆	◆	
Cinematography and Video Production				◆				
Cognitive Science			◆					
Communication Sciences and Disorders			◆	◆	◆			
Communications Studies		◆	◆	◆	◆	◆	◆	
Community Health Services	◆		◆	◆	◆	◆	◆	
Computational Science		◆				◆		
Computer Engineering Technology			◆	◆				
Computer Networking and System Administration			◆	◆				
Computer Programming		◆	◆	◆				
Computer Science and Information Systems	◆	◆	◆	◆	◆	◆	◆	
Computer Security and Forensics/IT Auditing			◆	◆	◆			
Construction Management	◆		◆	◆	◆			
Counseling – Chemical Dependency	◆	◆	◆	◆	◆			
Criminal Justice/Corrections	◆	◆	◆	◆	◆	◆	◆	
Culinary Arts and Food Service						◆		
Customer Service/Call Center				◆				◆
Dance			◆					
Database Technologies and Administration				◆	◆	◆		
Dental Hygienist		◆	◆					◆
Digital Arts, Computer Animation, and Multimedia				◆	◆			
Early Childhood Studies		◆			◆	◆		
East Asian Studies								
Economics	◆	◆	◆	◆	◆	◆	◆	
Education – General	◆		◆			◆		
Education – Instructional Technology				◆				
Engineering – Automotive				◆				
Engineering – Civil and Surveying				◆	◆			
Engineering – Composite Materials							◆	
Engineering – Computer Hardware/Software			◆	◆				◆
Engineering – Electrical			◆	◆				
Engineering – General			◆	◆	◆	◆	◆	
Engineering – Manufacturing				◆				
Engineering – Mechanical			◆	◆				

	Benidji State	Metropolitan State	Minnesota State Mankato	MSU Moorhead	St. Cloud State	Southwest Minnesota State	Winona State	MinnState.edu/online
Engineering Management	◆							◆
Engineering Technology – Electronic			◆					
Engineering Technology – General	◆							
Engineering Technology – Manufacturing	◆		◆		◆			
English – Language, Literature, Writing	◆	◆	◆	◆	◆	◆	◆	
Entrepreneurship	◆	◆	◆	◆	◆	◆	◆	
Environmental and Earth Sciences	◆	◆	◆	◆	◆	◆	◆	
Ethnic and Cultural Studies		◆	◆					
Family Consumer Science			◆					
Farm Business Management					◆			
Film Studies			◆	◆	◆		◆	
Food Processing Safety			◆					
Geographical Information Systems (GIS)	◆	◆	◆	◆	◆			
Geography and Cartography	◆	◆	◆					
Gerontology			◆	◆				◆
Global Studies/International Relations			◆	◆	◆		◆	
Graphic Design and Visual Communications	◆		◆	◆	◆			
Health Information Technology			◆					
Health Services Administration		◆	◆	◆	◆	◆	◆	
Health, Fitness, and Sport Science	◆	◆	◆	◆	◆	◆	◆	
History	◆	◆	◆	◆	◆	◆	◆	
Hotel, Restaurant, and Casino Management					◆	◆		
Human and Community Services		◆						
Human Resources Management	◆	◆	◆	◆	◆	◆	◆	
Humanities			◆	◆	◆			
Individualized and Multidisciplinary Studies	◆	◆	◆	◆	◆	◆	◆	
Insurance				◆	◆			
International Business		◆	◆	◆	◆	◆	◆	
Languages – French			◆					
Languages – German			◆					
Languages – Spanish	◆	◆	◆	◆	◆	◆	◆	
Latin American Studies					◆			
Law Enforcement	◆	◆	◆	◆	◆			
Legal Studies					◆	◆		
Liberal Arts and Sciences – AA Transfer	◆	◆	◆	◆	◆	◆	◆	
Management Information Systems		◆	◆	◆	◆	◆	◆	
Manufacturing and Industrial Technology	◆				◆			
Manufacturing Operations Management	◆	◆	◆	◆			◆	
Marketing and Sales	◆	◆	◆	◆	◆	◆	◆	
Mass Communication	◆			◆	◆	◆	◆	
Mass Media	◆	◆	◆	◆	◆	◆	◆	
Mathematics	◆	◆	◆	◆	◆	◆	◆	
Medical Technology/Clinical Lab Science	◆	◆	◆	◆	◆	◆	◆	
Meteorology					◆			
Music	◆	◆	◆	◆	◆	◆	◆	
Music Industry Management						◆		
Nuclear Medical Technology					◆			
Nursing	◆	◆	◆	◆	◆	◆	◆	
Nursing – Advanced Practice						◆		
Paralegal								◆

	Benidji State	Metropolitan State	Minnesota State Mankato	MSU Moorhead	St. Cloud State	Southwest Minnesota State	Winona State	MinnState.edu/online
Parks and Recreation			◆			◆	◆	
Philosophy	◆	◆	◆			◆	◆	
Photography/Photographic Technology						◆	◆	
Physics			◆		◆	◆	◆	
Political Science	◆		◆	◆	◆	◆	◆	
Project Management				◆	◆	◆	◆	
Psychology	◆	◆	◆	◆	◆	◆	◆	
Psychology – Counseling					◆	◆	◆	
Public Administration		◆				◆	◆	
Publishing								
Radiologic Technology						◆		
Real Estate/Property Management						◆		
Scandinavian Studies			◆					
Screenwriting		◆						
Social Sciences/Studies	◆	◆	◆	◆	◆	◆	◆	
Social Work	◆	◆	◆	◆	◆	◆	◆	
Sociology	◆	◆	◆	◆	◆	◆	◆	
Sports Management	◆	◆	◆	◆	◆			
Statistics			◆		◆		◆	
Surgical Technology								◆
Teaching – Agriculture						◆		
Teaching – Art						◆	◆	
Teaching – Biology/Life Sciences	◆	◆	◆	◆	◆	◆	◆	
Teaching – Business Education						◆	◆	
Teaching – Career and Technical	◆					◆		
Teaching – Chemistry	◆		◆	◆	◆	◆	◆	
Teaching – Communication Arts and Literature	◆	◆	◆	◆	◆	◆	◆	
Teaching – Early Childhood		◆				◆	◆	
Teaching – Elementary	◆	◆	◆	◆	◆	◆	◆	
Teaching – English as a Second Language					◆	◆	◆	
Teaching – Family Consumer Science			◆					
Teaching – French Language and Culture			◆					
Teaching – German Language and Culture			◆					
Teaching – Health	◆	◆	◆	◆	◆	◆	◆	
Teaching – Mathematics		◆	◆	◆	◆	◆	◆	
Teaching – Music	◆	◆	◆	◆	◆	◆	◆	
Teaching – Physical Education	◆	◆	◆	◆	◆	◆	◆	
Teaching – Physical/Earth Science	◆	◆	◆	◆	◆	◆	◆	
Teaching – Physics						◆	◆	
Teaching – Social Studies/History	◆	◆	◆	◆	◆	◆	◆	
Teaching – Spanish Language and Culture						◆	◆	
Teaching – Special Education						◆	◆	
Teaching – Theater Arts/Dance			◆					
Technology Studies						◆		
Theater Arts and Drama		◆	◆			◆	◆	
Urban Planning/Regional Studies	◆					◆	◆	
Wilderness Management and Wildland Firefighter	◆							
Women and Gender Studies		◆	◆	◆	◆	◆	◆	
Writing – Creative and Technical	◆	◆	◆	◆	◆	◆	◆	

# State University GRADUATE PROGRAMS

For a complete list of programs, visit [MinnState.edu/programs](https://www.mnstate.edu/programs).

	Bemidji State	Metropolitan State	Minnesota State Mankato	MSU Moorhead	St. Cloud State	Southwest Minnesota State	Winona State	MinnState.edu/online
Accounting	◆	◆	◆	◆			◆	◆
Anthropology/Archaeology			◆					◆
Art/Studio Arts		◆						
Banking and Finance				◆				
Biological and Natural Sciences		◆	◆					◆
Biomedical Equipment Technology	◆				◆			
Business Administration and Management		◆	◆	◆		◆	◆	◆
Communication Sciences and Disorders			◆	◆	◆			
Communications Studies	◆	◆						◆
Community Health Services		◆						
Computer Science and Information Systems		◆	◆		◆			◆
Computer Security and Forensics/IT Auditing		◆	◆		◆	◆		◆
Counseling – Chemical Dependency	◆	◆		◆	◆			◆
Counseling – College	◆				◆			
Counseling – K–12	◆		◆	◆	◆		◆	◆
Counseling – Marriage and Family	◆				◆			
Counseling – Mental Health	◆		◆	◆	◆		◆	
Counseling – Rehabilitation					◆			
Criminal Justice/Corrections		◆			◆			◆
Data Analytics					◆			
Database Technologies and Administration		◆	◆					◆
Dental Health Specialist	◆	◆	◆					
Economics					◆			
Education – Administration and Support			◆	◆	◆	◆	◆	◆
Education – Curriculum and Instruction				◆	◆		◆	◆
Education – General			◆			◆	◆	◆
Education – Higher Education Administration	◆			◆	◆			◆
Education – Instructional Technology			◆		◆	◆		◆
Education – Student Development and Learning	◆				◆		◆	◆
Engineering – Computer Hardware/Software	◆				◆			◆
Engineering – Electrical	◆	◆		◆				◆
Engineering – General			◆	◆				
Engineering – Mechanical		◆						
Engineering Management			◆	◆				◆
Engineering Technology – Manufacturing			◆	◆				
English – Language, Literature, Writing			◆		◆	◆	◆	◆

	Bemidji State	Metropolitan State	Minnesota State Mankato	MSU Moorhead	St. Cloud State	Southwest Minnesota State	Winona State	MinnState.edu/online
Environmental and Earth Sciences			◆					
Ethnic and Cultural Studies			◆					◆
Family Consumer Science								
Geographical Information Systems (GIS)	◆		◆		◆			
Geography and Cartography	◆		◆					
Gerontology			◆		◆			
Health Information Technology			◆					
Health Services Administration				◆				◆
Health, Fitness, and Sport Science			◆			◆	◆	
History			◆					
Human and Community Services		◆	◆		◆			◆
Individualized and Multidisciplinary Studies		◆	◆					
Languages – French			◆					
Languages – Spanish			◆					◆
Liberal Arts and Sciences	◆	◆						
Management Information Systems			◆					◆
Mass Media	◆							
Mathematics	◆	◆	◆		◆			◆
Medical Product Regulation	◆				◆			
Medical Technology/Clinical Lab Science	◆				◆			
Music	◆		◆					
Nanotechnology								
Nursing		◆	◆	◆	◆			◆
Nursing – Administration		◆		◆			◆	◆
Nursing – Adult Health/Geriatric							◆	◆
Nursing – Advanced Practice		◆	◆				◆	◆
Nursing – Educator	◆	◆		◆			◆	◆
Parks and Recreation	◆							
Physics			◆					
Project Management	◆	◆	◆					
Psychology	◆	◆	◆					◆
Psychology – Clinical			◆					◆
Psychology – Counseling					◆			
Psychology – Industrial and Organizational	◆		◆		◆			
Psychology – School	◆		◆	◆	◆			
Psychology – Sports			◆					

	Bemidji State	Metropolitan State	Minnesota State Mankato	MSU Moorhead	St. Cloud State	Southwest Minnesota State	Winona State	MinnState.edu/online
Public Administration			◆	◆				◆
Publishing	◆							
Quality Improvement							◆	
Social Work	◆		◆		◆			
Sociology			◆					
Sports Management			◆		◆	◆	◆	◆
Statistics			◆		◆			
Teaching – Biology/Life Sciences			◆		◆			
Teaching – Career and Technical	◆							◆
Teaching – Communication Arts and Literature			◆		◆	◆	◆	◆
Teaching – Early Childhood	◆		◆		◆			◆
Teaching – Elementary			◆		◆			◆
Teaching – English	◆	◆	◆			◆		
Teaching – English as a Second Language			◆		◆	◆		◆
Teaching – French Language and Culture	◆		◆					
Teaching – Health	◆							
Teaching – Humanities/Interdisciplinary	◆		◆					
Teaching – Library/Information Media	◆				◆			◆
Teaching – Mathematics	◆		◆		◆	◆		◆
Teaching – Music	◆			◆	◆			
Teaching – Physical Education	◆					◆		
Teaching – Physical/Earth Science								
Teaching – Physics	◆	◆						
Teaching – Reading/Literacy			◆			◆		◆
Teaching – Social Studies		◆			◆			
Teaching – Special Education	◆		◆	◆	◆	◆	◆	◆
Teaching – Urban Education		◆						
Theater Arts and Drama			◆					
Urban Planning/Regional Studies			◆		◆			◆
Women and Gender Studies	◆		◆					
Writing – Creative and Technical		◆	◆			◆	◆	◆



# INTERCOLLEGIATE ATHLETICS – UNIVERSITIES

Student-athletes attending Minnesota State universities have remarkable opportunities to join elite, nationally competitive programs. The Northern Sun Intercollegiate Conference, one of the nation's premier NCAA Division II leagues, counts six Minnesota State universities among its 16 members. And, three of our universities sponsor NCAA Division I ice hockey.

		Bemidji State	MSU Moorhead	Minnesota State Mankato	St. Cloud State	Southwest Minnesota State	Winona State
MEN'S ATHLETICS	Baseball	◆		◆	◆	◆	◆
	Basketball	◆	◆	◆	◆	◆	◆
	Cross Country		◆	◆		◆	◆
	Football	◆	◆	◆		◆	◆
	Golf	◆		◆			◆
	Hockey	◆		◆	◆		
	Soccer				◆		
	Swimming/Diving				◆		
	Track and Field		◆	◆		◆	
	Wrestling		◆	◆	◆	◆	
WOMEN'S ATHLETICS	Basketball	◆	◆	◆	◆	◆	◆
	Cross Country	◆	◆	◆	◆	◆	◆
	Dance		◆				
	Golf	◆	◆	◆		◆	◆
	Gymnastics						◆
	Hockey	◆		◆	◆		
	Nordic Ski				◆		
	Soccer	◆	◆	◆	◆	◆	◆
	Softball	◆	◆	◆	◆	◆	◆
	Swimming/Diving		◆	◆	◆	◆	◆
	Tennis	◆	◆	◆	◆	◆	◆
	Track and Field	◆	◆	◆	◆	◆	◆
	Volleyball	◆	◆	◆	◆	◆	◆
CO-ED	Cheerleading			◆		◆	
	Esports			◆		◆	
	Wheelchair Basketball					◆	



# » CONNECT WITH US!

Contact the state college or university you are interested in to get started today.

## COLLEGES

### Alexandria Technical & Community College

ALEXANDRIA  
320-762-0221  
[alextech.edu](http://alextech.edu)

### Anoka Technical College

ANOKA  
763-576-4850  
[anokatech.edu](http://anokatech.edu)

### Anoka-Ramsey Community College

CAMBRIDGE  
COON RAPIDS  
763-433-1300  
[anokaramsey.edu](http://anokaramsey.edu)

### Central Lakes College

BRAINERD  
STAPLES  
218-855-8031  
[clcmn.edu](http://clcmn.edu)

### Century College

WHITE BEAR LAKE  
651-779-3300  
[century.edu](http://century.edu)

### Dakota County Technical College

ROSEMOUNT  
651-423-8000  
[dctc.edu](http://dctc.edu)

### Fond du Lac Tribal & Community College

CLOQUET  
218-879-0800  
[fdltcc.edu](http://fdltcc.edu)

### Hennepin Technical College

BROOKLYN PARK  
EDEN PRAIRIE  
952-995-1300  
[hennepintech.edu](http://hennepintech.edu)

### Hibbing Community College

HIBBING  
218-262-7200  
[hibbing.edu](http://hibbing.edu)

### Inver Hills Community College

INVER GROVE HEIGHTS  
651-450-3000  
[inverhills.edu](http://inverhills.edu)

### Itasca Community College

GRAND RAPIDS  
218-322-2340  
[itascacc.edu](http://itascacc.edu)

### Lake Superior College

DULUTH  
218-733-7601  
[lsc.edu](http://lsc.edu)

### Mesabi Range College

EVELETH  
VIRGINIA  
218-749-0313  
[mesabirange.edu](http://mesabirange.edu)

### Minneapolis Community & Technical College

MINNEAPOLIS  
612-659-6200  
[minneapolis.edu](http://minneapolis.edu)

### Minnesota State College Southeast

RED WING  
WINONA  
877-853-8324  
[southeastmn.edu](http://southeastmn.edu)

### Minnesota State Community and Technical College

DETROIT LAKES  
FERGUS FALLS  
MOORHEAD  
WADENA  
877-450-3322  
[minnesota.edu](http://minnesota.edu)

### Minnesota West Community & Technical College

CANBY  
GRANITE FALLS  
JACKSON  
PIPESTONE  
WORTHINGTON  
800-658-2330  
[mnwest.edu](http://mnwest.edu)

### Normandale Community College

BLOOMINGTON  
952-358-8201  
[normandale.edu](http://normandale.edu)

### North Hennepin Community College

BROOKLYN PARK  
763-424-0724  
[nhcc.edu](http://nhcc.edu)

### Northland Community & Technical College

EAST GRAND FORKS  
THIEF RIVER FALLS  
218-683-8800  
[northlandcollege.edu](http://northlandcollege.edu)

### Northwest Technical College

BEMIDJI  
218-333-6600  
[ntcmn.edu](http://ntcmn.edu)

### Pine Technical & Community College

PINE CITY  
320-629-5100  
[pine.edu](http://pine.edu)

### Rainy River Community College

INTERNATIONAL FALLS  
218-285-7722  
[rainyriver.edu](http://rainyriver.edu)

### Ridgewater College

HUTCHINSON  
WILLMAR  
320-222-5200  
[ridgewater.edu](http://ridgewater.edu)

### Riverland Community College

ALBERT LEA  
AUSTIN  
OWATONNA  
507-433-0600  
[riverland.edu](http://riverland.edu)

### Rochester Community and Technical College

ROCHESTER  
507-258-7210  
[rctc.edu](http://rctc.edu)

### Saint Paul College

ST. PAUL  
651-846-1600  
[saintpaul.edu](http://saintpaul.edu)

### South Central College

FARIBAULT  
NORTH MANKATO  
507-389-7220  
[southcentral.edu](http://southcentral.edu)

### St. Cloud Technical & Community College

ST. CLOUD  
320-308-5000  
[sctcc.edu](http://sctcc.edu)

### Vermilion Community College

ELY  
218-235-2191  
[vcc.edu](http://vcc.edu)

## UNIVERSITIES

### Bemidji State University

BEMIDJI  
218-755-2040  
[bemidjistate.edu](http://bemidjistate.edu)

### Metropolitan State University

MINNEAPOLIS  
ST. PAUL  
651-793-1302  
[metrostate.edu](http://metrostate.edu)

### Minnesota State University, Mankato

MANKATO  
507-389-1822  
[mnsu.edu](http://mnsu.edu)

### Minnesota State University Moorhead

MOORHEAD  
218-477-2161  
[mnstate.edu](http://mnstate.edu)

### Southwest Minnesota State University

MARSHALL  
507-537-6286  
[smsu.edu](http://smsu.edu)

### St. Cloud State University

ST. CLOUD  
320-308-2244  
[stcloudstate.edu](http://stcloudstate.edu)

### Winona State University

WINONA  
507-457-5100  
[winona.edu](http://winona.edu)

To order free copies of this Guidebook or download an electronic file, please visit: [MinnState.edu/guide](http://MinnState.edu/guide).





# MINNESOTA STATE

[MinnState.edu](https://MinnState.edu)

STAY IN TOUCH!

 [Facebook.com/MinnStateEdu](https://Facebook.com/MinnStateEdu)

 [Twitter.com/MinnStateEdu](https://Twitter.com/MinnStateEdu)

This document is available in alternative formats to individuals with disabilities.  
To request an alternate format, contact Human Resources at 651-201-1664.

Individuals with hearing or speech disabilities may contact us  
via their preferred Telecommunications Relay Service.

Minnesota State is an affirmative action, equal opportunity employer and educator.